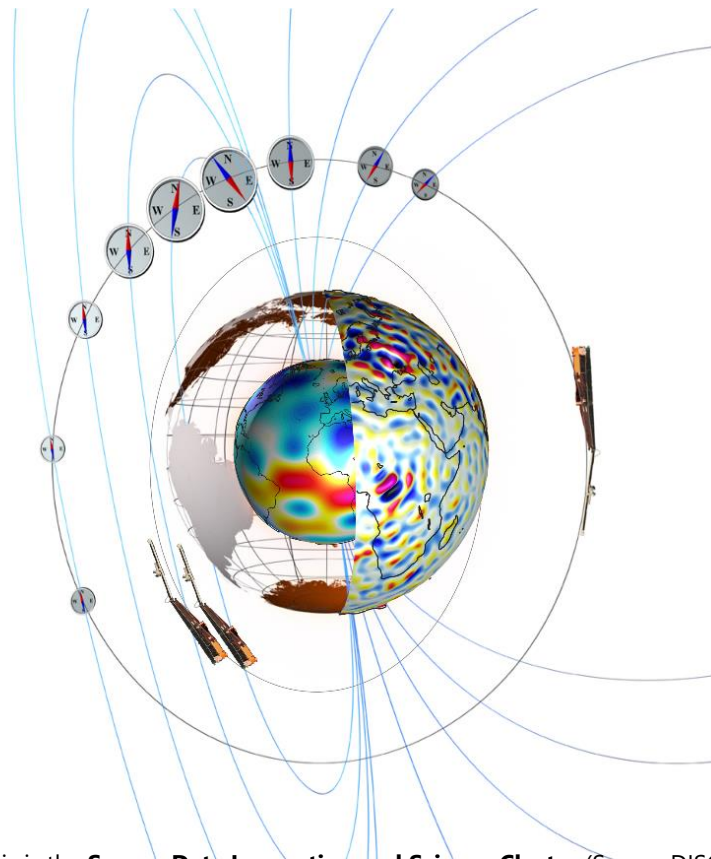

Swarm DISC Weekly Report 2019/19: 2019/05/06 - 2019/05/12



Abstract : This is the **Swarm Data Innovation and Science Cluster** (Swarm DISC) Weekly report on Swarm products quality, covering the period from 06 May 2019 to 12 May 2019 .

Doc. No : SW-RP-SER-GS-010

Author : _____
Martyna Romanowska and
Filomena Catapano on behalf
of Swarm DISC Team

Approval : _____
Jerome Bouffard
ESA – EOP/GMQ

Distribution : ESA/ESRIN EOP-GMQ
ESA/ESRIN EOP-GM Swarm MM
Swarm DISC Management Team
Swarm DISC subcontractors

ESA/ESTEC Swarm PLSO
ESA/ESOC Swarm FOS

TABLE OF CONTENTS

TABLE OF CONTENTS	2
1. INTRODUCTION	4
1.1 Annual Swarm Data Quality Workshop	4
1.2 Current Operational configuration of monitored data:	5
1.3 Recent evolutions.....	5
1.4 Reference documents.....	5
2. SUMMARY OF THE OBSERVATIONS.....	6
2.1 Changes in the general status of Swarm instruments and Level 1B products quality	6
2.2 Relevant observations of the week.....	6
3. ROUTINE QUALITY CONTROL.....	7
3.1 Gaps analysis.....	7
3.2 Orbit and Attitude Products	7
3.2.1 Position Statistics	7
3.2.2 Attitude observations.....	8
3.2.2.1 Swarm A.....	8
3.2.2.2 Swarm B.....	8
3.2.2.3 Swarm C.....	9
3.3 Magnetic Products.....	9
3.3.1 VFM-ASM anomaly.....	9
3.3.1.1 ASM-VFM difference statistics	9
3.3.1.2 Swarm A.....	11
3.3.1.3 Swarm B.....	12
3.3.1.4 Swarm C.....	12
3.3.2 ASM Instrument parameters: quartz frequency and ASM temperature (ASMAVEC_0)	12
3.3.3 VFM Instrument parameters: VFM temperatures (MAG_CA)	12
3.3.4 Magnetic time series visual inspection.....	12
3.3.4.1 Swarm A.....	13
3.3.4.2 Swarm B.....	14
3.3.4.3 Swarm C.....	14
3.3.5 B_{NEC} vs Chaos5 model residuals.....	15
3.3.5.1 Swarm A.....	16
3.3.5.2 Swarm B.....	16
3.3.5.3 Swarm C.....	17
3.4 Plasma Products	17
3.4.1 Plasma time series visual inspection.....	18
3.4.1.1 Swarm A.....	18
3.4.1.2 Swarm B.....	18
3.4.1.3 Swarm C.....	19
3.4.2 Plasma products latitudinal variations.....	19
3.4.2.1 Swarm A.....	19
3.4.2.2 Swarm B.....	20
3.4.2.3 Swarm C.....	20
4. SPECIAL INVESTIGATIONS	21

AMENDMENT POLICY

This document shall be amended by releasing a new edition of the document in its entirety. The Amendment Record Sheet below records the history and issue status of this document.

AMENDMENT RECORD SHEET

ISSUE	DATE	REASON
1.0	08 Jul 2019	First issue

1. Introduction

This document refers to the activities carried out in the framework of the ESA Sensor Performance, Products and Algorithms (SPPA) Office [RD.1].

Chapter 1 gives an overview on the outcomes from the annual Swarm Data Quality Workshop and reports the information on the current operational configuration and its future improvements. It also contains the list of used reference documents.

In Chapter 2, the Section 2.1 gives an overview of the general quality status of the Swarm mission instruments and products, while the main observations of the week are summarized in the Section 0.

The document also includes information on data quality for the three Swarm spacecraft, inferred from automated HTML quality reports, which are produced on daily basis for each product. If interested in accessing the reports via web or FTP, please contact the Swarm DISC team at the following email address: <swarm@eo-sppa.org>. Such data quality reports represent the main component of the Routine Quality Control performed by ESA SPPA (Chapter 3). A description of the implemented quality checks is given in [RD.2], and references therein.

Based on specific findings of the routine quality control, or requests from other entities (i.e. Swarm Payload Data Ground Segment (PDGS), Flight Operation Segment (FOS), Mission Management, Post-Launch Support Office (PLSO), Expert Support Laboratories (ESL), Quality Working Groups (QWG), and user community), investigations on anomalies can be triggered. Preliminary characterisations of possibly detected anomalies are given in Chapter 4 .

Information on Swarm Level 1B products can be found in [RD.3].

This weekly report is based on QC methods and diagnostics that tend to be continuously evolved and improved throughout the mission lifetime, reporting on the data quality, product evolutions, and status of the instruments on weekly basis.

1.1 Annual Swarm Data Quality Workshop

The Swarm Data Quality Workshop takes place each year. The 8th Swarm Data Quality Workshop (DQW#8) held in ESA ESRIN from 08 to 12 October 2018.

The main objectives of the workshop were to:

- Provide an overview of Swarm Mission status to the user Community
- Update the data quality status from Magnetic, Electric, GPSR and accelerometer measurements
- Discuss new Swarm-based Scientific results

Besides the usual Cal/Val topics, this Swarm DQW#8 has also allowed to address new technical, scientific and strategic challenges related to:

- Swarm-based Multi-disciplinary applications
- Swarm-based Data processing virtual environments
- Swarm-based Machine Learning methods
- Multi-mission synergies (e.g. with CryoSat, Goce, e-POP, CSES etc.)

The Swarm DQW#8 was an occasion to discuss potential synergetic benefits obtained through collaboration initiatives with ESA's partner agencies and other sensor systems.

A complete summary of the recommendations based on the contributions from Swarm DQW#8 sessions can be found at [RD.4] and [RD.5].

1.2 Current Operational configuration of monitored data:

Processors	
Name	Version
L1BOP	v3.20p1
L2-Cat2	v01.18p2
Products	
Name	Baseline
L0 inputs	02
L1B MAGNET and PLASMA	05
L1B ORBATT and ACCELE	04
L2-Cat2 EEF*	01
L2-Cat2 IBI, FAC and TEC	03
Others	
Input auxiliary files	S/C A, CCDB 0022 (06/03/2019) S/C B, CCDB 0022 (02/01/2019) S/C C, CCDB 0023 (06/03/2019)
MPPF-CVQ	v03.07 (27/12/2018)

1.3 Recent evolutions

The L1BOP v03.21 has been delivered on 11/03/2019, and the L2 Cat-2 OP v01.19 has been delivered on 13/03/2019. These new versions of the operational processors contain only the porting to a newer operational system, Red Hat Enterprise Linux 7.5. No evolutions of the processor algorithms are included in this delivery. The PDGS Team has generated the test scenarios in order to compare their outputs with the ones from GMV. The comparison with the L1BOP v03.20 has been performed by the Data Quality Team. Negligible discrepancies have been found, demonstrating that the porting to the newer OS will be transparent to the users.

1.4 Reference documents

The following is a list of documents with a direct bearing on the content of this report. Where referenced in the text, these are identified as RD.n, where 'n' is the number in the list below:

- [RD.1] Sensor Performance, Products and Algorithms (SPPA), PGSI-GSOP-EOPG-TN-05-0025. Version 2.3.
- [RD.2] Swarm MPPF-CVQ Monitoring Baseline Document, ST-ESA-SWARM-MBD-0001, Issue 1.7.
- [RD.3] Swarm Level 1B Product Definition, SW-RS-DSC-SY-0007, Issue 5.23.
- [RD.4] <https://earth.esa.int/documents/10174/3687590/SWARM-DQW%238-SUMMARY-%26-RECOM-VFINAL.pdf/73683cc8-be21-47f7-a1c3-db4a60a911cb>
- [RD.5] <https://eos.org/meeting-reports/the-swarm-satellite-trio-studies-earth-and-its-environment>
- [RD.6] Olsen, N., H. Luhr, C.C. Finlay, T.J. Sabaka, I. Michaelis, J. Rauberg and L. Tøffner-Clausen, The CHAOS-4 geomagnetic field model, Geophys. J. Int. 197, 815–827, 2014
- [RD.7] SW-RP-SER-GS-010_SPPA_SwarmWeeklyReport_201918_20190429_20190505.pdf

2. Summary of the observations

2.1 Changes in the general status of Swarm instruments and Level 1B products quality

EFI-TII Gain Map Calibration has been executed on 08/05/2019 between 18:12 and 21:47 UT for Swarm Bravo, and on 12/05/2019 between 10:18 and 13:53 UT for Swarm Alpha. This operation have generated data gaps in the EFI L1B data products.

2.2 Relevant observations of the week

During the monitored week the following events have been found or investigated:

- On days 11-12/05/2019, on S/C A B, C, we observe differences on B_NEC – CHAOS5 model plots. It is caused by a small geomagnetic storm, which occurred those days

3. Routine Quality control

3.1 Gaps analysis

- Time gaps found in HK_ANOM_0_ from 05:09:34 till 05:10:56 on day 10/05/2019. It does not affect other products.
- Time gaps found in EFIA_LP_1B from 10:18 to 13:53 on 12/05/2019.
- Time gaps found in EFIB_LP_1B from 18:12 to 21:47 on 08/05/2019.
- Time gaps found in HK_BNOM_0_ from 08:33:41 till 08:34:50 on day 10/05/2019. It does not affect other products.
- Time gaps found in HK_CNOM_0_ from 11:27:16 till 11:28:47 on day 10/05/2019. It does not affect other products.
- Time gaps found in VFMCNOM_0_, GPSCOBS_0_, GPSCNAV_0_, STRCNOM_0_, HK_CNOM_0_ from 18:49:18 till 18:50:17 on day 12/05/2019. It affects STR, MAG and GPS L1A and L1B products.

3.2 Orbit and Attitude Products

The relevant parameters that have been monitored are:

- Position difference between calculated Medium Accuracy orbits (MODx_SC_1B) and on-board solution (GPSxNAV_0). Threshold values for such differences have not been assessed yet: we have just monitored the average values and maximum variations within the week. We evaluate an anomaly raise if one (or more) of the following conditions is registered :
 - The **average difference** on a given day exceeds the position accuracy requirement for the mission (1.5 m),
 - The variability around the average is quite high: **standard deviation** threshold has been arbitrarily chosen to be twice the position accuracy requirement for the mission (2-sigma = 3 m).
 - At least 4-5 spikes are observed on a given day, exceeding +/- 50 m.

The following monitor activity is also performed and will be reported only in case of anomaly detection:

- Visual inspection of Star Tracker characterisation flags (STRxATT_1B)
- Deviation of the quaternion norm from unity (deviation threshold = +/- 10⁻⁹)
- Visual inspection of Euler Angles derived from quaternions.

3.2.1 Position Statistics

In Figure 3-1, one can see the statistics of the differences between MOD and on-board solution positions for S/C A, B and C respectively. In the third column the maximum differences (maximum negative and maximum positive) are reported. The standard deviation is in the fourth column. Maxima, minima and standard deviations usually refer to the Z component that is often the most disturbed; in case another component is most affected, it will be specified in parentheses. Figure 3-1 shows a cumulative trend of the maximum daily standard deviation for the past 30 days of operations

of the MOD-NAV difference, while Figure 3-2 shows the daily maximum difference, in absolute value, of the MOD-NAV difference, always for the past 30 days of operations.

Note that data are missing from 28/04/2019 17:06 UTC till 30/04/2019 13:50 UTC for Swarm C. See [RD.7] for more details.

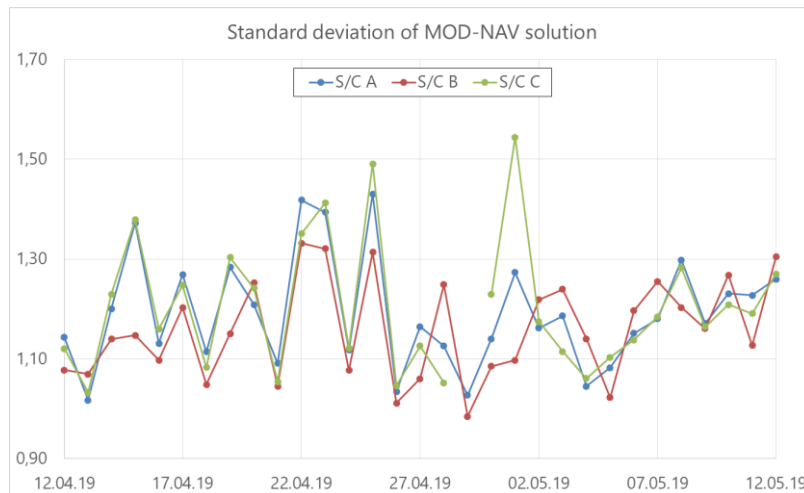


Figure 3-1: Plot of the standard deviation of the difference between MOD and NAV solutions for all satellites. Plot covers last month of operation.

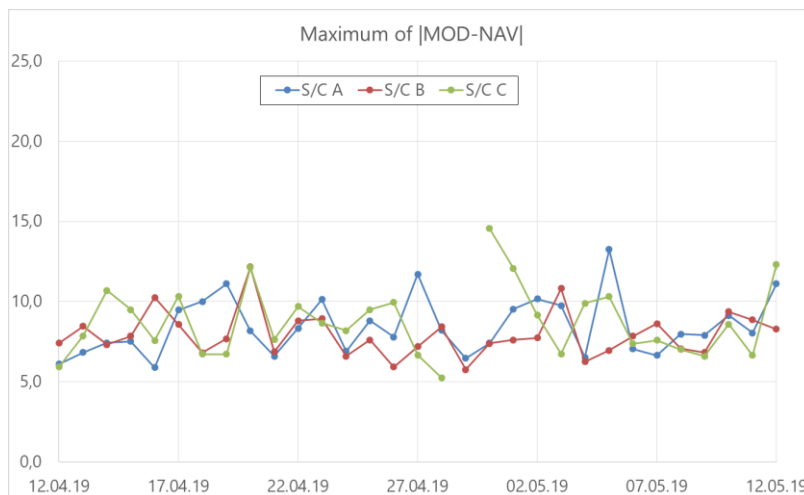


Figure 3-2: Plot of the maximum difference of the absolute value of the difference between MOD and NAV solutions for all satellites. Plot covers last month of operation.

3.2.2 Attitude observations

3.2.2.1 Swarm A

Nominal. Nothing to report.

3.2.2.2 Swarm B

Nominal. Nothing to report.

3.2.2.3 Swarm C

Nominal. Nothing to report.

3.3 Magnetic Products

For the magnetic products, the weekly monitoring consists of:

- ASM instrument monitoring: quartz frequency (nominal range: [2.949E7 – 2.950E7] Hz) and ASM temperature (temperature range shall be: [-30;+50] °C, Rel. Variation shall not exceed: 0.1 °C/sec).
- VFM instrument monitoring: temperatures (Rel. Variation shall not exceed: 0.1 °C/sec).
- Visual inspection of daily time series of magnetic field intensity F , B_{NEC} and B_{VFM} . Looking for gaps (or zero values in case of MAGx_LR_1B products), out-of-threshold values (i.e. exceeding +/- 60000 nT), and other strange features. Map plots of F and B_{NEC} for the whole week are then displayed.
- Monitoring of the ASM-VFM known anomaly: visual inspection of $|B_{VFM}| - F$ taken from MAGx_CA_1B products and recording of daily maximum variations and standard deviations. If +/- 1 nT are exceeded on a given day, an alert is raised. Map plots of the residuals are shown along with weekly time series of the residuals with and without the "dB_Sun" correction: in fact, at least a part of the discrepancies found in the measurements between ASM and VFM are modelled through a stray field (dB_Sun) that is a function of the orientation of the VFM wrt Sun.
- Comparison of magnetic data (B_{NEC}) with a model (Chaos5).

3.3.1 VFM-ASM anomaly

- S/C A – no violation of thresholds.
- S/C B – no violation of thresholds.

3.3.1.1 ASM-VFM difference statistics

The ASM-VFM difference is defined as follow:

$$dF = |B_{VFM}| - F_{ASM}$$

Figure 3-3 and Figure 3-4 show the daily mean (circles) and standard deviation (crosses) of dF of the last month for Swarm A and Swarm B respectively.

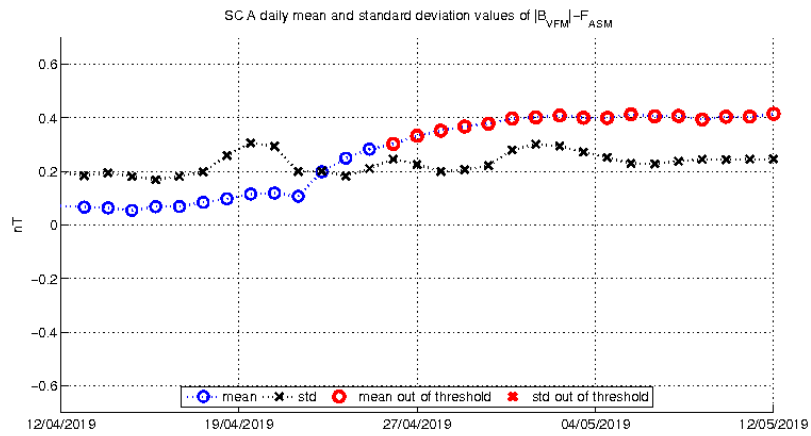


Figure 3-3: Daily mean and standard deviation values of ASM-VFM residuals (defined as $dF = |B_{VFM}| - F_{ASM}$) for S/C A.

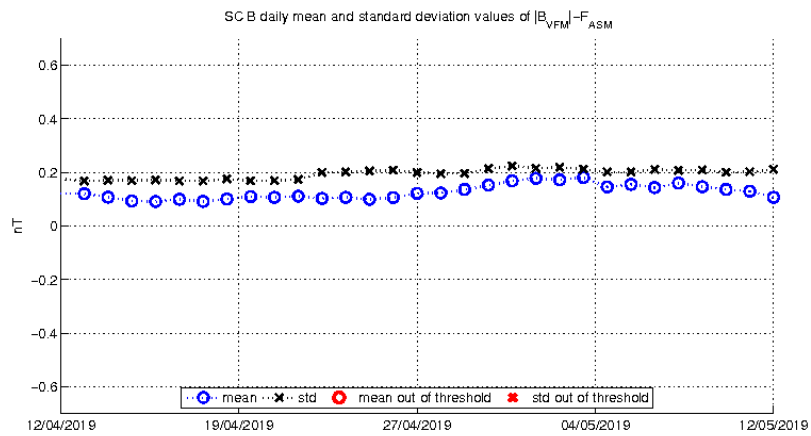


Figure 3-4: Daily mean and standard deviation values of ASM-VFM residuals (defined as $dF = |B_{VFM}| - F_{ASM}$) for S/C B.

3.3.1.2 Swarm A

The daily peak-to-peak difference around the week stays within $[-0,49 - 0,81]$ nT. Below follow two plots of such differences for current week (Figure 3-5).

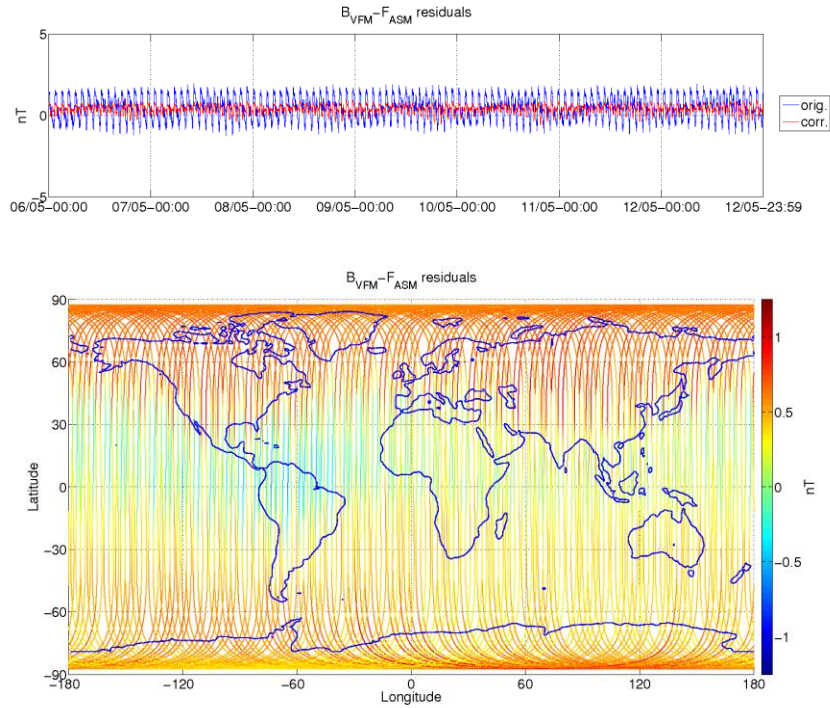


Figure 3-5: ASM-VFM residuals for S/C A, during monitoring period. In top figure are plotted: difference between $|B_{VFM}|$ and F_{ASM} (without dB_{Sun} correction) (blue colour), and the residuals with dB_{Sun} corrections (red colour). In bottom figure residuals are presented on the world map.

3.3.1.3 Swarm B

The daily peak-to-peak difference around the week stays within $[-0,77 - 0,97]$ nT. Below follow two plots of such differences for current week (Figure 3-6).

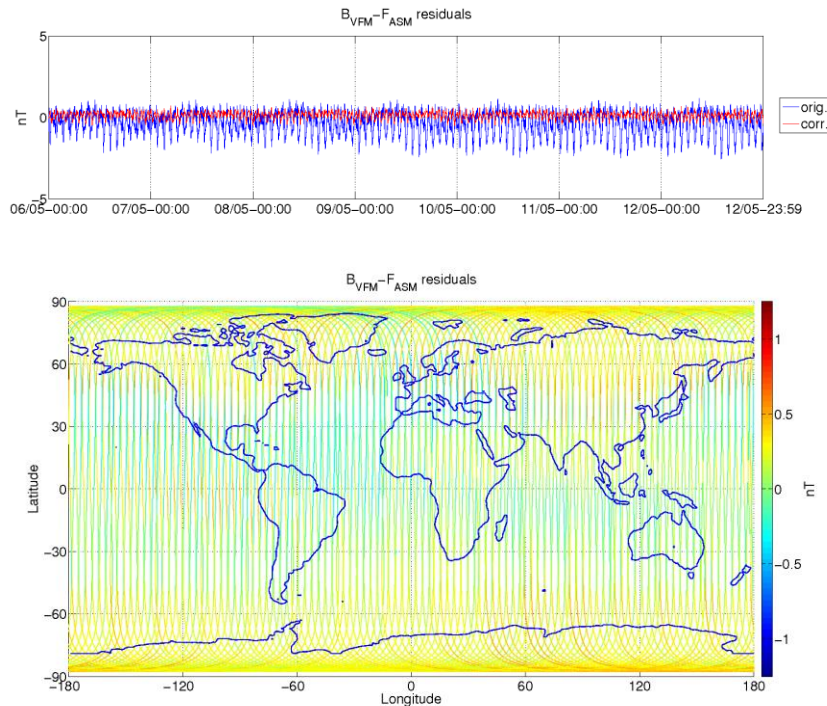


Figure 3-6: ASM-VFM residuals for S/C B, during monitoring period. In top figure are plotted: difference between $|B_VFM|$ and F_ASM (without dB_Sun correction) (blue colour), and the residuals with dB_Sun corrections (red colour). In bottom figure residuals are presented on the world map.

3.3.1.4 Swarm C

No data because ASM is switched off.

3.3.2 ASM Instrument parameters: quartz frequency and ASM temperature (ASMAVEC_0)

For S/C A and B, the temperature and quartz frequency behaved as expected.

3.3.3 VFM Instrument parameters: VFM temperatures (MAG_CA)

The VFM instrument parameters important for monitoring the instrument health are the VFM sensor temperatures: T_CDC , T_CSC and T_EU .

For S/C A, B and C, for reported period, the temperatures behaved as expected.

3.3.4 Magnetic time series visual inspection

3.3.4.1 Swarm A

Map plots of magnetic field measurement for week 19 for S/C A can be seen in Figure 3-7 below.

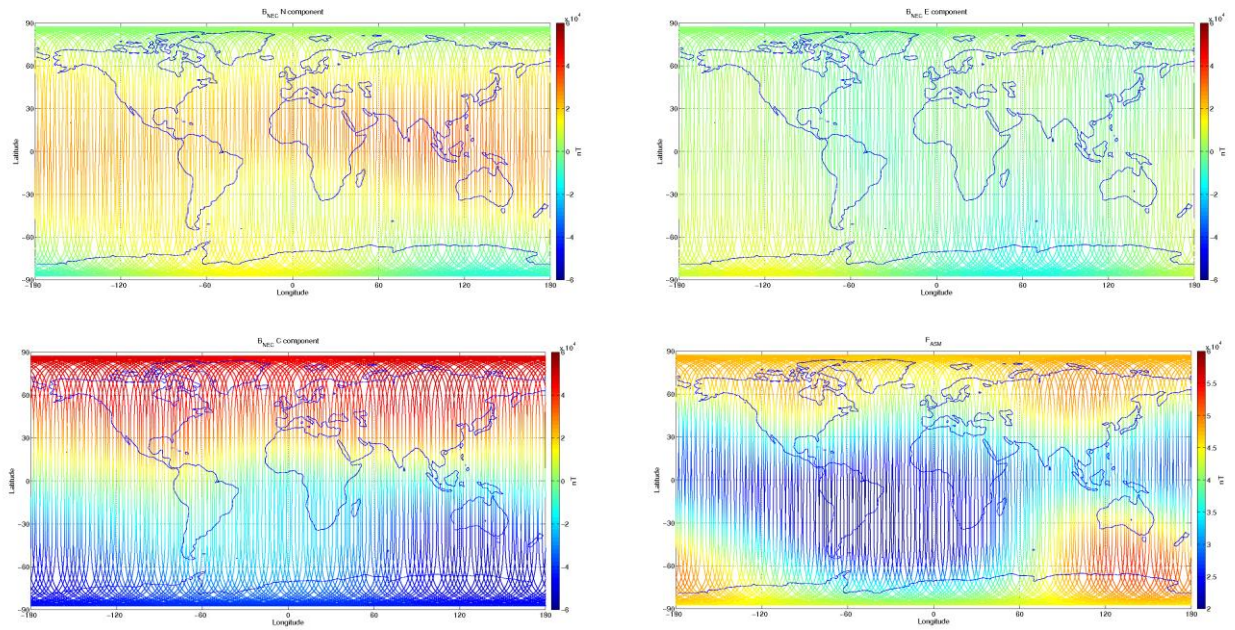


Figure 3-7: S/C A, world map plots of the geomagnetic field and components measured during monitoring period. From top left to bottom right: B_{NEC} components (North, East, and Centre) of magnetic field from VFM measurement, F_{mag} magnetic field from ASM measurement.

3.3.4.2 Swarm B

Map plots of magnetic field measurement for week 19 for S/C B can be seen in Figure 3-8.

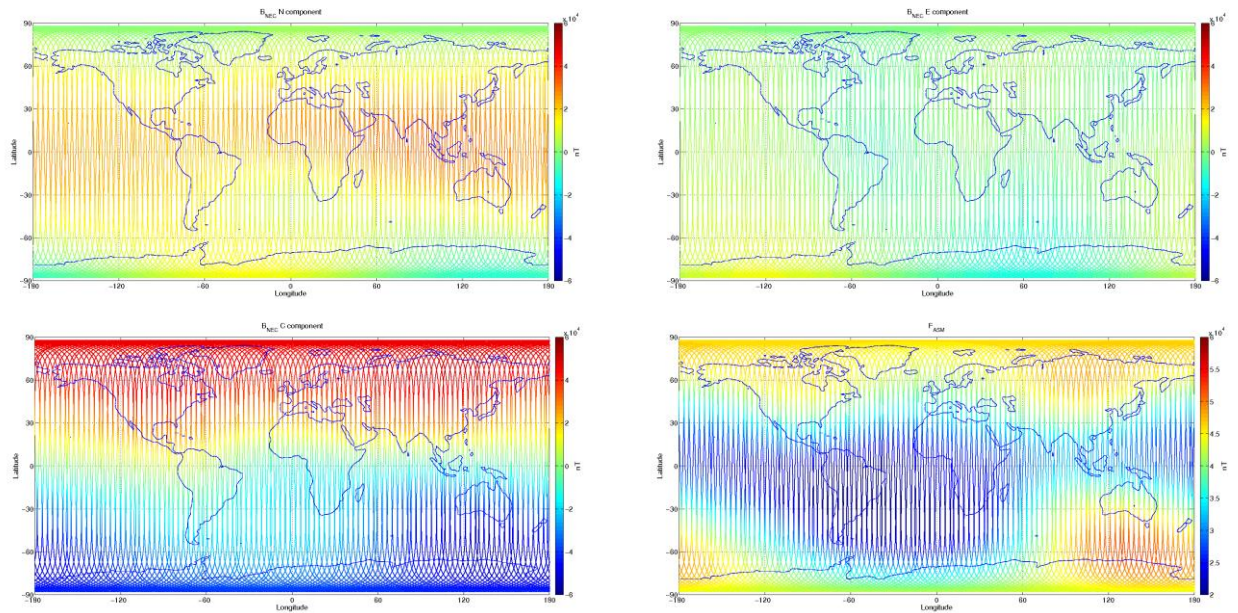
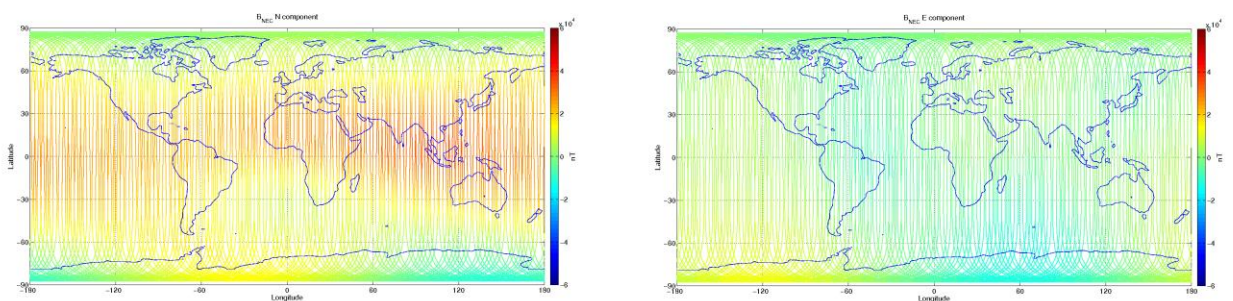


Figure 3-8: S/C B, world map plots of the geomagnetic field and components measured during monitoring period. From top left to bottom right: F-magnetic field from ASM measurement, B_{NEC} components (North, East, and Centre) of magnetic field from VFM measurement, F-magnetic field from ASM measurement.

3.3.4.3 Swarm C

Map plots of magnetic field measurement for week 19 for S/C C can be seen in Figure 3-9.



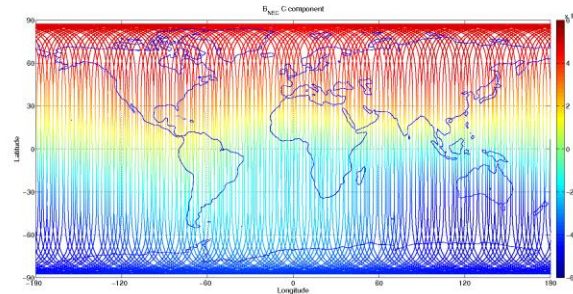


Figure 3-9: S/C C, world map plots of the geomagnetic field and components measured during monitoring period. From top left to bottom right: B_{NEC} components (North, East, and Centre) of magnetic field from VFM measurement, F-magnetic field from ASM measurement.

3.3.5 B_{NEC} vs Chaos5 model residuals

The magnetic field measurement is compared to magnetic field estimated from the Chaos5 global geomagnetic field model (only Core and Crustal contributions). Currently in the monitoring routines the external contribution based on Dst index is not taken into account.

Left side of Figure 3-10 and Figure 3-11 show field residuals $\delta B = B_{NEC} - B_{Chaos}$ (all versus co-latitude in degrees), from top to bottom: 1) B_r , 2) B_θ and 3) B_ϕ .

As a general feature one can see the field residuals to be steady and usually below 50 nT at low and middle latitudes, up to $|55| - |60|$ degrees; then the residual increases at high latitudes because the Chaos model does not take into account the contribution from the external field ([RD.6]).

Right side of Figure 3-10 and Figure 3-11, show, from top to bottom, the time series on first day of the week of: (1-2-3) residuals of $B_{NEC} - B_{Chaos}$ by components, related to S/C A, B and C respectively.

The component most affected by residual spikes and variations is $B_{\theta_{NEC}}$, i.e. the component that shows the variations of the field wrt to co-latitude. At high latitudes, the order of magnitude of the variability is about ± 200 nT.

On days 11-12/05/2019, on S/C A, B, C, we observe differences on $B_{NEC} - CHAOS5$ model plots. It is caused by a small geomagnetic storm, which occurred those days.

3.3.5.1 Swarm A

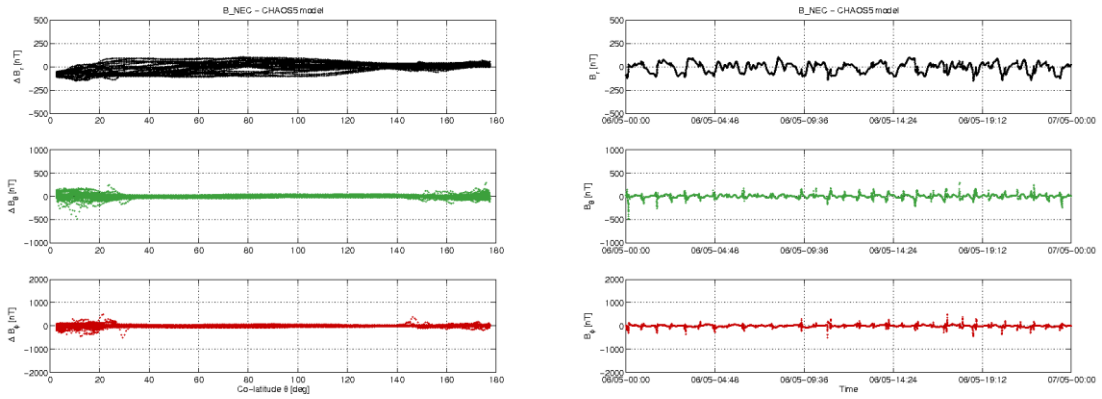


Figure 3-10: S/C A day 06/05: time series of $B_{NEC} - B_{Chaos}$ residuals (right) and $B_{NEC} - B_{Chaos}$ vs colatitude (left).

3.3.5.2 Swarm B

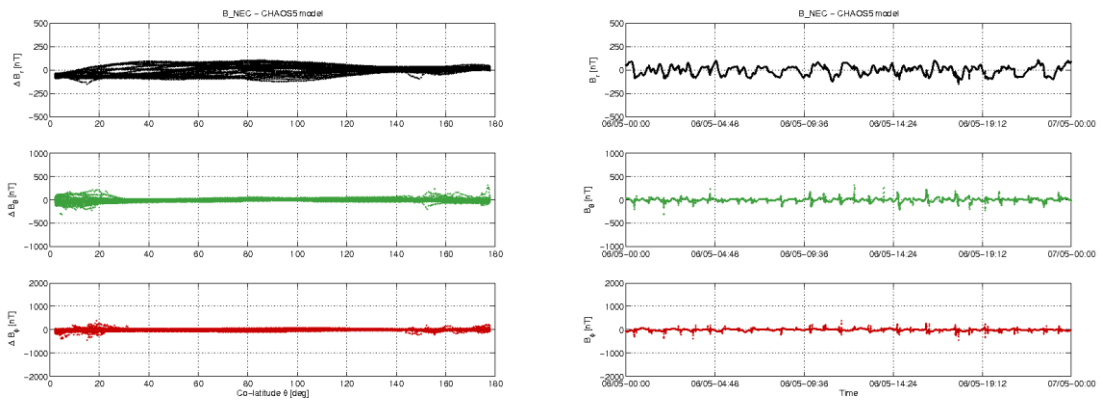


Figure 3-11: S/C B day 06/05: time series of $B_{NEC} - B_{Chaos}$ residuals (right) and $B_{NEC} - B_{Chaos}$ vs colatitude (left).

3.3.5.3 Swarm C

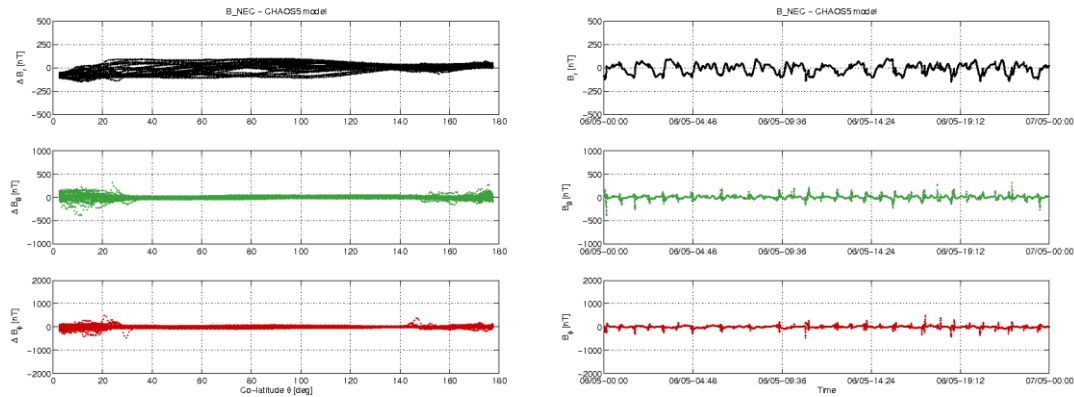


Figure 3-12: S/C C day 06/05: time series of $B_{NEC} - B_{Chaos}$ residuals (right) and $B_{NEC} - B_{Chaos}$ vs colatitude (left).

3.4 Plasma Products

The monitored plasma products are the electron density (Ne) and electron temperature (Te) measured by the EFI-LP instruments. The monitoring of the data is done on different temporal basis (daily, weekly, monthly, yearly) in order to have a comprehensive view on the data quality. Here we report only two examples of the performed data monitoring, which are the most representative of the data quality.

On Figures from Figure 3-13 to Figure 3-15, are shown the weekly profiles of the electron density and temperature as a function of time for the last week of operations. Data have been down sampled from 0.5s to 2min in order to have a clearer representation (grey lines). Also, the 20 minutes moving window average is shown in the figures (black points). From these figures, it is possible to see if there are measurements with large discrepancies from the average behaviour, and their time location. Information on the local magnetic time is reported in the captions.

On Figures from Figure 3-16 to Figure 3-18, are shown the variations of the electron density and temperature as a function of the latitudes in quasi-dipole (QD) coordinate system, during the last week of operations. These analyses are useful to study the dependence of the variables on the QD magnetic coordinate system.

The analyses are shown for the ascending (upper panels) and descending (bottom panels) phase orbits, separately.

It is visible that sometimes the electron temperature reaches very high values, exceeding ten thousands Kelvin, particularly at high latitudes. The nature of this feature is currently under investigation.

3.4.1 Plasma time series visual inspection

3.4.1.1 Swarm A

EFIA_LP_1B data are not available from 10:18 to 13:53 on 12/05/2019. See Section 2.1 for more details.

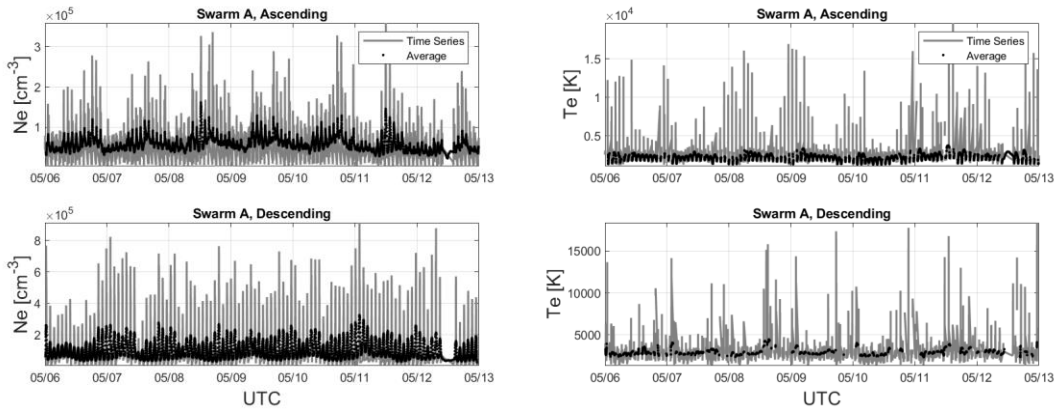


Figure 3-13: The panels show the electron density (left) and temperature (right) weekly time series (grey lines) together with the 20 min moving windows average (black lines). The analysis is made separately for ascending (upper panels) and descending (bottom panels) orbits. The average magnetic local time during the week is 4 a.m. for ascending phase and 4 p.m. for descending phase.

3.4.1.2 Swarm B

EFIB_LP_1B data are not available from 18:12 to 21:47 on 08/05/2019. See Section 2.1 for more details.

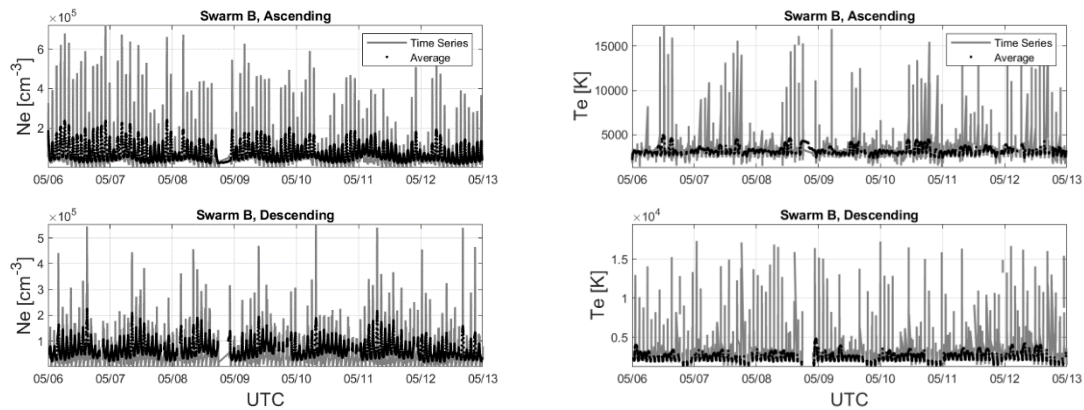


Figure 3-14: The panels show the electron density (left) and temperature (right) weekly time series (grey lines) together with the 20 min moving windows average (black lines). The analysis is made separately for ascending (upper panels) and descending (bottom panels) orbits. The average magnetic local time during the week is 12 a.m. for ascending phase and 12 p.m. for descending phase.

3.4.1.3 Swarm C

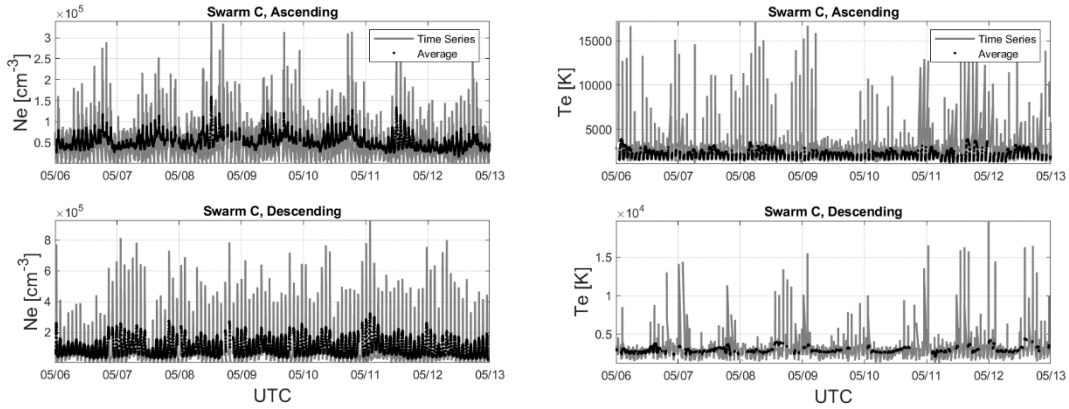


Figure 3-15: The panels show the electron density (left) and temperature (right) weekly time series (grey lines) together with the 20 min moving windows average (black lines). The analysis is made separately for ascending (upper panels) and descending (bottom panels) orbits. The average magnetic local time during the week is 4 a.m. for ascending phase and 4 p.m. for descending phase.

3.4.2 Plasma products latitudinal variations

3.4.2.1 Swarm A

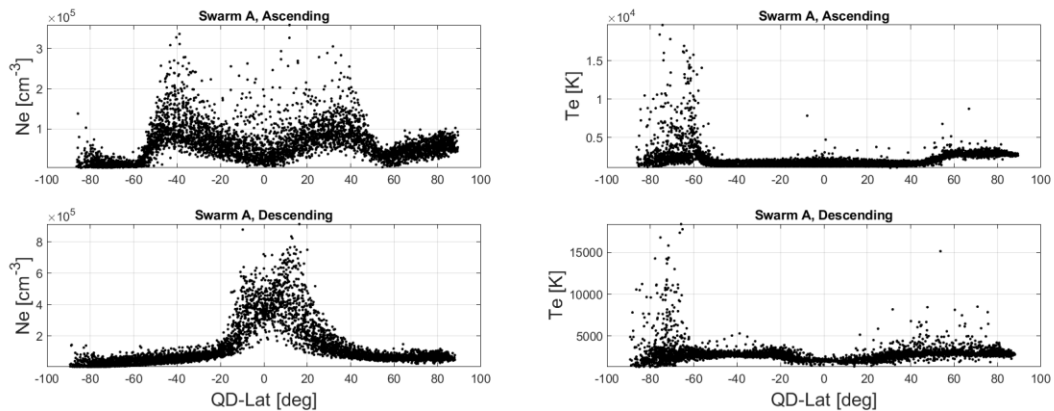


Figure 3-16: The panels show the electron density (left) and temperature (right) profile as a function of QD Latitudes for the last week of operation. The analysis is made separately for ascending (upper panels) and descending (bottom panels) orbits.

3.4.2.2 Swarm B

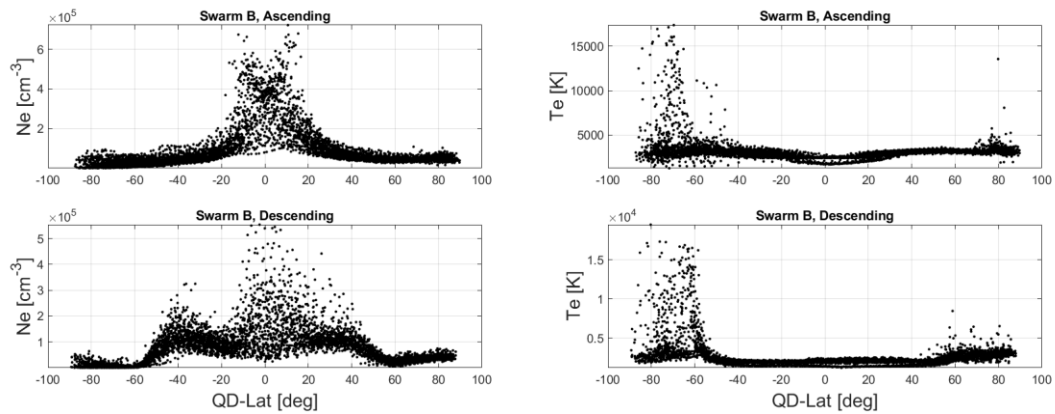


Figure 3-17: The panels show the electron density (left) and temperature (right) profile as a function of QD Latitudes for the last week of operation. The analysis is made separately for ascending (upper panels) and descending (bottom panels) orbits.

3.4.2.3 Swarm C

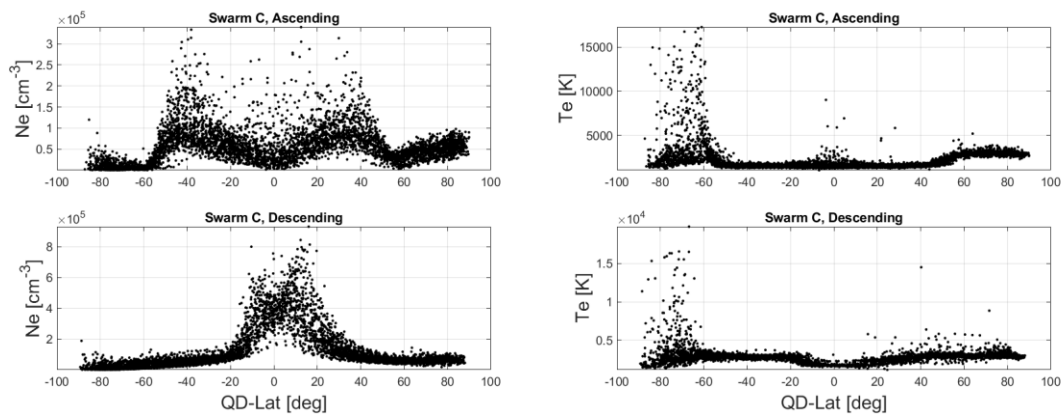


Figure 3-18: The panels show the electron density (left) and temperature (right) profile as a function of QD Latitudes for the last week of operation. The analysis is made separately for ascending (upper panels) and descending (bottom panels) orbits.

4. **Special Investigations**

Nominal. Nothing to report.

End of Document