



Customer	: ESRIN	Document Ref	: IDEAS+-SER-OQC-REP-2071
Contract No	: 4000111304/14/I-AM	Issue Date	: 30 March 2015
WP No	: 6110	Issue	: 1.0



IDEAS+ Swarm Weekly Report 2015/12: 2015/03/16 - 2015/03/22

Abstract : This is the **Instrument Data quality Evaluation and Analysis Service Plus** (IDEAS+) Swarm Weekly report on Swarm products quality, covering the period from 16 to 22 March 2015.

Author : _____ **Approval** : _____
Igino Coco and Jan Miedzik on
behalf of Swarm IDEAS+ Team
Lidia Saavedra de Miguel
IDEAS+ Science and Ops.
Coordinator

Distribution : ESA/ESRIN EOP-GMQ
ESA/ESRIN EOP-GM Swarm MM
IDEAS+ Leadership Team
IDEAS+ subcontractors
ESA/ESTEC Swarm PLSO
ESA/ESOC Swarm FOS

Copyright © 2015 Serco Italia Spa

All rights reserved.

No part of this work may be disclosed to any third party translated reproduced copied or disseminated in any form or by any means except as defined in the contract or with the written permission of Serco Italia Spa.

Serco Italia Spa
Via Sciadonna 24/26, 00040, Frascati, Italy
Tel: +39 06 98354400 Fax: +39 06 9419426
www.serco.com



TABLE OF CONTENTS

Contents

TABLE OF CONTENTS	2
1. INTRODUCTION	5
1.1 Current Operational configuration of monitored data:.....	6
1.2 Reference documents	6
2. SUMMARY OF THE OBSERVATIONS	7
2.1 General status of Swarm instruments and Level 1B products quality	7
2.2 Plan for operational processor updates	7
2.3 Quality Working Group and Cal/Val Coordination.....	7
2.4 Summary of observations for 2015, Week 12 (16/03 - 22/03)	8
3. ROUTINE QUALITY CONTROL	9
3.1 Gaps analysis	9
3.2 Orbit and Attitude Products	9
3.2.1 Swarm A	10
3.2.2 Swarm B	13
3.2.3 Swarm C	17
3.3 Magnetic Products	21
3.3.1 Swarm A	22
3.3.2 Swarm B	24
3.3.3 Swarm C	27
3.3.4 Summary of TCF behaviour for the three S/C	28
4. ON-DEMAND ANALYSIS	29



This page intentionally left blank.



AMENDMENT POLICY

This document shall be amended by releasing a new edition of the document in its entirety. The Amendment Record Sheet below records the history and issue status of this document.

AMENDMENT RECORD SHEET

ISSUE	DATE	REASON
1.0	30 Mar 2015	First issue



1. INTRODUCTION

This document refers to the activities carried out in the framework of the Sensor Performance, Products and Algorithms (SPPA) Office [RD.1], and as such it reports on work related to:

- Algorithms and Processors Development, Maintenance and Evolution: these include all algorithm and software evolution and maintenance aspects for the different components, for both the Operational processors (OP) and Prototypes processors (PP) of L1 and L2 chains.
- Performance Assessment: these include all Quality Control activities (on-line and offline, systematic or on-demand), for the applicable product levels.
- System Calibration: these include the activities related to calibration, from sensor to system level. They also include aspects like cross calibration and handling of external calibration sources.
- Product validation: these include definition and maintenance of product validation plans.
- End-to-end Sensor Dataset Performance: these include activities related to the organisation and coordination of Quality Working Groups and all aspects of the Experimental platform. It also covers the product baseline, coordination and handling of external communities, and all aspects of ADF handling (both for the operational processors and for the prototypes).

This weekly report constitutes a work in progress throughout the mission life time, and new parts and complements will be added while the consolidation of knowledge on Swarm data and instruments will progress.

Section 2.1 always gives an overview of the general quality status of the mission instruments and products, while the main observations of the week are summarized in Section 2.4.

The document also includes information on data quality for the three Swarm spacecraft, inferred from automated HTML quality reports which are produced on daily basis for each product. Please contact the IDEAS+ Swarm team if interested in accessing the reports via web or FTP (all details about interfaces and folder structure available on [RD.2]). Such quality reports represent the core of the Routine Quality Control (Chapter 3). A description of the implemented quality checks is given in [RD.3], and references therein.

Basing on specific findings of the routine quality control, or on-demand from other entities (i.e. Swarm PDGS, FOS, Mission Management, Post-Launch Support Office, Expert Support Laboratories, Quality Working Groups, user community), anomalies can be triggered and preliminary characterisations and investigations of such anomalies are given in Chapter 4. The anomalies documented in the Weekly Reports are tracked in the following way:

1. If triggered by ESA Eohelp or within the Service: IDEAS+ action and ticketing system (<http://requests-sppa.serco.it/RT3/index.html>).
2. If triggered by IDEAS+ Swarm team or other entities:
 - 2a. If the observation/analysis leads to an anomaly to be addressed to the processor provider (GMV): SPR on EO ARTS (<https://arts.eo.esa.int>), SWL1L2DB project;



2.b. If the observation/analysis does not lead to an anomaly or the investigation shall be escalated to other entities (PLSO/industry, ESL, PDGS): Action tracked on EO ARTS, **SW-IDEAS** project, then addressed to the proper tracking system if needed (e.g. JIRA for ESLs, SW-CP-AR project on EO ARTS for PDGS).

Information on Level 1B Swarm products can be found in [RD.4].

1.1 Current Operational configuration of monitored data:

- Processors Version: L1BOP 3.14.01, L2-Cat2 1.12
- L0 input products baseline: 02
- L1B baseline: 03 (for definitions and description of the data baseline concept see <https://earth.esa.int/web/guest/missions/esa-operational-eo-missions/swarm/data-access/product-baseline-definition>)
- Level 2 – Cat 2 baseline: 01
- Input auxiliary files baseline: CCDB 0009, ADF 0101
- MPPF-CVQ v.2.12p1

1.2 Reference documents

The following is a list of documents with a direct bearing on the content of this report. Where referenced in the text, these are identified as RD.n, where 'n' is the number in the list below:

- [RD.1] Sensor Performance, Products and Algorithms (SPPA), PGSI-GSOP-EOPG-TN-05-0025. Version 2.3.
- [RD.2] Swarm PDGS External DMC Interface Control Document, SW-ID-DS-GS-0001, Issue 3.2.
- [RD.3] Swarm MPPF-CVQ Monitoring Baseline Document, ST-ESA-SWARM-MBD-0001, Issue 1.7.
- [RD.4] Swarm Level 1B Product Definition, SW-RS-DSC-SY-0007, Issue 5.13.
- [RD.5] Swarm IDEAS Configuration Management Plan, IDEAS-SER-MGT-PLN-1081 v0.14.
- [RD.6] Swarm Quality Control Project Plan, IDEAS-SER-MGT-PLN-1071
- [RD.7] SW_L1BOP_status_20141124_MoM
- [RD.8] Planned Updates for Level 1b, SW-PL-DTU-GS-008, Rev: 1dC.
- [RD.9] IDEAS+ Swarm Weekly Report: 25/08/2014 – 31/08/2014, IDEAS+-SER-OQC-REP-2071_SPPA_SwarmWeeklyReport_20140825_20140831.pdf (ref. for SWL1L2DB-9)
- [RD.10] IDEAS+ Swarm Weekly Report: 29/09/2014 – 05/10/2014, IDEAS+-SER-OQC-REP-2071_SPPA_SwarmWeeklyReport_20140929_20141005.pdf (ref. for SW-IDEAS-34)
- [RD.11] IDEAS+ Swarm Weekly Report: 06/10/2014 – 12/10/2014, IDEAS+-SER-OQC-REP-2071_SPPA_SwarmWeeklyReport_20141006_20141012.pdf (ref. for SW-IDEAS-36)
- [RD.12] IDEAS+ Swarm Weekly Report: 20/10/2014 – 26/10/2014, IDEAS+-SER-OQC-REP-2071_SPPA_SwarmWeeklyReport_20141020_20141026.pdf (ref. for SW-IDEAS-40, GPS sync loss)
- [RD.13] IDEAS+ Swarm Weekly Report: 15/09/2014 – 21/09/2014, IDEAS+-SER-OQC-REP-2071_SPPA_SwarmWeeklyReport_20140915_20140921.pdf (ref. for SW-IDEAS-27)



2. SUMMARY OF THE OBSERVATIONS

2.1 General status of Swarm instruments and Level 1B products quality

Nothing to report.

2.2 Plan for operational processor updates

L1BOP 3.14 p1 has been put in operations the 24th February 2015. Full information of the major changes and implications in data quality are described here: <https://earth.esa.int/web/guest/missions/esa-operational-eo-missions/swarm/data-quality>.

The most important feature to be noted is the capability to generate magnetic Level 1B products based on Vector Field Magnetometer inputs only, in order to cope with failures of the Absolute Scalar Magnetometer, as occurred on 5 November 2014 on Swarm Charlie.

Therefore, starting from 21 February 2015, the following magnetic product types for Swarm Charlie are again available: MAGC_HR_1B, MAGC_LR_1B, ASMCAUX_1B and VFMCAUX_1B.

Unfortunately, when the operations team tried to recover the past production of Swarm C from 6th November, the processing failed. The processor manufacturer promptly investigated and found the cause of the failure in an error in the function that interpolates the bus currents for calculating the stray fields when there are gaps or overflows.

It has been found that such gaps occurred because of GPS out-of-sync that caused the processor to reject the data. In fact, the issue has occurred again on 25 and 26/2, S/C A, and 25, 27/2, S/C C: again the MAGNET processor failed. Many other failures are reported during week 10, as it is detailed in the following sections.

GMV has delivered a fix (**L1BOP 3.15**) that, after a couple of weeks of tests, has been put into operations on 30/03/2015.

2.3 Quality Working Group and Cal/Val Coordination

Coordination is in place for organizing the 6th Swarm Data Quality Workshop in Paris (hosted by IPGP) in late September 2015.

Following the QWG recommendations in Potsdam and the scientists need in view of the IUGG conference in June, the preliminary plasma dataset has been released early February 2015.

According to the last coordination meeting within the MAGNET QWG (22/01/2015) the following decisions have been taken:

- With the data provided by DTU/ESL, further analysis can be performed by industry (ADS, DTU-MI), other scientific groups (e.g. Richard Marchand and Stephan Buchert on plasma induced fields), and of course by ESA. The agreement is - as always - that results will be shared with all others on the Task Force.
- DTU/ESL will further refine the Lesur-Tøffner-Clausen model parametrisation and share a final description of the process (input data, model description, output results and tests) (by mid-February).
- In parallel, GFZ will distribute the Lühr-Michaelis results, and a number of people (e.g. Malcolm Dunlop, Yulia Bogdanova, Arnaud Chulliat, and Patrick Alken) will further support the analysis of these datasets (by mid-February).
- The PDGS will generate the currently VFM missing data on Charlie due to the ASM failure (by end February).



- DTU/ESL will share the final set of corrected data by early March. These corrected data will also contain the dBsun correction, providing the users the possibility to access to uncorrected data.
- The corrected data will be distributed by ESA to all Swarm users (by early April and no later than 20th April). The correction will also be implemented in the OP. Until this is fully validated, it is agreed that the operational processing will continue as nominal without the correction.
- Next Task Force meeting: **9-10 April**. The meeting will be held in ESTEC.

2.4 Summary of observations for 2015, Week 12 (16/03 - 22/03)

During the monitored week the following events have been found and investigated:

1. Several features observed in the **MOD-NAV solution difference** in all S/C: beside the usual occurrence of the SW-IDEAS-34 anomaly (i.e. deviations from the average value lasting for several minutes), we also report rather often the occurrence of big spikes, often exceeding 20 m, and lasting up to 1 min (SW-IDEAS-61).
2. Several **GPS out-of-sync events** observed especially on Swarm A and C; one case reported also on Swarm B (18/03).



3. ROUTINE QUALITY CONTROL

3.1 Gaps analysis

- **Magnetic production lost on**
 - o **S/C A** on 16/03, 17/03 and 20/03;
 - o **S/C B** on 16/03 and 17/03;
 - o **S/C C** on 17/03 and 20/03

This is due to regression in the new L1B MAGNET processor installed.

- **GPS sync loss events** Details are given in Sect. 3.2.1.2, 3.2.2.2 and 3.2.3.2. GPS out-of-sync timestamps are rejected by the Level 1B processor and cause gaps to be present in all the Level 1A products.
- **Time gaps observed on MAGB_CA_1B** on 18/03/2015 from 00:30:55 to 00:30:59 and from 06:43:57 and 06:44:06 UT. The reason of such gaps is unclear because apparently no telemetry gaps are reported neither in the ASM and VFM Level 0s, nor in the HK Level 0s, for such intervals. Moreover, the PPS of the instruments was correctly synchronized with the GPS signal (no GPS sync losses). The issue is under investigation (**SW-IDEAS-63**).

3.2 Orbit and Attitude Products

The following events have to be reported:

Observation ID	Description	Affected parameter	Sect. of Obs. Description	Sect. of Obs. Analysis
SW-IDEAS-34	OBS_ROUTINE: large number of spiky features observed in the NAV-MOD difference	Orbits (position and velocity)	3.2.1.1	[RD.10]
SW-IDEAS-40	OBS_ROUTINE: STR out of range - ANOMALOUS CASES	All level 1A and level 1B products	3.2.1.2 3.2.2.2 3.2.3.2	[RD.12]
SW-IDEAS-61	OBS_ROUTINE: huge spikes observed in the MOD-NAV difference	Orbits (position and velocity)	3.2.3.1	3.2.3.1

Table 1: List of events related to attitude and orbit products to be reported in the monitoring for 2015, Week 12: 16/03 - 22/03.

The relevant parameters that have been monitored are:

- Position difference between calculated Medium Accuracy orbits (**MODx_SC_1B**) and on-board solution (**GPSxNAV_0**). Threshold values for such differences have not been assessed yet: we have just monitored the average values and maximum variations around the week, and reported in tables in the sections below, along with some example from the HTML daily reports. For the time being we evaluated an anomaly should be raised if one (or more) of the following conditions occurs:



- The **average difference** on a given day exceeds the position accuracy requirement for the mission (1.5 m),
 - The variability around the average is quite high: **standard deviation** threshold has been arbitrarily chosen to be twice the position accuracy requirement for the mission (2-sigma = 3 m).
 - At least 4-5 spikes are observed on a given day, exceeding +/- 50 m.
- Visual inspection of Star Tracker characterisation flags (**STRxATT_1B**)
 - Deviation of the quaternion norm from unity (deviation threshold = +/- 10⁻⁹)
 - Visual inspection of Euler Angles derived from quaternions.

3.2.1 Swarm A

3.2.1.1 Position statistics

In Table 2 one can see the statistics of the differences between MOD and on-board solution positions. In the third column the maximum differences (maximum negative and maximum positive) are reported. The maximum standard deviation is in the fourth column. Maxima, minima and standard deviations usually refer to the Z component which is often the most disturbed; in case another component is most affected, it will be specified in parentheses.

Swarm A, 16/03 - 22/03, Position difference					
Day	Average difference (m)	Maximum difference (m)		Maximum standard deviation (m)	Notes
16/03	0.13	-8.88	10.73	1.81	
17/03	0.13	-19.02 (Y)	18.41 (X)	1.73	
18/03	0.16	-6.90	8.03 (X)	1.40	
19/03	0.09	-7.60	6.16 (X)	1.26	
20/03	0.06	-7.58	7.20	1.24	
21/03	0.11	-7.02	9.72	1.64	SW-IDEAS-34 [RD.10]
22/03	0.06	-7.04	7.45	1.48	SW-IDEAS-34 [RD.10]

Table 2: Swarm A, difference between MOD and on-board solution positions. If not specified maximum difference and maximum standard deviation refers to the Z axis.

Below some plot example follows of such differences taken at the beginning of the week (16/03, Figure 1), in the middle (19/03, Figure 2) and at the end (22/03, Figure 3). From top to bottom the plots show: the S/C position determined from the MOD calculation, the S/C position determined on-board, and the difference between the two. The values are given in Km.

In Figure 3, an example of SW-IDEAS-34 ([RD.10]) anomaly is shown (red-circled area): the MOD-NAV difference on the Z axis started to depart from the average at 9:12:01, falling back to the previous levels at 9:25:03 (total time 782 sec) with max difference reaching 7.44m.

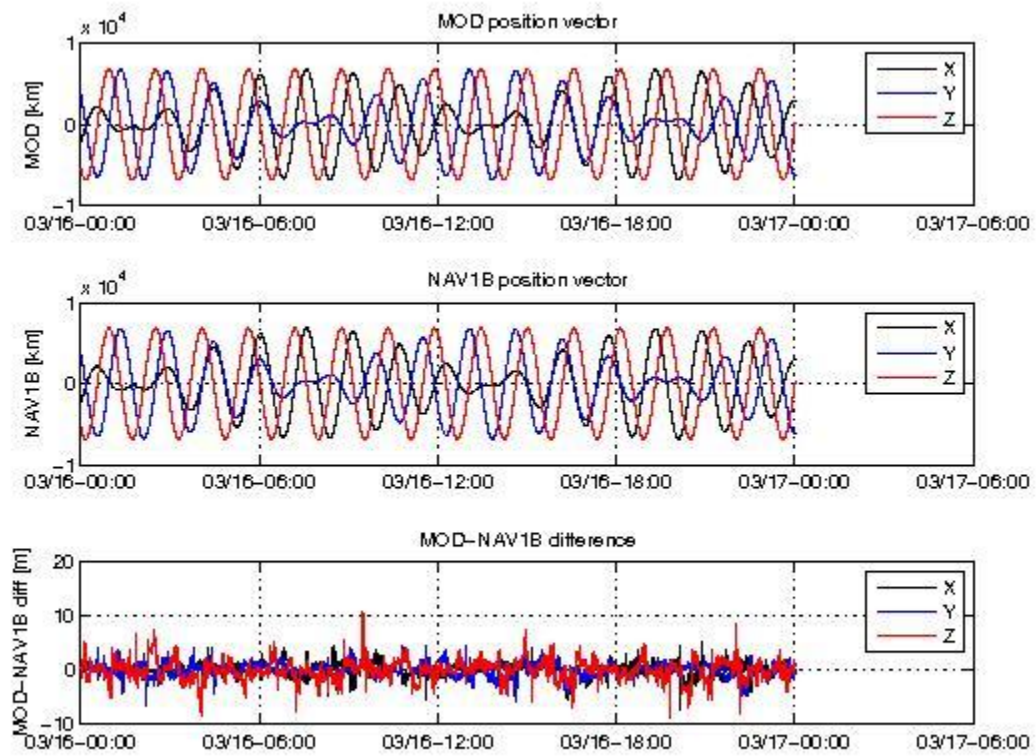


Figure 1: Difference MOD-GPSNAV, S/C A, 16/03. From top to bottom: the S/C position determined from the MOD calculation, the S/C position determined on-board, and the difference between the two.

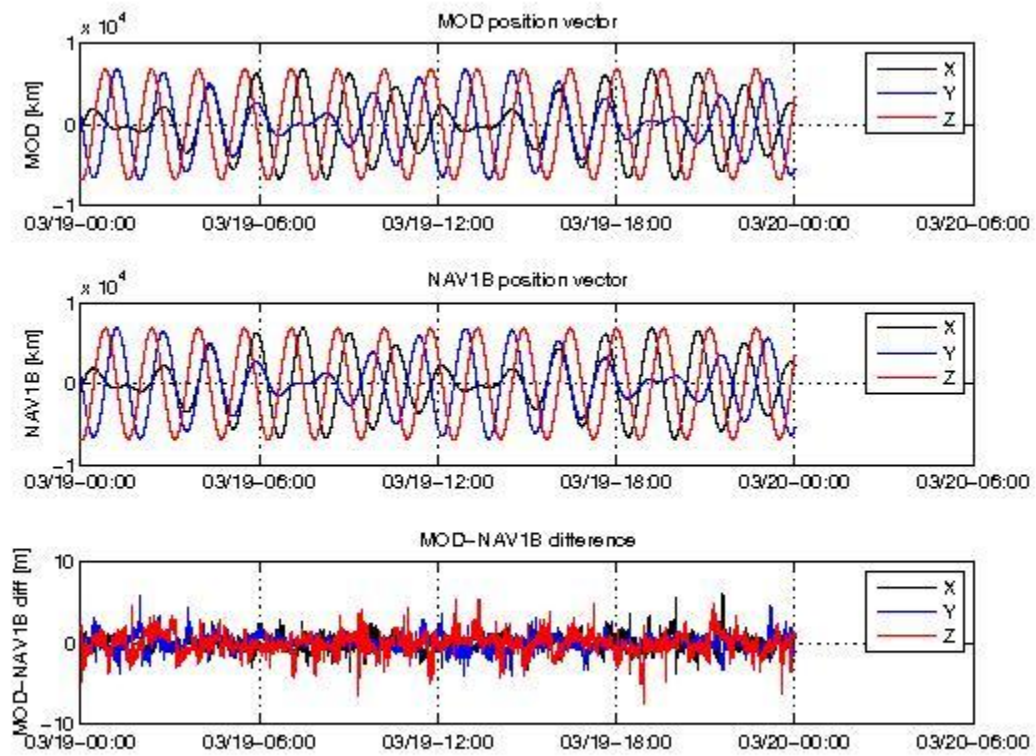


Figure 2: Difference MOD-GPSNAV, S/C A, 19/03. From top to bottom: the S/C position determined from the MOD calculation, the S/C position determined on-board, and the difference between the two. The red circled area shows a big spike in the X and Y components.

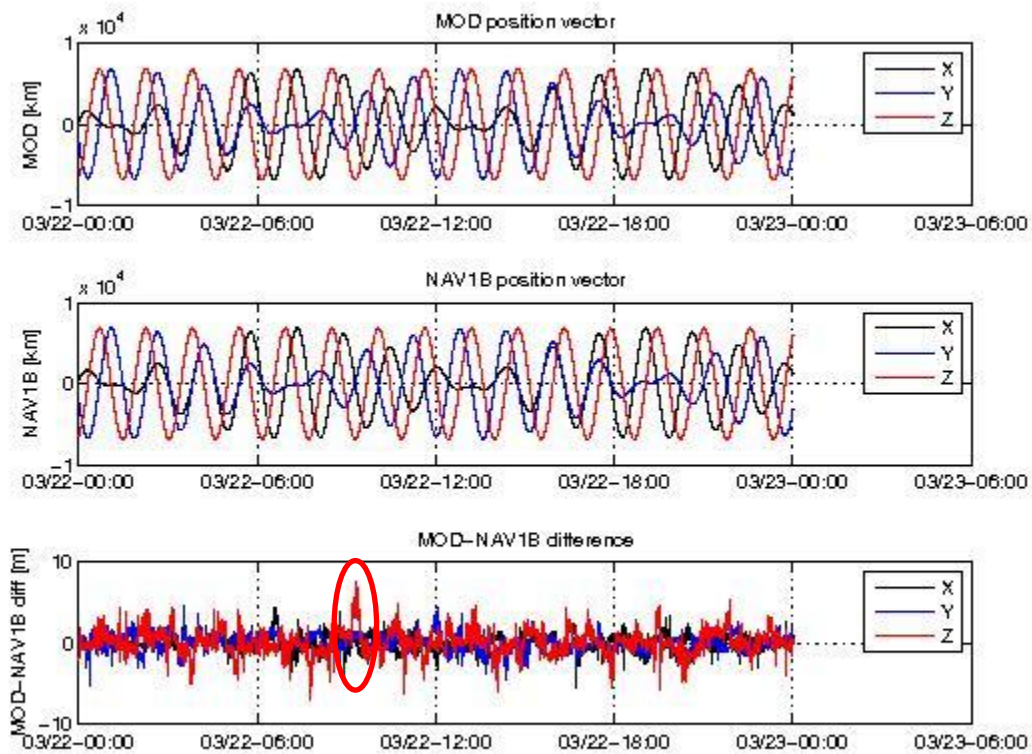


Figure 3: Difference MOD-GPSNAV, S/C A, 22/03. From top to bottom: the S/C position determined from the MOD calculation, the S/C position determined on-board, and the difference between the two. The red circled area shows an example of SW-IDEAS-34 anomaly occurrence ([RD.10]).

3.2.1.2 Attitude observations

- SW-IDEAS-40

During week 12 several GPS out-of-Sync were detected. As explained in [RD.12], this affects the STR data, causing rejection of packets in the Level 1A products and filling gaps with zero quaternions and Flags_q = 255 in the Level 1B products. In Table 3 below, the list of such events for S/C A is given.

Start time	Stop time	Length (s)
17/03/2015 00:02:01	17/03/2015 00:02:07	7
17/03/2015 14:02:17	17/03/2015 14:03:38	82
20/03/2015 01:21:31	20/03/2015 01:21:37	7
20/03/2015 23:19:55	20/03/2015 23:20:00	5

Table 3: Attitudes out-of-range on S/C A, week 12.

3.2.2 Swarm B

3.2.2.1 Position Statistics

In Table 4 one can see the statistics of the differences between MOD and on-board solution positions. In the third column the maximum differences (maximum negative and maximum positive) are reported. The maximum standard deviation is in the fourth



column. Maxima, minima and standard deviations usually refer to the Z component which is often the most disturbed; in case another component is most affected, it will be specified in parentheses.

Swarm B, 16/03 - 22/03, Position difference					
Day	Average Difference (m)	Maximum difference (m)		Standard Deviation (m)	Notes
16/03	0.11	-9.52	7.31 (Y)	1.79	
17/03	0.11	-13.74	7.90	1.55	
18/03	0.10	-8.87	6.97	1.38	SW-IDEAS-34 [RD.10]
19/03	0.06	-7.62 (Y)	8.42	1.43	SW-IDEAS-34 [RD.10]
20/03	0.09	-10.13	6.88 (Y)	1.50	SW-IDEAS-34 [RD.10]
21/03	0.14	-7.30	8.33	1.55	
22/03	0.17	-7.47	12.88	1.54	

Table 4: Swarm B, difference between MOD and on-board solution positions. If not specified maximum difference and maximum standard deviation refers to the Z axis.

Below some plot example follows of such differences taken at the beginning of the week (16/03, Figure 4), in the middle (19/03, Figure 5), and at end of the week (22/03, Figure 6). From top to bottom the plots show: the S/C position determined from the MOD calculation, the S/C position determined on-board, and the difference between the two. The values are given in Km.

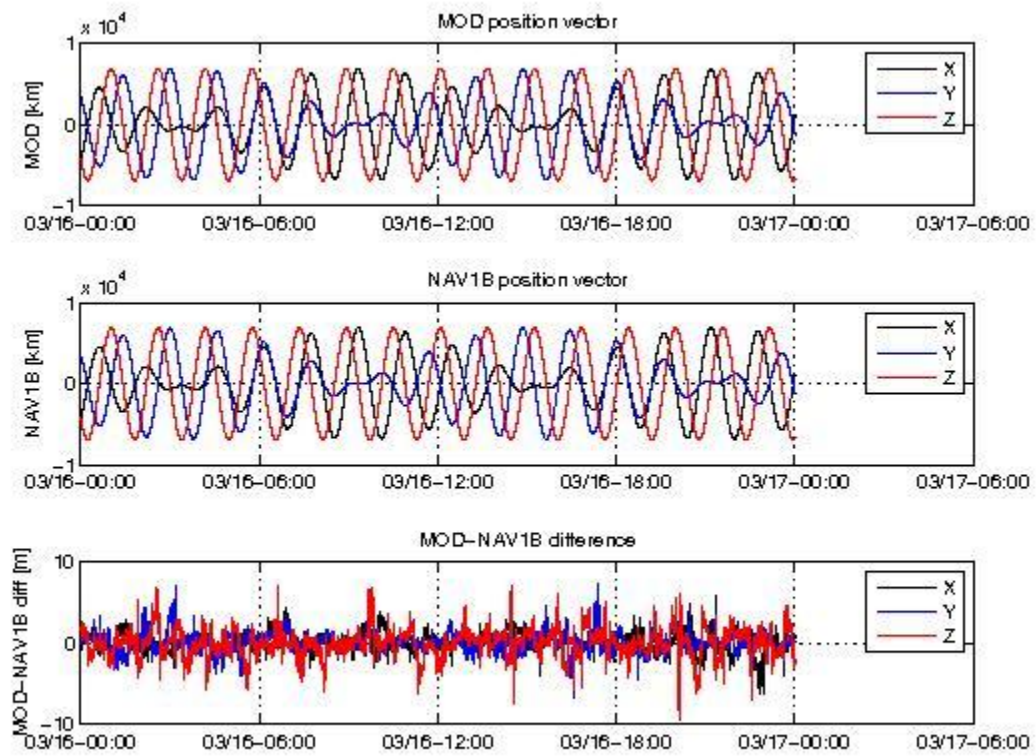


Figure 4: Difference MOD-GPSNAV, S/C B, 16/03. From top to bottom: the S/C position determined from the MOD calculation, the S/C position determined on-board, and the difference between the two.

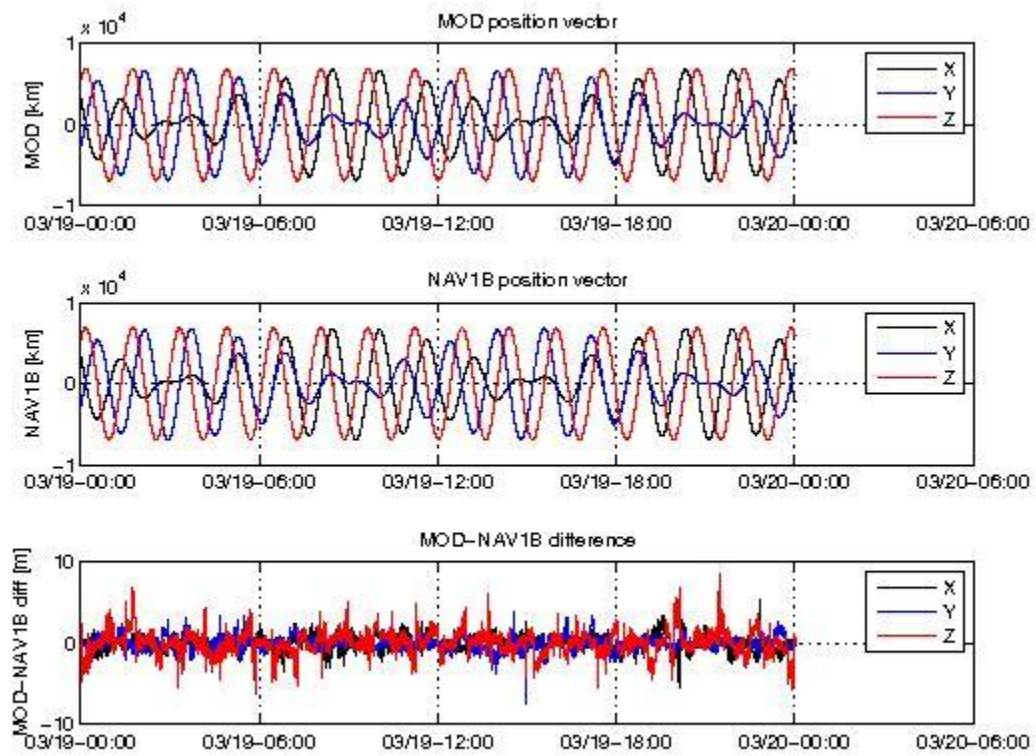


Figure 5: Difference MOD-GPSNAV, S/C B, 19/03. From top to bottom: the S/C position determined from the MOD calculation, the S/C position determined on-board, and the difference between the two.

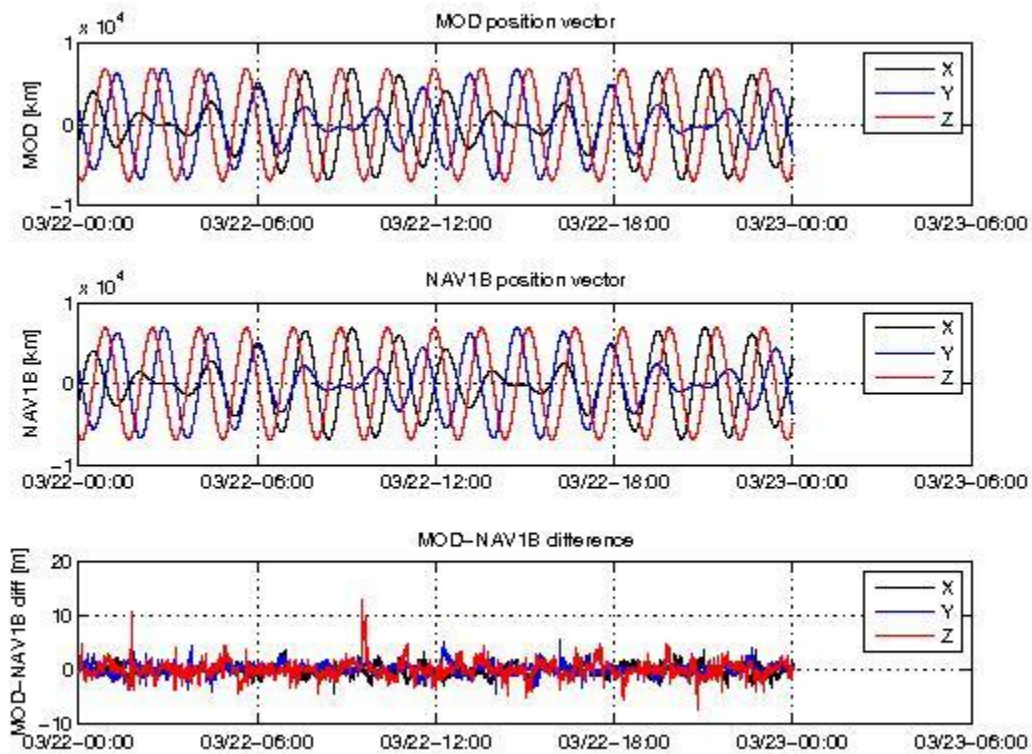


Figure 6: Difference MOD-GPSNAV, S/C B, 22/03. From top to bottom: the S/C position determined from the MOD calculation, the S/C position determined on-board, and the difference between the two.

3.2.2.2 Attitude observations

During week 12 one GPS out-of-Sync was detected. As explained in [RD.12], this affects the STR data, causing rejection of packets in the Level 1A products and filling gaps with zero quaternions and Flags_q = 255 in the Level 1B products. In Table below, the list of such events for S/C B is given.

Start time	Stop time	Length (s)
17/03/2015 18:53:17	17/03/2015 18:54:08	52

Table 5 Attitudes out-of-range, S/C B, week 12.

3.2.3 Swarm C

3.2.3.1 Position Statistics

In Table 6 one can see the statistics of the differences between MOD and on-board solution positions. In the third column the maximum differences (maximum negative and maximum positive) are reported. The maximum standard deviation is in the fourth column. Maxima, minima and standard deviations usually refer to the Z component which is often the most disturbed; in case another component is most affected, it will be specified in parentheses.



Swarm C, 16/03 - 22/03, Position difference					
Day	Average Difference (m)	Maximum difference (m)		Standard Deviation (m)	Notes
16/03	0.18	-14.77	7.88	1.60	
17/03	0.15	-18.02 (Y)	19.59 (Y)	1.56	
18/03	0.09	-7.09	8.86	1.40	
19/03	0.06	-7.58	7.20	1.24	
20/03	0.14	-18.42 (X)	22.60 (Y)	1.28	
21/03	0.14	-8.54	10.85	1.48	
22/03	0.05	-5.66	8.46	1.38	

Table 6: Swarm C, difference between MOD and on-board solution positions. If not specified maximum difference and maximum standard deviation refers to the Z axis.

Below some plot example of such differences follows, taken at the beginning of the week (16/03, Figure 7), in the middle (20/03, Figure 8) and at the end (22/03, Figure 9). From top to bottom the plots show: the S/C position determined from the MOD calculation, the S/C position determined on-board, and the difference between the two. The values are given in Km.

In Figure 8, the red-circled area evidenced the occurrence of rather big spikes in the X and Z components of the MOD-NAV difference, observed on day 20/03.

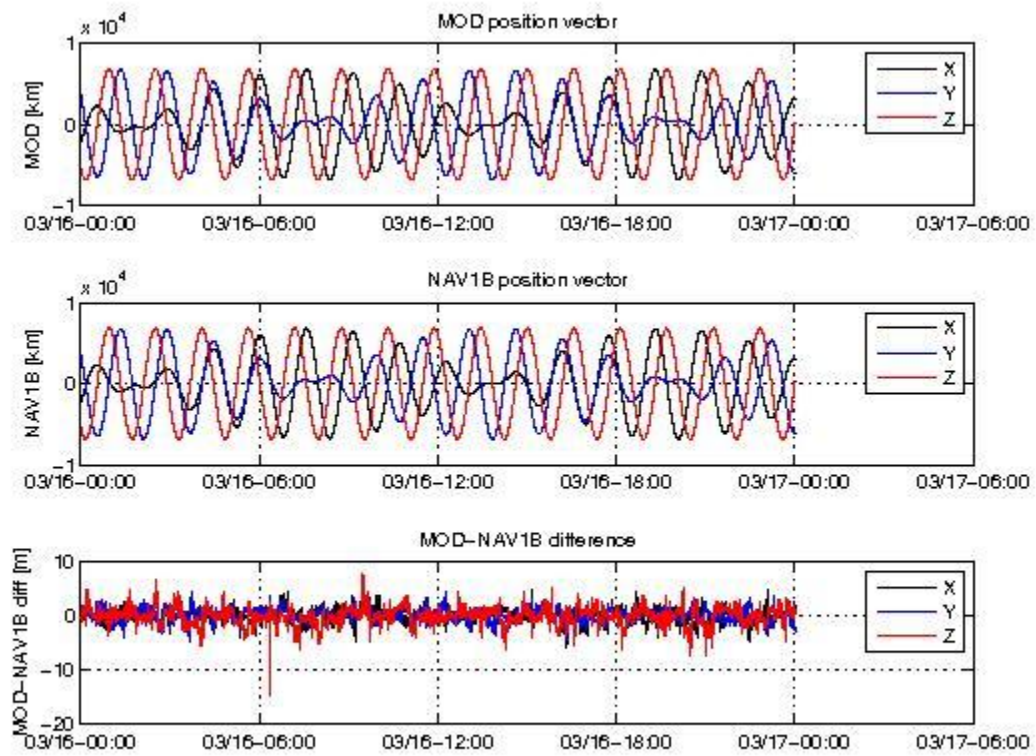


Figure 7: Difference MOD-GPSNAV, S/C C, 16/03. From top to bottom: the S/C position determined from the MOD calculation, the S/C position determined on-board, and the difference between the two.

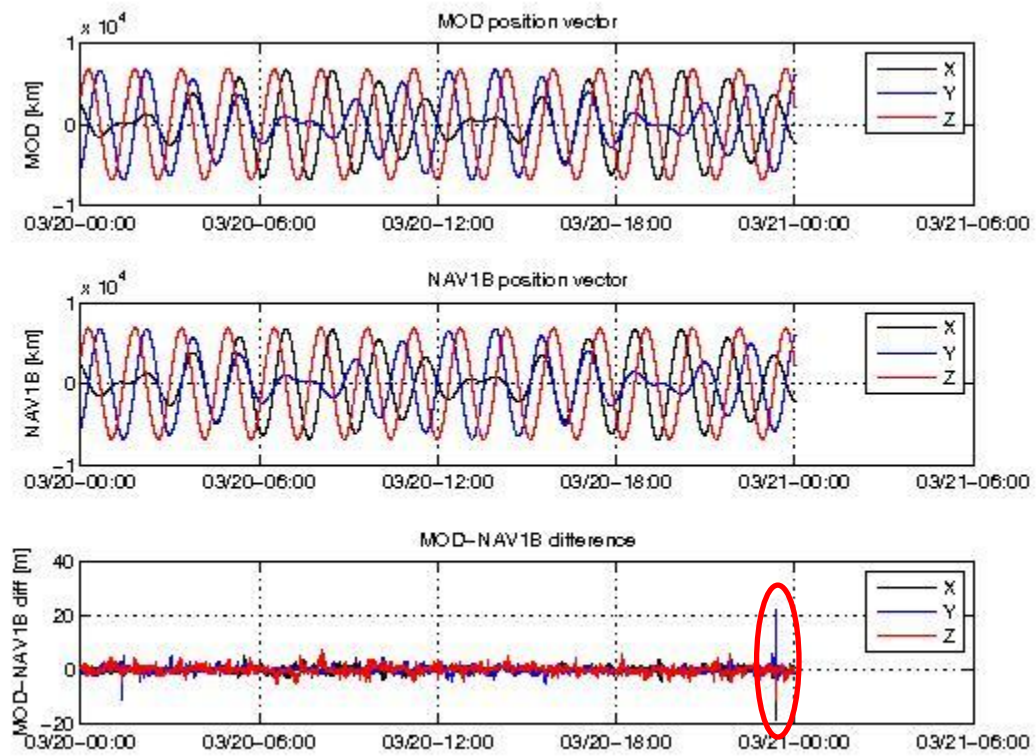


Figure 8: Difference MOD-GPSNAV, S/C C, 20/03. From top to bottom: the S/C position determined from the MOD calculation, the S/C position determined on-board, and the difference between the two. The red-circled area evidences the occurrence of spikes.

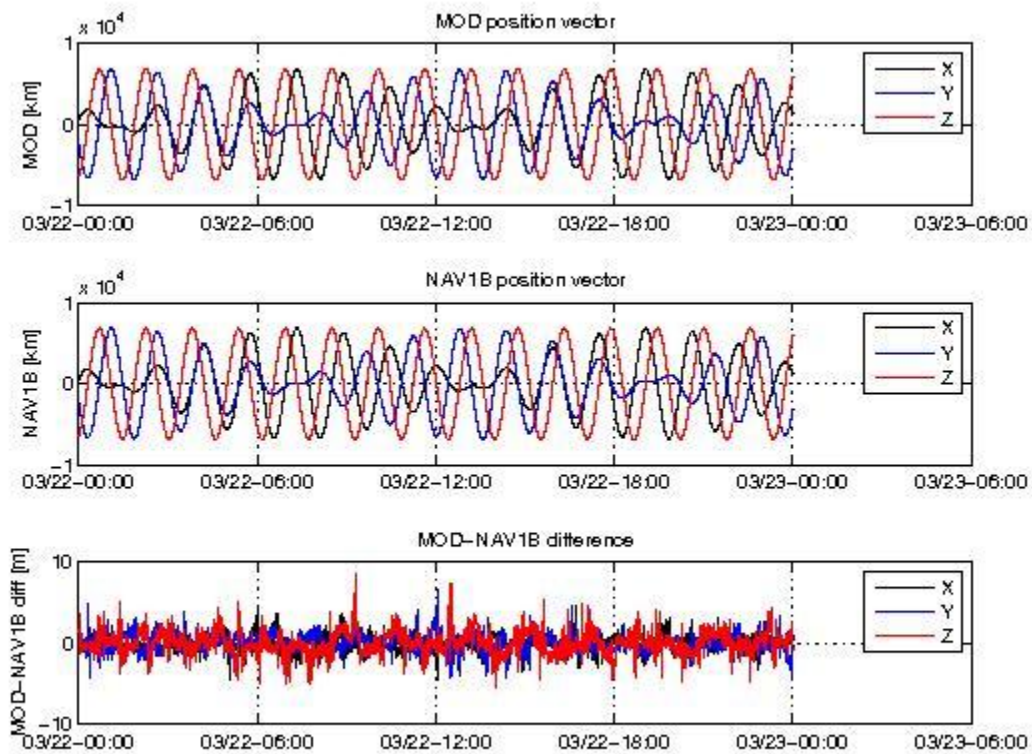


Figure 9: Difference MOD-GPSNAV, S/C C, 22/03. From top to bottom: the S/C position determined from the MOD calculation, the S/C position determined on-board, and the difference between the two.

3.2.3.2 Attitude observations

- SW-IDEAS-40

During week 12 several GPS out-of-Sync were detected. As explained in [RD.12], this affects the STR data, causing rejection of packets in the Level 1A products and filling gaps with zero quaternions and $Flags_q = 255$ in the Level 1B products. In Table 7 below, the list of such events for S/C C is given.

Start time	Stop time	Length
17/03/2015 14:01:50	17/03/2015 14:04:08	138
20/03/2015 23:20:55	20/03/2015 23:21:07	14

Table 7: Attitudes out-of-range, S/C C, week 12.

3.3 Magnetic Products

For the magnetic products the weekly monitoring consists in:

- Visual inspection of daily time series of magnetic field intensity F , \mathbf{B}_{NEC} and \mathbf{B}_{VFM} . Looking for gaps (or zero values in case of **MAGx_LR_1B** products), out-of-threshold values (i.e. exceeding ± 60000 nT), and other strange features.



- Monitoring of the **VFM-ASM known anomaly**: visual inspection of $|B_{NEC}| - F$ and recording of daily maximum variations. If ± 5 nT are exceeded on a given day, an alert is raised.
- TCF.VFM parameters monitoring (VFM calibration parameters): series of biases, scales, non-orthogonality factors and RMS. **This check is performed on monthly basis.**

3.3.1 Swarm A

3.3.1.1 Magnetic time series visual inspection

The magnetic field time series for S/C A on 22/03 can be seen in Figure 10.

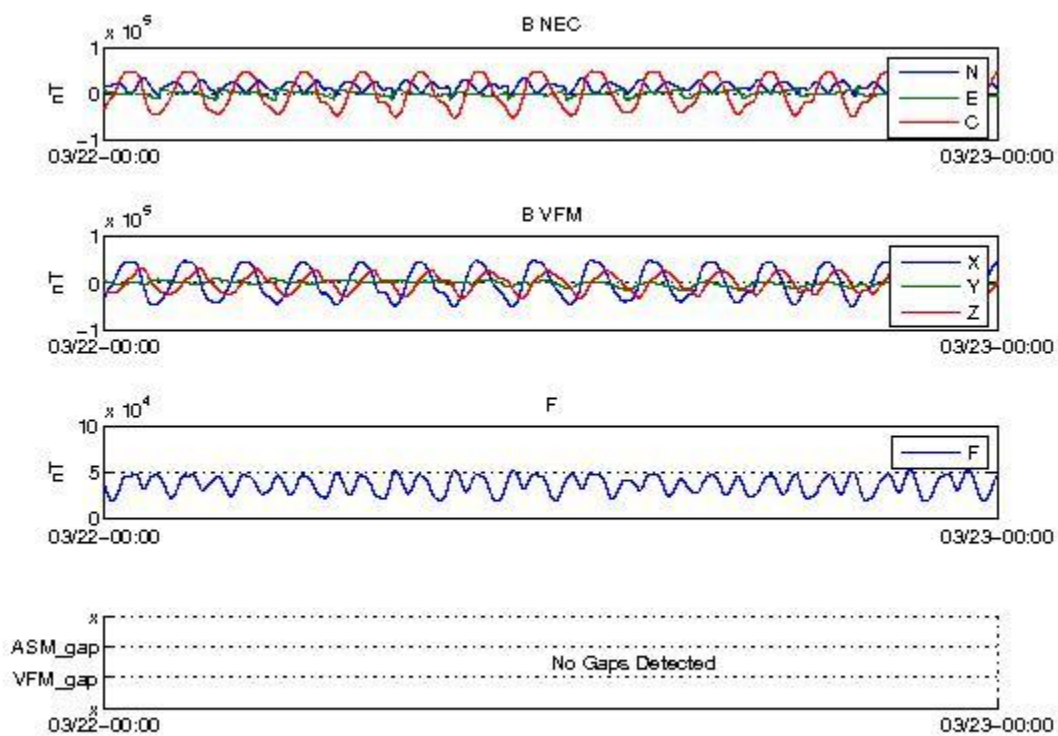


Figure 10: Time series of the geomagnetic field, for 22/03, S/C A. From top to bottom: magnetic field components in NEC reference frame, magnetic field components in the VFM reference frame, magnetic field intensity (F) from ASM, and location of gaps (if any).

3.3.1.2 VFM-ASM anomaly

The daily peak-to-peak difference during current week stays within $[-4, +2]$ nT with few spikes exceeding ± 4 nT (encircled in red).

Below two example plots follows of such differences: 18/03 (Figure 14), and 22/03 (Figure 15). From top to bottom the plots show: The VFM module, the ASM module, the difference ASM-VFM.

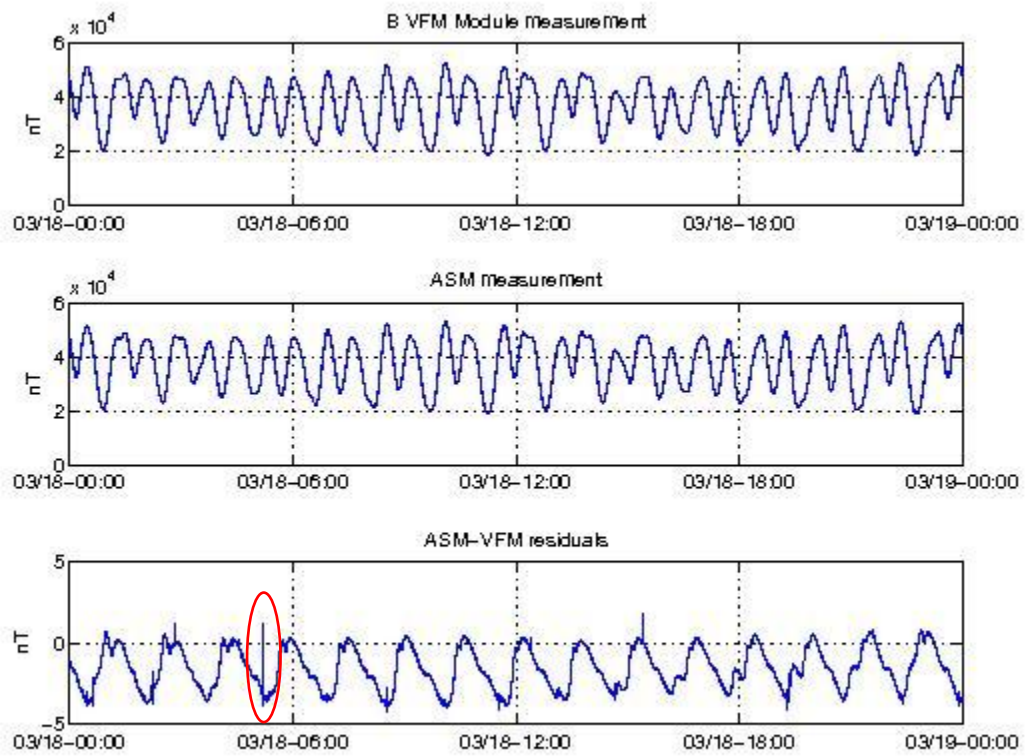


Figure 11: VFM module, ASM module and ASM-VFM residuals for S/C A, 18/03.

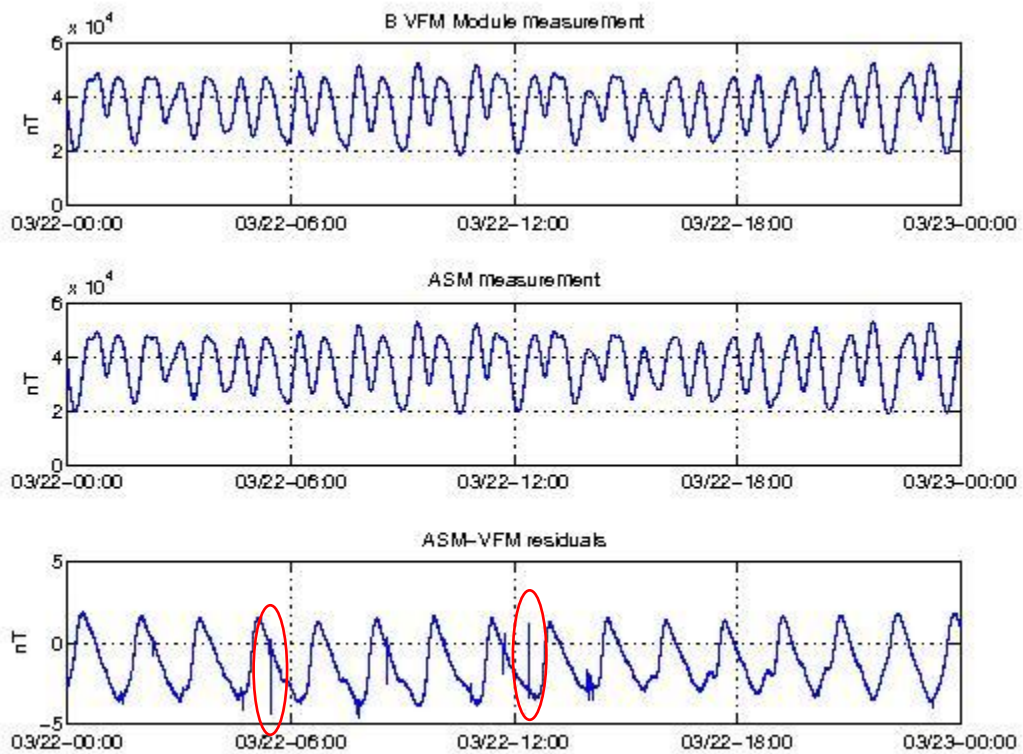


Figure 12: VFM module, ASM module and ASM-VFM residuals for S/C A, 22/03.

3.3.1.3 TCF.VFM monitoring

The TCF.VFM monitoring is a monthly check and will be contained in the first report of April, related to March 2015.

3.3.2 Swarm B

3.3.2.1 Magnetic time series visual inspection

An example of representative magnetic field time series for S/C B (22/03) can be seen in Figure 13 below.

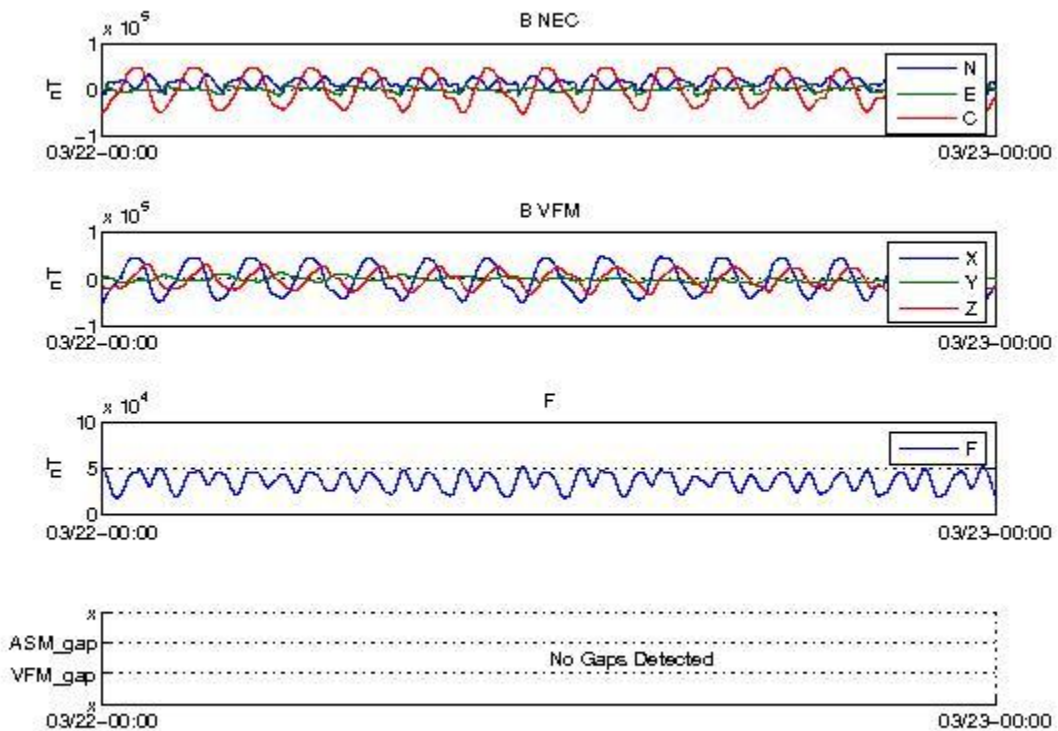


Figure 13: Time series of the geomagnetic field for 22/03, S/C B. From top to bottom: magnetic field components in NEC reference frame, magnetic field components in the VFM reference frame, magnetic field intensity (F) from ASM, and location of gaps (if any).

3.3.2.2 VFM-ASM anomaly

The daily peak-to-peak difference during current week stays within [-2, +2] nT with few spikes exceeding +/-4nT.

Below two example plots follows of such differences: 19/03 (Figure 14), and 22/03 (Figure 15). From top to bottom the plots show: The VFM module, the ASM module, the difference ASM-VFM.

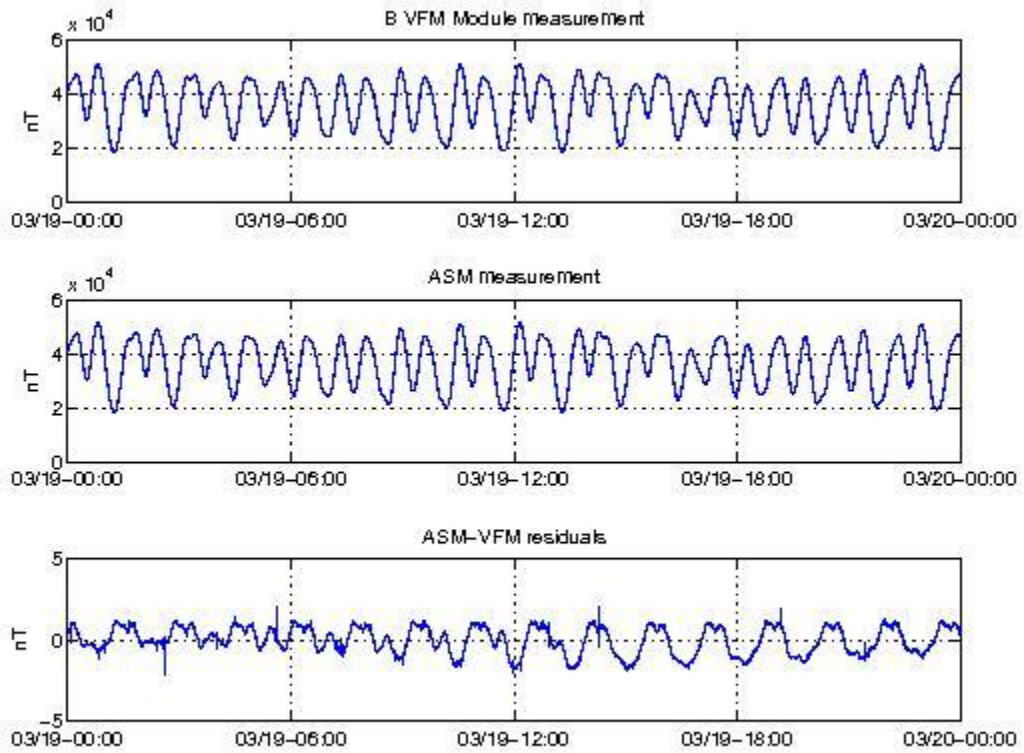


Figure 14: VFM module, ASM module and ASM-VFM residuals for S/C B, 19/03.

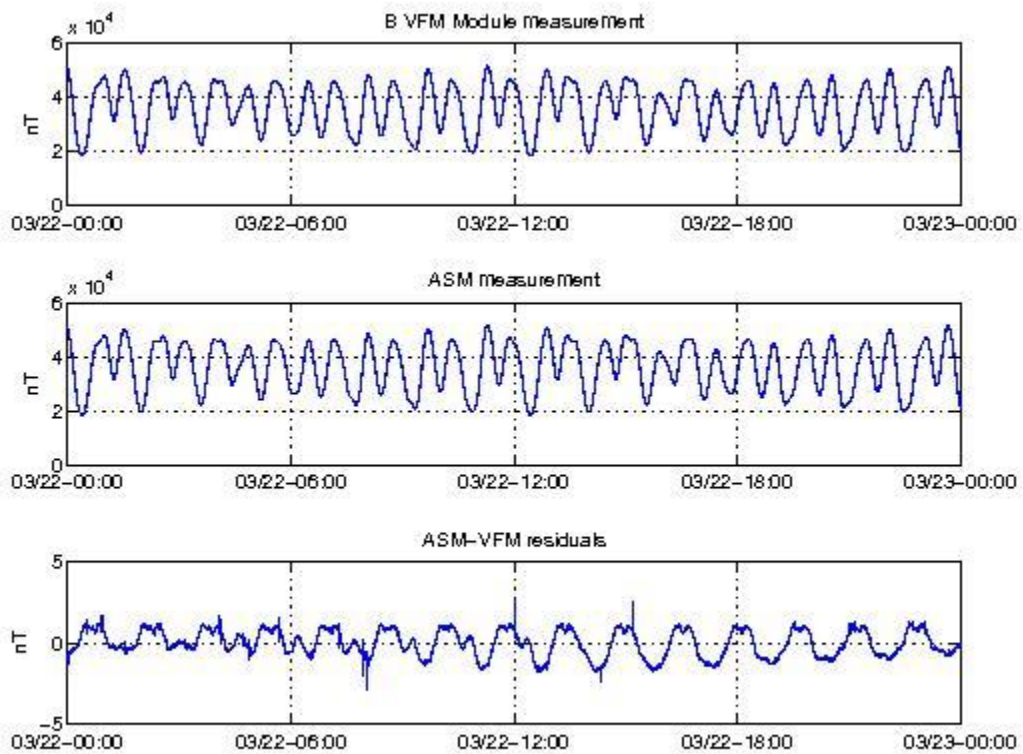


Figure 15: VFM module, ASM module and ASM-VFM residuals for S/C B, 22/03.

3.3.2.3 TCF.VFM monitoring

The TCF.VFM monitoring is a monthly check and will be contained in the first report of April, related to March 2015.

3.3.3 Swarm C

3.3.3.1 Magnetic time series visual inspection

An example of magnetic field time series for S/C C (22/03) can be seen in Figure 16.

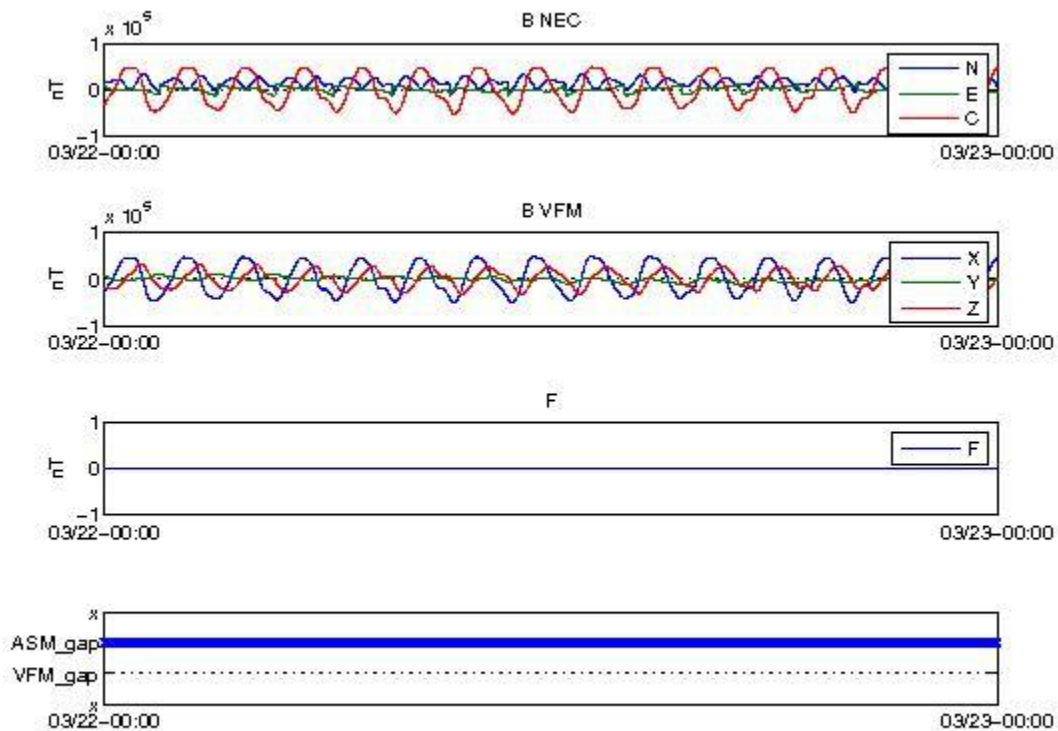


Figure 16: Time series of the geomagnetic field for 22/03, S/C C. From top to bottom: magnetic field components in NEC reference frame, magnetic field components in the VFM reference frame, magnetic field intensity (F) from ASM (no data here because ASM it is off) and location of gaps.

3.3.3.2 VFM-ASM anomaly

No data because ASM is switched off.

3.3.3.3 TCF.VFM monitoring

No data because ASM is still switched off

3.3.4 Summary of TCF behaviour for the three S/C

The TCF.VFM monitoring is a monthly check and will be contained in the first report of April, related to March 2015.



4. ON-DEMAND ANALYSIS

Nothing to report.



End of Document