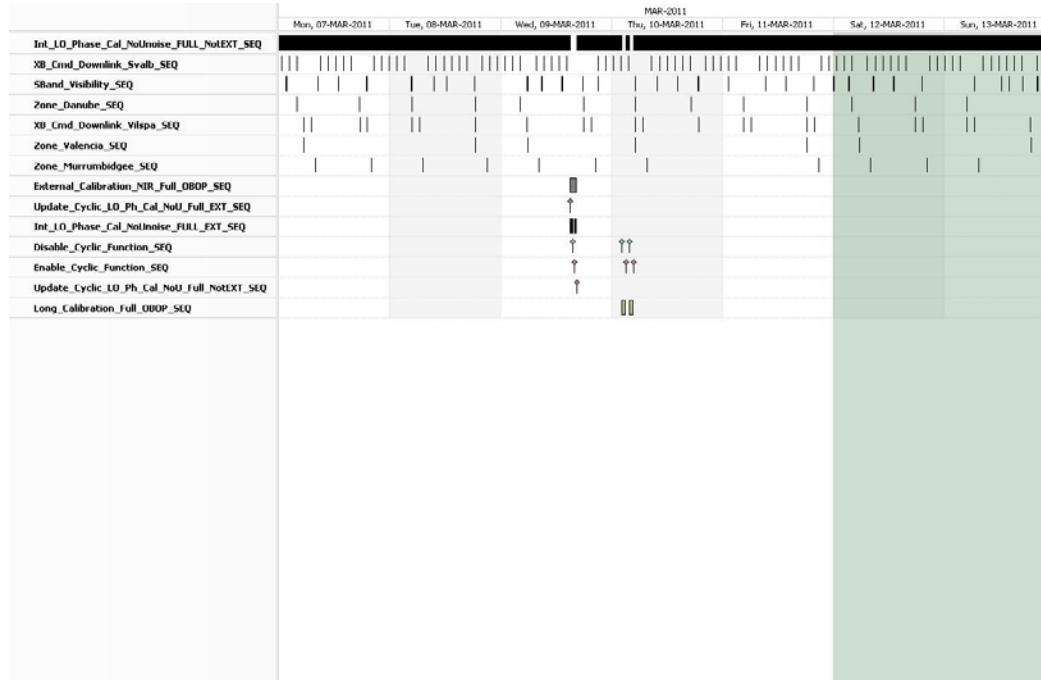




# 1 General Comments

The activities scheduled for this week are those planned for the CW10.



This week contained a **NIR** External Calibration on the 09/03/11 with **ETO** at **15:47 UTC + 2 Long Calibrations** afterwards on the 10/04/11, and also X\_Band passes over Svalbard and ESAC.

# 2 Mission Planning Deviation

None.



### 3 TC Failures

None

### 4 Unforseen Out Of Limits (OOLs)

Parameter	Description	OOL Time	Value

See appendix A for a complete list of OOL's in the period.

### 5 On Board Anomalies

No MM Latch-Ups nor CMN Unlocks in the period.

### 6 Telemetry On Board Events in the period.

Event Description	Event Time	Parameters
RAM single Bit Error	2011.068.22.27.21.327	2163C7C
RAM single Bit Error	2011.072.09.56.22.905	215C054

### 7 FOS System Status

Still some error messages linked to sftp connectivity, but not affecting operations.



---

## **8 Data Reception from CNES**

On 07/03/11 (KER-14), we had the same effect of duplicated TM and of some gaps as we had on 23/02 also with KER Ground Station.

On 13/03, the PLPC System detected a TM gap of 7 packets when processing data from AUS-5 dump.

## **9 X-Band Data Reception in PXMF**

No events on-board in the period were causing loss of sensed data.

## **10 Exceptional Activities**

None.

## **11 AOB**

None.



## APPENDIX A: OOL's

Event Logger printout from time: 2011.066.00.00.00.000 to time: 2011.073.00.00.00.000

Current printout time: 2011.074.08.46.52.463

Filter info:

Application : BEHVlimitChecker  
Workstation : All  
Packets type : All  
Packets severity : All  
Message filter : out

Event time	Stream	Application	Workstation	Severity	Type	Message
2011.068.18.14.39.471	1	BEHVlimitChecker	plpcprm	WARNING	LOG	2011.068.17.22.56.652 NMASME08 VAL: 1 LOW :0 HIGH :0 SOFT limit is out of nominal range
2011.068.18.14.39.473	1	BEHVlimitChecker	plpcprm	WARNING	LOG	2011.068.17.22.56.652 NMASME19 VAL: 1 LOW :0 HIGH :0 SOFT limit is out of nominal range
2011.070.14.05.37.010	1	BEHVlimitChecker	plpcprm	WARNING	LOG	2011.070.09.46.05.221 NMASME08 VAL: 1 LOW :0 HIGH :0 SOFT limit is out of nominal range
2011.070.14.05.37.013	1	BEHVlimitChecker	plpcprm	WARNING	LOG	2011.070.09.46.05.221 NMASME17 VAL: 1 LOW :0 HIGH :0 SOFT limit is out of nominal range