



1 General Comments

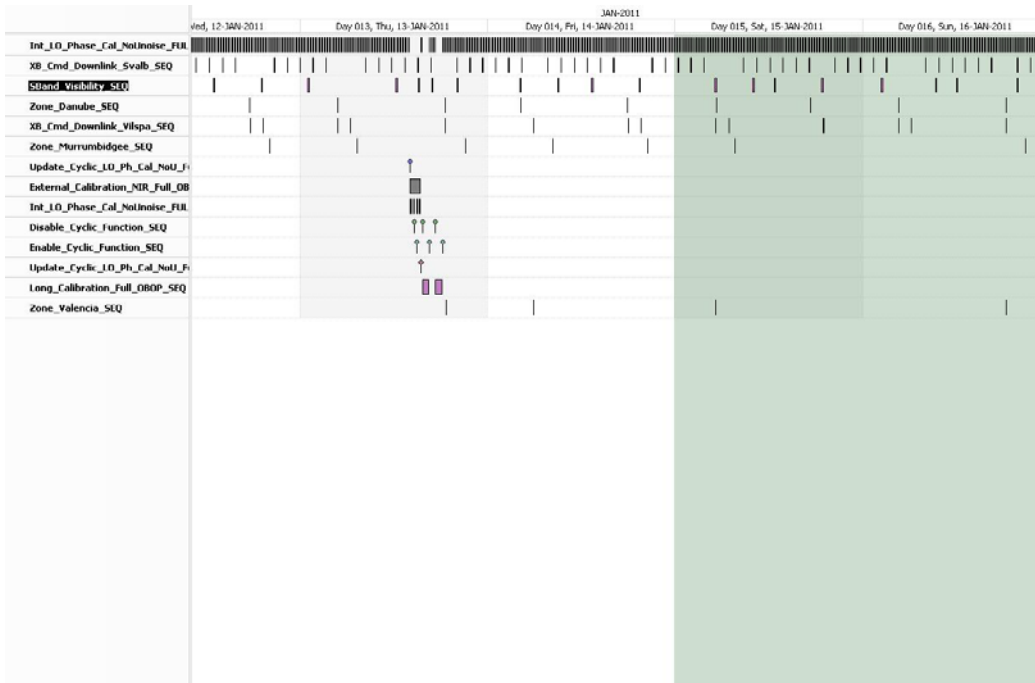
The activities scheduled for this week are those planned for the CW02. This week contained only X-Band Passes over Svalbard and ESAC

	Mon, 10-JAN-2011	Tue, 11-JAN-2011	Wed, 12-JAN-2011	Thu, 13-JAN-2011	Fri, 14-JAN-2011	Sat, 15-JAN-2011	Sun, 16-JAN-2011
Dummy_SEQ							
Int_LO_Phase_Cal_NoNoise_FULL_NotEXT_SEQ	[Solid black bar]						
XB_Cmd_Downlink_Svalb_SEQ							
SBand_Visibility_SEQ							
XB_Cmd_Downlink_Vilspa_SEQ							

2 Mission Planning Deviation

After the Power Cycling of the PLM and the consecutive Switch ON of Nominal Arm B, by request, one additional ECM (NIR) scheduled on **13/01/2011** with an ETO @ **14:47 UTC + 2 Long Calibrations** afterwards.

Moreover, one X_Band dump was left in the return slew of the ECM (planning error), but data transmitted nonetheless.



3 TC Failures

None

4 Unforeseen Out Of Limits (OOLs)

Parameter	Description	OOL Time	Value

For this period and due to the great quantity of OOLs related to the B1 Temperature Readings Anomaly, the complete list of OOL's has not been provided.



5 On Board Anomalies

CMN_Unlock B1 on 11/01 @ 09:21:14 UTC.

One MM partition 2 latch-up, on the 16/01 at 21:59:02 UTC. No data impact.

Arm B switch OFF/ON procedure executed on 10/01 for 105 minutes (approximately two orbits).

B1 false Temperature acquisition anomaly persistent up to 12/01 when there was the Power Cycling of the PLM with switch ON of Nominal Arm B finishing at 09:15 UTC.

6 Telemetry On Board Events in the period.

Event Description	Event Time	Parameters

For this period and due to the great quantity of On-Board Events related to the B1 Temperature Readings Anomaly, the complete list of OBEH TM has not been provided.

7 FOS System Status

- Still some error messages linked to sftp connectivity, but not affecting operations.
- On 12/01, installation new version of MIB DB v5.2. Modifications in ICMBN, ICMBR, IHTBN, IHTBR, and one status parameter, XRCMBR.

8 Data Reception from CNES

No gaps nor missing passes in the period.



9 X-Band Data Reception in PXMF

Data loss (about 1h 44 min 23 sec) due to the Instrument Power OFF on 12/01/11 @ 09:05 UTC.

10 Exceptional Activities

- ARB Teleconference Nr.3 on 10/01 at 09:00 UTC
- Mini-OCG with CNES on 11/01 at 08:00 UTC
- ARB Teleconference Nr.4 on 11/01 at 10:00 UTC

11 AOB

Issued new PRO-CRP-401 to cover the power cycle into Prime-B. Some other FOP adaptations being produced.