



Customer : ESRIN	Document Ref : IDEAS+-VEG-OQC-REP-2213
Contract No : 21525/08/I-OL	Issue Date : 17 February 2015
WP No : 14500	Issue : 1

Title : IDEAS – SMOS Public Monthly Report - January 2015

Abstract : This document provides a summary of the status and performance of SMOS over the course of the reporting month.

Author : _____ **Accepted** : _____
IDEAS SMOS QC Team R. Crapolicchio on behalf of
ESA EOP-GMQ

Distribution :
Hard Copy File:
Filename: IDEAS+-VEG-OQC-REP-2213_v1.doc

Copyright © 2015 Telespazio Vega UK Ltd.

All rights reserved.

No part of this work may be disclosed to any third party translated reproduced copied or disseminated in any form or by any means except as defined in the contract or with the written permission of Telespazio Vega UK Ltd..

Telespazio Vega UK Ltd.
350 Capability Green, Luton, Bedfordshire, LU1 3LU, United Kingdom
Tel: +44 (0)1582 399 000 Fax: +44 (0)1582 728 686
www.vegaspaces.com





TABLE OF CONTENTS

1. EXECUTIVE SUMMARY.....	6
2. INTRODUCTION	7
2.1 Structure of the Document.....	7
2.2 Definitions of Terms.....	7
3. INSTRUMENT STATUS.....	10
3.1 Instrument health.....	10
3.2 Instrument unavailabilities and anomalies.....	10
4. DATA SUMMARY	12
4.1 Reprocessing activities.....	12
4.2 Processing changes.....	15
4.2.1 Processor updates.....	15
4.2.2 Processor Status.....	15
4.2.3 Schema updates.....	15
4.2.4 Schema status.....	15
4.2.5 Aux file updates.....	16
4.3 Calibration Events Summary.....	18
4.4 Data Coverage Summary.....	18
4.5 Summary of degraded data.....	19
4.6 Product Quality Disclaimers.....	19
5. LONG-TERM ANALYSIS.....	22
5.1 Calibration Analysis.....	22
6. PRODUCT QUALITY ANALYSIS.....	37
7. ADF CONFIGURATION AT THE END OF THE REPORTING PERIOD	67
APPENDIX A. CONFIGURATION DOCUMENT LIST.....	69



AMENDMENT POLICY

This document shall be amended by releasing a new edition of the document in its entirety. The Amendment Record Sheet below records the history and issue status of this document.

AMENDMENT RECORD SHEET

ISSUE	DATE	DCI No	REASON
1	17 February 2015	N/A	First release



This Page is Intentionally Blank



1. EXECUTIVE SUMMARY

This is the routine Soil Moisture and Ocean Salinity (**SMOS**) Monthly Public Report containing a summary of the instrument health, product quality status and updates to SMOS processing and AUX files during January 2015.

The instrument health during January was found to be nominal. There were seven unavailability's reported during the reporting period that translate into time intervals with data loss or degraded data. The list of unavailability's is included in the section 3.2.

The data quality during January was found to be nominal, with the exceptions listed in section 4.5. These degraded periods have been induced either by instrument anomalies or unavailability of dynamic auxiliary files.



2. INTRODUCTION

2.1 Structure of the Document

After this introduction, the document is divided into a number of major sections that are briefly described below:

1 Executive summary

The executive summary covers the main findings from the report.

2 Introduction

A list of referenced documents and definitions of terms are available.

3 Instrument status

This section covers the instrument health and unavailabilities from this reporting period.

4 Data Summary

This section covers reprocessing, updates to processors and aux files as well as a data coverage summary.

5 Long Term Analysis

Long-term analysis of the instrument calibration and data quality are provided in this section.

2.2 Definitions of Terms

The following terms have been used in this report with the meanings shown.

Term	Definition
CMN	Control and Monitoring Node, responsible for commanding the receivers, reading their physical temperatures and telemetry and the generation of the synchronization signal (local oscillator tone) among receivers.
CCU	Correlator and Control unit, instrument computer on-board
DPGS	Data Processing Ground Segment
ESL	Expert Science Laboratory
IC4EC	Internal Calibration for External calibration. Calibration sequences for the instrument monitoring and calibration of science data acquired in external target pointing.
IDEAS	Instrument Data quality Evaluation and Analysis Service, reporting to the ESA Data Quality and Algorithms Management Office (EOP-GQ), responsible for quality of data provided to users including the data calibration and validation, the data processing algorithms, and the routine instrument and processing chain performances.



IPF	Instrument Processor Facility
L2SM	Level 2 Soil Moisture
MM	Mass Memory
OCM	Orbit Correction Manoeuvre
PMS	Power Measurement System
RFI	Radio Frequency Interference
N/A	Not applicable



This Page is Intentionally Blank



3. INSTRUMENT STATUS

3.1 Instrument health

The current instrument status is that all the **instrument** subsystems are working correctly. The current configuration of the instrument is that the arm A and the arm B are working in nominal side and arm C is in the redundant side.

Table 3-1 History of instrument problems and mode changes

Start	Stop	Description
11 January 2010 12:07z Orbit 1013	N/A	Arm A changes from redundant to nominal side. That operation is to avoid the malfunction of one of the redundant CMNs of the arm.
12 January 2011 09:15z Orbit 6278	N/A	Arm B changes from redundant to nominal side. That operation is to avoid the malfunction of one of the redundant CMNs of the arm.

3.2 Instrument unavailabilities and anomalies

The unavailabilities and anomalies listed in Table 3-2 occurred during the reporting period. A full list of unavailabilities can be found in the Mission Status section on the SMOS Earthnet website (<http://earth.esa.int/object/index.cfm?fobjectid=7060>).

During these unavailabilities and anomalies the instrument may have either not collected data or may have collected corrupt data which may not have been processed to higher levels. Table 4-5, Table 4-6 and Table 4-7 provide details of the data which has been affected by gaps and quality degradation respectively.

Table 3-2 SMOS unavailability list

Start		Stop		Unavailability Report Reference	Planned	Description
Time	Orbit	Time	Orbit			
01/01/2015 22:17	27150	01/01/2015 22:17	27150	FOS-0307	No	MM Latch up P2



07/01/2015 14:00	27231	07/01/2015 14:00	27231	FOS-0308	Yes	MM Latchup Recovery P2
21/01/2015 02:20	27426	21/01/2015 02:20	27426	FOS-0309	Yes	OCM CAM
21/01/2015 23:43	27438	21/01/2015 23:53	27439	FOS-0310	No	CMN unlock CMN
29/01/2015 20:49	27552	29/01/2015 20:49	27552	FOS-0311	No	MM Latch up P0
30/01/2015 14:42	27563	30/01/2015 14:42	27563	FOS-0312	Yes	MM Latchup Recovery P0
30/01/2015 09:04	27559	30/01/2015 09:14	27559	FOS-0313	No	CMN Unlock H3



4. DATA SUMMARY

4.1 Reprocessing activities

The information regarding to data reprocessing activities (REPR data type) during the reporting period are:

- 1) The second SMOS L2 data reprocessing started on 2014-12-15T11:00z and is currently on-going. The distribution of the complete reprocessed data set (L1 and L2) is planned for the first quarter of 2015.

The information regarding to the data regeneration activities (OPER data type) during the reporting period are:

- 1) The degraded period between 15 October until 2 December 2014 has been regenerated in the reporting period, using Cold-NIR calibration. Therefore they do not present increased bias level. This regeneration activity also corrects for data between 20141107 and 20141111, computed without VTEC ionospheric information.

The information regarding to past data reprocessing activities (REPR data type) are:

- 1) The second SMOS mission reprocessing for L1 data started on 2014-07-10, and finished on 2014-09-04.
- 2) The first SMOS mission reprocessing campaign has been completed and the data set is available to the SMOS user community.

Particularly, the processors used are the Level 1 Processor v505, the Level 2 Ocean Salinity processor v550 and the Level 2 Soil Moisture processor v501. The reprocessed period covers from 2010-01-12 to 2011-12-22 for the L1 and L2 sea surface salinity data and from 2010-01-12 to 2011-11-28 for the L2 soil moisture data.

The improvements and known caveats in the quality of the SMOS Level 1 and Level 2 data products are described in the data release notes available on the ESA web page:

- a) L1 read-me-first note available on:

https://earth.esa.int/c/document_library/get_file?folderId=127856&name=DLFE-5105.pdf

- b) L2 soil moisture read-me-first note available on:

https://earth.esa.int/documents/10174/118493/L2SMv551_release_note_2013-08-09.pdf

- c) L2 sea surface salinity read-me-first note available on:

https://earth.esa.int/c/document_library/get_file?folderId=118493&name=DLFE-6605.pdf

Data users are strongly encouraged to consult those notes before using SMOS data.

- 3) The first SMOS L2 sea surface salinity "catch-up" reprocessing campaign has been completed and the data set covering the period from 22 December 2011 to 31 December 2012 has been released to the SMOS user community. The SMOS L2 sea surface salinity "catch-up" data set has been generated by the L2OS processor version V5.50 using as input the level 1C data from the nominal operational chain (i.e. L1C V505 OPER



data type) and an improved Ocean Target Transformation (OTT) correction for the sea surface salinity retrieval. The catch-up reprocessing aimed at aligning the operationally available data set to the reprocessed data set and will be repeated until the operational processing chain will use the same approach (foreseen for end of 2014). With the release of this data set the SMOS users now have a consistent dataset of sea surface salinity measurements from the beginning of the SMOS mission till December 2012 (REPR data type). Data users are strongly encouraged to consult the Level 2OS read-me-first note (https://earth.esa.int/c/document_library/get_file?folderId=118493&name=DLFE-6605.pdf) to understand the improvements and known caveats in the data set before using the SMOS data.

- 4) The first SMOS level 2 soil moisture "catch-up" reprocessing campaign has been completed and the dataset covering the period from 12 January 2010 to 27 April 2012 has been released to the SMOS user community. The SMOS level 2 soil moisture "catch-up" dataset has been generated by the current version V5.51 of the level 2 soil moisture processor using as input the level 1C data from the level 1 reprocessing campaign (i.e. L1C V5.05 REPR data type) with sensing time till 22 December 2011 and the level 1 from the nominal operational chain (i.e. L1C V5.05 OPER data type) thereafter. The "catch-up" soil moisture reprocessing intends to align the entire soil moisture data archive to the currently used level 2 soil moisture processor baseline V5.51.

With the "catch-up" campaign now completed, the users have a consistent and homogenous long term soil moisture level 2 soil moisture V5.51 dataset that can be exploited for their research activities from the beginning of the SMOS mission up to the present. Data users are strongly encouraged to consult the Level 2SM read-me-first note (https://earth.esa.int/documents/10174/118493/L2SMv551_release_note_2013-08-09.pdf) to understand the known caveats in the dataset before using the SMOS data.

- 5) The Second SMOS L2 sea surface salinity "catch-up" reprocessing campaign has been completed and the data set covering the period from 01 January 2013 to 31 December 2013 has been released to the SMOS user community.

The SMOS L2 sea surface salinity "catch-up" data set has been generated by the L2OS processor version V5.50 using as input the level 1C data from the nominal operational chain (i.e. L1C V505 OPER data type) and an improved Ocean Target Transformation (OTT) correction for the sea surface salinity retrieval. The catch-up reprocessing aimed at aligning the operationally available data set to the reprocessed data set and will be repeated until the operational processing chain will use the same approach (foreseen for end of 2014). With the release of this data set the SMOS users now have a consistent dataset of sea surface salinity measurements from the beginning of the SMOS mission till December 2013 (REPR data type). Data users are strongly encouraged to consult the Level 2OS read-me-first note (https://earth.esa.int/documents/10174/127856/SMOS_Level-2_Ocean_Salinity_RN) to understand the improvements and known caveats in the data set before using the SMOS data.

The information regarding to the past data regeneration activities (OPER data type) are:

- 1) The Level 2 Ocean Salinity data covering the period 15-Dec-2011 00:25:04z to 24-Jan-2012 00:21:40z have been regenerated. The period covers from the L2 Ocean Salinity processor deployment until the introduction of the L2 configuration update. The L2 Ocean Salinity data have been regenerated using the L2 configuration introduced on 23-Jan-2012 (see section 4.2.5 in the January 2012 monthly report for the details of the L2 OS configuration used for the re-generation) and the Ocean Target Transformation (OTT) files for December and January. Those files were not available in the nominal processing due to an intrinsic delay in the OTT generation and their usage in this regeneration activity improved the L2 OS data quality with respect to the nominal processing. The files are OPER class and they can be identified through the file counter which is 2 or higher.



- 2) The Level 1 and Level 2 data covering the period of 28th September to 1st October 2012 has been regenerated applying the correct phase calibration. The data regeneration does not cover the regeneration of the AUX_DGGxxx files. Therefore, the Level 2 Soil Moisture products have been regenerated using the degraded AUX_DGGxxx files. The files are OPER class and they can be identified through the file counter which is 2 or higher.

- 3) The Level 1 and Level 2 data covering the period from 2012-11-24 13:16z to 2012-11-25 00:10z has been regenerated applying the correct phase calibration. The data regeneration does not cover the regeneration of the AUX_DGGxxx files. Therefore, the Level 2 Soil Moisture products have been regenerated using the degraded AUX_DGGxxx files. The files are OPER class and they can be identified through the file counter which is 2 or higher.



4.2 Processing changes

4.2.1 Processor updates

No processor updates have been conducted during the reporting period.

4.2.2 Processor Status

At the end of the reporting period, the Processing Facility is using the following processors:

Table 4-1 Instrument Processors status

Processor	Version
L1OP	504 (L1a/L1b) 505 (L1c)
L2OS	550
L2SM	551

Table 4-2 Pre- and Post-processors status

Processor	Version
ECMWFP	318
VTECGN	311
LAI pre-processor	307
L2 Post-processors	400

4.2.3 Schema updates

No schema changes have been conducted during the reporting period.

4.2.4 Schema status

At the end of the reporting period, the schema version of the datablock of the products generated and distributed through EOLI is:



Table 4-3 Schema version status

Product type	Version
MIR_SC_F1B	300
MIR_SCSF1C	300
MIR_SCLF1C	300
MIR_BWSF1C	300
MIR_BWLF1C	300
MIR_SMUDP2	300
MIR_OSUDP2	300
AUX_ECMWF_	300

The schema packages are available from the SMOS Global Mapping Tool (GMT) webpage:

https://earth.esa.int/web/guest/software-tools/-/asset_publisher/P2xs/content/gmt-smos-global-mapping-tool

4.2.5 Aux file updates

The following quasi-static AUX files were disseminated to the processing stations this reporting period. The status of the quasi-static AUX files at the end of the reporting period is in the section 7.

SM_OPER_AUX_BULL_B_20141102T000000_20141201T235959_120_001_3

Start sensing time at L1 processor: N/A

Justification: Bulletin Update including values from November 2014 and the prediction for December 2014. Its usage is intended for reprocessing.

SM_OPER_AUX_BULL_B_20141102T000000_20500101T000000_120_001_3

Start sensing time at L1 processor: 015-01-07 11:57:52z

Justification: Bulletin Update including values from November 2014 and the prediction for December 2014. Its usage is intended for the nominal production.

SM_OPER_AUX_OTT1D_20150102T000000_20500101T000000_550_001_3

Start sensing time at L2 processor: N/A

Justification: January update.

SM_OPER_AUX_OTT1F_20150102T000000_20500101T000000_550_001_3

Start sensing time at L2 processor: 2015-01-13 12:14:34z



Justification: January update.

SM_OPER_AUX_OTT2D__20150102T000000_20500101T000000_550_001_3

Start sensing time at L2 processor: N/A

Justification: January update.

SM_OPER_AUX_OTT2F__20150102T000000_20500101T000000_550_001_3

Start sensing time at L2 processor: 2015-01-13 12:14:34z

Justification: January update.

SM_OPER_AUX_OTT3D__20150102T000000_20500101T000000_550_001_3

Start sensing time at L2 processor: N/A

Justification: January update.

SM_OPER_AUX_OTT3F__20150102T000000_20500101T000000_550_001_3

Start sensing time at L1 processor: 2015-01-13 12:14:34z

Justification: January update.

SM_OPER_MIR_ANIR1A_20150129T163943_20150129T165327_504_002_3

Start sensing time at L1 processor: 2015-01-30 05:21:42z

Justification: ANIR1A Update to correct for seasonal drifts (see section 5.1).

SM_OPER_MIR_FTTF__20140501T000000_20140501T001500_500_006_3

Start sensing time at L1 processor: 2015-01-30 05:21:42z

Justification: Date updated to avoid that the processor considers that the Flat Target file is outdated.

SM_OPER_MIR_FTTD__20140501T000000_20140501T001500_500_007_3

Start sensing time at L1 processor: 2015-01-30 05:21:42z

Justification: Date updated to avoid that the processor considers that the Flat Target file is outdated.



4.3 Calibration Events Summary

The following table summarizes the major calibration activities conducted during the reporting period. The Local Oscillator calibration is not included in the table since occurs periodically every 10 minutes. The short calibrations are acquired since 2011-03-24 and they are currently used in the nominal processing chain.

Table 4-4 Calibration summary

Date	Start Time	Stop Time	Calibration	Comments
01/01/15	15:54:02.000	16:47:21.200	Long	
01/01/15	17:34:07.000	18:27:26.200	Long	
02/01/15	16:45:29.200	18:11:08.800	FTR	
08/01/15	17:59:30.000	18:01:14.400	Short	
14/01/15	04:45:58.400	06:08:11.600	NIR-WARM	BT: 3.646842 RMS: 0.069624 Moon elevation: -61.725163 Sun elevation: 9.932332 RA: 20.755354 Declination: -16.028502
15/01/15	05:08:35.000	05:10:19.400	Short	
22/01/15	17:19:39.000	17:21:23.400	Short	
28/01/15	16:18:55.400	17:41:08.600	NIR-WARM	BT: 4.601999 RMS: 1.892567 Moon elevation: -72.745377 Sun elevation: 9.800391 RA: 222.080353 Declination: -28.609419
29/01/15	17:44:01.000	17:45:45.400	Short	

4.4 Data Coverage Summary

Where instrument unavailabilities or anomalies have occurred during this reporting period, gaps in data coverage may have occurred. A list of the gaps due to a permanent data loss is given in Table 4-5 by product level. On the other hand, a list of gaps due to operational problems is given in Table 4-6. The latter gaps may be recovered when the problem is fixed.

The science data gaps due to the execution of calibration activities are not listed in this section.



Table 4-5 Data loss summary

Start	Finish	Data Level	Comments
21/01/2015 02:20 27426	21/01/2015 02:20 27426	All Products	OCM-CAM (FOS-0309) ¹
30/01/2015 14:42 27563	30/01/2015 14:42 27563	All Products	MM Latchup Recovery P0

1: Data acquired during the manoeuvre is flagged as external pointing and not available as nominal data.

Table 4-6 Operational gaps summary

Start	Finish	Data Level	Comments
N/A	N/A	N/A	N/A

4.5 Summary of degraded data

In January 2015, SMOS data was affected by the following instrument and processing anomalies which have had a detrimental effect on the data quality.

Table 4-7 Summary of degraded data

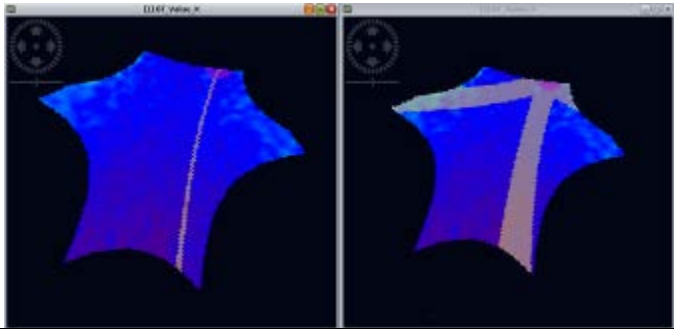
Start	Finish	Affected products	Problem Description
19/01/2015 19:11	19/01/2015 20:04	L1a and above products.	Gap in LO calibration due orchestration anomaly
21/01/2015 23:43 27438	21/01/2015 23:5327439	L1a and above products.	CMN Unlock (FOS-0310)
30/01/2015 09:04 27559	30/01/2015 09:14 27559	L1a and above products.	CMN Unlock H3 (FOS-0313)

4.6 Product Quality Disclaimers

The following product disclaimers affects the data generated in the reporting period:



Table 4-8 Summary of product quality disclaimers

Date	
21 March 2012	<p>Due to a software anomaly in the L1OP V5.04 and V5.05 processor, the Sun Glint Flag available in the L1c Product is not correctly set. This flag aims to indicate measurements affected by Sun glint over ocean. The major impact of this anomaly is on the users who are using L1c data to retrieve Sea Surface Salinity. Those users need to discard the information provided by the Sun glint flag in their retrieval algorithms. This anomaly does not impact the ESA Level 2 Ocean salinity product because the Sun glint flag from L1c input data is not used by the retrieval algorithm. Information on Sun glint are directly computed by the L2 processor and used for the retrieval of the Sea Surface Salinity. Only the Dg_sun_glint_area counter in the Level 2 Ocean Salinity products is affected due to this anomaly.</p>
12 July 2012	<p>Due to a software anomaly in the Level 0 processor, the <i>Cycle</i> field in all the product headers is incorrectly set. This value is annotated in the headers of all the higher level products.</p>
15 August 2012	<p>Due to a software anomaly in the Level 1 processor, the sun tails flag is not correctly set in the L1C products. Therefore, not all the affected data by the Sun tails are flagged in the Level 1C products and the Level 2 processors will take those data as nominal. The following figure shows where the not flagged pixels are located in the snapshot in case of descending passes. The current flagging is provided in the left, whereas the correct flagging of the Sun tail is shown in the right. Notice that in the current data one of the Sun tail is missing and therefore the pixel in the upper part of the snapshot are not flagged. The figure on the right has been generated with an increase of the width of the Sun tail to make clear the area affected. The impact of the Sun tail in the measurements is under investigation by the ESL and a refinement of the width of the Sun Tail will be available in the next version of the L1 processor.</p> 
06 March 2013	<p>Due to a software anomaly in the Level 2 Ocean Salinity processor V550, Fg_ctrl_galactic_noise (part of Fg_ctrl_poor_geophysical) may be set sometimes when it should be clear. As a result, good quality data may be rejected when filtering retrievals using the Fg_ctrl_poor_geophysical flag. Users are recommended to filter data using either a threshold (eg < 150)</p>



	<p>on Dg_quality_SSS, or a combination of Fg_ctrl_poor_retrieval and applicable flags from Fg_ctrl_poor_geophysical (ie any of Fg_ctrl_many_outliers or Fg_ctrl_sunlint or Fg_ctrl_moonglint or Fg_ctrl_num_meas_low or Fg_sc_suspect_ice or Fg_sc_rain). In the OSDAP the Fm_gal_noise_error flag may also be set incorrectly.</p>
06 March 2013	<p>Due to a software anomaly in the Level 2 Ocean Salinity processor v550, the salinity retrieval error is slightly increased in high wind speed conditions.</p>
1 November 2014 till 2 December 2014	<p>From 15 October 18:22 UTC onwards, the brightness temperature presents a bias about 1K warmer. This was originated by the use of Warm-NIR to calibrate the scientific products. This warmer bias affects to all L1 products until 2 December 2014 20:19 UTC, when the calibration used was reverted back to Cold-NIR.</p> <p>The data is being reprocessed with correct calibration. So far, the period between 15 Oct – 31 Oct has been regenerated, so the aforementioned degradation only affects to the period between 1 Nov to 2 Dec.</p>
1 November 2014 till 7 November 2014	<p>Since the OTT in use on October 15 was computed with data not affected by the increased bias level, it was unable to compensate those biases in L2. Therefore, this originated an impact in SSS of about 1psu, and a decrease in the retrievals. In order to mitigate this impact, a new OTT was computed and deployed on 2014-11-07.</p> <p>The data is being reprocessed with correct calibration. So far, the period between 15 Oct – 31 Oct has been regenerated, so the aforementioned degradation only affects to the period between 1 Nov to 7 Nov.</p>
1 January 2015 onwards	<p>L1C products are flagged as ADF Degraded because the IGRF model used by the processors is out of validity. The impact on the Faraday rotation using the out-dated or the new model is in the order of 10⁻² degrees. Brightness Temperature quality, however, is not affected.</p>



5. LONG-TERM ANALYSIS

5.1 Calibration Analysis

The calibration parameters are under monitoring. During the reporting period, there have been NIR calibrations events on 14th and 28th of January. The NIR calibration events have been monitored and the noise injection levels of the NIR diodes are inside the range defined in the routine calibration plan, with Warm-NIR values closer to the limit range.

The evolution of the noise temperature of the reference noise diodes T_{na} and T_{nr} show some drifting and seasonal variations since the beginning of the mission (Figure 1 to Figure 4). After the compensation of those variations by means of the calibration, residual seasonal variations are still observed in the data (see Release notes: https://earth.esa.int/c/document_library/get_file?folderId=127856&name=DLFE-5105.pdf).

Recently, it has been discovered that the antenna losses are the elements which are varying and those variations are propagated to the reference noise temperatures T_{na} and T_{nr} through the calibration. Therefore, the variation in T_{na} and T_{nr} is not totally related to the diode stability which is the purpose to monitor these parameters.

Currently, the calibration algorithms compensates both variations, the antenna losses and the reference noise diodes, simultaneously since both factors are coupled in the current calibration strategy. The Level 1 Processor 620 will introduce a new calibration algorithm which decouples the variation of the antenna losses and the reference noise diodes drifts. That will allow the compensation of each drift separately improving the diode stability monitoring, further improving the calibration of the NIR and as such the final data quality in terms of Brightness temperature stability and accuracy.

The leakage and cross-coupling factors of the NIR channels remain small and no problems can be observed apart from a peak in the phase of the NIR-AB cross-coupling term on 11 April 2012. That peak corresponds to an anomaly in the NIR-AB that did not have impact on the data.

The Warm NIR calibrations performed on 7th of July, 15th and 29th of September were commanded with the Sun slightly above the antenna plane. These were experimental NIR calibrations and have not been used in the operational chain, but there are included in the analysis for completeness. The result of these calibrations can be easily seen in the plots as an outlier value. After these three experimental calibrations it was agreed that the execution of NIR calibrations with the Sun slightly above the antenna plane and elevations between 5 and 10 degrees removes the anomalous behaviour of LICEF-BC-03, while maintaining a better thermal stability and reducing the thermal stress of the instrument. Therefore, Warm NIR calibrations with a Sun elevation of 10 degrees were implemented operationally in the flight and ground segment since 15 October 2014.

The operational warm-NR calibrations performed on 15th, 29th of October and 12th, 26th of November were ingested in the nominal chain, and have been used to calibrate the data in the operational chain. This has caused an increase of ~1K in brightness temperature in L1c products. Such effect is mainly due to the calibration methodology used in the operational processor which is based on the usage of antenna temperature to compute the antenna losses. As explained above, with the new processor version V620 this coupling effect between antenna losses and antenna temperature will be much more reduced and no jump in the brightness temperature is expected. The biases in the brightness temperature were not compensated by the October OTT (which was computed by analysing data acquired before the implementation of the warm-NIR calibration) and therefore, sea surface salinity data was impacted by a reduction in the retrieved salinity of about 1psu. The November OTTs have been already computed taking into account the warm-NIR calibration and so, November sea surface salinity data are already compensated by them.



In order to keep stability in the long term operational data set, it was decided to remove from the operational chain the warm-NIR calibrations (i.e. calibrations from 15th October onwards), thus reverting to cold-NIR calibration. The deployment of the cold-NIR was done on the 2 December 2014. The products from 2 December 2014 20:19:56 UTC are calibrated with the cold-NIR performed on 2014-10-01, and therefore they do not show increased bias levels or degradation in salinity retrieval. It was decided to keep the planning for warm-NIR (without ingesting them in the operational chain) for monitoring purposes.

The NIR calibration was updated on 30/01/2015 by using a one year old calibration measurement (acquired on 29/01/2014) in order to compensate for the seasonal drift.

Figure 1 Tna evolution of NIR AB (blue), NIR BC (green) and NIR CA (red) in the H-channel since the beginning of the mission. Thresholds in dashed lines

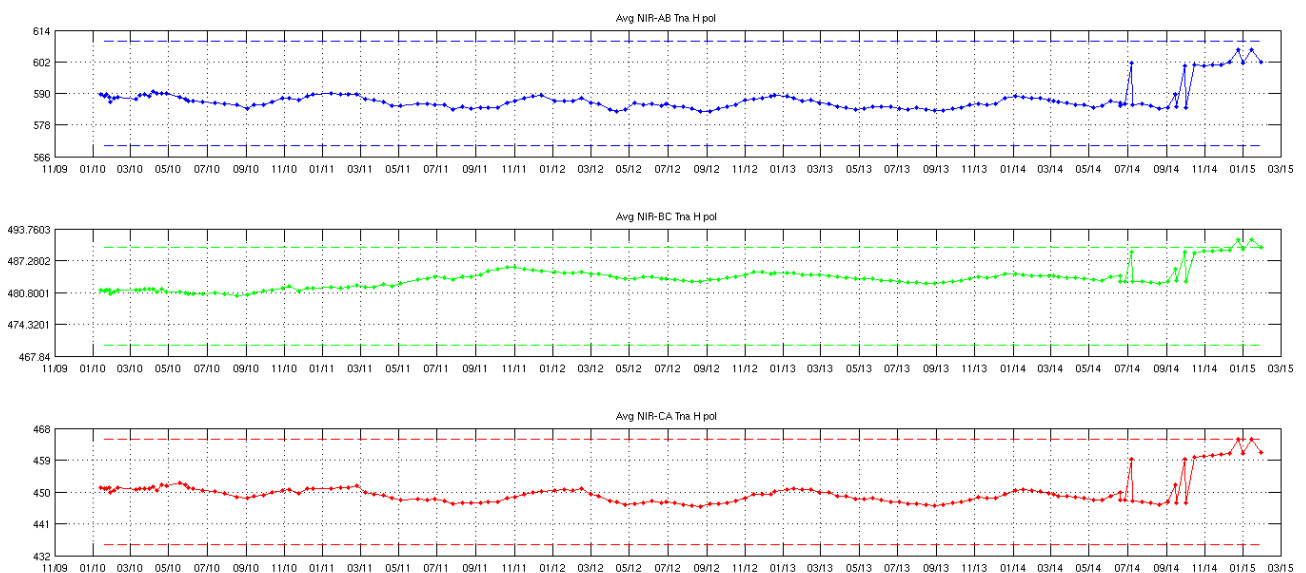




Figure 2 Tna evolution of NIR AB (blue), NIR BC (green) and NIR CA (red) in the V-channel since the beginning of the mission. Thresholds in dashed lines

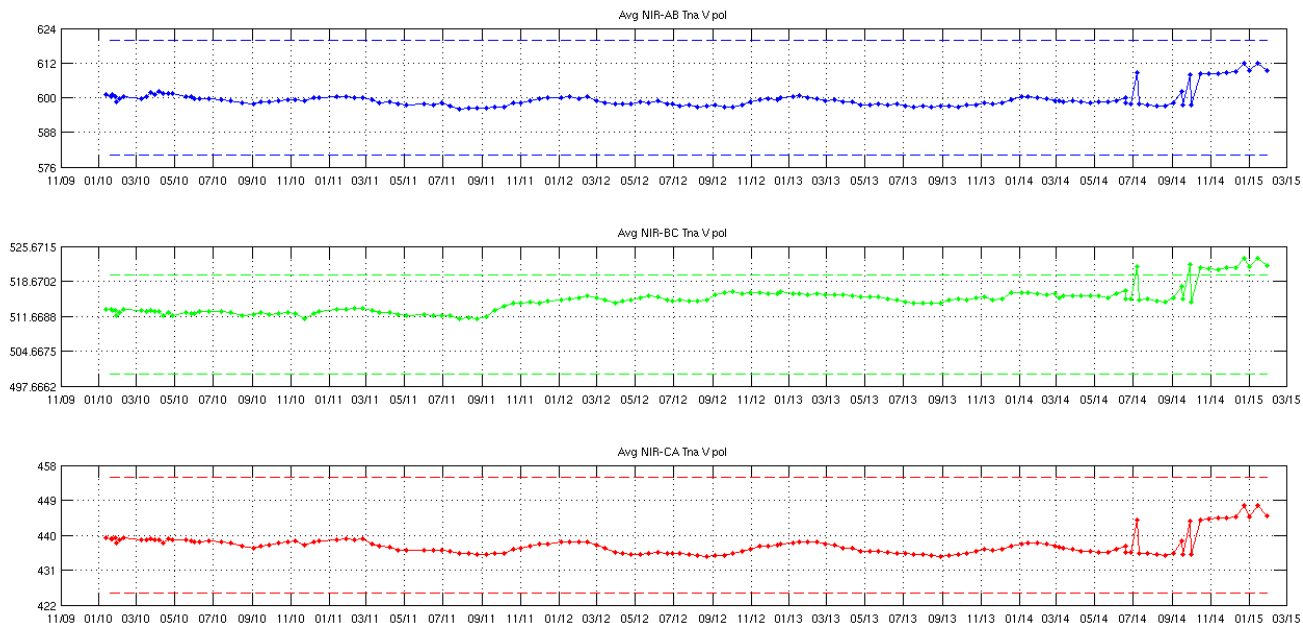


Figure 3 Tnr evolution of NIR AB (blue), NIR BC (green) and NIR CA (red) in the H-channel since the beginning of the mission. Thresholds in dashed lines

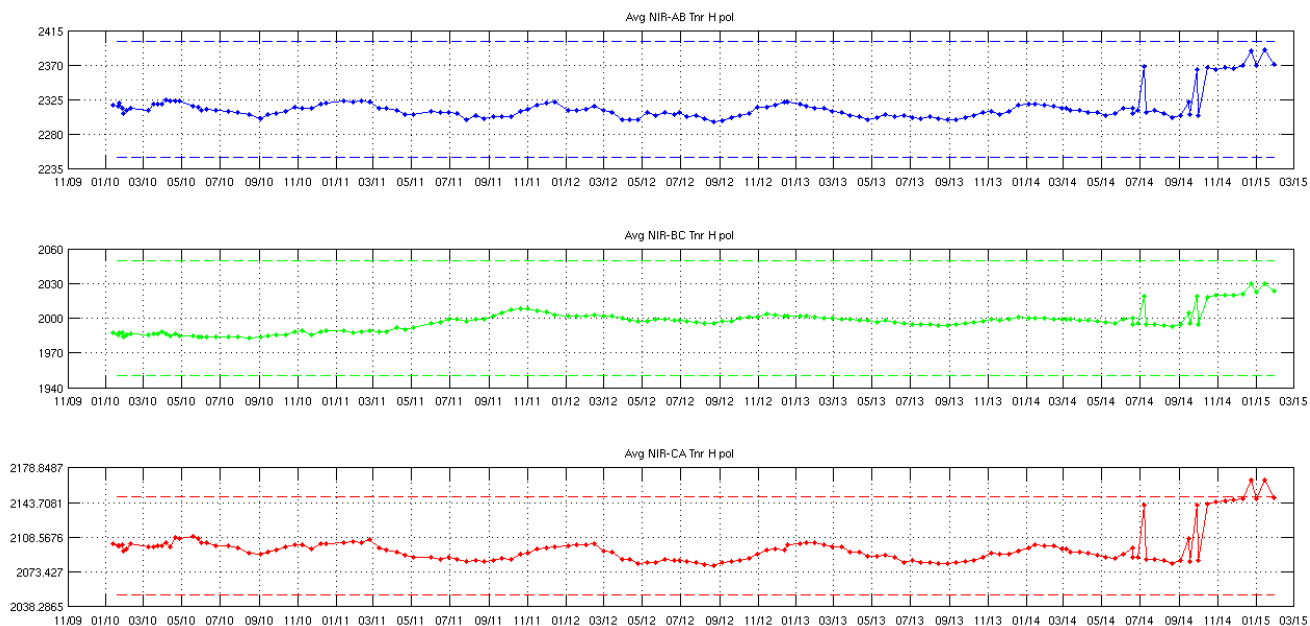




Figure 4 Tnr evolution of NIR AB (blue), NIR BC (green) and NIR CA (red) in the V-channel since the beginning of the mission. Thresholds in dashed lines

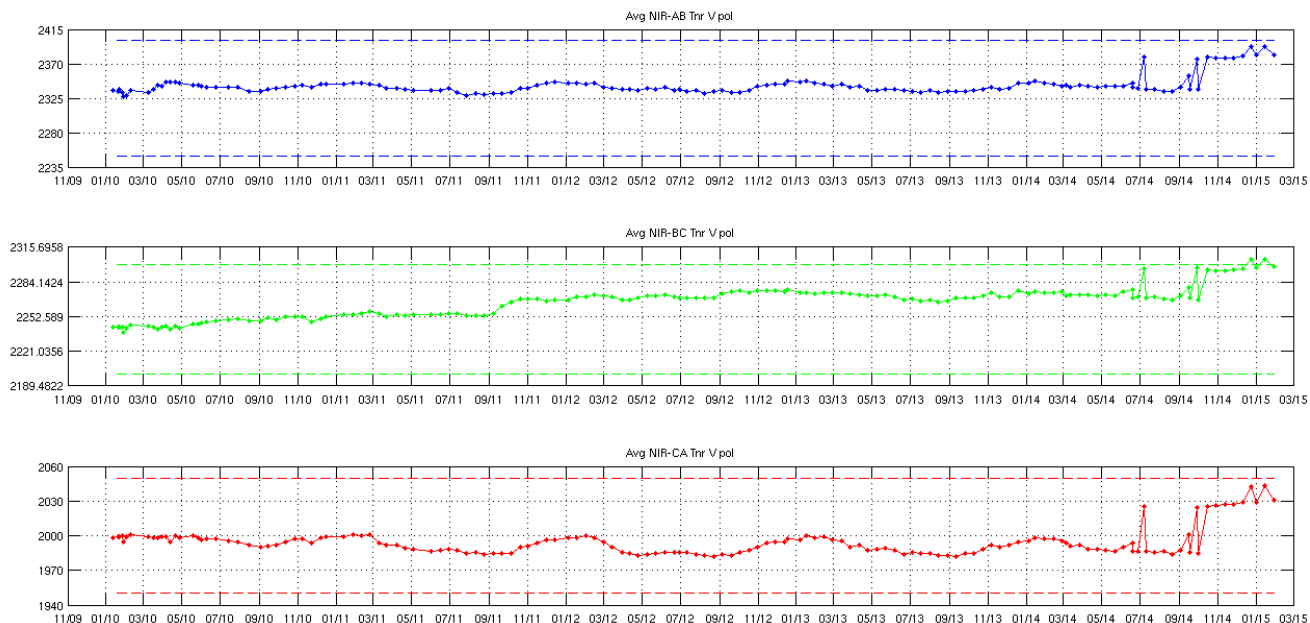


Figure 5 Cross-coupling evolution in amplitude and phase of NIR AB (blue), NIR BC (green) and NIR CA (red) since the beginning of the mission

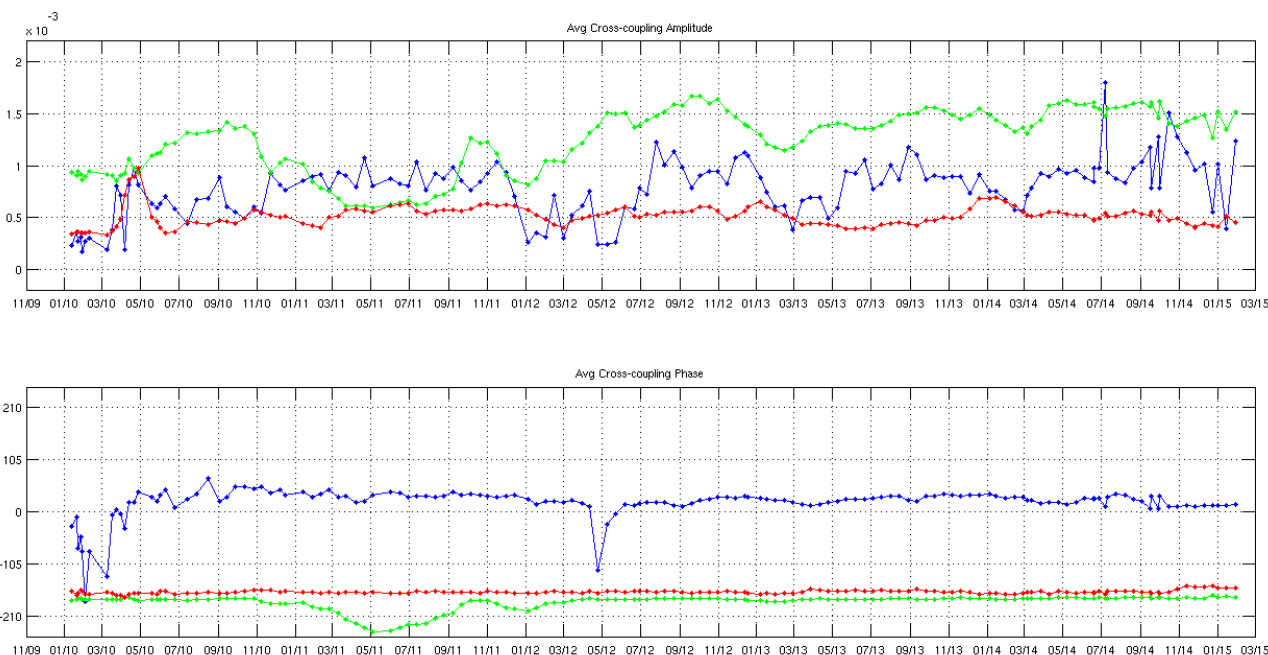
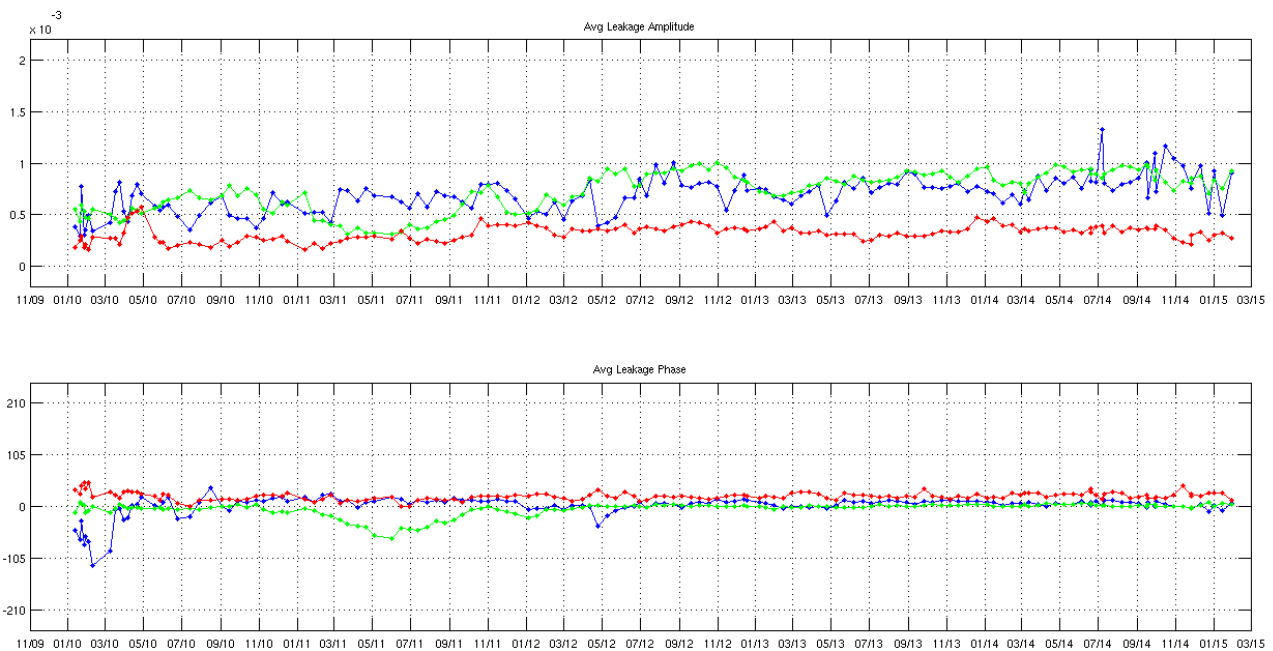




Figure 6 Leakage factor evolution in amplitude and phase of NIR AB (blue), NIR BC (green) and NIR CA (red) since the beginning of the mission



The LICEF calibration status is updated by long (every 8 weeks) and short (weekly) on-board calibration activities. A long calibration has been executed during the reporting period on 01th January.

LICEF PMS gain is derived during the long calibration activity and the Figure 7 to Figure 18 show the evolution of the deviations of the PMS gain with respect to its average over time.

Figure 19 to Figure 30 show the evolution of the PMS offsets derived during the short calibration activity. The PMS gain and offset values (not computed using the warm-NIR calibrations) are inside the range defined in the routine calibration plan although small drift can be observed. That drift can be explained due to the current limitations of the NIR calibration algorithm to track the antenna losses and the reference noise diodes. The drifts in the antenna losses that the NIR calibration algorithm cannot compensate are directly propagated to the PMS gain and offset calibration. It is expected that the introduction of the future L1OP v600 will remove these apparent drifts allowing to improve the PMS stability and as such the final data quality in terms of Brightness temperature stability and accuracy.

The PMS gain computed using the warm-NIR calibration (from 15 October 2014 to 2 December 2014), shows an evolution of about 2%. This is caused by higher T_{na} and T_{nr} temperatures due to warm-NIR calibrations. By using again cold-NIR calibration from 2 December onwards, PMS gain comes back to nominal values.

Figure 31 shows the evolution of the average over all the baselines of the Fringe Washing Function (FWF) amplitude in the origin derived during the long calibration. The amplitude of the FWF at the origin does not show any drift and their values are inside the ranges defined in the routine calibration plan.

During the reporting period updates has been applied for the Long and Short calibration as reported in Table 4-4.



Figure 7 Evolution of the Δ PMS Gain of the LICEFS in CMN H1

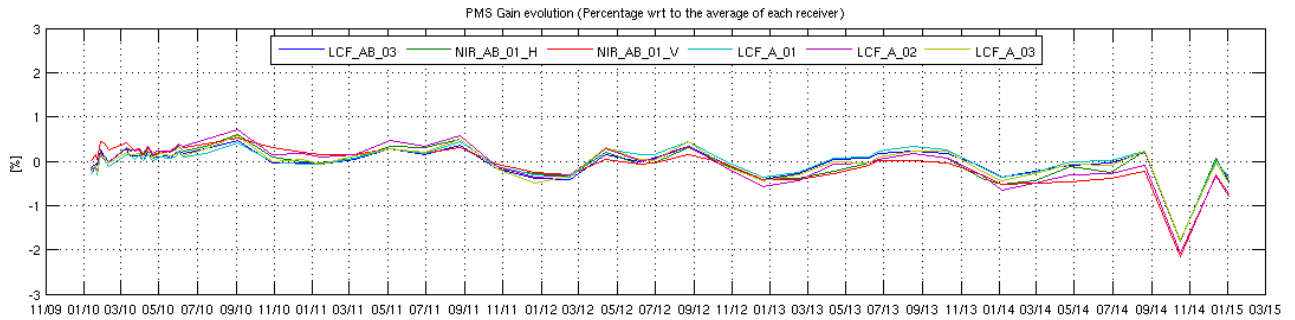


Figure 8 Evolution of the Δ PMS Gain of the LICEFS in CMN A1

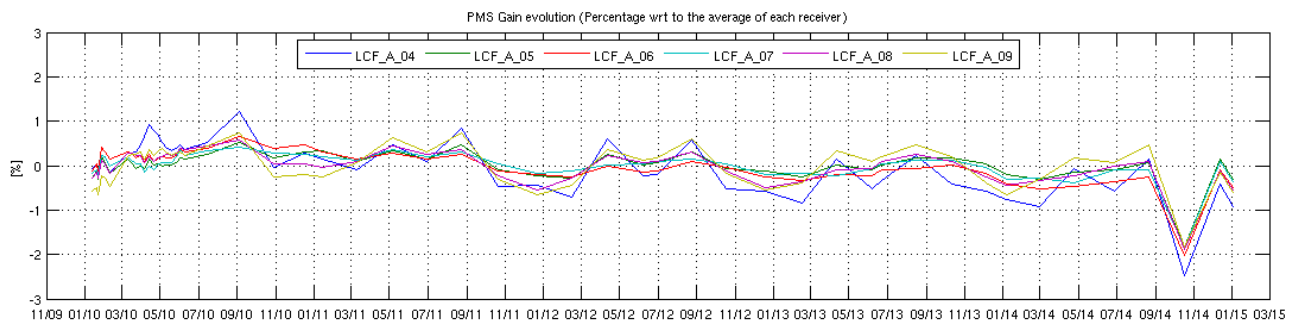


Figure 9 Evolution of the Δ PMS Gain of the LICEFS in CMN A2

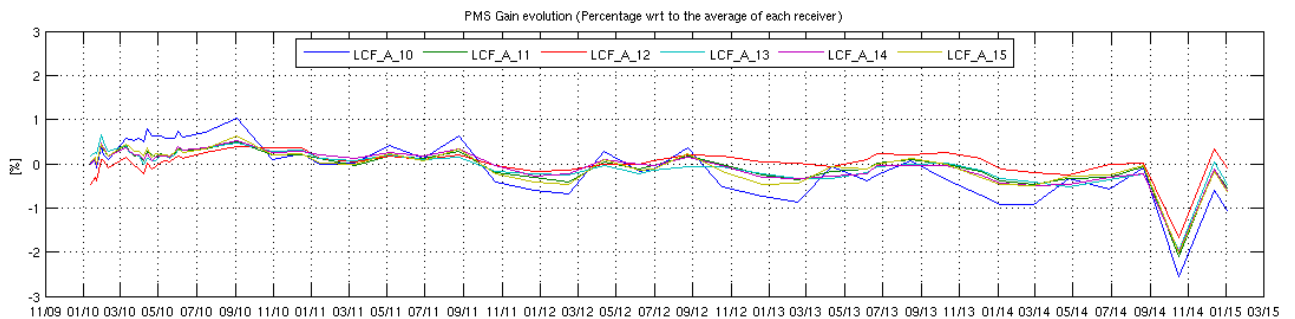




Figure 10 Evolution of the Δ PMS Gain of the LICEFS in CMN A3

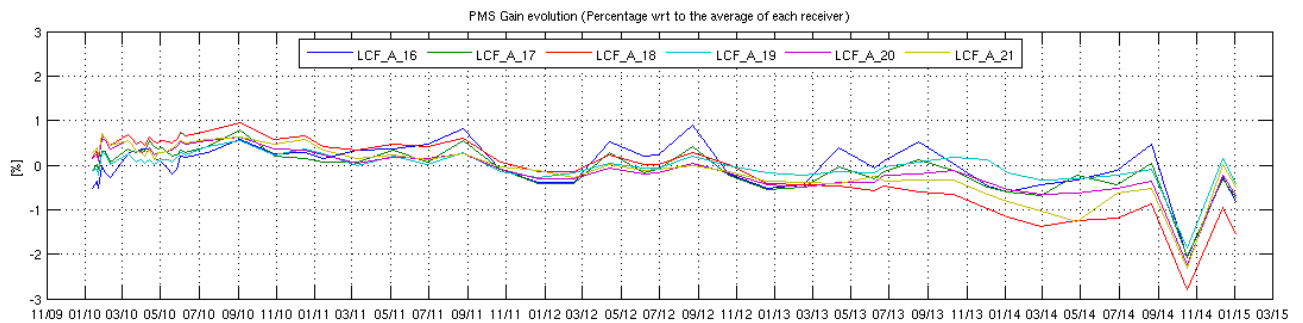


Figure 11 Evolution of the Δ PMS Gain of the LICEFS in CMN H2

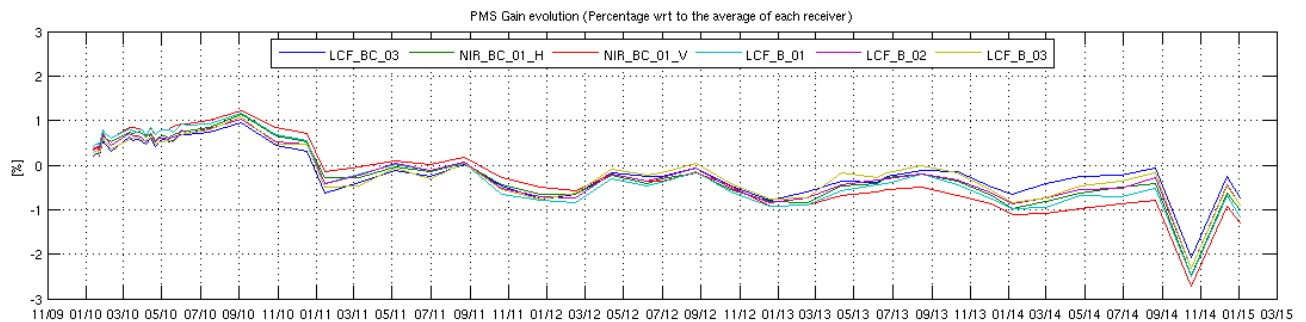


Figure 12 Evolution of the Δ PMS Gain of the LICEFS in CMN B1

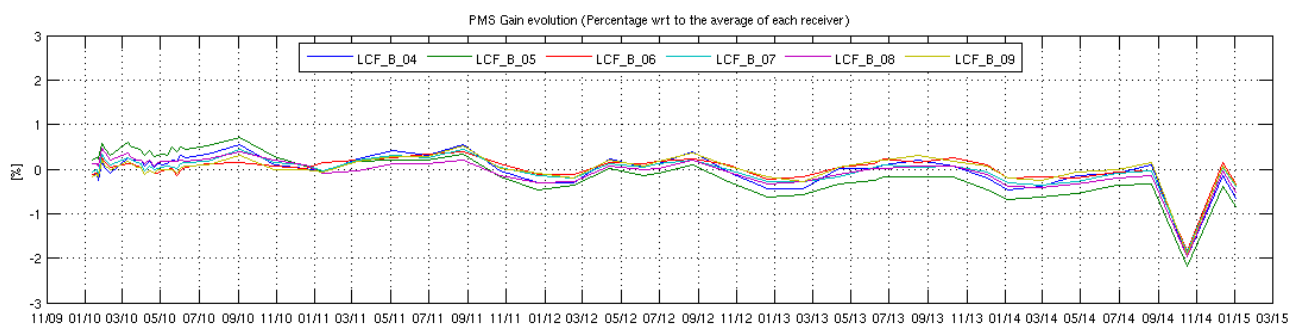




Figure 13 Evolution of the Δ PMS Gain of the LICEFS in CMN B2

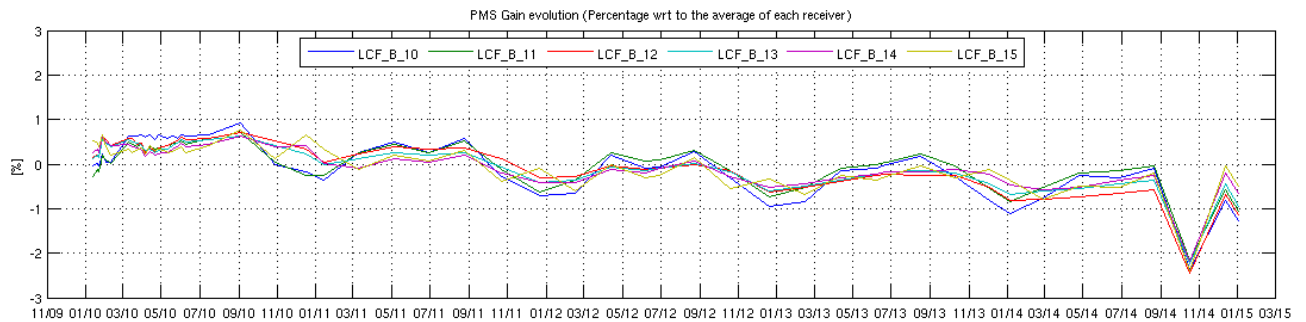


Figure 14 Evolution of the Δ PMS Gain of the LICEFS in CMN B3

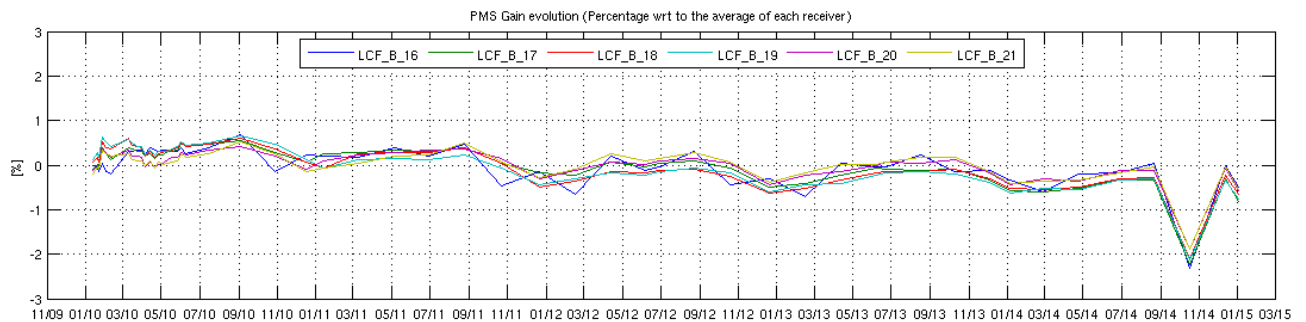


Figure 15 Evolution of the Δ PMS Gain of the LICEFS in CMN H3

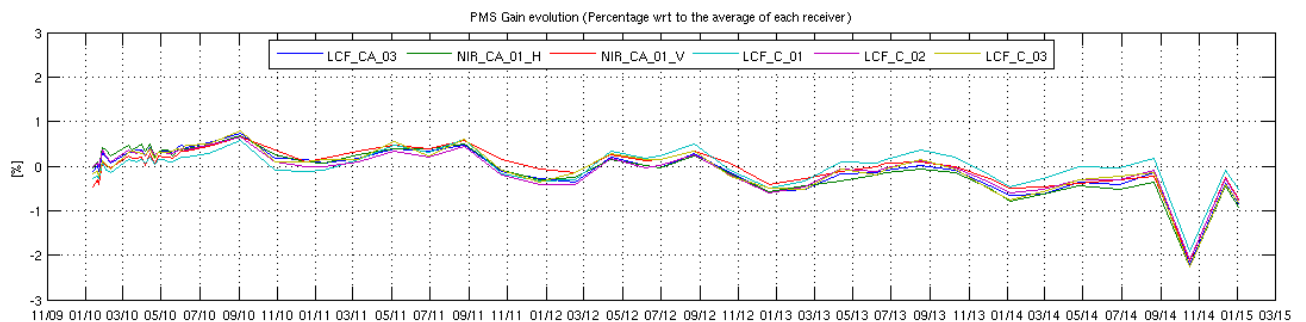




Figure 16 Evolution of the Δ PMS Gain of the LICEFS in CMN C1

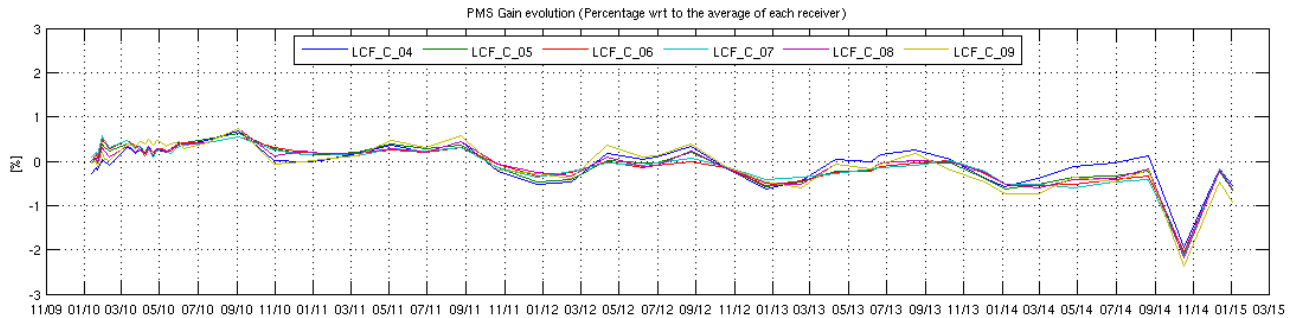


Figure 17 Evolution of the Δ PMS Gain of the LICEFS in CMN C2

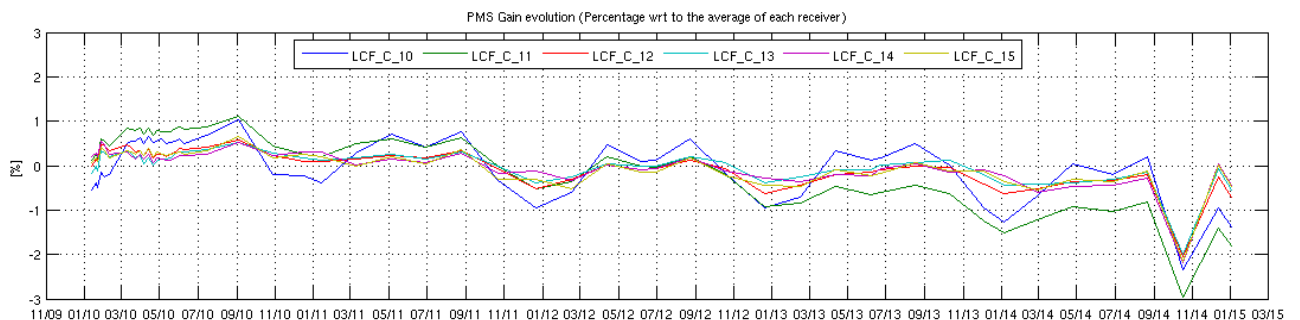


Figure 18 Evolution of the Δ PMS Gain of the LICEFS in CMN C3

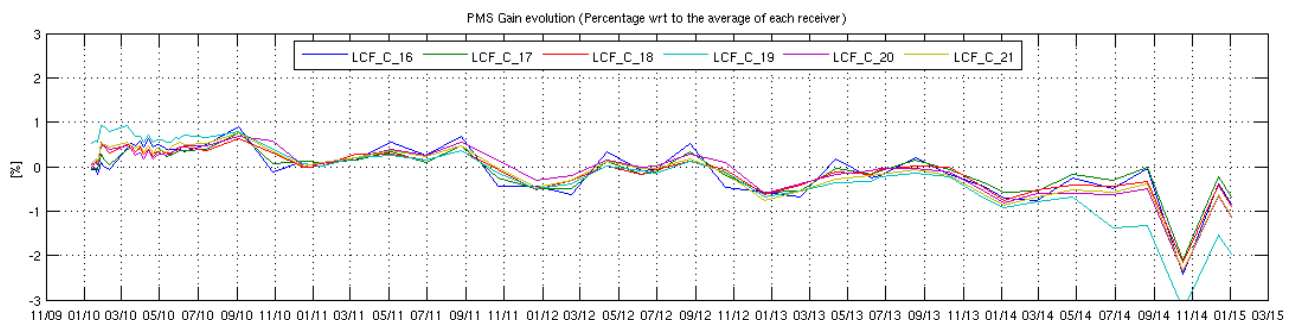




Figure 19 Evolution of the Δ PMS Offset of the LICEFS in CMN H1

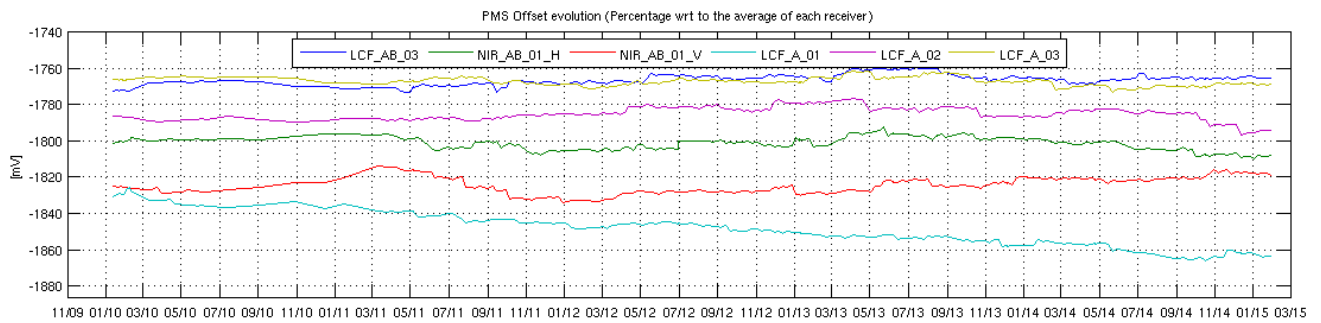


Figure 20 Evolution of the Δ PMS Offset of the LICEFS in CMN A1

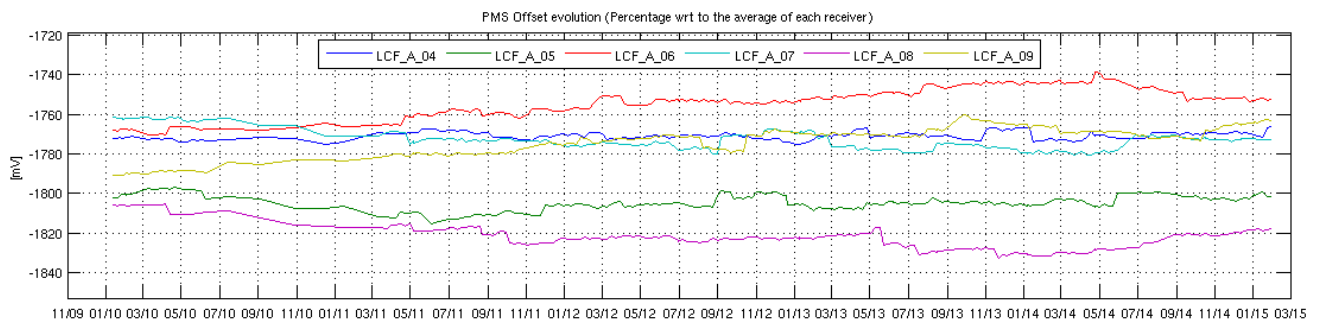


Figure 21 Evolution of the Δ PMS Offset of the LICEFS in CMN A2

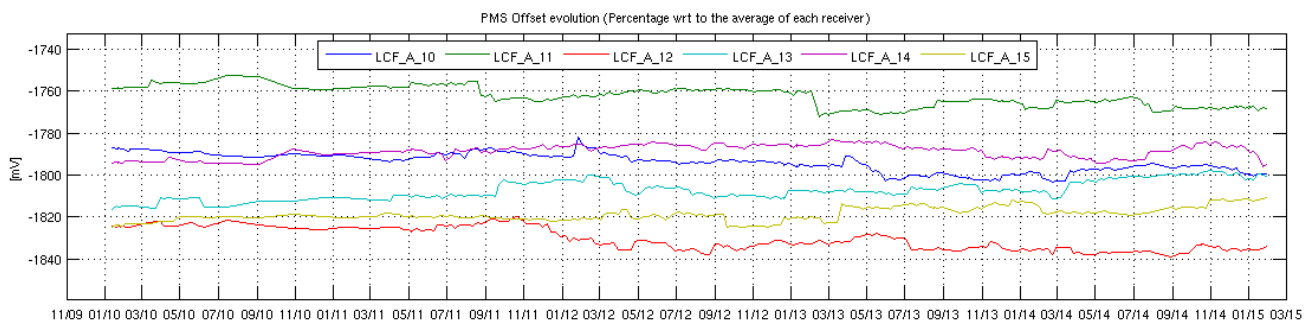




Figure 22 Evolution of the Δ PMS Offset of the LICEFS in CMN A3

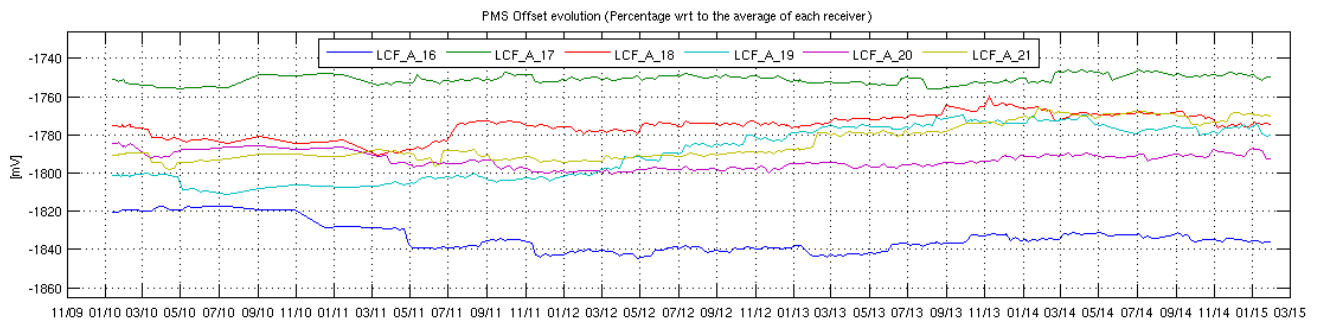


Figure 23 Evolution of the Δ PMS Offset of the LICEFS in CMN H2

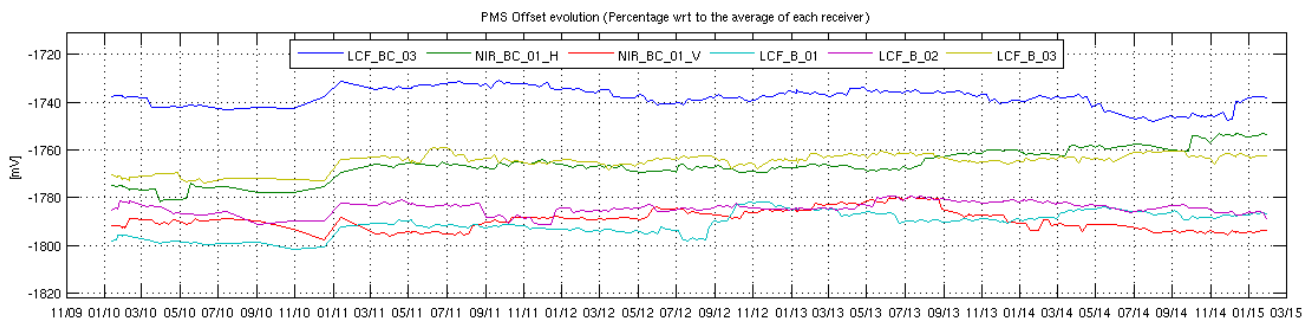


Figure 24 Evolution of the Δ PMS Offset of the LICEFS in CMN B1

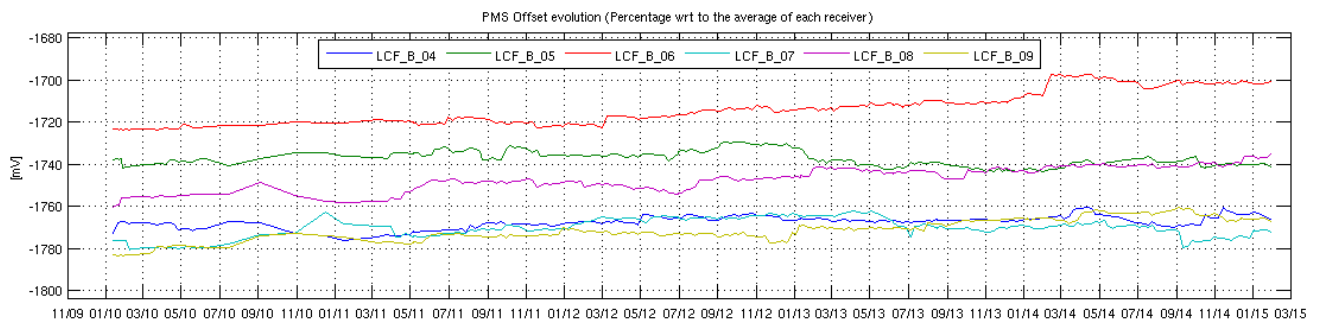




Figure 25 Evolution of the Δ PMS Offset of the LICEFS in CMN B2

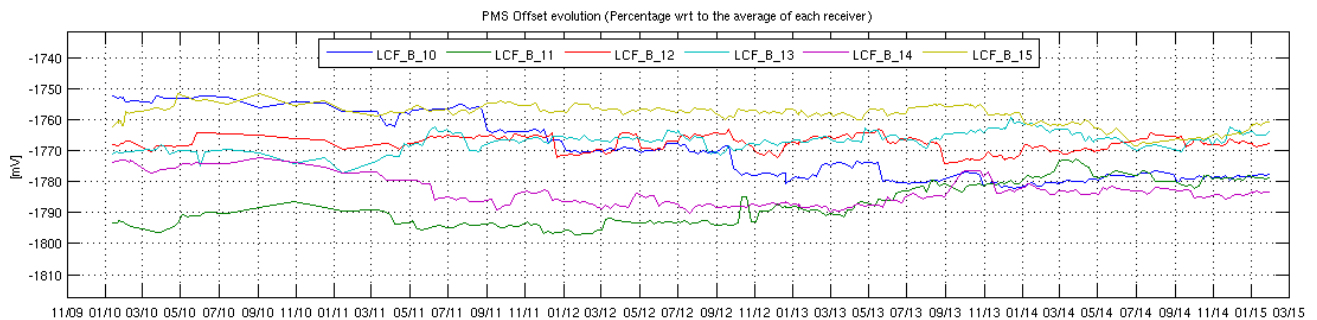


Figure 26 Evolution of the Δ PMS Offset of the LICEFS in CMN B3

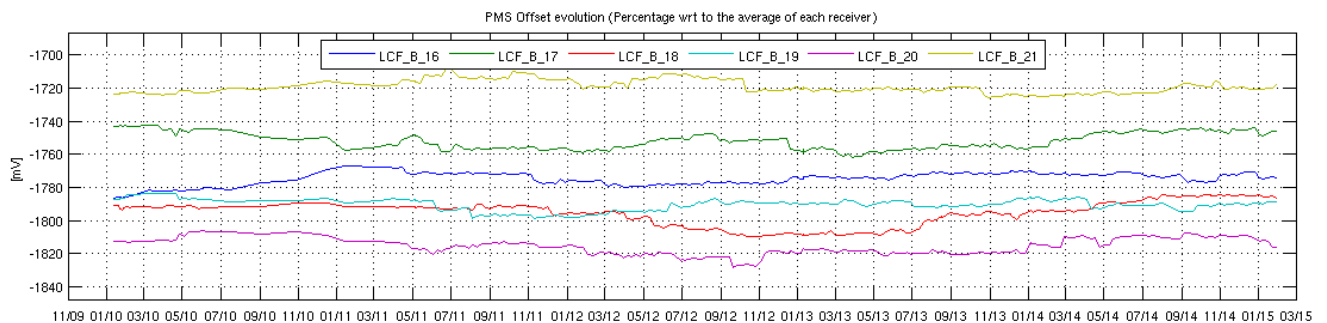


Figure 27 Evolution of the Δ PMS Offset of the LICEFS in CMN H3

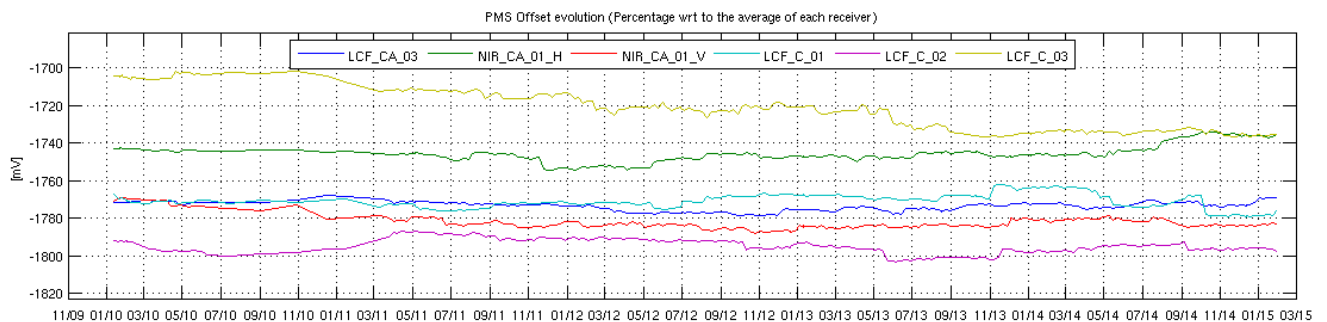




Figure 28 Evolution of the Δ PMS Offset of the LICEFS in CMN C1

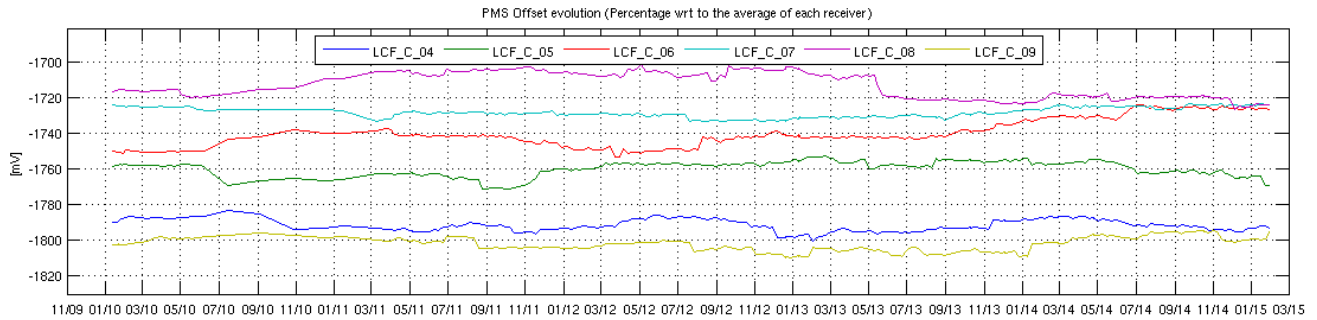


Figure 29 Evolution of the Δ PMS Offset of the LICEFS in CMN C2

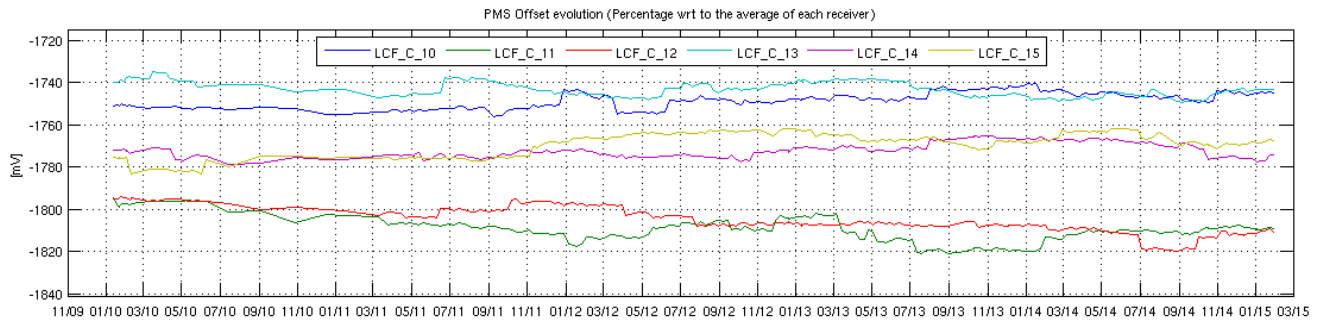


Figure 30 Evolution of the Δ PMS Offset of the LICEFS in CMN C3

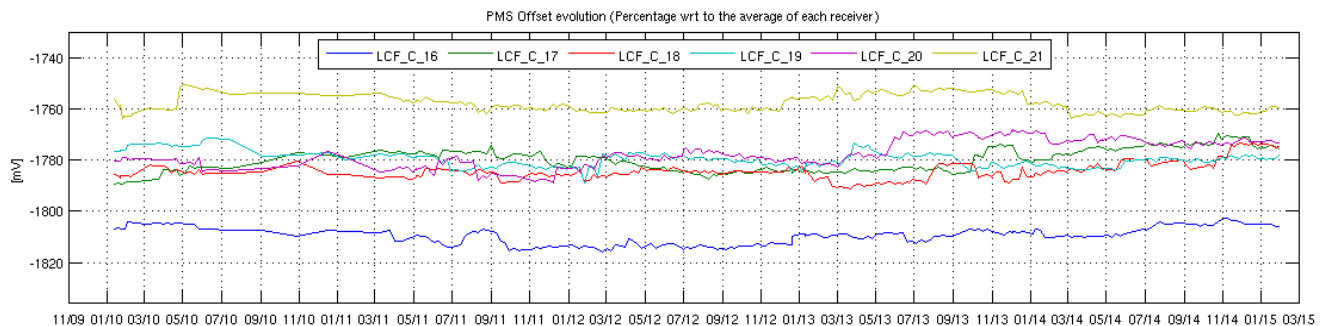
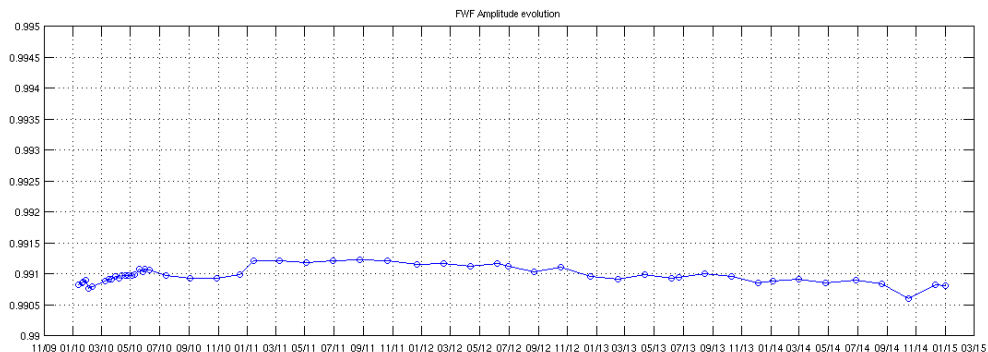




Figure 31 Evolution of the average of the FWF Amplitude at the origin



The evolution of the average of the correlator offsets does not show any significant drift. Also, the correlation offsets between receivers that do not share local oscillator remains much smaller than the correlation offsets between receivers sharing local oscillator. This result is expected since any residual correlated signal arriving to a pair of receivers arrives through the local oscillator signal. On the other hand, the measurement of the correlator offsets acquired between 29th February to 7th June 2012 are noisier because they have been derived using only 122 samples from the NIR calibration events whereas the long calibrations provide 846 samples. The average and maximum difference in brightness temperature between using the nominal calibration and the values obtained from the NIR calibration events are 0.03 K and 0.4 K, respectively.

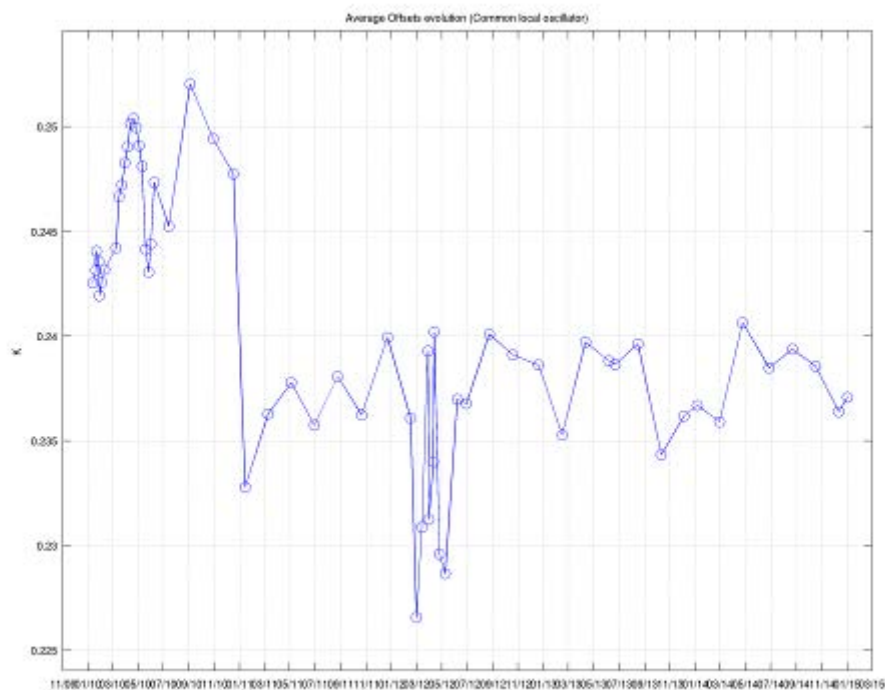


Figure 32 Evolution of the average of the Correlator offsets for the baselines which share local oscillator

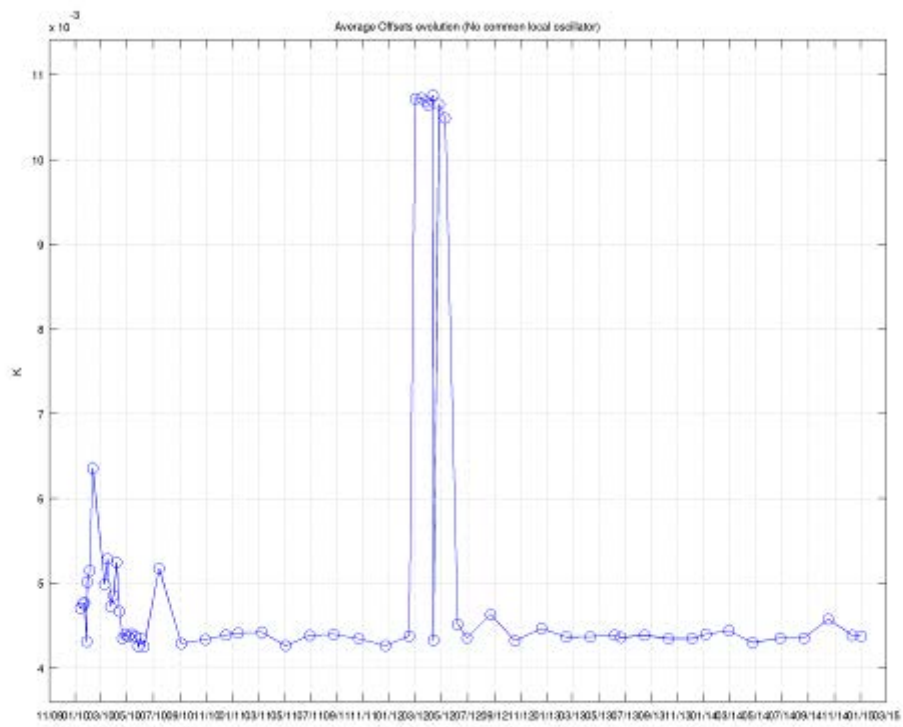


Figure 33 Evolution of the average of the Correlator offsets for the baselines which do not share local oscillator



6. PRODUCT QUALITY ANALYSIS

Data quality for January has found to be nominal except in the time intervals listed in the section 4.5.

The L1 production is nominal as no artefacts are observed in the Stokes maps in Figure 34 to Figure 61. The figures plot the Stokes parameter computed at 42.5 deg from the L1C Browse products. All the artificial patterns in the images can be explained by the presence of RFIs. The impact of the RFI in the brightness temperature measurements over land can be observed mainly in Europe and Asia.

The third Stokes parameter (Real part of XY) shows a clear pattern between ascending and descending pass due to the different values of the Total Electron Content in the atmosphere for morning / evening orbits. Strong values of the third Stokes parameter are related to RFI. The fourth Stokes parameter (Imaginary part of XY) shows as expected a mean value around zero. Strong values of the fourth Stokes parameter are related to RFI.

The L2 Soil Moisture and Ocean Salinity production is nominal in the reporting period.

Figure 69 shows the evolution of the soil moisture retrievals. Those values present significant differences with the Volumetric Soil Water at L1 (see figure 70) provided by ECMWF, mainly for the ascending passes. The Level 2 ESL has pointed out that the possible cause is that the predicted precipitation event might not actually occur. An important lack of soil moisture retrievals in the selected area that are polluted by the presence of RFI and frozen soil that does not allow soil moisture retrieval. For more detail on Soil Moisture retrieval algorithm see the L2 Soil Moisture Algorithm Theoretical Baseline Document:

https://earth.esa.int/c/document_library/get_file?folderId=127856&name=DLFE-1633.pdf.



Figure 34 1st Stokes evolution over land during the reporting period (week 1)



MIR_BWXF1C - ST1_ToA - 20150104T235509 - 20150112T002606
Cylindrical projection - 202 product(s) - Generated on 20150112T091958
Orbits: All - FOV: Alias_Free

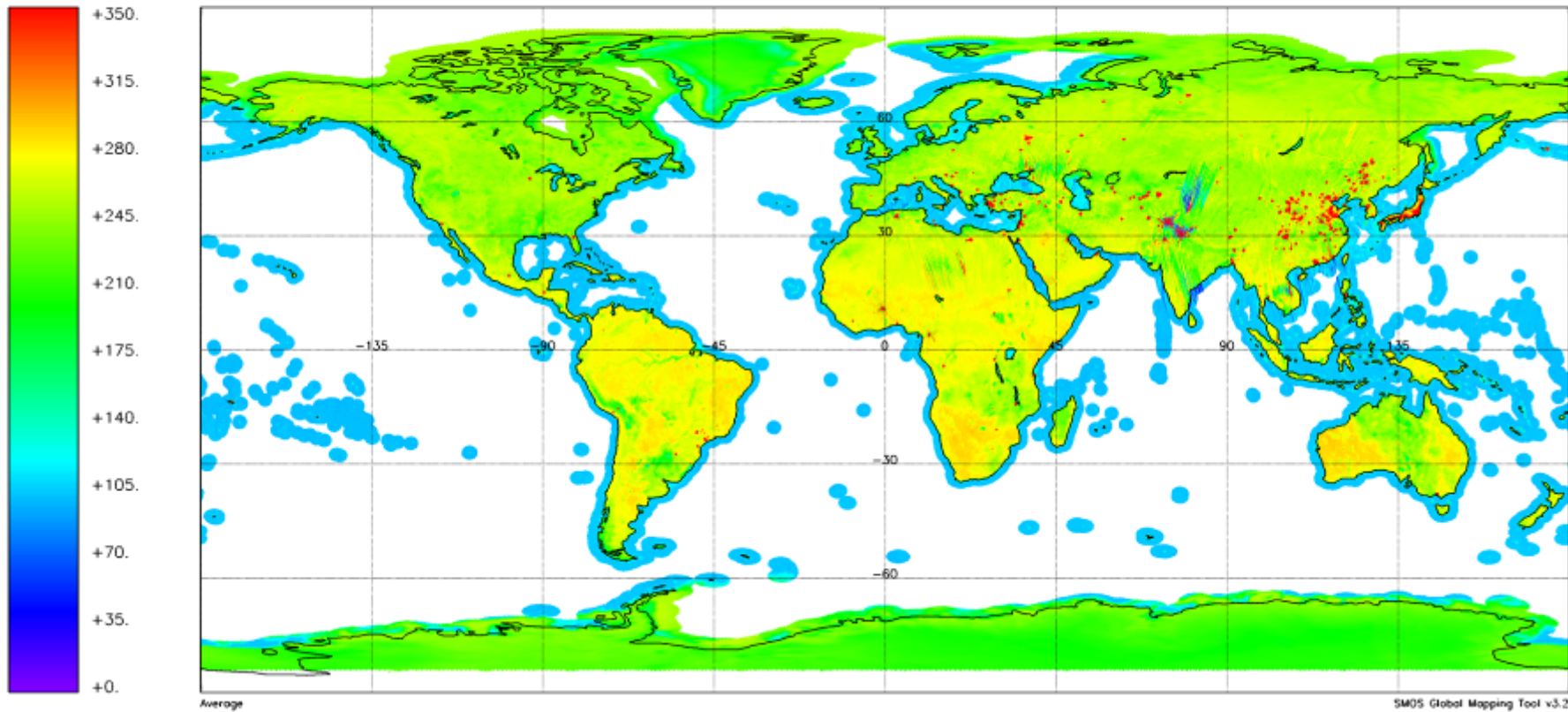


Figure 35 1st Stokes evolution over land during the reporting period (week 2)



MIR_BWXF1C - ST1_ToA - 20150111T233253 - 20150118T231341
Cylindrical projection - 200 product(s) - Generated on 20150119T091719
Orbits: All - FOV: Alias_Free

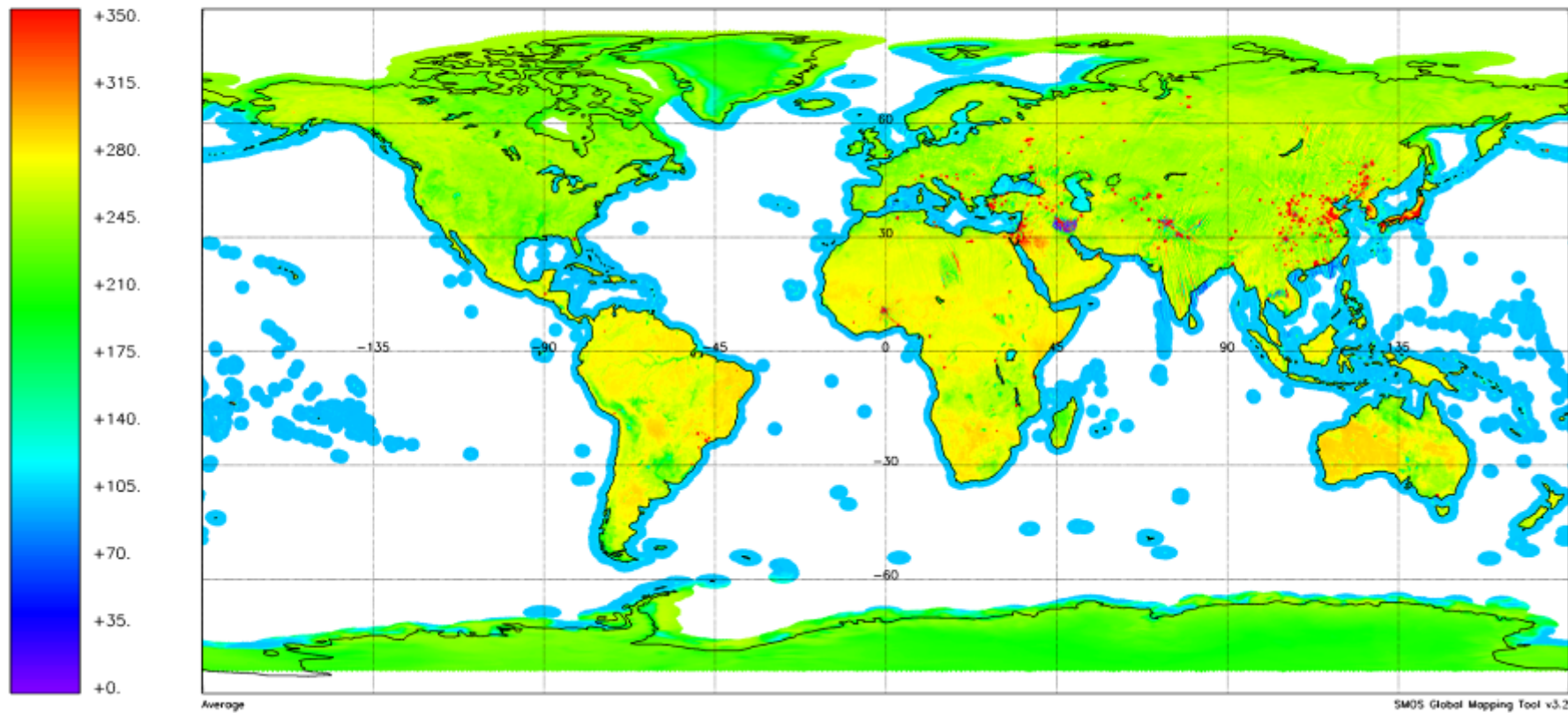




Figure 36 1st Stokes evolution over land during the reporting period (week 3)



MIR_BWXF1C - ST1_ToA - 20150118T231025 - 20150125T234111
Cylindrical projection - 203 product(s) - Generated on 20150126T091822
Orbits: All - FOV: Alias_Free

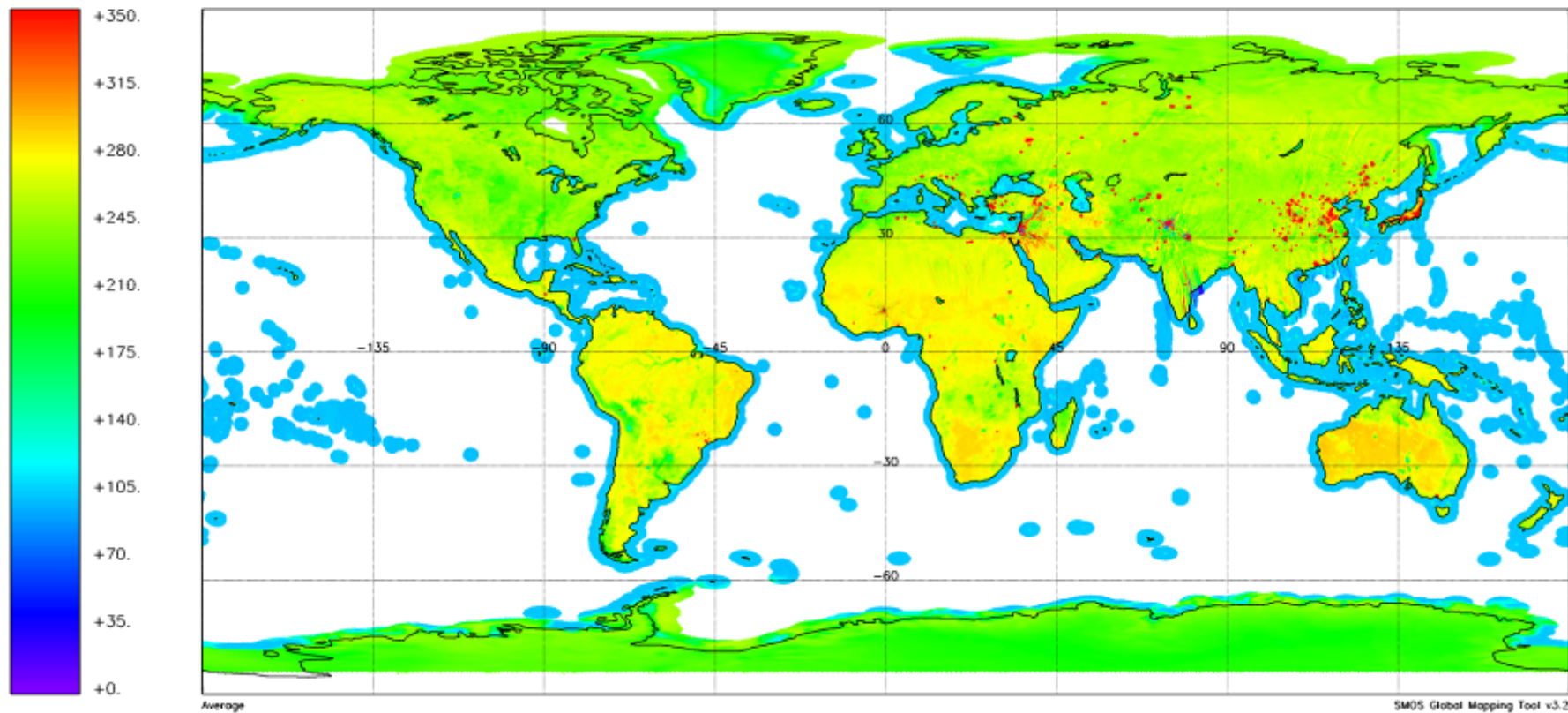


Figure 37 1st Stokes evolution over land during the reporting period (week 4)



MIR_BWXF1C - ST1_ToA - 20150125T233755 - 20150202T000834
Cylindrical projection - 203 product(s) - Generated on 20150202T091657
Orbits: All - FOV: Alias_Free

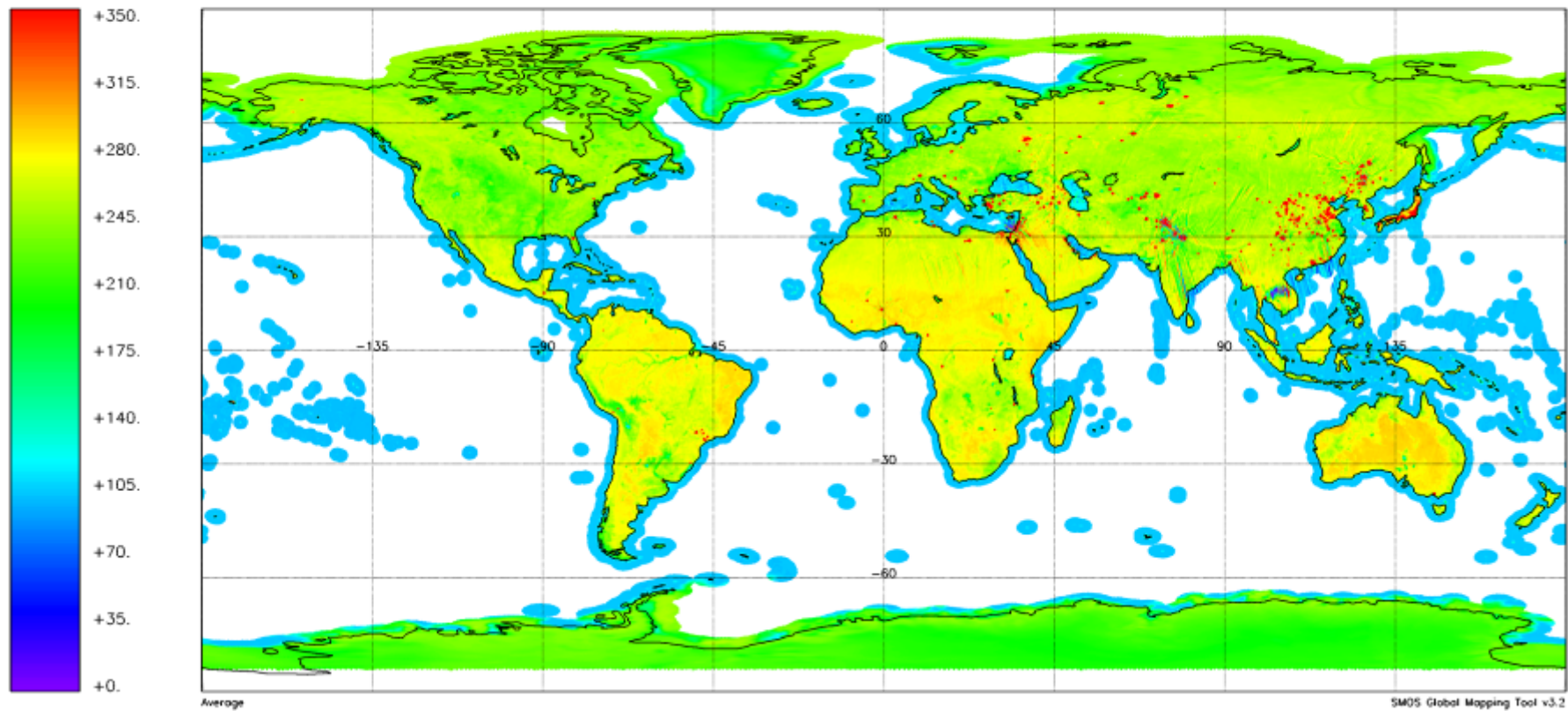


Figure 38 Real Part of the XY Brightness temperature evolution over land during the reporting period (week 1)



MIR_BWXF1C - BT_Value (K) - 20150104T235509 - 20150112T002606

Cylindrical projection - 202 product(s) - Generated on 20150112T080835

Orbits: All - Polarization: HV_real - FOV: Alias_Free

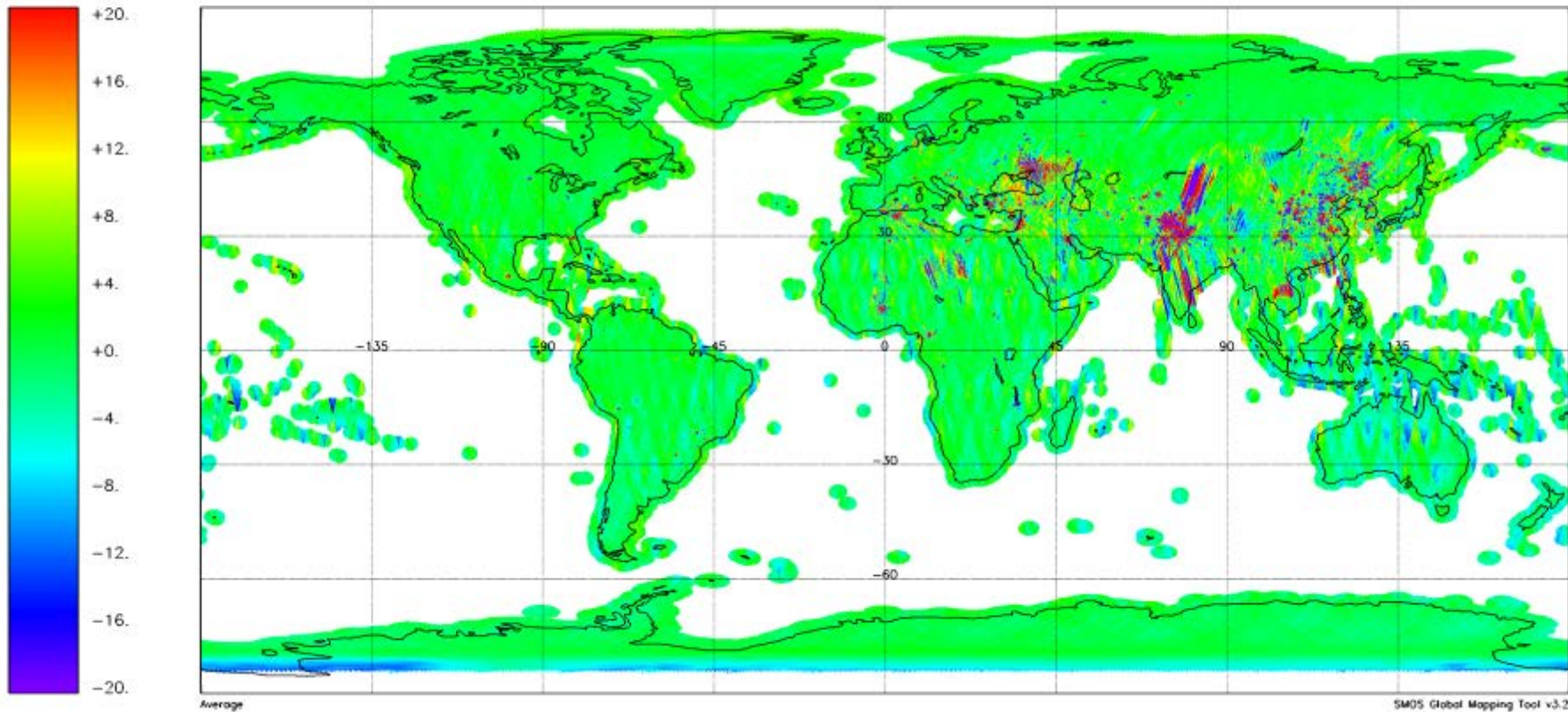


Figure 39 Real Part of the XY Brightness temperature evolution over land during the reporting period (week 2)



MIR_BWXF1C - BT_Value (K) - 20150111T233253 - 20150118T231341
Cylindrical projection - 200 product(s) - Generated on 20150119T080809
Orbits: All - Polarization: HV_real - FOV: Alias_Free

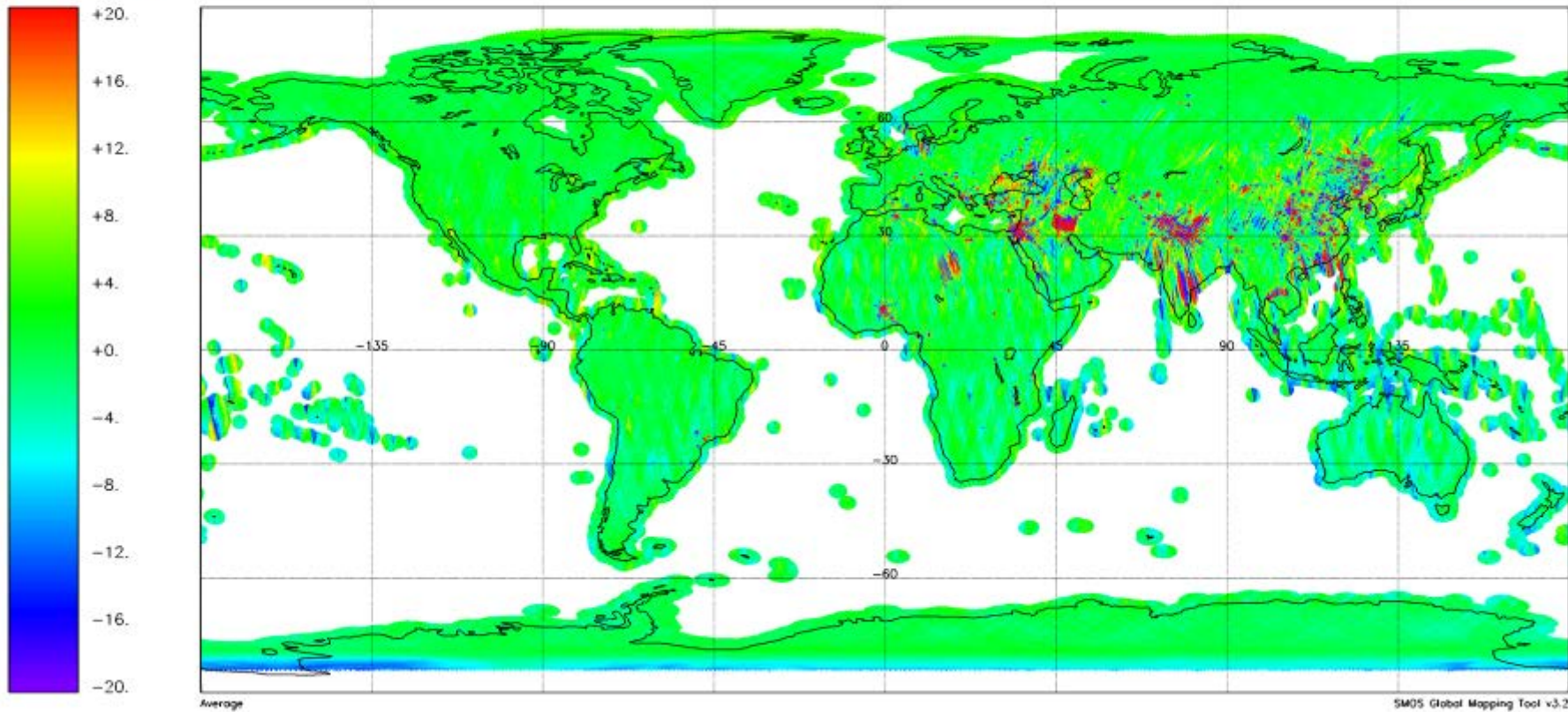




Figure 40 Real Part of the XY Brightness temperature evolution over land during the reporting period (week 3)



MIR_BWXF1C - BT_Value (K) - 20150118T231025 - 20150125T234111

Cylindrical projection - 203 product(s) - Generated on 20150126T080821

Orbits: All - Polarization: HV_real - FOV: Alias_Free

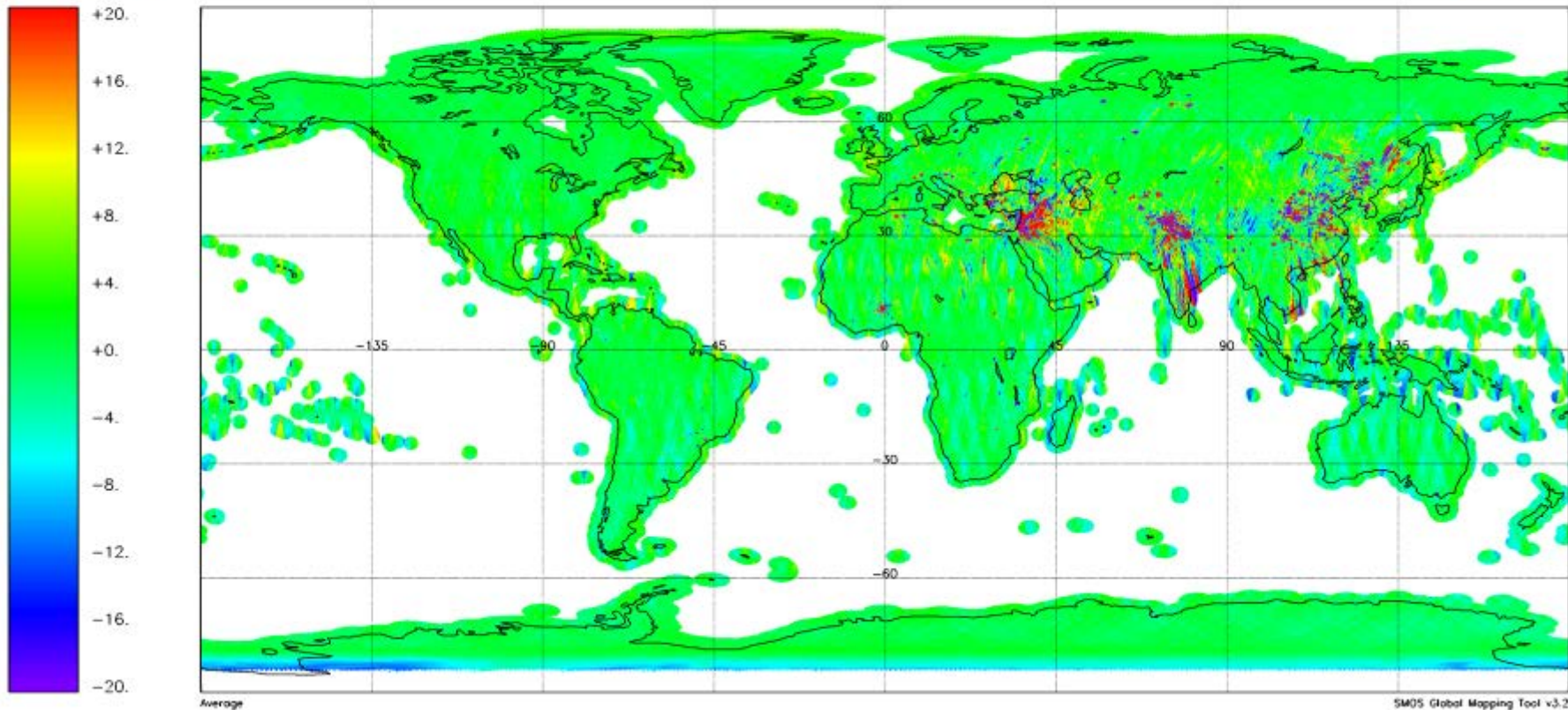


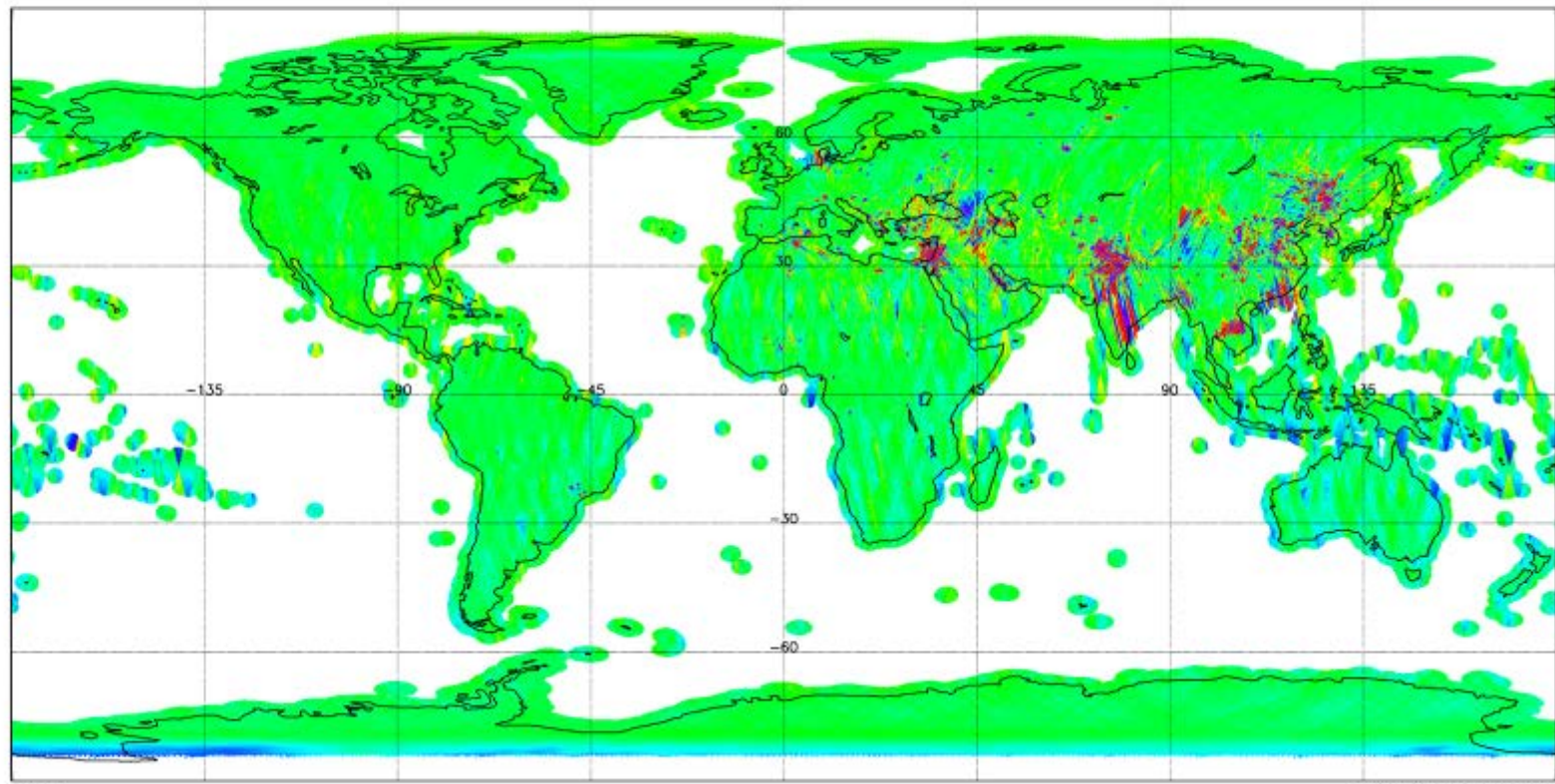
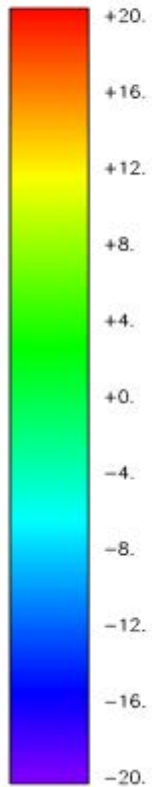
Figure 41 Real Part of the XY Brightness temperature evolution over land during the reporting period (week 4)



MIR_BWXF1C - BT_Value (K) - 20150125T233755 - 20150202T000834

Cylindrical projection - 203 product(s) - Generated on 20150202T080833

Orbits: All - Polarization: HV_real - FOV: Alias_Free



Average

SMOS Global Mapping Tool v3.2

Figure 42 Imaginary Part of the XY Brightness temperature evolution over land during the reporting period (week 1)



MIR_BWXF1C - BT_Value (K) - 20150104T235509 - 20150112T002606

Cylindrical projection - 202 product(s) - Generated on 20150112T080835

Orbits: All - Polarization: HV_img - FOV: Alias_Free

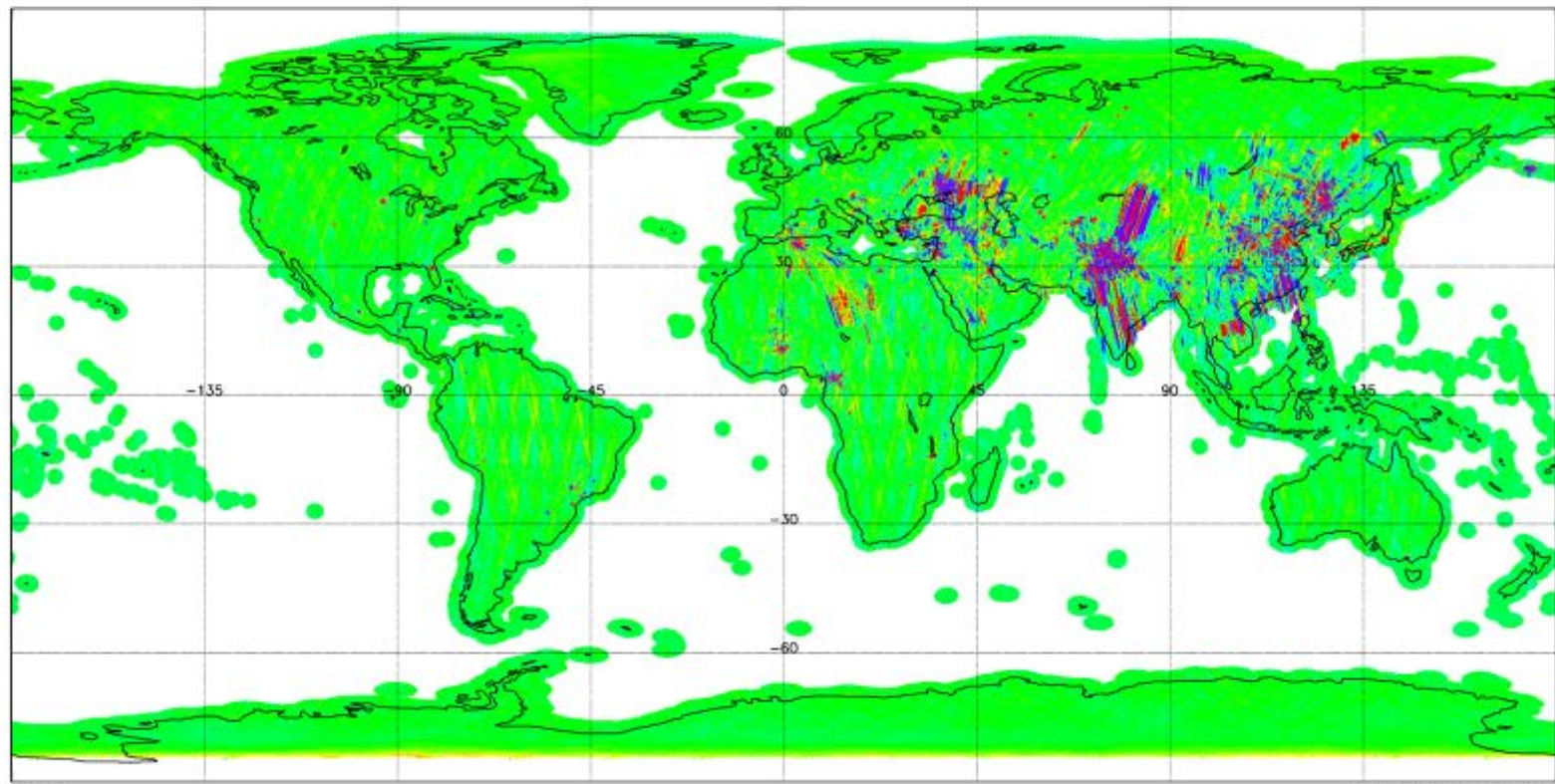
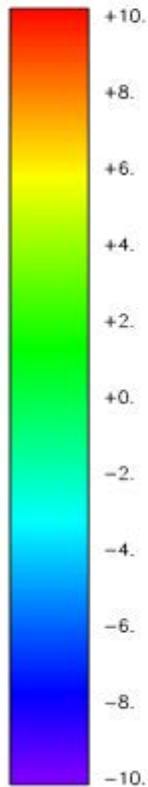


Figure 43 Imaginary Part of the XY Brightness temperature evolution over land during the reporting period (week 2)



MIR_BWXF1C - BT_Value (K) - 20150111T233253 - 20150118T231341

Cylindrical projection - 200 product(s) - Generated on 20150119T080809

Orbits: All - Polarization: HV_img - FOV: Alias_Free

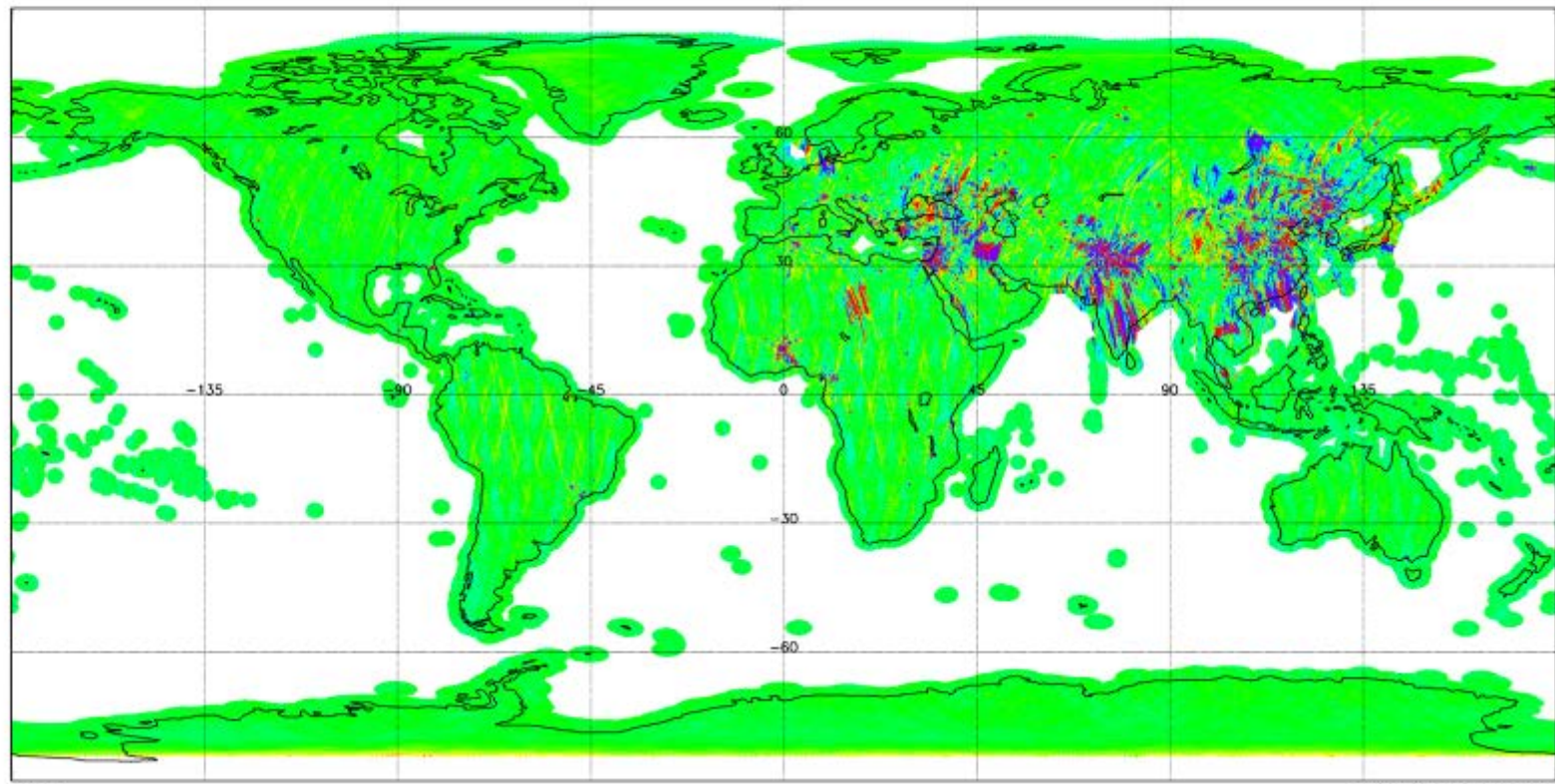
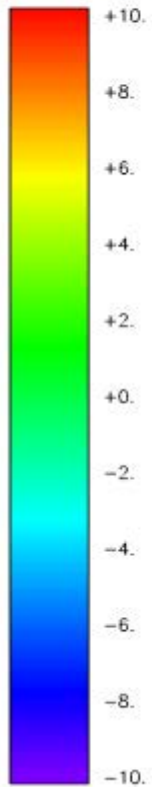


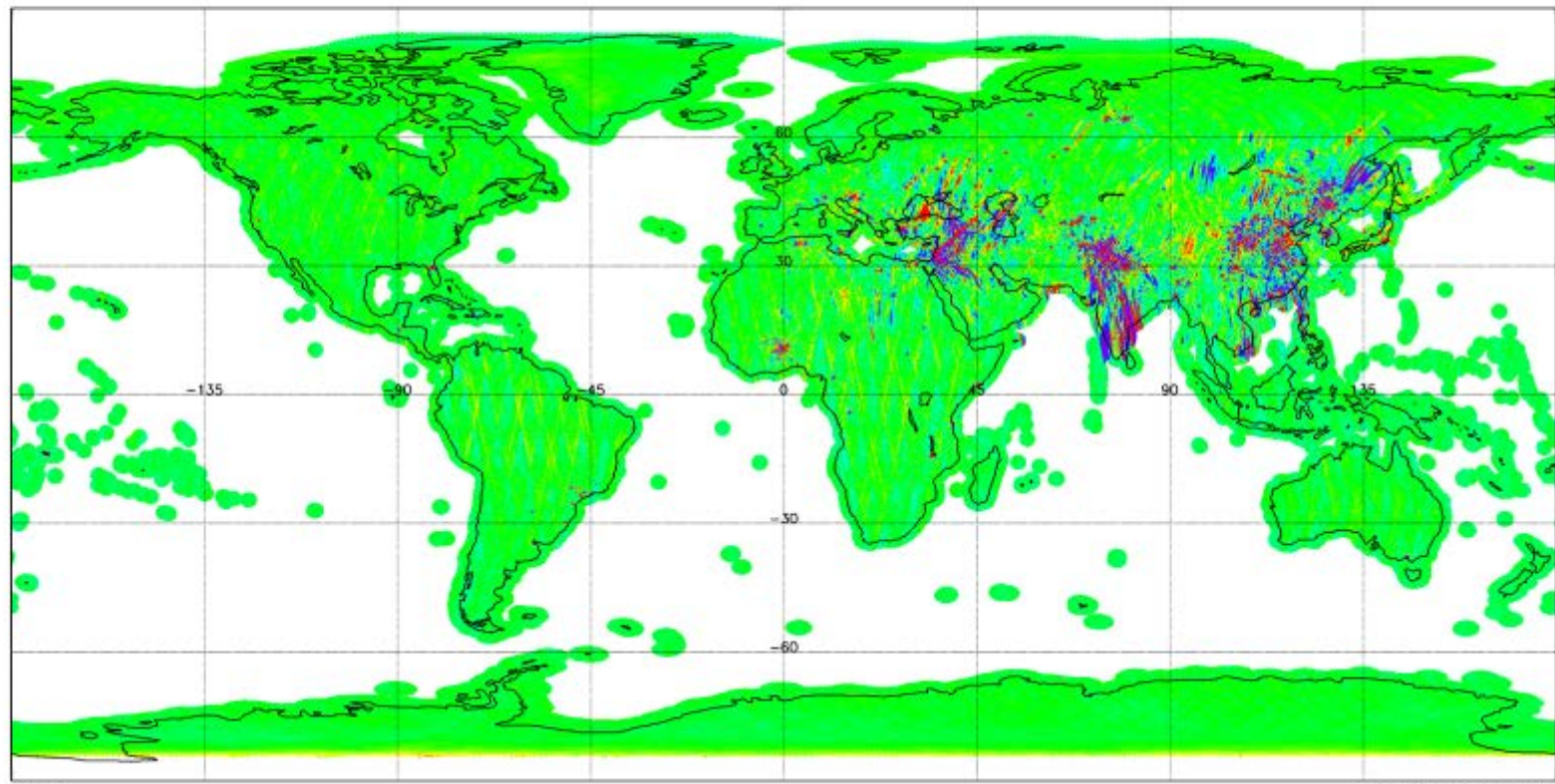
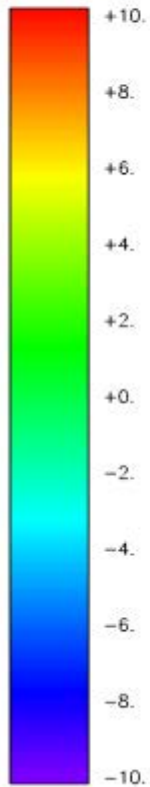
Figure 44 Imaginary Part of the XY Brightness temperature evolution over land during the reporting period (week 3)



MIR_BWXF1C - BT_Value (K) - 20150118T231025 - 20150125T234111

Cylindrical projection - 203 product(s) - Generated on 20150126T080821

Orbits: All - Polarization: HV_img - FOV: Alias_Free



Average

SMOS Global Mapping Tool v3.2

Figure 45 Imaginary Part of the XY Brightness temperature evolution over land during the reporting period (week 4)



MIR_BWXF1C - BT_Value (K) - 20150125T233755 - 20150202T000834

Cylindrical projection - 203 product(s) - Generated on 20150202T080833

Orbits: All - Polarization: HV_img - FOV: Alias_Free

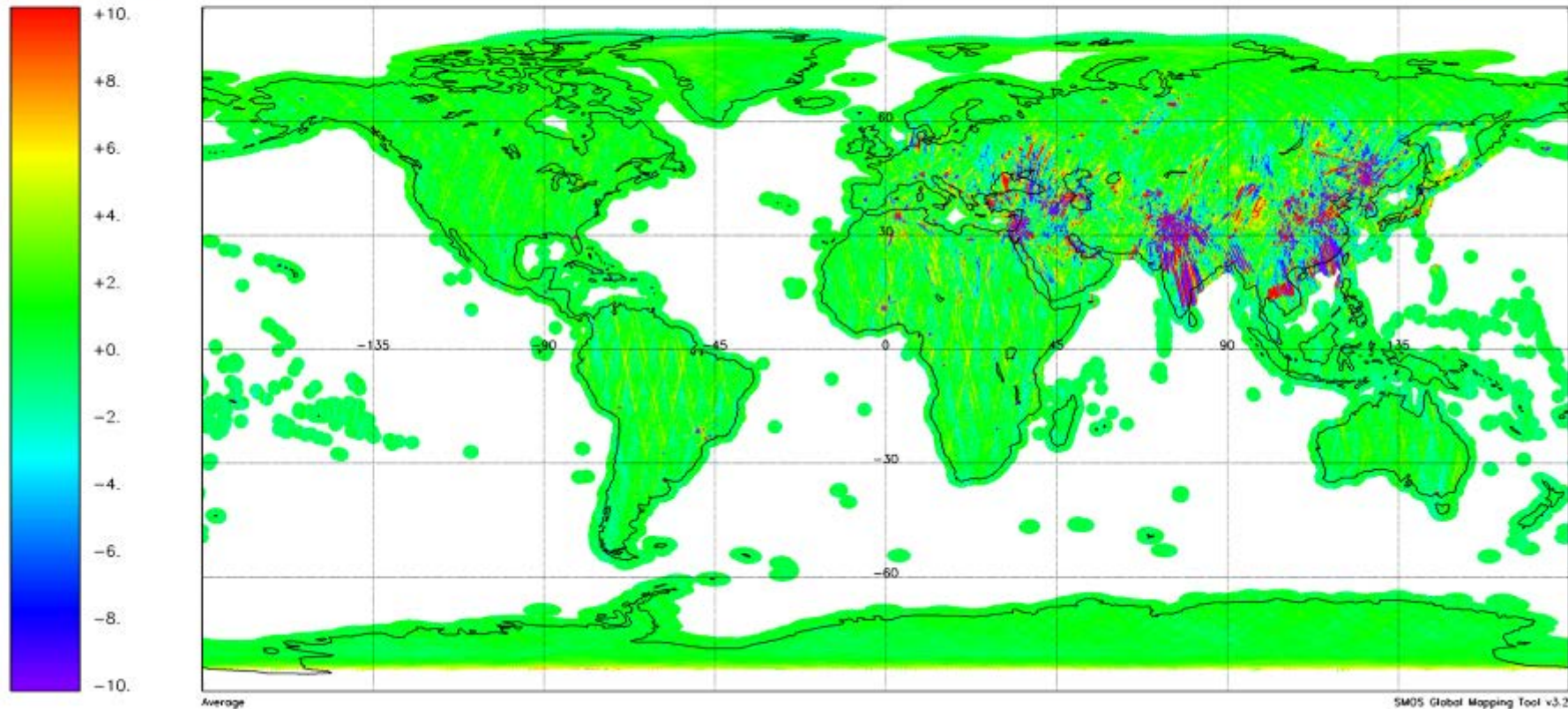




Figure 46 1st Stokes evolution over sea during the reporting period (week 1)



MIR_BWXF1C - ST1_ToA - 20150104T235509 - 20150112T002606
Cylindrical projection - 202 product(s) - Generated on 20150112T095718
Orbits: All - FOV: Alias_Free

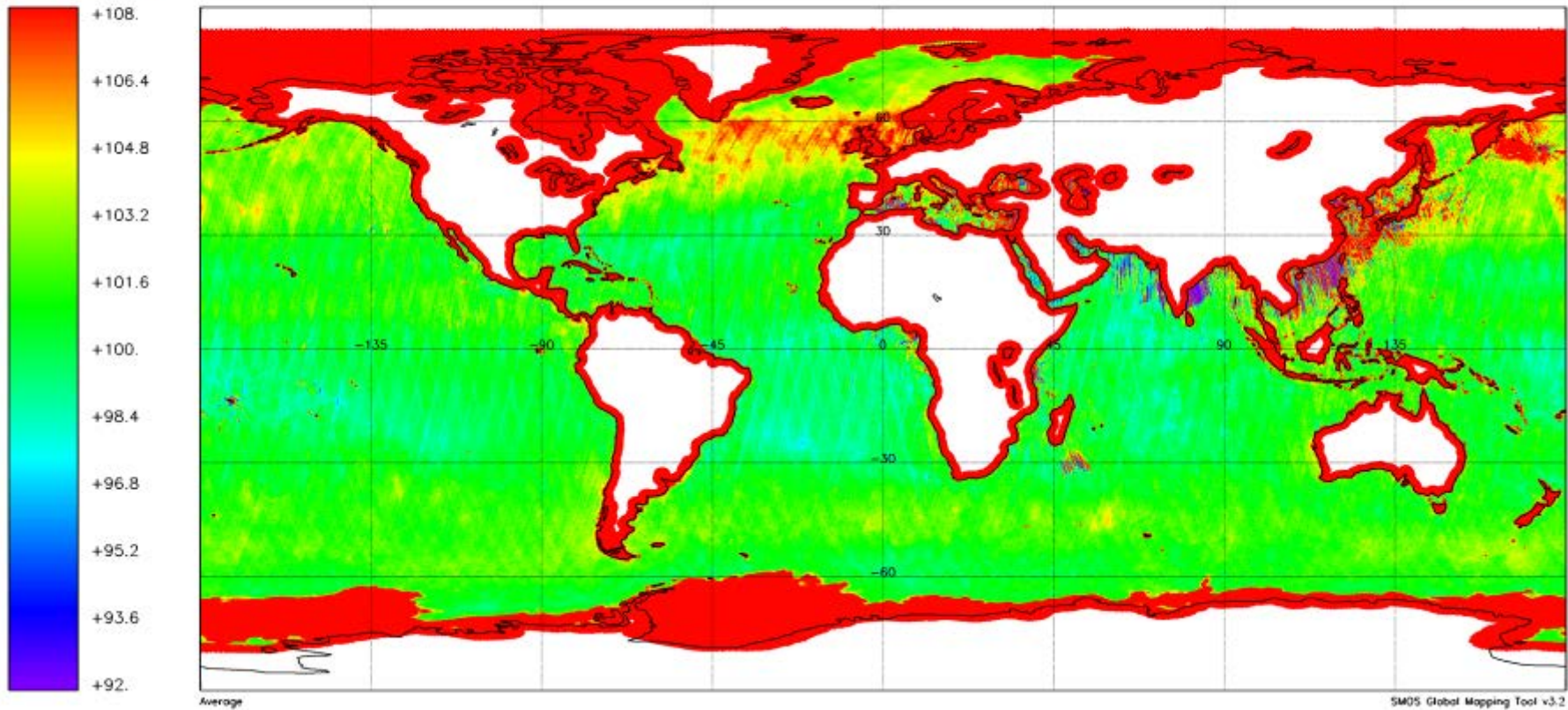


Figure 47 1st Stokes evolution over sea during the reporting period (week 2)



MIR_BWXF1C - ST1_ToA - 20150111T233253 - 20150119T000343
Cylindrical projection - 201 product(s) - Generated on 20150119T095440
Orbits: All - FOV: Alias_Free

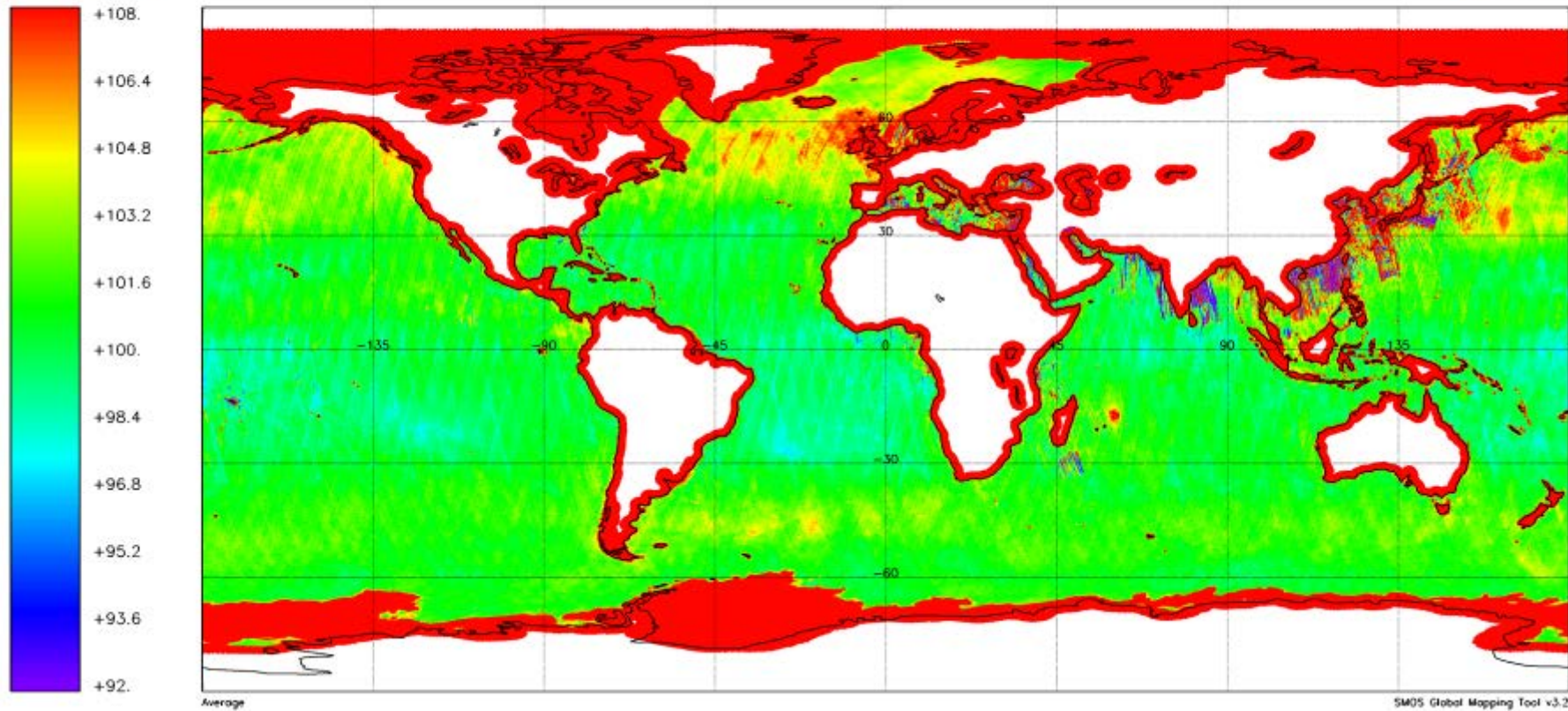




Figure 48 1st Stokes evolution over sea during the reporting period (week 3)



MIR_BWXF1C - ST1_ToA - 20150118T231025 - 20150126T003113
Cylindrical projection - 204 product(s) - Generated on 20150126T095642
Orbits: All - FOV: Alias_Free

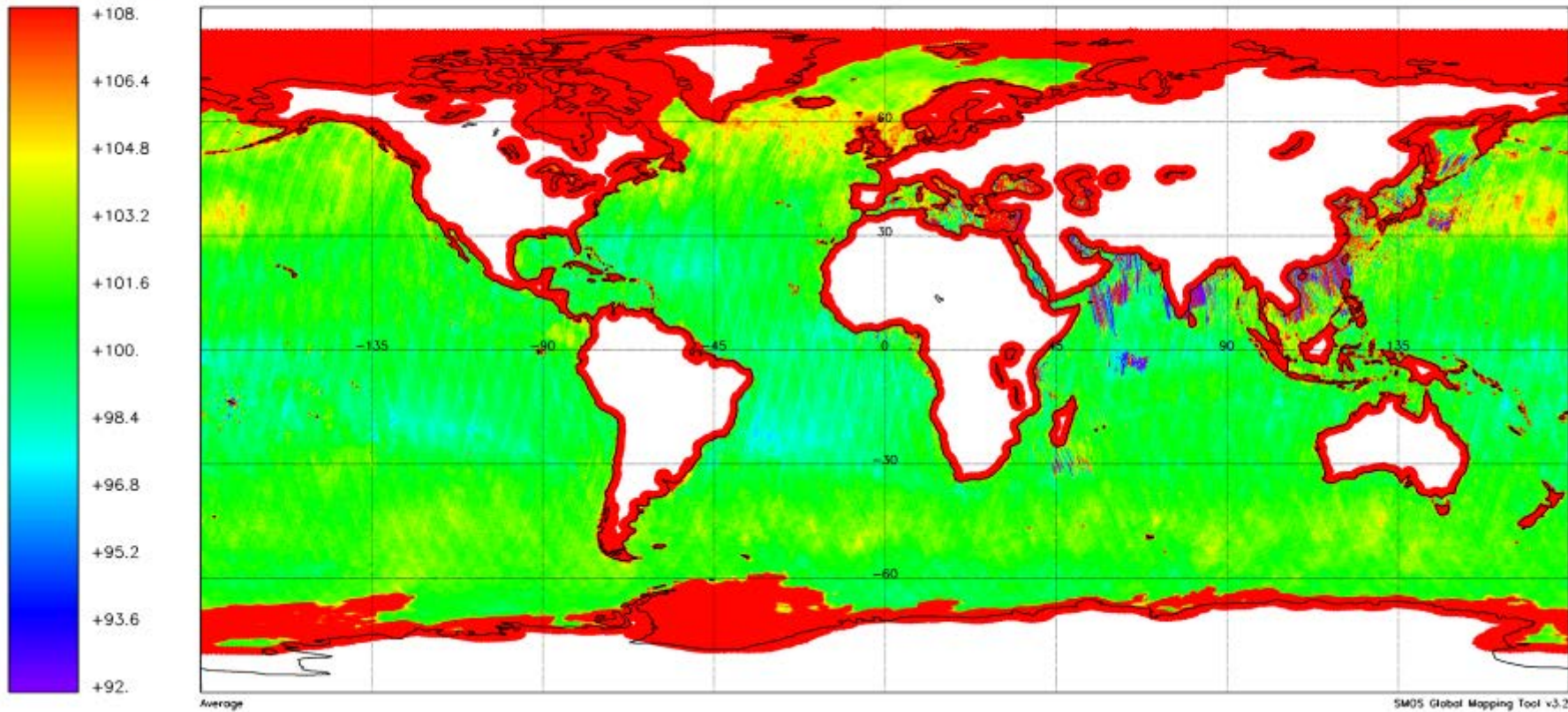


Figure 49 1st Stokes evolution over sea during the reporting period (week 4)



MIR_BWXF1C - ST1_ToA - 20150125T233755 - 20150202T000834
Cylindrical projection - 203 product(s) - Generated on 20150202T095443
Orbits: All - FOV: Alias_Free

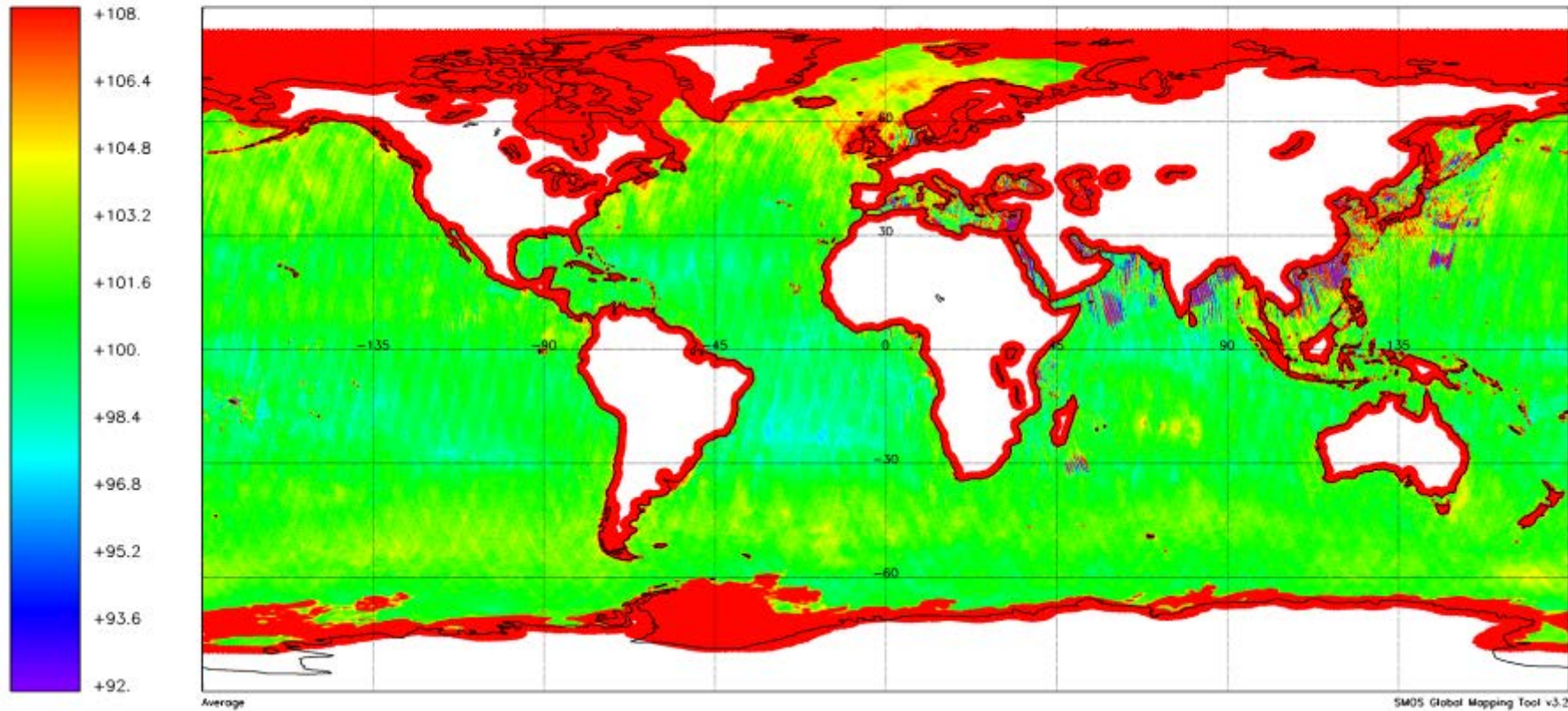




Figure 50 Real Part of the XY Brightness temperature evolution over sea during the reporting period (week 1)



MIR_BWXF1C - BT_Value (K) - 20150104T235509 - 20150112T002606
Cylindrical projection - 202 product(s) - Generated on 20150112T090732
Orbits: All - Polarization: HV_real - FOV: Alias_Free

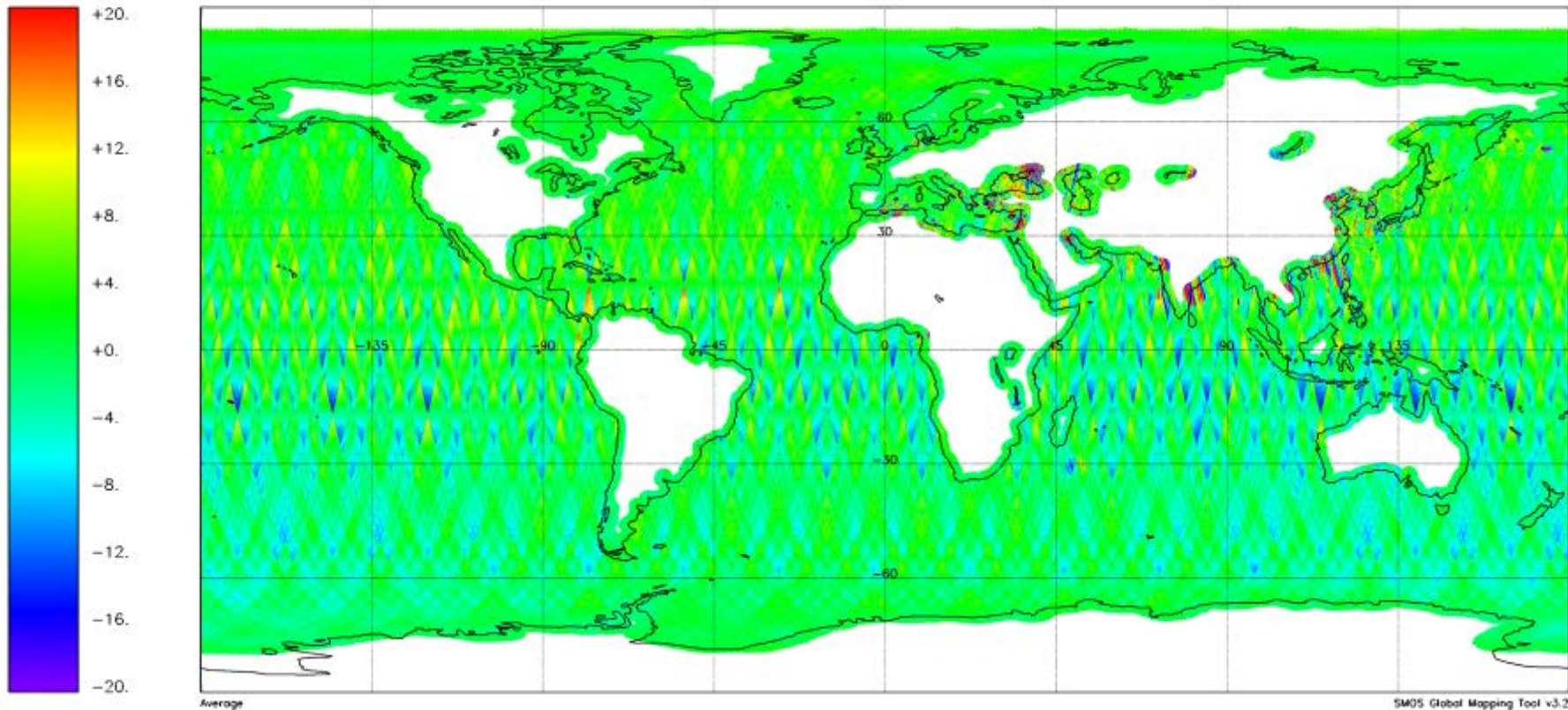


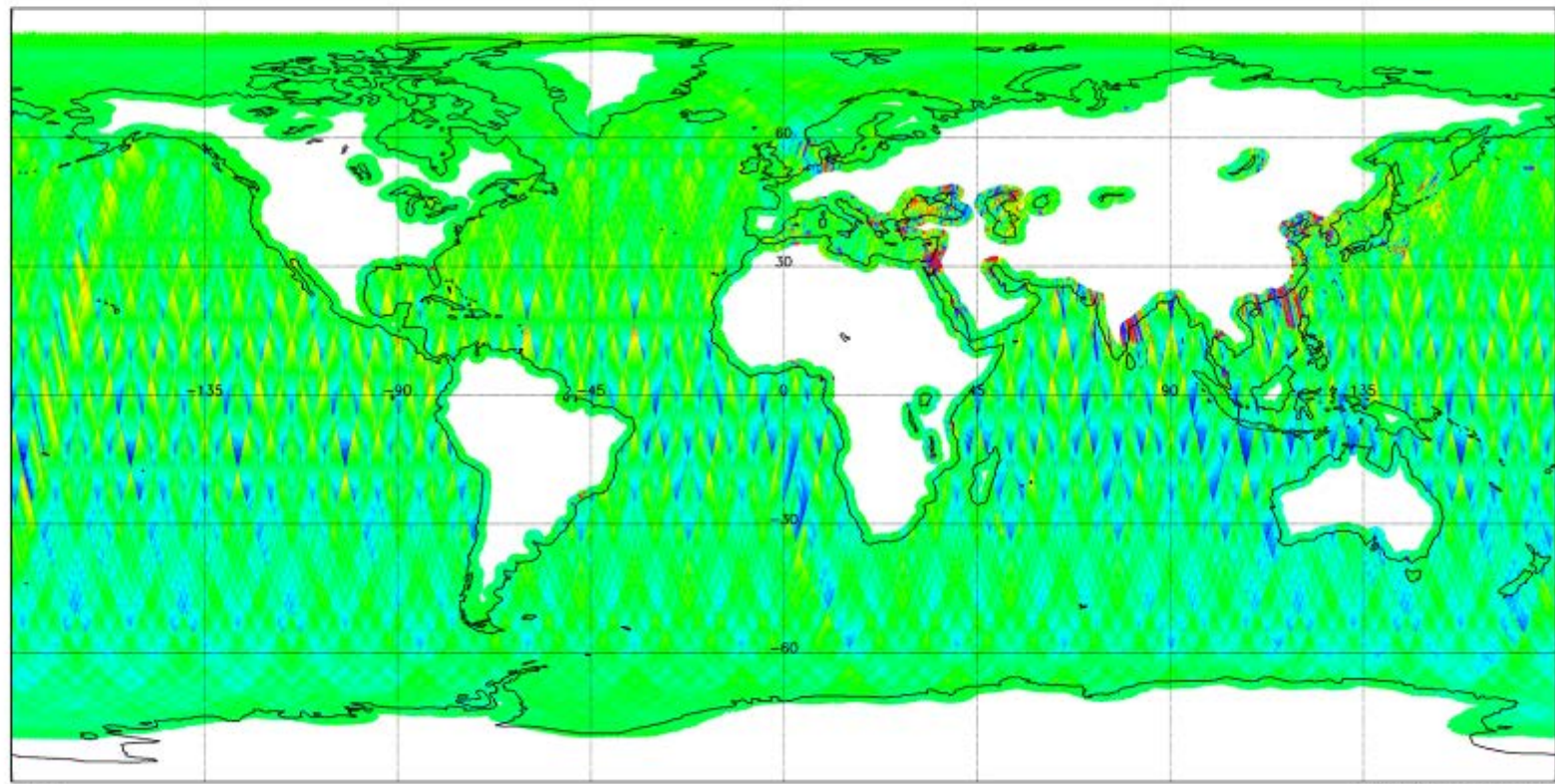
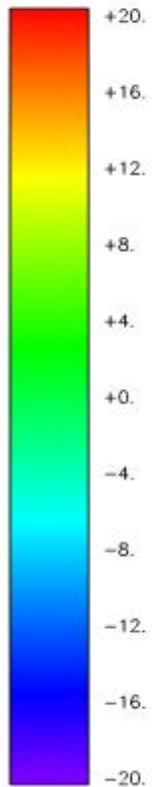
Figure 51 Real Part of the XY Brightness temperature evolution over sea during the reporting period (week 2)



MIR_BWXF1C - BT_Value (K) - 20150111T233253 - 20150118T231341

Cylindrical projection - 200 product(s) - Generated on 20150119T090518

Orbits: All - Polarization: HV_real - FOV: Alias_Free



Average

SMOS Global Mapping Tool v3.2

Figure 52 Real Part of the XY Brightness temperature evolution over sea during the reporting period (week 3)



MIR_BWXF1C - BT_Value (K) - 20150118T231025 - 20150125T234111

Cylindrical projection - 203 product(s) - Generated on 20150126T090611

Orbits: All - Polarization: HV_real - FOV: Alias_Free

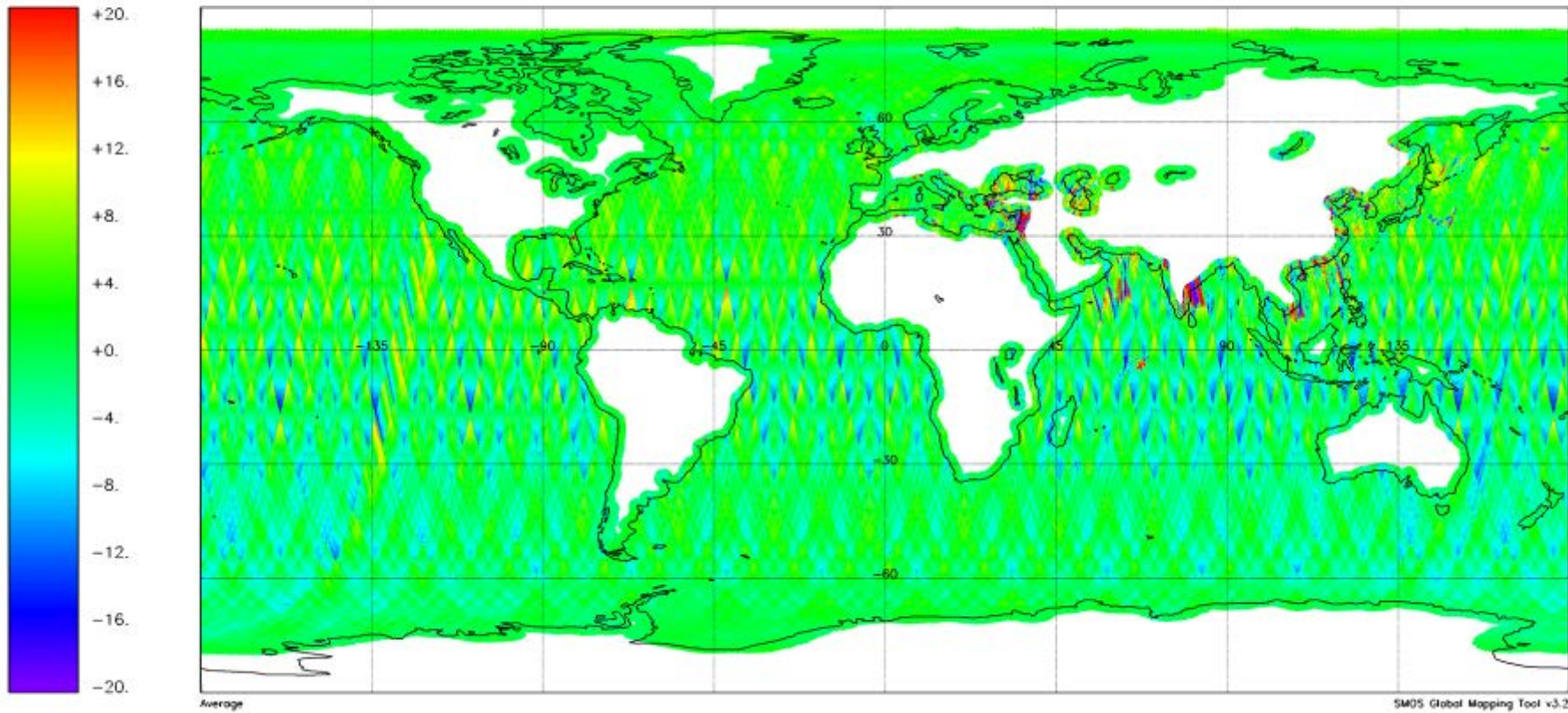


Figure 53 Real Part of the XY Brightness temperature evolution over sea during the reporting period (week 4)



MIR_BWXF1C - BT_Value (K) - 20150125T233755 - 20150202T000834
Cylindrical projection - 203 product(s) - Generated on 20150202T090547
Orbits: All - Polarization: HV_real - FOV: Alias_Free

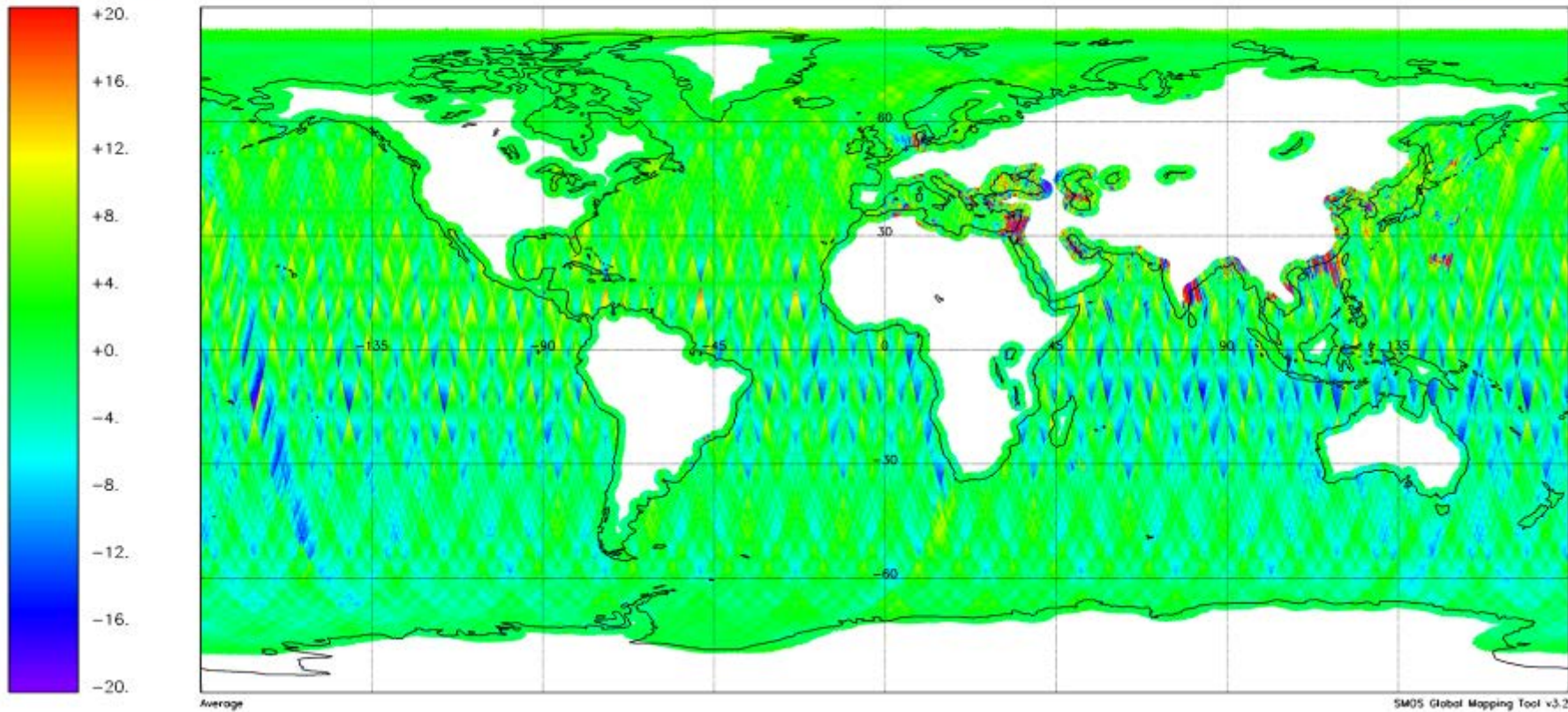


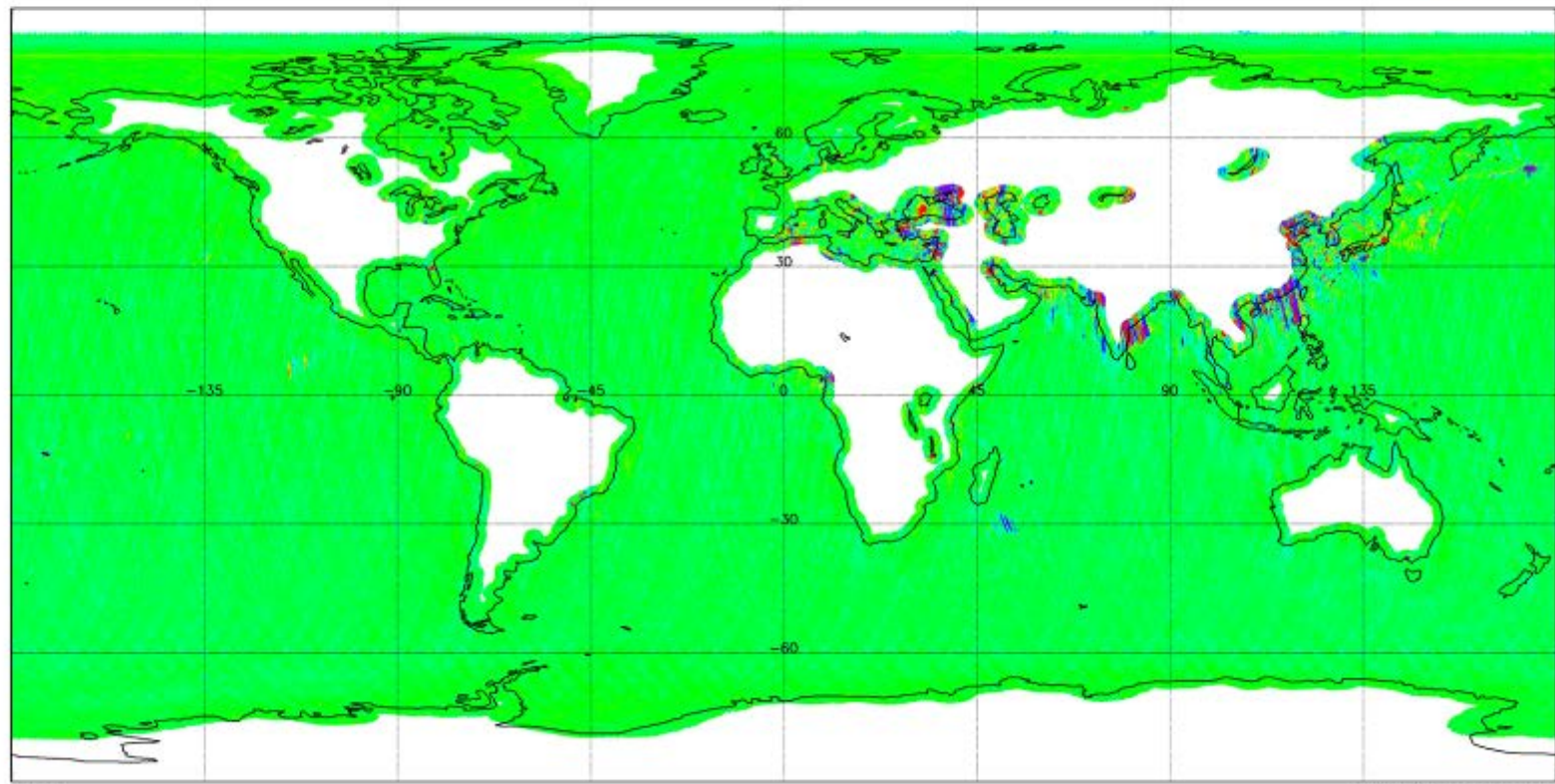
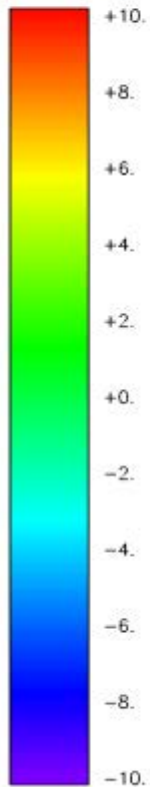
Figure 54 Imaginary Part of the XY Brightness temperature evolution over sea during the reporting period (week 1)



MIR_BWXF1C - BT_Value (K) - 20150104T235509 - 20150112T002606

Cylindrical projection - 202 product(s) - Generated on 20150112T090732

Orbits: All - Polarization: HV_img - FOV: Alias_Free



Average

SMOS Global Mapping Tool v3.2

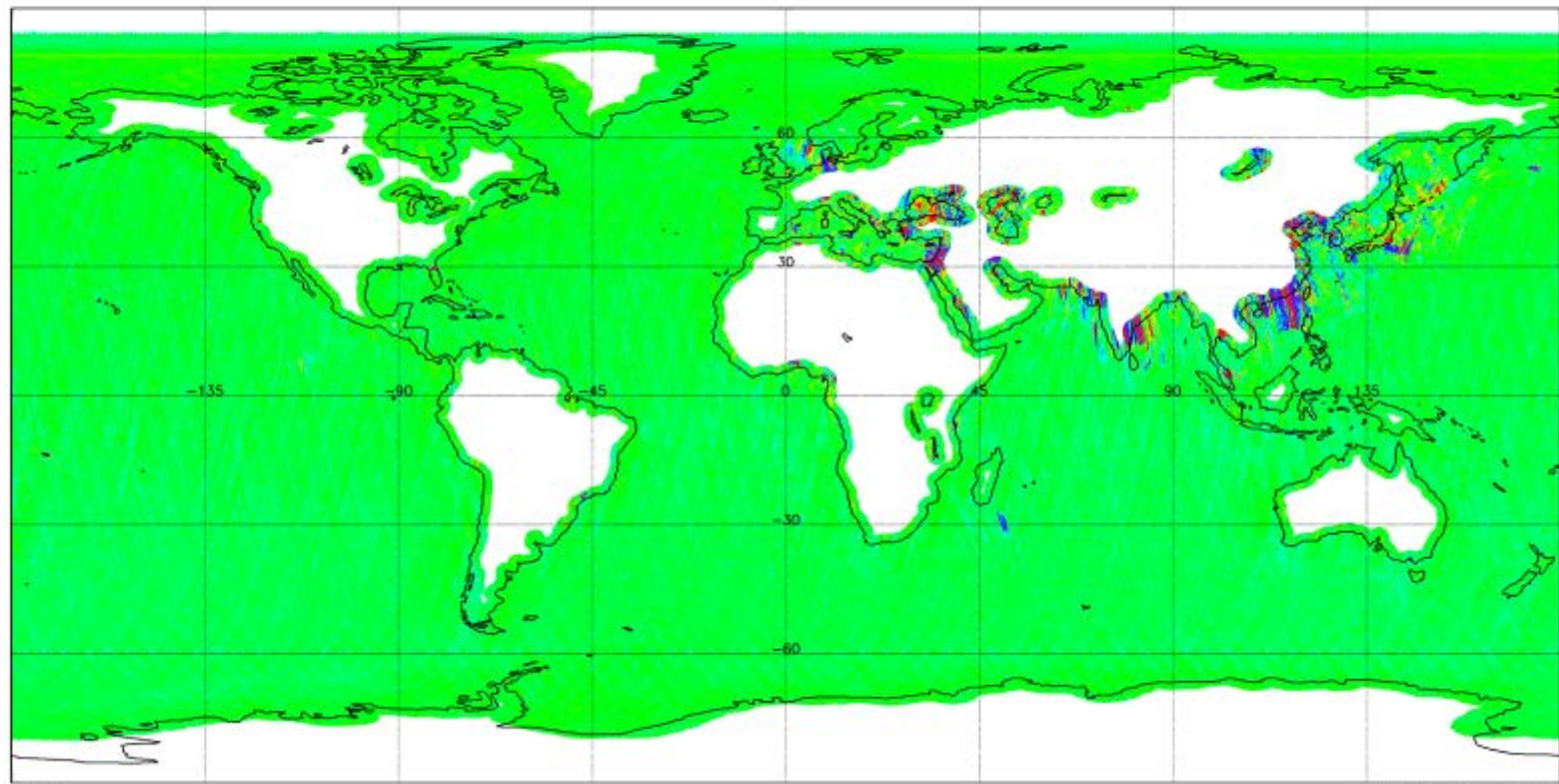
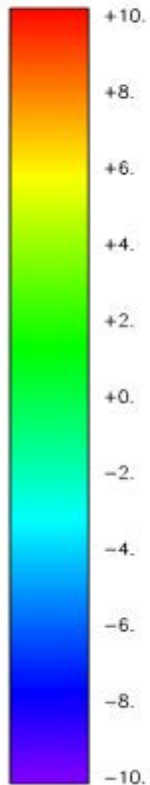
Figure 55 Imaginary Part of the XY Brightness temperature evolution over sea during the reporting period (week 2)



MIR_BWXF1C - BT_Value (K) - 20150111T233253 - 20150118T231341

Cylindrical projection - 200 product(s) - Generated on 20150119T090518

Orbits: All - Polarization: HV_img - FOV: Alias_Free



Average

SMOS Global Mapping Tool v3.2



Figure 56 Imaginary Part of the XY Brightness temperature evolution over sea during the reporting period (week 3)



MIR_BWXF1C - BT_Value (K) - 20150118T231025 - 20150125T234111
Cylindrical projection - 203 product(s) - Generated on 20150126T090611
Orbits: All - Polarization: HV_img - FOV: Alias_Free

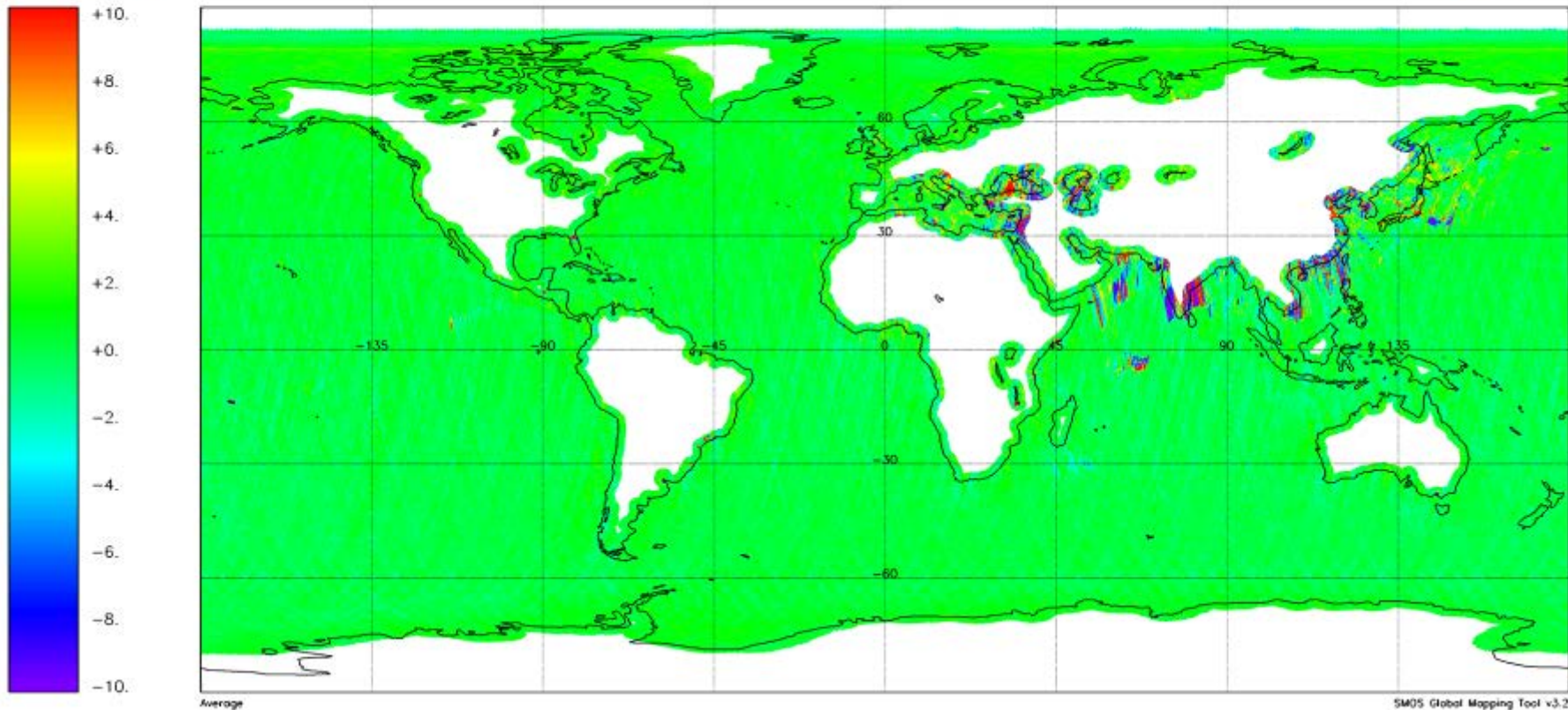


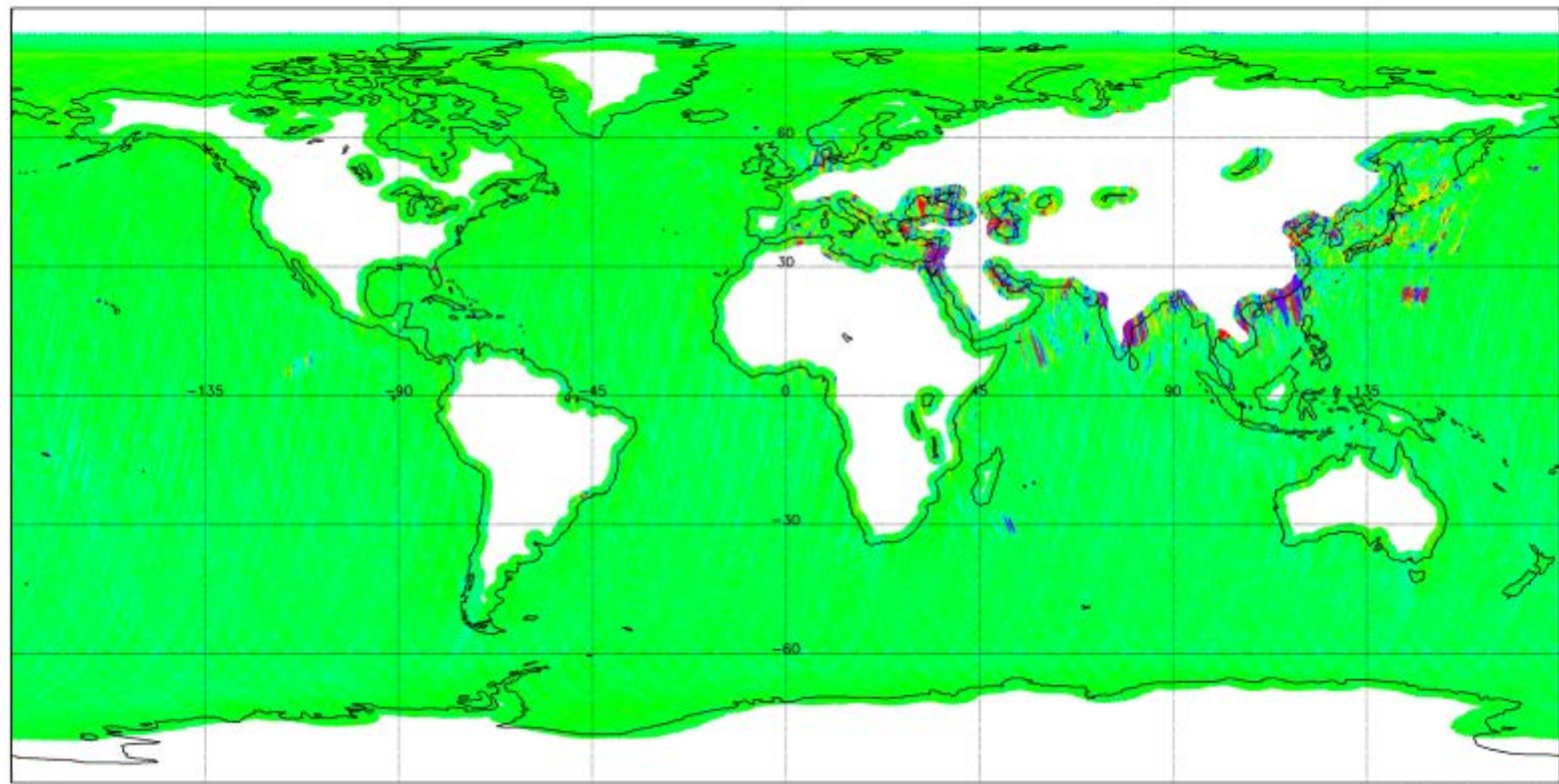
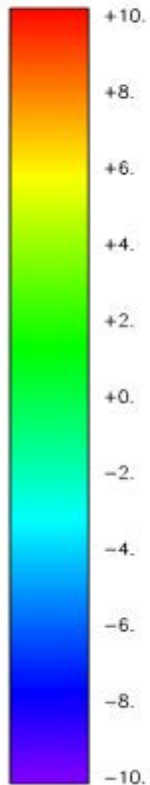
Figure 57 Imaginary Part of the XY Brightness temperature evolution over sea during the reporting period (week 4)



MIR_BWXF1C - BT_Value (K) - 20150125T233755 - 20150202T000834

Cylindrical projection - 203 product(s) - Generated on 20150202T090547

Orbits: All - Polarization: HV_img - FOV: Alias_Free



Average

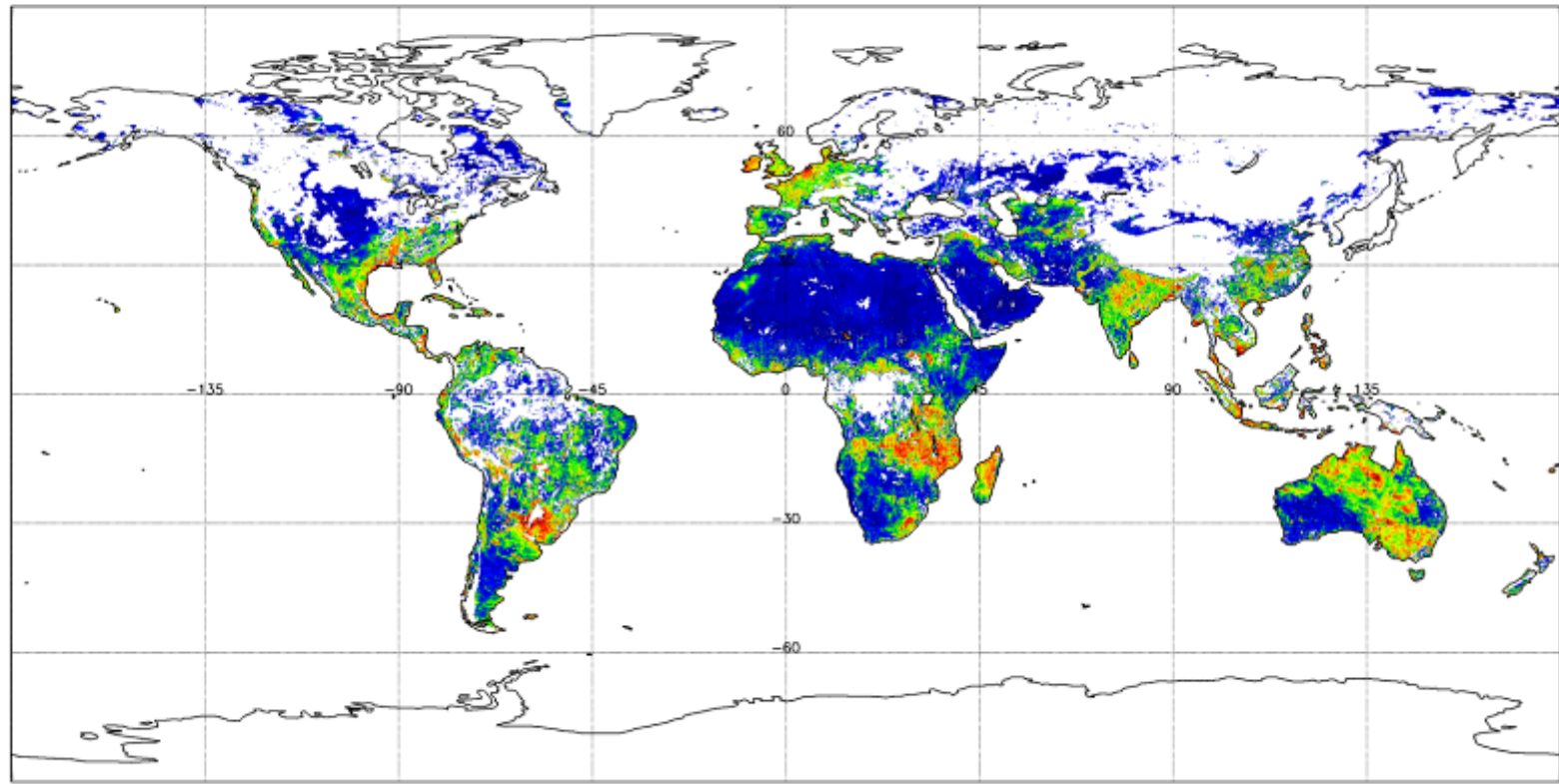
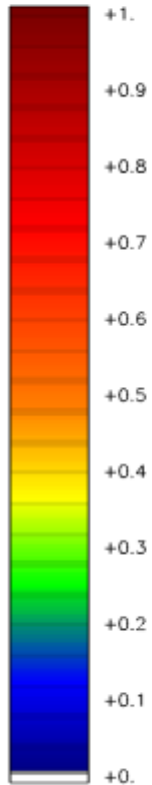
SMOS Global Mapping Tool v3.2



Figure 58 Soil moisture evolution during the reporting period (week 1)



MIR_SMUDP2 – Soil_Moisture (m3m-3) – 20150104T235509 – 20150112T002606
Cylindrical projection – 202 product(s) – Generated on 20150112T100521
Orbits: All – Fill value: None



Maximum

SMOS Global Mapping Tool v3.2

Figure 59 Soil moisture evolution during the reporting period (week 2)



MIR_SMUDP2 – Soil_Moisture (m3m-3) – 20150111T233253 – 20150119T000343
Cylindrical projection – 201 product(s) – Generated on 20150119T100222
Orbits: All – Fill value: None

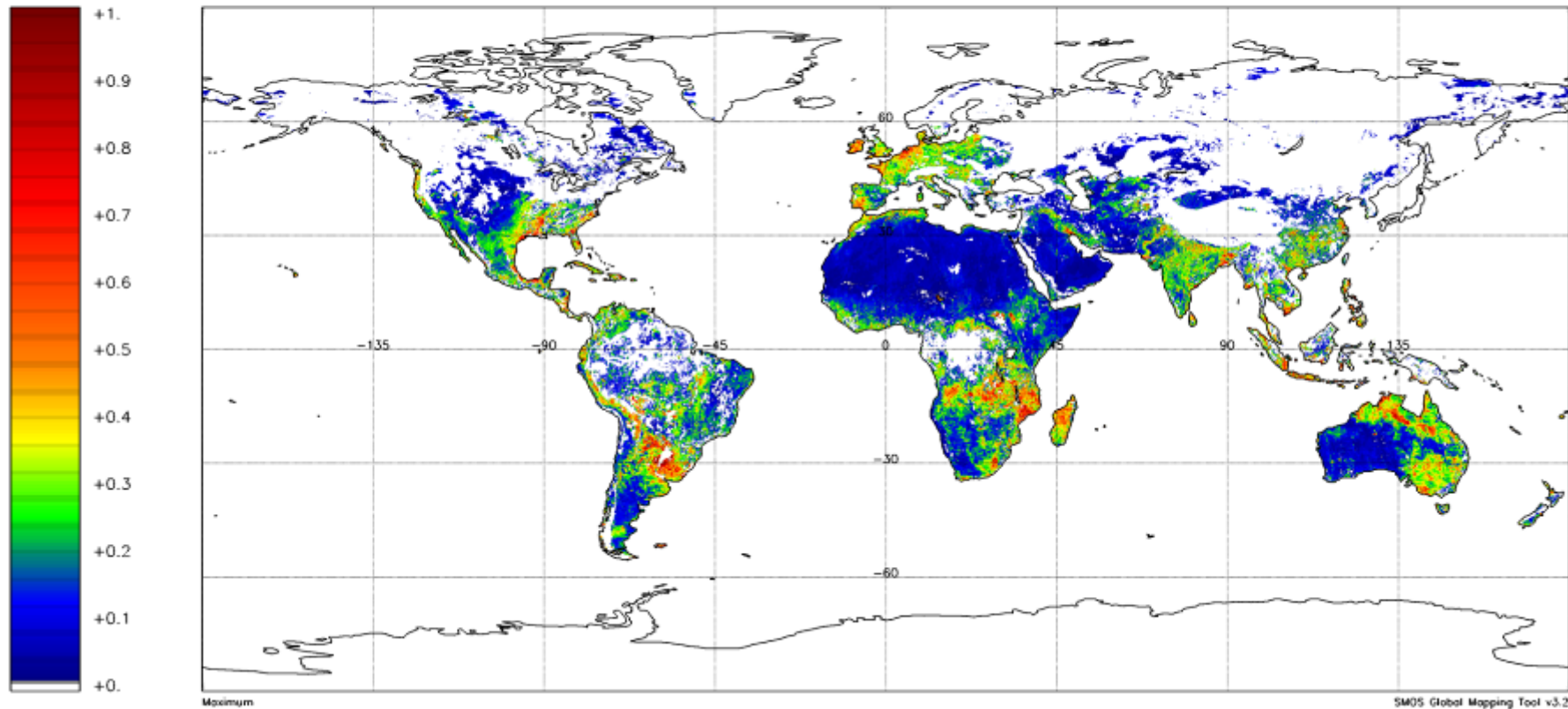




Figure 60 Soil moisture evolution during the reporting period (week 3)



MIR_SMUDP2 – Soil_Moisture (m3m-3) – 20150118T231025 – 20150126T003113
Cylindrical projection – 204 product(s) – Generated on 20150126T100442
Orbits: All – Fill value: None

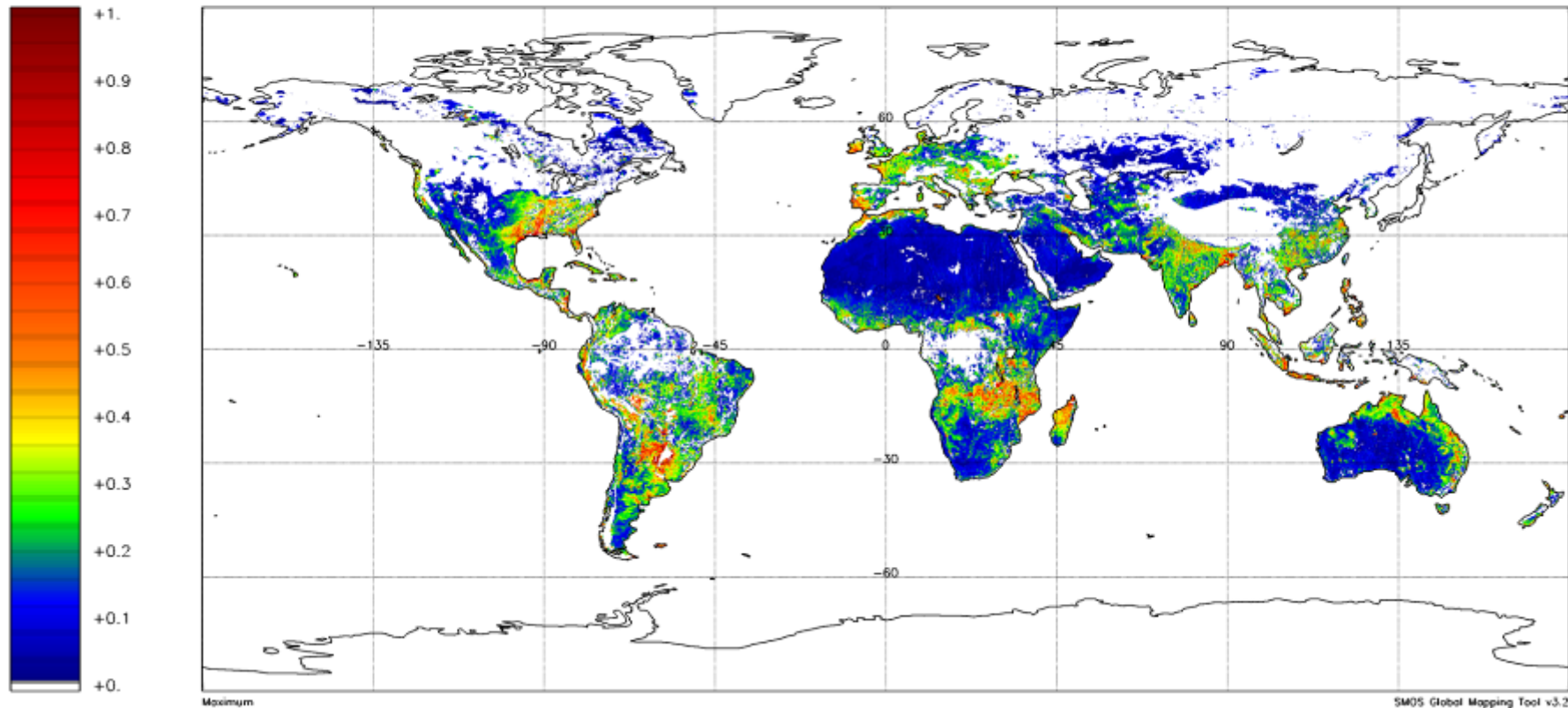


Figure 61 Soil moisture evolution during the reporting period (week 4)



MIR_SMUDP2 – Soil_Moisture (m3m-3) – 20150125T233755 – 20150202T000834
Cylindrical projection – 203 product(s) – Generated on 20150202T100252
Orbits: All – Fill value: None

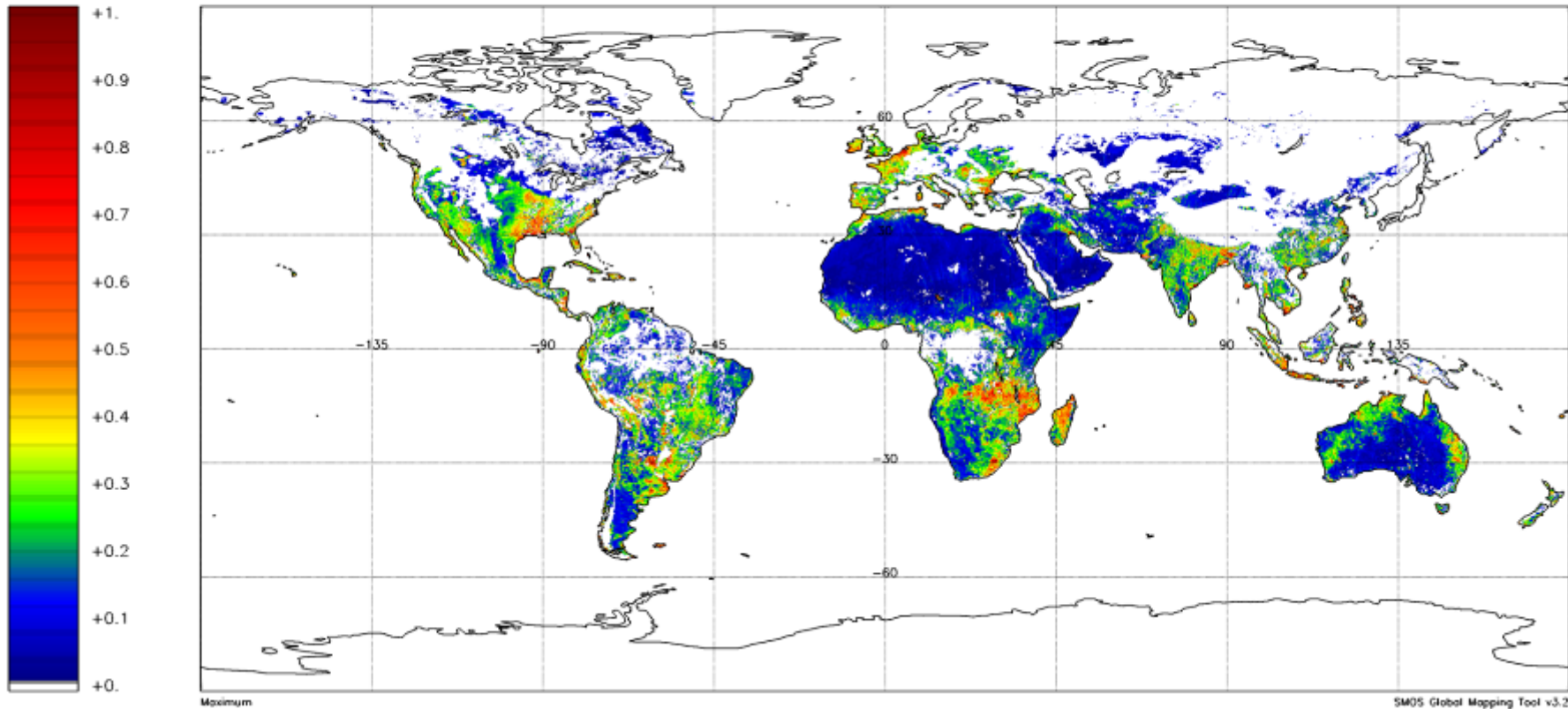




Figure 62 Soil moisture on Taklamakan desert during the reporting period: SM in ascending passes (left) and SM in descending passes (right)

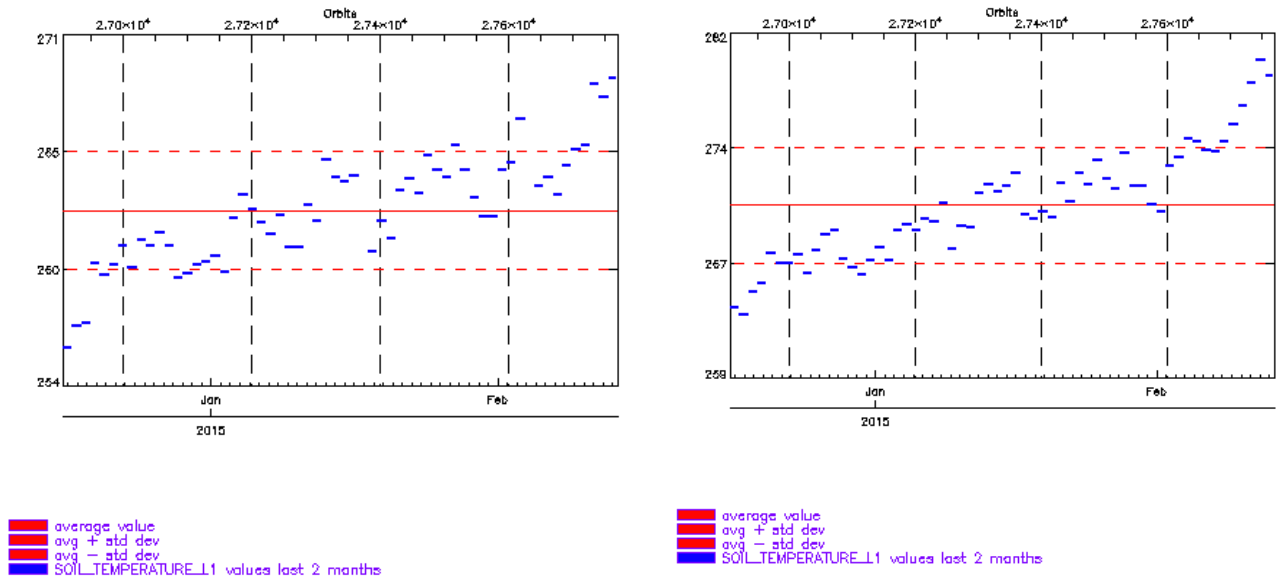
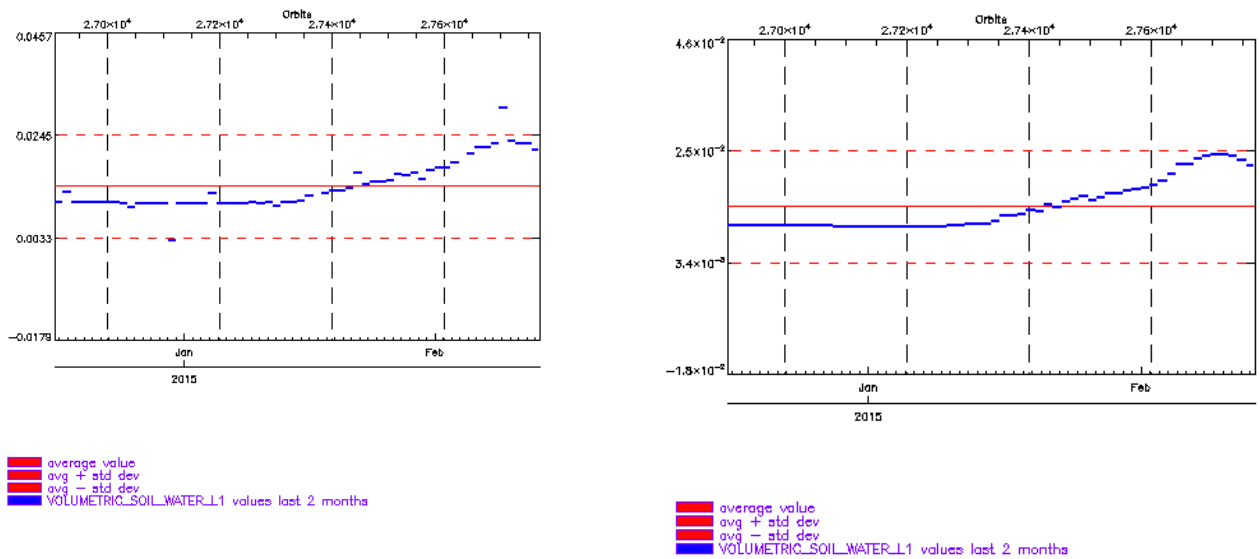


Figure 63 Volumetric Soil Water L1 provided by ECMWF on Taklamakan desert during the reporting period: ascending passes (left) and descending passes (right)



7. ADF CONFIGURATION AT THE END OF THE REPORTING PERIOD

ADF File Type	Operational ADF Version (DPGS Baseline)	Updated
AUX_APDL__	SM_OPER_AUX_APDL__20050101T000000_20500101T000000_300_004_3.EEF	No
AUX_APDNRT	SM_OPER_AUX_APDNRT_20050101T000000_20500101T000000_207_001_6.EEF	No
AUX_APDS__	SM_OPER_AUX_APDS__20050101T000000_20500101T000000_300_004_3.EEF	No
AUX_ATMOS_	SM_OPER_AUX_ATMOS_20050101T000000_20500101T000000_001_010_3.EEF	No
AUX_BFP__	SM_OPER_AUX_BFP__20050101T000000_20500101T000000_340_004_3.EEF	No
AUX_BNDLST	SM_OPER_AUX_BNDLST_20050101T000000_20500101T000000_300_001_3	No
AUX_BSCAT__	SM_OPER_AUX_BSCAT__20050101T000000_20500101T000000_300_003_3	No
AUX_BULL_B	SM_OPER_AUX_BULL_B_20141102T000000_20500101T000000_120_001_3	Yes
AUX_BWGHT_	SM_OPER_AUX_BWGHT_20050101T000000_20500101T000000_340_006_3.EEF	No
AUX_CNFFAR	SM_OPER_AUX_CNFFAR_20050101T000000_20500101T000000_100_002_3.EEF	No
AUX_CNFL0P	SM_OPER_AUX_CNFL0P_20050101T000000_20500101T000000_001_005_3.EEF	No
AUX_CNFL1P	SM_OPER_AUX_CNFL1P_20110206T010100_20500101T000000_500_050_3.EEF	No
AUX_CNFNRT	SM_OPER_AUX_CNFNRT_20050101T000000_20500101T000000_505_009_3.EEF	No
AUX_CNFOSD	SM_OPER_AUX_CNFOSD_20050101T000000_20500101T000000_001_022_3.EEF	No
AUX_CNFOSF	M_OPER_AUX_CNFOSF_20050101T000000_20500101T000000_001_023_3.EEF	No
AUX_CNFSMD	SM_OPER_AUX_CNFSMD_20050101T000000_20500101T000000_001_011_3.EEF	No
AUX_CNFSMF	SM_OPER_AUX_CNFSMF_20050101T000000_20500101T000000_001_011_3.EEF	No
AUX_DFFFRA	SM_OPER_AUX_DFFFRA_20050101T000000_20500101T000000_001_004_3	No
AUX_DFFLMX	SM_OPER_AUX_DFFLMX_20050101T000000_20500101T000000_001_005_3	No
AUX_DFFSOI	SM_OPER_AUX_DFFSOI_20050101T000000_20500101T000000_001_002_3	No
AUX_DFFXYZ	SM_OPER_AUX_DFFXYZ_20050101T000000_20500101T000000_001_003_3	No
AUX_DGG__	SM_OPER_AUX_DGG__20050101T000000_20500101T000000_300_003_3	No
AUX_DGGXYZ	SM_OPER_AUX_DGGXYZ_20050101T000000_20500101T000000_001_004_3	No
AUX_DISTAN	SM_OPER_AUX_DISTAN_20050101T000000_20500101T000000_001_011_3	No
AUX_DTBCUR	SM_OPER_AUX_DTBCUR_20000101T000001_20500101T000000_611_001_3	No
AUX_ECOLAI	SM_OPER_AUX_ECOLAI_20050101T000000_20500101T000000_305_006_3	No
AUX_ECMCDF	SM_OPER_AUX_ECMCDF_20101109T000000_20500101T000000_001_001_3.EEF	No
AUX_FAIL__	SM_OPER_AUX_FAIL__20050101T000000_20500101T000000_300_004_3.EEF	No
AUX_FLTSEA	SM_OPER_AUX_FLTSEA_20050101T000000_20500101T000000_001_010_3.EEF	No
AUX_FOAM__	SM_OPER_AUX_FOAM__20050101T000000_20500101T000000_001_011_3	No
AUX_GAL_OS	SM_OPER_AUX_GAL_OS_20050101T000000_20500101T000000_001_010_8	No
AUX_GAL_SM	SM_OPER_AUX_GAL_SM_20050101T000000_20500101T000000_001_003_3	No
AUX_GAL2OS	SM_OPER_AUX_GAL2OS_20050101T000000_20500101T000000_001_014_3	No
AUX_GALAXY	SM_OPER_AUX_GALAXY_20050101T000000_20500101T000000_300_003_3	No
AUX_GALNIR	SM_OPER_AUX_GALNIR_20050101T000000_20500101T000000_300_002_3	No
AUX_LANDCL	SM_OPER_AUX_LANDCL_20050101T000000_20500101T000000_001_004_3.EEF	No
AUX_LCF__	SM_OPER_AUX_LCF__20050101T000000_20500101T000000_500_016_3.EEF	No
AUX_LSMASK	SM_OPER_AUX_LSMASK_20050101T000000_20500101T000000_300_003_3	No
AUX_MASK__	SM_OPER_AUX_MASK__20050101T000000_20500101T000000_300_002_3	No
AUX_MISP__	SM_OPER_AUX_MISP__20050101T000000_20500101T000000_300_003_3.EEF	No
AUX_MN_WEF	SM_OPER_AUX_MN_WEF_20050101T000000_20500101T000000_001_002_3	No
AUX_MOONT__	SM_OPER_AUX_MOONT__20050101T000000_20500101T000000_300_002_3	No
AUX_N256__	SM_OPER_AUX_N256__20050101T000000_20500101T000000_504_001_3	No
AUX_NIR__	SM_OPER_AUX_NIR__20050101T000000_20500101T000000_350_010_3.EEF	No
AUX_NRTMSK	SM_OPER_AUX_NRTMSK_20050101T000000_20500101T000000_207_001_6	No



AUX_OTT1D_	SM_OPER_AUX_OTT1D_20150102T000000_20500101T000000_550_001_3	Yes
AUX_OTT1F_	SM_OPER_AUX_OTT1F_20150102T000000_20500101T000000_550_001_3	Yes
AUX_OTT2D_	SM_OPER_AUX_OTT2D_20150102T000000_20500101T000000_550_001_3	Yes
AUX_OTT2F_	SM_OPER_AUX_OTT2F_20150102T000000_20500101T000000_550_001_3	Yes
AUX_OTT3D_	SM_OPER_AUX_OTT3D_20150102T000000_20500101T000000_550_001_3	Yes
AUX_OTT3F_	SM_OPER_AUX_OTT3F_20150102T000000_20500101T000000_550_001_3	Yes
AUX_PATT_	SM_OPER_AUX_PATT_20050101T000000_20500101T000000_320_003_3	No
AUX_PLM_	SM_OPER_AUX_PLM_20050101T000000_20500101T000000_300_007_3.EEF	No
AUX_PMS_	SM_OPER_AUX_PMS_20050101T000000_20500101T000000_340_010_3.EEF	No
AUX_RFI_	SM_OPER_AUX_RFI_20050101T000000_20500101T000000_300_003_3	No
AUX_RFILST	SM_OPER_AUX_RFILST_20050101T000000_20500101T000000_100_005_3.EEF	No
AUX_RGHNS1	SM_OPER_AUX_RGHNS1_20050101T000000_20500101T000000_001_015_3	No
AUX_RGHNS2	SM_OPER_AUX_RGHNS2_20050101T000000_20500101T000000_001_013_3	No
AUX_RGHNS3	SM_OPER_AUX_RGHNS3_20050101T000000_20500101T000000_001_014_3.EEF	No
AUX_SGLINT	SM_OPER_AUX_SGLINT_20050101T000000_20500101T000000_001_011_3	No
AUX_SOIL_P	SM_OPER_AUX_SOIL_P_20050101T000000_20500101T000000_001_002_3	No
AUX_SPAR_	SM_OPER_AUX_SPAR_20110112T091500_20500101T000000_340_012_3.EEF SM_OPER_AUX_SPAR_20100111T120700_20110112T091500_340_011_3.EEF SM_OPER_AUX_SPAR_20050101T000000_20100111T120700_340_010_3.EEF	No
AUX_SSS_	SM_OPER_AUX_SSS_20050101T000000_20500101T000000_001_013_3	No
AUX_SUNT_	SM_OPER_AUX_SUNT_20050101T000000_20500101T000000_300_002_3	No
AUX_WEF_	SM_OPER_AUX_WEF_20050101T000000_20500101T000000_001_003_3	No
MPL_ORBSCT	SM_OPER_MPL_ORBSCT_20091102T031142_20500101T000000_360_001_1	No



APPENDIX A. CONFIGURATION DOCUMENT LIST

The list of internal documents used for the generation of this report is:

- Unavailability.xls
- Details_Calibrations.xls
- SMOS-CEC-VEG-IPF-REP-0609_v1.71_SMOS_Auxiliary_Data_File_List.pdf



This Page Is Intentionally Blank

End of Document