

GOME Daily Report

INDEX

1. [General Info](#)
 - 1.1 [Report Summary](#)
 - 1.2 [List of received products](#)
 - 1.3 [List of data gaps](#)
 - 1.4 [List of missing products](#)
 - 1.5 [List of corrupted products](#)
2. [Instrument Indicators and Daily Plots](#)
 - 2.1 [Instrument Indicators Status](#)
 - 2.2 [Daily Plots](#)
3. [Instrument Calibration](#)
 - 3.1 [Solar Calibration \(daily/TST44\)](#)
 - 3.2 [Lamp Calibration \(quarterly/TST44\)](#)
4. [Instrument Anomalies](#)
 - 4.1 [Single Event Upset \(SEU\)](#)
 - 4.2 [Instrument Off](#)
 - 4.3 [Cooler Switchings](#)
5. [Instrument Operations](#)
 - 5.1 [Timeline Interruptions](#)
 - 5.2 [TST44](#)
 - 5.3 [Power Cycle](#)
 - 5.4 [Wrong Command Execution](#)
 - 5.5 [Narrow Swath Timeline](#)
 - 5.6 [Seasonal Operations](#)

1 - General Info

1.1 - Report Summary

Item	Value
Report Version	GOMEver3_3
Report of Day	09-MAY-2011
Start Time of First Product	23:37:35 (08-May)
Stop Time of Last Product	23:18:22
Number of EGOI Products analysed	33
Number of corrupted products	--
Anomalies and/or Special Operations	GOME OFF from 04:36:26; GOMTST44 at 10:34:50 (outside gs visibility); back to nominal before 10:48:55 (outside gs visibility)

1.2 - List of received products

Name	Date	Time
EGOI_110509CMEP6371.E2	09-MAY-2011	03:42:21.712
EGOI_110509CMEP6382.E2	09-MAY-2011	16:04:53.990
EGOI_110509CMEP6392.E2	09-MAY-2011	17:45:27.604
EGOI_110509GSEP1733.E2	09-MAY-2011	00:34:02.559
EGOI_110509GSEP1755.E2	09-MAY-2011	02:09:19.645
EGOI_110509GSEP1780.E2	09-MAY-2011	03:48:50.255
EGOI_110509HLEP0243.E2	08-MAY-2011	23:37:35.214
EGOI_110509HLEP0252.E2	09-MAY-2011	01:17:53.829
EGOI_110509HLEP0259.E2	09-MAY-2011	11:47:22.359

EGOI_110509HLEP0267.E2	09-MAY-2011	13:28:03.500
EGOI_110509HLEP0279.E2	09-MAY-2011	15:06:41.619
EGOI_110509HLEP0286.E2	09-MAY-2011	23:10:49.056
EGOI_110509KSEP9813.E2	09-MAY-2011	09:13:34.892
EGOI_110509KSEP9835.E2	09-MAY-2011	10:48:54.990
EGOI_110509KSEP9861.E2	09-MAY-2011	12:28:04.625
EGOI_110509KSEP9876.E2	09-MAY-2011	14:06:57.750
EGOI_110509KSEP9891.E2	09-MAY-2011	15:44:49.361
EGOI_110509KSEP9902.E2	09-MAY-2011	17:22:31.955
EGOI_110509KSEP9932.E2	09-MAY-2011	19:00:11.550
EGOI_110509KSEP9941.E2	09-MAY-2011	20:39:33.148
EGOI_110509KSEP9959.E2	09-MAY-2011	22:21:32.258
EGOI_110509MAEP6912.E2	09-MAY-2011	10:56:25.037
EGOI_110509MAEP6927.E2	09-MAY-2011	20:33:16.608
EGOI_110509MAEP6940.E2	09-MAY-2011	22:13:23.211
EGOI_110509MIEP1437.E2	09-MAY-2011	02:06:40.626
EGOI_110509MIEP1458.E2	09-MAY-2011	03:43:45.720
EGOI_110509MIEP1477.E2	09-MAY-2011	14:26:21.875
EGOI_110509MIEP1504.E2	09-MAY-2011	16:02:35.974
EGOI_110509MIEP1528.E2	09-MAY-2011	17:44:03.593
EGOI_110509MSEP6970.E2	09-MAY-2011	00:23:58.001
EGOI_110509MSEP6998.E2	09-MAY-2011	11:02:07.072
EGOI_110509MSEP7025.E2	09-MAY-2011	12:41:30.207
EGOI_110509MSEP7042.E2	09-MAY-2011	22:11:00.699

[[BACK TO MENU](#)]

1.3 - List of data gaps

Station	Orbit	Date	Start Time	Stop Time	Duration (s)
---------	-------	------	------------	-----------	--------------

[[BACK TO MENU](#)]

1.4 - List of missing products

Station	Orbit	Date	Start Time	Stop Time	Duration (s)
HO	83909	09-MAY-2011	00:14:53.352	00:29:31.589	878.23700
MM	83909	09-MAY-2011	00:26:23.456	00:37:28.821	665.36500
HO	83910	09-MAY-2011	01:58:12.897	02:06:52.472	519.57500
MM	83910	09-MAY-2011	02:08:43.053	02:17:46.842	543.78900
BE	83911	09-MAY-2011	03:13:04.814	03:26:26.856	802.04200
MM	83911	09-MAY-2011	03:51:46.052	03:58:30.399	404.34700
SG	83911	09-MAY-2011	03:24:04.570	03:37:57.360	832.79000
BE	83912	09-MAY-2011	04:54:04.276	05:02:21.707	497.43100
MM	83912	09-MAY-2011	05:34:26.679	05:40:15.067	348.38800

MI	83912	09-MAY-2011	04:22:26.560	04:34:09.545	702.98500
GS	83912	09-MAY-2011	04:28:44.155	04:39:21.747	637.59200
MM	83913	09-MAY-2011	07:15:48.181	07:23:11.652	443.47100
KS	83913	09-MAY-2011	06:28:52.677	06:36:36.005	463.32800
JO	83913	09-MAY-2011	06:55:33.912	07:07:10.522	696.61000
MM	83914	09-MAY-2011	08:56:21.553	09:06:06.027	584.47400
KS	83914	09-MAY-2011	08:08:04.614	08:20:28.098	743.48400
MA	83914	09-MAY-2011	08:17:23.185	08:28:16.341	653.15600
JO	83914	09-MAY-2011	08:32:45.776	08:47:38.960	893.18400
MM	83915	09-MAY-2011	10:36:34.570	10:48:06.984	692.41400
MA	83915	09-MAY-2011	09:55:44.064	10:08:50.668	786.60400
MM	83916	09-MAY-2011	12:16:33.931	12:29:03.202	749.27100
MM	83917	09-MAY-2011	13:56:19.167	14:09:03.101	763.93400
SG	83917	09-MAY-2011	14:21:19.025	14:31:59.530	640.50500
BE	83918	09-MAY-2011	14:29:49.004	14:43:02.859	793.85500
MM	83918	09-MAY-2011	15:35:48.420	15:48:25.587	757.16700
GS	83918	09-MAY-2011	14:56:46.011	15:09:28.274	762.26300
SG	83918	09-MAY-2011	15:59:08.751	16:12:19.653	790.90200
CM	83918	09-MAY-2011	15:07:58.832	15:14:27.538	388.70600
MM	83919	09-MAY-2011	17:15:02.439	17:27:33.974	751.53500
GS	83919	09-MAY-2011	16:35:56.096	16:49:25.267	809.17100
MM	83920	09-MAY-2011	18:54:10.576	19:06:47.734	757.15800
GS	83920	09-MAY-2011	18:16:57.033	18:24:37.771	460.73800
JO	83920	09-MAY-2011	19:15:40.490	19:25:29.042	588.55200
MM	83921	09-MAY-2011	20:33:32.467	20:46:16.469	764.00200
JO	83921	09-MAY-2011	20:52:45.119	21:07:45.239	900.12000
HO	83922	09-MAY-2011	22:07:17.692	22:18:02.332	644.64000
MM	83922	09-MAY-2011	22:13:31.658	22:26:01.441	749.78300
JO	83922	09-MAY-2011	22:34:29.856	22:43:00.452	510.59600
HO	83923	09-MAY-2011	23:43:52.514	23:58:16.072	863.55800
MM	83923	09-MAY-2011	23:54:26.980	00:06:00.624	693.64400
KS	83923	09-MAY-2011	23:02:52.823	23:12:25.359	572.53600

[[BACK TO MENU](#)]

1.5 - List of corrupted products

Station	Orbit	Time
---------	-------	------

2 - Instrument Indicators and Daily Plots

2.1 - Instrument Indicators Status

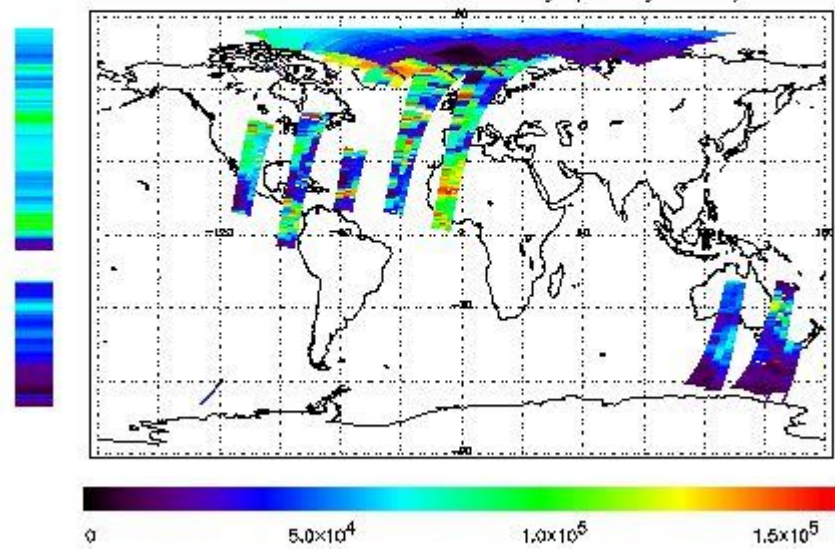
Indicator	Value
MPH Product Confidence	OK
SPH Product Confidence	OK
Command Word Echo Summary	OK
Instrument Status 1A	OK
Instrument Status 1B	OK
Instrument Status 2	OK
Integration Times Channel 1	OK
Co-Adding and Cluster Mode Flags	OK
Integration Times Band 2A	OK
Integration Times Band 2B	OK
Integration Times Band 3	OK
Integration Times Band 4	OK
Scan Mirror position	OK
Polarization Detectors	OK
FPA Temperatures A	OK
FPA Temperaturas B	OK
Charge Amp Temperatures	OK
Other Temperatures A	OK
DDHU Temperatures	OK
Optical Bench Temperatures	OK
Other Temperatures B	OK
Calibration Lamp and Instr. Status 3	OK
Scan Mirror and Motor Current	OK
Selected Temperature A	OK
Selected Temperature B	OK
Selected Temperature C	OK
Channel 1 Summation	OK
Channel 2 Summation	OK
Channel 4 Summation	OK
Log Pages	OK
331/338 nm Uncal. Line Ratio	OK
Uncal. PMDs as RGB signal	OK
780 nm Uncal. Intensity	OK

2.2 - Daily Plots

The images linked below provide a quick check on the data coverage and instrument performance. All data are UNCALIBRATED. For the explanation see the [GOME Performance Legend](#)

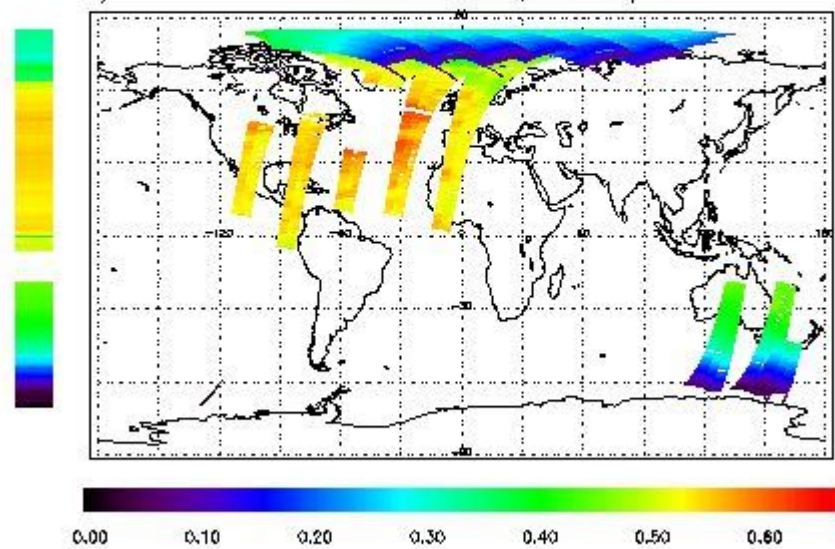
NEAR IR Intensity

778 nm Uncalibrated Intensity (Binary Units)



Ozone Line Ratio

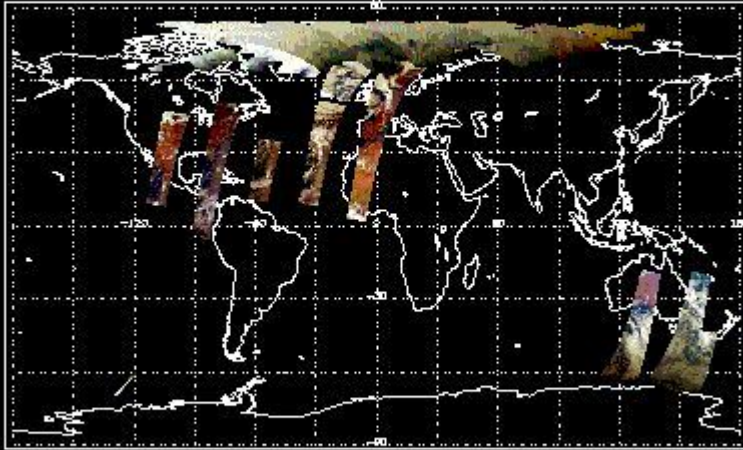
331/313 nm Uncalibrated Line Ratio, SZA Dependence Removed



PMD Image (Earthshine Radiance)

First Product : 08-MAY-2011 23:37:35.214 : ORBIT : 83909.1627
 Last Product : 09-MAY-2011 23:18:22.098 : ORBIT : 83923.2859
 Total Products Processed : 15479 Day : 129 Page : 20

Uncalibrated PMDs as RGB Signal



3 - Instrument Calibration

3.1 - Solar Calibration (Daily/TST44)

Daily(D)/TST44(T)	Start Time	End Time (T)	Orbit	Ground Station Visibility	Warm Detector Temperature (TST/44)	Max PMD Readout during solar calibration (BU set 2/12)
D	10:24:24.466	--	83919	Yes	--	--

3.2 - Lamp Calibration (Quarterly/TST44)

Quarterly(Q)/TST44(T)	Start Time	End Time	Orbit	Ground Station Visibility	Warm Detector Temperature (TST/44)	Lamp Instability Voltage (if any) (V)	Lamp Failure N. (if any)
--	--	--	--	--	--	--	--

(1)

[BACK TO MENU]

4 - Instrument Anomalies

4.1 - Single Event Upset (SEU)

Start Time	End Time	Start Orbit	End Orbit	Ground Station Visibility
--	--	--	--	--

4.2 - Instrument Off

Start Time	End Time	Start Orbit	End Orbit	MPS Resumption	Ground Station Visibility
04:36:26	09:16:56	83912	83914	--	No End

4.3 - Cooler Switchings

Start Time	End Time	Start Orbit	End Orbit	Ground Station Visibility	Max Temp. Ch 1	Max Temp. Ch 2	Max Temp. Ch 3	Max Temp. Ch 4
04:36:26	10:34:50	83912	83915	No End	273.8	274.6	274.2	274.5

5 - Instrument Operations

[Additional Info](#)

5.1 - Timeline Interruptions

Start Time	End Time	Start Orbit	End Orbit	Ground Station Visibility
--	--	--	--	--

5.2 - TST44

Start Time	Start Orbit	Ground Station Visibility
--	--	--

5.3 - Power Cycle

Start Time	End Time	Start Orbit	End Orbit	Ground Station Visibility
--	--	--	--	--

5.4 - Wrong Command Execution

Start Time	End Time	Start Orbit	End Orbit	Ground Station Visibility
--	--	--	--	--

5.5 - Narrow Swath Timeline

Start Time	End Time	Start Orbit	End Orbit
--	--	--	--

5.6 - Seasonal Operations

Start Time	End Time	Start Orbit	End Orbit
--	--	--	--