

GOME Daily Report

SUMMARY

1. General Info
 - 1.1 Report Summary
 - 1.2 List of received products
 - 1.3 List of data gaps
 - 1.4 List of missing products
 - 1.5 List of corrupted products
2. Instrument Indicators and Daily Plots
 - 2.1 Instrument Indicators Status
 - 2.2 Daily Plots
3. Instrument Calibration
 - 3.1 Solar Calibration (daily/TST44)
 - 3.2 Lamp Calibration (quarterly/TST44)
4. Instrument Anomalies
 - 4.1 Single Event Upset (SEU)
 - 4.2 Instrument Off
 - 4.3 Cooler Switchings
5. Instrument Operations
 - 5.1 Timeline Interruptions
 - 5.2 TST44
 - 5.3 Power Cycle
 - 5.4 Wrong Command Execution
 - 5.5 Narrow Swath Timeline
 - 5.6 Seasonal Operations

1 - General Info

1.1 - Report Summary

| Item | Value |
|-------------------------------------|-------------------|
| Report Version | GOMEver3_3 |
| Time of Report Generation | 17-JUN-2009 |
| Start Time of First Product | 23:55:40 (16-JUN) |
| Stop Time of Last Product | 23:32:40 |
| Number of EGOI Products analysed | 38 |
| Number of corrupted products | -- |
| Anomalies and/or Special Operations | -- |

1.2 - List of received products

| Name | Date | Time |
|------------------------|-------------|--------------|
| EGOI_090617GSEP2459.E2 | 17-JUN-2009 | 01:28:15.201 |
| EGOI_090617GSEP2485.E2 | 17-JUN-2009 | 03:06:14.299 |
| EGOI_090617GSEP2512.E2 | 17-JUN-2009 | 04:48:35.920 |
| EGOI_090617GSEP2518.E2 | 17-JUN-2009 | 06:30:26.041 |
| EGOI_090617HLEP1284.E2 | 17-JUN-2009 | 00:34:23.876 |
| EGOI_090617HLEP1292.E2 | 17-JUN-2009 | 02:21:14.029 |
| EGOI_090617HLEP1300.E2 | 17-JUN-2009 | 11:07:23.224 |
| EGOI_090617HLEP1307.E2 | 17-JUN-2009 | 12:44:44.818 |
| EGOI_090617HLEP1315.E2 | 17-JUN-2009 | 14:24:37.926 |

| | | |
|------------------------|-------------|--------------|
| EGOI_090617HLEP1323.E2 | 17-JUN-2009 | 22:25:46.850 |
| EGOI_090617KSEP8471.E2 | 16-JUN-2009 | 23:55:40.138 |
| EGOI_090617KSEP8489.E2 | 17-JUN-2009 | 06:47:35.143 |
| EGOI_090617KSEP8520.E2 | 17-JUN-2009 | 08:27:31.260 |
| EGOI_090617KSEP8542.E2 | 17-JUN-2009 | 10:07:10.864 |
| EGOI_090617KSEP8568.E2 | 17-JUN-2009 | 11:46:44.471 |
| EGOI_090617KSEP8589.E2 | 17-JUN-2009 | 13:25:45.073 |
| EGOI_090617KSEP8617.E2 | 17-JUN-2009 | 15:04:26.168 |
| EGOI_090617KSEP8638.E2 | 17-JUN-2009 | 16:41:59.762 |
| EGOI_090617KSEP8671.E2 | 17-JUN-2009 | 18:19:54.357 |
| EGOI_090617KSEP8698.E2 | 17-JUN-2009 | 19:58:33.959 |
| EGOI_090617KSEP8724.E2 | 17-JUN-2009 | 21:39:28.569 |
| EGOI_090617KSEP8742.E2 | 17-JUN-2009 | 23:23:27.706 |
| EGOI_090617MAEP0758.E2 | 17-JUN-2009 | 10:14:42.407 |
| EGOI_090617MAEP0770.E2 | 17-JUN-2009 | 19:53:12.928 |
| EGOI_090617MAEP0787.E2 | 17-JUN-2009 | 21:31:31.522 |
| EGOI_090617MIEP1296.E2 | 17-JUN-2009 | 03:01:30.772 |
| EGOI_090617MIEP1322.E2 | 17-JUN-2009 | 04:42:13.385 |
| EGOI_090617MIEP1348.E2 | 17-JUN-2009 | 15:21:47.277 |
| EGOI_090617MIEP1376.E2 | 17-JUN-2009 | 17:01:13.376 |
| EGOI_090617MSEP7108.E2 | 17-JUN-2009 | 10:21:57.450 |
| EGOI_090617MSEP7137.E2 | 17-JUN-2009 | 11:59:40.045 |
| EGOI_090617MSEP7150.E2 | 17-JUN-2009 | 13:42:16.667 |
| EGOI_090617MSEP7167.E2 | 17-JUN-2009 | 21:32:34.526 |
| EGOI_090617MSEP7199.E2 | 17-JUN-2009 | 23:08:35.113 |
| EGOI_090617SGEP7615.E2 | 17-JUN-2009 | 02:09:57.459 |
| EGOI_090617SGEP7622.E2 | 17-JUN-2009 | 02:09:57.459 |
| EGOI_090617SGEP7627.E2 | 17-JUN-2009 | 03:49:47.565 |
| EGOI_090617SGEP7633.E2 | 17-JUN-2009 | 14:41:17.027 |
| EGOI_090617SGEP7643.E2 | 17-JUN-2009 | 16:19:10.126 |

[[BACK TO MENU](#)]

1.3 - List of data gaps

| Station | Orbit | Date | Start Time | Stop Time | Duration (s) |
|---------|-------|-------------|--------------|--------------|--------------|
| KS | 74018 | 16-JUN-2009 | 23:54:12.978 | 23:55:40.137 | 87.159000 |
| KS | 74022 | 17-JUN-2009 | 06:45:47.762 | 06:47:35.142 | 107.38000 |
| KS | 74023 | 17-JUN-2009 | 08:25:08.748 | 08:27:31.259 | 142.51100 |
| KS | 74024 | 17-JUN-2009 | 10:04:46.382 | 10:07:10.864 | 144.48200 |
| KS | 74025 | 17-JUN-2009 | 11:44:16.441 | 11:46:44.470 | 148.02900 |
| KS | 74026 | 17-JUN-2009 | 13:23:21.042 | 13:25:45.072 | 144.03000 |
| KS | 74027 | 17-JUN-2009 | 15:01:53.273 | 15:04:26.168 | 152.89500 |
| KS | 74028 | 17-JUN-2009 | 16:39:29.825 | 16:41:59.762 | 149.93700 |

| | | | | | |
|----|-------|-------------|--------------|--------------|-----------|
| KS | 74029 | 17-JUN-2009 | 18:17:23.791 | 18:19:54.356 | 150.56500 |
| KS | 74030 | 17-JUN-2009 | 19:56:28.502 | 19:58:33.959 | 125.45700 |
| KS | 74031 | 17-JUN-2009 | 21:37:22.778 | 21:39:28.568 | 125.79000 |
| KS | 74032 | 17-JUN-2009 | 23:20:51.560 | 23:23:27.706 | 156.14600 |
| GS | 74019 | 17-JUN-2009 | 01:26:24.285 | 01:28:15.201 | 110.91600 |
| GS | 74020 | 17-JUN-2009 | 03:04:06.642 | 03:06:14.299 | 127.65700 |
| GS | 74021 | 17-JUN-2009 | 04:46:55.598 | 04:48:35.919 | 100.32100 |
| MS | 74024 | 17-JUN-2009 | 10:19:26.527 | 10:21:57.450 | 150.92300 |
| MS | 74025 | 17-JUN-2009 | 11:57:09.627 | 11:59:40.044 | 150.41700 |
| MS | 74032 | 17-JUN-2009 | 23:06:23.805 | 23:08:35.113 | 131.30800 |
| MA | 74024 | 17-JUN-2009 | 10:12:51.137 | 10:14:42.407 | 111.27000 |
| MA | 74030 | 17-JUN-2009 | 19:49:48.547 | 19:53:12.927 | 204.38000 |
| MA | 74031 | 17-JUN-2009 | 21:28:58.310 | 21:31:31.521 | 153.21100 |
| MI | 74020 | 17-JUN-2009 | 02:59:31.184 | 03:01:30.771 | 119.58700 |
| MI | 74021 | 17-JUN-2009 | 04:40:18.292 | 04:42:13.385 | 115.09300 |
| MI | 74027 | 17-JUN-2009 | 15:19:45.349 | 15:21:47.277 | 121.92800 |
| MI | 74028 | 17-JUN-2009 | 16:59:25.607 | 17:01:13.376 | 107.76900 |
| SG | 74019 | 17-JUN-2009 | 02:05:04.773 | 02:09:57.458 | 292.68500 |
| SG | 74019 | 17-JUN-2009 | 02:05:04.773 | 02:09:57.458 | 292.68500 |
| SG | 74020 | 17-JUN-2009 | 03:41:07.598 | 03:49:47.565 | 519.96700 |
| SG | 74026 | 17-JUN-2009 | 14:37:30.284 | 14:41:17.027 | 226.74300 |
| SG | 74027 | 17-JUN-2009 | 16:16:37.875 | 16:19:10.125 | 152.25000 |

[[BACK TO MENU](#)]

1.4 - List of missing products

| Station | Orbit | Date | Start Time | Stop Time | Duration (s) |
|---------|-------|-------------|--------------|--------------|--------------|
| MM | 74018 | 17-JUN-2009 | 00:43:51.556 | 00:54:39.319 | 647.76300 |
| BE | 74019 | 17-JUN-2009 | 01:51:29.315 | 02:02:42.855 | 673.54000 |
| MM | 74019 | 17-JUN-2009 | 02:26:21.074 | 02:35:00.480 | 519.40600 |
| BE | 74020 | 17-JUN-2009 | 03:30:11.453 | 03:43:18.204 | 786.75100 |
| MM | 74020 | 17-JUN-2009 | 04:09:26.264 | 04:15:51.179 | 384.91500 |
| CM | 74020 | 17-JUN-2009 | 03:00:07.112 | 03:09:18.137 | 551.02500 |
| MM | 74021 | 17-JUN-2009 | 05:51:54.730 | 05:57:50.267 | 355.53700 |
| CM | 74021 | 17-JUN-2009 | 06:18:27.337 | 06:30:09.918 | 702.58100 |
| MM | 74022 | 17-JUN-2009 | 07:33:04.715 | 07:40:52.396 | 467.68100 |
| JO | 74022 | 17-JUN-2009 | 07:11:43.853 | 07:24:42.469 | 778.61600 |

| | | | | | |
|----|-------|-------------|--------------|--------------|-----------|
| MM | 74023 | 17-JUN-2009 | 09:13:33.450 | 09:23:39.803 | 606.35300 |
| MA | 74023 | 17-JUN-2009 | 08:33:56.120 | 08:46:05.421 | 729.30100 |
| JO | 74023 | 17-JUN-2009 | 08:50:02.296 | 09:04:29.541 | 867.24500 |
| MM | 74024 | 17-JUN-2009 | 10:53:43.972 | 11:05:29.733 | 705.76100 |
| MM | 74025 | 17-JUN-2009 | 12:33:41.023 | 12:46:15.331 | 754.30800 |
| MA | 74025 | 17-JUN-2009 | 11:55:05.035 | 11:59:33.744 | 268.70900 |
| MM | 74026 | 17-JUN-2009 | 14:13:23.642 | 14:26:07.266 | 763.62400 |
| BE | 74027 | 17-JUN-2009 | 14:47:07.888 | 14:59:56.523 | 768.63500 |
| MM | 74027 | 17-JUN-2009 | 15:52:50.070 | 16:05:25.669 | 755.59900 |
| GS | 74027 | 17-JUN-2009 | 15:13:37.424 | 15:26:57.034 | 799.61000 |
| CM | 74027 | 17-JUN-2009 | 15:23:40.965 | 15:32:56.104 | 555.13900 |
| MM | 74028 | 17-JUN-2009 | 17:32:02.110 | 17:44:33.836 | 751.72600 |
| GS | 74028 | 17-JUN-2009 | 16:53:05.868 | 17:06:06.501 | 780.63300 |
| CM | 74028 | 17-JUN-2009 | 17:01:46.927 | 17:13:23.496 | 696.56900 |
| MM | 74029 | 17-JUN-2009 | 19:11:10.969 | 19:23:49.759 | 758.79000 |
| JO | 74029 | 17-JUN-2009 | 19:31:47.022 | 19:43:41.442 | 714.42000 |
| MM | 74030 | 17-JUN-2009 | 20:50:37.633 | 21:03:21.356 | 763.72300 |
| JO | 74030 | 17-JUN-2009 | 21:09:51.556 | 21:24:36.545 | 884.98900 |
| MM | 74031 | 17-JUN-2009 | 22:30:45.320 | 22:43:08.911 | 743.59100 |

[[BACK TO MENU](#)]

1.5 - List of corrupted products

| Station | Orbit | Time |
|---------|-------|------|
|---------|-------|------|

2 - Instrument Indicators and Daily Plots

2.1 - Instrument Indicators Status

| Indicator | Value |
|----------------------------------|-------|
| MPH Product Confidence | OK |
| SPH Product Confidence | OK |
| Command Word Echo Summary | OK |
| Instrument Status 1A | OK |
| Instrument Status 1B | OK |
| Instrument Status 2 | OK |
| Integration Times Channel 1 | OK |
| Co-Adding and Cluster Mode Flags | OK |
| Integration Times Band 2A | OK |
| Integration Times Band 2B | OK |
| Integration Times Band 3 | OK |
| Integration Times Band 4 | OK |
| Scan Mirror position | OK |

| | |
|--------------------------------------|----|
| Polarization Detectors | OK |
| FPA Temperatures A | OK |
| FPA Temperaturas B | OK |
| Charge Amp Temperatures | OK |
| Other Temperatures A | OK |
| DDHU Temperatures | OK |
| Optical Bench Temperatures | OK |
| Other Temperatures B | OK |
| Calibration Lamp and Instr. Status 3 | OK |
| Scan Mirror and Motor Current | OK |
| Selected Temperature A | OK |
| Selected Temperature B | Ok |
| Selected Temperature C | OK |
| Channel 1 Summation | OK |
| Channel 2 Summation | OK |
| Channel 4 Summation | OK |
| Log Pages | OK |
| 331/338 nm Uncal. Line Ratio | OK |
| Uncal. PMDs as RGB signal | OK |
| 780 nm Uncal. Intensity | OK |

2.2 - Daily Plots

The images linked below provide a quick check on the data coverage and instrument performance. All data are UNCALIBRATED. For the explanation see the GOME Performance Legend

NEAR IR Intensity

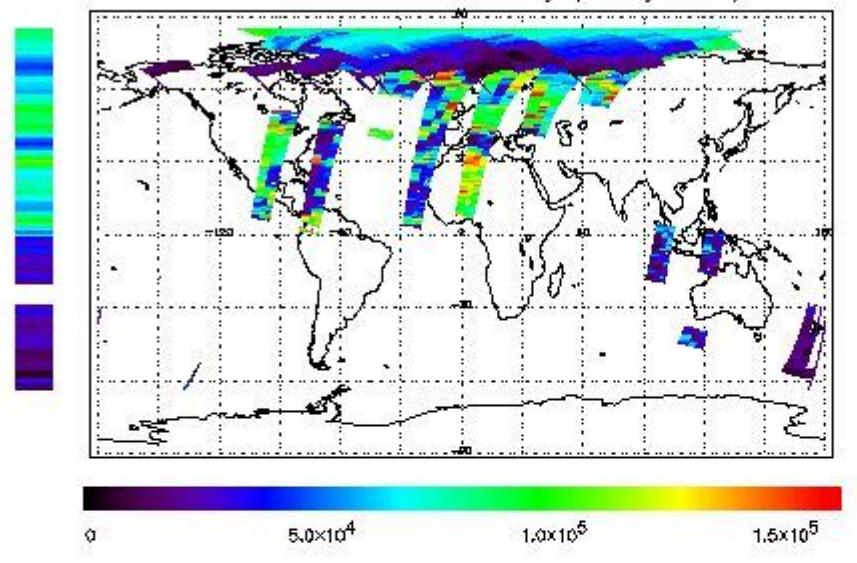
First Product : 16-JUN-2009 23:55:40.138 : ORBIT : 74018.1710

Last Product : 17-JUN-2009 23:32:39.760 : ORBIT : 74032.2566

Total Products Processed : 18959 Day : 168

Page : 21

778 nm Uncalibrated Intensity (Binary Units)



Ozone Line Ratio

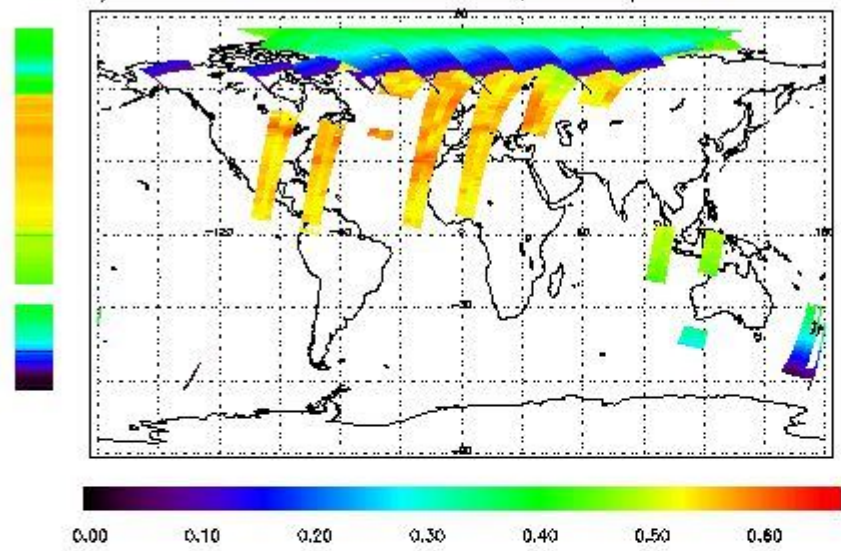
First Product : 16-JUN-2009 23:55:40.138 : ORBIT : 74018.1710

Last Product : 17-JUN-2009 23:32:39.760 : ORBIT : 74032.2566

Total Products Processed : 18959 Day : 168

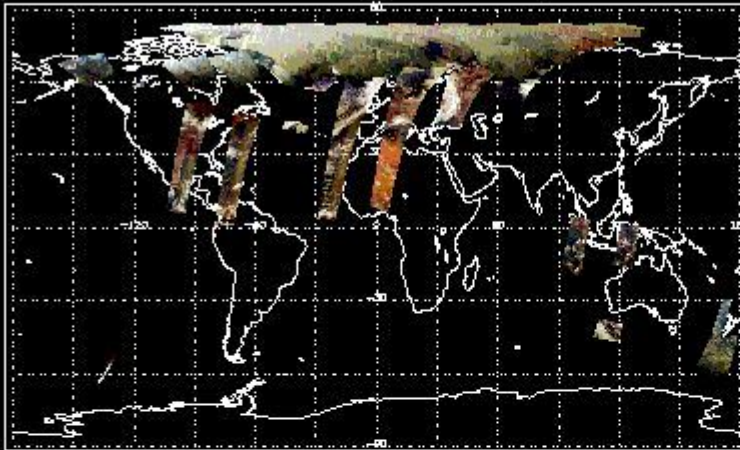
Page : 20

331/313 nm Uncalibrated Line Ratio, SZA Dependence Removed



PMD Image (Earthshine Radiance)

Uncalibrated PMDs as RGB Signal



3 - Instrument Calibration

3.1 - Solar Calibration (Daily/TST44)

| Daily(D)/TST44(T) | Start Time | End Time (T) | Orbit | Ground Station Visibility (Y/NS/NE) | Warm Detector Temperature (TST/44) | Max PMD Readout during solar calibration (BU set 2/12) |
|-------------------|--------------|--------------|-------|-------------------------------------|------------------------------------|--|
| D | 18:21:42.370 | -- | 74029 | Y | -- | 14495 |

3.2 - Lamp Calibration (Quarterly/TST44)

| Quarterly(D)/TST44(T) | Start Time | End Time | Orbit | Ground Station Visibility (Y/NS/NE) | Warm Detector Temperature (TST/44) | Lamp Instability Voltage (if any) (V) | Lamp Failure N. (if any) |
|-----------------------|------------|----------|-------|-------------------------------------|------------------------------------|---------------------------------------|--------------------------|
| -- | -- | -- | -- | -- | -- | -- | -- |

[BACK TO MENU]

4 - Instrument Anomalies

4.1 - Single Event Upset (SEU)

| Start Time | End Time | Start Orbit | Orbit End | Ground Station Visibility (Y/NS/NE) |
|------------|----------|-------------|-----------|-------------------------------------|
| -- | -- | -- | -- | -- |

4.2 - Instrument Off

| Start Time | End Time | Start Orbit | Orbit End | MPS Resumption | Ground Station Visibility (Y/NS/NE) |
|------------|----------|-------------|-----------|----------------|-------------------------------------|
| -- | -- | -- | -- | -- | -- |

4.3 - Cooler Switchings

| Start Time | End Time | Start Orbit | Orbit End | Ground Station Visibility (Y/NS/NE) | Max Temp. Ch 1 | Max Temp. Ch 2 | Max Temp. Ch 3 | Max Temp. Ch 4 |
|------------|----------|-------------|-----------|-------------------------------------|----------------|----------------|----------------|----------------|
| -- | -- | -- | -- | -- | -- | -- | -- | -- |

[BACK TO MENU]

5 - Instrument Operations

5.1 - Timeline Interruptions

| Start Time | End Time | Start Orbit | Orbit End | Ground Station Visibility (Y/NS/NE) |
|------------|----------|-------------|-----------|-------------------------------------|
| -- | -- | -- | -- | -- |

5.2 - TST44

| Start Time | Start Orbit | Ground Station Visibility (Y/NS/NE) |
|------------|-------------|-------------------------------------|
| -- | -- | -- |

5.3 - Power Cycle

| Start Time | End Time | Start Orbit | Orbit End | Ground Station Visibility (Y/NS/NE) |
|------------|----------|-------------|-----------|-------------------------------------|
| -- | -- | -- | -- | -- |

5.4 - Wrong Command Execution

| Start Time | End Time | Start Orbit | Orbit End | Ground Station Visibility (Y/NS/NE) |
|------------|----------|-------------|-----------|-------------------------------------|
| -- | -- | -- | -- | -- |

5.5 - Narrow Swath Timeline

| Start Time | End Time | Start Orbit | Orbit End |
|------------|----------|-------------|-----------|
| -- | -- | -- | -- |

5.6 - Seasonal Operations

| Start Time | End Time | Start Orbit | Orbit End |
|------------|----------|-------------|-----------|
| -- | -- | -- | -- |

[BACK TO MENU]