

GOME Daily Report

SUMMARY

1. General Info
 - 1.1 Report Summary
 - 1.2 List of received products
 - 1.3 List of data gaps
 - 1.4 List of missing products
 - 1.5 List of corrupted products
2. Instrument Indicators and Daily Plots
 - 2.1 Instrument Indicators Status
 - 2.2 Daily Plots
3. Instrument Calibration
 - 3.1 Solar Calibration (daily/TST44)
 - 3.2 Lamp Calibration (quarterly/TST44)
4. Instrument Anomalies
 - 4.1 Single Event Upset (SEU)
 - 4.2 Instrument Off
 - 4.3 Cooler Switchings
5. Instrument Operations
 - 5.1 Timeline Interruptions
 - 5.2 TST44
 - 5.3 Power Cycle
 - 5.4 Wrong Command Execution
 - 5.5 Narrow Swath Timeline
 - 5.6 Seasonal Operations

1 - General Info

1.1 - Report Summary

Item	Value
Report Version	GOMEver3_3
Time of Report Generation	13-JUN-2009
Start Time of First Product	00:06:15
Stop Time of Last Product	23:34:23
Number of EGOI Products analysed	28
Number of corrupted products	--
Anomalies and/or Special Operations	--

1.2 - List of received products

Name	Date	Time
EGOI_090613GSEP2149.E2	13-JUN-2009	01:52:50.018
EGOI_090613GSEP2180.E2	13-JUN-2009	03:31:44.616
EGOI_090613GSEP2189.E2	13-JUN-2009	05:14:36.237
EGOI_090613KSEP7339.E2	13-JUN-2009	07:13:14.459
EGOI_090613KSEP7356.E2	13-JUN-2009	08:53:07.564
EGOI_090613KSEP7376.E2	13-JUN-2009	10:32:48.674
EGOI_090613KSEP7406.E2	13-JUN-2009	12:12:11.776
EGOI_090613KSEP7422.E2	13-JUN-2009	13:51:10.875
EGOI_090613KSEP7450.E2	13-JUN-2009	15:29:35.470

EGOI_090613KSEP7482.E2	13-JUN-2009	17:07:04.564
EGOI_090613KSEP7517.E2	13-JUN-2009	18:45:05.162
EGOI_090613KSEP7553.E2	13-JUN-2009	20:24:10.260
EGOI_090613KSEP7579.E2	13-JUN-2009	22:05:43.875
EGOI_090613MAEP0625.E2	13-JUN-2009	09:01:09.111
EGOI_090613MAEP0635.E2	13-JUN-2009	10:40:23.217
EGOI_090613MAEP0651.E2	13-JUN-2009	21:57:43.828
EGOI_090613MIEP0864.E2	13-JUN-2009	01:51:21.506
EGOI_090613MIEP0890.E2	13-JUN-2009	03:27:23.584
EGOI_090613MIEP0914.E2	13-JUN-2009	05:09:22.706
EGOI_090613MIEP0924.E2	13-JUN-2009	15:46:46.075
EGOI_090613MIEP0948.E2	13-JUN-2009	17:27:33.185
EGOI_090613MSEP6628.E2	13-JUN-2009	00:06:14.865
EGOI_090613MSEP6651.E2	13-JUN-2009	10:46:36.756
EGOI_090613MSEP6679.E2	13-JUN-2009	12:25:32.854
EGOI_090613MSEP6701.E2	13-JUN-2009	21:56:28.820
EGOI_090613MSEP6728.E2	13-JUN-2009	23:34:23.414
EGOI_090613SGEP7505.E2	13-JUN-2009	02:31:00.741
EGOI_090613SGEP7517.E2	13-JUN-2009	15:04:45.821

[[BACK TO MENU](#)]

1.3 - List of data gaps

Station	Orbit	Date	Start Time	Stop Time	Duration (s)
KS	73965	13-JUN-2009	07:11:16.173	07:13:14.458	118.28500
KS	73966	13-JUN-2009	08:50:45.599	08:53:07.563	141.96400
KS	73967	13-JUN-2009	10:30:22.936	10:32:48.673	145.73700
KS	73968	13-JUN-2009	12:09:48.275	12:12:11.775	143.50000
KS	73969	13-JUN-2009	13:48:43.190	13:51:10.875	147.68500
KS	73970	13-JUN-2009	15:26:52.610	15:29:35.470	162.86000
KS	73971	13-JUN-2009	17:04:34.640	17:07:04.564	149.92400
KS	73972	13-JUN-2009	18:42:44.050	18:45:05.161	141.11100
KS	73973	13-JUN-2009	20:22:13.379	20:24:10.260	116.88100
KS	73974	13-JUN-2009	22:03:42.046	22:05:43.875	121.82900
KS	73975	13-JUN-2009	23:48:06.102	23:49:34.003	87.901000
GS	73962	13-JUN-2009	01:51:06.167	01:52:50.017	103.85000
GS	73963	13-JUN-2009	03:29:57.217	03:31:44.616	107.39900
MS	73961	13-JUN-2009	00:04:07.178	00:06:14.864	127.68600
MS	73967	13-JUN-2009	10:44:06.299	10:46:36.756	150.45700
MS	73968	13-JUN-2009	12:23:00.975	12:25:32.853	151.87800
MS	73974	13-JUN-2009	21:54:32.068	21:56:28.819	116.75100

MS	73975	13-JUN-2009	23:32:05.795	23:34:23.413	137.61800
MA	73966	13-JUN-2009	08:59:58.636	09:01:09.110	70.474000
MA	73967	13-JUN-2009	10:38:24.000	10:40:23.217	119.21700
MA	73974	13-JUN-2009	21:55:51.158	21:57:43.827	112.66900
MI	73962	13-JUN-2009	01:50:00.768	01:51:21.506	80.738000
MI	73963	13-JUN-2009	03:24:45.761	03:27:23.583	157.82200
MI	73964	13-JUN-2009	05:08:10.369	05:09:22.705	72.336000
MI	73970	13-JUN-2009	15:44:57.452	15:46:46.074	108.62200
MI	73971	13-JUN-2009	17:25:57.649	17:27:33.185	95.536000
SG	73962	13-JUN-2009	02:28:42.789	02:31:00.741	137.95200
SG	73969	13-JUN-2009	15:02:19.957	15:04:45.820	145.86300
MM	73963	13-JUN-2009	04:35:54.344	04:41:56.343	361.99900
SG	73963	13-JUN-2009	04:07:03.378	04:19:55.306	771.92800
CM	73963	13-JUN-2009	03:24:25.501	03:35:43.190	677.68900
CM	73963	13-JUN-2009	05:04:20.722	05:14:15.472	594.75000
MM	73964	13-JUN-2009	06:18:01.999	06:24:16.919	374.92000
MM	73965	13-JUN-2009	07:58:57.475	08:07:22.303	504.82800
JO	73965	13-JUN-2009	07:36:25.378	07:50:43.344	857.96600
MM	73966	13-JUN-2009	09:39:20.382	09:49:57.116	636.73400
JO	73966	13-JUN-2009	09:16:19.943	09:29:29.167	789.22400
MM	73967	13-JUN-2009	11:19:27.354	11:31:30.248	722.89400
MM	73968	13-JUN-2009	12:59:20.864	13:12:00.547	759.68300
HO	73969	13-JUN-2009	14:48:25.320	14:58:21.870	596.55000
MM	73969	13-JUN-2009	14:38:59.458	14:51:41.690	762.23200
GS	73969	13-JUN-2009	14:01:36.446	14:09:31.191	474.74500
BE	73970	13-JUN-2009	15:13:27.413	15:25:05.069	697.65600
MM	73970	13-JUN-2009	16:18:21.715	16:30:55.288	753.57300
GS	73970	13-JUN-2009	15:39:02.484	15:52:52.731	830.24700
SG	73970	13-JUN-2009	16:43:27.275	16:52:55.593	568.31800
CM	73970	13-JUN-2009	15:48:12.409	15:59:36.668	684.25900
MM	73971	13-JUN-2009	17:57:31.422	18:10:04.131	752.70900
GS	73971	13-JUN-2009	17:18:55.844	17:30:53.402	717.55800
CM	73971	13-JUN-2009	17:28:03.521	17:37:52.547	589.02600
MM	73972	13-JUN-2009	19:36:42.585	19:49:23.706	761.12100
JO	73972	13-JUN-2009	19:56:31.192	20:10:19.131	827.93900
MM	73973	13-JUN-2009	21:16:17.709	21:28:59.569	761.86000

MA	73973	13-JUN-2009	20:14:47.161	20:28:33.970	826.80900
JO	73973	13-JUN-2009	21:35:43.012	21:49:33.649	830.63700
HO	73974	13-JUN-2009	22:48:03.693	23:01:09.896	786.20300
MM	73974	13-JUN-2009	22:56:39.110	23:08:50.883	731.77300
KS	73965	13-JUN-2009	07:11:16.173	07:13:14.458	118.28500
KS	73966	13-JUN-2009	08:50:45.599	08:53:07.563	141.96400
KS	73967	13-JUN-2009	10:30:22.936	10:32:48.673	145.73700
KS	73968	13-JUN-2009	12:09:48.275	12:12:11.775	143.50000
KS	73969	13-JUN-2009	13:48:43.190	13:51:10.875	147.68500
KS	73970	13-JUN-2009	15:26:52.610	15:29:35.470	162.86000
KS	73971	13-JUN-2009	17:04:34.640	17:07:04.564	149.92400
KS	73972	13-JUN-2009	18:42:44.050	18:45:05.161	141.11100
KS	73973	13-JUN-2009	20:22:13.379	20:24:10.260	116.88100
KS	73974	13-JUN-2009	22:03:42.046	22:05:43.875	121.82900
KS	73975	13-JUN-2009	23:48:06.102	23:49:34.003	87.901000
GS	73962	13-JUN-2009	01:51:06.167	01:52:50.017	103.85000
GS	73963	13-JUN-2009	03:29:57.217	03:31:44.616	107.39900
MS	73961	13-JUN-2009	00:04:07.178	00:06:14.864	127.68600
MS	73967	13-JUN-2009	10:44:06.299	10:46:36.756	150.45700
MS	73968	13-JUN-2009	12:23:00.975	12:25:32.853	151.87800
MS	73974	13-JUN-2009	21:54:32.068	21:56:28.819	116.75100
MS	73975	13-JUN-2009	23:32:05.795	23:34:23.413	137.61800
MA	73966	13-JUN-2009	08:59:58.636	09:01:09.110	70.474000
MA	73967	13-JUN-2009	10:38:24.000	10:40:23.217	119.21700
MA	73974	13-JUN-2009	21:55:51.158	21:57:43.827	112.66900
MI	73962	13-JUN-2009	01:50:00.768	01:51:21.506	80.738000
MI	73963	13-JUN-2009	03:24:45.761	03:27:23.583	157.82200
MI	73964	13-JUN-2009	05:08:10.369	05:09:22.705	72.336000
MI	73970	13-JUN-2009	15:44:57.452	15:46:46.074	108.62200
MI	73971	13-JUN-2009	17:25:57.649	17:27:33.185	95.536000
SG	73962	13-JUN-2009	02:28:42.789	02:31:00.741	137.95200
SG	73969	13-JUN-2009	15:02:19.957	15:04:45.820	145.86300

[[BACK TO MENU](#)]

1.4 - List of missing products

Station	Orbit	Date	Start Time	Stop Time	Duration (s)
---------	-------	------	------------	-----------	--------------

HO	73961	13-JUN-2009	00:58:16.112	01:11:47.916	811.80400
MM	73961	13-JUN-2009	01:10:07.273	01:20:25.892	618.61900
KS	73961	13-JUN-2009	00:22:22.250	00:24:51.688	149.43800
BE	73962	13-JUN-2009	02:16:33.577	02:29:09.378	755.80100
MM	73962	13-JUN-2009	02:52:50.239	03:00:52.465	482.22600
BE	73963	13-JUN-2009	03:55:58.945	04:08:18.211	739.26600
MM	73963	13-JUN-2009	04:35:54.344	04:41:56.343	361.99900
SG	73963	13-JUN-2009	04:07:03.378	04:19:55.306	771.92800
CM	73963	13-JUN-2009	03:24:25.501	03:35:43.190	677.68900
CM	73963	13-JUN-2009	05:04:20.722	05:14:15.472	594.75000
MM	73964	13-JUN-2009	06:18:01.999	06:24:16.919	374.92000
MM	73965	13-JUN-2009	07:58:57.475	08:07:22.303	504.82800
JO	73965	13-JUN-2009	07:36:25.378	07:50:43.344	857.96600
MM	73966	13-JUN-2009	09:39:20.382	09:49:57.116	636.73400
JO	73966	13-JUN-2009	09:16:19.943	09:29:29.167	789.22400
MM	73967	13-JUN-2009	11:19:27.354	11:31:30.248	722.89400
MM	73968	13-JUN-2009	12:59:20.864	13:12:00.547	759.68300
HO	73969	13-JUN-2009	14:48:25.320	14:58:21.870	596.55000
MM	73969	13-JUN-2009	14:38:59.458	14:51:41.690	762.23200
GS	73969	13-JUN-2009	14:01:36.446	14:09:31.191	474.74500
BE	73970	13-JUN-2009	15:13:27.413	15:25:05.069	697.65600
MM	73970	13-JUN-2009	16:18:21.715	16:30:55.288	753.57300
GS	73970	13-JUN-2009	15:39:02.484	15:52:52.731	830.24700
SG	73970	13-JUN-2009	16:43:27.275	16:52:55.593	568.31800
CM	73970	13-JUN-2009	15:48:12.409	15:59:36.668	684.25900
MM	73971	13-JUN-2009	17:57:31.422	18:10:04.131	752.70900
GS	73971	13-JUN-2009	17:18:55.844	17:30:53.402	717.55800
CM	73971	13-JUN-2009	17:28:03.521	17:37:52.547	589.02600
MM	73972	13-JUN-2009	19:36:42.585	19:49:23.706	761.12100
JO	73972	13-JUN-2009	19:56:31.192	20:10:19.131	827.93900
MM	73973	13-JUN-2009	21:16:17.709	21:28:59.569	761.86000
MA	73973	13-JUN-2009	20:14:47.161	20:28:33.970	826.80900
JO	73973	13-JUN-2009	21:35:43.012	21:49:33.649	830.63700
HO	73974	13-JUN-2009	22:48:03.693	23:01:09.896	786.20300
MM	73974	13-JUN-2009	22:56:39.110	23:08:50.883	731.77300

1.5 - List of corrupted products

Station	Orbit	Time
---------	-------	------

2 - Instrument Indicators and Daily Plots

2.1 - Instrument Indicators Status

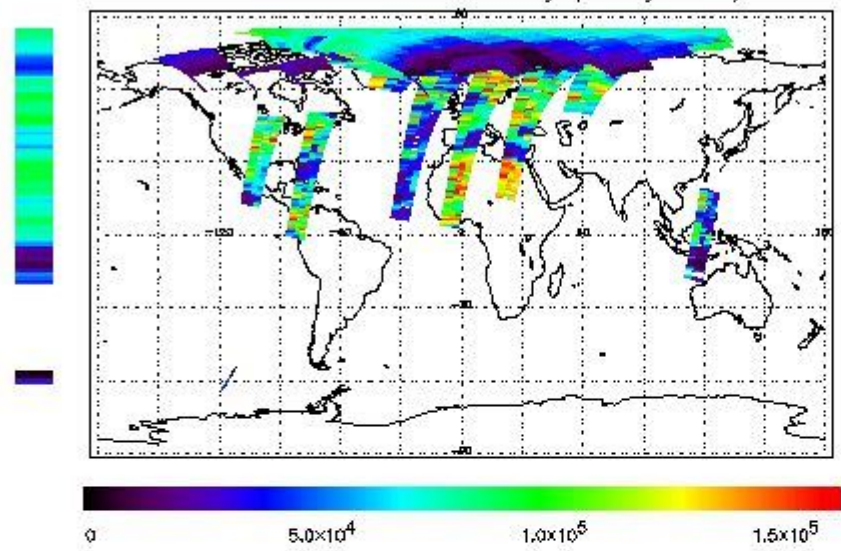
Indicator	Value
MPH Product Confidence	OK
SPH Product Confidence	OK
Command Word Echo Summary	OK
Instrument Status 1A	OK
Instrument Status 1B	OK
Instrument Status 2	OK
Integration Times Channel 1	OK
Co-Adding and Cluster Mode Flags	OK
Integration Times Band 2A	OK
Integration Times Band 2B	OK
Integration Times Band 3	OK
Integration Times Band 4	OK
Scan Mirror position	OK
Polarization Detectors	OK
FPA Temperatures A	OK
FPA Temperaturas B	OK
Charge Amp Temperatures	OK
Other Temperatures A	OK
DDHU Temperatures	OK
Optical Bench Temperatures	OK
Other Temperatures B	OK
Calibration Lamp and Instr. Status 3	OK
Scan Mirror and Motor Current	OK
Selected Temperature A	OK
Selected Temperature B	Ok
Selected Temperature C	OK
Channel 1 Summation	OK
Channel 2 Summation	OK
Channel 4 Summation	OK
Log Pages	OK
331/338 nm Uncal. Line Ratio	OK
Uncal. PMDs as RGB signal	OK
780 nm Uncal. Intensity	OK

2.2 - Daily Plots

The images linked below provide a quick check on the data coverage and instrument performance. All data are UNCALIBRATED. For the explanation see the GOME Performance Legend

NEAR IR Intensity

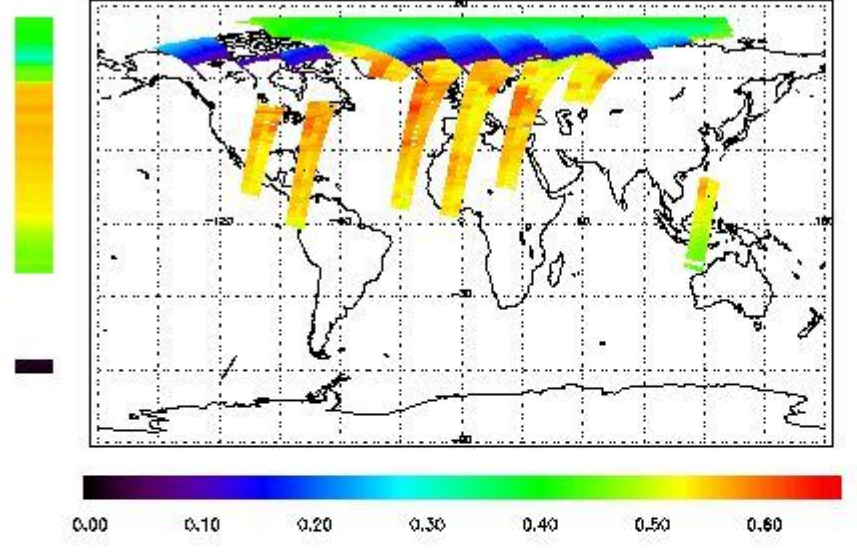
778 nm Uncalibrated Intensity (Binary Units)



Ozone Line Ratio

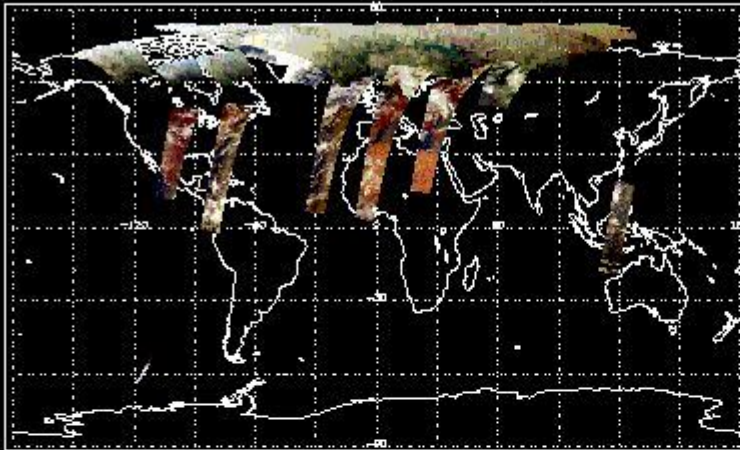
First Product : 13-JUN-2009 00:06:14.865 : ORBIT : 73961.0190
Last Product : 13-JUN-2009 23:47:51.996 : ORBIT : 73975.1506
Total Products Processed : 14018 Day : 164

331/313 nm Uncalibrated Line Ratio, SZA Dependence Removed



PMD Image (Earthshine Radiance)

Uncalibrated PMDs as RGB Signal



3 - Instrument Calibration

3.1 - Solar Calibration (Daily/TST44)

Daily(D)/TST44(T)	Start Time	End Time (T)	Orbit	Ground Station Visibility (Y/NS/NE)	Warm Detector Temperature (TST/44)	Max PMD Readout during solar calibration (BU set 2/12)
D	17:07:04.560	--	73971	Y	--	14390

3.2 - Lamp Calibration (Quarterly/TST44)

Quarterly(D)/TST44(T)	Start Time	End Time	Orbit	Ground Station Visibility (Y/NS/NE)	Warm Detector Temperature (TST/44)	Lamp Instability Voltage (if any) (V)	Lamp Failure N. (if any)
--	--	--	--	--	--	--	--

[BACK TO MENU]

4 - Instrument Anomalies

4.1 - Single Event Upset (SEU)

Start Time	End Time	Start Orbit	Orbit End	Ground Station Visibility (Y/NS/NE)
--	--	--	--	--

4.2 - Instrument Off

Start Time	End Time	Start Orbit	Orbit End	MPS Resumption	Ground Station Visibility (Y/NS/NE)
--	--	--	--	--	--

4.3 - Cooler Switchings

Start Time	End Time	Start Orbit	Orbit End	Ground Station Visibility (Y/NS/NE)	Max Temp. Ch 1	Max Temp. Ch 2	Max Temp. Ch 3	Max Temp. Ch 4
--	--	--	--	--	--	--	--	--

[BACK TO MENU]

5 - Instrument Operations

5.1 - Timeline Interruptions

Start Time	End Time	Start Orbit	Orbit End	Ground Station Visibility (Y/NS/NE)
--	--	--	--	--

5.2 - TST44

Start Time	Start Orbit	Ground Station Visibility (Y/NS/NE)
--	--	--

5.3 - Power Cycle

Start Time	End Time	Start Orbit	Orbit End	Ground Station Visibility (Y/NS/NE)
--	--	--	--	--

5.4 - Wrong Command Execution

Start Time	End Time	Start Orbit	Orbit End	Ground Station Visibility (Y/NS/NE)
--	--	--	--	--

5.5 - Narrow Swath Timeline

Start Time	End Time	Start Orbit	Orbit End
--	--	--	--

5.6 - Seasonal Operations

Start Time	End Time	Start Orbit	Orbit End
--	--	--	--

[BACK TO MENU]