

GOME Daily Report

SUMMARY

1. General Info
 - 1.1 Report Summary
 - 1.2 List of received products
 - 1.3 List of data gaps
 - 1.4 List of missing products
 - 1.5 List of corrupted products
2. Instrument Indicators and Daily Plots
 - 2.1 Instrument Indicators Status
 - 2.2 Daily Plots
3. Instrument Calibration
 - 3.1 Solar Calibration (daily/TST44)
 - 3.2 Lamp Calibration (quarterly/TST44)
4. Instrument Anomalies
 - 4.1 Single Event Upset (SEU)
 - 4.2 Instrument Off
 - 4.3 Cooler Switchings
5. Instrument Operations
 - 5.1 Timeline Interruptions
 - 5.2 TST44
 - 5.3 Power Cycle
 - 5.4 Wrong Command Execution
 - 5.5 Narrow Swath Timeline
 - 5.6 Seasonal Operations

1 - General Info

1.1 - Report Summary

Item	Value
Report Version	GOMEver3_3
Time of Report Generation	11-JUN-2009
Start Time of First Product	00:22:57
Stop Time of Last Product	23:11:18
Number of EGOI Products analysed	31
Number of corrupted products	--
Anomalies and/or Special Operations	--

1.2 - List of received products

Name	Date	Time
EGOI_090611GSEP1989.E2	11-JUN-2009	01:17:29.318
EGOI_090611GSEP2018.E2	11-JUN-2009	02:54:37.403
EGOI_090611GSEP2046.E2	11-JUN-2009	04:36:36.525
EGOI_090611GSEP2054.E2	11-JUN-2009	06:18:37.142
EGOI_090611HLEP1269.E2	11-JUN-2009	00:22:57.484
EGOI_090611KSEP6814.E2	11-JUN-2009	06:36:13.247
EGOI_090611KSEP6837.E2	11-JUN-2009	08:16:07.855
EGOI_090611KSEP6859.E2	11-JUN-2009	09:55:47.458
EGOI_090611KSEP6884.E2	11-JUN-2009	11:35:24.064

EGOI_090611KSEP6916.E2	11-JUN-2009	13:14:26.166
EGOI_090611KSEP6930.E2	11-JUN-2009	14:53:11.768
EGOI_090611KSEP6949.E2	11-JUN-2009	16:30:49.855
EGOI_090611KSEP6980.E2	11-JUN-2009	18:08:50.458
EGOI_090611KSEP7008.E2	11-JUN-2009	19:47:06.052
EGOI_090611KSEP7034.E2	11-JUN-2009	21:27:39.658
EGOI_090611KSEP7061.E2	11-JUN-2009	23:10:32.784
EGOI_090611MAEP0533.E2	11-JUN-2009	08:24:28.906
EGOI_090611MAEP0548.E2	11-JUN-2009	10:03:14.501
EGOI_090611MAEP0563.E2	11-JUN-2009	21:20:00.615
EGOI_090611MIEP0666.E2	11-JUN-2009	02:50:13.376
EGOI_090611MIEP0694.E2	11-JUN-2009	04:30:18.486
EGOI_090611MIEP0720.E2	11-JUN-2009	15:10:29.870
EGOI_090611MIEP0744.E2	11-JUN-2009	16:50:57.476
EGOI_090611MMEP5163.E2	11-JUN-2009	02:15:46.165
EGOI_090611MMEP5171.E2	11-JUN-2009	03:58:34.790
EGOI_090611MSEP6418.E2	11-JUN-2009	10:11:04.052
EGOI_090611MSEP6443.E2	11-JUN-2009	11:48:18.142
EGOI_090611MSEP6465.E2	11-JUN-2009	13:29:56.256
EGOI_090611MSEP6478.E2	11-JUN-2009	21:22:00.630
EGOI_090611MSEP6508.E2	11-JUN-2009	22:56:46.202
EGOI_090611SGEP7487.E2	11-JUN-2009	14:29:05.620

[[BACK TO MENU](#)]

1.3 - List of data gaps

Station	Orbit	Date	Start Time	Stop Time	Duration (s)
KS	73936	11-JUN-2009	06:34:30.564	06:36:13.247	102.68300
KS	73937	11-JUN-2009	08:13:45.939	08:16:07.854	141.91500
KS	73938	11-JUN-2009	09:53:23.289	09:55:47.457	144.16800
KS	73939	11-JUN-2009	11:32:55.073	11:35:24.064	148.99100
KS	73940	11-JUN-2009	13:12:03.585	13:14:26.166	142.58100
KS	73941	11-JUN-2009	14:50:43.083	14:53:11.767	148.68400
KS	73942	11-JUN-2009	16:28:22.197	16:30:49.855	147.65800
KS	73943	11-JUN-2009	18:06:09.645	18:08:50.457	160.81200
KS	73944	11-JUN-2009	19:45:04.251	19:47:06.052	121.80100
KS	73945	11-JUN-2009	21:25:44.114	21:27:39.657	115.54300
KS	73946	11-JUN-2009	23:08:51.586	23:10:32.784	101.19800
GS	73933	11-JUN-2009	01:15:32.131	01:17:29.318	117.18700
GS	73934	11-JUN-2009	02:52:43.376	02:54:37.402	114.02600
GS	73935	11-JUN-2009	04:34:45.469	04:36:36.525	111.05600
MS	73938	11-JUN-2009	10:08:38.762	10:11:04.052	145.29000

MS	73939	11-JUN-2009	11:45:49.136	11:48:18.141	149.00500
MS	73940	11-JUN-2009	13:27:40.105	13:29:56.255	136.15000
MS	73946	11-JUN-2009	22:55:06.205	22:56:46.202	99.997000
MA	73937	11-JUN-2009	08:22:51.460	08:24:28.906	97.446000
MA	73938	11-JUN-2009	10:01:25.951	10:03:14.500	108.54900
MA	73945	11-JUN-2009	21:17:25.248	21:20:00.615	155.36700
MI	73934	11-JUN-2009	02:48:26.575	02:50:13.375	106.80000
MI	73935	11-JUN-2009	04:28:21.463	04:30:18.486	117.02300
MI	73941	11-JUN-2009	15:08:40.688	15:10:29.869	109.18100
MI	73942	11-JUN-2009	16:47:48.006	16:50:57.476	189.47000
MM	73933	11-JUN-2009	02:14:35.579	02:15:46.164	70.585000
SG	73940	11-JUN-2009	14:26:40.285	14:29:05.619	145.33400

[[BACK TO MENU](#)]

1.4 - List of missing products

Station	Orbit	Date	Start Time	Stop Time	Duration (s)
MM	73932	11-JUN-2009	00:32:12.607	00:43:12.273	659.66600
HO	73933	11-JUN-2009	02:04:47.916	02:12:07.010	439.09400
BE	73934	11-JUN-2009	03:18:46.591	03:32:04.956	798.36500
SG	73934	11-JUN-2009	03:29:44.373	03:43:37.315	832.94200
CM	73934	11-JUN-2009	02:49:38.510	02:57:17.351	458.84100
CM	73934	11-JUN-2009	04:26:17.346	04:38:24.997	727.65100
MM	73935	11-JUN-2009	05:40:16.326	05:46:06.538	350.21200
MM	73936	11-JUN-2009	07:21:33.826	07:29:05.275	451.44900
JO	73936	11-JUN-2009	07:00:55.356	07:13:02.431	727.07500
MM	73937	11-JUN-2009	09:02:05.574	09:11:57.474	591.90000
JO	73937	11-JUN-2009	08:38:30.064	08:53:16.634	886.57000
MM	73938	11-JUN-2009	10:42:17.744	10:53:54.781	697.03700
MM	73939	11-JUN-2009	12:22:16.341	12:34:47.428	751.08700
MA	73939	11-JUN-2009	11:42:55.031	11:49:28.172	393.14100
BE	73940	11-JUN-2009	12:57:21.424	13:08:49.660	688.23600
MM	73940	11-JUN-2009	14:02:00.710	14:14:44.606	763.89600
BE	73941	11-JUN-2009	14:35:34.169	14:48:41.332	787.16300
MM	73941	11-JUN-2009	15:41:29.019	15:54:05.652	756.63300
GS	73941	11-JUN-2009	15:02:22.588	15:15:18.992	776.40400
SG	73941	11-JUN-2009	16:04:56.853	16:17:51.169	774.31600

CM	73941	11-JUN-2009	15:13:06.924	15:20:43.236	456.31200
MM	73942	11-JUN-2009	17:20:42.346	17:33:13.902	751.55600
GS	73942	11-JUN-2009	16:41:39.059	16:54:59.867	800.80800
CM	73942	11-JUN-2009	16:50:15.380	17:02:18.644	723.26400
MM	73943	11-JUN-2009	18:59:50.654	19:12:28.354	757.70000
GS	73943	11-JUN-2009	18:22:50.796	18:29:51.193	420.39700
JO	73943	11-JUN-2009	19:20:59.700	19:31:36.531	636.83100
MM	73944	11-JUN-2009	20:39:14.057	20:51:58.043	763.98600
MA	73944	11-JUN-2009	19:38:48.826	19:50:55.072	726.24600
JO	73944	11-JUN-2009	20:58:26.591	21:13:23.463	896.87200
HO	73945	11-JUN-2009	22:12:38.581	22:23:50.147	671.56600
MM	73945	11-JUN-2009	22:19:16.020	22:31:43.883	747.86300
JO	73945	11-JUN-2009	22:40:35.774	22:48:04.249	448.47500
HO	73946	11-JUN-2009	23:49:30.004	00:03:57.669	867.66500

[[BACK TO MENU](#)]

1.5 - List of corrupted products

Station	Orbit	Time
---------	-------	------

2 - Instrument Indicators and Daily Plots

2.1 - Instrument Indicators Status

Indicator	Value
MPH Product Confidence	OK
SPH Product Confidence	OK
Command Word Echo Summary	OK
Instrument Status 1A	OK
Instrument Status 1B	OK
Instrument Status 2	OK
Integration Times Channel 1	OK
Co-Adding and Cluster Mode Flags	OK
Integration Times Band 2A	OK
Integration Times Band 2B	OK
Integration Times Band 3	OK
Integration Times Band 4	OK
Scan Mirror position	OK
Polarization Detectors	OK
FPA Temperatures A	OK
FPA Temperaturas B	OK
Charge Amp Temperatures	OK
Other Temperatures A	OK
DDHU Temperatures	OK
Optical Bench Temperatures	OK

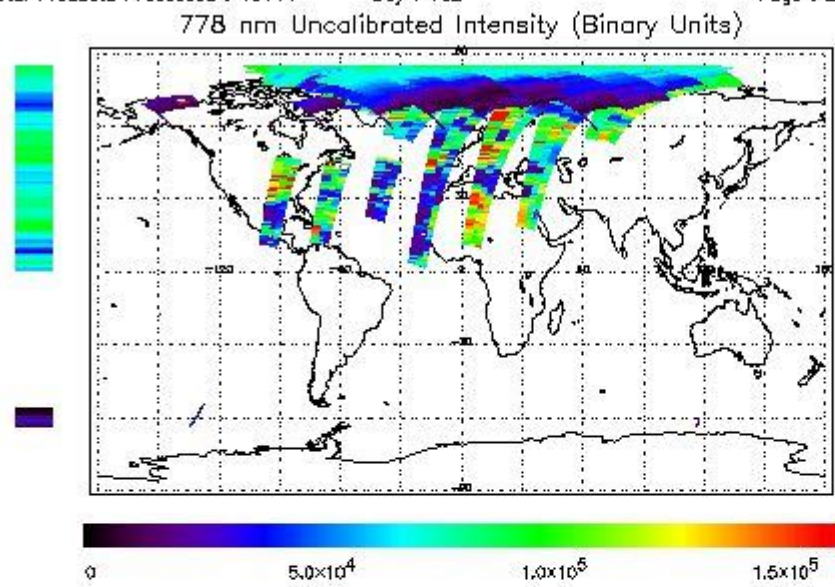
Other Temperatures B	OK
Calibration Lamp and Instr. Status 3	OK
Scan Mirror and Motor Current	OK
Selected Temperature A	OK
Selected Temperature B	Ok
Selected Temperature C	OK
Channel 1 Summation	OK
Channel 2 Summation	OK
Channel 4 Summation	OK
Log Pages	OK
331/338 nm Uncal. Line Ratio	OK
Uncal. PMDs as RGB signal	OK
780 nm Uncal. Intensity	OK

2.2 - Daily Plots

The images linked below provide a quick check on the data coverage and instrument performance. All data are UNCALIBRATED. For the explanation see the GOME Performance Legend

NEAR IR Intensity

First Product : 11-JUN-2009 00:22:57.484 : ORBIT : 73932.5565
 Last Product : 11-JUN-2009 23:21:17.850 : ORBIT : 73946.2579
 Total Products Processed : 15144 Day : 162 Page : 21



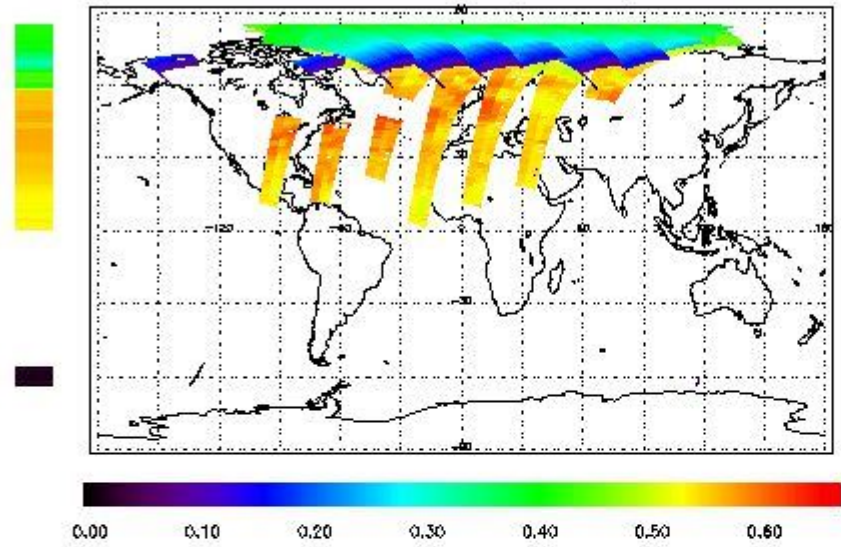
First Product : 11-JUN-2009 00:22:57.484 : ORBIT : 73932.5565

Last Product : 11-JUN-2009 23:21:17.850 : ORBIT : 73946.2579

Total Products Processed : 15144 Day : 162

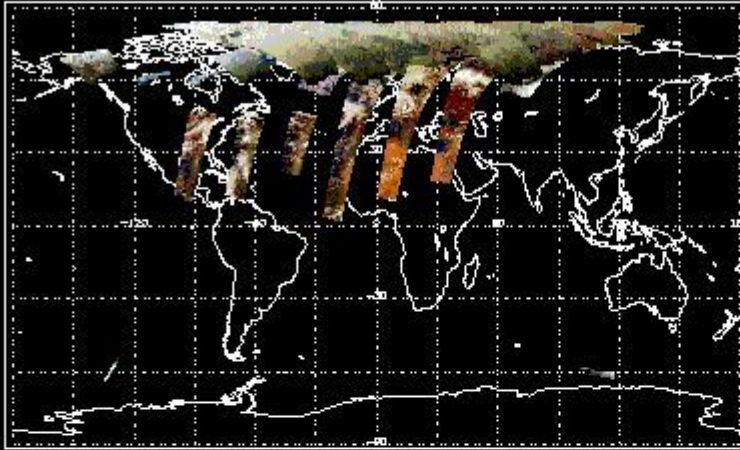
Page : 20

331/313 nm Uncalibrated Line Ratio, SZA Dependence Removed



PMD Image (Earthshine Radiance)

Uncalibrated PMDs as RGB Signal



3 - Instrument Calibration

3.1 - Solar Calibration (Daily/TST44)

Daily(D)/TST44(T)	Start Time	End Time (T)	Orbit	Ground Station Visibility (Y/NS/NE)	Warm Detector Temperature (TST/44)	Max PMD Readout during solar calibration (BU set 2/12)
D	18:10:23.465	--	73943	Y	--	14290

3.2 - Lamp Calibration (Quarterly/TST44)

Quarterly(D)/TST44(T)	Start Time	End Time	Orbit	Ground Station Visibility (Y/NS/NE)	Warm Detector Temperature (TST/44)	Lamp Instability Voltage (if any) (V)	Lamp Failure N. (if any)
--	--	--	--	--	--	--	--

[BACK TO MENU]

4 - Instrument Anomalies

4.1 - Single Event Upset (SEU)

Start Time	End Time	Start Orbit	Orbit End	Ground Station Visibility (Y/NS/NE)
--	--	--	--	--

4.2 - Instrument Off

Start Time	End Time	Start Orbit	Orbit End	MPS Resumption	Ground Station Visibility (Y/NS/NE)
--	--	--	--	--	--

4.3 - Cooler Switchings

Start Time	End Time	Start Orbit	Orbit End	Ground Station Visibility (Y/NS/NE)	Max Temp. Ch 1	Max Temp. Ch 2	Max Temp. Ch 3	Max Temp. Ch 4
--	--	--	--	--	--	--	--	--

[BACK TO MENU]

5 - Instrument Operations

5.1 - Timeline Interruptions

Start Time	End Time	Start Orbit	Orbit End	Ground Station Visibility (Y/NS/NE)
--	--	--	--	--

5.2 - TST44

Start Time	Start Orbit	Ground Station Visibility (Y/NS/NE)
--	--	--

5.3 - Power Cycle

Start Time	End Time	Start Orbit	Orbit End	Ground Station Visibility (Y/NS/NE)
--	--	--	--	--

5.4 - Wrong Command Execution

Start Time	End Time	Start Orbit	Orbit End	Ground Station Visibility (Y/NS/NE)
--	--	--	--	--

5.5 - Narrow Swath Timeline

Start Time	End Time	Start Orbit	Orbit End
--	--	--	--

5.6 - Seasonal Operations

Start Time	End Time	Start Orbit	Orbit End
--	--	--	--

[BACK TO MENU]