

# GOME Daily Report

## SUMMARY

1. General Info
  - 1.1 Report Summary
  - 1.2 List of products used in this report
  - 1.3 List of data gaps
  - 1.4 List of missing products
  - 1.5 List of corrupted products
2. Instrument Indicators and Daily Plots
  - 2.1 Instrument Indicators Status
  - 2.2 Daily Plots
3. Instrument Calibration
  - 3.1 Solar Calibration (daily/TST44)
  - 3.2 Lamp Calibration (quarterly/TST44)
4. Instrument Anomalies
  - 4.1 Single Event Upset (SEU)
  - 4.2 Instrument Off
  - 4.3 Cooler Switchings
5. Instrument Operations
  - 5.1 Timeline Interruptions
  - 5.2 TST44
  - 5.3 Power Cycle
  - 5.4 Wrong Command Execution
  - 5.5 Narrow Swath Timeline
  - 5.6 Seasonal Operations

## 1 - General Info

### 1.1 - Report Summary

Item	Value
Report Version	GOMEver3_3
Time of Report Generation	07-JUN-2009
Start Time of First Product	00:48:56
Stop Time of Last Product	23:46:49
Total Number of EGOI Products	40
Number of corrupted products	--
Anomalies and/or Special Operations	--

### 1.2 - Products used in this report

Name	Date	Time
EGOI_090607BEEP0079.E2	07-JUN-2009	03:47:04.302
EGOI_090607HLEP1128.E2	07-JUN-2009	00:48:55.731
EGOI_090607HLEP1135.E2	07-JUN-2009	11:21:11.537
EGOI_090607HLEP1142.E2	07-JUN-2009	12:59:15.127
EGOI_090607HLEP1151.E2	07-JUN-2009	14:39:21.727
EGOI_090607HLEP1159.E2	07-JUN-2009	22:39:29.128
EGOI_090607KSEP5771.E2	07-JUN-2009	07:01:45.973
EGOI_090607KSEP5792.E2	07-JUN-2009	08:41:43.572
EGOI_090607KSEP5814.E2	07-JUN-2009	10:21:24.673

EGOI_090607KSEP5839.E2	07-JUN-2009	12:00:55.272
EGOI_090607KSEP5858.E2	07-JUN-2009	13:39:51.367
EGOI_090607KSEP5886.E2	07-JUN-2009	15:18:29.465
EGOI_090607KSEP5907.E2	07-JUN-2009	16:55:57.052
EGOI_090607KSEP5932.E2	07-JUN-2009	18:33:53.142
EGOI_090607KSEP5966.E2	07-JUN-2009	20:12:41.745
EGOI_090607KSEP5994.E2	07-JUN-2009	23:37:27.985
EGOI_090607MAEP0342.E2	07-JUN-2009	08:50:25.623
EGOI_090607MAEP0355.E2	07-JUN-2009	10:29:08.220
EGOI_090607MAEP0377.E2	07-JUN-2009	20:06:13.202
EGOI_090607MAEP0397.E2	07-JUN-2009	21:45:54.304
EGOI_090607MIEP0321.E2	07-JUN-2009	01:40:59.044
EGOI_090607MIEP0342.E2	07-JUN-2009	03:15:26.610
EGOI_090607MIEP0367.E2	07-JUN-2009	04:57:00.220
EGOI_090607MIEP0388.E2	07-JUN-2009	15:35:31.071
EGOI_090607MIEP0416.E2	07-JUN-2009	17:15:39.173
EGOI_090607MMEP4956.E2	07-JUN-2009	00:59:46.798
EGOI_090607MMEP4962.E2	07-JUN-2009	02:42:08.411
EGOI_090607MMEP4969.E2	07-JUN-2009	04:24:51.025
EGOI_090607MMEP4983.E2	07-JUN-2009	16:08:40.266
EGOI_090607MMEP4989.E2	07-JUN-2009	17:48:43.873
EGOI_090607MMEP4996.E2	07-JUN-2009	21:06:40.573
EGOI_090607MMEP5005.E2	07-JUN-2009	22:46:44.173
EGOI_090607MSEP5889.E2	06-JUN-2009	23:54:31.403
EGOI_090607MSEP5913.E2	07-JUN-2009	10:35:36.760
EGOI_090607MSEP5942.E2	07-JUN-2009	12:14:02.850
EGOI_090607MSEP5964.E2	07-JUN-2009	21:45:42.304
EGOI_090607MSEP5991.E2	07-JUN-2009	23:22:51.900
EGOI_090607SGEP7414.E2	07-JUN-2009	02:19:56.278
EGOI_090607SGEP7423.E2	07-JUN-2009	03:57:41.864
EGOI_090607SGEP7431.E2	07-JUN-2009	14:53:29.317

[ [BACK TO MENU](#) ]

### 1.3 - List of data gaps

Station	Orbit	Date	Start Time	Stop Time	Duration (s)
KS	73879	07-JUN-2009	06:59:56.238	07:01:45.972	109.73400
KS	73880	07-JUN-2009	08:39:22.482	08:41:43.571	141.08900
KS	73881	07-JUN-2009	10:19:00.103	10:21:24.672	144.56900
KS	73882	07-JUN-2009	11:58:27.686	12:00:55.271	147.58500
KS	73883	07-JUN-2009	13:37:27.033	13:39:51.366	144.33300
KS	73884	07-JUN-2009	15:15:45.517	15:18:29.465	163.94800
KS	73885	07-JUN-2009	16:53:24.456	16:55:57.052	152.59600
KS	73886	07-JUN-2009	18:31:27.761	18:33:53.142	145.38100

KS	73887	07-JUN-2009	20:10:45.833	20:12:41.744	115.91100
KS	73889	07-JUN-2009	23:35:56.764	23:37:27.985	91.221000
MS	73875	06-JUN-2009	23:52:23.172	23:54:31.403	128.23100
MS	73881	07-JUN-2009	10:33:07.041	10:35:36.760	149.71900
MS	73882	07-JUN-2009	12:11:30.015	12:14:02.849	152.83400
MS	73889	07-JUN-2009	23:20:37.432	23:22:51.899	134.46700
MA	73880	07-JUN-2009	08:47:50.088	08:50:25.623	155.53500
MA	73881	07-JUN-2009	10:27:01.874	10:29:08.219	126.34500
MA	73887	07-JUN-2009	20:03:38.753	20:06:13.201	154.44800
MA	73888	07-JUN-2009	21:43:49.477	21:45:54.304	124.82700
MI	73877	07-JUN-2009	03:13:29.454	03:15:26.609	117.15500
MI	73878	07-JUN-2009	04:55:32.515	04:57:00.220	87.705000
MI	73884	07-JUN-2009	15:33:42.903	15:35:31.071	108.16800
MI	73885	07-JUN-2009	17:14:05.272	17:15:39.172	93.900000
MM	73875	07-JUN-2009	00:58:26.434	00:59:46.798	80.364000
MM	73876	07-JUN-2009	02:41:03.672	02:42:08.410	64.738000
MM	73884	07-JUN-2009	16:07:01.103	16:08:40.266	99.163000
MM	73885	07-JUN-2009	17:46:11.742	17:48:43.873	152.13100
MM	73887	07-JUN-2009	21:04:52.869	21:06:40.573	107.70400
MM	73888	07-JUN-2009	22:45:08.036	22:46:44.172	96.136000
BE	73877	07-JUN-2009	03:44:30.008	03:47:04.302	154.29400
SG	73876	07-JUN-2009	02:18:02.261	02:19:56.278	114.01700
SG	73877	07-JUN-2009	03:55:28.578	03:57:41.863	133.28500
SG	73883	07-JUN-2009	14:51:13.873	14:53:29.317	135.44400

[ [BACK TO MENU](#) ]

#### 1.4 - List of missing products

Station	Orbit	Date	Start Time	Stop Time	Duration (s)
HO	73875	07-JUN-2009	00:46:36.603	01:00:36.377	839.77400
KS	73875	07-JUN-2009	00:09:39.761	00:14:06.318	266.55700
BE	73876	07-JUN-2009	02:05:22.705	02:17:27.972	725.26700
GS	73876	07-JUN-2009	01:40:05.194	01:52:23.675	738.48100
GS	73877	07-JUN-2009	03:18:25.733	03:32:09.933	824.20000
CM	73877	07-JUN-2009	03:13:31.518	03:24:03.356	631.83800
CM	73877	07-JUN-2009	04:52:28.904	05:03:21.850	652.94600
MM	73878	07-JUN-2009	06:06:26.112	06:12:31.247	365.13500

MM	73879	07-JUN-2009	07:47:27.632	07:55:35.914	488.28200
JO	73879	07-JUN-2009	07:25:23.457	07:39:11.746	828.28900
MM	73880	07-JUN-2009	09:27:52.985	09:38:16.598	623.61300
JO	73880	07-JUN-2009	09:04:35.002	09:18:25.463	830.46100
HO	73881	07-JUN-2009	11:18:38.840	11:28:55.492	616.65200
MM	73881	07-JUN-2009	11:08:01.514	11:19:57.215	715.70100
HO	73882	07-JUN-2009	12:56:33.147	13:11:22.584	889.43700
MM	73882	07-JUN-2009	12:47:56.609	13:00:34.209	757.60000
HO	73883	07-JUN-2009	14:36:49.153	14:48:20.781	691.62800
MM	73883	07-JUN-2009	14:27:37.009	14:40:19.974	762.96500
SG	73883	07-JUN-2009	14:51:13.873	15:04:18.529	784.65600
BE	73884	07-JUN-2009	15:01:41.926	15:13:56.693	734.76700
GS	73884	07-JUN-2009	15:27:43.660	15:41:23.722	820.06200
CM	73884	07-JUN-2009	15:37:12.910	15:47:51.459	638.54900
GS	73885	07-JUN-2009	17:07:26.116	17:19:54.853	748.73700
CM	73885	07-JUN-2009	17:16:18.724	17:27:04.859	646.13500
MM	73886	07-JUN-2009	19:25:21.694	19:38:01.816	760.12200
JO	73886	07-JUN-2009	19:45:27.842	19:58:33.729	785.88700
JO	73887	07-JUN-2009	21:24:11.633	21:38:31.365	859.73200
HO	73888	07-JUN-2009	22:37:02.664	22:49:42.876	760.21200
KS	73888	07-JUN-2009	21:51:58.866	22:04:17.748	738.88200

[ [BACK TO MENU](#) ]

## 1.5 - List of corrupted products

Station	Orbit	Time
---------	-------	------

## 2 - Instrument Indicators and Daily Plots

### 2.1 - Instrument Indicators Status

Indicator	Value
MPH Product Confidence	OK
SPH Product Confidence	OK
Command Word Echo Summary	OK
Instrument Status 1A	OK
Instrument Status 1B	OK
Instrument Status 2	OK
Integration Times Channel 1	OK
Co-Adding and Cluster Mode Flags	OK
Integration Times Band 2A	OK
Integration Times Band 2B	OK

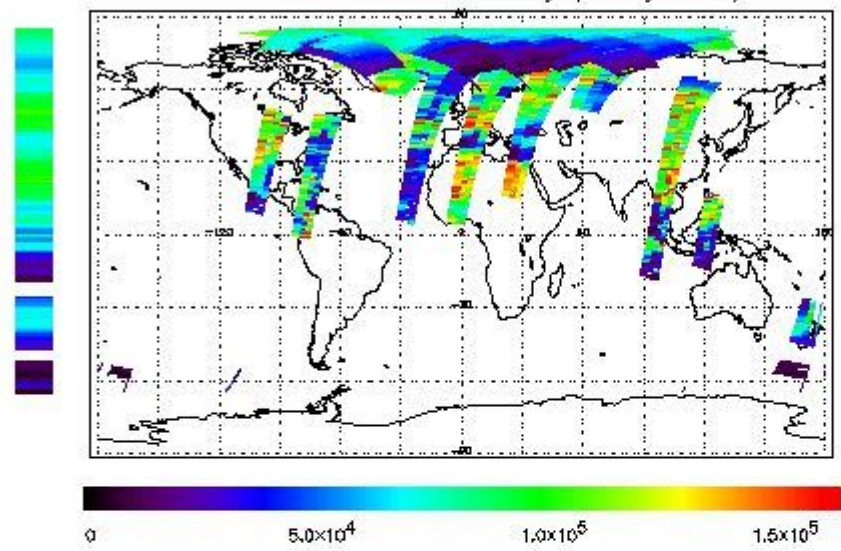
Integration Times Band 3	OK
Integration Times Band 4	OK
Scan Mirror position	OK
Polarization Detectors	OK
FPA Temperatures A	OK
FPA Temperaturas B	OK
Charge Amp Temperatures	OK
Other Temperatures A	OK
DDHU Temperatures	OK
Optical Bench Temperatures	OK
Other Temperatures B	OK
Calibration Lamp and Instr. Status 3	OK
Scan Mirror and Motor Current	OK
Selected Temperature A	OK
Selected Temperature B	Ok
Selected Temperature C	OK
Channel 1 Summation	OK
Channel 2 Summation	OK
Channel 4 Summation	OK
Log Pages	OK
331/338 nm Uncal. Line Ratio	OK
Uncal. PMDs as RGB signal	OK
780 nm Uncal. Intensity	OK

## 2.2 - Daily Plots

The images linked below provide a quick check on the data coverage and instrument performance. All data are UNCALIBRATED. For the explanation see the GOME Performance Legend

NEAR IR Intensity

778 nm Uncalibrated Intensity (Binary Units)



Ozone Line Ratio

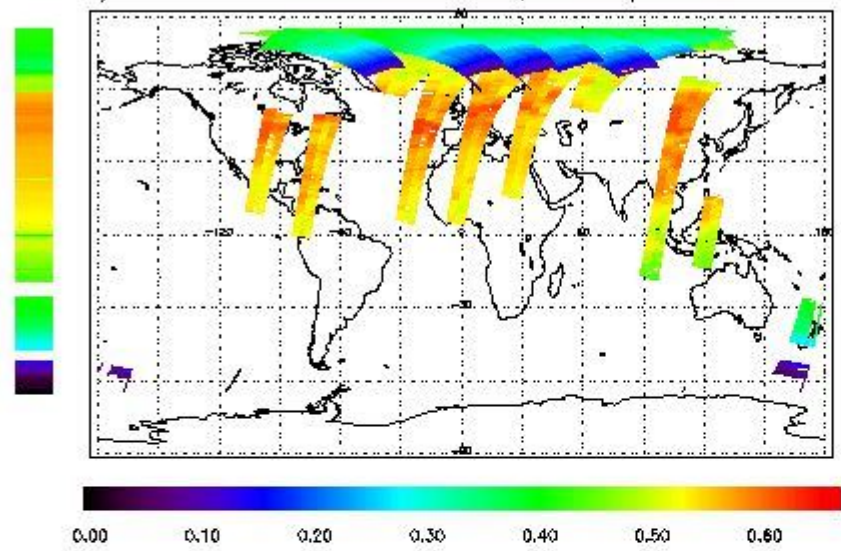
First Product : 06-JUN-2009 23:54:31.403 : ORBIT : 73875.0167

Last Product : 07-JUN-2009 23:46:49.035 : ORBIT : 73889.2544

Total Products Processed : 18953 Day : 158

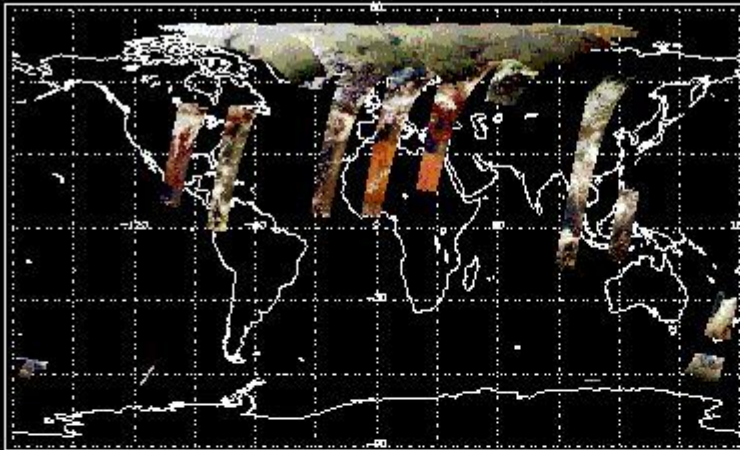
Page : 20

331/313 nm Uncalibrated Line Ratio, SZA Dependence Removed



PMD Image (Earthshine Radiance)

Uncalibrated PMDs as RGB Signal



### 3 - Instrument Calibration

#### 3.1 - Solar Calibration (Daily/TST44)

Daily(D)/TST44(T)	Start Time	End Time (T)	Orbit	Ground Station Visibility (Y/NS/NE)	Warm Detector Temperature (TST/44)	Max PMD Readout during solar calibration (BU set 2/12)
D	NA	--	73885	--	--	14410

#### 3.2 - Lamp Calibration (Quarterly/TST44)

Quarterly(D)/TST44(T)	Start Time	End Time	Orbit	Ground Station Visibility (Y/NS/NE)	Warm Detector Temperature (TST/44)	Lamp Instability Voltage (if any) (V)	Lamp Failure N. (if any)
--	--	--	--	--	--	--	--

[ BACK TO MENU ]

### 4 - Instrument Anomalies

#### 4.1 - Single Event Upset (SEU)



Start Time	End Time	Start Orbit	Orbit End	Ground Station Visibility (Y/NS/NE)
--	--	--	--	--

#### 4.2 - Instrument Off

Start Time	End Time	Start Orbit	Orbit End	MPS Resumption	Ground Station Visibility (Y/NS/NE)
--	--	--	--	--	--

#### 4.3 - Cooler Switchings

Start Time	End Time	Start Orbit	Orbit End	Ground Station Visibility (Y/NS/NE)	Max Temp. Ch 1	Max Temp. Ch 2	Max Temp. Ch 3	Max Temp. Ch 4
--	--	--	--	--	--	--	--	--

[ BACK TO MENU ]

### 5 - Instrument Operations

#### 5.1 - Timeline Interruptions

Start Time	End Time	Start Orbit	Orbit End	Ground Station Visibility (Y/NS/NE)
--	--	--	--	--

#### 5.2 - TST44

Start Time	Start Orbit	Ground Station Visibility (Y/NS/NE)
--	--	--

#### 5.3 - Power Cycle

Start Time	End Time	Start Orbit	Orbit End	Ground Station Visibility (Y/NS/NE)
--	--	--	--	--

#### 5.4 - Wrong Command Execution

Start Time	End Time	Start Orbit	Orbit End	Ground Station Visibility (Y/NS/NE)
--	--	--	--	--

#### 5.5 - Narrow Swath Timeline

Start Time	End Time	Start Orbit	Orbit End
--	--	--	--

#### 5.6 - Seasonal Operations

Start Time	End Time	Start Orbit	Orbit End
--	--	--	--

[ BACK TO MENU ]