

GOME Daily Report

SUMMARY

1. General Info
 - 1.1 Report Summary
 - 1.2 List of products used in this report
 - 1.3 List of data gaps
 - 1.4 List of missing products
 - 1.5 List of corrupted products
2. Instrument Indicators and Daily Plots
 - 2.1 Instrument Indicators Status
 - 2.2 Daily Plots
3. Instrument Calibration
 - 3.1 Solar Calibration (daily/TST44)
 - 3.2 Lamp Calibration (quarterly/TST44)
4. Instrument Anomalies
 - 4.1 Single Event Upset (SEU)
 - 4.2 Instrument Off
 - 4.3 Cooler Switchings
5. Instrument Operations
 - 5.1 Timeline Interruptions
 - 5.2 TST44
 - 5.3 Power Cycle
 - 5.4 Wrong Command Execution
 - 5.5 Narrow Swath Timeline
 - 5.6 Seasonal Operations

1 - General Info

1.1 - Report Summary

Item	Value
Report Version	GOMEver3_3
Time of Report Generation	05-JUN-2009
Start Time of First Product	06:24:52
Stop Time of Last Product	23:09:55
Total Number of EGOI Products	17
Number of corrupted products	--
Anomalies and/or Special Operations	Still missing products; data dissemination resumed on 05-JUN-2009 at about 14:30 UTC

1.2 - Products used in this report

Name	Date	Time
EGOI_090605HLEP1102.E2	05-JUN-2009	22:04:27.569
EGOI_090605KSEP5229.E2	05-JUN-2009	06:24:51.829
EGOI_090605KSEP5255.E2	05-JUN-2009	08:04:46.438
EGOI_090605KSEP5350.E2	05-JUN-2009	14:41:56.376
EGOI_090605KSEP5371.E2	05-JUN-2009	16:19:35.973
EGOI_090605KSEP5402.E2	05-JUN-2009	17:57:42.571
EGOI_090605KSEP5438.E2	05-JUN-2009	19:35:40.169
EGOI_090605KSEP5473.E2	05-JUN-2009	21:16:00.276
EGOI_090605KSEP5492.E2	05-JUN-2009	22:58:39.898

EGOI_090605MMEP4840.E2	05-JUN-2009	15:31:34.177
EGOI_090605MMEP4849.E2	05-JUN-2009	17:11:27.290
EGOI_090605MMEP4854.E2	05-JUN-2009	20:29:49.499
EGOI_090605MMEP4860.E2	05-JUN-2009	22:09:54.601
EGOI_090605MSEP5731.E2	05-JUN-2009	11:37:02.751
EGOI_090605MSEP5762.E2	05-JUN-2009	22:45:57.823
EGOI_090605SGEP7383.E2	05-JUN-2009	14:17:50.230
EGOI_090605SGEP7393.E2	05-JUN-2009	15:56:04.329

[BACK TO MENU]

1.3 - List of data gaps

Station	Orbit	Date	Start Time	Stop Time	Duration (s)
NA					

[BACK TO MENU]

1.4 - List of missing products

Station	Orbit	Date	Start Time	Stop Time	Duration (s)
NA					

[BACK TO MENU]

1.5 - List of corrupted products

Station	Orbit	Time

2 - Instrument Indicators and Daily Plots

2.1 - Instrument Indicators Status

Indicator	Value
MPH Product Confidence	OK
SPH Product Confidence	OK
Command Word Echo Summary	OK
Instrument Status 1A	OK
Instrument Status 1B	OK
Instrument Status 2	OK
Integration Times Channel 1	OK
Co-Adding and Cluster Mode Flags	OK
Integration Times Band 2A	OK
Integration Times Band 2B	OK
Integration Times Band 3	OK
Integration Times Band 4	OK
Scan Mirror position	OK
Polarization Detectors	OK
FPA Temperatures A	OK
FPA Temperaturas B	OK
Charge Amp Temperatures	OK

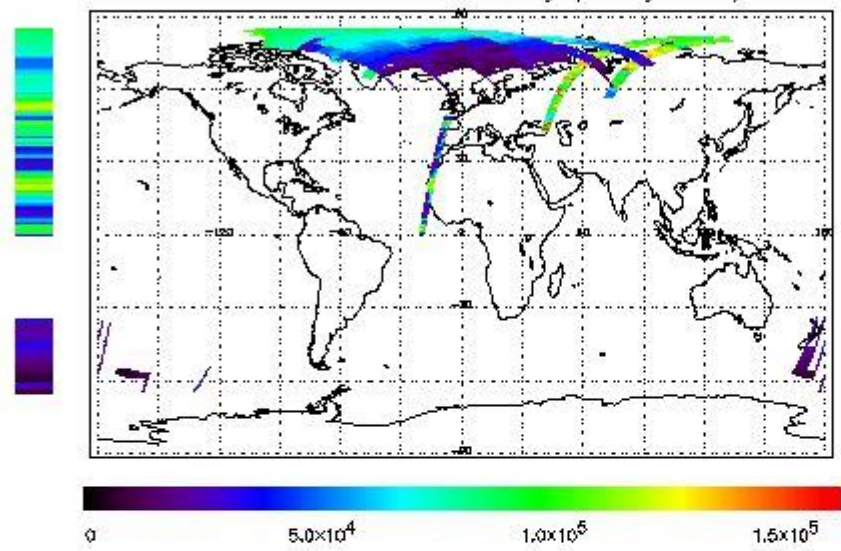
Other Temperatures A	OK
DDHU Temperatures	OK
Optical Bench Temperatures	OK
Other Temperatures B	OK
Calibration Lamp and Instr. Status 3	OK
Scan Mirror and Motor Current	OK
Selected Temperature A	OK
Selected Temperature B	Ok
Selected Temperature C	OK
Channel 1 Summation	OK
Channel 2 Summation	OK
Channel 4 Summation	OK
Log Pages	OK
331/338 nm Uncal. Line Ratio	OK
Uncal. PMDs as RGB signal	OK
780 nm Uncal. Intensity	OK

2.2 - Daily Plots

The images linked below provide a quick check on the data coverage and instrument performance. All data are UNCALIBRATED. For the explanation see the GOME Performance Legend

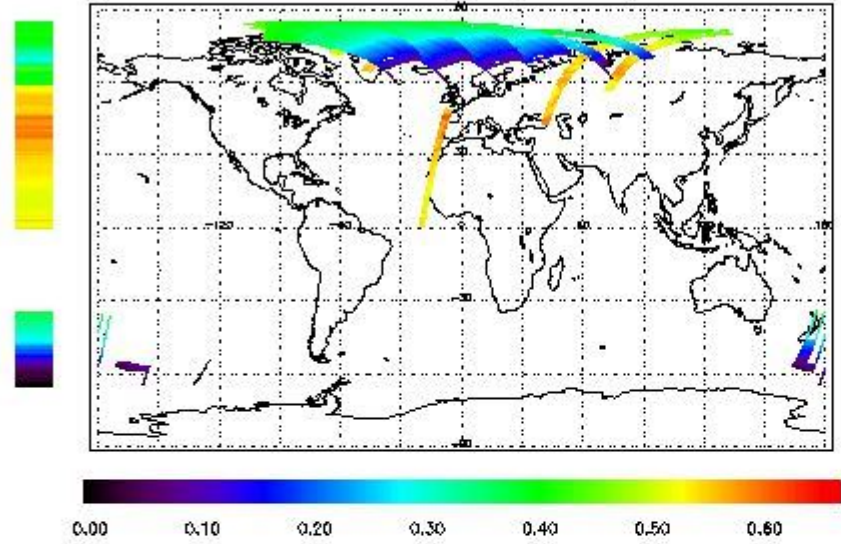
NEAR IR Intensity

778 nm Uncalibrated Intensity (Binary Units)



Ozone Line Ratio

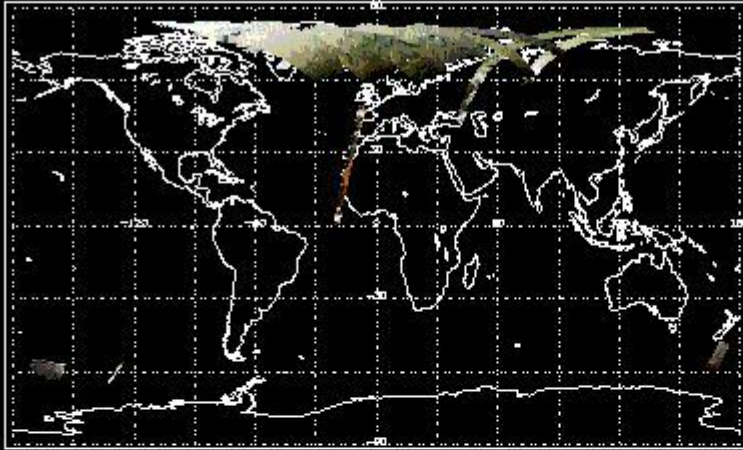
331/313 nm Uncalibrated Line Ratio, SZA Dependence Removed



PMD Image (Earthshine Radiance)

First Product : 05-JUN-2009 06:24:51.829 : ORBIT : 73850.2683
 Last Product : 05-JUN-2009 23:09:54.972 : ORBIT : 73860.2590
 Total Products Processed : 8374 Day : 156 Page : 20

Uncalibrated PMDs as RGB Signal



3 - Instrument Calibration

3.1 - Solar Calibration (Daily/TST44)

Daily(D)/TST44(T)	Start Time	End Time (T)	Orbit	Ground Station Visibility (Y/NS/NE)	Warm Detector Temperature (TST/44)	Max PMD Readout during solar calibration (BU set 2/12)
D	17:59:00.570	--	73857	--	--	14498

3.2 - Lamp Calibration (Quarterly/TST44)

Quarterly(D)/TST44(T)	Start Time	End Time	Orbit	Ground Station Visibility (Y/NS/NE)	Warm Detector Temperature (TST/44)	Lamp Instability Voltage (if any) (V)	Lamp Failure N. (if any)
--	--	--	--	--	--	--	--

[BACK TO MENU]

4 - Instrument Anomalies

4.1 - Single Event Upset (SEU)

Start Time	End Time	Start Orbit	Orbit End	Ground Station Visibility (Y/NS/NE)
--	--	--	--	--

4.2 - Instrument Off

Start Time	End Time	Start Orbit	Orbit End	MPS Resumption	Ground Station Visibility (Y/NS/NE)
--	--	--	--	--	--

4.3 - Cooler Switchings

Start Time	End Time	Start Orbit	Orbit End	Ground Station Visibility (Y/NS/NE)
--	--	--	--	--

[BACK TO MENU]

5 - Instrument Operations

5.1 - Timeline Interruptions

Start Time	End Time	Start Orbit	Orbit End	Ground Station Visibility (Y/NS/NE)
--	--	--	--	--

5.2 - TST44

Start Time	Start Orbit	Ground Station Visibility (Y/NS/NE)
--	--	--

5.3 - Power Cycle

Start Time	End Time	Start Orbit	Orbit End	Ground Station Visibility (Y/NS/NE)
--	--	--	--	--

5.4 - Wrong Command Execution

Start Time	End Time	Start Orbit	Orbit End	Ground Station Visibility (Y/NS/NE)
--	--	--	--	--

5.5 - Narrow Swath Timeline

Start Time	End Time	Start Orbit	Orbit End
20:00 (04-Jun-2009)	18:00	73844	73857

5.6 - Seasonal Operations

Start Time	End Time	Start Orbit	Orbit End
--	--	--	--

[BACK TO MENU]