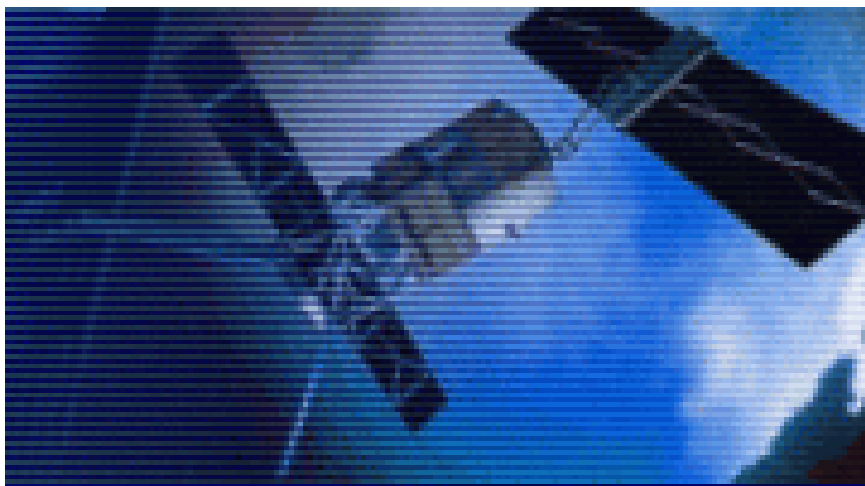

ERS-2 Wind Scatterometer Cyclic Report

From 8th September 2008 to 13th October 2008
Cycle 140



| | | |
|----------------|---------------------------|--------------------|
| Prepared by: | G. De Chiara | (scat@eo-sppa.org) |
| Inputs from: | H. Hersbach | (ECMWF) |
| Issue: | 1.0 | |
| Reference | ERSE-SPPA-EOPG-TN-08-0009 | |
| Date of issue: | 27 October 2008 | |
| Document type: | Technical Note | |

Table of Content

| | | |
|-------|---------------------------------------------------------------------------|----|
| 1 | Introduction and Summary | 3 |
| 2 | Calibration Performances..... | 6 |
| 2.1 | Gain Constant over transponder..... | 6 |
| 2.2 | Ocean Calibration | 7 |
| 2.3 | Gamma-nought over the Brazilian rain forest | 9 |
| 2.4 | Antenna pattern: Gamma-nought as a function of elevation angle..... | 9 |
| 2.5 | Antenna pattern: Gamma-nought as a function of incidence angle..... | 9 |
| 2.6 | Gamma nought histograms and peak position evolution..... | 9 |
| 2.7 | Gamma nought image of the reference area | 10 |
| 2.8 | Sigma nought evolution | 10 |
| 2.9 | Antenna temperature evolution over the Rain Forest | 10 |
| 3 | Instrument performance | 11 |
| 3.1 | Centre of gravity and standard deviation of received power spectrum | 11 |
| 3.2 | Noise power level I and Q channel | 18 |
| 3.3 | Power level of internal calibration pulse | 22 |
| 4 | Products performance | 25 |
| 4.1 | Products availability..... | 25 |
| 4.2 | PCS Geophysical Monitoring | 31 |
| 4.3 | ECMWF Geophysical Monitoring..... | 36 |
| 4.3.1 | Distance to cone history..... | 42 |
| 4.3.2 | UWI minus First-Guess history | 44 |
| 4.3.3 | Scatter plots..... | 53 |
| 4.3.4 | Timeliness evolution..... | 59 |
| 5 | Yaw error angle estimation..... | 62 |

1 Introduction and Summary

The document includes a summary of the daily quality control made within the IDEAS (Instrument Data quality Evaluation and Analysis Service) and various sections describing the results of the investigations and studies of “open-problems” related to the Scatterometer. In each section results are shown from the beginning of the mission in order to see the evolution and to outline possible “seasonal” effects. An explanation for the major events which have impacted the performance since launch is given, and comments about the recent events which occurred during the last cycle are included.

This report covers the period 8th September 2008 to 13th October (cycle 140) and includes the results of the monitoring activity performed by ESRIN and ECMWF. This document is available on line at: http://earth.esa.int/pcs/ers/scatt/reports/pcs_cyclic/

Mission events

The following bullets summarize the major mission facts for cycle 140:

- The ERS-2 satellite was piloted in ZGM throughout the cycle.
- The ESACA processor worked nominally without faults.
- No anomalies occurred on the AMI instrument:
- A planned manoeuvre (FCM) was performed on 2nd October.
- Missing data from Miami station from 15th August to 21st September due to a ground station antenna failure caused by a lightning strike.
- Missing data from West Freugh from 15th August to 13th October due to ground station hardware problem.
- Missing data from Mcmurdo station from 25th August to 15th September due to ground station antenna failure.
- Missing data from Hobart station from 16th September to 13th October due to ground station maintenance activity.
- Missing data from Chetumal station from 10th October to 13th October due to ground station problem.
- For the entire period of cycle 140, ERS-2 Scatterometer data was used in the 4D-Var data assimilation system at ECMWF.

News on the ERS mission is available on line: http://earth.esa.int/ers/new_ers_news.html

Data Coverage

After the on board tape recorder failure in July 2003, data is acquired in real time whenever within the visibility range of a ground station. For cycle 140 data coverage has been extended due to the installation of a new ground station in Johannesburg. The data coverage includes: the North-Atlantic, the Mediterranean, the Gulf of Mexico, a small part of the Pacific west from the US, Canada and Central America, a small part of the Atlantic and Indian Ocean around South Africa, the Chinese Sea, a small part of the Indian Ocean South-East of Thailand and Indonesia, and the Southern Ocean close to the Antarctic and south of Australia and New Zealand.

Yaw performance

The result of the monitoring for cycle 140 is an average (per orbit) yaw error angle within the expected nominal range (± 2 degrees) for most of the orbits.

Calibration performance

- Calibration data from Transponder are not available since January 2005. This is due to a hardware failure on the transponder. The repair of such device is still under evaluation. The calibration data acquired until 2005 in the ZGM will be re-processed with TOSCA (Tool for Scatterometer Calibration) and the results will be provided in this report when available.
- Due to the regional mission scenario the calibration performances over the Brazilian rain forest are not available because that area is not covered by the ESA ground station. The chance to install a new station to cover the calibration site is still under investigation as well as the possibility to use stable ice area in Greenland or Antarctic to monitor the instrument calibration.
- The Ocean Calibration monitoring is performed by ECMWF. The average backscatter bias level are similarly large, compared to Cycle 139. For the ascending tracks, the gap between the fore/aft and mid beam is still considerable. Average bias levels became 0.18 dB less negative (-0.72 dB, was -0.90 dB) being around 0.3 dB more negative than for nominal data in 2000 (around -0.4dB; see Figure 1 of the reports for Cycle 48 to 59). The negative level in bias is not uncommon for this time of the year. The current situation is similar to that of one year ago (see report for Cycle 130). Long-term variations correlate with the yearly cycle, which, given the non-global coverage, is understandable. Therefore, the method of ocean calibration will probably only provide accurate information on calibration levels for globally or yearly data sets.

Instrument performance

- During the cycle 140 the mean transmitted power evolution had a mean decrease of 0.1855 dB. This value is slightly higher than the nominal decreasing trend of 0.1 dB/Cycle detected since the beginning of the mission. This parameter will be further monitored in the next cycles.
- The evolution of the noise power during the cycle 140 was stable. The daily average for the Fore and Aft beam noise is around 1.7 ADC (I) and around 1.6 ADC (Q) respectively. For the Mid beam the noise is not measurable. During the reporting period many orbits with peaks in the noise power have been detected. Investigations are on-going.
- During the cycle 140 the Doppler compensation evolution was stable. The daily average of the CoG of the compensated received signal is around 30 Hz and -50 Hz for the Fore and Aft antenna respectively. For the Mid antenna it was around 240 Hz. The standard deviation of the CoG was around 1500 Hz for the Fore and Aft antenna and around 2750 Hz for the Mid antenna.

Timeliness performance

Timeliness performances stayed stable during the cycle 140 for most of the stations. Kiruna data is delivered in 30 min; for the other stations the delivery delay is ranging between 40 and 50 minutes. In the reporting period a decrease has been detected for Hobart and Johannesburg stations that reached an average timeliness value of about 40 and 50 minutes respectively.

Product performance

During Cycle 140 data was received between 21:03 UTC 8 September 2008 and 20:58 UTC 13 October 2008. Data was grouped into 6-hourly batches (centred around 00, 06, 12 and 18 UTC). No data was received in the batches from 06 UTC 5 October 2008, until 00 UTC 6 October 2008 due to an Esrin ground segment maintenance activity.

Compared to Cycle 139, the UWI wind speed relative to ECMWF first-guess (FG) fields showed a higher standard deviation (1.41 m/s, was 1.31 m/s). Bias levels were less negative (on average -0.94 m/s, was -1.04 m/s).

The PCS geophysical monitoring reports a wind speed bias (UWI vs 18 or 24 hour forecast)

of 0.7 m/s and a speed bias standard deviation around 1.6 m/s.

Missing statistics on 8th September is due to a ground segment dissemination problem that affected the Meteo files dissemination. Meteo tables were not disseminated to the ground station therefore data was processed with wrong meteorological tables.

The wind direction deviation for cycle 140 was good with more than 98% of the nodes wind direction in agreement with the ECMWF forecast.

2 Calibration Performances

The calibration performances are estimated using three types of target: a man made target (the transponder) and two natural targets (the rain forest and the ocean). This approach allow us to design the correct calibration using a punctual but accurate information from transponders and an extended but noisy information from rain forest and ocean for which the main component of the variance comes from the geophysical evolution of the natural target and from the backscattering models used. These aspects are in the calibration performance monitoring philosophy. The major goals of the calibration monitoring activities are the achievement of a “flat” antenna pattern profile and the assurance of a stable absolute calibration level.

2.1 Gain Constant over transponder

One gain constant is computed per transponder per beam from the actual and simulated two-dimensional echo power, which is given as a function of the orbit time and range time. This parameter clearly indicates the difference between “real instrument” and the mathematic model. In order to acquire data over the transponder the Scatterometer must be set in an appropriate operational mode defined as “Calibration Mode”. Since January 2001 with the operations in Zero Gyro Mode (ZGM) the satellite attitude is not stable as it was in the nominal Yaw Steering Mode (YSM). In particular there is a non-predictable variation of the yaw error angle along the orbit. For that reason the gain constant data computed by the CALPROC processor, that assumes a stable orbit, are meaningless and a new calibration processor is under development. In the mean time, data from the Transponder are still acquired and archived for future re-processing. The reprocessed gain constants will be provided in this section when available. For the gain constant computed during the nominal YSM please refer to the Scatterometer cyclic report cycle 60.

2.2 Ocean Calibration

The average sigma0 bias levels (compared to simulated sigma0's based on ECMWF model FG winds) stratified with respect to antenna beam, ascending or descending track and as function of incidence angle (i.e. across-node number) is displayed in Figure 1.

Compared to Cycle 139, inter-node and inter-beam dependencies between the fore and aft antenna have decreased. For the ascending tracks, the gap between the fore/aft and mid beam is still considerable. Average bias level became 0.18 dB less negative (-0.72 dB, was -0.90 dB), being around 0.3 dB more negative than for nominal data in 2000 (around -0.4 dB; see Figure 1 of the reports for Cycle 48 to 59). The negative level in bias is not uncommon for the time of this year. The current situation is similar to that of one year ago (see e.g. the report for Cycle 130).

Long-term variations correlate with the yearly cycle, which, given the non-global coverage, is understandable. Therefore, the method of ocean calibration will probably only provide accurate information on calibration levels for globally or yearly averaged data sets.

The data volume of descending tracks was about 10% lower than for ascending tracks.

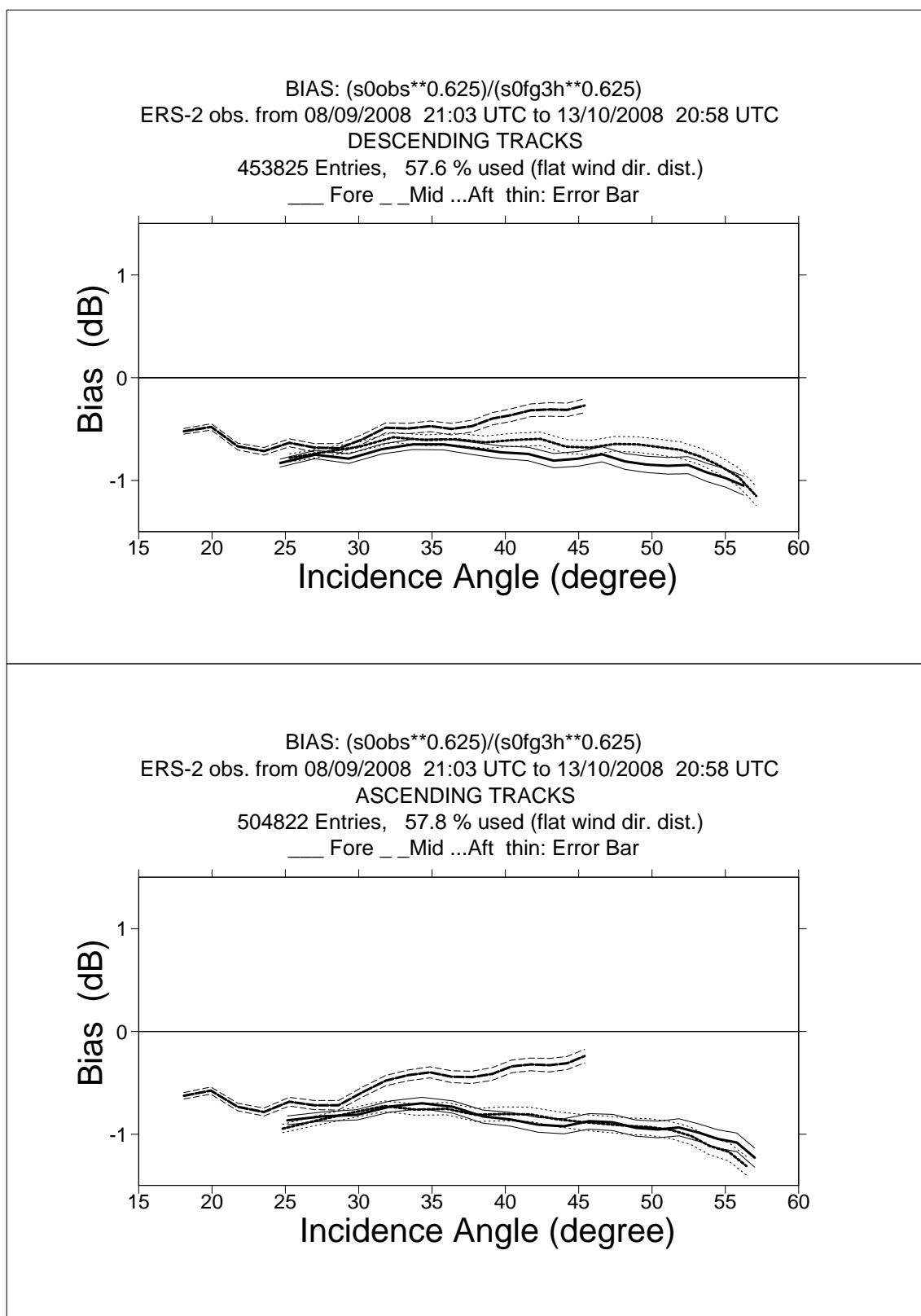


FIGURE 1 ERS-2 Scatterometer Ocean Calibration cycle 140. Ratio of $\langle \sigma_0^{0.625} \rangle / \langle \text{CMOD4}(\text{First Guess})^{0.625} \rangle$ converted in dB for the fore beam (solid line), mid beam (dashed line) and aft beam (dotted line), as a function of incidence angle for descending and ascending tracks. The thin lines indicate the error bars on the estimated mean. First-guess winds are based on the in time closest (+3h, +6h, +9h, or +12h) T511 forecast field, and are bilinearly interpolated in space.

2.3 Gamma-nought over the Brazilian rain forest

Although the transponders give accurate measurements of the antenna attenuation at particular points of the antenna pattern, they are not adequate for fine tuning across all incidence angles, as there are simply not enough samples. The tropical rain forest in South America has been used as a reference distributed target. The target at the working frequency (C-band) of ERS-2 Scatterometer acts as a very rough surface, and the transmitted signal is equally scattered in all directions (the target is assumed to follow the isotropic approximation). Consequently, for the angle of incidence used by ERS-2 Scatterometer, the normalized backscattering coefficient (sigma nought) will depend solely on the surface effectively seen by the instrument:

$$S^0 = S \bullet \cos \theta$$

With this hypothesis it is possible to define the following formula:

$$\gamma^0 = \frac{\sigma^0}{\cos \theta}$$

Using the above equation, the gamma nought backscattering coefficient over the rain forest is independent of the incident angle, allowing the measurements from each of the three beams to be compared. The test area used by the PCS is located between 2.5 degrees North and 5.0 degrees south in latitude and 60.5 degrees West and 70.0 degrees West in longitude. That area is actually not covered by the Regional mission scenario (since cycle 86 onwards) and therefore the calibration monitoring activity over the Brazilian rain forest is suspended because no data are available. The chance to continue the monitoring activity with a new receiving station covering the Brazilian rain forest is under investigation. The following paragraphs will report on the results when data will be available.

2.4 Antenna pattern: Gamma-nought as a function of elevation angle

Due to the regional mission scenario data over the Brazilian rain forest are not available. For that reason the antenna patterns in function of the elevation angle have not been computed.

2.5 Antenna pattern: Gamma-nought as a function of incidence angle

Due to the regional mission scenario data over the Brazilian rain forest are not available. For that reason the antenna patterns in function of the incidence angle have not been computed.

2.6 Gamma nought histograms and peak position evolution

As the gamma nought is independent from the incidence angle, the histogram of gamma

nought over the rain forest is characterized by a sharp peak. The time-series of the peak position gives some information on the stability of the calibration. This parameter is computed by fitting the histogram with a normal distribution added to a second order polynomial:

$$F(x) = A_0 \cdot \exp\left(-\frac{z^2}{2}\right) + A_3 + A_4 \cdot x + A_5 \cdot x^2$$

where: $z = \frac{x - A_1}{A_2}$

The parameters are computed using a non linear least square method called “gradient expansion”. The position of the peak is given by the maximum of the function $F(x)$. The histograms are computed weekly (from Monday to Sunday) for each antenna individually “Fore”, “Mid” and “Aft” and for ascending and descending passes with a bin size of 0.02 dB. Due to the regional mission scenario data over the Brazilian rain forest are not available and the histograms have not been computed. For the time series since the beginning of the mission please refer to the Scatterometer cyclic report cycle 86.

2.7 Gamma nought image of the reference area

Due to the regional mission scenario data over the Brazilian rain forest are not available and the histograms have not been computed.

2.8 Sigma nought evolution

Due to the regional mission scenario data over the Brazilian rain forest are not available. For that reason none update has been done to the sigma nought evolution time series. For the time series since the beginning of the mission until June 2003 please refer to the Scatterometer cyclic report cycle 86.

2.9 Antenna temperature evolution over the Rain Forest

Due to the regional mission scenario data over the Brazilian rain forest are not available. For the time series since the beginning of the mission please refer to the Scatterometer cyclic report cycle 86.

3 Instrument performance

The instrument status is checked by monitoring the following parameters:

- Centre of Gravity (CoG) and standard deviation of the received signal spectrum after the on-ground Doppler Compensation filter. This parameter is useful for the monitoring of the orbit stability, the performances of the Doppler compensation filter, the behavior of the yaw steering mode and the performances of the devices in charge for the satellite attitude (e.g. gyroscopes, Earth sensor, Sun sensor).
- Noise power I and Q channel.
- Internal calibration pulse power.

The latter is an important parameter to monitor the transmitter and receiver chain, the evolution of pulse generator, the High Power Amplifier (HPA), the Traveling Wave Tube (TWT) and the receiver. These parameters are extracted daily from the UWI products and averaged. The evolution of each parameter is characterized by a least square line fit. The coefficients of the line fit are printed in each plot.

3.1 Centre of gravity and standard deviation of received power spectrum

The Figure 2 shows the evolution of the two parameters for each beam since the beginning of the ERS-2 mission and Figure 3 shows the same evolution only for the cycle 140.

The tendency during the nominal Yaw Steering Mode (YSM) period (beginning of the mission since the operation with the Mono Gyro (MGM) Attitude On-board Control System (AOCS) configuration on 7th February 2000) is a small and regular increase of the Centre of gravity (CoG) of received spectrum for the three antennae. During the YSM, two small changes can be detected in the CoG evolution. The first change is from 24th, January 1996 to 14th, March 1996, the second one is from 14th February 1997 to 22nd April 1997. The reason was a change in the pointing subsystem (DES reconfiguration) side B instead of side A after a depointing anomaly (see table 1 for the list of the all AOCS depointing anomaly occurred during the ERS-2 mission). During these periods side B was switched on. It is important to note that during the first time a clear difference in the CoG of the received spectrum is present only for the Fore antenna (an increase of roughly 100 Hz) while during the second time the change has affected all the three antennae (roughly an increase of 200 Hz, 50 Hz and

50 Hz for the fore, mid and aft antenna respectively).

At the beginning of 2000 the nominal 3-gyros AOCS configuration (plus one Digital Earth Sensor -DES, and one Digital Sun Sensor -DSS and backups) was no more considered safe because 3 of the six gyros on-board were out of order or very noisy. For that reason the MGM was implemented as default piloting mode. The MGM configuration was designed to pilot the ERS-2 using only one gyro plus the DES and the DSS modules. Scope of ZGM configuration was to extend the satellite lifetime by using the available gyros one at the time.

With the MGM, an increase of roughly 200 Hz was observed at the end of the qualification period. After the AOCS commissioning phase this parameter further evolved within the nominal range with a negligible impact on the data quality.

In MGM configuration, the gyro 5 was used until 7th October 2000 when it failed. From 10th October 2000 to 24th October 2000 the gyro 6 was used. This explains the decrease of roughly 100Hz in the CoG of the received spectrum. From 25th October 2000 to 17th January 2001 the gyro 1 was used to pilot the ERS-2 satellite. On 17th January 2001 the AOCS was upgraded. The new configuration allows piloting the satellite without gyroscopes. Unfortunately a failure of the Digital Earth Sensor (DES A-side) caused ERS-2 to enter in Safe-Mode on the same day. On 25th January 2001 gyro #1 also failed.

Satellite attitude was recovered on 5th February 2001 with a coarse attitude control mode (EBM). During the period of safe mode the spacecraft had drifted out of the nominal dead band by some 30 Km. The nominal orbit was reached on 6th February 2001.

The EBM mode had a strong negative impact on the Scatterometer data quality and the dissemination of data products to end users was discontinued.

After that a series of AOCS upgrades has been implemented in order to improve the satellite attitude: on 30th March 2001 the Yaw steering law was re-introduced into the piloting function and on 7th June 2001 the Zero Gyro Mode (ZGM) has been implemented as nominal piloting mode. In ZGM the satellite attitude had an improvement in particular for the pitch and yaw error angle. This explains the reduction of the fluctuation in the received signal.

The CoG returns within its nominal value in February 2003 when the new ERS Scatterometer ground processor (ESACA) was put in operation (only for validation purposes) in Kiruna station. ESACA is able to compensate for errors in satellite attitude and to produce calibrated sigma noughts.

The evolution of the standard deviation of the CoG of the received spectrum was stable during the YSM phase. Small peaks are related with the events listed in Table 2. In MGM the evolution was within the nominal range while for the initial phase of the ZGM the performance was strongly degraded. This because the on-ground Doppler filters were not able to compensate for the satellite degraded attitude. The introduction of the ESACA processor in February 2003 cured the problem.

On 8th December 2006 10:43 p.m. to 9th December 2006 07:18 anomaly in the on board Doppler Compensation occurred. That did not impact on the evolution of the CoG because the ESACA ground processor has compensated the receiver signal for the Doppler frequency shift. The Scat Team has carried out a deep analysis of the anomaly (see the technical note OSME-DPQC-SEDA-TN-06-0328 for further details).

TABLE 1 ERS-2 Scatterometer AOCS depointing anomaly list

| Start of the anomaly | | | End of the anomaly | | | Remarks |
|---------------------------|------|-----------|---------------------------|------|------------|---------------------------------------|
| 24 th January | 1996 | 9:10 a.m. | 26 th January | 1996 | 6:53 p.m. | AOCS depointing anomaly |
| 14 th February | 1997 | 1:25 a.m. | 15 th February | 1997 | 3:44 p.m. | AOCS depointing anomaly |
| 3 rd June | 1998 | 2:43 p.m. | 6 th June | 1998 | 12:47 a.m. | AOCS depointing anomaly |
| 1 st September | 1999 | 8:50 a.m. | 2 nd September | 1999 | 1:28 a.m. | |
| 7 th October | 2000 | 4:38 p.m. | 10 th October | 2000 | 4:49 p.m. | depointing anomaly gyro 5 failure |
| 24 th October | 2000 | 4:05 p.m. | 25 th October | 2000 | 12:05 p.m. | depointing anomaly gyro 6 failure |
| 17 th January | 2001 | | 5 th February | 2001 | | gyro 1 failure Satellite in safe mode |

TABLE 2 ERS-2 Scatterometer anomalies in the Doppler Compensation monitoring

| Date start | Year | Date stop | Year | Reason |
|----------------------------|------|----------------------------|------|----------------------------------------------------------------------------|
| 26 th September | 1996 | 27 th September | 1996 | Missing on-board Doppler coefficient (after cal. DC converter test period) |
| 6 th June | 1998 | 7 th June | 1998 | No Yaw Steering Mode (after depointing anomaly) |
| 2 nd December | 1998 | 3 rd December | 1998 | Missing on-board Doppler coefficients (after AMI anomaly number 228) |
| 16 th February | 2000 | 17 th February | 2000 | Fine Pointing Mode (FPM) (due to AOCS mono-gyro qualification period) |
| 14 th April | 2000 | 14 th April | 2000 | Fine Pointing Mode (FPM) |
| 5 th July | 2000 | 5 th July | 2000 | Fine Pointing Mode (FPM) after instrument switch-on |
| 27 th September | 2000 | 27 th September | 2000 | Fine Pointing Mode (FPM) to upload AOCS software patch |
| 2 nd November | 2000 | 2 nd November | 2000 | Fine Pointing Mode (FPM) |
| 5 th December | 2000 | 6 th December | 2000 | Fine Pointing Mode (FPM) due to orbital manoeuvre |
| 6 th February | 2001 | 30 th March | 2001 | Extra Backup Mode (EBM) coarse attitude control |

| | | | | |
|----------------------------|------|----------------------------|------|---------------------------------------------------------------------------------------------------------------------|
| 30 th March | 2001 | 17 th June | 2001 | ZGM-EBM coarse attitude control |
| 17 th June | 2001 | 21 st August | 2003 | ZGM phase. Error in yaw angle not corrected in the ground segment processor. Data shall be reprocessed with ESACA. |
| 24 th March | 2004 | 24 th March | 2004 | Fine Pointing Mode (FPM) due to orbital manoeuvre |
| 25 th October | 2004 | 27 th October | 2004 | Series of orbital manoeuvres (OCM and FPM) |
| 10 th November | 2004 | 11 th November | 2004 | Intense geomagnetic storm |
| 8 th March | 2005 | 8 th March | 2005 | orbital manoeuvre (OCM) |
| 11 th March | 2005 | 11 th March | 2005 | orbital manoeuvre (FPM) |
| 2 nd November | 2005 | 2 nd November | 2005 | orbital manoeuvre (OCM) |
| 1 st March | 2006 | 1 st March | 2006 | orbital manoeuvre (OCM) |
| 3 rd November | 2006 | 3 rd November | 2006 | orbital manoeuvre (OCM) at 10:07:46 |
| 4 th November | 2006 | 4 th November | 2006 | orbital manoeuvre (FCM) at 02:56:53 and 04:37:38 |
| 8 th December | 2006 | 9 th December | 2006 | Missing on-board Doppler coefficients after AMI anomaly from 10:43 p.m. to 9 th December 2006 07:18 a.m. |
| 19 th December | 2006 | 19 th December | 2006 | orbital manoeuvre (FCM) at 23:06:12 |
| 1 st February | 2007 | 1 st February | 2007 | orbital manoeuvre (FCM) at 02:53:31 |
| 13 th February | 2007 | 13 th February | 2007 | orbital manoeuvre (FCM) at 05:00:15 and 06:40:51 |
| 14 th February | 2007 | 14 th February | 2007 | orbital manoeuvre (OCM) at 09:30:29 |
| 26 th April | 2007 | 26 th April | 2007 | Orbital manoeuvre (FCM) at 03:12:03 |
| 11 th May | 2007 | 11 th May | 2007 | Orbital manoeuvre (FCM) at 02:04:10 |
| 13 th June | 2007 | 13 th June | 2007 | Orbital manoeuvre (FCM) at 03:41:38 |
| 10 th September | 2007 | 10 th September | 2007 | Orbital manoeuvre (FCM) at 02:10:29 and 03:51:05 |
| 11 th September | 2007 | 11 th September | 2007 | Orbital manoeuvre (FCM) at 10:01:58 |
| 12 th September | 2007 | 12 th September | 2007 | Orbital manoeuvre (FCM) at 02:47:55 and 04:28:31 |
| 13 th September | 2007 | 13 th September | 2007 | Orbital manoeuvre (FCM) at 05:37:30 and 07:18:16 |
| 14 th September | 2007 | 14 th September | 2007 | Orbital manoeuvre (OCM) at 10:07:42 |
| 15 th September | 2007 | 15 th September | 2007 | Orbital manoeuvre (FCM) at 23:00:51 |
| 16 th September | 2007 | 16 th September | 2007 | Orbital manoeuvre (FCM) at 00:41:27 |
| 18 th October | 2007 | 18 th October | 2007 | Orbital manoeuvre (FCM) at 02:00:00 |
| 30 th October | 2007 | 30 th October | 2007 | Orbital manoeuvre (FCM) at 02:03:10 |
| 16 th November | 2007 | 16 th November | 2007 | Orbital manoeuvre (FCM) at 02:51:08 |
| 4 th December | 2007 | 4 th December | 2007 | Orbital manoeuvre (FCM) at 02:39:54 |
| 4 th December | 2007 | 4 th December | 2007 | Orbital manoeuvre (FCM) at 04:20:30 |
| 7 th December | 2007 | 7 th December | 2007 | Orbital manoeuvre (FCM) at 16:10:00 |
| 19 th December | 2007 | 19 th December | 2007 | Orbital manoeuvre (FCM) at 01:28:00 |
| 10 th January | 2008 | 10 th January | 2007 | Orbital manoeuvre (FCM) at 02:00:00 |

| | | | | |
|---------------------------|------|---------------------------|------|-------------------------------------|
| 31 st January | 2008 | 31 st January | 2008 | Orbital manoeuvre (FCM) at 03:30:45 |
| 14 th February | 2008 | 14 th February | 2008 | Orbital manoeuvre (FCM) at 02:58:12 |
| 7 th March | 2008 | 7 th March | 2008 | Orbital manoeuvre (FCM) at 03:00:00 |
| 20 th March | 2008 | 20 th March | 2008 | Orbital manoeuvre (FCM) at 02:58:21 |
| 30 th May | 2008 | 30 th May | 2008 | Orbital manoeuvre (FCM) at 01:45:00 |
| 30 th May | 2008 | 30 th May | 2008 | Orbital manoeuvre (FCM) at 02:35:14 |
| 08 th August | 2008 | 08 th August | 2008 | Orbital manoeuvre (FCM) at 03:16:09 |
| 2 nd October | 2008 | 2 nd October | 2008 | Orbital manoeuvre (FCM) at 02:44:33 |

The Doppler compensation evolution for cycle 140 is showed in Figure 3. The monitoring shows a daily average of the CoG of the compensated received signal around 30 Hz and -50 Hz for the Fore and Aft antenna respectively. For the Mid antenna it was around 230 Hz. The standard deviation of the CoG was around 1500 Hz for the Fore and Aft antenna and around 2750 Hz for the Mid antenna. Those values are within the nominal range.

ERS-2 WindScatterometer: DOPPLER COMPENSATION Evolution (UWI)

Least-square poly. fit fore beam Center of gravity = $-11.30 + (0.0086) \cdot \text{day}$ Standard Deviation = $5278.1 + (-0.894) \cdot \text{day}$
 Least-square poly. fit mid beam Center of gravity = $-685.2 + (0.2387) \cdot \text{day}$ Standard Deviation = $5924.2 + (-0.760) \cdot \text{day}$
 Least-square poly. fit aft beam Center of gravity = $-262.6 + (0.0698) \cdot \text{day}$ Standard Deviation = $5421.7 + (-0.927) \cdot \text{day}$

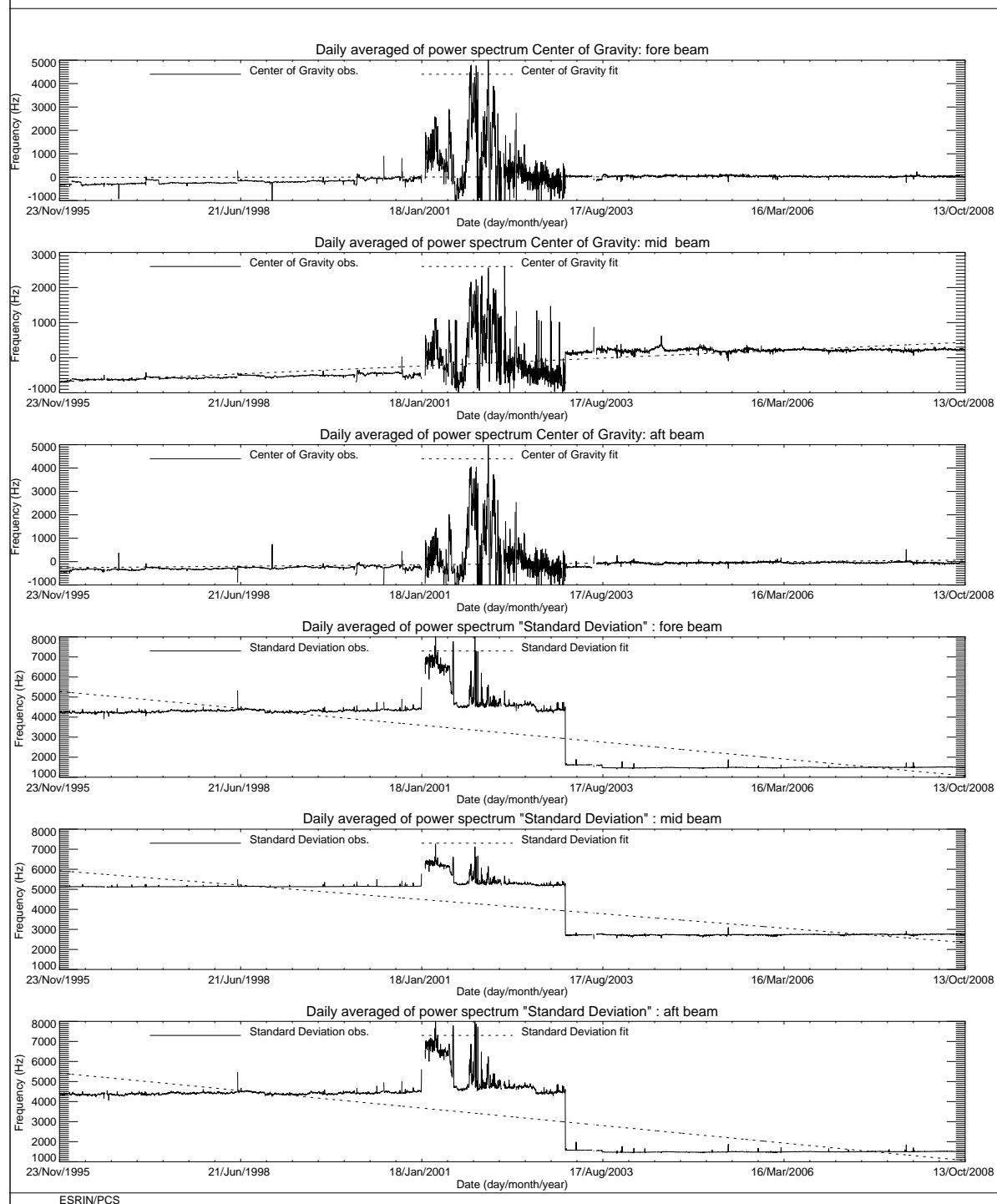


FIGURE 2 ERS-2 Scatterometer: Centre of Gravity and standard deviation of received power spectrum since the beginning of the mission.

ERS-2 WindScatterometer: DOPPLER COMPENSATION Evolution (UWI)

Least-square poly. fit fore beam Center of gravity = $28.519 + (-0.019) \cdot \text{day}$ Standard Deviation = $1505.9 + (-0.336) \cdot \text{day}$
 Least-square poly. fit mid beam Center of gravity = $231.24 + (-0.016) \cdot \text{day}$ Standard Deviation = $2753.9 + (-0.315) \cdot \text{day}$
 Least-square poly. fit aft beam Center of gravity = $-54.91 + (1.1779) \cdot \text{day}$ Standard Deviation = $1511.7 + (-0.233) \cdot \text{day}$

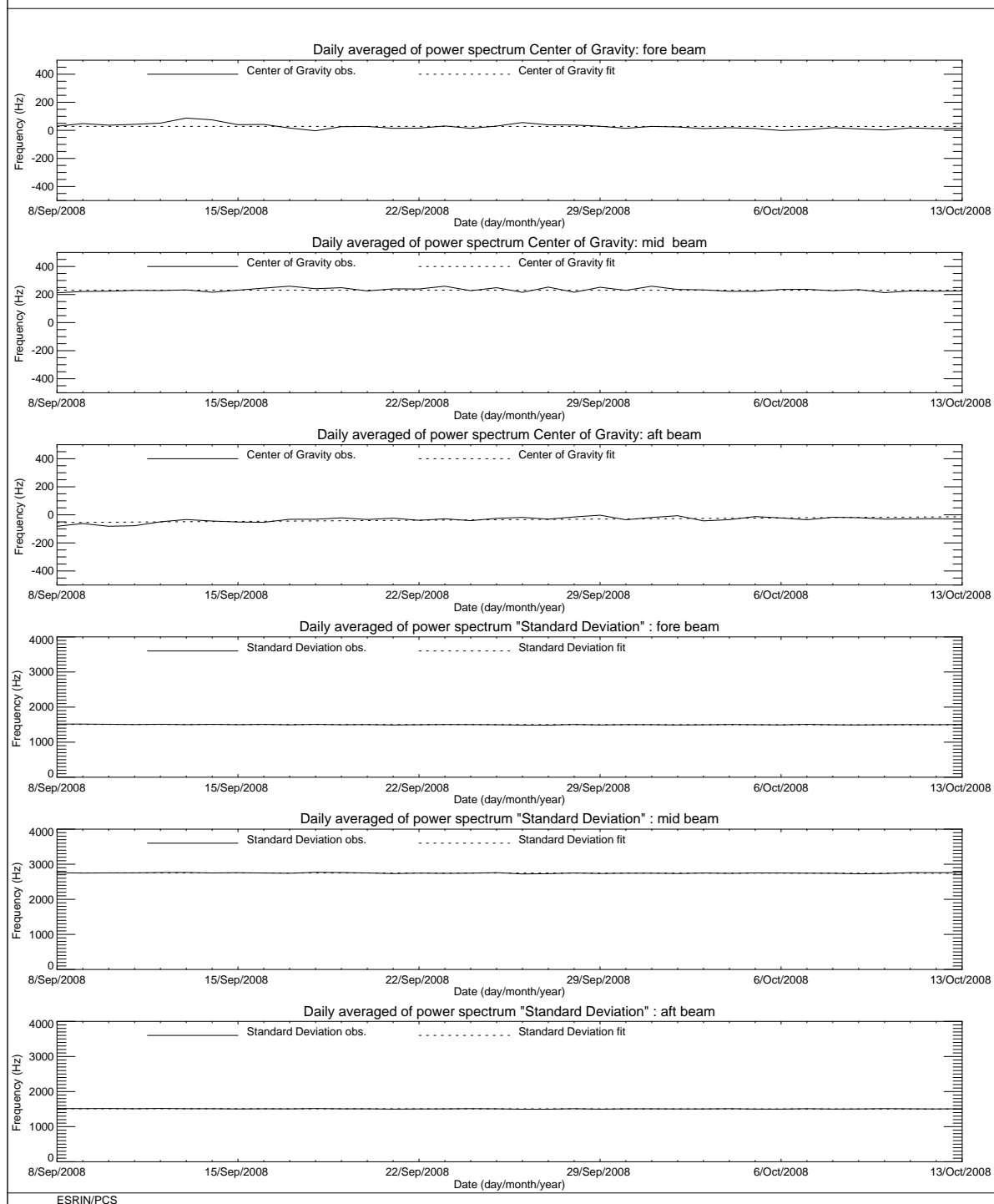


FIGURE 3 ERS-2 Scatterometer: Centre of Gravity and standard deviation of received power spectrum for cycle 140.

3.2 Noise power level I and Q channel

The results of the monitoring are shown in Figure 4 (long-term) and Figure 5 (cycle 140). The first set of three plots presents the noise power evolution for the I channel while the second set shows the Q channel. From the plots one can see that the noise level is more stable in the I channel than in the Q one. The I and Q receivers are inside the same box and any external interference should affect both channel. The fact that the receivers are closer to the ATSR-GOME electronics could have some impact but there is no clear explanation on that behavior. From 5th December 1997 until November 1998 some high peaks appear in the plots. These high values for the daily mean are due to the presence for these special days of a single UWI product with an unrealistic value in the noise power field of its Specific Product Header. The analysis of the raw data used to generate these products lead in all cases to the presence of one source packet with a corrupted value in the noise field stored into the source packet Secondary Header. The reason why noise field corruption is beginning from 5th December 1997 and last until November 1998 is at present unknown. It is interesting to note that at the beginning of December 1997, we started to get as well the corruption of the Satellite Binary Times (SBTs) stored in the EWIC product. The impact in the fast delivery products was the production of blank products starting from the corrupted EWIC until the end of the scheduled stop time. A change in the ground station processing in March 1998 overcame this problem.

Since 9th August 1998 until March 2000 some periods with a clear small instability in the noise power have been recognized, Table 3 gives the detailed list.

TABLE 3 ERS-2 Periods with instability in the noise power

| Start date | Stop date | Year |
|---------------------------|---------------------------|------|
| 9 th August | 26 th October | 1998 |
| 29 th November | 6 th December | 1998 |
| 23 rd December | 24 th December | 1998 |
| 7 th June | 10 th June | 1999 |
| 17 th August | 22 nd August | 1999 |
| 8 th September | 9 th September | 1999 |
| 3 rd October | 8 th October | 1999 |
| 16 th October | 18 th October | 1999 |
| 26 th October | 28 th October | 1999 |
| 25 th December | 2 nd January | 2000 |
| 10 th February | 11 th February | 2000 |
| 19 th March | 26 th March | 2000 |

To better understand the instability of the noise power the PCS has carried out investigations in the Scatterometer raw data (EWIC) to compute the noise power with more resolution. The result is that for the orbits affected by the instability the noise power had a decrease of roughly 0.7 dB for the fore and aft signals and a decrease of roughly 0.6 dB in the mid beam case (see the report for the cycle 42). The decrease of the noise power during the orbits affected by the instability is comparable with the decrease of the internal calibration level that occurred during the same orbits. The reason of this instability (linked to the AMI anomalies) is still unknown. On 28th February 2003 the Scatterometer receiver gain has been increased by 3 dB to optimize the usage of the on-board ADC converter. This explains the increase of the noise for the Fore and Aft beam channel. For the mid beam channel the noise still remains not measurable.

On 17th February 2006 a high peak was detected in the noise power, causing the daily average for that day very high. The case has been deeply investigated and a technical note (Ref OSME-DPQC-SEDA-TN-06-0163) is available. The cause was an acquisition problem that corrupted one source packet and not an instrument anomaly. The same happened on April 24th 2006 (cycle 115).

On 8th September 2006 a high peak in the noise power of the Mid beam has been detected. The event occurred between 17:41:54 and 17:42:43 (UTC) and the noise power reached the value of 43 ADC (fore beam) and 19 ADC (mid beam). Those values had affected the daily average and are clear present in the plots of the Figure 4. That anomaly has been deeply investigated in the Technical Note OSME-DPQC-SEDA-TN-06-0251 and cannot be linked to any anomaly in the acquired data. The conclusion of the investigation was that a problem had occurred in the transmitter or in the pulse generator of the AMI instrument. At that time the AMI was in wind only mode so no additional comparison with SAR data can be done. Similar peaks had been noted also for September 15th and 18th. ESOC has checked the Mission Plan and noticed that in all three events the peak in the noise power occurred very close to 6 minutes after the start of a Wind mode and 40 minutes after ascending node crossing.

The evolution of the noise power during the cycle 140 was stable. The daily average for the Fore and Aft beam noise is around 1.7 ADC (I) and around 1.6 ADC (Q) respectively. For the Mid beam the noise is not measurable. During the reporting period many orbits with peaks in the noise power have been detected. Investigations are on-going.

ERS-2 WindScatterometer: NOISE Level Evolution (UWI)

Least-square line fit fore beam: $I = 752.37 + (0.2358) \cdot \text{day}$

$Q = 701.32 + (0.2231) \cdot \text{day}$

I channel: No line fit standard deviation too high

Q channel: No line fit standard deviation too high

Least-square line fit aft beam: $I = 750.80 + (0.2263) \cdot \text{day}$

Q channel: No line fit standard deviation too high

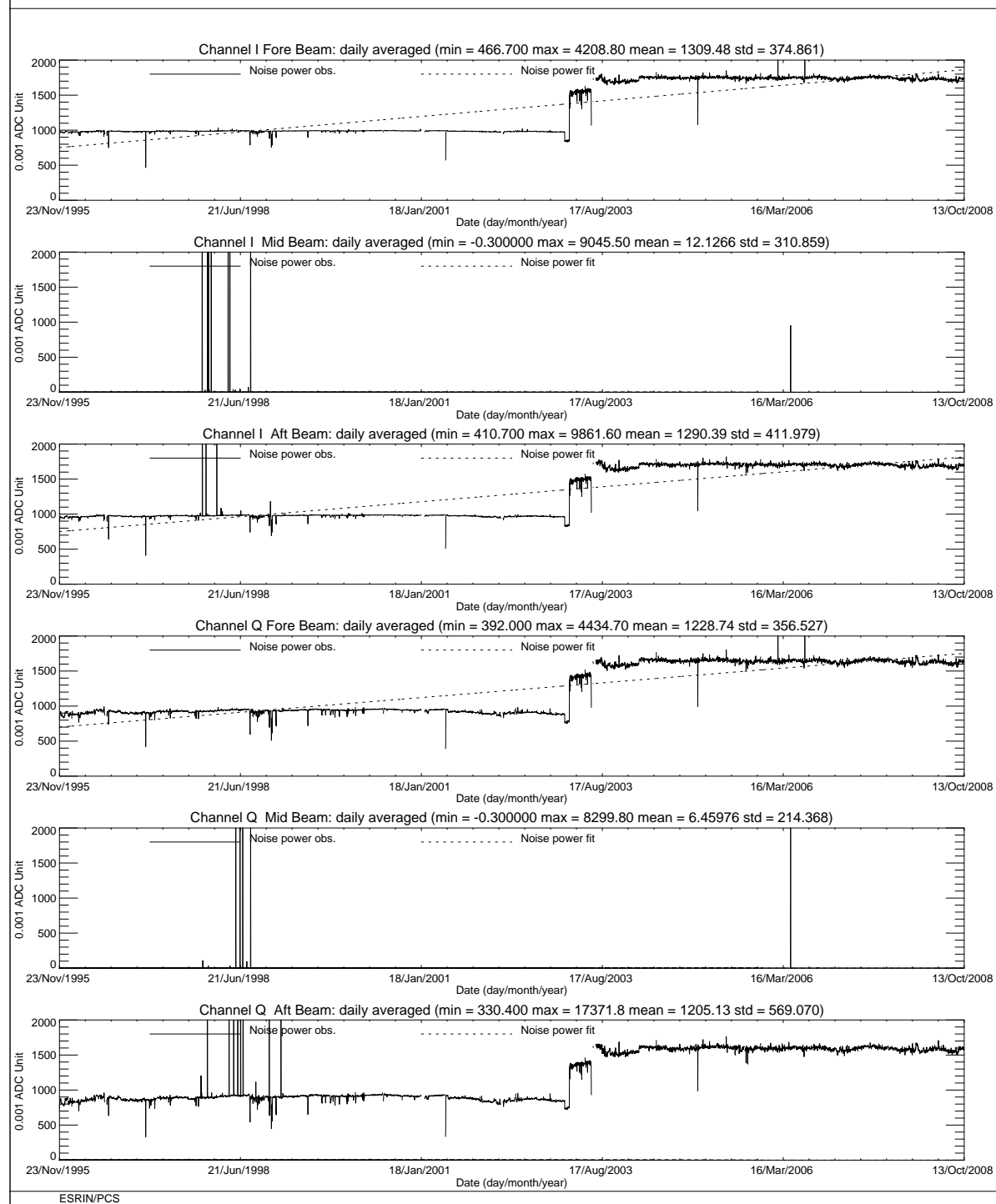


FIGURE 4 ERS-2 Scatterometer: noise power I and Q channel since the beginning of the mission.

ERS-2 WindScatterometer: NOISE Level Evolution (UWI)

Least-square line fit fore beam: $I = 1718.3 + (0.7559) \cdot \text{day}$

$Q = 1611.2 + (1.1471) \cdot \text{day}$

Least-square line fit mid beam: $I = 0.1323 + (-0.004) \cdot \text{day}$

$Q = 0.0915 + (-0.002) \cdot \text{day}$

Least-square line fit aft beam: $I = 1673.8 + (1.0321) \cdot \text{day}$

$Q = 1559.2 + (1.4242) \cdot \text{day}$

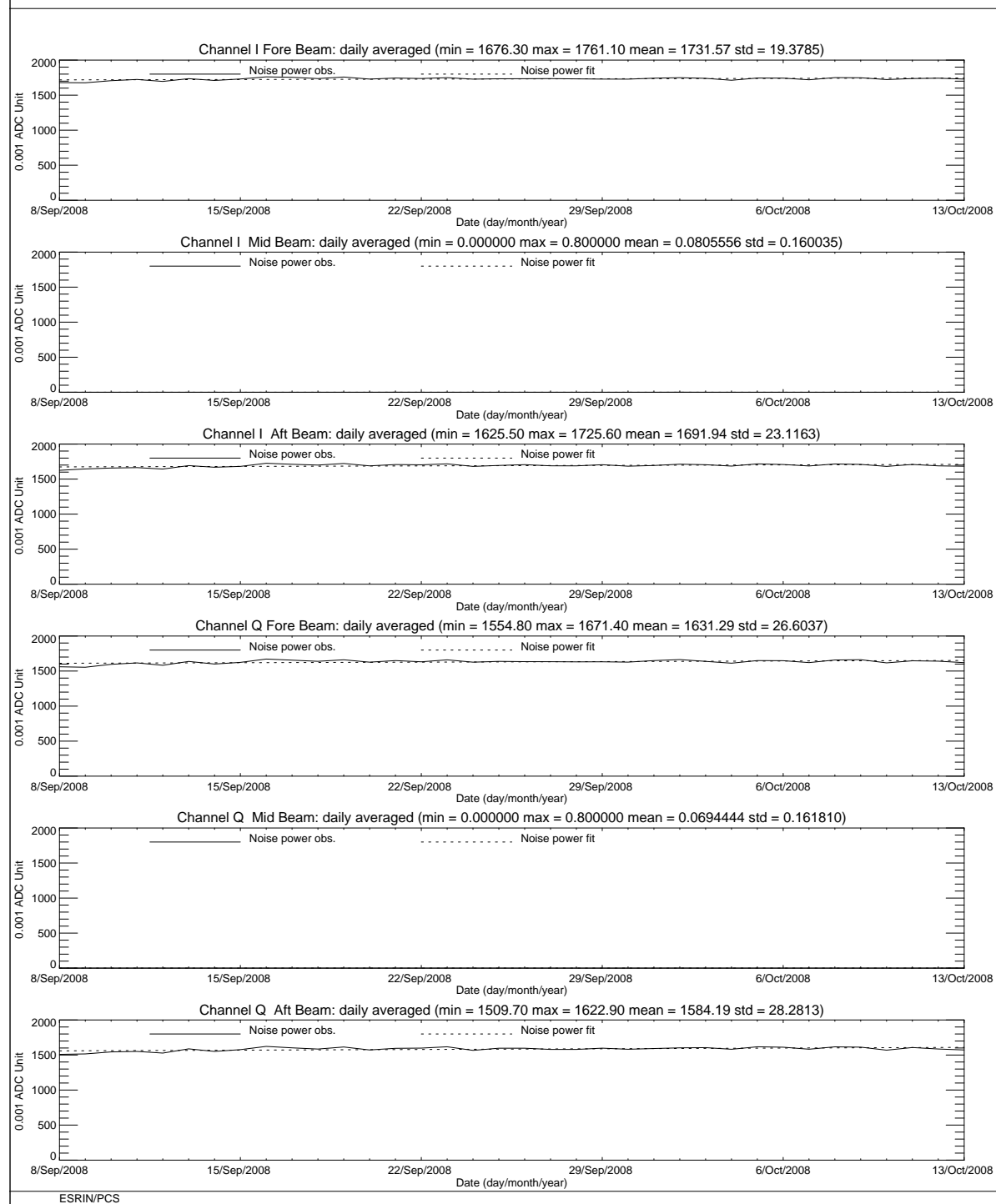


FIGURE 5 ERS-2 Scatterometer: noise power I and Q channel for cycle 140.

3.3 Power level of internal calibration pulse

For the internal calibration level, the results are shown in Figure 6 (long-term) and Figure 7 (cycle 140). The high value of the variance in the fore beam until August, 12th 1996 is due to the ground processing. In fact all the blank source packets ingested by the processor were recognized as Fore beam source packets with a default value for the internal calibration level. The default value was applicable for ERS-1 and therefore was not appropriate for ERS-2 data processing. On August 12th, 1996 a change in the ground processing LUT overcame the problem. Since the beginning of the mission a power decrease is detected. The power decrease is regular and affects the AMI when it is working in wind-only mode, wind/wave mode and image mode indifferently. The average power decrease is around 0.08 dB per cycle (0.0022 dB/day) and is clearer after August, 6th 1996 when the calibration subsystem has been changed. The reason of the power decrease is because the TWT is not working in saturation, so that a variation in the input signal is visible in the output. The variability of the input signal can be two-fold: the evolution of the pulse generator or the tendency of the switches between the pulse generator and the TWT to reset themselves into a nominal position. These switches were set into an intermediate position in order to put into operation the Scatterometer instrument (on 16th November 1995). To compensate for this decrease, on 26th October 1998 (cycle 37) 2.0 dB were added to the Scatterometer transmitted power and on 4th September 2002 (cycle 77) were added 3.0 dB. On 28th February 2003 (cycle 82) the Scatterometer receiver gain was increased by 3 dB to improve the usage of the on-board ADC converter. These events are clearly displayed by the large steps show in Figure 6.

Since 9th August 1998 until March 2000 the internal calibration level shows instability after an AMI or platform anomaly (see reports from cycle 35 to cycle 52). This instability is very well correlated with the fluctuations observed in the noise power. On 13th July 2000 a high peak (+3.5 dB) was detected in the transmitted power. This event has been investigated deeply by PCS and ESOC. The results of the analysis are reported in the technical note “ERS-2 Scatterometer: high peak in the calibration level” available in the PCS. The high transmitted power was detected after an arcing event which occurred inside the HPA. After that event the transmitted power had an average increase of roughly 0.14 dB.

During the cycle 140 the mean transmitted power evolution had a mean decrease of 0.1855 dB. This value is slightly higher than the nominal decreasing trend of 0.1 dB/Cycle detected since the beginning of the mission. This parameter will be further monitored in the next cycles.

ERS-2 WindScatterometer: Internal CALIBRATION Level Evolution (UWI)

| | | | |
|---------------------------------------|-------------------|--------|--------------------------------------------|
| Least-square polynomial fit fore beam | gain (dB) per day | 0.0000 | $1050.13 + (-0.00341329) \cdot \text{day}$ |
| Least-square polynomial fit mid beam | gain (dB) per day | 0.0000 | $311.370 + (-0.00145837) \cdot \text{day}$ |
| Least-square polynomial fit aft beam | gain (dB) per day | 0.0000 | $1038.27 + (-0.00235906) \cdot \text{day}$ |

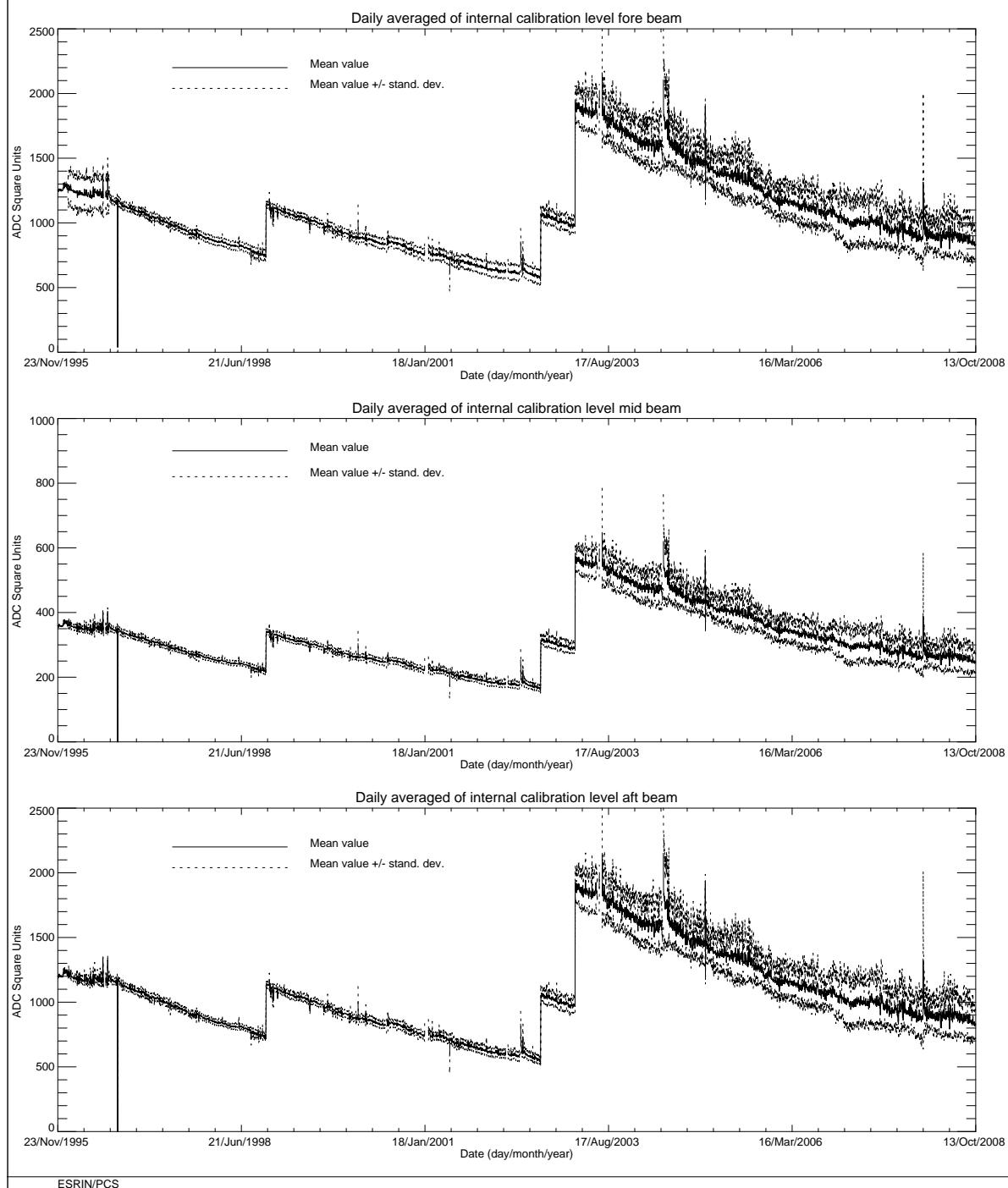


FIGURE 6 ERS-2 Scatterometer: power of internal calibration pulse since the beginning of the mission.

ERS-2 WindScatterometer: Internal CALIBRATION Level Evolution (UWI)

| | | |
|---------------------------------------|---------------------------|------------------------------------------|
| Least-square polynomial fit fore beam | gain (dB) per day -0.0051 | $867.194 + (-1.00078) \cdot \text{day}$ |
| Least-square polynomial fit mid beam | gain (dB) per day -0.0053 | $255.635 + (-0.304463) \cdot \text{day}$ |
| Least-square polynomial fit aft beam | gain (dB) per day -0.0054 | $863.520 + (-1.04672) \cdot \text{day}$ |

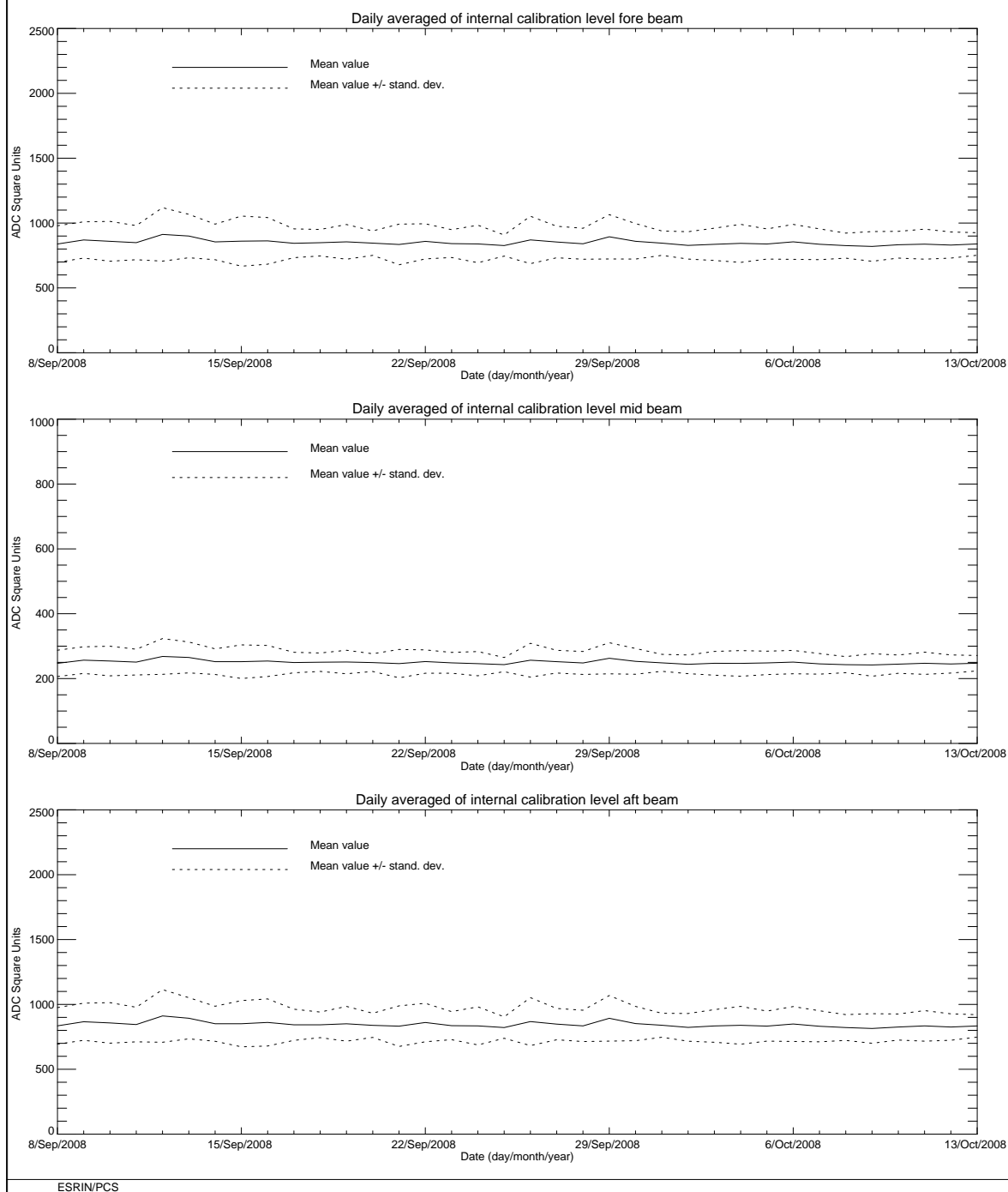


FIGURE 7 ERS-2 Scatterometer: power of internal calibration level cycle 140.

4 Products performance

The PCS carries out a quality control of the winds generated from the WSCATT data. External contributions to this quality control (from ECMWF) are also reported in this chapter.

4.1 Products availability

One of the most important points in the monitoring of the products performance is their availability. The Scatterometer is a part of ERS payload and it is combined with a Synthetic Aperture Radar (SAR) into a single Active Microwave Instrument (AMI). The SAR users requirements and the constraints imposed by the on-board hardware (e.g. amount of data that can be recorded in the on-board tape) set rules in the mission operation plan.

The principal rules that affected the Scatterometer instrument data coverage are:

- Over the Ocean the AMI is in wind/wave mode (Scatterometer with small SAR imagerettes acquired every 30 sec.) and the ATSR-2 is in low rate data mode.
- Over the Land the AMI is in wind only mode (only Scatterometer) and the ATSR-2 is in high rate mode. (Due to on board recorder capacity, ATSR-2 in high rate is not compatible with SAR wave imagerettes acquisitions.) This strategy preserves the Ocean mission.
- The SAR images are planned as consequence of users' request.

Moreover:

- since July 16th 2003 the ERS-2 Low Rate mission is continued within only the visibility of ESA ground stations over Europe, North Atlantic, the Arctic and western North America. The reason was the failure of both on-board tape recorders.
- During the cycles 64 – 92 (June 2001 since 25th February 2004) the AMI instrument was operated in wind/wave mode also over the land. The reason was because the SAR wave data was used to estimate the satellite mispointing along the full orbit. Since 25th February onwards the nominal mission scenario has been resumed, with the AMI instrument in wind only mode over the land (and consequently ATSR was operated again in High Rate over land). The mispointing performances (in particular the yaw error angle) along the full orbit are computing by analyzing the Scatterometer data.

In order to maximize the data coverage, after the on-board tape recorder failure, an upgrade of the ERS ground segment acquisition scenario has been performed.

In that framework the following has been implemented:

- Since September 7th 2003 the ground station in Maspalomas, Gatineau and Prince Albert are acquiring and processing data for all the ERS-2 satellite passes within the station visibility (apart from passes for which other satellites have an higher priority).
- To further increase the wind coverage of the North Atlantic area, since December 8th, 2003 is operative a new ground Station in West Freugh (UK) and data from this new station are available to the user since mid January 2004. Due to its location, the West Freugh acquisitions have some overlap with those from three other ESA stations, Kiruna, Gatineau or Maspalomas. The station overlap depends on the relative orbit of the satellite. Consequentially, overlapping wind Scatterometer LBR data may be included in two products. Since the two products are generated at different ground stations the overlap may not be completely precise, with a displacement up to 12 Km and slight differences in the wind data itself.
- Since March, 3rd 2004, Matera station is acquiring and processing low rate bit data for all the passes for which is planned a SAR acquisition. This means for the Scatterometer data coverage a limited improvement due to the fact that is acquired only a passage with some planned SAR activity.
- Since February 2005 a new acquisition station in Miami (US) is in operations. This new station allows a full data coverage of the Gulf of Mexico and part of the Pacific Ocean on the west Mexico coast.
- Since 25th, June 2005 a new acquisition stations have been put into operations in Beijing. It covers part of China and Oriental Asia.
- Since 5th July 2005 McMurdo ground station is operational in the South Pole. It covers all the Antarctic region.
- Since 5th December 2005 the Hobart station is operational and it is covering the Australian and New Zealand area. Hobart data has been disseminated into BUFR format since February 13th 2006.
- At the end of August 2006 a new ground station in Singapore has been installed and products are distributed to the users since October 19th 2006.
- At the end of September 2007 a new ground station has been put into operation in Chetumal (Mexico). Products are distributed to the users since October 18th 2007.
- On May 2008 a new ground station is operational in Johannesburg. Data has been disseminated to users since July 2008.

Figure 8 shows the AMI operational modes for cycle 140. Each segment of the orbit has different color depending on the instrument mode: brown for wind only mode, blue for wind-wave mode and green for image mode. The red and yellow colors correspond to gap modes (no data acquired). For cycle 140 the percentage of the ERS-2 AMI activity is shown in table

4. The value for cycle 140 shows a decrease of SAR activity at descending passes with respect to the cycle 139 (15.84%, was 18.95%).

TABLE 4 ERS-2 AMI activity (cycle 140)

| Ami Mode | Ascending passes | Descending passes |
|---------------------------|------------------|-------------------|
| Wind and Wind-Wave | 87.80 % | 76.04% |
| Image | 4.14 % | 15.84 % |
| Gap and others | 8.04 % | 8.08 % |

Table 5 reports the major data lost (day or more) due to the test periods, AMI and satellite anomalies or ground segment anomalies occurred after 6th August, 1996 (before that day for many times data were not acquired due to the DC converter failure).

TABLE 5 ERS-2 Scatterometer mission major data lost (day or more) after 6th, August 1996

| Start date | Stop Date | Reason |
|-----------------------------------|-----------------------------------|-----------------------------------------------------------|
| September 23 rd , 1996 | September 26 th , 1996 | ERS 2 switched off due to a test period |
| February 14 th , 1997 | February 15 th , 1997 | ERS 2 switched off due to a depointing anomaly |
| June 3 rd , 1998 | June 6 th , 1998 | ERS 2 switched off due to a depointing anomaly |
| November 17 th , 1998 | November 18 th , 1998 | ERS 2 switched off to face out Leonide meteor storm |
| September 22 nd , 1999 | September 23 rd , 1999 | ERS 2 switched off due to Year 2000 certification test |
| November 17 th , 1999 | November 18 th , 1999 | ERS 2 switched off to face out Leonide meteor storm |
| December 31 st , 1999 | January 2 nd , 2000 | ERS 2 switched off Y2K transition operation |
| February 7 th , 2000 | February 9 th , 2000 | ERS 2 switched off due to new AOCS s/w up link |
| June 30 th , 2000 | July 5 th , 2000 | ERS 2 Payload switched off after RA anomaly |
| July 10 th , 2000 | July 11 th , 2000 | ERS 2 Payload reconfiguration |
| October 7 th , 2000 | October 10 th , 2000 | ERS 2 Payload switched off after AOCS anomaly |
| January 17 th , 2001 | February 5 th , 2001 | ERS 2 Payload switched off due to AOCS anomaly |
| May 22 nd , 2001 | May 24 th , 2001 | ERS 2 Payload switched off due to platform anomaly |
| May 25 th , 2001 | May 25 th , 2001 | AMI switched off due thermal analysis |
| November 17 th , 2001 | November 18 th , 2001 | ERS 2 switched off to face out Leonide meteor storm |
| November 27 th , 2001 | November 28 th , 2001 | ERS 2 payload off due to 1Gyro Coarse Mode commissioning |
| March 8 th , 2002 | March 20 th , 2002 | ERS 2 payload unavailability after RA anomaly |
| May 19 th , 2002 | May 24 th , 2002 | AMI switched off due to arc events |
| May 24 th , 2002 | May 28 th , 2002 | AMI partially switched off due to arc events |
| May 31 st , 2002 | June 3 rd , 2002 | Gatineau orbits partially acquired due to antenna problem |
| June 4 th , 2002 | June 5 th , 2002 | AMI partially switched-off due to arc events |

| | | |
|------------------------------------|-----------------------------------|--------------------------------------------------------------------------------------------------------------------------------------|
| July 25 th , 2002 | July 25 th , 2002 | AMI switched off HPA voltage too low |
| September 11 th , 2002 | September 11 th , 2002 | AMI switched off macrocommand transfer error |
| November 17 th , 2002 | November 18 th , 2002 | ERS-2 switched off to face out Leonide meteor storm |
| December 9 th , 2002 | December 10 th , 2002 | IDHT anomaly no data recorded on board |
| December 20 th , 2002 | December 20 th , 2002 | IDHT anomaly no data recorded on board |
| January 14 th , 2003 | January 14 th , 2003 | IDHT anomaly no data recorded on board |
| May 6 th , 2003 | May 19 th , 2003 | AMI off due to bus reconfiguration |
| June 22 nd , 2003 | July 16 th , 2003 | IDHT recorders test no data acquired |
| Since July 16 th , 2003 | | Regional Mission Scenario. Data available only within the visibility of ESA ground station |
| May 21 st , 2004 | May 25 th , 2004 | AMI in refuse mode due to excessive HPA arcing |
| June 22 nd , 2004 | June 22 nd , 2004 | AMI in refuse mode due to excessive HPA arcing |
| September 23 rd , 2004 | September 24 th , 2004 | AMI switched down |
| December 16 th , 2004 | December 17 th , 2004 | AMI memory test |
| December 26 th , 2004 | December 26 th , 2004 | IDHT anomaly. No data acquired |
| December 27 th , 2004 | December 28 th , 2004 | Payload off due to on board anomaly |
| January 23 rd , 2005 | January 23 rd , 2005 | AMI switched down (00:51 a.m. – 1.26 p.m.) |
| February 26 th , 2005 | February 26 th , 2005 | AMI switched down (01:20 a.m. – 12.37 a.m.) |
| May 23 rd , 2005 | May 24 th , 2005 | ERS 2 payload unavailability after RA anomaly |
| Jun 20 th , 2005 | Jun 21 st , 2005 | AMI switched off caused by RBI status error (08:44 p.m. – 10:13 a.m.) |
| December 8 th , 2006 | December 8 th , 2006 | AMI switched down to Standby/MCMD Execution Inhibited due to Format Acquisition Error (02:04 p.m. – 10:43 p.m.) |
| April, 13 th , 2007 | April 13 th , 2007 | AMI Switched down to Standby/MCMD Execution Inhibited due to Format Acquisition Error (03:10 a.m. – 12.06 p.m.) |
| May, 22 nd , 2007 | May, 22 nd , 2007 | AMI Switched down to Standby/MCMD Execution Inhibited due to Acquisition Errors (01:50 p.m. – 07.04 p.m.) |
| June, 10 th , 2007 | June, 10 th , 2007 | AMI Switched down to Standby/MCMD Execution Inhibited due to Format Length and ICU Begin Identifier Errors (00:55 a.m. – 10.13 a.m.) |
| June, 11 th , 2007 | June, 12 th , 2007 | AMI Switched down to Standby/MCMD Execution Inhibited due to Emergency Switchdown requested by AMI ICU (10:39 p.m. – 10.49 a.m.) |
| July, 27 th , 2007 | July, 27 th , 2007 | AMI switchdown to Standby/MCMD Execution Inhibited due to RBI Status Error (00:44 a.m. - 09:43 a.m.). |
| January, 17 th , 2007 | January, 17 th , 2007 | AMI switched down to Heater/MCMD Refuse mode due to HPA Arcing (04:01 a.m. – 07:22 p.m.) |
| January, 17 th , 2007 | January, 18 th , 2007 | AMI switched down to Heater/MCMD Refuse mode due to HPA Arcing (07:51 p.m. – 12:49 p.m.) |
| January, 18 th , 2007 | January, 18 th , 2007 | AMI switched down to Heater/MCMD Refuse mode due to HPA Arcing (03:26 p.m. – 03:39 p.m.) |
| January, 18 th , 2007 | January, 18 th , 2007 | AMI switched down to Heater/MCMD Refuse mode due to HPA Arcing (08:12 p.m. – 08:31 p.m.) |
| January, 18 th , 2007 | January, 19 th , 2007 | AMI switched down to Heater/MCMD Refuse mode due to HPA Arcing (10:37 p.m. – 01:32 a.m.) |
| January, 20 th , 2007 | January, 20 th , 2007 | AMI switched down to Heater/MCMD Refuse mode due to HPA Arcing (02:04 a.m. – 07:53 a.m.) |

| | | |
|----------------------------------|-----------------------------------|------------------------------------------------------------------------------------------------------------------------------------------------|
| February, 5 th , 2007 | February, 5 th , 2007 | AMI switched down to Standby/MCMD Execution Inhibited due to Format Length and ICU Begin Identifier Errors (02:05:09 a.m. – 05:43:33 p.m.) |
| February, 6 th , 2007 | February, 6 th , 2007 | AMI switched down to Standby/MCMD Execution Inhibited due to Format Length and ICU Begin Identifier Errors (12:14:23 p.m. – 12:52:51 p.m.) |
| April, 14 th , 2008 | April, 14 th , April | AMI switched down to Standby/MCMD Execution Inhibited due to Format Length and ICU Begin Identifier Errors (13:43:34 – 18:57:19) |
| April, 30 th , 2008 | April, 30 th , 2008 | AMI switched down to Standby/MCMD Refuse Mode due to 228 ICU Req. (08:25:42 – 11:44:05) |
| June, 12 th , 2008 | June, 12 th , 2008 | AMI switched down to Heater/MCMD Refuse Mode due to incorrect timetag entered for quarterly AMI Science Data Memory Test (08:44:43 – 09:10:34) |
| June, 16 th , 2008 | June, 12 th , 2008 | AMI Switched down to Standby/MCMD Execution Inhibited due to Format Length and ICU Begin Identifier Errors (01:17:26 – 10:24:10). |
| June, 20 th , 2008 | June, 20 th , 2008 | AMI Emergency Switchdown to Standby/MCMD Execution Inhibited due to RBI Status Error (13:12:22 – 18:20:40). |
| June, 29 th , 2008 | June, 29 th , 2008 | AMI unavailable for PL Synchronisation (20:23:00 – 20:48:59) |
| July, 26 th , 2008 | July, 26 th , 2008 | AMI in Standby/MCMD Refused due to Anomaly 228 ICU REQ 1500 0082 (18:38:30 – 22:40:52) |
| August, 31 st , 2008 | September, 1 st , 2008 | AMI switchdown to Standby/MCMD Execution Inhibited due to Format Length and ICU Begin Identifier Errors (22:10:15 – 12:15:06) |

ERS-2 Active Microwave Instrument: Working modes

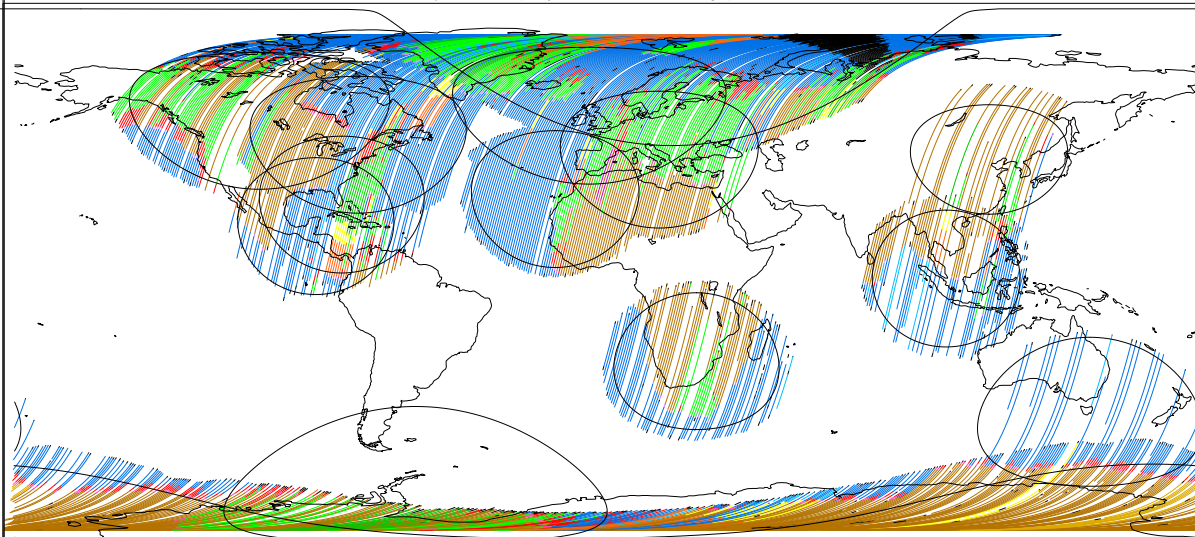
First product : 8/Sep/2008 0:00:03.991

Last product : 12/Oct/2008 23:25:24.430

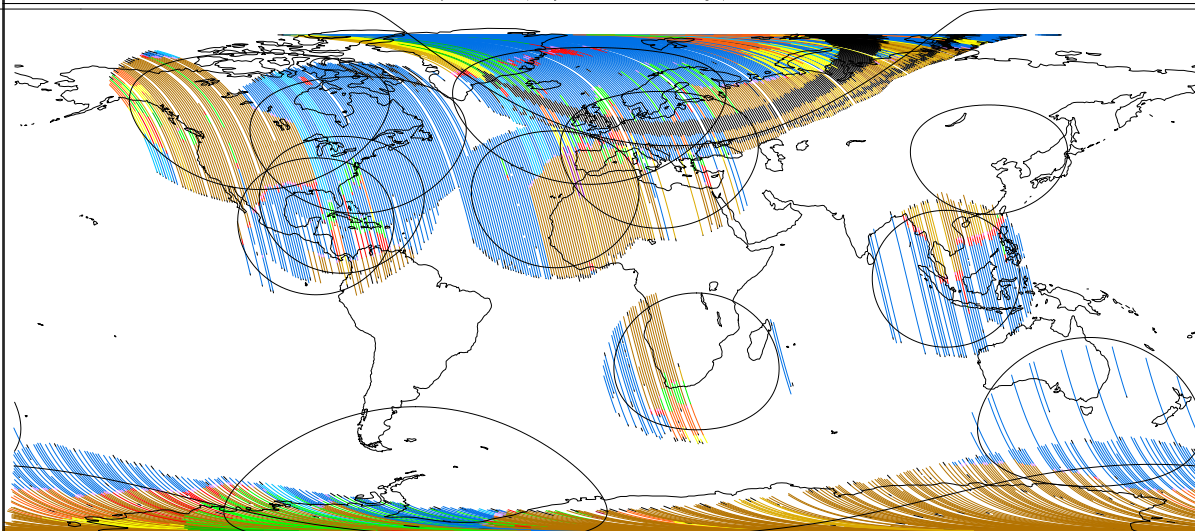
Products found: 65124

Created : 14-OCT-2008 08:09:46.000

Cylindrical projection: Descending passes



Cylindrical projection: Ascending passes



AMI MODE Decoding Key and percentage of occurrences per mode & passage

| | | | | | | |
|---------------------------------|---------------------------------|---------------------------------|---------------------------------|---------------------------------|---------------------------------|---------------------------------|
| WI/WV OG HTR A 0.000 D 0.000 | WI/WV OB GAP A 41.95 D 39.42 | WI/WV OB HTR A 2.620 D 1.450 | WIND CAL GAP A 0.000 D 0.100 | WIND CAL HTR A 0.110 D 0.000 | HEATER A 2.450 D 1.180 | GAP A 1.660 D 3.290 |
| IMAGE OB HTR A 0.000 D 0.000 | WAVE OG GAP A 0.000 D 0.000 | WAVE OG HTR A 0.000 D 0.000 | WAVE OB GAP A 0.000 D 0.000 | WAVE OB HTR A 0.000 D 0.000 | WIND GAP A 31.96 D 30.30 | WIND HTR A 3.790 D 0.920 |
| TX WINDC GAP A 0.000 D 0.010 | TX WINDC HTR A 0.000 D 0.000 | TX TO HEATER A 0.040 D 0.020 | TX TO GAP A 2.990 D 2.540 | STANDBY A 0.000 D 0.000 | IMAGE OG GAP A 3.320 D 13.42 | IMAGE OG HTR A 0.820 D 2.420 |
| TX WVOB GAP A 0.000 D 0.000 | TX WVOB HTR A 0.000 D 0.000 | TX WIND GAP A 0.090 D 0.470 | TX WIND HTR A 0.050 D 0.010 | TX WVOG GAP A 0.000 D 0.000 | TX WVOG HTR A 0.000 D 0.000 | TX WVOB GAP A 0.550 D 0.350 |
| NONE A 7.480 D 3.950 | TX TO STBY A 0.000 D 0.000 | TX IMOG GAP A 0.050 D 0.080 | TX IMOG HTR A 0.010 D 0.020 | TX IMOB GAP A 0.000 D 0.000 | TX IMOB HTR A 0.000 D 0.000 | TX WVOG GAP A 0.000 D 0.000 |
| ESRIN/PCS | | | | | | |

Page 1

FIGURE 8 ERS-2 AMI activity during cycle 140.

4.2 PCS Geophysical Monitoring

The routine analysis is summarized in the plots of figure 9; from top to bottom:

- the monitoring of the valid sigma-nought triplets per day.
- the evolution of the wind direction quality. The ERS wind direction (for all nodes and only for those nodes where the ambiguity removal has worked properly) is compared with the ECMWF forecast. The plot shows the percentage of nodes for which the difference falls in the range -90.0, +90.0 degrees.
- the monitoring of the percentage of nodes whose ambiguity removal works successfully.
- the comparison of the wind speed deviation: (bias and standard deviation) with the ECMWF forecast.

The results since August 6th, 1996 until the beginning of the operation with the Zero Gyro Mode (ZGM) in January 2001 can be summarized as:

- High quality wind products has been distributed since Mid March 1996 (end of calibration and validation phase)
- The number of valid sigma-nought distributed per day was almost stable with a small increase after June 29th, 1999 due to the dissemination in fast delivery of the data acquired in the Prince Albert station (Canada).
- The wind direction is very accurate for roughly 93% of the nodes, the ambiguity removal processing successfully worked for more than 90.0% of the nodes.
- The UWI wind speed shows an absolute bias of roughly 0.5 m/s and a standard deviation that ranges from 2.5 m/s to 3.5 m/s with respect to the ECMWF forecast.
- The wind speed bias and its standard deviation have a seasonal pattern due to the different winds distribution between the winter and summer season.
- Two important changes affect the speed bias plot.
- the first is on June 3rd, 1996 due to the switch from ERS-1 to ERS-2 data assimilation in the meteorological model.
- the second which occurred at the beginning of September 1997, is due to the new monitoring and assimilation scheme in ECMWF algorithms (4D-Var).
- Since 19th April 1999 two set of meteo-table (meteorological forecast centred at 00:00 and 12:00 of each day) are used in the ground processing. This allowed the processing of wind data with 18 and 24 hours meteorological forecast instead of the 18, 24, 30 36 hours forecast. The comparison between data processed with the 18-24 hours forecast instead of 30-36 hours forecast shown an increase in the number of ambiguity removed nodes with a neutral impact in the daily statistics.

- The mono-gyro AOCS configuration (see report for cycle 50) that was operative from 7th February 2000 to 17th January 2001 did not affect the wind data performance.

During the Zero Gyro Mode (ZGM) phase the dissemination of the fast delivery Scatterometer data to the users has been interrupted on 17th January 2001 due to degraded quality in sigma noughts and winds. The satellite attitude in ZGM is slightly degraded and the “old” ground processor was not able to produce calibrated data anymore. For that reason a re-design of the entire ground processing has been carried out and since August 21st 2003 the new processor named ERS Scatterometer Attitude Corrected Algorithm (ESACA) is operative in all the ESA ground station and data was redistributed to the user.

Although for a long period data was not distributed, the PCS has monitored the data quality (as shown in Figure 9) and the results during that period can be summarized as:

At the beginning of the ZGM (January 2001 - end July 2001) the number of valid nodes has clear drop from 190000 per day to 9000 per day. This because the satellite attitude was strong degraded and the received signal had a very high Kp figure (in particular for the far range nodes). For the valid nodes, due to no calibrated sigma nought, the quality of the wind was very poor, the distance from the cone was high and the wind speed bias was above 1.5 m/s.

At the end of July 2001 the ZGM has been tuned and the satellite attitude had an improvement. This explains the increase of the number of valid nodes (returned around the nominal level) and the improvements in the wind speed bias (around 0.5 m/s).

On 4th February 2003, a beta version of the new ESACA processor has been put in operation in Kiruna for validation and the monitoring of the data quality has been done only for the new ESACA data. The number of valid nodes slight decreased because Kiruna station process only 9 of 14 orbits per day. The wind speed direction deviation had a clear improvement because ESACA implements a new ambiguity removal algorithm (MSC) and the ambiguity removal rate is now stable at 100% (the MSC is able to remove ambiguity for all the nodes). The wind speed bias had a clear drop from 0.5 to -0.5 m/s. That value is closer to the nominal one (around -0.2 m/s). As reported in the previous cyclic reports the beta version of ESACA had some calibration problem for the near range nodes and this explains why the data quality does not match exactly the one obtained in the nominal YSM. That problem has been overcome with the final release of the ESACA processor put into operation on August 21st 2003. On June 22nd the failure of the on-board tape recorder discontinued the ERS global mission (see section 4.1) and this explains the low number of valid nodes available after that day.

The performances of ESACA winds delivered between August 2003 and September 2004 are affected by land contamination. Around costal zones many Sea nodes have a strong contribution of Land backscattering and the retrieved wind is not correct. An optimization of

the Land/Sea flag in the ground processing has been carried out during the cycle 98. In the statistics computed by PCS on the fast delivered winds the Land contamination has been removed by using a refined Land/Sea mask. Also the ice contamination has been removed with a simple geographical filter. With these new setting the PCS statistics are very similar to the ones reported by ECMWF.

For cycle 140 the wind performances stayed stable. The wind speed bias (UWI vs 18 or 24 hour forecast) was roughly 0.7 m/s and the speed bias standard deviation was around 1.6 m/s.

Missing statistics on 8th September is due to a ground segment dissemination problem that affected the Meteo files dissemination. Meteo tables were not disseminated to the ground station therefore data was processed with wrong meteorological tables.

The wind direction deviation for cycle 140 was good with more than 98% of the nodes wind direction in agreement with the ECMWF forecast.

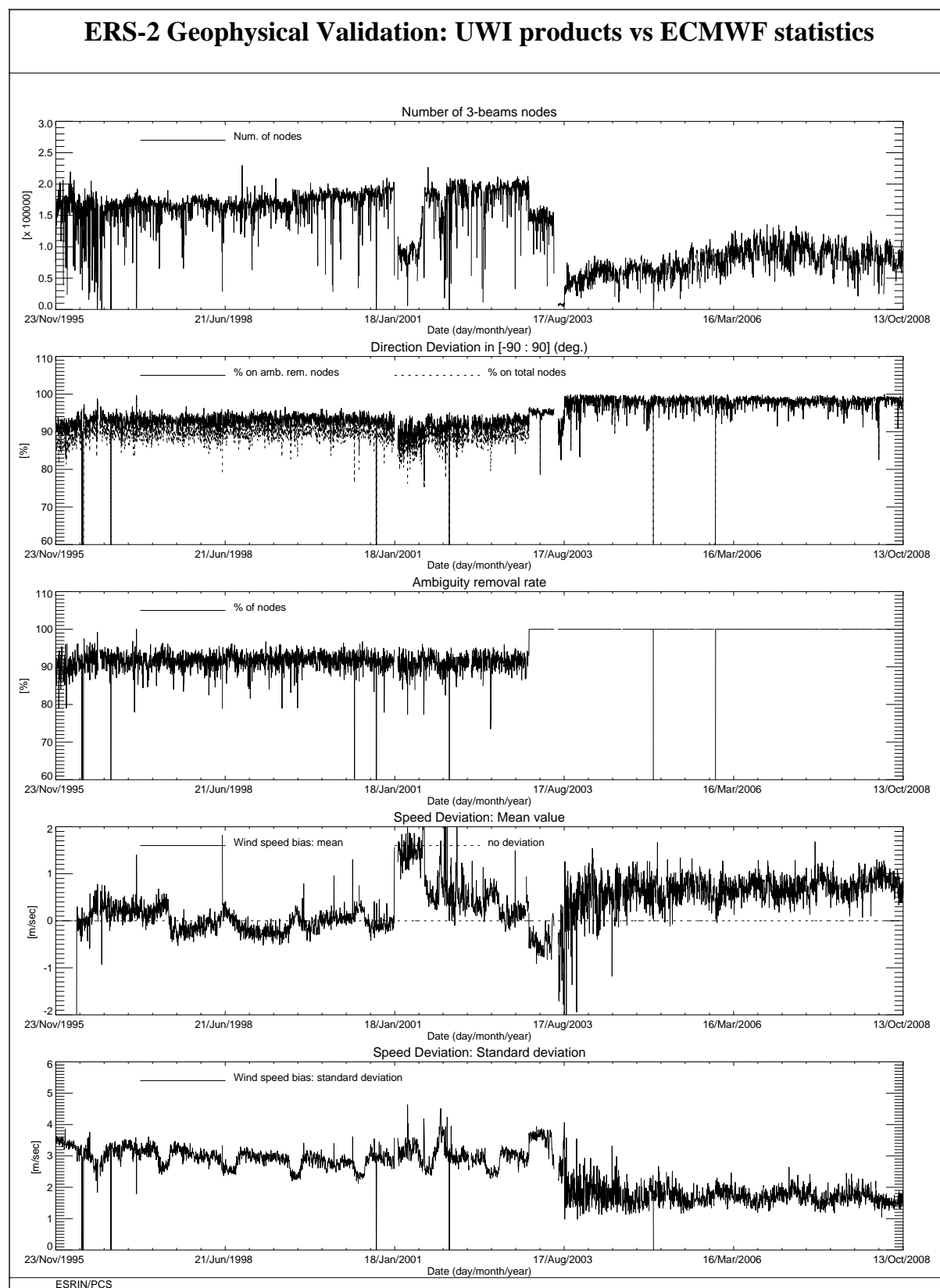
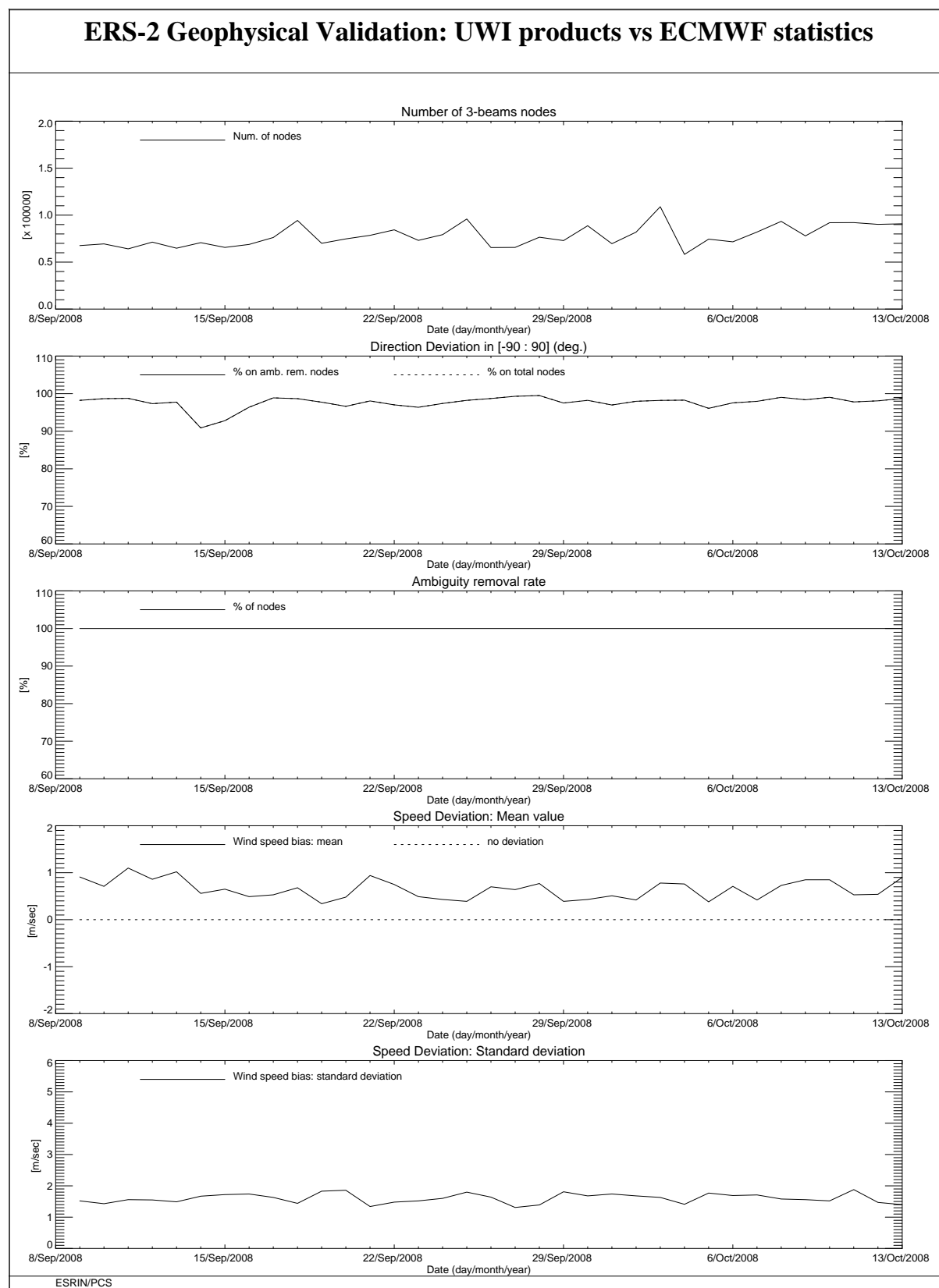


FIGURE 9 ERS-2 Scatterometer: wind products performance since the beginning of the mission.

**FIGURE 10 ERS-2 Scatterometer: wind products performance for cycle 140.**

4.3 ECMWF Geophysical Monitoring

The quality of the UWI product was monitored at ECMWF for Cycle 140. Results were compared to those obtained from the previous Cycle, as well for data received during the nominal period in 2000 (up to Cycle 59). No corrections for duplicate observations were applied.

During Cycle 140 data was received between 21:03 UTC 8 September 2008 and 20:58 UTC 13 October 2008. Data was grouped into 6-hourly batches (centred around 00, 06, 12 and 18 UTC). No data was received in the batches from 06 UTC 5 October 2008, until 00 UTC 6 October 2008 inclusive due to an Esrin ground segment maintenance activity.

Data is being recorder whenever within the visibility range of a ground station. For Cycle 140, data coverage was over the North-Atlantic, the Mediterranean, the Gulf of Mexico, a small part of the Pacific west from the US, Canada and Central America, a small part of the Atlantic and Indian Ocean around South Africa, the Chinese Sea, a small part of the Indian Ocean South-East of Thailand and Indonesia, and the Southern Ocean close to the Antarctic and south of Australia and New Zealand.

The asymmetry between the fore and aft incidence angles showed three not too extreme peaks. There was hardly any solar activity during Cycle 140 (source www.spaceweather.com).

Compared to Cycle 139, the UWI wind speed relative to ECMWF first-guess (FG) fields showed a higher standard deviation (1.41 m/s, was 1.31 m/s). Bias levels were less negative (on average -0.94 m/s, was -1.04 m/s).

The ECMWF operational assimilation and forecast system was changed on 1 October 2008. The sea-surface temperature and sea-ice fraction analyses are now based on products from OSTIA, rather than from NCEP. Other changes include an adaptation in snow physics, and a convective contribution to wind gusts in the post-processing. Due to a slightly lower sea-ice fraction in the OSTIA product, ECMWF surface winds can locally be increased (due to lower surface roughness) up to 1 m/s in confined areas around the poles.

The Cycle-averaged evolution of performance relative to ECMWF first-guess (FG) winds is displayed in Figure 11. Figure 12 shows global maps of the over Cycle 140 averaged UWI data coverage and wind climate, Figure 13 for performance relative to FG winds.

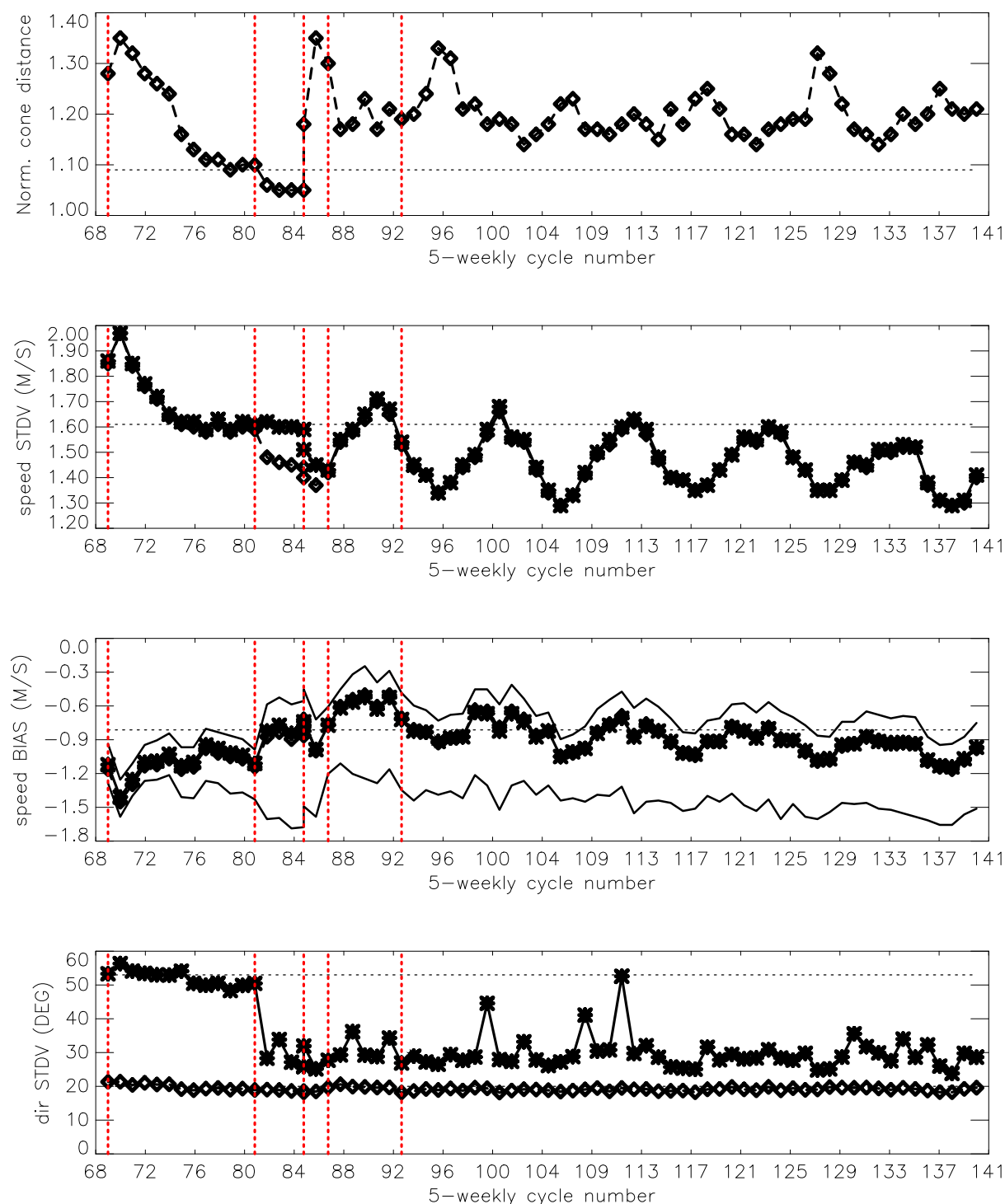
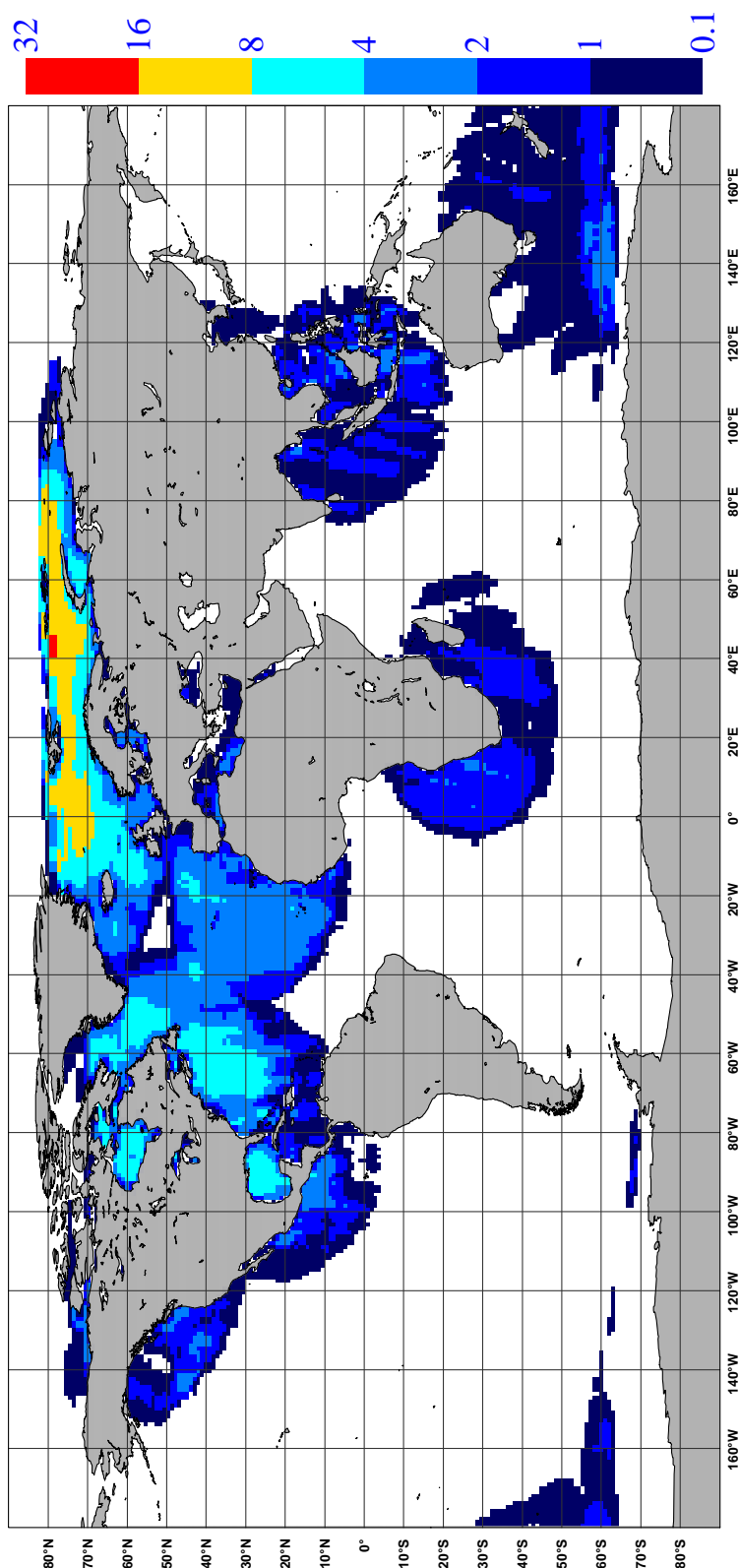


FIGURE 11 Evolution of the performance of the ERS-2 Scatterometer averaged over 5-weekly cycles from 12 December 2001 (cycle 69) to 13 October 2008 (end cycle 140) for the UWI product (solid, star) and de-aliased winds based on CMOD4 (dashed, diamond). Results are based on data that passed the UWI QC flags. For cycle 85 two values are plotted; the first value for the global set, the second one for the regional set. Dotted lines represent values for cycle 59 (5 December 2000 to 17 January 2001), i.e. the last stable cycle of the nominal period. From top to bottom panel are shown the normalized distance to the one (CMOD4 only) the standard deviation of the wind speed compared to FG winds, the corresponding bias (for UWI winds the extreme inter-node averages are shown as well), and the standard deviation of wind direction compared to FG.

NOBS (ERS-2 UWI), per 12H, per 125km box
average from 2008090900 to 2008101318 GLOB:1.62



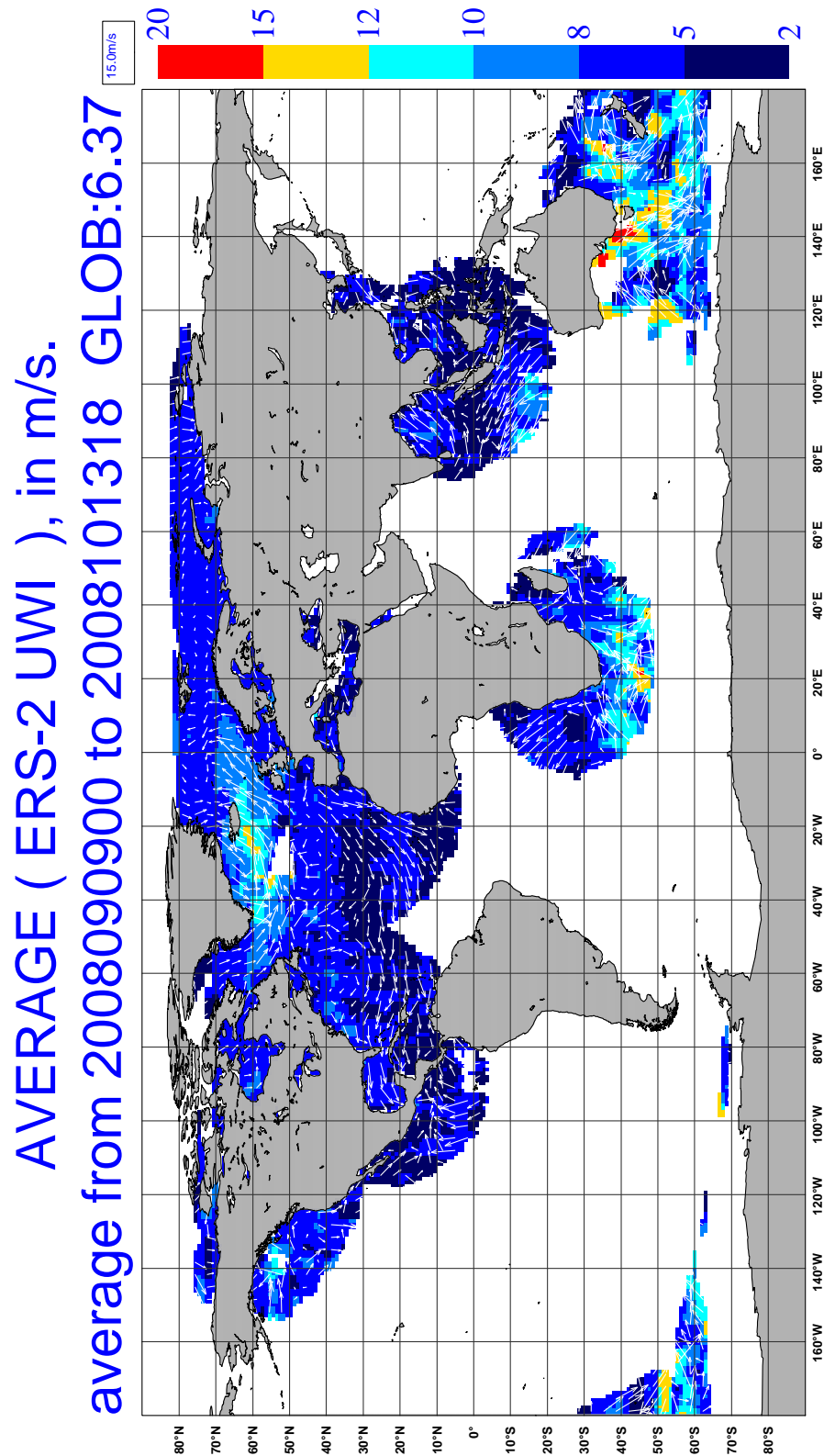
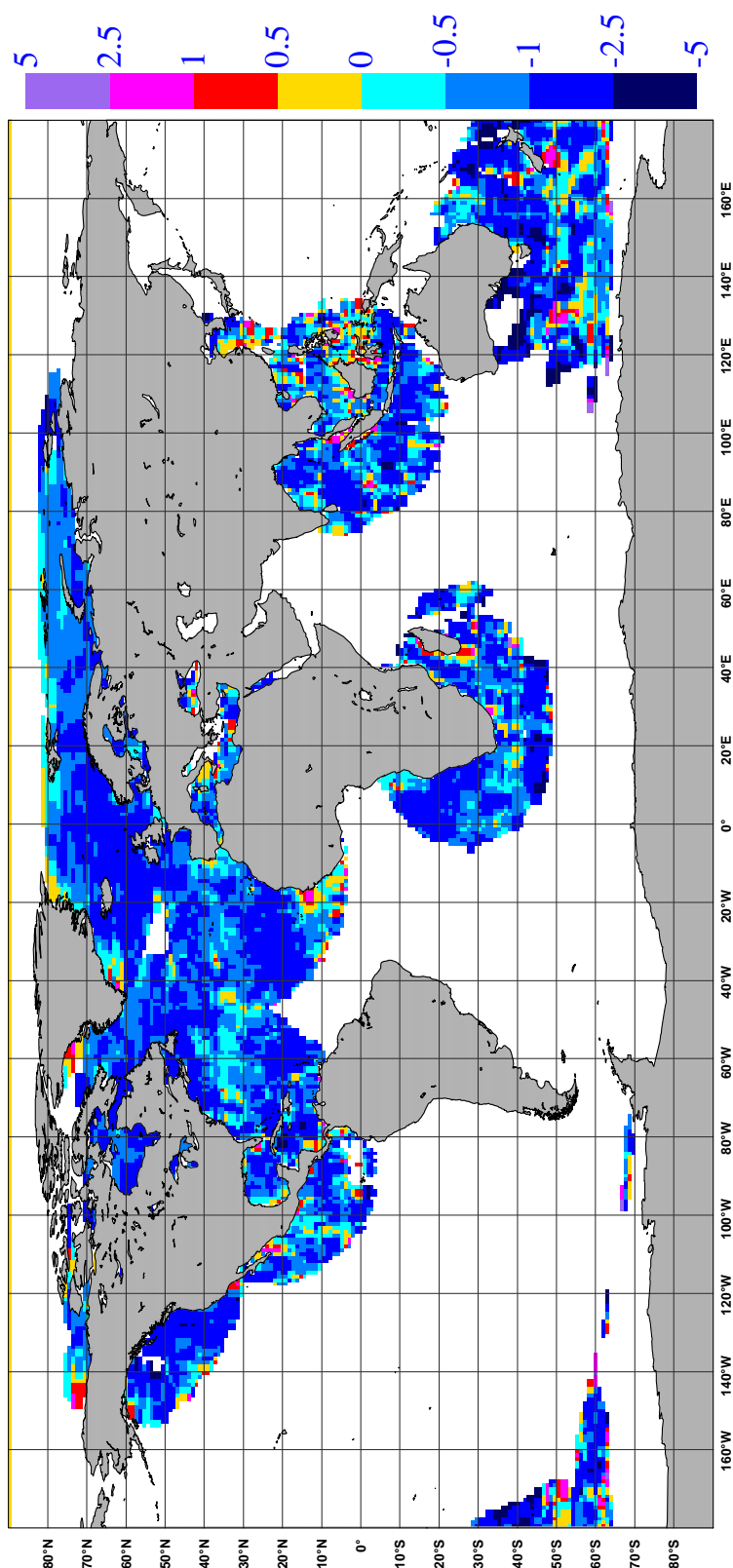


FIGURE 12 Average number of observations per 12H and per 125km grid box (top panel) and wind-climate (lower panel) for UWI winds that passed the UWI flags QC and a check on the collocated ECMWF land and sea-ice mask.

BIAS (ERS-2 UWI vs FIRST-GUESS), in m/s.
average from 2008090900 to 2008101318 GLOB:-0.94



STDV (ERS-2 UWI vs FIRST-GUESS), in m/s.
average from 2008090900 to 2008101318 GLOB:1.07

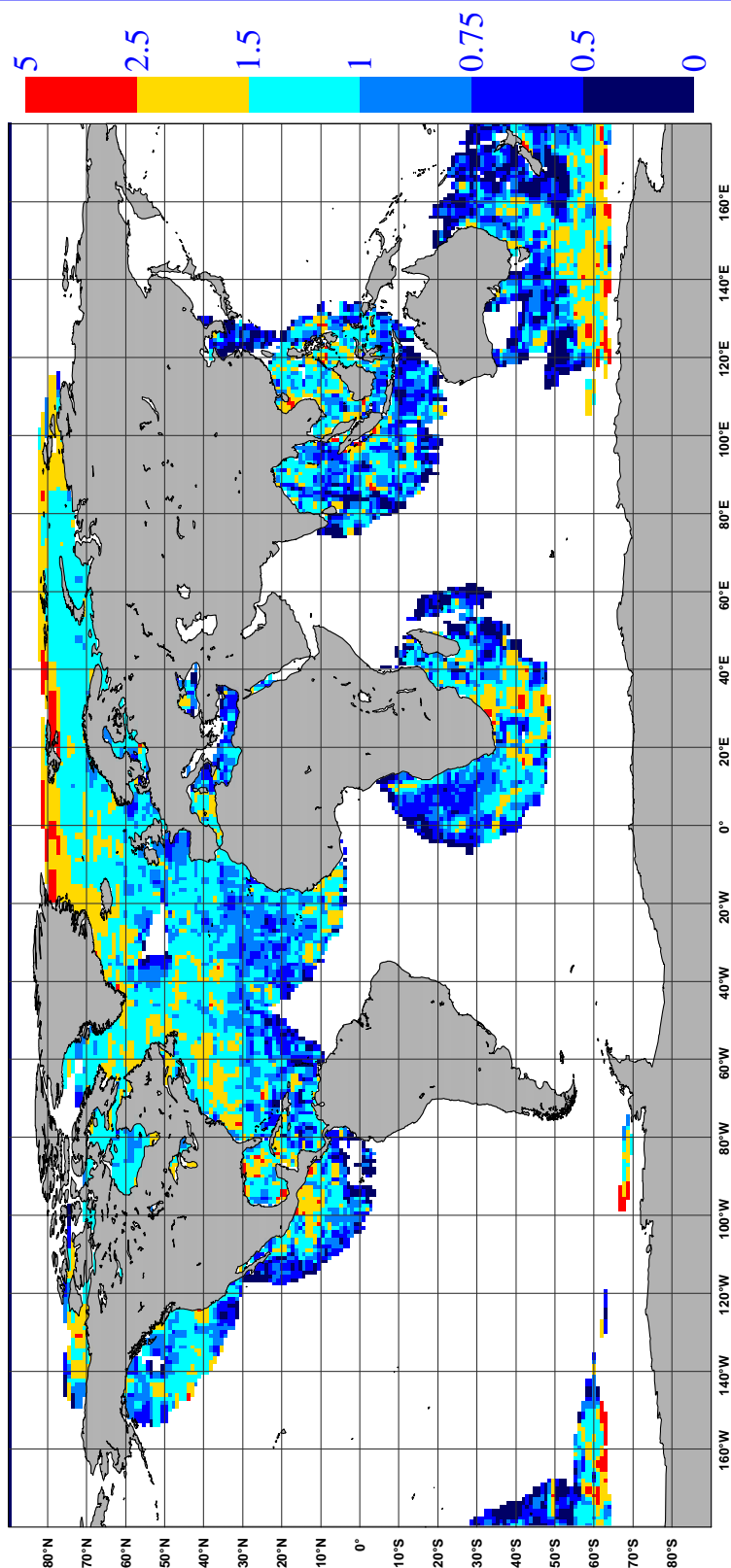


FIGURE 13 The same as Figure 12, but now for the relative bias (top panel) and standard deviation (lower panel) with ECMWF first-guess winds.

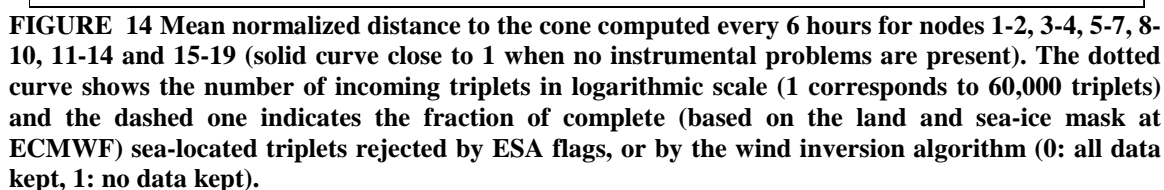
4.3.1 Distance to cone history

The distance to the cone history is shown in Figure 14. Curves are based on data that passed all QC, including the test on the K_p-yaw flag, and subject to the land and sea-ice check at ECMWF (see cyclic report 88 for details).

Like for previous cycles, time series are (due to lack of statistics) very noisy, especially for the near-range nodes. Most spikes were found to be the result of low data volumes.

Compared to cycle 139, the average level was stable (1.21 versus 1.20), which is higher (by 11%) than for nominal data (see top panel Figure 11).

The fraction of data that did not pass QC is displayed in Figure 14 as well (dash curves).



4.3.2 UWI minus First-Guess history

In Figure 15, the UWI minus ECMWF first-guess wind-speed history is plotted. The history plot shows a few peaks, which are usually the result of low data volume.

Figure 19 displays the locations for which UWI winds were more than 8 m/s weaker (top panel), respectively more than 8 m/s stronger (lower panel) than FG winds. Like for cycle 139, such collocations are isolated, and often indicate meteorologically active regions, for which UWI data and ECMWF model field show reasonably small differences in phase and/or intensity.

Deviations near the poles are the result of imperfect sea-ice flagging.

Two cases for which UWI winds were considerably different from FG winds are presented in Figure 20. They concern the double capture of hurricane Ike on 11 September 2008 around 04 UTC (lower panel) and around 16 UTC (upper panel) in the Gulf of Mexico. Maximum UWI wind speed is lower than that for the ECMWF FG field. There is a de-aliasing problem for a very small part of the scatterometer winds. Winds based on CMOD5 are, by construction, stronger. For a small section north of the cyclone centre, retrieved CMOD5 wind speed appears above 35 m/s and pointing in an erroneous north-south direction (not shown). Apparently the level of backscatter is higher than can be accommodated by the CMOD5 model function. Such cases are rare, though. Both ERS-2 captures of Ike were assimilated at ECMWF, and the erroneously high winds were rejected (not shown).

Average bias levels and standard deviations of UWI winds relative to FG winds are displayed in Table 6. From this it follows that the bias of UWI winds was less negative (-0.94 m/s, was -1.04 m/s), being around -0.1 m/s more negative than the nominal data in 2000.

Table 6 Wind speed and direction biases

| | Cycle 139 | | Cycle 140 | |
|----------------|------------------|-------|------------------|-------|
| | UWI | CMOD4 | UWI | CMOD4 |
| Speed STDV | 1.31 | 1.30 | 1.41 | 1.40 |
| Node 1-2 | 1.38 | 1.36 | 1.45 | 1.42 |
| Node 3-4 | 1.33 | 1.32 | 1.40 | 1.38 |
| Node 5-7 | 1.28 | 1.28 | 1.35 | 1.34 |
| Node 8-10 | 1.25 | 1.25 | 1.36 | 1.37 |
| Node 11-14 | 1.26 | 1.25 | 1.39 | 1.39 |
| Node 15-19 | 1.27 | 1.27 | 1.38 | 1.39 |
| Speed BIAS | -1.04 | -1.05 | -0.94 | -0.95 |
| Node 1-2 | -1.52 | -1.50 | -1.47 | -1.44 |
| Node 3-4 | -1.30 | -1.26 | -1.23 | -1.19 |
| Node 5-7 | -1.08 | -1.06 | -0.99 | -0.96 |
| Node 8-10 | -0.92 | -0.93 | -0.81 | -0.82 |
| Node 11-14 | -0.85 | -0.88 | -0.73 | -0.76 |
| Node 15-19 | -0.85 | -0.90 | -0.74 | -0.78 |
| Direction STDV | 29.8 | 19.2 | 28.6 | 19.6 |
| Direction BIAS | -1.6 | -1.6 | -2.0 | -2.0 |

On a longer time scale seasonal bias trends are observed (see Figure 11). As was highlighted in the previous cyclic reports, it is believed that this yearly trend is partly induced by changing local geophysical conditions. Strong indication for this is a similar trend observed for QuikSCAT data when restricted to an area well-covered by ERS-2 (20N-90N, 80W-20E).

Figure 25 shows time series for that area for both ERS-2 (top panel) and QuikSCAT (lower panel) for the period between 1 January 2004 and 13 October 2008 (end of cycle 140). Results are displayed for at ECMWF actively assimilated data, i.e., CMOD5 winds for ERS-2 and 4%-reduced QuikSCAT winds on a 50km resolution.

Note the increase in ERS-2 wind speed as used at ECMWF since the introduction of the new model cycle at ECMWF on 7 June 2007. It reflects a switch at ECMWF from the CMOD5 to CMOD5.4 model function, which has enhanced the Scatterometer wind speed by 0.48 m/s.

The standard deviation of UWI wind speed versus ECMWF FG was, compared to cycle 139, higher (1.41 m/s, was 1.31 m/s).

For cycle 140 the (UWI - FG) direction standard deviations were mostly ranging between 20 and 40 degrees (Figure 17), which represents nominal variations. Average STDV for UWI wind direction was, compared to Cycle 139 lower (28.6 degrees, was 29.8 degrees). For at ECMWF de-aliased winds performance was slightly worse (STDV 19.6 degrees, was 19.2 degrees).

Monitoring of UWI winds versus First Guess for ERS-2

from 2008090900 to 2008101318

(solid) wind speed bias UWI - First Guess over 6h (deg.)

(dashed) wind speed standard deviation UWI - First Guess over 6h (deg.)

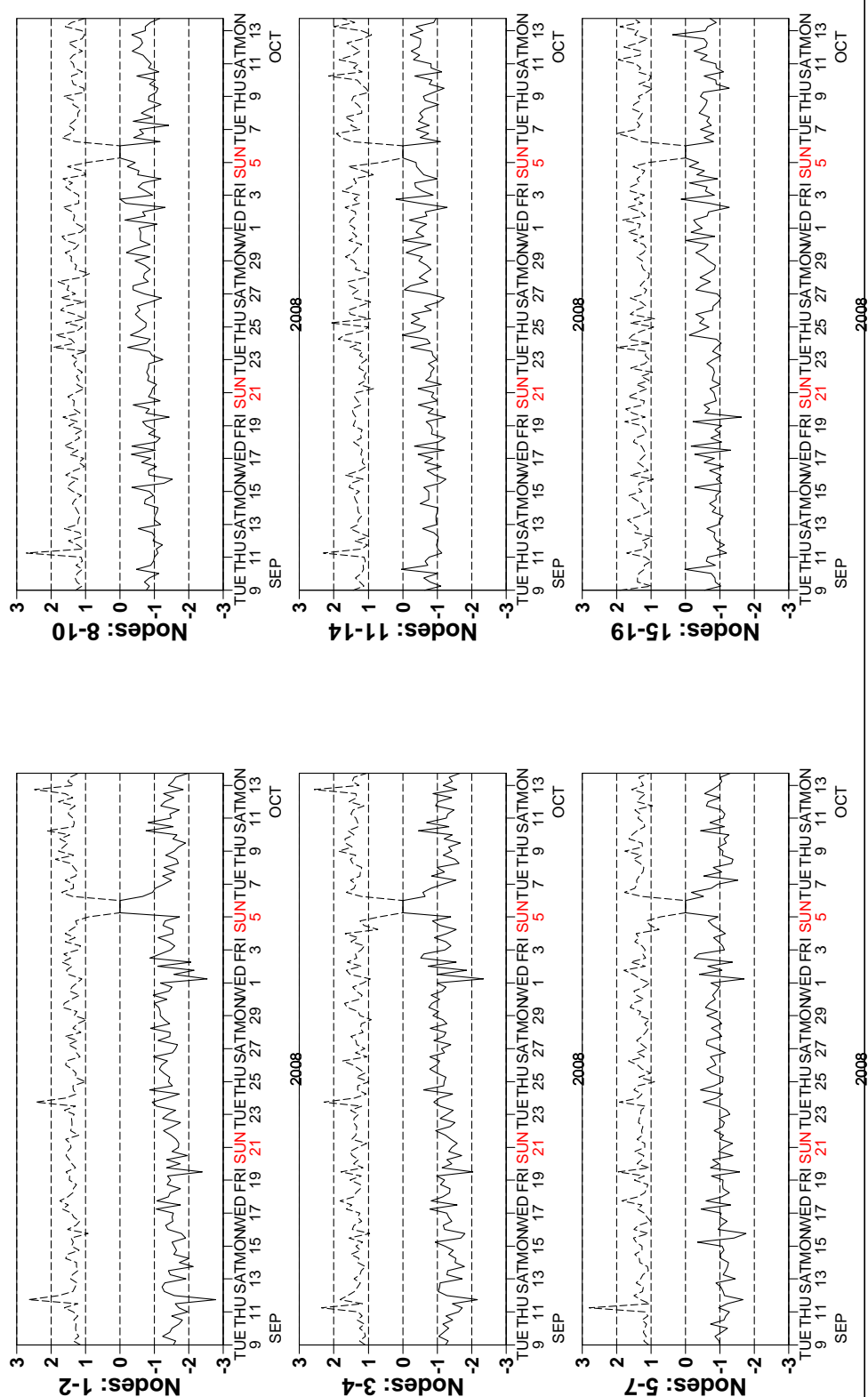


FIGURE 15 Mean (solid line) and standard deviation (dashed line) of the wind speed difference UWI - first guess for the data retained by the quality control.

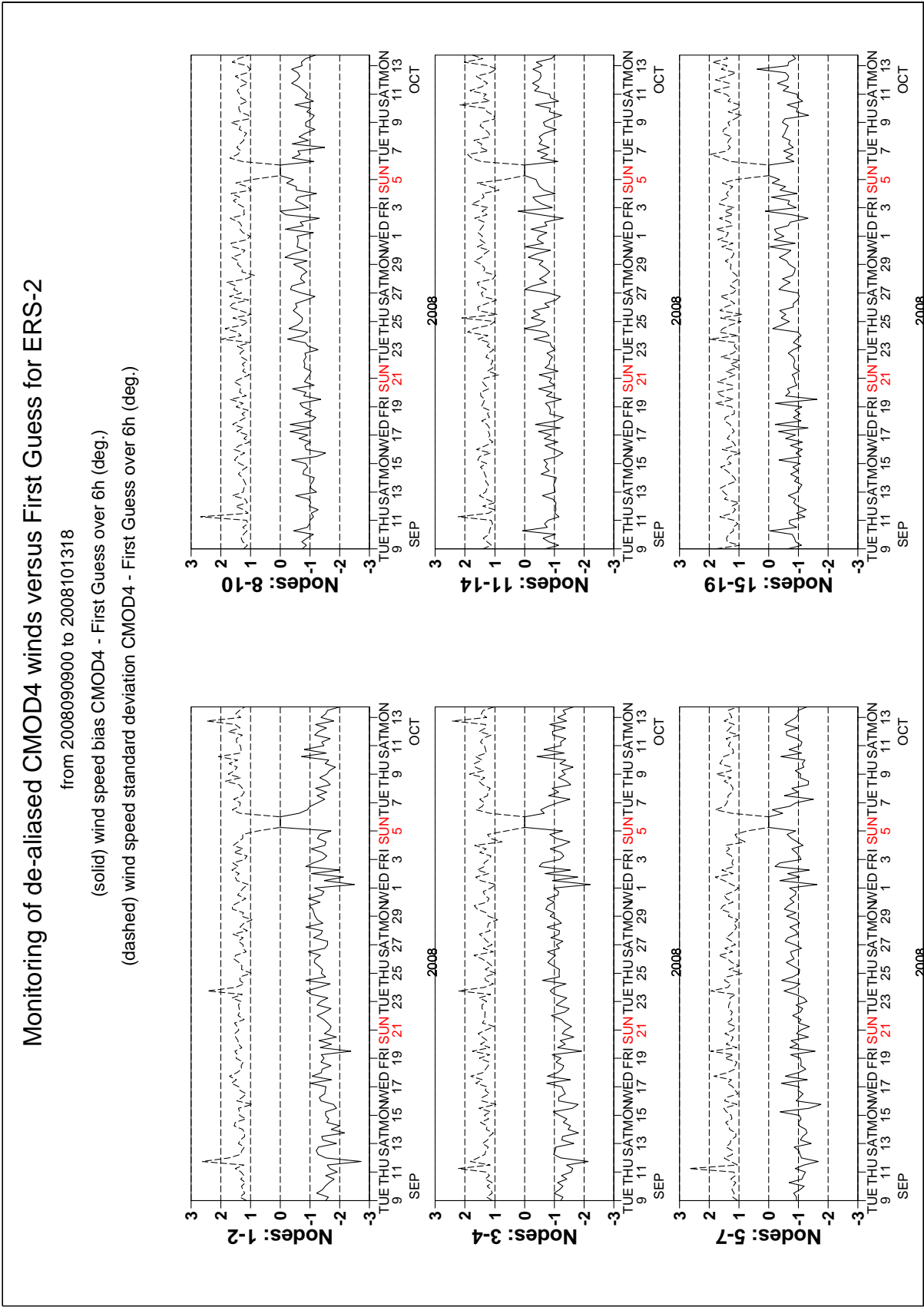


FIGURE 16 Same as Fig. 15, but for the de-aliased CMOD4 data.

Monitoring of UWI winds versus First Guess for ERS-2

from 2008090900 to 2008101318

(solid) wind direction bias UWI - First Guess over 6h (deg.)

(dashed) wind direction standard deviation UWI - First Guess over 6h (deg.)

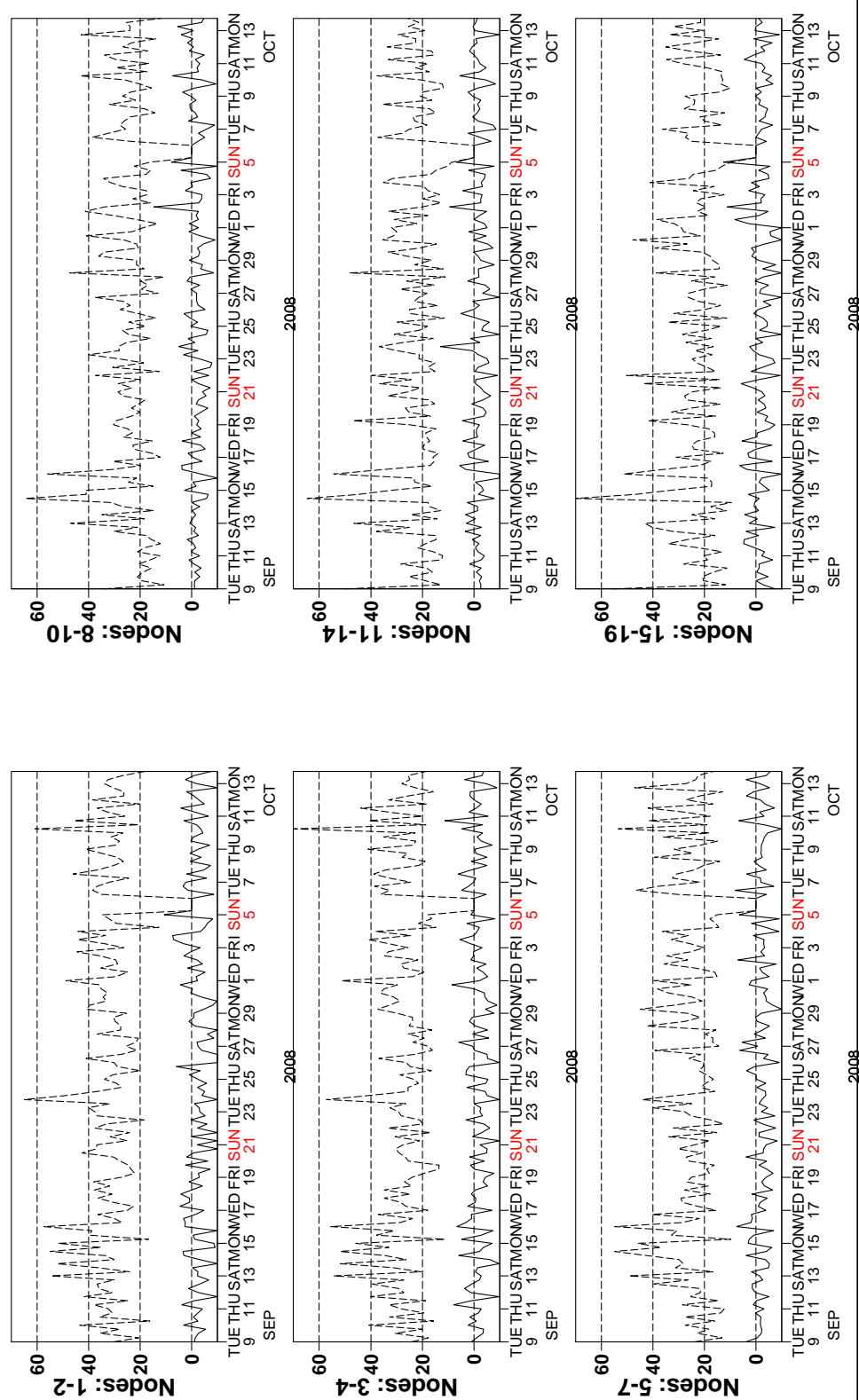


FIGURE 17 Same as Fig. 15, but for the wind direction difference. Statistics are computed only for wind speeds higher than 4 m/s.

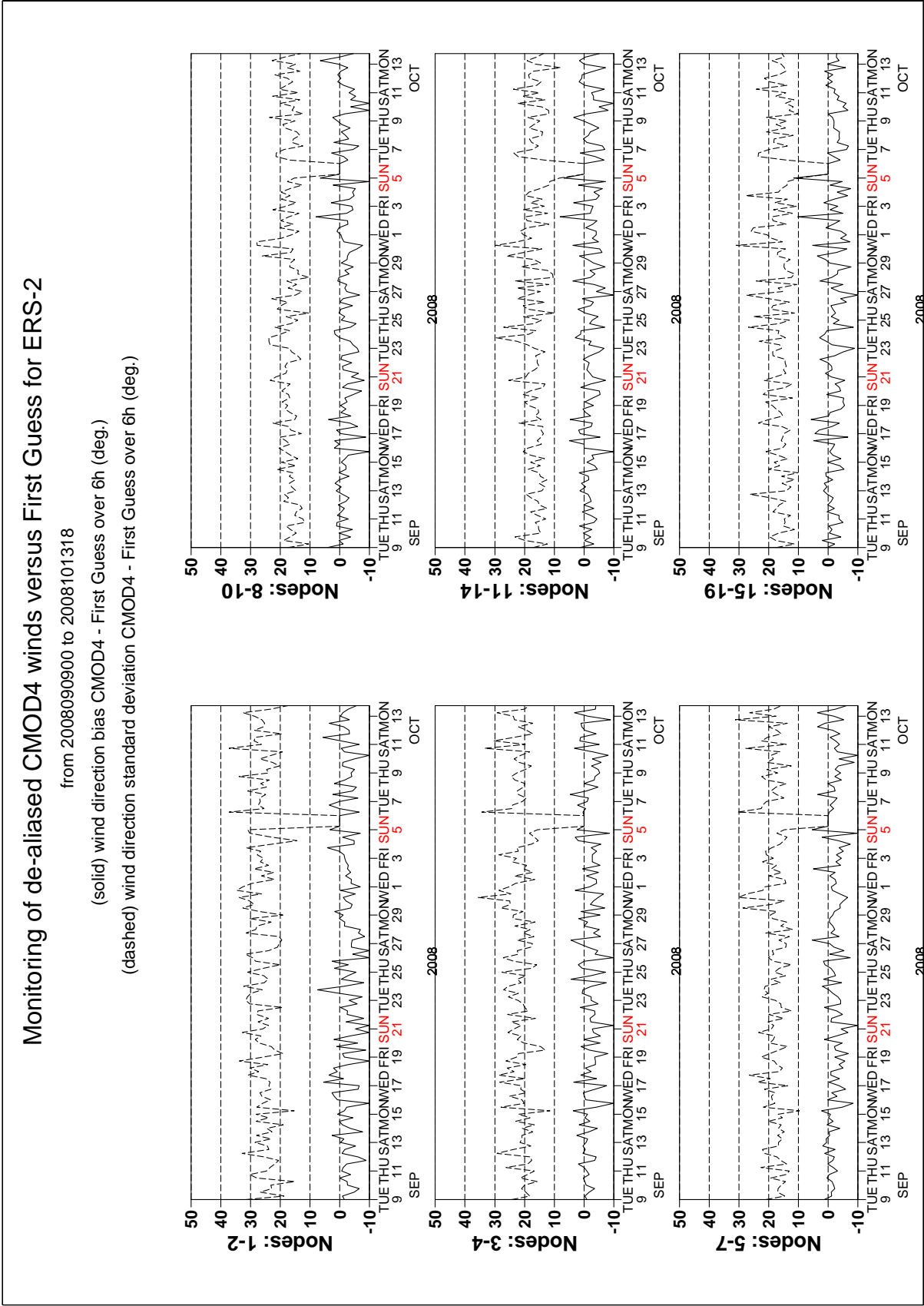


FIGURE 18 Same as Fig. 17, but for the de-aliased CMOD4 data.

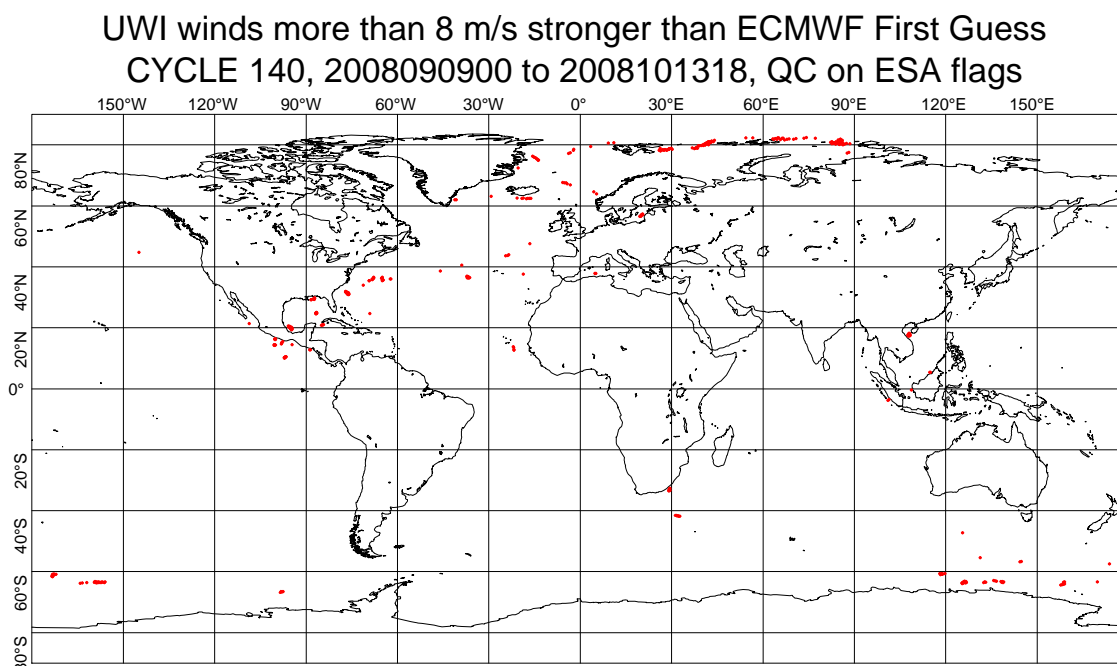
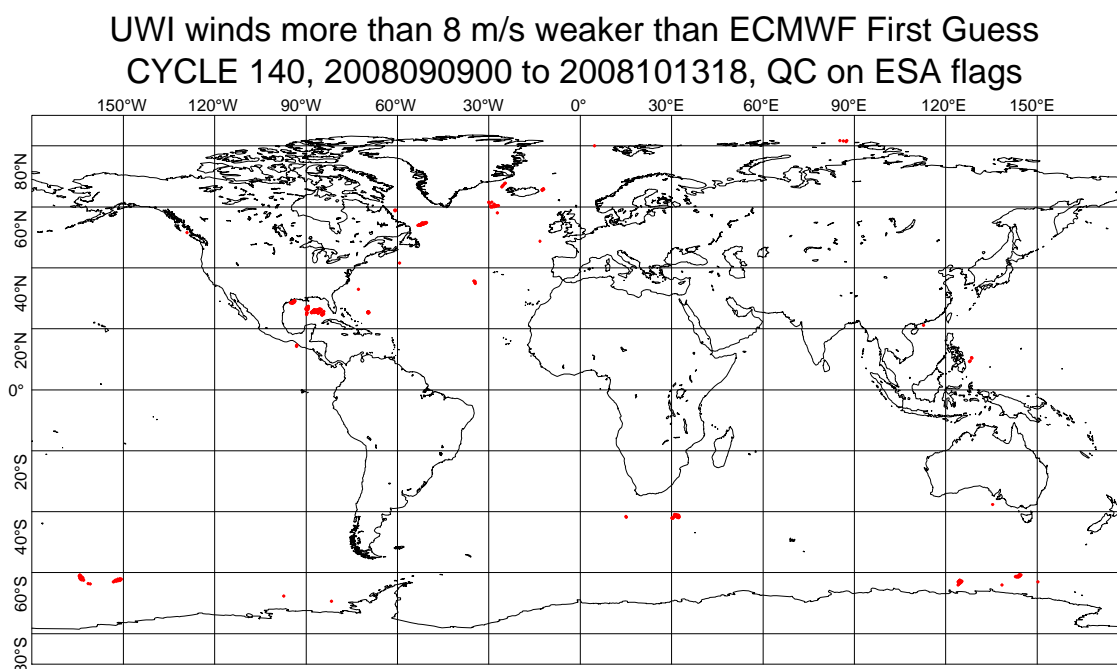


FIGURE 19 Locations of data during cycle 140 for which UWI winds are more than 8 m/s weaker (top panel) respectively stronger (lower panel) than FGAT, and on which QC on UWI flags and the ECMWF land/sea-ice mask was applied.

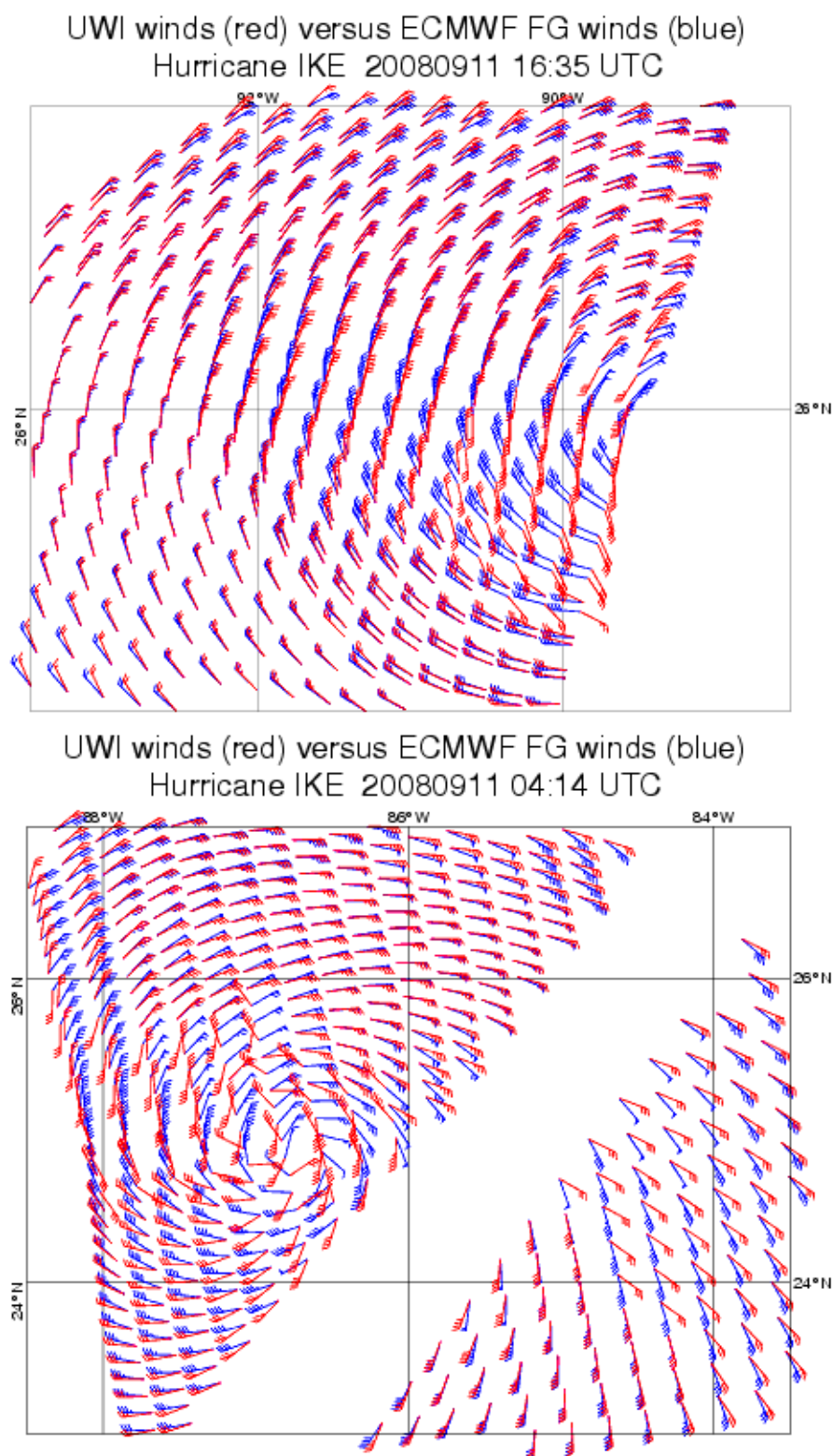


FIGURE 20 Comparison between UWI winds (in red) and ECMWF FG winds (in blue) for hurricane Ike on 9 September 2008 around 4 UTC (lower panel) and around 16:30 UTC (top panel) .

4.3.3 Scatter plots

Scatter plots of FG winds versus ERS-2 winds are displayed in Figures 21 to 24. Values of standard deviations and biases are slightly different from those displayed in Table 6. Reason for this is that, for plotting purposes, the in 0.5 m/s resolution ERS-2 winds have been slightly perturbed (increases scatter with 0.02 m/s), and that zero wind-speed ERS-2 winds have been excluded (decreases scatter with about 0.05 m/s).

The scatter plot of UWI wind speed versus FG (Figure 21) is very similar to that for (at ECMWF inverted) de-aliased CMOD4 winds (Figure 23). It confirms that the ESACA inversion scheme is working properly.

Winds derived on the basis of CMOD5 are displayed in Figure 24. The relative standard deviation is lower than for CMOD4 winds (1.38 m/s versus 1.43 m/s). Compared to ECMWF FG, CMOD5 winds are 0.46 m/s slower.

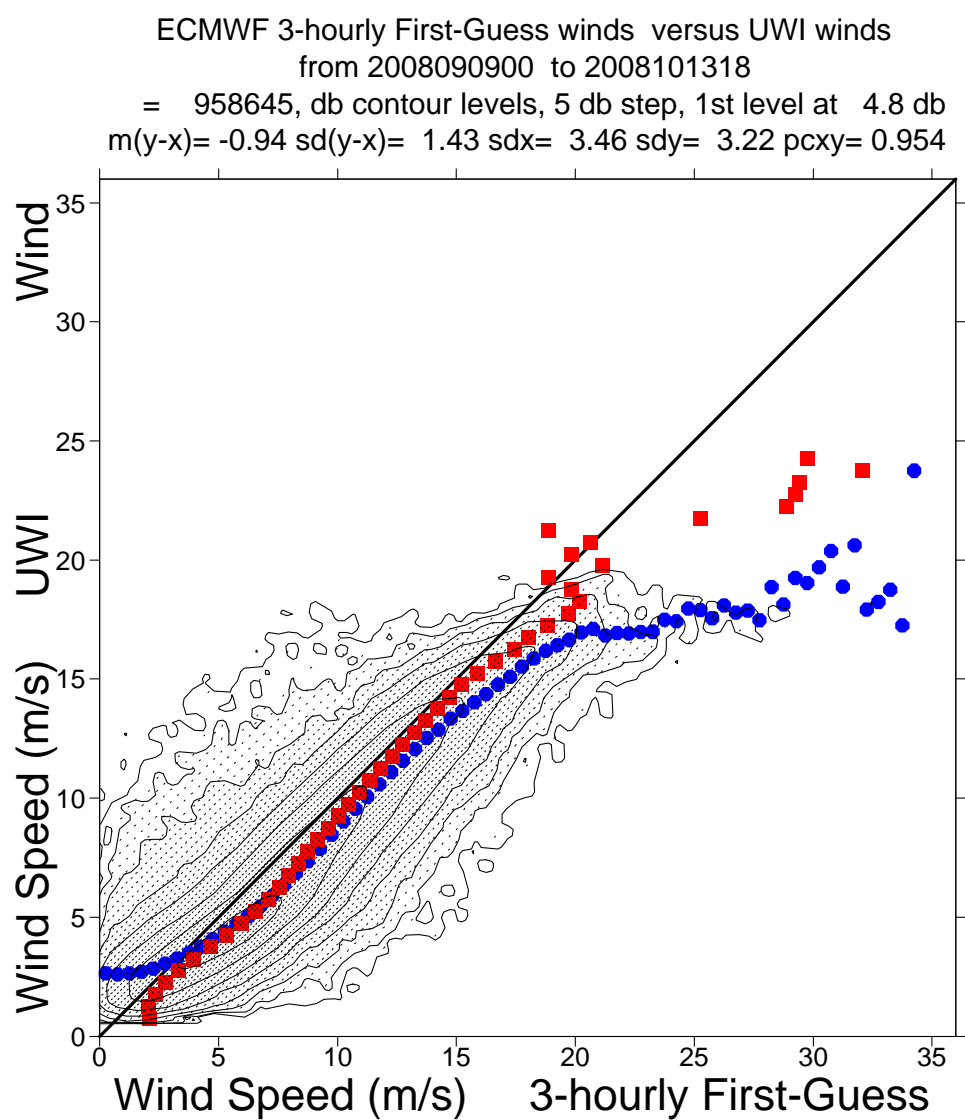


FIGURE 21 Two-dimensional histogram of first guess and UWI wind speeds, for the data kept by the UWI flags, and QC based on the ECMWF ice and land and sea-ice mask. Circles denote the mean values in the y-direction and squares those in the x-direction.

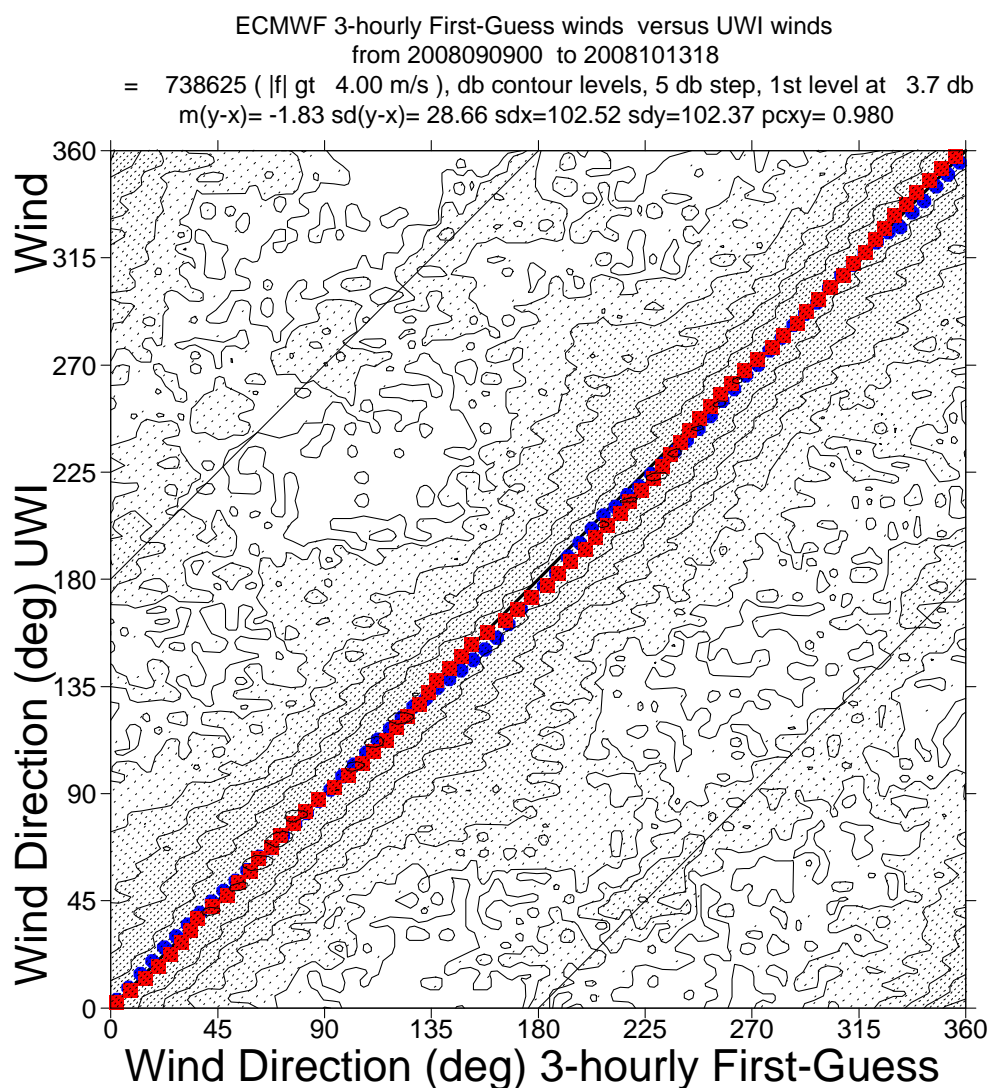


FIGURE 22 Same as Fig. 21, but for wind direction. Only wind speeds higher than 4m/s are taken into account.

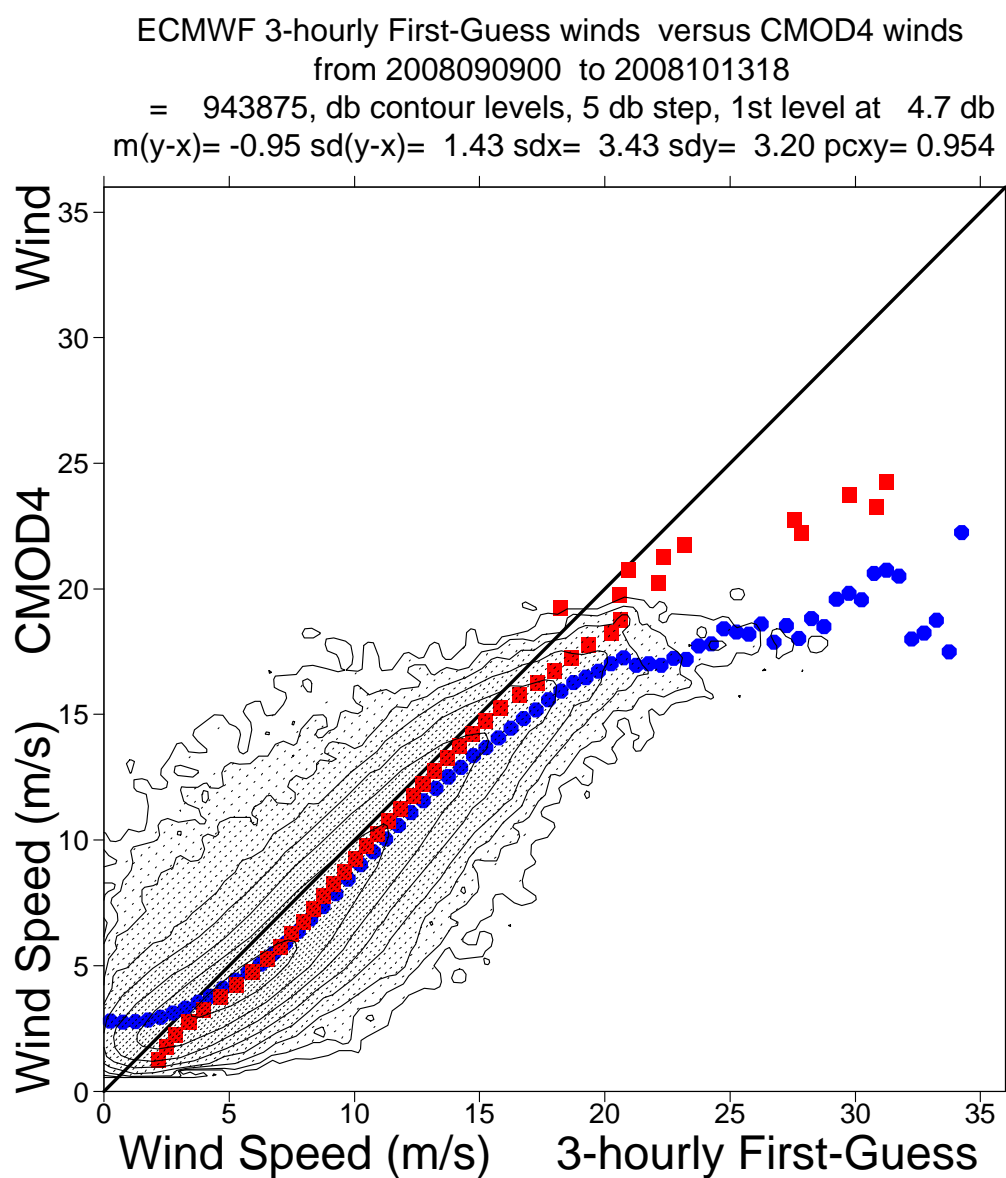


FIGURE 23 Same as Fig. 21, but for de-aliased CMOD4 winds.

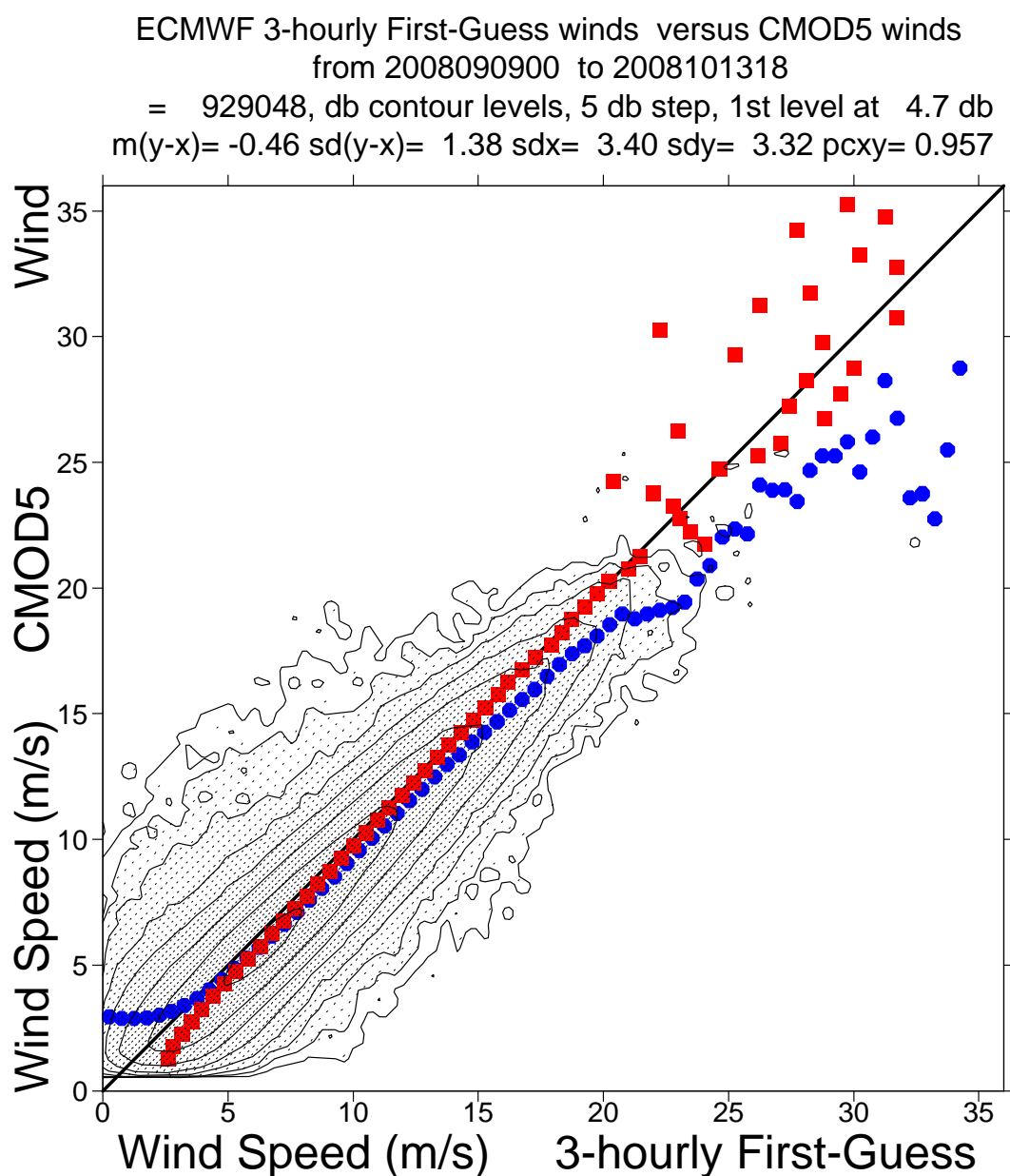


FIGURE 24 Same as Fig. 21, but for de-aliased CMOD5 winds.

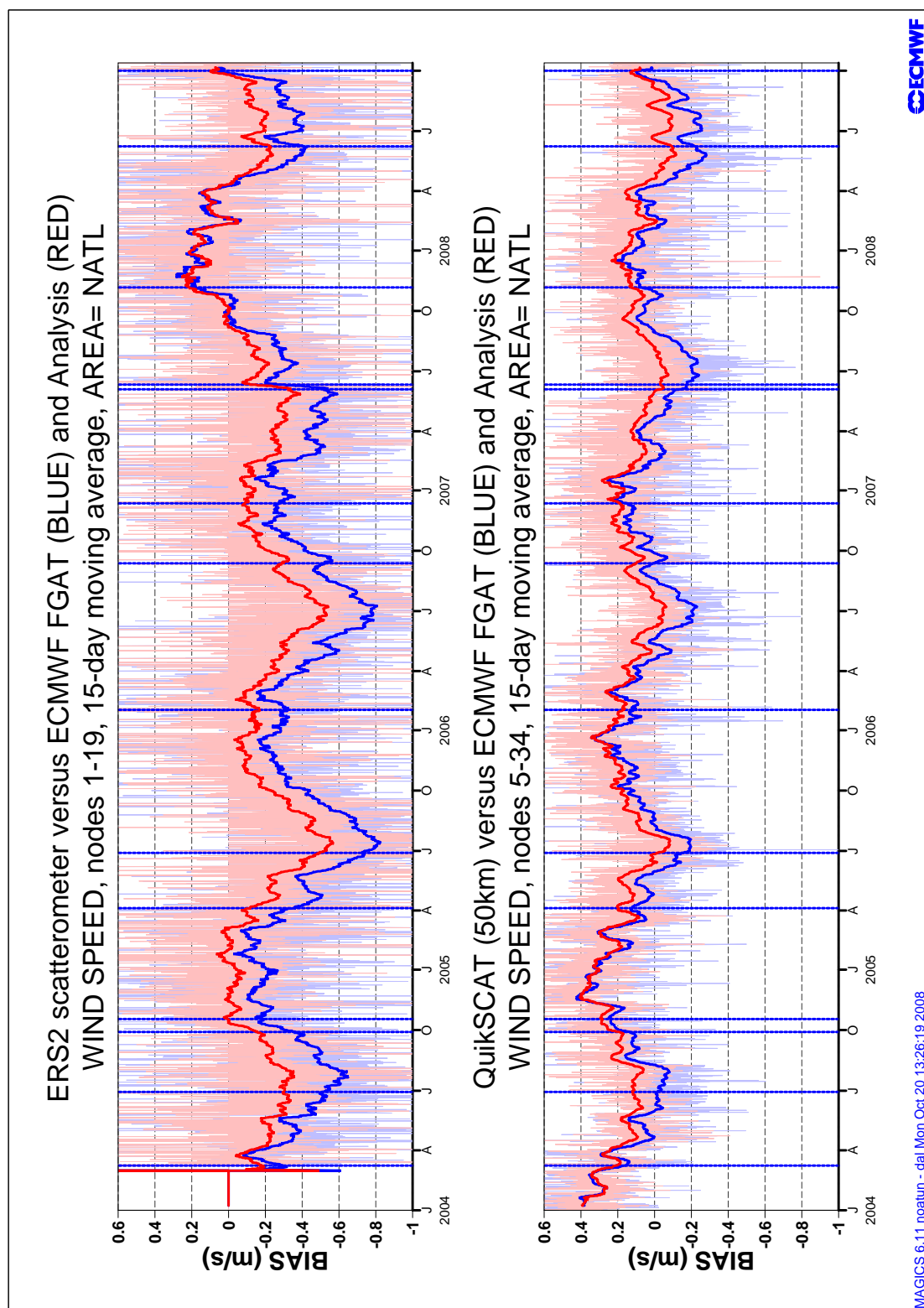


FIGURE 25 Bias relative to FG winds for actively assimilated ERS-2 winds (based on CMOD5) for nodes 1-19 (top panel) respectively of 50-km QuikSCAT (based on the QSCAT-1 model function and reduced by 4%) for nodes 5-34 (lower panels) averaged over the area (20N-90N, 80W-20E), and displayed for the period 01 January 2004 – 13 October 2008. Fat curves represent centered 15-day running means, thin curves values for 6-hourly period. Vertical dashed blue lines mark ECMWF model changes

4.3.4 Timeliness evolution

The Scatterometer product timeliness is defined as the difference between the acquisition time of the first product and the creation date of the file received in ESRIN-PCS. Once the UWI file is received in ESRIN, data are converted in BUFR format and sent to users via the GTS network. Therefore that timeliness is an indicator of the delay time that the user could expect in the data dissemination. The analysis does not take into account delays in the GTS network. For each file received from the ground station, the timeliness is computed and this analysis reports the daily mean timeliness obtained by averaging all the values.

The analysis has been performed on the daily timeliness average. Timeliness is zero when no products are received.

In the next figures is showed the evolution of the daily mean timeliness of Kiruna, Maspalomas, Gatineau, West Freugh and Miami stations since April 2005. Since 2007 the analysis has been extended also first to McMurdo and Beijing products and then to Matera, Hobart, Singapore and Chetumal products. The starting date of the analysis, for each station, is reported in the following table:

TABLE 6 Starting date of Timeliness analysis for each station

| STATION | START DATE |
|--------------|-----------------|
| Kiruna | 19 April 2005 |
| Gatineau | 19 April 2005 |
| Maspalomas | 19 April 2005 |
| West Freugh | 19 April 2005 |
| Miami | 19 April 2005 |
| McMurdo | 13 March 2007 |
| Beijing | 13 March 2007 |
| Matera | 5 December 2007 |
| Hobart | 5 December 2007 |
| Singapore | 5 December 2007 |
| Chetumal | 5 December 2007 |
| Johannesburg | 17 July 2008 |

The Figure 26 shows the results of the investigation for Gatineau, Kiruna, Maspalomas, Matera and Singapore stations.

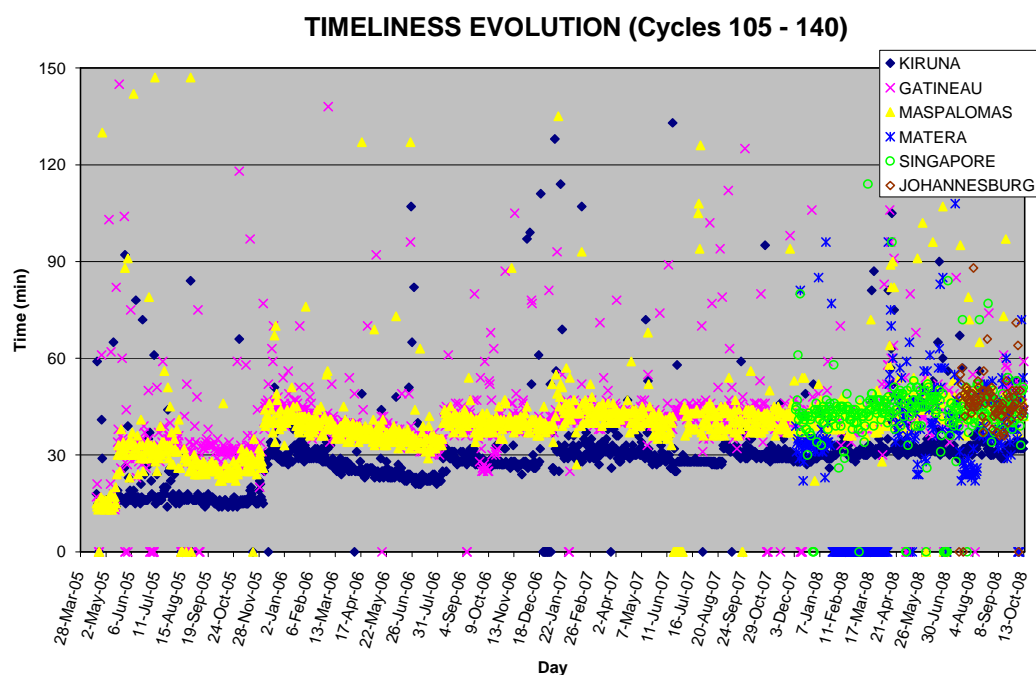


FIGURE 26 Timeliness evolution from 19th April 2005 to 13th October 2008 for Gatineau, Kiruna, Maspalomas, Matera, Singapore and Johannesburg ground stations.

Apart from some values out of the general tendency due to temporary system or connection problem, since the beginning of the analyzed period a timeliness increase is detected for Kiruna, Maspalomas and Gatineau stations. In particular, it can be recognized a discontinuous trend for the three stations with quickly increases in the same days for the 3 stations followed by a slightly decrease in the subsequent months. In depth analysis showed that these rapid increases occur about in the following days: 5 May 2005, 5 December 2005, 9 August 2006 and 9 January 2007. This behavior could be due to settings modifications in the ground segment.

During the cycles 140 Gatineau, Maspalomas and Singapore remain stable with a timeliness value of 45 minutes. Matera station was stable around 40 minutes. A slight decrease has been observed for Johannesburg station that reached a value of about 45 minutes. The lowest timeliness in the reporting period is for Kiruna station with a stable value around 30 minutes.

The analysis for West Freugh, Miami, Beijing, McMurdo, Hobart and Chetumal stations is showed in Figure 27.

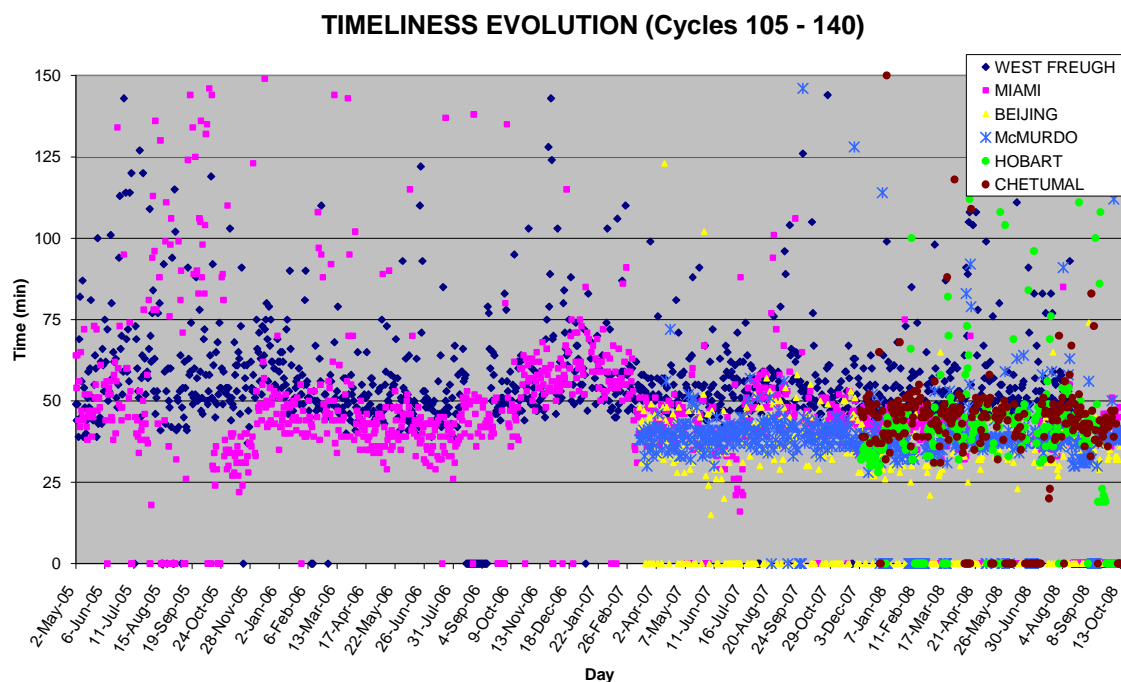


FIGURE 27 : Timeliness evolution from 19 April 2005 to 13th October 2008 for West Freugh, Miami, Beijing, McMurdo, Hobart and Chetumal ground stations.

West Freugh and Miami stations show a similar regular trend in the analyzed period. More in detail a slightly increased timeliness could be identified since October 2006 followed by a decrease since January 2007.

Nowadays Chetumal and Miami products have an average timeliness of 45 minutes. Mcmurdo stayed stable around 40 minutes. Beijing has the lowest timeliness with values around 30 minutes. An improvement has been recorded for Hobart station that reached a mean timeliness of about 30 minutes.

The analysis carried out shows that till December 5th 2005 UWI products delivered from the three ESA ground station (Kiruna, Maspalomas, Gatineau) had a timeliness that fulfils the requirements for nowcasting application (data received on average within 25 minutes). After that date performances degraded and nowadays the average timeliness is around 35 minutes. This trend needs further investigations to better understand the cause.

5 Yaw error angle estimation

The yaw error angle estimation is computed on-ground by the ESACA processors. The full set of results of the yaw processing is stored in an internal ESA product named HEY (Helpful ESA Yaw) disseminated from the ground station to ESRIN. The estimation of the yaw error angle is based on the Doppler shift measured on the received echo. That estimation can be done with a good accuracy only for small yaw error angle (in the range between ± 4 deg.). Above that range, due to high Doppler frequency shift the signal spectrum is outside the receiver bandwidth and the yaw estimation is strongly degraded. Details regarding the yaw processing can be found on the following document (chapter 9): <http://earth.esa.int/pcs/ers/scatt/articles/soamain-030521.pdf>.

The yaw error angle estimation aims to compute the correct acquisition geometry for the three Scatterometer antenna throughout the entire orbit. The Yaw error angle information is used in the radar equation to derive the calibrated backscattering (sigma nought) from the Earth surface and to select the echo samples associated to one node. In ESACA the definition of the node position is as the one adopted in the old processor (for details see: http://earth.esa.int/pcs/ers/scatt/articles/scatt_work98_processing.pdf). In such way the distance between the nodes (both along and across track) is kept constant (25 Km) and what is changing in function of the yaw error angle is the number of echo samples that contributes to the node calculation and the incidence angle of the measurement. This is because the three Scatterometer antennae could see the node with a different geometry due to an arbitrary variation of the yaw angle along track. The number of samples that actually contributes to a node and the yaw flag can be retrieved from the UWI Data Set Record (DSR) product. For that reason the definition of few fields in the UWI product has been updated. For details see the Scatterometer cyclic report - cycle 90 -. The Figure 28 (since beginning of HEY dissemination) and Figure 29 (cycle) show for each orbit the average Doppler frequency shift (first 3 plots Fore Mid and Aft antenna), the minimum, maximum and mean yaw (fourth plot), the yaw standard deviation (fifth plot) and the percentage of source packets acquired with a yaw error angle outside the range ± 2 degrees (sixth plot). On average the yaw evolution is within the specification for the ESACA processor to assure calibrated data. The evolving yaw bias occurred in June 2004 has been reported to the flight segment and corrective actions have been put in place to compensate for.

The result of the monitoring for cycle 140 is an average (per orbit) yaw error angle within the expected nominal range (± 2 degrees) for most of the orbit.

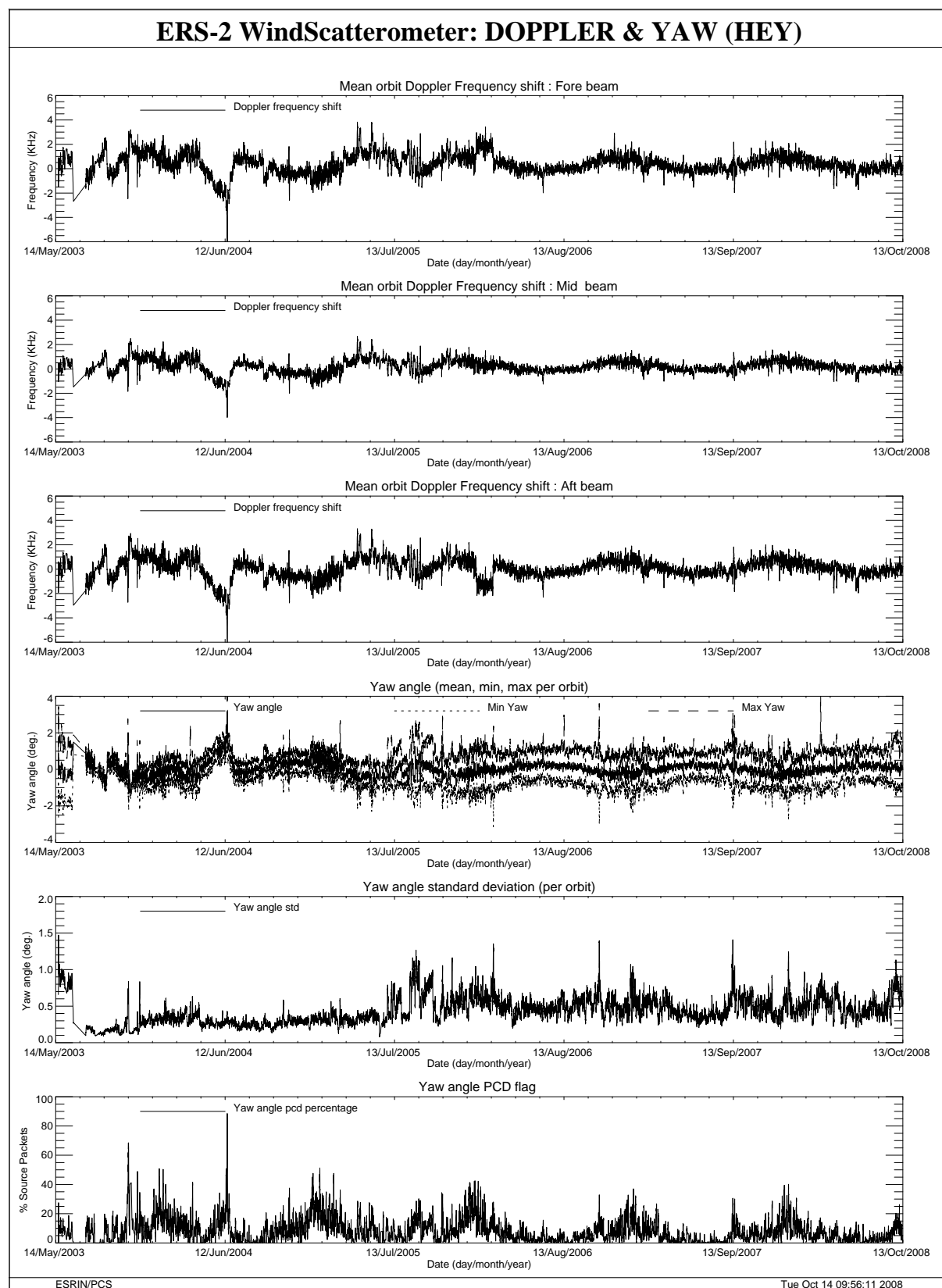


FIGURE 28 Doppler frequency shift and Yaw error angle evolution since August 2003 with a smooth of 14 orbits

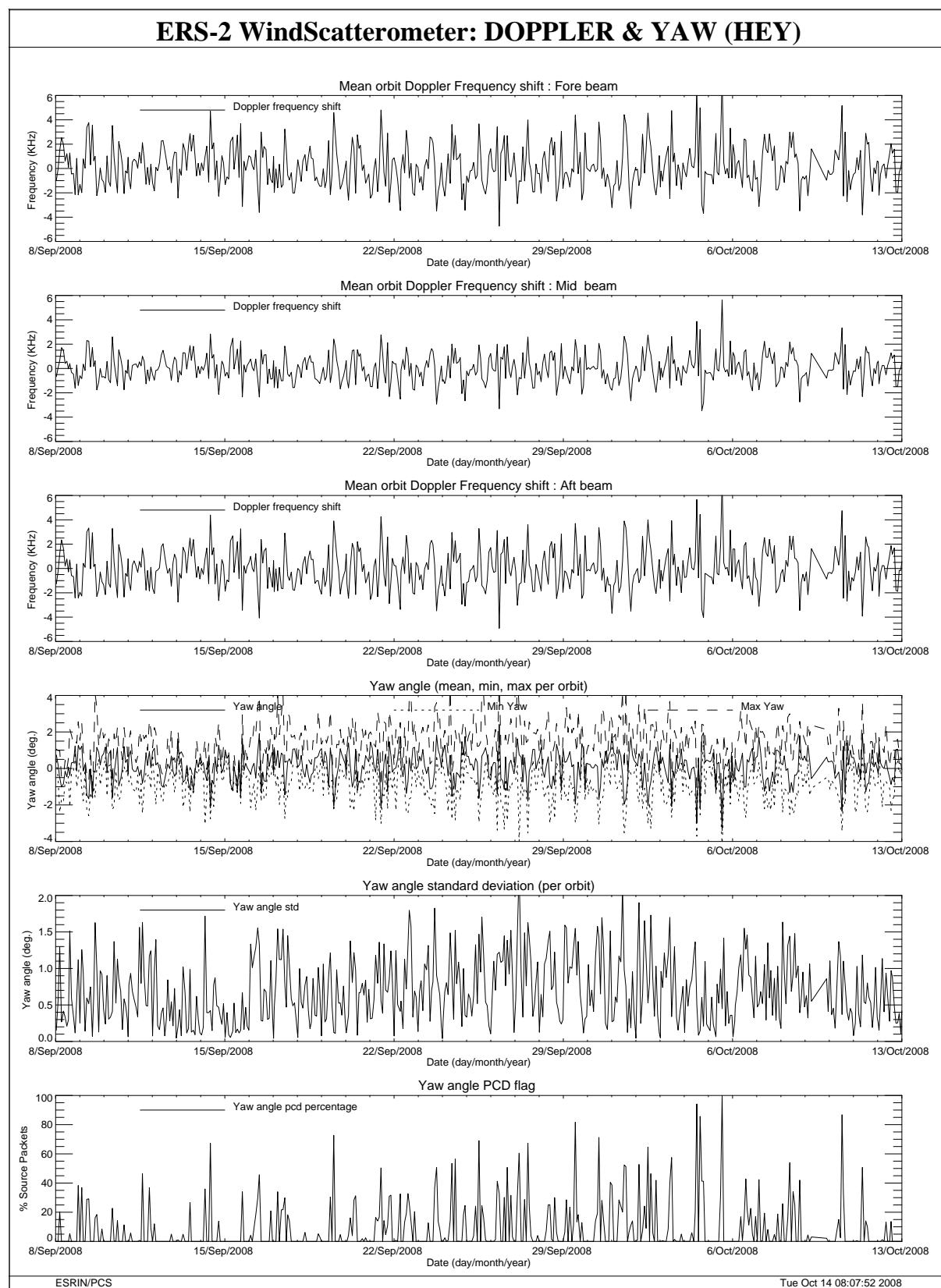


FIGURE 29 Doppler frequency shift and Yaw error angle evolution cycle 140.