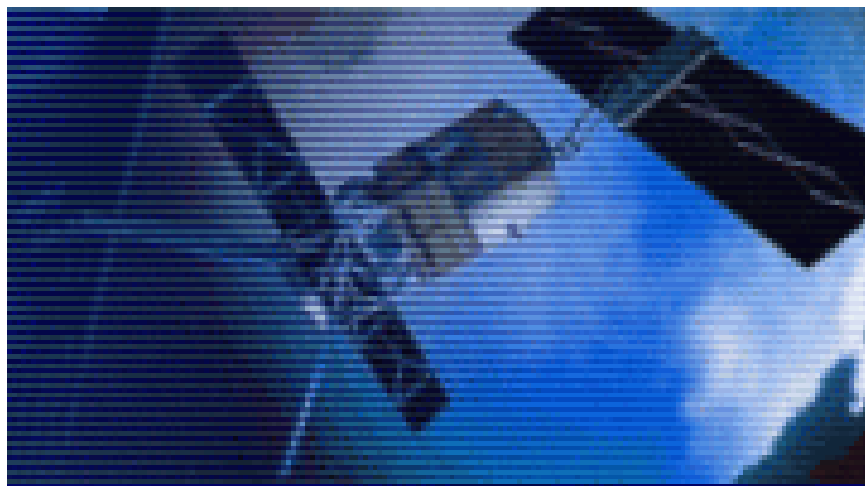


# ERS-2 Wind Scatterometer Cyclic Report

From 13<sup>th</sup> March to 17<sup>th</sup> April 2006  
Cycle 114



---

Prepared by:	A. Paciucci	(scat@dpqc.org)
Approved by:	R. Crapolicchio	(scat@dpqc.org)
Checked by:	G. Davies	(qc@dpqc.org)

Inputs from:	H. Hersbach	(ECMWF)
--------------	-------------	---------

Issue:	1.0
Reference	ERSE-SPPA-EOPG-TN-06-0006
Date of issue:	02 <sup>nd</sup> May 2006
Document type:	Technical Note

## Table of Content

1	Introduction and Summary .....	3
2	Calibration Performances.....	5
2.1	Gain Constant over transponder.....	5
2.2	Ocean Calibration .....	5
2.3	Gamma-nought over the Brazilian rain forest .....	7
2.4	Antenna pattern: Gamma-nought as a function of elevation angle.....	7
2.5	Antenna pattern: Gamma-nought as a function of incidence angle.....	7
2.6	Gamma nought histograms and peak position evolution.....	7
2.7	Gamma nought image of the reference area .....	8
2.8	Sigma nought evolution .....	8
2.9	Antenna temperature evolution over the Rain Forest .....	8
3	Instrument performance .....	9
3.1	Centre of gravity and standard deviation of received power spectrum .....	9
3.2	Noise power level I and Q channel .....	14
3.3	Power level of internal calibration pulse .....	17
4	Products performance .....	20
4.1	Products availability.....	20
4.2	PCS Geophysical Monitoring .....	24
4.3	ECMWF Geophysical Monitoring.....	28
4.3.1	Distance to cone history.....	34
4.3.2	UWI minus First-Guess history .....	36
4.3.3	Scatter plots.....	44
5	Yaw error angle estimation.....	50

## **1 Introduction and Summary**

The document includes a summary of the daily quality control made within the PCS and various sections describing the results of the investigations and studies of “open-problems” related to the Scatterometer. In each section results are shown from the beginning of the mission in order to see the evolution and to outline possible “seasonal” effects. An explanation for the major events which have impacted the performance since launch is given, and comments about the recent events which occurred during the last cycle are included. This report covers the period from 13<sup>th</sup> March to 17<sup>th</sup> April 2006 (cycle 114) and includes the results of the monitoring activity performed by ESRIN and ECMWF.

- This document is available on line: [http://earth.esa.int/pcs/ers/scatt/reports/pcs\\_cyclic/](http://earth.esa.int/pcs/ers/scatt/reports/pcs_cyclic/)

### **Mission events**

- The ERS-2 satellite was piloted in ZGM throughout the cycle 114.
- During cycle 114 the ESACA processor worked nominally without faults.
- Ami instrument was unavailable on 15<sup>th</sup> March 2006 from 14:25:05 to 14:45:53 due to Emergency switch down of RA to Standby for two successive RBI Status Error.
- Ami instrument was in Heater/MCMD refused, due to incorrect execution of PL SYNC procedure on 15 April 2006 from 09:51:45 to 14:14:19.
- Fast delivery UWI data produced during 12<sup>th</sup> April 2006 has been generated without meteorological background information. The reason was a failure in the dissemination of meteorological file to the ground station due to PCS software problem. This caused a degradation of the wind field quality with a temporary de-aliasing problem of UWI products.
- During the 13<sup>th</sup> – 17<sup>th</sup> April no data are available from McMurdo due to processing center problem, raw data has been acquired, but no disseminated.
- For the entire period in cycle 114, ERS-2 Scatterometer data was used in the 4D-Var data assimilation system at ECMWF.
- News on ERS mission is available on line: [http://earth.esa.int/ers/new\\_ers\\_news.html](http://earth.esa.int/ers/new_ers_news.html)

### **Yaw performance**

- The result of the yaw monitoring for cycle 114 is a yaw error angle within the expected nominal range (+/- 2 degrees) with an average level around 0 deg. for most of the orbits. There is a decrease of average yaw angle error respect the past cycles this should be related to seasonal trend and the less data acquired at McMurdo station.

### **Calibration performance**

- Calibration data from Transponder are regularly acquired and archived for re-processing. Calibration results will be provided in the next reports.
- Due to the regional mission scenario the calibration performances over the Brazilian rain forest are not available because that area is not covered by the ESA ground station. The chance to install a new station to cover the calibration site is under investigation as well as the possibility to use stable ice area in Greenland to monitor the instrument calibration.
- The Ocean Calibration monitoring is performed by ECMWF. Sigma Bias level was slightly more negative (overall relative bias -0.49 dB, was -0.42 dB). Inter-node and inter-beam

(mainly mid versus the fore/aft beam) dependencies are similar to that of cycle 114 and as function of incidence angle the bias is quite flat. Average bias level was similar to that for nominal data in 2000.

### **Instrument performance**

- During the cycle 114 the mean transmitted power evolution had a mean decrease of 0.05 dB per cycle. That value is close to the nominal trend detected since August 1996 (about 0.1 dB per cycle).
- The evolution of the noise power during the cycle 114 was stable (see Figure 5). The daily average for the Fore and Aft beam noise is around 1.7 ADC (I) and around 1.6 ADC (Q) respectively. For the Mid beam the noise is not measurable.
- During the cycle 114 the Doppler compensation evolution was showed in Figure 3. The CoG of the compensated signal was around 0 Hz for the Fore and -0.50 for Aft antenna and around 200 Hz for the Mid antenna. The standard deviation of the CoG was around 1500 Hz for the Fore and Aft antenna and around 2800 Hz for the Mid antenna. After the increase of value of Doppler frequency shift during the period 31<sup>st</sup> January – 01<sup>st</sup> March 2006 (orbital manoure OCM) the trend return to nominal behavior with a decrease of CoG on Aft antenna.

### **Product performance**

During cycle 114 data was received between 21:01 UTC 13 March and 20:57 UTC 17 April 2006. For all 6-hourly batches centered around 00, 06, 12 and 18 UTC, data was received.

Due to Kiruna station dissemination problem the PCS system has received the 12<sup>th</sup> April 2006 the file UWI\_\_060412KSEP6220 containing the products acquired at 07:05, 08:45, 10:24, 12:04 for four consecutive pass instead of one file for each pass. The same problem affected the EGH product. The PCS system has received only one file EGH\_\_060412KSEP629 for all products acquired between 07:5 and 13:50. This fact explain the dissemination delay occurred on 12<sup>th</sup> April.

After the on board tape recorder failure in July 2003, data is being recorded whenever within the visibility range of a ground station. For cycle 114 the data coverage was over North-Atlantic, part of the Mediterranean, the Caribbean, the Gulf of Mexico, a small part of the Pacific west from the US Canada and Central America, the Chinese and Japanese Sea, and the Southern Ocean south of Australia and New Zealand

Compared to cycle 113, the UWI wind speed relative to ECMWF first-guess (FG) fields shows a lower standard deviation (from 1.59 to 1.48 m/s), representing a natural seasonal trend, also observed one year ago. Bias levels were slightly more negative (from -0.76 m/s to -0.80 m/s).

The PCS geophysical monitoring reports winds speed bias (18 or 24 hour forecast vs UWI) was roughly 0.8 m/s and the speed bias standard deviation was around 1.9 m/s.

## **2 Calibration Performances**

The calibration performances are estimated using three types of target: a man made target (the transponder) and two natural targets (the rain forest and the ocean). This approach allow us to design the correct calibration using a punctual but accurate information from transponders and an extended but noisy information from rain forest and ocean for which the main component of the variance comes from the geophysical evolution of the natural target and from the backscattering models used. These aspects are in the calibration performance monitoring philosophy. The major goals of the calibration monitoring activities are the achievement of a “flat” antenna pattern profile and the assurance of a stable absolute calibration level.

### **2.1 Gain Constant over transponder**

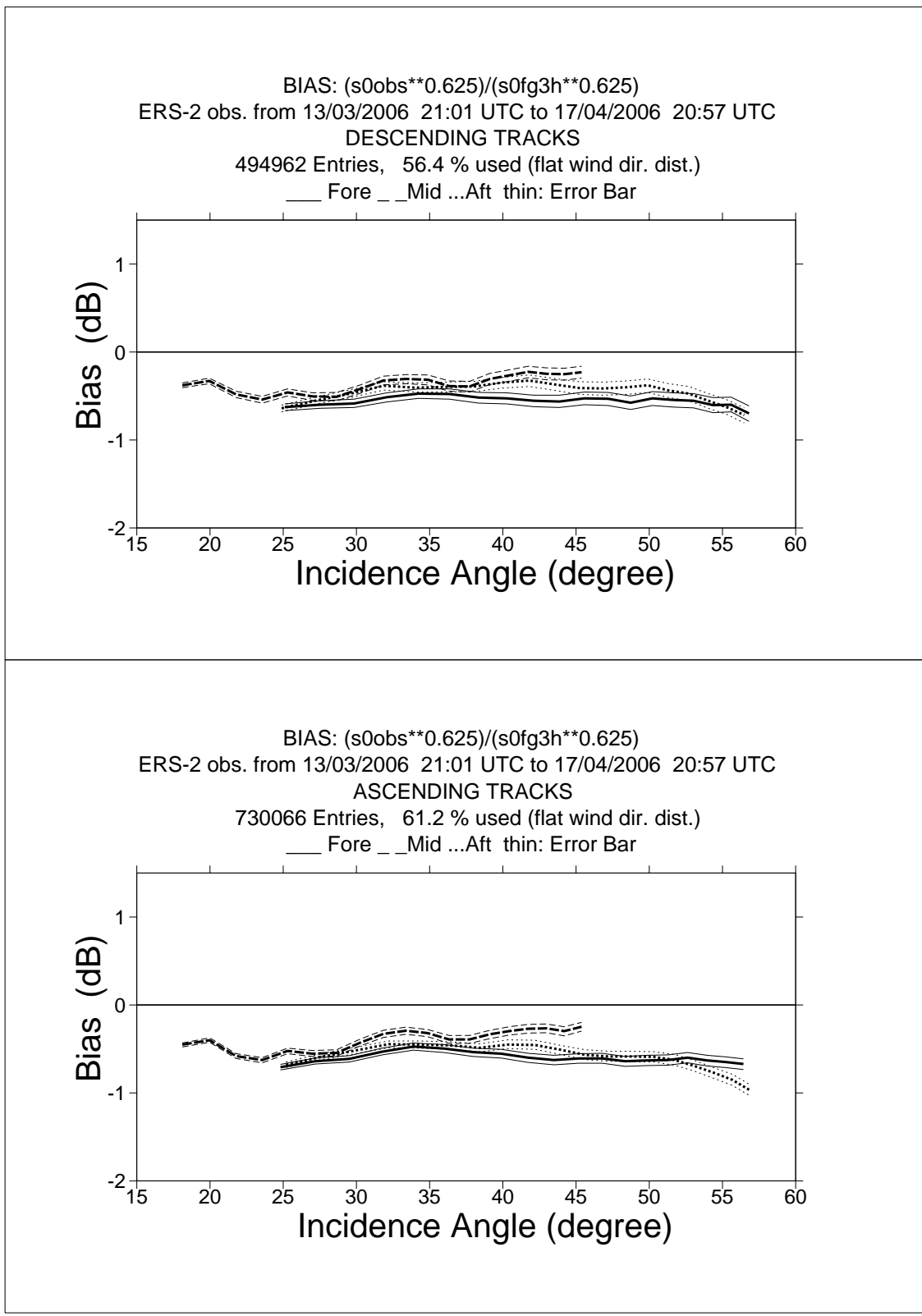
One gain constant is computed per transponder per beam from the actual and simulated two-dimensional echo power, which is given as a function of the orbit time and range time. This parameter clearly indicates the difference between “real instrument” and the mathematic model. In order to acquire data over the transponder the Scatterometer must be set in an appropriate operational mode defined as “Calibration Mode”. Since January 2001 with the operations in Zero Gyro Mode (ZGM) the satellite attitude is not stable as it was in the nominal Yaw Steering Mode (YSM). In particular there is a non-predictable variation of the yaw error angle along the orbit. For that reason the gain constant data computed by the CALPROC processor, that assumes a stable orbit, are meaningless and a new calibration processor is under development. In the mean time, data from the Transponder are still acquired and archived for future re-processing. The reprocessed gain constants will be provided in this section when available. For the gain constant computed during the nominal YSM please refer to the Scatterometer cyclic report cycle 60.

### **2.2 Ocean Calibration**

The average sigma0 bias levels (compared to simulated sigma0's based on ECMWF model FG winds) stratified with respect to antenna beam, ascending or descending track and as function of incidence angle (i.e. across-node number) is displayed in Figure 1.

Inter-node and inter-beam (mainly mid versus the fore/aft beam) dependencies are similar to that of cycle 113. As function of incidence angle the bias is quite flat. Average bias level was slightly more negative (-0.49 dB, was -0.42 dB), and similar to that for nominal data in 2000.

The data volume of descending was considerably lower (by 32%) than for ascending tracks. This is due to an increase of SAR acquisition activity at descending passes.



**FIGURE 1 ERS-2 Scatterometer Ocean Calibration cycle 114. Ratio of  $\langle \sigma_0^{0.625} \rangle / \langle CMOD4(First\ Guess)^{0.625} \rangle$  converted in dB for the fore beam (solid line), mid beam (dashed line) an aft beam (dotted line), as a function of incidence angle for descending and ascending tracks. The thin lines indicate the error bars on the estimated mean. First-guess winds are based on the in time closest (+3h, +6h, +9h, or +12h) T511 forecast field, and are bilinearly interpolated in space.**

### 2.3 Gamma-nought over the Brazilian rain forest

Although the transponders give accurate measurements of the antenna attenuation at particular points of the antenna pattern, they are not adequate for fine tuning across all incidence angles, as there are simply not enough samples. The tropical rain forest in South America has been used as a reference distributed target. The target at the working frequency (C-band) of ERS-2 Scatterometer acts as a very rough surface, and the transmitted signal is equally scattered in all directions (the target is assumed to follow the isotropic approximation). Consequently, for the angle of incidence used by ERS-2 Scatterometer, the normalized backscattering coefficient (sigma nought) will depend solely on the surface effectively seen by the instrument:

$$S^0 = S \cdot \cos \theta$$

With this hypothesis it is possible to define the following formula:

$$\gamma^0 = \frac{\sigma^0}{\cos \theta}$$

Using the above equation, the gamma nought backscattering coefficient over the rain forest is independent of the incident angle, allowing the measurements from each of the three beams to be compared. The test area used by the PCS is located between 2.5 degrees North and 5.0 degrees south in latitude and 60.5 degrees West and 70.0 degrees West in longitude. That area is actually not covered by the Regional mission scenario (since cycle 86 onwards) and therefore the calibration monitoring activity over the Brazilian rain forest is suspended because no data are available. The chance to continue the monitoring activity with a new receiving station covering the Brazilian rain forest is under investigation. The following paragraphs will report on the results when data will be available.

### 2.4 Antenna pattern: Gamma-nought as a function of elevation angle

Due to the regional mission scenario data over the Brazilian rain forest are not available. For that reason the antenna patterns in function of the elevation angle have not been computed.

### 2.5 Antenna pattern: Gamma-nought as a function of incidence angle

Due to the regional mission scenario data over the Brazilian rain forest are not available. For that reason the antenna patterns in function of the incidence angle have not been computed.

### 2.6 Gamma nought histograms and peak position evolution

As the gamma nought is independent from the incidence angle, the histogram of gamma nought over the rain forest is characterized by a sharp peak. The time-series of the peak position gives some information on the stability of the calibration. This parameter is computed by fitting the histogram with a normal distribution added to a second order polynomial:

$$F(x) = A_0 \cdot \exp\left(-\frac{z^2}{2}\right) + A_3 + A_4 \cdot x + A_5 \cdot x^2$$

where:  $z = \frac{x - A_1}{A_2}$

The parameters are computed using a non linear least square method called “gradient expansion”. The position of the peak is given by the maximum of the function F(x). The histograms are computed weekly (from Monday to Sunday) for each antenna individually “Fore”, “Mid” and “Aft” and for ascending and descending passes with a bin size of 0.02 dB. Due to the regional mission scenario data over the Brazilian rain forest are not available and the histograms have not been computed. For the time series since the beginning of the mission please refer to the Scatterometer cyclic report cycle 86.

## **2.7 Gamma nought image of the reference area**

Due to the regional mission scenario data over the Brazilian rain forest are not available and the histograms have not been computed.

## **2.8 Sigma nought evolution**

Due to the regional mission scenario data over the Brazilian rain forest are not available. For that reason none update has been done to the sigma nought evolution time series. For the time series since the beginning of the mission until June 2003 please refer to the Scatterometer cyclic report cycle 86.

## **2.9 Antenna temperature evolution over the Rain Forest**

Due to the regional mission scenario data over the Brazilian rain forest are not available. For the time series since the beginning of the mission please refer to the Scatterometer cyclic report cycle 86.



### **3 Instrument performance**

The instrument status is checked by monitoring the following parameters:

- Centre of Gravity (CoG) and standard deviation of the received signal spectrum after the on-ground Doppler Compensation filter. This parameter is useful for the monitoring of the orbit stability, the performances of the Doppler compensation filter, the behavior of the yaw steering mode and the performances of the devices in charge for the satellite attitude (e.g. gyroscopes, Earth sensor, Sun sensor).
- Noise power I and Q channel.
- Internal calibration pulse power.

The latter is an important parameter to monitor the transmitter and receiver chain, the evolution of pulse generator, the High Power Amplifier (HPA), the Traveling Wave Tube (TWT) and the receiver. These parameters are extracted daily from the UWI products and averaged. The evolution of each parameter is characterized by a least square line fit. The coefficients of the line fit are printed in each plot.

#### **3.1 Centre of gravity and standard deviation of received power spectrum**

The Figure 2 shows the evolution of the two parameters for each beam since the beginning of the ERS-2 mission and Figure 3 shows the same evolution only for the cycle114.

The tendency during the nominal Yaw Steering Mode (YSM) period (beginning of the mission since the operation with the Mono Gyro (MGM) Attitude On-board Control System (AOCS) configuration on 7<sup>th</sup> February 2000) is a small and regular increase of the Centre of gravity (CoG) of received spectrum for the three antennae. During the YSM, two small changes can be detected in the CoG evolution. The first change is from 24<sup>th</sup>, January 1996 to 14<sup>th</sup>, March 1996, the second one is from 14<sup>th</sup> February 1997 to 22<sup>nd</sup> April 1997. The reason was a change in the pointing subsystem (DES reconfiguration) side B instead of side A after a depointing anomaly (see table 1 for the list of the all AOCS depointing anomaly occurred during the ERS-2 mission). During these periods side B was switched on. It is important to note that during the first time a clear difference in the CoG of the received spectrum is present only for the Fore antenna (an increase of roughly 100 Hz) while during the second time the change has affected all the three antennae (roughly an increase of 200 Hz, 50 Hz and 50 Hz for the fore, mid and aft antenna respectively).

At the beginning of 2000 the nominal 3-gyros AOCS configuration (plus one Digital Earth Sensor -DES, and one Digital Sun Sensor -DSS and backups) was no more considered safe because 3 of the six gyros on-board were out of order or very noisy. For that reason the MGM was implemented as default piloting mode. The MGM configuration was designed to pilot the ERS-2 using only one gyro plus the DES and the DSS modules. Scope of ZGM configuration was to extend the satellite lifetime by using the available gyros one at the time.

With the MGM, an increase of roughly 200 Hz was observed at the end of the qualification period. After the AOCS commissioning phase this parameter further evolved within the nominal range with a negligible impact on the data quality.

In MGM configuration, the gyro 5 was used until 7<sup>th</sup> October 2000 when it failed. From 10<sup>th</sup> October 2000 to 24<sup>th</sup> October 2000 the gyro 6 was used. This explains the decrease of roughly 100Hz in the CoG of the received spectrum. From 25<sup>th</sup> October 2000 to 17<sup>th</sup> January 2001 the gyro 1 was used to pilot the ERS-2 satellite. On 17<sup>th</sup> January 2001 the AOCS was upgraded. The new configuration allows piloting the satellite without gyroscopes. Unfortunately a failure of the Digital Earth Sensor (DES A-side) caused ERS-2 to enter in Safe-Mode on the same day. On 25<sup>th</sup> January 2001 gyro #1 also failed.

Satellite attitude was recovered on 5<sup>th</sup> February 2001 with a coarse attitude control mode (EBM). During the period of safe mode the spacecraft had drifted out of the nominal dead band by some 30 Km. The nominal orbit was reached on 6<sup>th</sup> February 2001. The EBM mode had a strong negative impact on the Scatterometer data quality and the dissemination of data products to end users was discontinued.

After that a series of AOCS upgrades has been implemented in order to improve the satellite attitude: on 30<sup>th</sup> March 2001 the Yaw steering law was re-introduced into the piloting function and on 7<sup>th</sup> June 2001 the Zero Gyro Mode (ZGM) has been implemented as nominal piloting mode. In ZGM the satellite attitude had an improvement in particular for the pitch and yaw error angle. This explains the reduction of the fluctuation in the received signal.

The CoG returns within its nominal value in February 2003 when the new ERS Scatterometer ground processor (ESACA) was put in operation (only for validation purposes) in Kiruna station. ESACA is able to compensate for errors in satellite attitude and to produce calibrated sigma noughts.

The evolution of the standard deviation of the CoG of the received spectrum was stable during the YSM phase. Small peaks are related with the events listed in Table 2. In MGM the evolution was within the nominal range while for the initial phase of the ZGM the performance was strong degraded. This because the on-ground Doppler filters was not able to compensate for the satellite degraded attitude. The introduction of the ESACA processor in February 2003 cured the problem.

**TABLE 1 ERS-2 Scatterometer AOCS depointing anomaly list**

Start of the anomaly			End of the anomaly			Remarks
24 <sup>th</sup> January	1996	9:10 a.m.	26 <sup>th</sup> January	1996	6:53 p.m.	AOCS depointing anomaly
14 <sup>th</sup> February	1997	1:25 a.m.	15 <sup>th</sup> February	1997	3:44 p.m.	AOCS depointing anomaly
3 <sup>rd</sup> June	1998	2:43 p.m.	6 <sup>th</sup> June	1998	12:47 a.m.	AOCS depointing anomaly
1 <sup>st</sup> September	1999	8:50 a.m.	2 <sup>nd</sup> September	1999	1:28 a.m.	
7 <sup>th</sup> October	2000	4:38 p.m.	10 <sup>th</sup> October	2000	4:49 p.m.	depointing anomaly gyro 5 failure
24 <sup>th</sup> October	2000	4:05 p.m.	25 <sup>th</sup> October	2000	12:05 p.m.	depointing anomaly gyro 6 failure
17 <sup>th</sup> January	2001		5 <sup>th</sup> February	2001		gyro 1 failure Satellite in safe mode

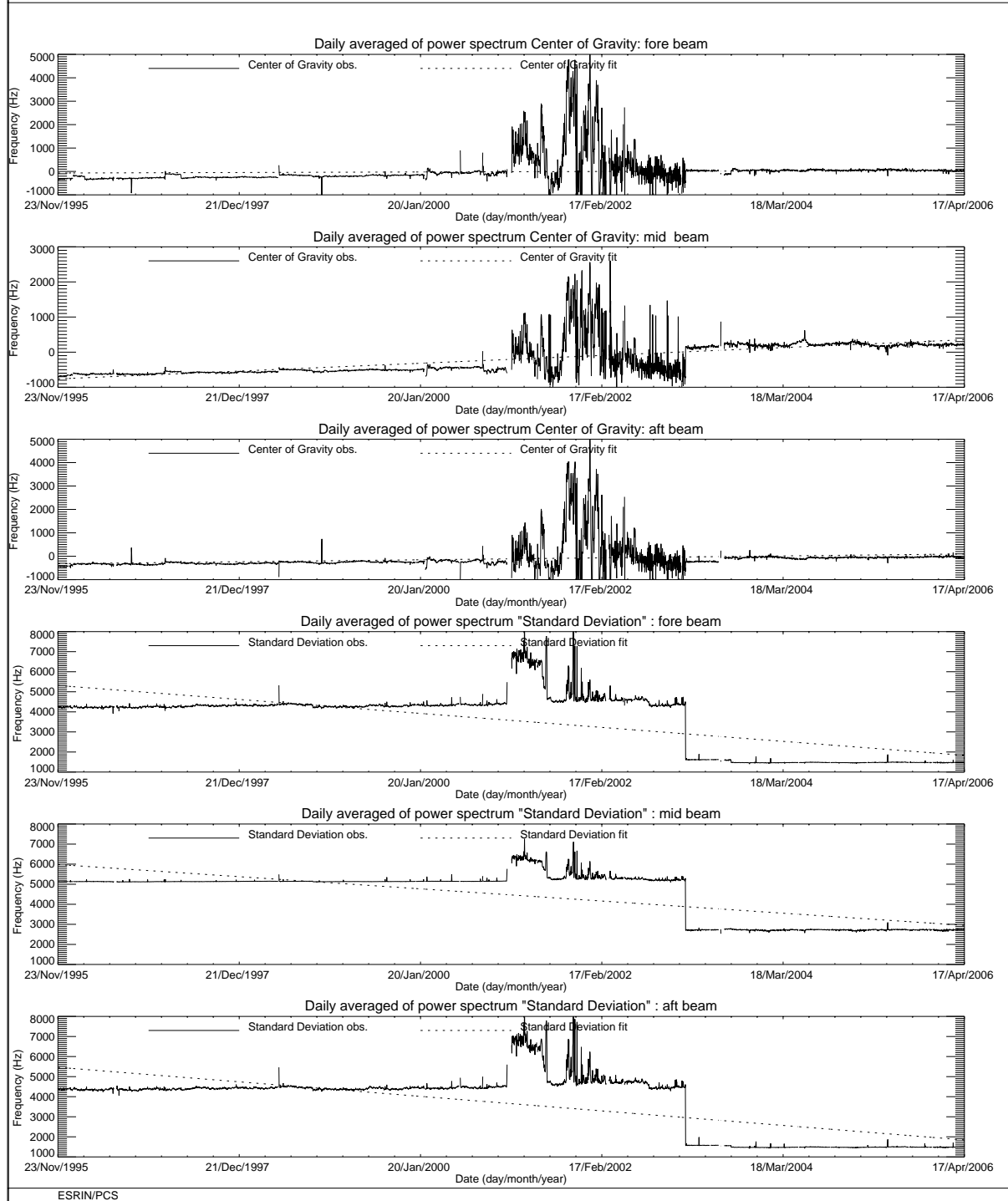
**TABLE 2 ERS-2 Scatterometer anomalies in the Doppler Compensation monitoring**

Date start	Year	Date stop	Year	Reason
26 <sup>th</sup> September	1996	27 <sup>th</sup> September	1996	Missing on-board Doppler coefficient (after cal. DC converter test period)
6 <sup>th</sup> June	1998	7 <sup>th</sup> June	1998	No Yaw Steering Mode (after depointing anomaly)
2 <sup>nd</sup> December	1998	3 <sup>rd</sup> December	1998	Missing on-board Doppler coefficients (after AMI anomaly number 228)
16 <sup>th</sup> February	2000	17 <sup>th</sup> February	2000	Fine Pointing Mode (FPM) (due to AOCS mono-gyro qualification period)
14 <sup>th</sup> April	2000	14 <sup>th</sup> April	2000	Fine Pointing Mode (FPM)
5 <sup>th</sup> July	2000	5 <sup>th</sup> July	2000	Fine Pointing Mode (FPM) after instrument switch-on
27 <sup>th</sup> September	2000	27 <sup>th</sup> September	2000	Fine Pointing Mode (FPM) to upload AOCS software patch
2 <sup>nd</sup> November	2000	2 <sup>nd</sup> November	2000	Fine Pointing Mode (FPM)
5 <sup>th</sup> December	2000	6 <sup>th</sup> December	2000	Fine Pointing Mode (FPM) due to orbital manoeuvre
6 <sup>th</sup> February	2001	30 <sup>th</sup> March	2001	Extra Backup Mode (EBM) coarse attitude control
30 <sup>th</sup> March	2001	17 <sup>th</sup> June	2001	ZGM-EBM coarse attitude control
17 <sup>th</sup> June	2001	21 <sup>st</sup> August	2003	ZGM phase. Error in yaw angle not corrected in the ground segment processor. Data shall be reprocessed with ESACA.
24 <sup>th</sup> March	2004	24 <sup>th</sup> March	2004	Fine Pointing Mode (FPM) due to orbital manoeuvre
25 <sup>th</sup> October	2004	27 <sup>th</sup> October	2004	Series of orbital manoeuvres (OCM and FPM)
10 <sup>th</sup> November	2004	11 <sup>th</sup> November	2004	Intense geomagnetic storm
8 <sup>th</sup> March	2005	8 <sup>th</sup> March	2005	orbital manoeuvre (OCM)
11 <sup>th</sup> March	2005	11 <sup>th</sup> March	2005	orbital manoeuvre (FPM)
2 <sup>nd</sup> November	2005	2 <sup>nd</sup> November	2005	orbital manoeuvre (OCM)
1 <sup>st</sup> March	2006	1 <sup>st</sup> March	2006	orbital manoeuvre (OCM)

During the cycle 114 the Doppler compensation evolution was showed in Figure 3. The CoG of the compensated signal was around 0 Hz for the Fore and -0.50 for Aft antenna and around 200 Hz for the Mid antenna. The standard deviation of the CoG was around 1500 Hz for the Fore and Aft antenna and around 2800 Hz for the Mid antenna. After the increase of value of Doppler frequency shift during the period 31<sup>st</sup> January – 01<sup>st</sup> March 2006 (orbital manoeuvre OCM) the trend return to nominal behavior with a decrease of CoG on Aft antenna.

### ERS-2 WindScatterometer: DOPPLER COMPENSATION Evolution (UWI)

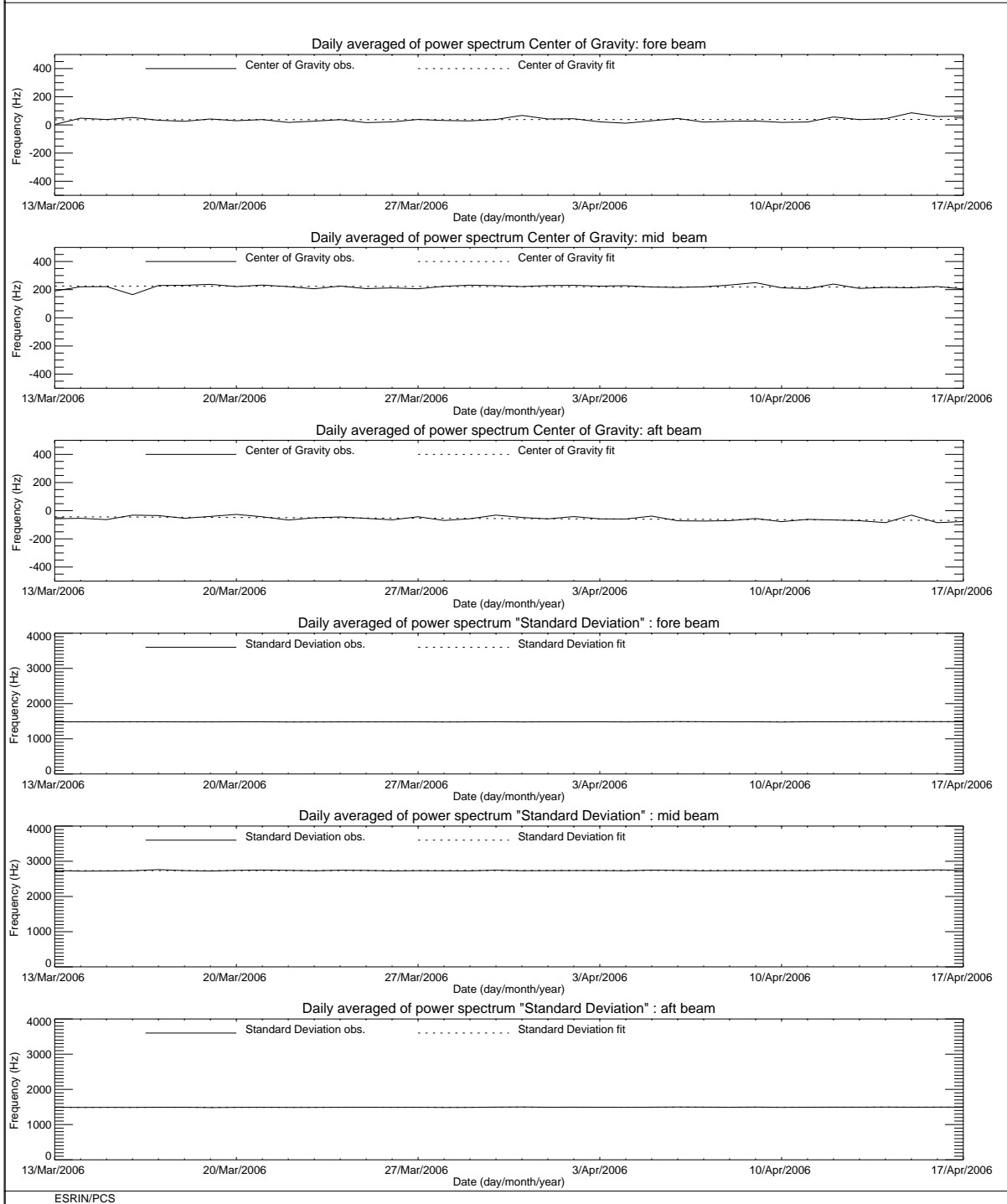
Least-square poly. fit fore beam      Center of gravity =  $-67.72 + (0.0290) \cdot \text{day}$       Standard Deviation =  $5315.4 + (-0.916) \cdot \text{day}$   
 Least-square poly. fit mid beam      Center of gravity =  $-762.7 + (0.2936) \cdot \text{day}$       Standard Deviation =  $5982.8 + (-0.798) \cdot \text{day}$   
 Least-square poly. fit aft beam      Center of gravity =  $-317.5 + (0.1092) \cdot \text{day}$       Standard Deviation =  $5464.4 + (-0.953) \cdot \text{day}$



**FIGURE 2 ERS-2 Scatterometer: Centre of Gravity and standard deviation of received power spectrum since the beginning of the mission.**

### ERS-2 WindScatterometer: DOPPLER COMPENSATION Evolution (UWI)

Least-square poly. fit fore beam    Center of gravity =  $36.714 + (0.0715) \cdot \text{day}$     Standard Deviation =  $1480.2 + (0.1347) \cdot \text{day}$   
 Least-square poly. fit mid beam    Center of gravity =  $226.10 + (-0.260) \cdot \text{day}$     Standard Deviation =  $2733.2 + (0.2476) \cdot \text{day}$   
 Least-square poly. fit aft beam    Center of gravity =  $-42.72 + (-0.753) \cdot \text{day}$     Standard Deviation =  $1488.6 + (0.2008) \cdot \text{day}$



**FIGURE 3 ERS-2 Scatterometer: Centre of Gravity and standard deviation of received power spectrum during the cycle 114.**

### 3.2 Noise power level I and Q channel

The results of the monitoring are shown in Figure 4 (long-term) and Figure 5 (cycle 113). The first set of three plots presents the noise power evolution for the I channel while the second set shows the Q channel. From the plots one can see that the noise level is more stable in the I channel than in the Q one. The I and Q receivers are inside the same box and any external interference should affect both channel. The fact that the receivers are closer to the ATSR-GOME electronics could have some impact but there is no clear explanation on that behavior. From 5<sup>th</sup> December 1997 until November 1998 some high peaks appear in the plots. These high values for the daily mean are due to the presence for these special days of a single UWI product with an unrealistic value in the noise power field of its Specific Product Header. The analysis of the raw data used to generate these products lead in all cases to the presence of one source packet with a corrupted value in the noise field stored into the source packet Secondary Header. The reason why noise field corruption is beginning from 5<sup>th</sup> December 1997 and last until November 1998 is at present unknown. It is interesting to note that at the beginning of December 1997, we started to get as well the corruption of the Satellite Binary Times (SBTs) stored in the EWIC product. The impact in the fast delivery products was the production of blank products starting from the corrupted EWIC until the end of the scheduled stop time. A change in the ground station processing in March 1998 overcame this problem.

Since 9<sup>th</sup> August 1998 until March 2000 some periods with a clear small instability in the noise power have been recognized, Table 3 gives the detailed list.

**TABLE 3 ERS-2 Periods with instability in the noise power**

Start date	Stop date	Year
9 <sup>th</sup> August	26 <sup>th</sup> October	1998
29 <sup>th</sup> November	6 <sup>th</sup> December	1998
23 <sup>rd</sup> December	24 <sup>th</sup> December	1998
7 <sup>th</sup> June	10 <sup>th</sup> June	1999
17 <sup>th</sup> August	22 <sup>nd</sup> August	1999
8 <sup>th</sup> September	9 <sup>th</sup> September	1999
3 <sup>rd</sup> October	8 <sup>th</sup> October	1999
16 <sup>th</sup> October	18 <sup>th</sup> October	1999
26 <sup>th</sup> October	28 <sup>th</sup> October	1999
25 <sup>th</sup> December	2 <sup>nd</sup> January	2000
10 <sup>th</sup> February	11 <sup>th</sup> February	2000
19 <sup>th</sup> March	26 <sup>th</sup> March	2000

To better understand the instability of the noise power the PCS has carried out investigations in the Scatterometer raw data (EWIC) to compute the noise power with more resolution. The result is that for the orbits affected by the instability the noise power had a decrease of roughly 0.7 dB for the fore and aft signals and a decrease of roughly 0.6 dB in the mid beam case (see the report for the cycle 42). The decrease of the noise power during the orbits affected by the instability is comparable with the decrease of the internal calibration level that occurred during the same orbits. The reason of this instability (linked to the AMI anomalies) is still unknown. On 28<sup>th</sup> February 2003 the Scatterometer receiver gain has been increased by 3 dB to optimize the usage of the on-board ADC converter. This explains the increase of the noise for the Fore and Aft beam channel. For the mid beam channel the noise still remains not measurable. 17<sup>th</sup> February 2006 a pick in noise power was due to an acquisition problem and not due to an instrument anomaly. The evolution of the noise power during the cycle 114 was stable (see Figure 5). The daily average for the Fore and Aft beam noise is around 1.7

ADC (I) and around 1.6 ADC (Q) respectively. For the Mid beam the noise is not measurable.

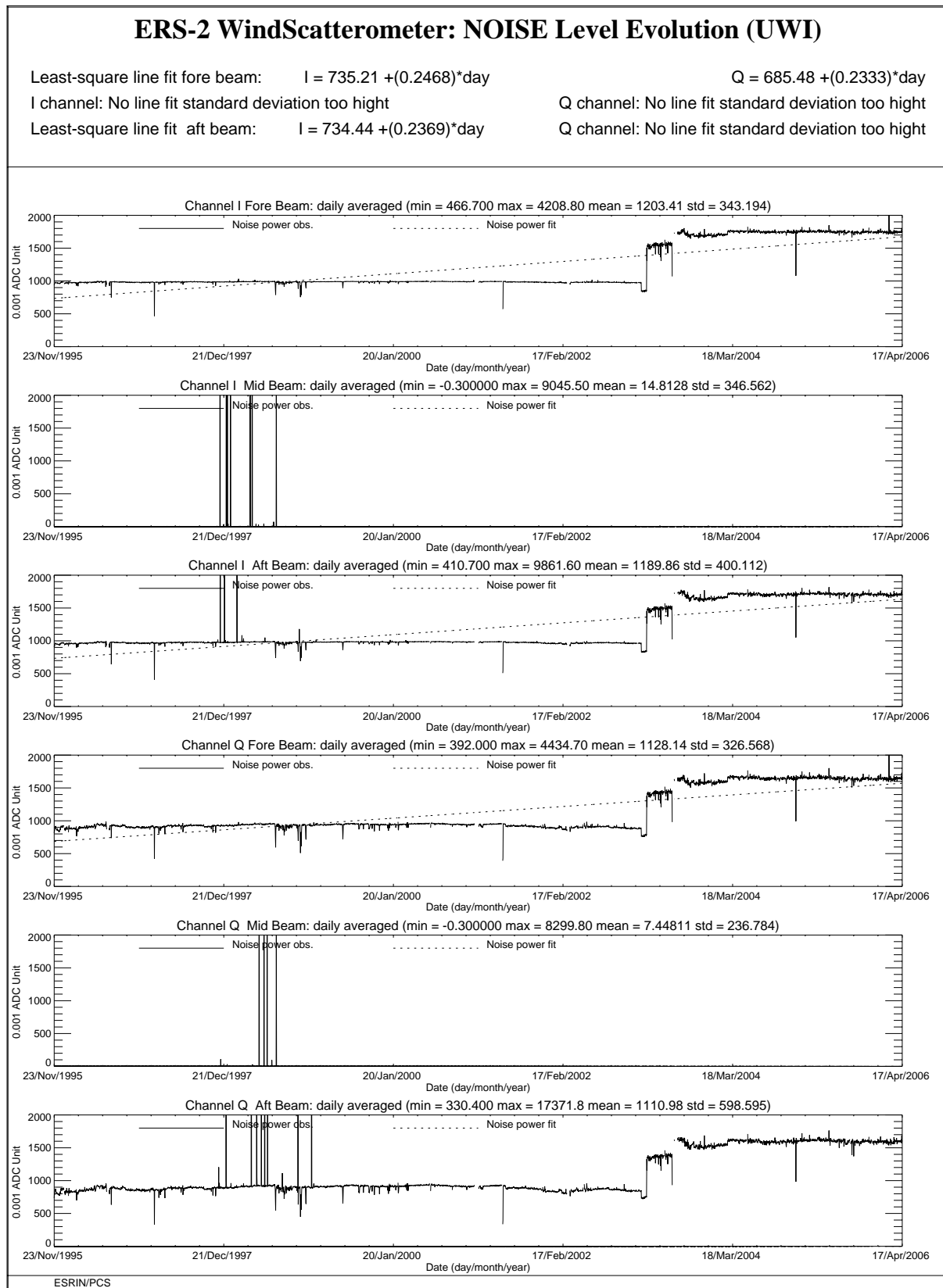


FIGURE 4 ERS-2 Scatterometer: noise power I and Q channel since the beginning of the mission.

### ERS-2 WindScatterometer: NOISE Level Evolution (UWI)

Least-square line fit fore beam:  $I = 1742.1 + (0.2200) \cdot \text{day}$   $Q = 1638.0 + (0.4485) \cdot \text{day}$   
 Least-square line fit mid beam:  $I = 0.1339 + (-0.002) \cdot \text{day}$   $Q = 0.0915 + (-0.000) \cdot \text{day}$   
 Least-square line fit aft beam:  $I = 1705.0 + (0.1069) \cdot \text{day}$   $Q = 1596.2 + (0.1491) \cdot \text{day}$

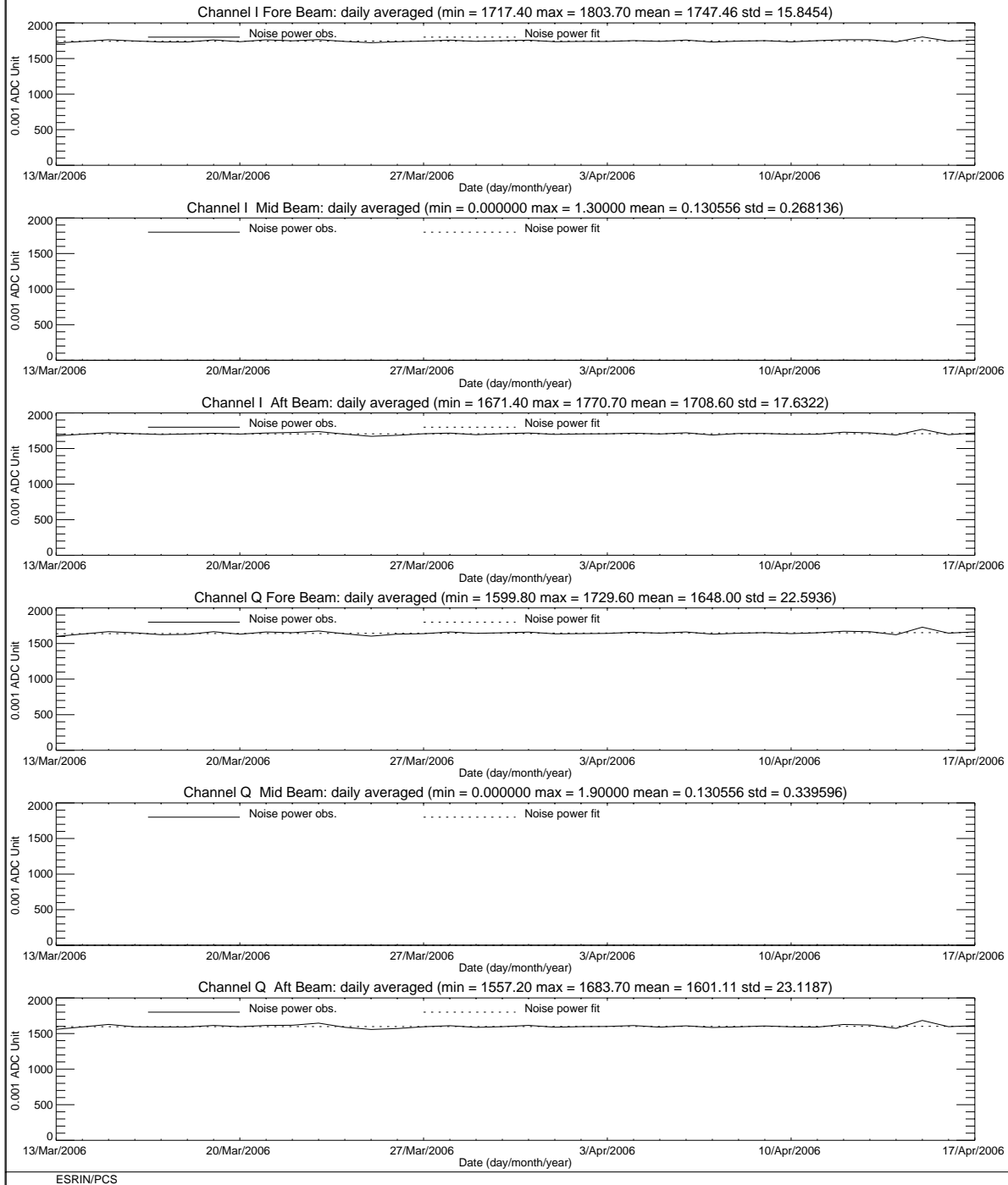


FIGURE 5 ERS-2 Scatterometer: noise power I and Q channel for cycle 114.



### 3.3 Power level of internal calibration pulse

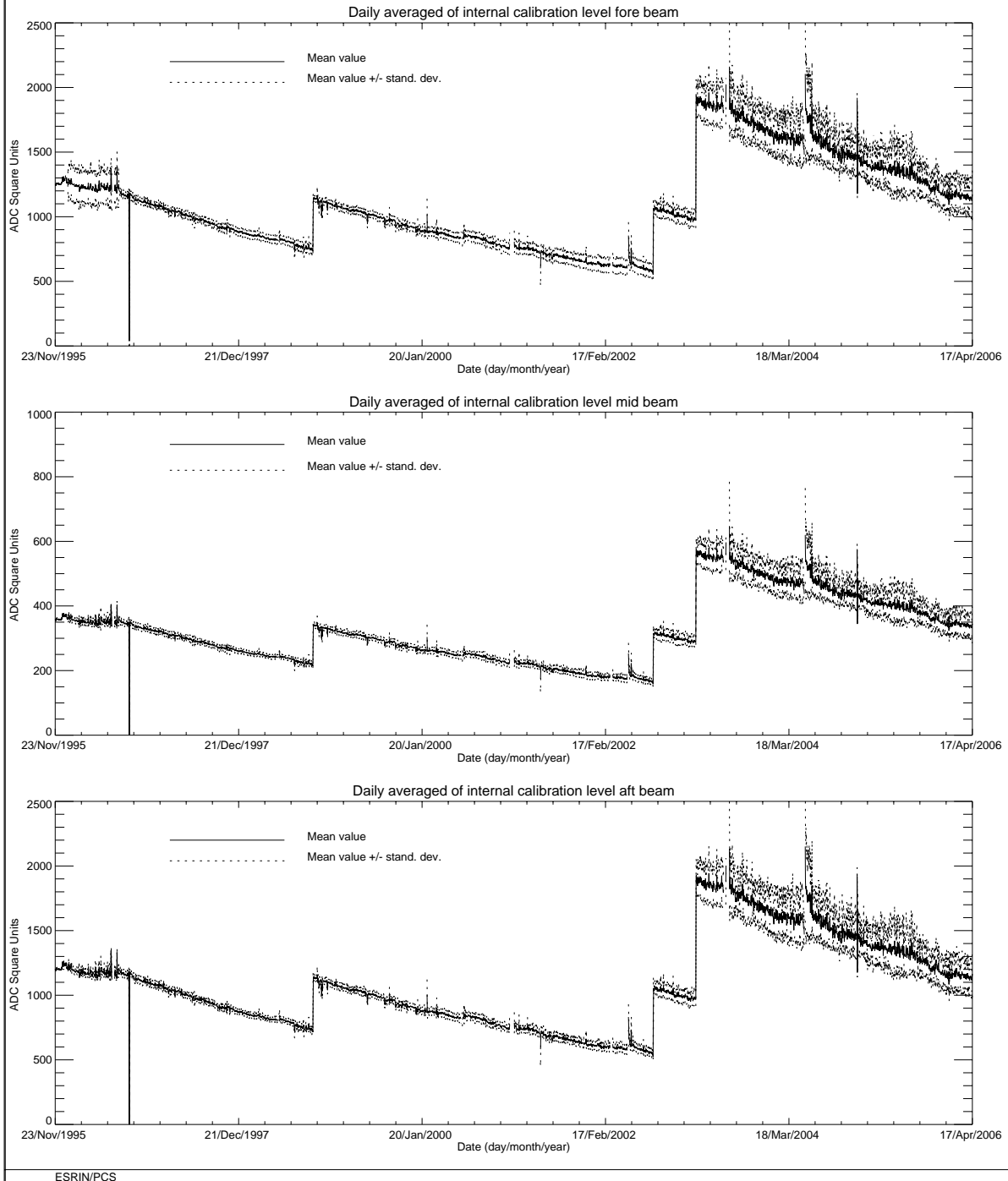
For the internal calibration level, the results are shown in Figure 6 (long-term) and Figure 7 (cycle 114). The high value of the variance in the fore beam until August, 12<sup>th</sup> 1996 is due to the ground processing. In fact all the blank source packets ingested by the processor were recognized as Fore beam source packets with a default value for the internal calibration level. The default value was applicable for ERS-1 and therefore was not appropriate for ERS-2 data processing. On August 12<sup>th</sup>, 1996 a change in the ground processing LUT overcame the problem. Since the beginning of the mission a power decrease is detected. The power decrease is regular and affects the AMI when it is working in wind-only mode, wind/wave mode and image mode indifferently. The average power decrease is around 0.08 dB per cycle (0.0022 dB/day) and is clearer after August, 6<sup>th</sup> 1996 when the calibration subsystem has been changed. The reason of the power decrease is because the TWT is not working in saturation, so that a variation in the input signal is visible in the output. The variability of the input signal can be two-fold: the evolution of the pulse generator or the tendency of the switches between the pulse generator and the TWT to reset themselves into a nominal position. These switches were set into an intermediate position in order to put into operation the Scatterometer instrument (on 16<sup>th</sup> November 1995). To compensate for this decrease, on 26<sup>th</sup> October 1998 (cycle 37) 2.0 dB were added to the Scatterometer transmitted power and on 4<sup>th</sup> September 2002 (cycle 77) were added 3.0 dB. On 28<sup>th</sup> February 2003 (cycle 82) the Scatterometer receiver gain was increased by 3 dB to improve the usage of the on-board ADC converter. These events are clearly displayed by the large steps show in Figure 6.

Since 9<sup>th</sup> August 1998 until March 2000 the internal calibration level shows instability after an AMI or platform anomaly (see reports from cycle 35 to cycle 52). This instability is very well correlated with the fluctuations observed in the noise power. On 13<sup>th</sup> July 2000 a high peak (+3.5 dB) was detected in the transmitted power. This event has been investigated deeply by PCS and ESOC. The results of the analysis are reported in the technical note "ERS-2 Scatterometer: high peak in the calibration level" available in the PCS. The high transmitted power was detected after an arcing event which occurred inside the HPA. After that event the transmitted power had an average increase of roughly 0.14 dB.

During the cycle 114 the mean transmitted power evolution had a mean decrease of 0.05 dB per cycle. That value is close to the nominal trend detected since August 1996 (about 0.1 dB per cycle).

### ERS-2 WindScatterometer: Internal CALIBRATION Level Evolution (UWI)

Least-square polynomial fit fore beam	gain (dB) per day	0.0000	$1047.46 + (0.00833035) \cdot \text{day}$
Least-square polynomial fit mid beam	gain (dB) per day	0.0000	$310.042 + (0.00210519) \cdot \text{day}$
Least-square polynomial fit aft beam	gain (dB) per day	0.0000	$1038.15 + (0.00519342) \cdot \text{day}$



**FIGURE 6 ERS-2 Scatterometer: power of internal calibration pulse since the beginning of the mission.**

### ERS-2 WindScatterometer: Internal CALIBRATION Level Evolution (UWI)

Least-square polynomial fit fore beam	gain (dB) per day -0.0016	1156.34 +(-0.415352)*day
Least-square polynomial fit mid beam	gain (dB) per day -0.0017	341.632 +(-0.133448)*day
Least-square polynomial fit aft beam	gain (dB) per day -0.0016	1148.30 +(-0.407626)*day

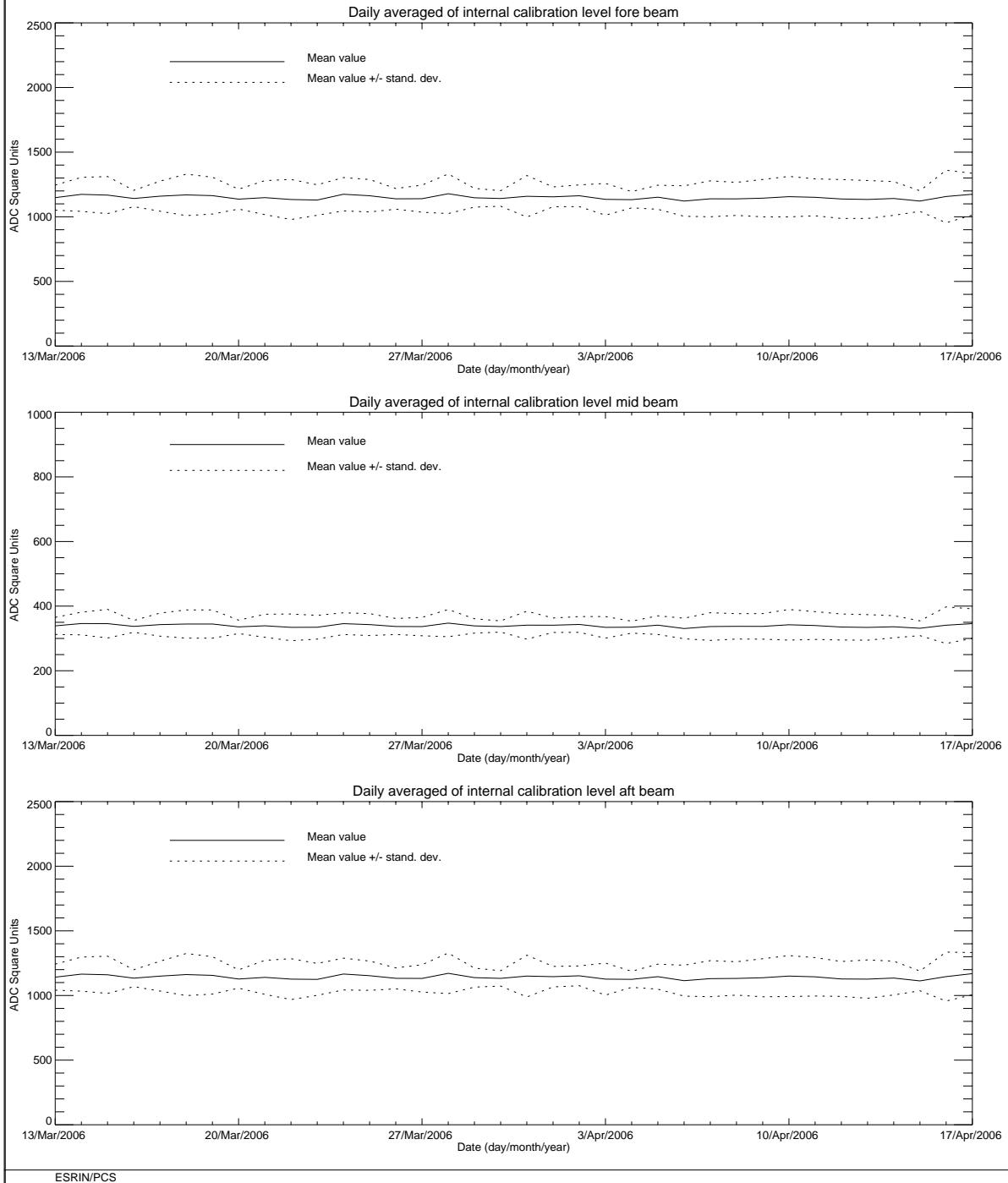


FIGURE 7 ERS-2 Scatterometer: power of internal calibration level cycle 114.

## **4 Products performance**

The PCS carries out a quality control of the winds generated from the WSCATT data. External contributions to this quality control (from ECMWF) are also reported in this chapter.

### **4.1 Products availability**

One of the most important points in the monitoring of the products performance is their availability. The Scatterometer is a part of ERS payload and it is combined with a Synthetic Aperture Radar (SAR) into a single Active Microwave Instrument (AMI). The SAR users requirements and the constraints imposed by the on-board hardware (e.g. amount of data that can be recorded in the on-board tape) set rules in the mission operation plan.

The principal rules that affected the Scatterometer instrument data coverage are:

- Over the Ocean the AMI is in wind/wave mode (Scatterometer with small SAR imagerettes acquired every 30 sec.) and the ATSR-2 is in low rate data mode.
- Over the Land the AMI is in wind only mode (only Scatterometer) and the ATSR-2 is in high rate mode. (Due to on board recorder capacity, ATSR-2 in high rate is not compatible with SAR wave imagerettes acquisitions.) This strategy preserves the Ocean mission.
- The SAR images are planned as consequence of users' request.

Moreover:

- since July 16<sup>th</sup> 2003 the ERS-2 Low Rate mission is continued within only the visibility of ESA ground stations over Europe, North Atlantic, the Arctic and western North America. The reason was the failure of both on-board tape recorders.
- During the cycles 64 – 92 (June 2001 since 25<sup>th</sup> February 2004) the AMI instrument was operated in wind/wave mode also over the land. The reason was because the SAR wave data was used to estimate the satellite miss pointing along the full orbit. Since 25<sup>th</sup> February onwards the nominal mission scenario has been resumed, with the AMI instrument in wind only mode over the land (and consequently ATSR was operated again in High Rate over land). The miss pointing performances (in particular the yaw error angle) along the full orbit are computed by analyzing the Scatterometer data.

In order to maximize the data coverage, after the on-board tape recorder failure, an upgrade of the ERS ground segment acquisition scenario has been performed.

In that framework the following has been implemented:

- Since September 7<sup>th</sup> 2003 the ground station in Maspalomas, Gatineau and Prince Albert are acquiring and processing data for all the ERS-2 satellite passes within the station visibility (apart from passes for which other satellites have a higher priority).
- To further increase the wind coverage of the North Atlantic area, since December 8<sup>th</sup>, 2003 is operative a new ground Station in West Freugh (UK) and data from this new station are available to the user since mid January 2004. Due to its location, the West Freugh acquisitions have some overlap with those from three other ESA stations, Kiruna, Gatineau or Maspalomas. The station overlap depends on the relative orbit of the satellite. Consequentially, overlapping wind Scatterometer LBR data may be included in two products. Since the two products are generated at different ground stations the overlap

may not be completely precise, with a displacement up to 12 Km and slight differences in the wind data itself.

- Since March, 3<sup>rd</sup> 2004, Matera station is acquiring low rate bit data for all the passes for which is planned a SAR acquisition. Some science data are produced and disseminated to users, Radar Altimeter data, Wave data and Scatterometer data are recorded on tapes and will be available off-line for re-processing. This means for the Scatterometer data coverage a very limited improvement due to the fact that are acquired only passes with some SAR activity.
- Since February 2005 a new acquisition station in Miami (US) is in operations. This new station allows a full data coverage of the Gulf of Mexico and part of the Pacific Ocean on the west Mexico coast.
- Since 25<sup>th</sup>, June 2005 a new acquisition stations have been put into operations in Beijing. It covers part of China and Oriental Asia.
- Since 5<sup>th</sup> July 2005 McMurdo ground station is operational in the South Pole. It covers all the Antarctic region.
- Since 05<sup>th</sup> December 2005 the Hobart station is operational and it is covering the Australian and New Zealand area. Hobart data has been disseminated into BUFR format since February 13<sup>th</sup> 2006

Figure 8 shows the AMI operational modes for cycle 114. Each segment of the orbit has different color depending on the instrument mode: brown for wind only mode, blue for wind-wave mode and green for image mode. The red and yellow colors correspond to gap modes (no data acquired). For cycle 114 the percentage of the ERS-2 AMI activity is shown in table 4. For cycle 114 is noted a slight increase of SAR activity at descending passes respect to cycle 113.

**TABLE 4 ERS-2 AMI activity (cycle 114)**

Ami Mode	Ascending passes	Descending passes
<b>Wind and Wind-Wave</b>	<b>93.06 %</b>	<b>81.85 %</b>
<b>Image</b>	<b>1.22 %</b>	<b>12.35 %</b>
<b>Gap and others</b>	<b>5.72 %</b>	<b>5.64 %</b>

Table 5 reports the major data lost (day or more) due to the test periods, AMI and satellite anomalies or ground segment anomalies occurred after 6<sup>th</sup> August, 1996 (before that day for many times data were not acquired due to the DC converter failure).

**TABLE 5 ERS-2 Scatterometer mission major data lost (day or more) after 6<sup>th</sup>, August 1996**

Start date	Stop Date	Reason
September 23 <sup>rd</sup> , 1996	September 26 <sup>th</sup> , 1996	ERS 2 switched off due to a test period
February 14 <sup>th</sup> , 1997	February 15 <sup>th</sup> , 1997	ERS 2 switched off due to a depointing anomaly
June 3 <sup>rd</sup> , 1998	June 6 <sup>th</sup> , 1998	ERS 2 switched off due to a depointing anomaly
November 17 <sup>th</sup> , 1998	November 18 <sup>th</sup> , 1998	ERS 2 switched off to face out Leonide meteor storm
September 22 <sup>nd</sup> 1999	September 23 <sup>rd</sup> 1999	ERS 2 switched off due to Year 2000 certification test
November 17 <sup>th</sup> , 1999	November 18 <sup>th</sup> , 1999	ERS 2 switched off to face out Leonide meteor storm
December 31 <sup>st</sup> , 1999	January 2 <sup>nd</sup> , 2000	ERS 2 switched off Y2K transition operation
February 7 <sup>th</sup> , 2000	February 9 <sup>th</sup> , 2000	ERS 2 switched off due to new AOCS s/w up link
June 30 <sup>th</sup> , 2000	July 5 <sup>th</sup> , 2000	ERS 2 Payload switched off after RA anomaly
July 10 <sup>th</sup> , 2000	July 11 <sup>th</sup> , 2000	ERS 2 Payload reconfiguration
October 7 <sup>th</sup> , 2000	October 10 <sup>th</sup> 2000	ERS 2 Payload switched off after AOCS anomaly
January 17 <sup>th</sup> , 2001	February 5 <sup>th</sup> , 2001	ERS 2 Payload switched off due to AOCS anomaly
May 22 <sup>nd</sup> , 2001	May 24 <sup>th</sup> , 2001	ERS 2 Payload switched off due to platform anomaly

May 25 <sup>th</sup> , 2001	May 25 <sup>th</sup> , 2001	AMI switched off due thermal analysis
November 17 <sup>th</sup> , 2001	November 18 <sup>th</sup> , 2001	ERS 2 switched off to face out Leonide meteor storm
November 27 <sup>th</sup> , 2001	November 28 <sup>th</sup> , 2001	ERS 2 payload off due to 1Gyro Coarse Mode commissioning
March 8 <sup>th</sup> , 2002	March 20 <sup>th</sup> , 2002	ERS 2 payload unavailability after RA anomaly
May 19 <sup>th</sup> , 2002	May 24 <sup>th</sup> , 2002	AMI switched off due to arc events
May 24 <sup>th</sup> , 2002	May 28 <sup>th</sup> , 2002	AMI partially switched off due to arc events
May 31 <sup>st</sup> , 2002	June 3 <sup>rd</sup> , 2002	Gatineau orbits partially acquired due to antenna problem
June 4 <sup>th</sup> , 2002	June 5 <sup>th</sup> , 2002	AMI partially switched-off due to arc events
July 25 <sup>th</sup> , 2002	July 25 <sup>th</sup> , 2002	AMI switched off HPA voltage too low
September 11 <sup>th</sup> , 2002	September 11 <sup>th</sup> , 2002	AMI switched off macrocommand transfer error
November 17 <sup>th</sup> , 2002	November 18 <sup>th</sup> , 2002	ERS-2 switched off to face out Leonide meteor storm
December 9 <sup>th</sup> , 2002	December 10 <sup>th</sup> , 2002	IDHT anomaly no data recorded on board
December 20 <sup>th</sup> , 2002	December 20 <sup>th</sup> , 2002	IDHT anomaly no data recorded on board
January 14 <sup>th</sup> , 2003	January 14 <sup>th</sup> , 2003	IDHT anomaly no data recorded on board
May 6 <sup>th</sup> , 2003	May 19 <sup>th</sup> , 2003	AMI off due to bus reconfiguration
June 22 <sup>nd</sup> , 2003	July 16 <sup>th</sup> , 2003	IDHT recorders test no data acquired
Since July 16 <sup>th</sup> , 2003		Regional Mission Scenario. Data available only within the visibility of ESA ground station
May 21 <sup>st</sup> , 2004	May 25 <sup>th</sup> , 2004	AMI in refuse mode due to excessive HPA arcing
June 22 <sup>nd</sup> , 2004	June 22 <sup>nd</sup> , 2004	AMI in refuse mode due to excessive HPA arcing
September 23 <sup>rd</sup> , 2004	September 24 <sup>th</sup> , 2004	AMI switched down
December 16 <sup>th</sup> , 2004	December 17 <sup>th</sup> , 2004	AMI memory test
December 26 <sup>th</sup> , 2004	December 26 <sup>th</sup> , 2004	IDHT anomaly. No data acquired
December 27 <sup>th</sup> , 2004	December 28 <sup>th</sup> , 2004	Payload off due to on board anomaly
January 23 <sup>rd</sup> , 2005	January 23 <sup>rd</sup> , 2005	AMI switched down (00.51 a.m. – 1.26 p.m.)
February 26 <sup>th</sup> , 2005	February 26 <sup>th</sup> , 2005	AMI switched down (01.20 a.m. – 12.37 a.m.)
May 23 <sup>rd</sup> , 2005	May 24 <sup>th</sup> , 2005	ERS 2 payload unavailability after RA anomaly
Jun 20 <sup>th</sup> , 2005	Jun 21 <sup>st</sup> , 2005	AMI switched off caused by RBI status error (08:44 p.m. – 10:13 a.m.)

Due to Kiruna station dissemination problem the PCS system has received the 12<sup>th</sup> April 2006 the file UWI\_060412KSEP6220 containing the products acquired at 07:05, 08:45, 10:24, 12:04 and no four different file, for the same problem for EGH products the PCS system has received only one file EGH\_060412KSEP629 for all products acquired between 07:5 and 13:50.

### ERS-2 Active Microwave Instrument: Working modes

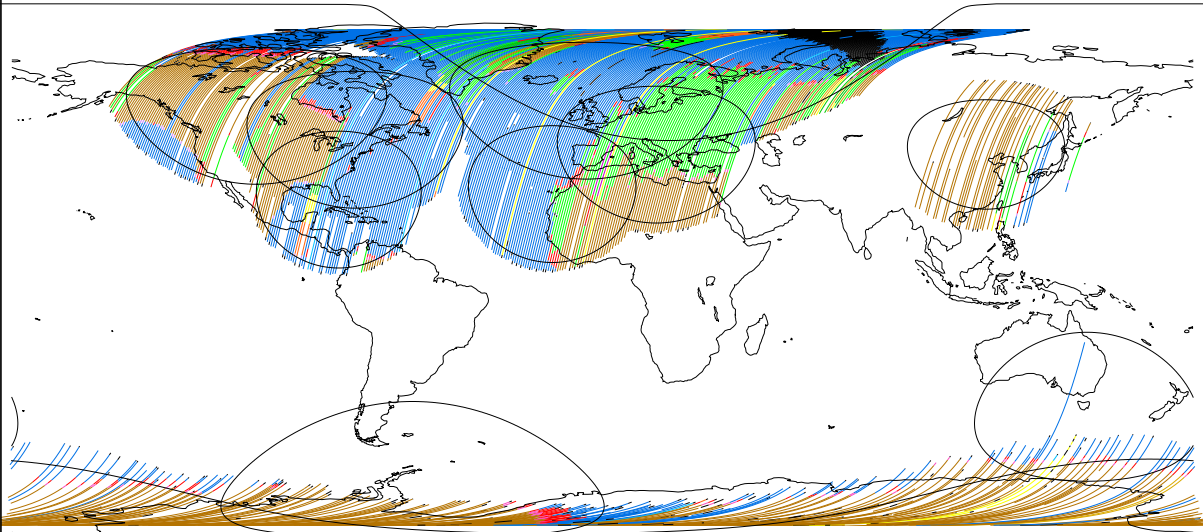
First product : 13/Mar/2006 0:42:18.047

Last product : 16/Apr/2006 23:24:10.343

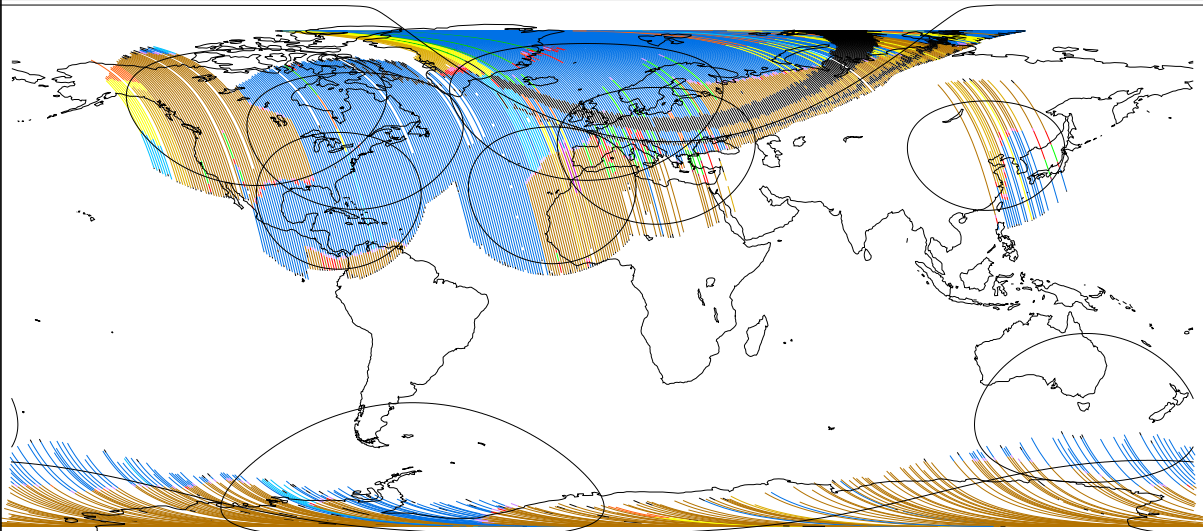
Products found: 53135

Created : 19-APR-2006 13:23:38.000

Cylindrical projection: Descending passes



Cylindrical projection: Ascending passes



#### AMI MODE Decoding Key and percentage of occurrences per mode & passage

WI/WV OG HTR A 0.000 D 0.000	WI/WV OB GAP A 47.74 D 46.11	WI/WV OB HTR A 1.770 D 0.780	WIND CAL GAP A 0.130 D 0.130	WIND CAL HTR A 0.000 D 0.000	HEATER A 2.410 D 1.450	GAP A 0.980 D 2.190	
IMAGE OB HTR A 0.000 D 0.000	WAVE OG GAP A 0.000 D 0.000	WAVE OG HTR A 0.000 D 0.000	WAVE OB GAP A 0.000 D 0.000	WAVE OB HTR A 0.000 D 0.000	WIND GAP A 31.93 D 30.38	WIND HTR A 3.300 D 0.410	WI/WV OG GAP A 0.000 D 0.000
TX WINDC GAP A 0.000 D 0.000	TX WINDC HTR A 0.000 D 0.000	TX TO HEATER A 0.030 D 0.000	TX TO GAP A 1.310 D 1.060	STANDBY A 0.000 D 0.000	IMAGE OG GAP A 0.910 D 11.48	IMAGE OG HTR A 0.310 D 1.030	IMAGE OB GAP A 0.000 D 0.000
TX WVOB GAP A 0.000 D 0.000	TX WVOB HTR A 0.000 D 0.000	TX WIND GAP A 0.120 D 0.500	TX WIND HTR A 0.040 D 0.010	TX WVOG GAP A 0.000 D 0.000	TX WVOG HTR A 0.000 D 0.000	TX WVOB GAP A 0.610 D 0.200	TX WVOB HTR A 0.040 D 0.000
NONE A 8.320 D 4.170	TX TO STBY A 0.000 D 0.000	TX IMOG GAP A 0.020 D 0.050	TX IMOG HTR A 0.000 D 0.010	TX IMOB GAP A 0.000 D 0.000	TX IMOB HTR A 0.000 D 0.000	TX WVOG GAP A 0.000 D 0.000	TX WVOG HTR A 0.000 D 0.000

ESRIN/PCS

Page 1

FIGURE 8 ERS-2 AMI activity during cycle 114.

## 4.2 PCS Geophysical Monitoring

The routine analysis is summarized in the plots of figure 9; from top to bottom:

- the monitoring of the valid sigma-nought triplets per day.
- the evolution of the wind direction quality. The ERS wind direction (for all nodes and only for those nodes where the ambiguity removal has worked properly) is compared with the ECMWF forecast. The plot shows the percentage of nodes for which the difference falls in the range -90.0, +90.0 degrees.
- the monitoring of the percentage of nodes whose ambiguity removal works successfully.
- the comparison of the wind speed deviation: (bias and standard deviation) with the ECMWF forecast.

The results since August 6<sup>th</sup>, 1996 until the beginning of the operation with the Zero Gyro Mode (ZGM) in January 2001 can be summarized as:

- High quality wind products has been distributed since Mid March 1996 (end of calibration and validation phase)
- The number of valid sigma-nought distributed per day was almost stable with a small increase after June 29<sup>th</sup>, 1999 due to the dissemination in fast delivery of the data acquired in the Prince Albert station (Canada).
- The wind direction is very accurate for roughly 93% of the nodes, the ambiguity removal processing successfully worked for more than 90.0% of the nodes.
- The UWI wind speed shows an absolute bias of roughly 0.5 m/s and a standard deviation that ranges from 2.5 m/s to 3.5 m/s with respect to the ECMWF forecast.
- The wind speed bias and its standard deviation have a seasonal pattern due to the different winds distribution between the winter and summer season.
- Two important changes affect the speed bias plot.
- the first is on June 3<sup>rd</sup>, 1996 due to the switch from ERS-1 to ERS-2 data assimilation in the meteorological model.
- the second which occurred at the beginning of September 1997, is due to the new monitoring and assimilation scheme in ECMWF algorithms (4D-Var).
- Since 19<sup>th</sup> April 1999 two set of meteo-table (meteorological forecast centered at 00:00 and 12:00 of each day) are used in the ground processing. This allowed the processing of wind data with 18 and 24 hours meteorological forecast instead of the 18, 24, 30 36 hours forecast. The comparison between data processed with the 18-24 hours forecast instead of 30-36 hours forecast shown an increase in the number of ambiguity removed nodes with a neutral impact in the daily statistics.
- The mono-gyro AOCS configuration (see report for cycle 50) that was operative from 7<sup>th</sup> February 2000 to 17<sup>th</sup> January 2001 did not affect the wind data performance.

During the Zero Gyro Mode (ZGM) phase the dissemination of the fast delivery Scatterometer data to the users has been interrupted on 17<sup>th</sup> January 2001 due to degraded quality in sigma noughts and winds. The satellite attitude in ZGM is slightly degraded and the “old” ground processor was not able to produce calibrated data anymore. For that reason a re-design of the entire ground processing has been carried out and since August 21<sup>st</sup> 2003 the new processor named ERS Scatterometer Attitude Corrected Algorithm (ESACA) is operative in all the ESA ground station and data was redistributed to the user.

Although for a long period data was not distributed, the PCS has monitored the data quality (as shown in Figure 9) and the results during that period can be summarized as:



At the beginning of the ZGM (January 2001 - end July 2001) the number of valid nodes has clear drop from 190000 per day to 9000 per day. This because the satellite attitude was strong degraded and the received signal had a very high Kp figure (in particular for the far range nodes). For the valid nodes, due to no calibrated sigma nought, the quality of the wind was very poor, the distance from the cone was high and the wind speed bias was above 1.5 m/s.

At the end of July 2001 the ZGM has been tuned and the satellite attitude had an improvement. This explains the increase of the number of valid nodes (returned around the nominal level) and the improvements in the wind speed bias (around 0.5 m/s).

On 4<sup>th</sup> February 2003, a beta version of the new ESACA processor has been put in operation in Kiruna for validation and the monitoring of the data quality has been done only for the new ESACA data. The number of valid nodes slight decreased because Kiruna station process only 9 of 14 orbits per day. The wind speed direction deviation had a clear improvement because ESACA implements a new ambiguity removal algorithm (MSC) and the ambiguity removal rate is now stable at 100% (the MSC is able to remove ambiguity for all the nodes). The wind speed bias had a clear drop from 0.5 to -0.5 m/s. That value is closer to the nominal one (around -0.2 m/s). As reported in the previous cyclic reports the beta version of ESACA had some calibration problem for the near range nodes and this explains why the data quality does not match exactly the one obtained in the nominal YSM. That problem has been overcome with the final release of the ESACA processor put into operation on August 21<sup>st</sup> 2003. On June 22<sup>nd</sup> the failure of the on-board tape recorder discontinued the ERS global mission (see section 4.1) and this explains the low number of valid nodes available after that day.

The performances of ESACA winds delivered between August 2003 and September 2004 are affected by land contamination. Around costal zones many Sea nodes have a strong contribution of Land backscattering and the retrieved wind is not correct. An optimization of the Land/Sea flag in the ground processing has been carried out during the cycle 98. In the statistics computed by PCS on the fast delivered winds the Land contamination has been removed by using a refined Land/Sea mask. Also the ice contamination has been removed with a simple geographical filter. With these new setting the PCS statistics are very similar to the ones reported by ECMWF.

For cycle 114 the wind performances stayed stable. The wind speed bias (UWI vs 18 or 24 hour forecast) was roughly 0.8 m/s and the speed bias standard deviation was around 1.9 m/s.

The wind direction deviation for cycle 114 was good. The performance for UWI wind direction was similar to that for cycle 113. The standard deviation of UWI wind speed was similar cycle 113.

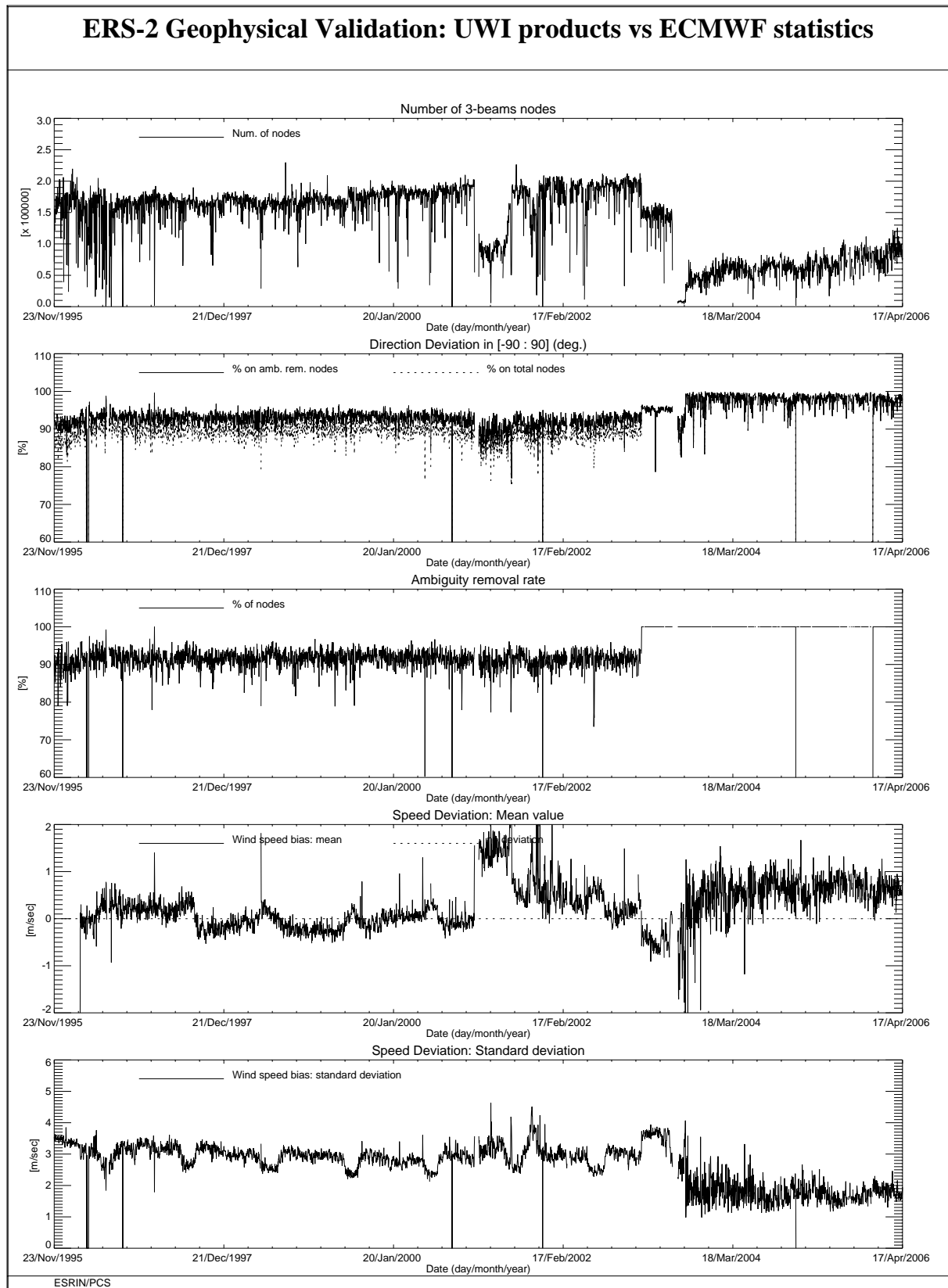
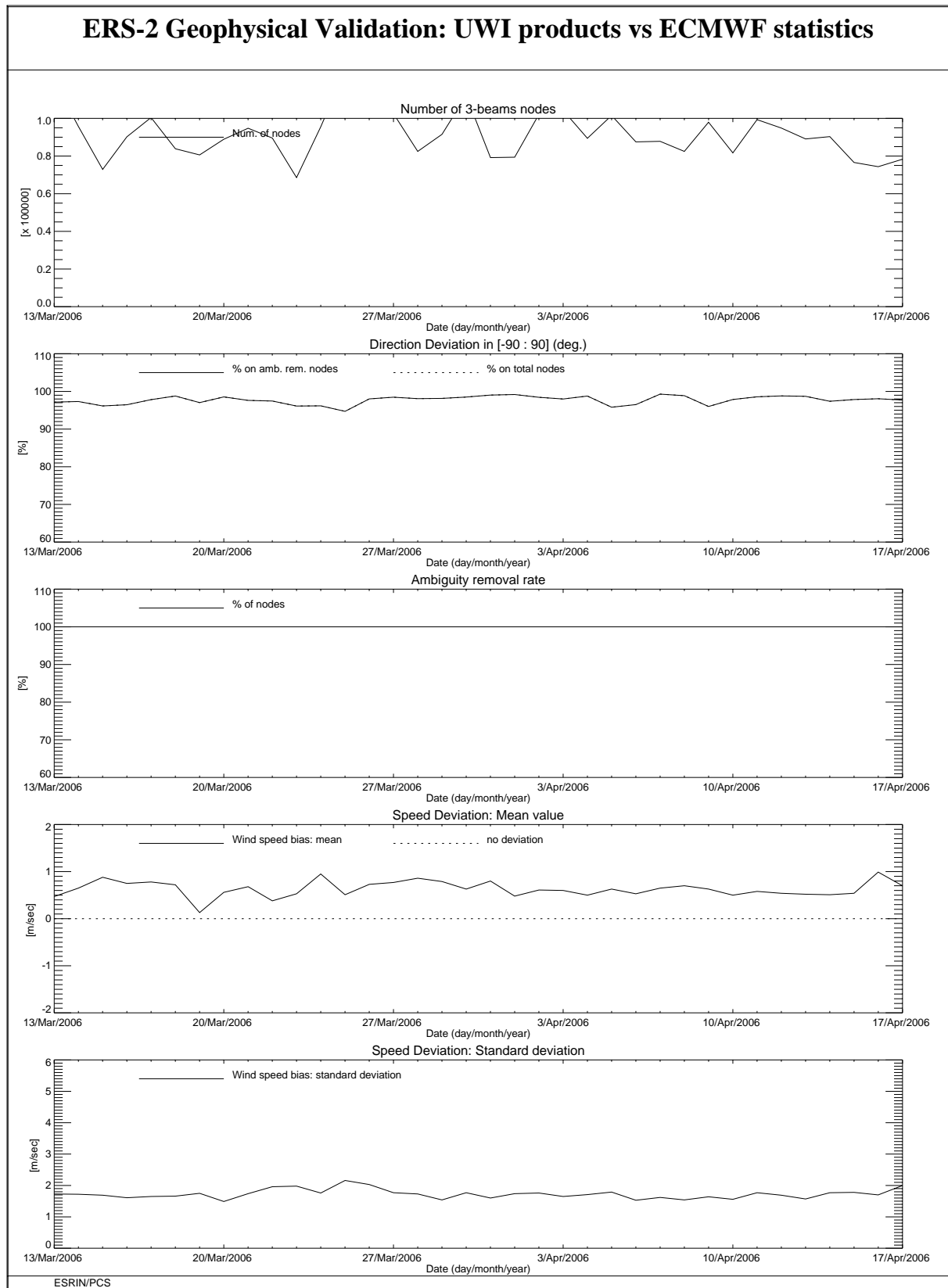


FIGURE 9 ERS-2 Scatterometer: wind products performance since the beginning of the mission.



**FIGURE 10 ERS-2 Scatterometer: wind products performance for cycle 114.**

### 4.3 ECMWF Geophysical Monitoring

The quality of the UWI product was monitored at ECMWF for cycle 114. Results were compared to those obtained from the previous cycle, as well for data received during the nominal period in 2000 (up to cycle 59). No corrections for duplicate observations were applied.

During cycle 114 data was received between 21:01 UTC 13 March and 20:57 UTC 17 April 2006. For all 6-hourly batches centered around 00, 06, 12 and 18 UTC, data was received.

Data is being recorded whenever within the visibility range of a ground station. For cycle 114 data coverage was over North-Atlantic, the Mediterranean, the Caribbean, the Gulf of Mexico, a small part of the Pacific west from the US Canada and Central America, the Chinese and Japanese Sea, and the Southern Ocean south of Australia and New Zealand (see Figure 12).

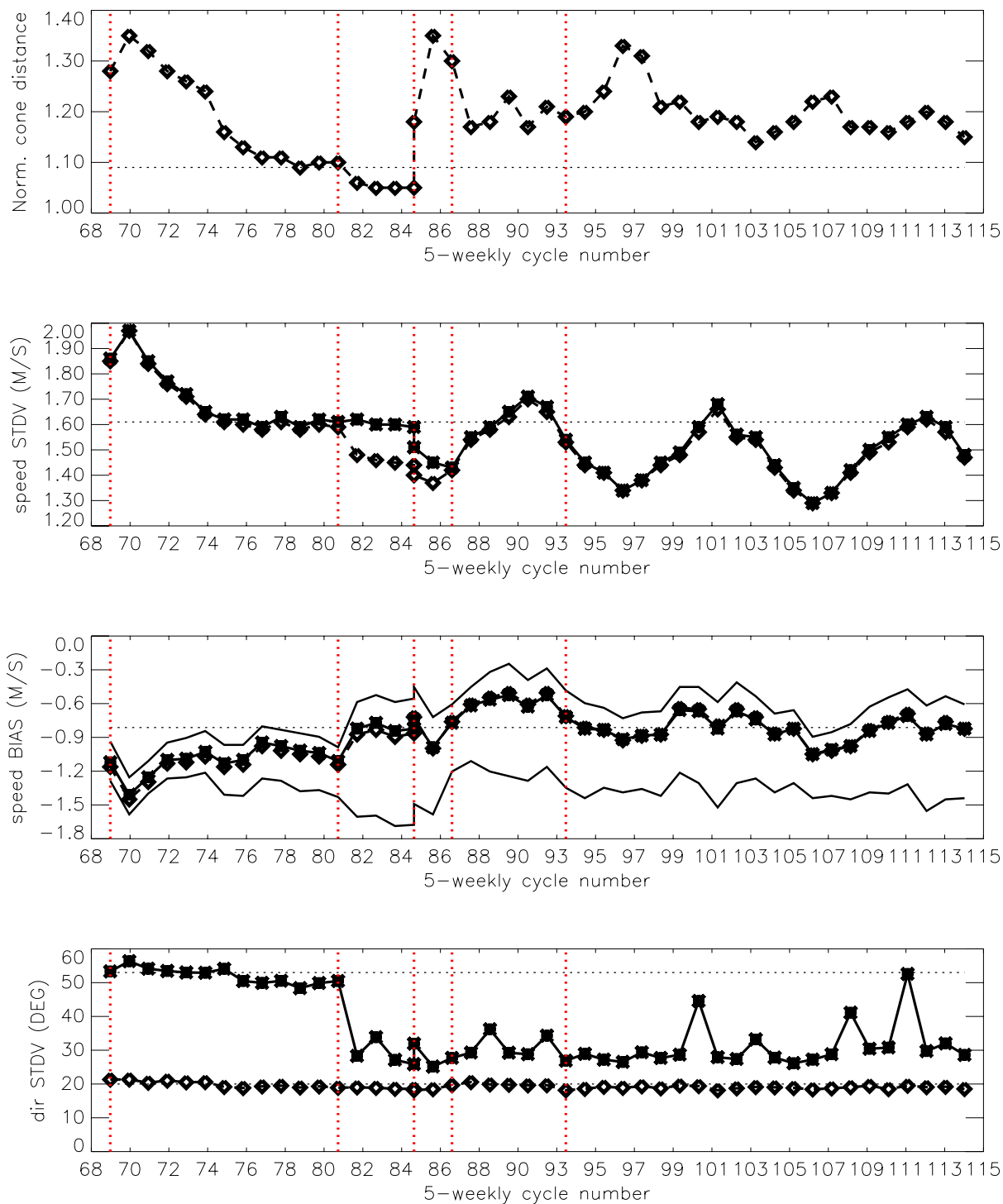
During cycle 114, the asymmetry between the fore and aft incidence angles showed a calm behavior. Although the Sun seems to have reached its point of minimal activity (period roughly 11 years) and solar activity was observed.

Compared to cycle 113, the UWI wind speed relative to ECMWF first-guess (FG) fields showed an lower standard deviation (from 1.59 to 1.48 m/s), representing a natural seasonal trend, also observed one year ago. Bias levels were slightly more negative (from -0.76 m/s to -0.80 m/s).

During cycle 114, the performance of the UWI wind direction was nominal.

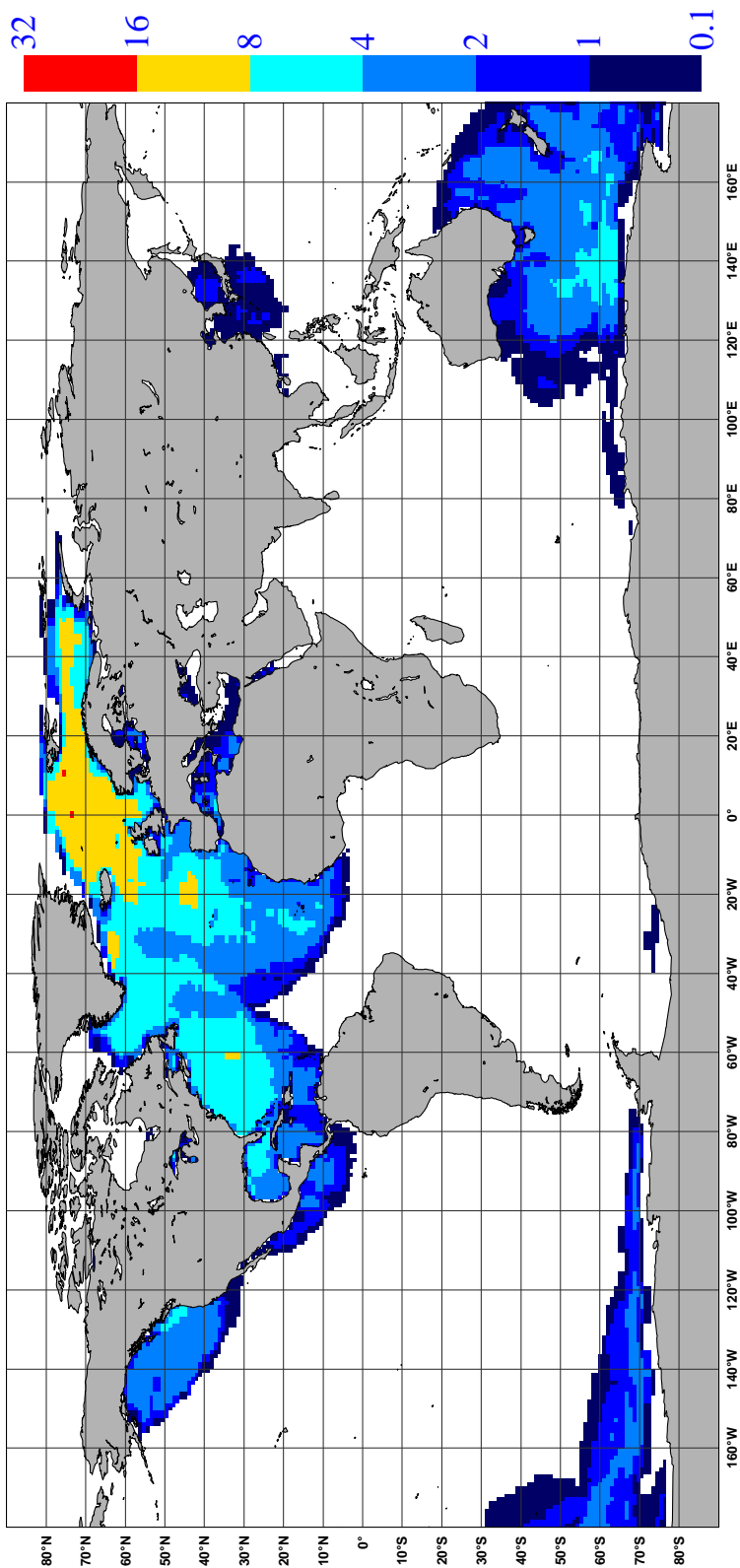
The ECMWF assimilation/forecast system was not changed during cycle 114.

The cycle-averaged evolution of performance relative to ECMWF first-guess (FG) winds is displayed in Figure 11. Figure 12 shows global maps of the over cycle 114 averaged UWI data coverage and wind climate, Figure 13 for performance relative to FG winds.



**FIGURE 11** Evolution of the performance of the ERS-2 Scatterometer averaged over 5-weekly cycles from 12 December 2001 (cycle 69) to 17 April 2006 (end cycle 114) for the UWI product (solid, star) and de-aliased winds based on CMOD4(dashed, diamond). Results are based on data that passed the UWI QC flags. For cycle 85 two values are plotted; the first value for the global set, the second one for the regional set. Dotted lines represent values for cycle 59 (5 December 2000 to 17 January 2001),i.e. the last stable cycle of the nominal period. From top to bottom panel are shown the normalized distance to the one (CMOD4 only) the standard deviation of the wind speed compared to FG winds, the corresponding bias(for UWI winds the extreme inter-node averages are shown as well),and the standard deviation of wind direction compared to FG.

NOBS ( ERS-2 UWI ), per 12H, per 125km box  
average from 2006031400 to 2006041718 GLOB:2.86



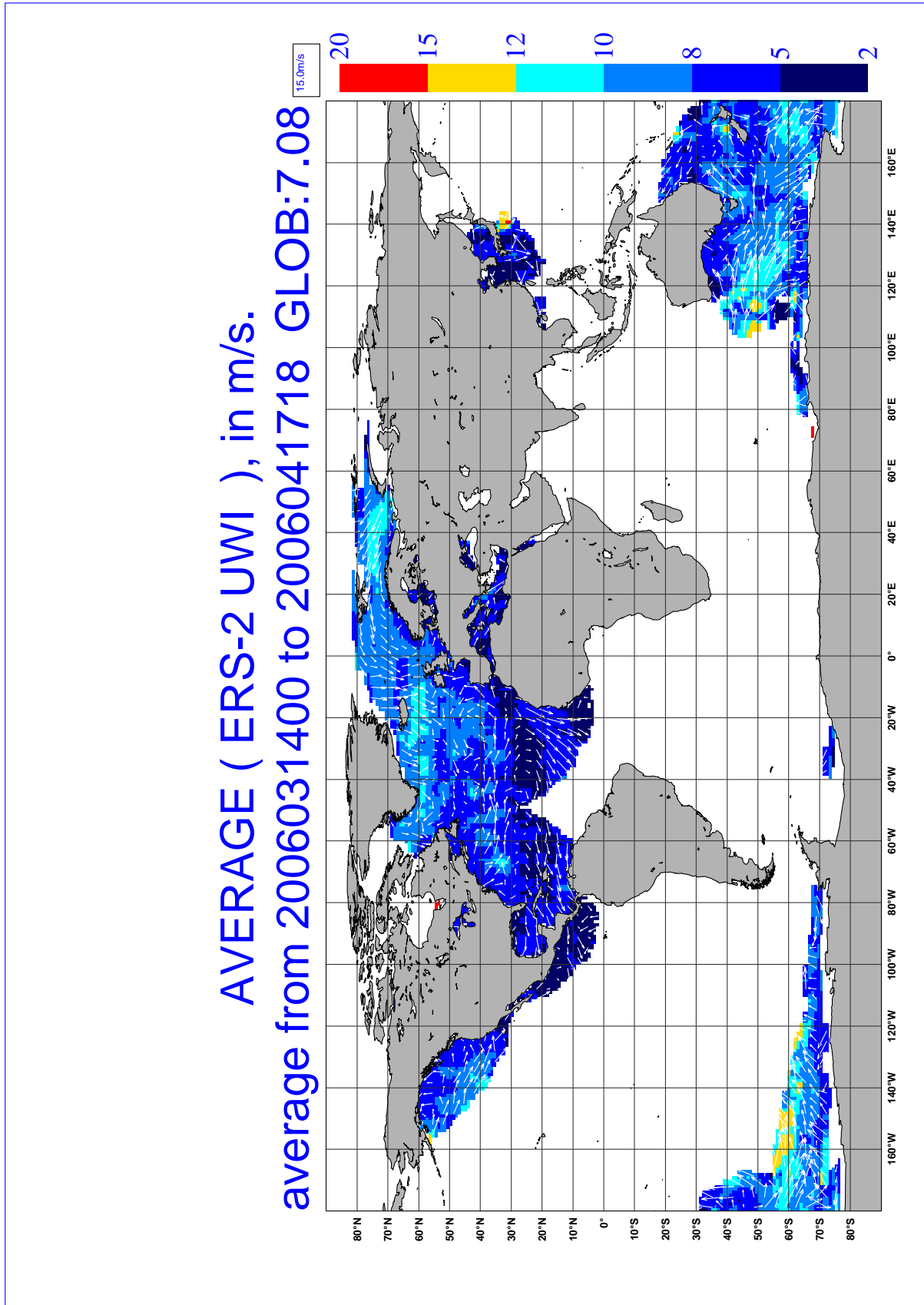
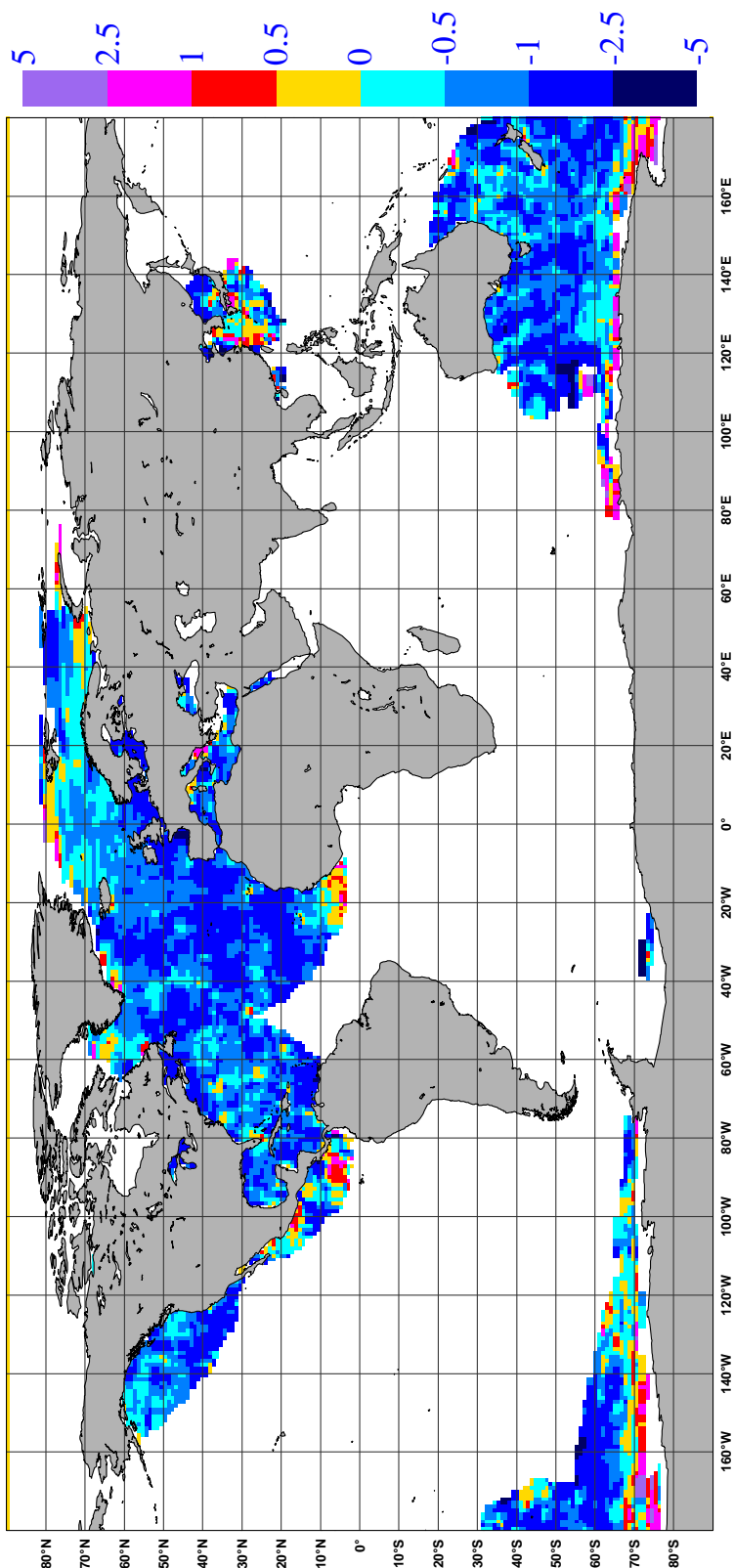


FIGURE 12 Average number of observations per 12H and per 125km grid box (top panel) and wind-climate (lower panel) for UWI winds that passed the UWI flags QC and a check on the collocated ECMWF land and sea-ice mask.

BIAS ( ERS-2 UWI vs FIRST-GUESS ), in m/s.  
average from 2006031400 to 2006041718 GLOB:-0.8





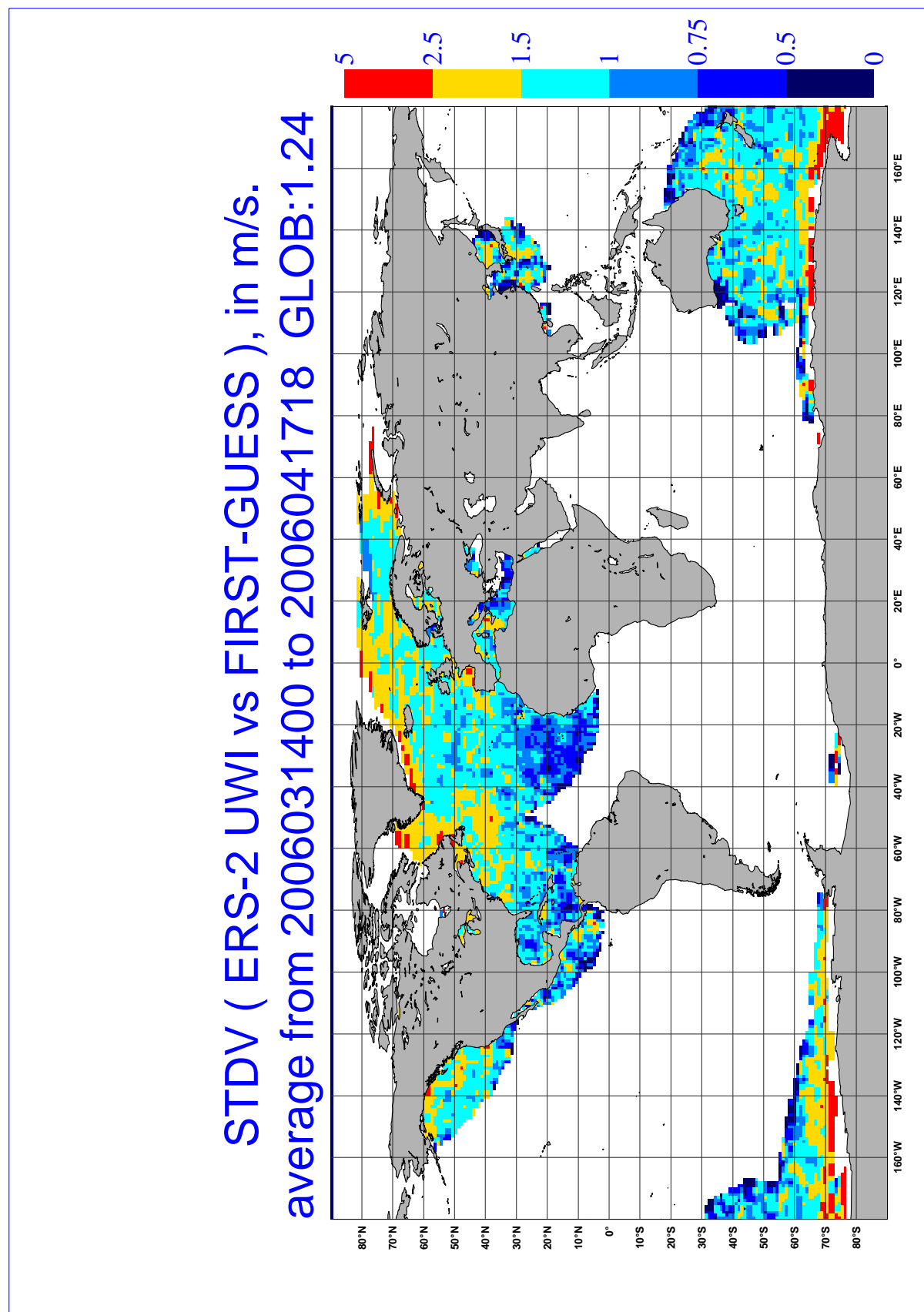


FIGURE 13 The same as Figure 12, but now for the relative bias (top panel) and standard deviation (lower panel) with ECMWF first-guess winds.

### 4.3.1 Distance to cone history

The distance to the cone history is shown in Figure 14. Curves are based on data that passed all QC, including the test on the K\_p-yaw flag, and subject to the land and sea-ice check at ECMWF (see cyclic report 88 for details).

Like for cycle 113, time series are (due to lack of statistics) very noisy, especially for the near-range nodes. Most spikes were found to be the result of low data volumes.

Compared to cycle 113, the average level was lower (1.15), i.e., about 6% higher than for nominal data (see top panel Figure 11).

The fraction of data that did not pass QC is displayed in Figure 14 as well (dash curves). High rejection rates are mostly related to activity of the k\_p-yaw flag.

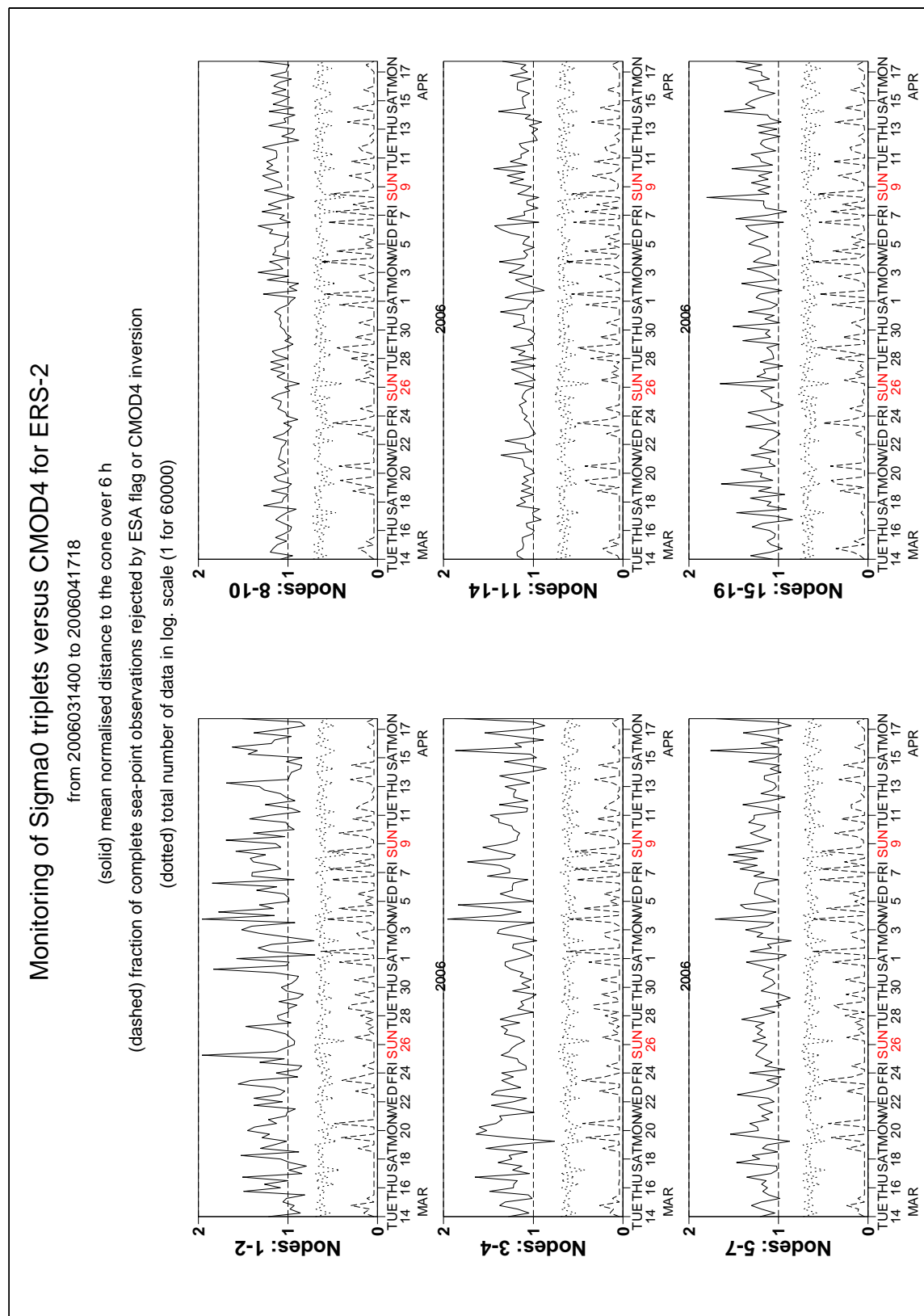


FIGURE 14 Mean normalized distance to the cone computed every 6 hours for nodes 1-2, 3-4, 5-7, 8-10, 11-14 and 15-19 (solid curve close to 1 when no instrumental problems are present). The dotted curve shows the number of incoming triplets in logarithmic scale (1 corresponds to 60,000 triplets) and the dashed one indicates the fraction of complete (based on the land and sea-ice mask at ECMWF) sea-located triplets rejected by ESA flags or by the wind inversion algorithm (0: all data kept, 1: no data kept).

### 4.3.2 UWI minus First-Guess history

In Figure 15, the UWI minus ECMWF first-guess wind-speed history is plotted. The history plot shows several peaks, most of which are related to low data volumes. Similar results apply for the history of de-aliased CMOD4 winds versus FG (Figure 17).

Figure 19 displays the locations for which UWI winds were more than 8 m/s weaker (top panel) and more than 8 m/s stronger (lower panel) than FG winds. Like for cycle 113, such collocations are isolated, and often indicate meteorologically active regions, for which UWI data and ECMWF model field show reasonably small differences in phase and/or intensity. Now coverage of the Southern hemisphere has been further extended, large differences are increasingly found near ice edges. It indicates non-optimal flagging in the ECMWF quality control, rather than anomalous ERS-2 backscatter triplets.

Two cases where UWI and ECMWF wind speed differ significantly are presented in Figure 20. Top panel shows a case in the Gulf of Biscay, off the Bordeaux coast, on 23 March 2006. It shows reported by two ground station a likely degraded patch of ERS-2 winds in a field of rather strong ECMWF winds. The lower panel shows a situation in the Tasman Sea west of New Zealand (26 March 2006). Here discrepancies are induced by a dislocation of an intensive low. The UWI winds probably present the most accurate view.

Average bias levels and standard deviations of UWI winds relative to FG winds are displayed in Table 6.

**Table 6 Wind speed and direction biases**

	Cycle 113		Cycle 114	
	UWI	CMOD4	UWI	CMOD4
Speed STDV	1.59	1.57	1.48	1.47
Node 1-2	1.60	1.56	1.53	1.50
Node 3-4	1.52	1.50	1.45	1.44
Node 5-7	1.50	1.50	1.43	1.42
Node 8-10	1.52	1.52	1.44	1.44
Node 11-14	1.57	1.57	1.46	1.46
Node 15-19	1.60	1.60	1.44	1.44
Speed BIAS	-0.76	-0.74	-0.80	-0.80
Node 1-2	-1.41	-1.37	-1.40	-1.38
Node 3-4	-1.10	-1.04	-1.12	-1.07
Node 5-7	-0.81	-0.78	-0.84	-0.82
Node 8-10	-0.60	-0.59	-0.64	-0.64
Node 11-14	-0.53	-0.54	-0.59	-0.61
Node 15-19	-0.52	-0.53	-0.60	-0.63
Direction STDV	32.0	19.2	28.6	18.5
Direction BIAS	-1.6	-1.5	-1.4	-1.6

From this it is seen that the bias of both the UWI and CMOD4 product has become more negative and are now slightly more negative than that for nominal data in 2000 (UWI: -0.80 m/s now, was -0.79 m/s for cycle 59).

On a longer time scale seasonal bias trends are observed (see Figure 11). As was highlighted in the previous cyclic reports, it is now believed that this yearly trend is induced by changing local geophysical conditions. Strong indication for this is a similar trend observed for QuikSCAT data when restricted to an area well-covered by ERS-2 (20N-90N, 80W-20E). Figure 25 shows time series for that area for both ERS-2 (top panel) and QuikSCAT (lower panel) for the period between 1 January 2004 and 17 April 2006 (end of cycle 114). Results are displayed for at ECMWF actively assimilated data, i.e., CMOD5 winds for ERS-2 and 4%-reduced QuikSCAT winds on a 50km resolution. The standard deviation of UWI wind speed compared to cycle 113 was lower (1.48 m/s, was 1.59 m/s). For cycle 114 the (UWI - FG) direction standard deviations were mostly ranging between 20 and 40 degrees (Figure 17) representing nominal variations.

Averaged over the entire cyclic period, STDV for UWI wind direction was 28.6 degrees, being somewhat lower than for cycle 113 (32.0 degrees). Performance for at ECMWF de-aliased winds was 18.5 degrees, similar for cycle 113 (STDV 19.2 degrees).

### Monitoring of UWI winds versus First Guess for ERS-2

from 2006031400 to 2006041718

(solid) wind speed bias UWI - First Guess over 6h (deg.)

(dashed) wind speed standard deviation UWI - First Guess over 6h (deg.)

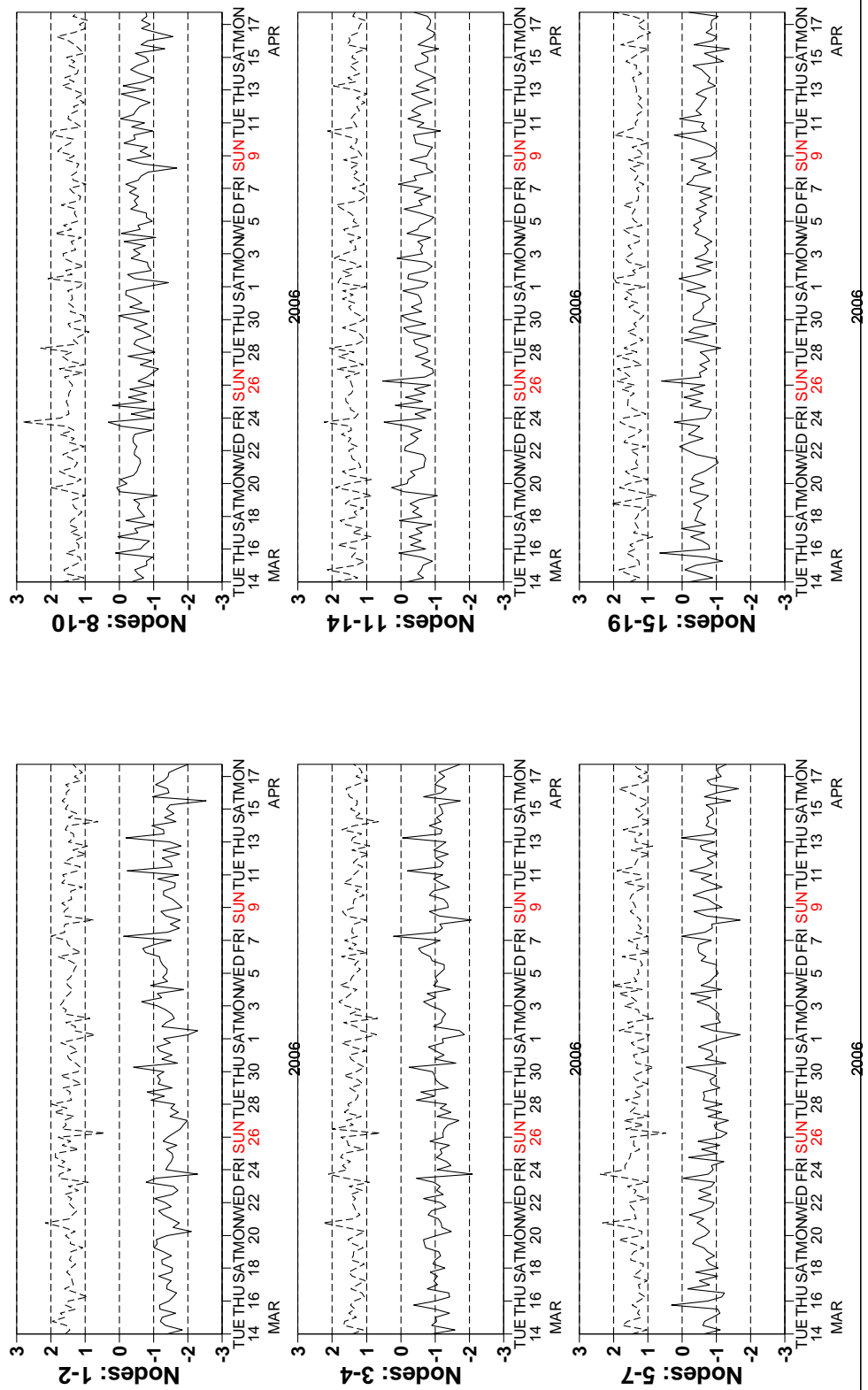


FIGURE 15 Mean (solid line) and standard deviation (dashed line) of the wind speed difference UWI - first guess for the data retained by the quality control.

### Monitoring of de-aliased CMOD4 winds versus First Guess for ERS-2

from 2006031400 to 2006041718

(solid) wind speed bias CMOD4 - First Guess over 6h (deg.)

(dashed) wind speed standard deviation CMOD4 - First Guess over 6h (deg.)

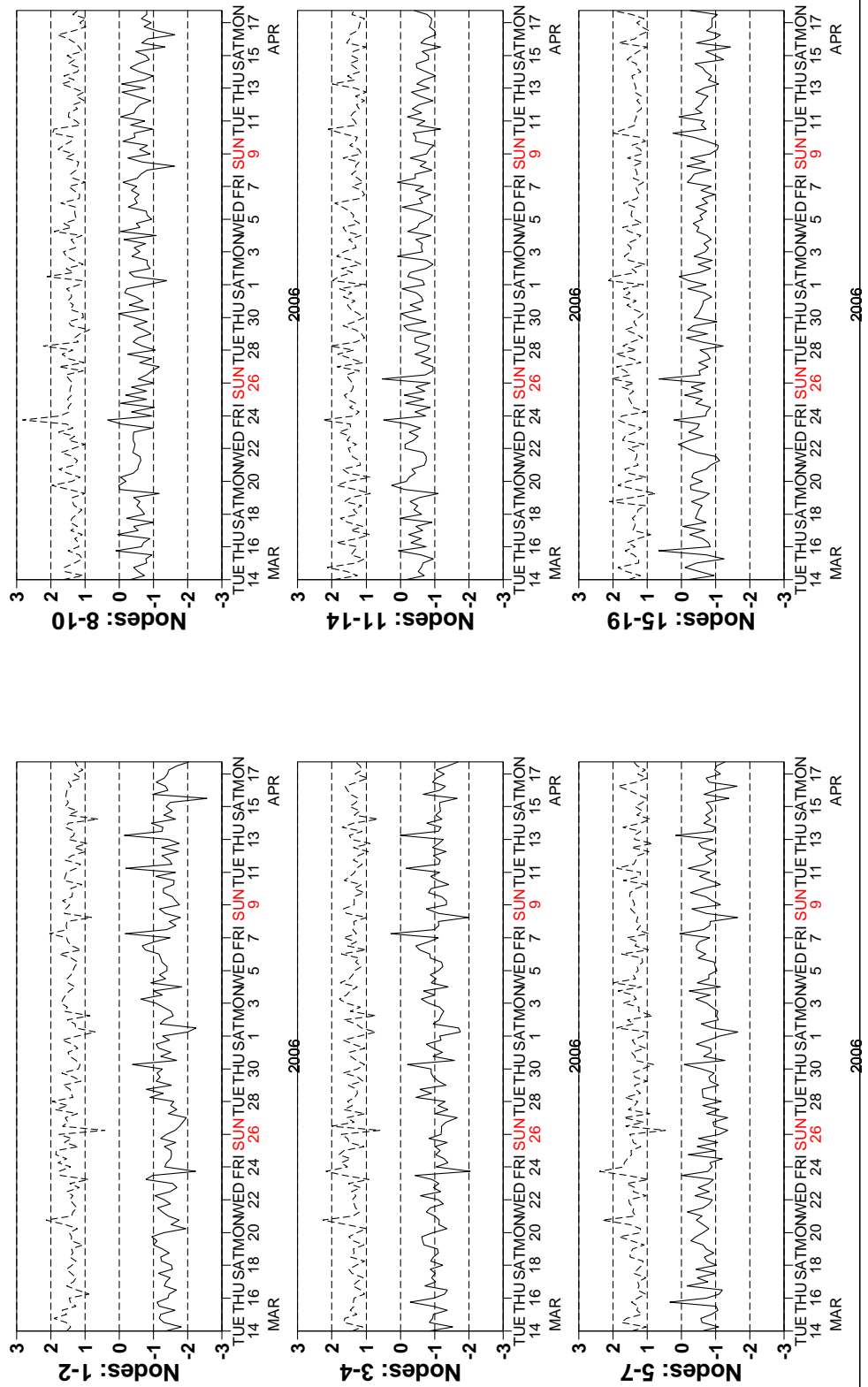


FIGURE 16 Same as Fig. 15, but for the de-aliased CMOD4 data.

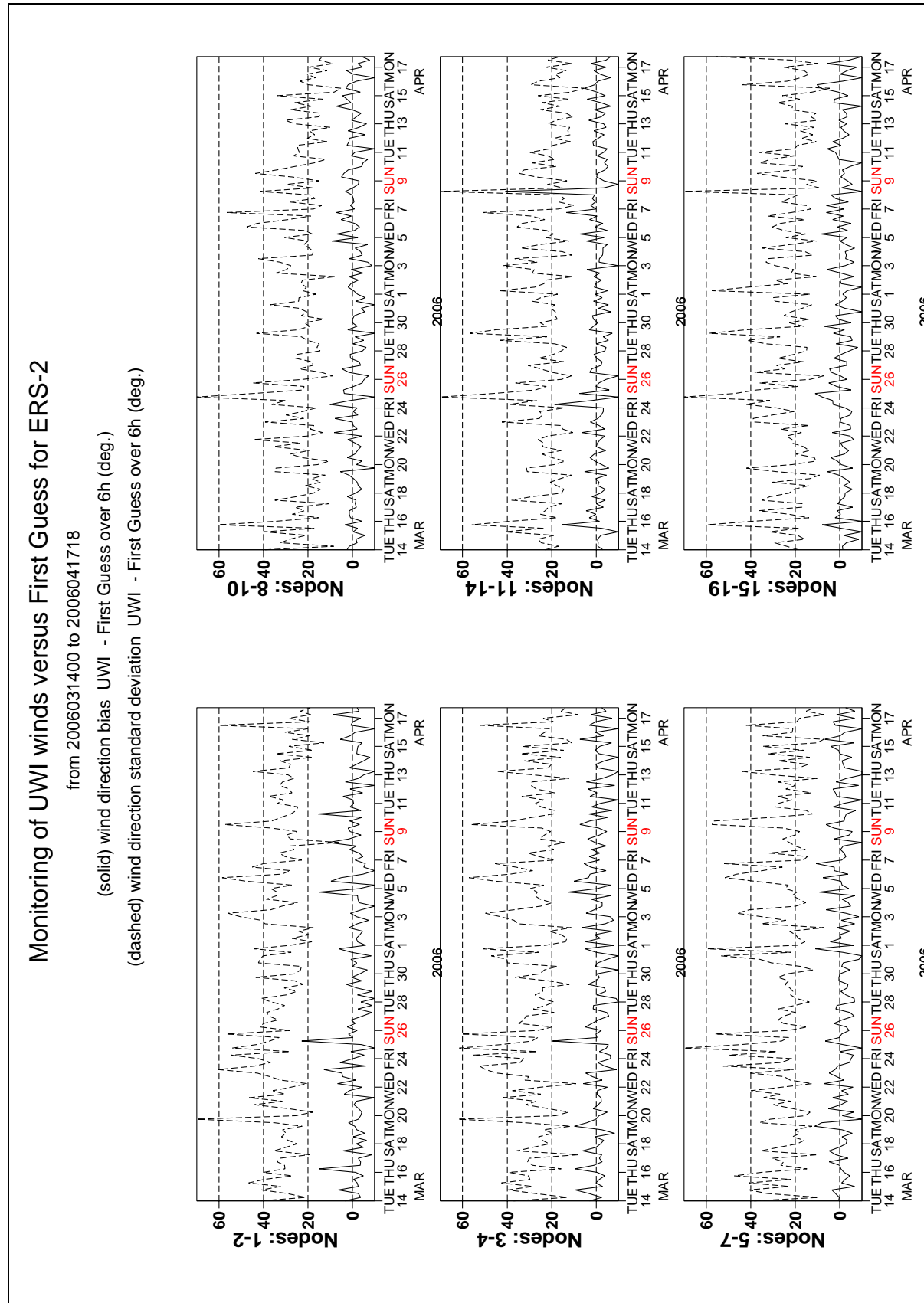


FIGURE 17 Same as Fig. 15, but for the wind direction difference. Statistics are computed only for wind speeds higher than 4 m/s.



### Monitoring of de-aliased CMOD4 winds versus First Guess for ERS-2

from 2006031400 to 2006041718

(solid) wind direction bias CMOD4 - First Guess over 6h (deg.)

(dashed) wind direction standard deviation CMOD4 - First Guess over 6h (deg.)

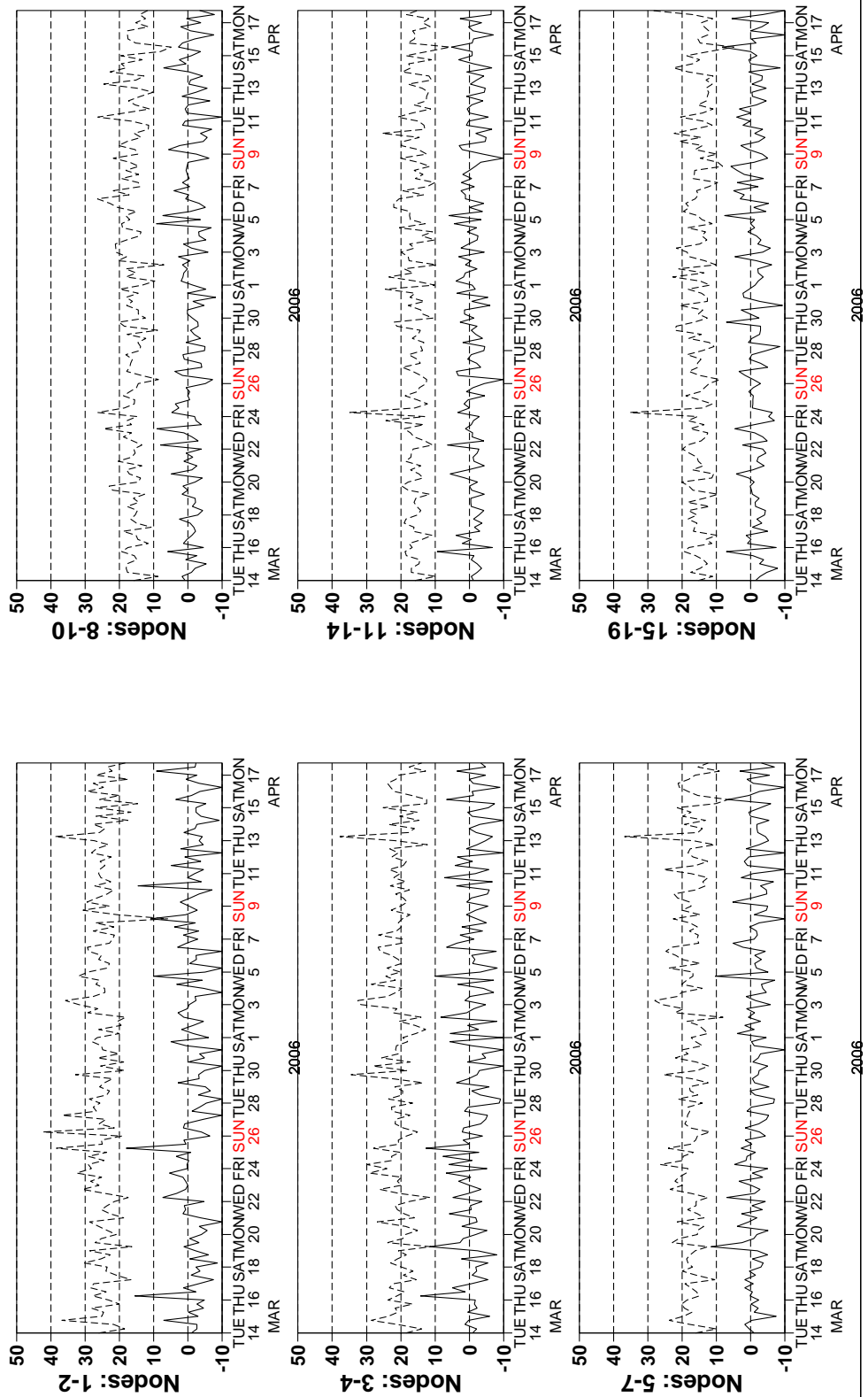
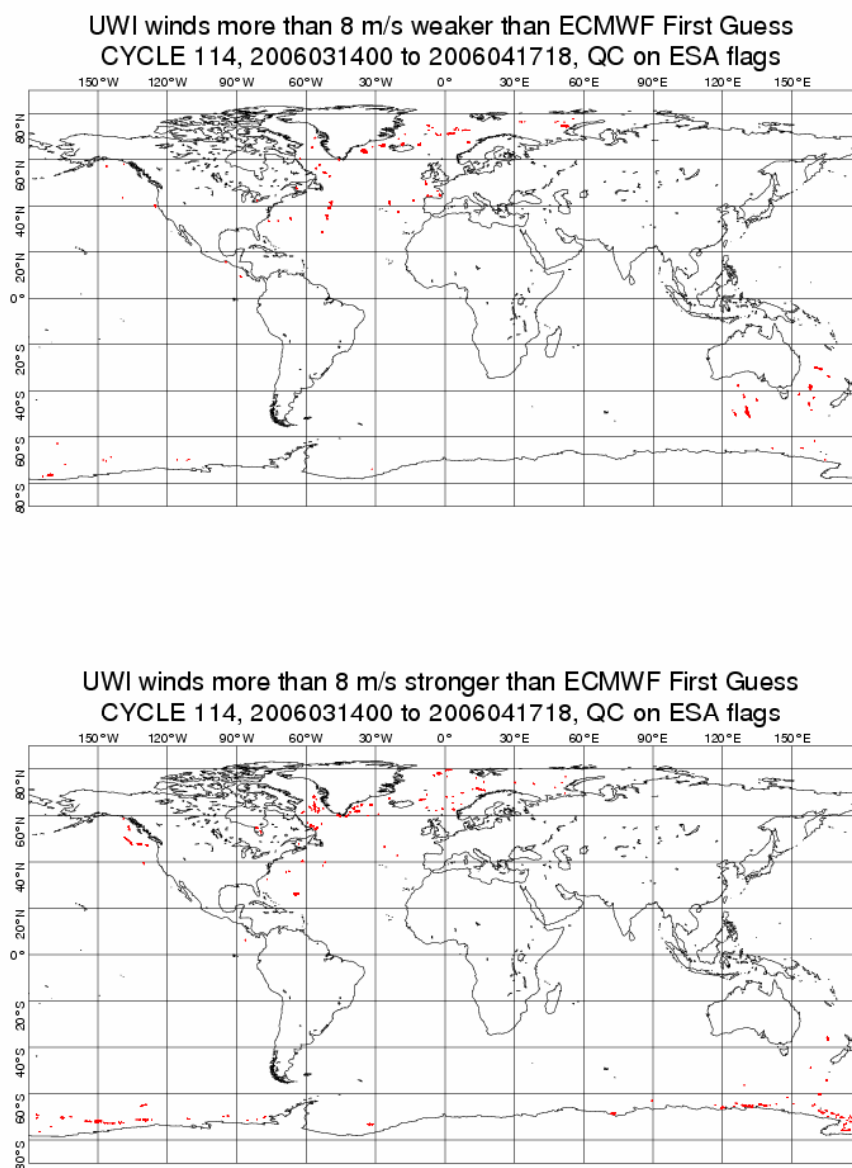
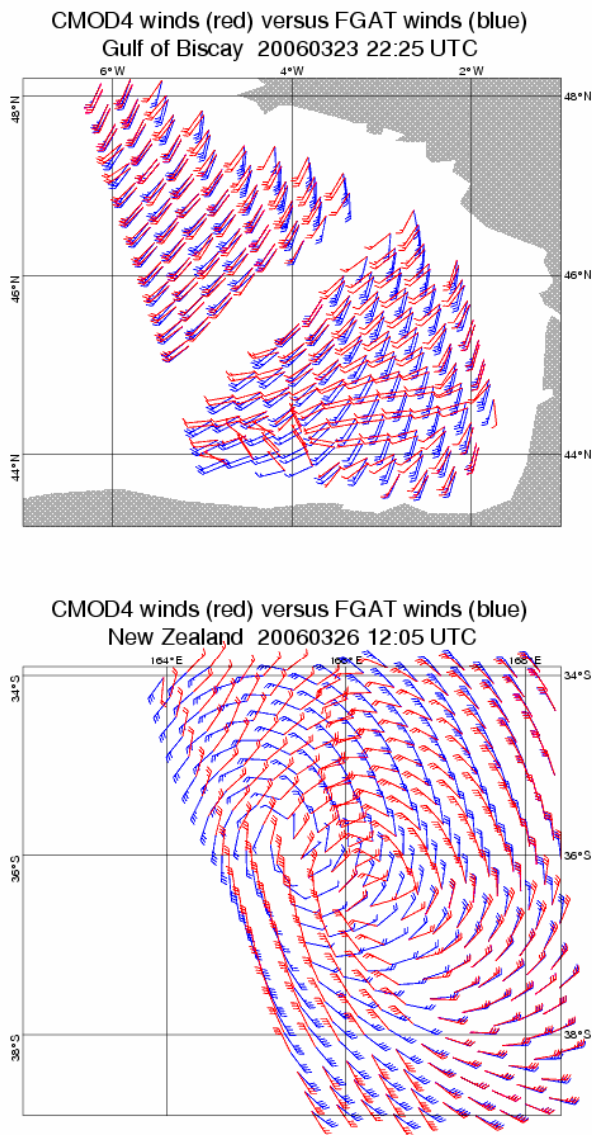


FIGURE 18 Same as Fig. 17, but for the de-aliased CMOD4 data.



**FIGURE 19** Locations of data during cycle 113 for which UWI winds are more than 8 m/s weaker (top panel) respectively stronger (lower panel) than FG, and on which QC on UWI flags and the ECMWF land/sea-ice mask was applied.



**FIGURE 20** Comparison between UWI (red) and ECMWF FG (blue) winds for a case on 23 March 2006 in the Bay of Biscay (top panel) and for a situation in the Tasman Sea on 26 March 2006 (lower panel)

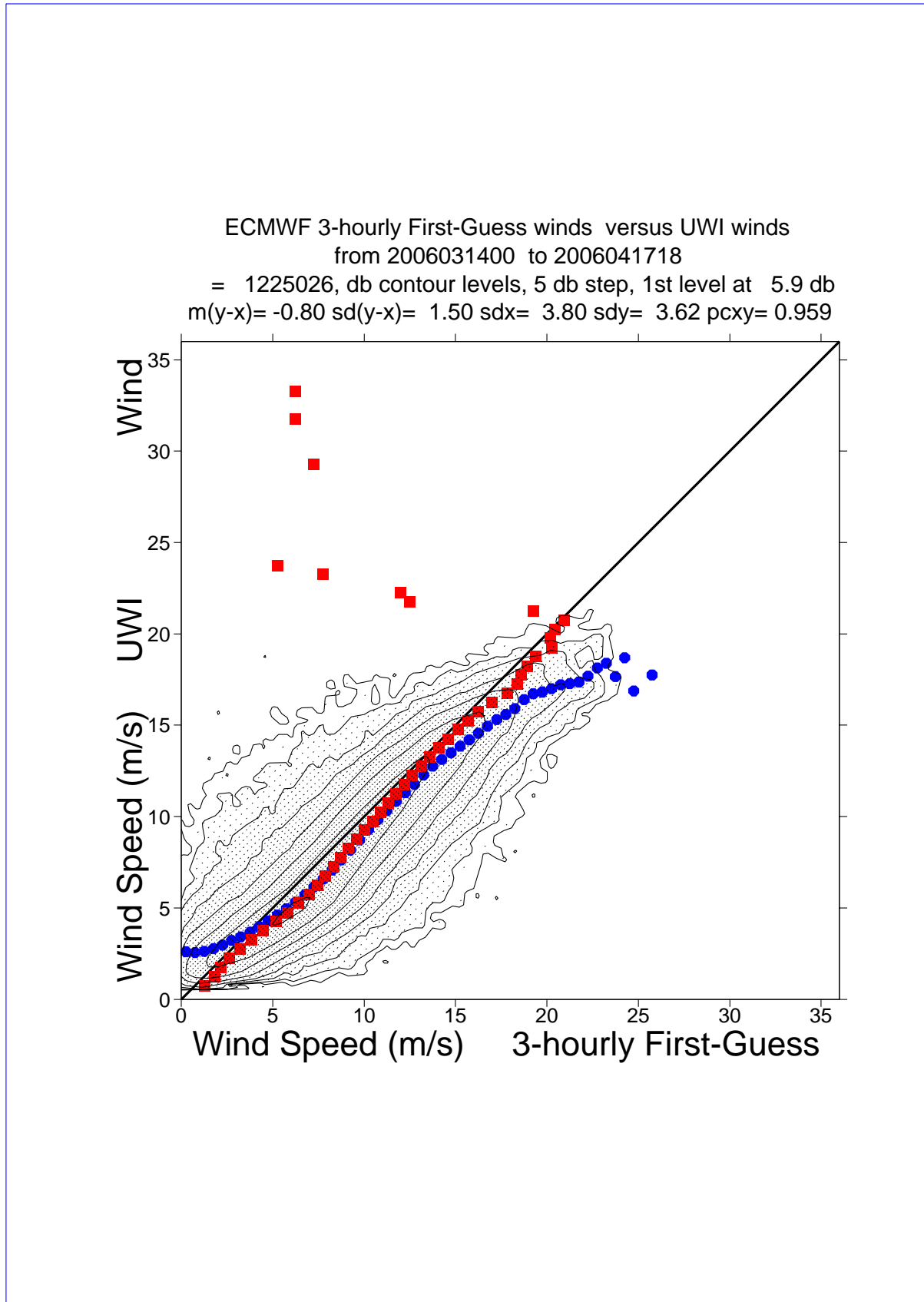
### 4.3.3 Scatter plots

Scatter plots of FG winds versus ERS-2 winds are displayed in Figures 21 to 24. Values of standard deviations and biases are slightly different from those displayed in Table 6. Reason for this is that, for plotting purposes, the in 0.5 m/s resolution ERS-2 winds have been slightly perturbed (increases scatter with 0.02 m/s), and that zero wind-speed ERS-2 winds have been excluded (decreases scatter with about 0.05 m/s).

The scatter plot of UWI wind speed versus FG (Figure 21) is very similar to that for (at ECMWF inverted) de-aliased CMOD4 winds (Figure 23). It confirms that the ESACA inversion scheme is working properly.

Winds derived on the basis of CMOD5 are displayed in Figure 24. The relative standard deviation is lower than for CMOD4 winds (1.45 m/s versus 1.50 m/s).

Compared to ECMWF FG, CMOD5 winds are 0.30 m/s slower.



**FIGURE 21** Two-dimensional histogram of first guess and UWI wind speeds, for the data kept by the UWI flags, and QC based on the ECMWF ice and land and sea-ice mask. Circles denote the mean values in the y-direction, and squares those in the x-direction.

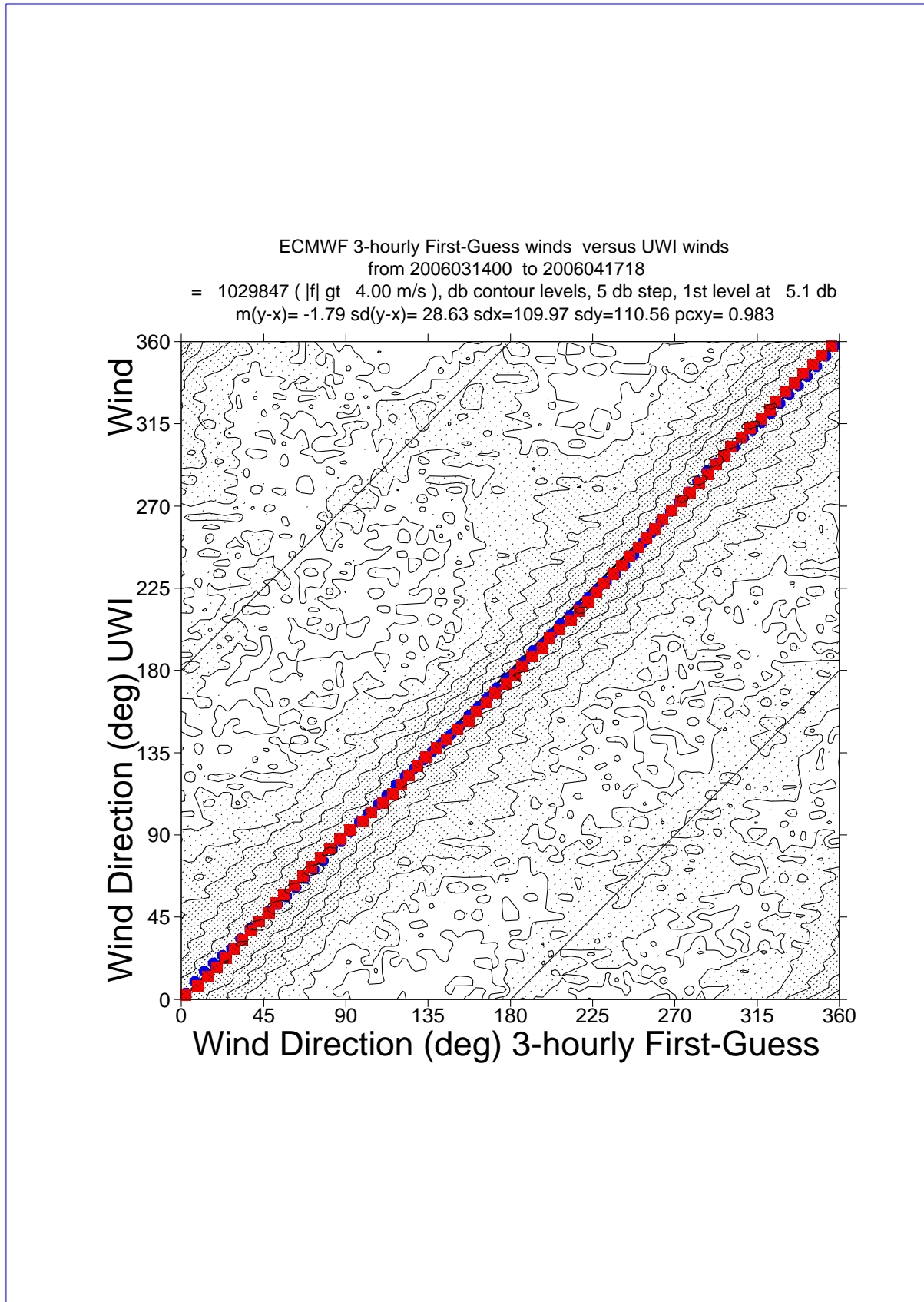


FIGURE 22 Same as Fig. 21, but for wind direction. Only wind speeds higher than 4m/s are taken into account.

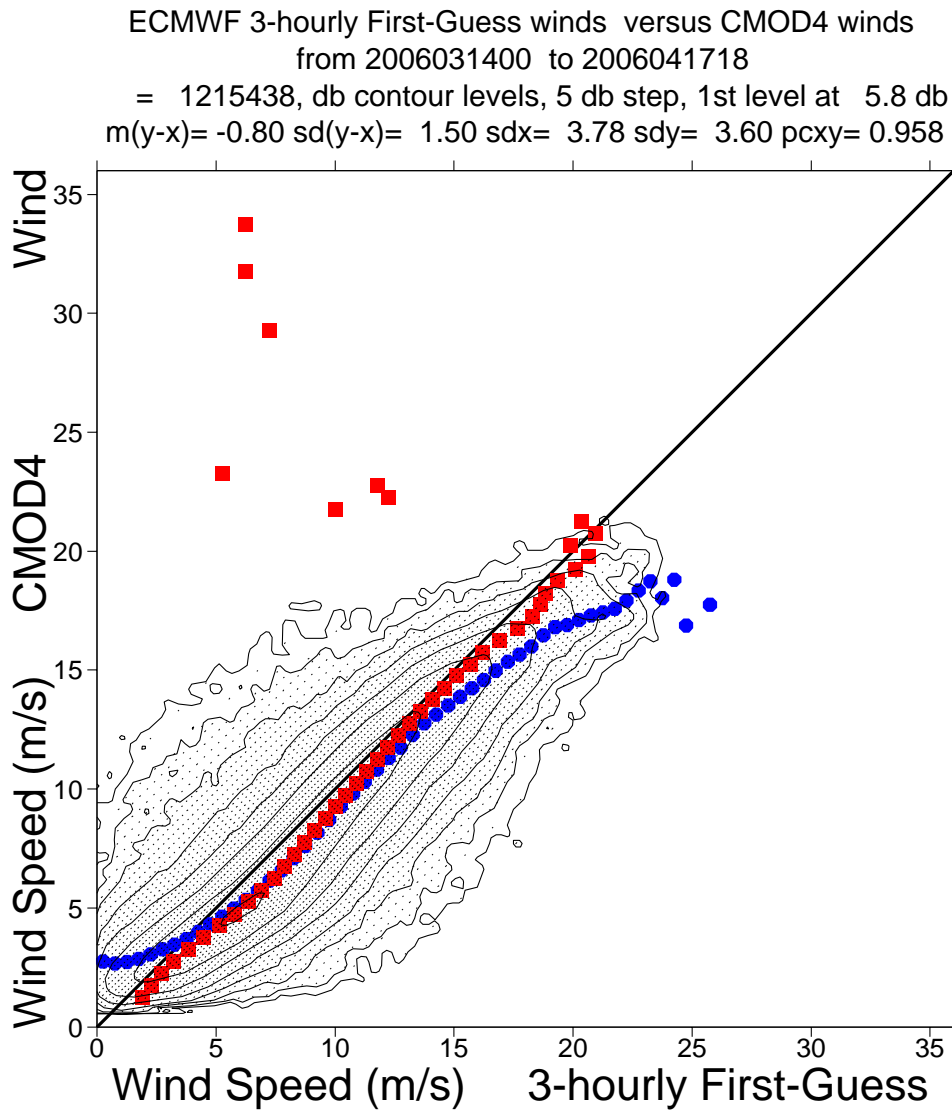


FIGURE 23 Same as Fig. 21, but for de-aliased CMOD4 winds.

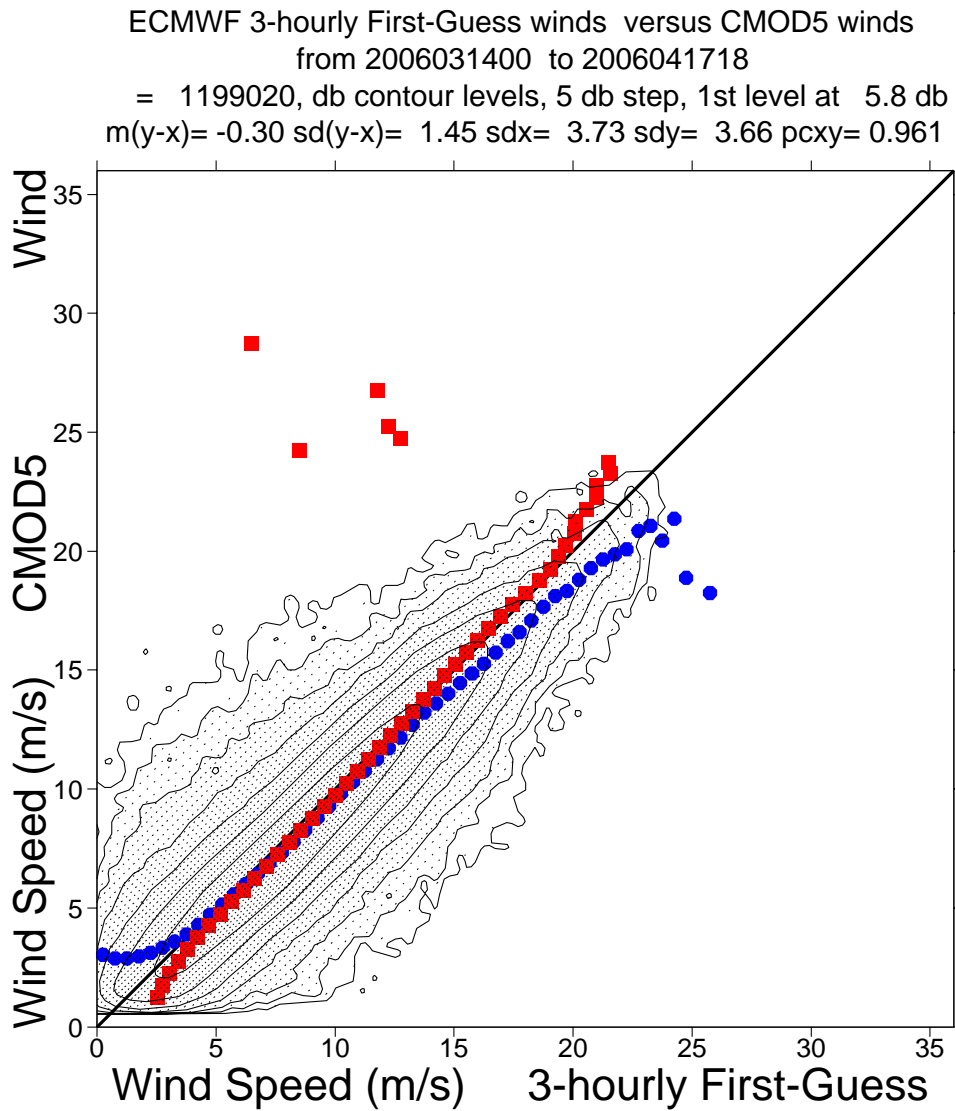


FIGURE 24 Same as Fig. 21, but for de-aliased CMOD5 winds.



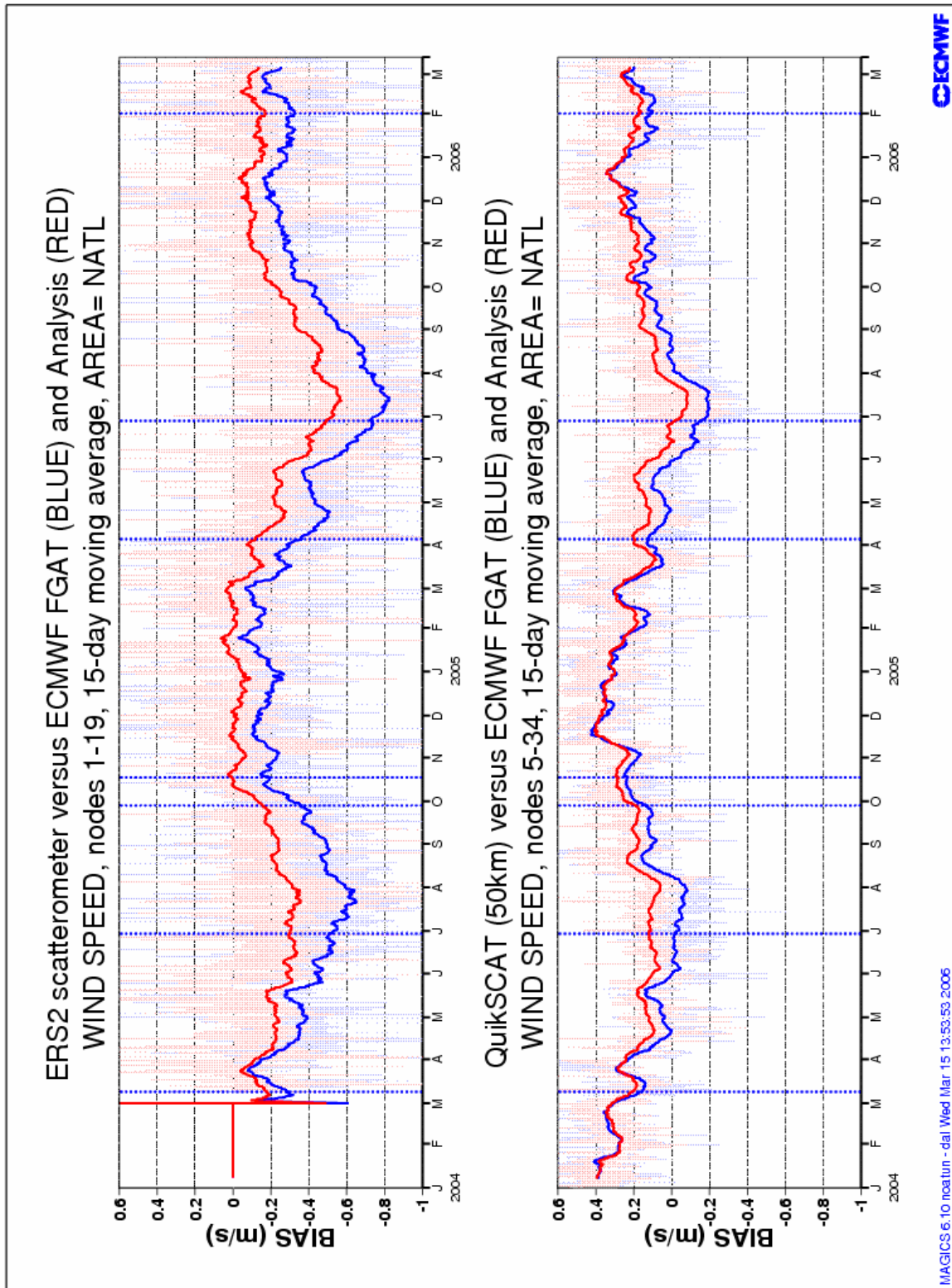


FIGURE 25 Bias relative to FG winds for actively assimilated ERS-2 winds (based on CMOD5) for nodes 1-19 (top panel) respectively of 50-km QuikSCAT (based on the QSCAT-1 model function and reduced by 4%) for nodes 5-34 (lower panels) averaged over the area (20N-90N, 80W-20E), and displayed for the period 01 January 2004 – 17 April 2006. Fat curves represent centered 15-day running means, thin curves represent values for 6-hourly period. Vertical dashed blue lines mark ECMWF model changes.

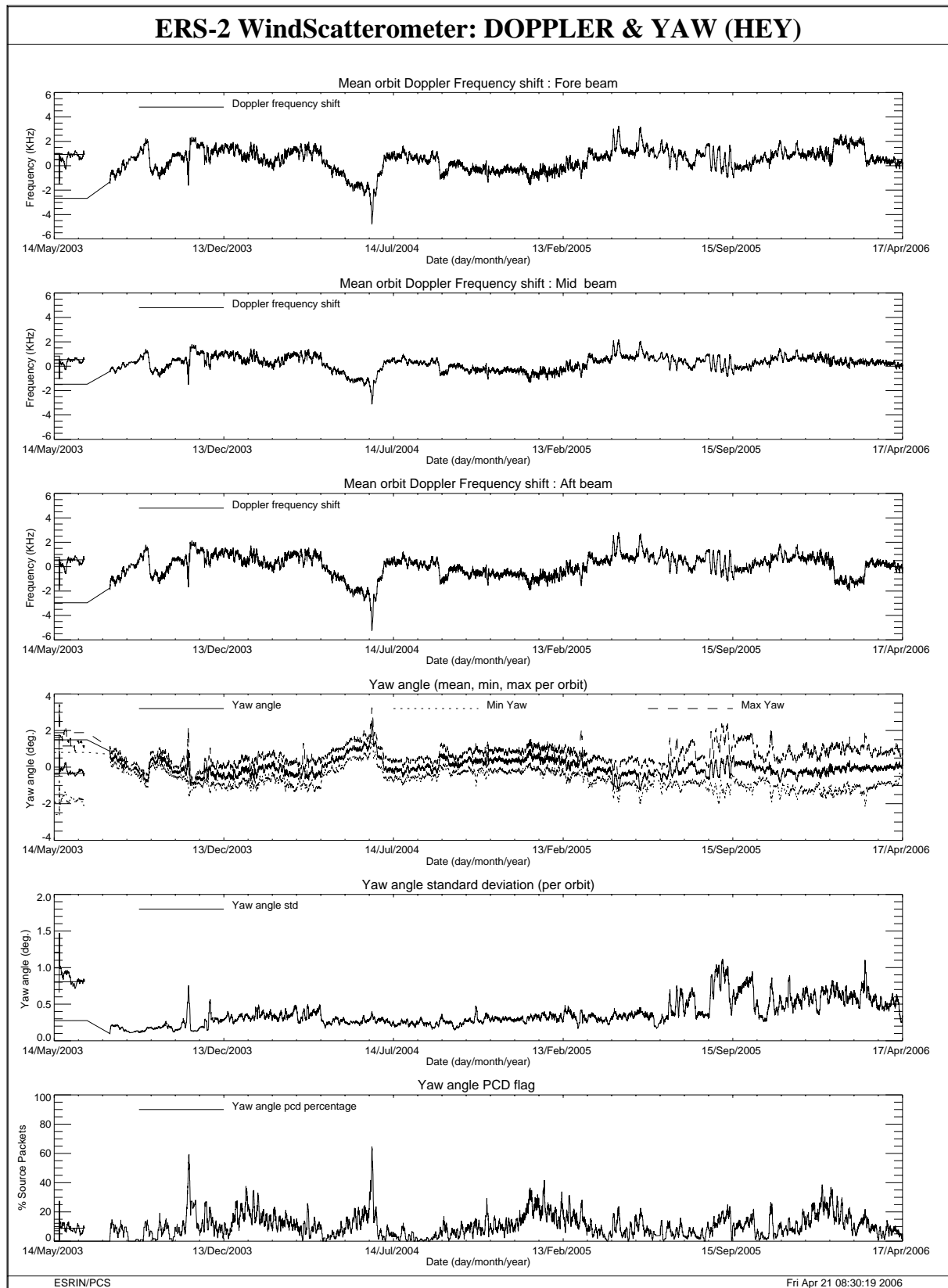
## **5 Yaw error angle estimation**

The yaw error angle estimation is computed on-ground by the ESACA processors. The full set of results of the yaw processing is stored in an internal ESA product named HEY (Helpful ESA Yaw) disseminated from the ground station to ESRIN. The estimation of the yaw error angle is based on the Doppler shift measured on the received echo. That estimation can be done with a good accuracy only for small yaw error angle (in the range between +/-4 deg.). Above that range, due to high Doppler frequency shift the signal spectrum is outside the receiver bandwidth and the yaw estimation is strongly degraded. Details regarding the yaw processing can be found on the following document (chapter 9): <http://earth.esa.int/pcs/ers/scatt/articles/soamain-030521.pdf>.

The yaw error angle estimation aims to compute the correct acquisition geometry for the three Scatterometer antenna throughout the entire orbit. The Yaw error angle information is used in the radar equation to derive the calibrated backscattering ( $\sigma$  nought) from the Earth surface and to select the echo samples associated to one node. In ESACA the definition of the node position is as the one adopted in the old processor (for details see: [http://earth.esa.int/pcs/ers/scatt/articles/scatt\\_work98\\_processing.pdf](http://earth.esa.int/pcs/ers/scatt/articles/scatt_work98_processing.pdf)). In such way the distance between the nodes (both along and across track) is kept constant (25 Km) and what is changing in function of the yaw error angle is the number of echo samples that contributes to the node calculation and the incidence angle of the measurement. This because the three Scatterometer antennae could see the node with a different geometry due to an arbitrary variation of the yaw angle along track. The number of samples that actually contributes to a node and the yaw flag can be retrieved from the UWI Data Set Record (DSR) product. For that reason the definition of few fields in the UWI product has been updated. For details see the Scatterometer cyclic report - cycle 90 -. The Figure 26 (since beginning of HEY dissemination) and Figure 27 (cycle) show for each orbit the average Doppler frequency shift (first 3 plots Fore Mid and Aft antenna), the minimum, maximum and mean yaw (fourth plot), the yaw standard deviation (fifth plot) and the percentage of source packets acquired with a yaw error angle outside the range +/- 2 degrees (sixth plot).

On average the yaw evolution is within the specification for the ESACA processor to assure calibrated data. The evolving yaw bias occurred in June 2004 has been reported to the flight segment and corrective actions have been put in place to compensate for.

The result of the yaw monitoring for cycle 114 is a yaw error angle within the expected nominal range (+/- 2 degrees) with an average level around 0 deg. for most of the orbits. There is a decrease of average yaw angle error respect the past cycles this should be related to seasonal trend and the less data acquired at McMurdo station.



**FIGURE 26** Doppler frequency shift and Yaw error angle evolution since August 2003 with a smooth 30 days.

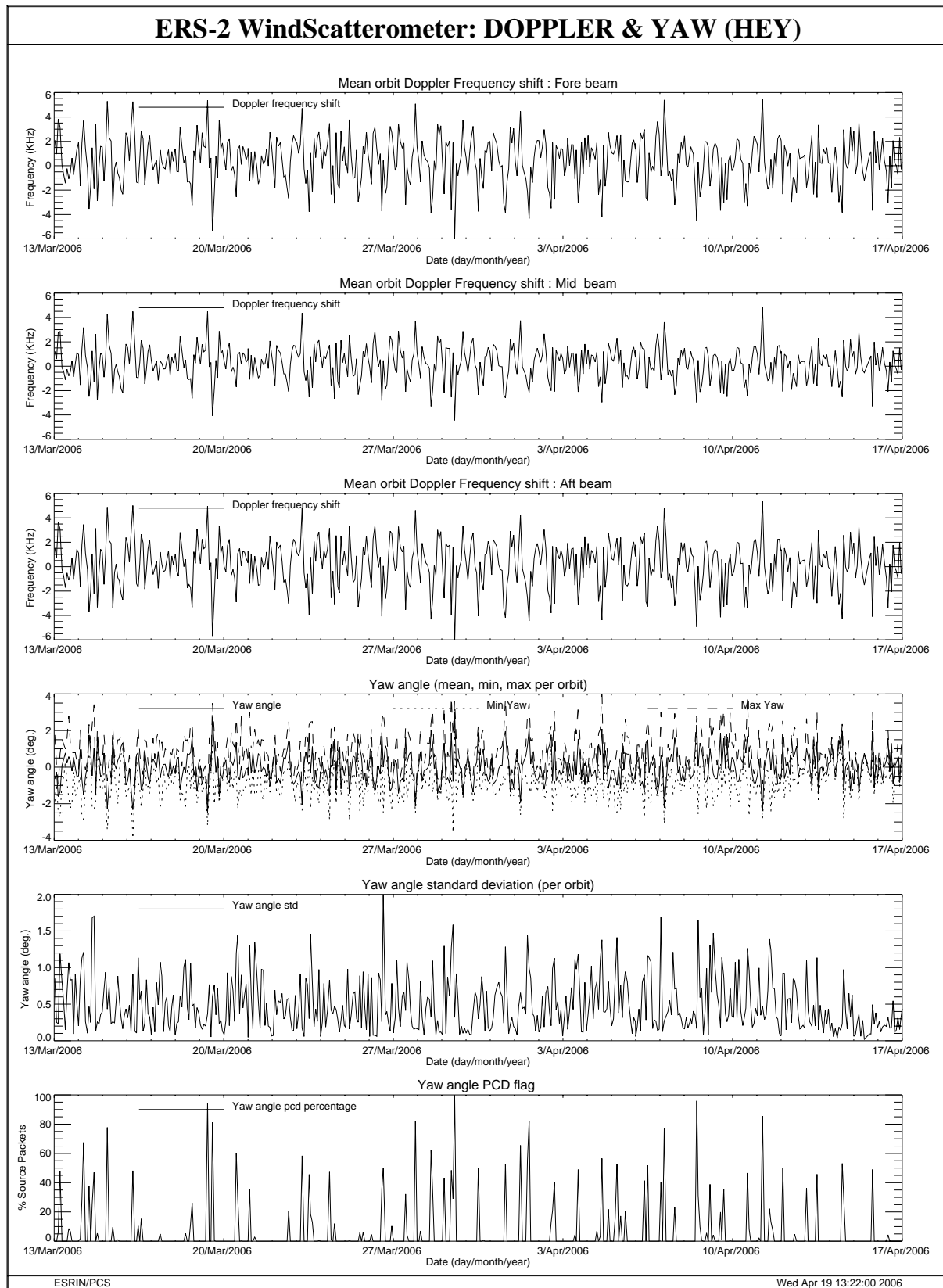


FIGURE 27 Doppler frequency shift and Yaw error angle evolution cycle 114.