

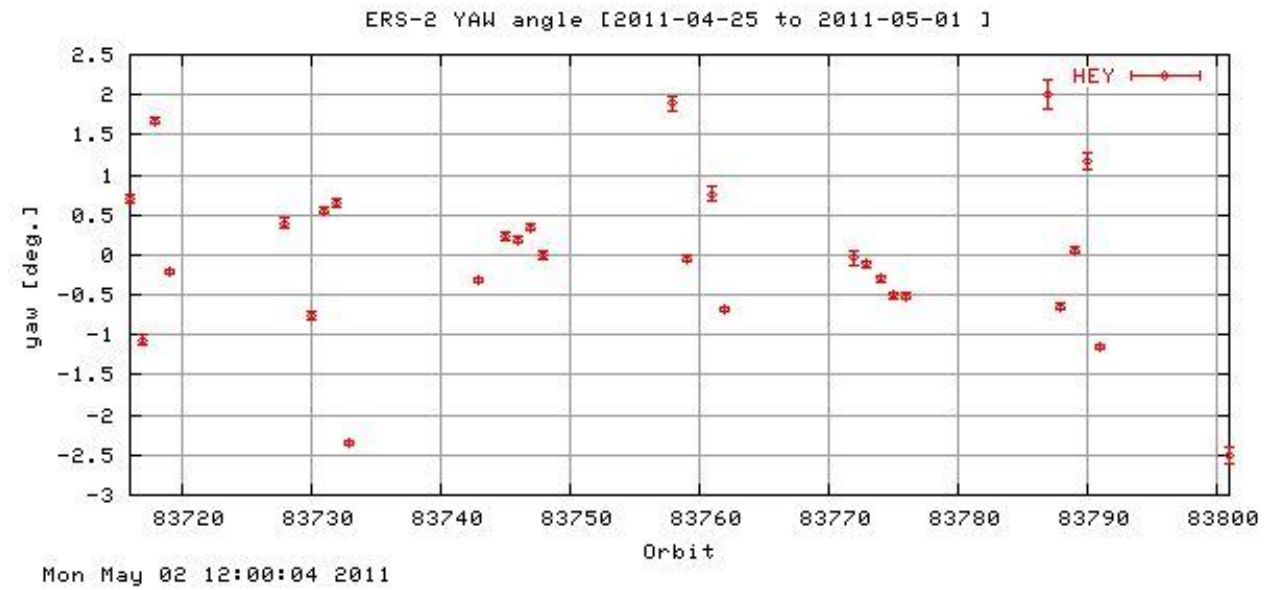
Weekly Results from 110425 to 110501

Figure 1 shows the evolution of the mean yaw (over one orbit) and its standard deviation for the period covered in this report.

During the YCM operations, a mean yaw per orbit within [-2.0, +2.0] degrees is expected. The following table resume the yaw statistics for this period:

Yaw statistics

Prod	Mean	Std. Dev.	Min.	Max.
HEY	-0.02024126	1.02633638	-2.5023	2.0110

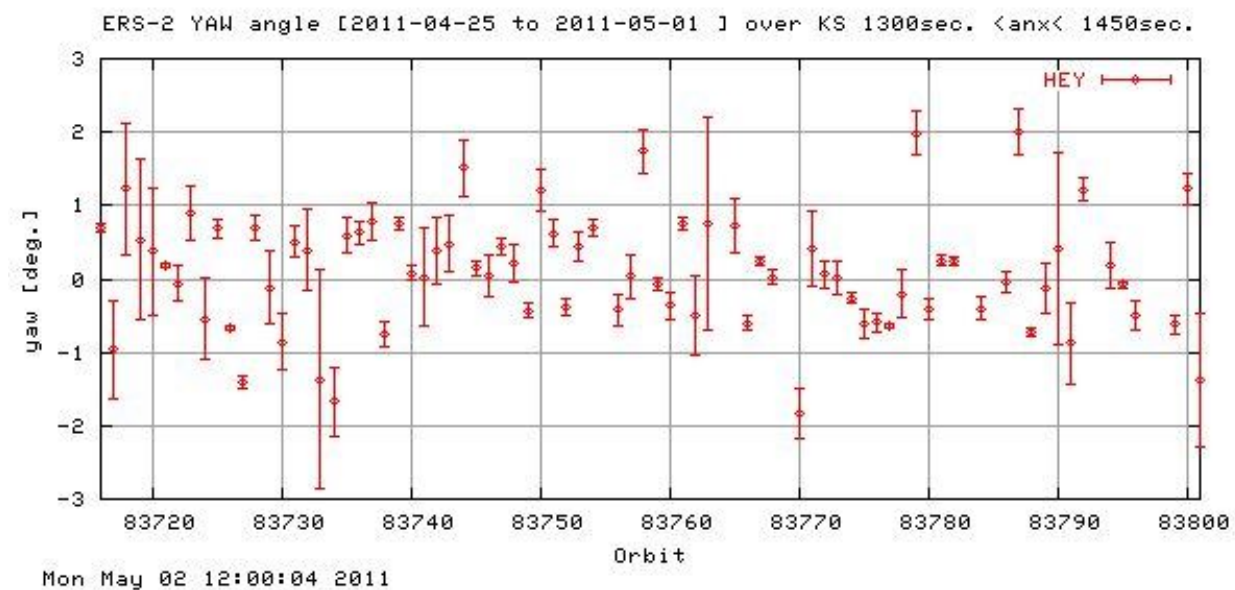


[click on image for enlargement](#)

Figure 1 Mean Yaw per orbit

Yaw statistics over KS anx+1350\

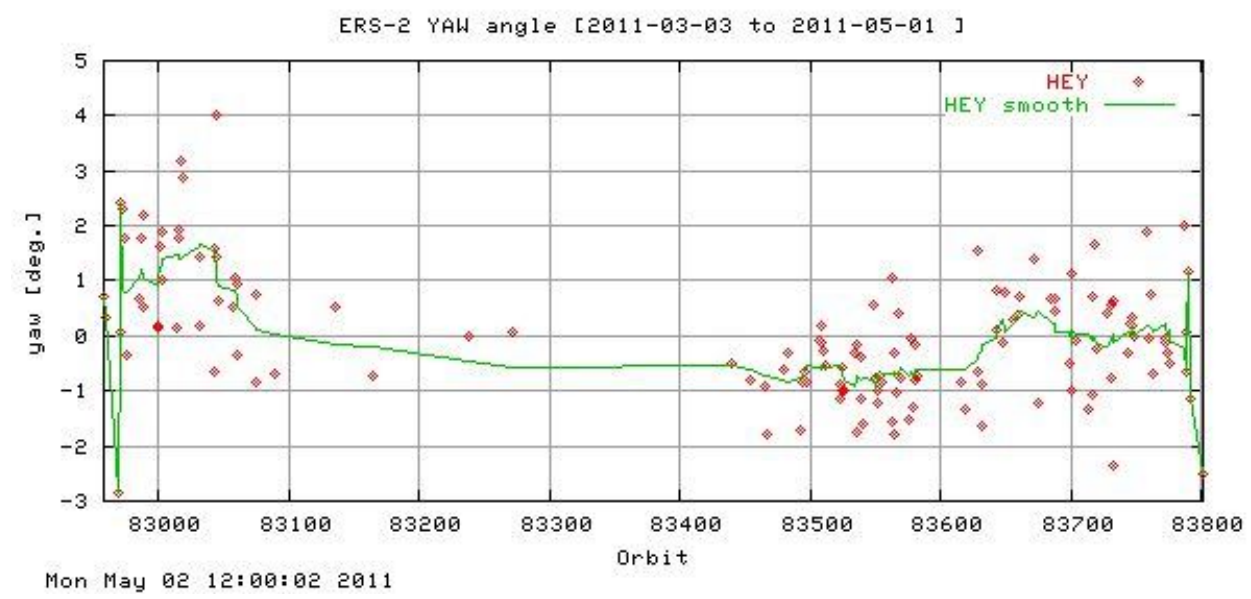
Prod	Mean	Std. Dev.	Min.	Max.
HEY	0.09070714	0.77810933	-2.5023	2.0110



[click on image for enlargement](#)

Figure 2 Mean Yaw over anx [1350, 1500] secs

Long term results



[click on image for enlargement](#)

Figure 3 Mean Yaw per orbit