

2. SCIAMACHY Daily Report for level 2 products

[2.1. General Info](#)

[2.2 Product Quality Indicators](#)

[2.3 ADF monitoring](#)

2.1 General Info

This report contains a daily analysis on parameters extracted from SCIAMACHY level 2 data (The SCI_OL__2P product).

2.1.1 Report summary

The table below shows general characteristics of the data that are included into this report.

Item	Value
Report version	1.6 (28-07-2008)
Time of report generation	09DEC2009 13:59:31
Data source version	SCIA-OL/3.01-R
Processing scope for products	27AUG2009 00:00:00 to 28AUG2009 00:00:00
Start time of first product within scope	26AUG2009 22:52:27
Stop time of last product within scope	28AUG2009 00:56:58
Total number of level 2 products	16
Number of level 2 products with errors	0

2.1.2 Summary per product

The following table shows a summary for each product used in this report.

Products are linked to a corresponding server directory for view/download. Note: Link access may be restricted by security settings of your internet browser or firewall.

#	Product name	Start time	Stop time	Prod err	Fit summary
0	SCI_OL__2PRDPA20090826_225227_000033812082_00030_39162_3972.N1	26AUG2009 22:52:27	26AUG2009 23:48:48	0	GOOD
1	SCI_OL__2PRDPA20090827_003303_000033252082_00031_39163_3973.N1	27AUG2009 00:33:03	27AUG2009 01:28:28	0	GOOD
2	SCI_OL__2PRDPA20090827_021339_000033812082_00032_39164_3974.N1	27AUG2009 02:13:39	27AUG2009 03:10:01	0	GOOD
3	SCI_OL__2PRDPA20090827_035416_000033252082_00033_39165_3975.N1	27AUG2009 03:54:16	27AUG2009 04:49:41	0	GOOD
4	SCI_OL__2PRDPA20090827_053452_000033812082_00034_39166_3976.N1	27AUG2009 05:34:52	27AUG2009 06:31:13	0	GOOD
5	SCI_OL__2PRDPA20090827_071528_000033252082_00035_39167_3977.N1	27AUG2009 07:15:28	27AUG2009 08:10:54	0	GOOD
6	SCI_OL__2PRDPA20090827_085605_000033812082_00036_39168_3979.N1	27AUG2009 08:56:05	27AUG2009 09:52:26	0	GOOD
7	SCI_OL__2PRDPA20090827_103641_000033252082_00037_39169_3980.N1	27AUG2009 10:36:41	27AUG2009 11:32:07	0	GOOD
8	SCI_OL__2PRDPA20090827_121717_000033812082_00038_39170_3981.N1	27AUG2009 12:17:17	27AUG2009 13:13:39	0	GOOD
9	SCI_OL__2PRDPA20090827_135754_000033252082_00039_39171_3982.N1	27AUG2009 13:57:54	27AUG2009 14:53:19	0	GOOD
10	SCI_OL__2PRDPA20090827_153830_000033812082_00040_39172_3983.N1	27AUG2009 15:38:30	27AUG2009 16:34:52	0	GOOD
11	SCI_OL__2PRDPA20090827_171926_000033252082_00041_39173_3984.N1	27AUG2009 17:19:26	27AUG2009 18:14:52	0	GOOD
12	SCI_OL__2PRDPA20090827_190003_000033122082_00042_39174_3985.N1	27AUG2009 19:00:03	27AUG2009 19:55:15	0	GOOD
13	SCI_OL__2PRDPA20090827_204020_000033252082_00043_39175_3988.N1	27AUG2009 20:40:20	27AUG2009 21:35:45	0	GOOD
14	SCI_OL__2PRDPA20090827_222056_000033812082_00044_39176_3987.N1	27AUG2009 22:20:56	27AUG2009 23:17:17	0	GOOD
15	SCI_OL__2PRDPA20090828_000132_000033252082_00045_39177_3986.N1	28AUG2009 00:01:32	28AUG2009 00:56:58	0	GOOD

2.2 Product Quality Indicators

2.2.1 Cloud parameters

This is a new section that shows information about the cloud parameters estimation, in particular cloud fractions and cloud top height. IMPORTANT NOTE: The contents and layout of this section are still being validated. Please use with caution.

General statistics:

Total number of cloud data DSRs: 144560

Total number of cloud data DSRs with good quality flag (=0): 144560 (100.0 %)

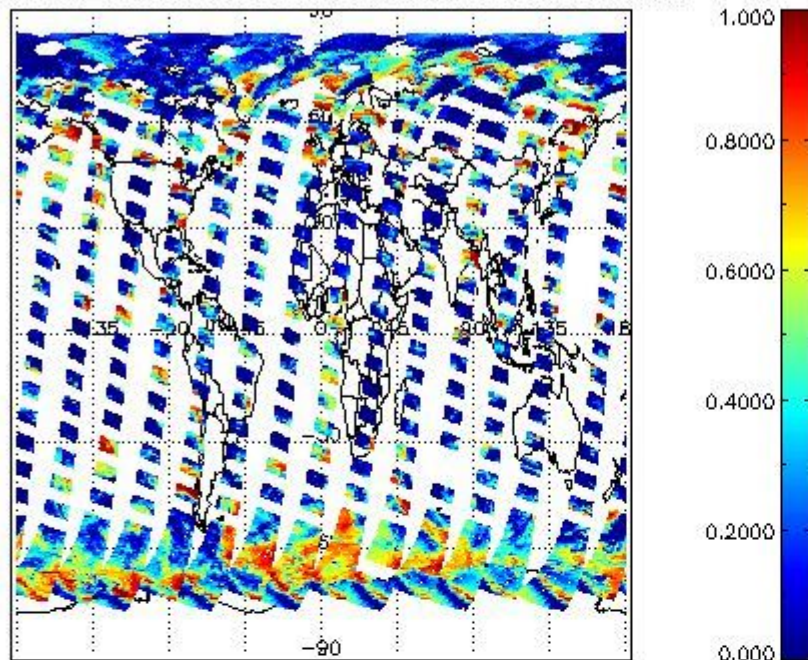
Parameter	#valid	Mean	Median	Min	Max	Stddev	Unit
QUALITY_FLAG	144560	0.0000	0.0000	0.0000	0.0000	0.0000	flag
INTEGR_TIME	144560	0.17041	0.12500	0.12500	0.25000	0.060119	s
CL_FRAC	144560	0.30186	0.23514	0.0000	1.0000	0.28320	-
CL_FRAC_ERR	144560	0.0000	0.0000	0.0000	0.0000	0.0000	%
PMD_READ	144560	5.4532	4.0000	4.0000	8.0000	1.9238	
PMD_READ_CL[0]	144560	0.11743	0.0000	0.0000	8.0000	0.78514	-
PMD_READ_CL[1]	144560	1.8103	0.0000	0.0000	8.0000	2.7135	-
CL_TOP_HEIGHT	123596	3.2519	1.4343	0.0000	17.000	3.8412	km
CL_TOP_HEIGHT_ERR	0	---	---	---	---	---	---
CL_OPT_DEPTH	123596	58.779	87.862	0.0000	101.00	44.825	km
CL_OPT_DEPTH_ERR	0	---	---	---	---	---	---
CL_TYPE_FLAGS	144560	11100000	11100000	11100000	11100000	0.0000	flags
CLOUD_FLAGS	144560	11001101	11000100	11000000	11100000	3592.9	flags
AERO_ABSO_IND	144560	4.2738	5.1773	-0.36516	16.475	2.8128	
AERO_IND_DIAG	144560	0.0000	0.0000	0.0000	0.0000	0.0000	
AERO_FLAGS	144560	01010111	00000000	00000000	11000000	24484.	flags

Time and geolocation plots:

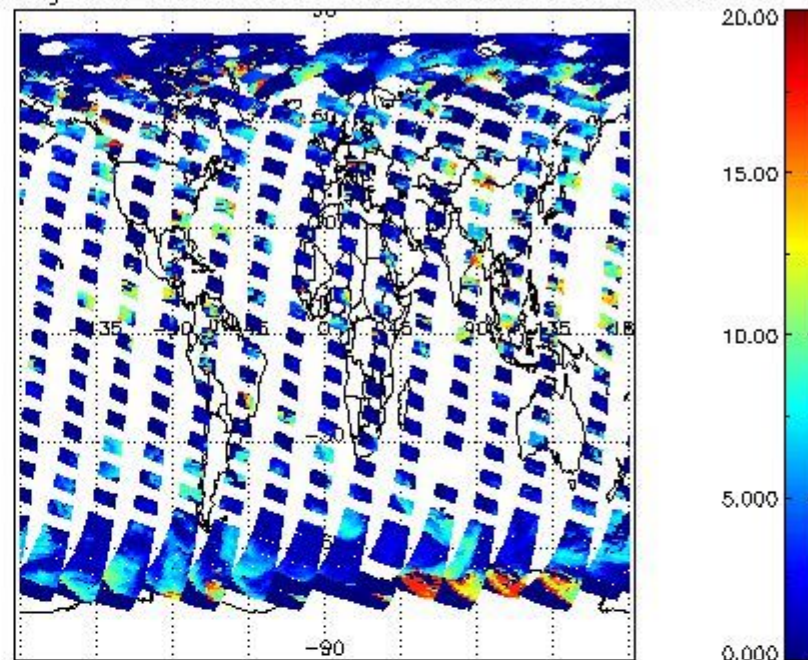
Plots are available for the following parameters:

Number	Data item ID
0	cl_frac
1	cl_top_height
2	cl_opt_depth
3	cloud_flags

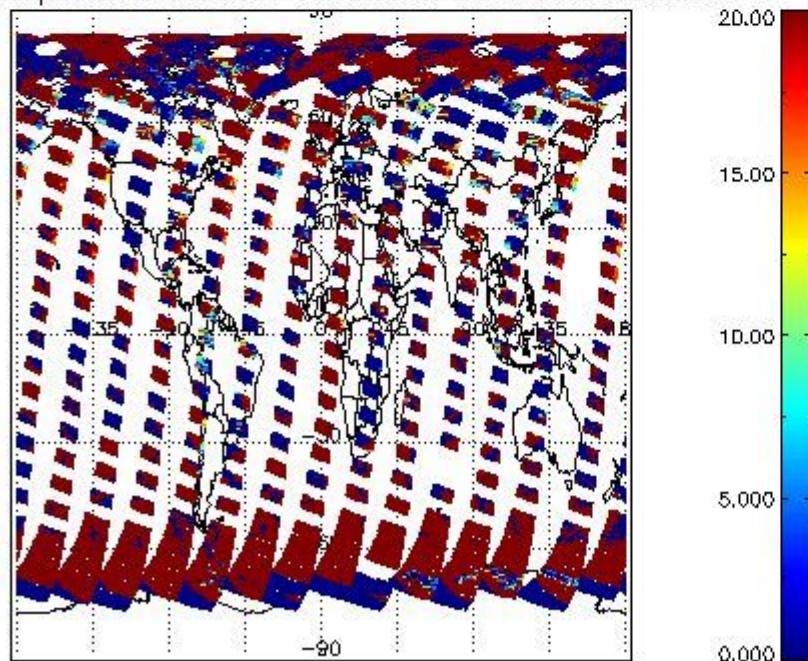
cL_frac for 27AUG2009 00:00:00 to 28AUG2009 00:00:00



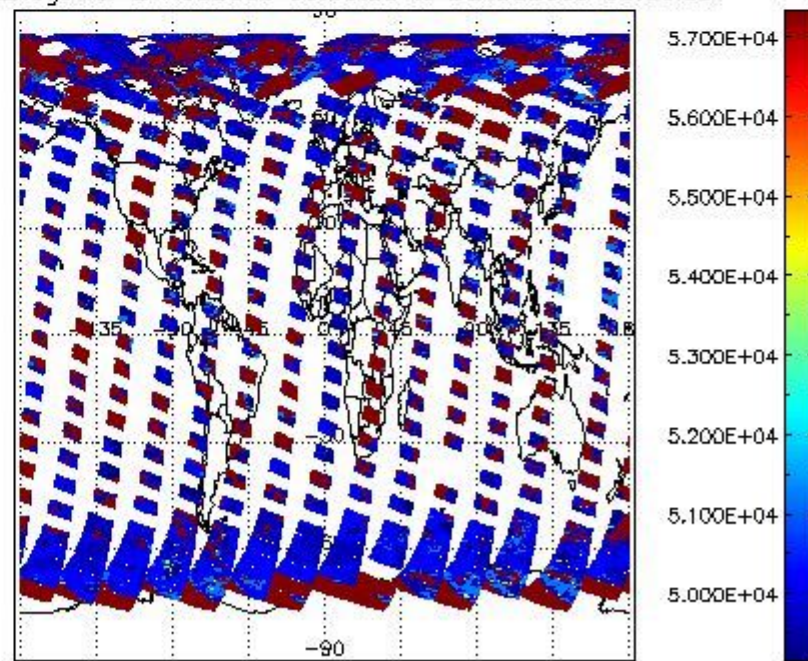
cL_top_height for 27AUG2009 00:00:00 to 28AUG2009 00:00:00



cL_opt_depth for 27AUG2009 00:00:00 to 28AUG2009 00:00:00



cloud_flags for 27AUG2009 00:00:00 to 28AUG2009 00:00:00



2.2.2 Nadir

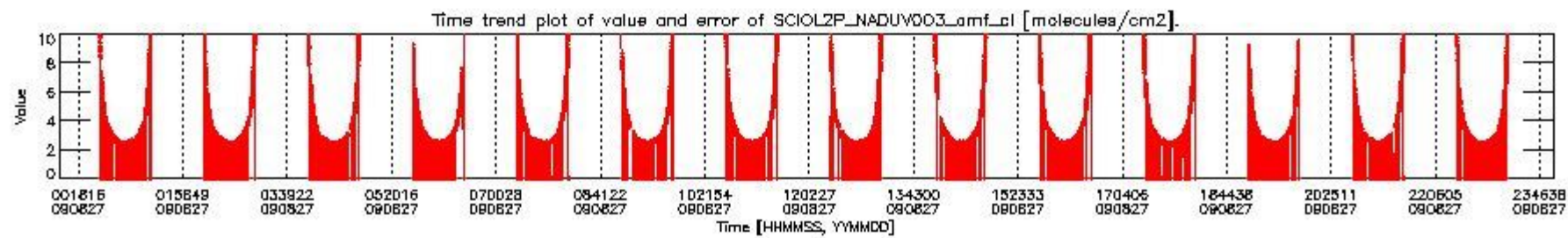
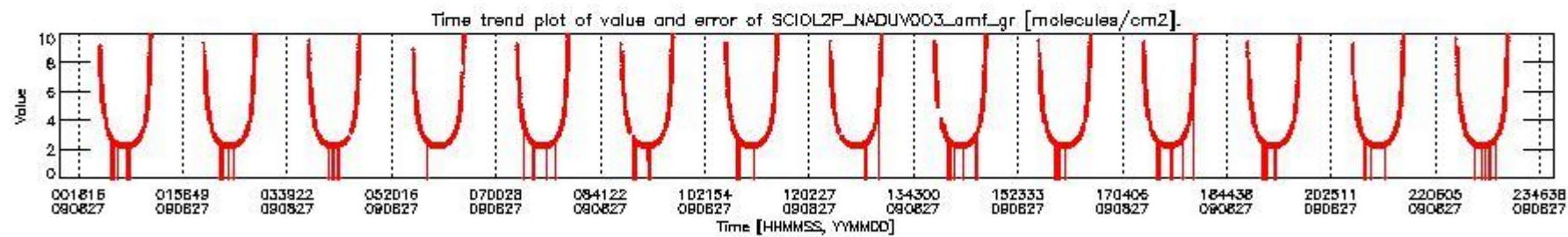
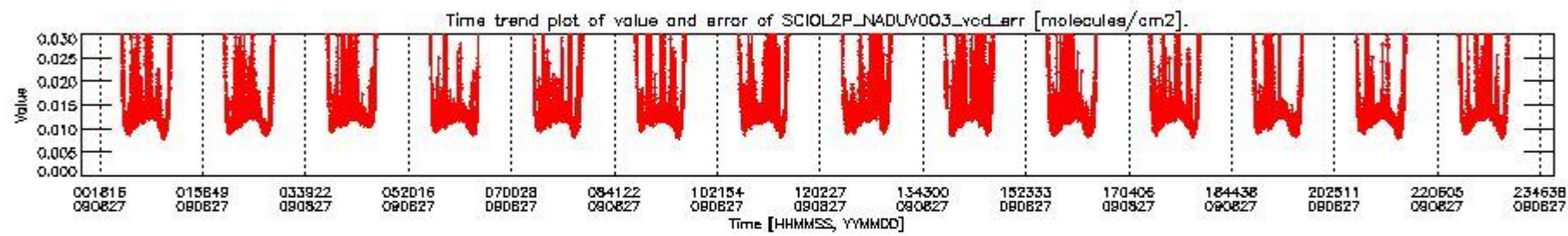
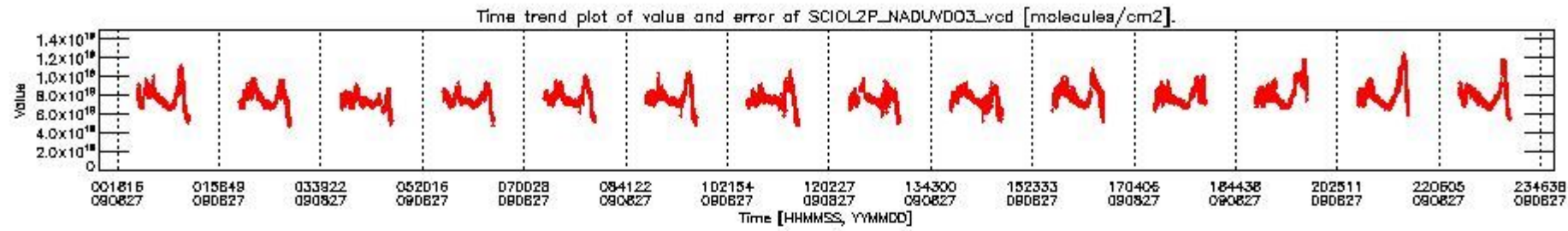
This section shows information about product quality of nadir measurements, in particular the quality of retrieved species.

The following data items are currently included into this section:

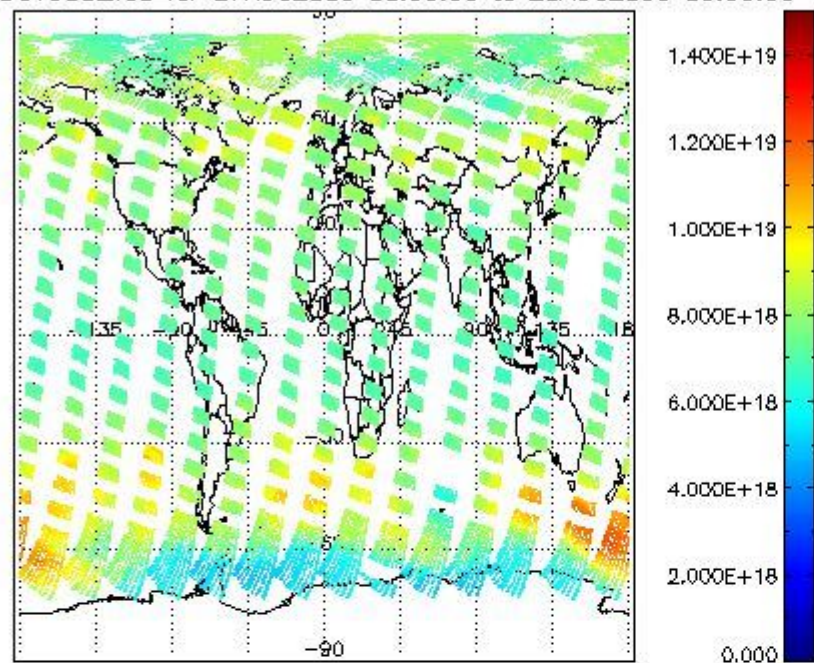
Number	Data item ID
0	SCIOL2P_NADUV003_vcd
1	SCIOL2P_NADUV003_vcd_err
2	SCIOL2P_NADUV003_amf_gr

3	SCIOL2P_NADUV003_amf_cl
4	SCIOL2P_NADUV1NO2_vcd
5	SCIOL2P_NADUV1NO2_vcd_err
6	SCIOL2P_NADUV1NO2_amf_gr
7	SCIOL2P_NADUV1NO2_amf_cl

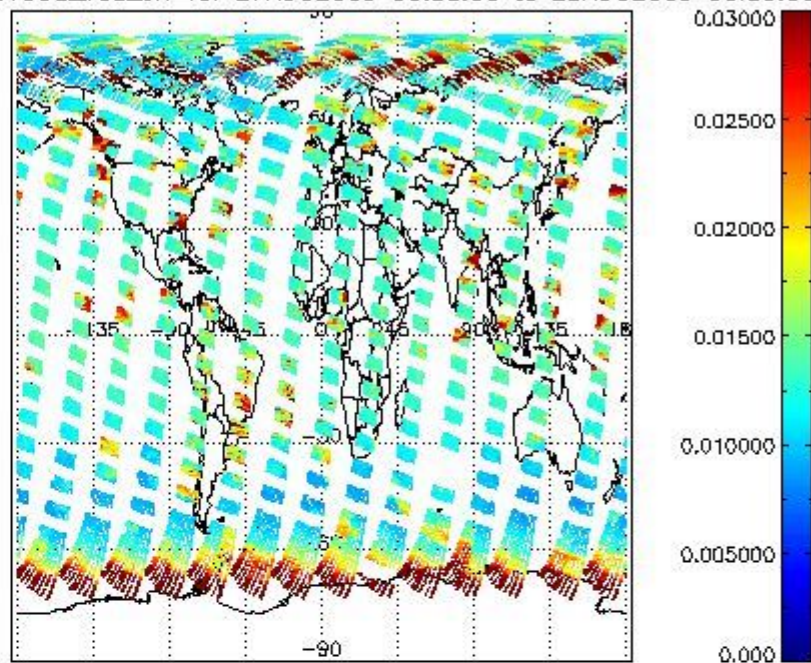
Data is presented both in time trend plots and world map plots, in order to show variations with time and geolocation. The vertical dotted lines in the time trend plots indicate orbits. The orbit times on the X-axis are estimated sensing_start time as suggested by the product sensing_start time in the MPH.



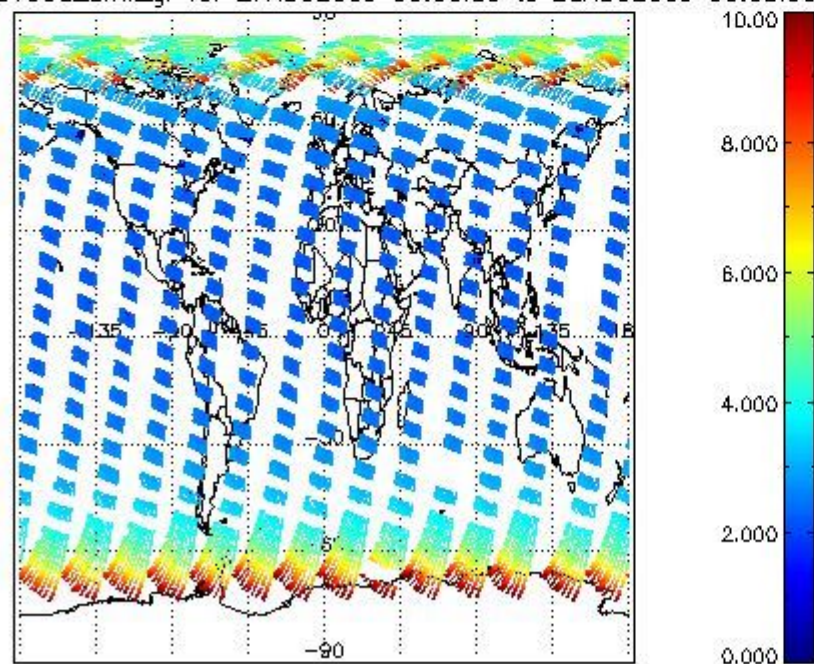
SCIOL2P_NADUV003_vcd for 27AUG2009 00:00:00 to 28AUG2009 00:00:00



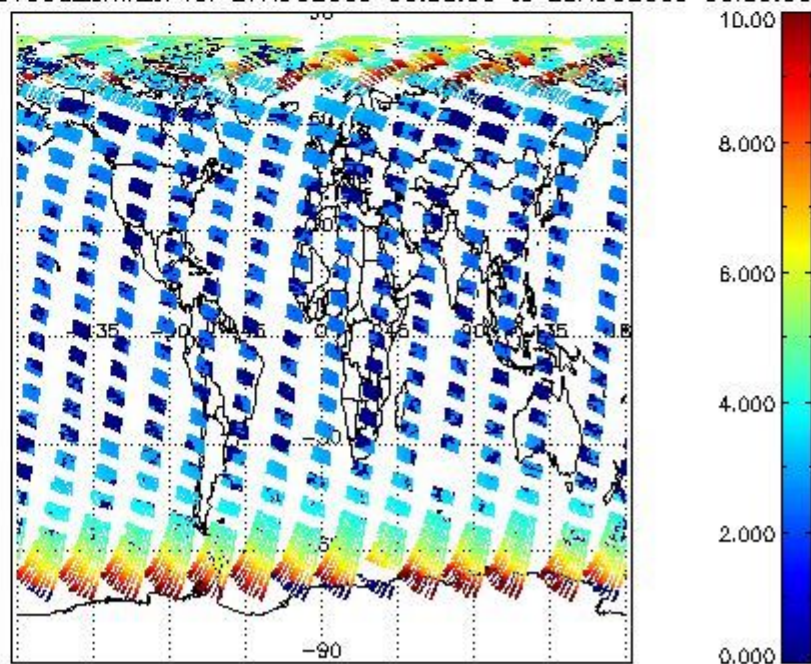
SCIOL2P_NADUV003_vcd_err for 27AUG2009 00:00:00 to 28AUG2009 00:00:00

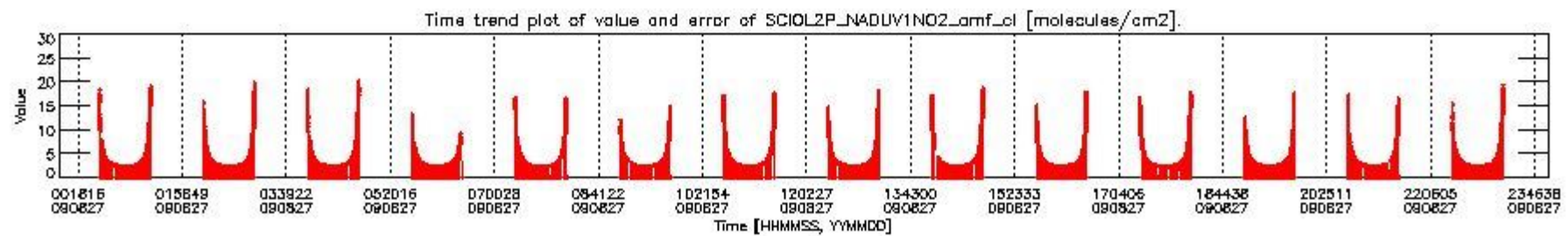
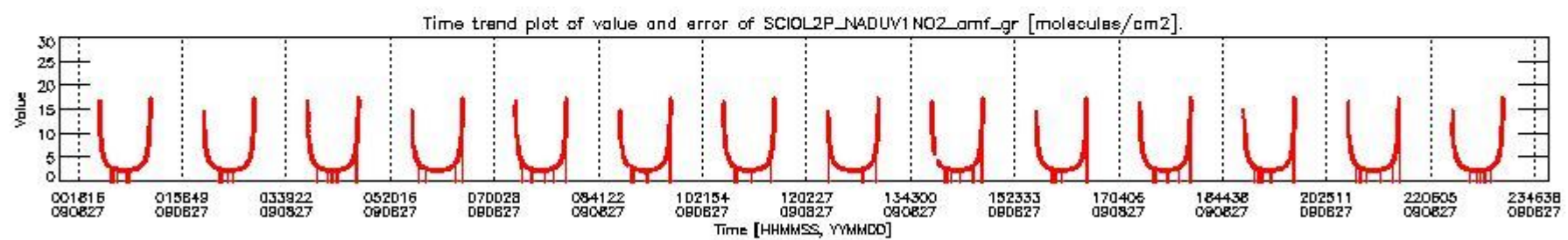
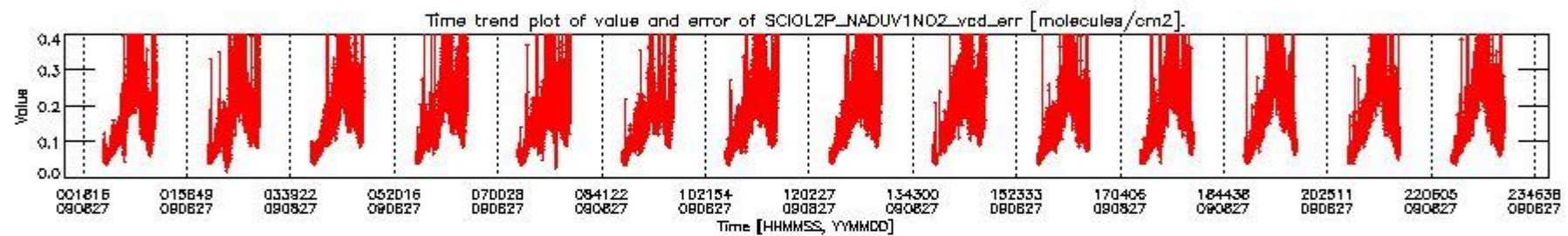
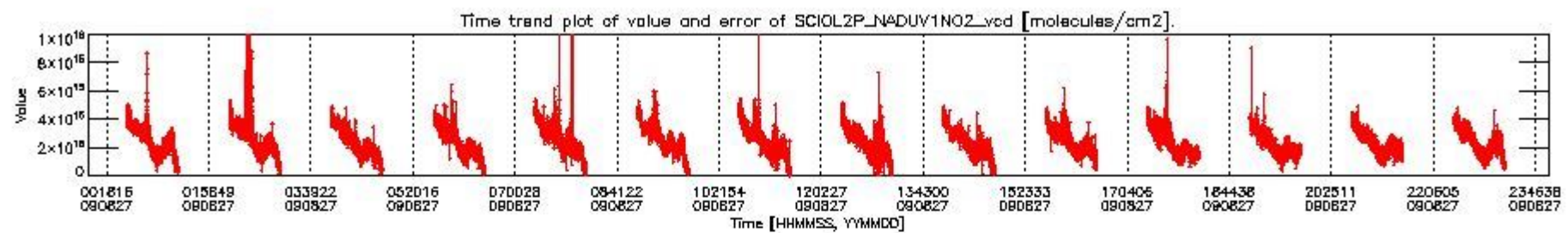


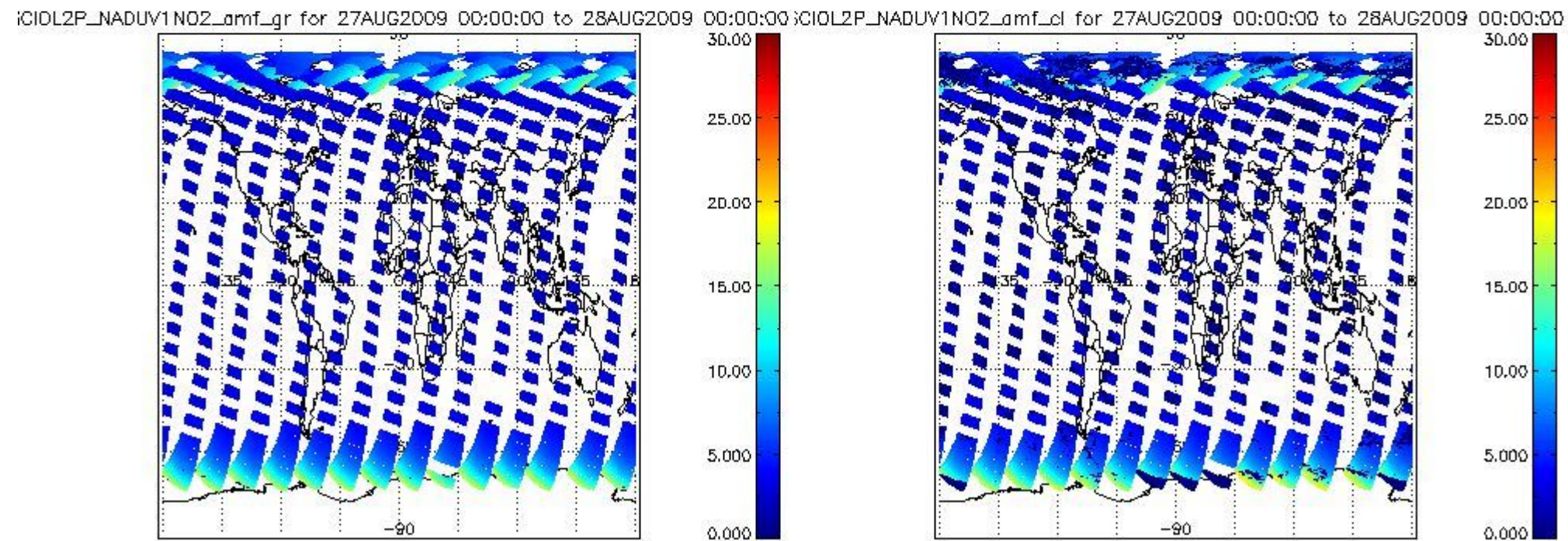
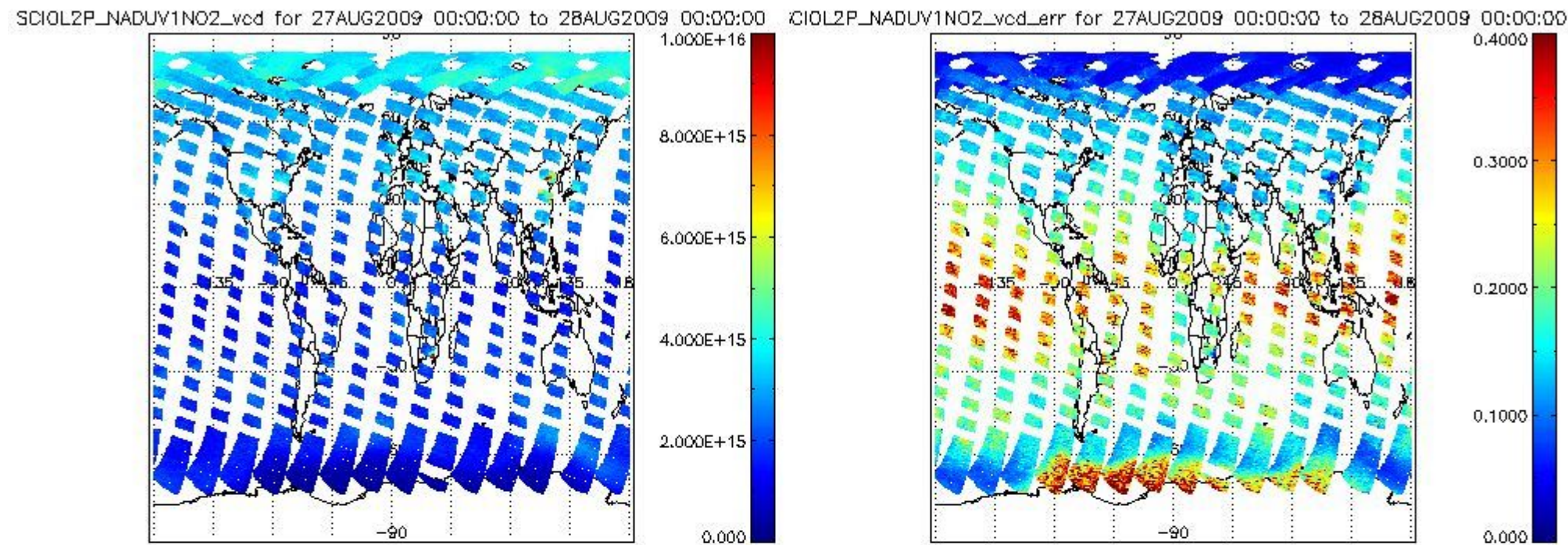
SCIOL2P_NADUV003_amf_gr for 27AUG2009 00:00:00 to 28AUG2009 00:00:00



SCIOL2P_NADUV003_amf_sl for 27AUG2009 00:00:00 to 28AUG2009 00:00:00







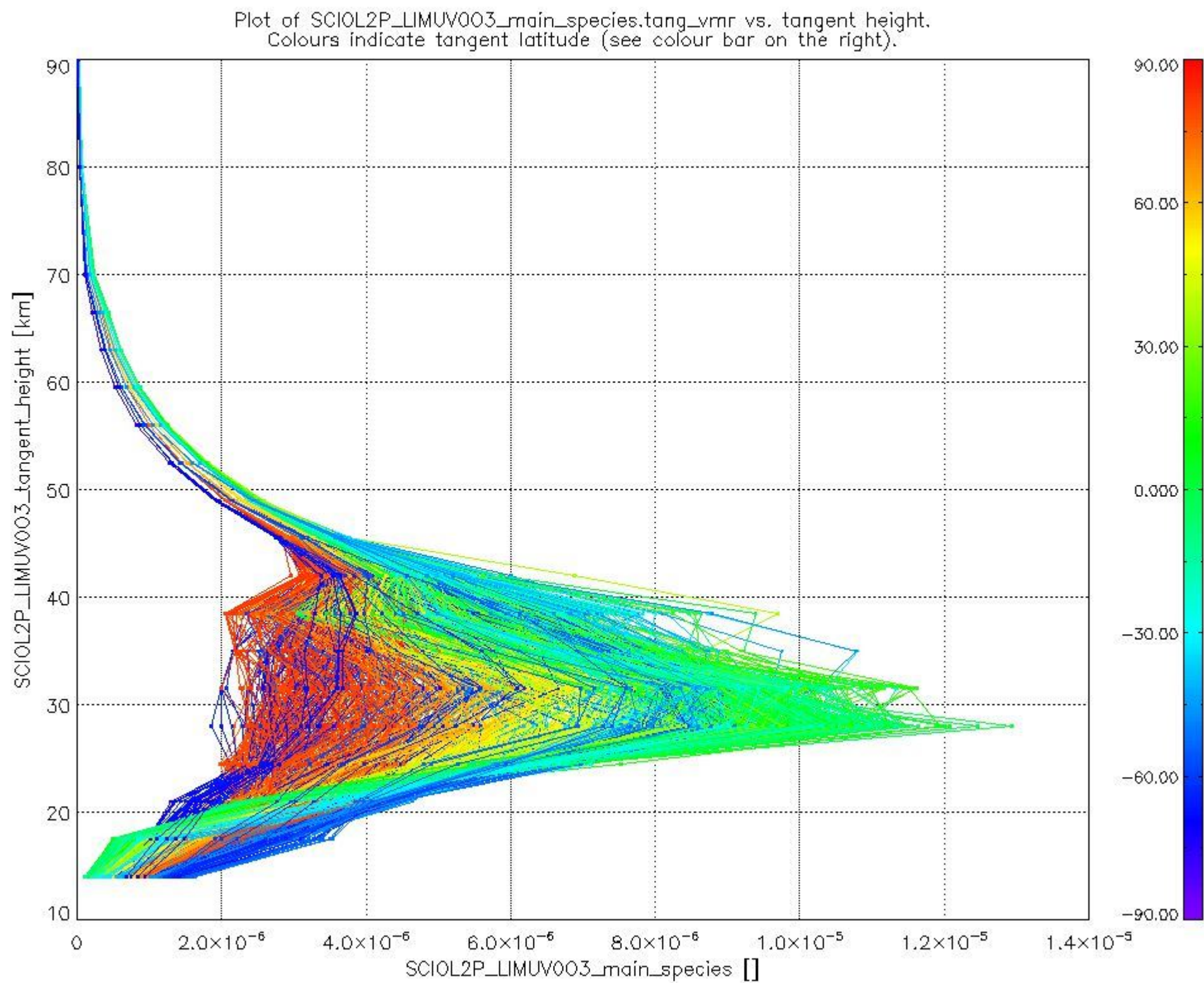
2.2.3 Limb

This section shows information about product quality of the limb retrievals, in particular the quality of retrieved species.

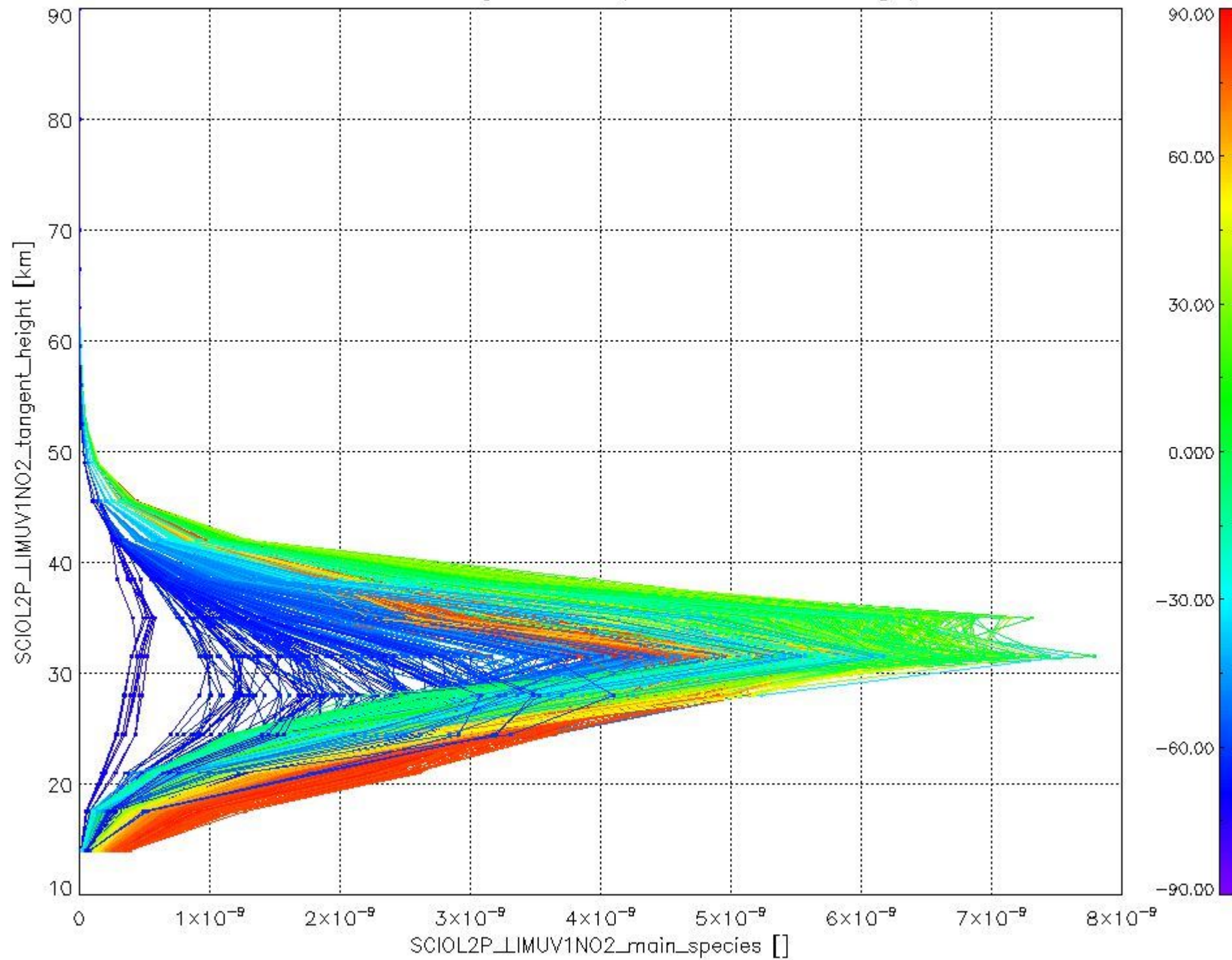
The following data items are currently included into this section:

Number	Data item ID
0	SCIOL2PLIMUV003_main_species
1	SCIOL2PLIMUV1NO2_main_species

The following plots shows for each species the tangent volume mixing ratio vs. tangent height. Colours indicate tangent latitude.



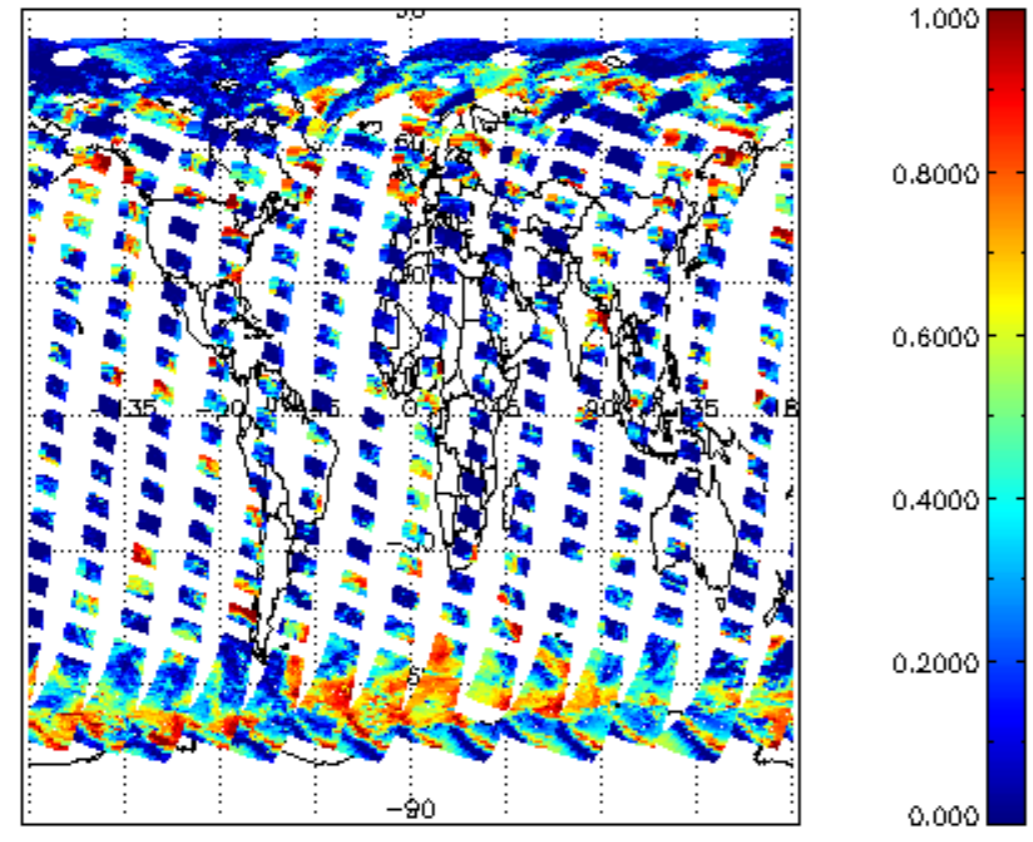
Plot of SCIOL2P_LIMUV1NO2_main_species.tang_vmr vs. tangent height.
Colours indicate tangent latitude (see colour bar on the right).



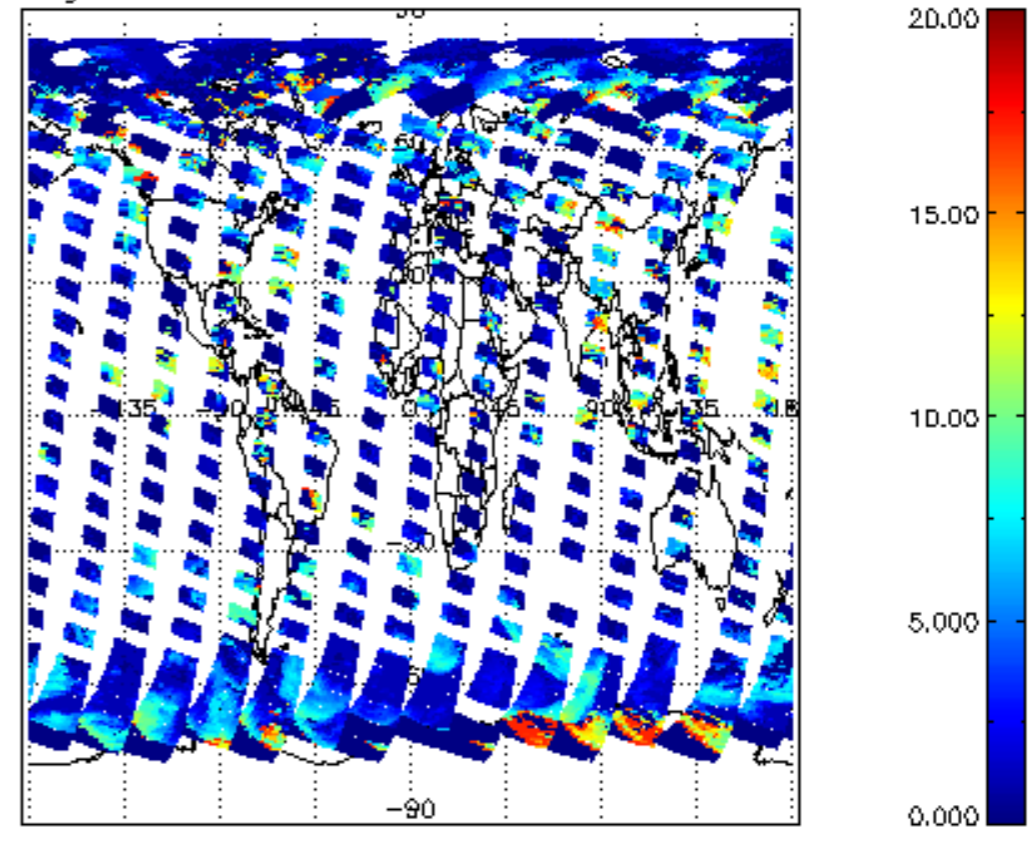
2.3 ADF monitoring

Number	ADF
	IN_ (INITIALISATION_FILE)
0	SCI_IN__AXNPDE20070629_092400_20070720_000000_20991231_235959
	ECF (ECMWF_FILE)
1	NOT USED

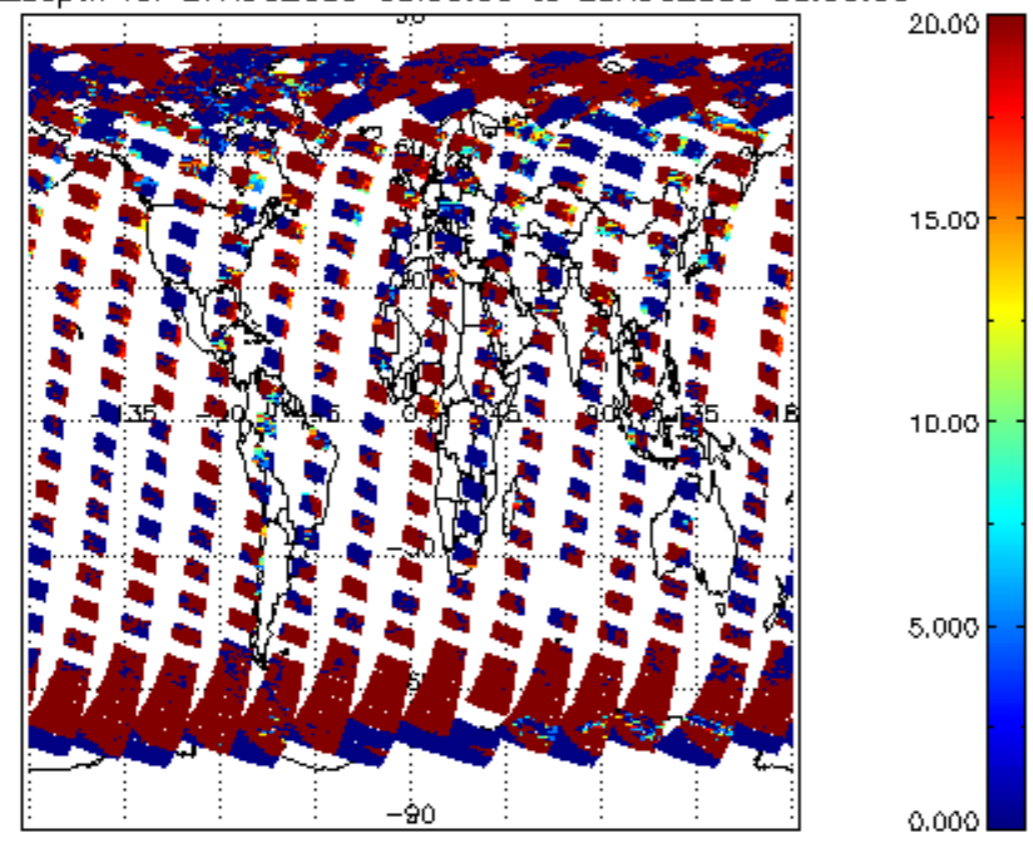
cL_frac for 27AUG2009 00:00:00 to 28AUG2009 00:00:00



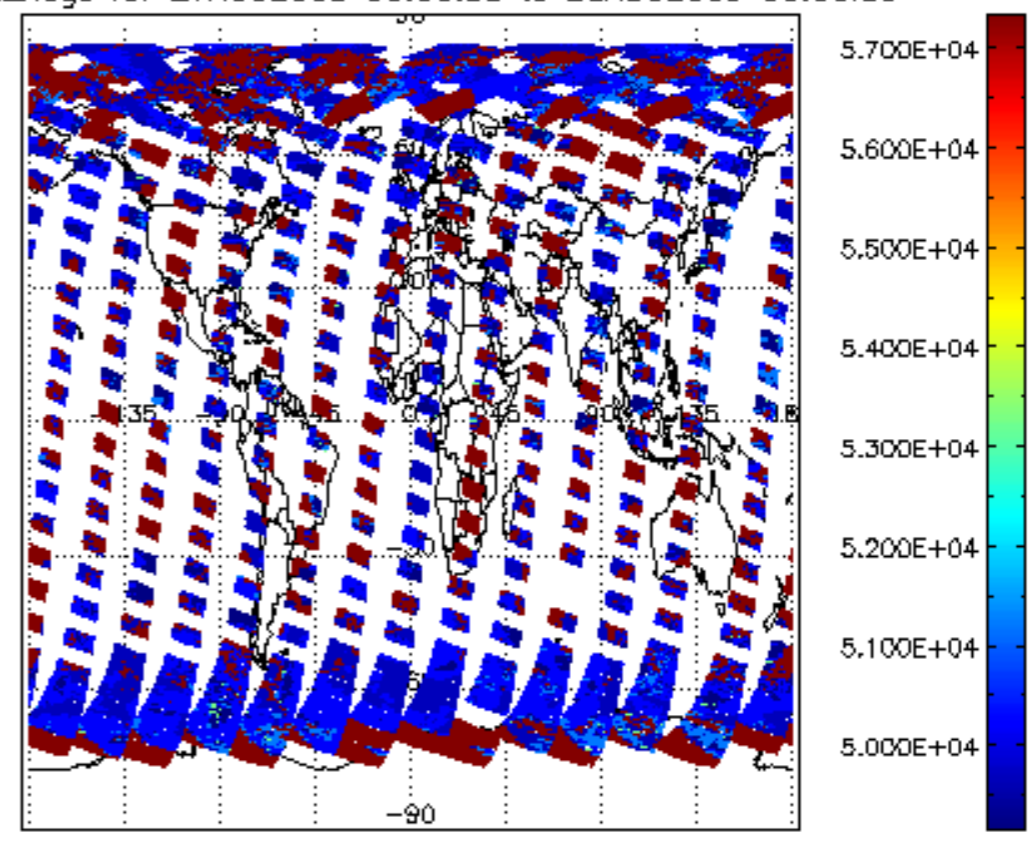
cL_top_height for 27AUG2009 00:00:00 to 28AUG2009 00:00:00

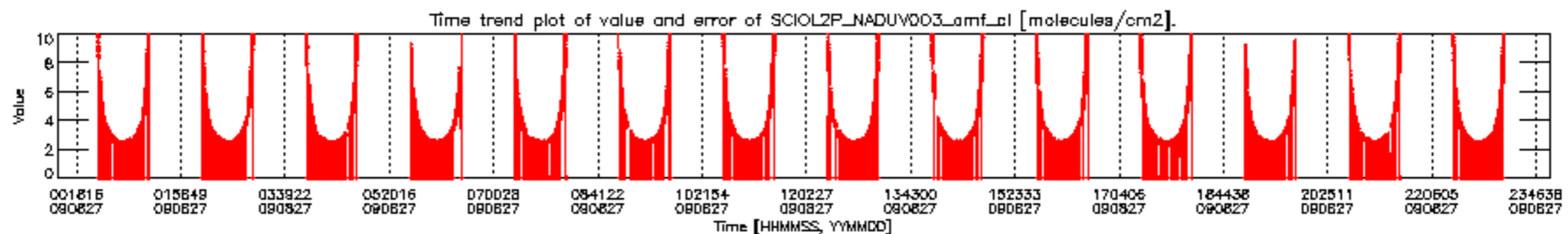
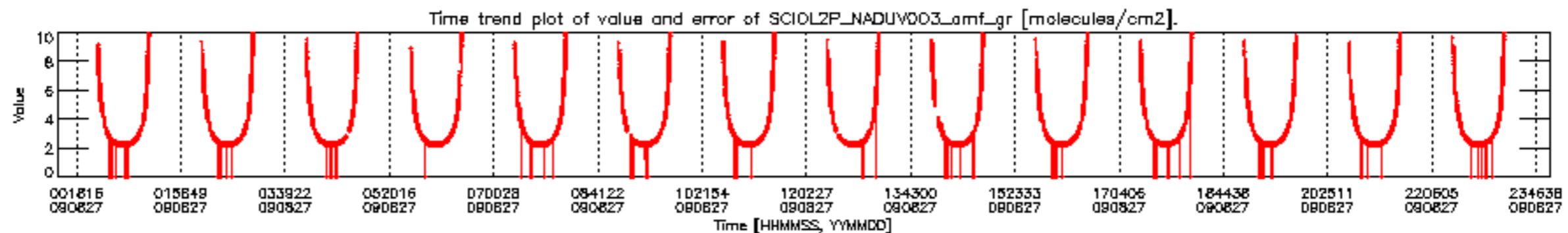
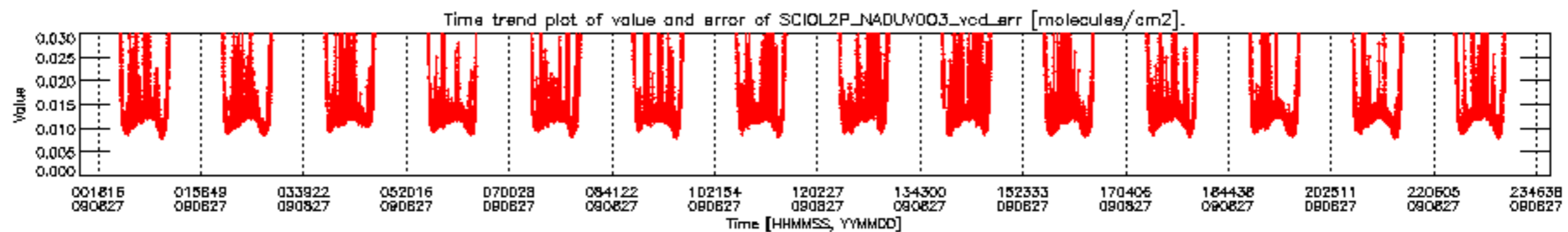
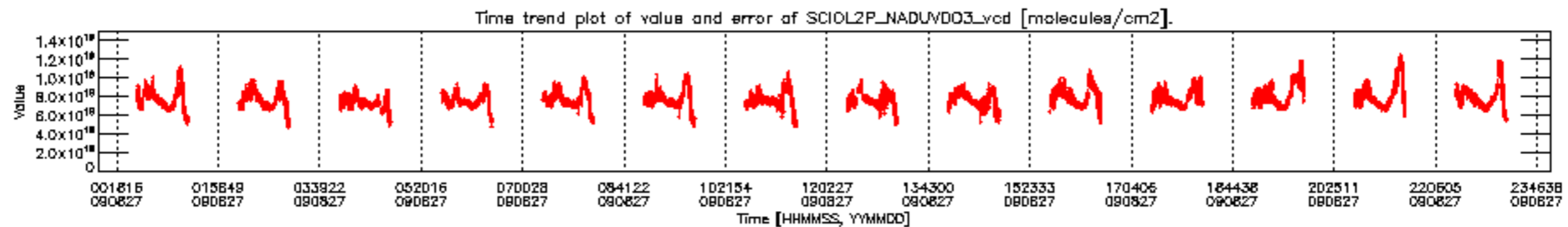


cL_opt_depth for 27AUG2009 00:00:00 to 28AUG2009 00:00:00

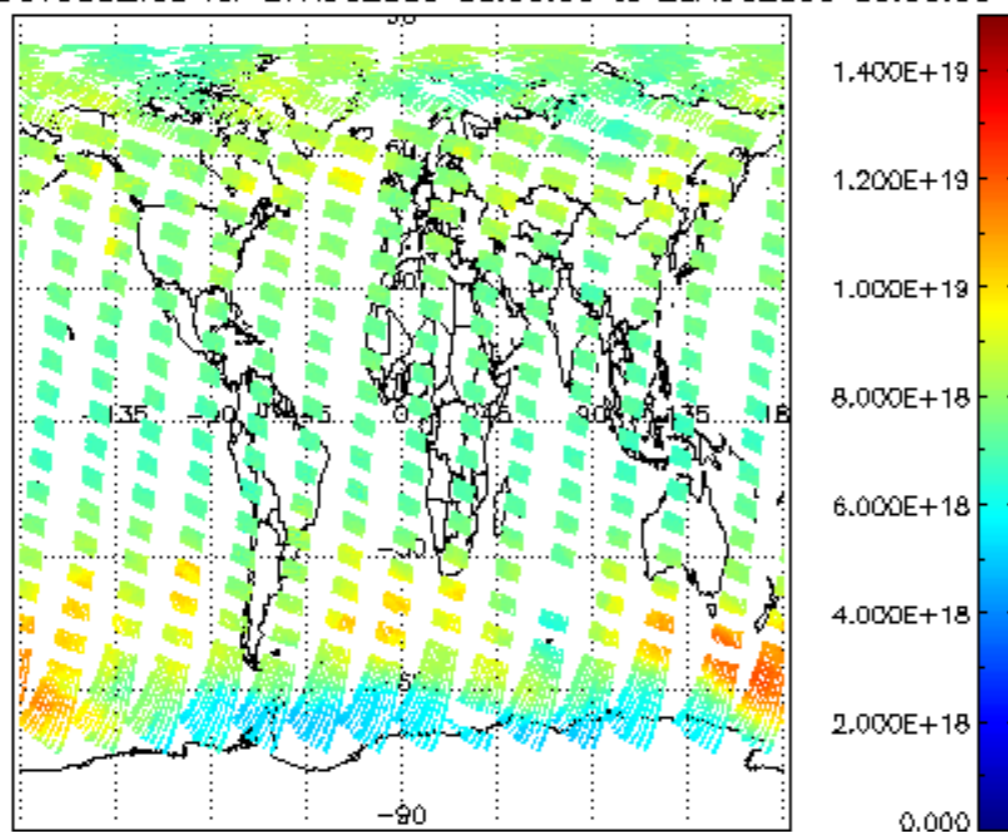


cloud_flags for 27AUG2009 00:00:00 to 28AUG2009 00:00:00

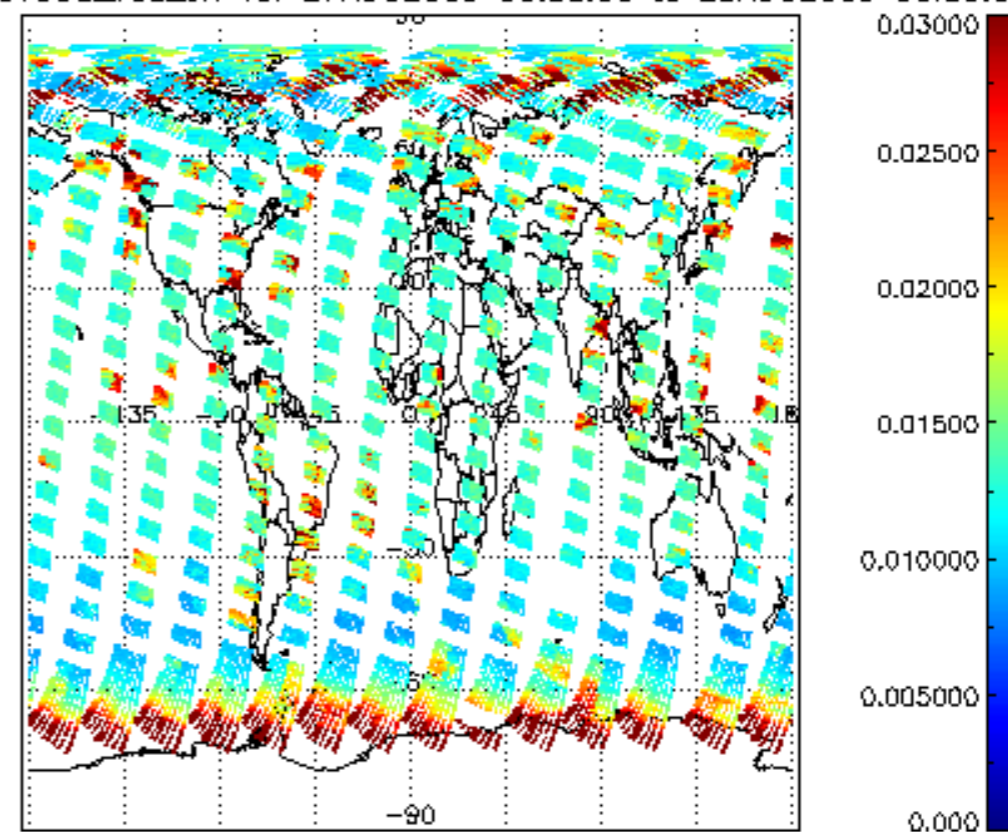




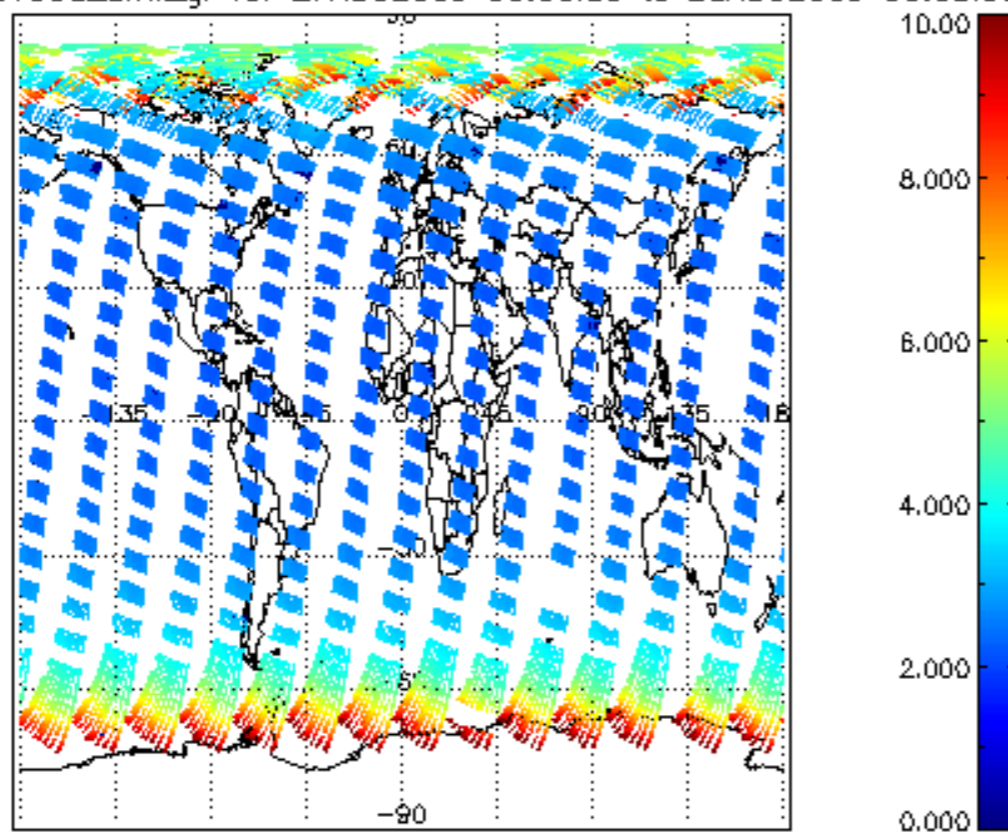
SCIOL2P_NADUV003_vcd for 27AUG2009 00:00:00 to 28AUG2009 00:00:00



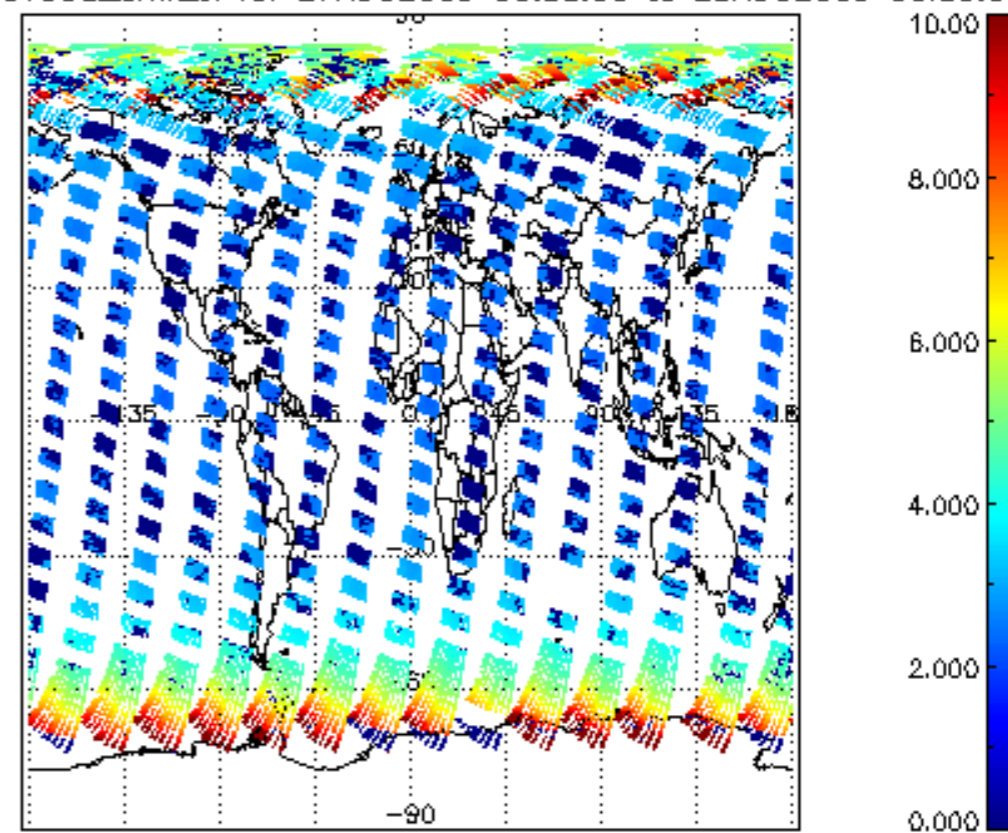
SCIOL2P_NADUV003_vcd_err for 27AUG2009 00:00:00 to 28AUG2009 00:00:00

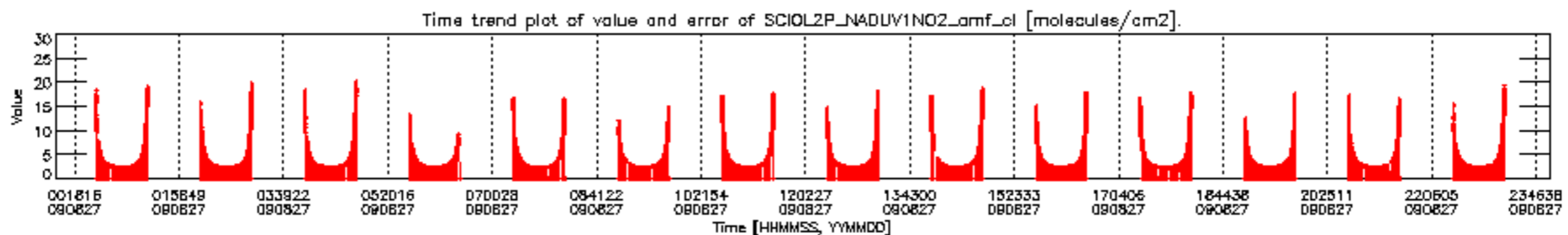
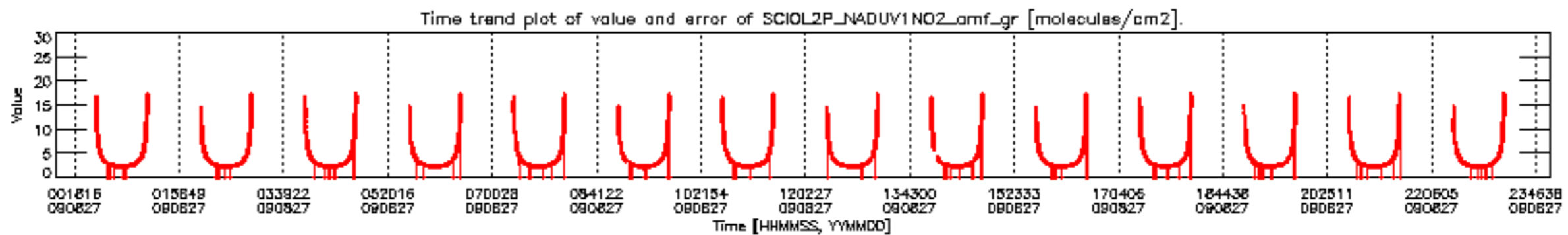
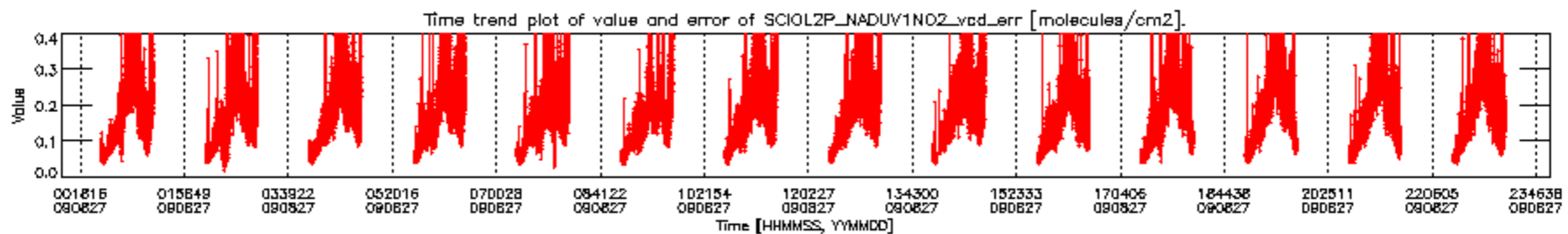
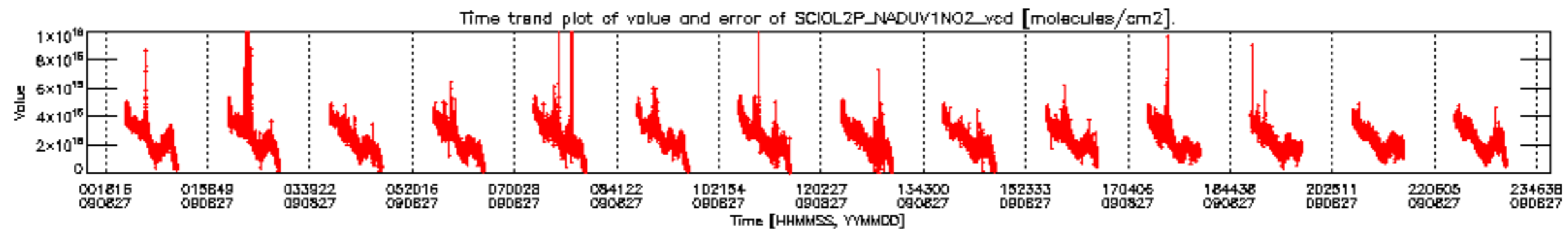


SCIOL2P_NADUV003_amf_gr for 27AUG2009 00:00:00 to 28AUG2009 00:00:00

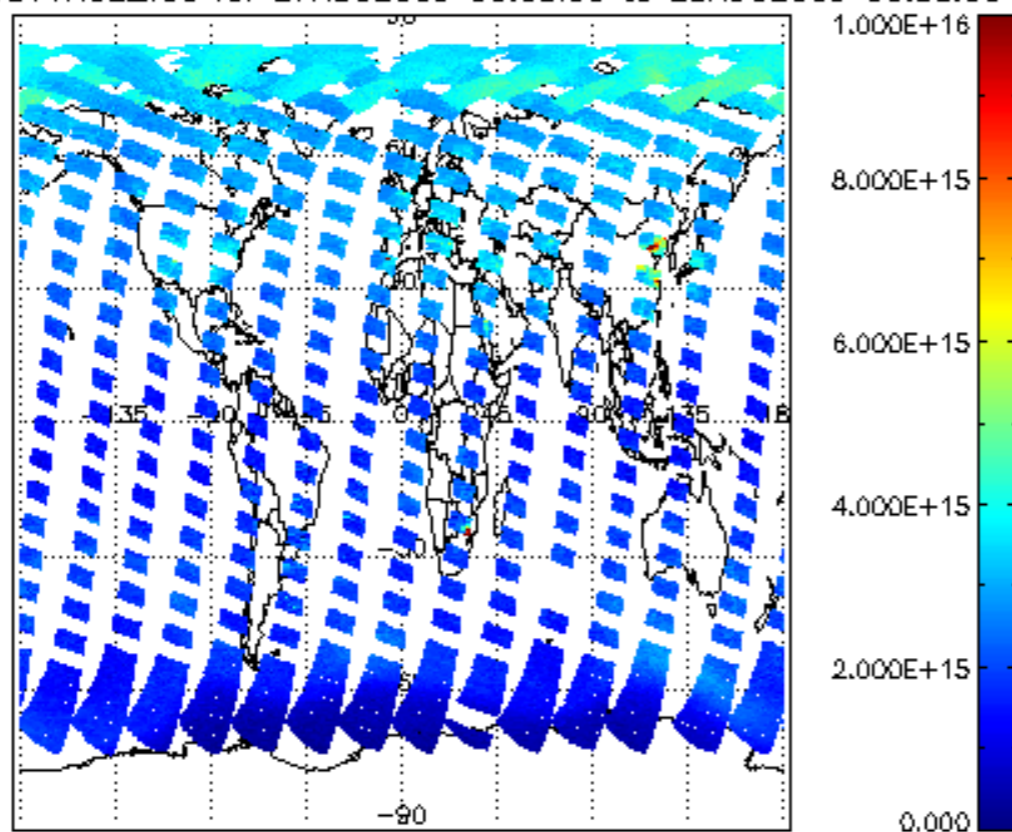


SCIOL2P_NADUV003_amf_cl for 27AUG2009 00:00:00 to 28AUG2009 00:00:00

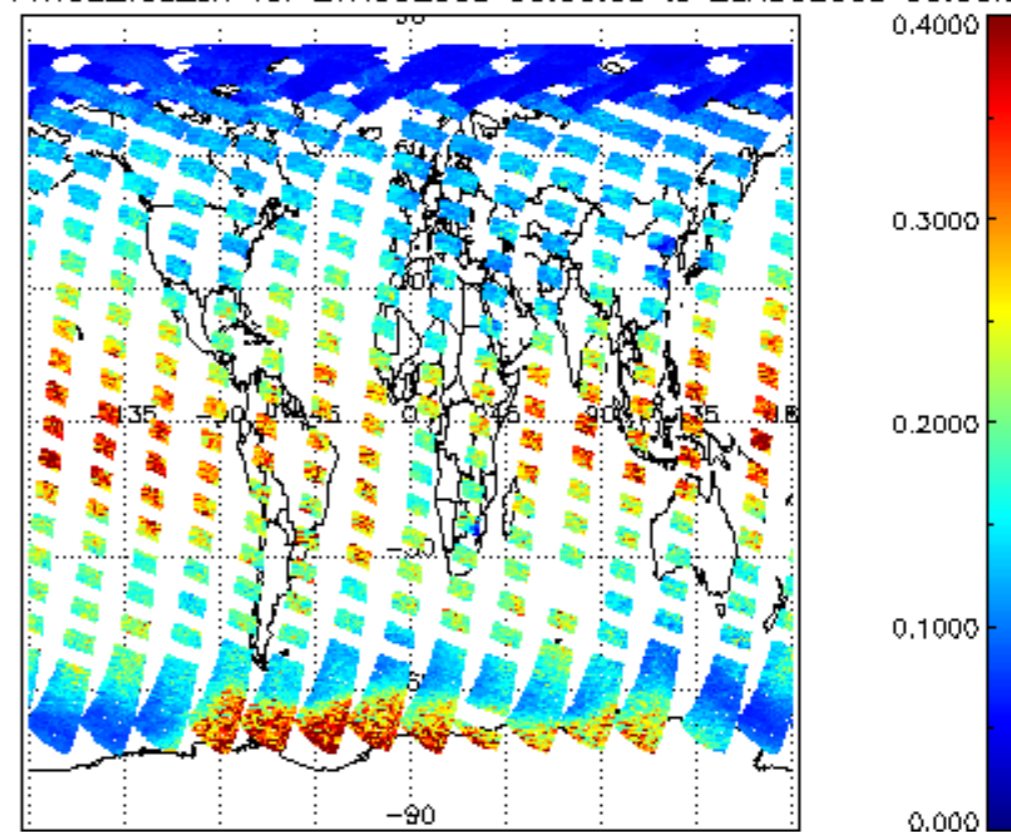




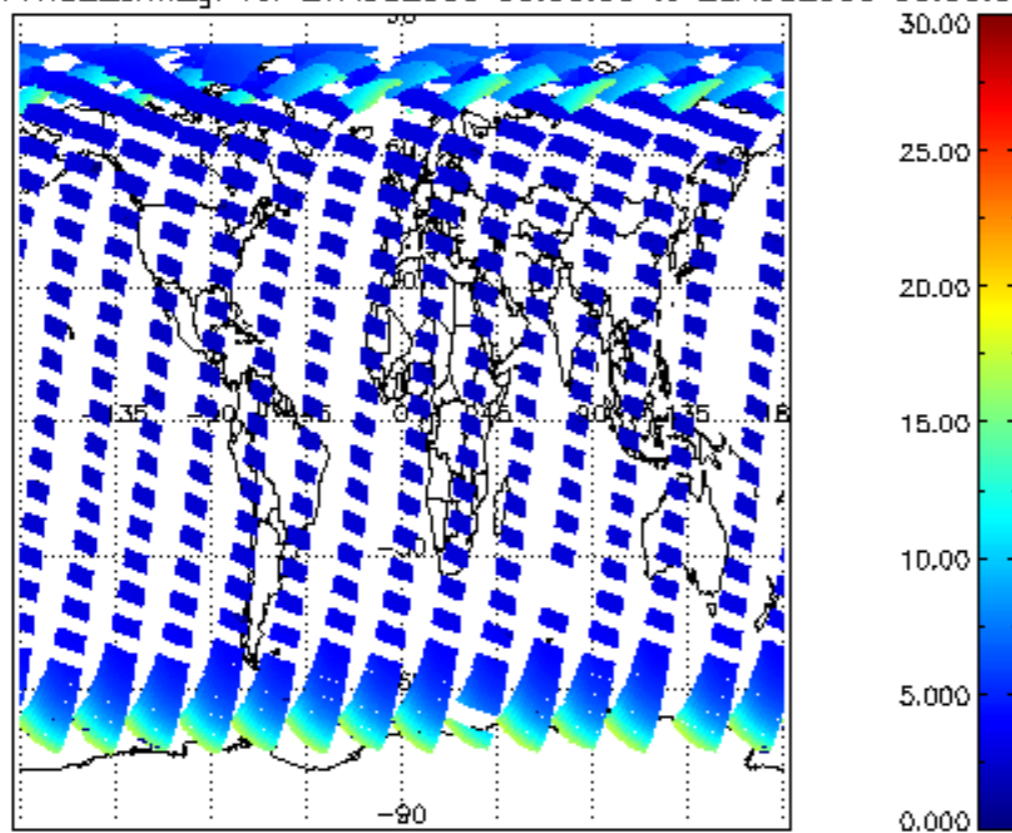
SCIOL2P_NADUV1NO2_vcd for 27AUG2009 00:00:00 to 28AUG2009 00:00:00



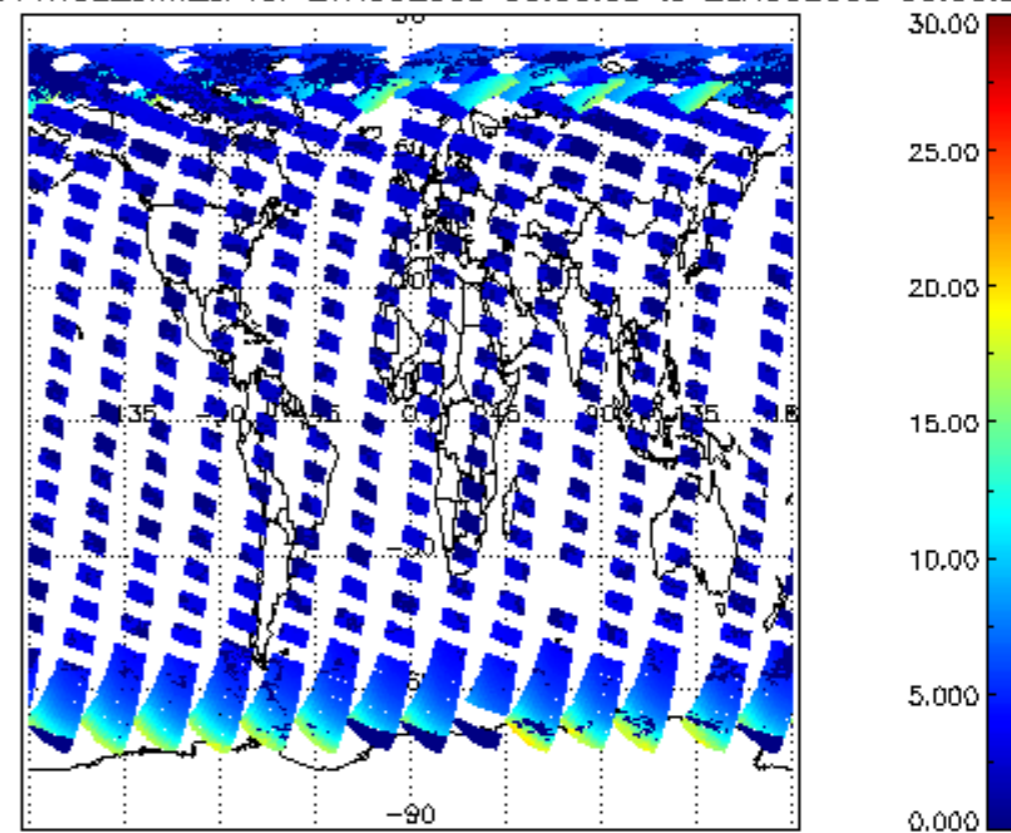
SCIOL2P_NADUV1NO2_vcd_err for 27AUG2009 00:00:00 to 28AUG2009 00:00:00



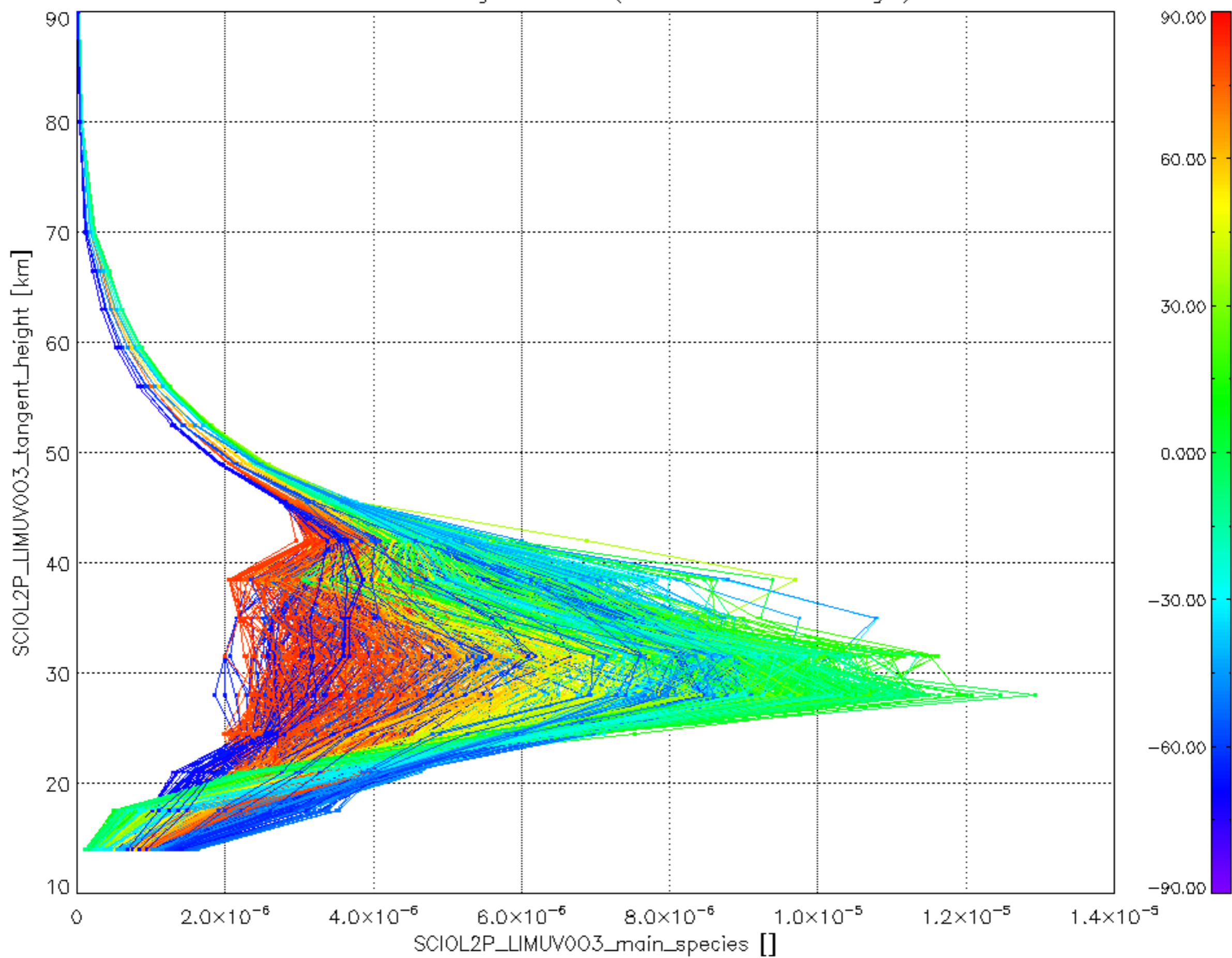
SCIOL2P_NADUV1NO2_amf_gr for 27AUG2009 00:00:00 to 28AUG2009 00:00:00



SCIOL2P_NADUV1NO2_amf_cl for 27AUG2009 00:00:00 to 28AUG2009 00:00:00



Plot of SCIOL2P_LIMUV003_main_species.tang_vmr vs. tangent height.
 Colours indicate tangent latitude (see colour bar on the right).



Plot of SCIOL2P_LIMUV1NO2_main_species.tang_vmr vs. tangent height.
 Colours indicate tangent latitude (see colour bar on the right).

