

2. SCIAMACHY Daily Report for level 2 products

[2.1. General Info](#)

[2.2 Product Quality Indicators](#)

[2.3 ADF monitoring](#)

2.1 General Info

This report contains a daily analysis on parameters extracted from SCIAMACHY level 2 data (The SCI_OL__2P product).

2.1.1 Report summary

The table below shows general characteristics of the data that are included into this report.

Item	Value
Report version	1.6 (28-07-2008)
Time of report generation	09DEC2009 13:57:06
Data source version	SCIA-OL/3.01-R
Processing scope for products	23AUG2009 00:00:00 to 24AUG2009 00:00:00
Start time of first product within scope	22AUG2009 23:22:58
Stop time of last product within scope	23AUG2009 23:41:48
Total number of level 2 products	15
Number of level 2 products with errors	0

2.1.2 Summary per product

The following table shows a summary for each product used in this report.

Products are linked to a corresponding server directory for view/download. Note: Link access may be restricted by security settings of your internet browser or firewall.

#	Product name	Start time	Stop time	Prod err	Fit summary
0	SCI_OL__2PRDPA20090822_232258_000030202081_00474_39105_3916.N1	22AUG2009 23:22:58	23AUG2009 00:13:19	0	GOOD
1	SCI_OL__2PRDPA20090823_010226_000031452081_00475_39106_3917.N1	23AUG2009 01:02:26	23AUG2009 01:54:51	0	GOOD
2	SCI_OL__2PRDPA20090823_023906_000033252081_00476_39107_3918.N1	23AUG2009 02:39:06	23AUG2009 03:34:31	0	GOOD
3	SCI_OL__2PRDPA20090823_041942_000033812081_00477_39108_3919.N1	23AUG2009 04:19:42	23AUG2009 05:16:04	0	GOOD
4	SCI_OL__2PRDPA20090823_060019_000033252081_00478_39109_3920.N1	23AUG2009 06:00:19	23AUG2009 06:55:44	0	GOOD
5	SCI_OL__2PRDPA20090823_074055_000033812081_00479_39110_3921.N1	23AUG2009 07:40:55	23AUG2009 08:37:17	0	GOOD
6	SCI_OL__2PRDPA20090823_092131_000033252081_00480_39111_3922.N1	23AUG2009 09:21:31	23AUG2009 10:16:57	0	GOOD
7	SCI_OL__2PRDPA20090823_110208_000033812081_00481_39112_3923.N1	23AUG2009 11:02:08	23AUG2009 11:58:29	0	GOOD
8	SCI_OL__2PRDPA20090823_124244_000033252081_00482_39113_3924.N1	23AUG2009 12:42:44	23AUG2009 13:38:10	0	GOOD
9	SCI_OL__2PRDPA20090823_142320_000033812081_00483_39114_3925.N1	23AUG2009 14:23:20	23AUG2009 15:19:42	0	GOOD
10	SCI_OL__2PRDPA20090823_160357_000033252081_00484_39115_3926.N1	23AUG2009 16:03:57	23AUG2009 16:59:22	0	GOOD
11	SCI_OL__2PRDPA20090823_174452_000033122081_00485_39116_3927.N1	23AUG2009 17:44:52	23AUG2009 18:40:05	0	GOOD
12	SCI_OL__2PRDPA20090823_192529_000033252081_00486_39117_3928.N1	23AUG2009 19:25:29	23AUG2009 20:20:54	0	GOOD
13	SCI_OL__2PRDPA20090823_210546_000033812081_00487_39118_3929.N1	23AUG2009 21:05:46	23AUG2009 22:02:07	0	GOOD
14	SCI_OL__2PRDPA20090823_224622_000033252081_00488_39119_3930.N1	23AUG2009 22:46:22	23AUG2009 23:41:48	0	GOOD

2.2 Product Quality Indicators

2.2.1 Cloud parameters

This is a new section that shows information about the cloud parameters estimation, in particular cloud fractions and cloud top height. IMPORTANT NOTE: The contents and layout of this section are still being validated. Please use with caution.

General statistics:

Total number of cloud data DSRs: 151060

Total number of cloud data DSRs with good quality flag (=0): 151060 (100.0 %)

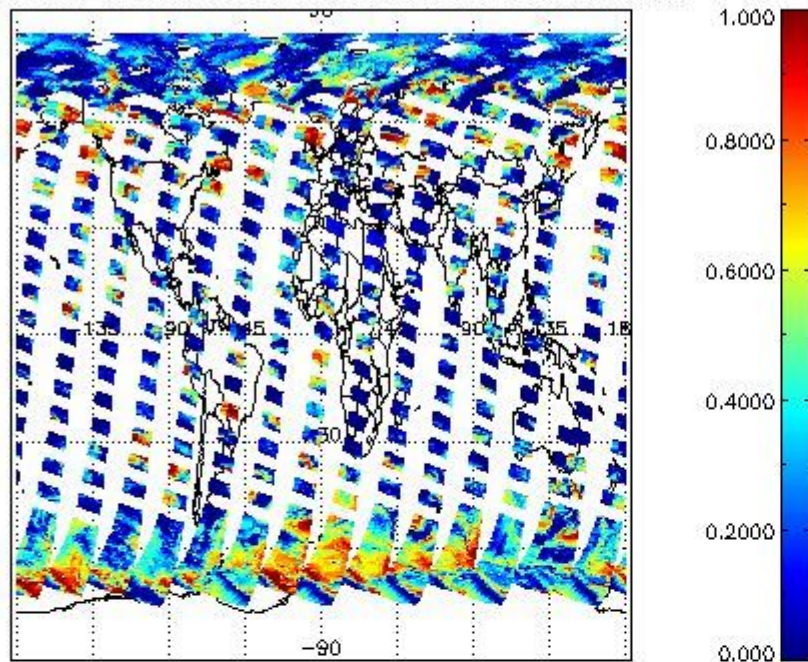
Parameter	#valid	Mean	Median	Min	Max	Stddev	Unit
QUALITY_FLAG	151060	0.0000	0.0000	0.0000	0.0000	0.0000	flag
INTEGR_TIME	151060	0.16910	0.12500	0.12500	0.25000	0.059732	s
CL_FRAC	151060	0.30160	0.23958	0.0000	1.0000	0.28108	-
CL_FRAC_ERR	151060	0.0000	0.0000	0.0000	0.0000	0.0000	%
PMD_READ	151060	5.4114	4.0000	4.0000	8.0000	1.9114	
PMD_READ_CL[0]	151060	0.13965	0.0000	0.0000	8.0000	0.83055	-
PMD_READ_CL[1]	151060	1.7516	0.0000	0.0000	8.0000	2.6683	-
CL_TOP_HEIGHT	131764	3.3907	1.6521	0.0000	17.000	3.8549	km
CL_TOP_HEIGHT_ERR	0	---	---	---	---	---	---
CL_OPT_DEPTH	131764	60.717	100.00	0.0000	101.00	44.735	km
CL_OPT_DEPTH_ERR	0	---	---	---	---	---	---
CL_TYPE_FLAGS	151060	11100000	11100000	11100000	11100000	0.0000	flags
CLOUD_FLAGS	151060	11001100	11000100	11000000	11100000	3535.1	flags
AERO_ABSO_IND	151060	4.2202	5.1726	-0.60984	16.067	2.7732	
AERO_IND_DIAG	151060	0.0000	0.0000	0.0000	0.0000	0.0000	
AERO_FLAGS	151060	01010110	00000000	00000000	11000000	24444.	flags

Time and geolocation plots:

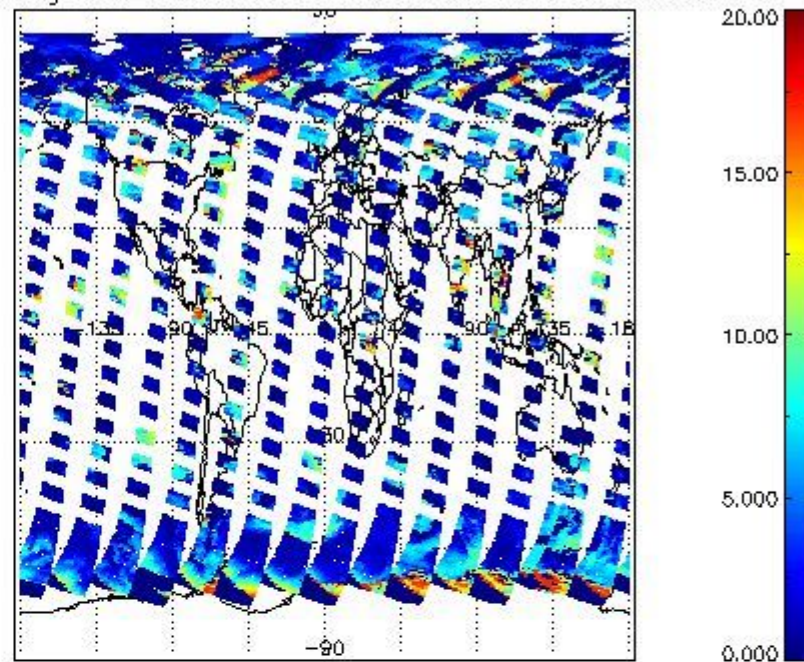
Plots are available for the following parameters:

Number	Data item ID
0	cl_frac
1	cl_top_height
2	cl_opt_depth
3	cloud_flags

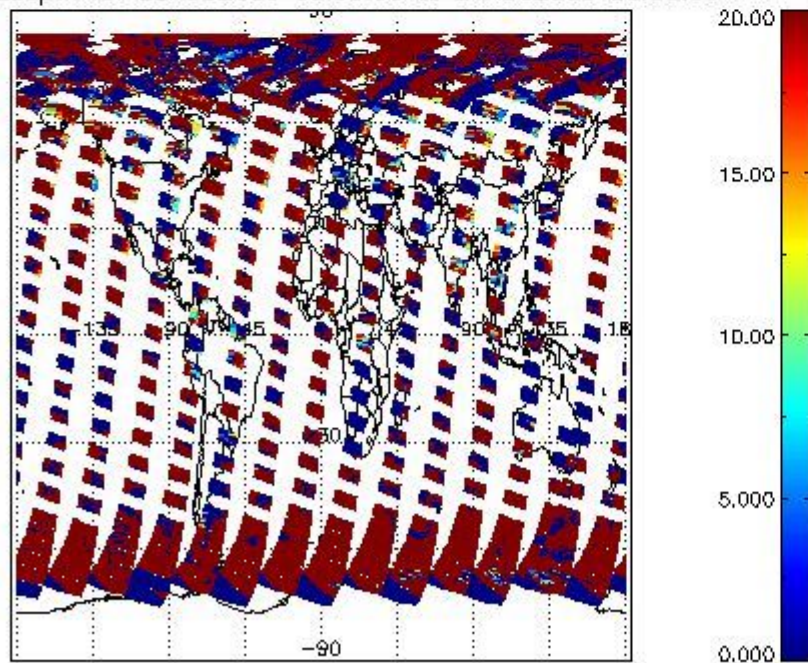
cL_frac for 23AUG2009 00:00:00 to 24AUG2009 00:00:00



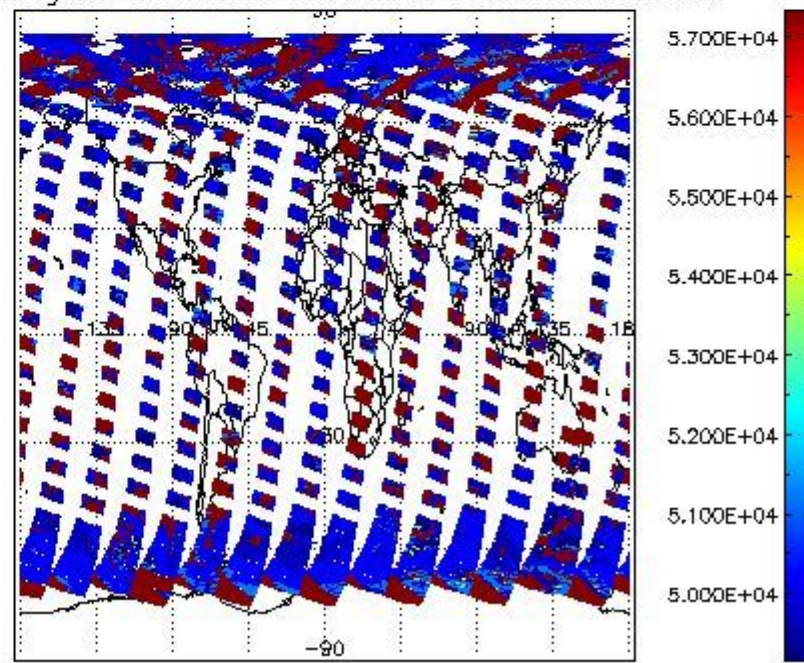
cL_top_height for 23AUG2009 00:00:00 to 24AUG2009 00:00:00



cL_opt_depth for 23AUG2009 00:00:00 to 24AUG2009 00:00:00



cloud_flags for 23AUG2009 00:00:00 to 24AUG2009 00:00:00



2.2.2 Nadir

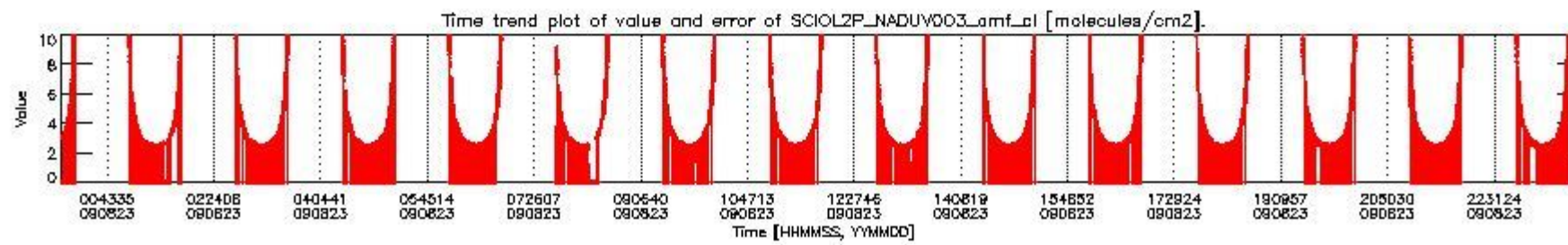
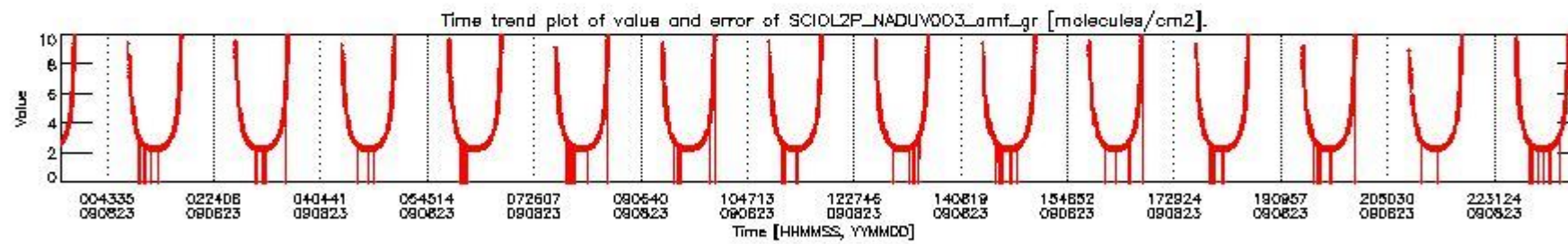
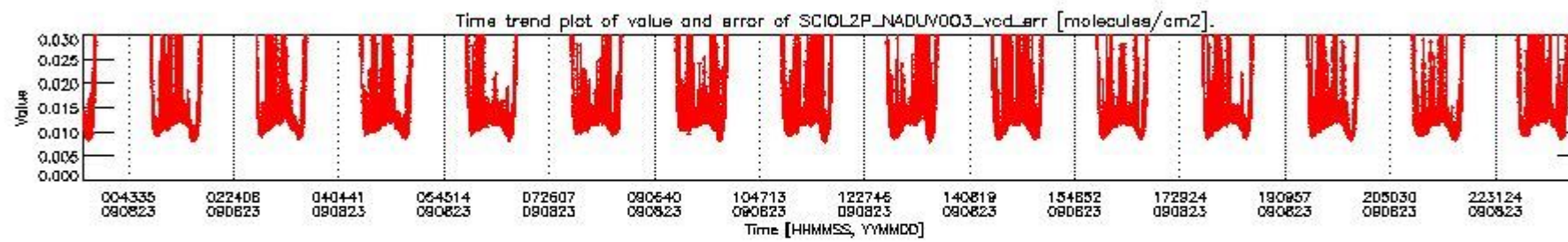
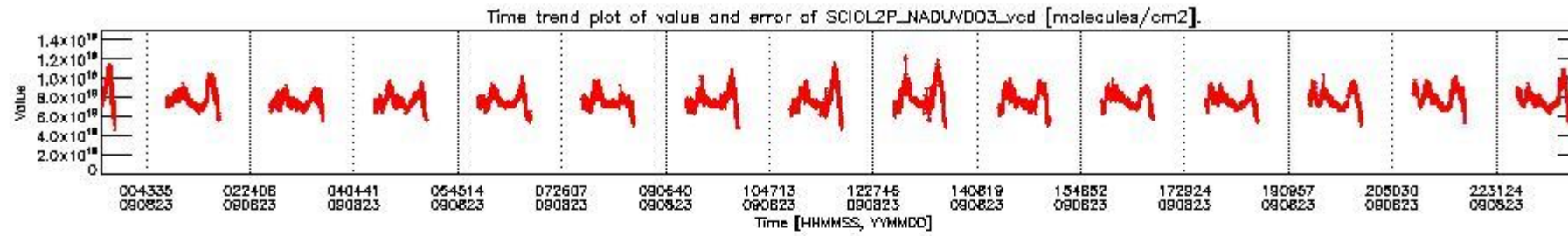
This section shows information about product quality of nadir measurements, in particular the quality of retrieved species.

The following data items are currently included into this section:

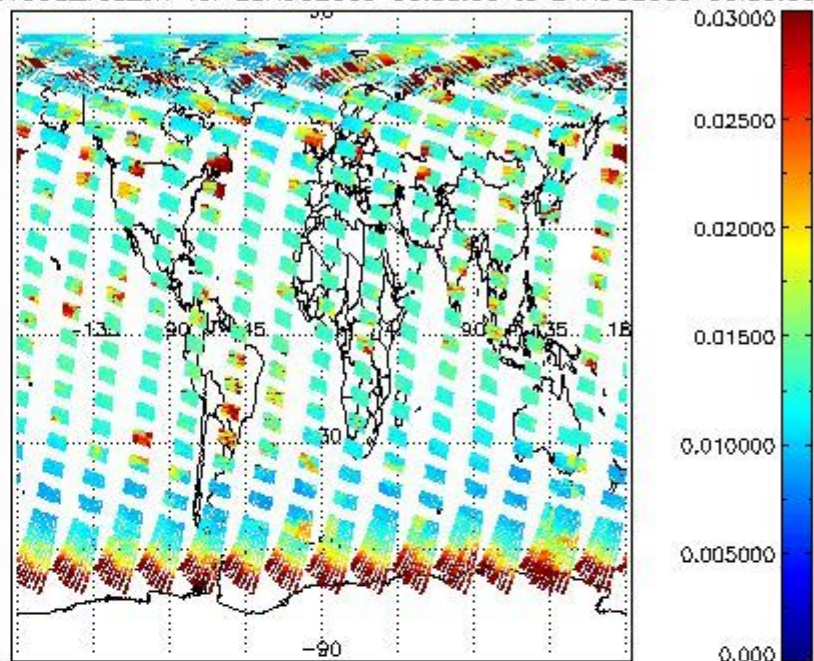
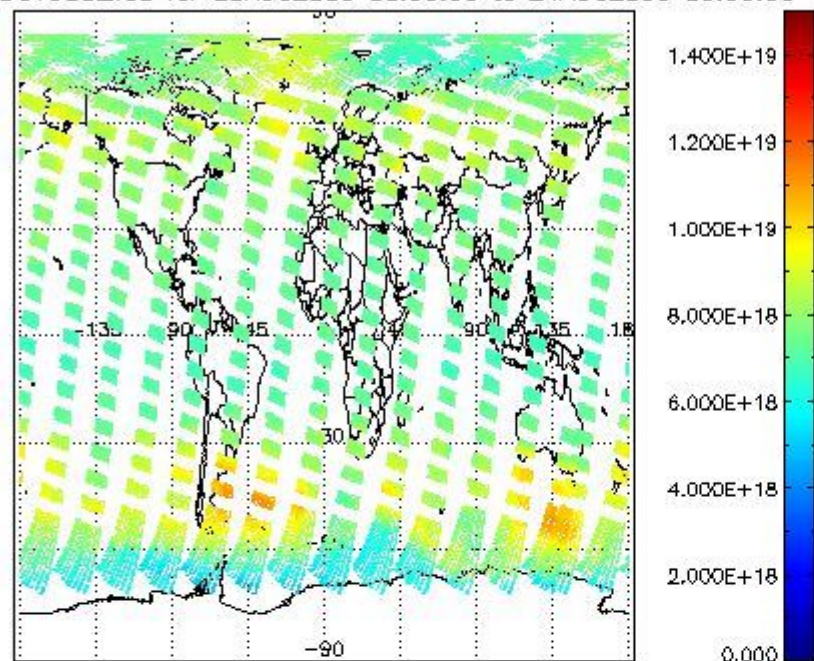
Number	Data item ID
0	SCIOL2P_NADUV003_vcd
1	SCIOL2P_NADUV003_vcd_err
2	SCIOL2P_NADUV003_amf_gr

3	SCIOL2P_NADUV003_amf_cl
4	SCIOL2P_NADUV1NO2_vcd
5	SCIOL2P_NADUV1NO2_vcd_err
6	SCIOL2P_NADUV1NO2_amf_gr
7	SCIOL2P_NADUV1NO2_amf_cl

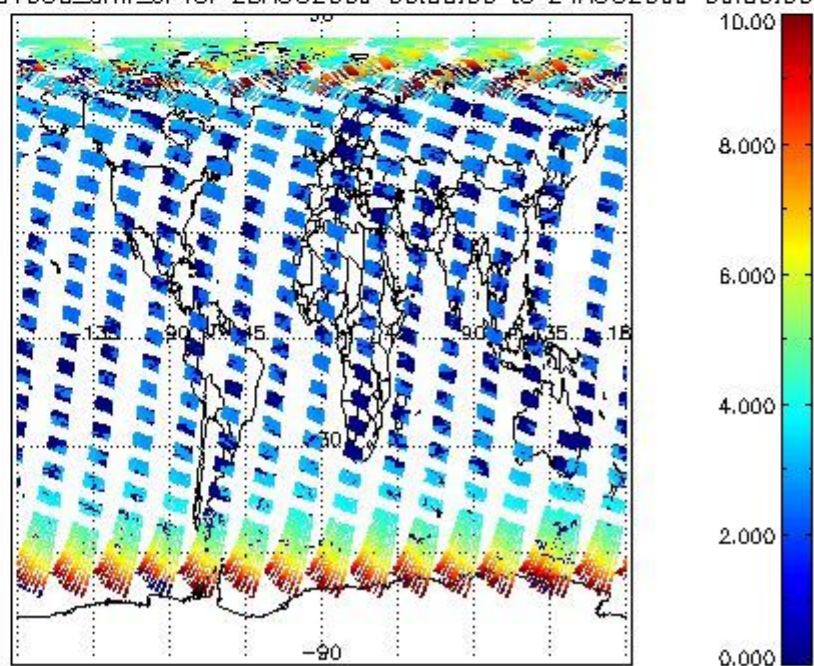
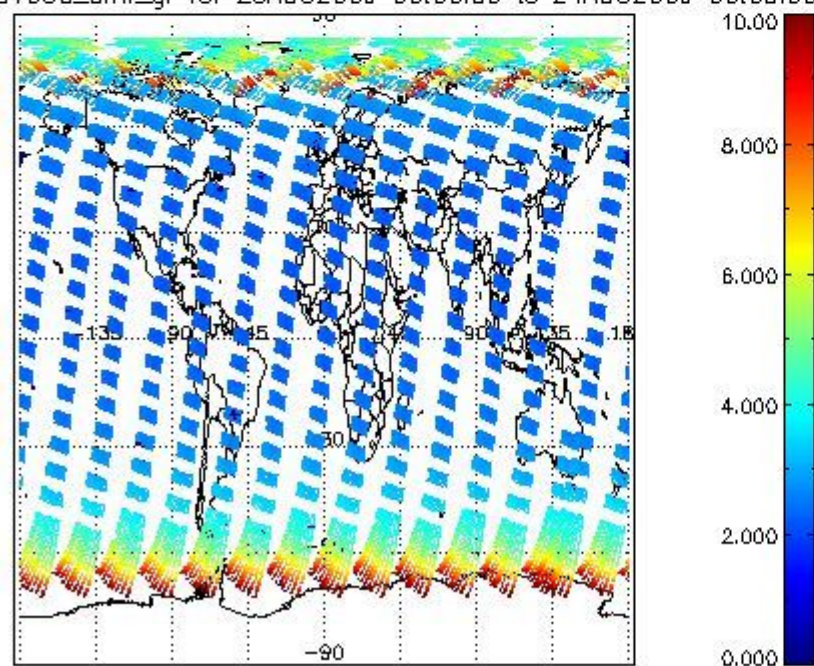
Data is presented both in time trend plots and world map plots, in order to show variations with time and geolocation. The vertical dotted lines in the time trend plots indicate orbits. The orbit times on the X-axis are estimated sensing_start time as suggested by the product sensing_start time in the MPH.

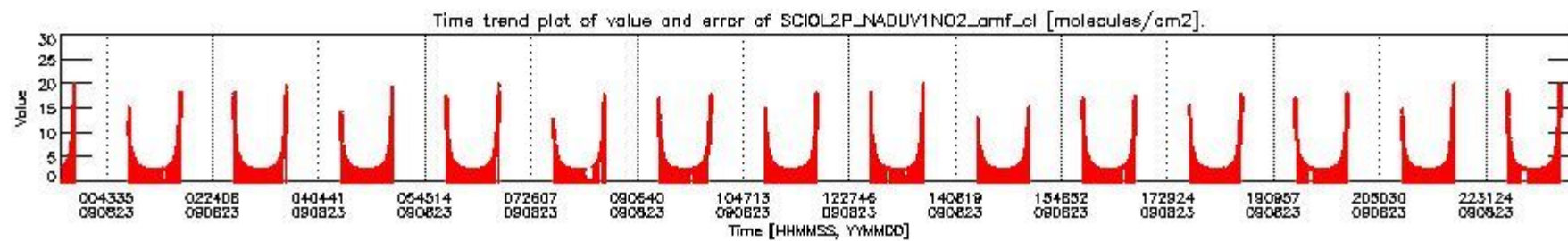
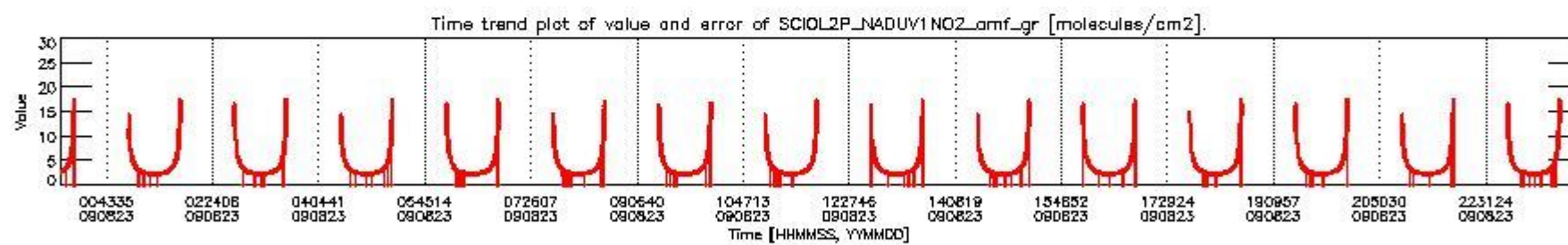
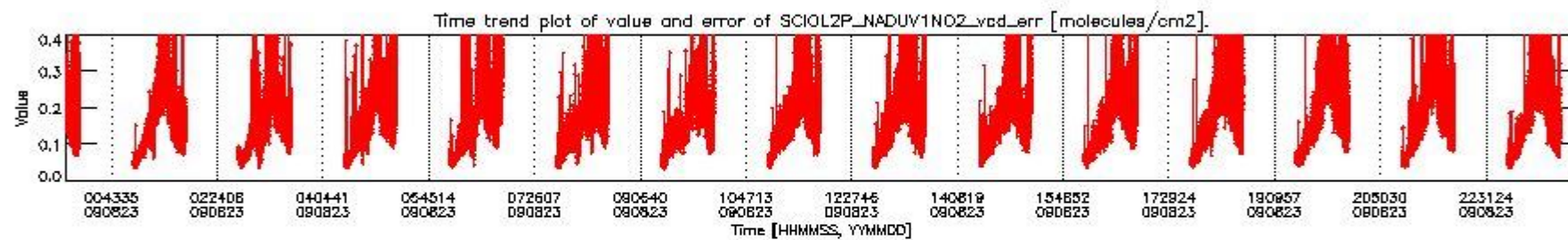
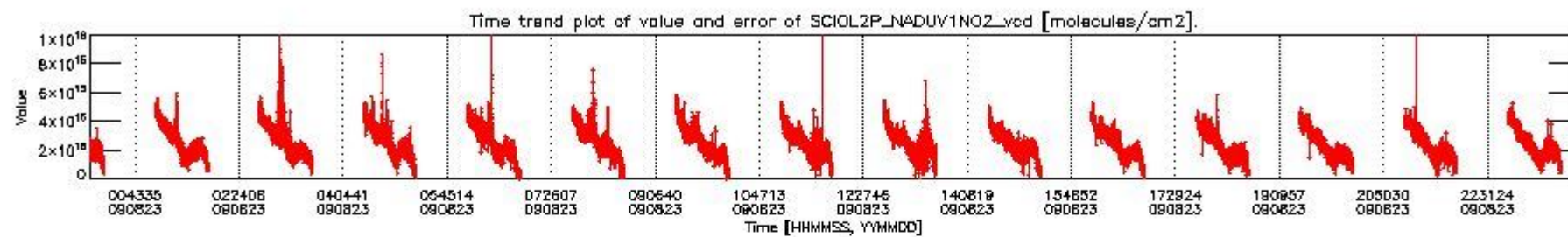


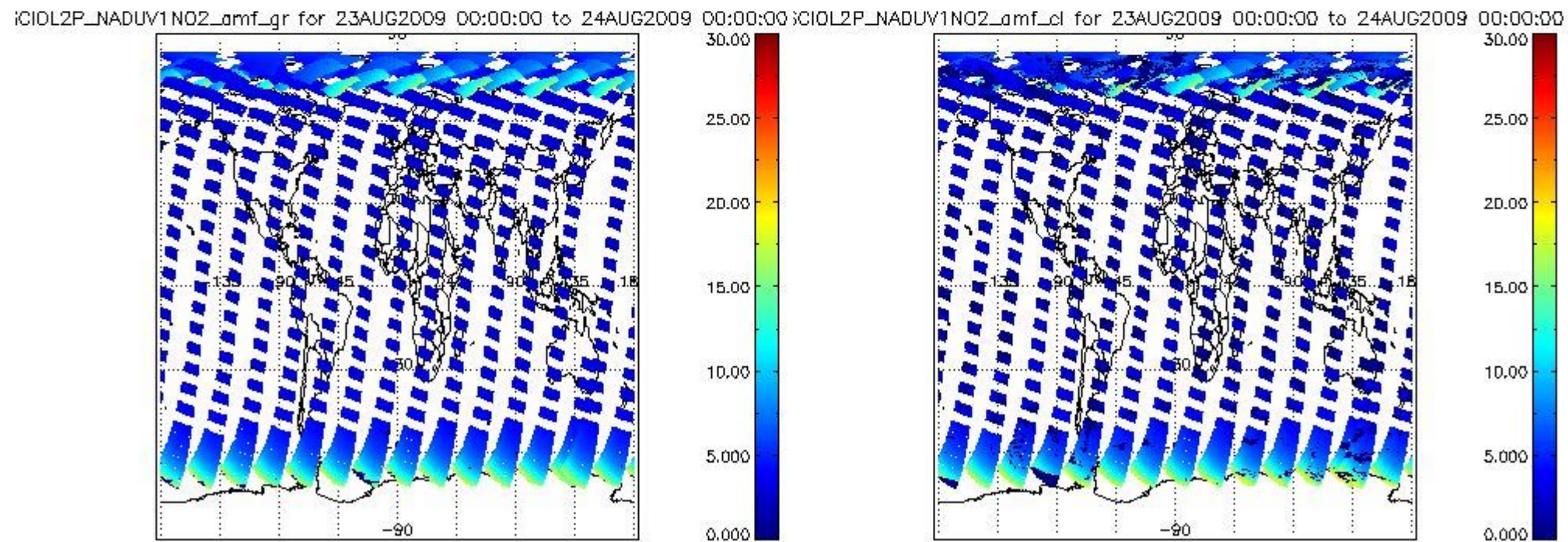
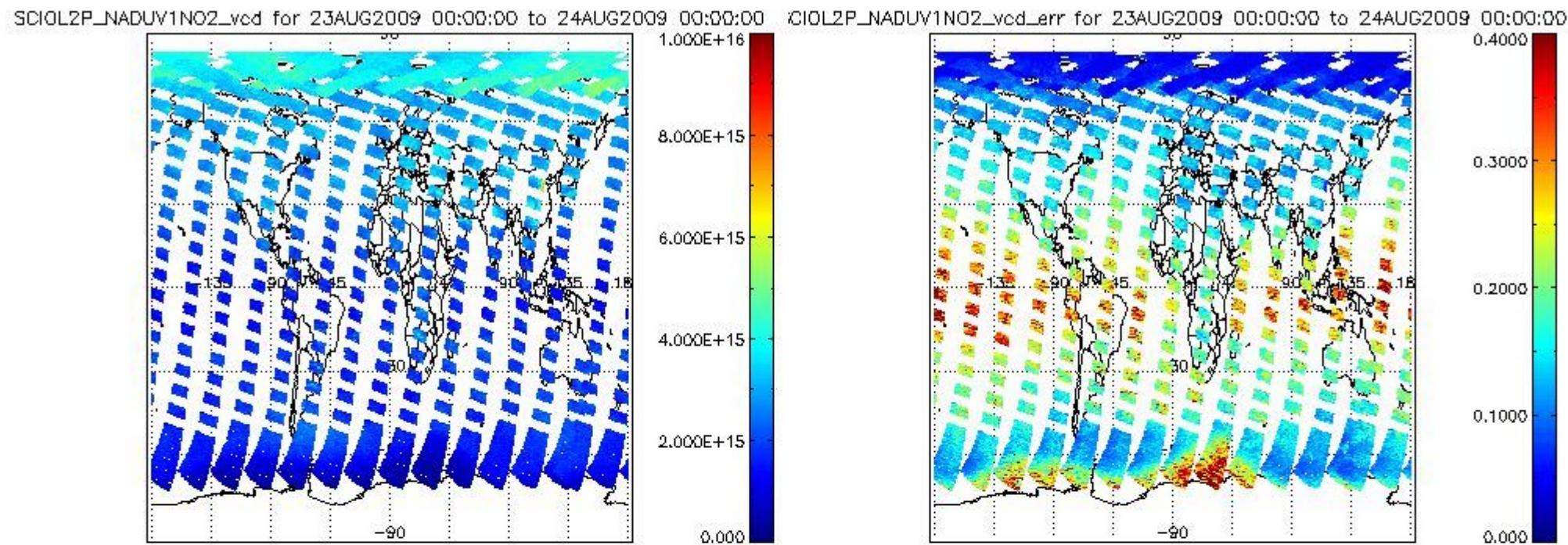
SCIOL2P_NADUV003_vcd for 23AUG2009 00:00:00 to 24AUG2009 00:00:00 SCIOL2P_NADUV003_vcd_err for 23AUG2009 00:00:00 to 24AUG2009 00:00:00



SCIOL2P_NADUV003_amf_gr for 23AUG2009 00:00:00 to 24AUG2009 00:00:00 SCIOL2P_NADUV003_amf_cl for 23AUG2009 00:00:00 to 24AUG2009 00:00:00







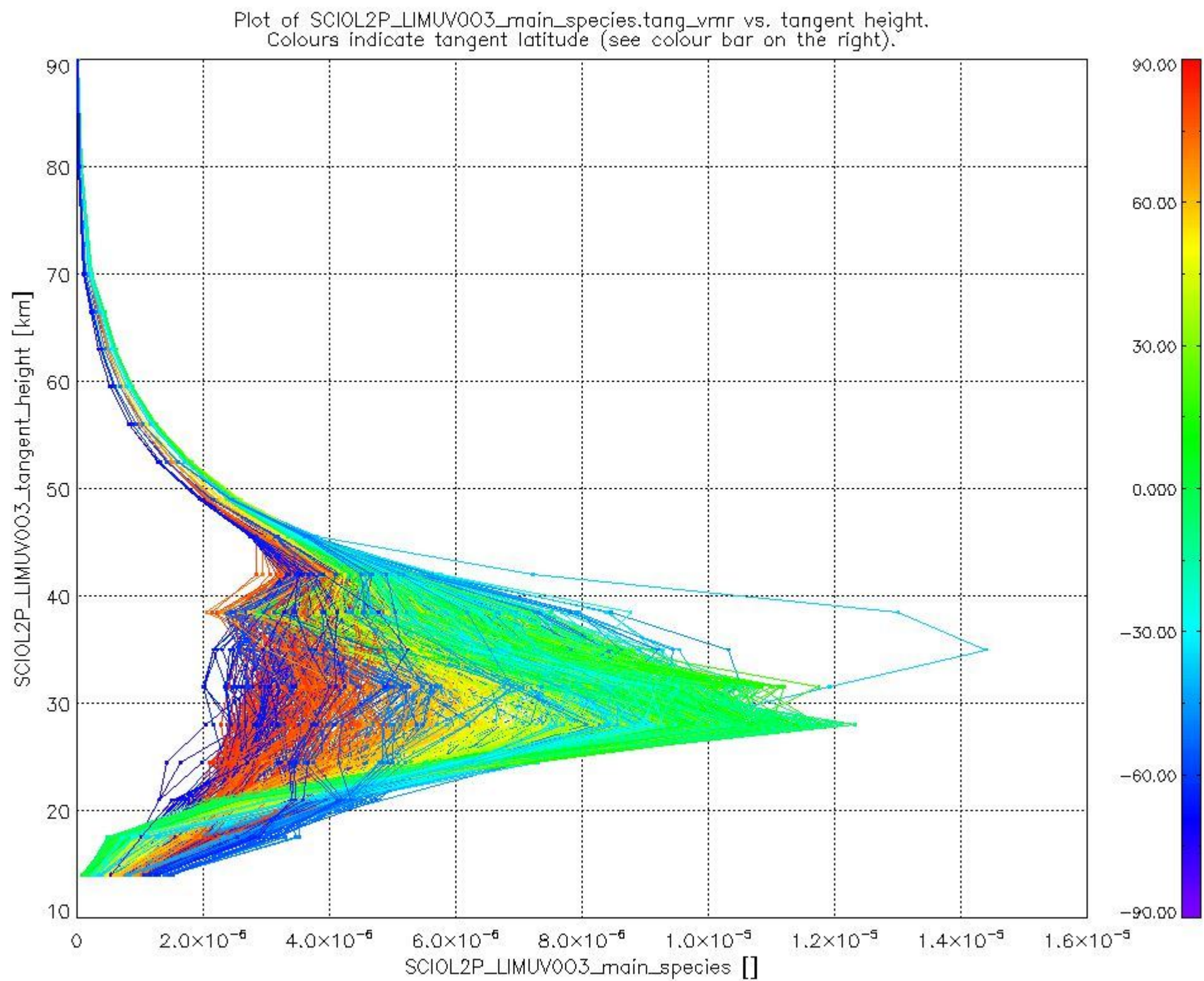
2.2.3 Limb

This section shows information about product quality of the limb retrievals, in particular the quality of retrieved species.

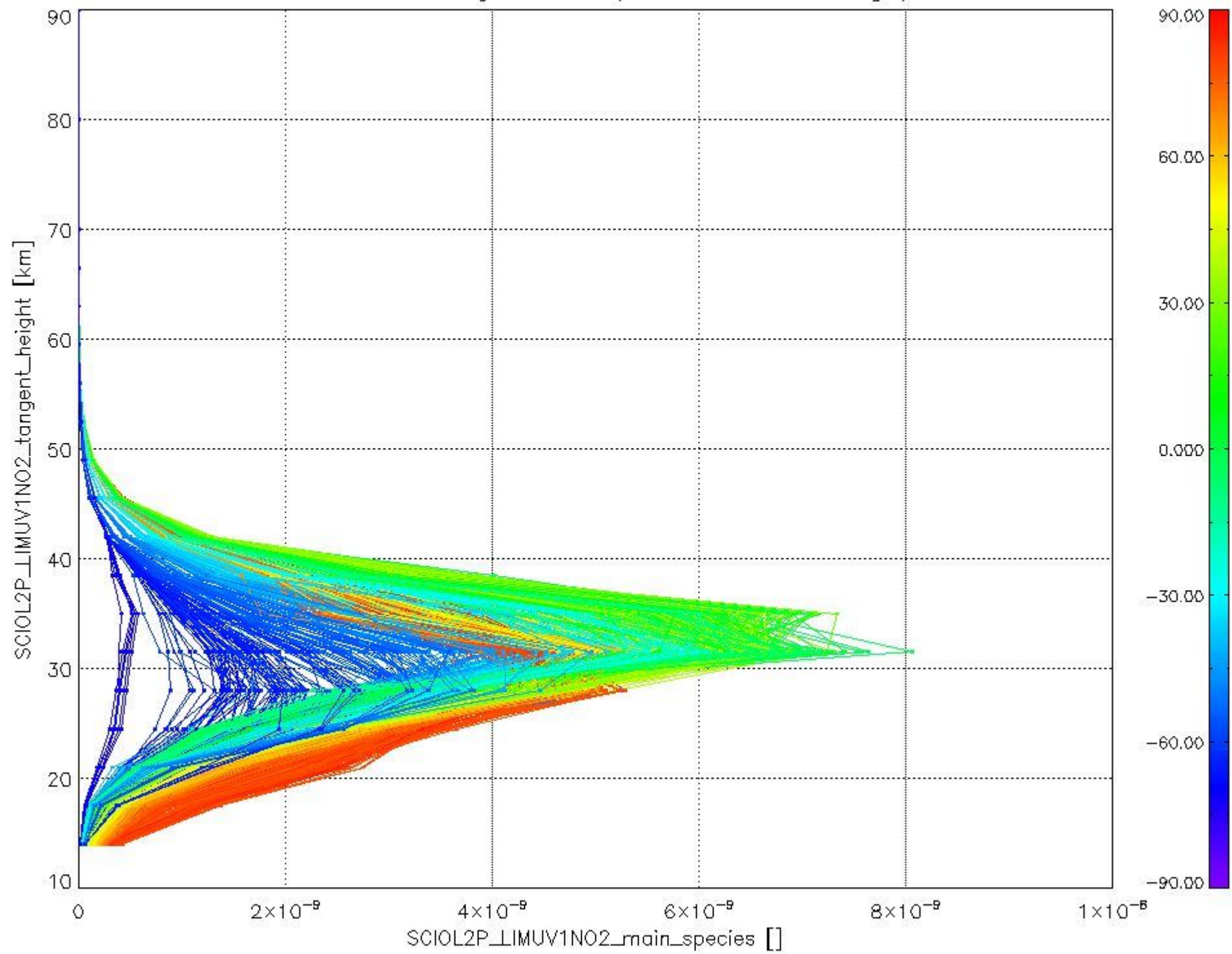
The following data items are currently included into this section:

Number	Data item ID
0	SCIOL2PLIMUV003_main_species
1	SCIOL2PLIMUV1NO2_main_species

The following plots shows for each species the tangent volume mixing ratio vs. tangent height. Colours indicate tangent latitude.



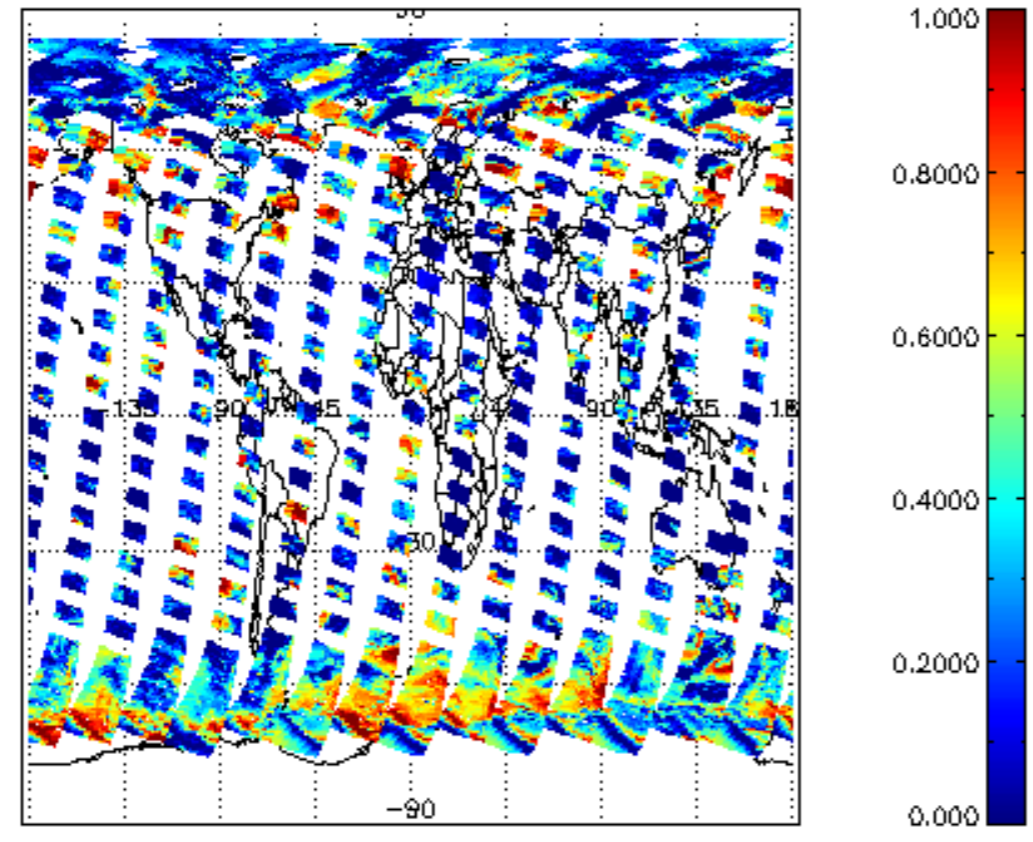
Plot of SCIOL2P_LIMUV1NO2_main_species.tang_vmr vs. tangent height.
Colours indicate tangent latitude (see colour bar on the right).



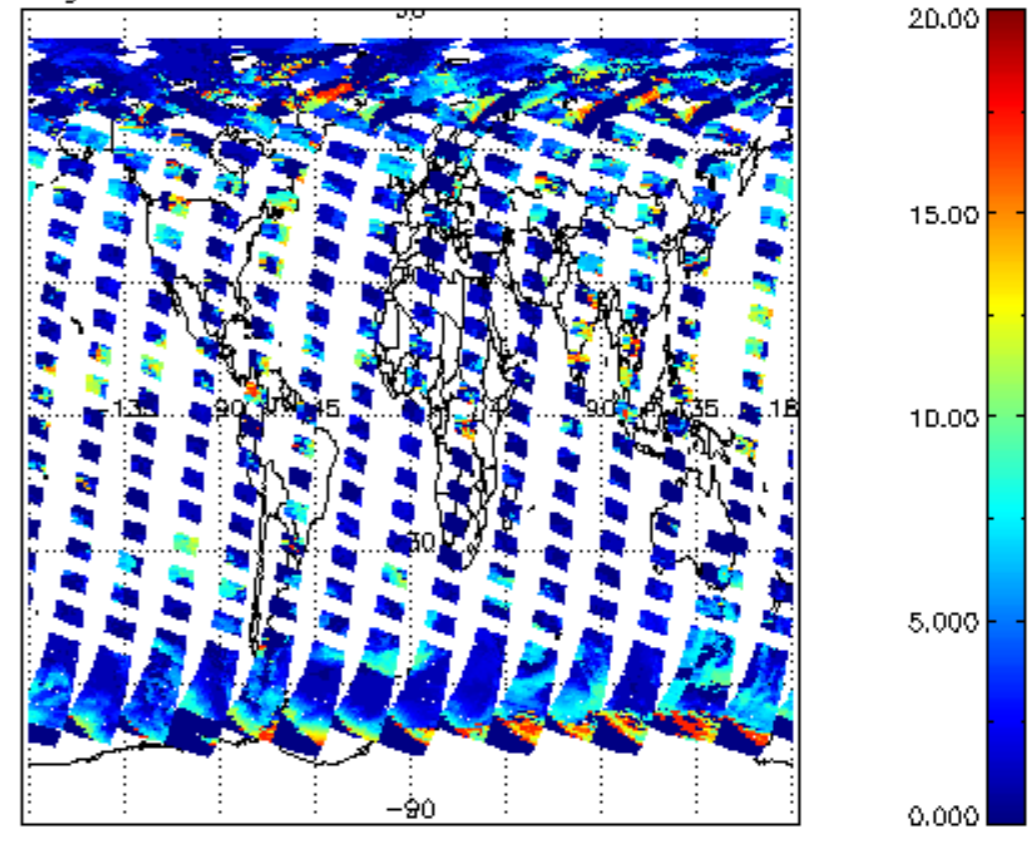
2.3 ADF monitoring

Number	ADF
	IN_ (INITIALISATION_FILE)
0	SCI_IN__AXNPDE20070629_092400_20070720_000000_20991231_235959
	ECF (ECMWF_FILE)
1	NOT USED

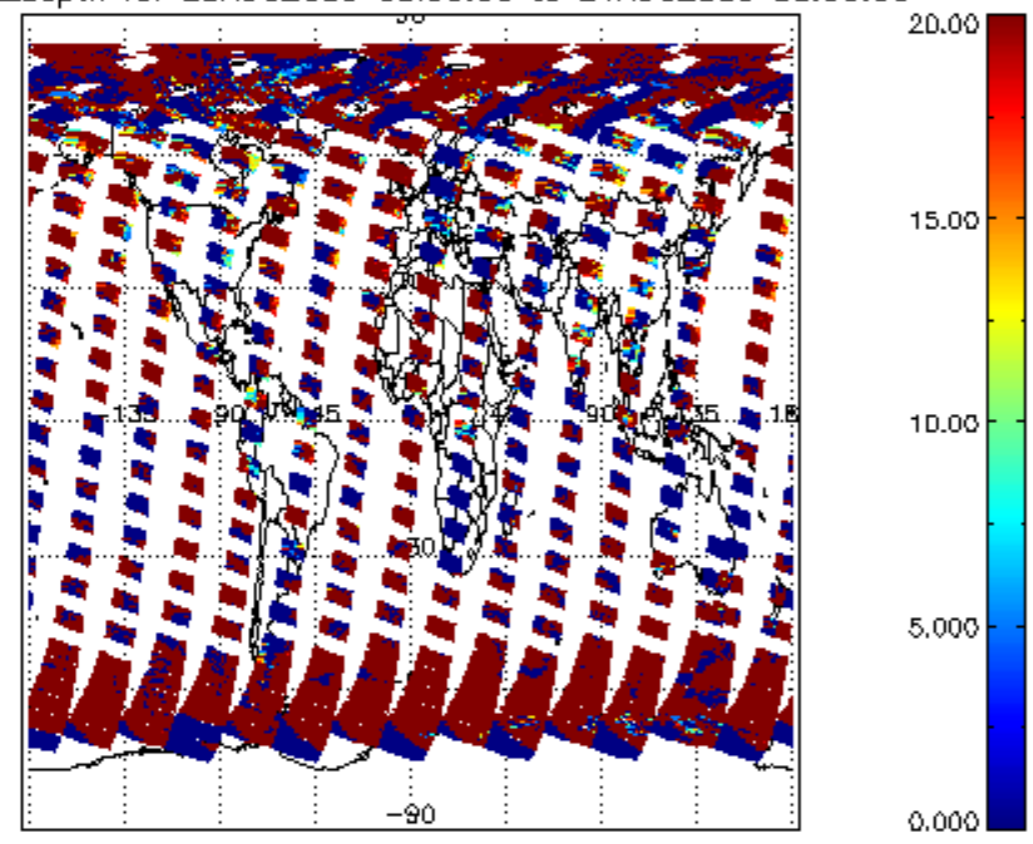
cL_frac for 23AUG2009 00:00:00 to 24AUG2009 00:00:00



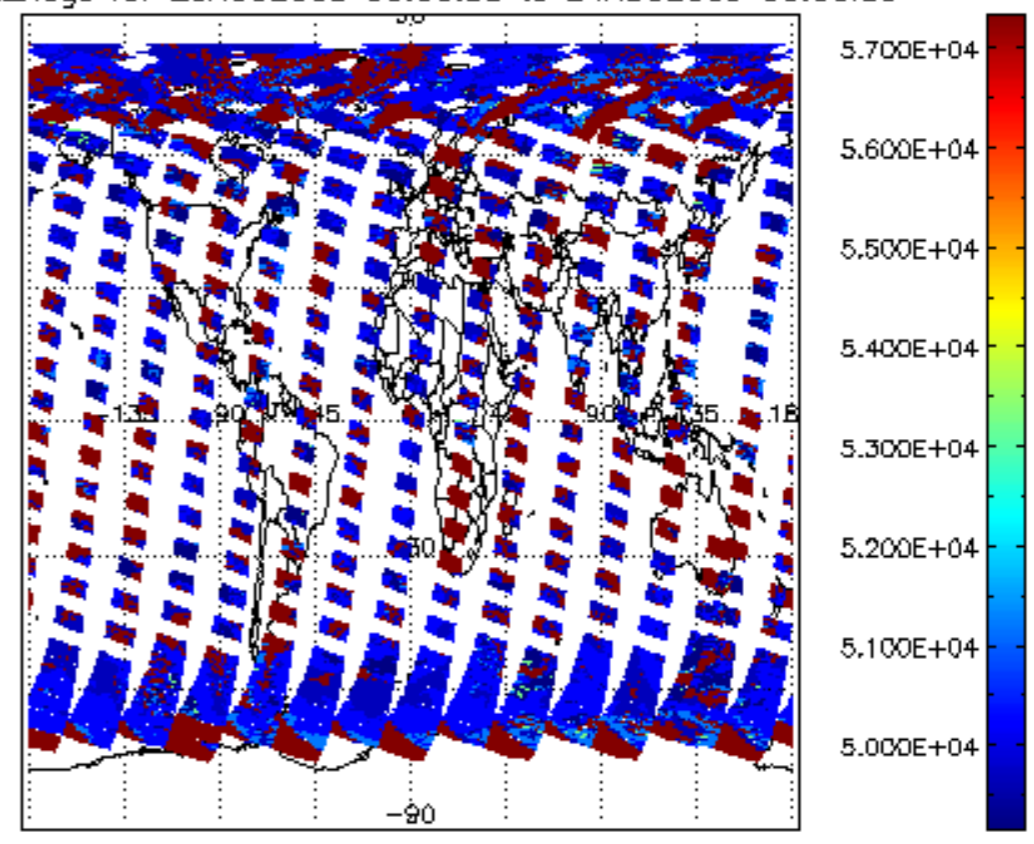
cL_top_height for 23AUG2009 00:00:00 to 24AUG2009 00:00:00

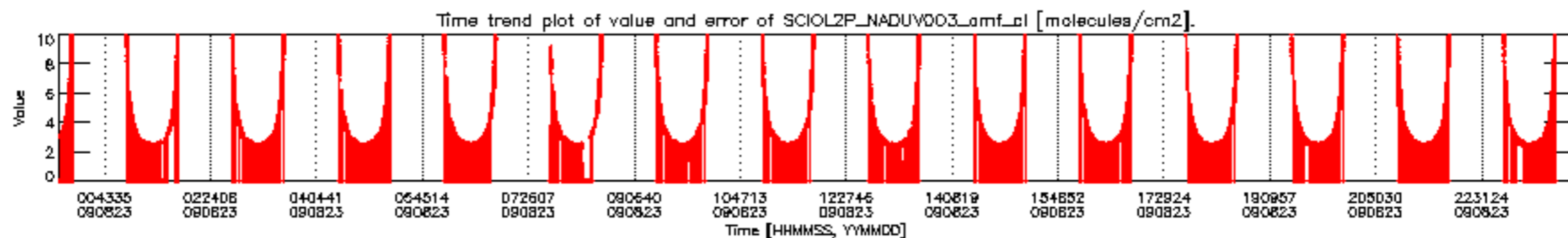
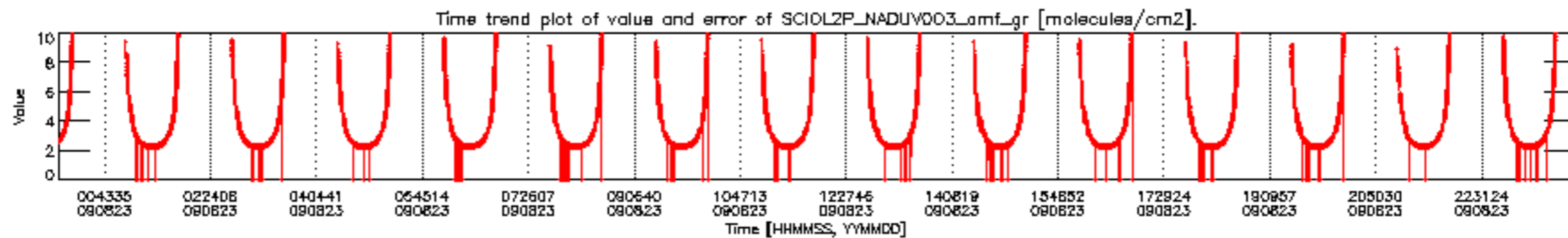
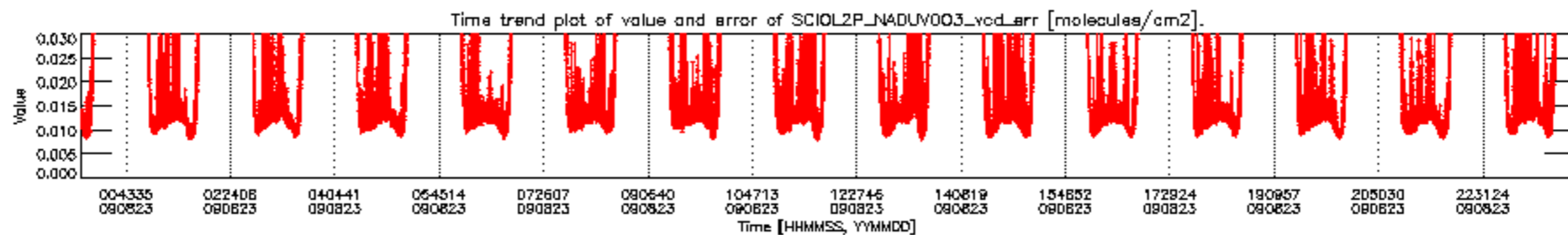
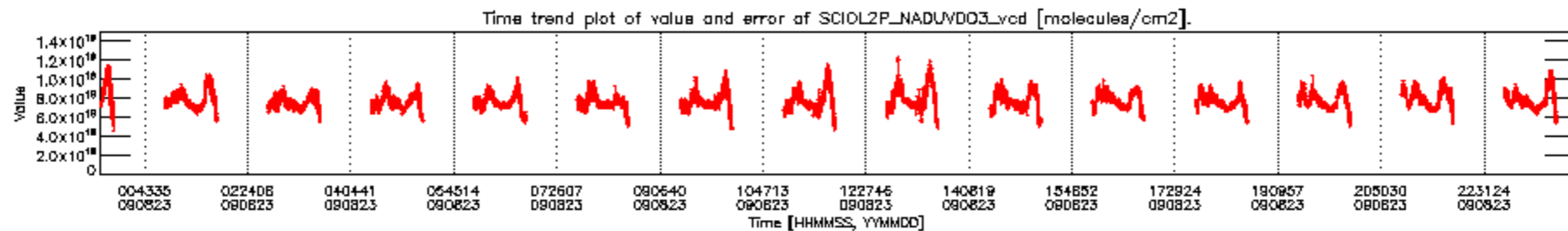


cL_opt_depth for 23AUG2009 00:00:00 to 24AUG2009 00:00:00

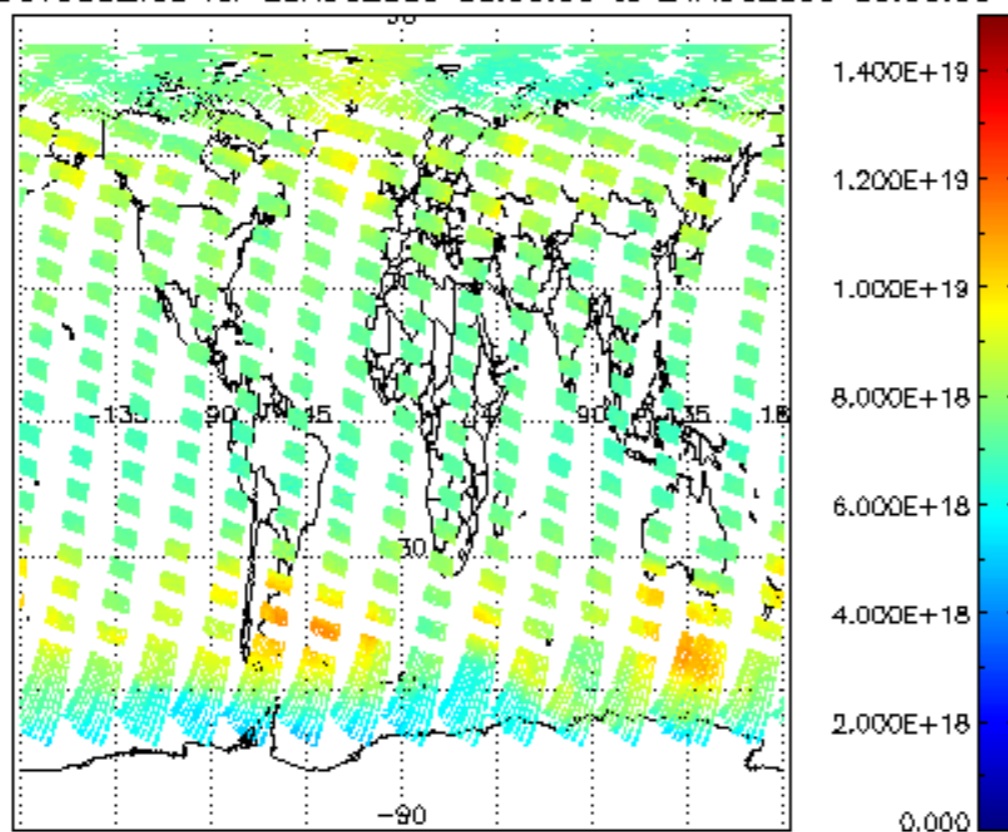


cloud_flags for 23AUG2009 00:00:00 to 24AUG2009 00:00:00

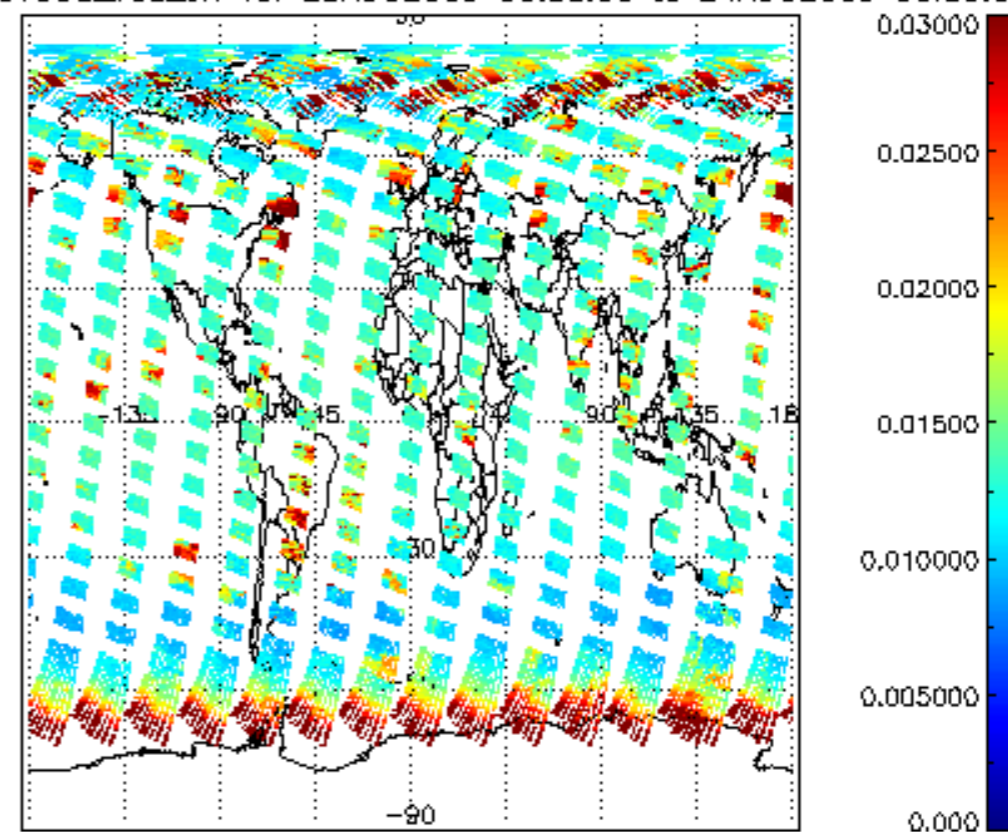




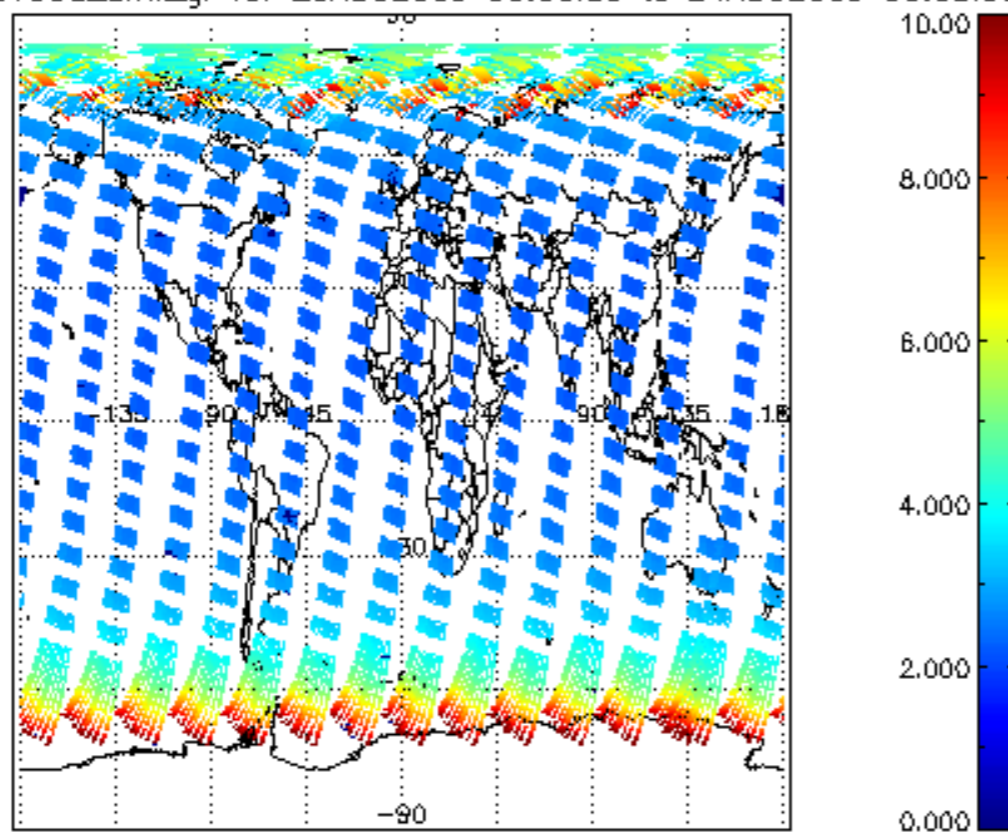
SCIOL2P_NADUV003_vcd for 23AUG2009 00:00:00 to 24AUG2009 00:00:00



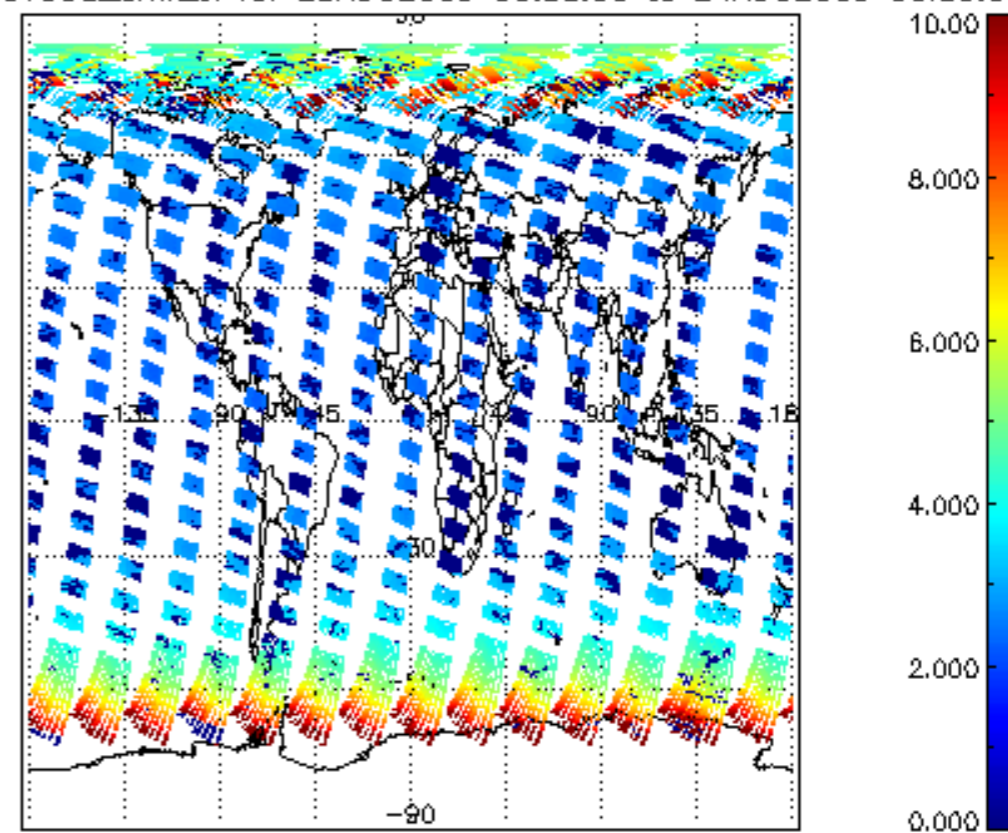
SCIOL2P_NADUV003_vcd_err for 23AUG2009 00:00:00 to 24AUG2009 00:00:00



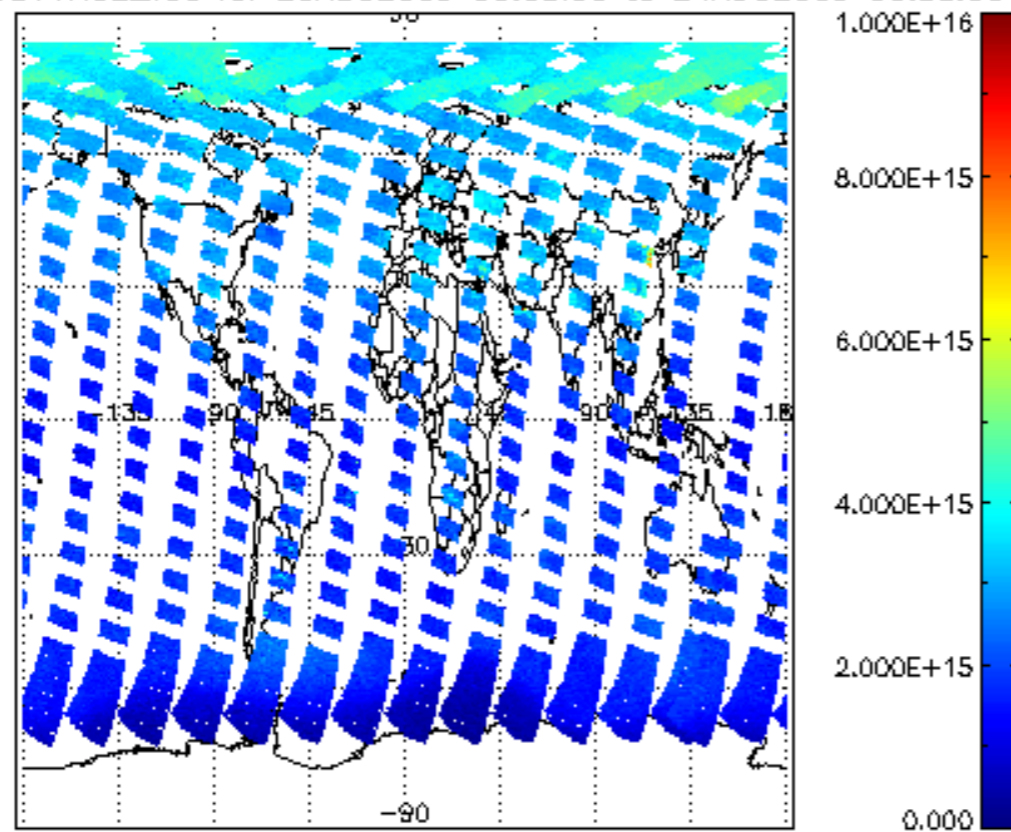
SCIOL2P_NADUV003_amf_gr for 23AUG2009 00:00:00 to 24AUG2009 00:00:00



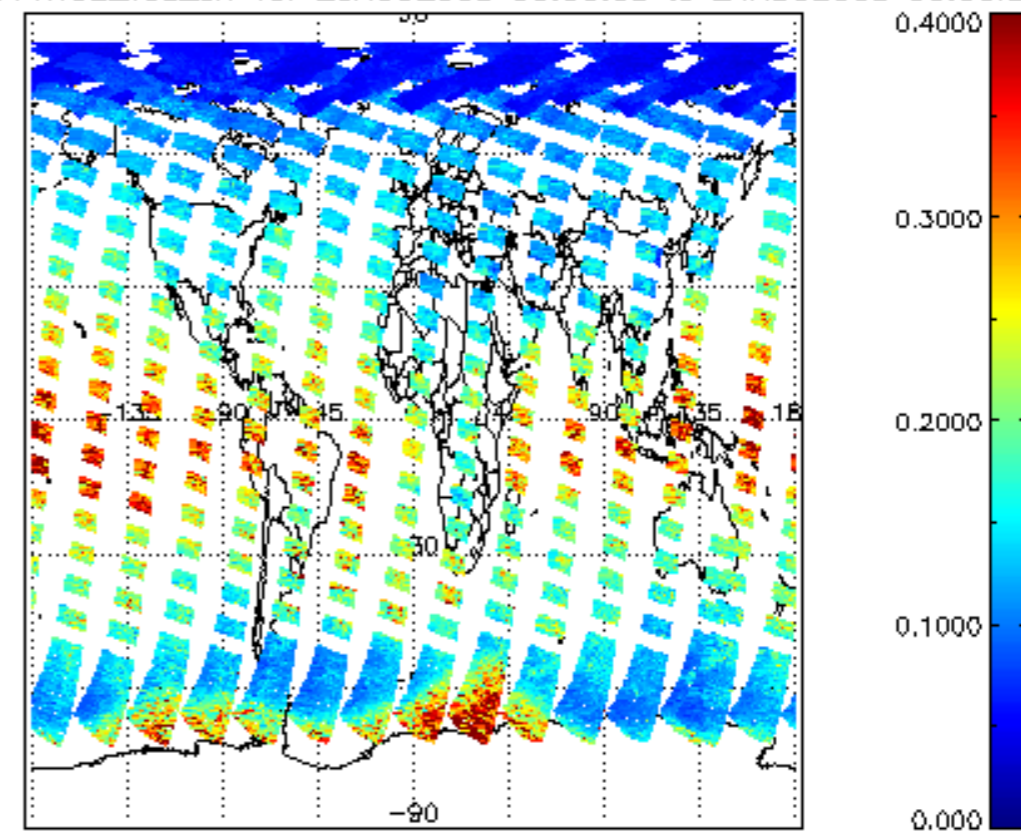
SCIOL2P_NADUV003_amf_cl for 23AUG2009 00:00:00 to 24AUG2009 00:00:00



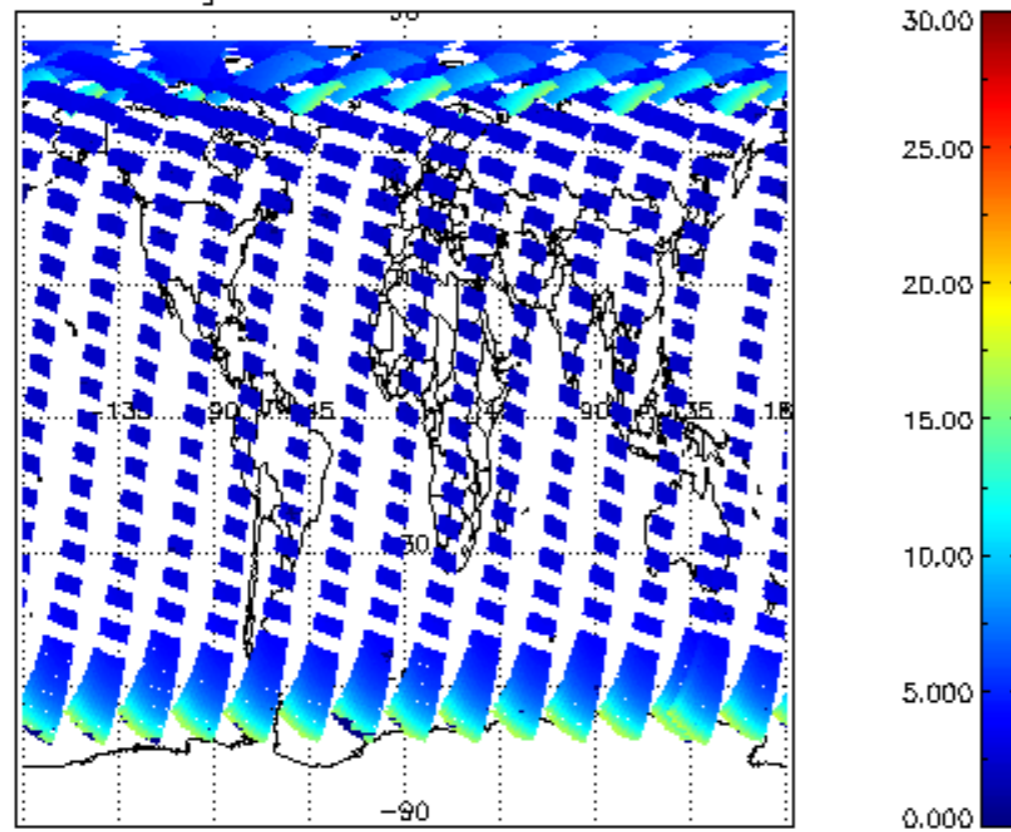
SCIOL2P_NADUV1NO2_vcd for 23AUG2009 00:00:00 to 24AUG2009 00:00:00



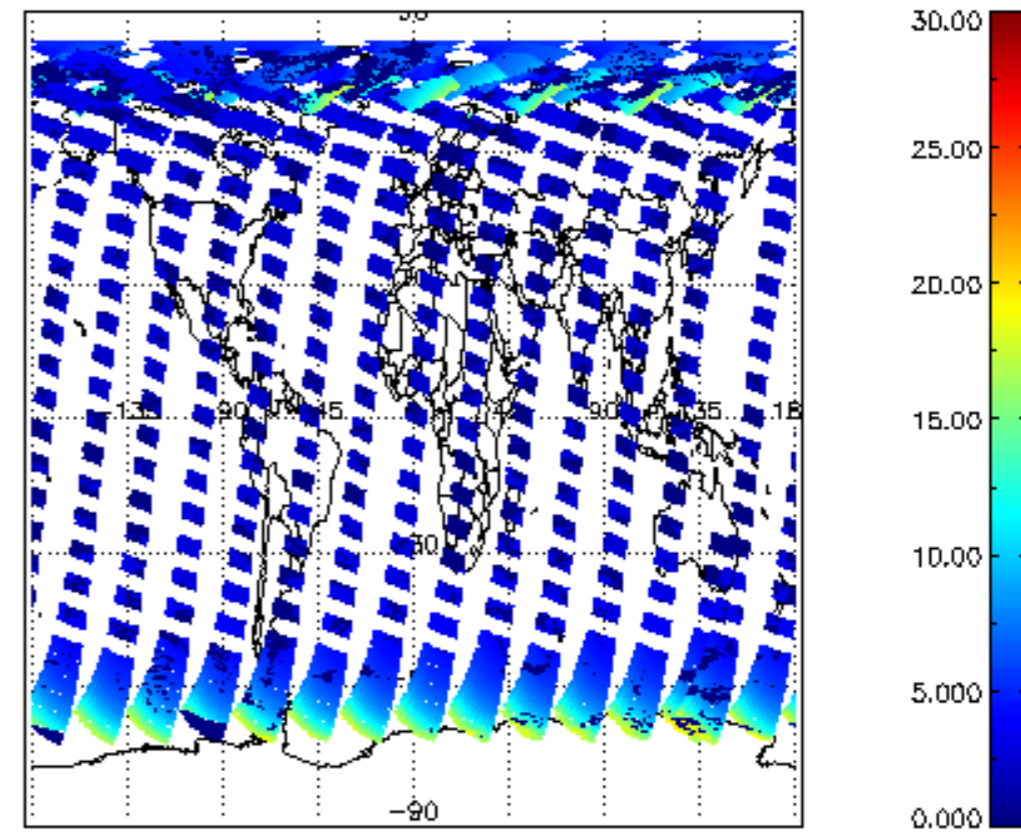
SCIOL2P_NADUV1NO2_vcd_err for 23AUG2009 00:00:00 to 24AUG2009 00:00:00



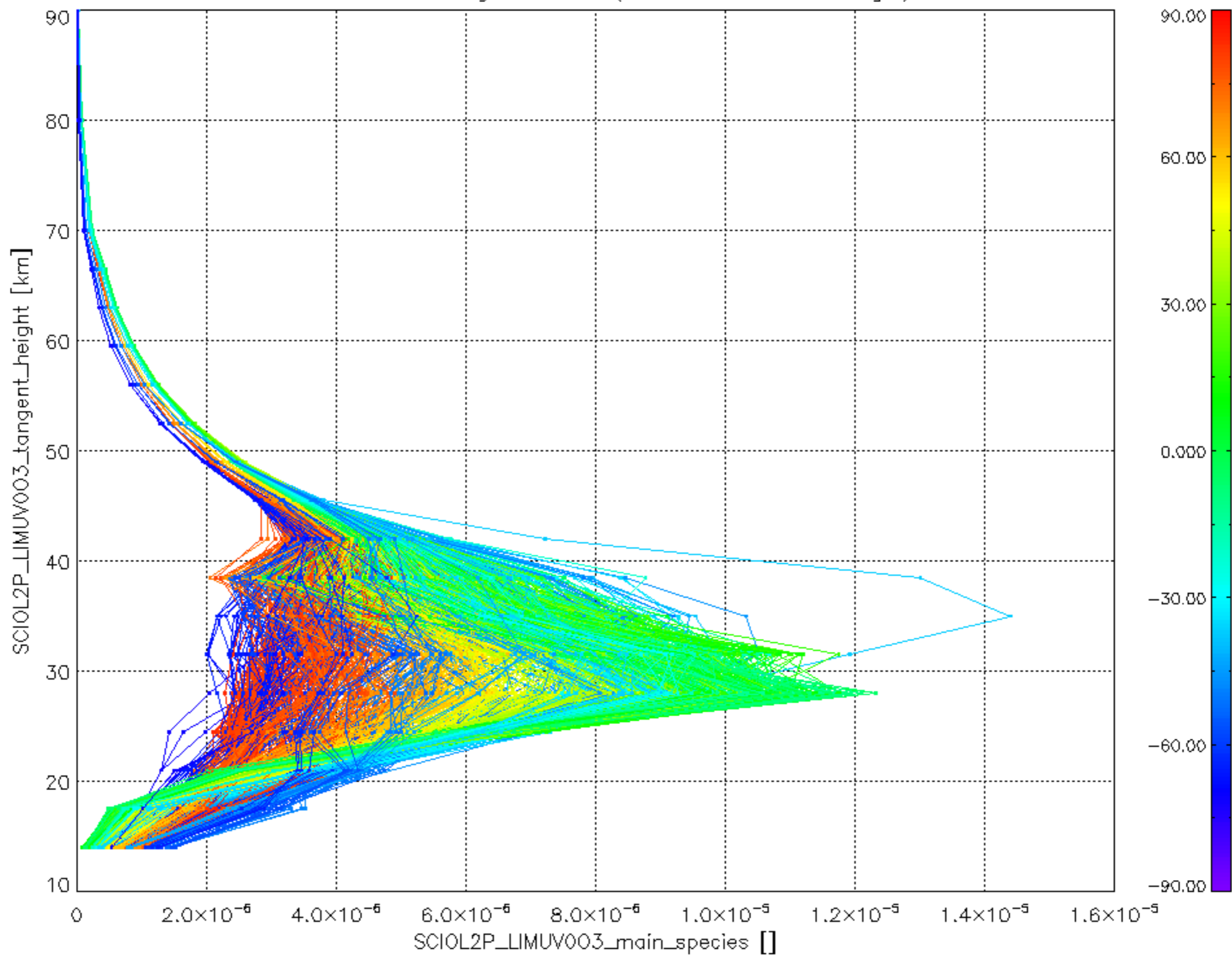
SCIOL2P_NADUV1NO2_amf_gr for 23AUG2009 00:00:00 to 24AUG2009 00:00:00



SCIOL2P_NADUV1NO2_amf_cl for 23AUG2009 00:00:00 to 24AUG2009 00:00:00



Plot of SCIOL2P_LIMUV003_main_species.tang_vmr vs. tangent height.
 Colours indicate tangent latitude (see colour bar on the right).



Plot of SCIOL2P_LIMUV1NO2_main_species.tang_vmr vs. tangent height.
 Colours indicate tangent latitude (see colour bar on the right).

