

2. SCIAMACHY Daily Report for level 2 products

[2.1. General Info](#)

[2.2 Product Quality Indicators](#)

[2.3 ADF monitoring](#)

2.1 General Info

This report contains a daily analysis on parameters extracted from SCIAMACHY level 2 data (The SCI_OL__2P product).

2.1.1 Report summary

The table below shows general characteristics of the data that are included into this report.

Item	Value
Report version	1.6 (28-07-2008)
Time of report generation	09DEC2009 13:52:27
Data source version	SCIA-OL/3.01-R
Processing scope for products	15AUG2009 00:00:00 to 16AUG2009 00:00:00
Start time of first product within scope	15AUG2009 00:08:50
Stop time of last product within scope	16AUG2009 00:32:44
Total number of level 2 products	15
Number of level 2 products with errors	0

2.1.2 Summary per product

The following table shows a summary for each product used in this report.

Products are linked to a corresponding server directory for view/download. Note: Link access may be restricted by security settings of your internet browser or firewall.

#	Product name	Start time	Stop time	Prod err	Fit summary
0	SCI_OL__2PRDPA20090815_000850_000033252081_00360_38991_3796.N1	15AUG2009 00:08:50	15AUG2009 01:04:16	0	GOOD
1	SCI_OL__2PRDPA20090815_014927_000033122081_00361_38992_3797.N1	15AUG2009 01:49:27	15AUG2009 02:44:39	0	GOOD
2	SCI_OL__2PRDPA20090815_033003_000033252081_00362_38993_3798.N1	15AUG2009 03:30:03	15AUG2009 04:25:28	0	GOOD
3	SCI_OL__2PRDPA20090815_051039_000033122081_00363_38994_3799.N1	15AUG2009 05:10:39	15AUG2009 06:05:52	0	GOOD
4	SCI_OL__2PRDPA20090815_065116_000033252081_00364_38995_3800.N1	15AUG2009 06:51:16	15AUG2009 07:46:41	0	GOOD
5	SCI_OL__2PRDPA20090815_083152_000033122081_00365_38996_3801.N1	15AUG2009 08:31:52	15AUG2009 09:27:05	0	GOOD
6	SCI_OL__2PRDPA20090815_101228_000033252081_00366_38997_3802.N1	15AUG2009 10:12:28	15AUG2009 11:07:54	0	GOOD
7	SCI_OL__2PRDPA20090815_115305_000033122081_00367_38998_3803.N1	15AUG2009 11:53:05	15AUG2009 12:48:17	0	GOOD
8	SCI_OL__2PRDPA20090815_133341_000033252081_00368_38999_3804.N1	15AUG2009 13:33:41	15AUG2009 14:29:06	0	GOOD
9	SCI_OL__2PRDPA20090815_151417_000033122081_00369_39000_3805.N1	15AUG2009 15:14:17	15AUG2009 16:09:30	0	GOOD
10	SCI_OL__2PRDPA20090815_165454_000033252081_00370_39001_3806.N1	15AUG2009 16:54:54	15AUG2009 17:50:19	0	GOOD
11	SCI_OL__2PRDPA20090815_183549_000033122081_00371_39002_3807.N1	15AUG2009 18:35:49	15AUG2009 19:31:02	0	GOOD
12	SCI_OL__2PRDPA20090815_201625_000033252081_00372_39003_3808.N1	15AUG2009 20:16:25	15AUG2009 21:11:51	0	GOOD
13	SCI_OL__2PRDPA20090815_215643_000033122081_00373_39004_3809.N1	15AUG2009 21:56:43	15AUG2009 22:51:55	0	GOOD
14	SCI_OL__2PRDPA20090815_233719_000033252081_00374_39005_3810.N1	15AUG2009 23:37:19	16AUG2009 00:32:44	0	GOOD

2.2 Product Quality Indicators

2.2.1 Cloud parameters

This is a new section that shows information about the cloud parameters estimation, in particular cloud fractions and cloud top height. IMPORTANT NOTE: The contents and layout of this section are still being validated. Please use with caution.

General statistics:

Total number of cloud data DSRs: 147403

Total number of cloud data DSRs with good quality flag (=0): 147403 (100.0 %)

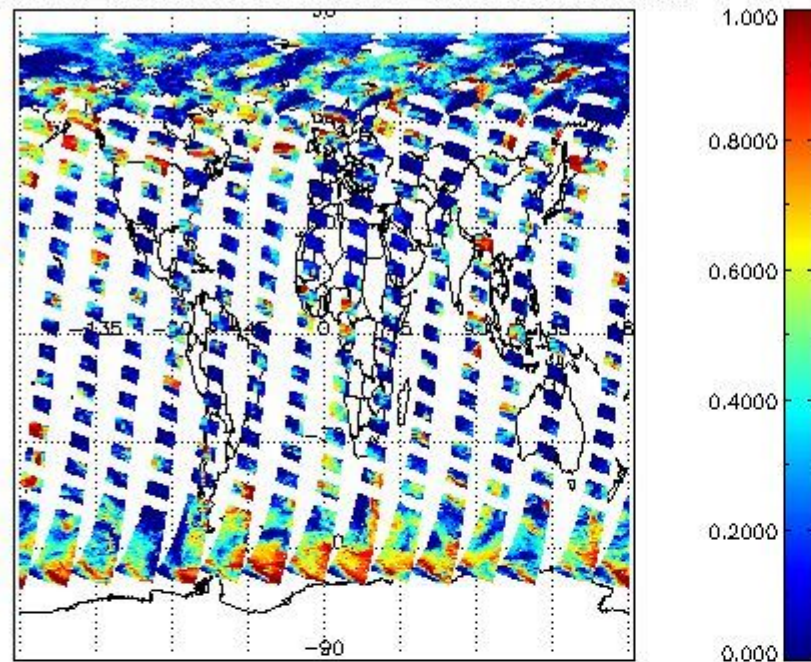
Parameter	#valid	Mean	Median	Min	Max	Stddev	Unit
QUALITY_FLAG	147403	0.0000	0.0000	0.0000	0.0000	0.0000	flag
INTEGR_TIME	147403	0.17063	0.12500	0.12500	0.25000	0.060179	s
CL_FRAC	147403	0.30780	0.25522	0.0000	1.0000	0.28017	-
CL_FRAC_ERR	147403	0.0000	0.0000	0.0000	0.0000	0.0000	%
PMD_READ	147403	5.4600	4.0000	4.0000	8.0000	1.9257	
PMD_READ_CL[0]	147403	0.15105	0.0000	0.0000	8.0000	0.86965	-
PMD_READ_CL[1]	147403	1.7139	0.0000	0.0000	8.0000	2.6710	-
CL_TOP_HEIGHT	128317	3.3179	1.7850	0.0000	17.000	3.6068	km
CL_TOP_HEIGHT_ERR	0	---	---	---	---	---	---
CL_OPT_DEPTH	128317	61.225	100.00	0.0000	101.00	44.495	km
CL_OPT_DEPTH_ERR	0	---	---	---	---	---	---
CL_TYPE_FLAGS	147403	11100000	11100000	11100000	11100000	0.0000	flags
CLOUD_FLAGS	147403	11001100	11000100	11000000	11100000	3522.8	flags
AERO_ABSO_IND	147403	4.2901	5.1152	-0.029843	16.129	2.7326	
AERO_IND_DIAG	147403	0.0000	0.0000	0.0000	0.0000	0.0000	
AERO_FLAGS	147403	01011000	00000000	00000000	11000000	24506.	flags

Time and geolocation plots:

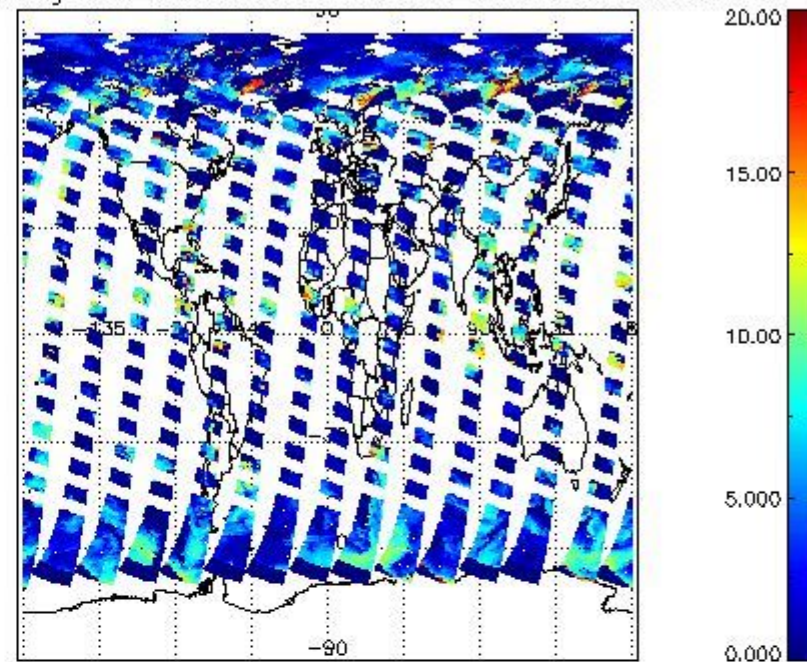
Plots are available for the following parameters:

Number	Data item ID
0	cl_frac
1	cl_top_height
2	cl_opt_depth
3	cloud_flags

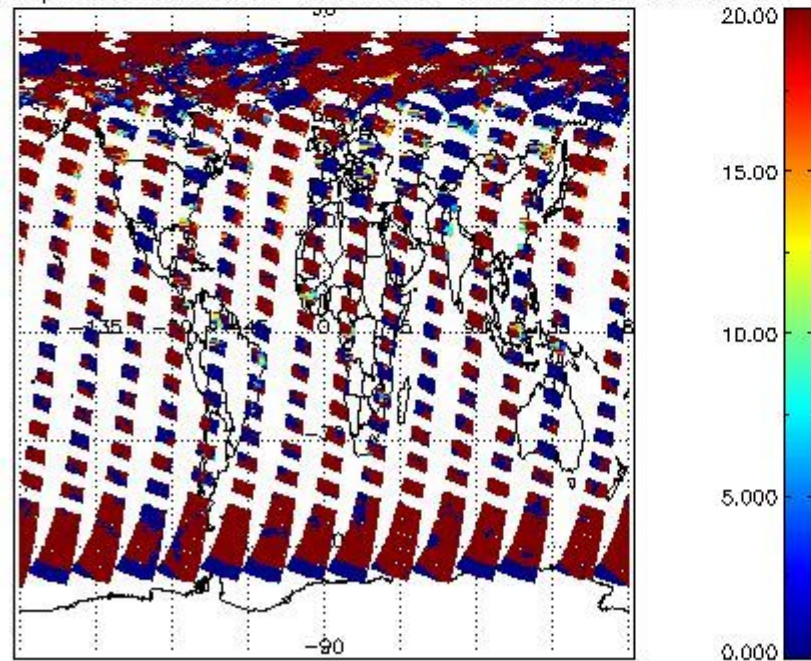
cL_frac for 15AUG2009 00:00:00 to 16AUG2009 00:00:00



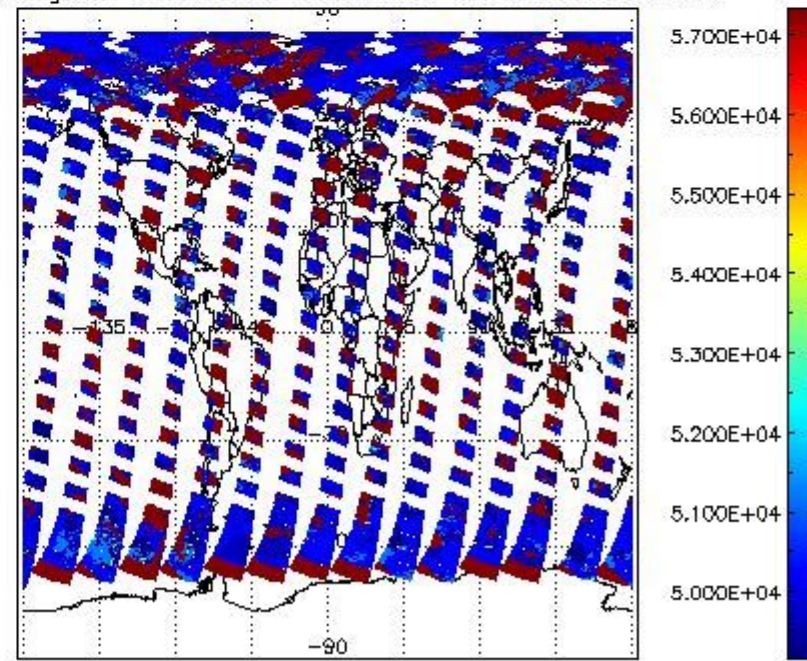
cL_top_height for 15AUG2009 00:00:00 to 16AUG2009 00:00:00



cL_opt_depth for 15AUG2009 00:00:00 to 16AUG2009 00:00:00



cloud_flags for 15AUG2009 00:00:00 to 16AUG2009 00:00:00



2.2.2 Nadir

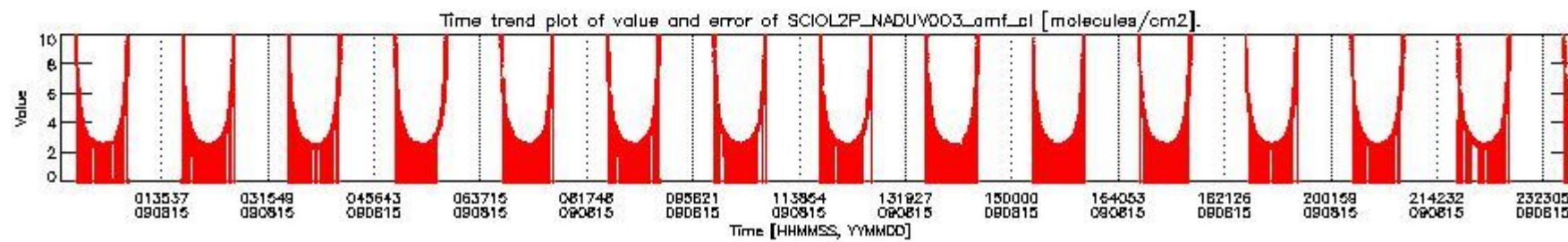
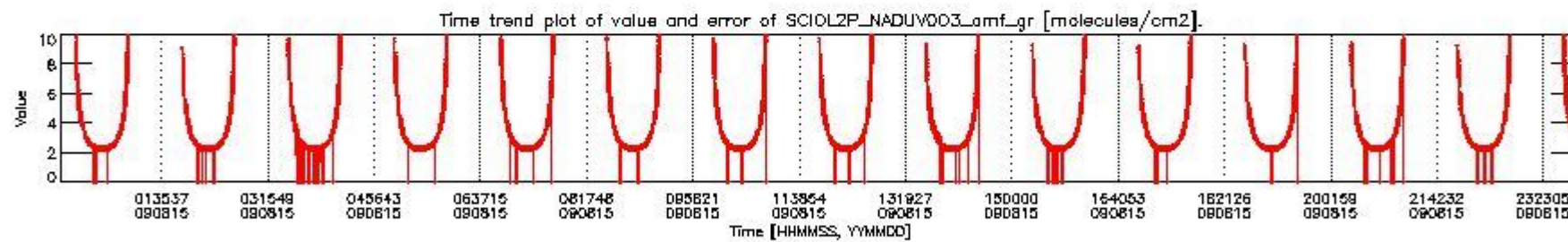
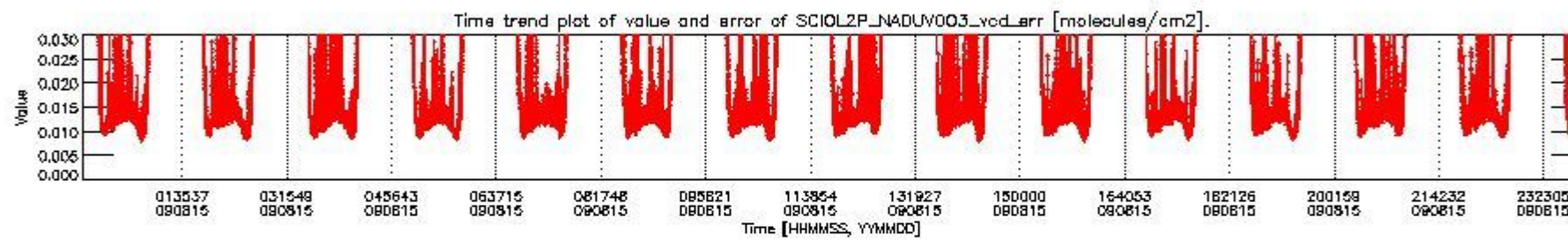
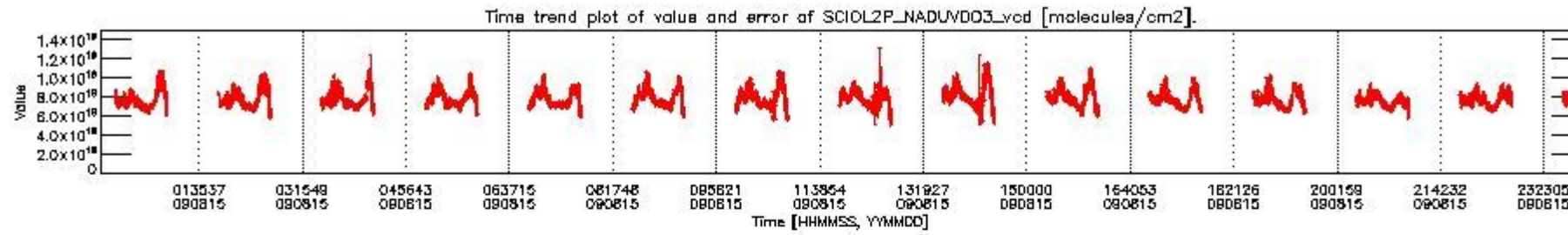
This section shows information about product quality of nadir measurements, in particular the quality of retrieved species.

The following data items are currently included into this section:

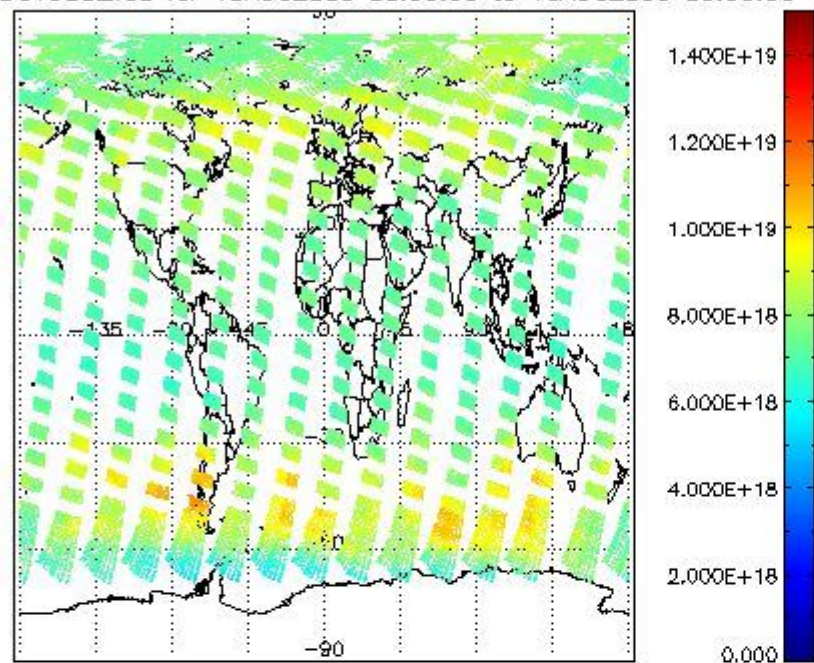
Number	Data item ID
0	SCIOL2P_NADUV003_vcd
1	SCIOL2P_NADUV003_vcd_err
2	SCIOL2P_NADUV003_amf_gr

3	SCIOL2P_NADUV003_amf_cl
4	SCIOL2P_NADUV1NO2_vcd
5	SCIOL2P_NADUV1NO2_vcd_err
6	SCIOL2P_NADUV1NO2_amf_gr
7	SCIOL2P_NADUV1NO2_amf_cl

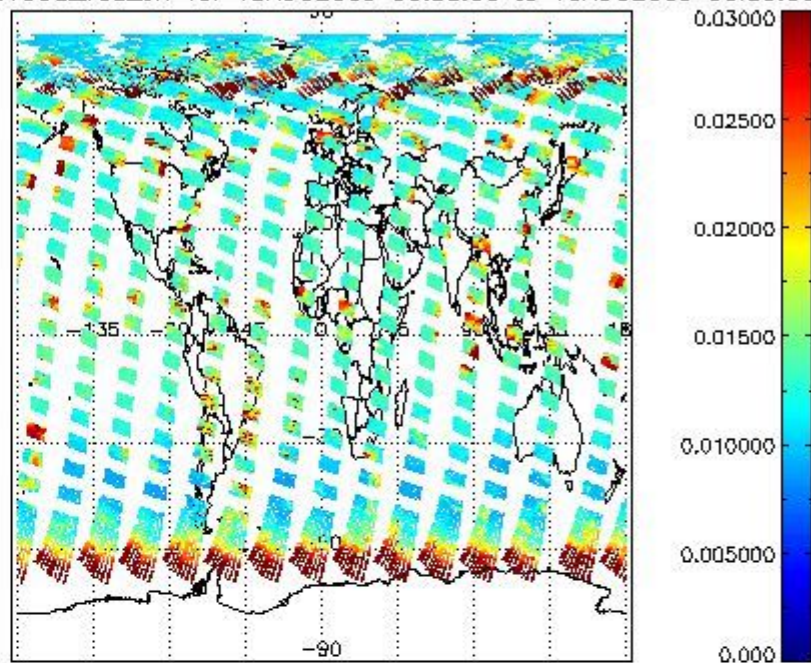
Data is presented both in time trend plots and world map plots, in order to show variations with time and geolocation. The vertical dotted lines in the time trend plots indicate orbits. The orbit times on the X-axis are estimated sensing_start time as suggested by the product sensing_start time in the MPH.



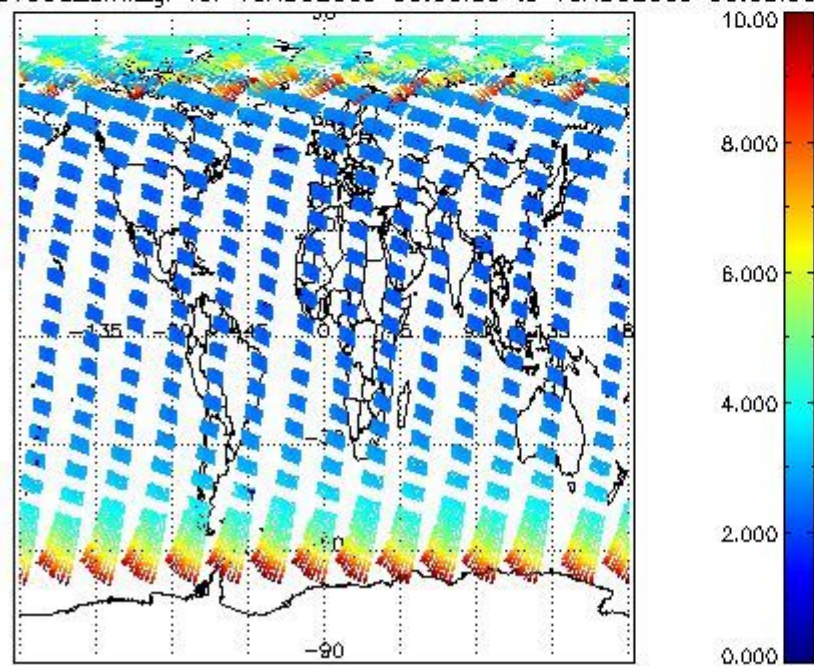
SCIOL2P_NADUV003_vcd for 15AUG2009 00:00:00 to 16AUG2009 00:00:00



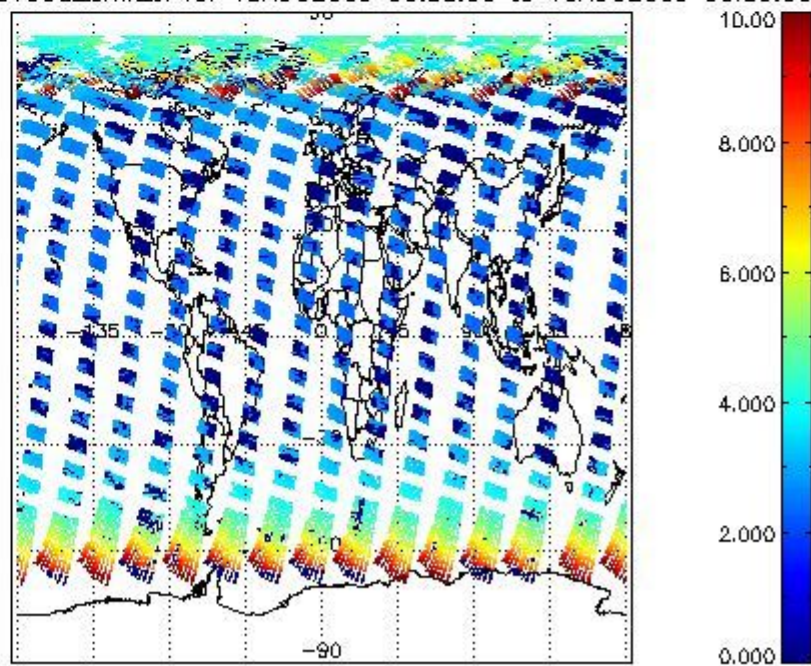
SCIOL2P_NADUV003_vcd_err for 15AUG2009 00:00:00 to 16AUG2009 00:00:00

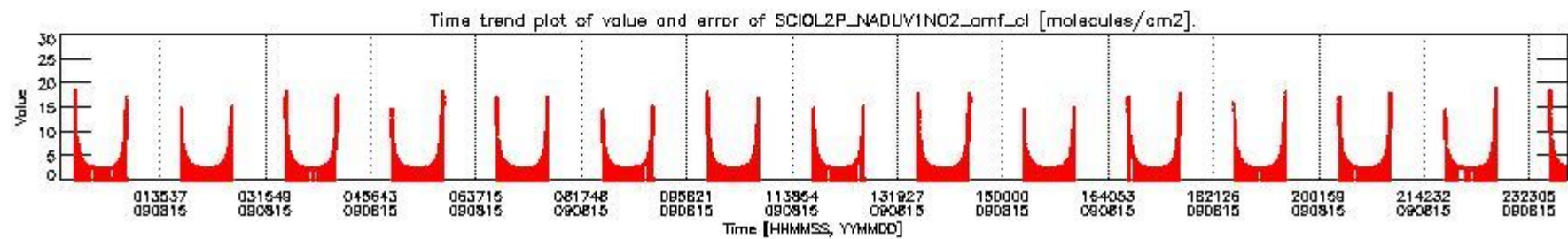
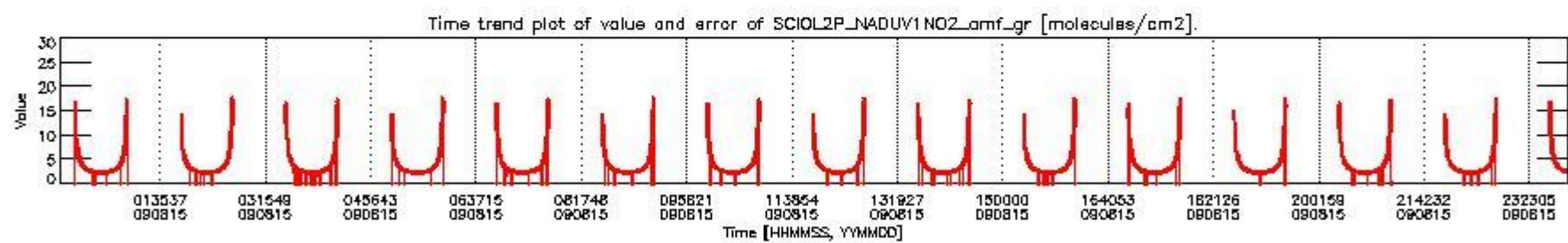
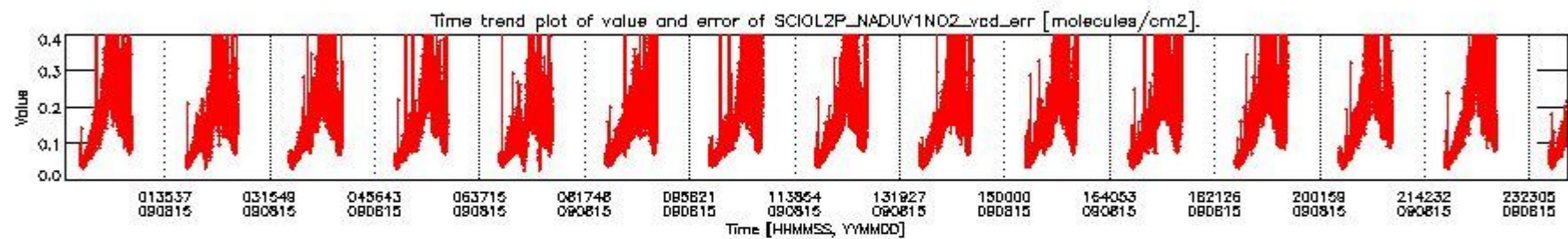
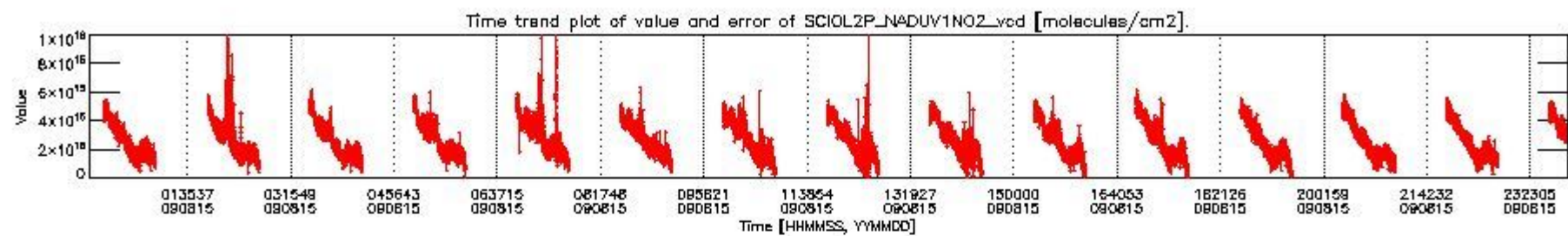


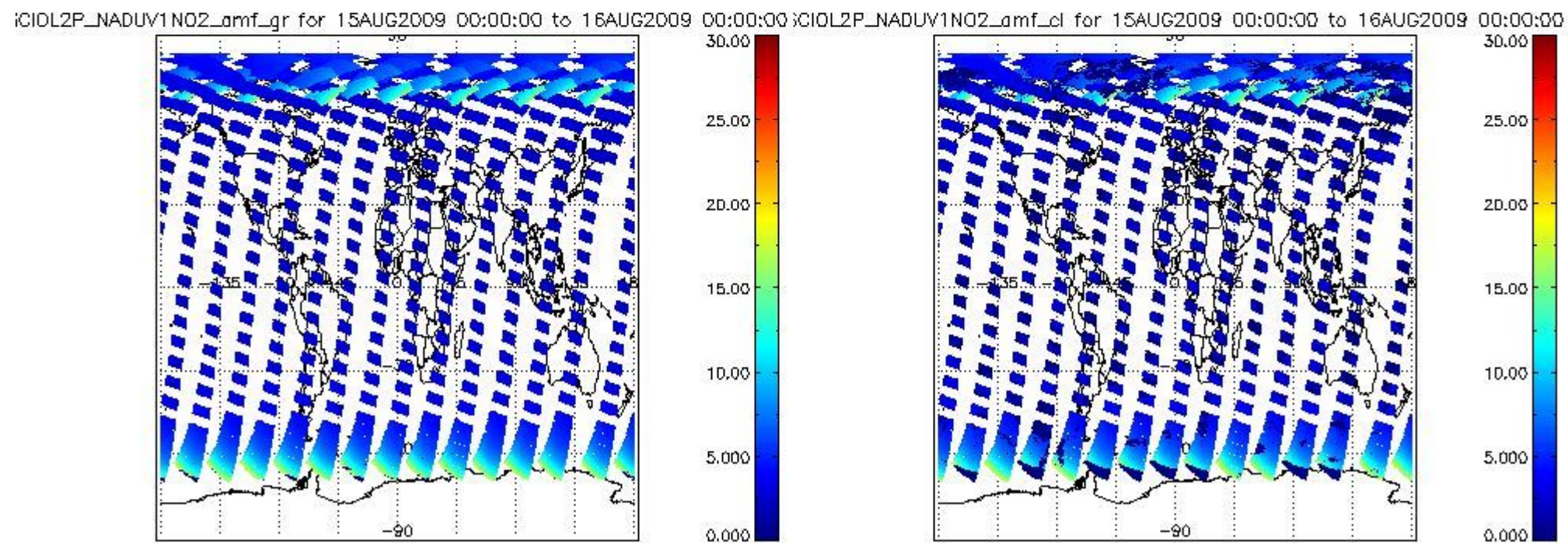
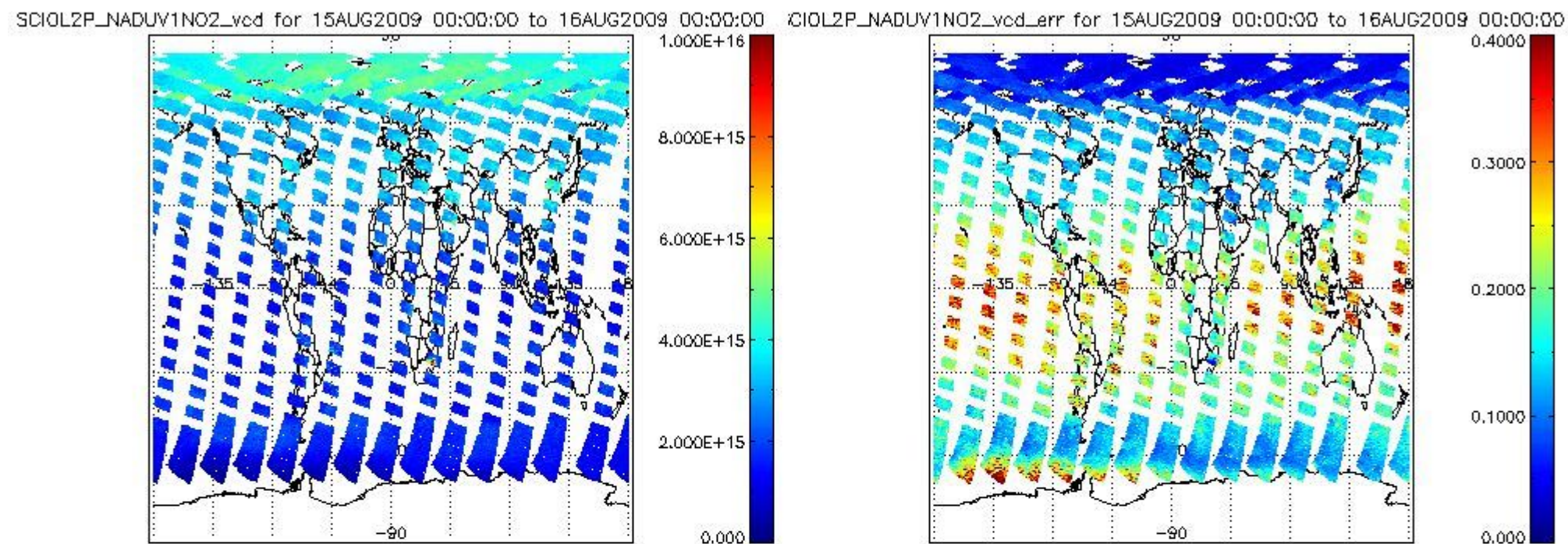
SCIOL2P_NADUV003_amf_gr for 15AUG2009 00:00:00 to 16AUG2009 00:00:00



SCIOL2P_NADUV003_amf_cl for 15AUG2009 00:00:00 to 16AUG2009 00:00:00







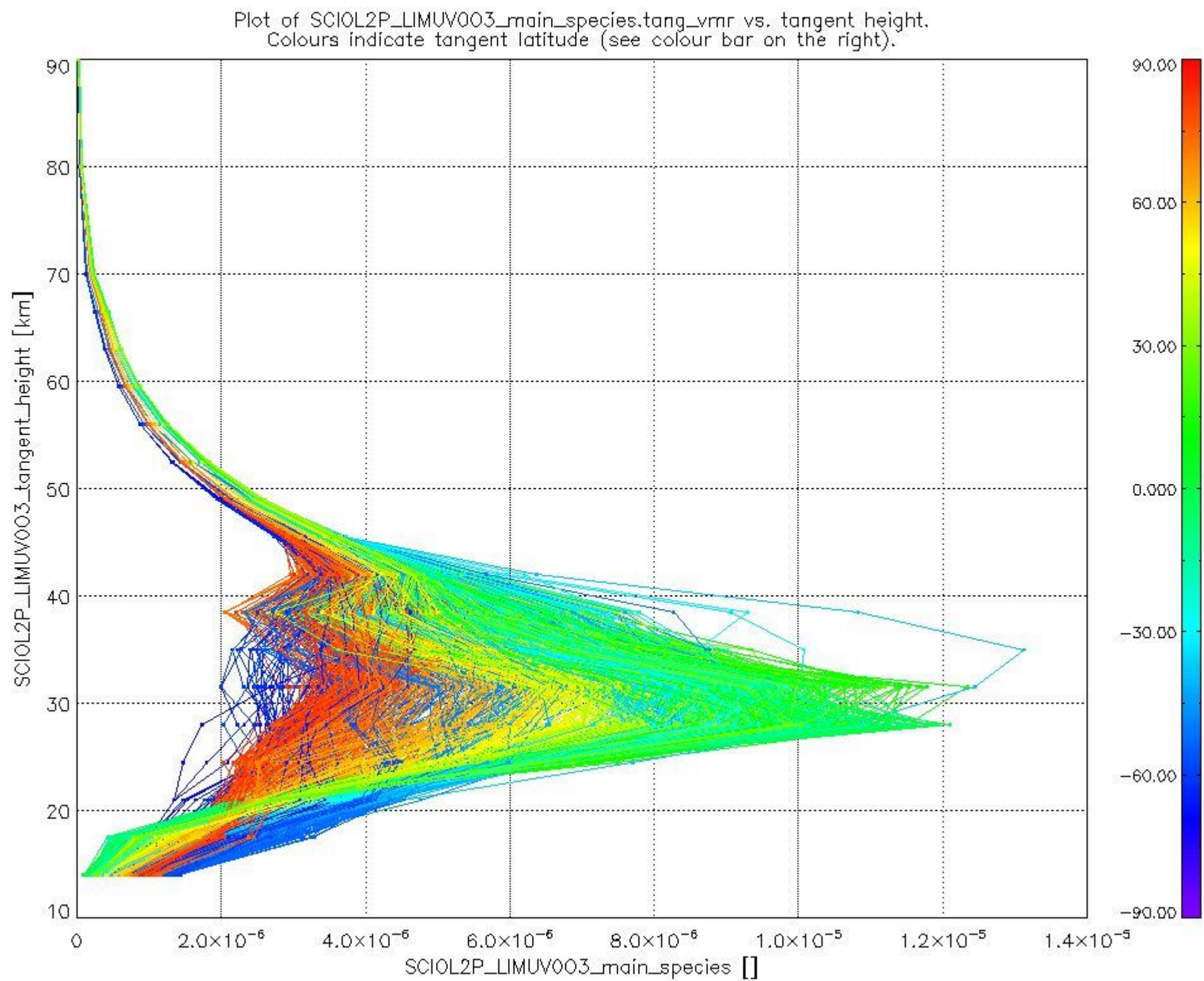
2.2.3 Limb

This section shows information about product quality of the limb retrievals, in particular the quality of retrieved species.

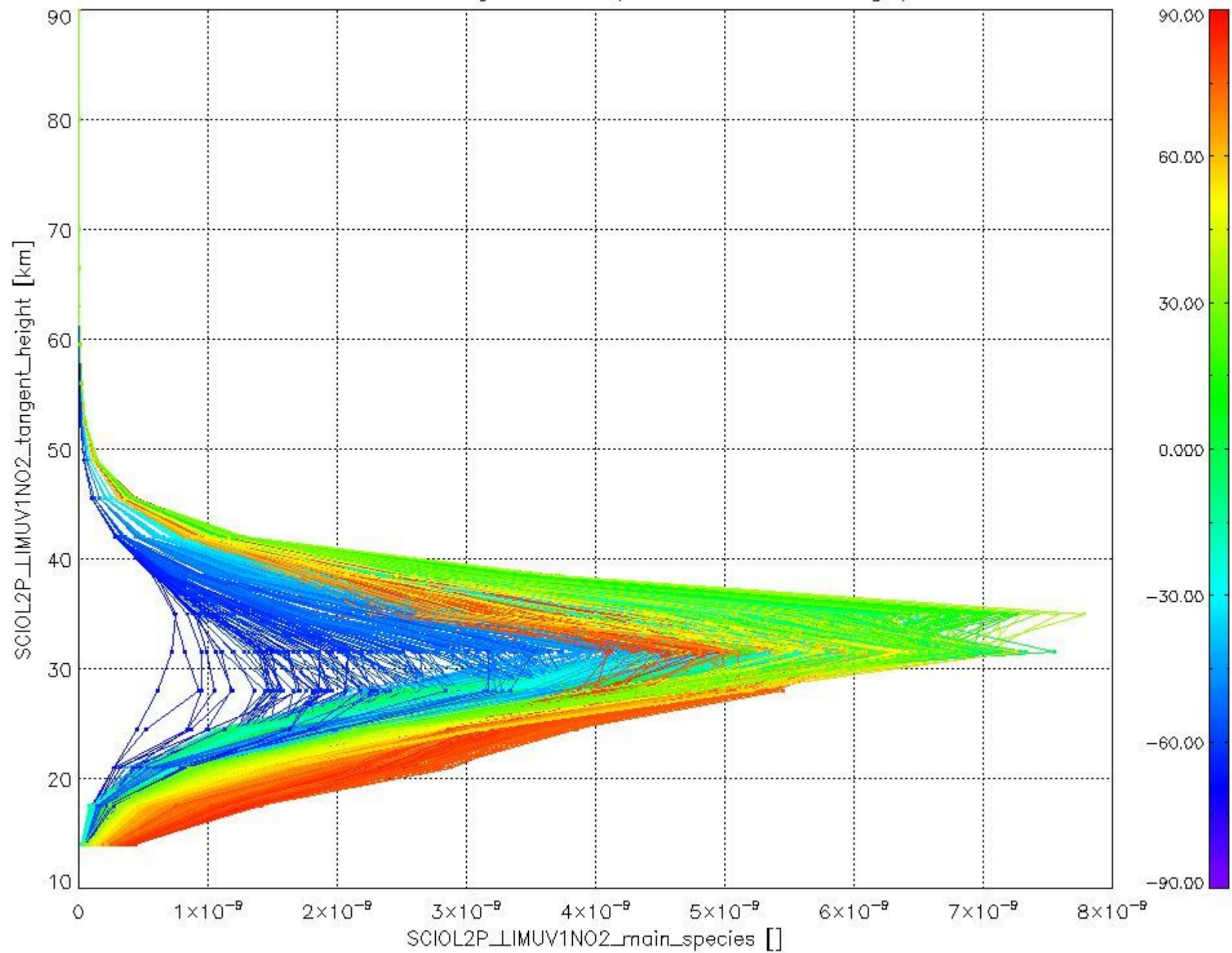
The following data items are currently included into this section:

Number	Data item ID
0	SCIOL2PLIMUV003_main_species
1	SCIOL2PLIMUV1NO2_main_species

The following plots shows for each species the tangent volume mixing ratio vs. tangent height. Colours indicate tangent latitude.



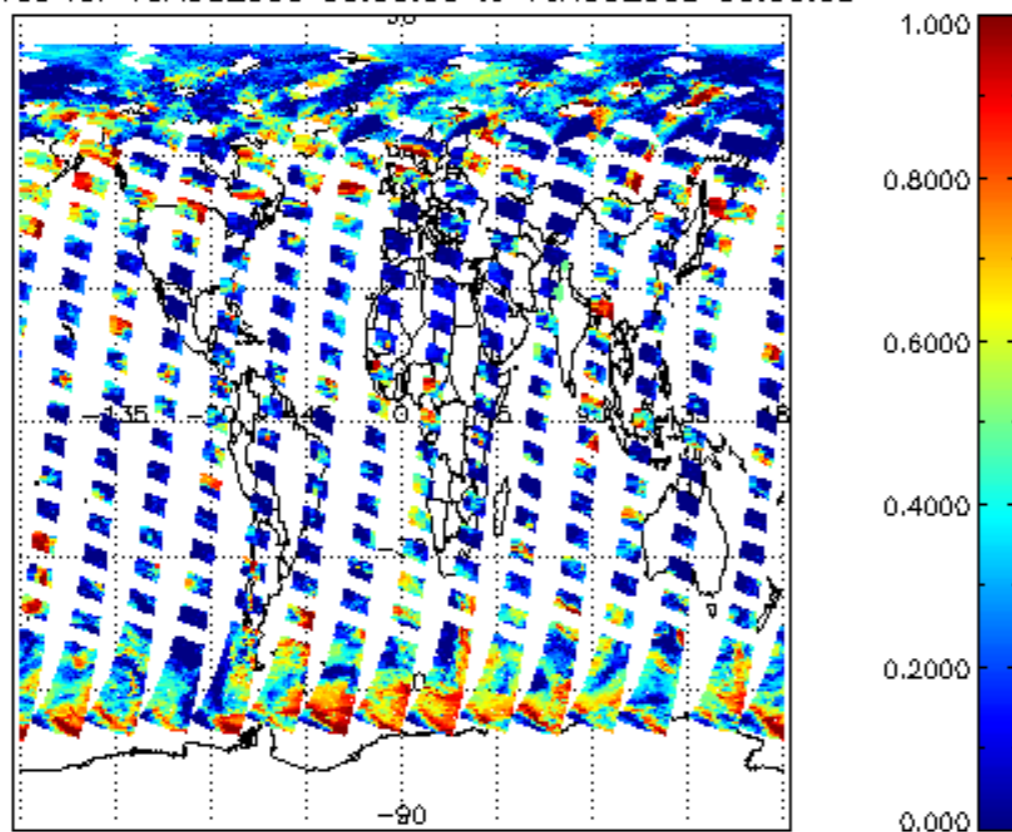
Plot of SCIOL2P_LIMUV1NO2_main_species.tang_vmr vs. tangent height.
Colours indicate tangent latitude (see colour bar on the right).



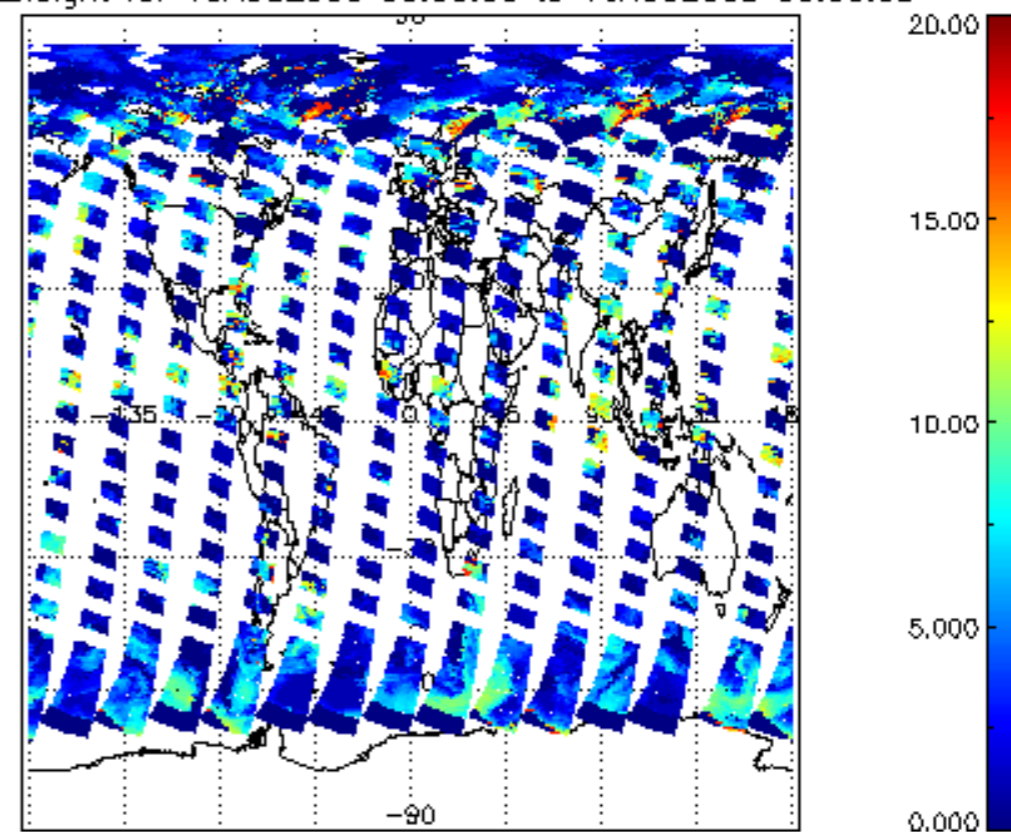
2.3 ADF monitoring

Number	ADF
	IN_ (INITIALISATION_FILE)
0	SCI_IN__AXNPDE20070629_092400_20070720_000000_20991231_235959
	ECF (ECMWF_FILE)
1	NOT USED

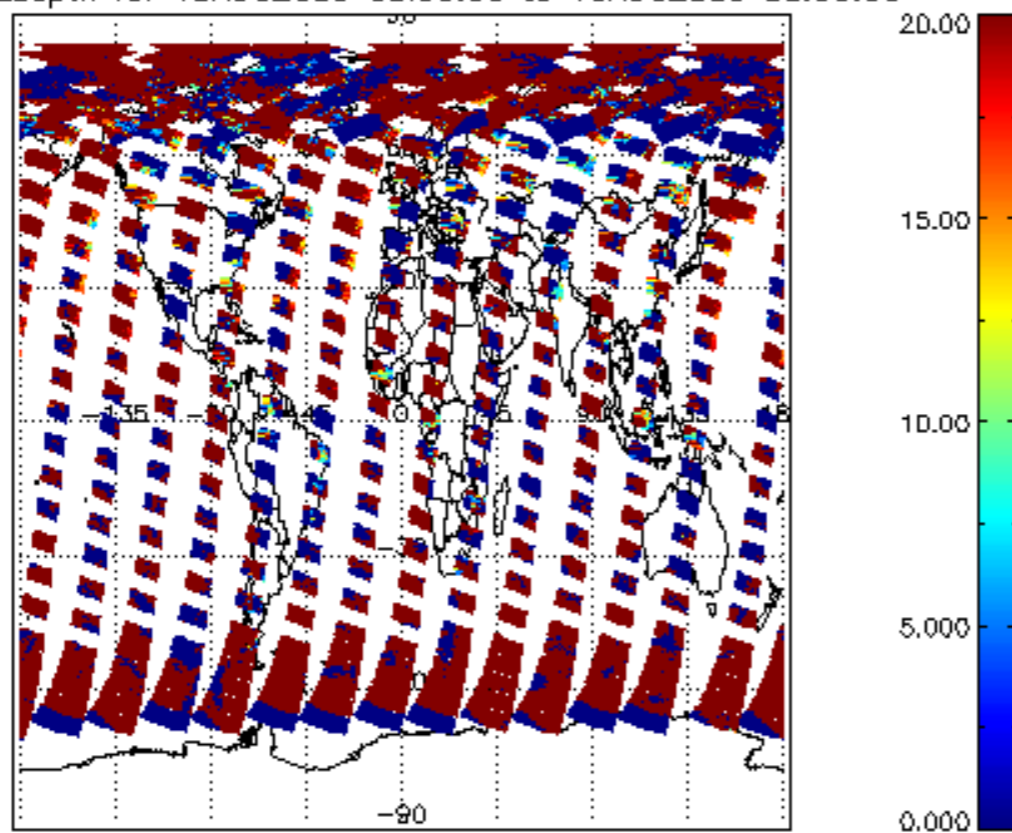
cL_frac for 15AUG2009 00:00:00 to 16AUG2009 00:00:00



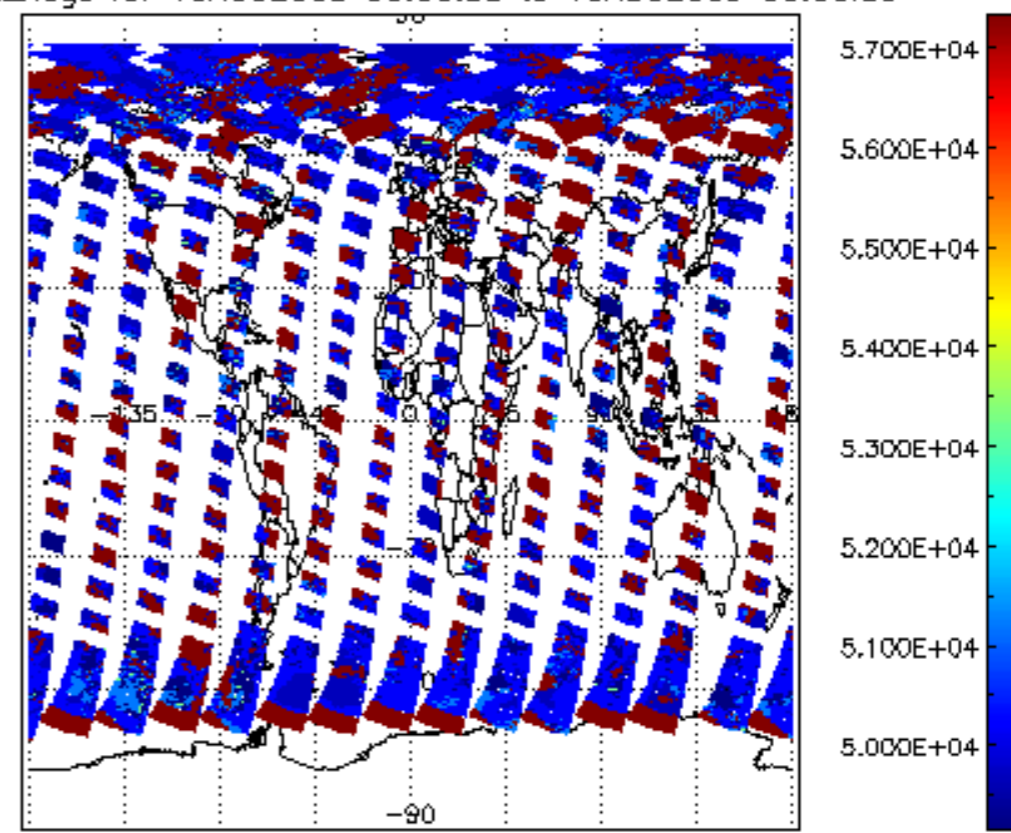
cL_top_height for 15AUG2009 00:00:00 to 16AUG2009 00:00:00

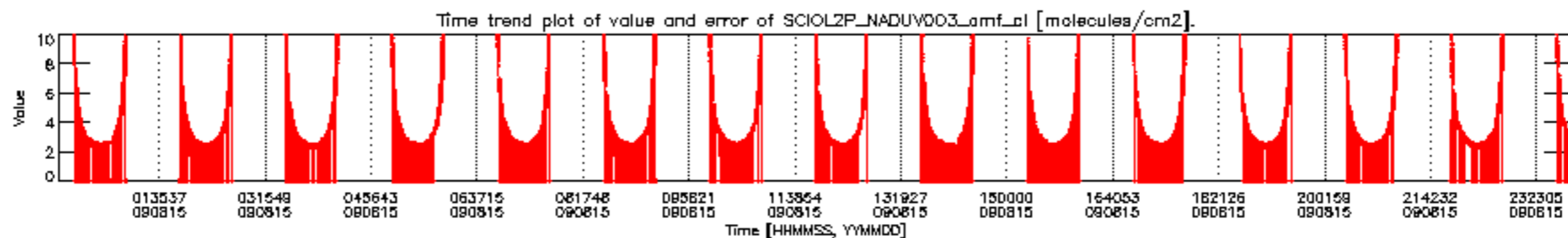
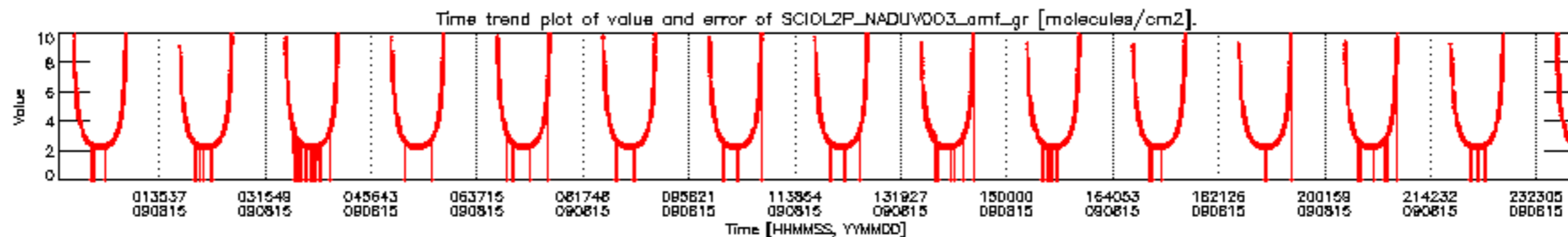
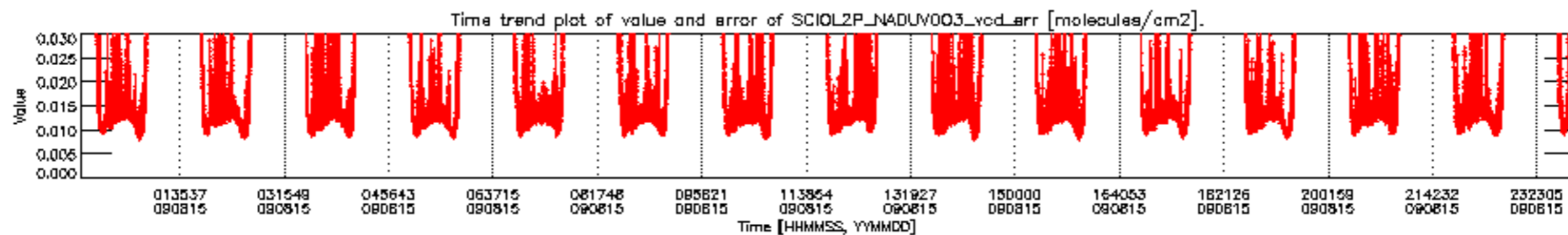
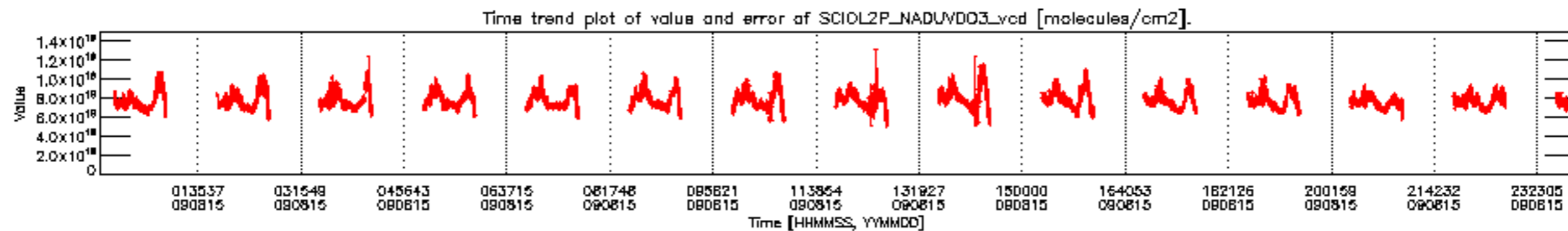


cL_opt_depth for 15AUG2009 00:00:00 to 16AUG2009 00:00:00

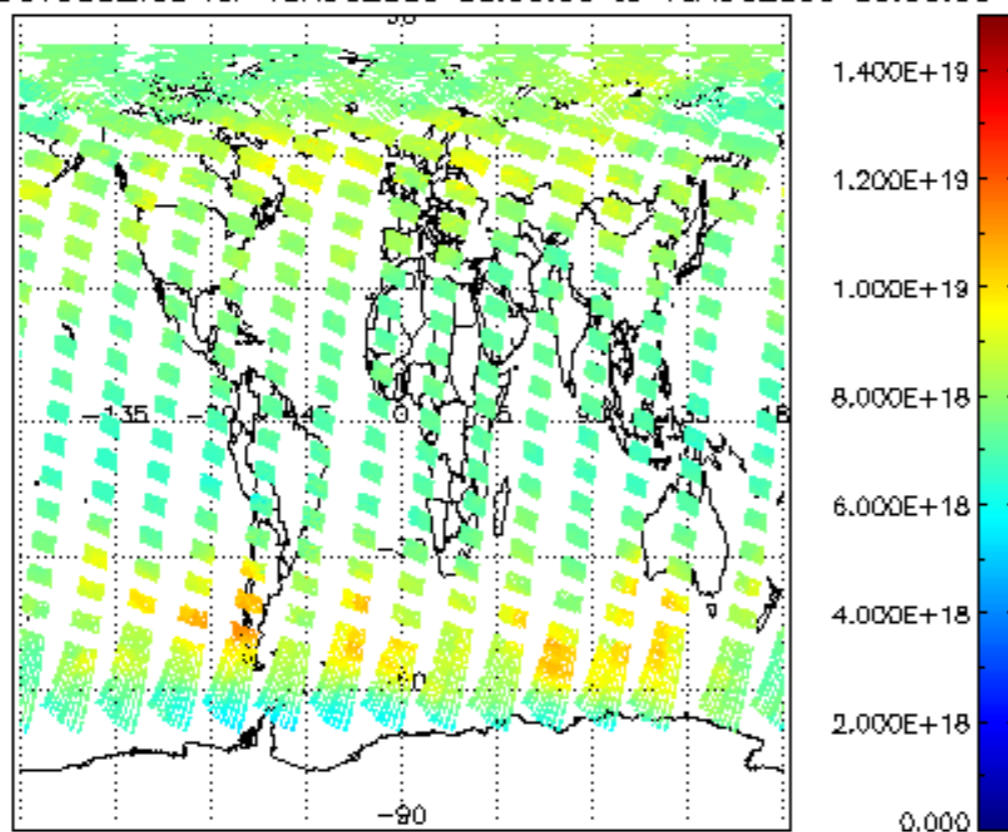


cloud_flags for 15AUG2009 00:00:00 to 16AUG2009 00:00:00

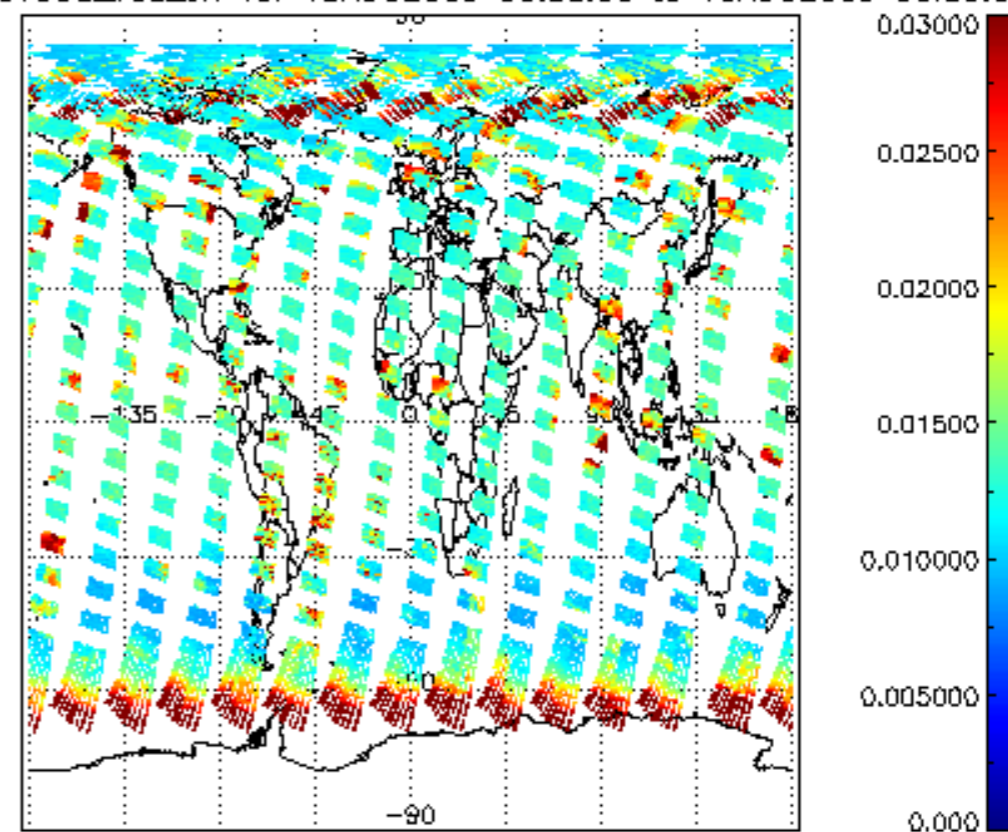




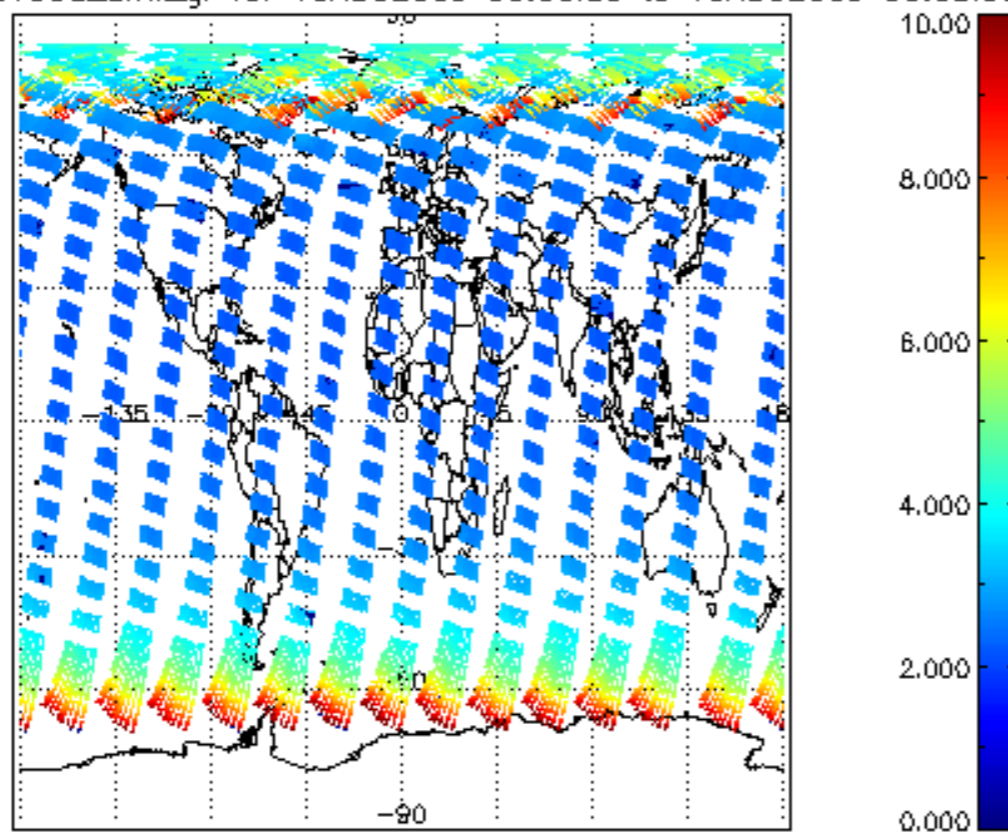
SCIOL2P_NADUV003_vcd for 15AUG2009 00:00:00 to 16AUG2009 00:00:00



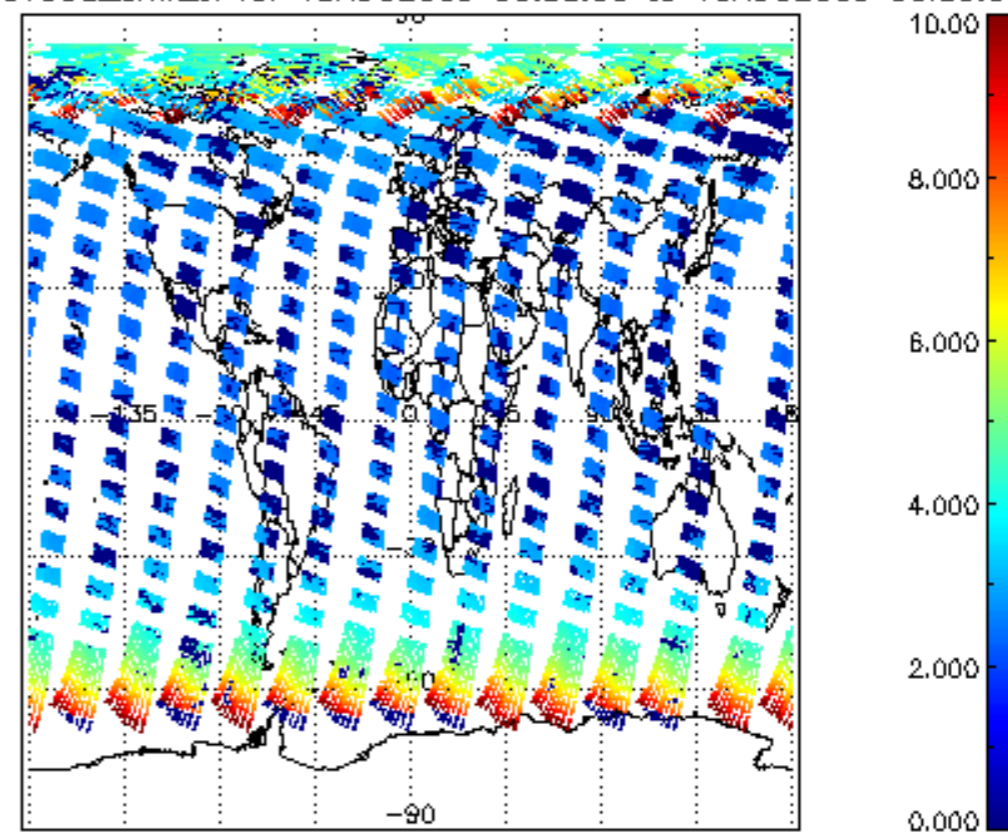
SCIOL2P_NADUV003_vcd_err for 15AUG2009 00:00:00 to 16AUG2009 00:00:00

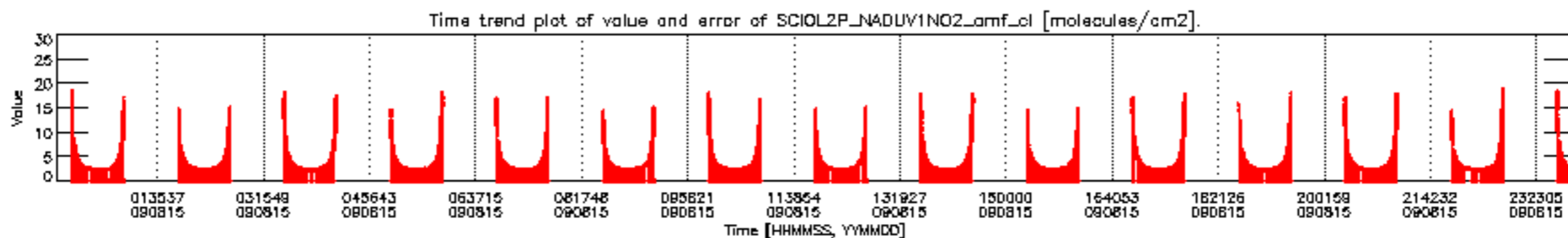
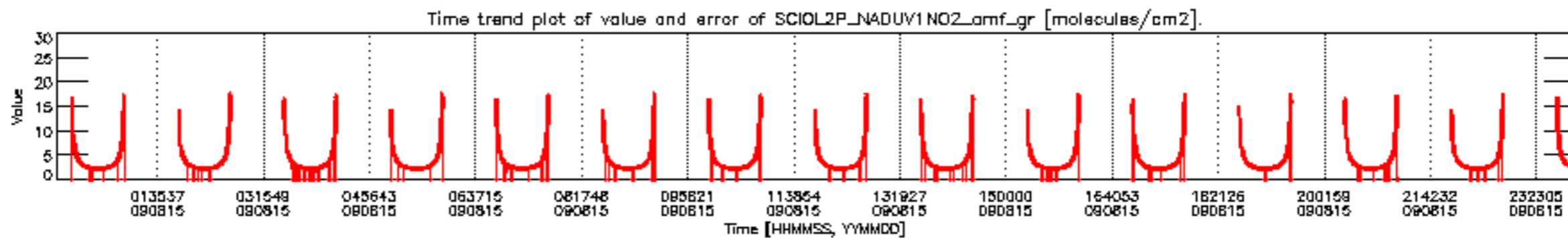
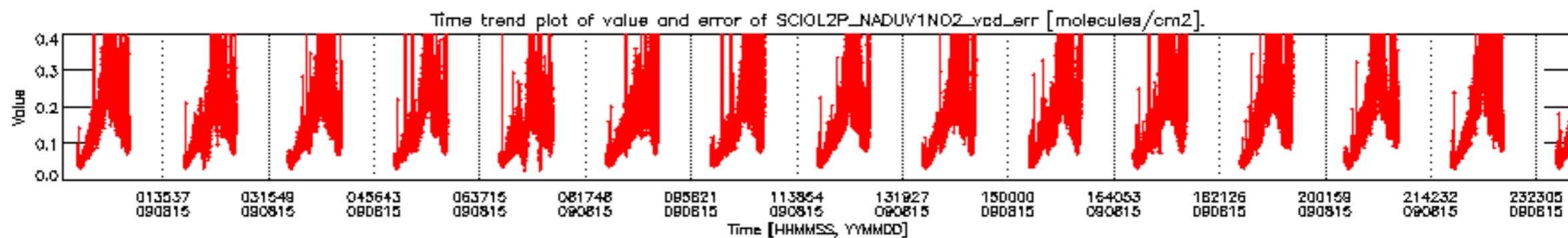
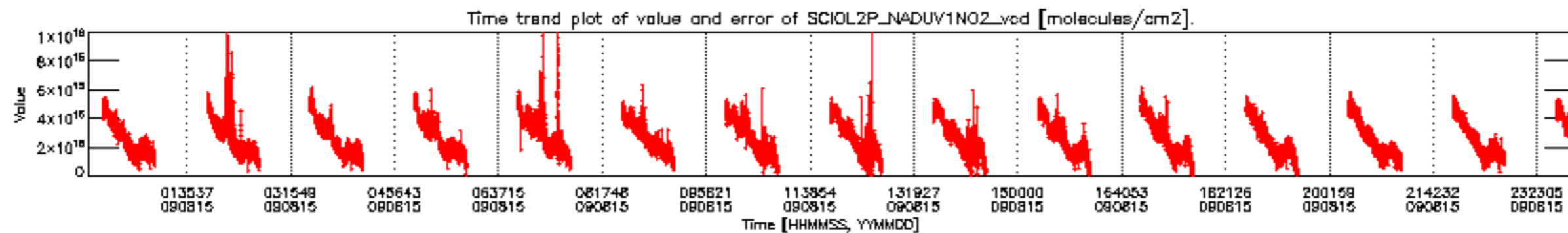


SCIOL2P_NADUV003_amf_gr for 15AUG2009 00:00:00 to 16AUG2009 00:00:00

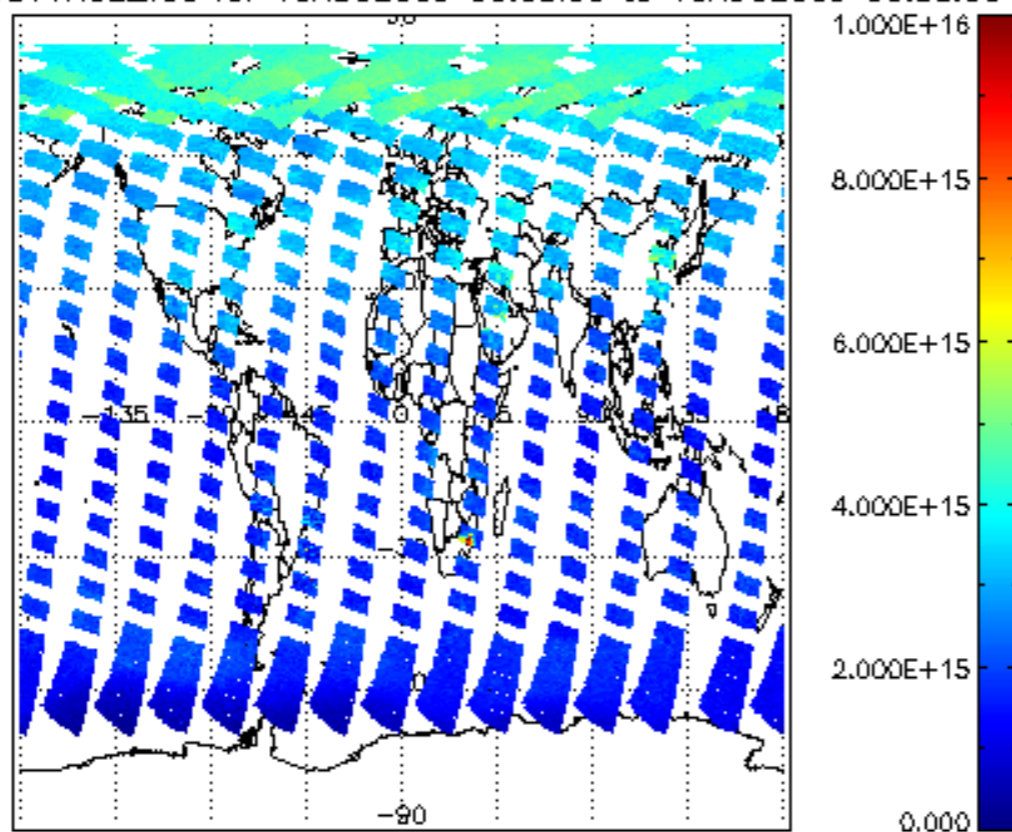


SCIOL2P_NADUV003_amf_cl for 15AUG2009 00:00:00 to 16AUG2009 00:00:00

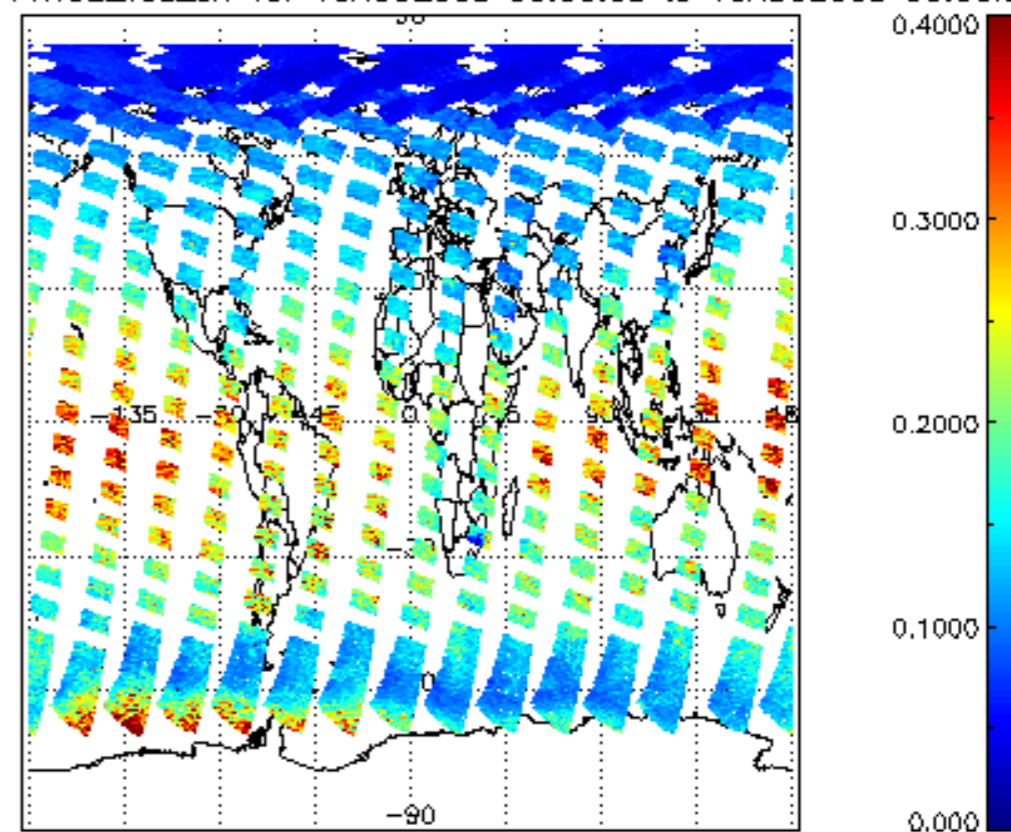




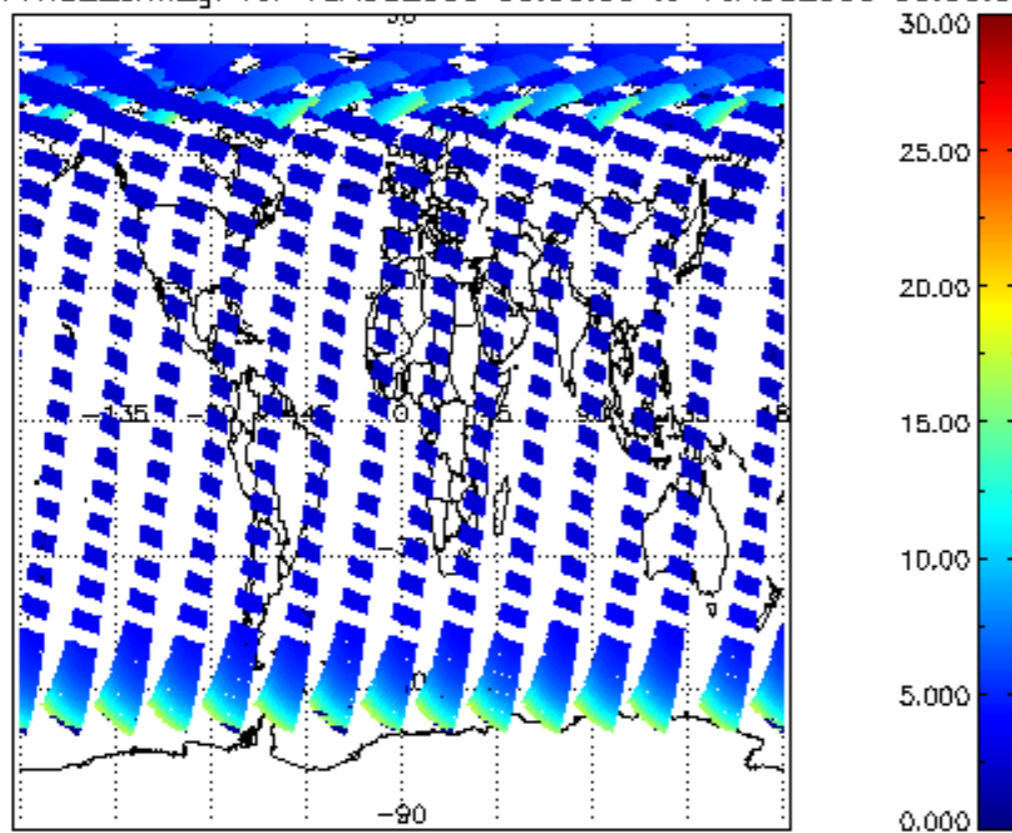
SCIOL2P_NADUV1NO2_vcd for 15AUG2009 00:00:00 to 16AUG2009 00:00:00



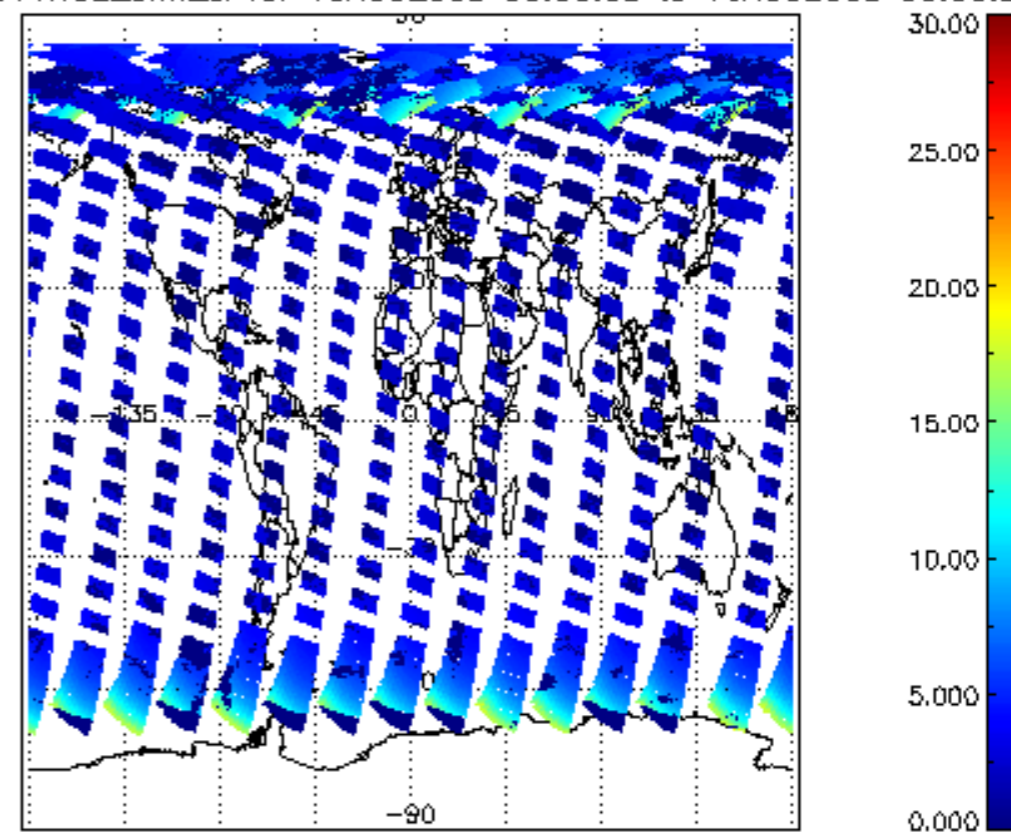
SCIOL2P_NADUV1NO2_vcd_err for 15AUG2009 00:00:00 to 16AUG2009 00:00:00



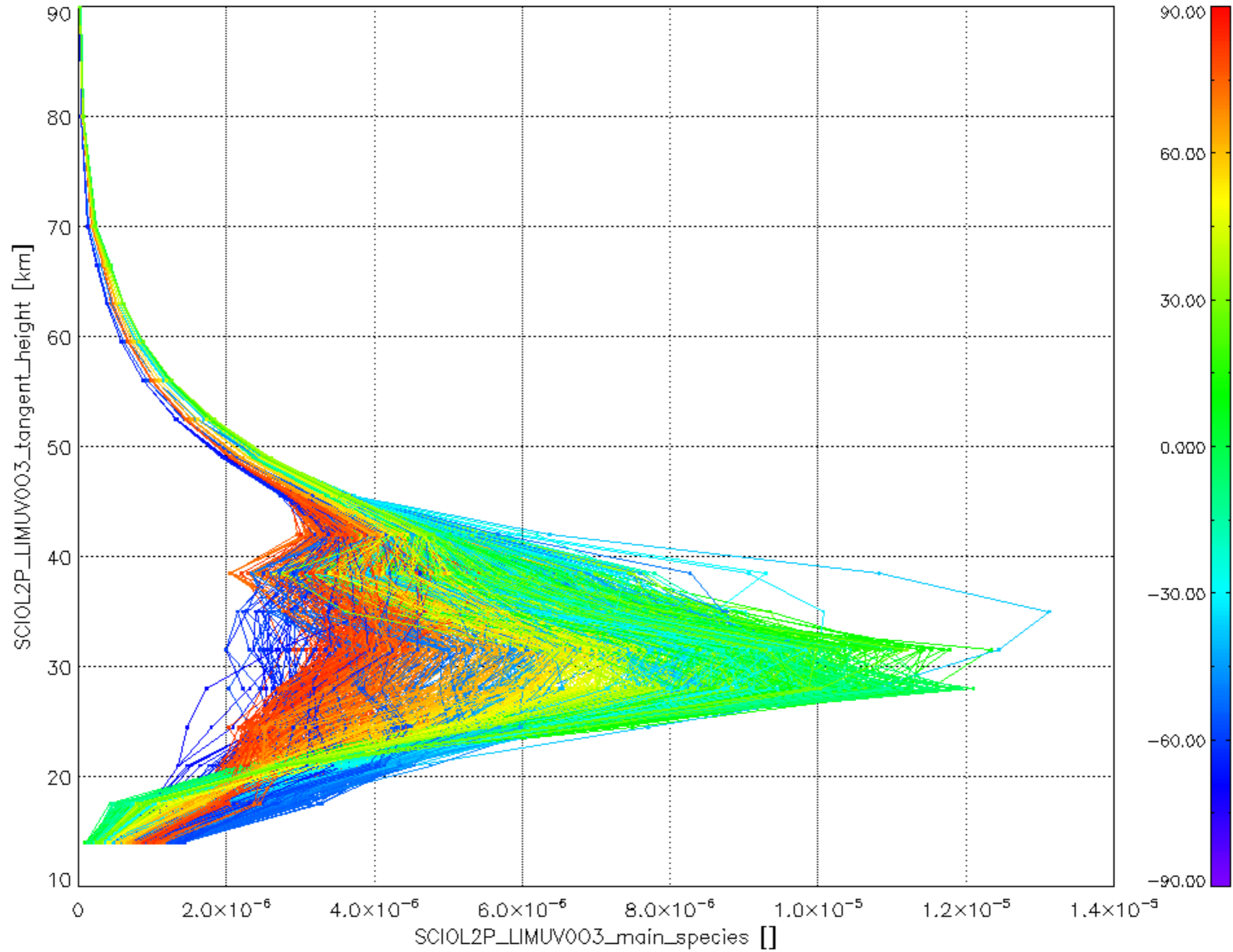
SCIOL2P_NADUV1NO2_amf_gr for 15AUG2009 00:00:00 to 16AUG2009 00:00:00



SCIOL2P_NADUV1NO2_amf_cl for 15AUG2009 00:00:00 to 16AUG2009 00:00:00



Plot of SCIOL2P_LIMUV003_main_species.tang_vmr vs. tangent height.
 Colours indicate tangent latitude (see colour bar on the right).



Plot of SCIOL2P_LIMUV1NO2_main_species.tang_vmr vs. tangent height.
 Colours indicate tangent latitude (see colour bar on the right).

