

## 2. SCIAMACHY Daily Report for level 2 products

### [2.1. General Info](#)

### [2.2 Product Quality Indicators](#)

### [2.3 ADF monitoring](#)

## 2.1 General Info

This report contains a daily analysis on parameters extracted from SCIAMACHY level 2 data (The SCI\_OL\_\_2P product).

### 2.1.1 Report summary

The table below shows general characteristics of the data that are included into this report.

Item	Value
Report version	1.6 (28-07-2008)
Time of report generation	05JUN2009 14:58:20
Data source version	SCIA-OL/3.01-R
Processing scope for products	11APR2009 00:00:00 to 12APR2009 00:00:00
Start time of first product within scope	10APR2009 23:30:18
Stop time of last product within scope	11APR2009 23:54:01
Total number of level 2 products	15
Number of level 2 products with errors	0

### 2.1.2 Summary per product

The following table shows a summary for each product used in this report.

Products are linked to a corresponding server directory for view/download. Note: Link access may be restricted by security settings of your internet browser or firewall.

#	Product name	Start time	Stop time	Prod err	Fit summary
0	<a href="#">SCI_OL__2PRDPA20090410_233018_000033252078_00059_37187_2017.N1</a>	10APR2009 23:30:18	11APR2009 00:25:43	0	GOOD
1	<a href="#">SCI_OL__2PRDPA20090411_011053_000033812078_00060_37188_2018.N1</a>	11APR2009 01:10:53	11APR2009 02:07:14	0	GOOD
2	<a href="#">SCI_OL__2PRDPA20090411_025129_000033252078_00061_37189_2019.N1</a>	11APR2009 02:51:29	11APR2009 03:46:54	0	GOOD
3	<a href="#">SCI_OL__2PRDPA20090411_043204_000033812078_00062_37190_2020.N1</a>	11APR2009 04:32:04	11APR2009 05:28:26	0	GOOD
4	<a href="#">SCI_OL__2PRDPA20090411_061240_000033252078_00063_37191_2021.N1</a>	11APR2009 06:12:40	11APR2009 07:08:05	0	GOOD
5	<a href="#">SCI_OL__2PRDPA20090411_075315_000033812078_00064_37192_2022.N1</a>	11APR2009 07:53:15	11APR2009 08:49:37	0	GOOD
6	<a href="#">SCI_OL__2PRDPA20090411_093351_000033252078_00065_37193_2023.N1</a>	11APR2009 09:33:51	11APR2009 10:29:16	0	GOOD
7	<a href="#">SCI_OL__2PRDPA20090411_111426_000033812078_00066_37194_2024.N1</a>	11APR2009 11:14:26	11APR2009 12:10:48	0	GOOD
8	<a href="#">SCI_OL__2PRDPA20090411_125502_000033252078_00067_37195_2025.N1</a>	11APR2009 12:55:02	11APR2009 13:50:27	0	GOOD
9	<a href="#">SCI_OL__2PRDPA20090411_143537_000033812078_00068_37196_2027.N1</a>	11APR2009 14:35:37	11APR2009 15:31:59	0	GOOD
10	<a href="#">SCI_OL__2PRDPA20090411_161613_000033252078_00069_37197_2026.N1</a>	11APR2009 16:16:13	11APR2009 17:11:39	0	GOOD
11	<a href="#">SCI_OL__2PRDPA20090411_175644_000033892078_00070_37198_2028.N1</a>	11APR2009 17:56:44	11APR2009 18:53:13	0	GOOD
12	<a href="#">SCI_OL__2PRDPA20090411_193744_000033252078_00071_37199_2029.N1</a>	11APR2009 19:37:44	11APR2009 20:33:09	0	GOOD
13	<a href="#">SCI_OL__2PRDPA20090411_211800_000033812078_00072_37200_2030.N1</a>	11APR2009 21:18:00	11APR2009 22:14:21	0	GOOD
14	<a href="#">SCI_OL__2PRDPA20090411_225835_000033252078_00073_37201_2031.N1</a>	11APR2009 22:58:35	11APR2009 23:54:01	0	GOOD

## 2.2 Product Quality Indicators

### 2.2.1 Cloud parameters

This is a new section that shows information about the cloud parameters estimation, in particular cloud fractions and cloud top height. IMPORTANT NOTE: The contents and layout of this section are still being validated. Please use with caution.

#### General statistics:

Total number of cloud data DSRs: 150280

Total number of cloud data DSRs with good quality flag (=0): 150280 (100.0 %)

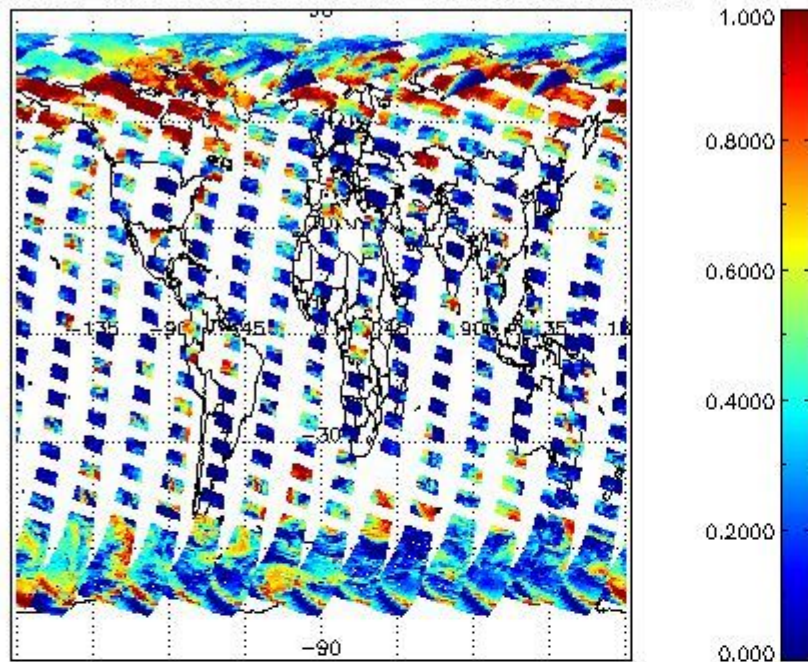
Parameter	#valid	Mean	Median	Min	Max	Stddev	Unit
QUALITY_FLAG	150280	0.0000	0.0000	0.0000	0.0000	0.0000	flag
INTEGR_TIME	150280	0.17042	0.12500	0.12500	0.25000	0.060120	s
CL_FRAC	150280	0.37338	0.33834	0.0000	1.0000	0.30726	-
CL_FRAC_ERR	150280	0.0000	0.0000	0.0000	0.0000	0.0000	rel. fraction
PMD_READ	150280	5.4533	4.0000	4.0000	8.0000	1.9238	
PMD_READ_CL[0]	150280	0.30453	0.0000	0.0000	8.0000	1.1753	-
PMD_READ_CL[1]	150280	1.3818	0.0000	0.0000	8.0000	2.5508	-
CL_TOP_HEIGHT	130301	2.9738	1.3277	0.0000	17.000	3.5071	km
CL_TOP_HEIGHT_ERR	0	---	---	---	---	---	---
CL_OPT_DEPTH	130301	64.604	100.00	0.0000	101.00	42.499	km
CL_OPT_DEPTH_ERR	0	---	---	---	---	---	---
CL_TYPE_FLAGS	150280	11100000	11100000	11100000	11100000	0.0000	flags. Bit definition = 0: low or high cloud; 1: ice or water cloud; 2: thick or thin cloud; 3-15: not used
CLOUD_FLAGS	150280	11001011	11000100	11000000	11100000	3396.9	flags
AERO_ABSO_IND	150280	3.6201	4.4315	-0.88068	16.720	2.4160	
AERO_IND_DIAG	150280	0.0000	0.0000	0.0000	0.0000	0.0000	
AERO_FLAGS	150280	01010111	00000000	00000000	11000000	24478.	flags

### Time and geolocation plots:

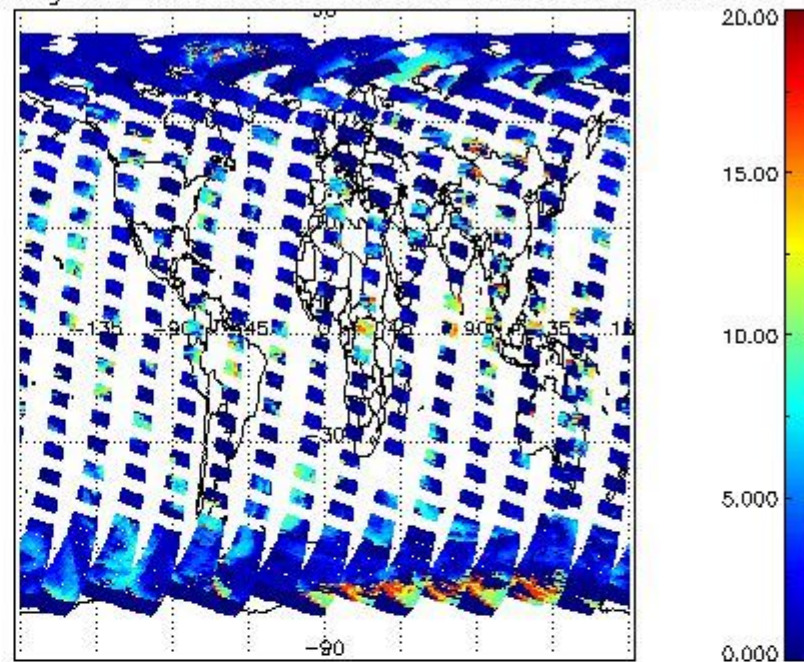
Plots are available for the following parameters:

Number	Data item ID
0	cl_frac
1	cl_top_height
2	cl_opt_depth
3	cloud_flags

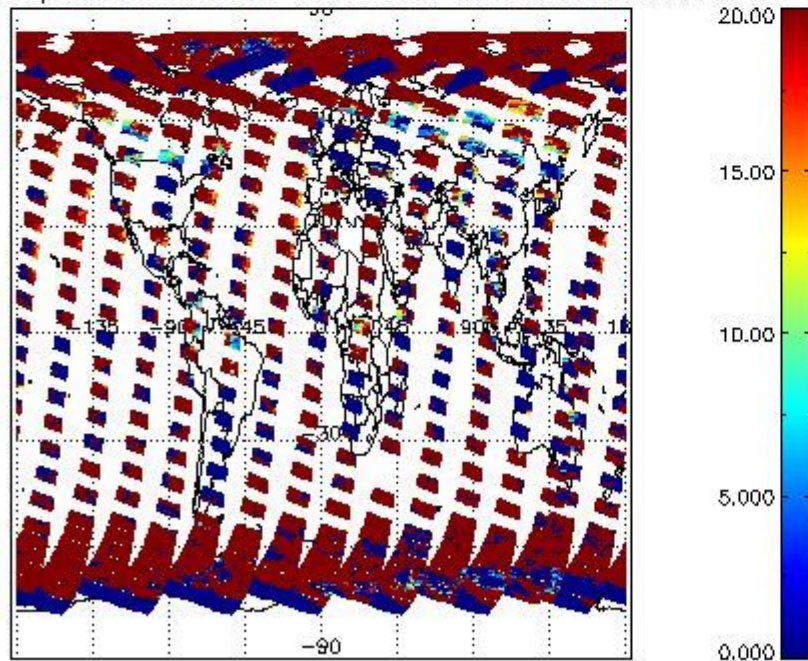
cL\_frac for 11APR2009 00:00:00 to 12APR2009 00:00:00



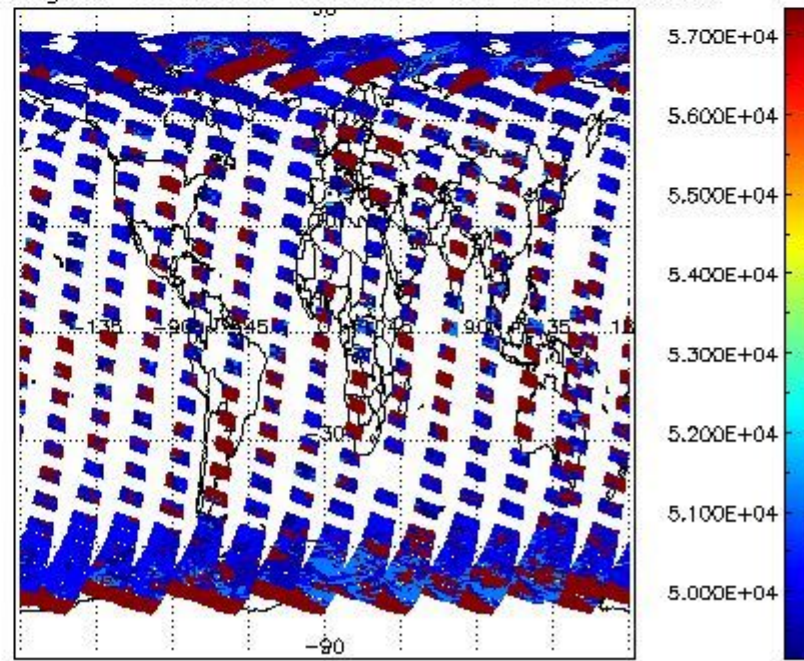
cL\_top\_height for 11APR2009 00:00:00 to 12APR2009 00:00:00



cL\_opt\_depth for 11APR2009 00:00:00 to 12APR2009 00:00:00



cloud\_flags for 11APR2009 00:00:00 to 12APR2009 00:00:00



## 2.2.2 Nadir

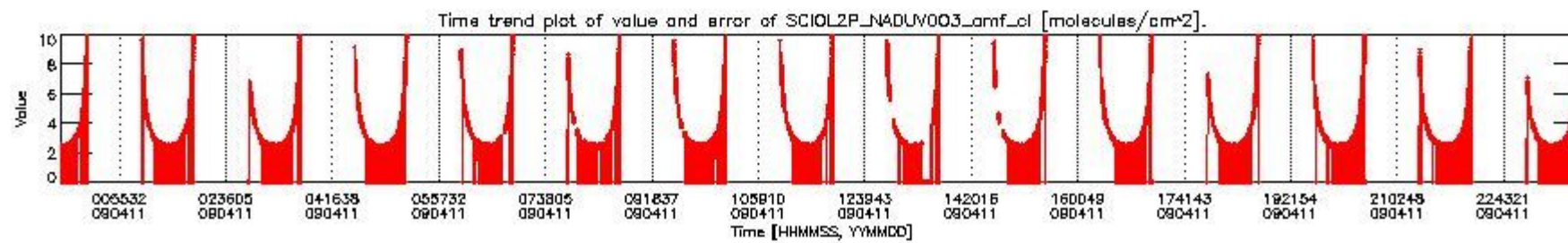
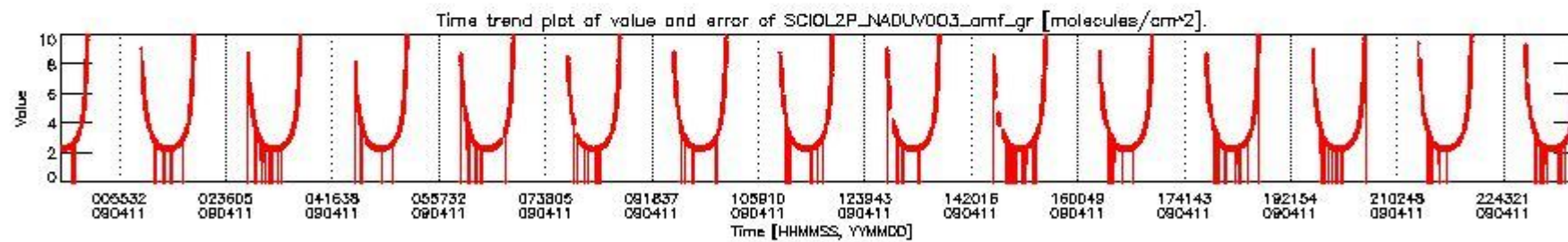
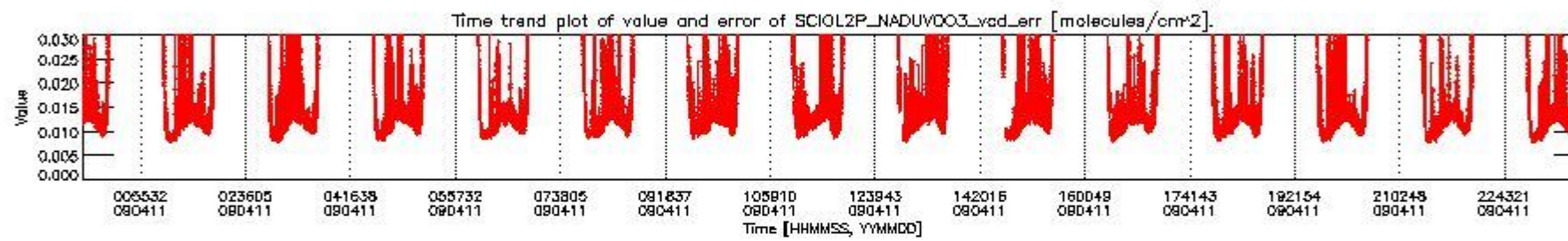
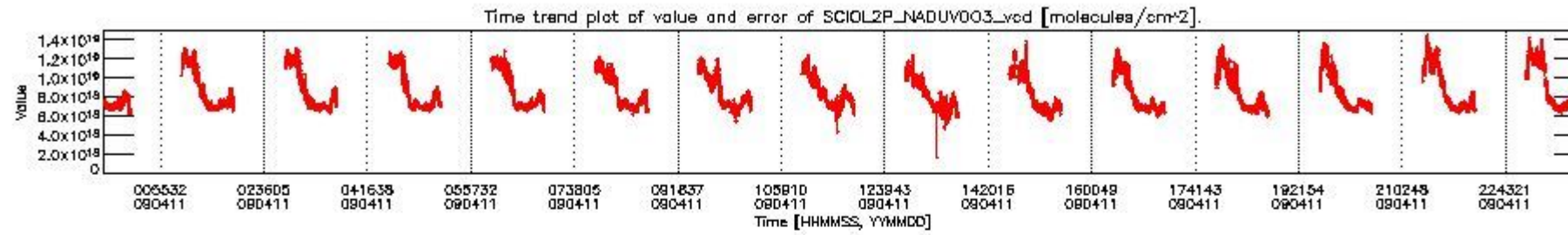
This section shows information about product quality of nadir measurements, in particular the quality of retrieved species.

The following data items are currently included into this section:

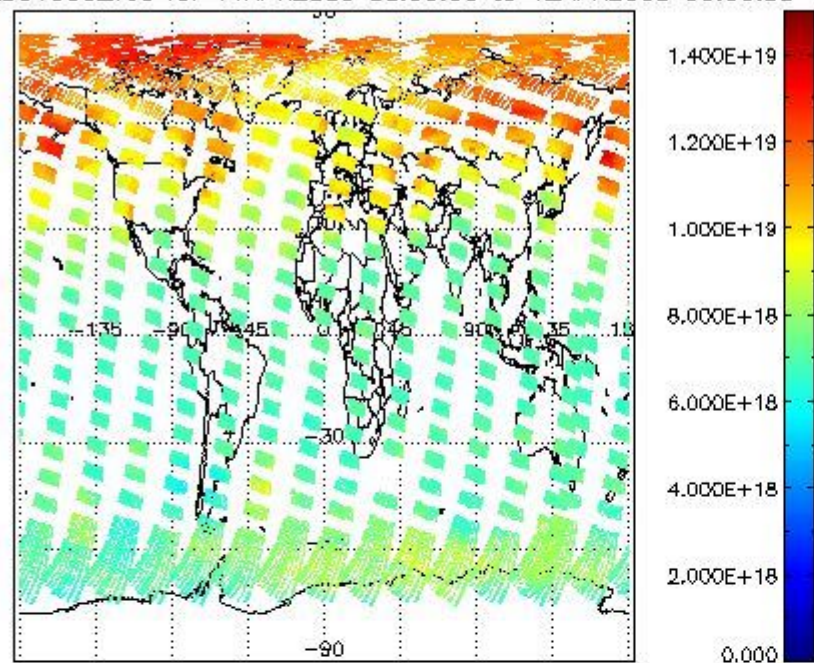
Number	Data item ID
0	SCIOL2P_NADUV003_vcd
1	SCIOL2P_NADUV003_vcd_err
2	SCIOL2P_NADUV003_amf_gr

3	SCIOL2P_NADUV003_amf_cl
4	SCIOL2P_NADUV1NO2_vcd
5	SCIOL2P_NADUV1NO2_vcd_err
6	SCIOL2P_NADUV1NO2_amf_gr
7	SCIOL2P_NADUV1NO2_amf_cl

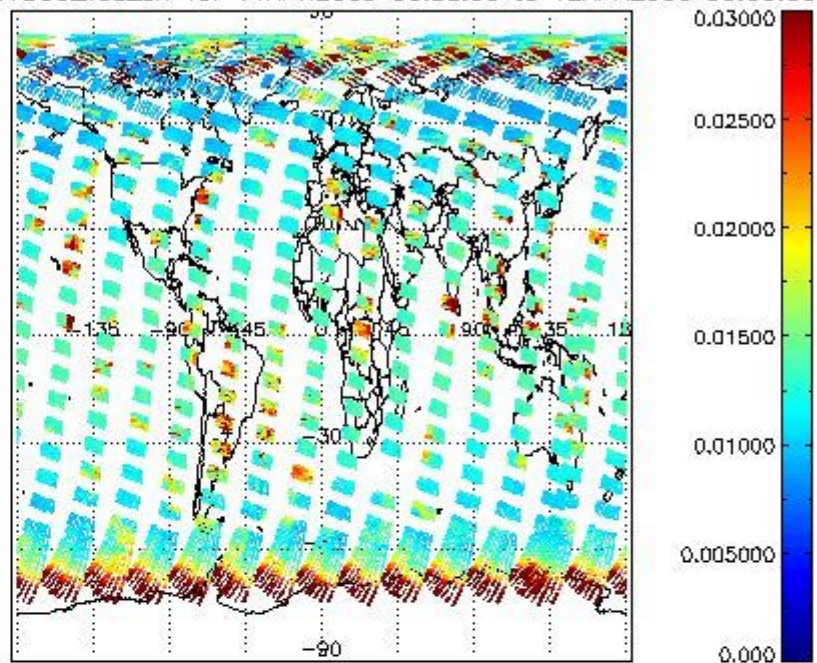
Data is presented both in time trend plots and world map plots, in order to show variations with time and geolocation. The vertical dotted lines in the time trend plots indicate orbits. The orbit times on the X-axis are estimated sensing\_start time as suggested by the product sensing\_start time in the MPH.



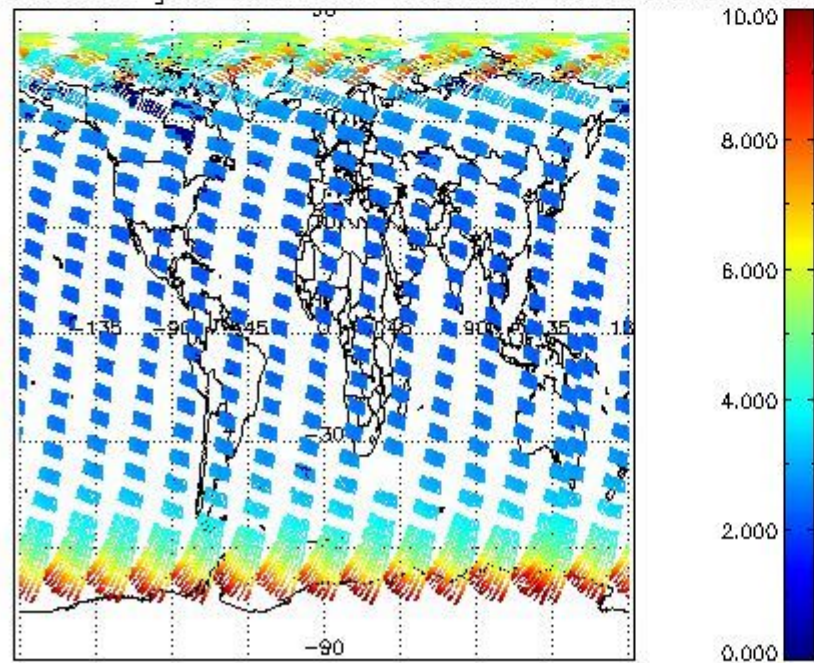
SCIOL2P\_NADUV003\_vcd for 11APR2009 00:00:00 to 12APR2009 00:00:00



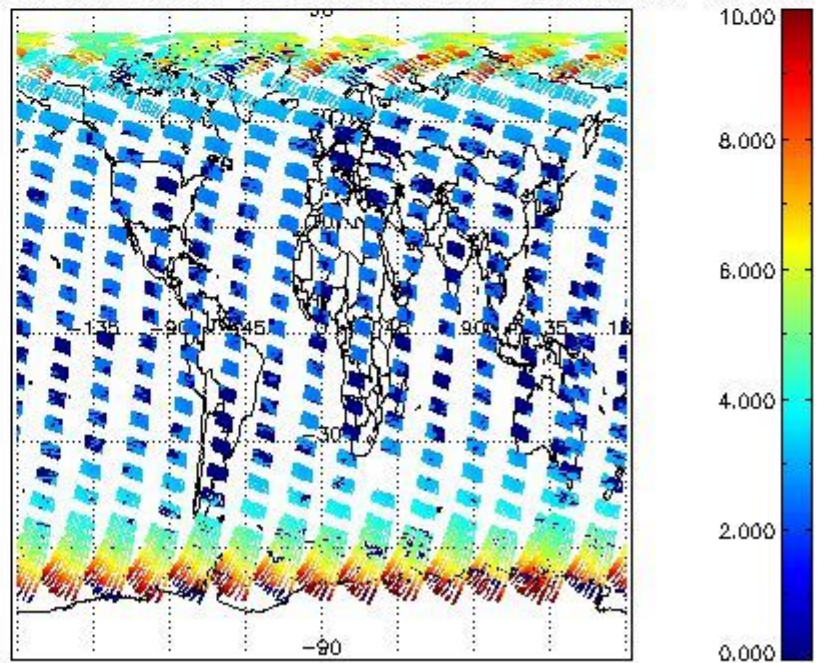
SCIOL2P\_NADUV003\_vcd\_err for 11APR2009 00:00:00 to 12APR2009 00:00:00

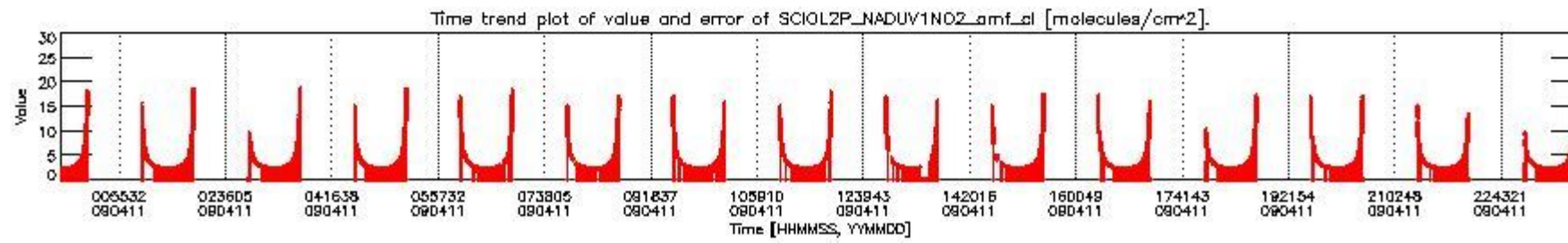
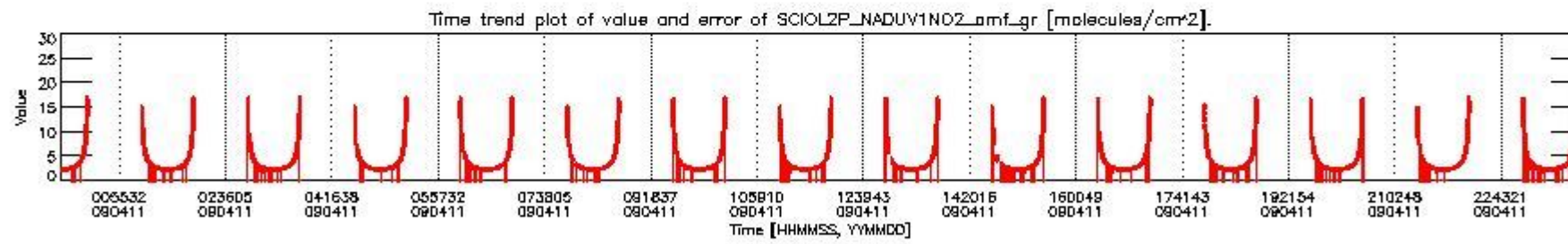
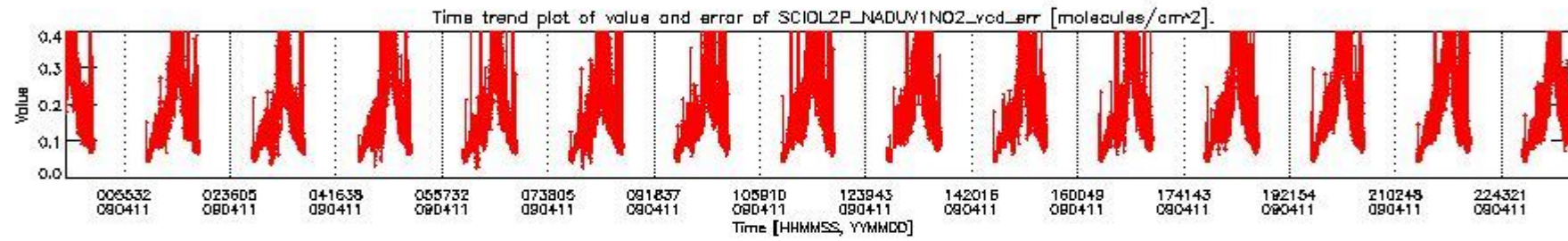
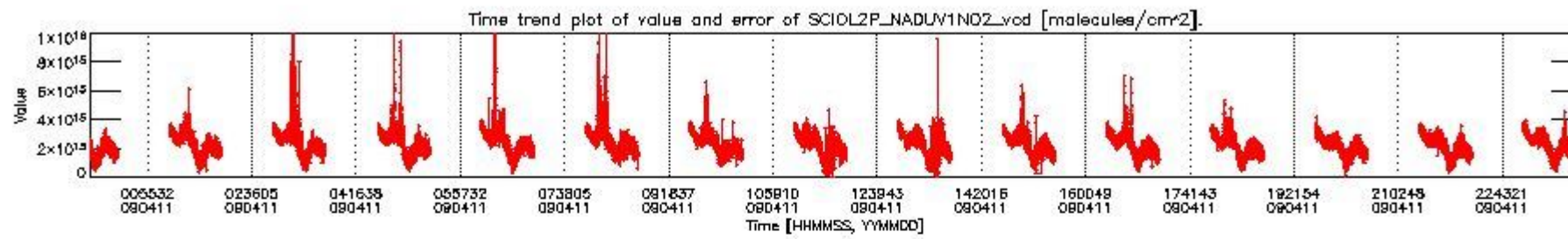


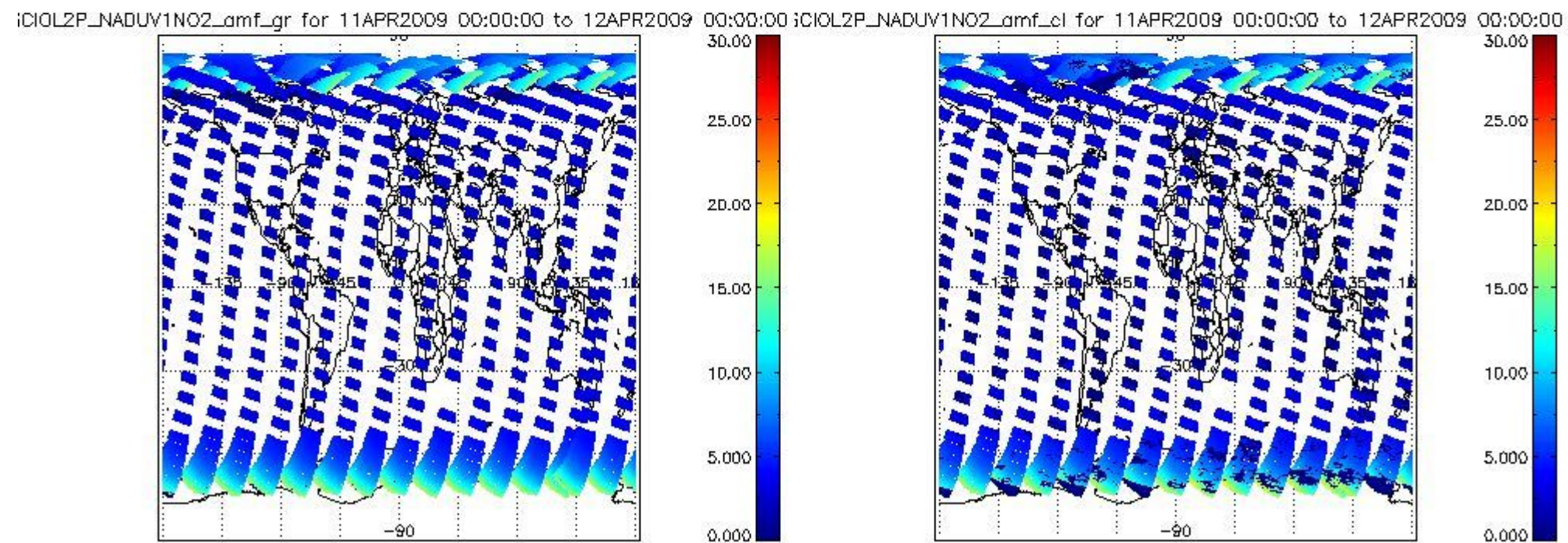
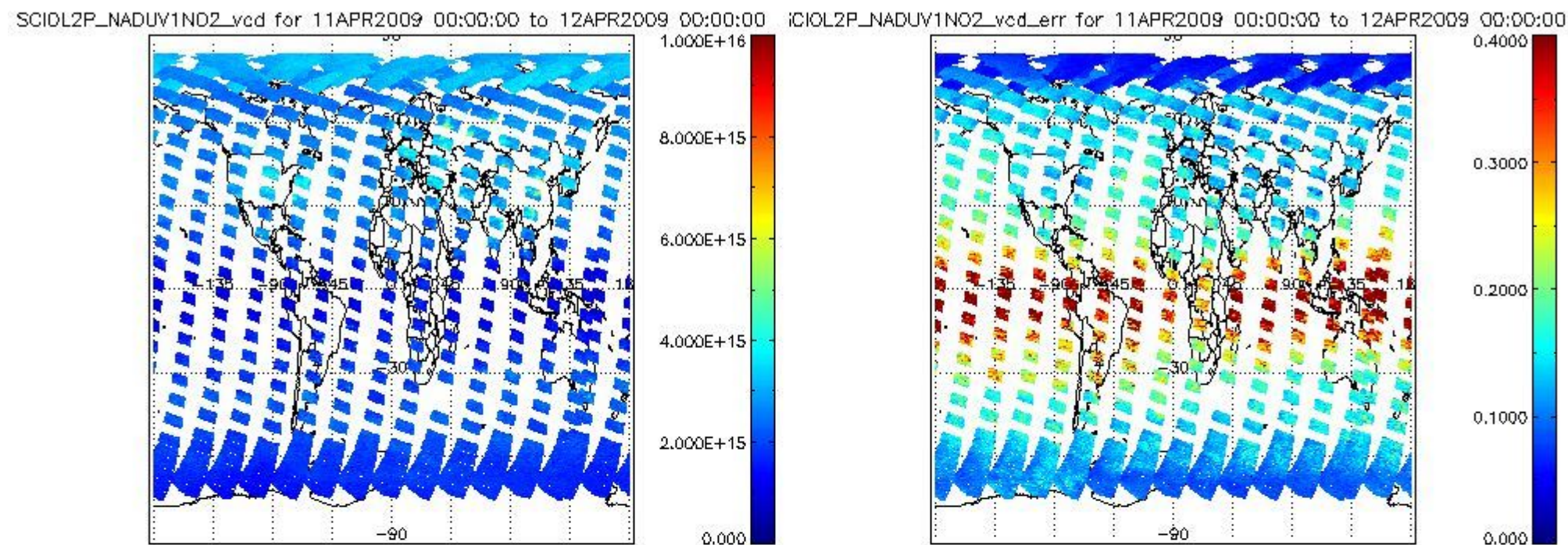
SCIOL2P\_NADUV003\_amf\_gr for 11APR2009 00:00:00 to 12APR2009 00:00:00



SCIOL2P\_NADUV003\_amf\_cl for 11APR2009 00:00:00 to 12APR2009 00:00:00







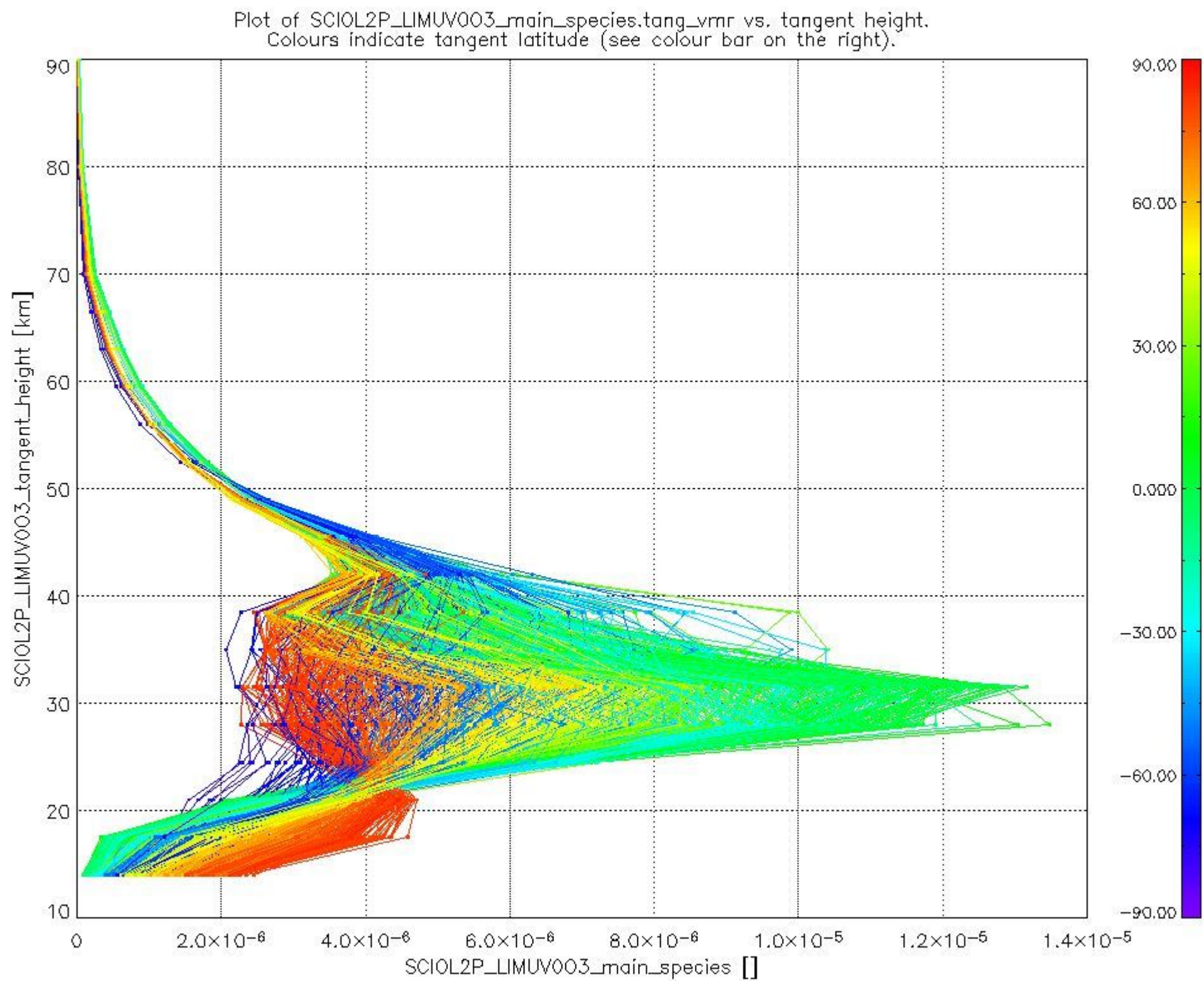
### 2.2.3 Limb

This section shows information about product quality of the limb retrievals, in particular the quality of retrieved species.

The following data items are currently included into this section:

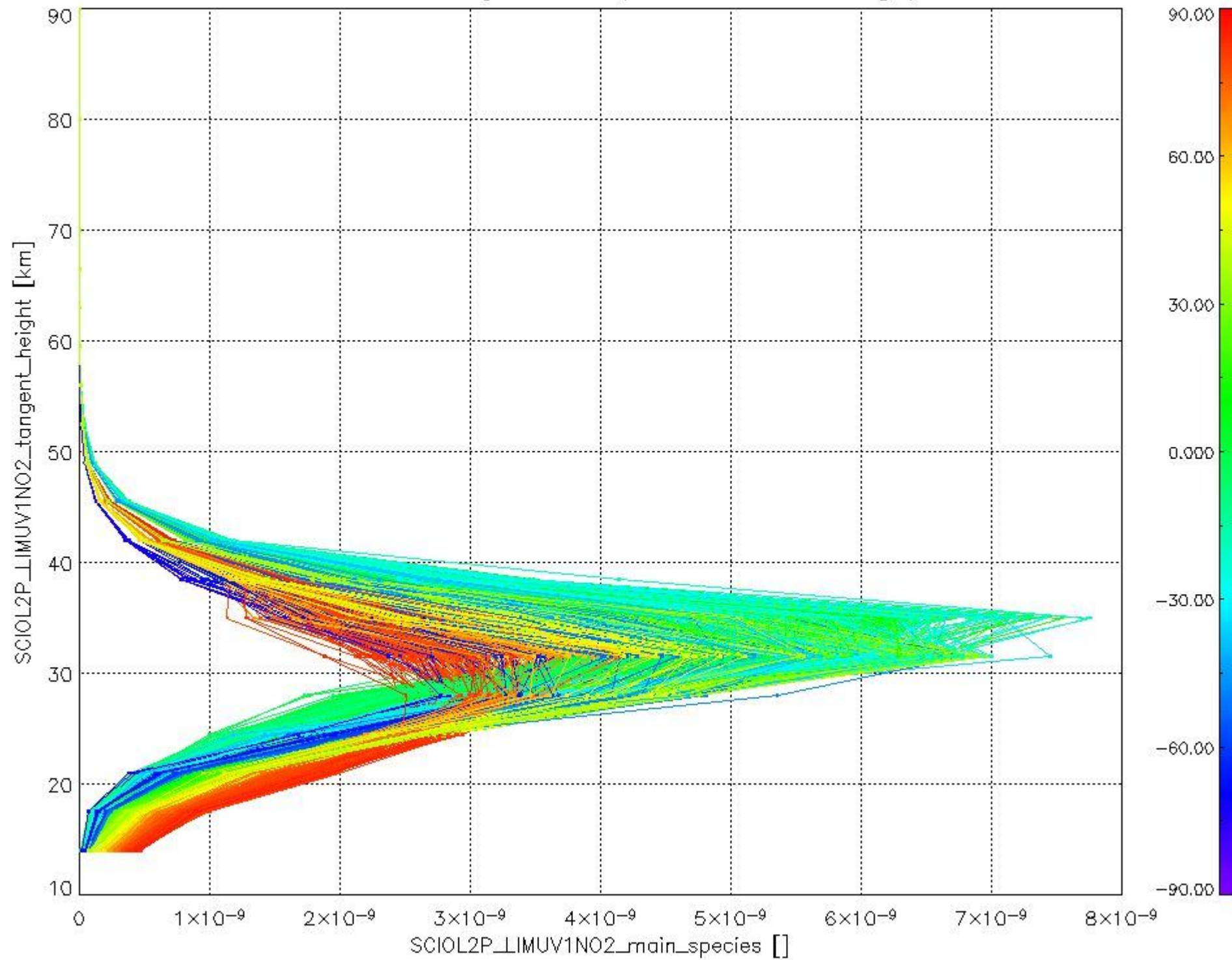
Number	Data item ID
0	SCIOL2PLIMUV003_main_species
1	SCIOL2PLIMUV1NO2_main_species

The following plots shows for each species the tangent volume mixing ratio vs. tangent height. Colours indicate tangent latitude.





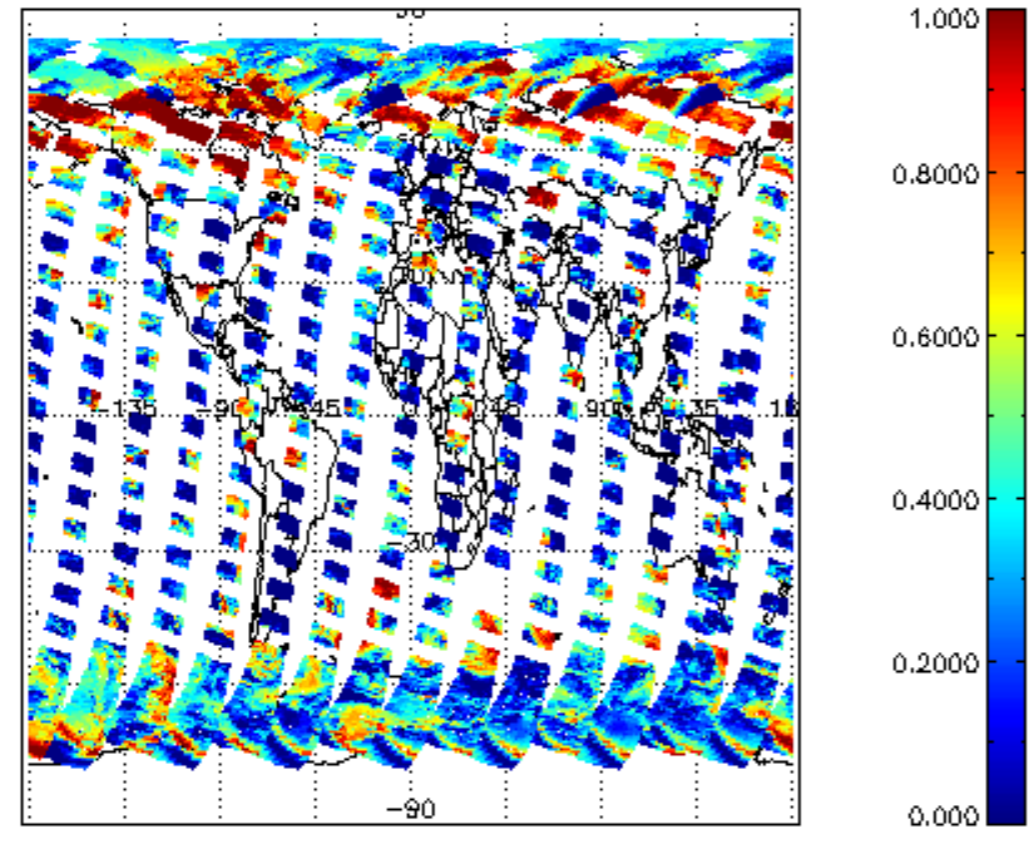
Plot of SCIOL2P\_LIMUV1NO2\_main\_species.tang\_vmr vs. tangent height.  
Colours indicate tangent latitude (see colour bar on the right).



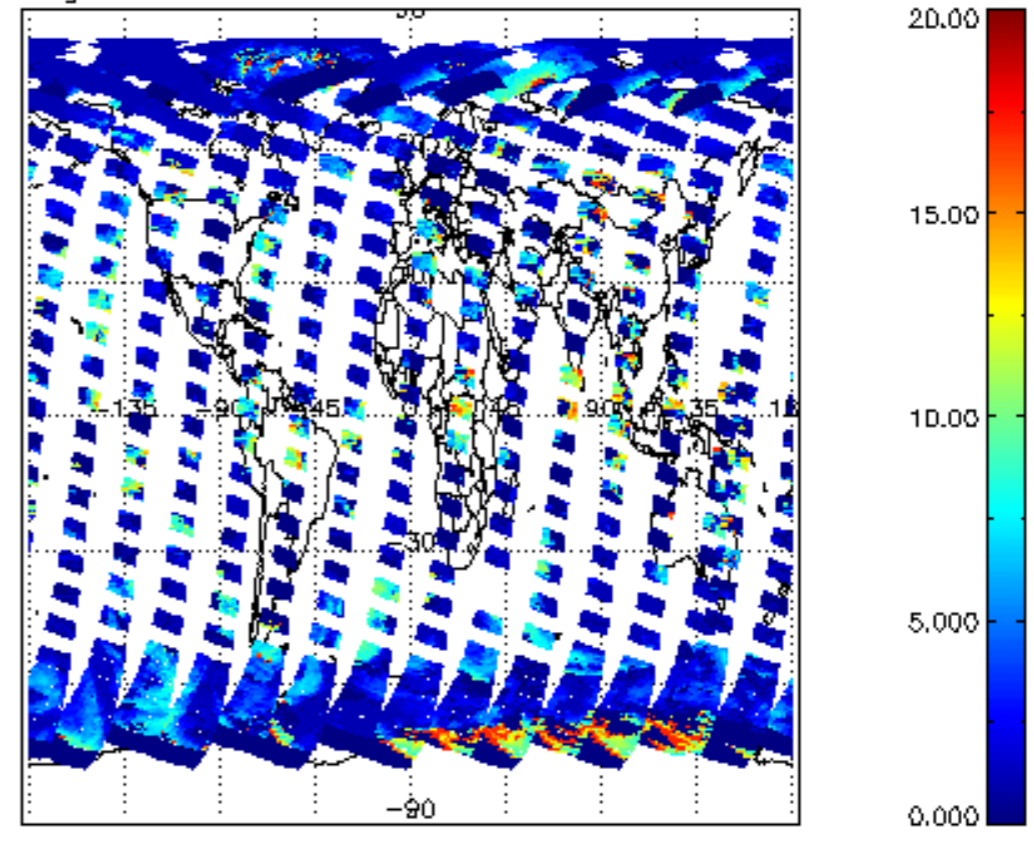
### 2.3 ADF monitoring

Number	ADF
	<b>IN_ (INITIALISATION_FILE)</b>
0	SCI_IN__AXNPDE20070629_092400_20070720_000000_20991231_235959
	<b>ECF (ECMWF_FILE)</b>
1	NOT USED

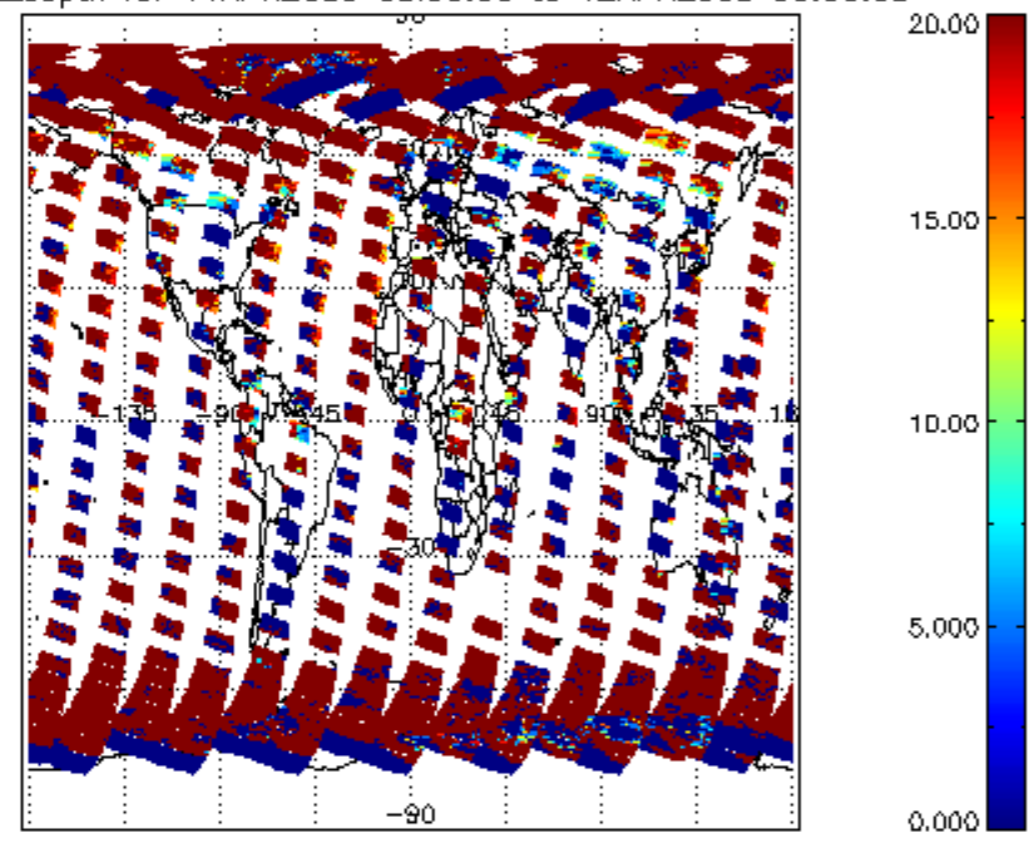
cl\_frac for 11APR2009 00:00:00 to 12APR2009 00:00:00



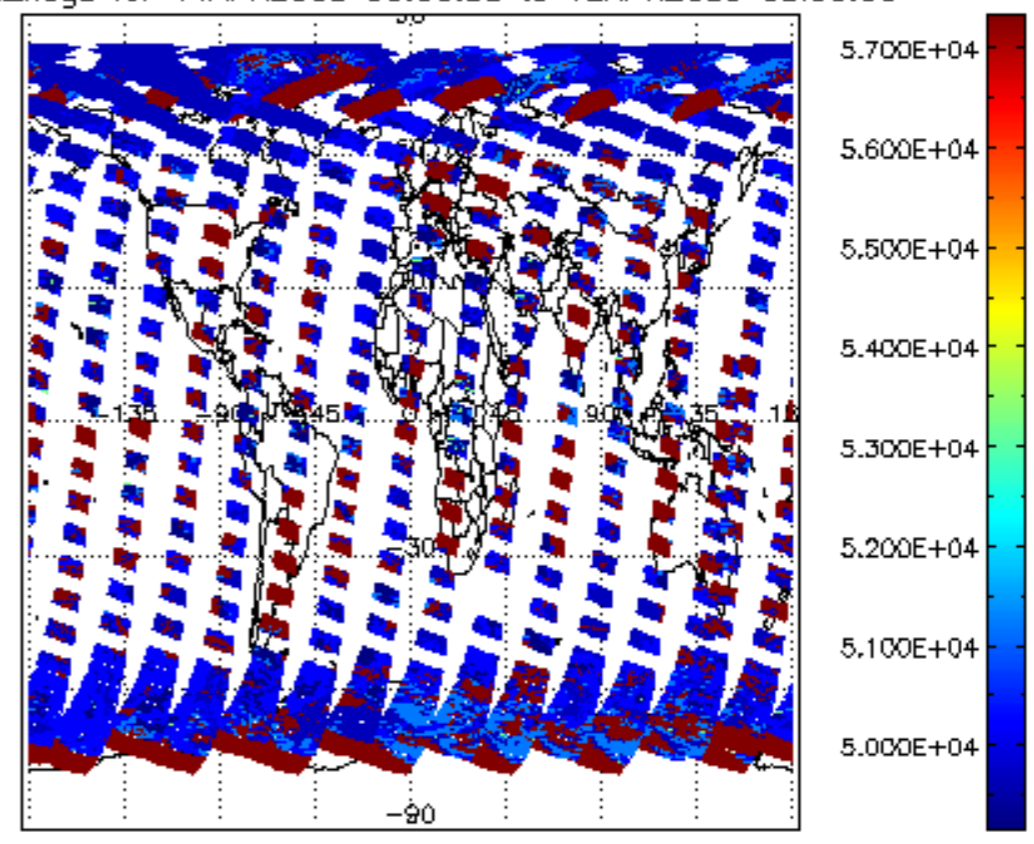
cl\_top\_height for 11APR2009 00:00:00 to 12APR2009 00:00:00

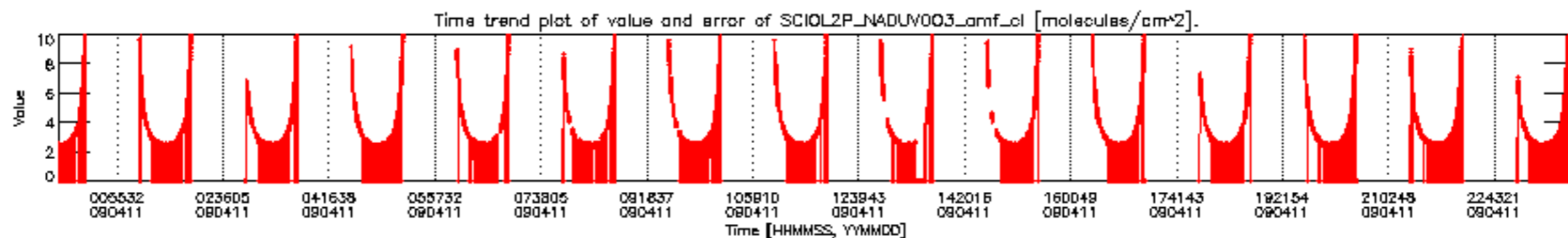
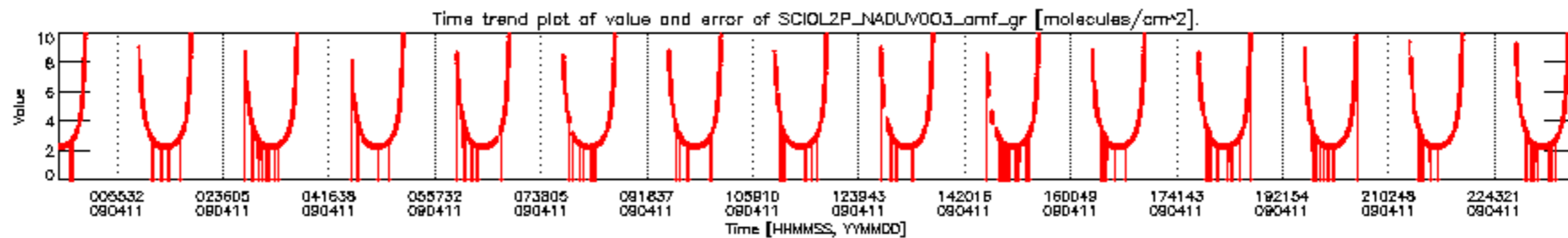
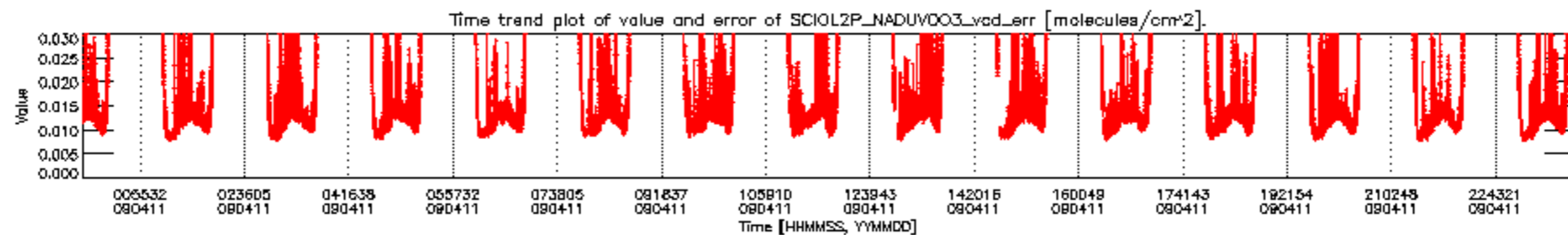
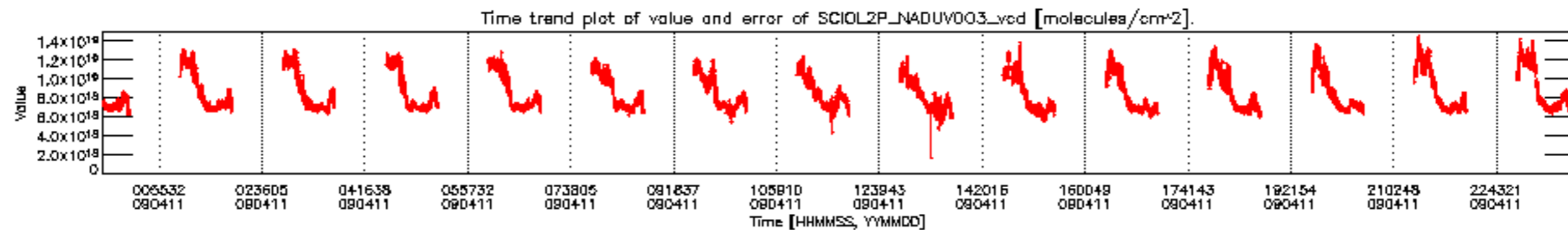


cl\_opt\_depth for 11APR2009 00:00:00 to 12APR2009 00:00:00

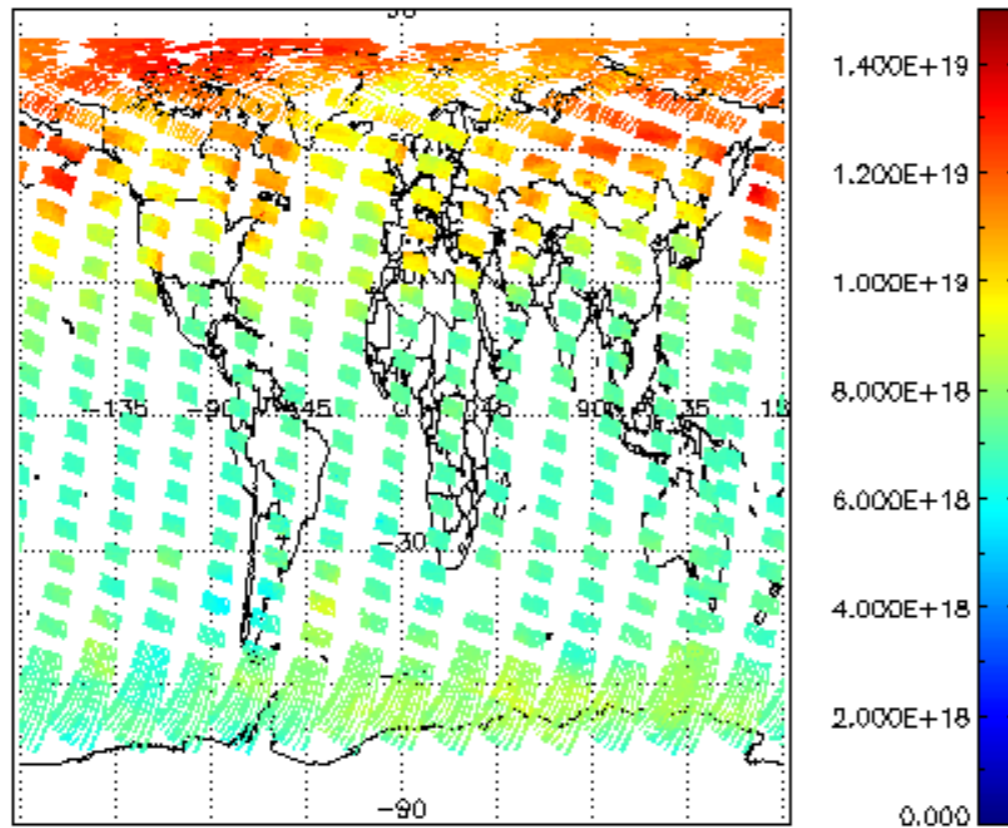


cloud\_flags for 11APR2009 00:00:00 to 12APR2009 00:00:00

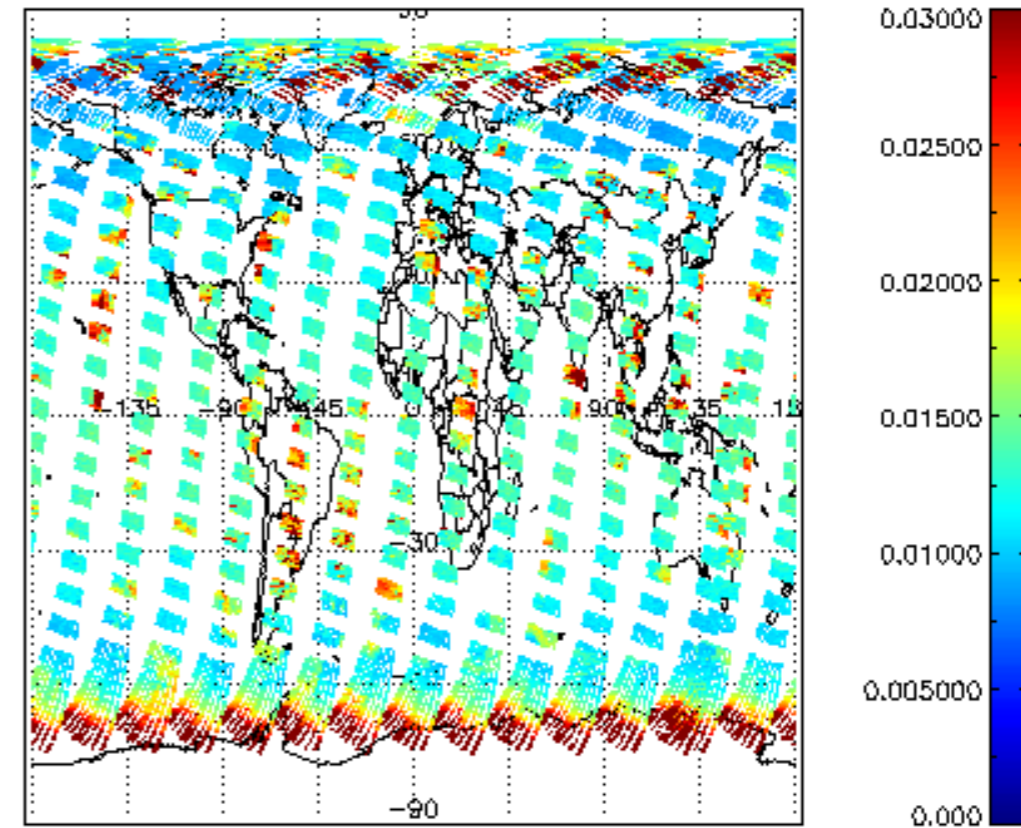




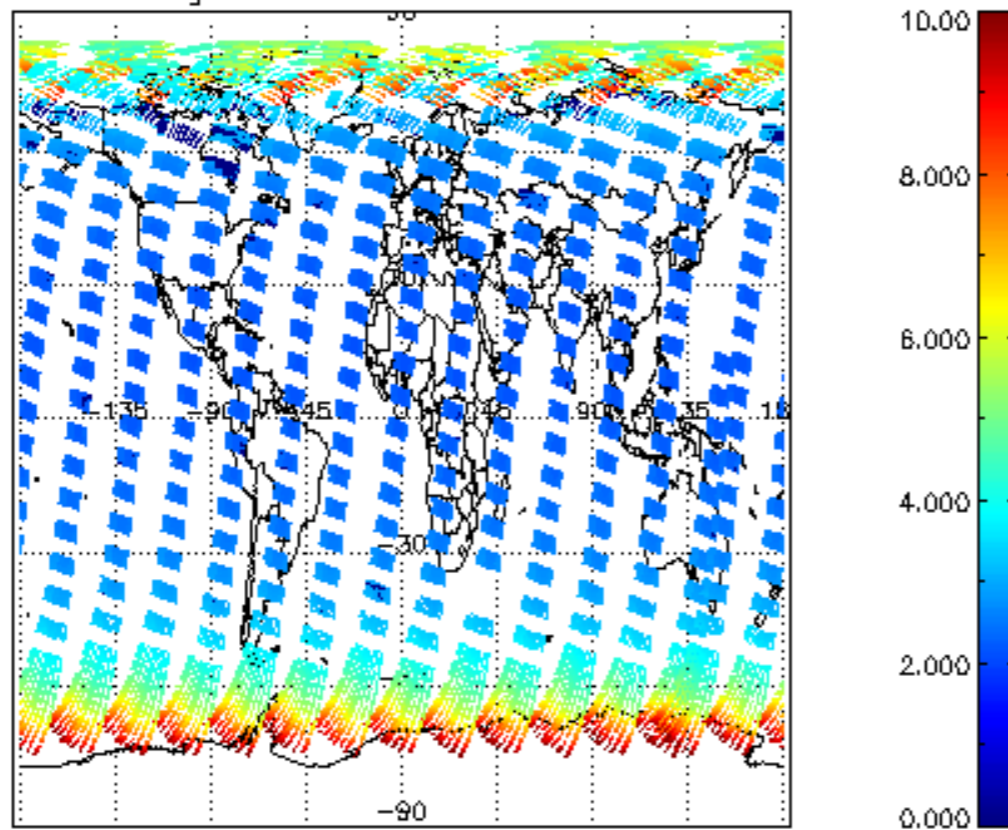
SCIOL2P\_NADUV003\_vcd for 11APR2009 00:00:00 to 12APR2009 00:00:00



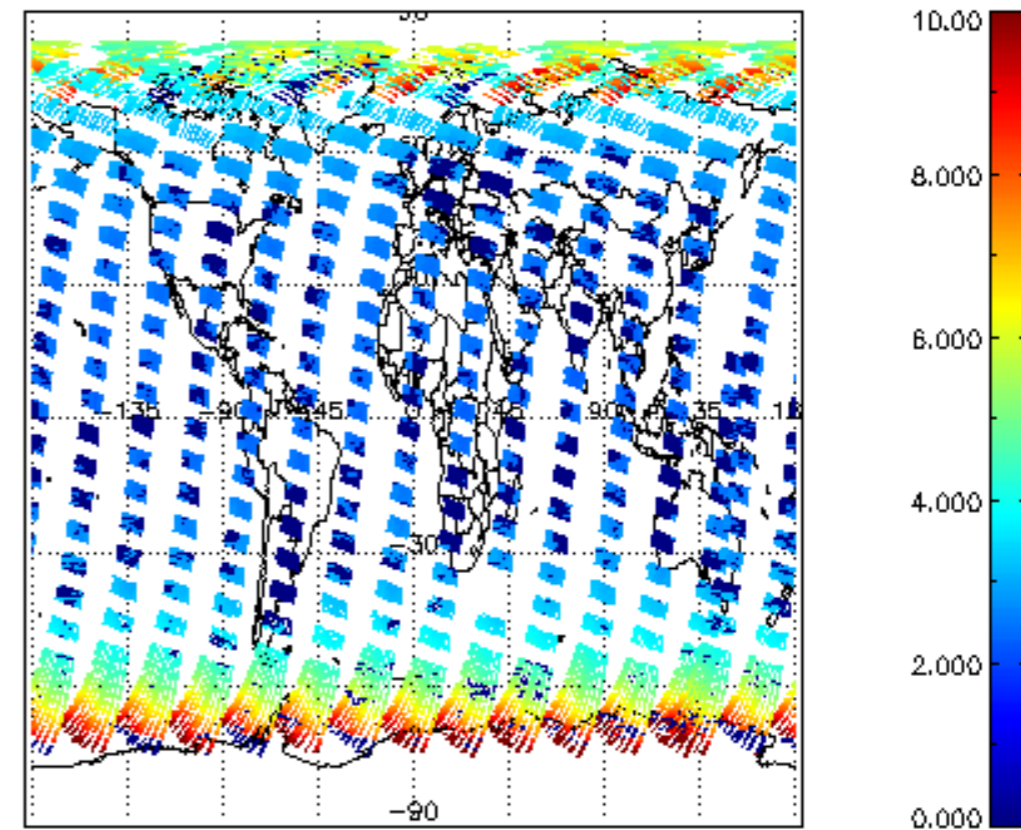
SCIOL2P\_NADUV003\_vcd\_err for 11APR2009 00:00:00 to 12APR2009 00:00:00

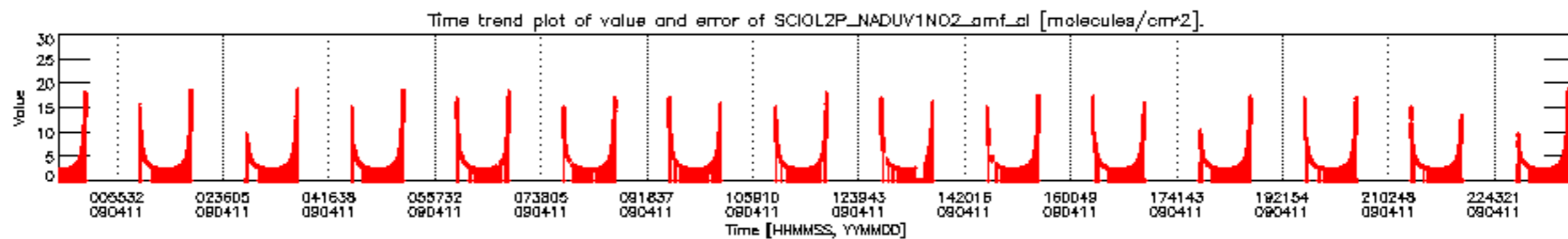
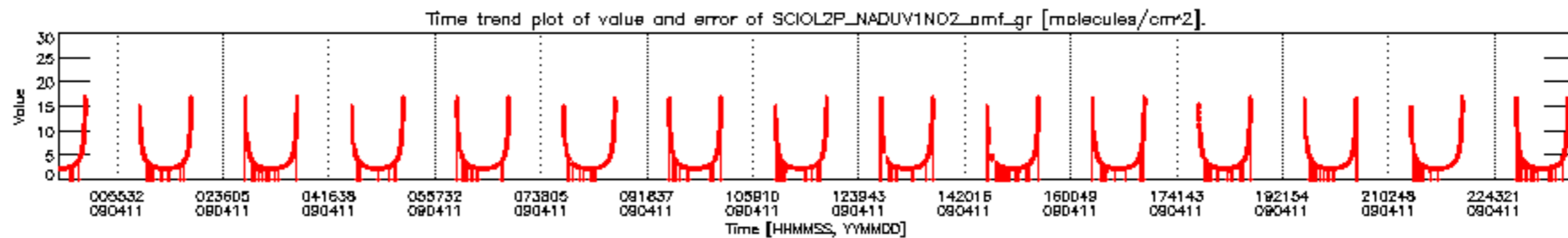
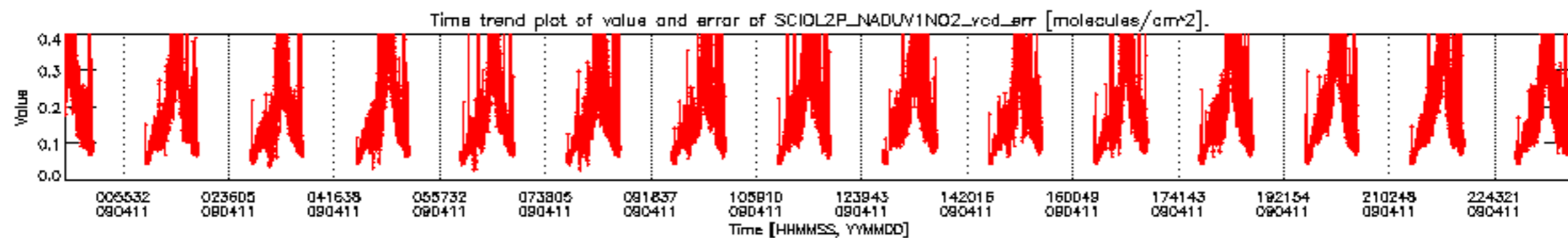
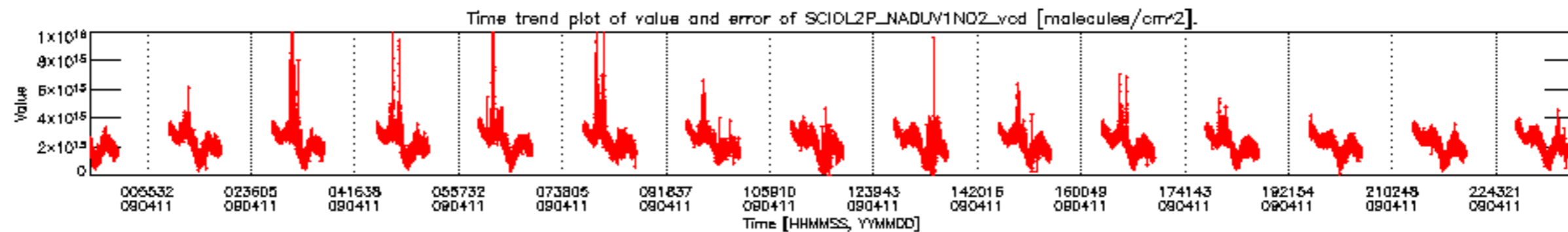


SCIOL2P\_NADUV003\_amf\_gr for 11APR2009 00:00:00 to 12APR2009 00:00:00

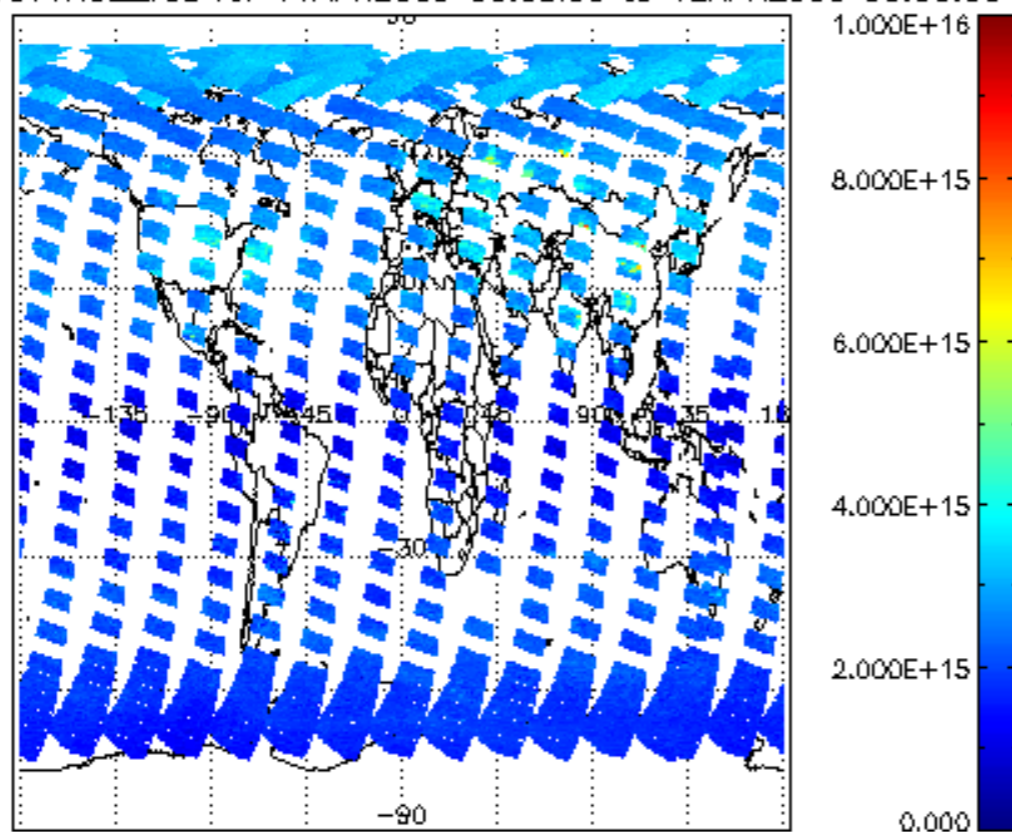


SCIOL2P\_NADUV003\_amf\_cl for 11APR2009 00:00:00 to 12APR2009 00:00:00

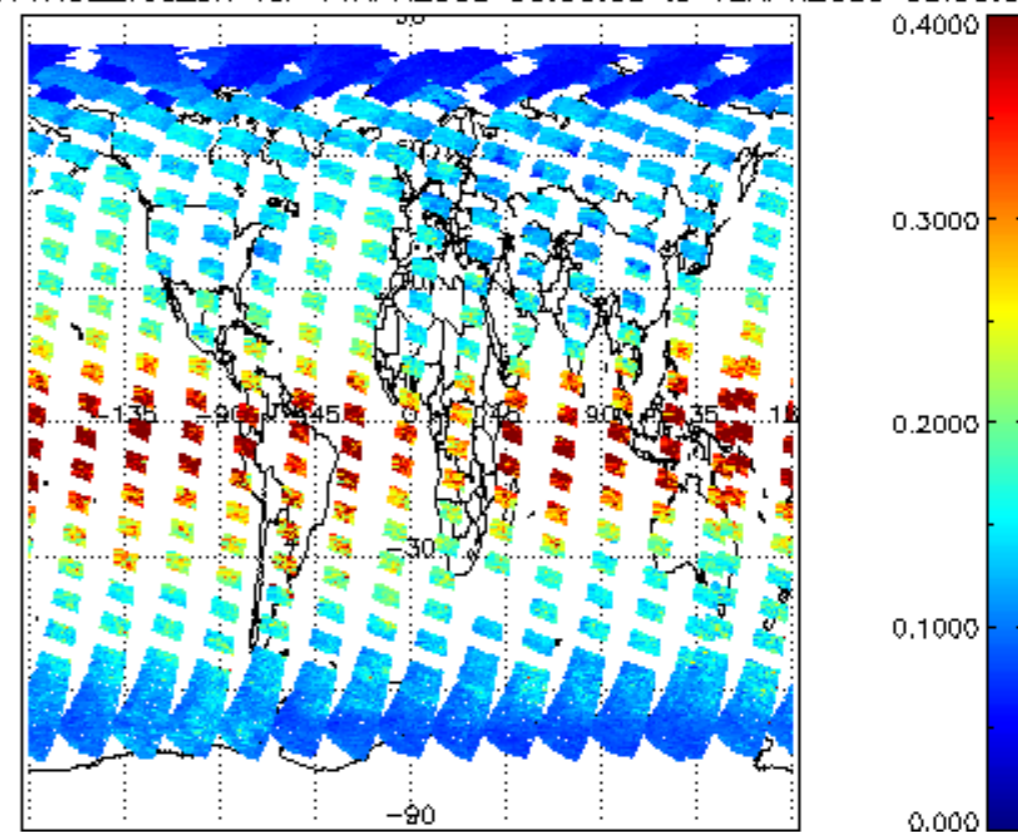




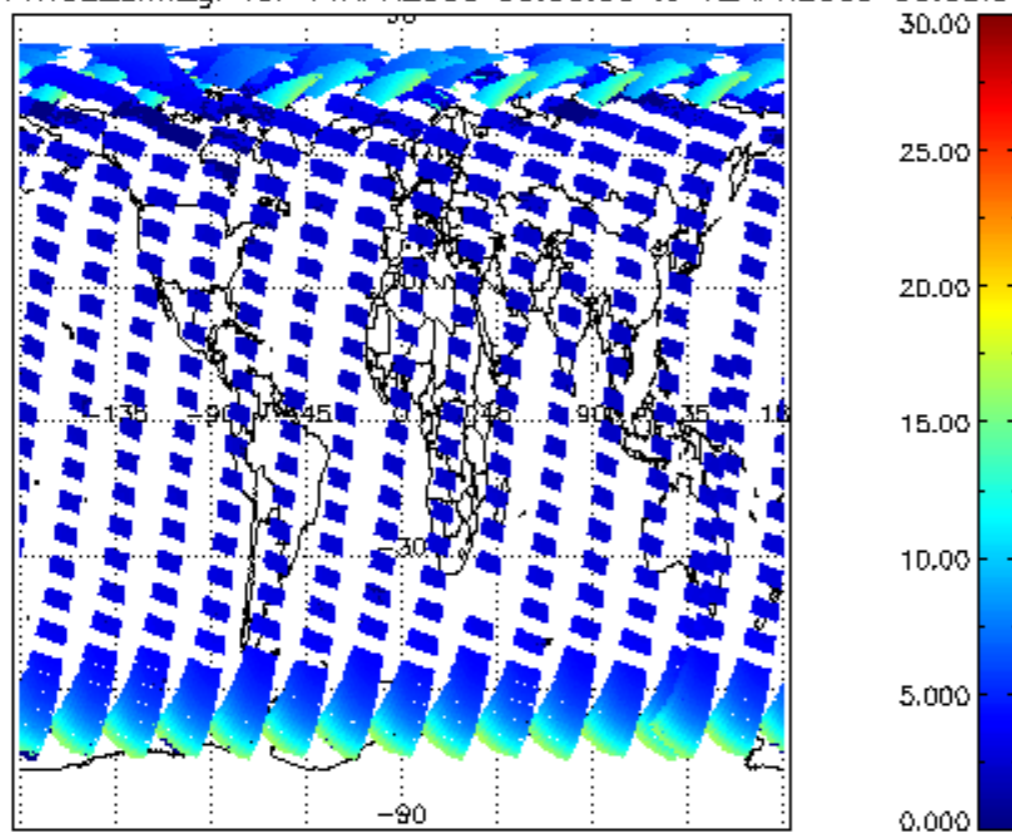
SCIOL2P\_NADUV1NO2\_vcd for 11APR2009 00:00:00 to 12APR2009 00:00:00



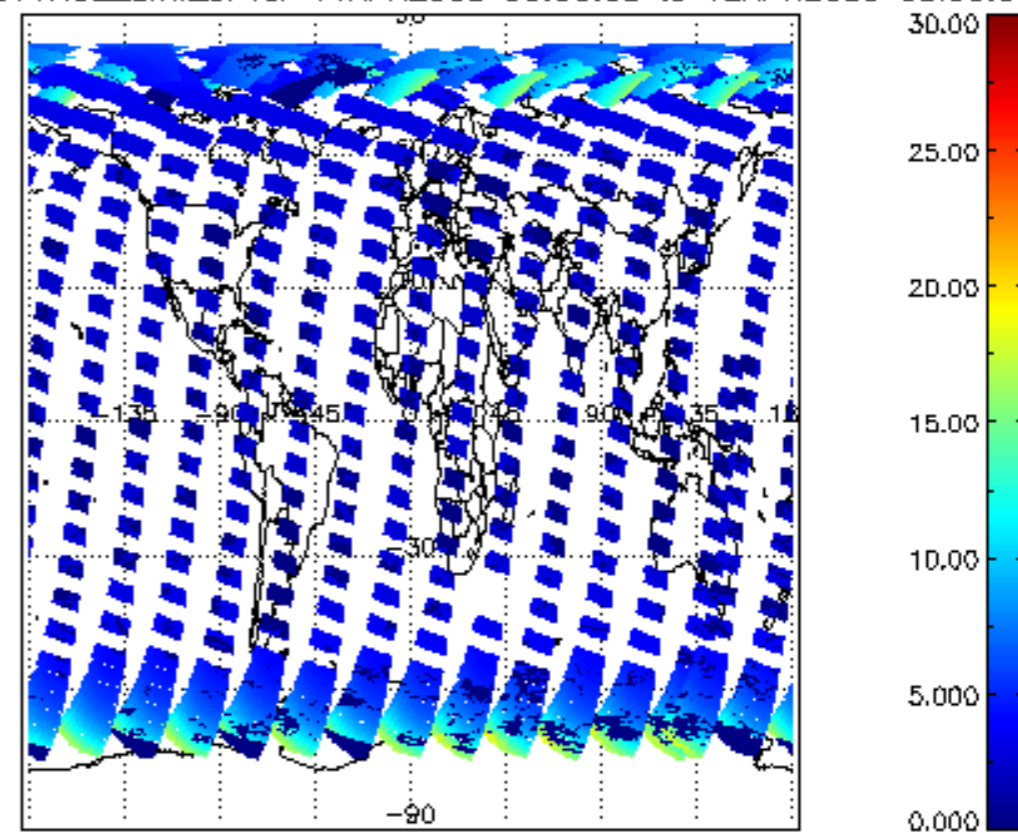
iCIOL2P\_NADUV1NO2\_vcd\_err for 11APR2009 00:00:00 to 12APR2009 00:00:00



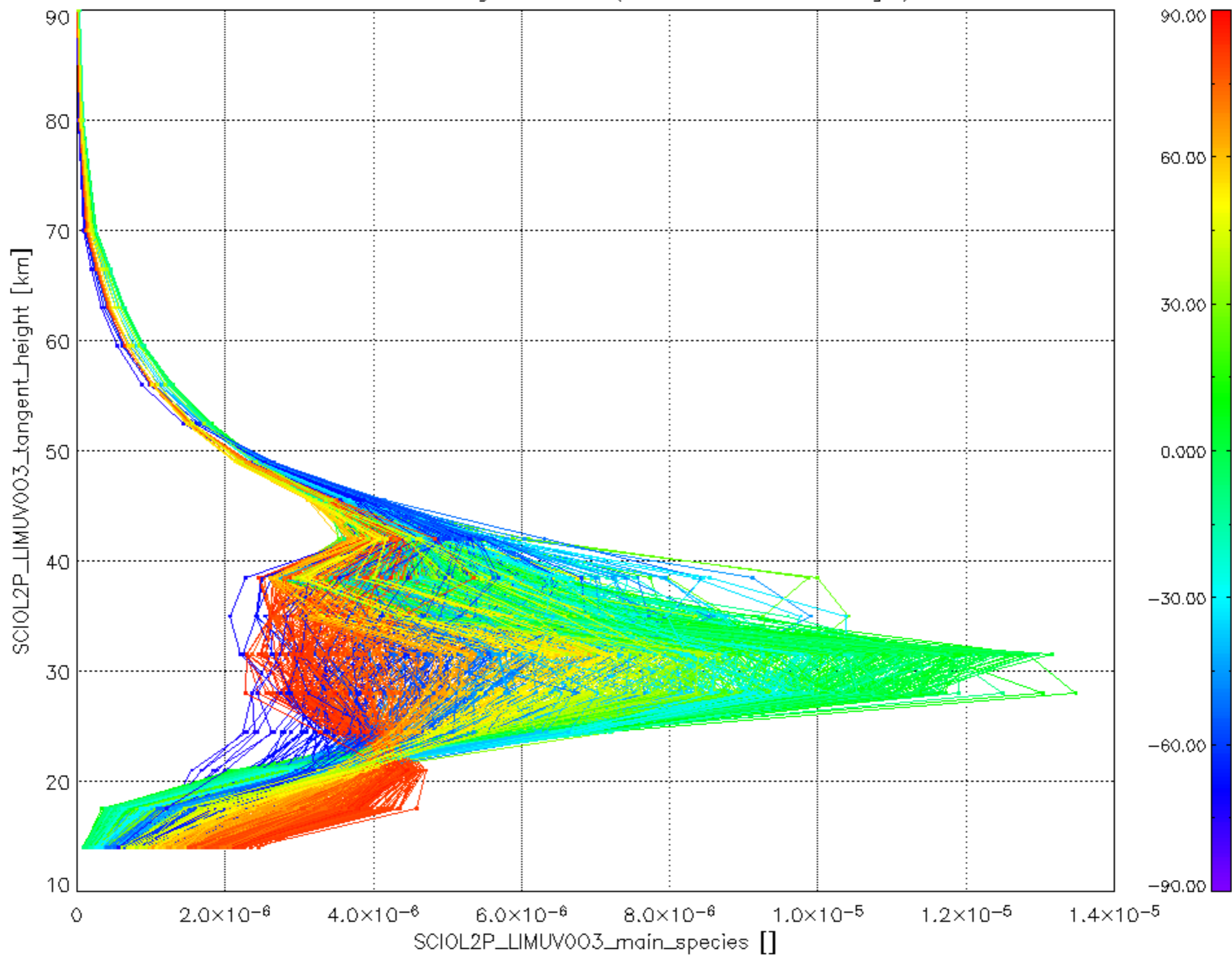
iCIOL2P\_NADUV1NO2\_amf\_gr for 11APR2009 00:00:00 to 12APR2009 00:00:00



iCIOL2P\_NADUV1NO2\_amf\_cl for 11APR2009 00:00:00 to 12APR2009 00:00:00



Plot of SCIOL2P\_LIMUV003\_main\_species.tang\_vmr vs. tangent height.  
 Colours indicate tangent latitude (see colour bar on the right).



Plot of SCIOL2P\_LIMUV1NO2\_main\_species.tang\_vmr vs. tangent height.  
 Colours indicate tangent latitude (see colour bar on the right).

