

2. SCIAMACHY Daily Report for level 2 products

[2.1. General Info](#)

[2.2 Product Quality Indicators](#)

[2.3 ADF monitoring](#)

2.1 General Info

This report contains a daily analysis on parameters extracted from SCIAMACHY level 2 data (The SCI_OL__2P product).

2.1.1 Report summary

The table below shows general characteristics of the data that are included into this report.

Item	Value
Report version	1.6 (28-07-2008)
Time of report generation	20SEP2008 06:02:47
Data source version	SCIA-OL/3.01-R
Processing scope for products	02SEP2008 00:00:00 to 03SEP2008 00:00:00
Start time of first product within scope	01SEP2008 22:35:54
Stop time of last product within scope	03SEP2008 00:41:21
Total number of level 2 products	15
Number of level 2 products with errors	0

2.1.2 Summary per product

The following table shows a summary for each product used in this report.

Products are linked to a corresponding server directory for view/download. Note: Link access may be restricted by security settings of your internet browser or firewall.

#	Product name	Start time	Stop time	Prod err	Fit summary
0	SCI_OL__2PRDPA20080901_223554_000033252071_00402_34023_6354.N1	01SEP2008 22:35:54	01SEP2008 23:31:19	0	GOOD
1	SCI_OL__2PRDPA20080902_001630_000033812071_00403_34024_6357.N1	02SEP2008 00:16:30	02SEP2008 01:12:52	0	GOOD
2	SCI_OL__2PRDPA20080902_015706_000033252071_00403_34024_6358.N1	02SEP2008 01:57:06	02SEP2008 02:52:32	0	GOOD
3	SCI_OL__2PRDPA20080902_033743_000033812071_00405_34026_6360.N1	02SEP2008 03:37:43	02SEP2008 04:34:04	0	GOOD
4	SCI_OL__2PRDPA20080902_051819_000033252071_00406_34027_6363.N1	02SEP2008 05:18:19	02SEP2008 06:13:45	0	GOOD
5	SCI_OL__2PRDPA20080902_065856_000033812071_00407_34028_6450.N1	02SEP2008 06:58:56	02SEP2008 07:55:17	0	GOOD
6	SCI_OL__2PRDPA20080902_083932_000033252071_00408_34029_6451.N1	02SEP2008 08:39:32	02SEP2008 09:34:58	0	GOOD
7	SCI_OL__2PRDPA20080902_102009_000033812071_00409_34030_6452.N1	02SEP2008 10:20:09	02SEP2008 11:16:30	0	GOOD
8	SCI_OL__2PRDPA20080902_120045_000033252071_00410_34031_6453.N1	02SEP2008 12:00:45	02SEP2008 12:56:10	0	GOOD
9	SCI_OL__2PRDPA20080902_134121_000033812071_00411_34032_6454.N1	02SEP2008 13:41:21	02SEP2008 14:37:43	0	GOOD
10	SCI_OL__2PRDPA20080902_152158_000033252071_00412_34033_6437.N1	02SEP2008 15:21:58	02SEP2008 16:17:23	0	GOOD
11	SCI_OL__2PRDPA20080902_170234_000033812071_00413_34034_6433.N1	02SEP2008 17:02:34	02SEP2008 17:58:56	0	GOOD
12	SCI_OL__2PRDPA20080902_184330_000033252071_00414_34035_6434.N1	02SEP2008 18:43:30	02SEP2008 19:38:56	0	GOOD
13	SCI_OL__2PRDPA20080902_220423_000033252071_00416_34037_6463.N1	02SEP2008 22:04:23	02SEP2008 22:59:49	0	GOOD
14	SCI_OL__2PRDPA20080902_234500_000033812071_00417_34038_6465.N1	02SEP2008 23:45:00	03SEP2008 00:41:21	0	GOOD

2.2 Product Quality Indicators

2.2.1 Cloud parameters

This is a new section that shows information about the cloud parameters estimation, in particular cloud fractions and cloud top height. IMPORTANT NOTE: The contents and layout of this section are still being validated. Please use with caution.

General statistics:

Total number of cloud data DSRs: 138911

Total number of cloud data DSRs with good quality flag (=0): 138911 (100.0 %)

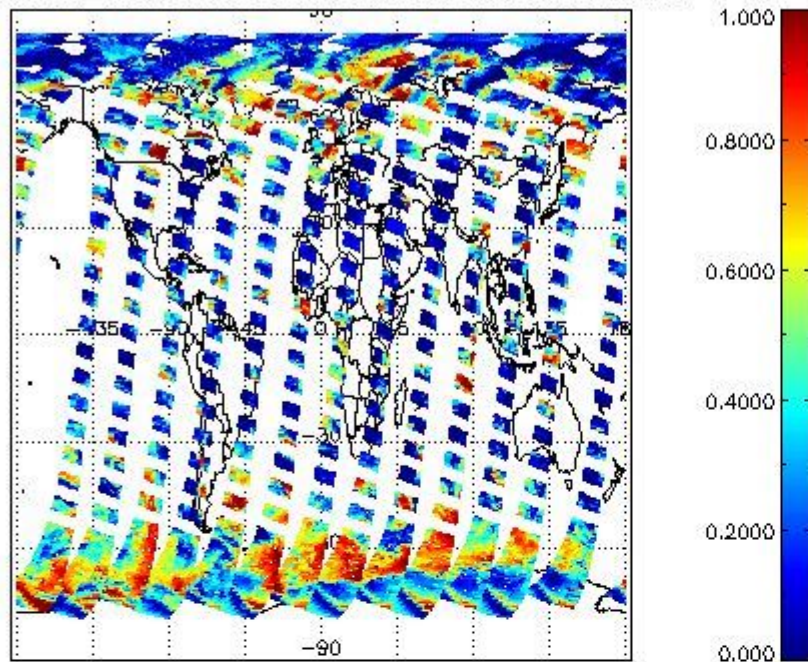
Parameter	#valid	Mean	Median	Min	Max	Stddev	Unit
QUALITY_FLAG	138911	0.0000	0.0000	0.0000	0.0000	0.0000	flag
INTEGR_TIME	138911	0.16922	0.12500	0.12500	0.25000	0.059767	s
CL_FRAC	138911	0.34850	0.29407	0.0000	1.0000	0.29754	-
CL_FRAC_ERR	138911	0.0000	0.0000	0.0000	0.0000	0.0000	rel. fraction
PMD_READ	138911	5.4150	4.0000	4.0000	8.0000	1.9125	
PMD_READ_CL[0]	138911	0.15519	0.0000	0.0000	8.0000	0.85547	-
PMD_READ_CL[1]	138911	1.4089	0.0000	0.0000	8.0000	2.4622	-
CL_TOP_HEIGHT	117652	3.6675	1.8339	0.0000	17.000	4.0319	km
CL_TOP_HEIGHT_ERR	0	---	---	---	---	---	---
CL_OPT_DEPTH	117652	61.143	97.187	0.0000	101.00	43.165	km
CL_OPT_DEPTH_ERR	0	---	---	---	---	---	---
CL_TYPE_FLAGS	138911	11100000	11100000	11100000	11100000	0.0000	flags. Bit definition = 0: low or high cloud; 1: ice or water cloud; 2: thick or thin cloud; 3-15: not used
CLOUD_FLAGS	138911	11001100	11000100	11000000	11100000	3483.6	flags
AERO_ABSO_IND	138911	3.1785	3.7748	-1.8725	16.862	2.1650	
AERO_IND_DIAG	138911	0.0000	0.0000	0.0000	0.0000	0.0000	
AERO_FLAGS	138911	01010110	00000000	00000000	11000000	24447.	flags

Time and geolocation plots:

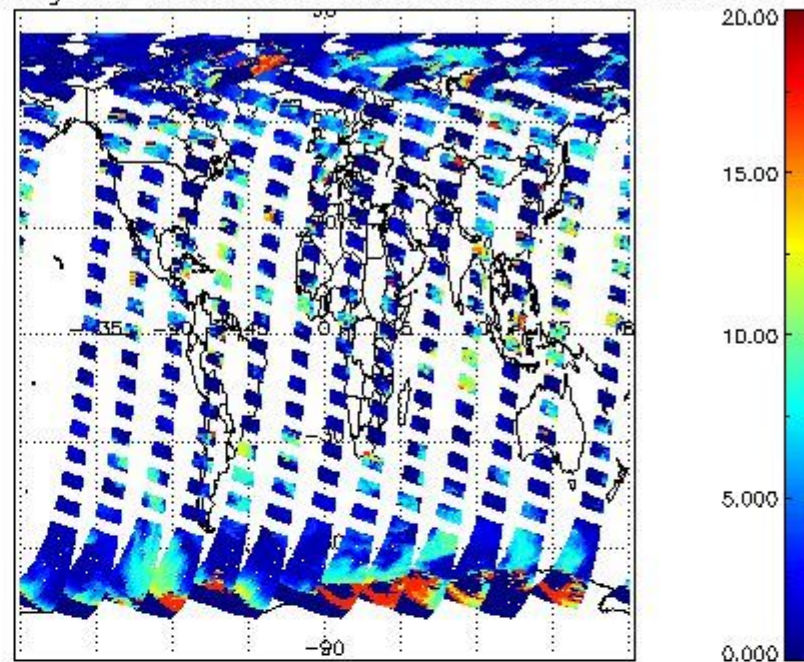
Plots are available for the following parameters:

Number	Data item ID
0	cl_frac
1	cl_top_height
2	cl_opt_depth
3	cloud_flags

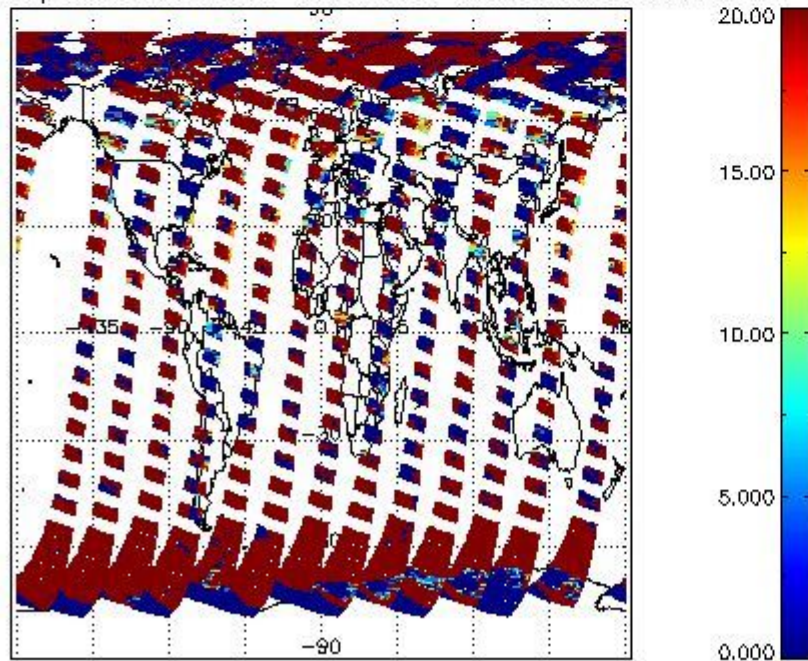
cLfrac for 02SEP2008 00:00:00 to 03SEP2008 00:00:00



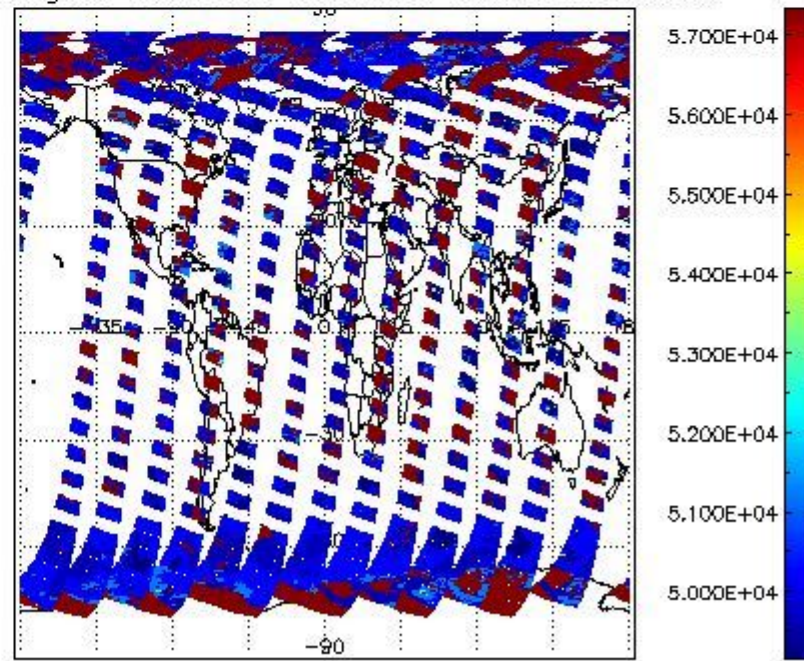
cL_top_height for 02SEP2008 00:00:00 to 03SEP2008 00:00:00



cLopt_depth for 02SEP2008 00:00:00 to 03SEP2008 00:00:00



cloud_flags for 02SEP2008 00:00:00 to 03SEP2008 00:00:00



2.2.2 Nadir

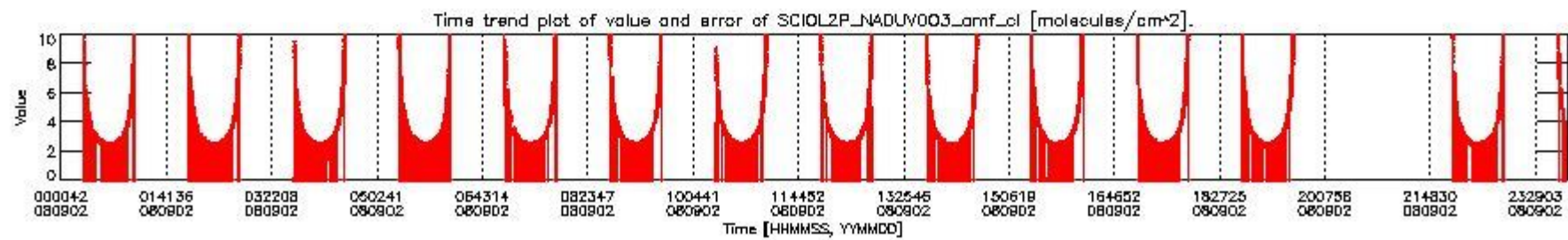
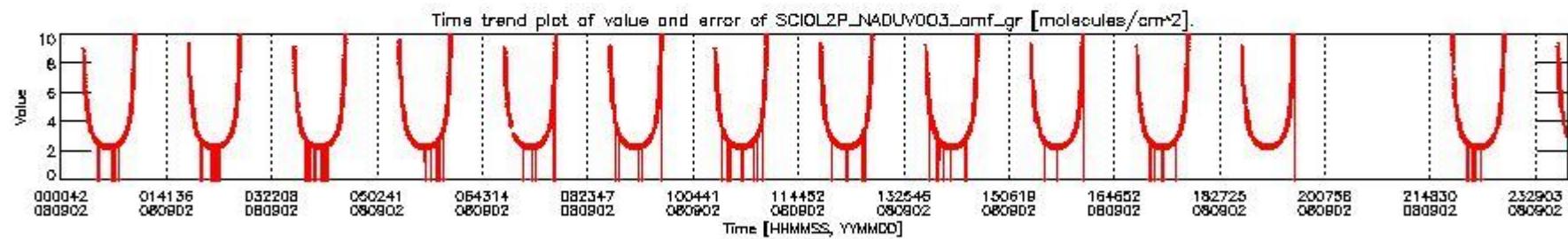
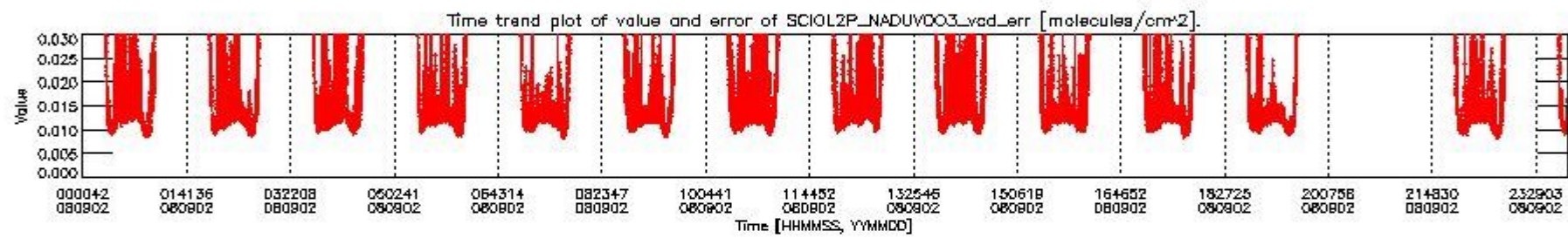
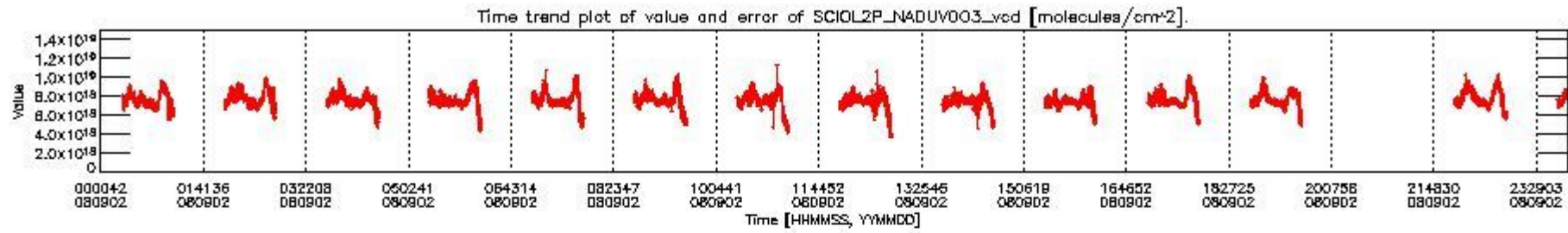
This section shows information about product quality of nadir measurements, in particular the quality of retrieved species.

The following data items are currently included into this section:

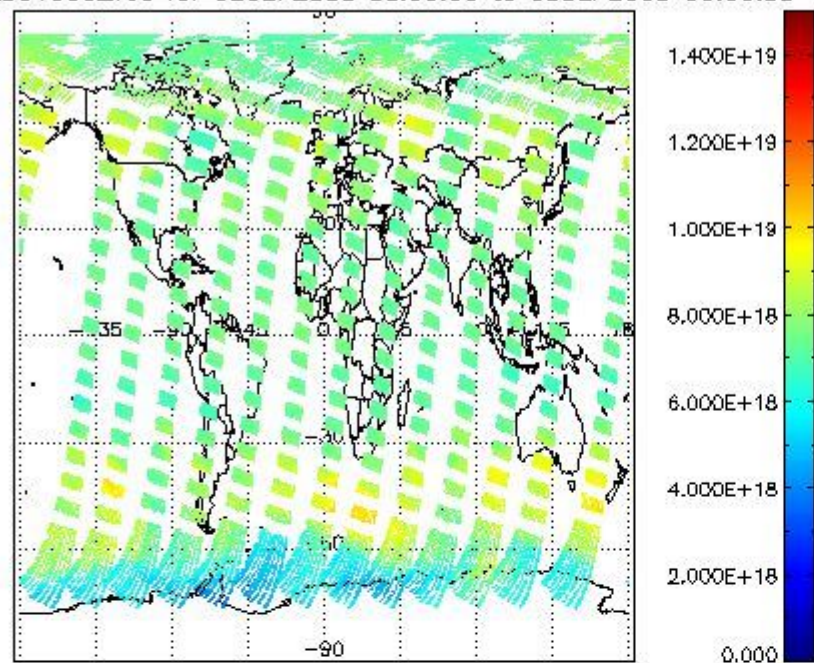
Number	Data item ID
0	SCIOL2P_NADUV003_vcd
1	SCIOL2P_NADUV003_vcd_err
2	SCIOL2P_NADUV003_amf_gr

3	SCIOL2P_NADUV003_amf_cl
4	SCIOL2P_NADUV1NO2_vcd
5	SCIOL2P_NADUV1NO2_vcd_err
6	SCIOL2P_NADUV1NO2_amf_gr
7	SCIOL2P_NADUV1NO2_amf_cl

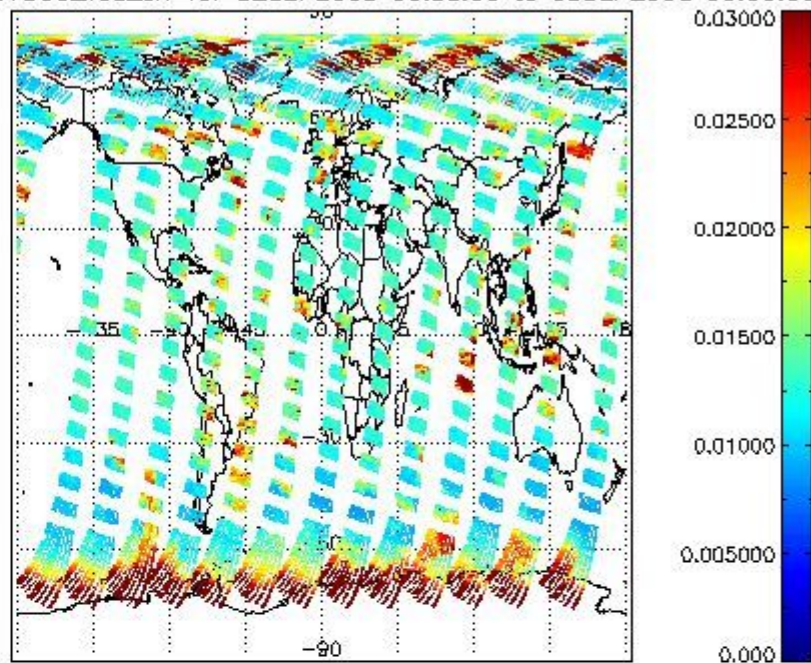
Data is presented both in time trend plots and world map plots, in order to show variations with time and geolocation. The vertical dotted lines in the time trend plots indicate orbits. The orbit times on the X-axis are estimated sensing_start time as suggested by the product sensing_start time in the MPH.



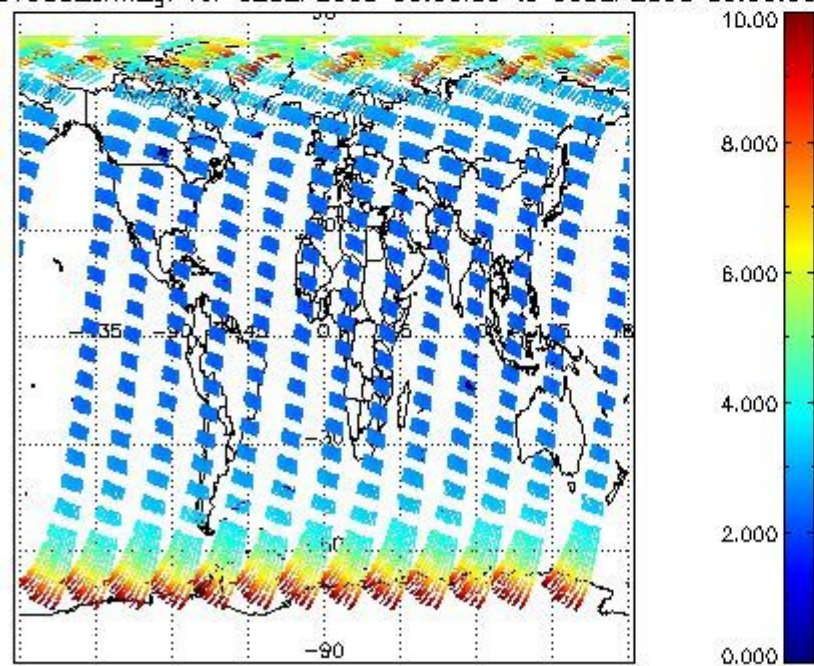
SCIOL2P_NADUV003_vcd for 02SEP2008 00:00:00 to 03SEP2008 00:00:00



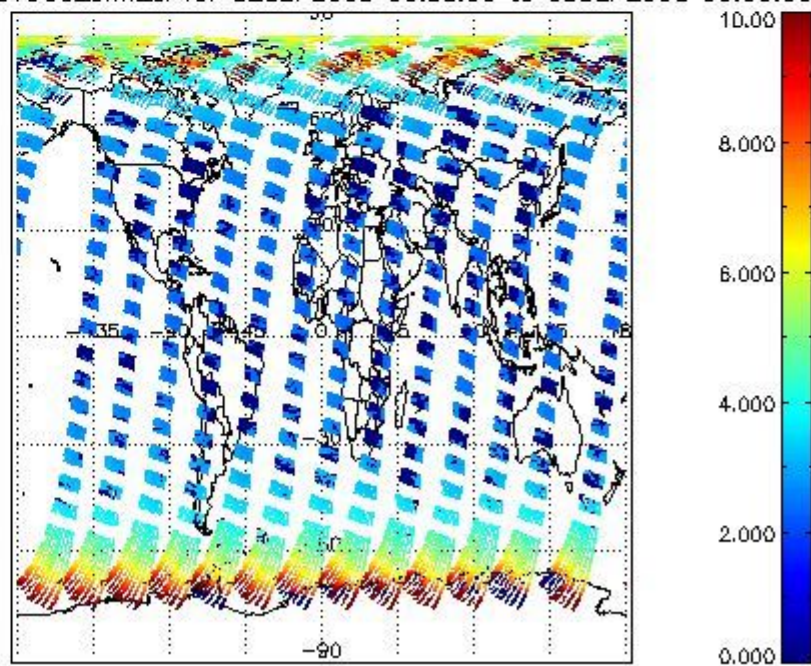
SCIOL2P_NADUV003_vcd_err for 02SEP2008 00:00:00 to 03SEP2008 00:00:00

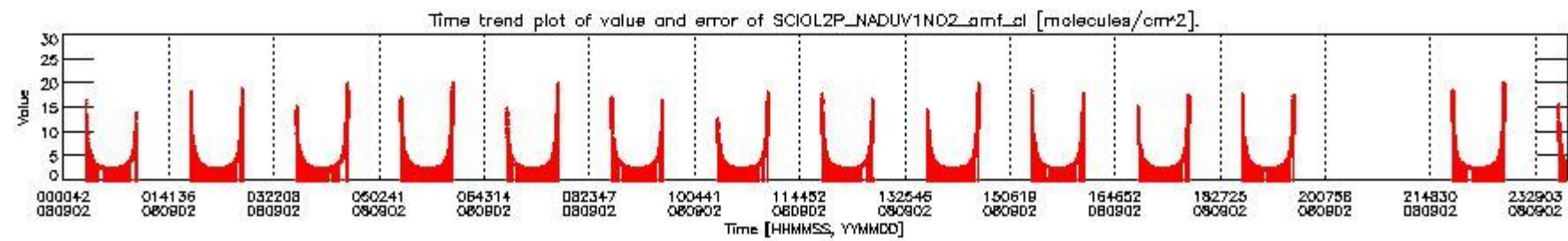
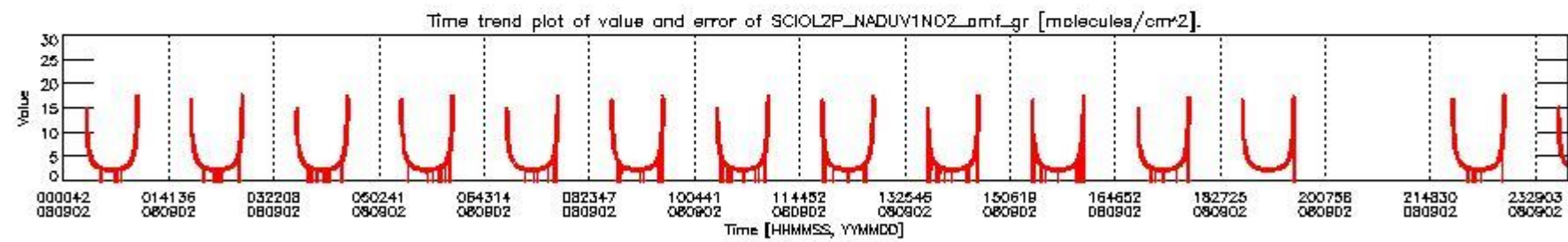
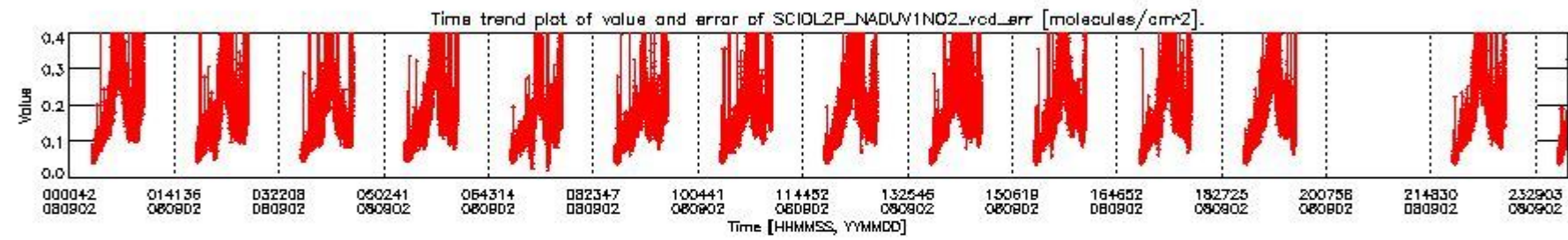
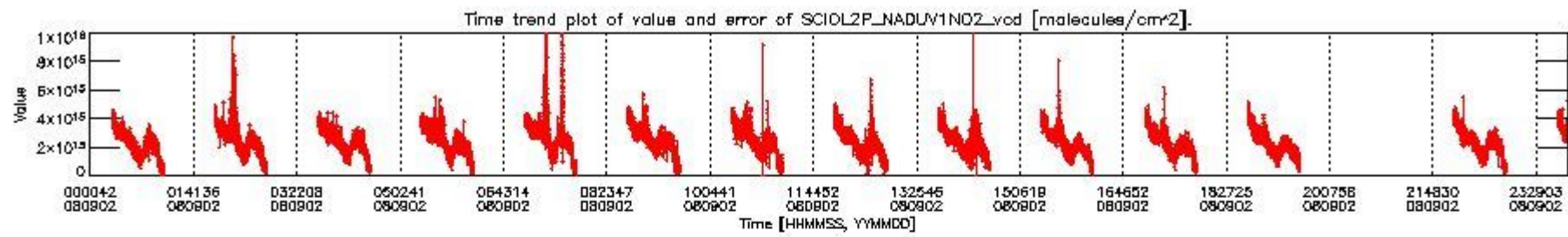


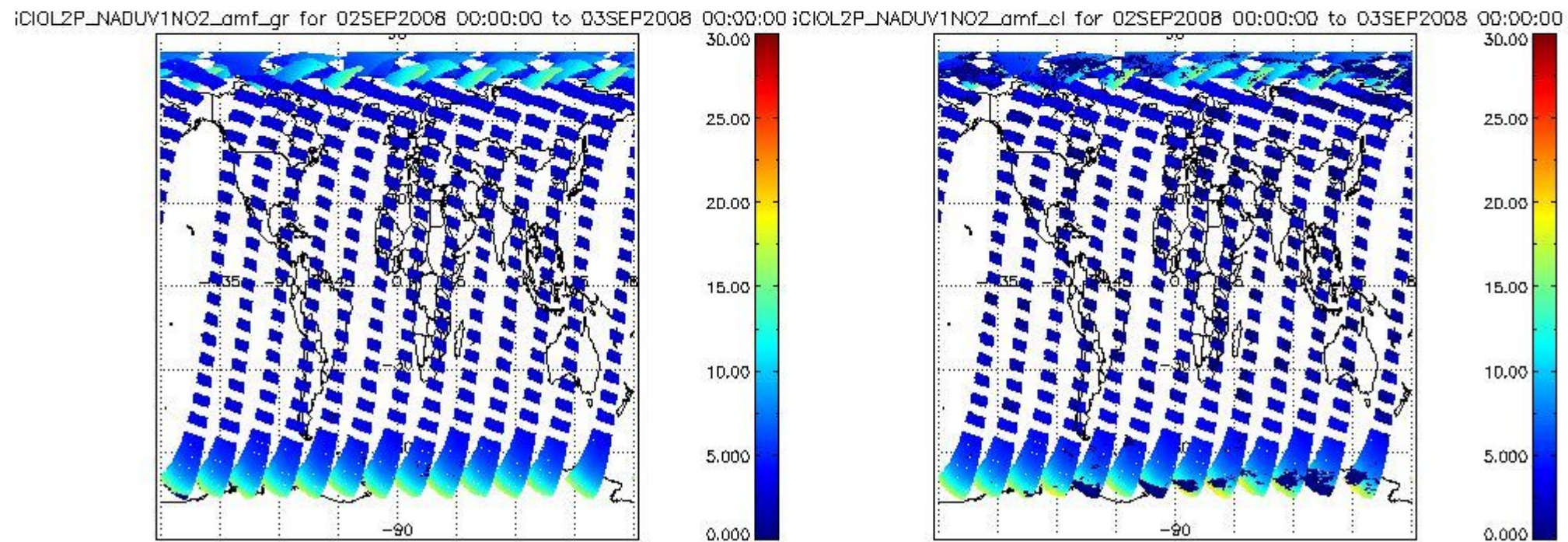
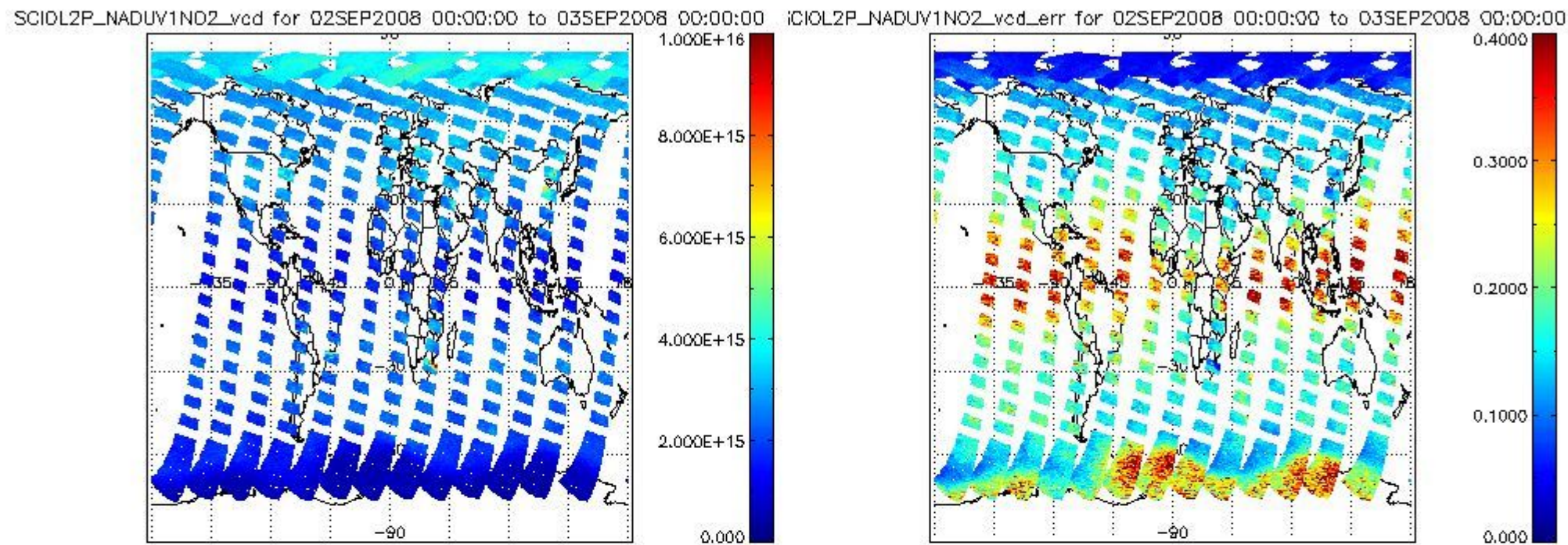
SCIOL2P_NADUV003_amf_gr for 02SEP2008 00:00:00 to 03SEP2008 00:00:00



SCIOL2P_NADUV003_amf_sl for 02SEP2008 00:00:00 to 03SEP2008 00:00:00







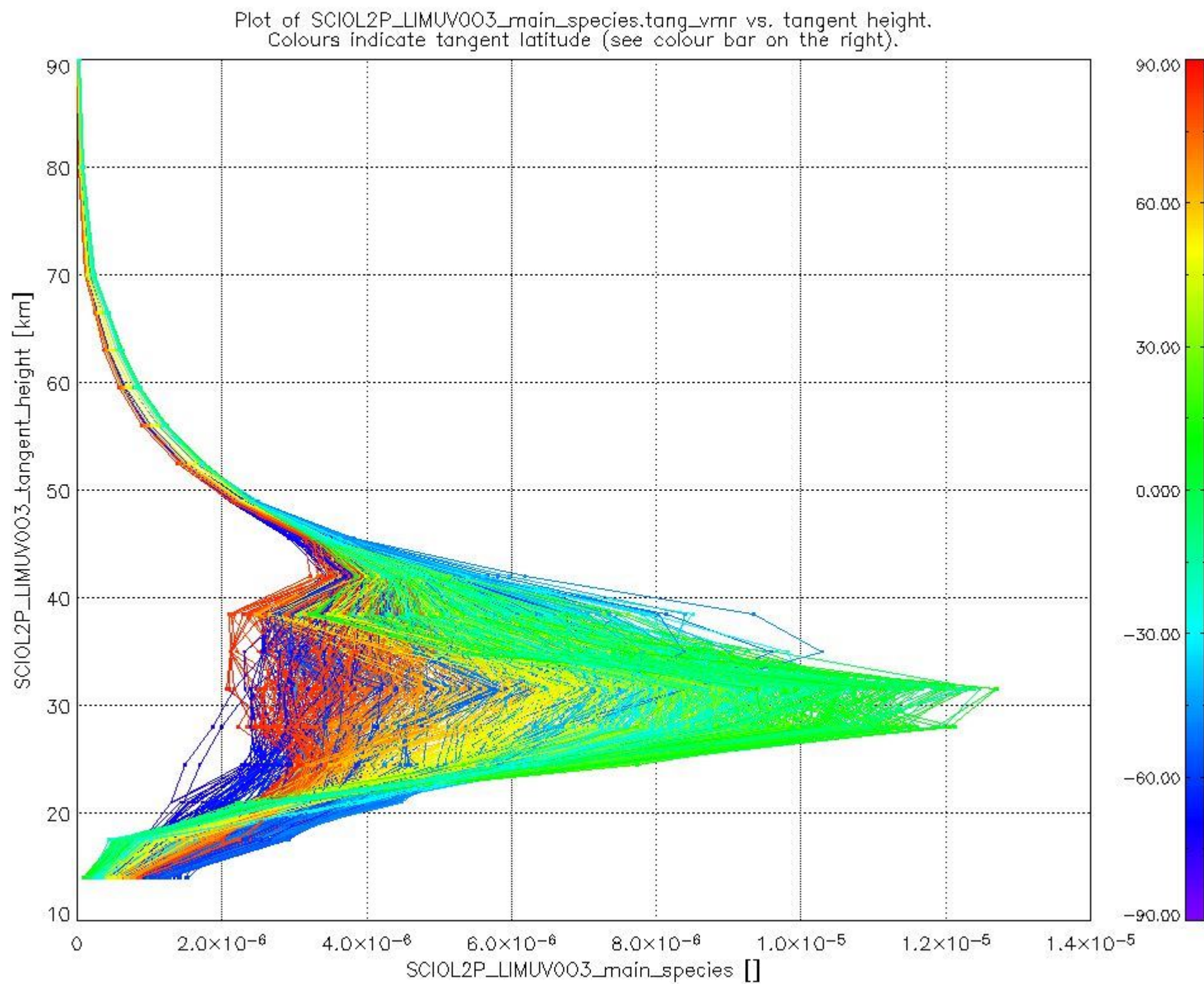
2.2.3 Limb

This section shows information about product quality of the limb retrievals, in particular the quality of retrieved species.

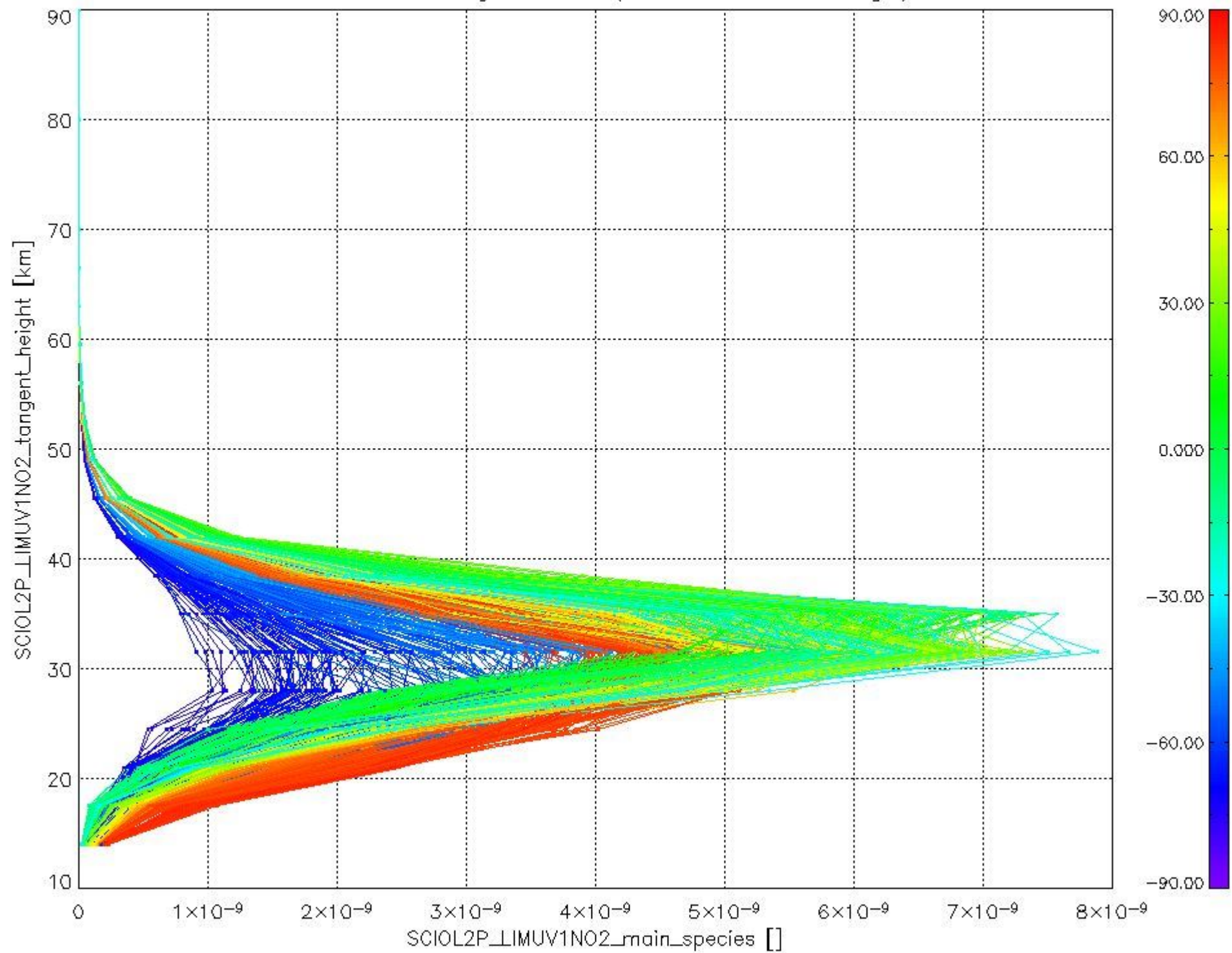
The following data items are currently included into this section:

Number	Data item ID
0	SCIOL2PLIMUV003_main_species
1	SCIOL2PLIMUV1NO2_main_species

The following plots shows for each species the tangent volume mixing ratio vs. tangent height. Colours indicate tangent latitude.



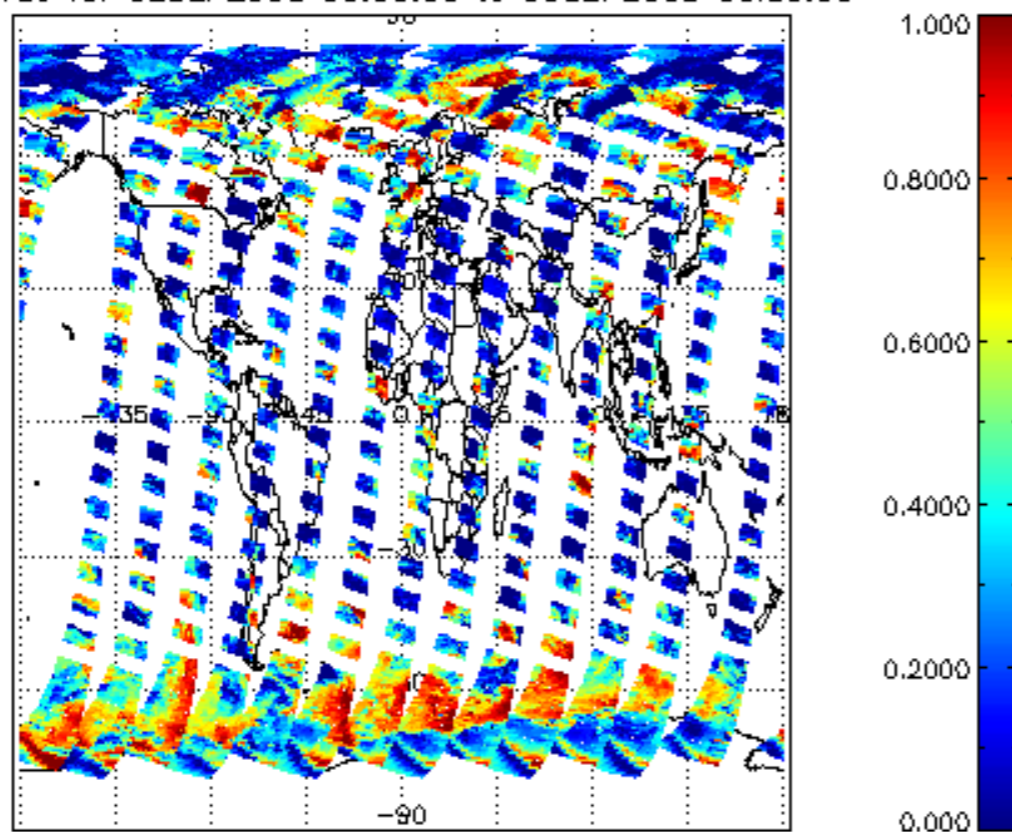
Plot of SCIOL2P_LIMUV1NO2_main_species.tang_vmr vs. tangent height.
Colours indicate tangent latitude (see colour bar on the right).



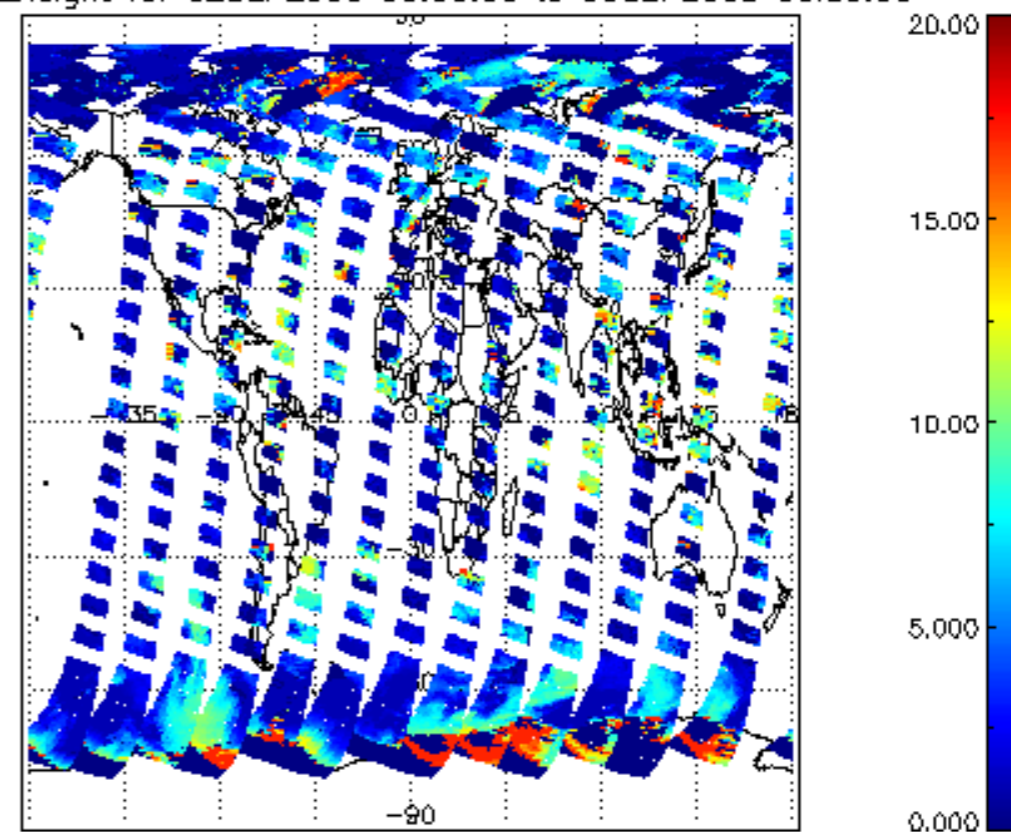
2.3 ADF monitoring

Number	ADF
	IN_ (INITIALISATION_FILE)
0	SCI_IN__AXNPDE20070629_092400_20070720_000000_20991231_235959
	ECF (ECMWF_FILE)
1	NOT USED

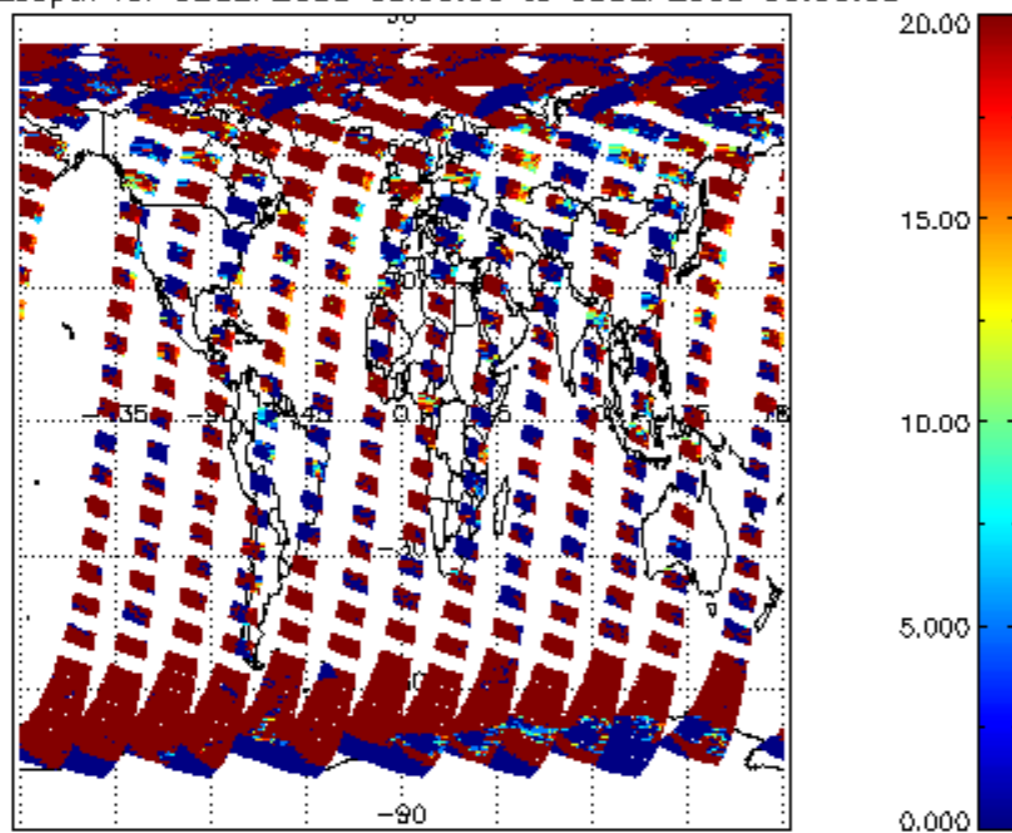
cl_frac for 02SEP2008 00:00:00 to 03SEP2008 00:00:00



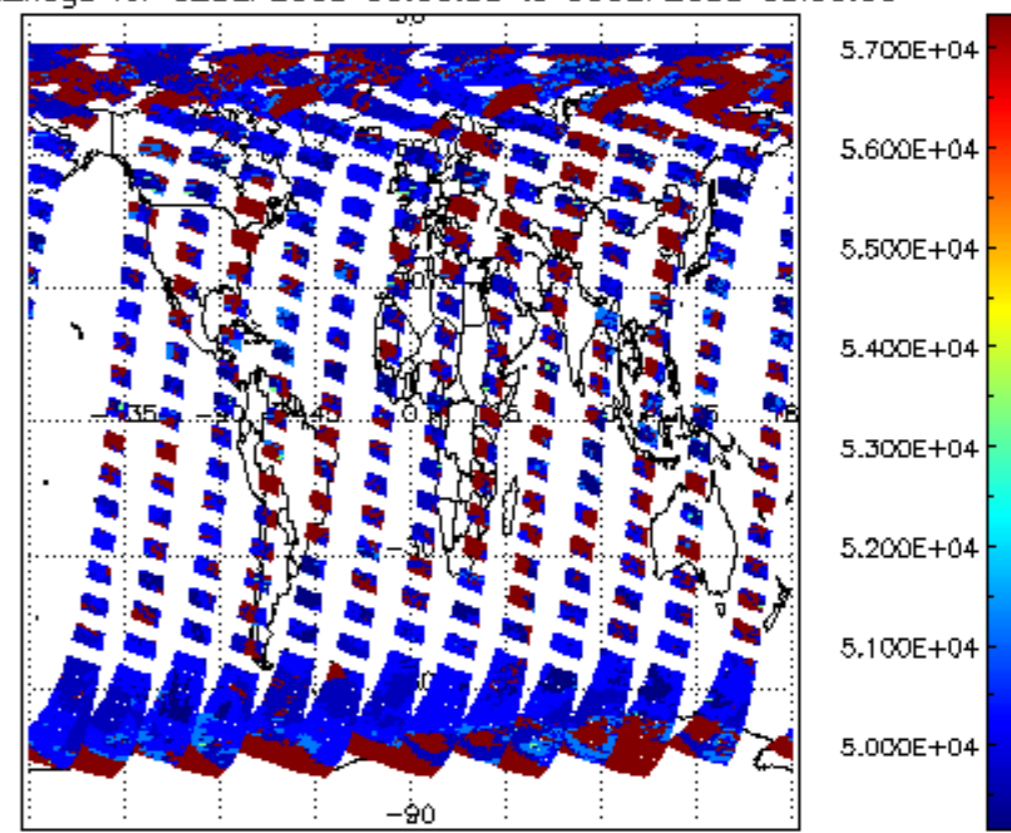
cl_top_height for 02SEP2008 00:00:00 to 03SEP2008 00:00:00

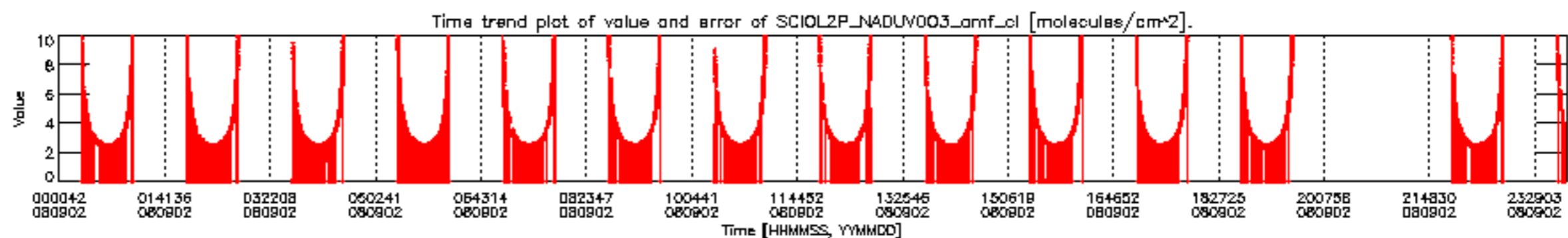
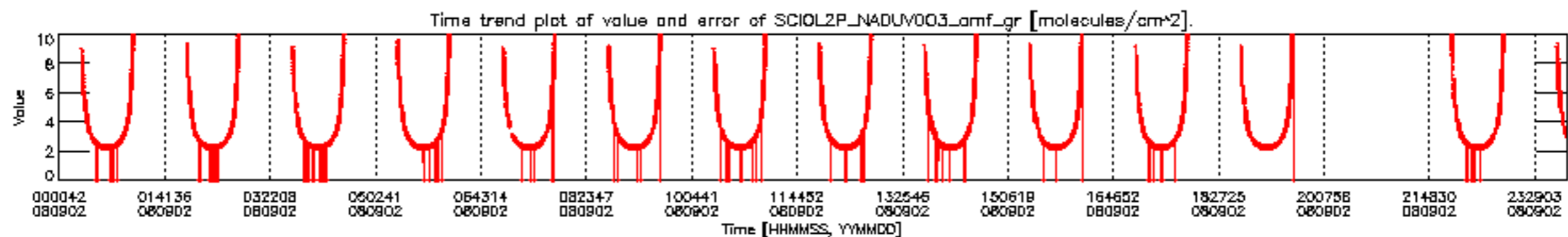
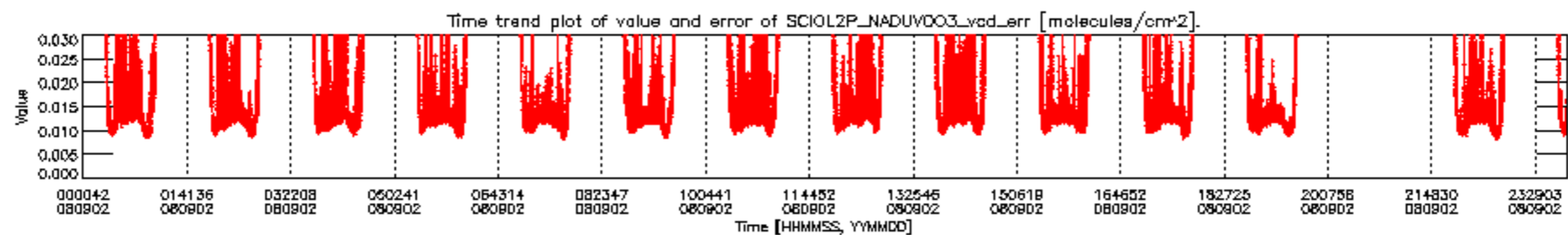
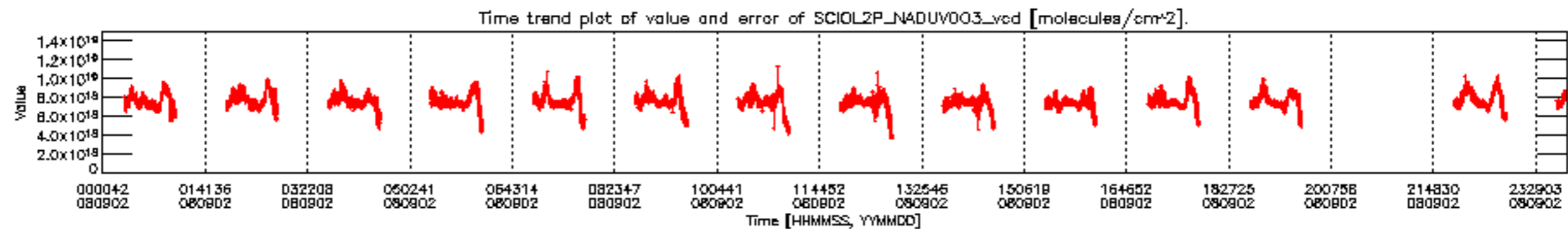


cl_opt_depth for 02SEP2008 00:00:00 to 03SEP2008 00:00:00

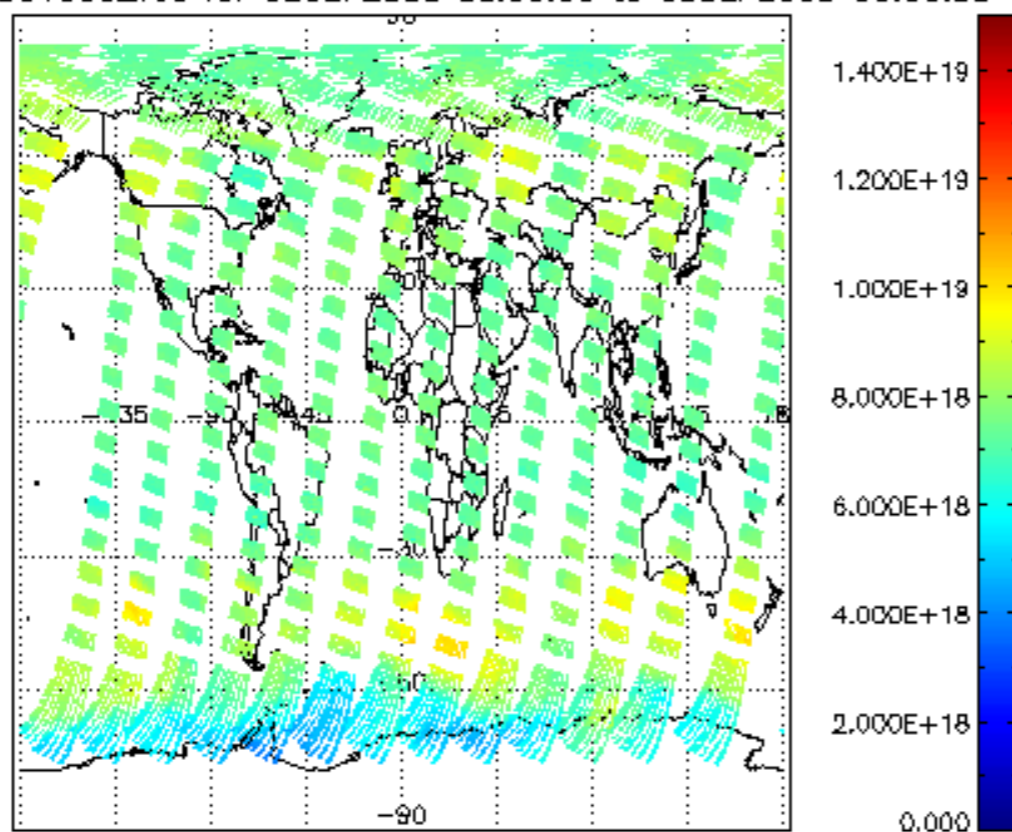


cloud_flags for 02SEP2008 00:00:00 to 03SEP2008 00:00:00

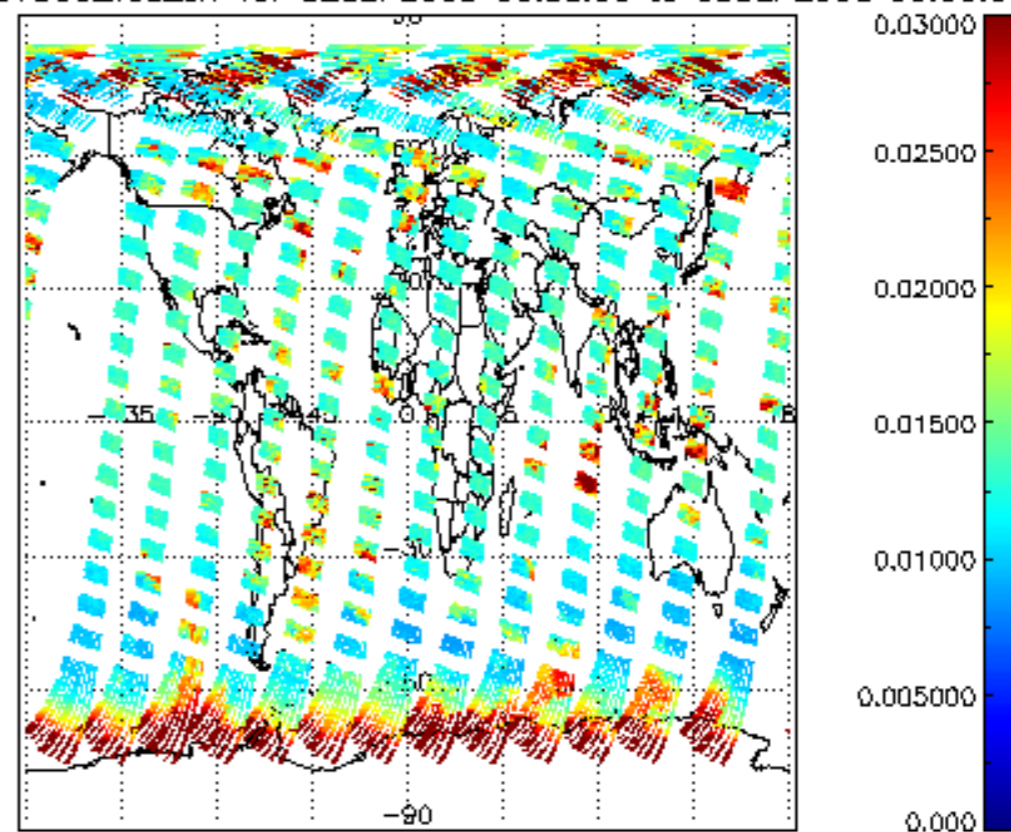




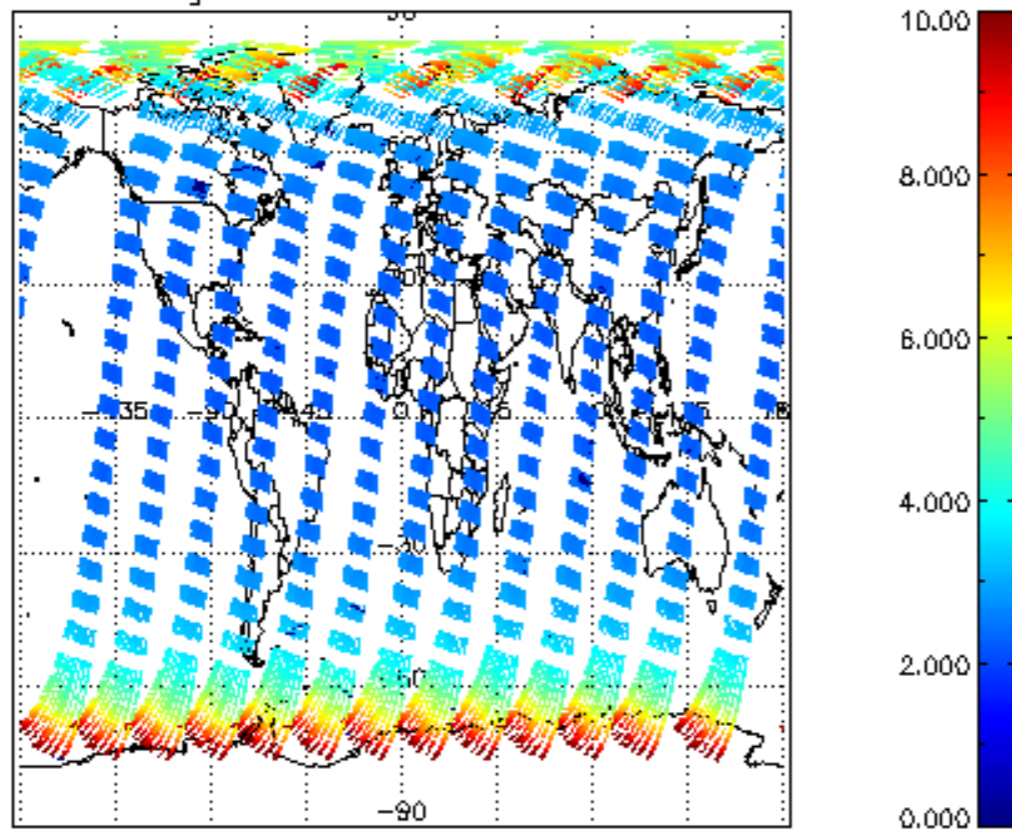
SCIOL2P_NADUV003_vcd for 02SEP2008 00:00:00 to 03SEP2008 00:00:00



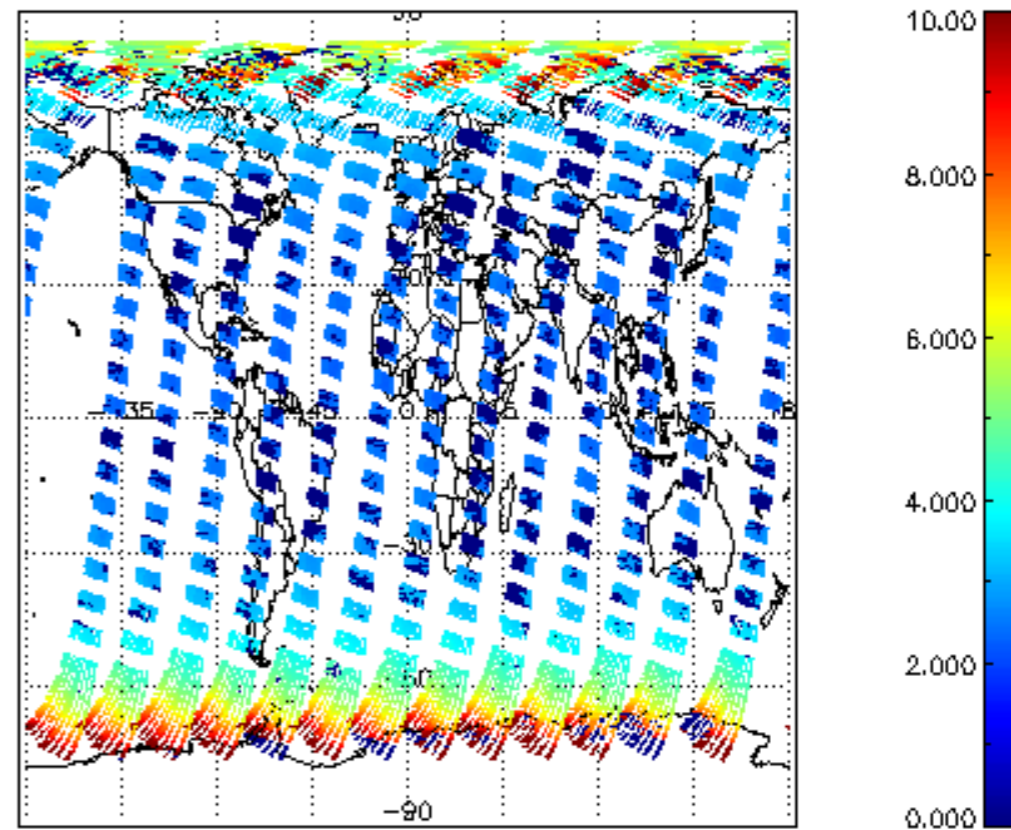
SCIOL2P_NADUV003_vcd_err for 02SEP2008 00:00:00 to 03SEP2008 00:00:00

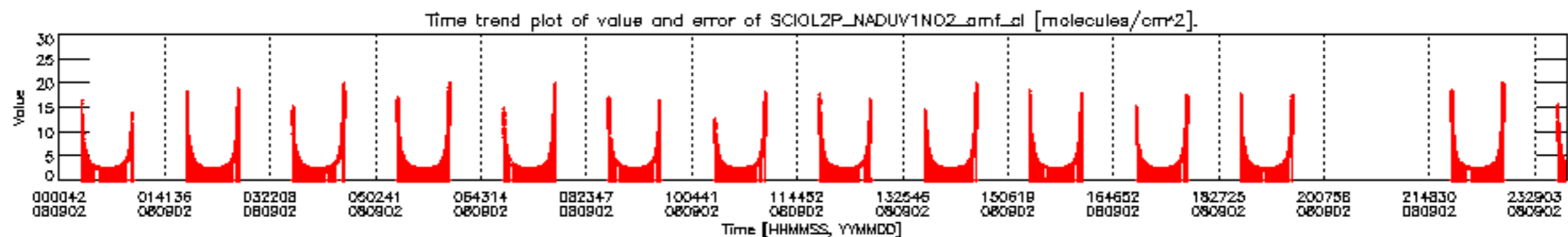
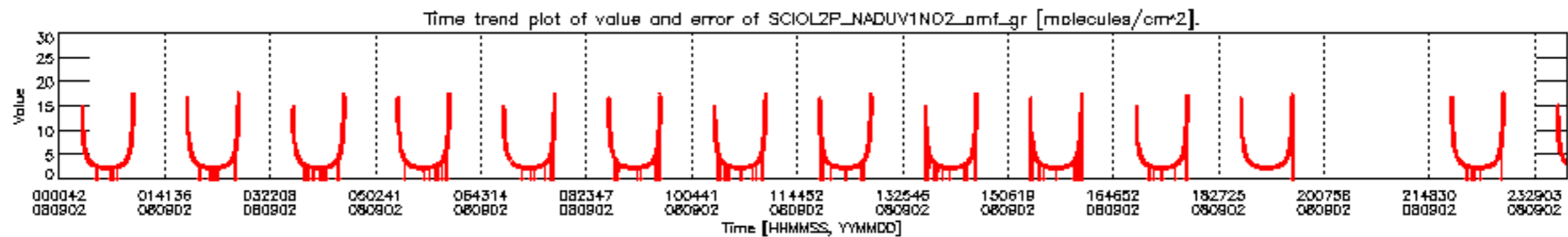
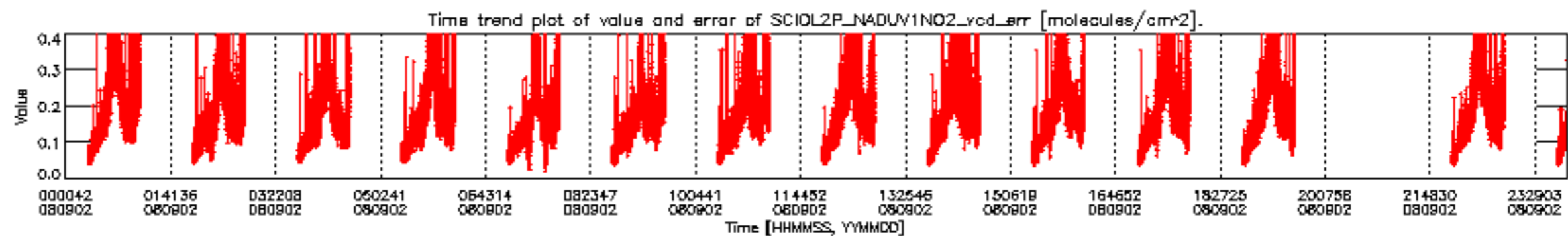
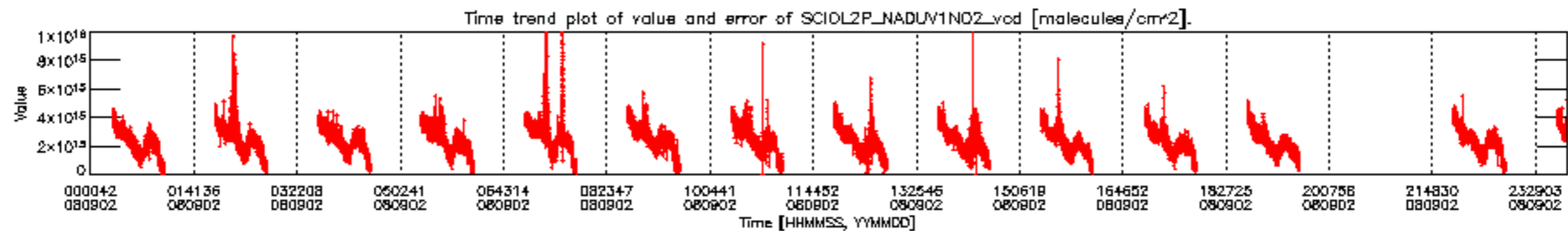


SCIOL2P_NADUV003_amf_gr for 02SEP2008 00:00:00 to 03SEP2008 00:00:00

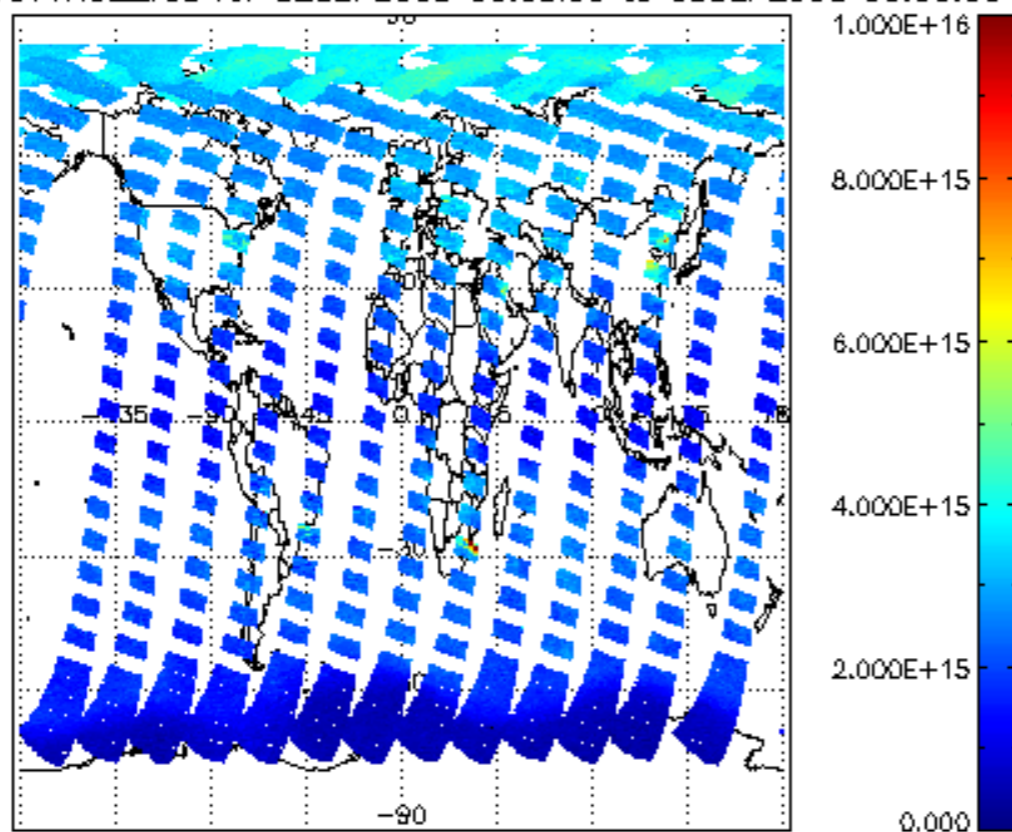


SCIOL2P_NADUV003_amf_cl for 02SEP2008 00:00:00 to 03SEP2008 00:00:00

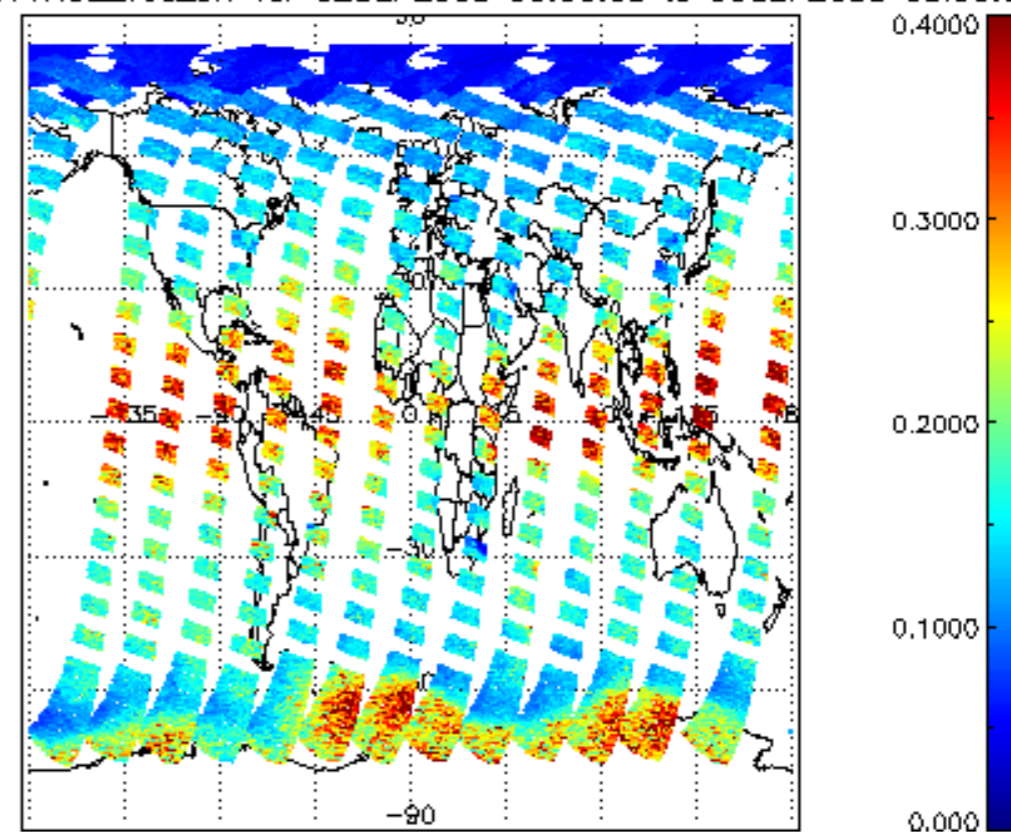




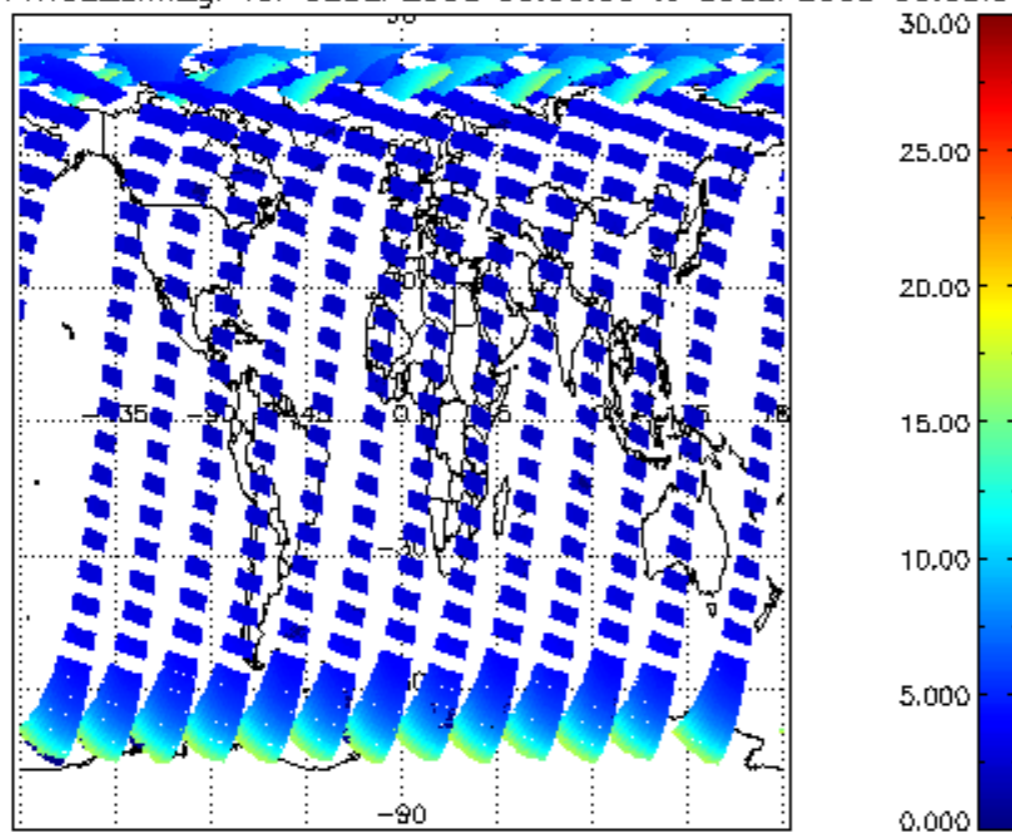
SCIOL2P_NADUV1NO2_vcd for 02SEP2008 00:00:00 to 03SEP2008 00:00:00



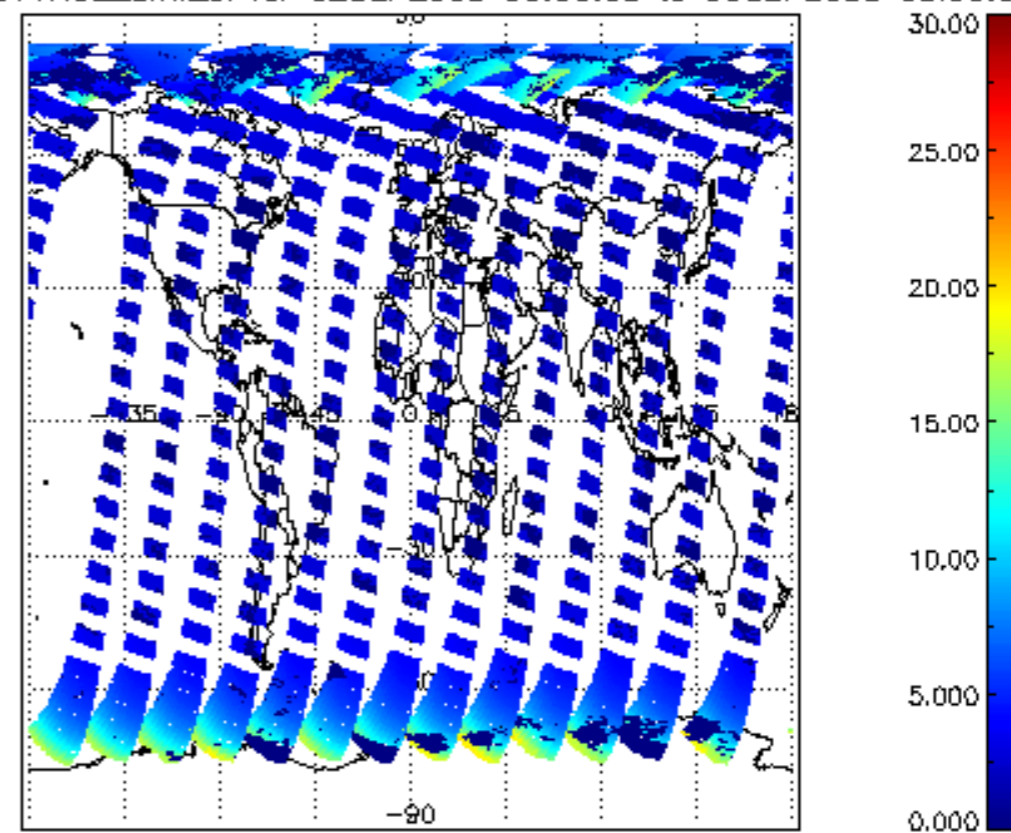
iCIOL2P_NADUV1NO2_vcd_err for 02SEP2008 00:00:00 to 03SEP2008 00:00:00



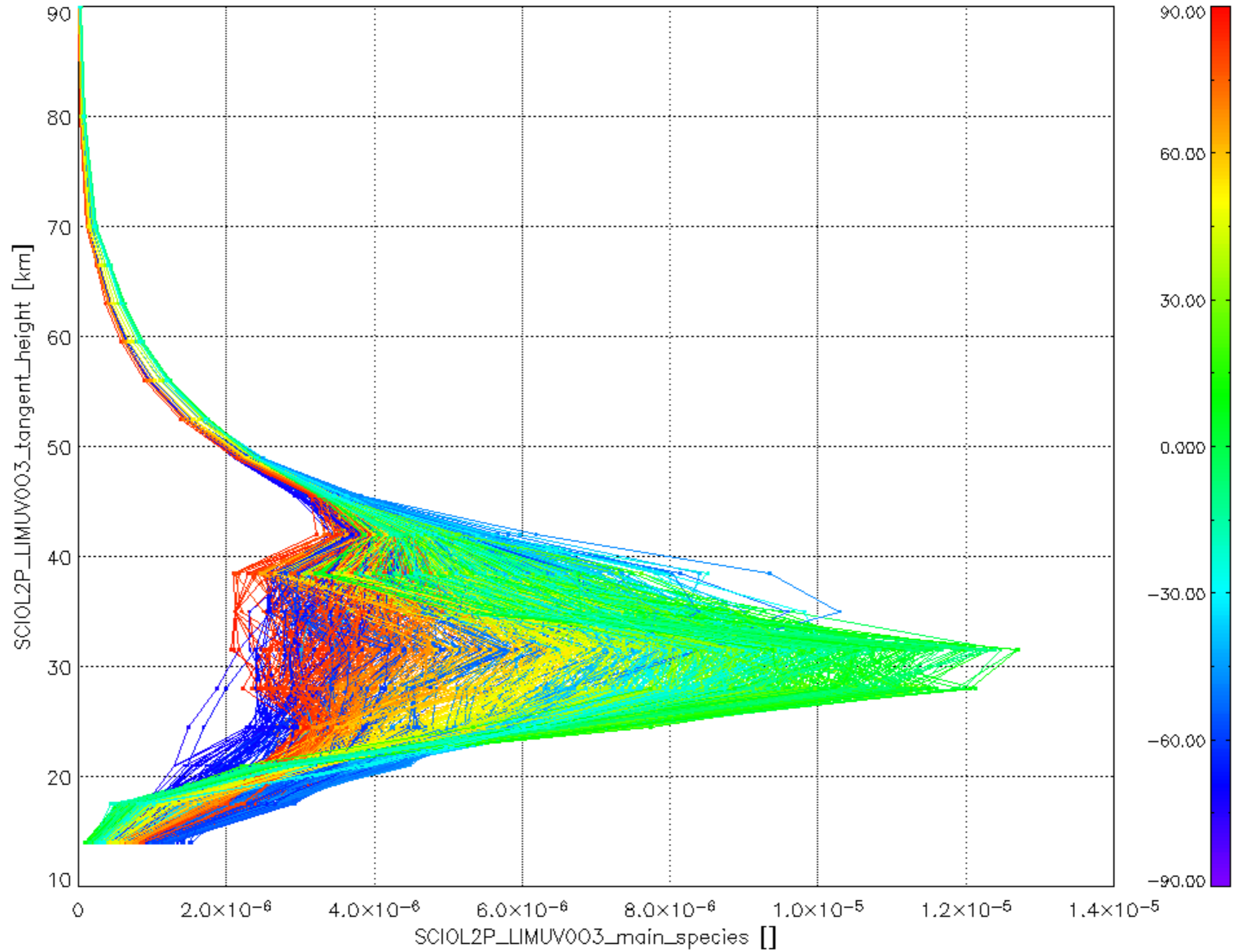
iCIOL2P_NADUV1NO2_amf_gr for 02SEP2008 00:00:00 to 03SEP2008 00:00:00



iCIOL2P_NADUV1NO2_amf_cl for 02SEP2008 00:00:00 to 03SEP2008 00:00:00



Plot of SCIOL2P_LIMUV003_main_species.tang_vmr vs. tangent height.
 Colours indicate tangent latitude (see colour bar on the right).



Plot of SCIOL2P_LIMUV1NO2_main_species.tang_vmr vs. tangent height.
 Colours indicate tangent latitude (see colour bar on the right).

