

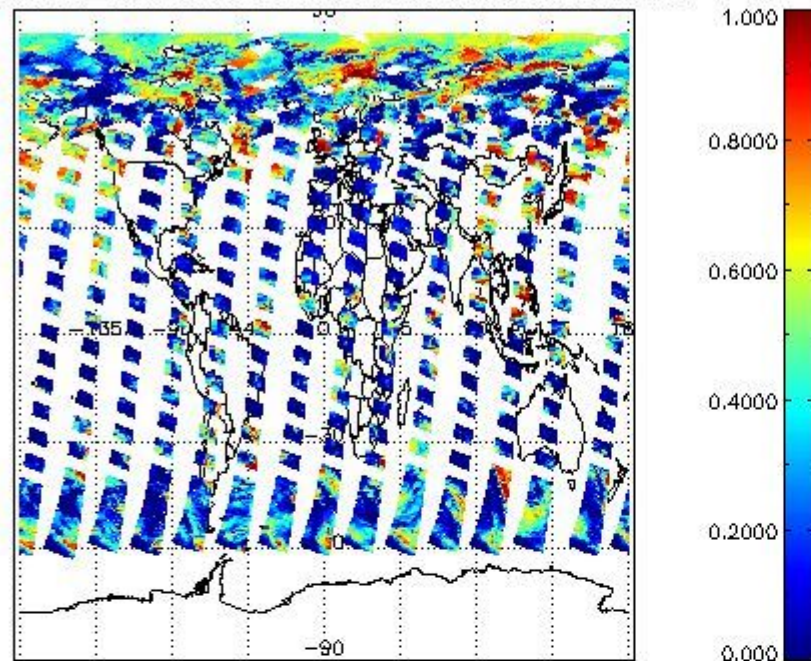
PMD_READ	148303	5.4474	4.0000	4.0000	8.0000	1.9221	
PMD_READ_CL[0]	148303	0.17076	0.0000	0.0000	8.0000	0.93169	-
PMD_READ_CL[1]	148303	1.6509	0.0000	0.0000	8.0000	2.5067	-
CL_TOP_HEIGHT	127874	2.9394	1.1020	0.0000	17.000	3.5782	km
CL_TOP_HEIGHT_ERR	0	---	---	---	---	---	---
CL_OPT_DEPTH	127874	56.543	63.712	0.0000	101.00	44.912	km
CL_OPT_DEPTH_ERR	0	---	---	---	---	---	---
CL_TYPE_FLAGS	148303	11100000	11100000	11100000	11100000	0.0000	flags. Bit definition = 0: low or high cloud; 1: ice or water cloud; 2: thick or thin cloud; 3-15: not used
CLOUD_FLAGS	148303	11001101	11000100	11000000	11100000	3604.2	flags
AERO_ABSO_IND	148303	3.2896	3.6896	-1.1472	15.408	2.2093	
AERO_IND_DIAG	148303	0.0000	0.0000	0.0000	0.0000	0.0000	
AERO_FLAGS	148303	01011000	00000000	00000000	11000000	24497.	flags

Time and geolocation plots:

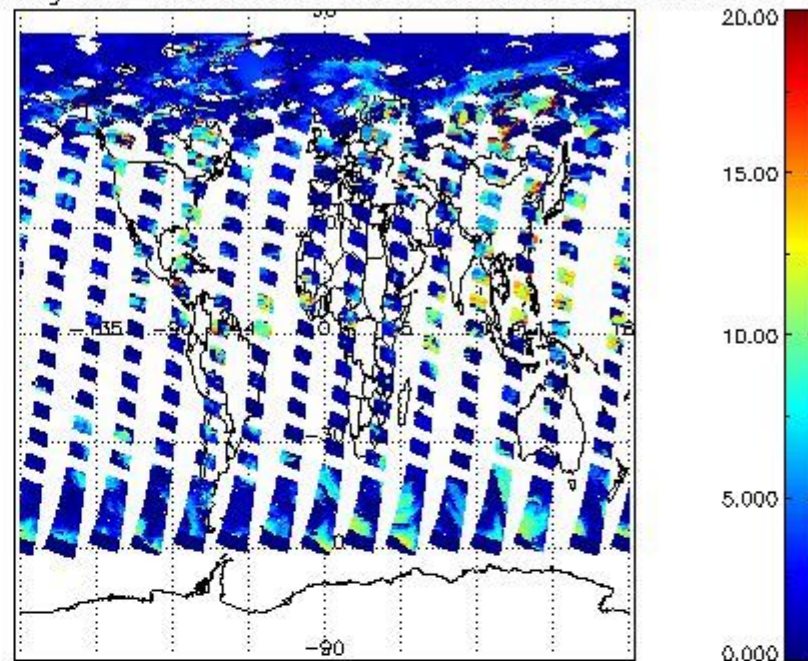
Plots are available for the following parameters:

Number	Data item ID
0	cl_frac
1	cl_top_height
2	cl_opt_depth
3	cloud_flags

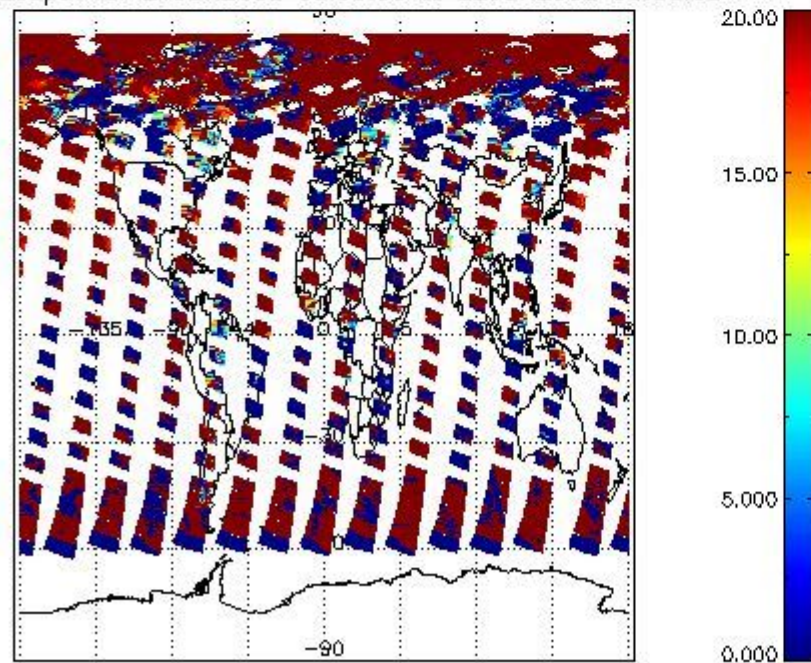
cL_frac for 21JUN2008 00:00:00 to 22JUN2008 00:00:00



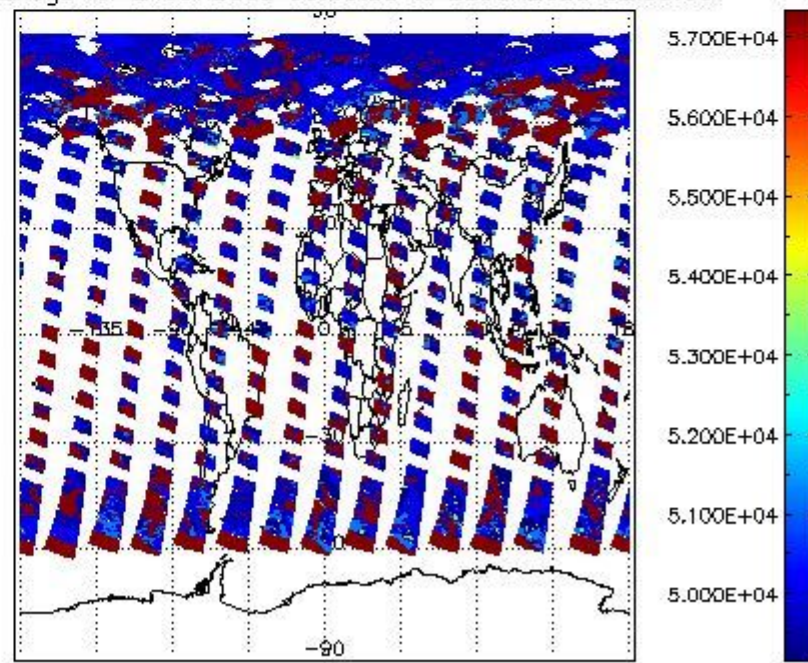
cL_top_height for 21JUN2008 00:00:00 to 22JUN2008 00:00:00



cL_opt_depth for 21JUN2008 00:00:00 to 22JUN2008 00:00:00



cloud_flags for 21JUN2008 00:00:00 to 22JUN2008 00:00:00



2.2.2 Nadir

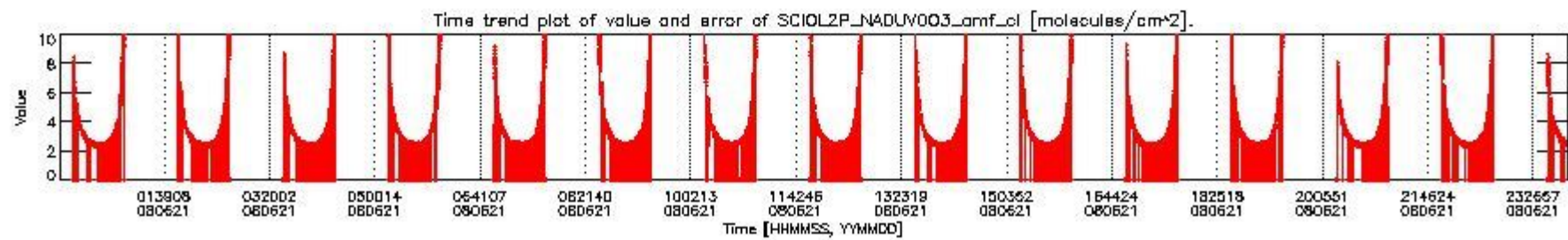
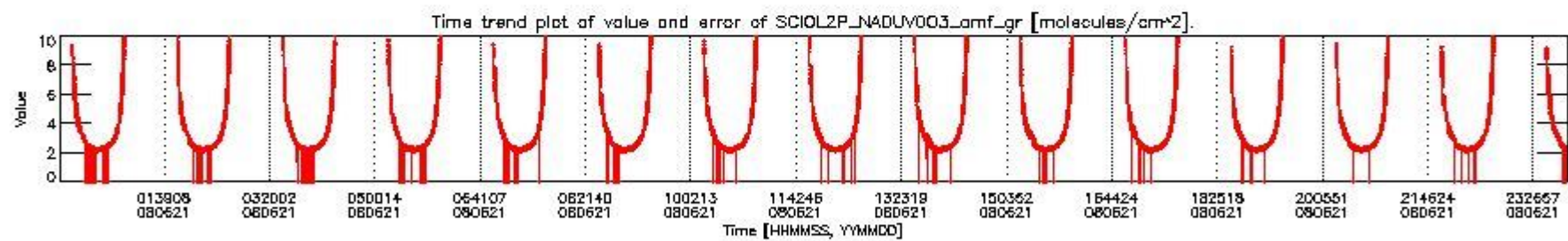
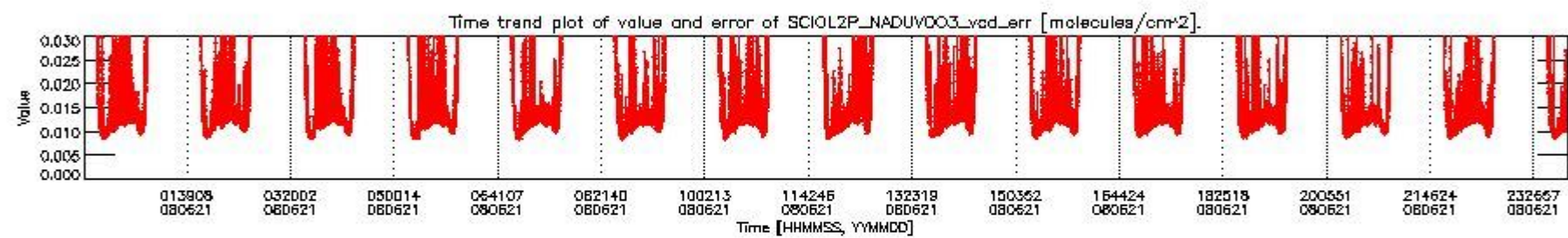
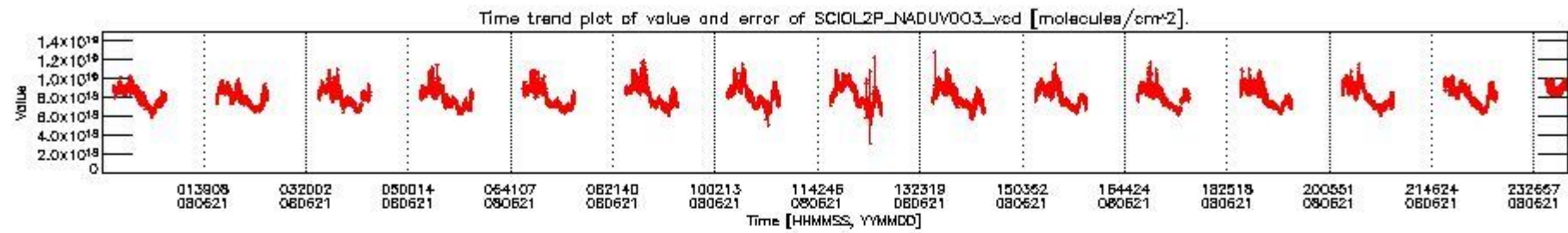
This section shows information about product quality of nadir measurements, in particular the quality of retrieved species.

The following data items are currently included into this section:

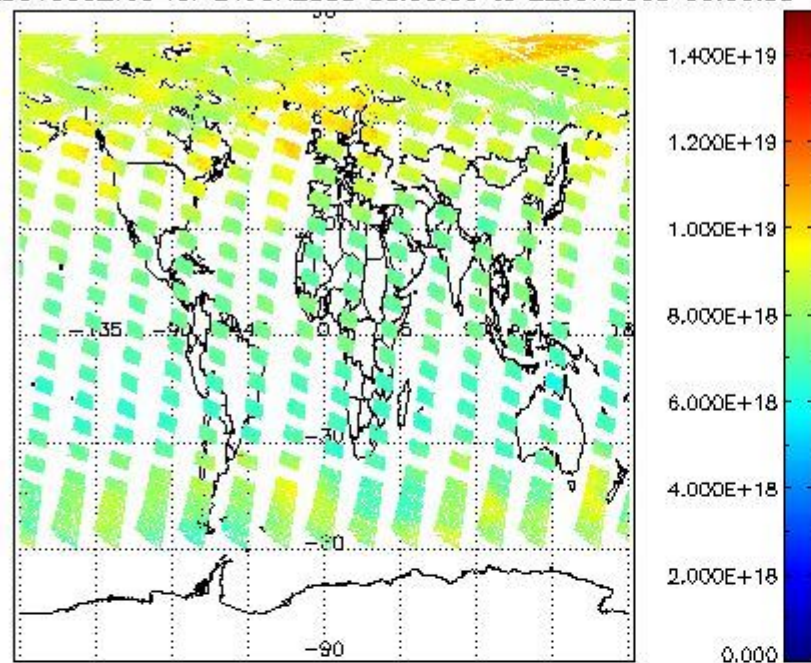
Number	Data item ID
0	SCIOL2P_NADUV003_vcd
1	SCIOL2P_NADUV003_vcd_err
2	SCIOL2P_NADUV003_amf_gr
3	SCIOL2P_NADUV003_amf_cl

4	SCIOL2P_NADUV1NO2_vcd
5	SCIOL2P_NADUV1NO2_vcd_err
6	SCIOL2P_NADUV1NO2_amf_gr
7	SCIOL2P_NADUV1NO2_amf_cl

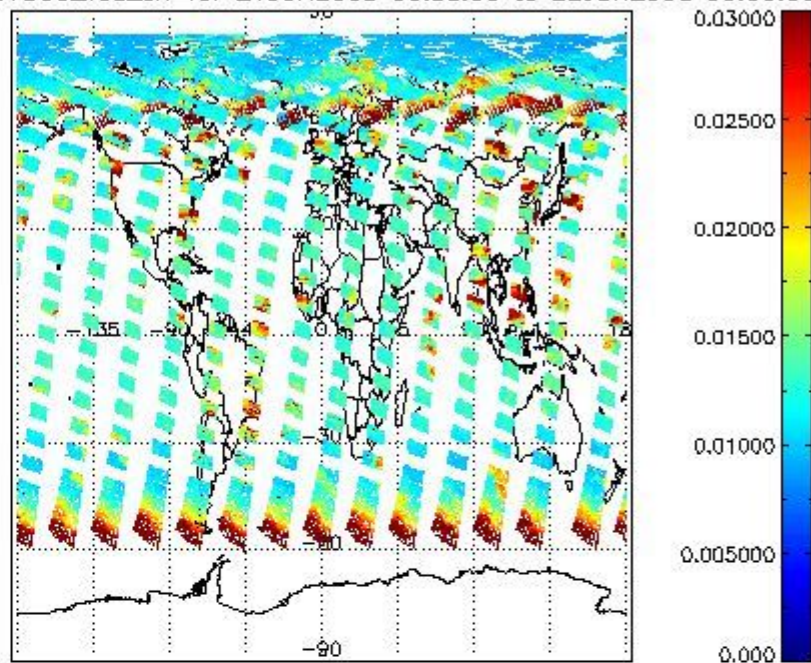
Data is presented both in time trend plots and world map plots, in order to show variations with time and geolocation. The vertical dotted lines in the time trend plots indicate orbits. The orbit times on the X-axis are estimated sensing_start time as suggested by the product sensing_start time in the MPH.



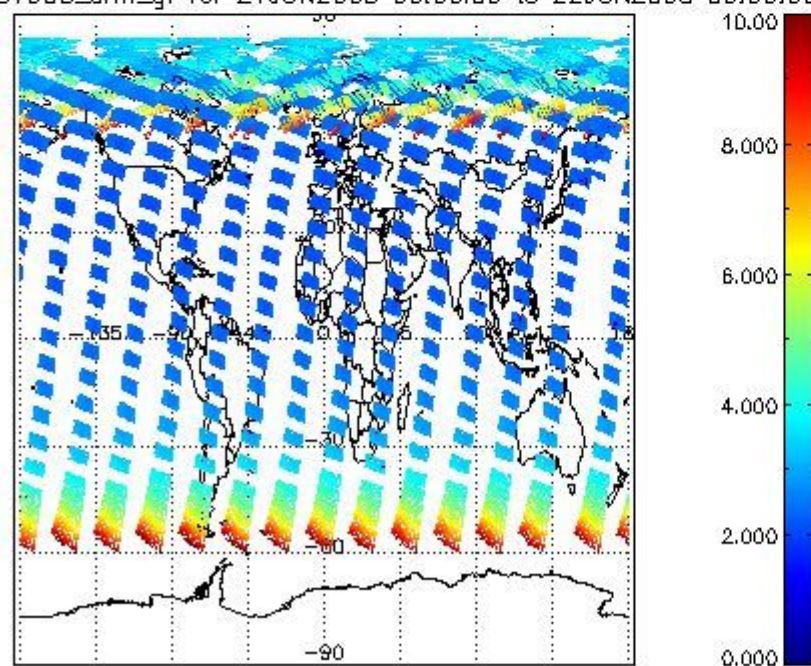
SCIOL2P_NADUV003_vcd for 21JUN2008 00:00:00 to 22JUN2008 00:00:00



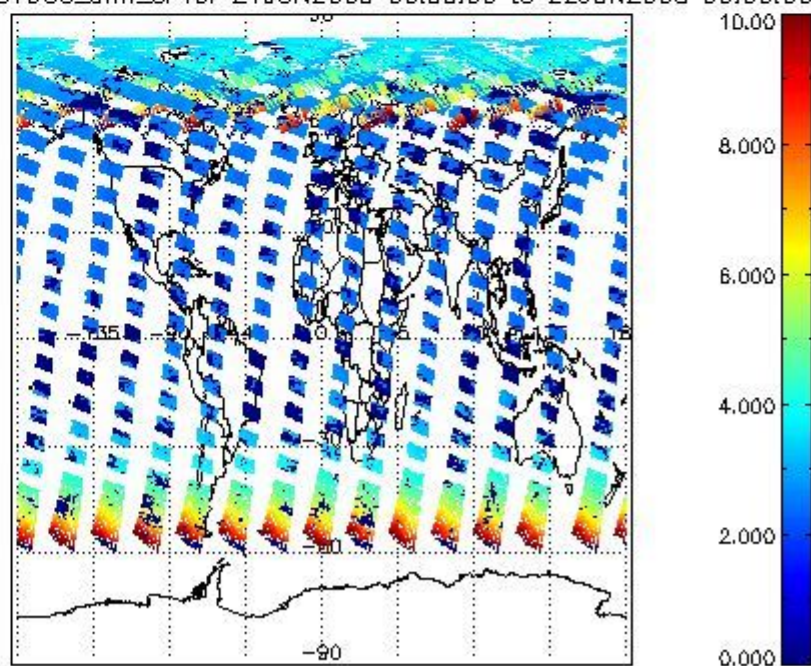
SCIOL2P_NADUV003_vcd_err for 21JUN2008 00:00:00 to 22JUN2008 00:00:00

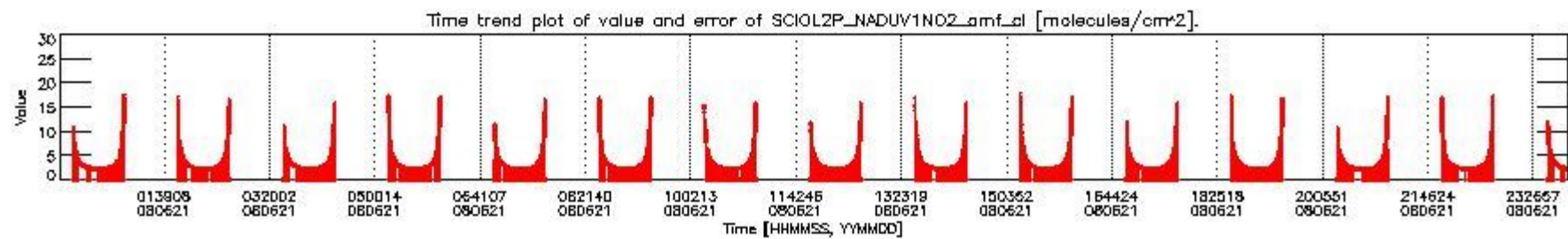
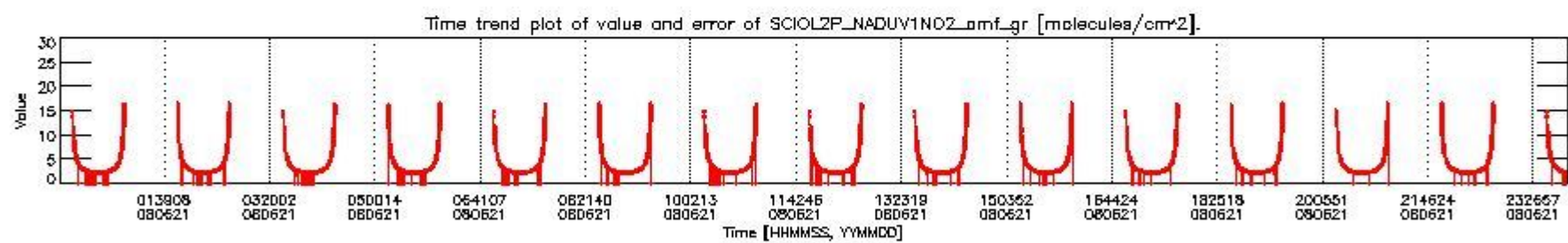
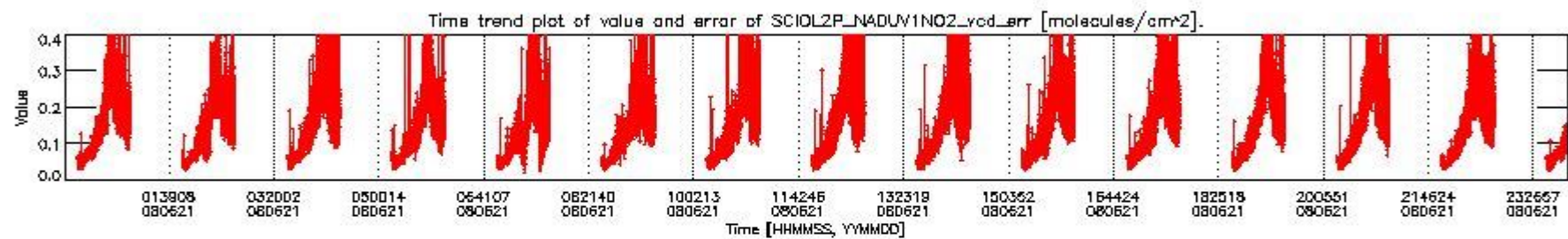
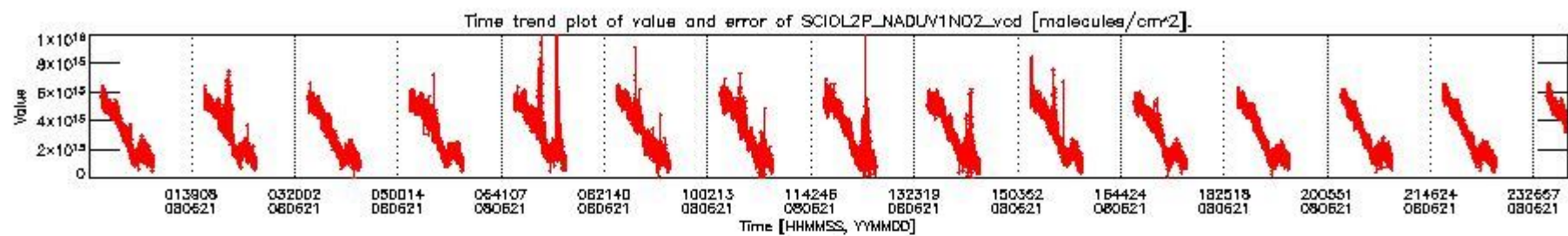


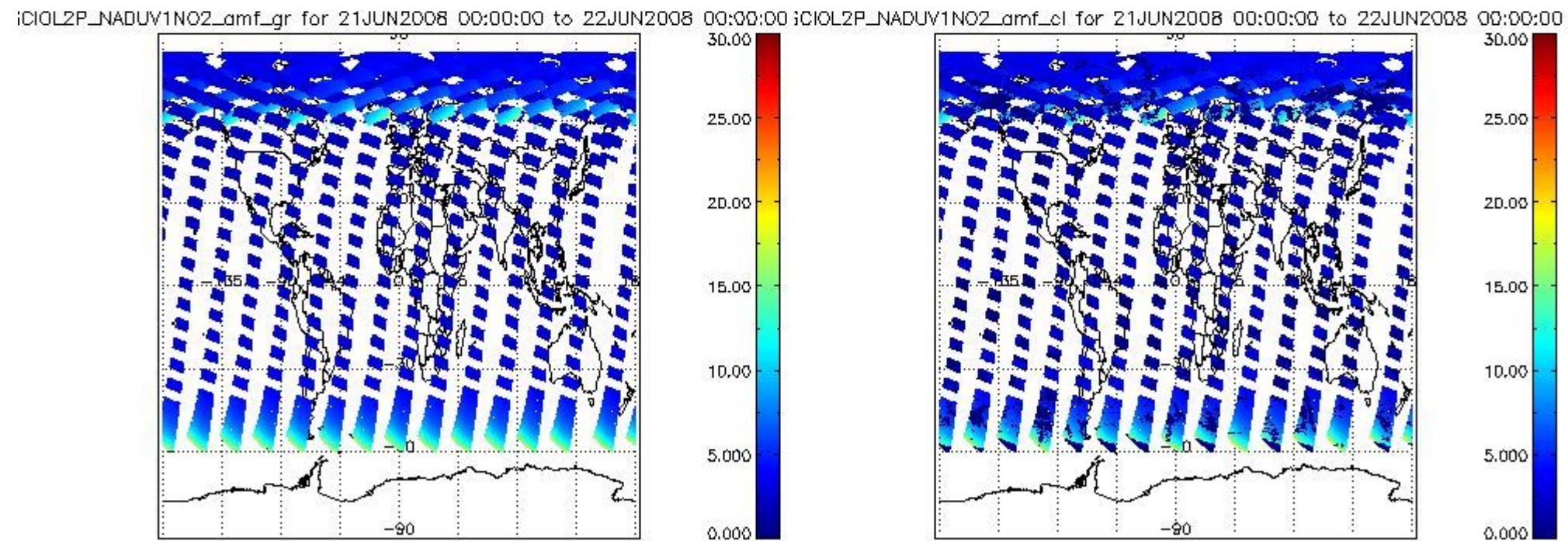
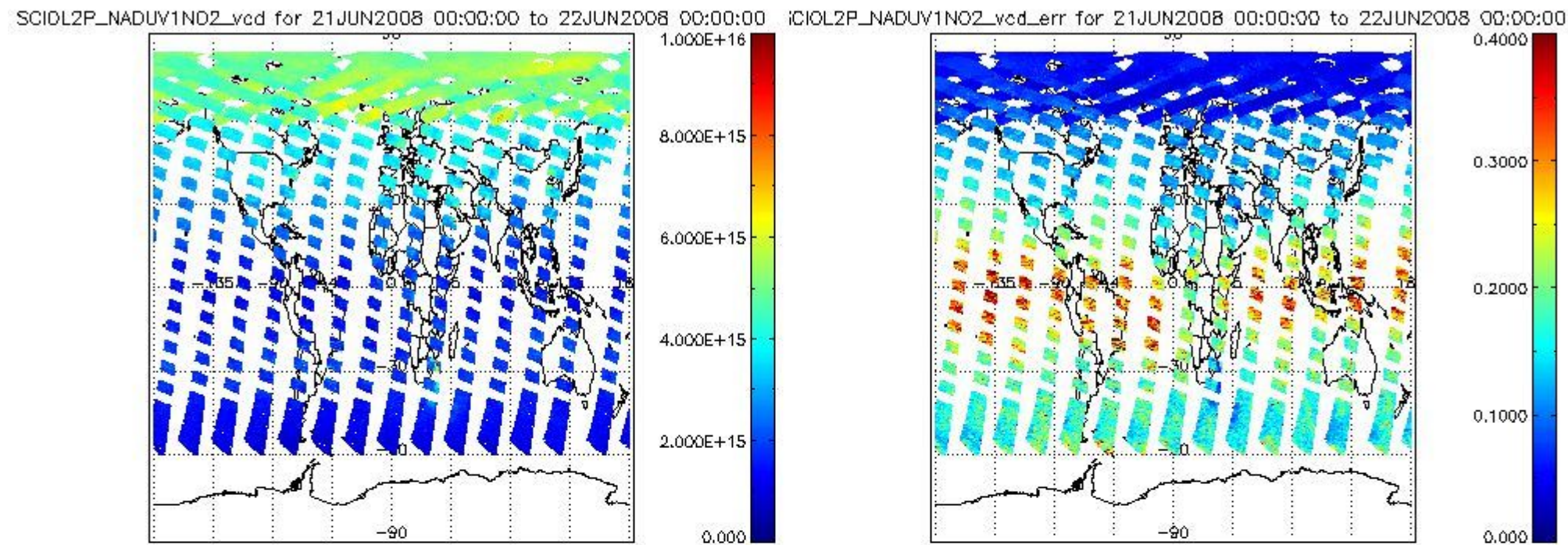
SCIOL2P_NADUV003_amf_gr for 21JUN2008 00:00:00 to 22JUN2008 00:00:00



SCIOL2P_NADUV003_amf_cl for 21JUN2008 00:00:00 to 22JUN2008 00:00:00







2.2.3 Limb

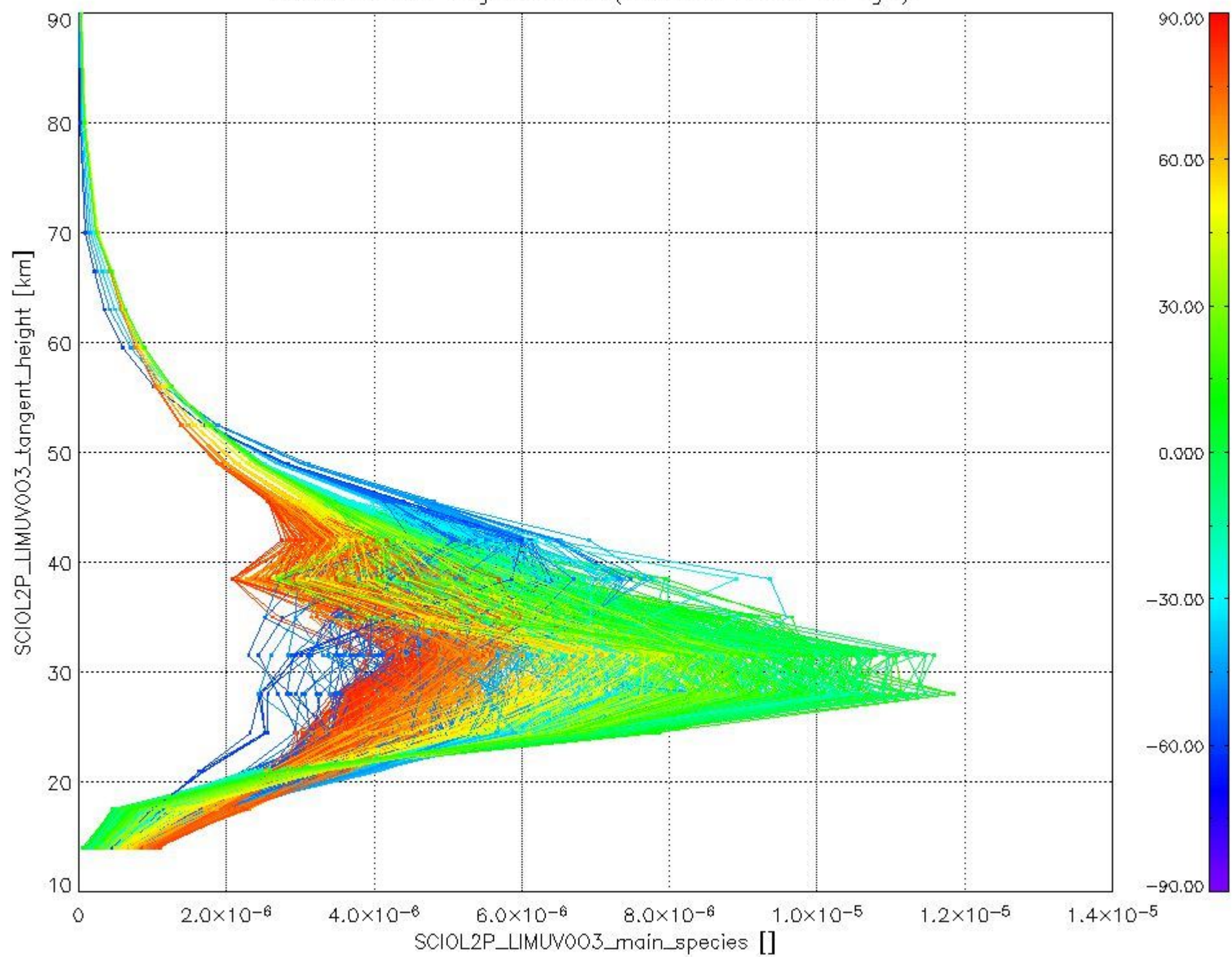
This section shows information about product quality of the limb retrievals, in particular the quality of retrieved species.

The following data items are currently included into this section:

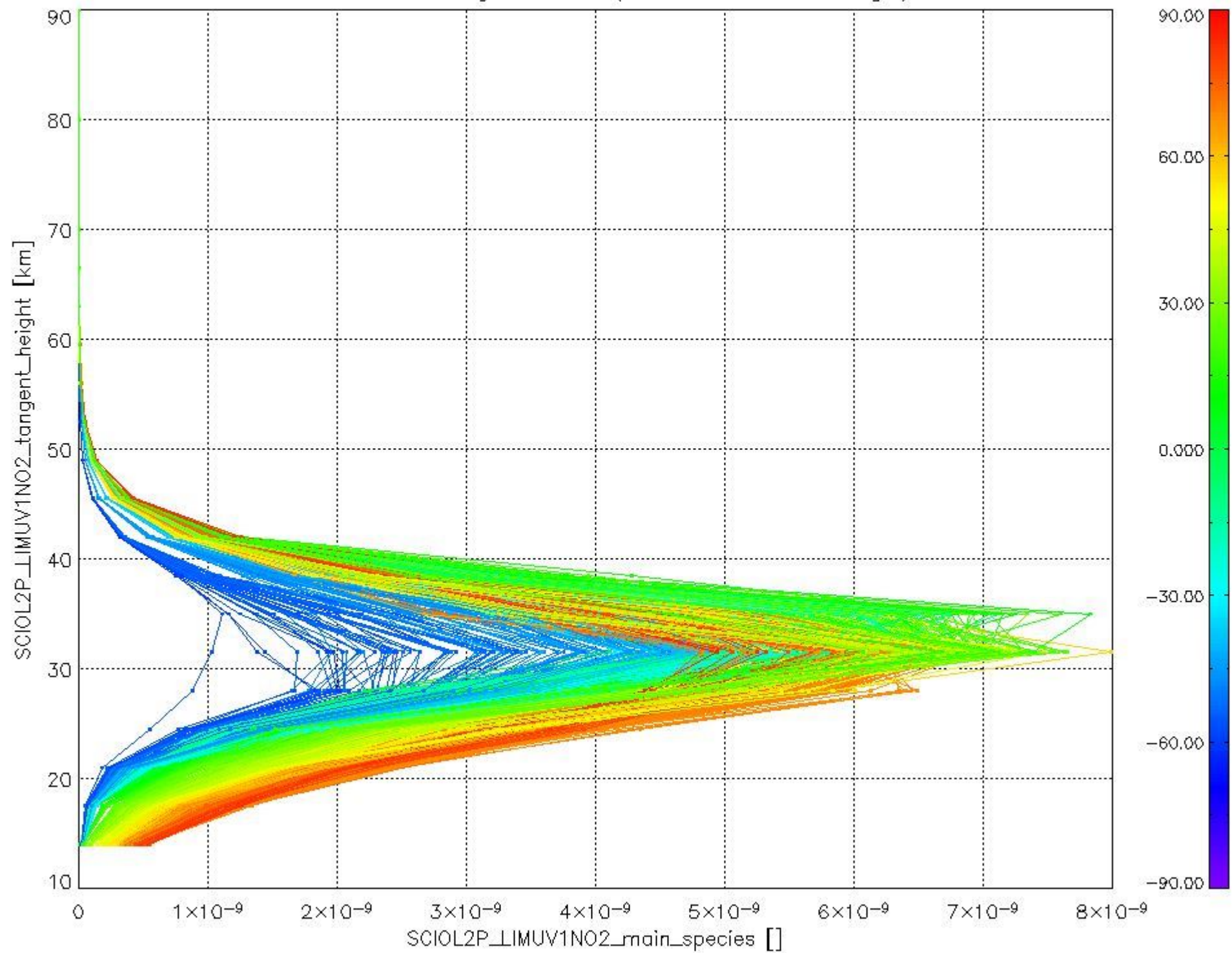
Number	Data item ID
0	SCIOL2PLIMUV003_main_species
1	SCIOL2PLIMUV1NO2_main_species

The following plots shows for each species the tangent volume mixing ratio vs. tangent height. Colours indicate tangent latitude.

Plot of SCIOL2P_LIMUV003_main_species.tang_vmr vs. tangent height.
 Colours indicate tangent latitude (see colour bar on the right).



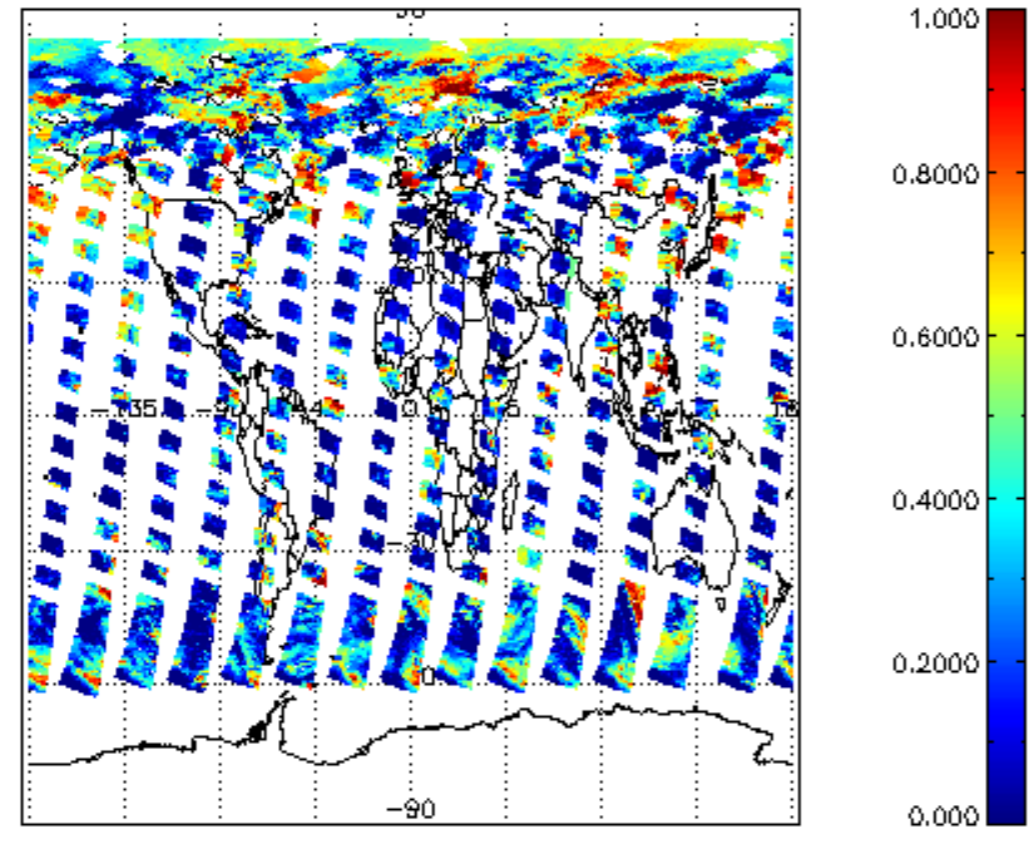
Plot of SCIOL2P_LIMUV1NO2_main_species.tang_vmr vs. tangent height.
 Colours indicate tangent latitude (see colour bar on the right).



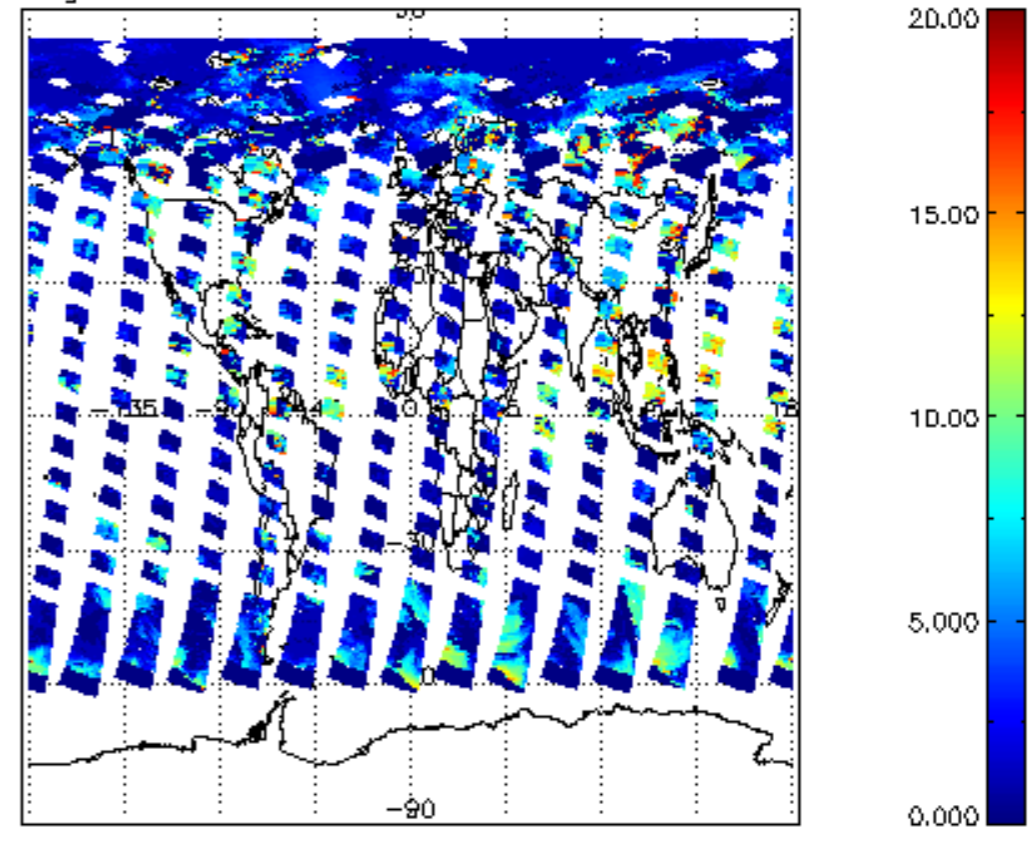
2.3 ADF monitoring

Number	ADF
	IN_ (INITIALISATION_FILE)
0	SCI_IN_AXNPDE20070629_092400_20070720_000000_20991231_235959
	ECF (ECMWF_FILE)
1	NOT USED

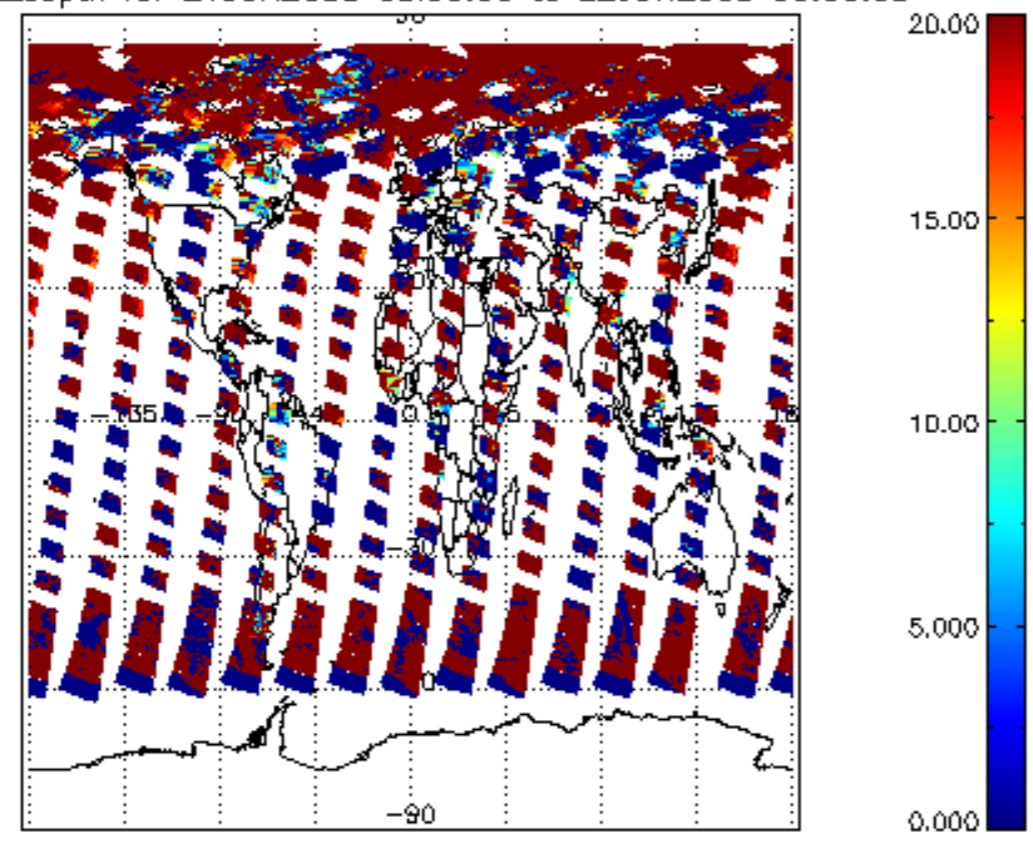
cl_frac for 21JUN2008 00:00:00 to 22JUN2008 00:00:00



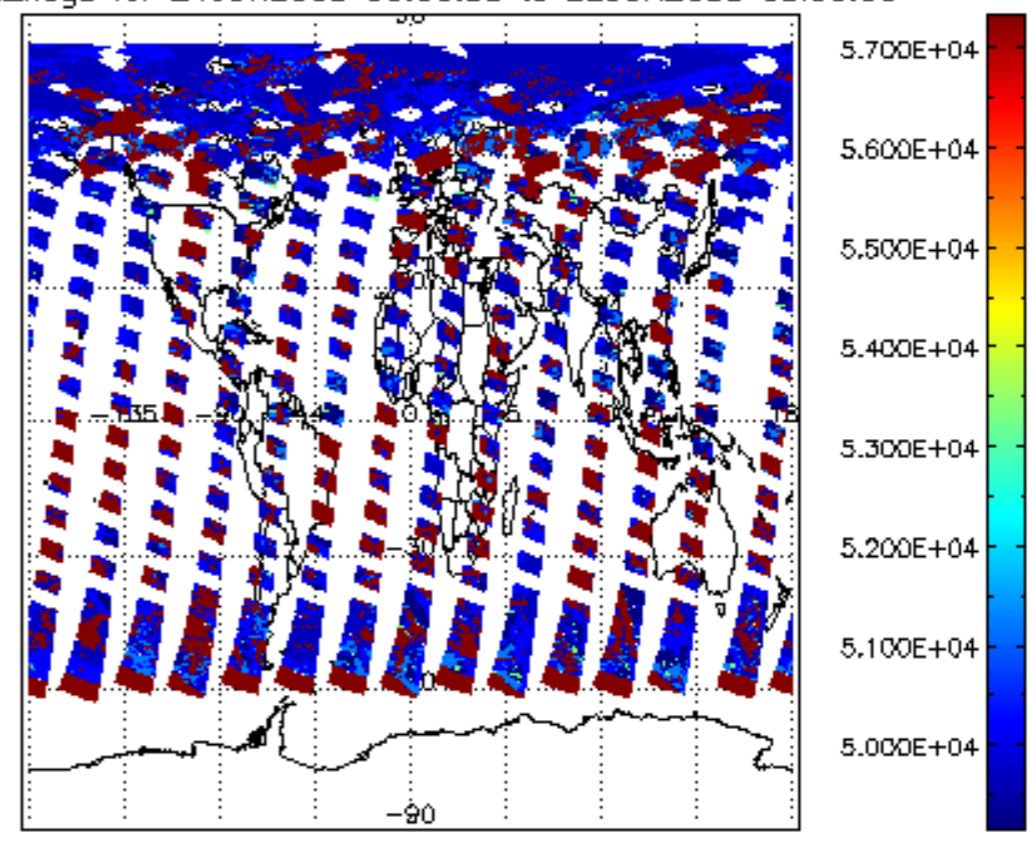
cl_top_height for 21JUN2008 00:00:00 to 22JUN2008 00:00:00

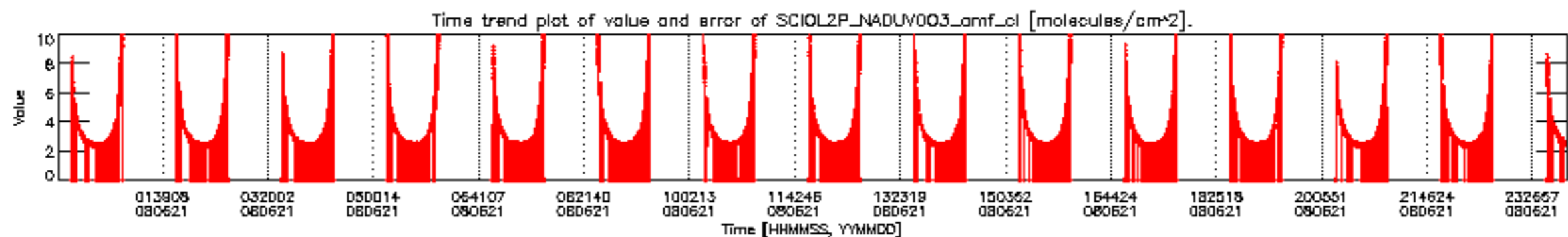
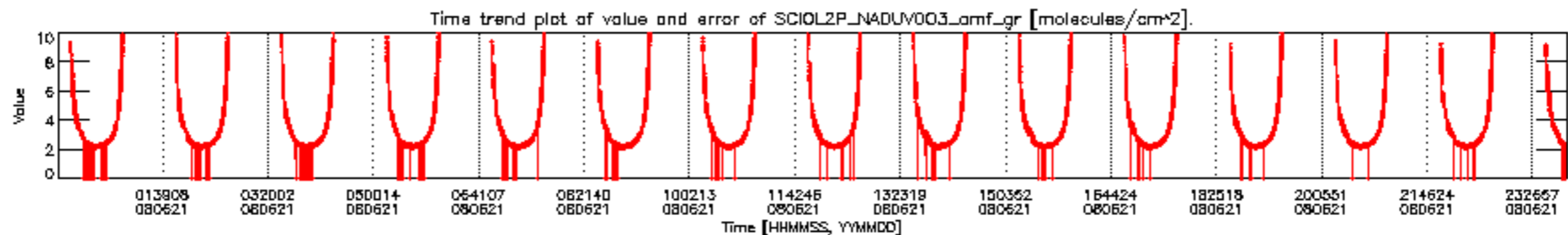
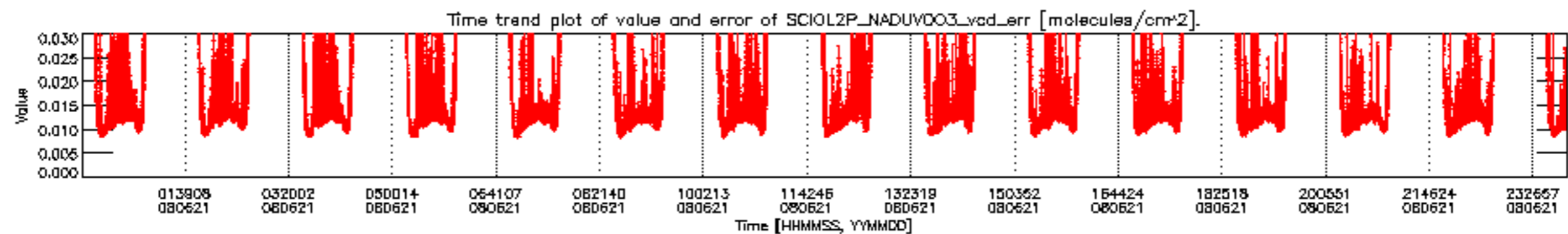
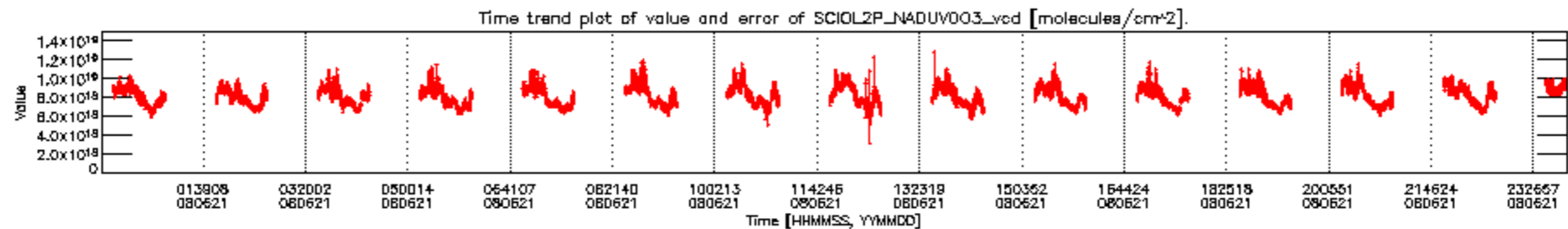


cl_opt_depth for 21JUN2008 00:00:00 to 22JUN2008 00:00:00

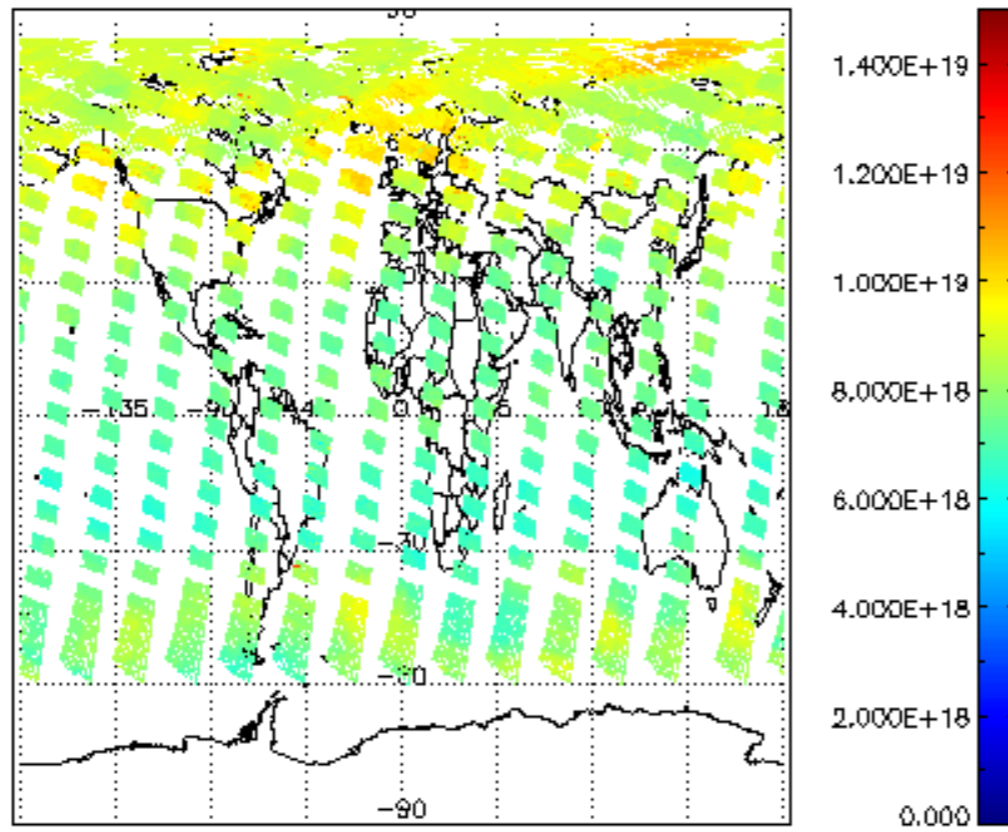


cloud_flags for 21JUN2008 00:00:00 to 22JUN2008 00:00:00

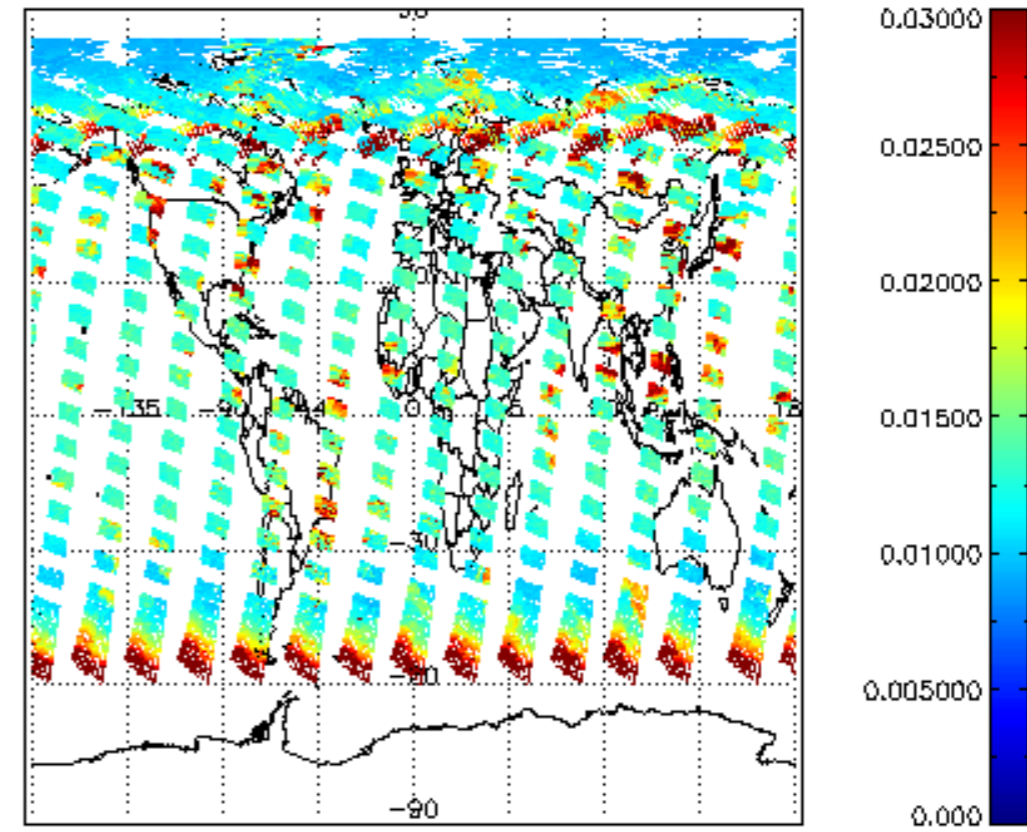




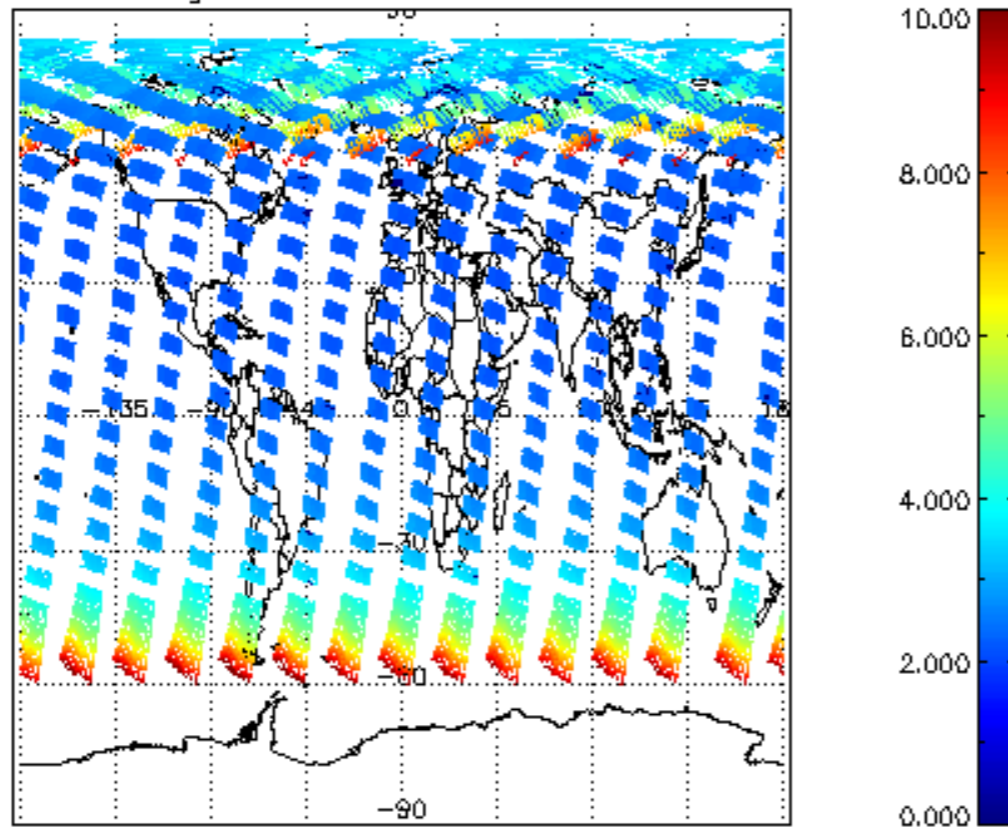
SCIOL2P_NADUV003_vcd for 21JUN2008 00:00:00 to 22JUN2008 00:00:00



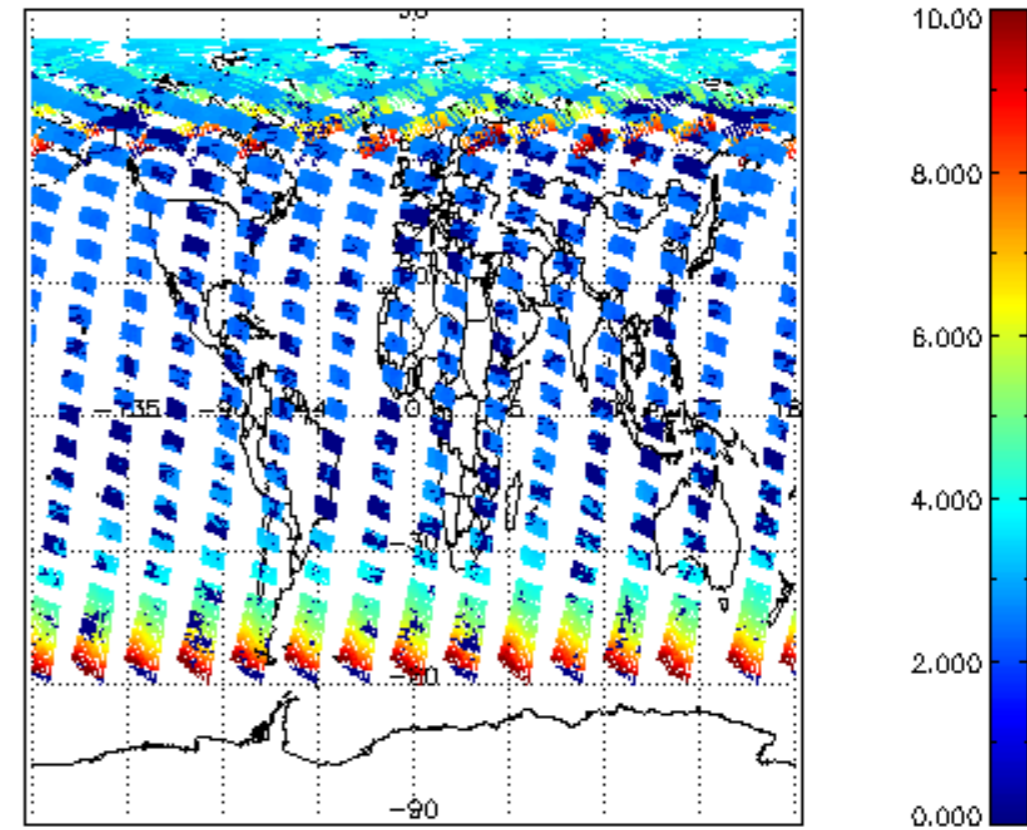
SCIOL2P_NADUV003_vcd_err for 21JUN2008 00:00:00 to 22JUN2008 00:00:00

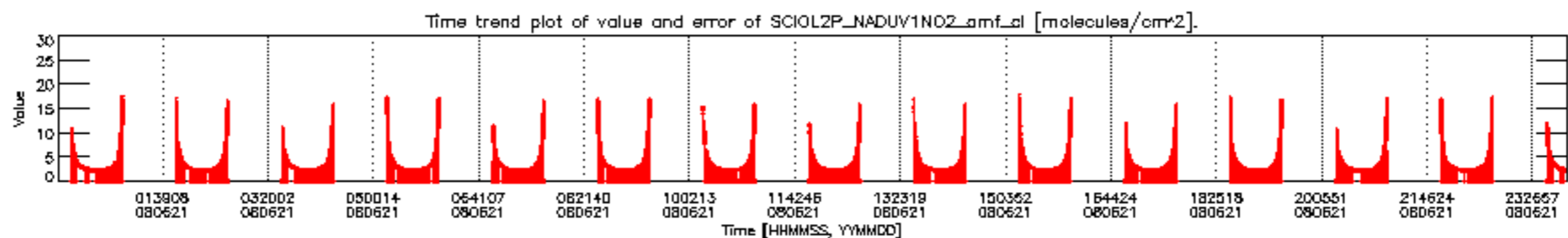
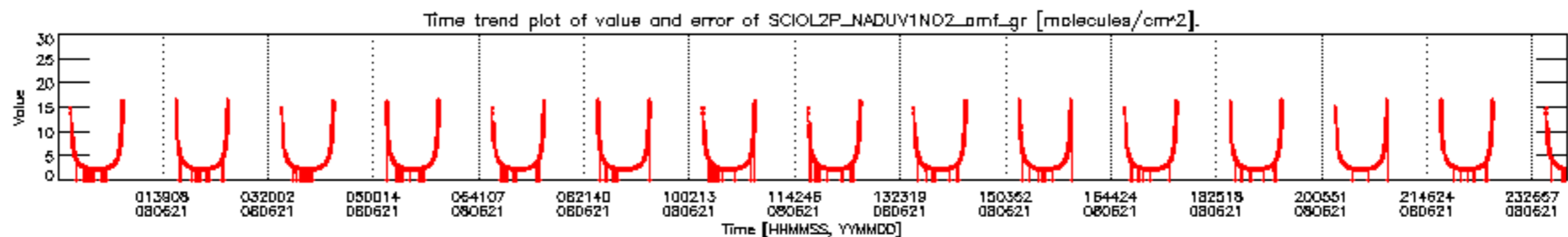
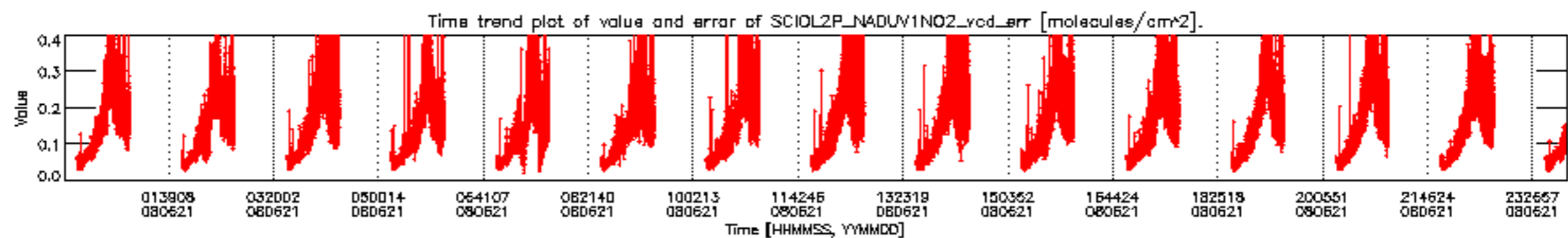
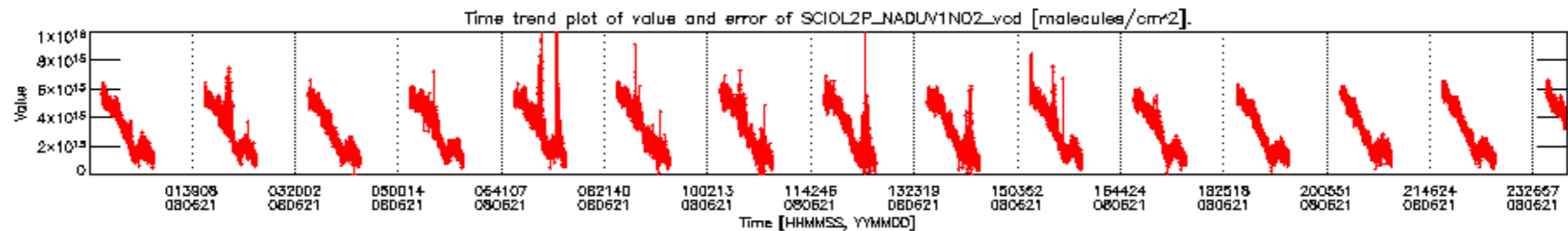


SCIOL2P_NADUV003_amf_gr for 21JUN2008 00:00:00 to 22JUN2008 00:00:00

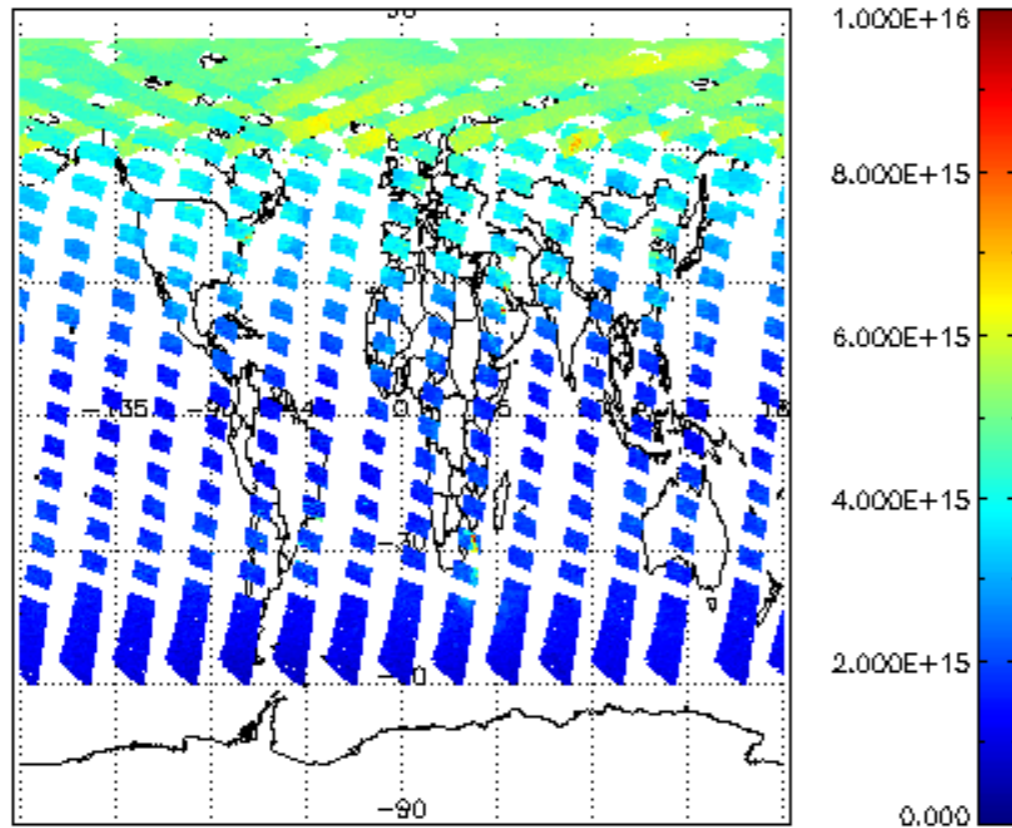


SCIOL2P_NADUV003_amf_cl for 21JUN2008 00:00:00 to 22JUN2008 00:00:00

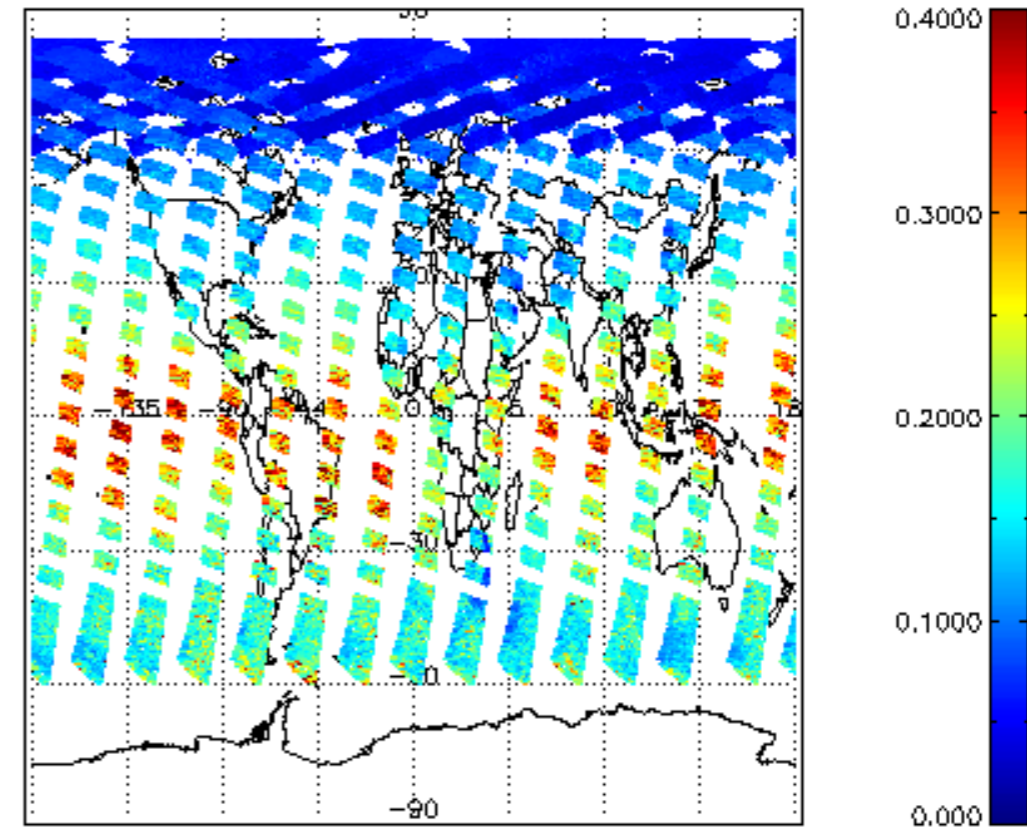




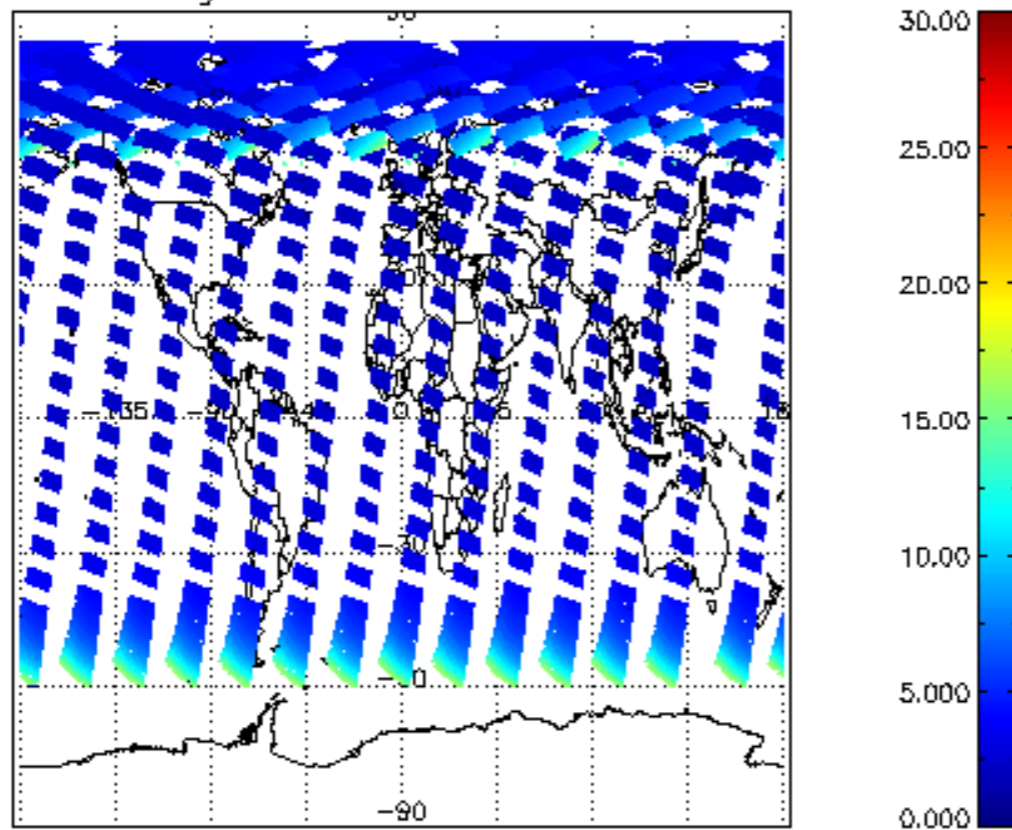
SCIOL2P_NADUV1NO2_vcd for 21JUN2008 00:00:00 to 22JUN2008 00:00:00



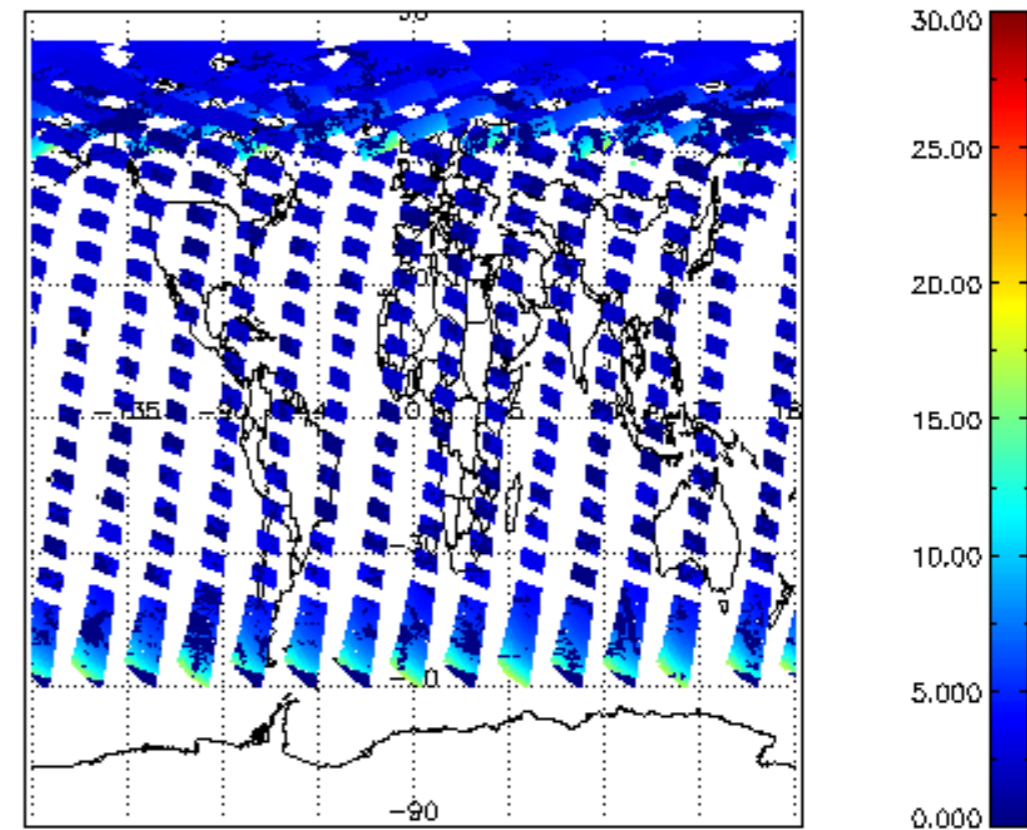
iCIOL2P_NADUV1NO2_vcd_err for 21JUN2008 00:00:00 to 22JUN2008 00:00:00



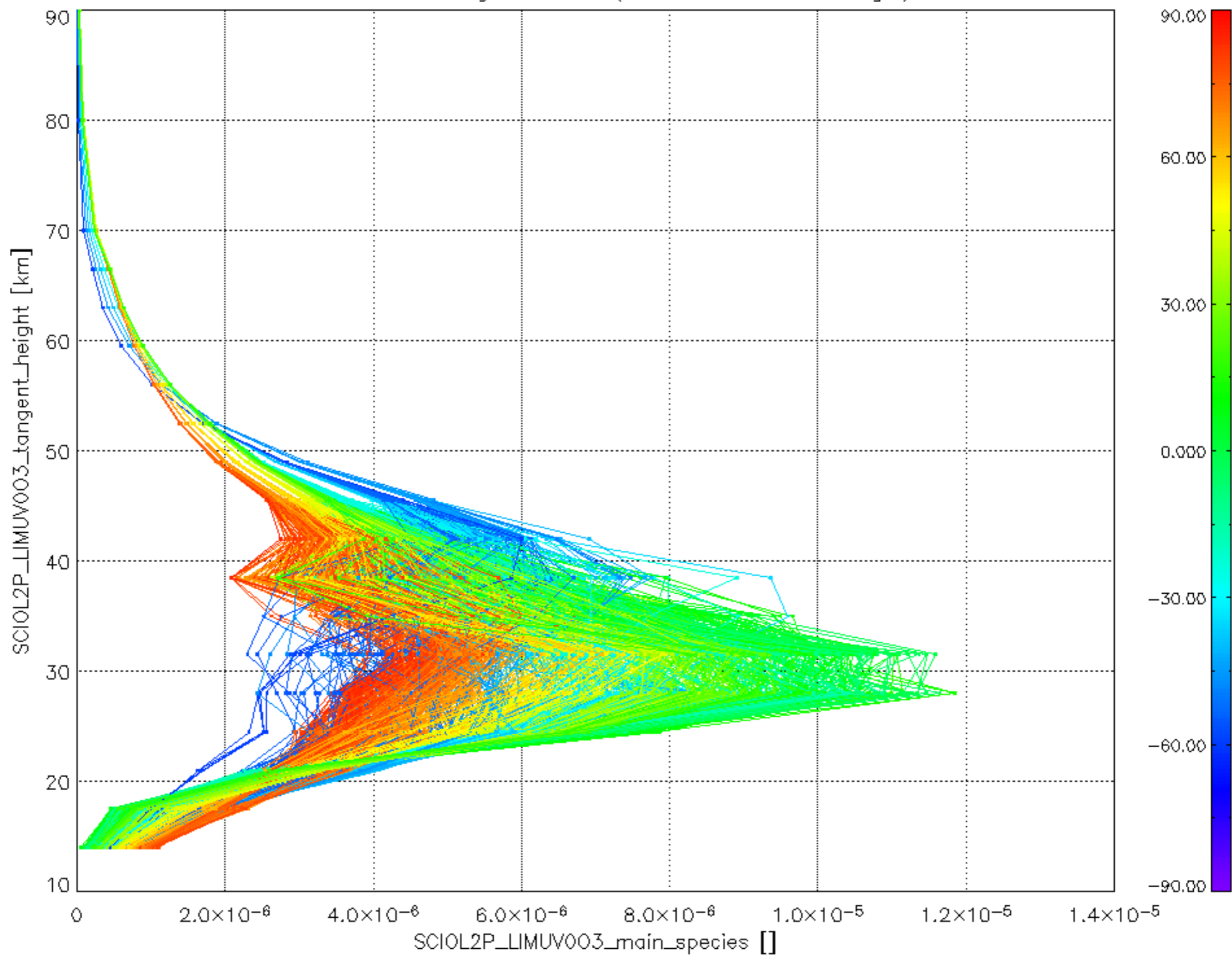
iCIOL2P_NADUV1NO2_amf_gr for 21JUN2008 00:00:00 to 22JUN2008 00:00:00



iCIOL2P_NADUV1NO2_amf_cl for 21JUN2008 00:00:00 to 22JUN2008 00:00:00



Plot of SCIOL2P_LIMUV003_main_species.tang_vmr vs. tangent height.
 Colours indicate tangent latitude (see colour bar on the right).



Plot of SCIOL2P_LIMUV1N02_main_species.tang_vmr vs. tangent height.
 Colours indicate tangent latitude (see colour bar on the right).

