

2. SCIAMACHY Daily Report for level 2 products

[2.1. General Info](#)

[2.2 Product Quality Indicators](#)

[2.3 ADF monitoring](#)

2.1 General Info

This report contains a daily analysis on parameters extracted from SCIAMACHY level 2 data (The SCI_OL__2P product).

2.1.1 Report summary

The table below shows general characteristics of the data that are included into this report.

Item	Value
Report version	1.6 (28-07-2008)
Time of report generation	20SEP2008 13:10:25
Data source version	SCIA-OL/3.01-R
Processing scope for products	07NOV2004 00:00:00 to 08NOV2004 00:00:00
Start time of first product within scope	06NOV2004 23:27:01
Stop time of last product within scope	07NOV2004 23:51:51
Total number of level 2 products	15
Number of level 2 products with errors	0

2.1.2 Summary per product

The following table shows a summary for each product used in this report.

Products are linked to a corresponding server directory for view/download. Note: Link access may be restricted by security settings of your internet browser or firewall.

#	Product name	Start time	Stop time	Prod err	Fit summary
0	SCI_OL__2PRDPA20041106_232701_000033812031_00474_14055_0512.N1	06NOV2004 23:27:01	07NOV2004 00:23:23	0	GOOD
1	SCI_OL__2PRDPA20041107_010738_000033252031_00475_14056_0524.N1	07NOV2004 01:07:38	07NOV2004 02:03:03	0	GOOD
2	SCI_OL__2PRDPA20041107_024814_000033812031_00476_14057_0520.N1	07NOV2004 02:48:14	07NOV2004 03:44:35	0	GOOD
3	SCI_OL__2PRDPA20041107_042850_000033252031_00477_14058_0591.N1	07NOV2004 04:28:50	07NOV2004 05:24:16	0	GOOD
4	SCI_OL__2PRDPA20041107_060927_000033812031_00478_14059_0438.N1	07NOV2004 06:09:27	07NOV2004 07:05:48	0	GOOD
5	SCI_OL__2PRDPA20041107_075003_000033252031_00479_14060_0571.N1	07NOV2004 07:50:03	07NOV2004 08:45:28	0	GOOD
6	SCI_OL__2PRDPA20041107_093039_000033812031_00480_14061_0506.N1	07NOV2004 09:30:39	07NOV2004 10:27:01	0	GOOD
7	SCI_OL__2PRDPA20041107_111115_000033252031_00481_14062_0533.N1	07NOV2004 11:11:15	07NOV2004 12:06:41	0	GOOD
8	SCI_OL__2PRDPA20041107_125152_000033812031_00482_14063_0477.N1	07NOV2004 12:51:52	07NOV2004 13:48:13	0	GOOD
9	SCI_OL__2PRDPA20041107_143228_000033252031_00483_14064_0602.N1	07NOV2004 14:32:28	07NOV2004 15:27:53	0	GOOD
10	SCI_OL__2PRDPA20041107_161304_000033812031_00484_14065_0600.N1	07NOV2004 16:13:04	07NOV2004 17:09:26	0	GOOD
11	SCI_OL__2PRDPA20041107_175333_000033852031_00485_14066_0599.N1	07NOV2004 17:53:33	07NOV2004 18:49:59	0	GOOD
12	SCI_OL__2PRDPA20041107_193437_000033122031_00486_14067_0527.N1	07NOV2004 19:34:37	07NOV2004 20:29:50	0	GOOD
13	SCI_OL__2PRDPA20041107_211453_000033252031_00487_14068_0557.N1	07NOV2004 21:14:53	07NOV2004 22:10:19	0	GOOD
14	SCI_OL__2PRDPA20041107_225529_000033812031_00488_14069_0555.N1	07NOV2004 22:55:29	07NOV2004 23:51:51	0	GOOD

2.2 Product Quality Indicators

2.2.1 Cloud parameters

This is a new section that shows information about the cloud parameters estimation, in particular cloud fractions and cloud top height. IMPORTANT NOTE: The contents and layout of this section are still being validated. Please use with caution.

General statistics:

Total number of cloud data DSRs: 152620

Total number of cloud data DSRs with good quality flag (=0): 152620 (100.0 %)

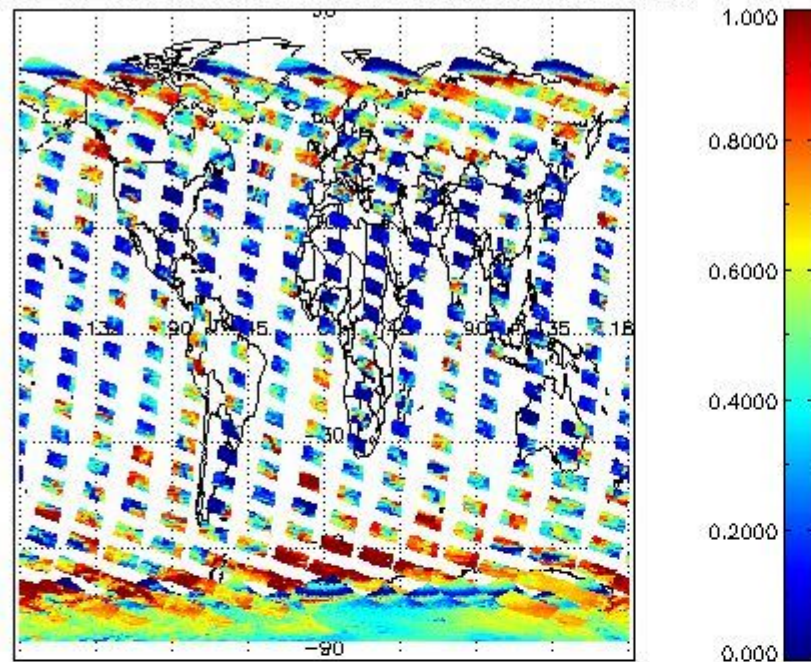
Parameter	#valid	Mean	Median	Min	Max	Stddev	Unit
QUALITY_FLAG	152620	0.0000	0.0000	0.0000	0.0000	0.0000	flag
INTEGR_TIME	152620	0.16908	0.12500	0.12500	0.25000	0.059724	s
CL_FRAC	152620	0.44532	0.44005	0.0000	1.0000	0.27591	-
CL_FRAC_ERR	152620	0.0000	0.0000	0.0000	0.0000	0.0000	rel. fraction
PMD_READ	152620	5.4106	4.0000	4.0000	8.0000	1.9112	-
PMD_READ_CL[0]	152620	0.29874	0.0000	0.0000	8.0000	1.2260	-
PMD_READ_CL[1]	152620	0.42637	0.0000	0.0000	8.0000	1.4423	-
CL_TOP_HEIGHT	130063	4.2658	3.2736	0.0000	17.000	3.8033	km
CL_TOP_HEIGHT_ERR	0	---	---	---	---	---	---
CL_OPT_DEPTH	130063	52.117	38.277	0.0000	101.00	39.849	km
CL_OPT_DEPTH_ERR	0	---	---	---	---	---	---
CL_TYPE_FLAGS	152620	11100000	11100000	11100000	11100000	0.0000	flags. Bit definition = 0: low or high cloud; 1: ice or water cloud; 2: thick or thin cloud; 3-15: not used
CLOUD_FLAGS	152620	11001000	11000100	11000000	11100000	3004.6	flags
AERO_ABSO_IND	152620	0.61338	0.31048	-3.7767	13.399	1.0453	-
AERO_IND_DIAG	152620	0.0000	0.0000	0.0000	0.0000	0.0000	-
AERO_FLAGS	152620	01010110	00000000	00000000	11000000	24446.	flags

Time and geolocation plots:

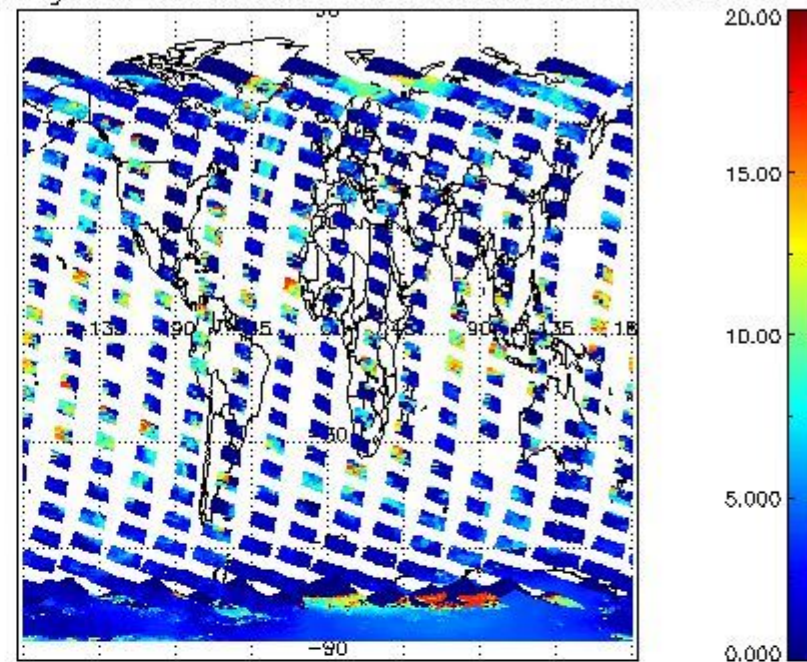
Plots are available for the following parameters:

Number	Data item ID
0	cl_frac
1	cl_top_height
2	cl_opt_depth
3	cloud_flags

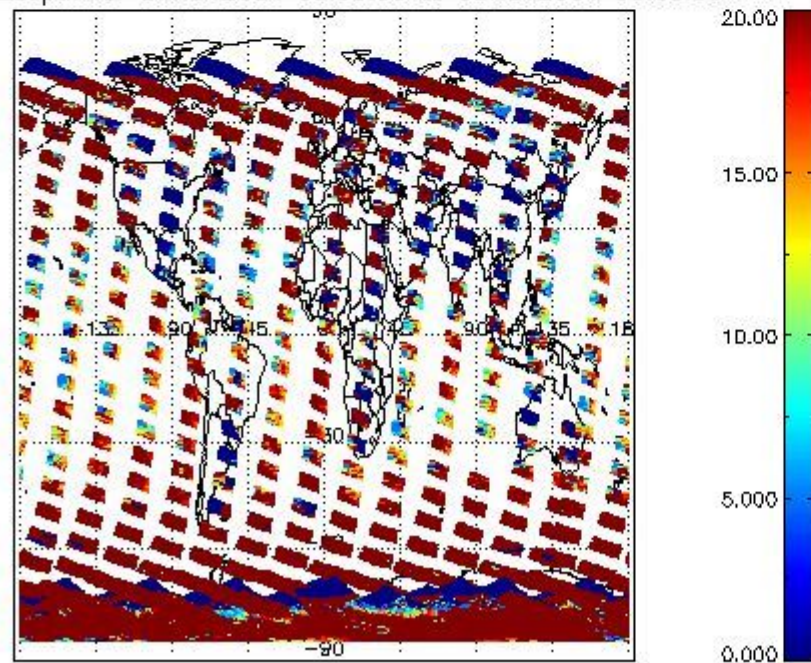
cLfrac for 07NOV2004 00:00:00 to 08NOV2004 00:00:00



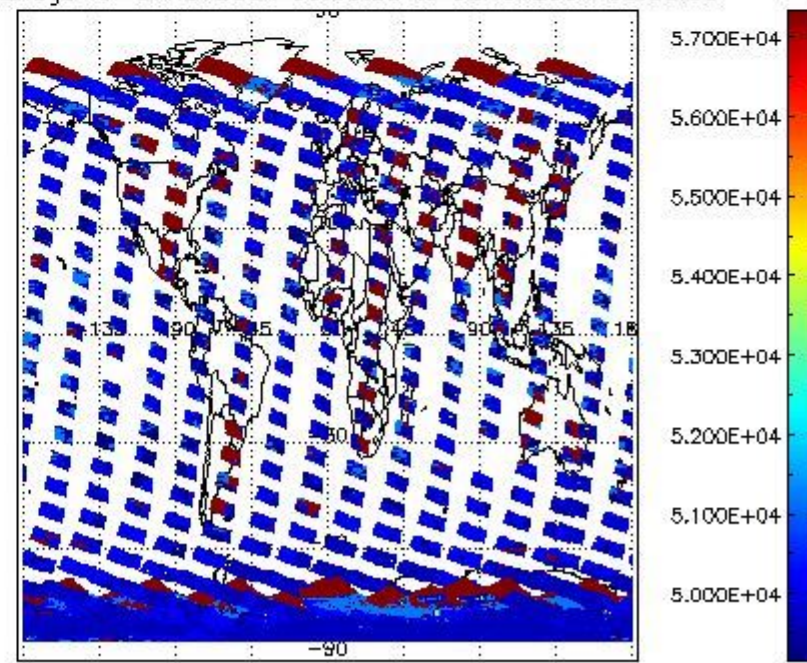
cL_top_height for 07NOV2004 00:00:00 to 08NOV2004 00:00:00



cLopt_depth for 07NOV2004 00:00:00 to 08NOV2004 00:00:00



cloud_flags for 07NOV2004 00:00:00 to 08NOV2004 00:00:00



2.2.2 Nadir

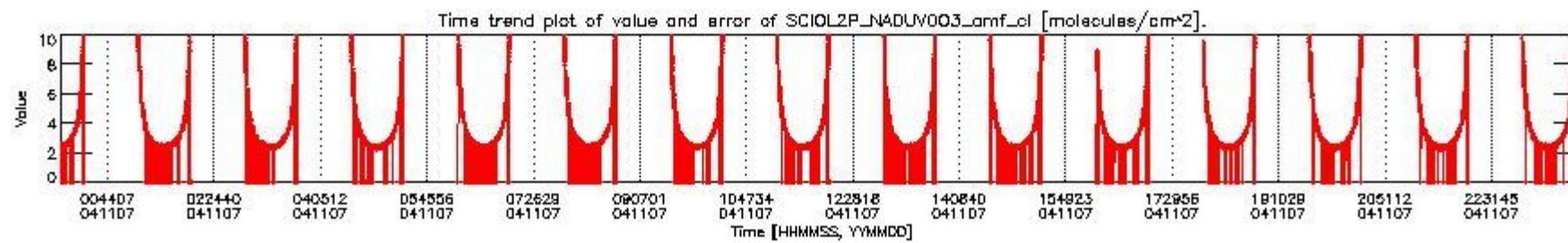
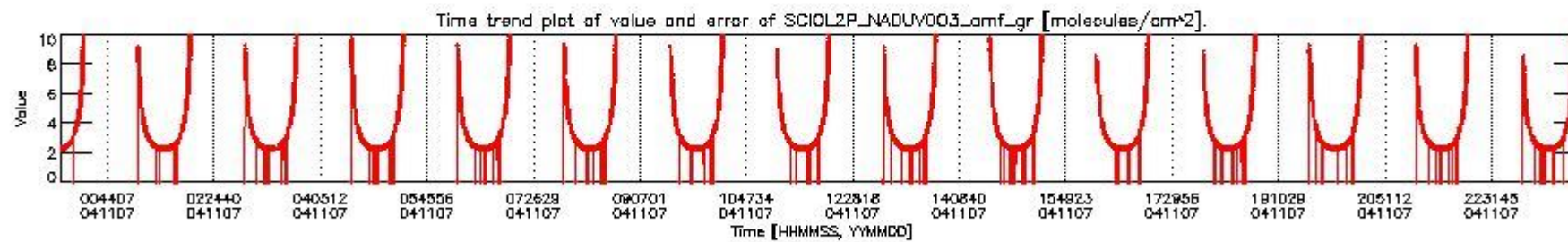
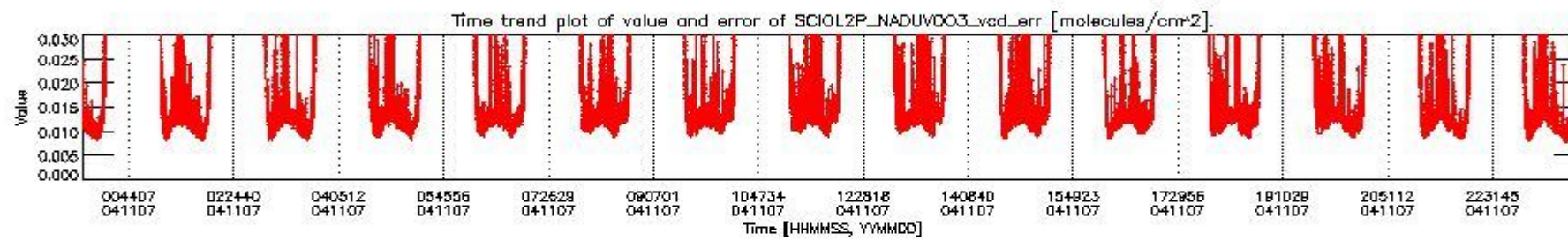
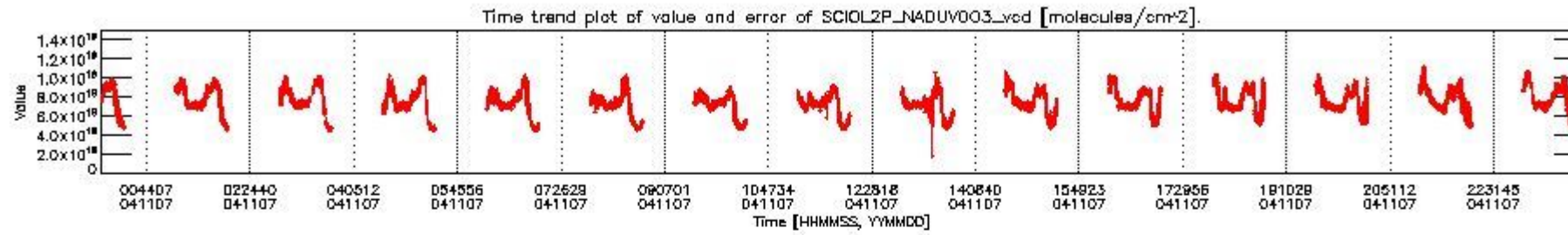
This section shows information about product quality of nadir measurements, in particular the quality of retrieved species.

The following data items are currently included into this section:

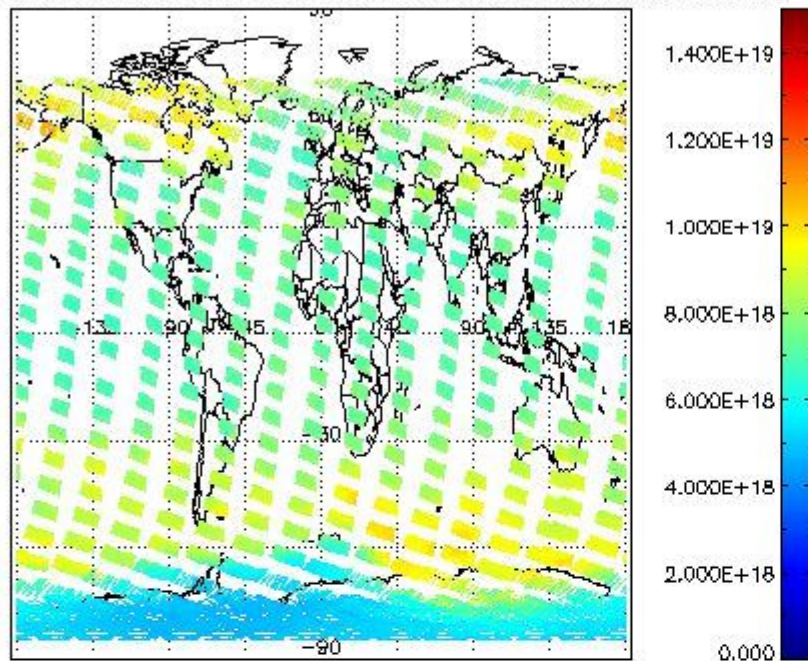
Number	Data item ID
0	SCIOL2P_NADUV003_vcd
1	SCIOL2P_NADUV003_vcd_err
2	SCIOL2P_NADUV003_amf_gr

3	SCIOL2P_NADUV003_amf_cl
4	SCIOL2P_NADUV1NO2_vcd
5	SCIOL2P_NADUV1NO2_vcd_err
6	SCIOL2P_NADUV1NO2_amf_gr
7	SCIOL2P_NADUV1NO2_amf_cl

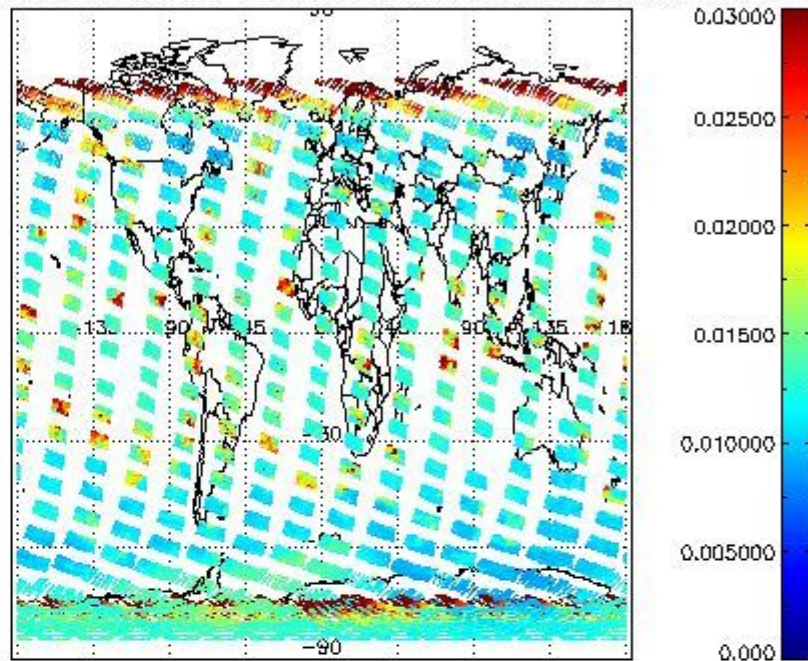
Data is presented both in time trend plots and world map plots, in order to show variations with time and geolocation. The vertical dotted lines in the time trend plots indicate orbits. The orbit times on the X-axis are estimated sensing_start time as suggested by the product sensing_start time in the MPH.



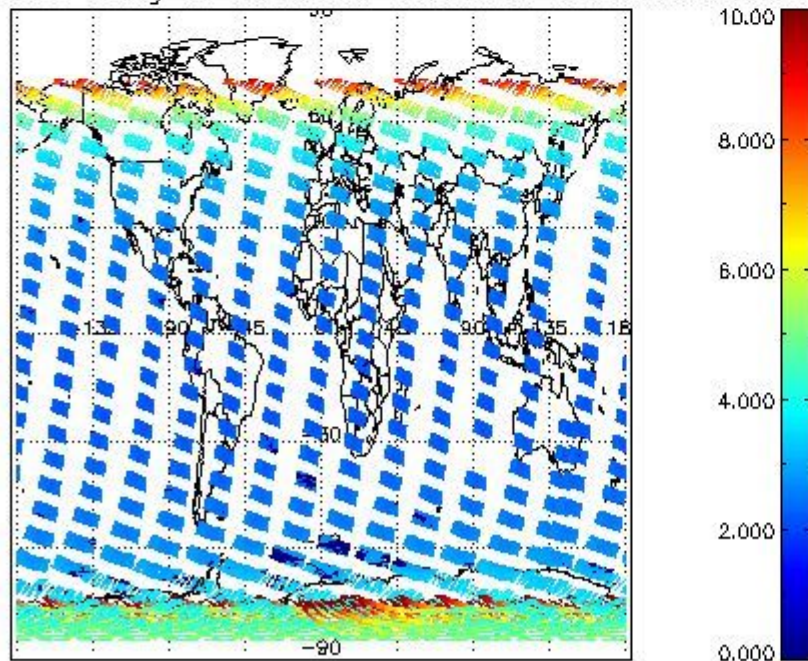
SCIOL2P_NADUV003_vcd for 07NOV2004 00:00:00 to 08NOV2004 00:00:00



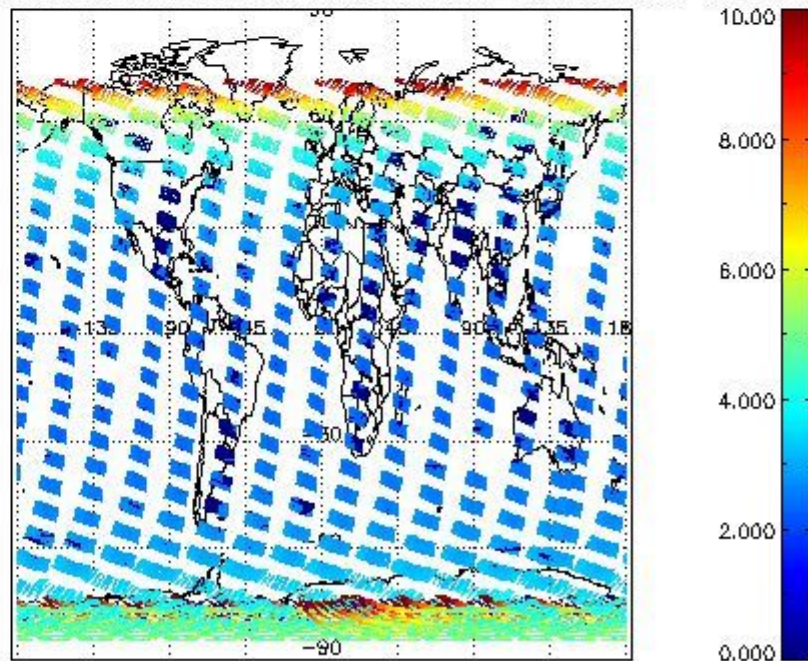
SCIOL2P_NADUV003_vcd_err for 07NOV2004 00:00:00 to 08NOV2004 00:00:00

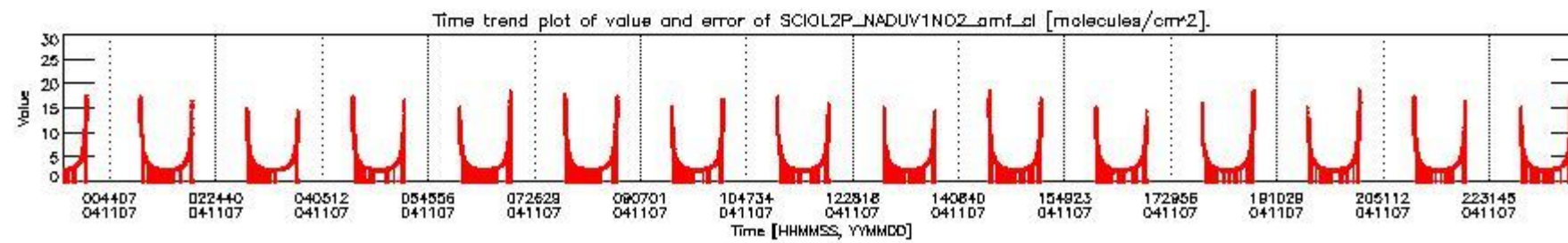
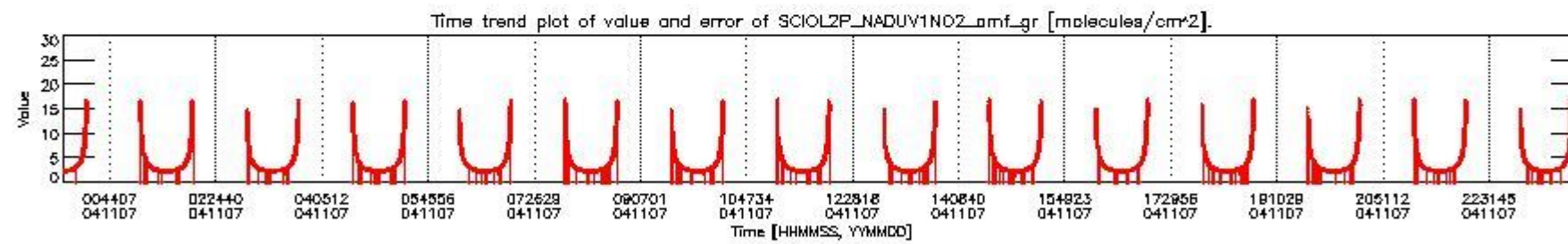
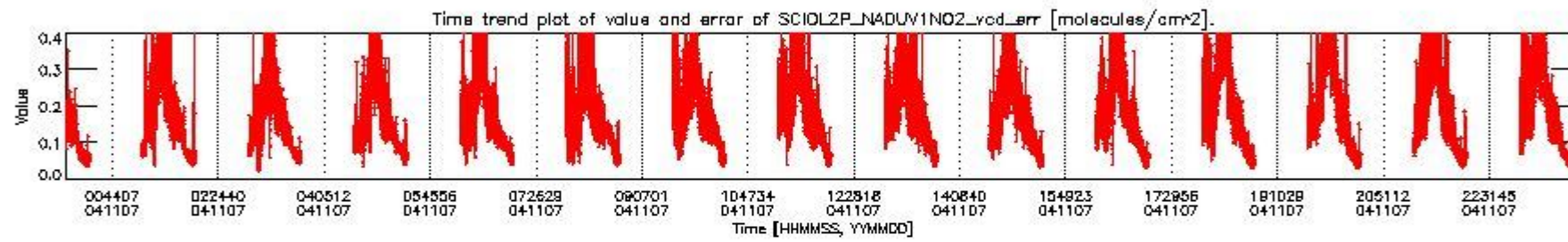
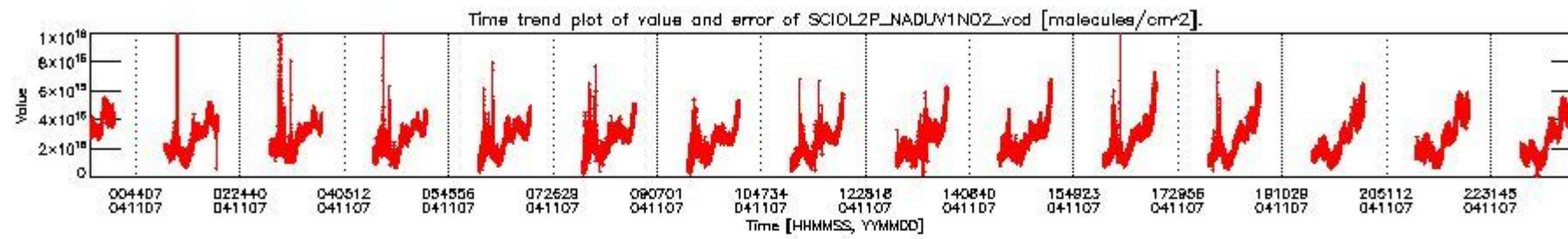


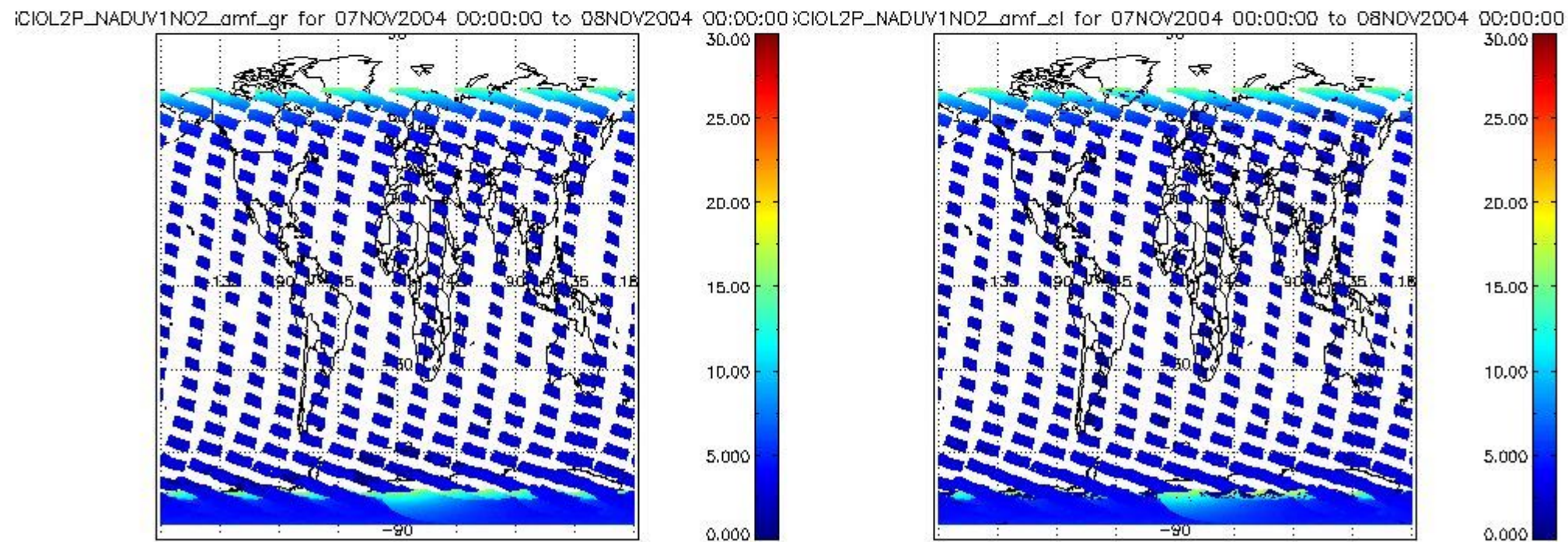
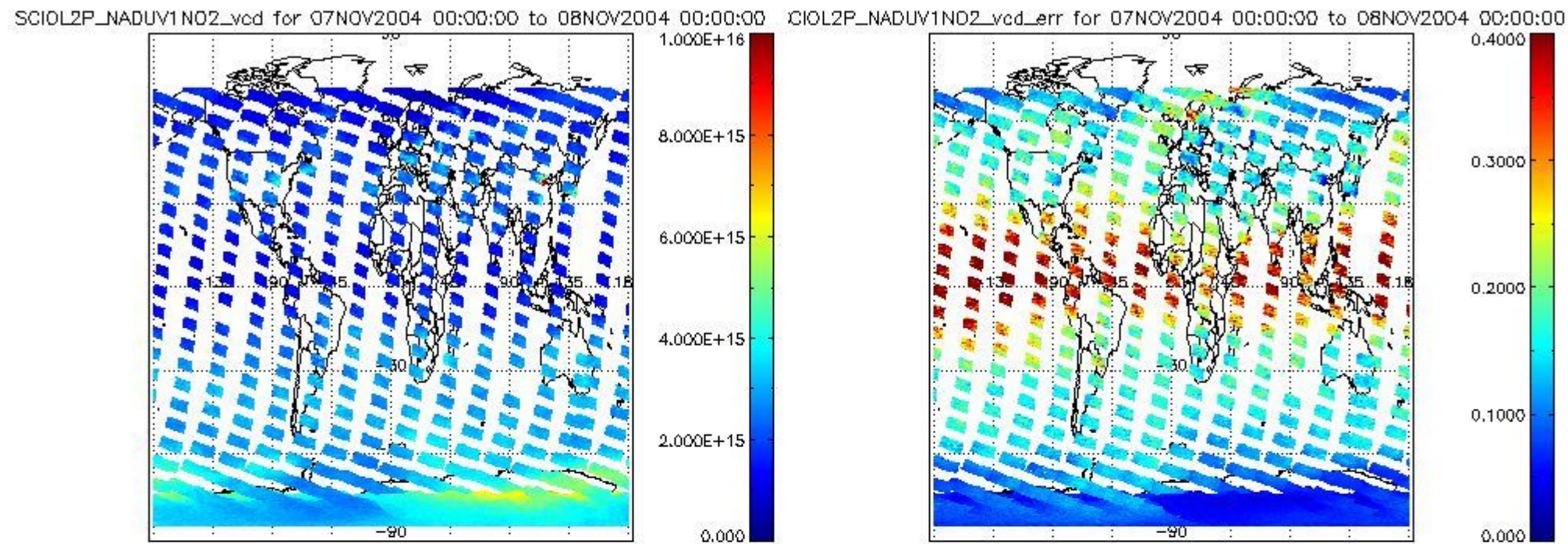
SCIOL2P_NADUV003_amf_gr for 07NOV2004 00:00:00 to 08NOV2004 00:00:00



SCIOL2P_NADUV003_amf_cl for 07NOV2004 00:00:00 to 08NOV2004 00:00:00







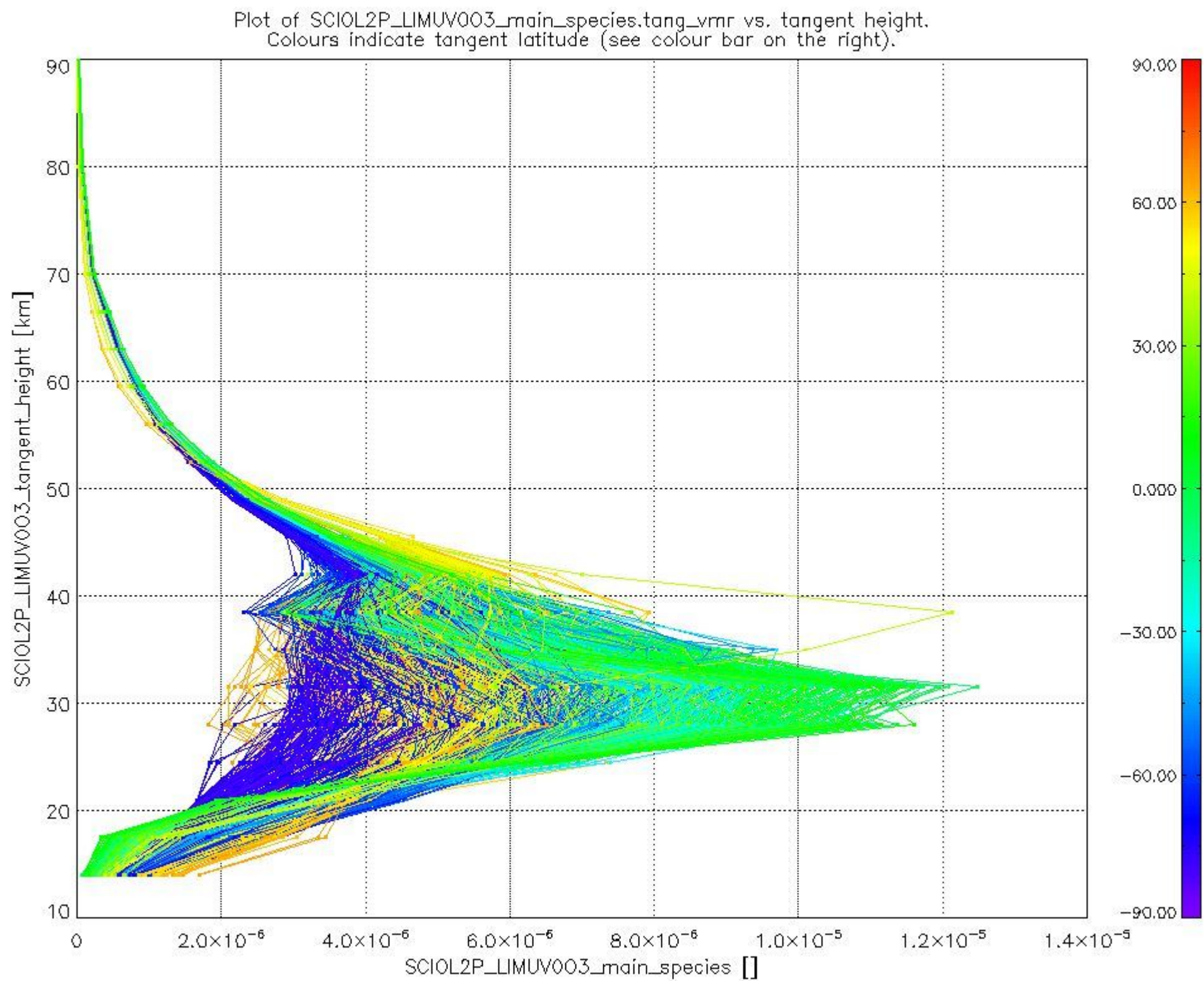
2.2.3 Limb

This section shows information about product quality of the limb retrievals, in particular the quality of retrieved species.

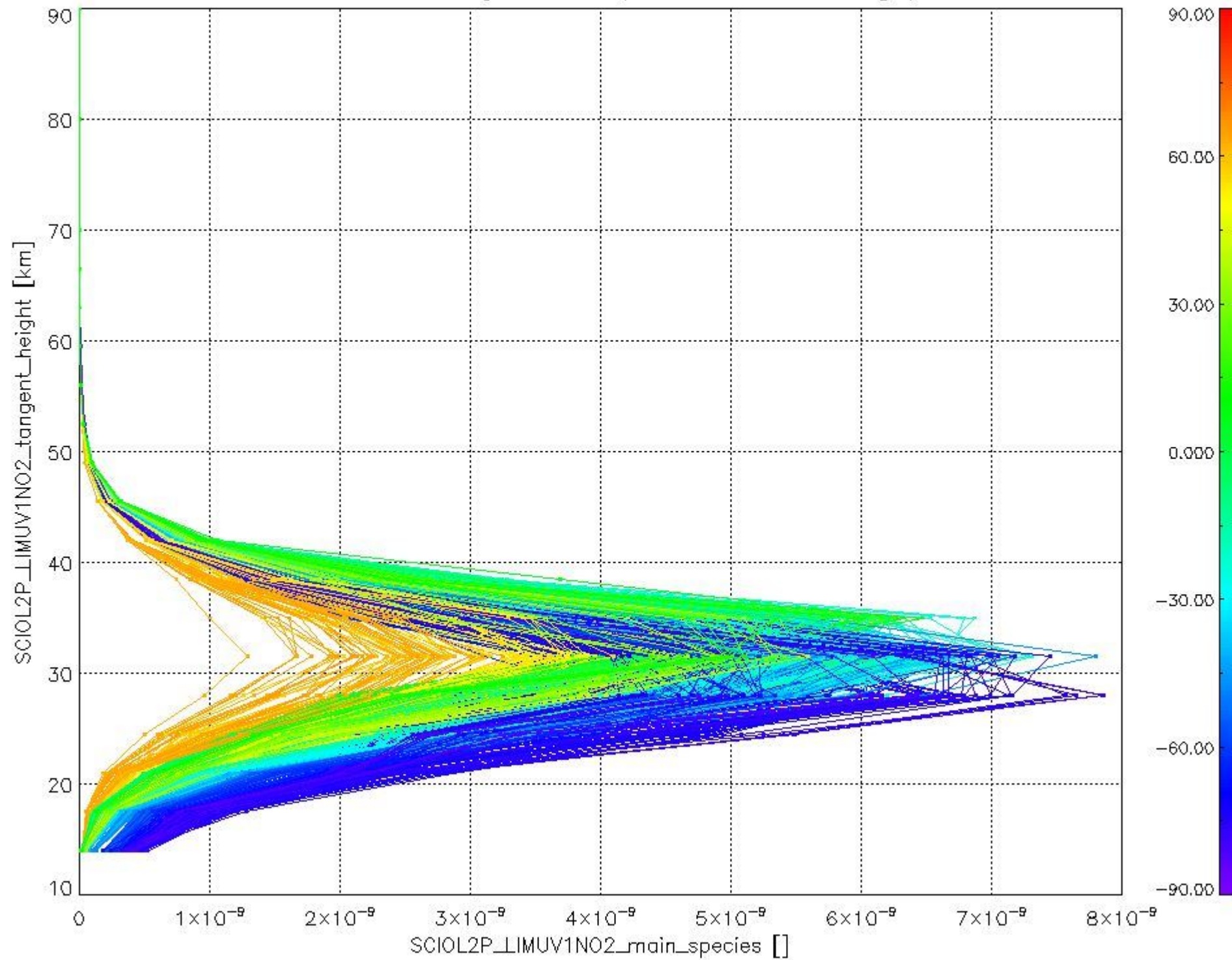
The following data items are currently included into this section:

Number	Data item ID
0	SCIOL2PLIMUV003_main_species
1	SCIOL2PLIMUV1NO2_main_species

The following plots shows for each species the tangent volume mixing ratio vs. tangent height. Colours indicate tangent latitude.



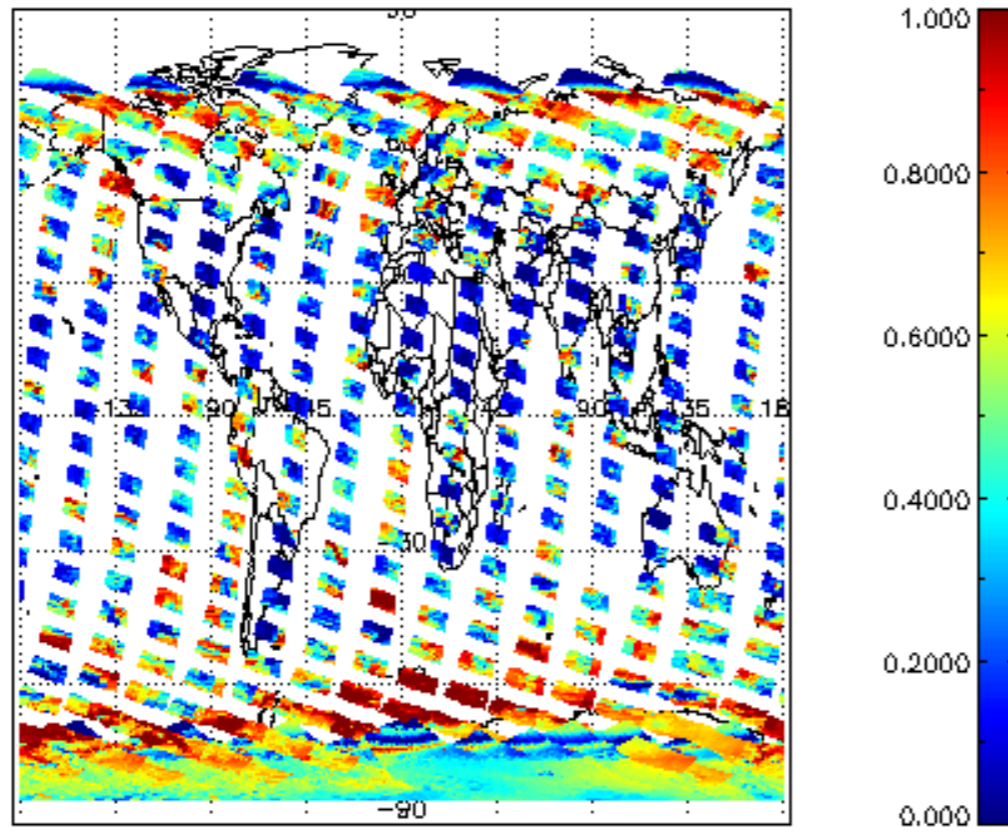
Plot of SCIO2P_LIMUV1NO2_main_species.tang_vmr vs. tangent height.
Colours indicate tangent latitude (see colour bar on the right).



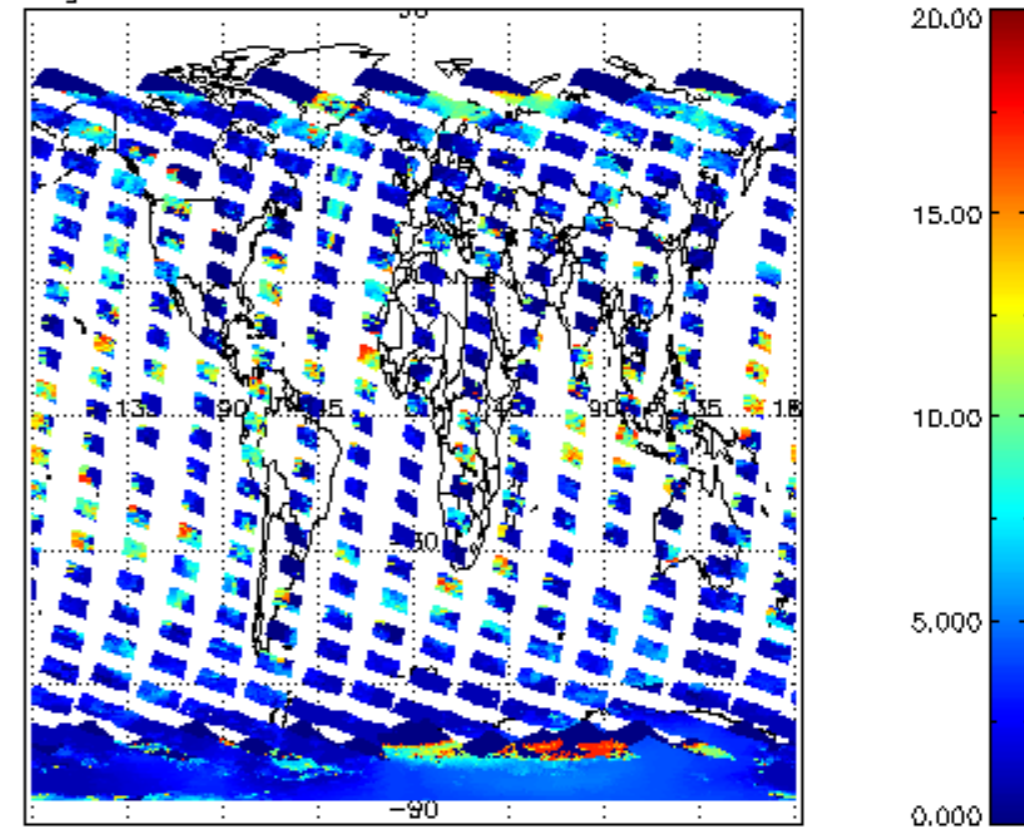
2.3 ADF monitoring

Number	ADF
	IN_ (INITIALISATION_FILE)
0	SCI_IN__AXNPDE20070629_092400_20070720_000000_20991231_235959
	ECF (ECMWF_FILE)
1	NOT USED

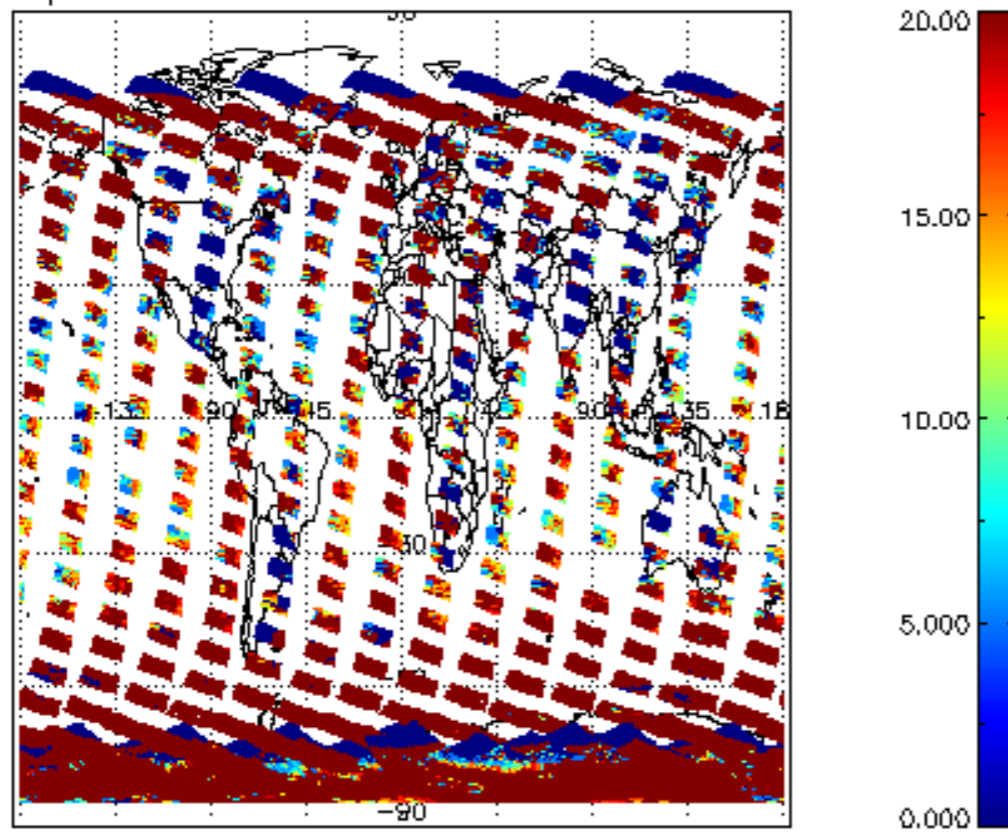
cLfrac for 07NOV2004 00:00:00 to 08NOV2004 00:00:00



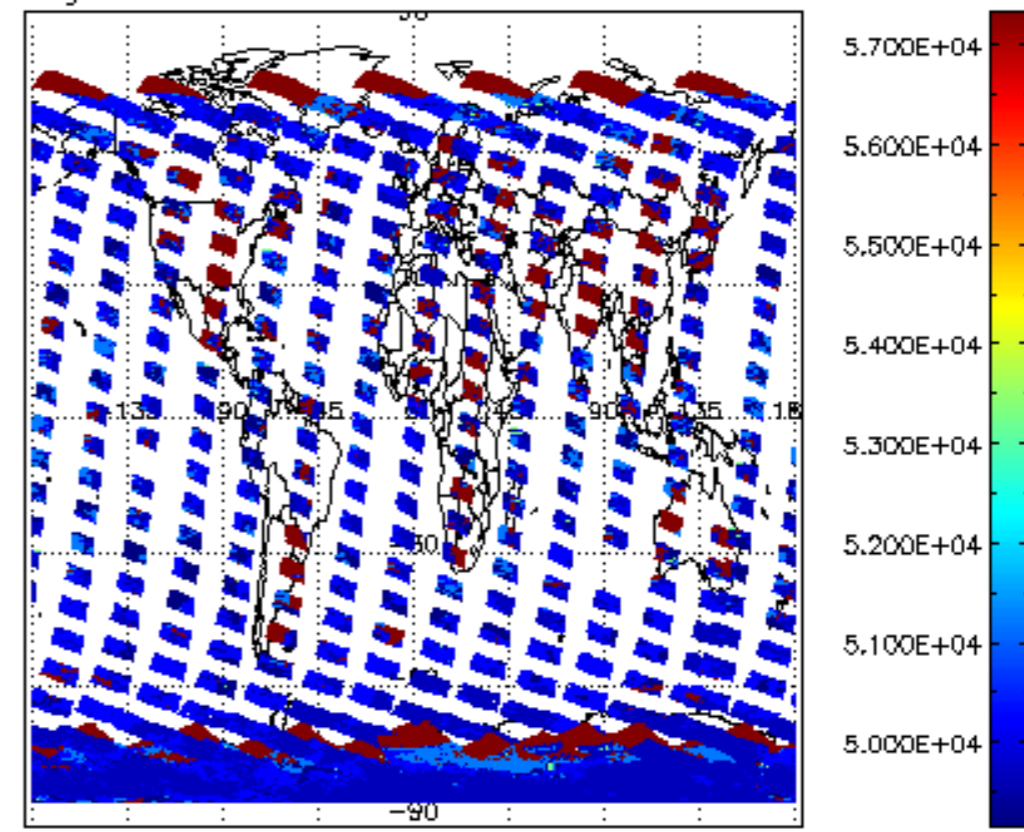
cL_top_height for 07NOV2004 00:00:00 to 08NOV2004 00:00:00

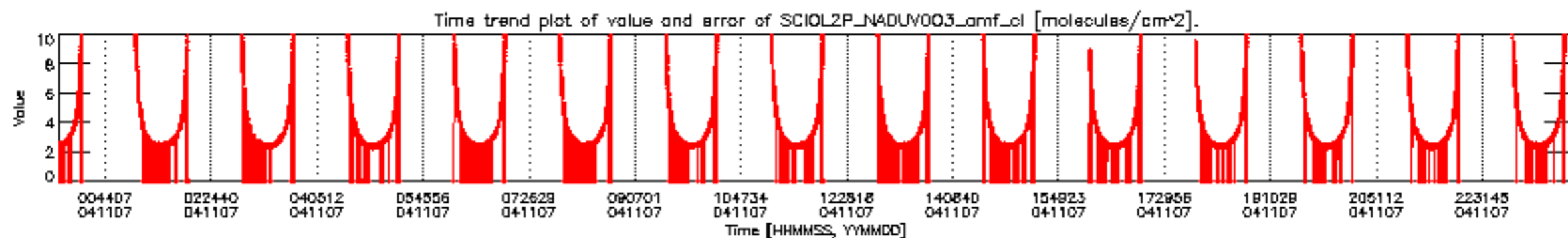
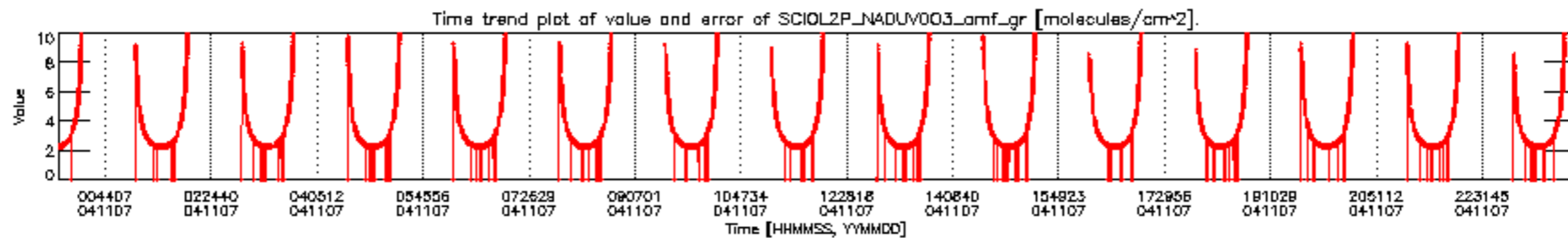
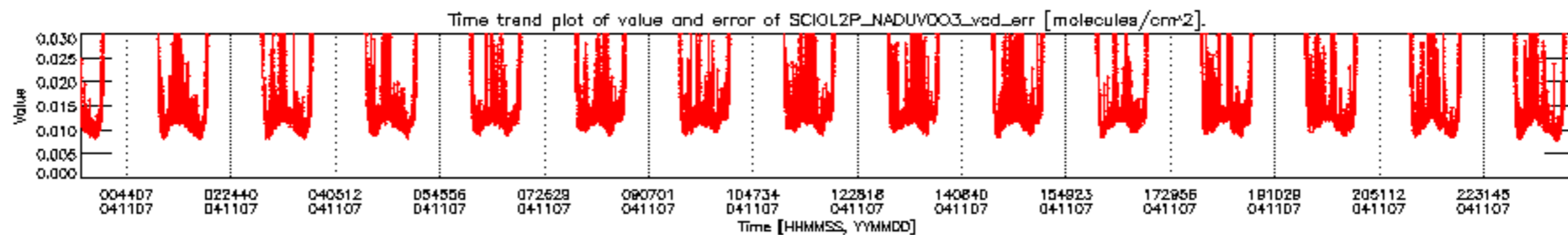
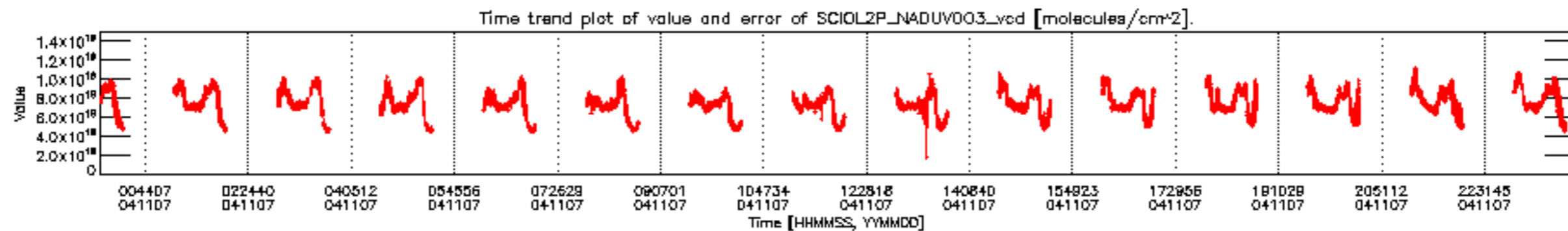


cL_opt_depth for 07NOV2004 00:00:00 to 08NOV2004 00:00:00

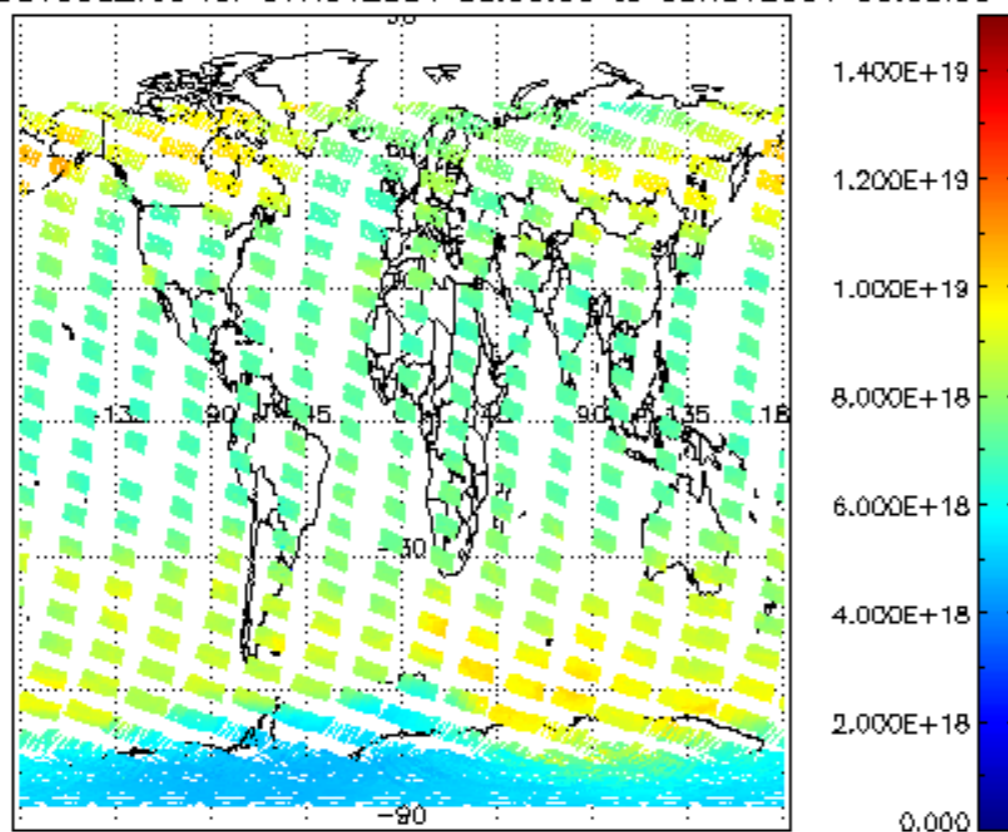


cloud_flags for 07NOV2004 00:00:00 to 08NOV2004 00:00:00

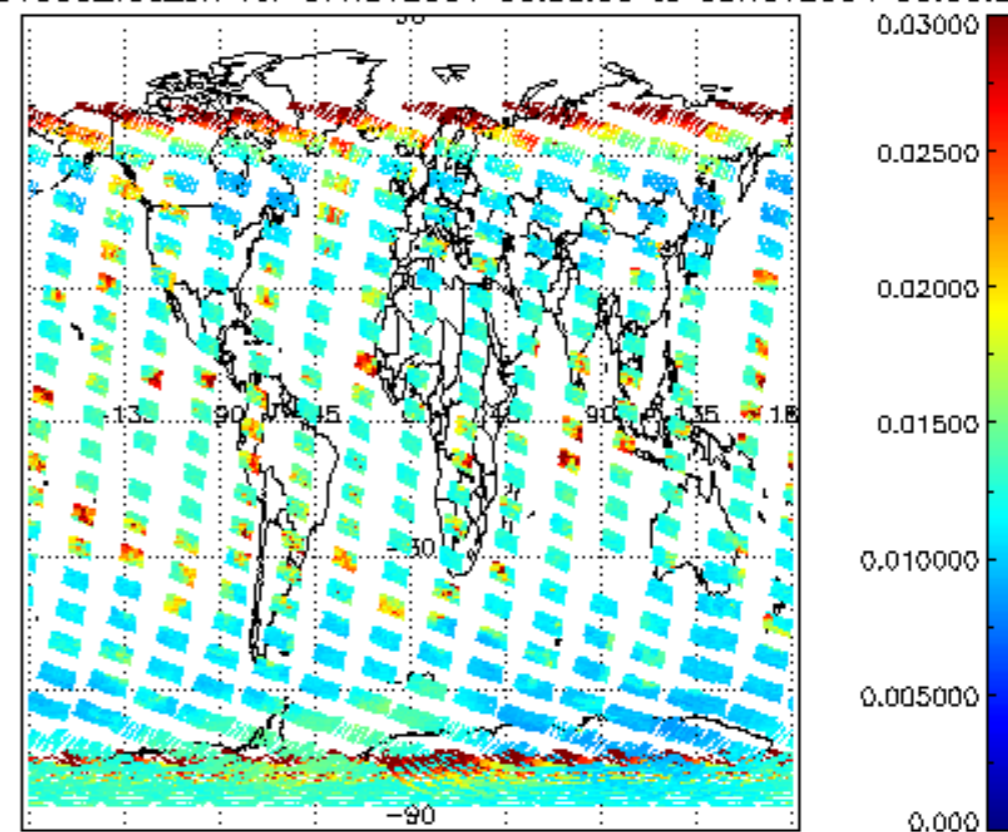




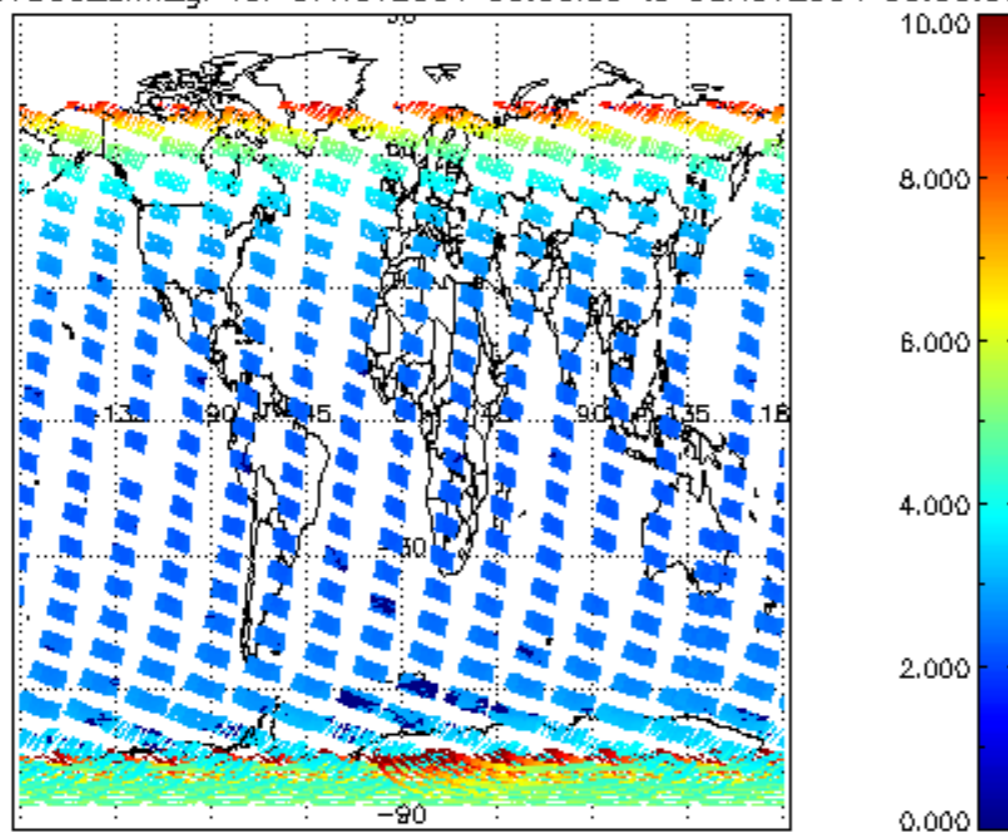
SCIOL2P_NADUV003_vcd for 07NOV2004 00:00:00 to 08NOV2004 00:00:00



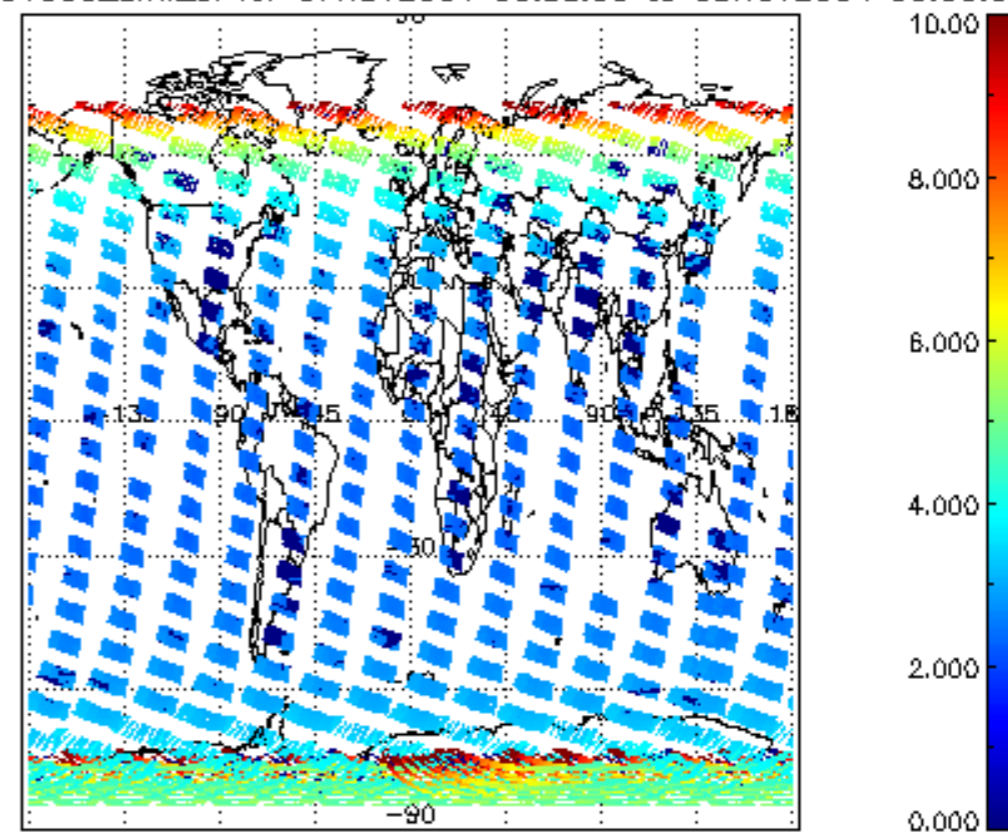
SCIOL2P_NADUV003_vcd_err for 07NOV2004 00:00:00 to 08NOV2004 00:00:00

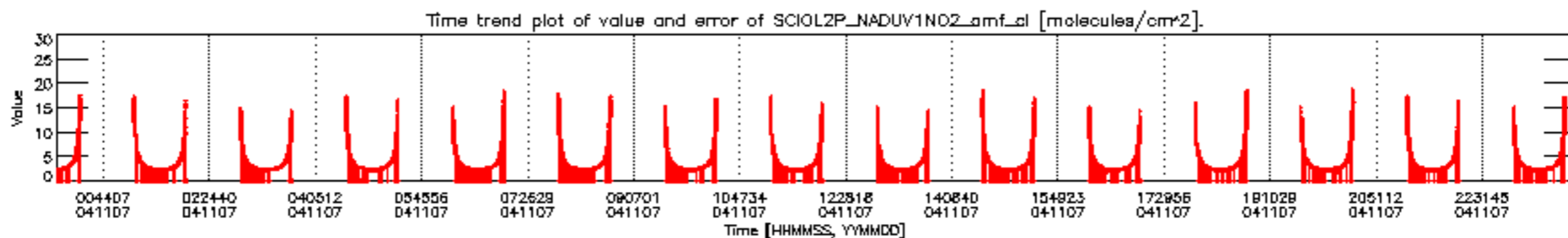
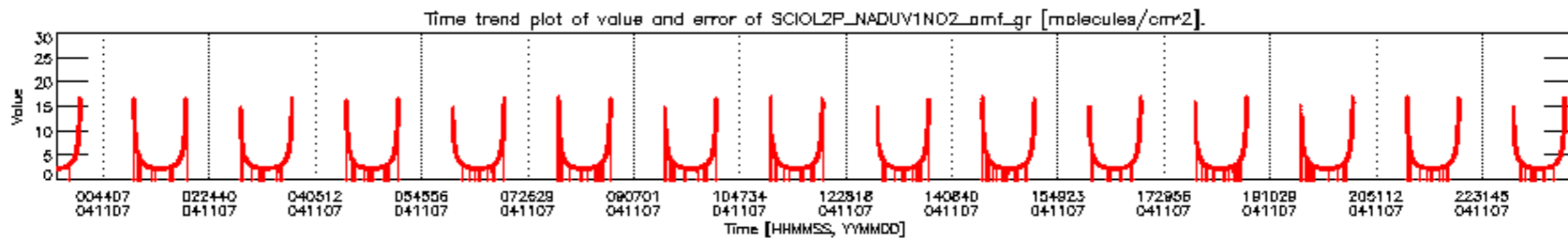
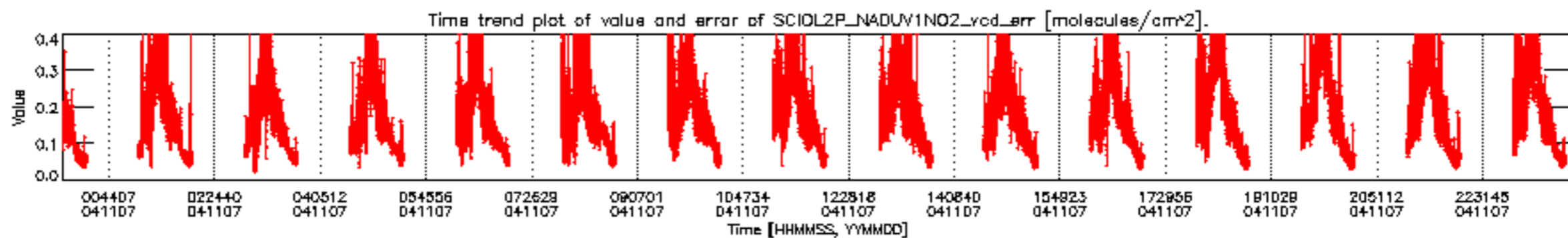
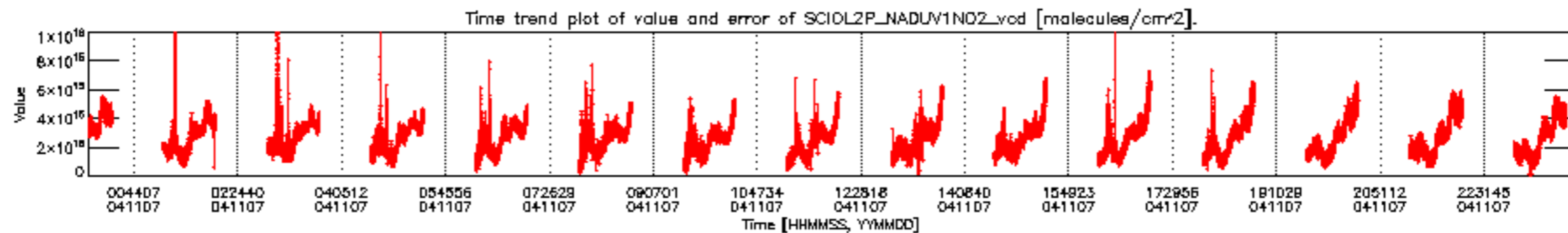


SCIOL2P_NADUV003_amf_gr for 07NOV2004 00:00:00 to 08NOV2004 00:00:00

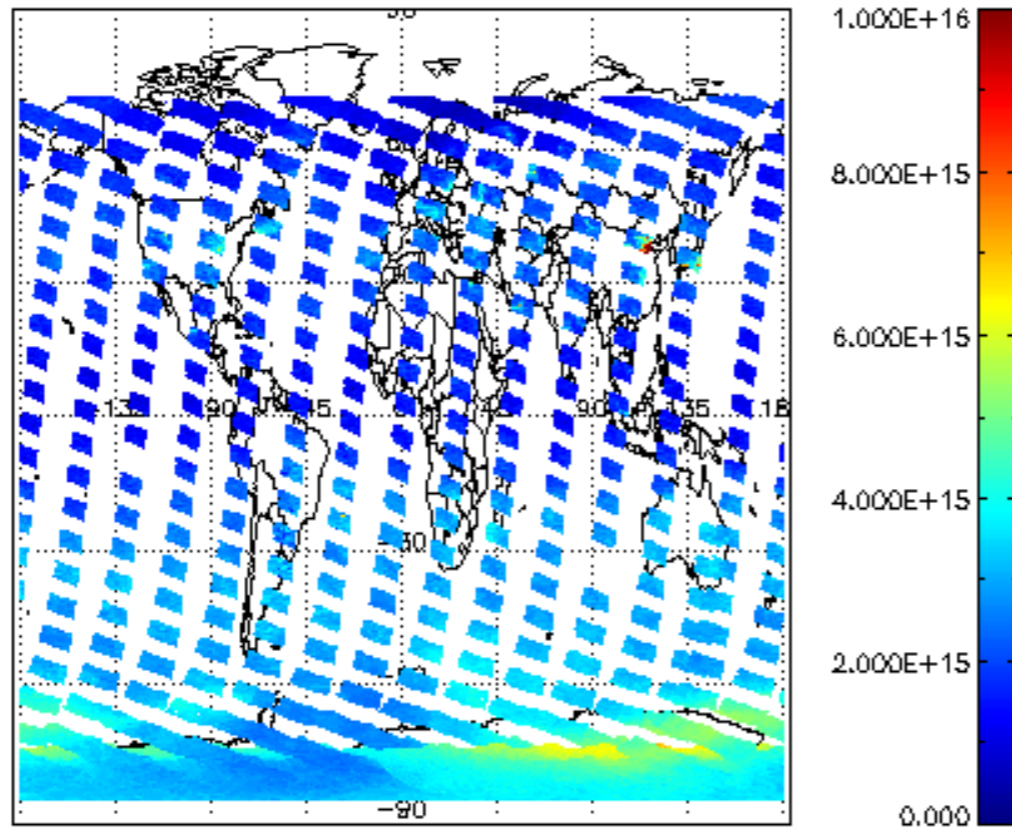


SCIOL2P_NADUV003_amf_cl for 07NOV2004 00:00:00 to 08NOV2004 00:00:00

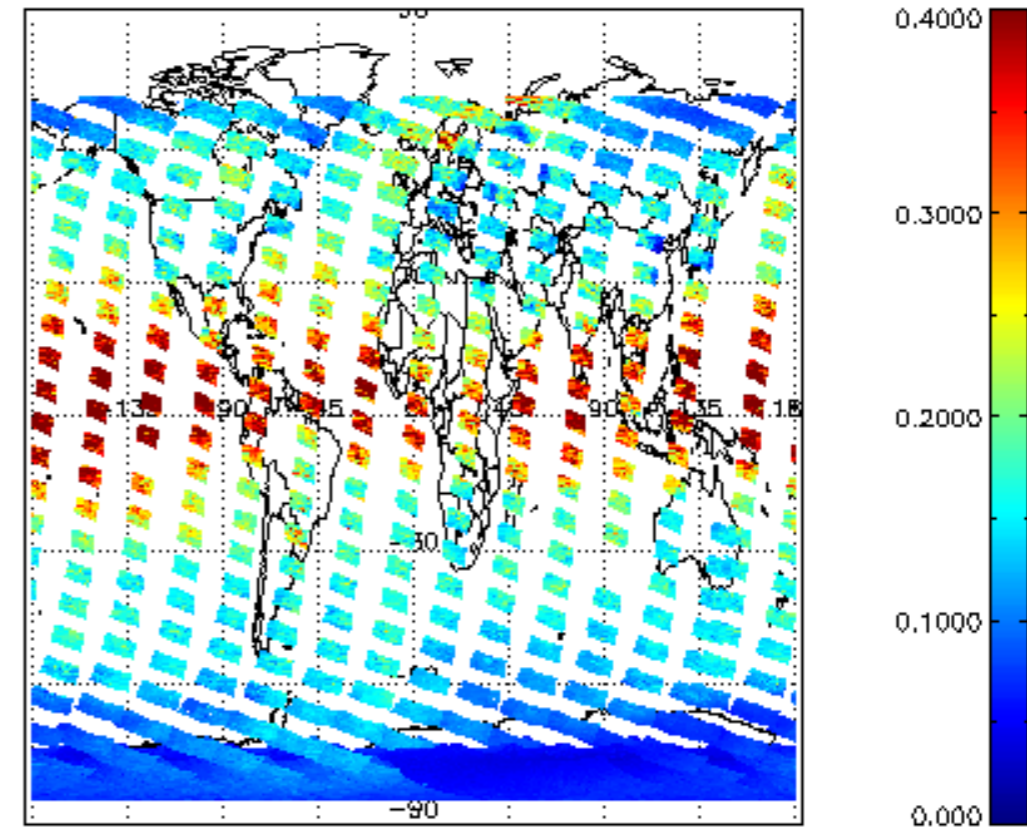




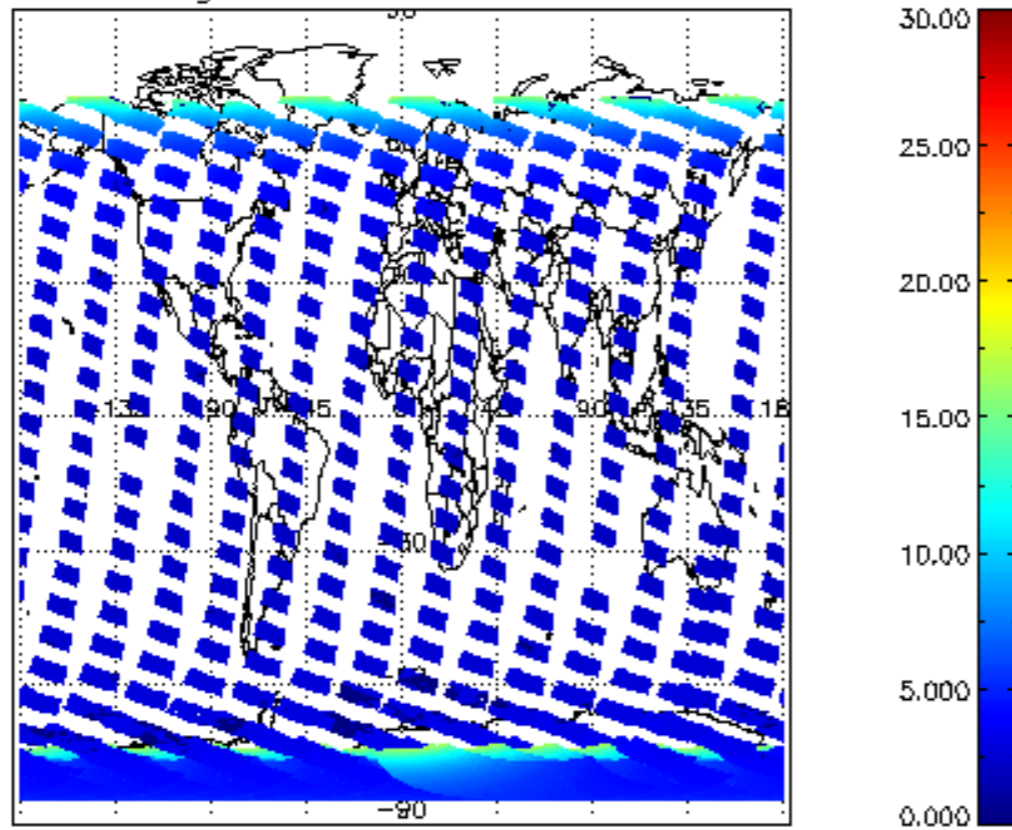
SCIOL2P_NADUV1NO2_vcd for 07NOV2004 00:00:00 to 08NOV2004 00:00:00



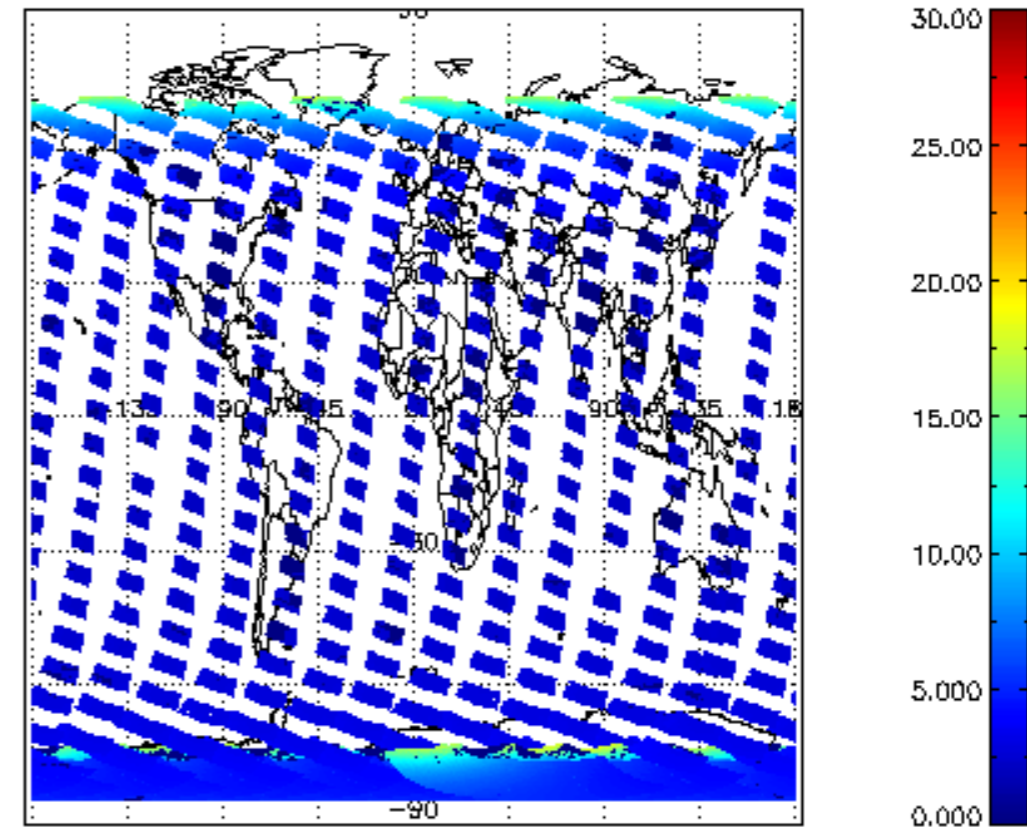
SCIOL2P_NADUV1NO2_vcd_err for 07NOV2004 00:00:00 to 08NOV2004 00:00:00



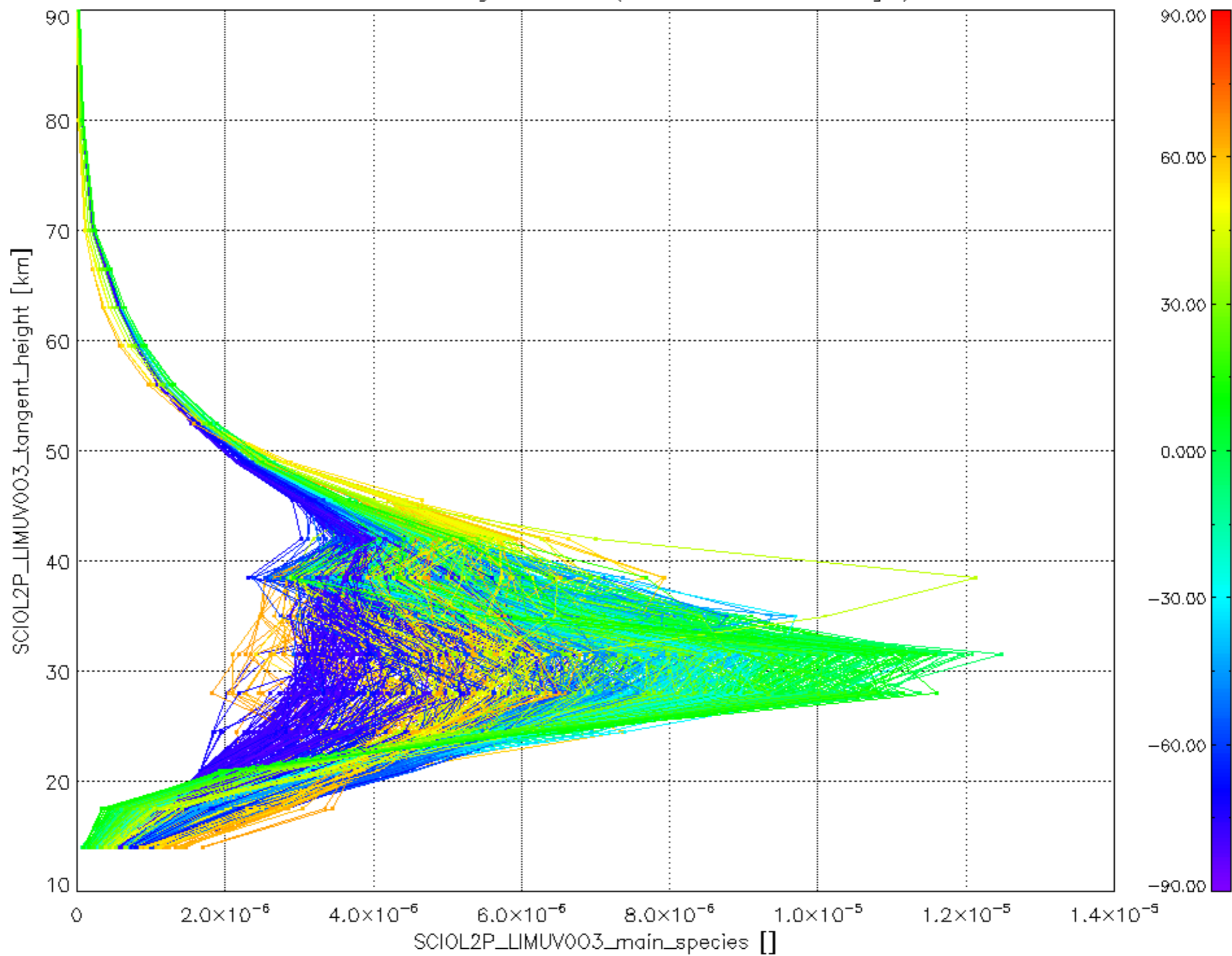
SCIOL2P_NADUV1NO2_amf_gr for 07NOV2004 00:00:00 to 08NOV2004 00:00:00



SCIOL2P_NADUV1NO2_amf_cl for 07NOV2004 00:00:00 to 08NOV2004 00:00:00



Plot of SCIOL2P_LIMUV003_main_species.tang_vmr vs. tangent height.
 Colours indicate tangent latitude (see colour bar on the right).



Plot of SCIOL2P_LIMUV1N02_main_species.tang_vmr vs. tangent height.
 Colours indicate tangent latitude (see colour bar on the right).

