

2. SCIAMACHY Daily Report for level 2 products

[2.1. General Info](#)

[2.2 Product Quality Indicators](#)

[2.3 ADF monitoring](#)

2.1 General Info

This report contains a daily analysis on parameters extracted from SCIAMACHY level 2 data (The SCI_OL__2P product).

2.1.1 Report summary

The table below shows general characteristics of the data that are included into this report.

Item	Value
Report version	1.6 (28-07-2008)
Time of report generation	03SEP2008 11:31:04
Data source version	SCIA-OL/3.01-R
Processing scope for products	17AUG2004 00:00:00 to 18AUG2004 00:00:00
Start time of first product within scope	16AUG2004 22:54:31
Stop time of last product within scope	18AUG2004 00:59:01
Total number of level 2 products	16
Number of level 2 products with errors	0

2.1.2 Summary per product

The following table shows a summary for each product used in this report.

Products are linked to a corresponding server directory for view/download. Note: Link access may be restricted by security settings of your internet browser or firewall.

#	Product name	Start time	Stop time	Prod err	Fit summary
0	SCI_OL__2PRDPA20040816_225431_000033812029_00302_12881_9342.N1	16AUG2004 22:54:31	16AUG2004 23:50:52	0	GOOD
1	SCI_OL__2PRDPA20040817_003507_000033252029_00303_12882_9649.N1	17AUG2004 00:35:07	17AUG2004 01:30:33	0	GOOD
2	SCI_OL__2PRDPA20040817_021543_000033812029_00304_12883_9572.N1	17AUG2004 02:15:43	17AUG2004 03:12:05	0	GOOD
3	SCI_OL__2PRDPA20040817_035620_000033252029_00305_12884_9433.N1	17AUG2004 03:56:20	17AUG2004 04:51:45	0	GOOD
4	SCI_OL__2PRDPA20040817_053656_000033812029_00306_12885_9411.N1	17AUG2004 05:36:56	17AUG2004 06:33:18	0	GOOD
5	SCI_OL__2PRDPA20040817_071733_000033252029_00307_12886_9365.N1	17AUG2004 07:17:33	17AUG2004 08:12:58	0	GOOD
6	SCI_OL__2PRDPA20040817_085809_000033812029_00308_12887_9484.N1	17AUG2004 08:58:09	17AUG2004 09:54:30	0	GOOD
7	SCI_OL__2PRDPA20040817_103845_000033252029_00309_12888_9401.N1	17AUG2004 10:38:45	17AUG2004 11:34:11	0	GOOD
8	SCI_OL__2PRDPA20040817_121921_000033812029_00310_12889_9633.N1	17AUG2004 12:19:21	17AUG2004 13:15:43	0	GOOD
9	SCI_OL__2PRDPA20040817_135958_000033252029_00311_12890_9330.N1	17AUG2004 13:59:58	17AUG2004 14:55:23	0	GOOD
10	SCI_OL__2PRDPA20040817_154034_000033812029_00312_12891_9238.N1	17AUG2004 15:40:34	17AUG2004 16:36:56	0	GOOD
11	SCI_OL__2PRDPA20040817_172105_000033892029_00313_12892_9391.N1	17AUG2004 17:21:05	17AUG2004 18:17:34	0	GOOD
12	SCI_OL__2PRDPA20040817_190206_000033122029_00314_12893_9519.N1	17AUG2004 19:02:06	17AUG2004 19:57:19	0	GOOD
13	SCI_OL__2PRDPA20040817_204223_000033252029_00315_12894_9657.N1	17AUG2004 20:42:23	17AUG2004 21:37:49	0	GOOD
14	SCI_OL__2PRDPA20040817_222300_000033812029_00316_12895_9299.N1	17AUG2004 22:23:00	17AUG2004 23:19:21	0	GOOD
15	SCI_OL__2PRDPA20040818_000336_000033252029_00317_12896_9446.N1	18AUG2004 00:03:36	18AUG2004 00:59:01	0	GOOD

2.2 Product Quality Indicators

2.2.1 Cloud parameters

This is a new section that shows information about the cloud parameters estimation, in particular cloud fractions and cloud top height. IMPORTANT NOTE: The contents and layout of this section are still being validated. Please use with caution.

General statistics:

Total number of cloud data DSRs: 146640

Total number of cloud data DSRs with good quality flag (=0): 146640 (100.0 %)

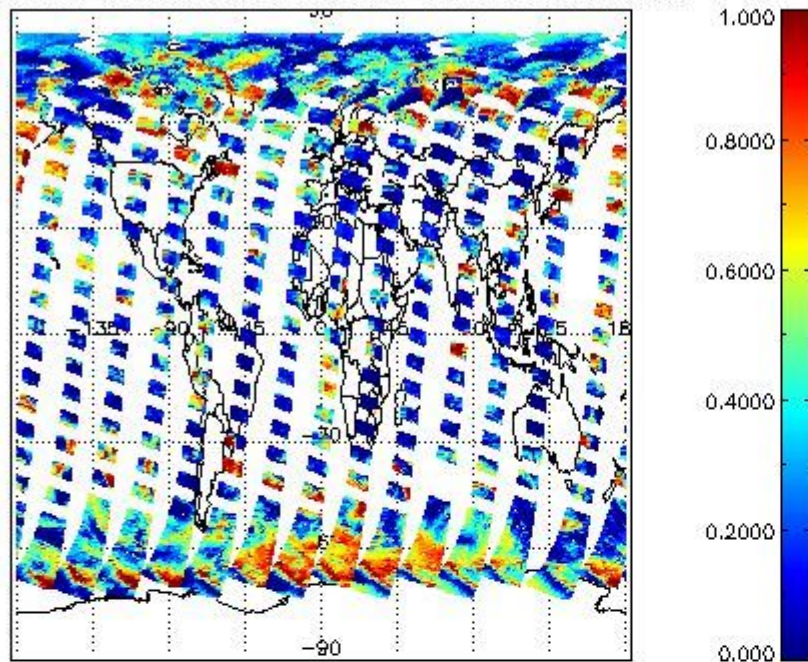
Parameter	#valid	Mean	Median	Min	Max	Stddev	Unit
QUALITY_FLAG	146640	0.0000	0.0000	0.0000	0.0000	0.0000	flag
INTEGR_TIME	146640	0.16977	0.12500	0.12500	0.25000	0.059932	s
CL_FRAC	146640	0.34177	0.28890	0.0000	1.0000	0.28459	-
CL_FRAC_ERR	146640	0.0000	0.0000	0.0000	0.0000	0.0000	rel. fraction
PMD_READ	146640	5.4326	4.0000	4.0000	8.0000	1.9178	
PMD_READ_CL[0]	146640	0.21084	0.0000	0.0000	8.0000	1.0395	-
PMD_READ_CL[1]	146640	1.0278	0.0000	0.0000	8.0000	2.0804	-
CL_TOP_HEIGHT	124956	3.5079	1.8900	0.0000	17.000	3.6668	km
CL_TOP_HEIGHT_ERR	0	---	---	---	---	---	---
CL_OPT_DEPTH	124956	59.110	70.728	0.0000	101.00	42.994	km
CL_OPT_DEPTH_ERR	0	---	---	---	---	---	---
CL_TYPE_FLAGS	146640	11100000	11100000	11100000	11100000	0.0000	flags. Bit definition = 0: low or high cloud; 1: ice or water cloud; 2: thick or thin cloud; 3-15: not used
CLOUD_FLAGS	146640	11001011	11000100	11000000	11100000	3349.9	flags
AERO_ABSO_IND	146640	0.80642	0.57147	-4.4151	10.540	1.1125	
AERO_IND_DIAG	146640	0.0000	0.0000	0.0000	0.0000	0.0000	
AERO_FLAGS	146640	01010110	00000000	00000000	11000000	24462.	flags

Time and geolocation plots:

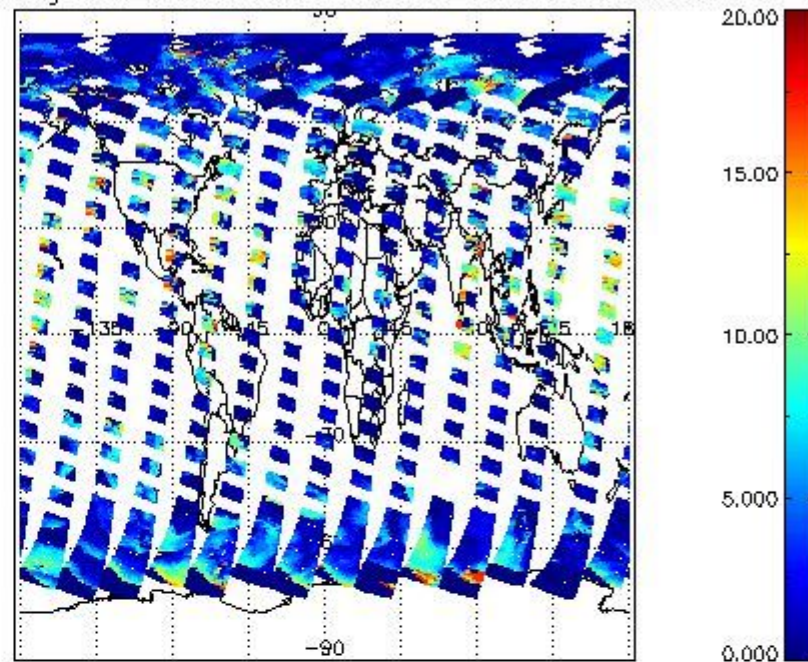
Plots are available for the following parameters:

Number	Data item ID
0	cl_frac
1	cl_top_height
2	cl_opt_depth
3	cloud_flags

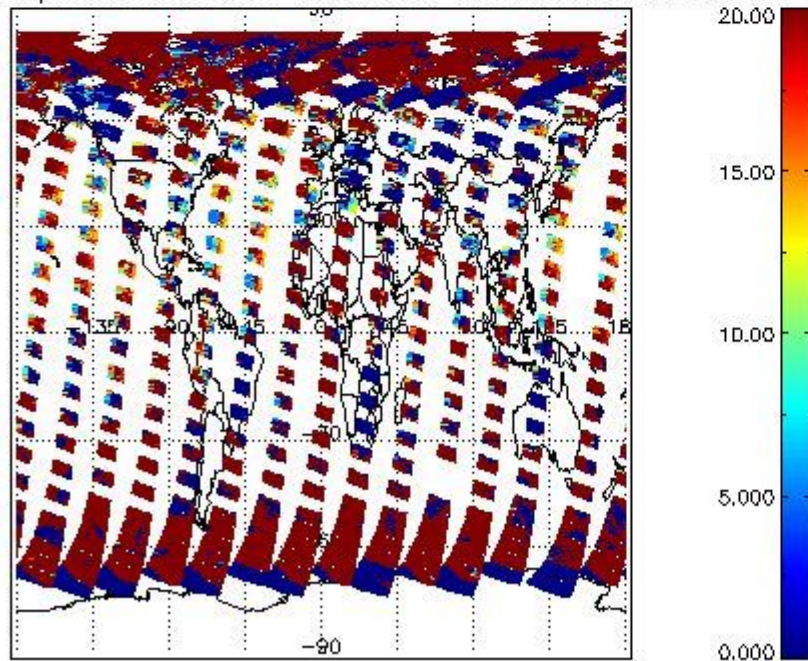
cL_frac for 17AUG2004 00:00:00 to 18AUG2004 00:00:00



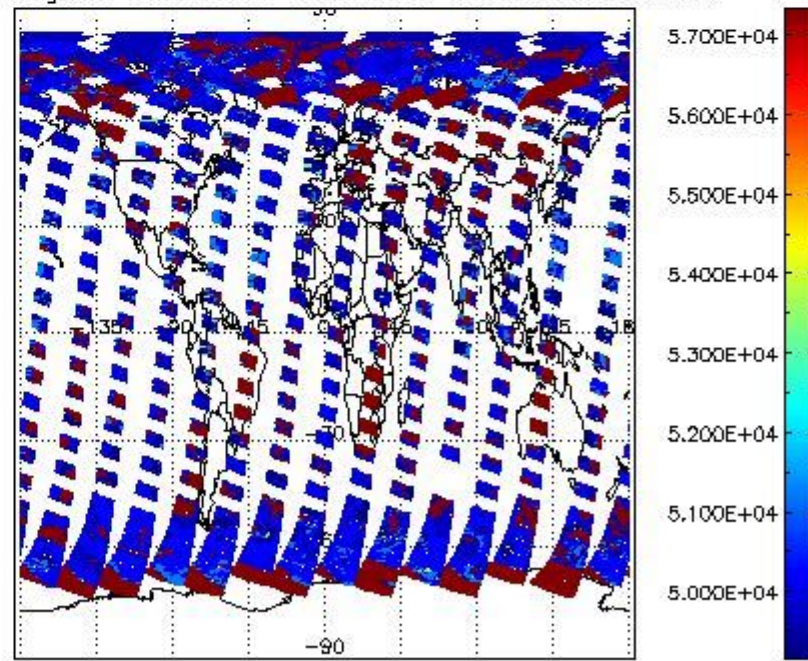
cL_top_height for 17AUG2004 00:00:00 to 18AUG2004 00:00:00



cL_opt_depth for 17AUG2004 00:00:00 to 18AUG2004 00:00:00



cloud_flags for 17AUG2004 00:00:00 to 18AUG2004 00:00:00



2.2.2 Nadir

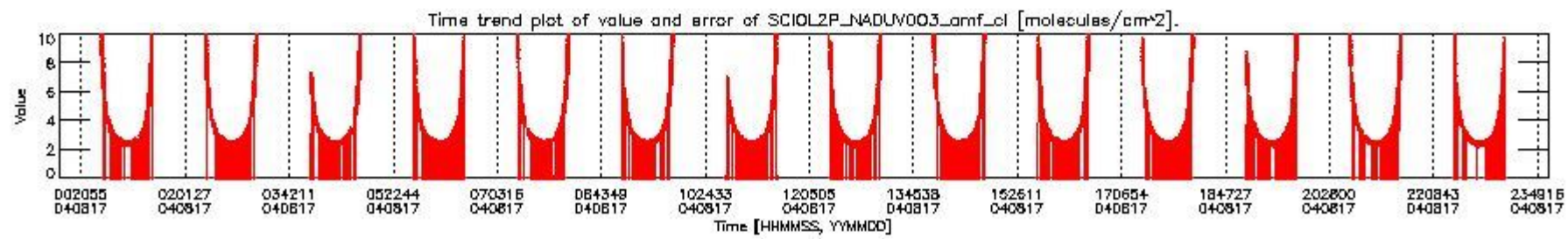
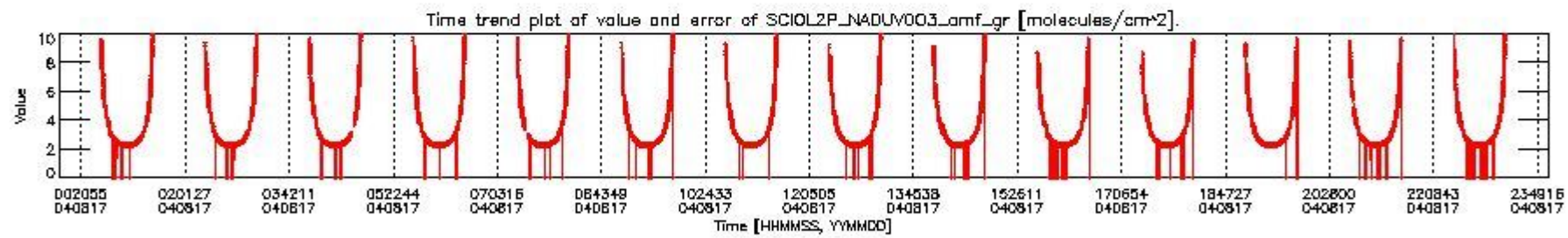
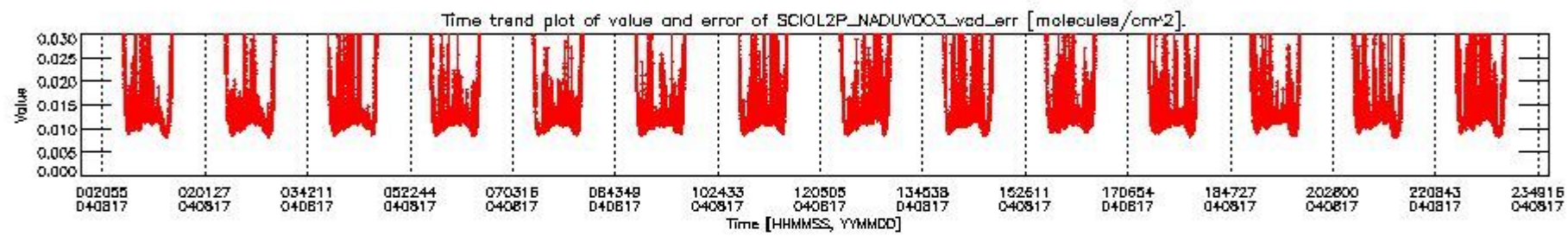
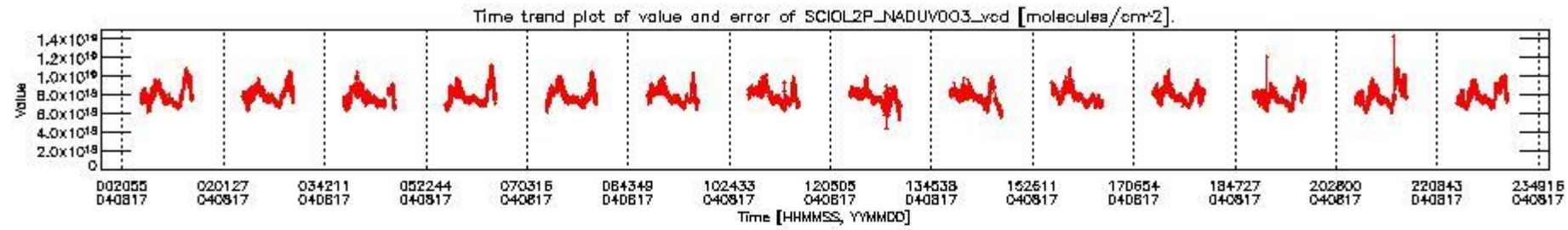
This section shows information about product quality of nadir measurements, in particular the quality of retrieved species.

The following data items are currently included into this section:

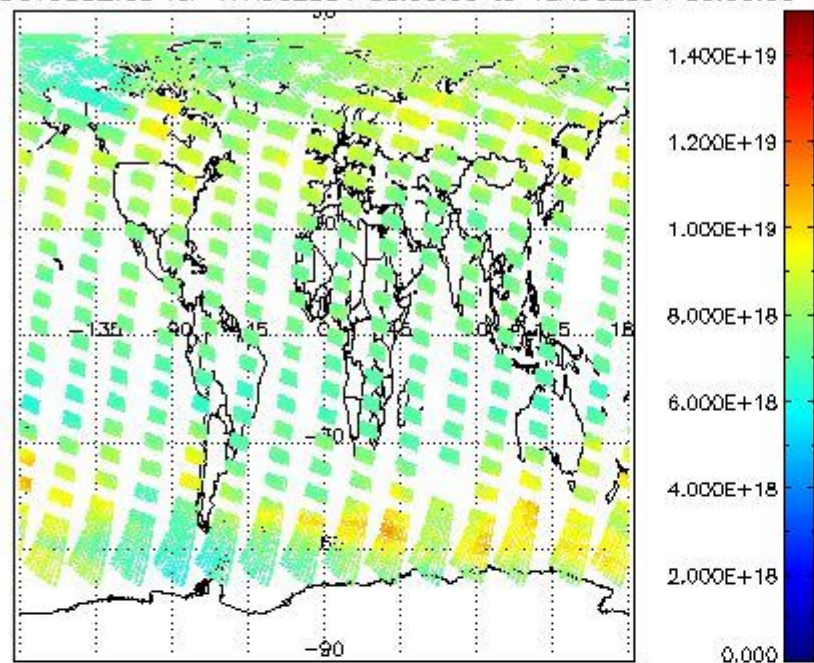
Number	Data item ID
0	SCIOL2P_NADUV003_vcd
1	SCIOL2P_NADUV003_vcd_err
2	SCIOL2P_NADUV003_amf_gr

3	SCIOL2P_NADUV003_amf_cl
4	SCIOL2P_NADUV1NO2_vcd
5	SCIOL2P_NADUV1NO2_vcd_err
6	SCIOL2P_NADUV1NO2_amf_gr
7	SCIOL2P_NADUV1NO2_amf_cl

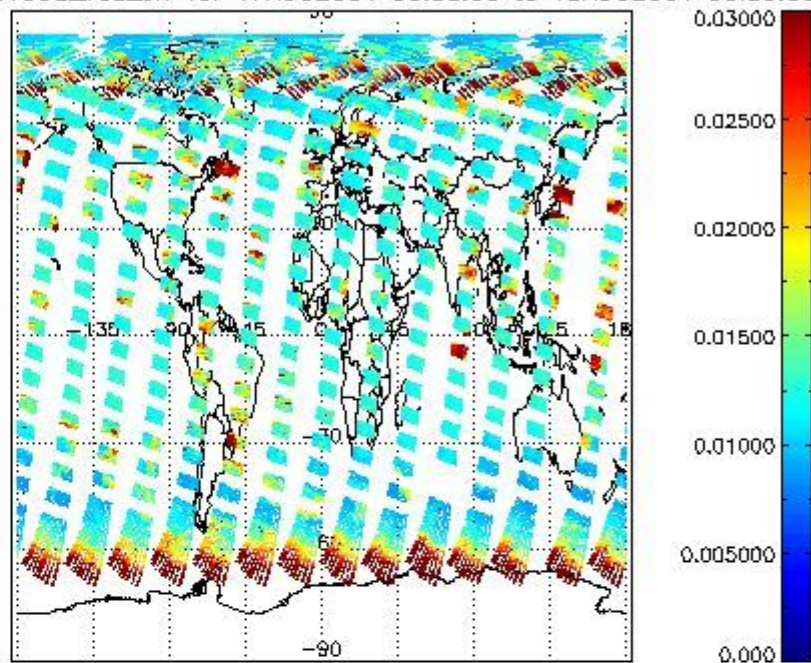
Data is presented both in time trend plots and world map plots, in order to show variations with time and geolocation. The vertical dotted lines in the time trend plots indicate orbits. The orbit times on the X-axis are estimated sensing_start time as suggested by the product sensing_start time in the MPH.



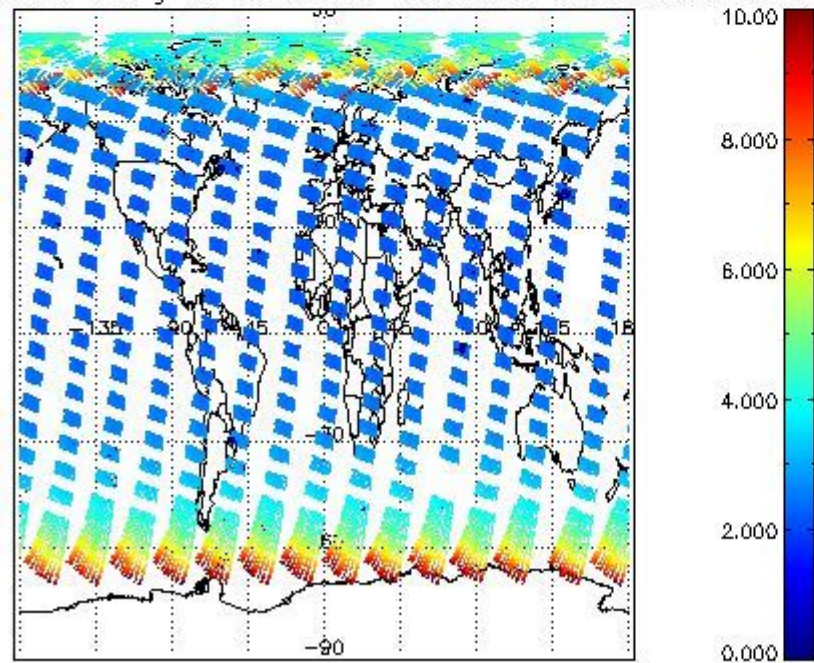
SCIOL2P_NADUV003_vcd for 17AUG2004 00:00:00 to 18AUG2004 00:00:00



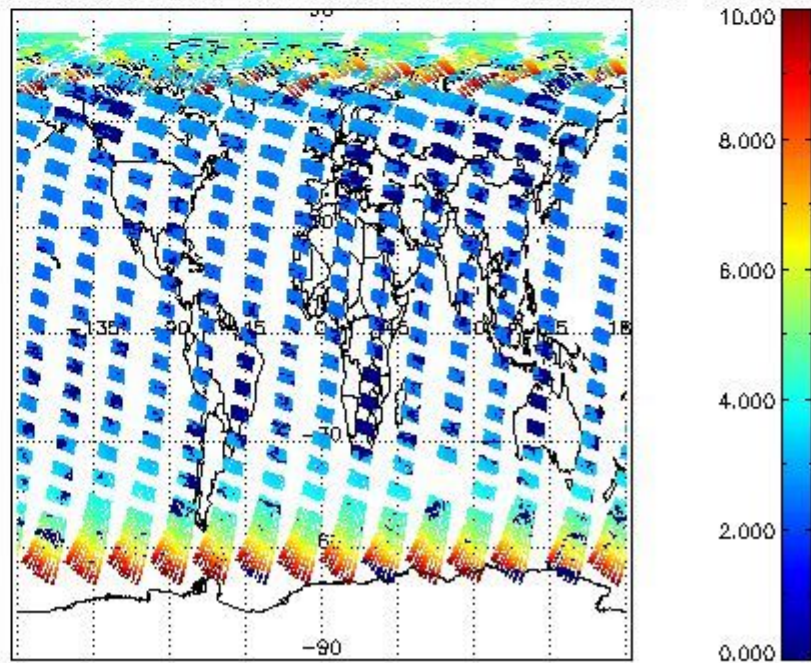
SCIOL2P_NADUV003_vcd_err for 17AUG2004 00:00:00 to 18AUG2004 00:00:00

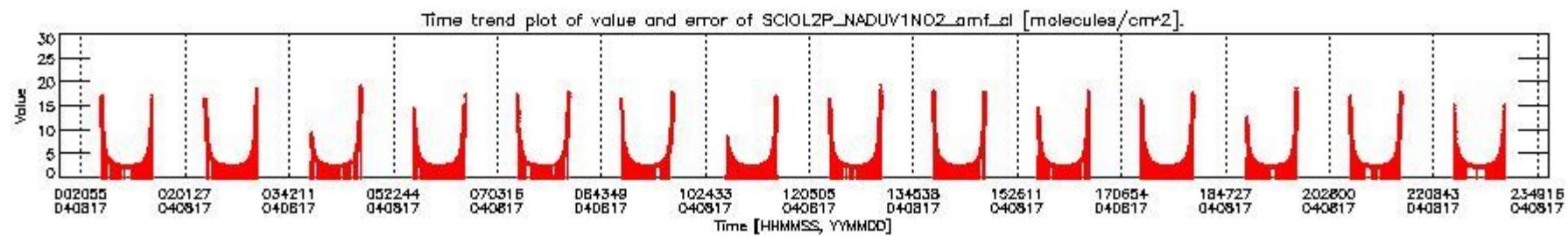
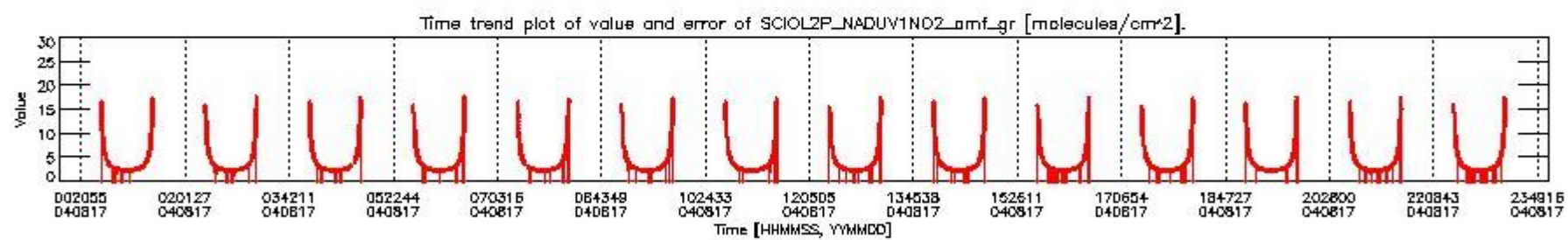
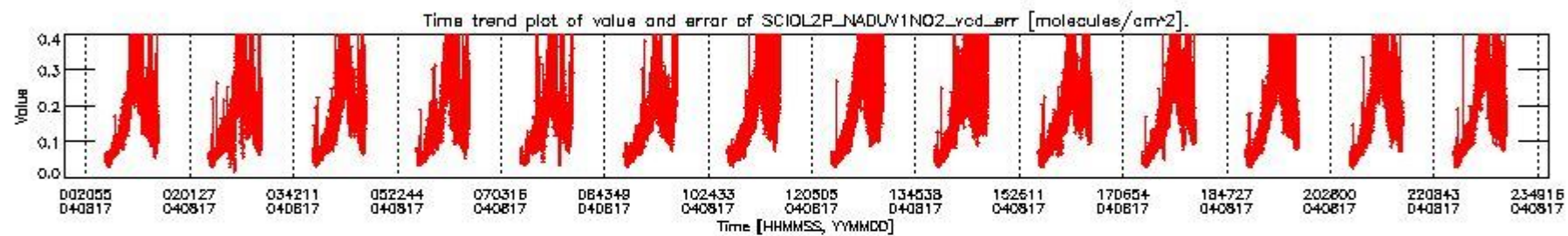
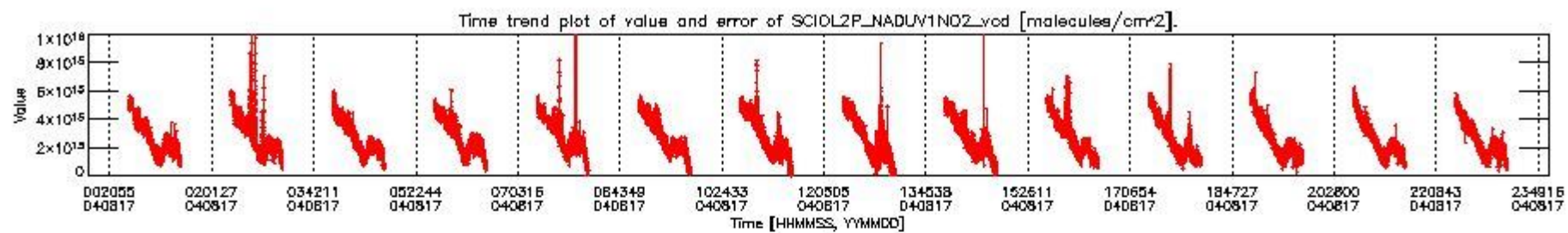


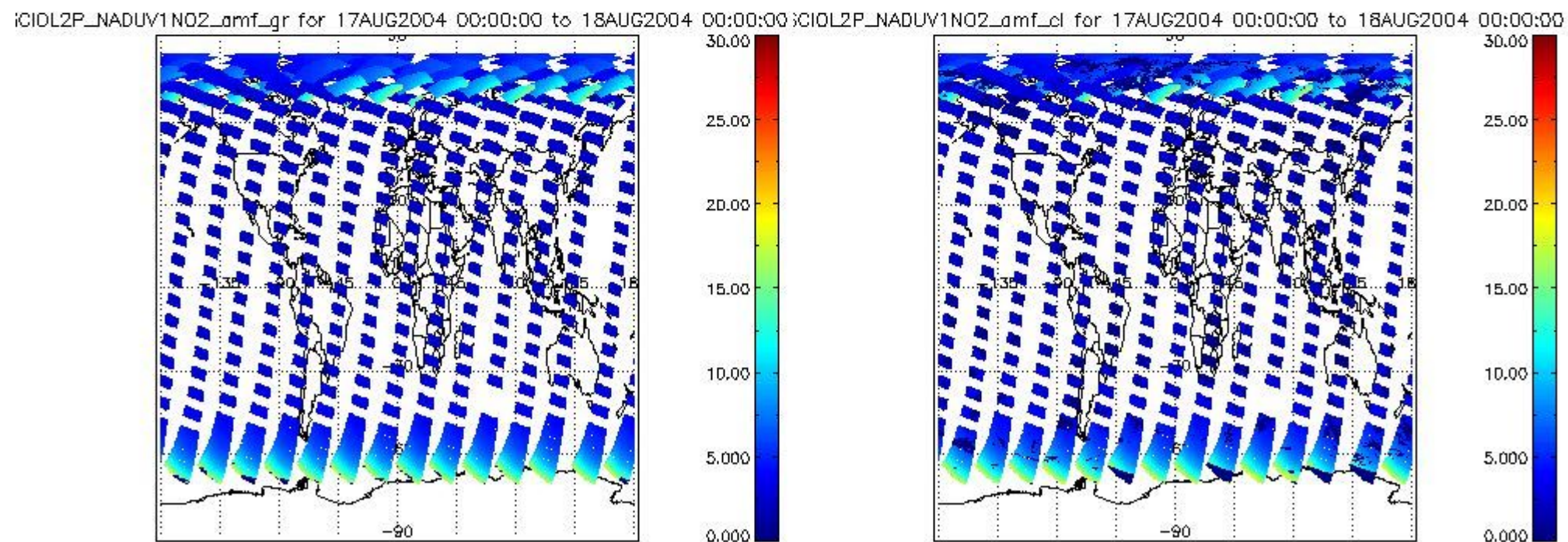
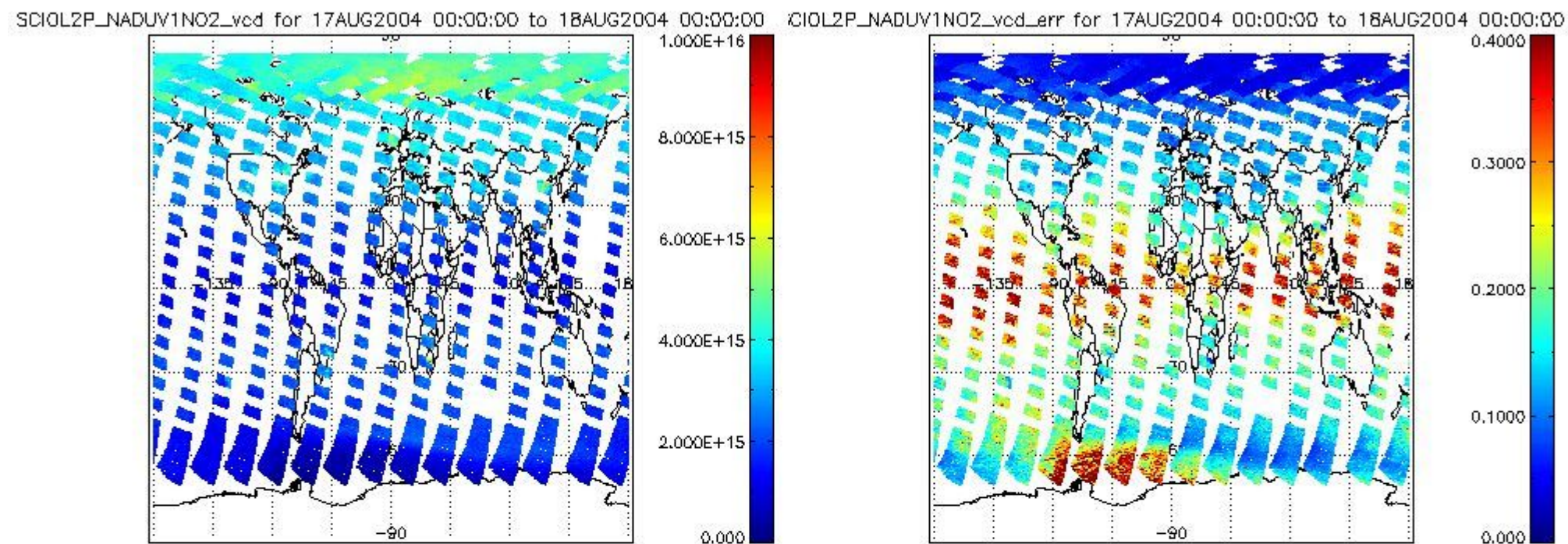
SCIOL2P_NADUV003_amf_gr for 17AUG2004 00:00:00 to 18AUG2004 00:00:00



SCIOL2P_NADUV003_amf_cl for 17AUG2004 00:00:00 to 18AUG2004 00:00:00







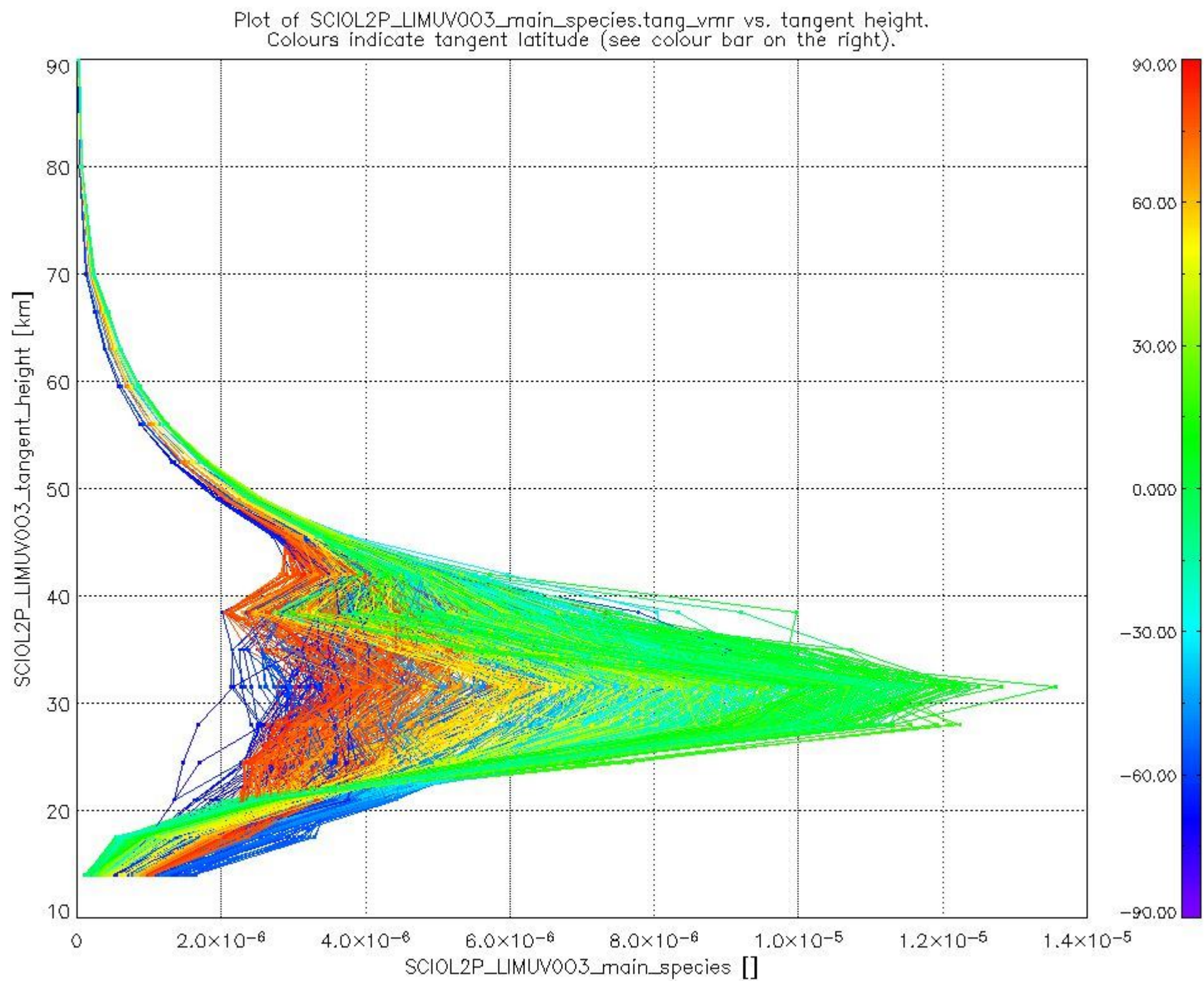
2.2.3 Limb

This section shows information about product quality of the limb retrievals, in particular the quality of retrieved species.

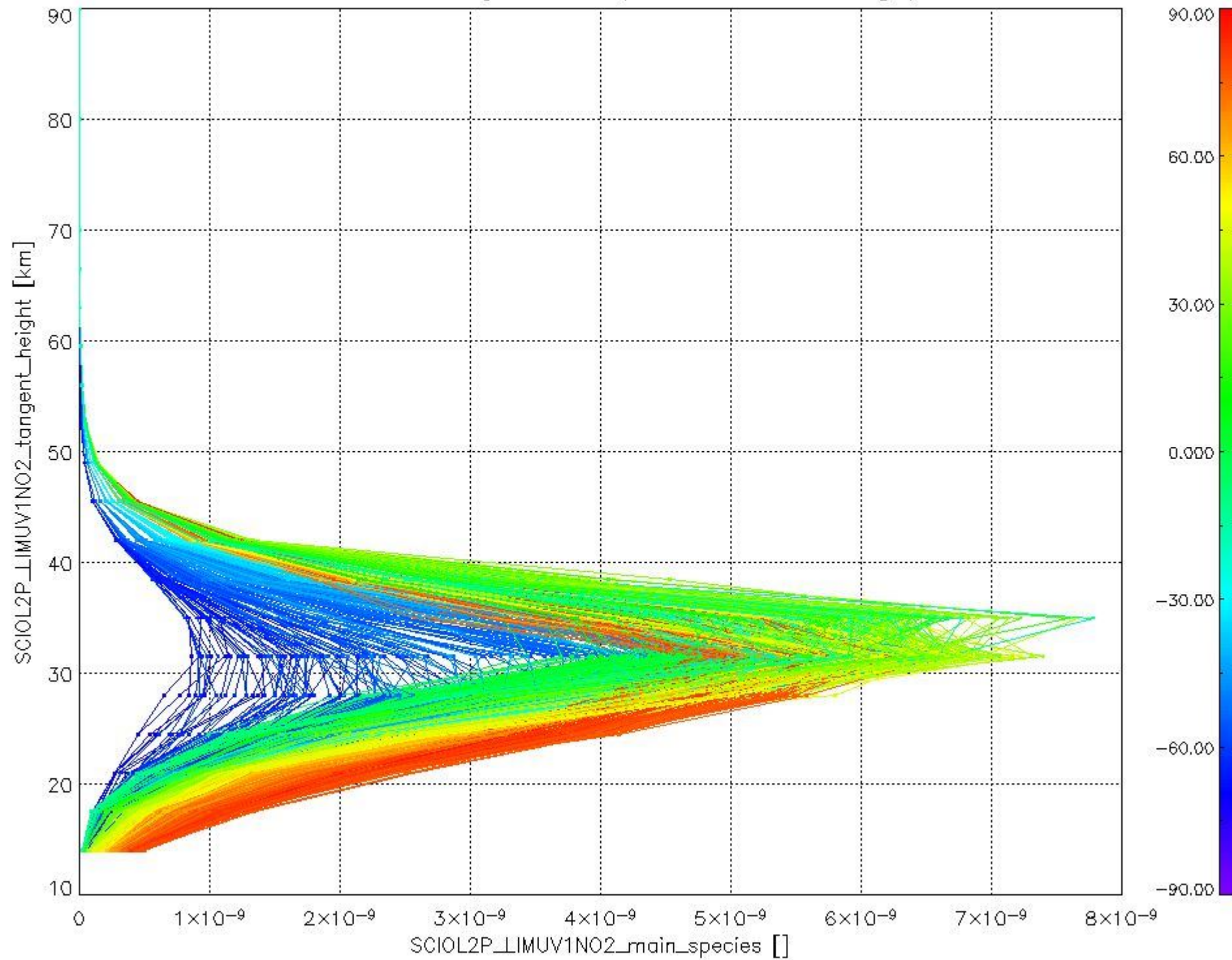
The following data items are currently included into this section:

Number	Data item ID
0	SCIOL2PLIMUV003_main_species
1	SCIOL2PLIMUV1NO2_main_species

The following plots shows for each species the tangent volume mixing ratio vs. tangent height. Colours indicate tangent latitude.



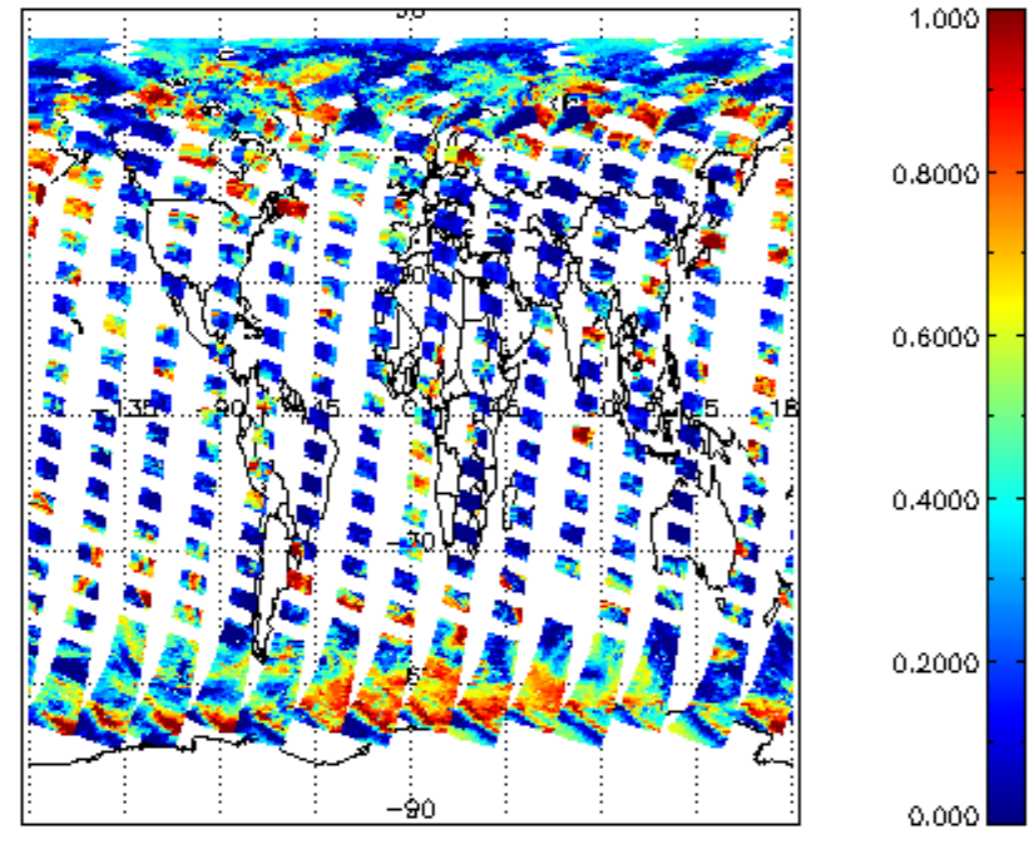
Plot of SCIOL2P_LIMUV1NO2_main_species.tang_vmr vs. tangent height.
Colours indicate tangent latitude (see colour bar on the right).



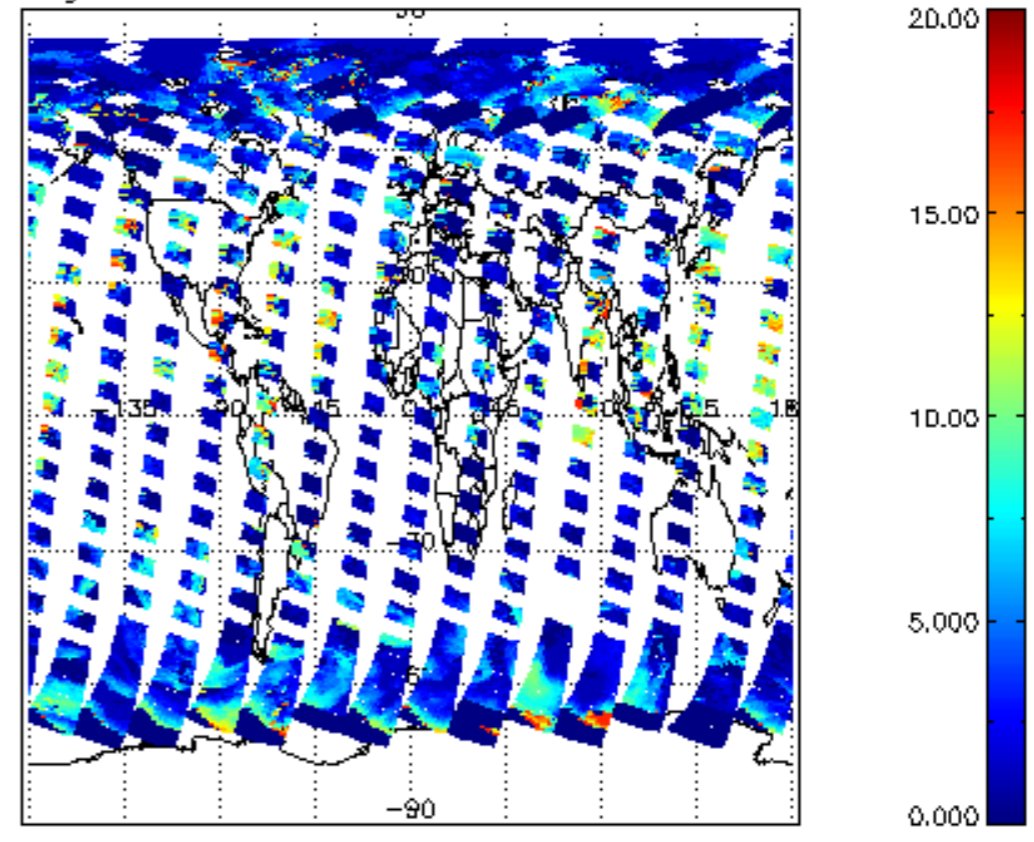
2.3 ADF monitoring

Number	ADF
	IN_ (INITIALISATION_FILE)
0	SCI_IN_AXNPDE20070629_092400_20070720_000000_20991231_235959
	ECF (ECMWF_FILE)
1	NOT USED

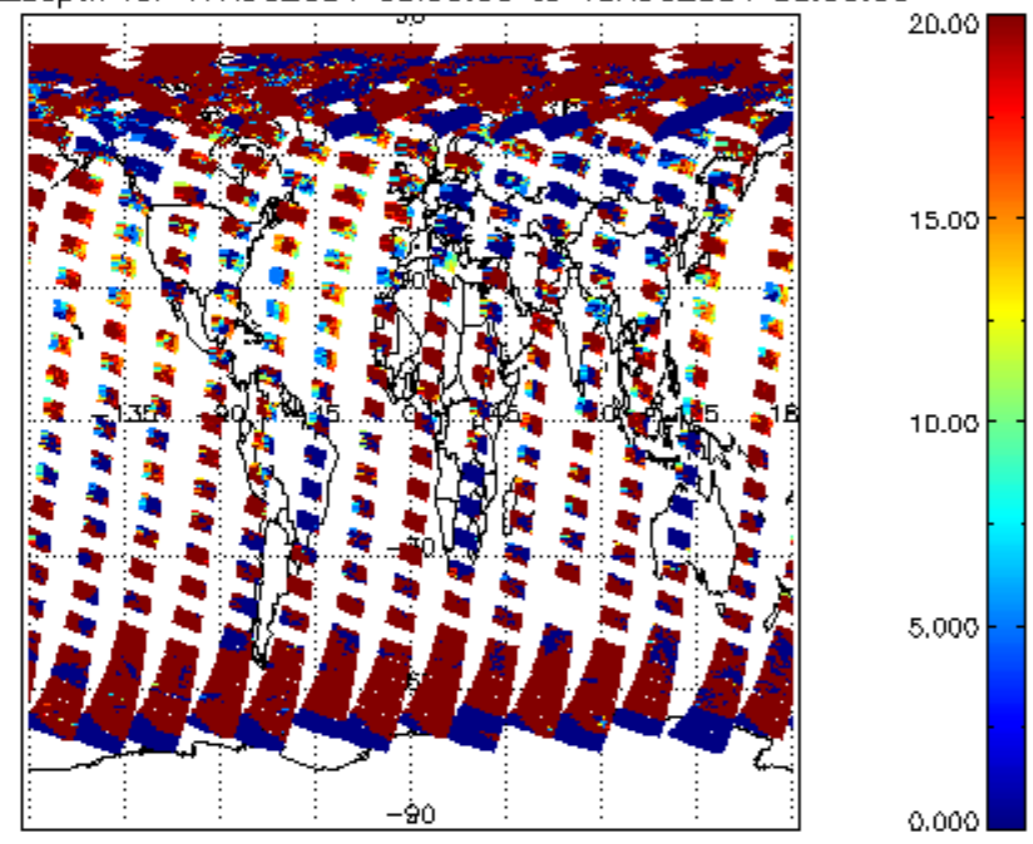
cL_frac for 17AUG2004 00:00:00 to 18AUG2004 00:00:00



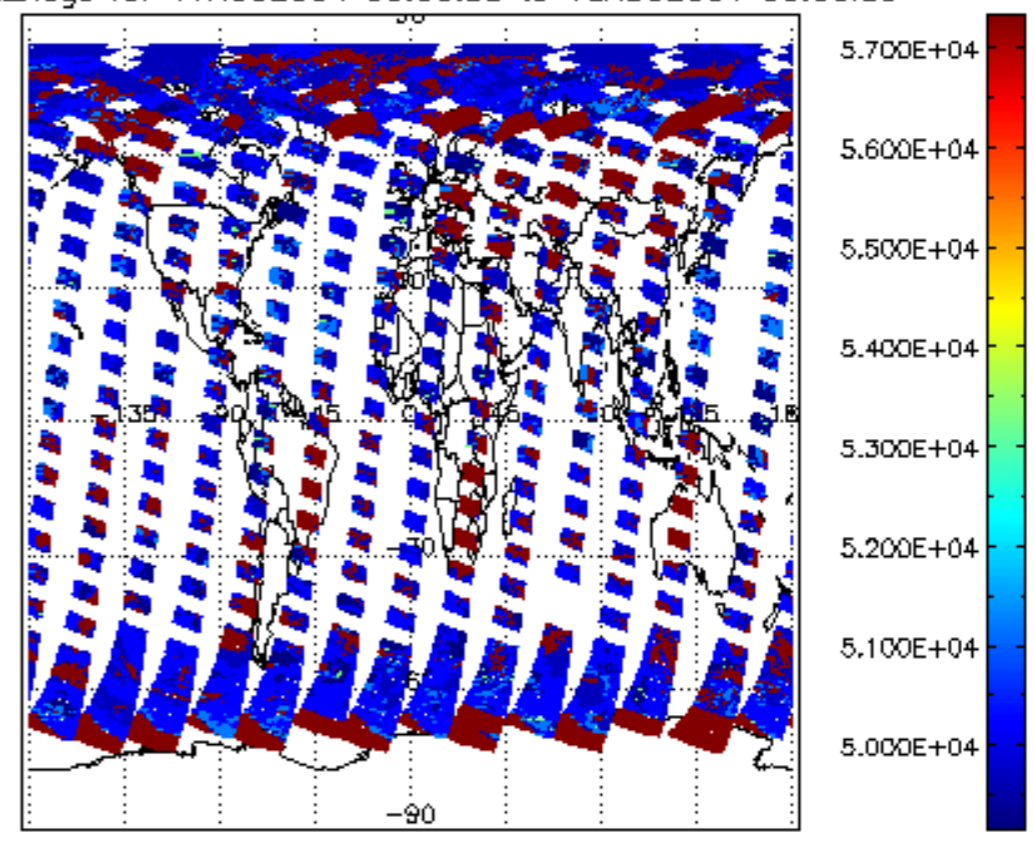
cL_top_height for 17AUG2004 00:00:00 to 18AUG2004 00:00:00

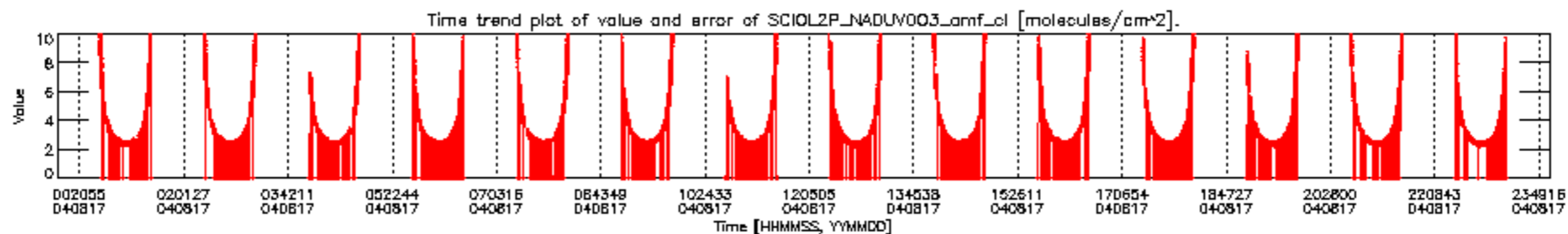
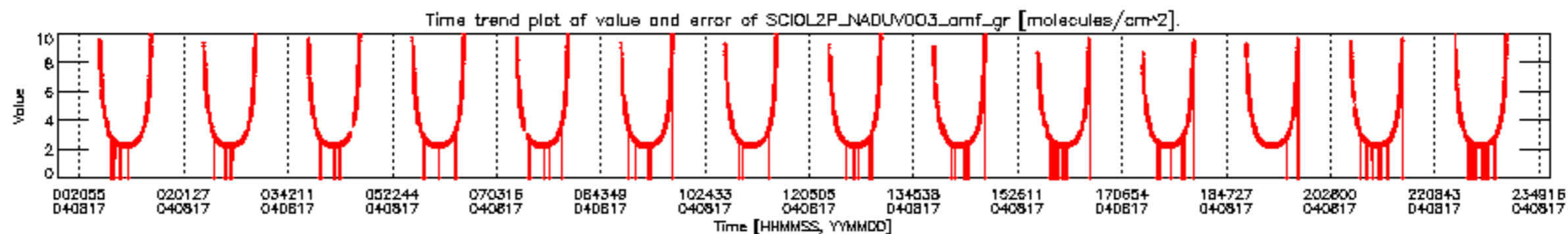
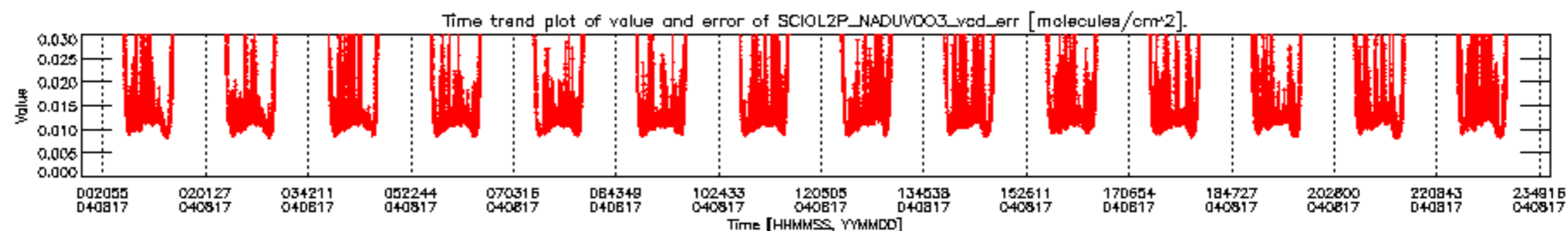
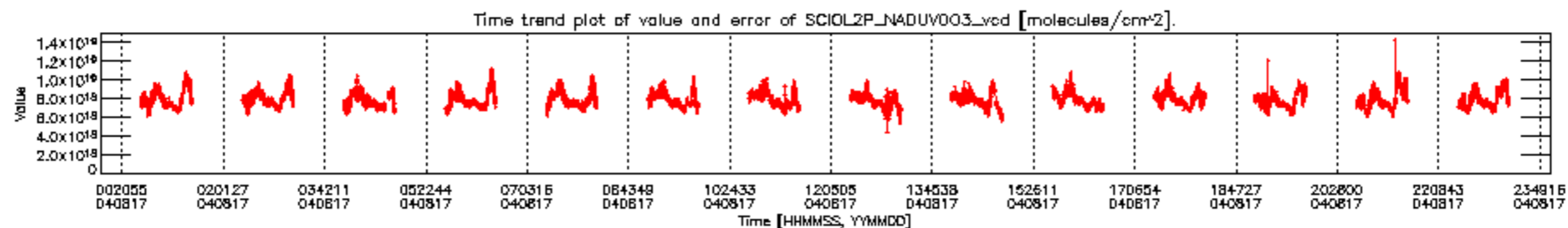


cL_opt_depth for 17AUG2004 00:00:00 to 18AUG2004 00:00:00

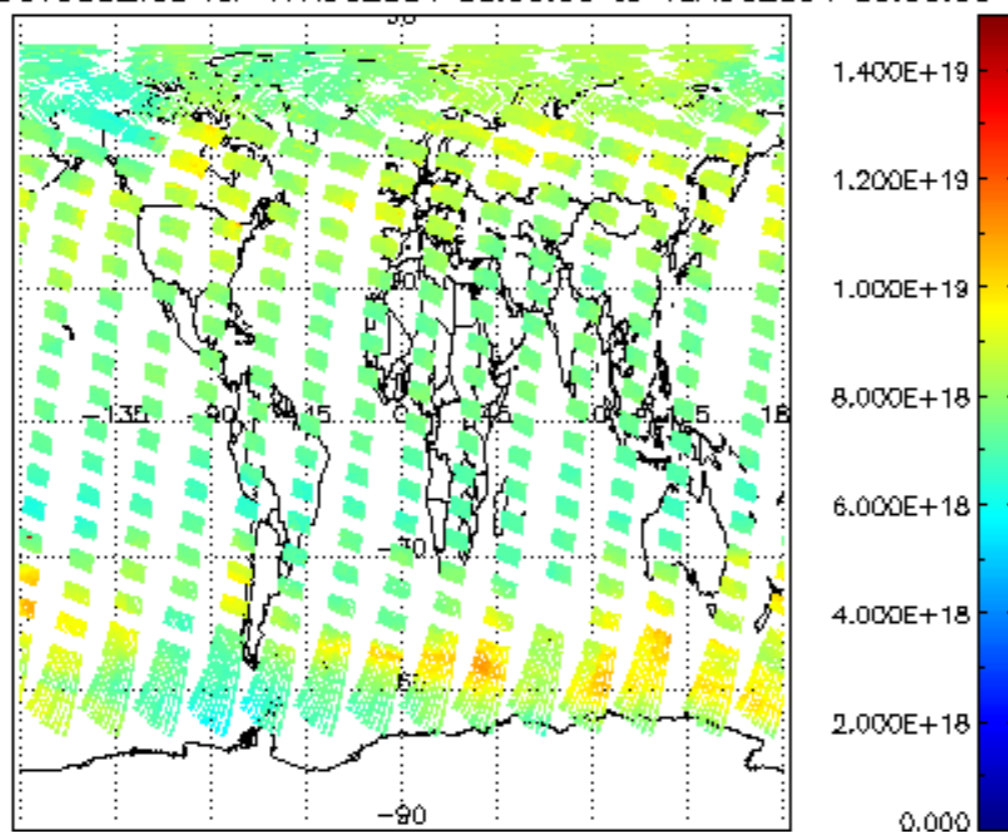


cloud_flags for 17AUG2004 00:00:00 to 18AUG2004 00:00:00

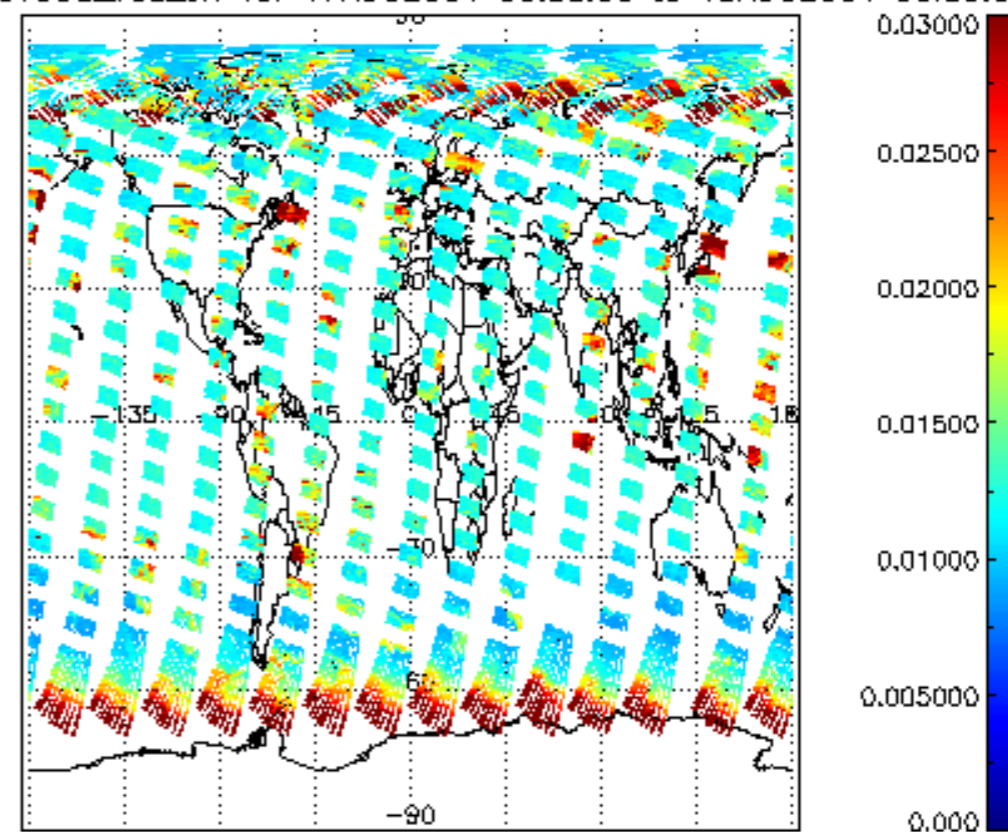




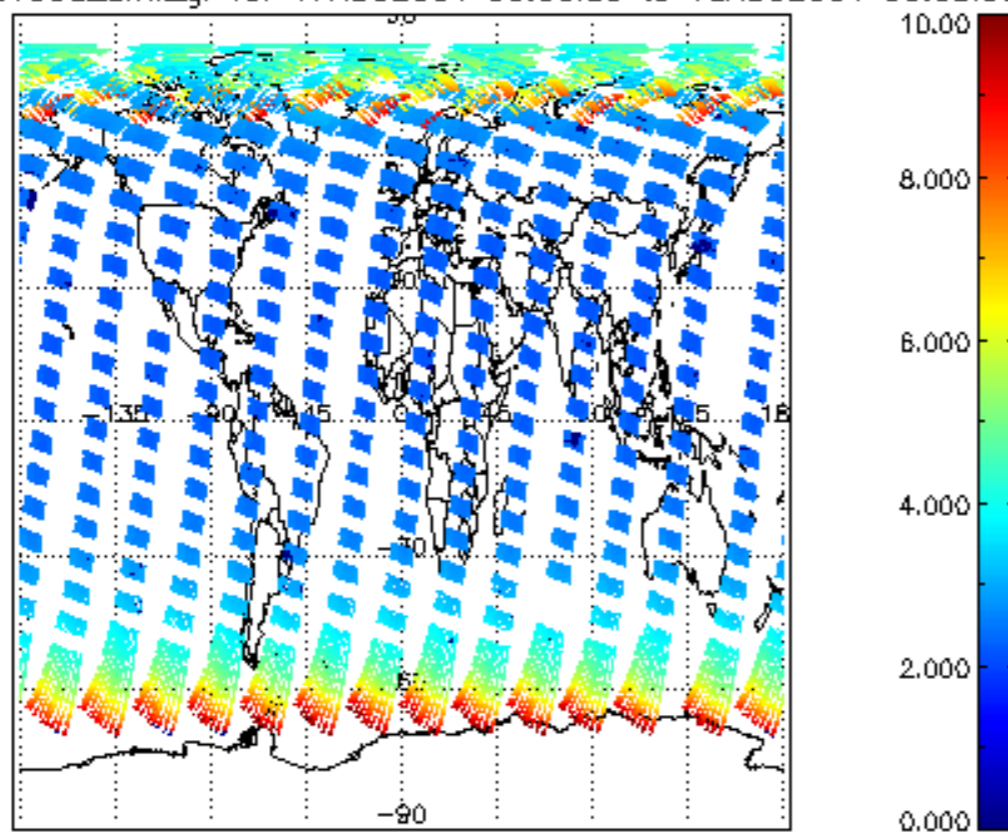
SCIOL2P_NADUV003_vcd for 17AUG2004 00:00:00 to 18AUG2004 00:00:00



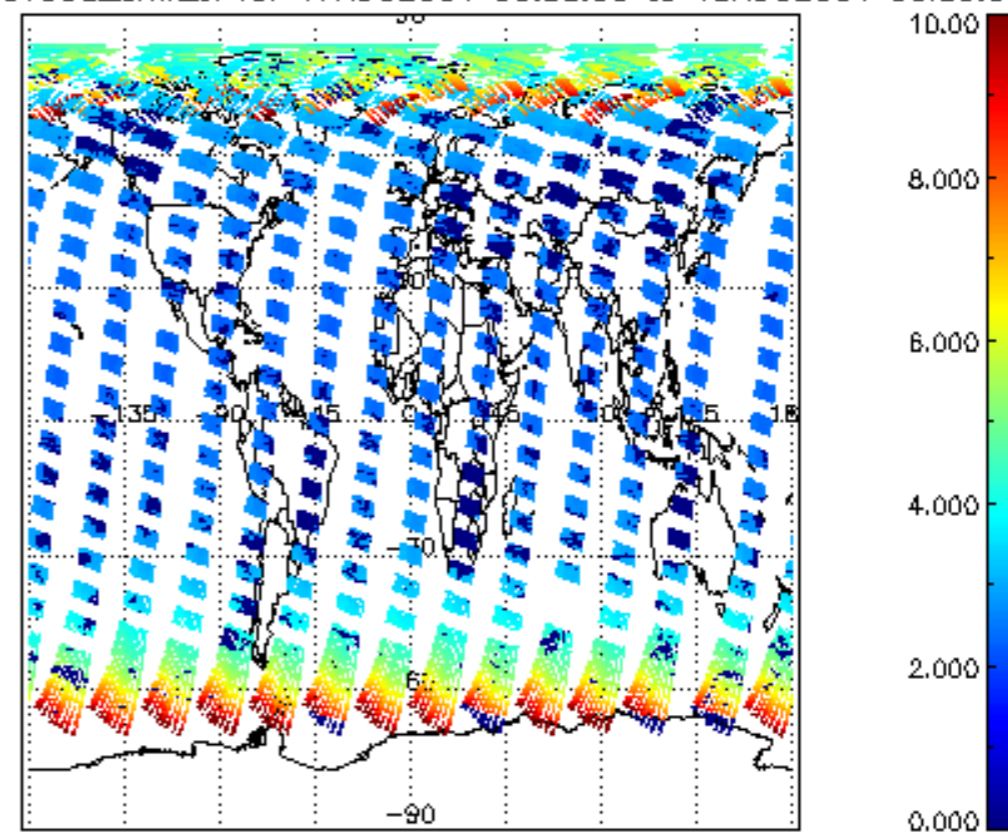
SCIOL2P_NADUV003_vcd_err for 17AUG2004 00:00:00 to 18AUG2004 00:00:00

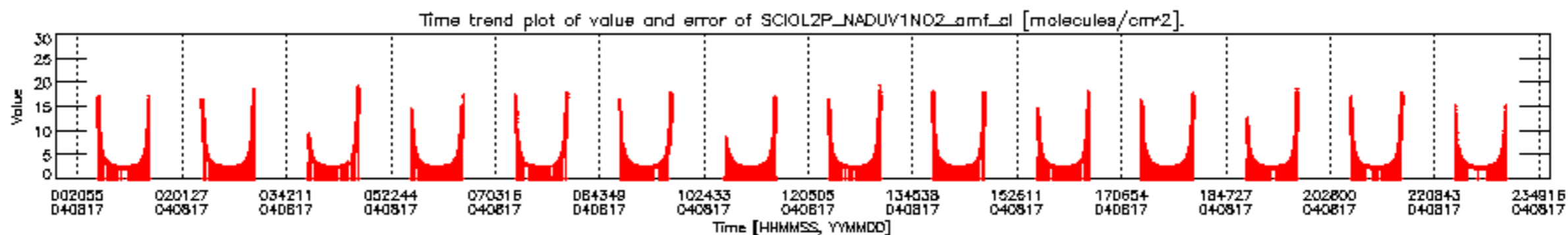
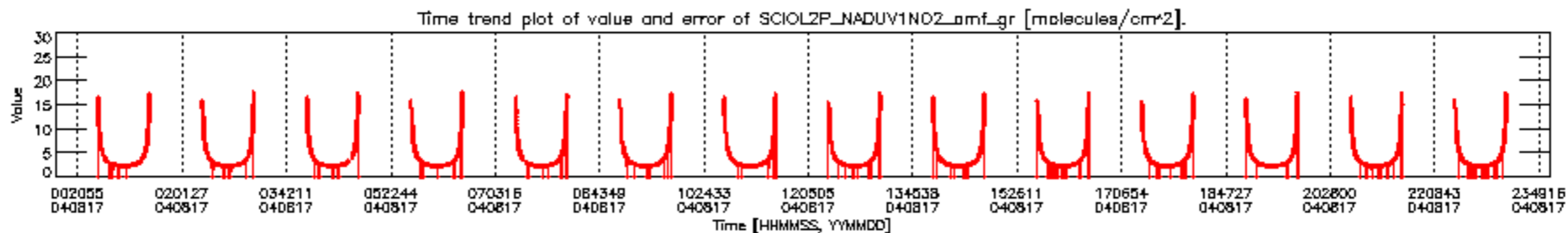
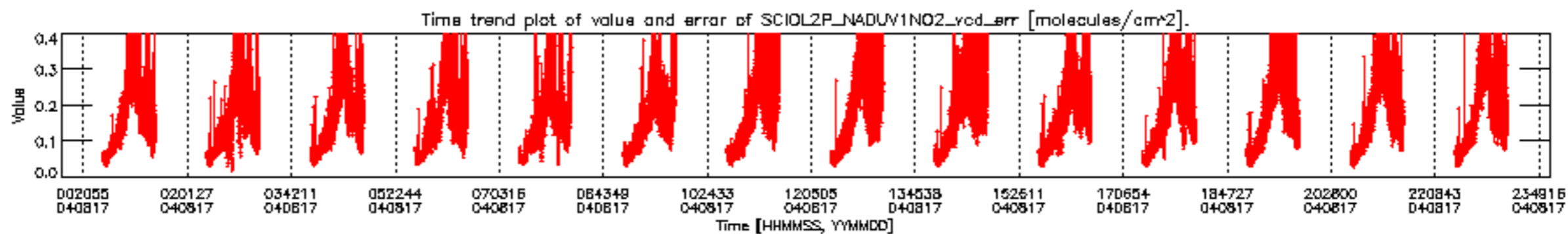
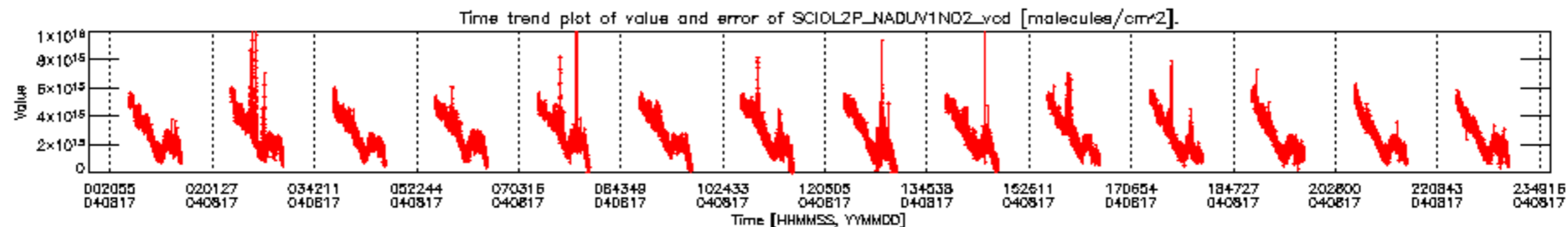


SCIOL2P_NADUV003_amf_gr for 17AUG2004 00:00:00 to 18AUG2004 00:00:00

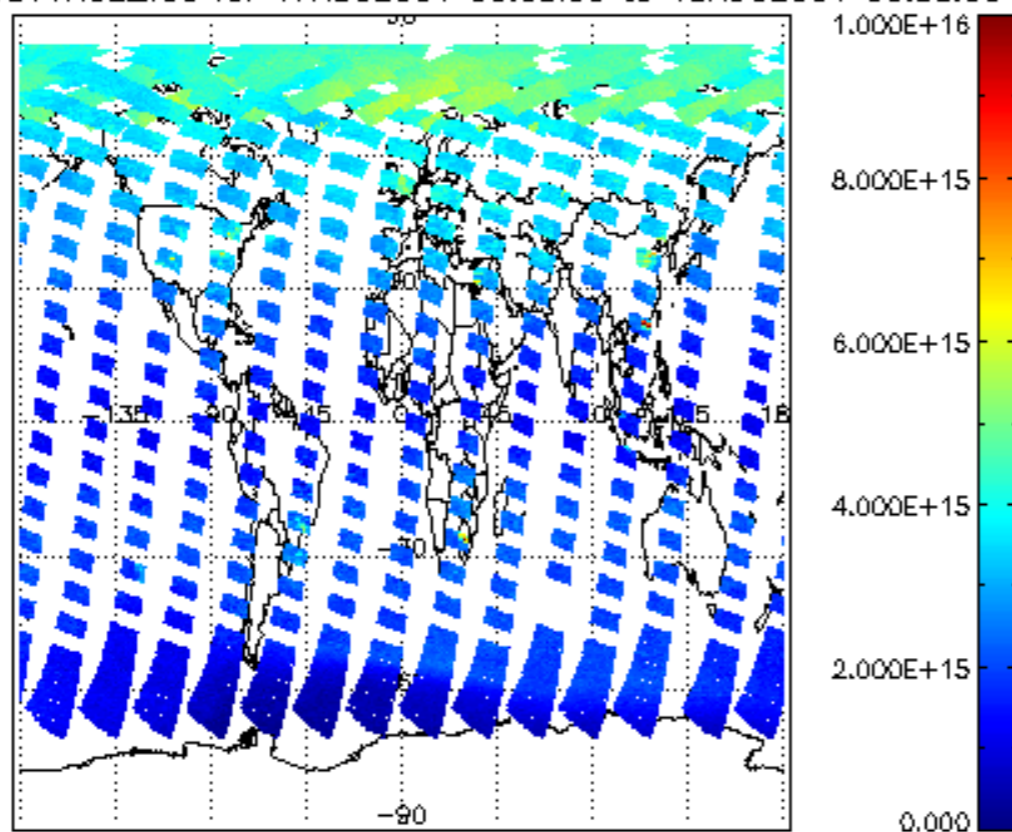


SCIOL2P_NADUV003_amf_cl for 17AUG2004 00:00:00 to 18AUG2004 00:00:00

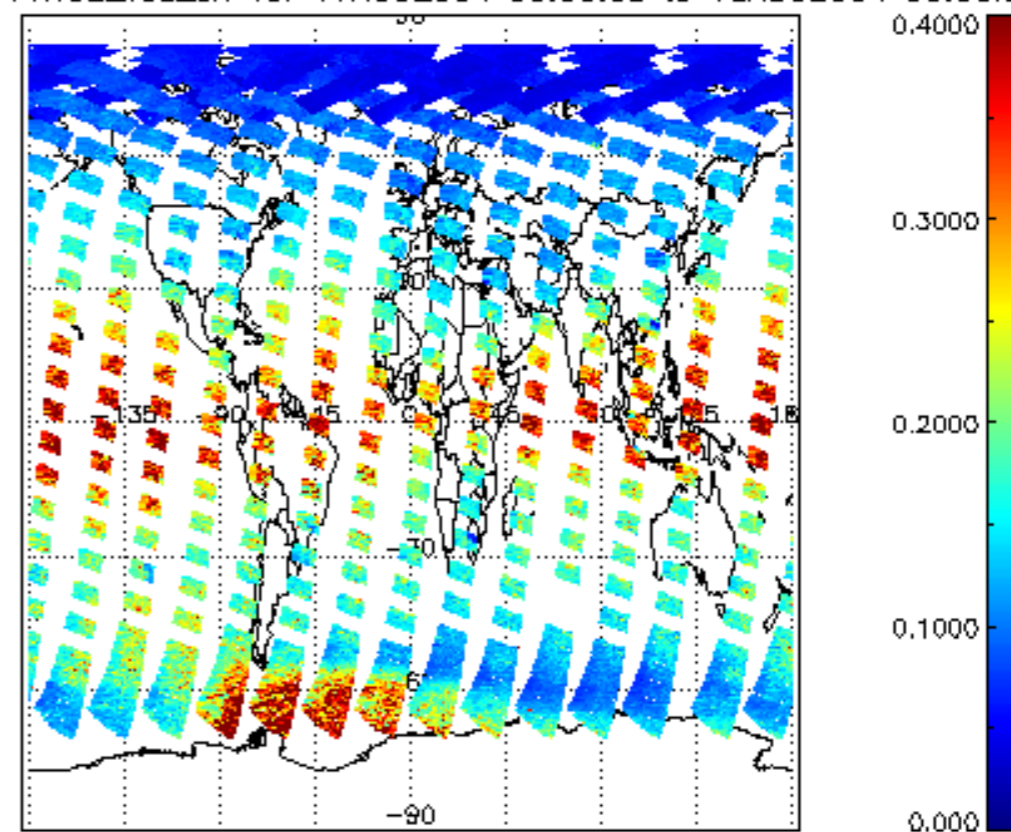




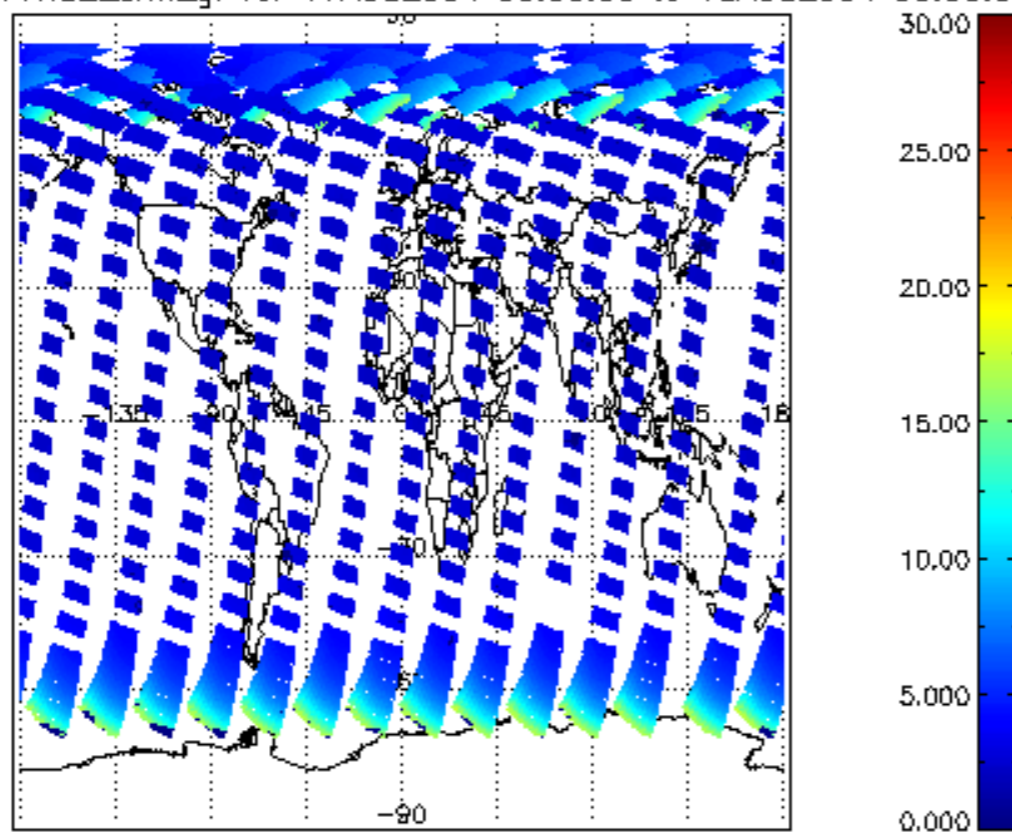
SCIOL2P_NADUV1NO2_vcd for 17AUG2004 00:00:00 to 18AUG2004 00:00:00



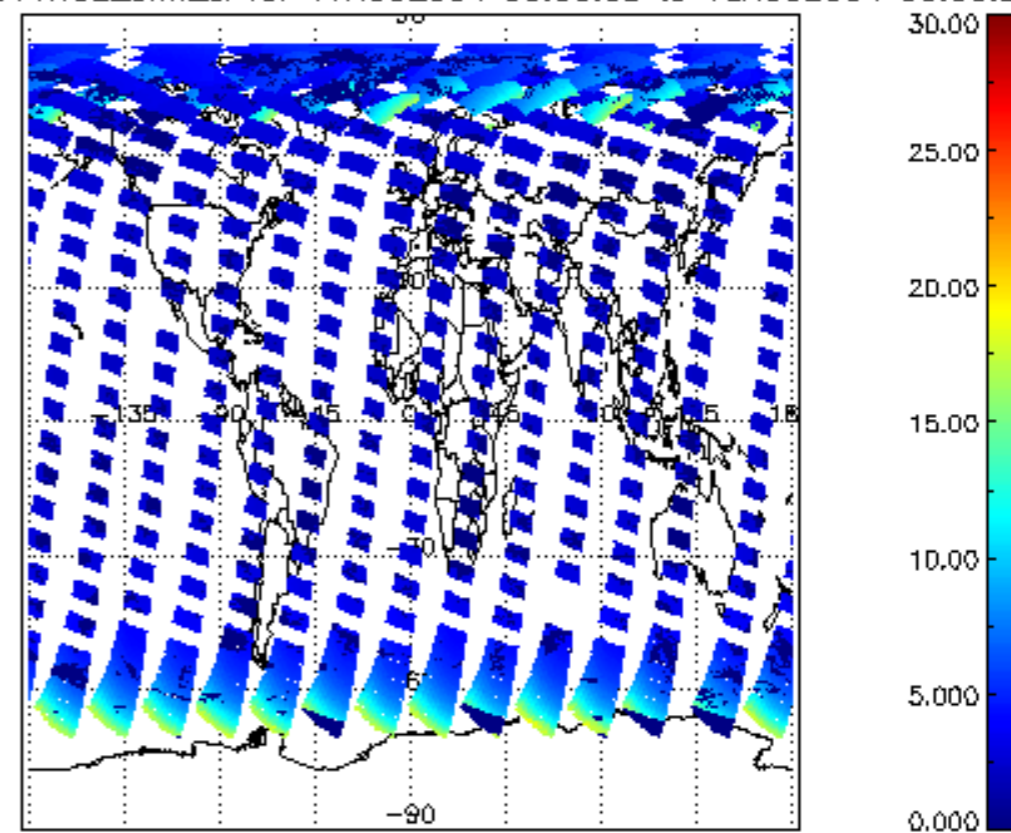
SCIOL2P_NADUV1NO2_vcd_err for 17AUG2004 00:00:00 to 18AUG2004 00:00:00



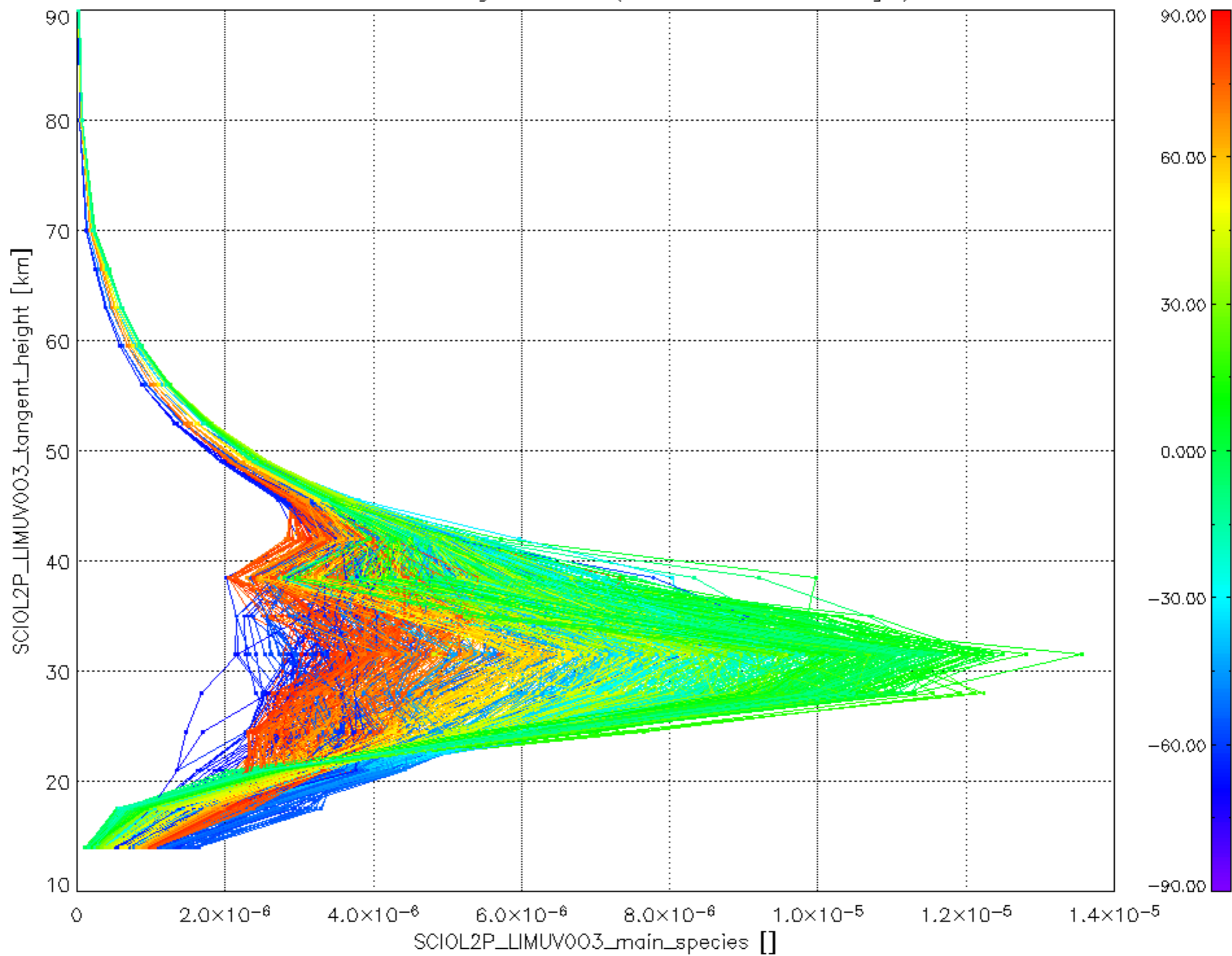
SCIOL2P_NADUV1NO2_amf_gr for 17AUG2004 00:00:00 to 18AUG2004 00:00:00



SCIOL2P_NADUV1NO2_amf_cl for 17AUG2004 00:00:00 to 18AUG2004 00:00:00



Plot of SCIOL2P_LIMUV003_main_species.tang_vmr vs. tangent height.
 Colours indicate tangent latitude (see colour bar on the right).



Plot of SCIOL2P_LIMUV1NO2_main_species.tang_vmr vs. tangent height.
 Colours indicate tangent latitude (see colour bar on the right).

