

2. SCIAMACHY Daily Report for level 2 products

[2.1. General Info](#)

[2.2 Product Quality Indicators](#)

[2.3 ADF monitoring](#)

2.1 General Info

This report contains a daily analysis on parameters extracted from SCIAMACHY level 2 data (The SCI_OL__2P product).

2.1.1 Report summary

The table below shows general characteristics of the data that are included into this report.

Item	Value
Report version	1.6 (28-07-2008)
Time of report generation	02SEP2008 15:23:30
Data source version	SCIA-OL/3.01-R
Processing scope for products	14AUG2004 00:00:00 to 15AUG2004 00:00:00
Start time of first product within scope	13AUG2004 22:48:30
Stop time of last product within scope	15AUG2004 00:53:56
Total number of level 2 products	16
Number of level 2 products with errors	0

2.1.2 Summary per product

The following table shows a summary for each product used in this report.

Products are linked to a corresponding server directory for view/download. Note: Link access may be restricted by security settings of your internet browser or firewall.

#	Product name	Start time	Stop time	Prod err	Fit summary
0	SCI_OL__2PRDPA20040813_224830_000033252029_00259_12838_9257.N1	13AUG2004 22:48:30	13AUG2004 23:43:55	0	GOOD
1	SCI_OL__2PRDPA20040814_002906_000033812029_00260_12839_9413.N1	14AUG2004 00:29:06	14AUG2004 01:25:27	0	GOOD
2	SCI_OL__2PRDPA20040814_020942_000033252029_00261_12840_9254.N1	14AUG2004 02:09:42	14AUG2004 03:05:08	0	GOOD
3	SCI_OL__2PRDPA20040814_035018_000033812029_00262_12841_9324.N1	14AUG2004 03:50:18	14AUG2004 04:46:40	0	GOOD
4	SCI_OL__2PRDPA20040814_053055_000033252029_00263_12842_9326.N1	14AUG2004 05:30:55	14AUG2004 06:26:20	0	GOOD
5	SCI_OL__2PRDPA20040814_071131_000033812029_00264_12843_9537.N1	14AUG2004 07:11:31	14AUG2004 08:07:53	0	GOOD
6	SCI_OL__2PRDPA20040814_085207_000033252029_00265_12844_9234.N1	14AUG2004 08:52:07	14AUG2004 09:47:33	0	GOOD
7	SCI_OL__2PRDPA20040814_103244_000033812029_00266_12845_9371.N1	14AUG2004 10:32:44	14AUG2004 11:29:05	0	GOOD
8	SCI_OL__2PRDPA20040814_121320_000033252029_00267_12846_9507.N1	14AUG2004 12:13:20	14AUG2004 13:08:45	0	GOOD
9	SCI_OL__2PRDPA20040814_135356_000033812029_00268_12847_9654.N1	14AUG2004 13:53:56	14AUG2004 14:50:18	0	GOOD
10	SCI_OL__2PRDPA20040814_153433_000033252029_00269_12848_9366.N1	14AUG2004 15:34:33	14AUG2004 16:29:58	0	GOOD
11	SCI_OL__2PRDPA20040814_171503_000033762029_00270_12849_9285.N1	14AUG2004 17:15:03	14AUG2004 18:11:19	0	GOOD
12	SCI_OL__2PRDPA20040814_185604_000033252029_00271_12850_9644.N1	14AUG2004 18:56:04	14AUG2004 19:51:30	0	GOOD
13	SCI_OL__2PRDPA20040814_203622_000033812029_00272_12851_9545.N1	14AUG2004 20:36:22	14AUG2004 21:32:43	0	GOOD
14	SCI_OL__2PRDPA20040814_221658_000033252029_00273_12852_9607.N1	14AUG2004 22:16:58	14AUG2004 23:12:23	0	GOOD
15	SCI_OL__2PRDPA20040814_235734_000033812029_00274_12853_9390.N1	14AUG2004 23:57:34	15AUG2004 00:53:56	0	GOOD

2.2 Product Quality Indicators

2.2.1 Cloud parameters

This is a new section that shows information about the cloud parameters estimation, in particular cloud fractions and cloud top height. IMPORTANT NOTE: The contents and layout of this section are still being validated. Please use with caution.

General statistics:

Total number of cloud data DSRs: 146640

Total number of cloud data DSRs with good quality flag (=0): 146640 (100.0 %)

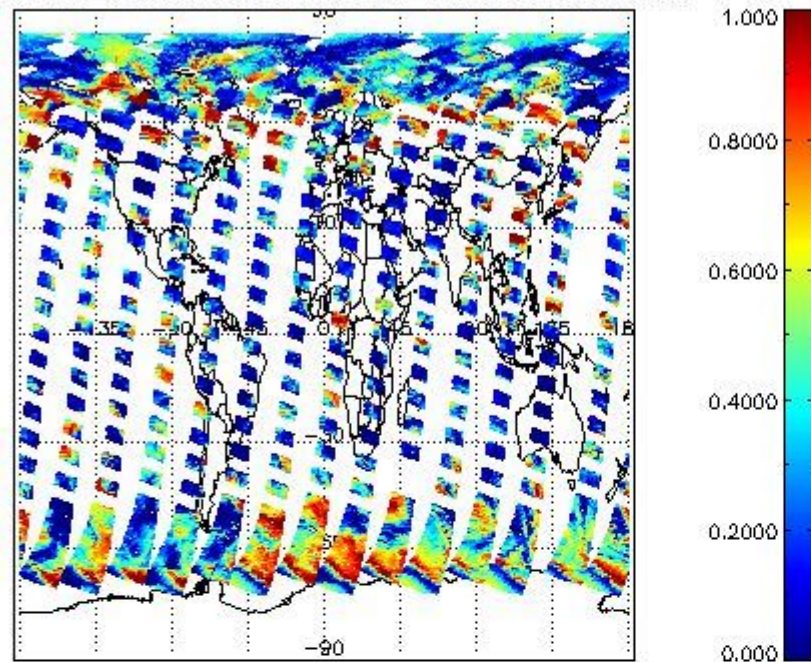
Parameter	#valid	Mean	Median	Min	Max	Stddev	Unit
QUALITY_FLAG	146640	0.0000	0.0000	0.0000	0.0000	0.0000	flag
INTEGR_TIME	146640	0.16977	0.12500	0.12500	0.25000	0.059932	s
CL_FRAC	146640	0.35063	0.29766	0.0000	1.0000	0.29083	-
CL_FRAC_ERR	146640	0.0000	0.0000	0.0000	0.0000	0.0000	rel. fraction
PMD_READ	146640	5.4326	4.0000	4.0000	8.0000	1.9178	
PMD_READ_CL[0]	146640	0.23960	0.0000	0.0000	8.0000	1.1055	-
PMD_READ_CL[1]	146640	1.0157	0.0000	0.0000	8.0000	2.0606	-
CL_TOP_HEIGHT	124516	3.7844	2.0931	0.0000	17.000	3.8811	km
CL_TOP_HEIGHT_ERR	0	---	---	---	---	---	---
CL_OPT_DEPTH	124516	58.119	61.862	0.0000	101.00	43.050	km
CL_OPT_DEPTH_ERR	0	---	---	---	---	---	---
CL_TYPE_FLAGS	146640	11100000	11100000	11100000	11100000	0.0000	flags. Bit definition = 0: low or high cloud; 1: ice or water cloud; 2: thick or thin cloud; 3-15: not used
CLOUD_FLAGS	146640	11001011	11000100	11000000	11100000	3357.5	flags
AERO_ABSO_IND	146640	0.79896	0.57917	-4.1466	10.722	1.1089	
AERO_IND_DIAG	146640	0.0000	0.0000	0.0000	0.0000	0.0000	
AERO_FLAGS	146640	01010110	00000000	00000000	11000000	24465.	flags

Time and geolocation plots:

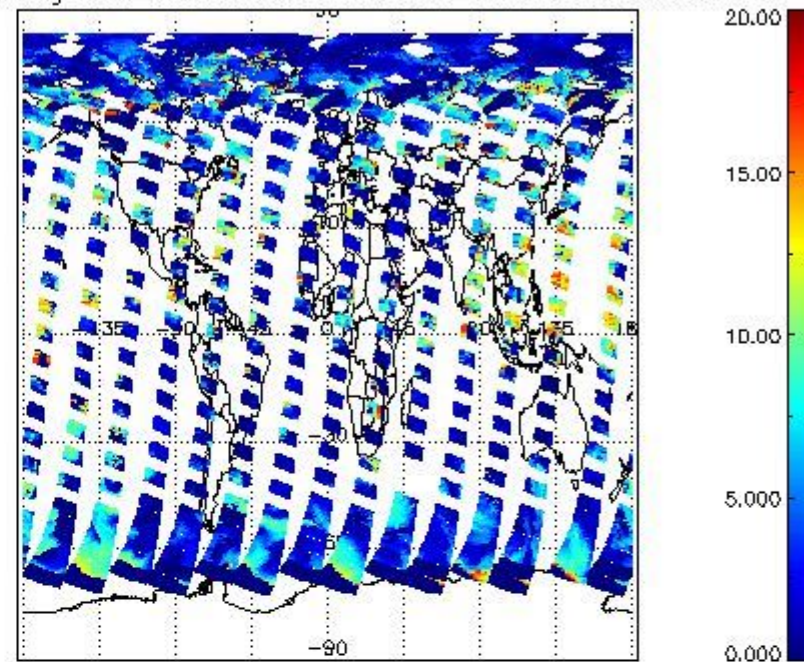
Plots are available for the following parameters:

Number	Data item ID
0	cl_frac
1	cl_top_height
2	cl_opt_depth
3	cloud_flags

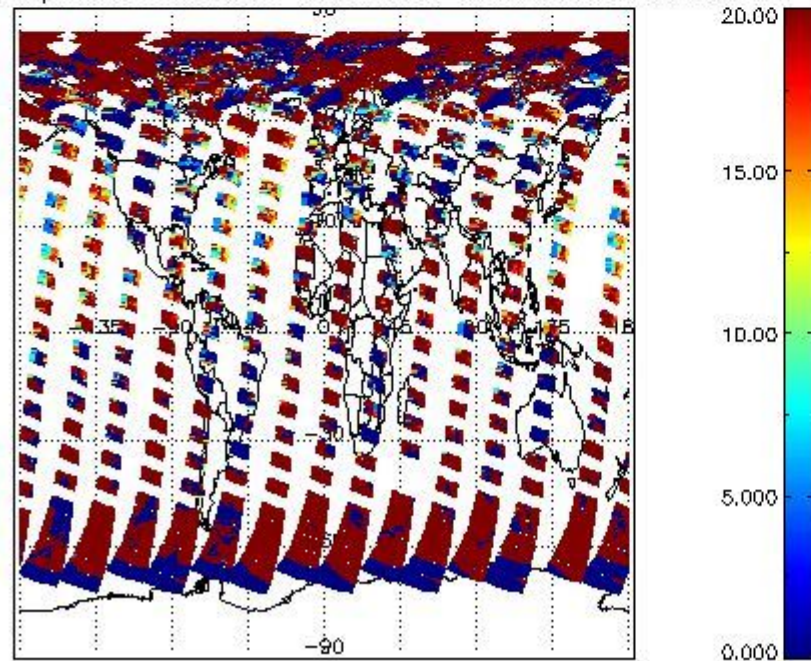
cL_frac for 14AUG2004 00:00:00 to 15AUG2004 00:00:00



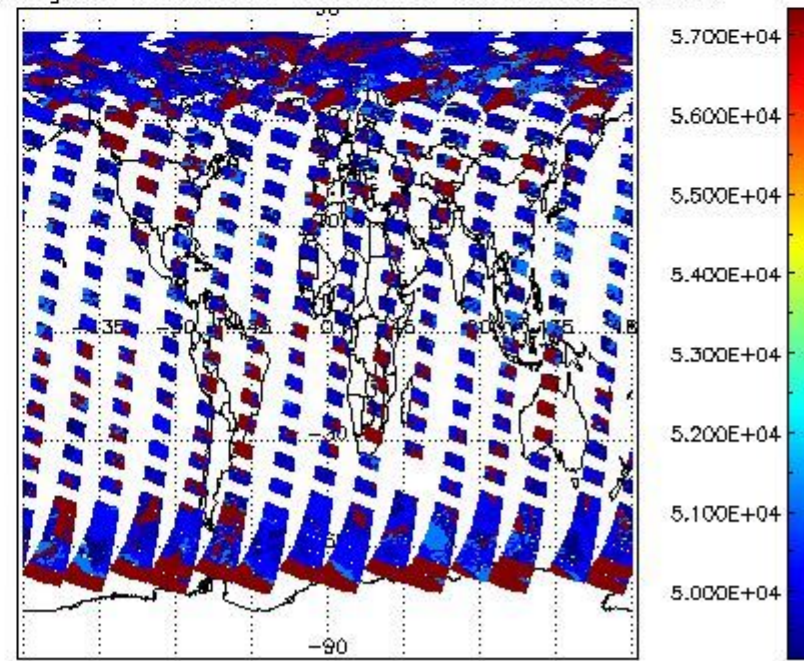
cL_top_height for 14AUG2004 00:00:00 to 15AUG2004 00:00:00



cL_opt_depth for 14AUG2004 00:00:00 to 15AUG2004 00:00:00



cloud_flags for 14AUG2004 00:00:00 to 15AUG2004 00:00:00



2.2.2 Nadir

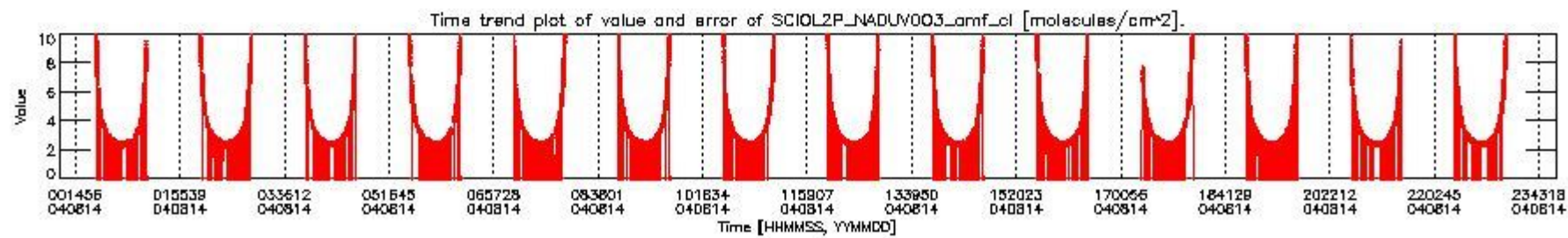
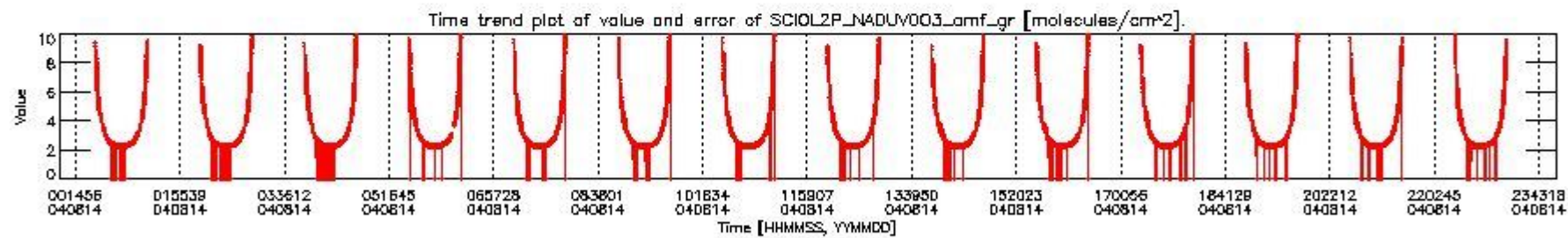
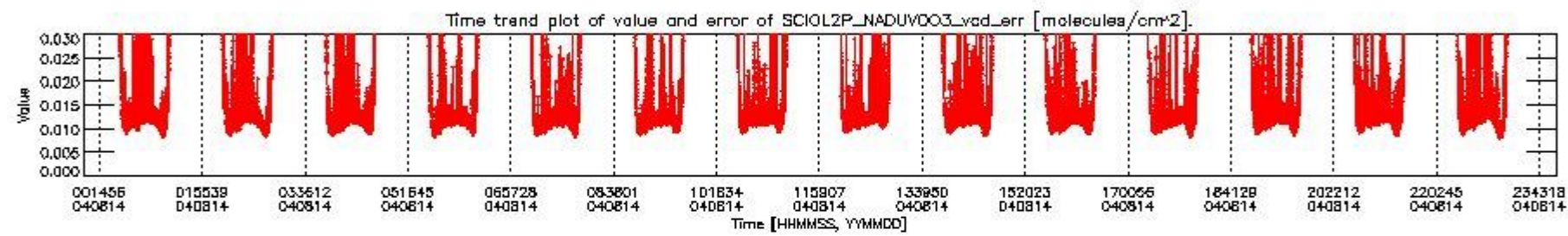
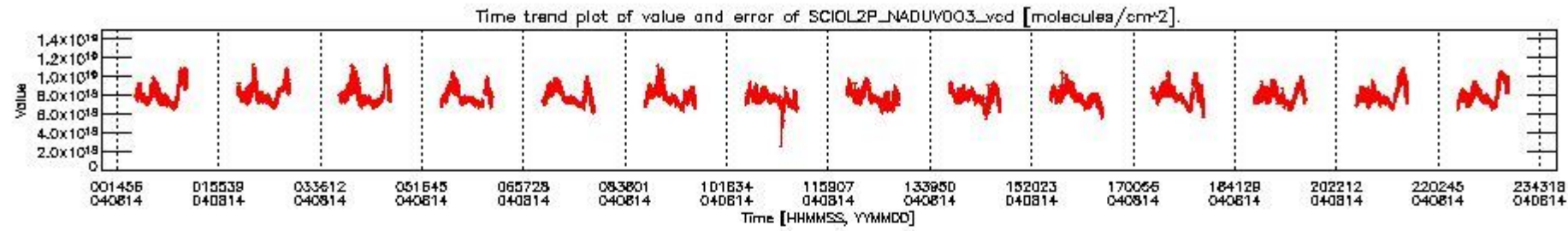
This section shows information about product quality of nadir measurements, in particular the quality of retrieved species.

The following data items are currently included into this section:

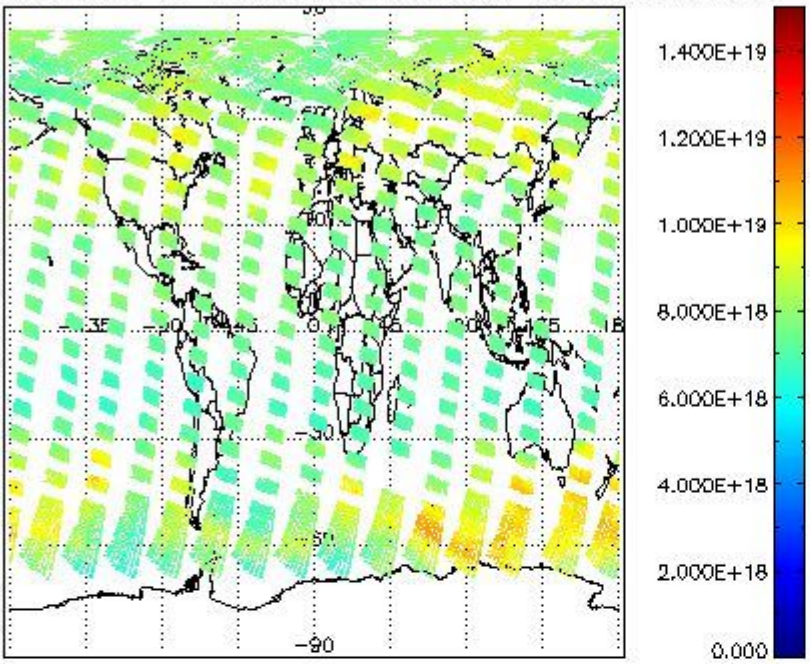
Number	Data item ID
0	SCIOL2P_NADUV003_vcd
1	SCIOL2P_NADUV003_vcd_err
2	SCIOL2P_NADUV003_amf_gr

3	SCIOL2P_NADUV003_amf_cl
4	SCIOL2P_NADUV1NO2_vcd
5	SCIOL2P_NADUV1NO2_vcd_err
6	SCIOL2P_NADUV1NO2_amf_gr
7	SCIOL2P_NADUV1NO2_amf_cl

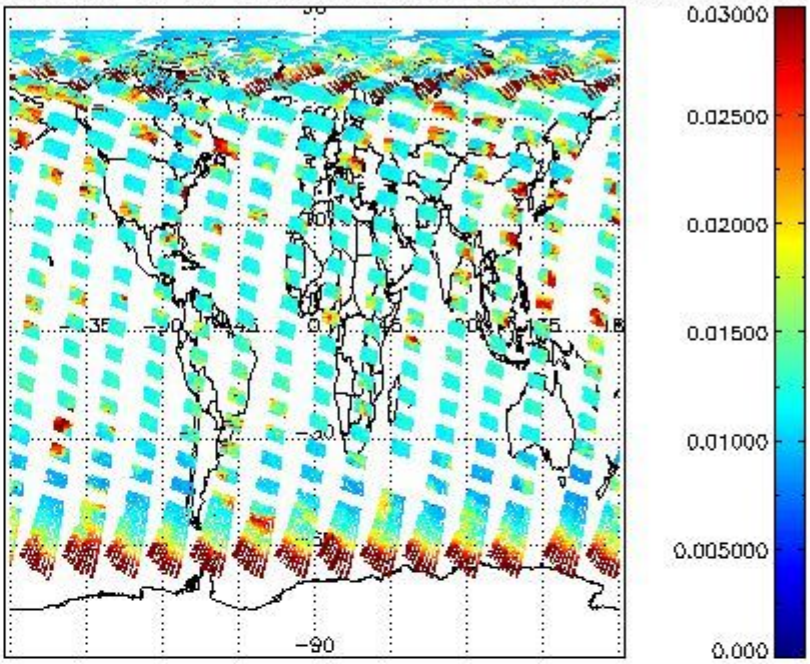
Data is presented both in time trend plots and world map plots, in order to show variations with time and geolocation. The vertical dotted lines in the time trend plots indicate orbits. The orbit times on the X-axis are estimated sensing_start time as suggested by the product sensing_start time in the MPH.



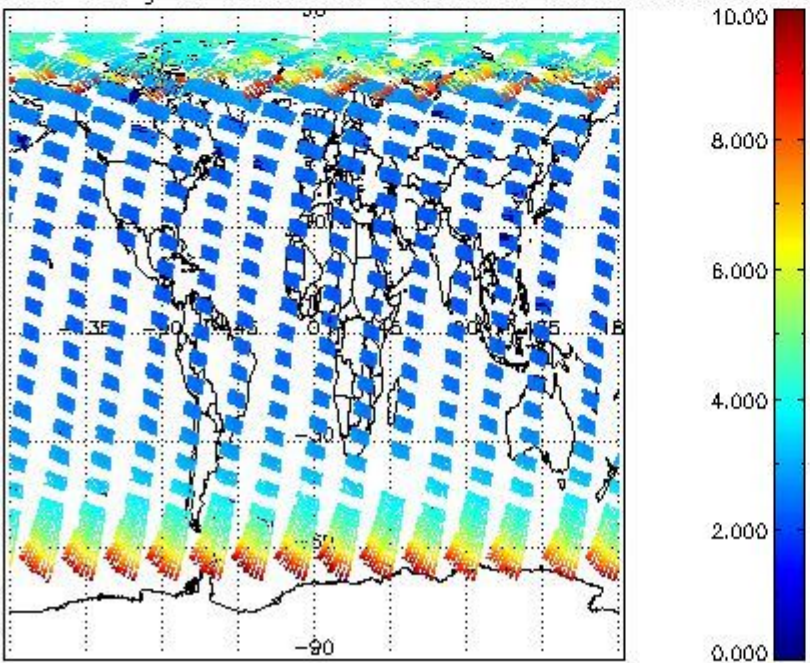
SCIOL2P_NADUV003_vcd for 14AUG2004 00:00:00 to 15AUG2004 00:00:00



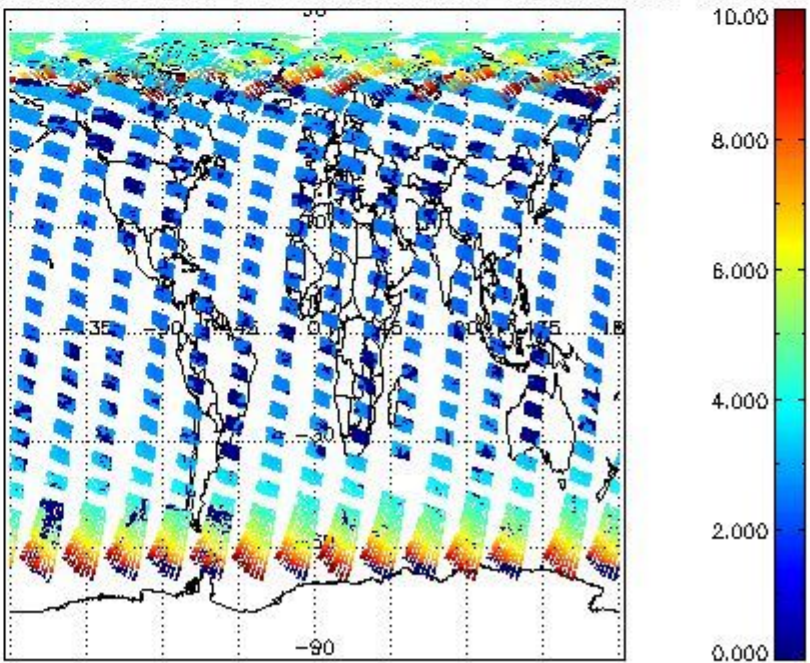
SCIOL2P_NADUV003_vcd_err for 14AUG2004 00:00:00 to 15AUG2004 00:00:00

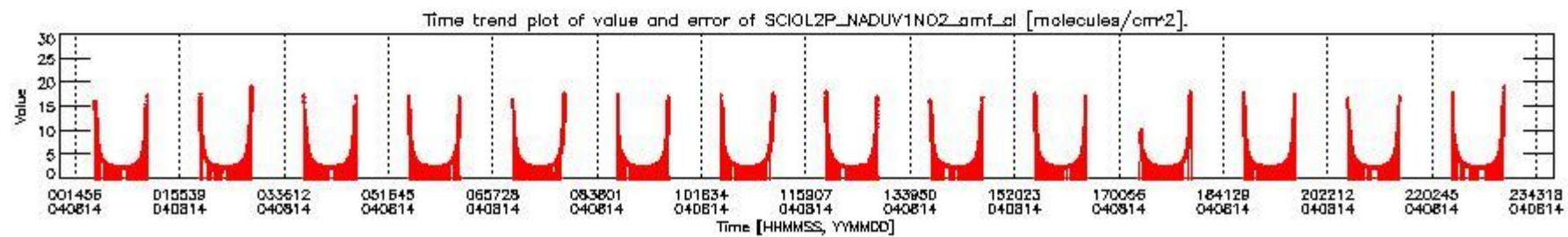
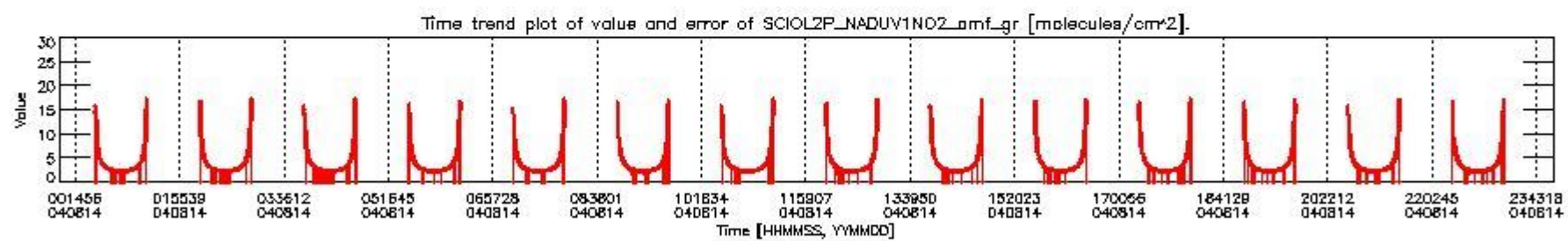
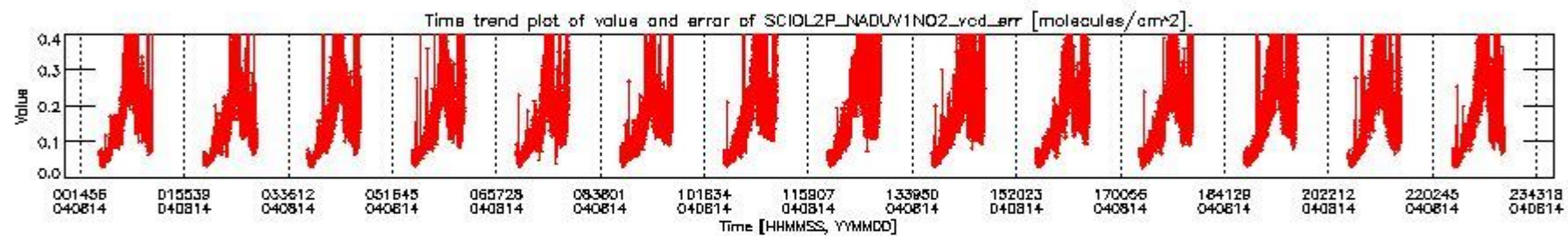
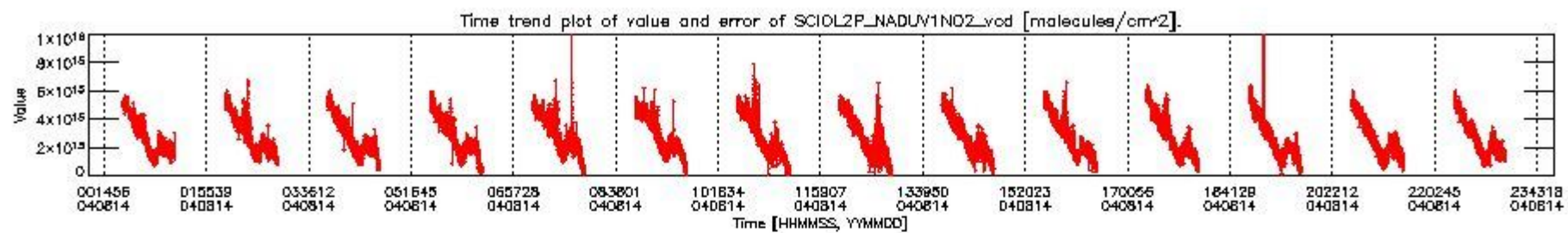


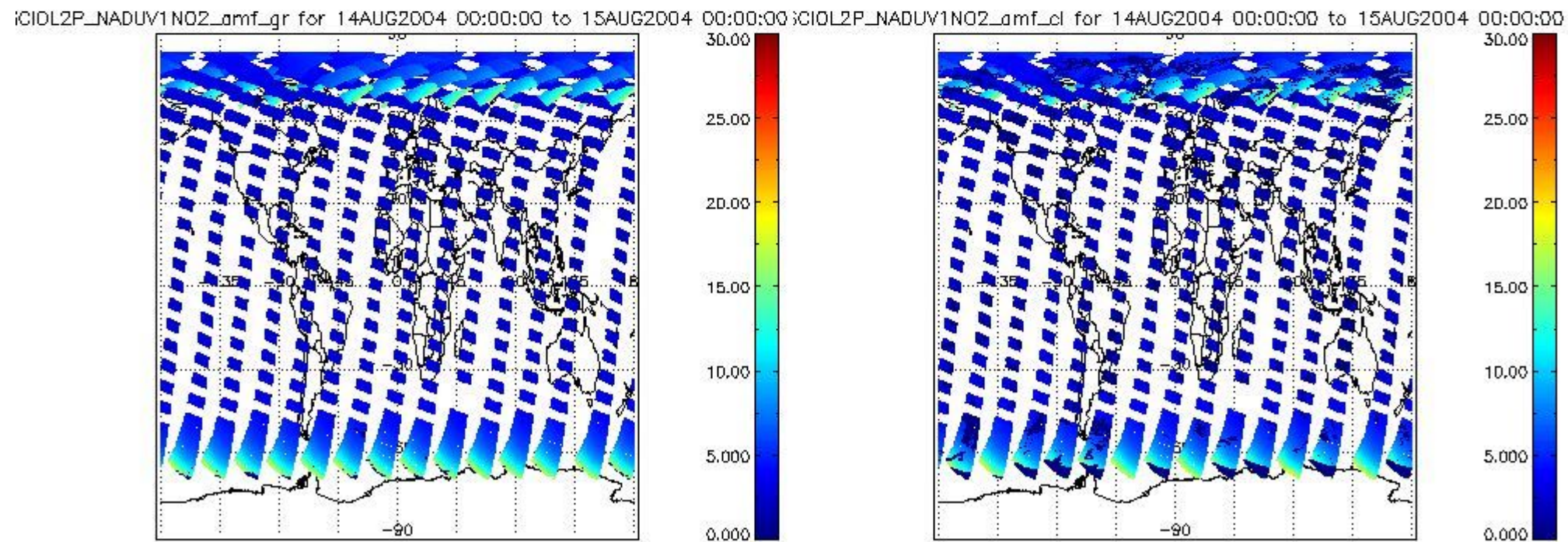
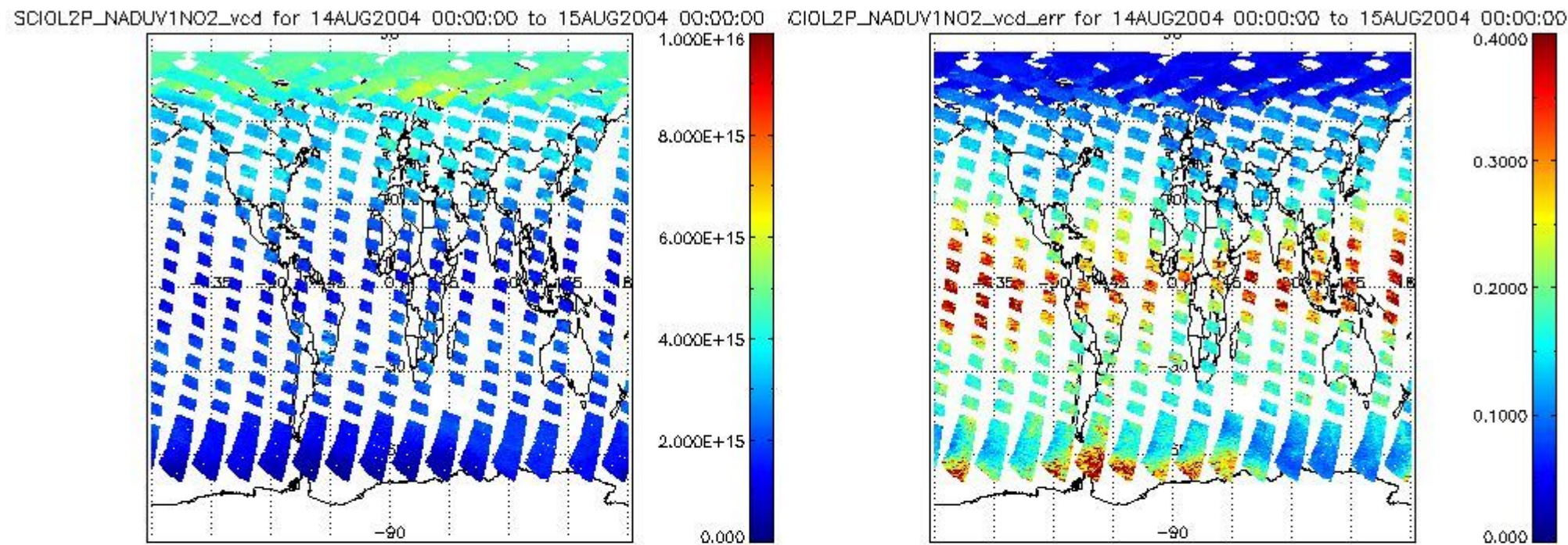
SCIOL2P_NADUV003_amf_gr for 14AUG2004 00:00:00 to 15AUG2004 00:00:00



SCIOL2P_NADUV003_amf_cl for 14AUG2004 00:00:00 to 15AUG2004 00:00:00







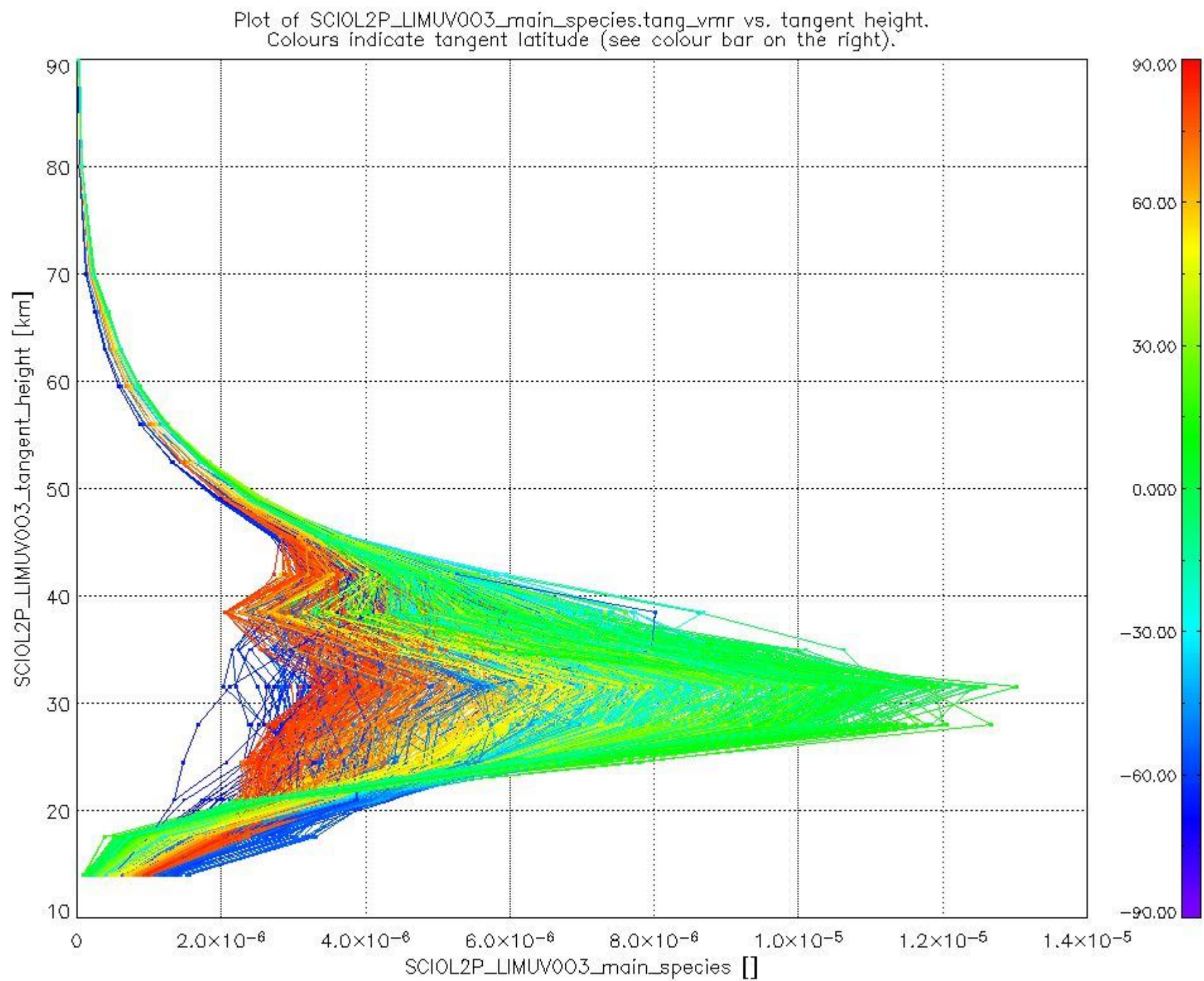
2.2.3 Limb

This section shows information about product quality of the limb retrievals, in particular the quality of retrieved species.

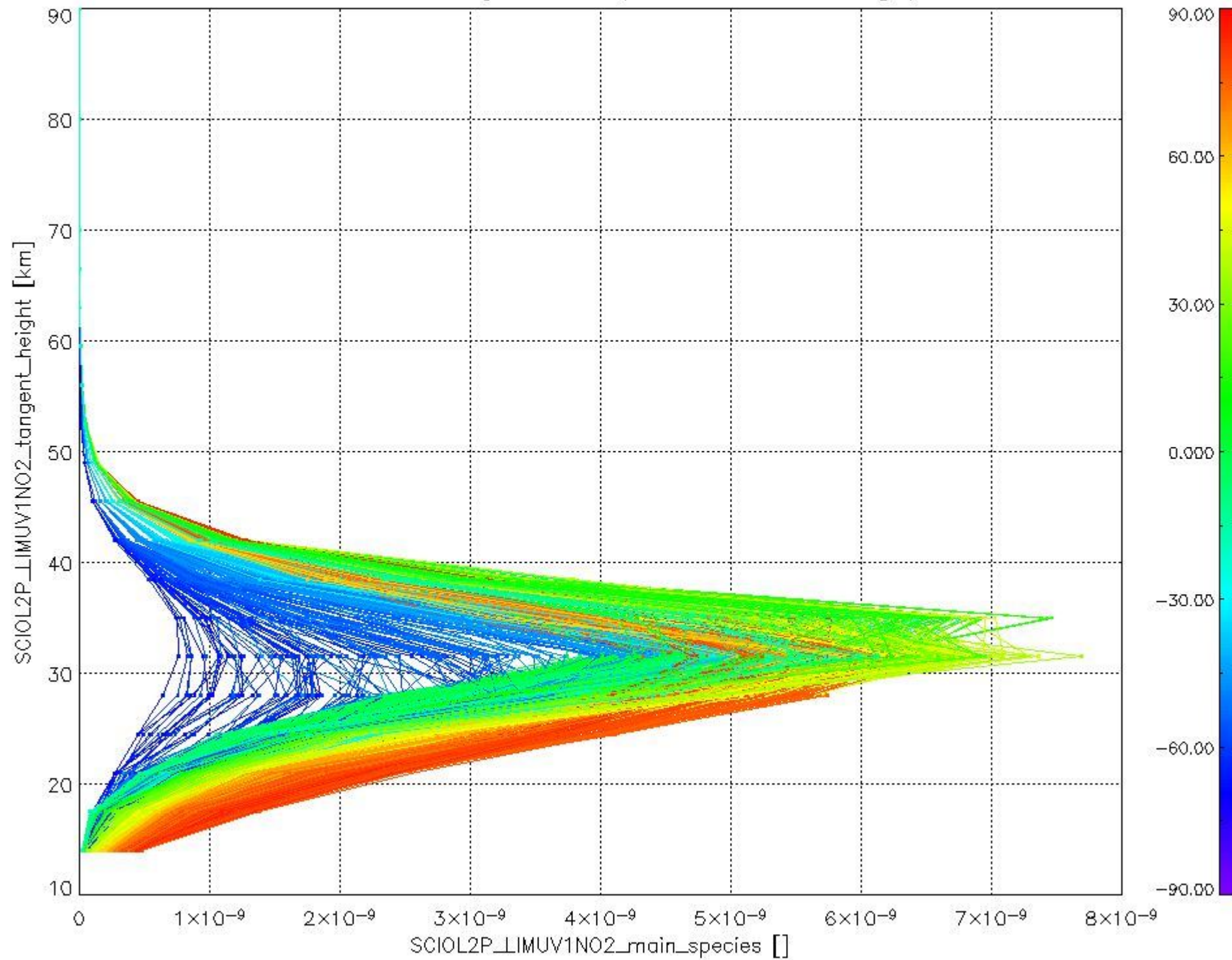
The following data items are currently included into this section:

Number	Data item ID
0	SCIOL2PLIMUV003_main_species
1	SCIOL2PLIMUV1NO2_main_species

The following plots shows for each species the tangent volume mixing ratio vs. tangent height. Colours indicate tangent latitude.



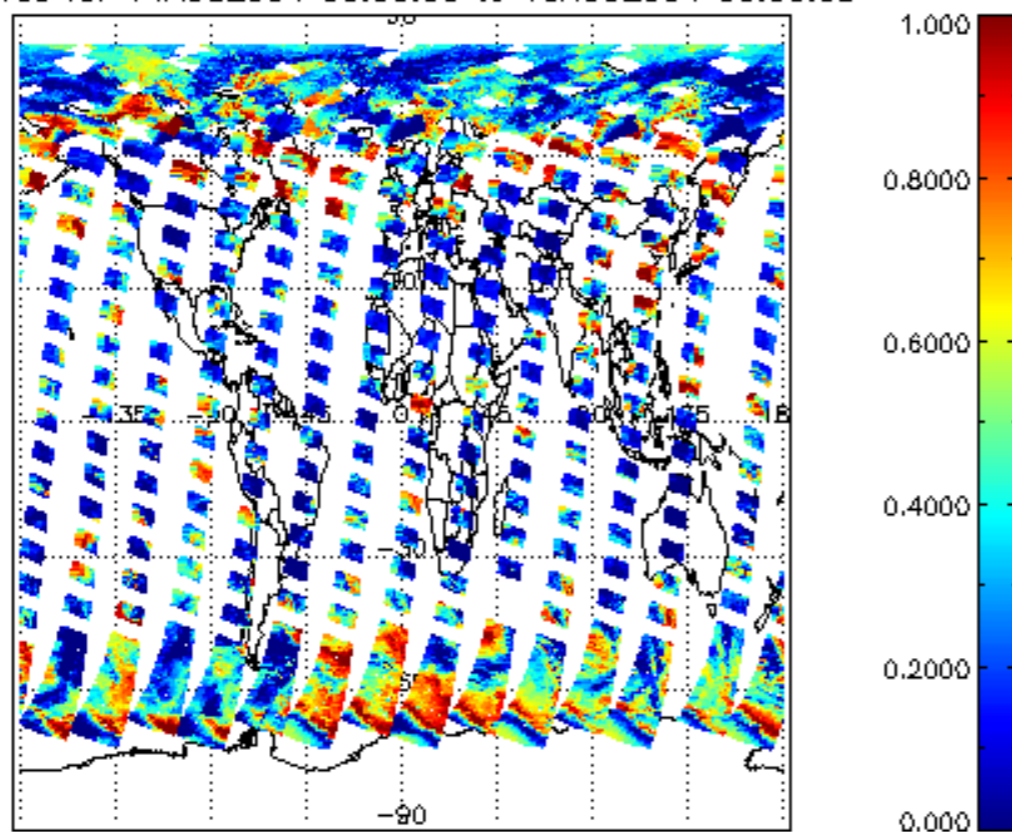
Plot of SCIOL2P_LIMUV1NO2_main_species.tang_vmr vs. tangent height.
Colours indicate tangent latitude (see colour bar on the right).



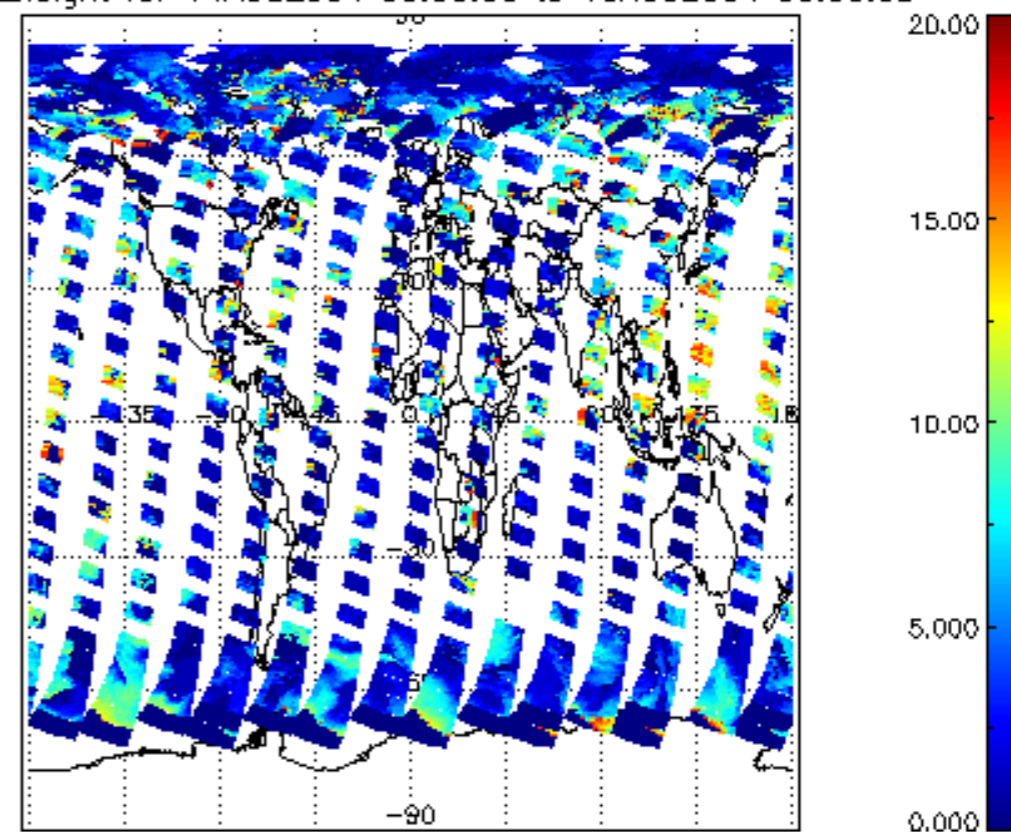
2.3 ADF monitoring

Number	ADF
	IN_ (INITIALISATION_FILE)
0	SCI_IN__AXNPDE20070629_092400_20070720_000000_20991231_235959
	ECF (ECMWF_FILE)
1	NOT USED

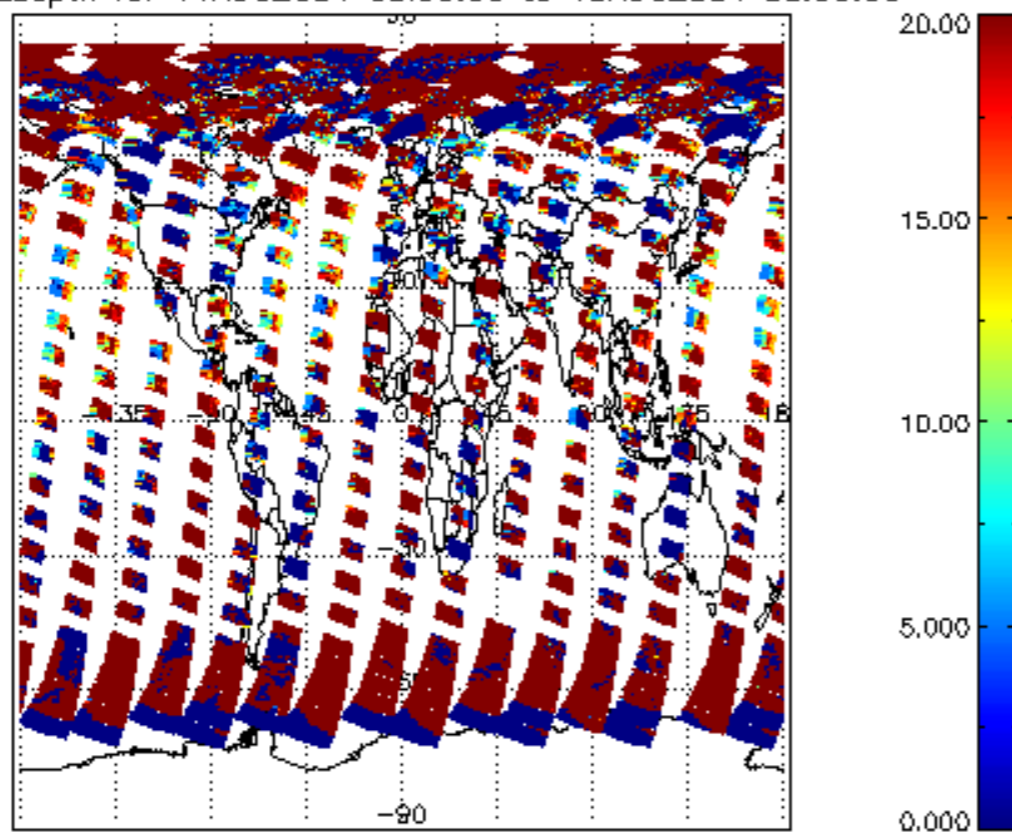
cL_frac for 14AUG2004 00:00:00 to 15AUG2004 00:00:00



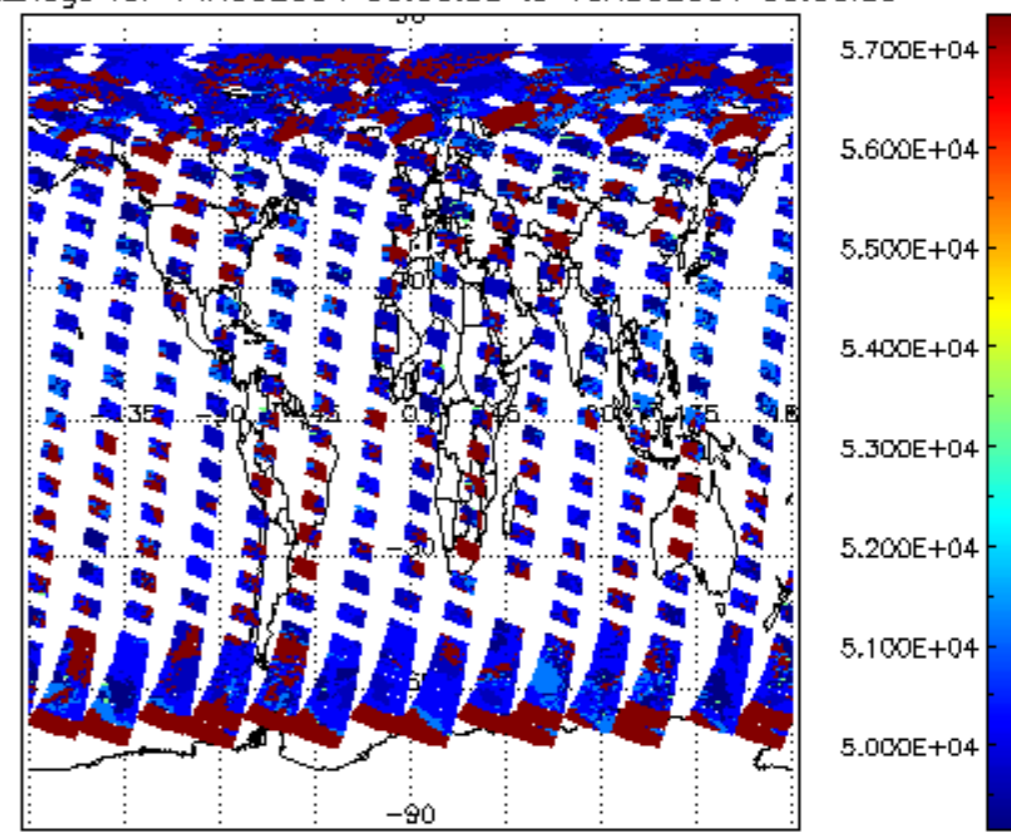
cL_top_height for 14AUG2004 00:00:00 to 15AUG2004 00:00:00

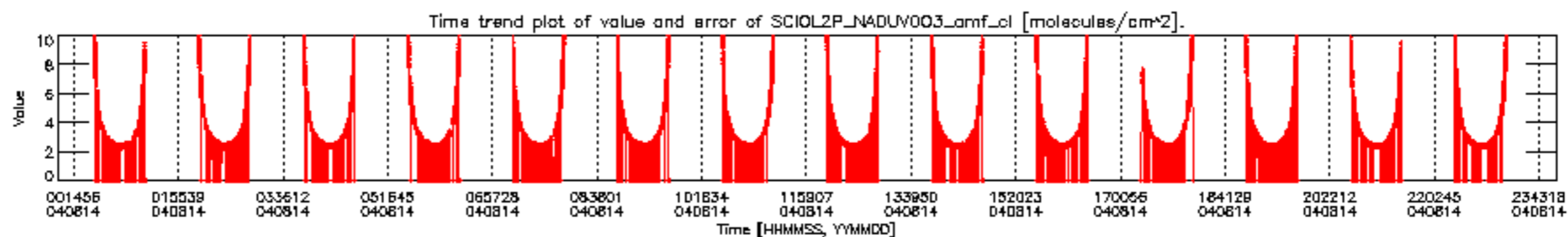
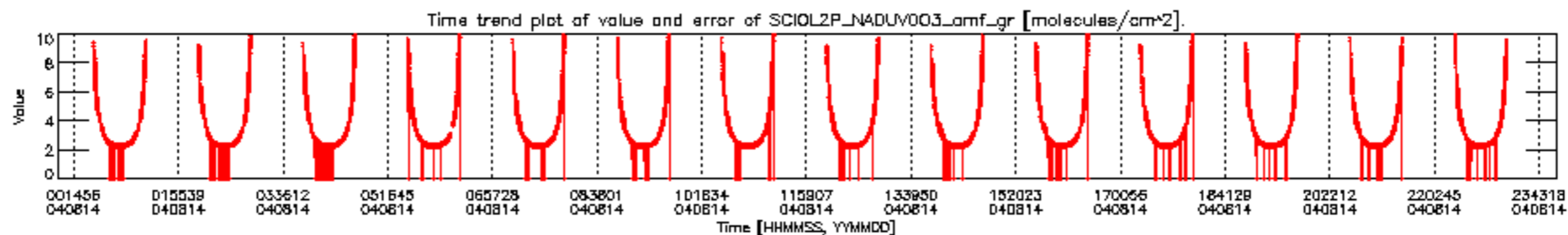
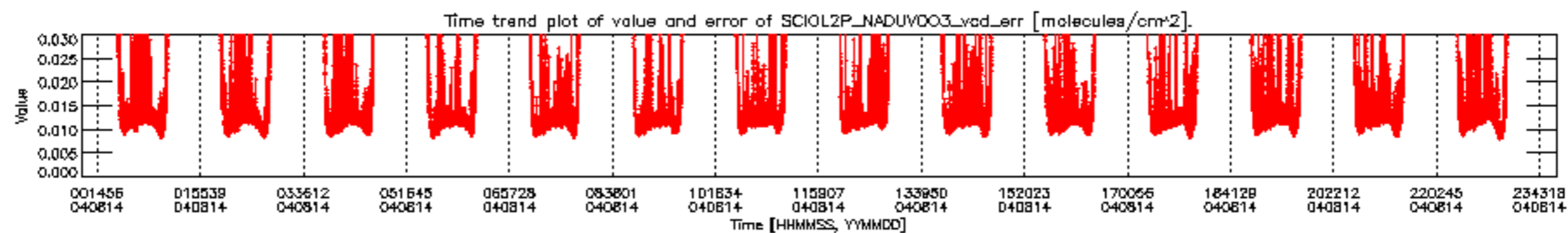
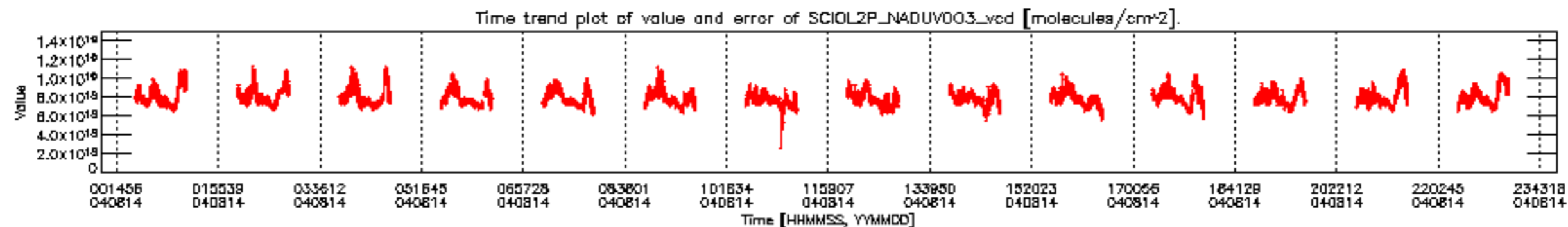


cL_opt_depth for 14AUG2004 00:00:00 to 15AUG2004 00:00:00

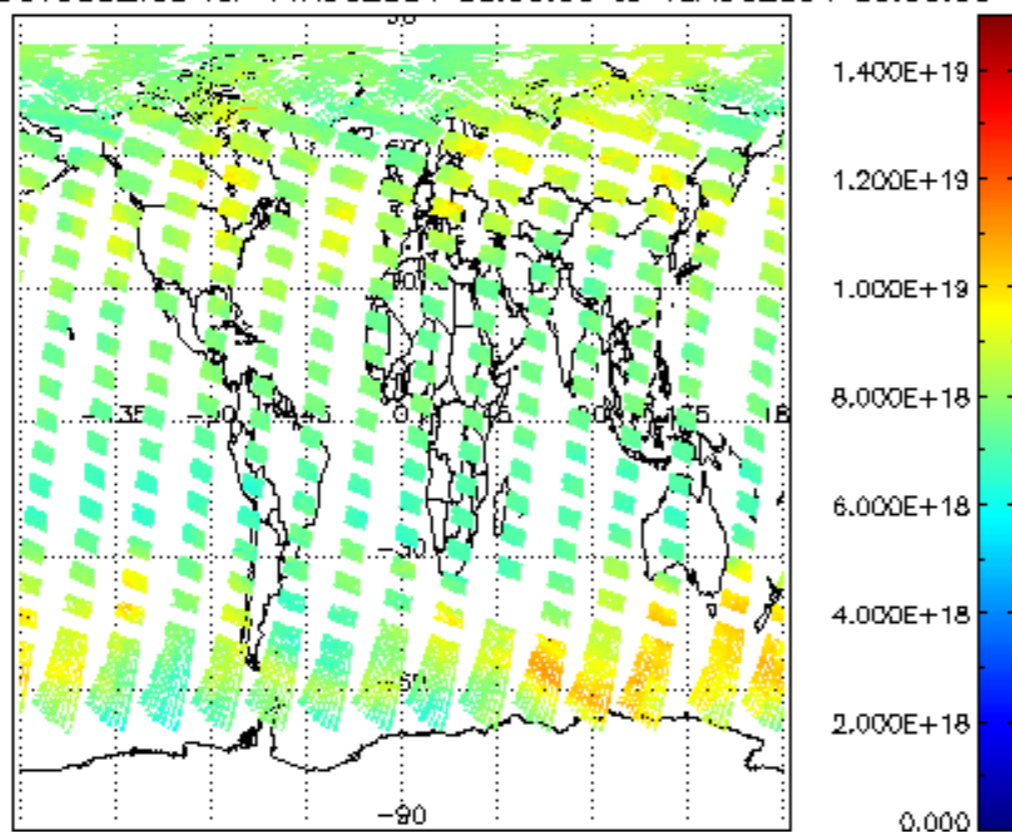


cloud_flags for 14AUG2004 00:00:00 to 15AUG2004 00:00:00

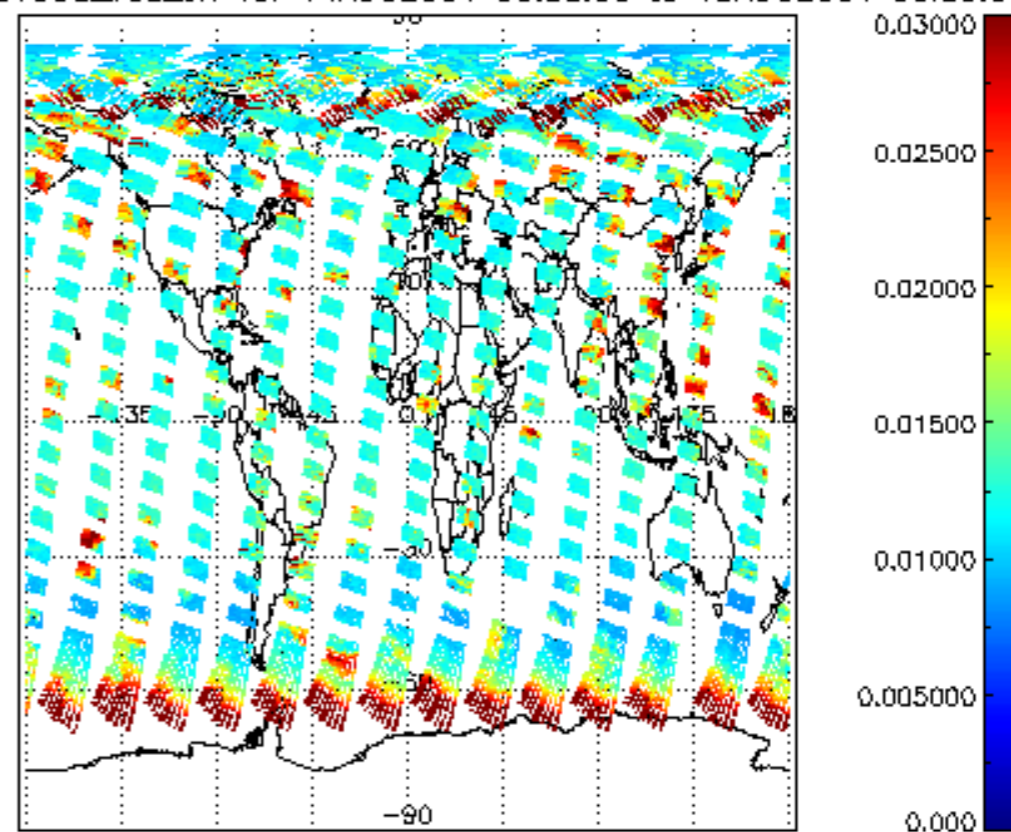




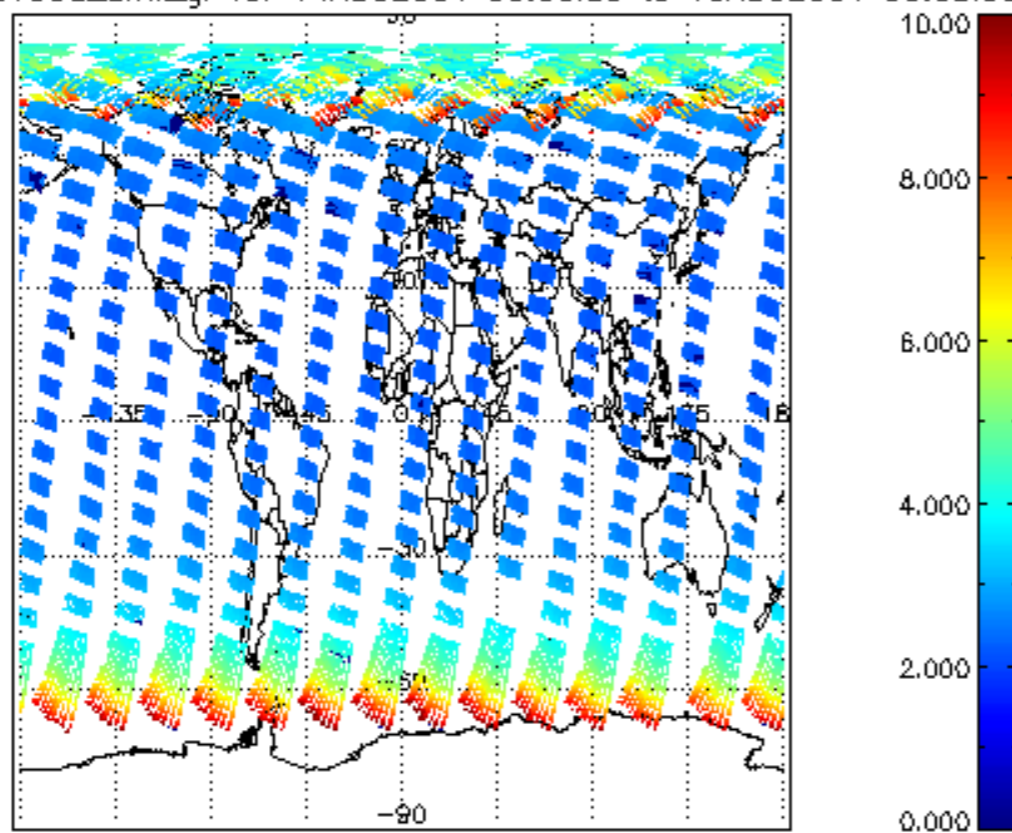
SCIOL2P_NADUV003_vcd for 14AUG2004 00:00:00 to 15AUG2004 00:00:00



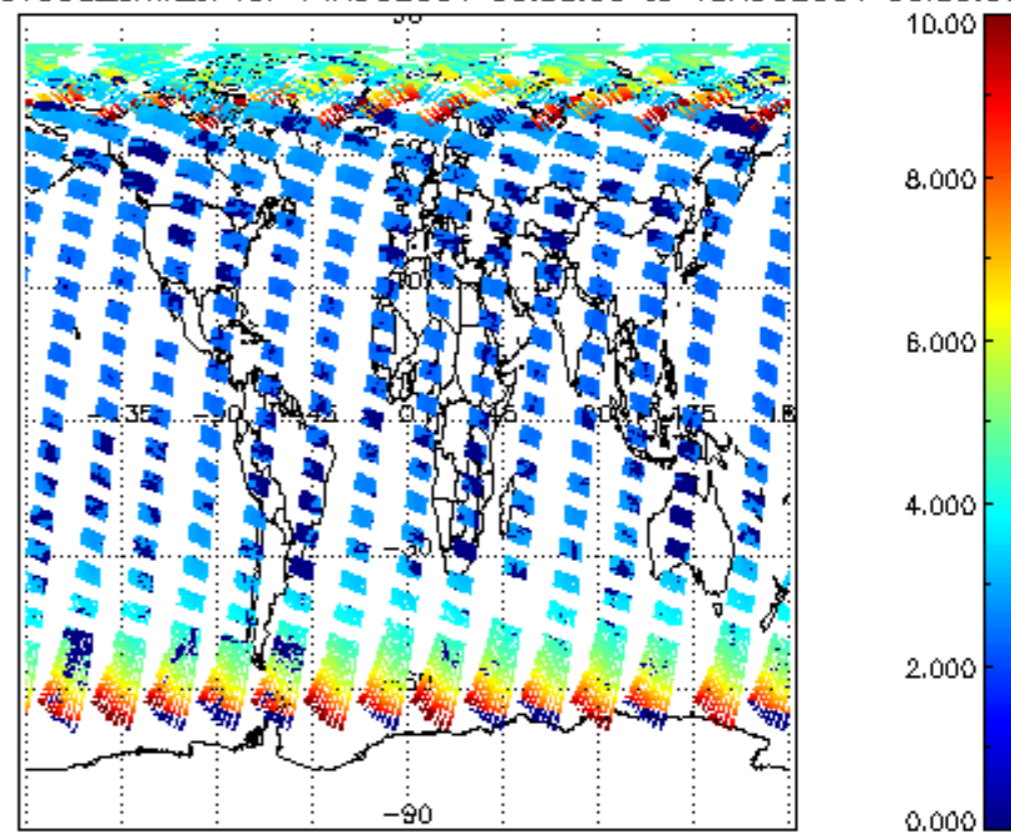
SCIOL2P_NADUV003_vcd_err for 14AUG2004 00:00:00 to 15AUG2004 00:00:00

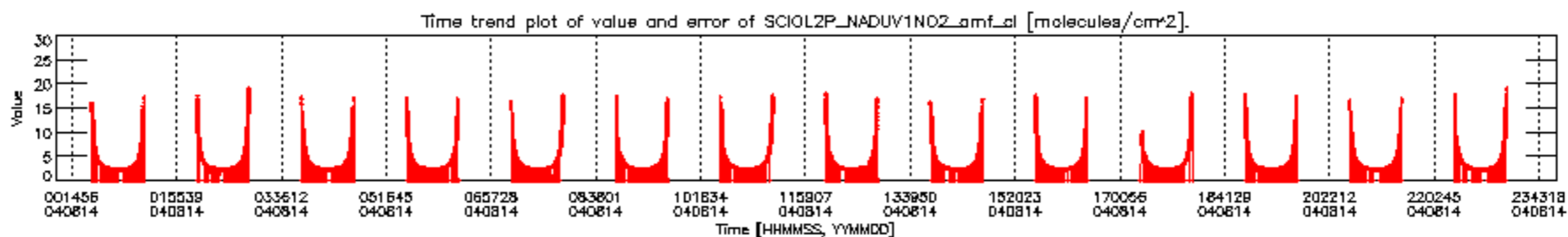
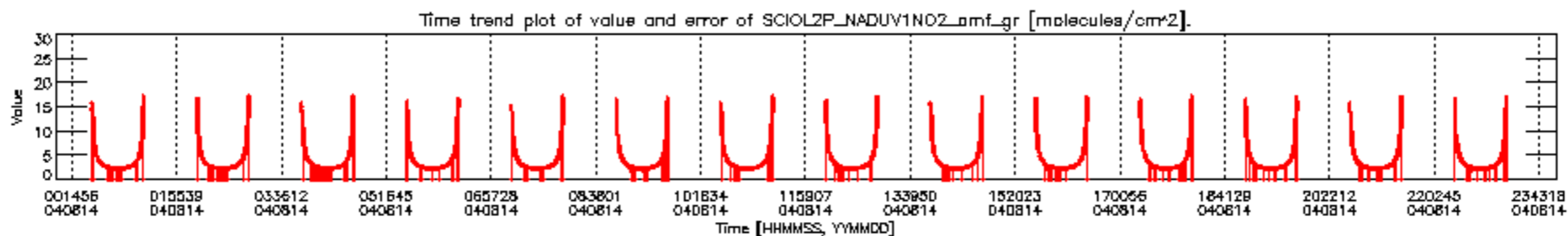
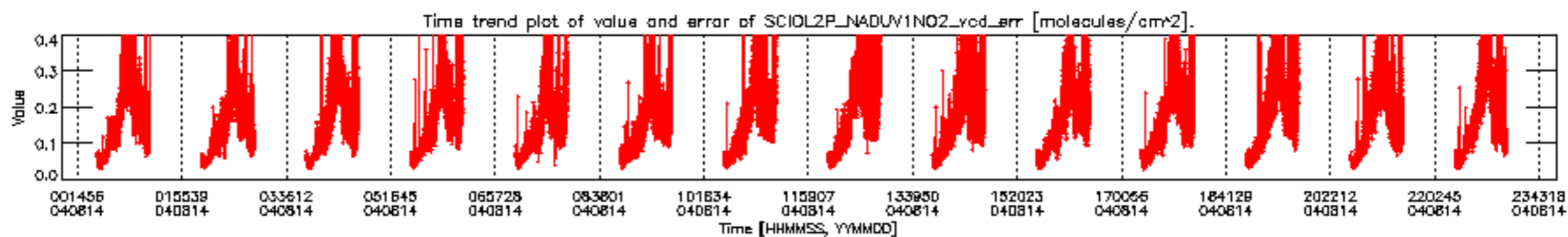
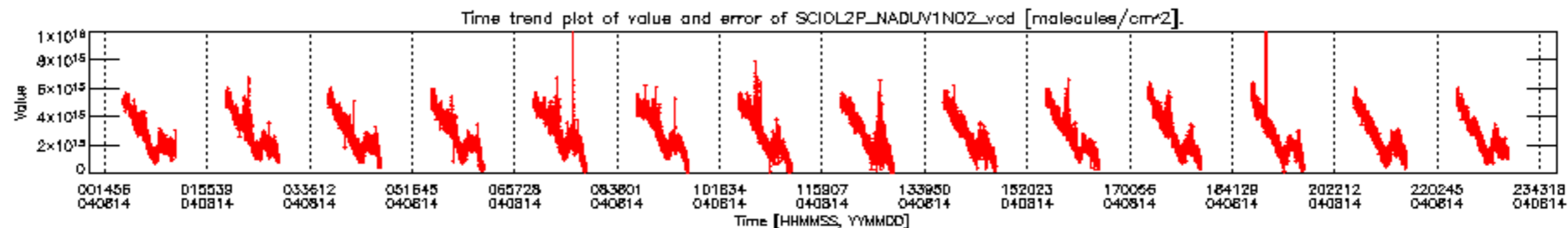


SCIOL2P_NADUV003_amf_gr for 14AUG2004 00:00:00 to 15AUG2004 00:00:00

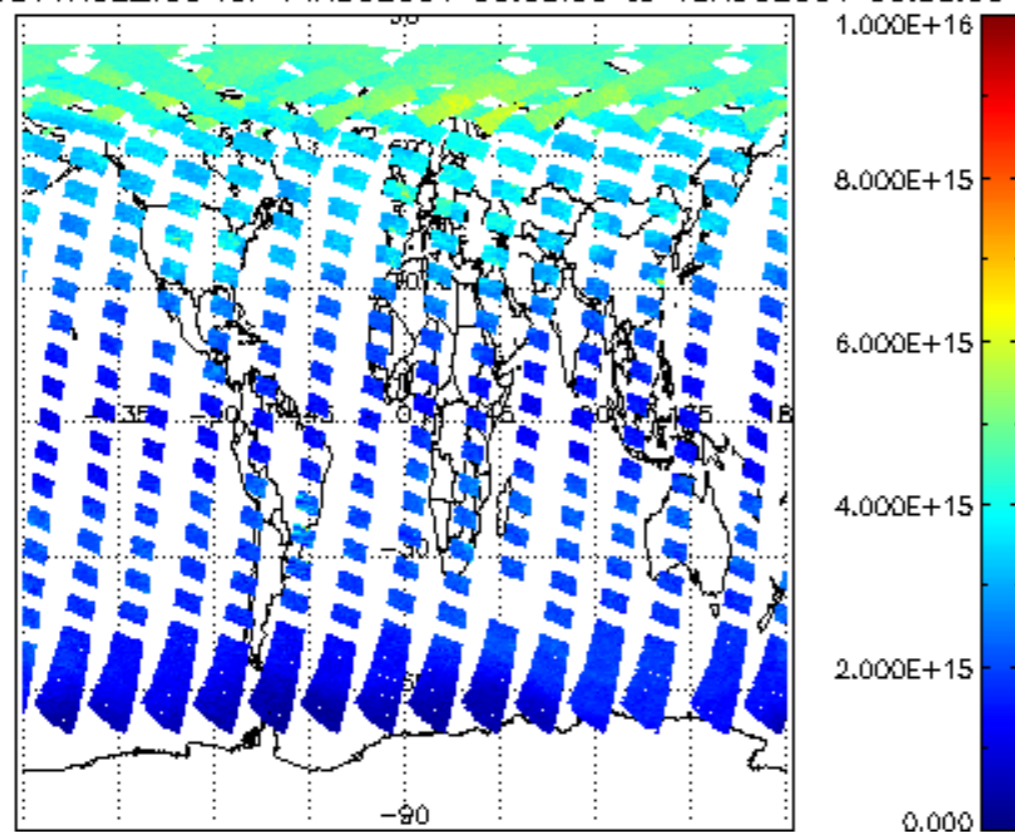


SCIOL2P_NADUV003_amf_cl for 14AUG2004 00:00:00 to 15AUG2004 00:00:00

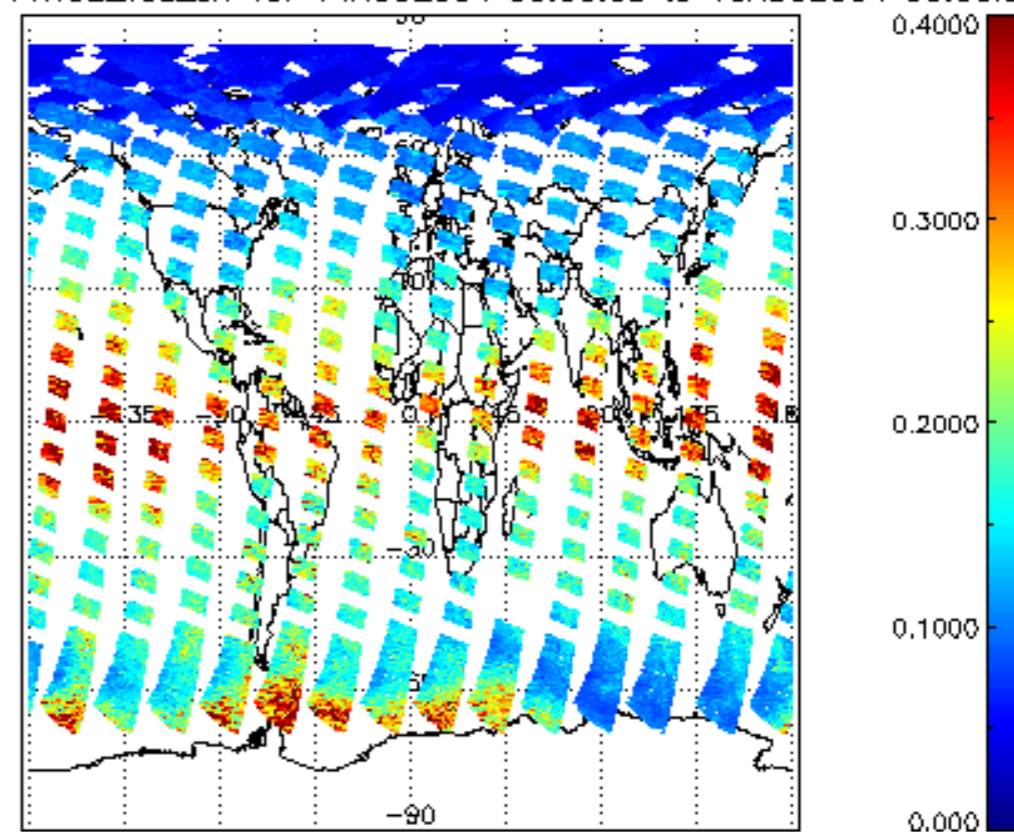




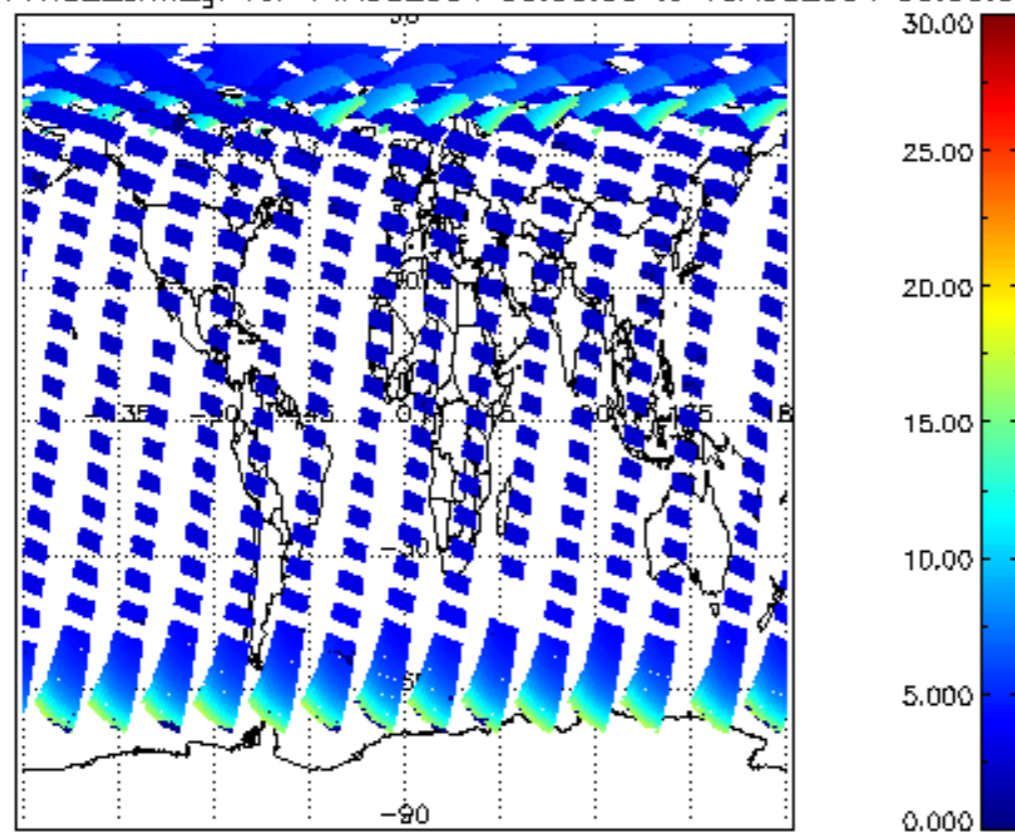
SCIOL2P_NADUV1NO2_vcd for 14AUG2004 00:00:00 to 15AUG2004 00:00:00



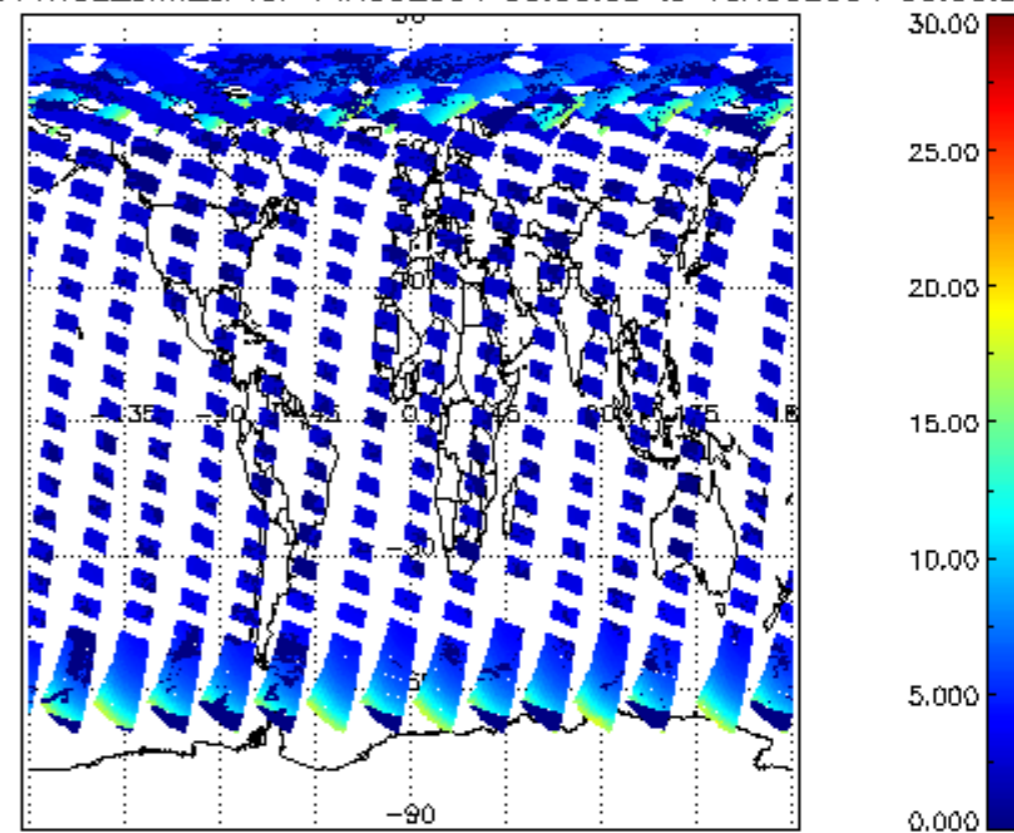
SCIOL2P_NADUV1NO2_vcd_err for 14AUG2004 00:00:00 to 15AUG2004 00:00:00



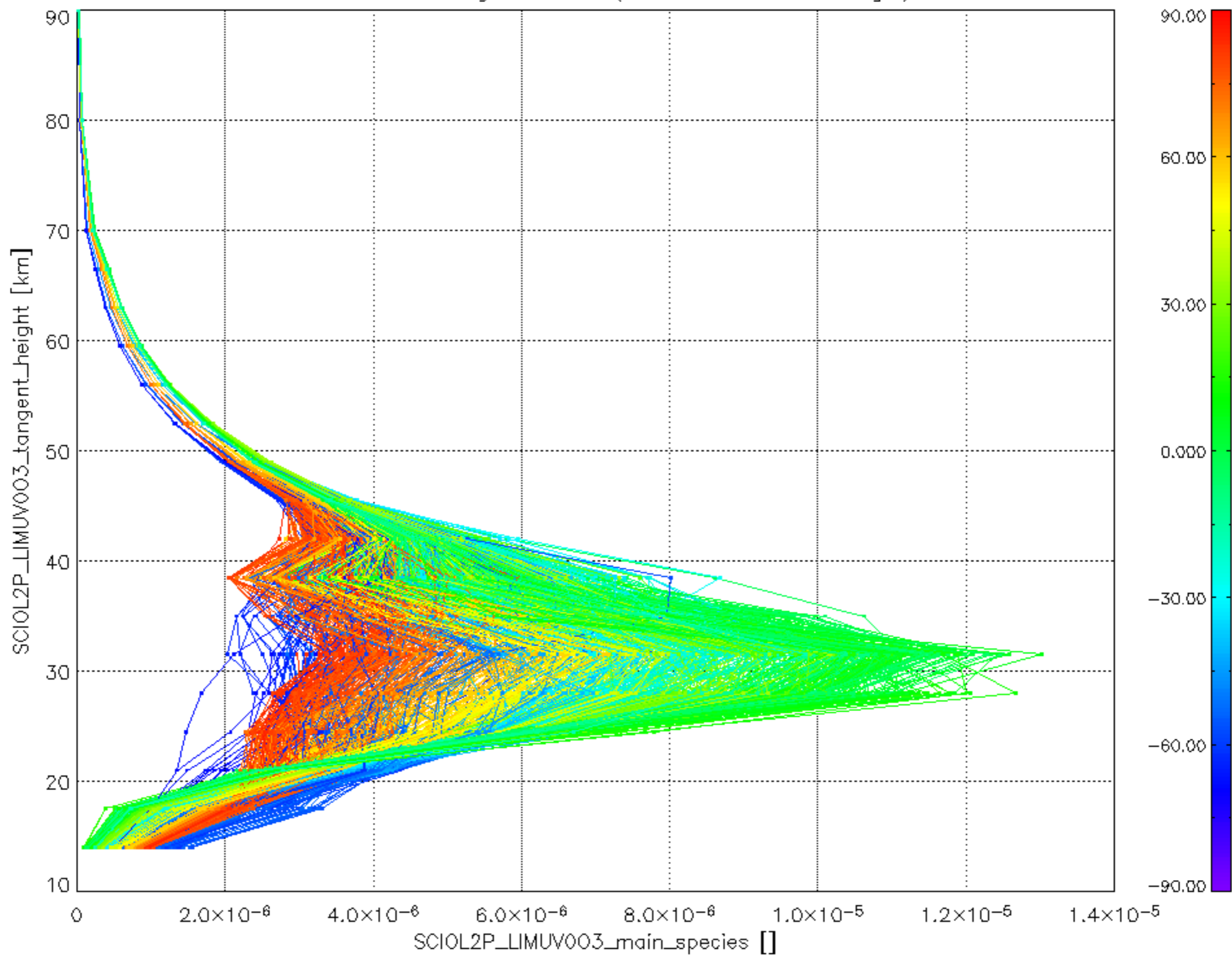
SCIOL2P_NADUV1NO2_amf_gr for 14AUG2004 00:00:00 to 15AUG2004 00:00:00



SCIOL2P_NADUV1NO2_amf_cl for 14AUG2004 00:00:00 to 15AUG2004 00:00:00



Plot of SCIOL2P_LIMUV003_main_species.tang_vmr vs. tangent height.
 Colours indicate tangent latitude (see colour bar on the right).



Plot of SCIOL2P_LIMUV1N02_main_species.tang_vmr vs. tangent height.
 Colours indicate tangent latitude (see colour bar on the right).

