

## 2. SCIAMACHY Daily Report for level 2 products

### [2.1. General Info](#)

### [2.2 Product Quality Indicators](#)

### [2.3 ADF monitoring](#)

## 2.1 General Info

This report contains a daily analysis on parameters extracted from SCIAMACHY level 2 data (The SCI\_OL\_\_2P product).

### 2.1.1 Report summary

The table below shows general characteristics of the data that are included into this report.

Item	Value
Report version	1.6 (28-07-2008)
Time of report generation	01SEP2008 07:41:10
Data source version	SCIA-OL/3.01-R
Processing scope for products	07AUG2004 00:00:00 to 08AUG2004 00:00:00
Start time of first product within scope	06AUG2004 23:08:02
Stop time of last product within scope	07AUG2004 23:31:55
Total number of level 2 products	15
Number of level 2 products with errors	0

### 2.1.2 Summary per product

The following table shows a summary for each product used in this report.

Products are linked to a corresponding server directory for view/download. Note: Link access may be restricted by security settings of your internet browser or firewall.

#	Product name	Start time	Stop time	Prod err	Fit summary
0	<a href="#">SCI_OL__2PRDPA20040806_230802_000033252029_00159_12738_9414.N1</a>	06AUG2004 23:08:02	07AUG2004 00:03:27	0	GOOD
1	<a href="#">SCI_OL__2PRDPA20040807_004838_000033812029_00160_12739_9512.N1</a>	07AUG2004 00:48:38	07AUG2004 01:45:00	0	GOOD
2	<a href="#">SCI_OL__2PRDPA20040807_022914_000033252029_00161_12740_9419.N1</a>	07AUG2004 02:29:14	07AUG2004 03:24:40	0	GOOD
3	<a href="#">SCI_OL__2PRDPA20040807_040951_000033812029_00162_12741_9570.N1</a>	07AUG2004 04:09:51	07AUG2004 05:06:12	0	GOOD
4	<a href="#">SCI_OL__2PRDPA20040807_055027_000033252029_00163_12742_9268.N1</a>	07AUG2004 05:50:27	07AUG2004 06:45:53	0	GOOD
5	<a href="#">SCI_OL__2PRDPA20040807_073103_000033812029_00164_12743_9284.N1</a>	07AUG2004 07:31:03	07AUG2004 08:27:25	0	GOOD
6	<a href="#">SCI_OL__2PRDPA20040807_091140_000033252029_00165_12744_9609.N1</a>	07AUG2004 09:11:40	07AUG2004 10:07:05	0	GOOD
7	<a href="#">SCI_OL__2PRDPA20040807_105216_000033812029_00166_12745_9628.N1</a>	07AUG2004 10:52:16	07AUG2004 11:48:37	0	GOOD
8	<a href="#">SCI_OL__2PRDPA20040807_123252_000033252029_00167_12746_9245.N1</a>	07AUG2004 12:32:52	07AUG2004 13:28:17	0	GOOD
9	<a href="#">SCI_OL__2PRDPA20040807_141328_000033812029_00168_12747_9336.N1</a>	07AUG2004 14:13:28	07AUG2004 15:09:50	0	GOOD
10	<a href="#">SCI_OL__2PRDPA20040807_155404_000033252029_00169_12748_9375.N1</a>	07AUG2004 15:54:04	07AUG2004 16:49:30	0	GOOD
11	<a href="#">SCI_OL__2PRDPA20040807_173434_000033762029_00170_12749_9487.N1</a>	07AUG2004 17:34:34	07AUG2004 18:30:50	0	GOOD
12	<a href="#">SCI_OL__2PRDPA20040807_191535_000033252029_00171_12750_9601.N1</a>	07AUG2004 19:15:35	07AUG2004 20:11:01	0	GOOD
13	<a href="#">SCI_OL__2PRDPA20040807_205553_000033812029_00172_12751_9350.N1</a>	07AUG2004 20:55:53	07AUG2004 21:52:15	0	GOOD
14	<a href="#">SCI_OL__2PRDPA20040807_223630_000033252029_00173_12752_9552.N1</a>	07AUG2004 22:36:30	07AUG2004 23:31:55	0	GOOD

## 2.2 Product Quality Indicators

### 2.2.1 Cloud parameters

This is a new section that shows information about the cloud parameters estimation, in particular cloud fractions and cloud top height. IMPORTANT NOTE: The contents and layout of this section are still being validated. Please use with caution.

#### General statistics:

Total number of cloud data DSRs: 147959

Total number of cloud data DSRs with good quality flag (=0): 147959 (100.0 %)

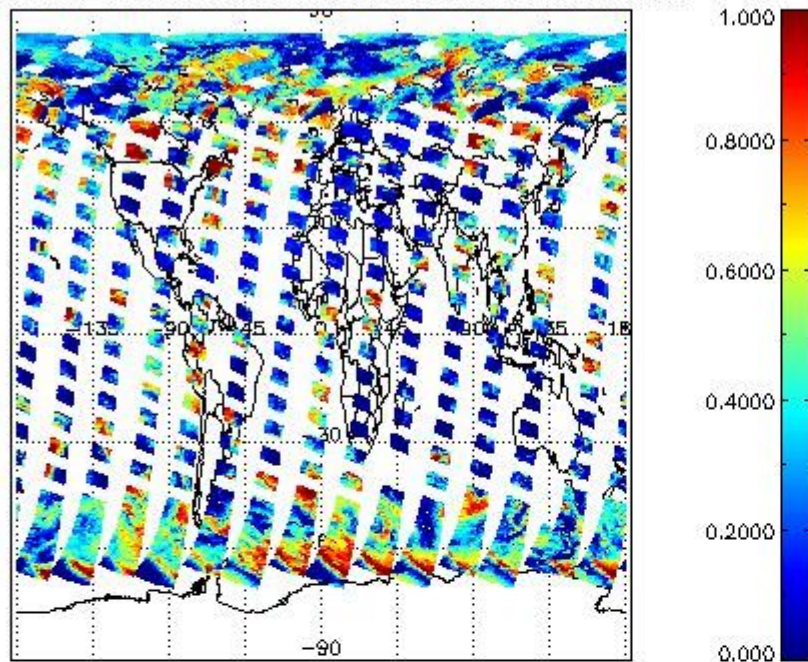
Parameter	#valid	Mean	Median	Min	Max	Stddev	Unit
QUALITY_FLAG	147959	0.0000	0.0000	0.0000	0.0000	0.0000	flag
INTEGR_TIME	147959	0.16915	0.12500	0.12500	0.25000	0.059746	s
CL_FRAC	147959	0.35162	0.31360	0.0000	1.0000	0.28465	-
CL_FRAC_ERR	147959	0.0000	0.0000	0.0000	0.0000	0.0000	rel. fraction
PMD_READ	147959	5.4128	4.0000	4.0000	8.0000	1.9119	-
PMD_READ_CL[0]	147959	0.22596	0.0000	0.0000	8.0000	1.0711	-
PMD_READ_CL[1]	147959	0.99286	0.0000	0.0000	8.0000	2.0433	-
CL_TOP_HEIGHT	128598	3.8467	2.2592	0.0000	17.000	3.8460	km
CL_TOP_HEIGHT_ERR	0	---	---	---	---	---	---
CL_OPT_DEPTH	128598	60.413	98.265	0.0000	101.00	43.150	km
CL_OPT_DEPTH_ERR	0	---	---	---	---	---	---
CL_TYPE_FLAGS	147959	11100000	11100000	11100000	11100000	0.0000	flags. Bit definition = 0: low or high cloud; 1: ice or water cloud; 2: thick or thin cloud; 3-15: not used
CLOUD_FLAGS	147959	11001010	11000100	11000000	11100000	3300.0	flags
AERO_ABSO_IND	147959	0.76249	0.55307	-3.6418	9.6772	1.0721	-
AERO_IND_DIAG	147959	0.0000	0.0000	0.0000	0.0000	0.0000	-
AERO_FLAGS	147959	01010101	00000000	00000000	11000000	24436.	flags

### Time and geolocation plots:

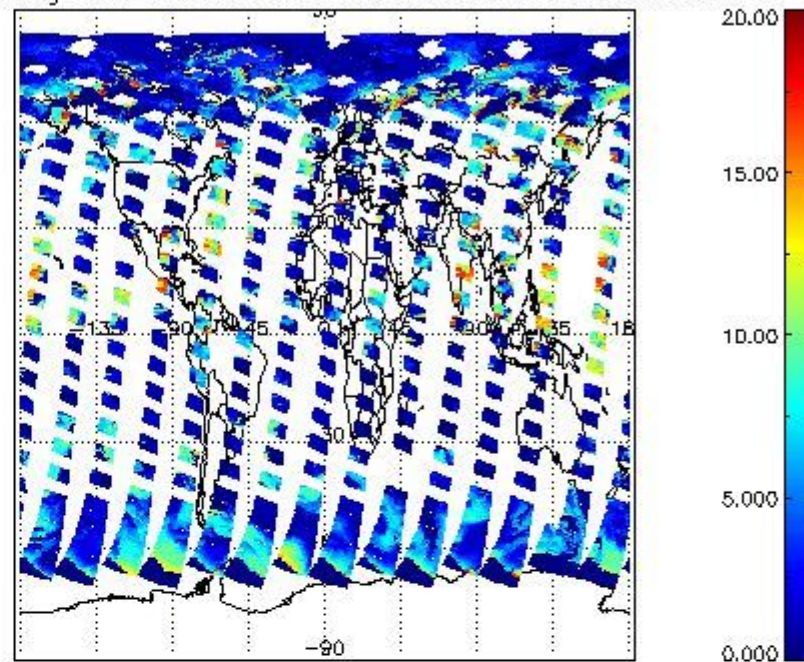
Plots are available for the following parameters:

Number	Data item ID
0	cl_frac
1	cl_top_height
2	cl_opt_depth
3	cloud_flags

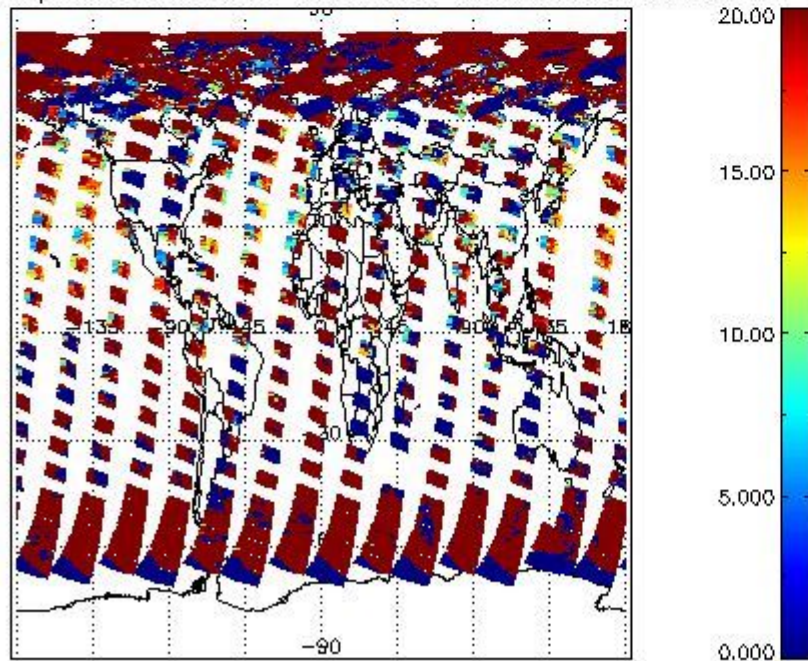
cL\_frac for 07AUG2004 00:00:00 to 08AUG2004 00:00:00



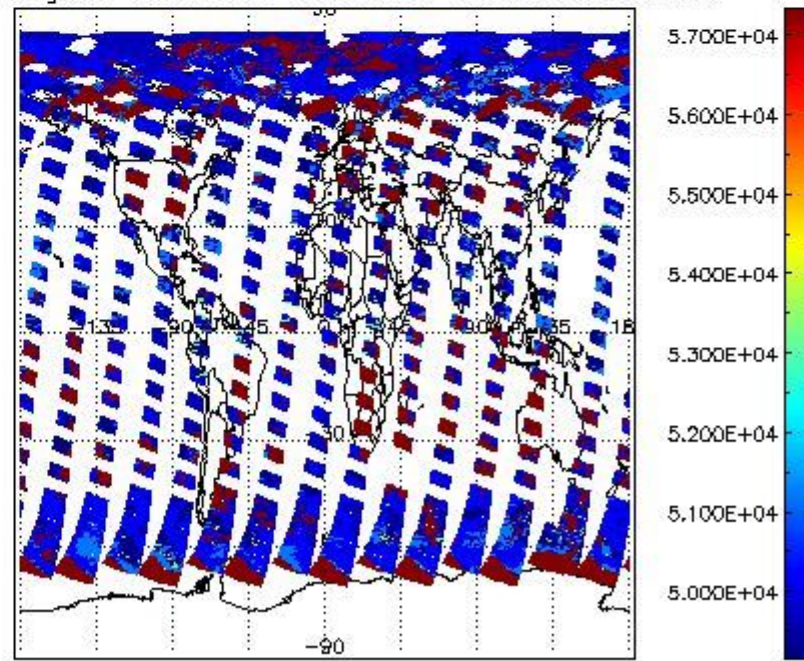
cL\_top\_height for 07AUG2004 00:00:00 to 08AUG2004 00:00:00



cL\_opt\_depth for 07AUG2004 00:00:00 to 08AUG2004 00:00:00



cloud\_flags for 07AUG2004 00:00:00 to 08AUG2004 00:00:00



## 2.2.2 Nadir

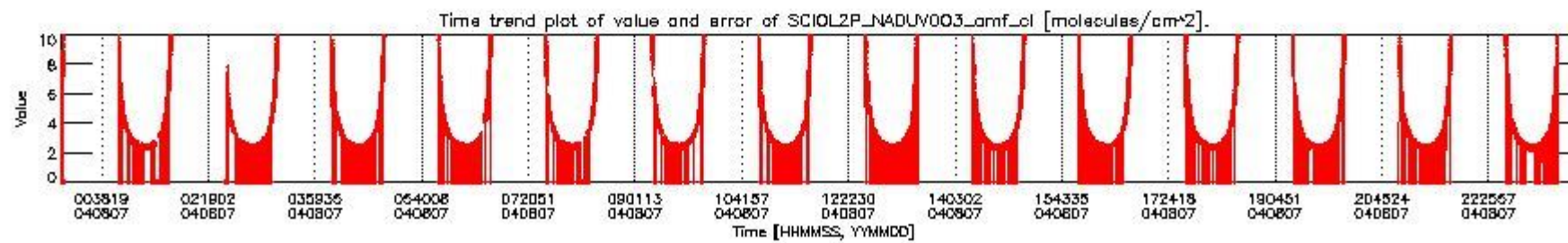
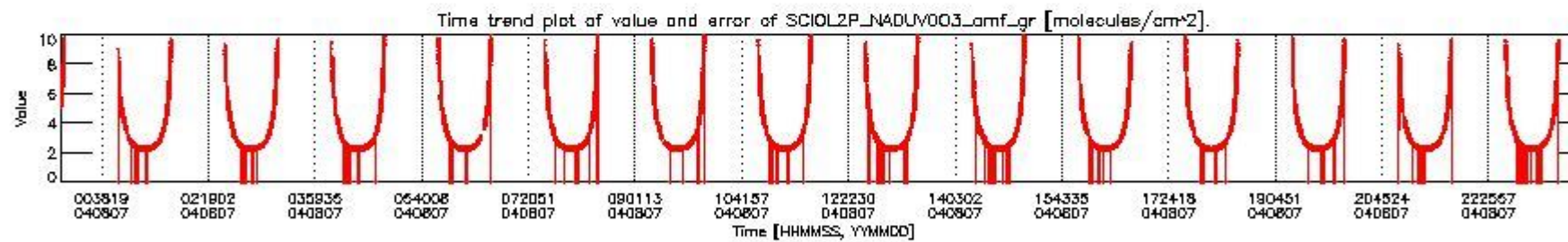
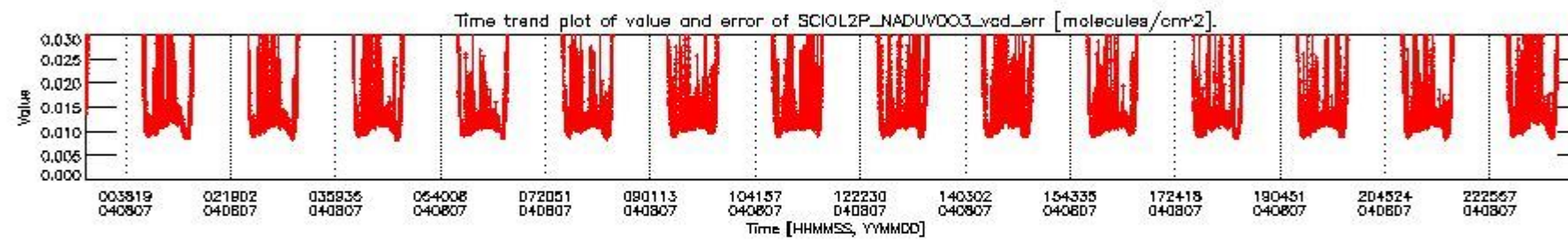
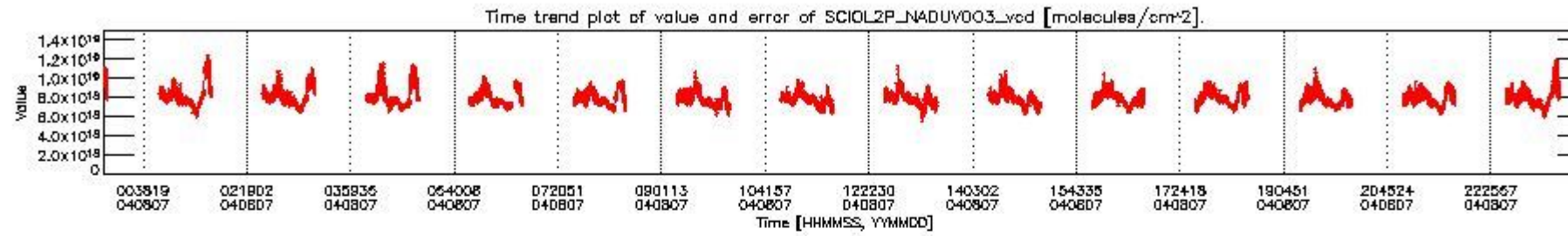
This section shows information about product quality of nadir measurements, in particular the quality of retrieved species.

The following data items are currently included into this section:

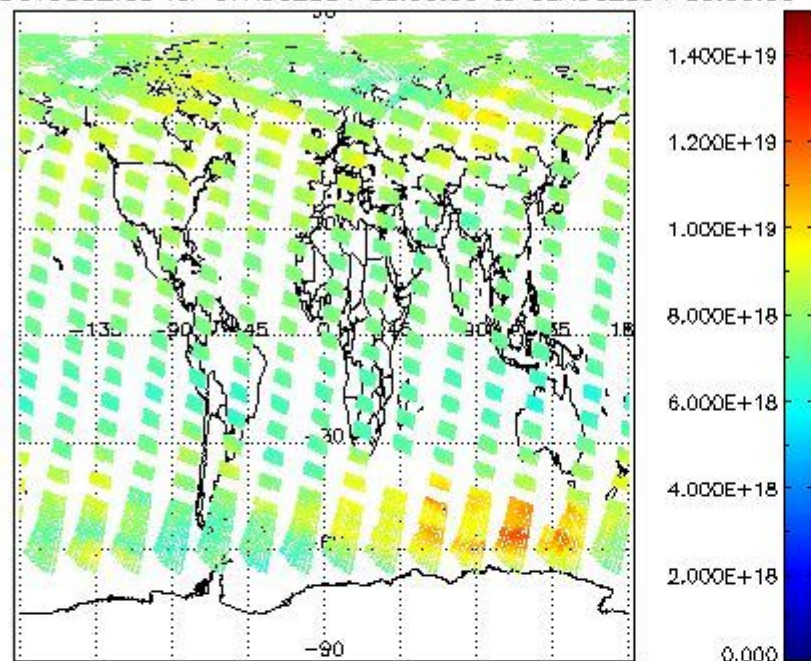
Number	Data item ID
0	SCIOL2P_NADUV003_vcd
1	SCIOL2P_NADUV003_vcd_err
2	SCIOL2P_NADUV003_amf_gr

3	SCIOL2P_NADUV003_amf_cl
4	SCIOL2P_NADUV1NO2_vcd
5	SCIOL2P_NADUV1NO2_vcd_err
6	SCIOL2P_NADUV1NO2_amf_gr
7	SCIOL2P_NADUV1NO2_amf_cl

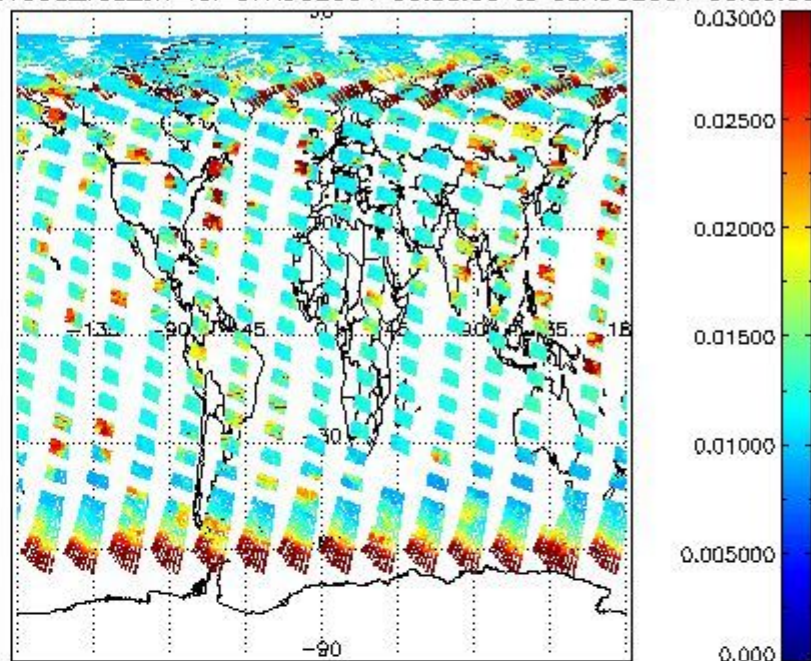
Data is presented both in time trend plots and world map plots, in order to show variations with time and geolocation. The vertical dotted lines in the time trend plots indicate orbits. The orbit times on the X-axis are estimated sensing\_start time as suggested by the product sensing\_start time in the MPH.



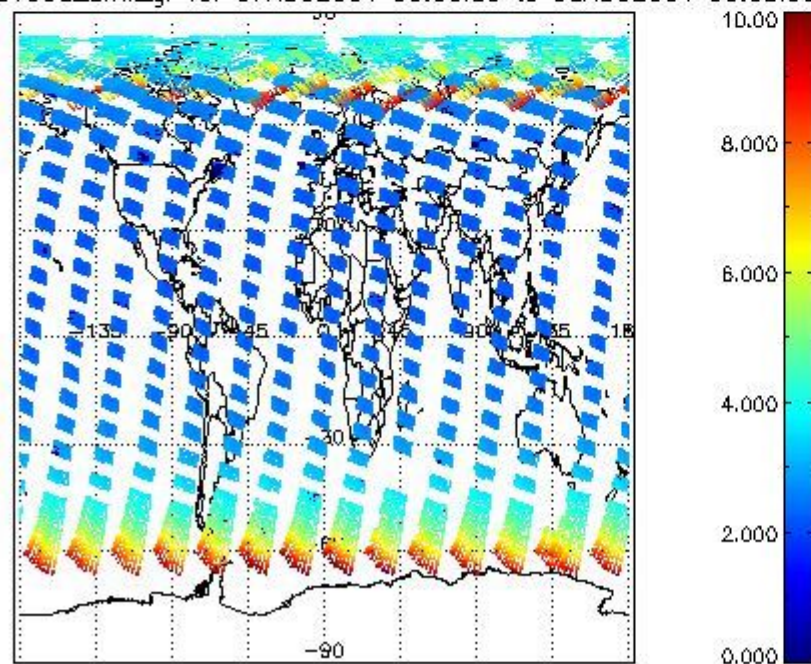
SCIOL2P\_NADUV003\_vcd for 07AUG2004 00:00:00 to 08AUG2004 00:00:00



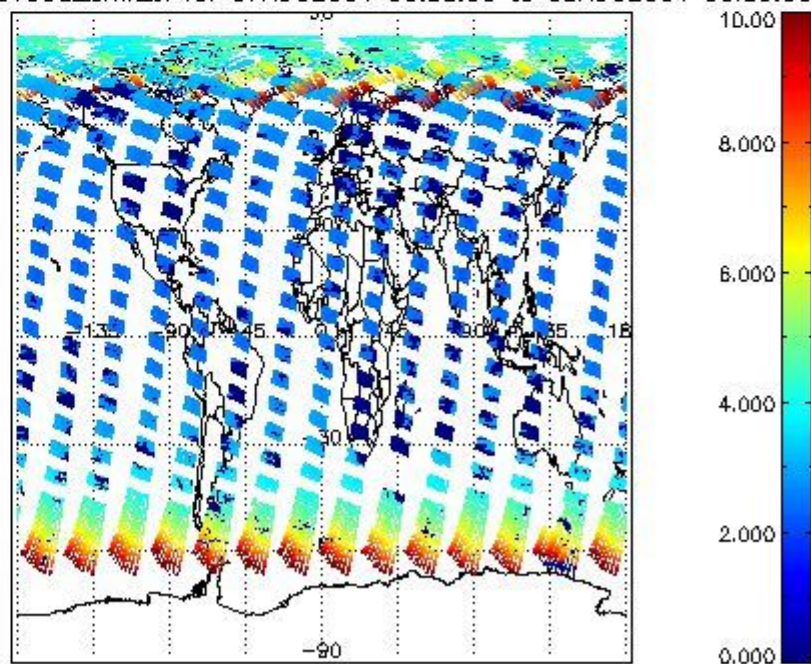
SCIOL2P\_NADUV003\_vcd\_err for 07AUG2004 00:00:00 to 08AUG2004 00:00:00

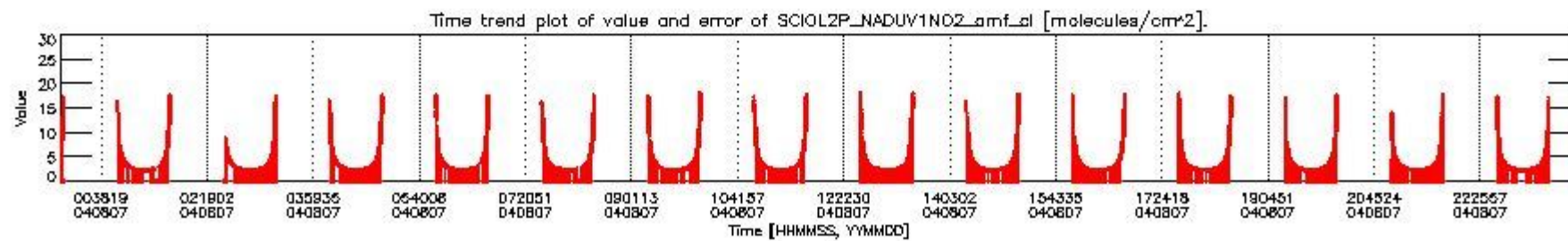
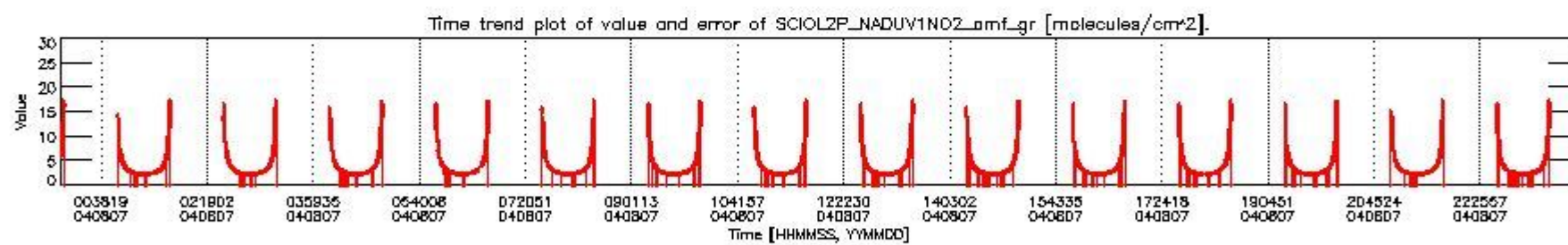
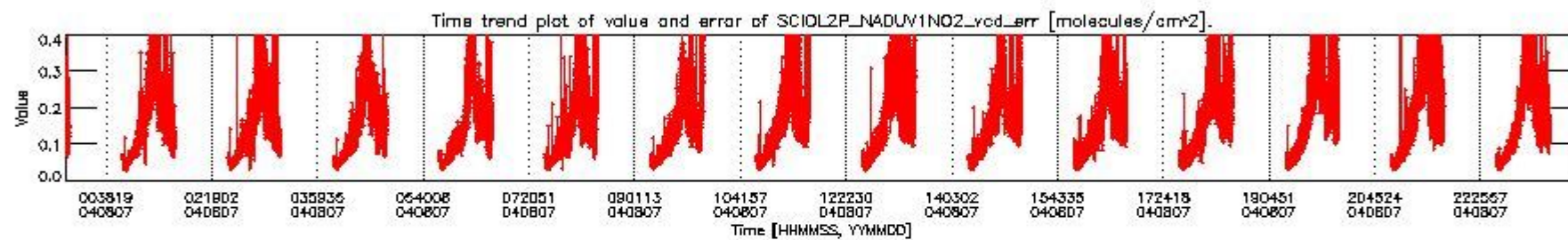
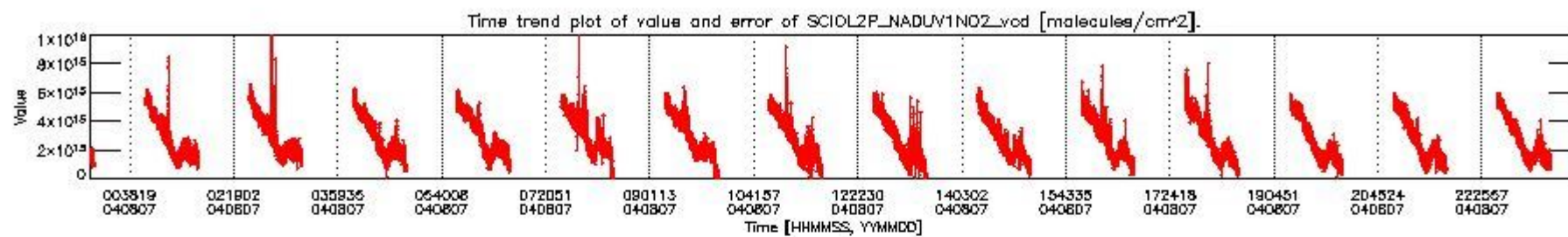


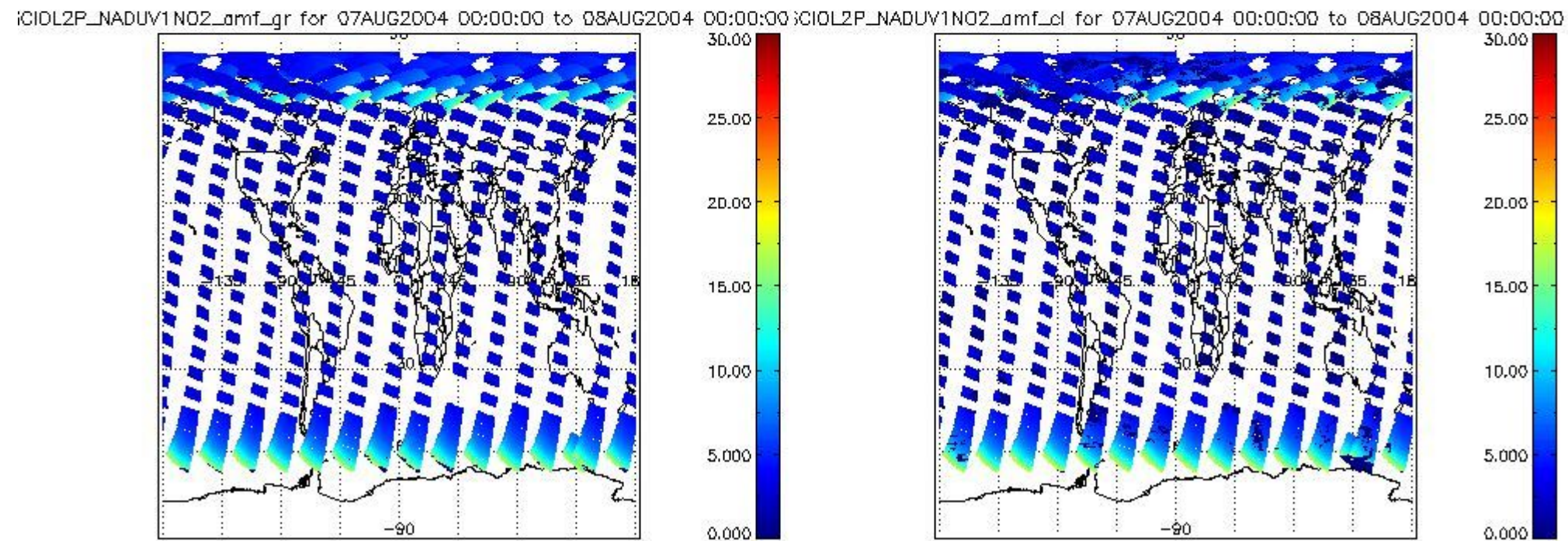
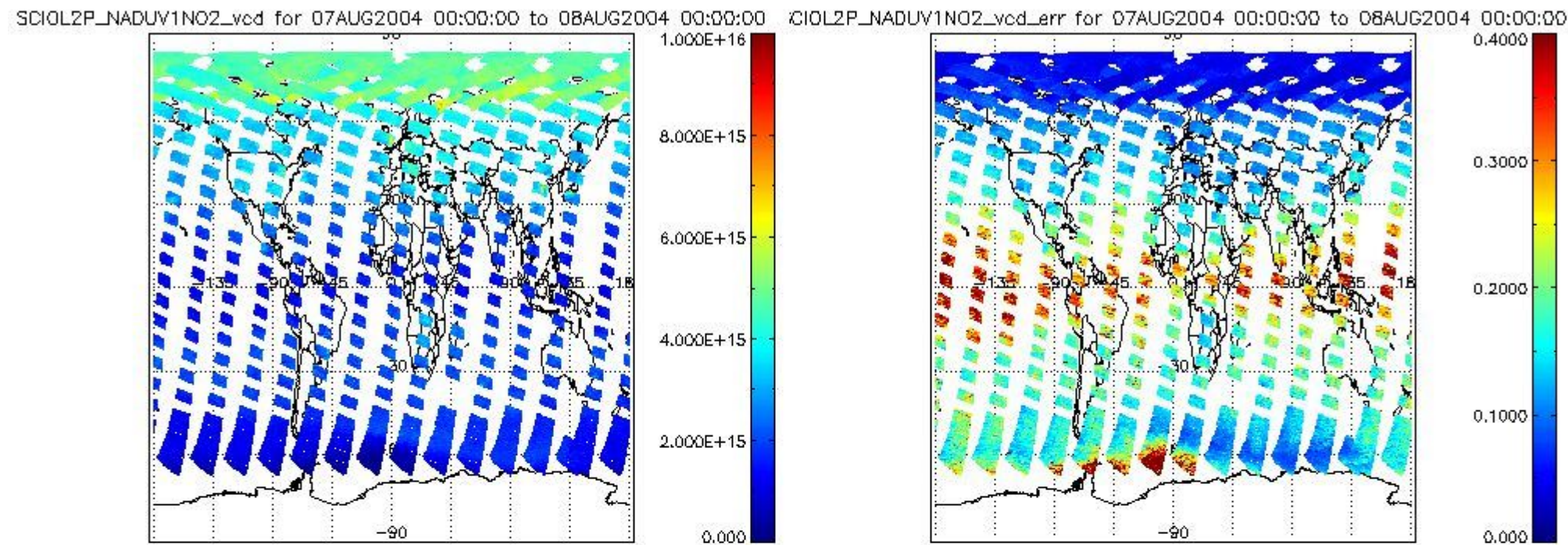
SCIOL2P\_NADUV003\_amf\_gr for 07AUG2004 00:00:00 to 08AUG2004 00:00:00



SCIOL2P\_NADUV003\_amf\_cl for 07AUG2004 00:00:00 to 08AUG2004 00:00:00







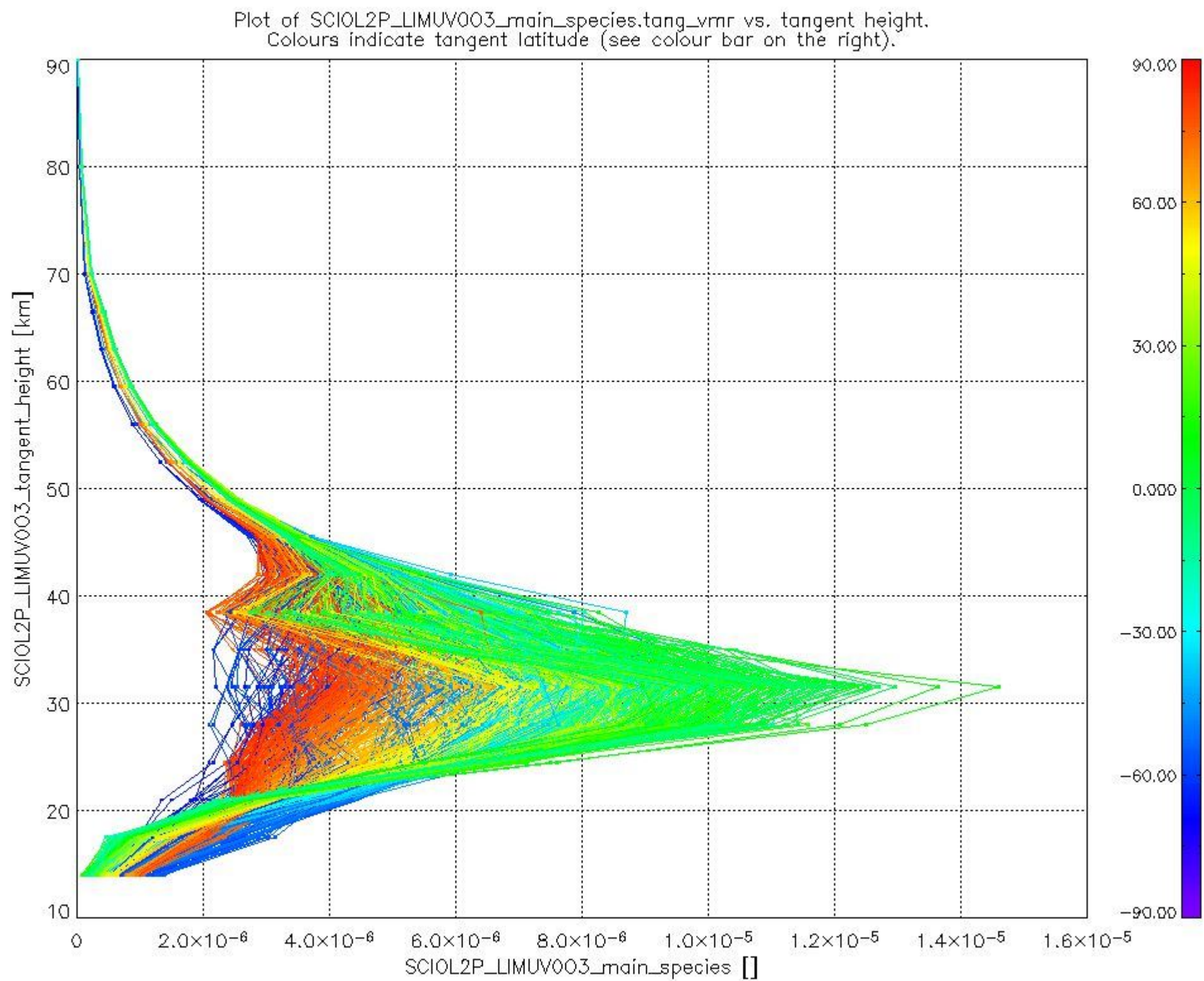
### 2.2.3 Limb

This section shows information about product quality of the limb retrievals, in particular the quality of retrieved species.

The following data items are currently included into this section:

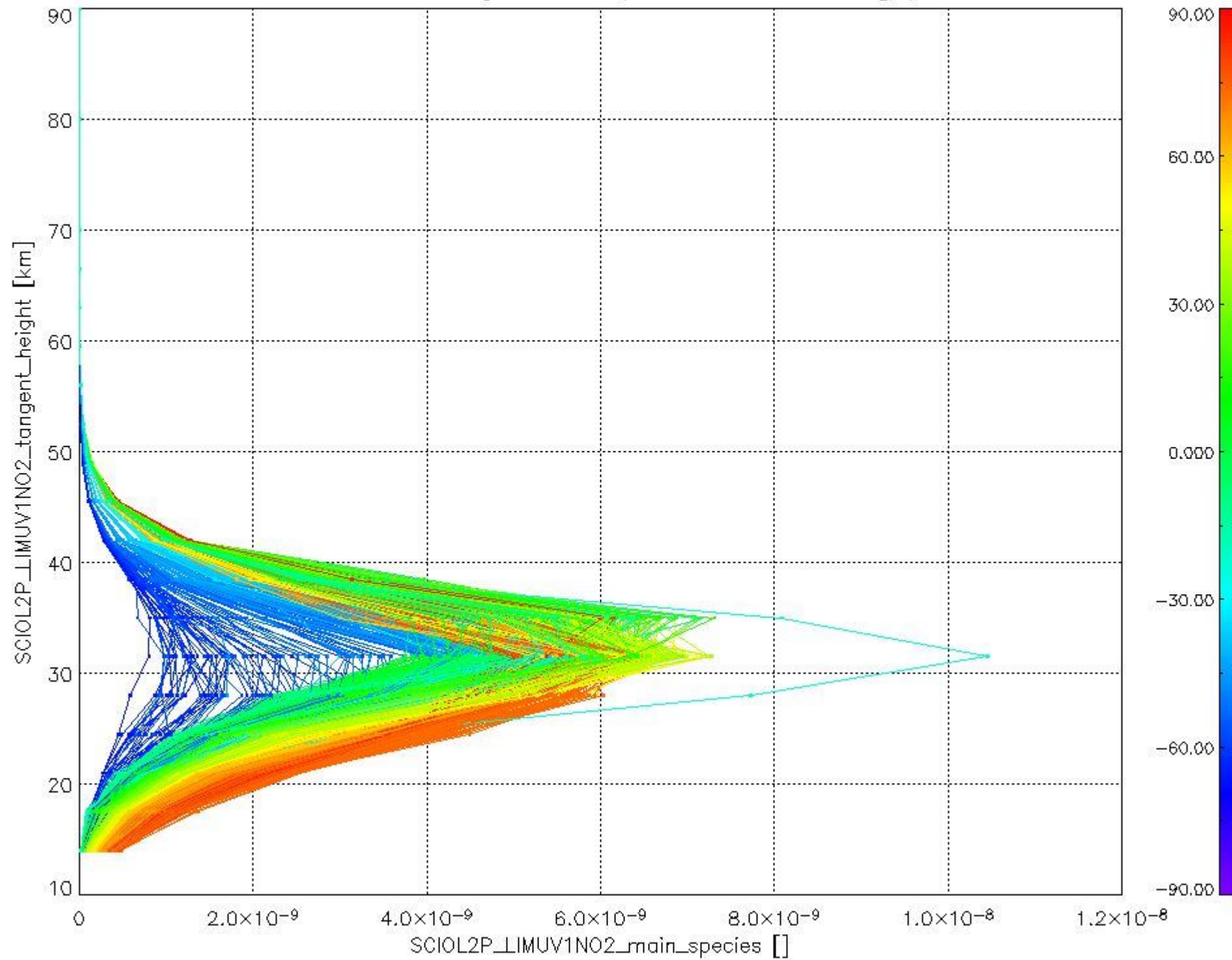
Number	Data item ID
0	SCIOL2PLIMUV003_main_species
1	SCIOL2PLIMUV1NO2_main_species

The following plots shows for each species the tangent volume mixing ratio vs. tangent height. Colours indicate tangent latitude.





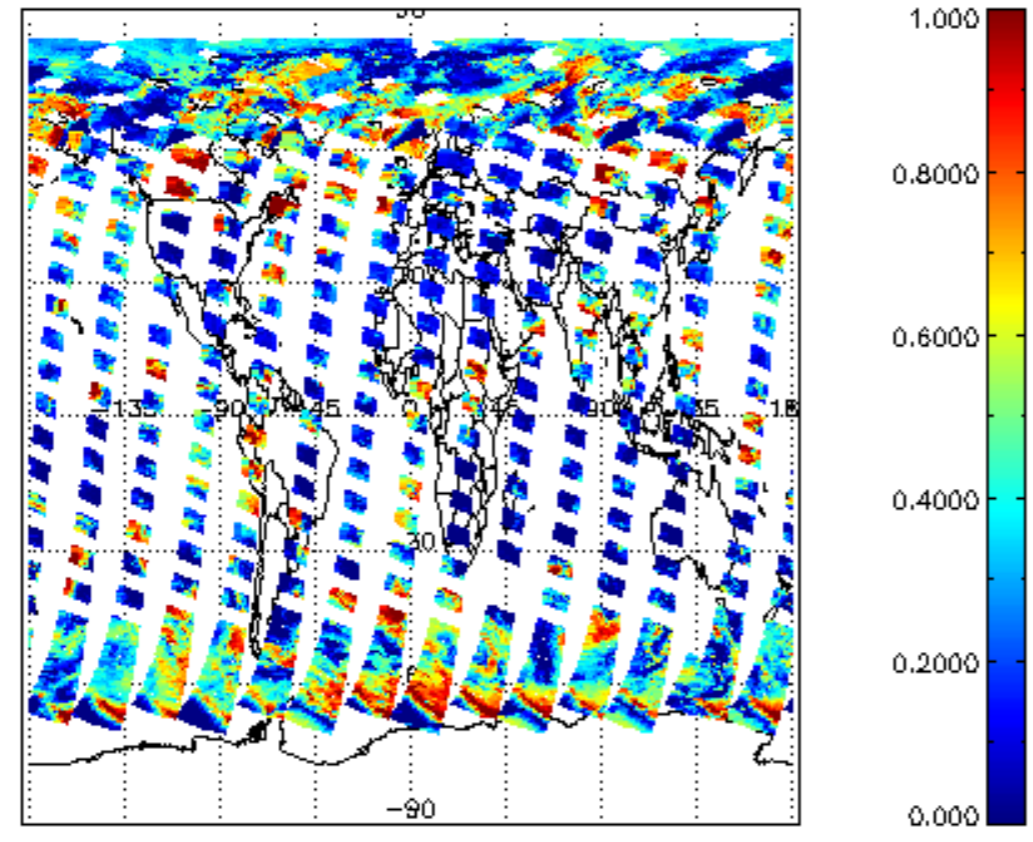
Plot of SCIOL2P\_LIMUV1NO2\_main\_species.tang\_vmr vs. tangent height.  
Colours indicate tangent latitude (see colour bar on the right).



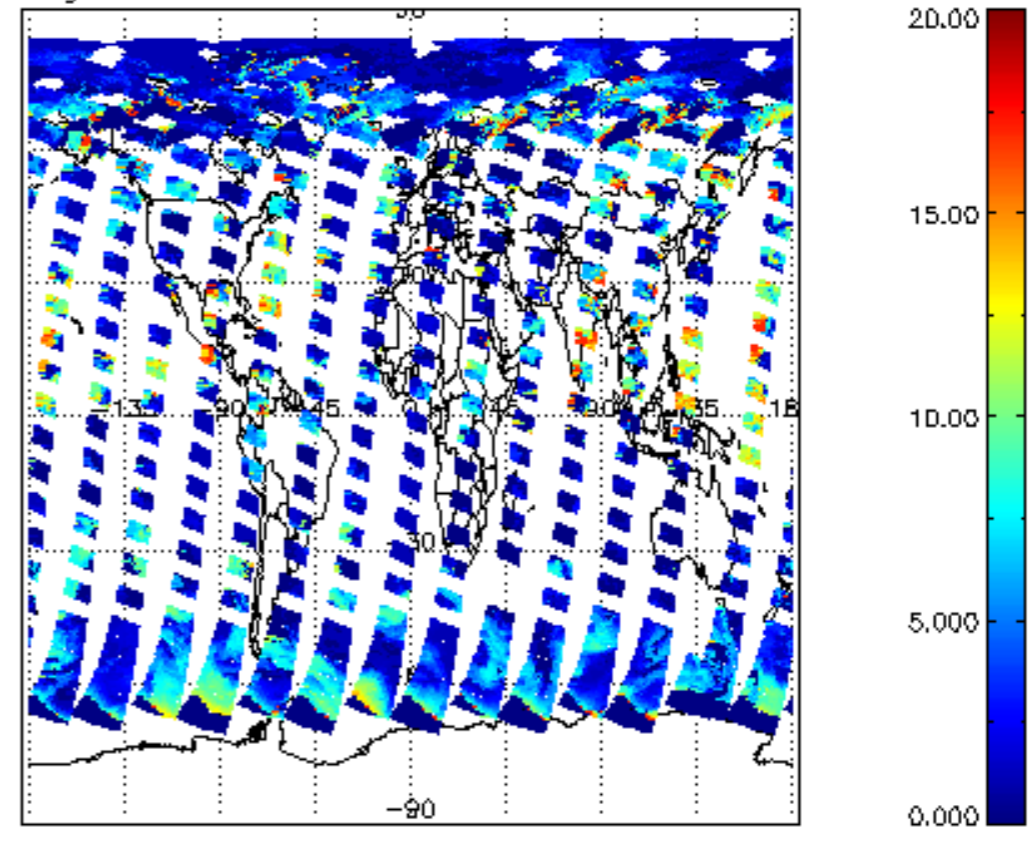
### 2.3 ADF monitoring

Number	ADF
	<b>IN_ (INITIALISATION_FILE)</b>
0	SCI_IN_AXNPDE20070629_092400_20070720_000000_20991231_235959
	<b>ECF (ECMWF_FILE)</b>
1	NOT USED

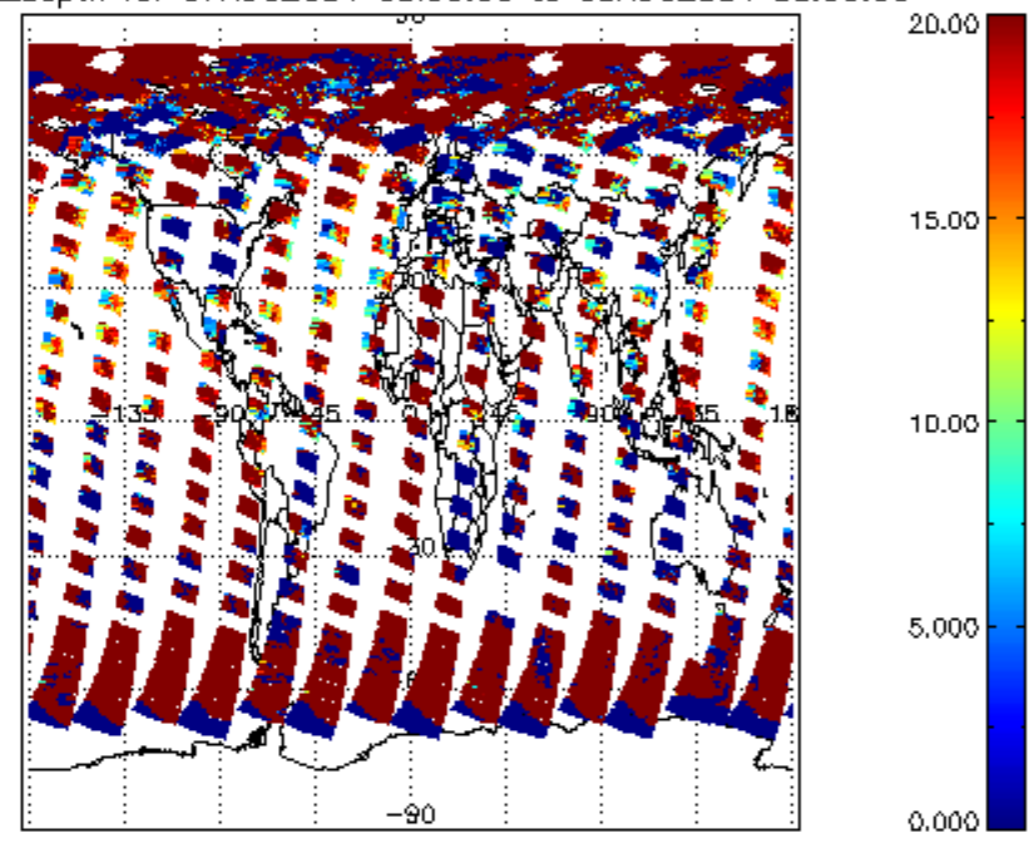
cI\_frac for 07AUG2004 00:00:00 to 08AUG2004 00:00:00



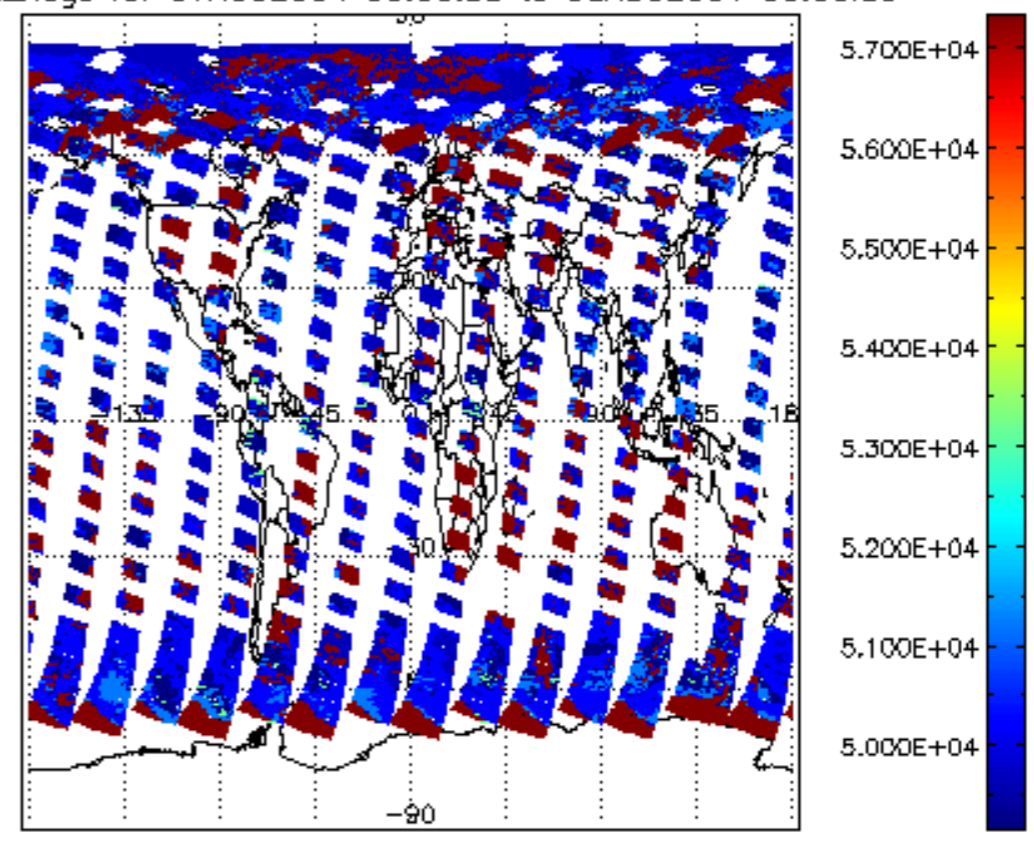
cI\_top\_height for 07AUG2004 00:00:00 to 08AUG2004 00:00:00

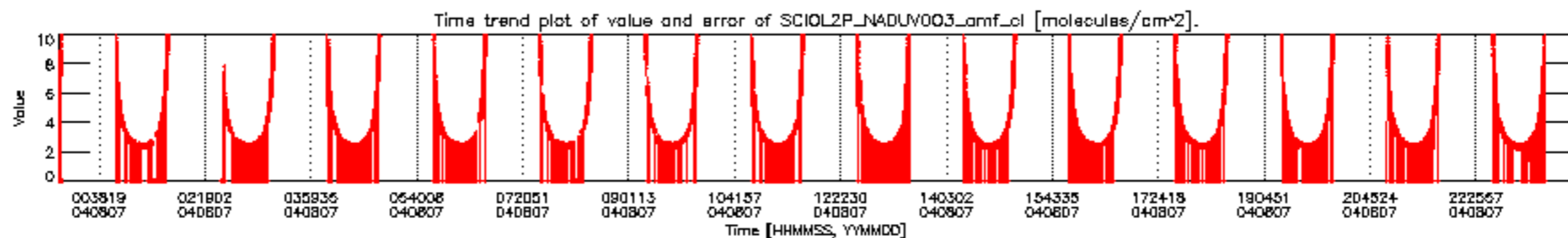
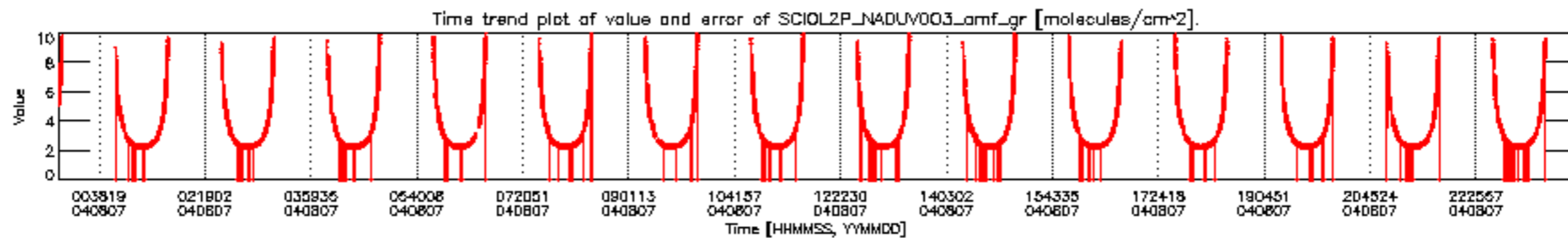
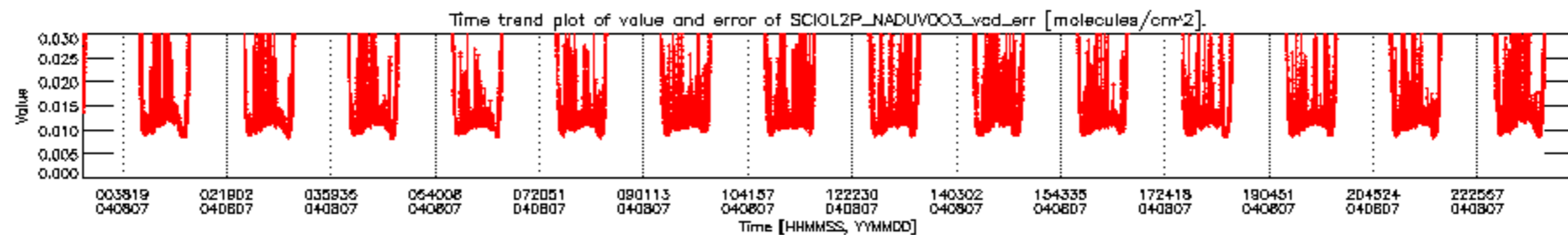
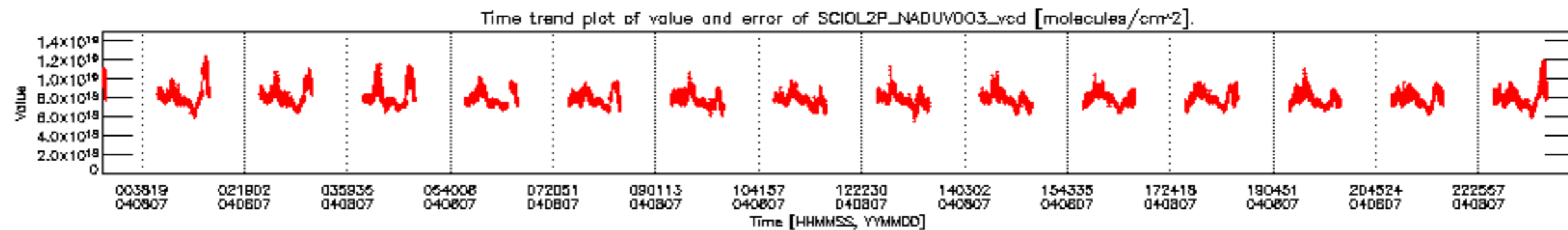


cI\_opt\_depth for 07AUG2004 00:00:00 to 08AUG2004 00:00:00

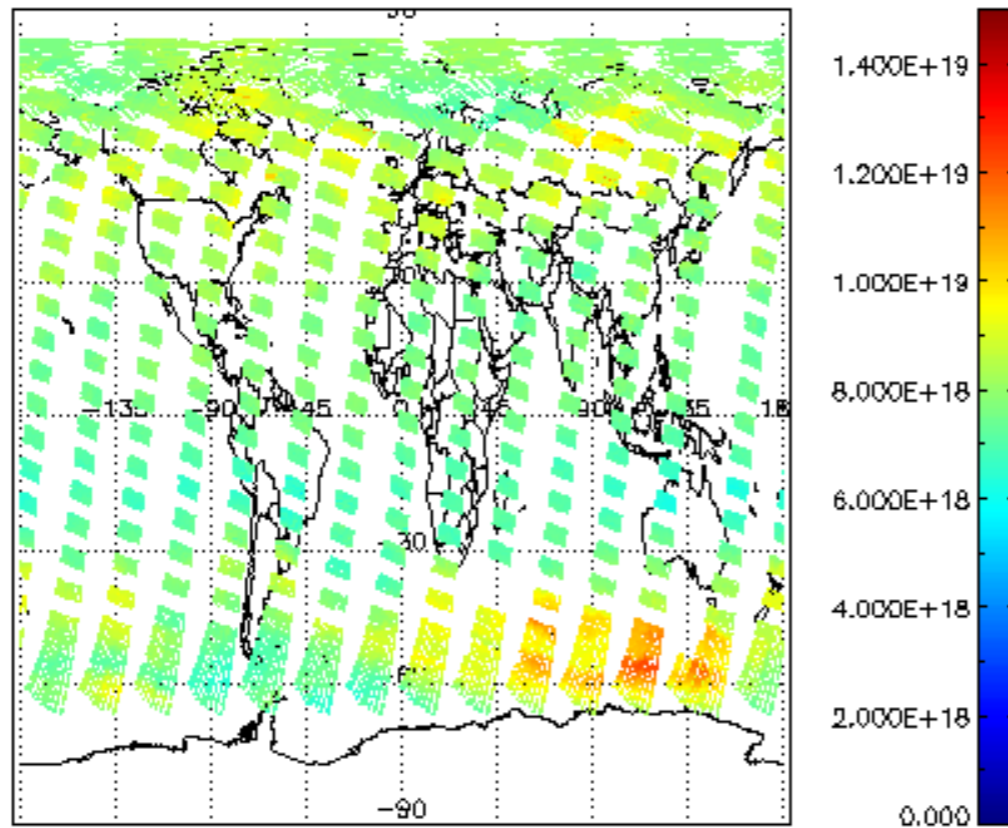


cloud\_flags for 07AUG2004 00:00:00 to 08AUG2004 00:00:00

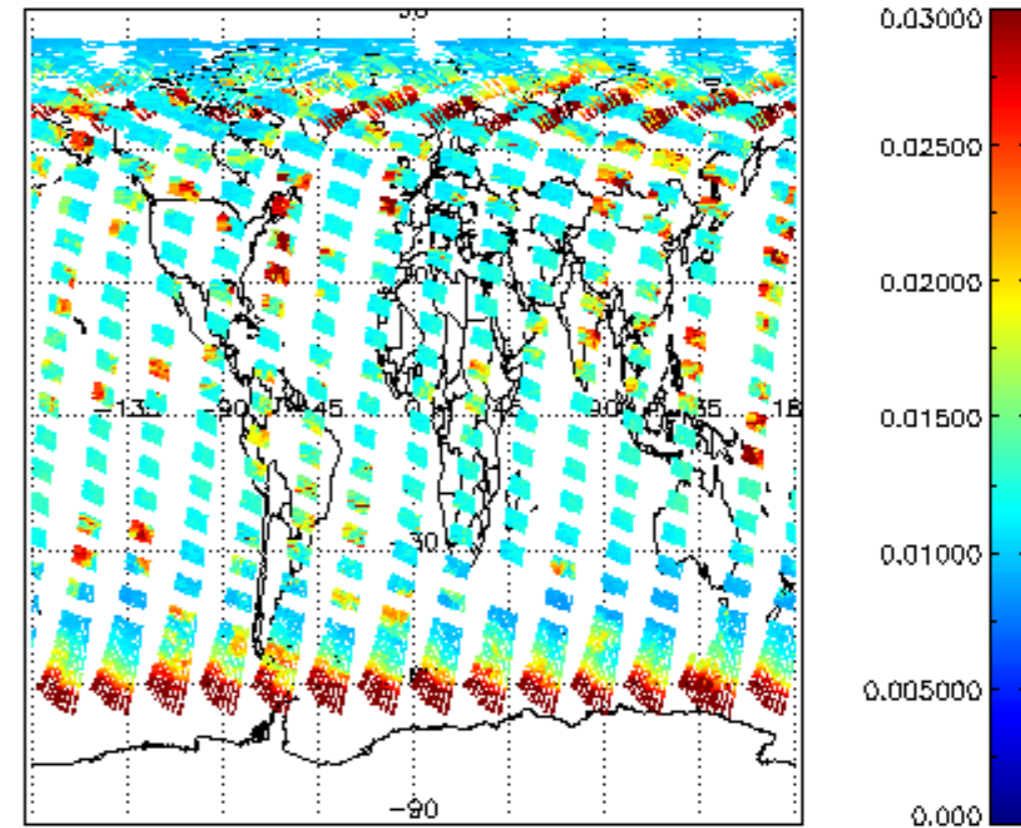




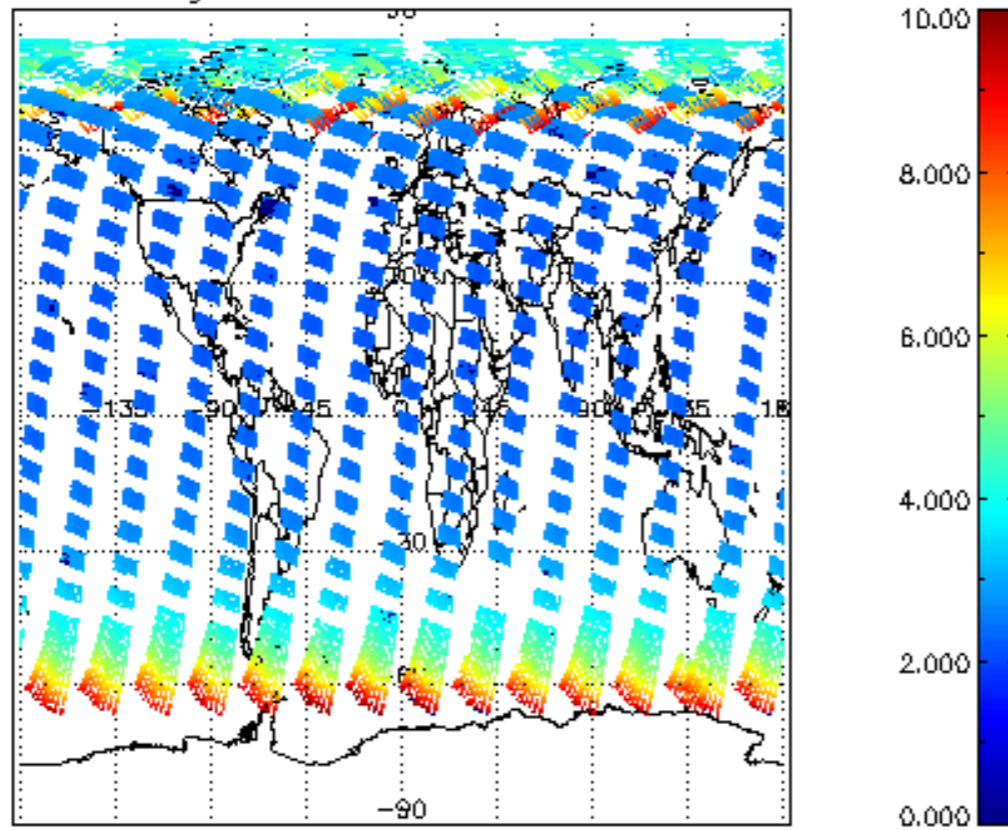
SCIOL2P\_NADUV003\_vcd for 07AUG2004 00:00:00 to 08AUG2004 00:00:00



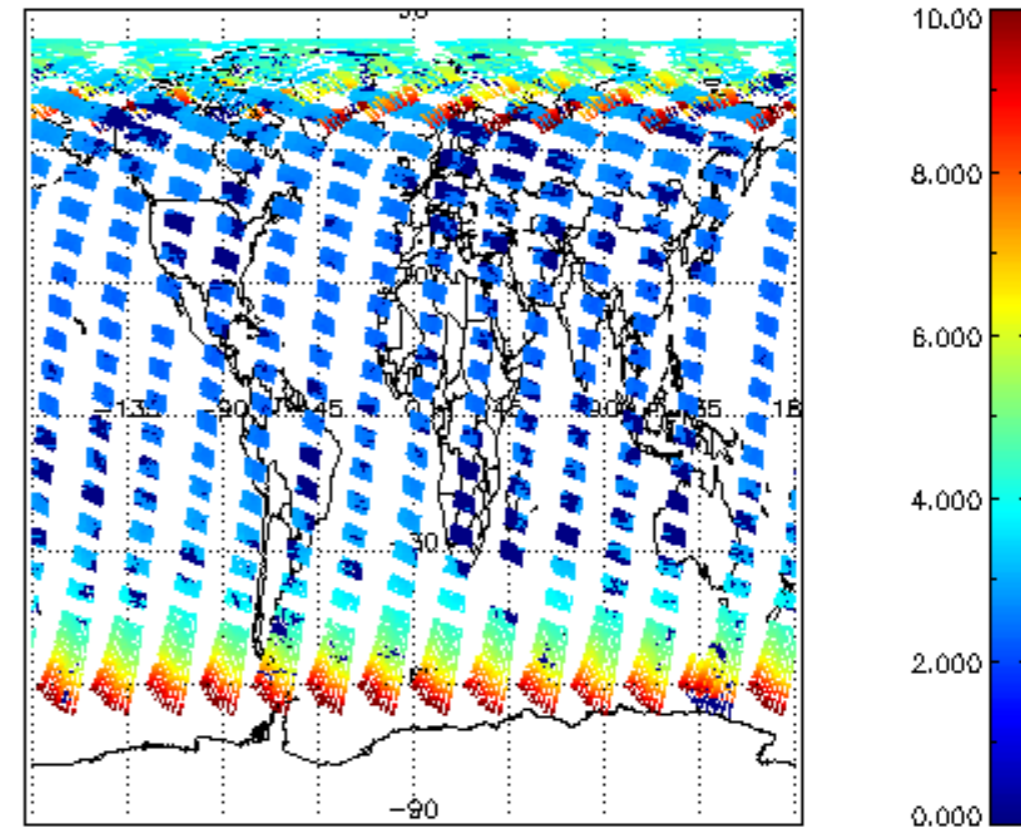
SCIOL2P\_NADUV003\_vcd\_err for 07AUG2004 00:00:00 to 08AUG2004 00:00:00

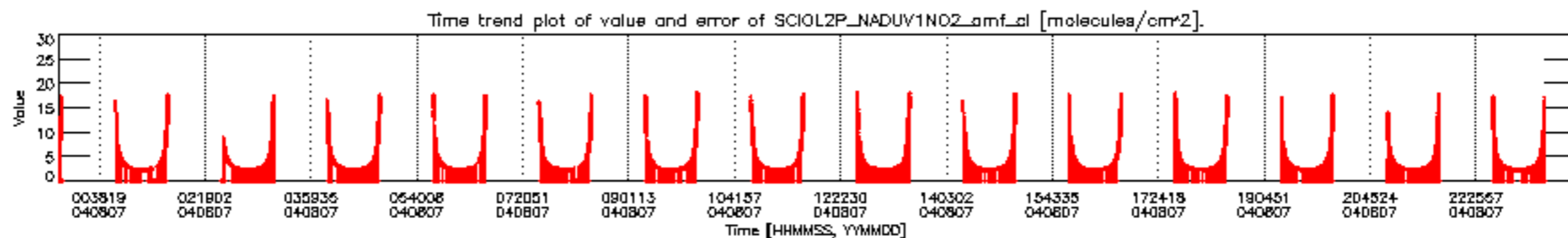
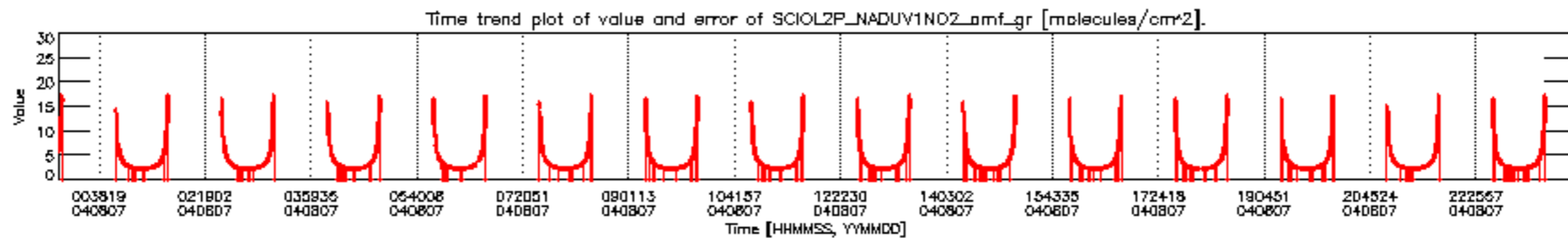
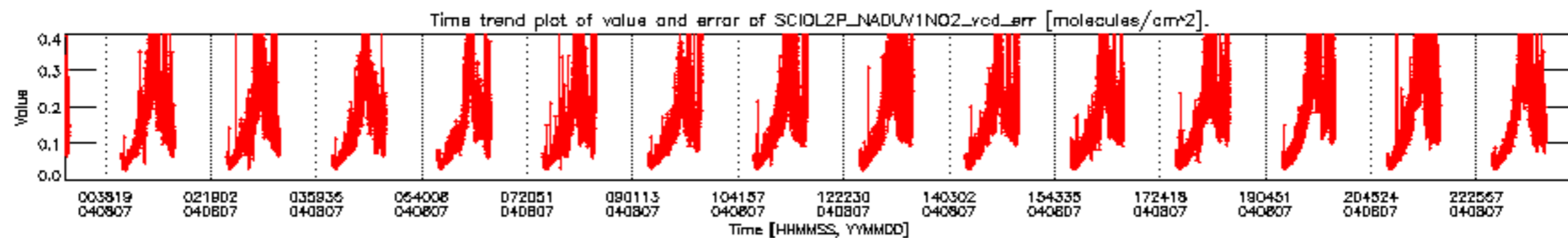
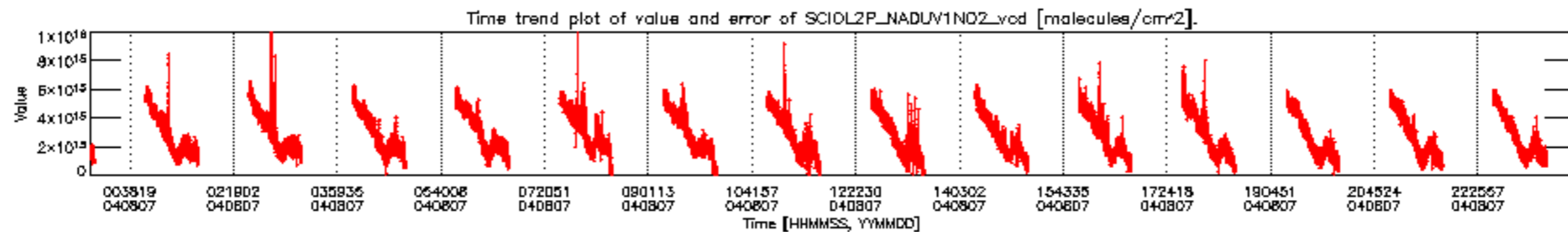


SCIOL2P\_NADUV003\_amf\_gr for 07AUG2004 00:00:00 to 08AUG2004 00:00:00

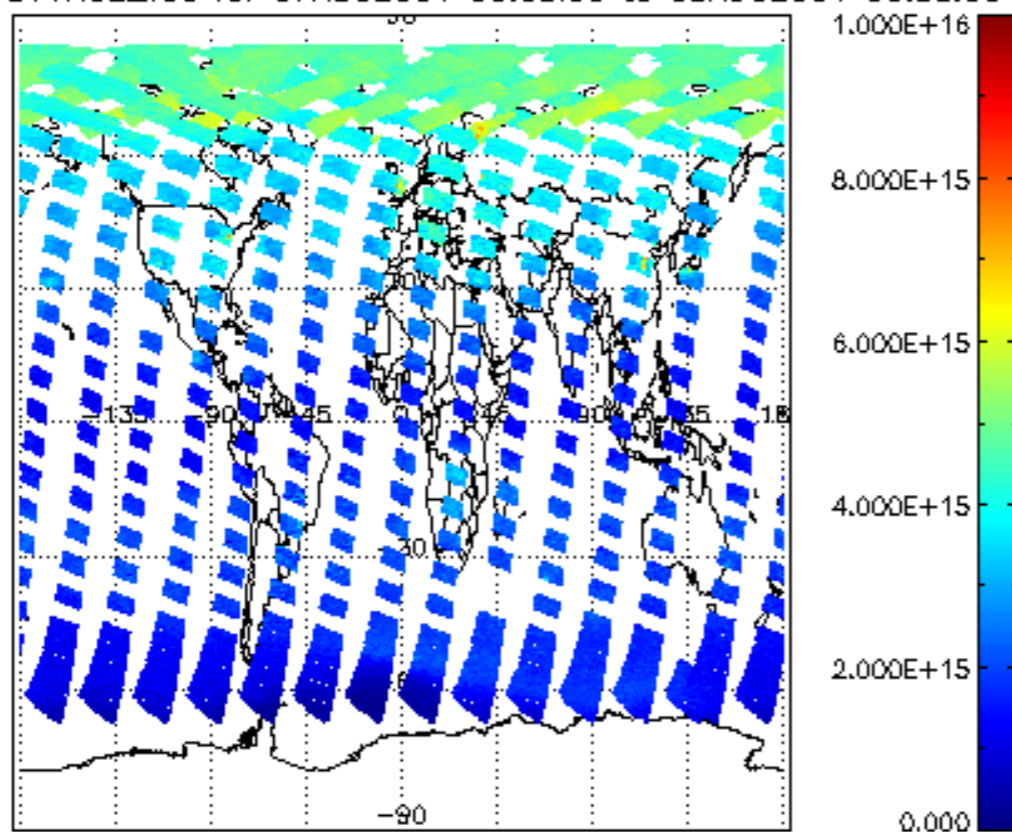


SCIOL2P\_NADUV003\_amf\_cl for 07AUG2004 00:00:00 to 08AUG2004 00:00:00

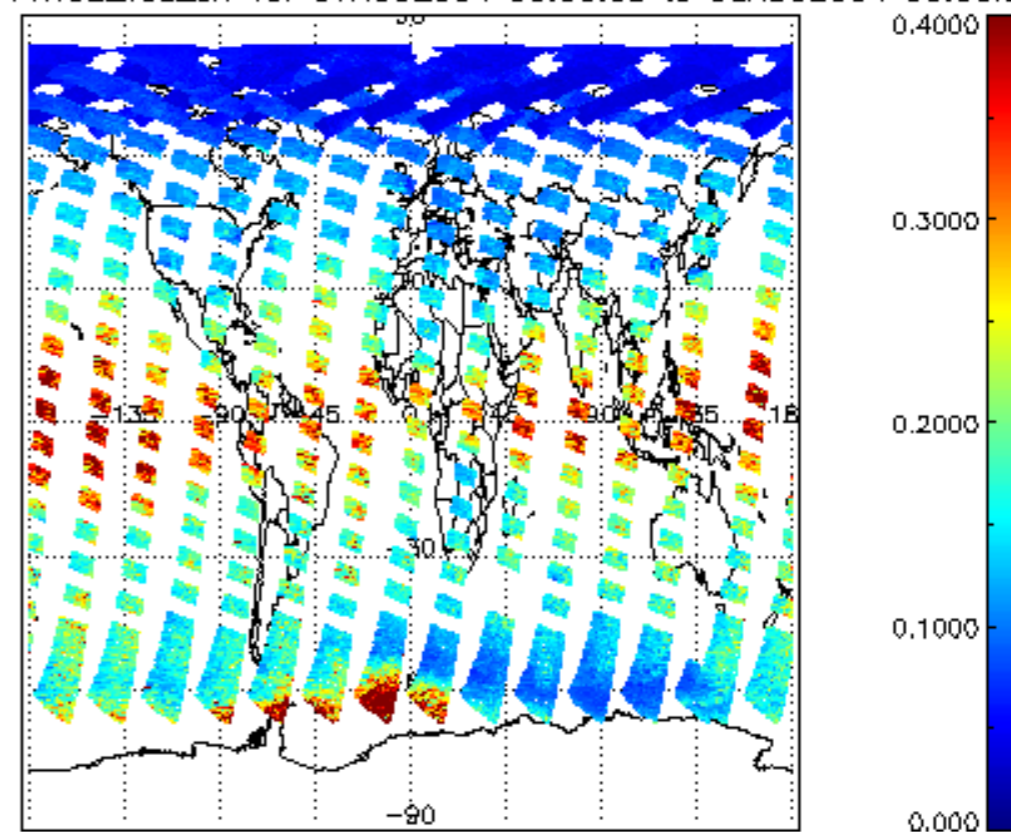




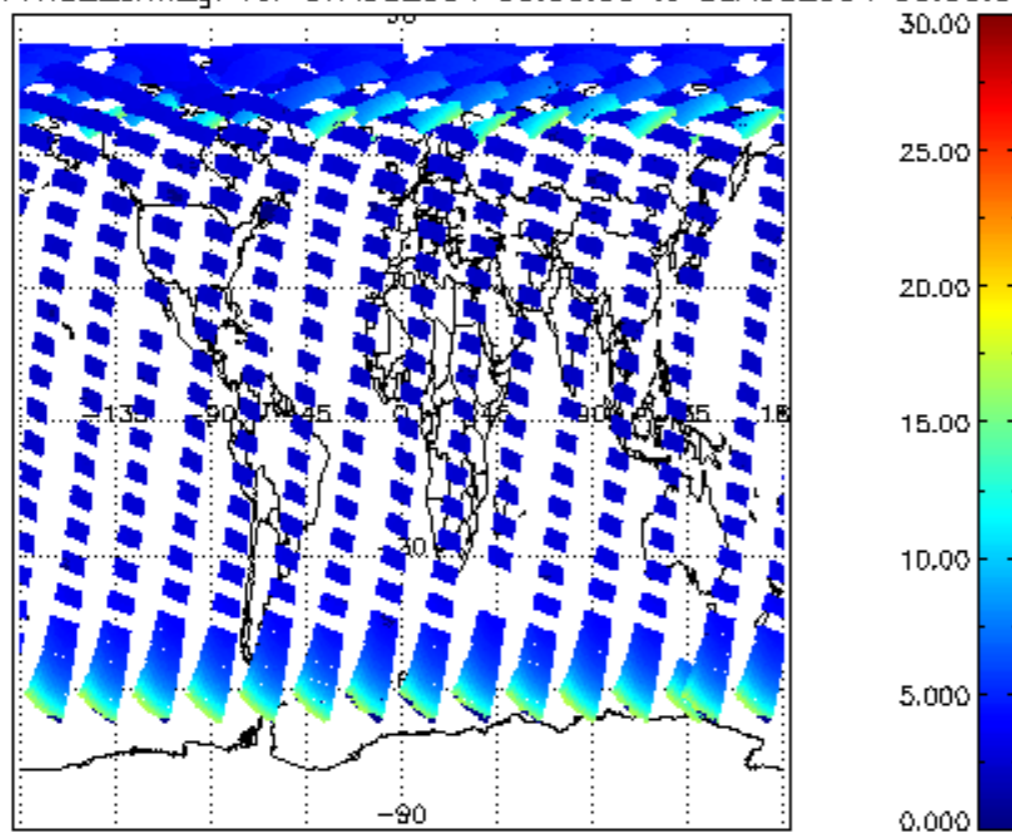
SCIOL2P\_NADUV1NO2\_vcd for 07AUG2004 00:00:00 to 08AUG2004 00:00:00



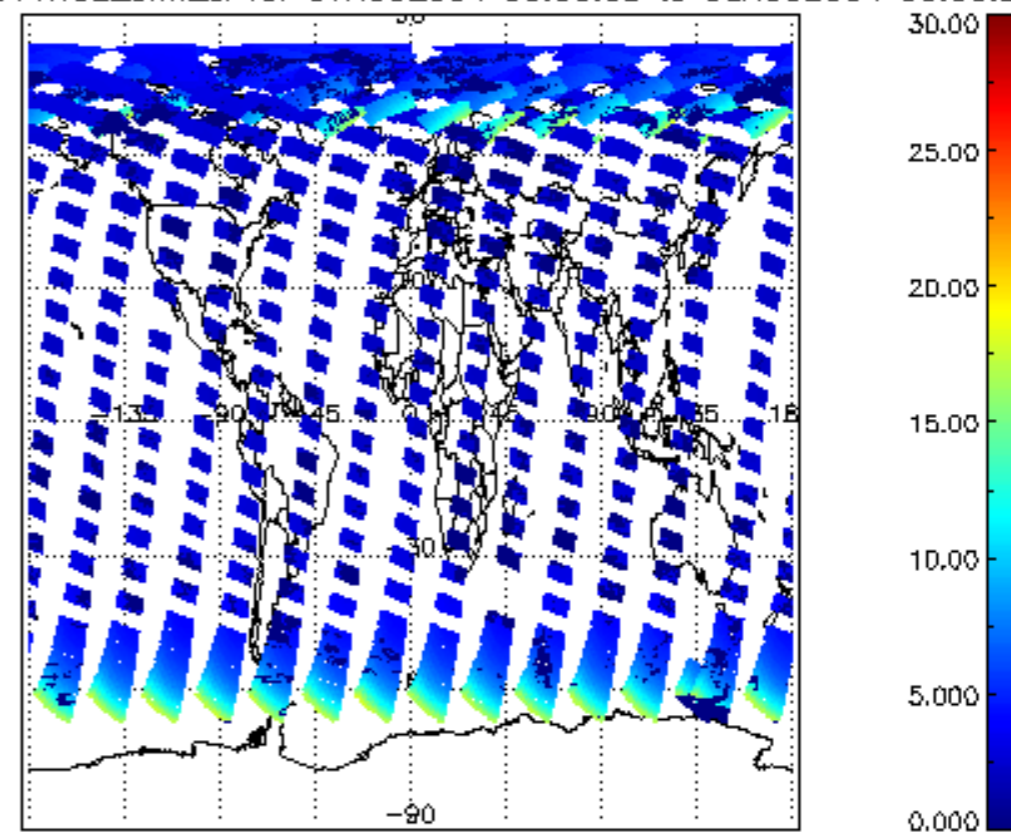
SCIOL2P\_NADUV1NO2\_vcd\_err for 07AUG2004 00:00:00 to 08AUG2004 00:00:00



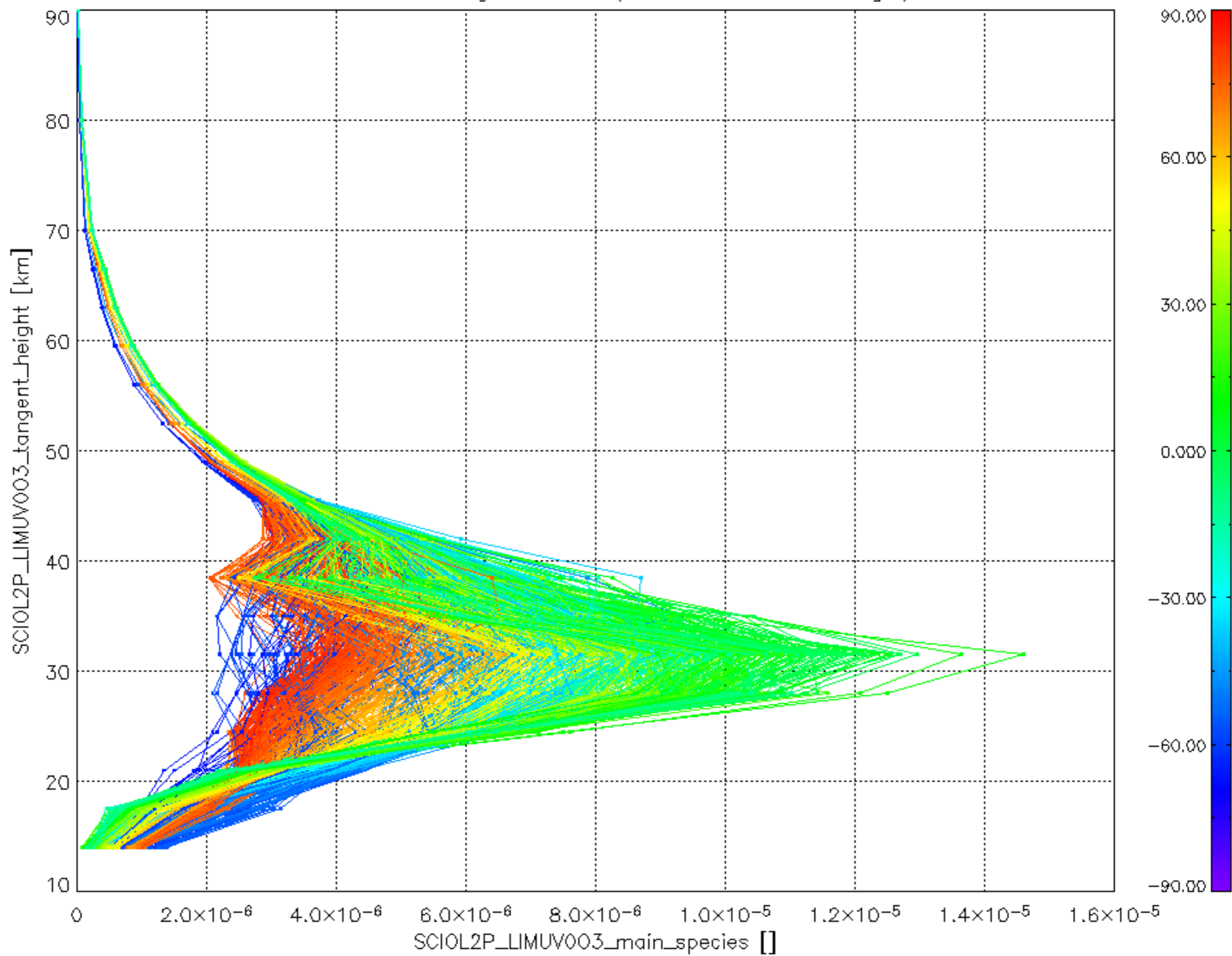
SCIOL2P\_NADUV1NO2\_amf\_gr for 07AUG2004 00:00:00 to 08AUG2004 00:00:00



SCIOL2P\_NADUV1NO2\_amf\_cl for 07AUG2004 00:00:00 to 08AUG2004 00:00:00



Plot of SCIOL2P\_LIMUV003\_main\_species.tang\_vmr vs. tangent height.  
 Colours indicate tangent latitude (see colour bar on the right).



Plot of SCIOL2P\_LIMUV1NO2\_main\_species.tang\_vmr vs. tangent height.  
 Colours indicate tangent latitude (see colour bar on the right).

