

2. SCIAMACHY Daily Report for level 2 products

[2.1. General Info](#)

[2.2 Product Quality Indicators](#)

[2.3 ADF monitoring](#)

2.1 General Info

This report contains a daily analysis on parameters extracted from SCIAMACHY level 2 data (The SCI_OL__2P product).

2.1.1 Report summary

The table below shows general characteristics of the data that are included into this report.

Item	Value
Report version	1.6 (28-07-2008)
Time of report generation	13AUG2008 09:18:12
Data source version	SCIA-OL/3.01-R
Processing scope for products	11APR2004 00:00:00 to 12APR2004 00:00:00
Start time of first product within scope	10APR2004 23:18:59
Stop time of last product within scope	11APR2004 23:43:33
Total number of level 2 products	15
Number of level 2 products with errors	0

2.1.2 Summary per product

The following table shows a summary for each product used in this report.

Products are linked to a corresponding server directory for view/download. Note: Link access may be restricted by security settings of your internet browser or firewall.

#	Product name	Start time	Stop time	Prod err	Fit summary
0	SCI_OL__2PRDPA20040410_231859_000033772025_00474_11049_7320.N1	10APR2004 23:18:59	11APR2004 00:15:16	0	GOOD
1	SCI_OL__2PRDPA20040411_005934_000033492025_00475_11050_7410.N1	11APR2004 00:59:34	11APR2004 01:55:24	0	GOOD
2	SCI_OL__2PRDPA20040411_024010_000033772025_00476_11051_7396.N1	11APR2004 02:40:10	11APR2004 03:36:27	0	GOOD
3	SCI_OL__2PRDPA20040411_042046_000033492025_00477_11052_7581.N1	11APR2004 04:20:46	11APR2004 05:16:35	0	GOOD
4	SCI_OL__2PRDPA20040411_060121_000033772025_00478_11053_7376.N1	11APR2004 06:01:21	11APR2004 06:57:38	0	GOOD
5	SCI_OL__2PRDPA20040411_074157_000033492025_00479_11054_7564.N1	11APR2004 07:41:57	11APR2004 08:37:46	0	GOOD
6	SCI_OL__2PRDPA20040411_092232_000033772025_00480_11055_7432.N1	11APR2004 09:22:32	11APR2004 10:18:49	0	GOOD
7	SCI_OL__2PRDPA20040411_110308_000033492025_00481_11056_7500.N1	11APR2004 11:03:08	11APR2004 11:58:57	0	GOOD
8	SCI_OL__2PRDPA20040411_124343_000033772025_00482_11057_7356.N1	11APR2004 12:43:43	11APR2004 13:40:00	0	GOOD
9	SCI_OL__2PRDPA20040411_142419_000033492025_00483_11058_7278.N1	11APR2004 14:24:19	11APR2004 15:20:08	0	GOOD
10	SCI_OL__2PRDPA20040411_160454_000033772025_00484_11059_7331.N1	11APR2004 16:04:54	11APR2004 17:01:11	0	GOOD
11	SCI_OL__2PRDPA20040411_174536_000033552025_00485_11060_7455.N1	11APR2004 17:45:36	11APR2004 18:41:32	0	GOOD
12	SCI_OL__2PRDPA20040411_192625_000032932025_00486_11061_7234.N1	11APR2004 19:26:25	11APR2004 20:21:19	0	GOOD
13	SCI_OL__2PRDPA20040411_210641_000033492025_00487_11062_7274.N1	11APR2004 21:06:41	11APR2004 22:02:30	0	GOOD
14	SCI_OL__2PRDPA20040411_224716_000033772025_00488_11063_7333.N1	11APR2004 22:47:16	11APR2004 23:43:33	0	GOOD

2.2 Product Quality Indicators

2.2.1 Cloud parameters

This is a new section that shows information about the cloud parameters estimation, in particular cloud fractions and cloud top height. IMPORTANT NOTE: The contents and layout of this section are still being validated. Please use with caution.

General statistics:

Total number of cloud data DSRs: 115620

Total number of cloud data DSRs with good quality flag (=0): 115620 (100.0 %)

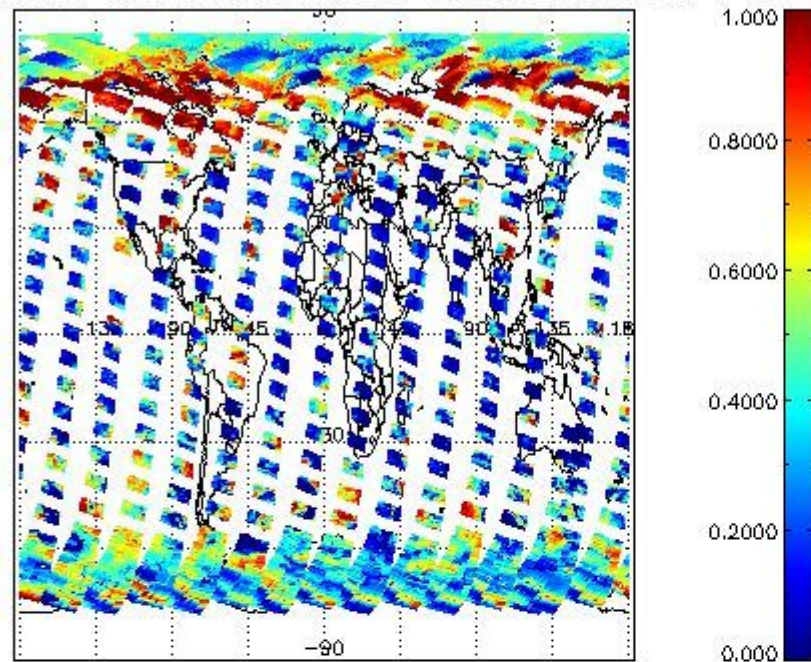
Parameter	#valid	Mean	Median	Min	Max	Stddev	Unit
QUALITY_FLAG	115620	0.0000	0.0000	0.0000	0.0000	0.0000	flag
INTEGR_TIME	115620	0.21804	0.25000	0.12500	0.50000	0.087430	s
CL_FRAC	115620	0.42764	0.40803	0.0000	1.0000	0.30856	-
CL_FRAC_ERR	115620	0.0000	0.0000	0.0000	0.0000	0.0000	rel. fraction
PMD_READ	115620	6.9773	8.0000	4.0000	16.000	2.7978	
PMD_READ_CL[0]	115620	0.47888	0.0000	0.0000	16.000	1.5324	-
PMD_READ_CL[1]	115620	0.82997	0.0000	0.0000	16.000	2.1421	-
CL_TOP_HEIGHT	105265	3.5639	1.6545	0.0000	17.000	3.8028	km
CL_TOP_HEIGHT_ERR	0	---	---	---	---	---	---
CL_OPT_DEPTH	105265	57.569	52.016	0.0000	101.00	40.691	km
CL_OPT_DEPTH_ERR	0	---	---	---	---	---	---
CL_TYPE_FLAGS	115620	11100000	11100000	11100000	11100000	0.0000	flags. Bit definition = 0: low or high cloud; 1: ice or water cloud; 2: thick or thin cloud; 3-15: not used
CLOUD_FLAGS	115620	11000111	11000010	11000000	11100000	2793.4	flags
AERO_ABSO_IND	115620	0.82596	0.78368	-4.1109	11.543	1.0764	
AERO_IND_DIAG	115620	0.0000	0.0000	0.0000	0.0000	0.0000	
AERO_FLAGS	115620	01100110	11000000	00000000	11000000	24513.	flags

Time and geolocation plots:

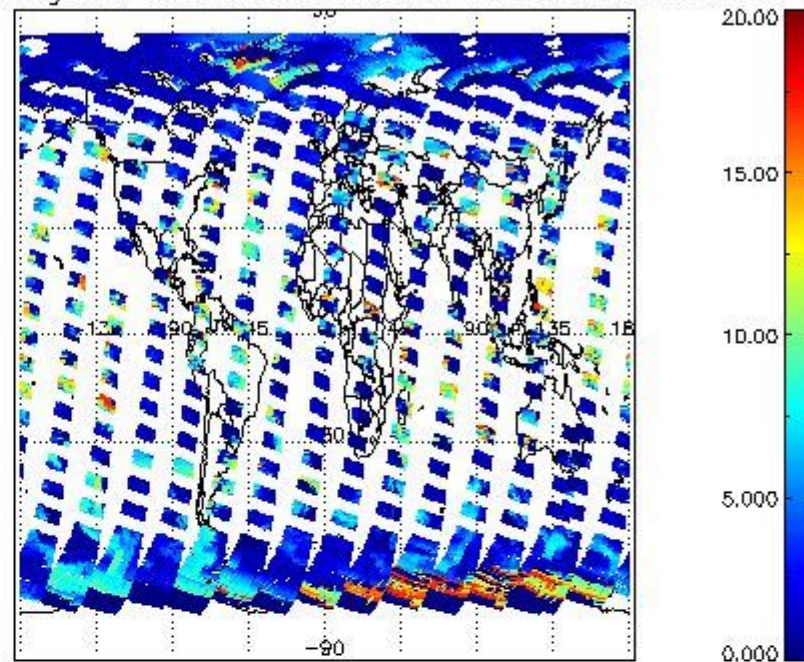
Plots are available for the following parameters:

Number	Data item ID
0	cl_frac
1	cl_top_height
2	cl_opt_depth
3	cloud_flags

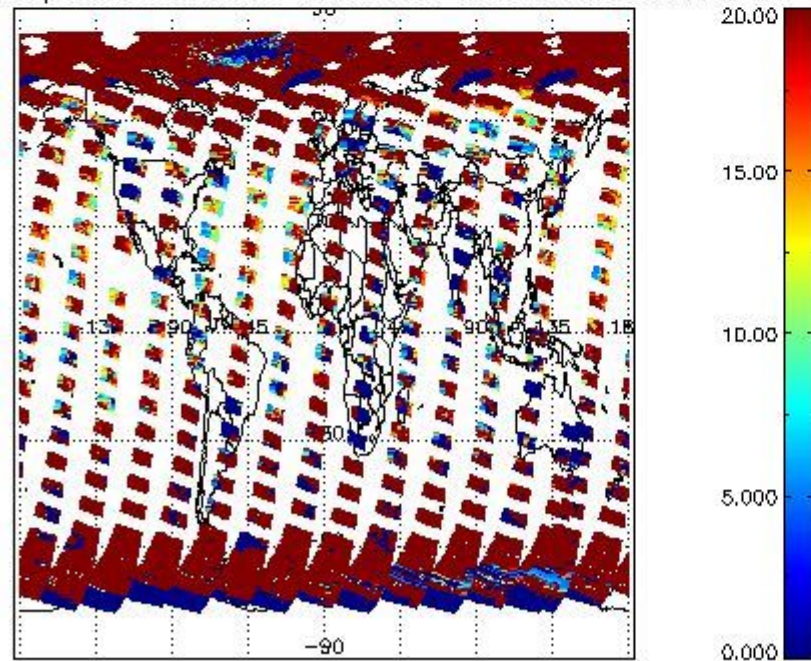
cL_frac for 11APR2004 00:00:00 to 12APR2004 00:00:00



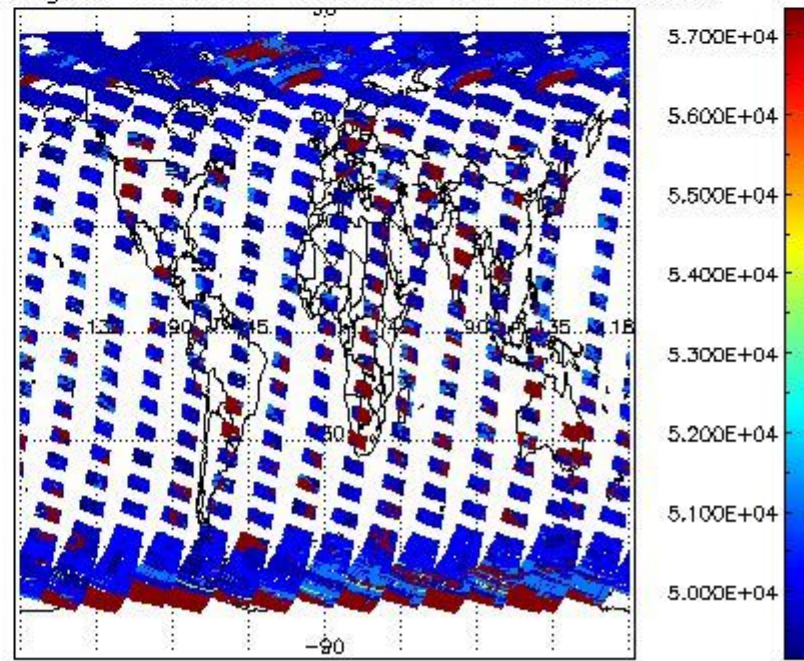
cL_top_height for 11APR2004 00:00:00 to 12APR2004 00:00:00



cL_opt_depth for 11APR2004 00:00:00 to 12APR2004 00:00:00



cloud_flags for 11APR2004 00:00:00 to 12APR2004 00:00:00



2.2.2 Nadir

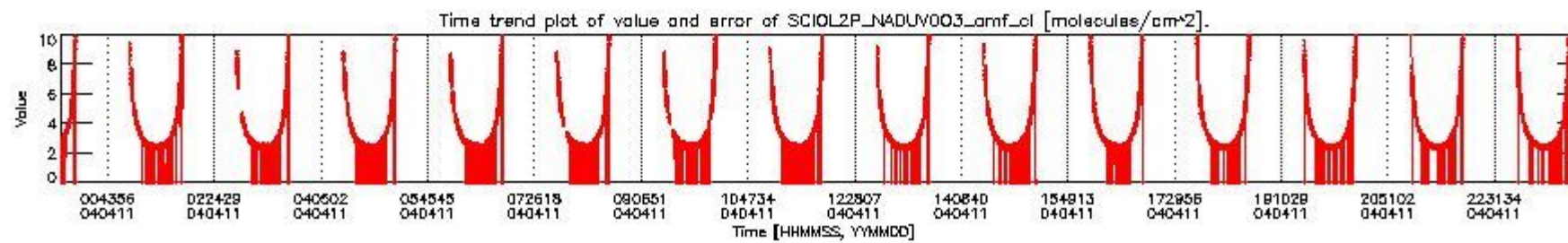
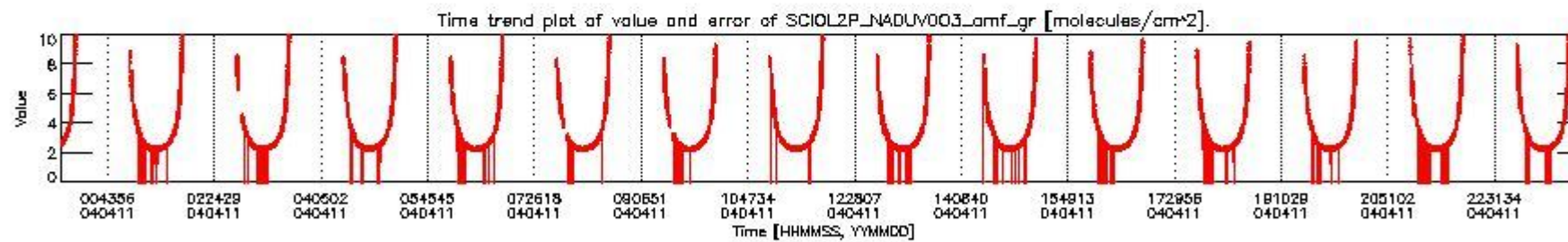
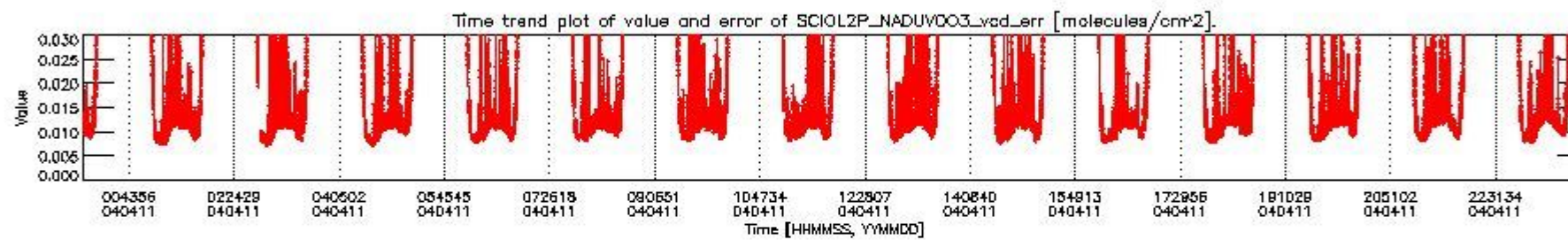
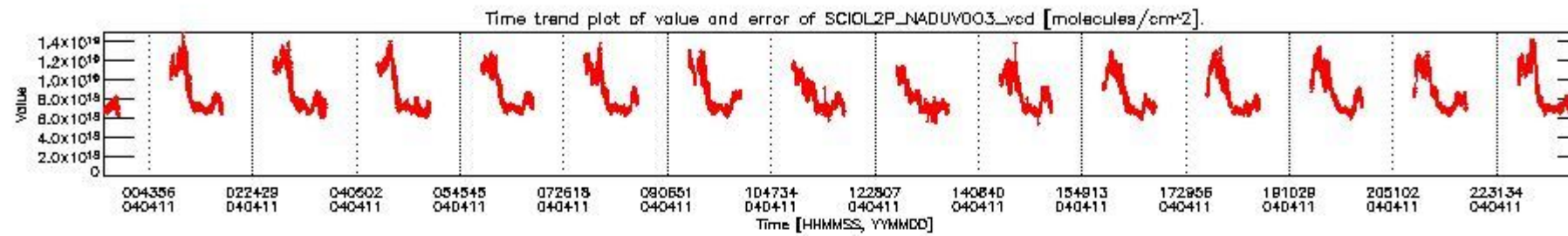
This section shows information about product quality of nadir measurements, in particular the quality of retrieved species.

The following data items are currently included into this section:

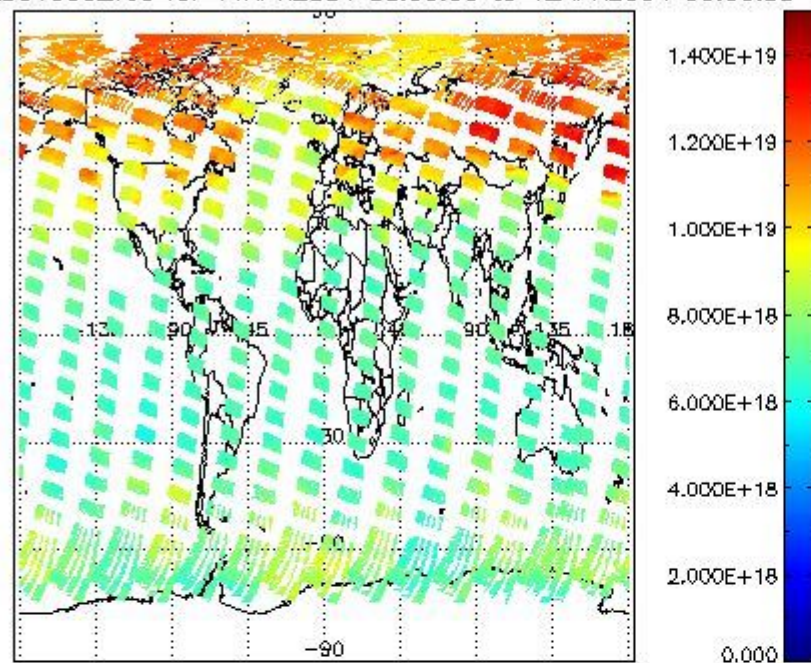
Number	Data item ID
0	SCIOL2P_NADUV003_vcd
1	SCIOL2P_NADUV003_vcd_err
2	SCIOL2P_NADUV003_amf_gr

3	SCIOL2P_NADUV003_amf_cl
4	SCIOL2P_NADUV1NO2_vcd
5	SCIOL2P_NADUV1NO2_vcd_err
6	SCIOL2P_NADUV1NO2_amf_gr
7	SCIOL2P_NADUV1NO2_amf_cl

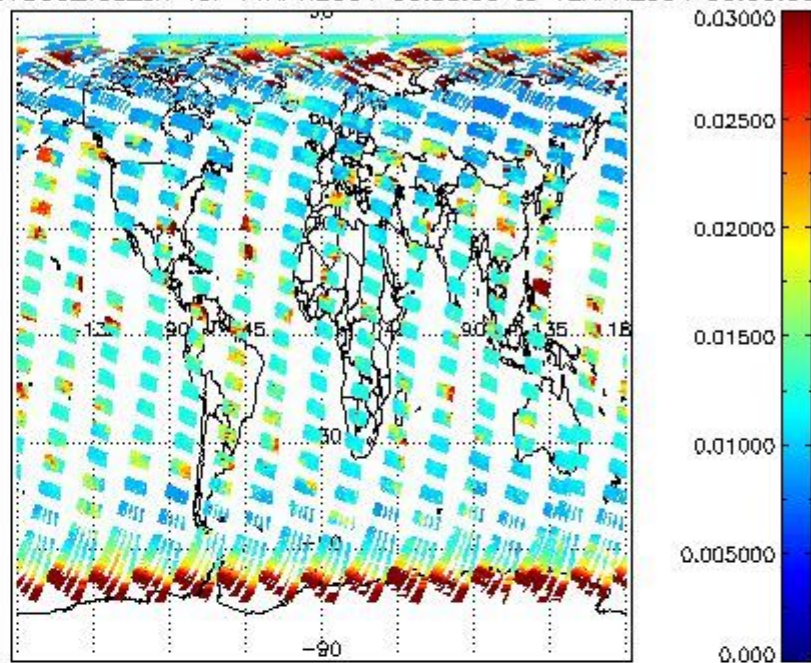
Data is presented both in time trend plots and world map plots, in order to show variations with time and geolocation. The vertical dotted lines in the time trend plots indicate orbits. The orbit times on the X-axis are estimated sensing_start time as suggested by the product sensing_start time in the MPH.



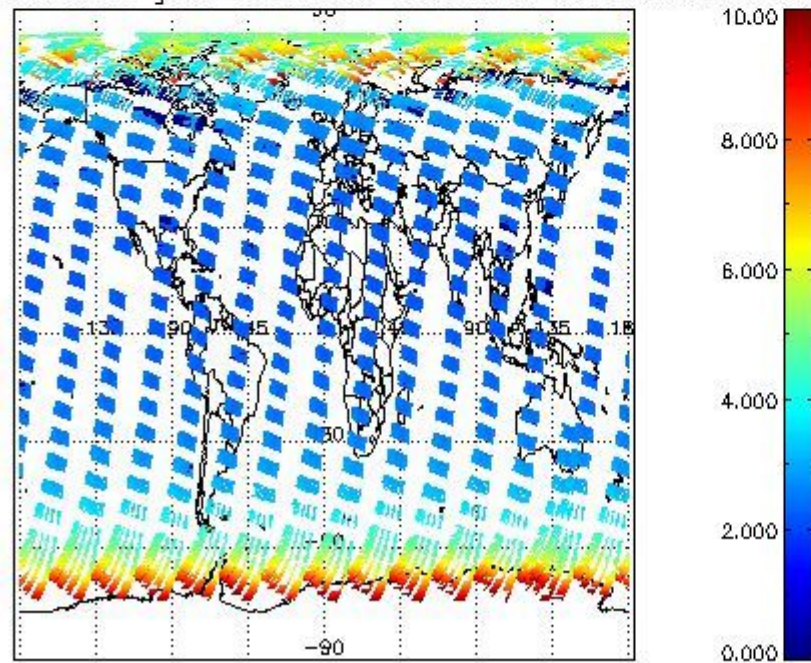
SCIOL2P_NADUV003_vcd for 11APR2004 00:00:00 to 12APR2004 00:00:00



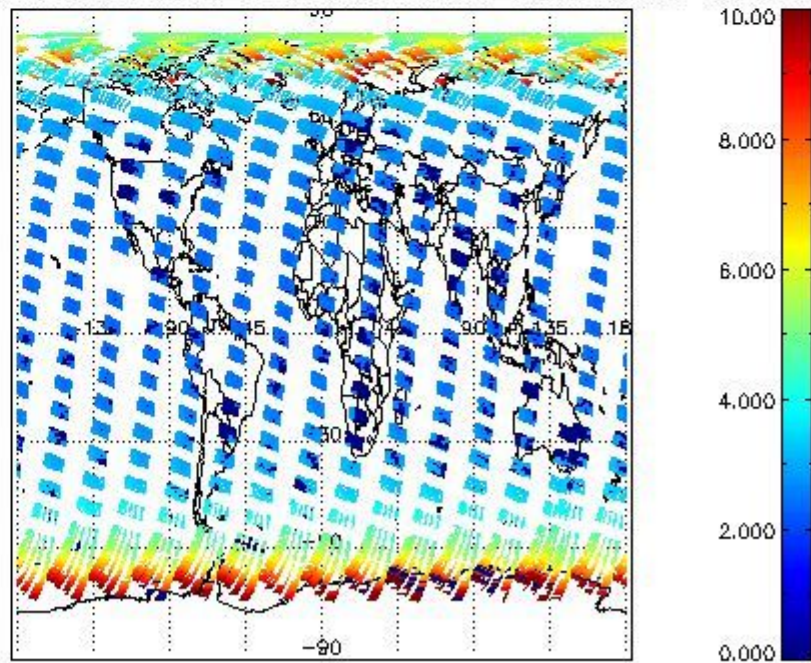
SCIOL2P_NADUV003_vcd_err for 11APR2004 00:00:00 to 12APR2004 00:00:00

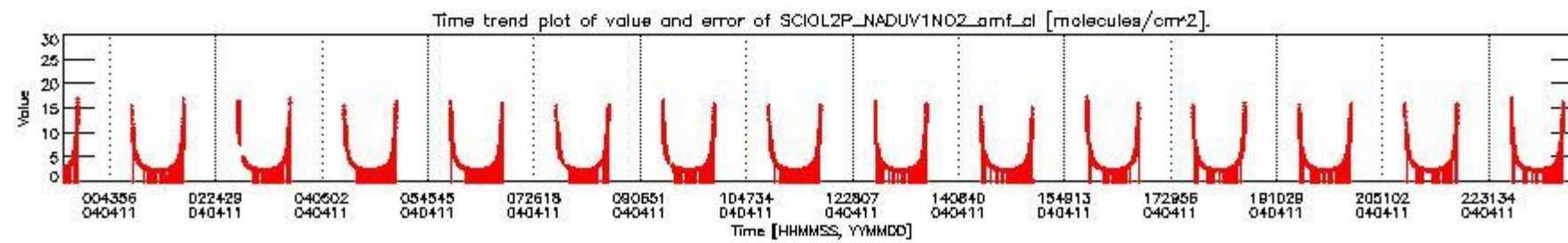
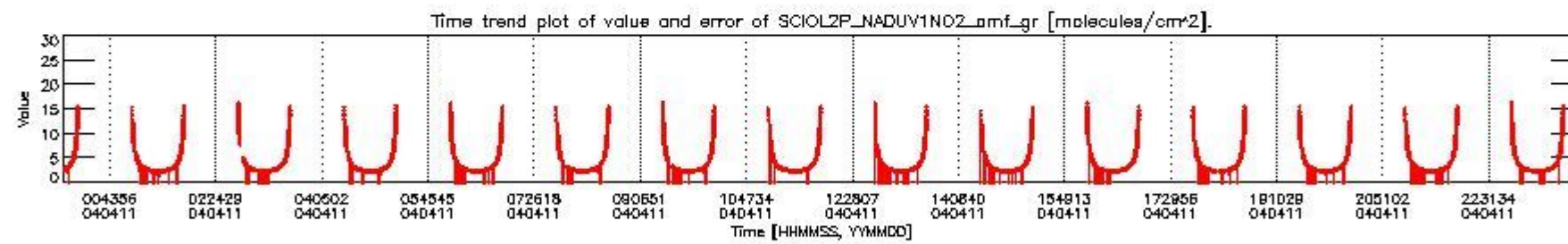
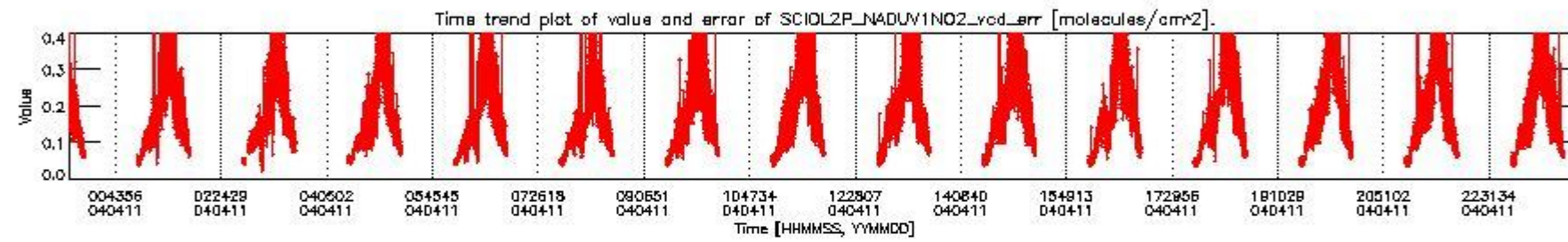
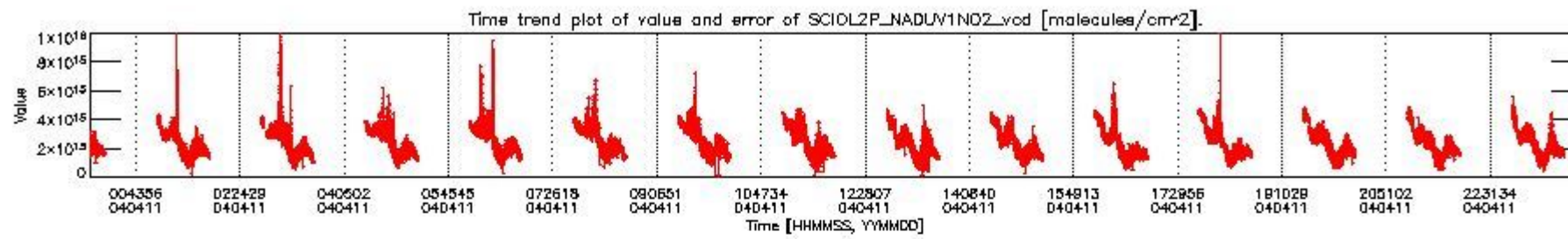


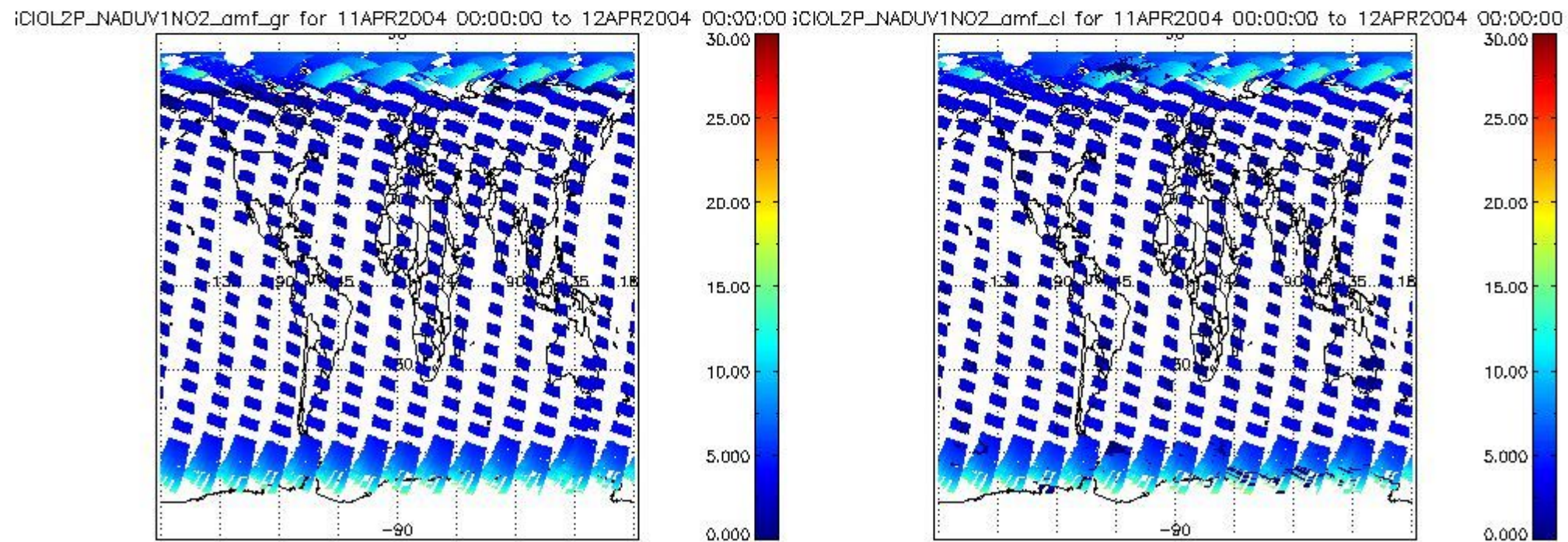
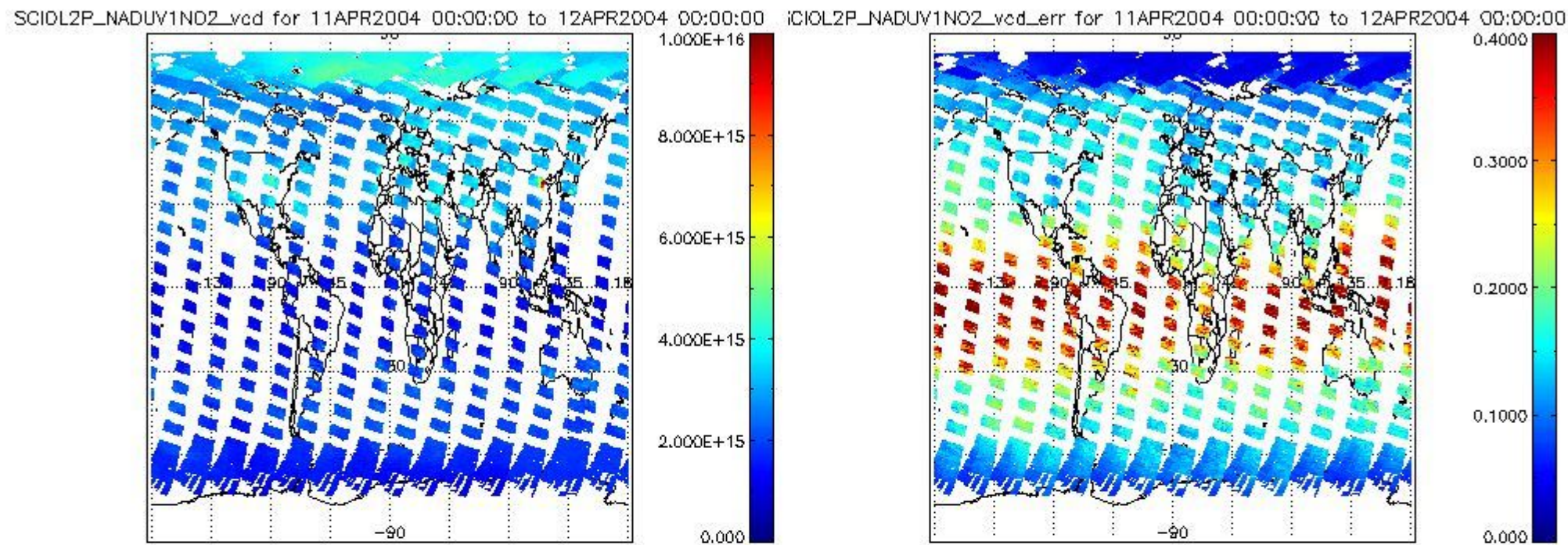
SCIOL2P_NADUV003_amf_gr for 11APR2004 00:00:00 to 12APR2004 00:00:00



SCIOL2P_NADUV003_amf_cl for 11APR2004 00:00:00 to 12APR2004 00:00:00







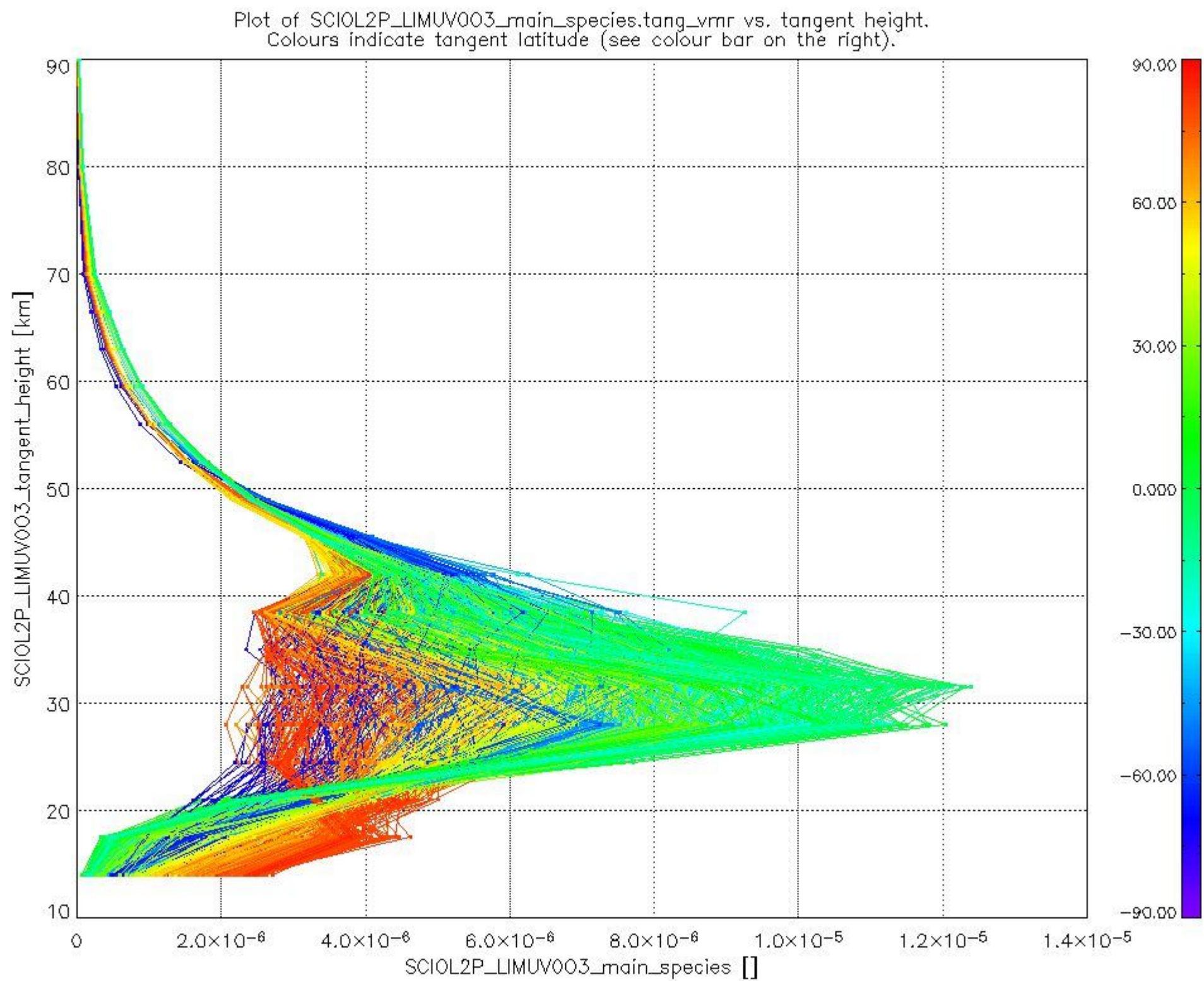
2.2.3 Limb

This section shows information about product quality of the limb retrievals, in particular the quality of retrieved species.

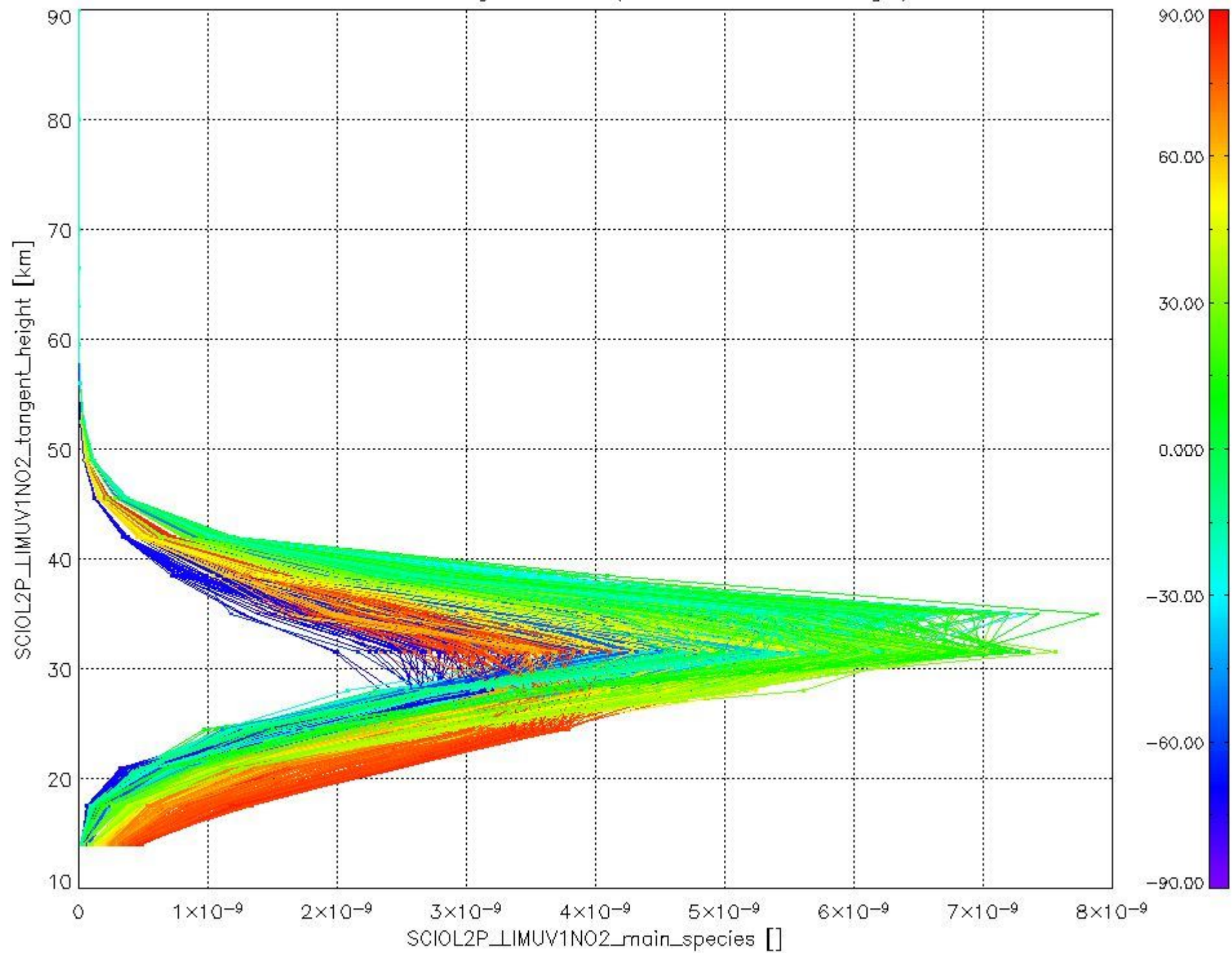
The following data items are currently included into this section:

Number	Data item ID
0	SCIOL2PLIMUV003_main_species
1	SCIOL2PLIMUV1NO2_main_species

The following plots shows for each species the tangent volume mixing ratio vs. tangent height. Colours indicate tangent latitude.



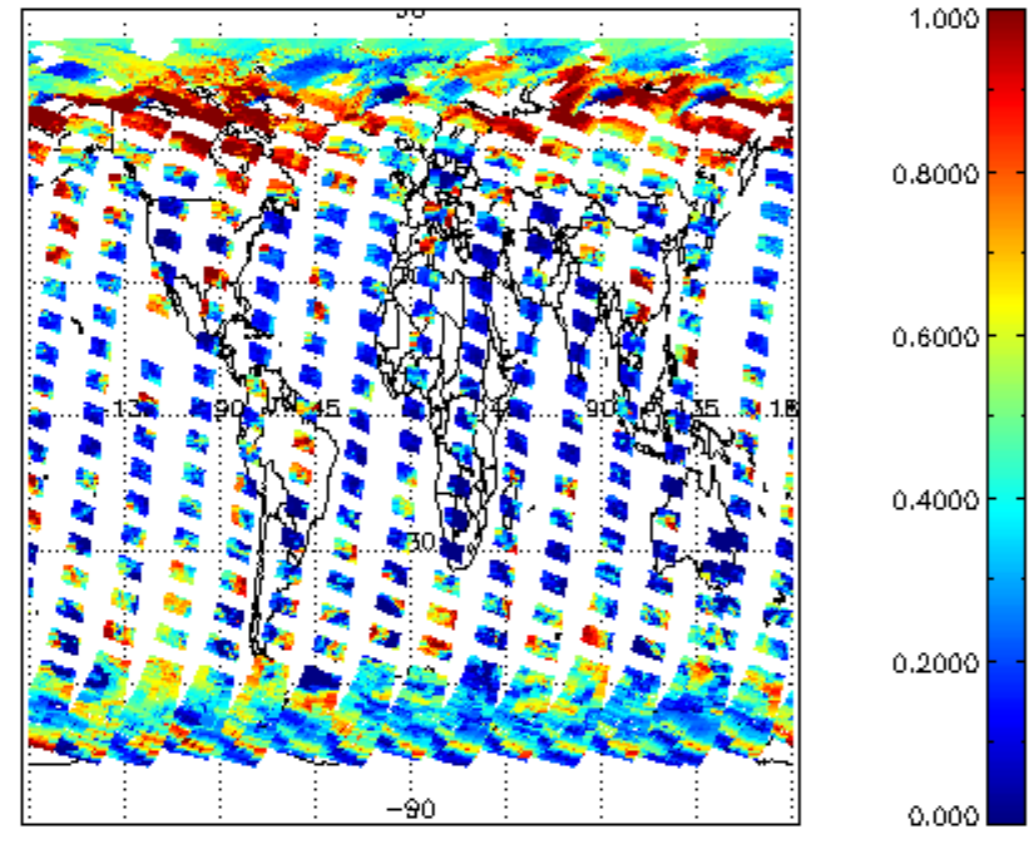
Plot of SCIOL2P_LIMUV1NO2_main_species.tang_vmr vs. tangent height.
Colours indicate tangent latitude (see colour bar on the right).



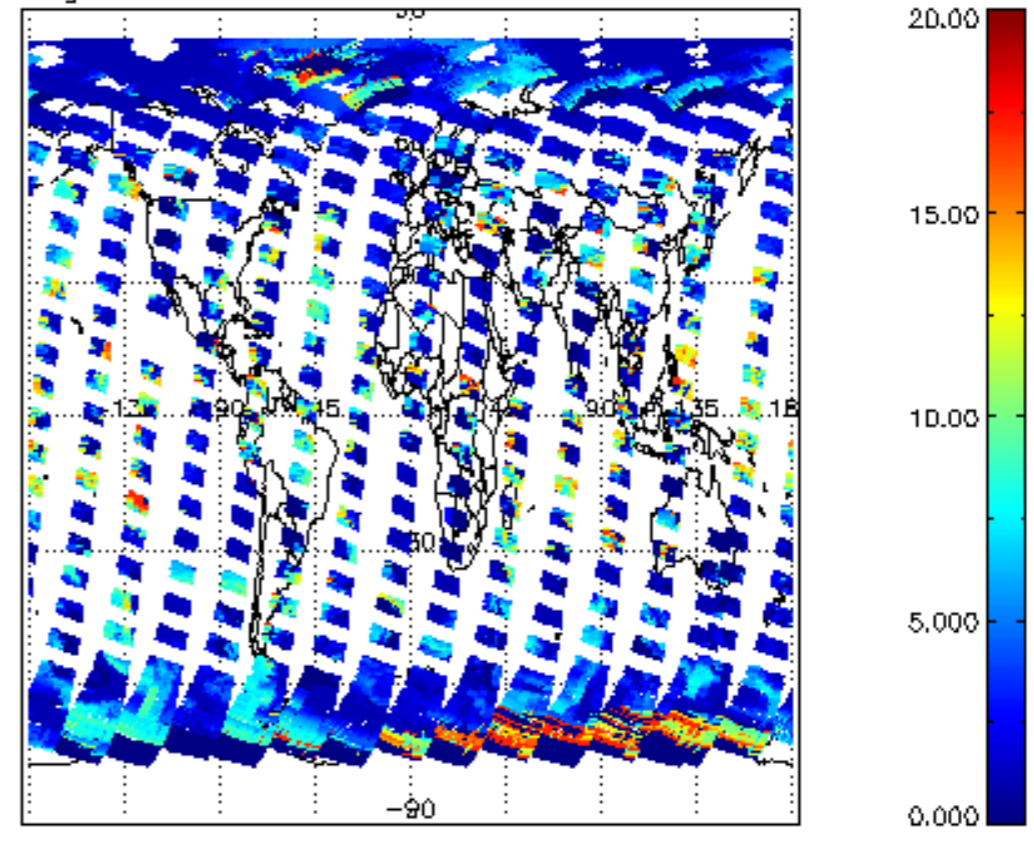
2.3 ADF monitoring

Number	ADF
	IN_ (INITIALISATION_FILE)
0	SCI_IN__AXNPDE20070629_092400_20070720_000000_20991231_235959
	ECF (ECMWF_FILE)
1	NOT USED

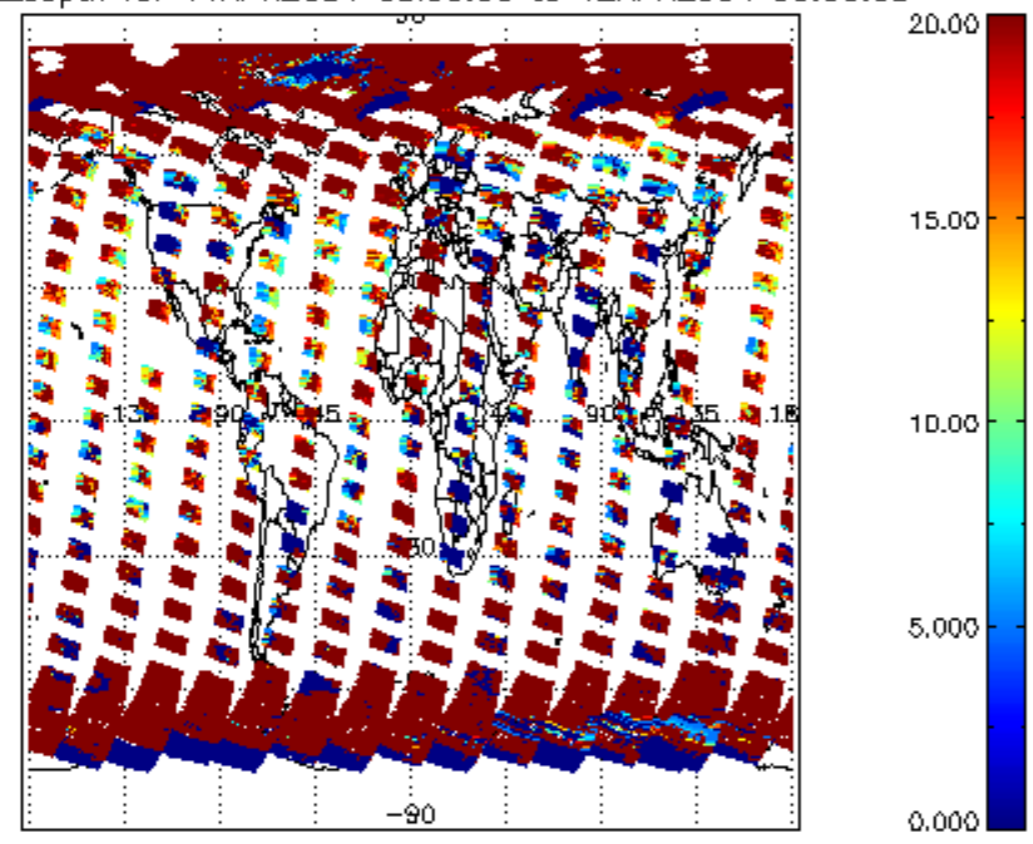
cl_frac for 11APR2004 00:00:00 to 12APR2004 00:00:00



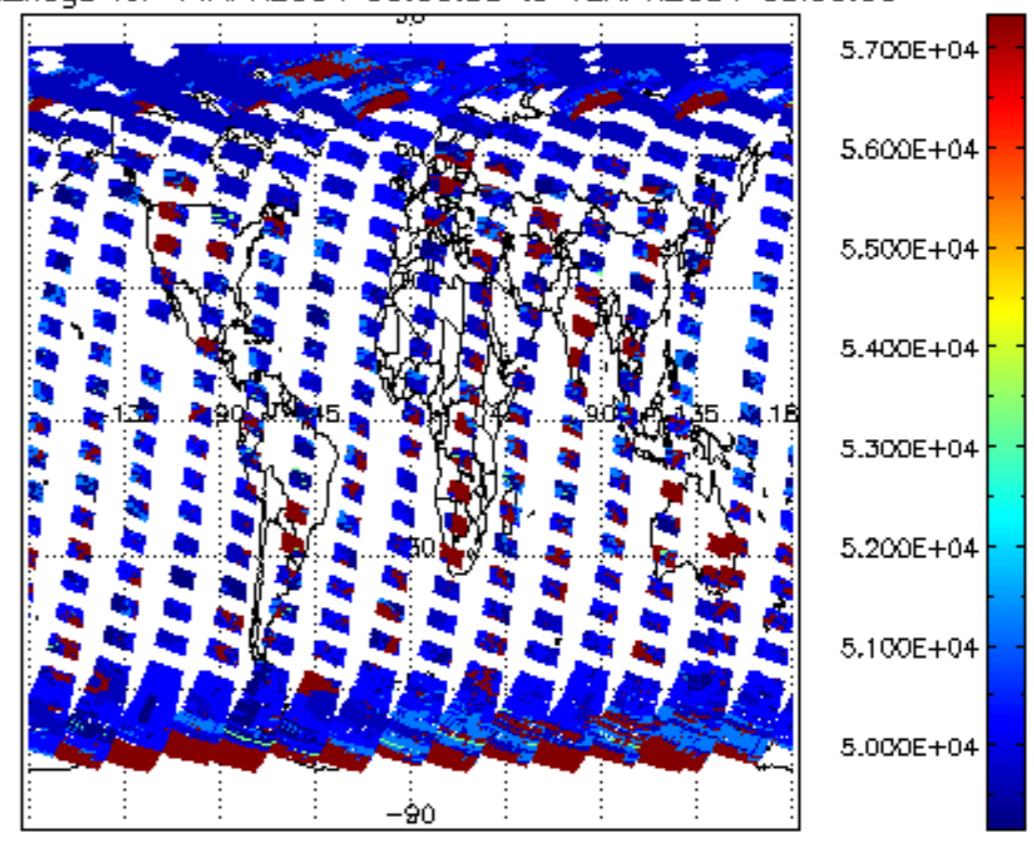
cl_top_height for 11APR2004 00:00:00 to 12APR2004 00:00:00

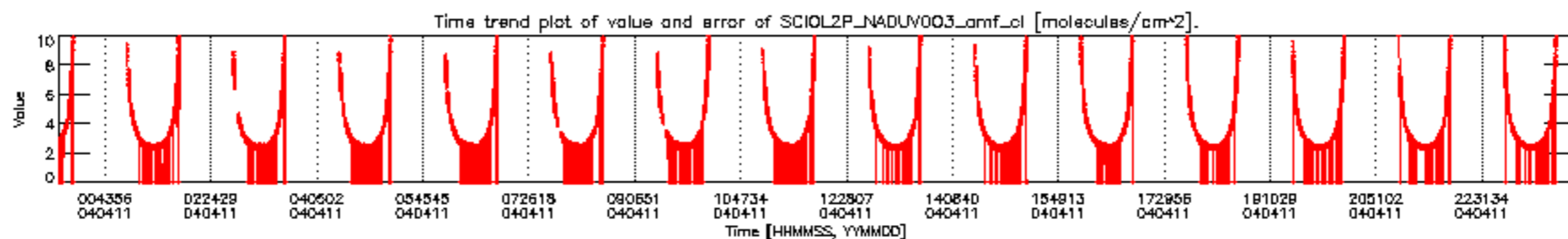
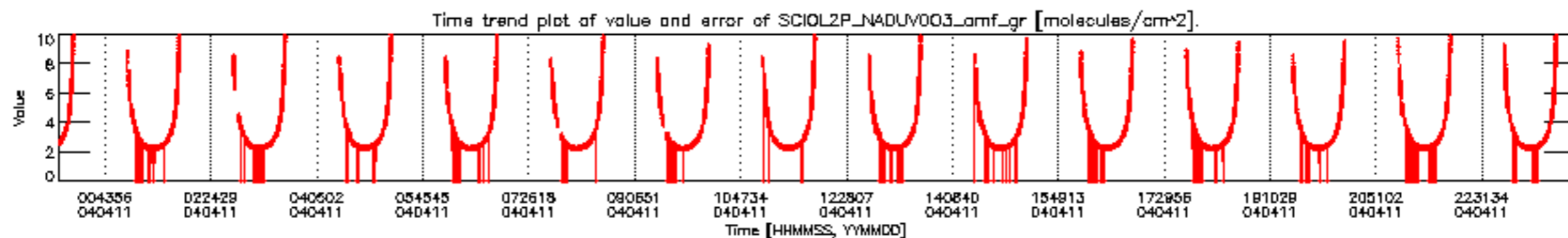
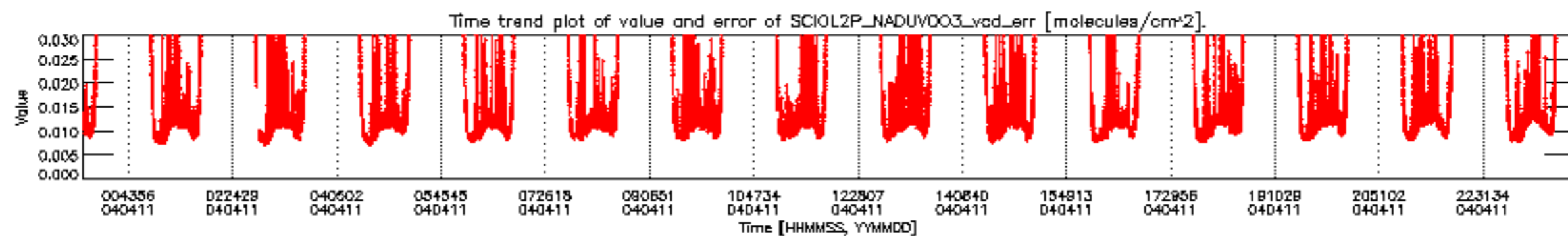
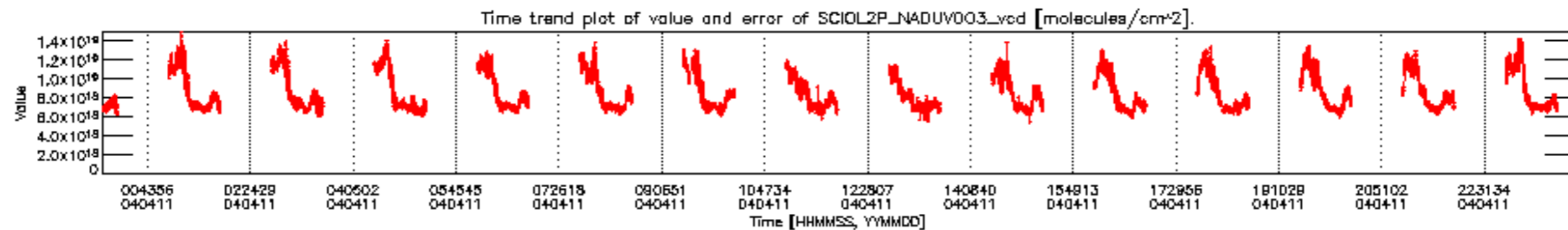


cl_opt_depth for 11APR2004 00:00:00 to 12APR2004 00:00:00

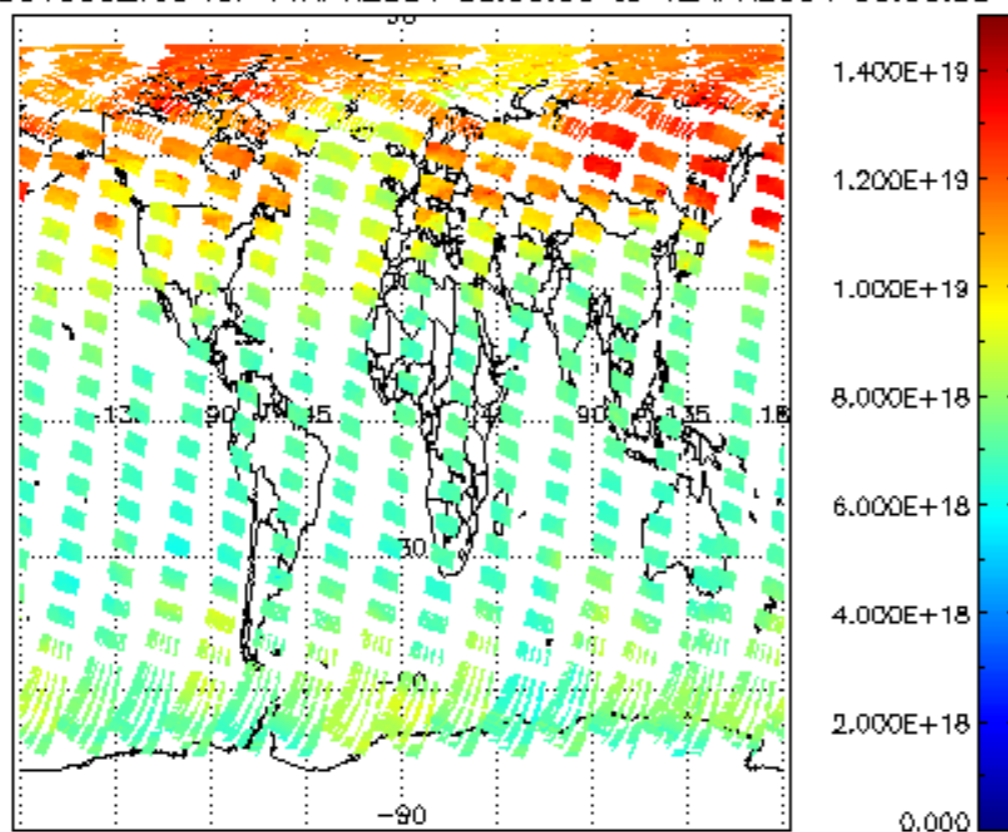


cloud_flags for 11APR2004 00:00:00 to 12APR2004 00:00:00

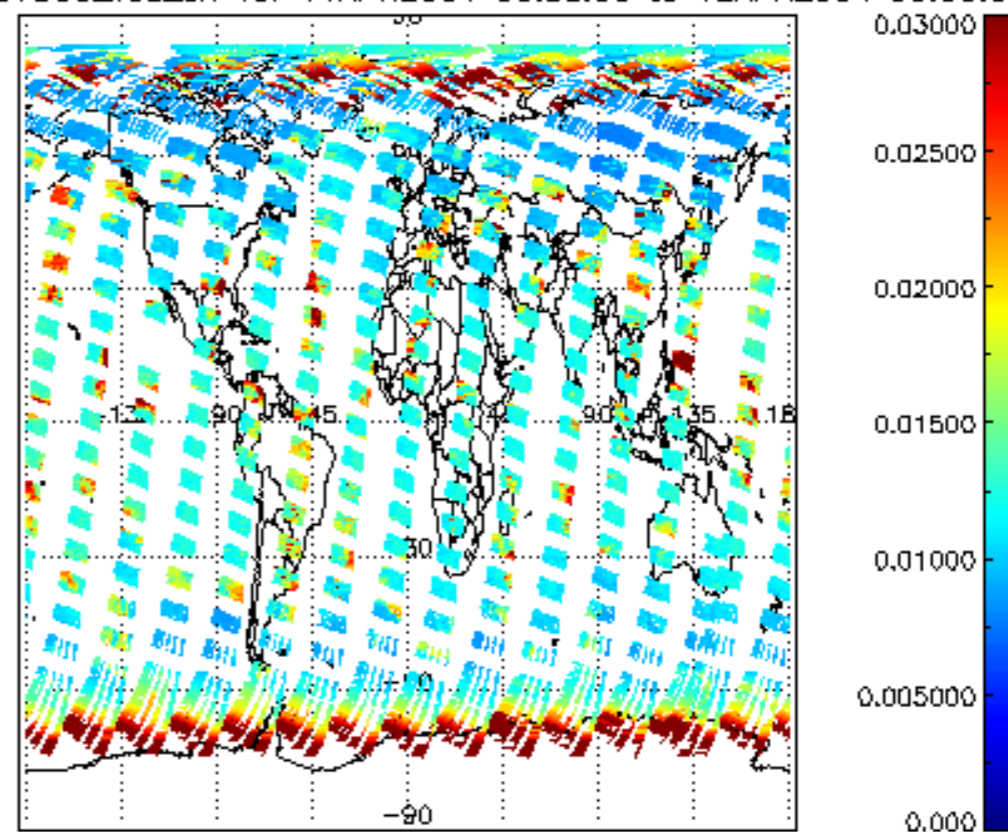




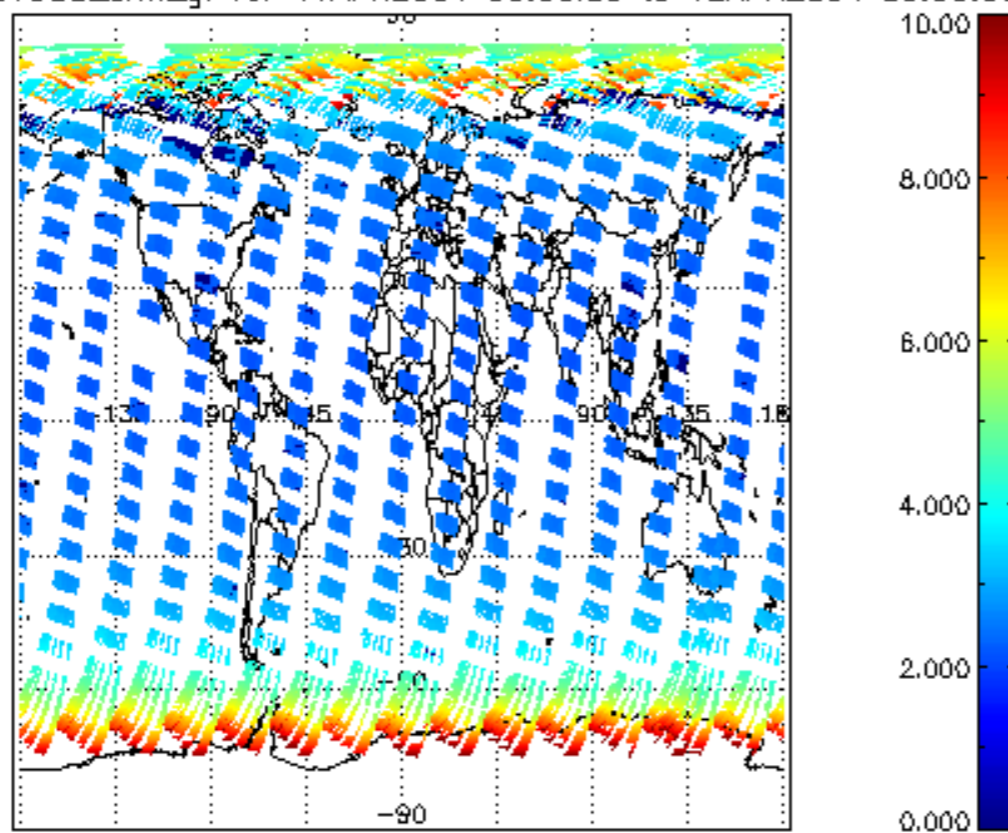
SCIOL2P_NADUV003_vcd for 11APR2004 00:00:00 to 12APR2004 00:00:00



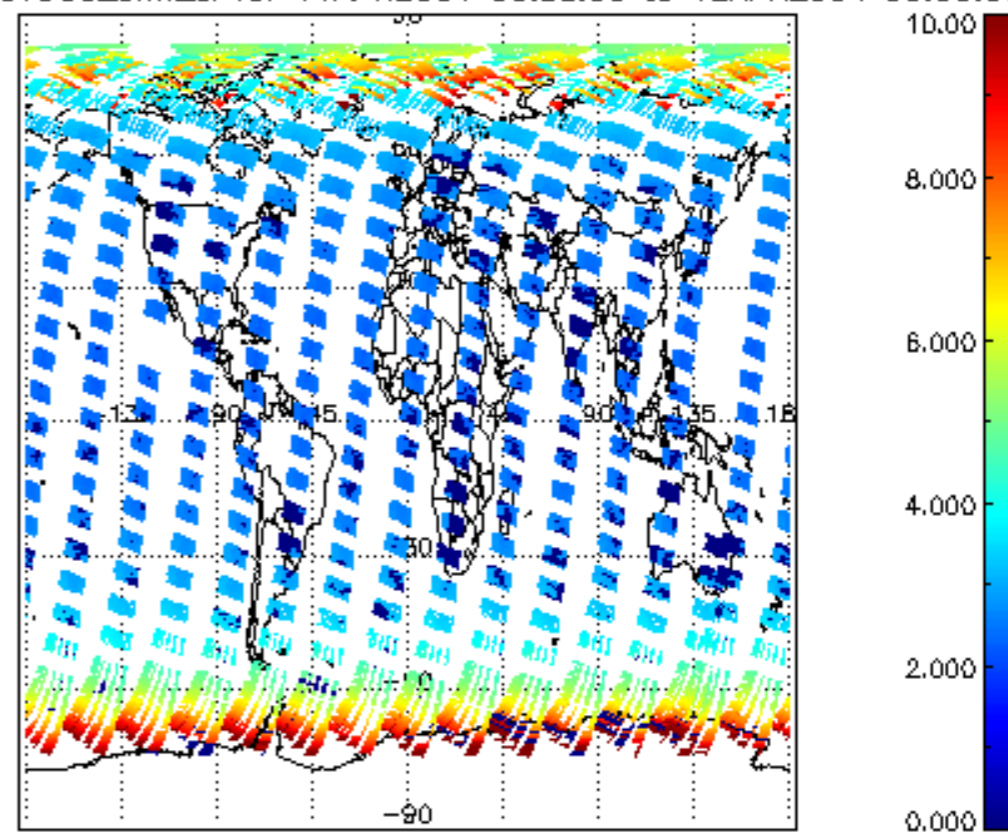
SCIOL2P_NADUV003_vcd_err for 11APR2004 00:00:00 to 12APR2004 00:00:00

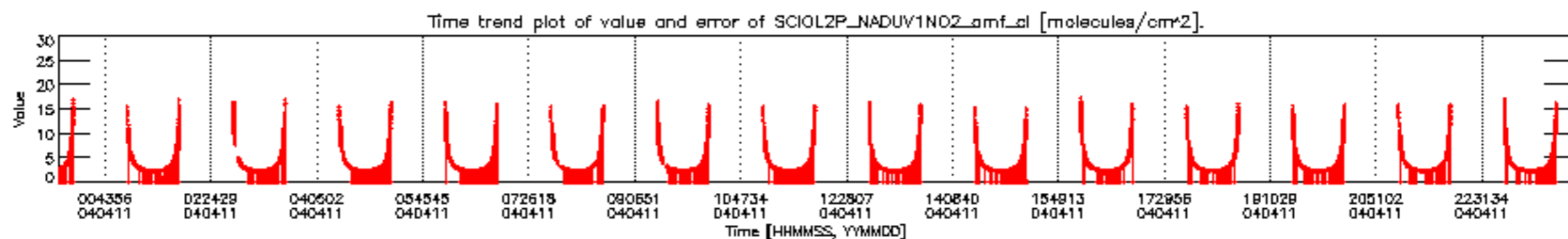
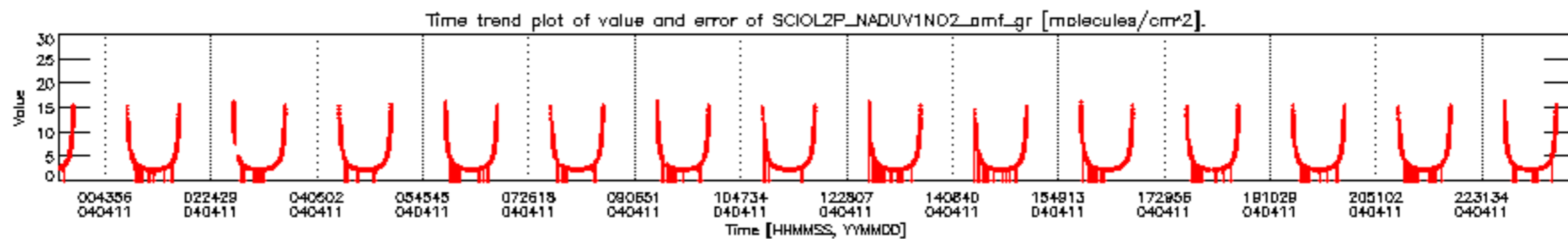
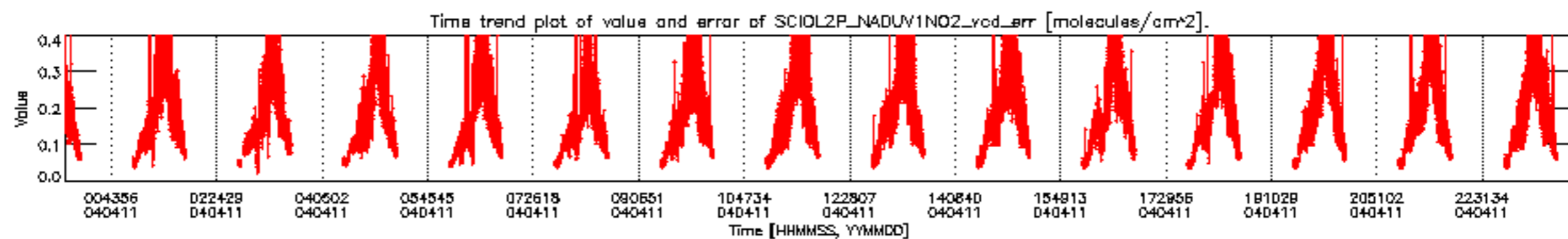
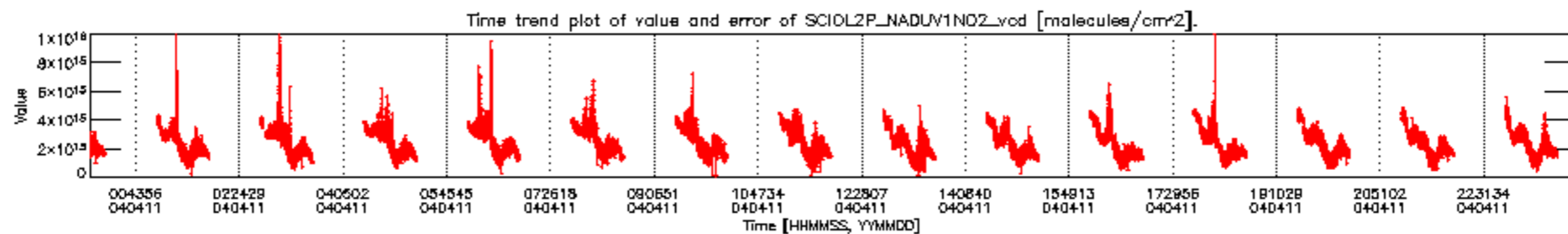


SCIOL2P_NADUV003_amf_gr for 11APR2004 00:00:00 to 12APR2004 00:00:00

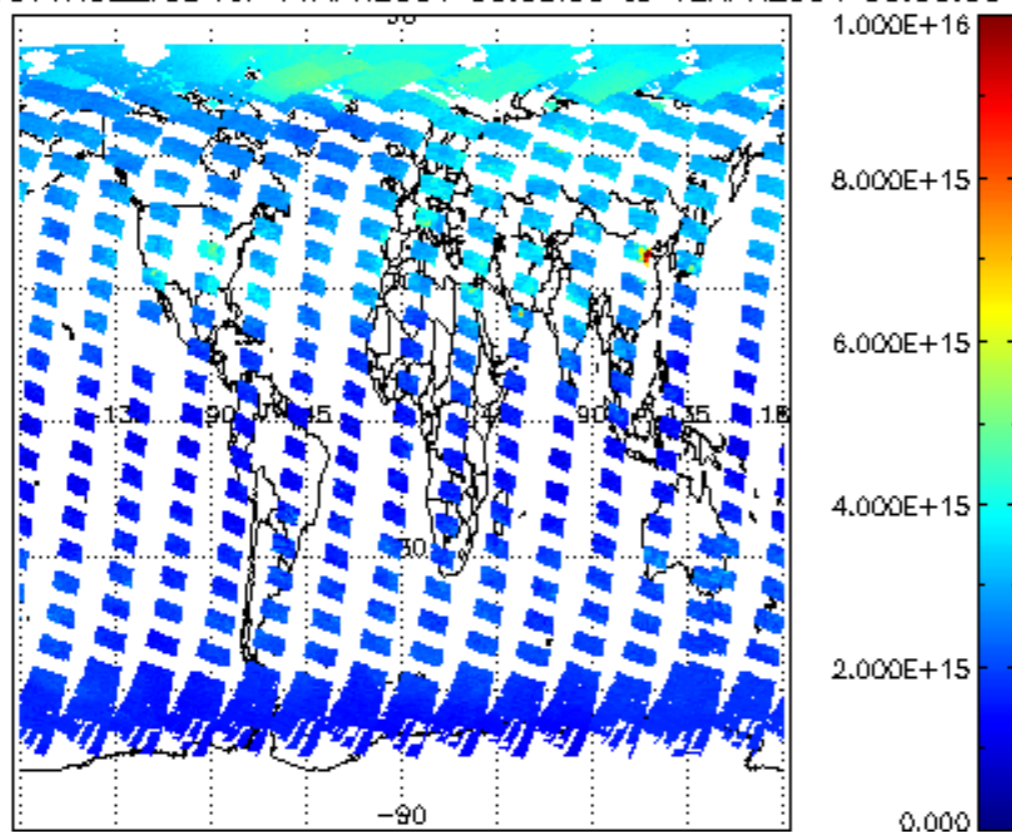


SCIOL2P_NADUV003_amf_cl for 11APR2004 00:00:00 to 12APR2004 00:00:00

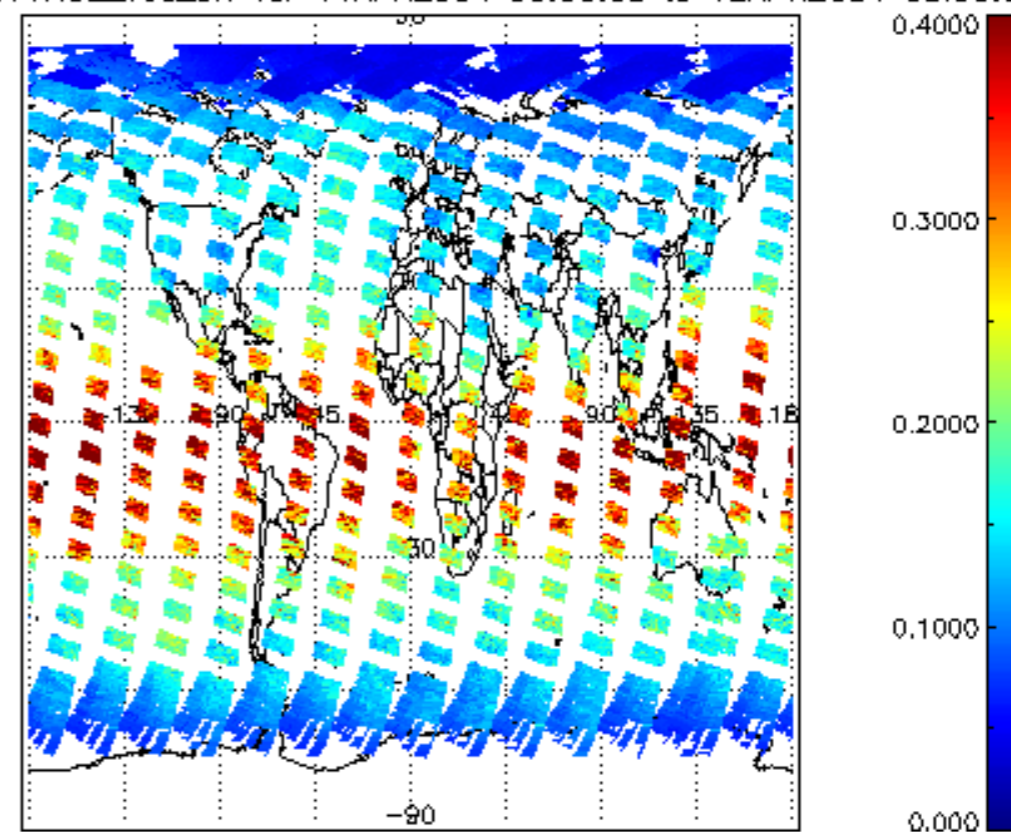




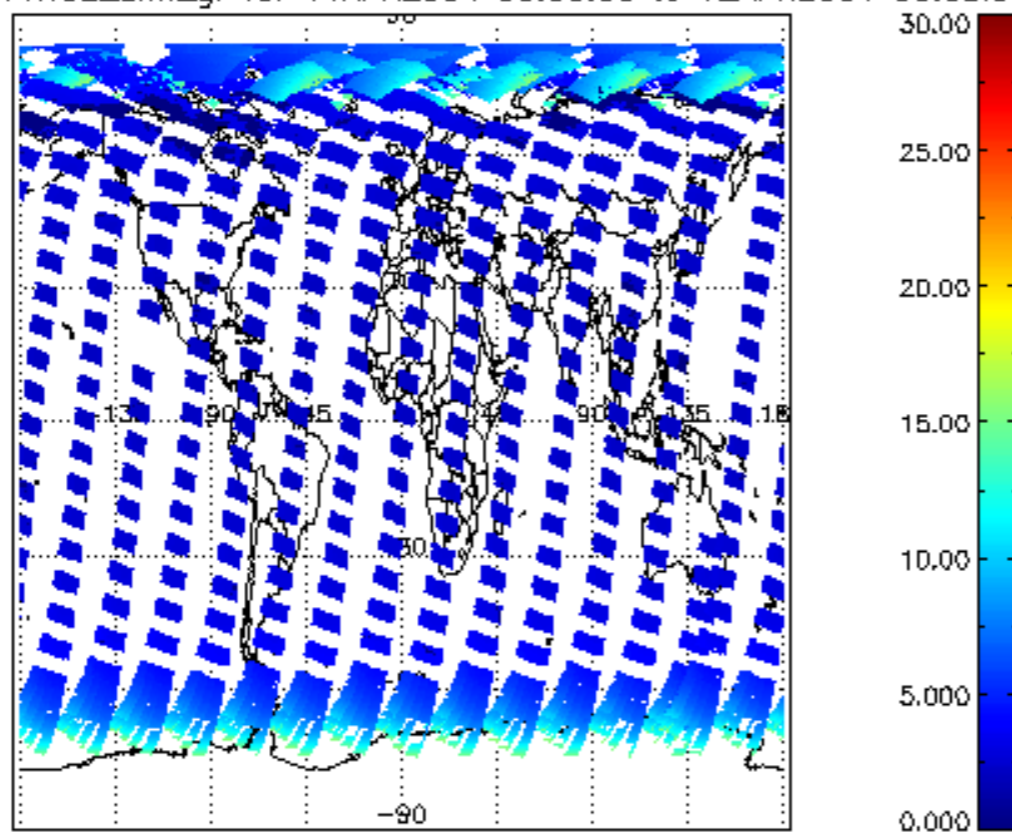
SCIOL2P_NADUV1NO2_vcd for 11APR2004 00:00:00 to 12APR2004 00:00:00



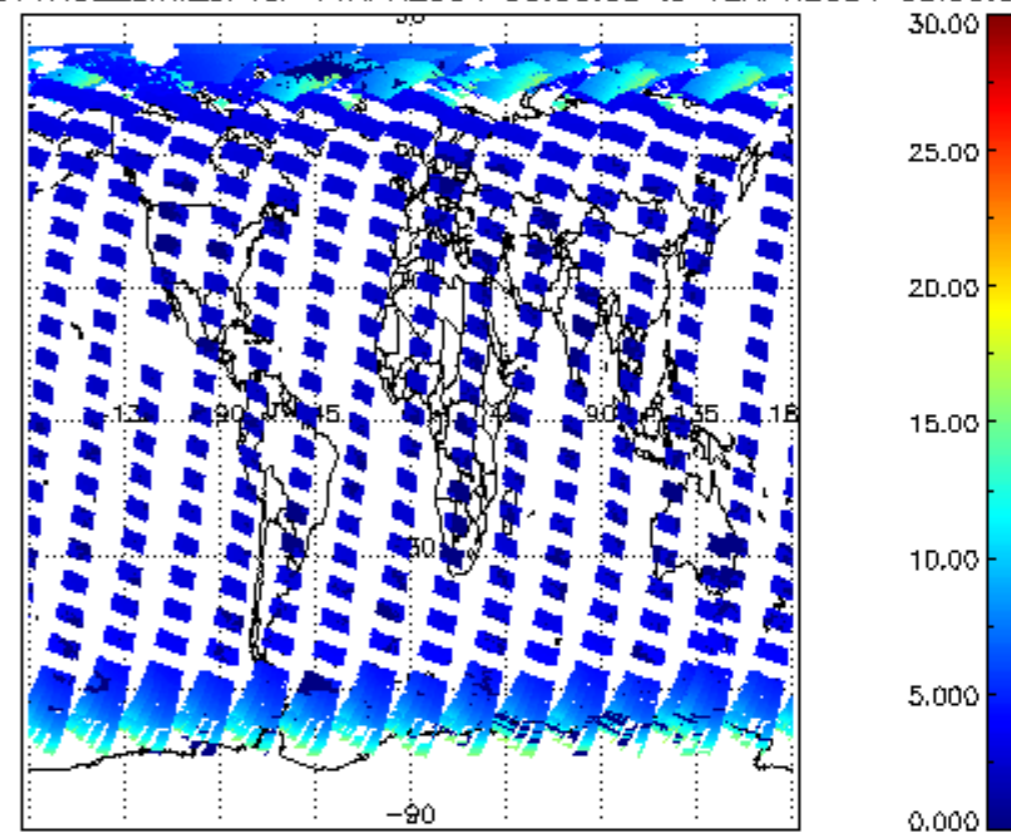
iCIOL2P_NADUV1NO2_vcd_err for 11APR2004 00:00:00 to 12APR2004 00:00:00



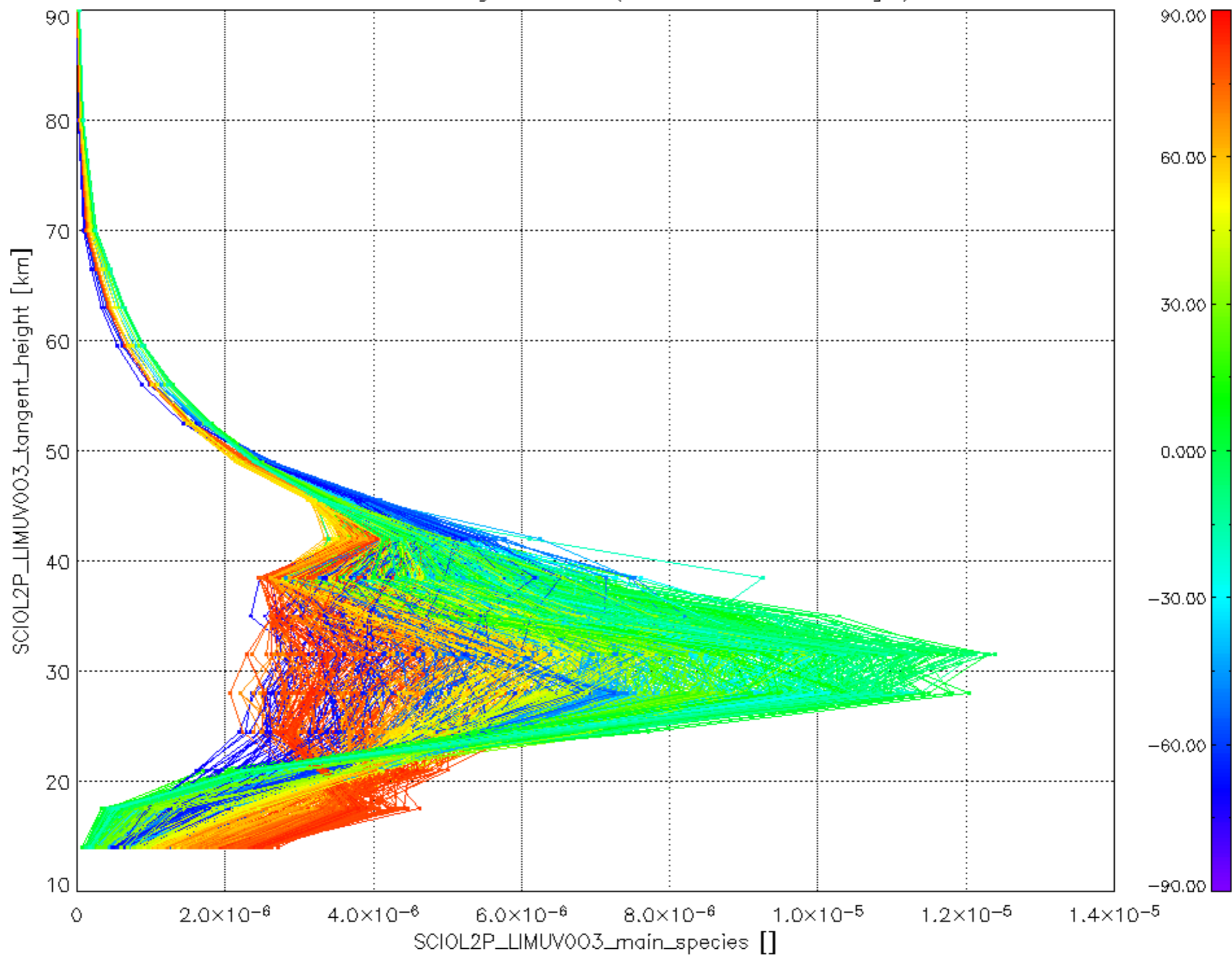
iCIOL2P_NADUV1NO2_amf_gr for 11APR2004 00:00:00 to 12APR2004 00:00:00



iCIOL2P_NADUV1NO2_amf_cl for 11APR2004 00:00:00 to 12APR2004 00:00:00



Plot of SCIOL2P_LIMUV003_main_species.tang_vmr vs. tangent height.
 Colours indicate tangent latitude (see colour bar on the right).



Plot of SCIOL2P_LIMUV1NO2_main_species.tang_vmr vs. tangent height.
 Colours indicate tangent latitude (see colour bar on the right).

