

2. SCIAMACHY Daily Report for level 2 products

[2.1. General Info](#)

[2.2 Product Quality Indicators](#)

[2.3 ADF monitoring](#)

2.1 General Info

This report contains a daily analysis on parameters extracted from SCIAMACHY level 2 data (The SCI_OL__2P product).

2.1.1 Report summary

The table below shows general characteristics of the data that are included into this report.

Item	Value
Report version	1.6 (28-07-2008)
Time of report generation	07AUG2008 16:41:07
Data source version	SCIA-OL/3.01-R
Processing scope for products	10MAR2004 00:00:00 to 11MAR2004 00:00:00
Start time of first product within scope	09MAR2004 23:30:25
Stop time of last product within scope	10MAR2004 23:52:40
Total number of level 2 products	15
Number of level 2 products with errors	0

2.1.2 Summary per product

The following table shows a summary for each product used in this report.

Products are linked to a corresponding server directory for view/download. Note: Link access may be restricted by security settings of your internet browser or firewall.

#	Product name	Start time	Stop time	Prod err	Fit summary
0	SCI_OL__2PRDPA20040309_233025_000032372025_00016_10591_7067.N1	09MAR2004 23:30:25	10MAR2004 00:24:23	0	GOOD
1	SCI_OL__2PRDPA20040310_010937_000032932025_00017_10592_6995.N1	10MAR2004 01:09:37	10MAR2004 02:04:31	0	GOOD
2	SCI_OL__2PRDPA20040310_025136_000032372025_00018_10593_7170.N1	10MAR2004 02:51:36	10MAR2004 03:45:34	0	GOOD
3	SCI_OL__2PRDPA20040310_043048_000032932025_00019_10594_6957.N1	10MAR2004 04:30:48	10MAR2004 05:25:42	0	GOOD
4	SCI_OL__2PRDPA20040310_061247_000032372025_00020_10595_7155.N1	10MAR2004 06:12:47	10MAR2004 07:06:45	0	GOOD
5	SCI_OL__2PRDPA20040310_075159_000032932025_00021_10596_6968.N1	10MAR2004 07:51:59	10MAR2004 08:46:53	0	GOOD
6	SCI_OL__2PRDPA20040310_093358_000032372025_00022_10597_7016.N1	10MAR2004 09:33:58	10MAR2004 10:27:56	0	GOOD
7	SCI_OL__2PRDPA20040310_111310_000032932025_00023_10598_7086.N1	10MAR2004 11:13:10	10MAR2004 12:08:04	0	GOOD
8	SCI_OL__2PRDPA20040310_125509_000032372025_00024_10599_7085.N1	10MAR2004 12:55:09	10MAR2004 13:49:07	0	GOOD
9	SCI_OL__2PRDPA20040310_143421_000032932025_00025_10600_7062.N1	10MAR2004 14:34:21	10MAR2004 15:29:14	0	GOOD
10	SCI_OL__2PRDPA20040310_161620_000032372025_00026_10601_7075.N1	10MAR2004 16:16:20	10MAR2004 17:10:18	0	GOOD
11	SCI_OL__2PRDPA20040310_175455_000033622025_00027_10602_7050.N1	10MAR2004 17:54:55	10MAR2004 18:50:57	0	GOOD
12	SCI_OL__2PRDPA20040310_193537_000033772025_00028_10603_6924.N1	10MAR2004 19:35:37	10MAR2004 20:31:54	0	GOOD
13	SCI_OL__2PRDPA20040310_211643_000032932025_00029_10604_6961.N1	10MAR2004 21:16:43	10MAR2004 22:11:36	0	GOOD
14	SCI_OL__2PRDPA20040310_225842_000032372025_00030_10605_6960.N1	10MAR2004 22:58:42	10MAR2004 23:52:40	0	GOOD

2.2 Product Quality Indicators

2.2.1 Cloud parameters

This is a new section that shows information about the cloud parameters estimation, in particular cloud fractions and cloud top height. IMPORTANT NOTE: The contents and layout of this section are still being validated. Please use with caution.

General statistics:

Total number of cloud data DSRs: 117258

Total number of cloud data DSRs with good quality flag (=0): 117258 (100.0 %)

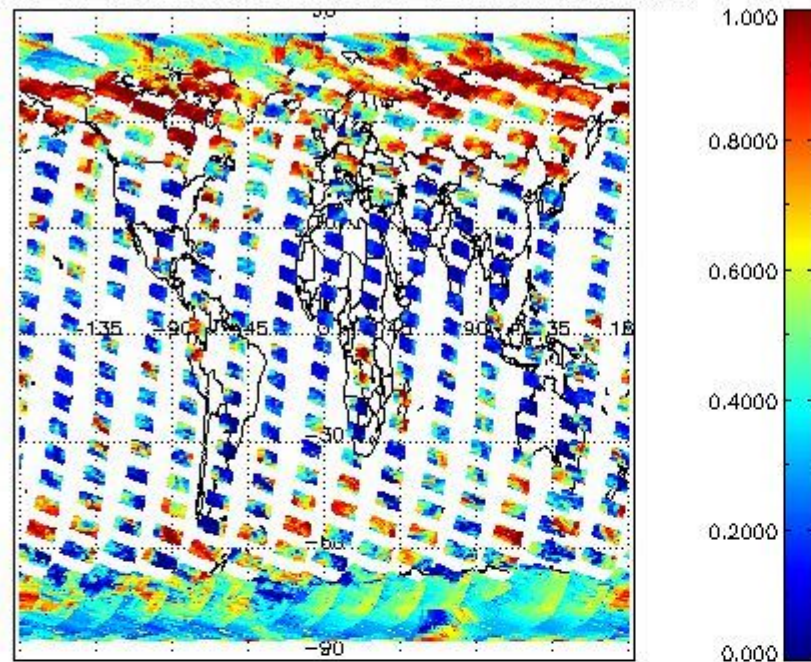
Parameter	#valid	Mean	Median	Min	Max	Stddev	Unit
QUALITY_FLAG	117258	0.0000	0.0000	0.0000	0.0000	0.0000	flag
INTEGR_TIME	117258	0.21567	0.25000	0.12500	0.50000	0.084132	s
CL_FRAC	117258	0.45373	0.42209	0.0000	1.0000	0.30089	-
CL_FRAC_ERR	117258	0.0000	0.0000	0.0000	0.0000	0.0000	rel. fraction
PMD_READ	117258	6.9016	8.0000	4.0000	16.000	2.6922	
PMD_READ_CL[0]	117258	0.37445	0.0000	0.0000	16.000	1.2851	-
PMD_READ_CL[1]	117258	0.42177	0.0000	0.0000	16.000	1.5078	-
CL_TOP_HEIGHT	107466	3.9276	2.1280	0.0000	17.000	3.9477	km
CL_TOP_HEIGHT_ERR	0	---	---	---	---	---	---
CL_OPT_DEPTH	107466	50.577	37.376	0.0000	101.00	38.938	km
CL_OPT_DEPTH_ERR	0	---	---	---	---	---	---
CL_TYPE_FLAGS	117258	11100000	11100000	11100000	11100000	0.0000	flags. Bit definition = 0: low or high cloud; 1: ice or water cloud; 2: thick or thin cloud; 3-15: not used
CLOUD_FLAGS	117258	11000110	11000100	11000000	11100000	2471.5	flags
AERO_ABSO_IND	117258	0.81351	0.65276	-4.8233	12.990	1.1987	
AERO_IND_DIAG	117258	0.0000	0.0000	0.0000	0.0000	0.0000	
AERO_FLAGS	117258	01100111	11000000	00000000	11000000	24498.	flags

Time and geolocation plots:

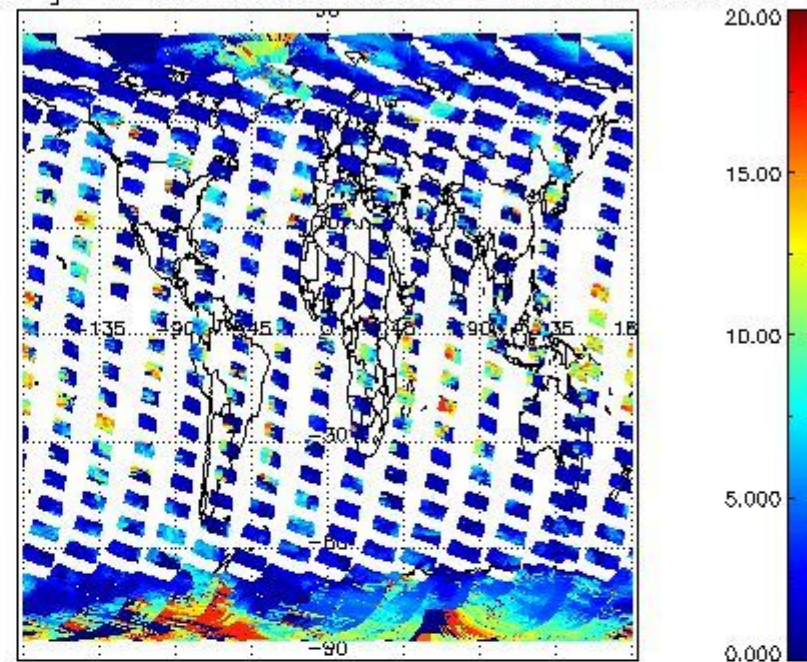
Plots are available for the following parameters:

Number	Data item ID
0	cl_frac
1	cl_top_height
2	cl_opt_depth
3	cloud_flags

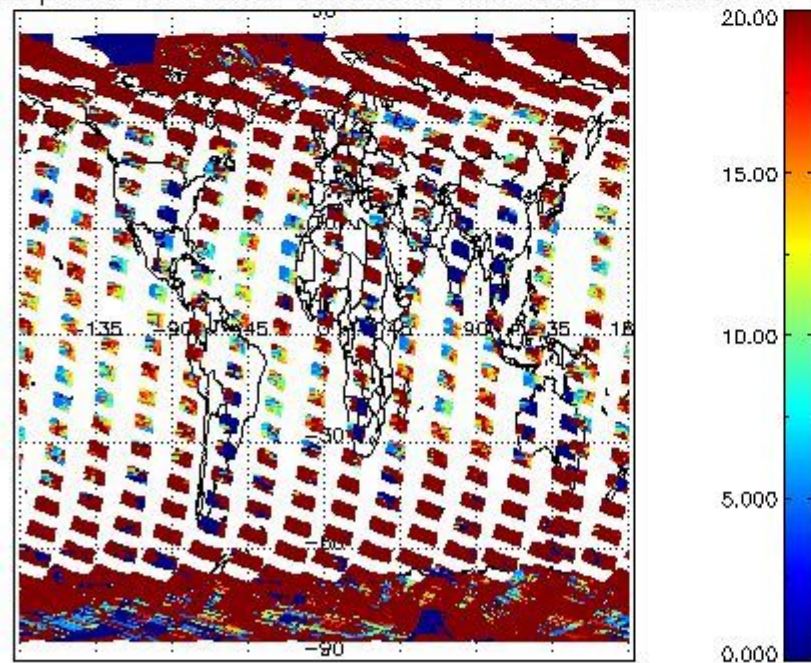
cL_frac for 10MAR2004 00:00:00 to 11MAR2004 00:00:00



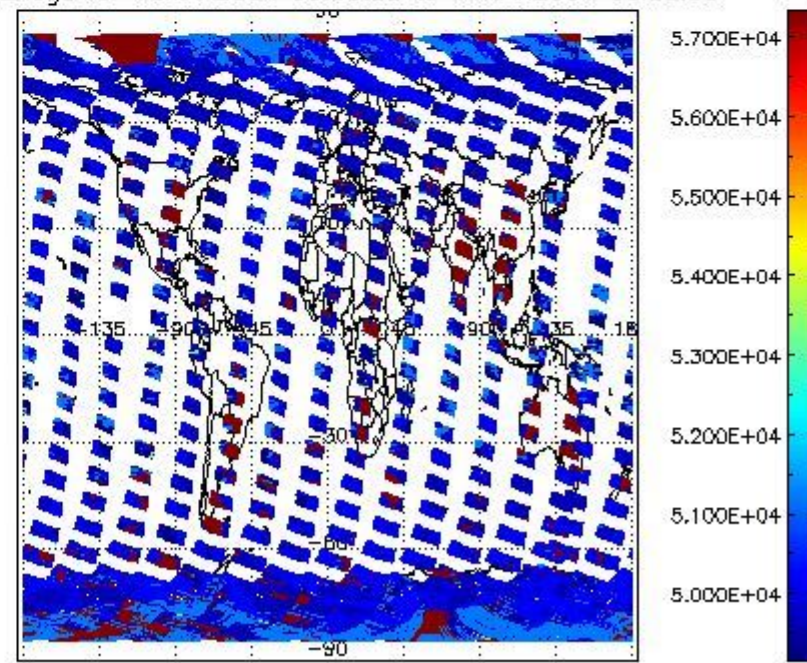
cL_top_height for 10MAR2004 00:00:00 to 11MAR2004 00:00:00



cL_opt_depth for 10MAR2004 00:00:00 to 11MAR2004 00:00:00



cloud_flags for 10MAR2004 00:00:00 to 11MAR2004 00:00:00



2.2.2 Nadir

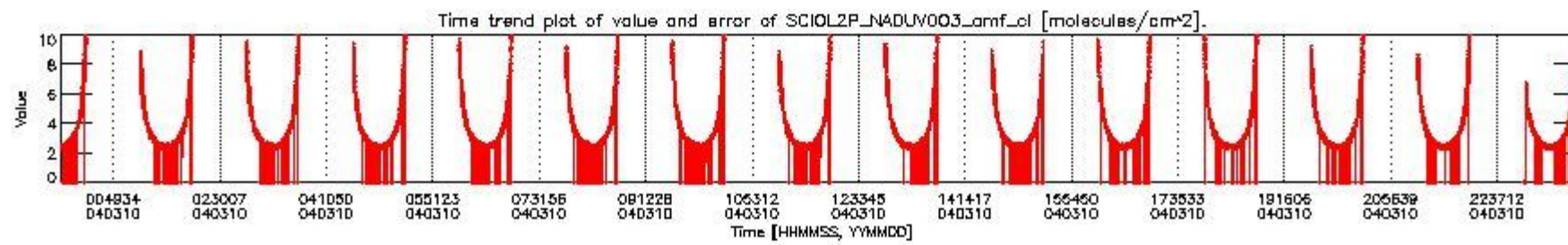
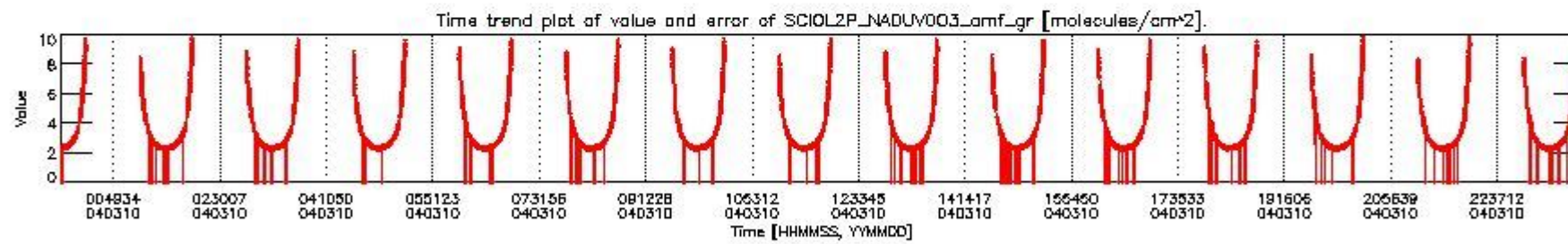
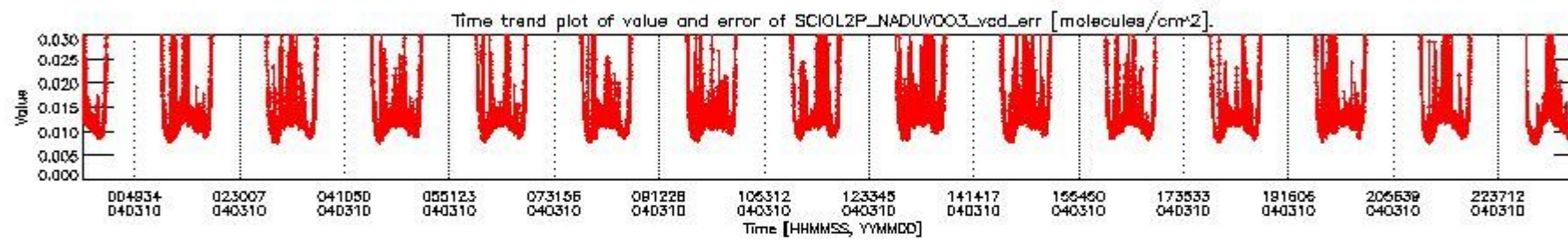
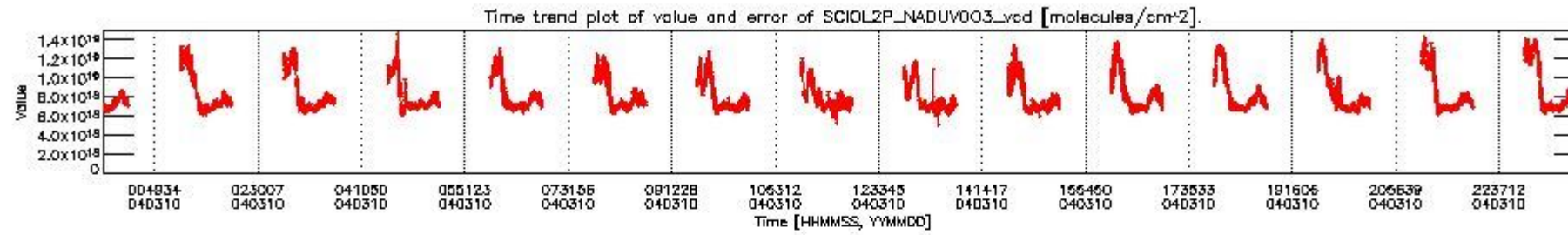
This section shows information about product quality of nadir measurements, in particular the quality of retrieved species.

The following data items are currently included into this section:

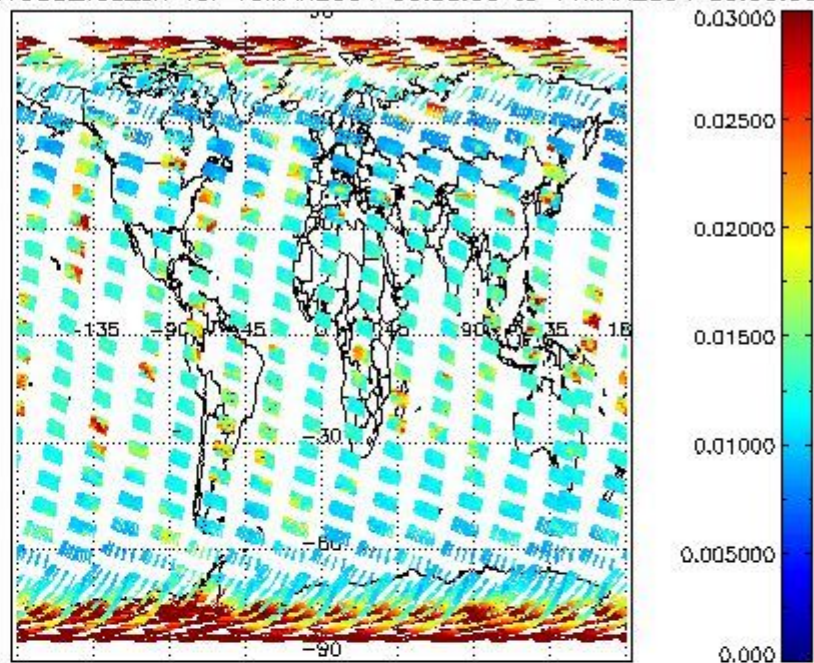
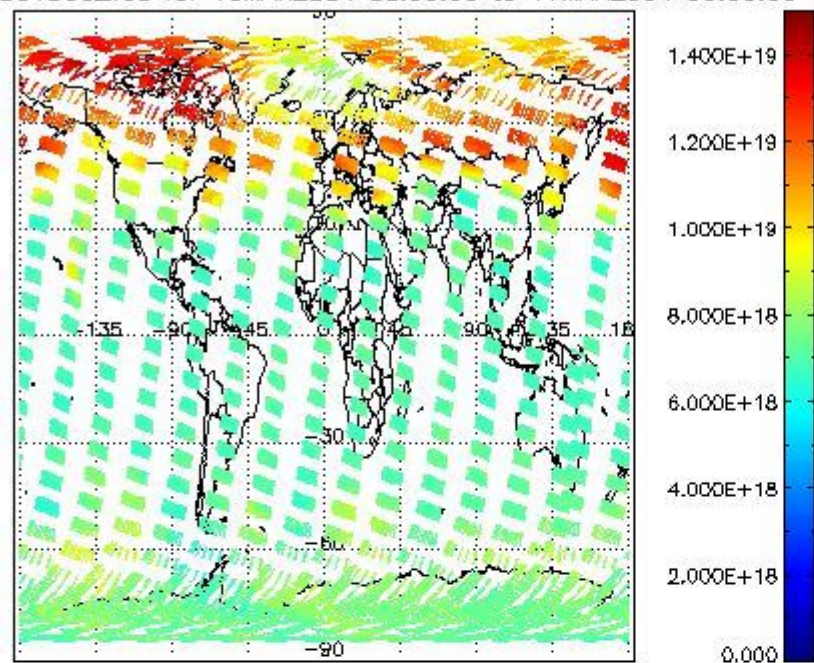
Number	Data item ID
0	SCIOL2P_NADUV003_vcd
1	SCIOL2P_NADUV003_vcd_err
2	SCIOL2P_NADUV003_amf_gr

3	SCIOL2P_NADUV003_amf_cl
4	SCIOL2P_NADUV1NO2_vcd
5	SCIOL2P_NADUV1NO2_vcd_err
6	SCIOL2P_NADUV1NO2_amf_gr
7	SCIOL2P_NADUV1NO2_amf_cl

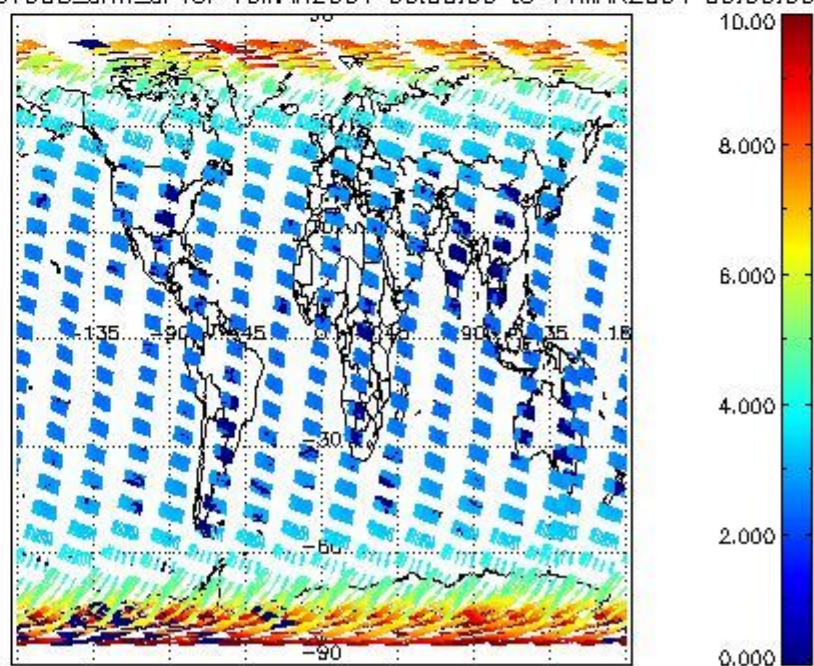
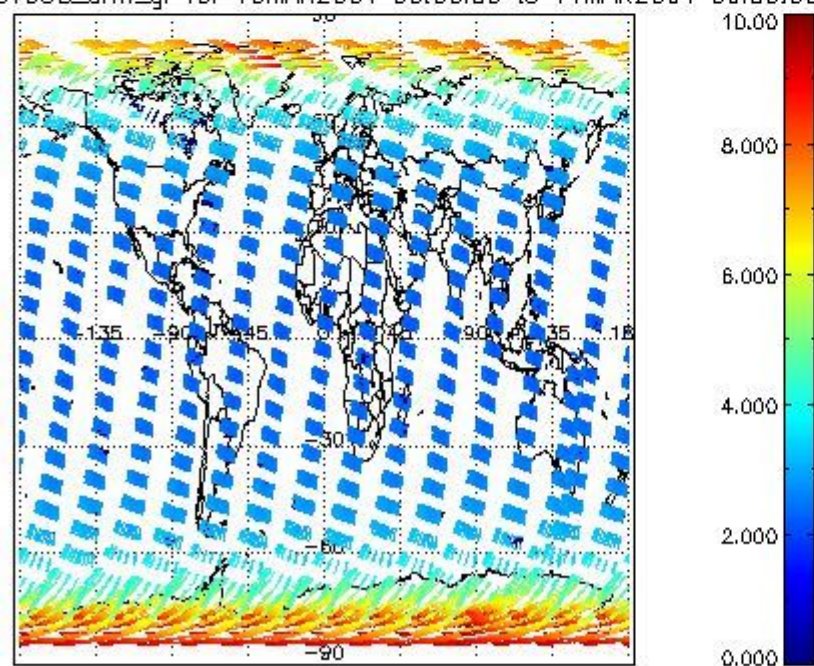
Data is presented both in time trend plots and world map plots, in order to show variations with time and geolocation. The vertical dotted lines in the time trend plots indicate orbits. The orbit times on the X-axis are estimated sensing_start time as suggested by the product sensing_start time in the MPH.

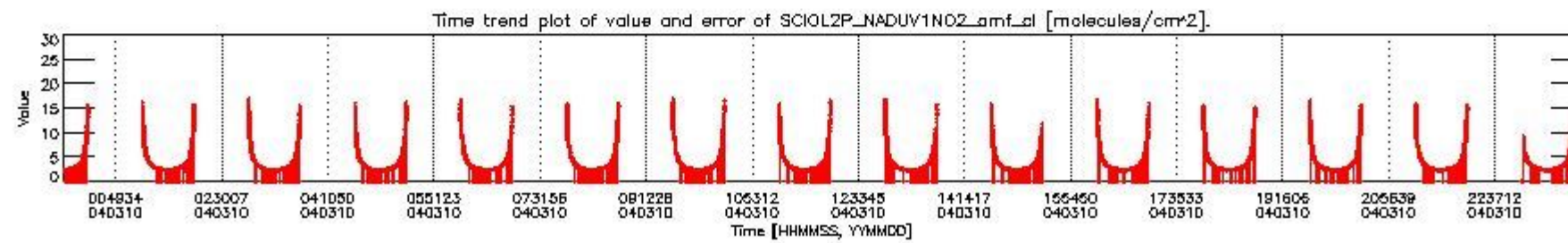
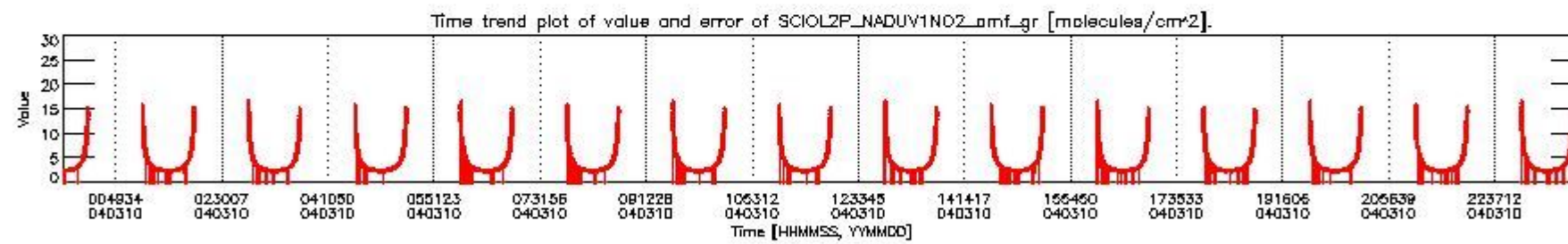
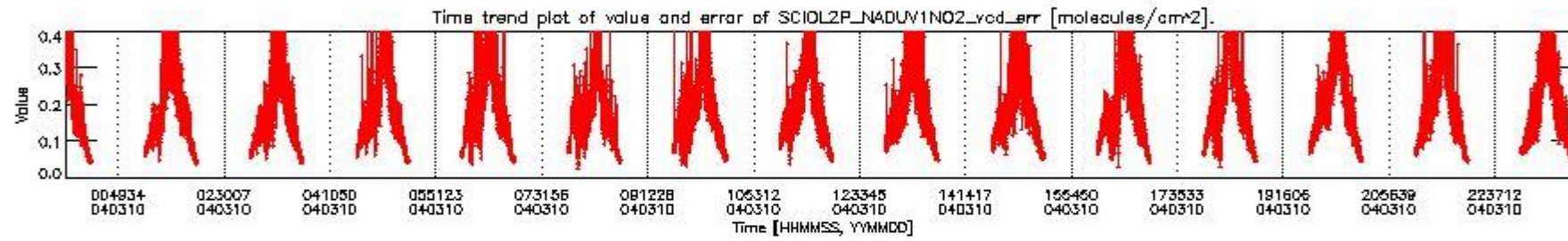
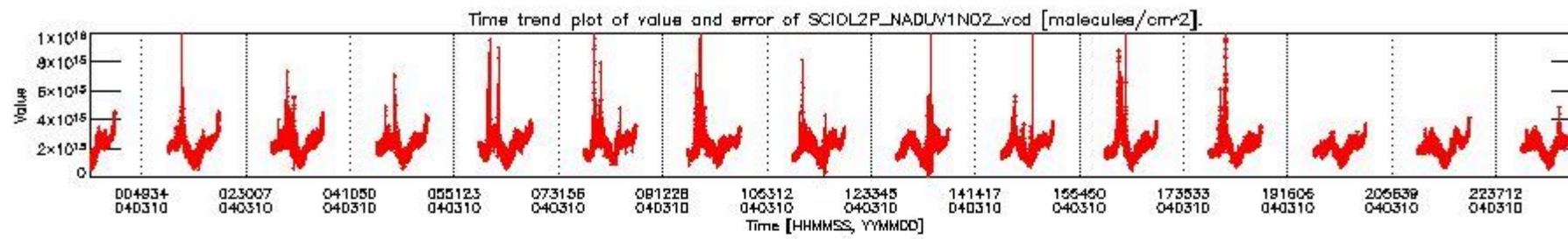


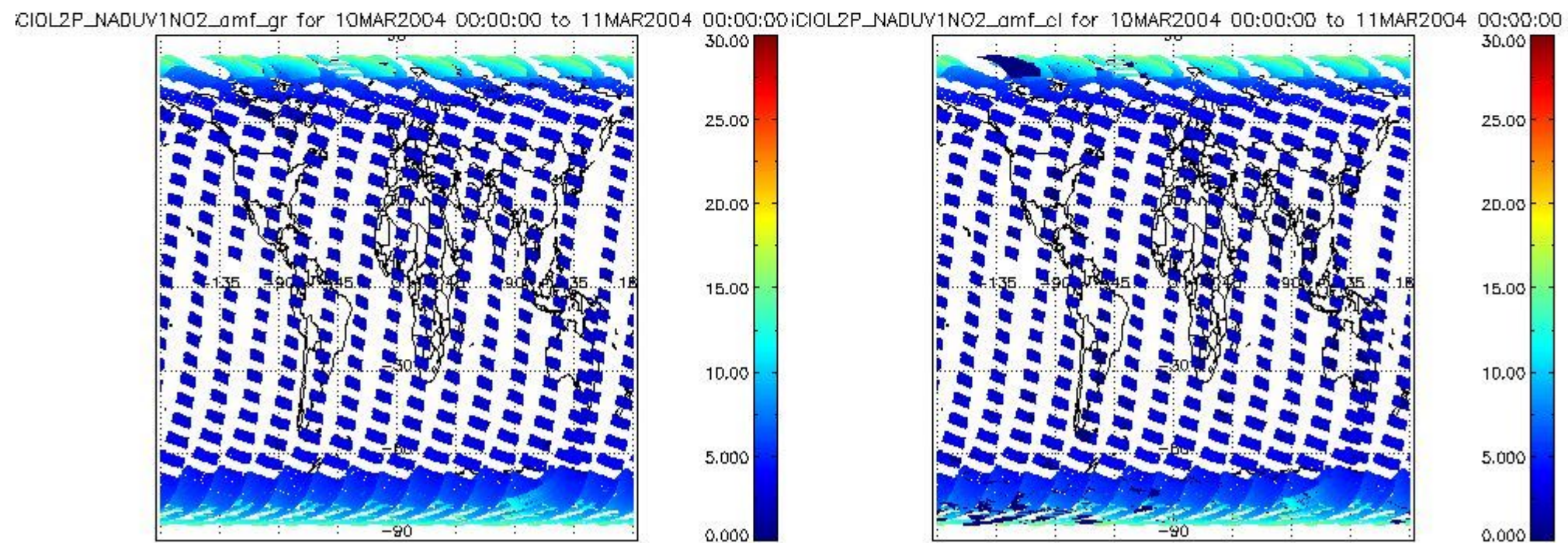
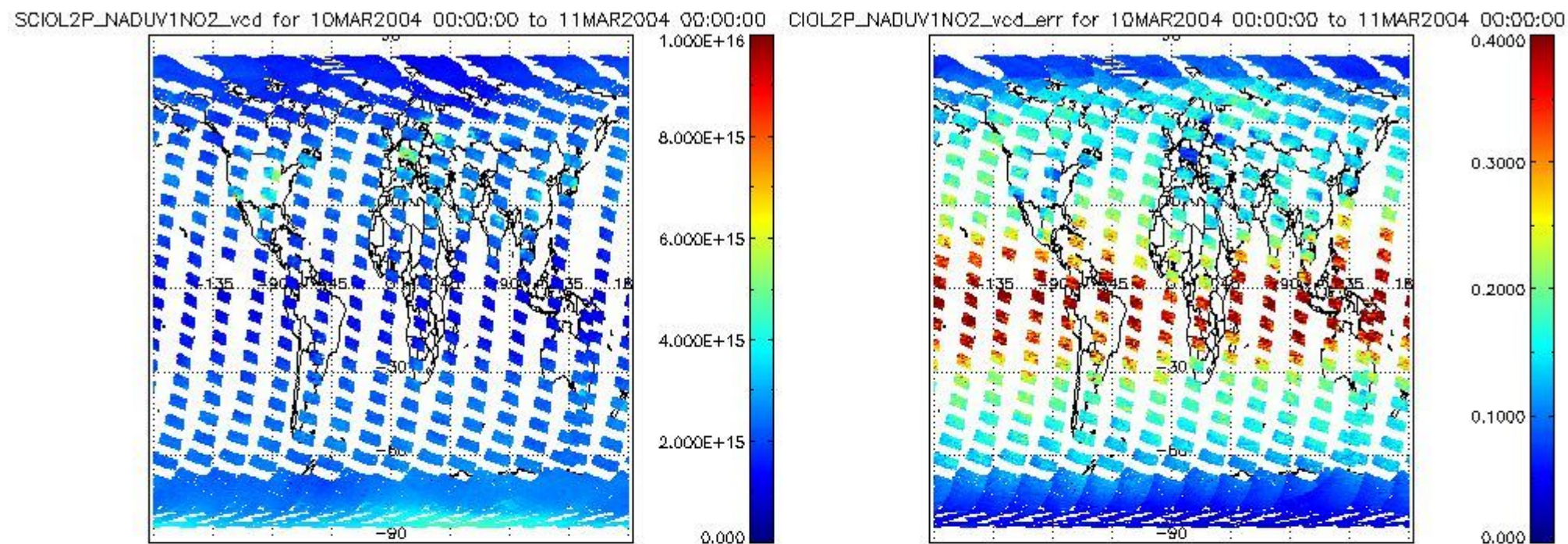
SCIOL2P_NADUV003_vcd for 10MAR2004 00:00:00 to 11MAR2004 00:00:00 SCIOL2P_NADUV003_vcd_err for 10MAR2004 00:00:00 to 11MAR2004 00:00:00



SCIOL2P_NADUV003_amf_gr for 10MAR2004 00:00:00 to 11MAR2004 00:00:00 SCIOL2P_NADUV003_amf_cl for 10MAR2004 00:00:00 to 11MAR2004 00:00:00







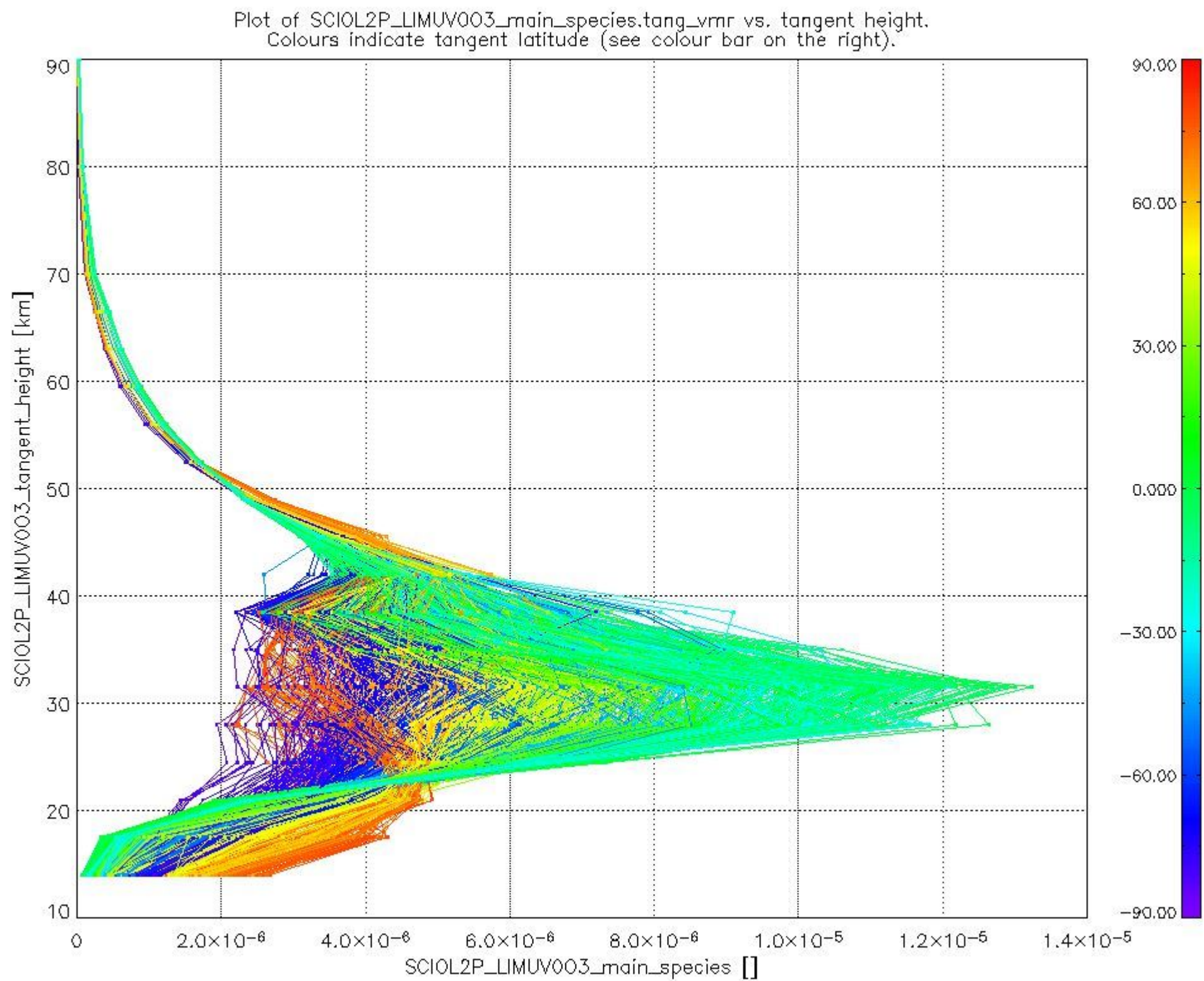
2.2.3 Limb

This section shows information about product quality of the limb retrievals, in particular the quality of retrieved species.

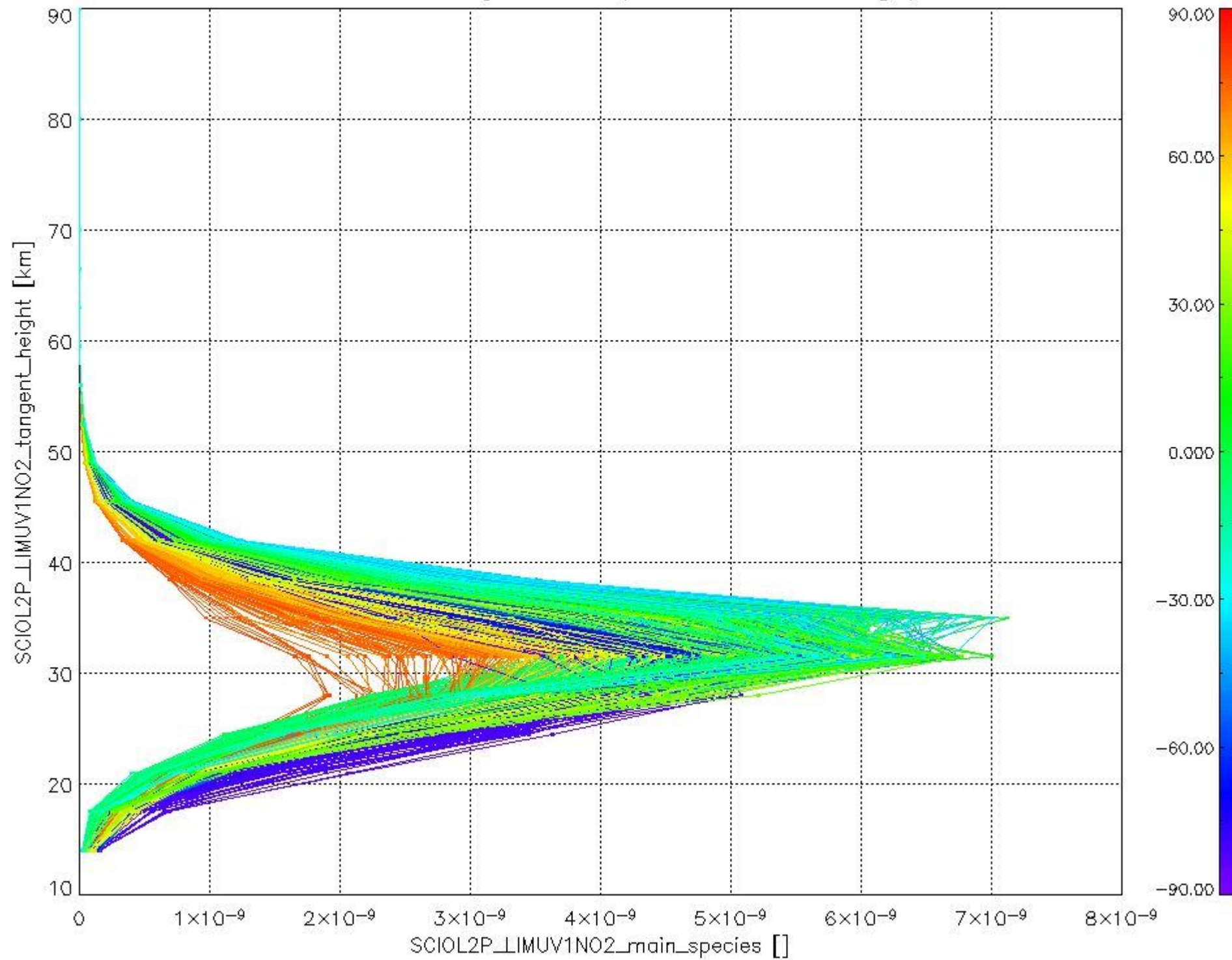
The following data items are currently included into this section:

Number	Data item ID
0	SCIOL2PLIMUV003_main_species
1	SCIOL2PLIMUV1NO2_main_species

The following plots shows for each species the tangent volume mixing ratio vs. tangent height. Colours indicate tangent latitude.



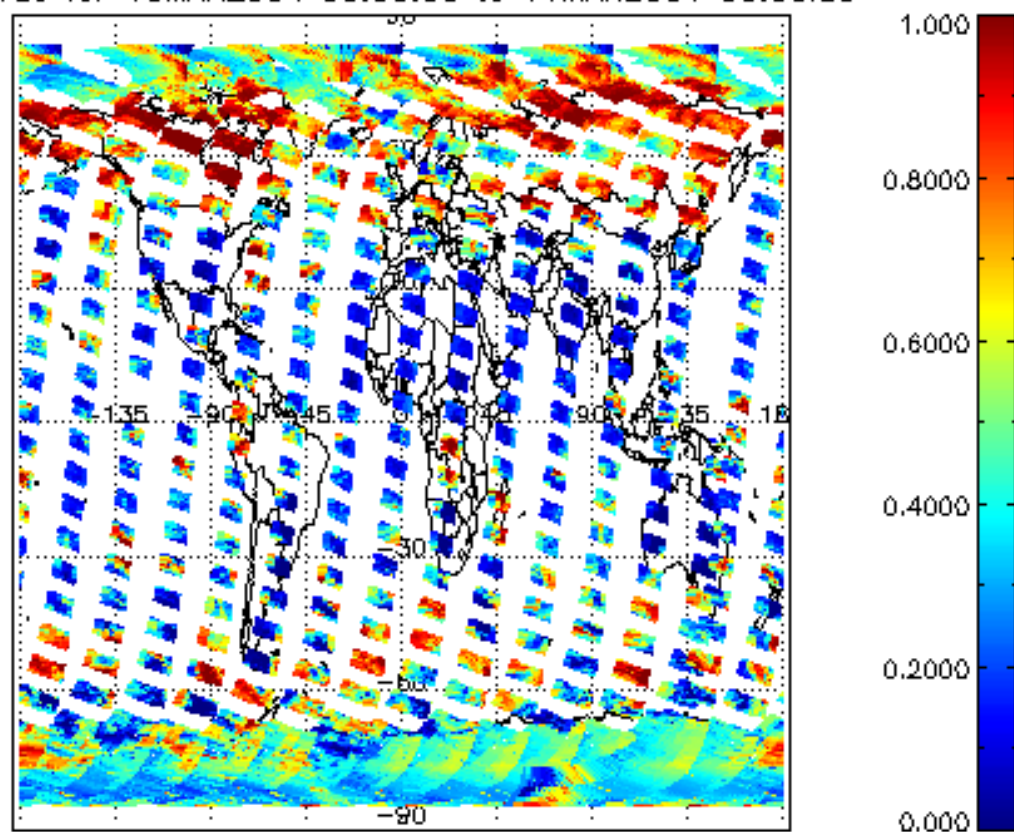
Plot of SCIOL2P_LIMUV1NO2_main_species.tang_vmr vs. tangent height.
Colours indicate tangent latitude (see colour bar on the right).



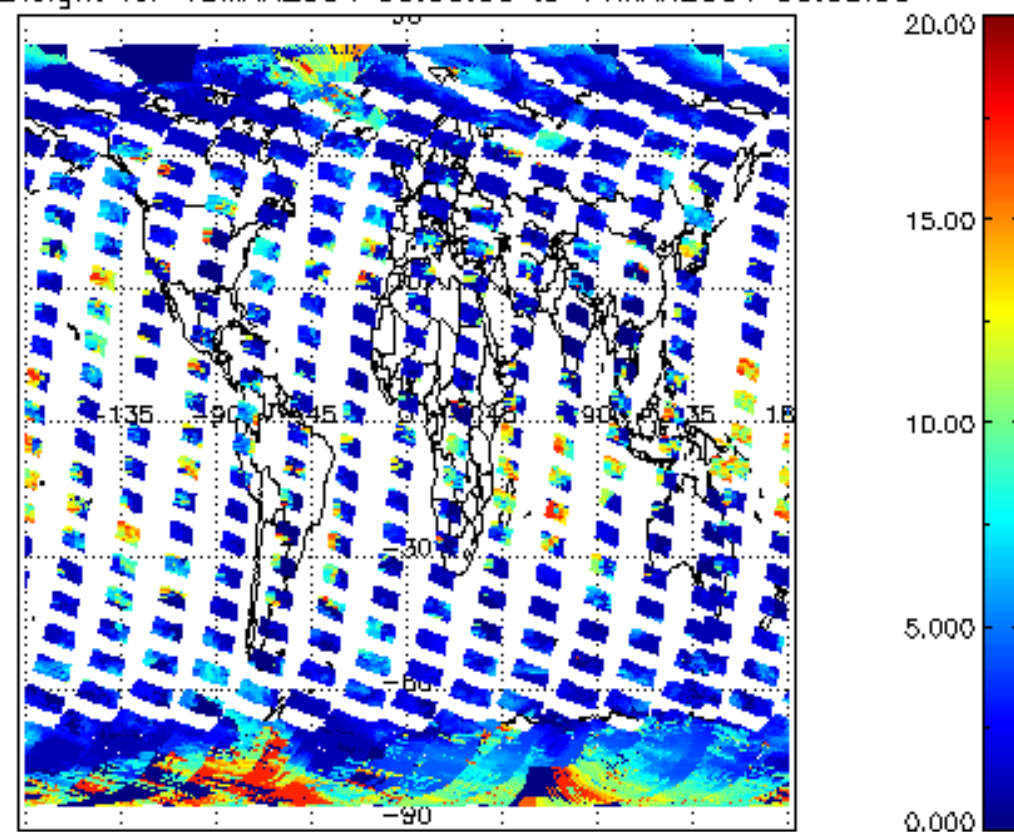
2.3 ADF monitoring

Number	ADF
	IN_ (INITIALISATION_FILE)
0	SCI_IN__AXNPDE20070629_092400_20070720_000000_20991231_235959
	ECF (ECMWF_FILE)
1	NOT USED

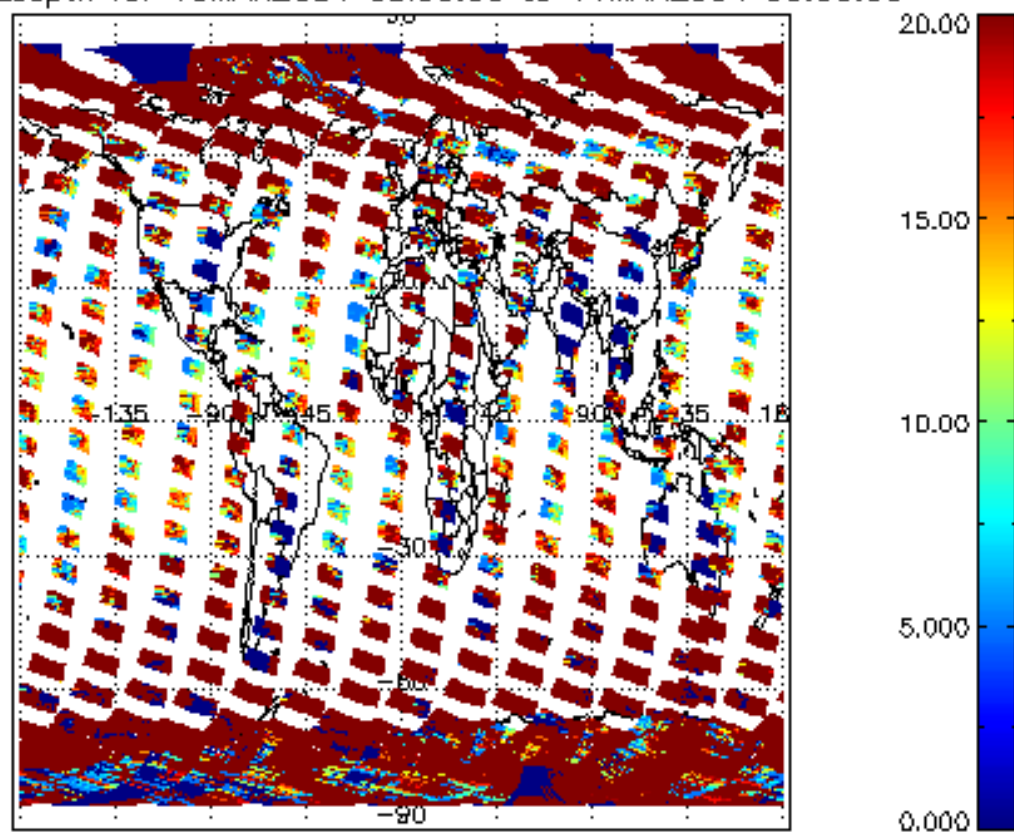
cL_frac for 10MAR2004 00:00:00 to 11MAR2004 00:00:00



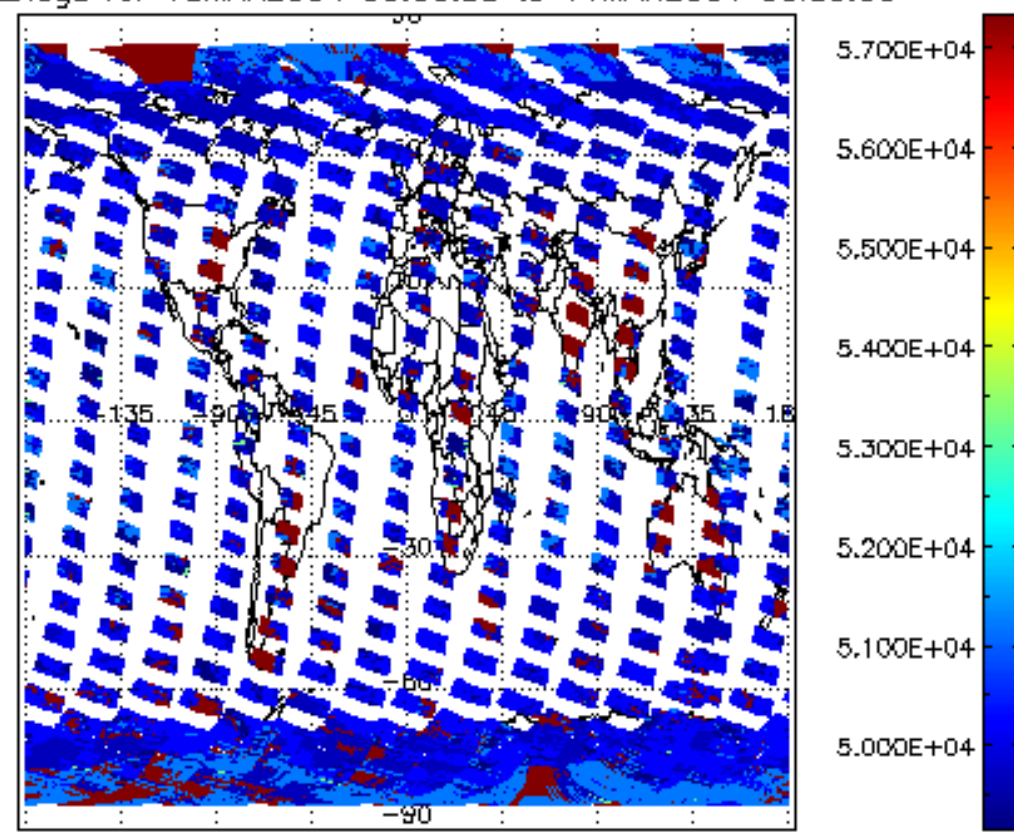
cL_top_height for 10MAR2004 00:00:00 to 11MAR2004 00:00:00

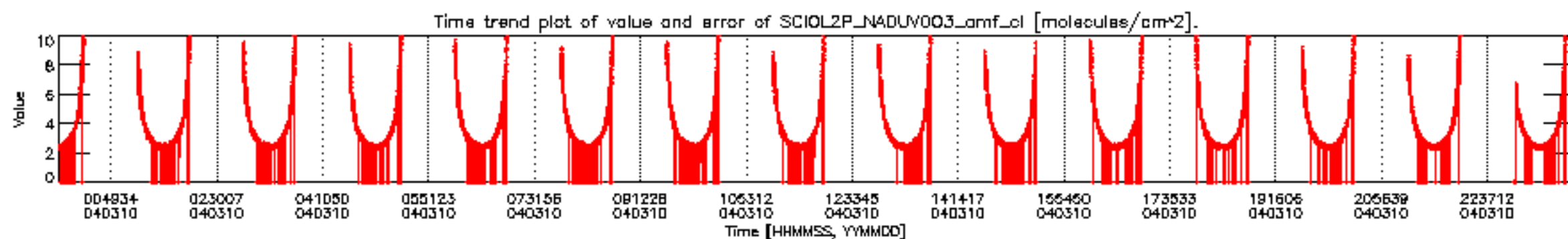
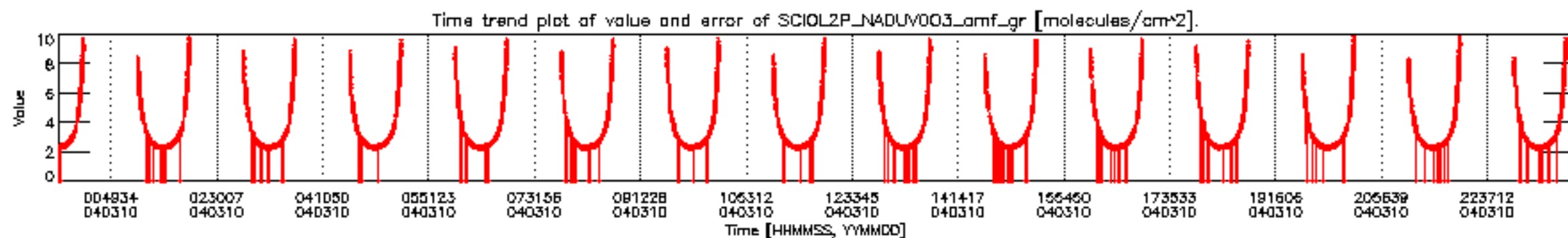
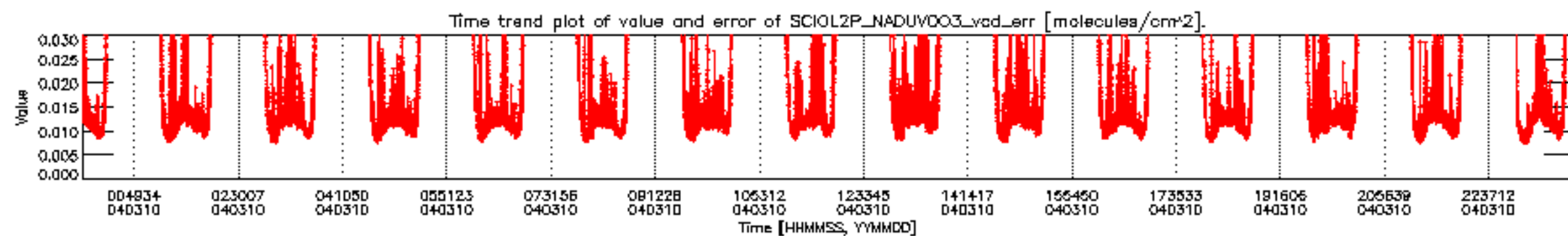
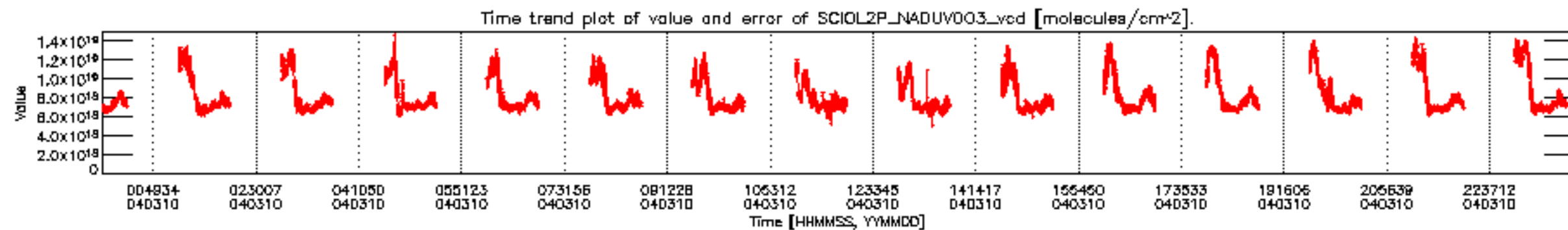


cL_opt_depth for 10MAR2004 00:00:00 to 11MAR2004 00:00:00

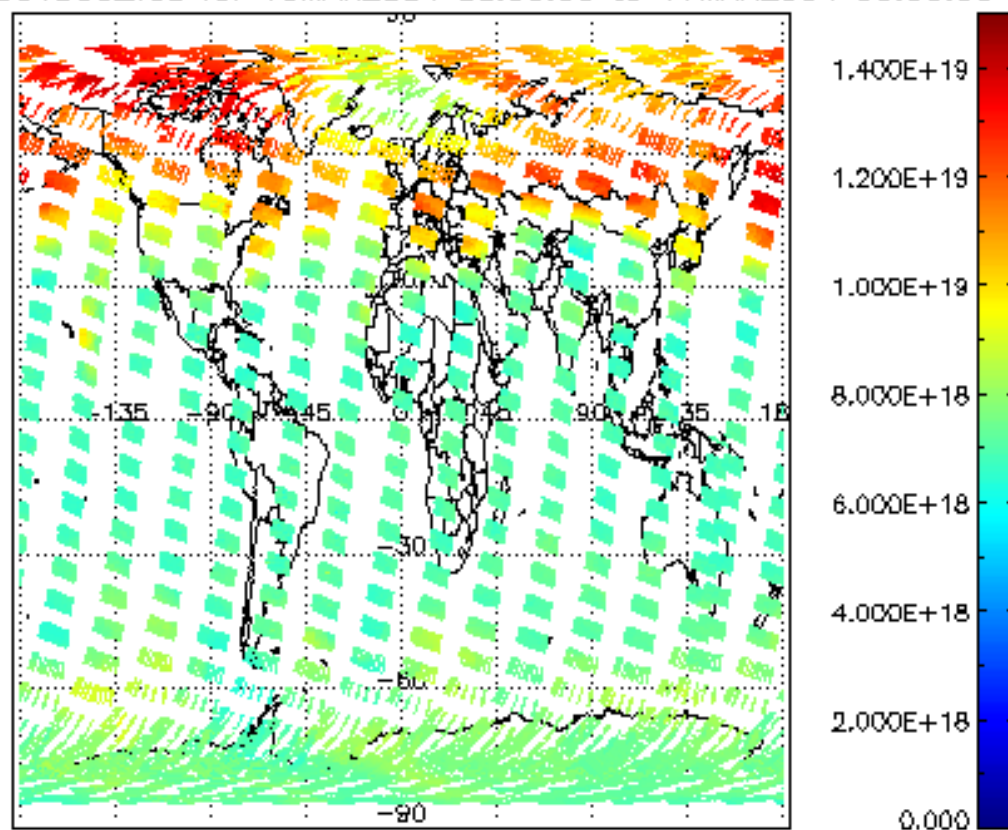


cloud_flags for 10MAR2004 00:00:00 to 11MAR2004 00:00:00

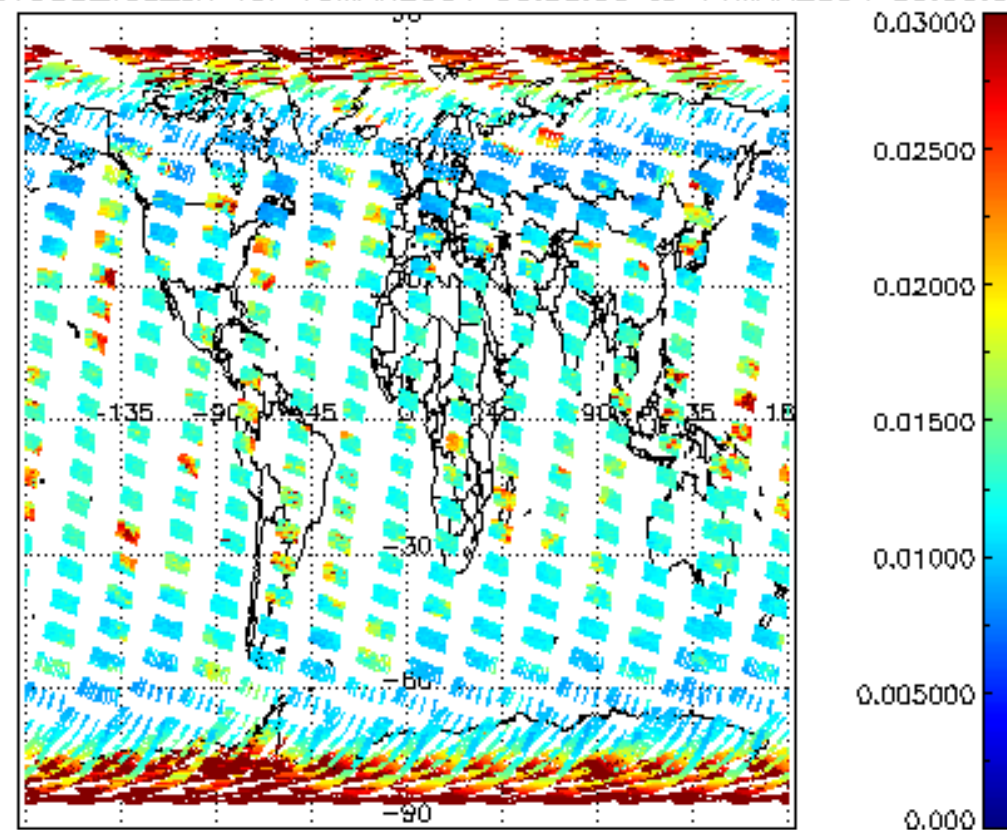




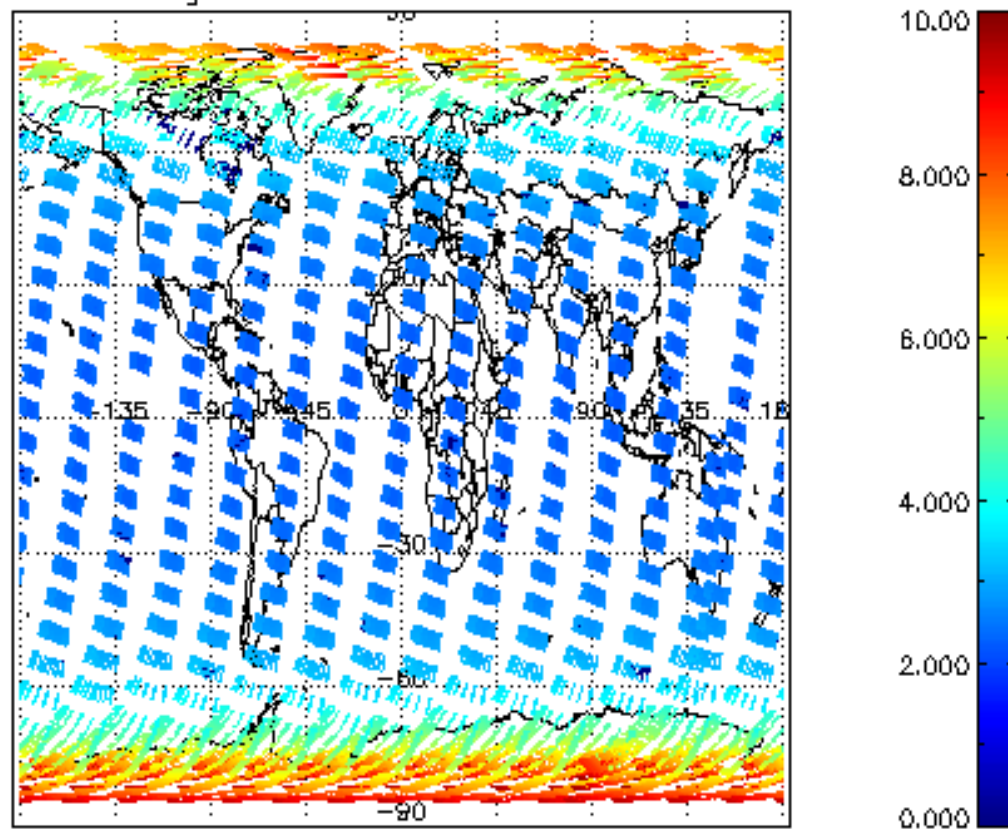
SCIOL2P_NADUV003_vcd for 10MAR2004 00:00:00 to 11MAR2004 00:00:00



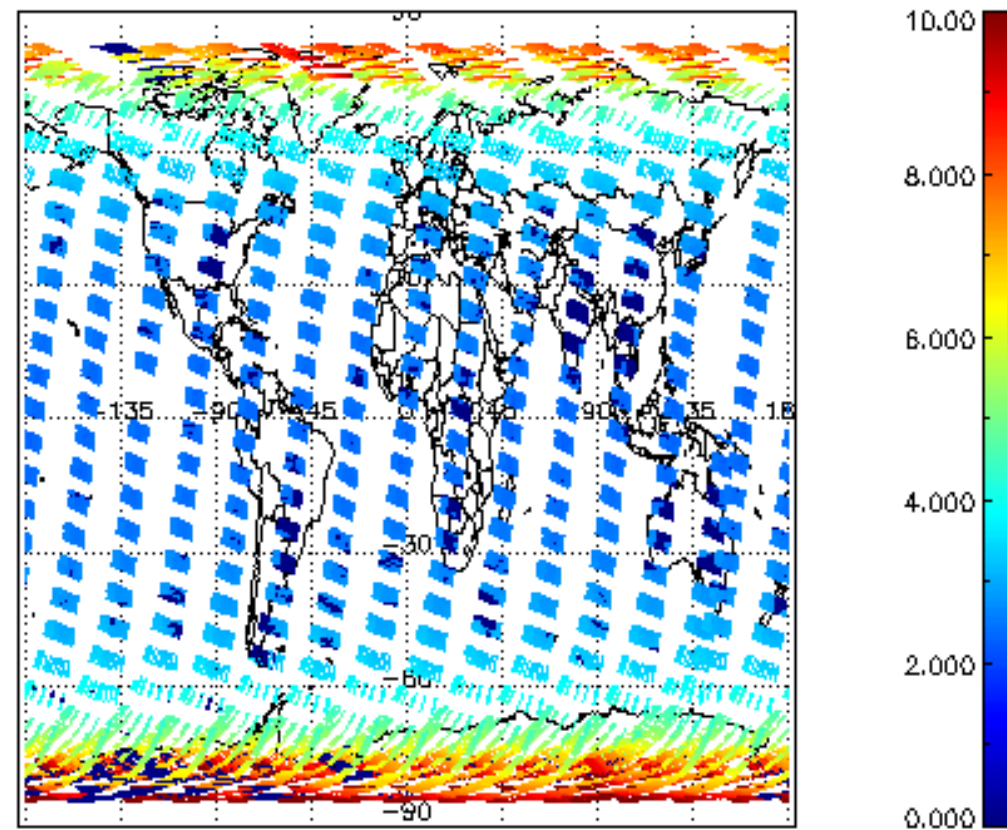
SCIOL2P_NADUV003_vcd_err for 10MAR2004 00:00:00 to 11MAR2004 00:00:00

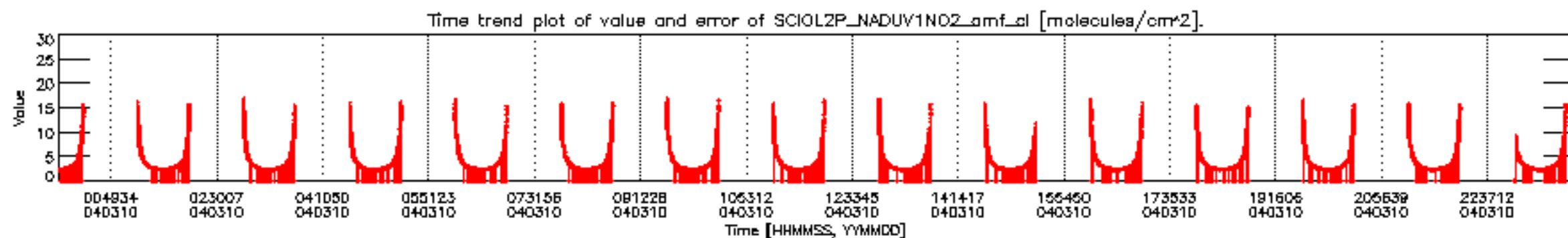
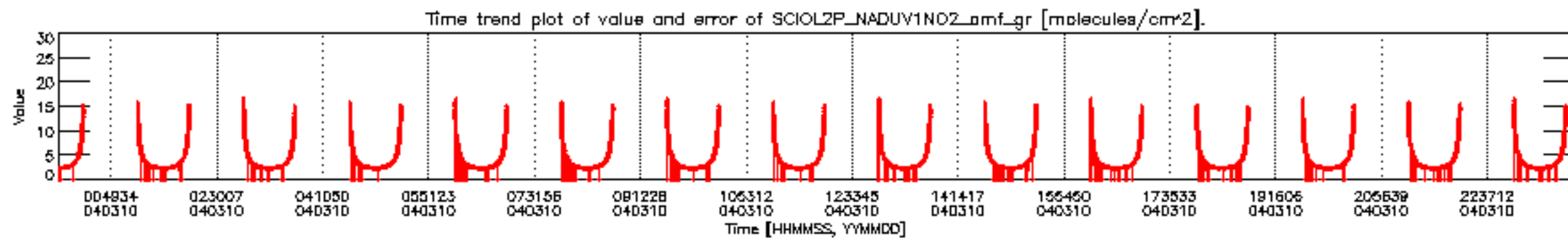
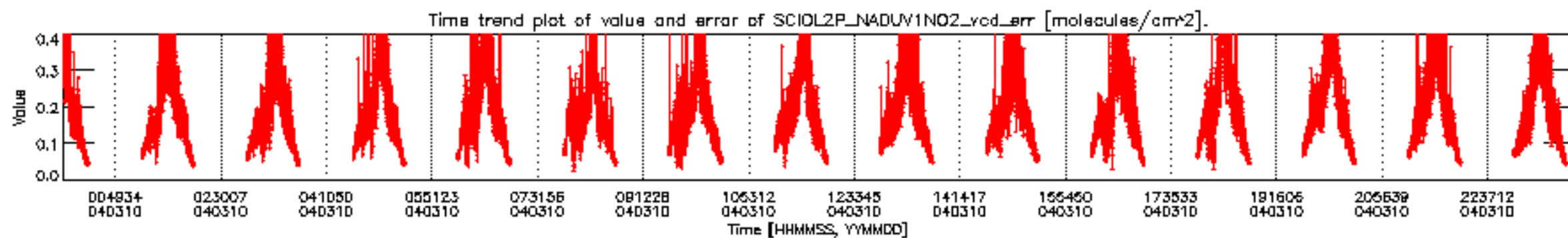
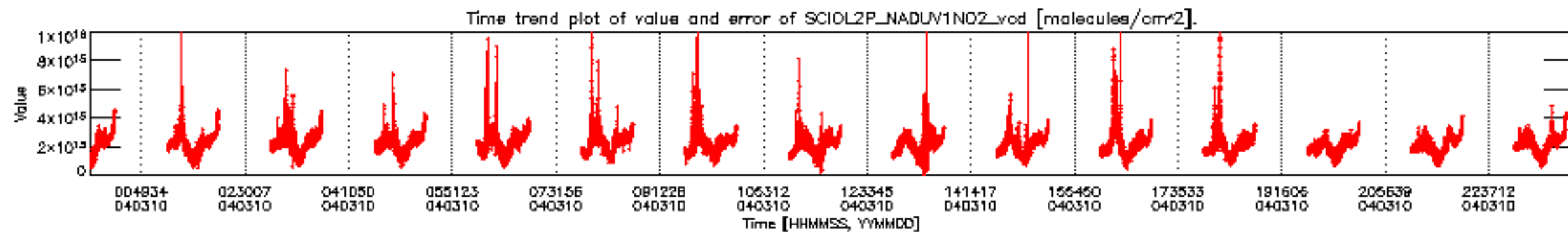


SCIOL2P_NADUV003_amf_gr for 10MAR2004 00:00:00 to 11MAR2004 00:00:00

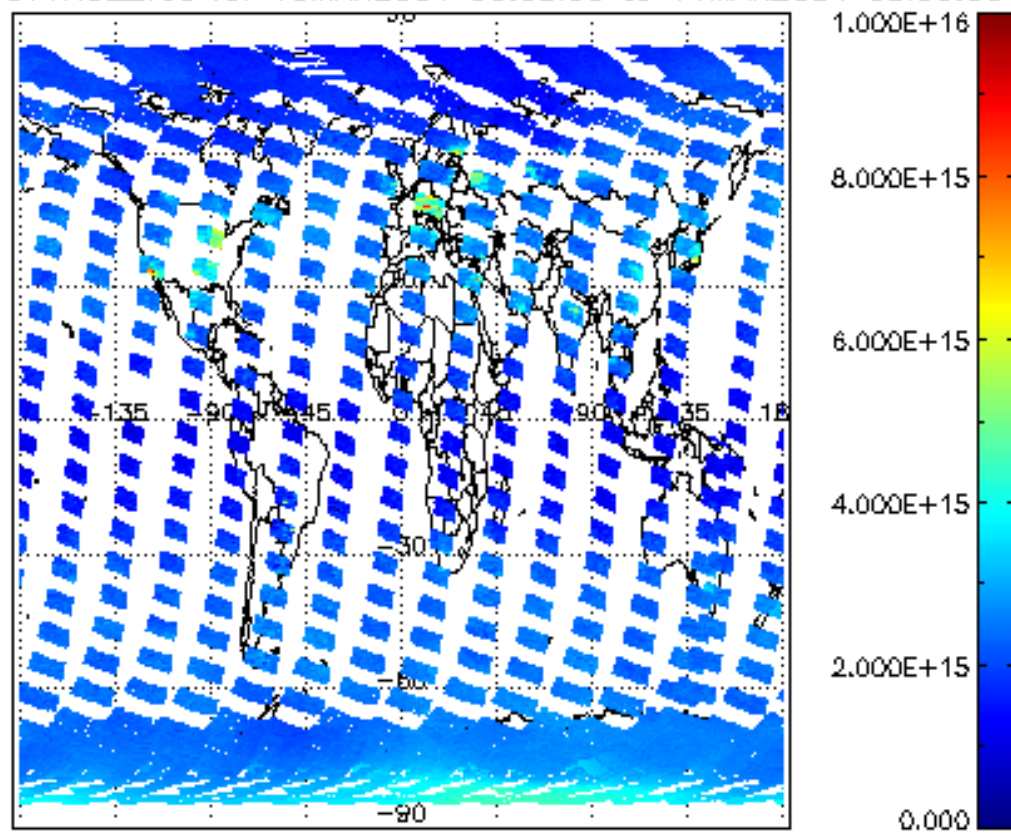


SCIOL2P_NADUV003_amf_cl for 10MAR2004 00:00:00 to 11MAR2004 00:00:00

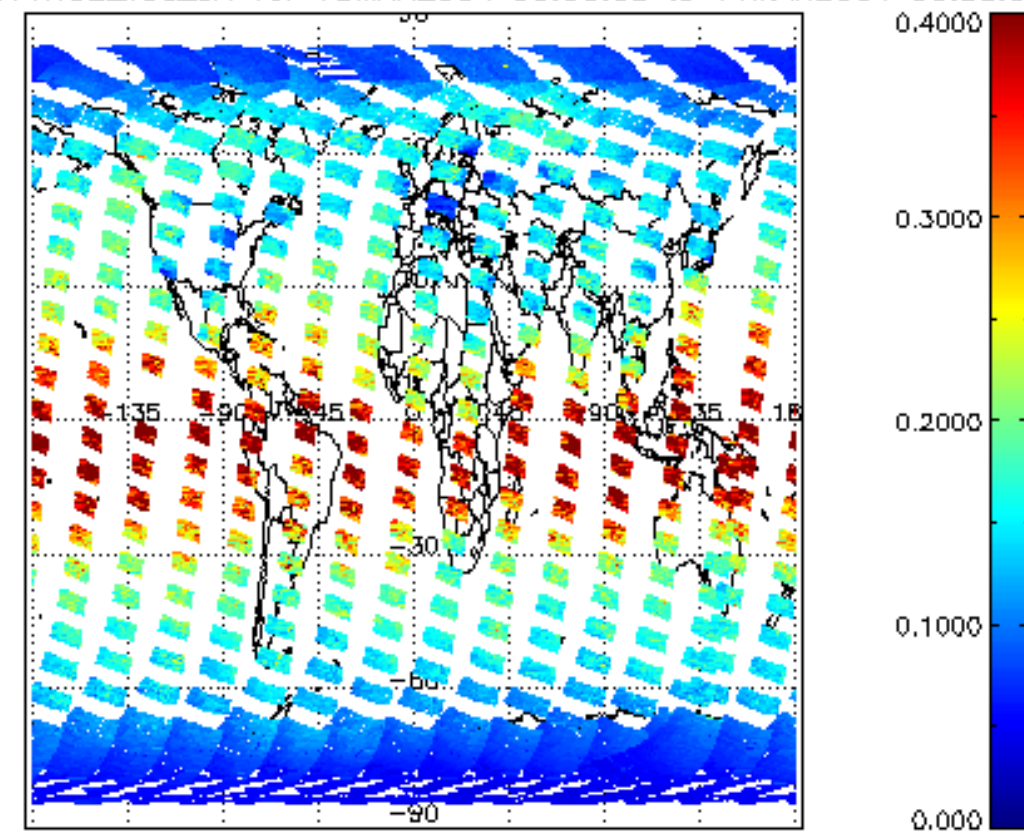




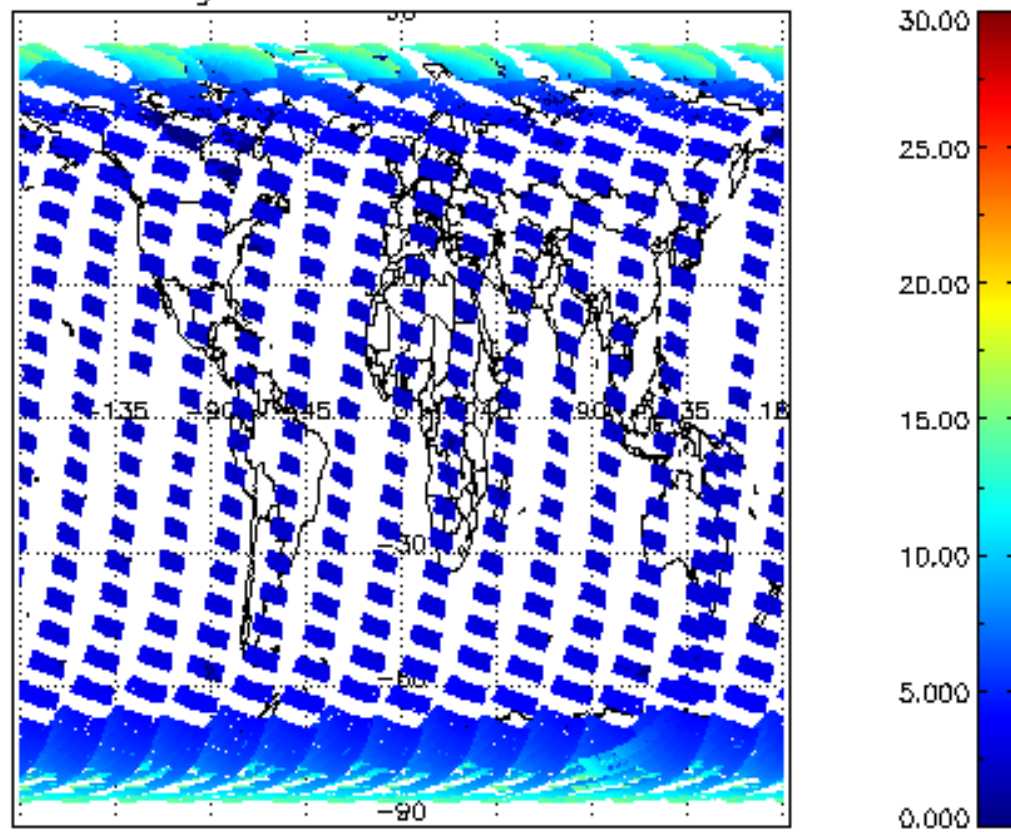
SCIOL2P_NADUV1NO2_vcd for 10MAR2004 00:00:00 to 11MAR2004 00:00:00



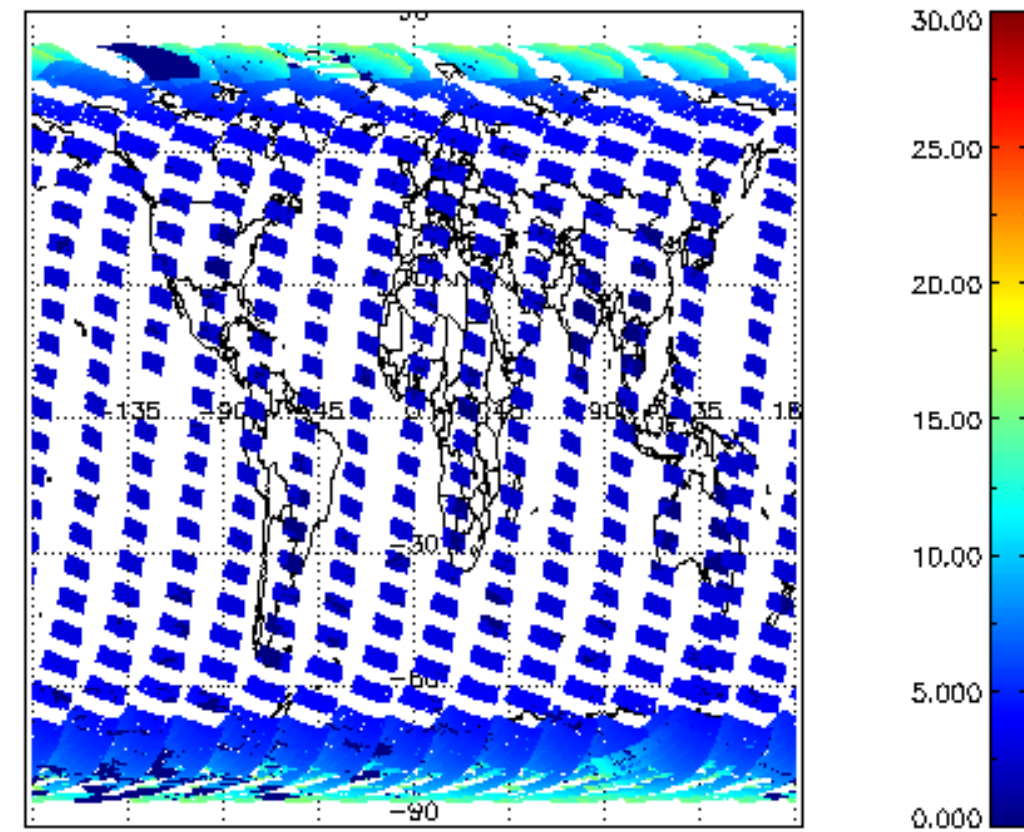
SCIOL2P_NADUV1NO2_vcd_err for 10MAR2004 00:00:00 to 11MAR2004 00:00:00



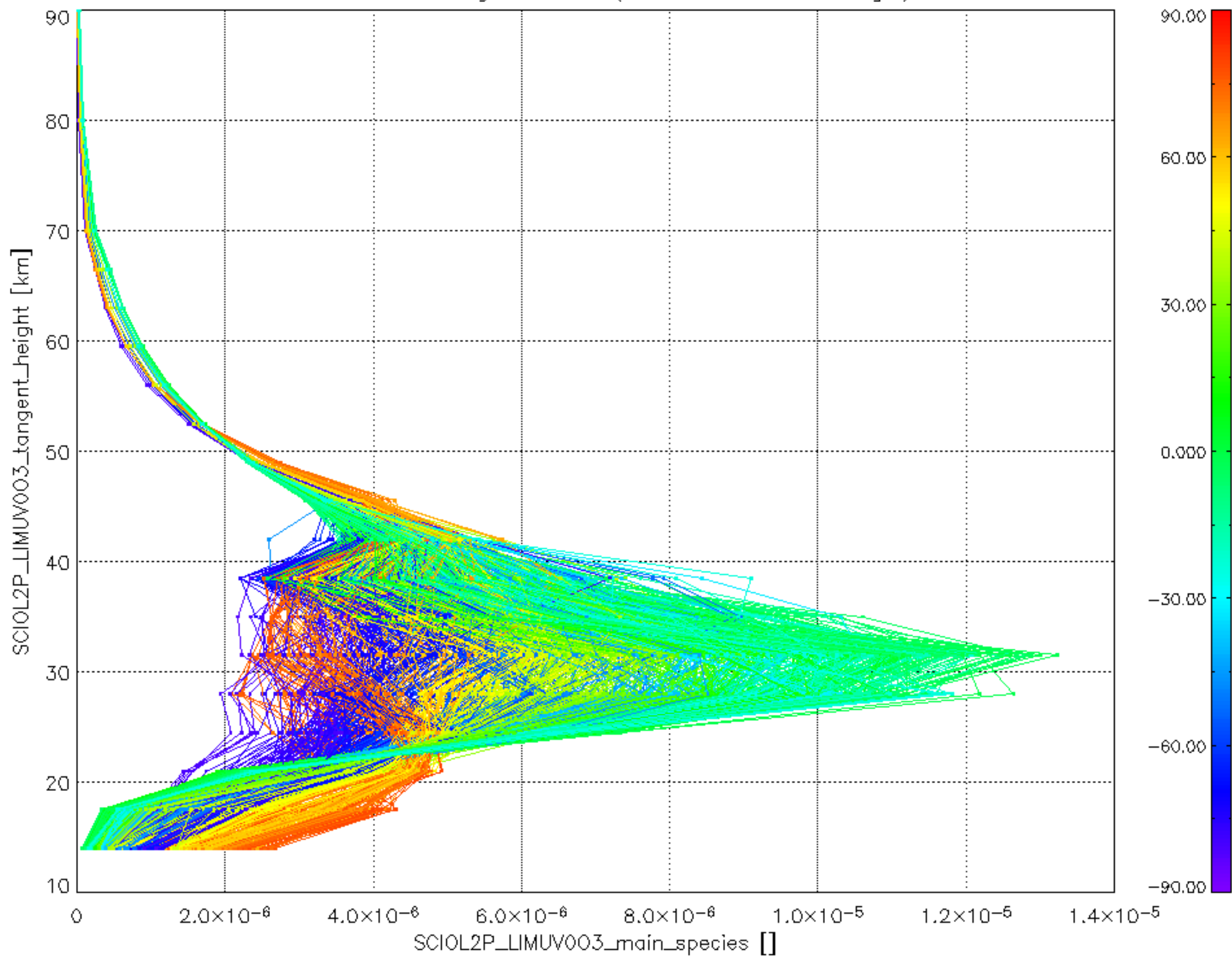
SCIOL2P_NADUV1NO2_amf_gr for 10MAR2004 00:00:00 to 11MAR2004 00:00:00



SCIOL2P_NADUV1NO2_amf_cl for 10MAR2004 00:00:00 to 11MAR2004 00:00:00



Plot of SCIOL2P_LIMUV003_main_species.tang_vmr vs. tangent height.
 Colours indicate tangent latitude (see colour bar on the right).



Plot of SCIOL2P_LIMUV1NO2_main_species.tang_vmr vs. tangent height.
 Colours indicate tangent latitude (see colour bar on the right).

