

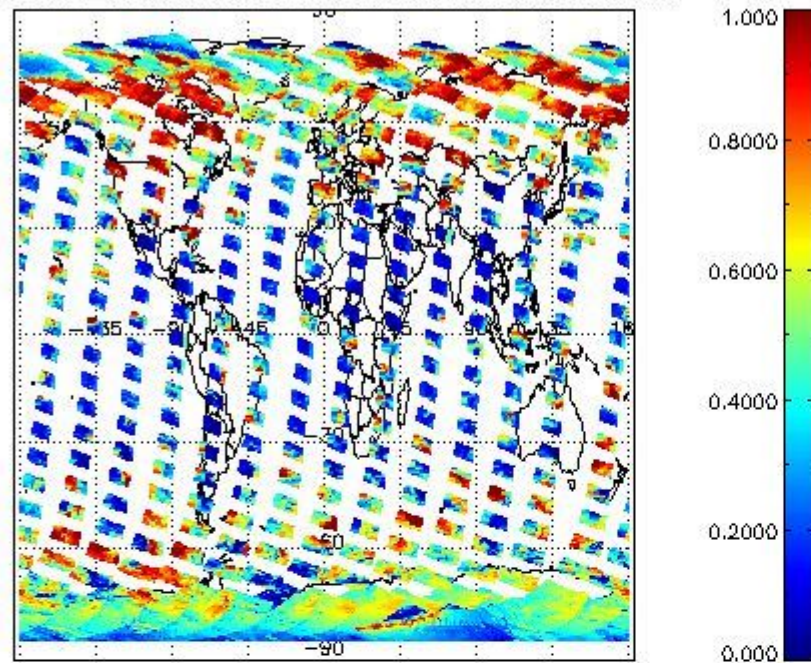
PMD_READ	116252	6.9980	8.0000	4.0000	32.000	3.1213	
PMD_READ_CL[0]	116252	0.34980	0.0000	0.0000	19.000	1.3170	-
PMD_READ_CL[1]	116252	0.32378	0.0000	0.0000	32.000	1.4170	-
CL_TOP_HEIGHT	106231	4.1856	2.5320	0.0000	17.000	3.9579	km
CL_TOP_HEIGHT_ERR	0	---	---	---	---	---	---
CL_OPT_DEPTH	106231	48.289	34.151	0.0000	101.00	38.363	km
CL_OPT_DEPTH_ERR	0	---	---	---	---	---	---
CL_TYPE_FLAGS	116252	11100000	11100000	11100000	11100000	0.0000	flags. Bit definition = 0: low or high cloud; 1: ice or water cloud; 2: thick or thin cloud; 3-15: not used
CLOUD_FLAGS	116252	11000110	11000100	11000000	11100000	2370.8	flags
AERO_ABSO_IND	116252	0.79744	0.56896	-3.7904	10.353	1.2022	
AERO_IND_DIAG	116252	0.0000	0.0000	0.0000	0.0000	0.0000	
AERO_FLAGS	116252	01100111	11000000	00000000	11000000	24493.	flags

Time and geolocation plots:

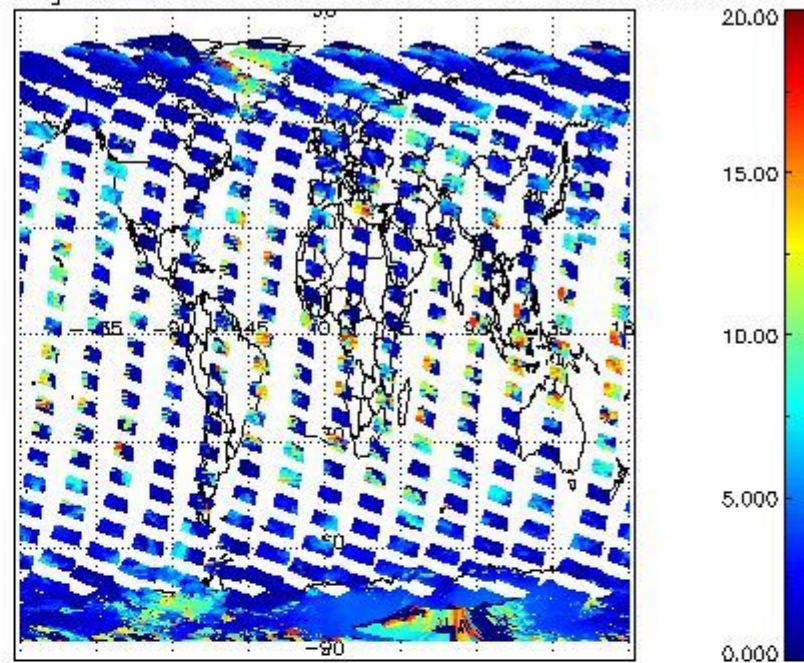
Plots are available for the following parameters:

Number	Data item ID
0	cl_frac
1	cl_top_height
2	cl_opt_depth
3	cloud_flags

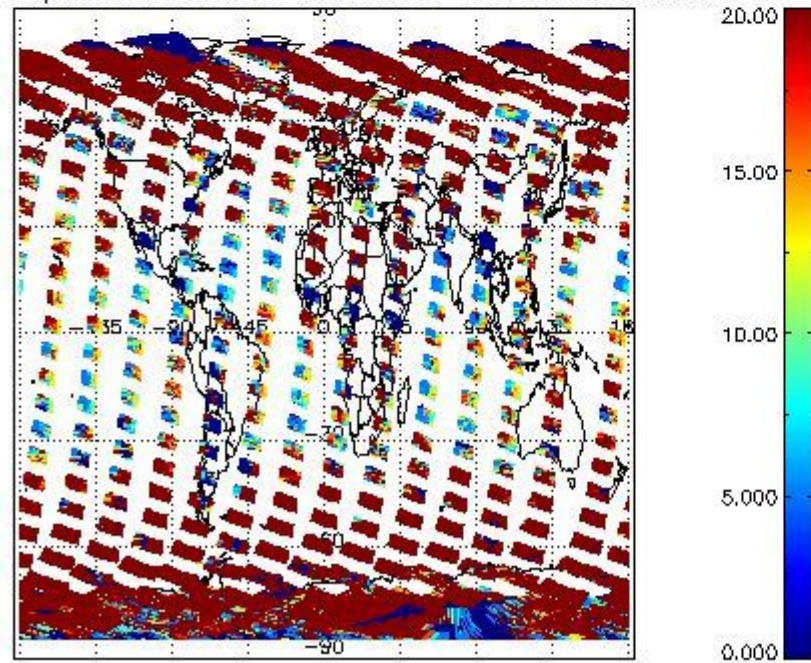
cLfrac for 25FEB2004 00:00:00 to 26FEB2004 00:00:00



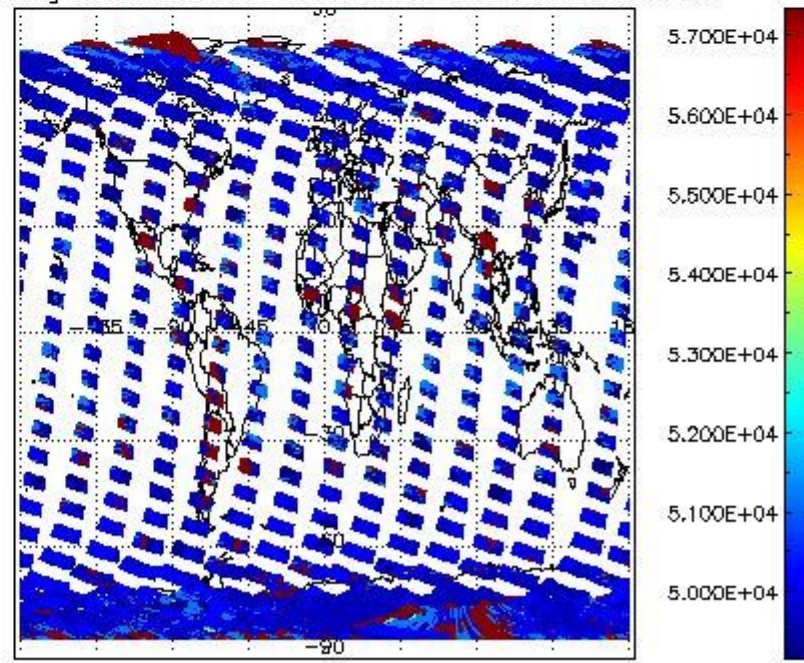
cL_top_height for 25FEB2004 00:00:00 to 26FEB2004 00:00:00



cLopt_depth for 25FEB2004 00:00:00 to 26FEB2004 00:00:00



cloud_flags for 25FEB2004 00:00:00 to 26FEB2004 00:00:00



2.2.2 Nadir

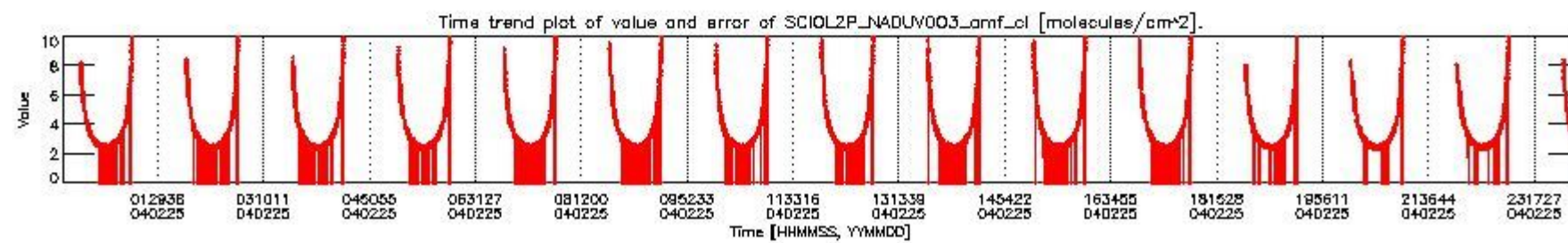
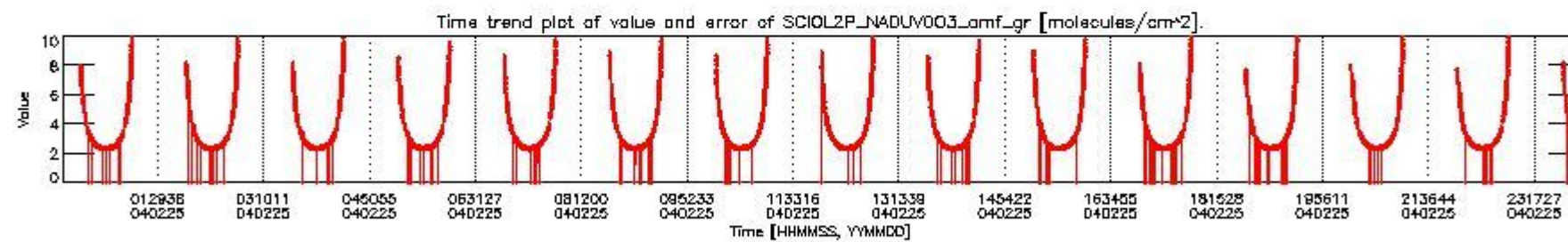
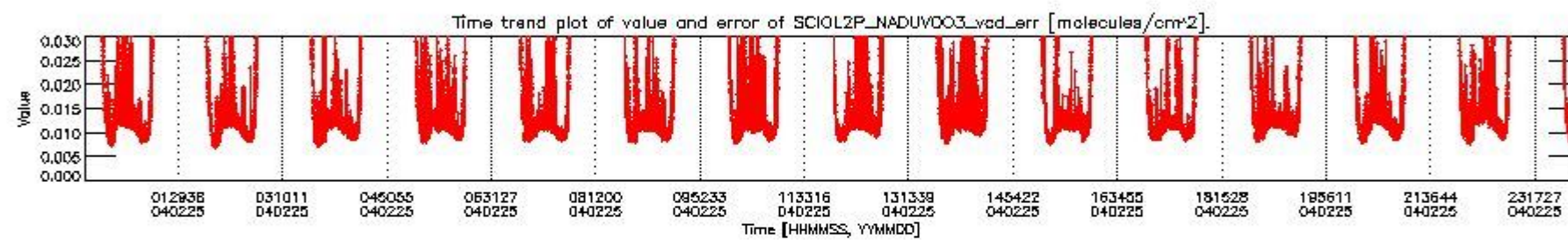
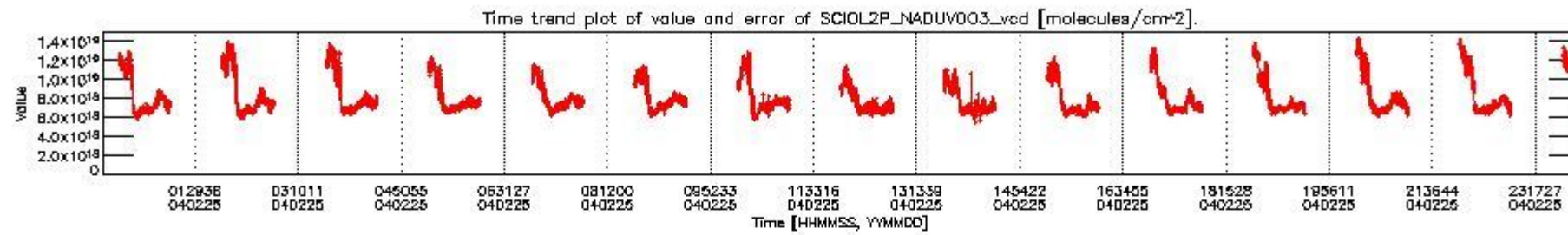
This section shows information about product quality of nadir measurements, in particular the quality of retrieved species.

The following data items are currently included into this section:

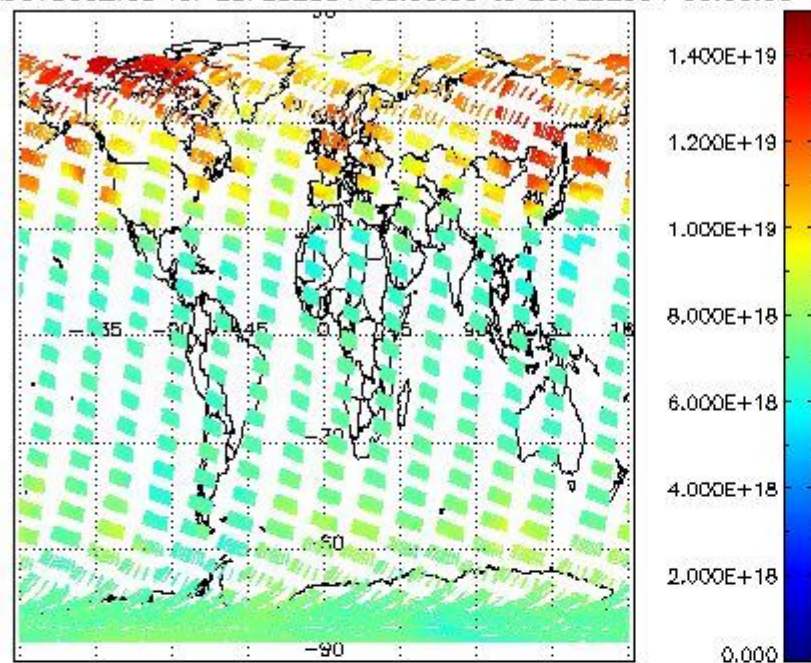
Number	Data item ID
0	SCIOL2P_NADUV003_vcd
1	SCIOL2P_NADUV003_vcd_err
2	SCIOL2P_NADUV003_amf_gr
3	SCIOL2P_NADUV003_amf_cl

4	SCIOL2P_NADUV1NO2_vcd
5	SCIOL2P_NADUV1NO2_vcd_err
6	SCIOL2P_NADUV1NO2_amf_gr
7	SCIOL2P_NADUV1NO2_amf_cl

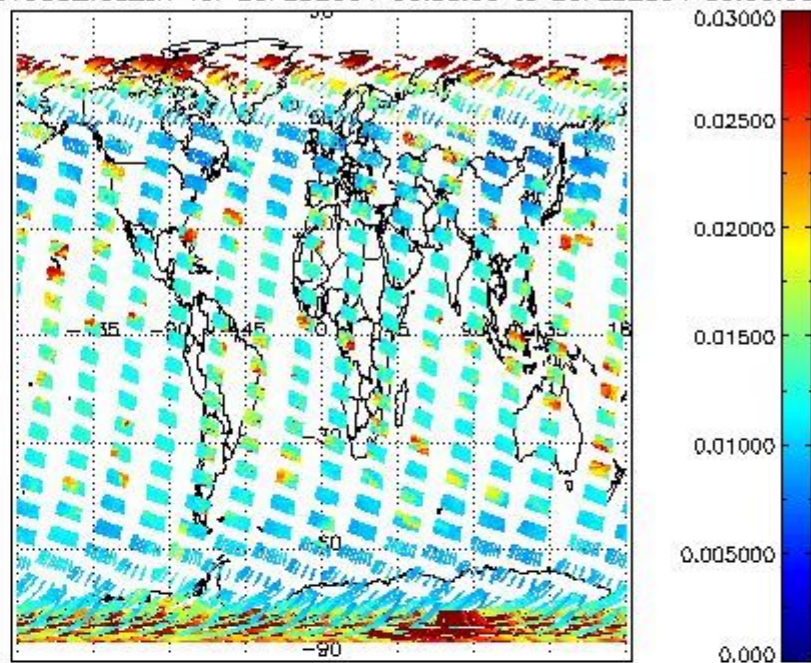
Data is presented both in time trend plots and world map plots, in order to show variations with time and geolocation. The vertical dotted lines in the time trend plots indicate orbits. The orbit times on the X-axis are estimated sensing_start time as suggested by the product sensing_start time in the MPH.



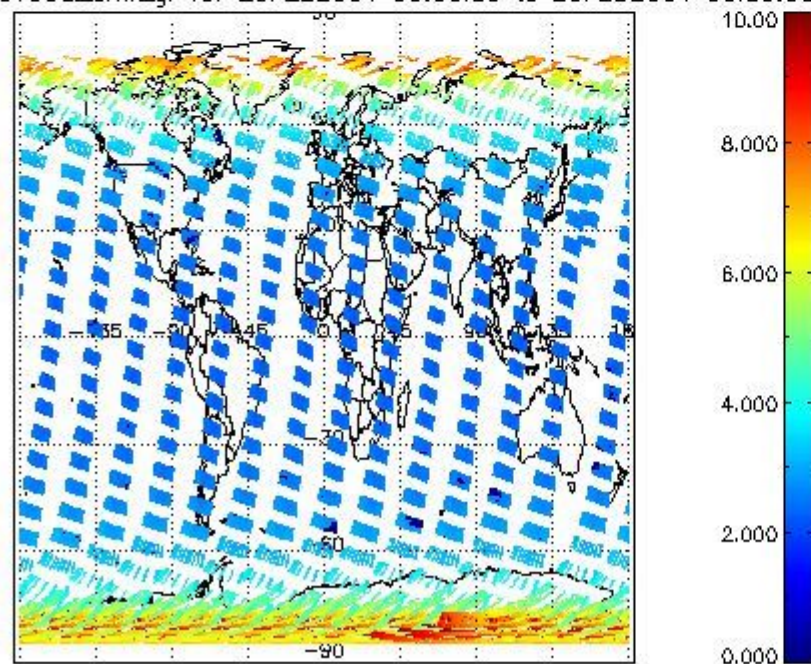
SCIOL2P_NADUV003_vcd for 25FEB2004 00:00:00 to 26FEB2004 00:00:00



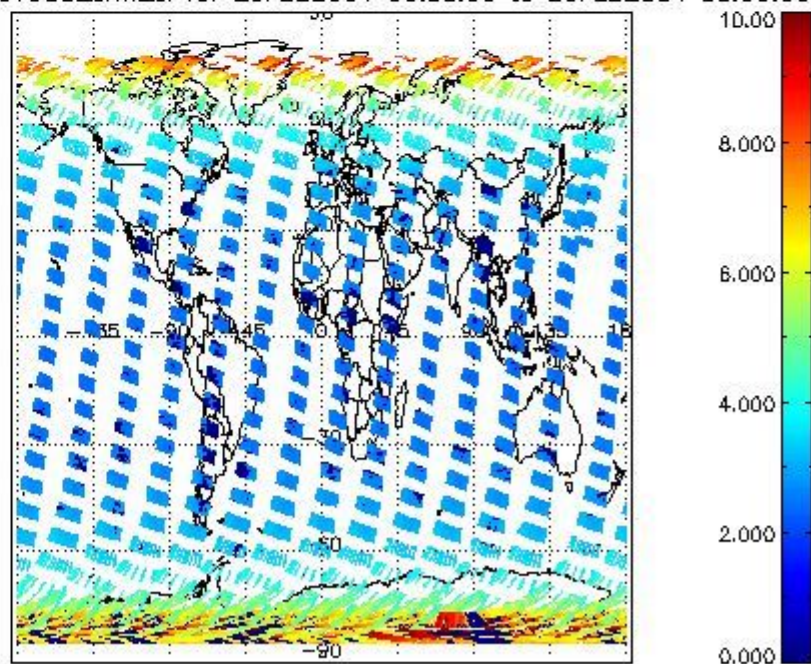
SCIOL2P_NADUV003_vcd_err for 25FEB2004 00:00:00 to 26FEB2004 00:00:00

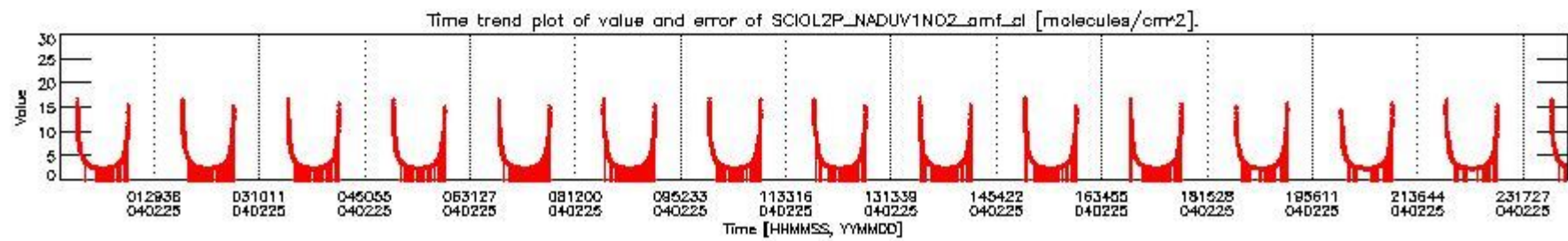
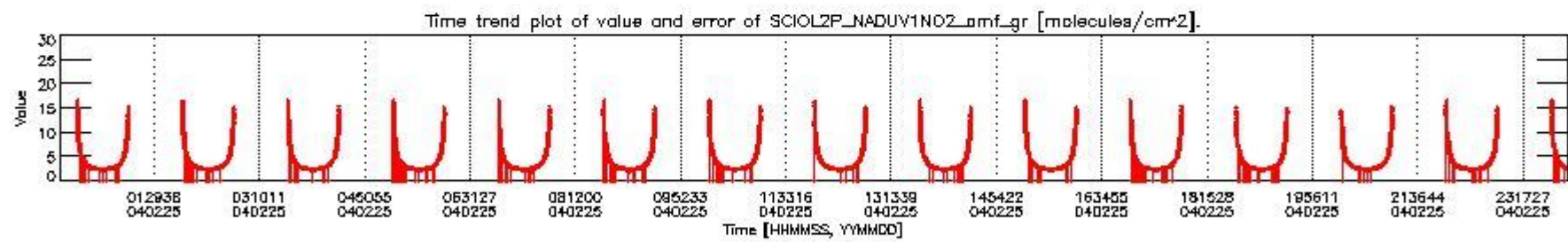
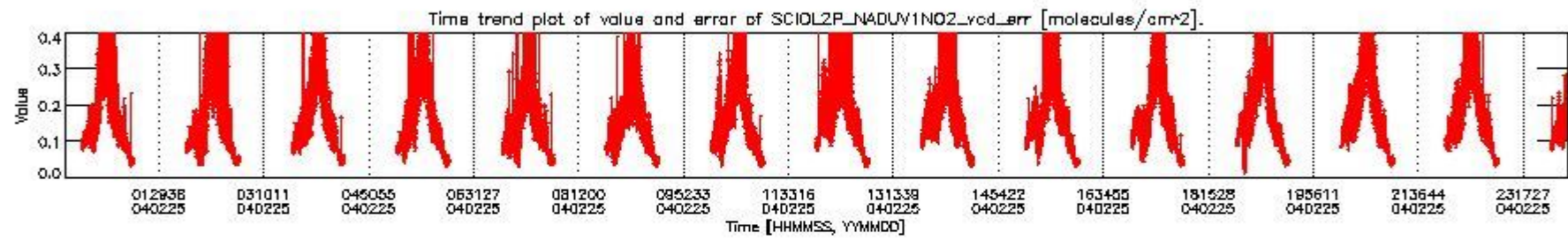
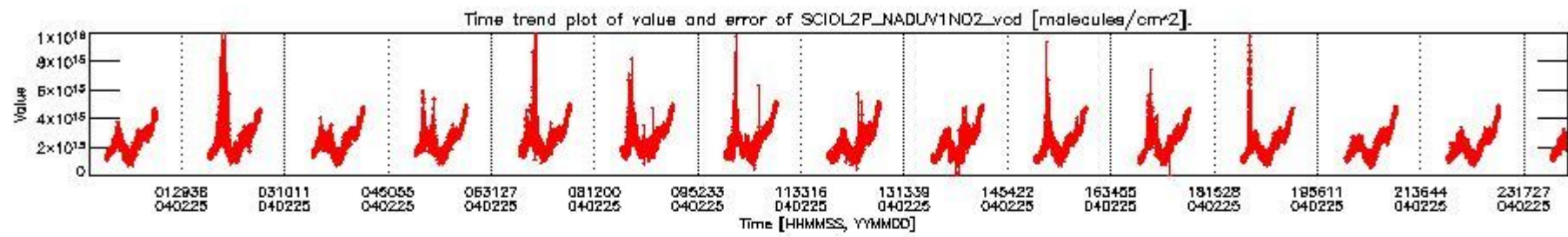


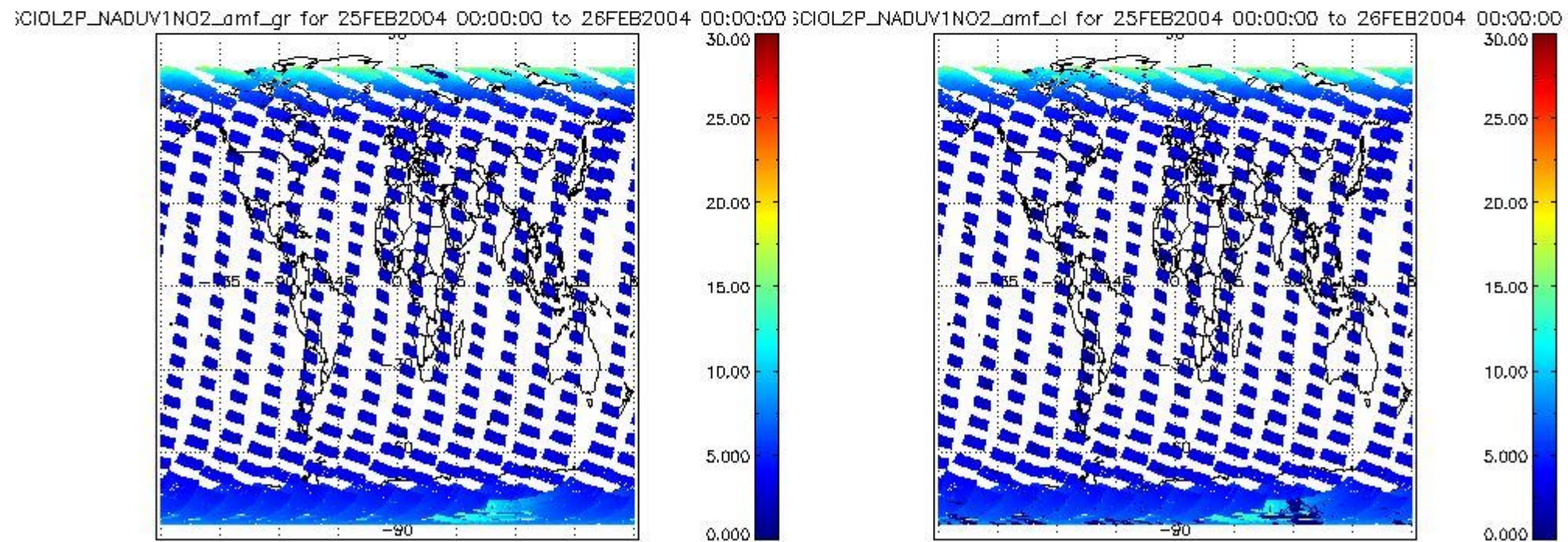
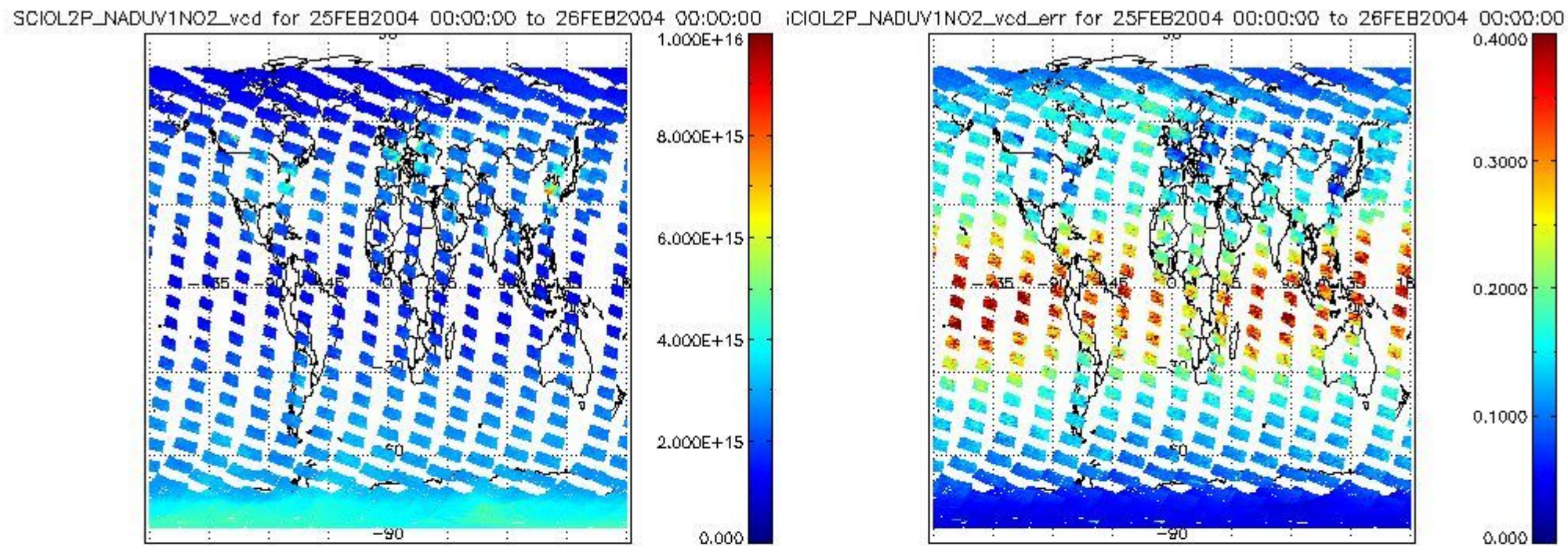
SCIOL2P_NADUV003_amf_gr for 25FEB2004 00:00:00 to 26FEB2004 00:00:00



SCIOL2P_NADUV003_amf_cl for 25FEB2004 00:00:00 to 26FEB2004 00:00:00







2.2.3 Limb

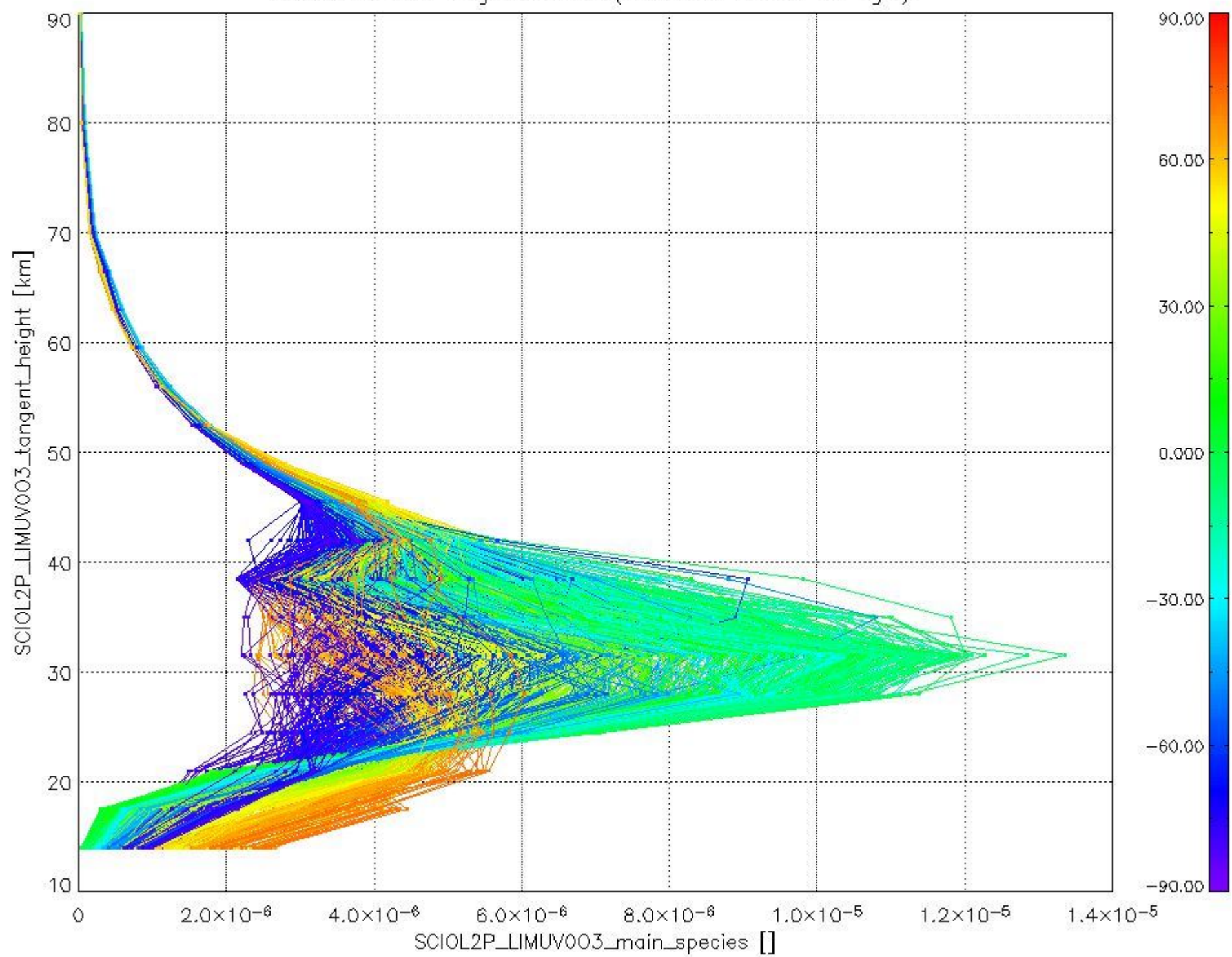
This section shows information about product quality of the limb retrievals, in particular the quality of retrieved species.

The following data items are currently included into this section:

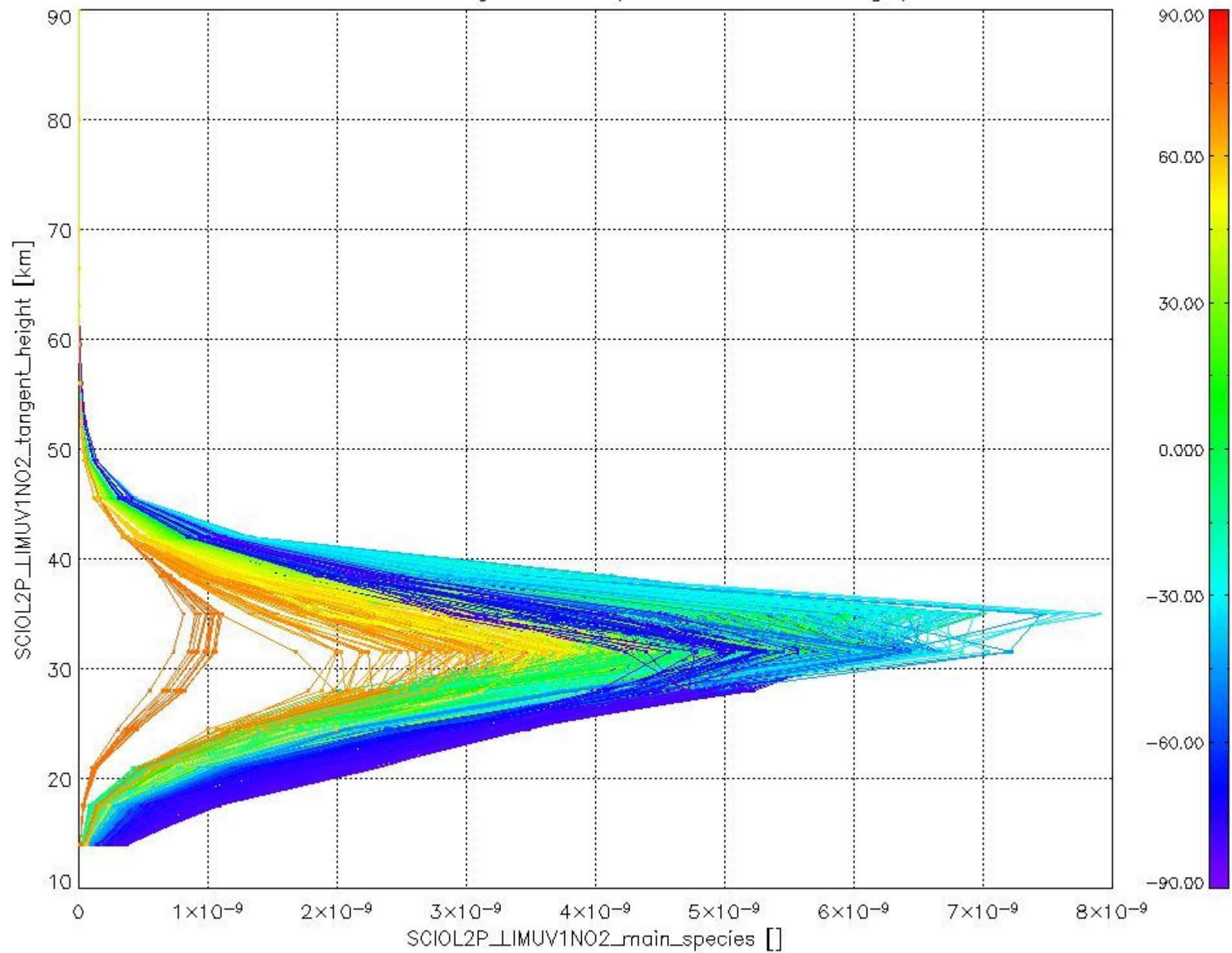
Number	Data item ID
0	SCIOL2PLIMUV003_main_species
1	SCIOL2PLIMUV1NO2_main_species

The following plots shows for each species the tangent volume mixing ratio vs. tangent height. Colours indicate tangent latitude.

Plot of SCIOL2P_LIMUV003_main_species.tang_vmr vs. tangent height.
 Colours indicate tangent latitude (see colour bar on the right).



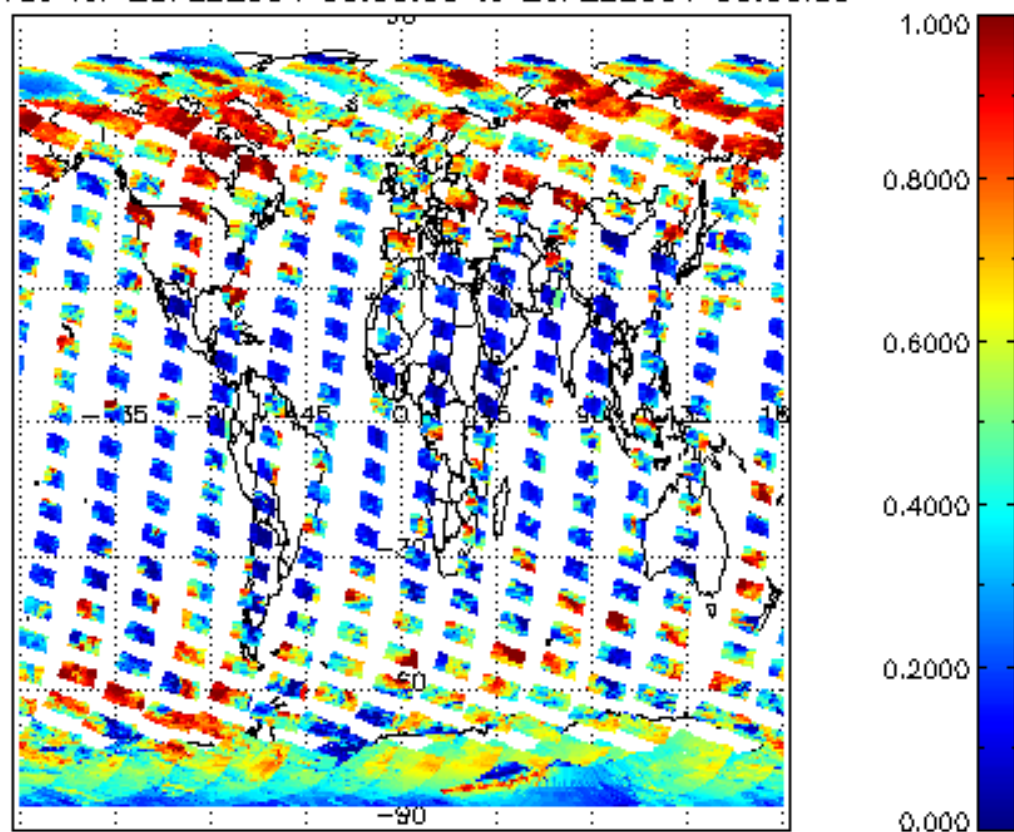
Plot of SCIOL2P_LIMUV1NO2_main_species.tang_vmr vs. tangent height.
Colours indicate tangent latitude (see colour bar on the right).



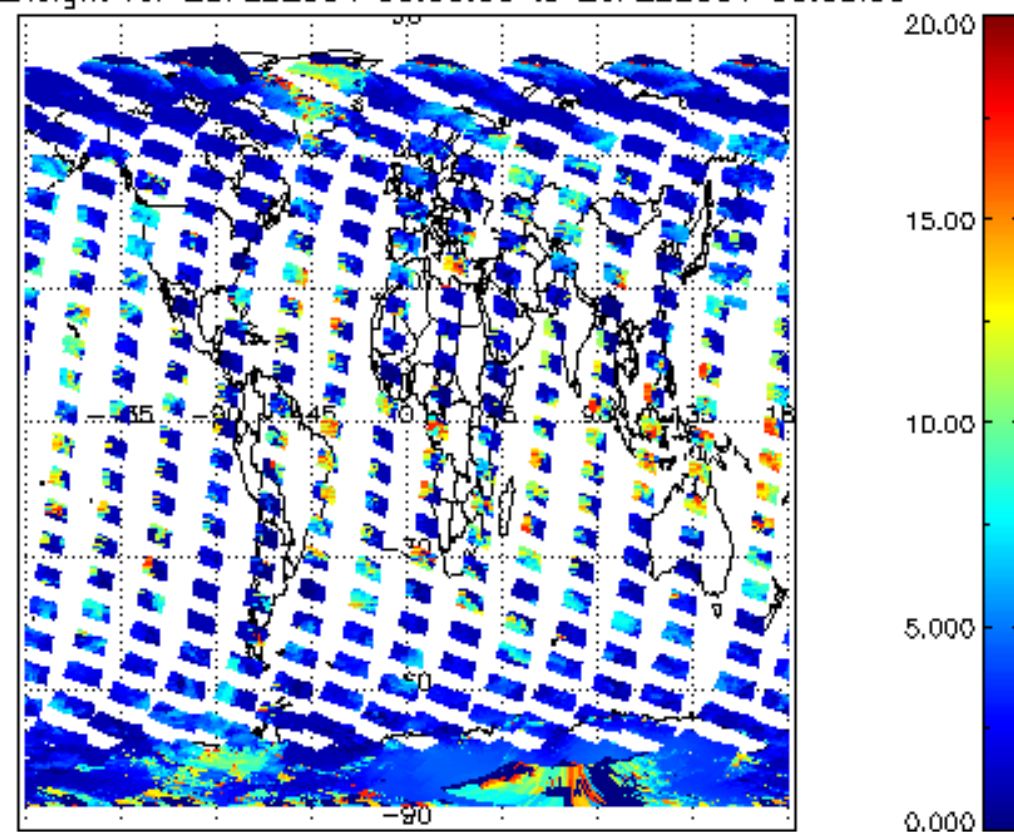
2.3 ADF monitoring

Number	ADF
	IN_ (INITIALISATION_FILE)
0	SCI_IN_AXNPDE20070629_092400_20070720_000000_20991231_235959
	ECF (ECMWF_FILE)
1	NOT USED

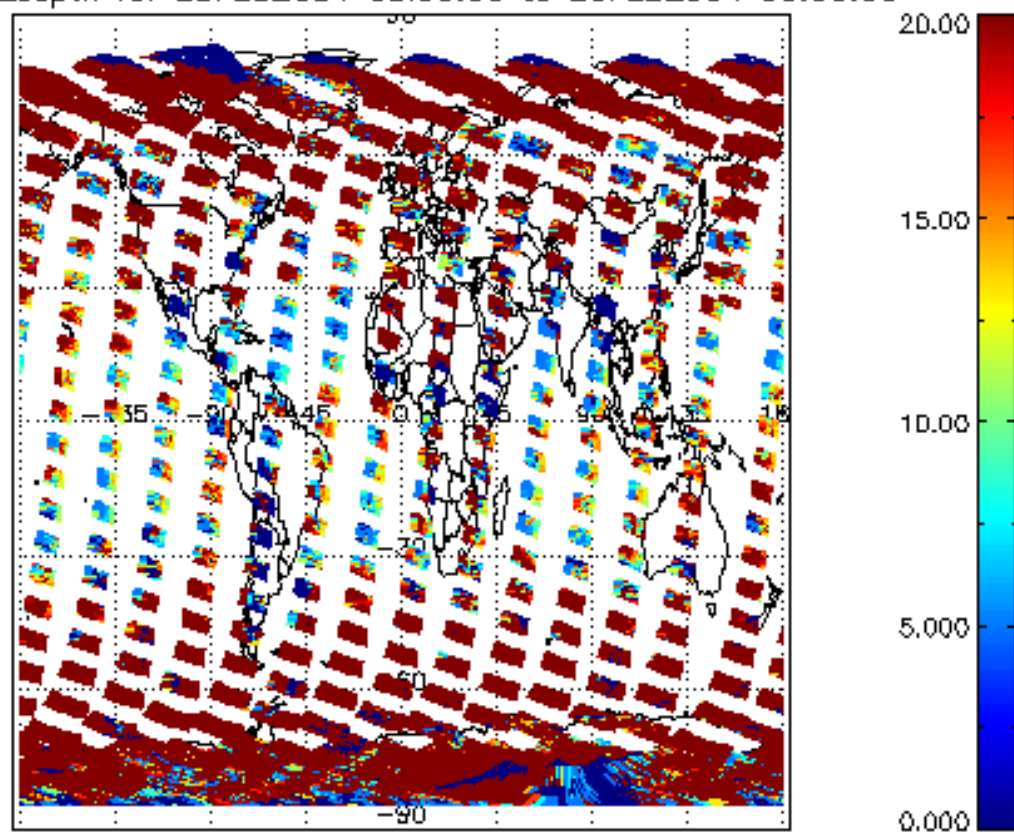
cl_frac for 25FEB2004 00:00:00 to 26FEB2004 00:00:00



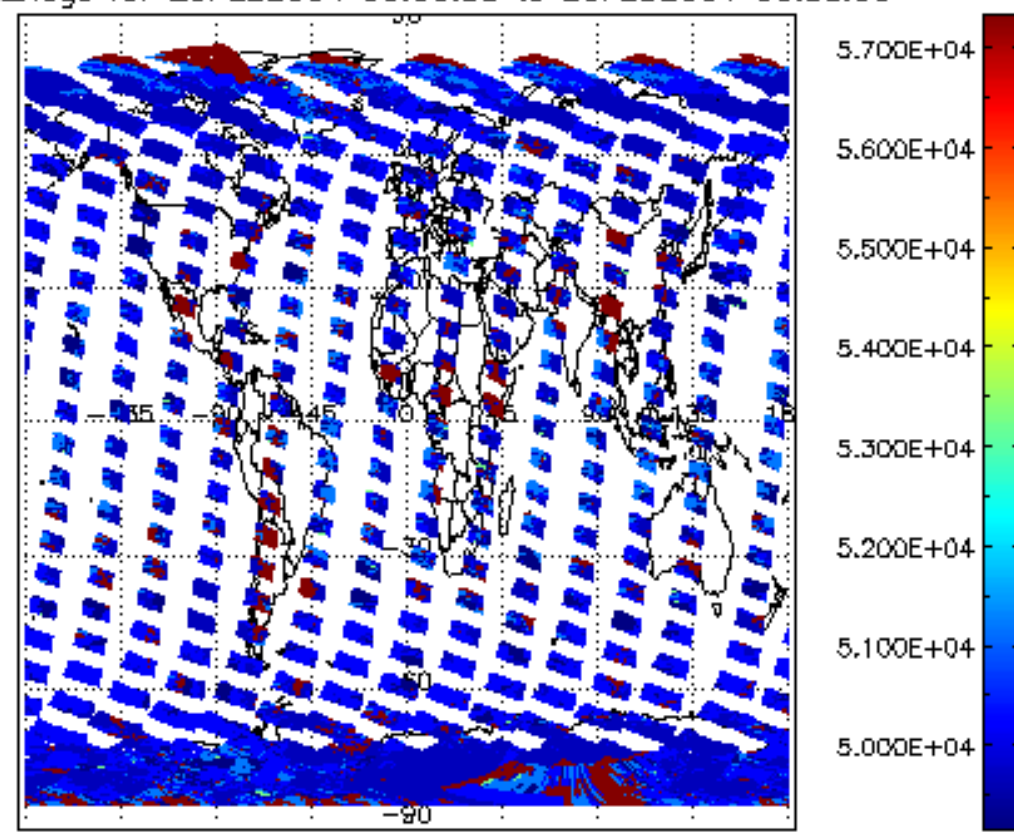
cl_top_height for 25FEB2004 00:00:00 to 26FEB2004 00:00:00

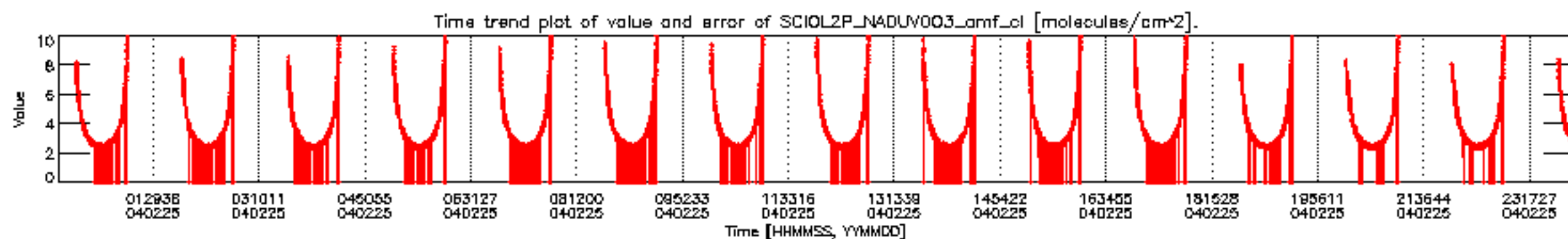
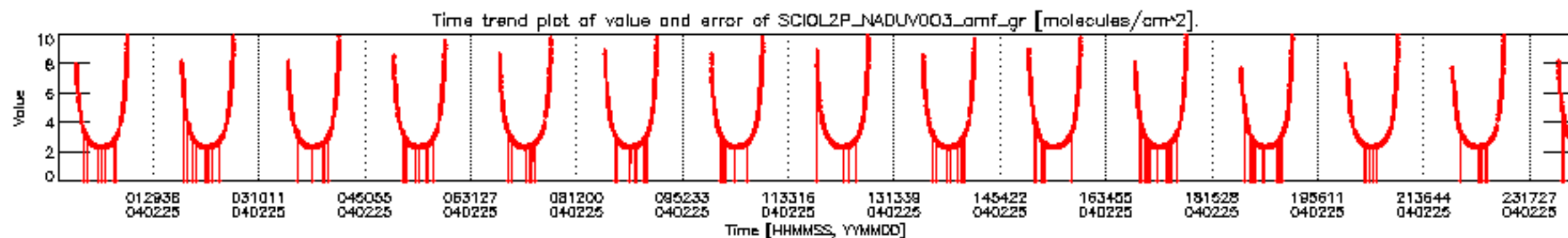
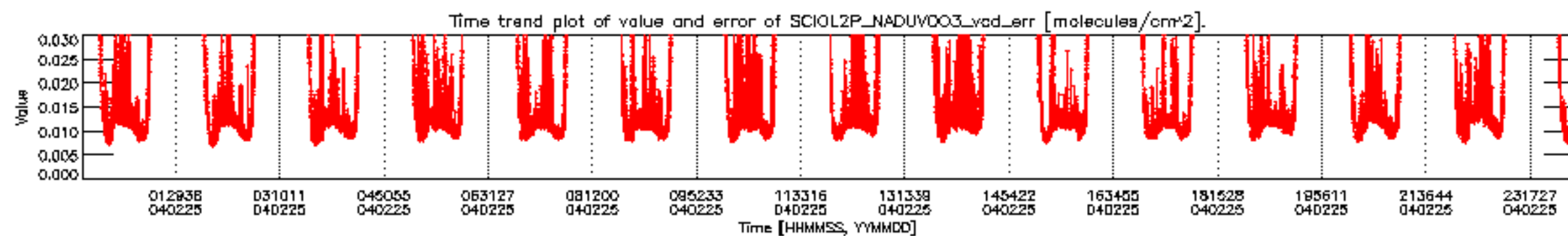
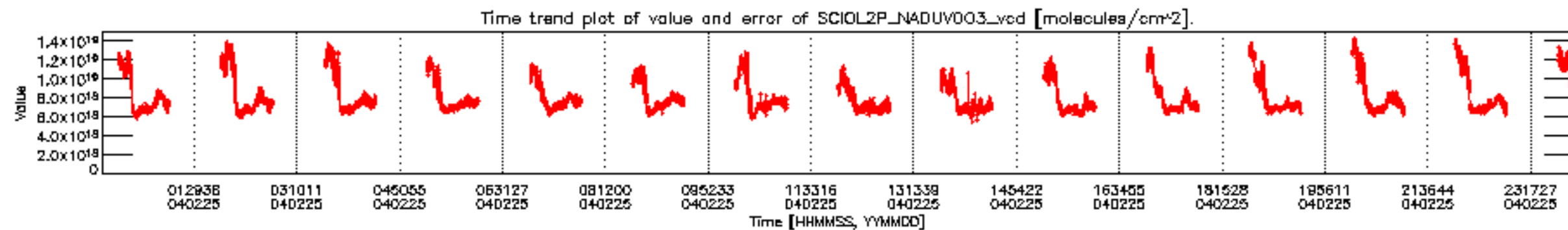


cl_opt_depth for 25FEB2004 00:00:00 to 26FEB2004 00:00:00

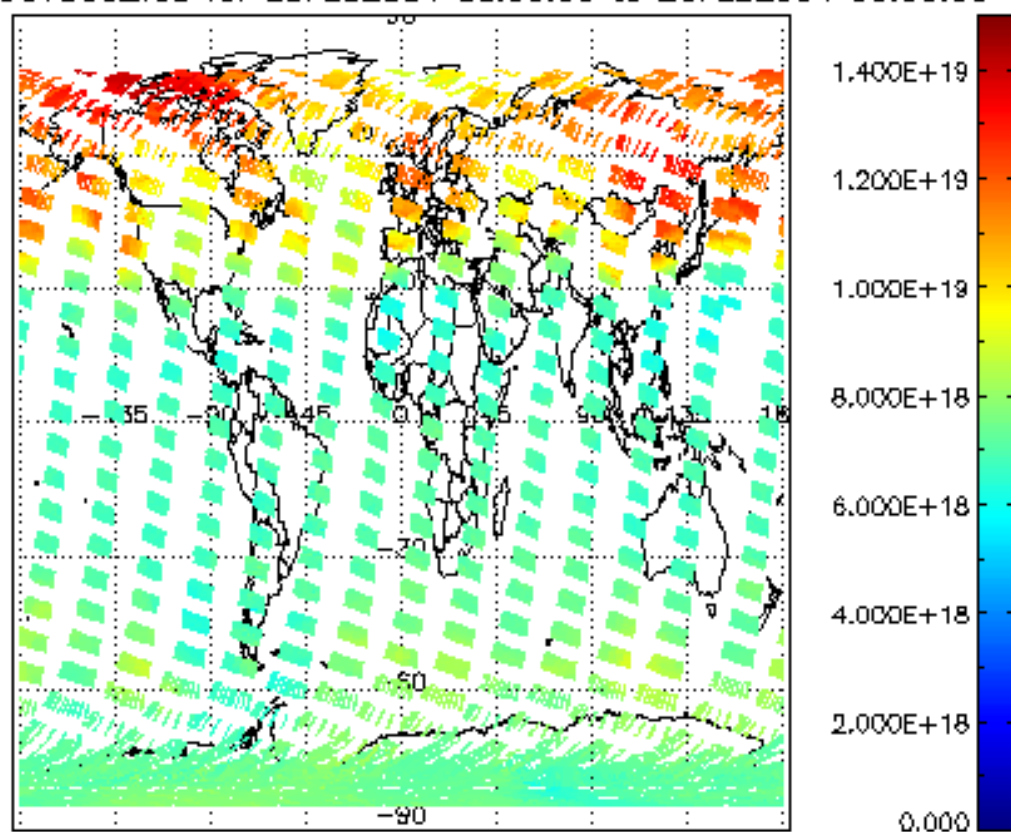


cloud_flags for 25FEB2004 00:00:00 to 26FEB2004 00:00:00

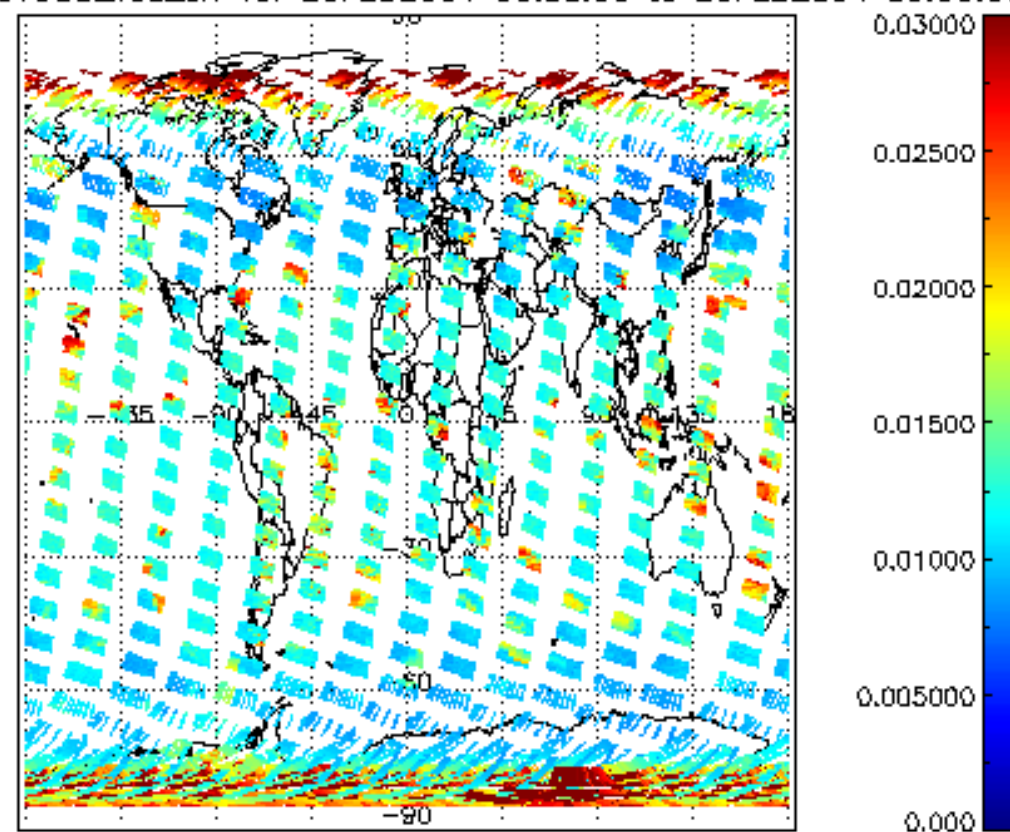




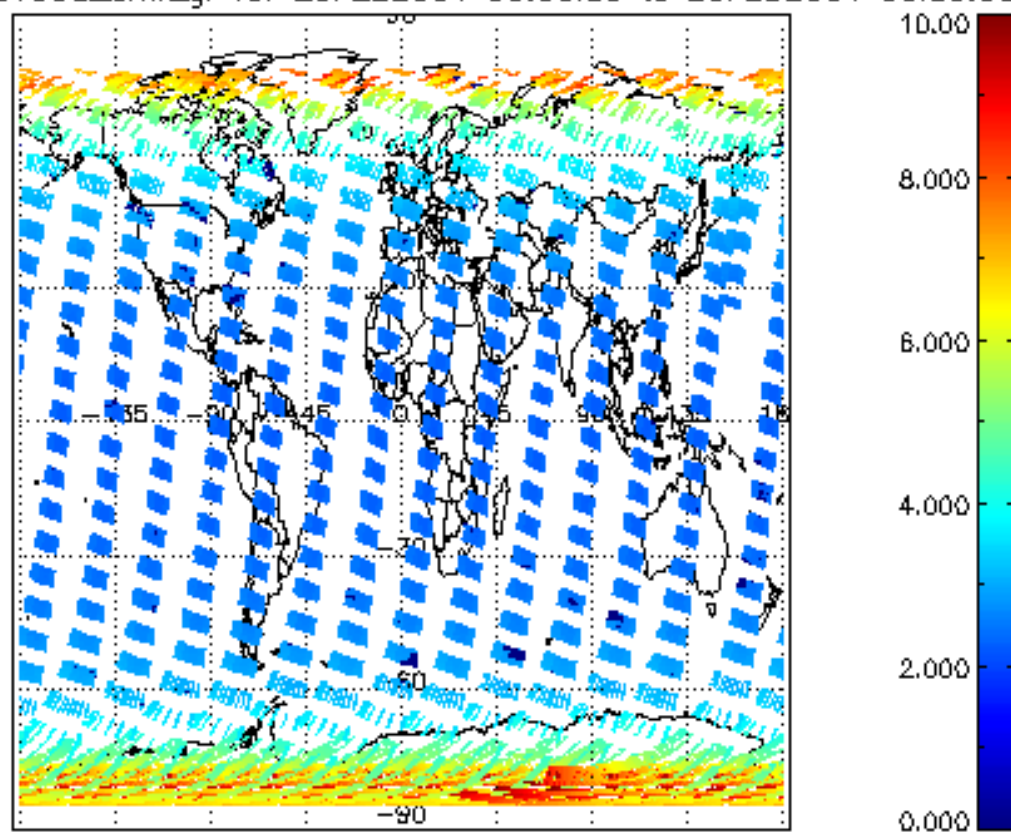
SCIOL2P_NADUV003_vcd for 25FEB2004 00:00:00 to 26FEB2004 00:00:00



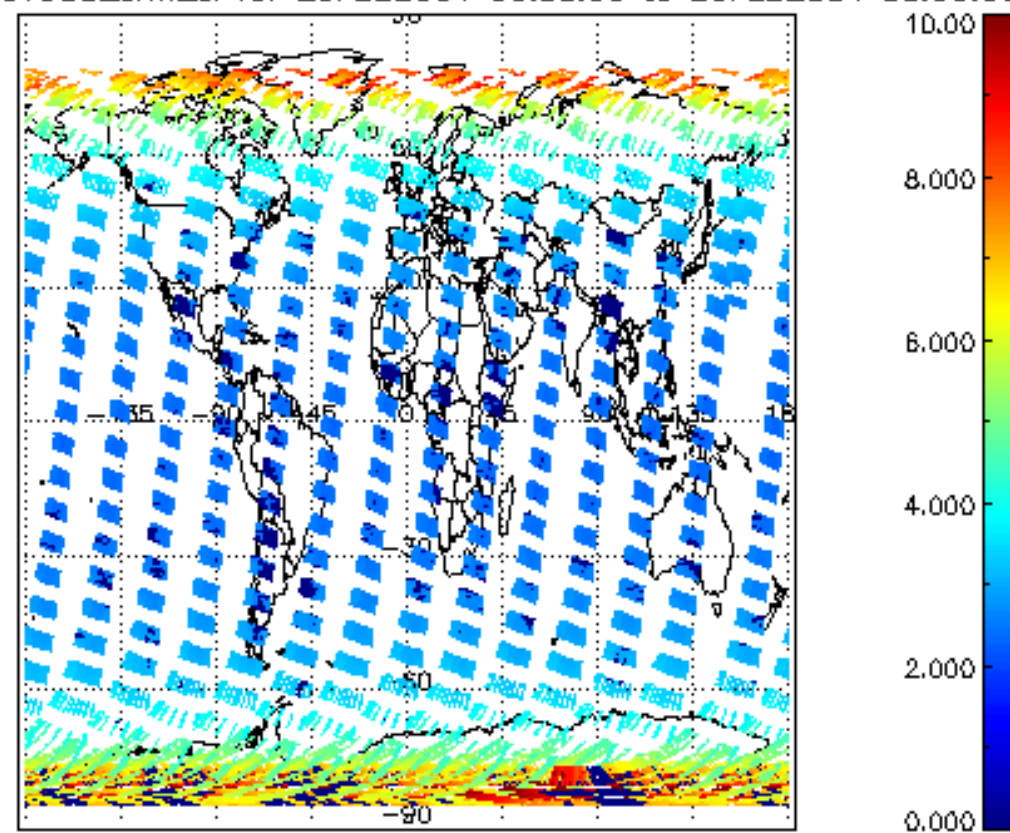
SCIOL2P_NADUV003_vcd_err for 25FEB2004 00:00:00 to 26FEB2004 00:00:00

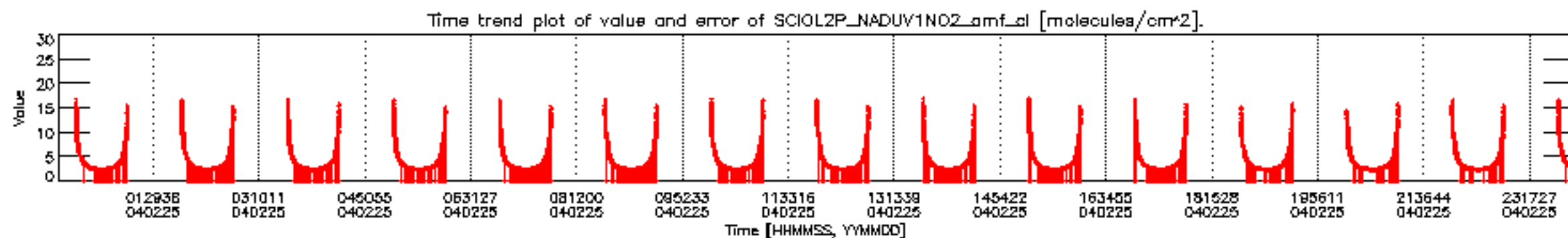
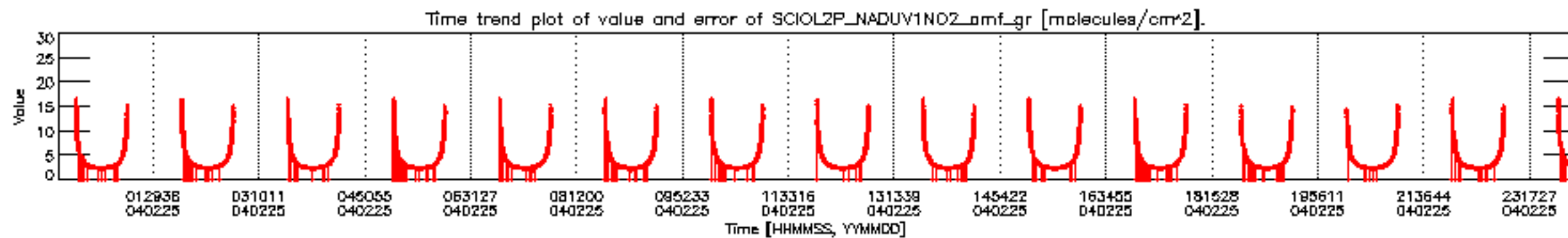
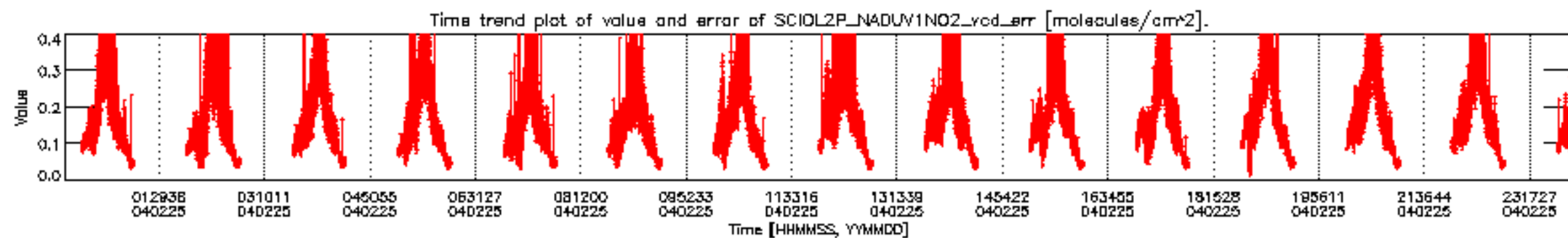
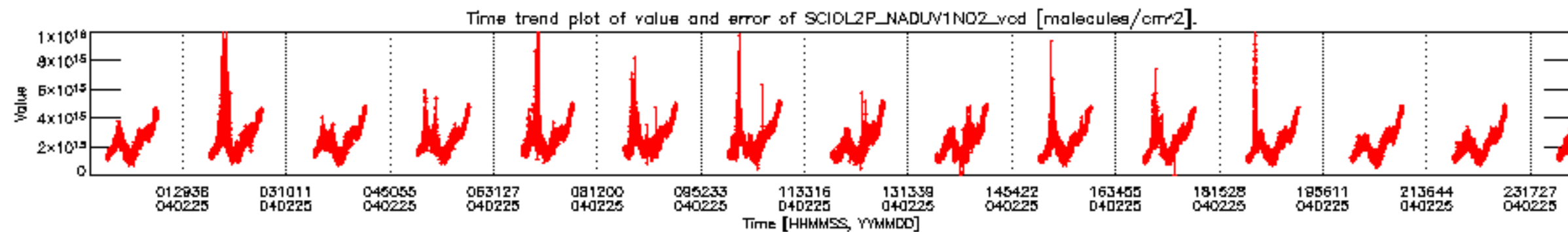


SCIOL2P_NADUV003_amf_gr for 25FEB2004 00:00:00 to 26FEB2004 00:00:00

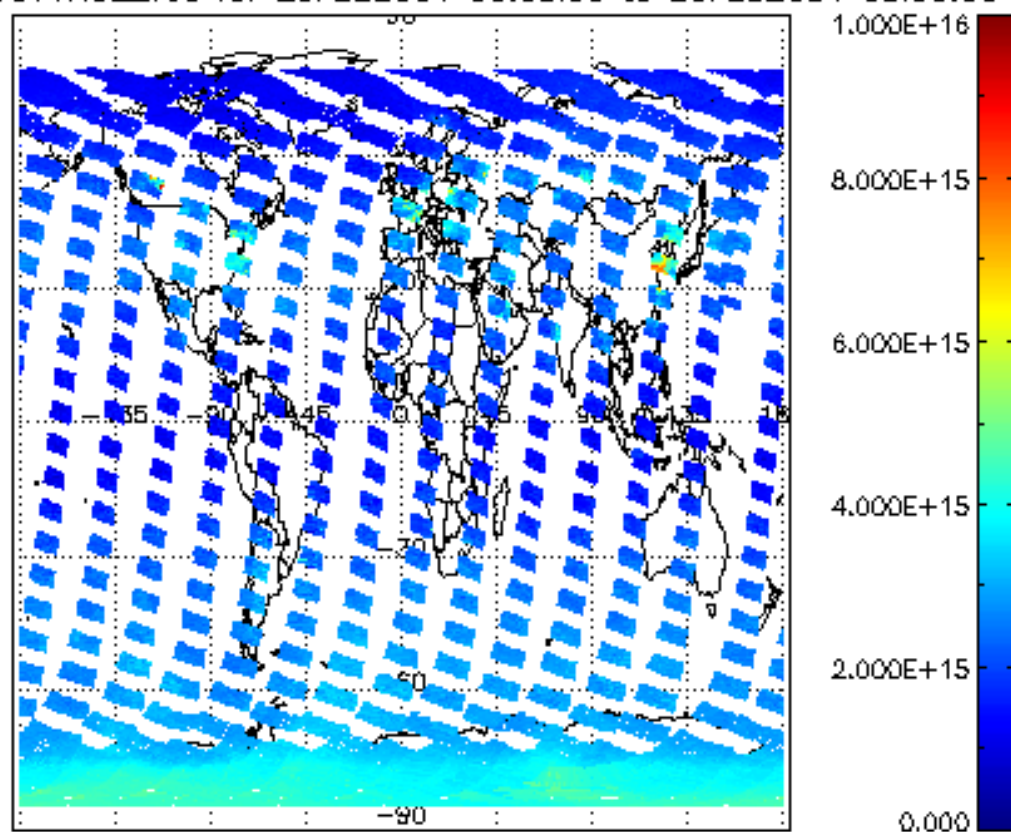


SCIOL2P_NADUV003_amf_cl for 25FEB2004 00:00:00 to 26FEB2004 00:00:00

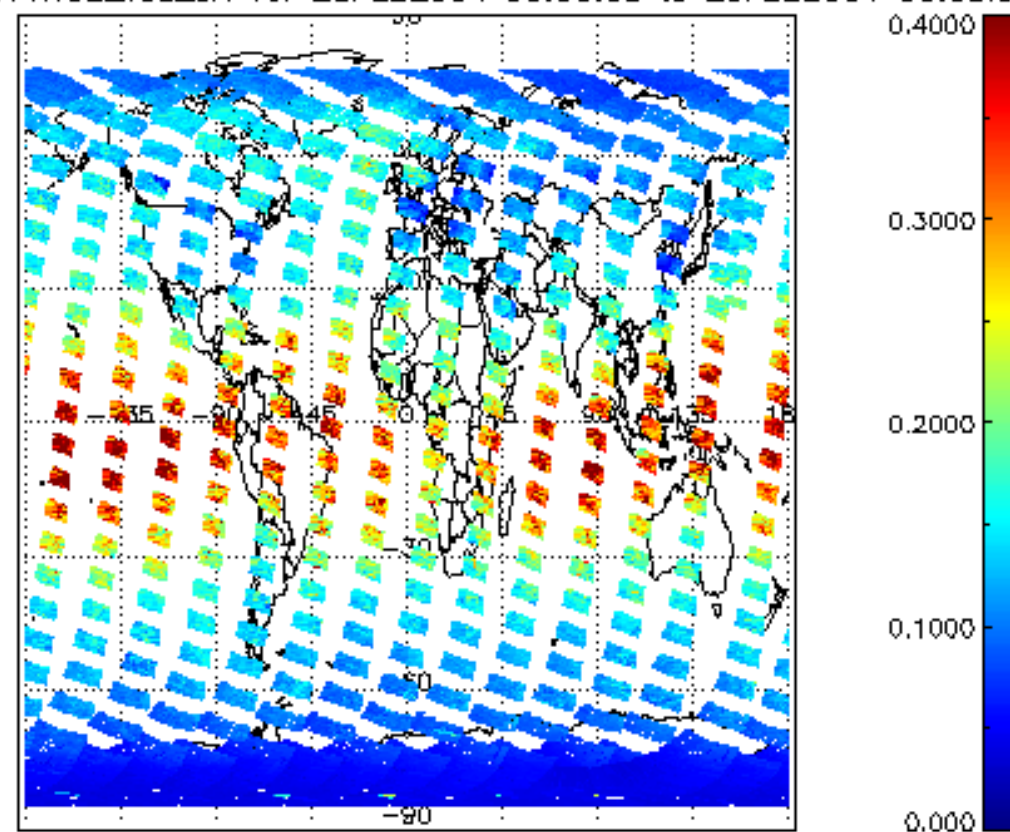




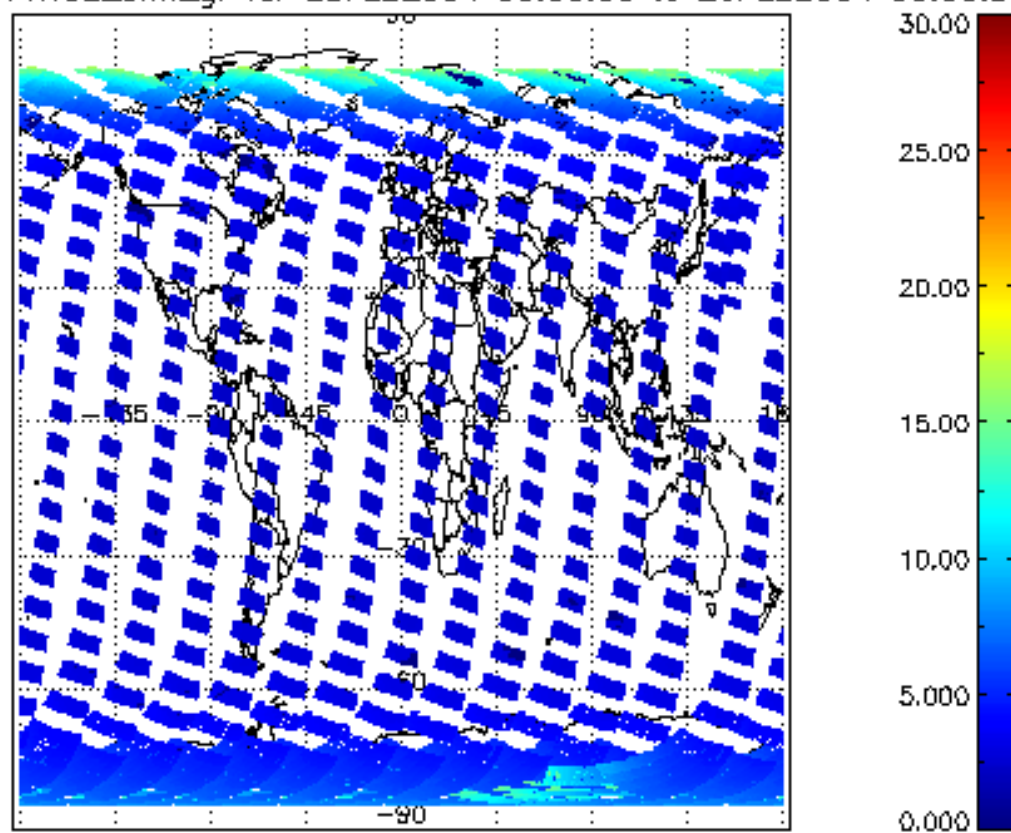
SCIOL2P_NADUV1NO2_vcd for 25FEB2004 00:00:00 to 26FEB2004 00:00:00



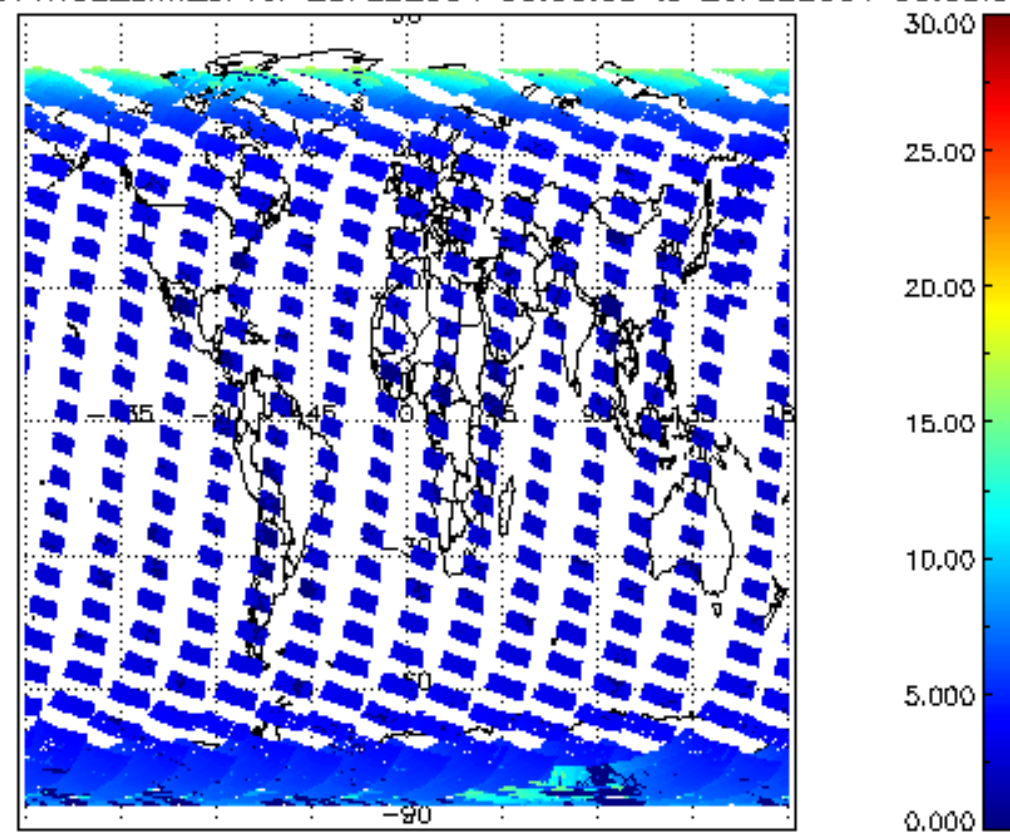
SCIOL2P_NADUV1NO2_vcd_err for 25FEB2004 00:00:00 to 26FEB2004 00:00:00



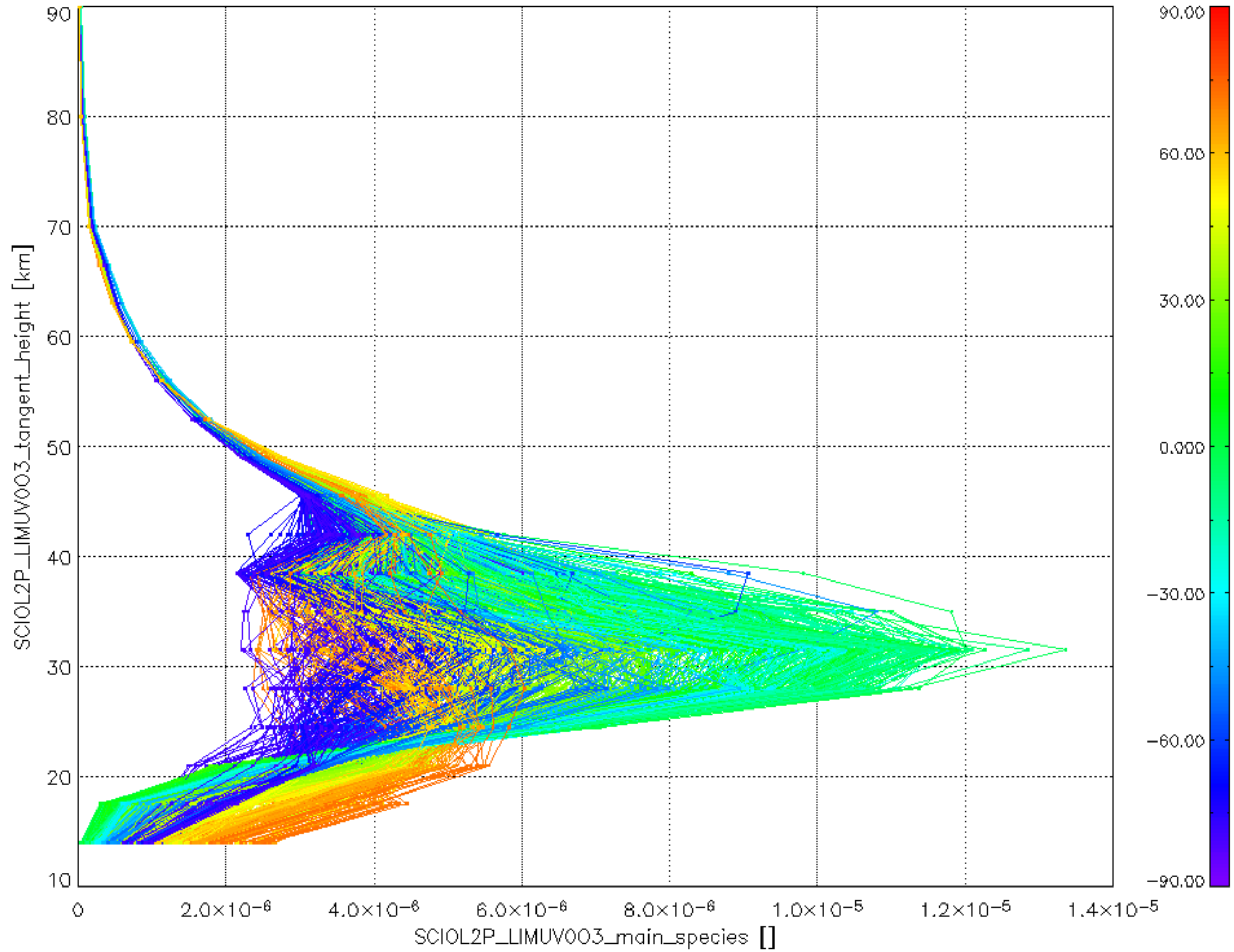
SCIOL2P_NADUV1NO2_amf_gr for 25FEB2004 00:00:00 to 26FEB2004 00:00:00



SCIOL2P_NADUV1NO2_amf_cl for 25FEB2004 00:00:00 to 26FEB2004 00:00:00



Plot of SCIOL2P_LIMUV003_main_species.tang_vmr vs. tangent height.
 Colours indicate tangent latitude (see colour bar on the right).



Plot of SCIOL2P_LIMUV1NO2_main_species.tang_vmr vs. tangent height.
 Colours indicate tangent latitude (see colour bar on the right).

