

1. SCIAMACHY Level 1B source packet monitoring report

[1.1. General Info](#)

[1.2 Source packet monitoring](#)

1.1 General Info

This report contains results of the analysis on source packets from SCIAMACHY level 1 data (The SCI_NL__1P product).

1.1.1 Report summary

The table below shows general characteristics of the data that are included into this report.

Item	Value
Report version	1.1 (07-01-2010)
Time of report generation	21JUN2011 06:30:52
Data source version	SCIA/7.04-U
Processing scope for products	08JUN2011 00:00:00 to 09JUN2011 00:00:00
Start time of first product within scope	07JUN2011 22:30:28
Stop time of last product within scope	09JUN2011 00:44:10
Total number of level 1 products	15
Number of level 1 products with errors	0
SCIAL1C executable used in processing	Unknown
SCIAL1C parameters used in processing	Unknown

1.1.2 Source packet summary

The table below shows which source packets have been included into the report.

Item	Mode	State	Cluster	Height	First start time	Last start time
0	NADIR	07	08	N/A	08JUN2011 00:42:44.522	08JUN2011 22:35:04.239
1	NADIR	07	09	N/A	08JUN2011 00:42:44.522	08JUN2011 22:35:04.239
2	NADIR	07	15	N/A	08JUN2011 00:42:44.522	08JUN2011 22:35:04.239
3	NADIR	07	24	N/A	08JUN2011 00:42:44.522	08JUN2011 22:35:04.239
4	NADIR	07	55	N/A	08JUN2011 00:42:44.522	08JUN2011 22:35:04.239
5	LIMB	32	09	~19 km	08JUN2011 00:29:33.885	08JUN2011 23:58:56.103
6	LIMB	32	09	~22 km	08JUN2011 00:29:33.885	08JUN2011 23:58:56.103
7	LIMB	32	09	~25 km	08JUN2011 00:29:33.885	08JUN2011 23:58:56.103
8	LIMB	32	15	~22 km	08JUN2011 00:29:33.885	08JUN2011 23:58:56.103
9	LIMB	32	15	~25 km	08JUN2011 00:29:33.885	08JUN2011 23:58:56.103
10	LIMB	32	15	~35 km	08JUN2011 00:29:33.885	08JUN2011 23:58:56.103

1.1.3 Summary per product

The following table shows a summary for each product used in this report.

Products are linked to a corresponding server directory for view/download. Note: Link access may be restricted by security settings of your internet browser or firewall.

#	Product name	Start time	Stop time	ProdErr	#nadir	#limb	#occ	#mon	#noprocc	#cmpl_drk	#incmpl_drk	Decont
0	SCI_NLC_1CUDPA20110607_223028_000057403103_00188_48478_2022.N1	07JUN2011 22:30:28	07JUN2011 23:40:57	0	36	30	0	0	1	0	0	
1	SCI_NLC_1CUDPA20110608_001041_000057403103_00189_48479_2027.N1	08JUN2011 00:10:41	08JUN2011 01:20:56	0	35	31	0	0	1	0	0	
2	SCI_NLC_1CUDPA20110608_015055_000033253103_00190_48480_2028.N1	08JUN2011 01:50:55	08JUN2011 02:45:39	0	23	29	0	0	1	0	0	
3	SCI_NLC_1CUDPA20110608_060704_000023993103_00192_48482_2031.N1	08JUN2011 06:08:13	08JUN2011 06:21:52	0	12	0	0	0	2	0	0	
4	SCI_NLC_1CUDPA20110608_065137_000057403103_00193_48483_2035.N1	08JUN2011 06:51:37	08JUN2011 08:01:52	0	35	31	0	0	1	0	0	
5	SCI_NLC_1CUDPA20110608_083151_000057403103_00194_48484_2036.N1	08JUN2011 08:31:51	08JUN2011 09:42:20	0	36	30	0	0	1	0	0	

6	SCI_NLC_1CUDPA20110608_101205_000057403103_00195_48485_2032.N1	08JUN2011 10:12:05	08JUN2011 11:22:19	0	35	31	0	0	1	0	0	
7	SCI_NLC_1CUDPA20110608_115218_000057403103_00196_48486_2034.N1	08JUN2011 11:52:18	08JUN2011 13:02:47	0	36	30	0	0	1	0	0	
8	SCI_NLC_1CUDPA20110608_133232_000057403103_00197_48487_2042.N1	08JUN2011 13:32:32	08JUN2011 14:42:47	0	35	31	0	0	1	0	0	
9	SCI_NLC_1CUDPA20110608_151246_000057403103_00198_48488_2041.N1	08JUN2011 15:12:46	08JUN2011 16:23:15	0	36	30	0	0	1	0	0	
10	SCI_NLC_1CUDPA20110608_165300_000057413103_00199_48489_2051.N1	08JUN2011 16:53:00	08JUN2011 18:03:15	0	35	31	0	0	1	0	0	
11	SCI_NLC_1CUDPA20110608_183314_000057403103_00200_48490_2047.N1	08JUN2011 18:33:14	08JUN2011 19:43:52	0	36	30	0	1	1	0	0	
12	SCI_NLC_1CUDPA20110608_201328_000057403103_00201_48491_2046.N1	08JUN2011 20:13:28	08JUN2011 21:23:51	0	35	31	0	1	1	0	0	
13	SCI_NLC_1CUDPA20110608_215342_000057403103_00202_48492_2049.N1	08JUN2011 21:53:42	08JUN2011 23:04:11	0	36	30	0	0	1	0	0	
14	SCI_NLC_1CUDPA20110608_233355_000057403103_00203_48493_2053.N1	08JUN2011 23:33:55	09JUN2011 00:44:10	0	35	31	0	0	1	0	0	

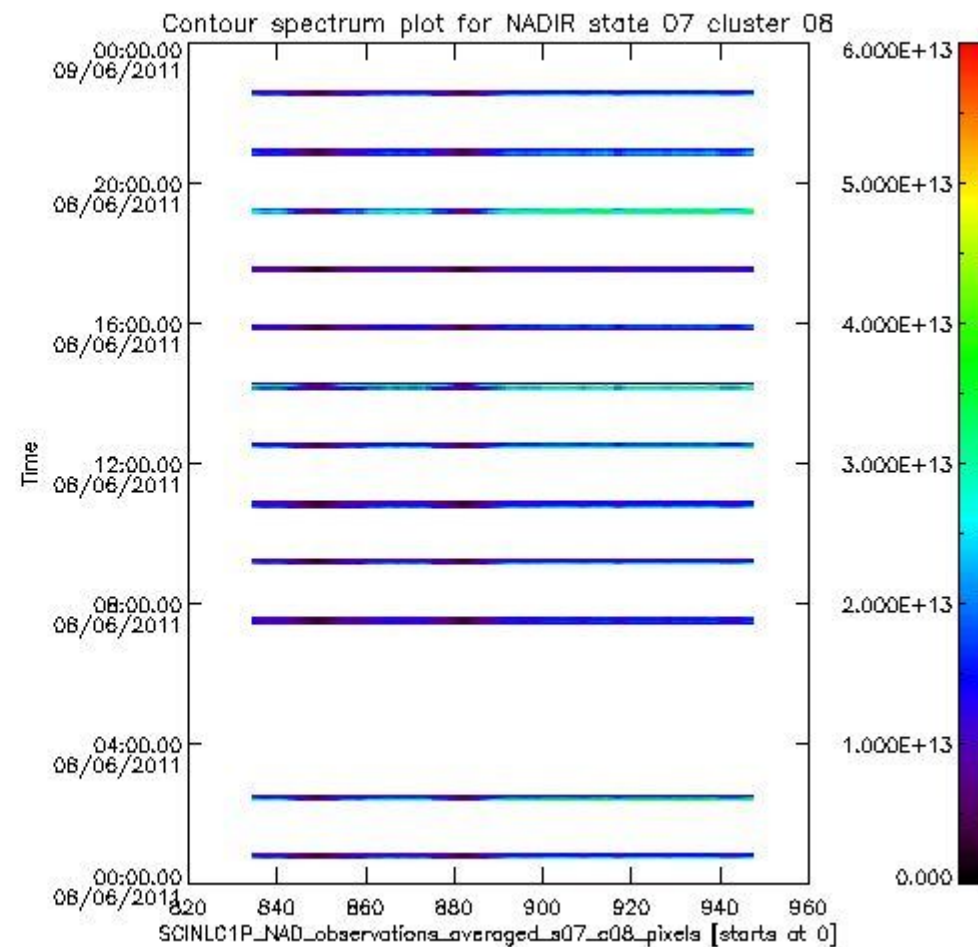
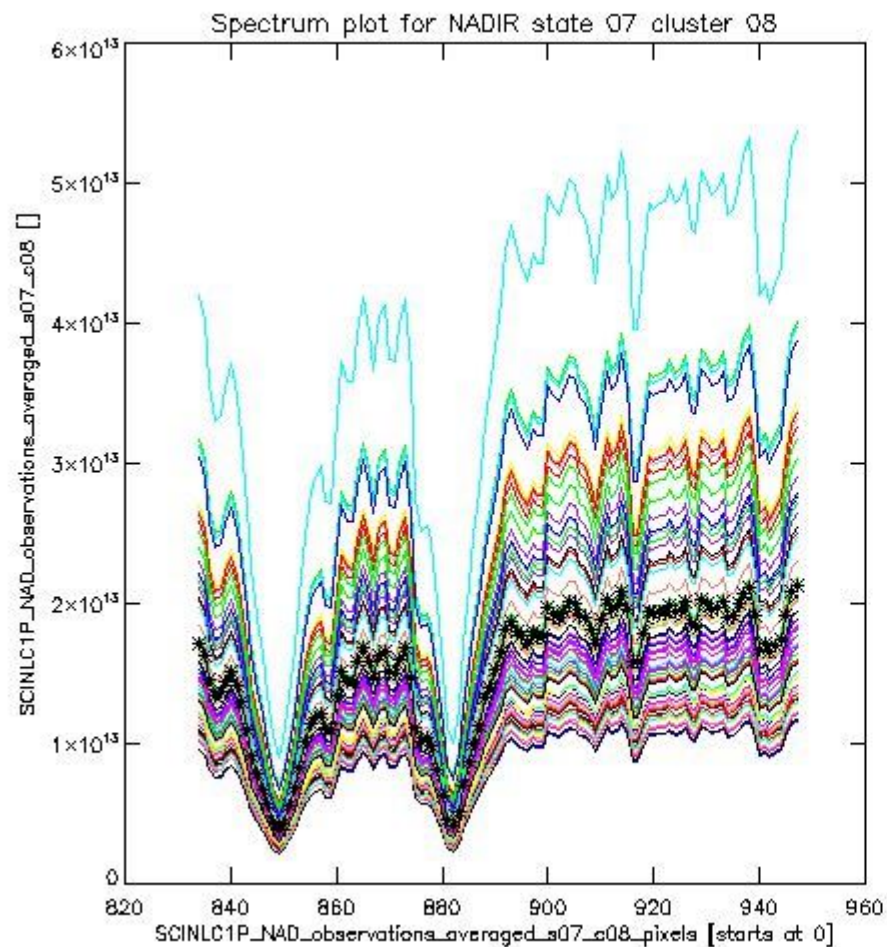
1.2 Source packet monitoring

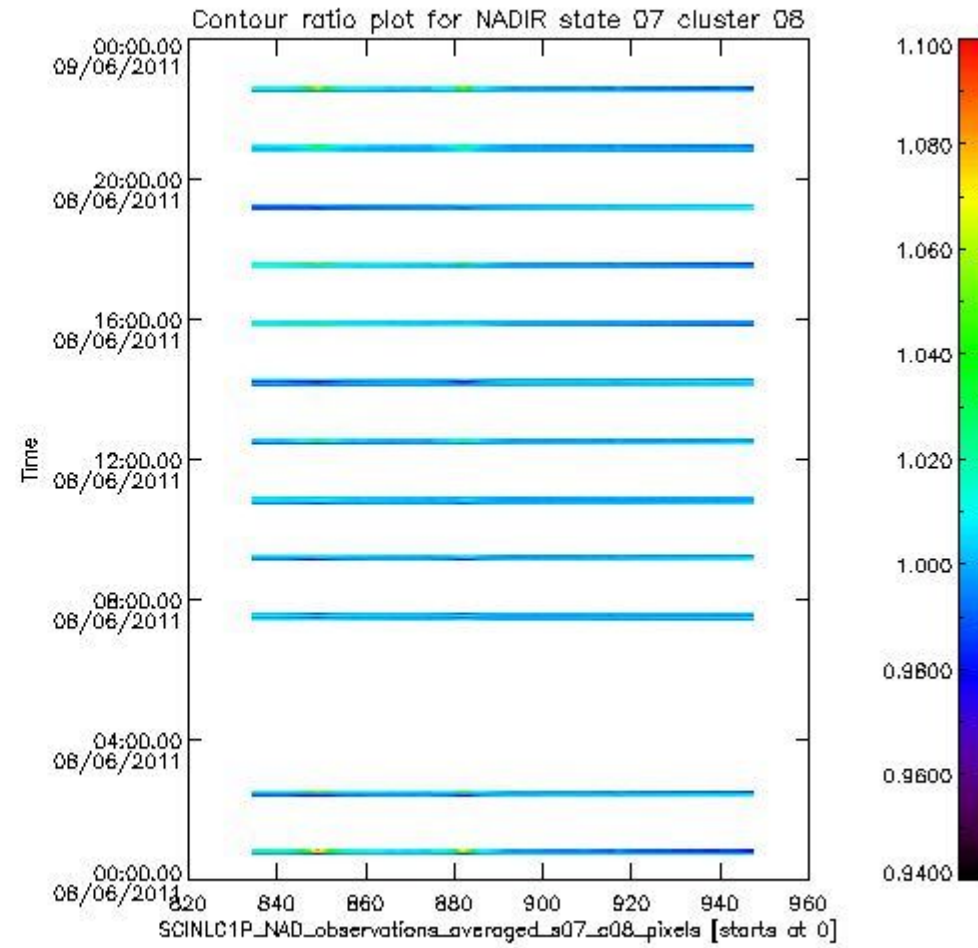
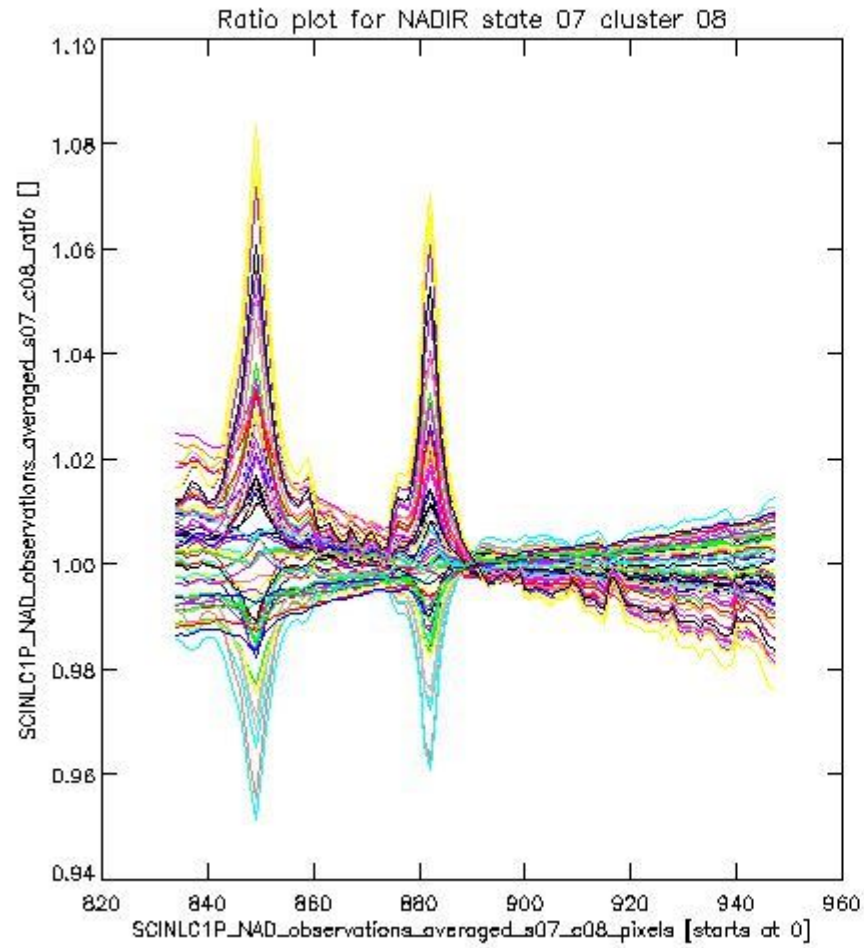
This section shows figures for each of the monitored source packet types listed in the Source Packet Summary section. For each mode-state-cluster(-height) combination the following plots are shown:

- A plot that shows all calibrated averaged spectra vs. pixel number as 2D-profiles. Each line is an average spectrum for a single state occurrence. For Limb modes, the average is performed on spectra recorded at a specific height. The reference spectrum that is used for comparison is also shown as a black line with * markers.
- A plot that shows all calibrated averaged spectra vs. pixel number and time using a coloured contour plot. The colours indicate the intensity.
- A plot that shows ratios of all calibrated averaged spectra and the reference spectrum vs. pixel number. Each line is the ratio of a calibrated averaged spectrum and the reference spectrum, where both spectra have been intensity corrected (the spectrum has been divided by the average pixel intensity) prior to division.
- A plot that shows ratios of all calibrated averaged spectra and the reference spectrum vs. pixel number and time using a coloured contour plot.

1.2.1 NADIR state 07 cluster 08 The data for the analysis of NADIR state 07 cluster 08 have the following characteristics:

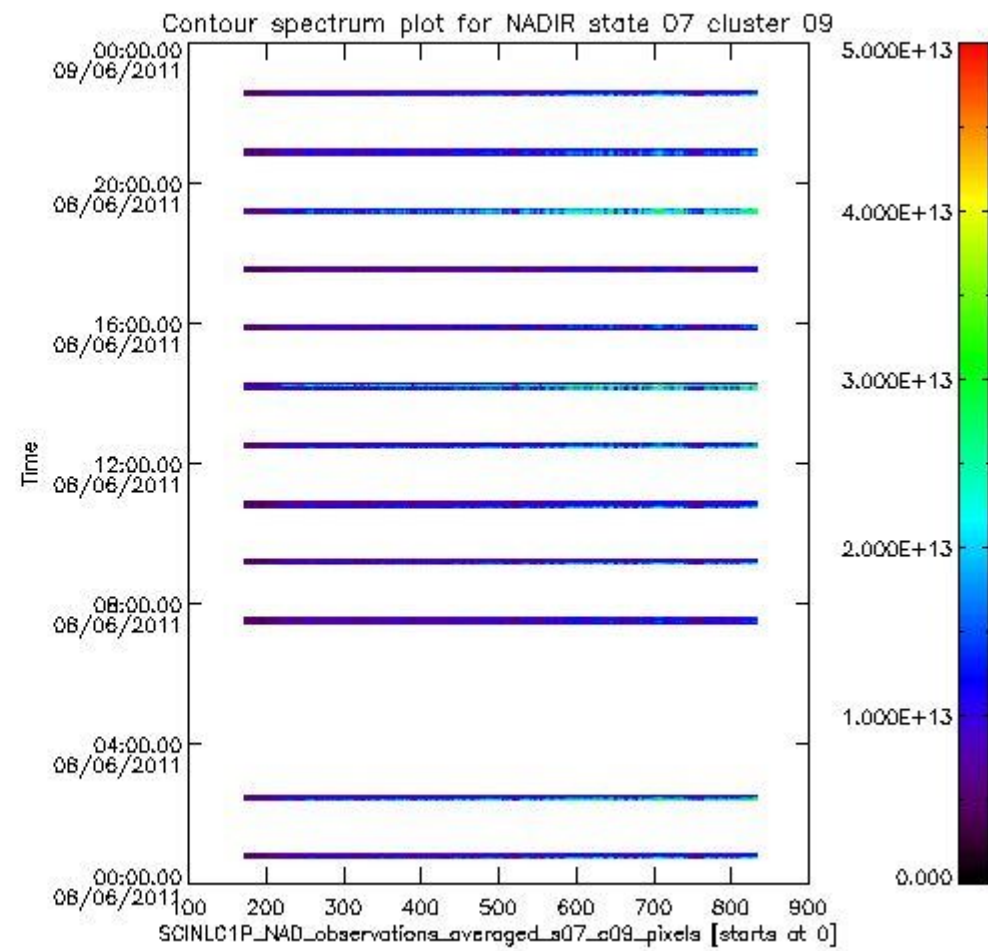
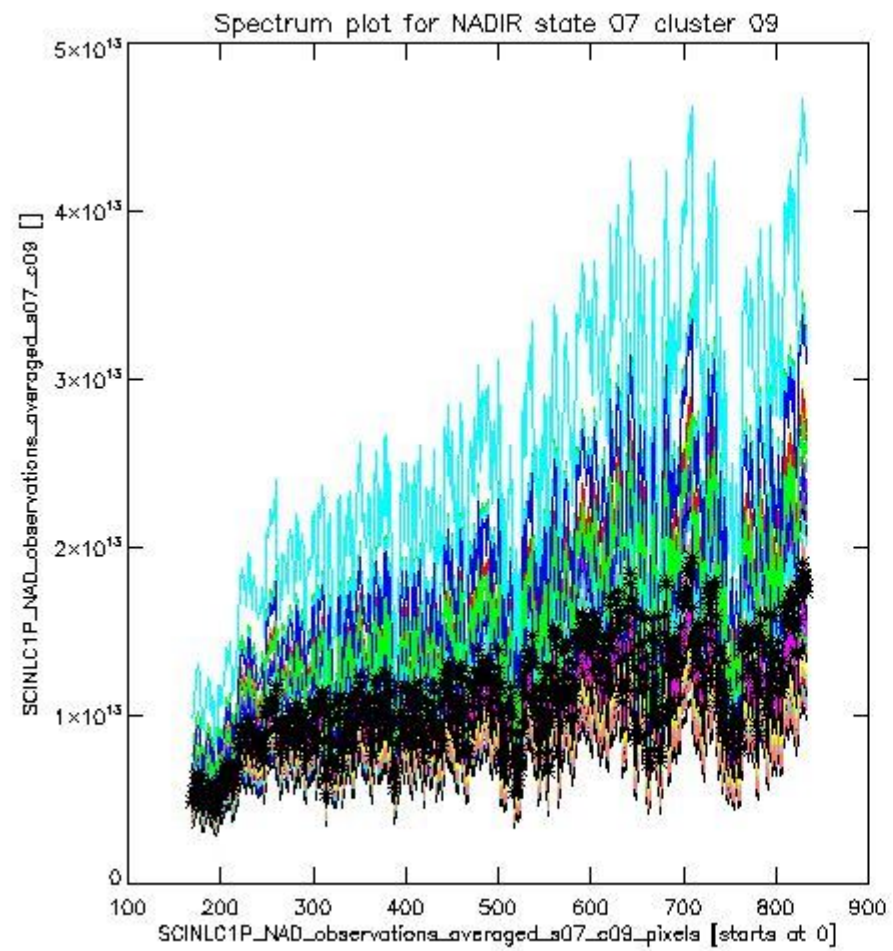
Item	Value
Start time of first sample	08JUN2011 00:42:44.522
Start time of last sample	08JUN2011 22:35:04.239
Reference period start time	09MAY2011 00:44:57.490
Reference period stop time	07JUN2011 23:11:50.259
Channel number	2
First pixel number (starts at 0)	834
Last pixel number (starts at 0)	947



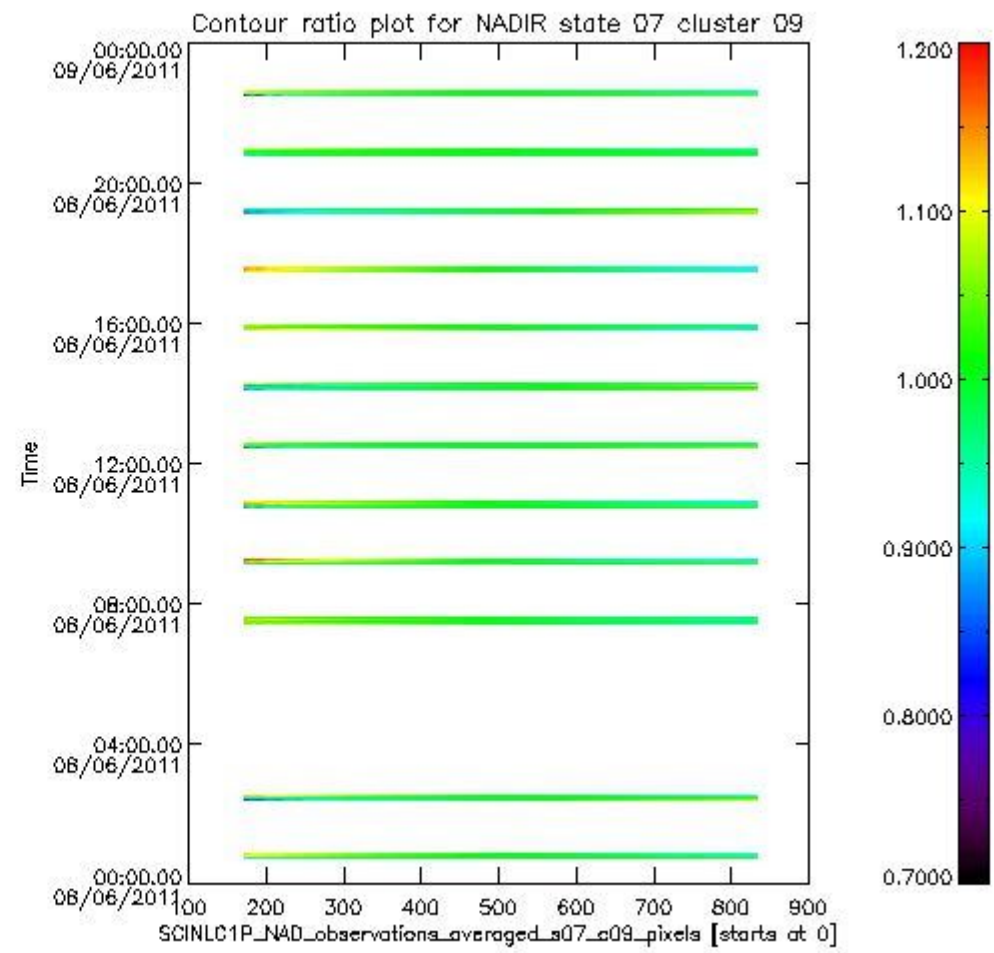
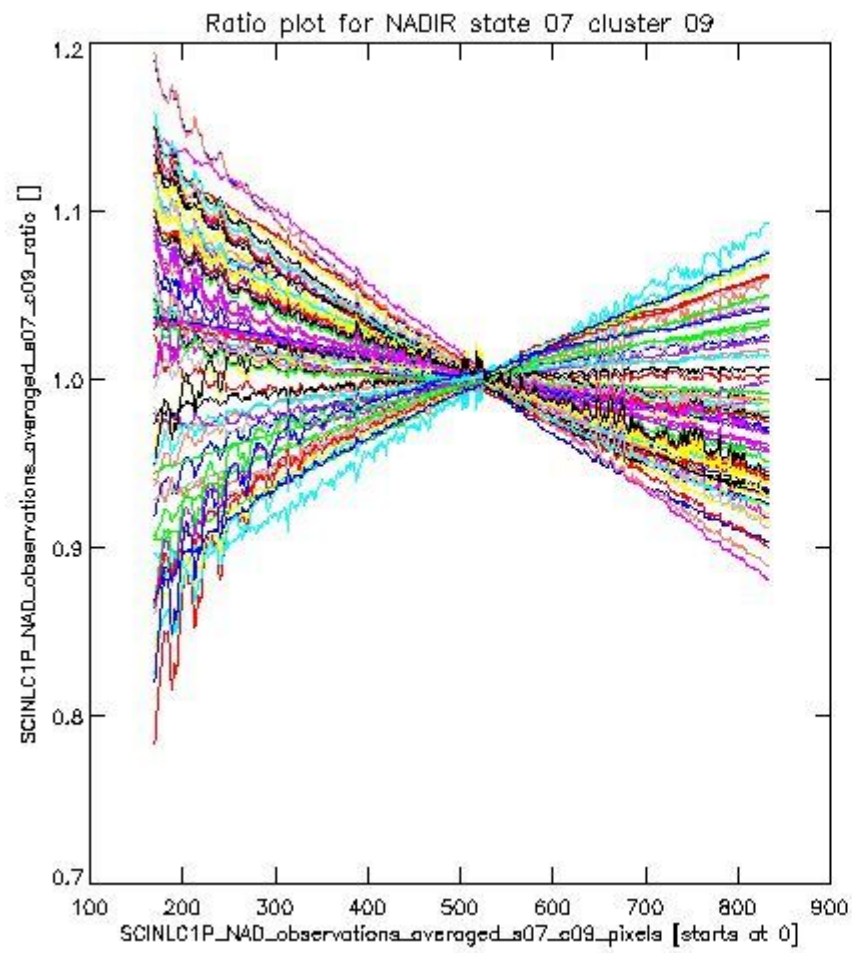


1.2.2 NADIR state 07 cluster 09 The data for the analysis of NADIR state 07 cluster 09 have the following characteristics:

Item	Value
Start time of first sample	08JUN2011 00:42:44.522
Start time of last sample	08JUN2011 22:35:04.239
Reference period start time	09MAY2011 00:44:57.490
Reference period stop time	07JUN2011 23:11:50.259
Channel number	2
First pixel number (starts at 0)	170
Last pixel number (starts at 0)	833



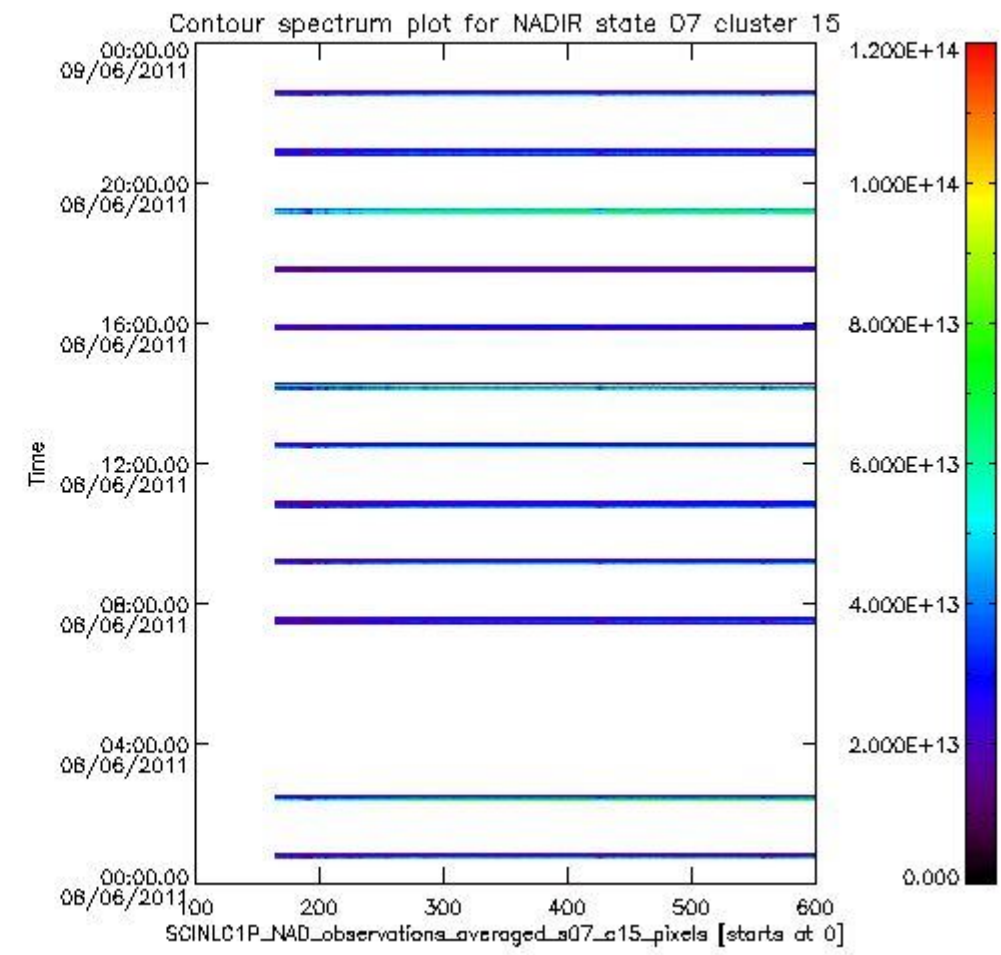
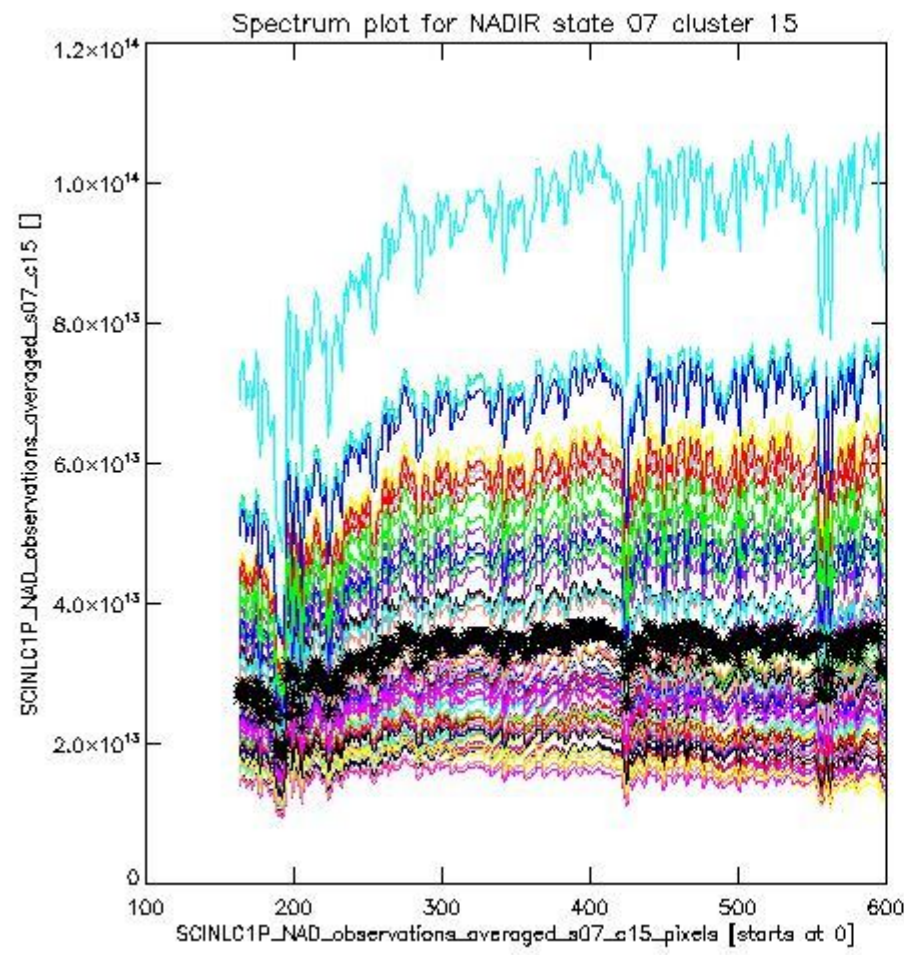
sciamachy_i1b_source_packet_report_SCIA_7_04_U_20110608_2.PNG



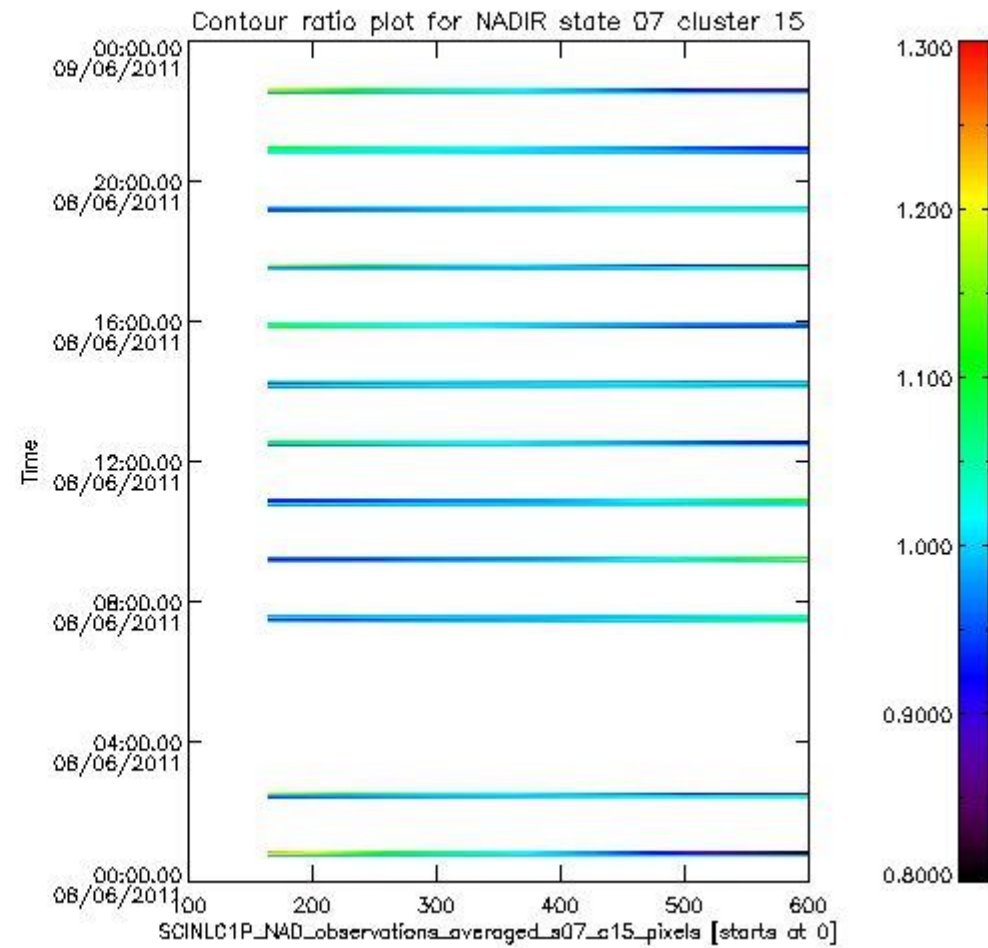
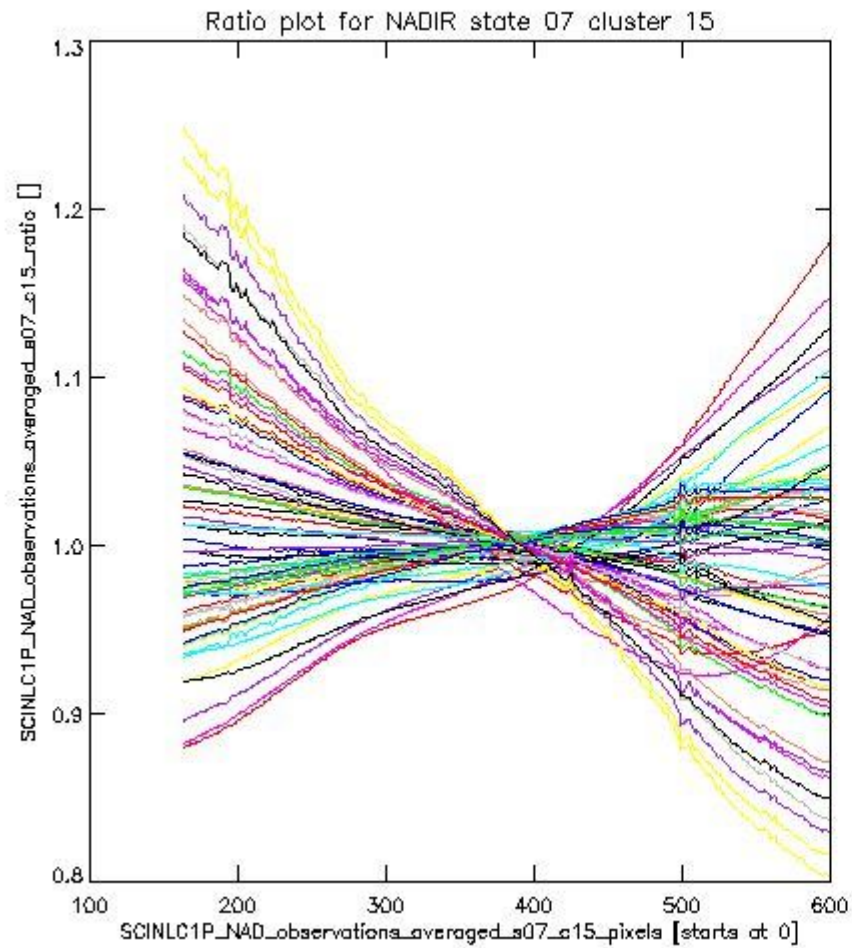
sciamachy_i1b_source_packet_report_SCIA_7_04_U_20110608_3.PNG

1.2.3 NADIR state 07 cluster 15 The data for the analysis of NADIR state 07 cluster 15 have the following characteristics:

Item	Value
Start time of first sample	08JUN2011 00:42:44.522
Start time of last sample	08JUN2011 22:35:04.239
Reference period start time	09MAY2011 00:44:57.490
Reference period stop time	07JUN2011 23:11:50.259
Channel number	3
First pixel number (starts at 0)	163
Last pixel number (starts at 0)	598



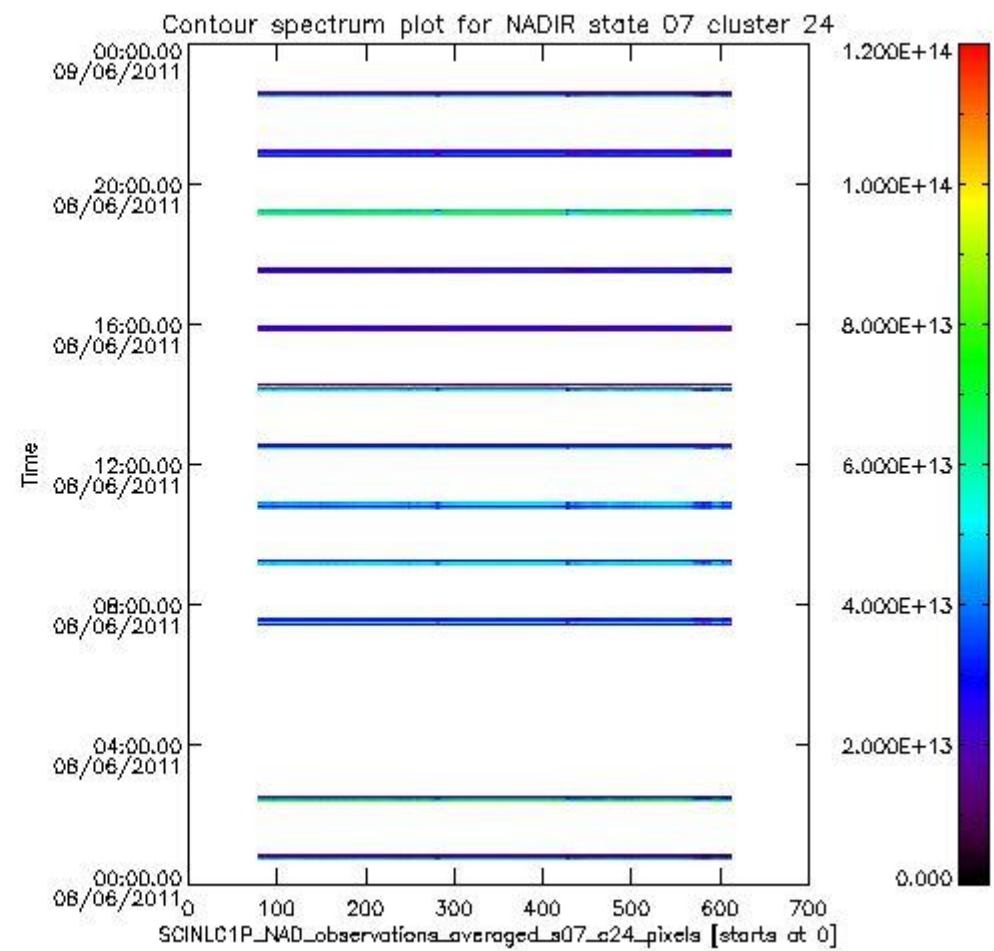
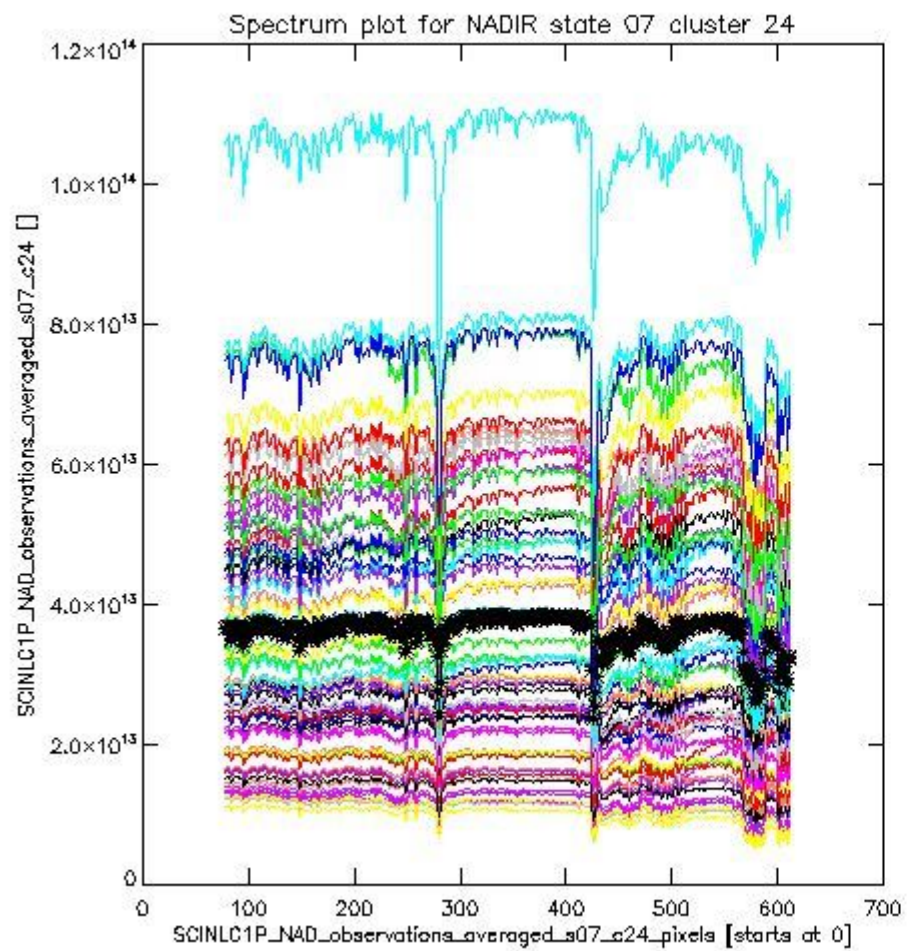
sciamachy_i1b_source_packet_report_SCIA_7_04_U_20110608_4.PNG



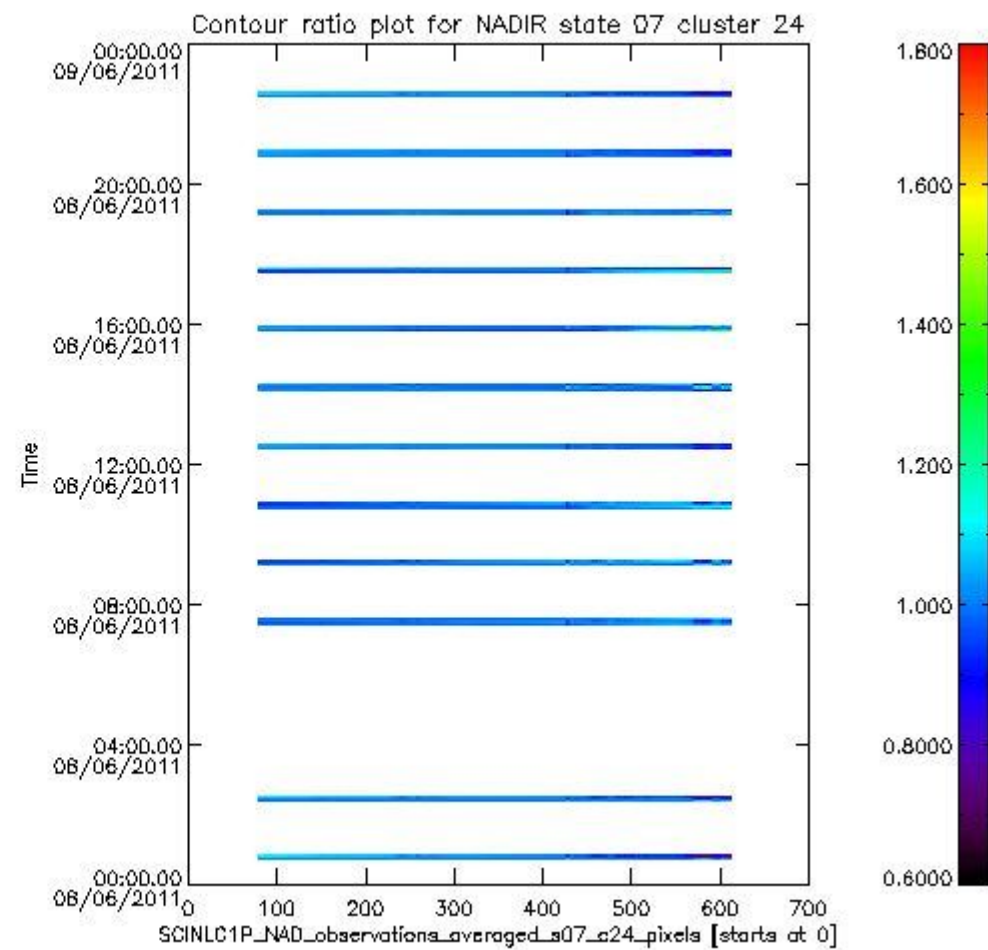
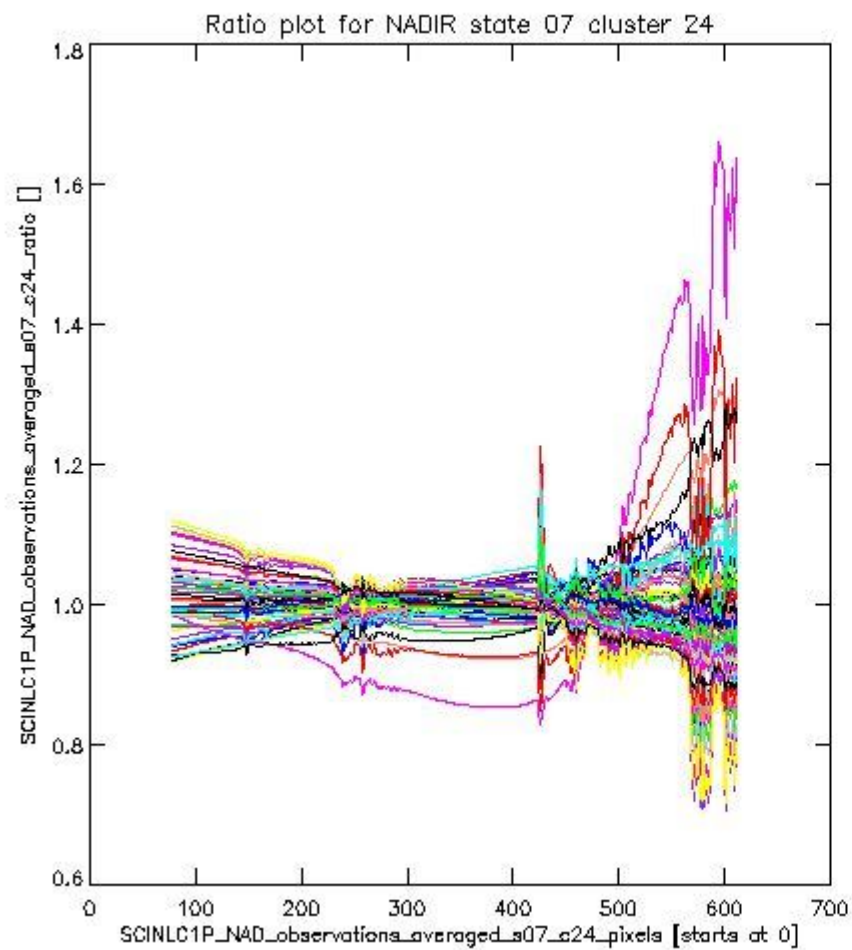
sciamachy_l1b_source_packet_report_SCIA_7_04_U_20110608_5.PNG

1.2.4 NADIR state 07 cluster 24 The data for the analysis of NADIR state 07 cluster 24 have the following characteristics:

Item	Value
Start time of first sample	08JUN2011 00:42:44.522
Start time of last sample	08JUN2011 22:35:04.239
Reference period start time	09MAY2011 00:44:57.490
Reference period stop time	07JUN2011 23:11:50.259
Channel number	4
First pixel number (starts at 0)	78
Last pixel number (starts at 0)	612



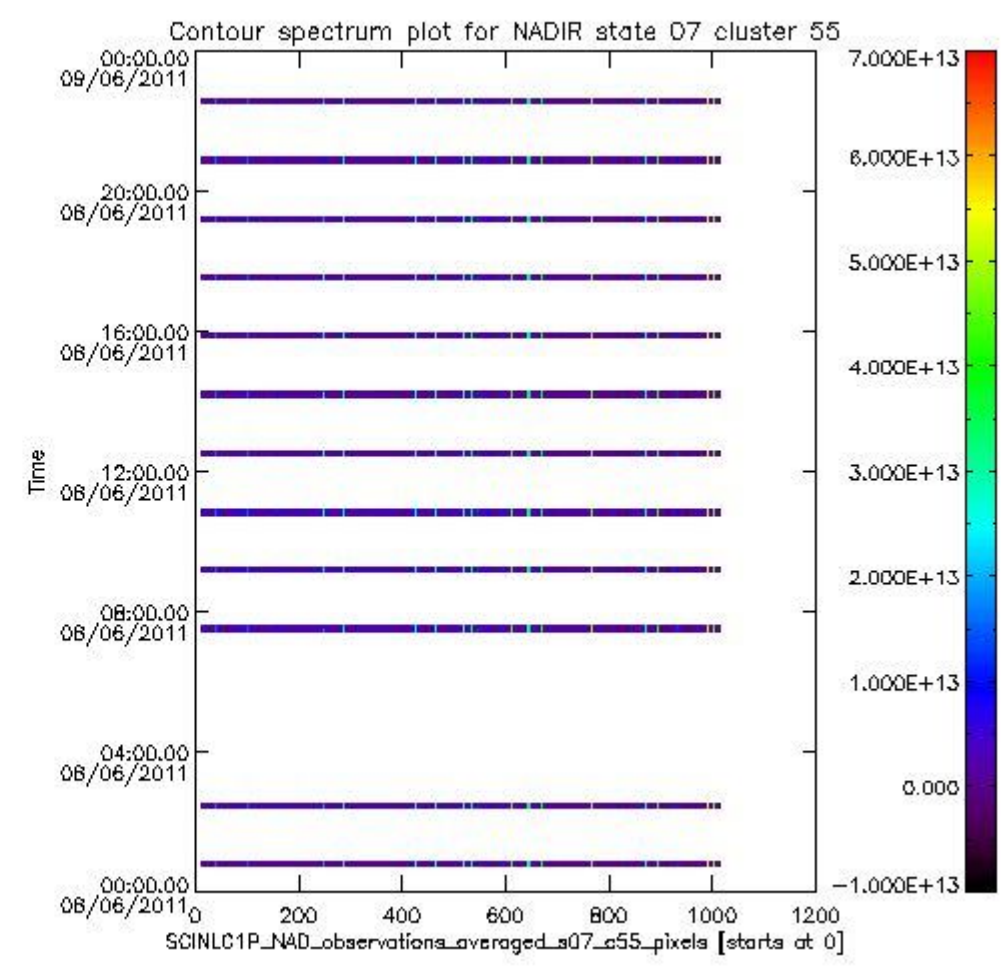
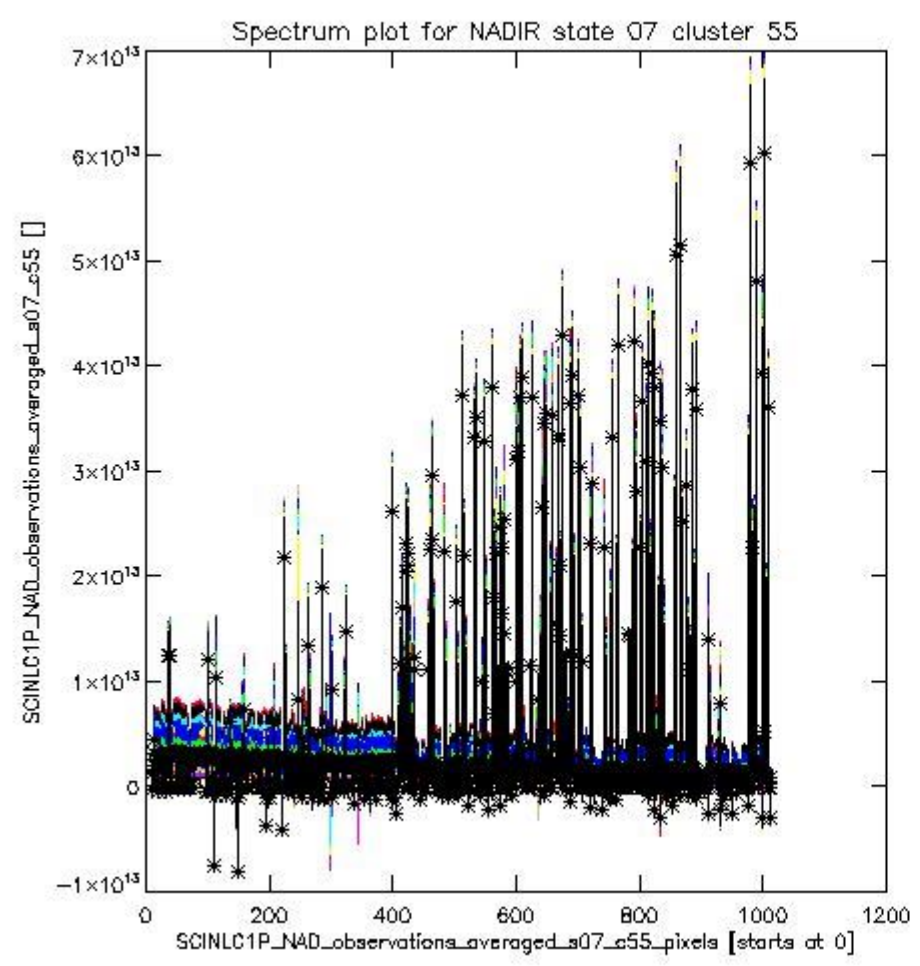
sciamachy_i1b_source_packet_report_SCIA_7_04_U_20110608_6.PNG



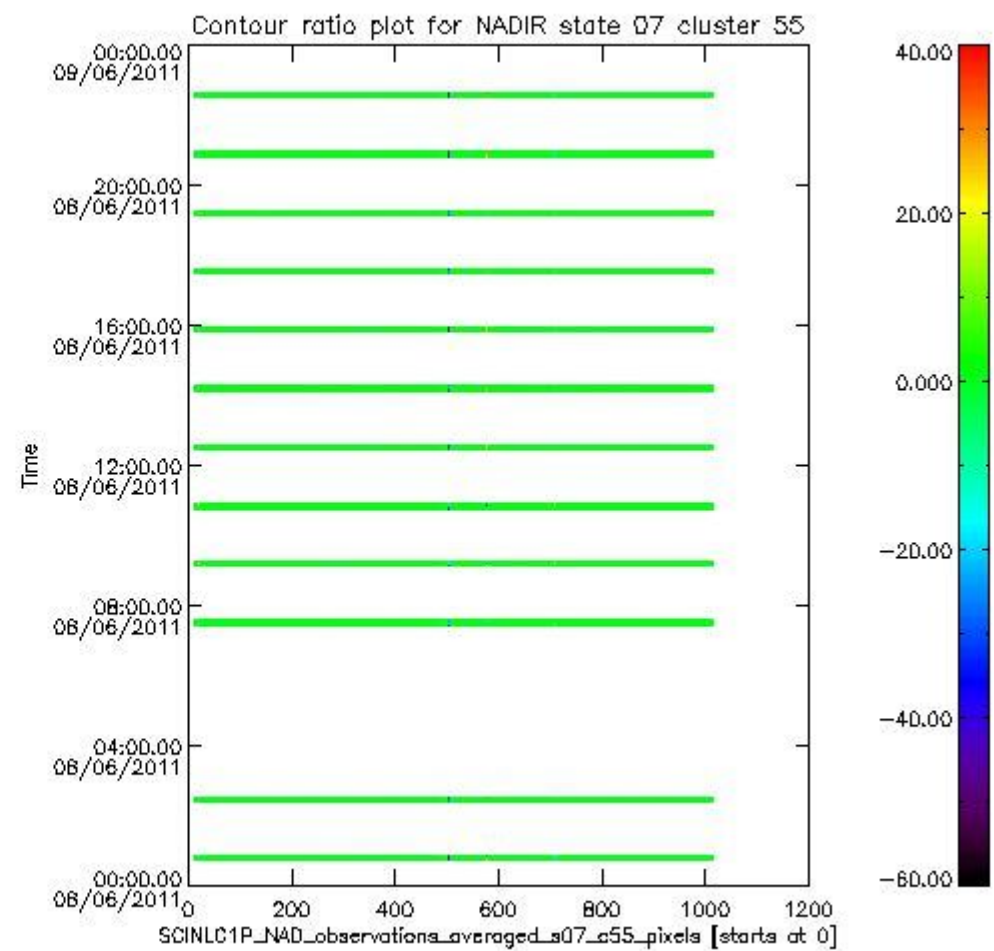
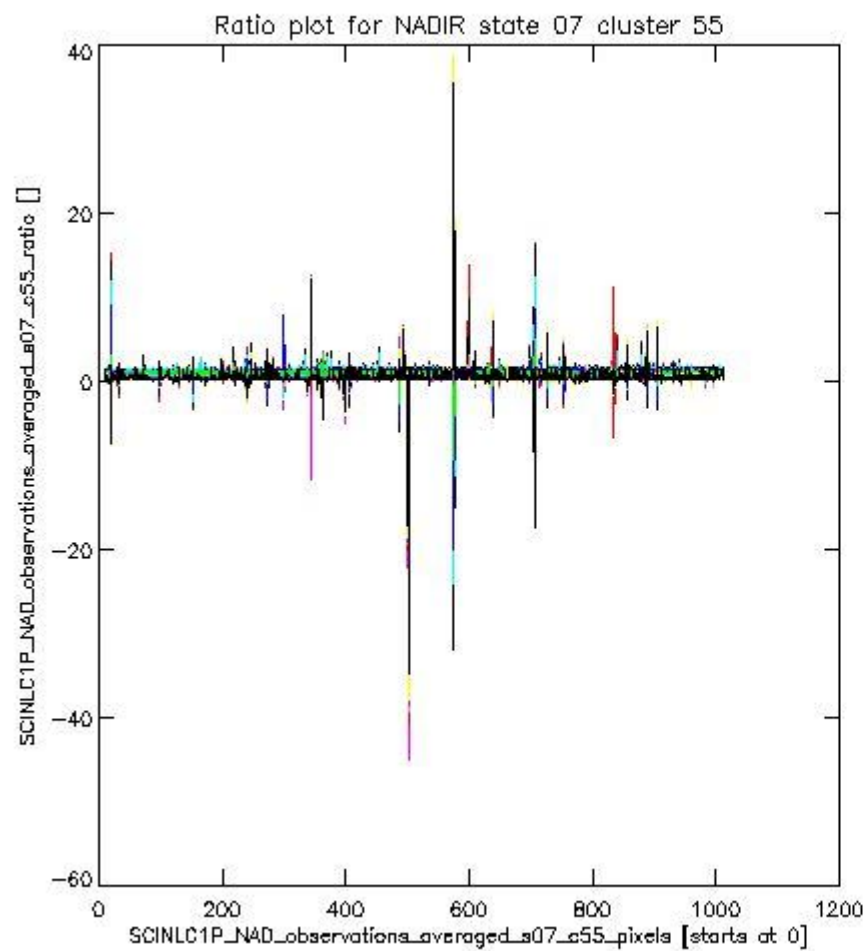
sciamachy_l1b_source_packet_report_SCIA_7_04_U_20110608_7.PNG

1.2.5 NADIR state 07 cluster 55 The data for the analysis of NADIR state 07 cluster 55 have the following characteristics:

Item	Value
Start time of first sample	08JUN2011 00:42:44.522
Start time of last sample	08JUN2011 22:35:04.239
Reference period start time	09MAY2011 00:44:57.490
Reference period stop time	07JUN2011 23:11:50.259
Channel number	8
First pixel number (starts at 0)	10
Last pixel number (starts at 0)	1013



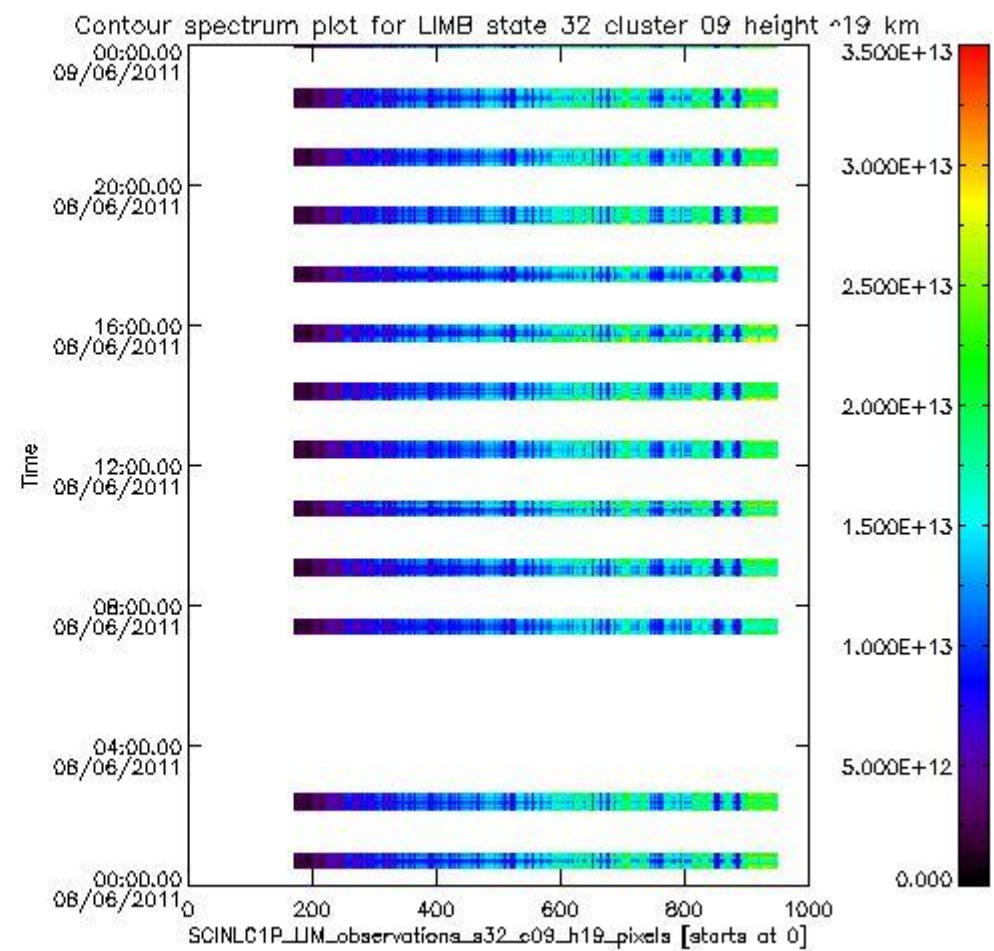
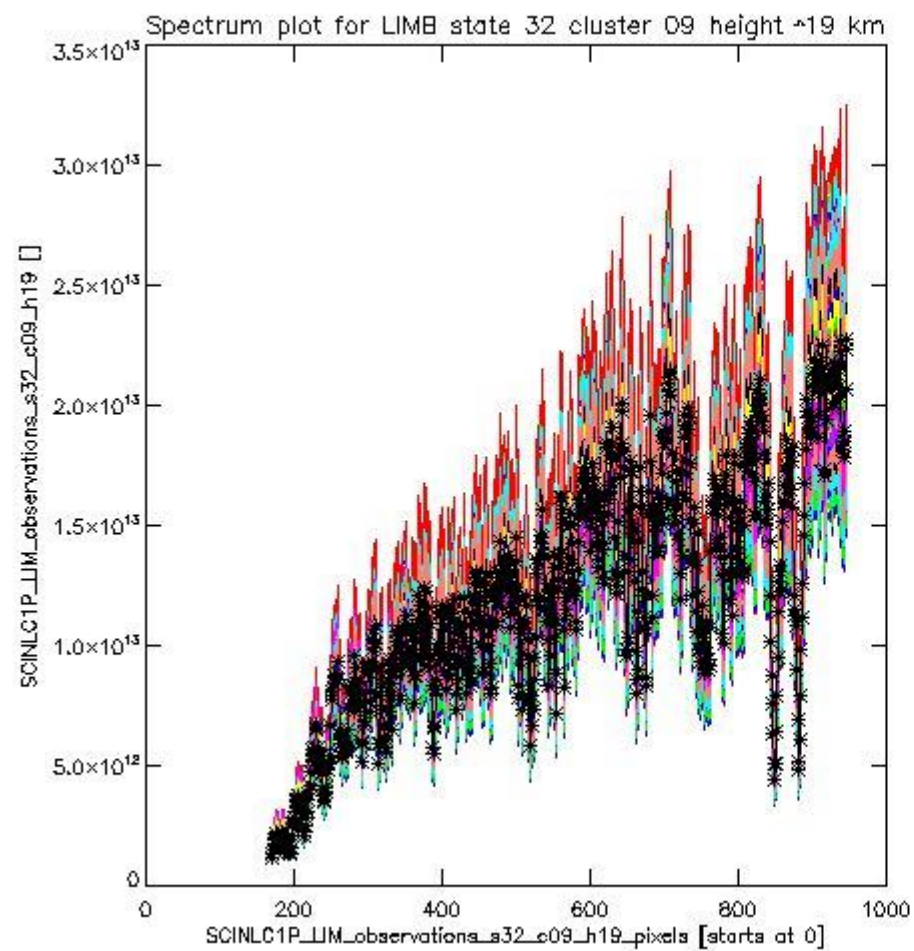
sciamachy_i1b_source_packet_report_SCIA_7_04_U_20110608_8.PNG



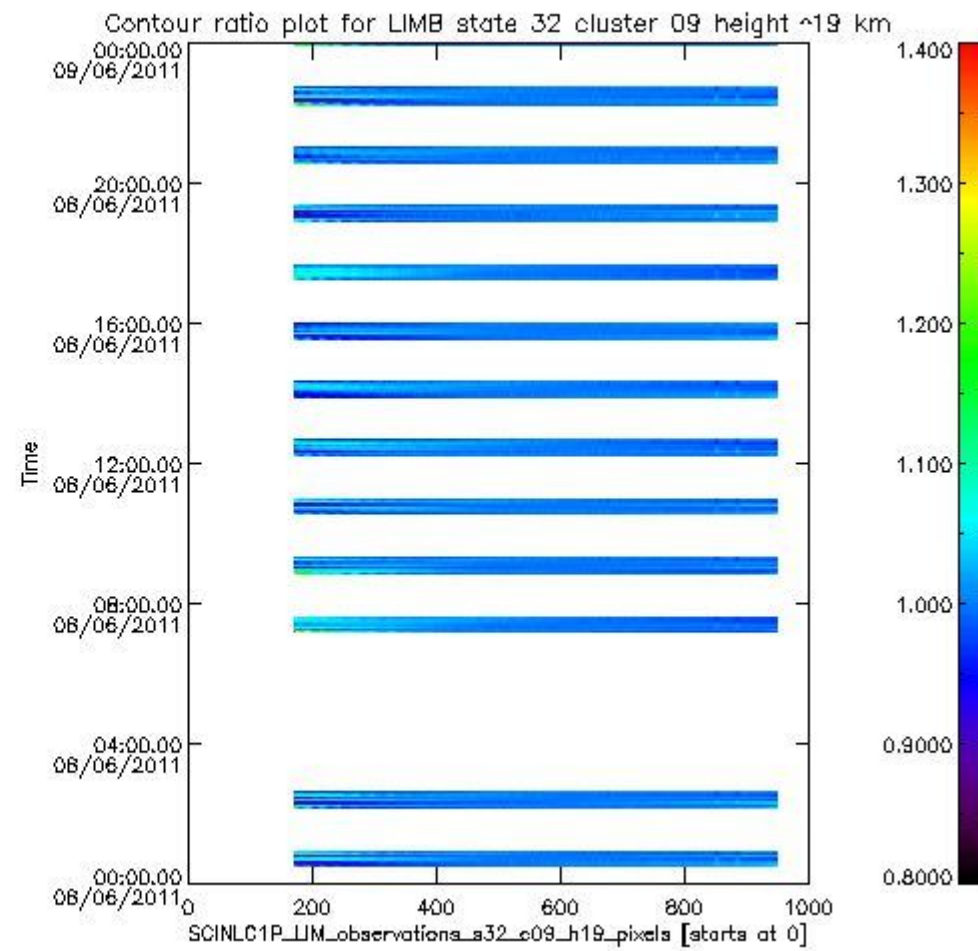
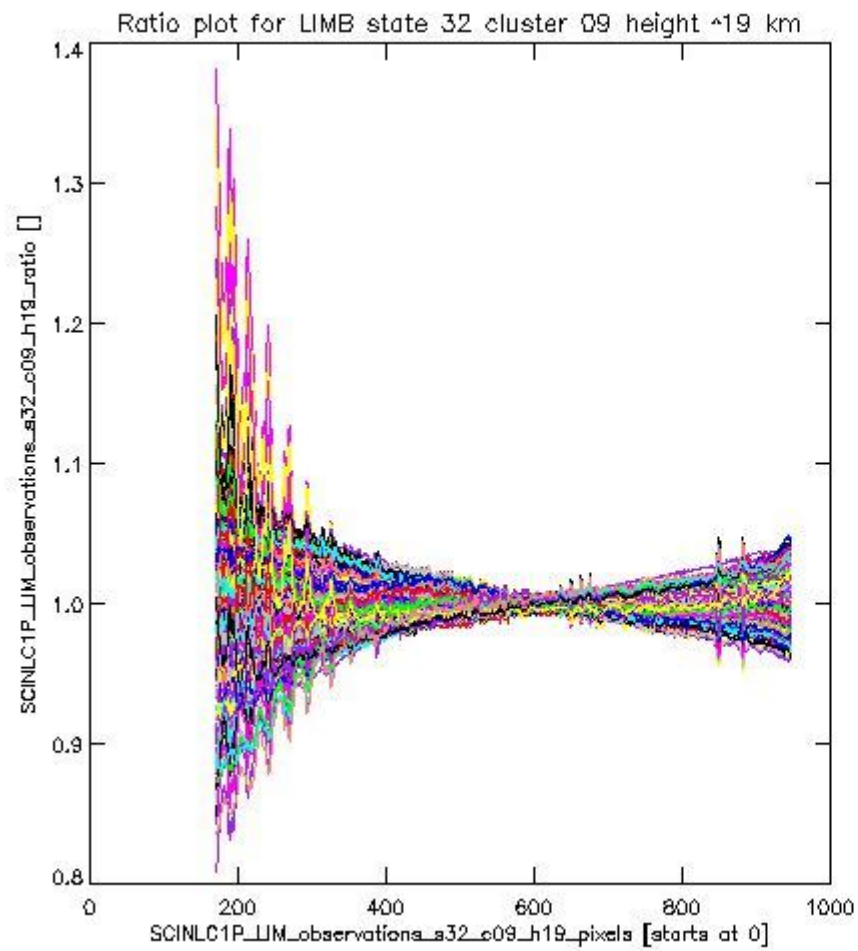
sciamachy_l1b_source_packet_report_SCIA_7_04_U_20110608_9.PNG

1.2.6 LIMB state 32 cluster 09 height ~19 km The data for the analysis of LIMB state 32 cluster 09 height ~19 km have the following characteristics:

Item	Value
Start time of first sample	08JUN2011 00:29:33.885
Start time of last sample	08JUN2011 23:58:56.103
Reference period start time	09MAY2011 00:29:44.115
Reference period stop time	07JUN2011 23:17:04.299
Channel number	2
First pixel number (starts at 0)	170
Last pixel number (starts at 0)	947



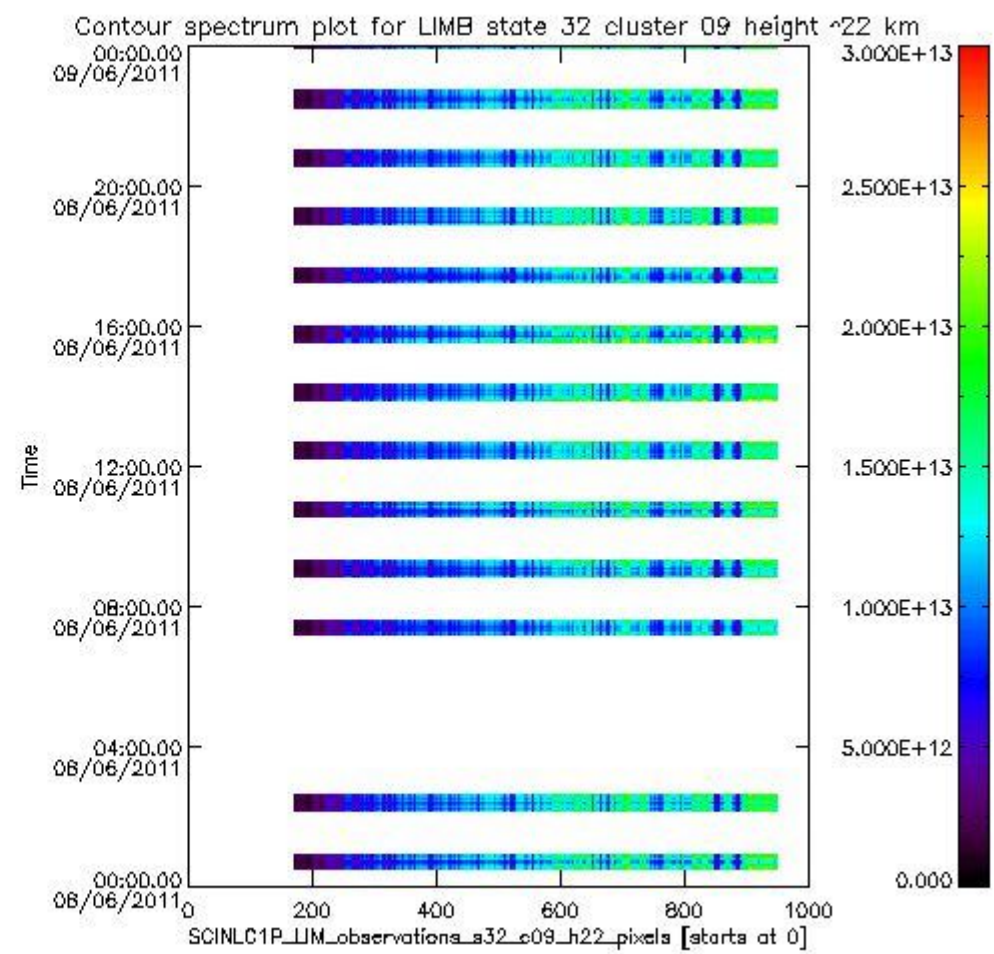
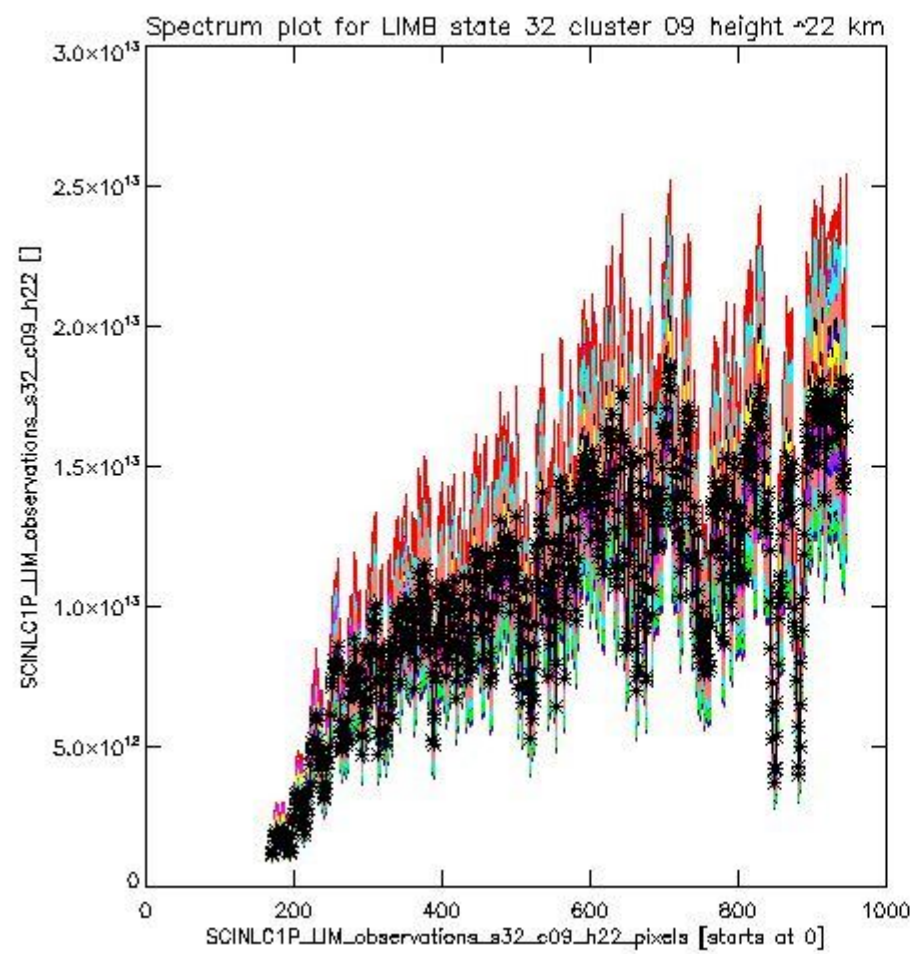
sciamachy_l1b_source_packet_report_SCIA_7_04_U_20110608_10.PNG



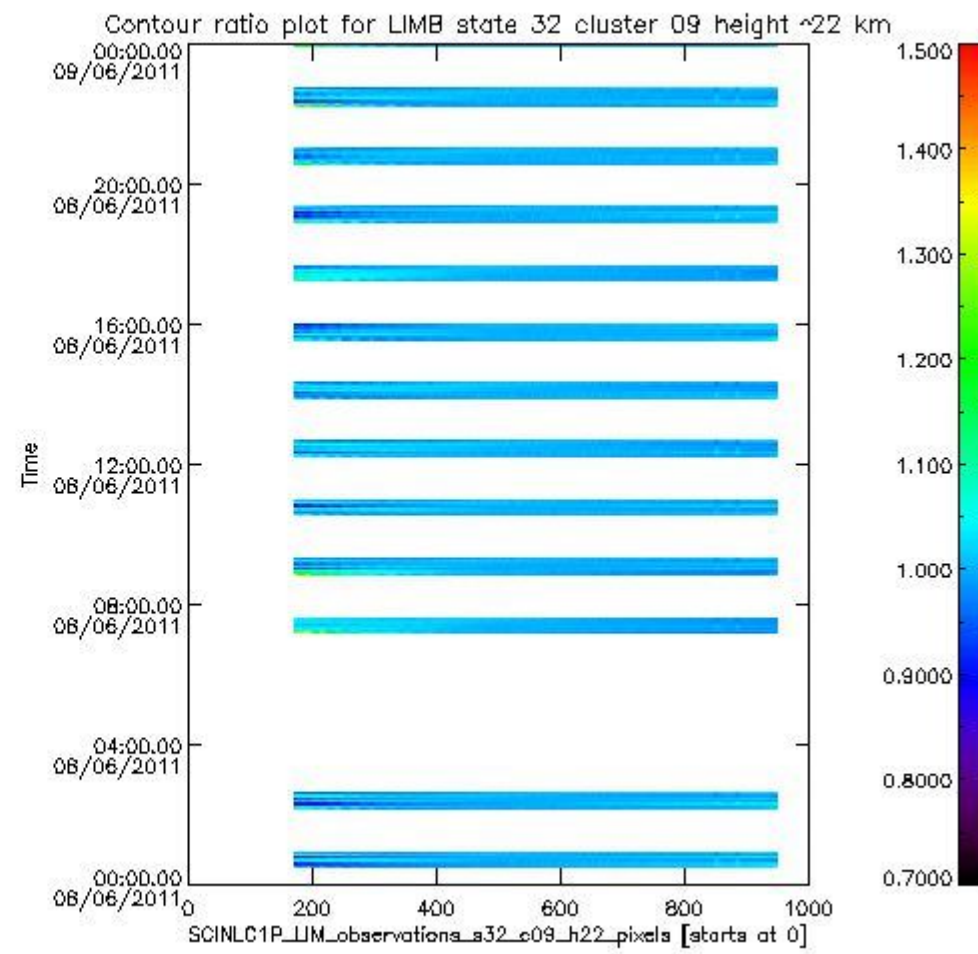
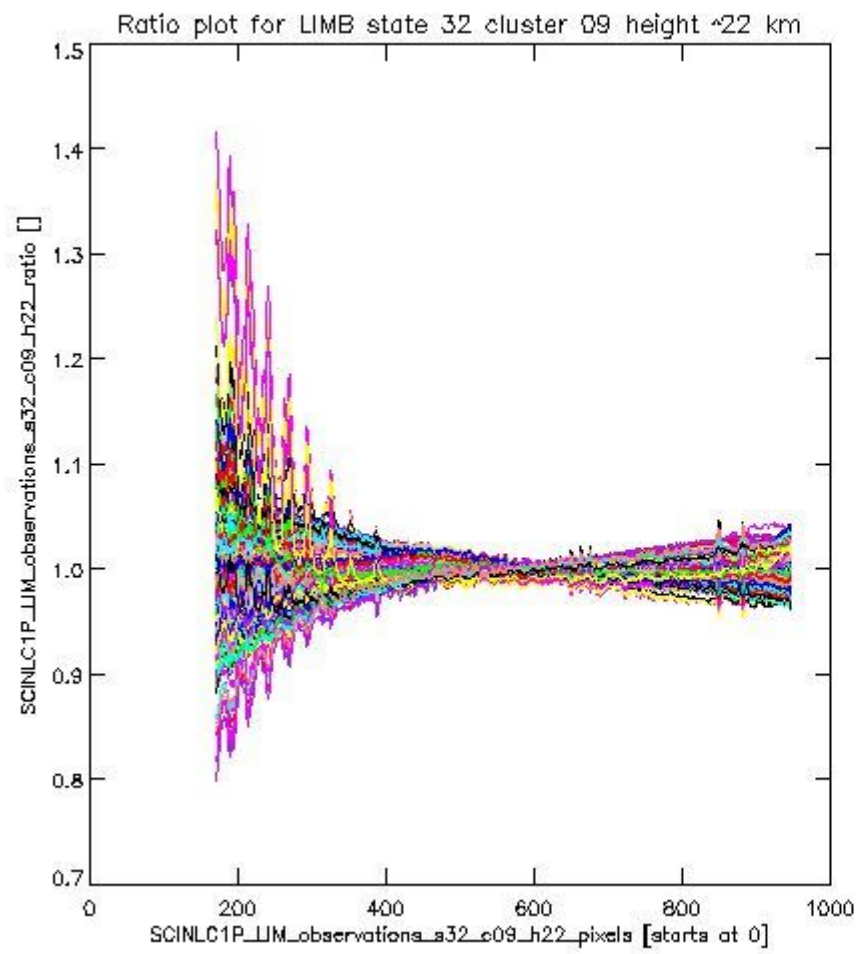
sciamachy_i1b_source_packet_report_SCIA_7_04_U_20110608_11.PNG

1.2.7 LIMB state 32 cluster 09 height ~22 km The data for the analysis of LIMB state 32 cluster 09 height ~22 km have the following characteristics:

Item	Value
Start time of first sample	08JUN2011 00:29:33.885
Start time of last sample	08JUN2011 23:58:56.103
Reference period start time	09MAY2011 00:29:44.115
Reference period stop time	07JUN2011 23:17:04.299
Channel number	2
First pixel number (starts at 0)	170
Last pixel number (starts at 0)	947



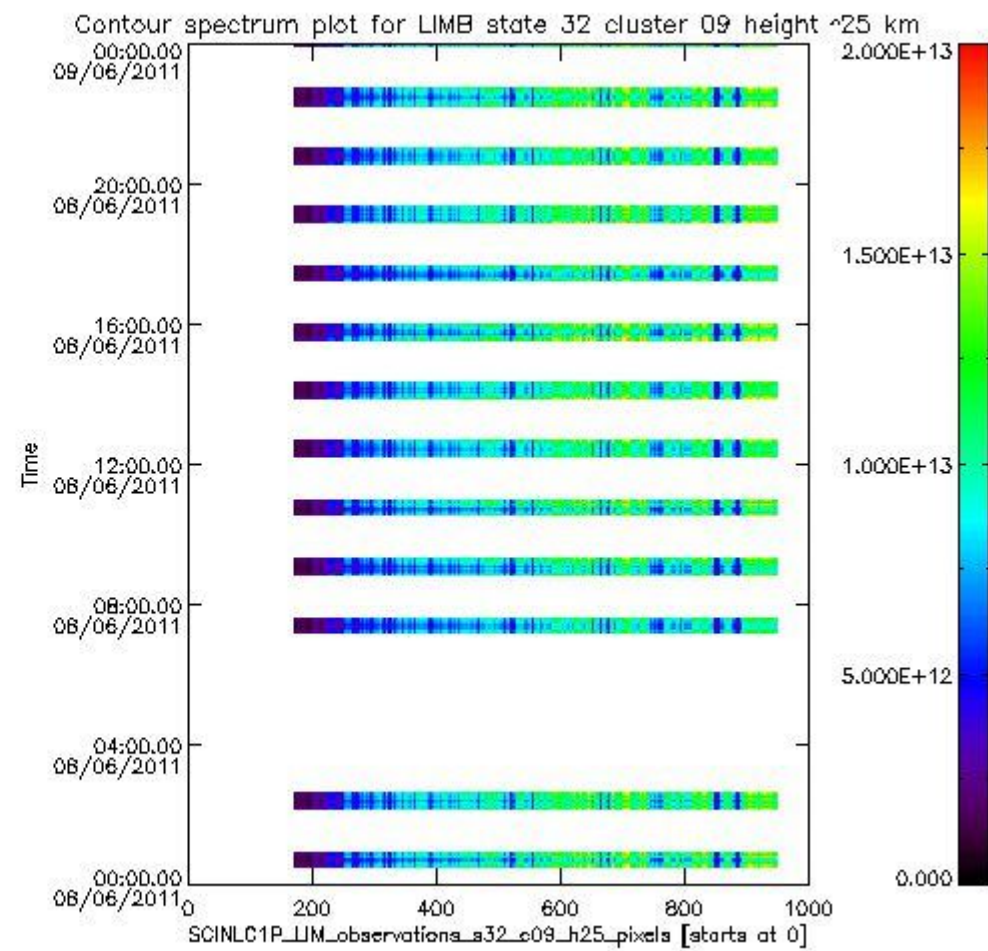
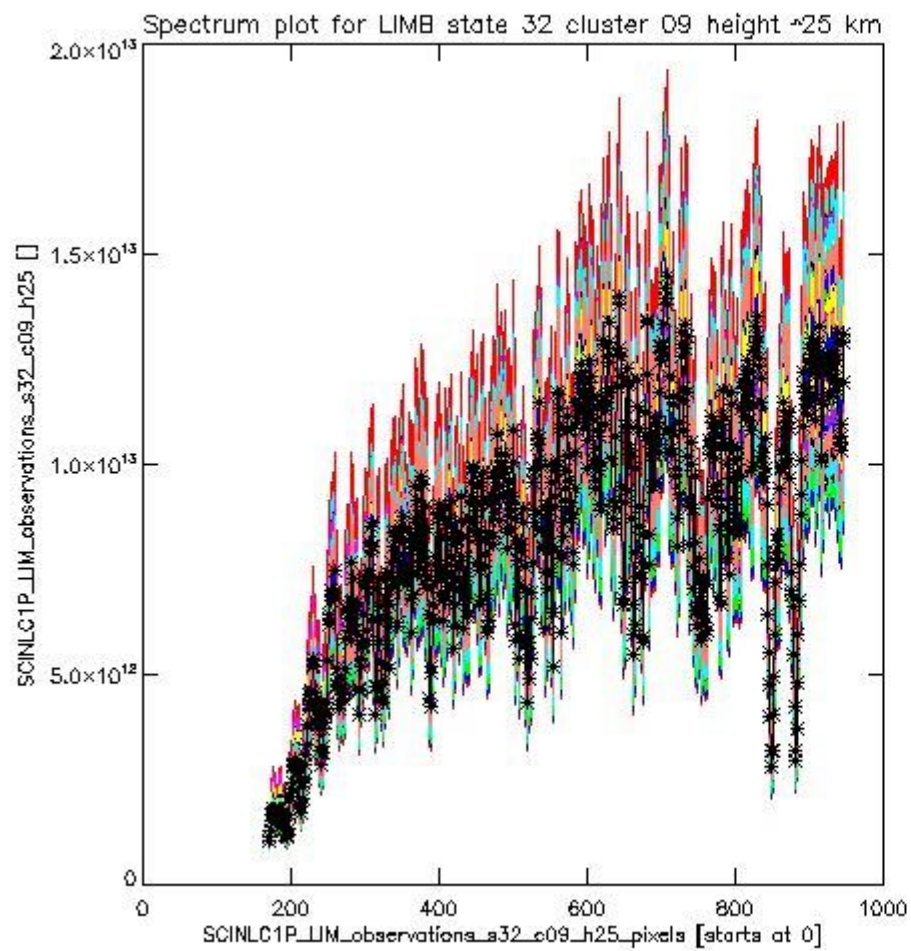
sciamachy_i1b_source_packet_report_SCIA_7_04_U_20110608_12.PNG



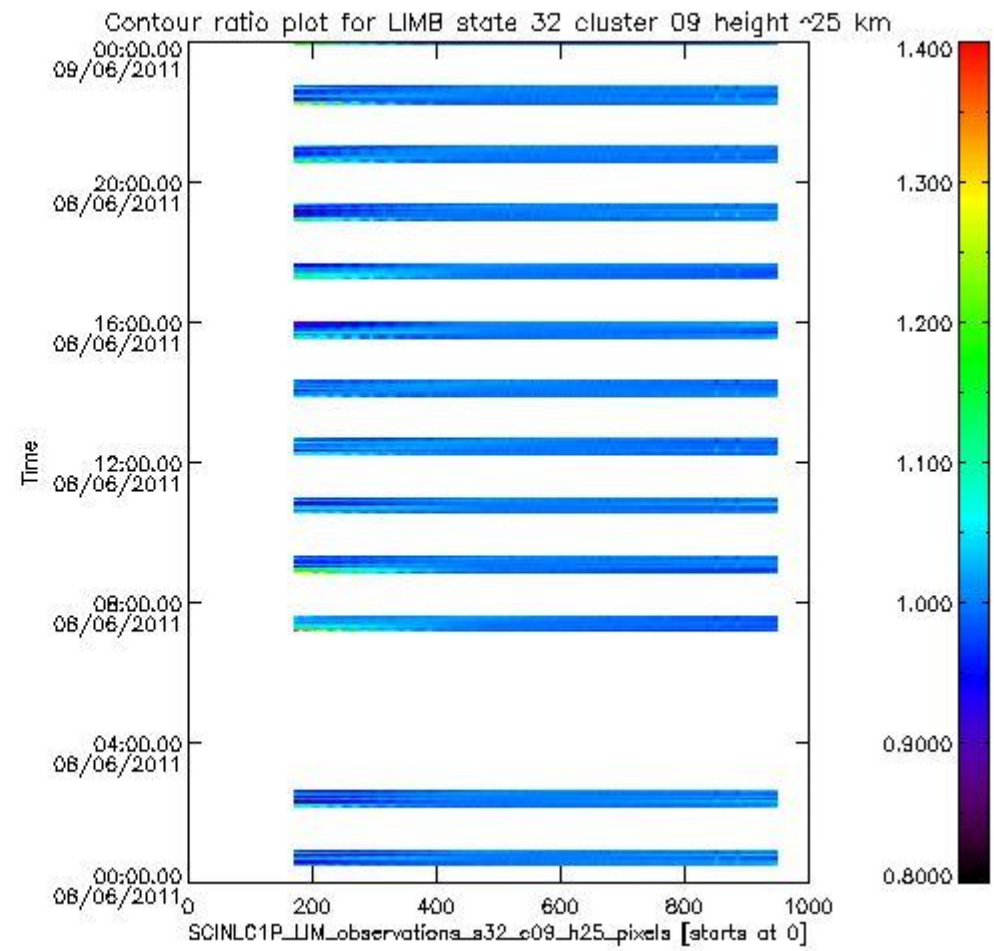
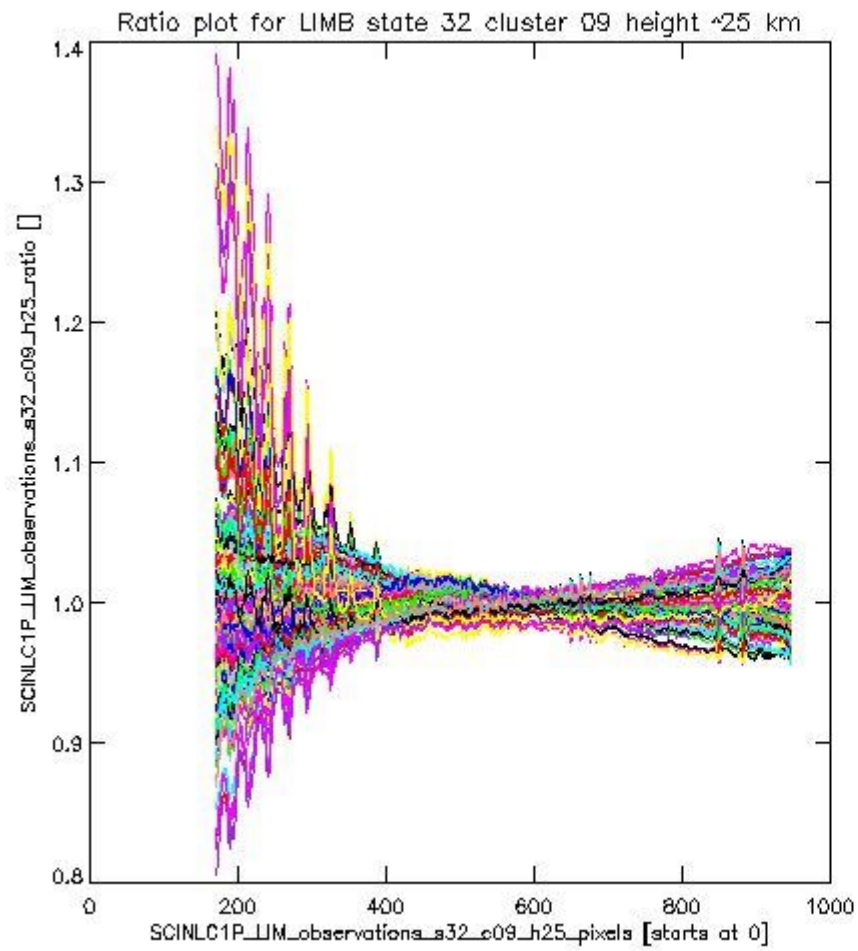
sciamachy_l1b_source_packet_report_SCIA_7_04_U_20110608_13.PNG

1.2.8 LIMB state 32 cluster 09 height ~25 km The data for the analysis of LIMB state 32 cluster 09 height ~25 km have the following characteristics:

Item	Value
Start time of first sample	08JUN2011 00:29:33.885
Start time of last sample	08JUN2011 23:58:56.103
Reference period start time	09MAY2011 00:29:44.115
Reference period stop time	07JUN2011 23:17:04.299
Channel number	2
First pixel number (starts at 0)	170
Last pixel number (starts at 0)	947



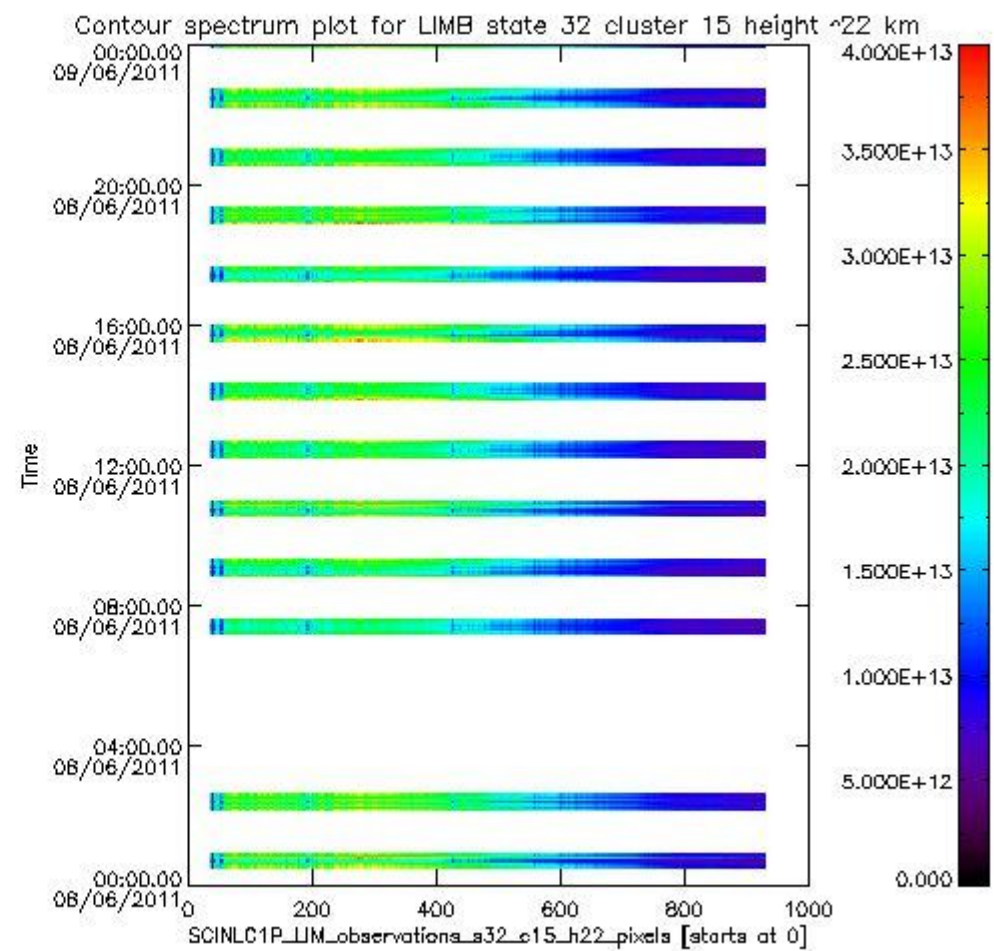
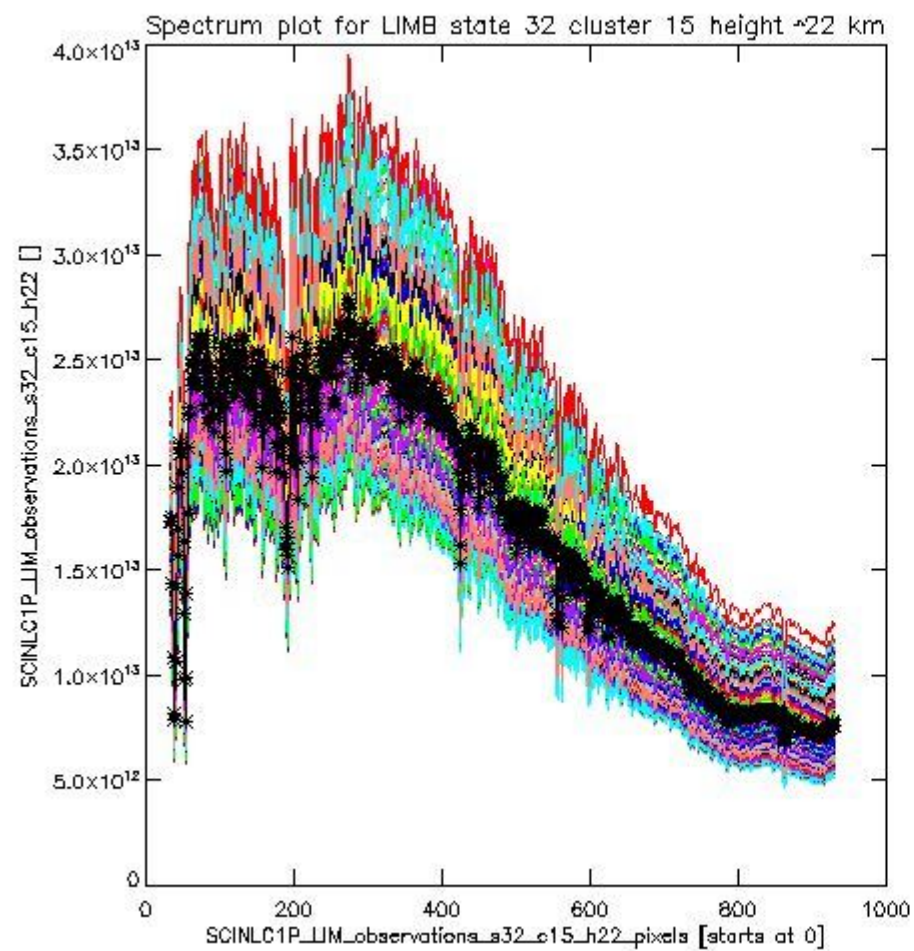
sciamachy_l1b_source_packet_report_SCIA_7_04_U_20110608_14.PNG



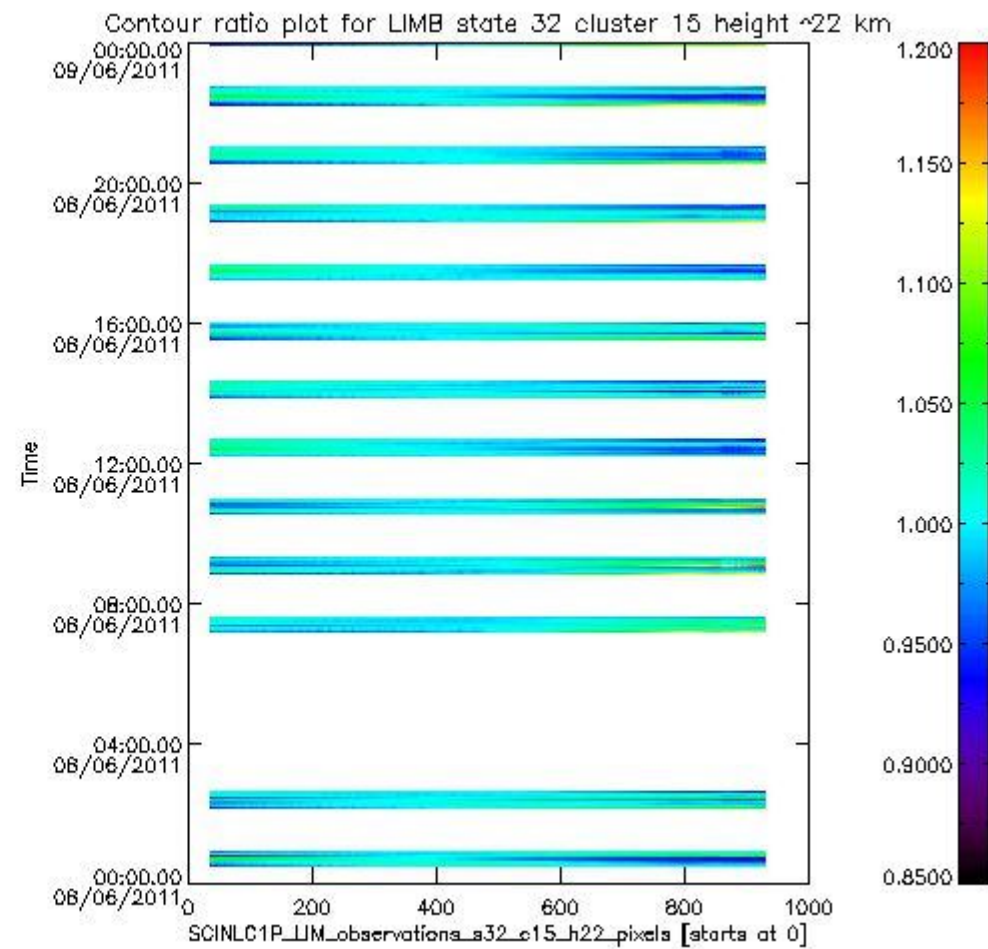
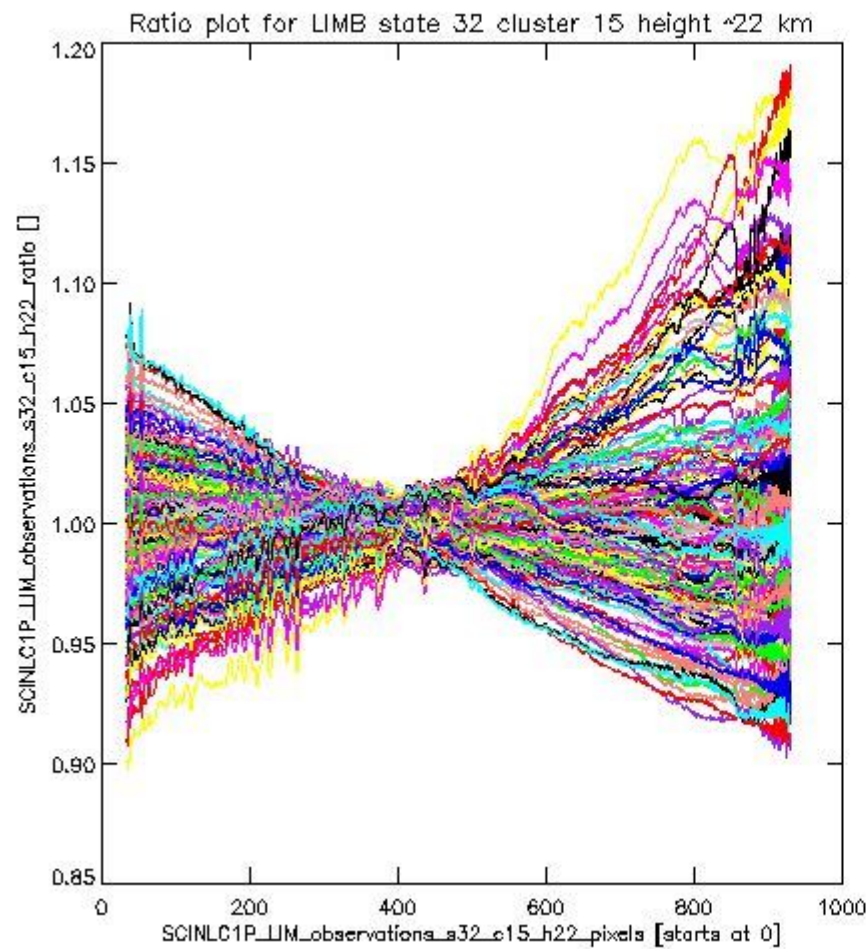
sciamachy_l1b_source_packet_report_SCIA_7_04_U_20110608_15.PNG

1.2.9 LIMB state 32 cluster 15 height ~22 km The data for the analysis of LIMB state 32 cluster 15 height ~22 km have the following characteristics:

Item	Value
Start time of first sample	08JUN2011 00:29:33.885
Start time of last sample	08JUN2011 23:58:56.103
Reference period start time	09MAY2011 00:29:44.115
Reference period stop time	07JUN2011 23:17:04.299
Channel number	3
First pixel number (starts at 0)	33
Last pixel number (starts at 0)	929



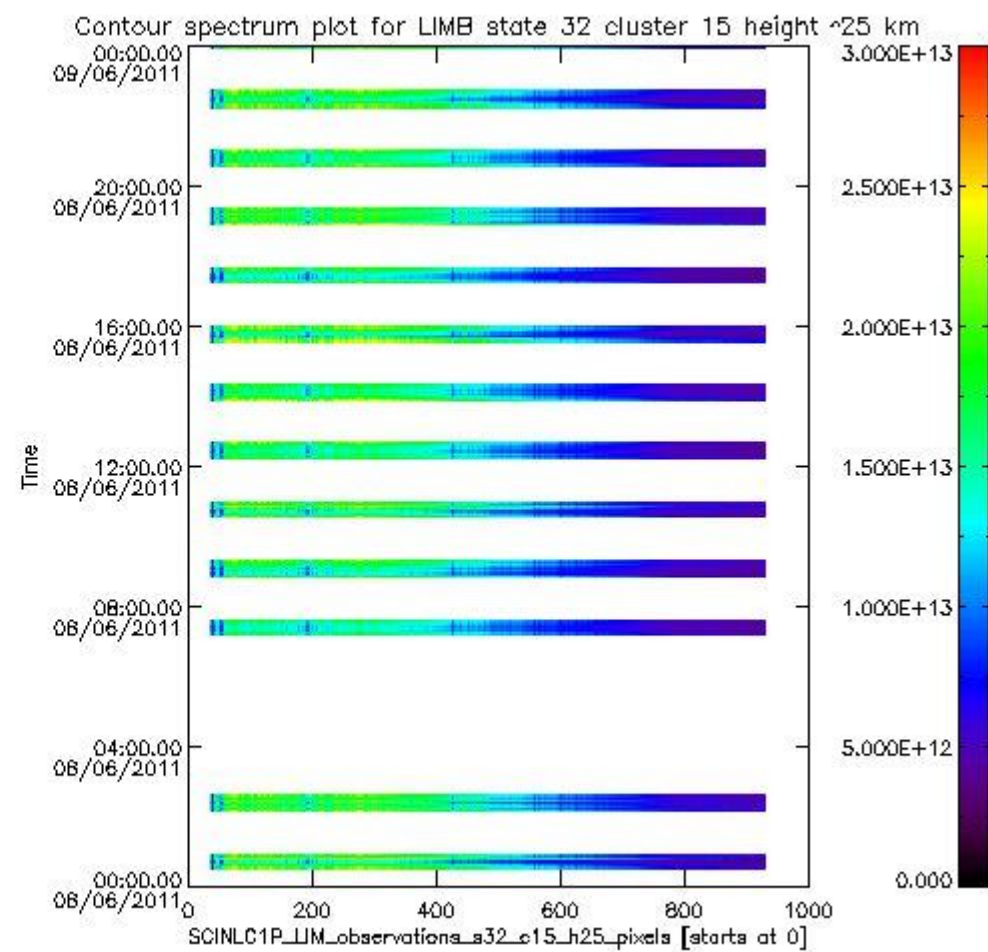
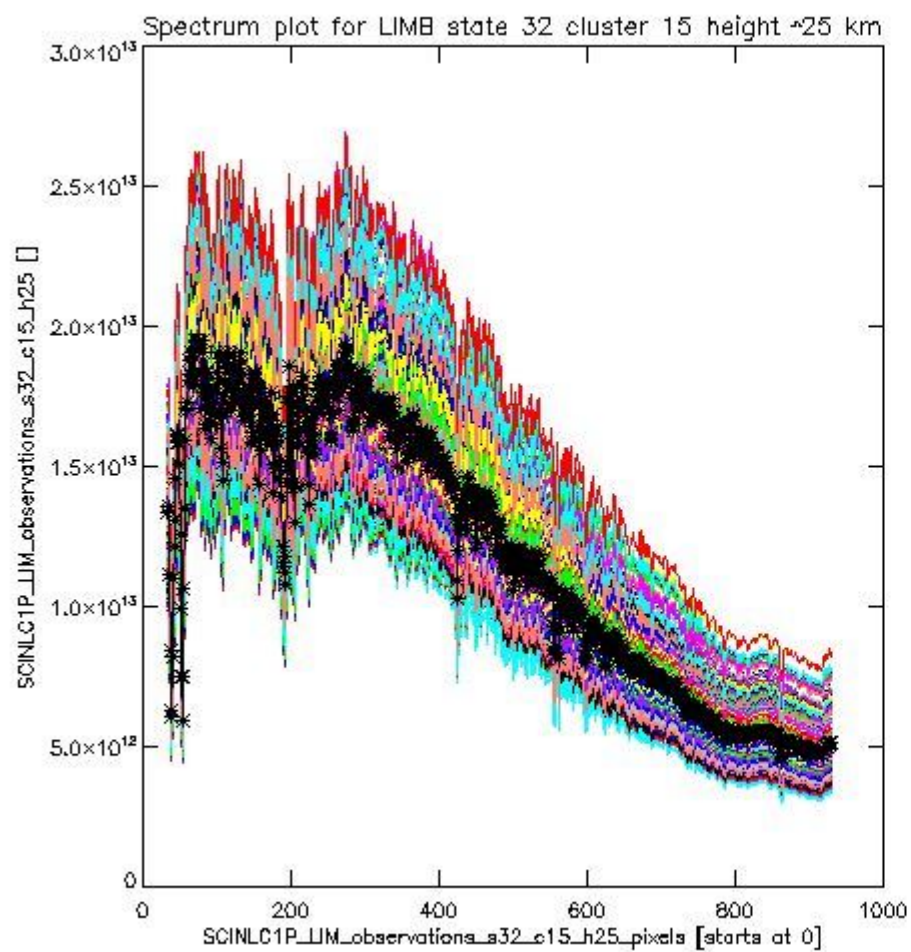
sciamachy_i1b_source_packet_report_SCIA_7_04_U_20110608_16.PNG

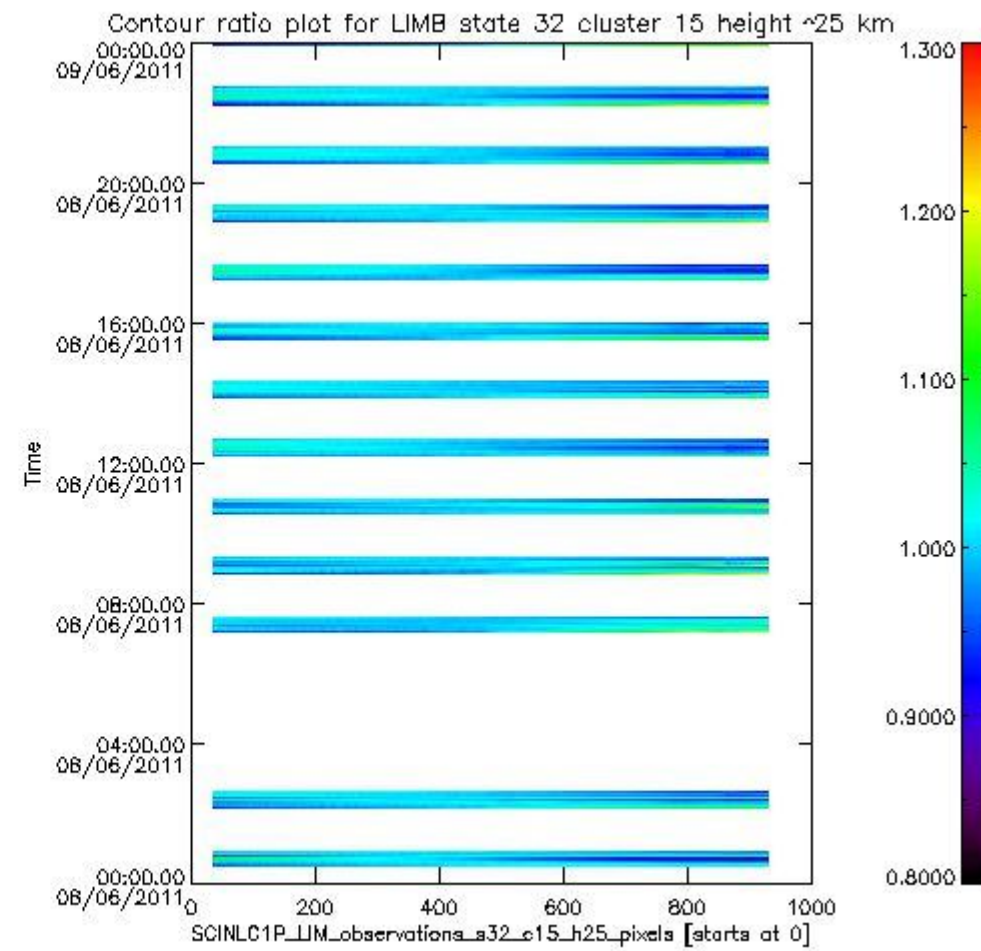
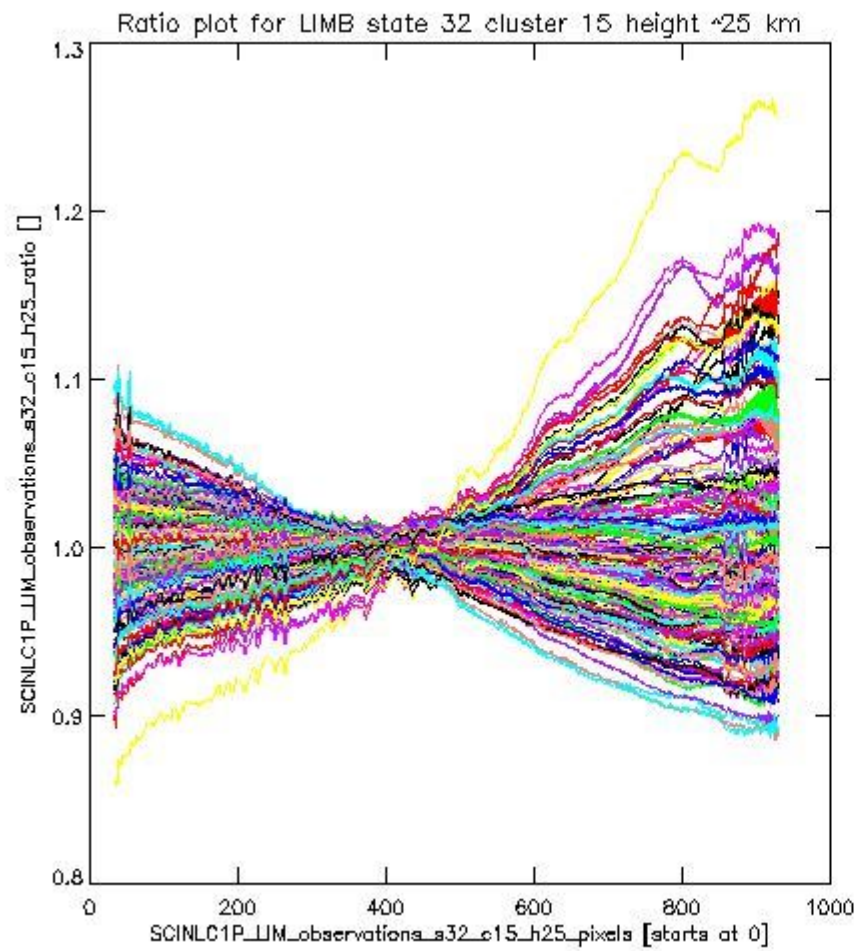


sciamachy_11b_source_packet_report_SCIA_7_04_U_20110608_17.PNG

1.2.10 LIMB state 32 cluster 15 height ~25 km The data for the analysis of LIMB state 32 cluster 15 height ~25 km have the following characteristics:

Item	Value
Start time of first sample	08JUN2011 00:29:33.885
Start time of last sample	08JUN2011 23:58:56.103
Reference period start time	09MAY2011 00:29:44.115
Reference period stop time	07JUN2011 23:17:04.299
Channel number	3
First pixel number (starts at 0)	33
Last pixel number (starts at 0)	929

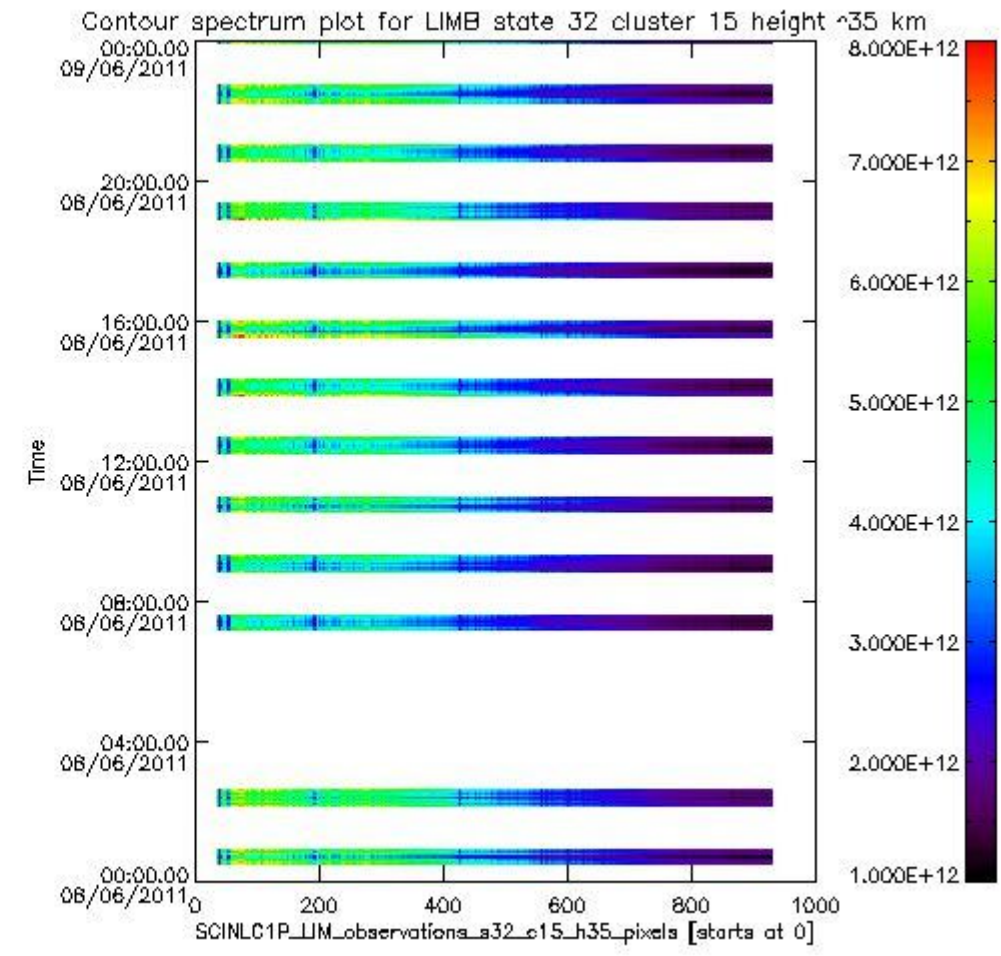
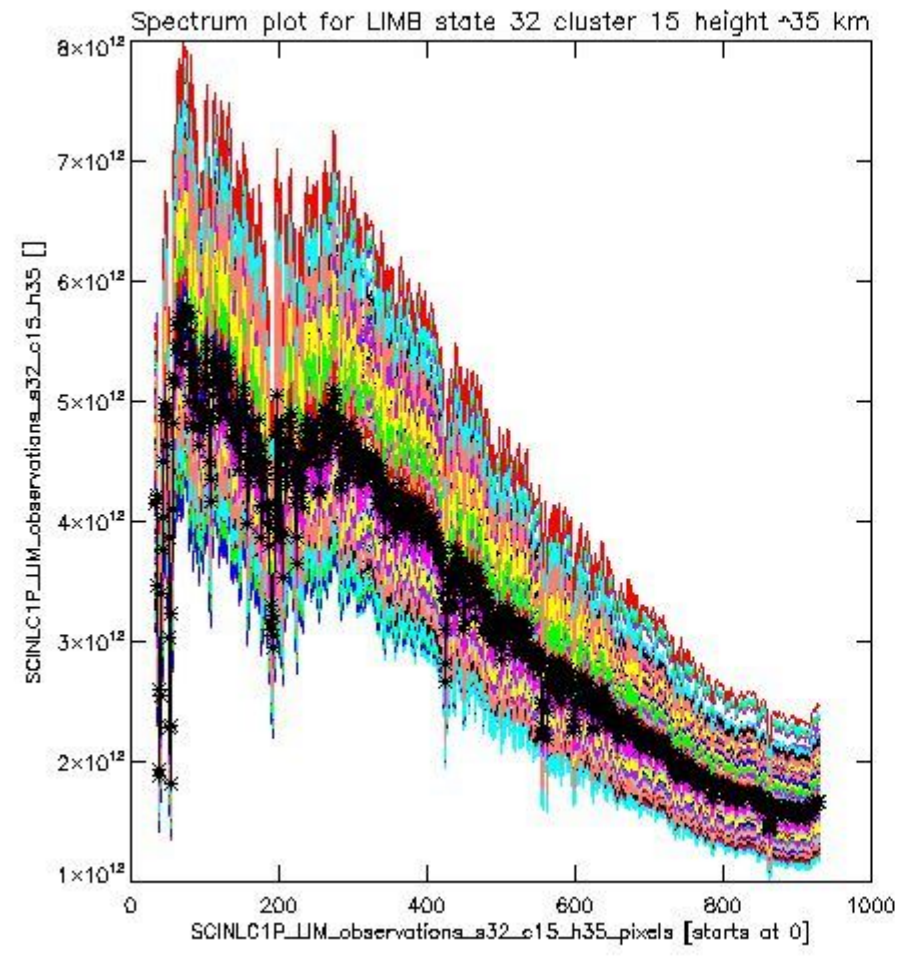




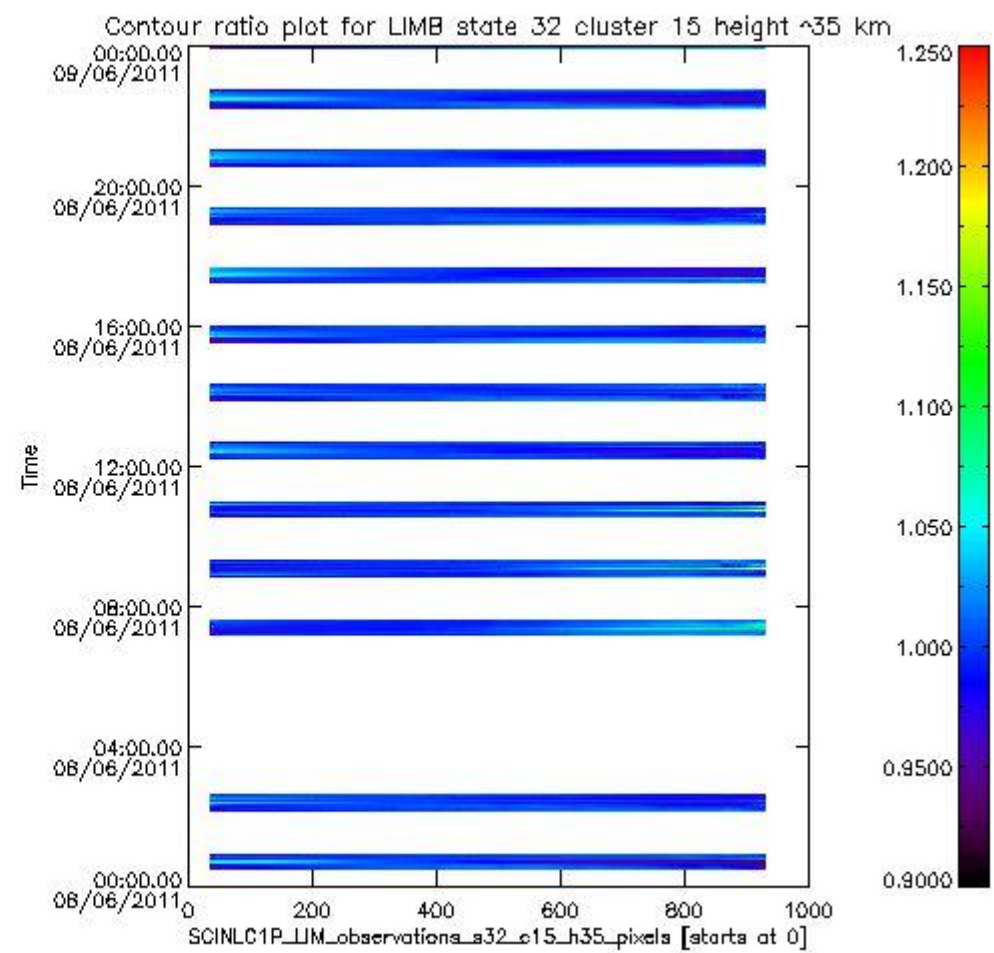
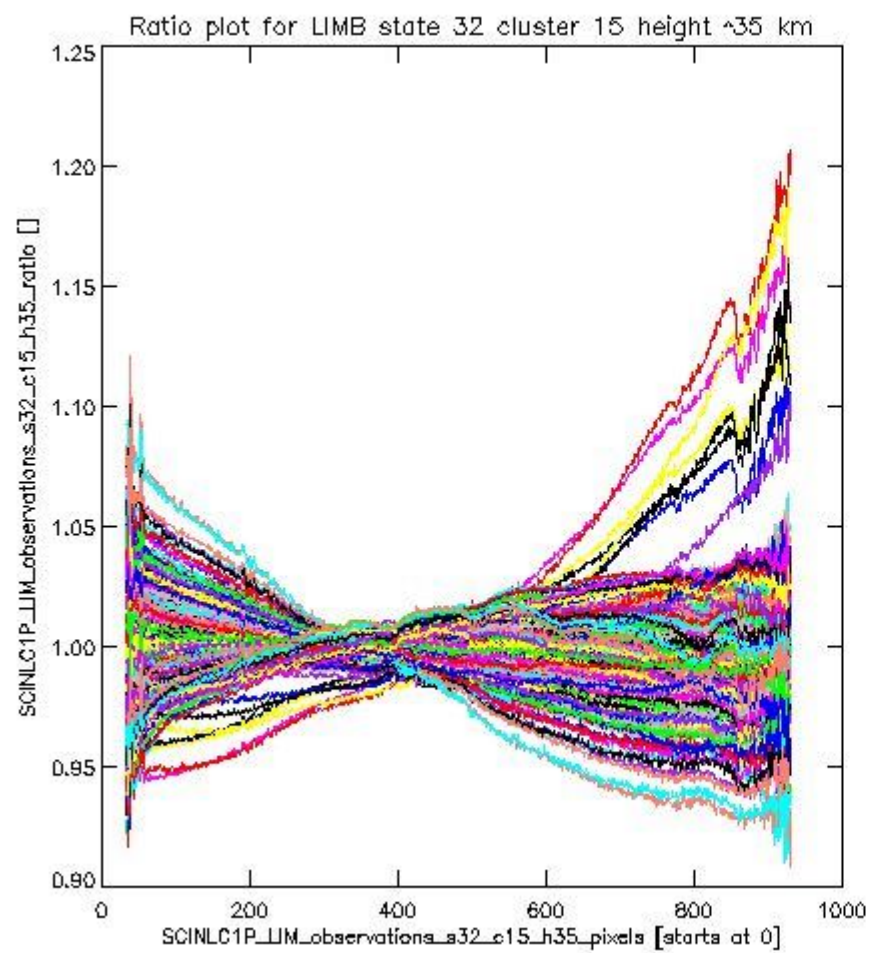
sciamachy_11b_source_packet_report_SCIA_7_04_U_20110608_19.PNG

1.2.11 LIMB state 32 cluster 15 height ~35 km The data for the analysis of LIMB state 32 cluster 15 height ~35 km have the following characteristics:

Item	Value
Start time of first sample	08JUN2011 00:29:33.885
Start time of last sample	08JUN2011 23:58:56.103
Reference period start time	09MAY2011 00:29:44.115
Reference period stop time	07JUN2011 23:17:04.299
Channel number	3
First pixel number (starts at 0)	33
Last pixel number (starts at 0)	929



sciamachy_11b_source_packet_report_SCIA_7_04_U_20110608_20.PNG



sciamachy_i1b_source_packet_report_SCIA_7_04_U_20110608_21.PNG

