

1. SCIAMACHY Level 1B source packet monitoring report

[1.1. General Info](#)

[1.2 Source packet monitoring](#)

1.1 General Info

This report contains results of the analysis on source packets from SCIAMACHY level 1 data (The SCI_NL__1P product).

1.1.1 Report summary

The table below shows general characteristics of the data that are included into this report.

Item	Value
Report version	1.1 (07-01-2010)
Time of report generation	19MAY2011 11:13:15
Data source version	SCIA/7.04-U
Processing scope for products	03MAY2011 00:00:00 to 04MAY2011 00:00:00
Start time of first product within scope	02MAY2011 22:51:55
Stop time of last product within scope	04MAY2011 01:05:49
Total number of level 1 products	16
Number of level 1 products with errors	0
SCIAL1C executable used in processing	scial1c-2.1.73-i686-pc-linux-gnu-gcc-3.3.6
SCIAL1C parameters used in processing	-allcal -type all -cat 1,2,8,10,11,16,19,23 -nadircluster 8,9,15,24,55 -limbcluster 9,15

1.1.2 Source packet summary

The table below shows which source packets have been included into the report.

Item	Mode	State	Cluster	Height	First start time	Last start time
0	NADIR	07	08	N/A	03MAY2011 01:05:20.275	03MAY2011 22:57:23.101
1	NADIR	07	09	N/A	03MAY2011 01:05:20.275	03MAY2011 22:57:23.101
2	NADIR	07	15	N/A	03MAY2011 01:05:20.275	03MAY2011 22:57:23.101
3	NADIR	07	24	N/A	03MAY2011 01:05:20.275	03MAY2011 22:57:23.101
4	NADIR	07	55	N/A	03MAY2011 01:05:20.275	03MAY2011 22:57:23.101
5	LIMB	32	09	~19 km	03MAY2011 00:50:06.896	03MAY2011 23:00:34.402
6	LIMB	32	09	~22 km	03MAY2011 00:50:06.896	03MAY2011 23:00:34.402
7	LIMB	32	09	~25 km	03MAY2011 00:50:06.896	03MAY2011 23:00:34.402
8	LIMB	32	15	~22 km	03MAY2011 00:50:06.896	03MAY2011 23:00:34.402
9	LIMB	32	15	~25 km	03MAY2011 00:50:06.896	03MAY2011 23:00:34.402
10	LIMB	32	15	~35 km	03MAY2011 00:50:06.896	03MAY2011 23:00:34.402

1.1.3 Summary per product

The following table shows a summary for each product used in this report.

Products are linked to a corresponding server directory for view/download. Note: Link access may be restricted by security settings of your internet browser or firewall.

#	Product name	Start time	Stop time	ProdErr	#nadir	#limb	#occ	#mon	#nopro	#cmlpl_drk	#incmpl_drk	Decont
0	SCI_NLC_1CUDPA20110502_224532_000060113102_00102_47961_1055.N1	02MAY2011 22:51:55	03MAY2011 00:02:10	0	35	31	0	0	1	0	0	
1	SCI_NLC_1CUDPA20110503_002547_000060083102_00103_47962_1058.N1	03MAY2011 00:32:09	03MAY2011 01:42:38	0	36	30	0	0	1	0	0	
2	SCI_NLC_1CUDPA20110503_020559_000060113102_00104_47963_1052.N1	03MAY2011 02:12:22	03MAY2011 03:22:37	0	35	31	0	0	1	0	0	
3	SCI_NLC_1CUDPA20110503_034614_000060083102_00105_47964_1067.N1	03MAY2011 03:52:36	03MAY2011 05:03:05	0	36	30	0	0	1	0	0	
4	SCI_NLC_1CUDPA20110503_052626_000060113102_00106_47965_1070.N1	03MAY2011 05:32:50	03MAY2011 06:43:04	0	35	31	0	0	1	0	0	
5	SCI_NLC_1CUDPA20110503_070642_000060083102_00107_47966_1072.N1	03MAY2011 07:13:03	03MAY2011 08:23:32	0	36	30	0	0	1	0	0	

6	SCI_NLC_1CUDPA20110503_084654_000060113102_00108_47967_1074.N1	03MAY2011 08:53:17	03MAY2011 10:03:32	0	35	31	0	0	1	0	0	
7	SCI_NLC_1CUDPA20110503_102709_000060083102_00109_47968_1075.N1	03MAY2011 10:33:31	03MAY2011 11:44:00	0	36	30	0	0	1	0	0	
8	SCI_NLC_1CUDPA20110503_120721_000060113102_00110_47969_1078.N1	03MAY2011 12:13:44	03MAY2011 13:23:59	0	35	31	0	0	1	0	0	
9	SCI_NLC_1CUDPA20110503_134736_000060083102_00111_47970_1079.N1	03MAY2011 13:53:58	03MAY2011 15:04:27	0	36	30	0	0	1	0	0	
10	SCI_NLC_1CUDPA20110503_152748_000060113102_00112_47971_1091.N1	03MAY2011 15:34:12	03MAY2011 16:44:26	0	35	31	0	0	1	0	0	
11	SCI_NLC_1CUDPA20110503_170803_000060083102_00113_47972_1090.N1	03MAY2011 17:14:25	03MAY2011 18:25:05	0	36	30	0	1	1	0	0	
12	SCI_NLC_1CUDPA20110503_184815_000060113102_00114_47973_1086.N1	03MAY2011 18:54:39	03MAY2011 20:05:04	0	35	31	0	1	1	0	0	
13	SCI_NLC_1CUDPA20110503_202830_000060083102_00115_47974_1083.N1	03MAY2011 20:34:53	03MAY2011 21:45:22	0	36	30	0	0	1	0	0	
14	SCI_NLC_1CUDPA20110503_220842_000060113102_00116_47975_1082.N1	03MAY2011 22:15:06	03MAY2011 23:25:21	0	35	31	0	0	1	0	0	
15	SCI_NLC_1CUDPA20110503_234857_000060083102_00117_47976_1088.N1	03MAY2011 23:55:20	04MAY2011 01:05:49	0	36	30	0	0	1	0	0	

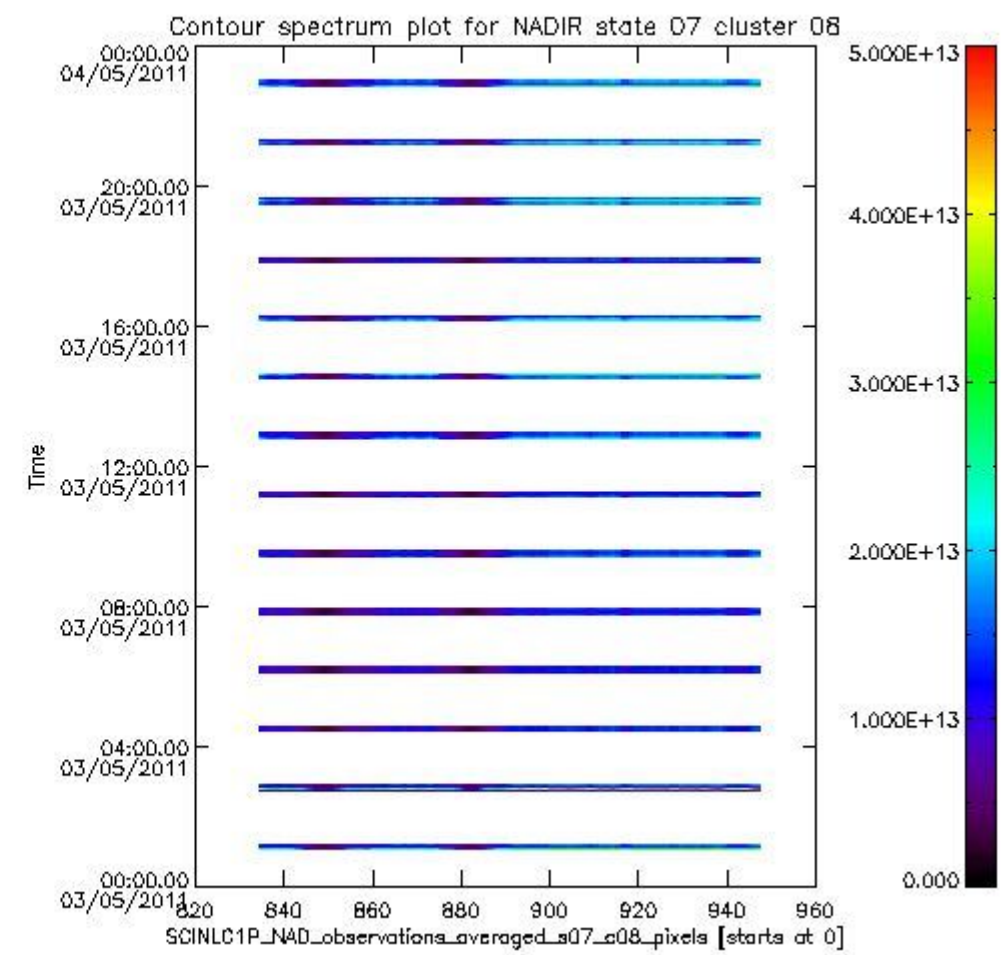
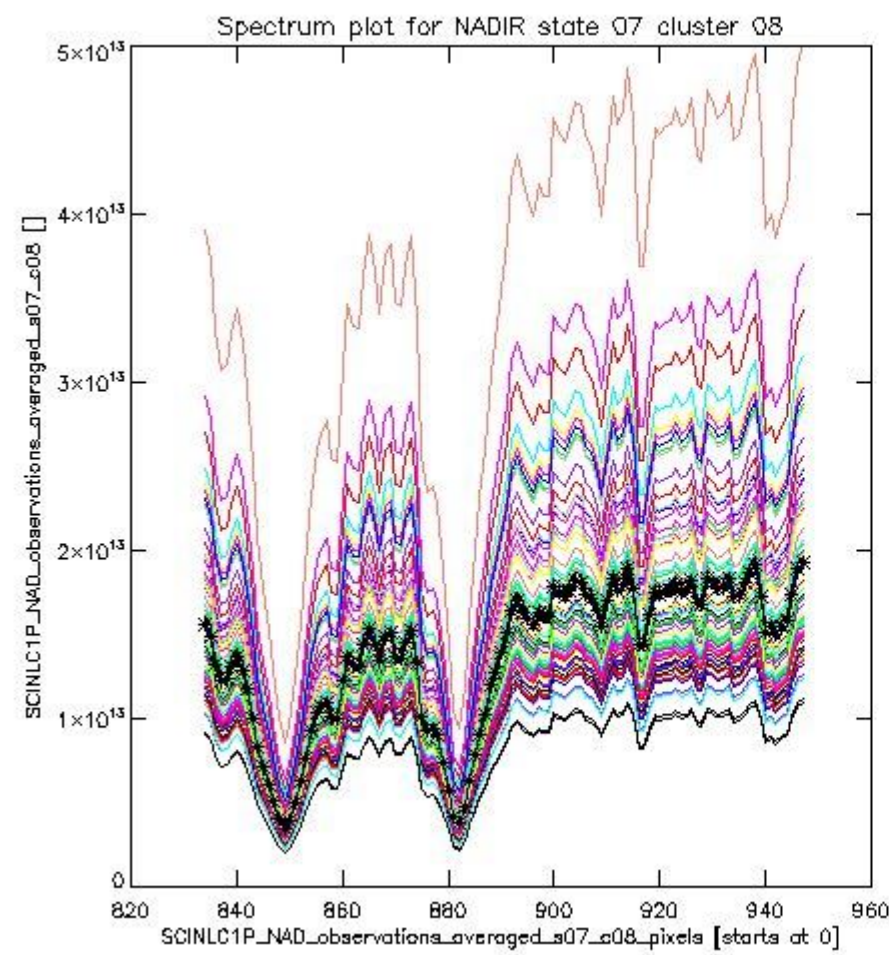
1.2 Source packet monitoring

This section shows figures for each of the monitored source packet types listed in the Source Packet Summary section. For each mode-state-cluster(-height) combination the following plots are shown:

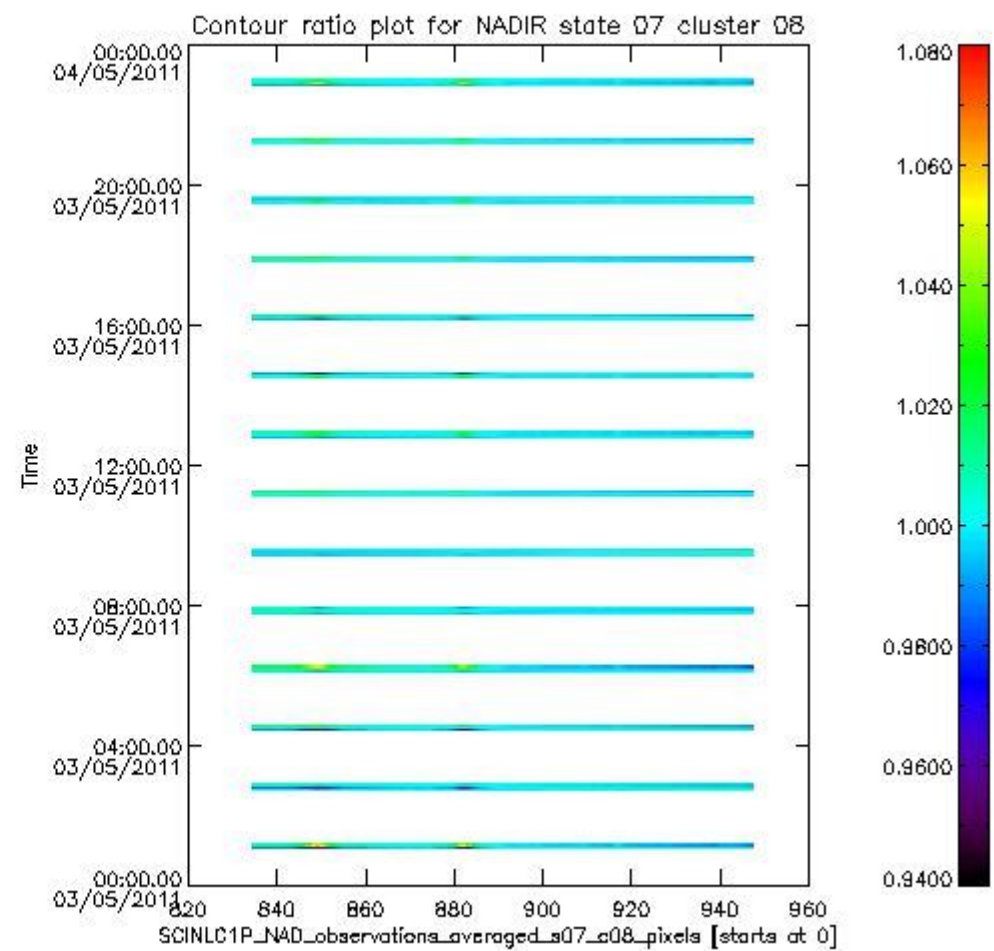
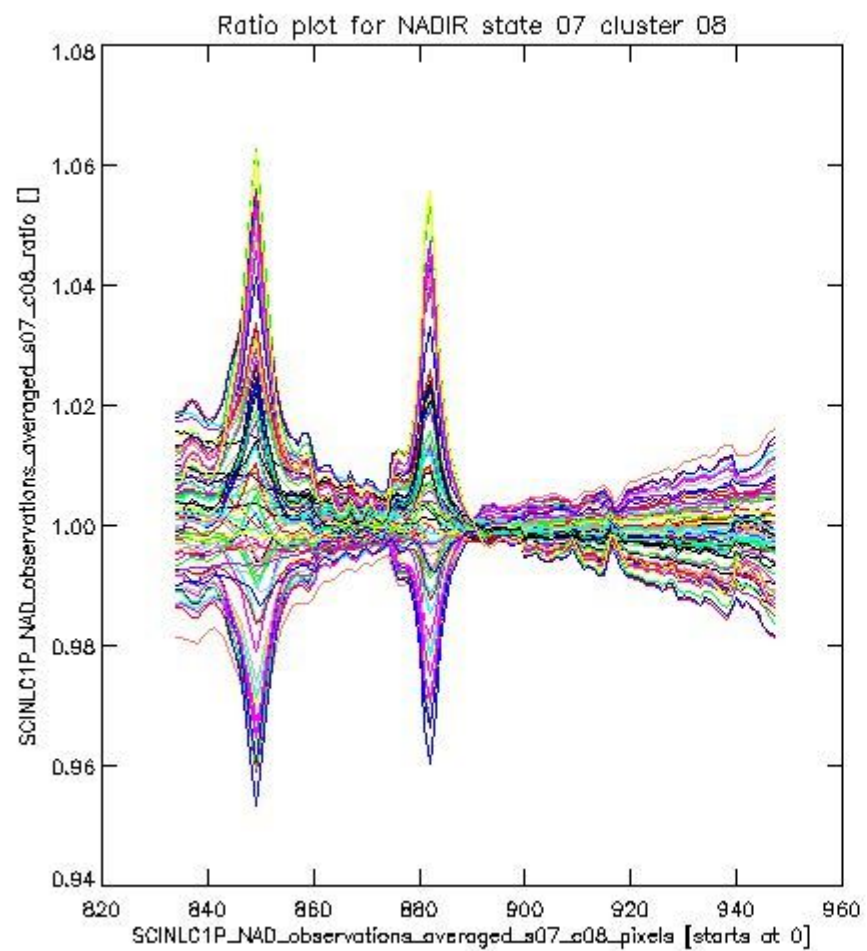
- A plot that shows all calibrated averaged spectra vs. pixel number as 2D-profiles. Each line is an average spectrum for a single state occurrence. For Limb modes, the average is performed on spectra recorded at a specific height. The reference spectrum that is used for comparison is also shown as a black line with * markers.
- A plot that shows all calibrated averaged spectra vs. pixel number and time using a coloured contour plot. The colours indicate the intensity.
- A plot that shows ratios of all calibrated averaged spectra and the reference spectrum vs. pixel number. Each line is the ratio of a calibrated averaged spectrum and the reference spectrum, where both spectra have been intensity corrected (the spectrum has been divided by the average pixel intensity) prior to division.
- A plot that shows ratios of all calibrated averaged spectra and the reference spectrum vs. pixel number and time using a coloured contour plot.

1.2.1 NADIR state 07 cluster 08 The data for the analysis of NADIR state 07 cluster 08 have the following characteristics:

Item	Value
Start time of first sample	03MAY2011 01:05:20.275
Start time of last sample	03MAY2011 22:57:23.101
Reference period start time	03APR2011 01:06:19.943
Reference period stop time	01MAY2011 22:29:52.700
Channel number	2
First pixel number (starts at 0)	834
Last pixel number (starts at 0)	947



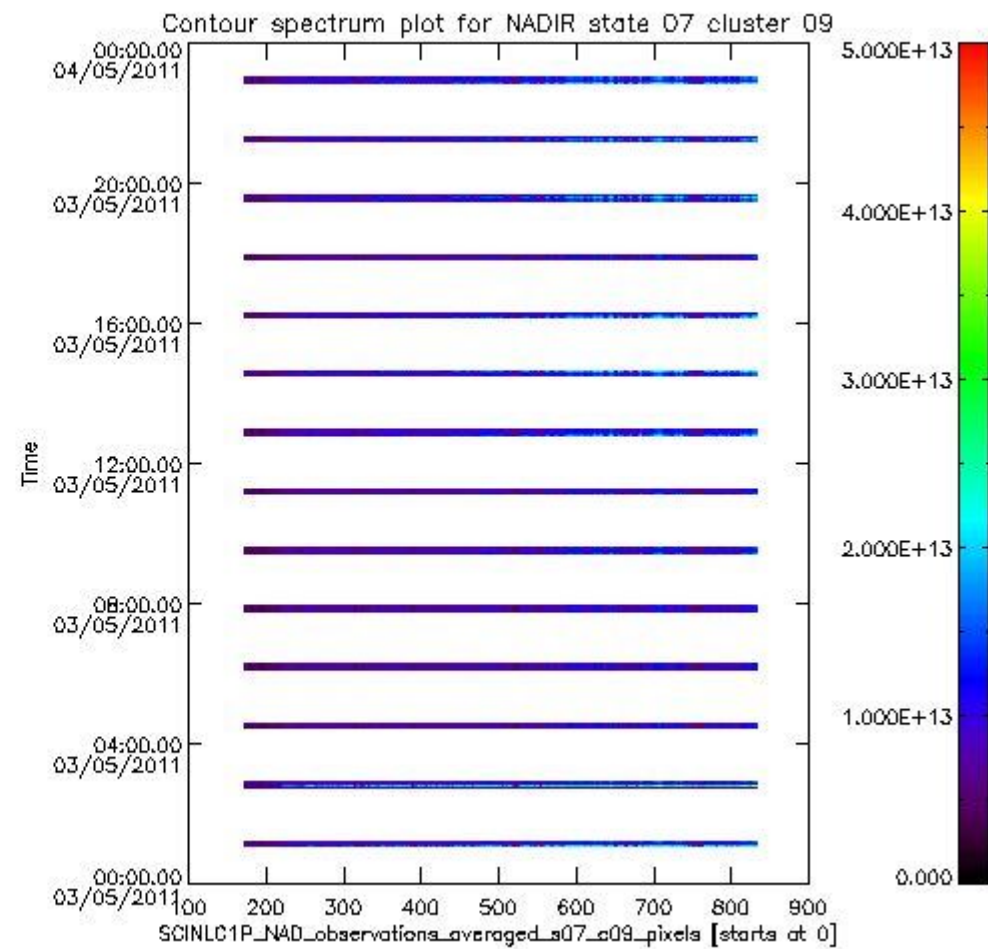
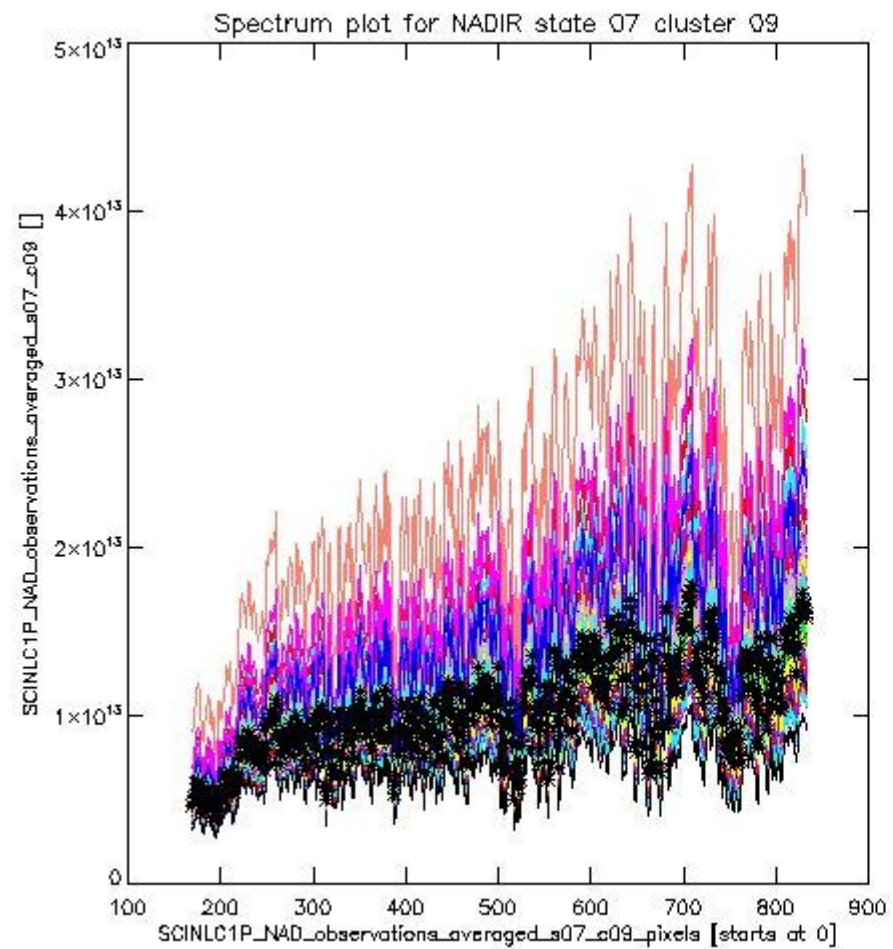
sciamachy_i1b_source_packet_report_SCIA_7_04_U_20110503_0.PNG



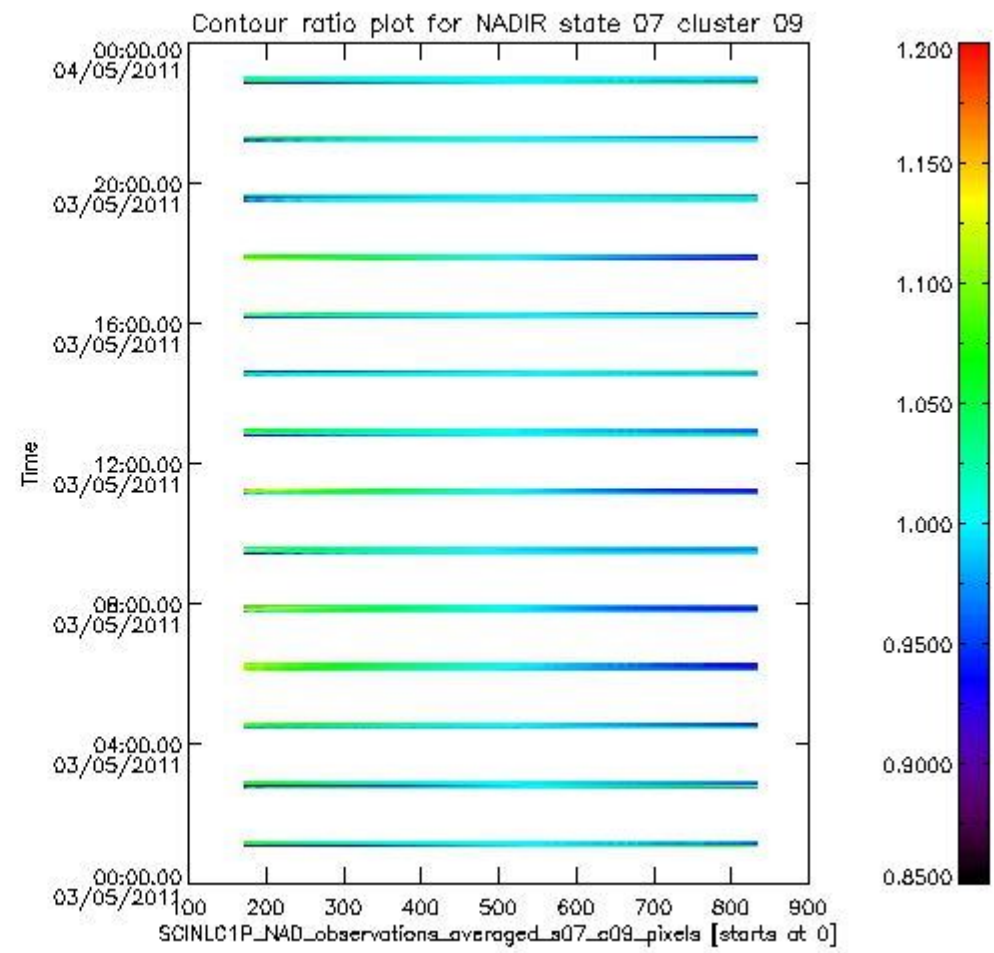
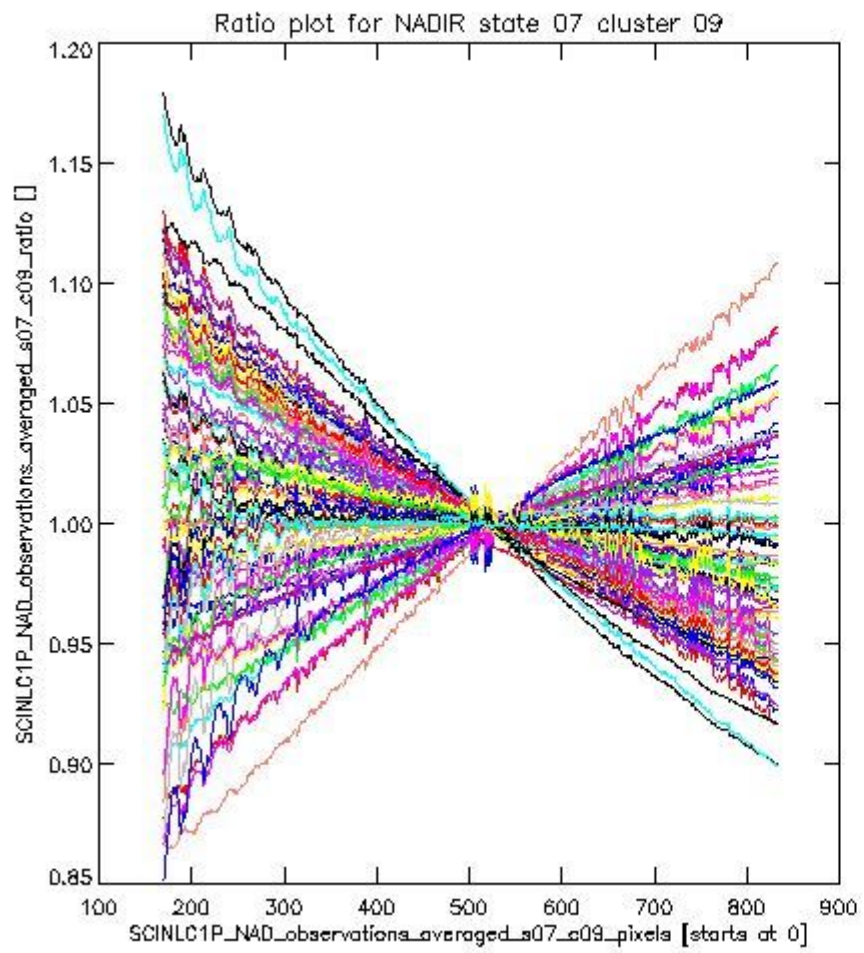
sciamachy_i1b_source_packet_report_SCIA_7_04_U_20110503_1.PNG

1.2.2 NADIR state 07 cluster 09 The data for the analysis of NADIR state 07 cluster 09 have the following characteristics:

Item	Value
Start time of first sample	03MAY2011 01:05:20.275
Start time of last sample	03MAY2011 22:57:23.101
Reference period start time	03APR2011 01:06:19.943
Reference period stop time	01MAY2011 22:29:52.700
Channel number	2
First pixel number (starts at 0)	170
Last pixel number (starts at 0)	833



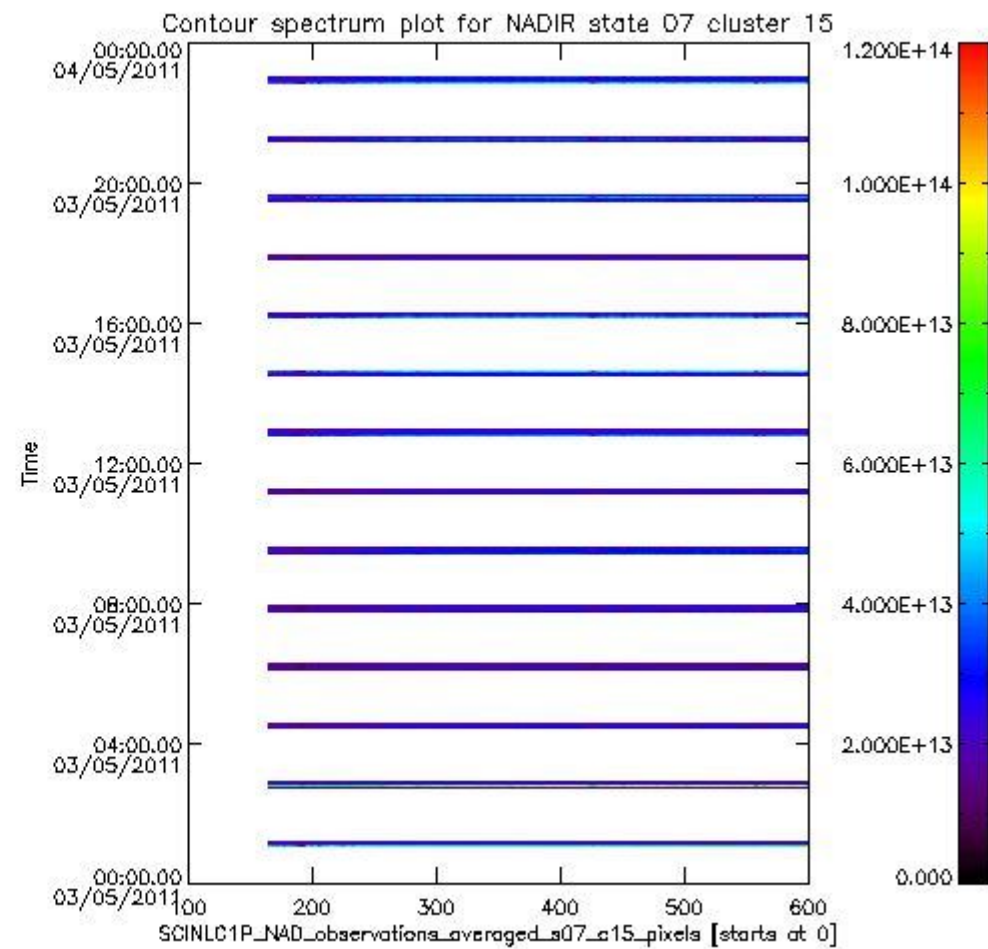
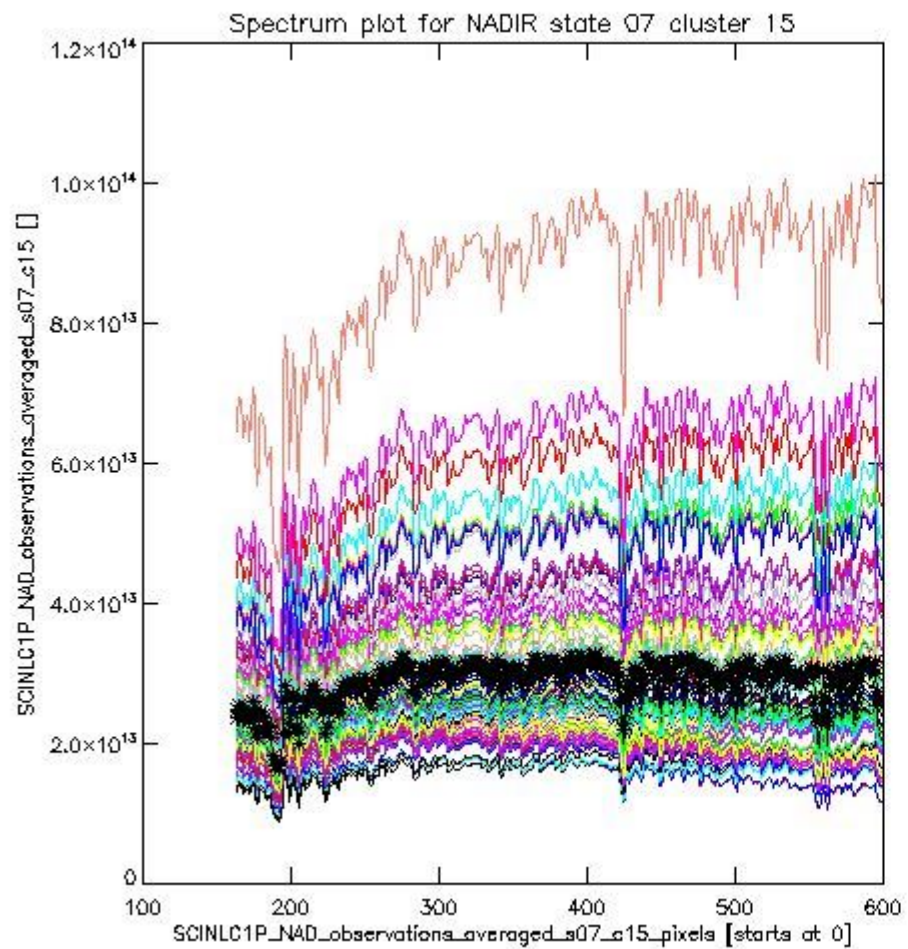
sciamachy_i1b_source_packet_report_SCIA_7_04_U_20110503_2.PNG



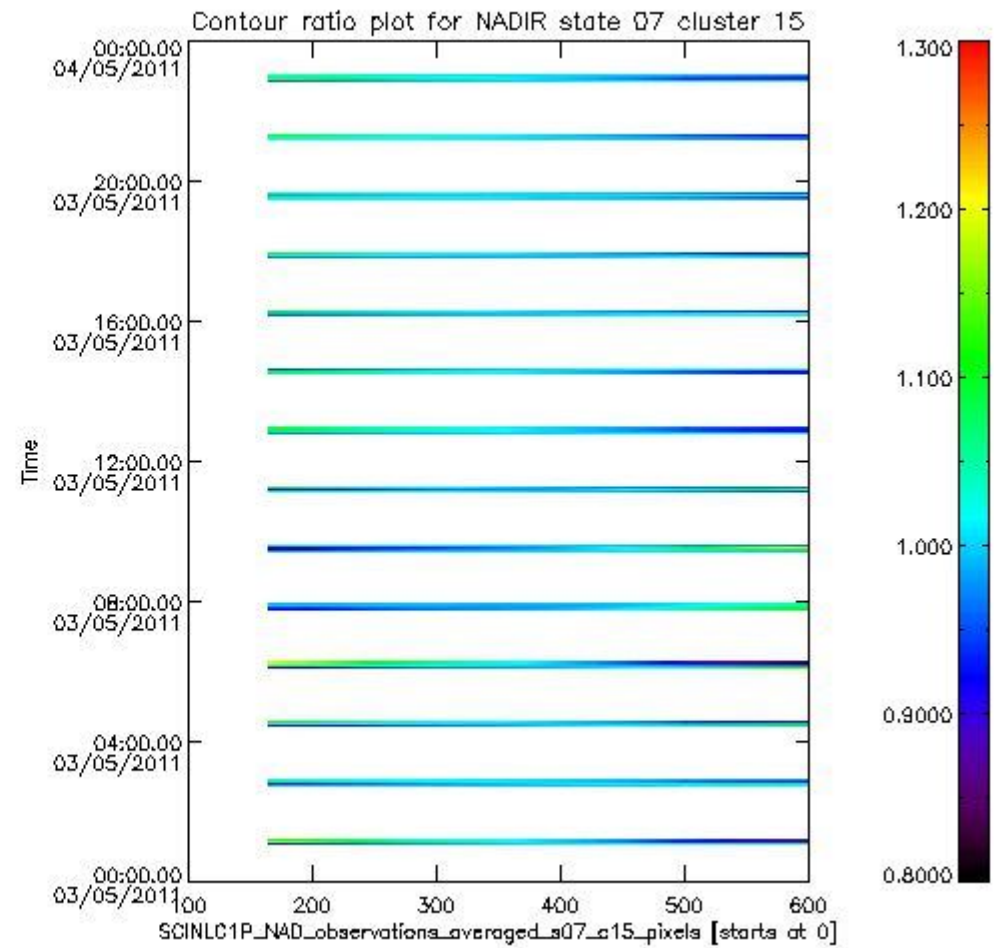
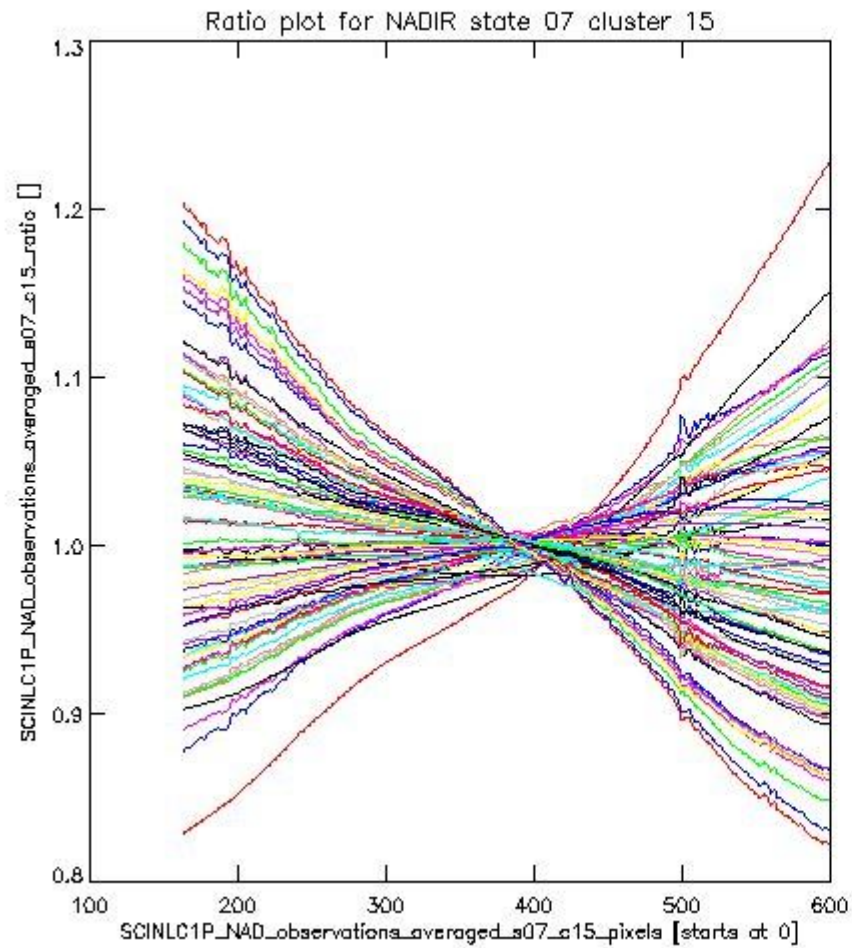
sciamachy_i1b_source_packet_report_SCIA_7_04_U_20110503_3.PNG

1.2.3 NADIR state 07 cluster 15 The data for the analysis of NADIR state 07 cluster 15 have the following characteristics:

Item	Value
Start time of first sample	03MAY2011 01:05:20.275
Start time of last sample	03MAY2011 22:57:23.101
Reference period start time	03APR2011 01:06:19.943
Reference period stop time	01MAY2011 22:29:52.700
Channel number	3
First pixel number (starts at 0)	163
Last pixel number (starts at 0)	598



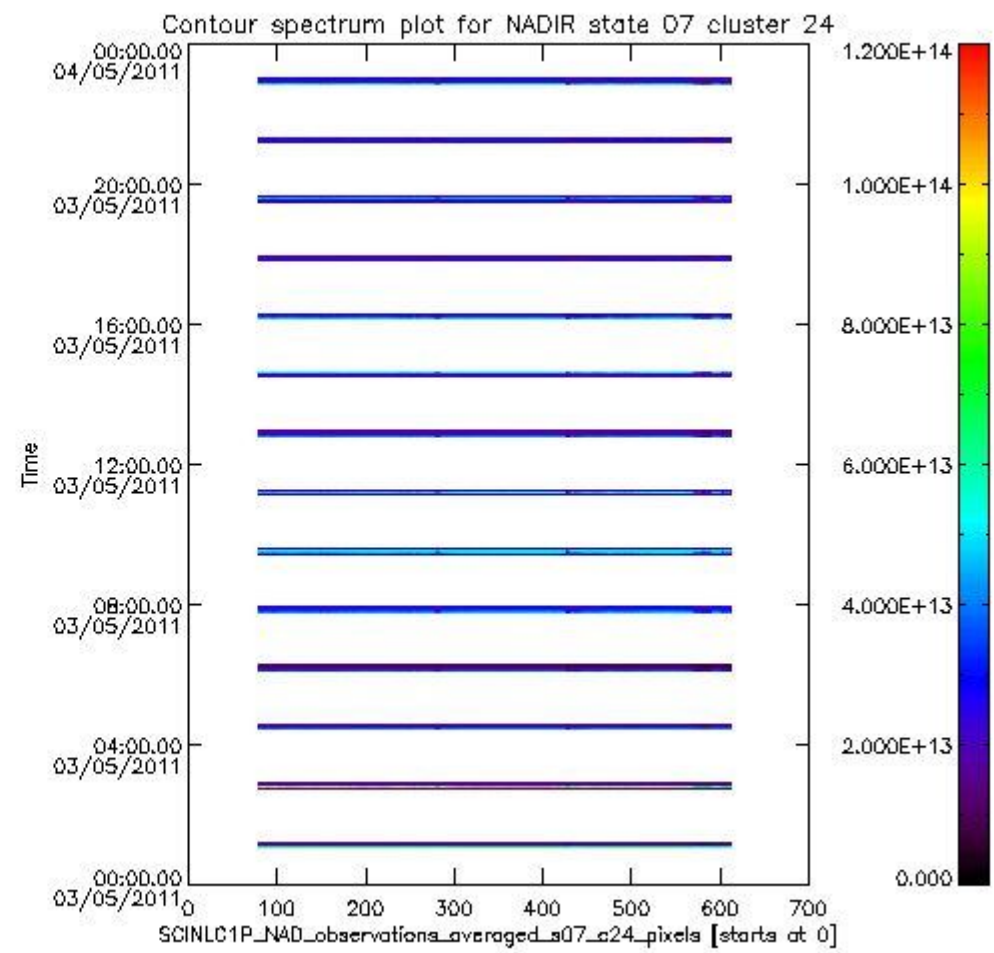
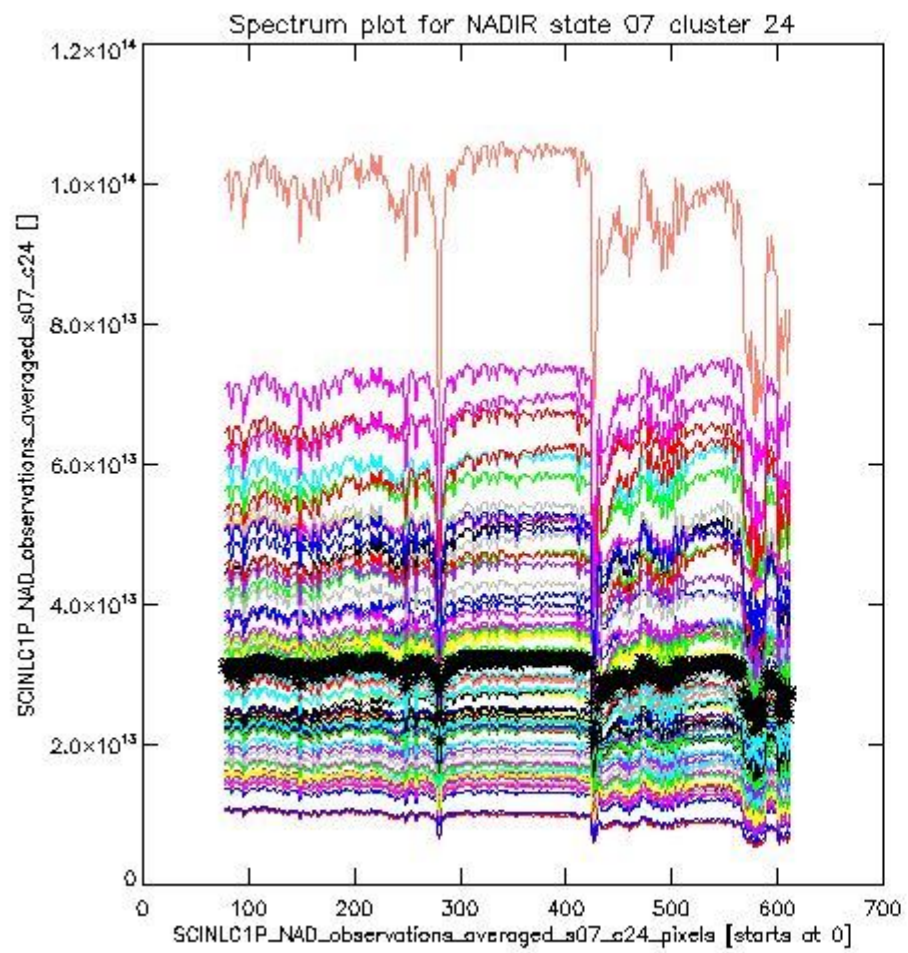
sciamachy_i1b_source_packet_report_SCIA_7_04_U_20110503_4.PNG



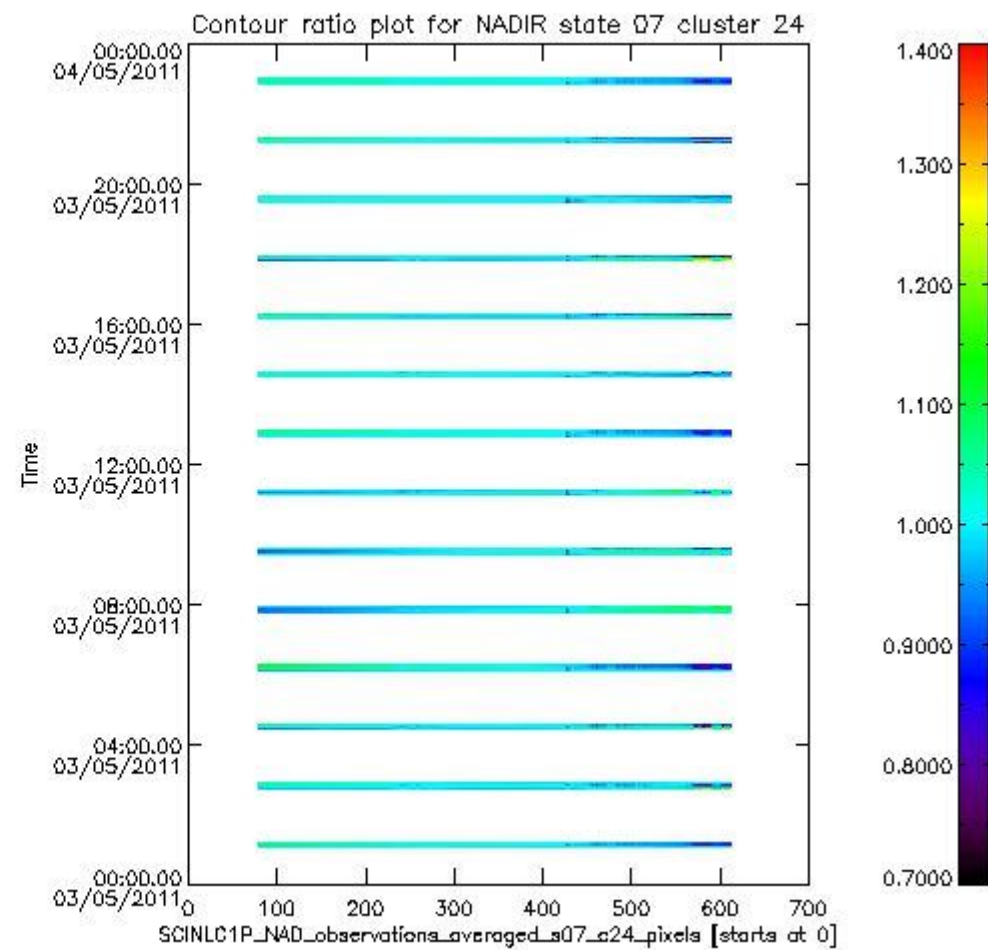
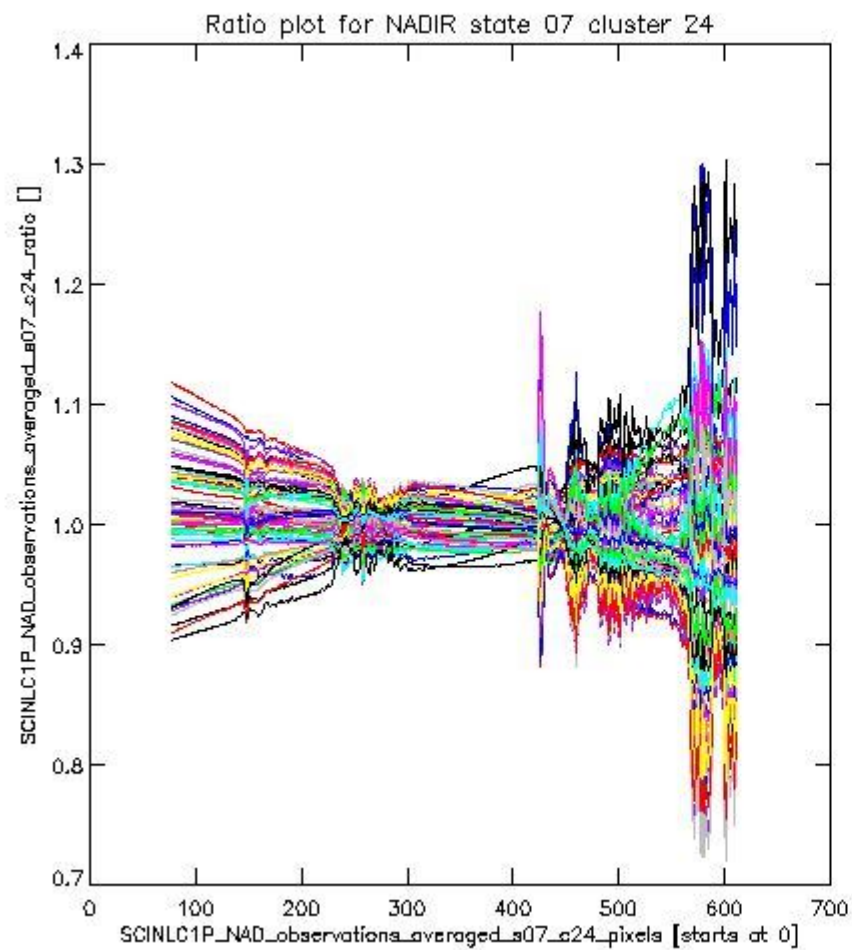
sciamachy_l1b_source_packet_report_SCIA_7_04_U_20110503_5.PNG

1.2.4 NADIR state 07 cluster 24 The data for the analysis of NADIR state 07 cluster 24 have the following characteristics:

Item	Value
Start time of first sample	03MAY2011 01:05:20.275
Start time of last sample	03MAY2011 22:57:23.101
Reference period start time	03APR2011 01:06:19.943
Reference period stop time	01MAY2011 22:29:52.700
Channel number	4
First pixel number (starts at 0)	78
Last pixel number (starts at 0)	612



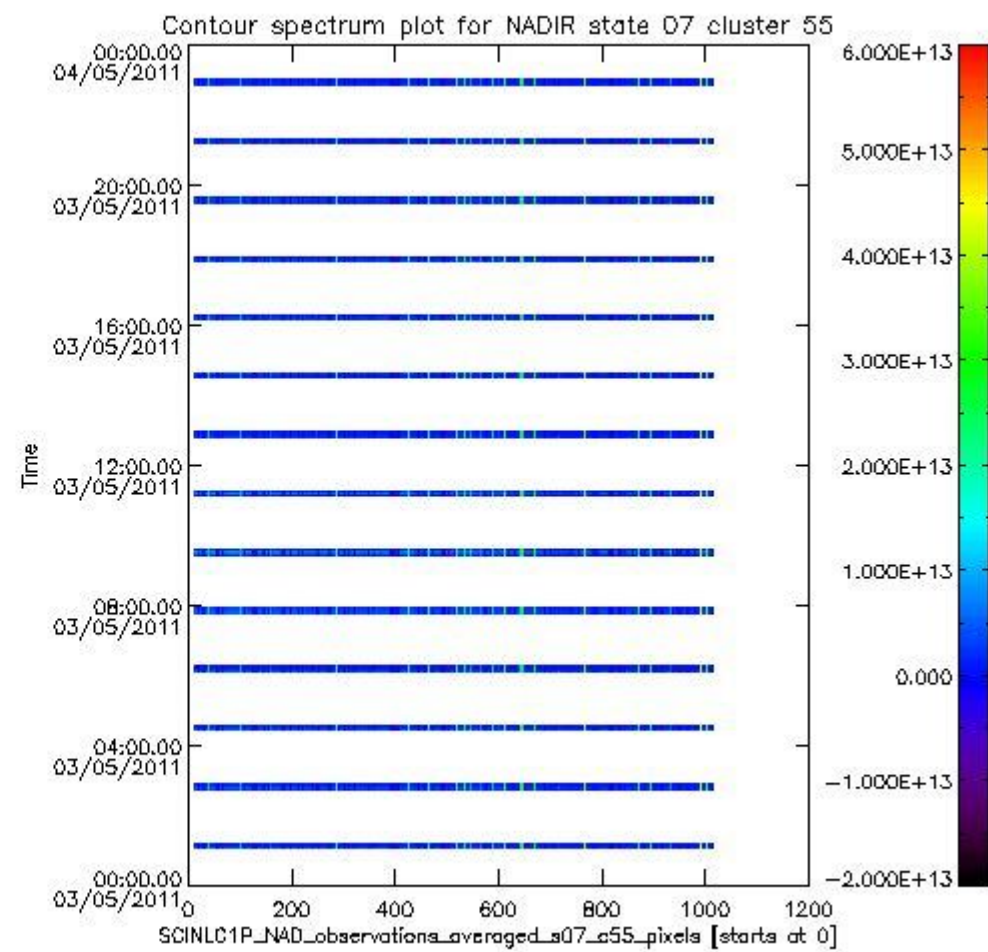
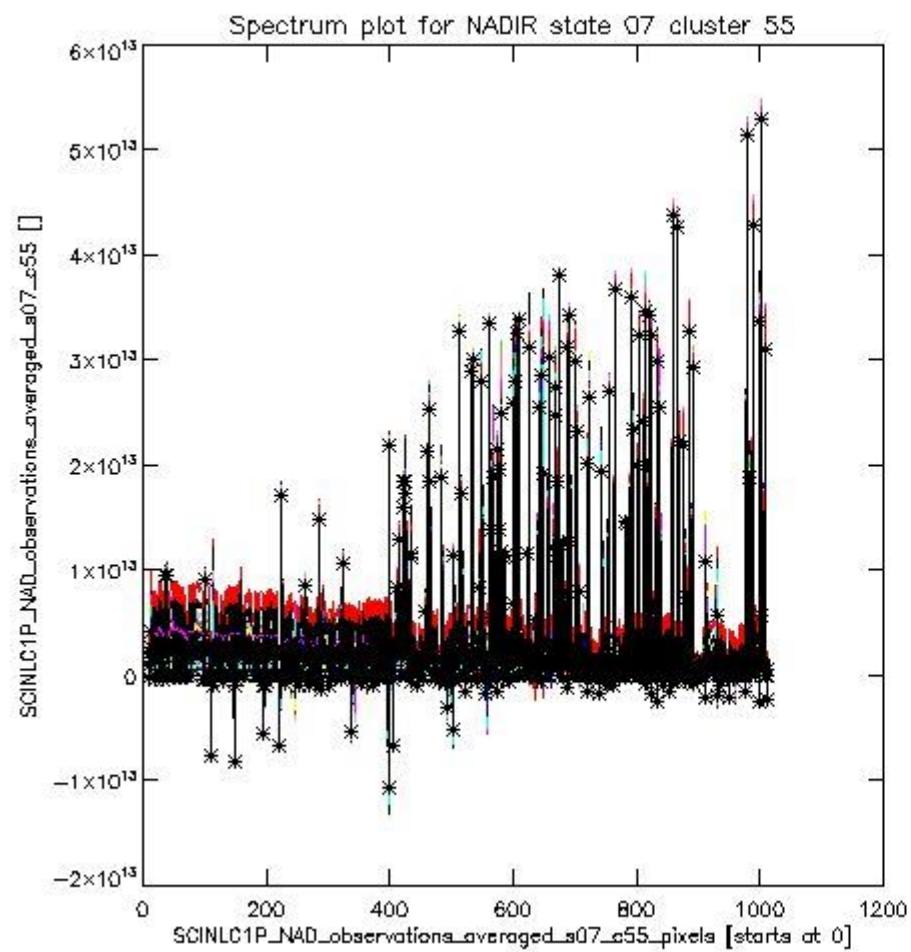
sciamachy_i1b_source_packet_report_SCIA_7_04_U_20110503_6.PNG



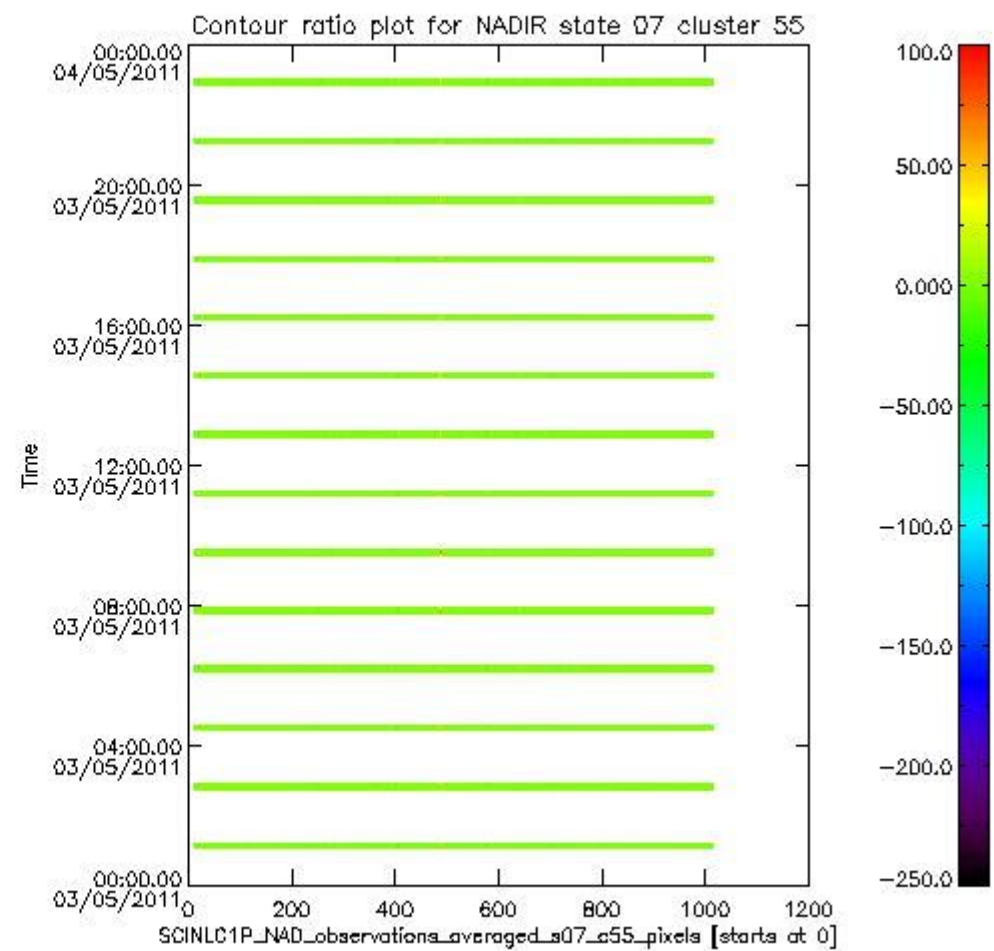
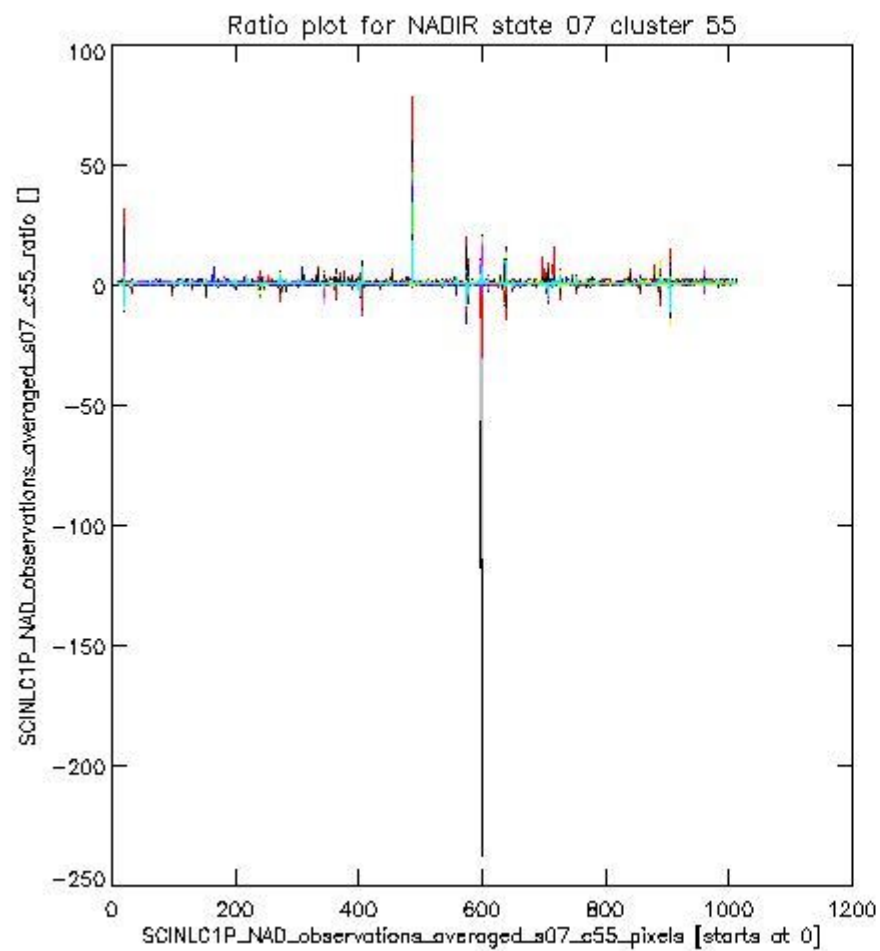
sciamachy_l1b_source_packet_report_SCIA_7_04_U_20110503_7.PNG

1.2.5 NADIR state 07 cluster 55 The data for the analysis of NADIR state 07 cluster 55 have the following characteristics:

Item	Value
Start time of first sample	03MAY2011 01:05:20.275
Start time of last sample	03MAY2011 22:57:23.101
Reference period start time	03APR2011 01:06:19.943
Reference period stop time	01MAY2011 22:29:52.700
Channel number	8
First pixel number (starts at 0)	10
Last pixel number (starts at 0)	1013



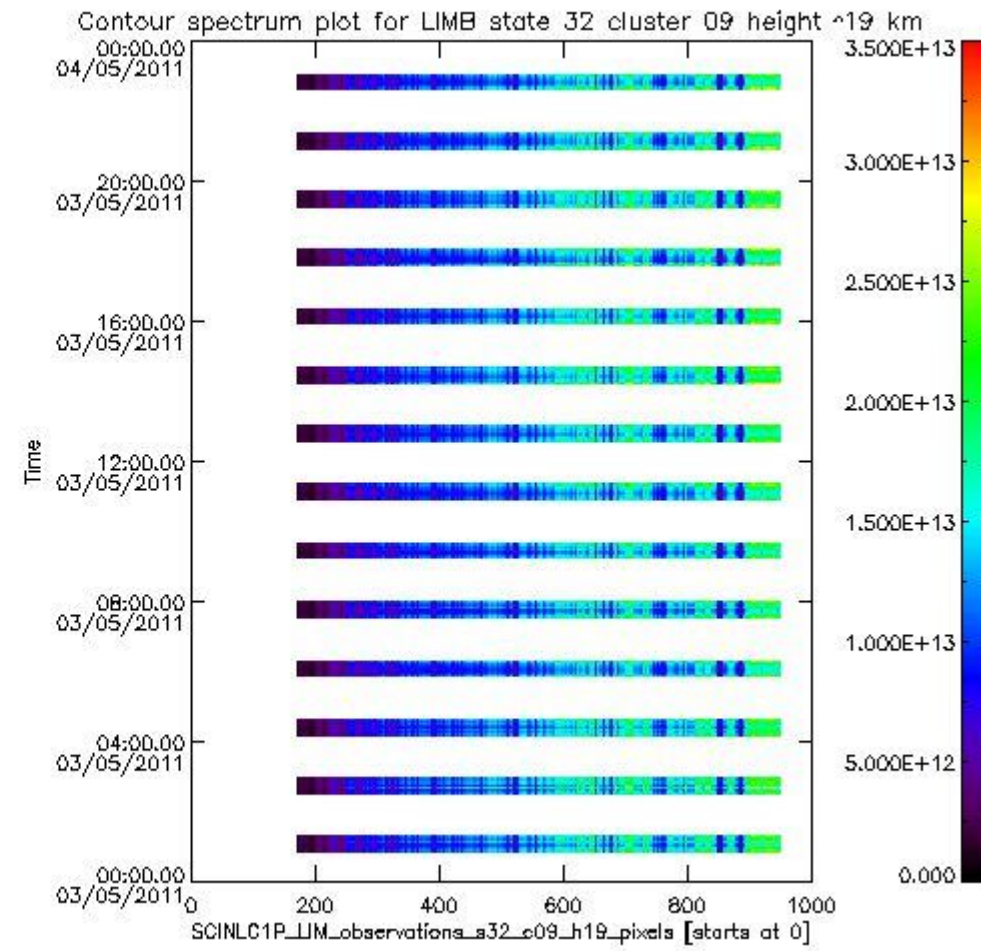
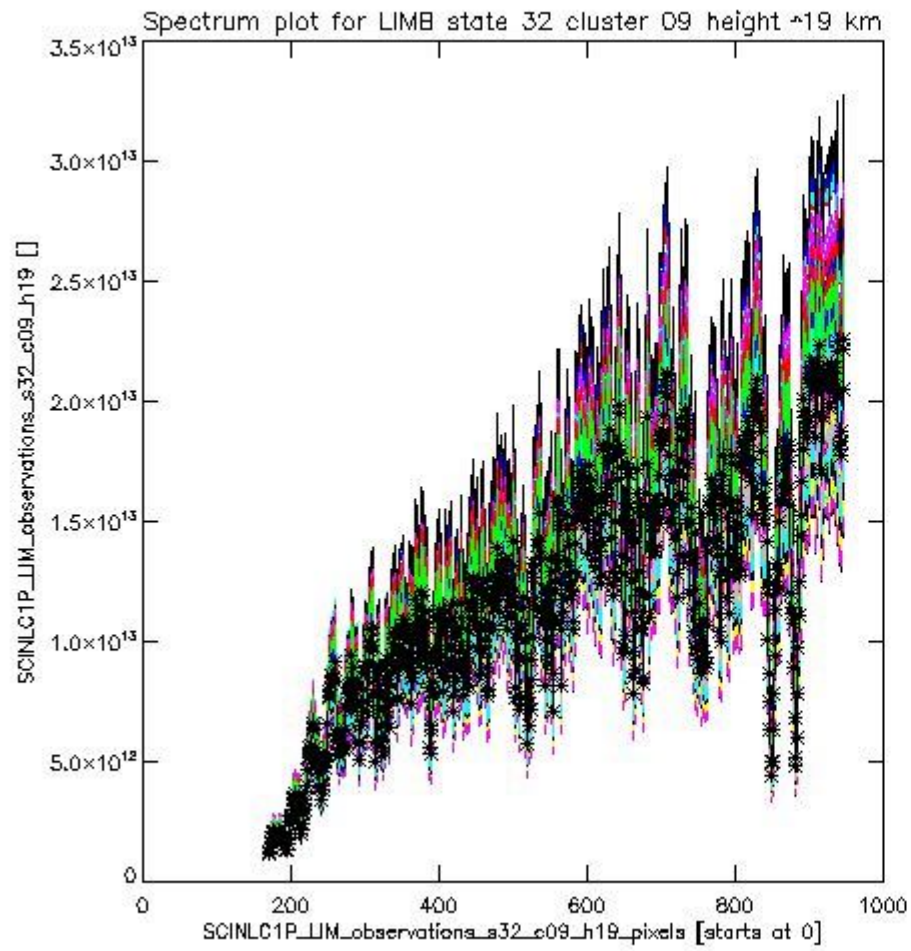
sciamachy_l1b_source_packet_report_SCIA_7_04_U_20110503_8.PNG



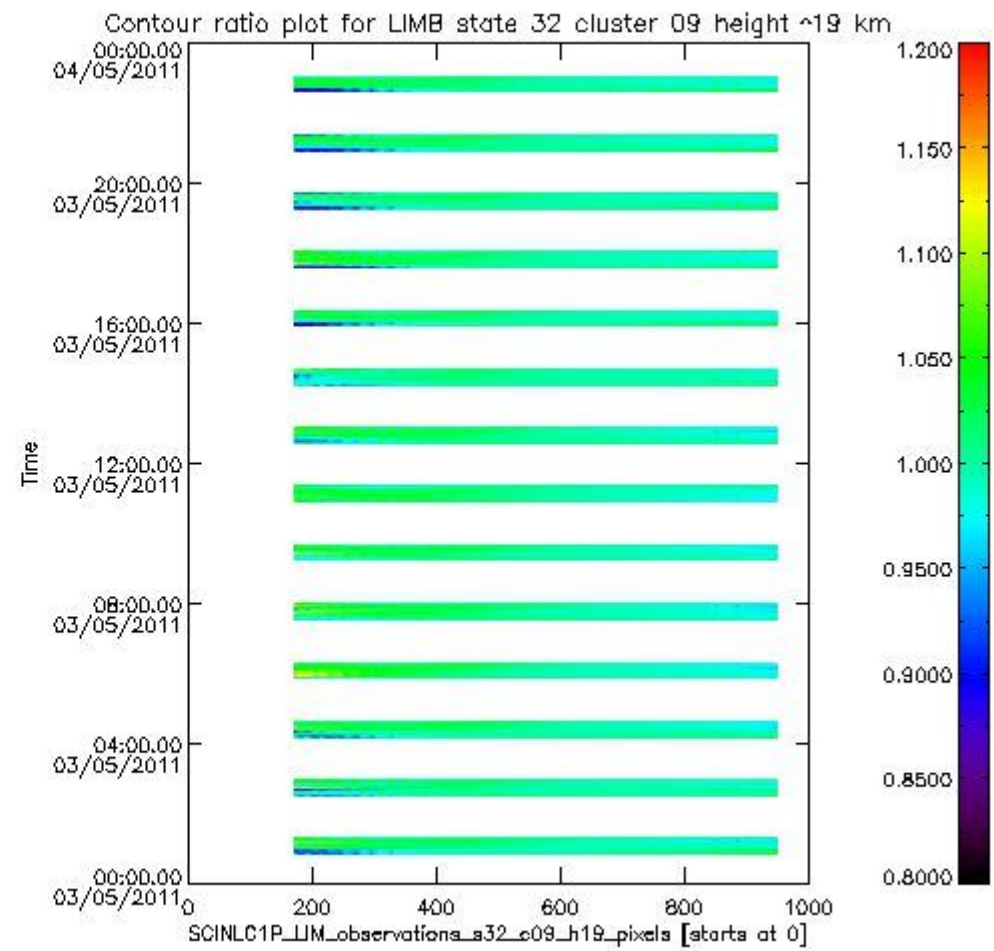
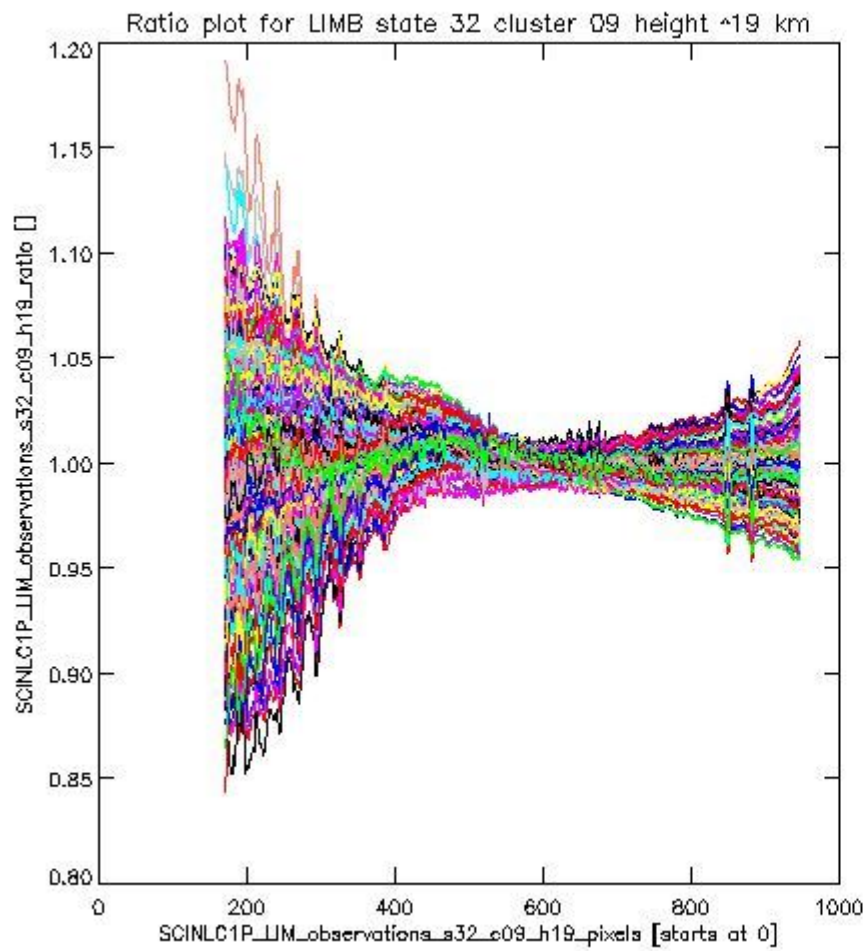
sciamachy_l1b_source_packet_report_SCIA_7_04_U_20110503_9.PNG

1.2.6 LIMB state 32 cluster 09 height ~19 km The data for the analysis of LIMB state 32 cluster 09 height ~19 km have the following characteristics:

Item	Value
Start time of first sample	03MAY2011 00:50:06.896
Start time of last sample	03MAY2011 23:00:34.402
Reference period start time	03APR2011 00:53:09.303
Reference period stop time	01MAY2011 23:59:52.599
Channel number	2
First pixel number (starts at 0)	170
Last pixel number (starts at 0)	947



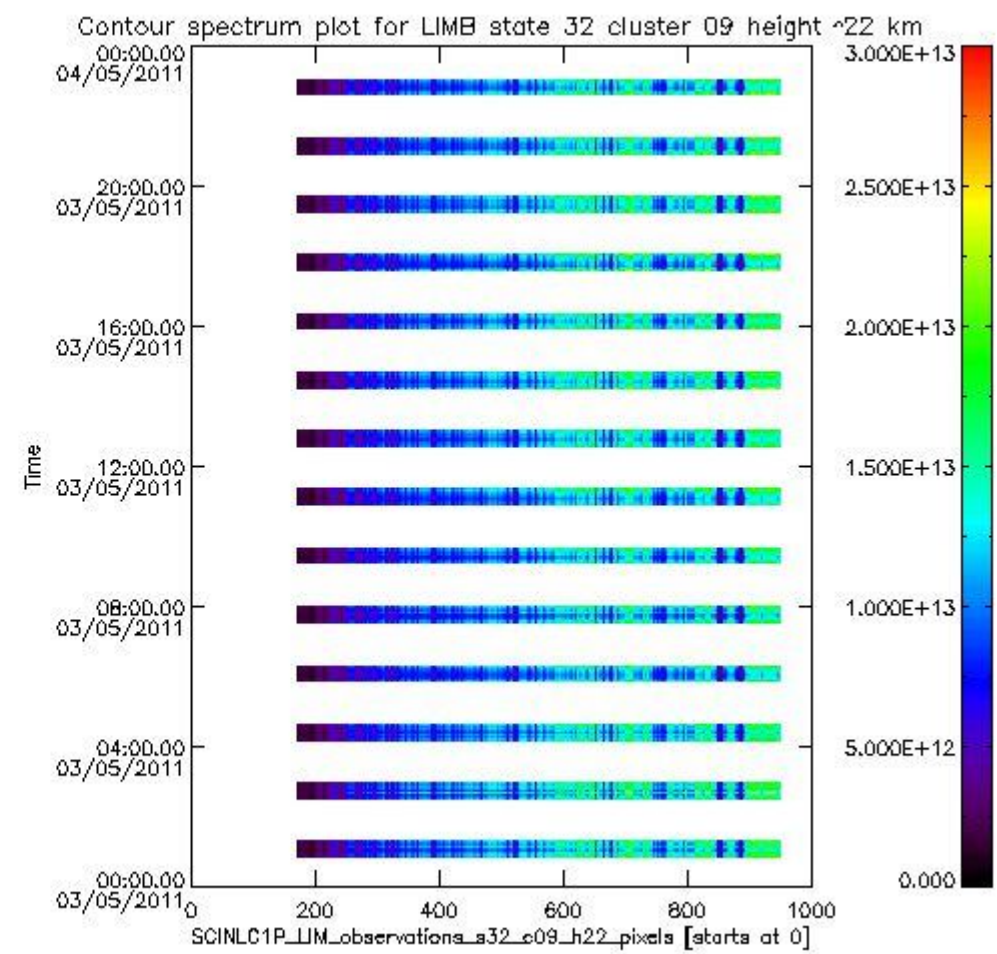
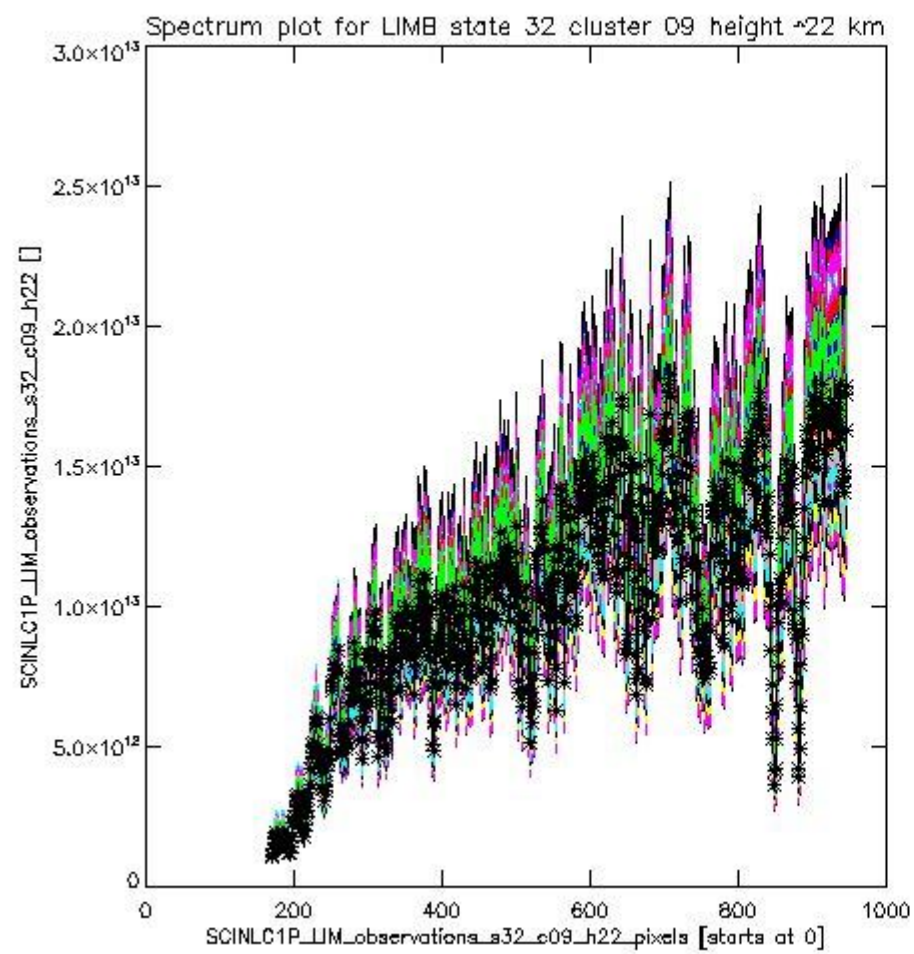
sciamachy_l1b_source_packet_report_SCIA_7_04_U_20110503_10.PNG



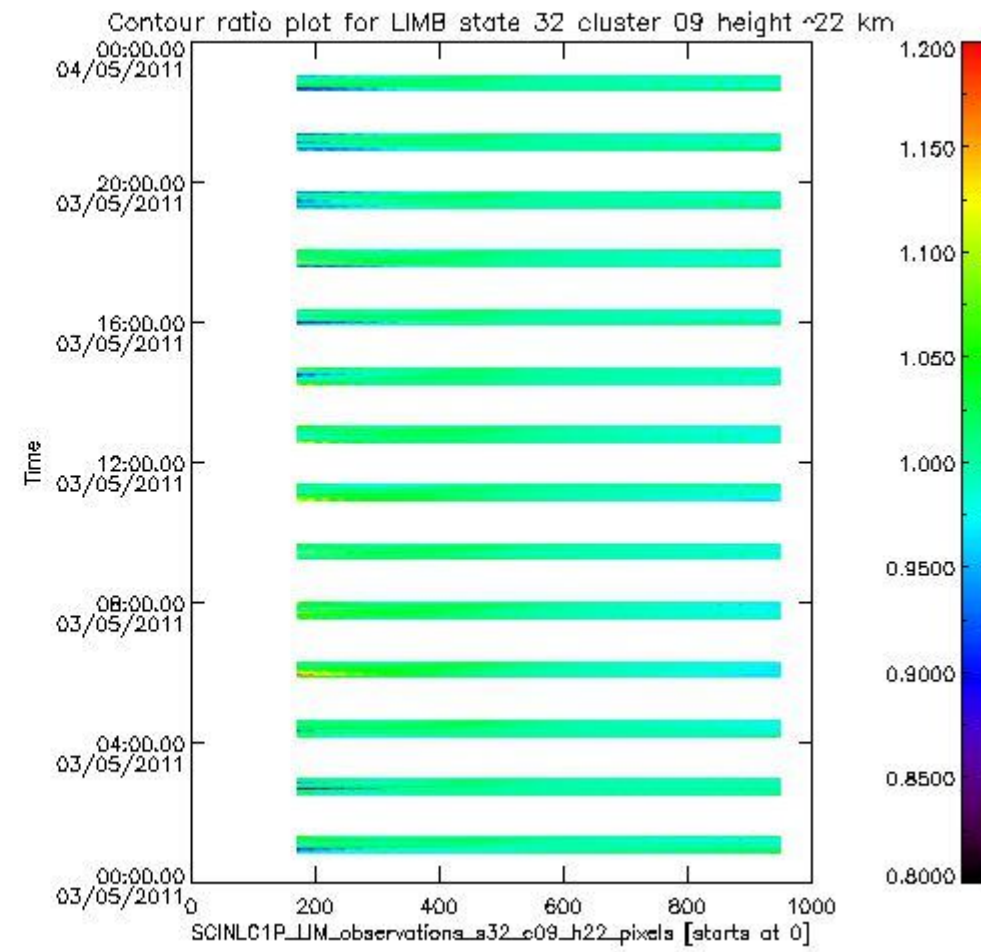
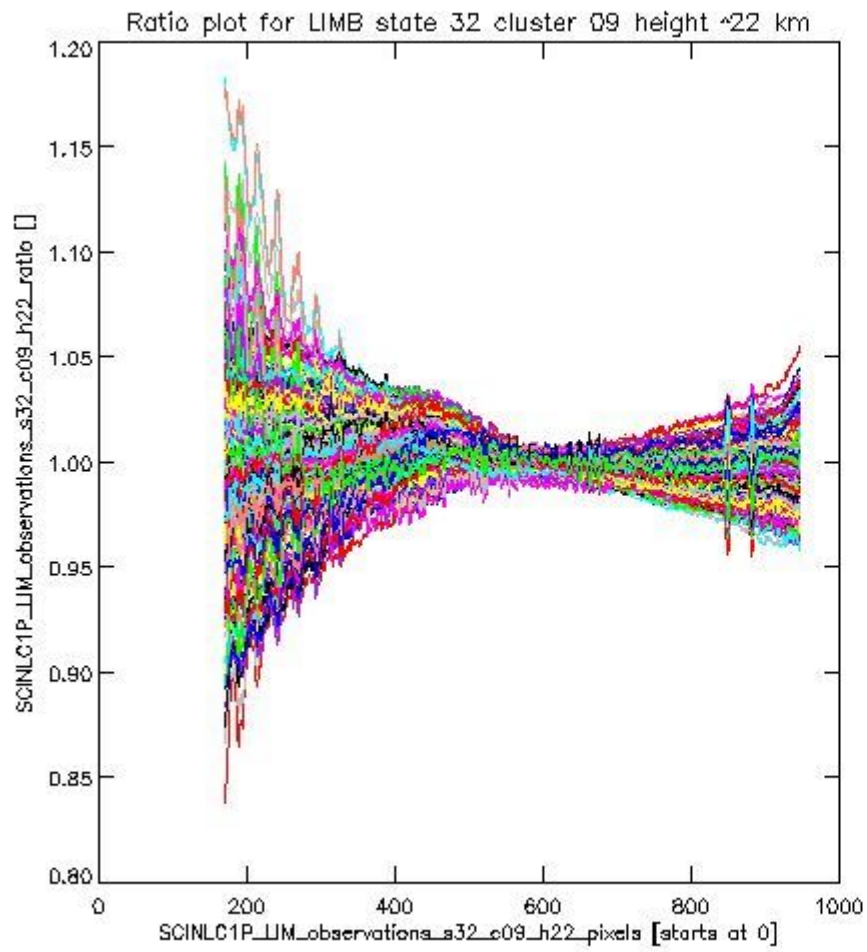
sciamachy_l1b_source_packet_report_SCIA_7_04_U_20110503_11.PNG

1.2.7 LIMB state 32 cluster 09 height ~22 km The data for the analysis of LIMB state 32 cluster 09 height ~22 km have the following characteristics:

Item	Value
Start time of first sample	03MAY2011 00:50:06.896
Start time of last sample	03MAY2011 23:00:34.402
Reference period start time	03APR2011 00:53:09.303
Reference period stop time	01MAY2011 23:59:52.599
Channel number	2
First pixel number (starts at 0)	170
Last pixel number (starts at 0)	947



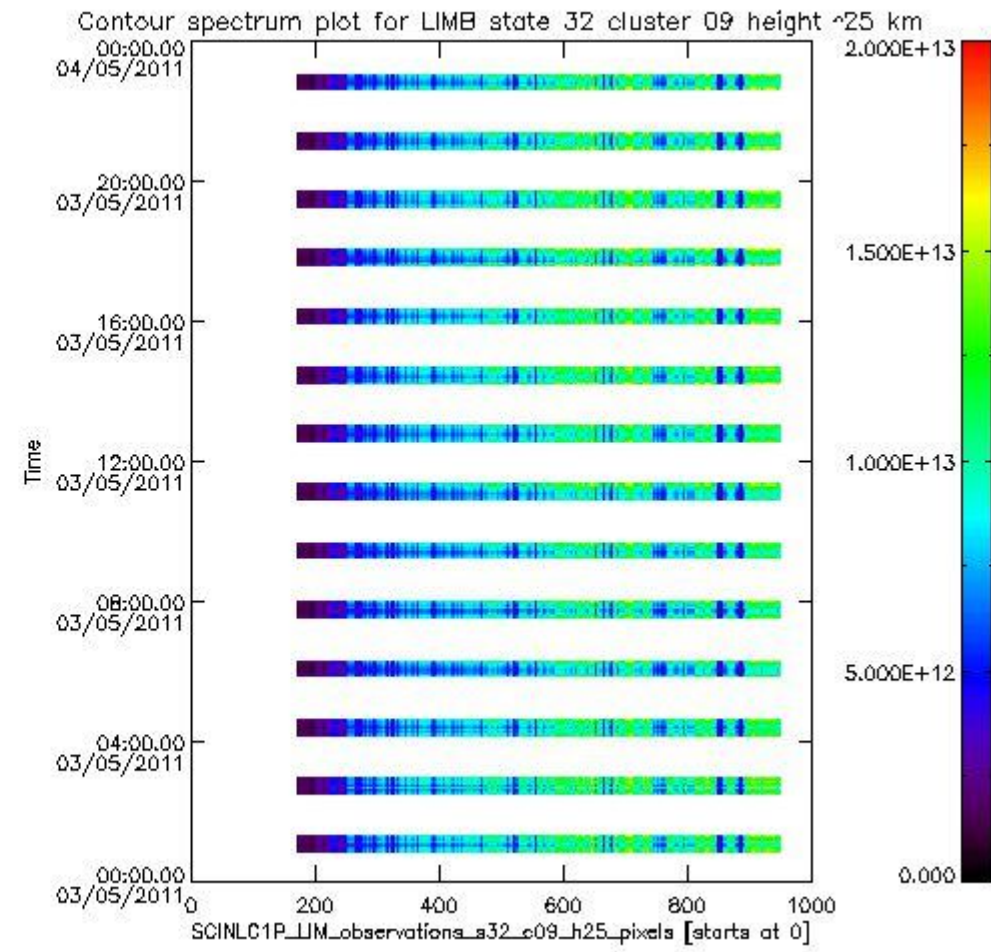
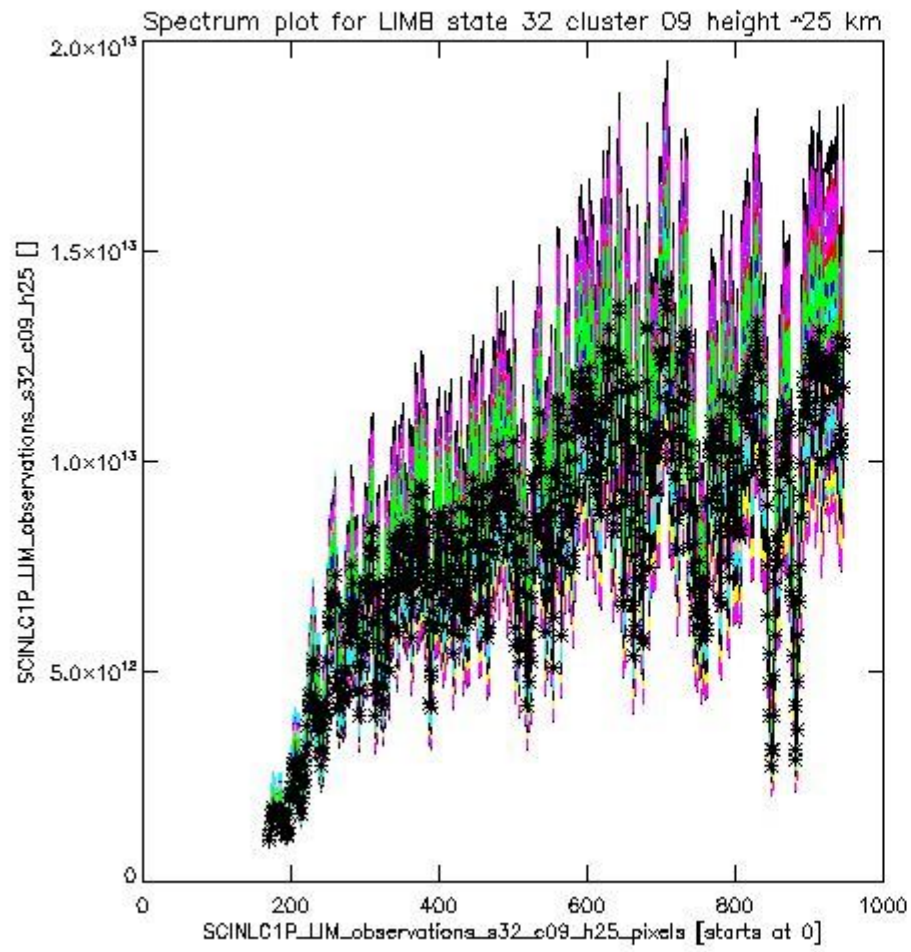
sciamachy_i1b_source_packet_report_SCIA_7_04_U_20110503_12.PNG



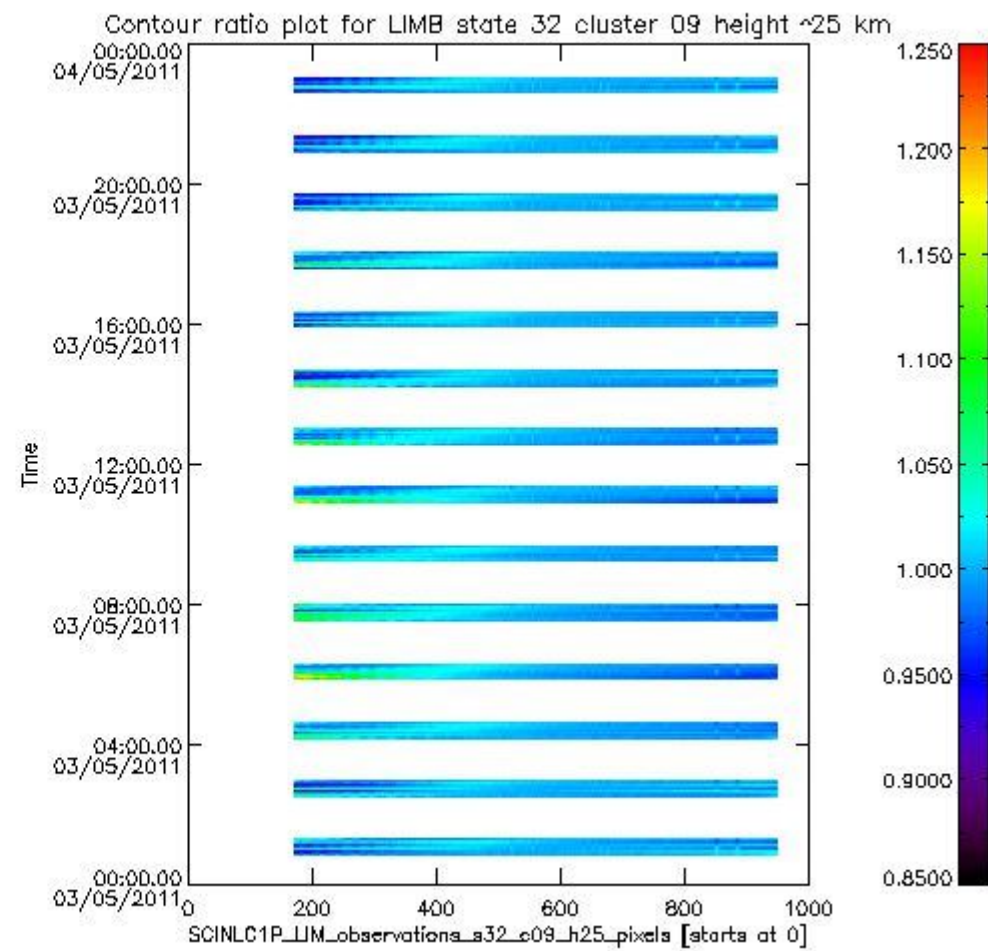
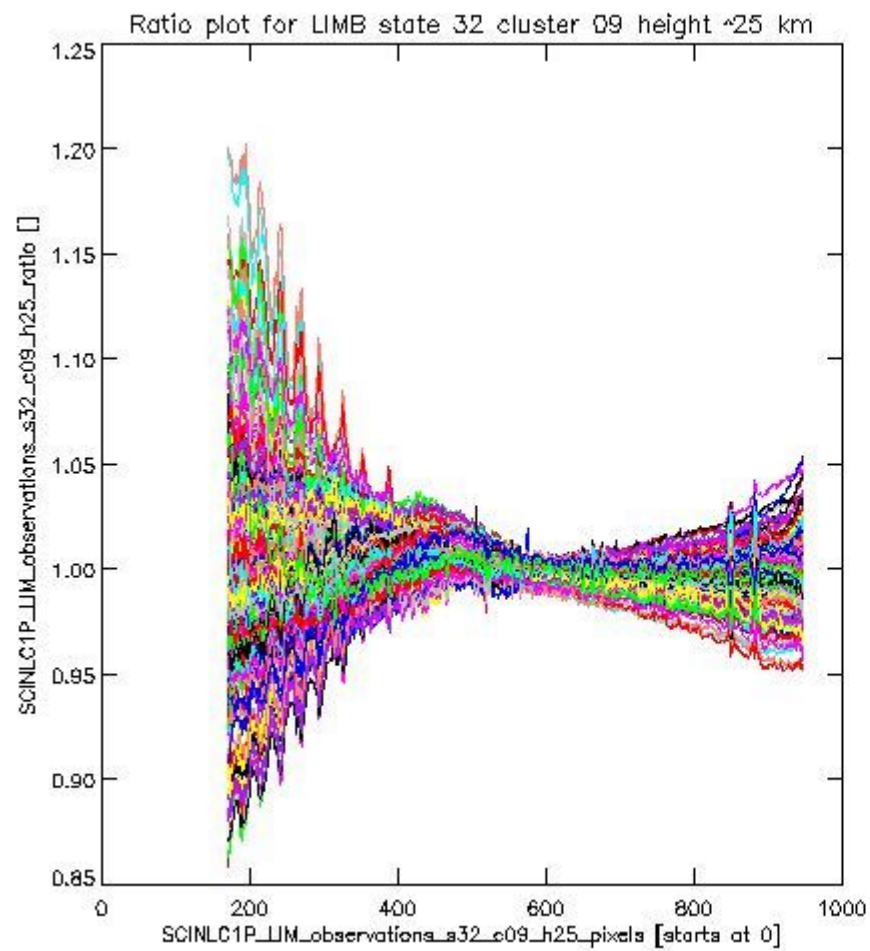
sciamachy_l1b_source_packet_report_SCIA_7_04_U_20110503_13.PNG

1.2.8 LIMB state 32 cluster 09 height ~25 km The data for the analysis of LIMB state 32 cluster 09 height ~25 km have the following characteristics:

Item	Value
Start time of first sample	03MAY2011 00:50:06.896
Start time of last sample	03MAY2011 23:00:34.402
Reference period start time	03APR2011 00:53:09.303
Reference period stop time	01MAY2011 23:59:52.599
Channel number	2
First pixel number (starts at 0)	170
Last pixel number (starts at 0)	947



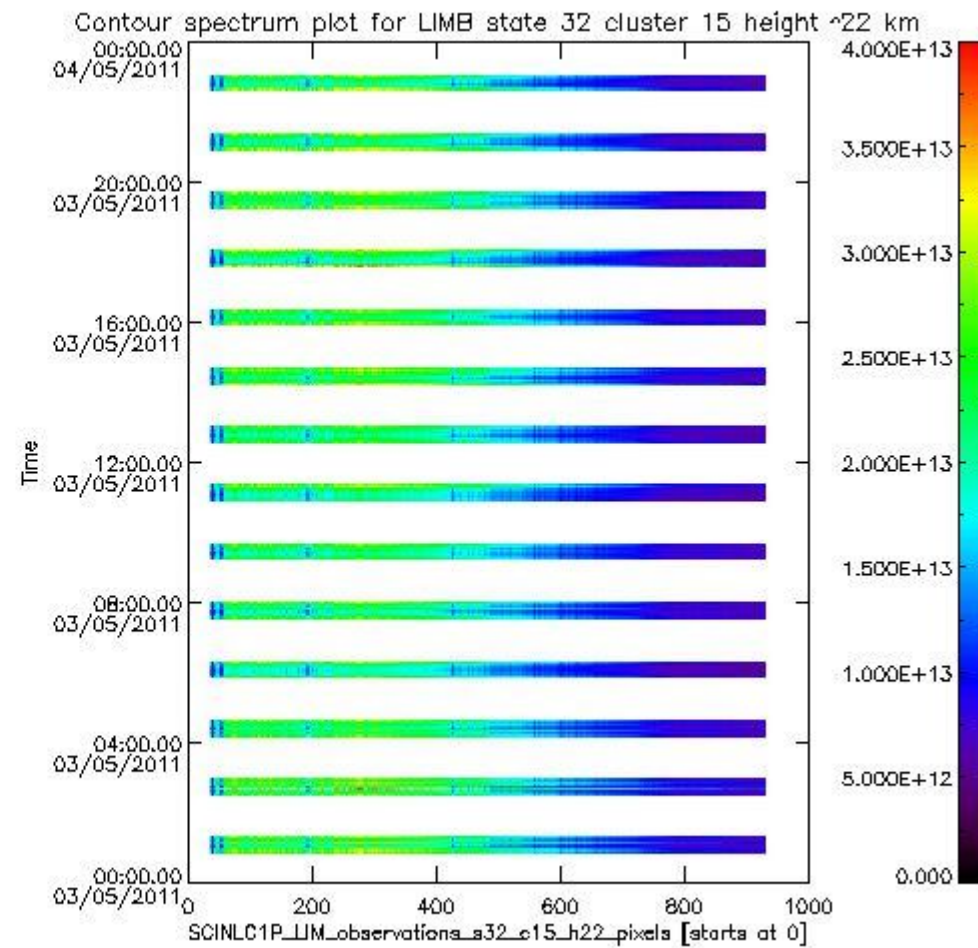
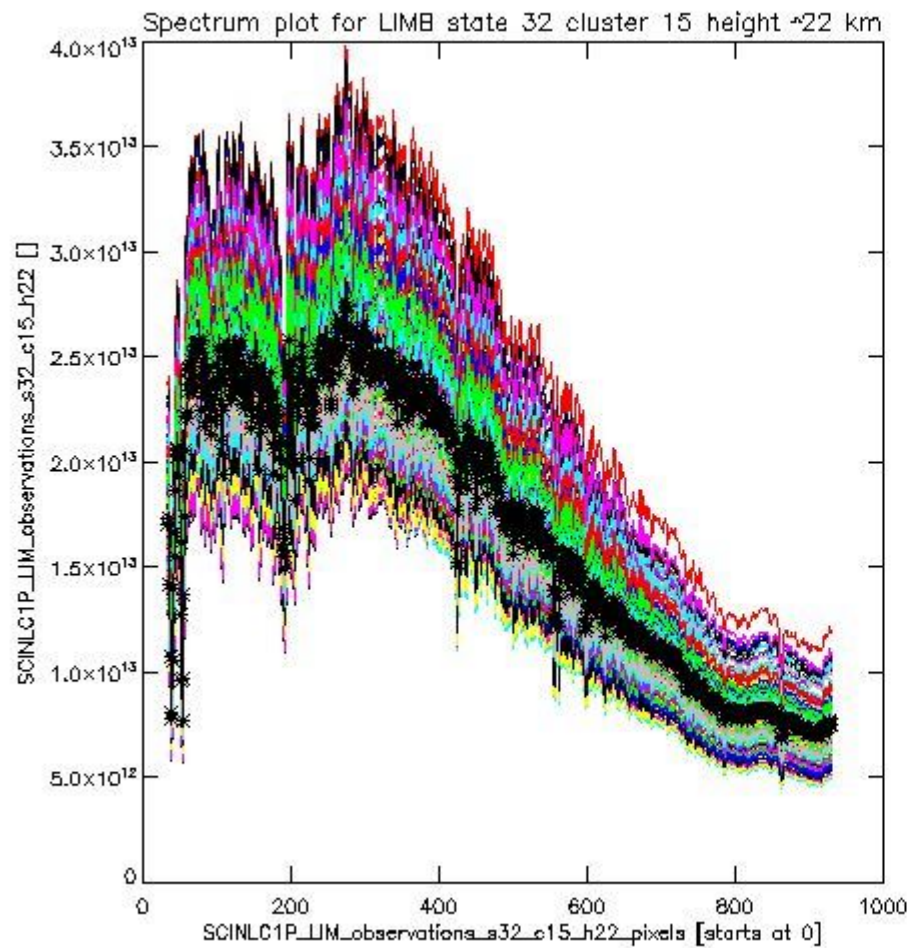
sciamachy_i1b_source_packet_report_SCIA_7_04_U_20110503_14.PNG



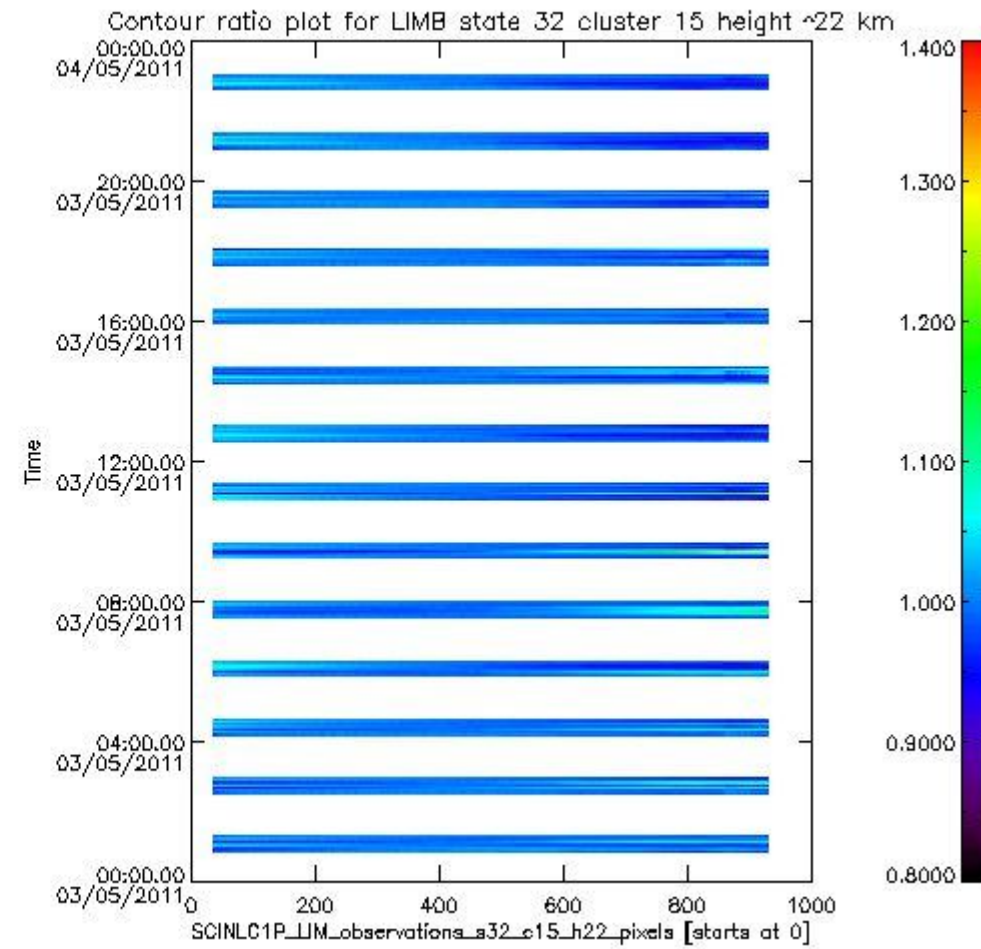
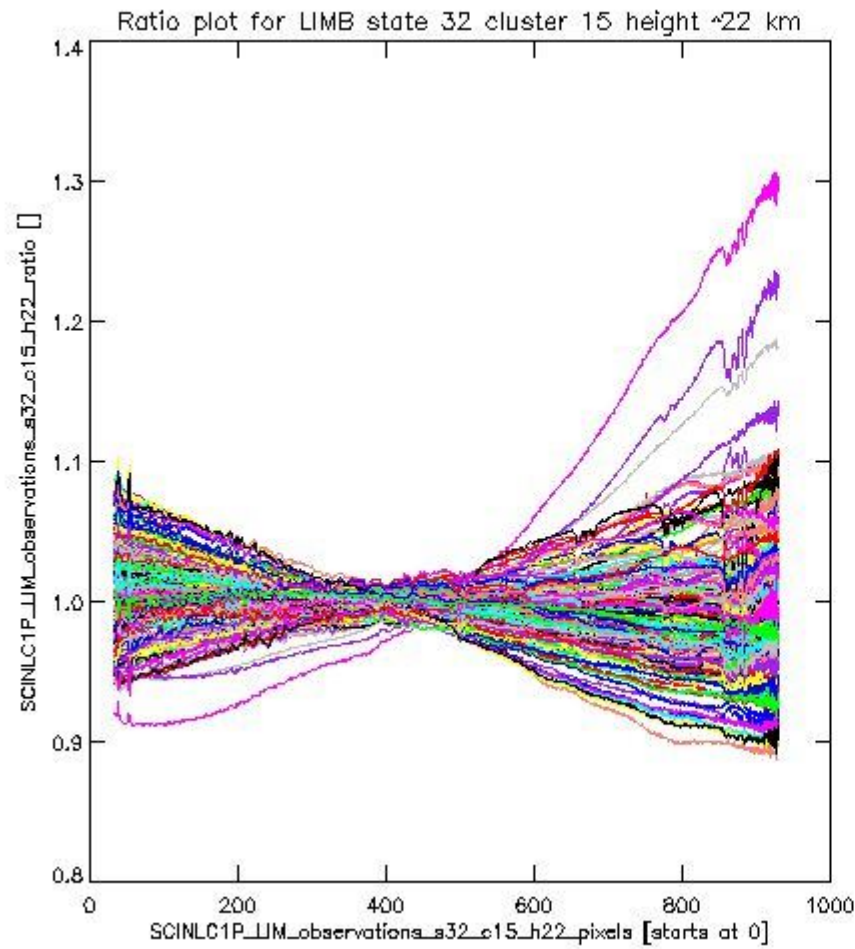
sciamachy_l1b_source_packet_report_SCIA_7_04_U_20110503_15.PNG

1.2.9 LIMB state 32 cluster 15 height ~22 km The data for the analysis of LIMB state 32 cluster 15 height ~22 km have the following characteristics:

Item	Value
Start time of first sample	03MAY2011 00:50:06.896
Start time of last sample	03MAY2011 23:00:34.402
Reference period start time	03APR2011 00:53:09.303
Reference period stop time	01MAY2011 23:59:52.599
Channel number	3
First pixel number (starts at 0)	33
Last pixel number (starts at 0)	929



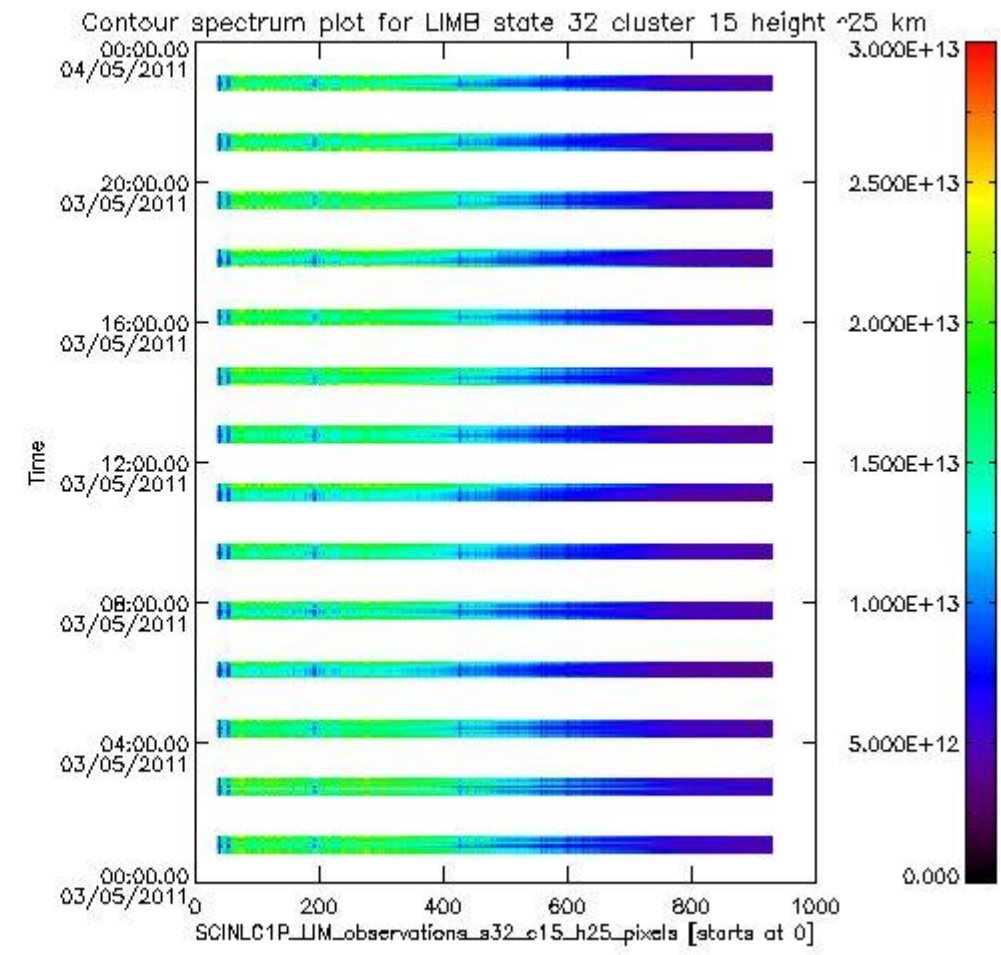
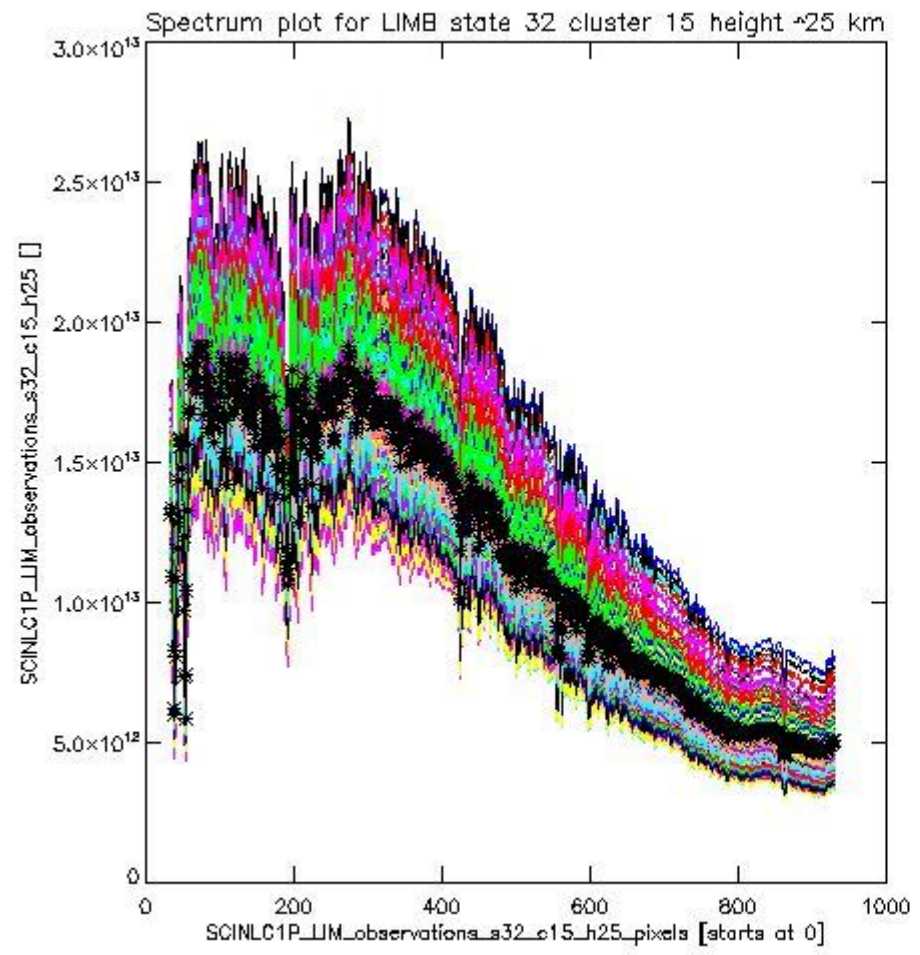
sciamachy_i1b_source_packet_report_SCIA_7_04_U_20110503_16.PNG



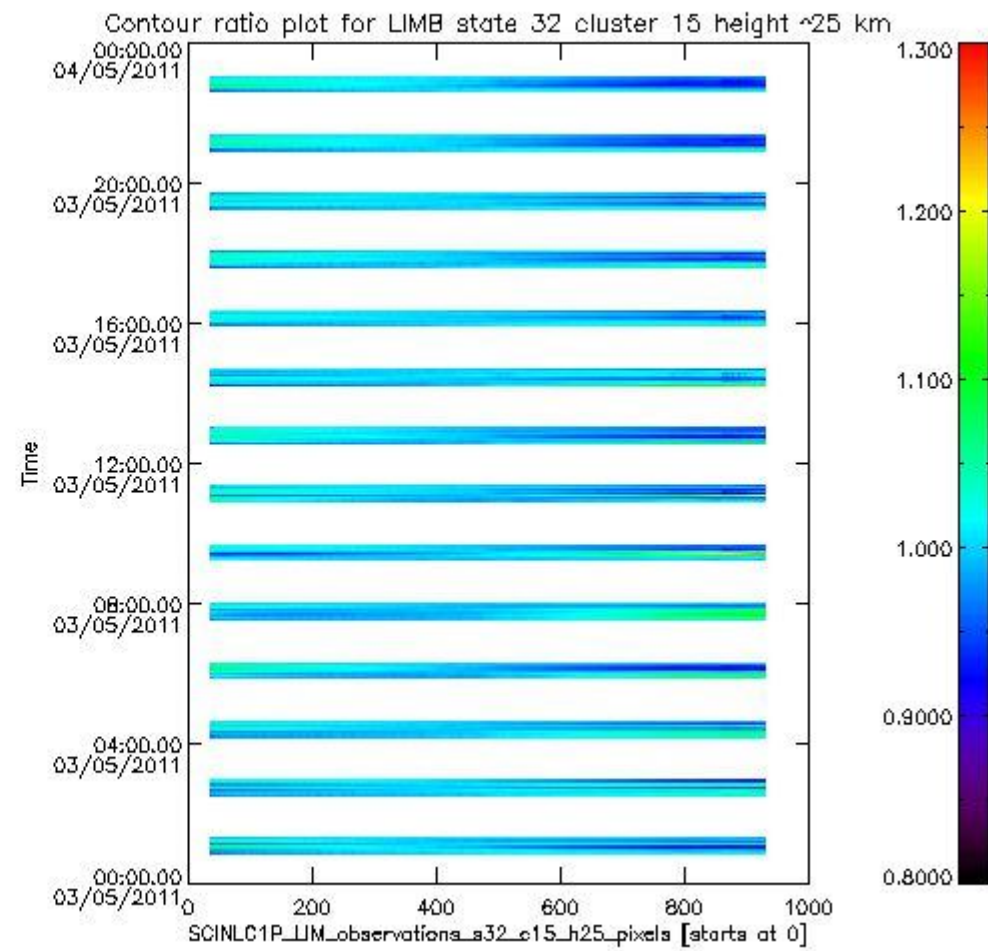
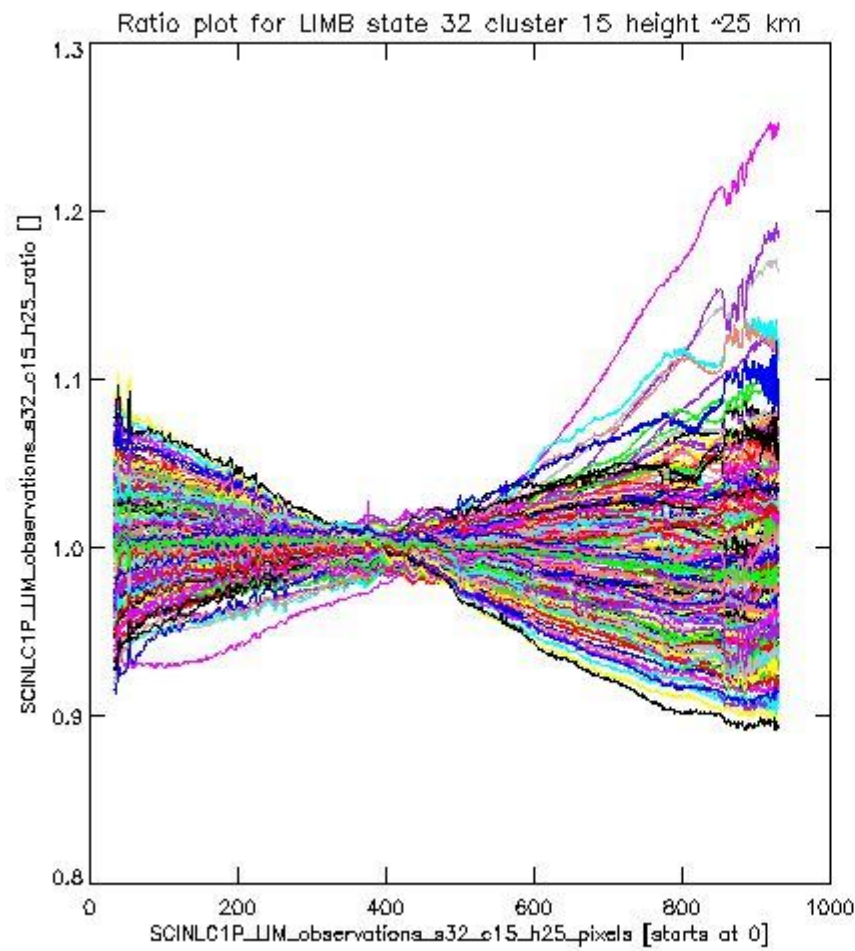
sciamachy_11b_source_packet_report_SCIA_7_04_U_20110503_17.PNG

1.2.10 LIMB state 32 cluster 15 height ~25 km The data for the analysis of LIMB state 32 cluster 15 height ~25 km have the following characteristics:

Item	Value
Start time of first sample	03MAY2011 00:50:06.896
Start time of last sample	03MAY2011 23:00:34.402
Reference period start time	03APR2011 00:53:09.303
Reference period stop time	01MAY2011 23:59:52.599
Channel number	3
First pixel number (starts at 0)	33
Last pixel number (starts at 0)	929



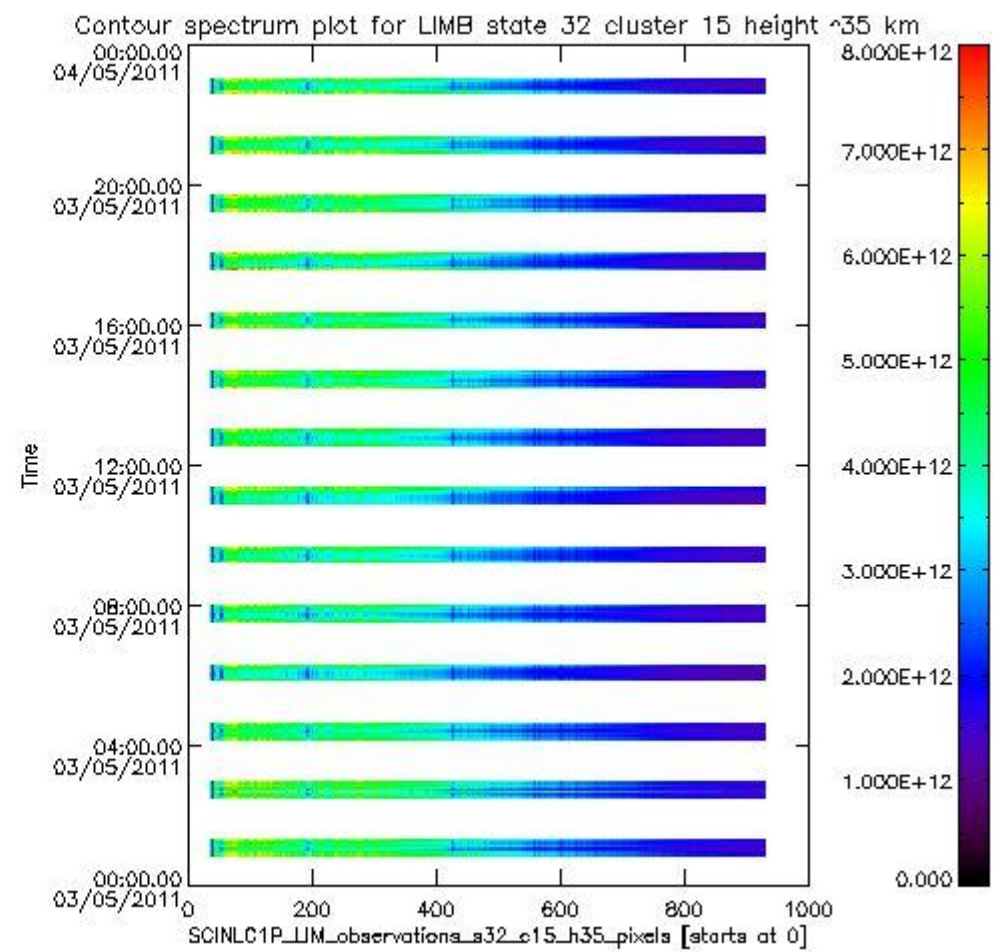
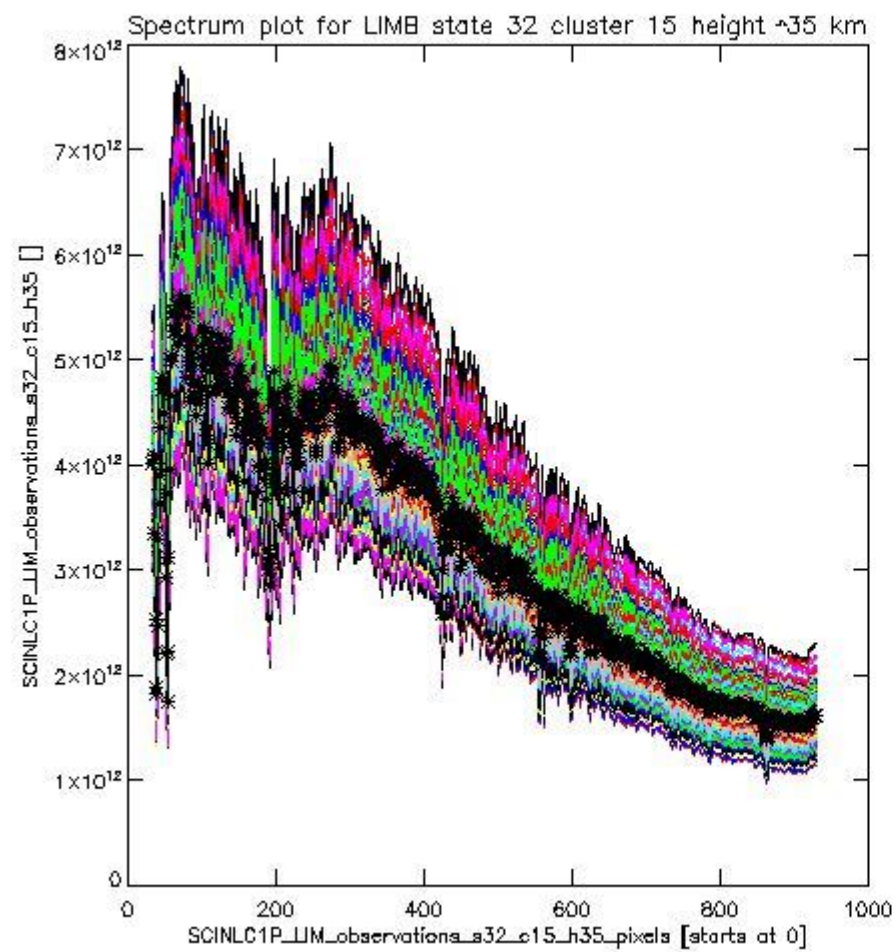
sciamachy_l1b_source_packet_report_SCIA_7_04_U_20110503_18.PNG



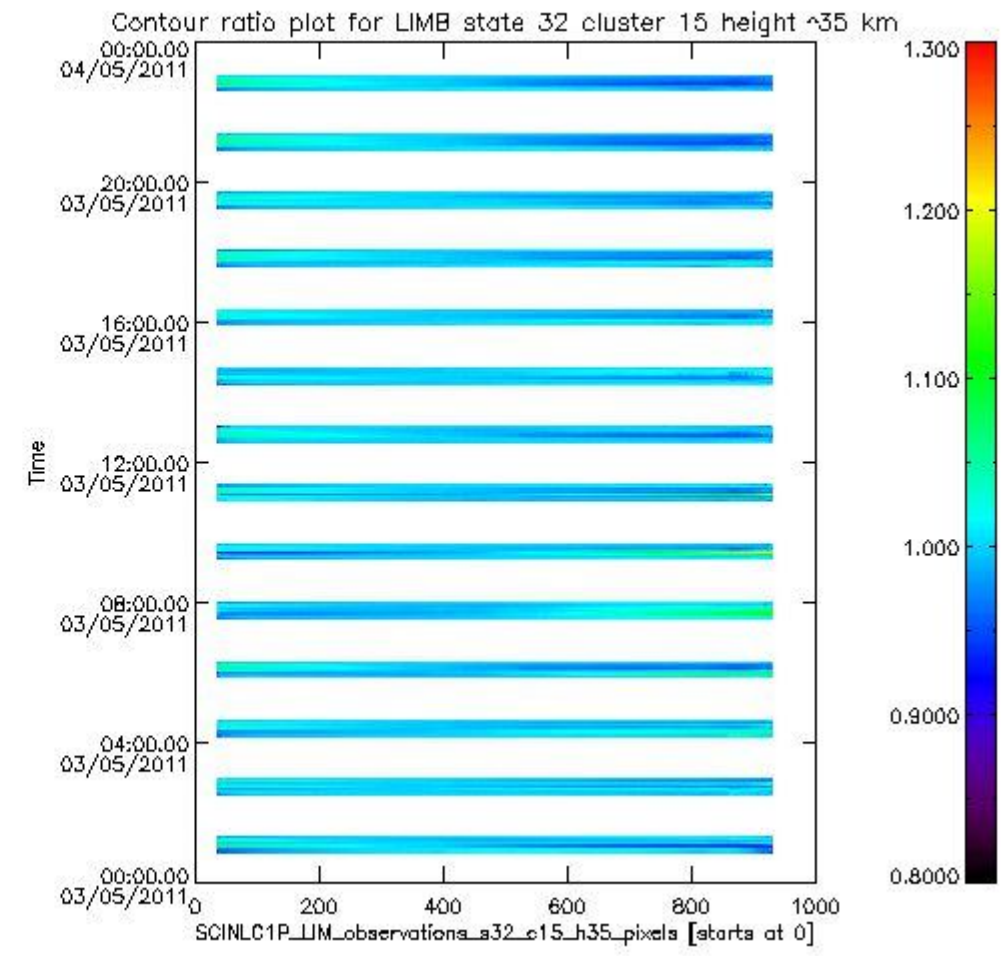
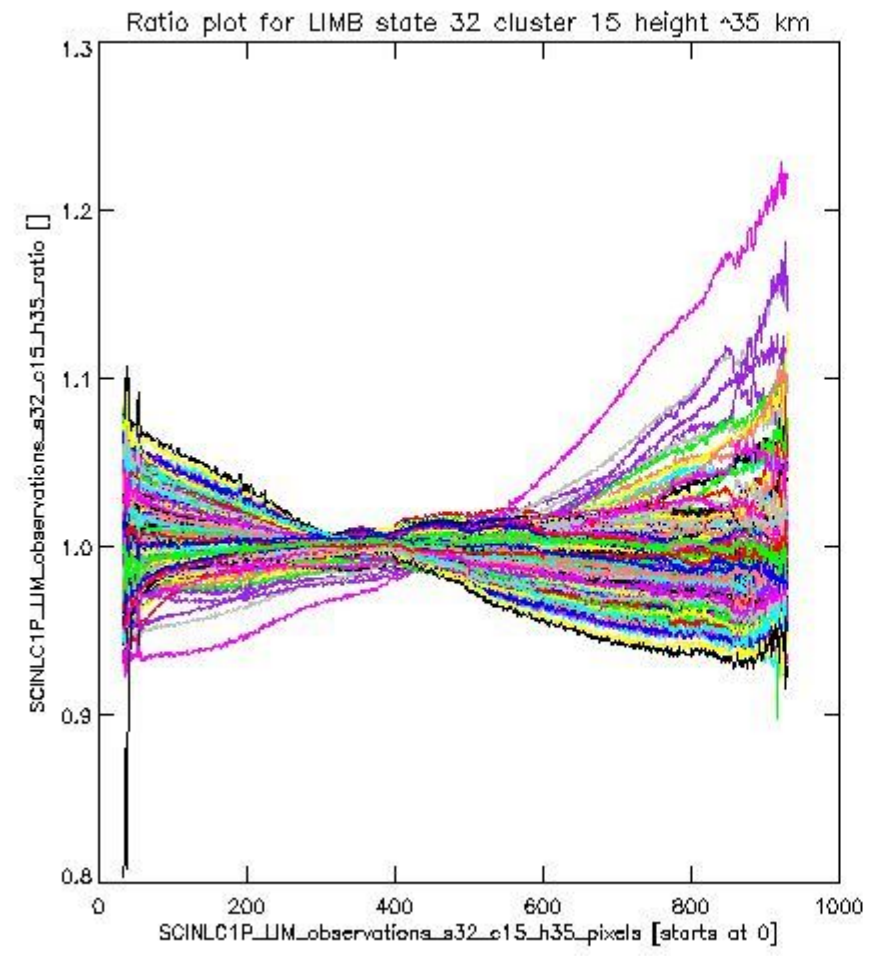
sciamachy_11b_source_packet_report_SCIA_7_04_U_20110503_19.PNG

1.2.11 LIMB state 32 cluster 15 height ~35 km The data for the analysis of LIMB state 32 cluster 15 height ~35 km have the following characteristics:

Item	Value
Start time of first sample	03MAY2011 00:50:06.896
Start time of last sample	03MAY2011 23:00:34.402
Reference period start time	03APR2011 00:53:09.303
Reference period stop time	01MAY2011 23:59:52.599
Channel number	3
First pixel number (starts at 0)	33
Last pixel number (starts at 0)	929



sciamachy_11b_source_packet_report_SCIA_7_04_U_20110503_20.PNG



sciamachy_11b_source_packet_report_SCIA_7_04_U_20110503_21.PNG

