

1. SCIAMACHY Level 1B source packet monitoring report

[1.1. General Info](#)

[1.2 Source packet monitoring](#)

1.1 General Info

This report contains results of the analysis on source packets from SCIAMACHY level 1 data (The SCI_NL__1P product).

1.1.1 Report summary

The table below shows general characteristics of the data that are included into this report.

Item	Value
Report version	1.1 (07-01-2010)
Time of report generation	19MAY2011 08:51:41
Data source version	SCIA/7.04-U
Processing scope for products	30APR2011 00:00:00 to 01MAY2011 00:00:00
Start time of first product within scope	29APR2011 23:02:08
Stop time of last product within scope	01MAY2011 01:15:47
Total number of level 1 products	16
Number of level 1 products with errors	0
SCIAL1C executable used in processing	scial1c-2.1.73-i686-pc-linux-gnu-gcc-3.3.6
SCIAL1C parameters used in processing	-allcal -type all -cat 1,2,8,10,11,16,19,23 -nadircluster 8,9,15,24,55 -limbcluster 9,15

1.1.2 Source packet summary

The table below shows which source packets have been included into the report.

Item	Mode	State	Cluster	Height	First start time	Last start time
0	NADIR	07	08	N/A	30APR2011 01:14:24.234	30APR2011 23:06:41.424
1	NADIR	07	09	N/A	30APR2011 01:14:24.234	30APR2011 23:06:41.424
2	NADIR	07	15	N/A	30APR2011 01:14:24.234	30APR2011 23:06:41.424
3	NADIR	07	24	N/A	30APR2011 01:14:24.234	30APR2011 23:06:41.424
4	NADIR	07	55	N/A	30APR2011 01:14:24.234	30APR2011 23:06:41.424
5	LIMB	32	09	~19 km	30APR2011 01:01:13.597	30APR2011 23:11:55.463
6	LIMB	32	09	~22 km	30APR2011 01:01:13.597	30APR2011 23:11:55.463
7	LIMB	32	09	~25 km	30APR2011 01:01:13.597	30APR2011 23:11:55.463
8	LIMB	32	15	~22 km	30APR2011 01:01:13.597	30APR2011 23:11:55.463
9	LIMB	32	15	~25 km	30APR2011 01:01:13.597	30APR2011 23:11:55.463
10	LIMB	32	15	~35 km	30APR2011 01:01:13.597	30APR2011 23:11:55.463

1.1.3 Summary per product

The following table shows a summary for each product used in this report.

Products are linked to a corresponding server directory for view/download. Note: Link access may be restricted by security settings of your internet browser or firewall.

#	Product name	Start time	Stop time	ProdErr	#nadir	#limb	#occ	#mon	#nopro	#cmlprk	#incmpl_rk	Decont
0	SCI_NLC_1CUDPA20110429_225516_000060413102_00059_47918_0975.N1	29APR2011 23:02:08	30APR2011 00:12:37	0	36	30	0	0	1	0	0	
1	SCI_NLC_1CUDPA20110430_003601_000059773102_00060_47919_0976.N1	30APR2011 00:42:21	30APR2011 01:52:36	0	35	31	0	0	1	0	0	
2	SCI_NLC_1CUDPA20110430_021543_000035723102_00061_47920_0979.N1	30APR2011 02:22:35	30APR2011 03:15:16	0	22	28	0	0	0	0	0	
3	SCI_NLC_1CUDPA20110430_045721_000023253102_00062_47921_0981.N1	30APR2011 04:58:30	30APR2011 05:13:03	0	12	1	0	0	2	0	0	
4	SCI_NLC_1CUDPA20110430_053610_000060423102_00063_47922_0982.N1	30APR2011 05:43:02	30APR2011 06:53:31	0	36	30	0	0	1	0	0	
5	SCI_NLC_1CUDPA20110430_071656_000059773102_00064_47923_0984.N1	30APR2011 07:23:16	30APR2011 08:33:31	0	35	31	0	0	1	0	0	

6	SCI_NLC_1CUDPA20110430_085637_000060413102_00065_47924_0988.N1	30APR2011 09:03:30	30APR2011 10:13:59	0	36	30	0	0	1	0	0	
7	SCI_NLC_1CUDPA20110430_103723_000059773102_00066_47925_0989.N1	30APR2011 10:43:43	30APR2011 11:53:58	0	35	31	0	0	1	0	0	
8	SCI_NLC_1CUDPA20110430_121705_000060413102_00067_47926_0991.N1	30APR2011 12:23:57	30APR2011 13:34:26	0	36	30	0	0	1	0	0	
9	SCI_NLC_1CUDPA20110430_135750_000059773102_00068_47927_0993.N1	30APR2011 14:04:10	30APR2011 15:14:25	0	35	31	0	0	1	0	0	
10	SCI_NLC_1CUDPA20110430_153732_000060423102_00069_47928_0995.N1	30APR2011 15:44:24	30APR2011 16:54:53	0	36	30	0	0	1	0	0	
11	SCI_NLC_1CUDPA20110430_171817_000060063102_00070_47929_0998.N1	30APR2011 17:24:38	30APR2011 18:50:41	0	35	31	0	3	1	0	0	
12	SCI_NLC_1CUDPA20110430_185828_000060133102_00071_47930_0999.N1	30APR2011 19:04:52	30APR2011 20:15:31	0	36	30	0	1	1	0	0	
13	SCI_NLC_1CUDPA20110430_203845_000059773102_00072_47931_1001.N1	30APR2011 20:45:05	30APR2011 21:55:20	0	35	31	0	0	1	0	0	
14	SCI_NLC_1CUDPA20110430_221900_000060083102_00073_47932_1003.N1	30APR2011 22:25:19	30APR2011 23:35:48	0	36	30	0	0	1	0	0	
15	SCI_NLC_1CUDPA20110430_235912_000060113102_00074_47933_1019.N1	01MAY2011 00:05:32	01MAY2011 01:15:47	0	35	31	0	0	1	0	0	

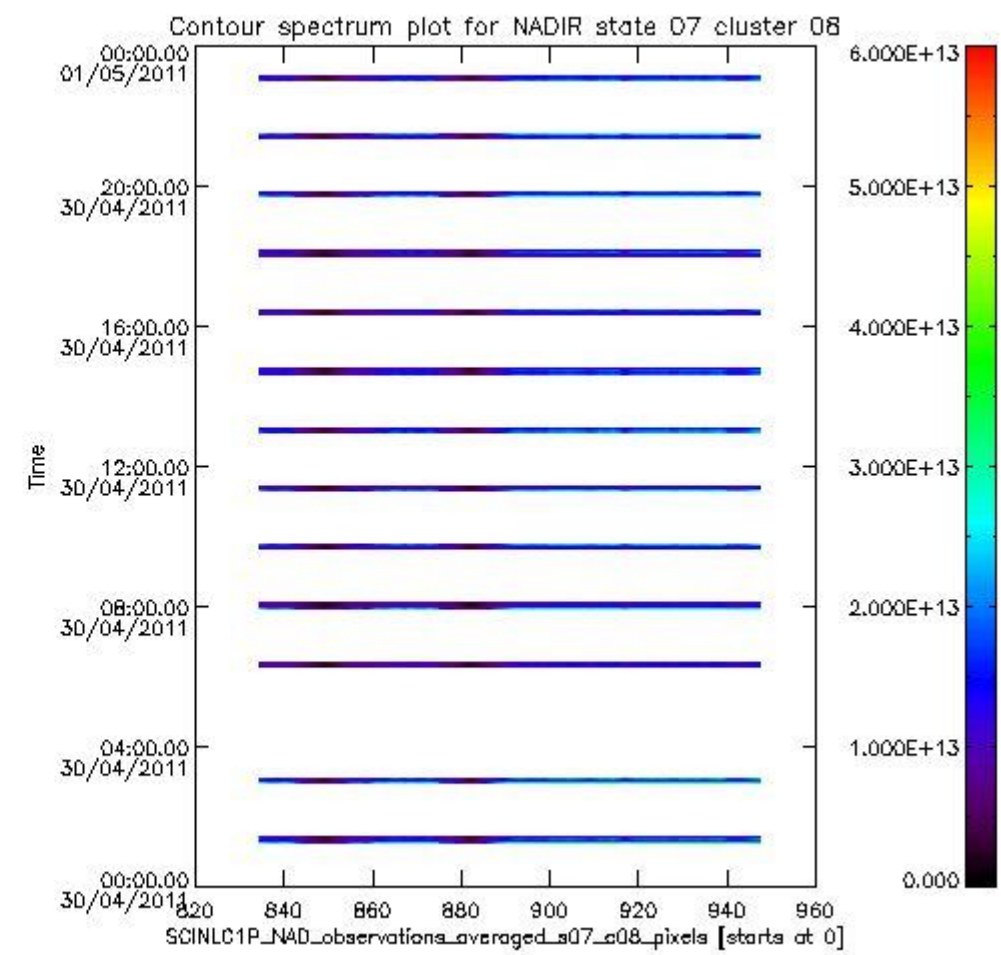
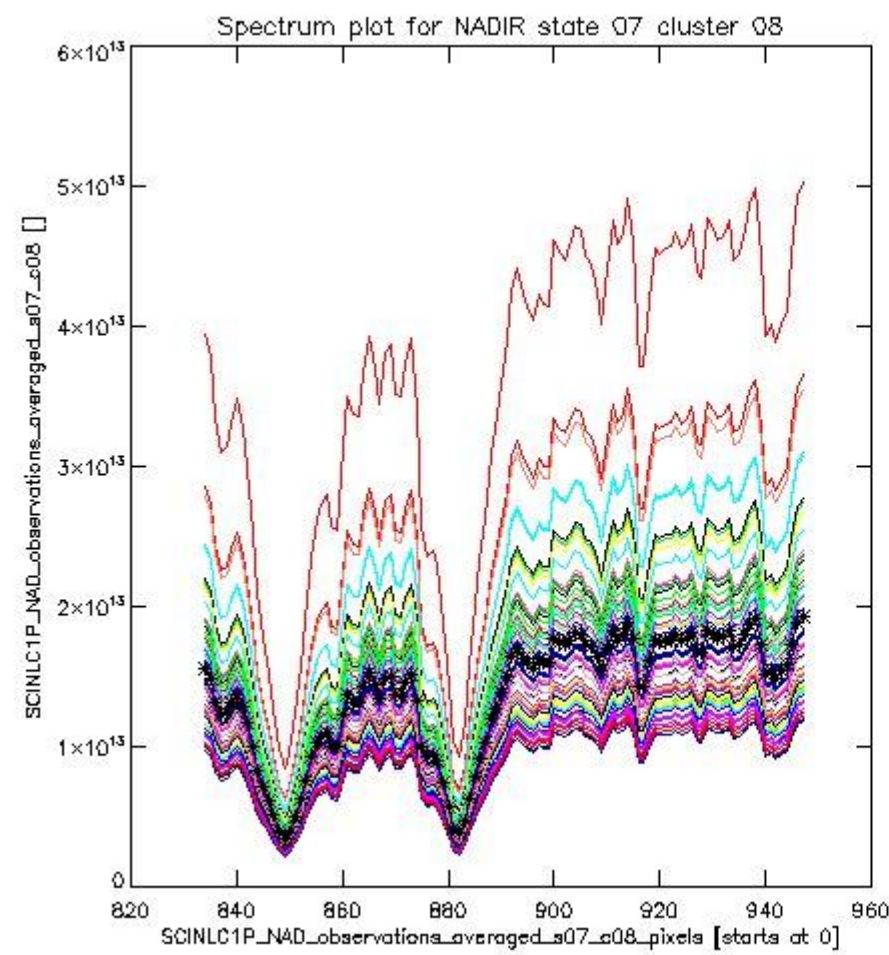
1.2 Source packet monitoring

This section shows figures for each of the monitored source packet types listed in the Source Packet Summary section. For each mode-state-cluster(-height) combination the following plots are shown:

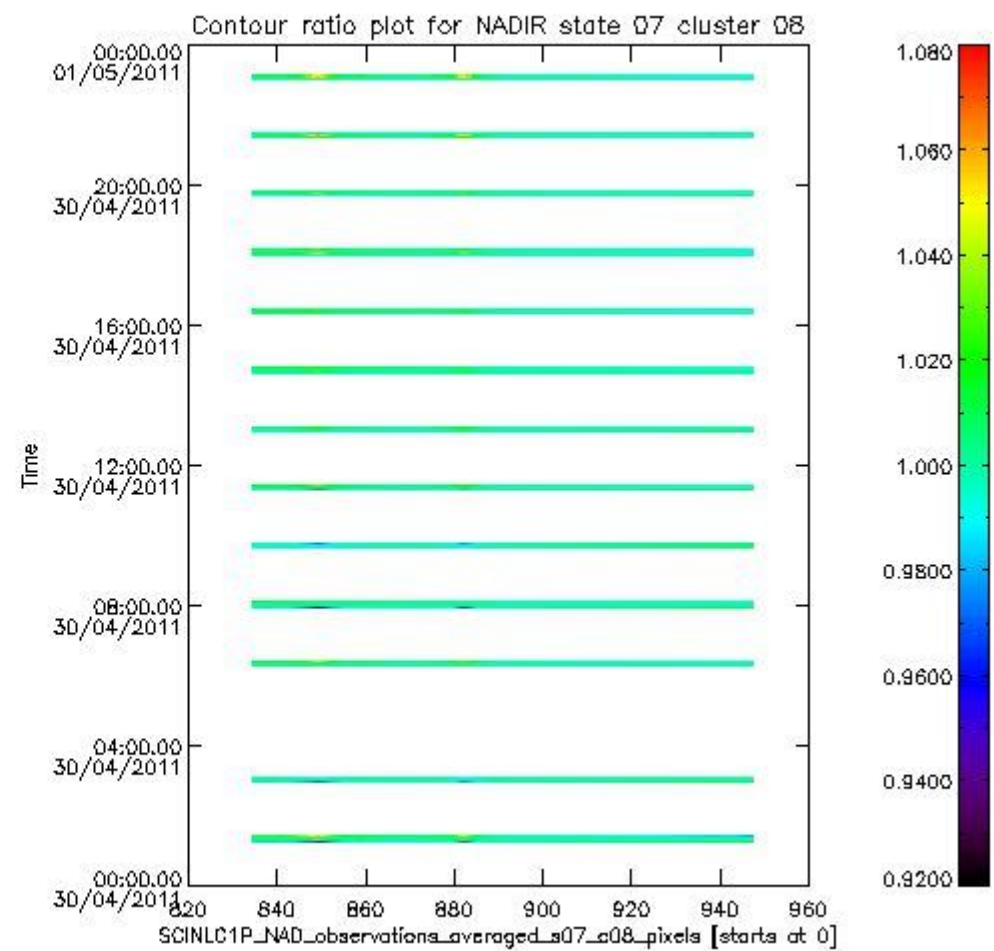
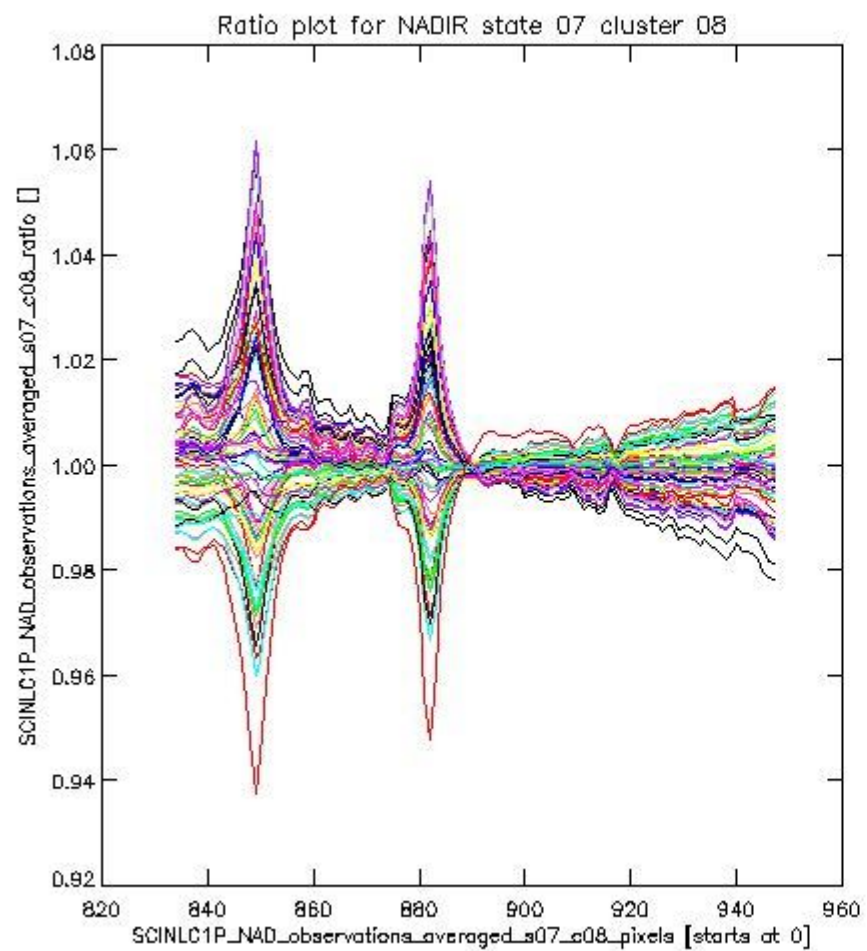
- A plot that shows all calibrated averaged spectra vs. pixel number as 2D-profiles. Each line is an average spectrum for a single state occurrence. For Limb modes, the average is performed on spectra recorded at a specific height. The reference spectrum that is used for comparison is also shown as a black line with * markers.
- A plot that shows all calibrated averaged spectra vs. pixel number and time using a coloured contour plot. The colours indicate the intensity.
- A plot that shows ratios of all calibrated averaged spectra and the reference spectrum vs. pixel number. Each line is the ratio of a calibrated averaged spectrum and the reference spectrum, where both spectra have been intensity corrected (the spectrum has been divided by the average pixel intensity) prior to division.
- A plot that shows ratios of all calibrated averaged spectra and the reference spectrum vs. pixel number and time using a coloured contour plot.

1.2.1 NADIR state 07 cluster 08 The data for the analysis of NADIR state 07 cluster 08 have the following characteristics:

Item	Value
Start time of first sample	30APR2011 01:14:24.234
Start time of last sample	30APR2011 23:06:41.424
Reference period start time	30MAR2011 00:13:12.668
Reference period stop time	28APR2011 22:40:59.538
Channel number	2
First pixel number (starts at 0)	834
Last pixel number (starts at 0)	947



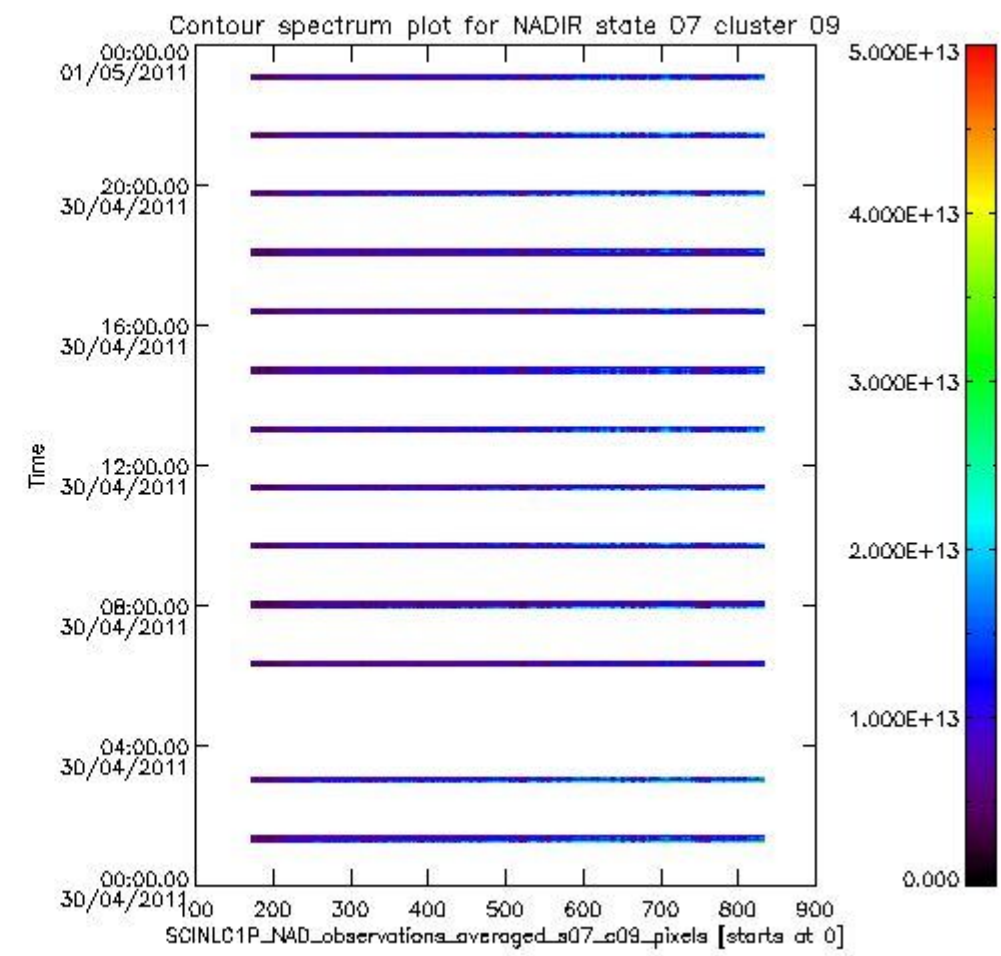
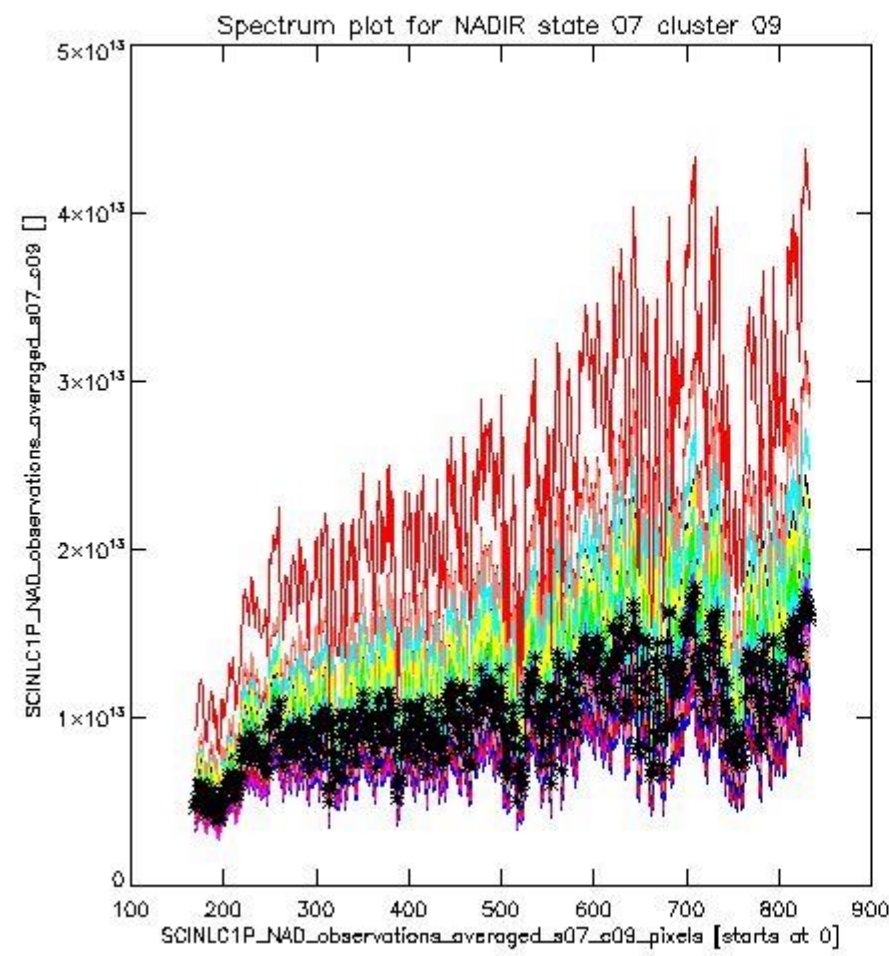
sciamachy_i1b_source_packet_report_SCIA_7_04_U_20110430_0.PNG



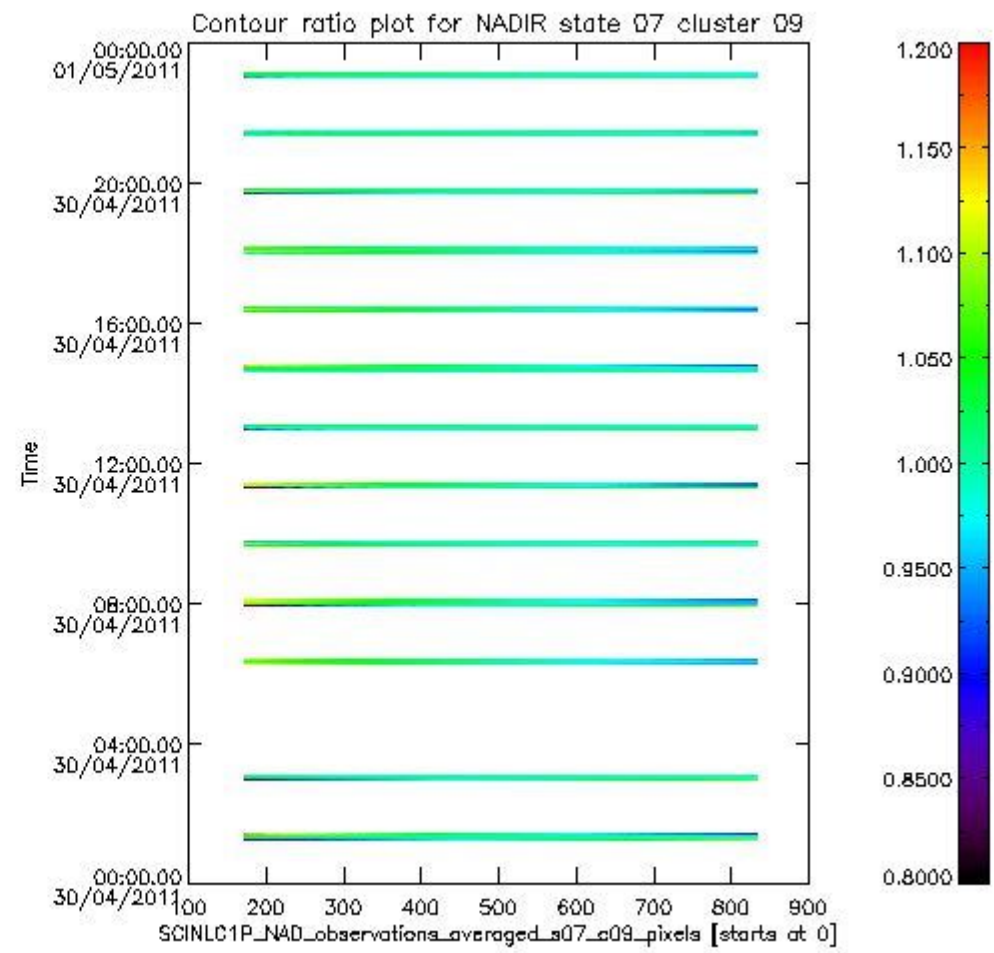
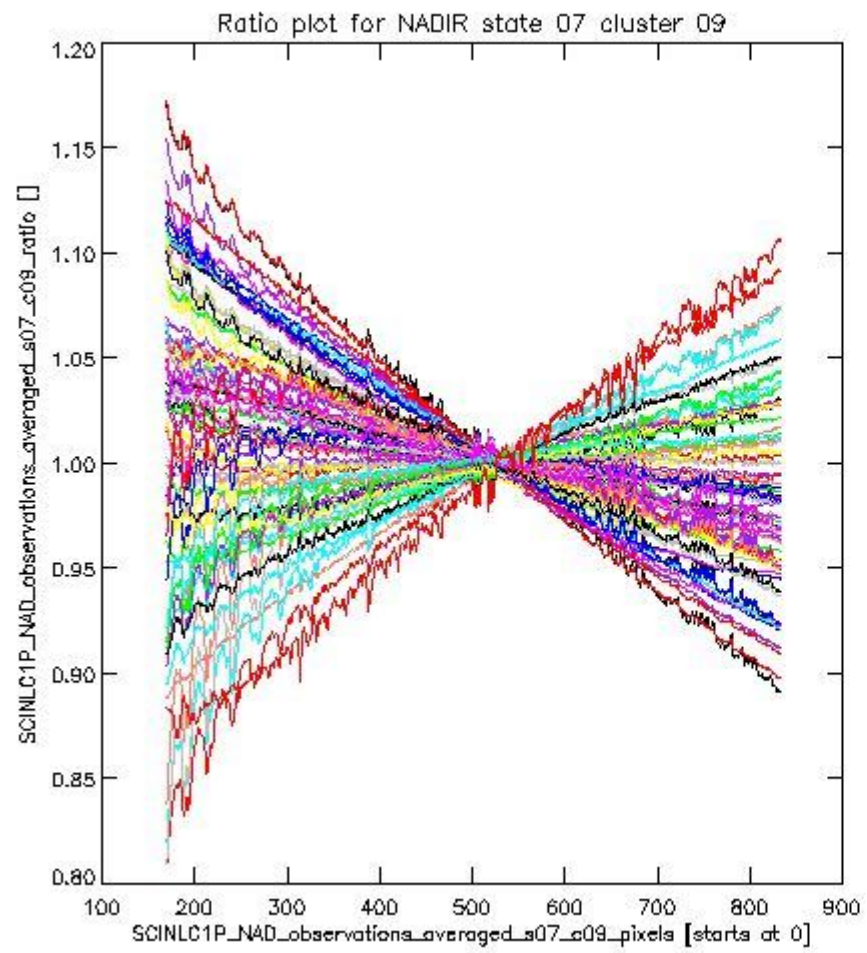
sciamachy_i1b_source_packet_report_SCIA_7_04_U_20110430_1.PNG

1.2.2 NADIR state 07 cluster 09 The data for the analysis of NADIR state 07 cluster 09 have the following characteristics:

Item	Value
Start time of first sample	30APR2011 01:14:24.234
Start time of last sample	30APR2011 23:06:41.424
Reference period start time	30MAR2011 00:13:12.668
Reference period stop time	28APR2011 22:40:59.538
Channel number	2
First pixel number (starts at 0)	170
Last pixel number (starts at 0)	833



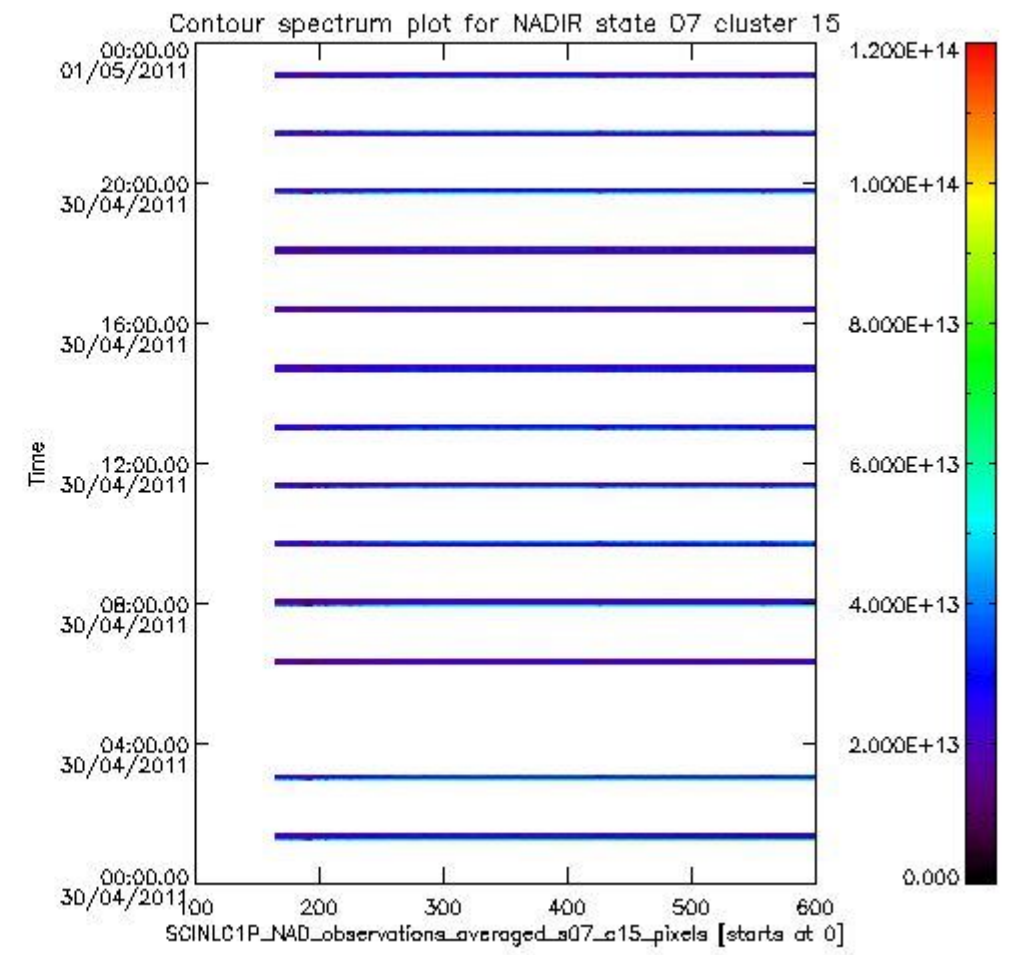
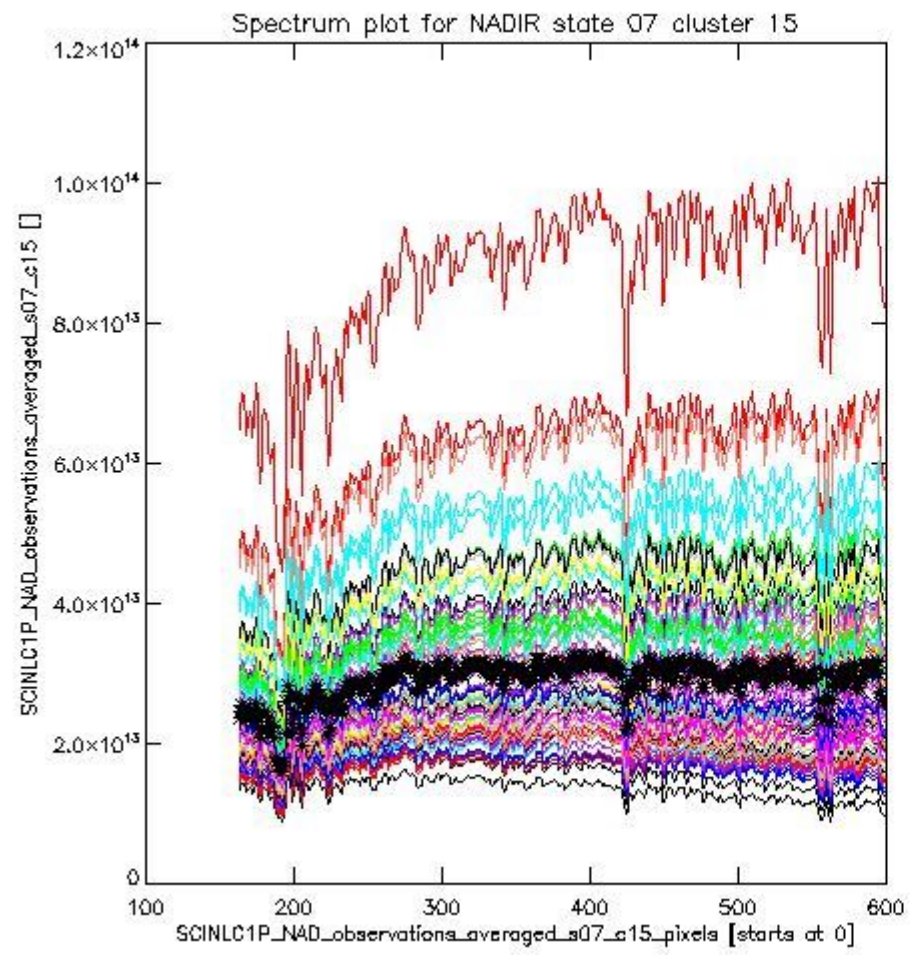
sciamachy_i1b_source_packet_report_SCIA_7_04_U_20110430_2.PNG



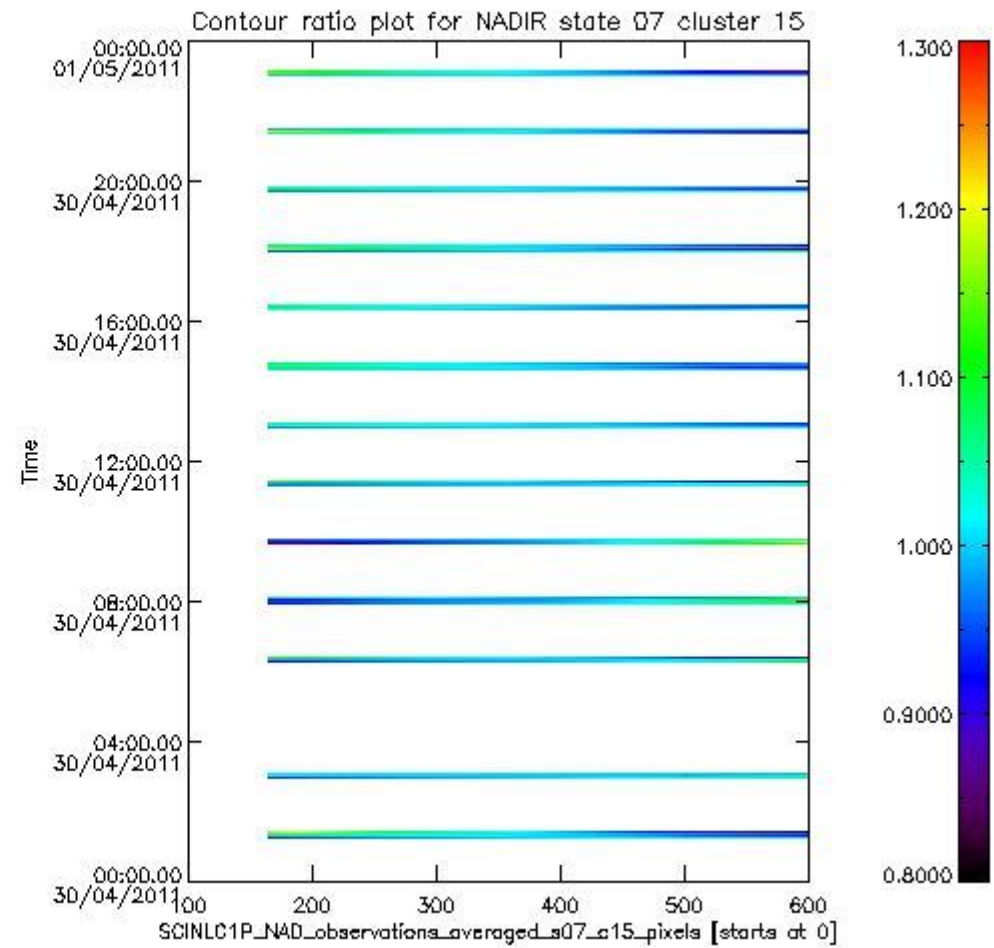
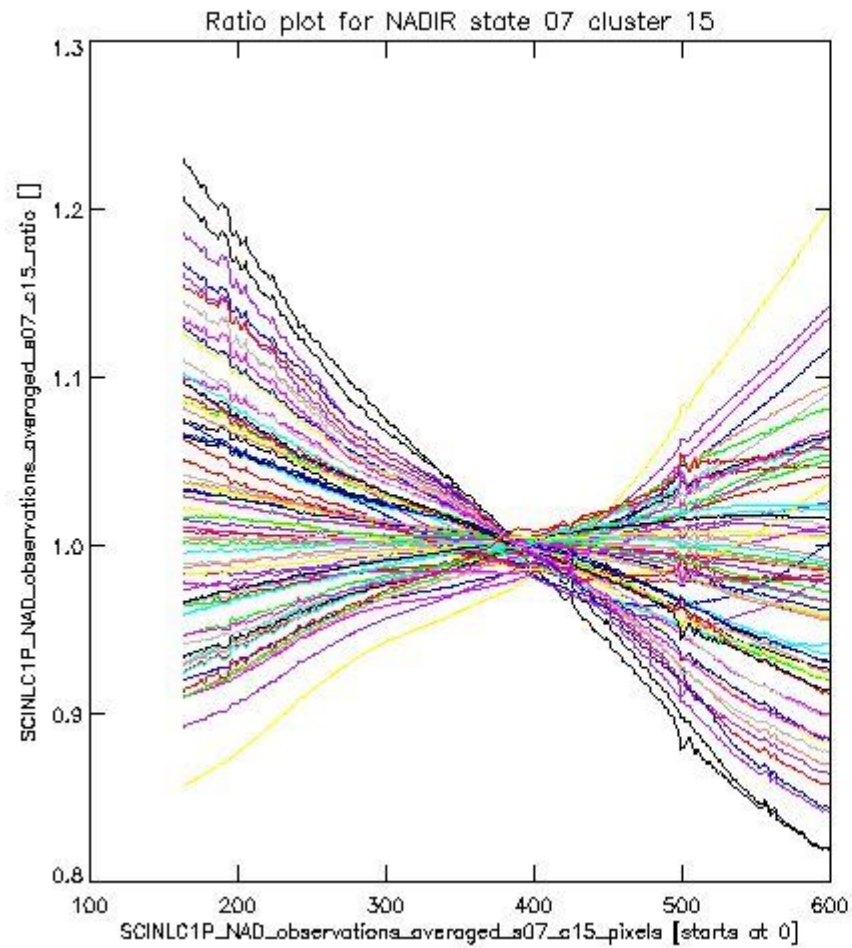
sciamachy_i1b_source_packet_report_SCIA_7_04_U_20110430_3.PNG

1.2.3 NADIR state 07 cluster 15 The data for the analysis of NADIR state 07 cluster 15 have the following characteristics:

Item	Value
Start time of first sample	30APR2011 01:14:24.234
Start time of last sample	30APR2011 23:06:41.424
Reference period start time	30MAR2011 00:13:12.668
Reference period stop time	28APR2011 22:40:59.538
Channel number	3
First pixel number (starts at 0)	163
Last pixel number (starts at 0)	598



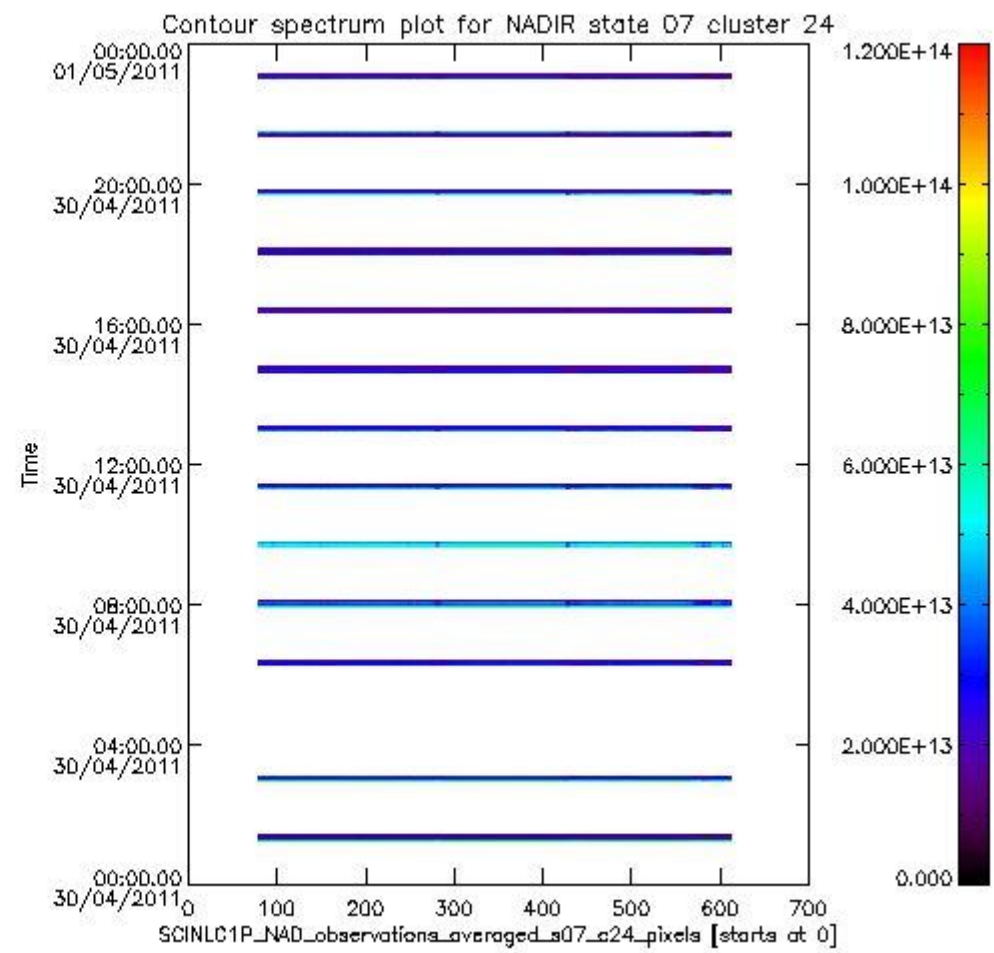
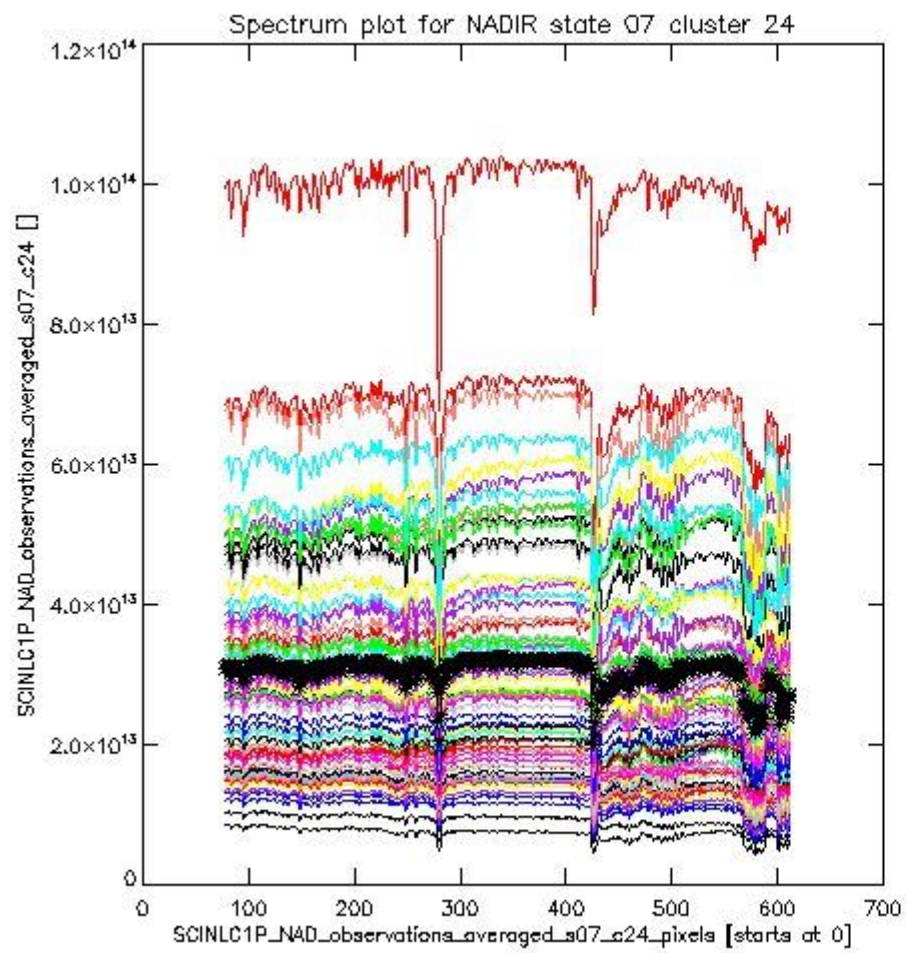
sciamachy_i1b_source_packet_report_SCIA_7_04_U_20110430_4.PNG



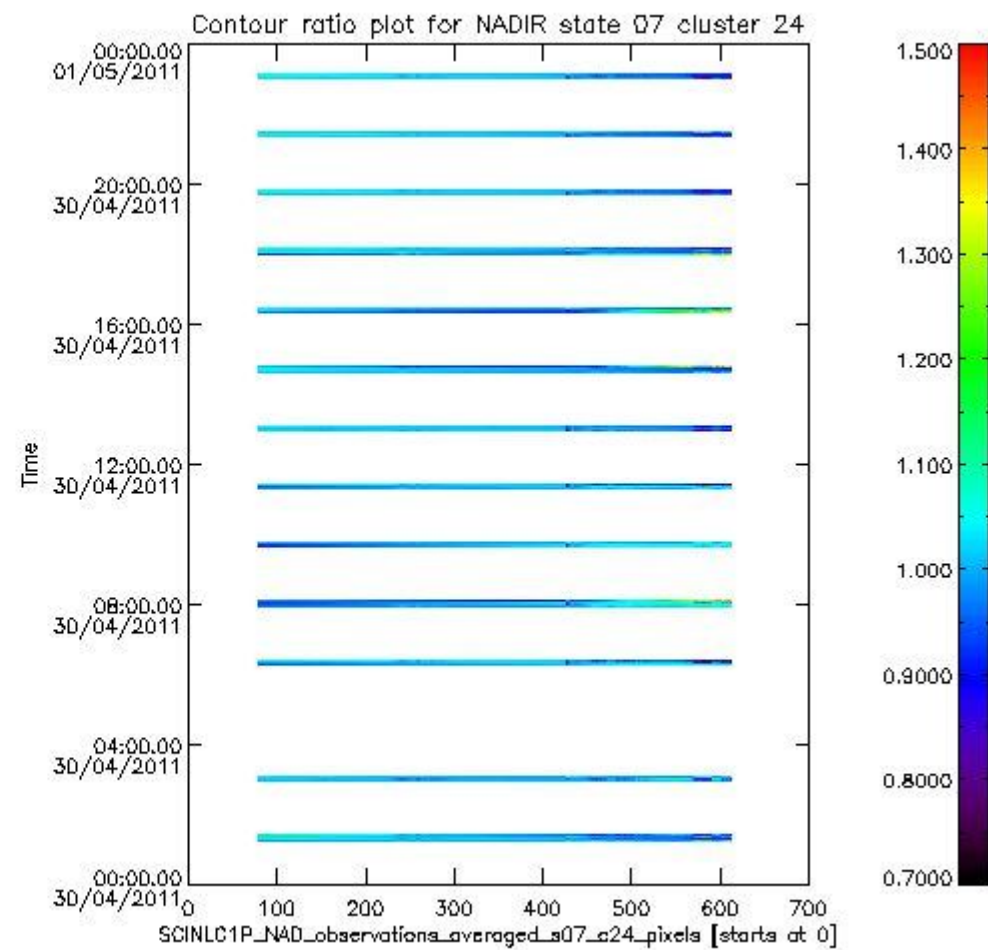
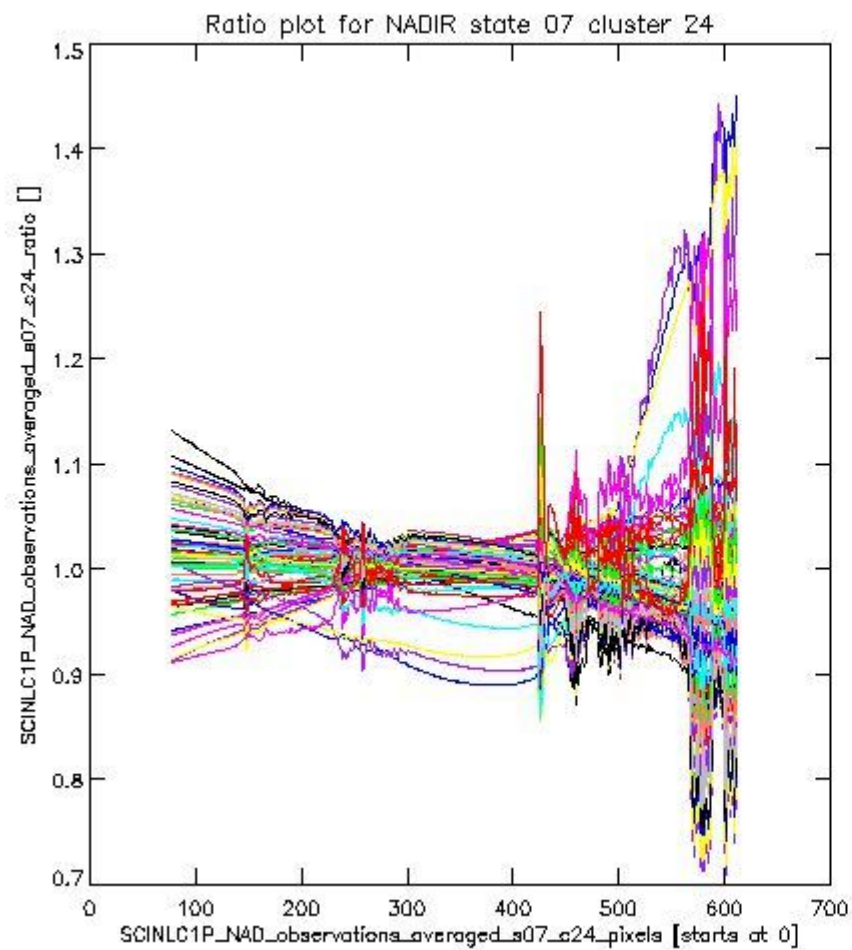
sciamachy_l1b_source_packet_report_SCIA_7_04_U_20110430_5.PNG

1.2.4 NADIR state 07 cluster 24 The data for the analysis of NADIR state 07 cluster 24 have the following characteristics:

Item	Value
Start time of first sample	30APR2011 01:14:24.234
Start time of last sample	30APR2011 23:06:41.424
Reference period start time	30MAR2011 00:13:12.668
Reference period stop time	28APR2011 22:40:59.538
Channel number	4
First pixel number (starts at 0)	78
Last pixel number (starts at 0)	612



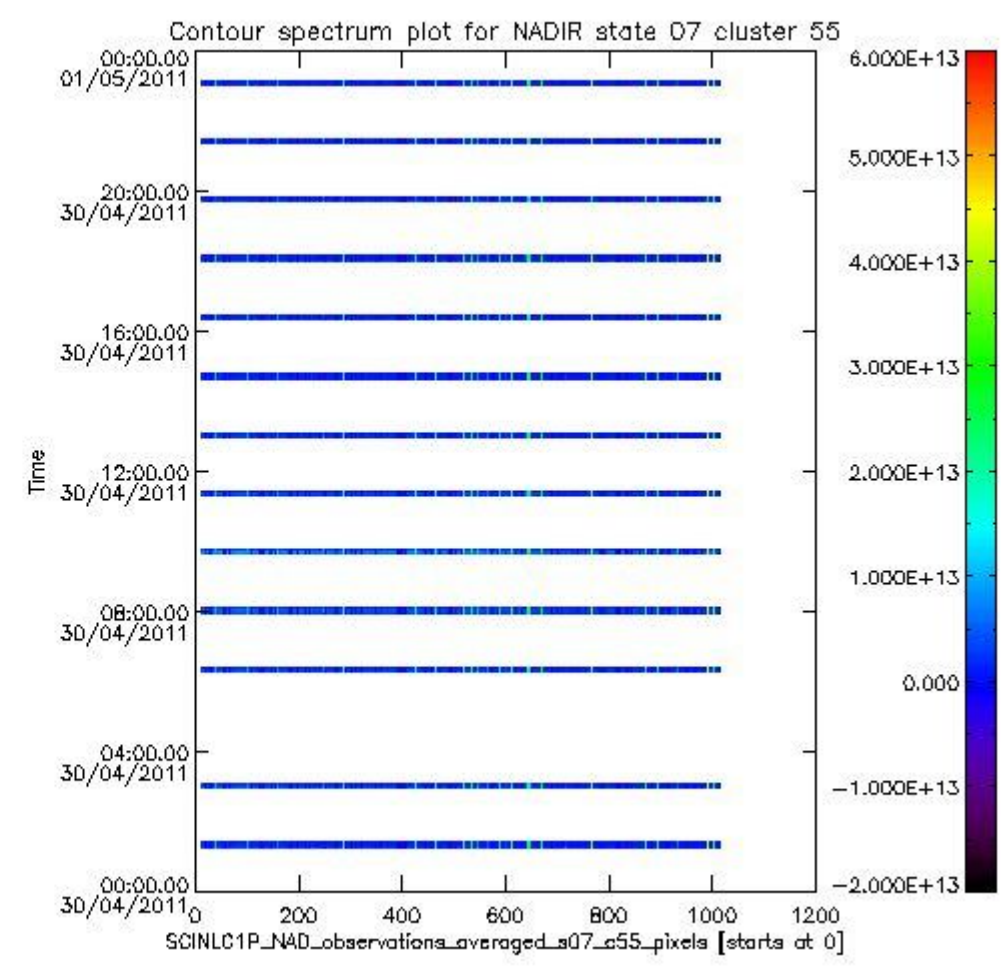
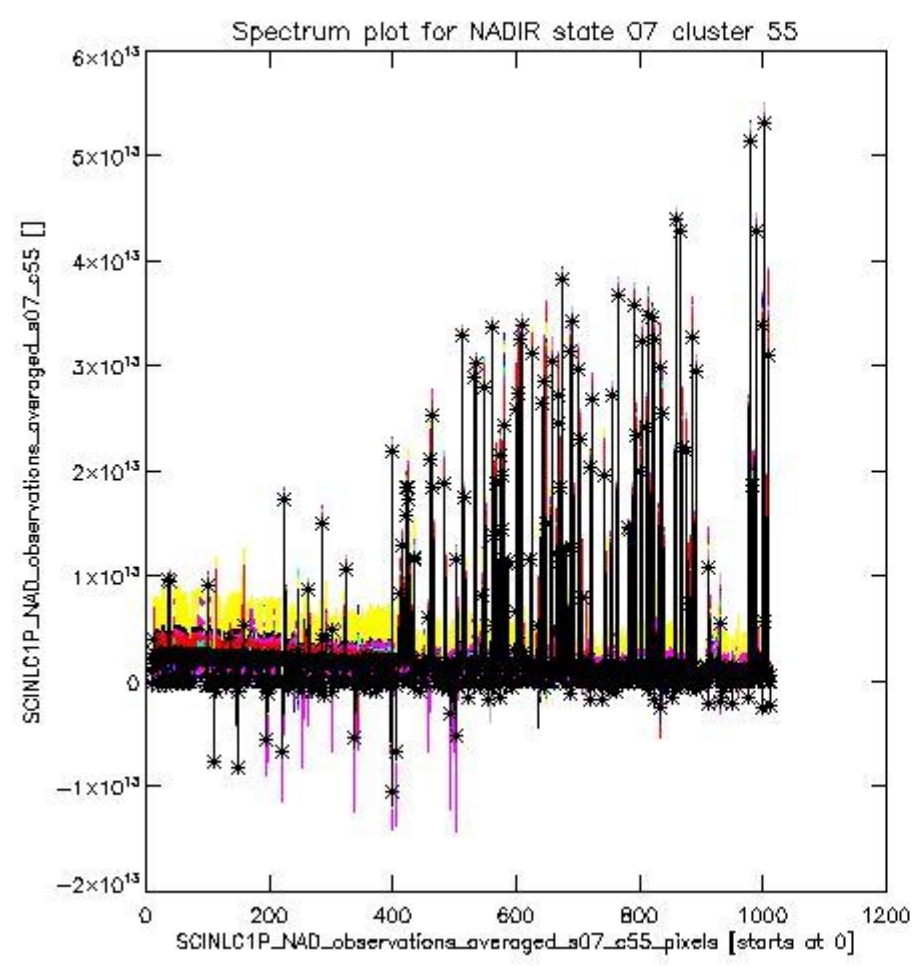
sciamachy_i1b_source_packet_report_SCIA_7_04_U_20110430_6.PNG



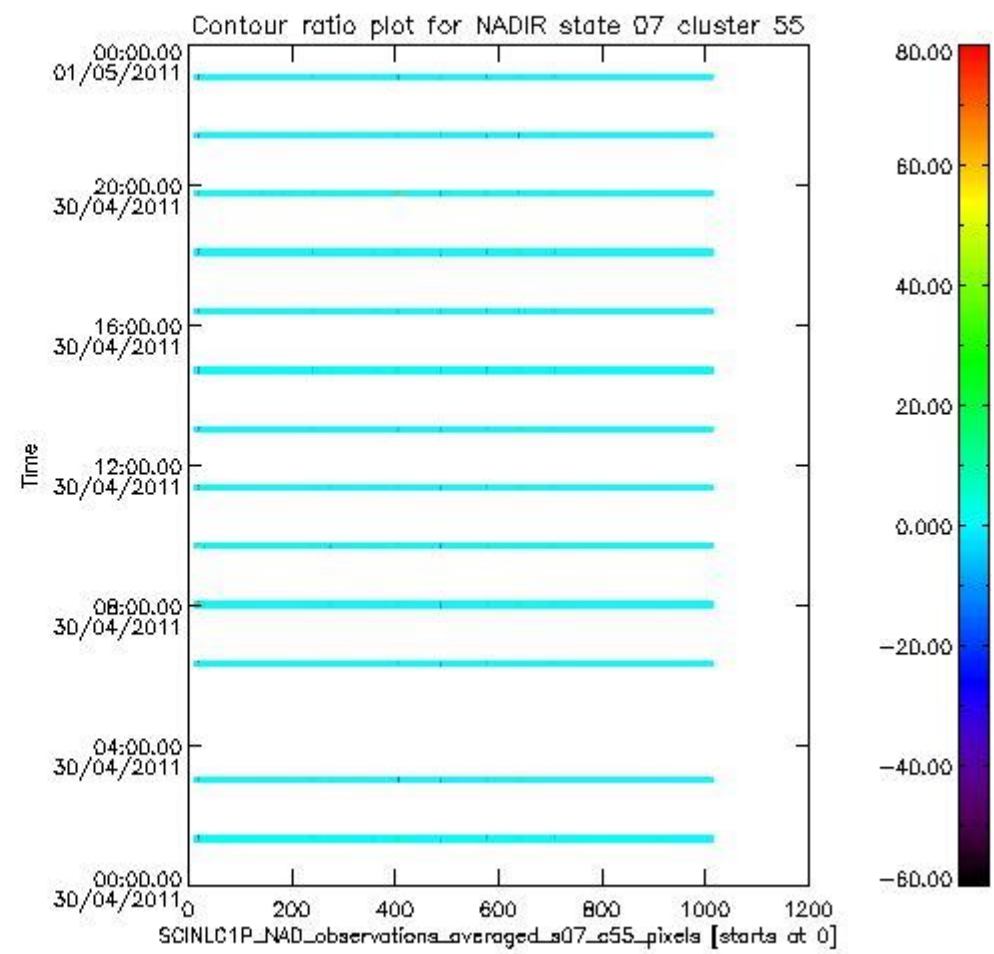
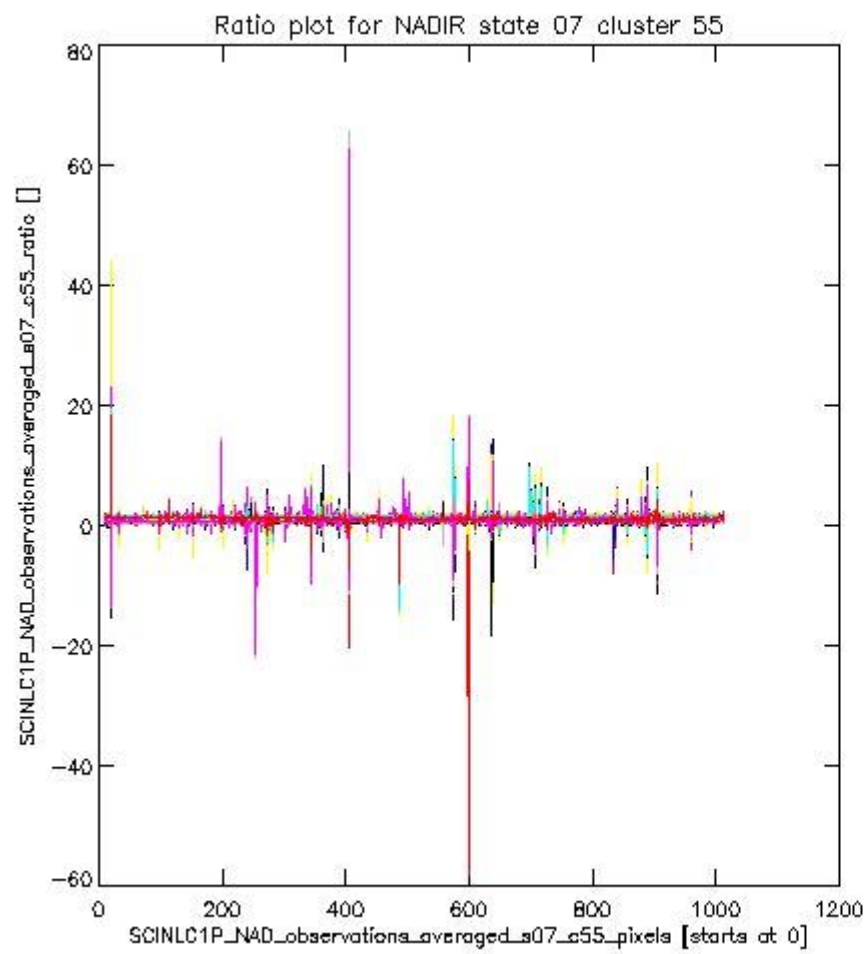
sciamachy_l1b_source_packet_report_SCIA_7_04_U_20110430_7.PNG

1.2.5 NADIR state 07 cluster 55 The data for the analysis of NADIR state 07 cluster 55 have the following characteristics:

Item	Value
Start time of first sample	30APR2011 01:14:24.234
Start time of last sample	30APR2011 23:06:41.424
Reference period start time	30MAR2011 00:13:12.668
Reference period stop time	28APR2011 22:40:59.538
Channel number	8
First pixel number (starts at 0)	10
Last pixel number (starts at 0)	1013



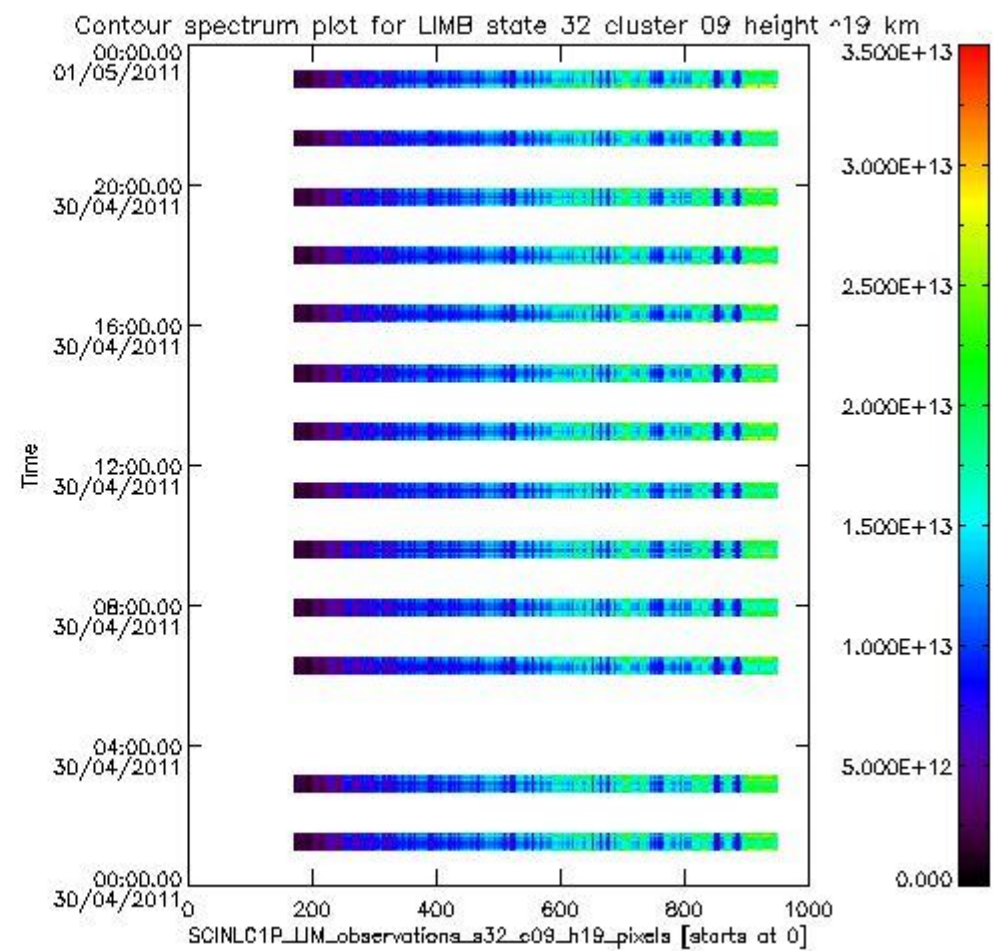
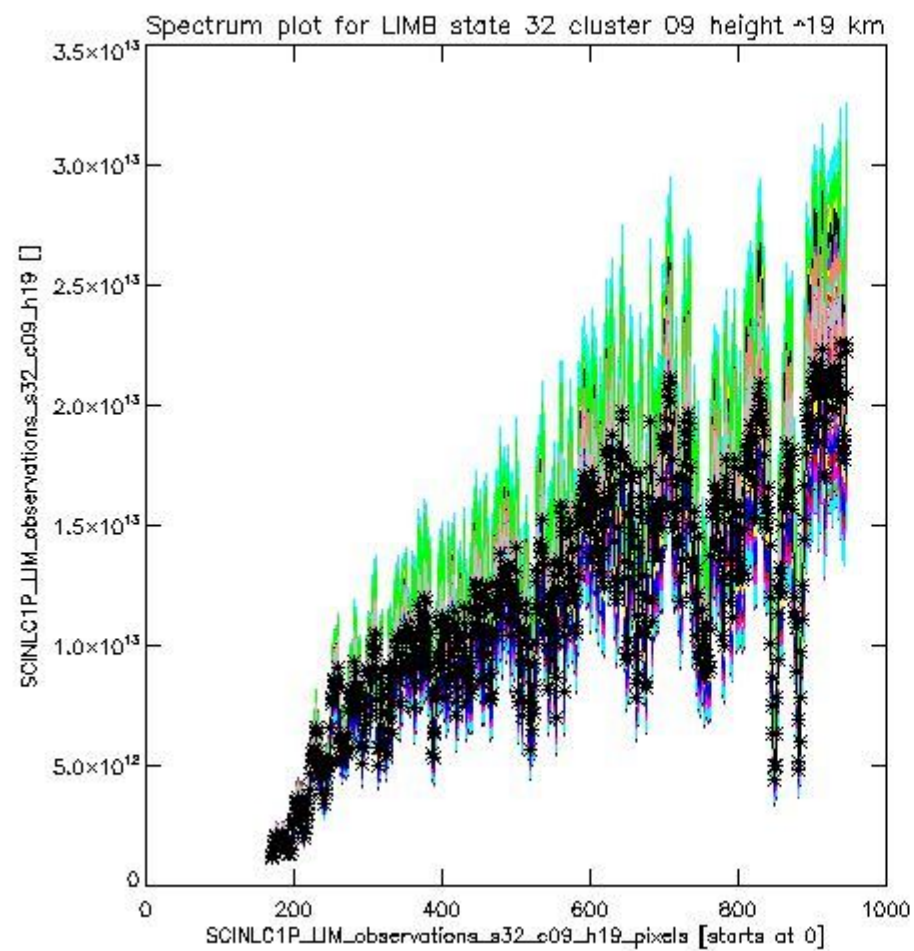
sciamachy_i1b_source_packet_report_SCIA_7_04_U_20110430_8.PNG



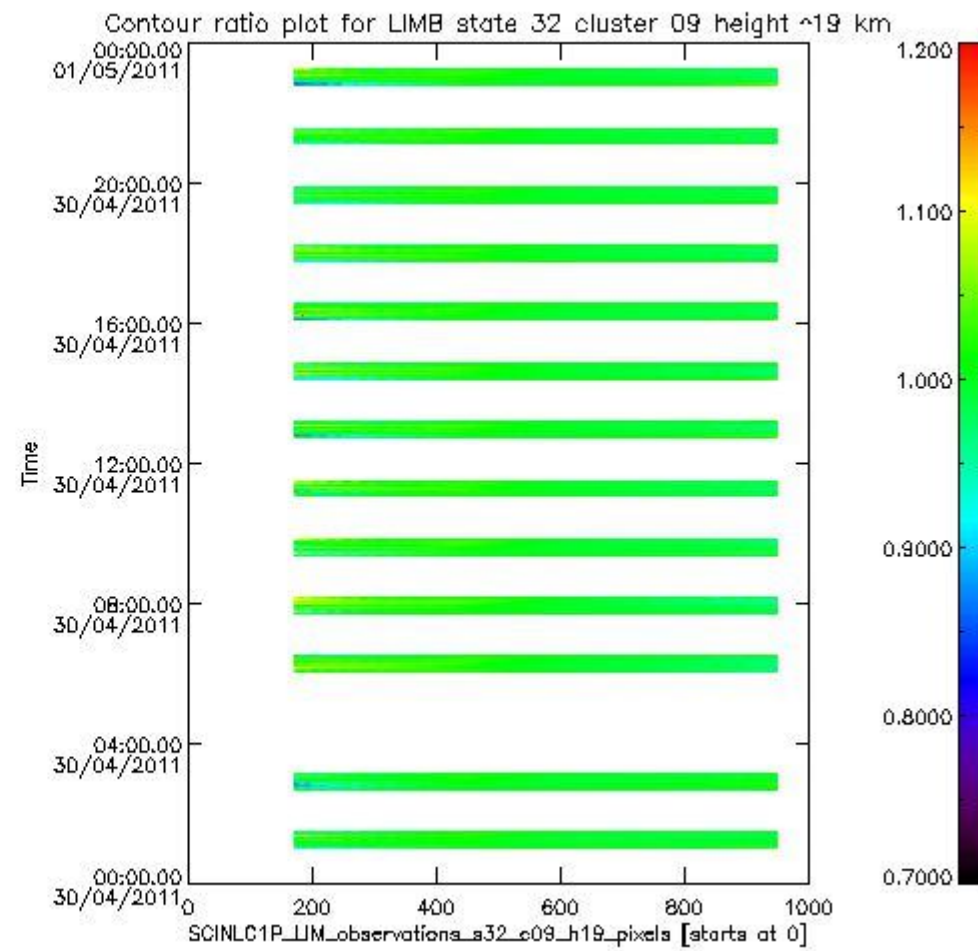
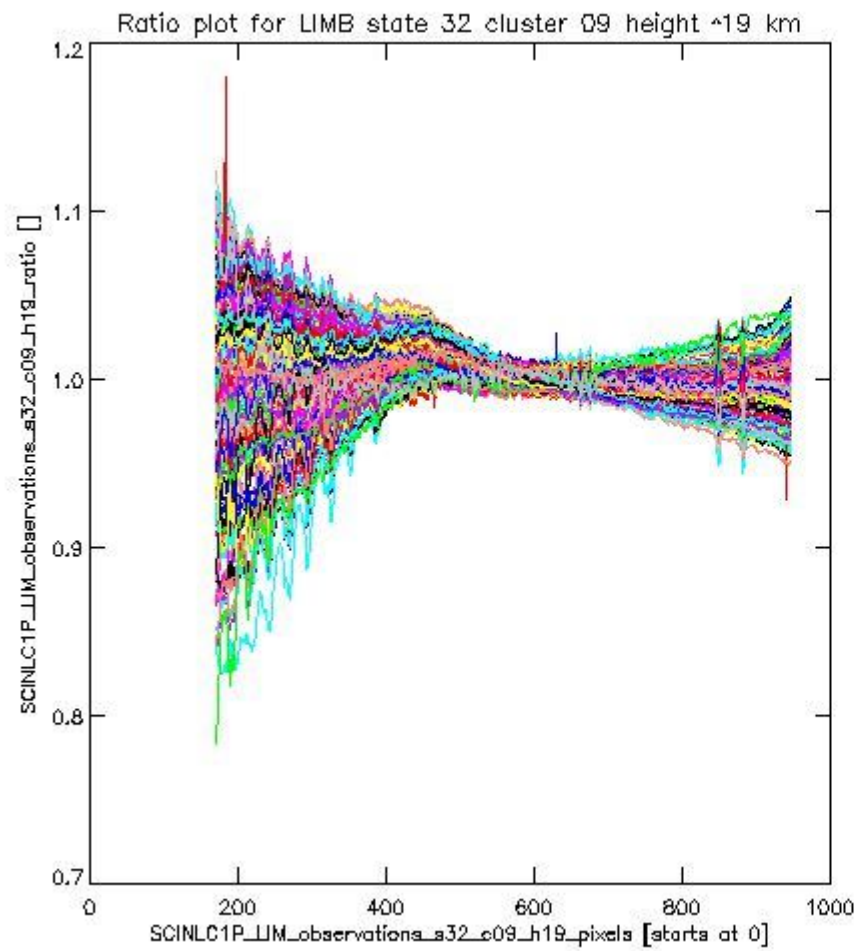
sciamachy_l1b_source_packet_report_SCIA_7_04_U_20110430_9.PNG

1.2.6 LIMB state 32 cluster 09 height ~19 km The data for the analysis of LIMB state 32 cluster 09 height ~19 km have the following characteristics:

Item	Value
Start time of first sample	30APR2011 01:01:13.597
Start time of last sample	30APR2011 23:11:55.463
Reference period start time	30MAR2011 00:00:02.028
Reference period stop time	28APR2011 23:58:57.351
Channel number	2
First pixel number (starts at 0)	170
Last pixel number (starts at 0)	947



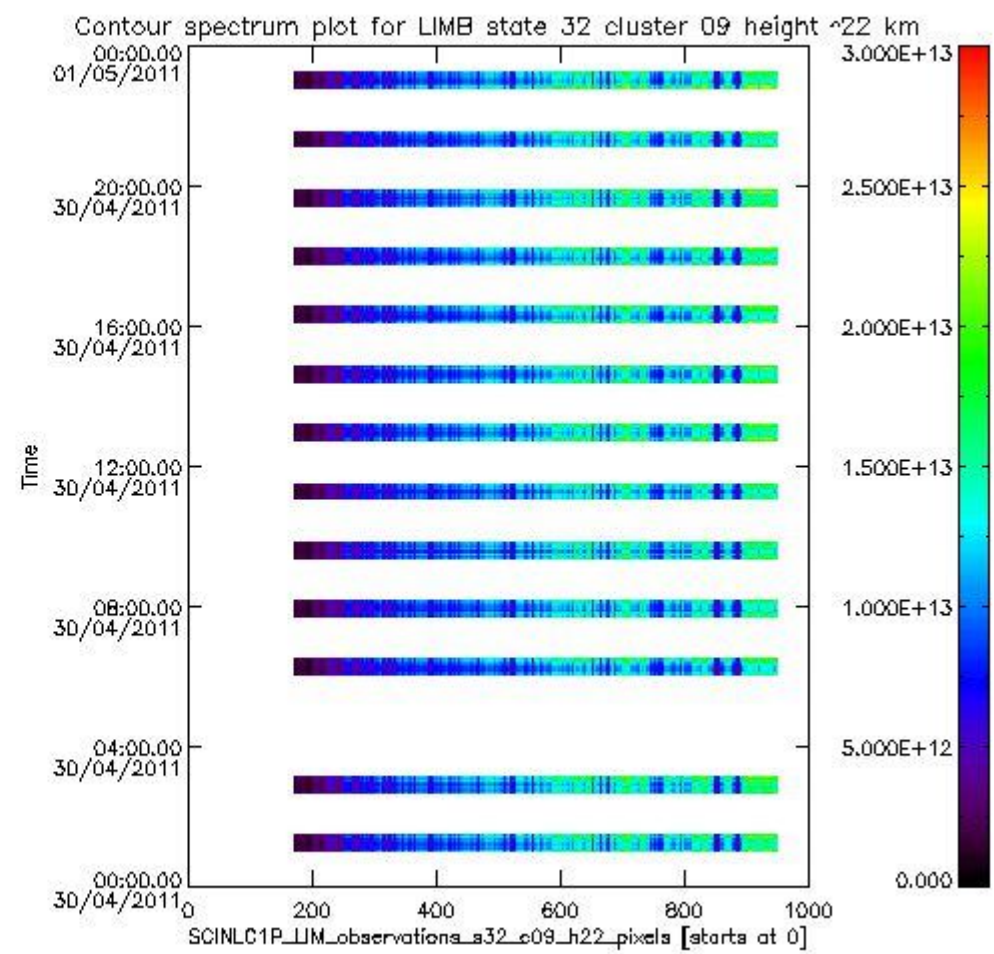
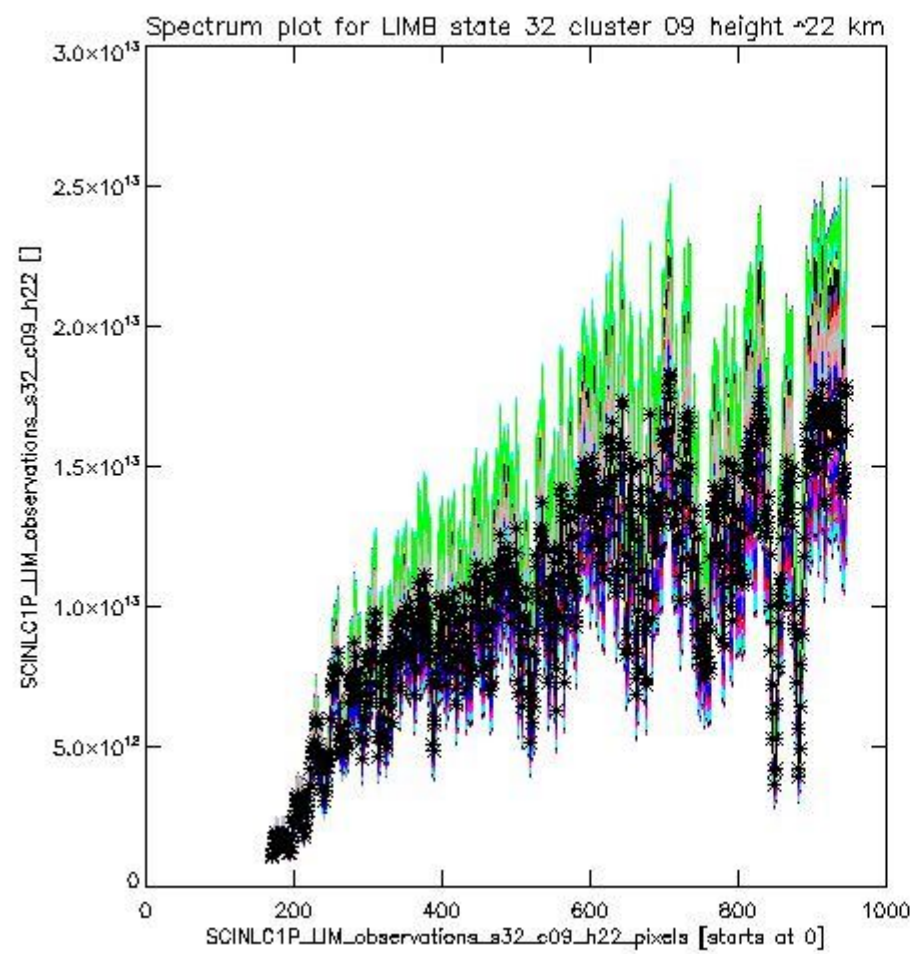
sciamachy_i1b_source_packet_report_SCIA_7_04_U_20110430_10.PNG



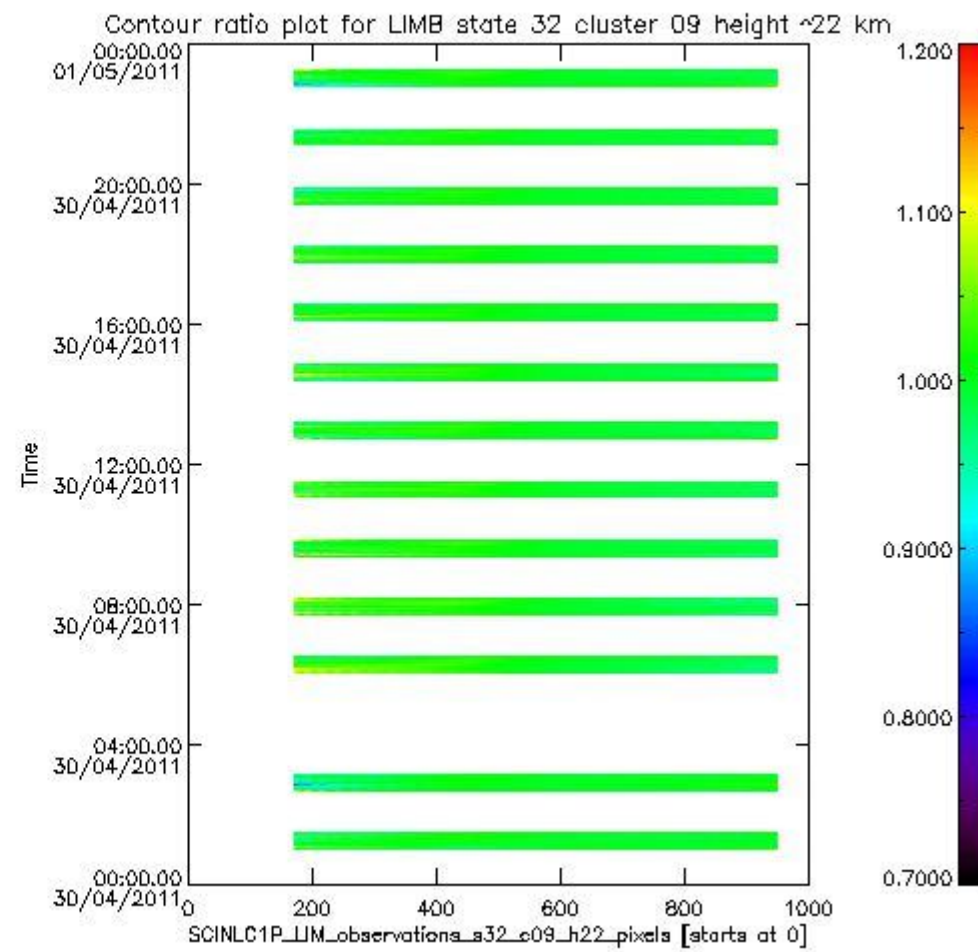
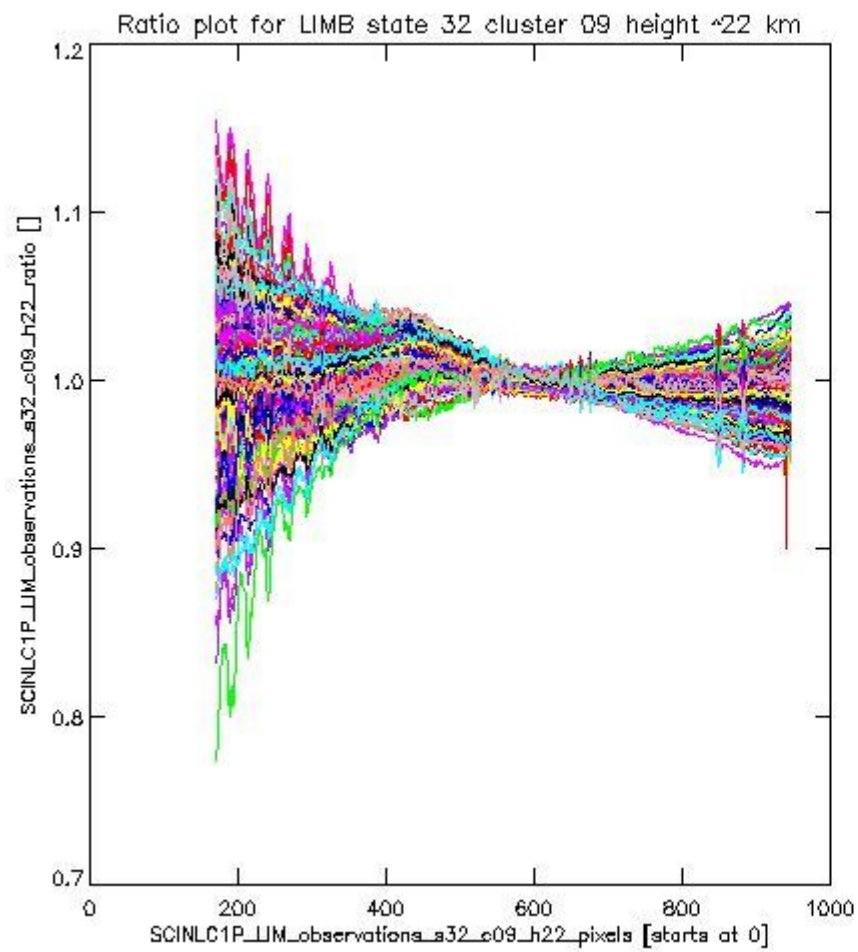
sciamachy_l1b_source_packet_report_SCIA_7_04_U_20110430_11.PNG

1.2.7 LIMB state 32 cluster 09 height ~22 km The data for the analysis of LIMB state 32 cluster 09 height ~22 km have the following characteristics:

Item	Value
Start time of first sample	30APR2011 01:01:13.597
Start time of last sample	30APR2011 23:11:55.463
Reference period start time	30MAR2011 00:00:02.028
Reference period stop time	28APR2011 23:58:57.351
Channel number	2
First pixel number (starts at 0)	170
Last pixel number (starts at 0)	947



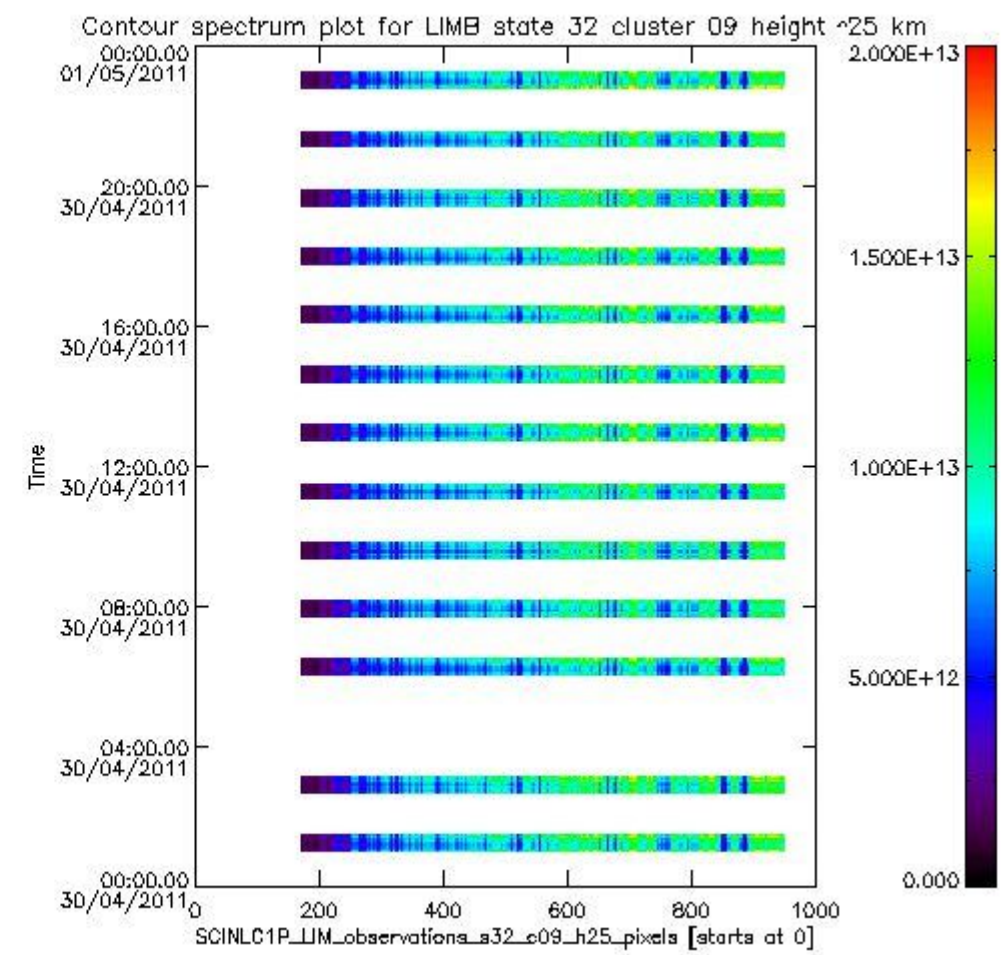
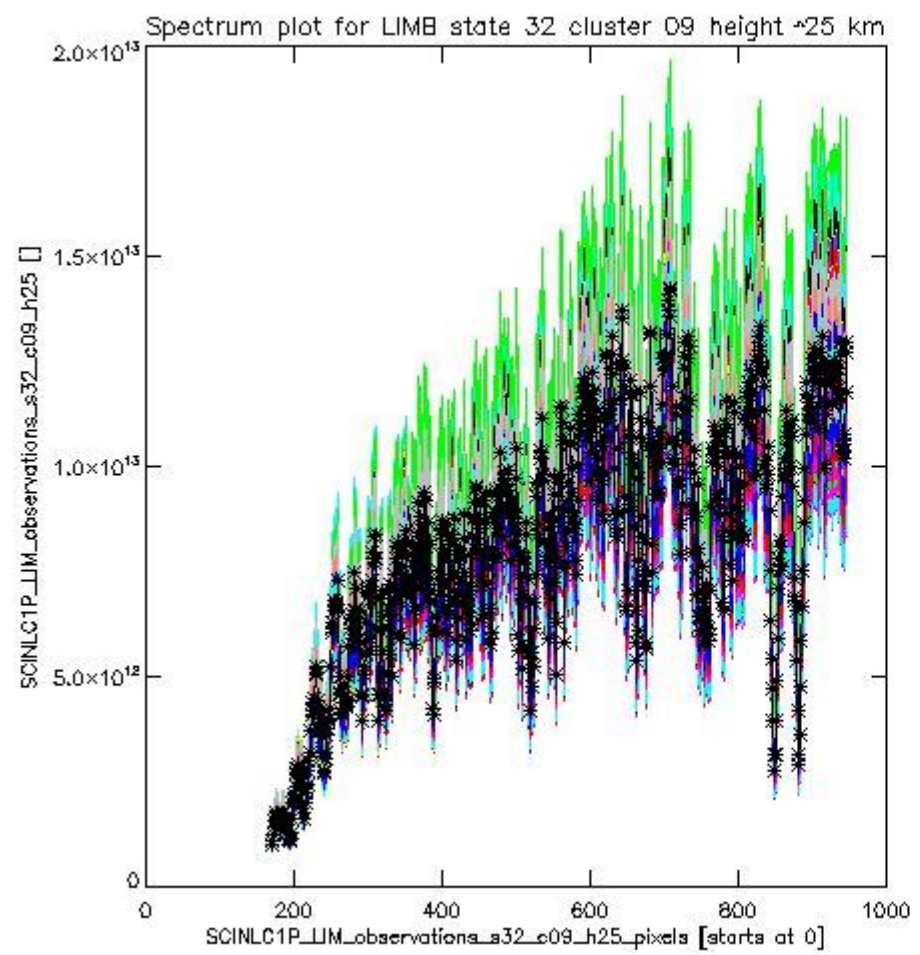
sciamachy_i1b_source_packet_report_SCIA_7_04_U_20110430_12.PNG



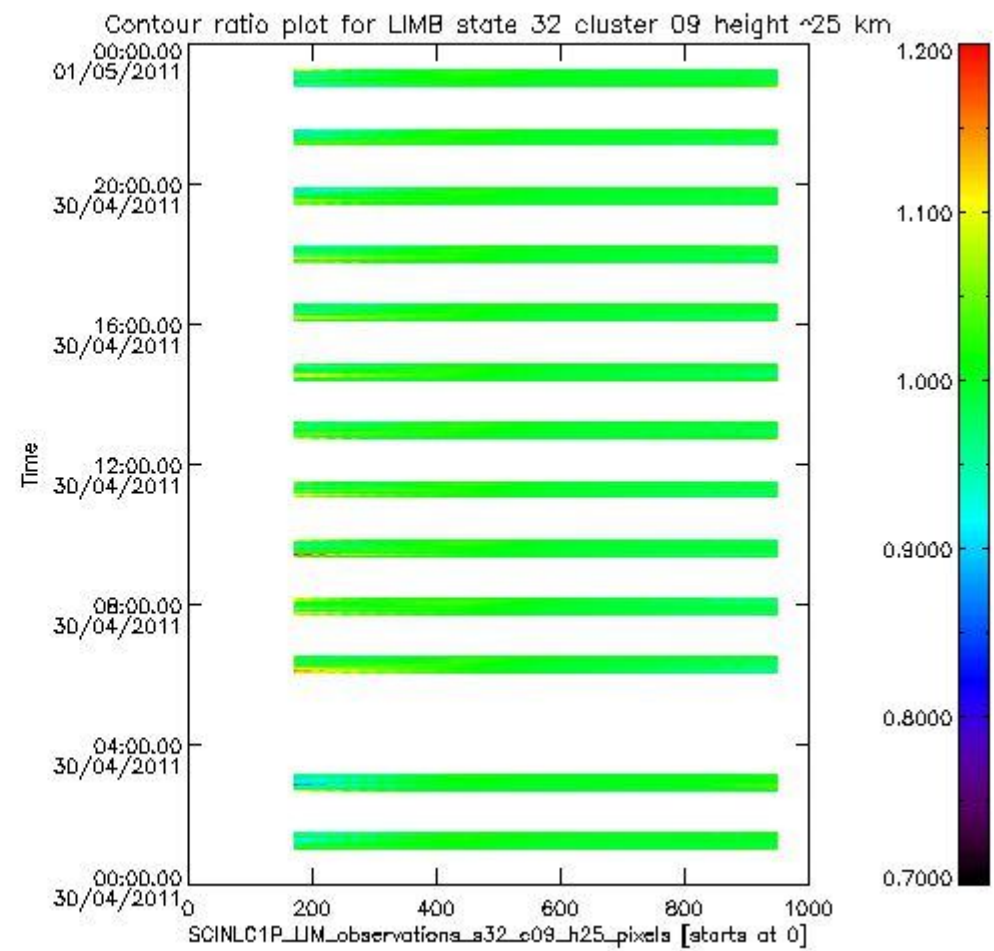
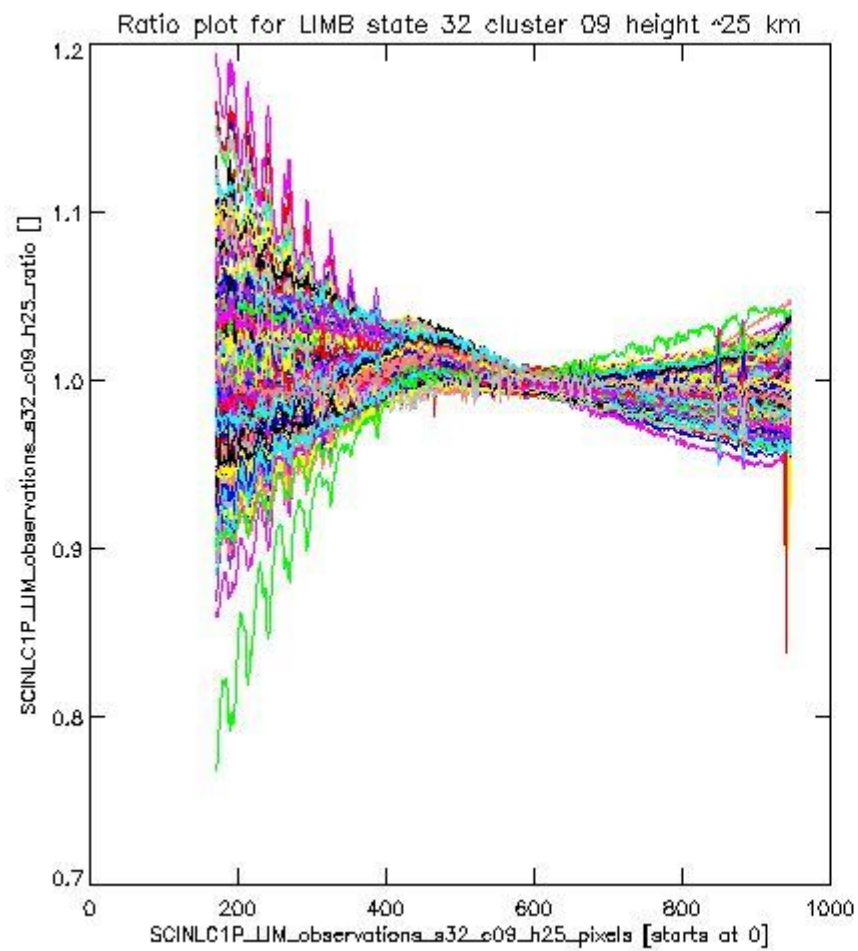
sciamachy_l1b_source_packet_report_SCIA_7_04_U_20110430_13.PNG

1.2.8 LIMB state 32 cluster 09 height ~25 km The data for the analysis of LIMB state 32 cluster 09 height ~25 km have the following characteristics:

Item	Value
Start time of first sample	30APR2011 01:01:13.597
Start time of last sample	30APR2011 23:11:55.463
Reference period start time	30MAR2011 00:00:02.028
Reference period stop time	28APR2011 23:58:57.351
Channel number	2
First pixel number (starts at 0)	170
Last pixel number (starts at 0)	947



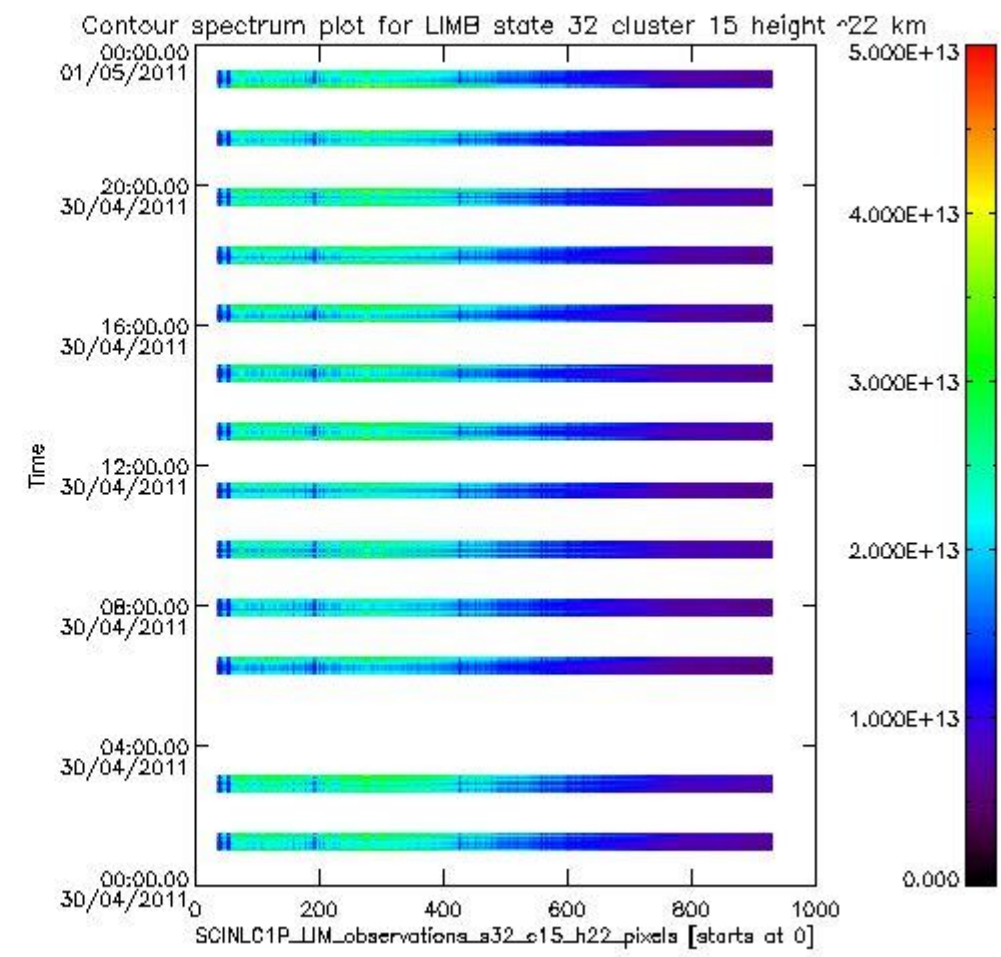
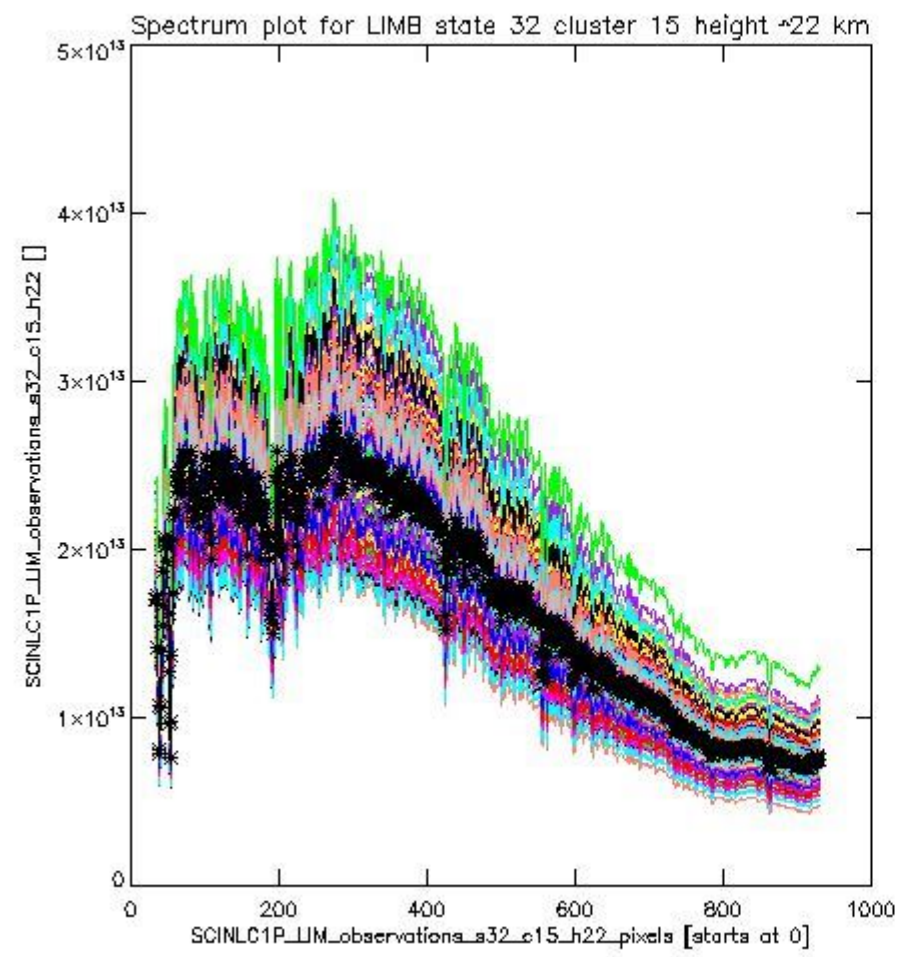
sciamachy_l1b_source_packet_report_SCIA_7_04_U_20110430_14.PNG



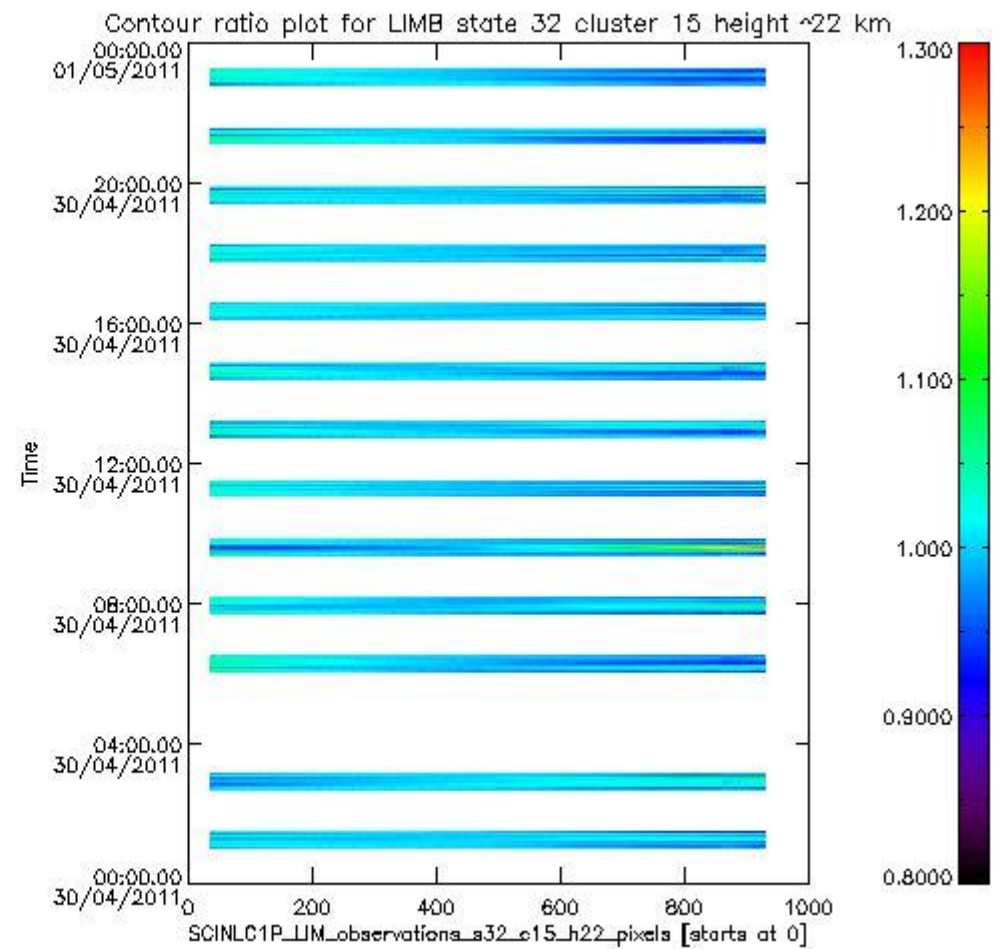
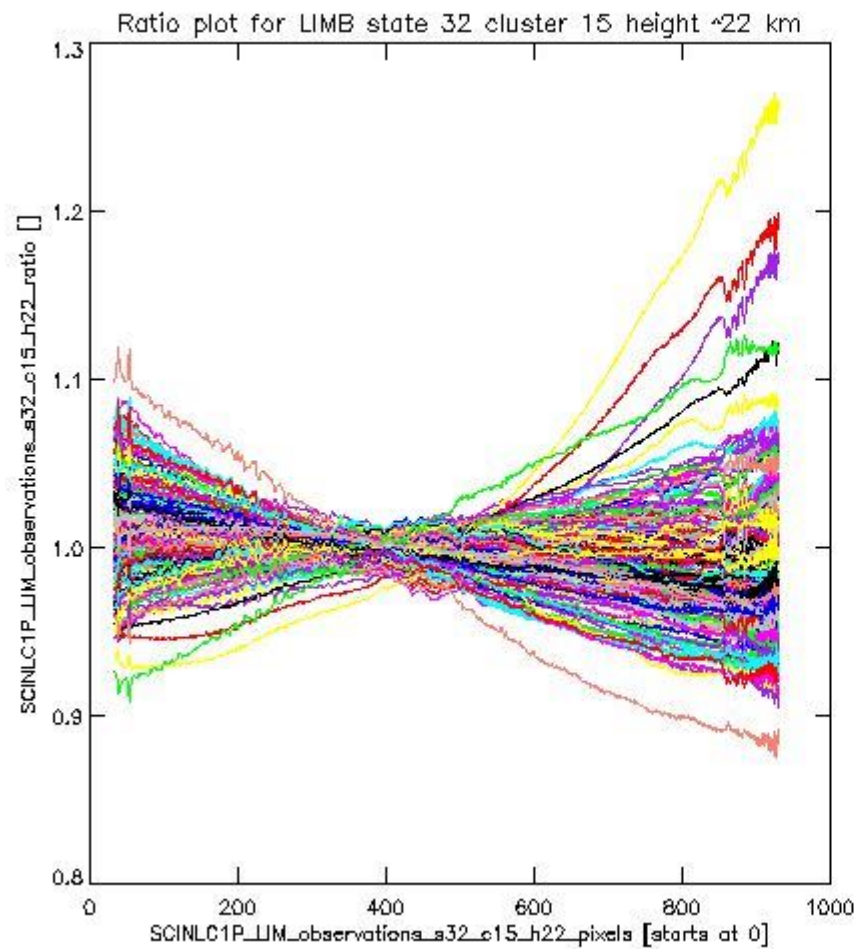
sciamachy_l1b_source_packet_report_SCIA_7_04_U_20110430_15.PNG

1.2.9 LIMB state 32 cluster 15 height ~22 km The data for the analysis of LIMB state 32 cluster 15 height ~22 km have the following characteristics:

Item	Value
Start time of first sample	30APR2011 01:01:13.597
Start time of last sample	30APR2011 23:11:55.463
Reference period start time	30MAR2011 00:00:02.028
Reference period stop time	28APR2011 23:58:57.351
Channel number	3
First pixel number (starts at 0)	33
Last pixel number (starts at 0)	929



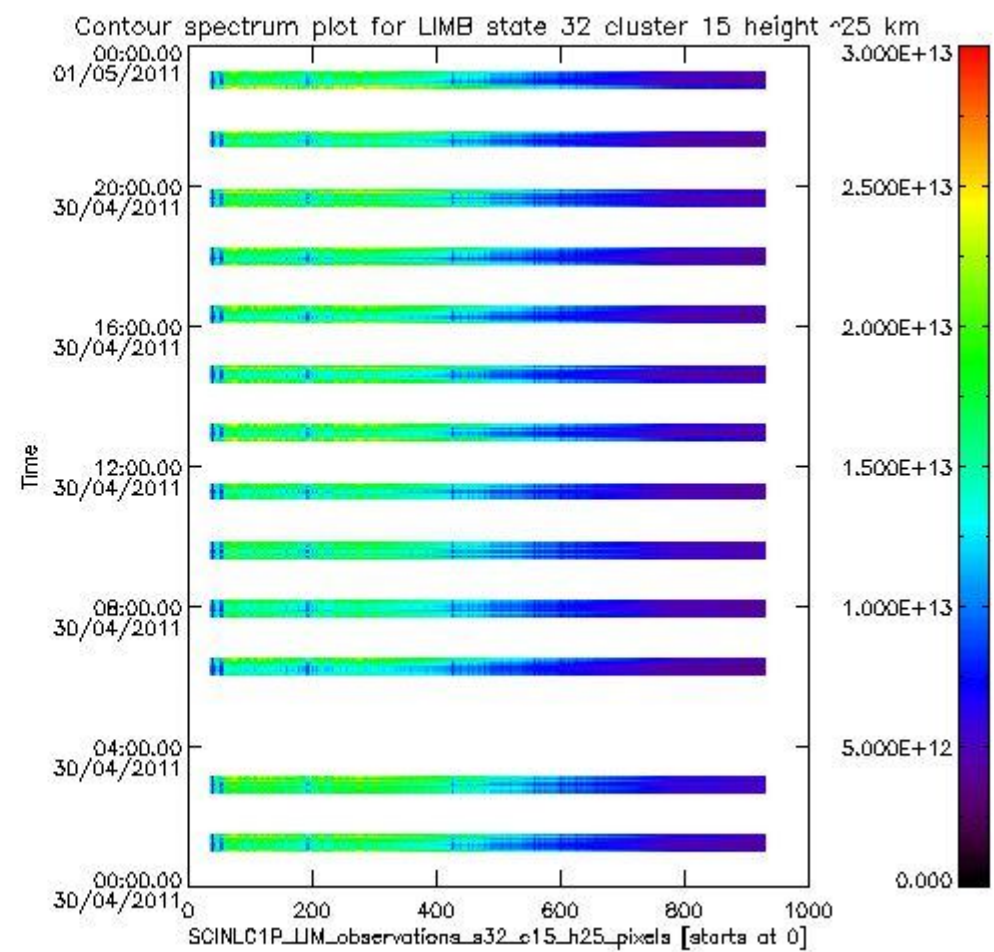
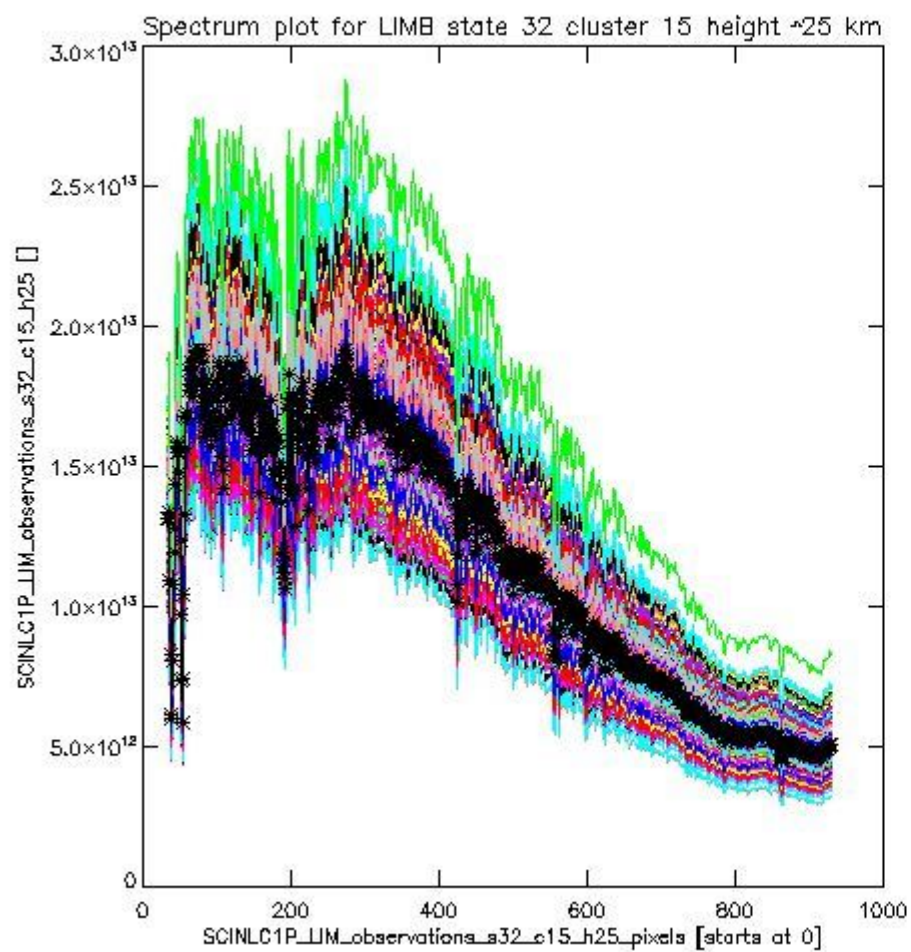
sciamachy_i1b_source_packet_report_SCIA_7_04_U_20110430_16.PNG

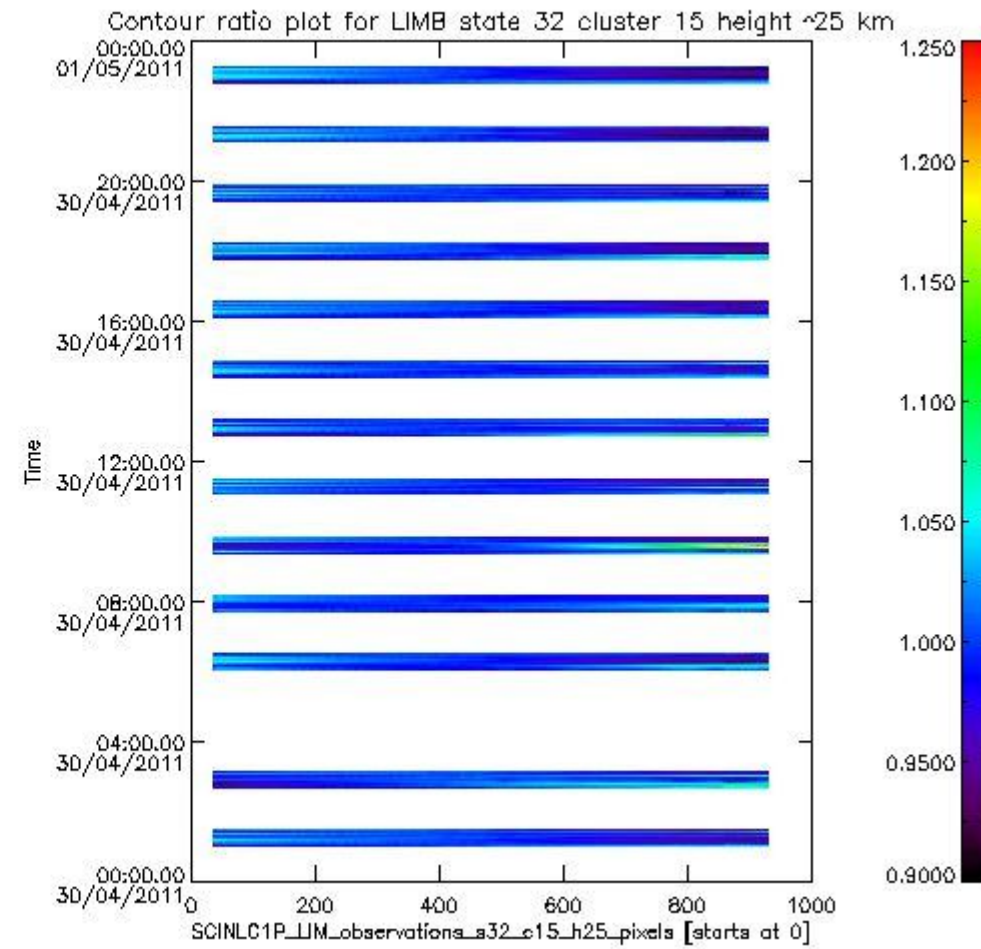
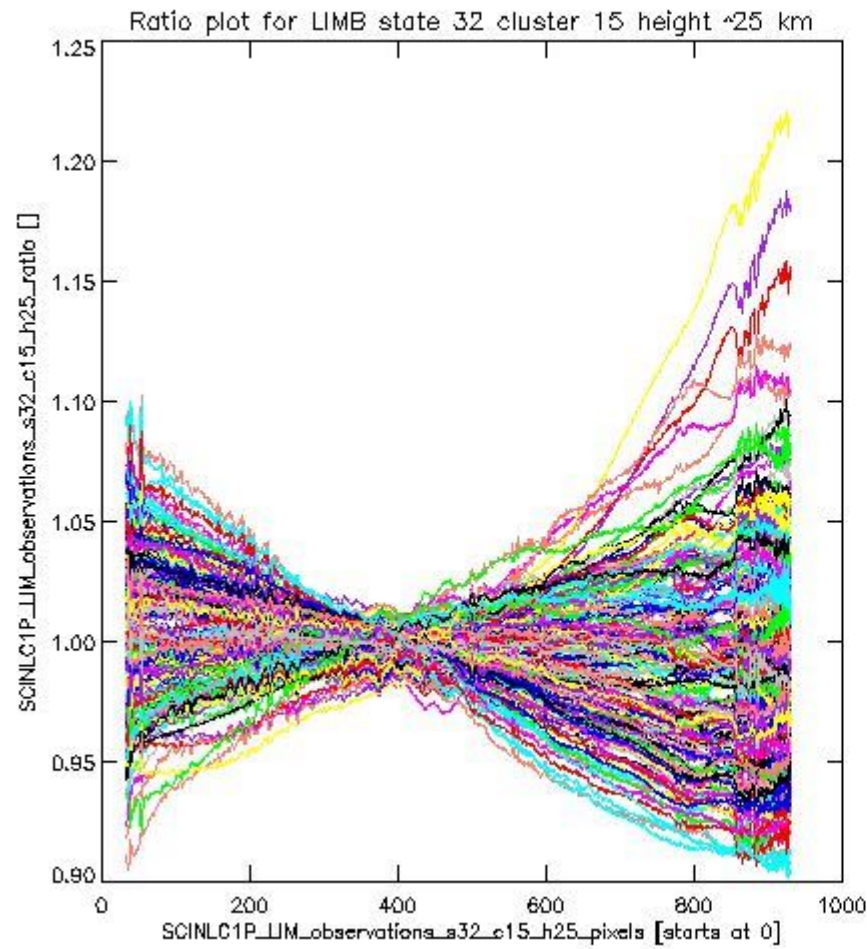


sciamachy_11b_source_packet_report_SCIA_7_04_U_20110430_17.PNG

1.2.10 LIMB state 32 cluster 15 height ~25 km The data for the analysis of LIMB state 32 cluster 15 height ~25 km have the following characteristics:

Item	Value
Start time of first sample	30APR2011 01:01:13.597
Start time of last sample	30APR2011 23:11:55.463
Reference period start time	30MAR2011 00:00:02.028
Reference period stop time	28APR2011 23:58:57.351
Channel number	3
First pixel number (starts at 0)	33
Last pixel number (starts at 0)	929

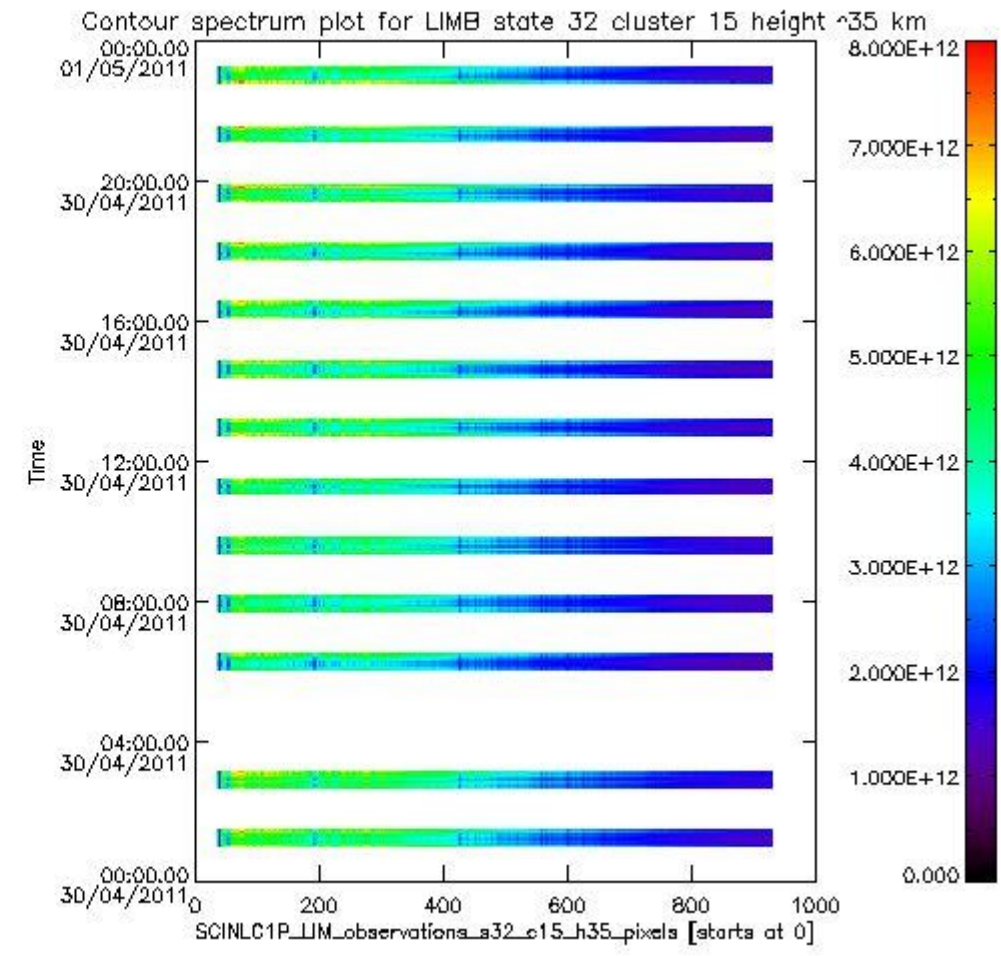
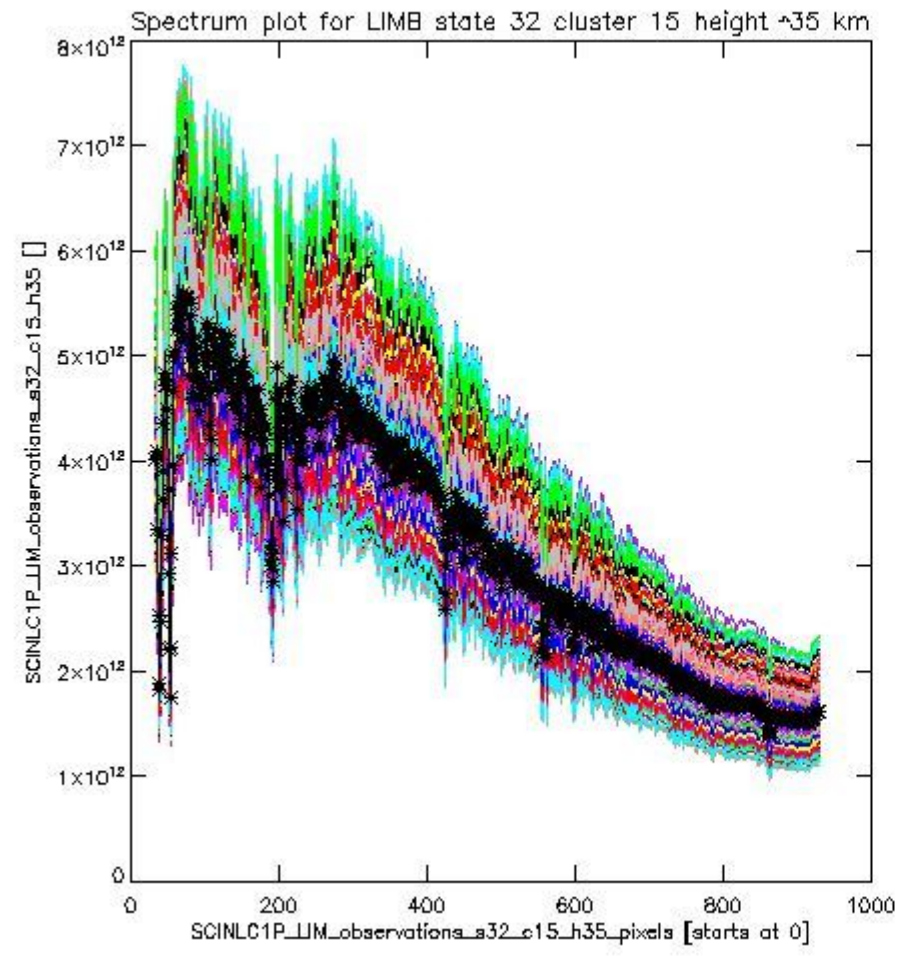




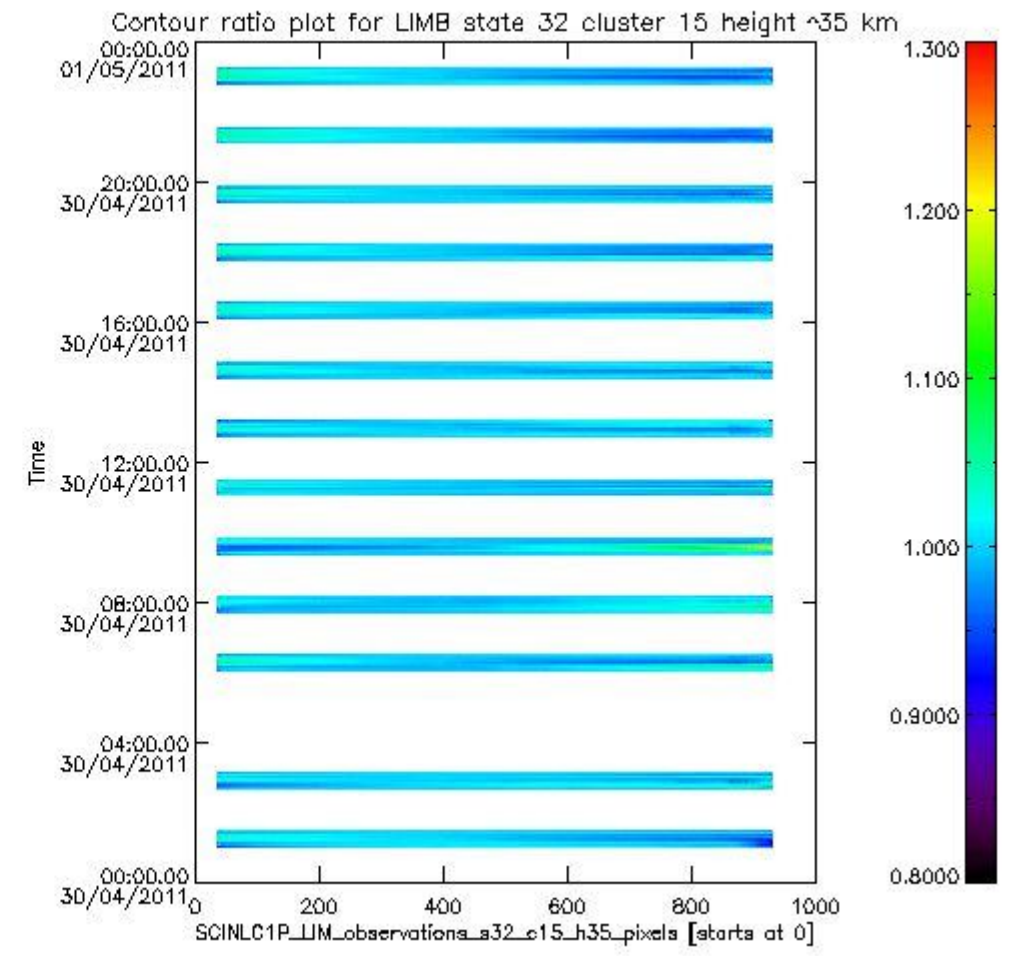
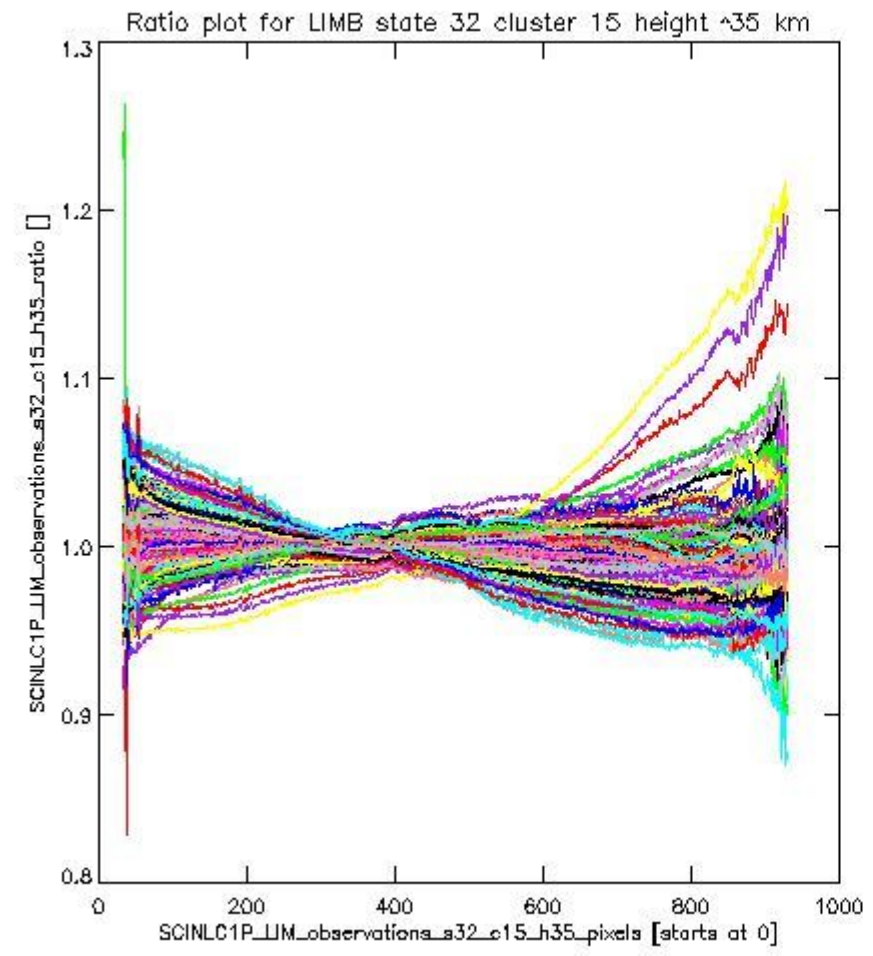
sciamachy_11b_source_packet_report_SCIA_7_04_U_20110430_19.PNG

1.2.11 LIMB state 32 cluster 15 height ~35 km The data for the analysis of LIMB state 32 cluster 15 height ~35 km have the following characteristics:

Item	Value
Start time of first sample	30APR2011 01:01:13.597
Start time of last sample	30APR2011 23:11:55.463
Reference period start time	30MAR2011 00:00:02.028
Reference period stop time	28APR2011 23:58:57.351
Channel number	3
First pixel number (starts at 0)	33
Last pixel number (starts at 0)	929



sciamachy_11b_source_packet_report_SCIA_7_04_U_20110430_20.PNG



sciamachy_i1b_source_packet_report_SCIA_7_04_U_20110430_21.PNG

