

1. SCIAMACHY Level 1B source packet monitoring report

[1.1. General Info](#)

[1.2 Source packet monitoring](#)

1.1 General Info

This report contains results of the analysis on source packets from SCIAMACHY level 1 data (The SCI_NL__1P product).

1.1.1 Report summary

The table below shows general characteristics of the data that are included into this report.

Item	Value
Report version	1.1 (07-01-2010)
Time of report generation	16MAY2011 14:49:48
Data source version	SCIA/7.04-U
Processing scope for products	26APR2011 00:00:00 to 29APR2011 00:00:00
Start time of first product within scope	25APR2011 23:49:09
Stop time of last product within scope	26APR2011 11:51:36
Total number of level 1 products	8
Number of level 1 products with errors	0
SCIAL1C executable used in processing	scial1c-2.1.73-i686-pc-linux-gnu-gcc-3.3.6
SCIAL1C parameters used in processing	-allcal -type all -cat 1,2,8,10,11,16,19,23 -nadircluster 8,9,15,24,55 -limbcluster 9,15

1.1.2 Source packet summary

The table below shows which source packets have been included into the report.

Item	Mode	State	Cluster	Height	First start time	Last start time
0	NADIR	07	08	N/A	26APR2011 00:21:12.451	26APR2011 10:32:48.112
1	NADIR	07	09	N/A	26APR2011 00:21:12.451	26APR2011 10:32:48.112
2	NADIR	07	15	N/A	26APR2011 00:21:12.451	26APR2011 10:32:48.112
3	NADIR	07	24	N/A	26APR2011 00:21:12.451	26APR2011 10:32:48.112
4	NADIR	07	55	N/A	26APR2011 00:21:12.451	26APR2011 10:32:48.112
5	LIMB	32	09	~19 km	26APR2011 00:08:01.818	26APR2011 11:50:45.890
6	LIMB	32	09	~22 km	26APR2011 00:08:01.818	26APR2011 11:50:45.890
7	LIMB	32	09	~25 km	26APR2011 00:08:01.818	26APR2011 11:50:45.890
8	LIMB	32	15	~22 km	26APR2011 00:08:01.818	26APR2011 11:50:45.890
9	LIMB	32	15	~25 km	26APR2011 00:08:01.818	26APR2011 11:50:45.890
10	LIMB	32	15	~35 km	26APR2011 00:08:01.818	26APR2011 11:50:45.890

1.1.3 Summary per product

The following table shows a summary for each product used in this report.

Products are linked to a corresponding server directory for view/download. Note: Link access may be restricted by security settings of your internet browser or firewall.

#	Product name	Start time	Stop time	ProdErr	#nadir	#limb	#occ	#mon	#nopro	#cpl_drk	#incpl_drk	Decont
0	SCI_NLC_1CUDPA20110425_234211_000060213102_00002_47861_0509.N1	25APR2011 23:49:09	26APR2011 00:59:24	0	35	31	0	0	1	0	0	
1	SCI_NLC_1CUDPA20110426_012236_000059973102_00003_47862_0512.N1	26APR2011 01:29:23	26APR2011 02:39:52	0	36	30	0	0	1	0	0	
2	SCI_NLC_1CUDPA20110426_030238_000060223102_00004_47863_0514.N1	26APR2011 03:09:37	26APR2011 04:19:51	0	35	31	0	0	1	0	0	
3	SCI_NLC_1CUDPA20110426_044303_000059983102_00005_47864_0515.N1	26APR2011 04:49:50	26APR2011 06:00:19	0	36	30	0	0	1	0	0	
4	SCI_NLC_1CUDPA20110426_062305_000060223102_00006_47865_0847.N1	26APR2011 06:30:04	26APR2011 07:40:19	0	35	31	0	0	1	0	0	
5	SCI_NLC_1CUDPA20110426_080331_000059973102_00007_47866_0848.N1	26APR2011 08:10:18	26APR2011 09:20:47	0	36	30	0	0	1	0	0	

6	SCI_NLC_1CUDPA20110426_094332_000060213102_00008_47867_0849.N1	26APR2011 09:50:31	26APR2011 11:00:46	0	35	31	0	0	1	0	0	
7	SCI_NLC_1CUDPA20110426_112358_000016973102_00009_47868_0850.N1	26APR2011 11:30:45	26APR2011 11:51:36	0	6	13	0	0	1	0	0	

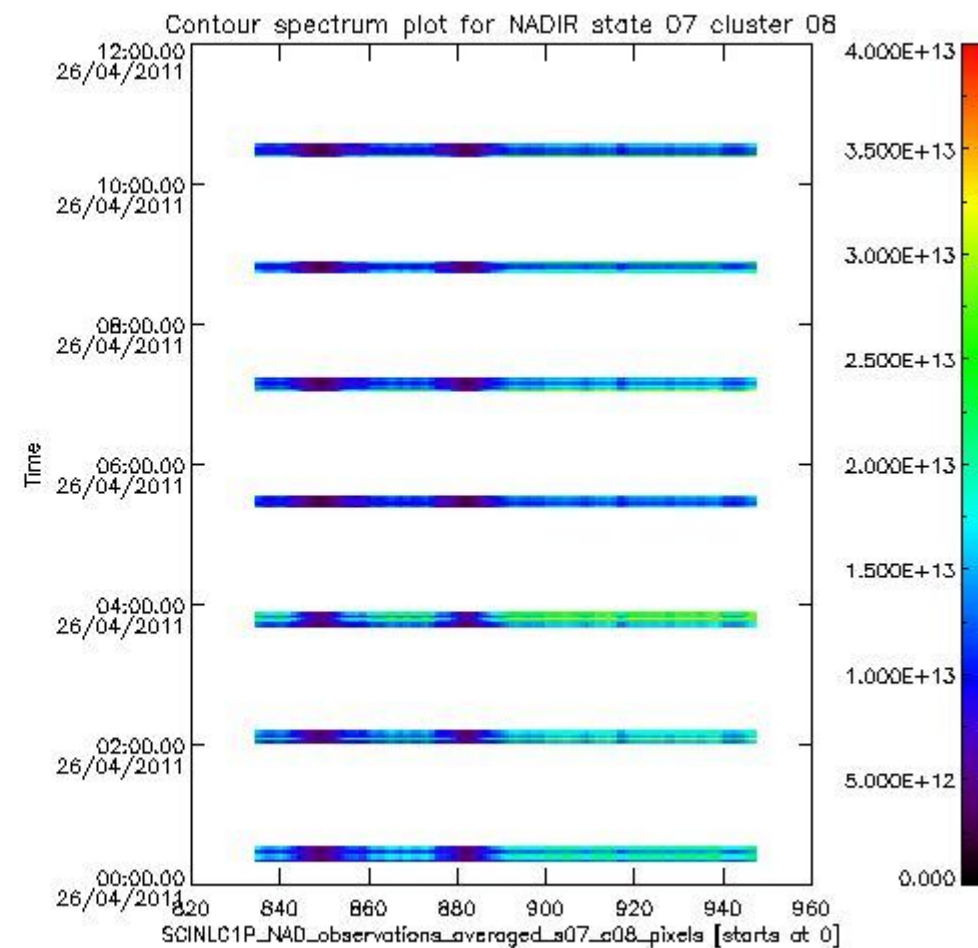
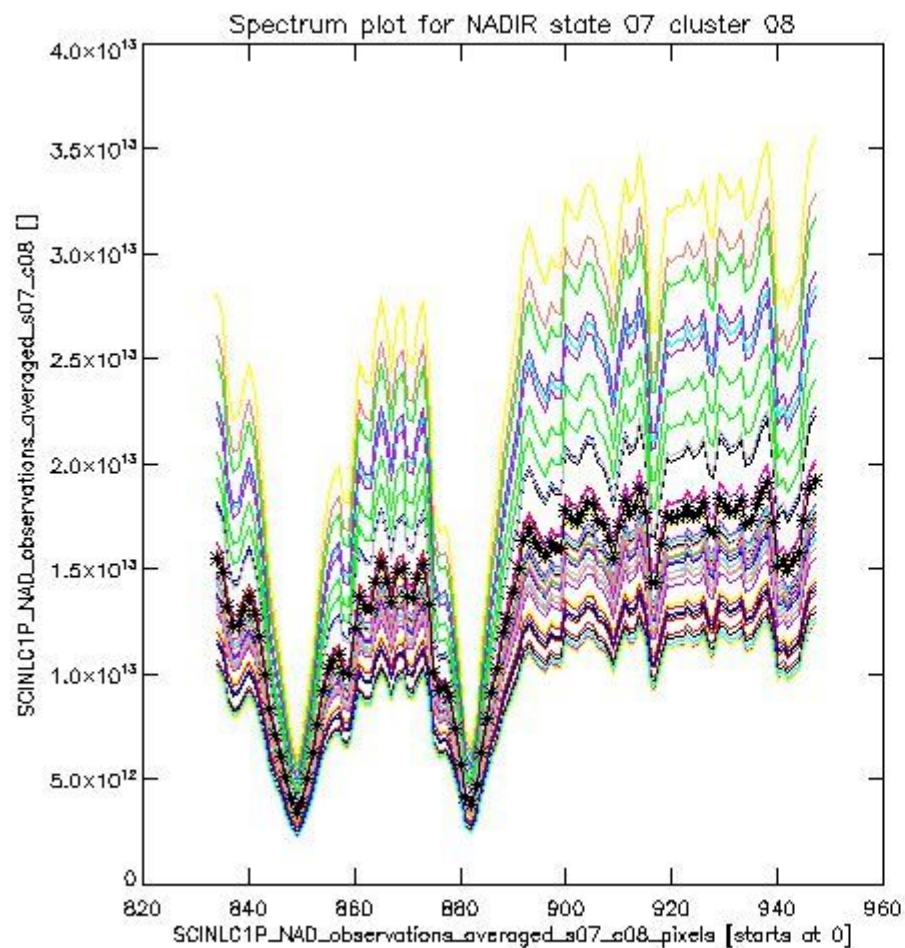
1.2 Source packet monitoring

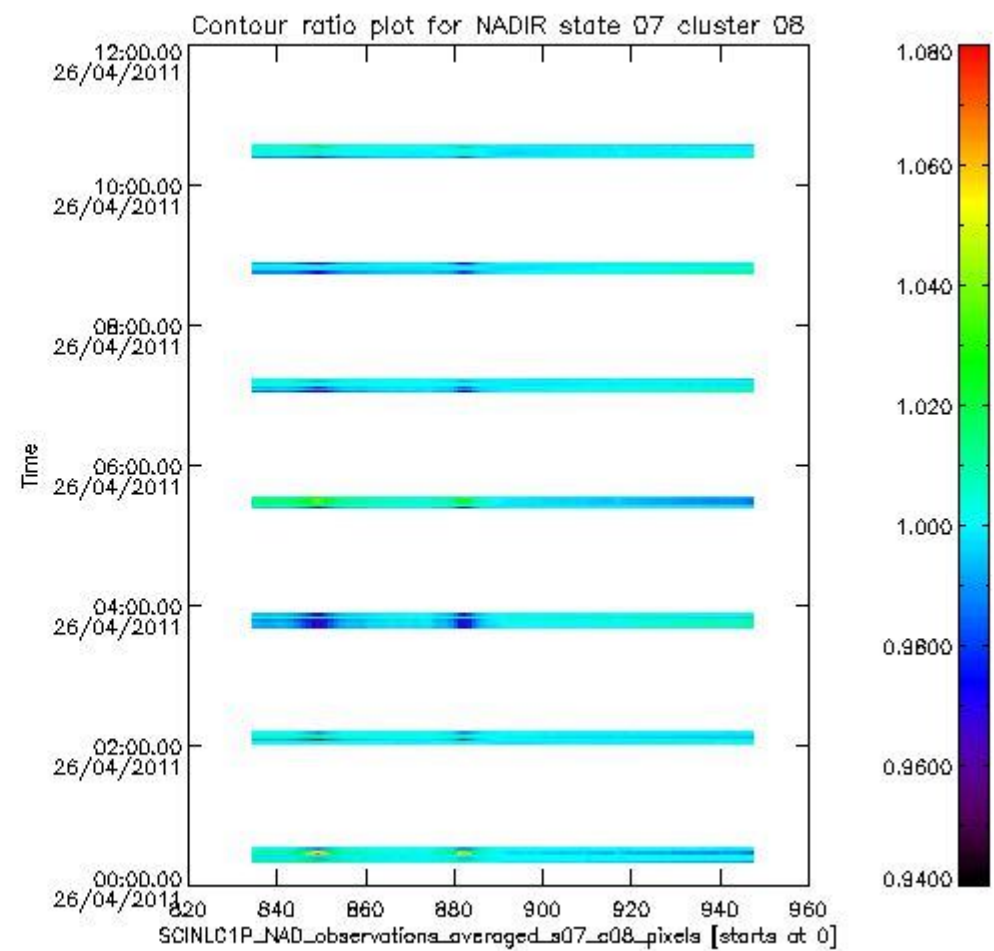
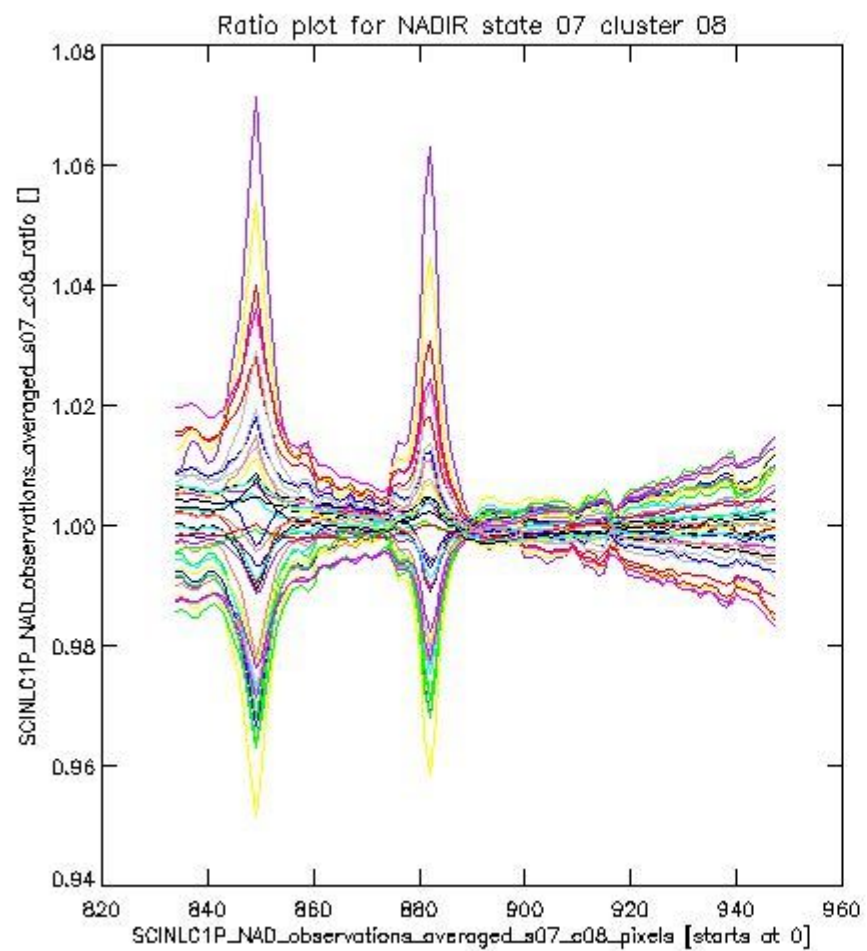
This section shows figures for each of the monitored source packet types listed in the Source Packet Summary section. For each mode-state-cluster(-height) combination the following plots are shown:

- A plot that shows all calibrated averaged spectra vs. pixel number as 2D-profiles. Each line is an average spectrum for a single state occurrence. For Limb modes, the average is performed on spectra recorded at a specific height. The reference spectrum that is used for comparison is also shown as a black line with * markers.
- A plot that shows all calibrated averaged spectra vs. pixel number and time using a coloured contour plot. The colours indicate the intensity.
- A plot that shows ratios of all calibrated averaged spectra and the reference spectrum vs. pixel number. Each line is the ratio of a calibrated averaged spectrum and the reference spectrum, where both spectra have been intensity corrected (the spectrum has been divided by the average pixel intensity) prior to division.
- A plot that shows ratios of all calibrated averaged spectra and the reference spectrum vs. pixel number and time using a coloured contour plot.

1.2.1 NADIR state 07 cluster 08 The data for the analysis of NADIR state 07 cluster 08 have the following characteristics:

Item	Value
Start time of first sample	26APR2011 00:21:12.451
Start time of last sample	26APR2011 10:32:48.112
Reference period start time	28MAR2011 01:26:52.674
Reference period stop time	26APR2011 10:32:48.112
Channel number	2
First pixel number (starts at 0)	834
Last pixel number (starts at 0)	947

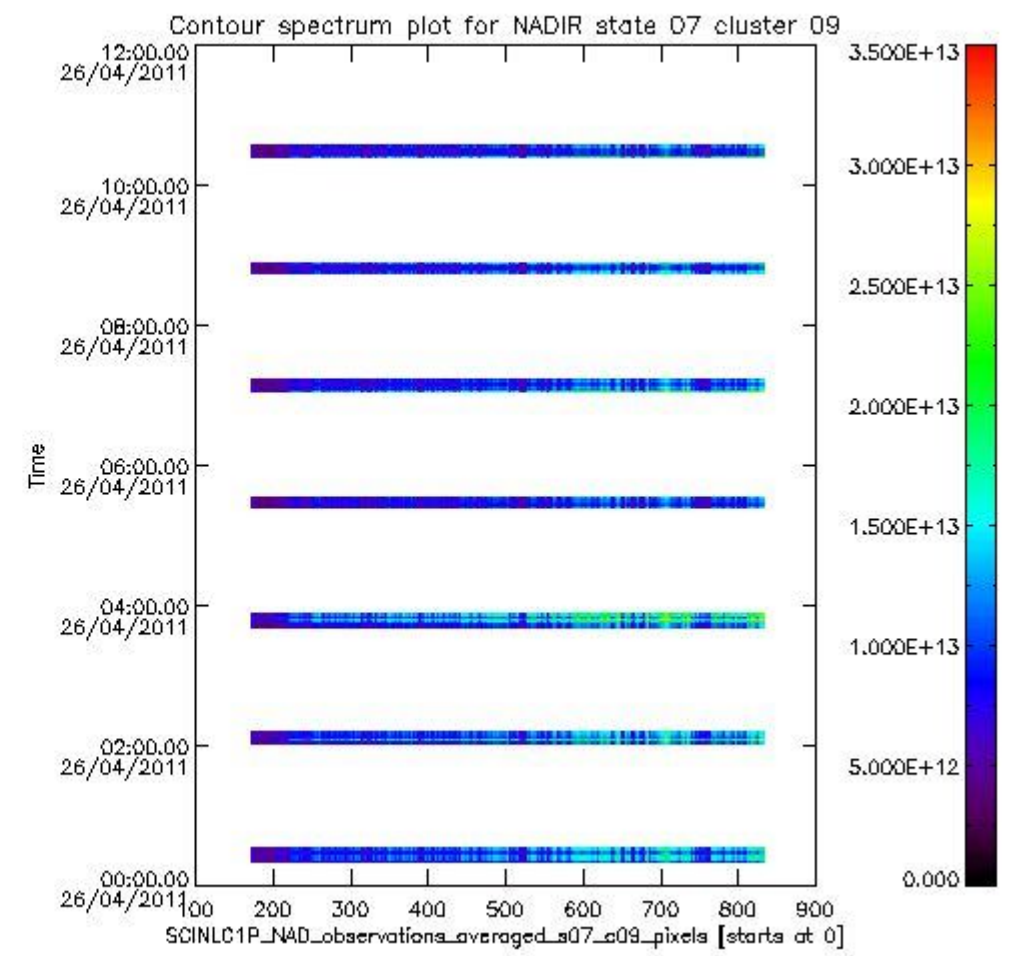
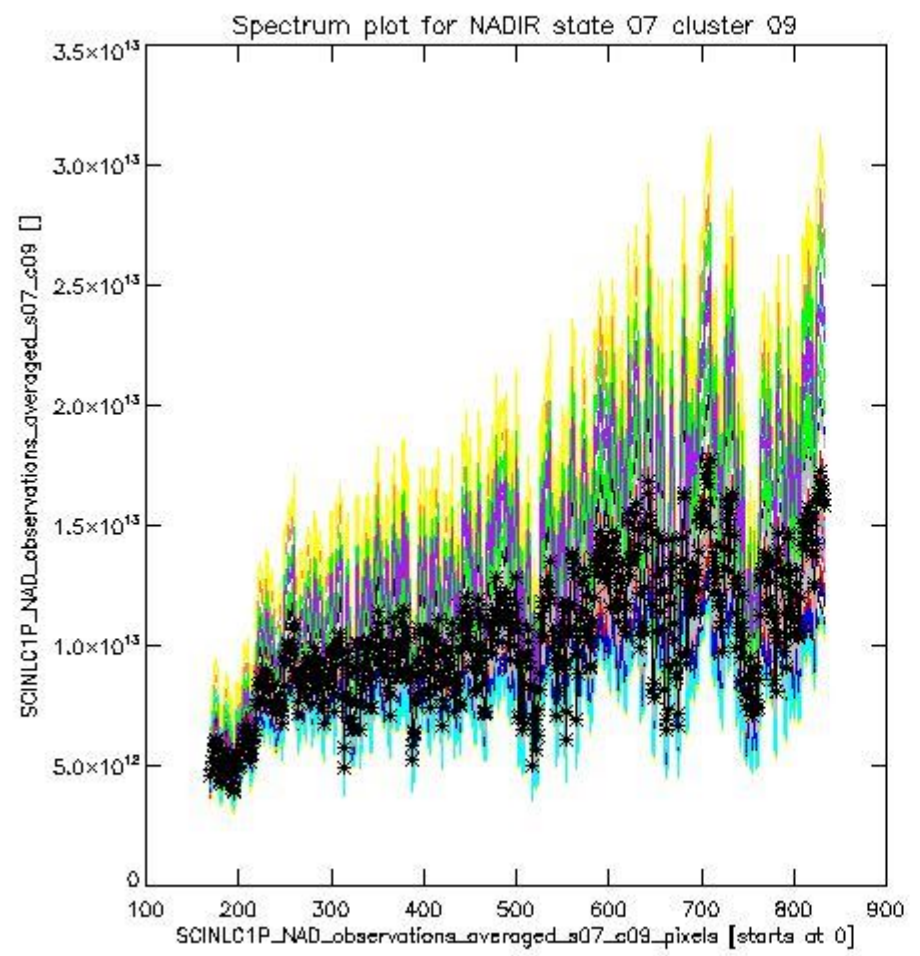




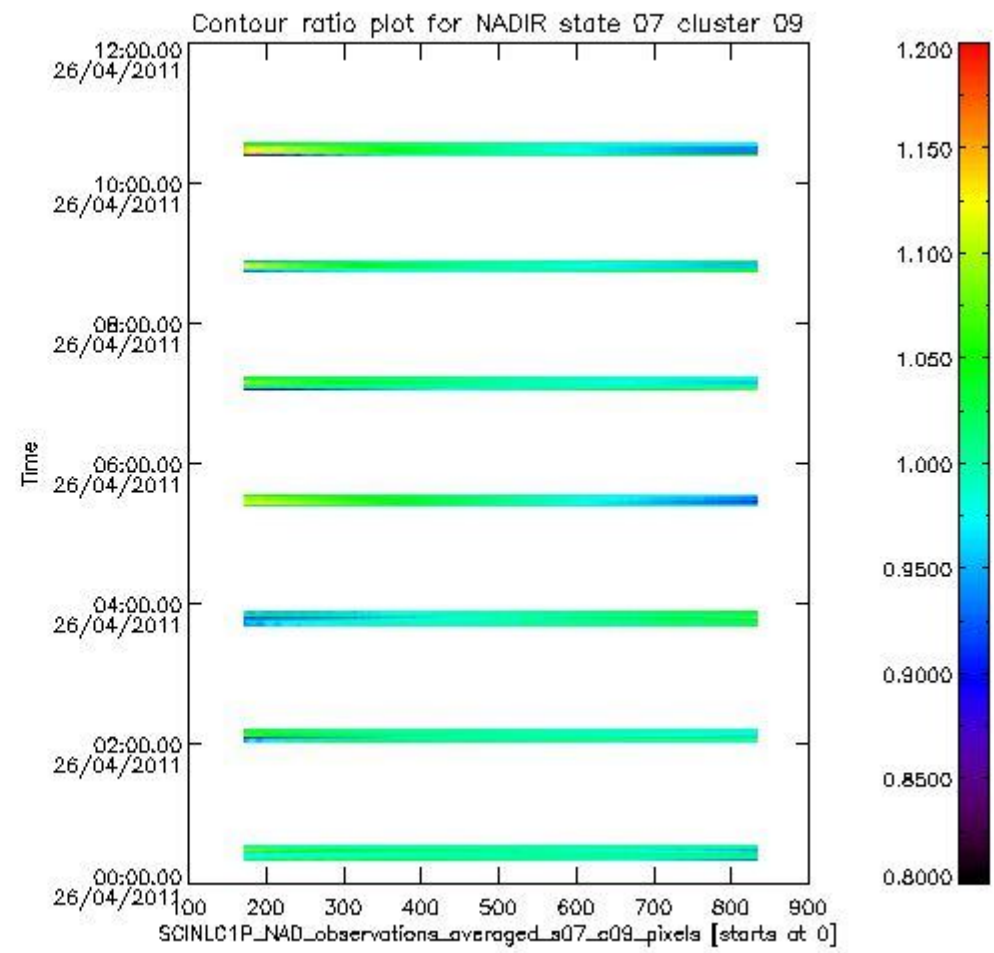
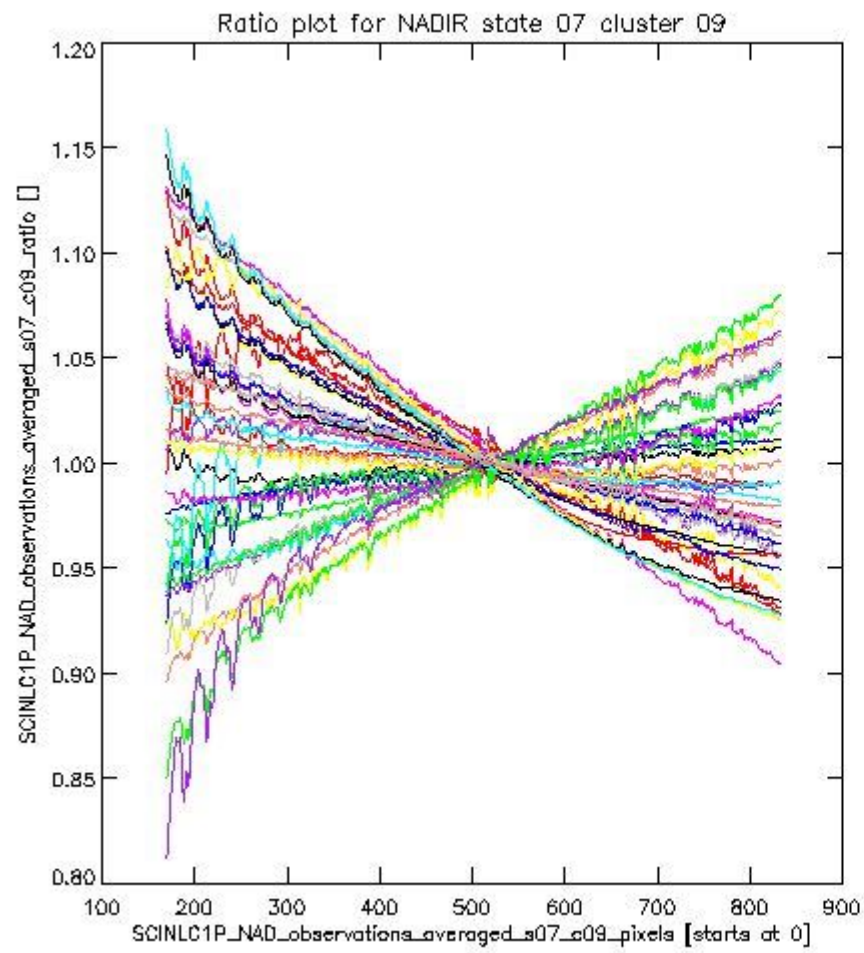
sciamachy_i1b_source_packet_report_SCIA_7_04_U_20110426_1.PNG

1.2.2 NADIR state 07 cluster 09 The data for the analysis of NADIR state 07 cluster 09 have the following characteristics:

Item	Value
Start time of first sample	26APR2011 00:21:12.451
Start time of last sample	26APR2011 10:32:48.112
Reference period start time	28MAR2011 01:26:52.674
Reference period stop time	26APR2011 10:32:48.112
Channel number	2
First pixel number (starts at 0)	170
Last pixel number (starts at 0)	833



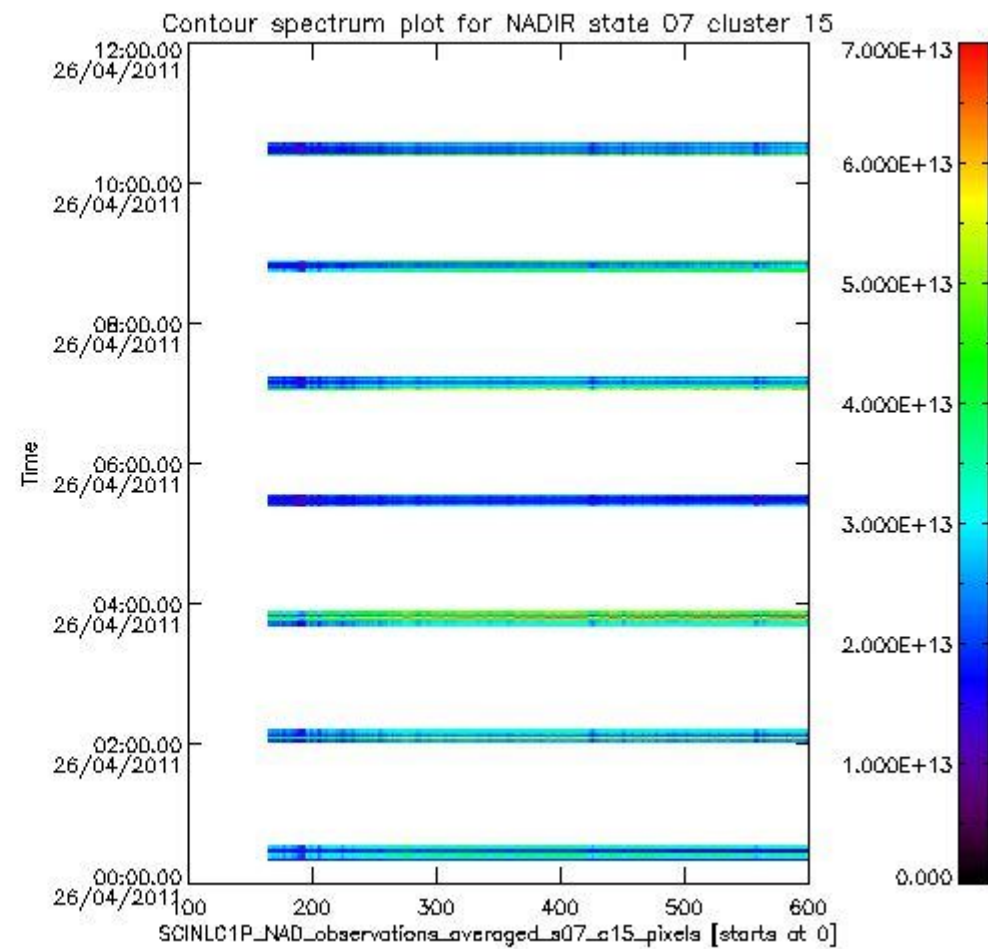
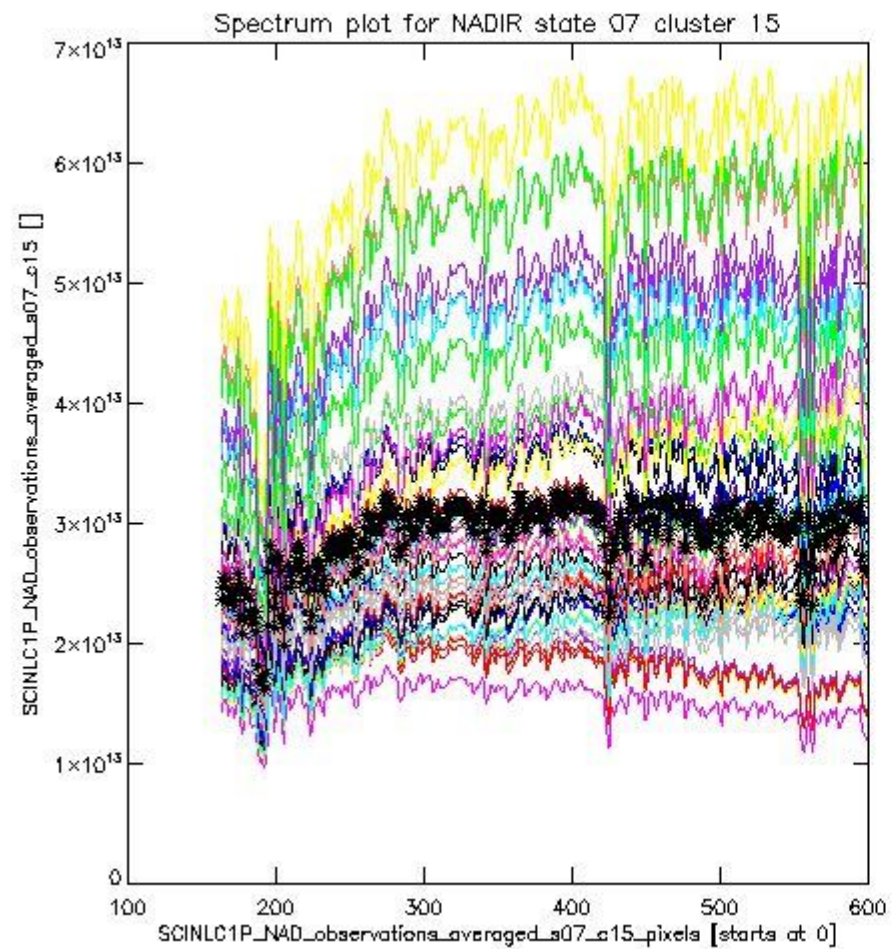
sciamachy_i1b_source_packet_report_SCIA_7_04_U_20110426_2.PNG



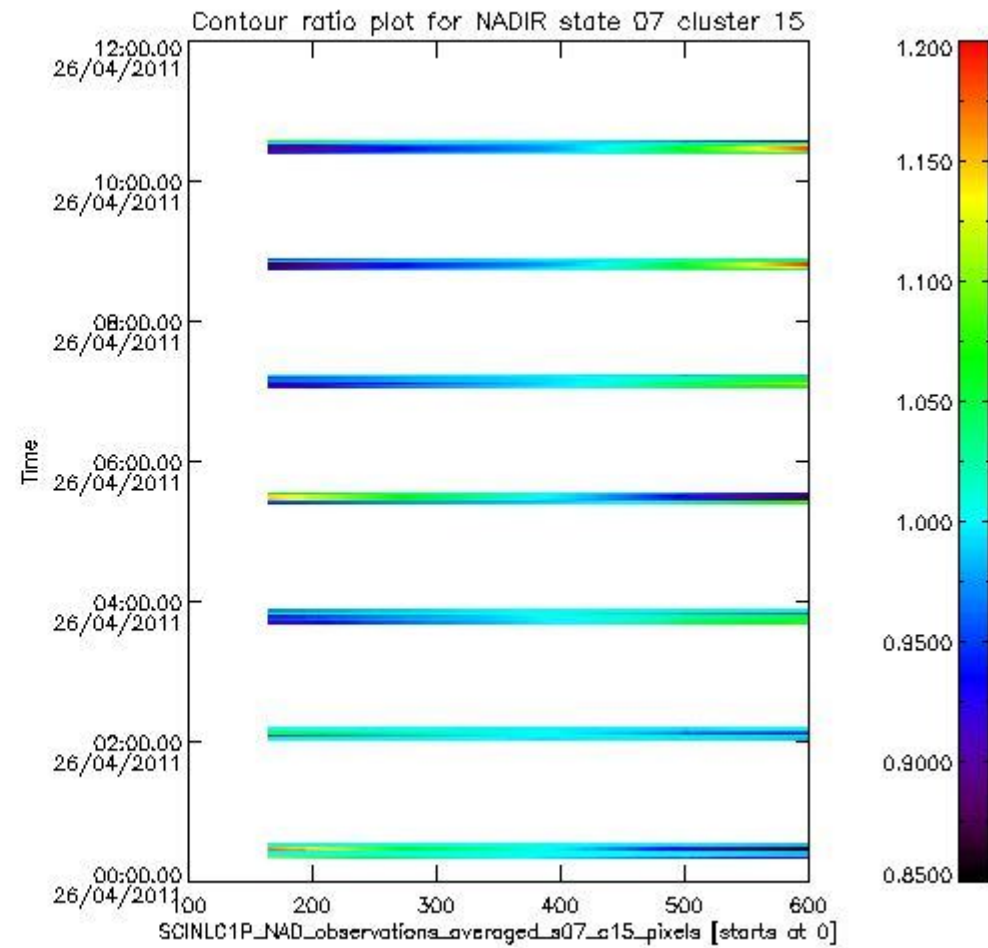
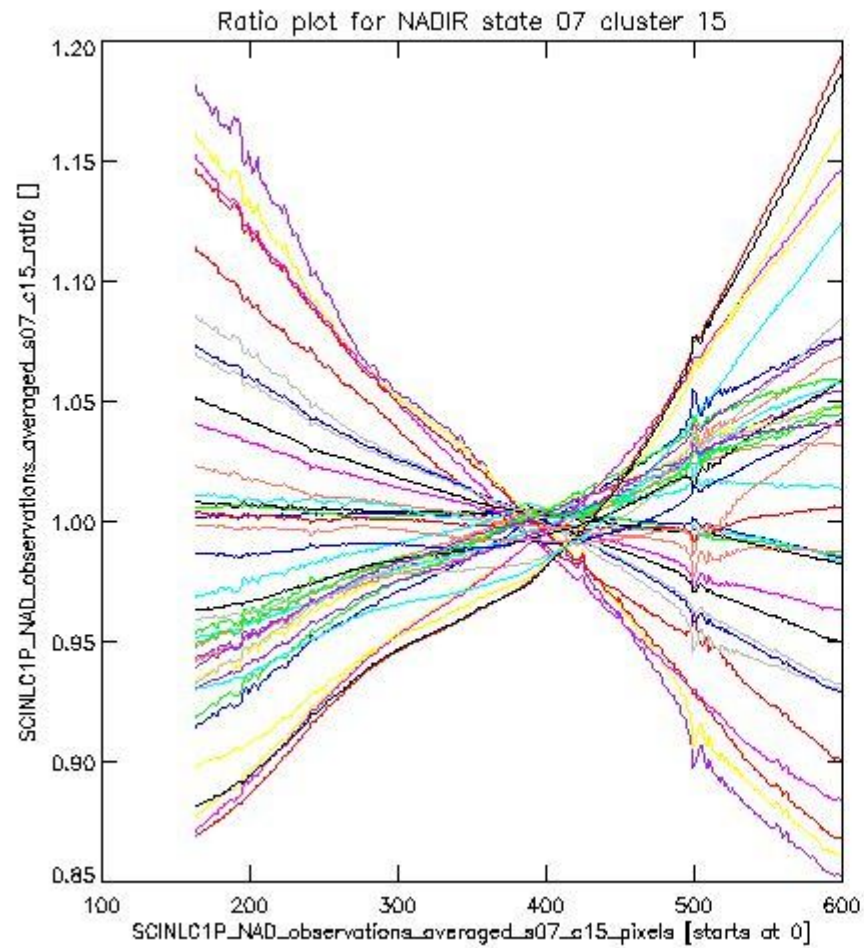
sciamachy_i1b_source_packet_report_SCIA_7_04_U_20110426_3.PNG

1.2.3 NADIR state 07 cluster 15 The data for the analysis of NADIR state 07 cluster 15 have the following characteristics:

Item	Value
Start time of first sample	26APR2011 00:21:12.451
Start time of last sample	26APR2011 10:32:48.112
Reference period start time	28MAR2011 01:26:52.674
Reference period stop time	26APR2011 10:32:48.112
Channel number	3
First pixel number (starts at 0)	163
Last pixel number (starts at 0)	598



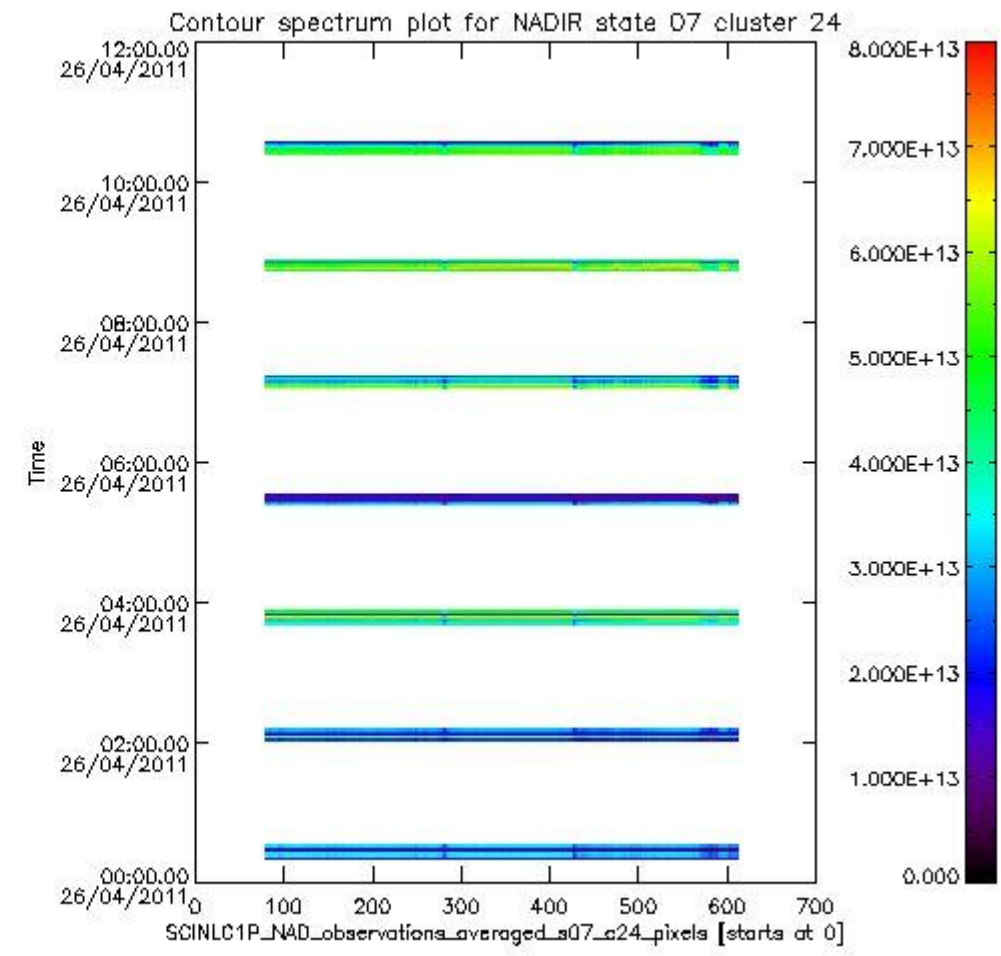
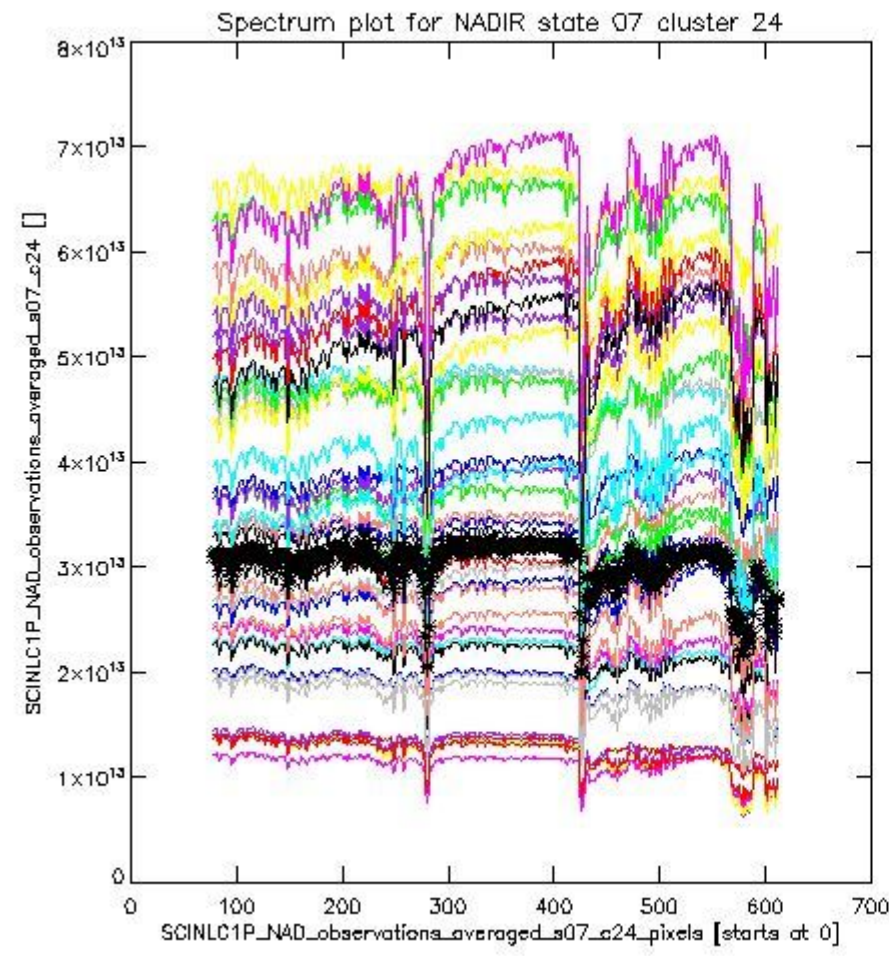
sciamachy_i1b_source_packet_report_SCIA_7_04_U_20110426_4.PNG



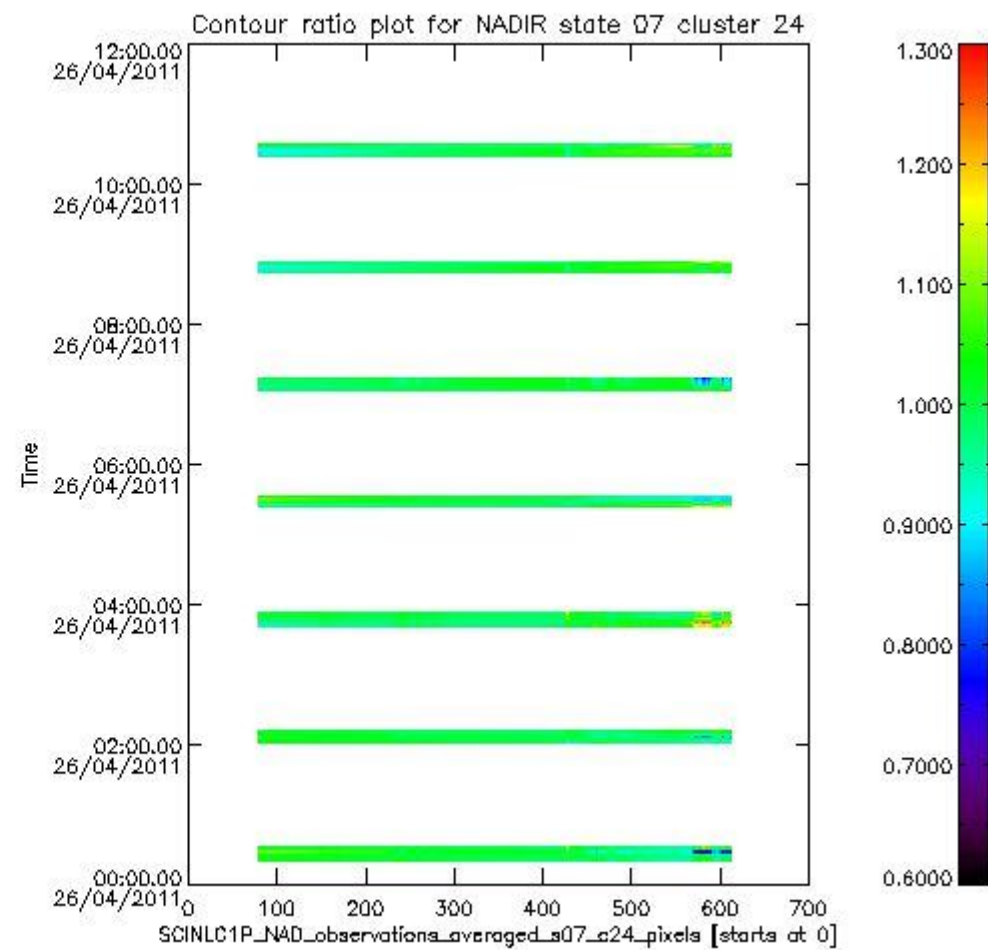
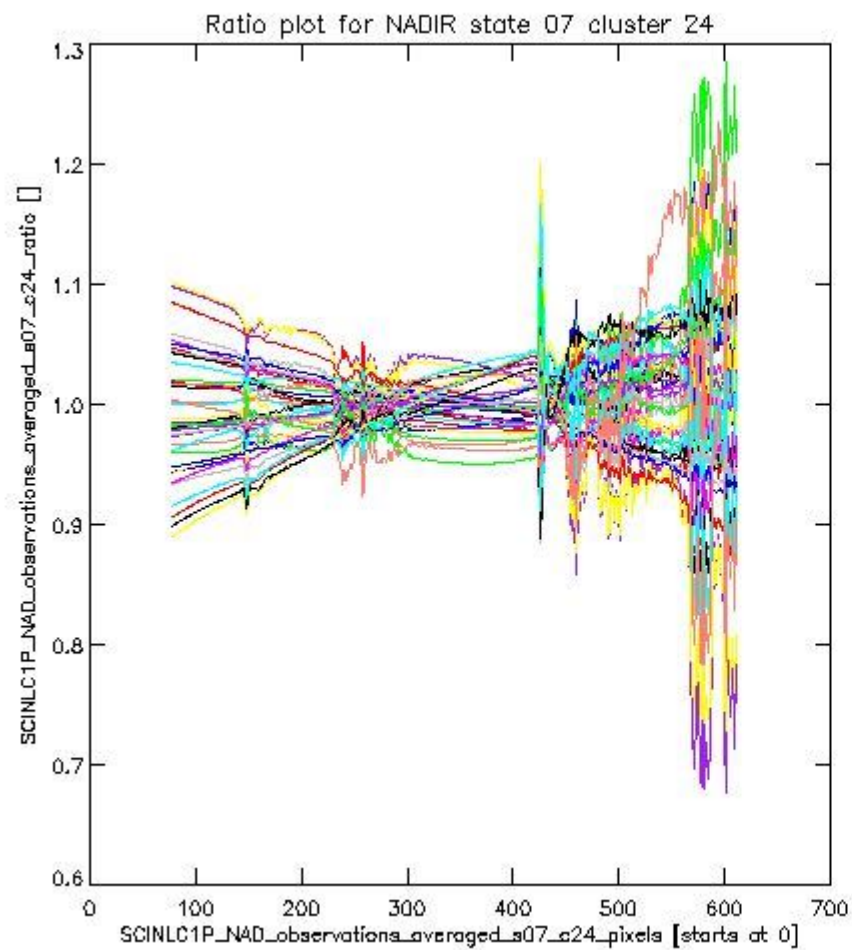
sciamachy_l1b_source_packet_report_SCIA_7_04_U_20110426_5.PNG

1.2.4 NADIR state 07 cluster 24 The data for the analysis of NADIR state 07 cluster 24 have the following characteristics:

Item	Value
Start time of first sample	26APR2011 00:21:12.451
Start time of last sample	26APR2011 10:32:48.112
Reference period start time	28MAR2011 01:26:52.674
Reference period stop time	26APR2011 10:32:48.112
Channel number	4
First pixel number (starts at 0)	78
Last pixel number (starts at 0)	612



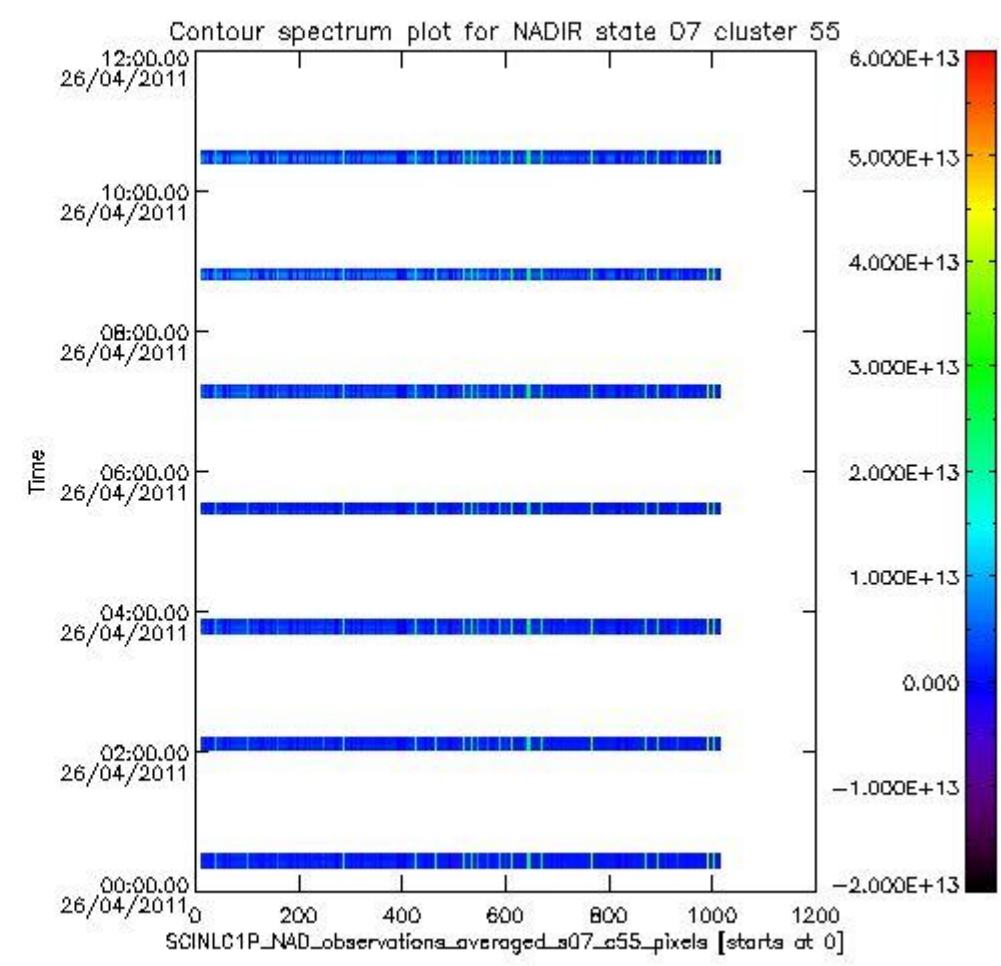
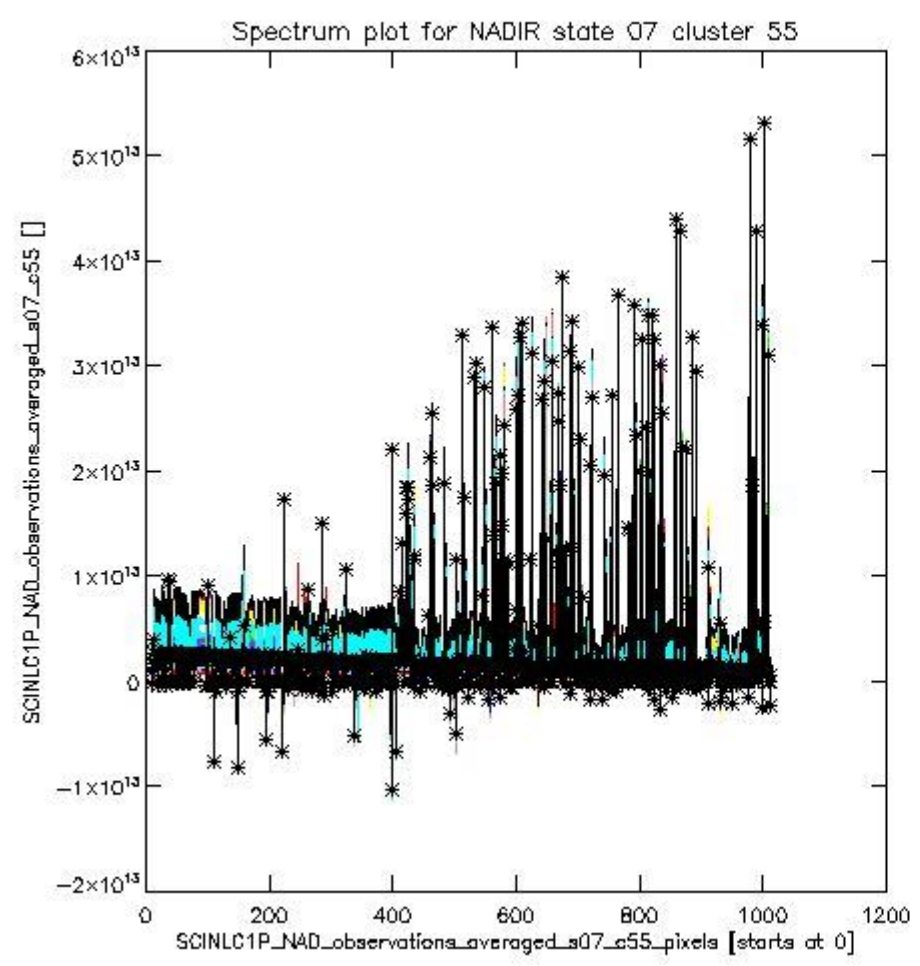
sciamachy_i1b_source_packet_report_SCIA_7_04_U_20110426_6.PNG



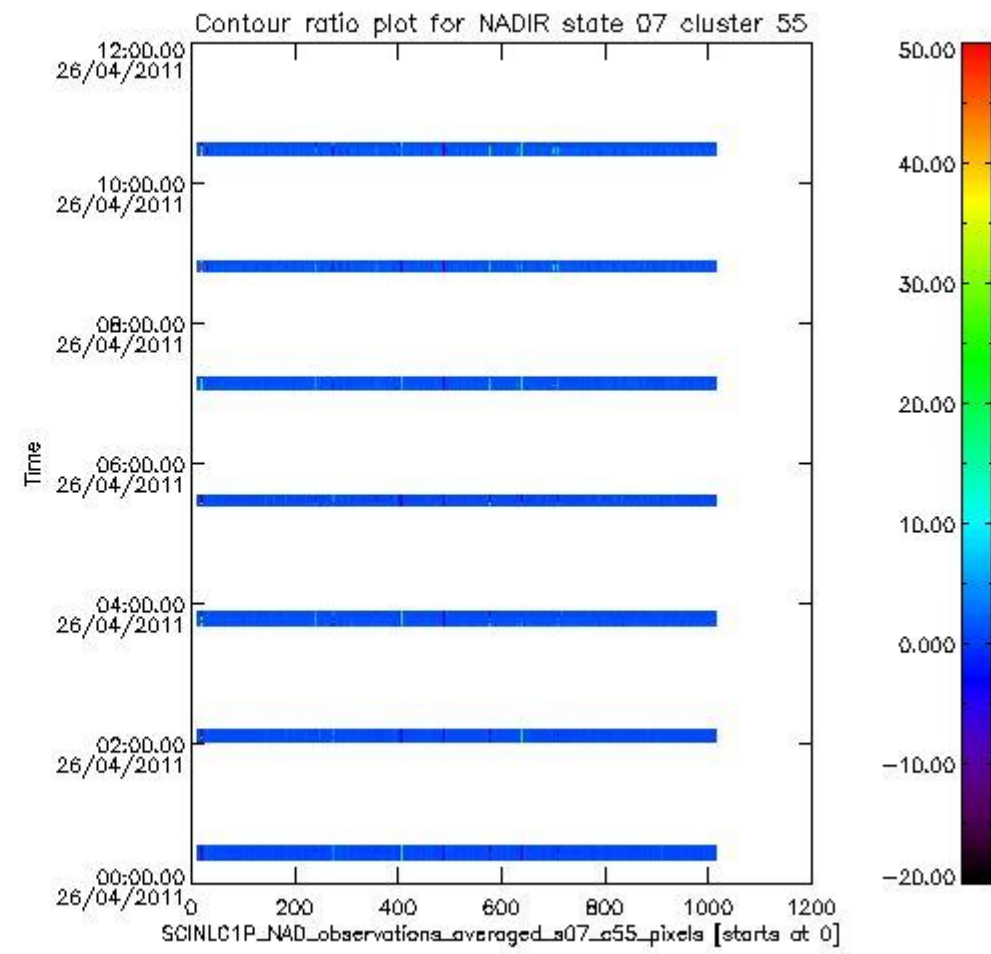
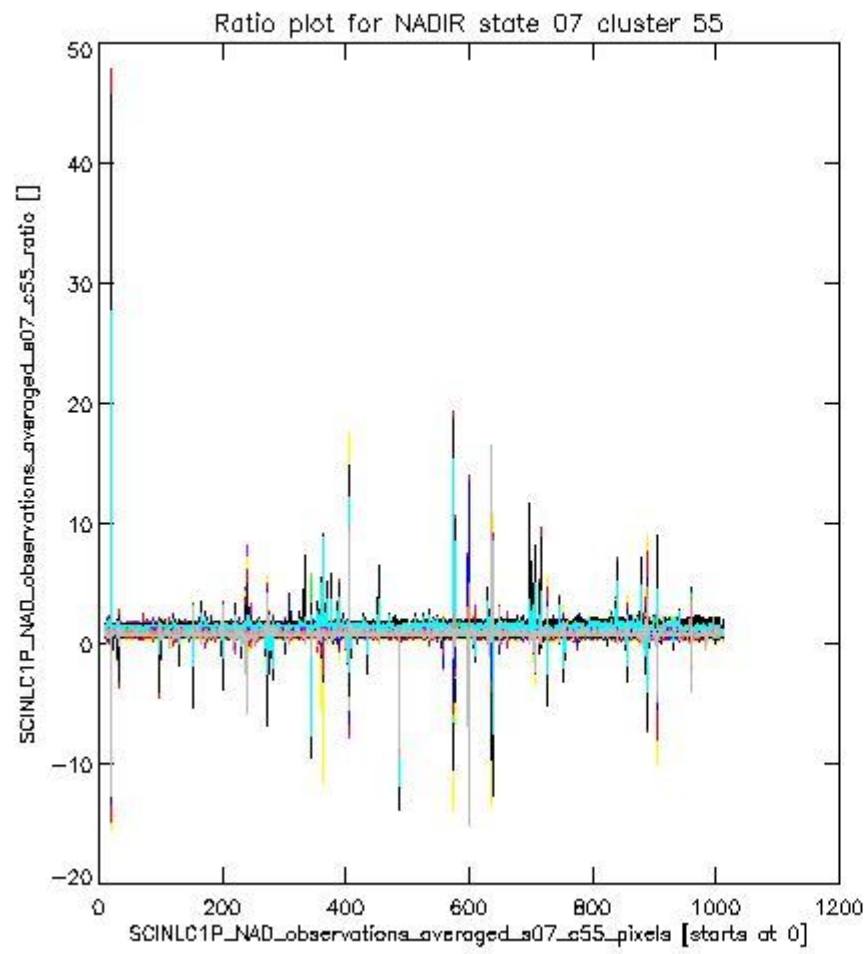
sciamachy_l1b_source_packet_report_SCIA_7_04_U_20110426_7.PNG

1.2.5 NADIR state 07 cluster 55 The data for the analysis of NADIR state 07 cluster 55 have the following characteristics:

Item	Value
Start time of first sample	26APR2011 00:21:12.451
Start time of last sample	26APR2011 10:32:48.112
Reference period start time	28MAR2011 01:26:52.674
Reference period stop time	26APR2011 10:32:48.112
Channel number	8
First pixel number (starts at 0)	10
Last pixel number (starts at 0)	1013



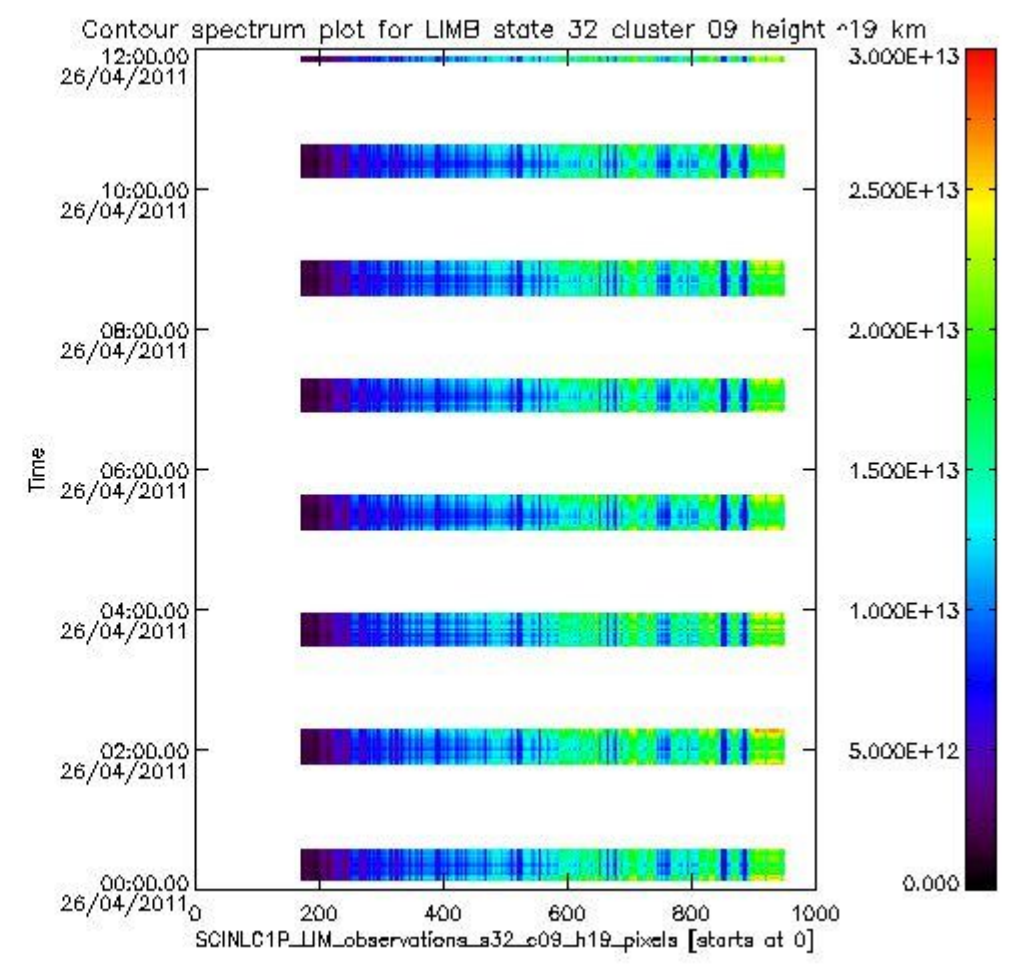
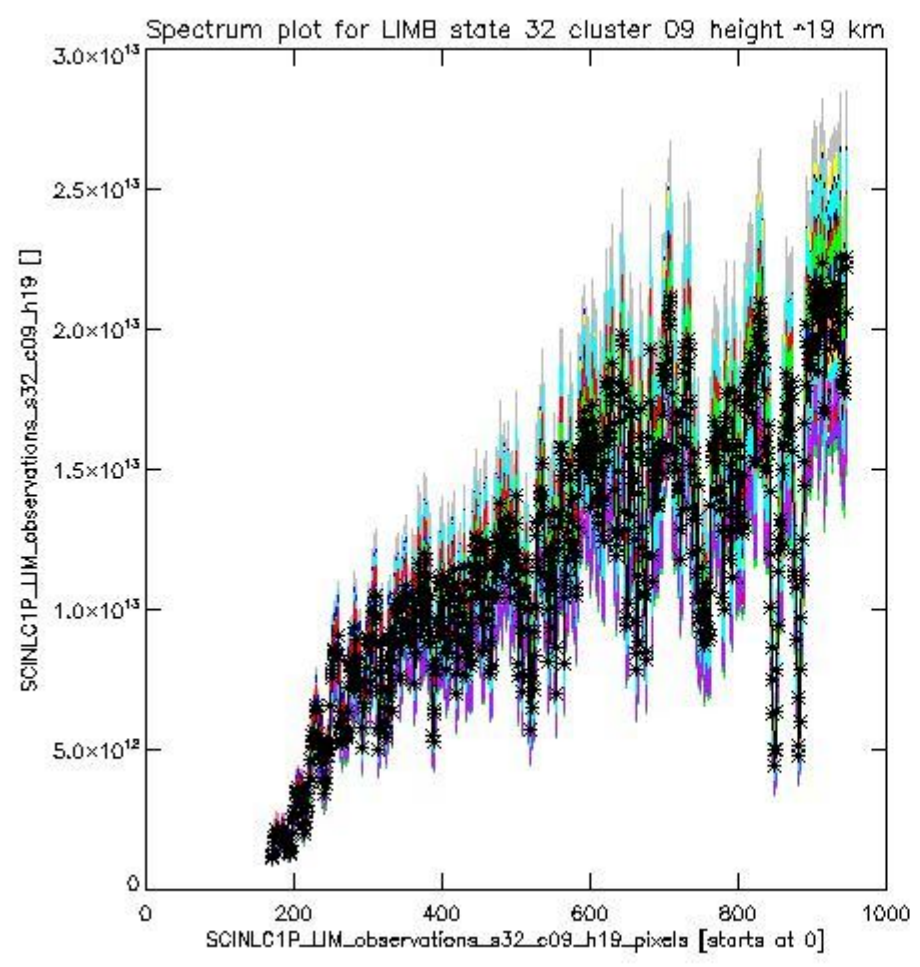
sciamachy_i1b_source_packet_report_SCIA_7_04_U_20110426_8.PNG



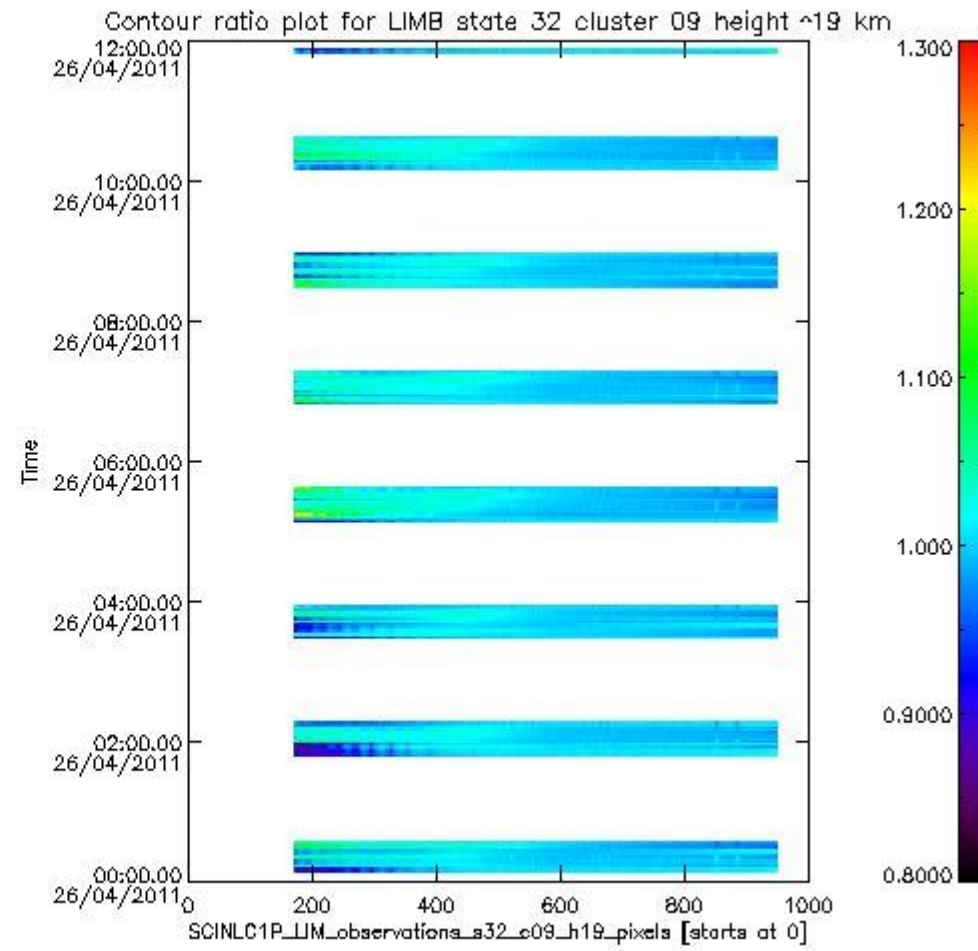
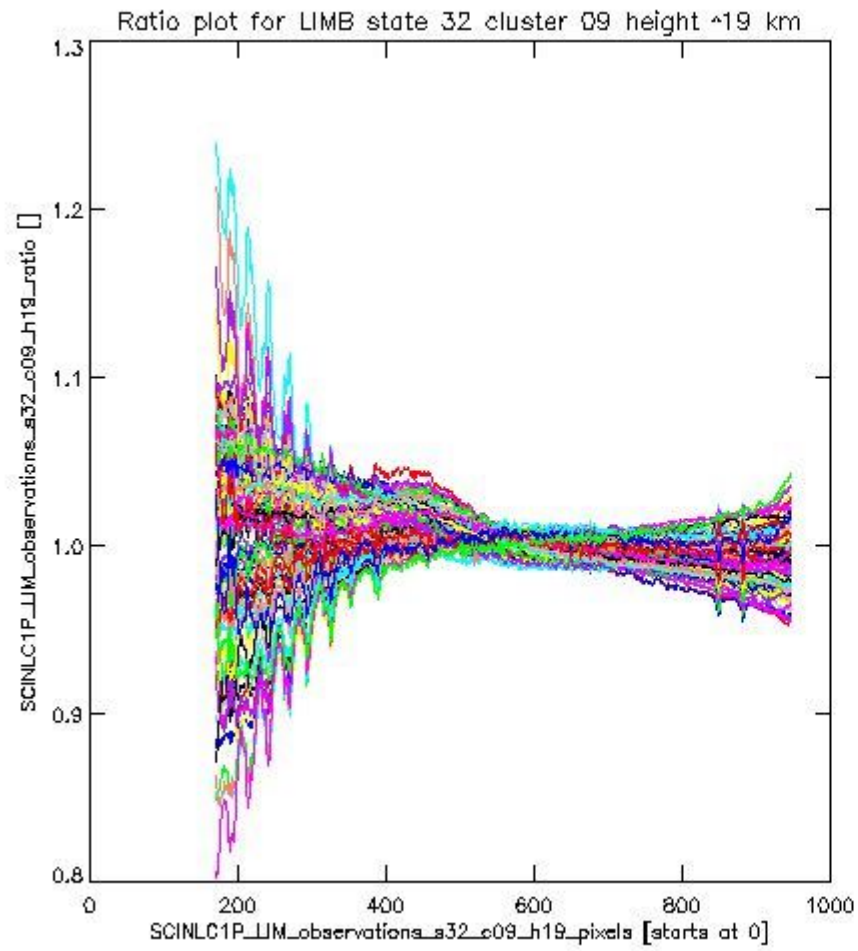
sciamachy_l1b_source_packet_report_SCIA_7_04_U_20110426_9.PNG

1.2.6 LIMB state 32 cluster 09 height ~19 km The data for the analysis of LIMB state 32 cluster 09 height ~19 km have the following characteristics:

Item	Value
Start time of first sample	26APR2011 00:08:01.818
Start time of last sample	26APR2011 11:50:45.890
Reference period start time	28MAR2011 00:01:12.751
Reference period stop time	26APR2011 11:50:45.890
Channel number	2
First pixel number (starts at 0)	170
Last pixel number (starts at 0)	947



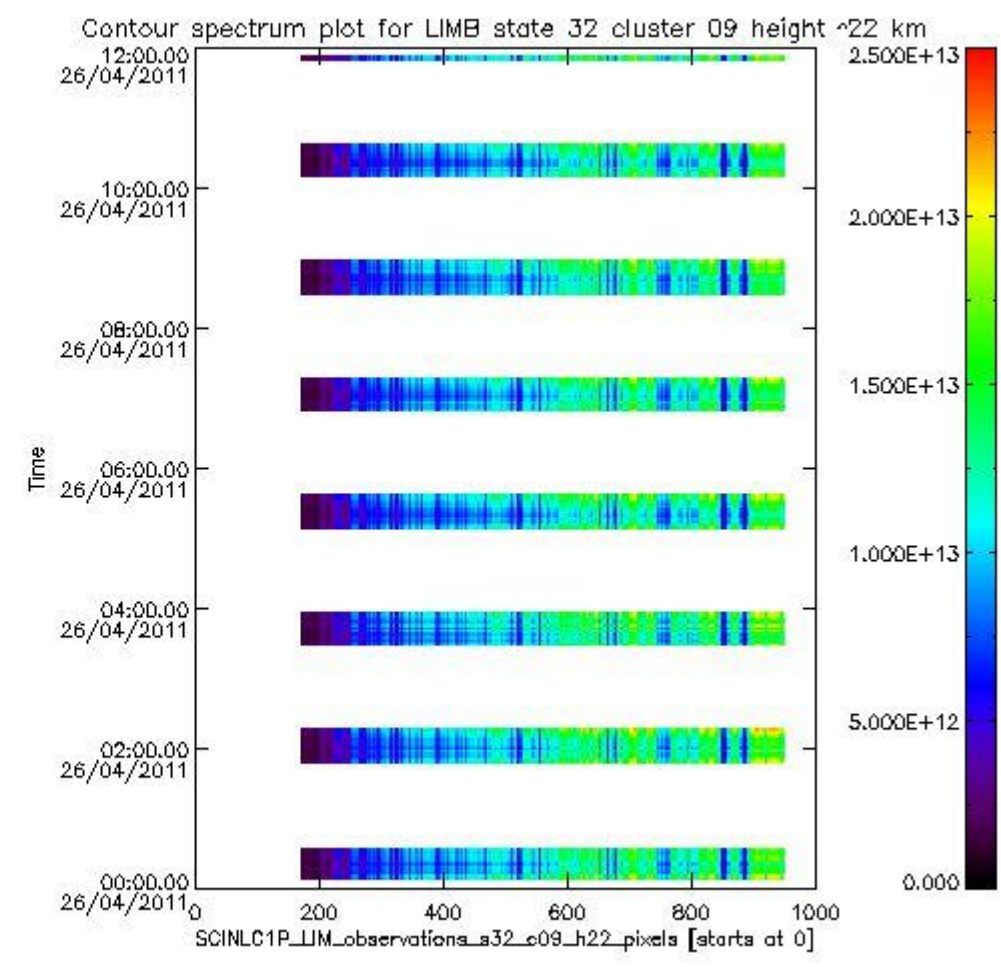
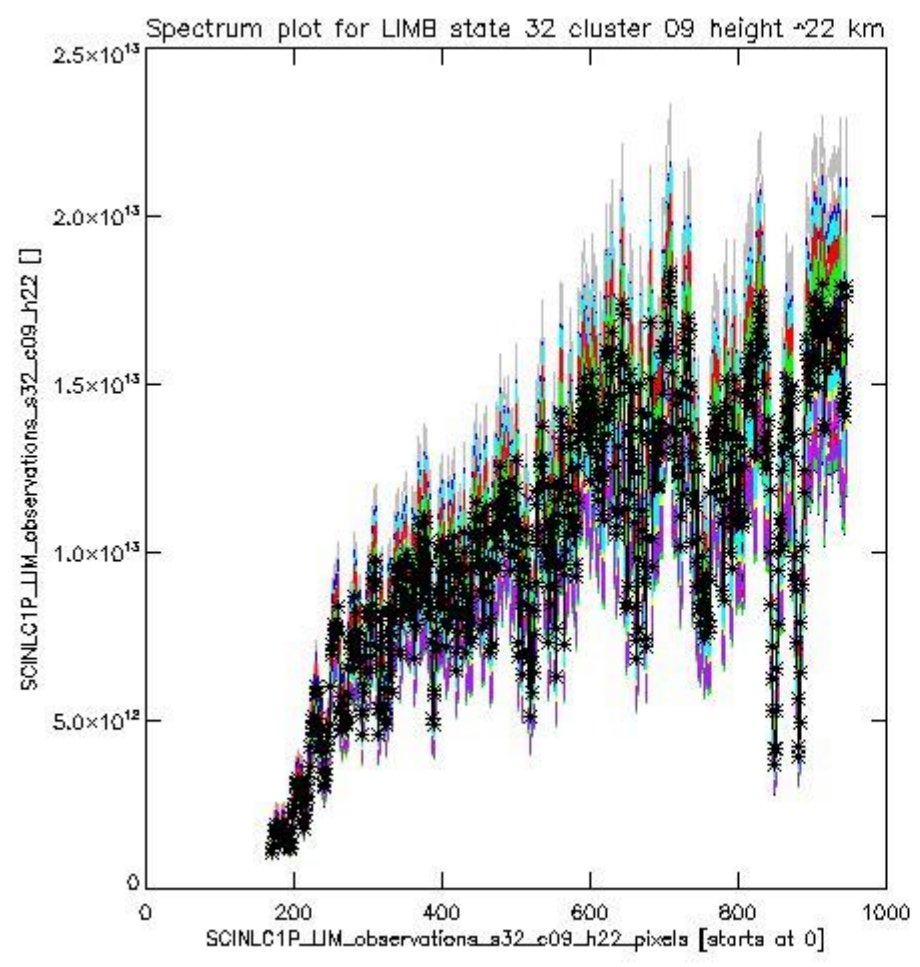
sciamachy_i1b_source_packet_report_SCIA_7_04_U_20110426_10.PNG



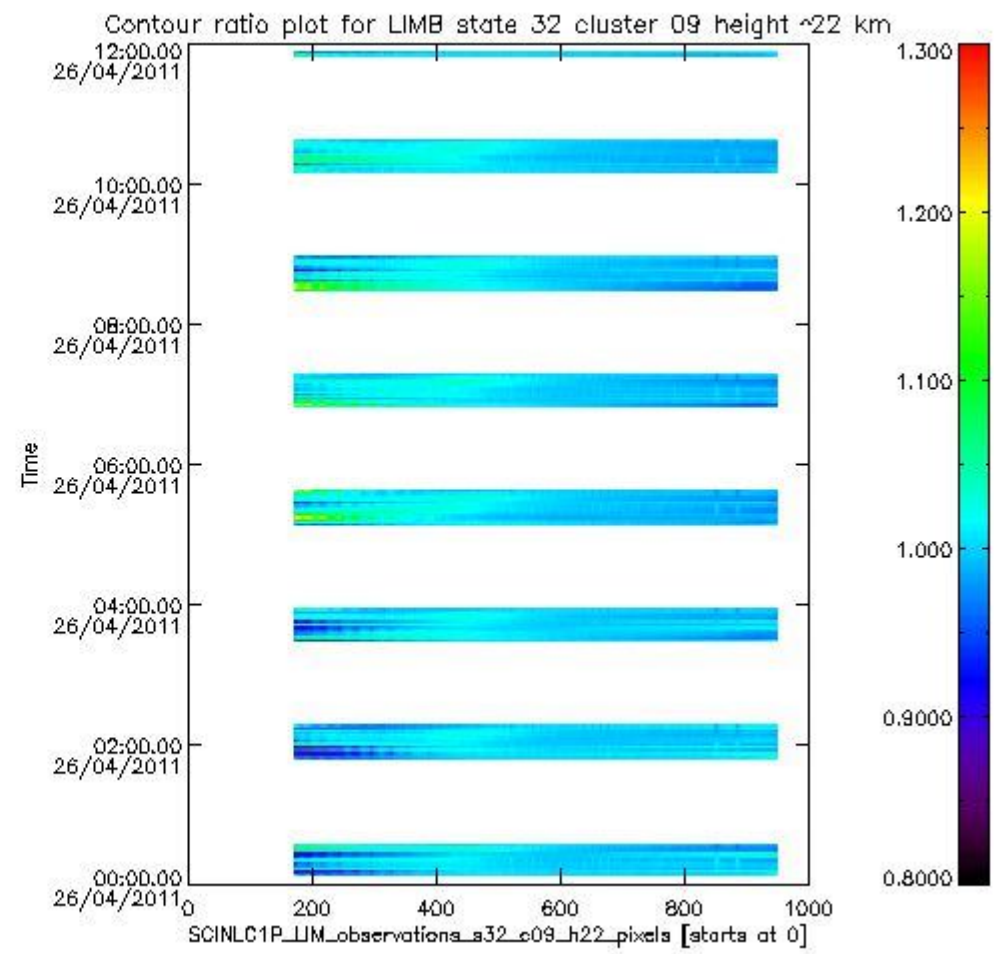
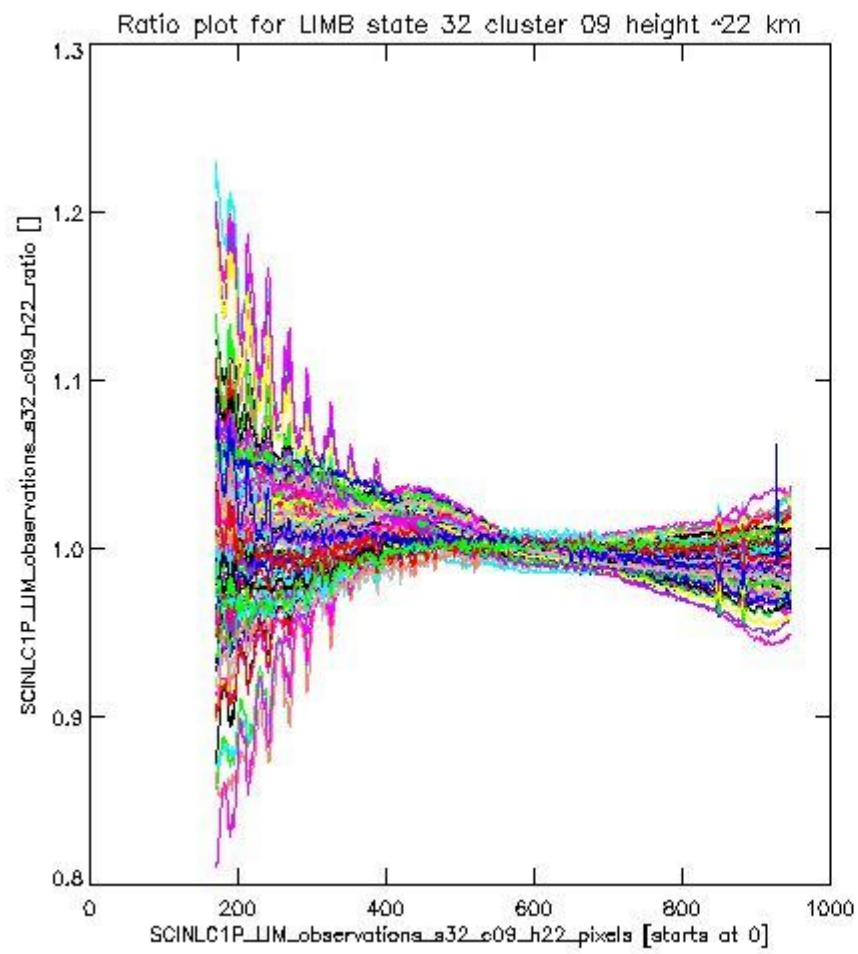
sciamachy_i1b_source_packet_report_SCIA_7_04_U_20110426_11.PNG

1.2.7 LIMB state 32 cluster 09 height ~22 km The data for the analysis of LIMB state 32 cluster 09 height ~22 km have the following characteristics:

Item	Value
Start time of first sample	26APR2011 00:08:01.818
Start time of last sample	26APR2011 11:50:45.890
Reference period start time	28MAR2011 00:01:12.751
Reference period stop time	26APR2011 11:50:45.890
Channel number	2
First pixel number (starts at 0)	170
Last pixel number (starts at 0)	947



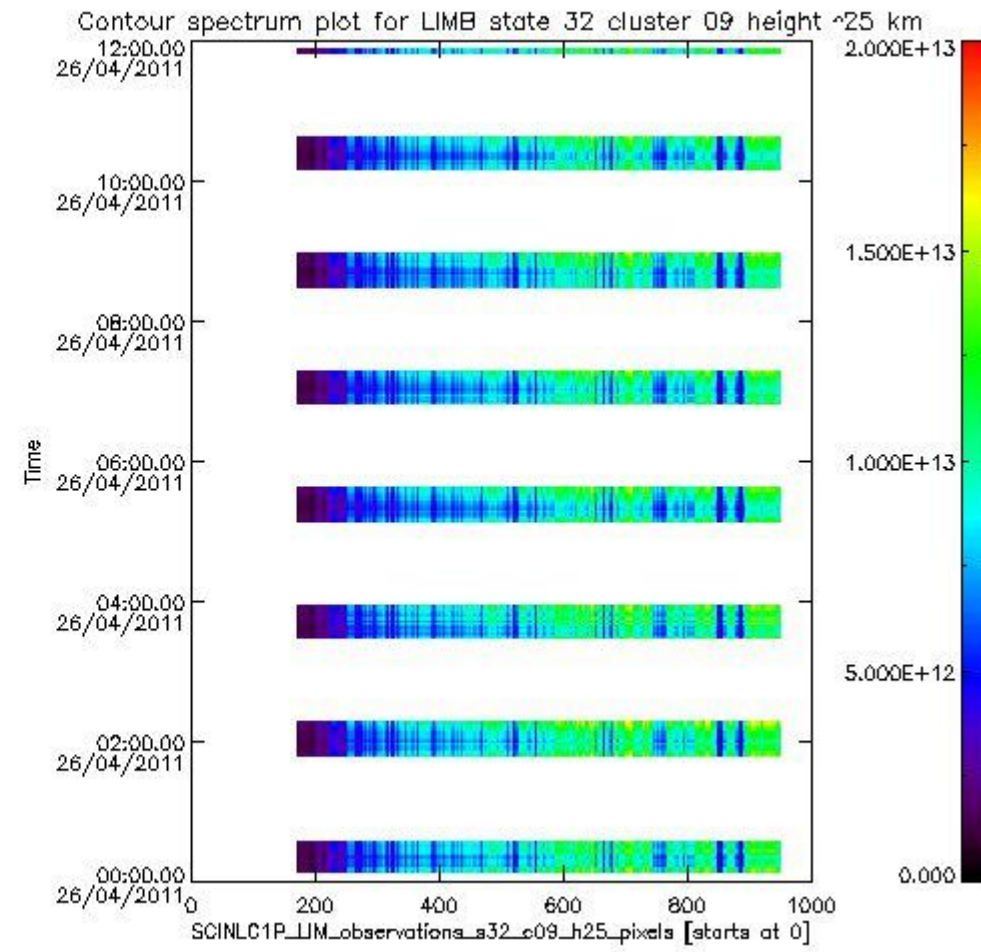
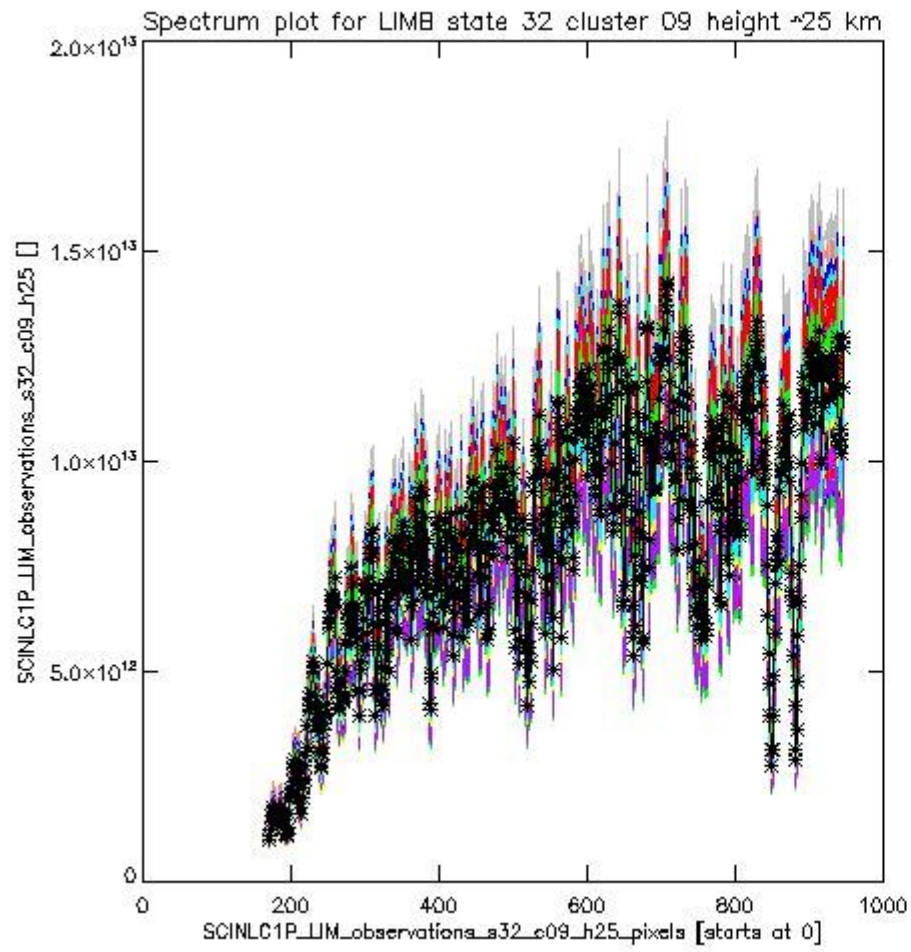
sciamachy_i1b_source_packet_report_SCIA_7_04_U_20110426_12.PNG



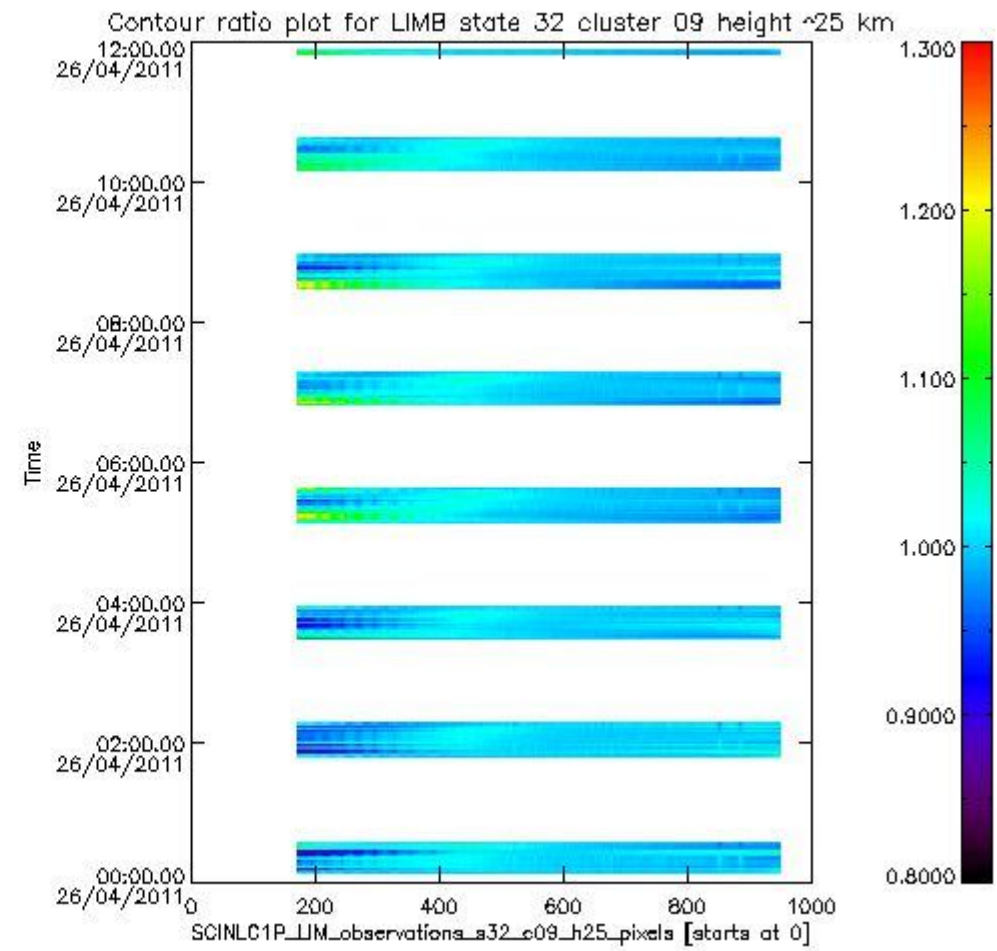
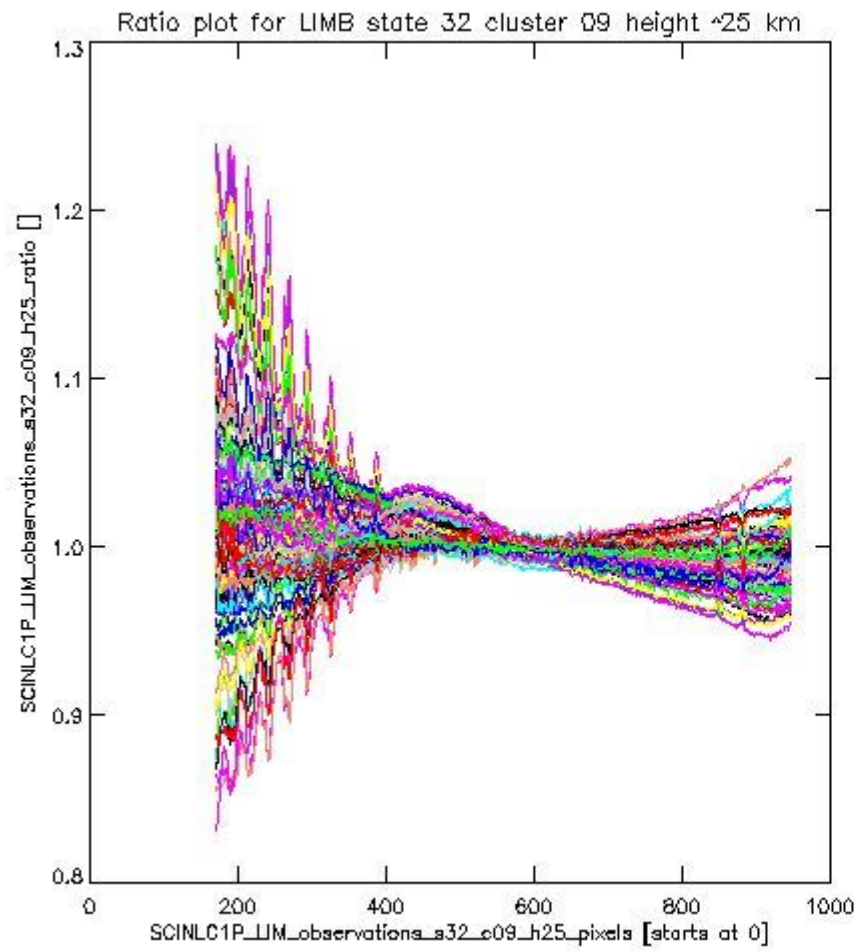
sciamachy_l1b_source_packet_report_SCIA_7_04_U_20110426_13.PNG

1.2.8 LIMB state 32 cluster 09 height ~25 km The data for the analysis of LIMB state 32 cluster 09 height ~25 km have the following characteristics:

Item	Value
Start time of first sample	26APR2011 00:08:01.818
Start time of last sample	26APR2011 11:50:45.890
Reference period start time	28MAR2011 00:01:12.751
Reference period stop time	26APR2011 11:50:45.890
Channel number	2
First pixel number (starts at 0)	170
Last pixel number (starts at 0)	947



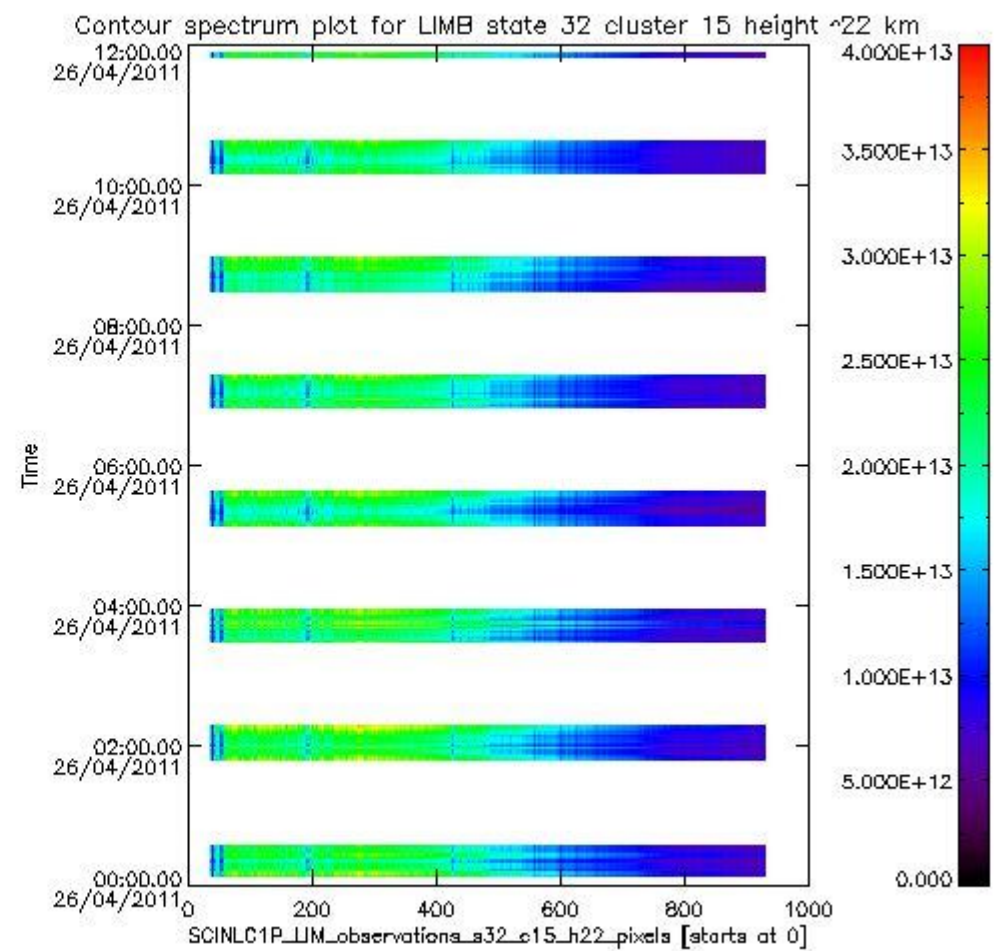
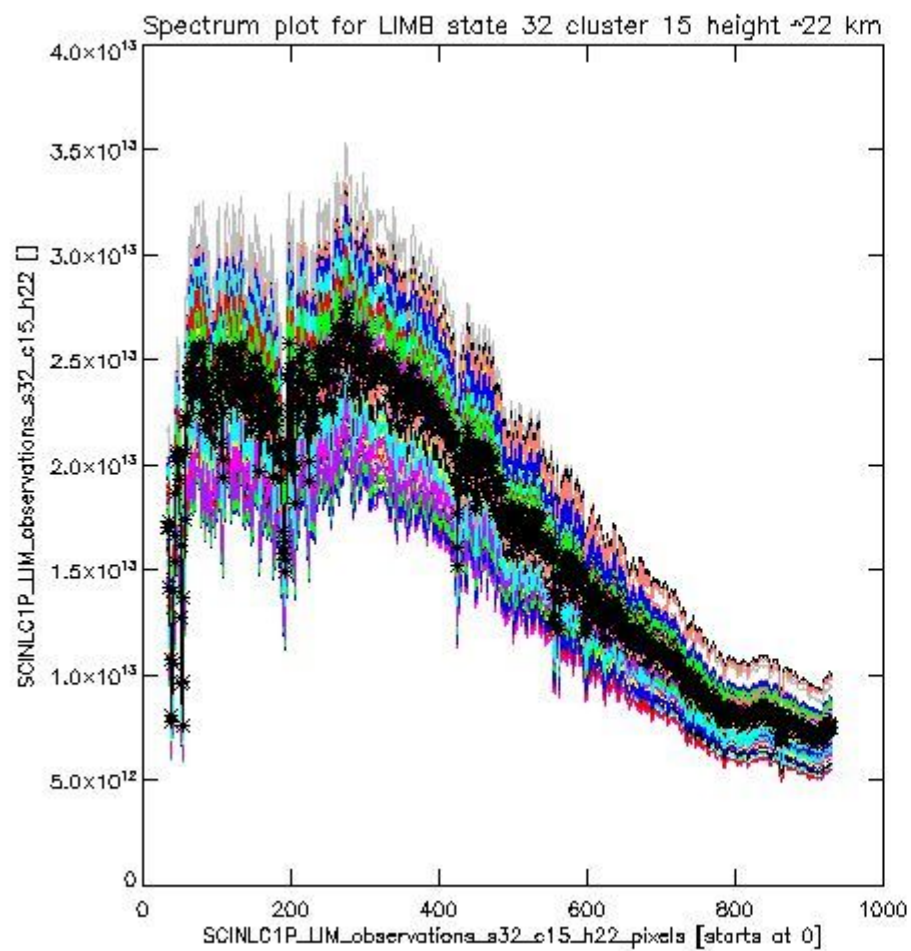
sciamachy_i1b_source_packet_report_SCIA_7_04_U_20110426_14.PNG



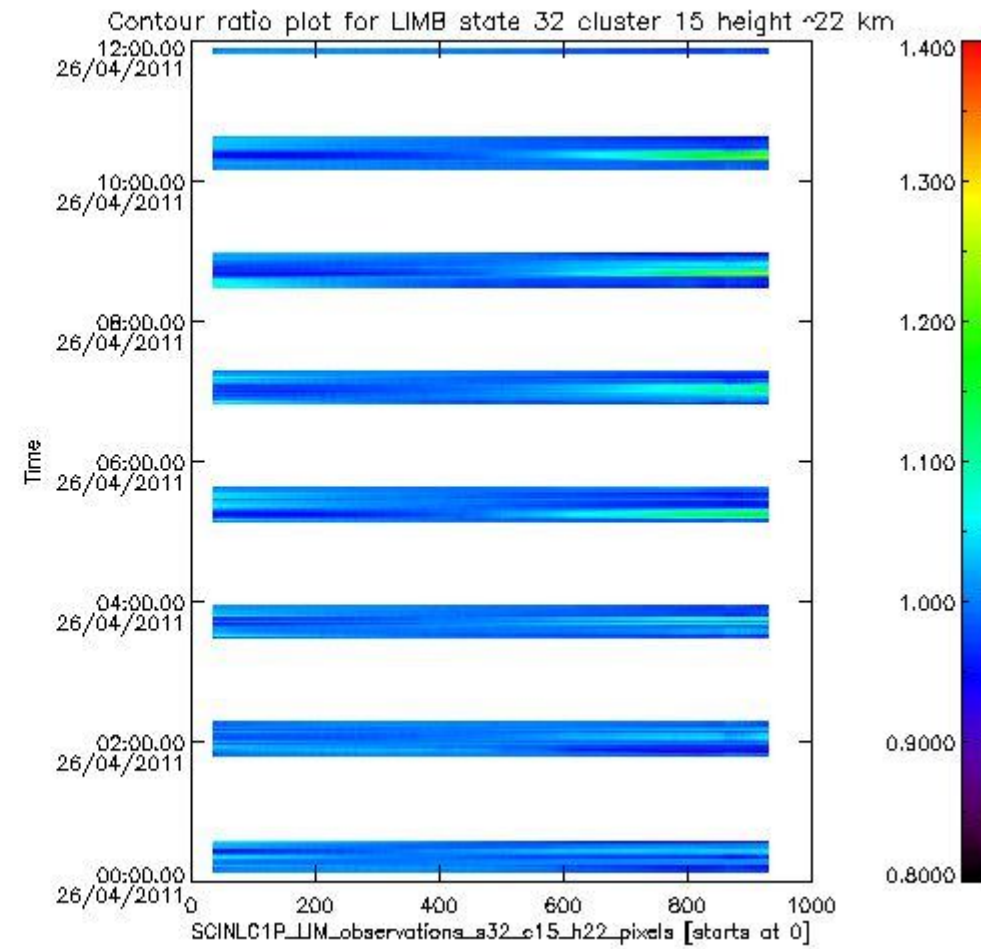
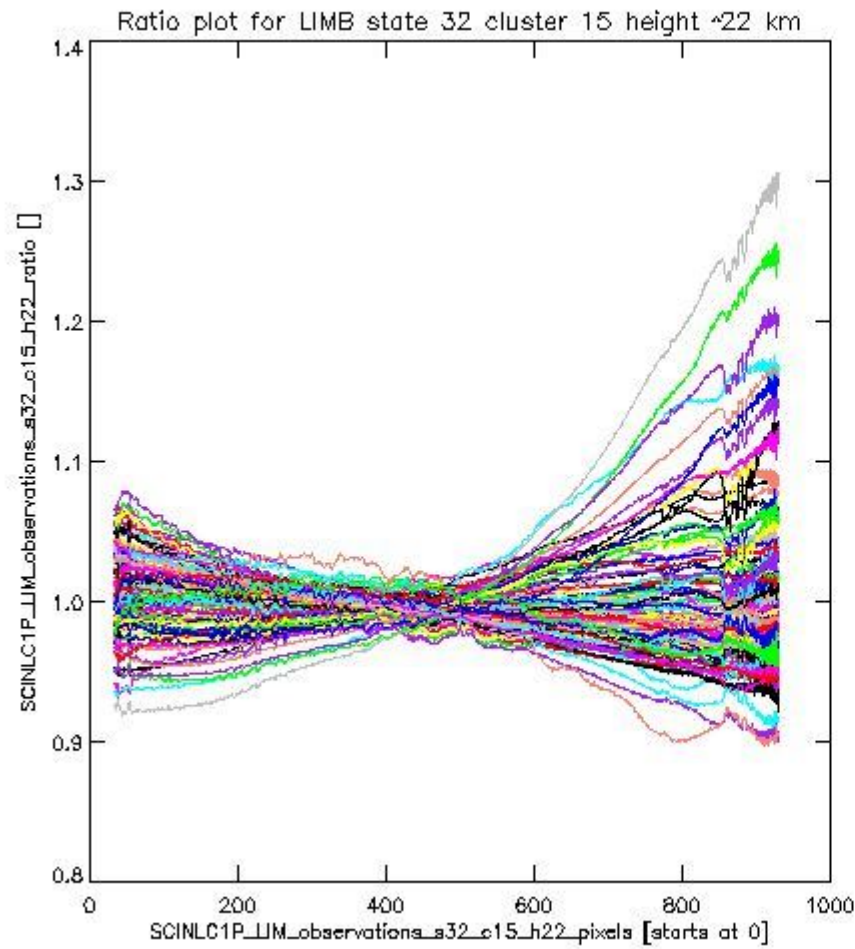
sciamachy_l1b_source_packet_report_SCIA_7_04_U_20110426_15.PNG

1.2.9 LIMB state 32 cluster 15 height ~22 km The data for the analysis of LIMB state 32 cluster 15 height ~22 km have the following characteristics:

Item	Value
Start time of first sample	26APR2011 00:08:01.818
Start time of last sample	26APR2011 11:50:45.890
Reference period start time	28MAR2011 00:01:12.751
Reference period stop time	26APR2011 11:50:45.890
Channel number	3
First pixel number (starts at 0)	33
Last pixel number (starts at 0)	929



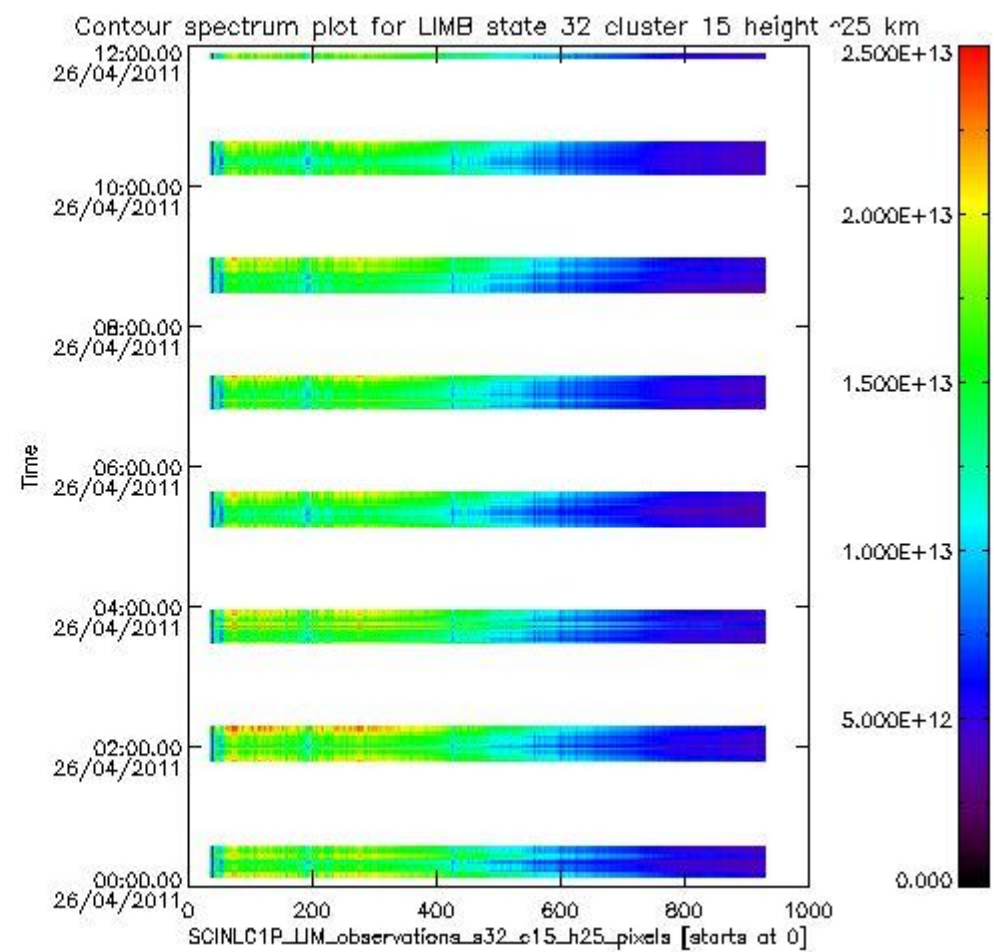
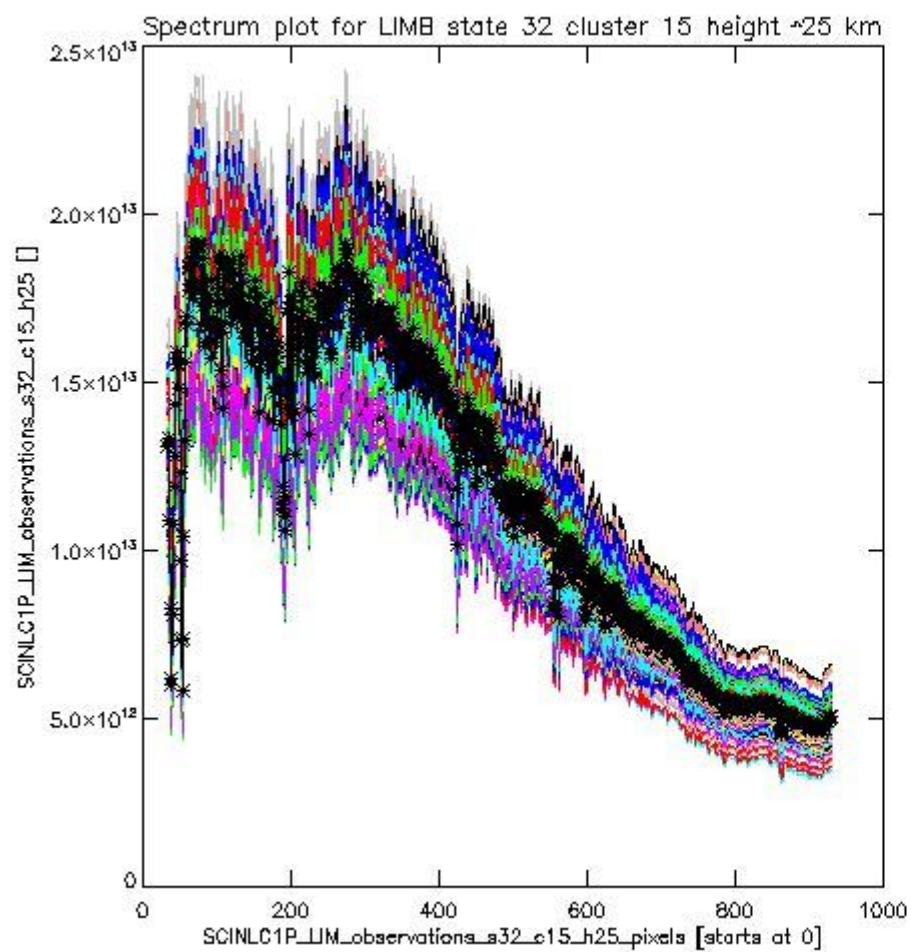
sciamachy_i1b_source_packet_report_SCIA_7_04_U_20110426_16.PNG



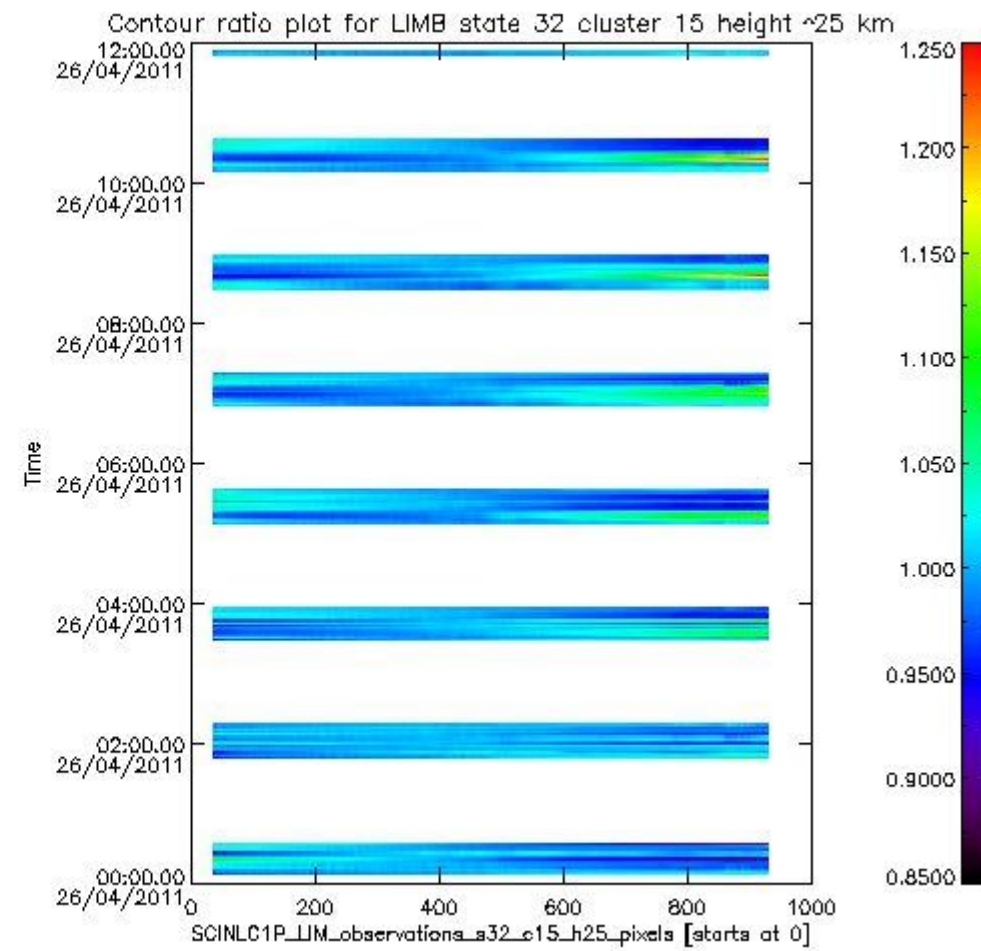
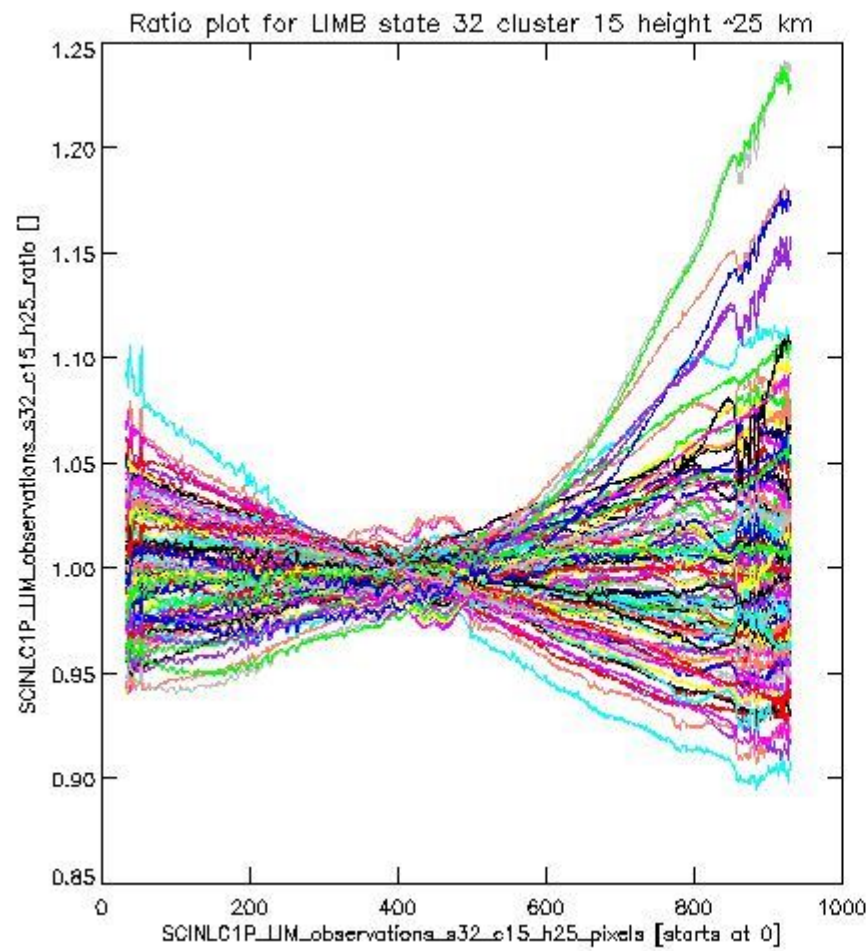
sciamachy_11b_source_packet_report_SCIA_7_04_U_20110426_17.PNG

1.2.10 LIMB state 32 cluster 15 height ~25 km The data for the analysis of LIMB state 32 cluster 15 height ~25 km have the following characteristics:

Item	Value
Start time of first sample	26APR2011 00:08:01.818
Start time of last sample	26APR2011 11:50:45.890
Reference period start time	28MAR2011 00:01:12.751
Reference period stop time	26APR2011 11:50:45.890
Channel number	3
First pixel number (starts at 0)	33
Last pixel number (starts at 0)	929



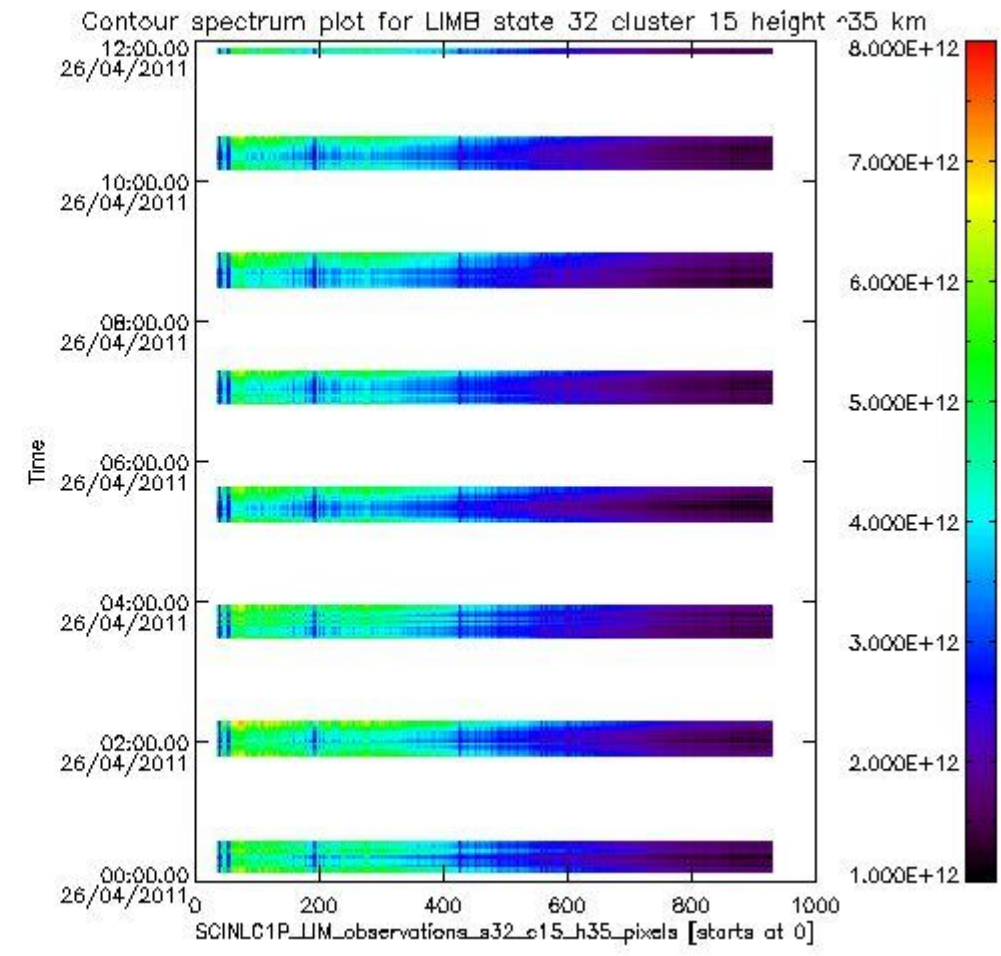
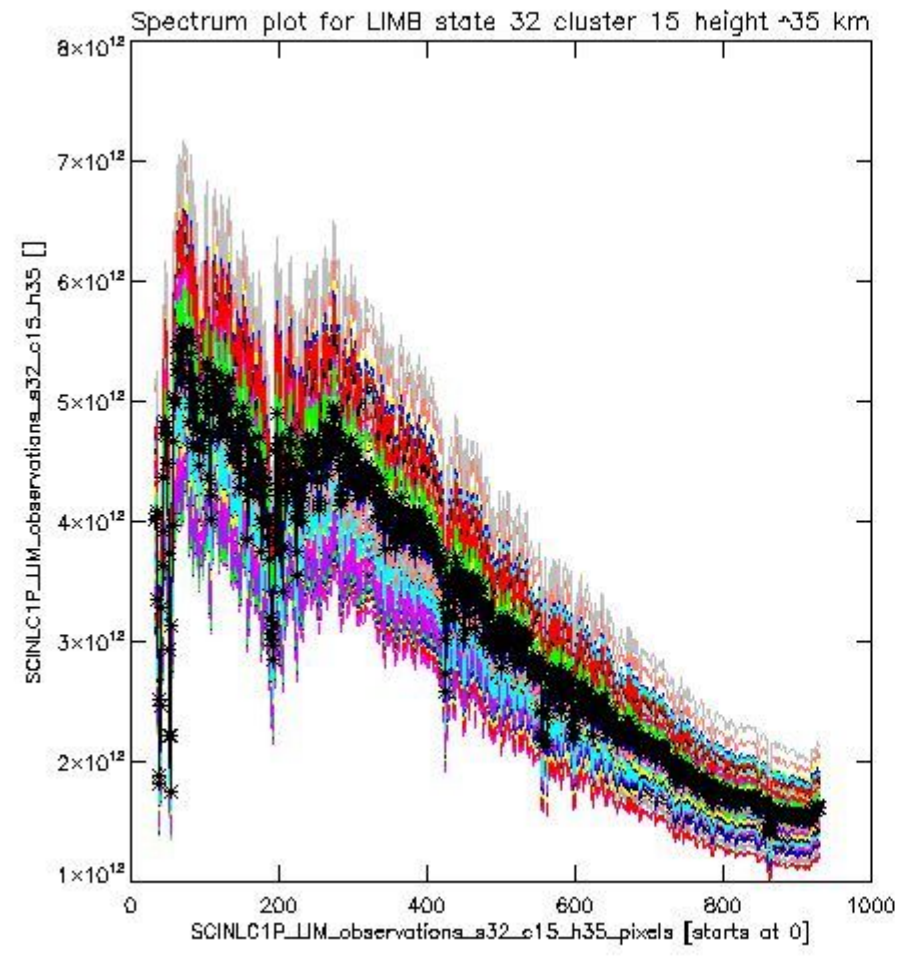
sciamachy_l1b_source_packet_report_SCIA_7_04_U_20110426_18.PNG

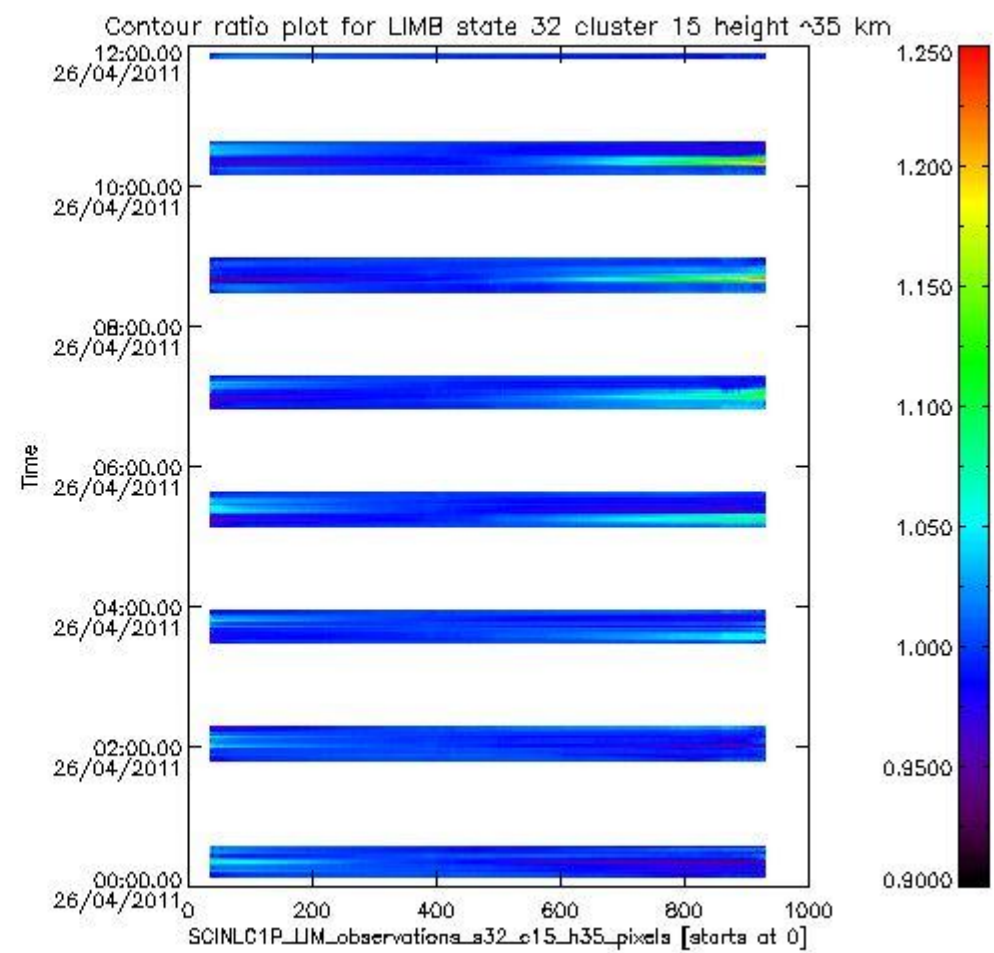
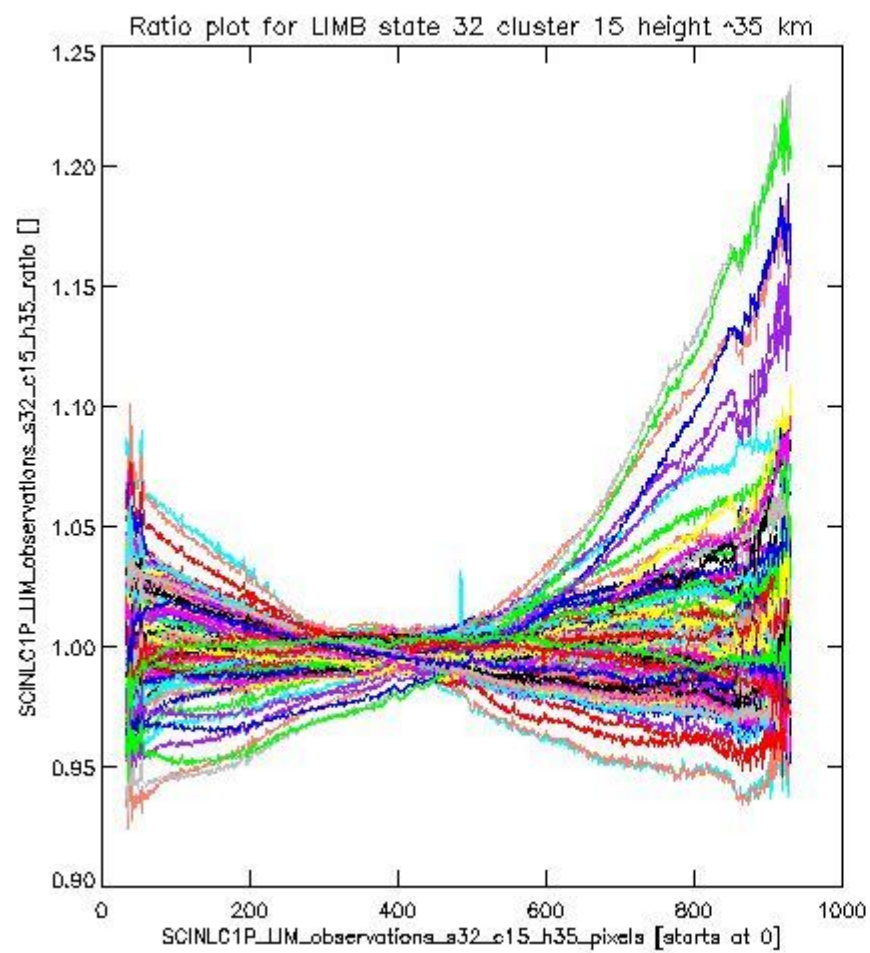


sciamachy_11b_source_packet_report_SCIA_7_04_U_20110426_19.PNG

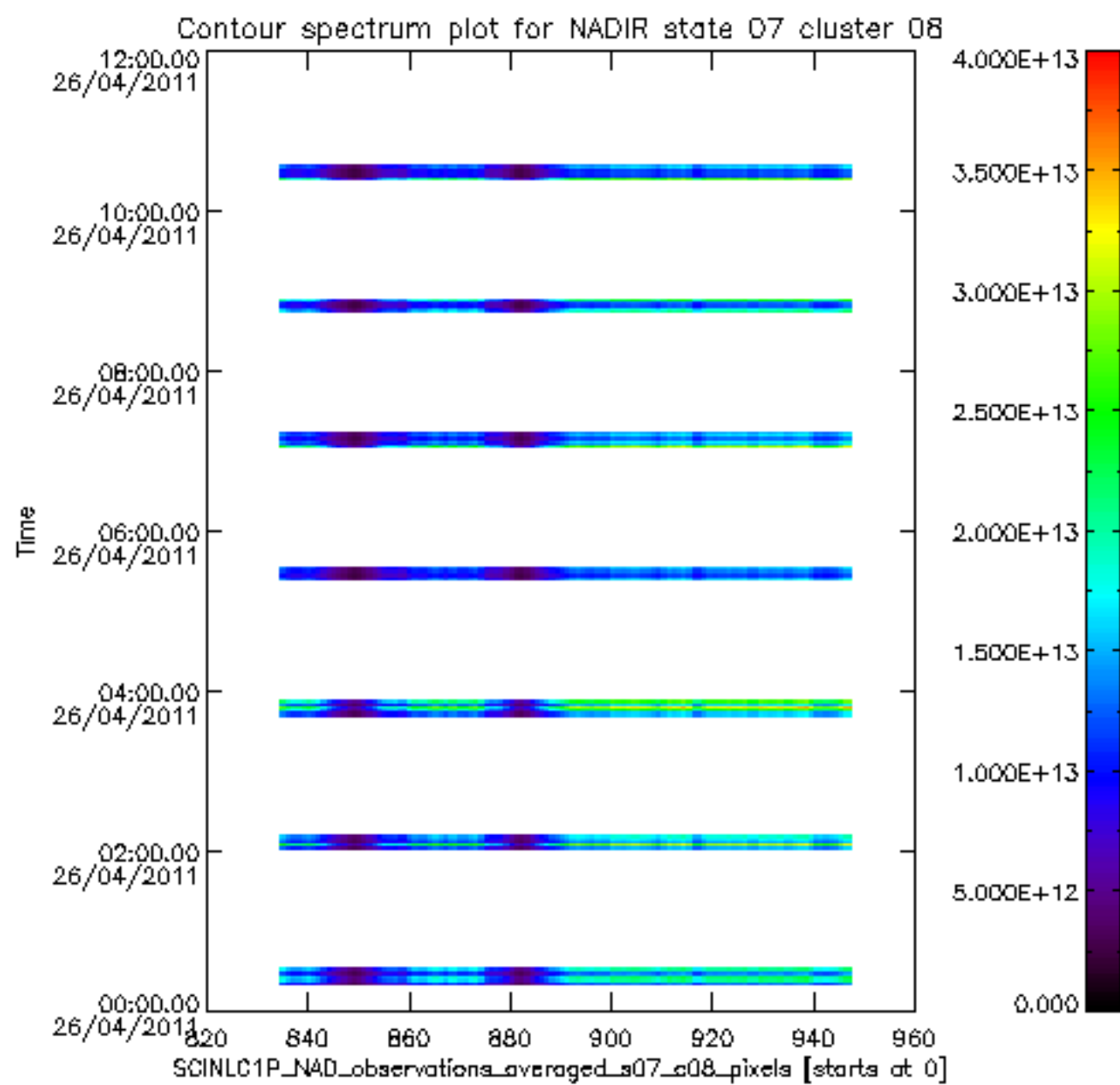
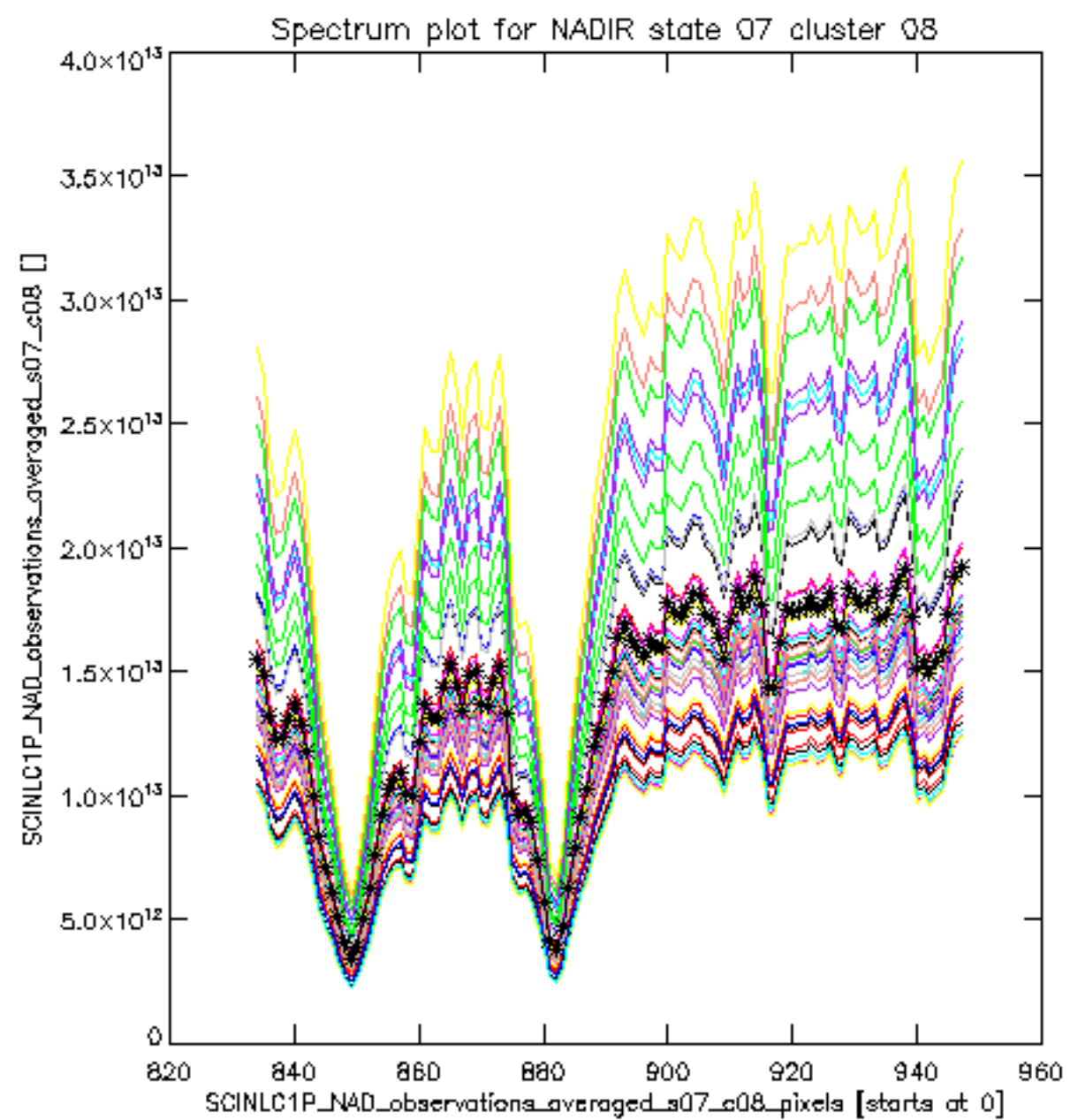
1.2.11 LIMB state 32 cluster 15 height ~35 km The data for the analysis of LIMB state 32 cluster 15 height ~35 km have the following characteristics:

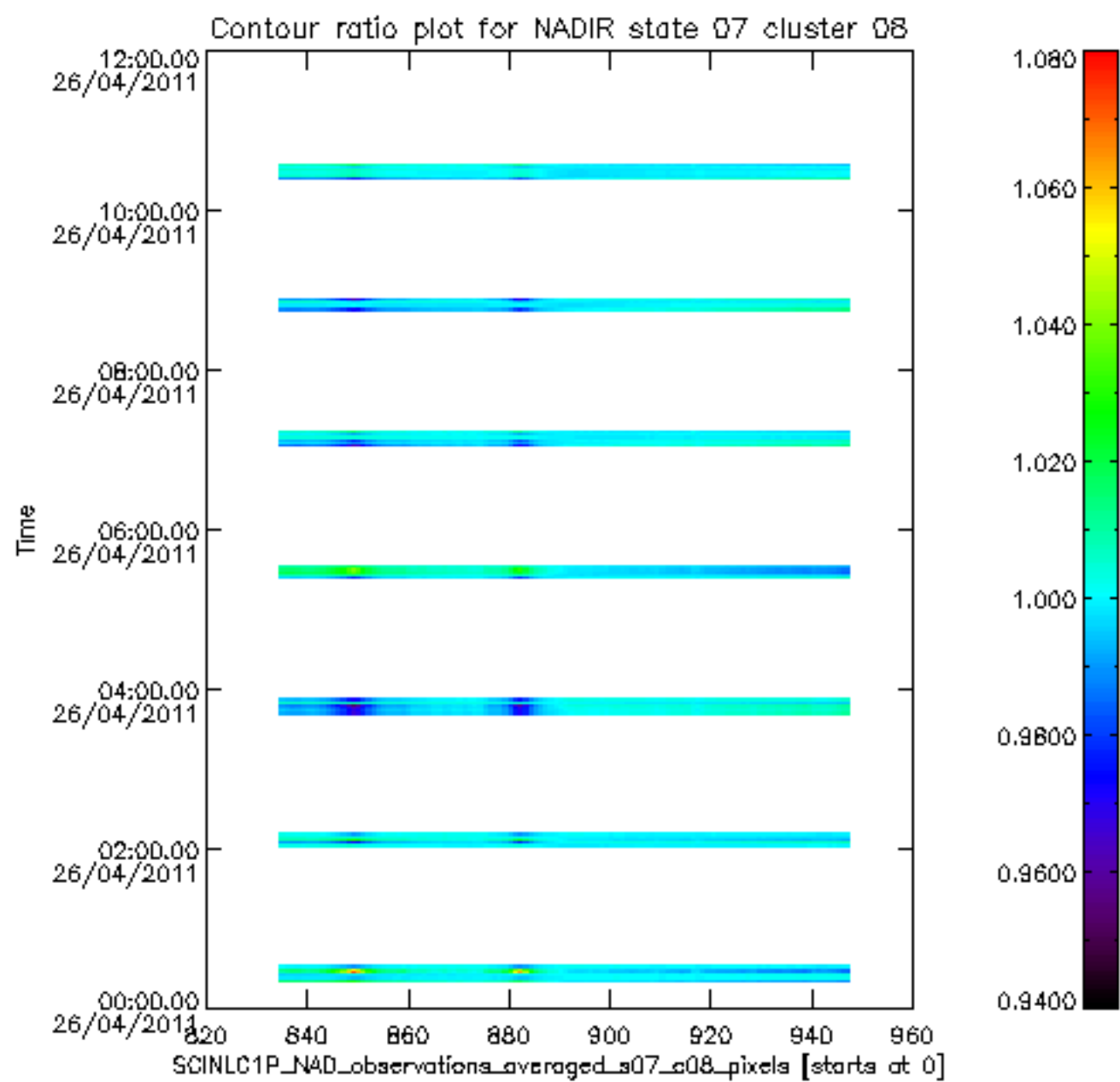
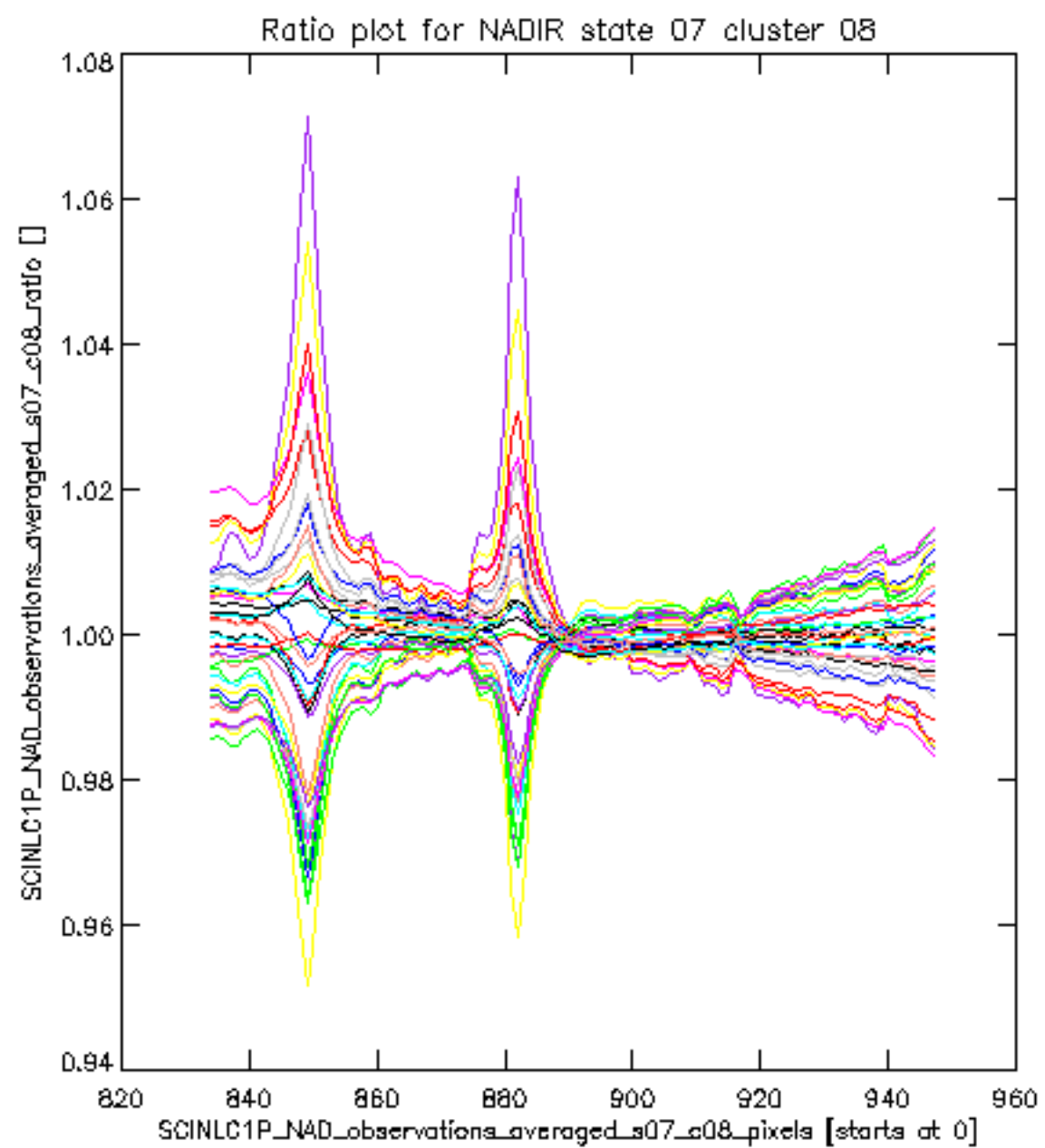
Item	Value
Start time of first sample	26APR2011 00:08:01.818
Start time of last sample	26APR2011 11:50:45.890
Reference period start time	28MAR2011 00:01:12.751
Reference period stop time	26APR2011 11:50:45.890
Channel number	3
First pixel number (starts at 0)	33
Last pixel number (starts at 0)	929

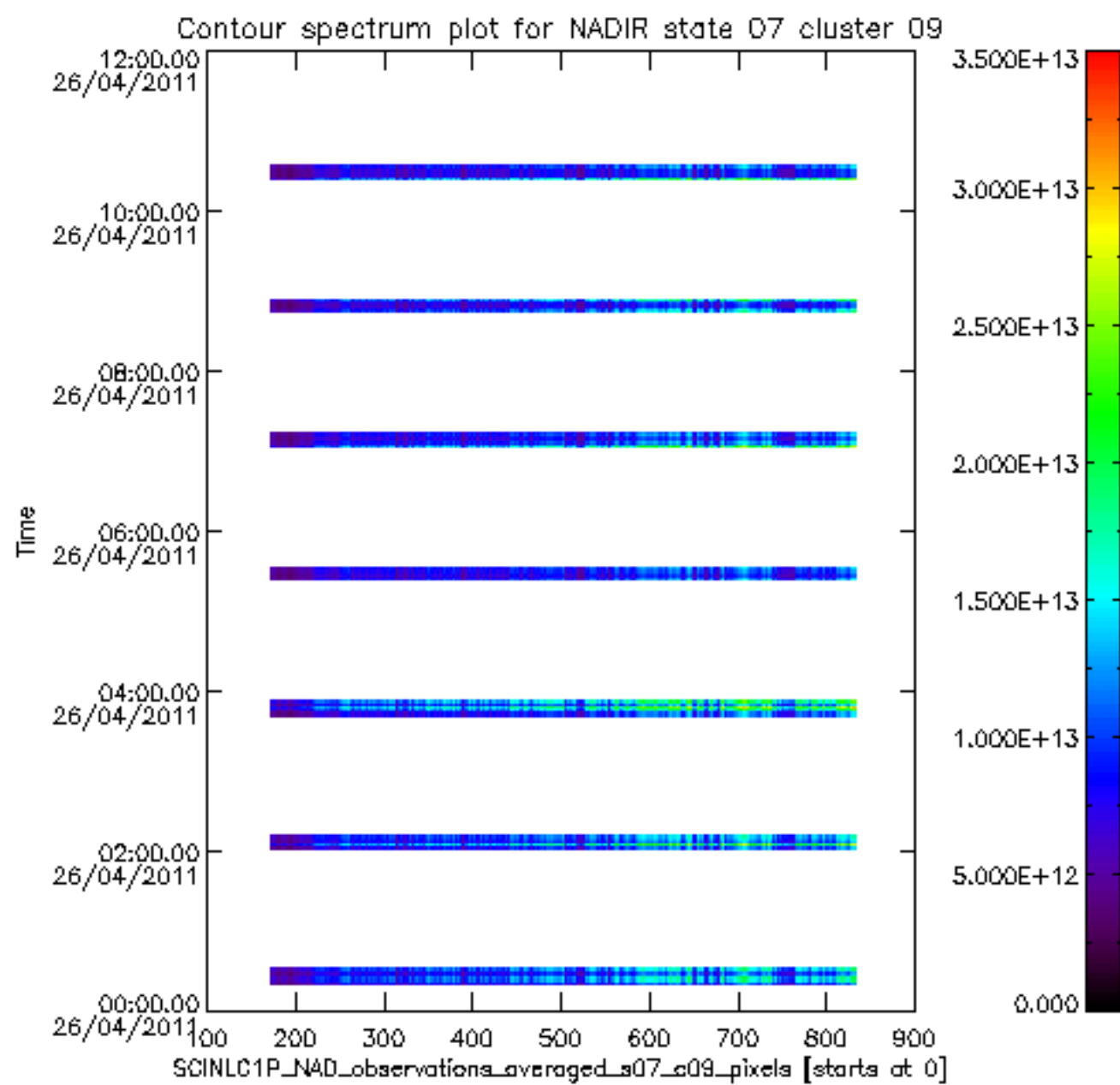
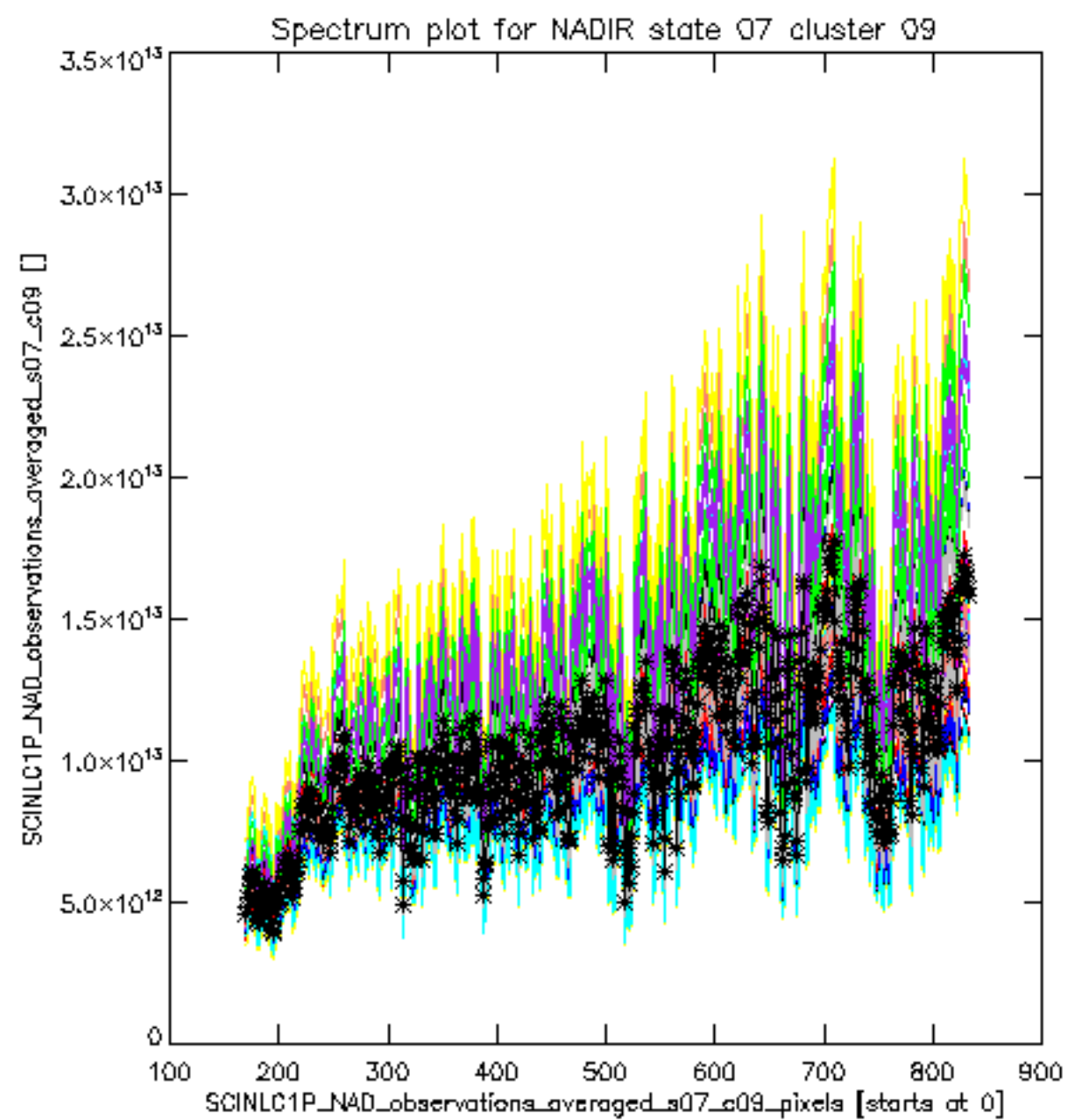


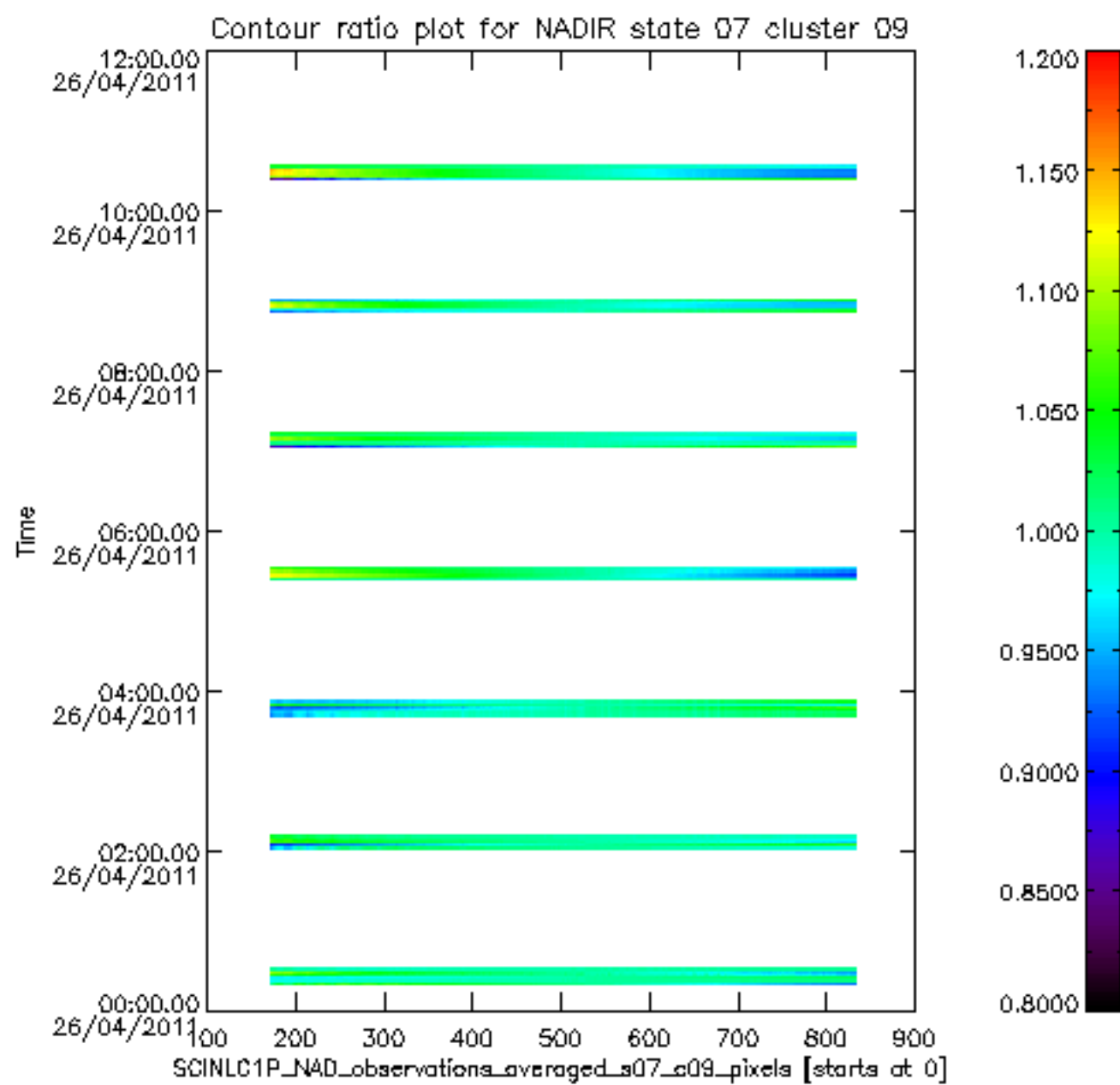
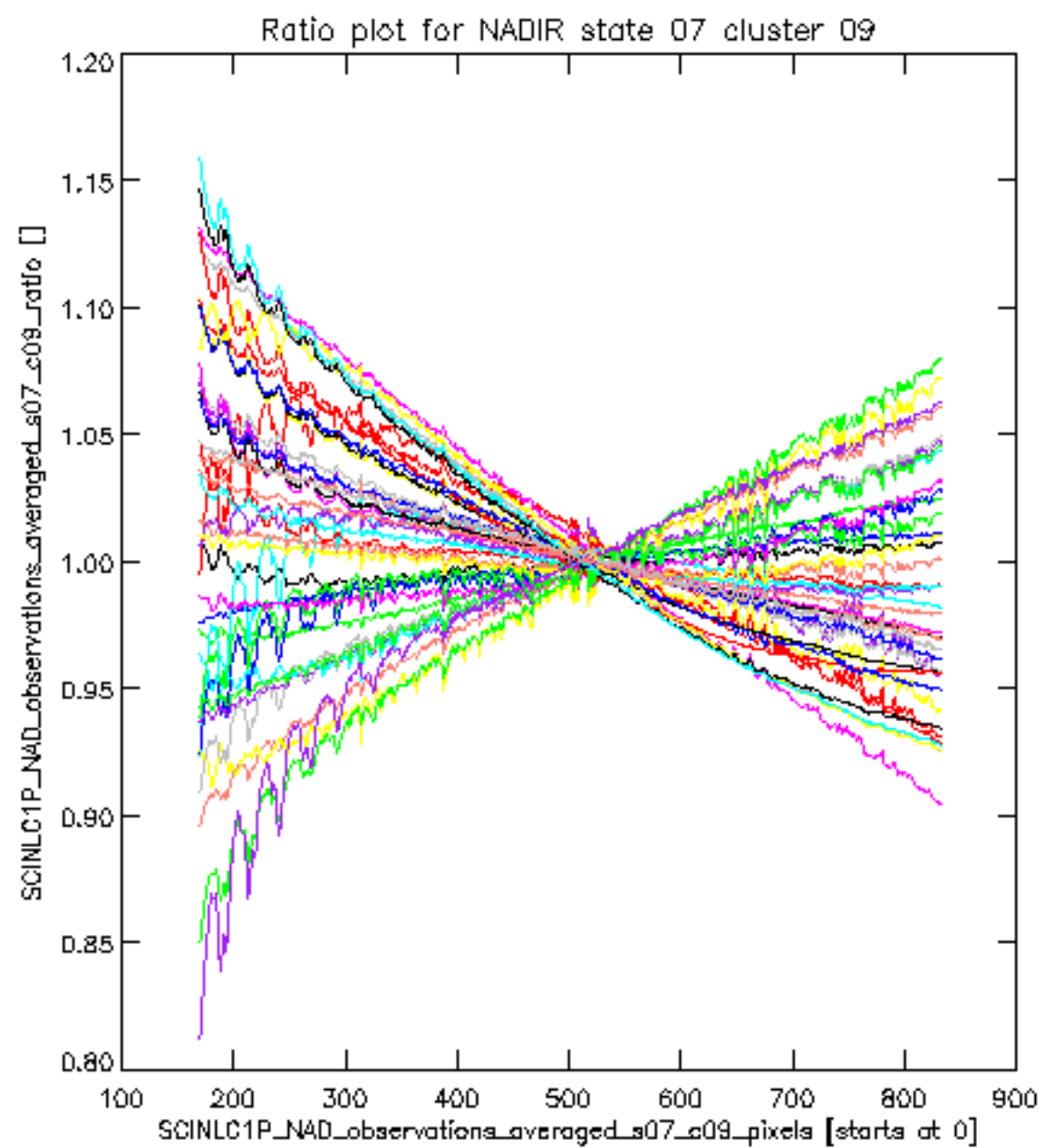


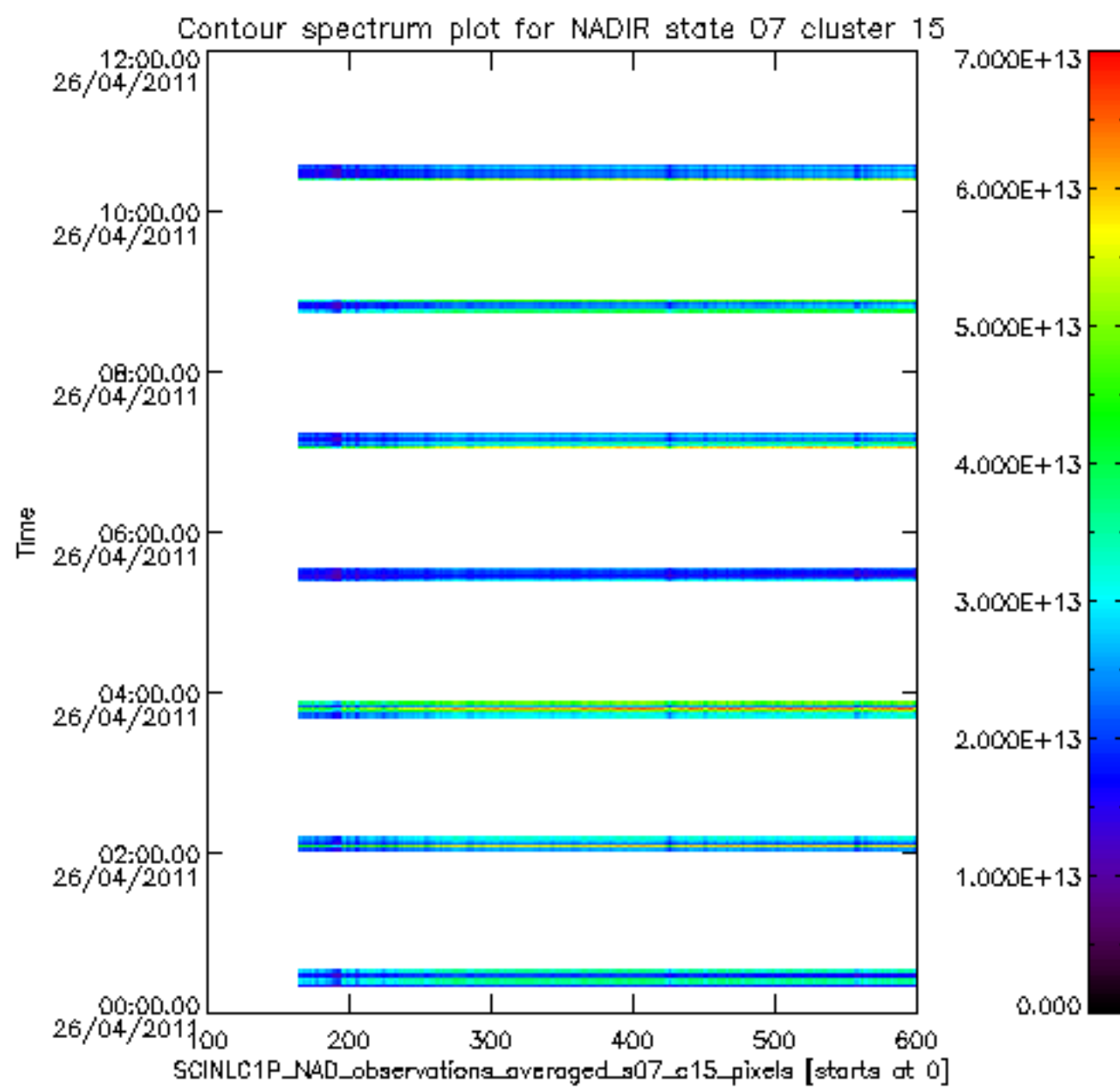
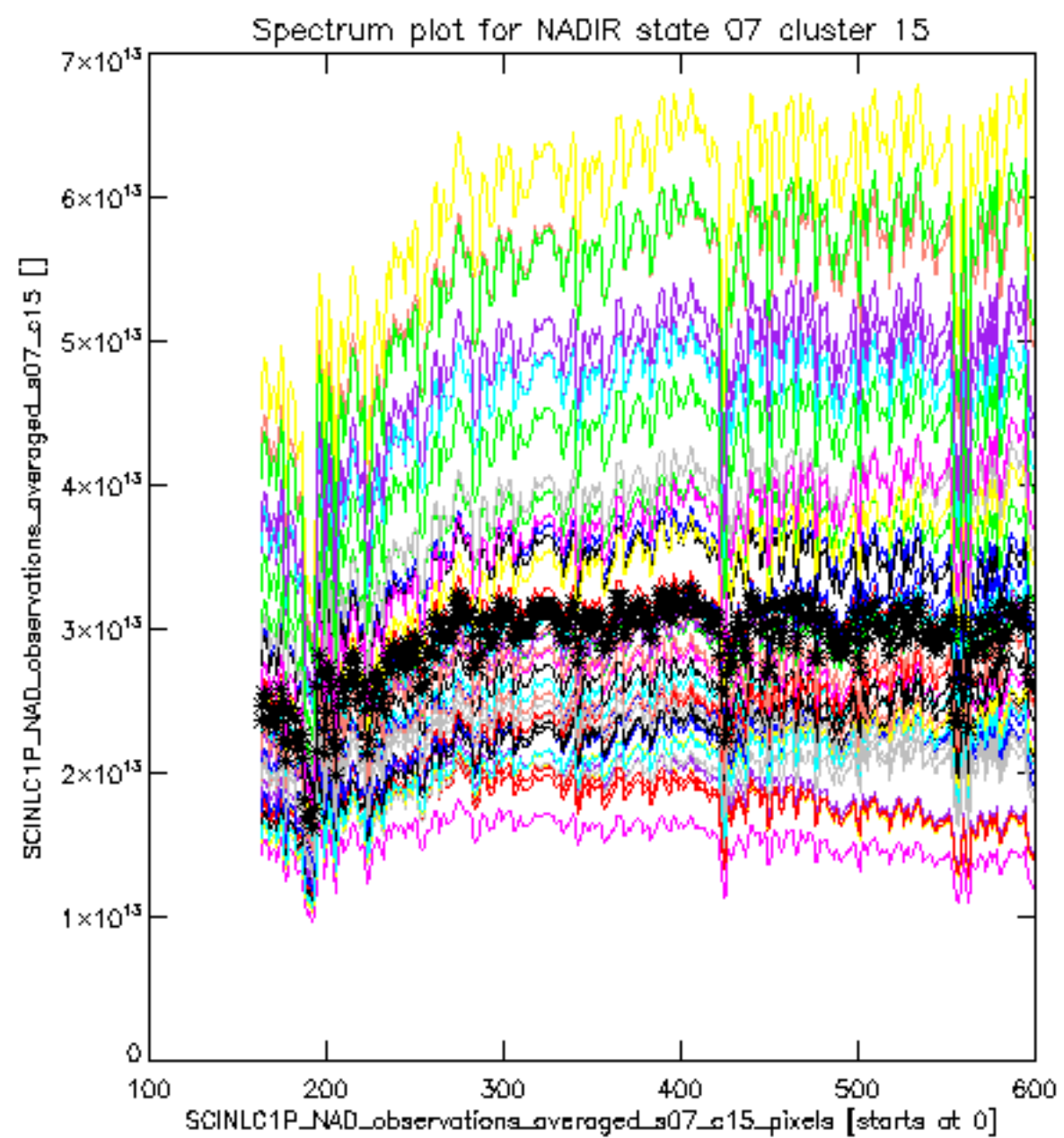
sciamachy_i1b_source_packet_report_SCIA_7_04_U_20110426_21.PNG

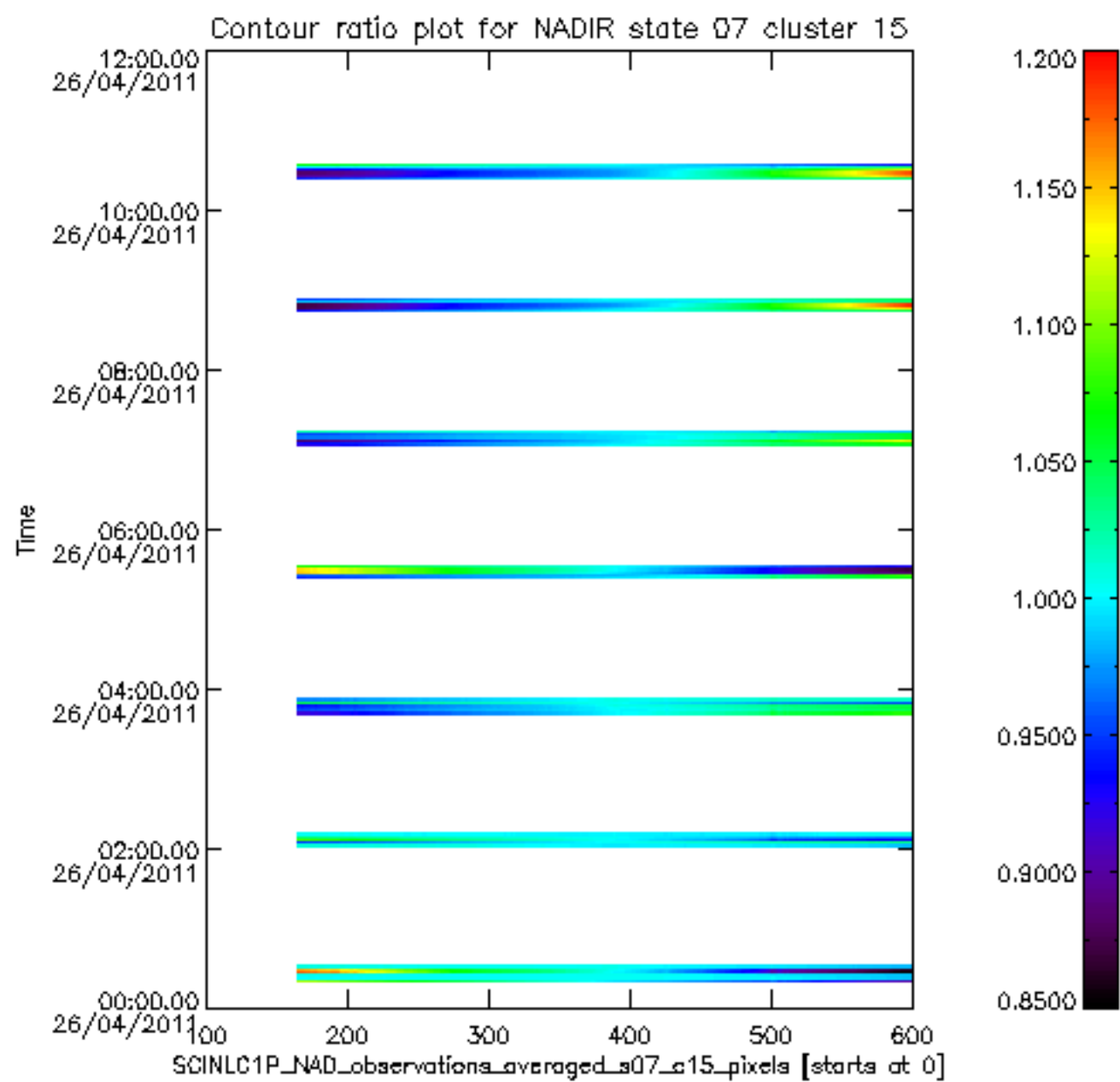
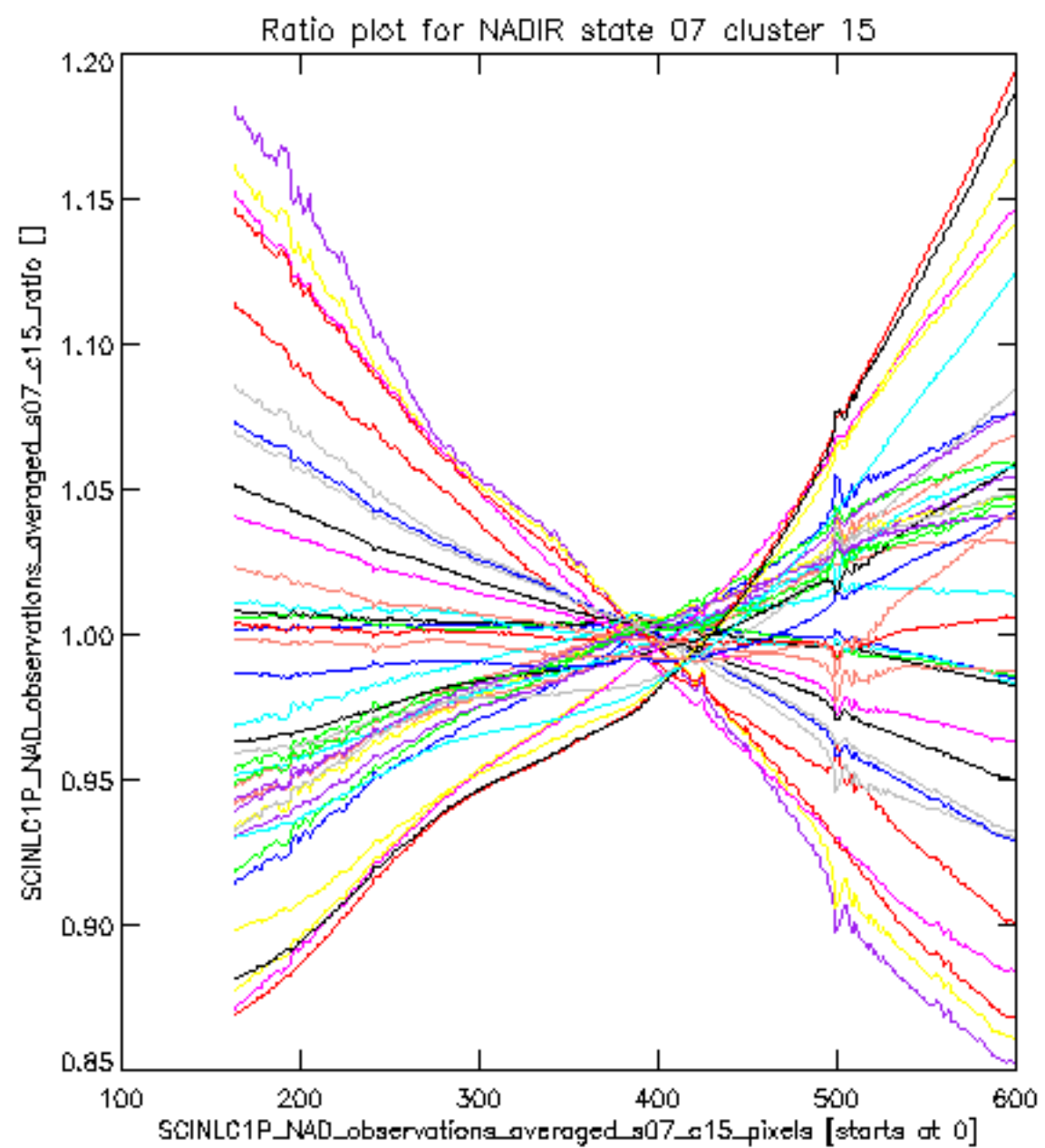


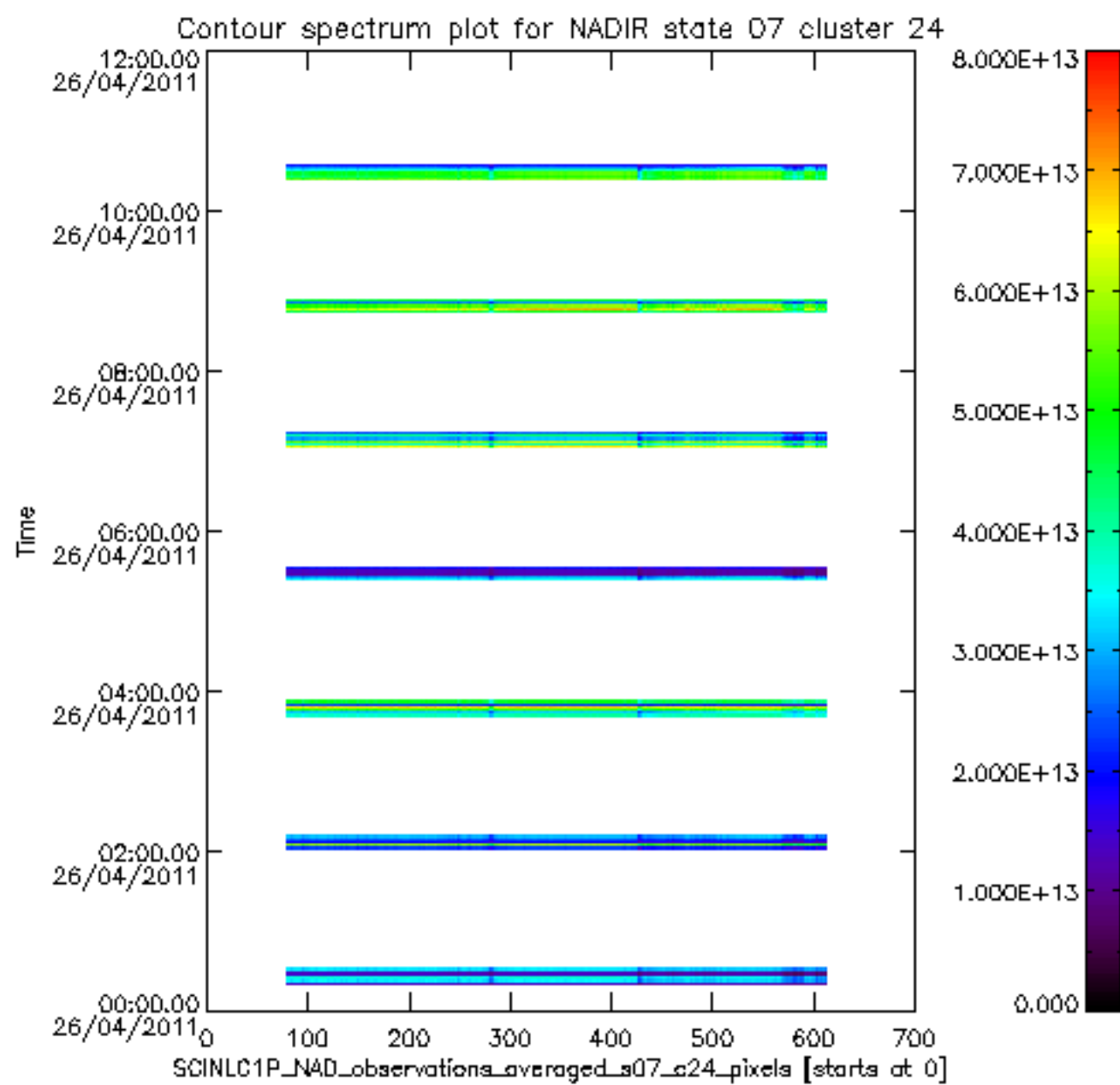
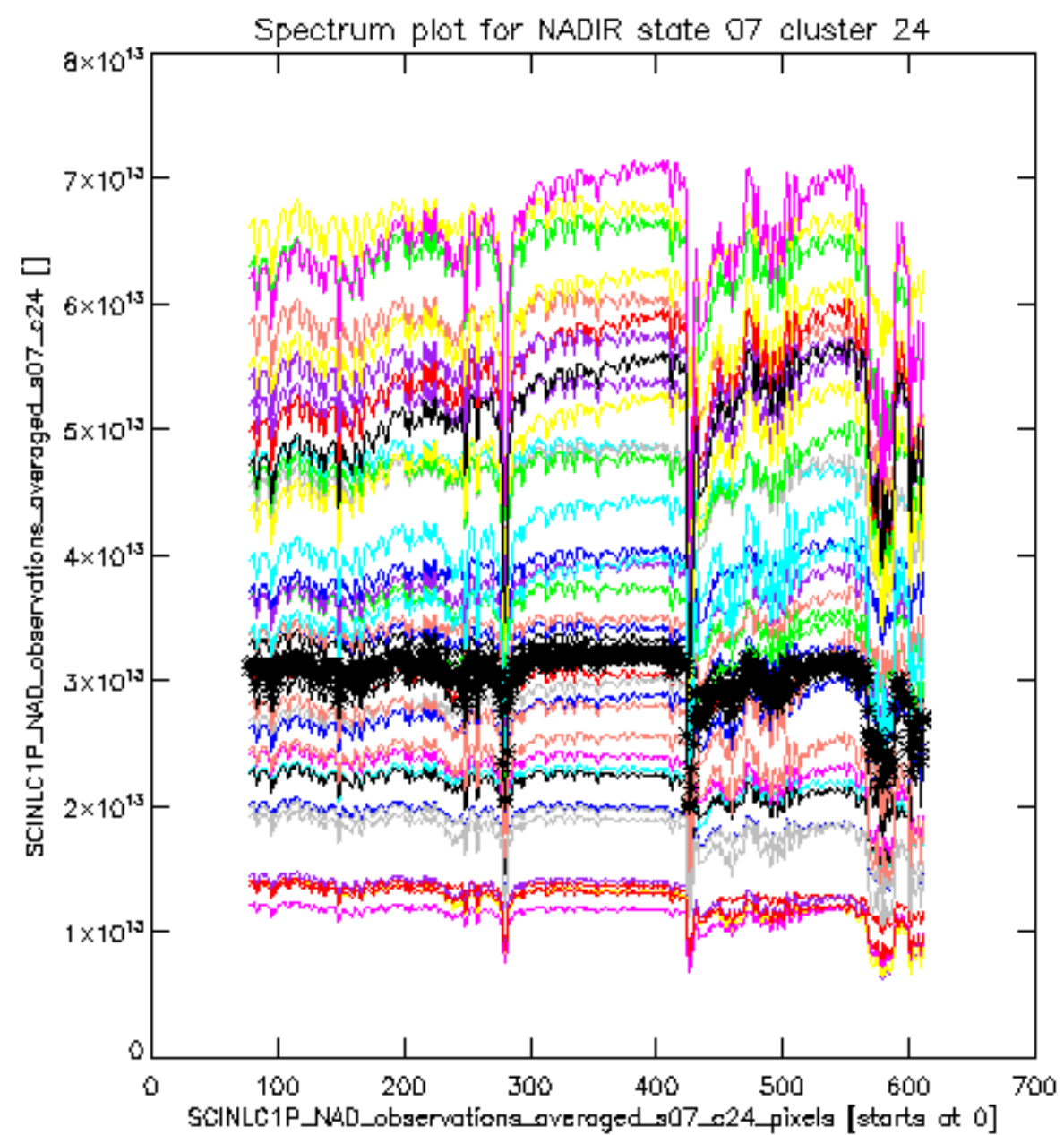


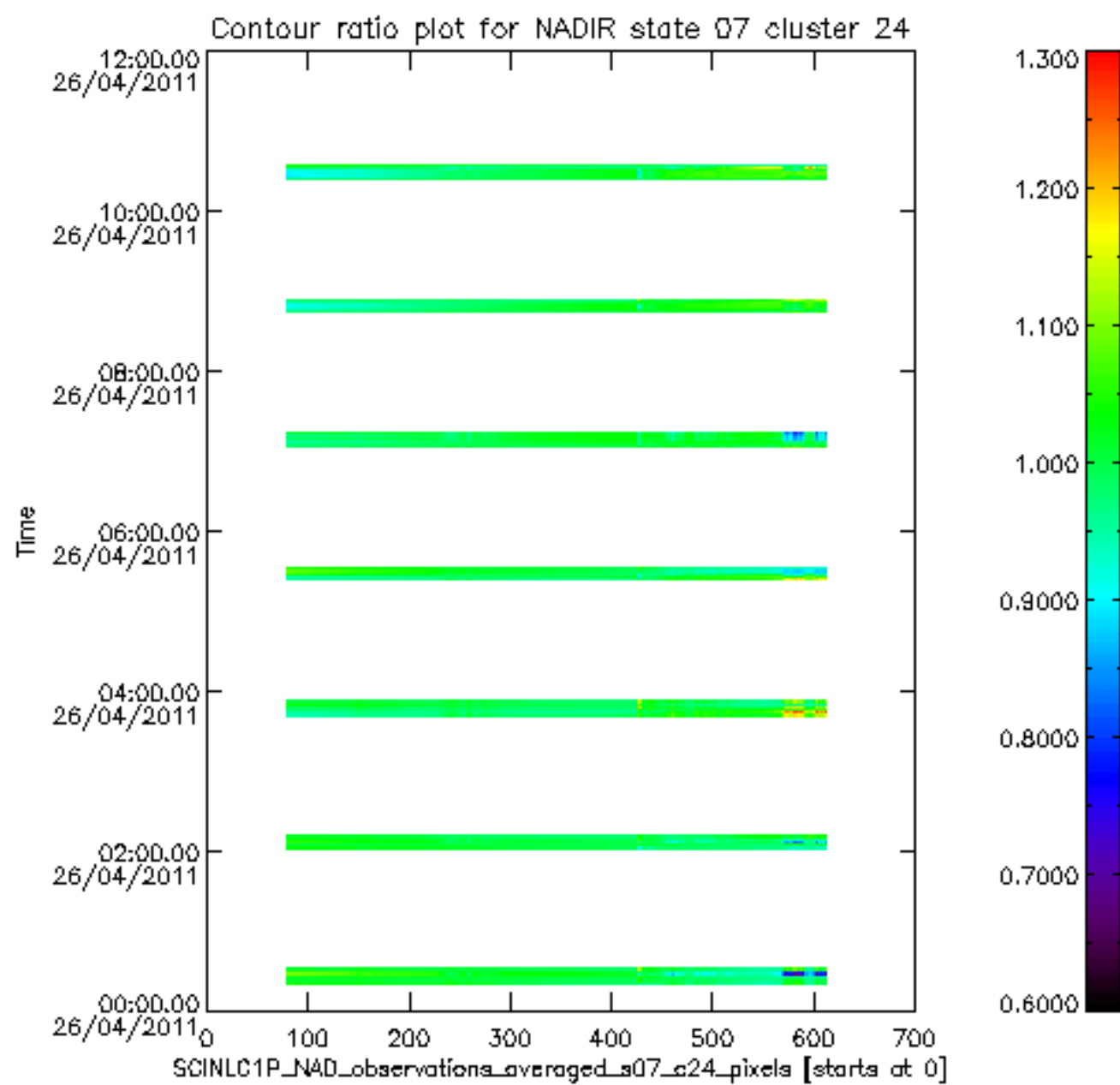
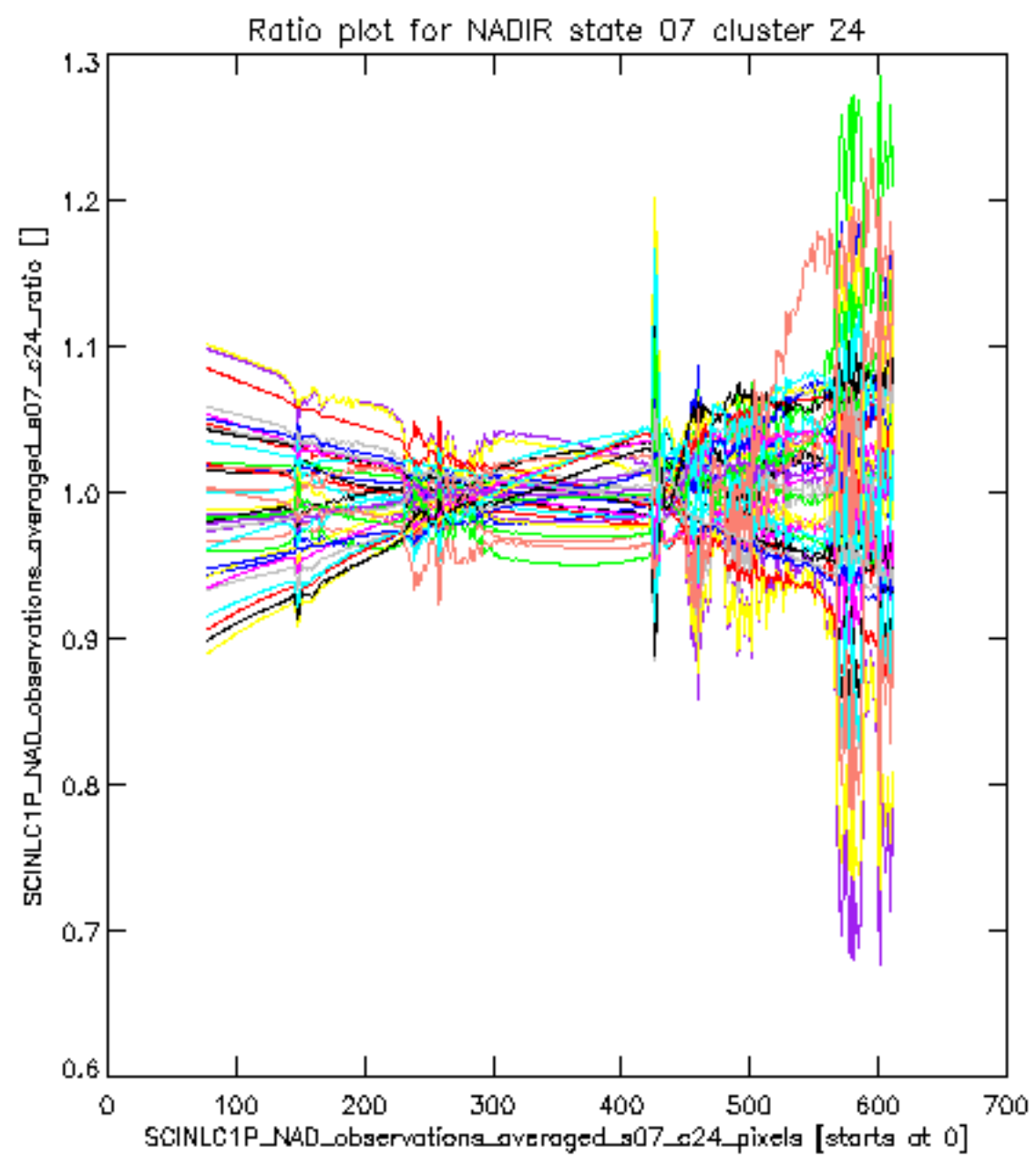




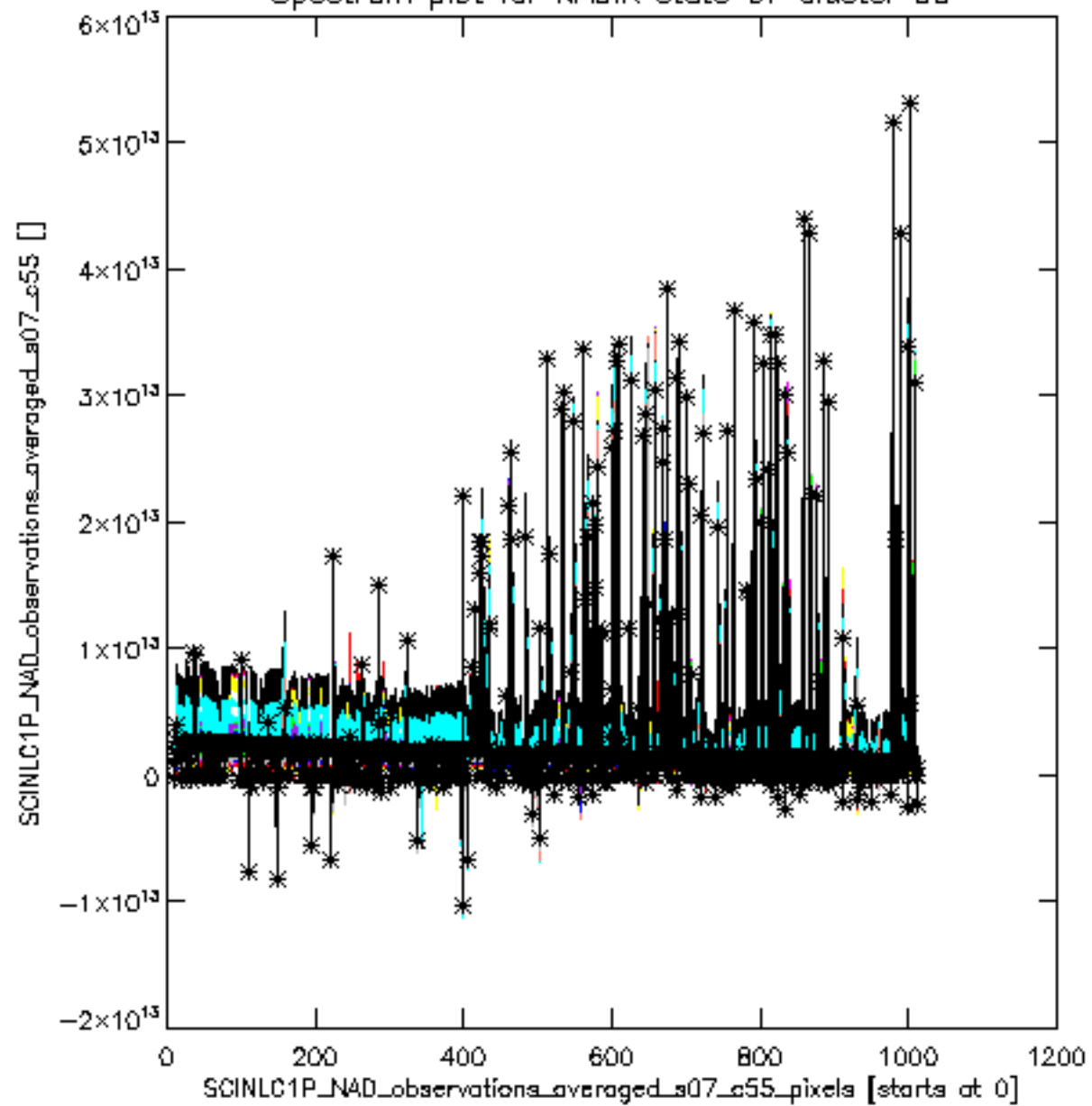








Spectrum plot for NADIR state 07 cluster 55



Contour spectrum plot for NADIR state 07 cluster 55

