

1. SCIAMACHY Level 1B source packet monitoring report

[1.1. General Info](#)

[1.2 Source packet monitoring](#)

1.1 General Info

This report contains results of the analysis on source packets from SCIAMACHY level 1 data (The SCI_NL__1P product).

1.1.1 Report summary

The table below shows general characteristics of the data that are included into this report.

Item	Value
Report version	1.1 (07-01-2010)
Time of report generation	25APR2011 06:55:31
Data source version	SCIA/7.04-U
Processing scope for products	14APR2011 00:00:00 to 15APR2011 00:00:00
Start time of first product within scope	13APR2011 22:49:51
Stop time of last product within scope	14APR2011 11:42:18
Total number of level 1 products	8
Number of level 1 products with errors	0
SCIAL1C executable used in processing	scial1c-2.1.73-i686-pc-linux-gnu-gcc-3.3.6
SCIAL1C parameters used in processing	-allcal -type all -cat 1,2,8,10,11,16,19,23 -nadircluster 8,9,15,24,55 -limbcluster 9,15

1.1.2 Source packet summary

The table below shows which source packets have been included into the report.

Item	Mode	State	Cluster	Height	First start time	Last start time
0	NADIR	07	08	N/A	14APR2011 01:02:07.709	14APR2011 11:13:43.131
1	NADIR	07	09	N/A	14APR2011 01:02:07.709	14APR2011 11:13:43.131
2	NADIR	07	15	N/A	14APR2011 01:02:07.709	14APR2011 11:13:43.131
3	NADIR	07	24	N/A	14APR2011 01:02:07.709	14APR2011 11:13:43.131
4	NADIR	07	55	N/A	14APR2011 01:02:07.709	14APR2011 11:13:43.131
5	LIMB	32	09	~19 km	14APR2011 00:48:57.068	14APR2011 11:16:54.428
6	LIMB	32	09	~22 km	14APR2011 00:48:57.068	14APR2011 11:16:54.428
7	LIMB	32	09	~25 km	14APR2011 00:48:57.068	14APR2011 11:16:54.428
8	LIMB	32	15	~22 km	14APR2011 00:48:57.068	14APR2011 11:16:54.428
9	LIMB	32	15	~25 km	14APR2011 00:48:57.068	14APR2011 11:16:54.428
10	LIMB	32	15	~35 km	14APR2011 00:48:57.068	14APR2011 11:16:54.428

1.1.3 Summary per product

The following table shows a summary for each product used in this report.

Products are linked to a corresponding server directory for view/download. Note: Link access may be restricted by security settings of your internet browser or firewall.

#	Product name	Start time	Stop time	ProdErr	#nadir	#limb	#occ	#mon	#nopro	#cmlp_drk	#incmpl_drk	Decont
0	SCI_NLC_1CUDPA20110413_224155_000060413101_00260_47688_0151.N1	13APR2011 22:49:51	14APR2011 00:00:23	0	32	31	0	0	1	0	0	
1	SCI_NLC_1CUDPA20110414_002240_000059783101_00261_47689_0152.N1	14APR2011 00:30:05	14APR2011 01:40:29	0	32	31	0	0	1	0	0	
2	SCI_NLC_1CUDPA20110414_020222_000060413101_00262_47690_0203.N1	14APR2011 02:10:18	14APR2011 03:20:36	0	32	31	0	0	1	0	0	
3	SCI_NLC_1CUDPA20110414_034307_000059783101_00263_47691_0204.N1	14APR2011 03:50:32	14APR2011 05:01:51	0	32	31	0	0	1	0	0	
4	SCI_NLC_1CUDPA20110414_052249_000060413101_00264_47692_0205.N1	14APR2011 05:30:46	14APR2011 06:41:58	0	32	31	0	0	1	0	0	
5	SCI_NLC_1CUDPA20110414_070334_000059783101_00265_47693_0206.N1	14APR2011 07:10:59	14APR2011 08:22:04	0	32	31	0	0	1	0	0	

6	SCI_NLC_1CUDPA20110414_084316_000060413101_00266_47694_0207.N1	14APR2011 08:51:13	14APR2011 10:02:11	0	32	31	0	0	1	0	0	
7	SCI_NLC_1CUDPA20110414_102401_000059783101_00267_47695_0208.N1	14APR2011 10:31:26	14APR2011 11:42:18	0	32	31	0	0	1	0	0	

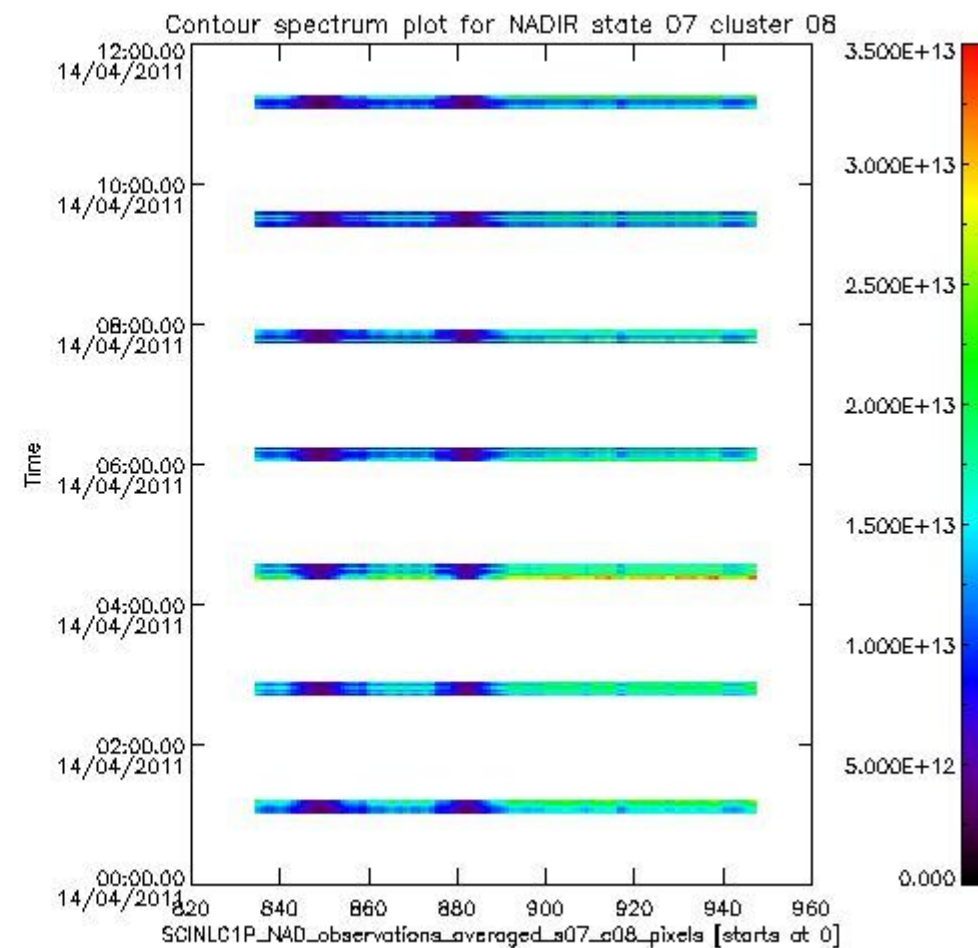
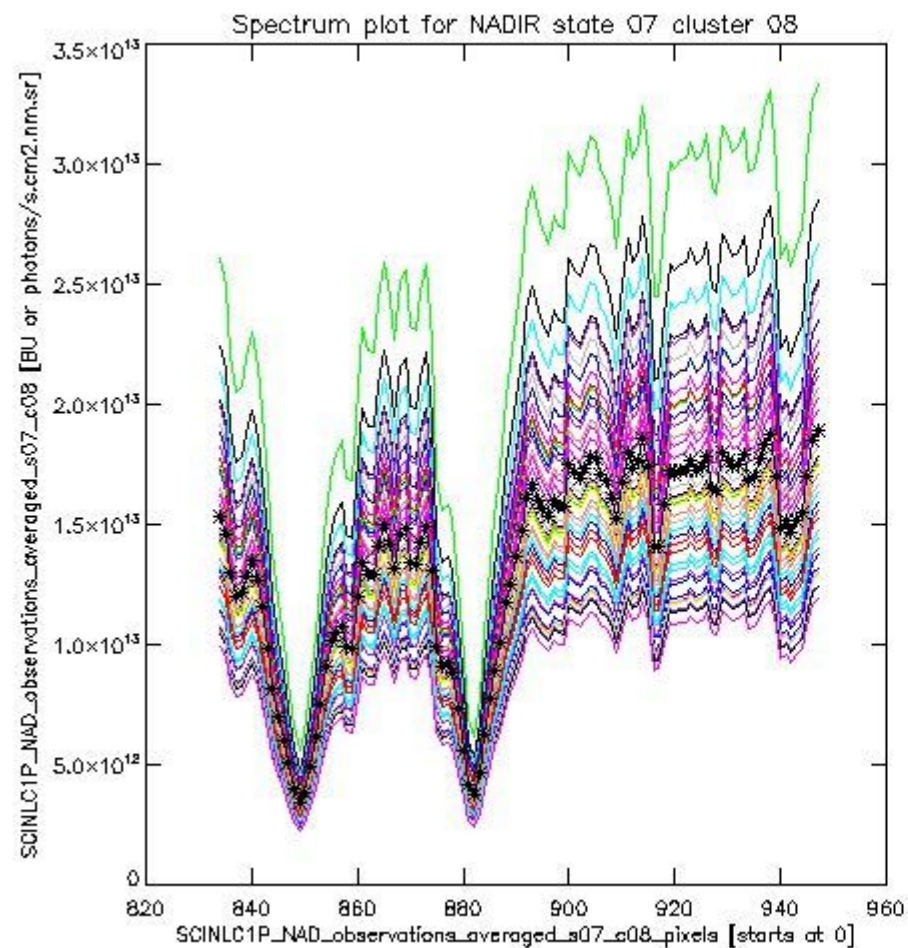
1.2 Source packet monitoring

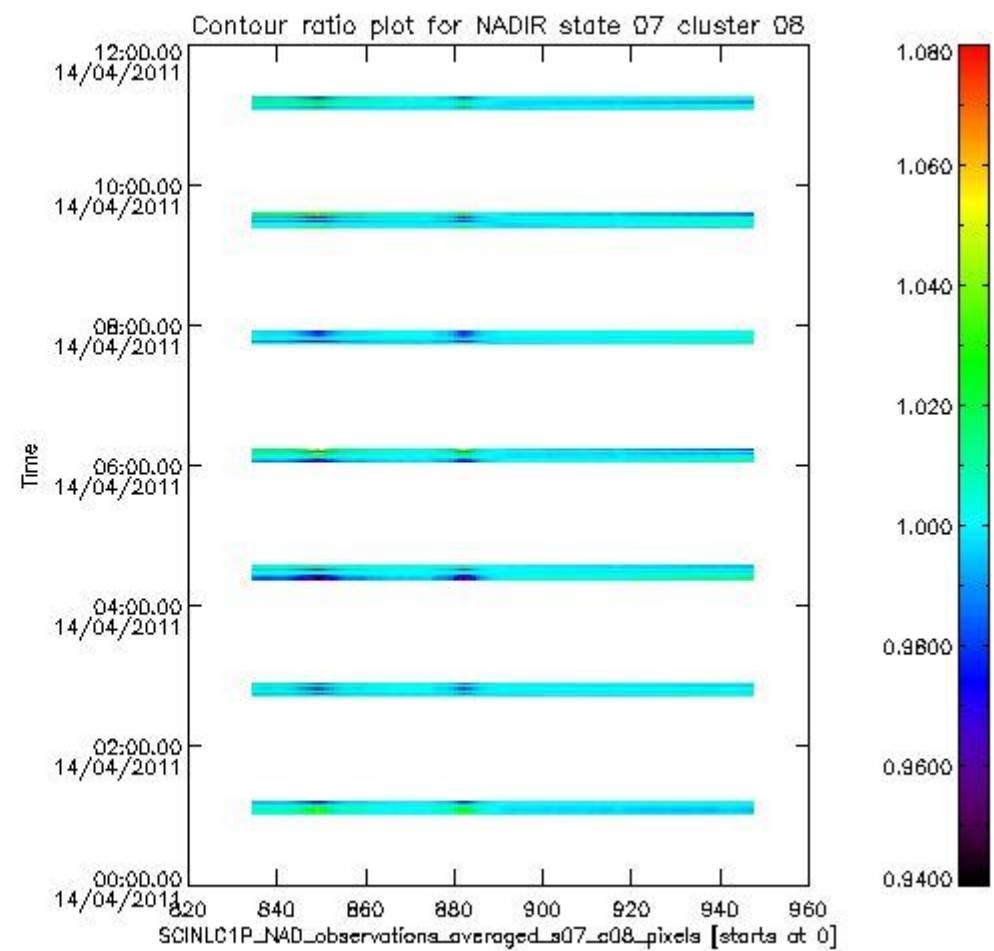
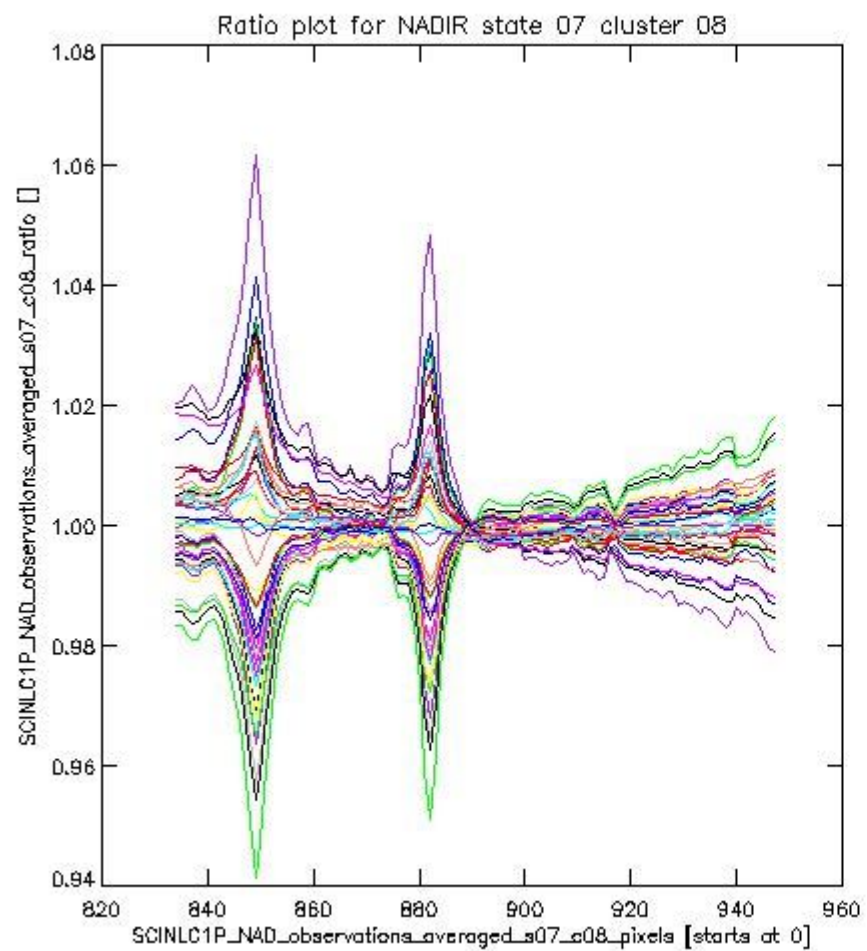
This section shows figures for each of the monitored source packet types listed in the Source Packet Summary section. For each mode-state-cluster(-height) combination the following plots are shown:

- A plot that shows all calibrated averaged spectra vs. pixel number as 2D-profiles. Each line is an average spectrum for a single state occurrence. For Limb modes, the average is performed on spectra recorded at a specific height. The reference spectrum that is used for comparison is also shown as a black line with * markers.
- A plot that shows all calibrated averaged spectra vs. pixel number and time using a coloured contour plot. The colours indicate the intensity.
- A plot that shows ratios of all calibrated averaged spectra and the reference spectrum vs. pixel number. Each line is the ratio of a calibrated averaged spectrum and the reference spectrum, where both spectra have been intensity corrected (the spectrum has been divided by the average pixel intensity) prior to division.
- A plot that shows ratios of all calibrated averaged spectra and the reference spectrum vs. pixel number and time using a coloured contour plot.

1.2.1 NADIR state 07 cluster 08 The data for the analysis of NADIR state 07 cluster 08 have the following characteristics:

Item	Value
Start time of first sample	14APR2011 01:02:07.709
Start time of last sample	14APR2011 11:13:43.131
Reference period start time	15MAR2011 01:04:37.807
Reference period stop time	13APR2011 23:32:07.884
Channel number	2
First pixel number (starts at 0)	834
Last pixel number (starts at 0)	947

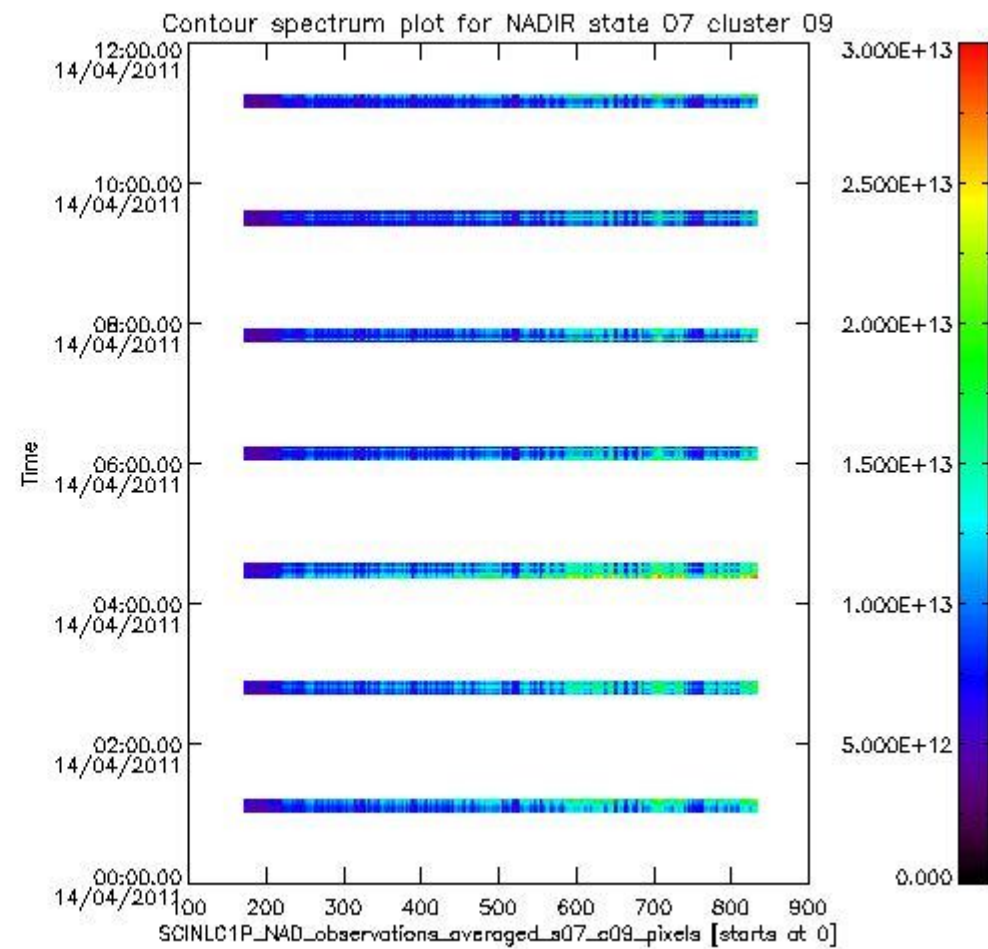
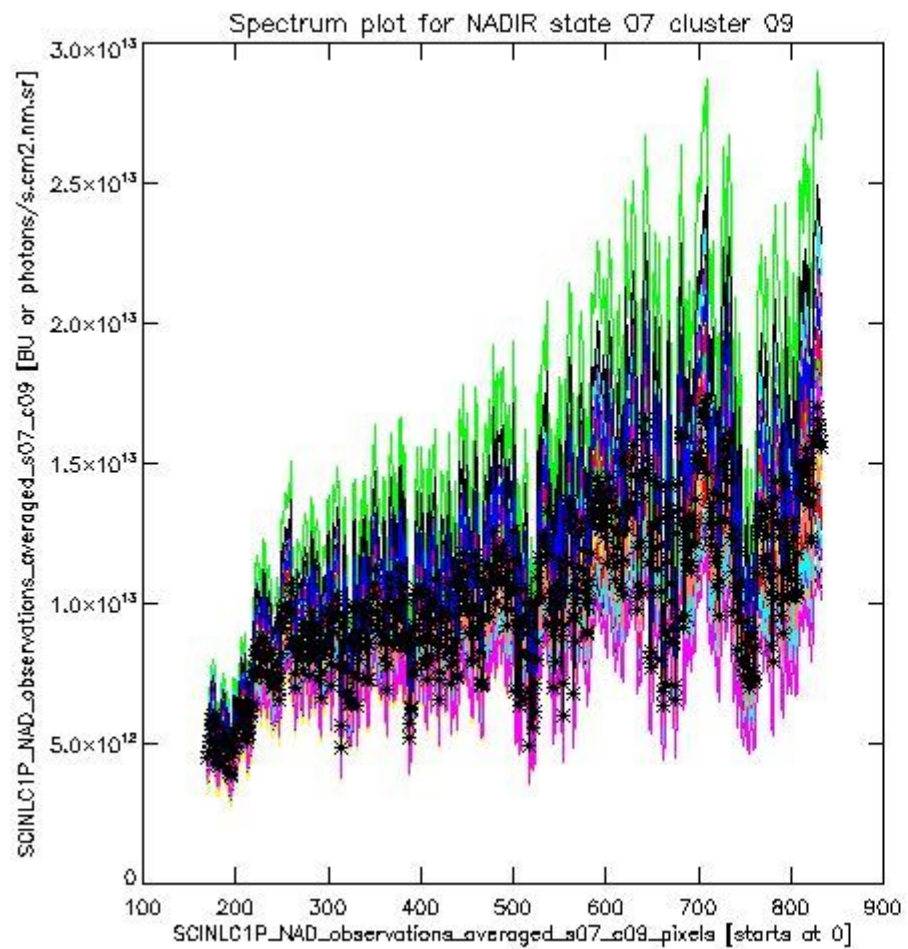




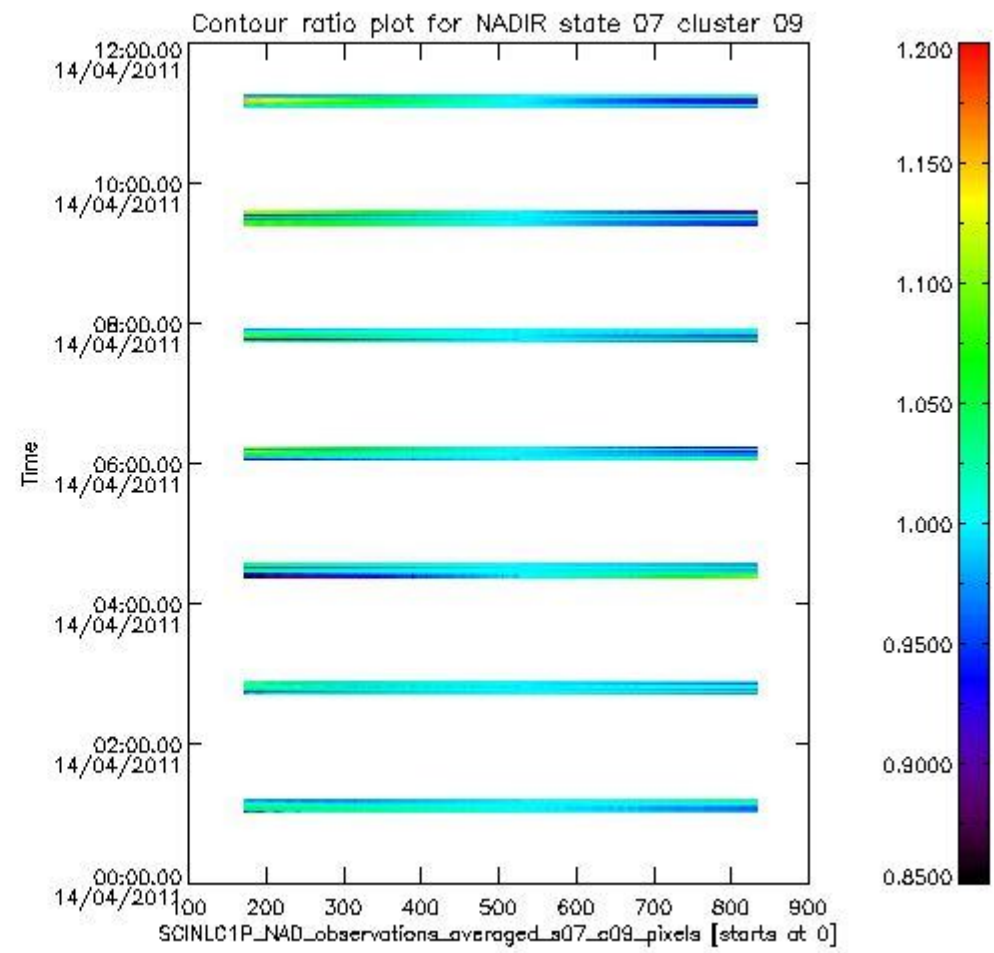
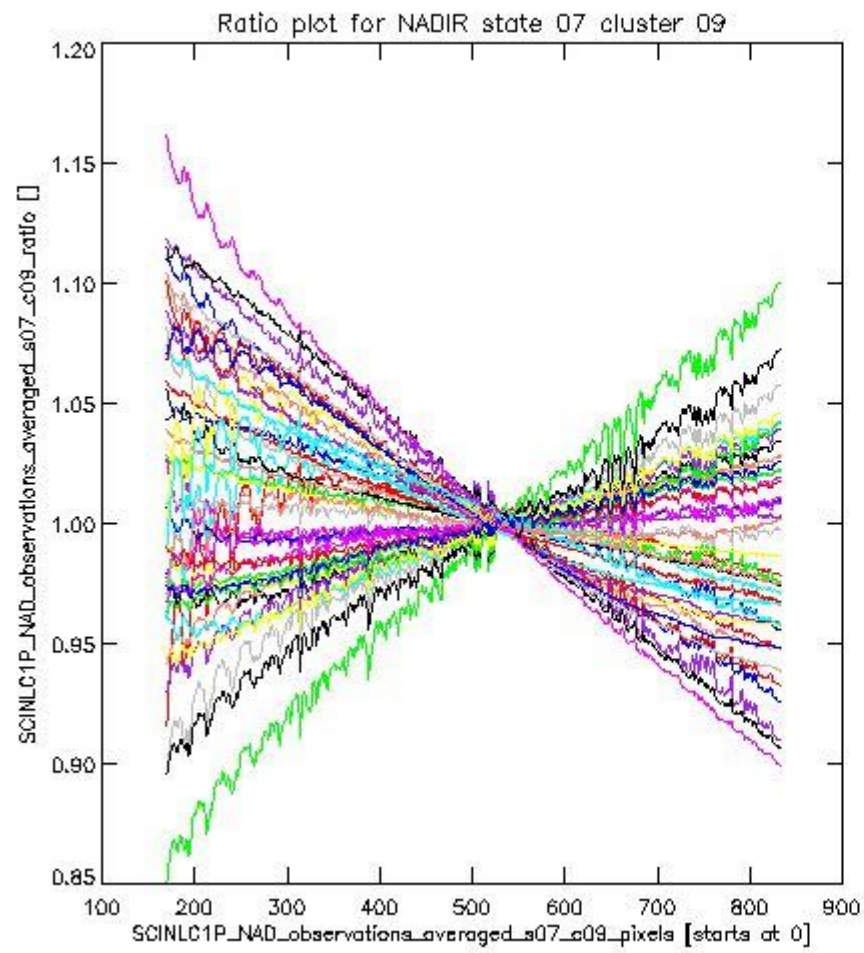
sciamachy_i1b_source_packet_report_SCIA_7_04_U_20110414_1.PNG

1.2.2 NADIR state 07 cluster 09 The data for the analysis of NADIR state 07 cluster 09 have the following characteristics:

Item	Value
Start time of first sample	14APR2011 01:02:07.709
Start time of last sample	14APR2011 11:13:43.131
Reference period start time	15MAR2011 01:04:37.807
Reference period stop time	13APR2011 23:32:07.884
Channel number	2
First pixel number (starts at 0)	170
Last pixel number (starts at 0)	833



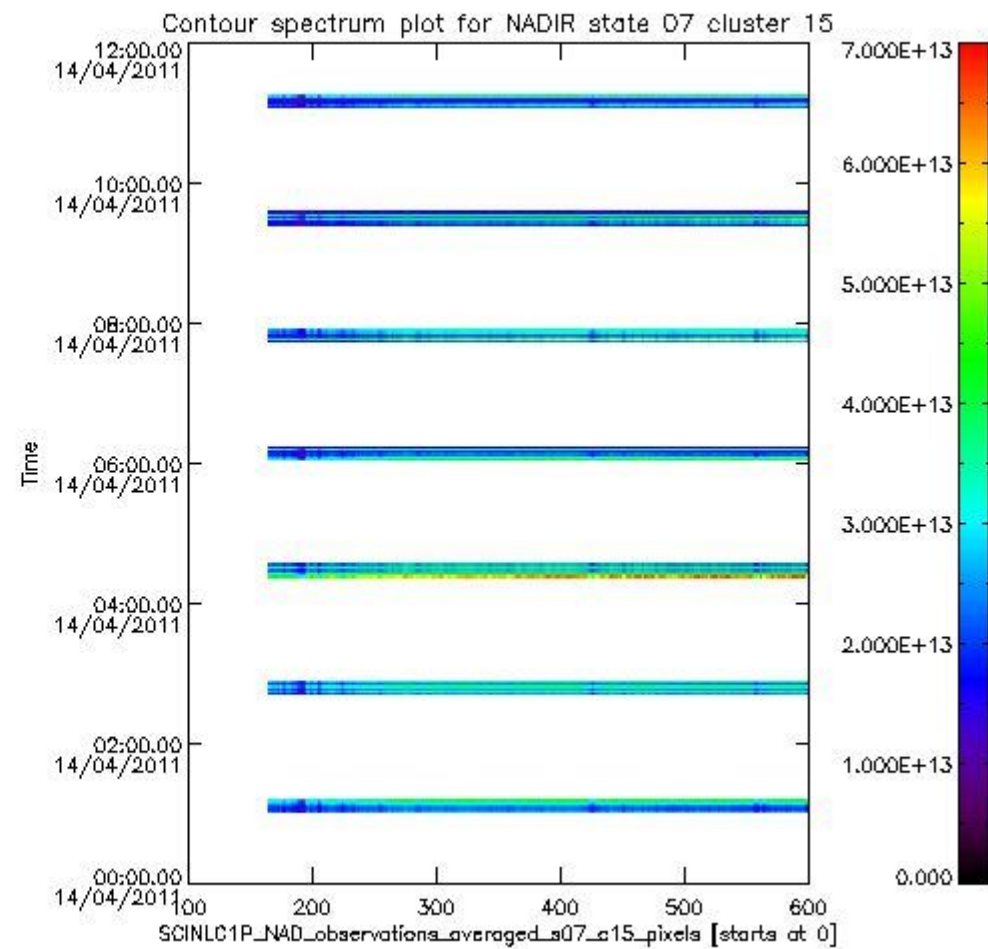
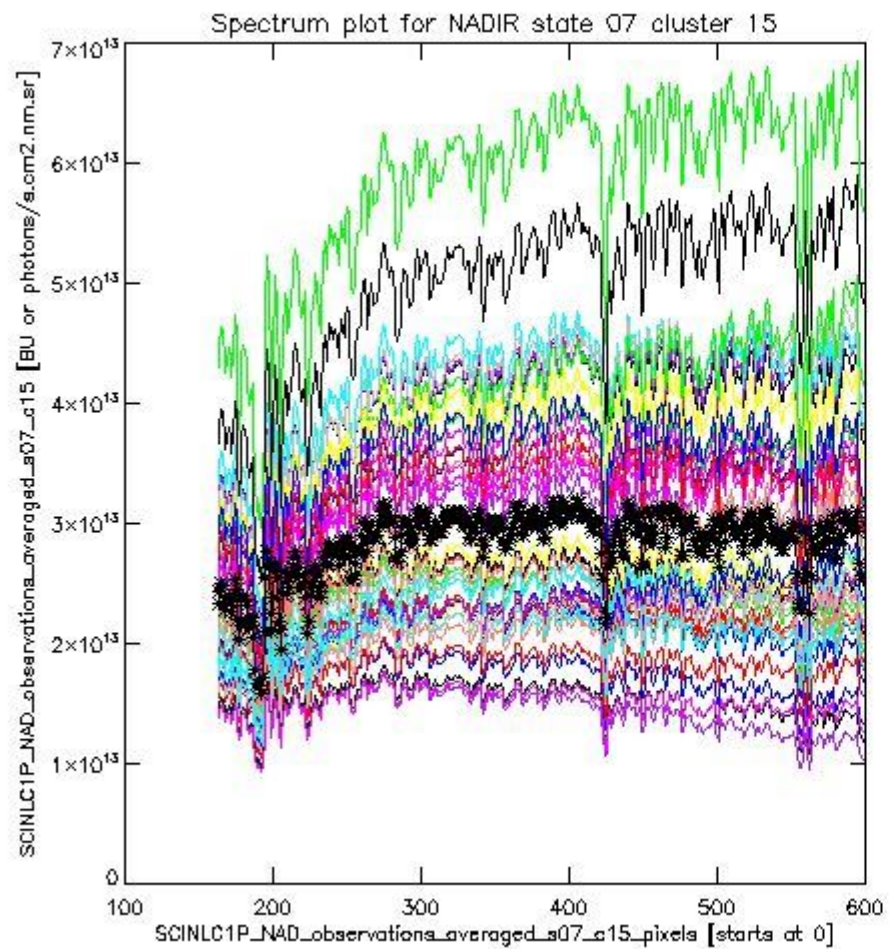
sciamachy_i1b_source_packet_report_SCIA_7_04_U_20110414_2.PNG



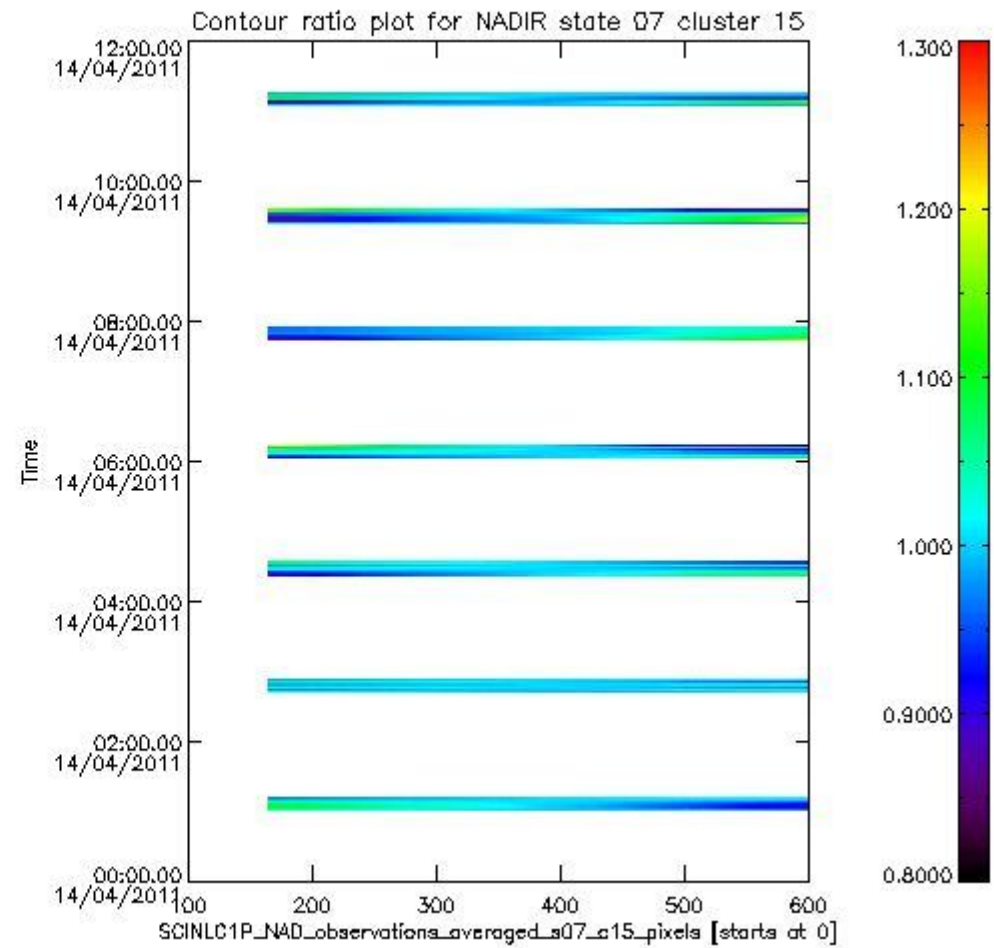
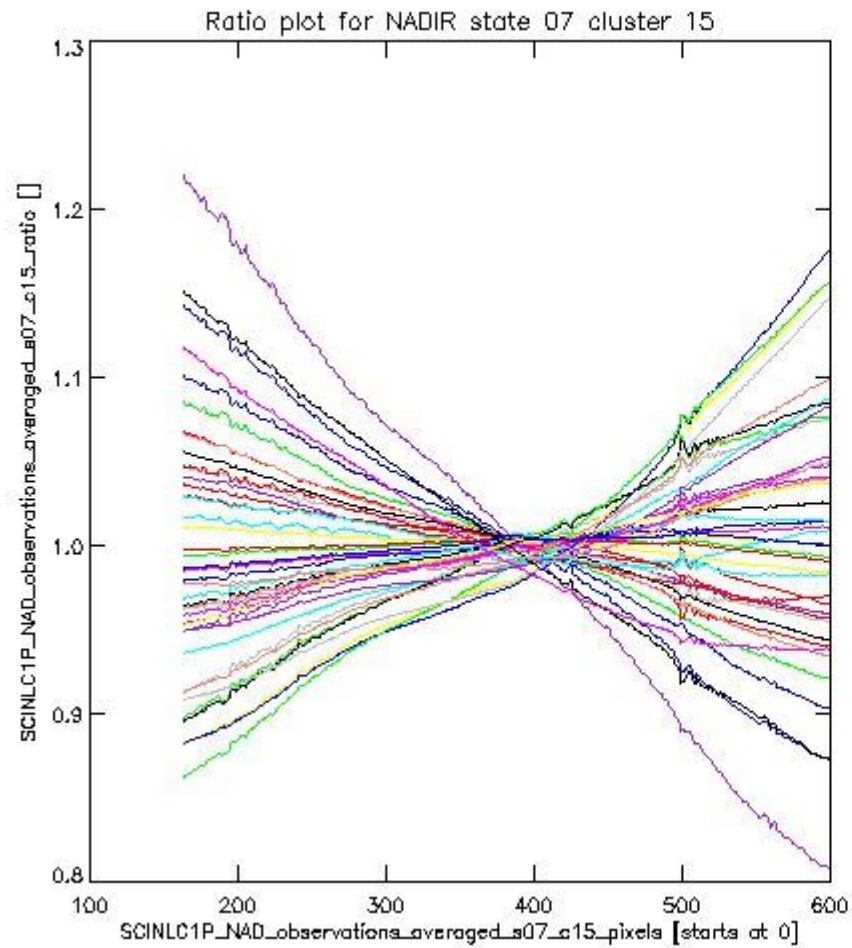
sciamachy_i1b_source_packet_report_SCIA_7_04_U_20110414_3.PNG

1.2.3 NADIR state 07 cluster 15 The data for the analysis of NADIR state 07 cluster 15 have the following characteristics:

Item	Value
Start time of first sample	14APR2011 01:02:07.709
Start time of last sample	14APR2011 11:13:43.131
Reference period start time	15MAR2011 01:04:37.807
Reference period stop time	13APR2011 23:32:07.884
Channel number	3
First pixel number (starts at 0)	163
Last pixel number (starts at 0)	598



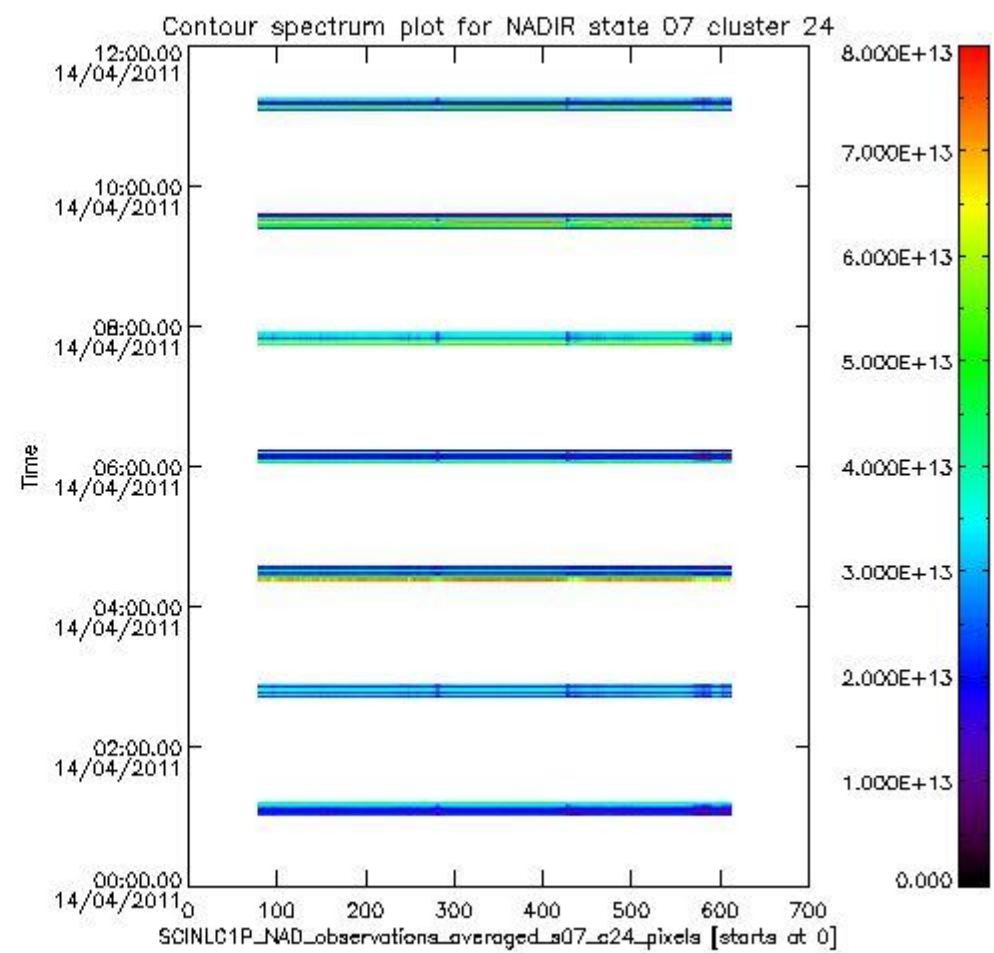
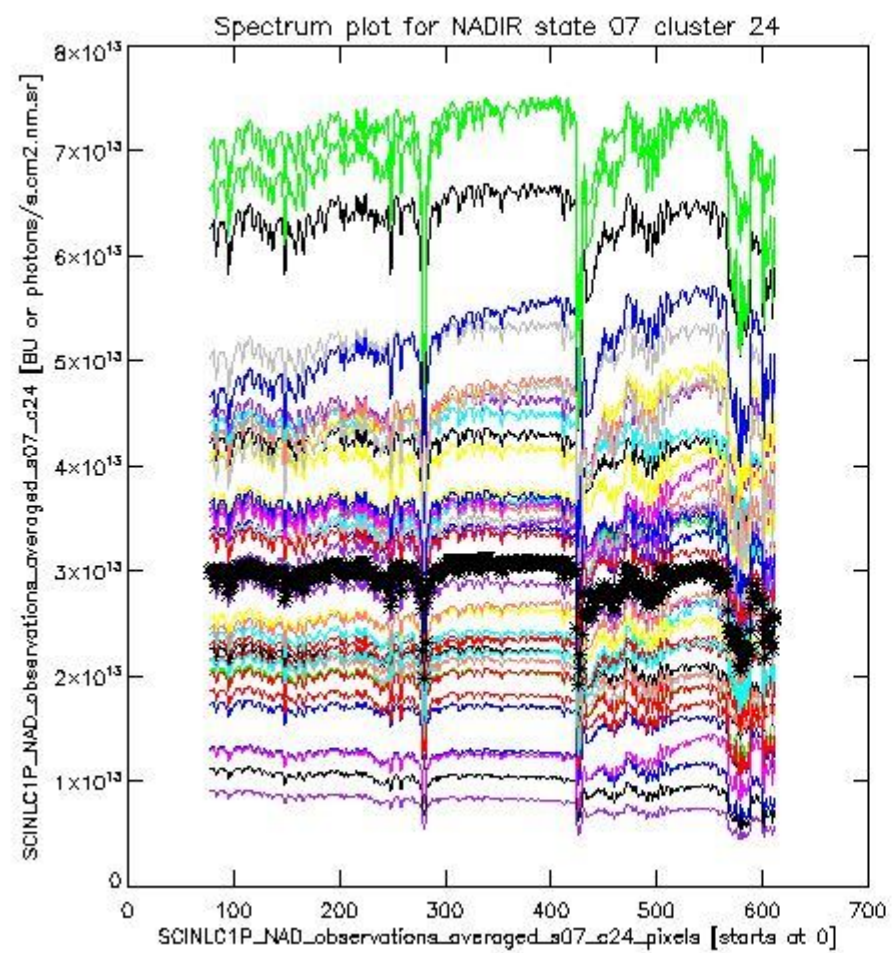
sciamachy_i1b_source_packet_report_SCIA_7_04_U_20110414_4.PNG



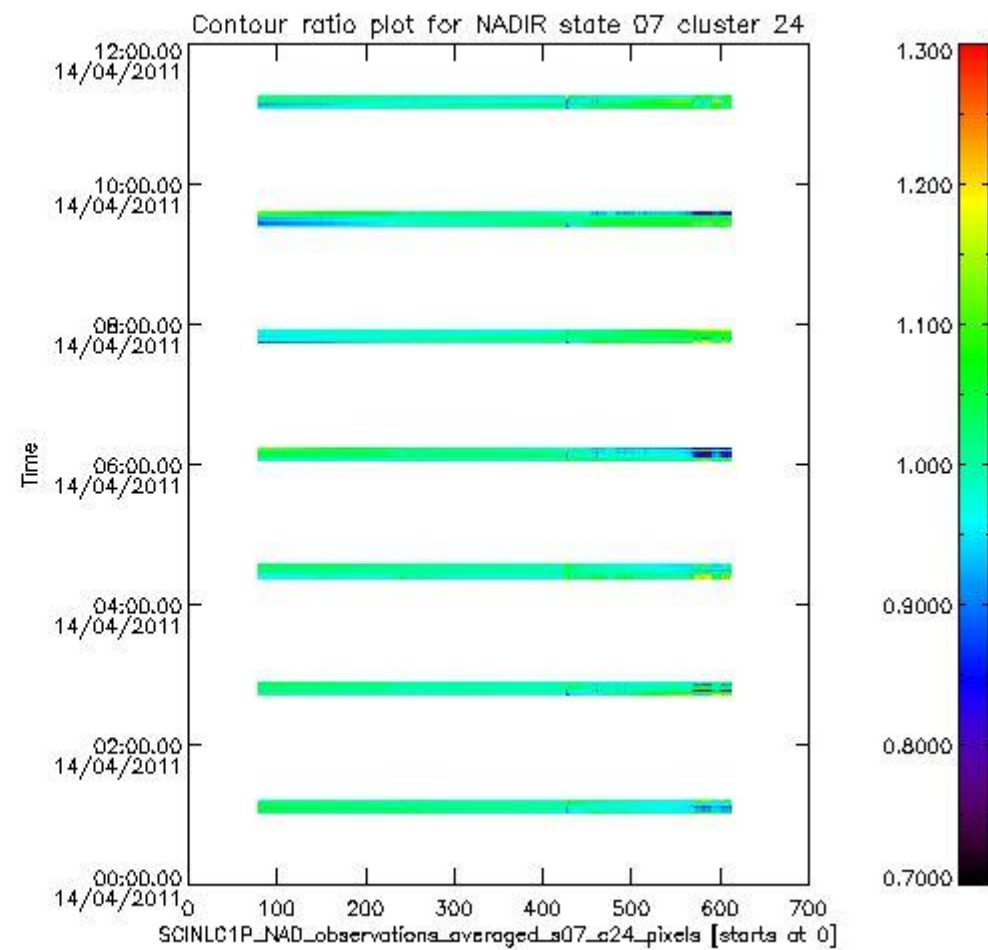
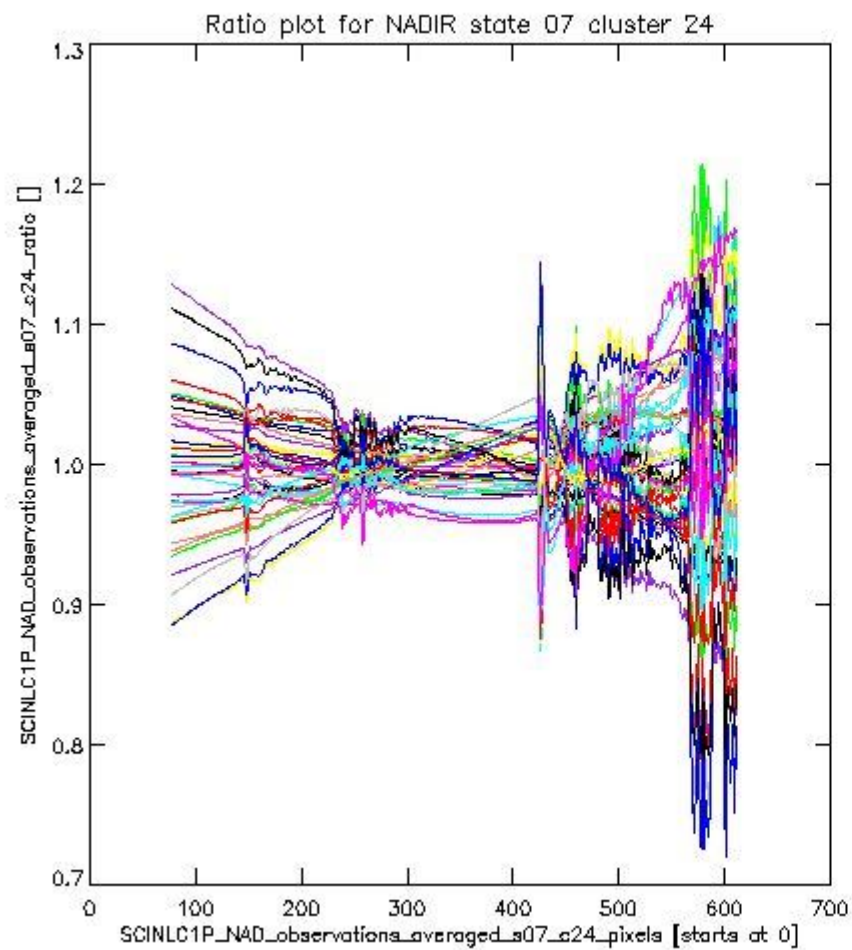
sciamachy_l1b_source_packet_report_SCIA_7_04_U_20110414_5.PNG

1.2.4 NADIR state 07 cluster 24 The data for the analysis of NADIR state 07 cluster 24 have the following characteristics:

Item	Value
Start time of first sample	14APR2011 01:02:07.709
Start time of last sample	14APR2011 11:13:43.131
Reference period start time	15MAR2011 01:04:37.807
Reference period stop time	13APR2011 23:32:07.884
Channel number	4
First pixel number (starts at 0)	78
Last pixel number (starts at 0)	612



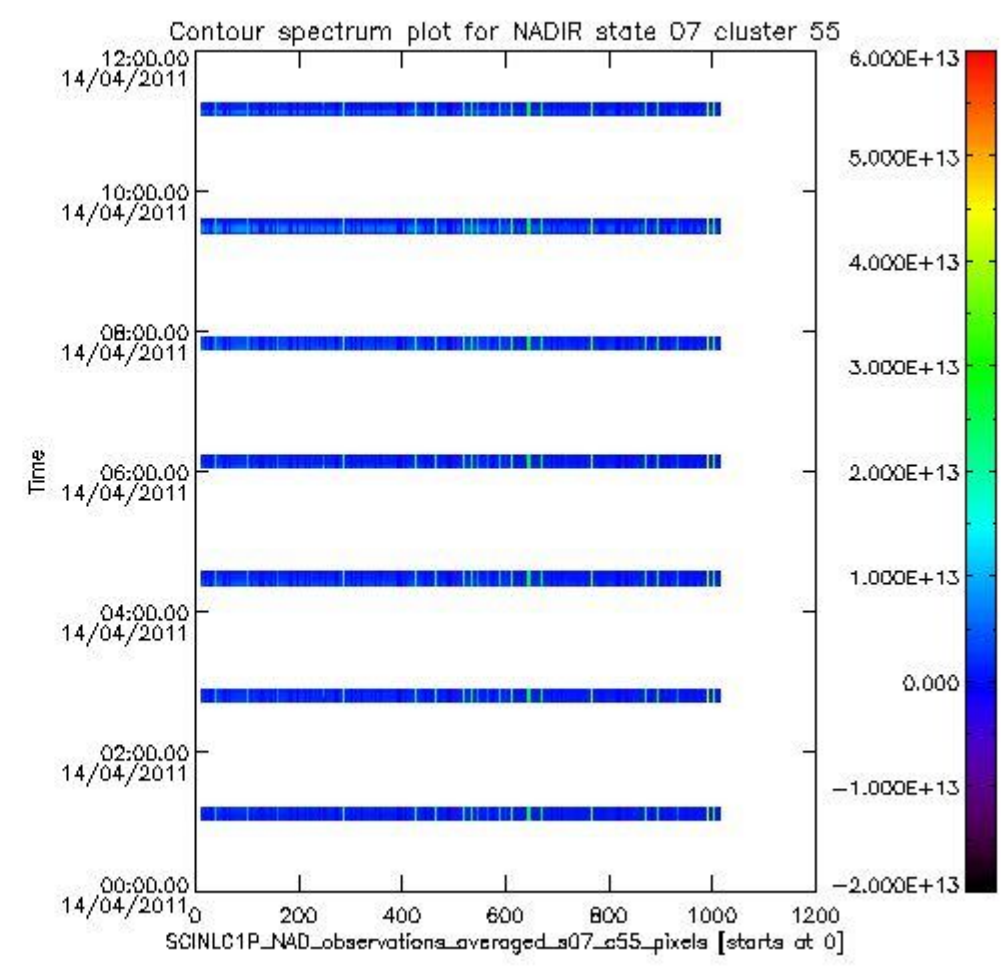
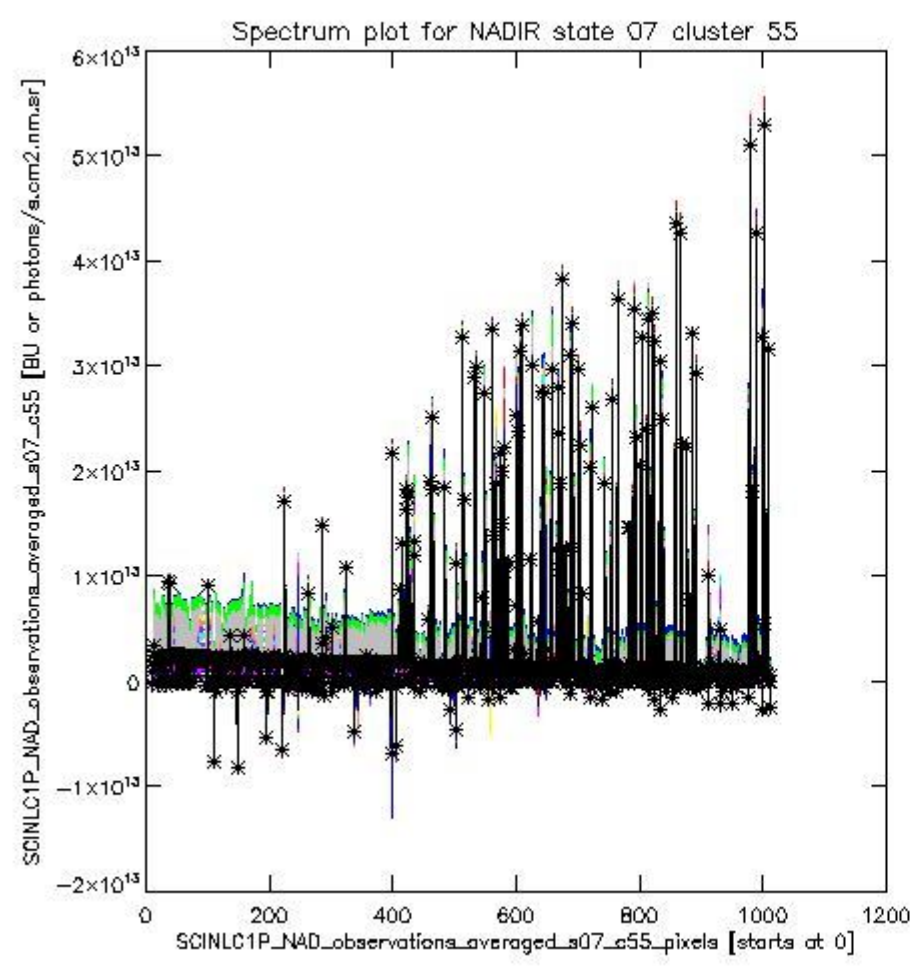
sciamachy_i1b_source_packet_report_SCIA_7_04_U_20110414_6.PNG



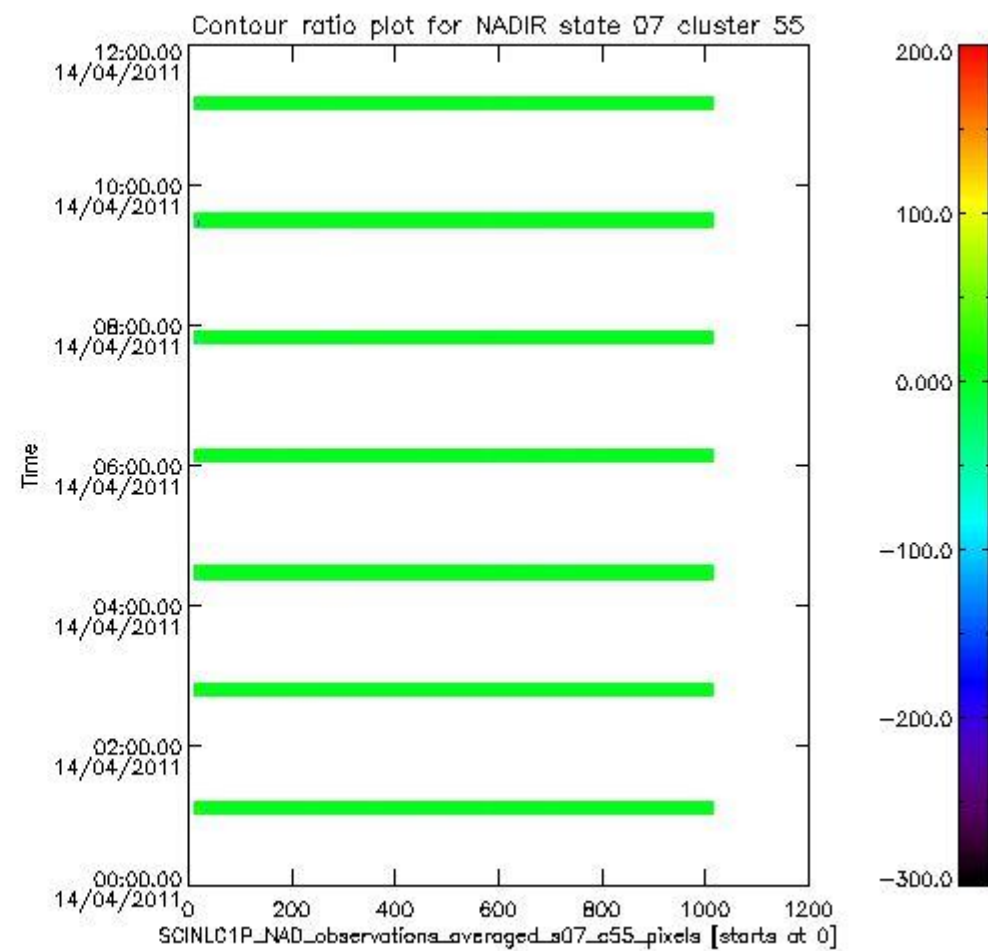
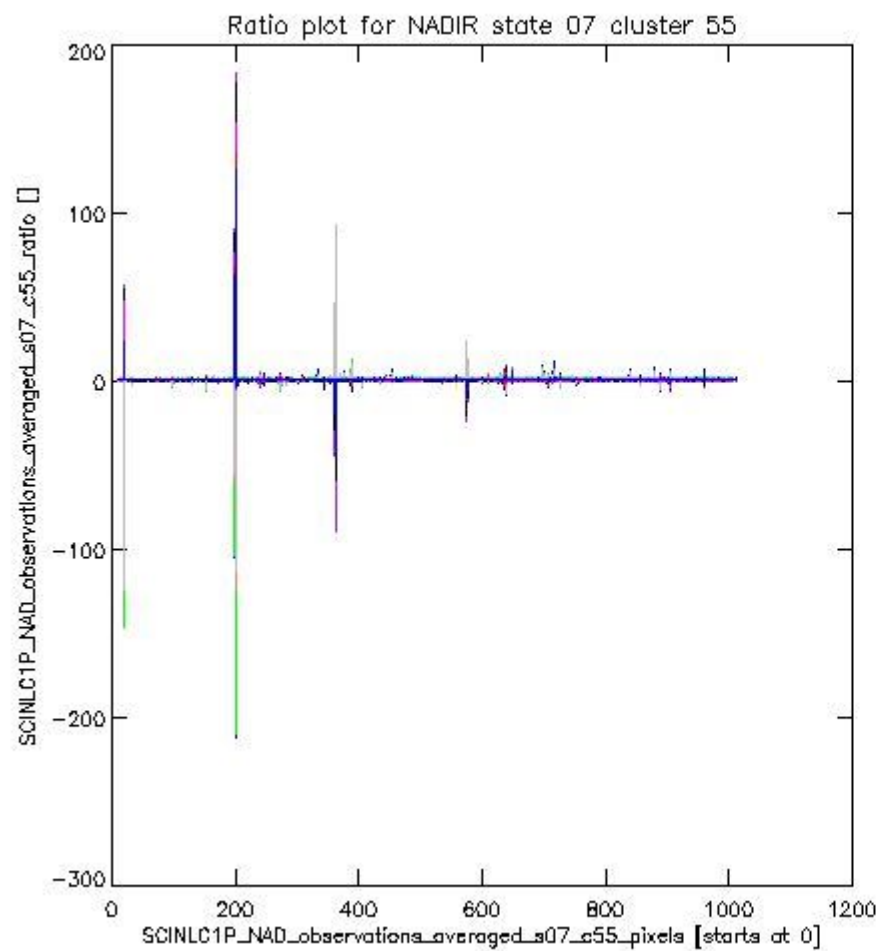
sciamachy_l1b_source_packet_report_SCIA_7_04_U_20110414_7.PNG

1.2.5 NADIR state 07 cluster 55 The data for the analysis of NADIR state 07 cluster 55 have the following characteristics:

Item	Value
Start time of first sample	14APR2011 01:02:07.709
Start time of last sample	14APR2011 11:13:43.131
Reference period start time	15MAR2011 01:06:40.550
Reference period stop time	13APR2011 23:32:07.884
Channel number	8
First pixel number (starts at 0)	10
Last pixel number (starts at 0)	1013



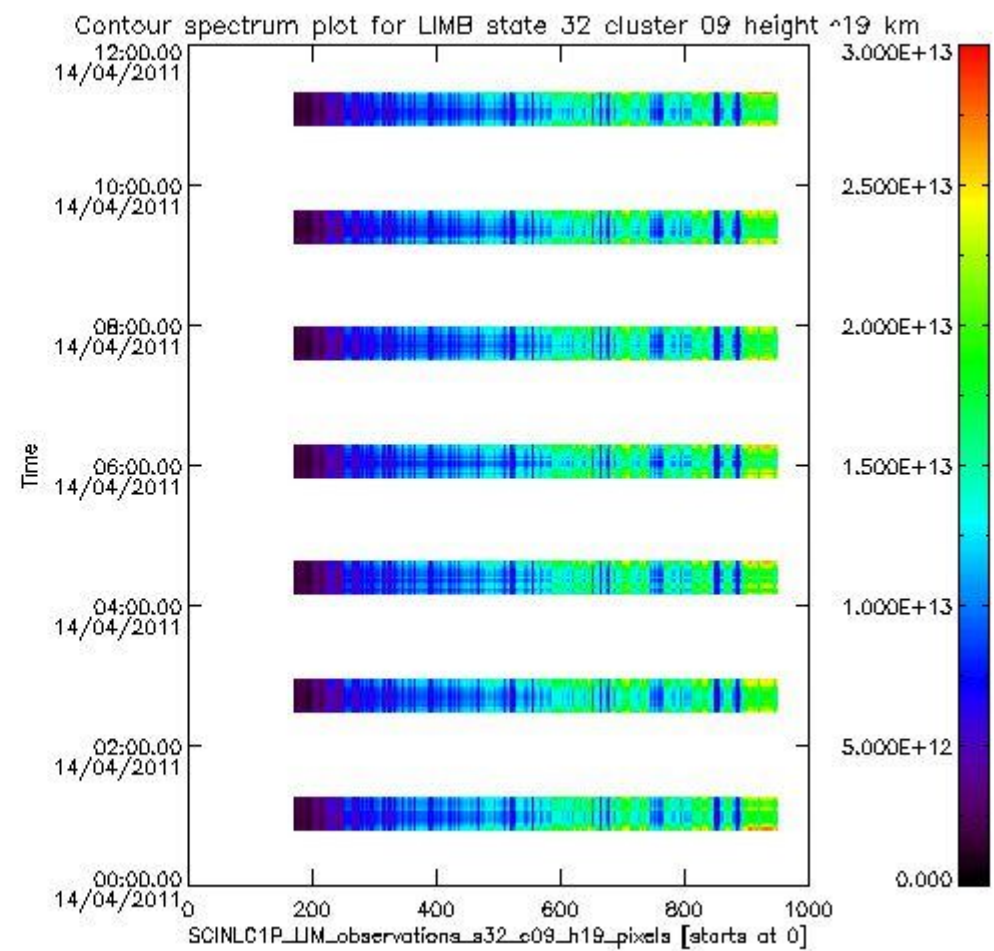
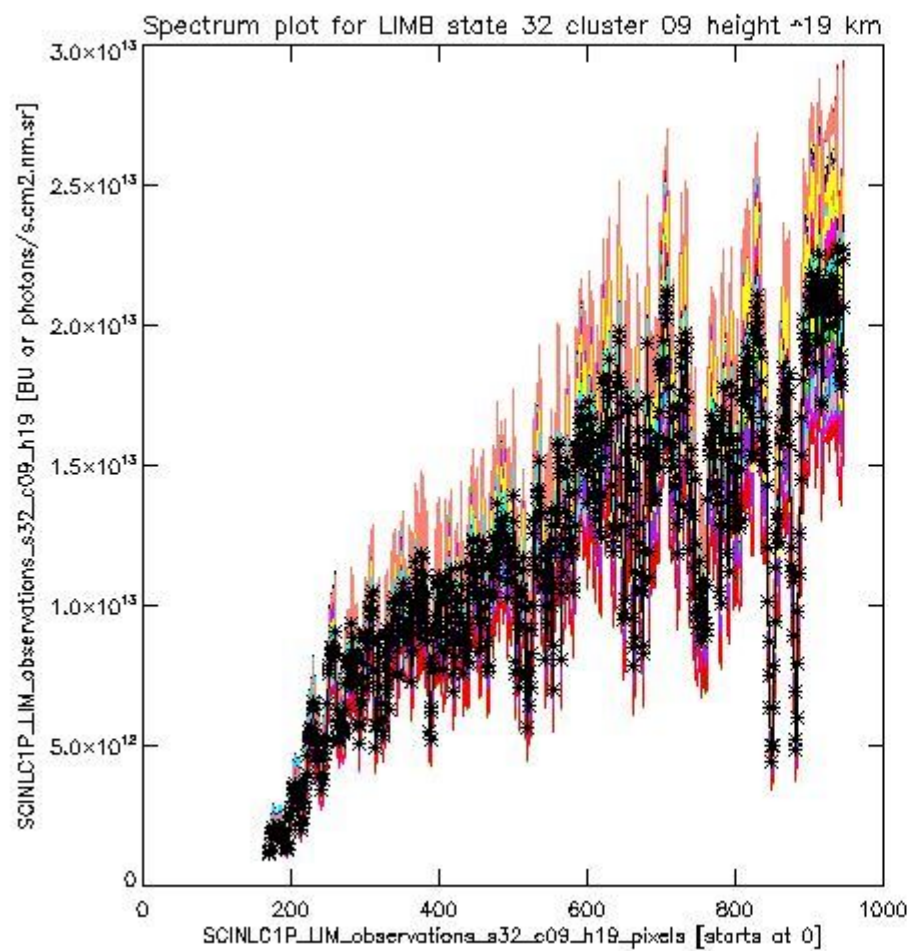
sciamachy_i1b_source_packet_report_SCIA_7_04_U_20110414_8.PNG



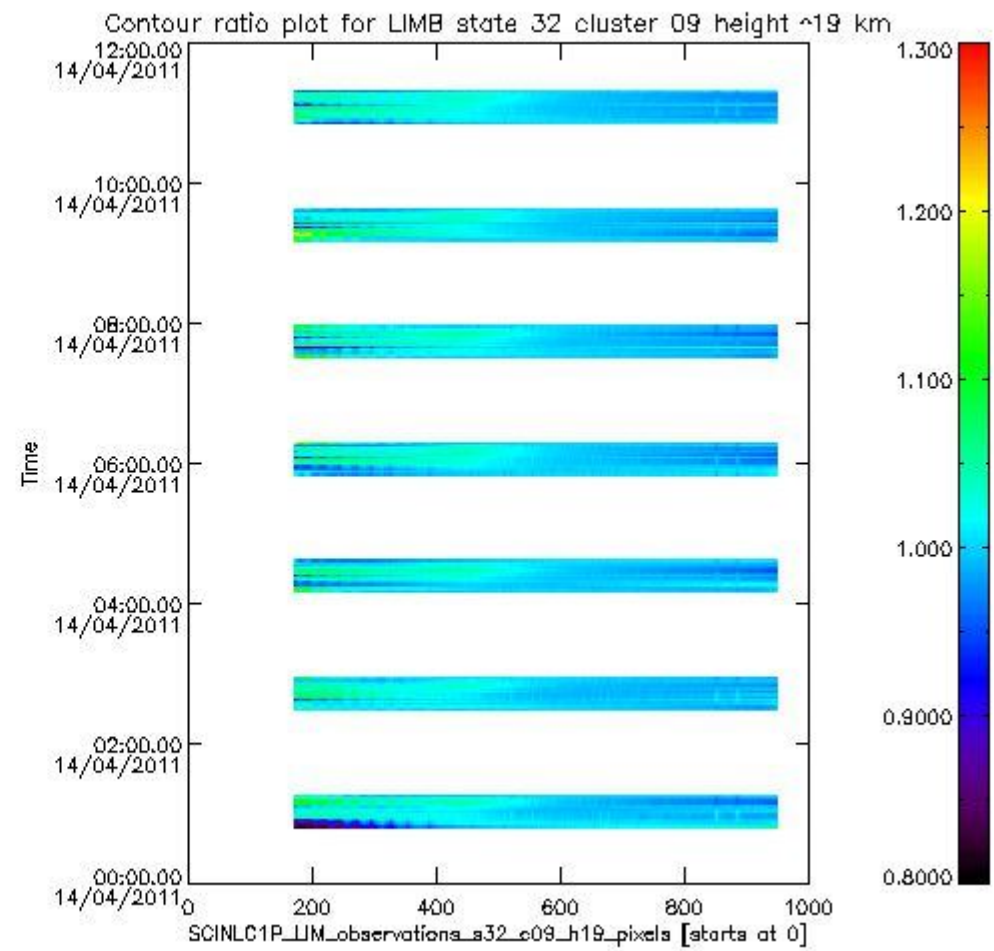
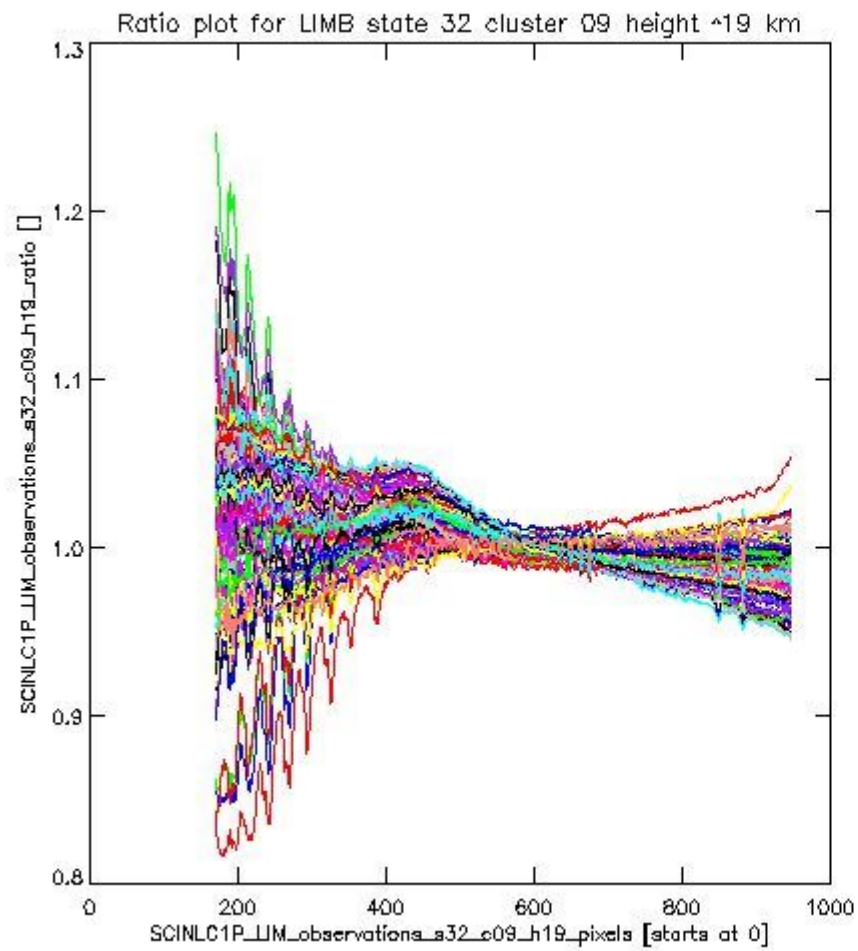
sciamachy_l1b_source_packet_report_SCIA_7_04_U_20110414_9.PNG

1.2.6 LIMB state 32 cluster 09 height ~19 km The data for the analysis of LIMB state 32 cluster 09 height ~19 km have the following characteristics:

Item	Value
Start time of first sample	14APR2011 00:48:57.068
Start time of last sample	14APR2011 11:16:54.428
Reference period start time	15MAR2011 00:51:27.167
Reference period stop time	13APR2011 23:35:19.185
Channel number	2
First pixel number (starts at 0)	170
Last pixel number (starts at 0)	947



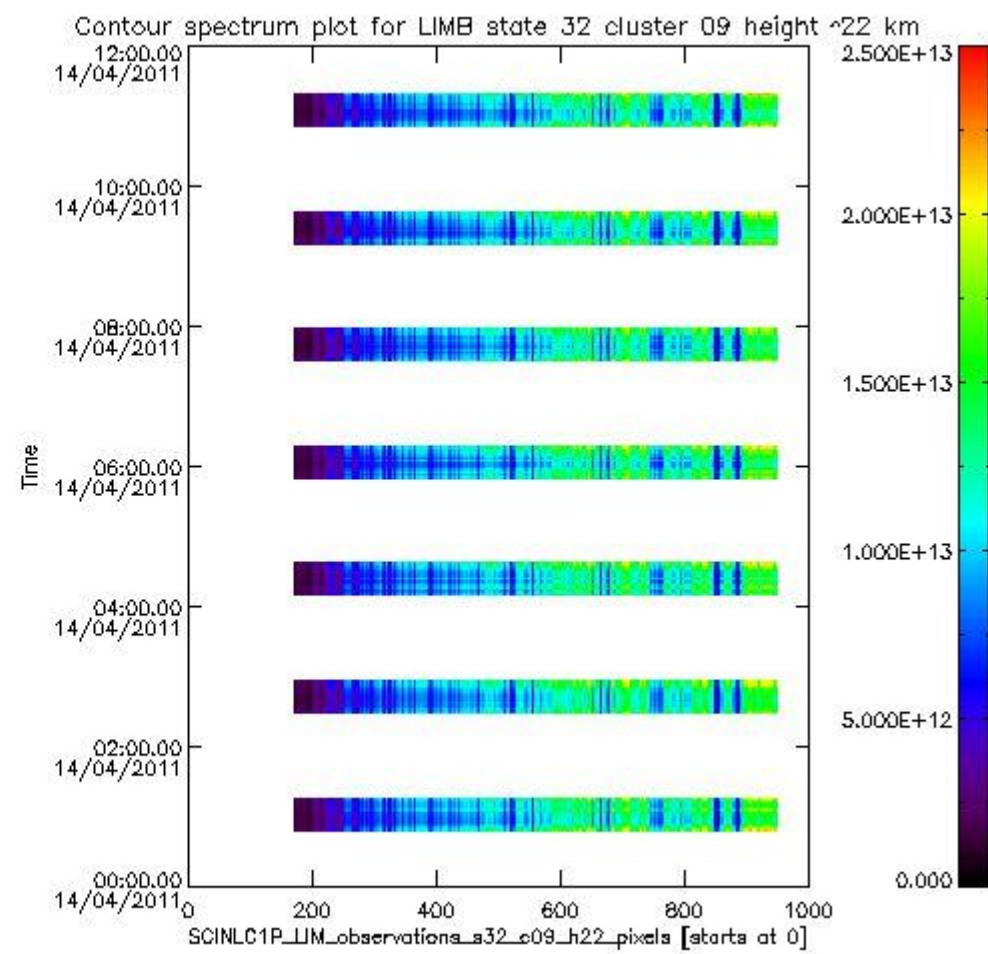
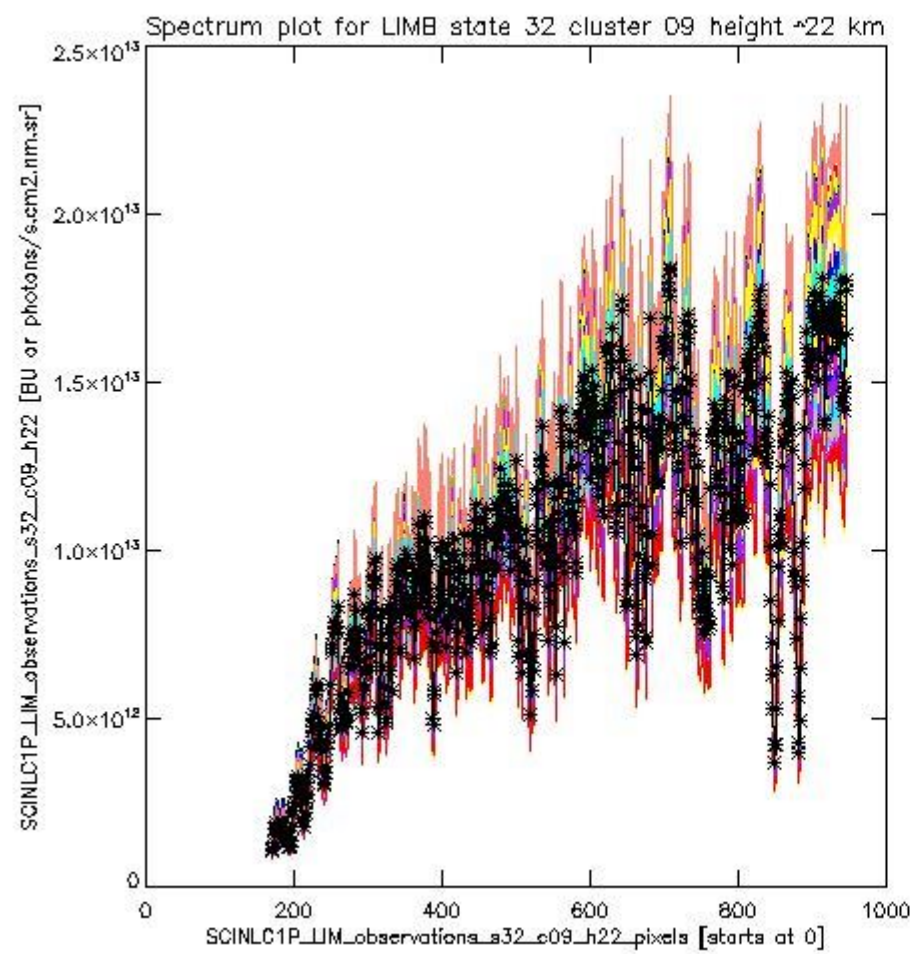
sciamachy_i1b_source_packet_report_SCIA_7_04_U_20110414_10.PNG



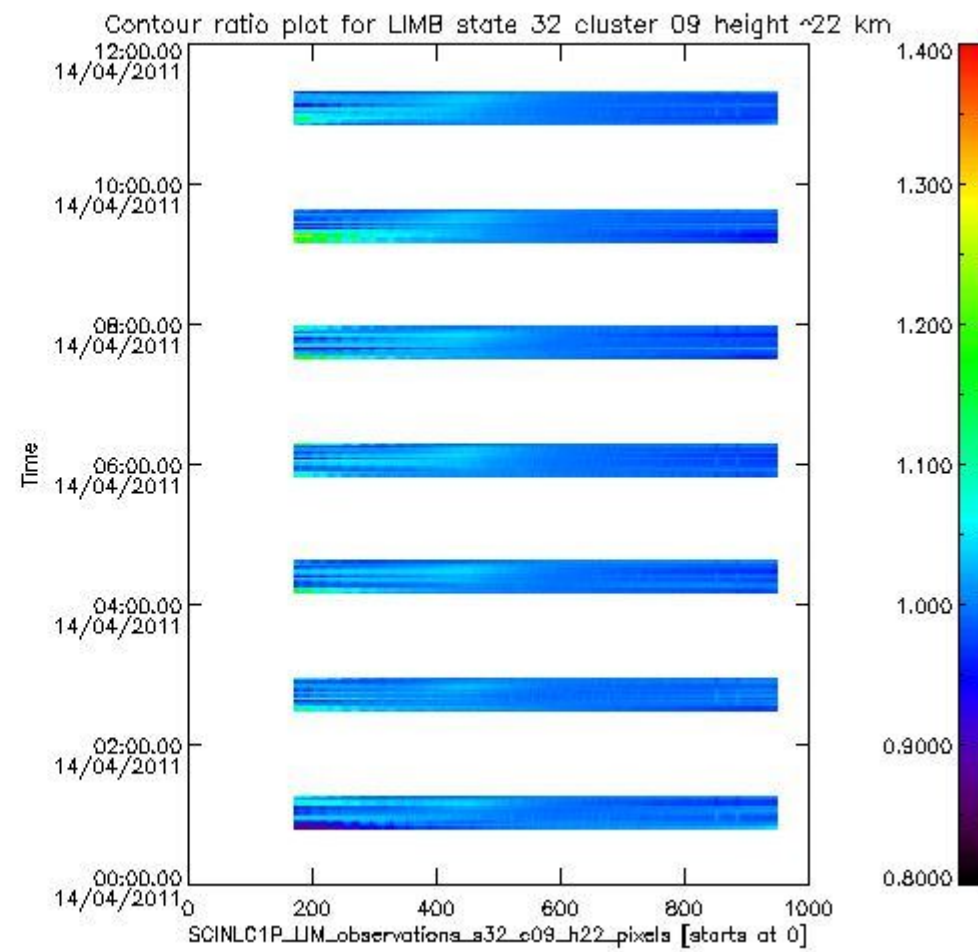
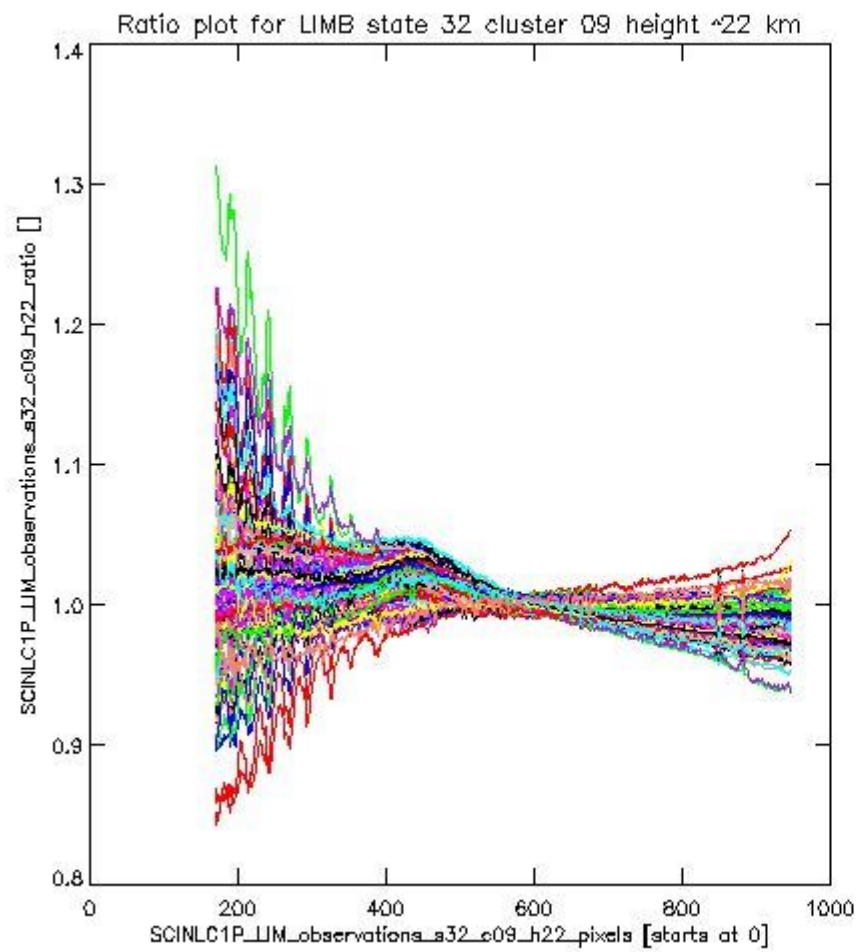
sciamachy_i1b_source_packet_report_SCIA_7_04_U_20110414_11.PNG

1.2.7 LIMB state 32 cluster 09 height ~22 km The data for the analysis of LIMB state 32 cluster 09 height ~22 km have the following characteristics:

Item	Value
Start time of first sample	14APR2011 00:48:57.068
Start time of last sample	14APR2011 11:16:54.428
Reference period start time	15MAR2011 00:51:27.167
Reference period stop time	13APR2011 23:35:19.185
Channel number	2
First pixel number (starts at 0)	170
Last pixel number (starts at 0)	947



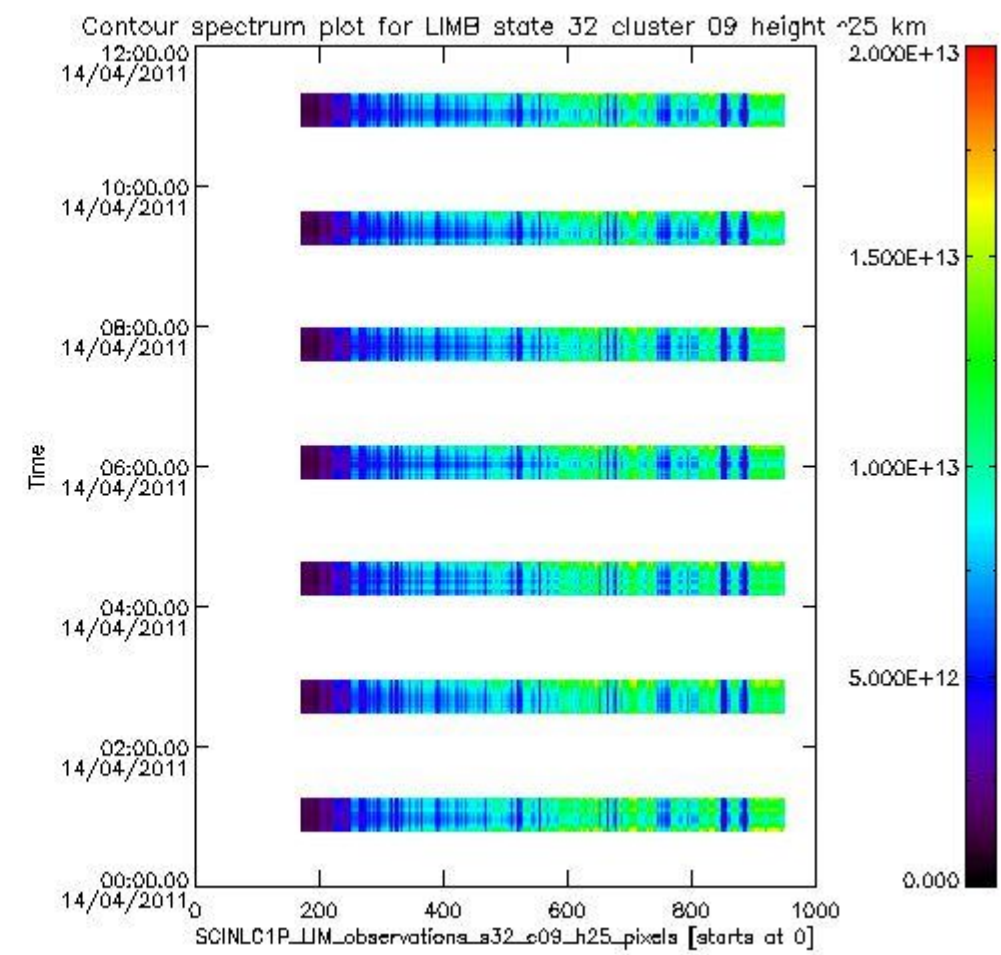
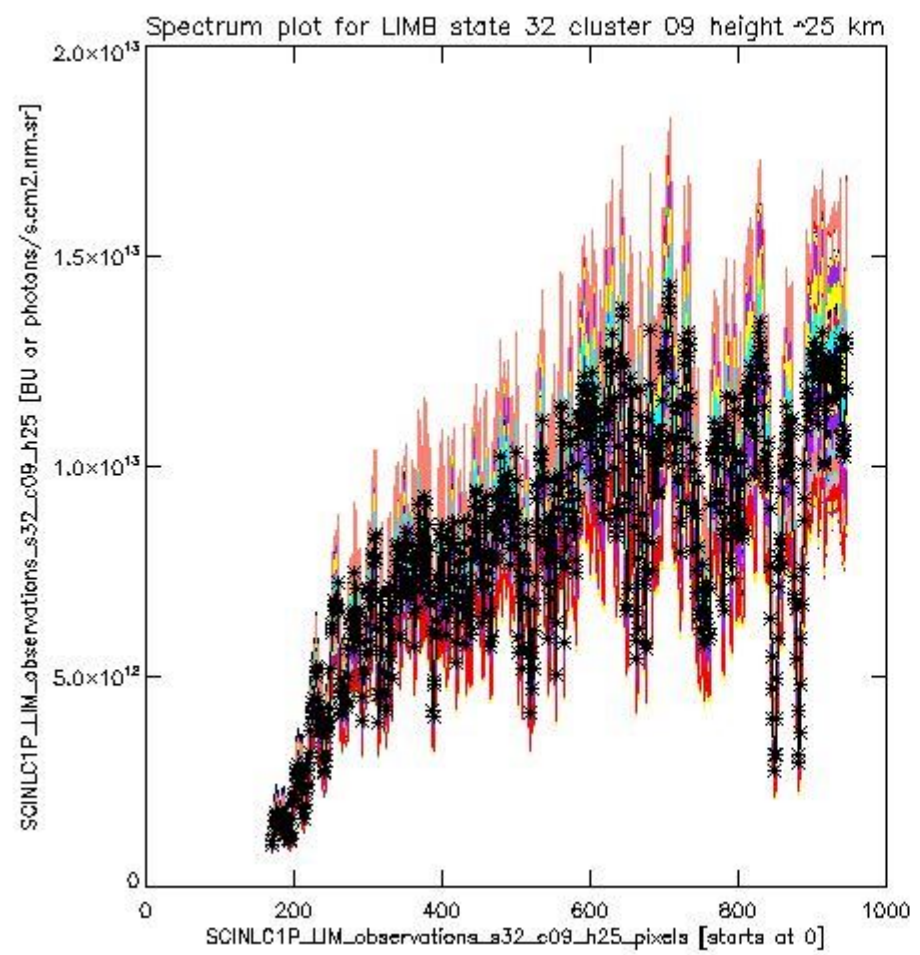
sciamachy_i1b_source_packet_report_SCIA_7_04_U_20110414_12.PNG



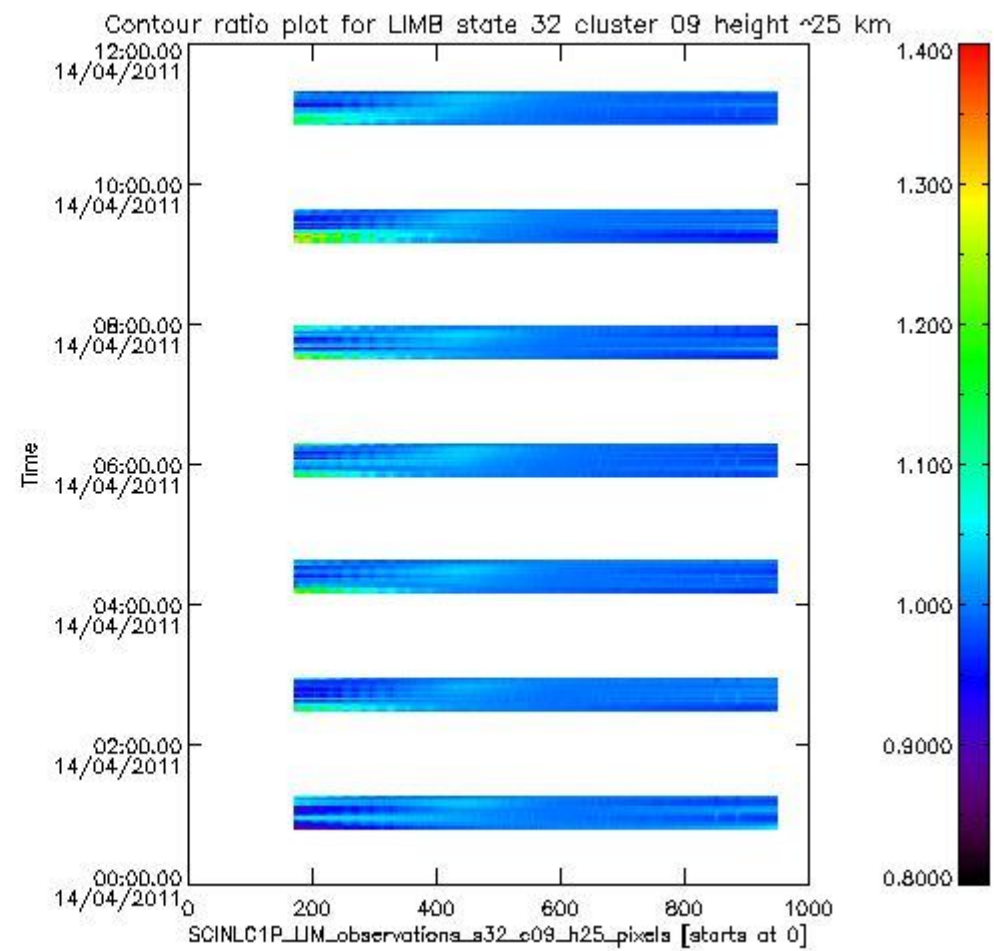
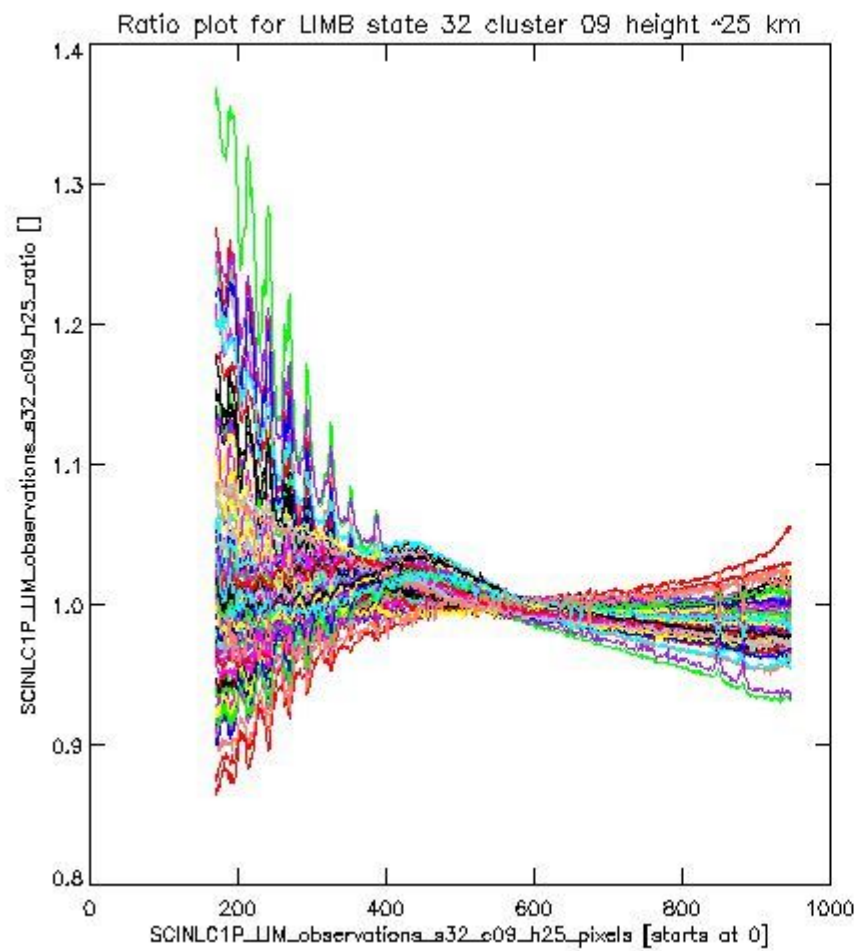
sciamachy_l1b_source_packet_report_SCIA_7_04_U_20110414_13.PNG

1.2.8 LIMB state 32 cluster 09 height ~25 km The data for the analysis of LIMB state 32 cluster 09 height ~25 km have the following characteristics:

Item	Value
Start time of first sample	14APR2011 00:48:57.068
Start time of last sample	14APR2011 11:16:54.428
Reference period start time	15MAR2011 00:51:27.167
Reference period stop time	13APR2011 23:35:19.185
Channel number	2
First pixel number (starts at 0)	170
Last pixel number (starts at 0)	947



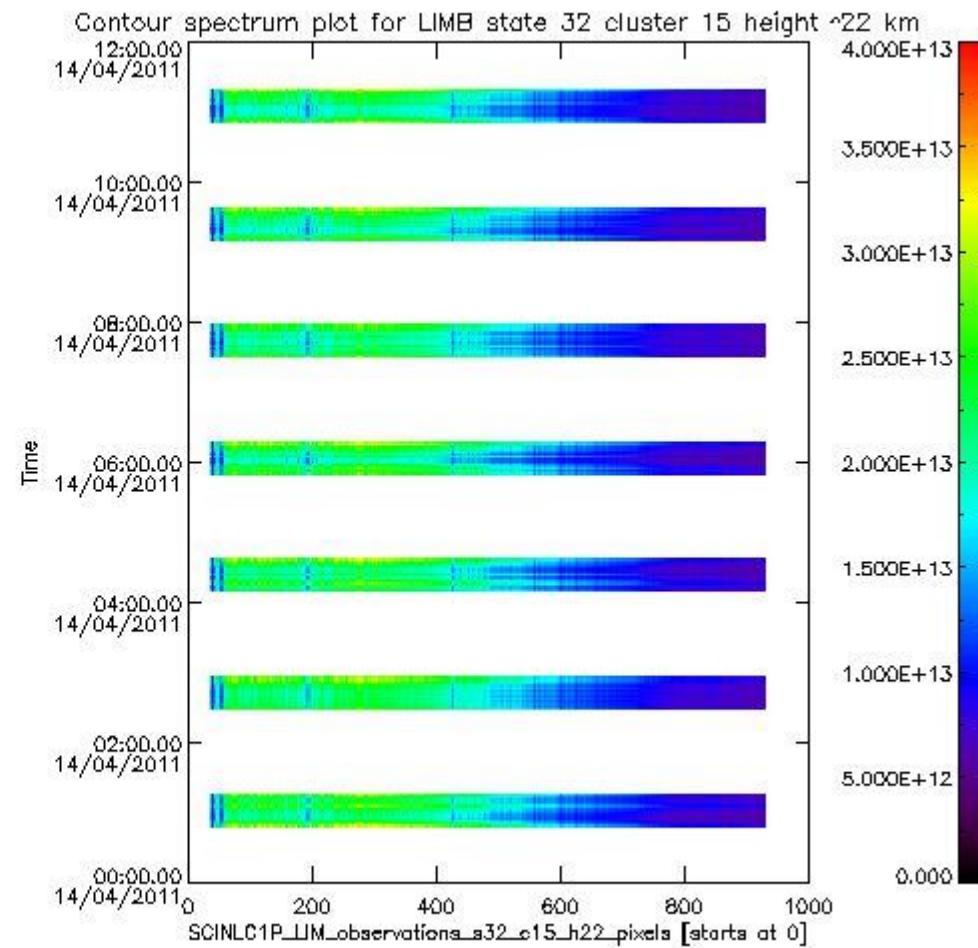
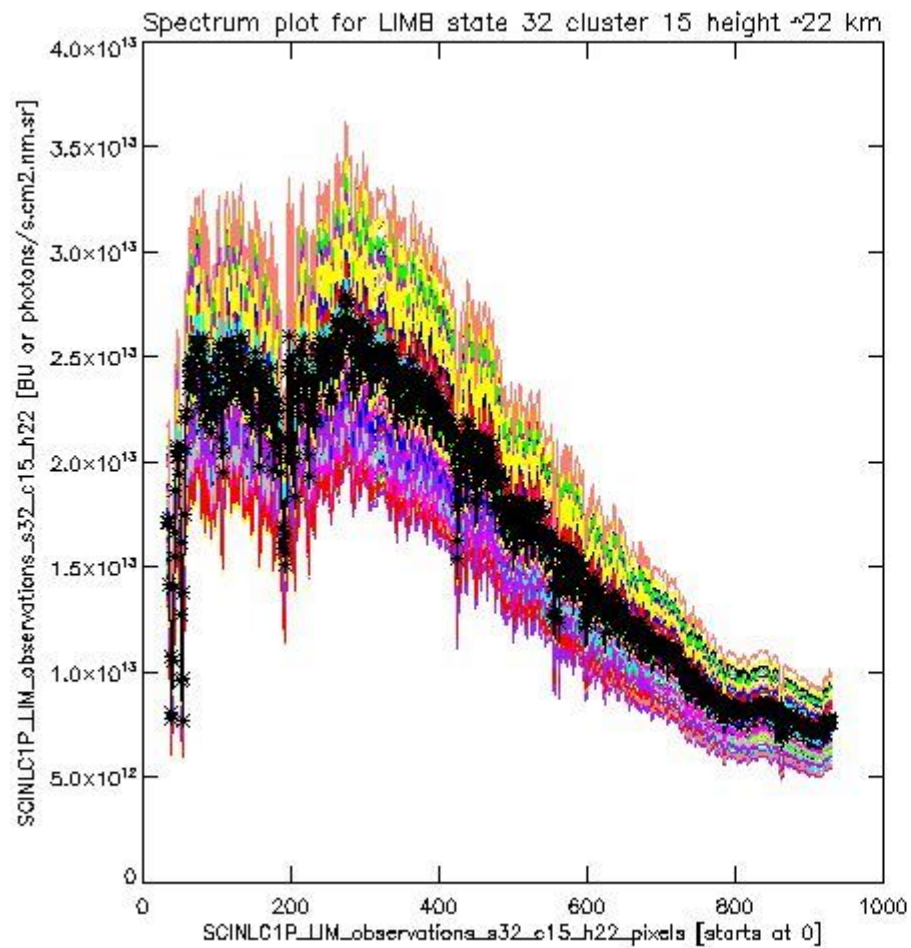
sciamachy_l1b_source_packet_report_SCIA_7_04_U_20110414_14.PNG



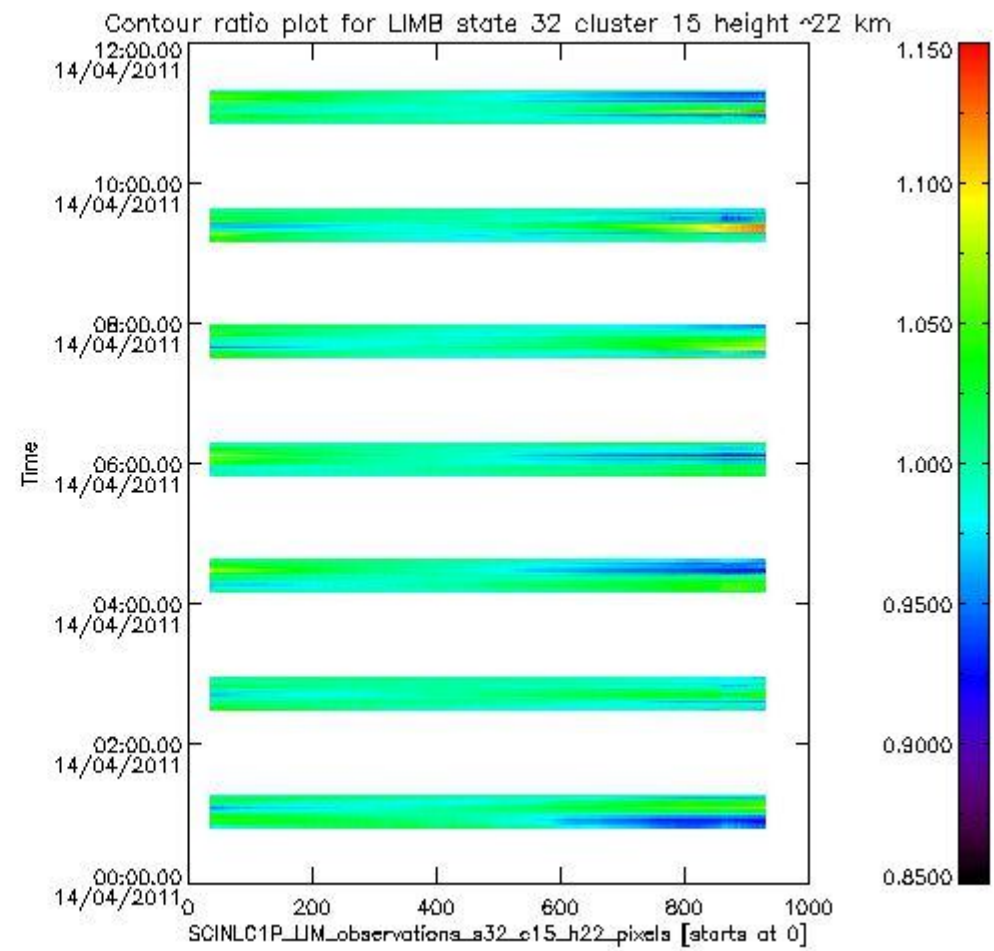
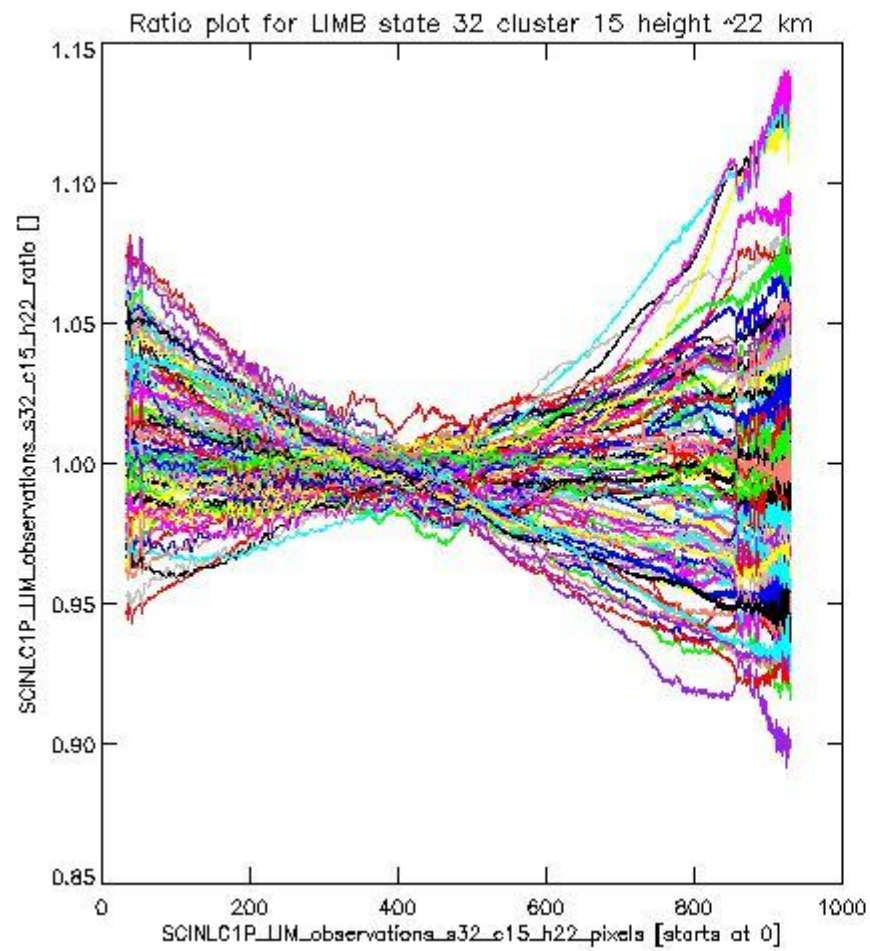
sciamachy_l1b_source_packet_report_SCIA_7_04_U_20110414_15.PNG

1.2.9 LIMB state 32 cluster 15 height ~22 km The data for the analysis of LIMB state 32 cluster 15 height ~22 km have the following characteristics:

Item	Value
Start time of first sample	14APR2011 00:48:57.068
Start time of last sample	14APR2011 11:16:54.428
Reference period start time	15MAR2011 00:51:27.167
Reference period stop time	13APR2011 23:35:19.185
Channel number	3
First pixel number (starts at 0)	33
Last pixel number (starts at 0)	929



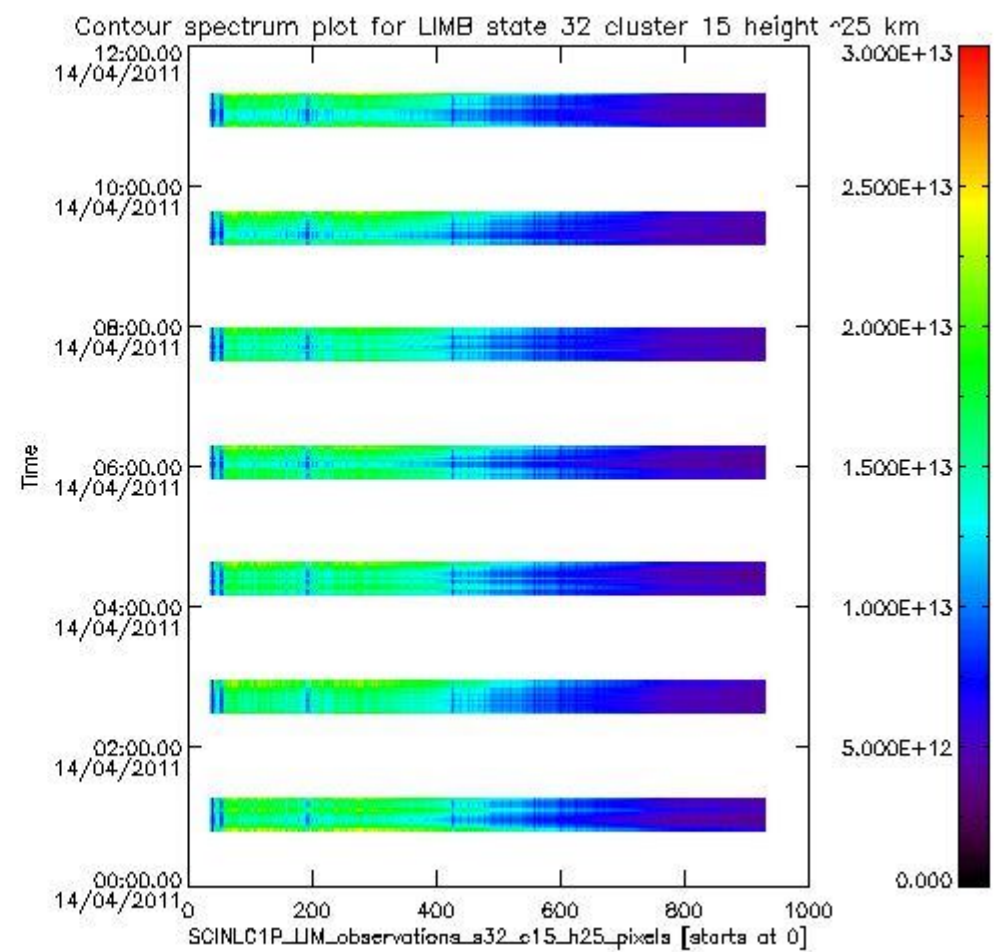
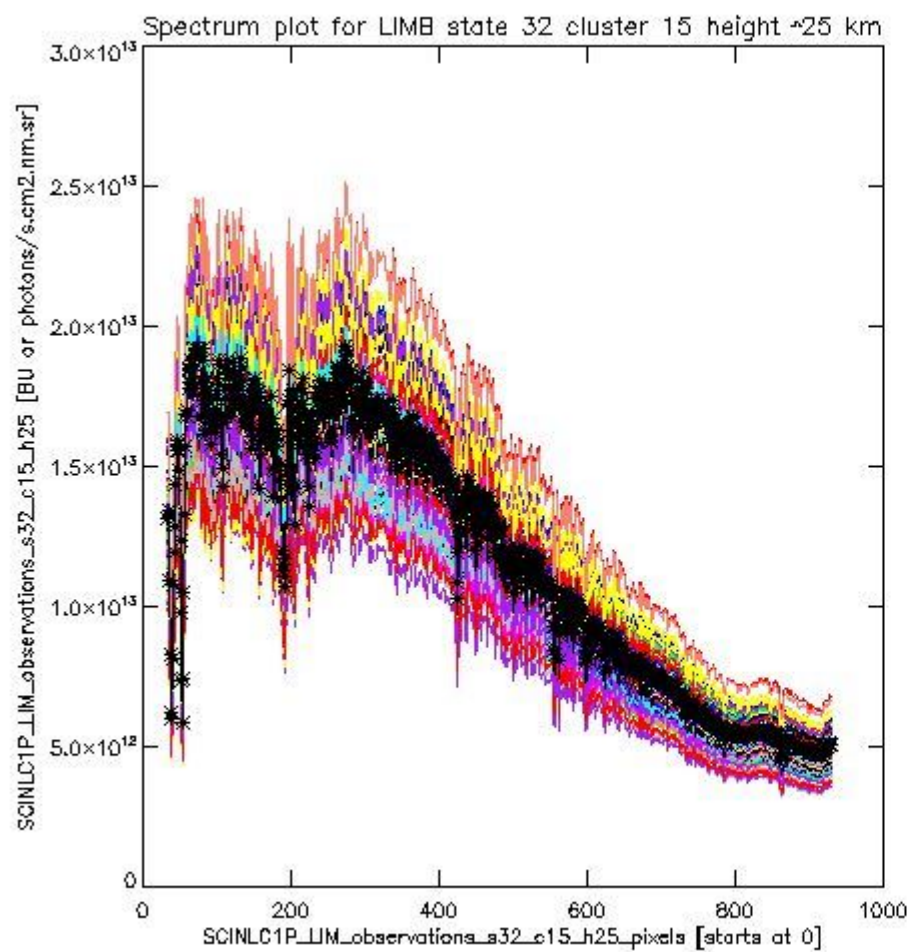
sciamachy_i1b_source_packet_report_SCIA_7_04_U_20110414_16.PNG



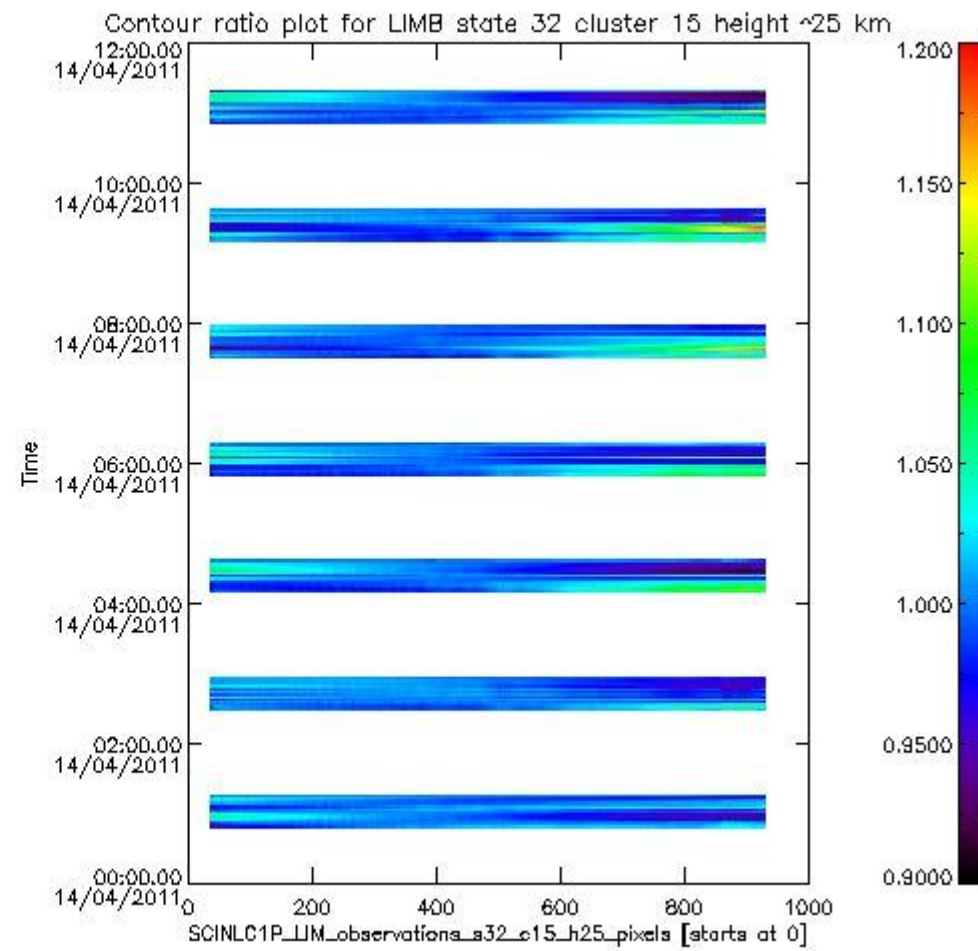
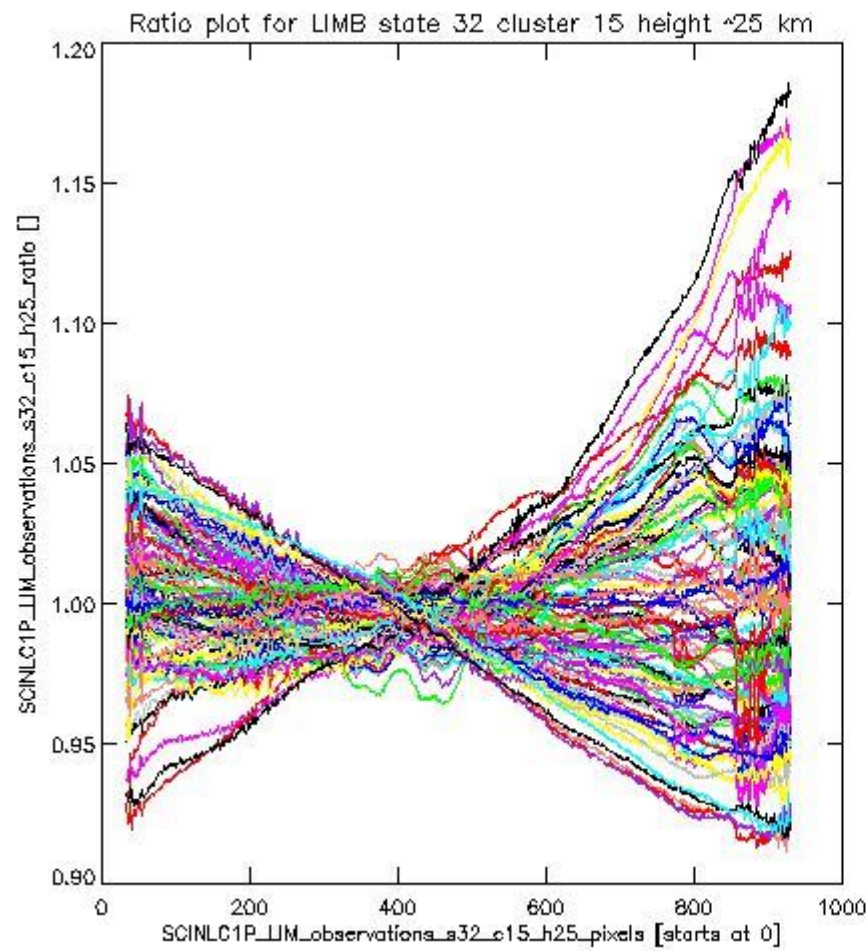
sciamachy_11b_source_packet_report_SCIA_7_04_U_20110414_17.PNG

1.2.10 LIMB state 32 cluster 15 height ~25 km The data for the analysis of LIMB state 32 cluster 15 height ~25 km have the following characteristics:

Item	Value
Start time of first sample	14APR2011 00:48:57.068
Start time of last sample	14APR2011 11:16:54.428
Reference period start time	15MAR2011 00:51:27.167
Reference period stop time	13APR2011 23:35:19.185
Channel number	3
First pixel number (starts at 0)	33
Last pixel number (starts at 0)	929



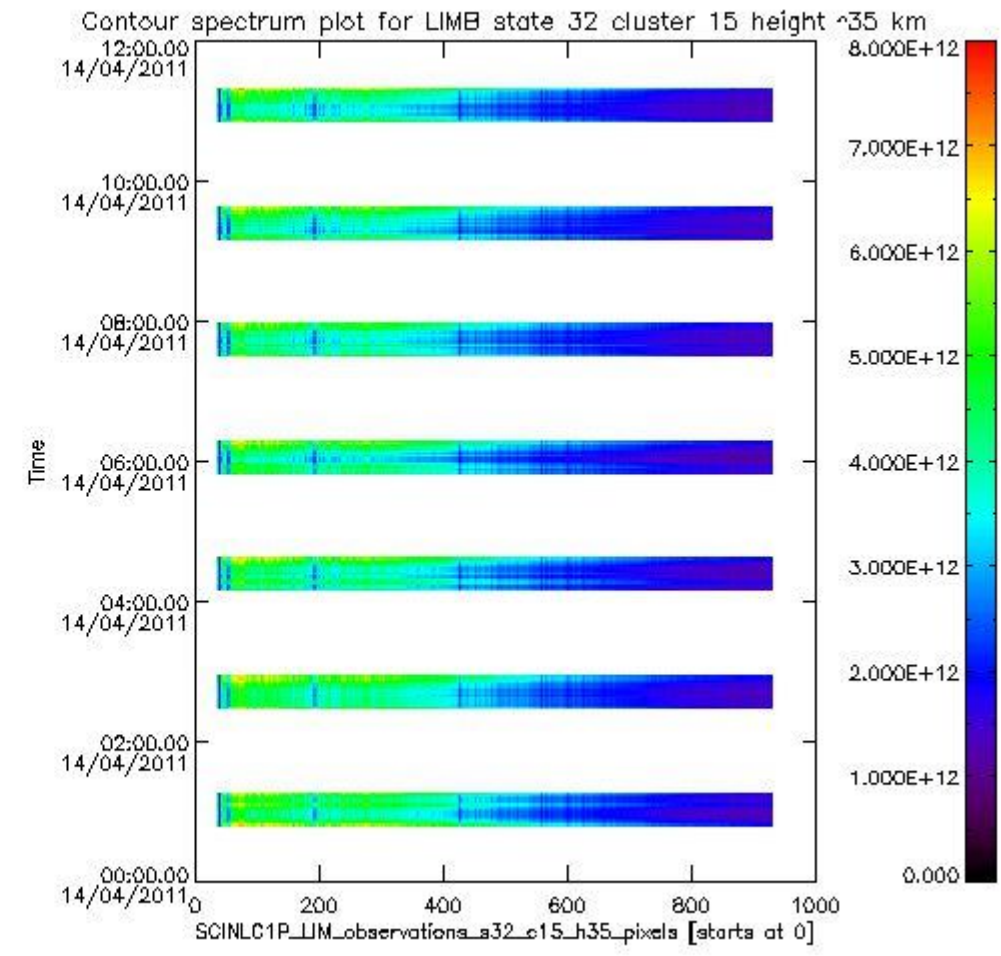
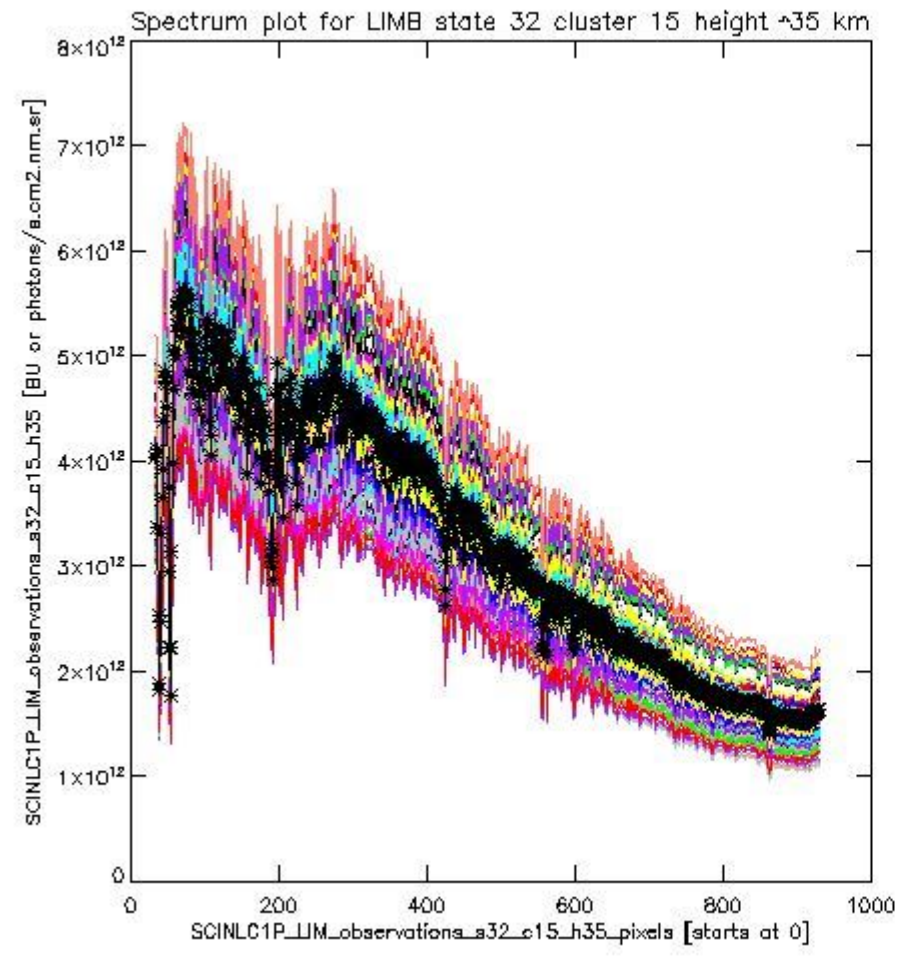
sciamachy_l1b_source_packet_report_SCIA_7_04_U_20110414_18.PNG



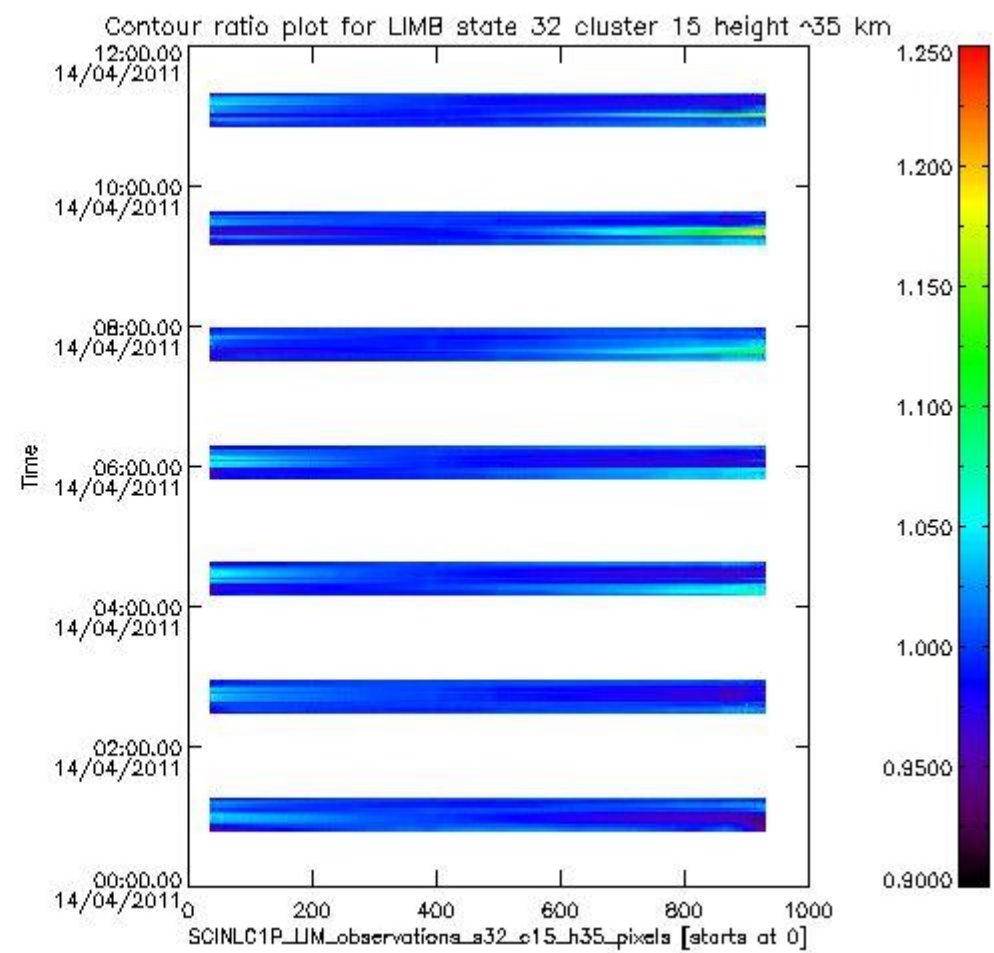
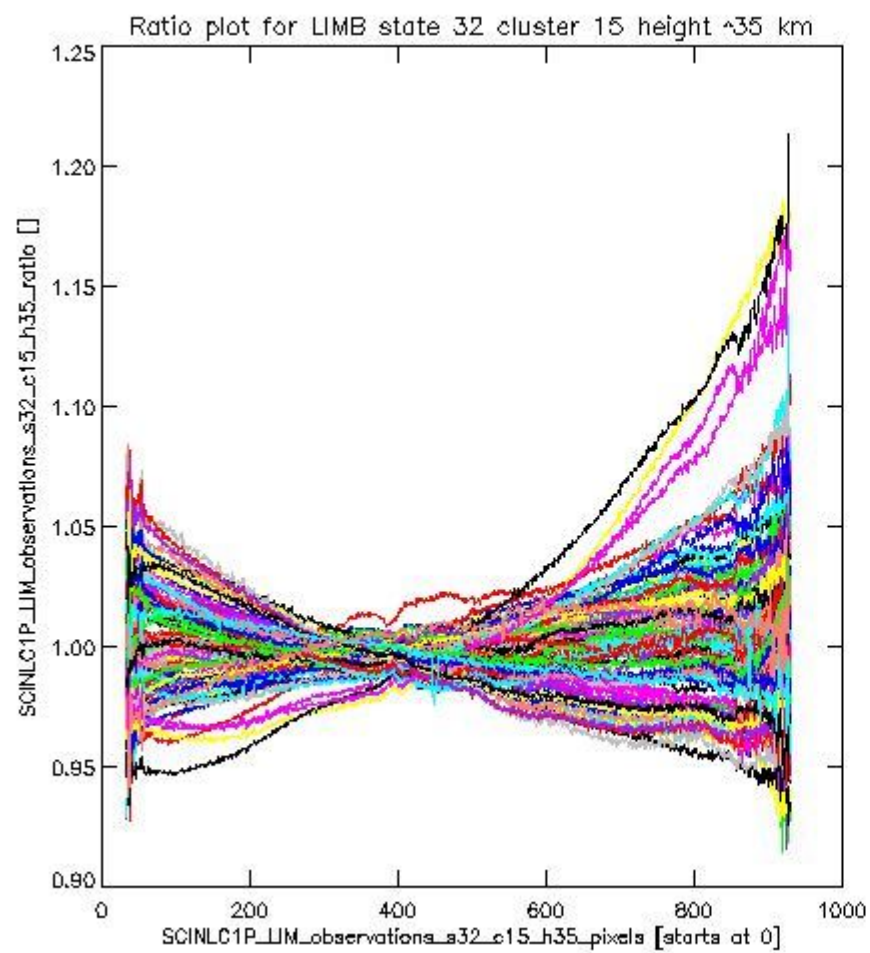
sciamachy_11b_source_packet_report_SCIA_7_04_U_20110414_19.PNG

1.2.11 LIMB state 32 cluster 15 height ~35 km The data for the analysis of LIMB state 32 cluster 15 height ~35 km have the following characteristics:

Item	Value
Start time of first sample	14APR2011 00:48:57.068
Start time of last sample	14APR2011 11:16:54.428
Reference period start time	15MAR2011 00:51:27.167
Reference period stop time	13APR2011 23:35:19.185
Channel number	3
First pixel number (starts at 0)	33
Last pixel number (starts at 0)	929



sciamachy_11b_source_packet_report_SCIA_7_04_U_20110414_20.PNG



sciamachy_i1b_source_packet_report_SCIA_7_04_U_20110414_21.PNG

