

1. SCIAMACHY Level 1B source packet monitoring report

[1.1. General Info](#)

[1.2 Source packet monitoring](#)

1.1 General Info

This report contains results of the analysis on source packets from SCIAMACHY level 1 data (The SCI_NL__1P product).

1.1.1 Report summary

The table below shows general characteristics of the data that are included into this report.

Item	Value
Report version	1.1 (07-01-2010)
Time of report generation	13APR2011 06:55:29
Data source version	SCIA/7.04-U
Processing scope for products	02APR2011 00:00:00 to 03APR2011 00:00:00
Start time of first product within scope	02APR2011 01:11:07
Stop time of last product within scope	03APR2011 00:04:32
Total number of level 1 products	13
Number of level 1 products with errors	0
SCIAL1C executable used in processing	scial1c-2.1.73-i686-pc-linux-gnu-gcc-3.3.6
SCIAL1C parameters used in processing	-allcal -type all -cat 1,2,8,10,11,16,19,23 -nadircluster 8,9,15,24,55 -limbcluster 9,15

1.1.2 Source packet summary

The table below shows which source packets have been included into the report.

Item	Mode	State	Cluster	Height	First start time	Last start time
0	NADIR	07	08	N/A	02APR2011 01:43:09.866	02APR2011 23:35:25.966
1	NADIR	07	09	N/A	02APR2011 01:43:09.866	02APR2011 23:35:25.966
2	NADIR	07	15	N/A	02APR2011 01:43:09.866	02APR2011 23:35:25.966
3	NADIR	07	24	N/A	02APR2011 01:43:09.866	02APR2011 23:35:25.966
4	NADIR	07	55	N/A	02APR2011 01:43:09.866	02APR2011 23:35:25.966
5	LIMB	32	09	~19 km	02APR2011 01:29:59.233	02APR2011 23:40:40.009
6	LIMB	32	09	~22 km	02APR2011 01:29:59.233	02APR2011 23:40:40.009
7	LIMB	32	09	~25 km	02APR2011 01:29:59.233	02APR2011 23:40:40.009
8	LIMB	32	15	~22 km	02APR2011 01:29:59.233	02APR2011 23:40:40.009
9	LIMB	32	15	~25 km	02APR2011 01:29:59.233	02APR2011 23:40:40.009
10	LIMB	32	15	~35 km	02APR2011 01:29:59.233	02APR2011 23:40:40.009

1.1.3 Summary per product

The following table shows a summary for each product used in this report.

Products are linked to a corresponding server directory for view/download. Note: Link access may be restricted by security settings of your internet browser or firewall.

#	Product name	Start time	Stop time	ProdErr	#nadir	#limb	#occ	#mon	#noproc	#cmlpl_drk	#incmpl_drk	Decont
0	SCI_NLC_1CUDPA20110402_010153_000060203101_00089_47517_5946.N1	02APR2011 01:11:07	02APR2011 02:21:21	0	35	31	0	0	1	0	0	
1	SCI_NLC_1CUDPA20110402_024217_000059983101_00090_47518_5941.N1	02APR2011 02:51:20	02APR2011 04:01:49	0	36	30	0	0	1	0	0	
2	SCI_NLC_1CUDPA20110402_042220_000060203101_00091_47519_5954.N1	02APR2011 04:31:34	02APR2011 05:41:49	0	35	31	0	0	1	0	0	
3	SCI_NLC_1CUDPA20110402_060244_000059983101_00092_47520_5967.N1	02APR2011 06:11:48	02APR2011 07:22:17	0	36	30	0	0	1	0	0	
4	SCI_NLC_1CUDPA20110402_092311_000059983101_00094_47522_5969.N1	02APR2011 09:32:15	02APR2011 10:42:44	0	36	30	0	0	1	0	0	
5	SCI_NLC_1CUDPA20110402_110313_000060203101_00095_47523_5960.N1	02APR2011 11:12:28	02APR2011 12:22:43	0	35	31	0	0	1	0	0	

6	SCI_NLC_1CUDPA20110402_124338_000059983101_00096_47524_5961.N1	02APR2011 12:52:42	02APR2011 14:03:11	0	36	30	0	0	1	0	0	
7	SCI_NLC_1CUDPA20110402_142340_000060203101_00097_47525_5962.N1	02APR2011 14:32:55	02APR2011 15:43:10	0	35	31	0	0	1	0	0	
8	SCI_NLC_1CUDPA20110402_160405_000059983101_00098_47526_5965.N1	02APR2011 16:13:09	02APR2011 17:23:38	0	36	30	0	0	1	0	0	
9	SCI_NLC_1CUDPA20110402_174407_000060203101_00099_47527_5963.N1	02APR2011 17:53:23	02APR2011 19:03:52	0	35	31	0	1	1	0	0	
10	SCI_NLC_1CUDPA20110402_192432_000059983101_00100_47528_5964.N1	02APR2011 19:33:36	02APR2011 20:44:20	0	36	30	0	1	1	0	0	
11	SCI_NLC_1CUDPA20110402_210434_000060203101_00101_47529_5966.N1	02APR2011 21:13:50	02APR2011 22:24:04	0	35	31	0	0	1	0	0	
12	SCI_NLC_1CUDPA20110402_224458_000059983101_00102_47530_5970.N1	02APR2011 22:54:03	03APR2011 00:04:32	0	36	30	0	0	1	0	0	

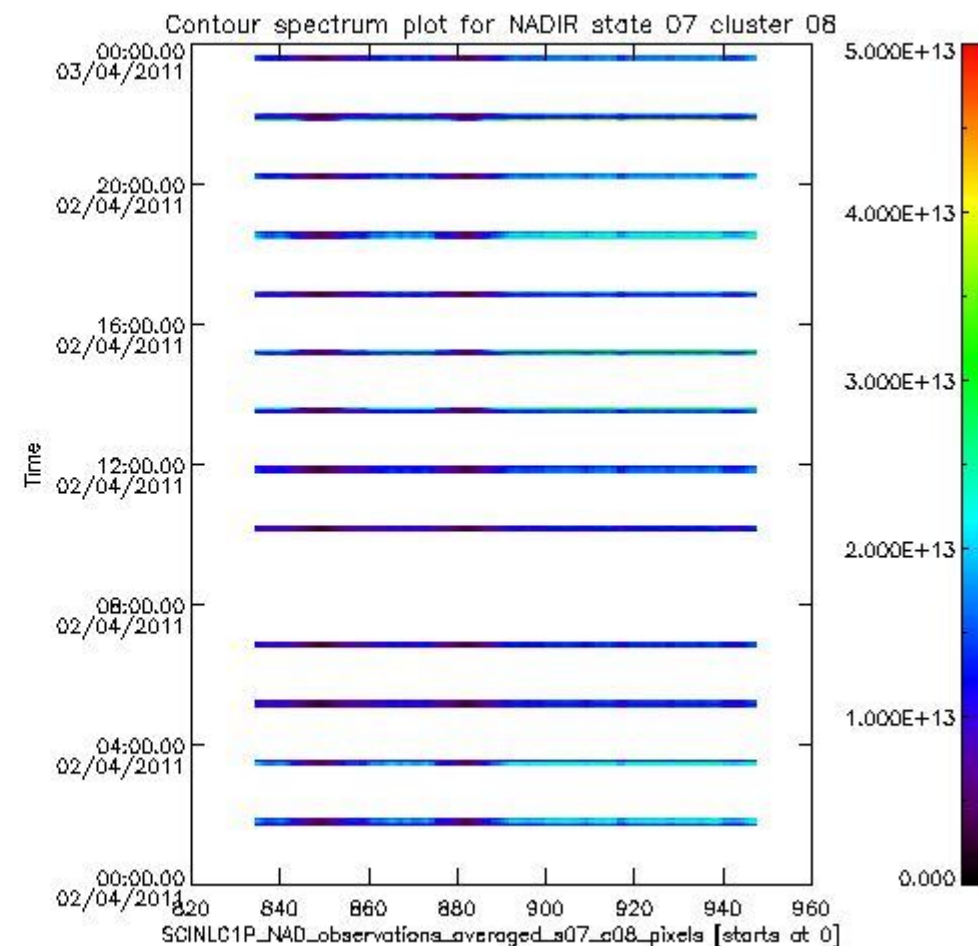
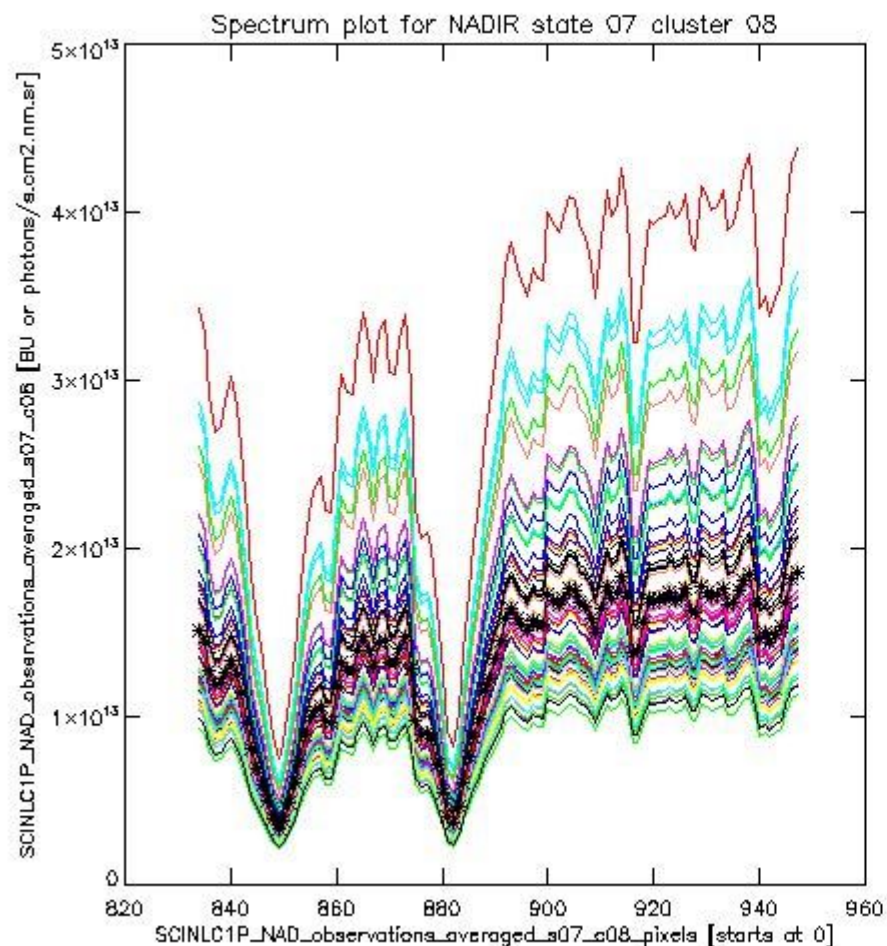
1.2 Source packet monitoring

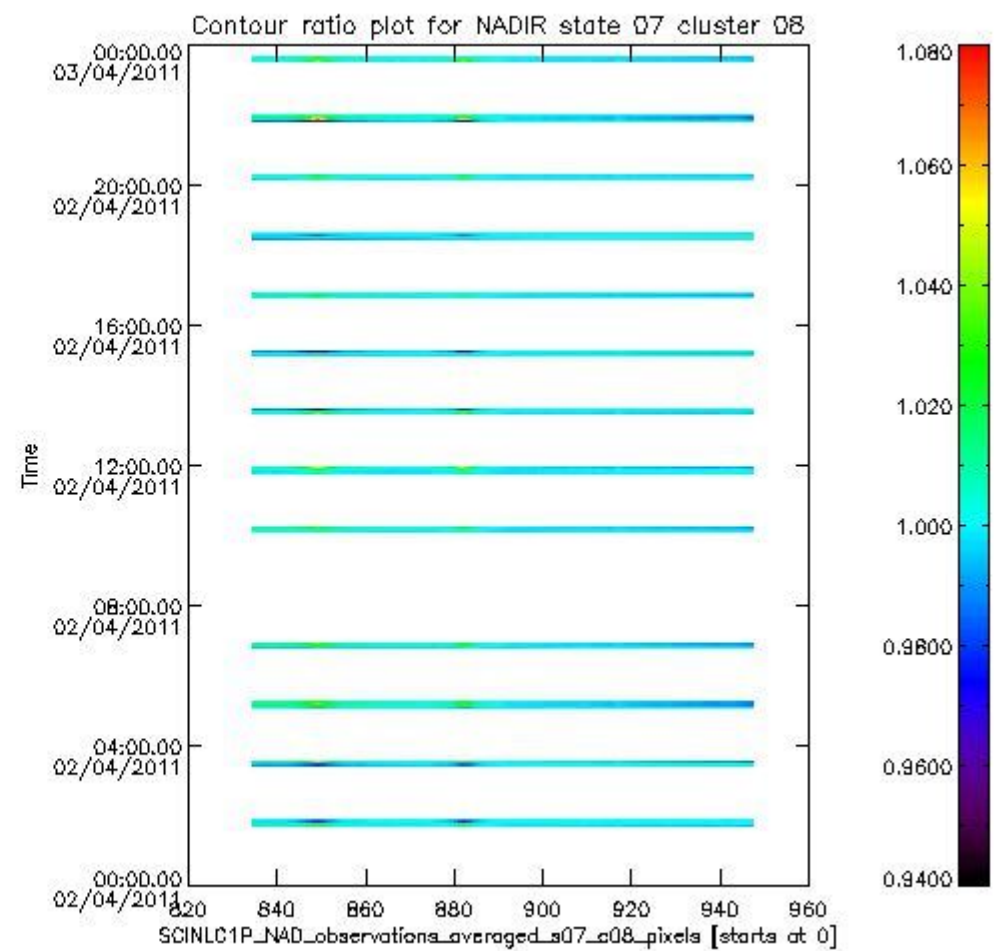
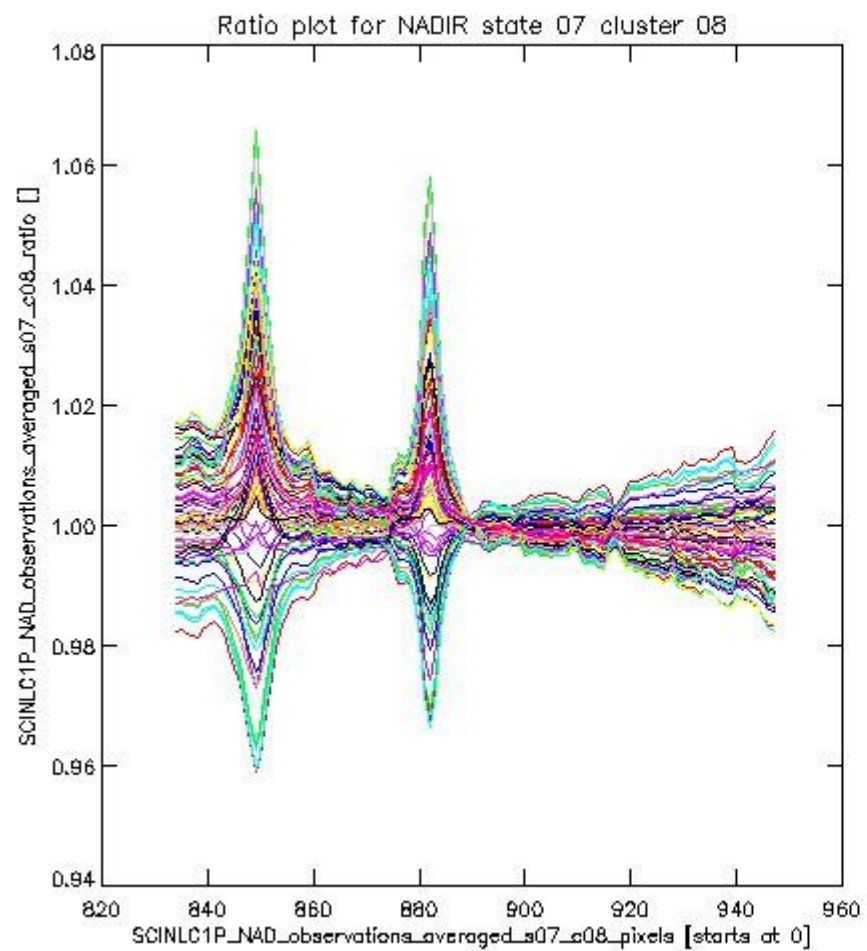
This section shows figures for each of the monitored source packet types listed in the Source Packet Summary section. For each mode-state-cluster(-height) combination the following plots are shown:

- A plot that shows all calibrated averaged spectra vs. pixel number as 2D-profiles. Each line is an average spectrum for a single state occurrence. For Limb modes, the average is performed on spectra recorded at a specific height. The reference spectrum that is used for comparison is also shown as a black line with * markers.
- A plot that shows all calibrated averaged spectra vs. pixel number and time using a coloured contour plot. The colours indicate the intensity.
- A plot that shows ratios of all calibrated averaged spectra and the reference spectrum vs. pixel number. Each line is the ratio of a calibrated averaged spectrum and the reference spectrum, where both spectra have been intensity corrected (the spectrum has been divided by the average pixel intensity) prior to division.
- A plot that shows ratios of all calibrated averaged spectra and the reference spectrum vs. pixel number and time using a coloured contour plot.

1.2.1 NADIR state 07 cluster 08 The data for the analysis of NADIR state 07 cluster 08 have the following characteristics:

Item	Value
Start time of first sample	02APR2011 01:43:09.866
Start time of last sample	02APR2011 23:35:25.966
Reference period start time	03MAR2011 00:05:37.385
Reference period stop time	01APR2011 22:32:56.552
Channel number	2
First pixel number (starts at 0)	834
Last pixel number (starts at 0)	947

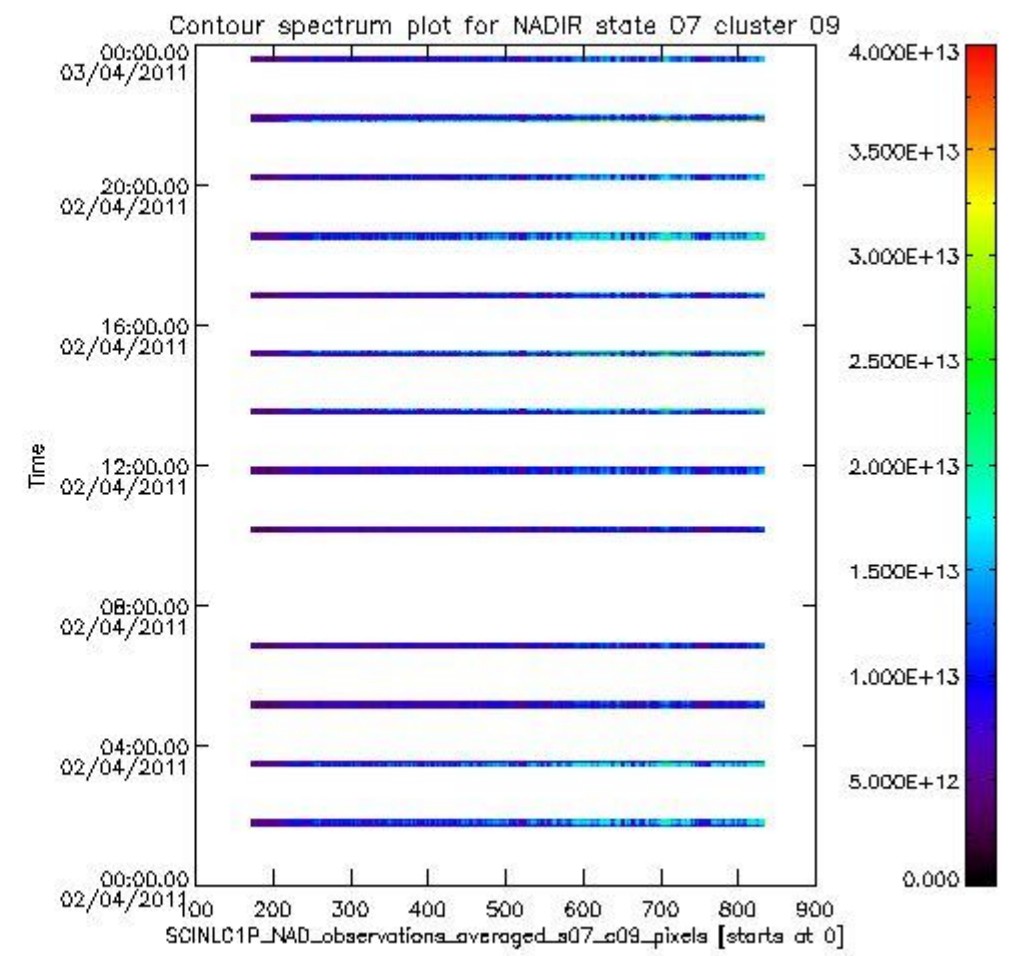
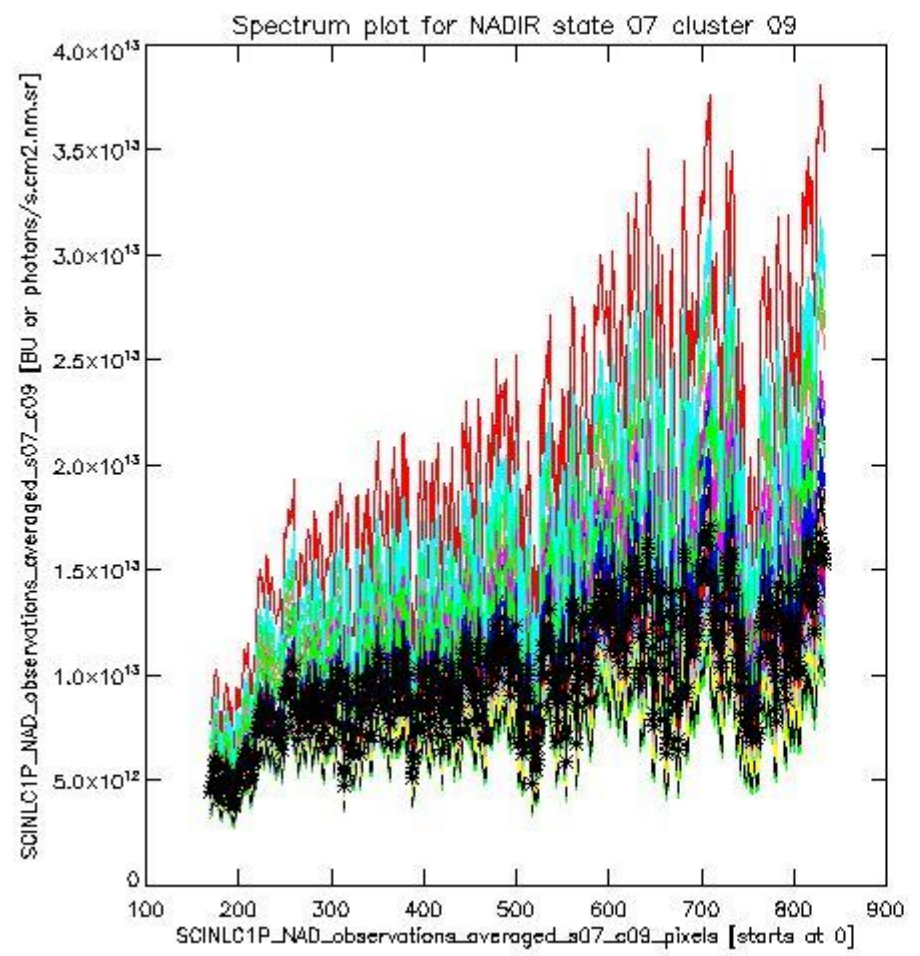




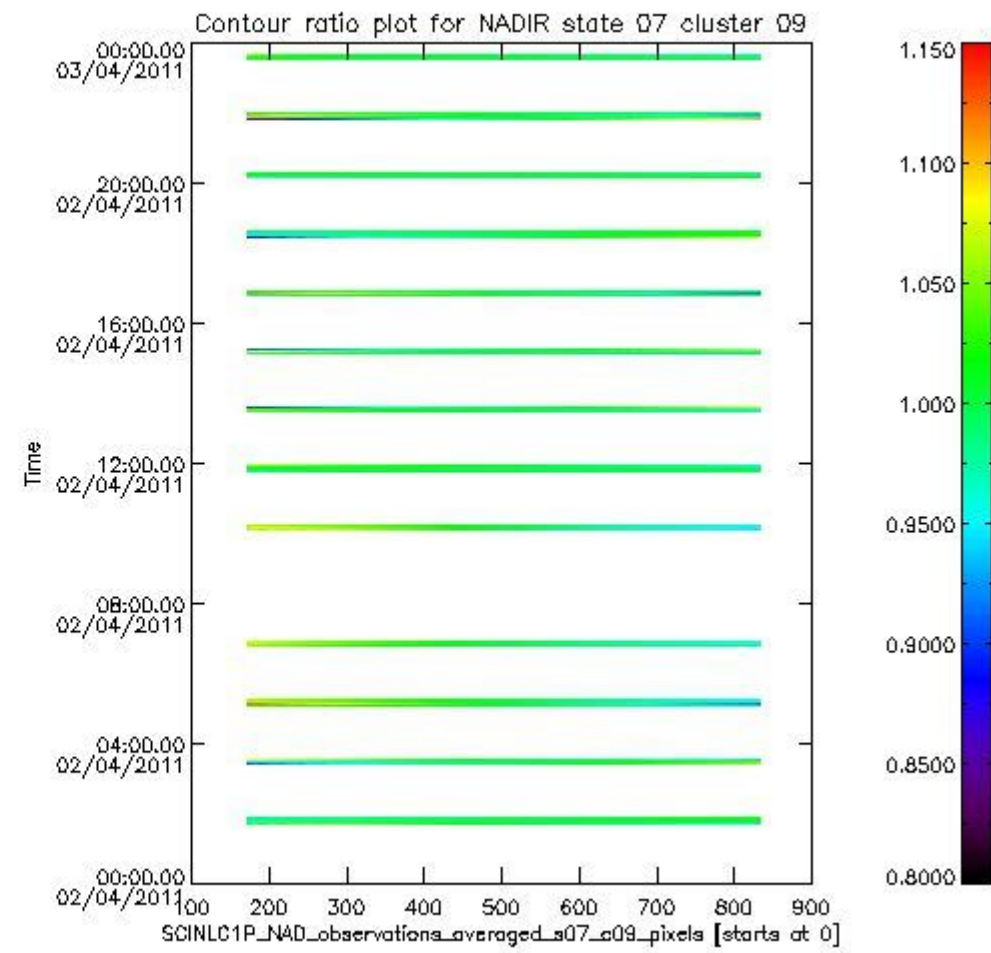
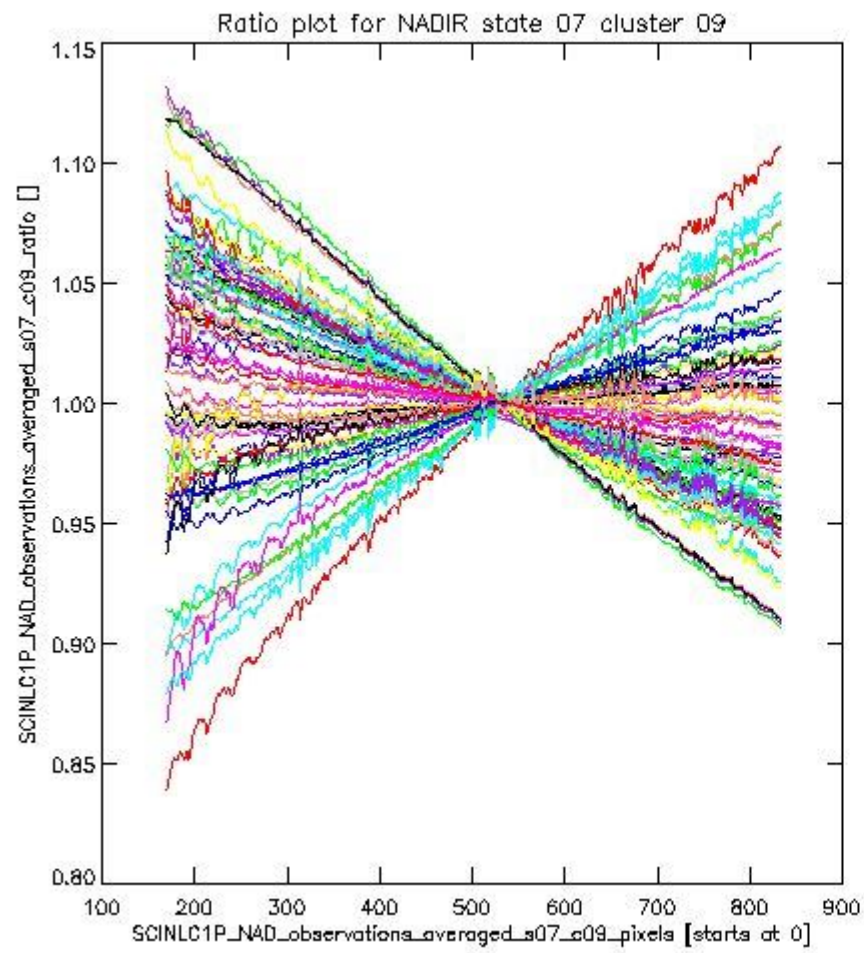
sciamachy_l1b_source_packet_report_SCIA_7_04_U_20110402_1.PNG

1.2.2 NADIR state 07 cluster 09 The data for the analysis of NADIR state 07 cluster 09 have the following characteristics:

Item	Value
Start time of first sample	02APR2011 01:43:09.866
Start time of last sample	02APR2011 23:35:25.966
Reference period start time	03MAR2011 00:05:37.385
Reference period stop time	01APR2011 22:32:56.552
Channel number	2
First pixel number (starts at 0)	170
Last pixel number (starts at 0)	833



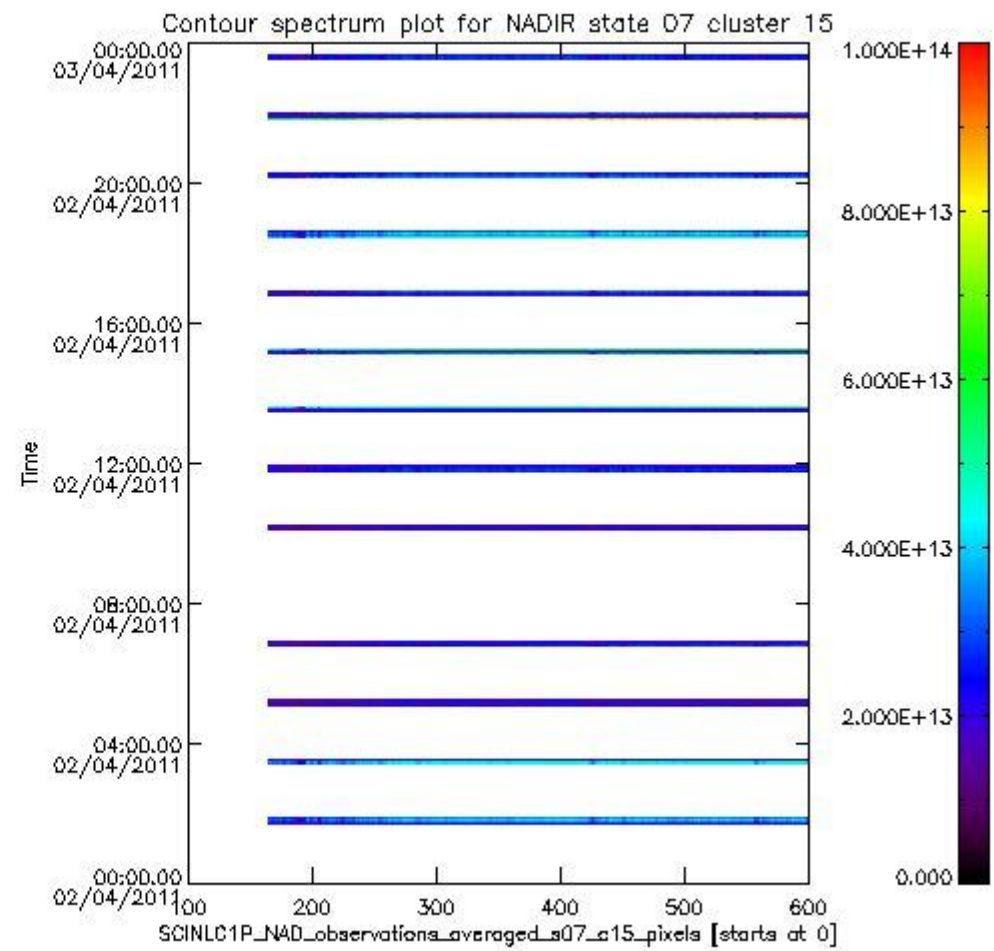
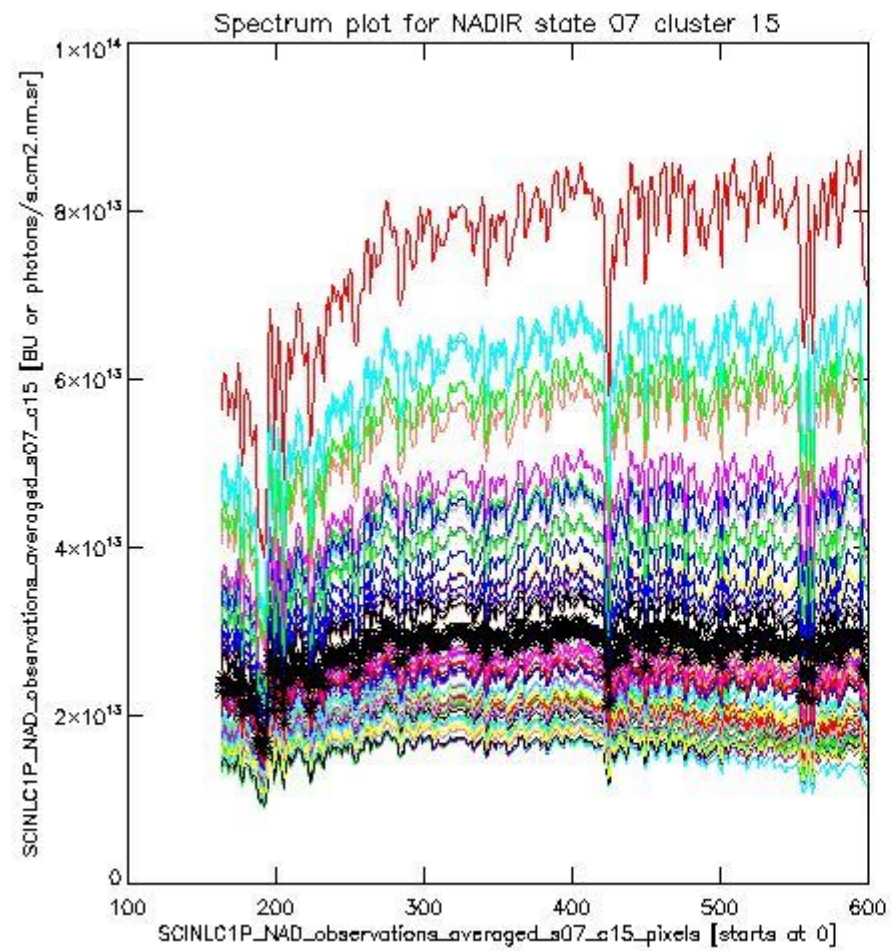
sciamachy_i1b_source_packet_report_SCIA_7_04_U_20110402_2.PNG



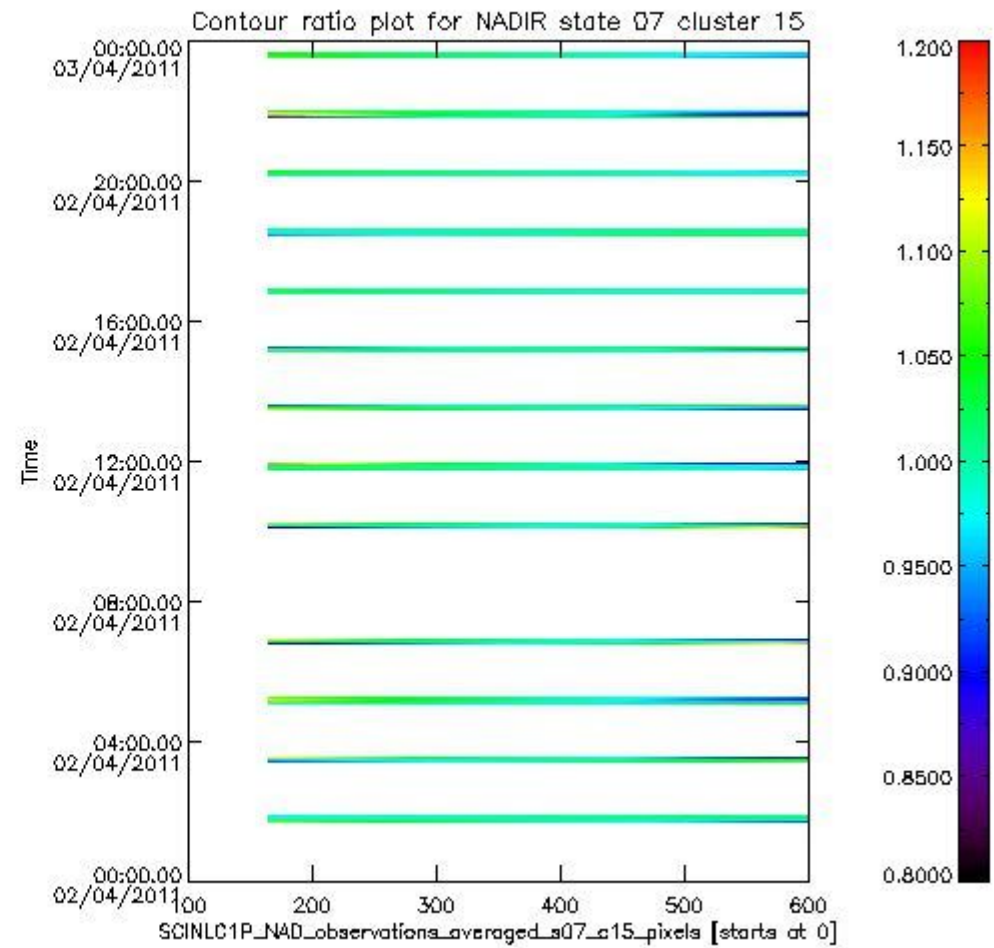
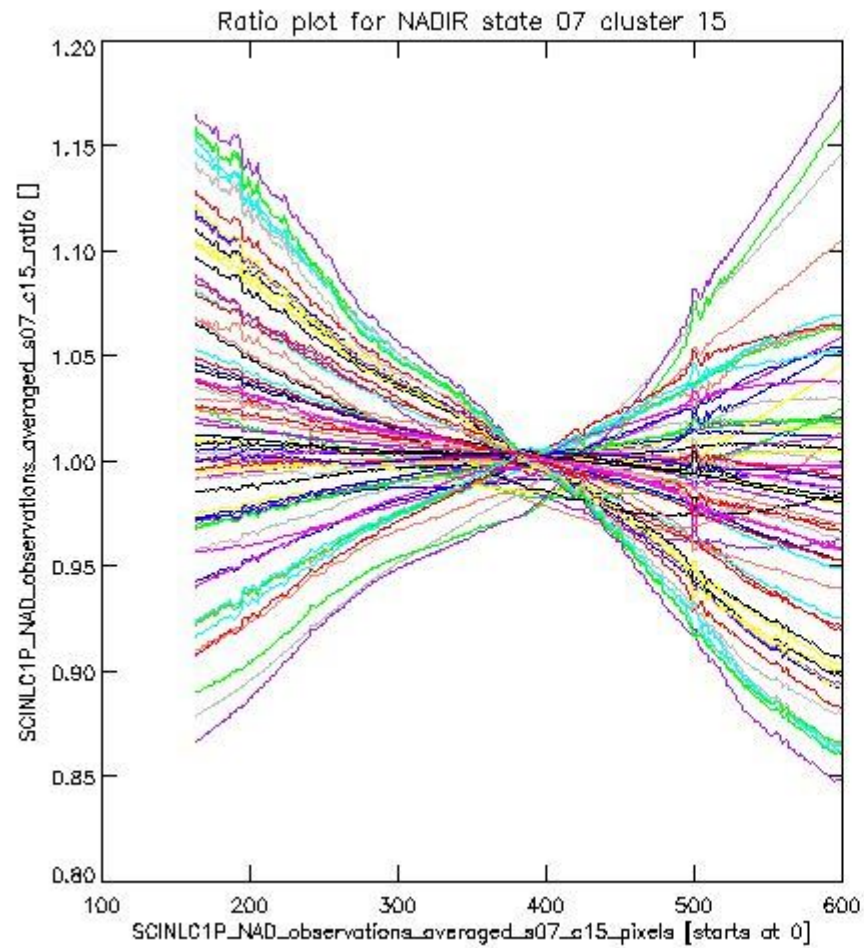
sciamachy_i1b_source_packet_report_SCIA_7_04_U_20110402_3.PNG

1.2.3 NADIR state 07 cluster 15 The data for the analysis of NADIR state 07 cluster 15 have the following characteristics:

Item	Value
Start time of first sample	02APR2011 01:43:09.866
Start time of last sample	02APR2011 23:35:25.966
Reference period start time	03MAR2011 00:05:37.385
Reference period stop time	01APR2011 22:32:56.552
Channel number	3
First pixel number (starts at 0)	163
Last pixel number (starts at 0)	598



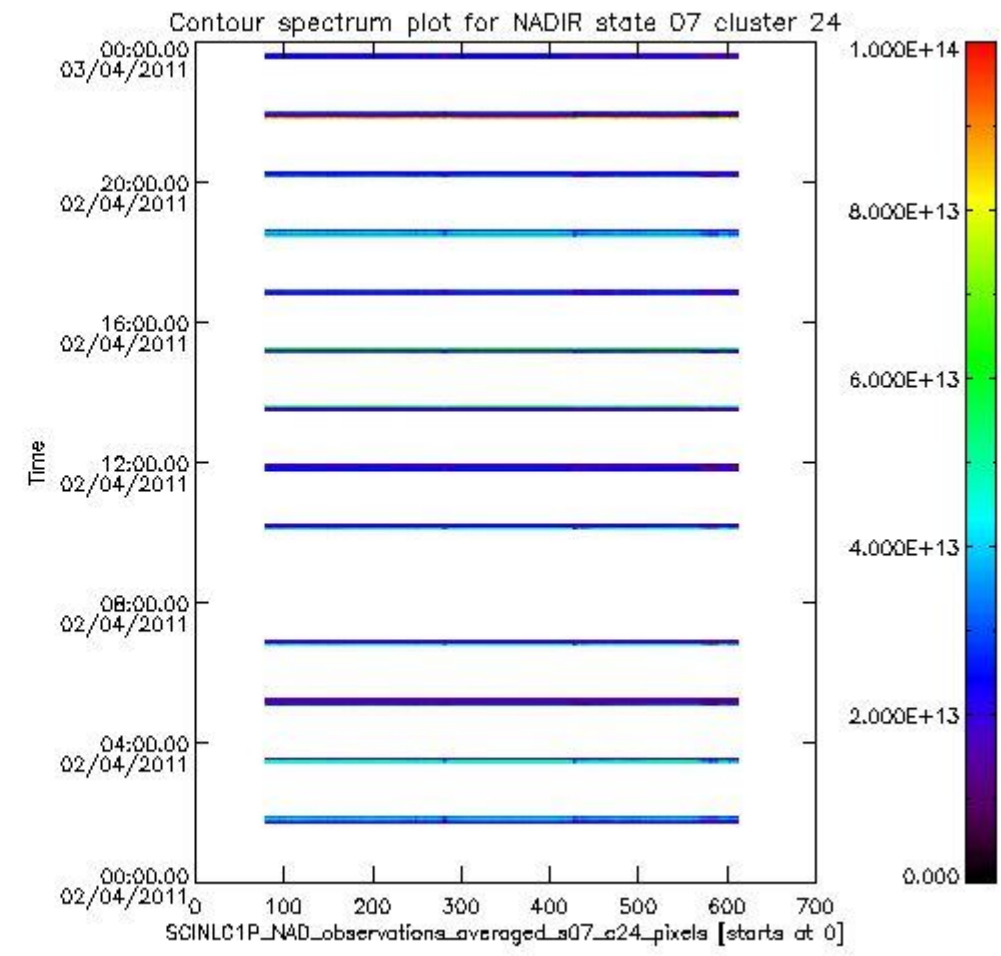
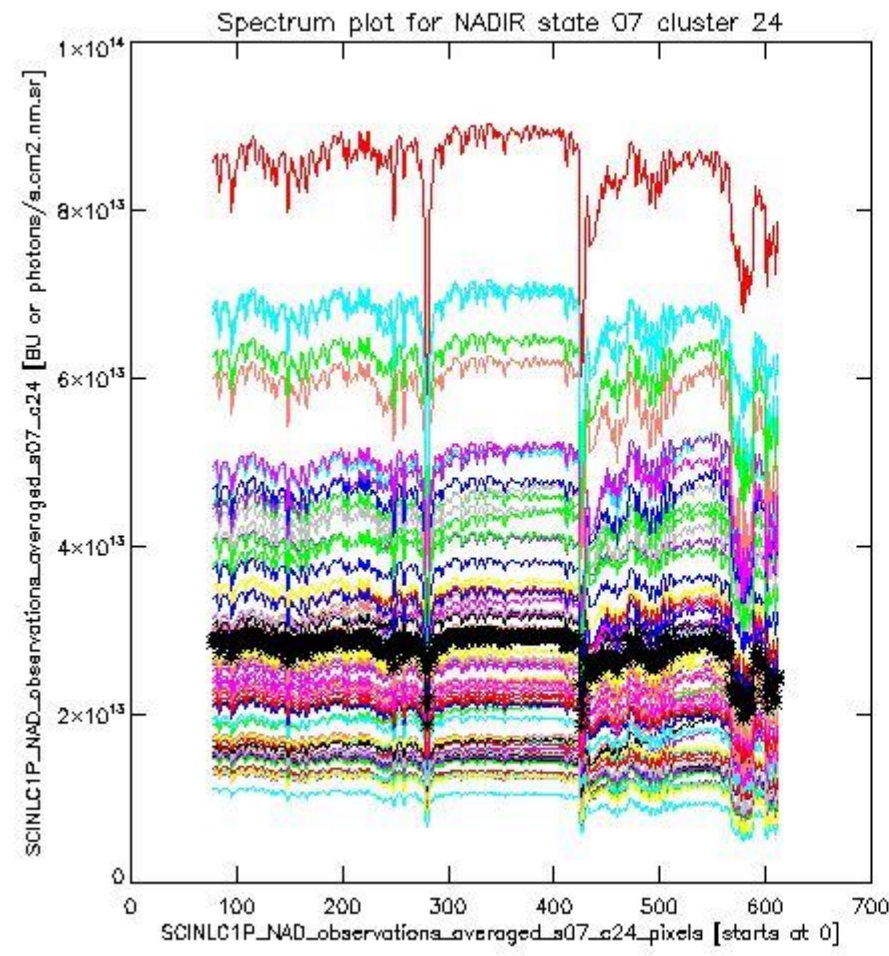
sciamachy_i1b_source_packet_report_SCIA_7_04_U_20110402_4.PNG



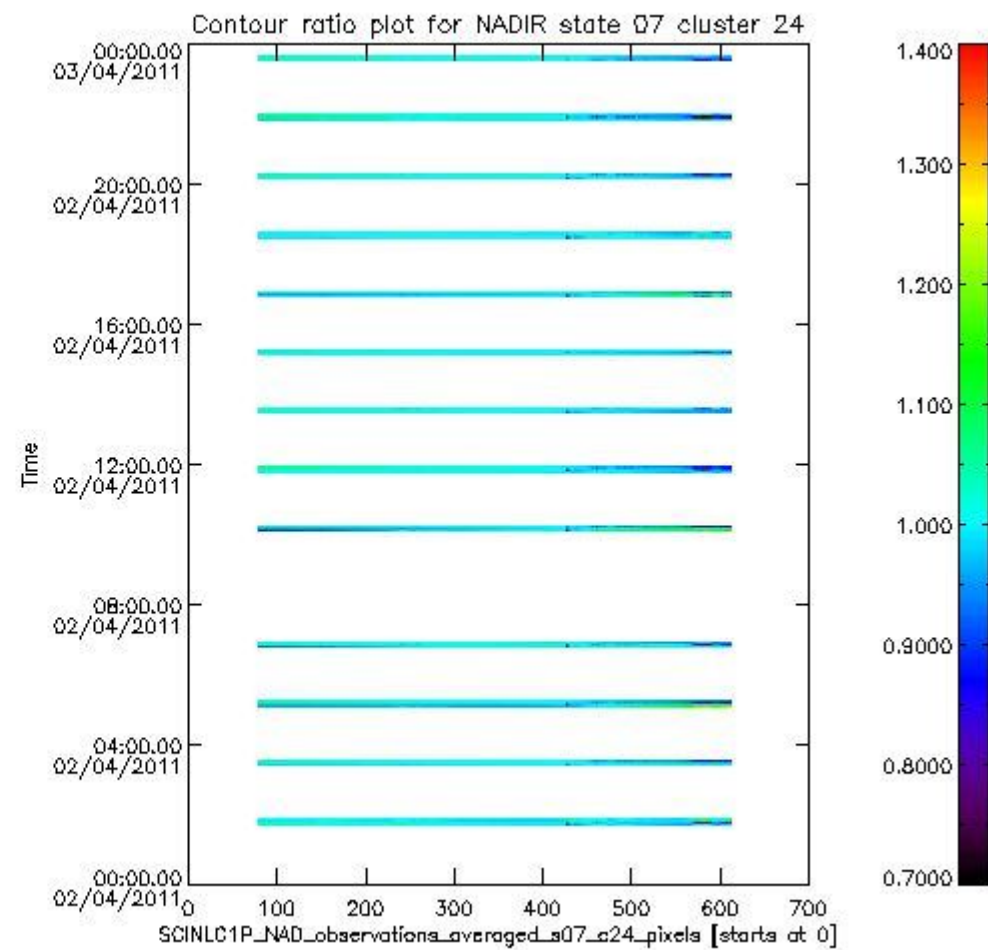
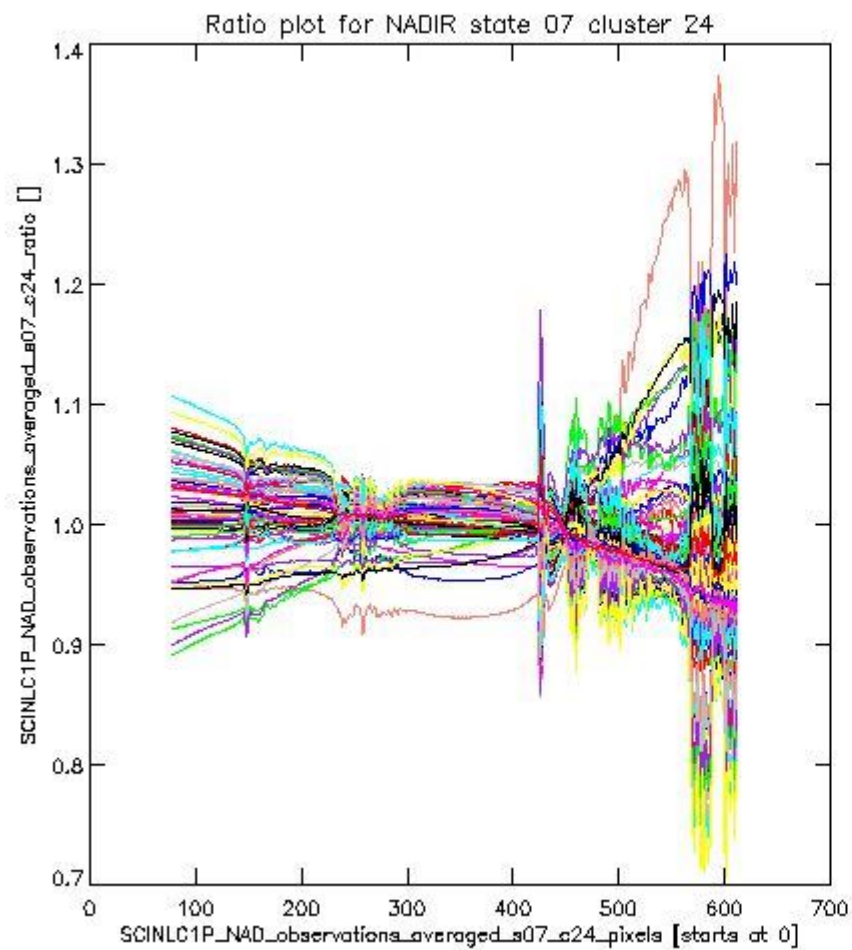
sciamachy_l1b_source_packet_report_SCIA_7_04_U_20110402_5.PNG

1.2.4 NADIR state 07 cluster 24 The data for the analysis of NADIR state 07 cluster 24 have the following characteristics:

Item	Value
Start time of first sample	02APR2011 01:43:09.866
Start time of last sample	02APR2011 23:35:25.966
Reference period start time	03MAR2011 00:05:37.385
Reference period stop time	01APR2011 22:32:56.552
Channel number	4
First pixel number (starts at 0)	78
Last pixel number (starts at 0)	612



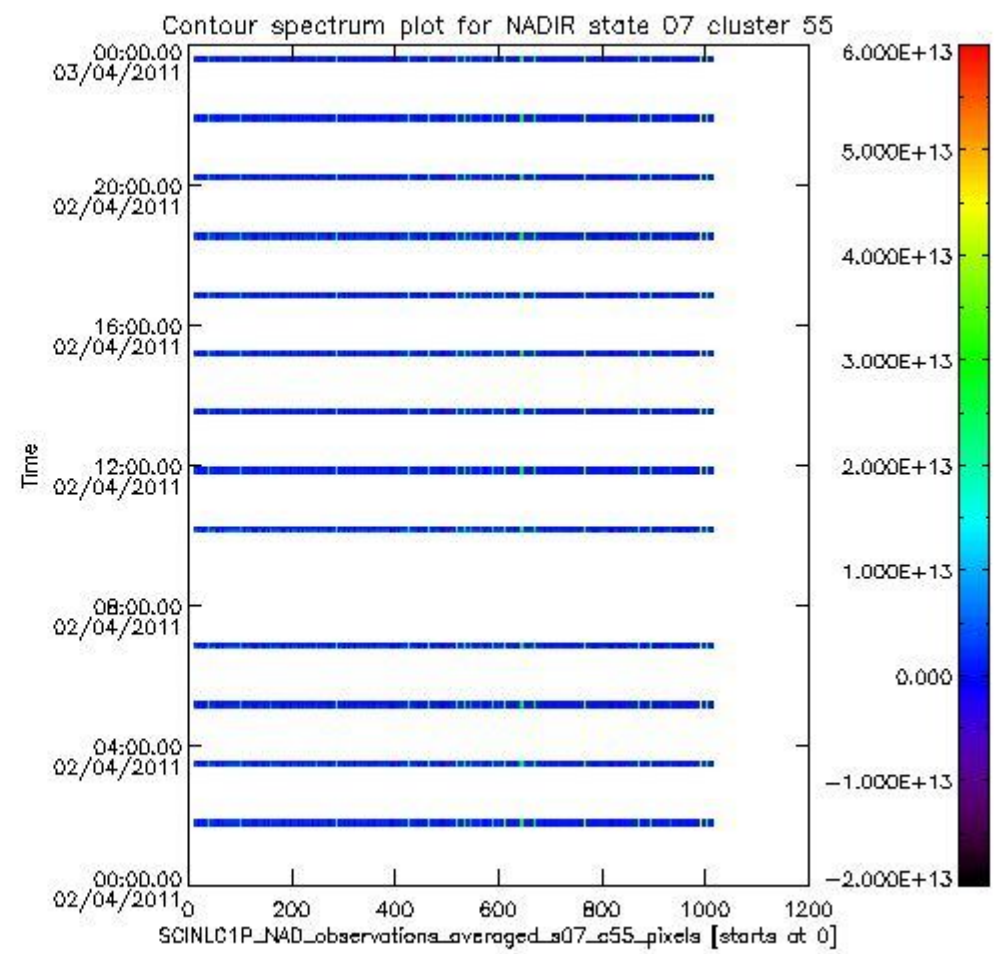
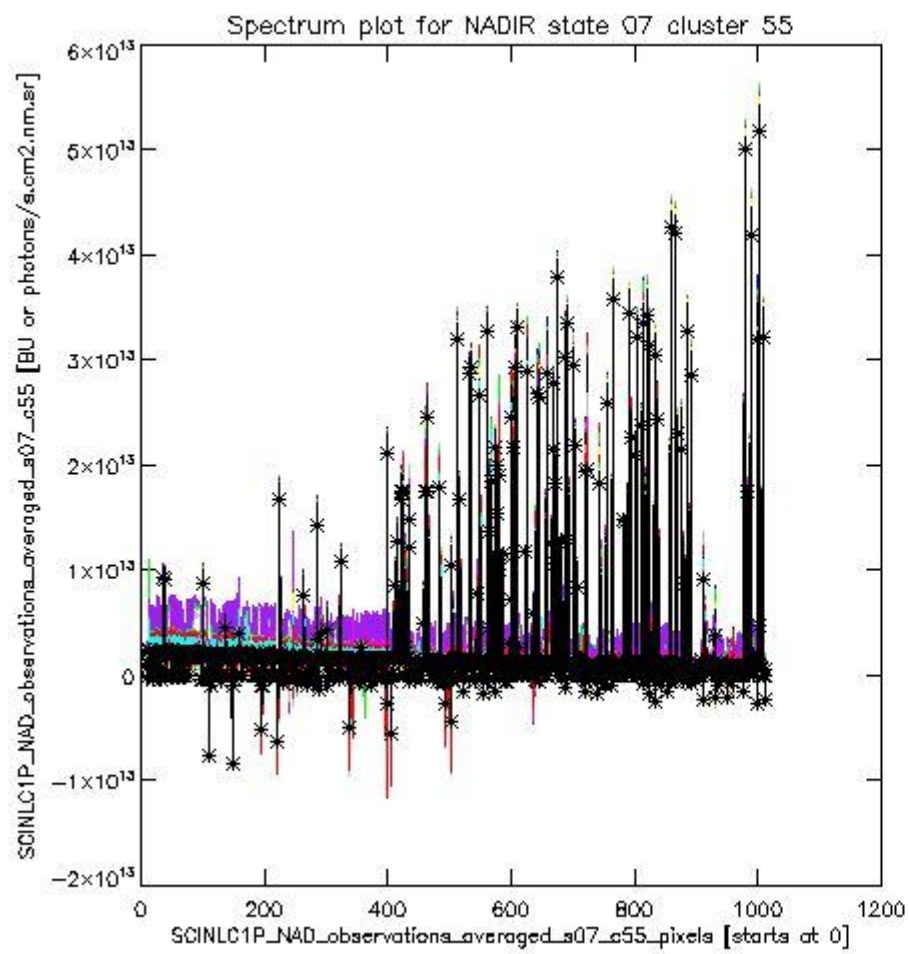
sciamachy_i1b_source_packet_report_SCIA_7_04_U_20110402_6.PNG



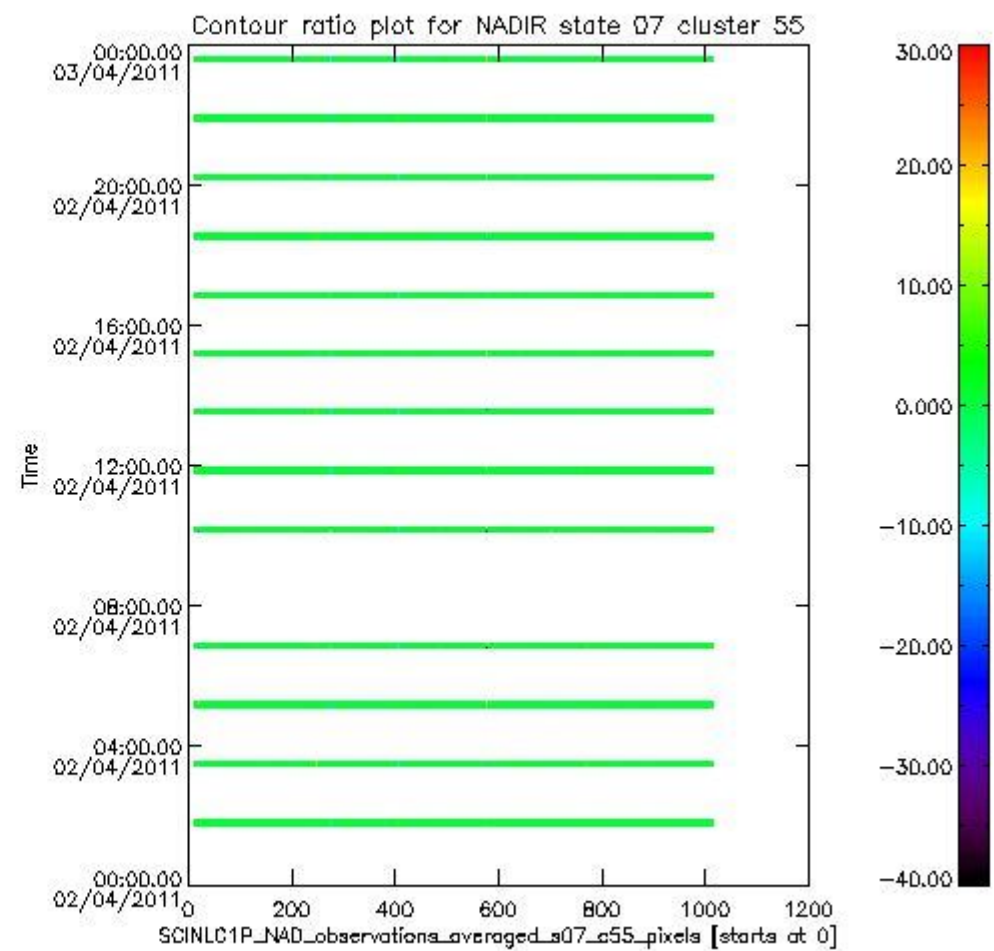
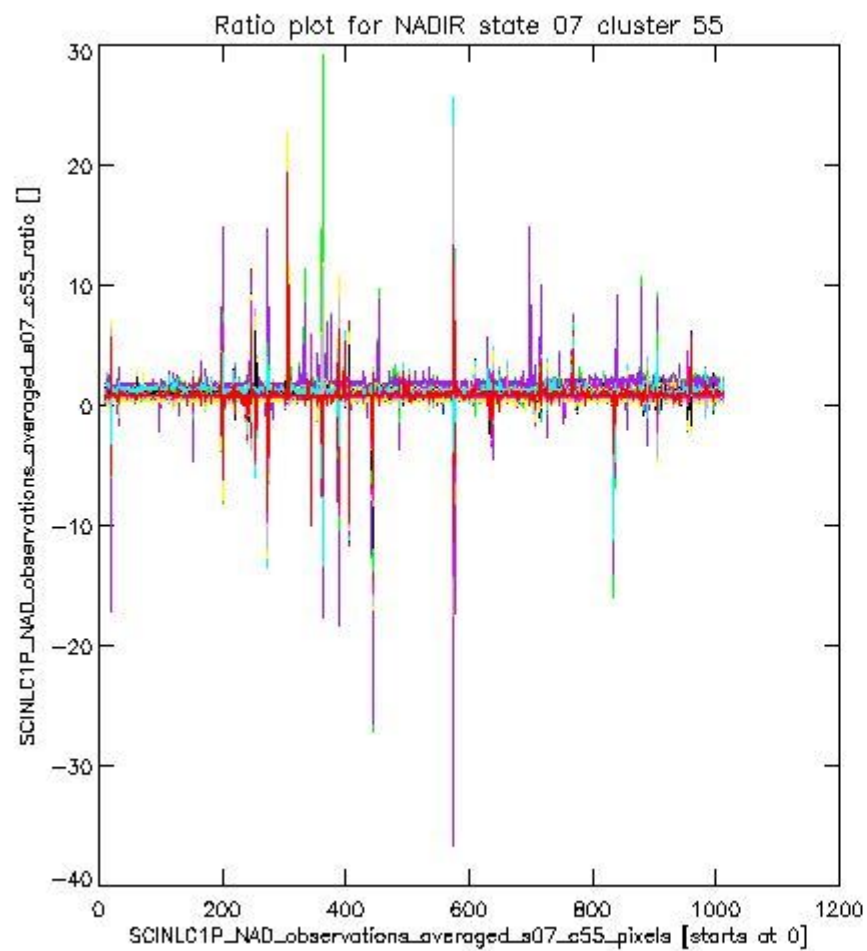
sciamachy_l1b_source_packet_report_SCIA_7_04_U_20110402_7.PNG

1.2.5 NADIR state 07 cluster 55 The data for the analysis of NADIR state 07 cluster 55 have the following characteristics:

Item	Value
Start time of first sample	02APR2011 01:43:09.866
Start time of last sample	02APR2011 23:35:25.966
Reference period start time	03MAR2011 00:05:37.385
Reference period stop time	01APR2011 22:32:56.552
Channel number	8
First pixel number (starts at 0)	10
Last pixel number (starts at 0)	1013



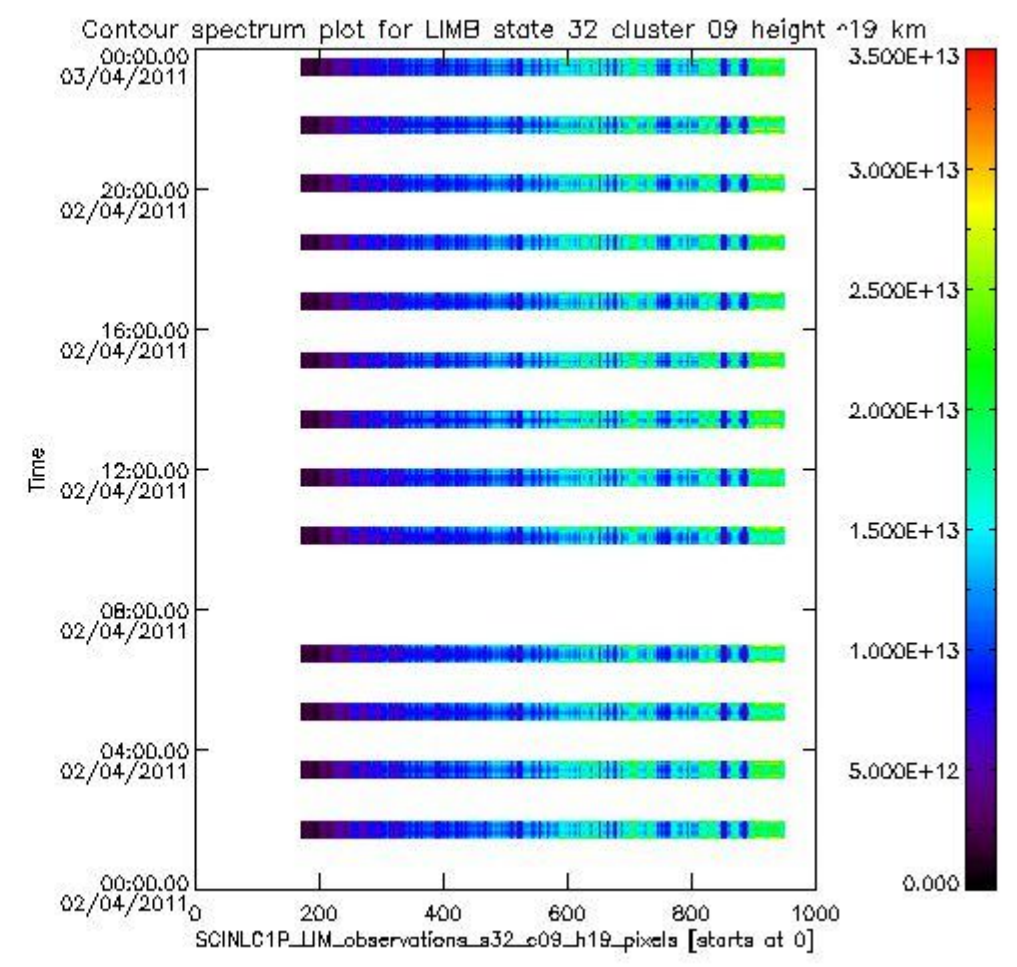
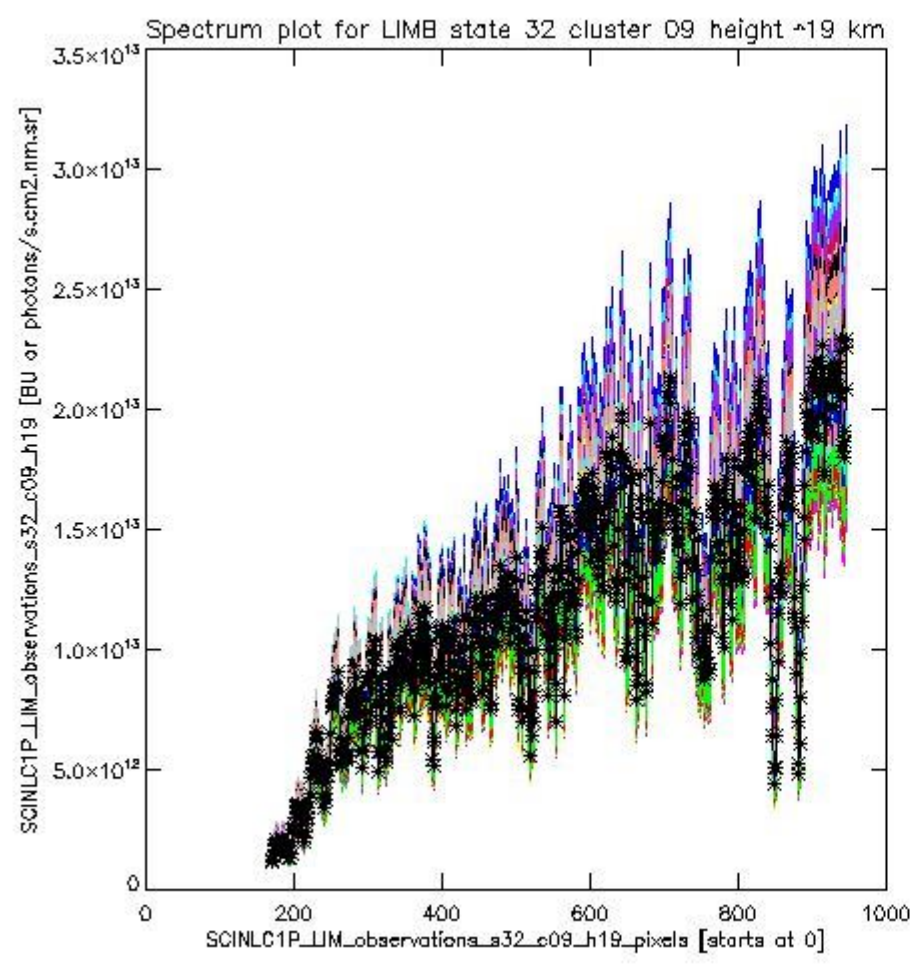
sciamachy_i1b_source_packet_report_SCIA_7_04_U_20110402_8.PNG



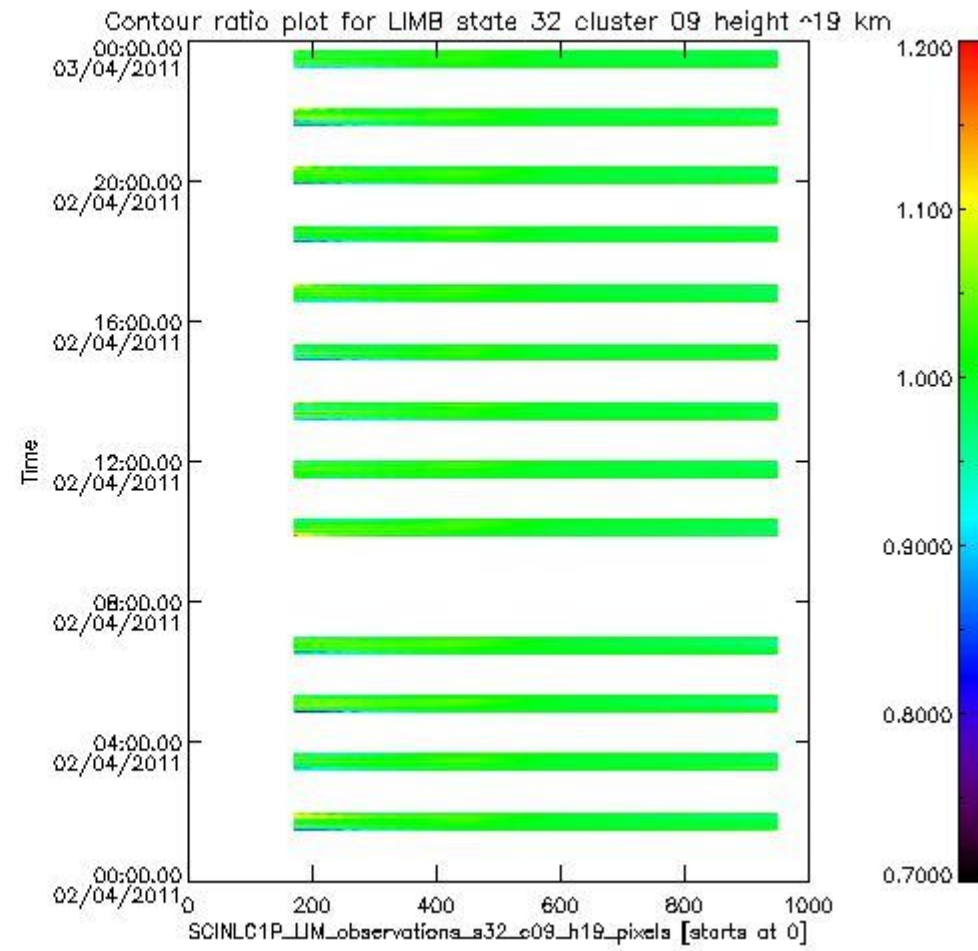
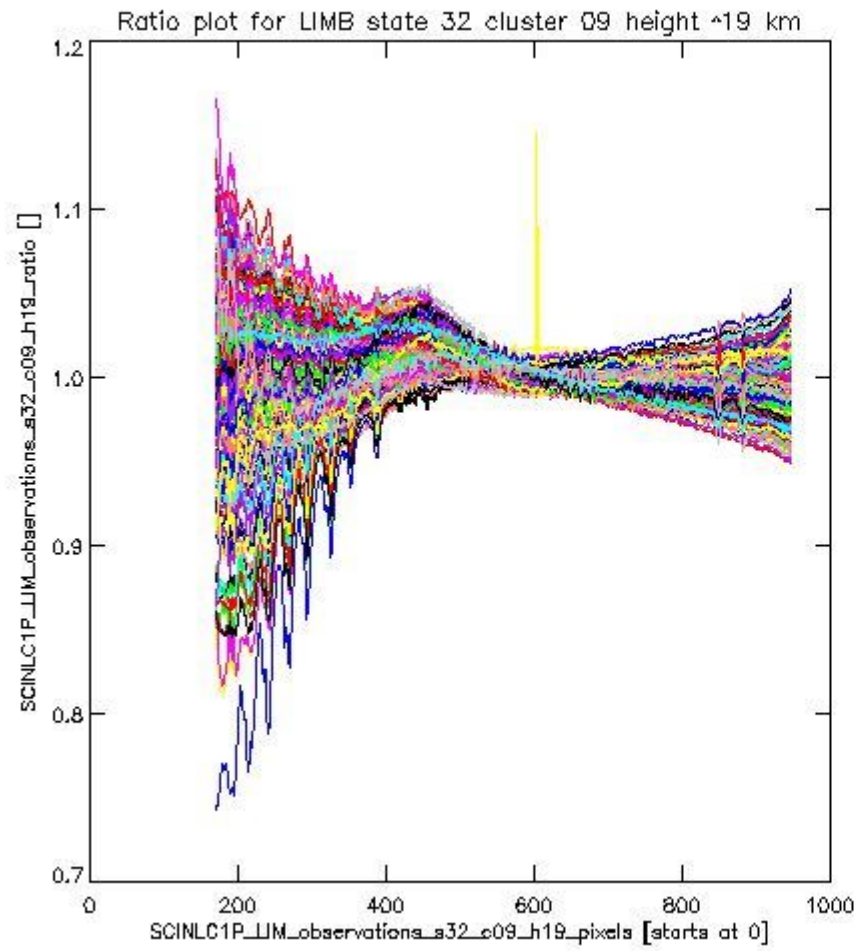
sciamachy_l1b_source_packet_report_SCIA_7_04_U_20110402_9.PNG

1.2.6 LIMB state 32 cluster 09 height ~19 km The data for the analysis of LIMB state 32 cluster 09 height ~19 km have the following characteristics:

Item	Value
Start time of first sample	02APR2011 01:29:59.233
Start time of last sample	02APR2011 23:40:40.009
Reference period start time	03MAR2011 00:00:37.713
Reference period stop time	01APR2011 22:36:07.853
Channel number	2
First pixel number (starts at 0)	170
Last pixel number (starts at 0)	947



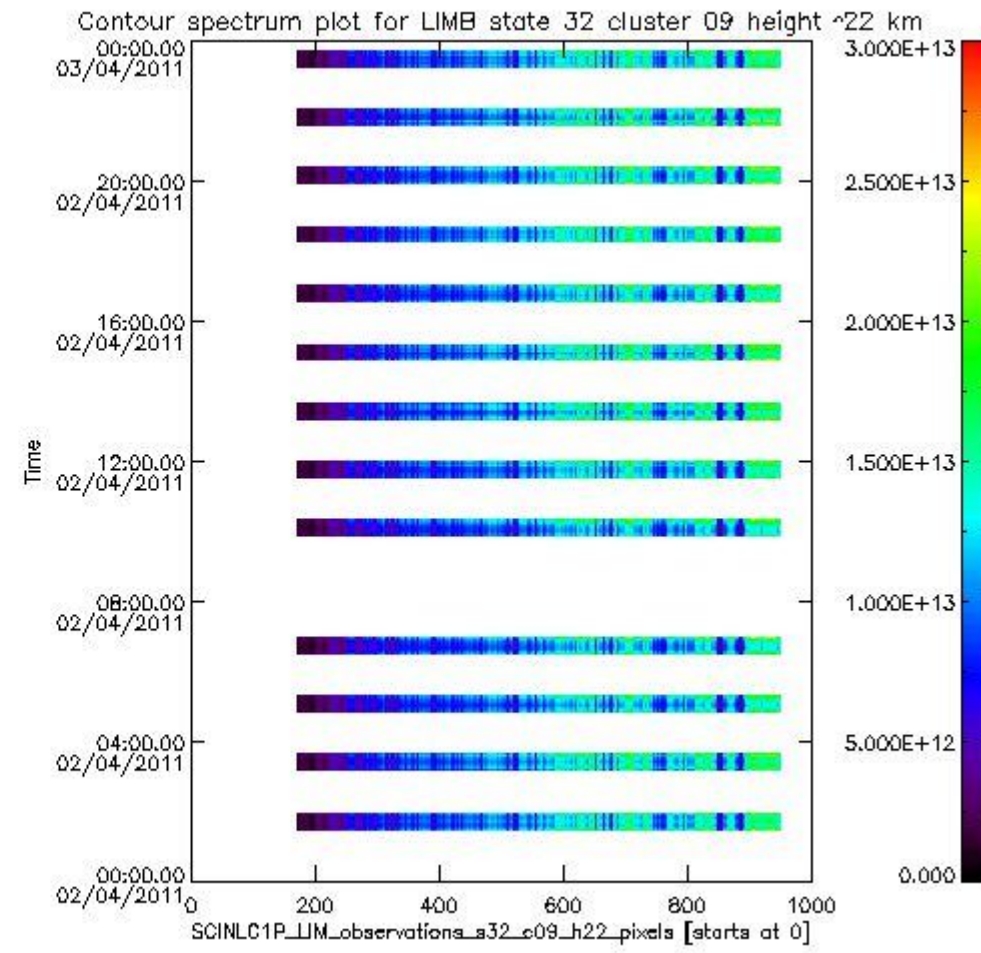
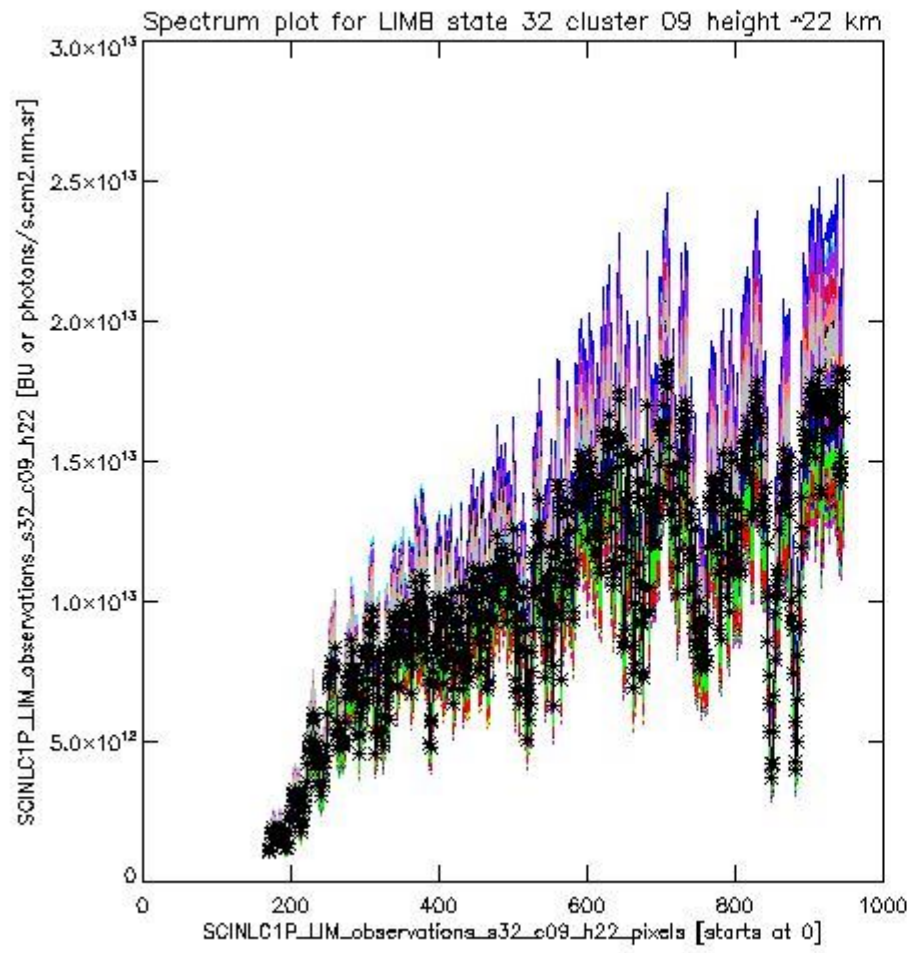
sciamachy_l1b_source_packet_report_SCIA_7_04_U_20110402_10.PNG



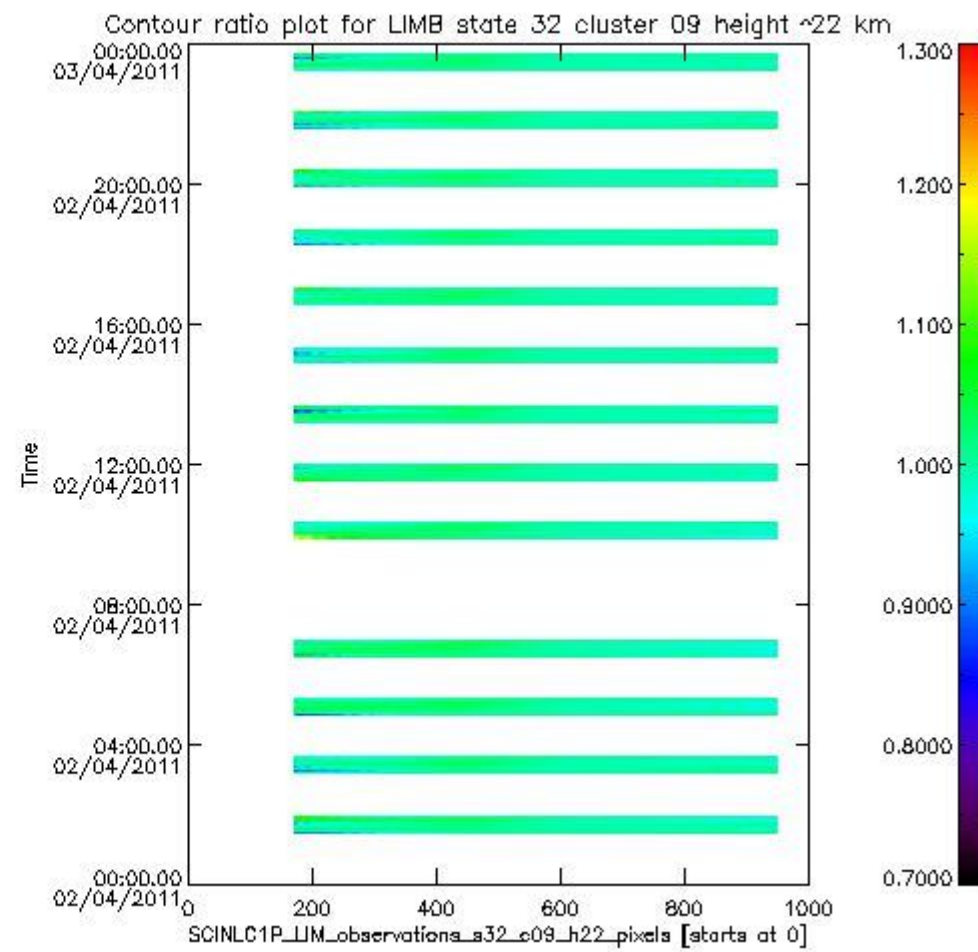
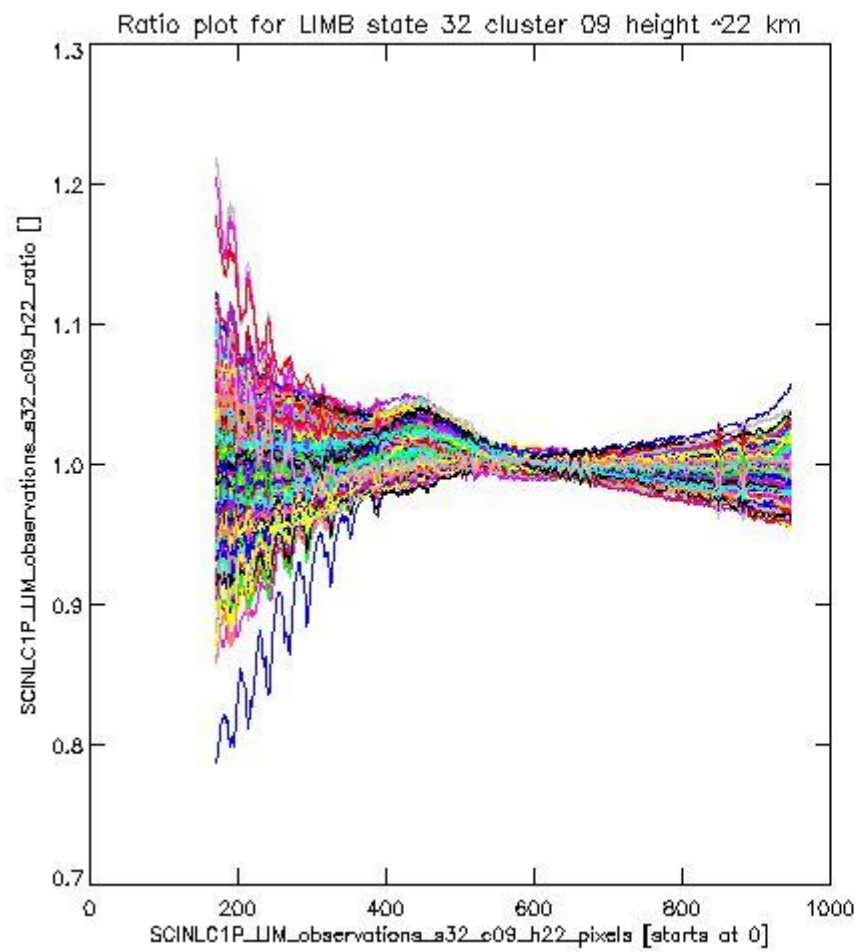
sciamachy_i1b_source_packet_report_SCIA_7_04_U_20110402_11.PNG

1.2.7 LIMB state 32 cluster 09 height ~22 km The data for the analysis of LIMB state 32 cluster 09 height ~22 km have the following characteristics:

Item	Value
Start time of first sample	02APR2011 01:29:59.233
Start time of last sample	02APR2011 23:40:40.009
Reference period start time	03MAR2011 00:00:37.713
Reference period stop time	01APR2011 22:36:07.853
Channel number	2
First pixel number (starts at 0)	170
Last pixel number (starts at 0)	947



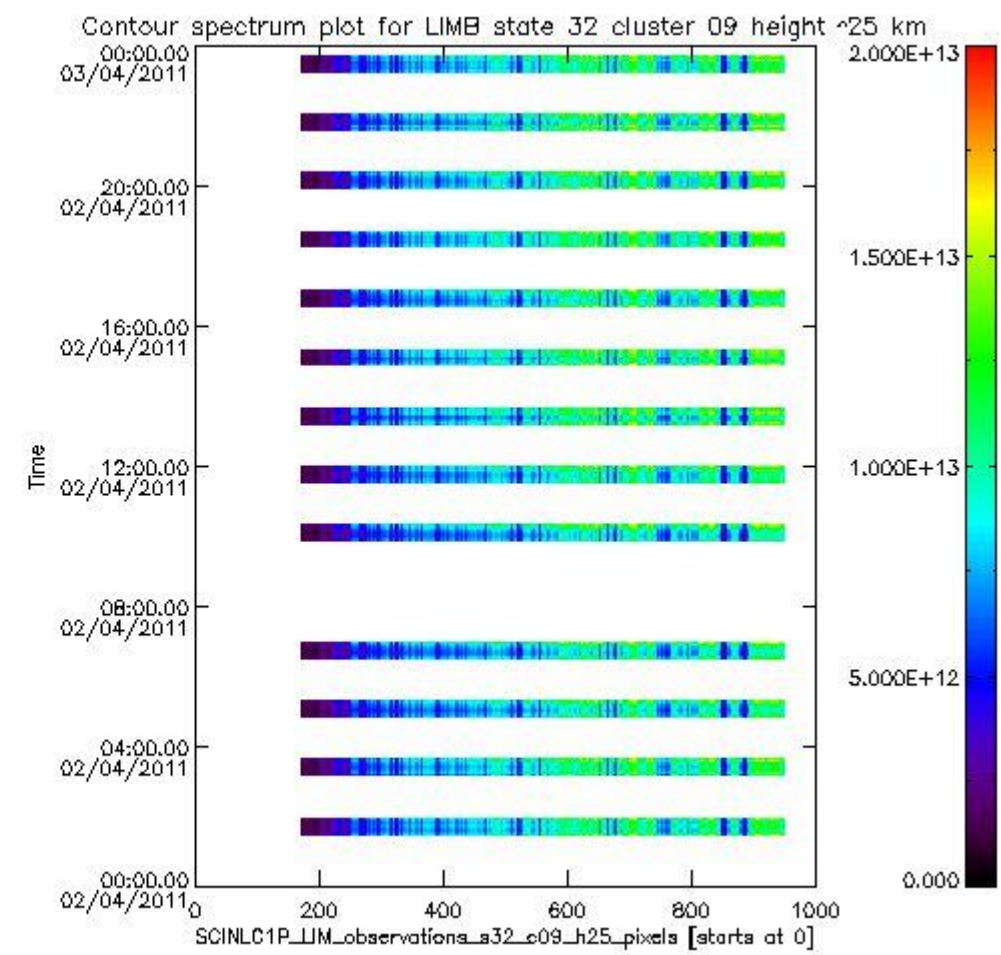
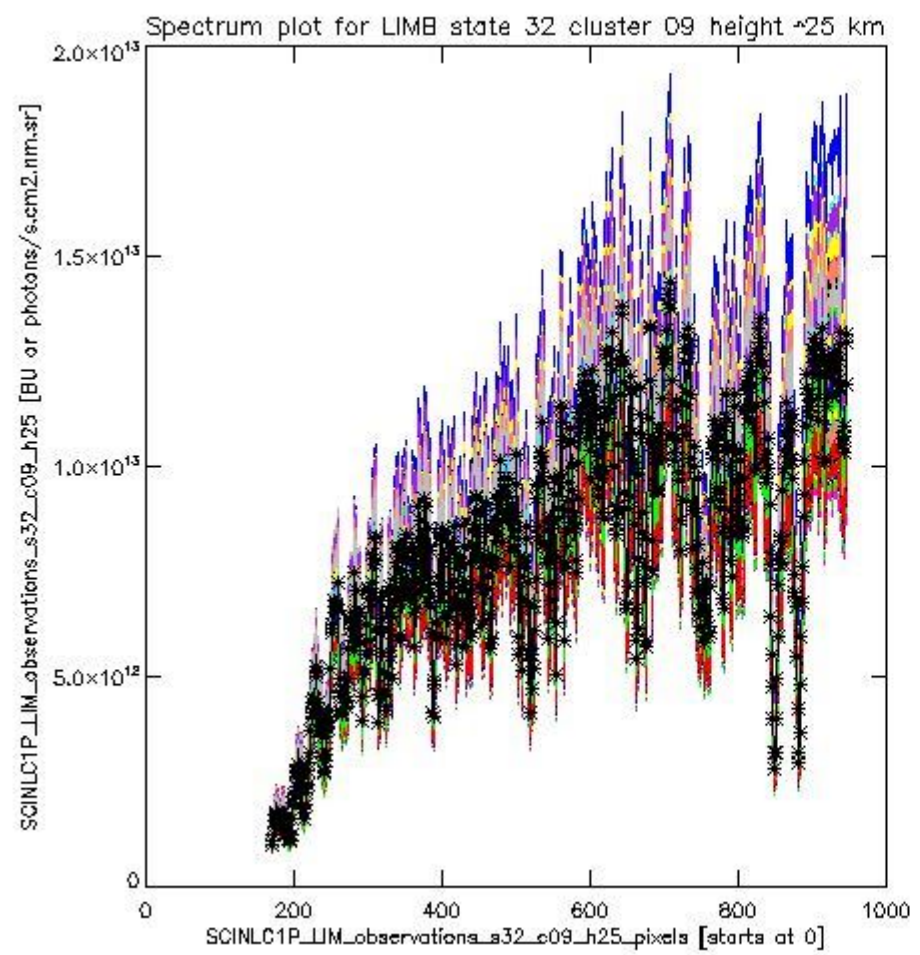
sciamachy_i1b_source_packet_report_SCIA_7_04_U_20110402_12.PNG



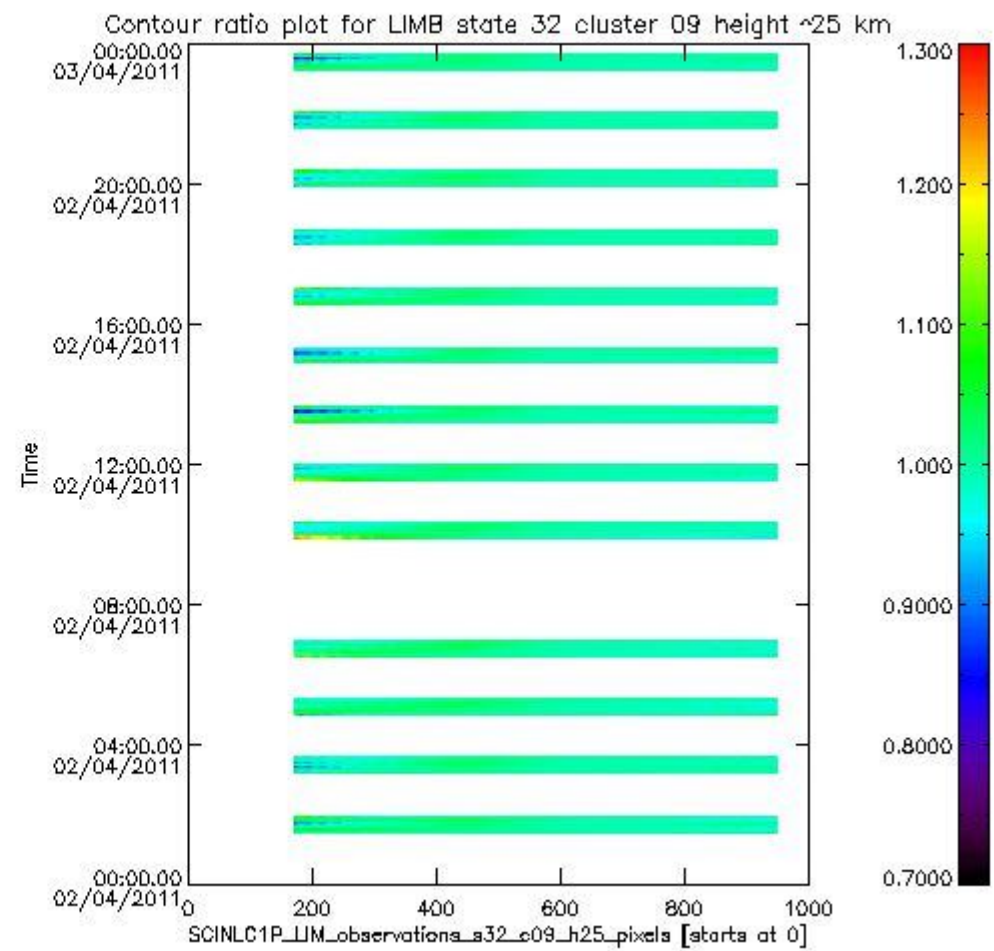
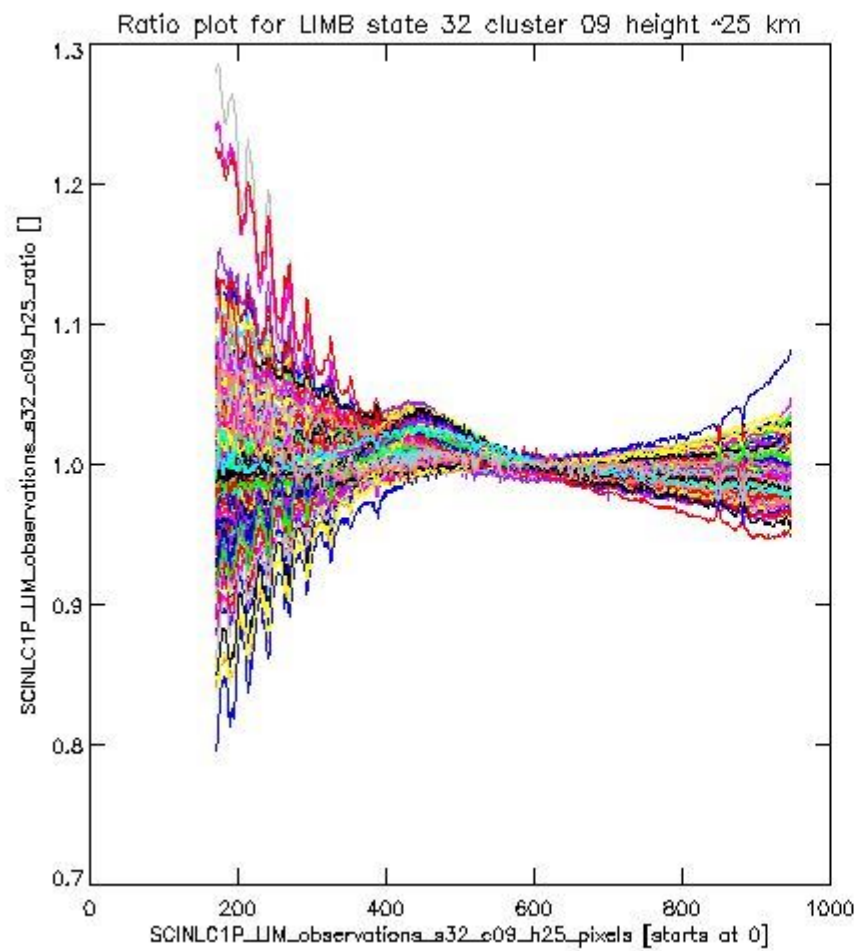
sciamachy_l1b_source_packet_report_SCIA_7_04_U_20110402_13.PNG

1.2.8 LIMB state 32 cluster 09 height ~25 km The data for the analysis of LIMB state 32 cluster 09 height ~25 km have the following characteristics:

Item	Value
Start time of first sample	02APR2011 01:29:59.233
Start time of last sample	02APR2011 23:40:40.009
Reference period start time	03MAR2011 00:00:37.713
Reference period stop time	01APR2011 22:36:07.853
Channel number	2
First pixel number (starts at 0)	170
Last pixel number (starts at 0)	947



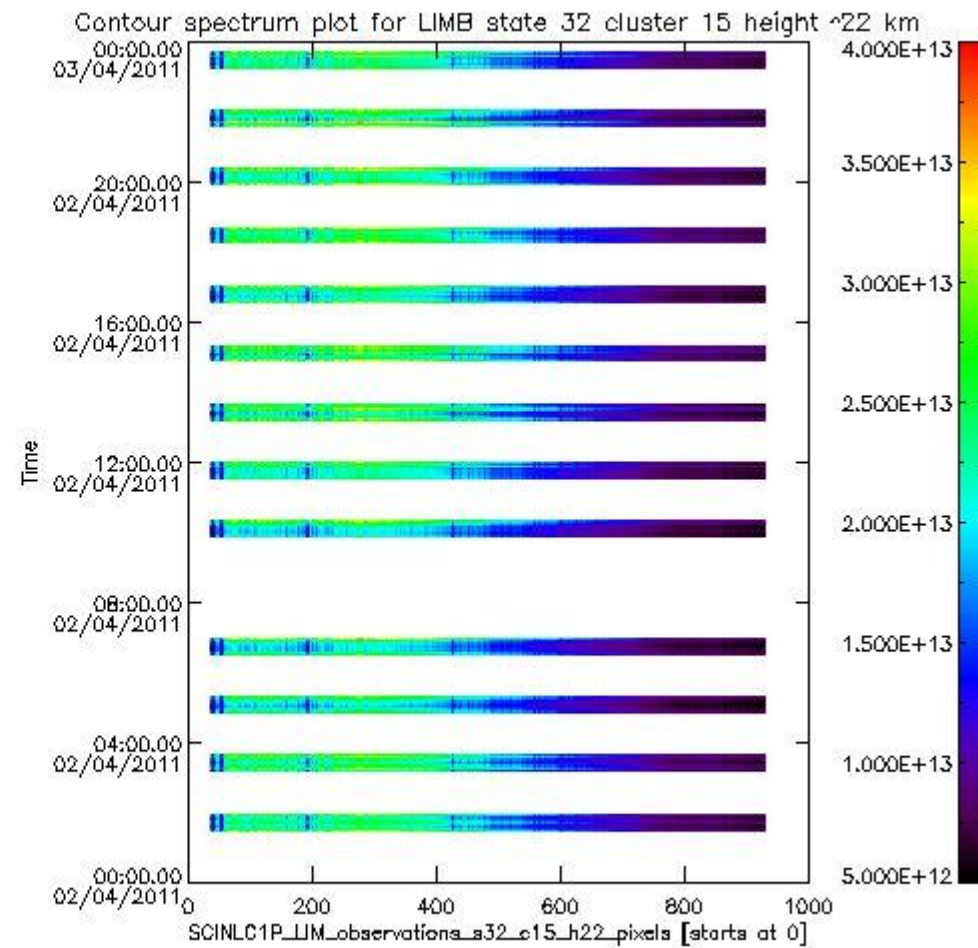
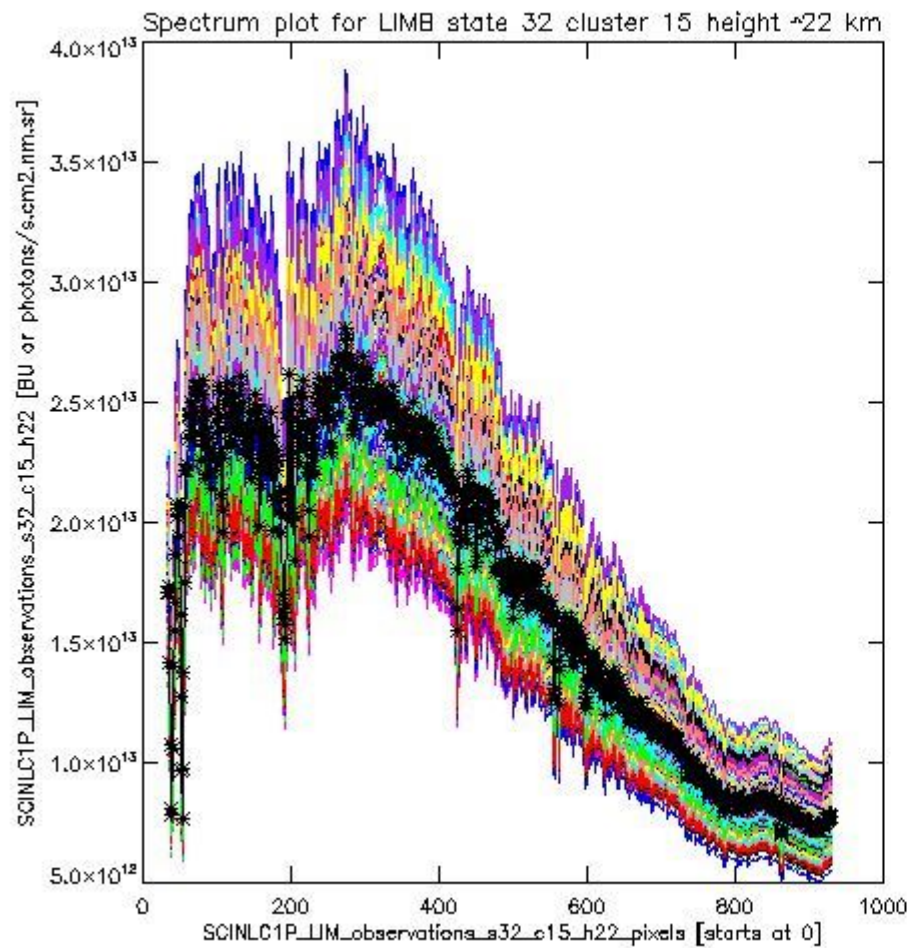
sciamachy_l1b_source_packet_report_SCIA_7_04_U_20110402_14.PNG



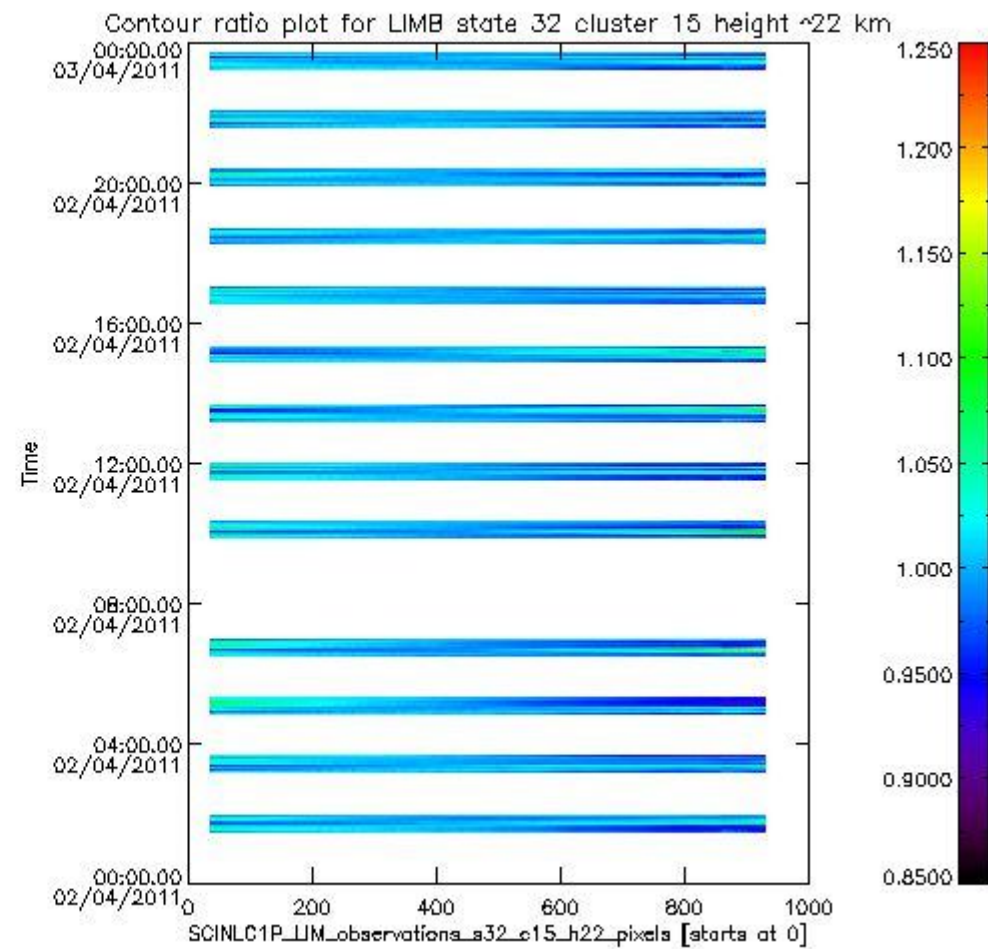
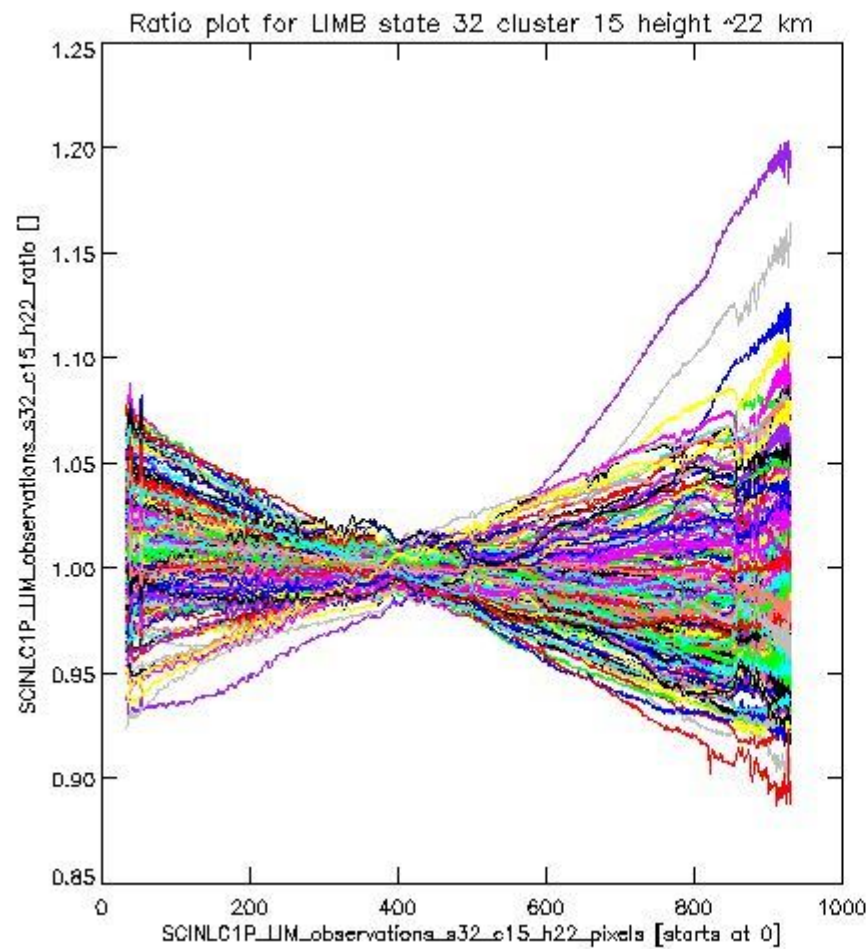
sciamachy_l1b_source_packet_report_SCIA_7_04_U_20110402_15.PNG

1.2.9 LIMB state 32 cluster 15 height ~22 km The data for the analysis of LIMB state 32 cluster 15 height ~22 km have the following characteristics:

Item	Value
Start time of first sample	02APR2011 01:29:59.233
Start time of last sample	02APR2011 23:40:40.009
Reference period start time	03MAR2011 00:00:37.713
Reference period stop time	01APR2011 22:36:07.853
Channel number	3
First pixel number (starts at 0)	33
Last pixel number (starts at 0)	929



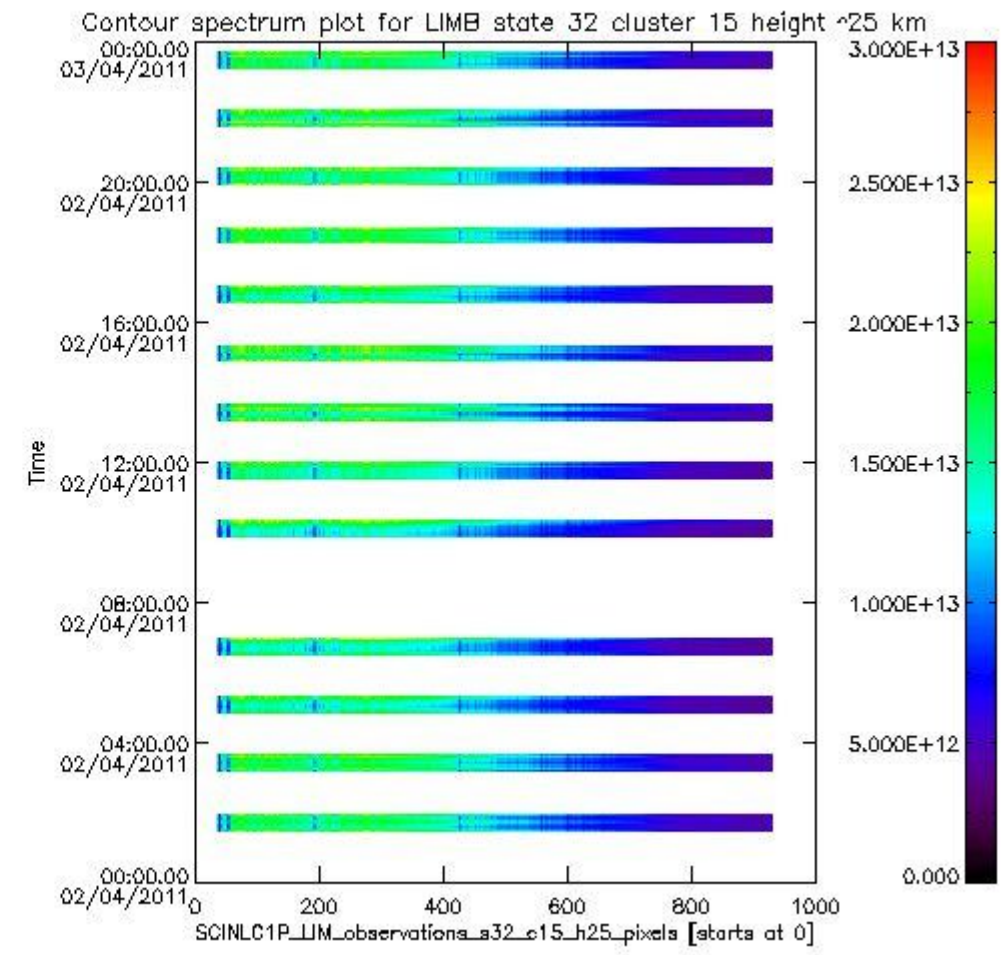
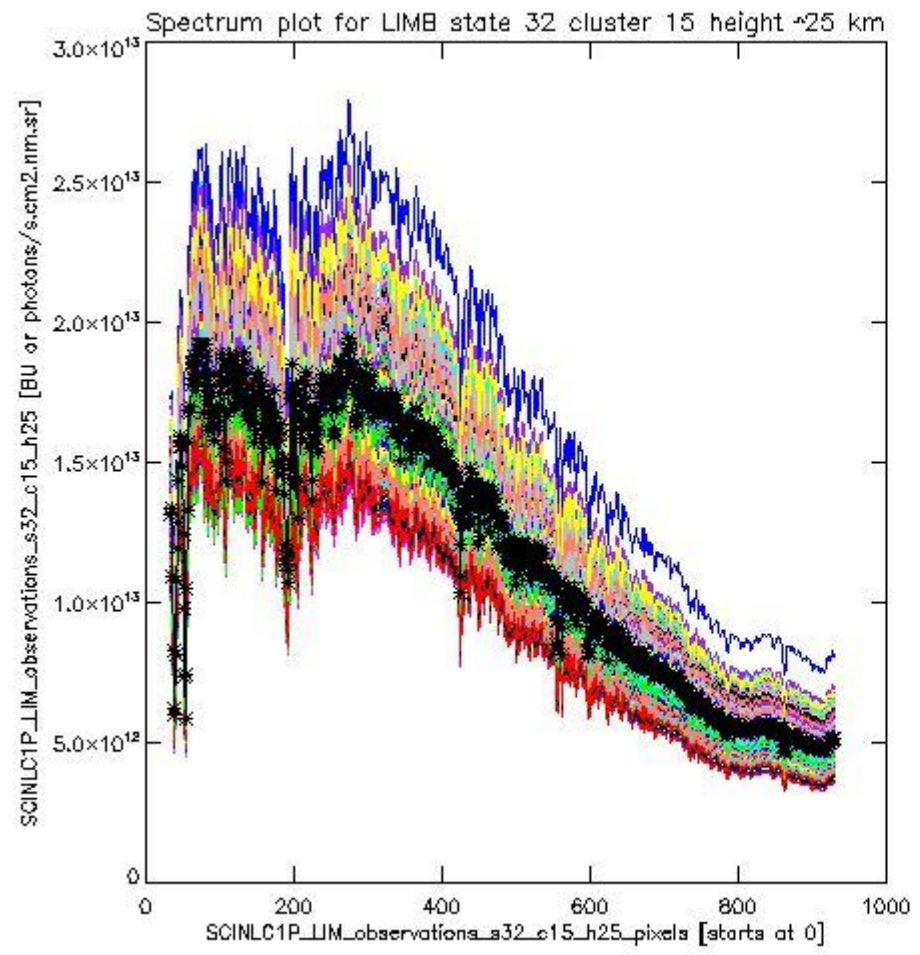
sciamachy_i1b_source_packet_report_SCIA_7_04_U_20110402_16.PNG



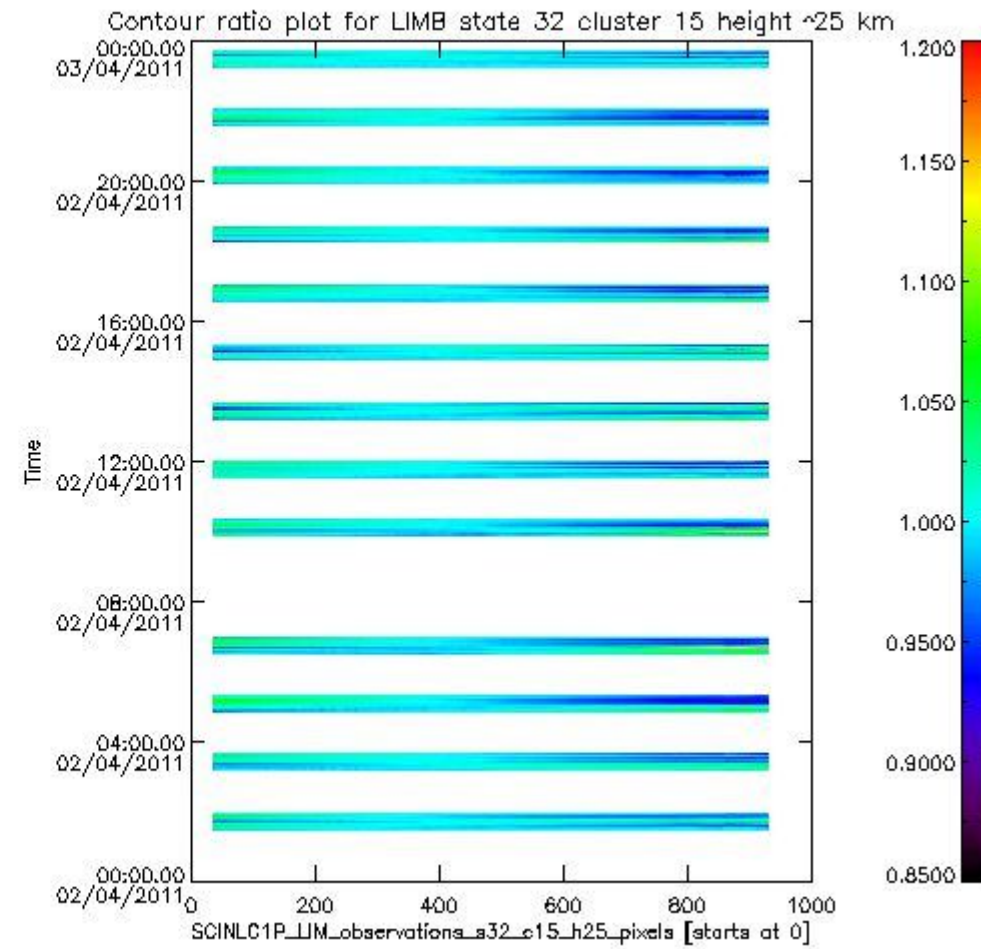
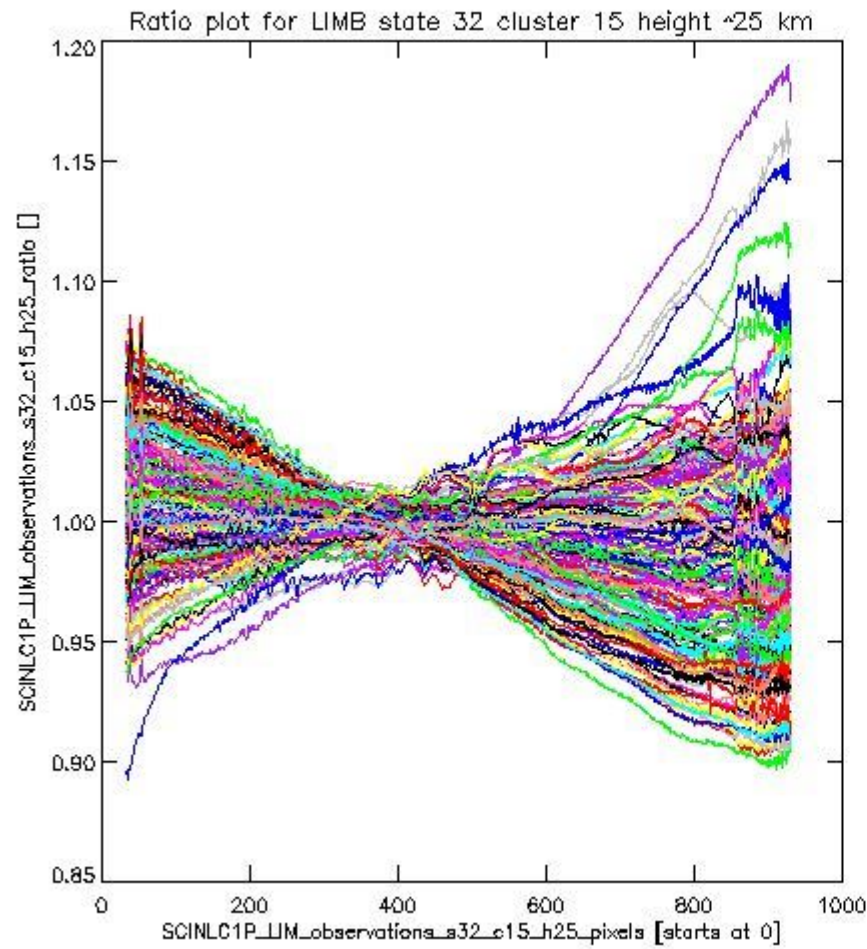
sciamachy_11b_source_packet_report_SCIA_7_04_U_20110402_17.PNG

1.2.10 LIMB state 32 cluster 15 height ~25 km The data for the analysis of LIMB state 32 cluster 15 height ~25 km have the following characteristics:

Item	Value
Start time of first sample	02APR2011 01:29:59.233
Start time of last sample	02APR2011 23:40:40.009
Reference period start time	03MAR2011 00:00:37.713
Reference period stop time	01APR2011 22:36:07.853
Channel number	3
First pixel number (starts at 0)	33
Last pixel number (starts at 0)	929



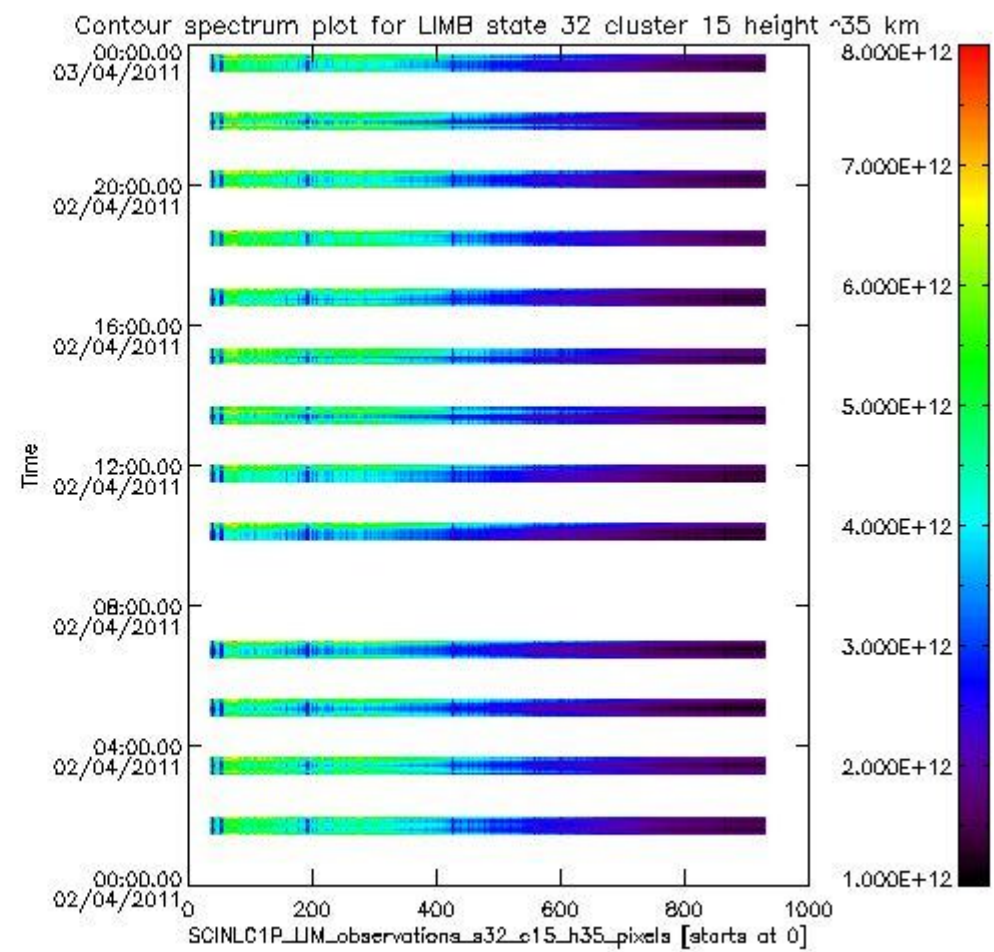
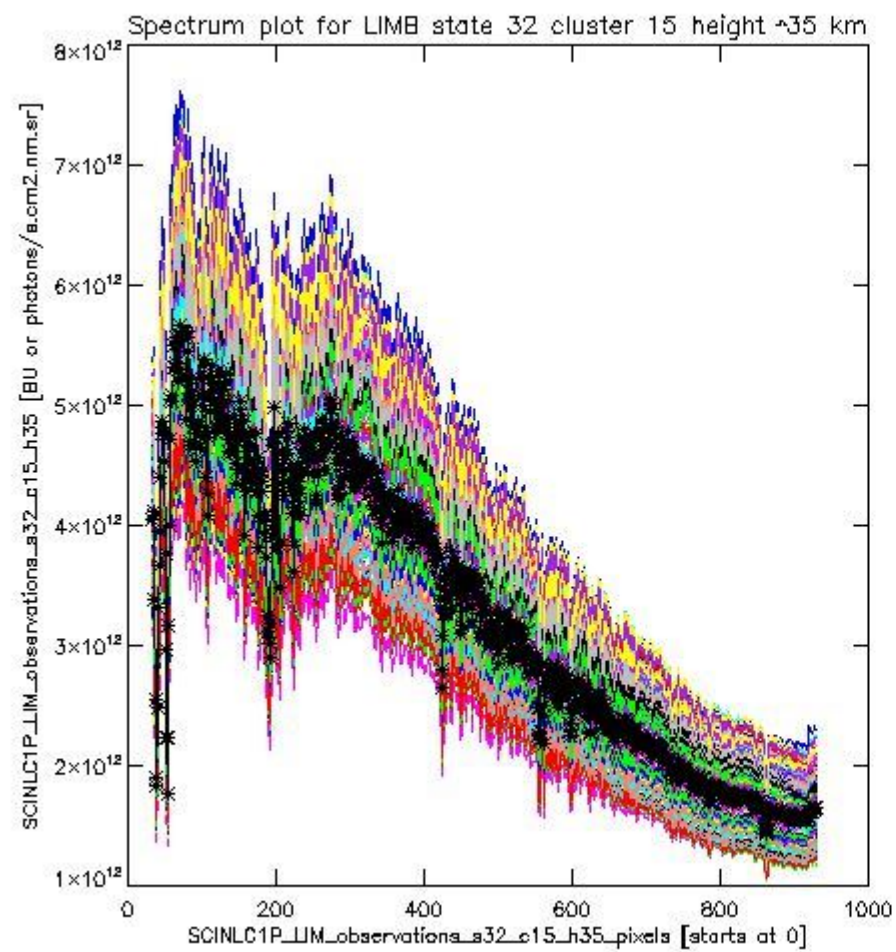
sciamachy_l1b_source_packet_report_SCIA_7_04_U_20110402_18.PNG

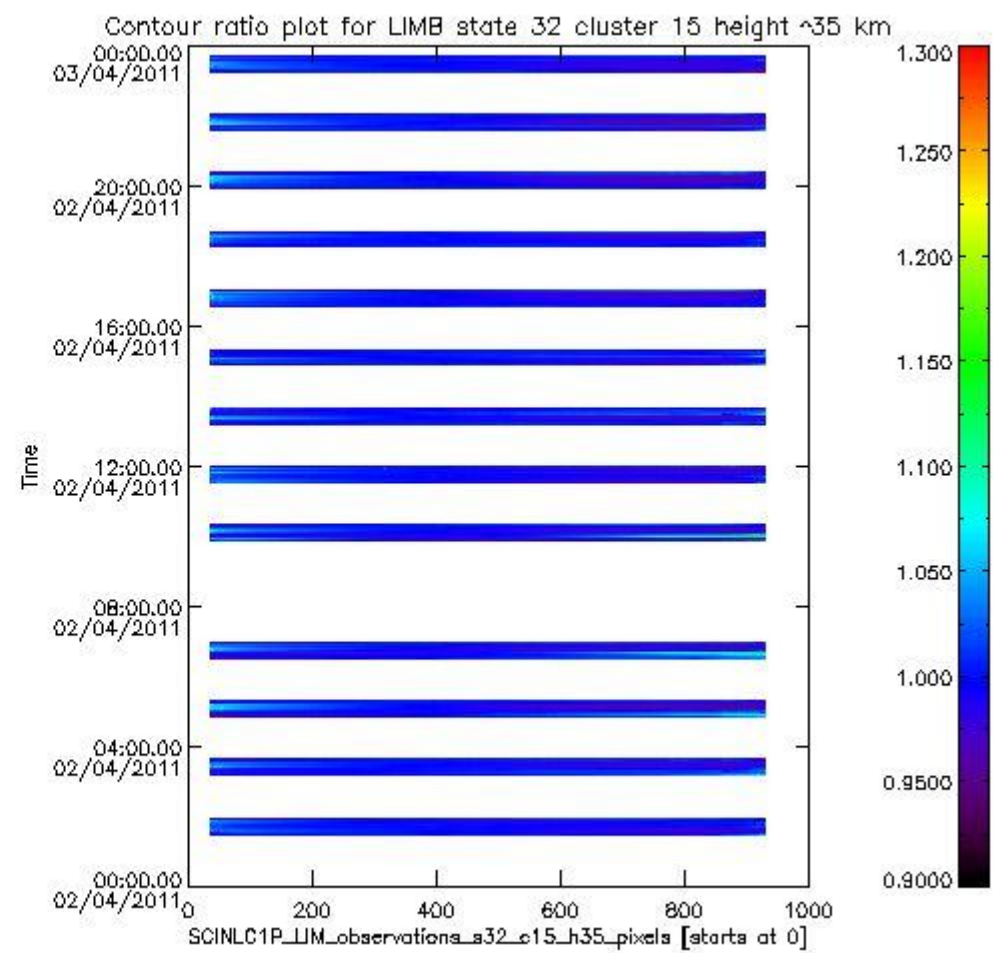
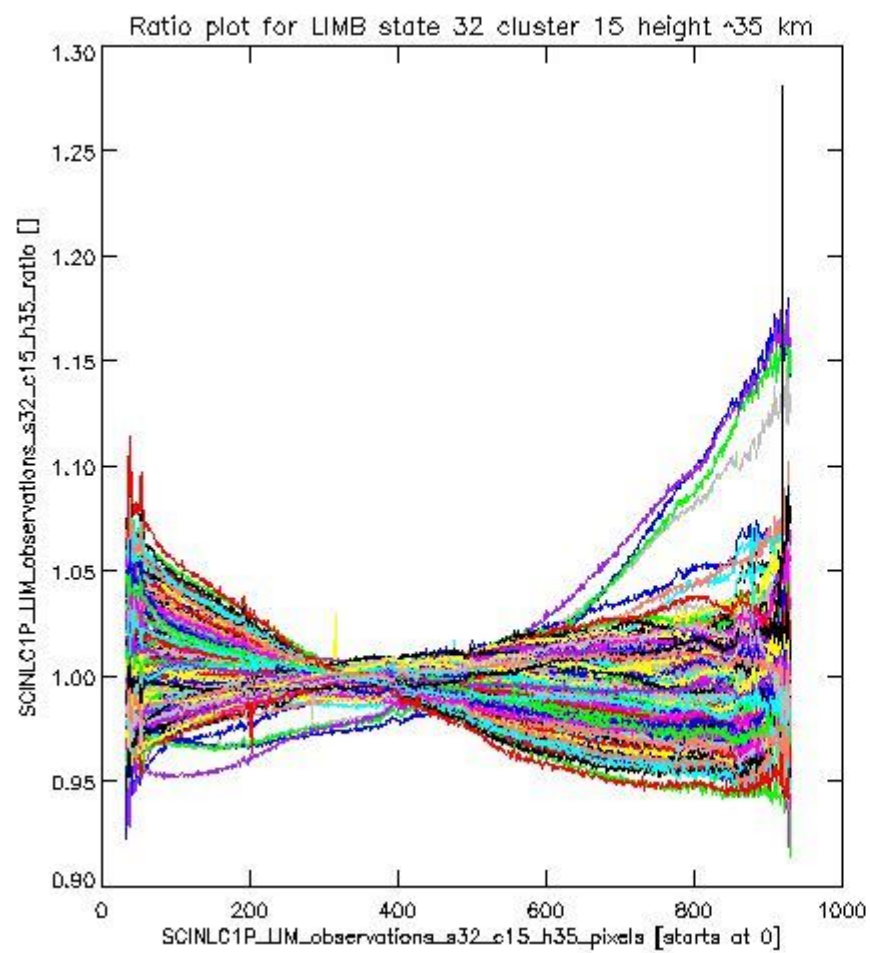


sciamachy_11b_source_packet_report_SCIA_7_04_U_20110402_19.PNG

1.2.11 LIMB state 32 cluster 15 height ~35 km The data for the analysis of LIMB state 32 cluster 15 height ~35 km have the following characteristics:

Item	Value
Start time of first sample	02APR2011 01:29:59.233
Start time of last sample	02APR2011 23:40:40.009
Reference period start time	03MAR2011 00:00:37.713
Reference period stop time	01APR2011 22:36:07.853
Channel number	3
First pixel number (starts at 0)	33
Last pixel number (starts at 0)	929





sciamachy_i1b_source_packet_report_SCIA_7_04_U_20110402_21.PNG

