

1. SCIAMACHY Level 1B source packet monitoring report

[1.1. General Info](#)

[1.2 Source packet monitoring](#)

1.1 General Info

This report contains results of the analysis on source packets from SCIAMACHY level 1 data (The SCI_NL__1P product).

1.1.1 Report summary

The table below shows general characteristics of the data that are included into this report.

Item	Value
Report version	1.1 (07-01-2010)
Time of report generation	29MAR2011 06:55:38
Data source version	SCIA/7.04-U
Processing scope for products	18MAR2011 00:00:00 to 19MAR2011 00:00:00
Start time of first product within scope	17MAR2011 22:42:03
Stop time of last product within scope	19MAR2011 01:14:48
Total number of level 1 products	16
Number of level 1 products with errors	0
SCIAL1C executable used in processing	scial1c-2.1.73-i686-pc-linux-gnu-gcc-3.3.6
SCIAL1C parameters used in processing	-allcal -type all -cat 1,2,8,10,11,16,19,23 -nadircluster 8,9,15,24,55 -limbcluster 9,15

1.1.2 Source packet summary

The table below shows which source packets have been included into the report.

Item	Mode	State	Cluster	Height	First start time	Last start time
0	NADIR	07	08	N/A	18MAR2011 00:54:20.028	18MAR2011 17:45:02.544
1	NADIR	07	09	N/A	18MAR2011 00:54:20.028	18MAR2011 17:45:02.544
2	NADIR	07	15	N/A	18MAR2011 00:54:20.028	18MAR2011 17:45:02.544
3	NADIR	07	24	N/A	18MAR2011 00:54:20.028	18MAR2011 17:45:02.544
4	NADIR	07	55	N/A	18MAR2011 00:54:20.028	18MAR2011 17:45:02.544
5	LIMB	32	09	~19 km	18MAR2011 00:41:09.391	18MAR2011 17:50:38.165
6	LIMB	32	09	~22 km	18MAR2011 00:41:09.391	18MAR2011 17:50:38.165
7	LIMB	32	09	~25 km	18MAR2011 00:41:09.391	18MAR2011 17:50:38.165
8	LIMB	32	15	~22 km	18MAR2011 00:41:09.391	18MAR2011 17:50:38.165
9	LIMB	32	15	~25 km	18MAR2011 00:41:09.391	18MAR2011 17:50:38.165
10	LIMB	32	15	~35 km	18MAR2011 00:41:09.391	18MAR2011 17:50:38.165

1.1.3 Summary per product

The following table shows a summary for each product used in this report.

Products are linked to a corresponding server directory for view/download. Note: Link access may be restricted by security settings of your internet browser or firewall.

#	Product name	Start time	Stop time	ProdErr	#nadir	#limb	#occ	#mon	#noprocc	#cempl_drk	#incmpl_drk	Decont
0	SCI_NLC_1CUDPA20110317_223117_000060093100_00303_47300_5536.N1	17MAR2011 22:42:03	17MAR2011 23:54:06	0	33	31	0	0	1	0	0	
1	SCI_NLC_1CUDPA20110318_001130_000060093100_00304_47301_5537.N1	18MAR2011 00:22:17	18MAR2011 01:34:10	0	33	31	0	0	1	0	0	
2	SCI_NLC_1CUDPA20110318_015144_000060093100_00305_47302_5538.N1	18MAR2011 02:02:30	18MAR2011 03:14:14	0	33	31	0	0	1	0	0	
3	SCI_NLC_1CUDPA20110318_033157_000060093100_00306_47303_5541.N1	18MAR2011 03:42:44	18MAR2011 04:54:18	0	33	31	0	0	1	0	0	
4	SCI_NLC_1CUDPA20110318_051211_000060093100_00307_47304_5543.N1	18MAR2011 05:22:58	18MAR2011 06:34:22	0	33	30	0	0	1	0	0	
5	SCI_NLC_1CUDPA20110318_065224_000060093100_00308_47305_5546.N1	18MAR2011 07:03:11	18MAR2011 08:14:25	0	33	30	0	0	1	0	0	

6	SCI_NLC_1CUDPA20110318_083237_000060093100_00309_47306_5547.N1	18MAR2011 08:43:25	18MAR2011 09:55:37	0	34	30	0	0	1	0	0	
7	SCI_NLC_1CUDPA20110318_101251_000060093100_00310_47307_5548.N1	18MAR2011 10:23:38	18MAR2011 11:35:41	0	34	30	0	0	1	0	0	
8	SCI_NLC_1CUDPA20110318_115304_000060093100_00311_47308_5551.N1	18MAR2011 12:03:52	18MAR2011 13:15:44	0	34	30	0	0	1	0	0	
9	SCI_NLC_1CUDPA20110318_133318_000060093100_00312_47309_5552.N1	18MAR2011 13:44:05	18MAR2011 14:55:47	0	34	30	0	0	1	0	0	
10	SCI_NLC_1CUDPA20110318_151331_000060093100_00313_47310_5557.N1	18MAR2011 15:24:19	18MAR2011 16:35:49	0	33	30	0	0	1	0	0	
11	SCI_NLC_1CUDPA20110318_165345_000060113100_00314_47311_5558.N1	18MAR2011 17:04:32	18MAR2011 18:31:48	0	30	28	0	11	1	0	0	
12	SCI_NLC_1CUDPA20110318_183400_000060083100_00315_47312_5560.N1	18MAR2011 18:44:46	18MAR2011 20:09:20	0	0	4	0	3	1	0	0	
13	SCI_NLC_1CUDPA20110318_201412_000060313100_00316_47313_5561.N1	18MAR2011 20:16:25	18MAR2011 21:45:44	0	0	4	0	3	1	0	0	
14	SCI_NLC_1CUDPA20110318_215446_000059883100_00317_47314_5564.N1	18MAR2011 22:05:13	18MAR2011 22:08:46	0	0	4	0	0	1	0	0	
15	SCI_NLC_1CUDPA20110318_233438_000060093100_00318_47315_5565.N1	18MAR2011 23:34:38	19MAR2011 01:14:48	0	0	0	0	0	1	0	0	

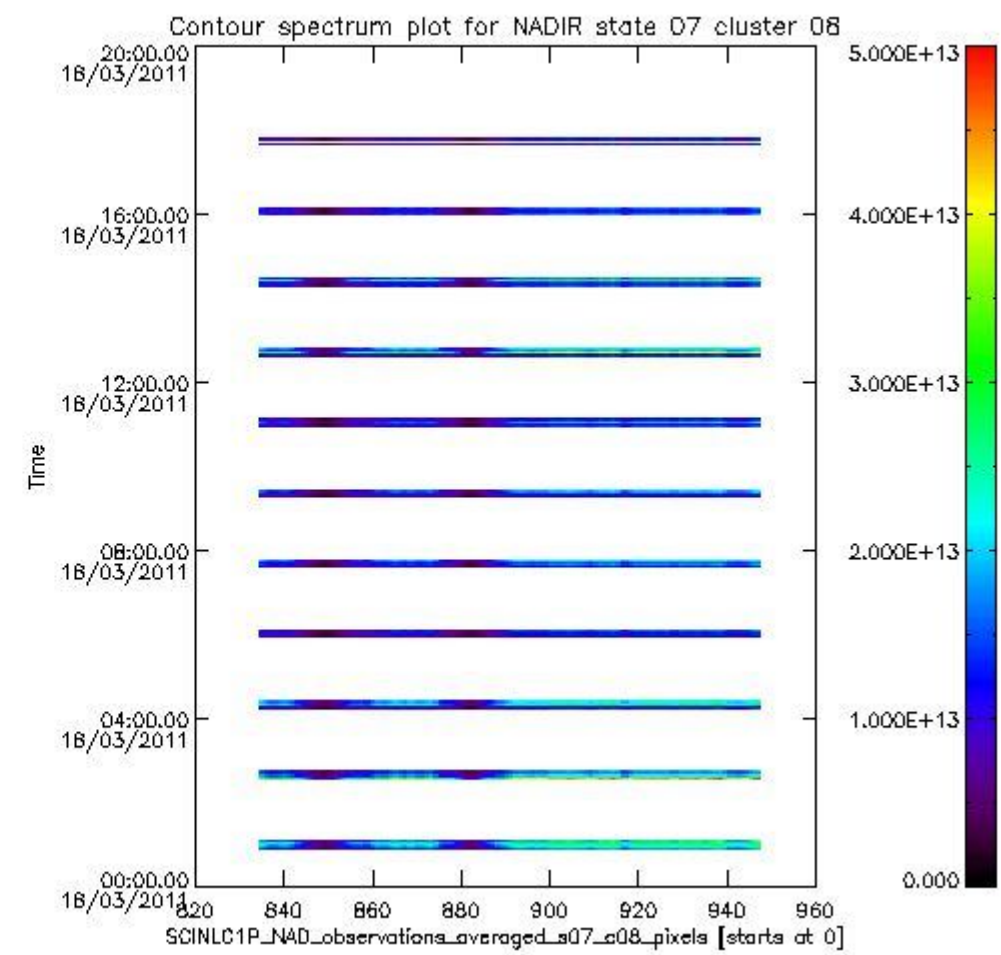
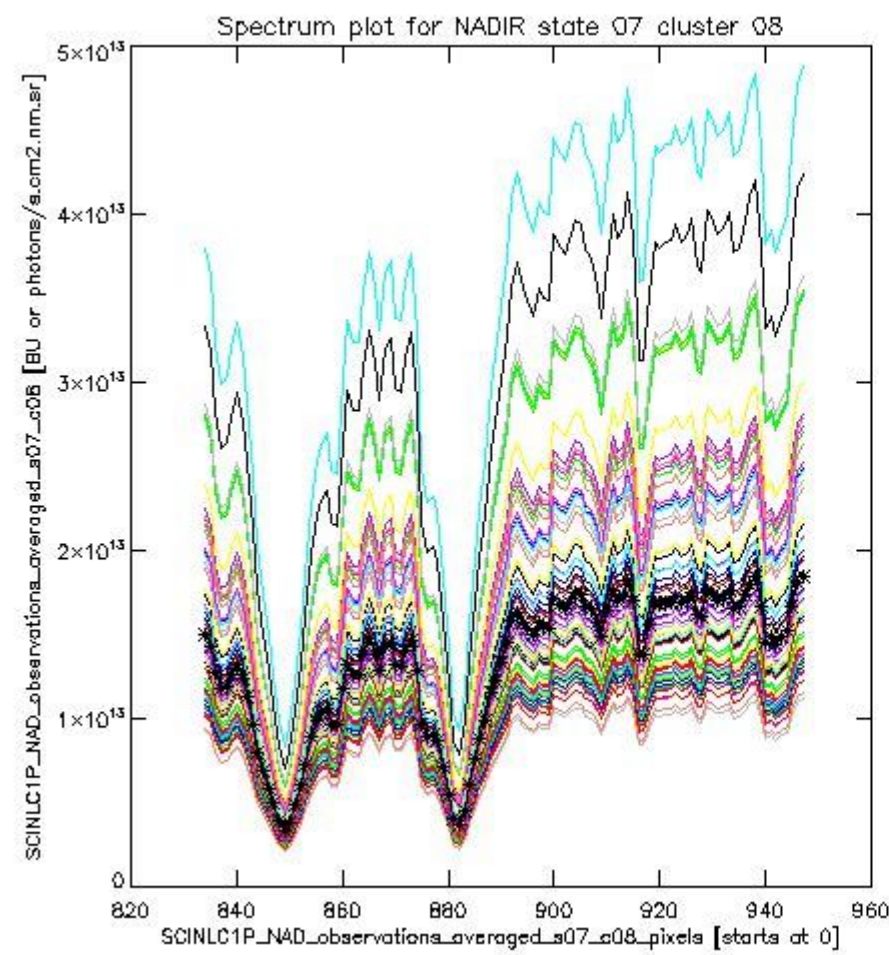
1.2 Source packet monitoring

This section shows figures for each of the monitored source packet types listed in the Source Packet Summary section. For each mode-state-cluster(-height) combination the following plots are shown:

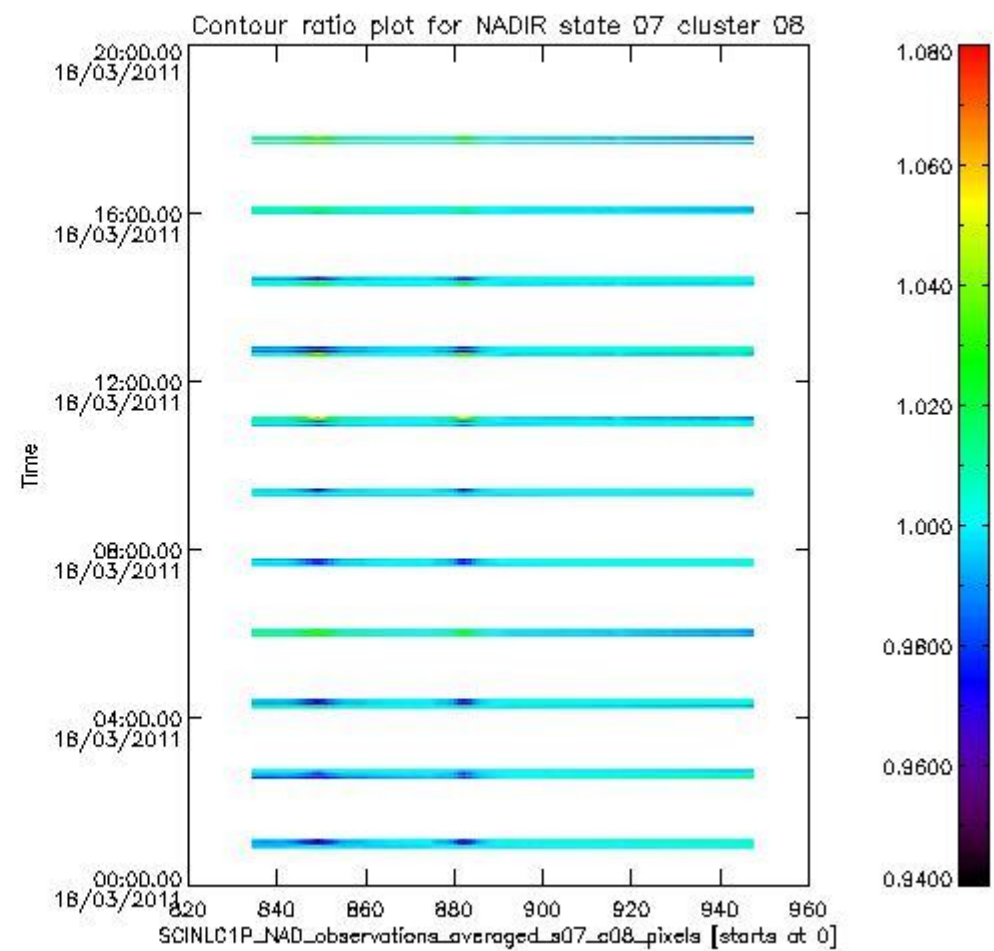
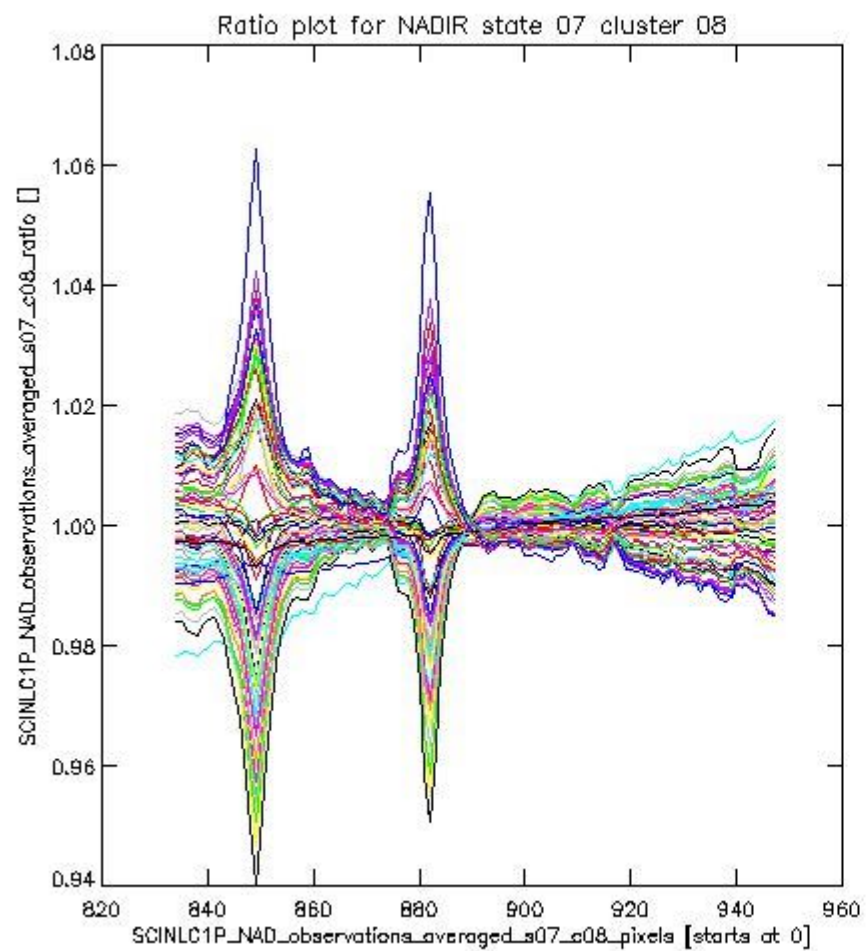
- A plot that shows all calibrated averaged spectra vs. pixel number as 2D-profiles. Each line is an average spectrum for a single state occurrence. For Limb modes, the average is performed on spectra recorded at a specific height. The reference spectrum that is used for comparison is also shown as a black line with * markers.
- A plot that shows all calibrated averaged spectra vs. pixel number and time using a coloured contour plot. The colours indicate the intensity.
- A plot that shows ratios of all calibrated averaged spectra and the reference spectrum vs. pixel number. Each line is the ratio of a calibrated averaged spectrum and the reference spectrum, where both spectra have been intensity corrected (the spectrum has been divided by the average pixel intensity) prior to division.
- A plot that shows ratios of all calibrated averaged spectra and the reference spectrum vs. pixel number and time using a coloured contour plot.

1.2.1 NADIR state 07 cluster 08 The data for the analysis of NADIR state 07 cluster 08 have the following characteristics:

Item	Value
Start time of first sample	18MAR2011 00:54:20.028
Start time of last sample	18MAR2011 17:45:02.544
Reference period start time	16FEB2011 00:57:07.892
Reference period stop time	17MAR2011 23:24:20.242
Channel number	2
First pixel number (starts at 0)	834
Last pixel number (starts at 0)	947



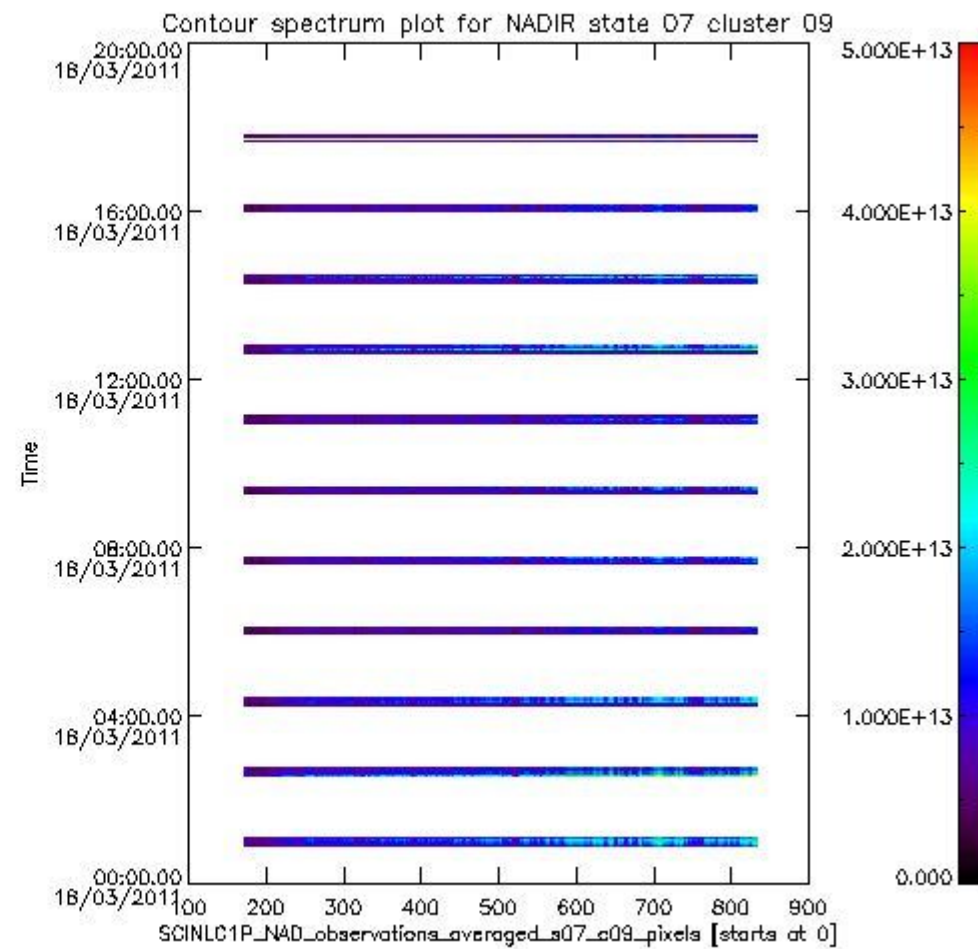
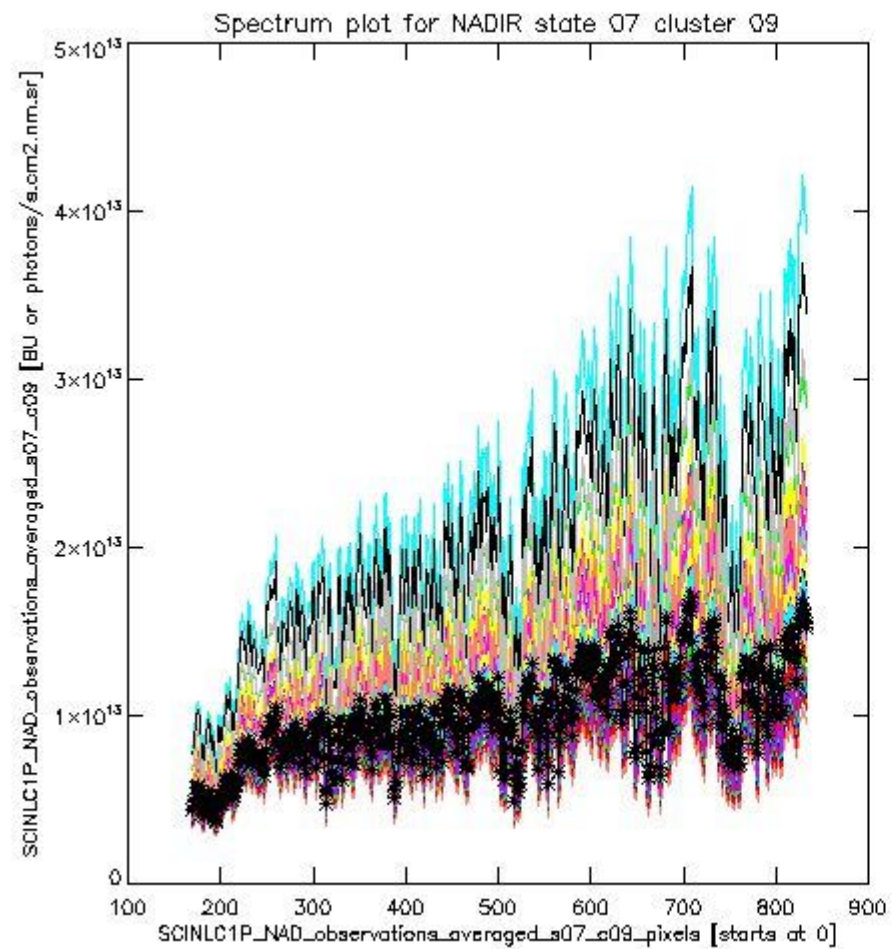
sciamachy_i1b_source_packet_report_SCIA_7_04_U_20110318_0.PNG



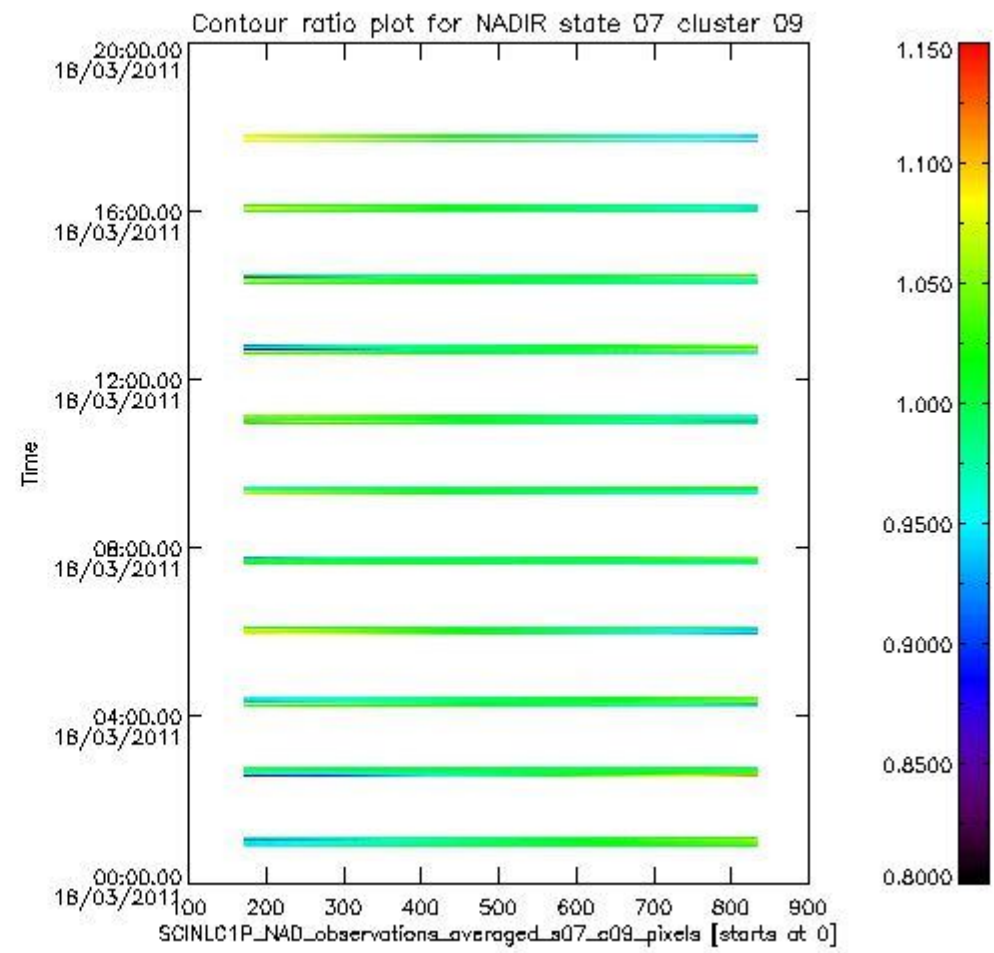
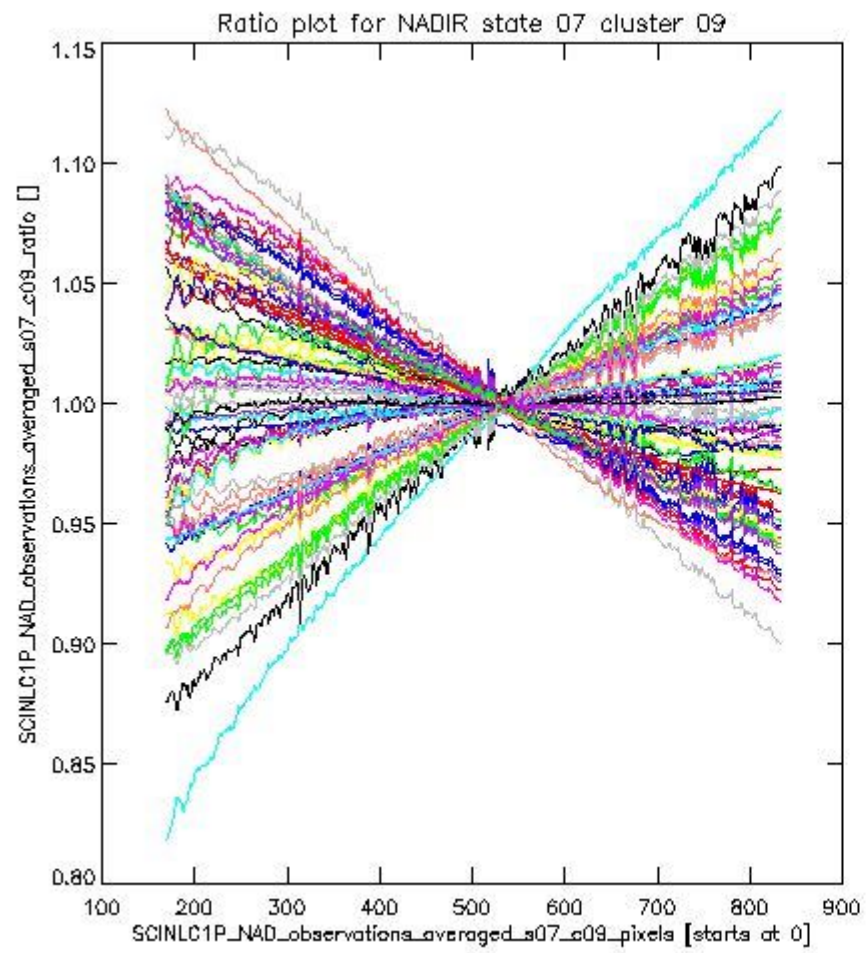
sciamachy_l1b_source_packet_report_SCIA_7_04_U_20110318_1.PNG

1.2.2 NADIR state 07 cluster 09 The data for the analysis of NADIR state 07 cluster 09 have the following characteristics:

Item	Value
Start time of first sample	18MAR2011 00:54:20.028
Start time of last sample	18MAR2011 17:45:02.544
Reference period start time	16FEB2011 00:57:07.892
Reference period stop time	17MAR2011 23:24:20.242
Channel number	2
First pixel number (starts at 0)	170
Last pixel number (starts at 0)	833



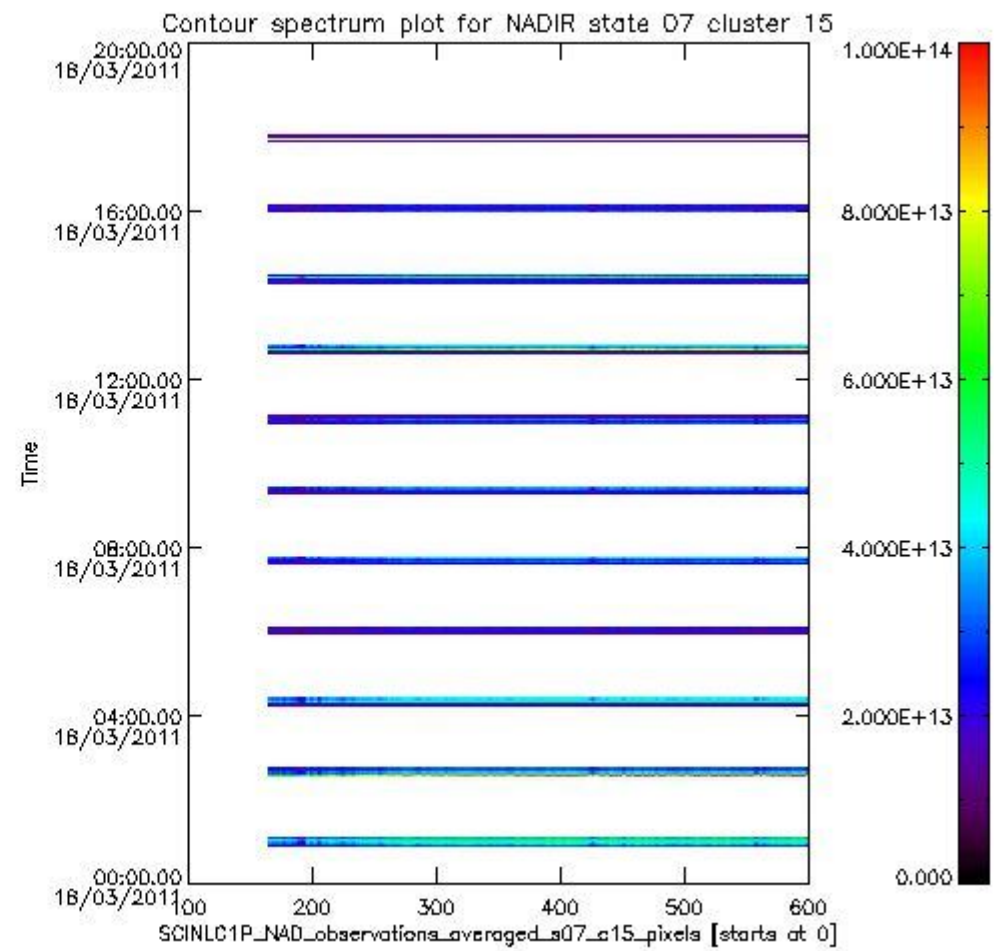
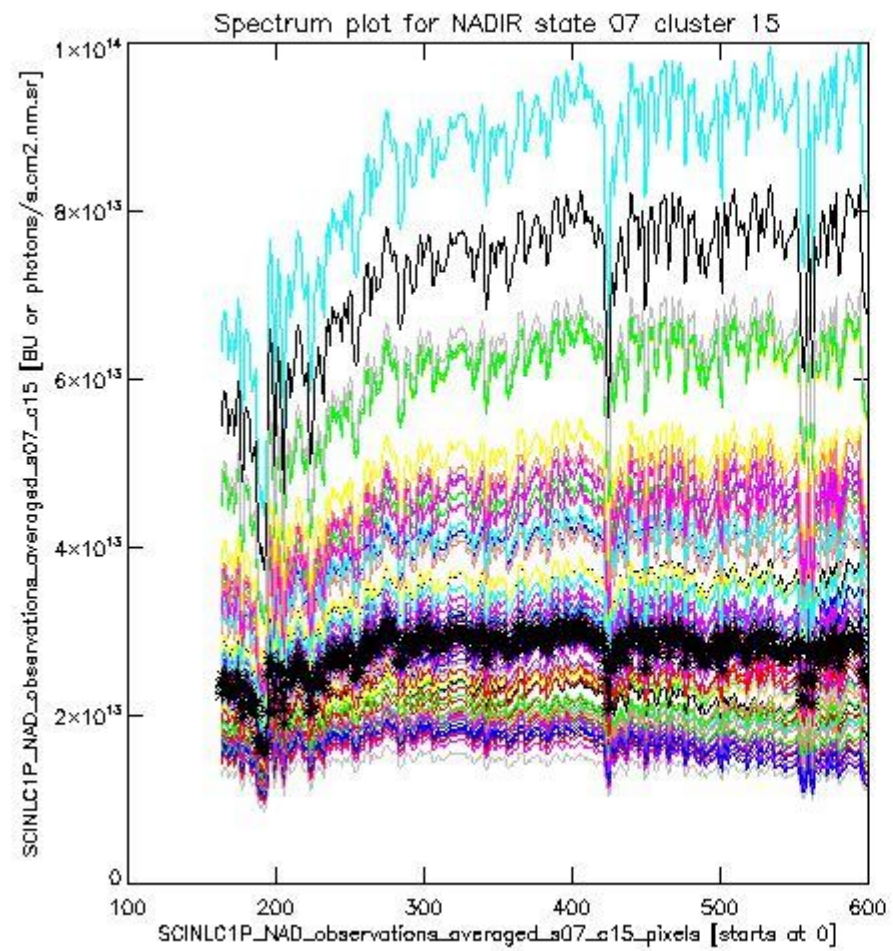
sciamachy_i1b_source_packet_report_SCIA_7_04_U_20110318_2.PNG



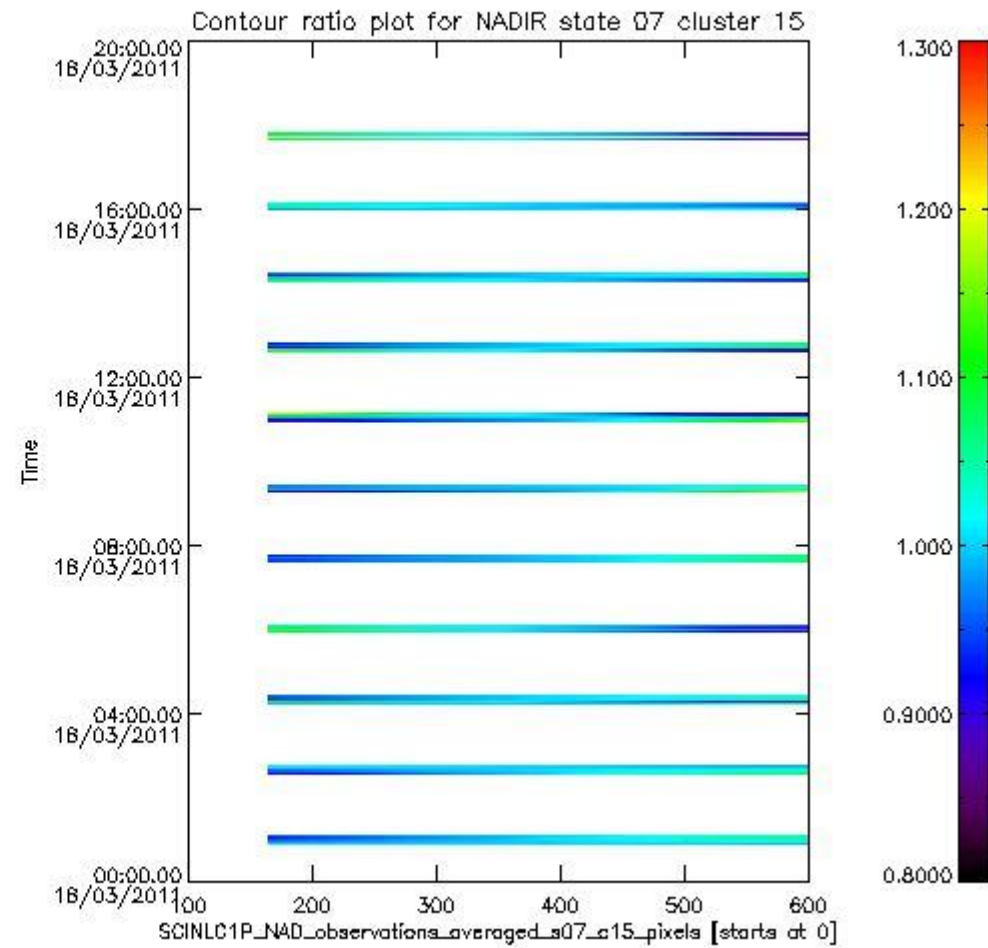
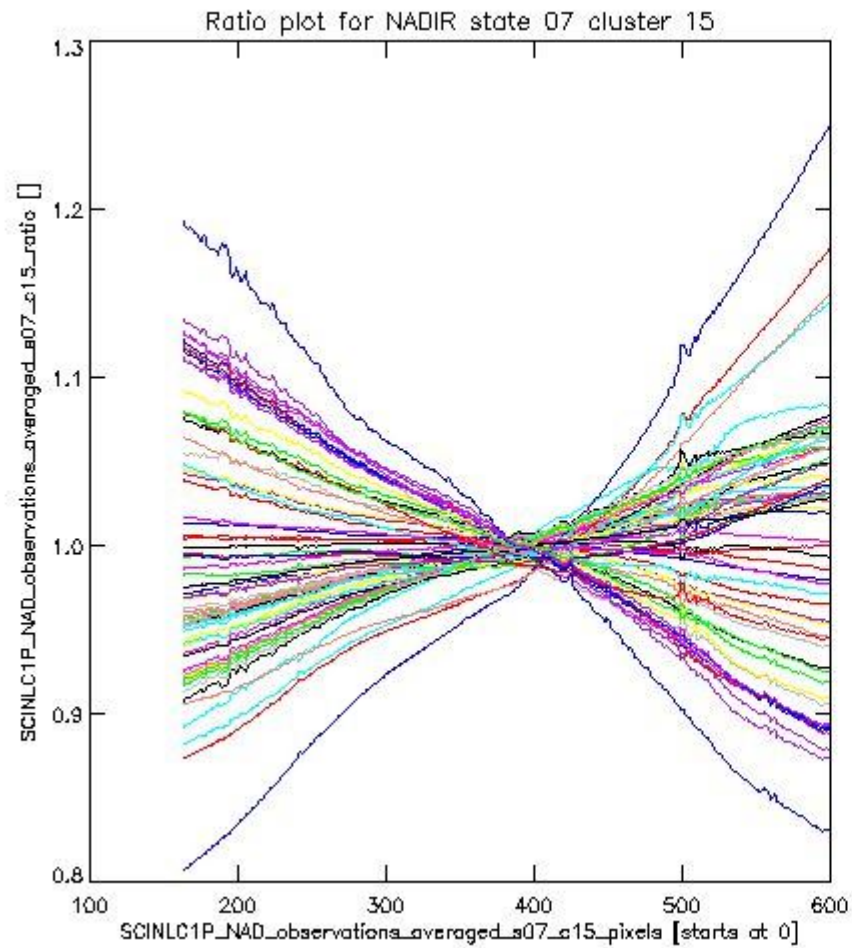
sciamachy_i1b_source_packet_report_SCIA_7_04_U_20110318_3.PNG

1.2.3 NADIR state 07 cluster 15 The data for the analysis of NADIR state 07 cluster 15 have the following characteristics:

Item	Value
Start time of first sample	18MAR2011 00:54:20.028
Start time of last sample	18MAR2011 17:45:02.544
Reference period start time	16FEB2011 00:57:07.892
Reference period stop time	17MAR2011 23:24:20.242
Channel number	3
First pixel number (starts at 0)	163
Last pixel number (starts at 0)	598



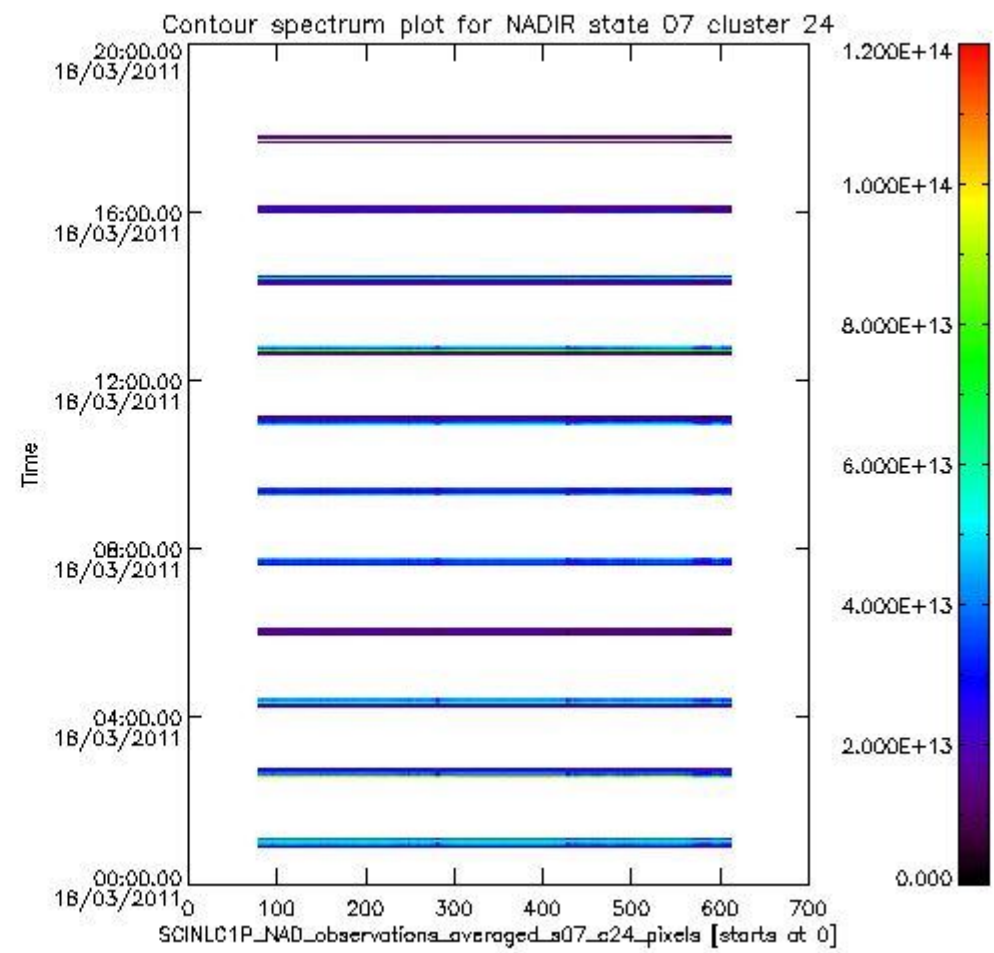
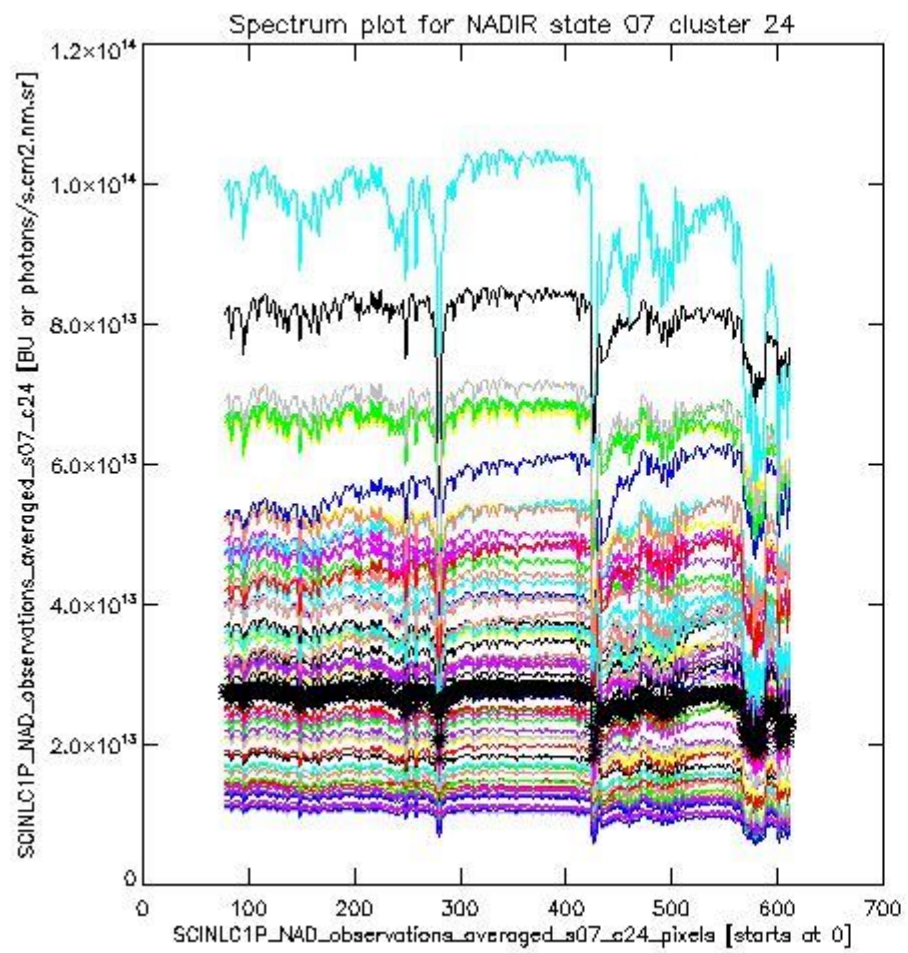
sciamachy_i1b_source_packet_report_SCIA_7_04_U_20110318_4.PNG



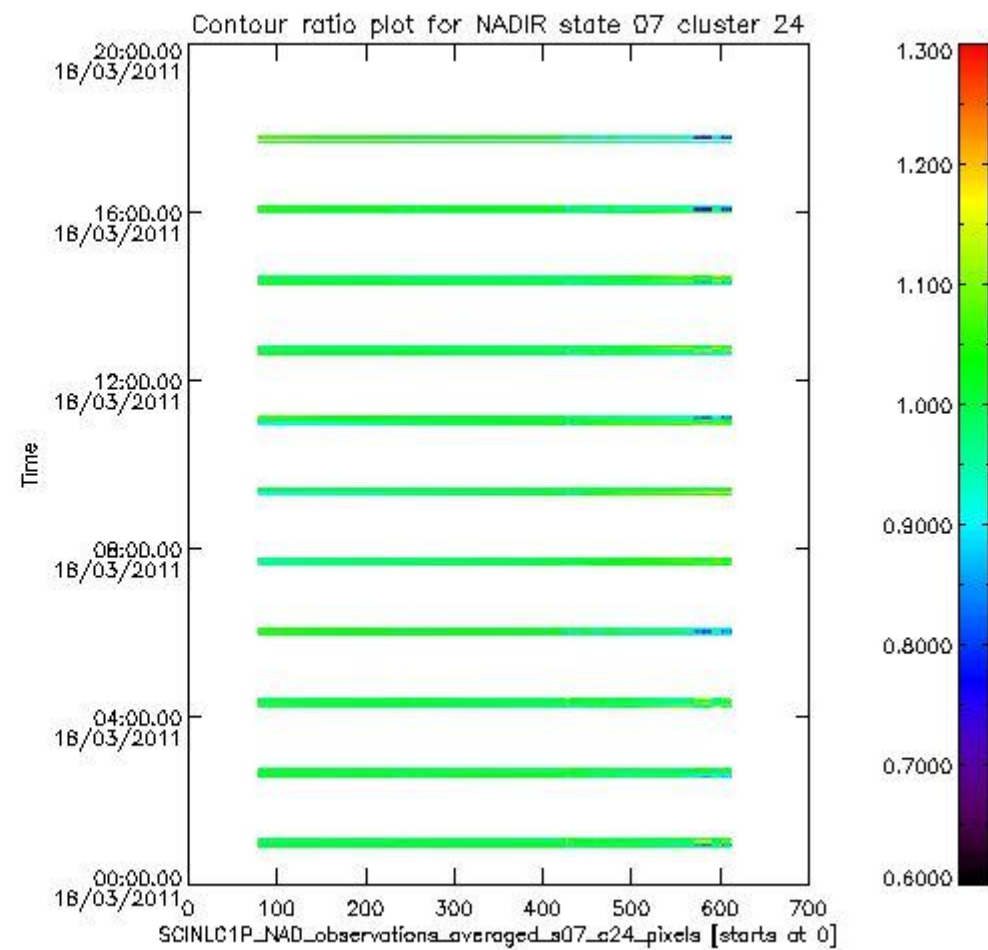
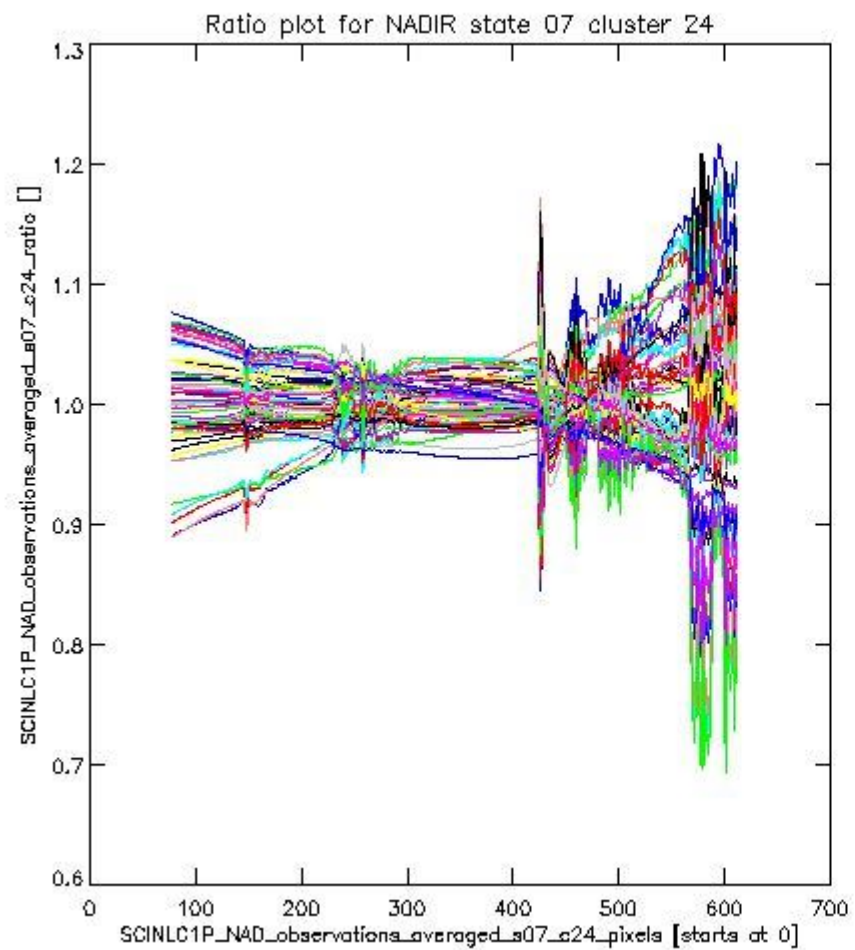
sciamachy_l1b_source_packet_report_SCIA_7_04_U_20110318_5.PNG

1.2.4 NADIR state 07 cluster 24 The data for the analysis of NADIR state 07 cluster 24 have the following characteristics:

Item	Value
Start time of first sample	18MAR2011 00:54:20.028
Start time of last sample	18MAR2011 17:45:02.544
Reference period start time	16FEB2011 00:57:07.892
Reference period stop time	17MAR2011 23:24:20.242
Channel number	4
First pixel number (starts at 0)	78
Last pixel number (starts at 0)	612



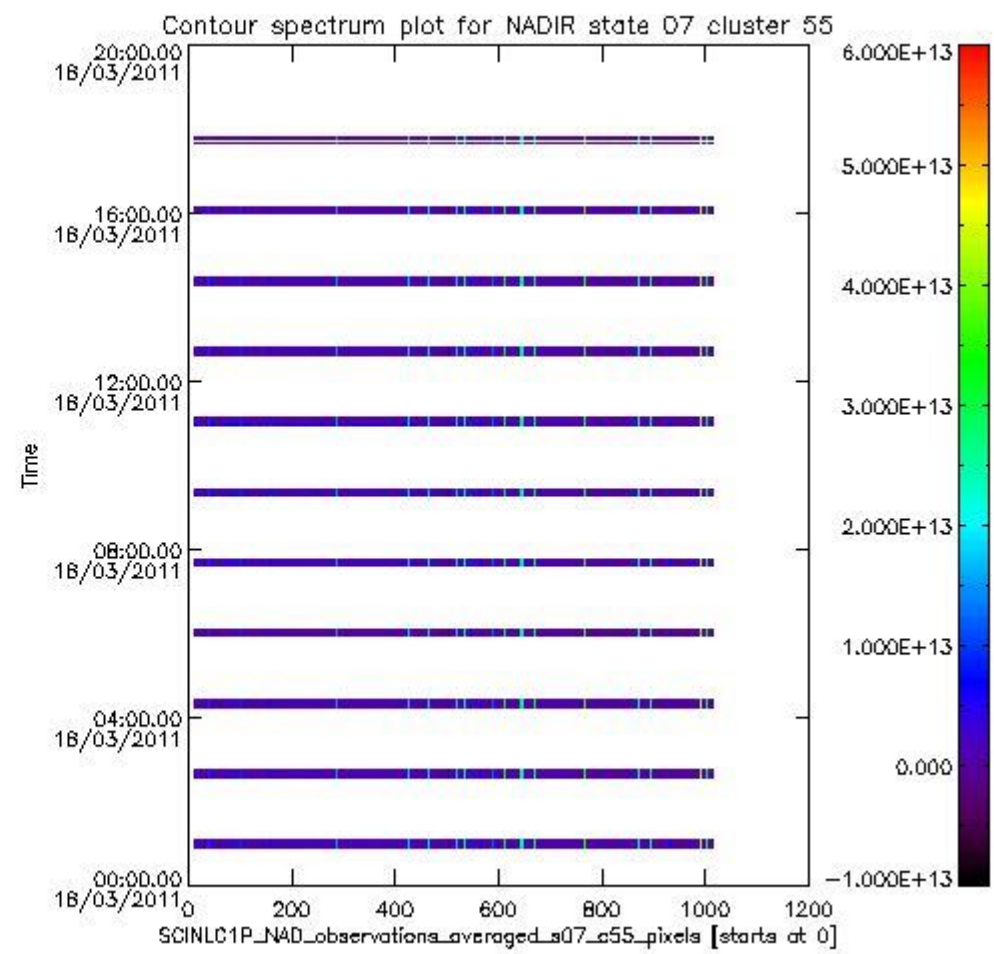
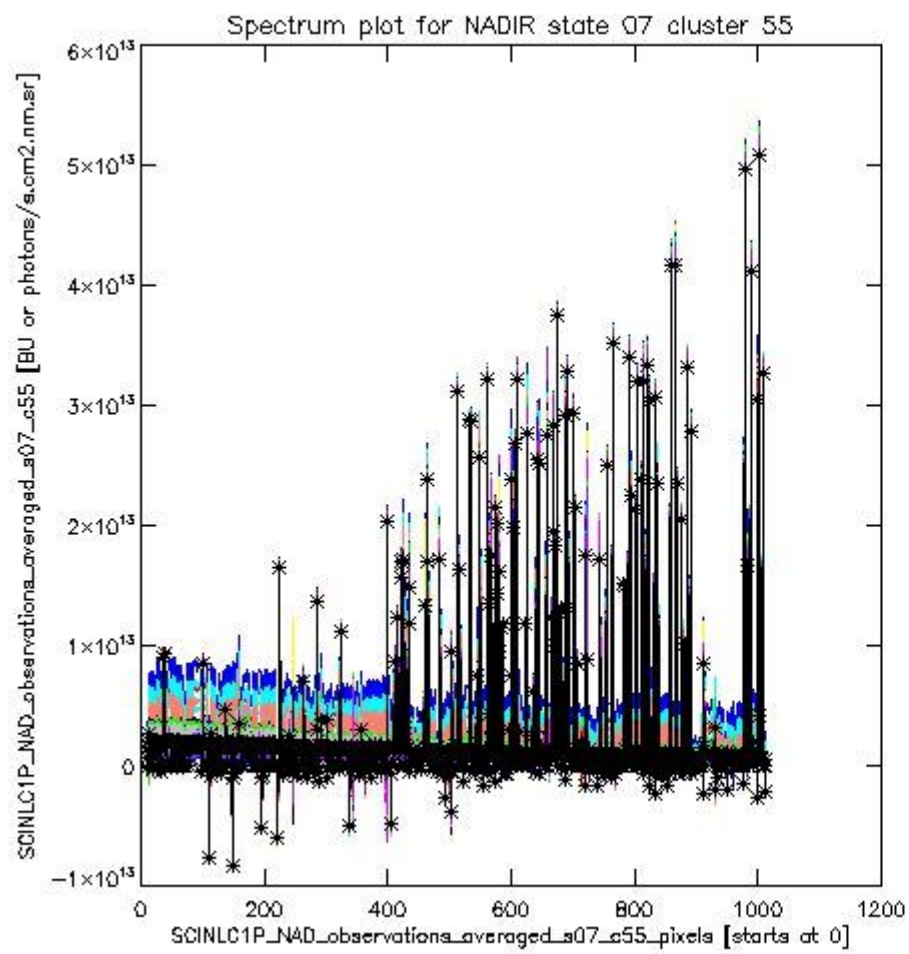
sciamachy_i1b_source_packet_report_SCIA_7_04_U_20110318_6.PNG



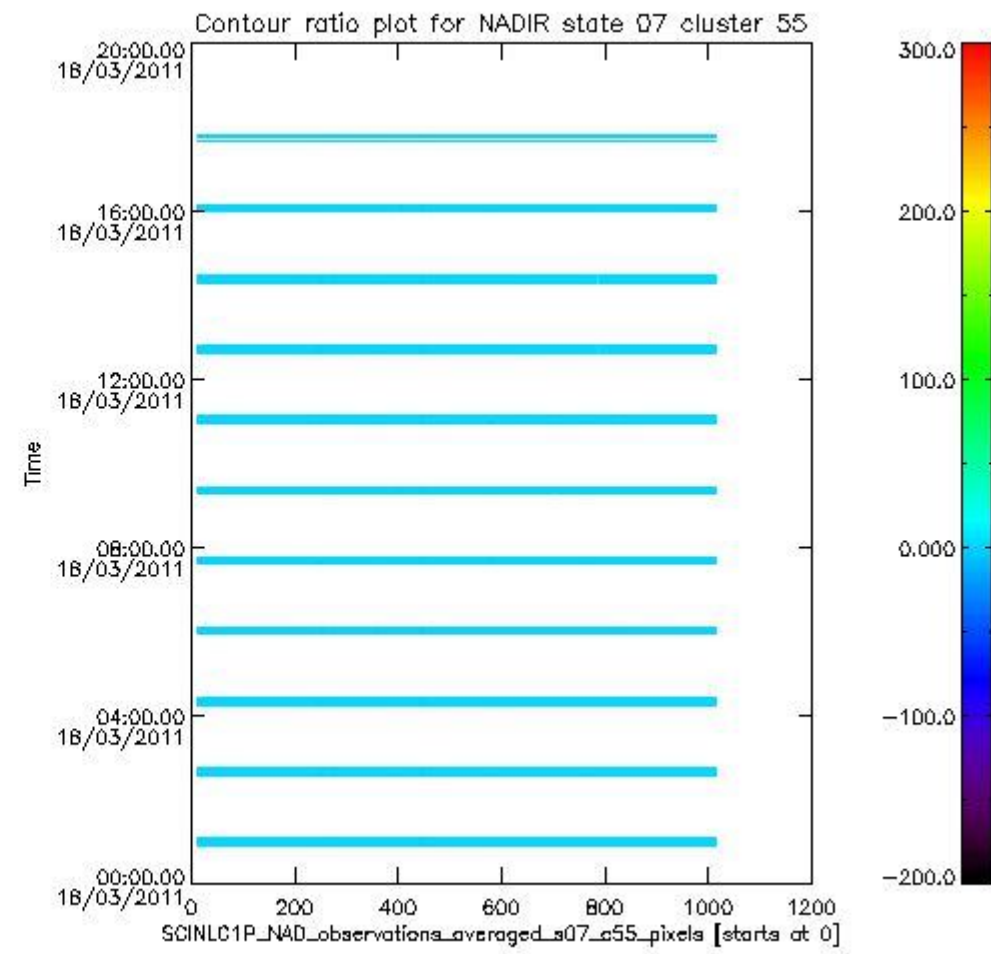
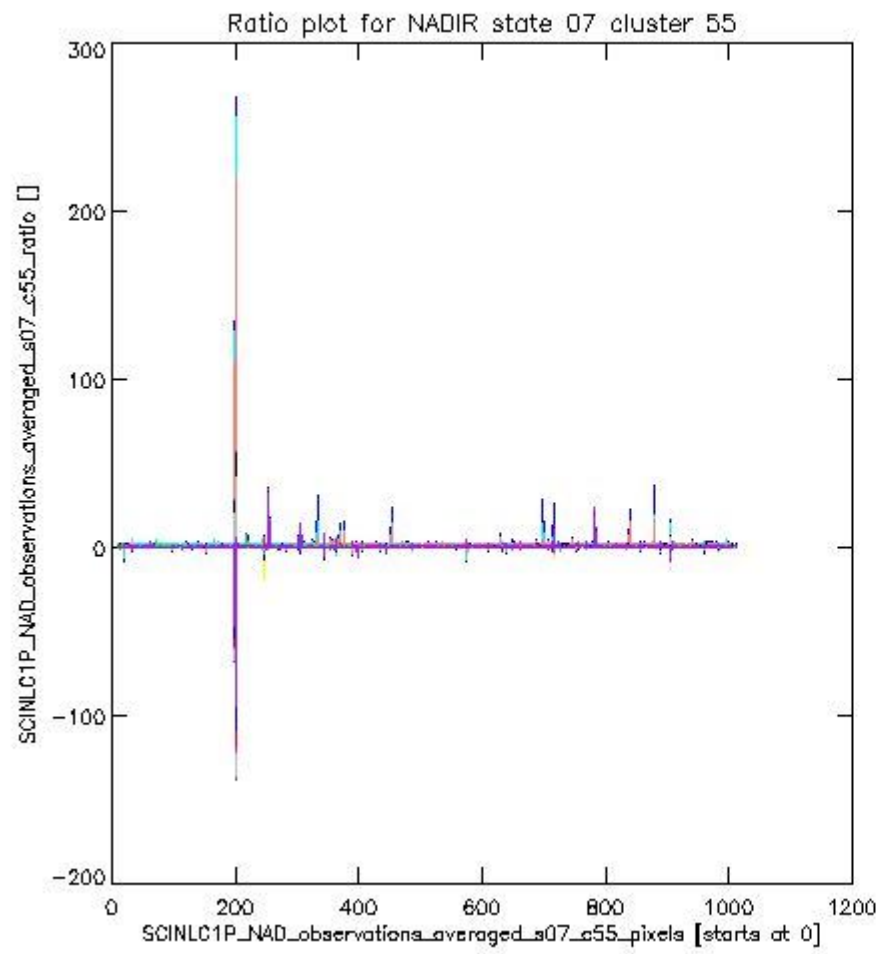
sciamachy_l1b_source_packet_report_SCIA_7_04_U_20110318_7.PNG

1.2.5 NADIR state 07 cluster 55 The data for the analysis of NADIR state 07 cluster 55 have the following characteristics:

Item	Value
Start time of first sample	18MAR2011 00:54:20.028
Start time of last sample	18MAR2011 17:45:02.544
Reference period start time	16FEB2011 00:57:07.892
Reference period stop time	17MAR2011 23:24:20.242
Channel number	8
First pixel number (starts at 0)	10
Last pixel number (starts at 0)	1013



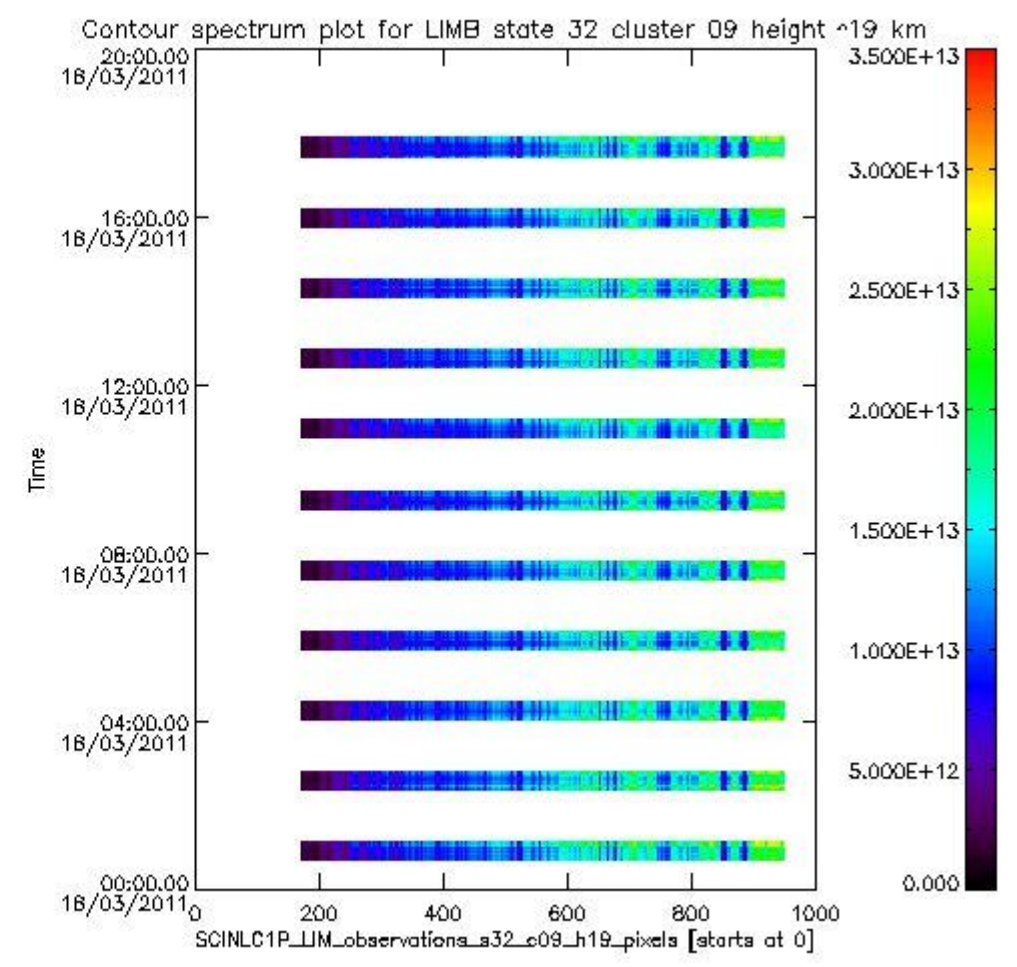
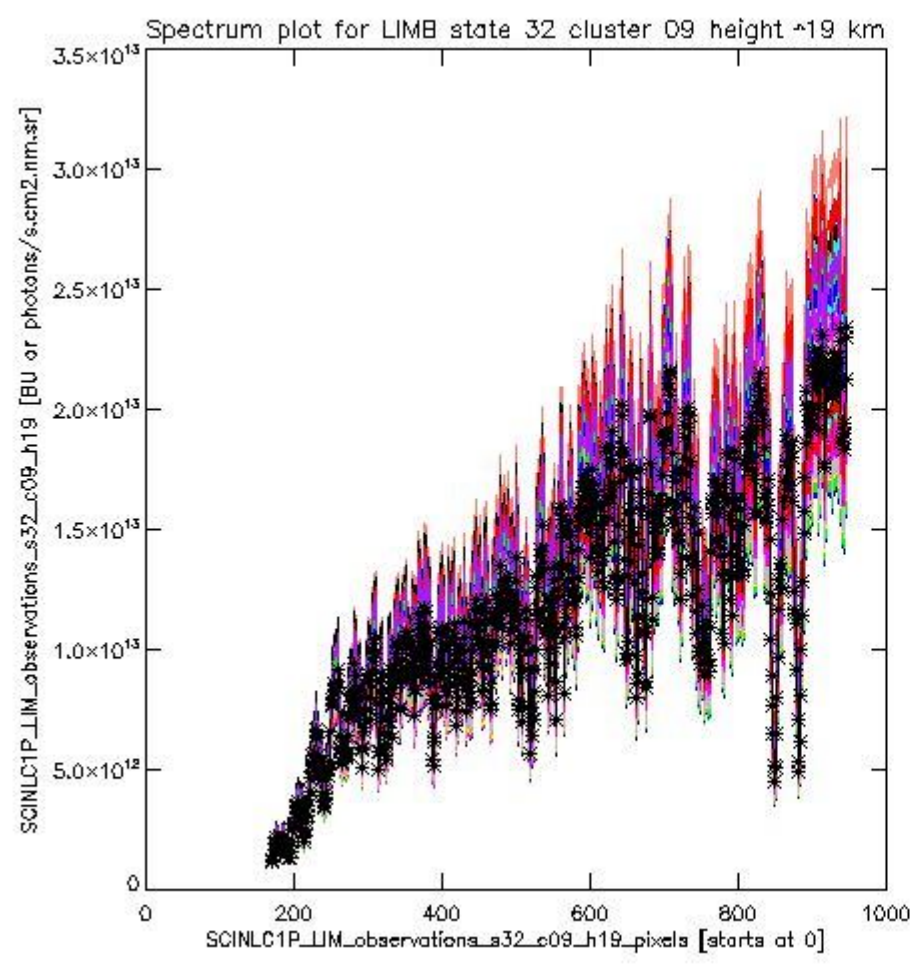
sciamachy_i1b_source_packet_report_SCIA_7_04_U_20110318_8.PNG



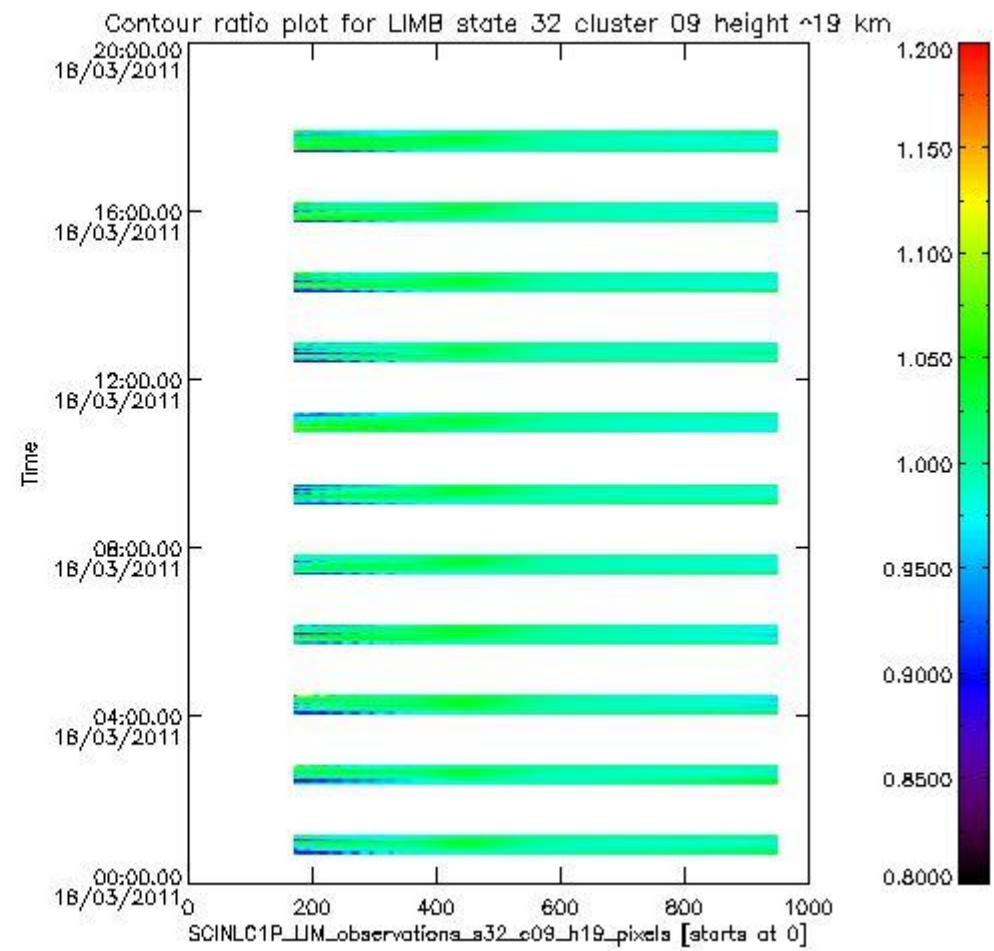
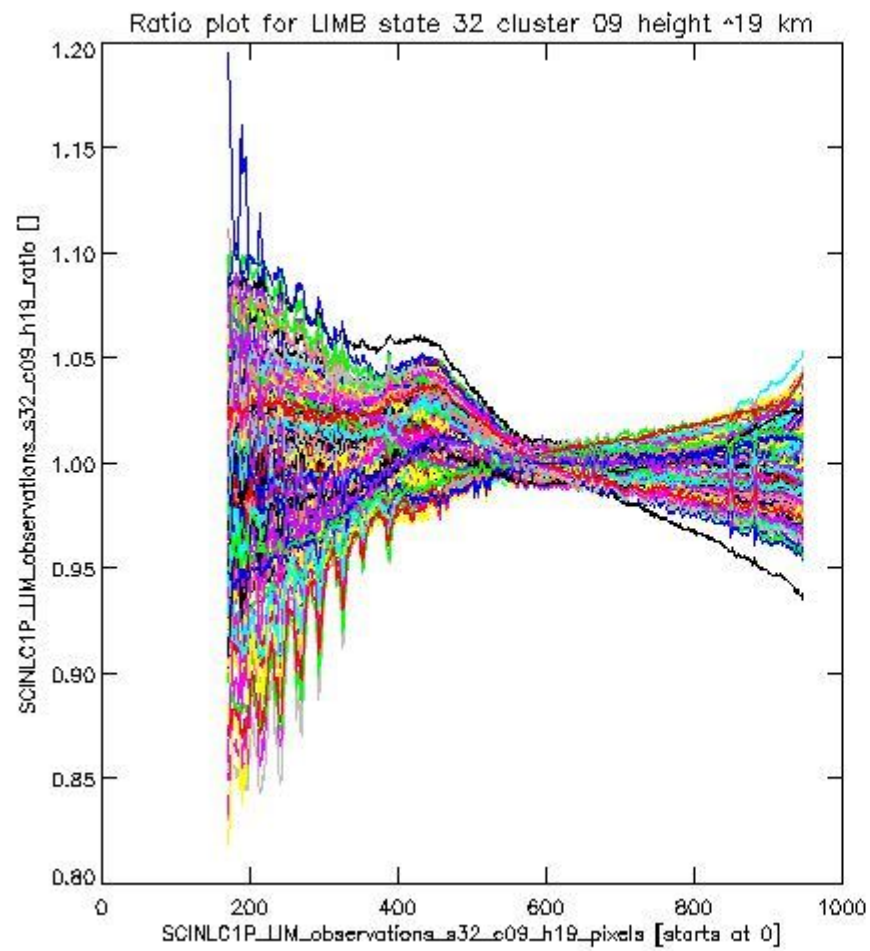
sciamachy_l1b_source_packet_report_SCIA_7_04_U_20110318_9.PNG

1.2.6 LIMB state 32 cluster 09 height ~19 km The data for the analysis of LIMB state 32 cluster 09 height ~19 km have the following characteristics:

Item	Value
Start time of first sample	18MAR2011 00:41:09.391
Start time of last sample	18MAR2011 17:50:38.165
Reference period start time	16FEB2011 00:43:57.255
Reference period stop time	17MAR2011 23:27:31.539
Channel number	2
First pixel number (starts at 0)	170
Last pixel number (starts at 0)	947



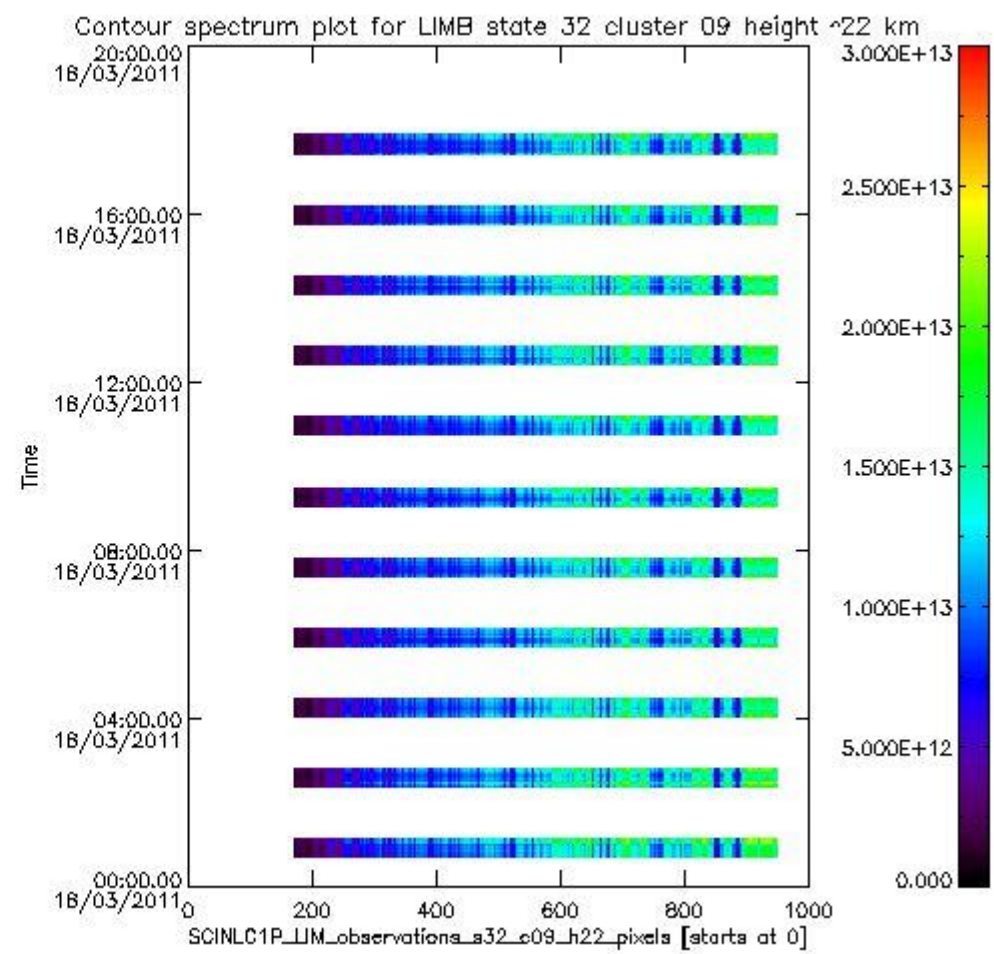
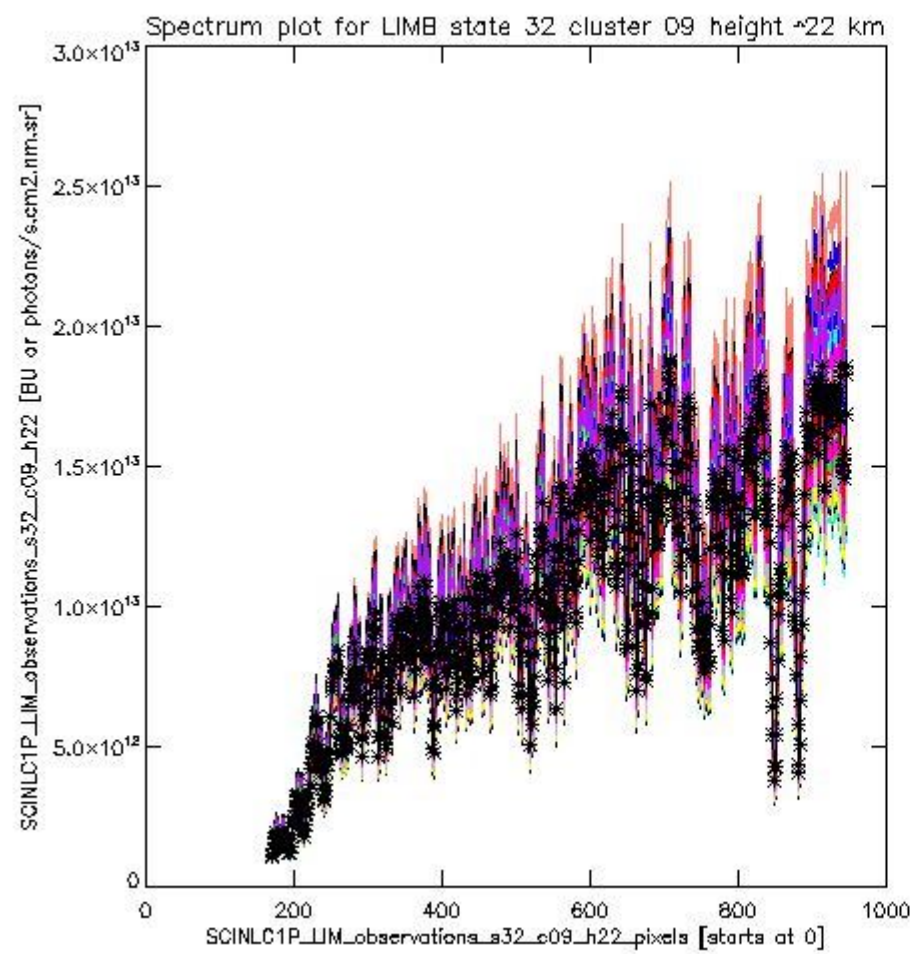
sciamachy_i1b_source_packet_report_SCIA_7_04_U_20110318_10.PNG



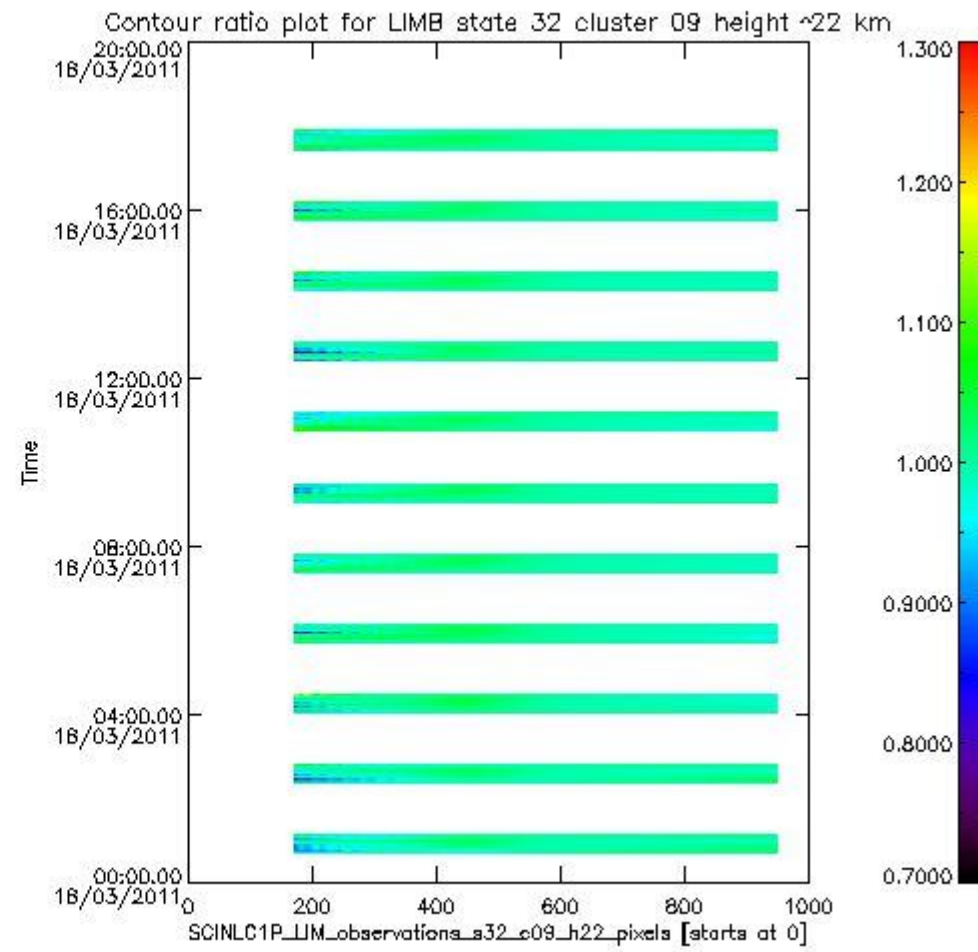
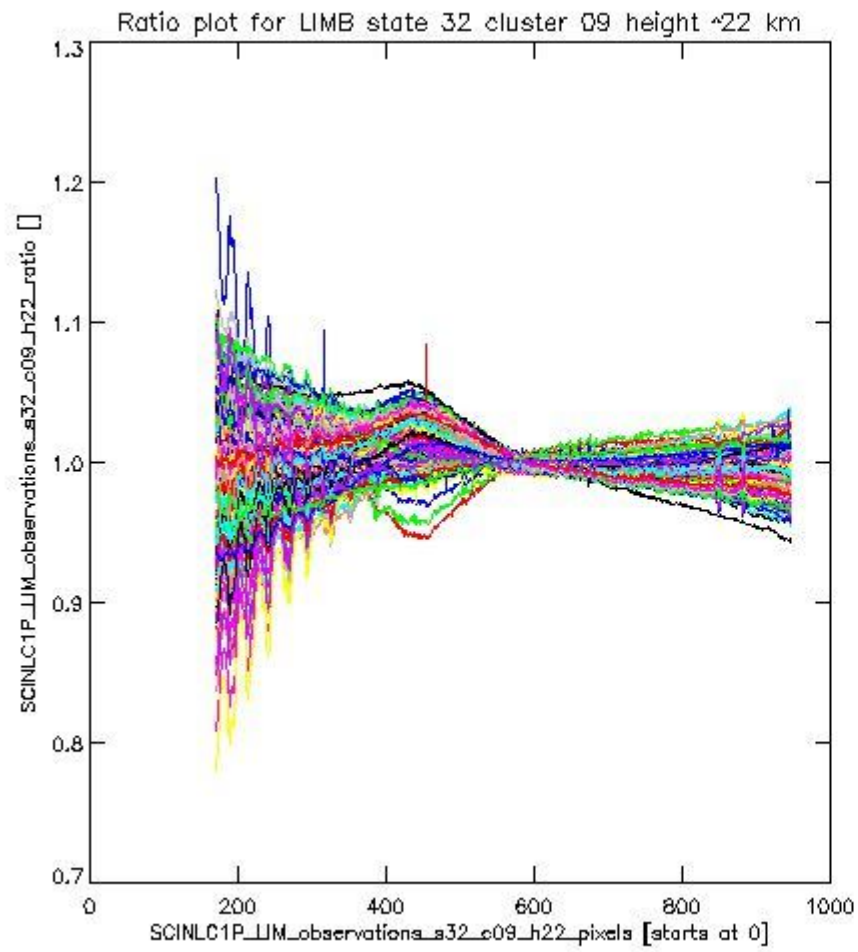
sciamachy_l1b_source_packet_report_SCIA_7_04_U_20110318_11.PNG

1.2.7 LIMB state 32 cluster 09 height ~22 km The data for the analysis of LIMB state 32 cluster 09 height ~22 km have the following characteristics:

Item	Value
Start time of first sample	18MAR2011 00:41:09.391
Start time of last sample	18MAR2011 17:50:38.165
Reference period start time	16FEB2011 00:43:57.255
Reference period stop time	17MAR2011 23:27:31.539
Channel number	2
First pixel number (starts at 0)	170
Last pixel number (starts at 0)	947



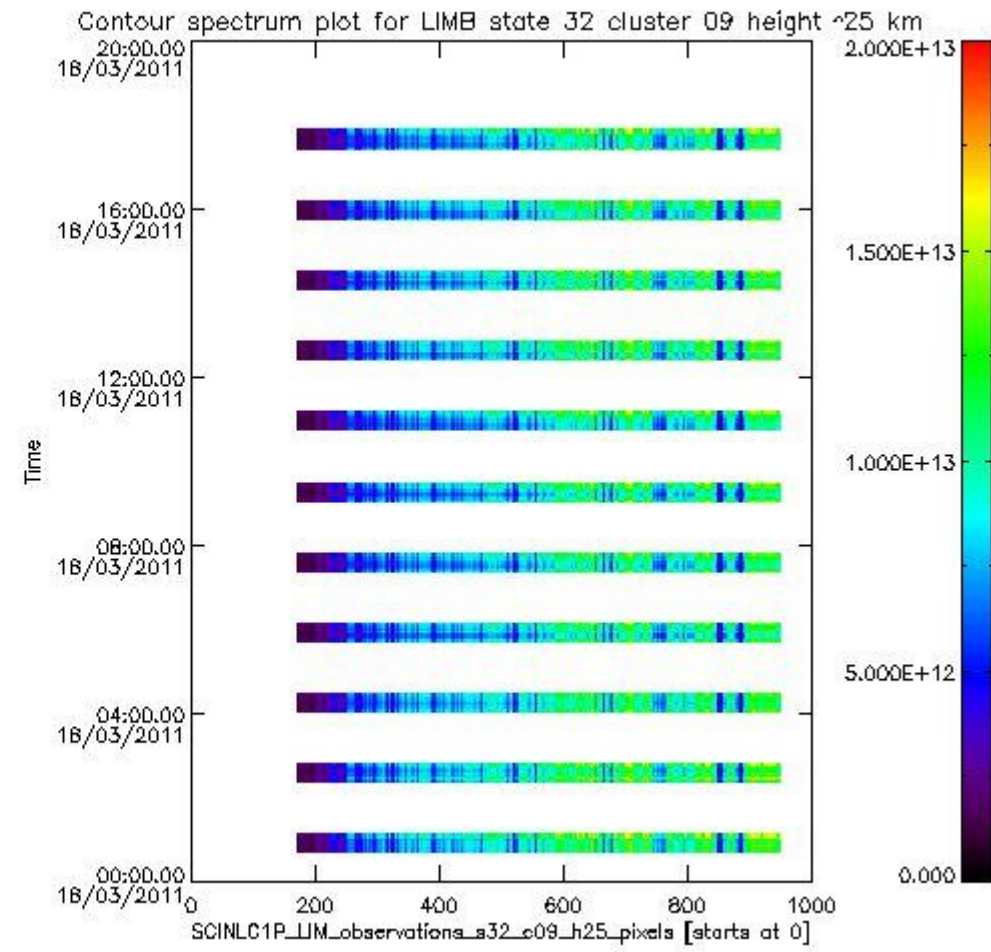
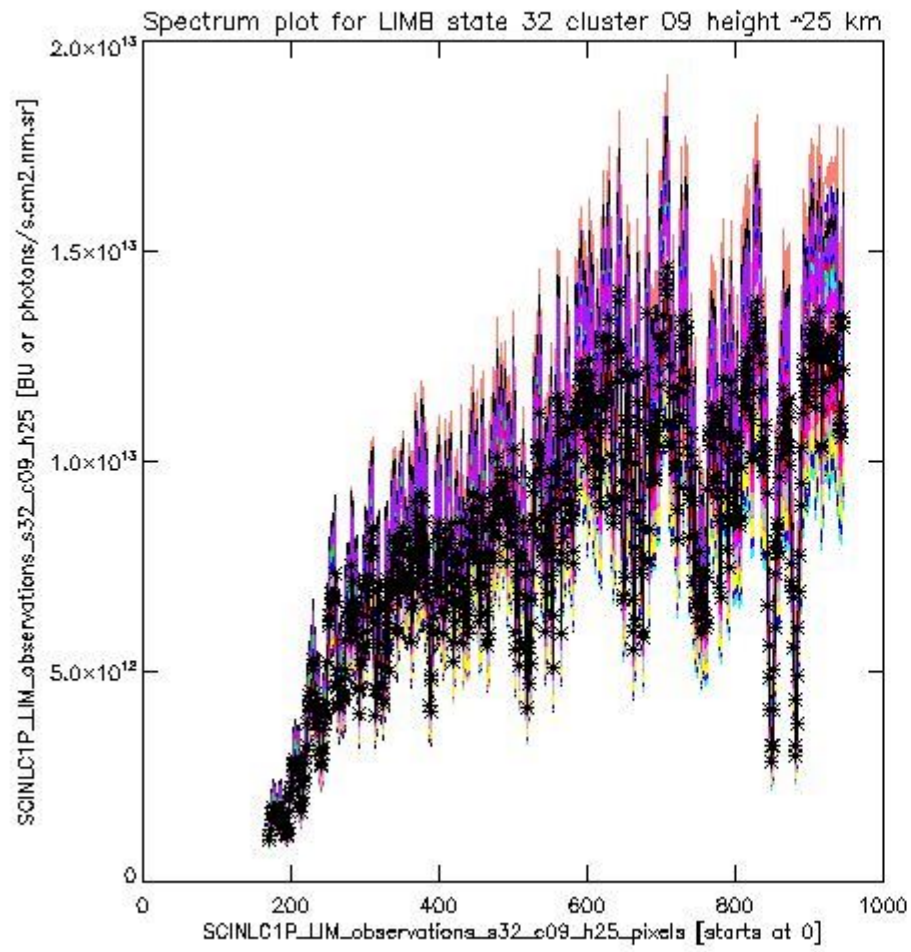
sciamachy_i1b_source_packet_report_SCIA_7_04_U_20110318_12.PNG



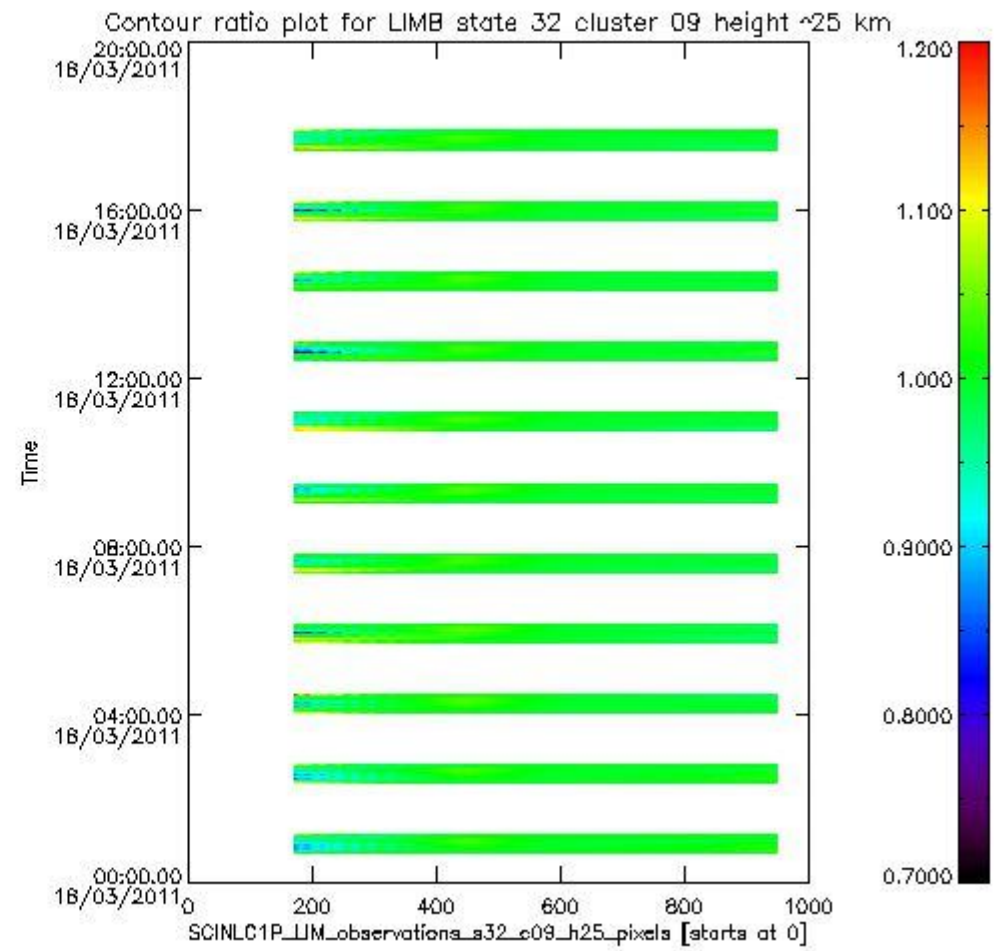
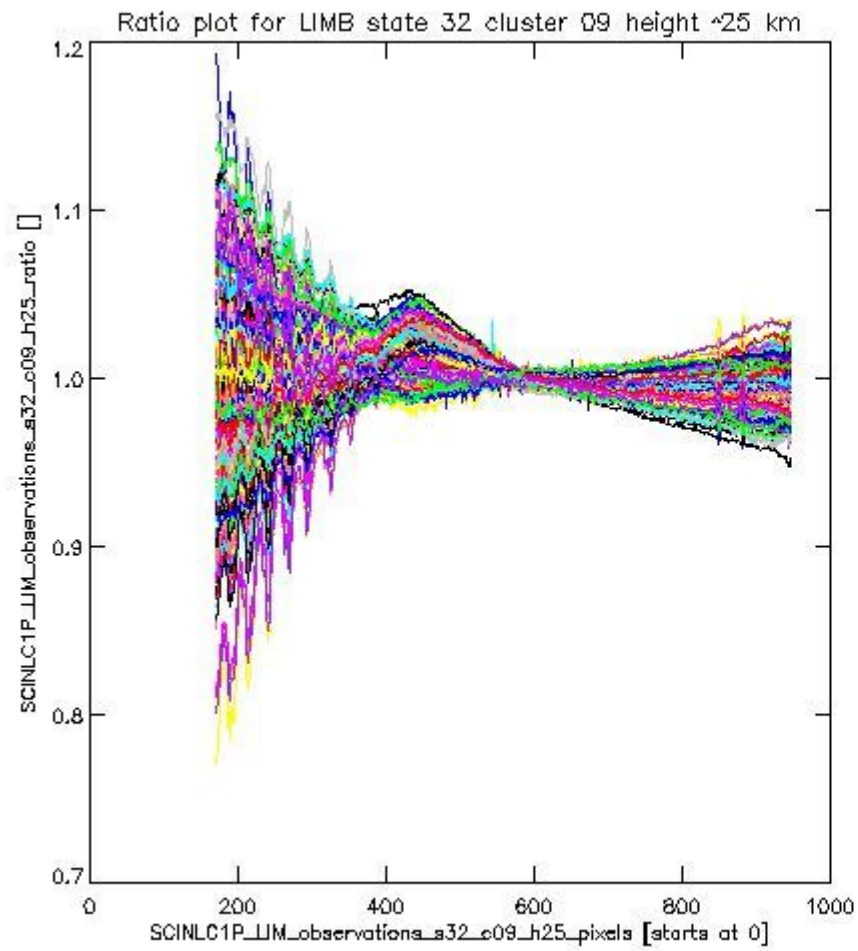
sciamachy_l1b_source_packet_report_SCIA_7_04_U_20110318_13.PNG

1.2.8 LIMB state 32 cluster 09 height ~25 km The data for the analysis of LIMB state 32 cluster 09 height ~25 km have the following characteristics:

Item	Value
Start time of first sample	18MAR2011 00:41:09.391
Start time of last sample	18MAR2011 17:50:38.165
Reference period start time	16FEB2011 00:43:57.255
Reference period stop time	17MAR2011 23:27:31.539
Channel number	2
First pixel number (starts at 0)	170
Last pixel number (starts at 0)	947



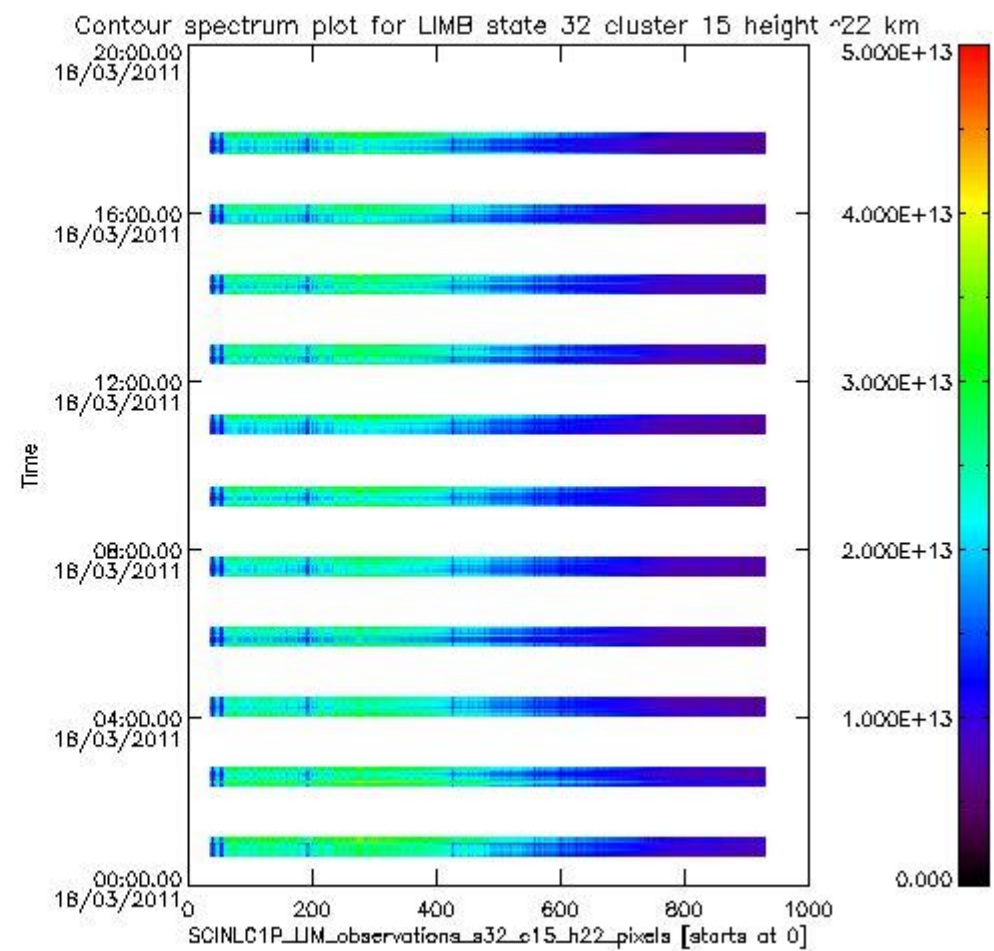
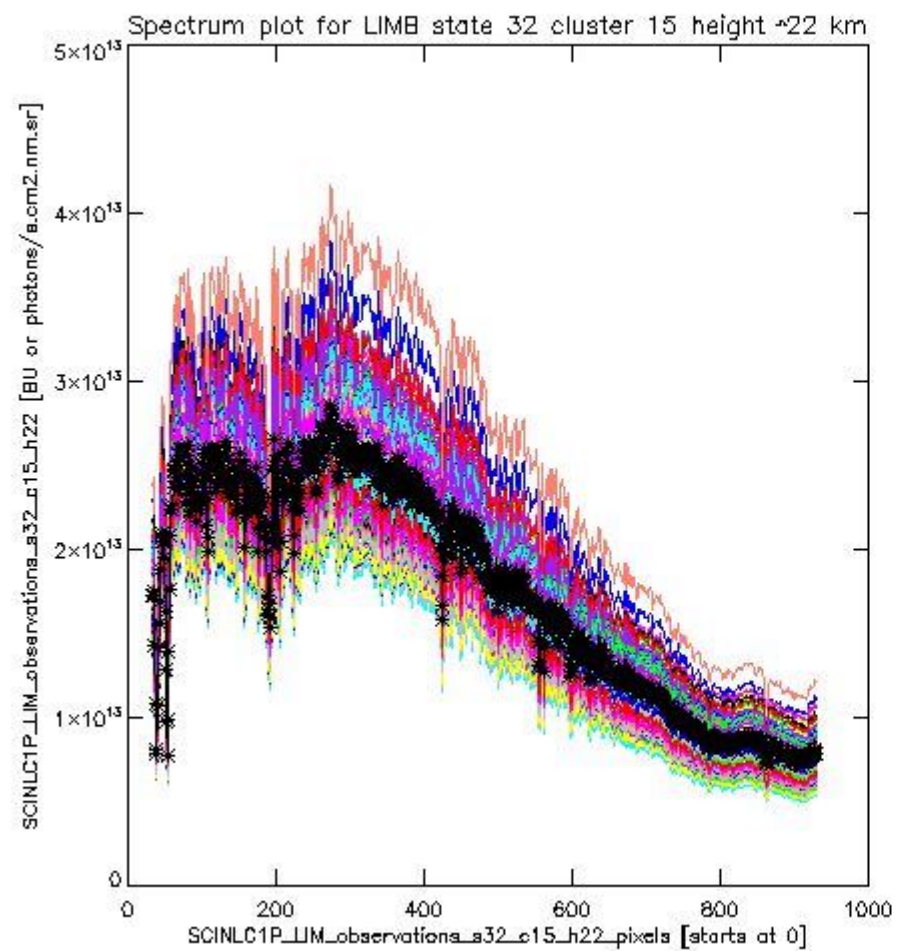
sciamachy_l1b_source_packet_report_SCIA_7_04_U_20110318_14.PNG



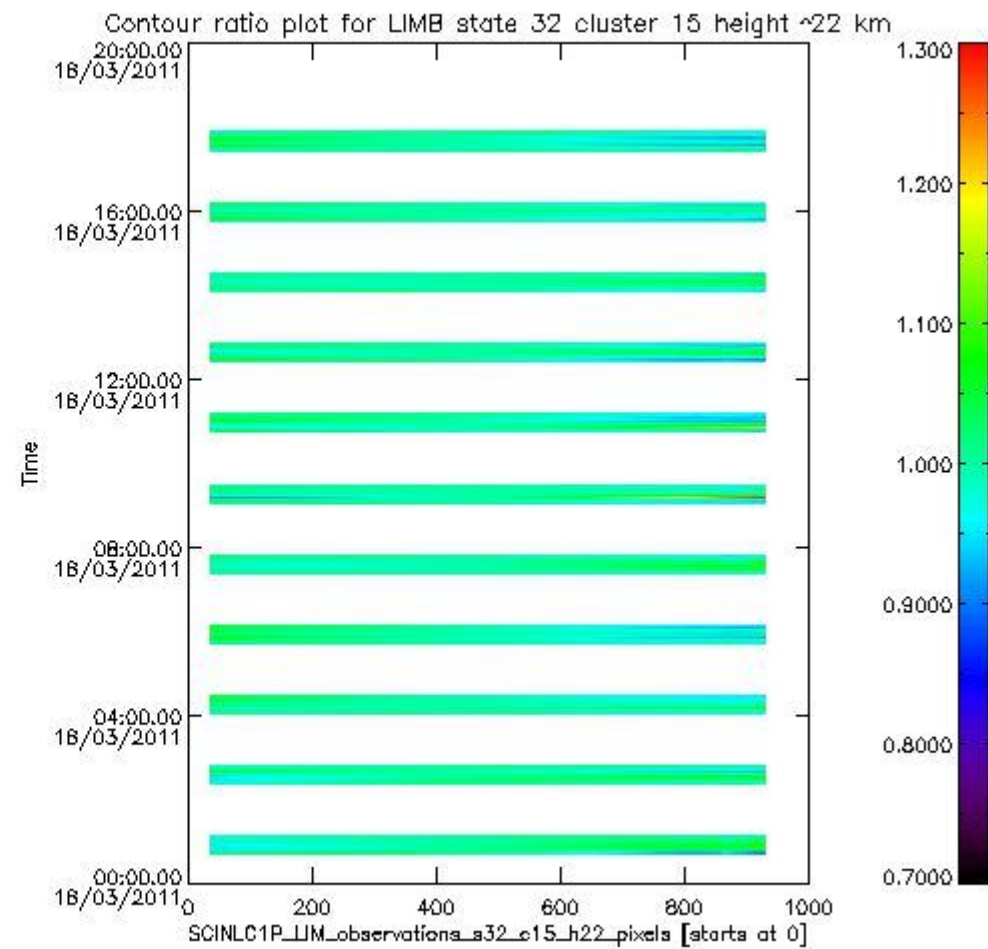
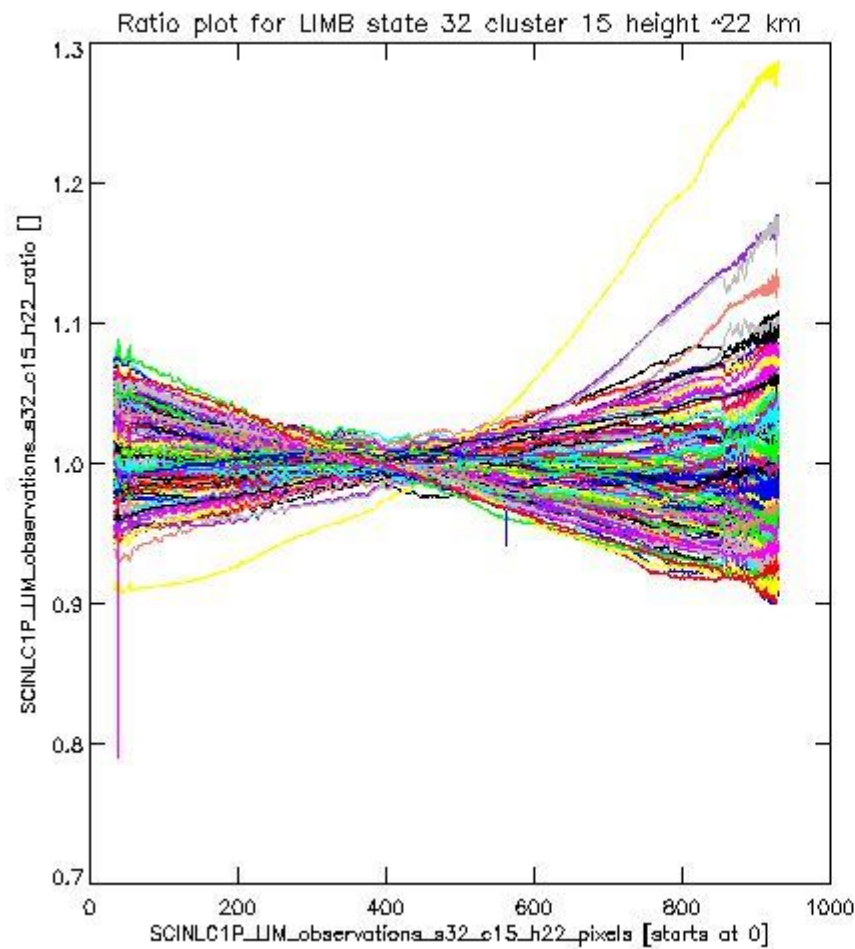
sciamachy_l1b_source_packet_report_SCIA_7_04_U_20110318_15.PNG

1.2.9 LIMB state 32 cluster 15 height ~22 km The data for the analysis of LIMB state 32 cluster 15 height ~22 km have the following characteristics:

Item	Value
Start time of first sample	18MAR2011 00:41:09.391
Start time of last sample	18MAR2011 17:50:38.165
Reference period start time	16FEB2011 00:43:57.255
Reference period stop time	17MAR2011 23:27:31.539
Channel number	3
First pixel number (starts at 0)	33
Last pixel number (starts at 0)	929



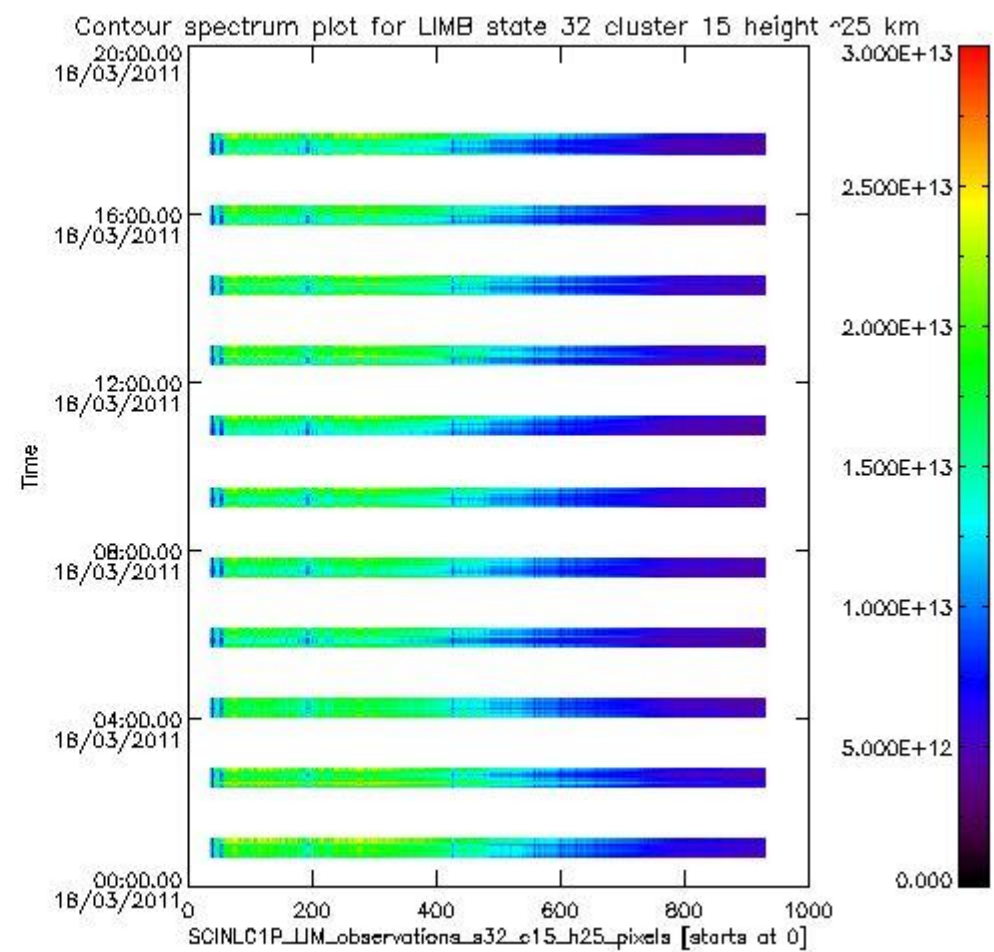
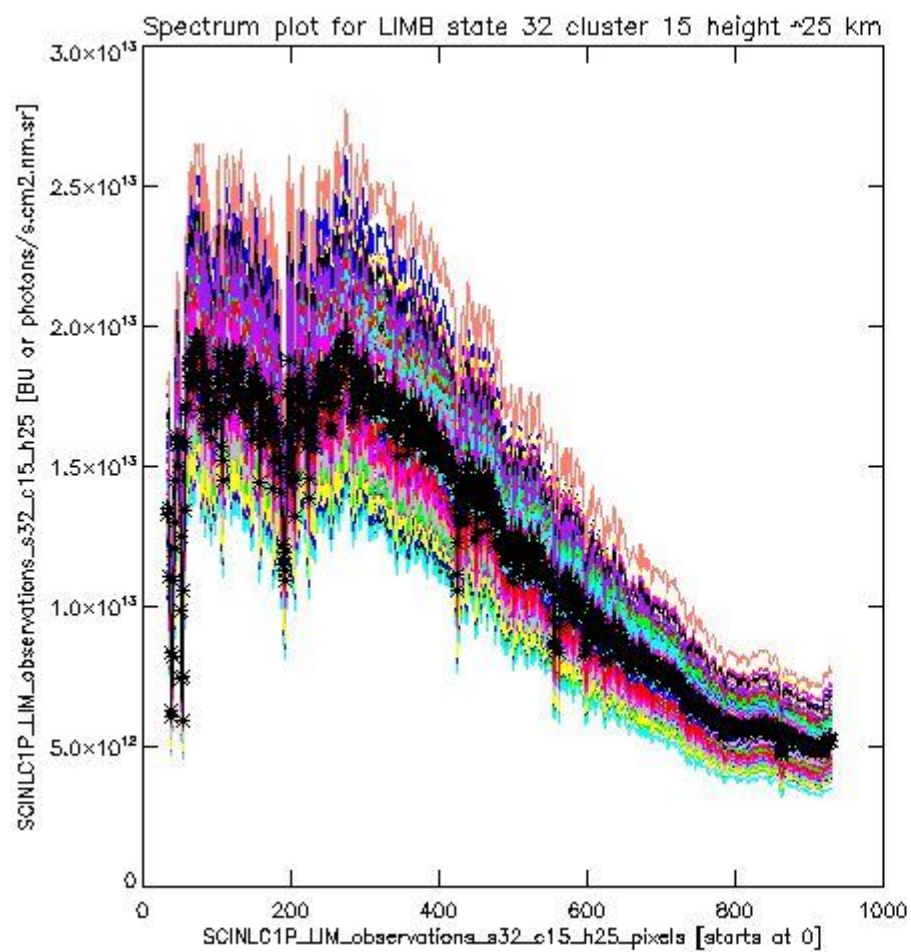
sciamachy_i1b_source_packet_report_SCIA_7_04_U_20110318_16.PNG



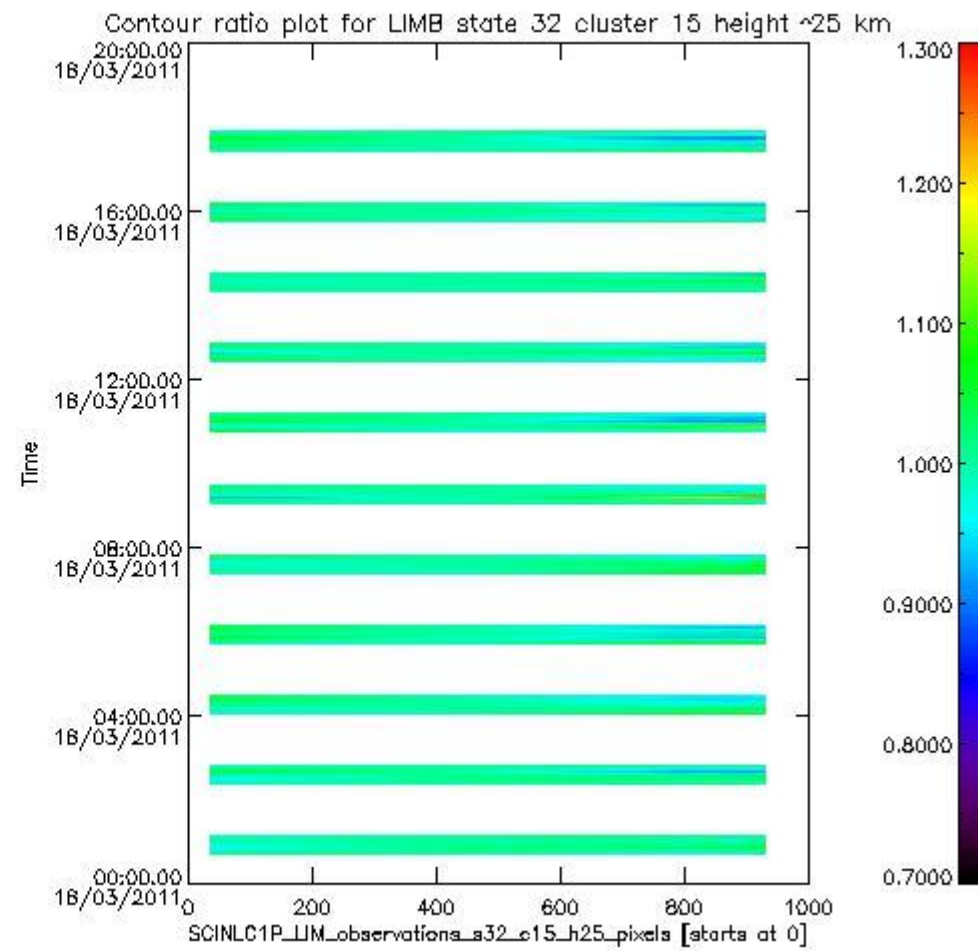
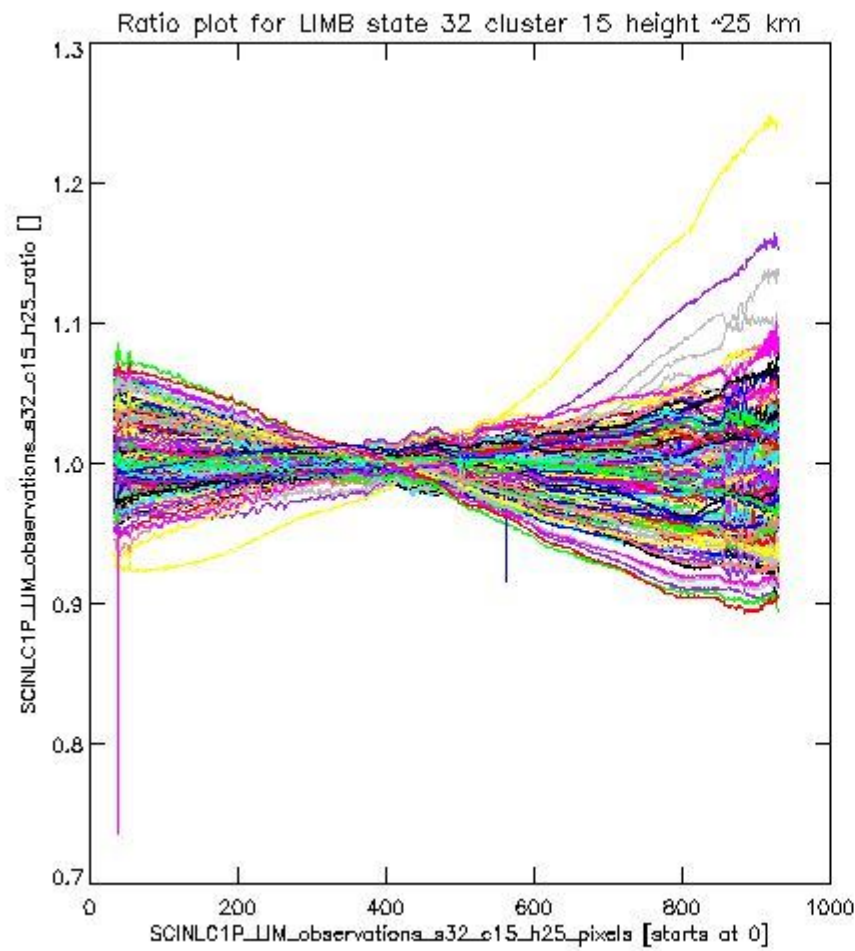
sciamachy_11b_source_packet_report_SCIA_7_04_U_20110318_17.PNG

1.2.10 LIMB state 32 cluster 15 height ~25 km The data for the analysis of LIMB state 32 cluster 15 height ~25 km have the following characteristics:

Item	Value
Start time of first sample	18MAR2011 00:41:09.391
Start time of last sample	18MAR2011 17:50:38.165
Reference period start time	16FEB2011 00:43:57.255
Reference period stop time	17MAR2011 23:27:31.539
Channel number	3
First pixel number (starts at 0)	33
Last pixel number (starts at 0)	929



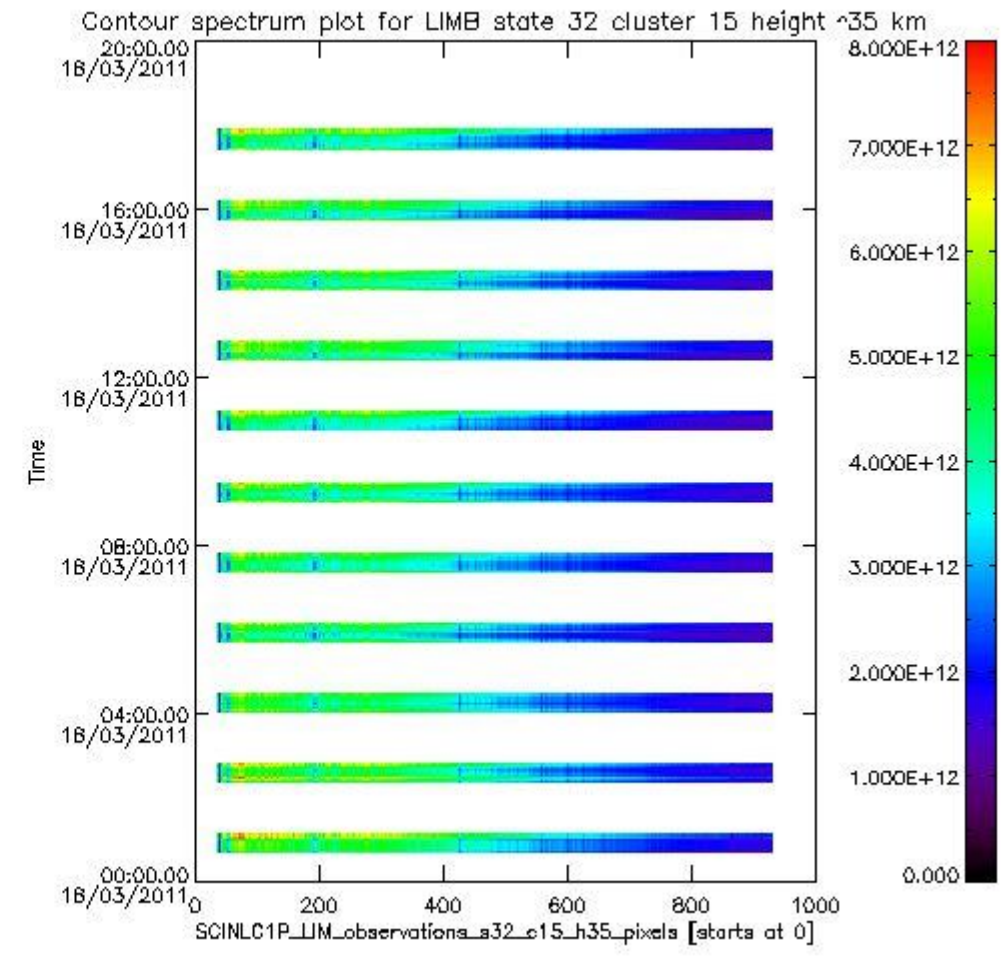
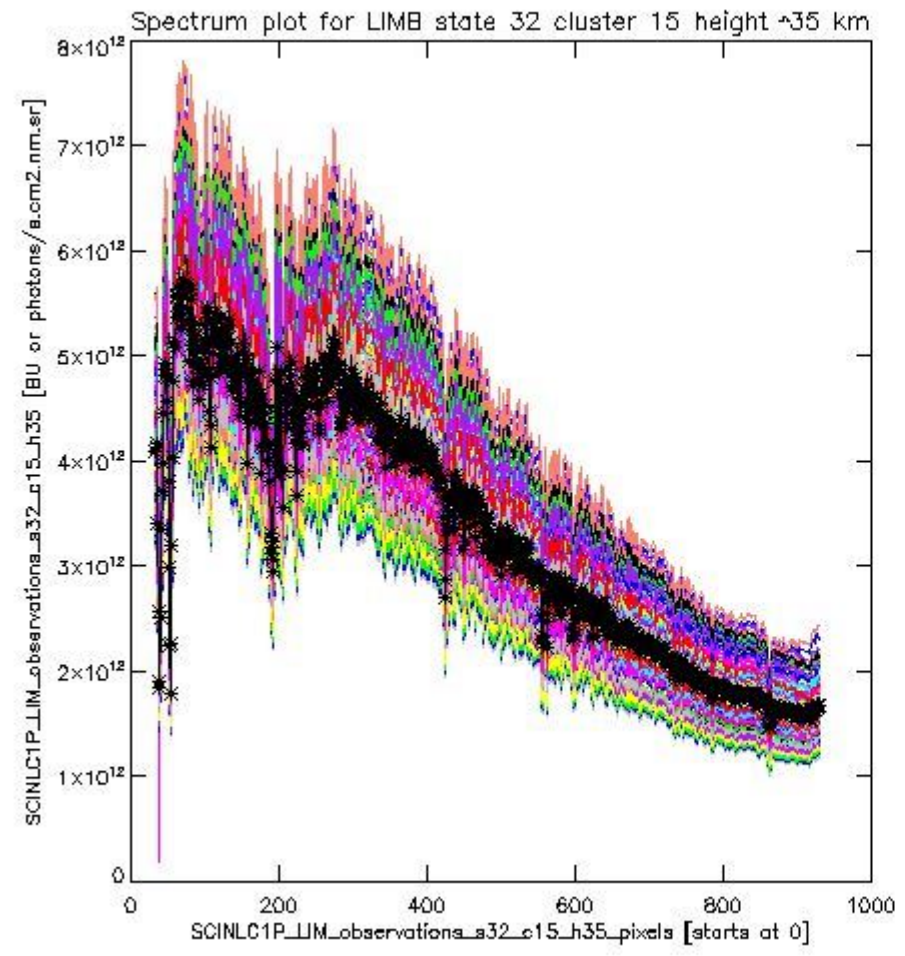
sciamachy_l1b_source_packet_report_SCIA_7_04_U_20110318_18.PNG



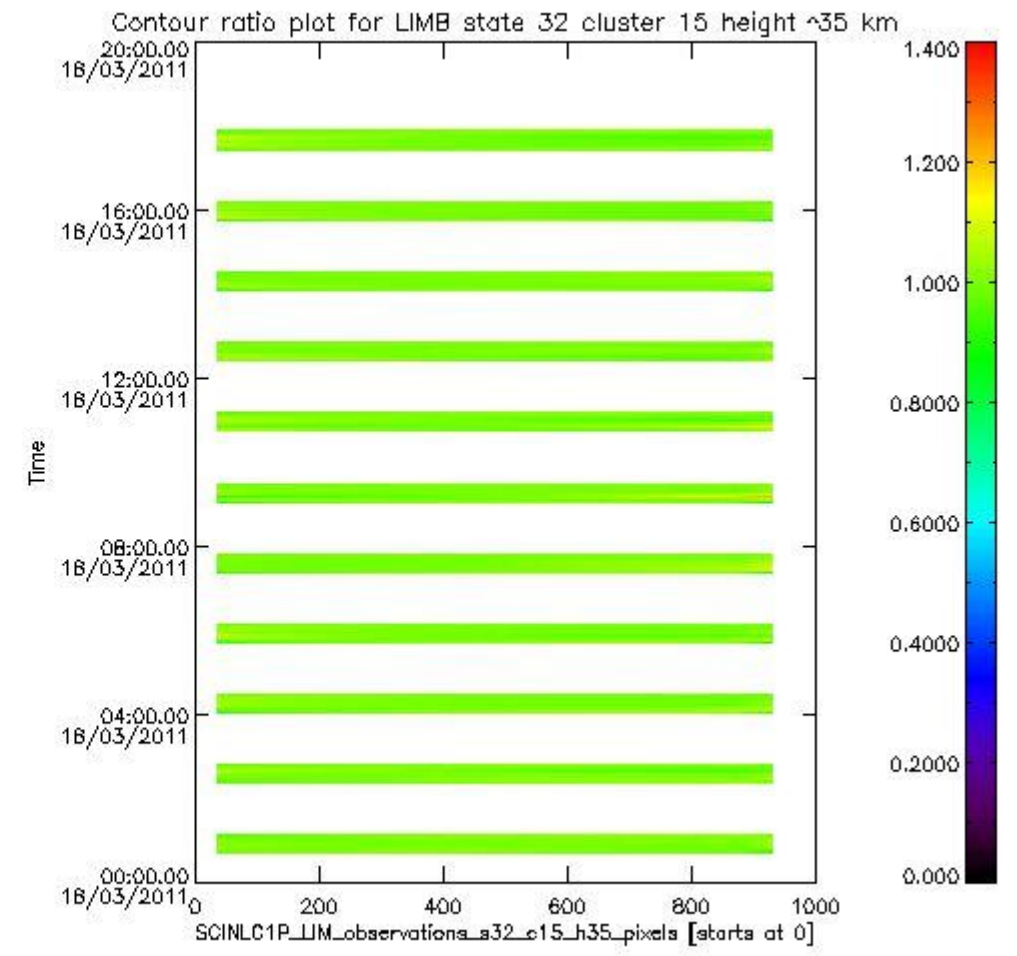
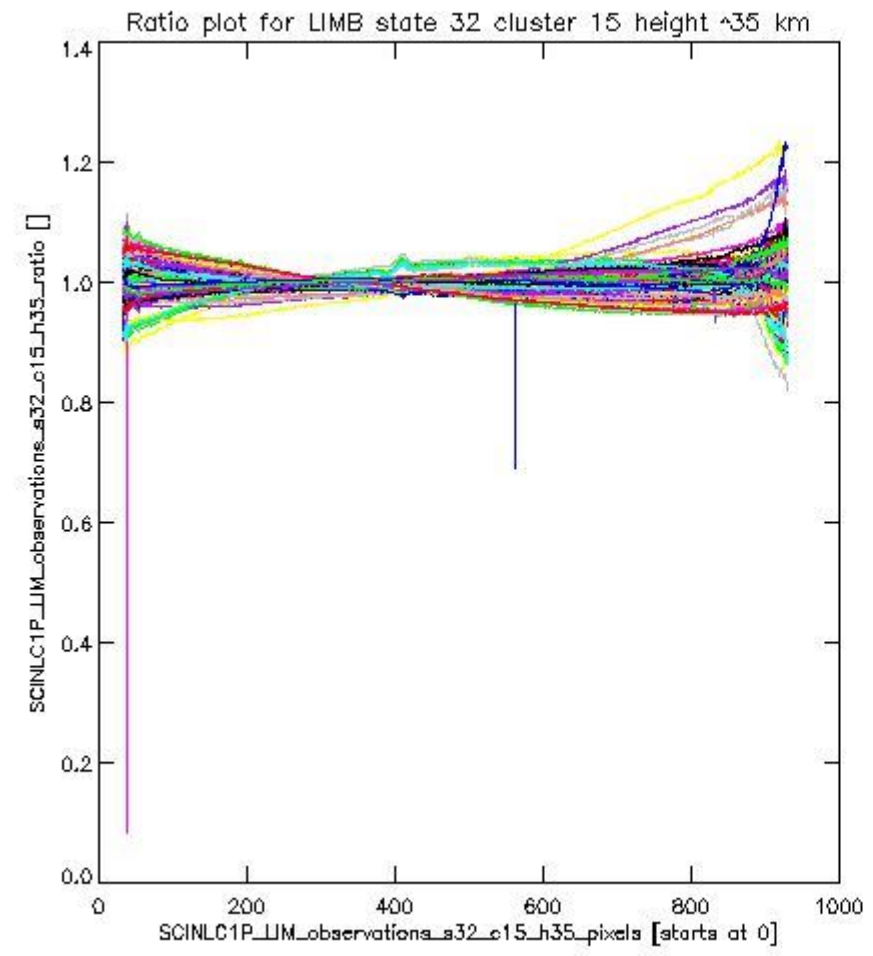
sciamachy_11b_source_packet_report_SCIA_7_04_U_20110318_19.PNG

1.2.11 LIMB state 32 cluster 15 height ~35 km The data for the analysis of LIMB state 32 cluster 15 height ~35 km have the following characteristics:

Item	Value
Start time of first sample	18MAR2011 00:41:09.391
Start time of last sample	18MAR2011 17:50:38.165
Reference period start time	16FEB2011 00:43:57.255
Reference period stop time	17MAR2011 23:27:31.539
Channel number	3
First pixel number (starts at 0)	33
Last pixel number (starts at 0)	929



sciamachy_11b_source_packet_report_SCIA_7_04_U_20110318_20.PNG



sciamachy_i1b_source_packet_report_SCIA_7_04_U_20110318_21.PNG

