

1. SCIAMACHY Level 1B source packet monitoring report

[1.1. General Info](#)

[1.2 Source packet monitoring](#)

1.1 General Info

This report contains results of the analysis on source packets from SCIAMACHY level 1 data (The SCI_NL__1P product).

1.1.1 Report summary

The table below shows general characteristics of the data that are included into this report.

Item	Value
Report version	1.1 (07-01-2010)
Time of report generation	23MAR2011 06:55:33
Data source version	SCIA/7.04-U
Processing scope for products	12MAR2011 00:00:00 to 13MAR2011 00:00:00
Start time of first product within scope	12MAR2011 00:42:53
Stop time of last product within scope	12MAR2011 13:34:57
Total number of level 1 products	8
Number of level 1 products with errors	0
SCIAL1C executable used in processing	scial1c-2.1.73-i686-pc-linux-gnu-gcc-3.3.6
SCIAL1C parameters used in processing	-allcal -type all -cat 1,2,8,10,11,16,19,23 -nadircluster 8,9,15,24,55 -limbcluster 9,15

1.1.2 Source packet summary

The table below shows which source packets have been included into the report.

Item	Mode	State	Cluster	Height	First start time	Last start time
0	NADIR	07	08	N/A	12MAR2011 01:14:56.017	12MAR2011 13:05:50.202
1	NADIR	07	09	N/A	12MAR2011 01:14:56.017	12MAR2011 13:05:50.202
2	NADIR	07	15	N/A	12MAR2011 01:14:56.017	12MAR2011 13:05:50.202
3	NADIR	07	24	N/A	12MAR2011 01:14:56.017	12MAR2011 13:05:50.202
4	NADIR	07	55	N/A	12MAR2011 01:14:56.017	12MAR2011 13:05:50.202
5	LIMB	32	09	~19 km	12MAR2011 01:01:45.380	12MAR2011 13:11:04.245
6	LIMB	32	09	~22 km	12MAR2011 01:01:45.380	12MAR2011 13:11:04.245
7	LIMB	32	09	~25 km	12MAR2011 01:01:45.380	12MAR2011 13:11:04.245
8	LIMB	32	15	~22 km	12MAR2011 01:01:45.380	12MAR2011 13:11:04.245
9	LIMB	32	15	~25 km	12MAR2011 01:01:45.380	12MAR2011 13:11:04.245
10	LIMB	32	15	~35 km	12MAR2011 01:01:45.380	12MAR2011 13:11:04.245

1.1.3 Summary per product

The following table shows a summary for each product used in this report.

Products are linked to a corresponding server directory for view/download. Note: Link access may be restricted by security settings of your internet browser or firewall.

#	Product name	Start time	Stop time	ProdErr	#nadir	#limb	#occ	#mon	#nopro	#cpl_drk	#incpl_drk	Decont
0	SCI_NLC_1CUDPA20110312_003133_000060093100_00218_47215_5345.N1	12MAR2011 00:42:53	12MAR2011 01:53:08	0	35	31	0	0	1	0	0	
1	SCI_NLC_1CUDPA20110312_021146_000060093100_00219_47216_5350.N1	12MAR2011 02:23:06	12MAR2011 03:33:35	0	36	30	0	0	1	0	0	
2	SCI_NLC_1CUDPA20110312_035200_000060093100_00220_47217_5353.N1	12MAR2011 04:03:20	12MAR2011 05:13:35	0	35	31	0	0	1	0	0	
3	SCI_NLC_1CUDPA20110312_053213_000060093100_00221_47218_5355.N1	12MAR2011 05:43:34	12MAR2011 06:54:03	0	36	30	0	0	1	0	0	
4	SCI_NLC_1CUDPA20110312_071227_000060093100_00222_47219_5357.N1	12MAR2011 07:23:47	12MAR2011 08:34:02	0	35	31	0	0	1	0	0	
5	SCI_NLC_1CUDPA20110312_085240_000060093100_00223_47220_5359.N1	12MAR2011 09:04:01	12MAR2011 10:14:30	0	36	30	0	0	1	0	0	

6	SCI_NLC_1CUDPA20110312_103254_000060093100_00224_47221_5360.N1	12MAR2011 10:44:14	12MAR2011 11:54:29	0	35	31	0	0	1	0	0
7	SCI_NLC_1CUDPA20110312_121307_000060093100_00225_47222_5363.N1	12MAR2011 12:24:28	12MAR2011 13:34:57	0	36	30	0	0	1	0	0

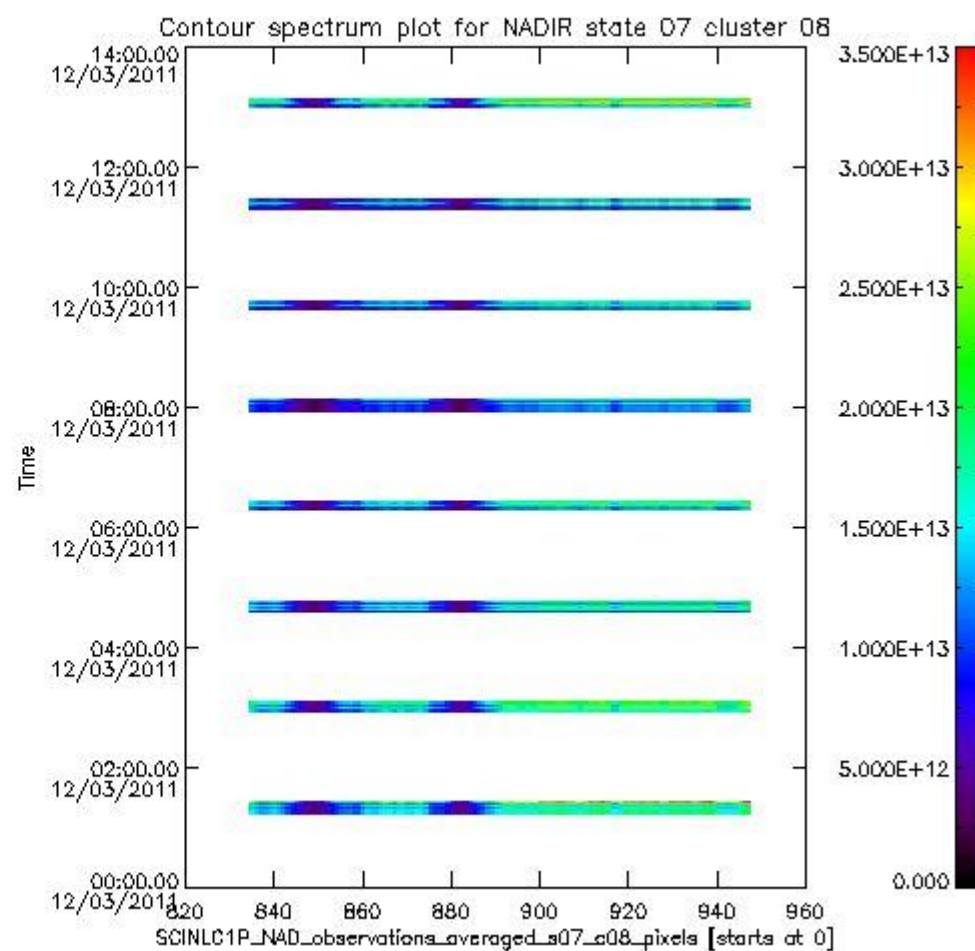
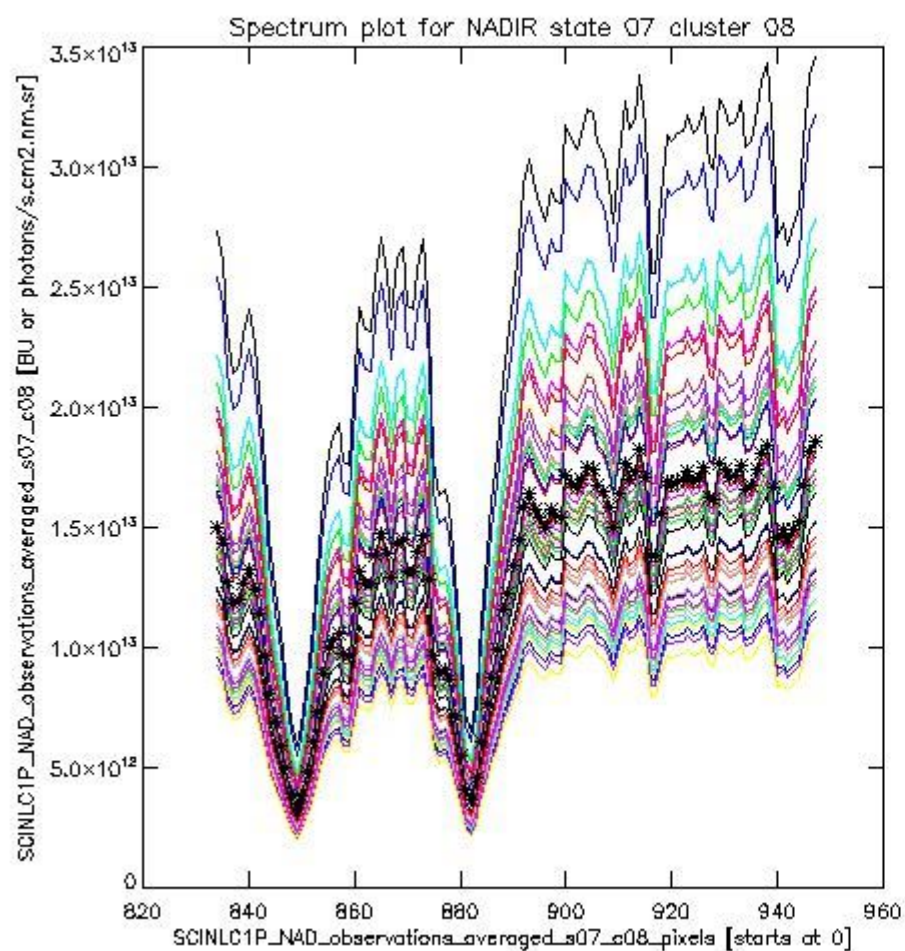
1.2 Source packet monitoring

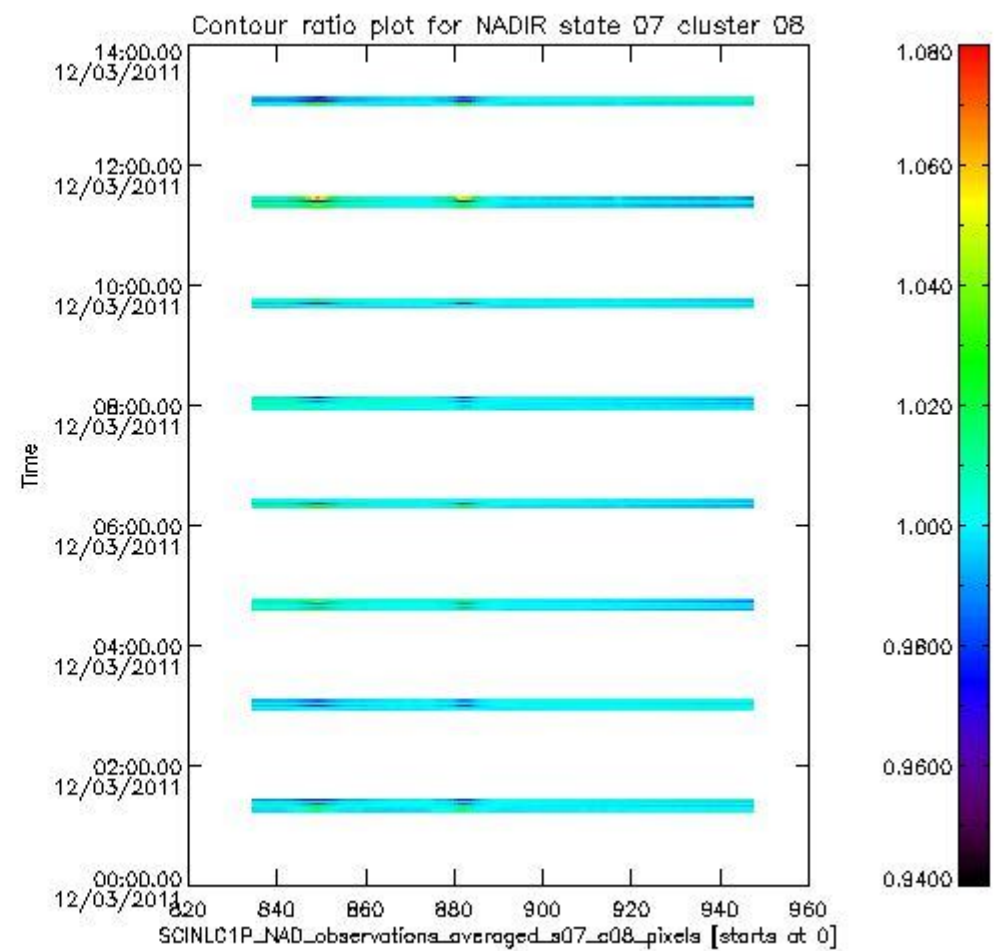
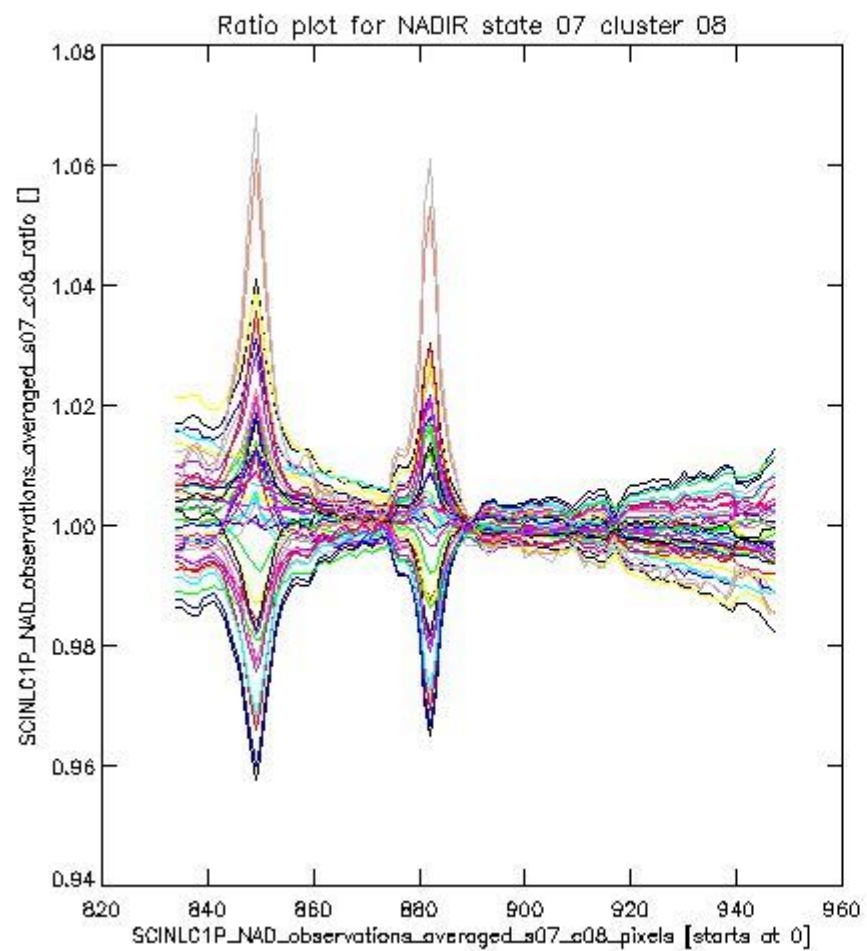
This section shows figures for each of the monitored source packet types listed in the Source Packet Summary section. For each mode-state-cluster(-height) combination the following plots are shown:

- A plot that shows all calibrated averaged spectra vs. pixel number as 2D-profiles. Each line is an average spectrum for a single state occurrence. For Limb modes, the average is performed on spectra recorded at a specific height. The reference spectrum that is used for comparison is also shown as a black line with * markers.
- A plot that shows all calibrated averaged spectra vs. pixel number and time using a coloured contour plot. The colours indicate the intensity.
- A plot that shows ratios of all calibrated averaged spectra and the reference spectrum vs. pixel number. Each line is the ratio of a calibrated averaged spectrum and the reference spectrum, where both spectra have been intensity corrected (the spectrum has been divided by the average pixel intensity) prior to division.
- A plot that shows ratios of all calibrated averaged spectra and the reference spectrum vs. pixel number and time using a coloured contour plot.

1.2.1 NADIR state 07 cluster 08 The data for the analysis of NADIR state 07 cluster 08 have the following characteristics:

Item	Value
Start time of first sample	12MAR2011 01:14:56.017
Start time of last sample	12MAR2011 13:05:50.202
Reference period start time	10FEB2011 01:17:42.783
Reference period stop time	11MAR2011 05:22:27.418
Channel number	2
First pixel number (starts at 0)	834
Last pixel number (starts at 0)	947

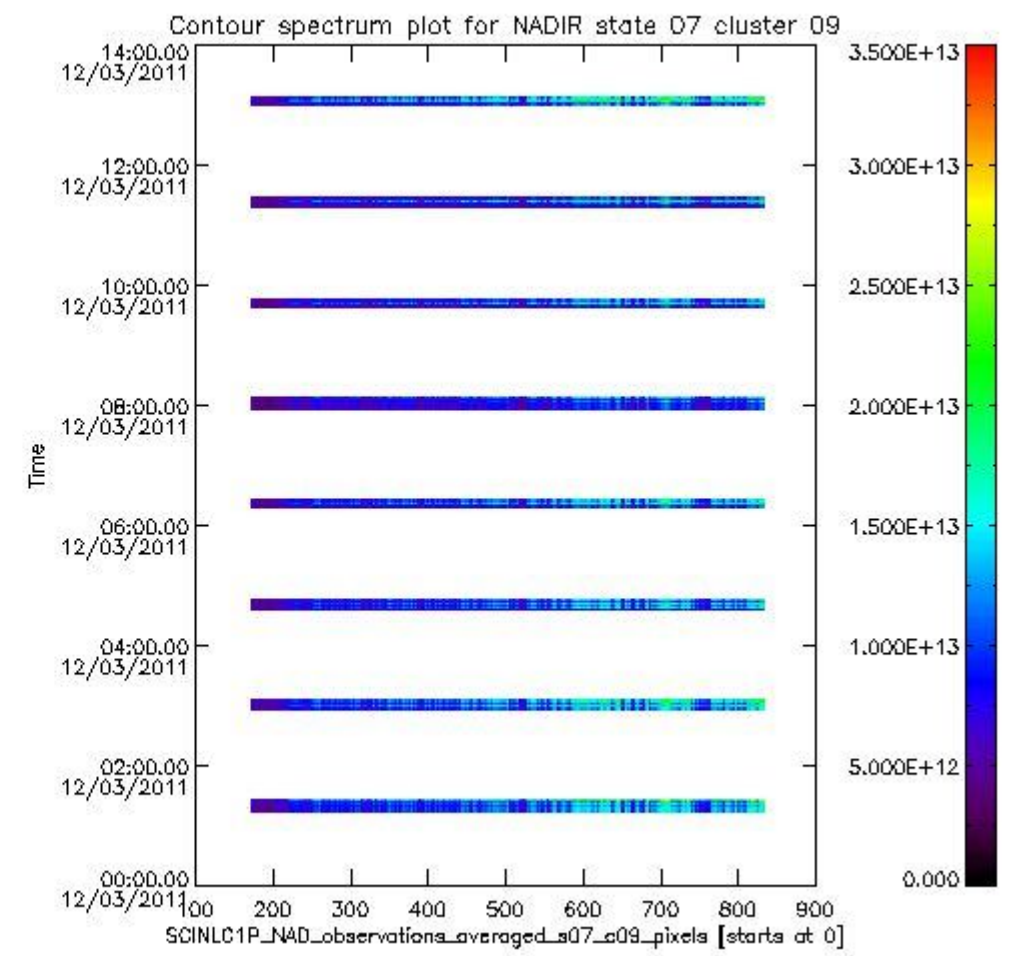
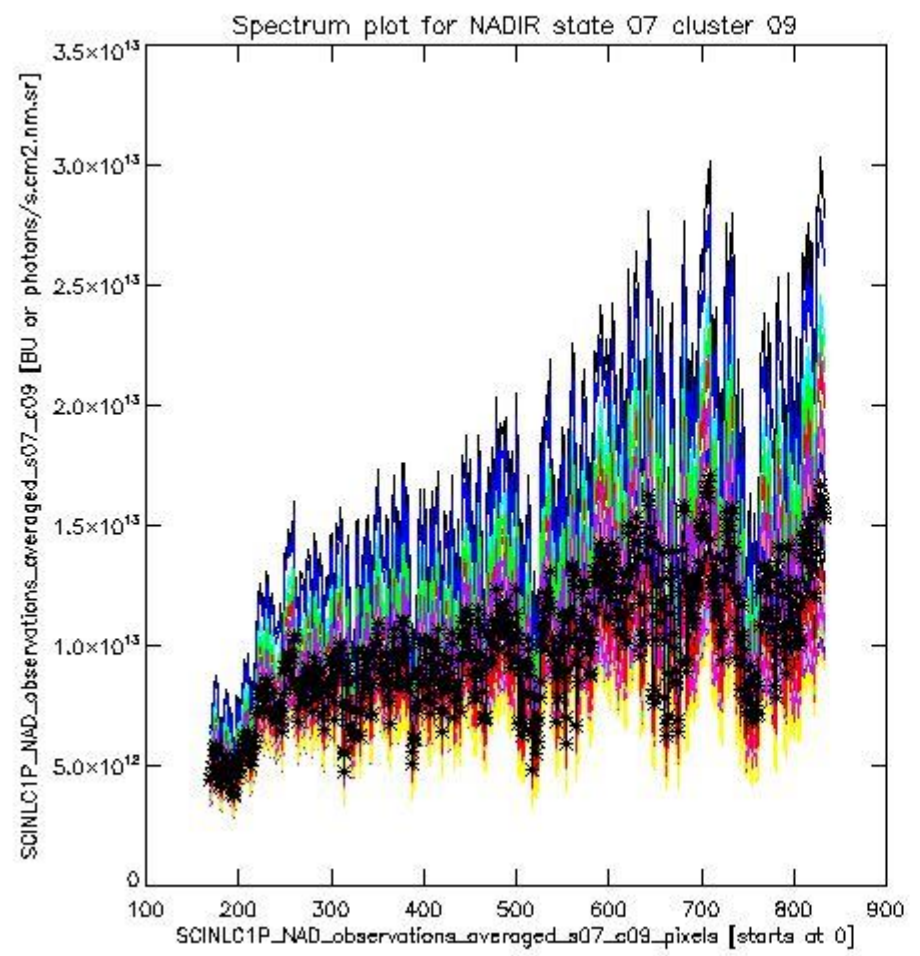




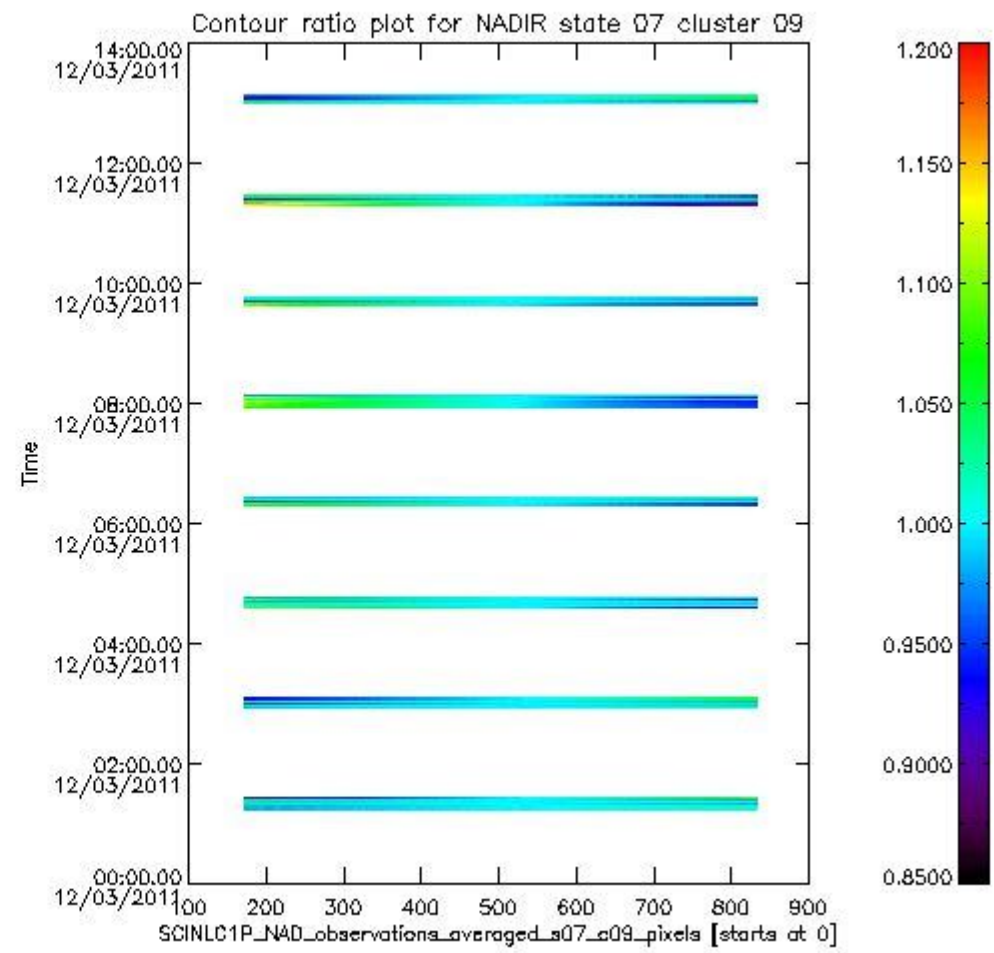
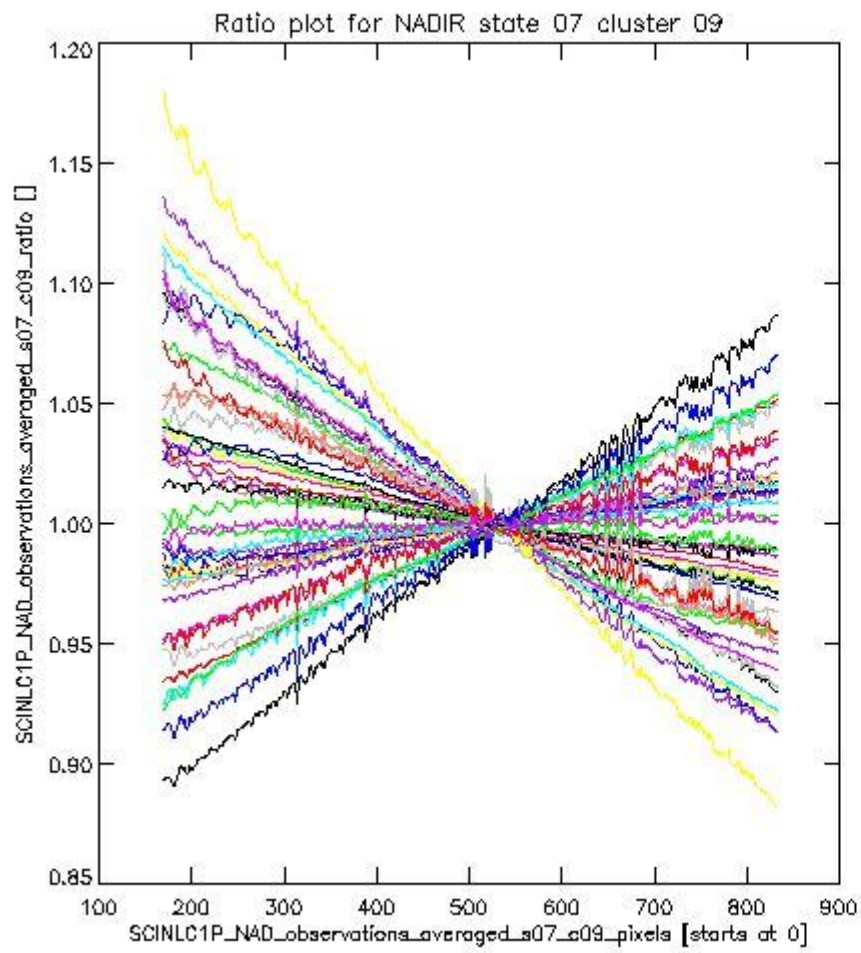
sciamachy_i1b_source_packet_report_SCIA_7_04_U_20110312_1.PNG

1.2.2 NADIR state 07 cluster 09 The data for the analysis of NADIR state 07 cluster 09 have the following characteristics:

Item	Value
Start time of first sample	12MAR2011 01:14:56.017
Start time of last sample	12MAR2011 13:05:50.202
Reference period start time	10FEB2011 01:17:42.783
Reference period stop time	11MAR2011 05:22:27.418
Channel number	2
First pixel number (starts at 0)	170
Last pixel number (starts at 0)	833



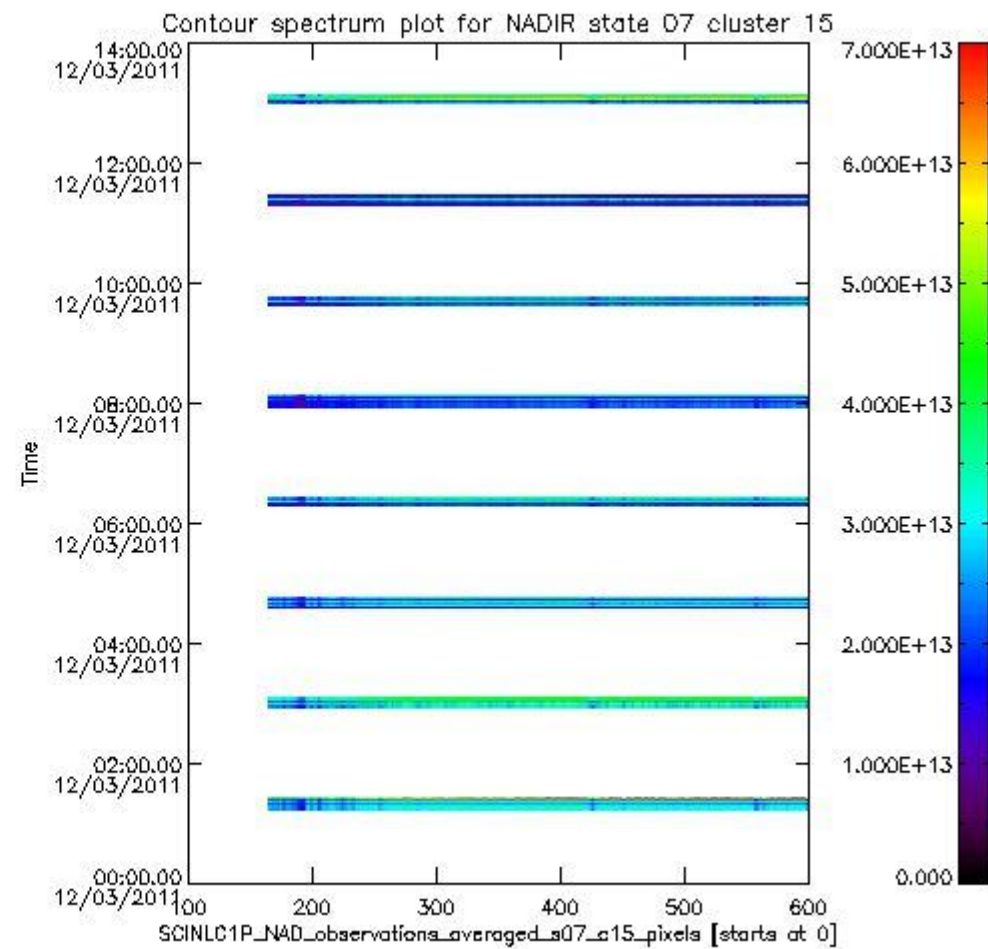
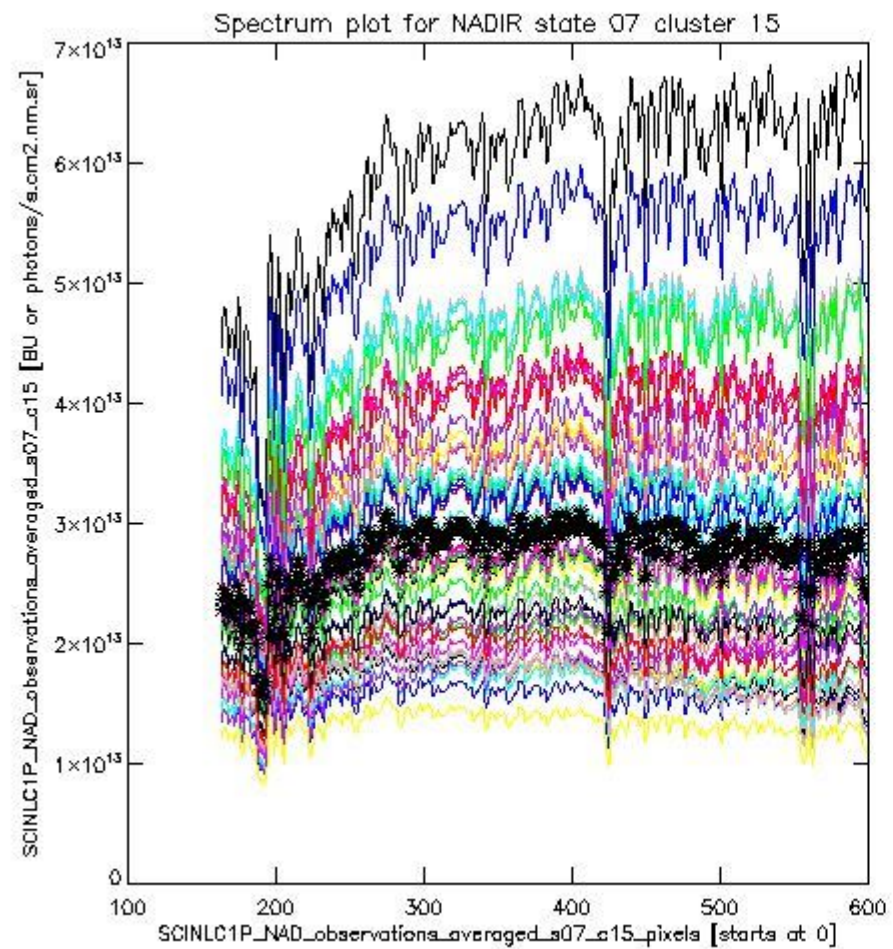
sciamachy_i1b_source_packet_report_SCIA_7_04_U_20110312_2.PNG



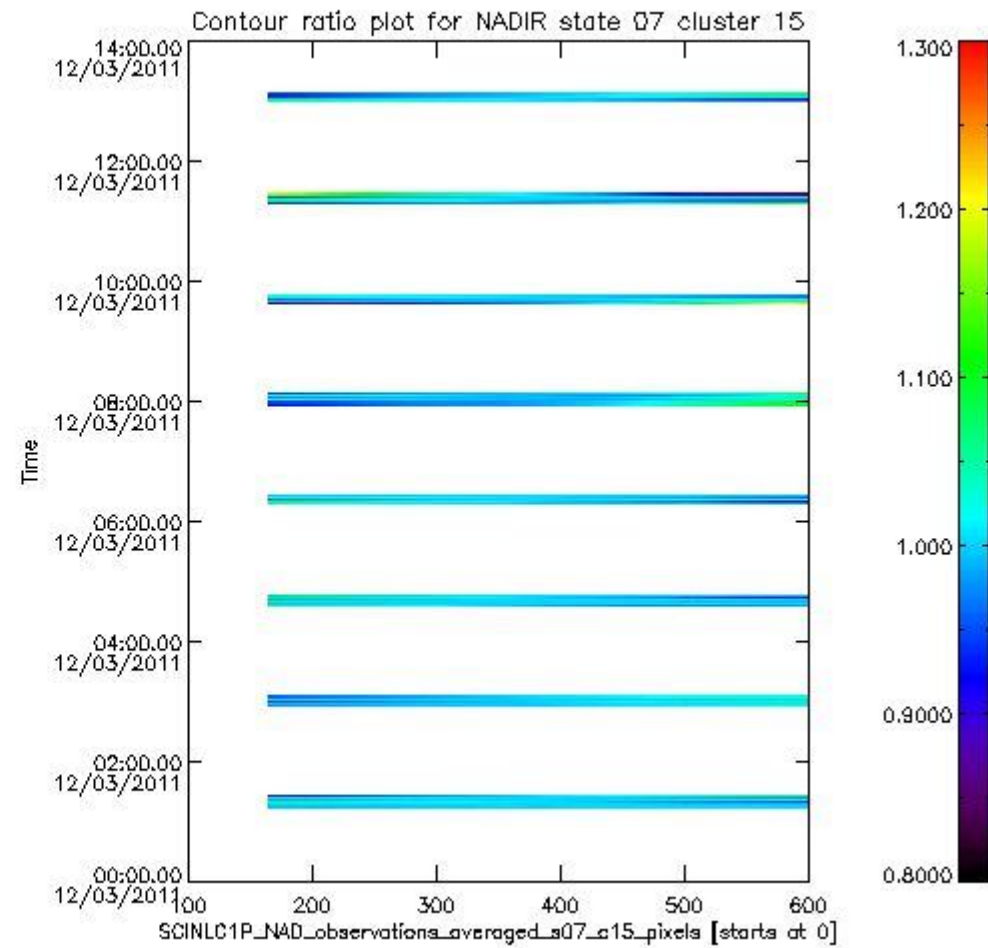
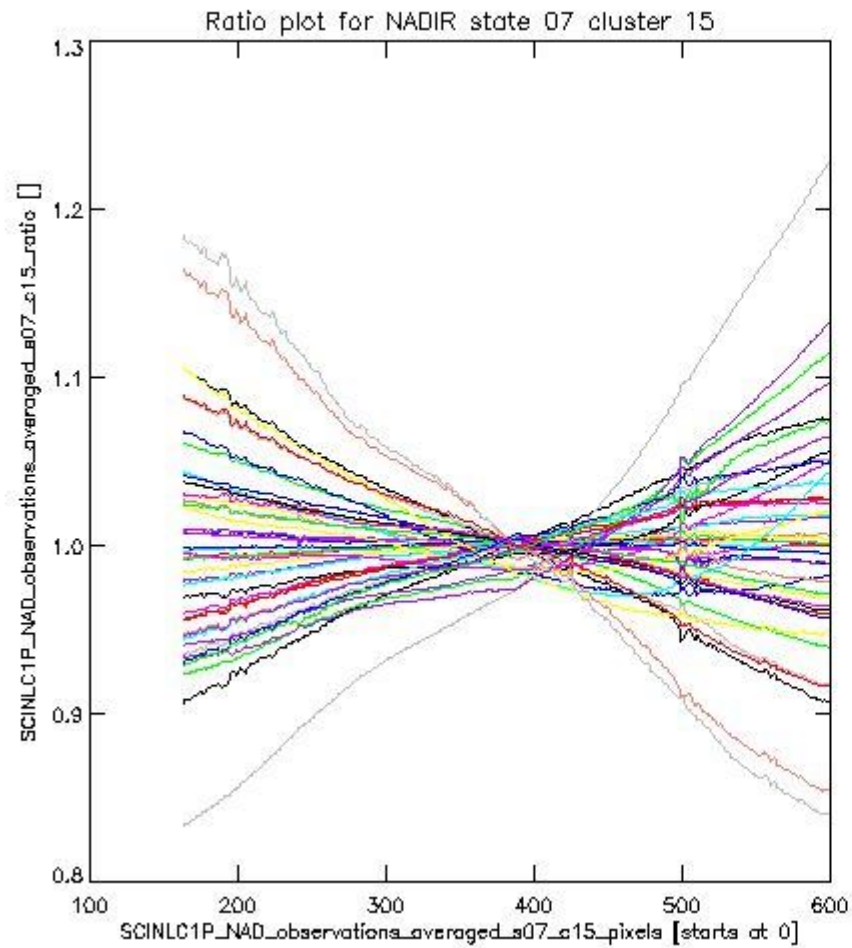
sciamachy_i1b_source_packet_report_SCIA_7_04_U_20110312_3.PNG

1.2.3 NADIR state 07 cluster 15 The data for the analysis of NADIR state 07 cluster 15 have the following characteristics:

Item	Value
Start time of first sample	12MAR2011 01:14:56.017
Start time of last sample	12MAR2011 13:05:50.202
Reference period start time	10FEB2011 01:17:42.783
Reference period stop time	11MAR2011 05:22:27.418
Channel number	3
First pixel number (starts at 0)	163
Last pixel number (starts at 0)	598



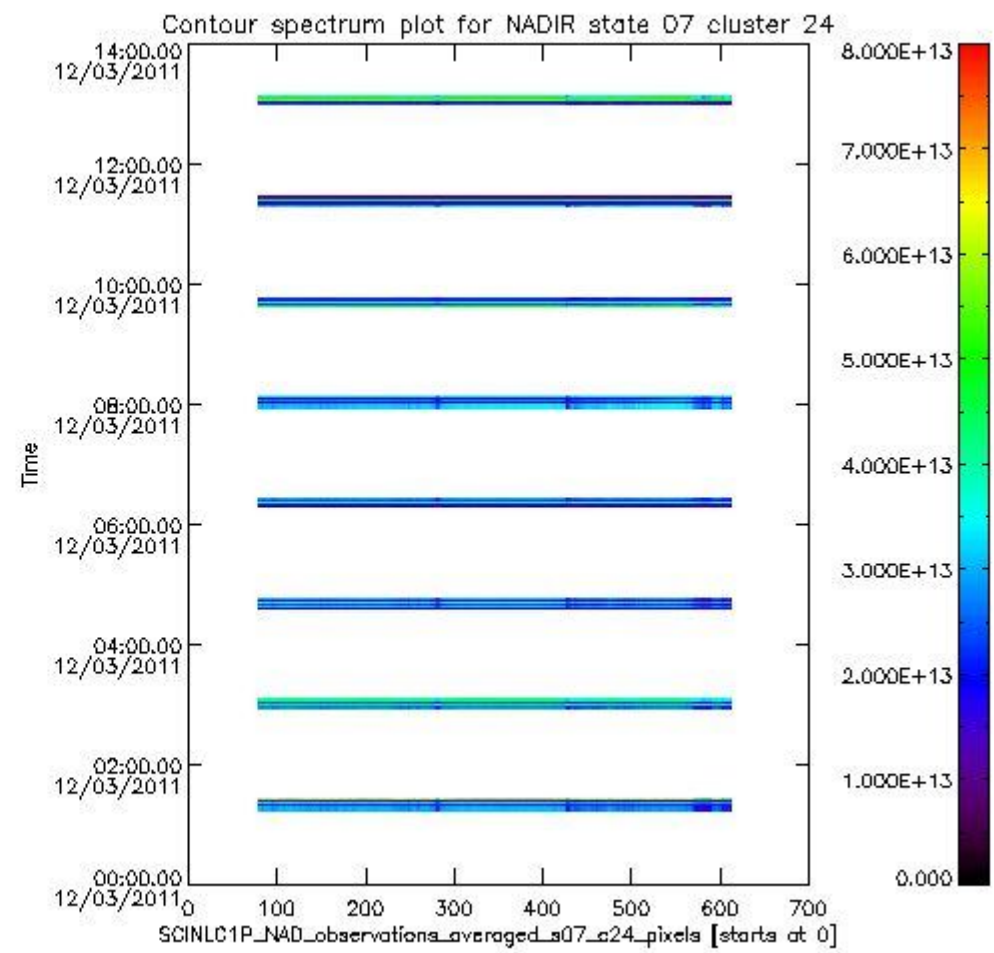
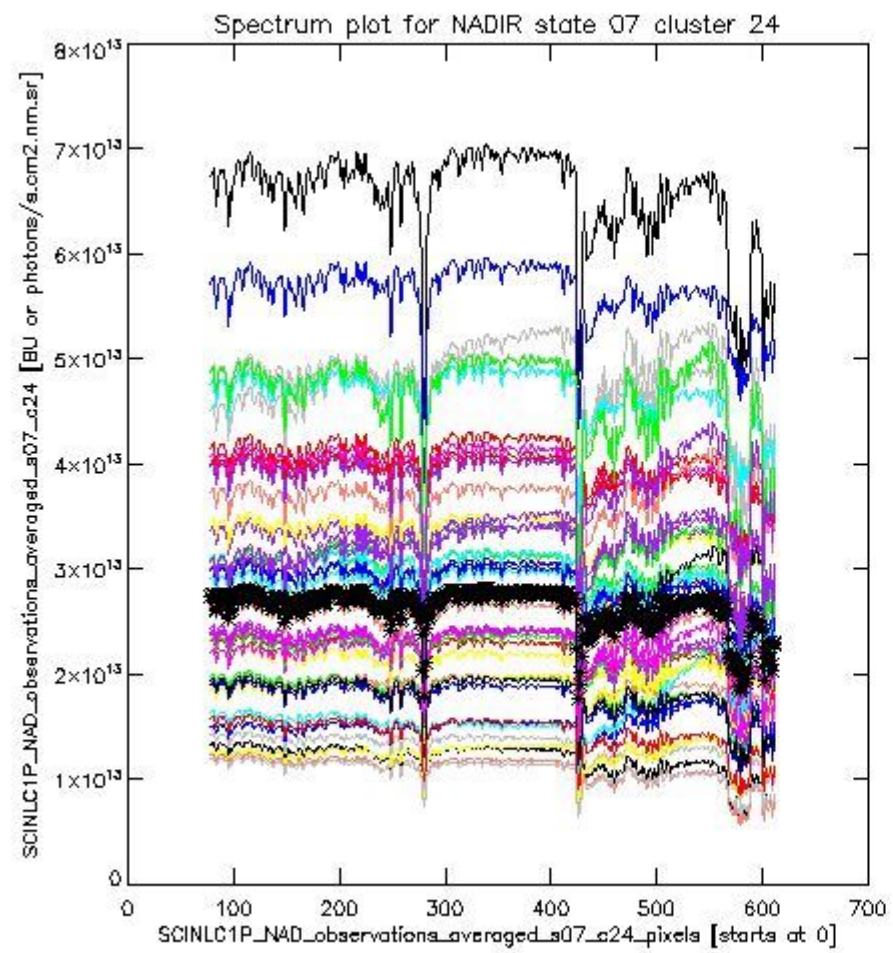
sciamachy_i1b_source_packet_report_SCIA_7_04_U_20110312_4.PNG



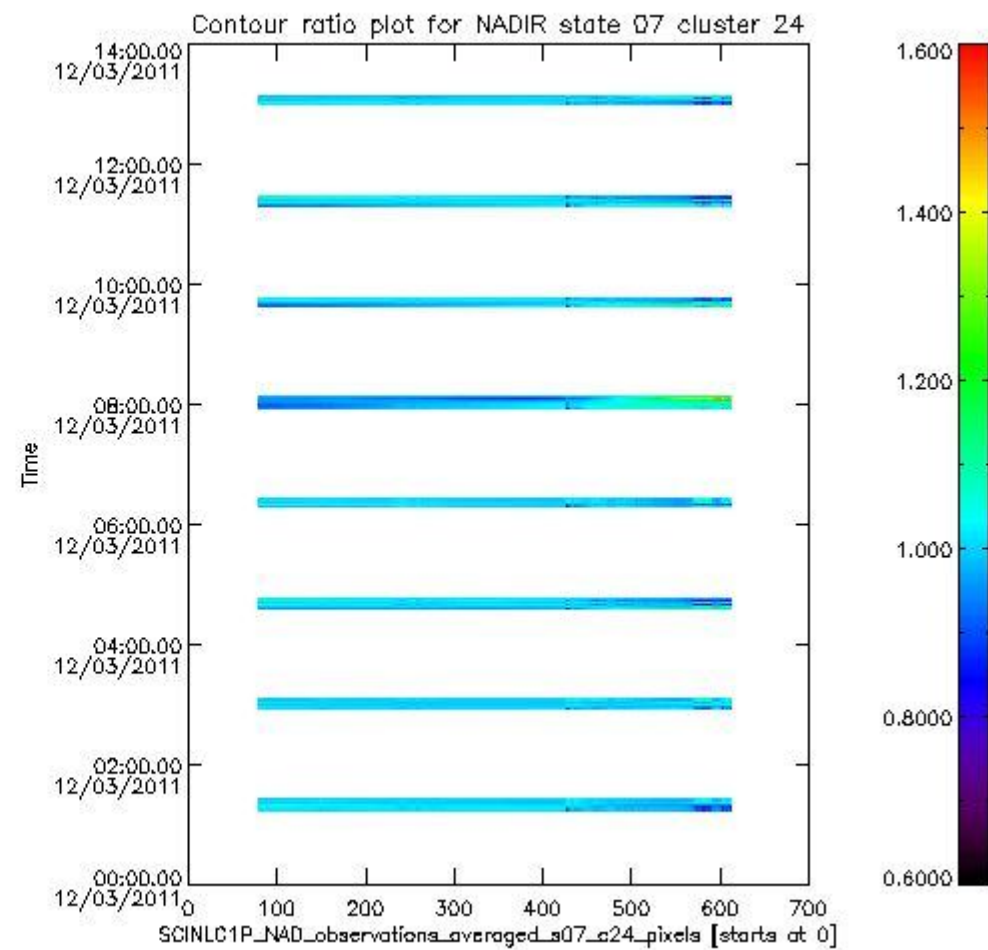
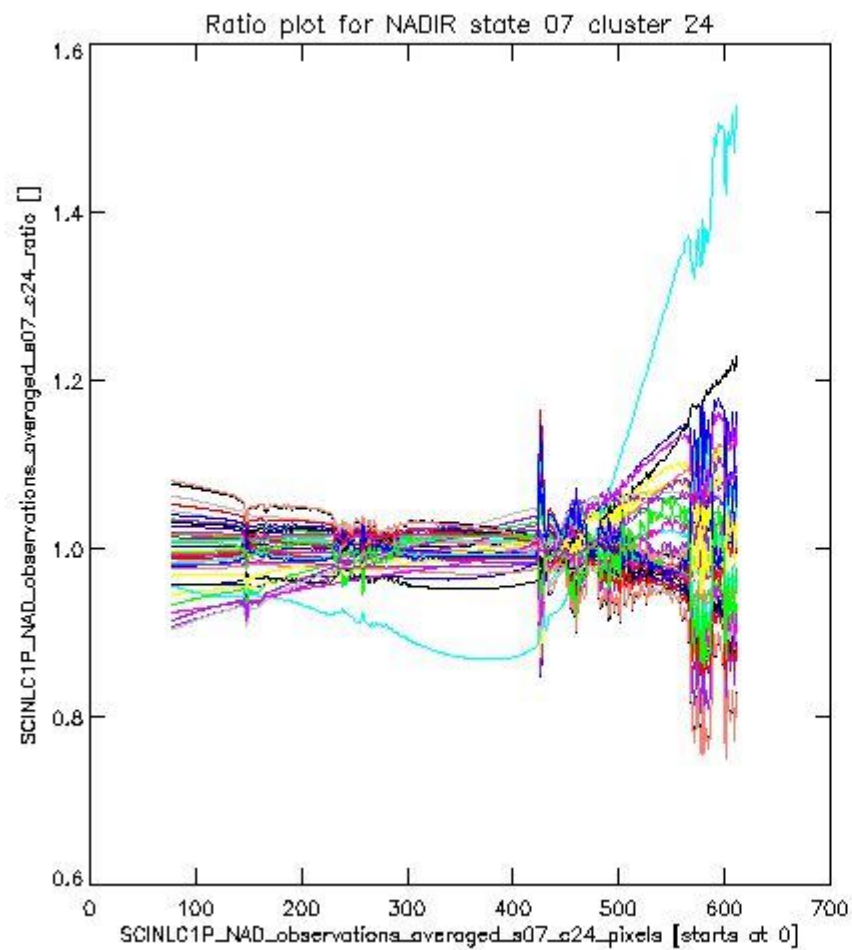
sciamachy_l1b_source_packet_report_SCIA_7_04_U_20110312_5.PNG

1.2.4 NADIR state 07 cluster 24 The data for the analysis of NADIR state 07 cluster 24 have the following characteristics:

Item	Value
Start time of first sample	12MAR2011 01:14:56.017
Start time of last sample	12MAR2011 13:05:50.202
Reference period start time	10FEB2011 01:17:42.783
Reference period stop time	11MAR2011 05:22:27.418
Channel number	4
First pixel number (starts at 0)	78
Last pixel number (starts at 0)	612



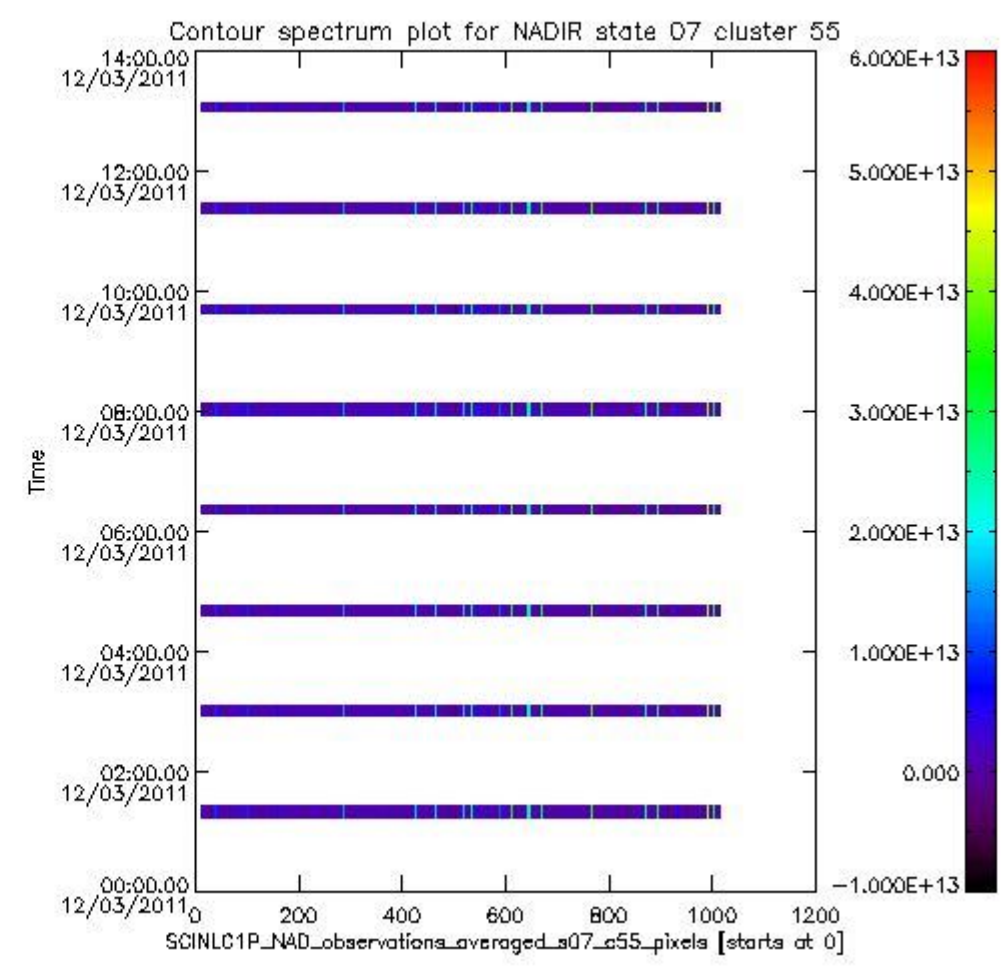
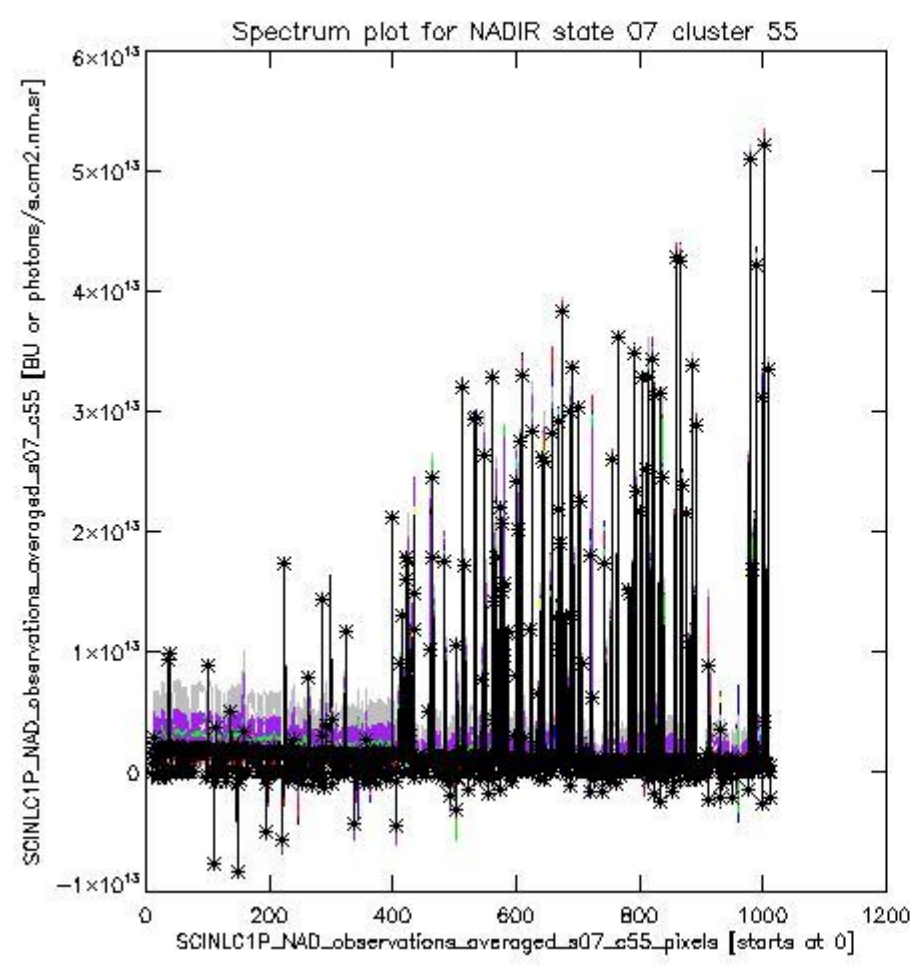
sciamachy_i1b_source_packet_report_SCIA_7_04_U_20110312_6.PNG



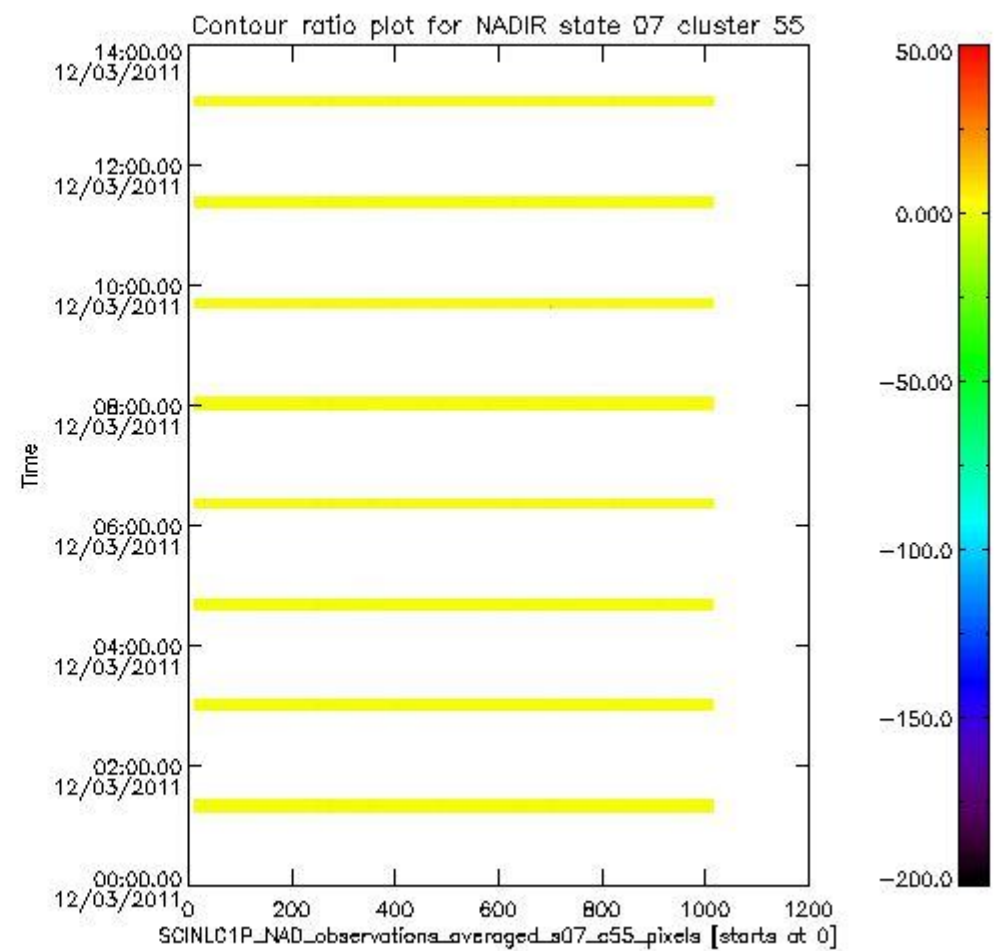
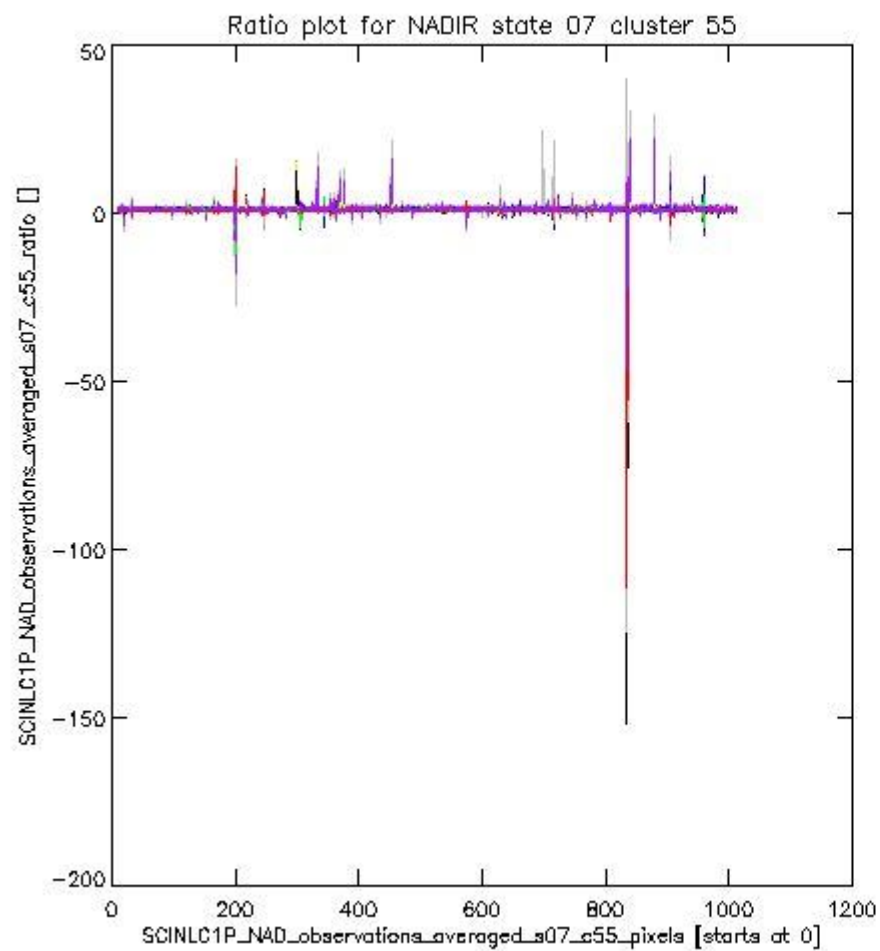
sciamachy_l1b_source_packet_report_SCIA_7_04_U_20110312_7.PNG

1.2.5 NADIR state 07 cluster 55 The data for the analysis of NADIR state 07 cluster 55 have the following characteristics:

Item	Value
Start time of first sample	12MAR2011 01:14:56.017
Start time of last sample	12MAR2011 13:05:50.202
Reference period start time	10FEB2011 01:17:42.783
Reference period stop time	11MAR2011 05:22:27.418
Channel number	8
First pixel number (starts at 0)	10
Last pixel number (starts at 0)	1013



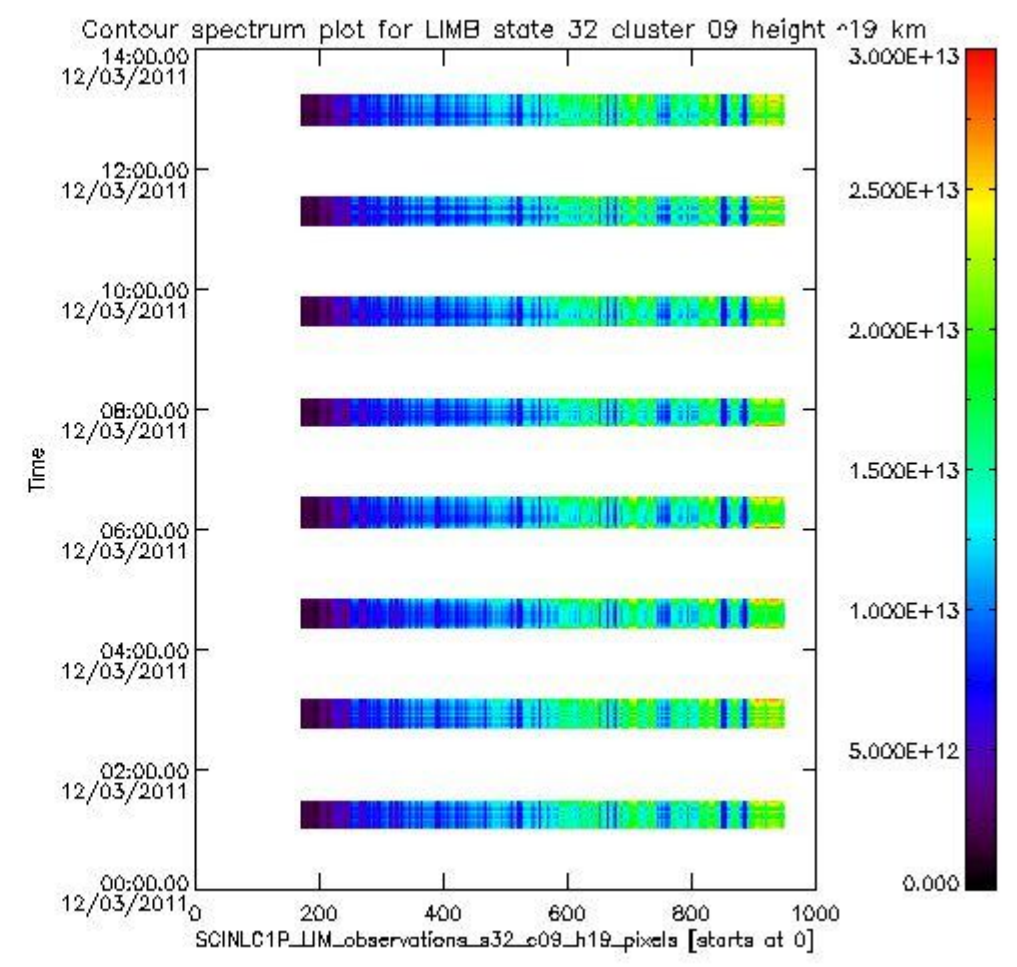
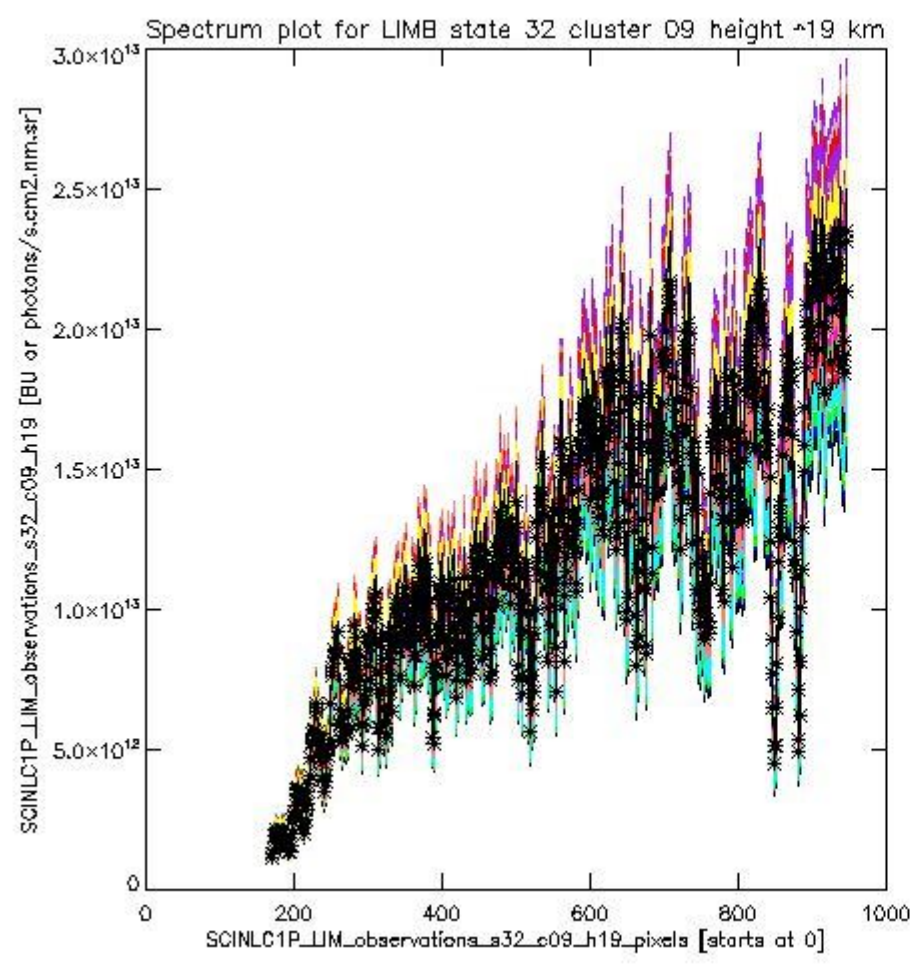
sciamachy_i1b_source_packet_report_SCIA_7_04_U_20110312_8.PNG



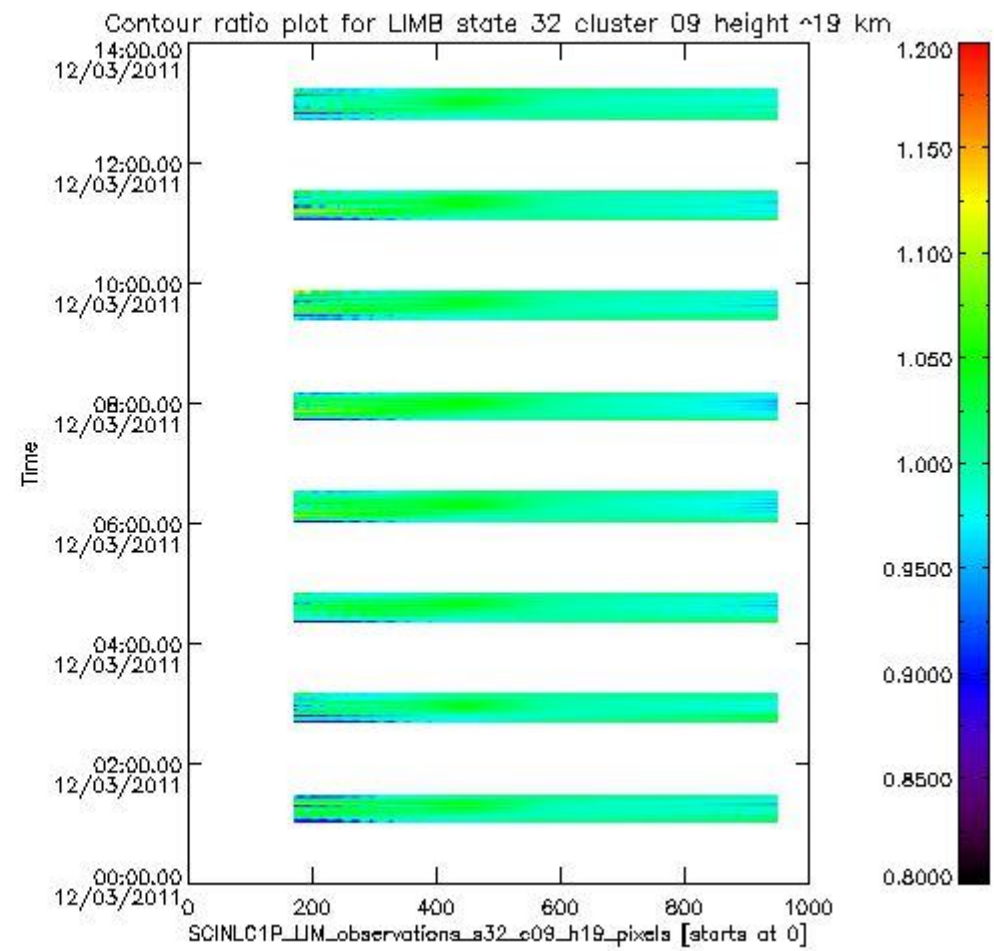
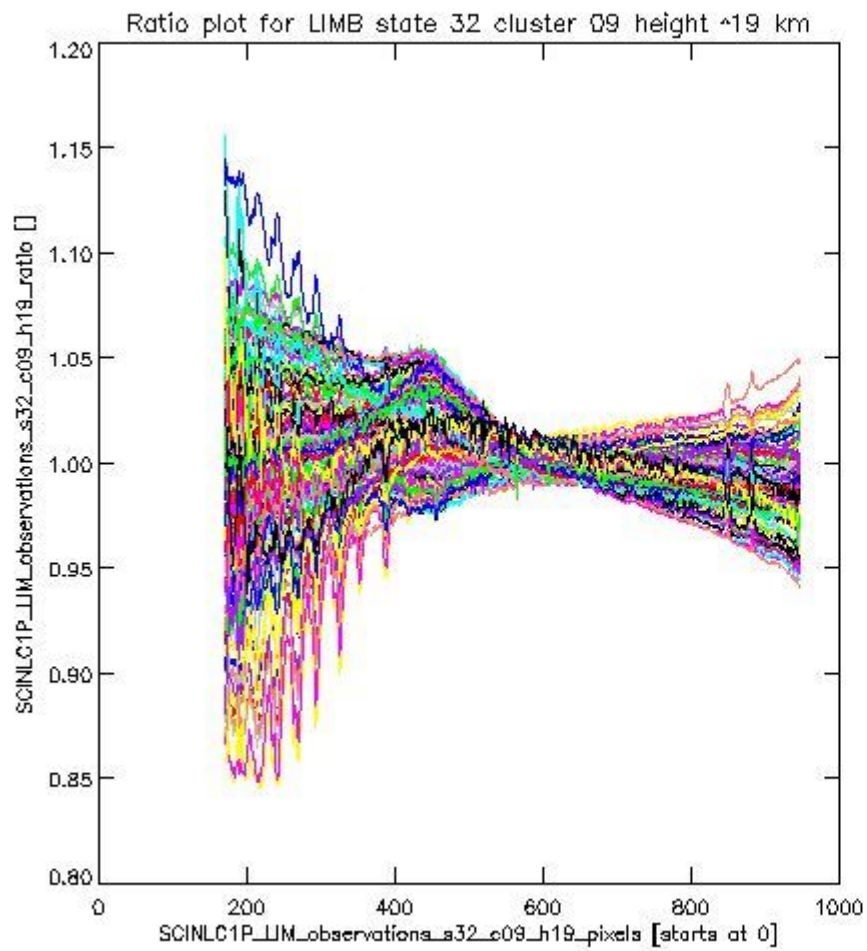
sciamachy_l1b_source_packet_report_SCIA_7_04_U_20110312_9.PNG

1.2.6 LIMB state 32 cluster 09 height ~19 km The data for the analysis of LIMB state 32 cluster 09 height ~19 km have the following characteristics:

Item	Value
Start time of first sample	12MAR2011 01:01:45.380
Start time of last sample	12MAR2011 13:11:04.245
Reference period start time	10FEB2011 01:04:32.142
Reference period stop time	11MAR2011 05:25:38.718
Channel number	2
First pixel number (starts at 0)	170
Last pixel number (starts at 0)	947



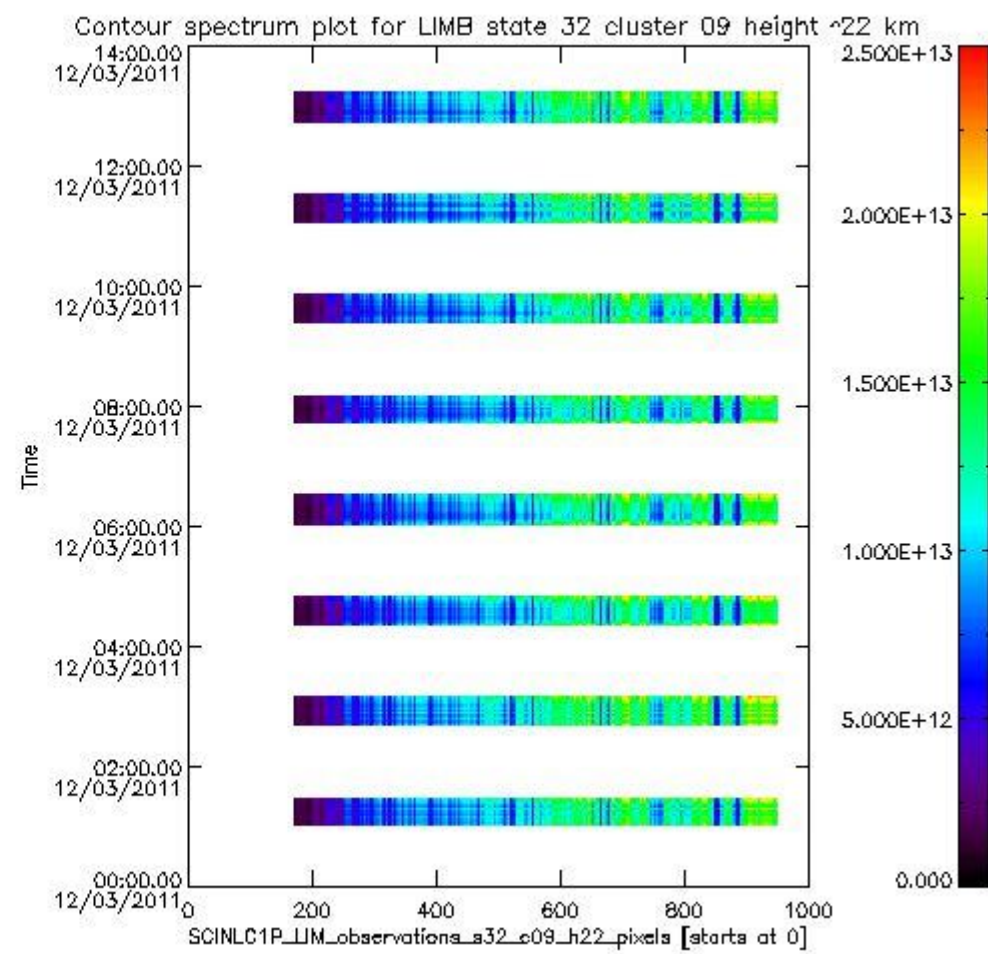
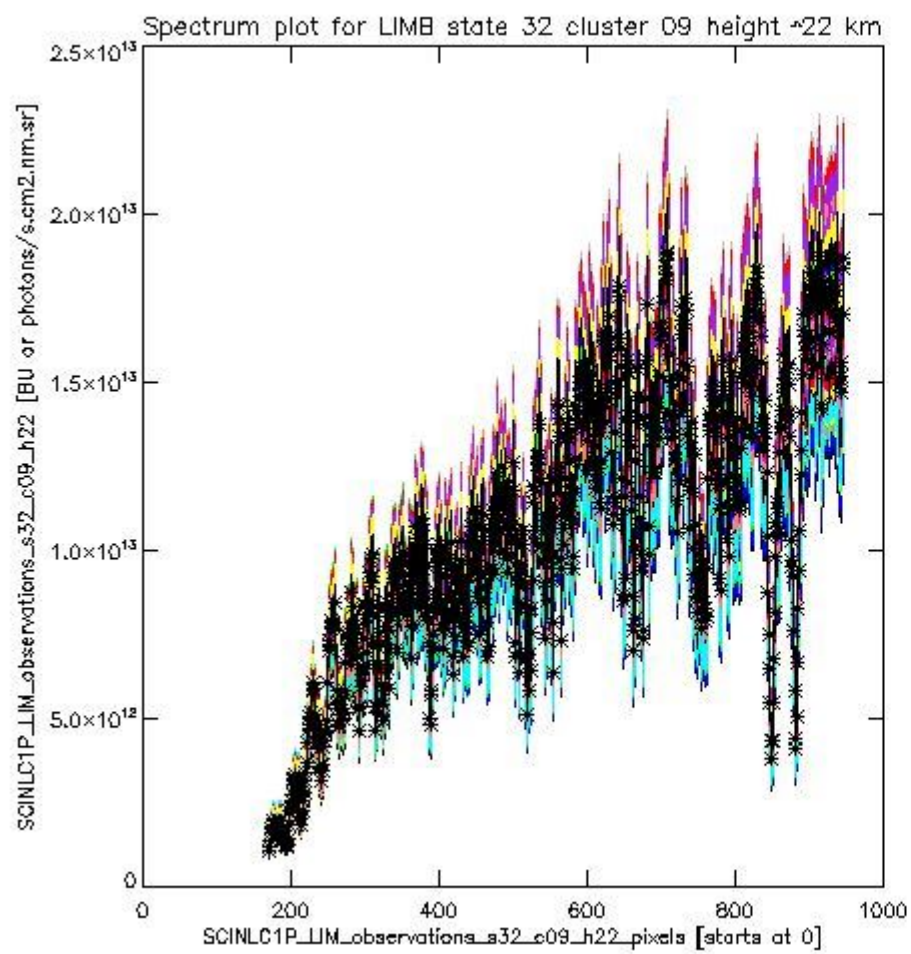
sciamachy_i1b_source_packet_report_SCIA_7_04_U_20110312_10.PNG



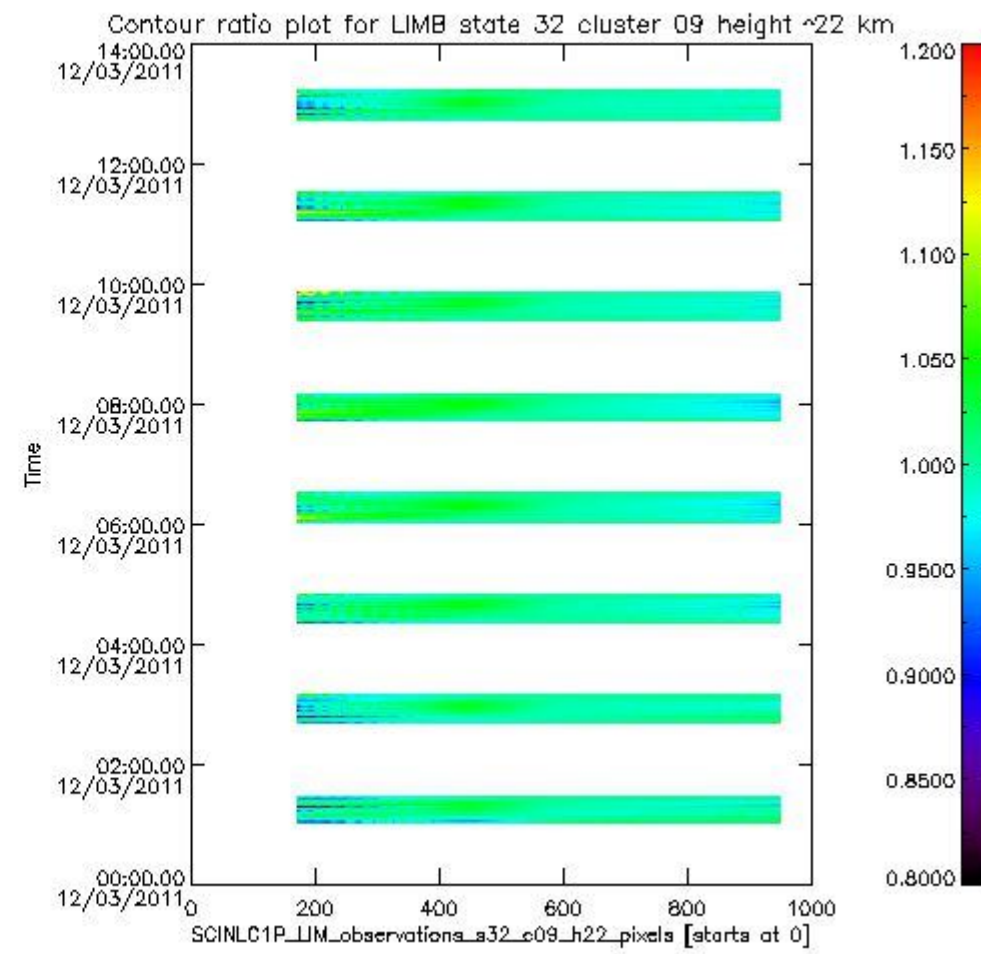
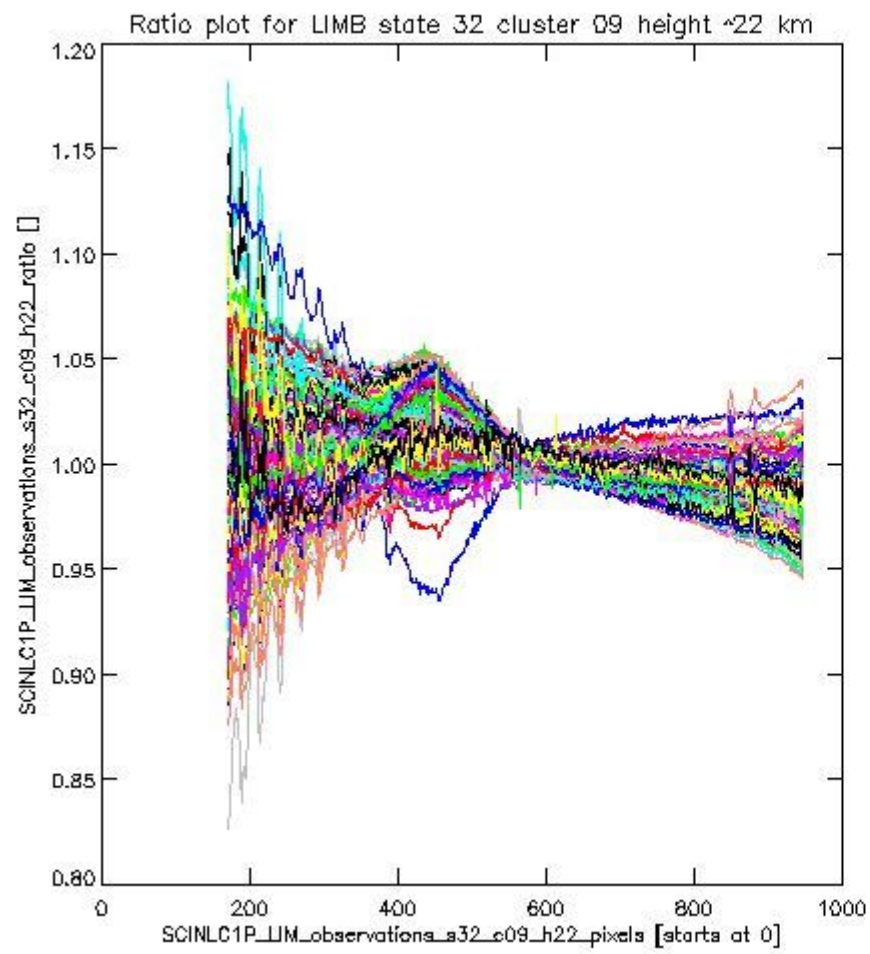
sciamachy_l1b_source_packet_report_SCIA_7_04_U_20110312_11.PNG

1.2.7 LIMB state 32 cluster 09 height ~22 km The data for the analysis of LIMB state 32 cluster 09 height ~22 km have the following characteristics:

Item	Value
Start time of first sample	12MAR2011 01:01:45.380
Start time of last sample	12MAR2011 13:11:04.245
Reference period start time	10FEB2011 01:04:32.142
Reference period stop time	11MAR2011 05:25:38.718
Channel number	2
First pixel number (starts at 0)	170
Last pixel number (starts at 0)	947



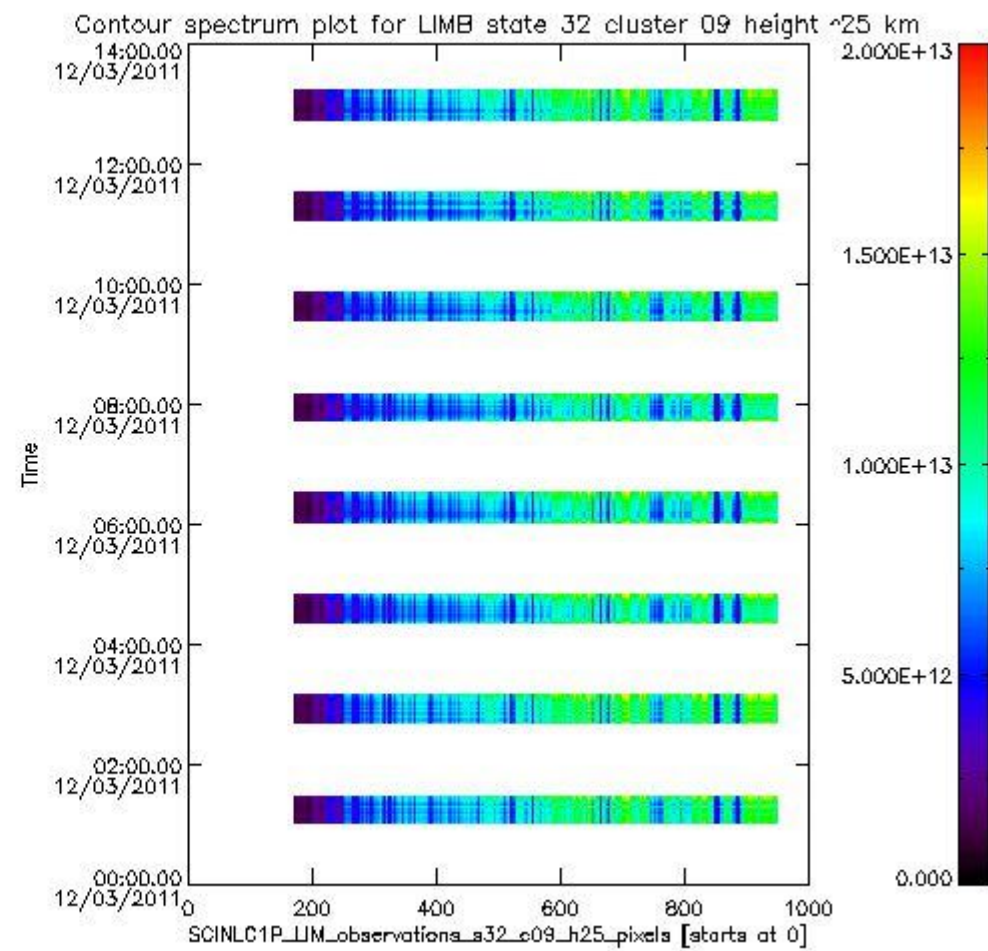
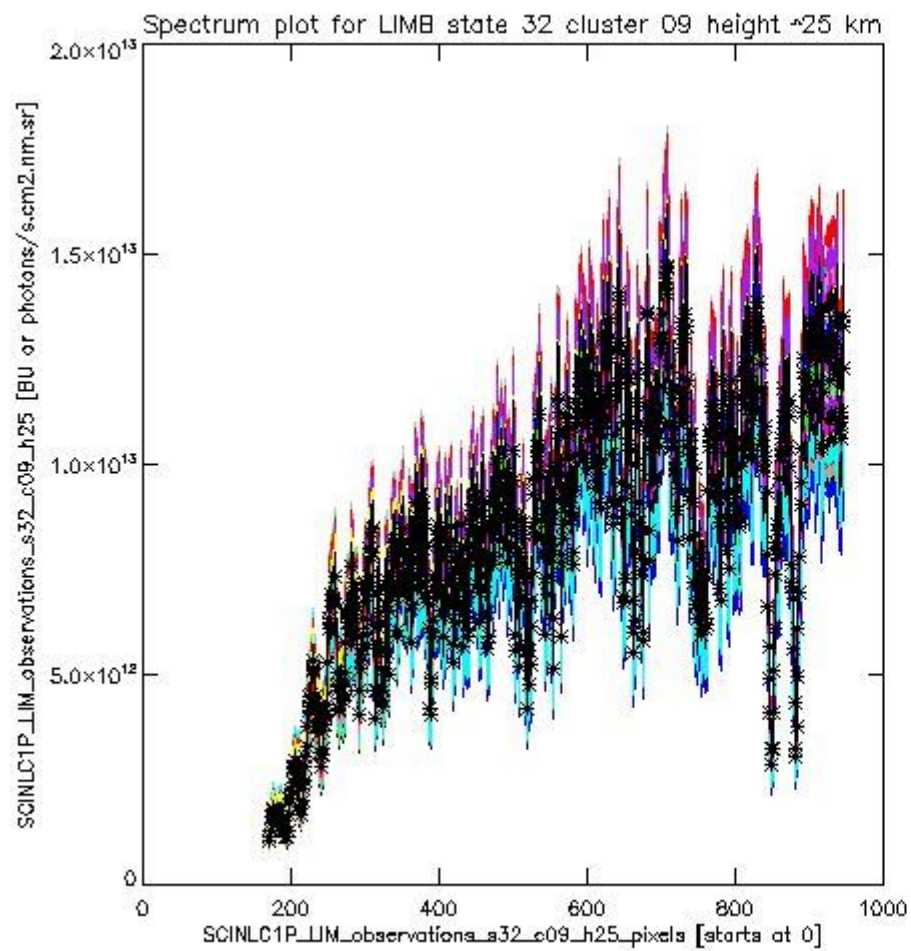
sciamachy_i1b_source_packet_report_SCIA_7_04_U_20110312_12.PNG



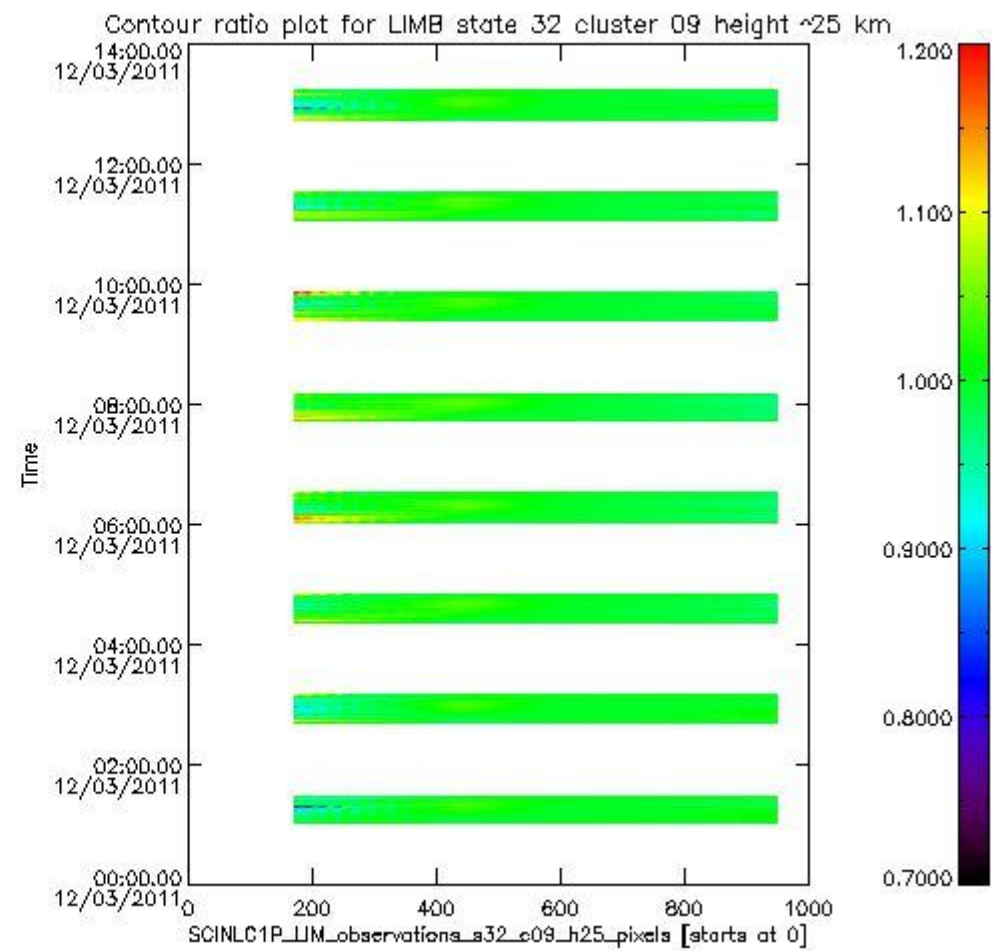
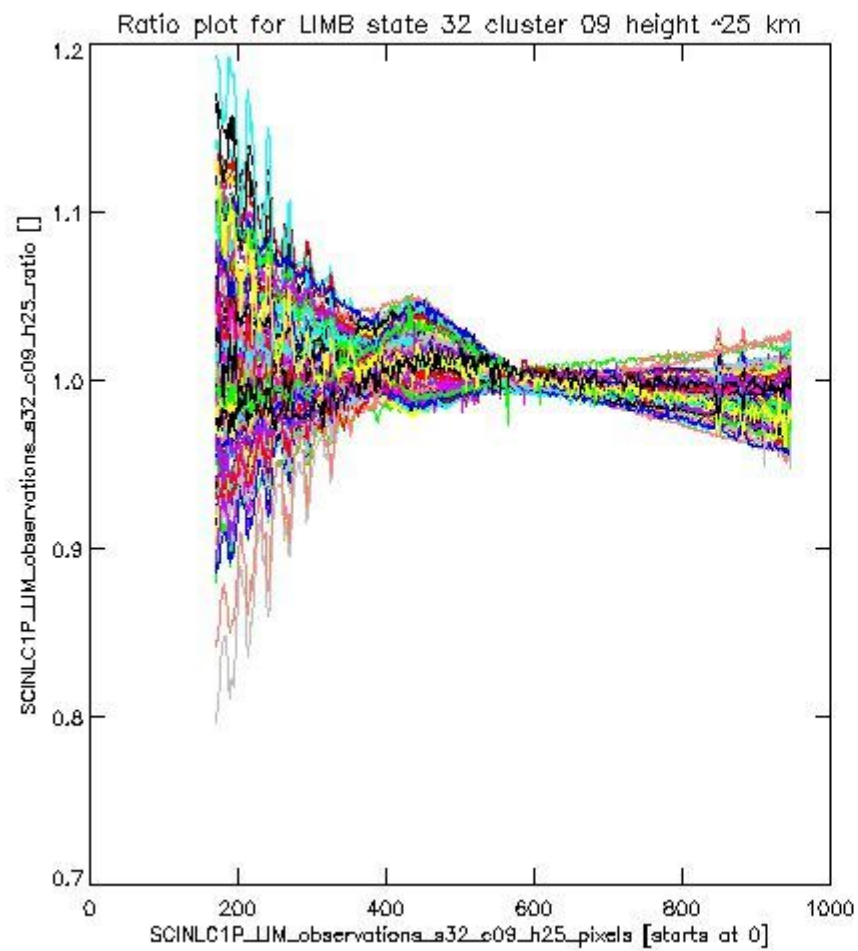
sciamachy_l1b_source_packet_report_SCIA_7_04_U_20110312_13.PNG

1.2.8 LIMB state 32 cluster 09 height ~25 km The data for the analysis of LIMB state 32 cluster 09 height ~25 km have the following characteristics:

Item	Value
Start time of first sample	12MAR2011 01:01:45.380
Start time of last sample	12MAR2011 13:11:04.245
Reference period start time	10FEB2011 01:04:32.142
Reference period stop time	11MAR2011 05:25:38.718
Channel number	2
First pixel number (starts at 0)	170
Last pixel number (starts at 0)	947



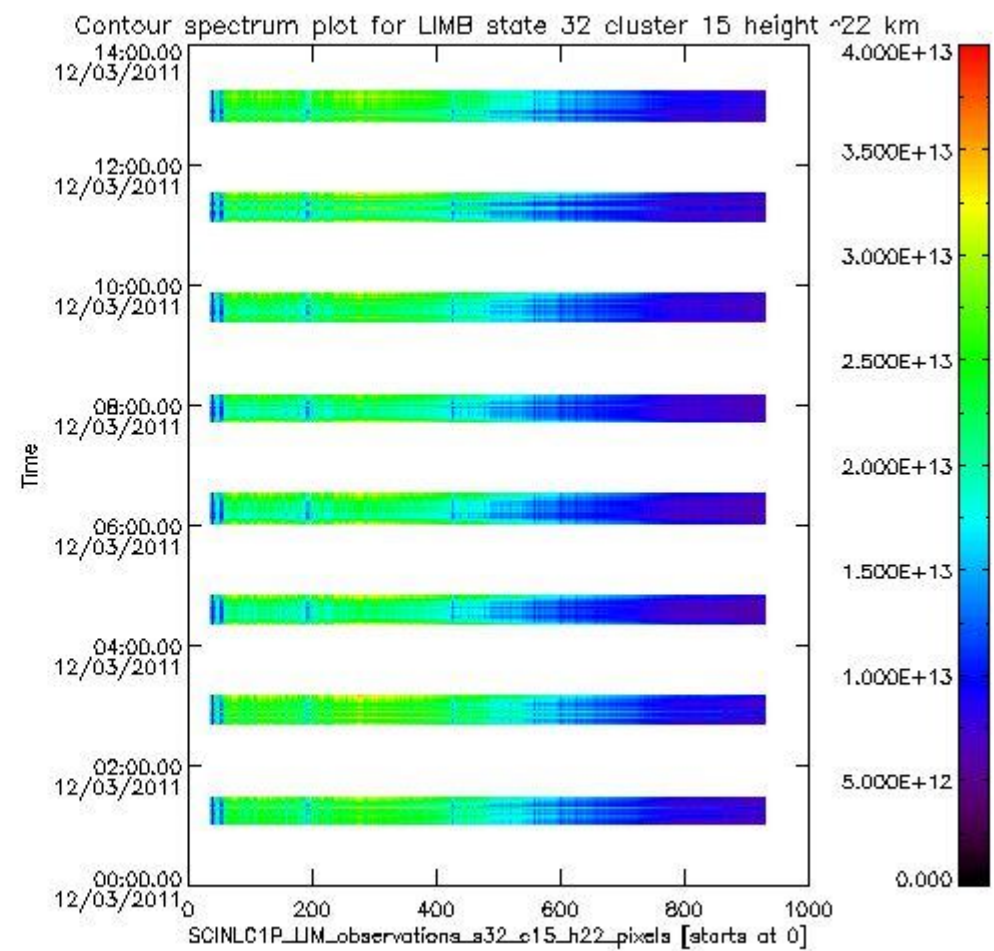
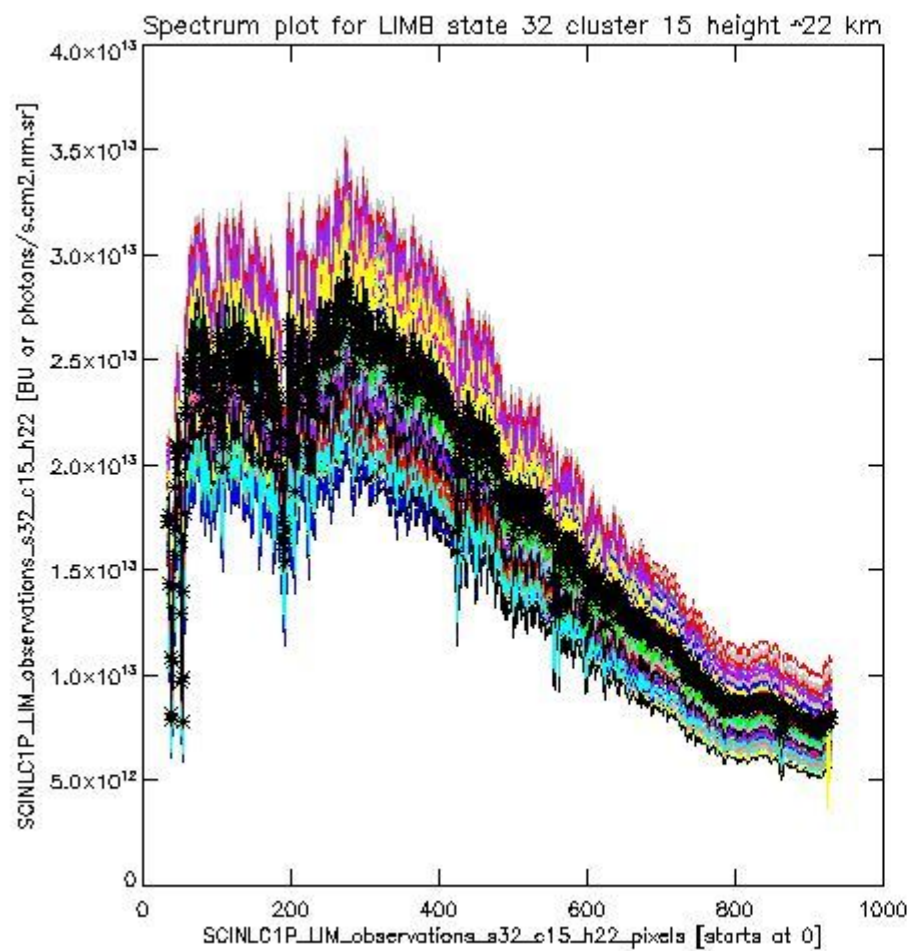
sciamachy_l1b_source_packet_report_SCIA_7_04_U_20110312_14.PNG



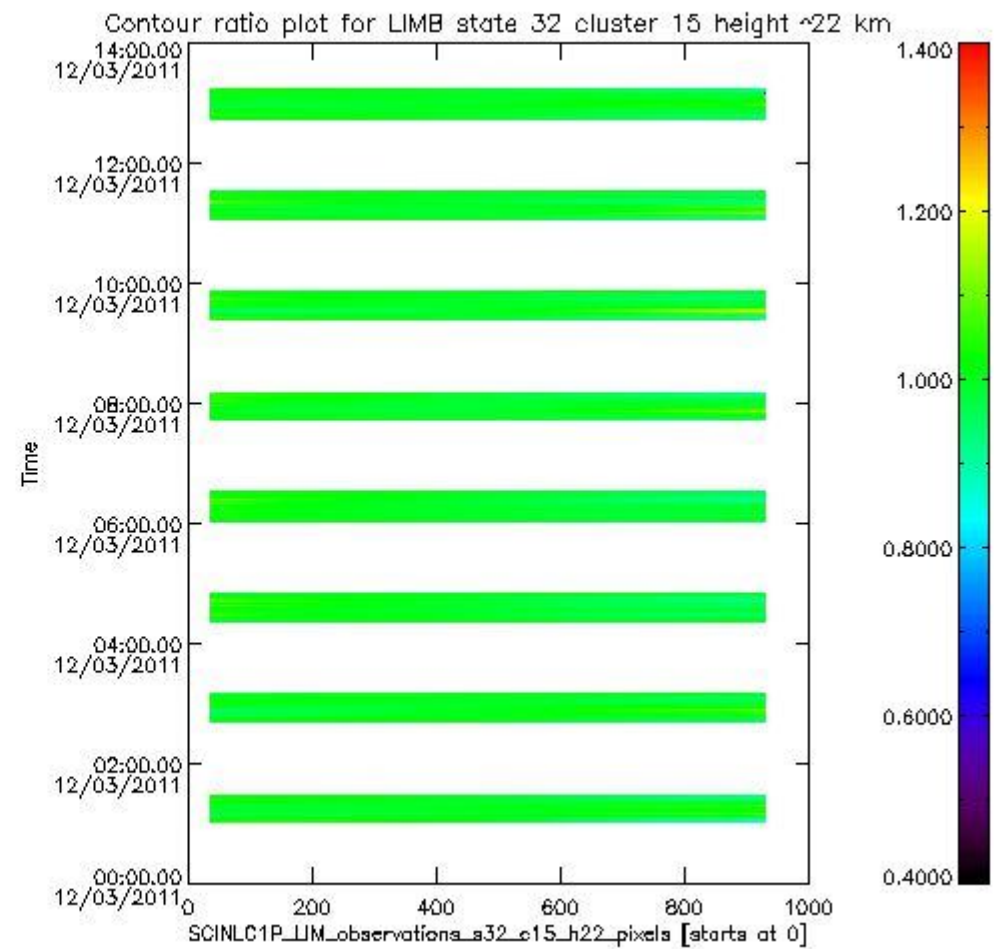
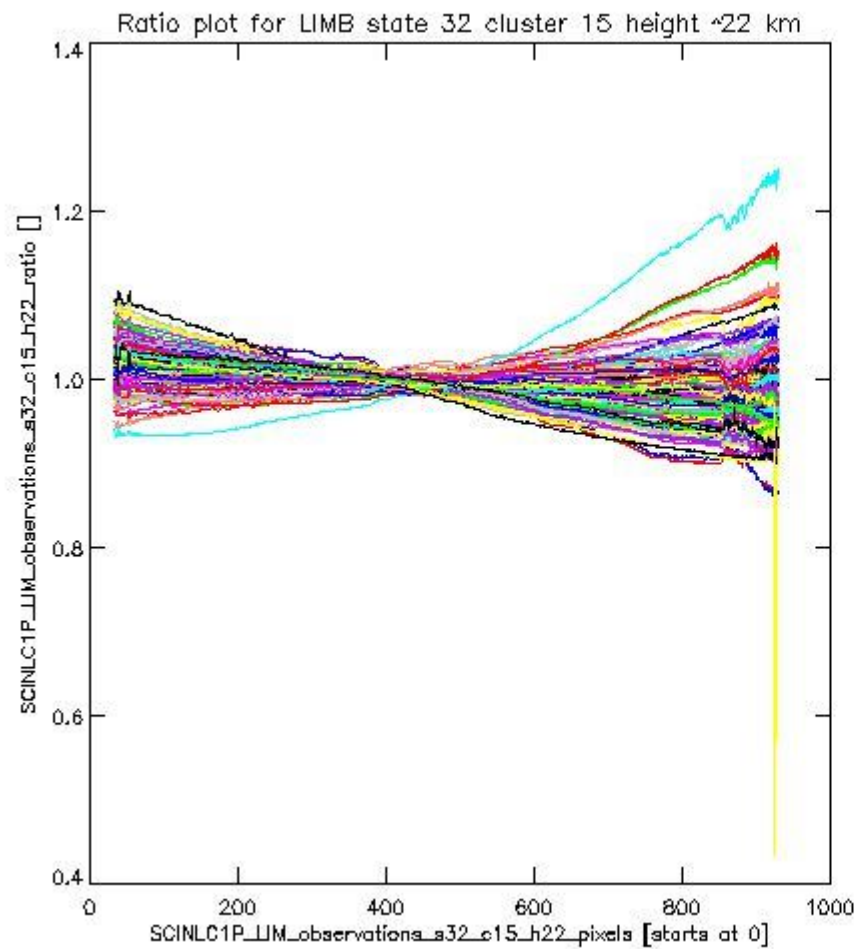
sciamachy_l1b_source_packet_report_SCIA_7_04_U_20110312_15.PNG

1.2.9 LIMB state 32 cluster 15 height ~22 km The data for the analysis of LIMB state 32 cluster 15 height ~22 km have the following characteristics:

Item	Value
Start time of first sample	12MAR2011 01:01:45.380
Start time of last sample	12MAR2011 13:11:04.245
Reference period start time	10FEB2011 01:04:32.142
Reference period stop time	11MAR2011 05:25:38.718
Channel number	3
First pixel number (starts at 0)	33
Last pixel number (starts at 0)	929



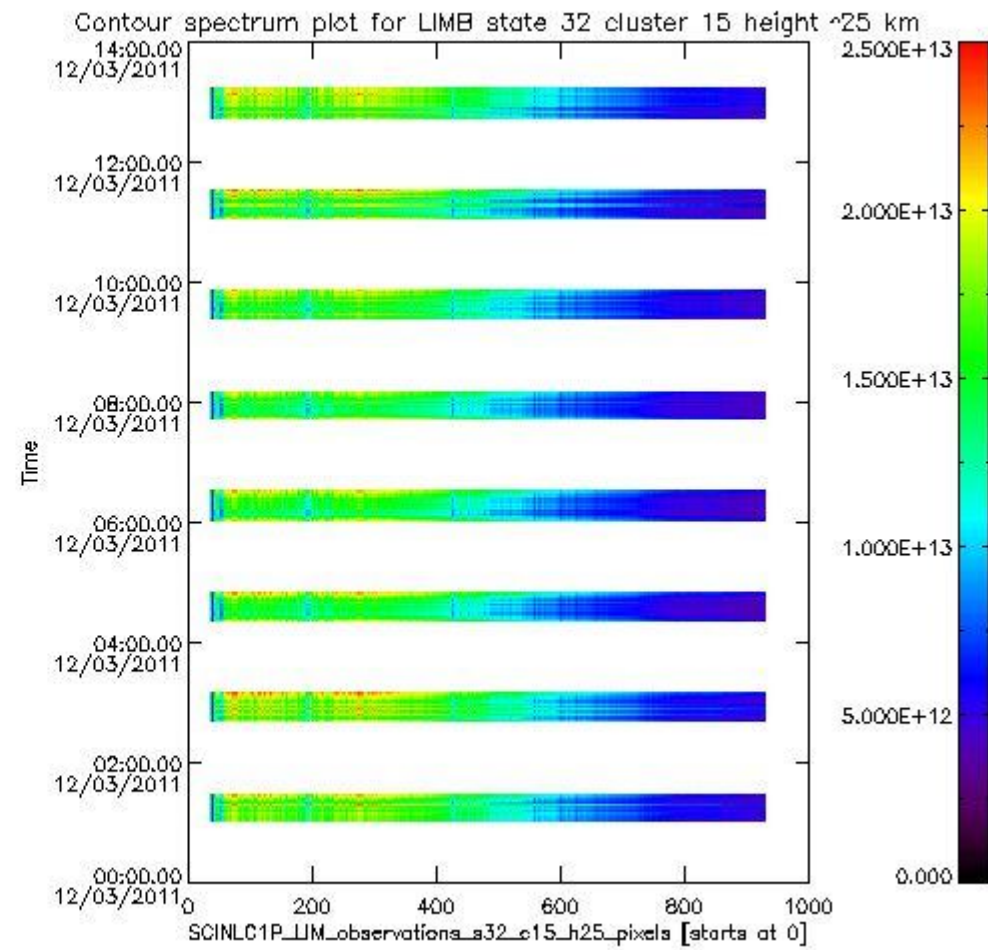
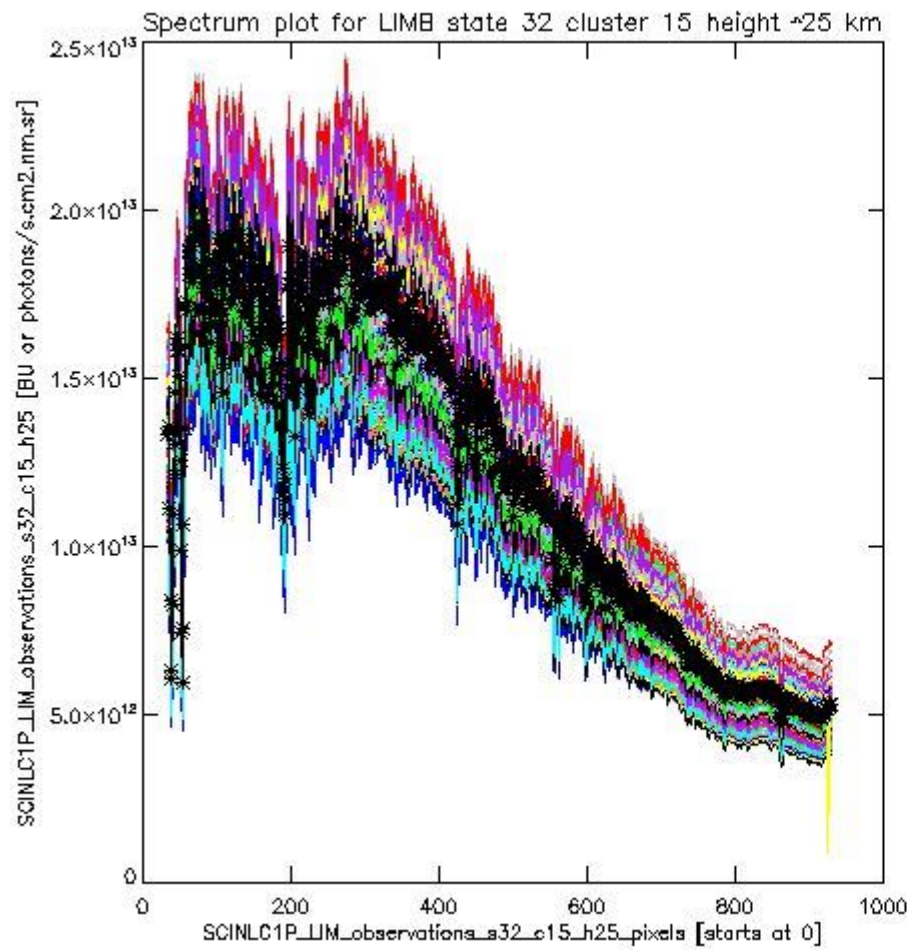
sciamachy_i1b_source_packet_report_SCIA_7_04_U_20110312_16.PNG



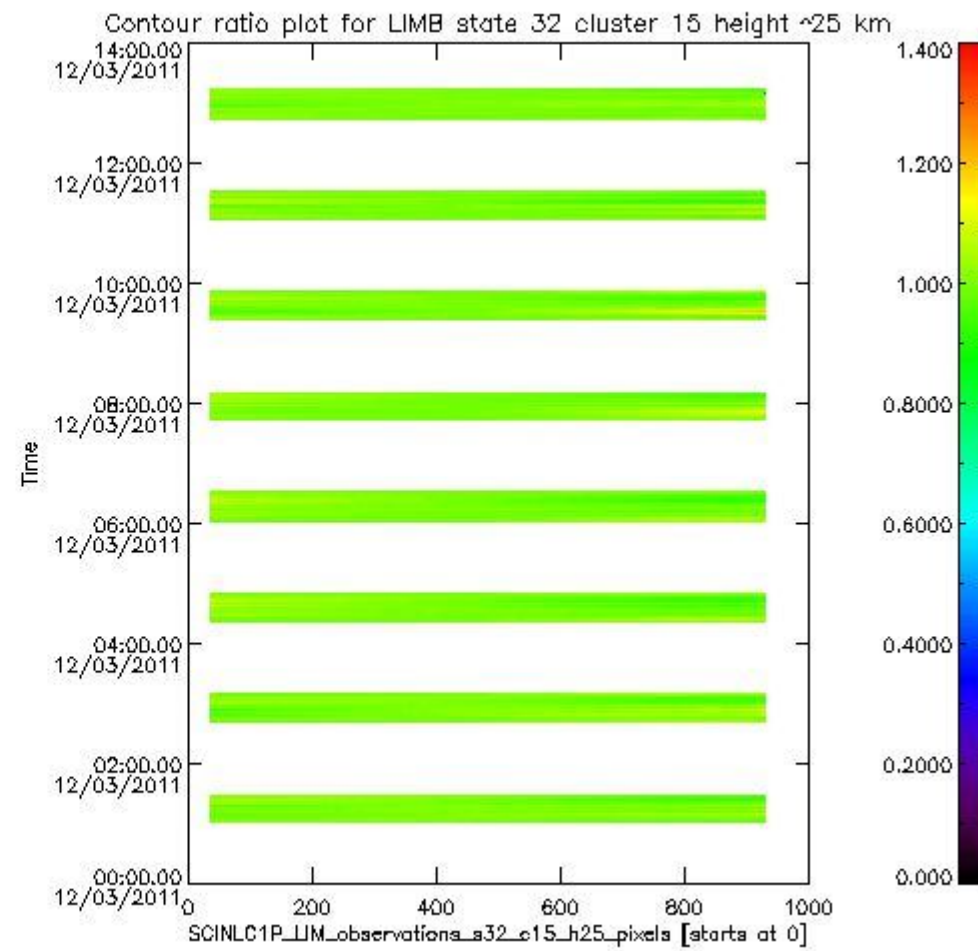
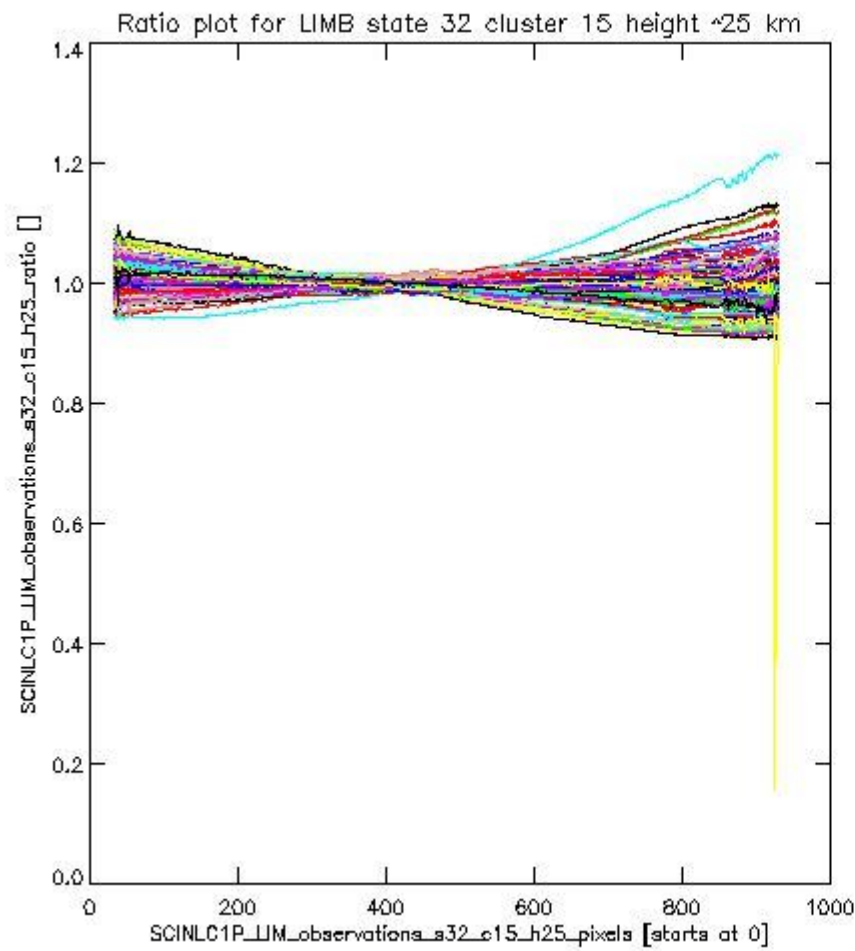
sciamachy_11b_source_packet_report_SCIA_7_04_U_20110312_17.PNG

1.2.10 LIMB state 32 cluster 15 height ~25 km The data for the analysis of LIMB state 32 cluster 15 height ~25 km have the following characteristics:

Item	Value
Start time of first sample	12MAR2011 01:01:45.380
Start time of last sample	12MAR2011 13:11:04.245
Reference period start time	10FEB2011 01:04:32.142
Reference period stop time	11MAR2011 05:25:38.718
Channel number	3
First pixel number (starts at 0)	33
Last pixel number (starts at 0)	929



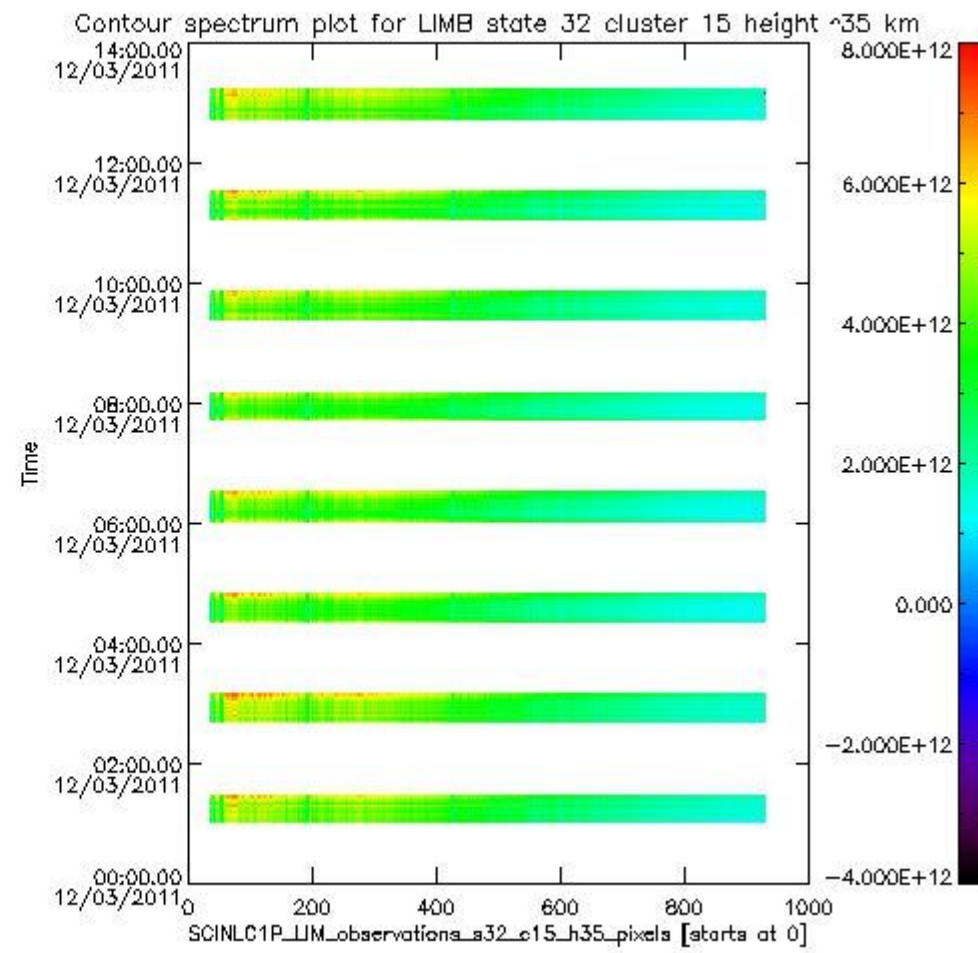
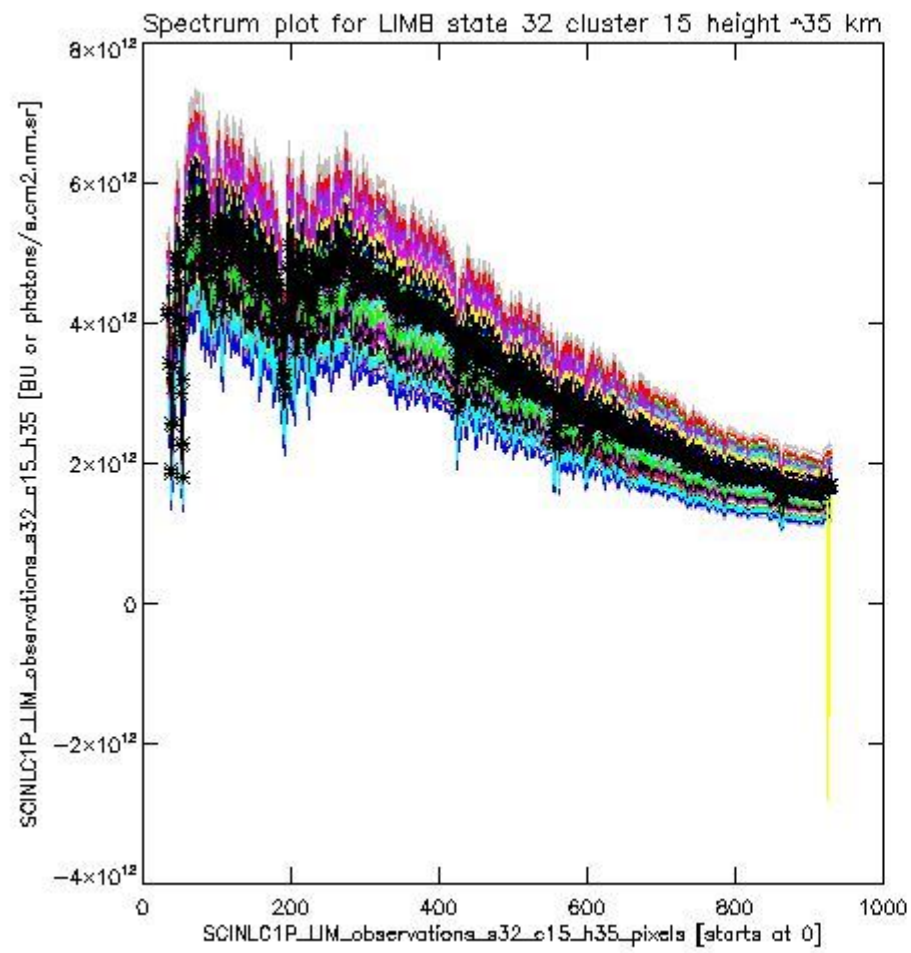
sciamachy_l1b_source_packet_report_SCIA_7_04_U_20110312_18.PNG

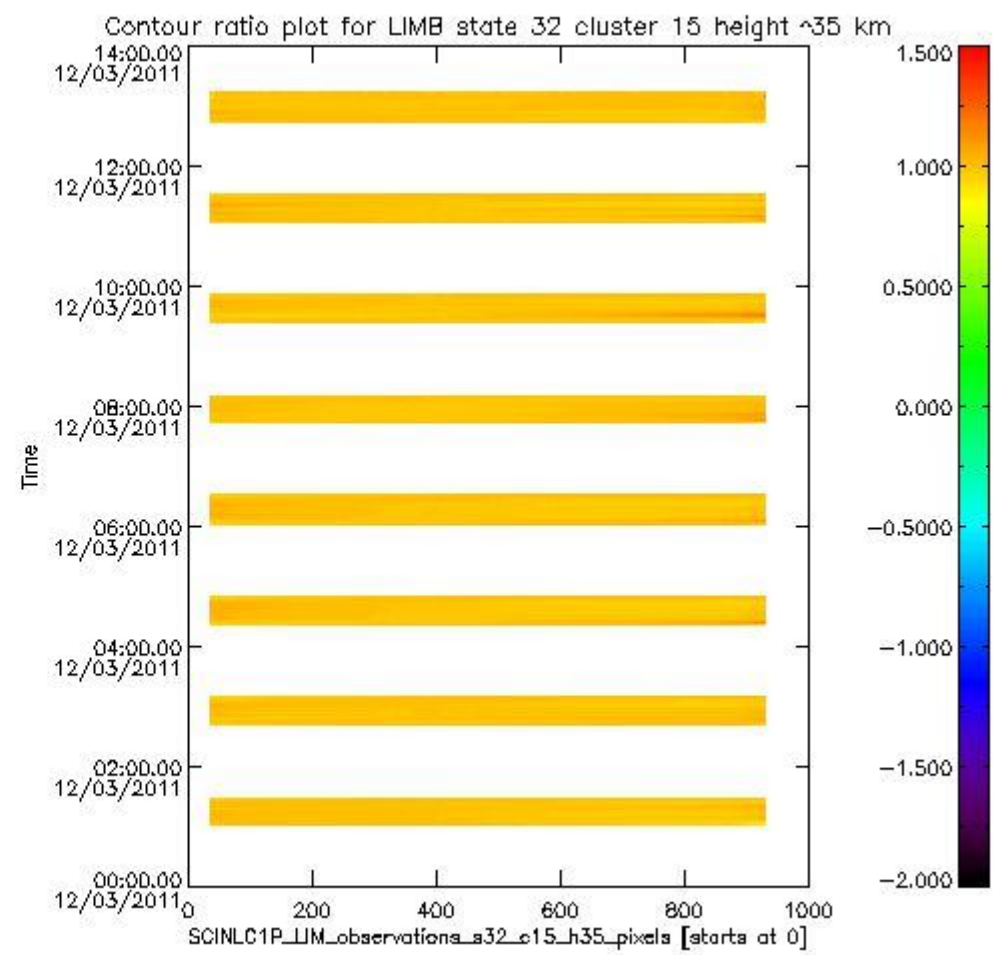
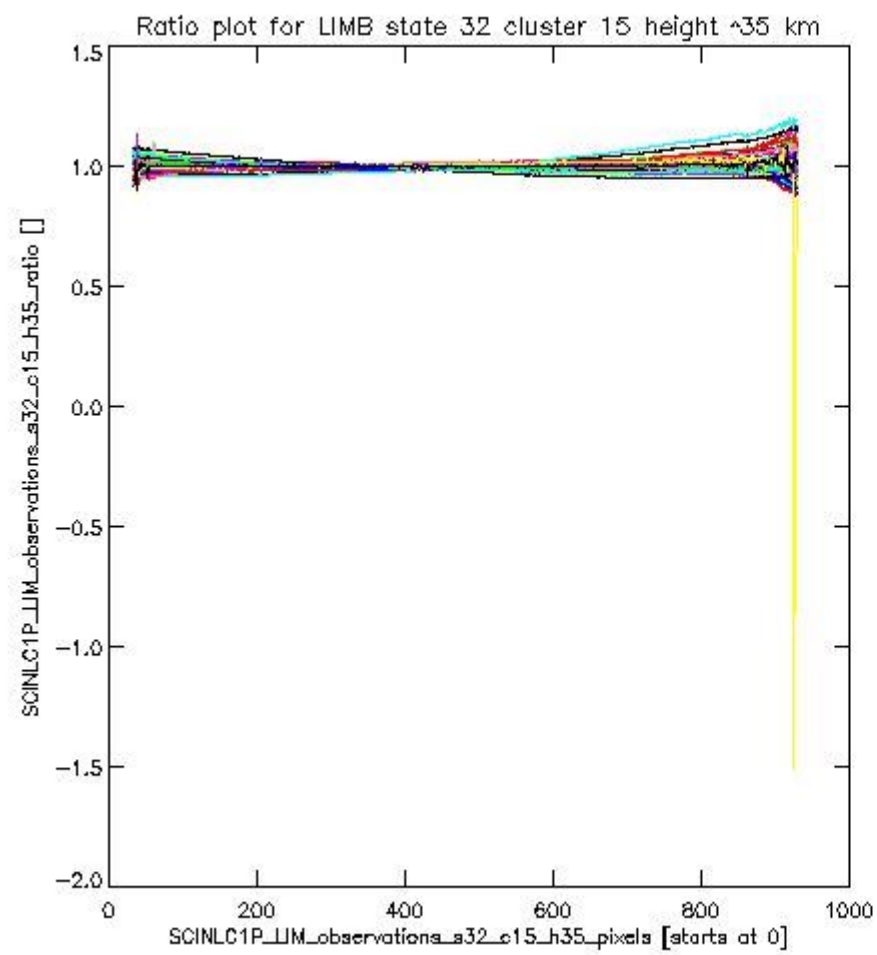


sciamachy_11b_source_packet_report_SCIA_7_04_U_20110312_19.PNG

1.2.11 LIMB state 32 cluster 15 height ~35 km The data for the analysis of LIMB state 32 cluster 15 height ~35 km have the following characteristics:

Item	Value
Start time of first sample	12MAR2011 01:01:45.380
Start time of last sample	12MAR2011 13:11:04.245
Reference period start time	10FEB2011 01:04:32.142
Reference period stop time	11MAR2011 05:25:38.718
Channel number	3
First pixel number (starts at 0)	33
Last pixel number (starts at 0)	929





sciamachy_i1b_source_packet_report_SCIA_7_04_U_20110312_21.PNG

