

1. SCIAMACHY Level 1B source packet monitoring report

[1.1. General Info](#)

[1.2 Source packet monitoring](#)

1.1 General Info

This report contains results of the analysis on source packets from SCIAMACHY level 1 data (The SCI_NL__1P product).

1.1.1 Report summary

The table below shows general characteristics of the data that are included into this report.

Item	Value
Report version	1.1 (07-01-2010)
Time of report generation	21MAR2011 06:55:35
Data source version	SCIA/7.04-U
Processing scope for products	10MAR2011 00:00:00 to 11MAR2011 00:00:00
Start time of first product within scope	09MAR2011 22:36:07
Stop time of last product within scope	10MAR2011 04:47:17
Total number of level 1 products	4
Number of level 1 products with errors	0
SCIAL1C executable used in processing	scial1c-2.1.73-i686-pc-linux-gnu-gcc-3.3.6
SCIAL1C parameters used in processing	-allcal -type all -cat 1,2,8,10,11,16,19,23 -nadircluster 8,9,15,24,55 -limbcluster 9,15

1.1.2 Source packet summary

The table below shows which source packets have been included into the report.

Item	Mode	State	Cluster	Height	First start time	Last start time
0	NADIR	07	08	N/A	10MAR2011 00:49:32.268	10MAR2011 04:18:10.226
1	NADIR	07	09	N/A	10MAR2011 00:49:32.268	10MAR2011 04:18:10.226
2	NADIR	07	15	N/A	10MAR2011 00:49:32.268	10MAR2011 04:18:10.226
3	NADIR	07	24	N/A	10MAR2011 00:49:32.268	10MAR2011 04:18:10.226
4	NADIR	07	55	N/A	10MAR2011 00:49:32.268	10MAR2011 04:18:10.226
5	LIMB	32	09	~19 km	10MAR2011 00:34:18.889	10MAR2011 04:23:24.273
6	LIMB	32	09	~22 km	10MAR2011 00:34:18.889	10MAR2011 04:23:24.273
7	LIMB	32	09	~25 km	10MAR2011 00:34:18.889	10MAR2011 04:23:24.273
8	LIMB	32	15	~22 km	10MAR2011 00:34:18.889	10MAR2011 04:23:24.273
9	LIMB	32	15	~25 km	10MAR2011 00:34:18.889	10MAR2011 04:23:24.273
10	LIMB	32	15	~35 km	10MAR2011 00:34:18.889	10MAR2011 04:23:24.273

1.1.3 Summary per product

The following table shows a summary for each product used in this report.

Products are linked to a corresponding server directory for view/download. Note: Link access may be restricted by security settings of your internet browser or firewall.

#	Product name	Start time	Stop time	ProdErr	#nadir	#limb	#occ	#mon	#nopro	#cpl_drk	#incpl_drk	Decont
0	SCI_NLC_1CUDPA20110309_222451_000060093100_00188_47185_5289.N1	09MAR2011 22:36:07	09MAR2011 23:46:22	0	35	31	0	0	1	0	0	
1	SCI_NLC_1CUDPA20110310_000504_000060093100_00189_47186_5306.N1	10MAR2011 00:16:21	10MAR2011 01:26:50	0	36	30	0	0	1	0	0	
2	SCI_NLC_1CUDPA20110310_014517_000060093100_00190_47187_5292.N1	10MAR2011 01:56:34	10MAR2011 03:06:49	0	35	31	0	0	1	0	0	
3	SCI_NLC_1CUDPA20110310_032531_000060093100_00191_47188_5294.N1	10MAR2011 03:36:48	10MAR2011 04:47:17	0	36	30	0	0	1	0	0	

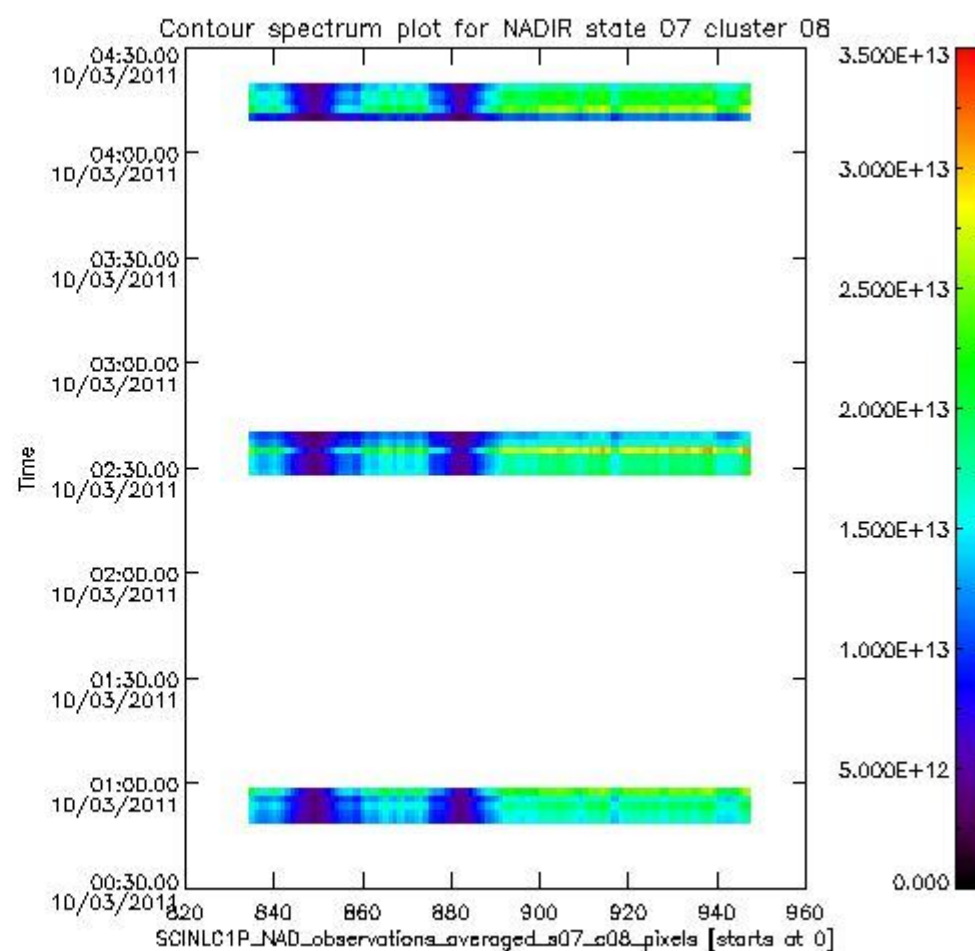
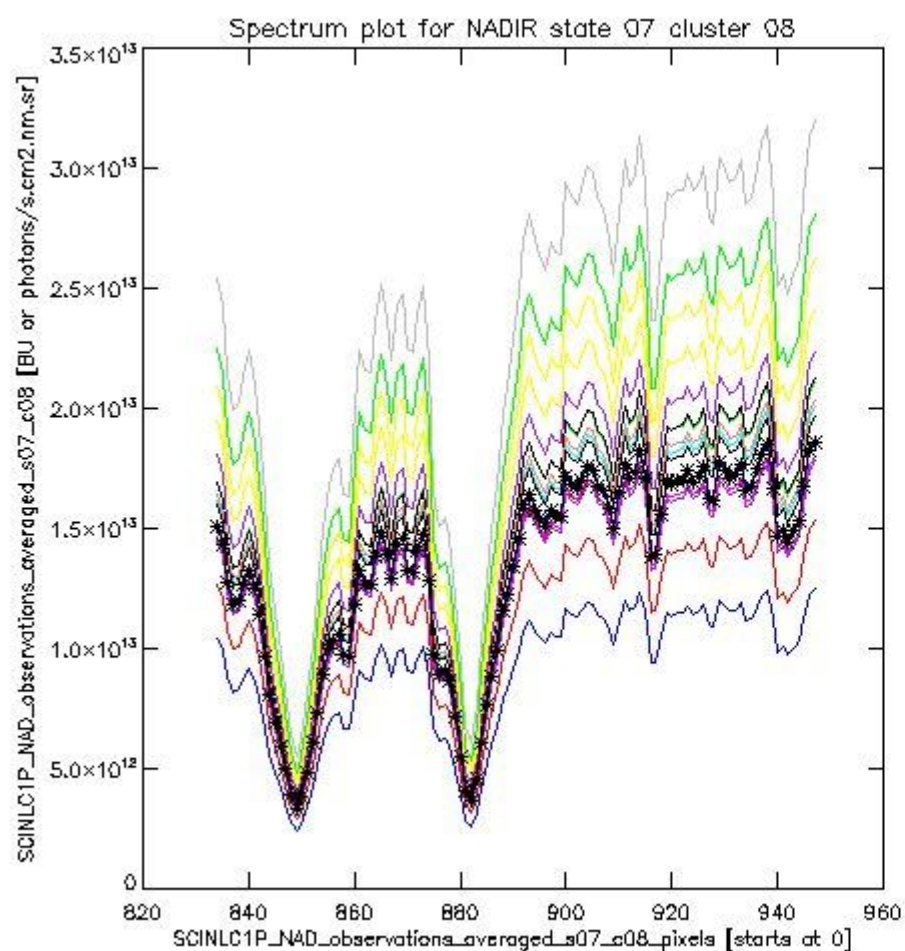
1.2 Source packet monitoring

This section shows figures for each of the monitored source packet types listed in the Source Packet Summary section. For each mode-state-cluster(-height) combination the following plots are shown

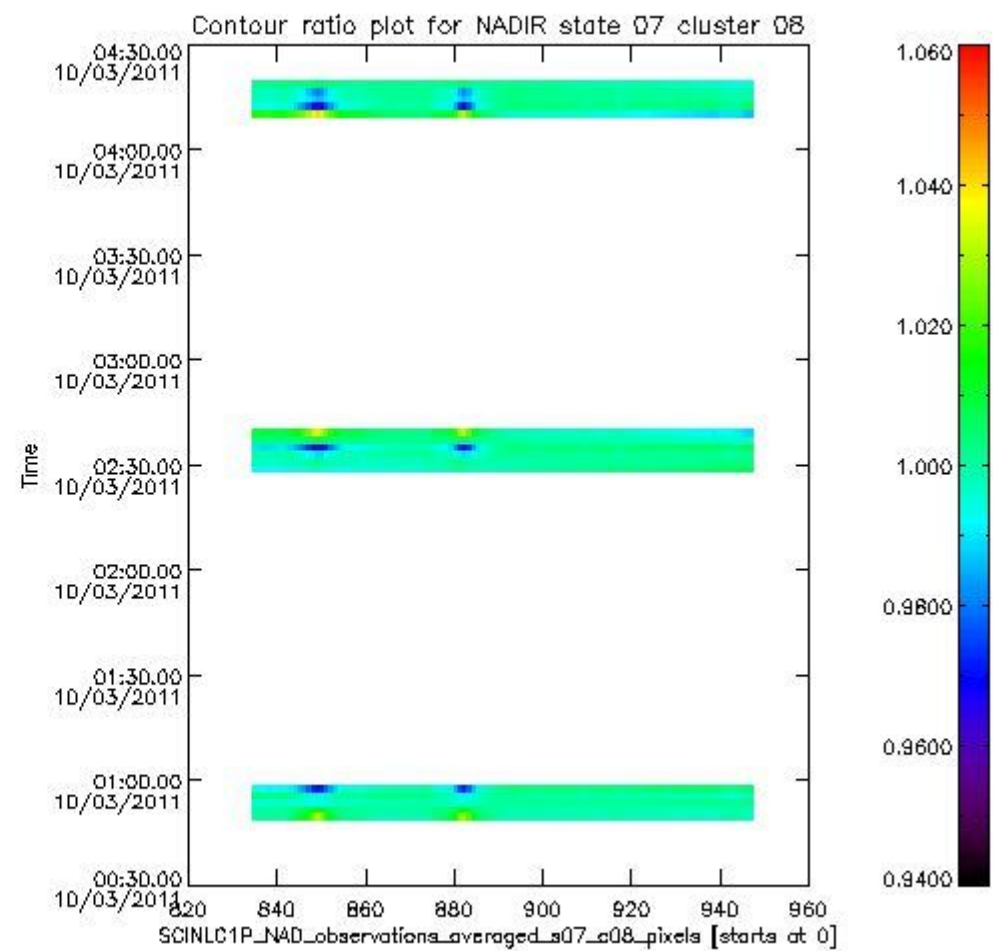
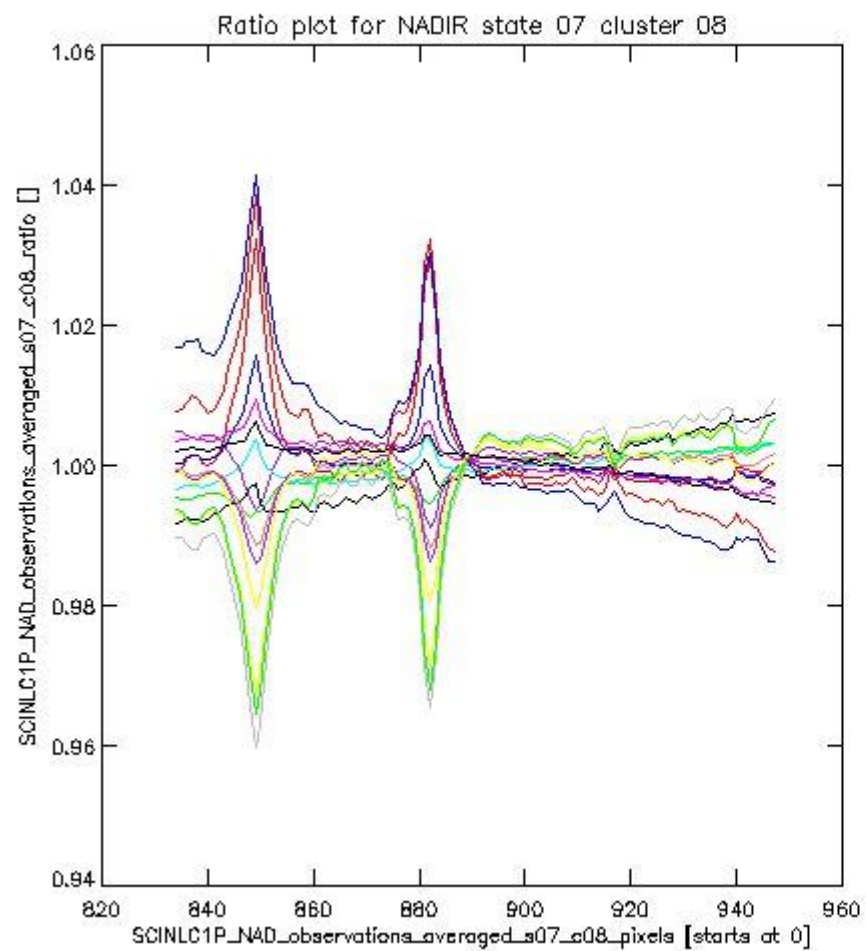
- A plot that shows all calibrated averaged spectra vs. pixel number as 2D-profiles. Each line is an average spectrum for a single state occurrence. For Limb modes, the average is performed on spectra recorded at a specific height. The reference spectrum that is used for comparison is also shown as a black line with * markers.
- A plot that shows all calibrated averaged spectra vs. pixel number and time using a coloured contour plot. The colours indicate the intensity.
- A plot that shows ratios of all calibrated averaged spectra and the reference spectrum vs. pixel number. Each line is the ratio of a calibrated averaged spectrum and the reference spectrum, where both spectra have been intensity corrected (the spectrum has been divided by the average pixel intensity) prior to division.
- A plot that shows ratios of all calibrated averaged spectra and the reference spectrum vs. pixel number and time using a coloured contour plot.

1.2.1 NADIR state 07 cluster 08 The data for the analysis of NADIR state 07 cluster 08 have the following characteristics:

Item	Value
Start time of first sample	10MAR2011 00:49:32.268
Start time of last sample	10MAR2011 04:18:10.226
Reference period start time	08FEB2011 00:52:18.081
Reference period stop time	09MAR2011 23:18:23.943
Channel number	2
First pixel number (starts at 0)	834
Last pixel number (starts at 0)	947



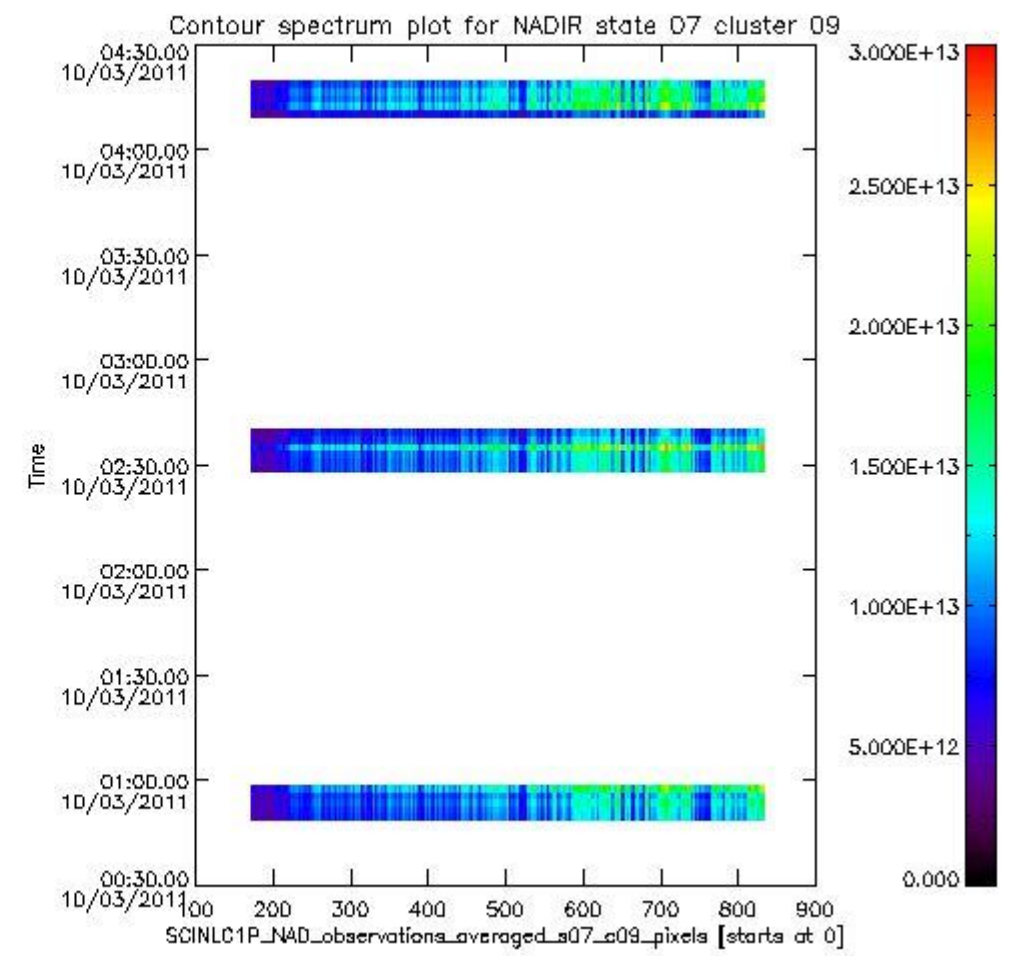
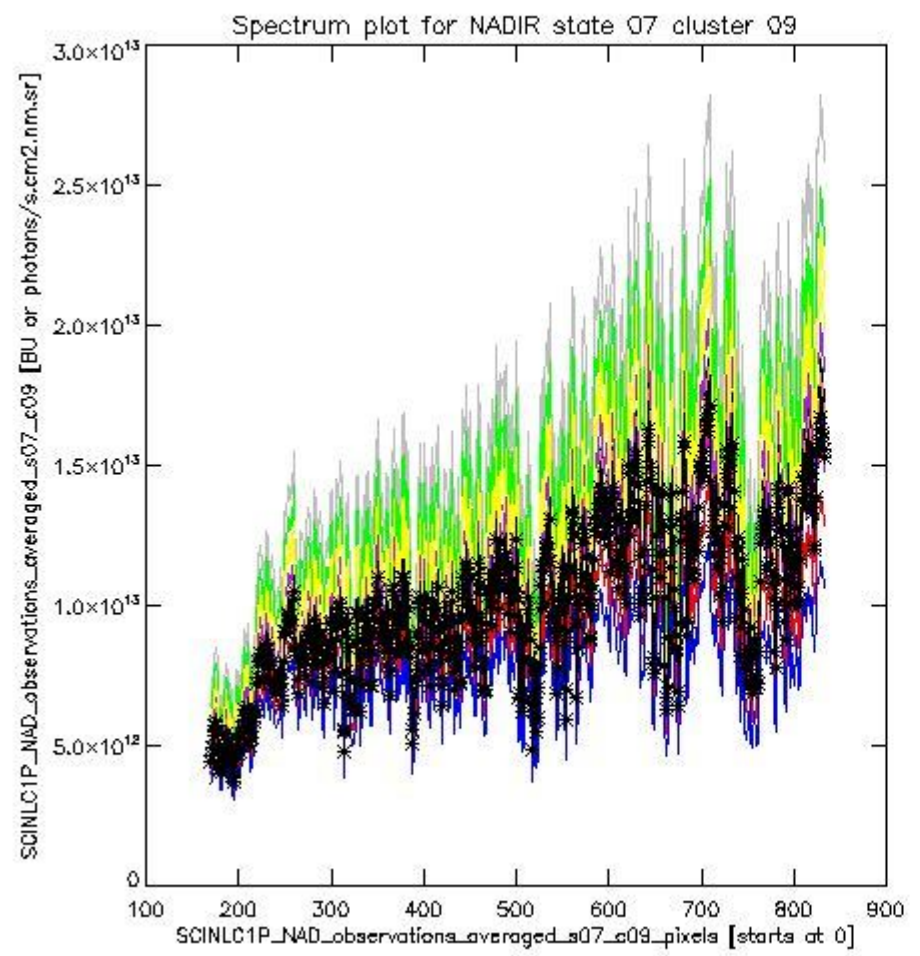
sciamachy_i1b_source_packet_report_SCIA_7_04_U_20110310_0.PNG



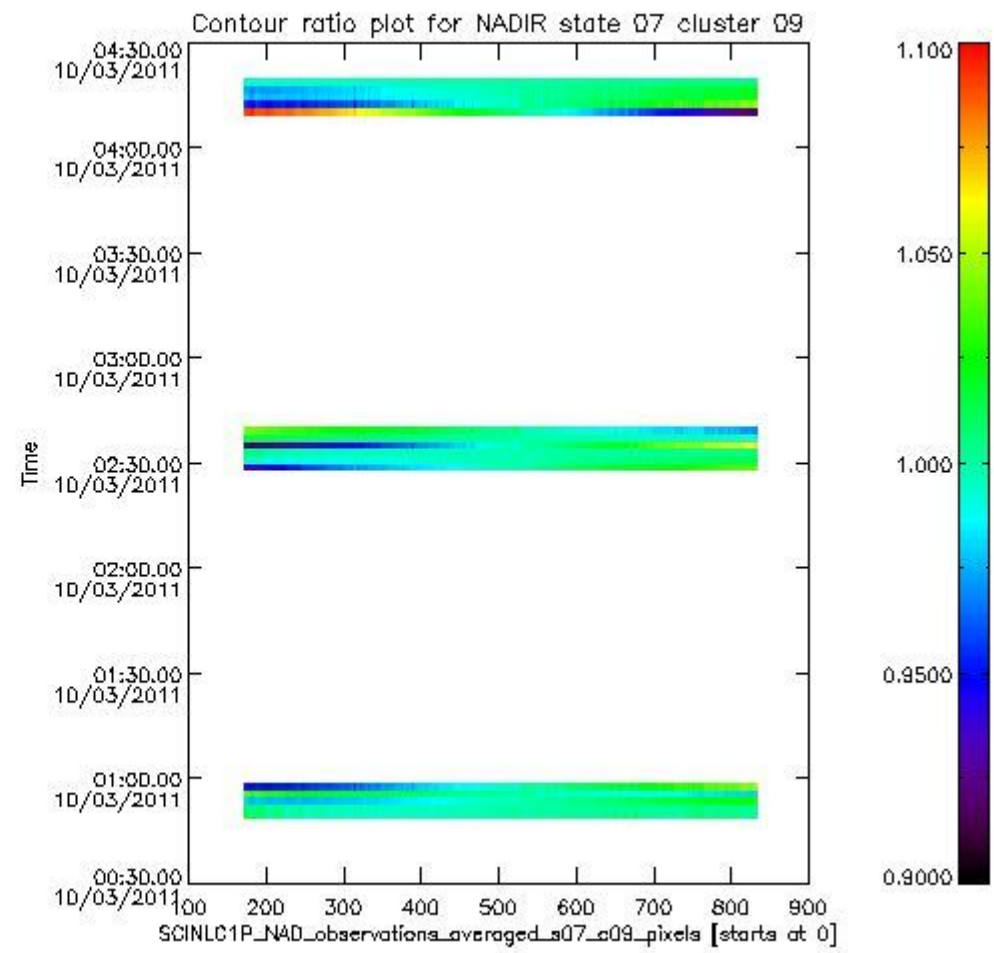
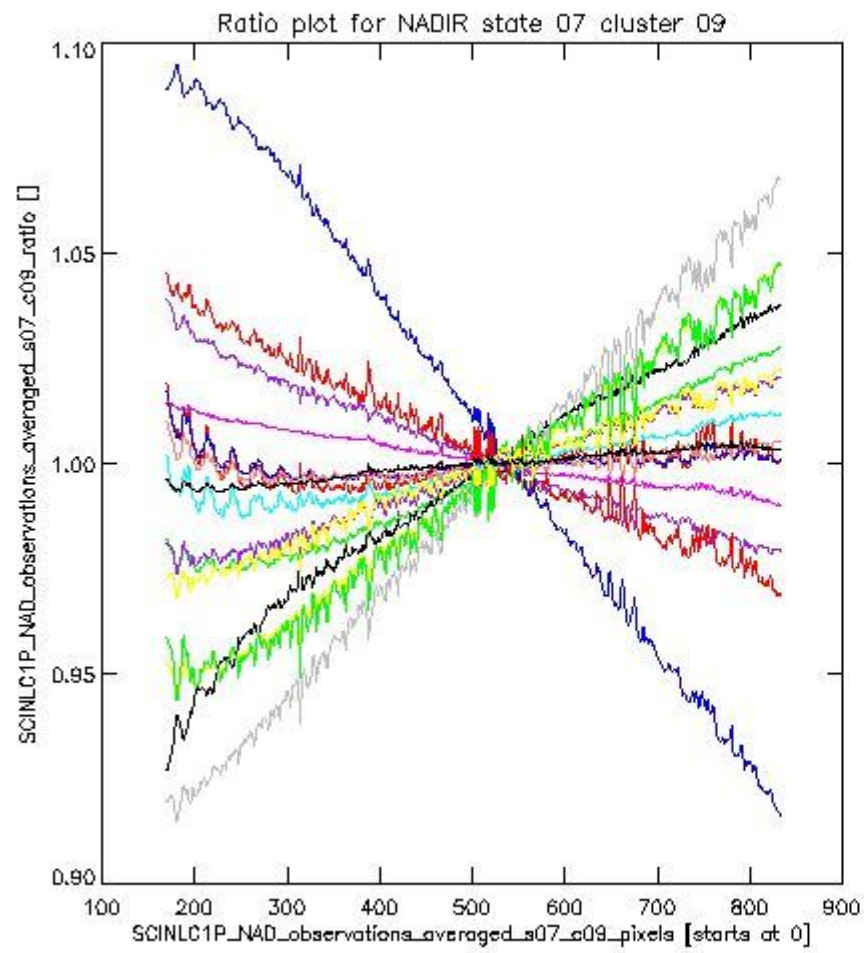
sciamachy_i1b_source_packet_report_SCIA_7_04_U_20110310_1.PNG

1.2.2 NADIR state 07 cluster 09 The data for the analysis of NADIR state 07 cluster 09 have the following characteristics:

Item	Value
Start time of first sample	10MAR2011 00:49:32.268
Start time of last sample	10MAR2011 04:18:10.226
Reference period start time	08FEB2011 00:52:18.081
Reference period stop time	09MAR2011 23:18:23.943
Channel number	2
First pixel number (starts at 0)	170
Last pixel number (starts at 0)	833



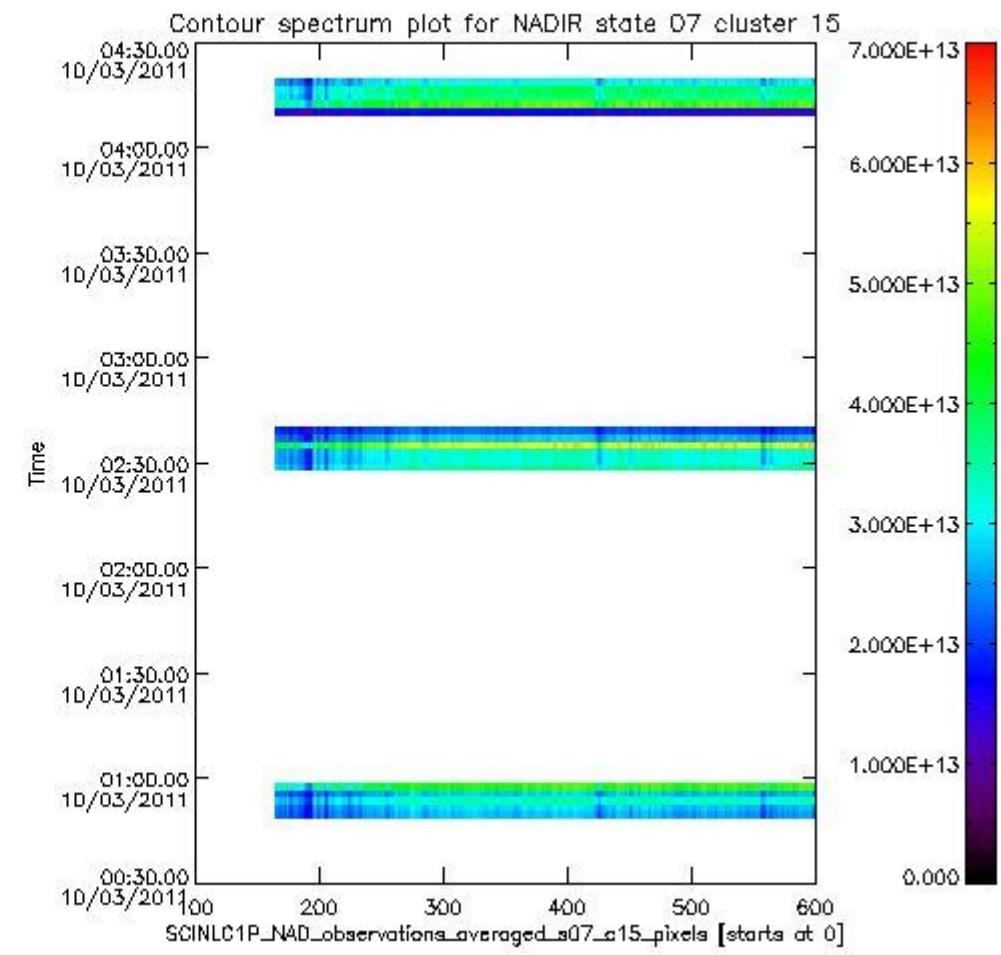
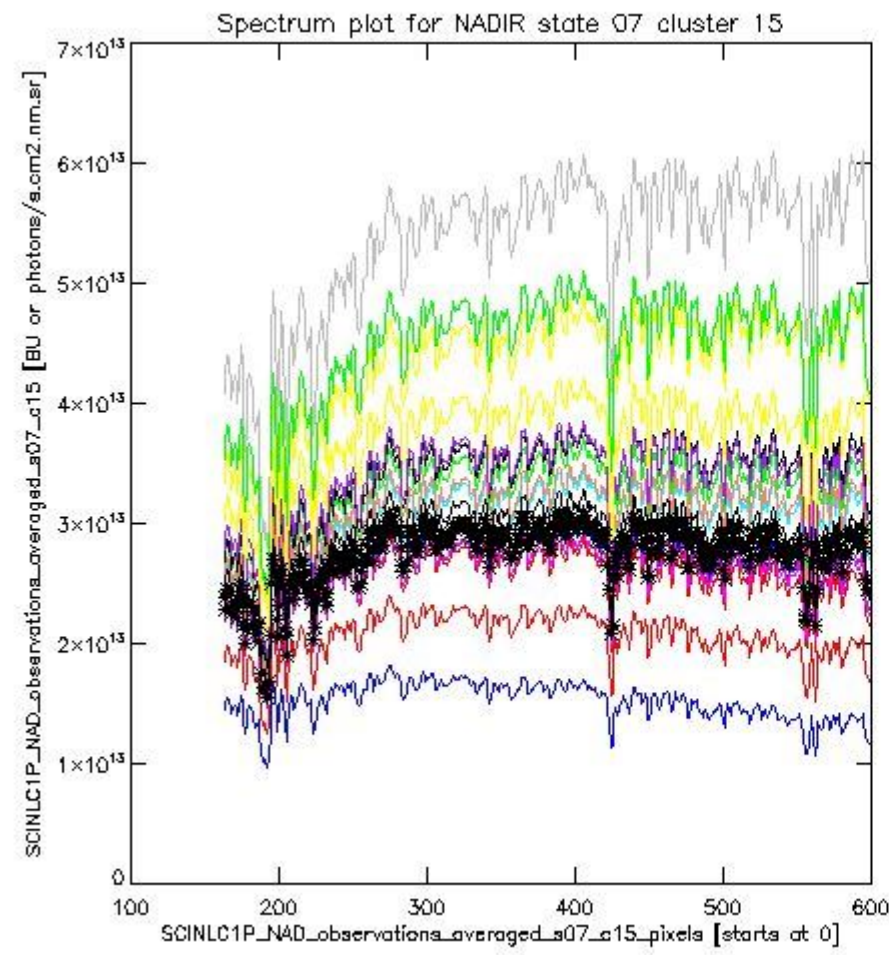
sciamachy_i1b_source_packet_report_SCIA_7_04_U_20110310_2.PNG



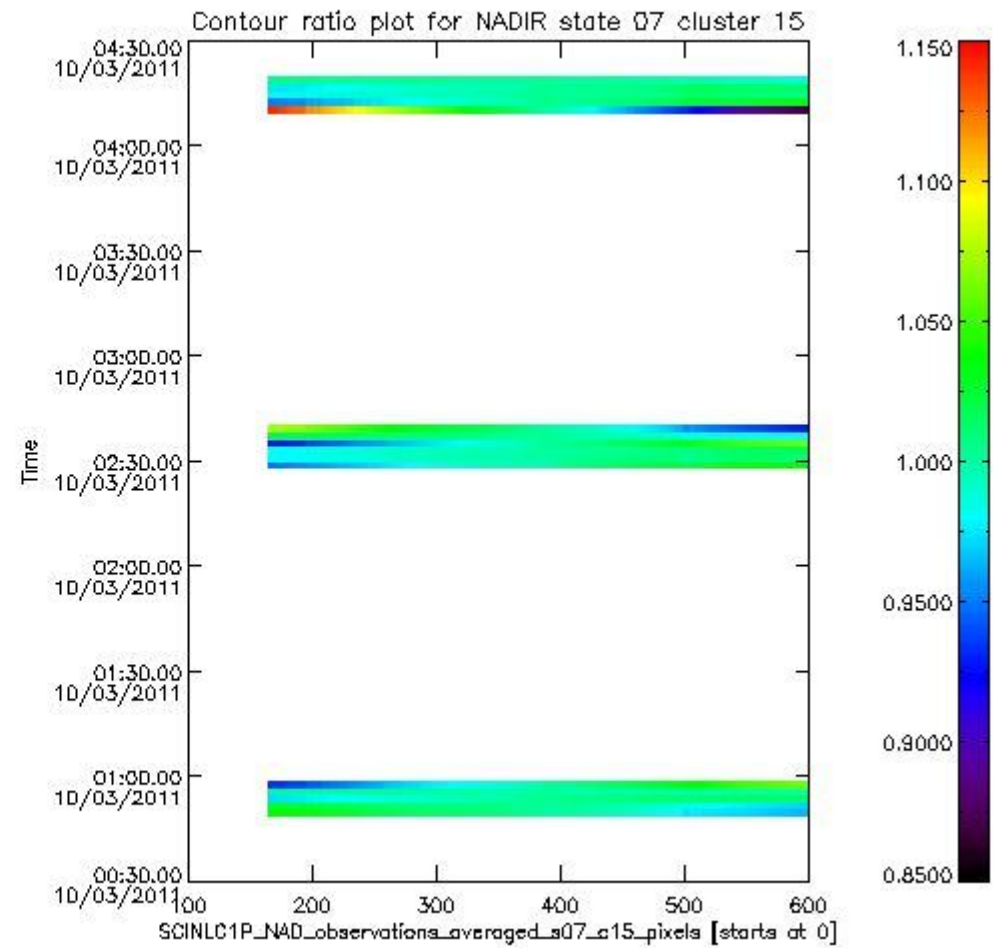
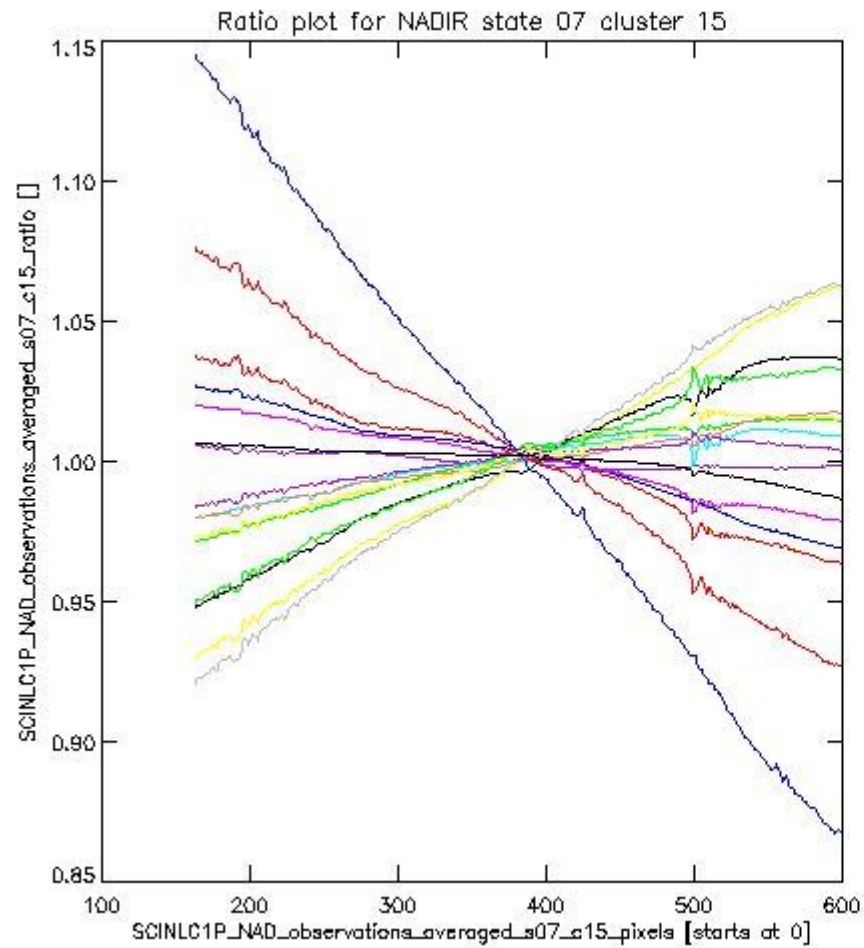
sciamachy_i1b_source_packet_report_SCIA_7_04_U_20110310_3.PNG

1.2.3 NADIR state 07 cluster 15 The data for the analysis of NADIR state 07 cluster 15 have the following characteristics:

Item	Value
Start time of first sample	10MAR2011 00:49:32.268
Start time of last sample	10MAR2011 04:18:10.226
Reference period start time	08FEB2011 00:52:18.081
Reference period stop time	09MAR2011 23:18:23.943
Channel number	3
First pixel number (starts at 0)	163
Last pixel number (starts at 0)	598



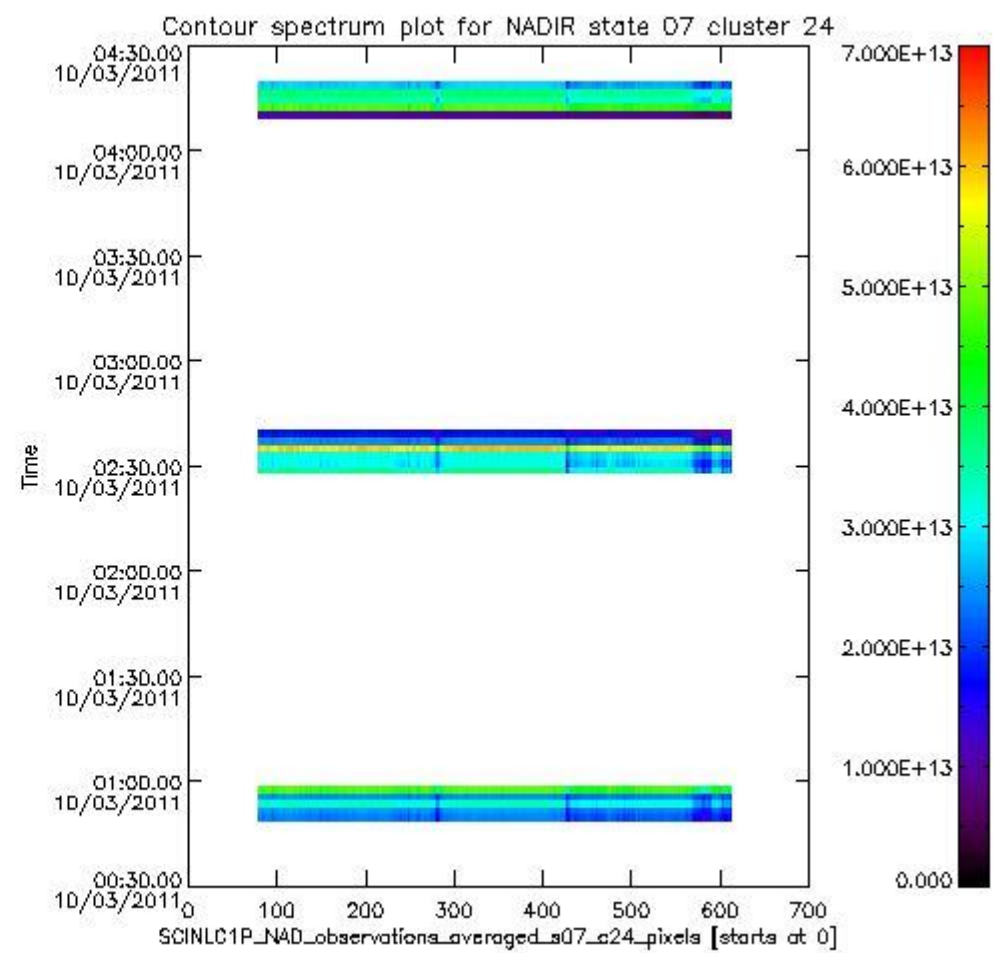
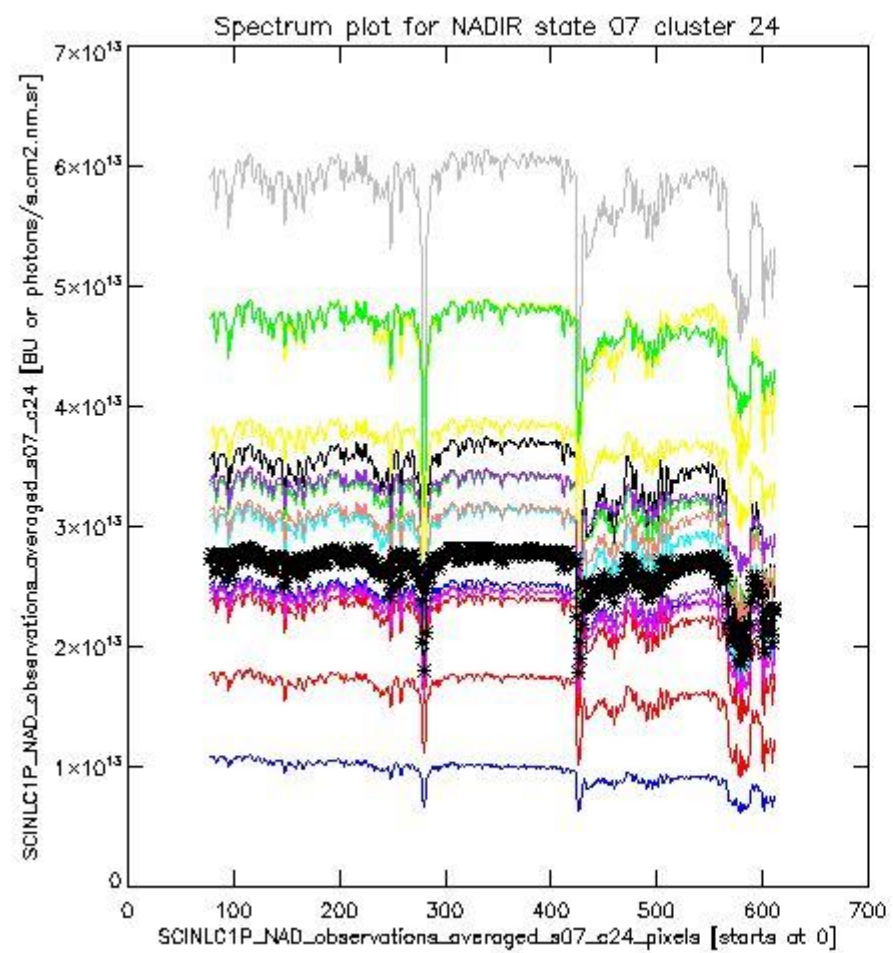
sciamachy_i1b_source_packet_report_SCIA_7_04_U_20110310_4.PNG



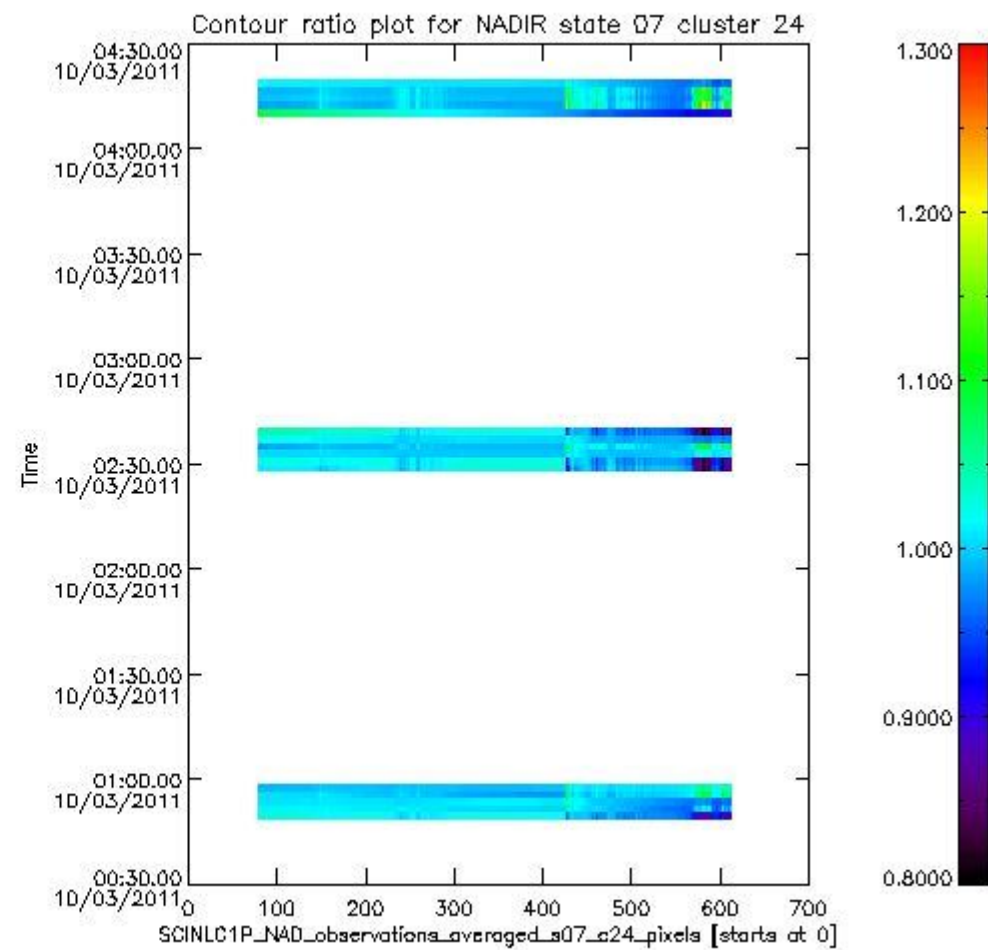
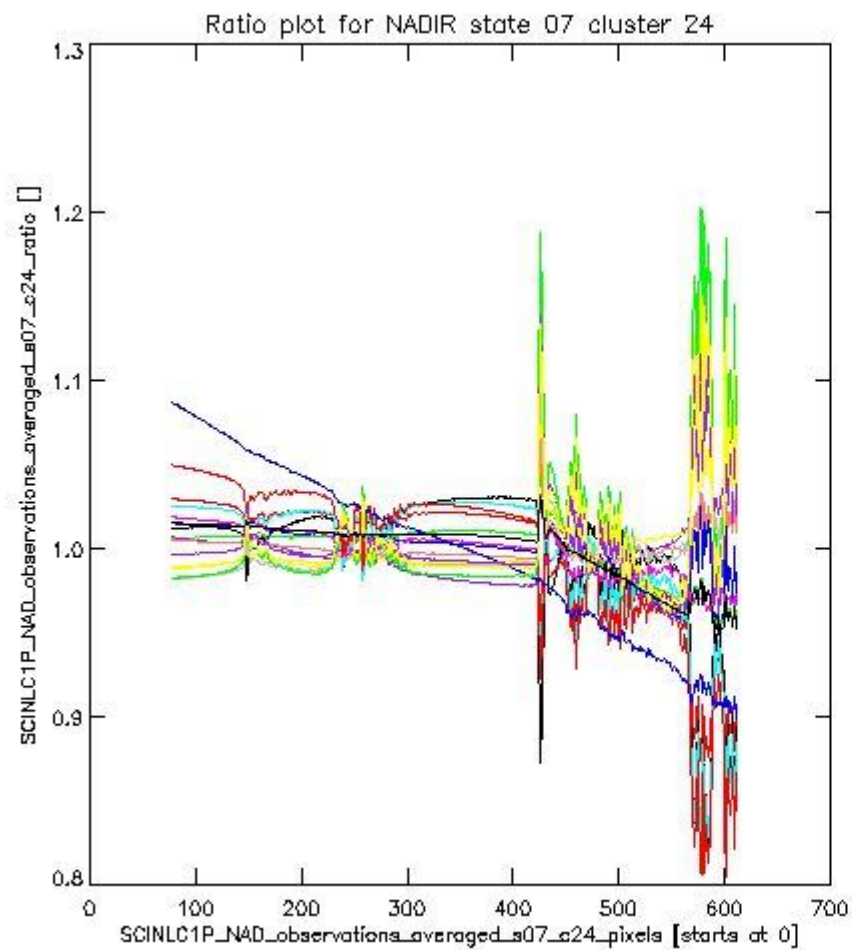
sciamachy_l1b_source_packet_report_SCIA_7_04_U_20110310_5.PNG

1.2.4 NADIR state 07 cluster 24 The data for the analysis of NADIR state 07 cluster 24 have the following characteristics:

Item	Value
Start time of first sample	10MAR2011 00:49:32.268
Start time of last sample	10MAR2011 04:18:10.226
Reference period start time	08FEB2011 00:52:18.081
Reference period stop time	09MAR2011 23:18:23.943
Channel number	4
First pixel number (starts at 0)	78
Last pixel number (starts at 0)	612



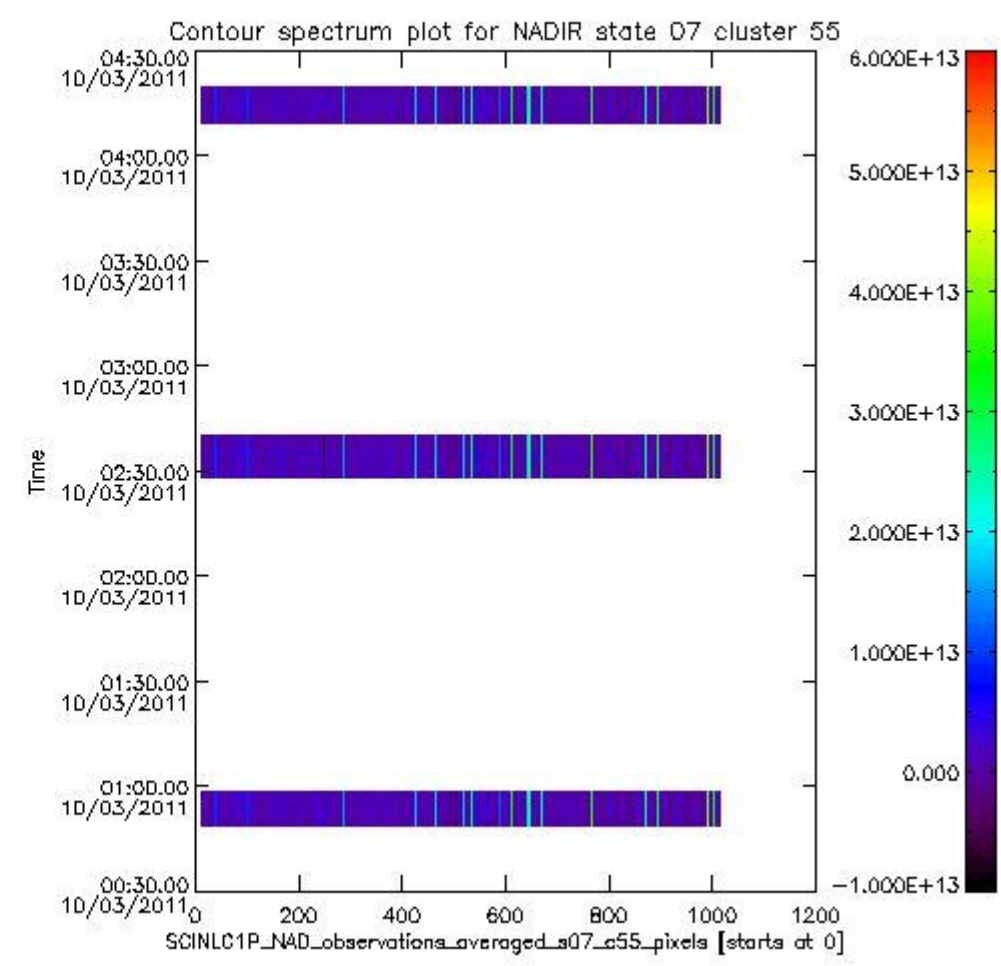
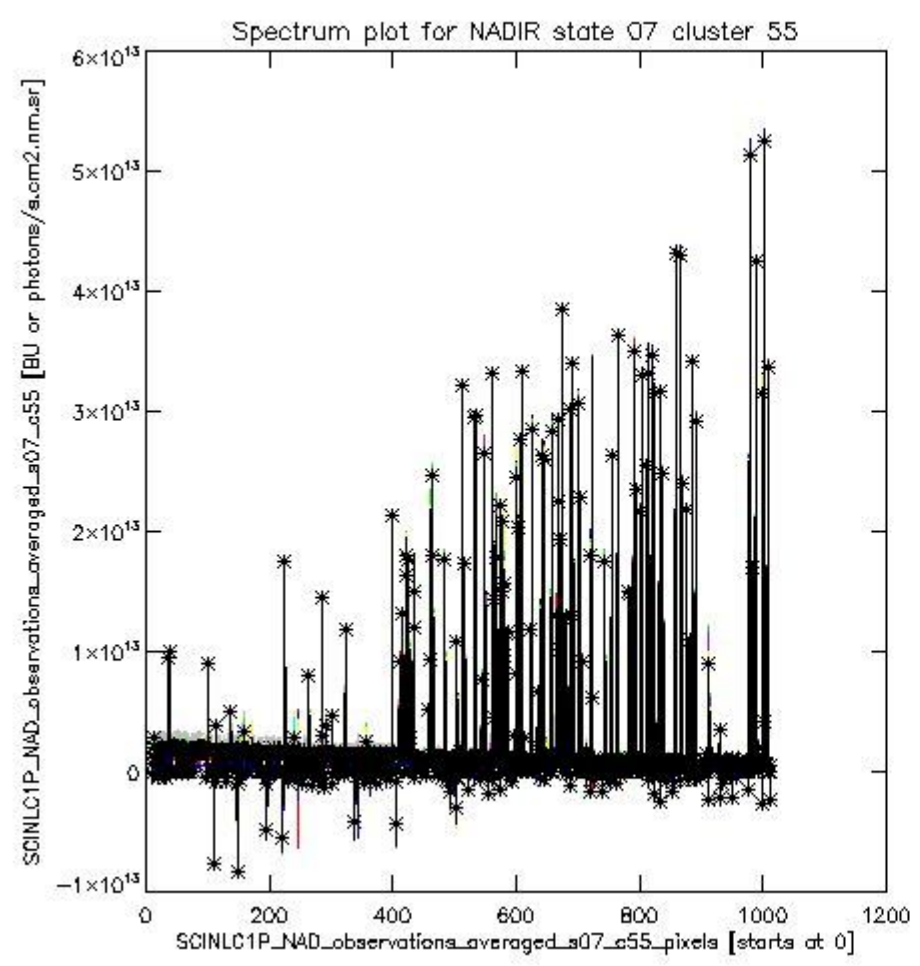
sciamachy_i1b_source_packet_report_SCIA_7_04_U_20110310_6.PNG



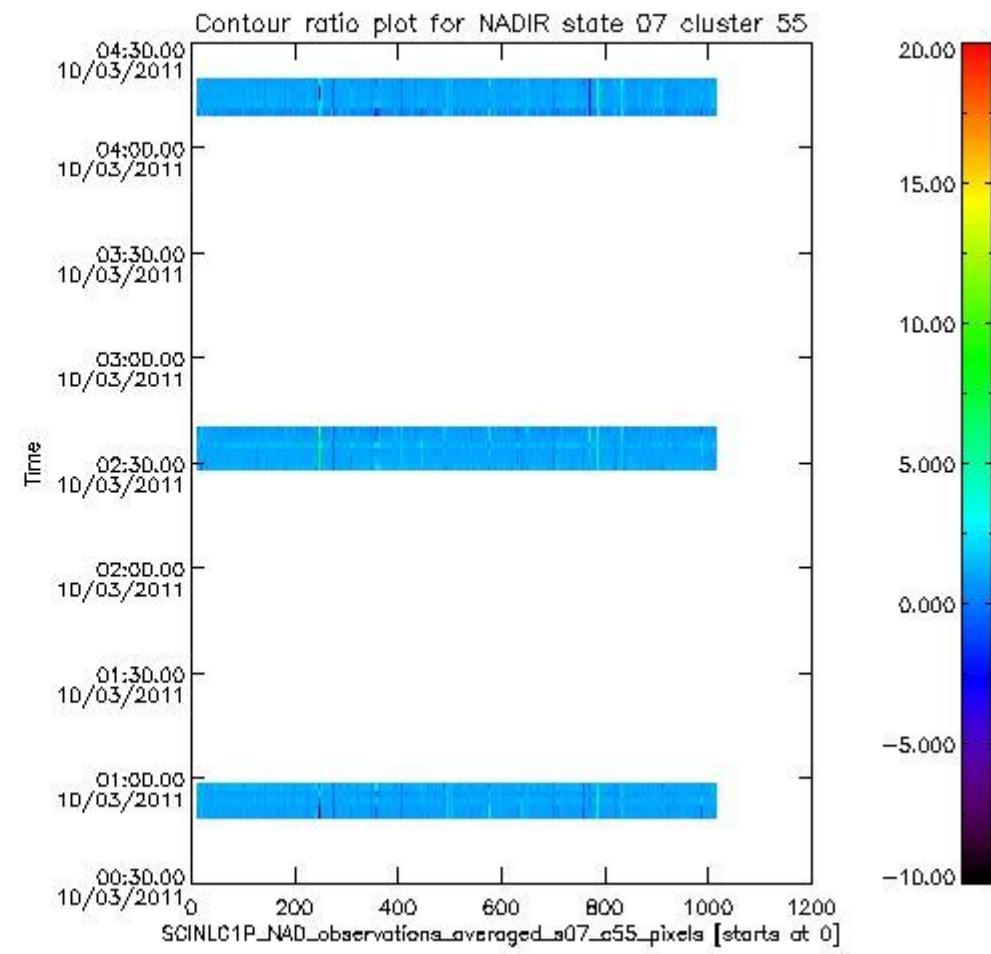
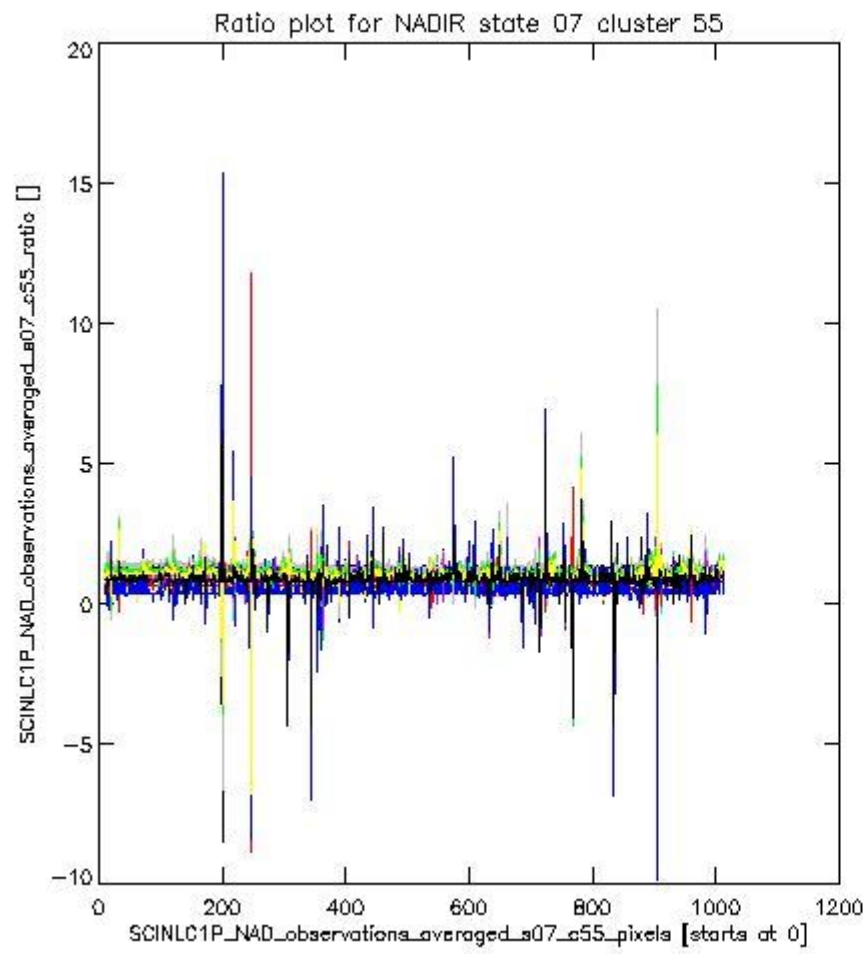
sciamachy_l1b_source_packet_report_SCIA_7_04_U_20110310_7.PNG

1.2.5 NADIR state 07 cluster 55 The data for the analysis of NADIR state 07 cluster 55 have the following characteristics:

Item	Value
Start time of first sample	10MAR2011 00:49:32.268
Start time of last sample	10MAR2011 04:18:10.226
Reference period start time	08FEB2011 00:52:18.081
Reference period stop time	09MAR2011 23:18:23.943
Channel number	8
First pixel number (starts at 0)	10
Last pixel number (starts at 0)	1013



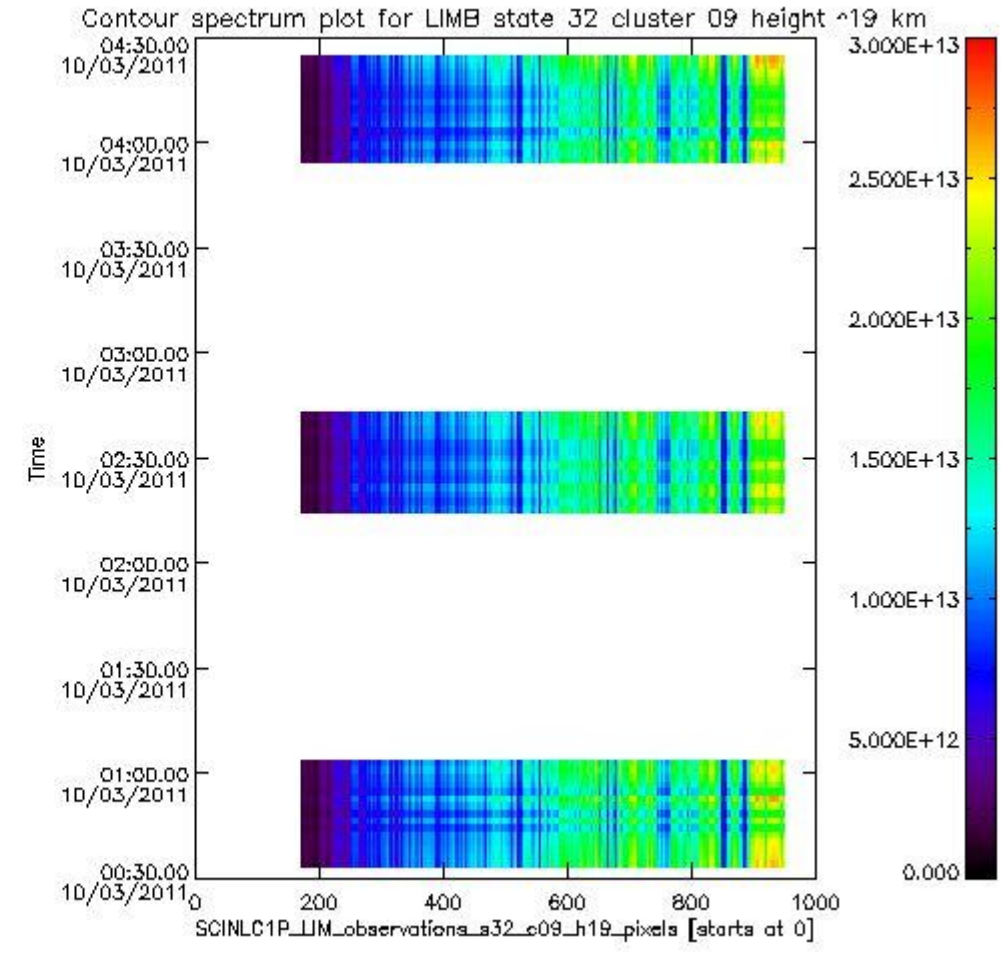
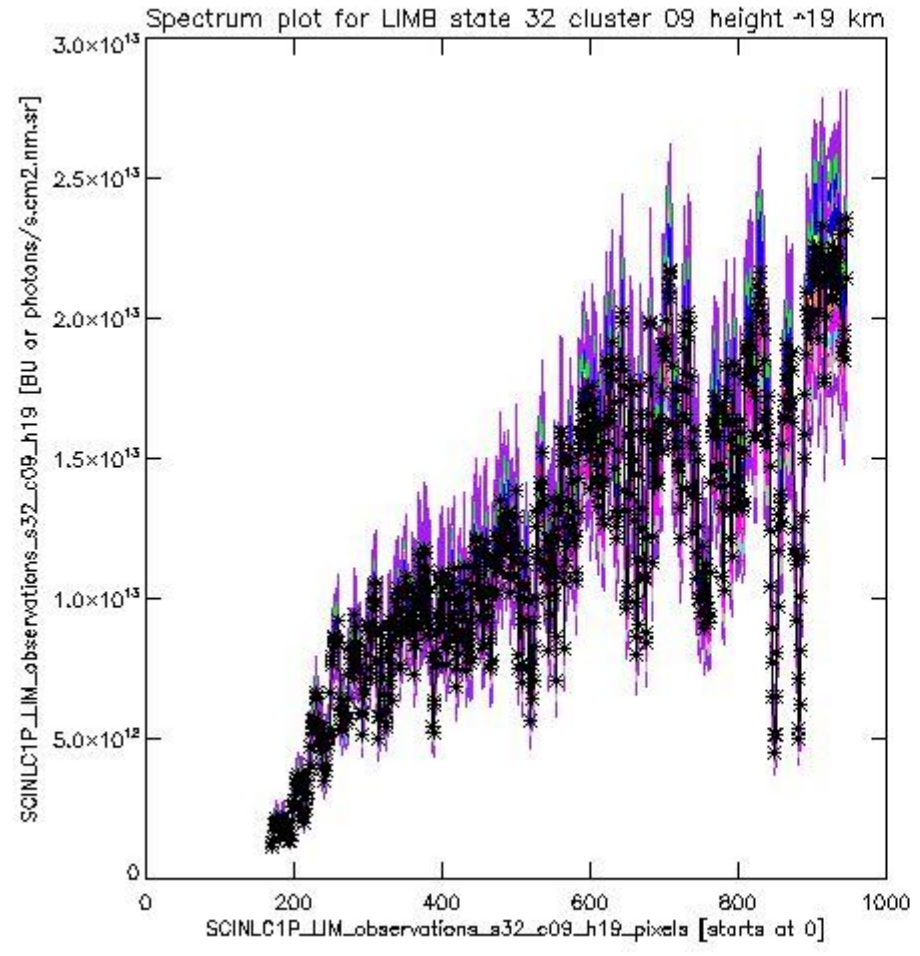
sciamachy_i1b_source_packet_report_SCIA_7_04_U_20110310_8.PNG



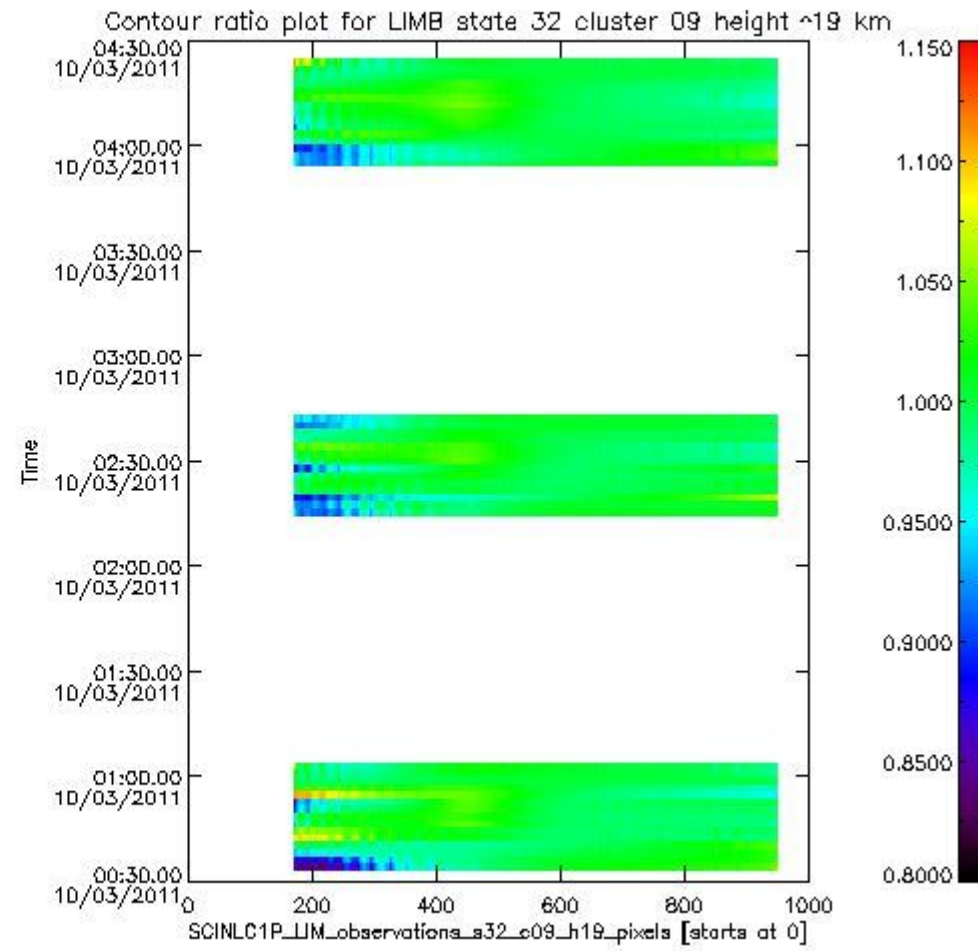
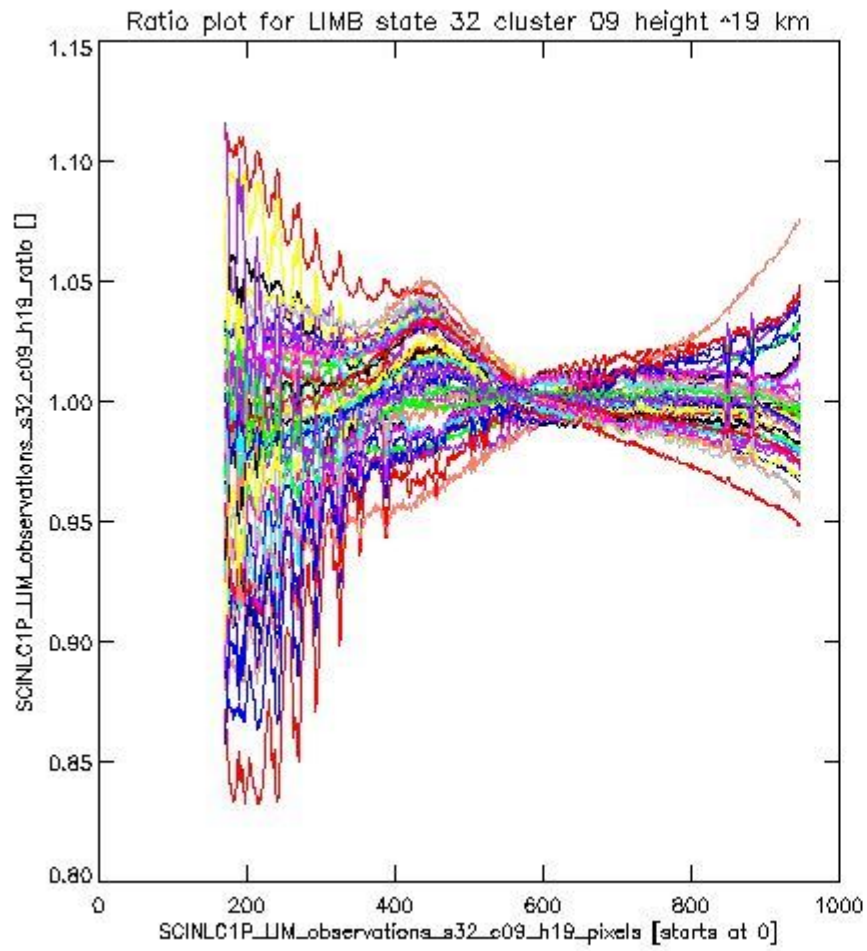
sciamachy_l1b_source_packet_report_SCIA_7_04_U_20110310_9.PNG

1.2.6 LIMB state 32 cluster 09 height ~19 km The data for the analysis of LIMB state 32 cluster 09 height ~19 km have the following characteristics:

Item	Value
Start time of first sample	10MAR2011 00:34:18.889
Start time of last sample	10MAR2011 04:23:24.273
Reference period start time	08FEB2011 00:37:04.706
Reference period stop time	09MAR2011 23:21:35.240
Channel number	2
First pixel number (starts at 0)	170
Last pixel number (starts at 0)	947



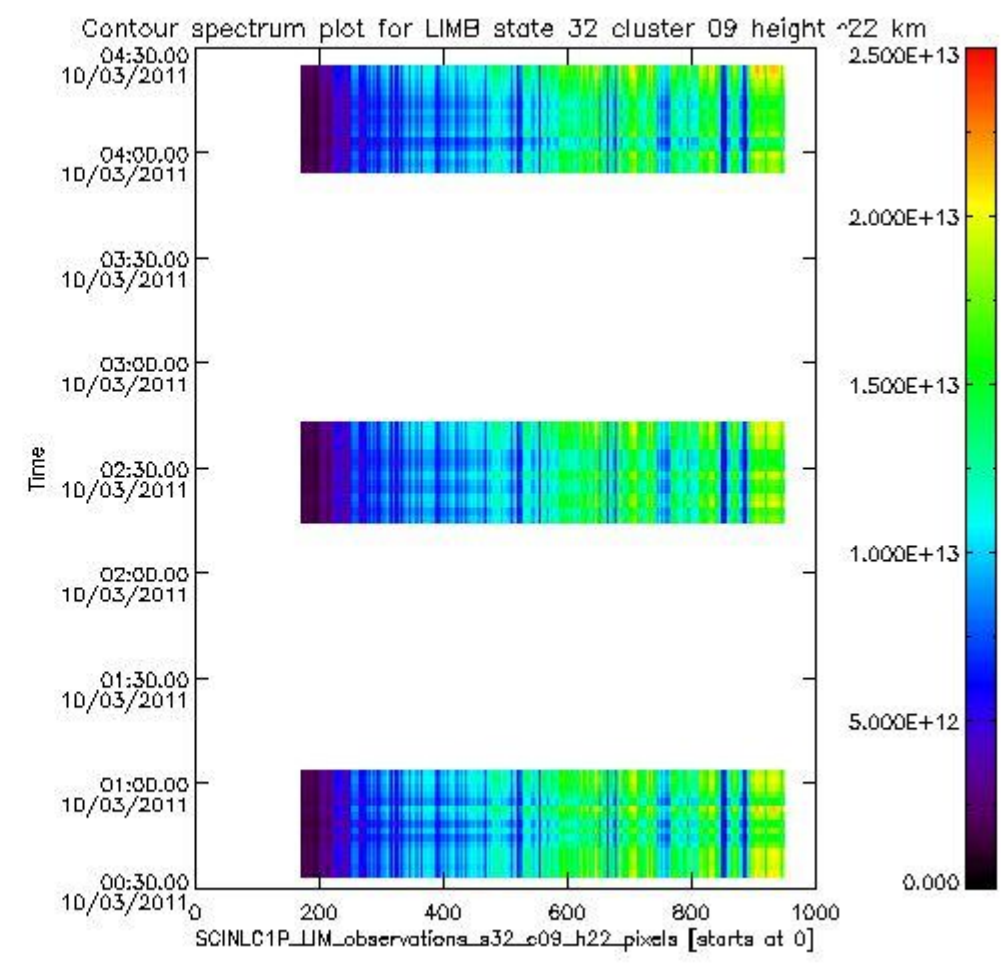
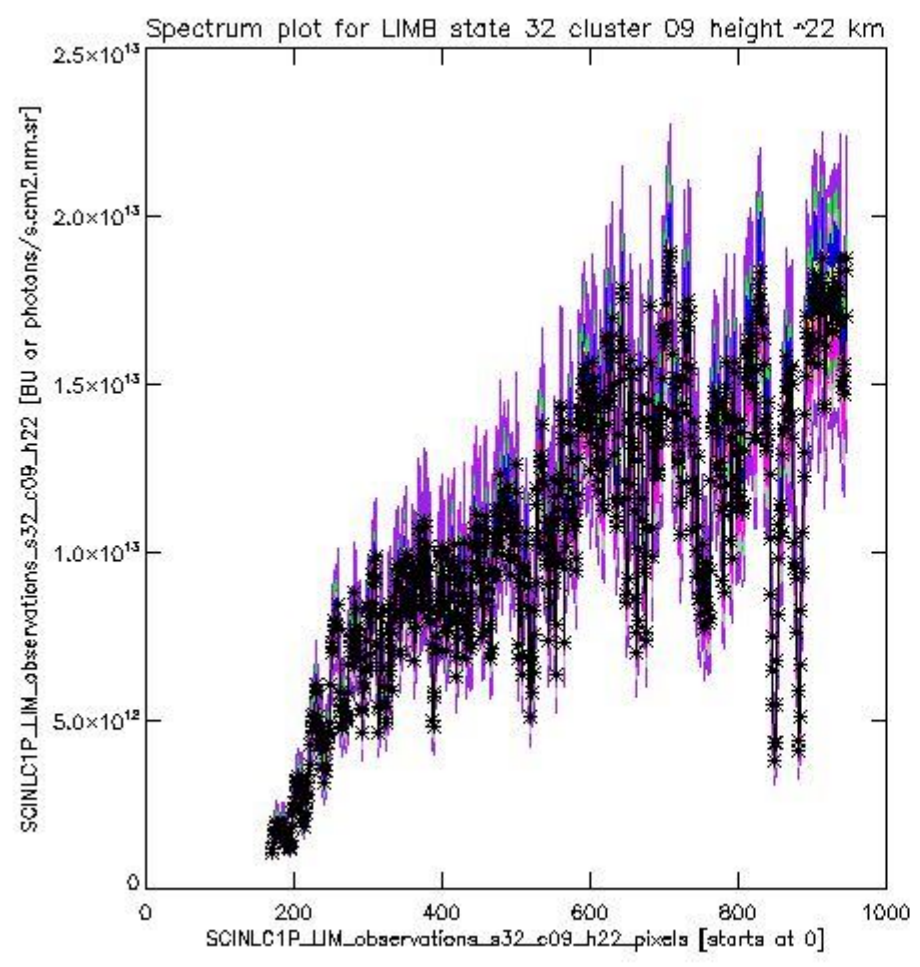
sciamachy_l1b_source_packet_report_SCIA_7_04_U_20110310_10.PNG



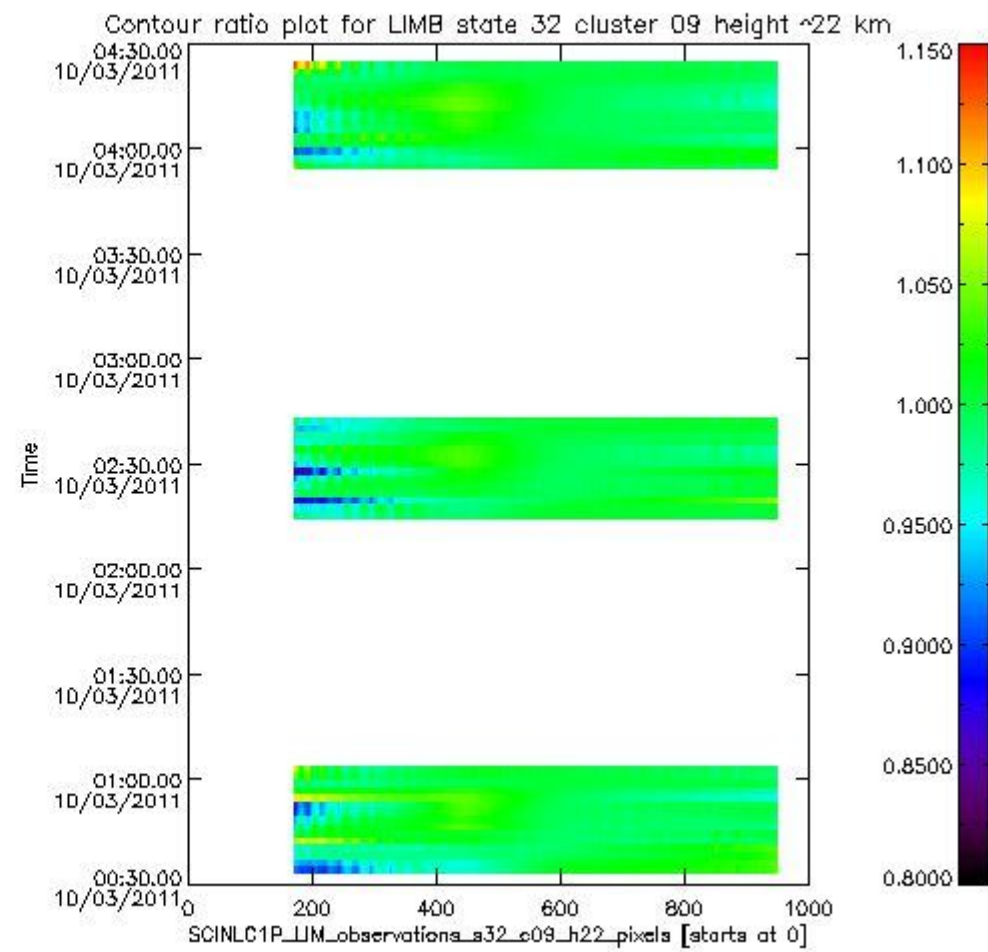
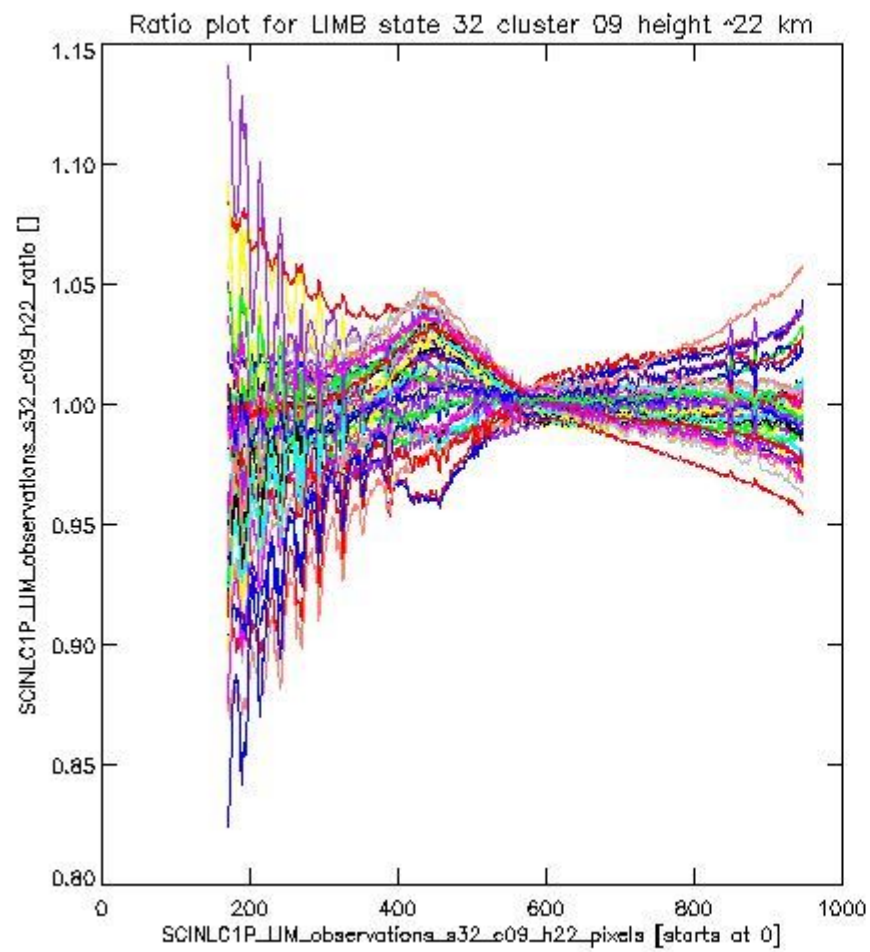
sciamachy_l1b_source_packet_report_SCIA_7_04_U_20110310_11.PNG

1.2.7 LIMB state 32 cluster 09 height ~22 km The data for the analysis of LIMB state 32 cluster 09 height ~22 km have the following characteristics:

Item	Value
Start time of first sample	10MAR2011 00:34:18.889
Start time of last sample	10MAR2011 04:23:24.273
Reference period start time	08FEB2011 00:37:04.706
Reference period stop time	09MAR2011 23:21:35.240
Channel number	2
First pixel number (starts at 0)	170
Last pixel number (starts at 0)	947



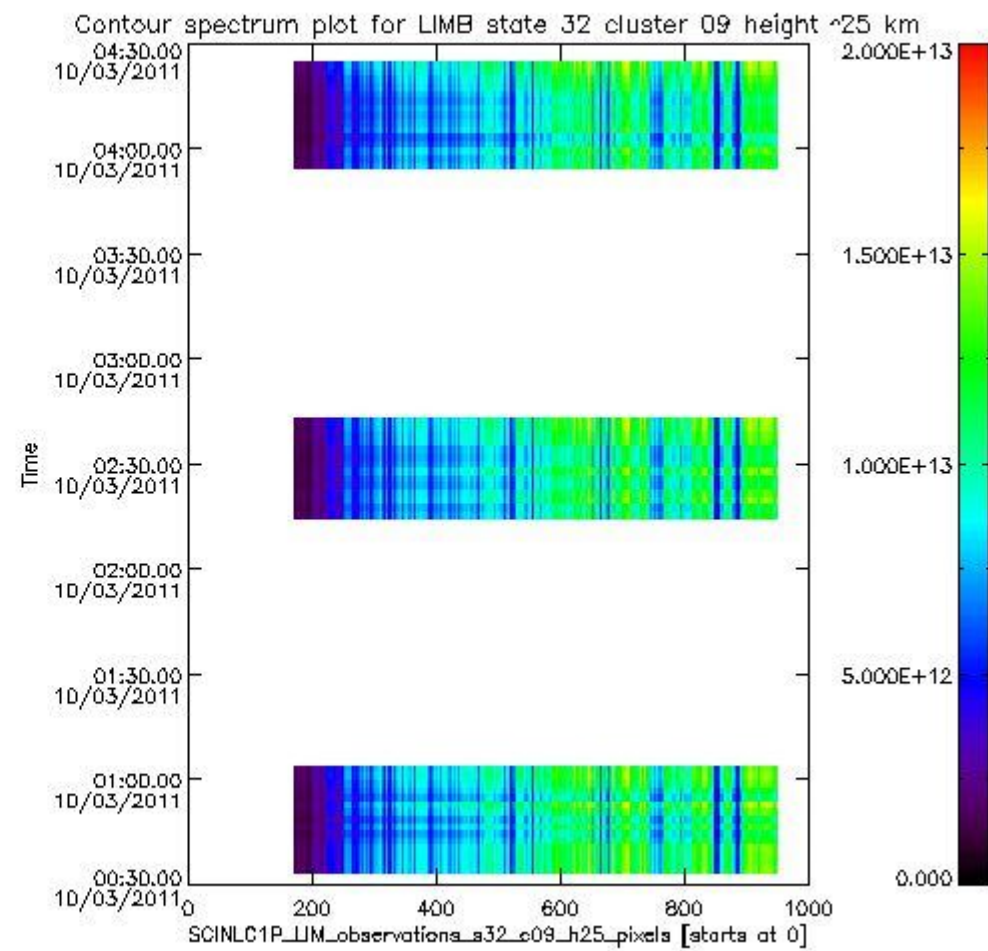
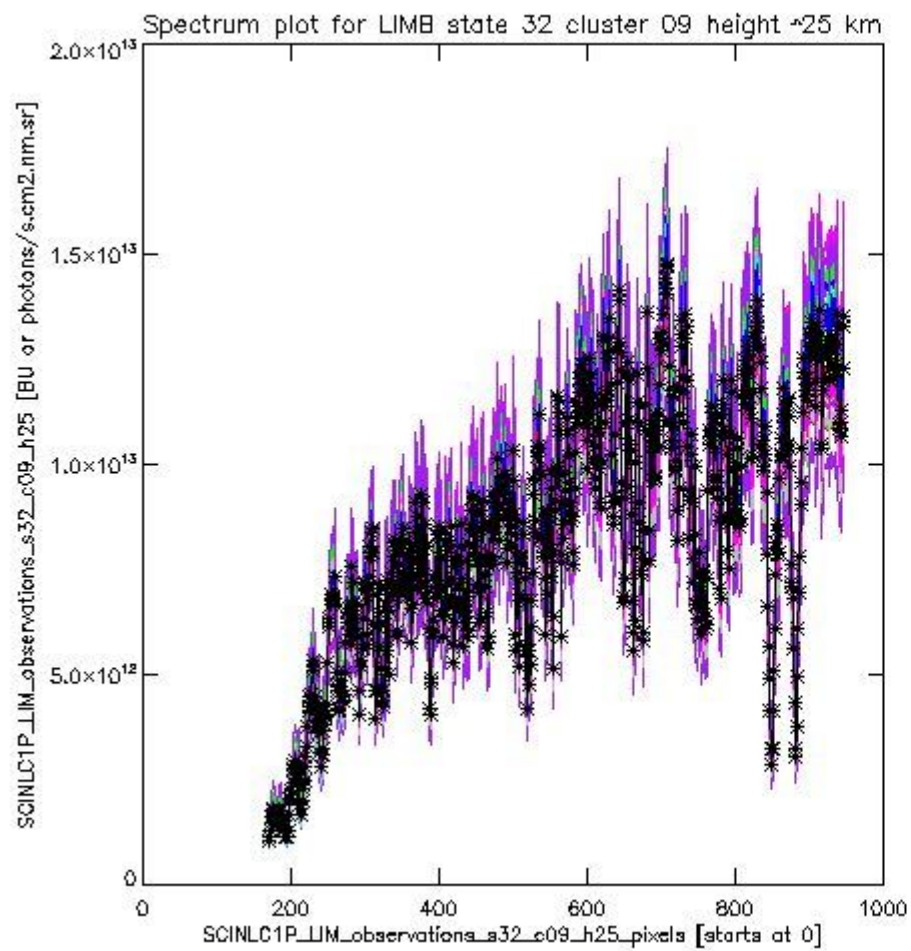
sciamachy_i1b_source_packet_report_SCIA_7_04_U_20110310_12.PNG



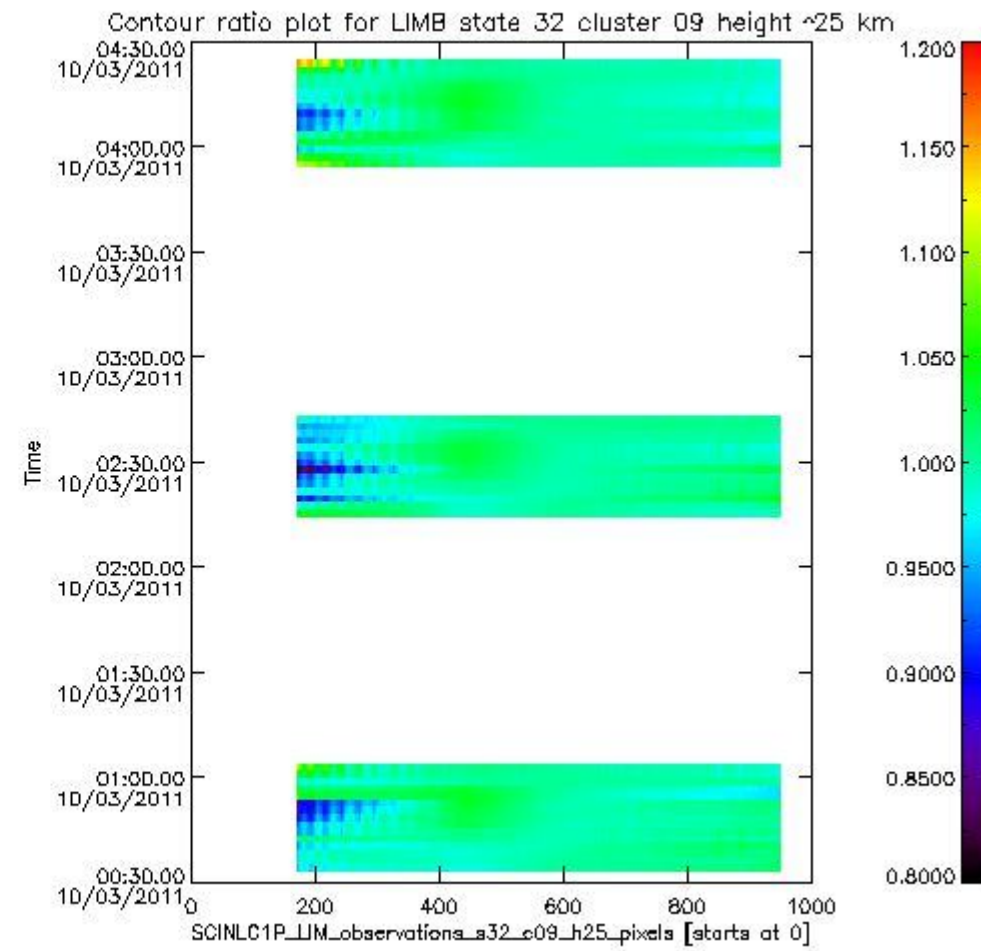
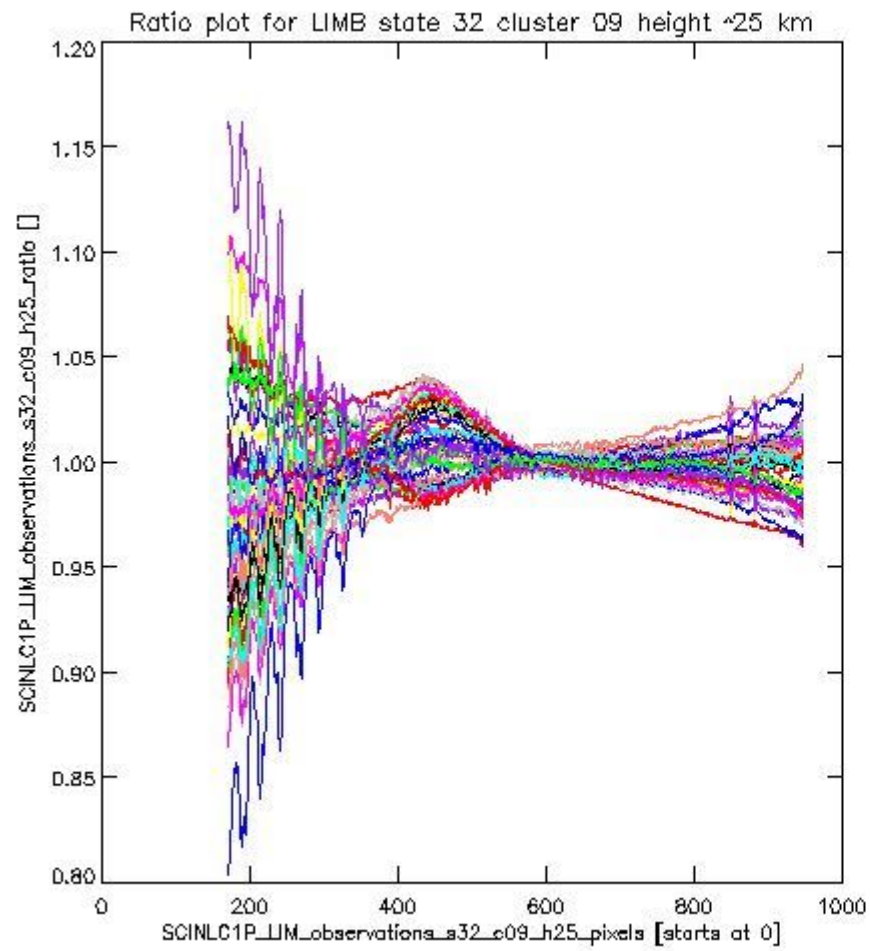
sciamachy_l1b_source_packet_report_SCIA_7_04_U_20110310_13.PNG

1.2.8 LIMB state 32 cluster 09 height ~25 km The data for the analysis of LIMB state 32 cluster 09 height ~25 km have the following characteristics:

Item	Value
Start time of first sample	10MAR2011 00:34:18.889
Start time of last sample	10MAR2011 04:23:24.273
Reference period start time	08FEB2011 00:37:04.706
Reference period stop time	09MAR2011 23:21:35.240
Channel number	2
First pixel number (starts at 0)	170
Last pixel number (starts at 0)	947



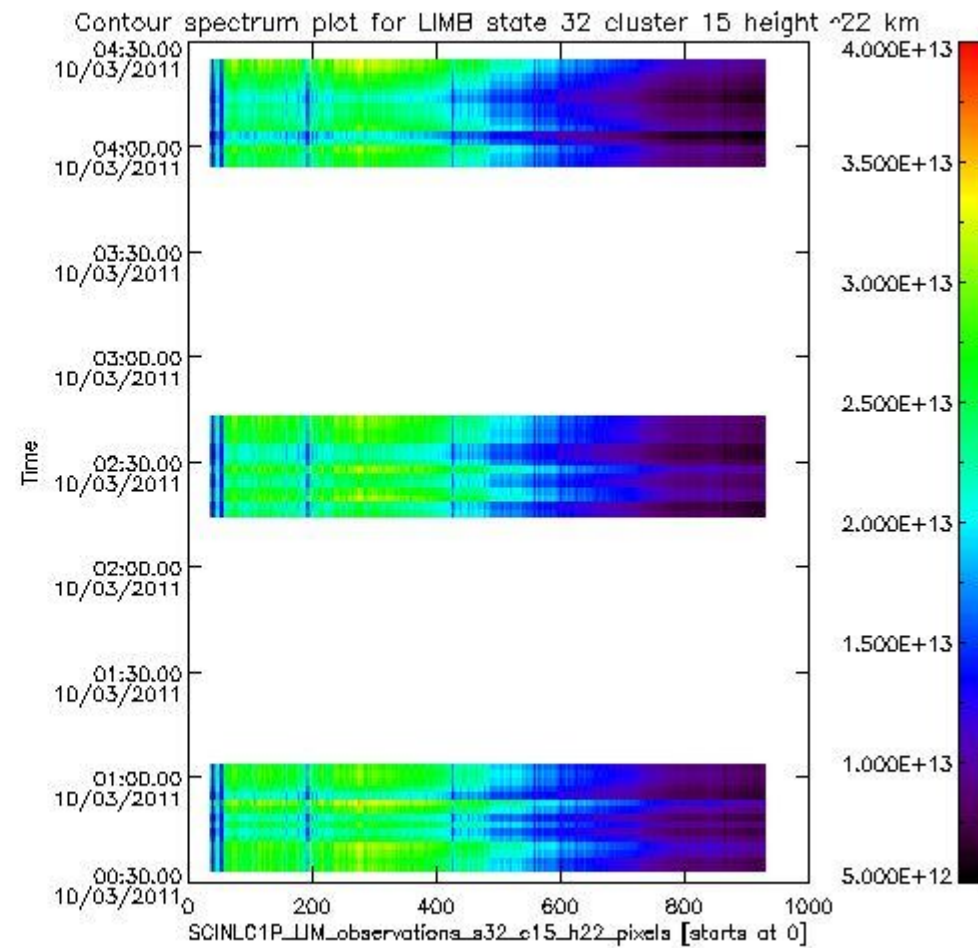
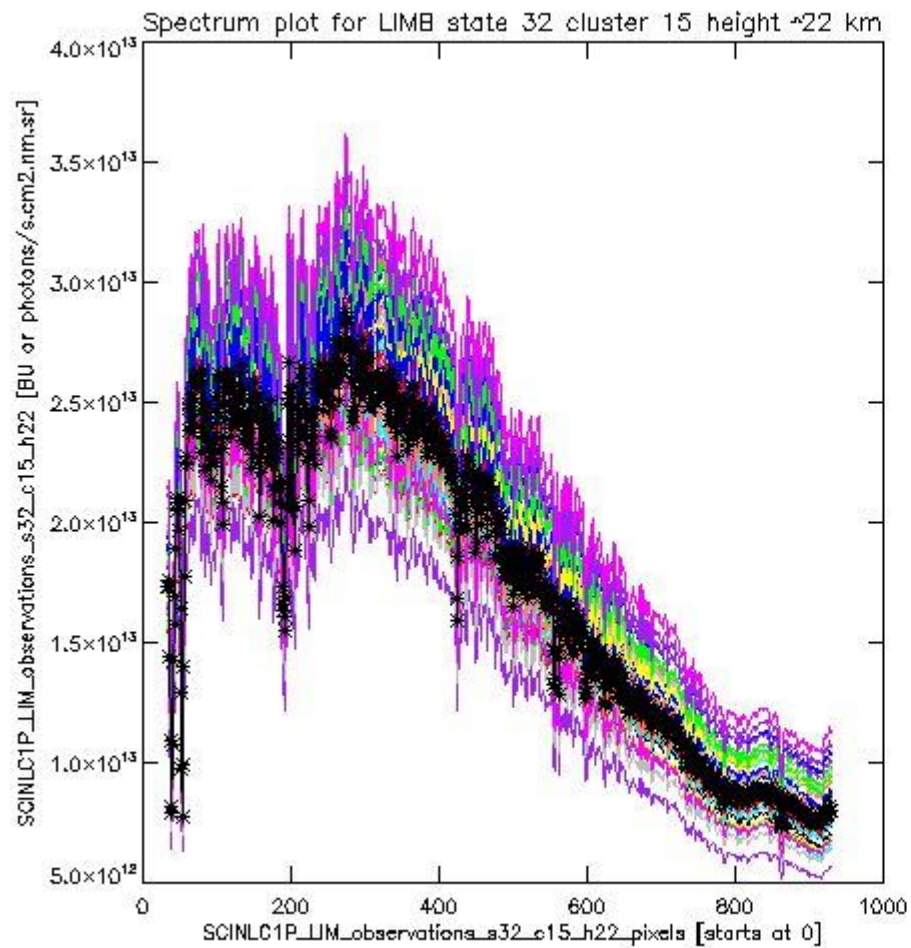
sciamachy_l1b_source_packet_report_SCIA_7_04_U_20110310_14.PNG



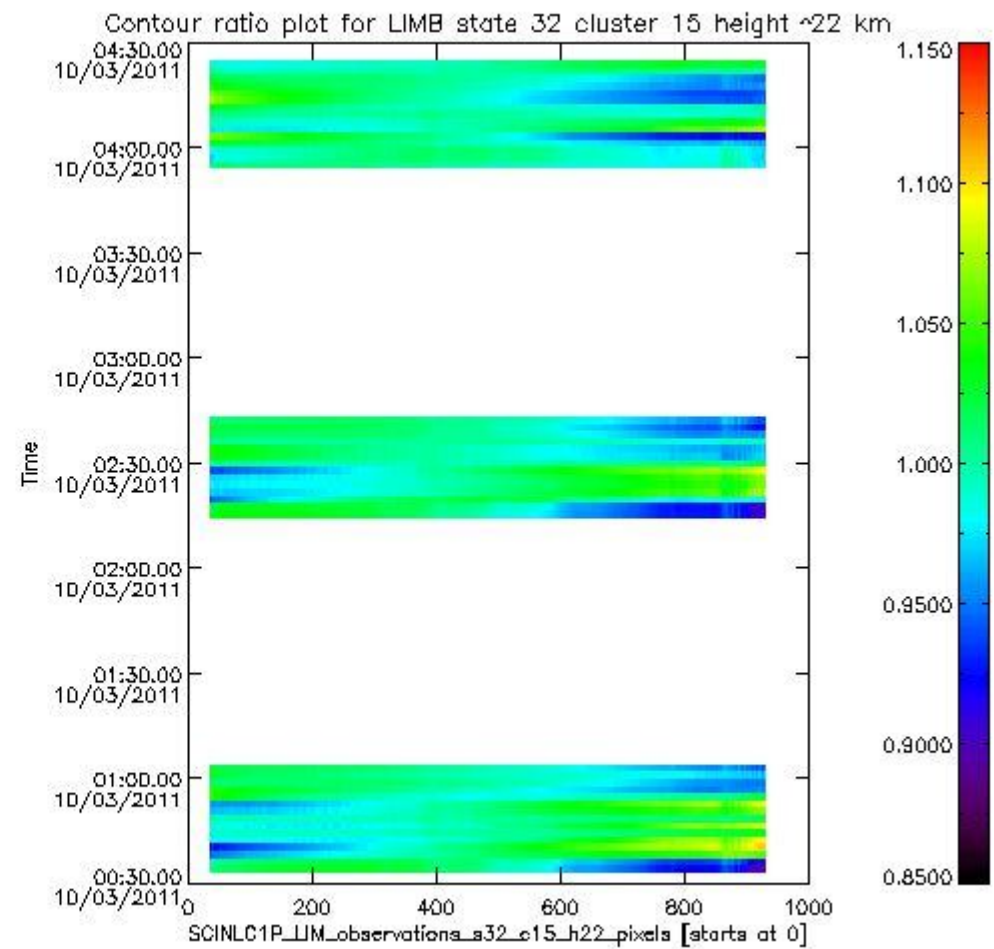
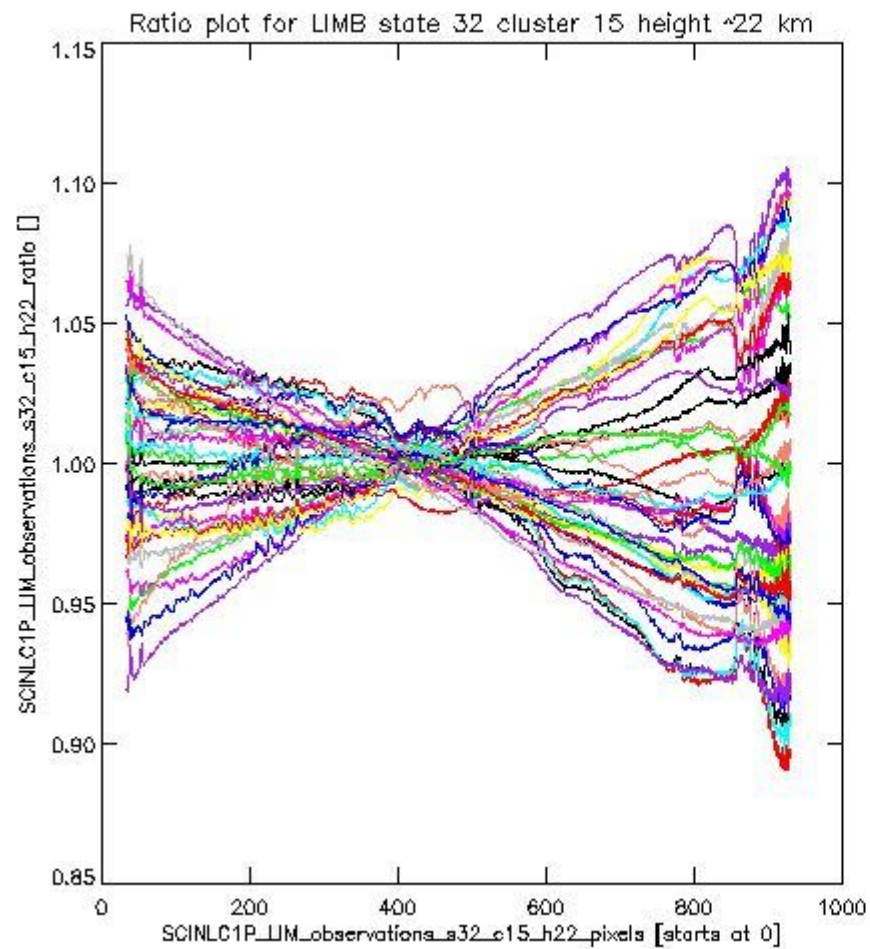
sciamachy_l1b_source_packet_report_SCIA_7_04_U_20110310_15.PNG

1.2.9 LIMB state 32 cluster 15 height ~22 km The data for the analysis of LIMB state 32 cluster 15 height ~22 km have the following characteristics:

Item	Value
Start time of first sample	10MAR2011 00:34:18.889
Start time of last sample	10MAR2011 04:23:24.273
Reference period start time	08FEB2011 00:37:04.706
Reference period stop time	09MAR2011 23:21:35.240
Channel number	3
First pixel number (starts at 0)	33
Last pixel number (starts at 0)	929



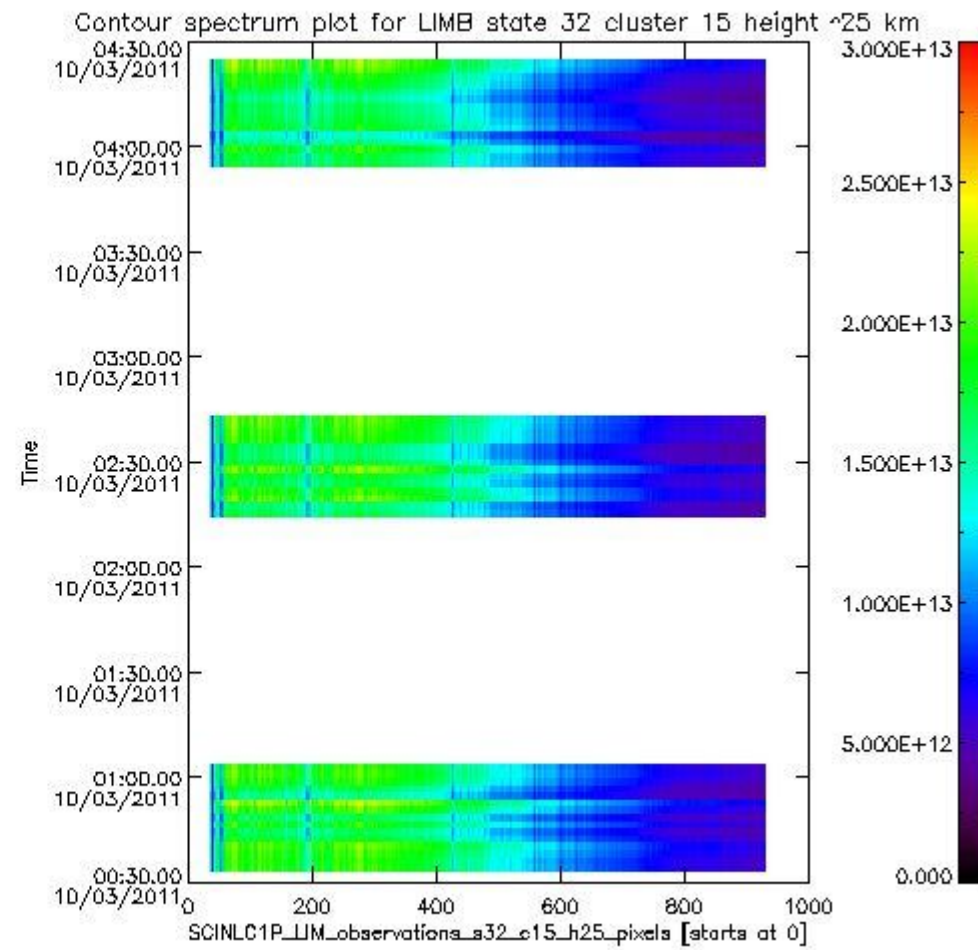
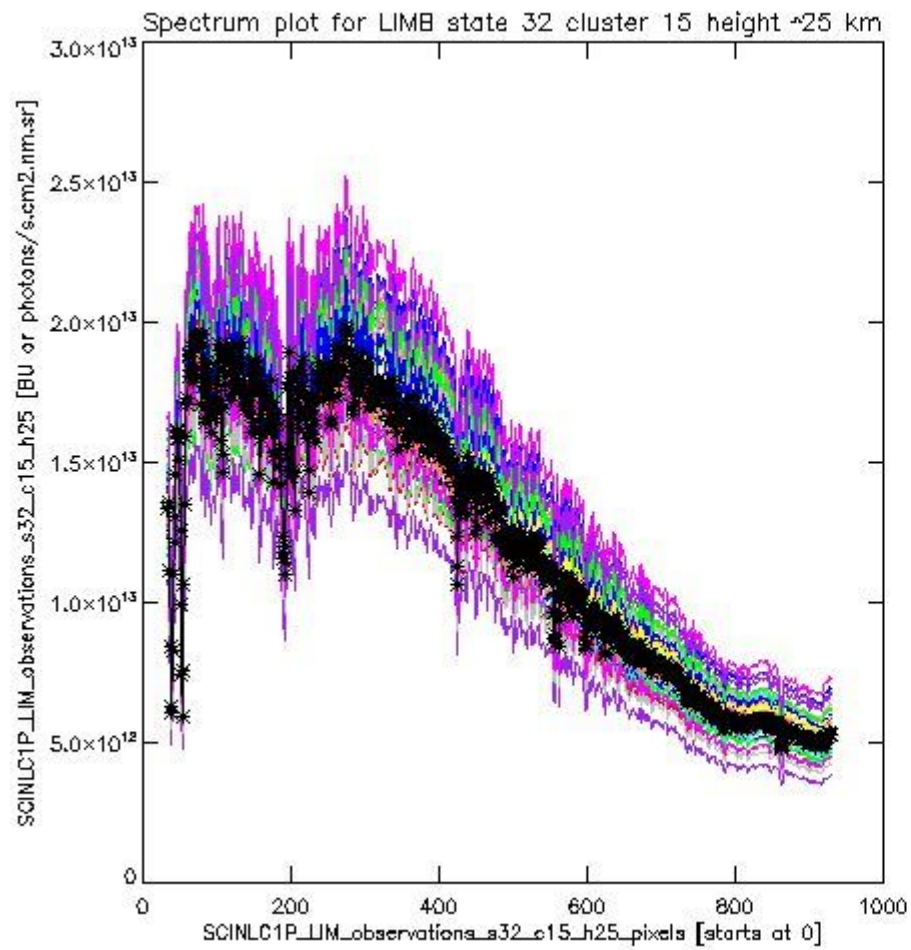
sciamachy_i1b_source_packet_report_SCIA_7_04_U_20110310_16.PNG



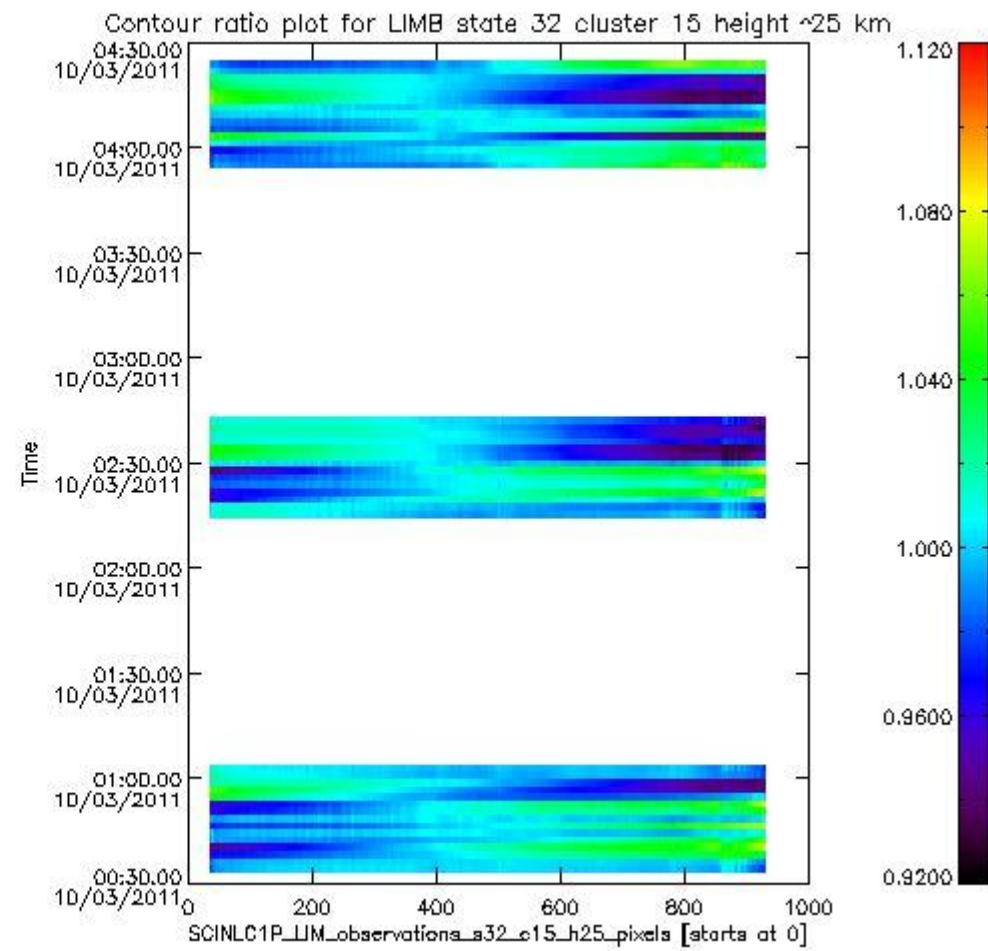
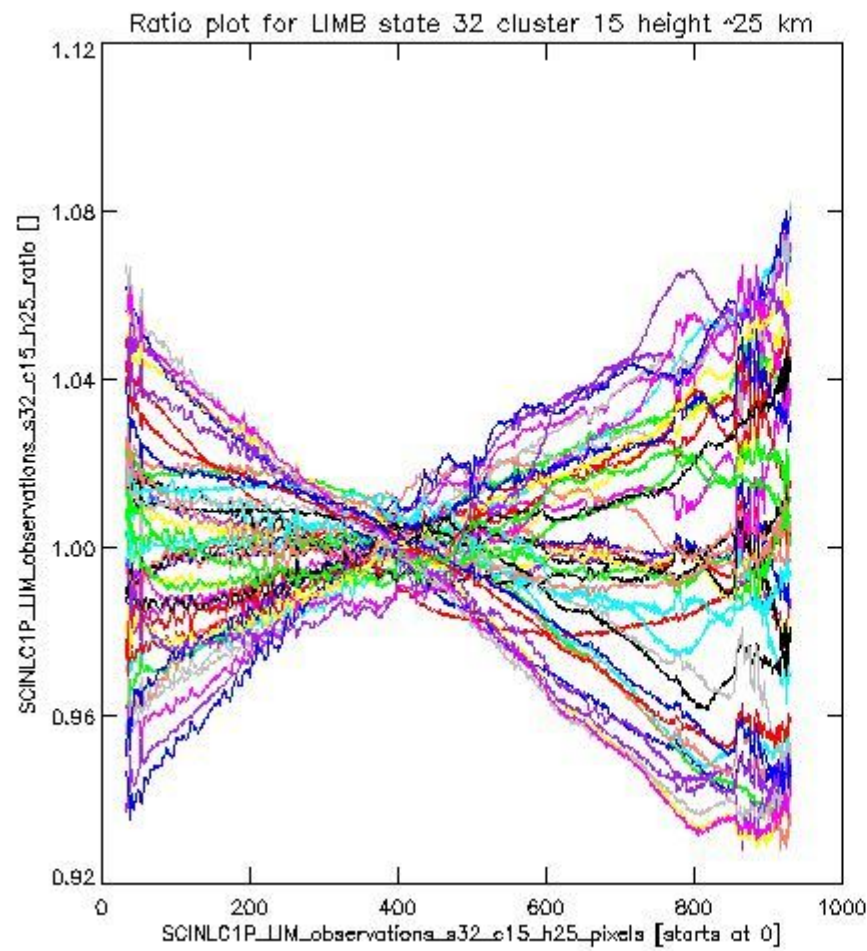
sciamachy_11b_source_packet_report_SCIA_7_04_U_20110310_17.PNG

1.2.10 LIMB state 32 cluster 15 height ~25 km The data for the analysis of LIMB state 32 cluster 15 height ~25 km have the following characteristics:

Item	Value
Start time of first sample	10MAR2011 00:34:18.889
Start time of last sample	10MAR2011 04:23:24.273
Reference period start time	08FEB2011 00:37:04.706
Reference period stop time	09MAR2011 23:21:35.240
Channel number	3
First pixel number (starts at 0)	33
Last pixel number (starts at 0)	929



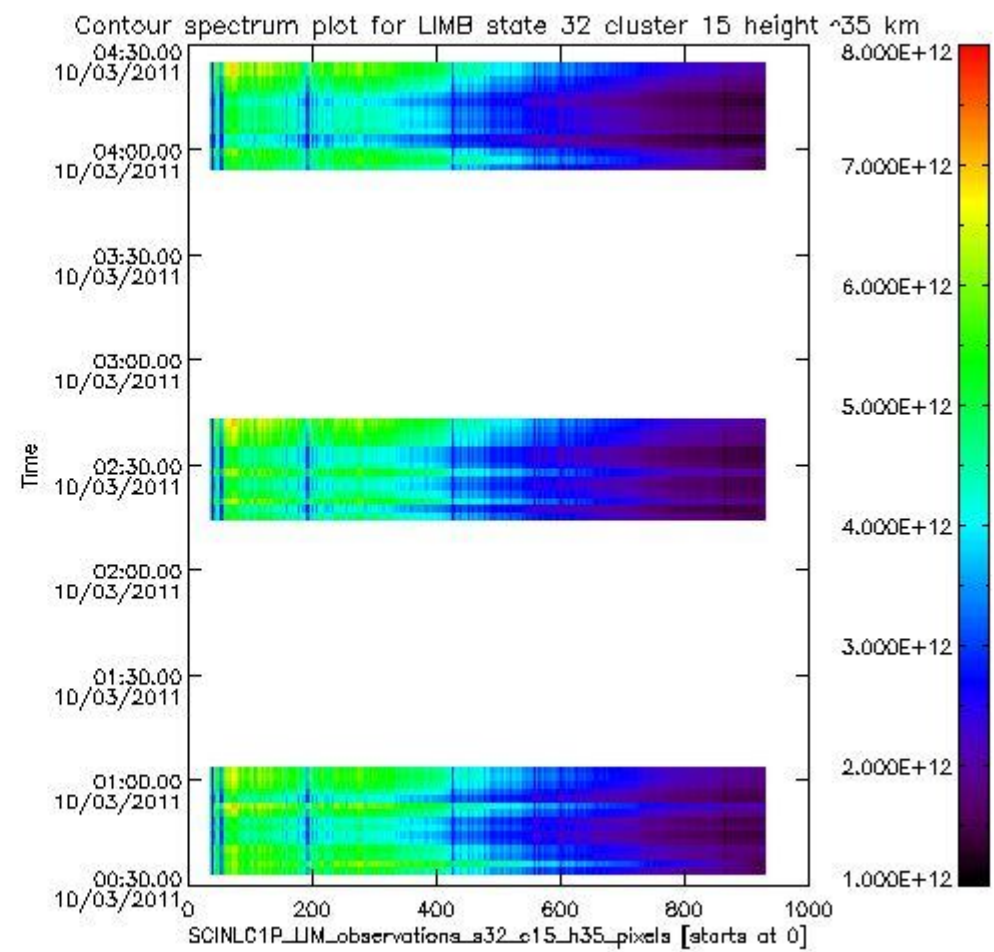
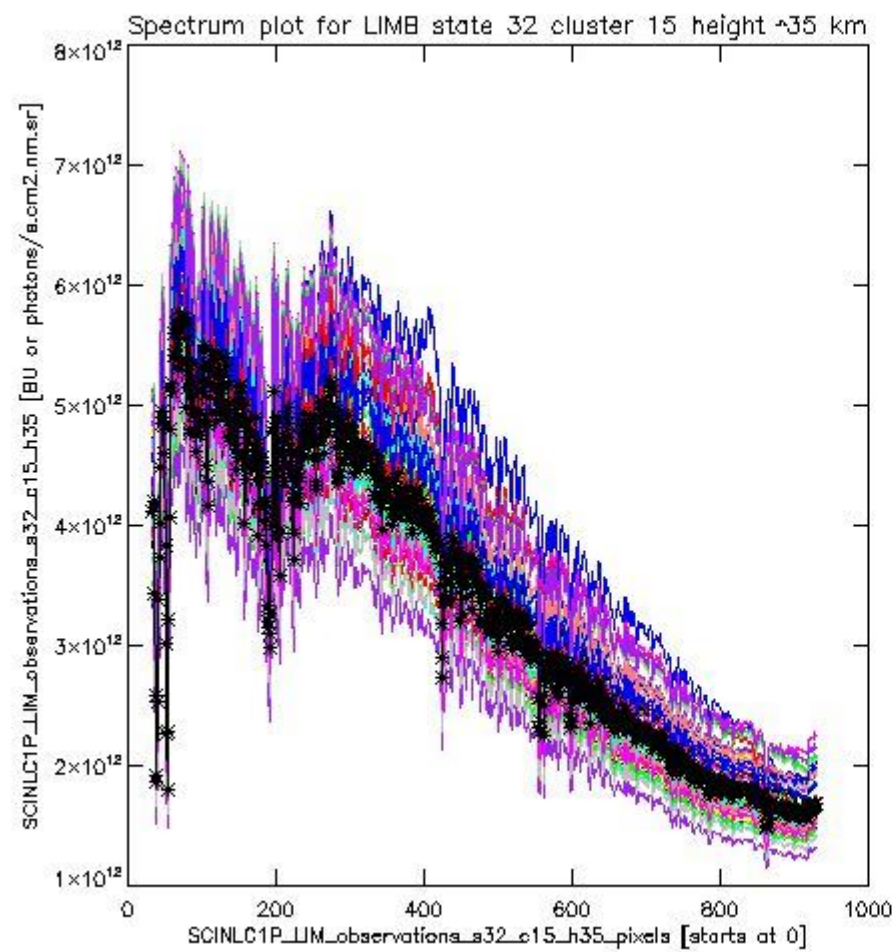
sciamachy_l1b_source_packet_report_SCIA_7_04_U_20110310_18.PNG

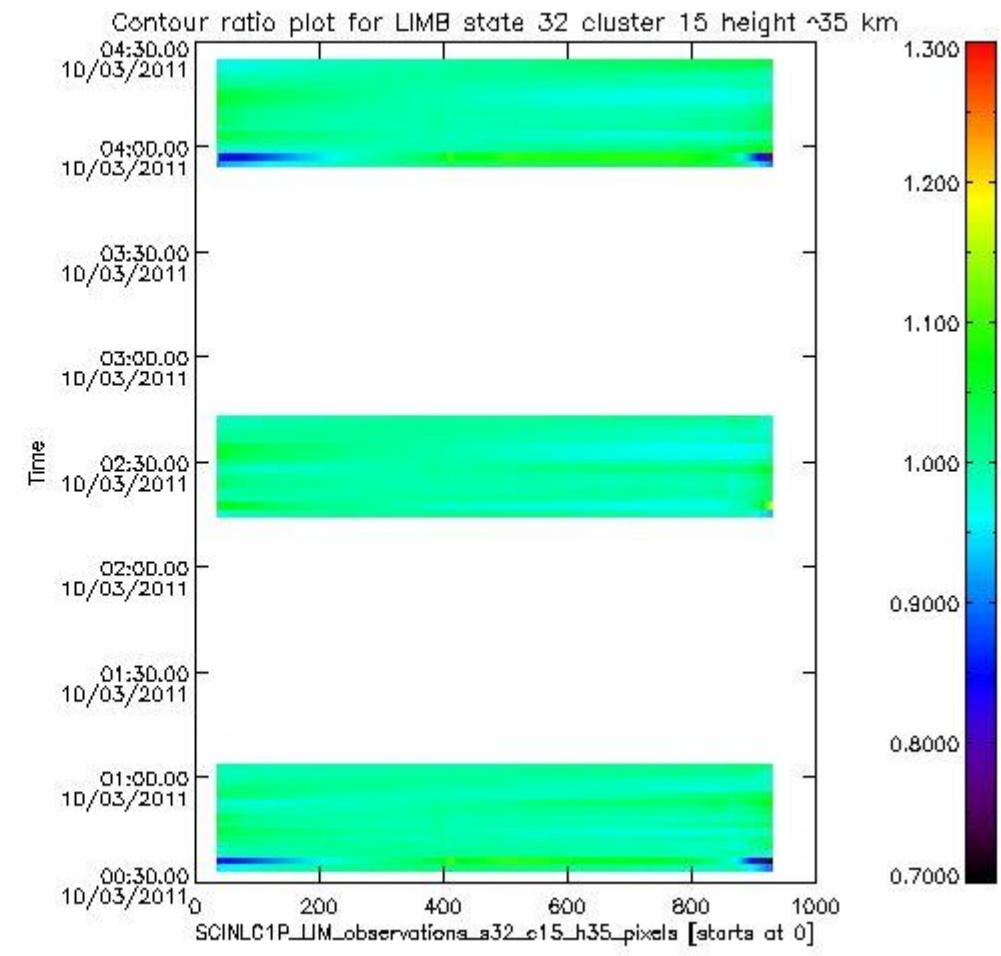
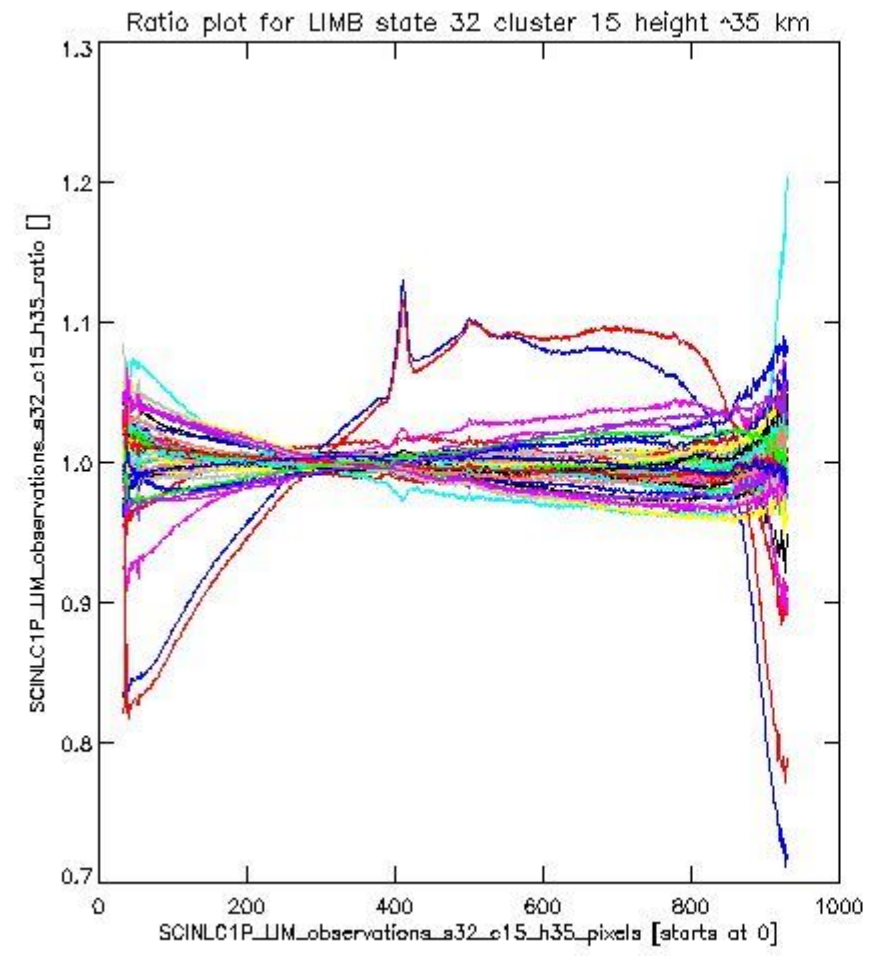


sciamachy_11b_source_packet_report_SCIA_7_04_U_20110310_19.PNG

1.2.11 LIMB state 32 cluster 15 height ~35 km The data for the analysis of LIMB state 32 cluster 15 height ~35 km have the following characteristics:

Item	Value
Start time of first sample	10MAR2011 00:34:18.889
Start time of last sample	10MAR2011 04:23:24.273
Reference period start time	08FEB2011 00:37:04.706
Reference period stop time	09MAR2011 23:21:35.240
Channel number	3
First pixel number (starts at 0)	33
Last pixel number (starts at 0)	929





sciamachy_i1b_source_packet_report_SCIA_7_04_U_20110310_21.PNG

