

1. SCIAMACHY Level 1B source packet monitoring report

[1.1. General Info](#)

[1.2 Source packet monitoring](#)

1.1 General Info

This report contains results of the analysis on source packets from SCIAMACHY level 1 data (The SCI_NL__1P product).

1.1.1 Report summary

The table below shows general characteristics of the data that are included into this report.

Item	Value
Report version	1.1 (07-01-2010)
Time of report generation	12MAR2011 06:55:41
Data source version	SCIA/7.04-U
Processing scope for products	01MAR2011 00:00:00 to 02MAR2011 00:00:00
Start time of first product within scope	28FEB2011 23:07:02
Stop time of last product within scope	02MAR2011 01:20:40
Total number of level 1 products	16
Number of level 1 products with errors	0
SCIAL1C executable used in processing	scial1c-2.1.73-i686-pc-linux-gnu-gcc-3.3.6
SCIAL1C parameters used in processing	-allcal -type all -cat 1,2,8,10,11,16,19,23 -nadircluster 8,9,15,24,55 -limbcluster 9,15

1.1.2 Source packet summary

The table below shows which source packets have been included into the report.

Item	Mode	State	Cluster	Height	First start time	Last start time
0	NADIR	07	08	N/A	01MAR2011 01:19:18.540	01MAR2011 23:11:34.022
1	NADIR	07	09	N/A	01MAR2011 01:19:18.540	01MAR2011 23:11:34.022
2	NADIR	07	15	N/A	01MAR2011 01:19:18.540	01MAR2011 23:11:34.022
3	NADIR	07	24	N/A	01MAR2011 01:19:18.540	01MAR2011 23:11:34.022
4	NADIR	07	55	N/A	01MAR2011 01:19:18.540	01MAR2011 23:11:34.022
5	LIMB	32	09	~19 km	01MAR2011 01:06:07.903	01MAR2011 23:16:48.065
6	LIMB	32	09	~22 km	01MAR2011 01:06:07.903	01MAR2011 23:16:48.065
7	LIMB	32	09	~25 km	01MAR2011 01:06:07.903	01MAR2011 23:16:48.065
8	LIMB	32	15	~22 km	01MAR2011 01:06:07.903	01MAR2011 23:16:48.065
9	LIMB	32	15	~25 km	01MAR2011 01:06:07.903	01MAR2011 23:16:48.065
10	LIMB	32	15	~35 km	01MAR2011 01:06:07.903	01MAR2011 23:16:48.065

1.1.3 Summary per product

The following table shows a summary for each product used in this report.

Products are linked to a corresponding server directory for view/download. Note: Link access may be restricted by security settings of your internet browser or firewall.

#	Product name	Start time	Stop time	ProdErr	#nadir	#limb	#occ	#mon	#noproduct	#cpl_drk	#incpl_drk	Decont
0	SCI_NLC_1CUDPA20110228_225435_000060053100_00059_47056_5022.N1	28FEB2011 23:07:02	01MAR2011 00:17:31	0	36	30	0	0	1	0	0	
1	SCI_NLC_1CUDPA20110301_003444_000060143100_00060_47057_5024.N1	01MAR2011 00:47:15	01MAR2011 01:57:30	0	35	31	0	0	1	0	0	
2	SCI_NLC_1CUDPA20110301_021502_000060053100_00061_47058_5025.N1	01MAR2011 02:27:29	01MAR2011 03:37:58	0	36	30	0	0	1	0	0	
3	SCI_NLC_1CUDPA20110301_035511_000060143100_00062_47059_5026.N1	01MAR2011 04:07:43	01MAR2011 05:17:57	0	35	31	0	0	1	0	0	
4	SCI_NLC_1CUDPA20110301_053529_000060053100_00063_47060_5030.N1	01MAR2011 05:47:56	01MAR2011 06:58:25	0	36	30	0	0	1	0	0	
5	SCI_NLC_1CUDPA20110301_071538_000060143100_00064_47061_5032.N1	01MAR2011 07:28:10	01MAR2011 08:38:24	0	35	31	0	0	1	0	0	

6	SCI_NLC_1CUDPA20110301_085556_000060053100_00065_47062_5035.N1	01MAR2011 09:08:23	01MAR2011 10:18:52	0	36	30	0	0	1	0	0	
7	SCI_NLC_1CUDPA20110301_103605_000060143100_00066_47063_5036.N1	01MAR2011 10:48:37	01MAR2011 11:58:51	0	35	31	0	0	1	0	0	
8	SCI_NLC_1CUDPA20110301_121623_000060053100_00067_47064_5037.N1	01MAR2011 12:28:50	01MAR2011 13:39:19	0	36	30	0	0	1	0	0	
9	SCI_NLC_1CUDPA20110301_135631_000060143100_00068_47065_5040.N1	01MAR2011 14:09:04	01MAR2011 15:19:18	0	35	31	0	0	1	0	0	
10	SCI_NLC_1CUDPA20110301_153649_000060053100_00069_47066_5042.N1	01MAR2011 15:49:17	01MAR2011 16:59:46	0	36	30	0	0	1	0	0	
11	SCI_NLC_1CUDPA20110301_171658_000060143100_00070_47067_5044.N1	01MAR2011 17:29:31	01MAR2011 18:40:06	0	35	31	0	1	1	0	0	
12	SCI_NLC_1CUDPA20110301_185716_000060053100_00071_47068_5047.N1	01MAR2011 19:09:44	01MAR2011 20:20:34	0	36	30	0	1	1	0	0	
13	SCI_NLC_1CUDPA20110301_203725_000060143100_00072_47069_5048.N1	01MAR2011 20:49:58	01MAR2011 22:00:13	0	35	31	0	0	1	0	0	
14	SCI_NLC_1CUDPA20110301_221743_000060053100_00073_47070_5050.N1	01MAR2011 22:30:11	01MAR2011 23:40:40	0	36	30	0	0	1	0	0	
15	SCI_NLC_1CUDPA20110301_235752_000060143100_00074_47071_5052.N1	02MAR2011 00:10:25	02MAR2011 01:20:40	0	35	31	0	0	1	0	0	

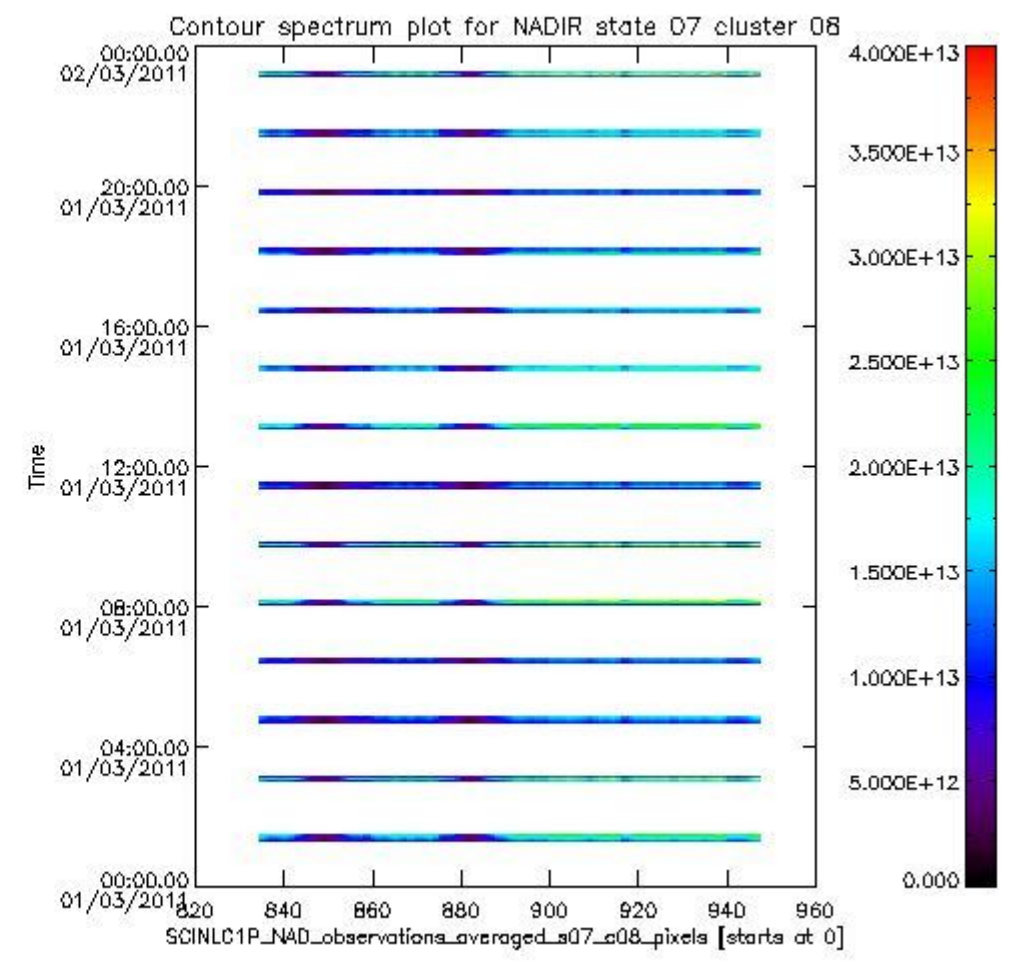
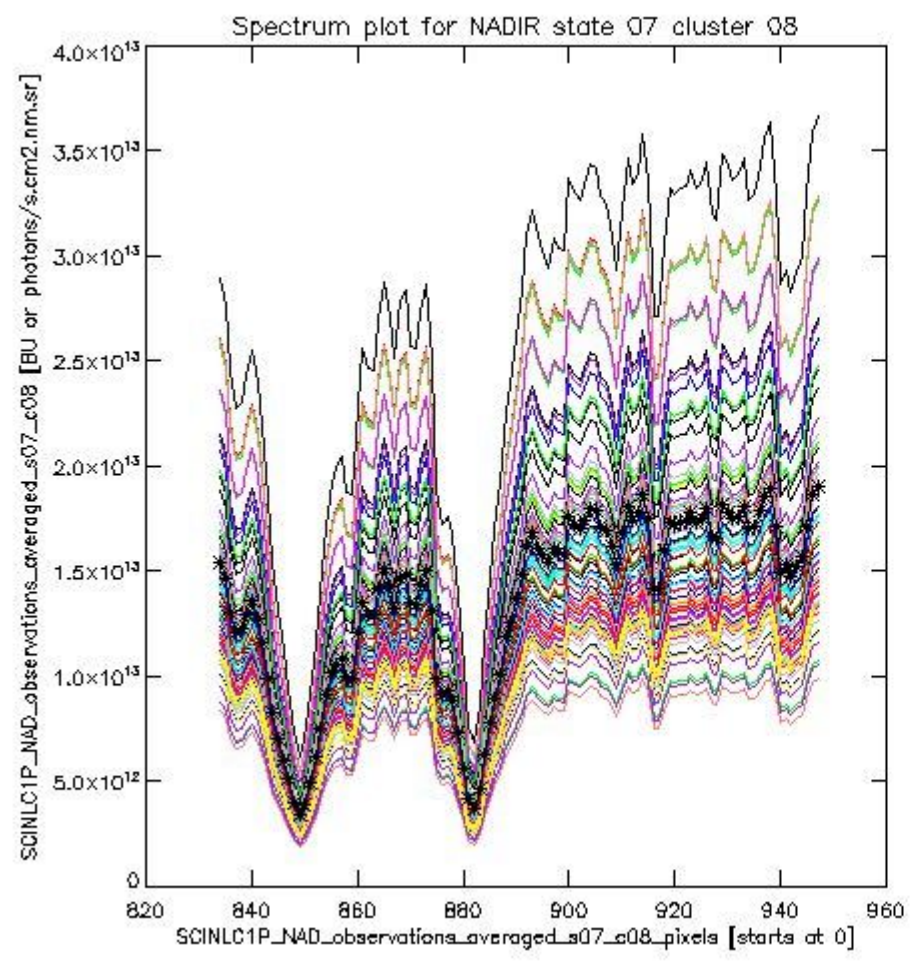
1.2 Source packet monitoring

This section shows figures for each of the monitored source packet types listed in the Source Packet Summary section. For each mode-state-cluster(-height) combination the following plots are shown:

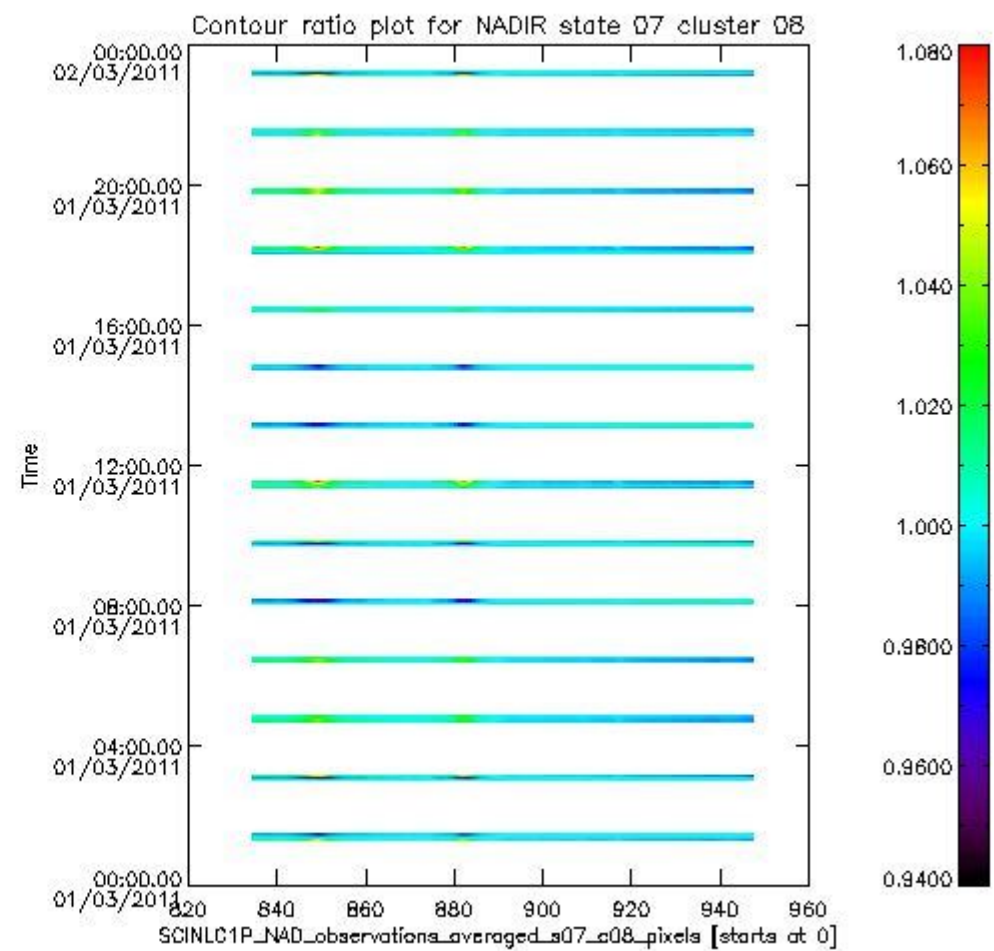
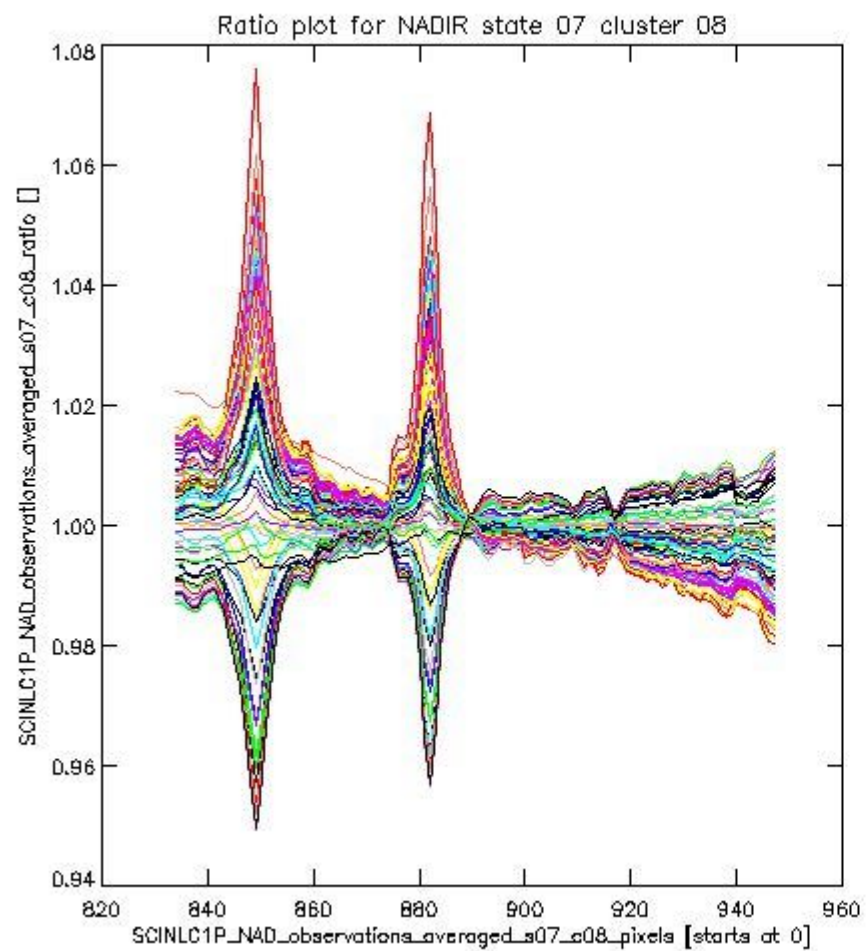
- A plot that shows all calibrated averaged spectra vs. pixel number as 2D-profiles. Each line is an average spectrum for a single state occurrence. For Limb modes, the average is performed on spectra recorded at a specific height. The reference spectrum that is used for comparison is also shown as a black line with * markers.
- A plot that shows all calibrated averaged spectra vs. pixel number and time using a coloured contour plot. The colours indicate the intensity.
- A plot that shows ratios of all calibrated averaged spectra and the reference spectrum vs. pixel number. Each line is the ratio of a calibrated averaged spectrum and the reference spectrum, where both spectra have been intensity corrected (the spectrum has been divided by the average pixel intensity) prior to division.
- A plot that shows ratios of all calibrated averaged spectra and the reference spectrum vs. pixel number and time using a coloured contour plot.

1.2.1 NADIR state 07 cluster 08 The data for the analysis of NADIR state 07 cluster 08 have the following characteristics:

Item	Value
Start time of first sample	01MAR2011 01:19:18.540
Start time of last sample	01MAR2011 23:11:34.022
Reference period start time	30JAN2011 01:21:56.525
Reference period stop time	28FEB2011 23:48:24.598
Channel number	2
First pixel number (starts at 0)	834
Last pixel number (starts at 0)	947



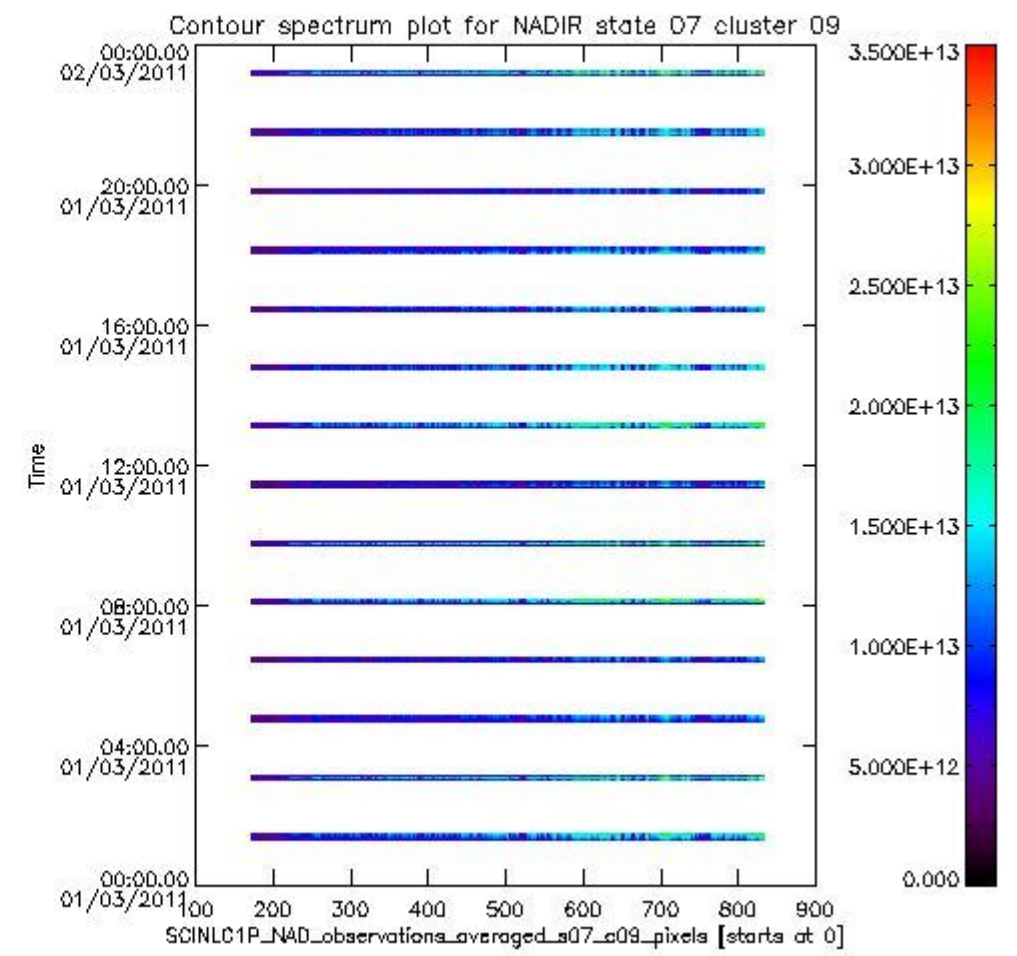
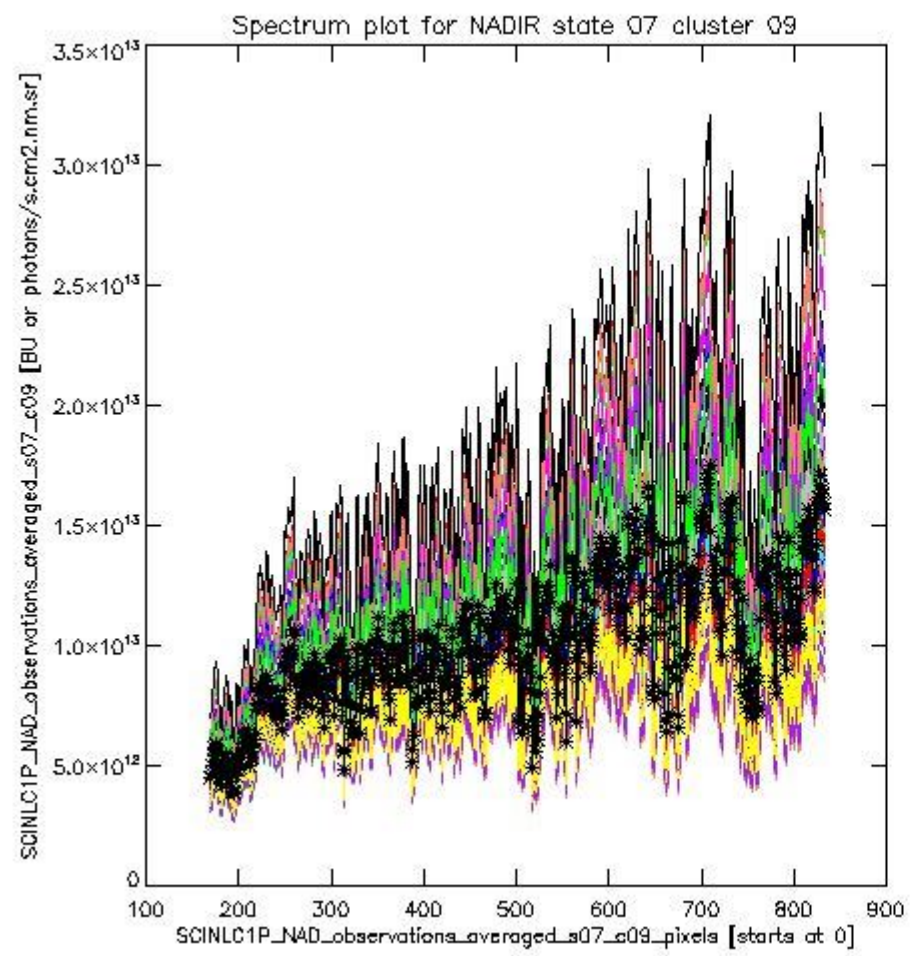
sciamachy_i1b_source_packet_report_SCIA_7_04_U_20110301_0.PNG



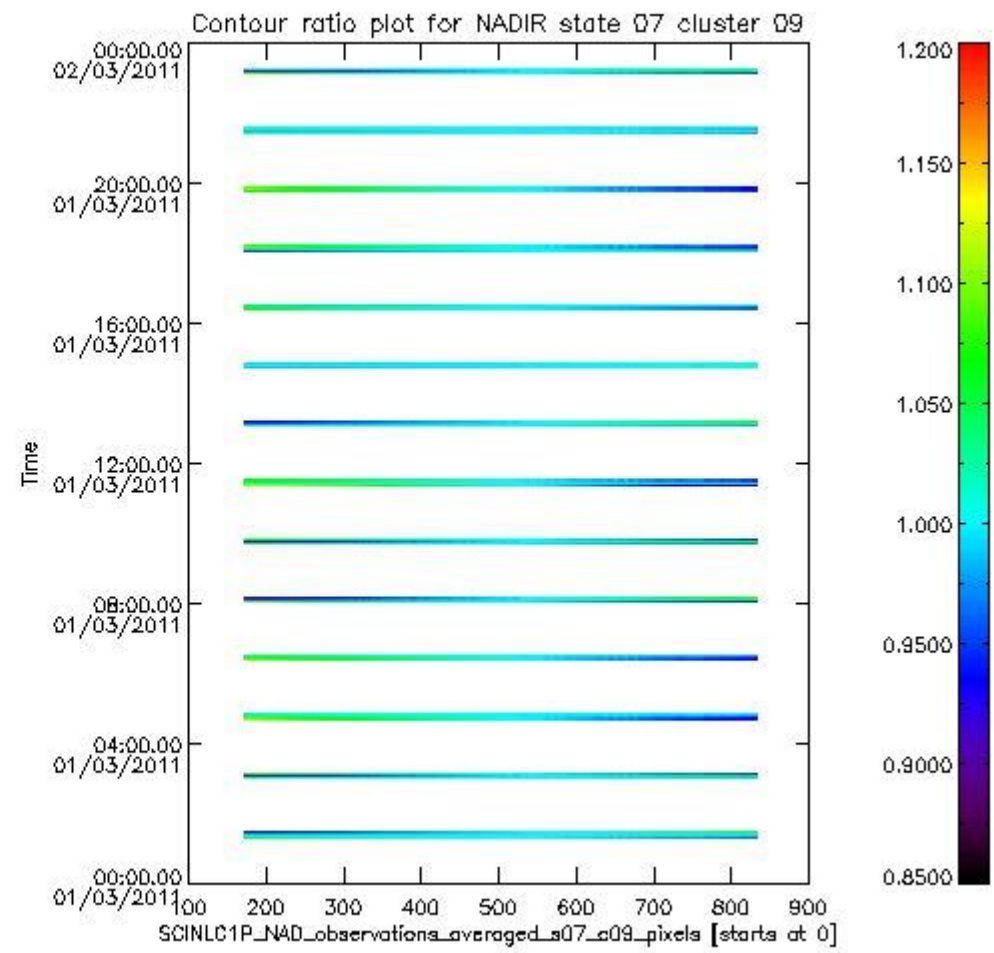
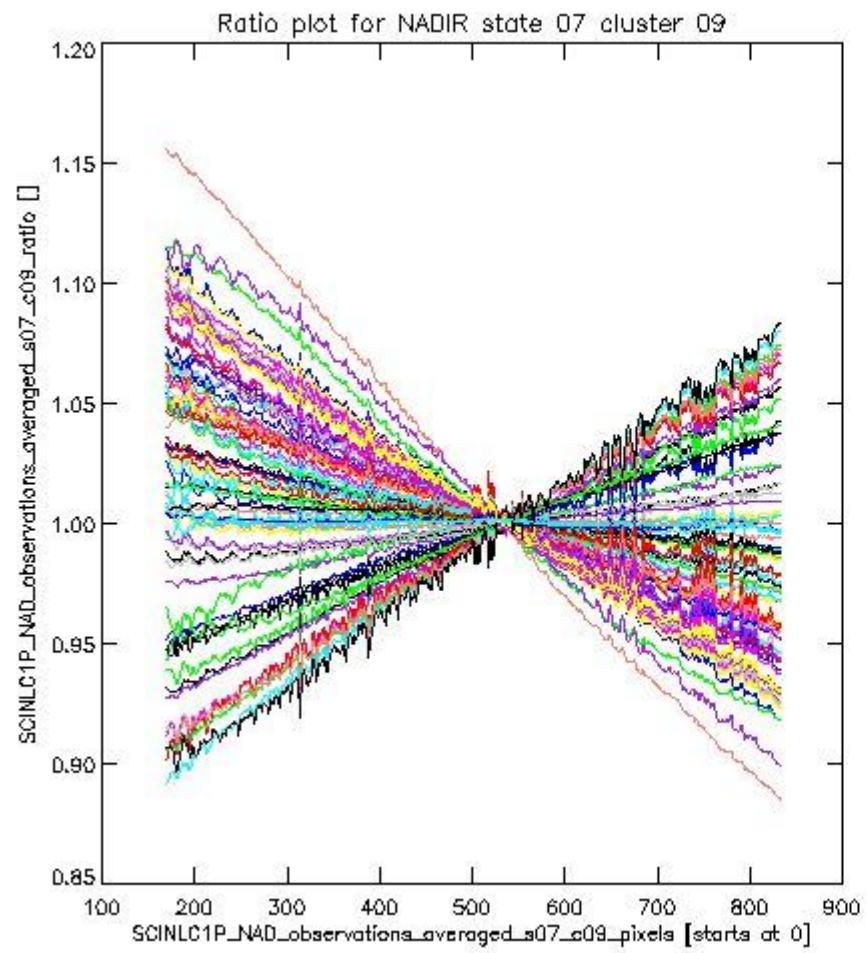
sciamachy_i1b_source_packet_report_SCIA_7_04_U_20110301_1.PNG

1.2.2 NADIR state 07 cluster 09 The data for the analysis of NADIR state 07 cluster 09 have the following characteristics:

Item	Value
Start time of first sample	01MAR2011 01:19:18.540
Start time of last sample	01MAR2011 23:11:34.022
Reference period start time	30JAN2011 01:21:56.525
Reference period stop time	28FEB2011 23:48:24.598
Channel number	2
First pixel number (starts at 0)	170
Last pixel number (starts at 0)	833



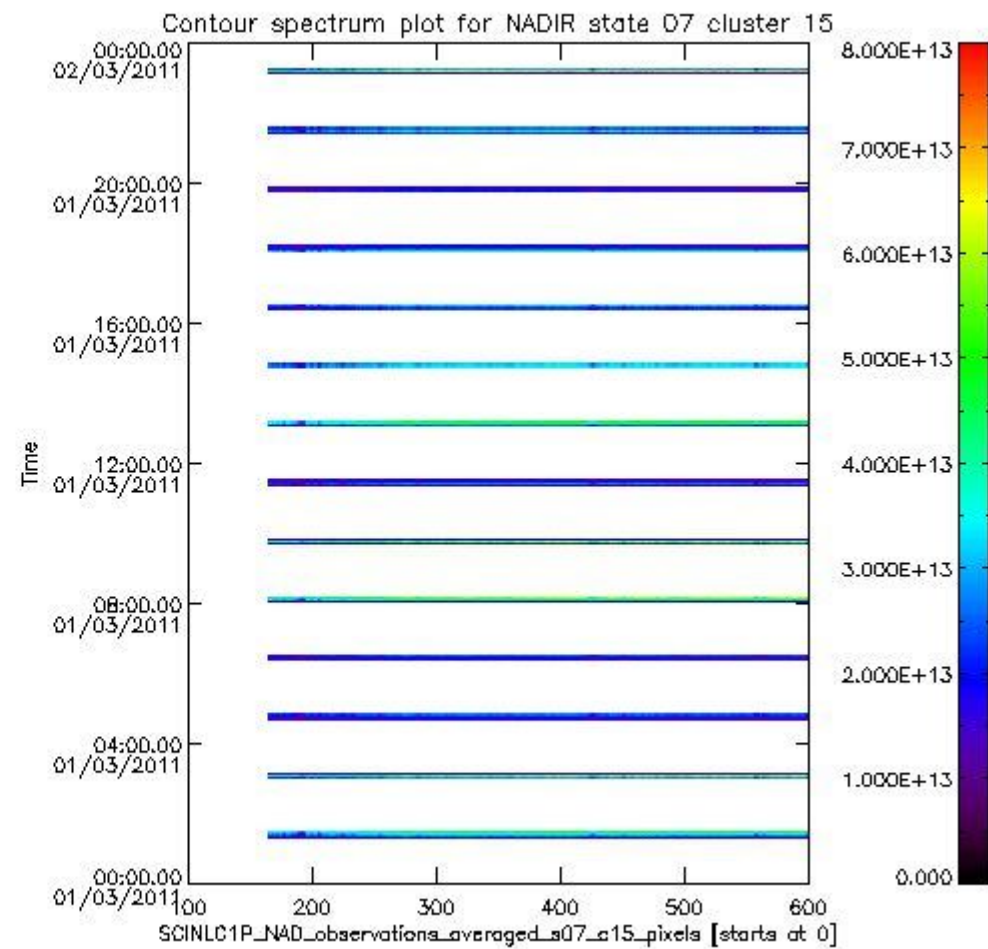
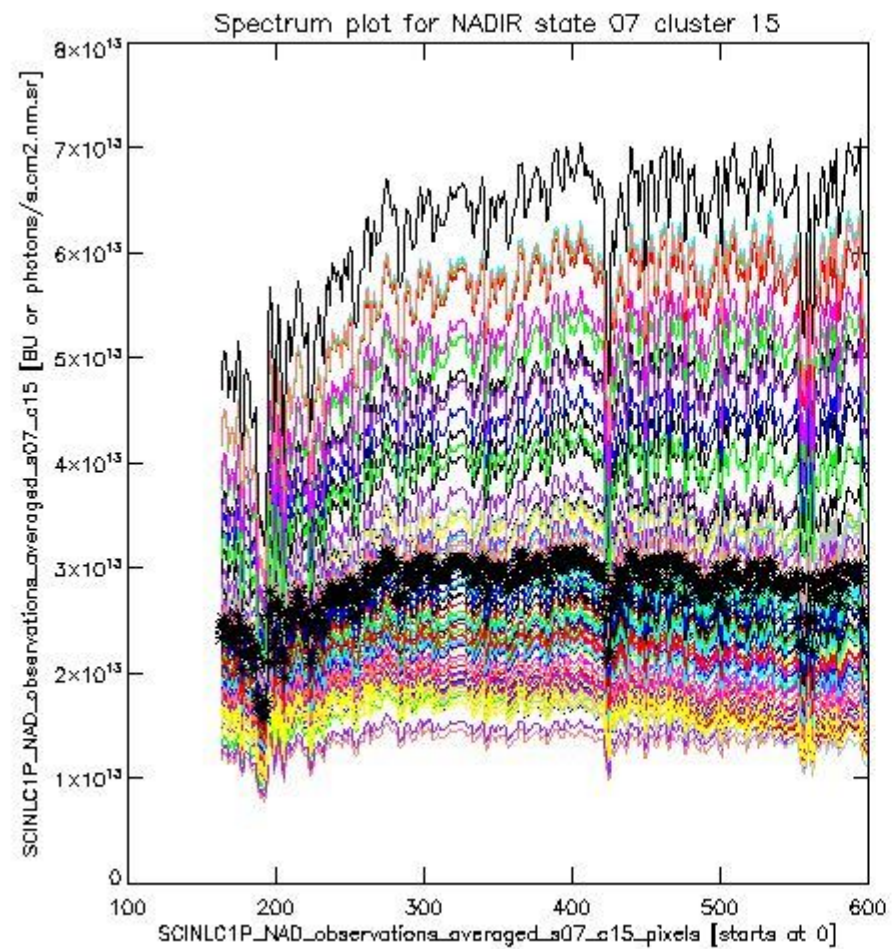
sciamachy_i1b_source_packet_report_SCIA_7_04_U_20110301_2.PNG



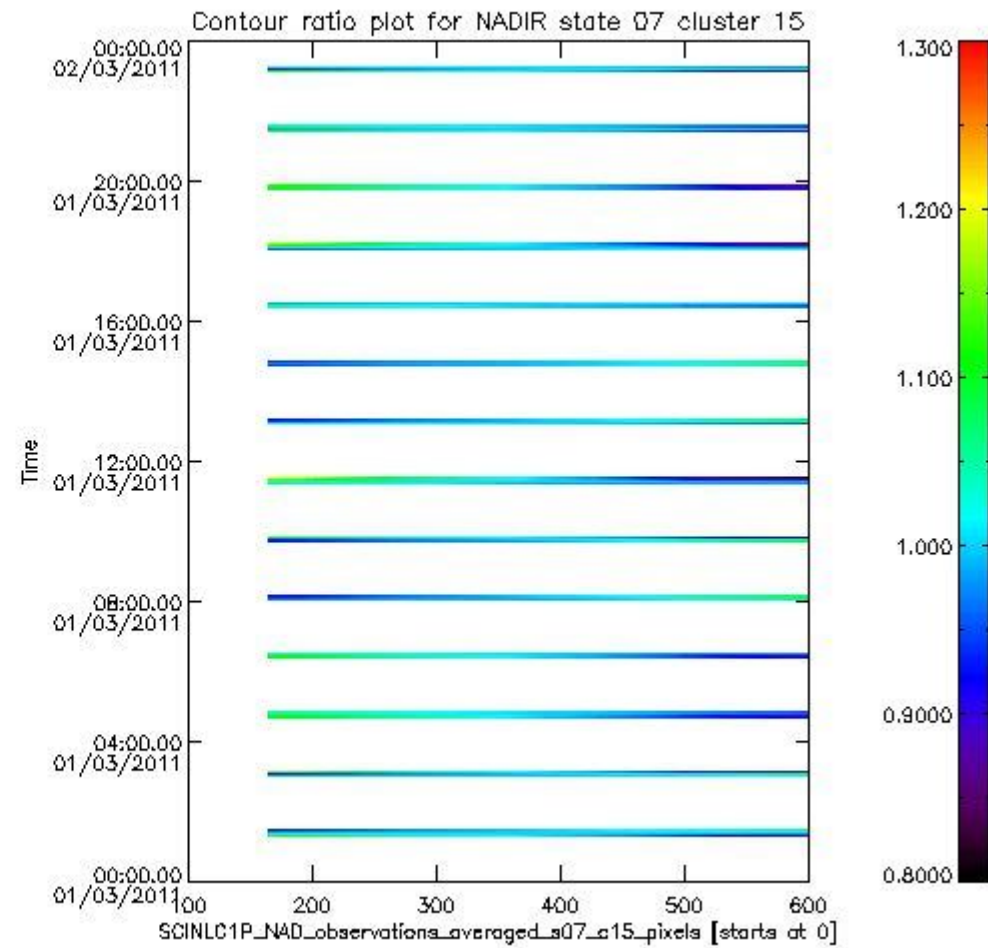
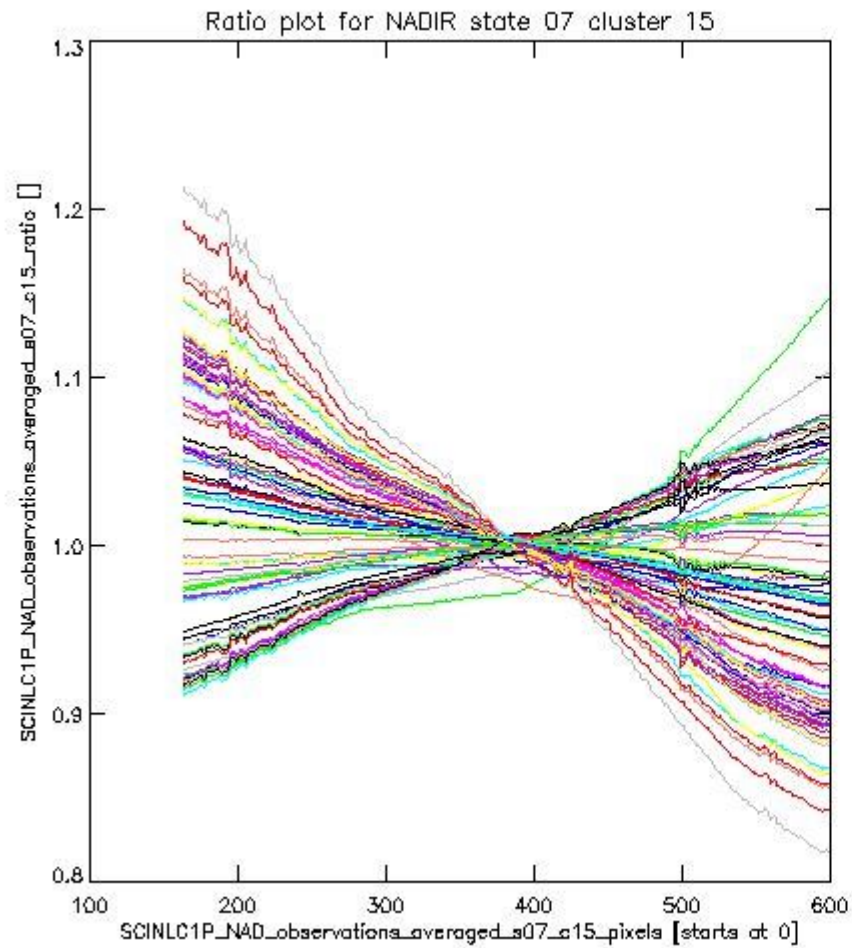
sciamachy_i1b_source_packet_report_SCIA_7_04_U_20110301_3.PNG

1.2.3 NADIR state 07 cluster 15 The data for the analysis of NADIR state 07 cluster 15 have the following characteristics:

Item	Value
Start time of first sample	01MAR2011 01:19:18.540
Start time of last sample	01MAR2011 23:11:34.022
Reference period start time	30JAN2011 01:21:56.525
Reference period stop time	28FEB2011 23:48:24.598
Channel number	3
First pixel number (starts at 0)	163
Last pixel number (starts at 0)	598



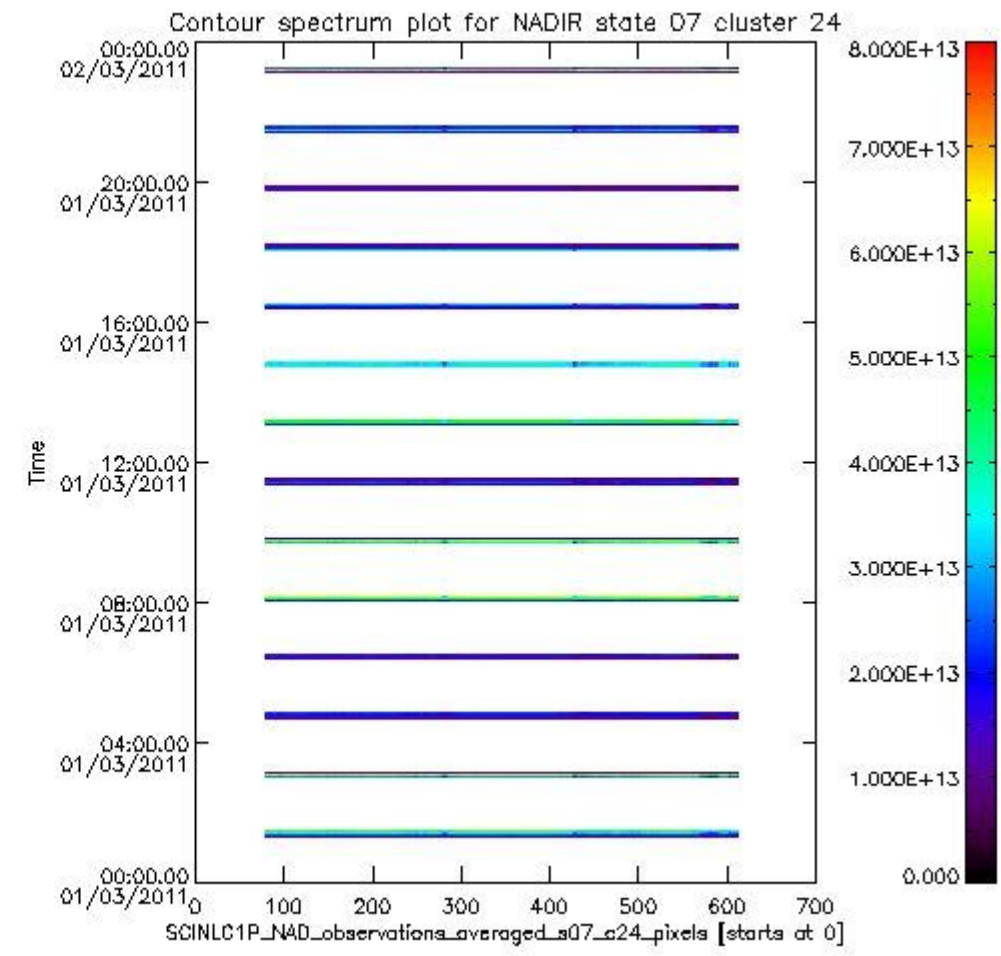
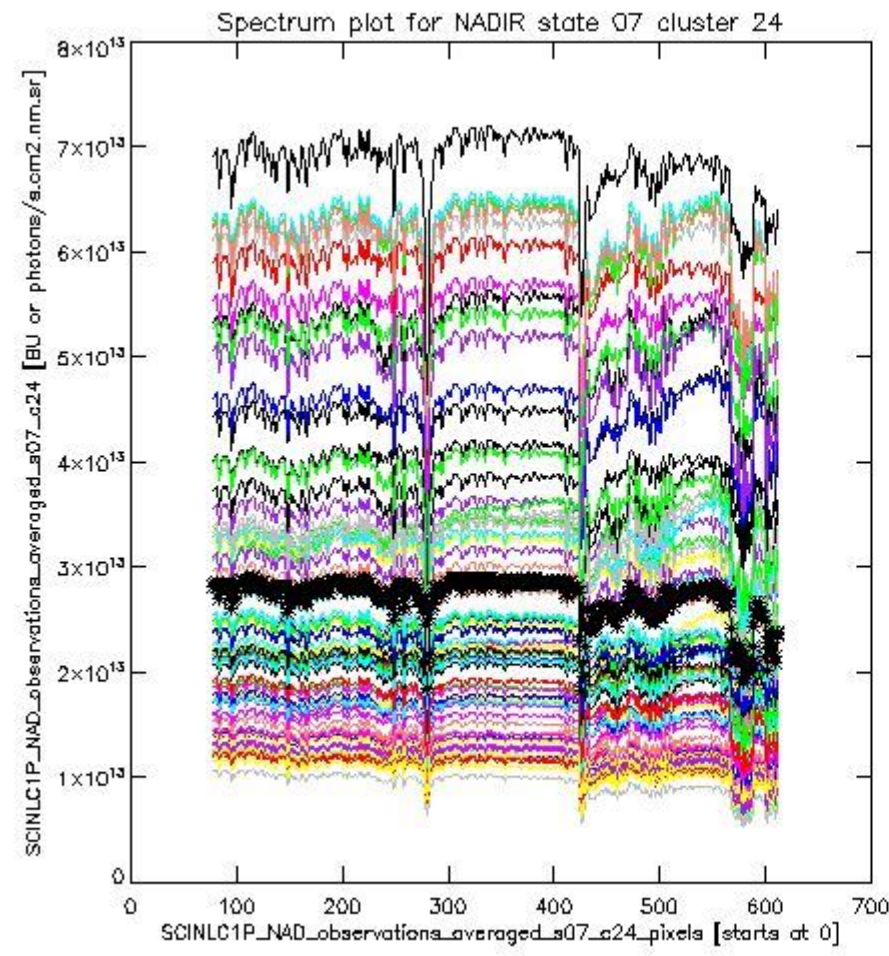
sciamachy_i1b_source_packet_report_SCIA_7_04_U_20110301_4.PNG



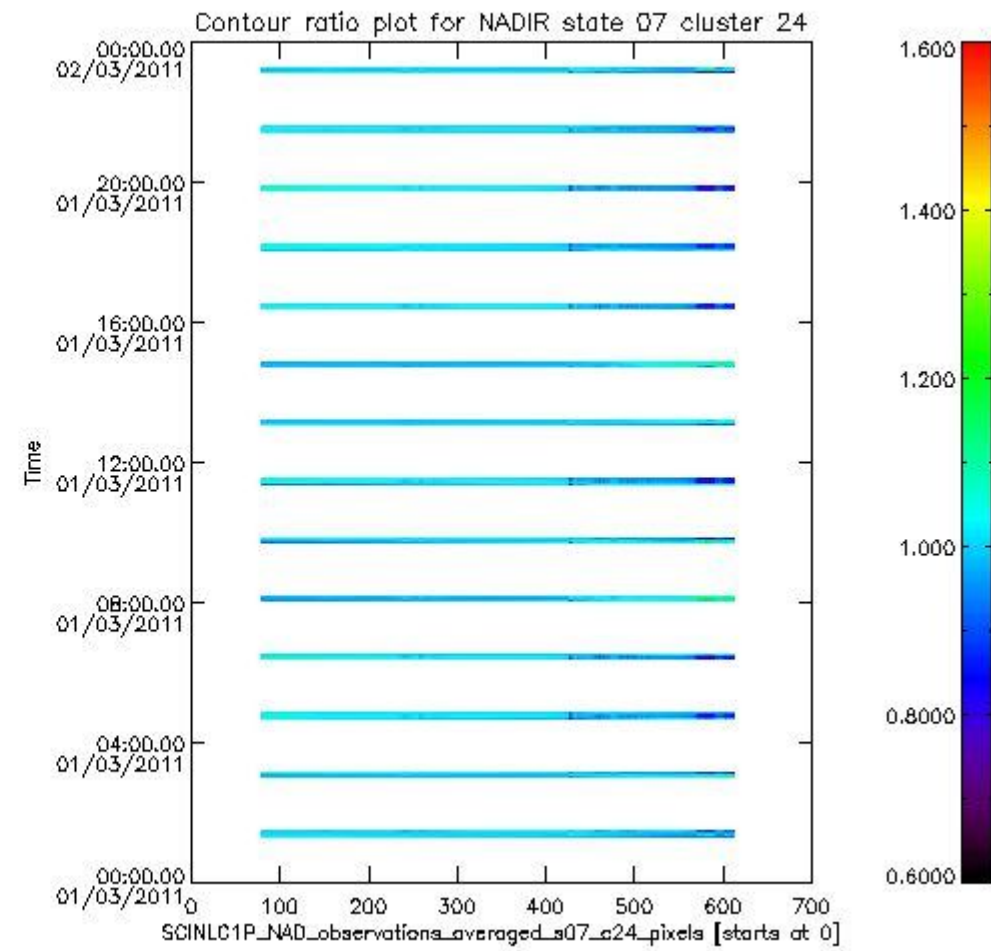
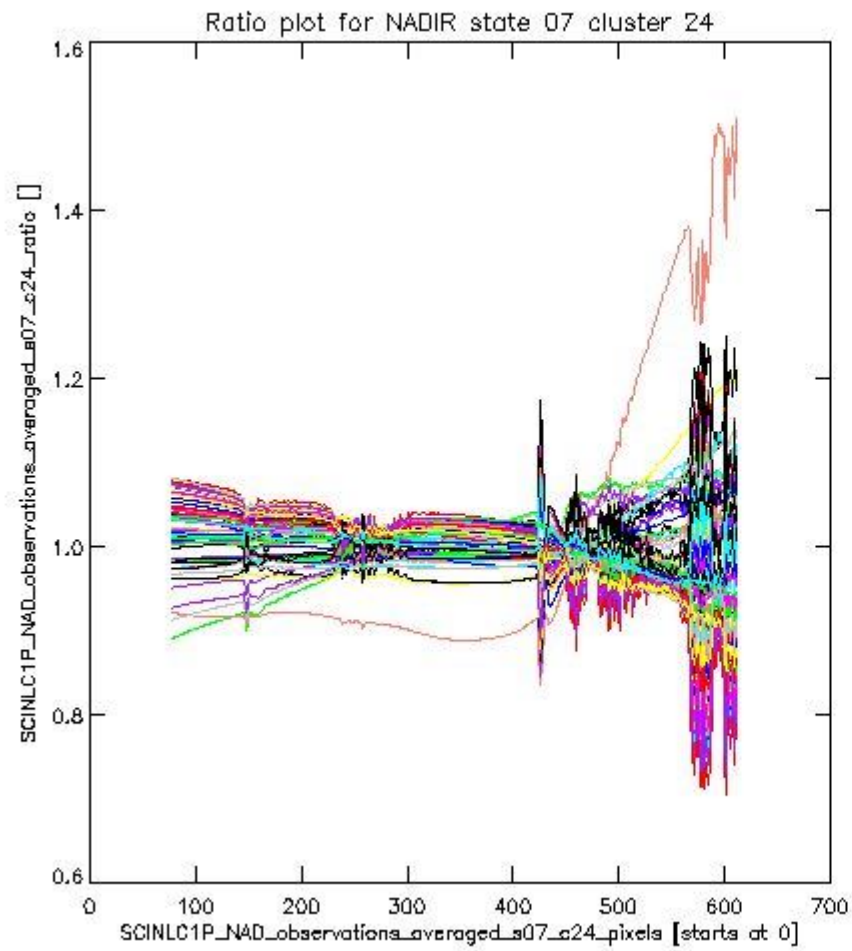
sciamachy_l1b_source_packet_report_SCIA_7_04_U_20110301_5.PNG

1.2.4 NADIR state 07 cluster 24 The data for the analysis of NADIR state 07 cluster 24 have the following characteristics:

Item	Value
Start time of first sample	01MAR2011 01:19:18.540
Start time of last sample	01MAR2011 23:11:34.022
Reference period start time	30JAN2011 01:21:56.525
Reference period stop time	28FEB2011 23:48:24.598
Channel number	4
First pixel number (starts at 0)	78
Last pixel number (starts at 0)	612



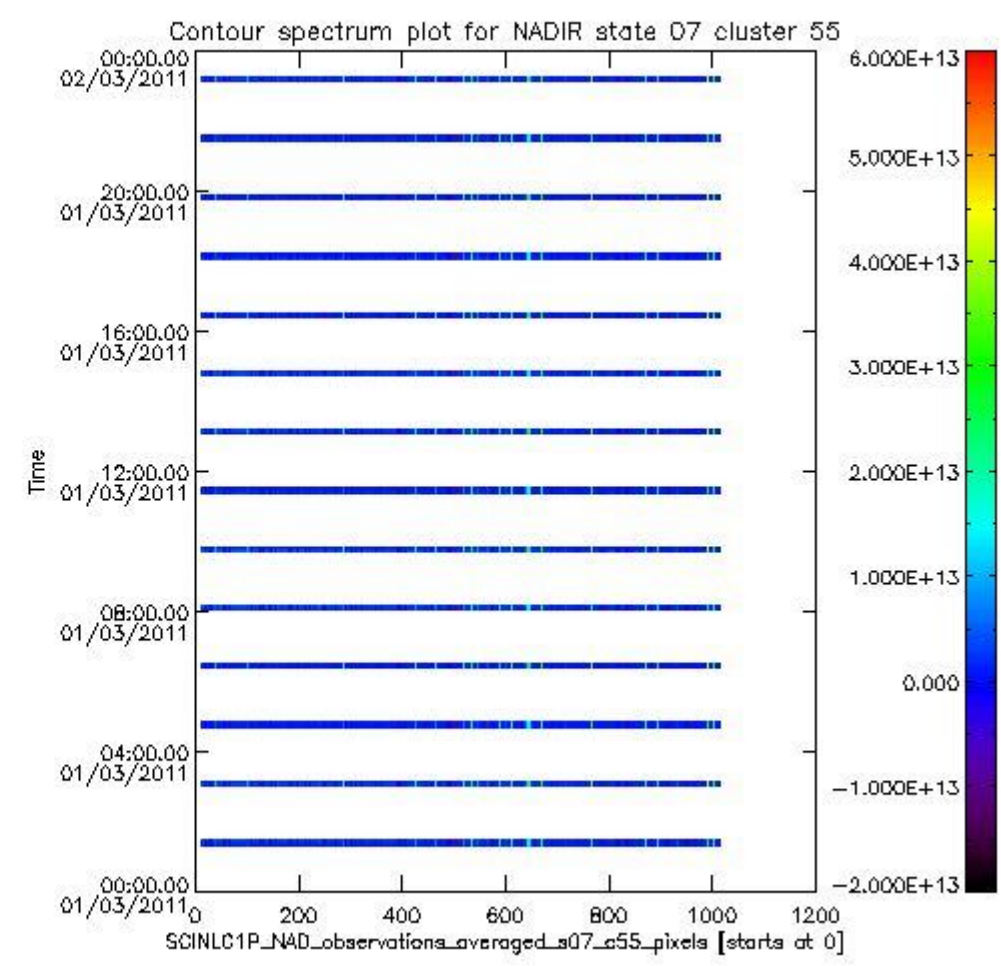
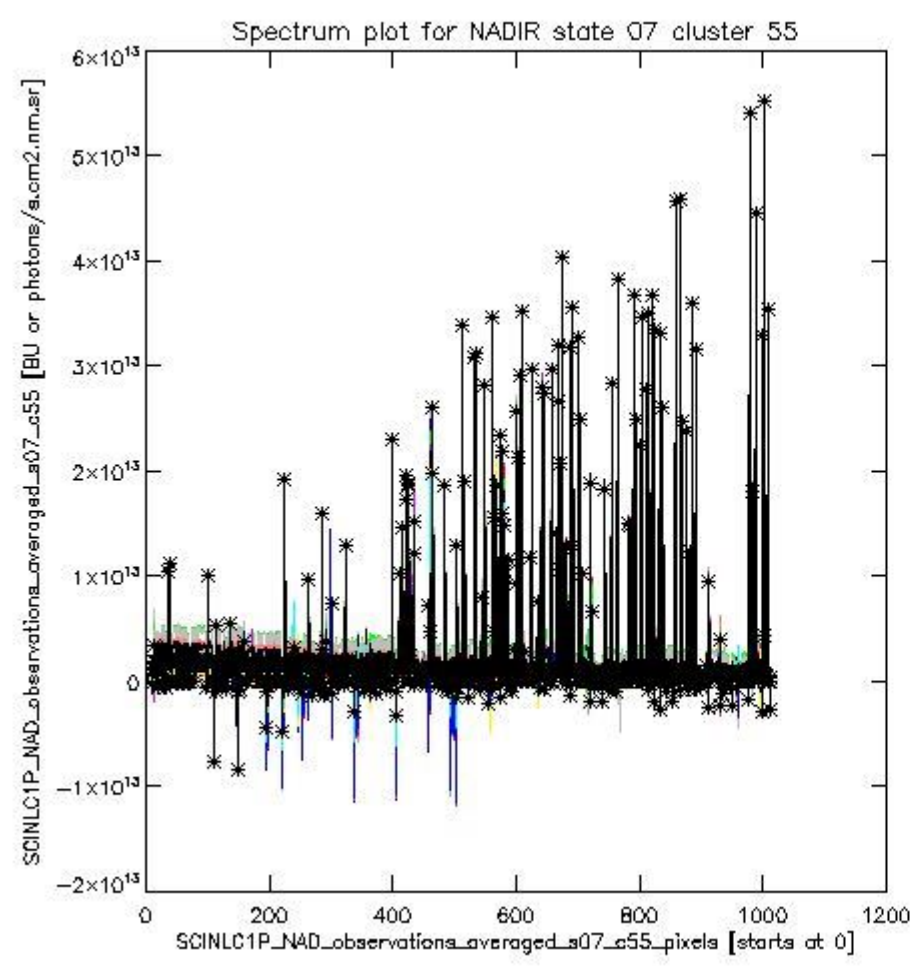
sciamachy_i1b_source_packet_report_SCIA_7_04_U_20110301_6.PNG



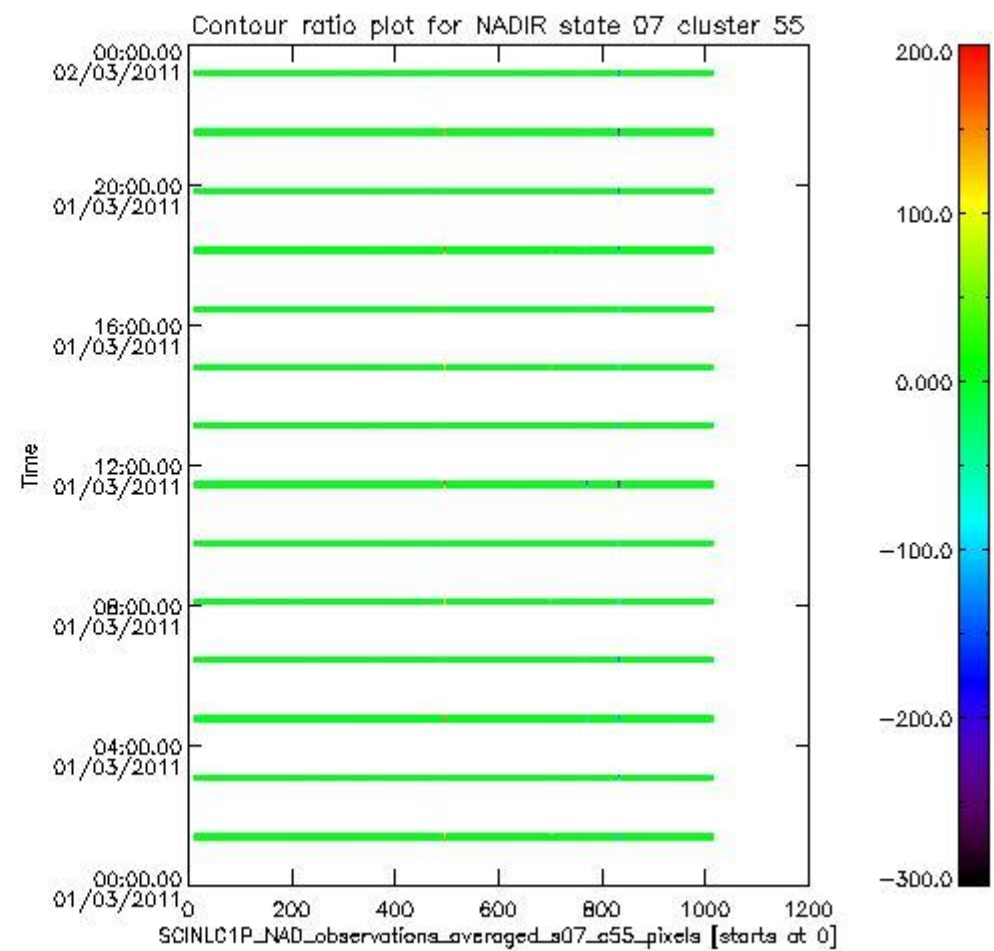
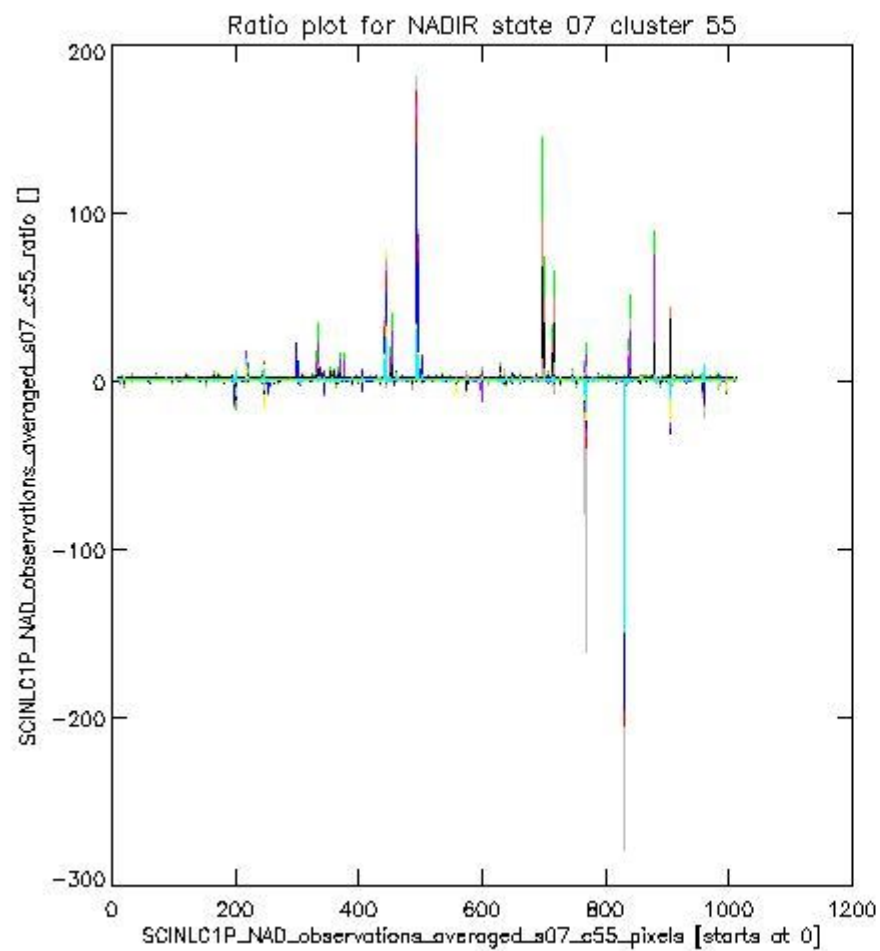
sciamachy_l1b_source_packet_report_SCIA_7_04_U_20110301_7.PNG

1.2.5 NADIR state 07 cluster 55 The data for the analysis of NADIR state 07 cluster 55 have the following characteristics:

Item	Value
Start time of first sample	01MAR2011 01:19:18.540
Start time of last sample	01MAR2011 23:11:34.022
Reference period start time	30JAN2011 01:21:56.525
Reference period stop time	28FEB2011 23:48:24.598
Channel number	8
First pixel number (starts at 0)	10
Last pixel number (starts at 0)	1013



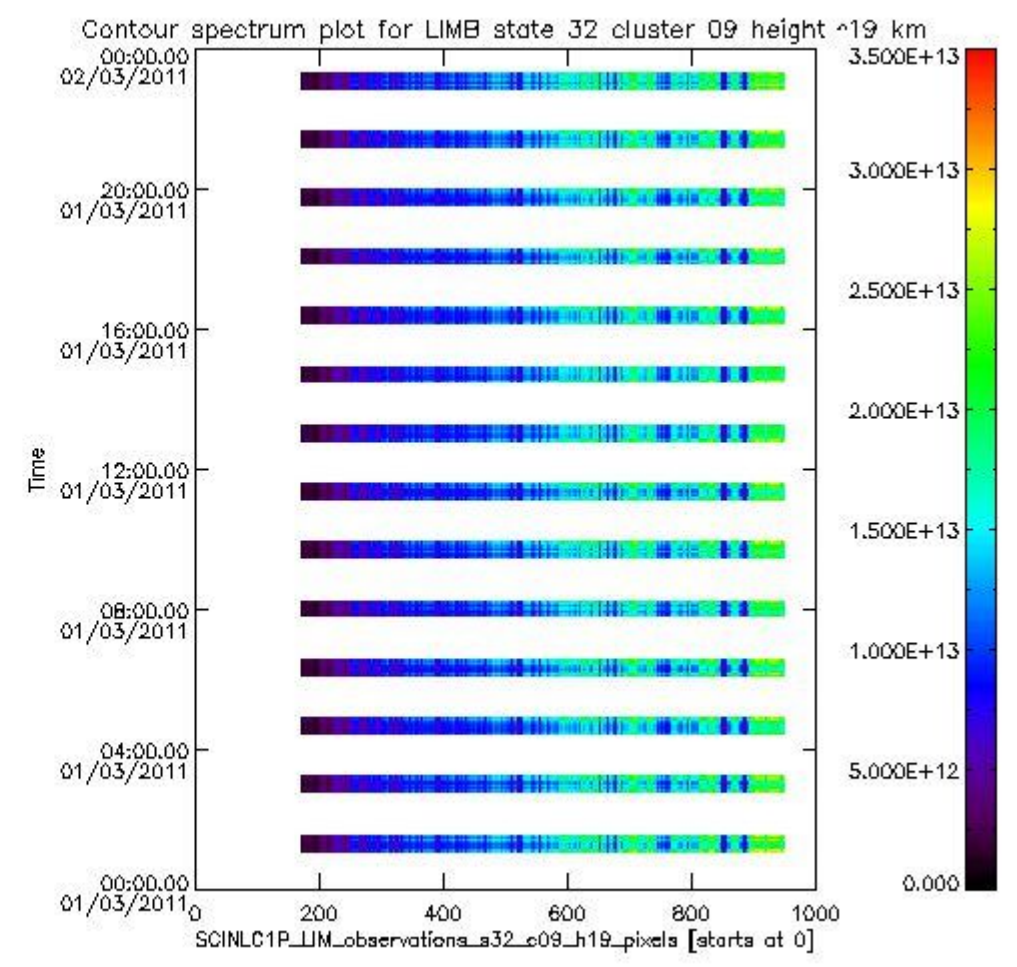
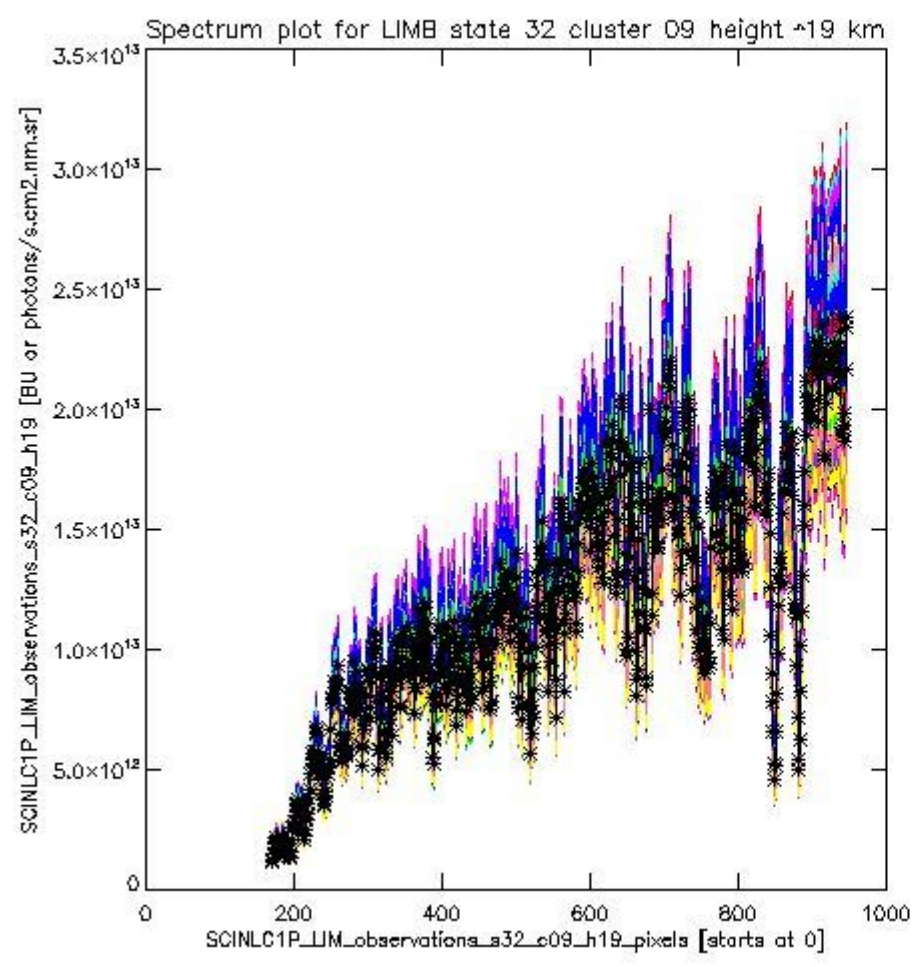
sciamachy_i1b_source_packet_report_SCIA_7_04_U_20110301_8.PNG



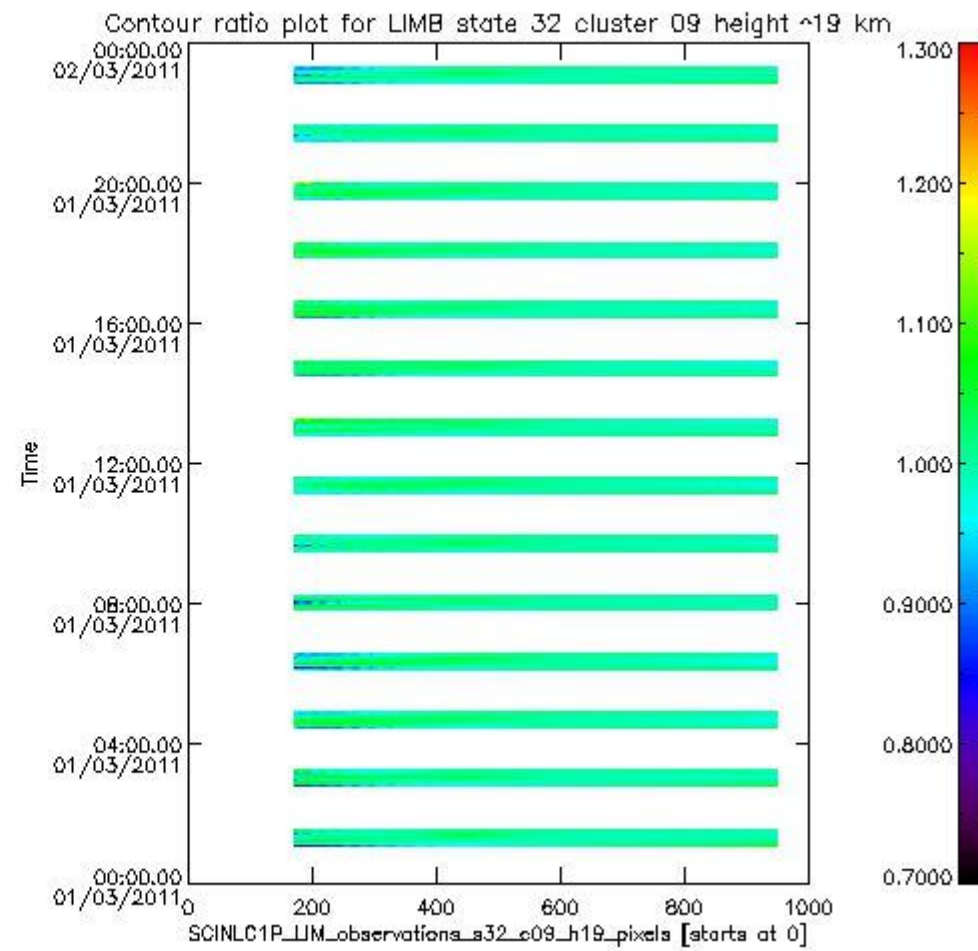
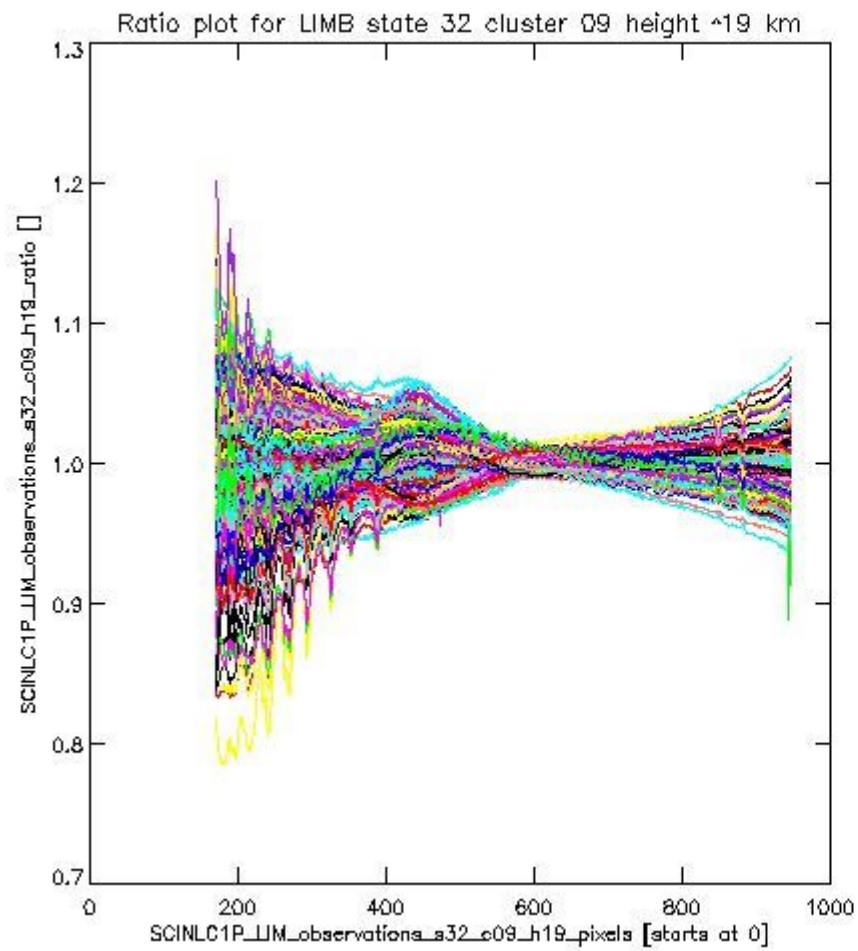
sciamachy_l1b_source_packet_report_SCIA_7_04_U_20110301_9.PNG

1.2.6 LIMB state 32 cluster 09 height ~19 km The data for the analysis of LIMB state 32 cluster 09 height ~19 km have the following characteristics:

Item	Value
Start time of first sample	01MAR2011 01:06:07.903
Start time of last sample	01MAR2011 23:16:48.065
Reference period start time	30JAN2011 01:08:45.884
Reference period stop time	28FEB2011 23:53:38.641
Channel number	2
First pixel number (starts at 0)	170
Last pixel number (starts at 0)	947



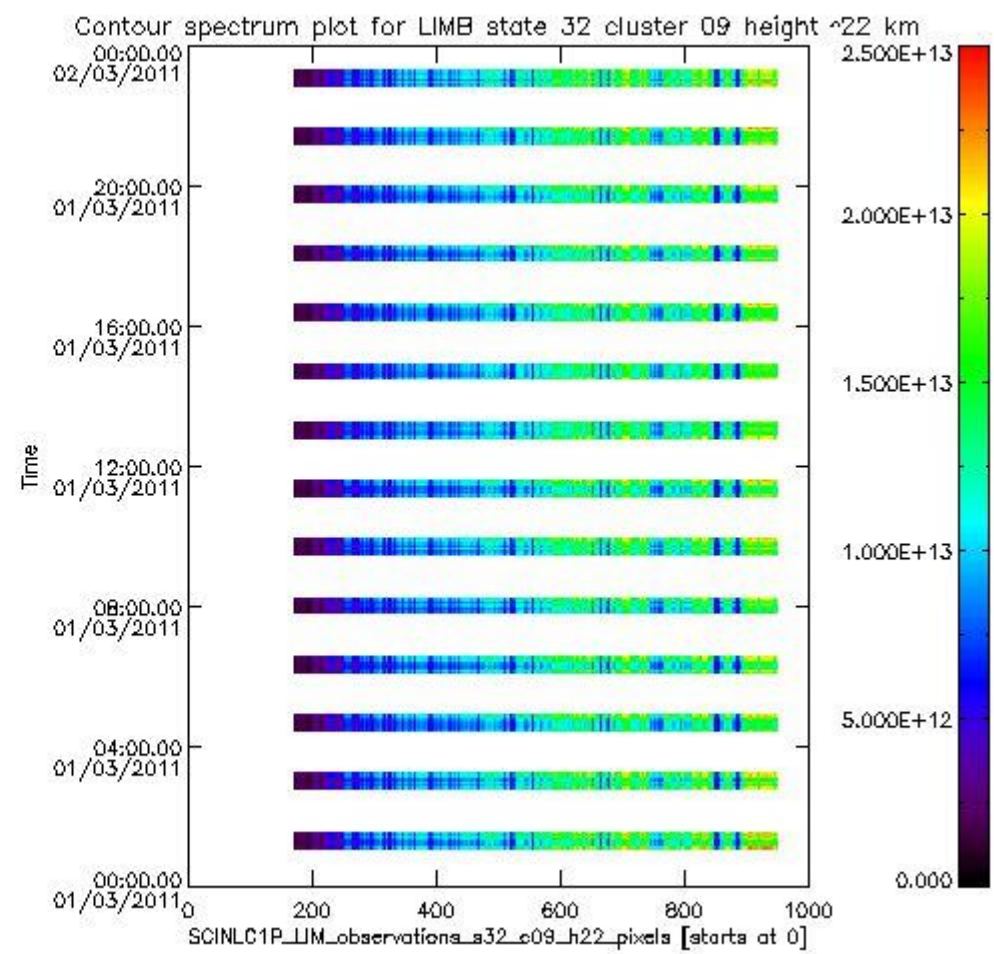
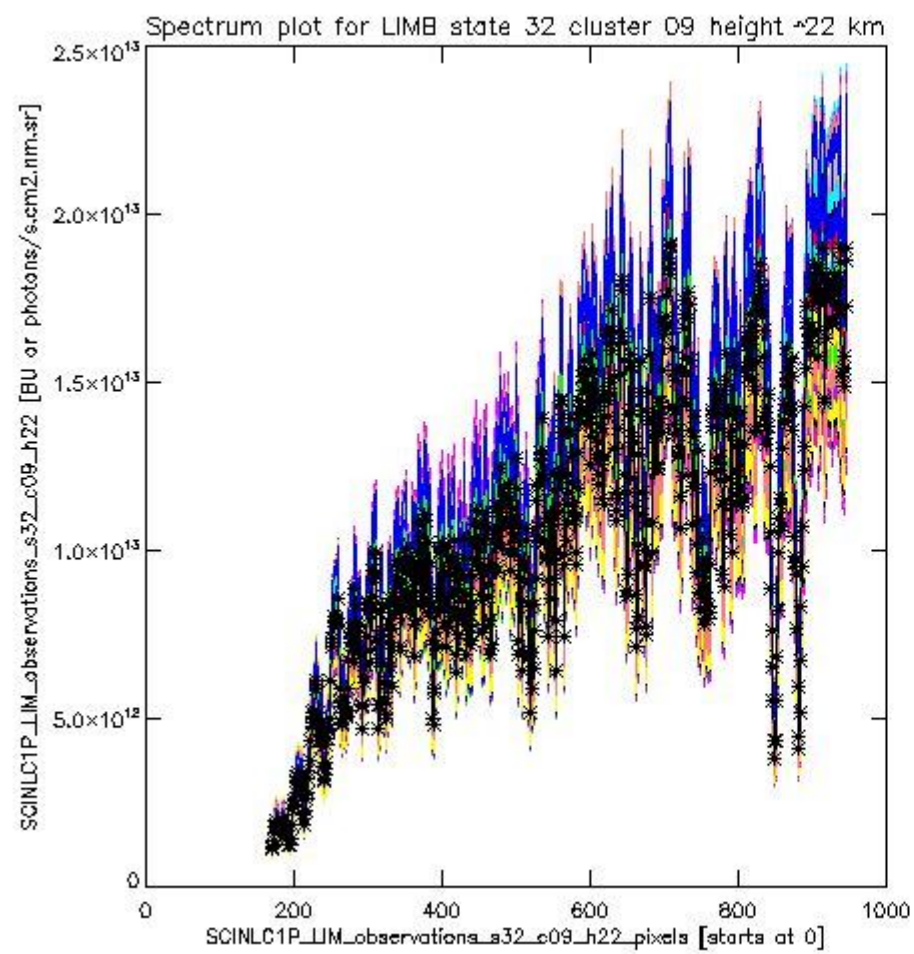
sciamachy_i1b_source_packet_report_SCIA_7_04_U_20110301_10.PNG

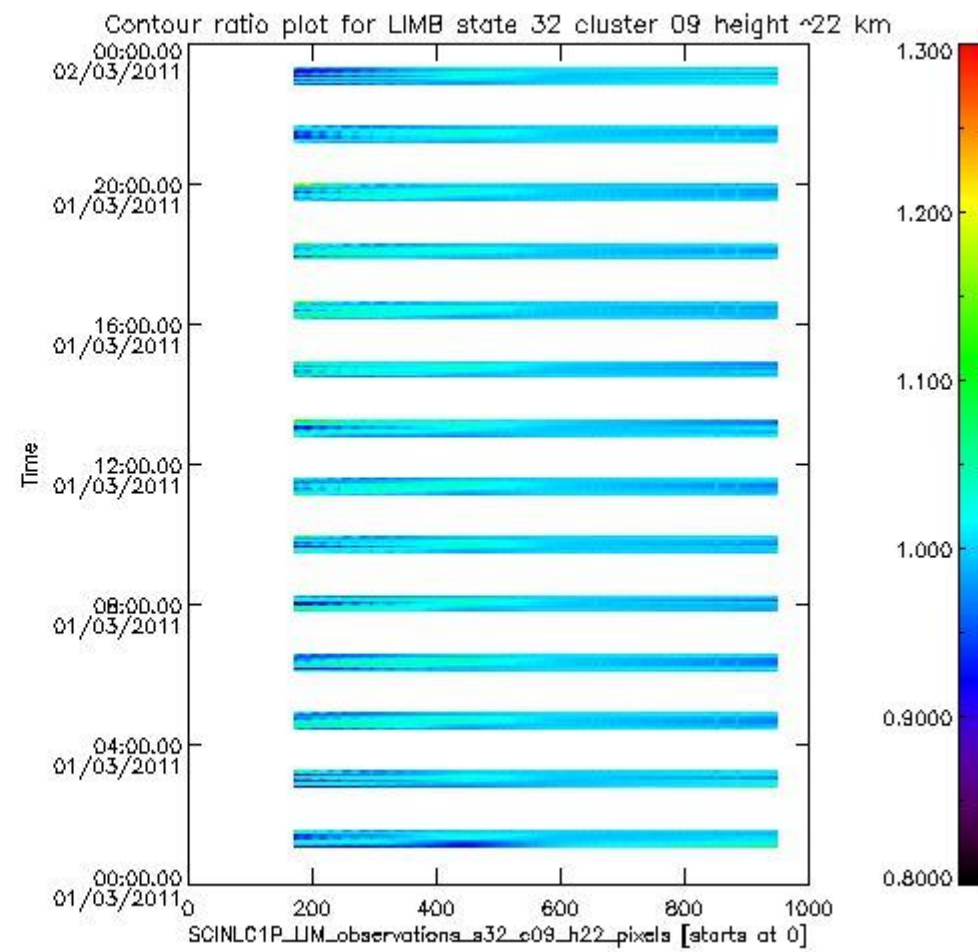
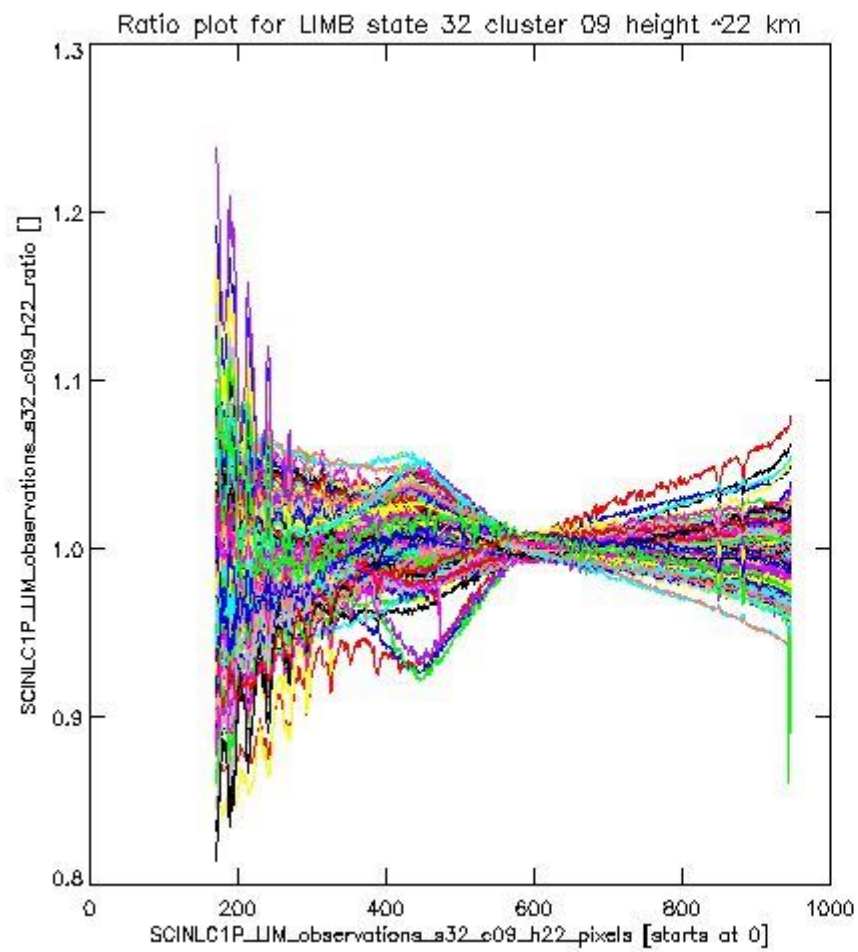


sciamachy_l1b_source_packet_report_SCIA_7_04_U_20110301_11.PNG

1.2.7 LIMB state 32 cluster 09 height ~22 km The data for the analysis of LIMB state 32 cluster 09 height ~22 km have the following characteristics:

Item	Value
Start time of first sample	01MAR2011 01:06:07.903
Start time of last sample	01MAR2011 23:16:48.065
Reference period start time	30JAN2011 01:08:45.884
Reference period stop time	28FEB2011 23:53:38.641
Channel number	2
First pixel number (starts at 0)	170
Last pixel number (starts at 0)	947

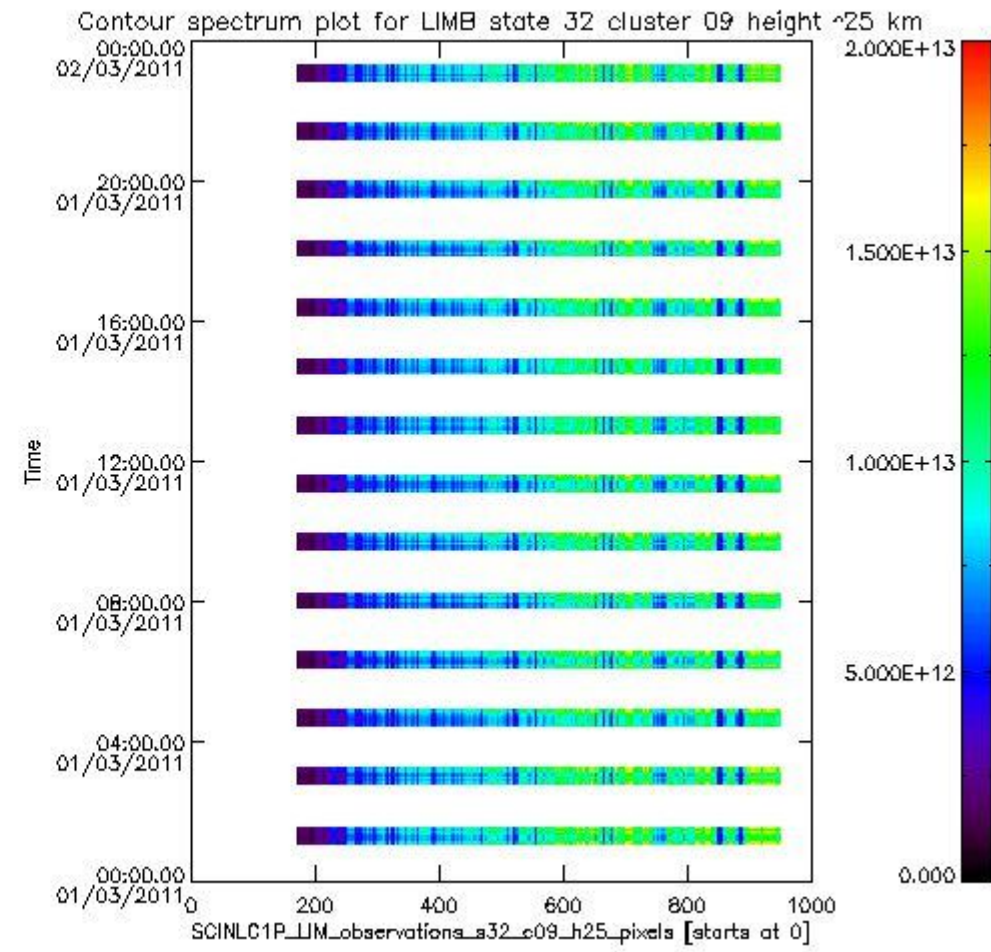
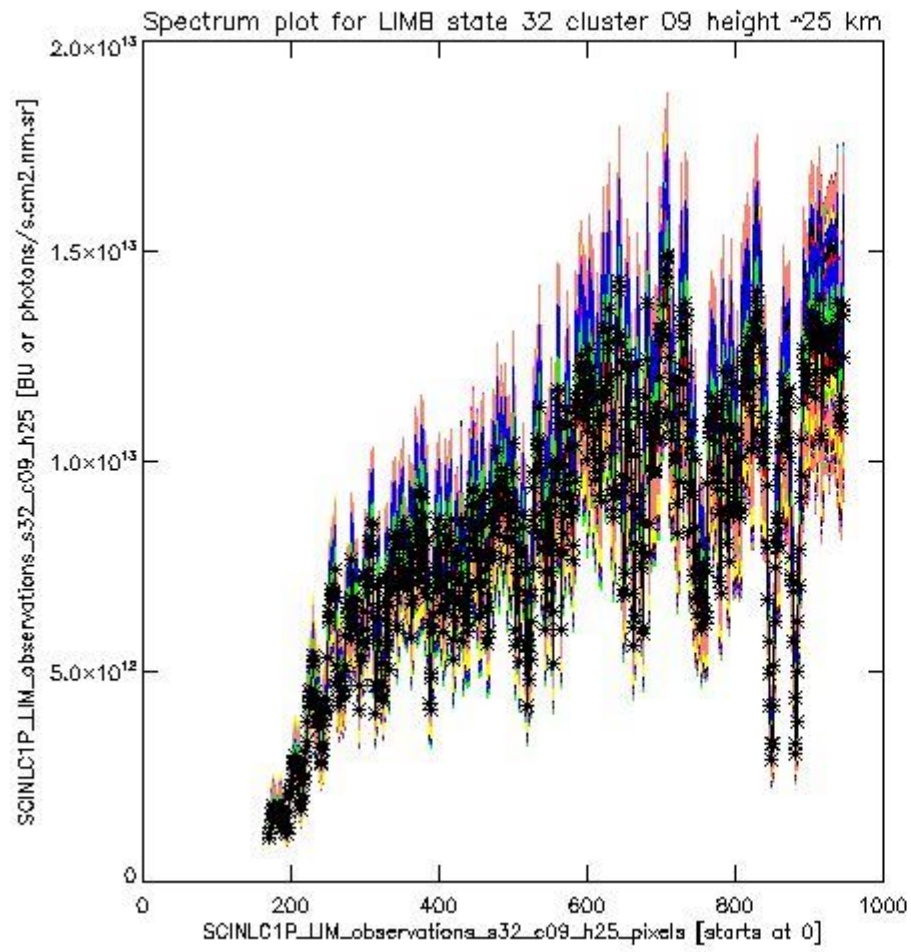




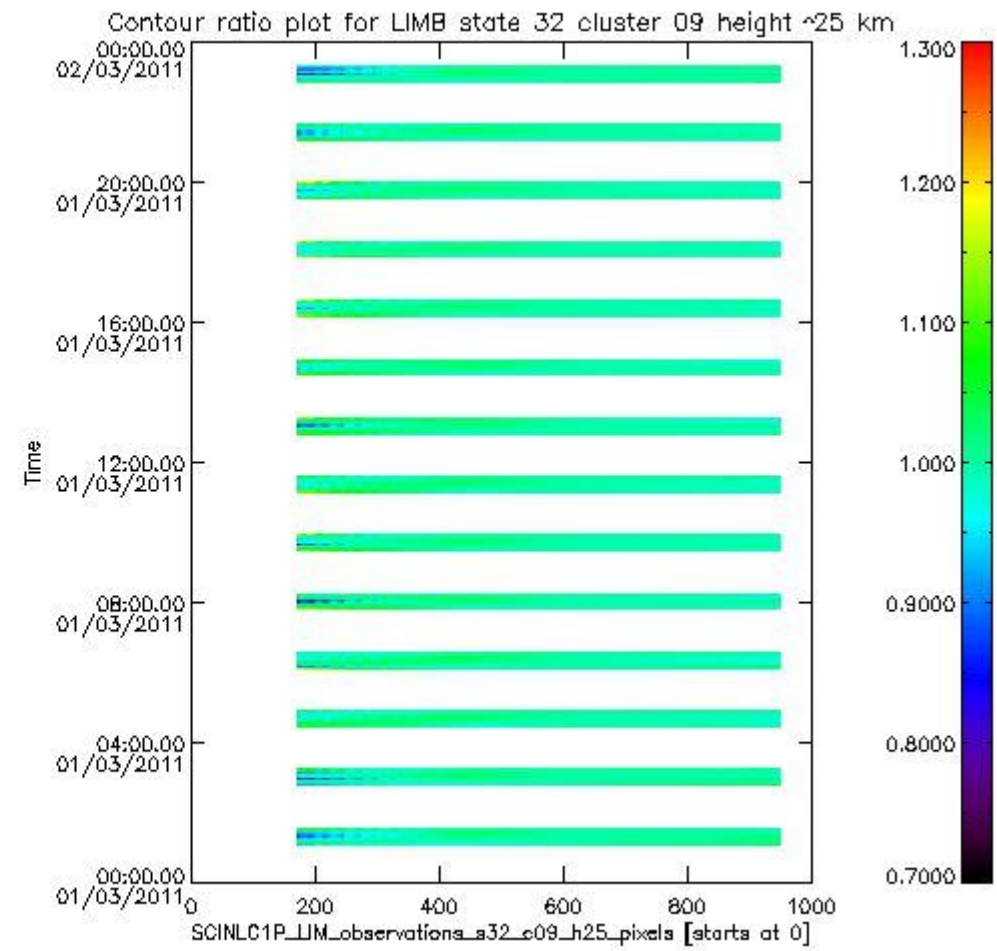
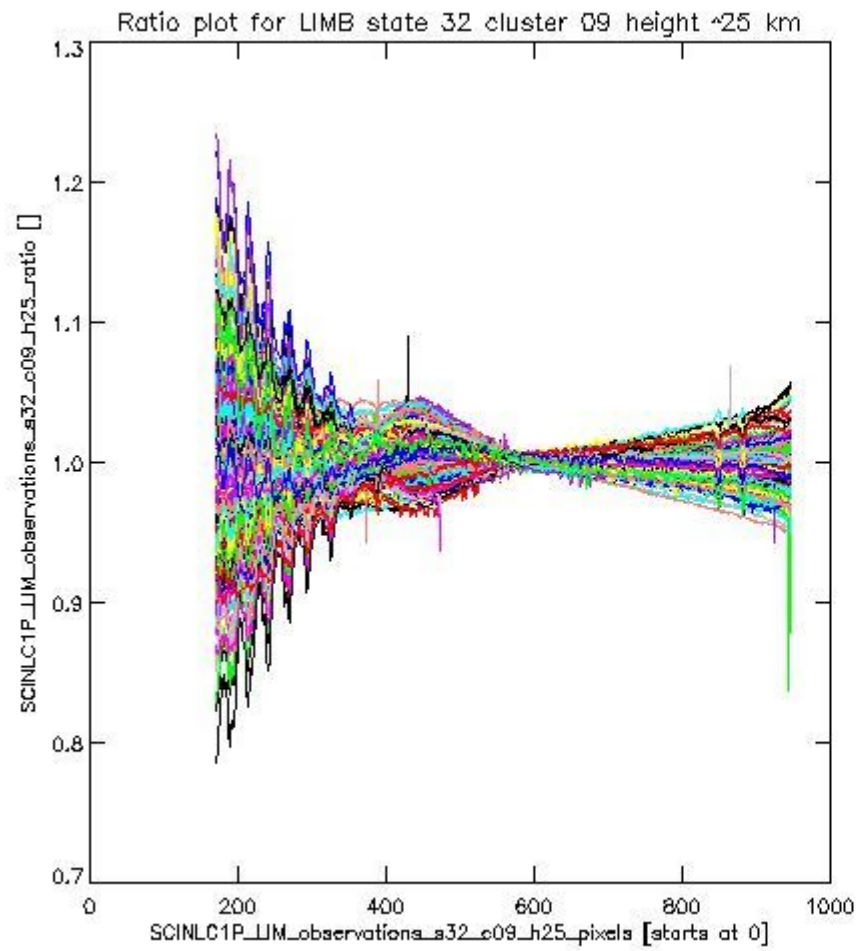
sciamachy_l1b_source_packet_report_SCIA_7_04_U_20110301_13.PNG

1.2.8 LIMB state 32 cluster 09 height ~25 km The data for the analysis of LIMB state 32 cluster 09 height ~25 km have the following characteristics:

Item	Value
Start time of first sample	01MAR2011 01:06:07.903
Start time of last sample	01MAR2011 23:16:48.065
Reference period start time	30JAN2011 01:08:45.884
Reference period stop time	28FEB2011 23:53:38.641
Channel number	2
First pixel number (starts at 0)	170
Last pixel number (starts at 0)	947



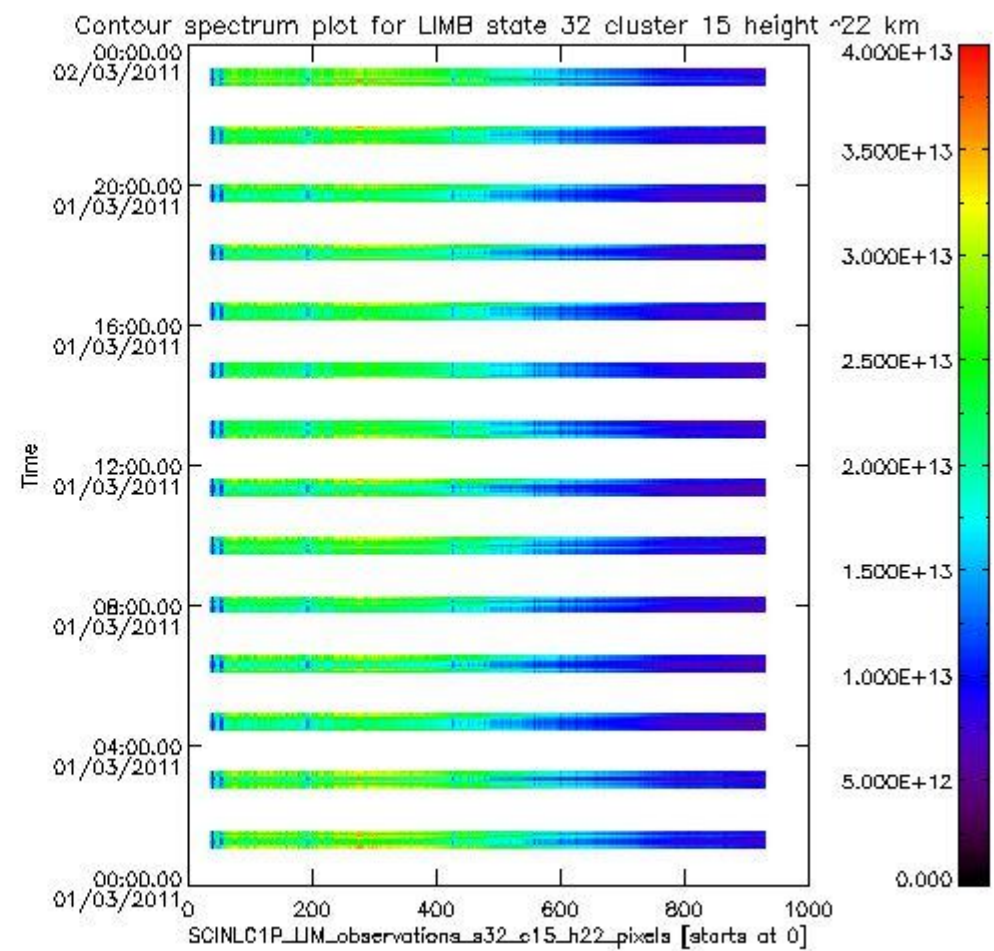
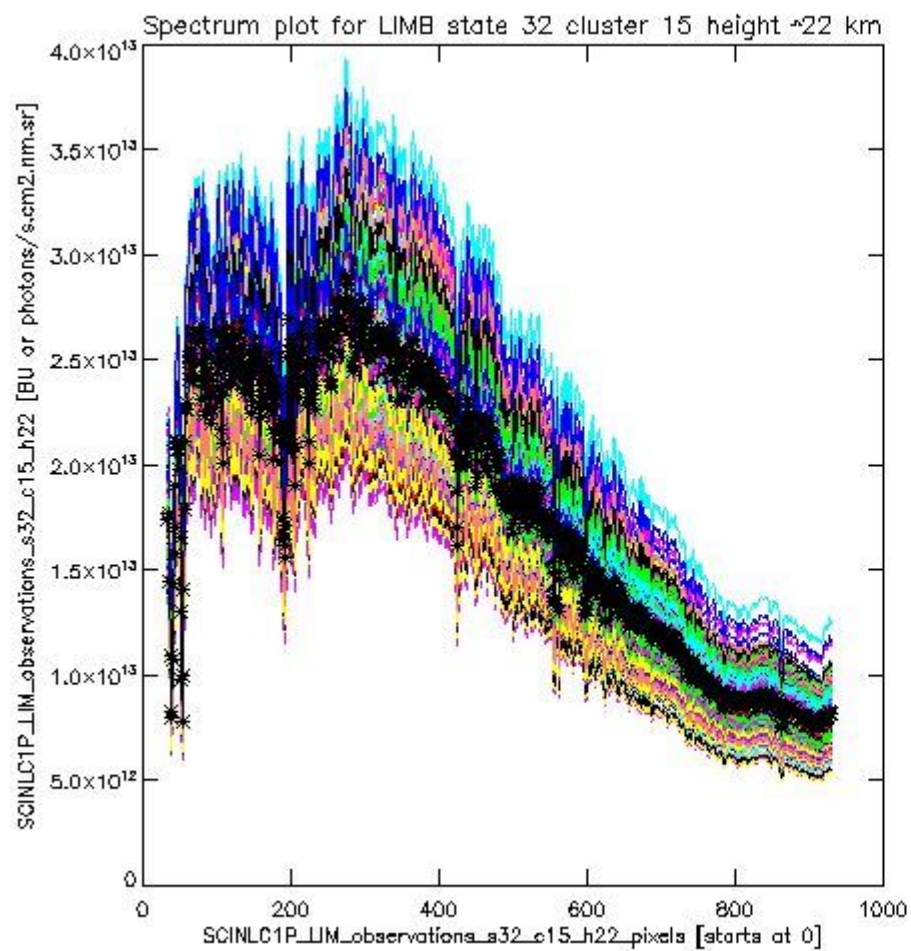
sciamachy_l1b_source_packet_report_SCIA_7_04_U_20110301_14.PNG



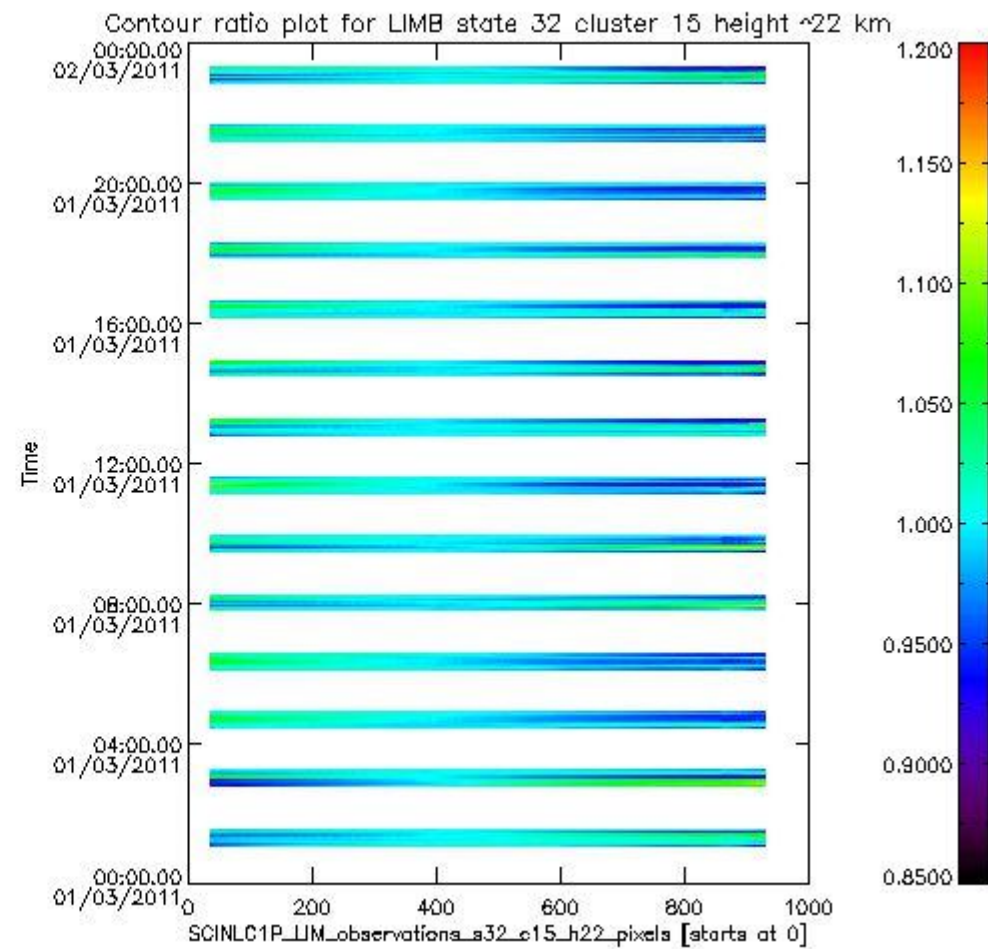
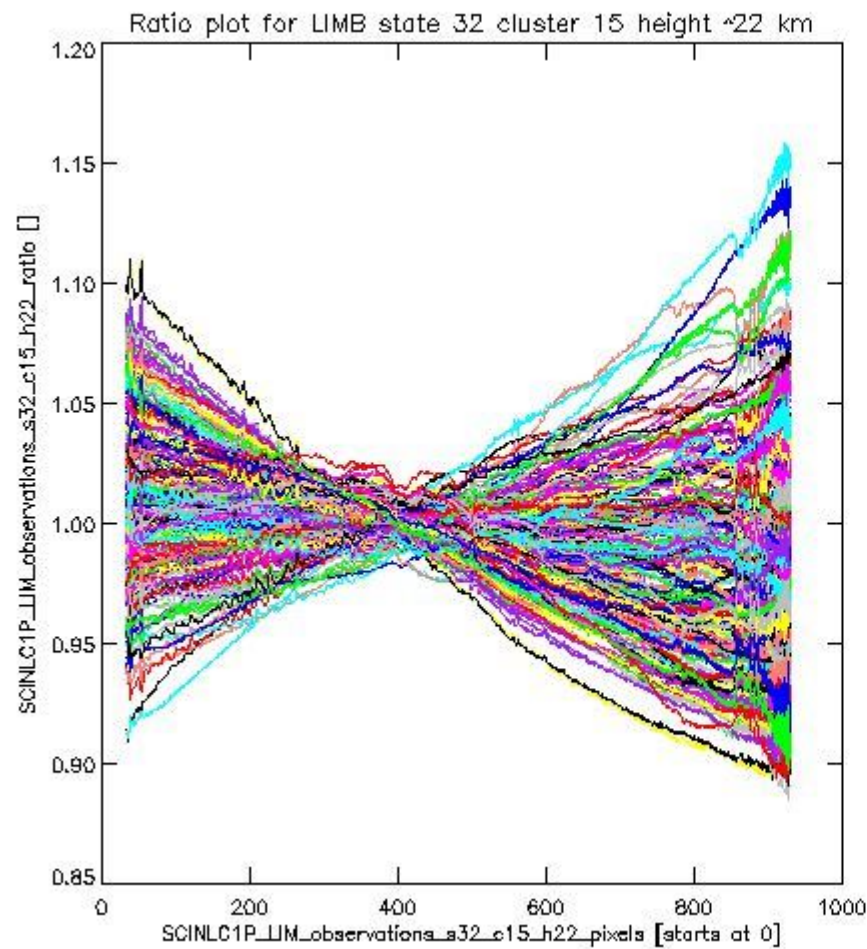
sciamachy_l1b_source_packet_report_SCIA_7_04_U_20110301_15.PNG

1.2.9 LIMB state 32 cluster 15 height ~22 km The data for the analysis of LIMB state 32 cluster 15 height ~22 km have the following characteristics:

Item	Value
Start time of first sample	01MAR2011 01:06:07.903
Start time of last sample	01MAR2011 23:16:48.065
Reference period start time	30JAN2011 01:08:45.884
Reference period stop time	28FEB2011 23:53:38.641
Channel number	3
First pixel number (starts at 0)	33
Last pixel number (starts at 0)	929



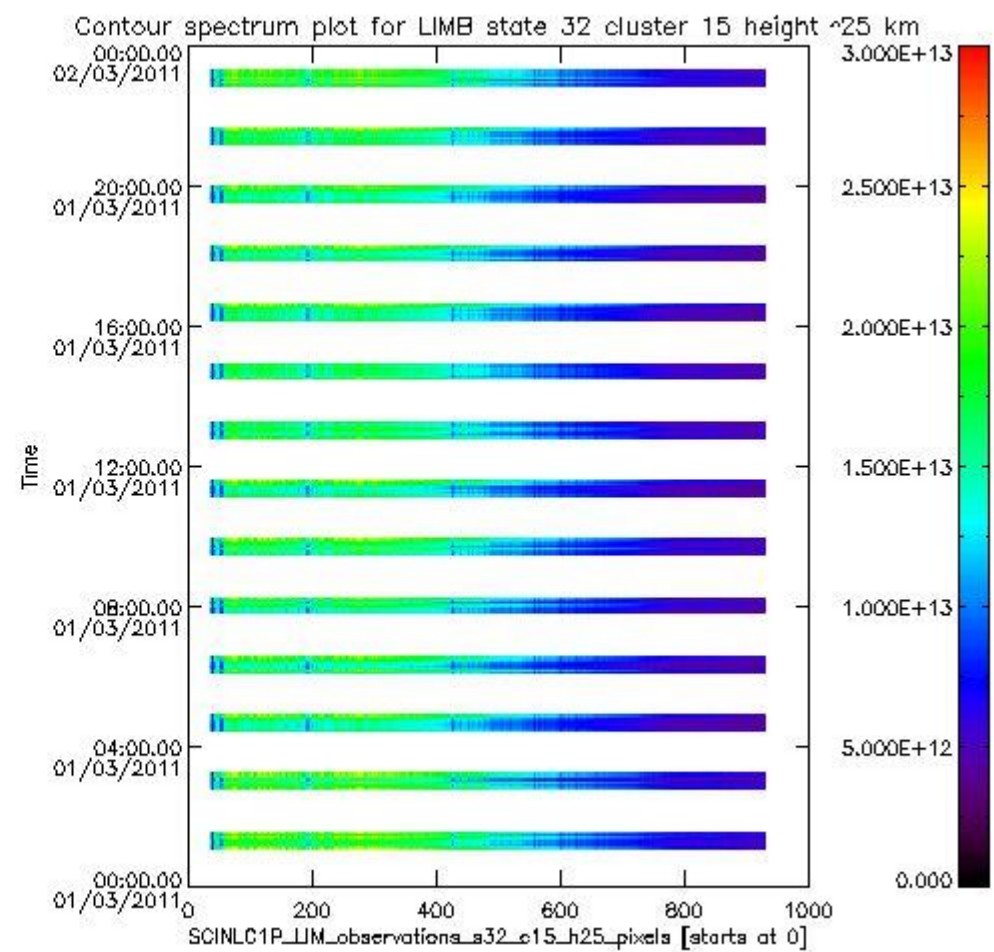
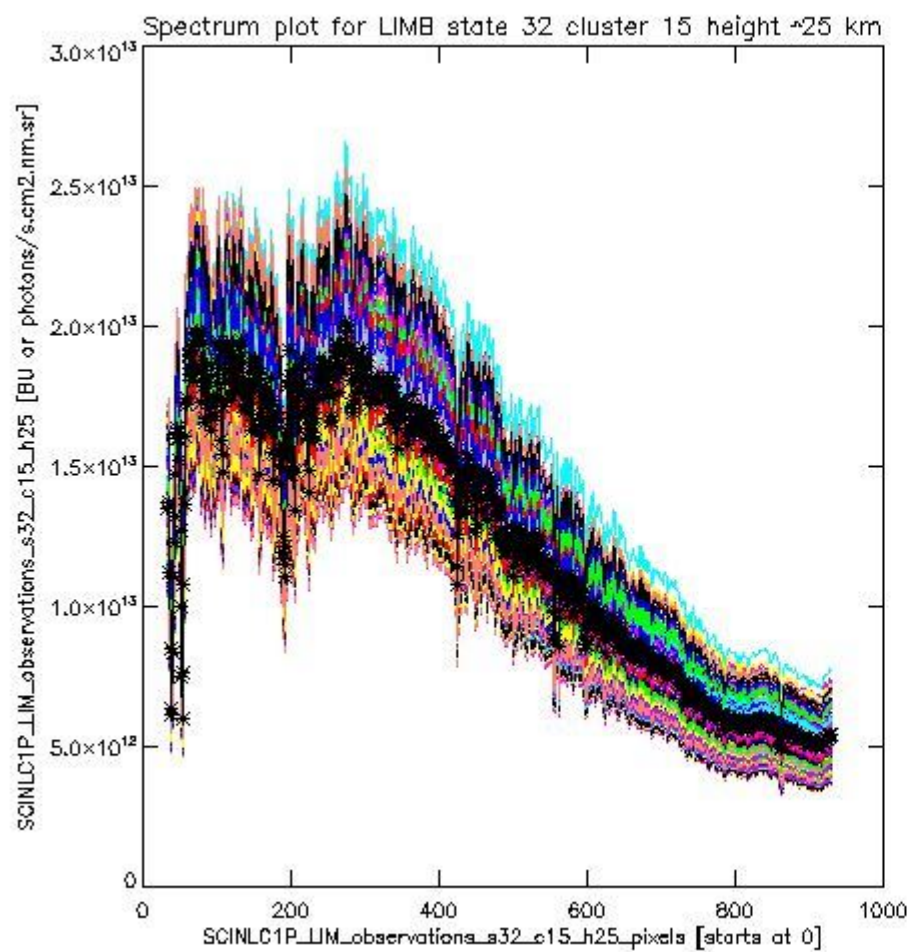
sciamachy_i1b_source_packet_report_SCIA_7_04_U_20110301_16.PNG



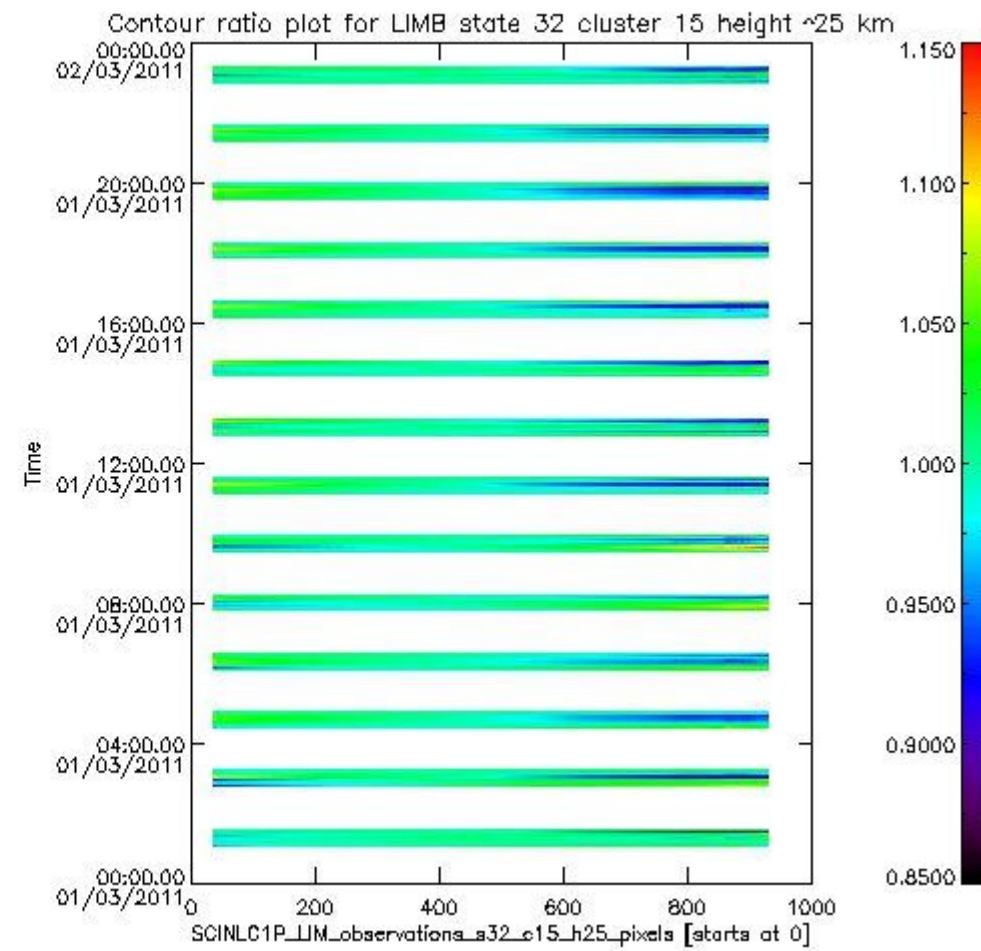
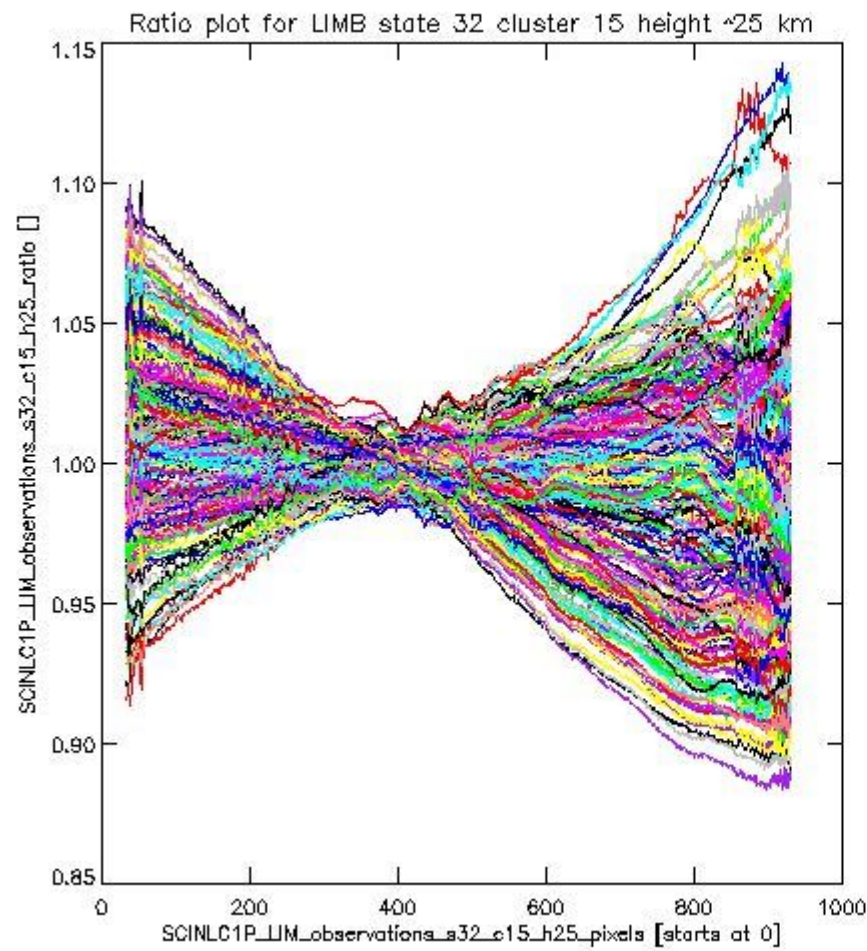
sciamachy_11b_source_packet_report_SCIA_7_04_U_20110301_17.PNG

1.2.10 LIMB state 32 cluster 15 height ~25 km The data for the analysis of LIMB state 32 cluster 15 height ~25 km have the following characteristics:

Item	Value
Start time of first sample	01MAR2011 01:06:07.903
Start time of last sample	01MAR2011 23:16:48.065
Reference period start time	30JAN2011 01:08:45.884
Reference period stop time	28FEB2011 23:53:38.641
Channel number	3
First pixel number (starts at 0)	33
Last pixel number (starts at 0)	929



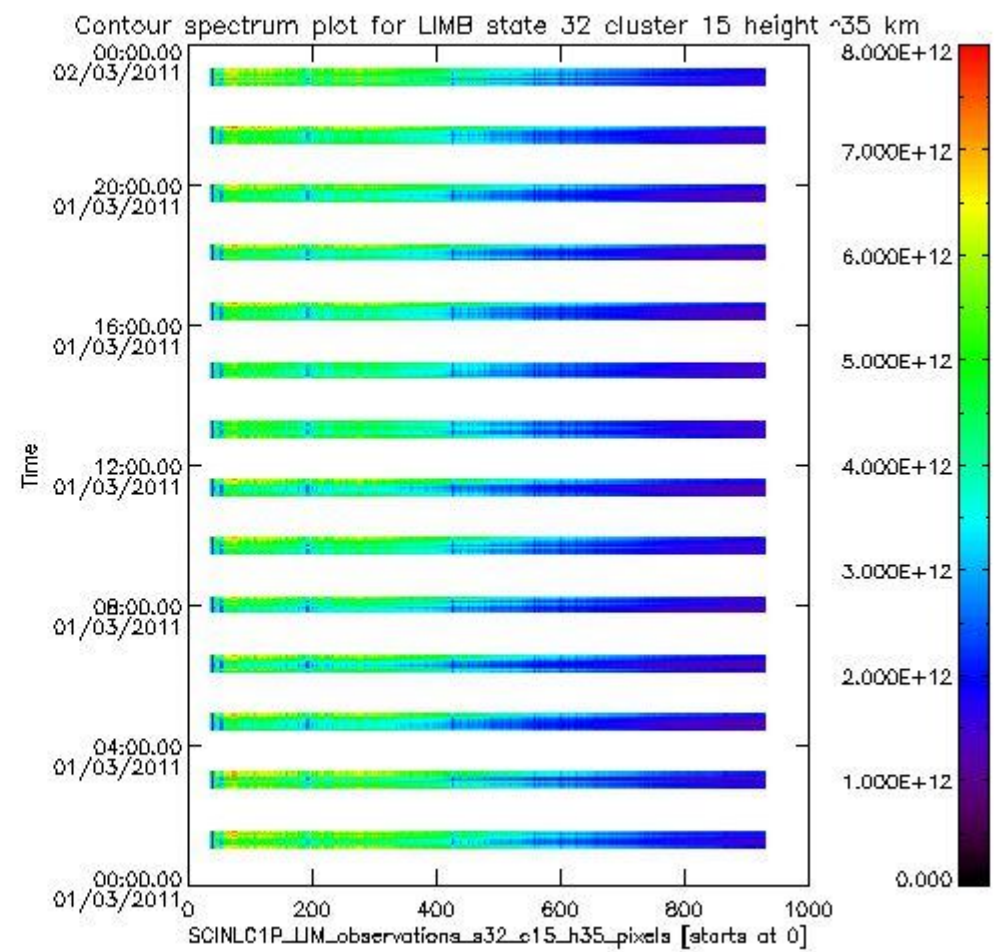
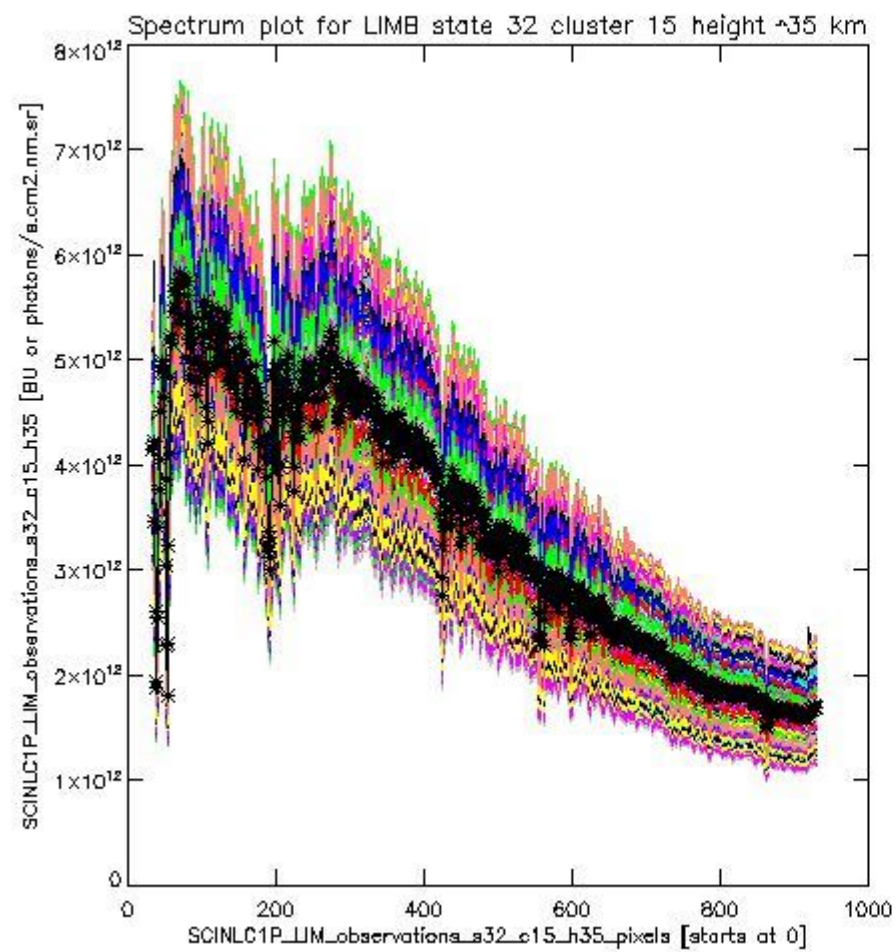
sciamachy_l1b_source_packet_report_SCIA_7_04_U_20110301_18.PNG



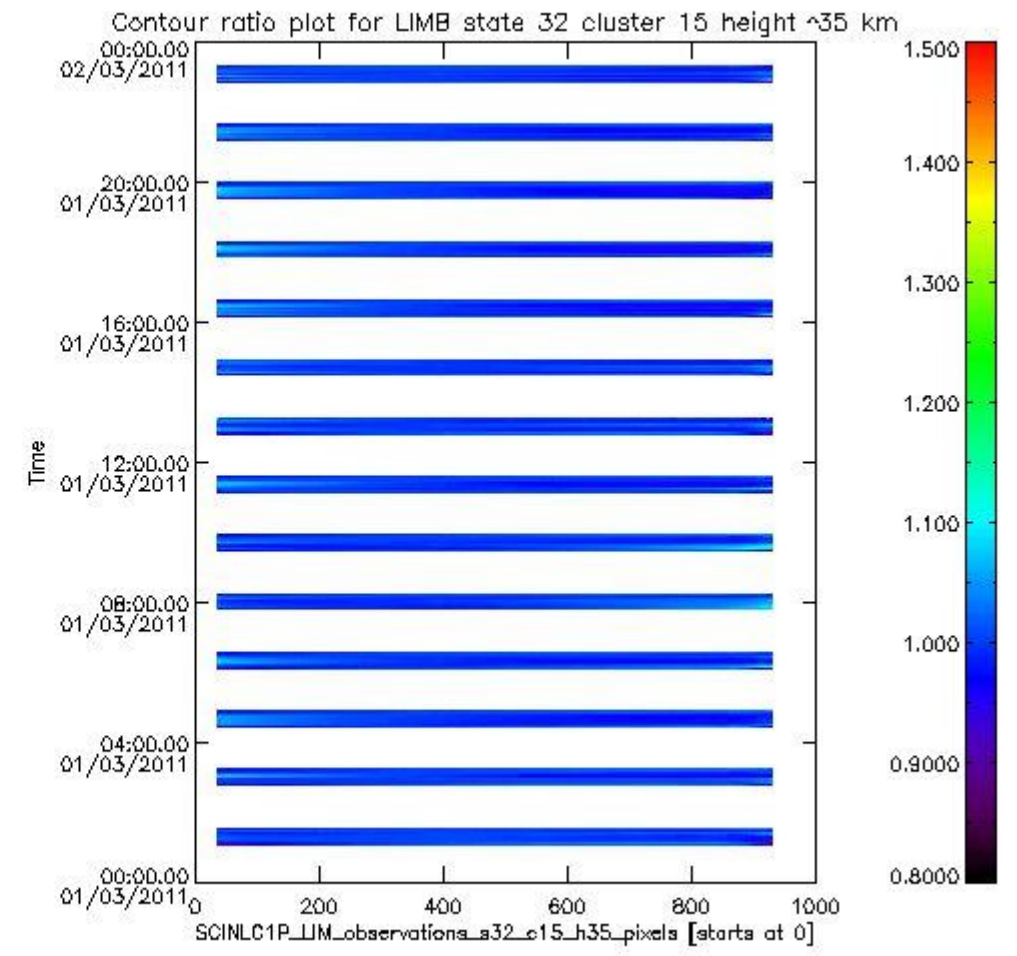
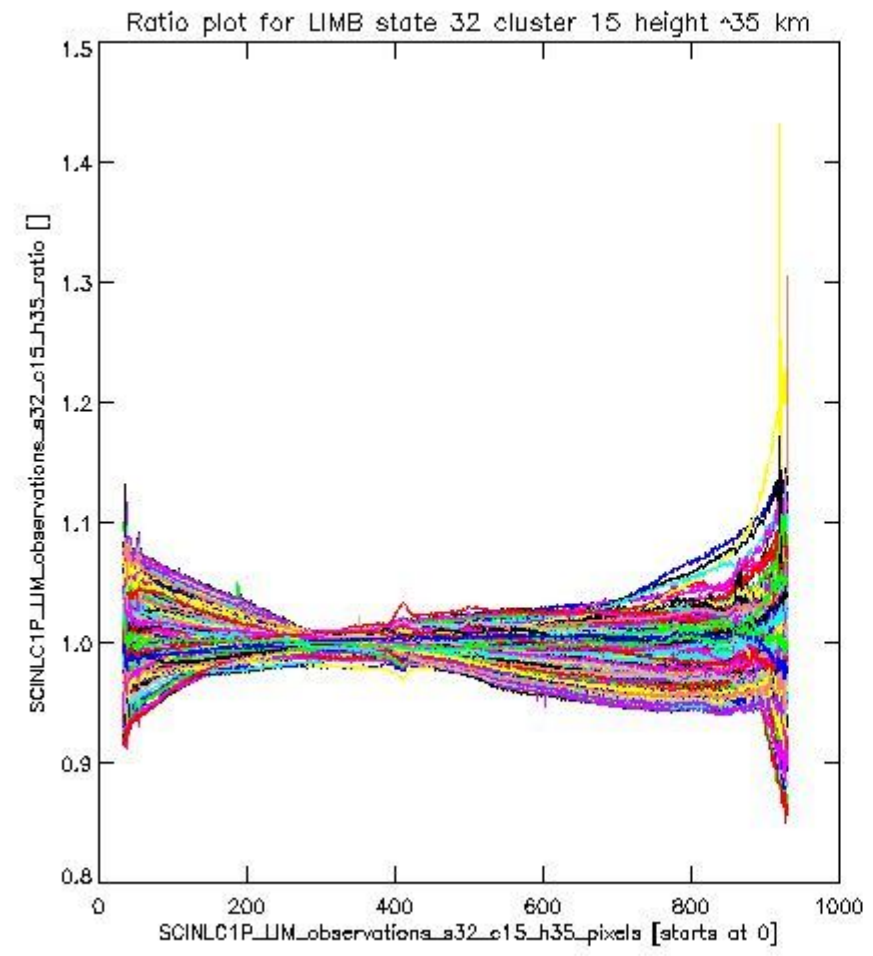
sciamachy_11b_source_packet_report_SCIA_7_04_U_20110301_19.PNG

1.2.11 LIMB state 32 cluster 15 height ~35 km The data for the analysis of LIMB state 32 cluster 15 height ~35 km have the following characteristics:

Item	Value
Start time of first sample	01MAR2011 01:06:07.903
Start time of last sample	01MAR2011 23:16:48.065
Reference period start time	30JAN2011 01:08:45.884
Reference period stop time	28FEB2011 23:53:38.641
Channel number	3
First pixel number (starts at 0)	33
Last pixel number (starts at 0)	929



sciamachy_11b_source_packet_report_SCIA_7_04_U_20110301_20.PNG



sciamachy_i1b_source_packet_report_SCIA_7_04_U_20110301_21.PNG

