

1. SCIAMACHY Level 1B source packet monitoring report

[1.1. General Info](#)

[1.2 Source packet monitoring](#)

1.1 General Info

This report contains results of the analysis on source packets from SCIAMACHY level 1 data (The SCI_NL__1P product).

1.1.1 Report summary

The table below shows general characteristics of the data that are included into this report.

Item	Value
Report version	1.1 (07-01-2010)
Time of report generation	16FEB2011 06:55:33
Data source version	SCIA/7.04-U
Processing scope for products	05FEB2011 00:00:00 to 06FEB2011 00:00:00
Start time of first product within scope	04FEB2011 22:49:09
Stop time of last product within scope	06FEB2011 01:02:48
Total number of level 1 products	16
Number of level 1 products with errors	0
SCIAL1C executable used in processing	scial1c-2.1.73-i686-pc-linux-gnu-gcc-3.3.6
SCIAL1C parameters used in processing	-allcal -type all -cat 1,2,8,10,11,16,19,23 -nadircluster 8,9,15,24,55 -limbcluster 9,15

1.1.2 Source packet summary

The table below shows which source packets have been included into the report.

Item	Mode	State	Cluster	Height	First start time	Last start time
0	NADIR	07	08	N/A	05FEB2011 01:01:25.892	05FEB2011 22:53:41.996
1	NADIR	07	09	N/A	05FEB2011 01:01:25.892	05FEB2011 22:53:41.996
2	NADIR	07	15	N/A	05FEB2011 01:01:25.892	05FEB2011 22:53:41.996
3	NADIR	07	24	N/A	05FEB2011 01:01:25.892	05FEB2011 22:53:41.996
4	NADIR	07	55	N/A	05FEB2011 01:01:25.892	05FEB2011 22:53:41.996
5	LIMB	32	09	~19 km	05FEB2011 00:48:15.255	05FEB2011 22:58:56.035
6	LIMB	32	09	~22 km	05FEB2011 00:48:15.255	05FEB2011 22:58:56.035
7	LIMB	32	09	~25 km	05FEB2011 00:48:15.255	05FEB2011 22:58:56.035
8	LIMB	32	15	~22 km	05FEB2011 00:48:15.255	05FEB2011 22:58:56.035
9	LIMB	32	15	~25 km	05FEB2011 00:48:15.255	05FEB2011 22:58:56.035
10	LIMB	32	15	~35 km	05FEB2011 00:48:15.255	05FEB2011 22:58:56.035

1.1.3 Summary per product

The following table shows a summary for each product used in this report.

Products are linked to a corresponding server directory for view/download. Note: Link access may be restricted by security settings of your internet browser or firewall.

#	Product name	Start time	Stop time	ProdErr	#nadir	#limb	#occ	#mon	#nopro	#cml_drk	#incmpl_drk	Decont
0	SCI_NLC_1CUDPA20110204_223406_000060413099_00145_46711_4323.N1	04FEB2011 22:49:09	04FEB2011 23:59:38	0	36	30	0	0	1	0	0	
1	SCI_NLC_1CUDPA20110205_001451_000059783099_00146_46712_4325.N1	05FEB2011 00:29:23	05FEB2011 01:39:37	0	35	31	0	0	1	0	0	
2	SCI_NLC_1CUDPA20110205_015433_000060413099_00147_46713_4327.N1	05FEB2011 02:09:36	05FEB2011 03:20:05	0	36	30	0	0	1	0	0	
3	SCI_NLC_1CUDPA20110205_033519_000059783099_00148_46714_4330.N1	05FEB2011 03:49:50	05FEB2011 05:00:05	0	35	31	0	0	1	0	0	
4	SCI_NLC_1CUDPA20110205_051501_000060413099_00149_46715_4332.N1	05FEB2011 05:30:04	05FEB2011 06:40:33	0	36	30	0	0	1	0	0	
5	SCI_NLC_1CUDPA20110205_065546_000059783099_00150_46716_4334.N1	05FEB2011 07:10:17	05FEB2011 08:20:32	0	35	31	0	0	1	0	0	

6	SCI_NLC_1CUDPA20110205_083528_000060413099_00151_46717_4336.N1	05FEB2011 08:50:31	05FEB2011 10:01:00	0	36	30	0	0	1	0	0	
7	SCI_NLC_1CUDPA20110205_101613_000059783099_00152_46718_4338.N1	05FEB2011 10:30:44	05FEB2011 11:40:59	0	35	31	0	0	1	0	0	
8	SCI_NLC_1CUDPA20110205_115555_000060413099_00153_46719_4340.N1	05FEB2011 12:10:58	05FEB2011 13:21:27	0	36	30	0	0	1	0	0	
9	SCI_NLC_1CUDPA20110205_133640_000059783099_00154_46720_4342.N1	05FEB2011 13:51:11	05FEB2011 15:01:26	0	35	31	0	0	1	0	0	
10	SCI_NLC_1CUDPA20110205_151622_000060413099_00155_46721_4344.N1	05FEB2011 15:31:25	05FEB2011 16:41:54	0	36	30	0	0	1	0	0	
11	SCI_NLC_1CUDPA20110205_165708_000059783099_00156_46722_4345.N1	05FEB2011 17:11:39	05FEB2011 18:22:15	0	35	31	0	1	1	0	0	
12	SCI_NLC_1CUDPA20110205_183650_000060413099_00157_46723_4346.N1	05FEB2011 18:51:52	05FEB2011 20:02:43	0	36	30	0	1	1	0	0	
13	SCI_NLC_1CUDPA20110205_201735_000059783099_00158_46724_4349.N1	05FEB2011 20:32:06	05FEB2011 21:42:20	0	35	31	0	0	1	0	0	
14	SCI_NLC_1CUDPA20110205_215717_000060413099_00159_46725_4361.N1	05FEB2011 22:12:19	05FEB2011 23:22:48	0	36	30	0	0	1	0	0	
15	SCI_NLC_1CUDPA20110205_233802_000059783099_00160_46726_4352.N1	05FEB2011 23:52:33	06FEB2011 01:02:48	0	35	31	0	0	1	0	0	

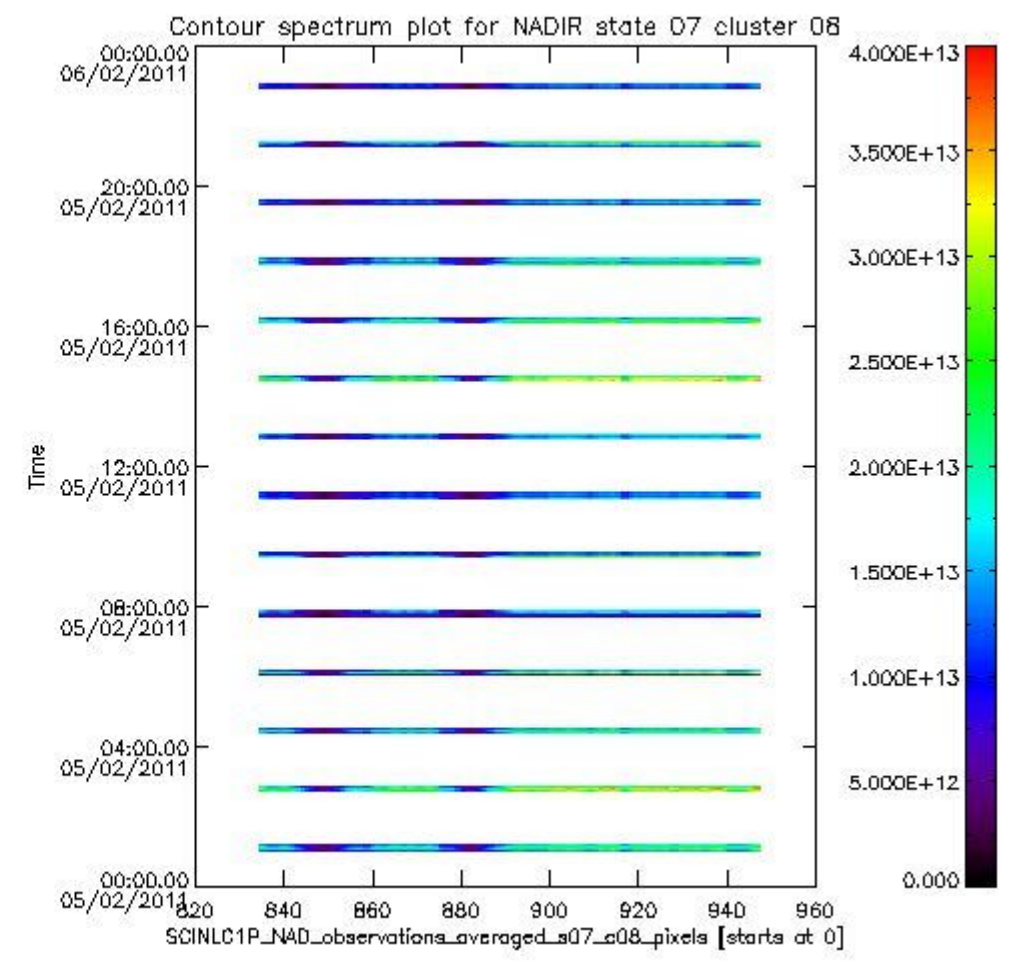
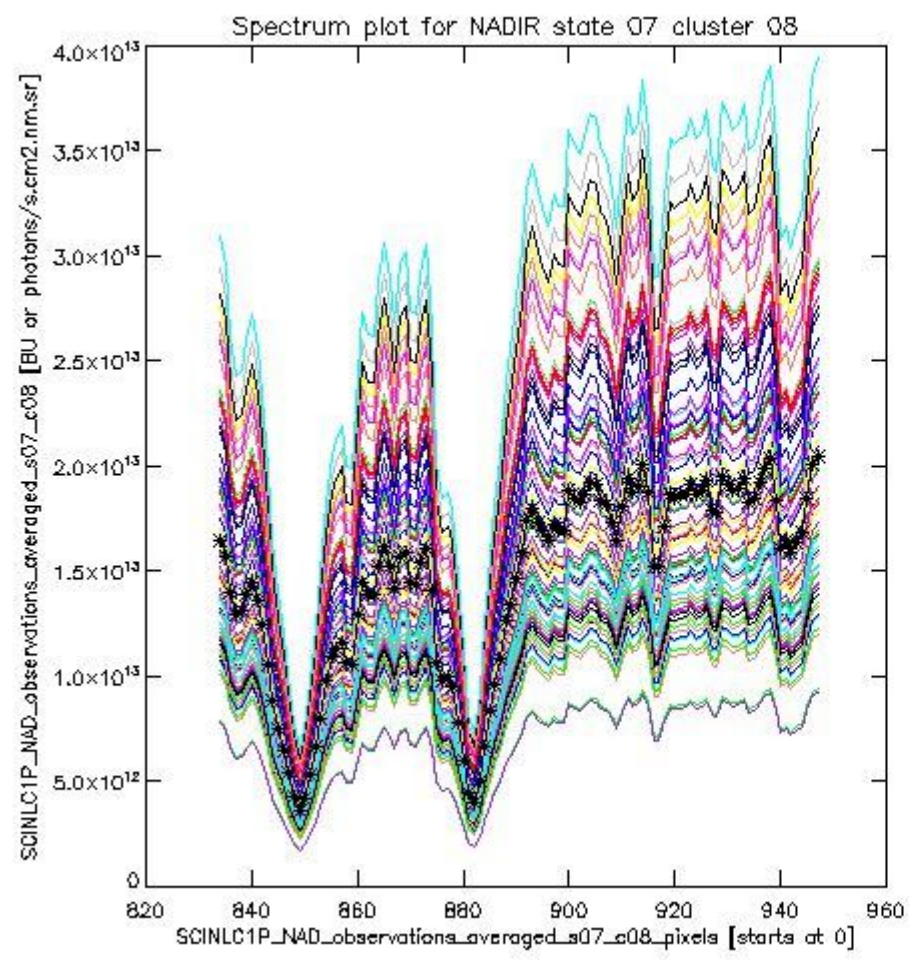
1.2 Source packet monitoring

This section shows figures for each of the monitored source packet types listed in the Source Packet Summary section. For each mode-state-cluster(-height) combination the following plots are shown:

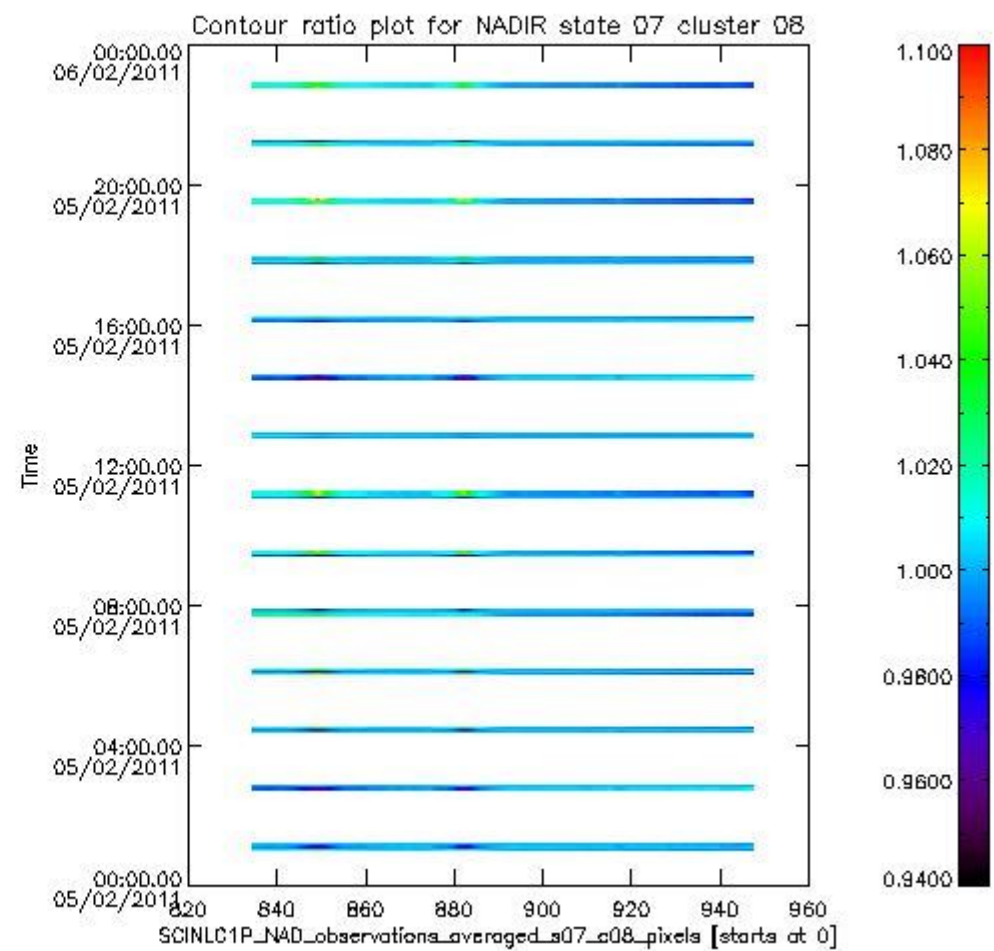
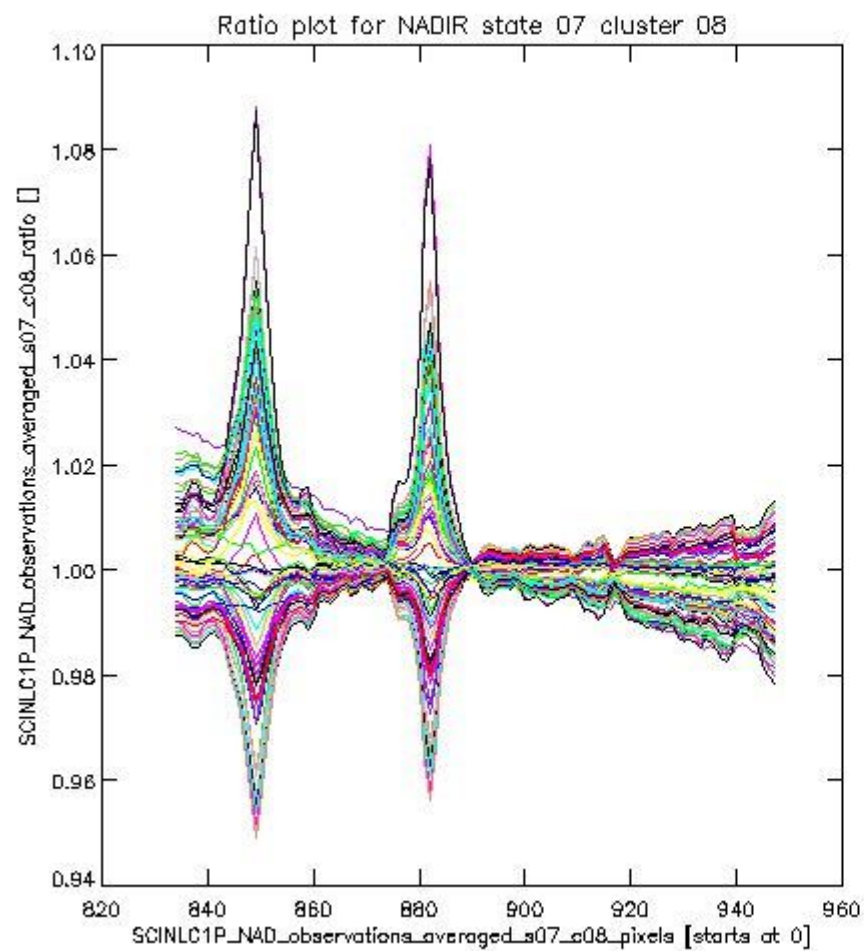
- A plot that shows all calibrated averaged spectra vs. pixel number as 2D-profiles. Each line is an average spectrum for a single state occurrence. For Limb modes, the average is performed on spectra recorded at a specific height. The reference spectrum that is used for comparison is also shown as a black line with * markers.
- A plot that shows all calibrated averaged spectra vs. pixel number and time using a coloured contour plot. The colours indicate the intensity.
- A plot that shows ratios of all calibrated averaged spectra and the reference spectrum vs. pixel number. Each line is the ratio of a calibrated averaged spectrum and the reference spectrum, where both spectra have been intensity corrected (the spectrum has been divided by the average pixel intensity) prior to division.
- A plot that shows ratios of all calibrated averaged spectra and the reference spectrum vs. pixel number and time using a coloured contour plot.

1.2.1 NADIR state 07 cluster 08 The data for the analysis of NADIR state 07 cluster 08 have the following characteristics:

Item	Value
Start time of first sample	05FEB2011 01:01:25.892
Start time of last sample	05FEB2011 22:53:41.996
Reference period start time	07JAN2011 10:28:51.135
Reference period stop time	04FEB2011 23:30:31.895
Channel number	2
First pixel number (starts at 0)	834
Last pixel number (starts at 0)	947



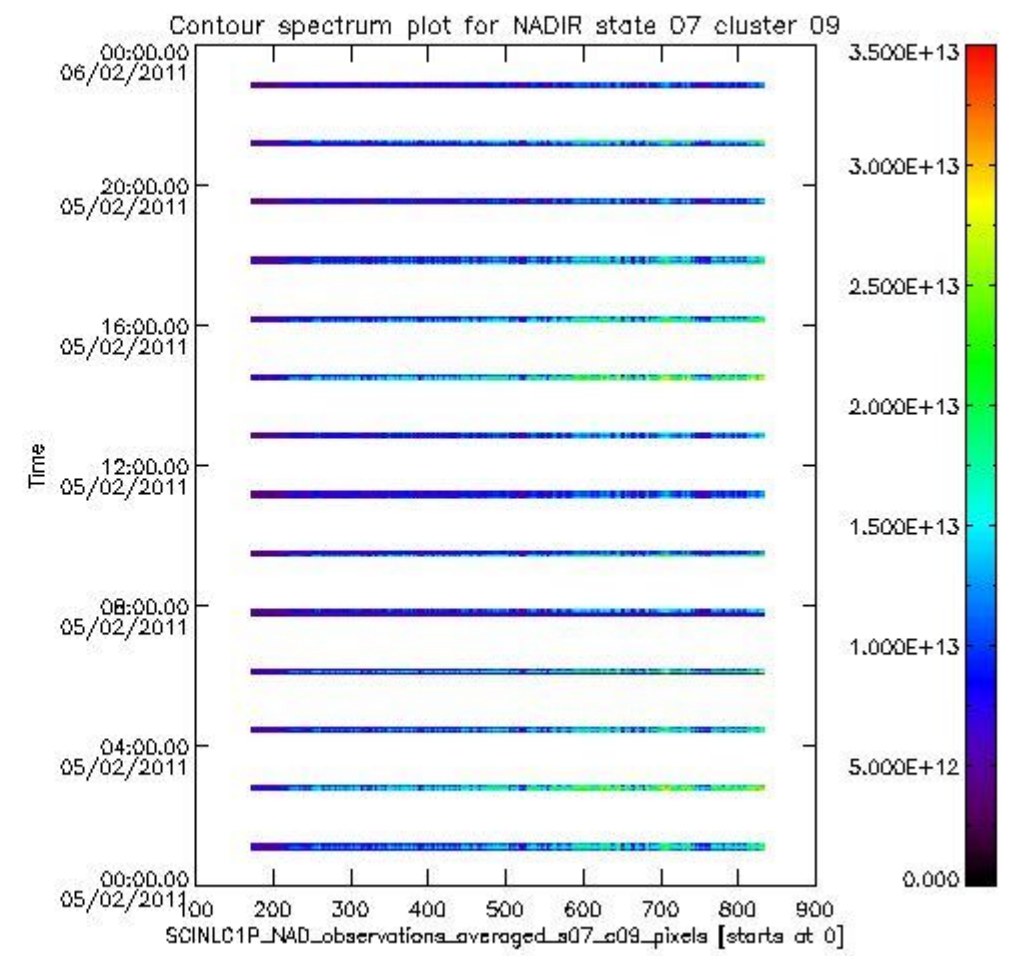
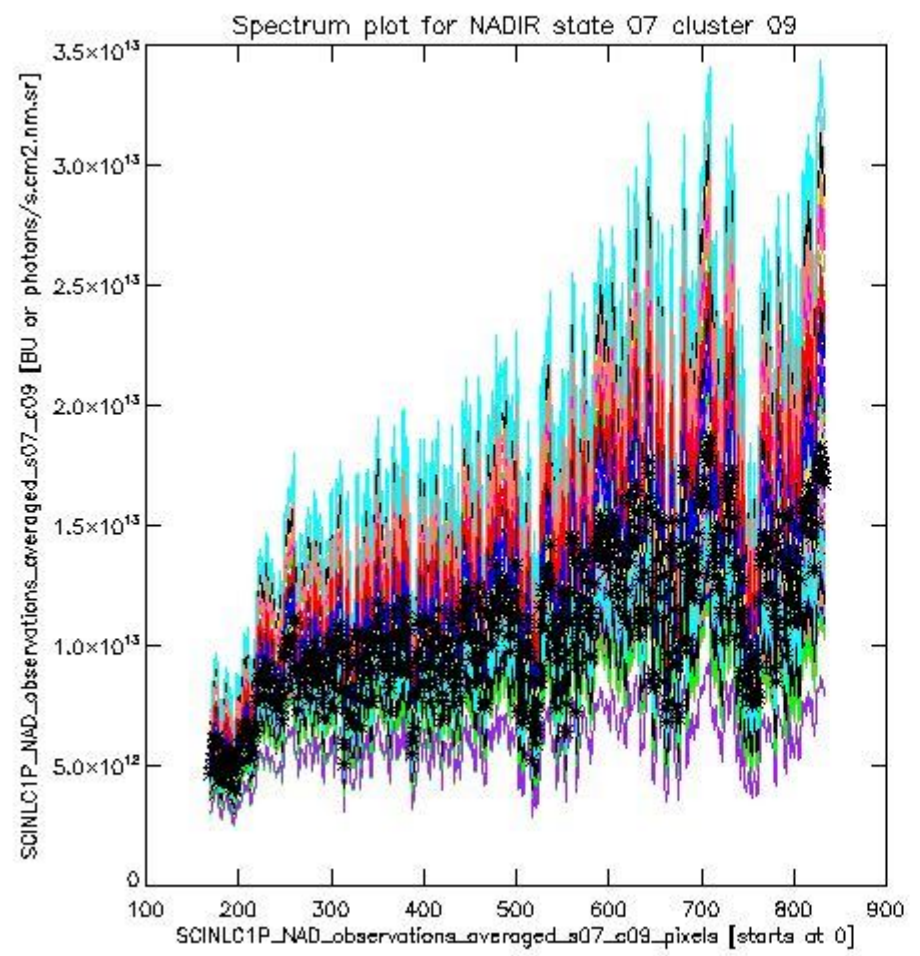
sciamachy_i1b_source_packet_report_SCIA_7_04_U_20110205_0.PNG



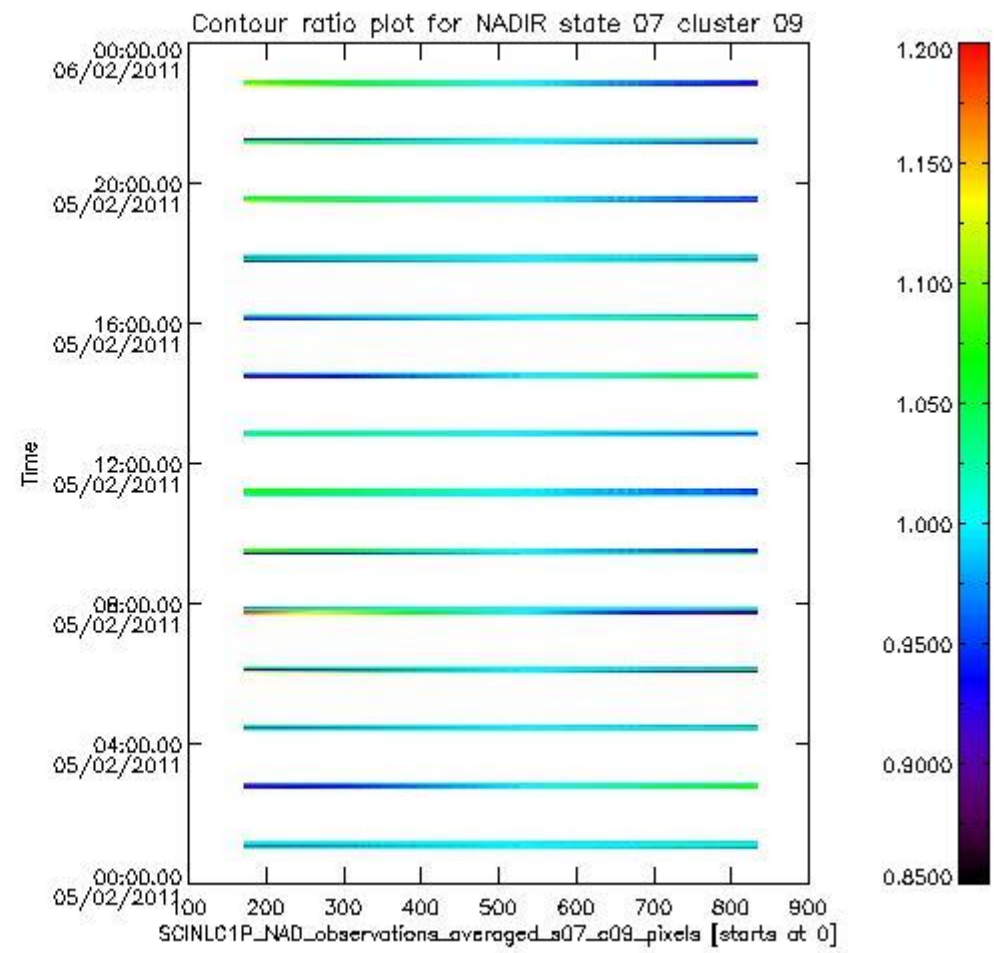
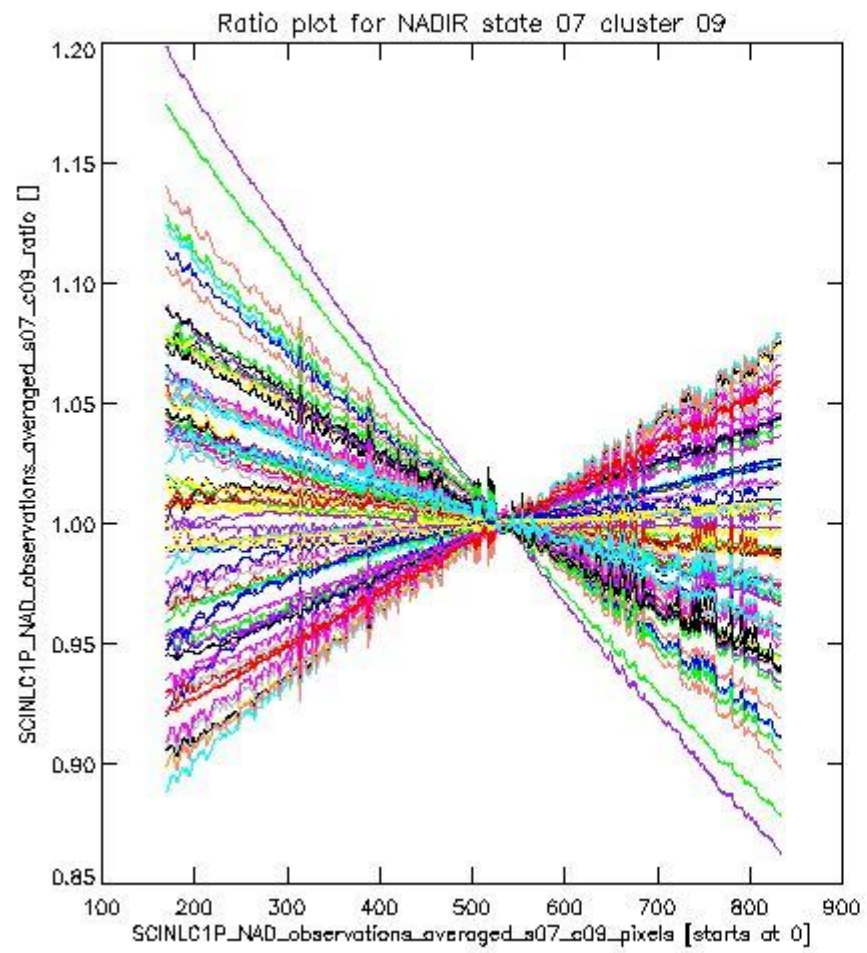
sciamachy_l1b_source_packet_report_SCIA_7_04_U_20110205_1.PNG

1.2.2 NADIR state 07 cluster 09 The data for the analysis of NADIR state 07 cluster 09 have the following characteristics:

Item	Value
Start time of first sample	05FEB2011 01:01:25.892
Start time of last sample	05FEB2011 22:53:41.996
Reference period start time	07JAN2011 10:28:51.135
Reference period stop time	04FEB2011 23:30:31.895
Channel number	2
First pixel number (starts at 0)	170
Last pixel number (starts at 0)	833



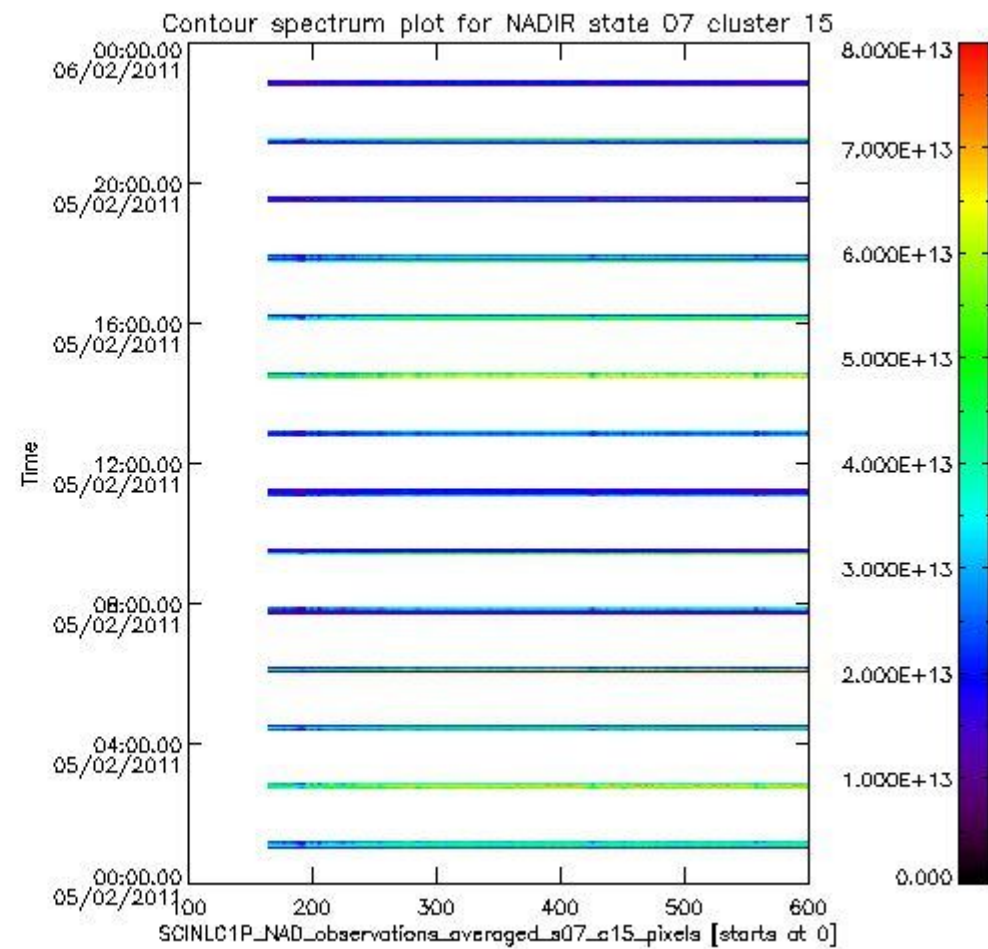
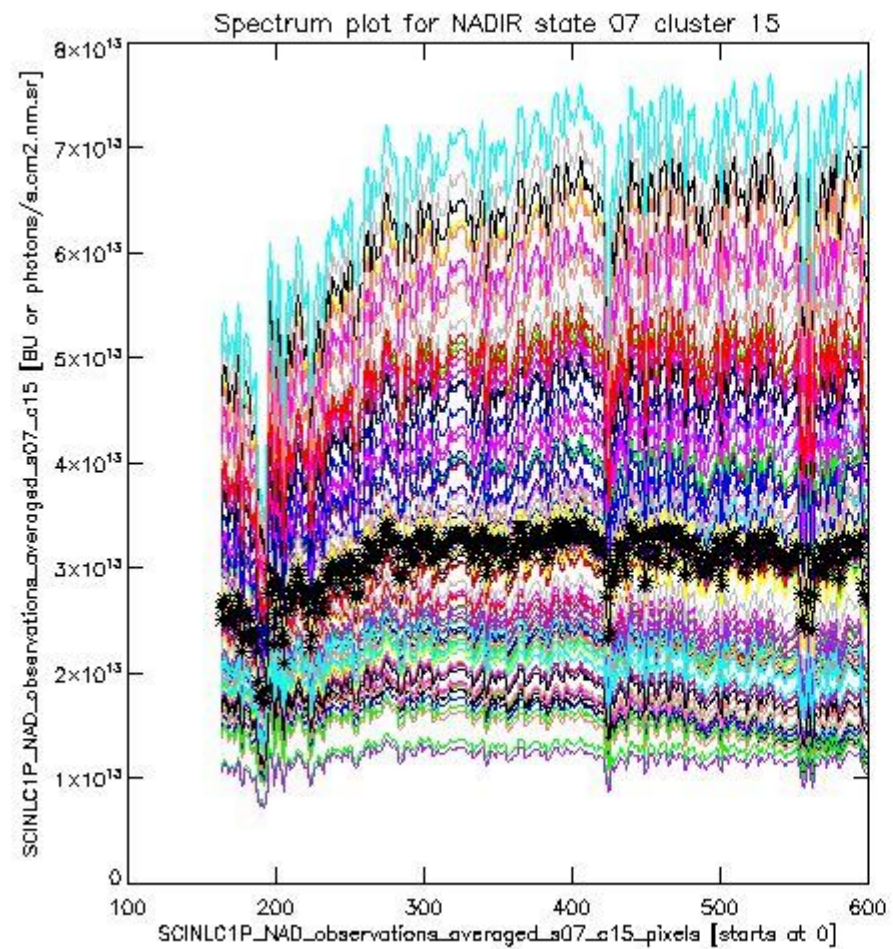
sciamachy_i1b_source_packet_report_SCIA_7_04_U_20110205_2.PNG



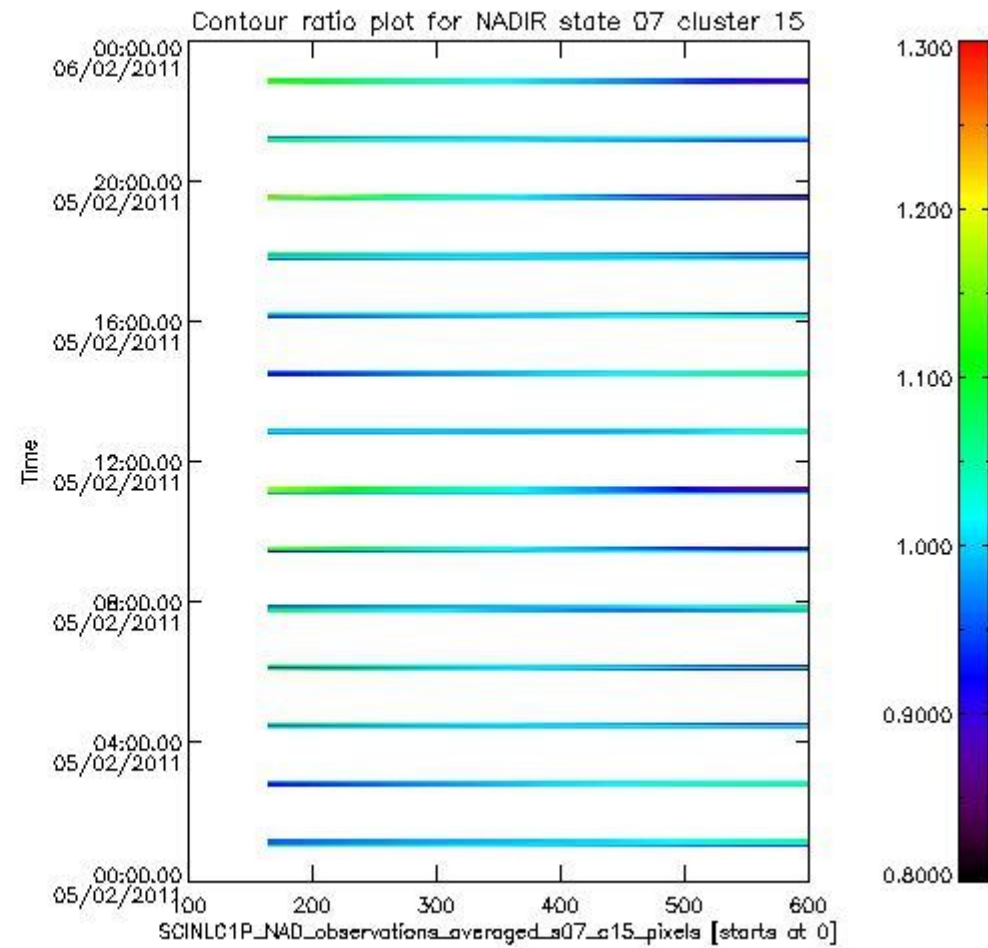
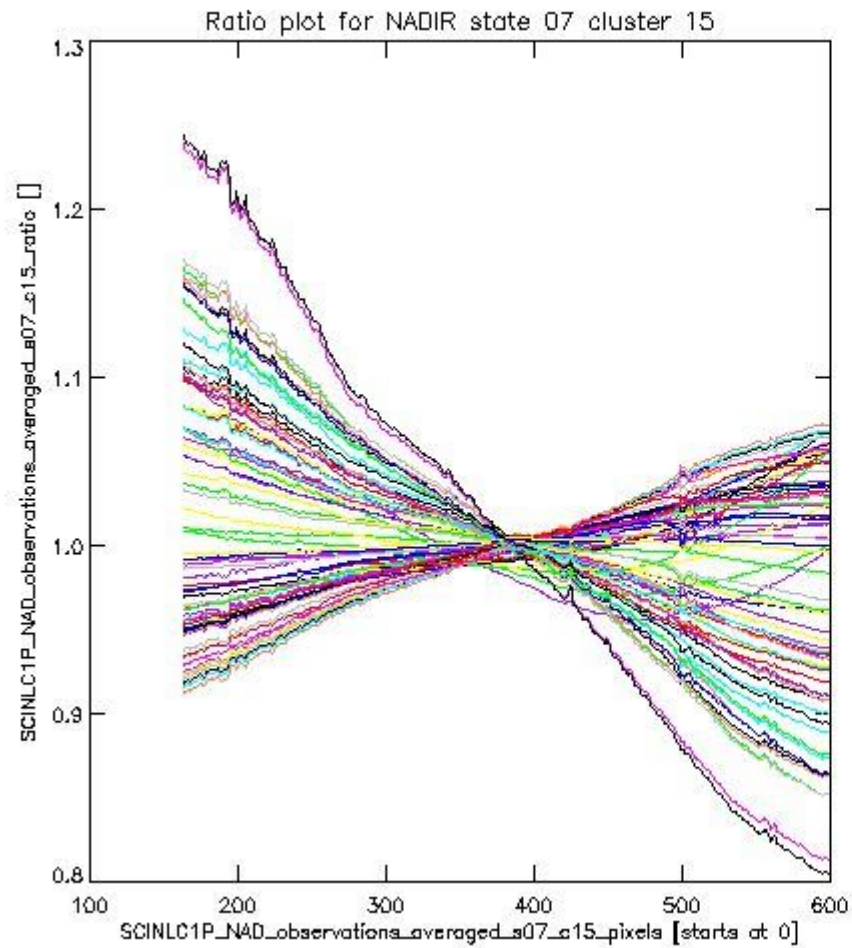
sciamachy_i1b_source_packet_report_SCIA_7_04_U_20110205_3.PNG

1.2.3 NADIR state 07 cluster 15 The data for the analysis of NADIR state 07 cluster 15 have the following characteristics:

Item	Value
Start time of first sample	05FEB2011 01:01:25.892
Start time of last sample	05FEB2011 22:53:41.996
Reference period start time	07JAN2011 10:28:51.135
Reference period stop time	04FEB2011 23:30:31.895
Channel number	3
First pixel number (starts at 0)	163
Last pixel number (starts at 0)	598



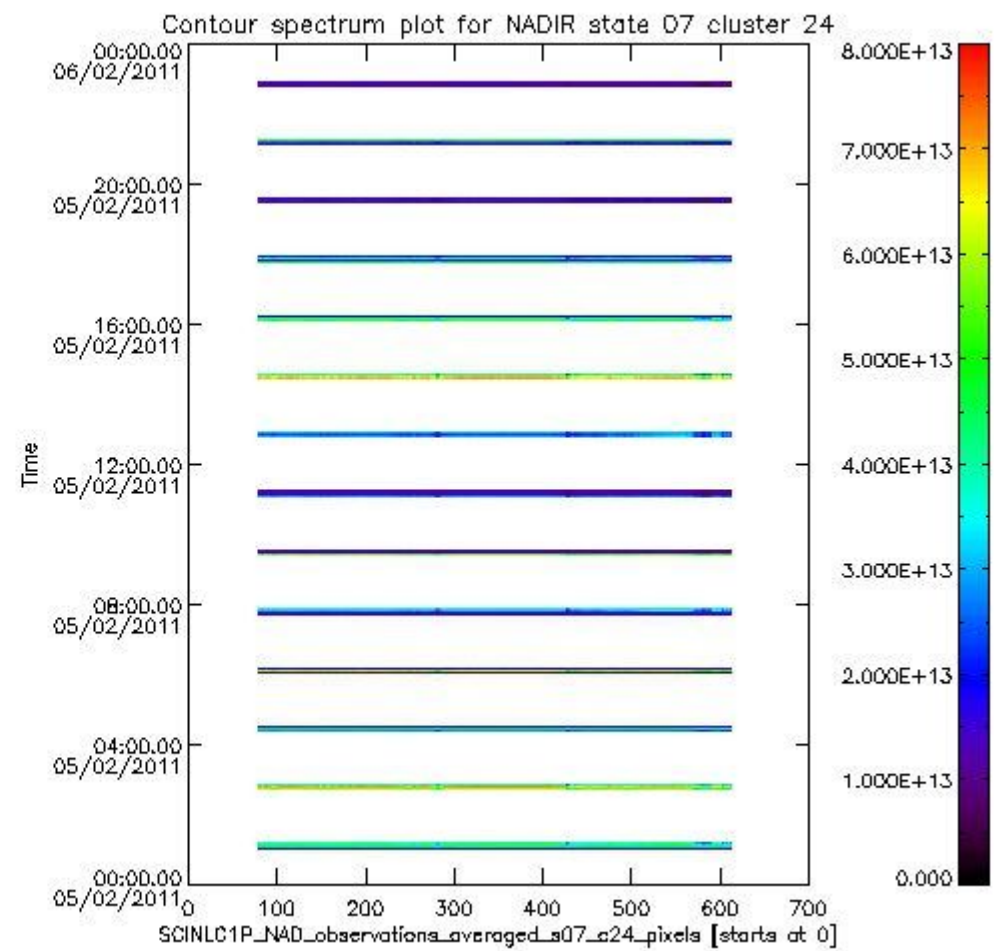
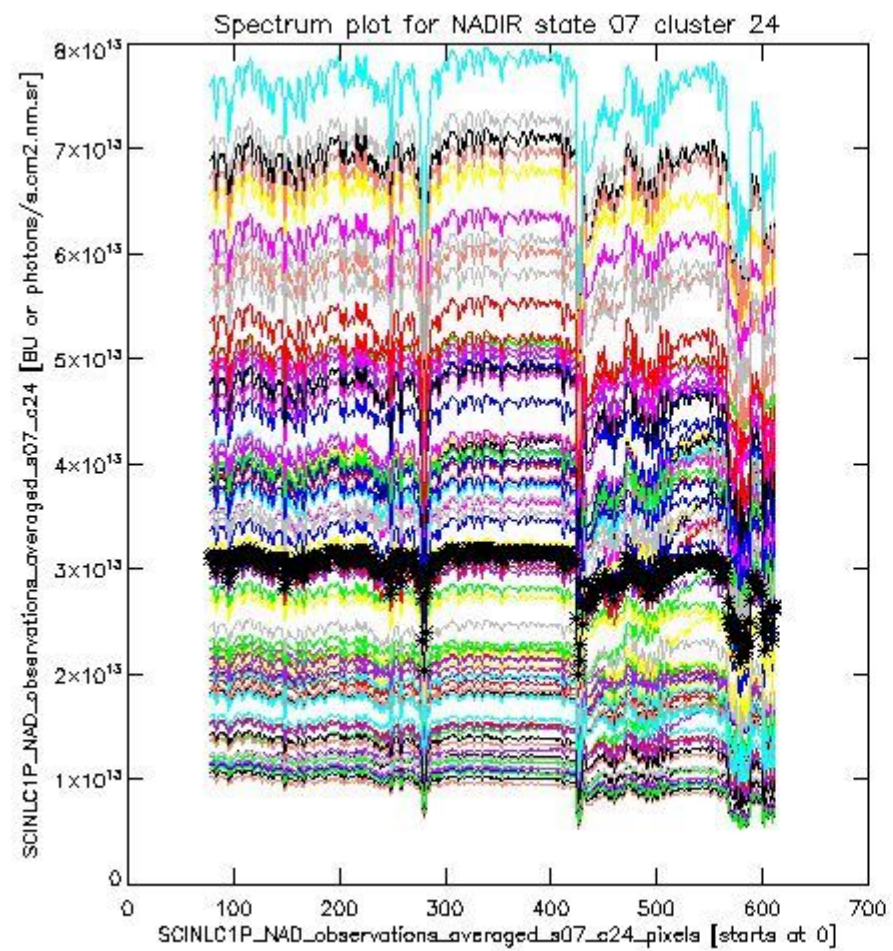
sciamachy_i1b_source_packet_report_SCIA_7_04_U_20110205_4.PNG



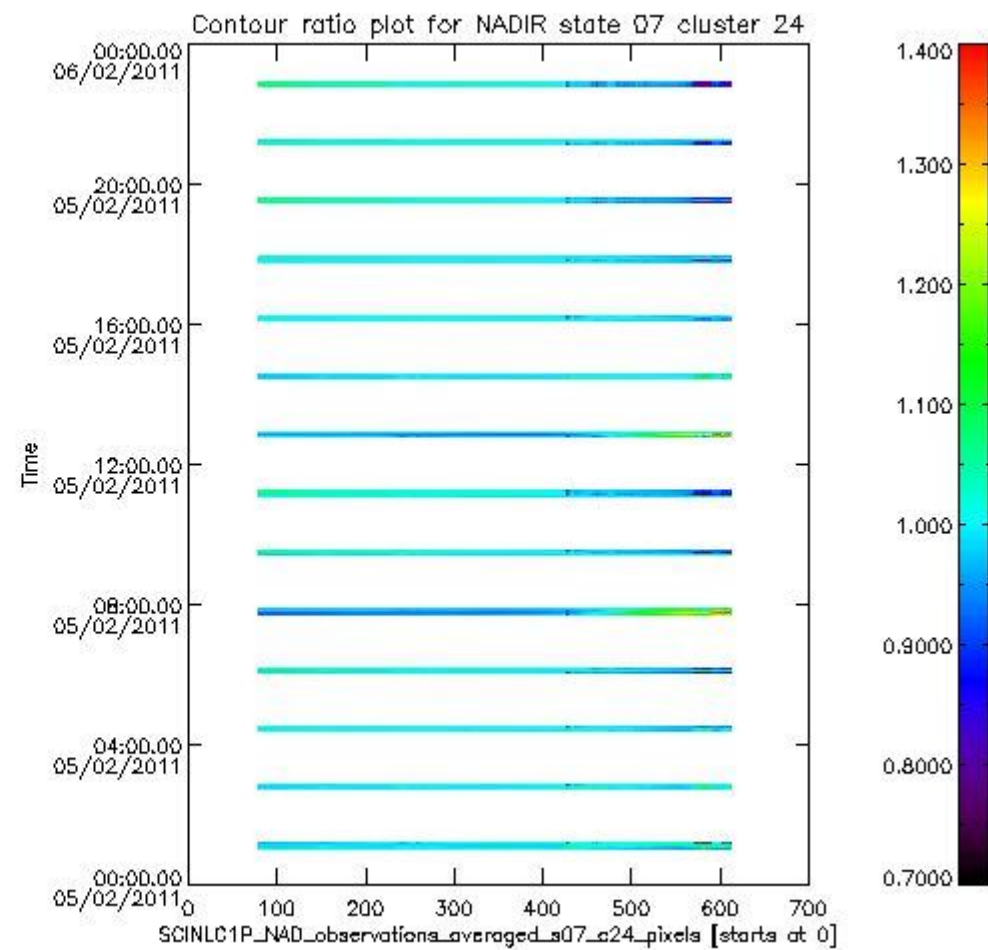
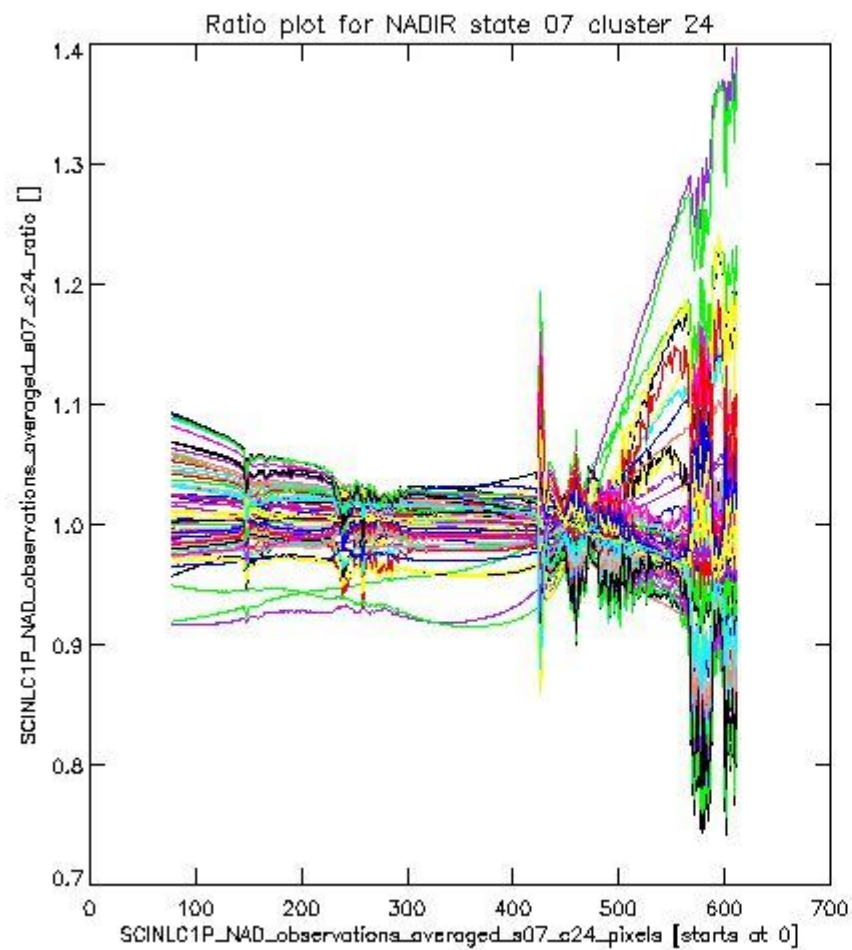
sciamachy_l1b_source_packet_report_SCIA_7_04_U_20110205_5.PNG

1.2.4 NADIR state 07 cluster 24 The data for the analysis of NADIR state 07 cluster 24 have the following characteristics:

Item	Value
Start time of first sample	05FEB2011 01:01:25.892
Start time of last sample	05FEB2011 22:53:41.996
Reference period start time	07JAN2011 10:28:51.135
Reference period stop time	04FEB2011 23:30:31.895
Channel number	4
First pixel number (starts at 0)	78
Last pixel number (starts at 0)	612



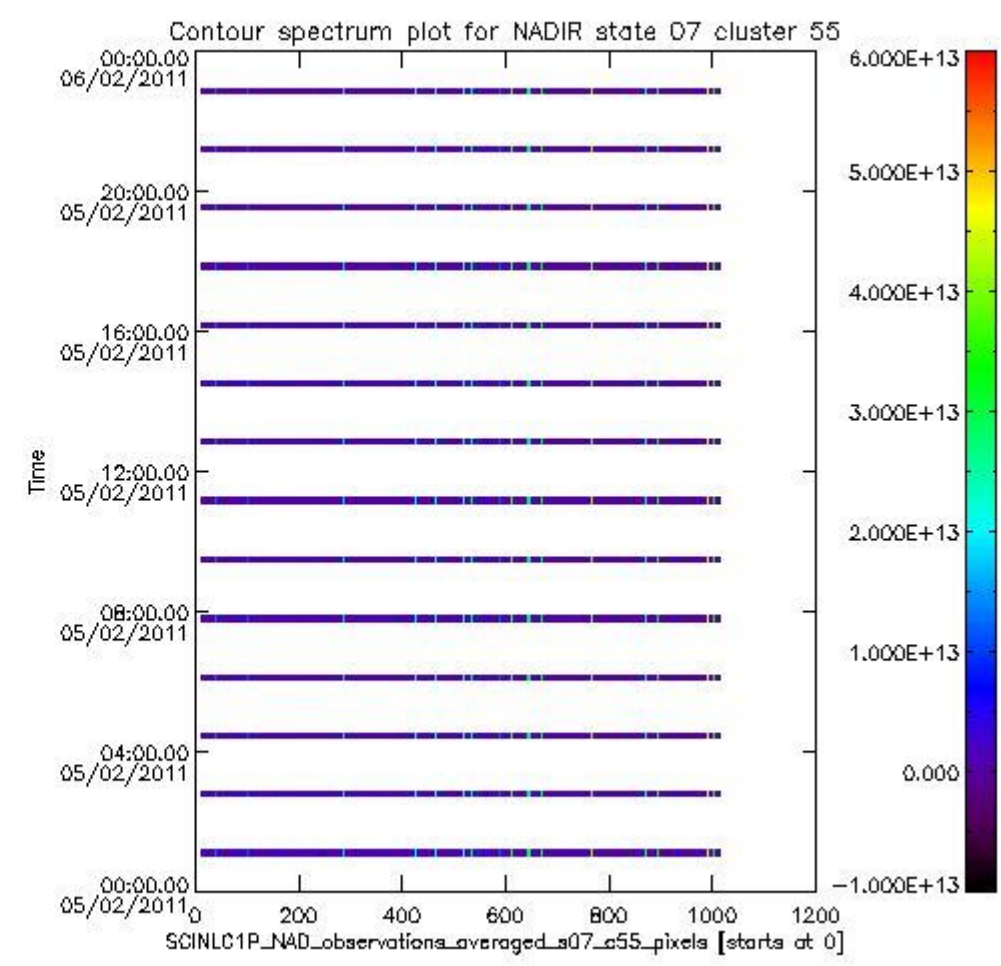
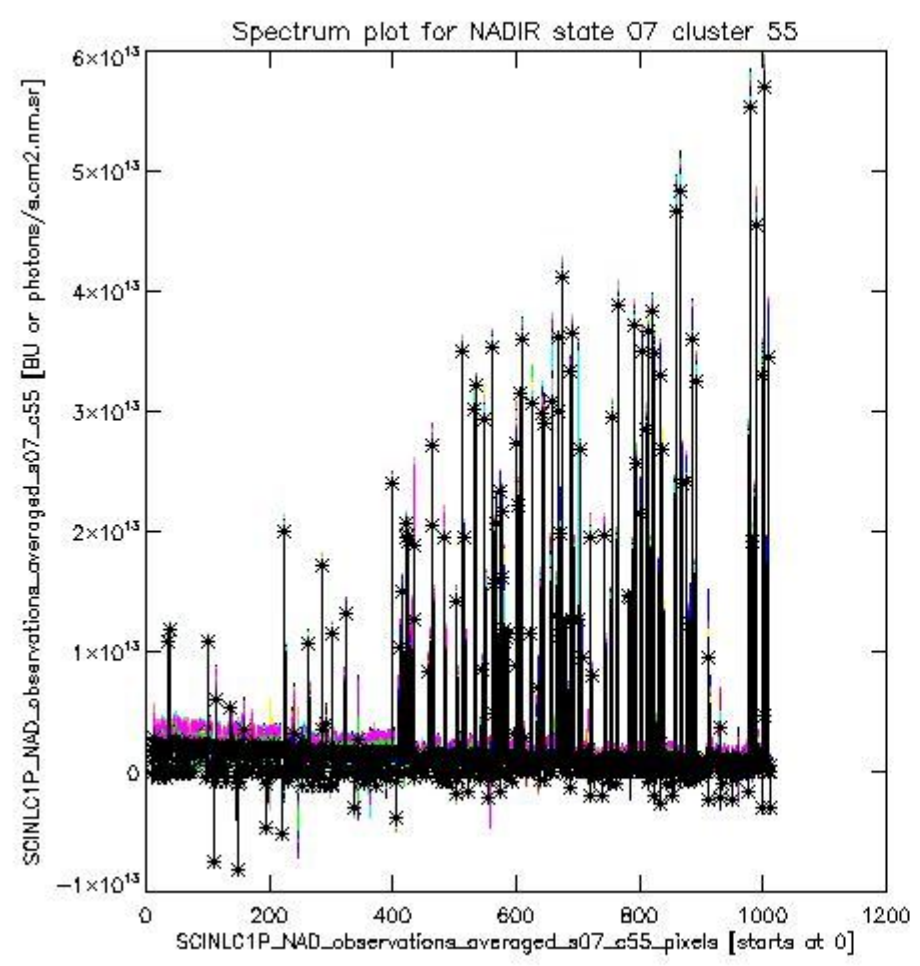
sciamachy_i1b_source_packet_report_SCIA_7_04_U_20110205_6.PNG



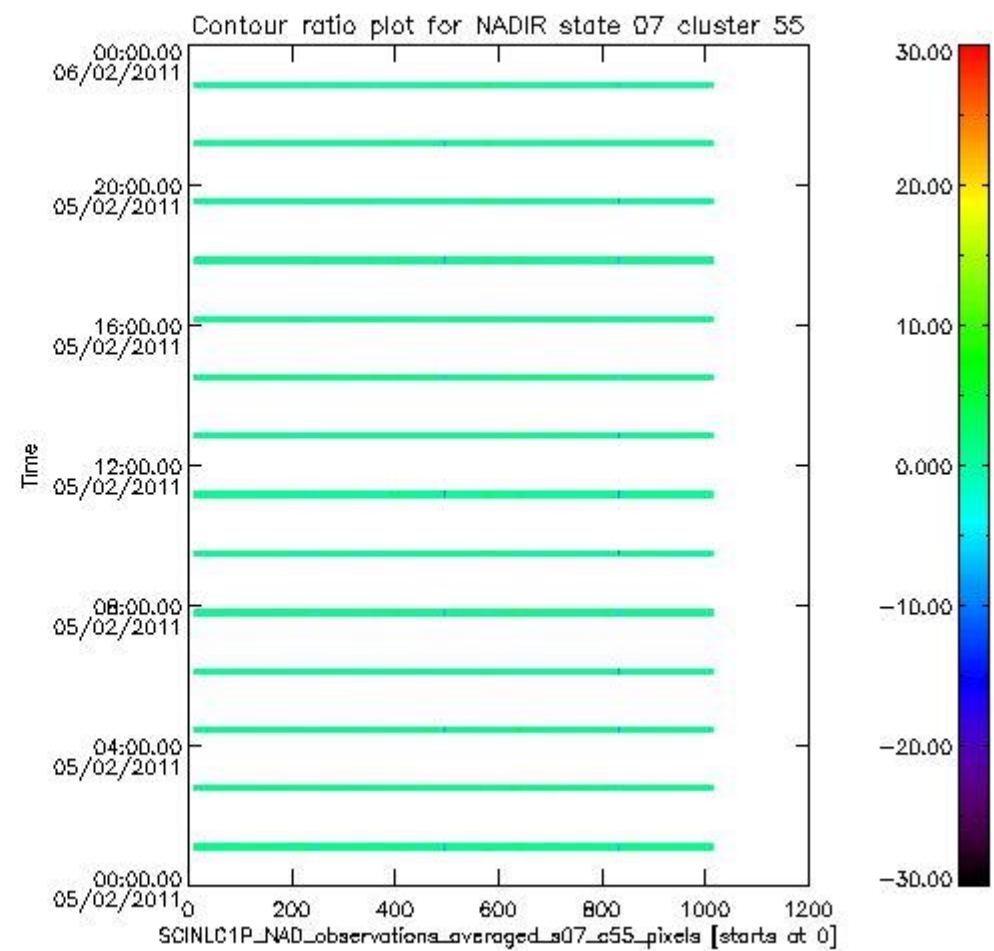
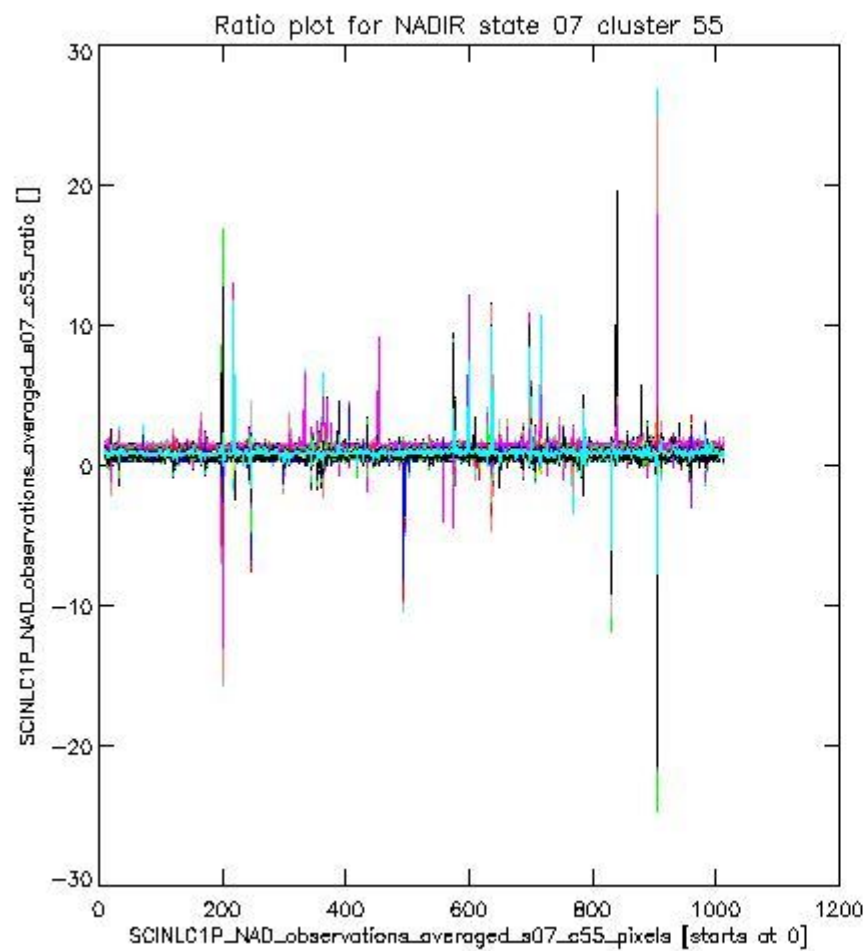
sciamachy_l1b_source_packet_report_SCIA_7_04_U_20110205_7.PNG

1.2.5 NADIR state 07 cluster 55 The data for the analysis of NADIR state 07 cluster 55 have the following characteristics:

Item	Value
Start time of first sample	05FEB2011 01:01:25.892
Start time of last sample	05FEB2011 22:53:41.996
Reference period start time	07JAN2011 10:28:51.135
Reference period stop time	04FEB2011 23:30:31.895
Channel number	8
First pixel number (starts at 0)	10
Last pixel number (starts at 0)	1013



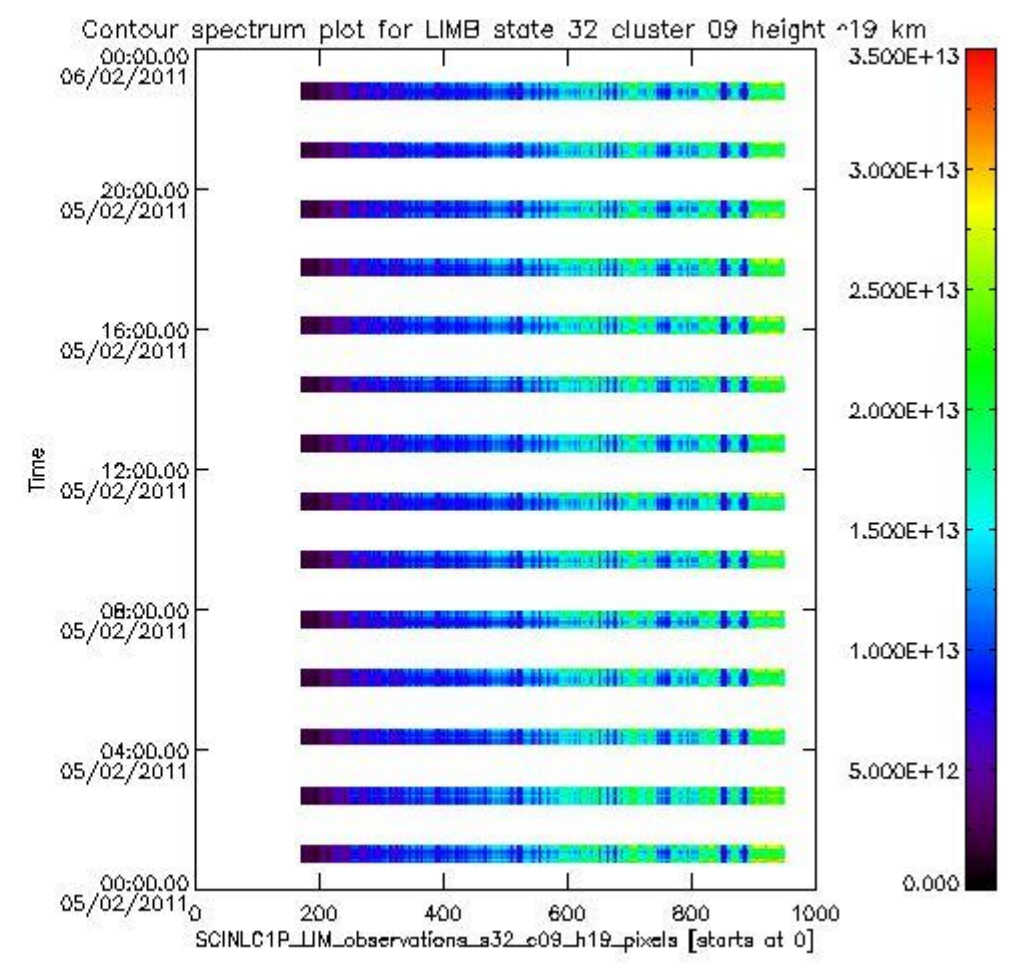
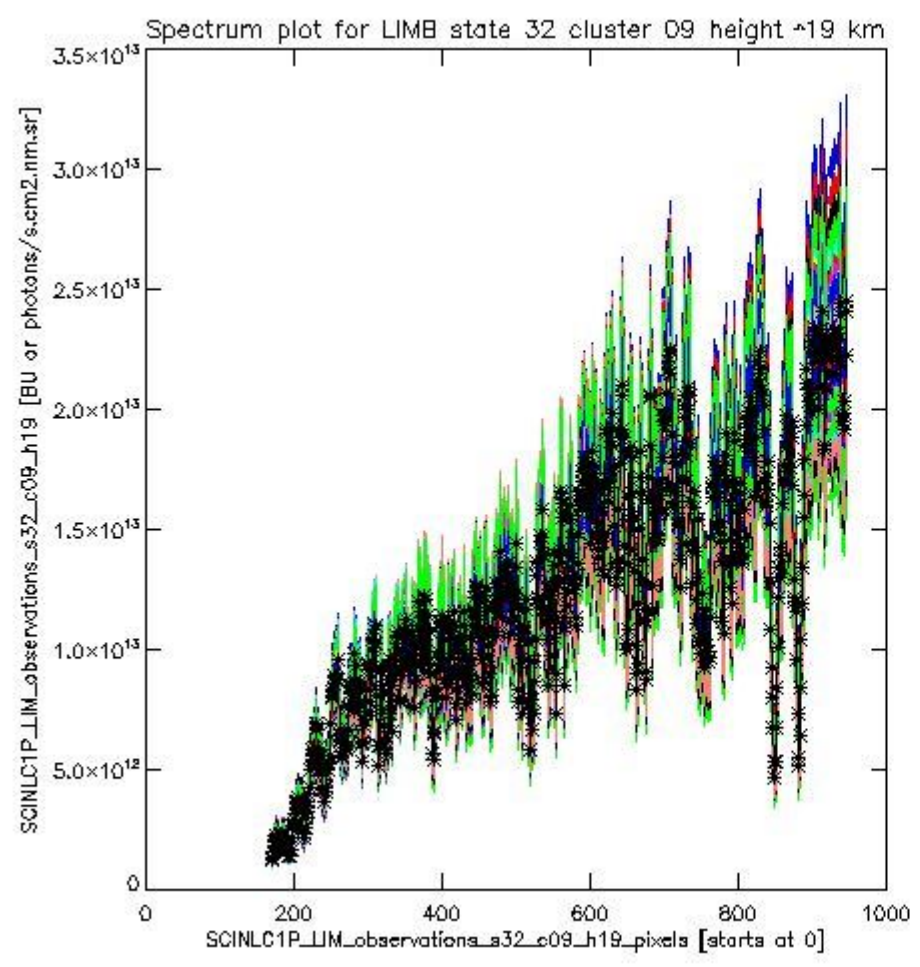
sciamachy_i1b_source_packet_report_SCIA_7_04_U_20110205_8.PNG



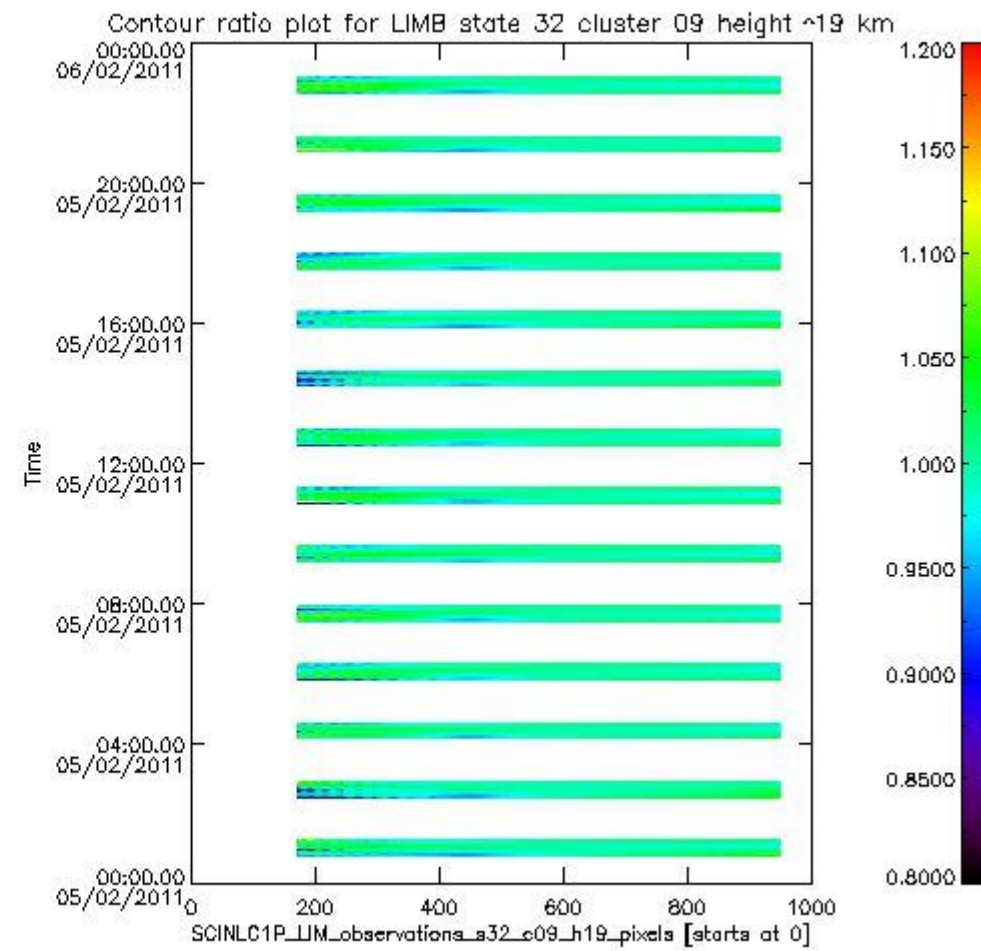
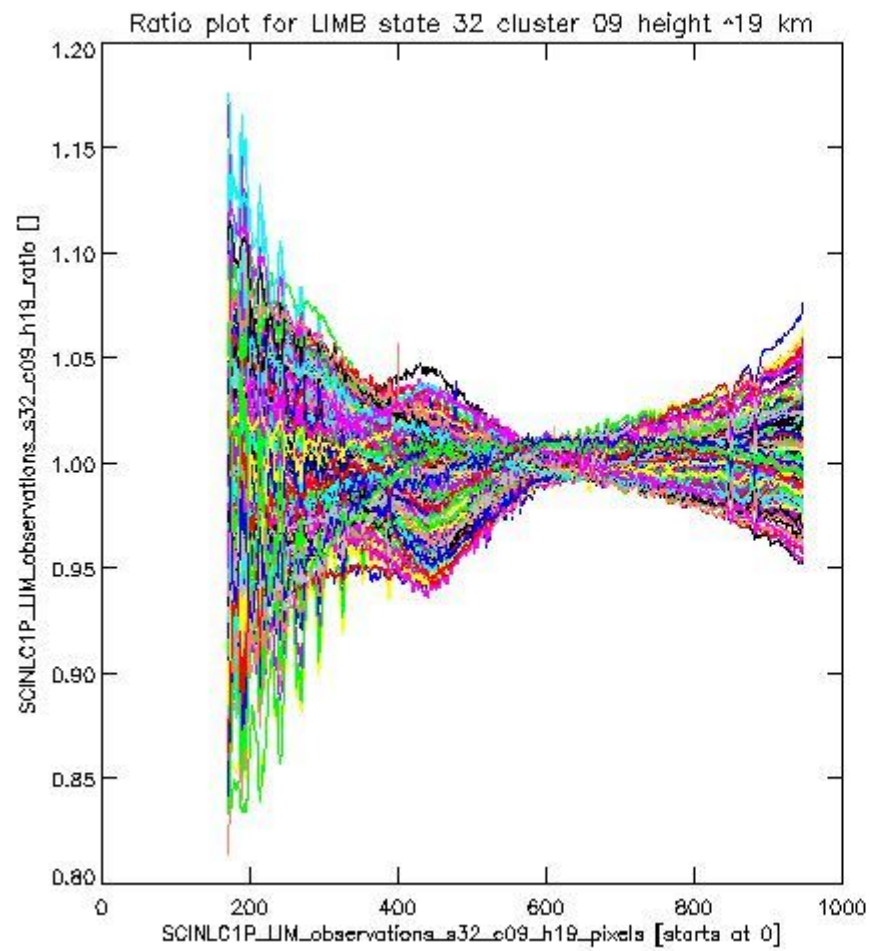
sciamachy_l1b_source_packet_report_SCIA_7_04_U_20110205_9.PNG

1.2.6 LIMB state 32 cluster 09 height ~19 km The data for the analysis of LIMB state 32 cluster 09 height ~19 km have the following characteristics:

Item	Value
Start time of first sample	05FEB2011 00:48:15.255
Start time of last sample	05FEB2011 22:58:56.035
Reference period start time	07JAN2011 10:13:37.752
Reference period stop time	04FEB2011 23:35:45.942
Channel number	2
First pixel number (starts at 0)	170
Last pixel number (starts at 0)	947



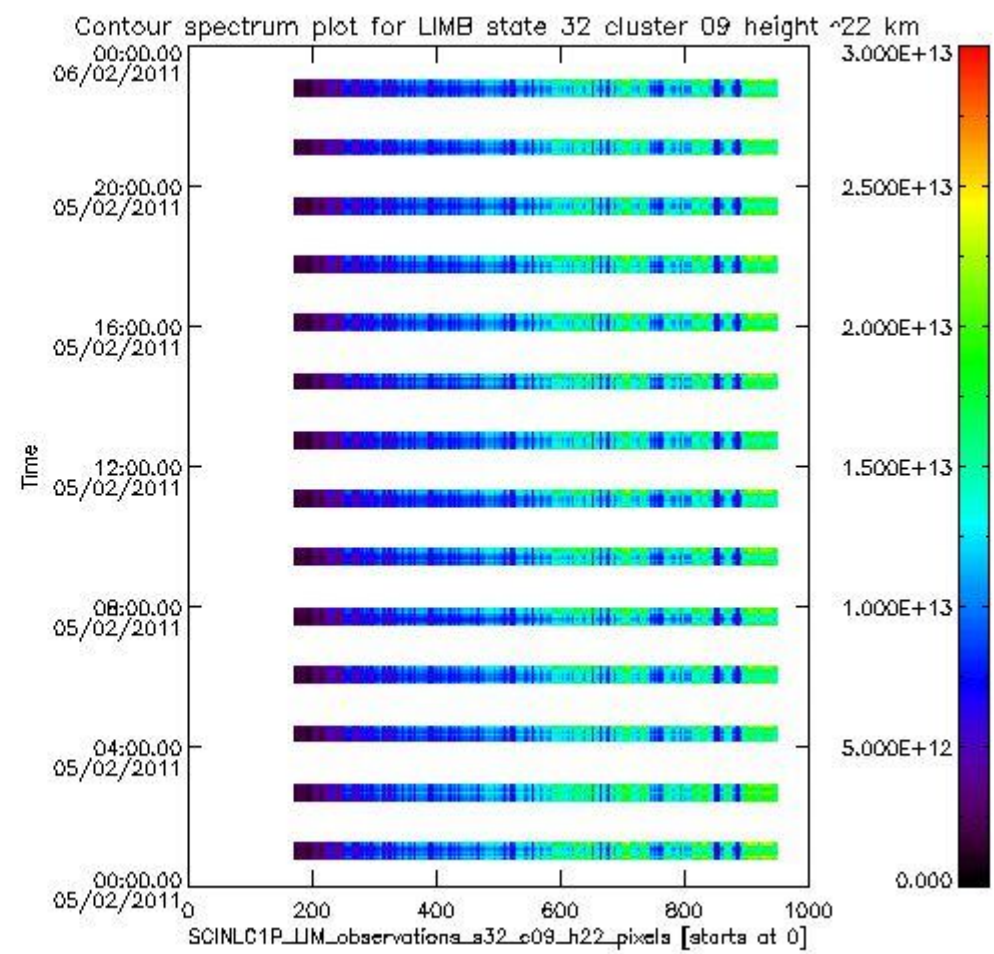
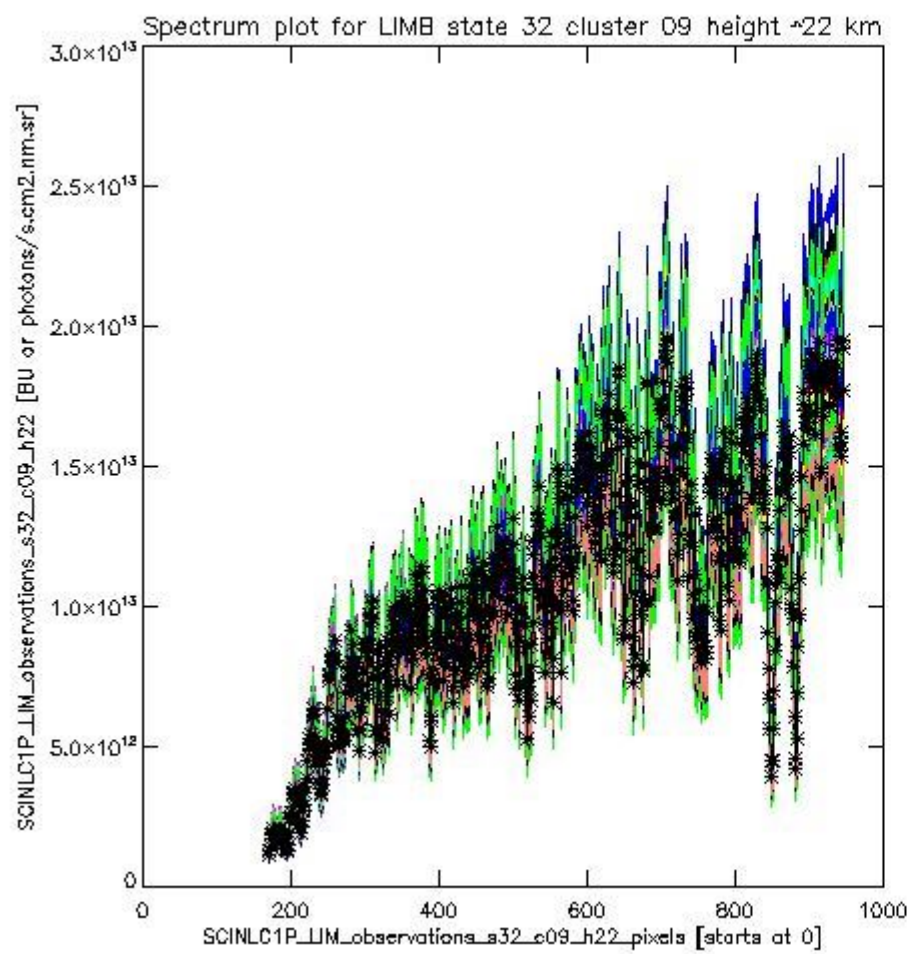
sciamachy_l1b_source_packet_report_SCIA_7_04_U_20110205_10.PNG



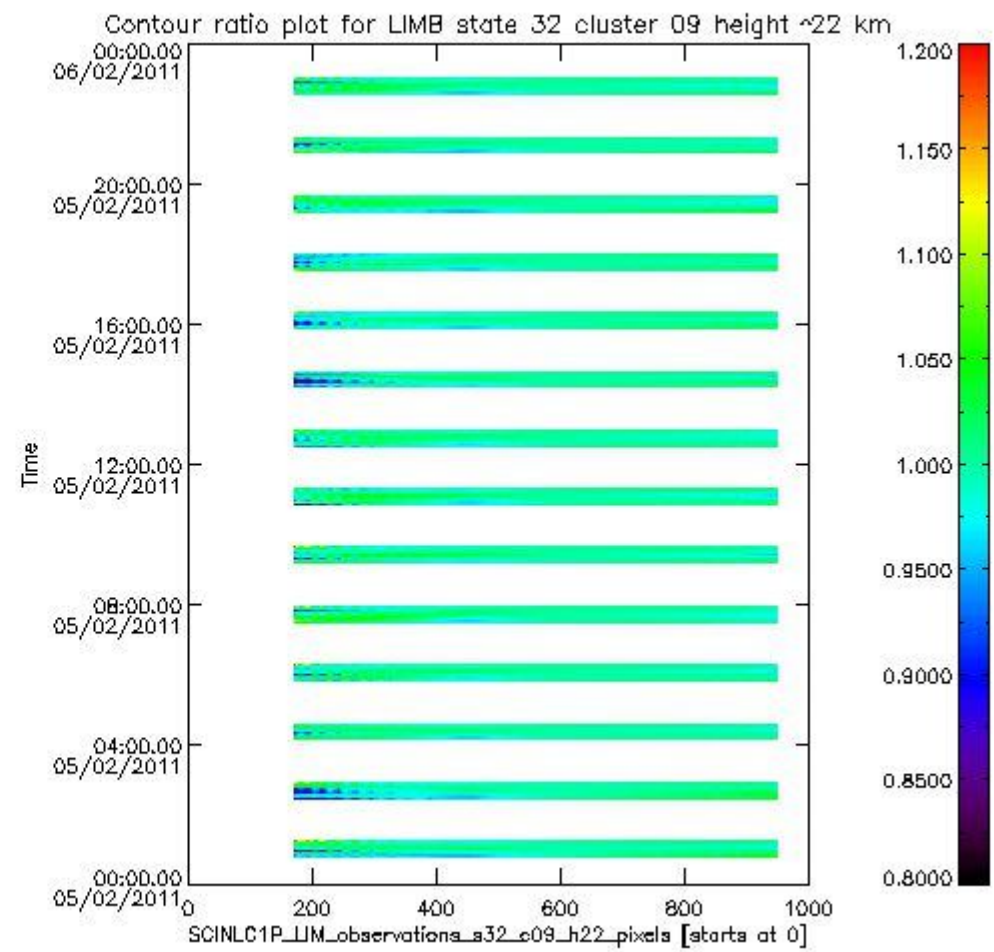
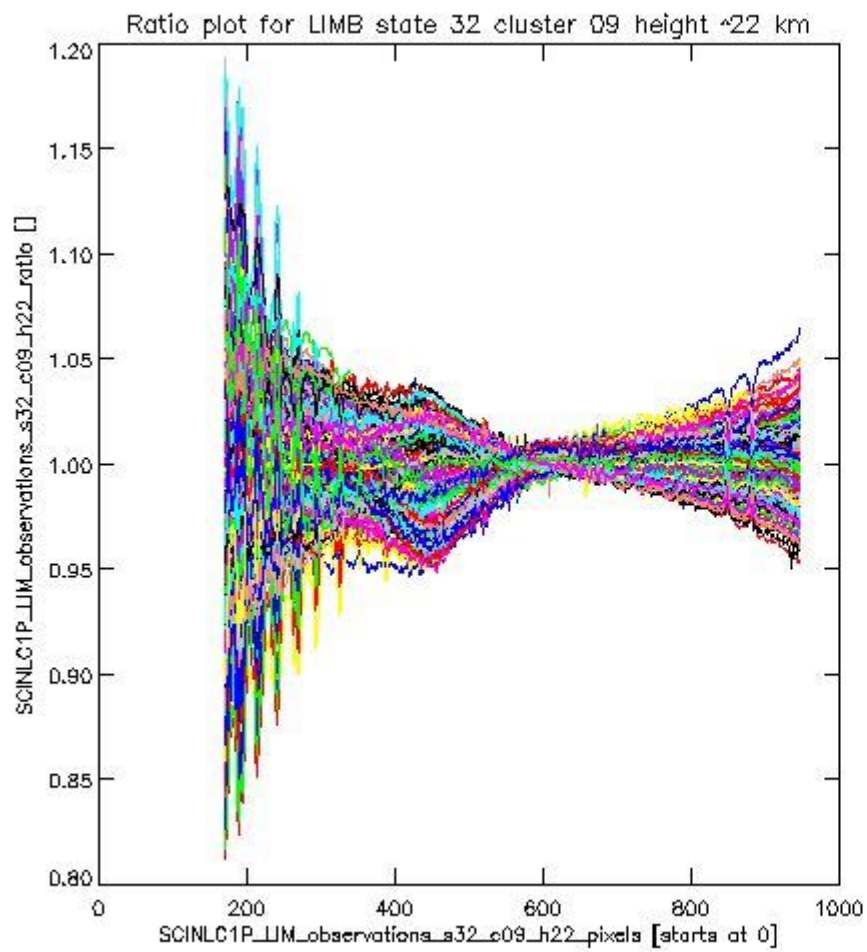
sciamachy_i1b_source_packet_report_SCIA_7_04_U_20110205_11.PNG

1.2.7 LIMB state 32 cluster 09 height ~22 km The data for the analysis of LIMB state 32 cluster 09 height ~22 km have the following characteristics:

Item	Value
Start time of first sample	05FEB2011 00:48:15.255
Start time of last sample	05FEB2011 22:58:56.035
Reference period start time	07JAN2011 10:13:37.752
Reference period stop time	04FEB2011 23:35:45.942
Channel number	2
First pixel number (starts at 0)	170
Last pixel number (starts at 0)	947



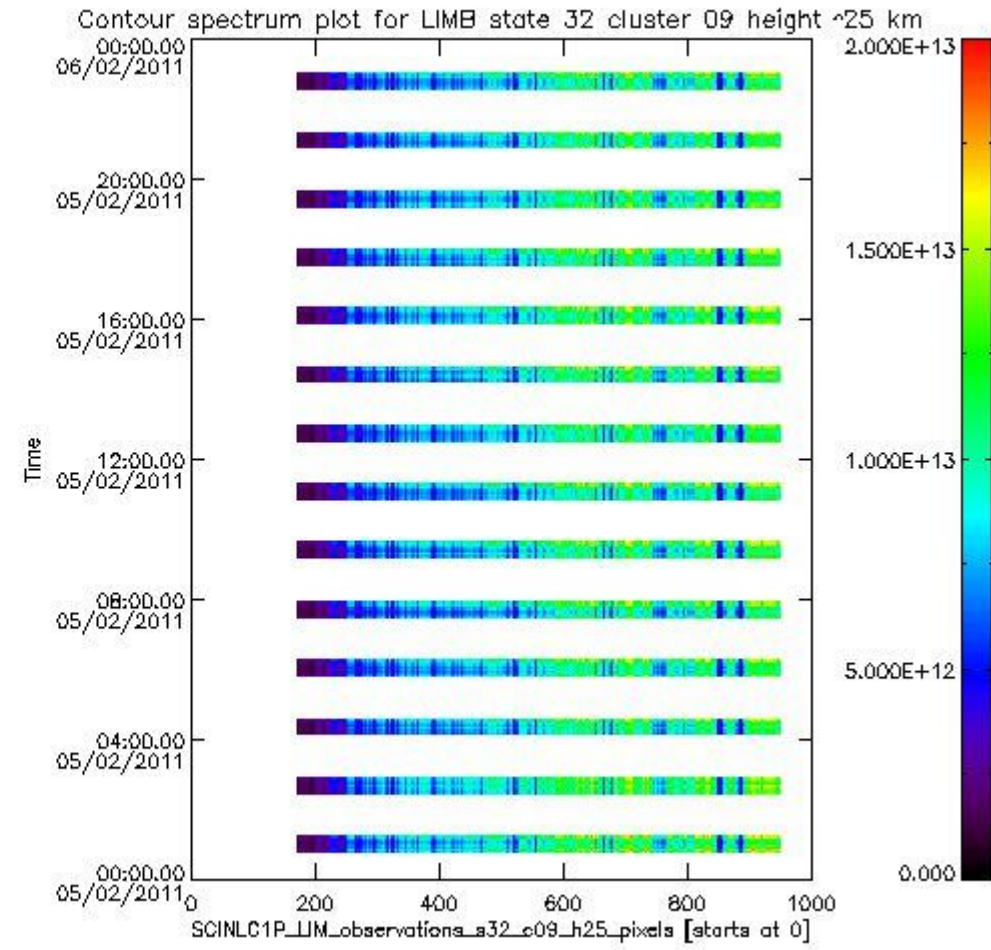
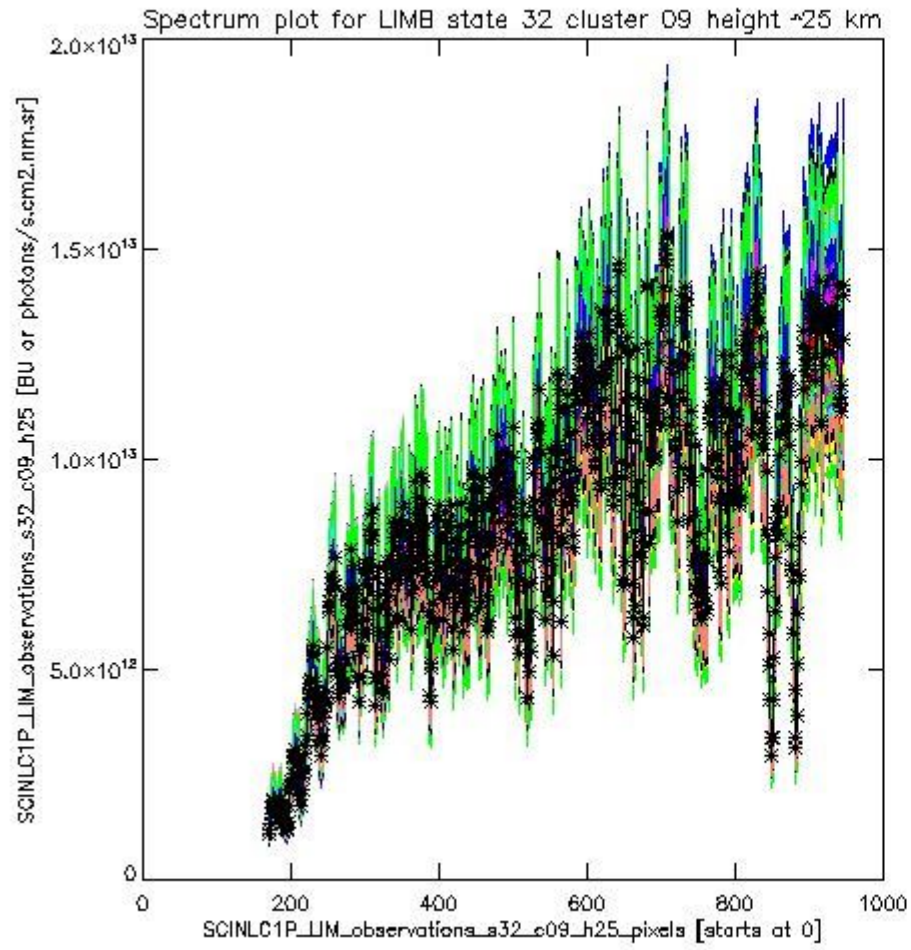
sciamachy_i1b_source_packet_report_SCIA_7_04_U_20110205_12.PNG



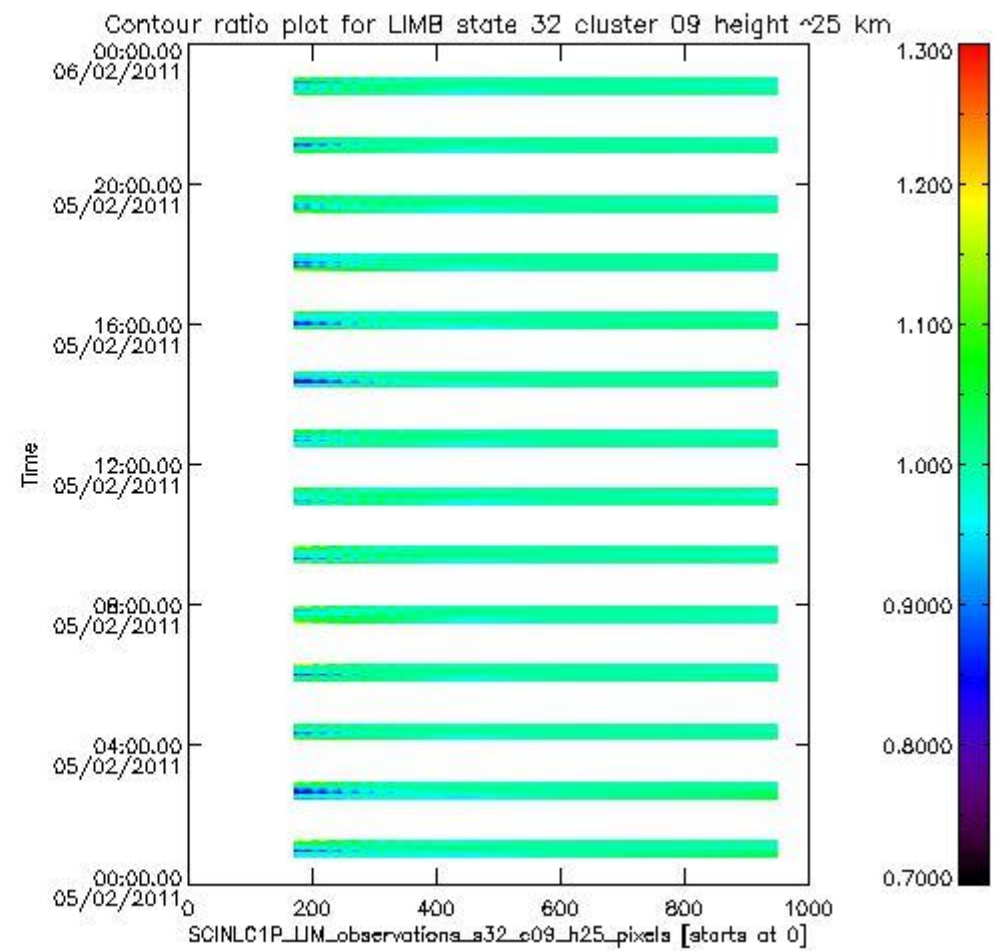
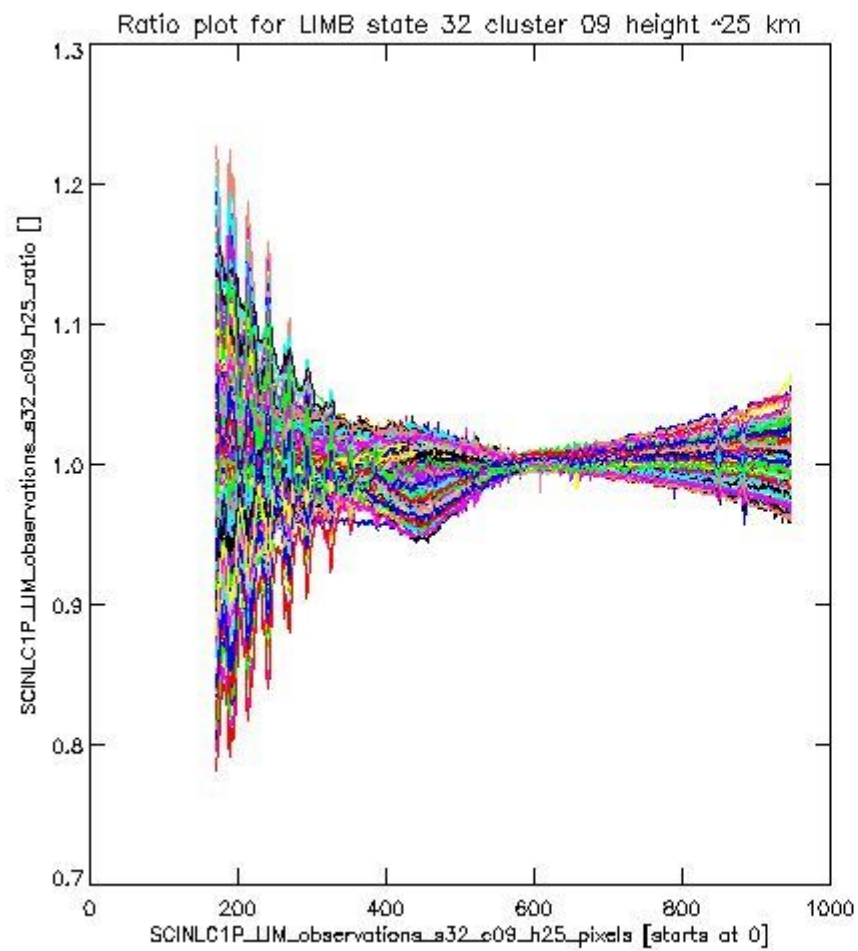
sciamachy_l1b_source_packet_report_SCIA_7_04_U_20110205_13.PNG

1.2.8 LIMB state 32 cluster 09 height ~25 km The data for the analysis of LIMB state 32 cluster 09 height ~25 km have the following characteristics:

Item	Value
Start time of first sample	05FEB2011 00:48:15.255
Start time of last sample	05FEB2011 22:58:56.035
Reference period start time	07JAN2011 10:13:37.752
Reference period stop time	04FEB2011 23:35:45.942
Channel number	2
First pixel number (starts at 0)	170
Last pixel number (starts at 0)	947



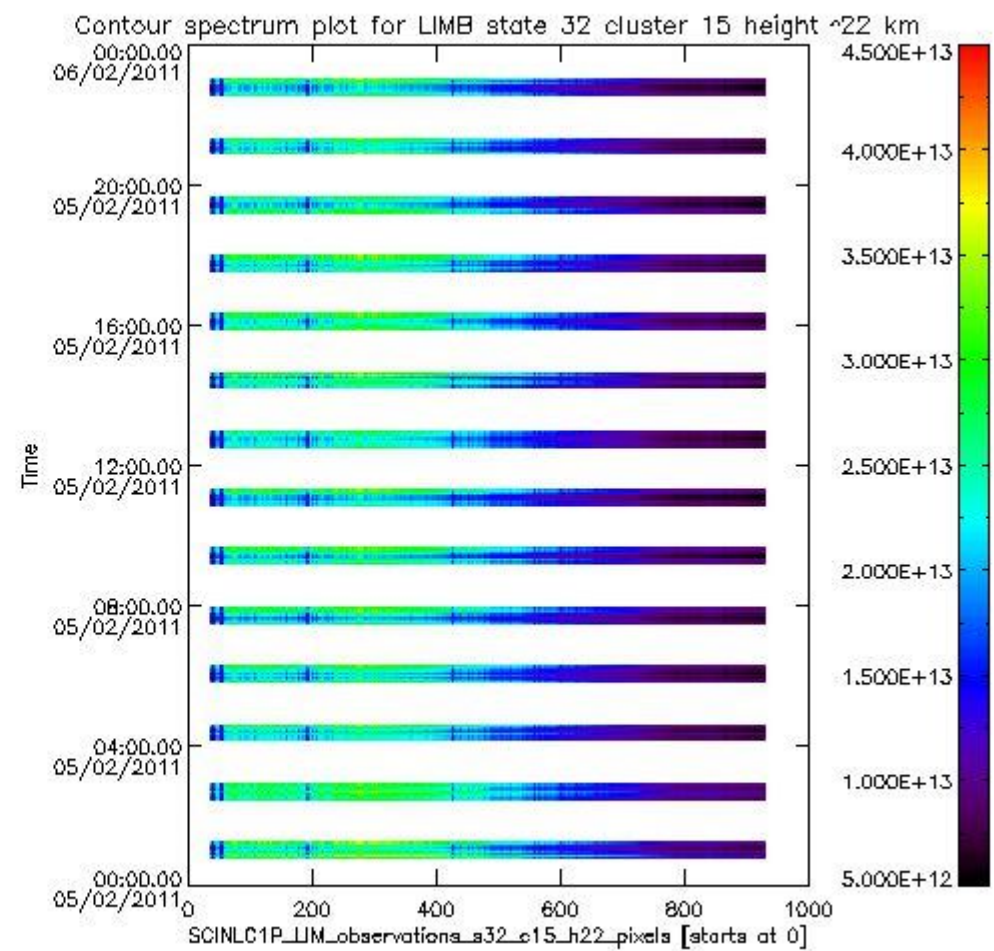
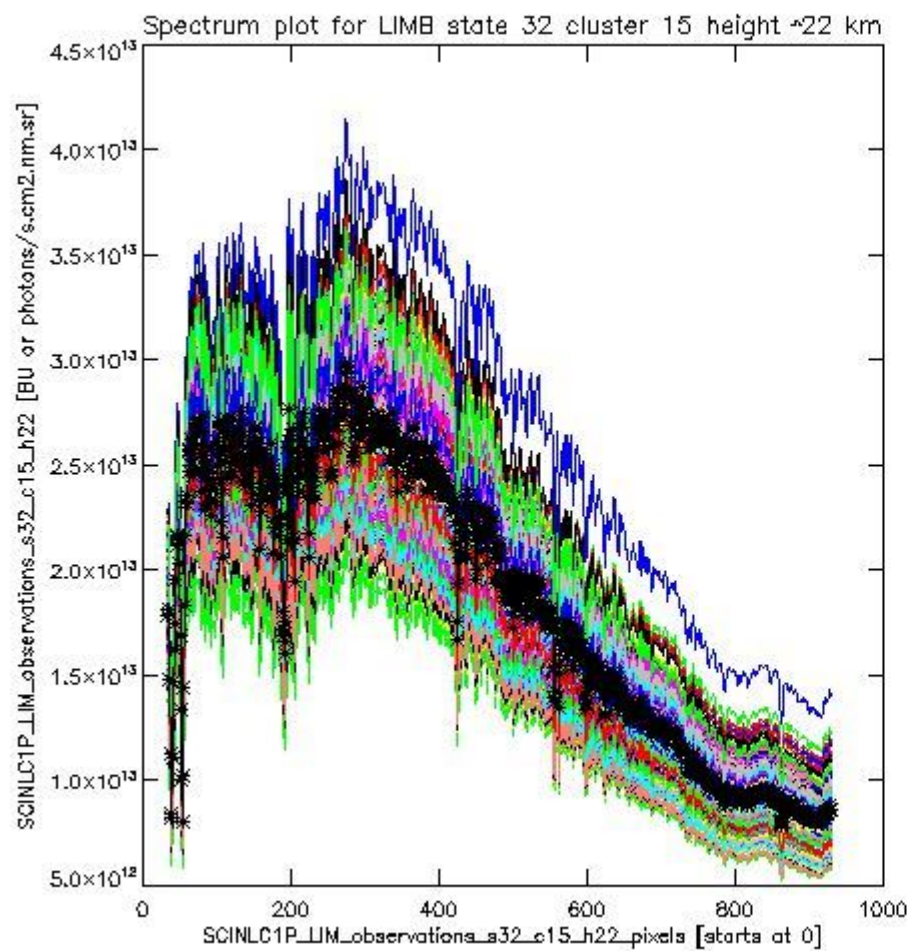
sciamachy_i1b_source_packet_report_SCIA_7_04_U_20110205_14.PNG



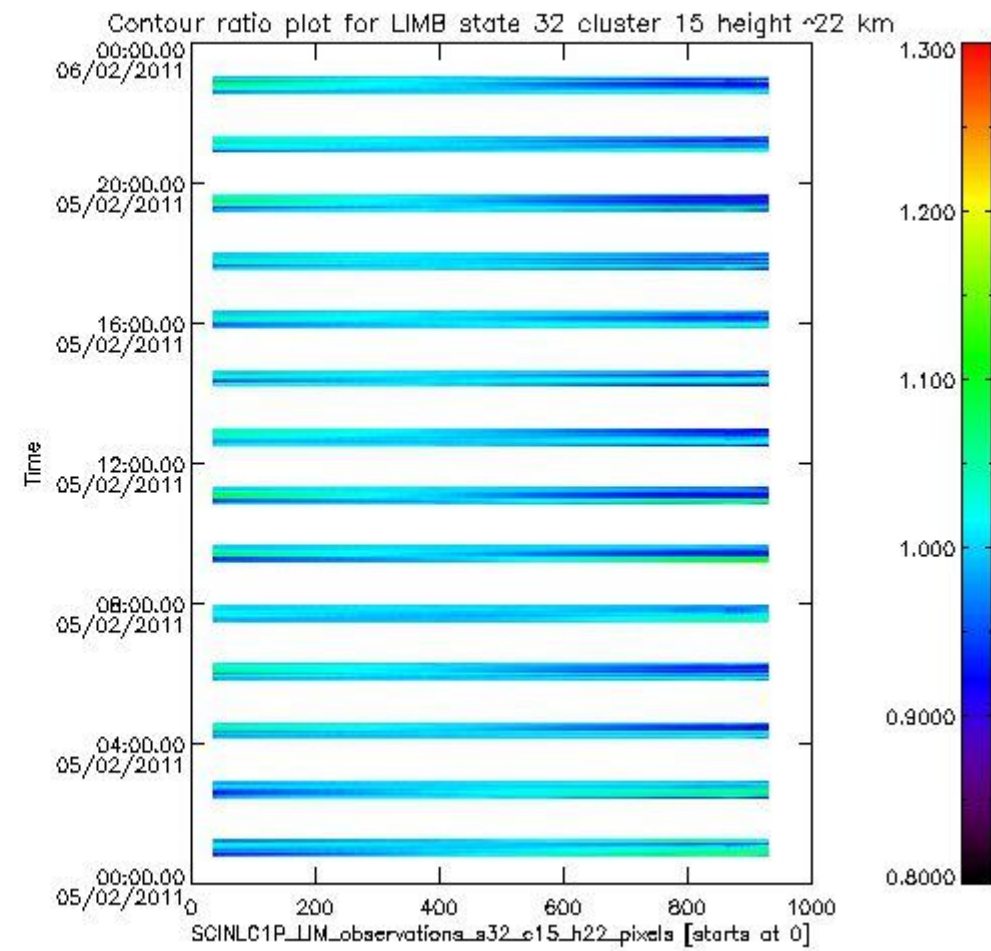
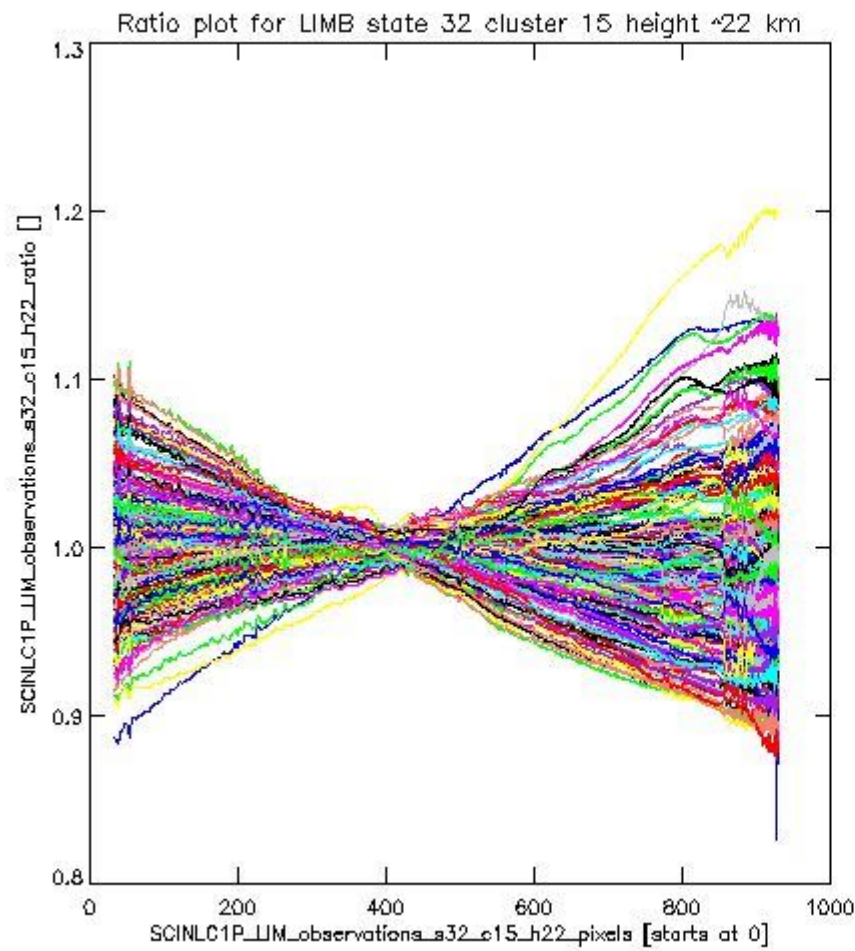
sciamachy_l1b_source_packet_report_SCIA_7_04_U_20110205_15.PNG

1.2.9 LIMB state 32 cluster 15 height ~22 km The data for the analysis of LIMB state 32 cluster 15 height ~22 km have the following characteristics:

Item	Value
Start time of first sample	05FEB2011 00:48:15.255
Start time of last sample	05FEB2011 22:58:56.035
Reference period start time	07JAN2011 10:13:37.752
Reference period stop time	04FEB2011 23:35:45.942
Channel number	3
First pixel number (starts at 0)	33
Last pixel number (starts at 0)	929



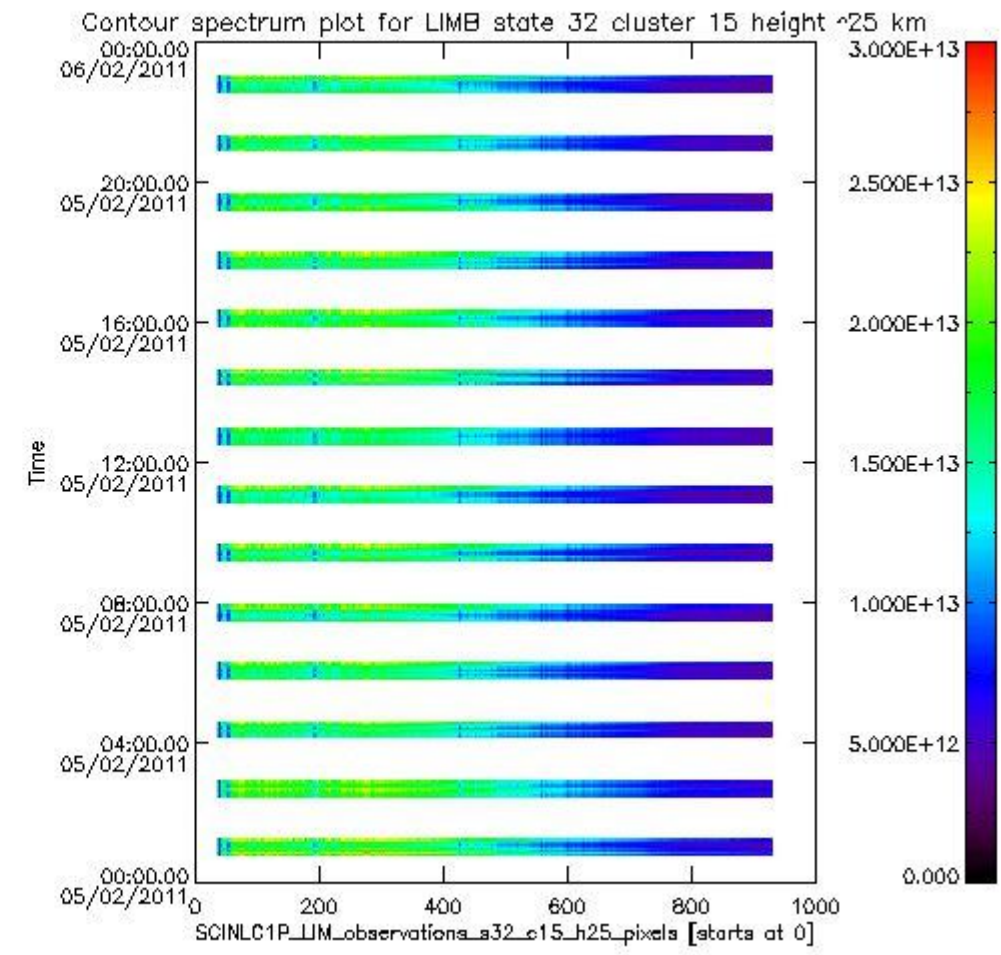
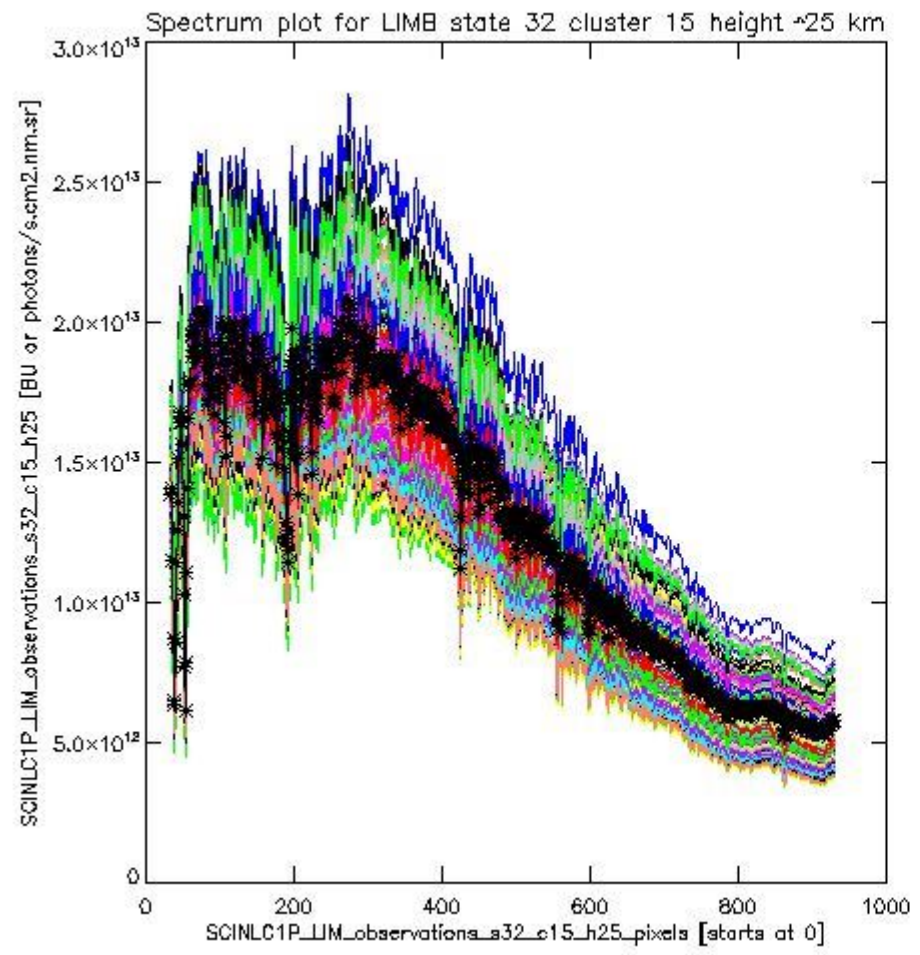
sciamachy_i1b_source_packet_report_SCIA_7_04_U_20110205_16.PNG



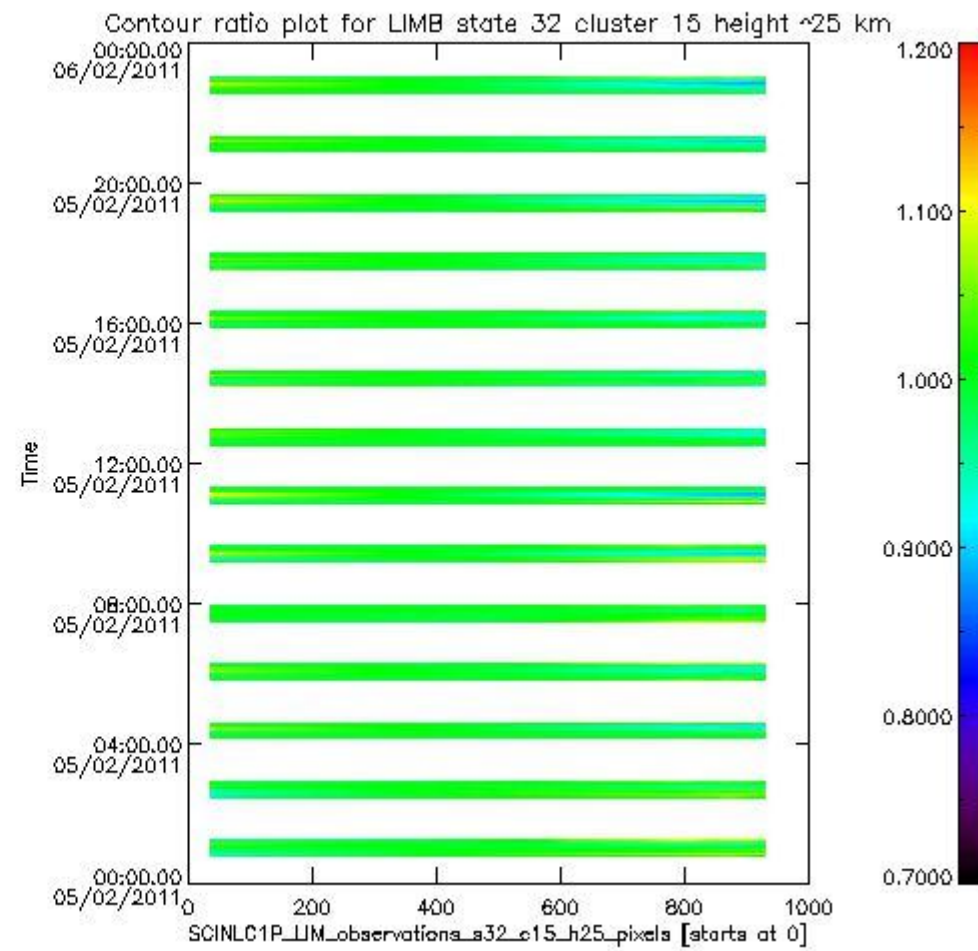
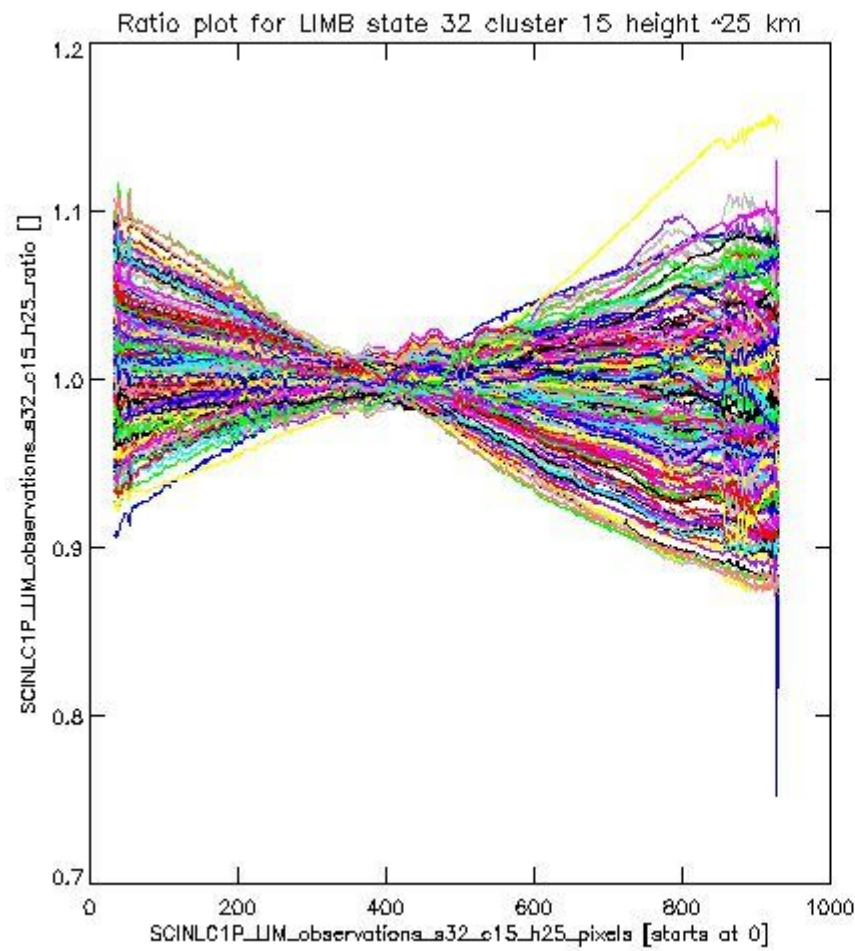
sciamachy_11b_source_packet_report_SCIA_7_04_U_20110205_17.PNG

1.2.10 LIMB state 32 cluster 15 height ~25 km The data for the analysis of LIMB state 32 cluster 15 height ~25 km have the following characteristics:

Item	Value
Start time of first sample	05FEB2011 00:48:15.255
Start time of last sample	05FEB2011 22:58:56.035
Reference period start time	07JAN2011 10:13:37.752
Reference period stop time	04FEB2011 23:35:45.942
Channel number	3
First pixel number (starts at 0)	33
Last pixel number (starts at 0)	929



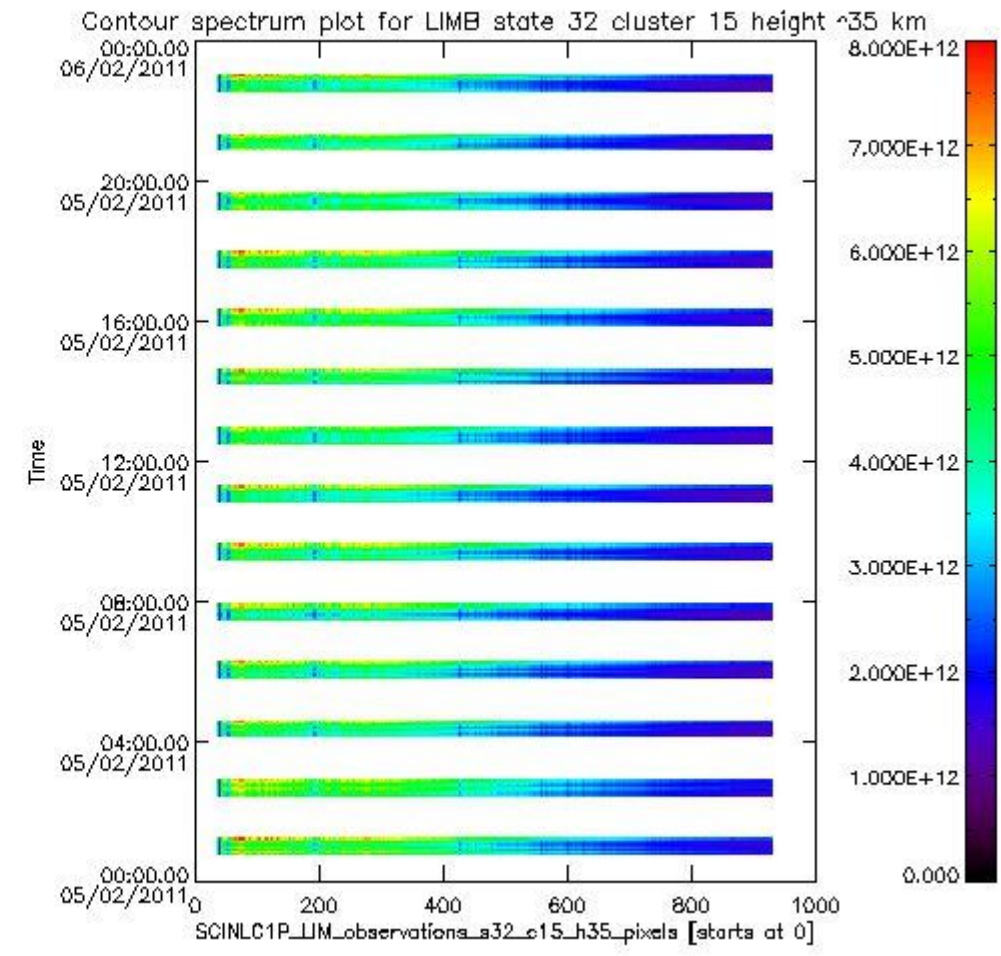
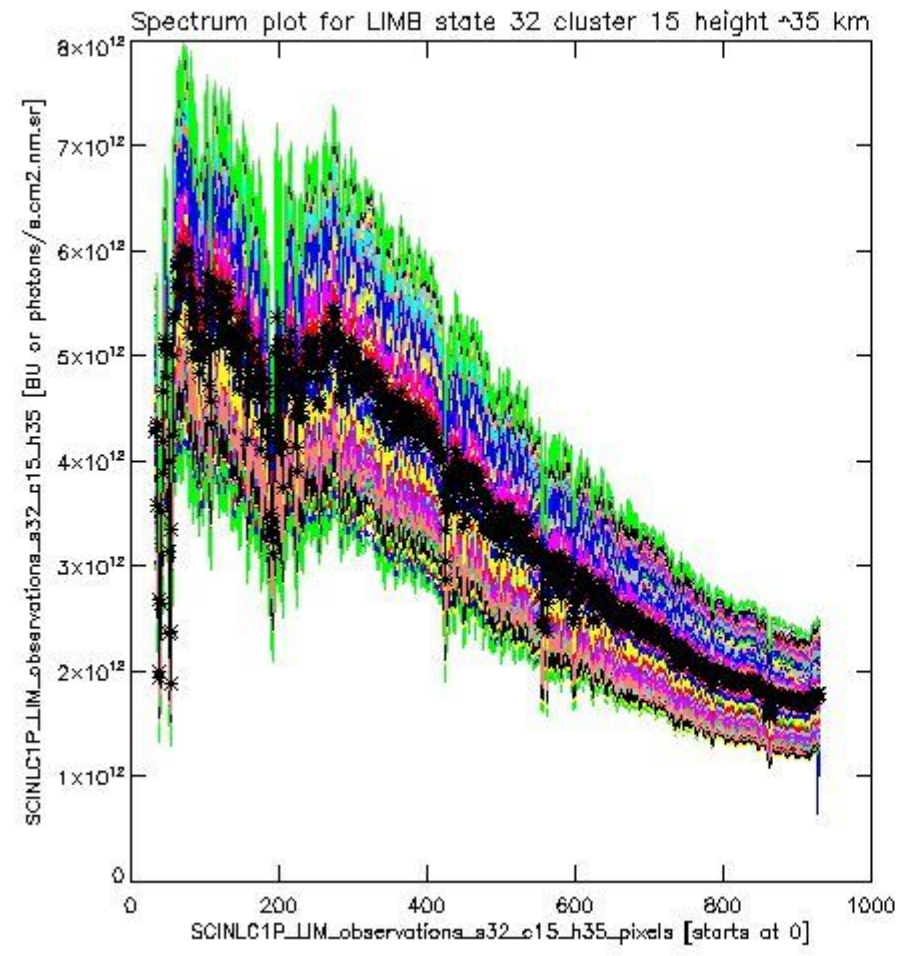
sciamachy_l1b_source_packet_report_SCIA_7_04_U_20110205_18.PNG



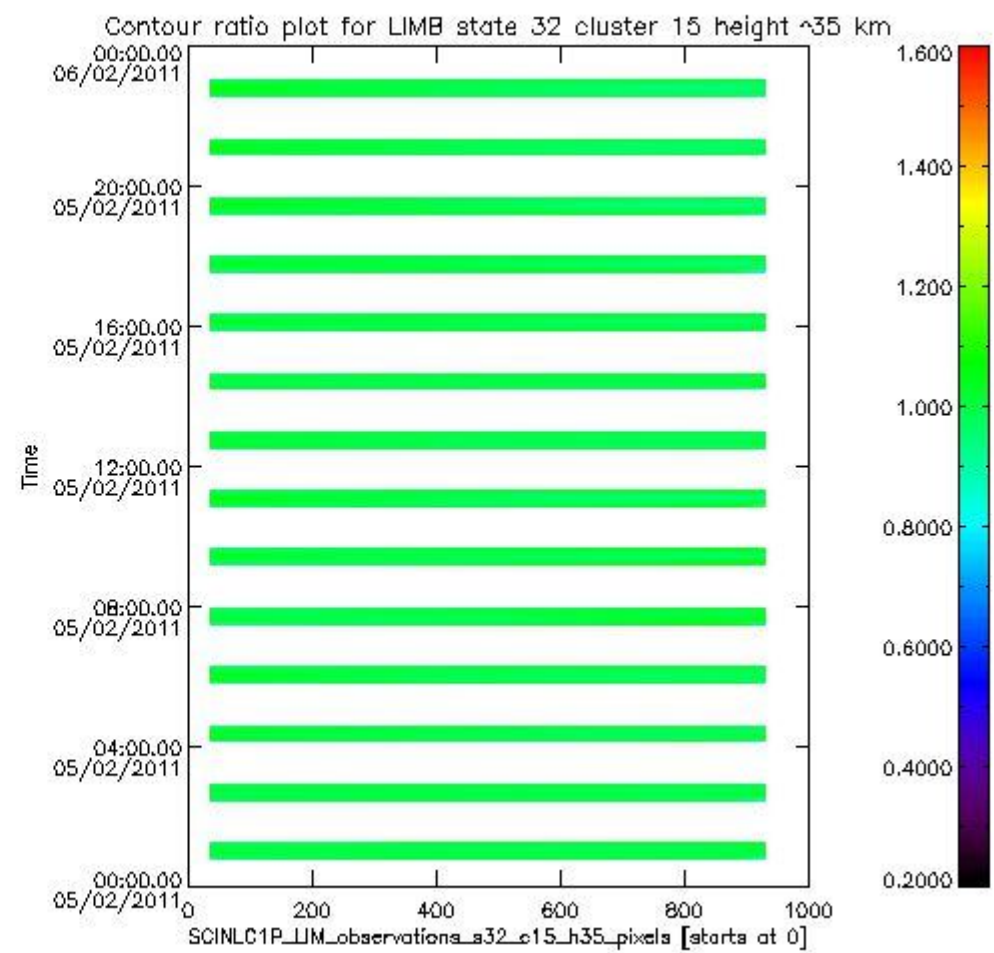
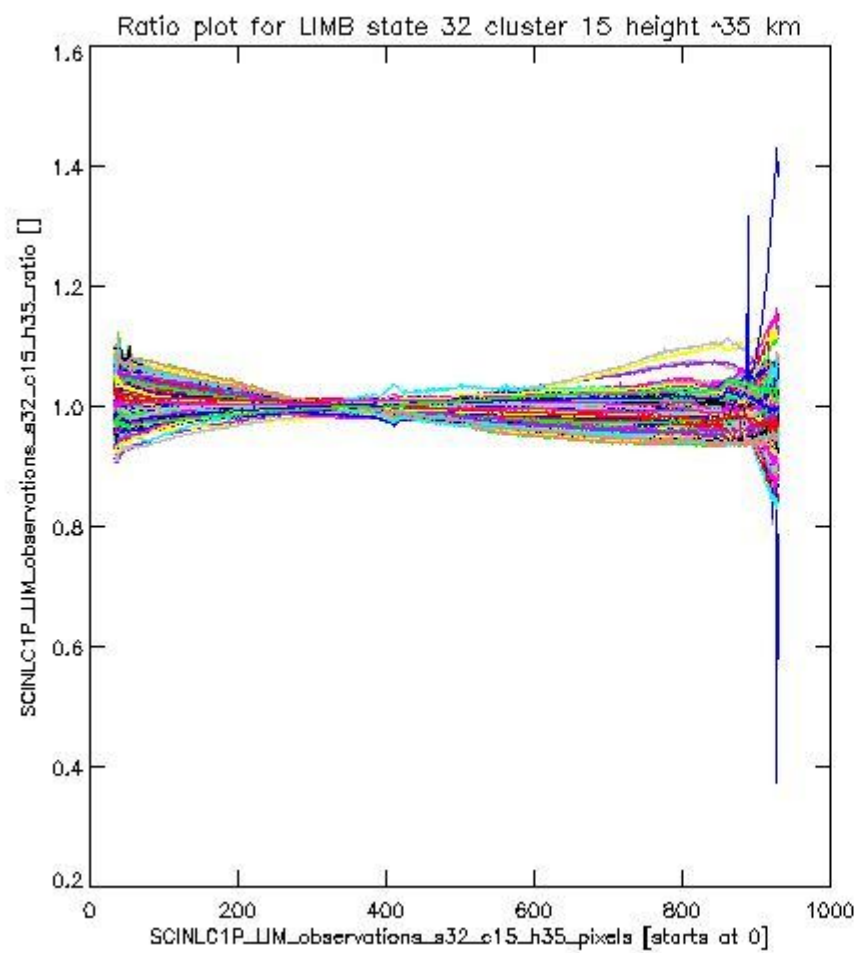
sciamachy_11b_source_packet_report_SCIA_7_04_U_20110205_19.PNG

1.2.11 LIMB state 32 cluster 15 height ~35 km The data for the analysis of LIMB state 32 cluster 15 height ~35 km have the following characteristics:

Item	Value
Start time of first sample	05FEB2011 00:48:15.255
Start time of last sample	05FEB2011 22:58:56.035
Reference period start time	07JAN2011 10:13:37.752
Reference period stop time	04FEB2011 23:35:45.942
Channel number	3
First pixel number (starts at 0)	33
Last pixel number (starts at 0)	929



sciamachy_11b_source_packet_report_SCIA_7_04_U_20110205_20.PNG



sciamachy_i1b_source_packet_report_SCIA_7_04_U_20110205_21.PNG

