

1. SCIAMACHY Level 1B source packet monitoring report

[1.1. General Info](#)

[1.2 Source packet monitoring](#)

1.1 General Info

This report contains results of the analysis on source packets from SCIAMACHY level 1 data (The SCI_NL__1P product).

1.1.1 Report summary

The table below shows general characteristics of the data that are included into this report.

Item	Value
Report version	1.1 (07-01-2010)
Time of report generation	10FEB2011 06:55:31
Data source version	SCIA/7.04-U
Processing scope for products	30JAN2011 00:00:00 to 31JAN2011 00:00:00
Start time of first product within scope	29JAN2011 23:09:40
Stop time of last product within scope	30JAN2011 07:01:03
Total number of level 1 products	5
Number of level 1 products with errors	0
SCIAL1C executable used in processing	scial1c-2.1.73-i686-pc-linux-gnu-gcc-3.3.6
SCIAL1C parameters used in processing	-allcal -type all -cat 1,2,8,10,11,16,19,23 -nadircluster 8,9,15,24,55 -limbcluster 9,15

1.1.2 Source packet summary

The table below shows which source packets have been included into the report.

Item	Mode	State	Cluster	Height	First start time	Last start time
0	NADIR	07	08	N/A	30JAN2011 01:21:56.525	30JAN2011 06:31:56.961
1	NADIR	07	09	N/A	30JAN2011 01:21:56.525	30JAN2011 06:31:56.961
2	NADIR	07	15	N/A	30JAN2011 01:21:56.525	30JAN2011 06:31:56.961
3	NADIR	07	24	N/A	30JAN2011 01:21:56.525	30JAN2011 06:31:56.961
4	NADIR	07	55	N/A	30JAN2011 01:21:56.525	30JAN2011 06:31:56.961
5	LIMB	32	09	~19 km	30JAN2011 01:08:45.884	30JAN2011 06:37:11.004
6	LIMB	32	09	~22 km	30JAN2011 01:08:45.884	30JAN2011 06:37:11.004
7	LIMB	32	09	~25 km	30JAN2011 01:08:45.884	30JAN2011 06:37:11.004
8	LIMB	32	15	~22 km	30JAN2011 01:08:45.884	30JAN2011 06:37:11.004
9	LIMB	32	15	~25 km	30JAN2011 01:08:45.884	30JAN2011 06:37:11.004
10	LIMB	32	15	~35 km	30JAN2011 01:08:45.884	30JAN2011 06:37:11.004

1.1.3 Summary per product

The following table shows a summary for each product used in this report.

Products are linked to a corresponding server directory for view/download. Note: Link access may be restricted by security settings of your internet browser or firewall.

#	Product name	Start time	Stop time	ProdErr	#nadir	#limb	#occ	#mon	#noprocc	#cmlpl_drk	#incmpl_drk	Decont
0	SCI_NLC_1CUDPA20110129_225350_000060023099_00059_46625_4080.N1	29JAN2011 23:09:40	30JAN2011 00:20:09	0	36	30	0	0	1	0	0	
1	SCI_NLC_1CUDPA20110130_003356_000060173099_00060_46626_4081.N1	30JAN2011 00:49:53	30JAN2011 02:00:08	0	35	31	0	0	1	0	0	
2	SCI_NLC_1CUDPA20110130_021417_000060023099_00061_46627_4084.N1	30JAN2011 02:30:07	30JAN2011 03:40:36	0	36	30	0	0	1	0	0	
3	SCI_NLC_1CUDPA20110130_035423_000060183099_00062_46628_4086.N1	30JAN2011 04:10:21	30JAN2011 05:20:35	0	35	31	0	0	1	0	0	
4	SCI_NLC_1CUDPA20110130_053445_000060023099_00063_46629_4087.N1	30JAN2011 05:50:34	30JAN2011 07:01:03	0	36	30	0	0	1	0	0	

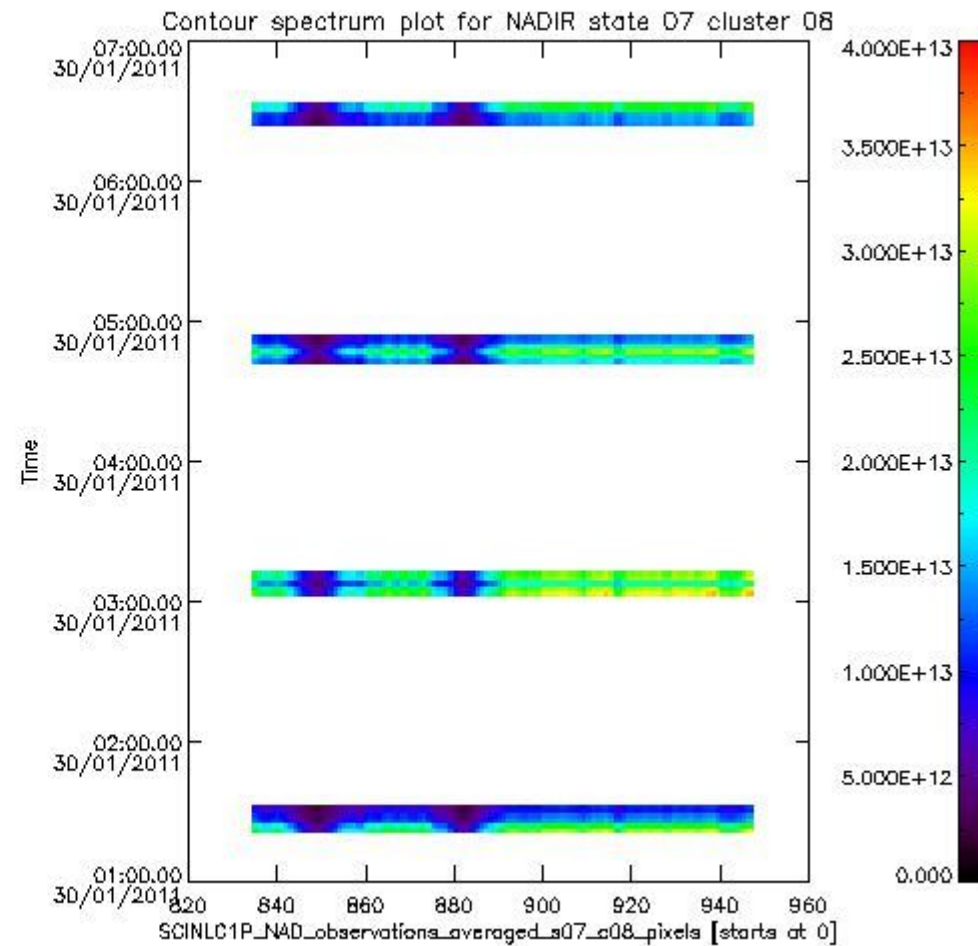
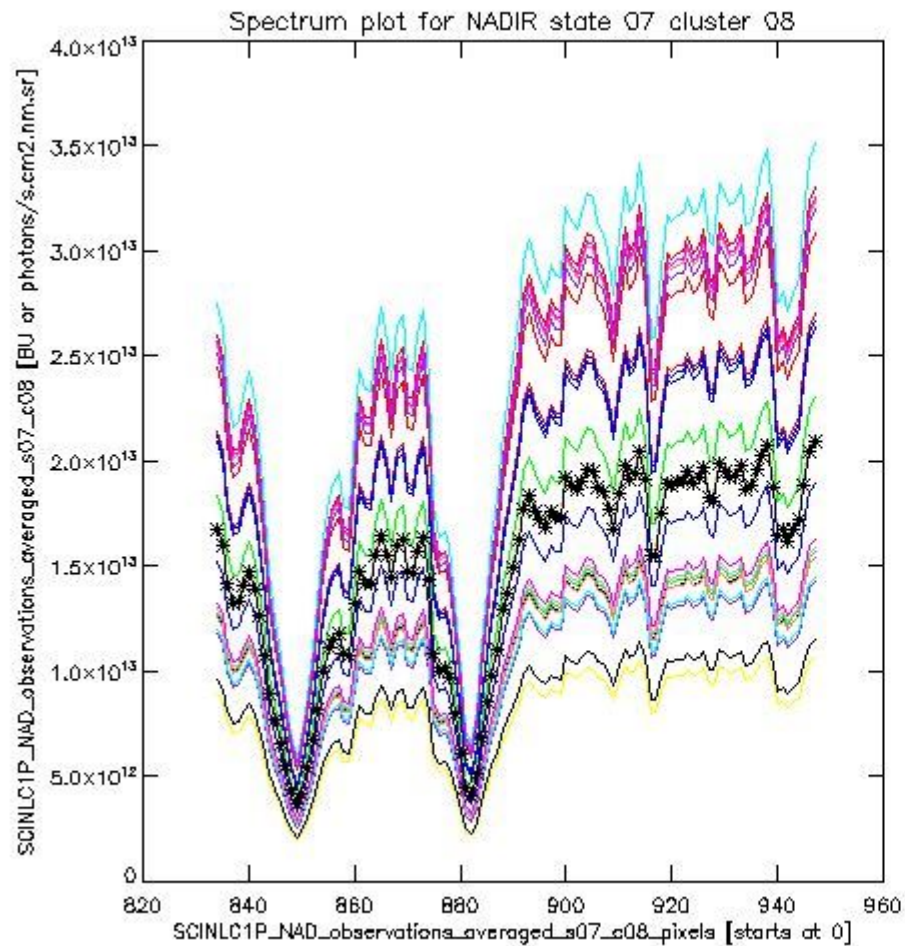
1.2 Source packet monitoring

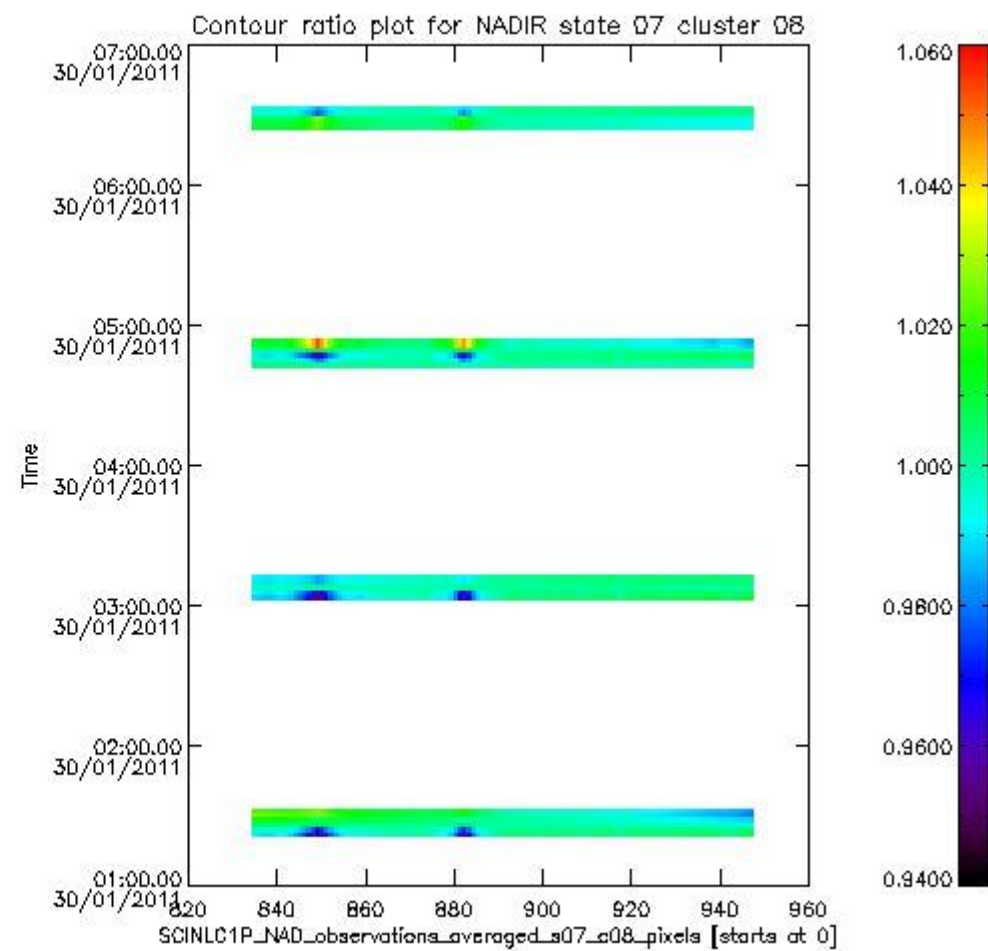
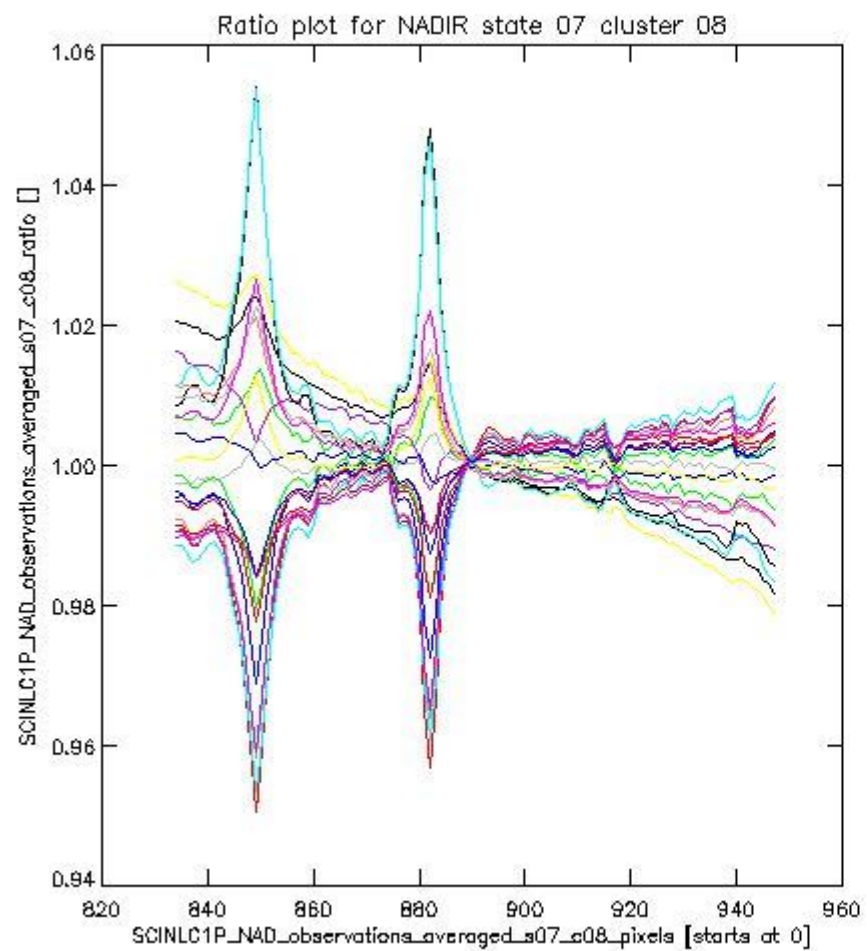
This section shows figures for each of the monitored source packet types listed in the Source Packet Summary section. For each mode-state-cluster(-height) combination the following plots are shown:

- A plot that shows all calibrated averaged spectra vs. pixel number as 2D-profiles. Each line is an average spectrum for a single state occurrence. For Limb modes, the average is performed on spectra recorded at a specific height. The reference spectrum that is used for comparison is also shown as a black line with * markers.
- A plot that shows all calibrated averaged spectra vs. pixel number and time using a coloured contour plot. The colours indicate the intensity.
- A plot that shows ratios of all calibrated averaged spectra and the reference spectrum vs. pixel number. Each line is the ratio of a calibrated averaged spectrum and the reference spectrum, where both spectra have been intensity corrected (the spectrum has been divided by the average pixel intensity) prior to division.
- A plot that shows ratios of all calibrated averaged spectra and the reference spectrum vs. pixel number and time using a coloured contour plot.

1.2.1 NADIR state 07 cluster 08 The data for the analysis of NADIR state 07 cluster 08 have the following characteristics:

Item	Value
Start time of first sample	30JAN2011 01:21:56.525
Start time of last sample	30JAN2011 06:31:56.961
Reference period start time	31DEC2010 01:24:23.191
Reference period stop time	29JAN2011 23:51:02.497
Channel number	2
First pixel number (starts at 0)	834
Last pixel number (starts at 0)	947

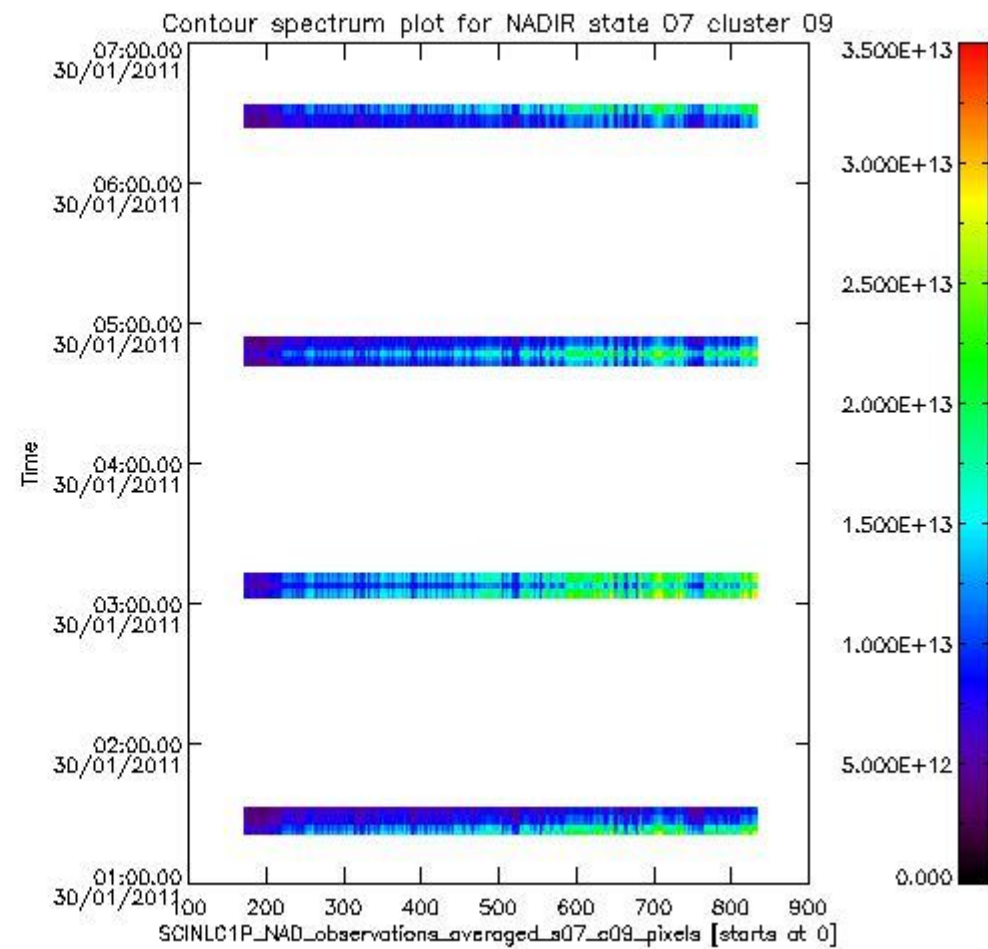
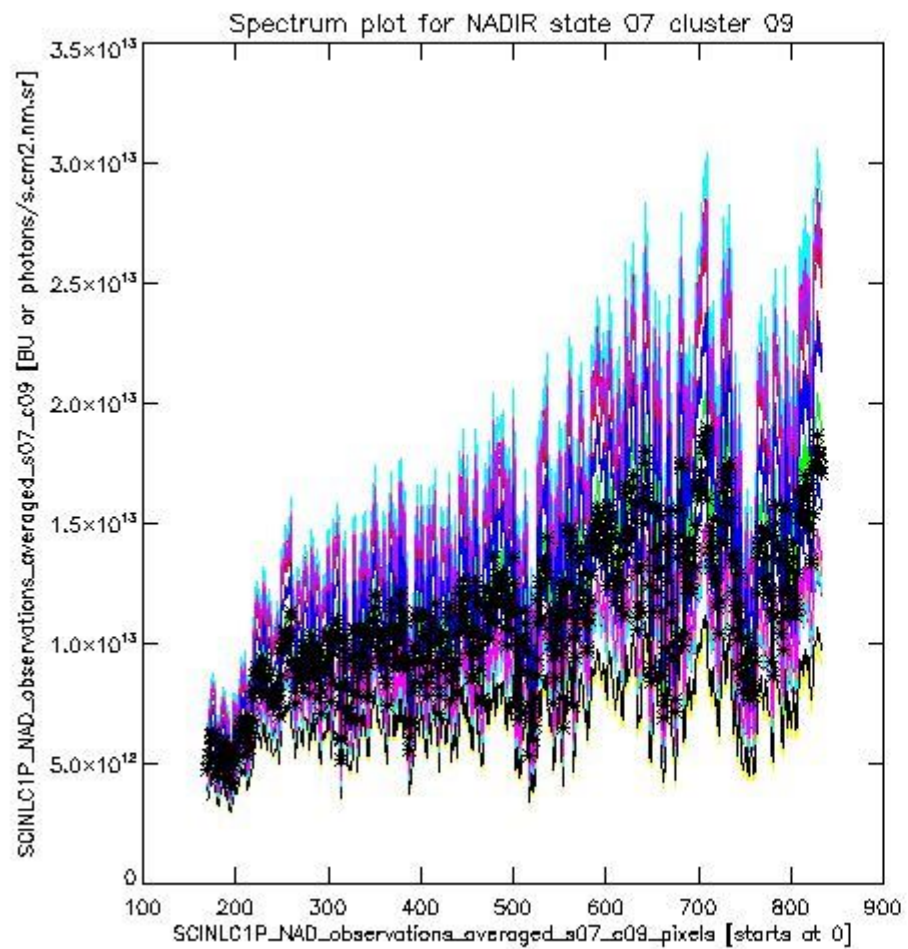




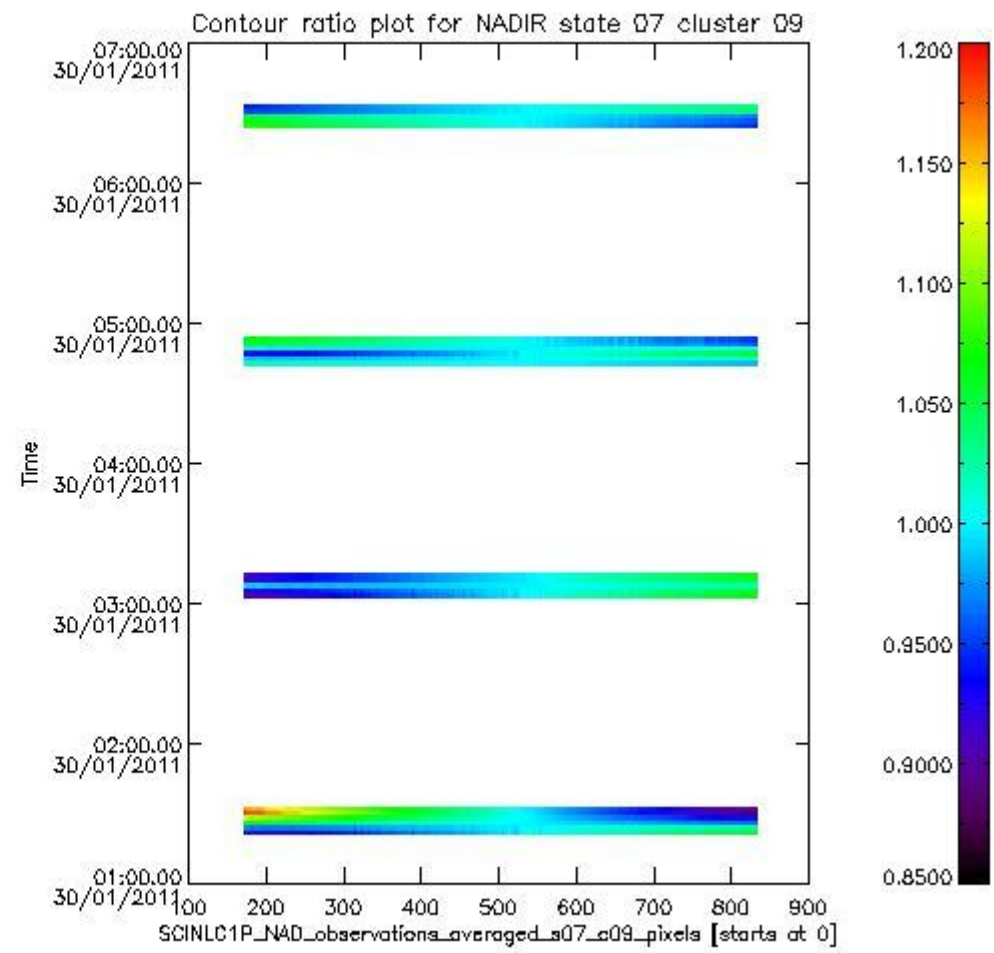
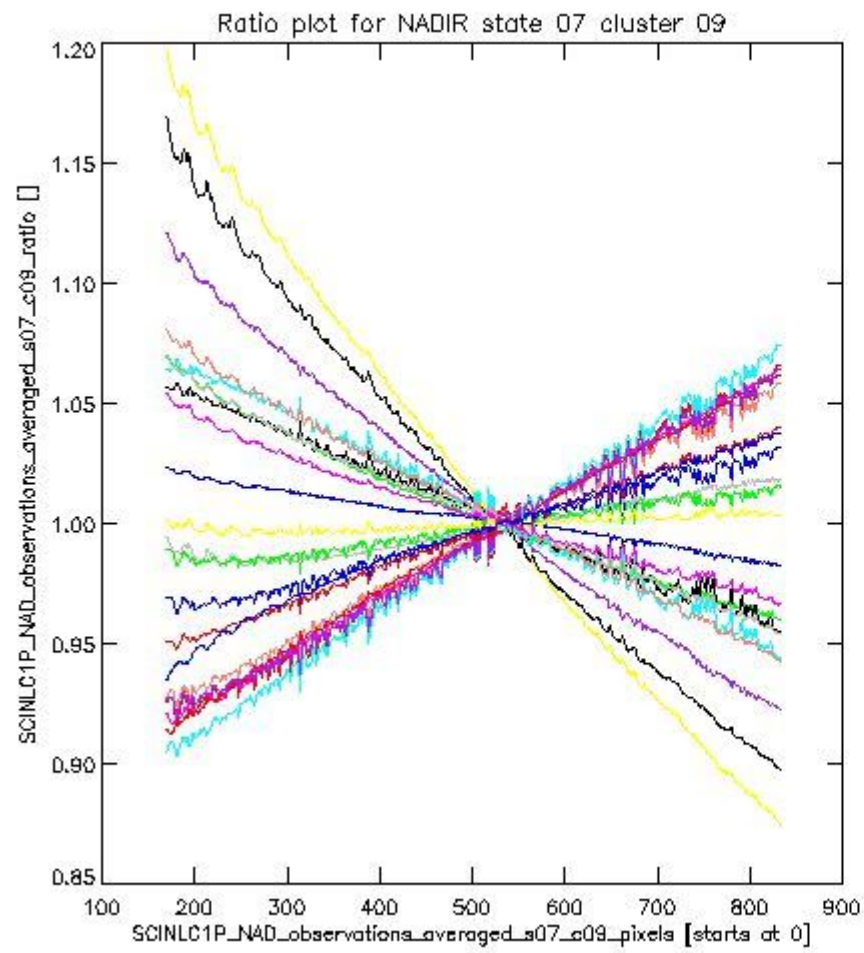
sciamachy_i1b_source_packet_report_SCIA_7_04_U_20110130_1.PNG

1.2.2 NADIR state 07 cluster 09 The data for the analysis of NADIR state 07 cluster 09 have the following characteristics:

Item	Value
Start time of first sample	30JAN2011 01:21:56.525
Start time of last sample	30JAN2011 06:31:56.961
Reference period start time	31DEC2010 01:24:23.191
Reference period stop time	29JAN2011 23:51:02.497
Channel number	2
First pixel number (starts at 0)	170
Last pixel number (starts at 0)	833



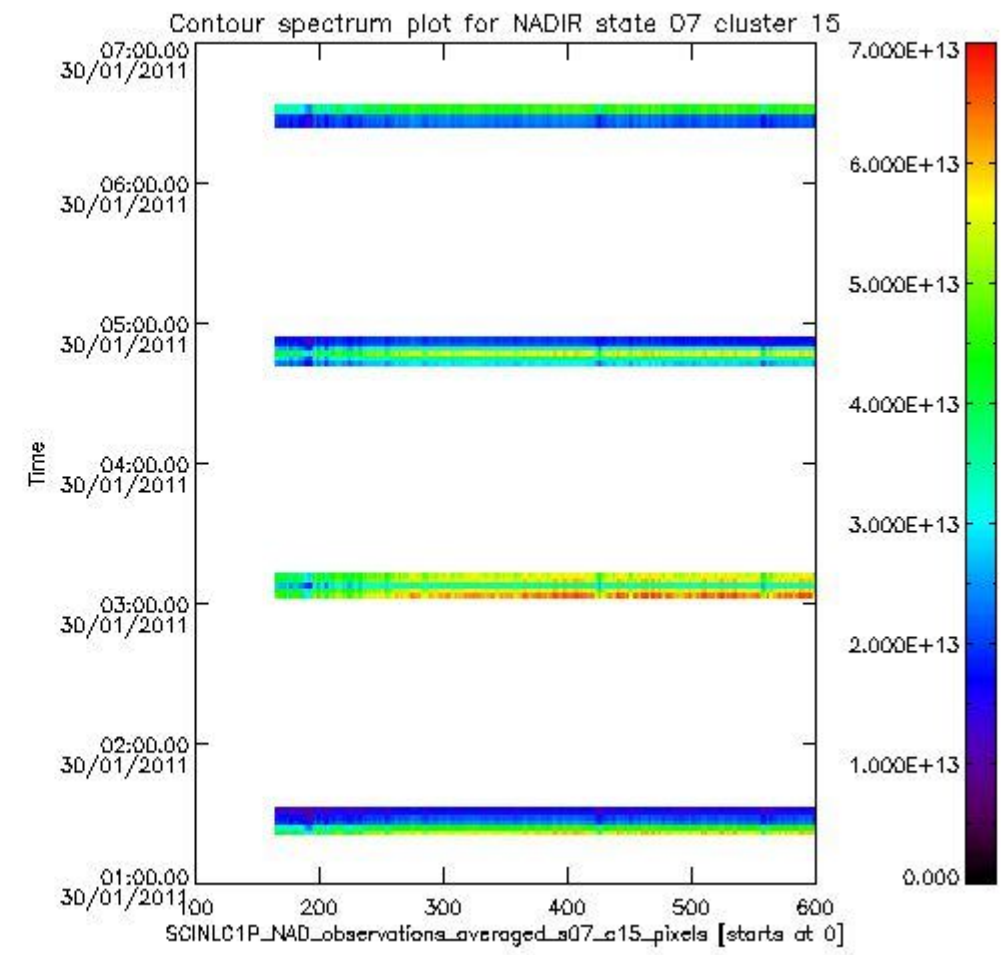
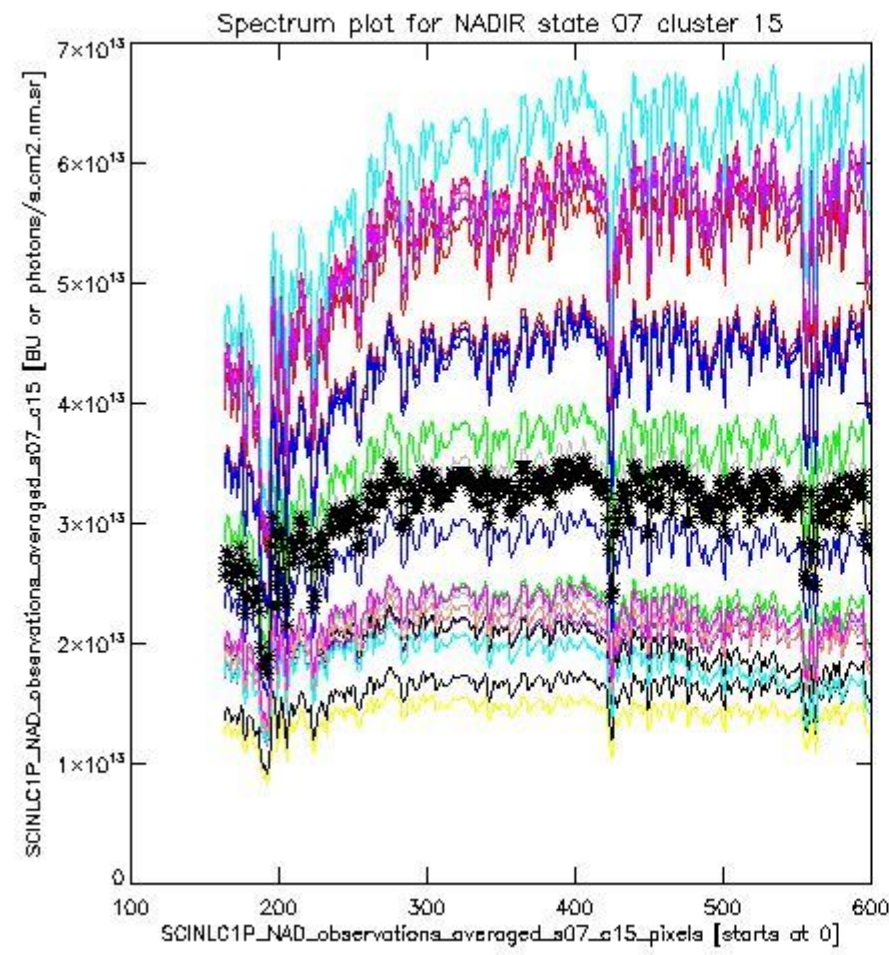
sciamachy_i1b_source_packet_report_SCIA_7_04_U_20110130_2.PNG



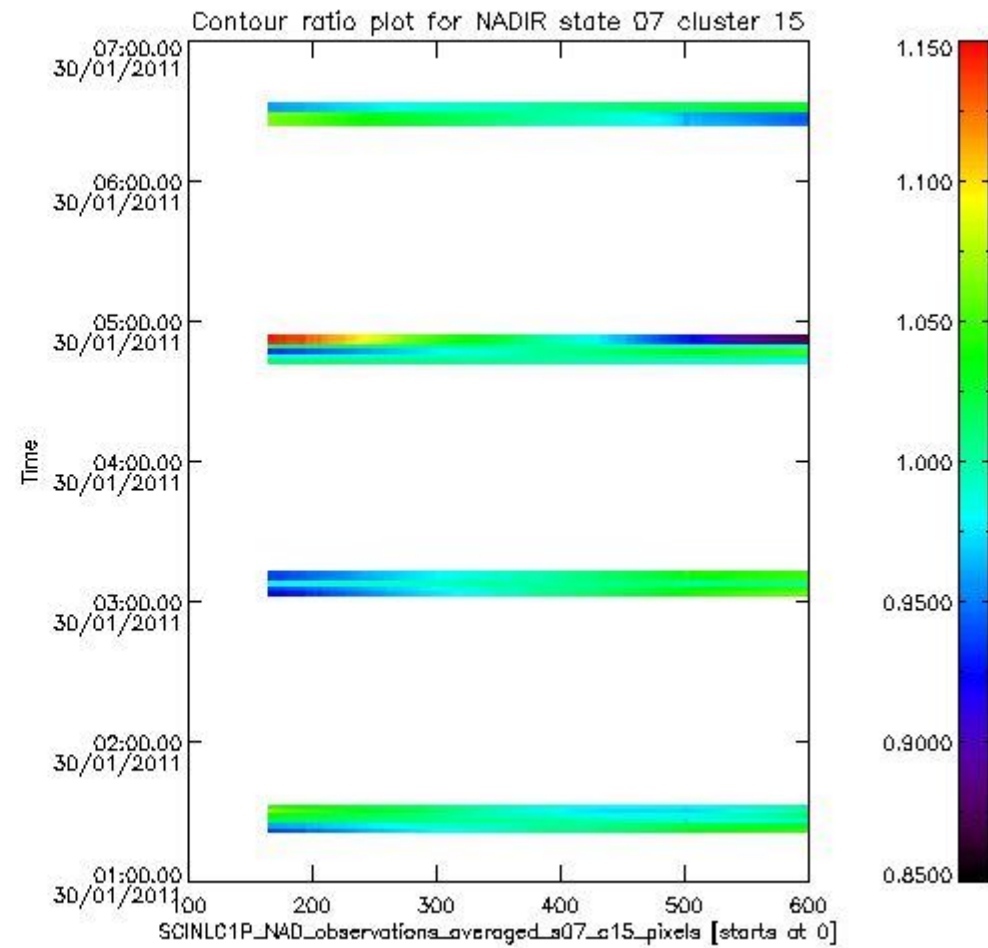
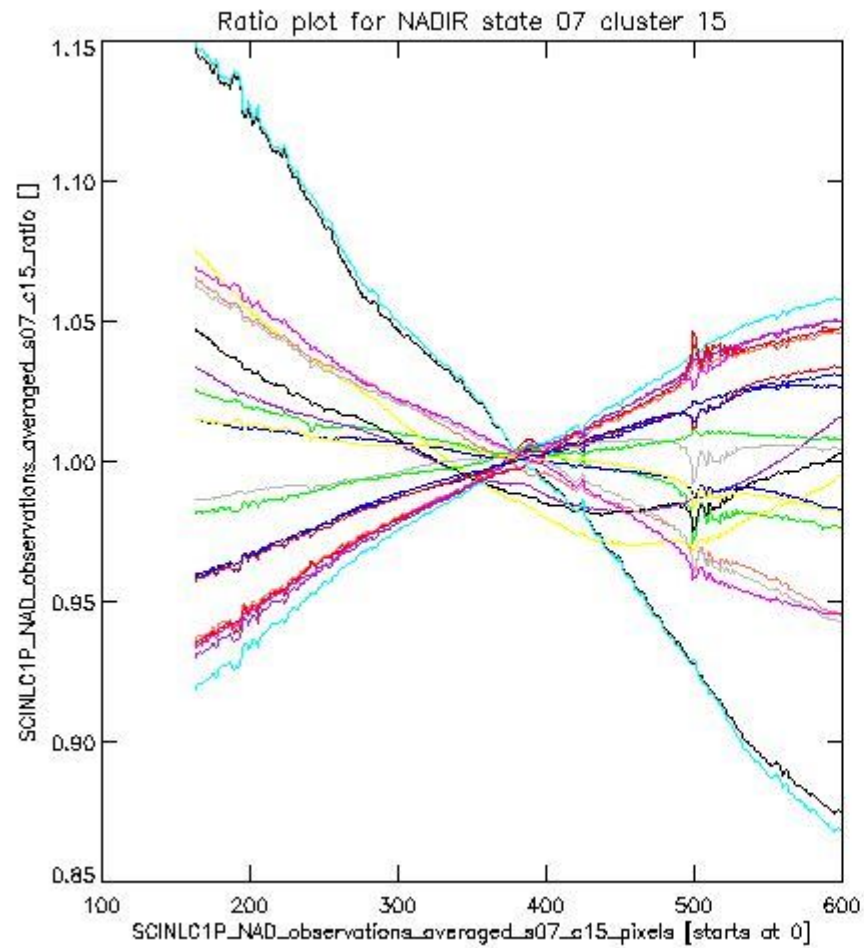
sciamachy_i1b_source_packet_report_SCIA_7_04_U_20110130_3.PNG

1.2.3 NADIR state 07 cluster 15 The data for the analysis of NADIR state 07 cluster 15 have the following characteristics:

Item	Value
Start time of first sample	30JAN2011 01:21:56.525
Start time of last sample	30JAN2011 06:31:56.961
Reference period start time	31DEC2010 01:24:23.191
Reference period stop time	29JAN2011 23:51:02.497
Channel number	3
First pixel number (starts at 0)	163
Last pixel number (starts at 0)	598



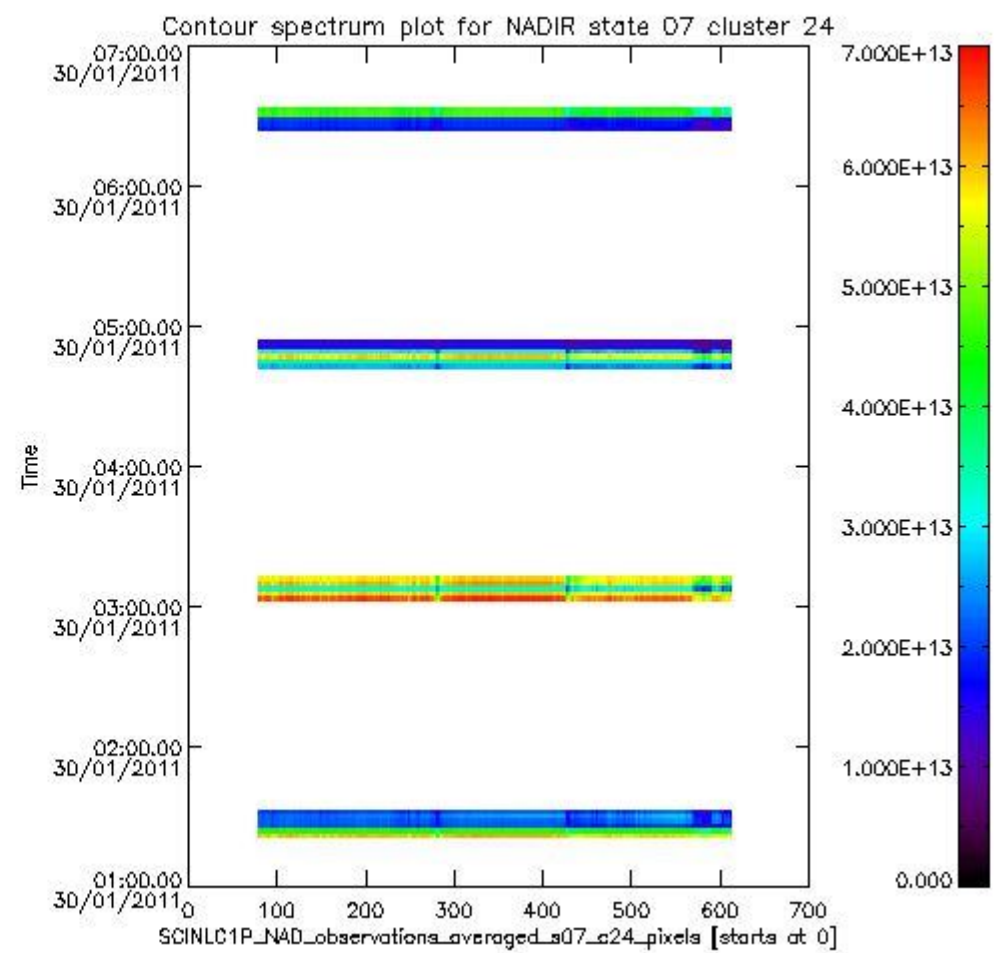
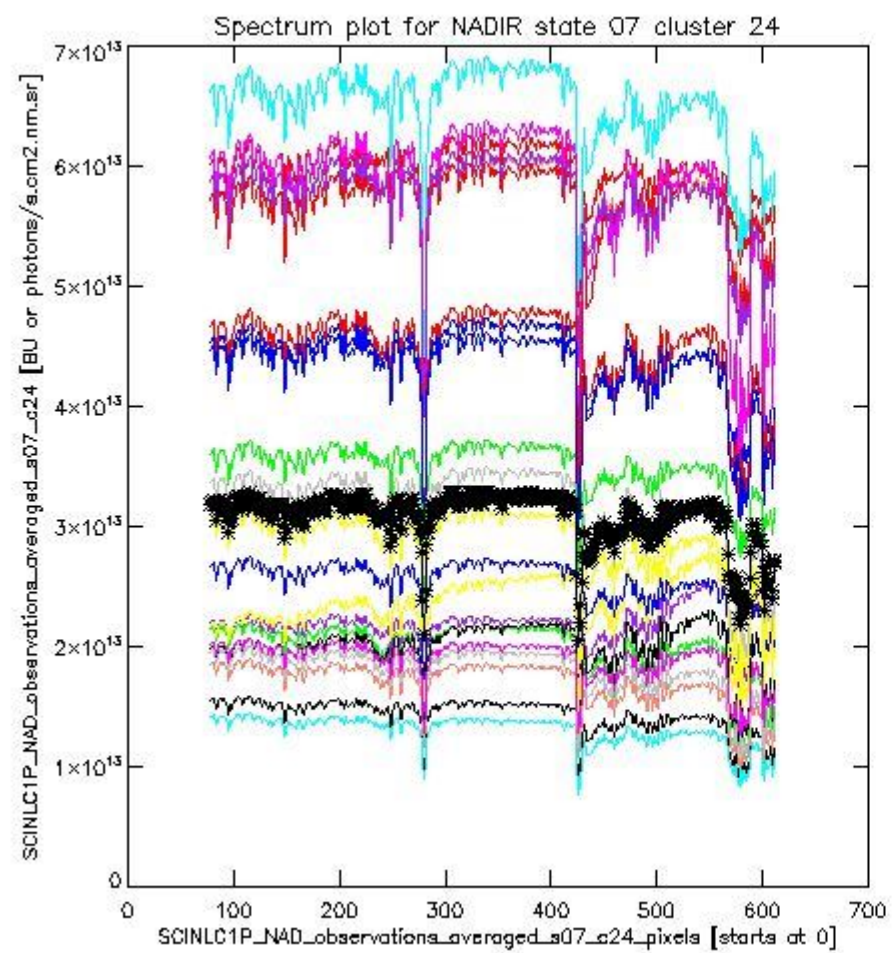
sciamachy_i1b_source_packet_report_SCIA_7_04_U_20110130_4.PNG



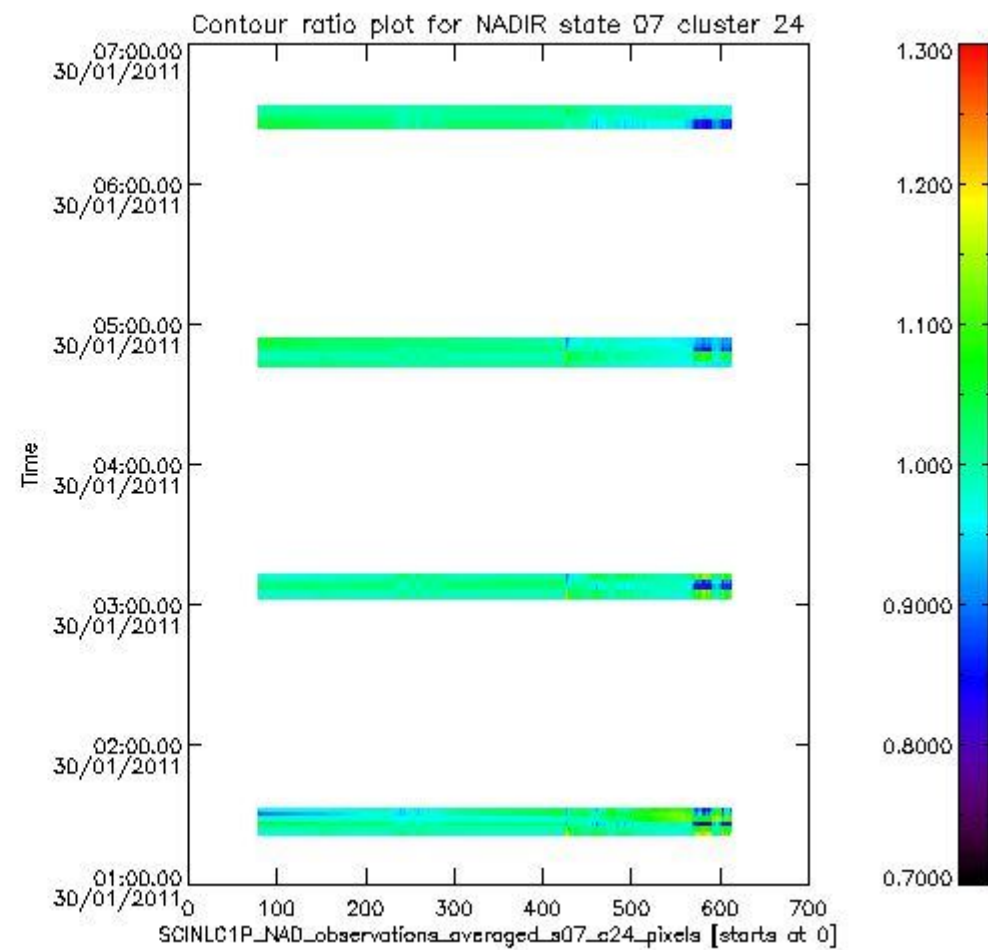
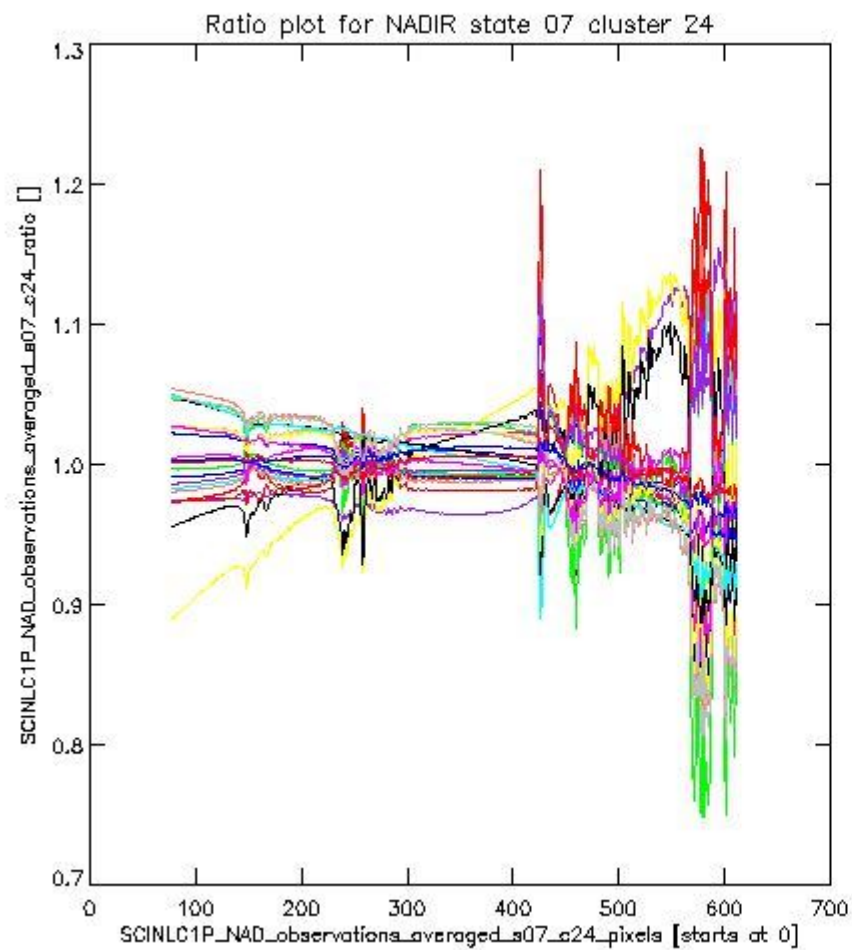
sciamachy_l1b_source_packet_report_SCIA_7_04_U_20110130_5.PNG

1.2.4 NADIR state 07 cluster 24 The data for the analysis of NADIR state 07 cluster 24 have the following characteristics:

Item	Value
Start time of first sample	30JAN2011 01:21:56.525
Start time of last sample	30JAN2011 06:31:56.961
Reference period start time	31DEC2010 01:24:23.191
Reference period stop time	29JAN2011 23:51:02.497
Channel number	4
First pixel number (starts at 0)	78
Last pixel number (starts at 0)	612



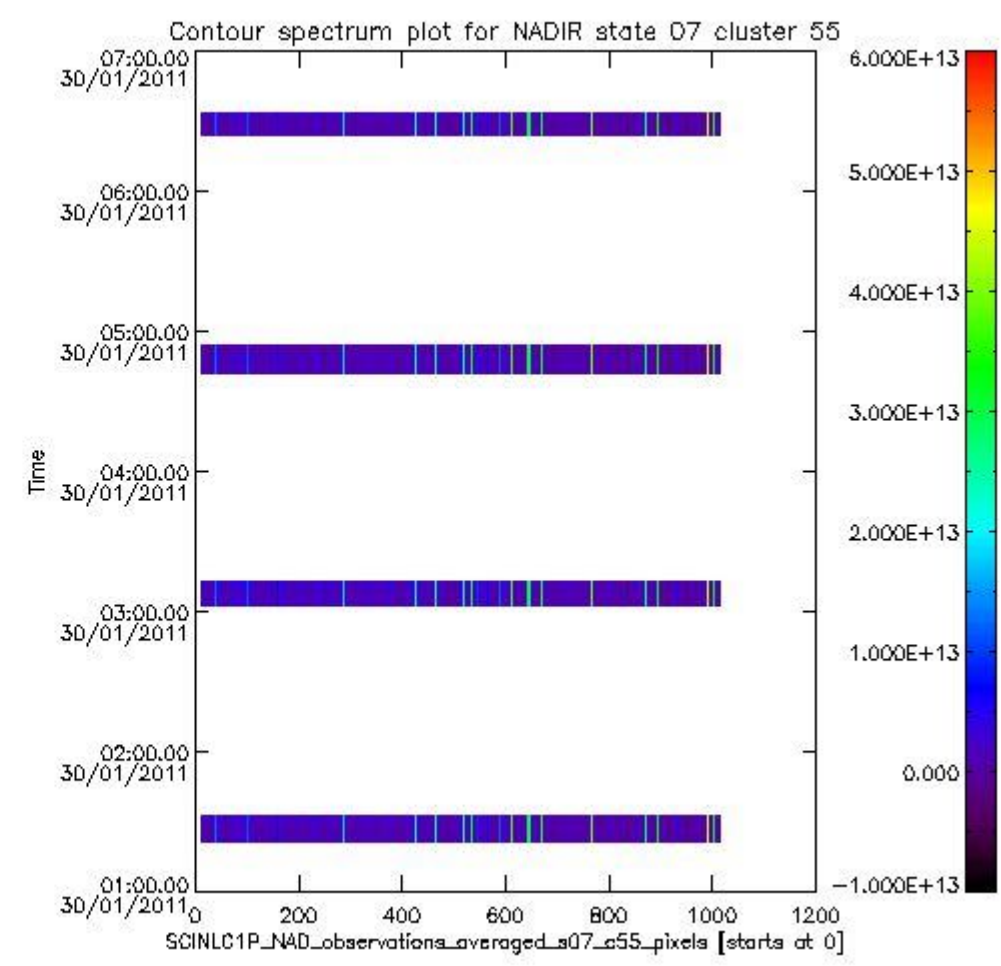
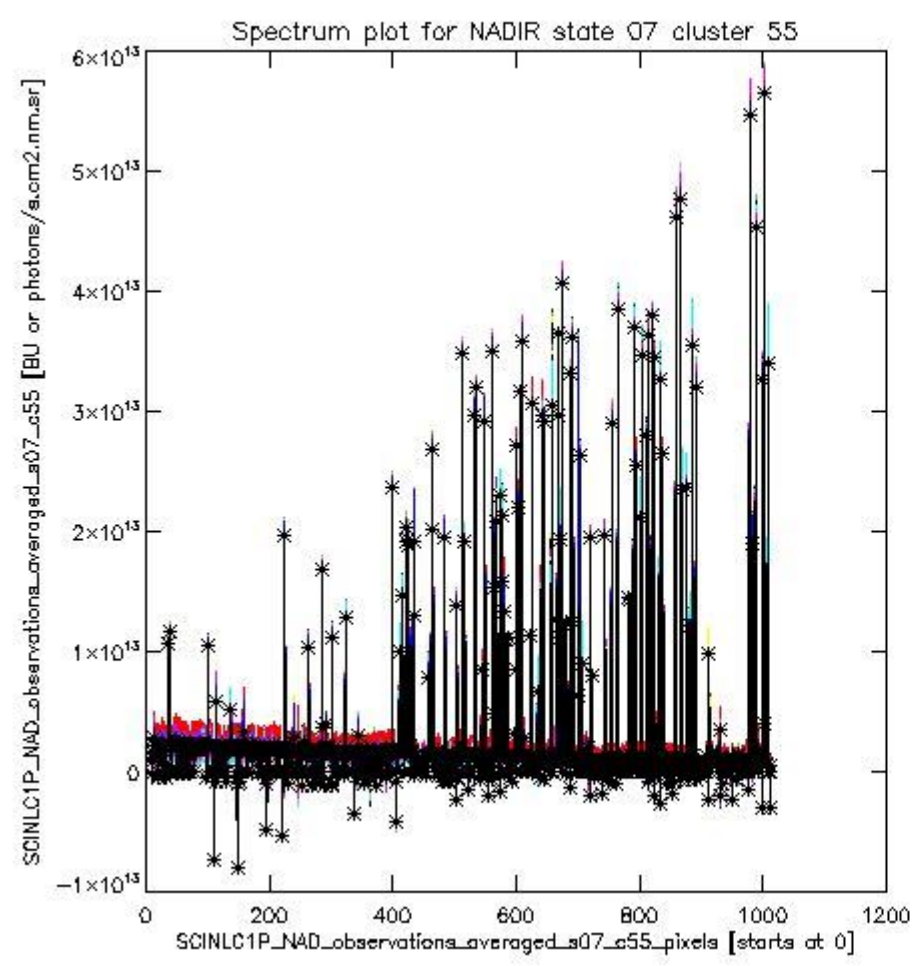
sciamachy_i1b_source_packet_report_SCIA_7_04_U_20110130_6.PNG



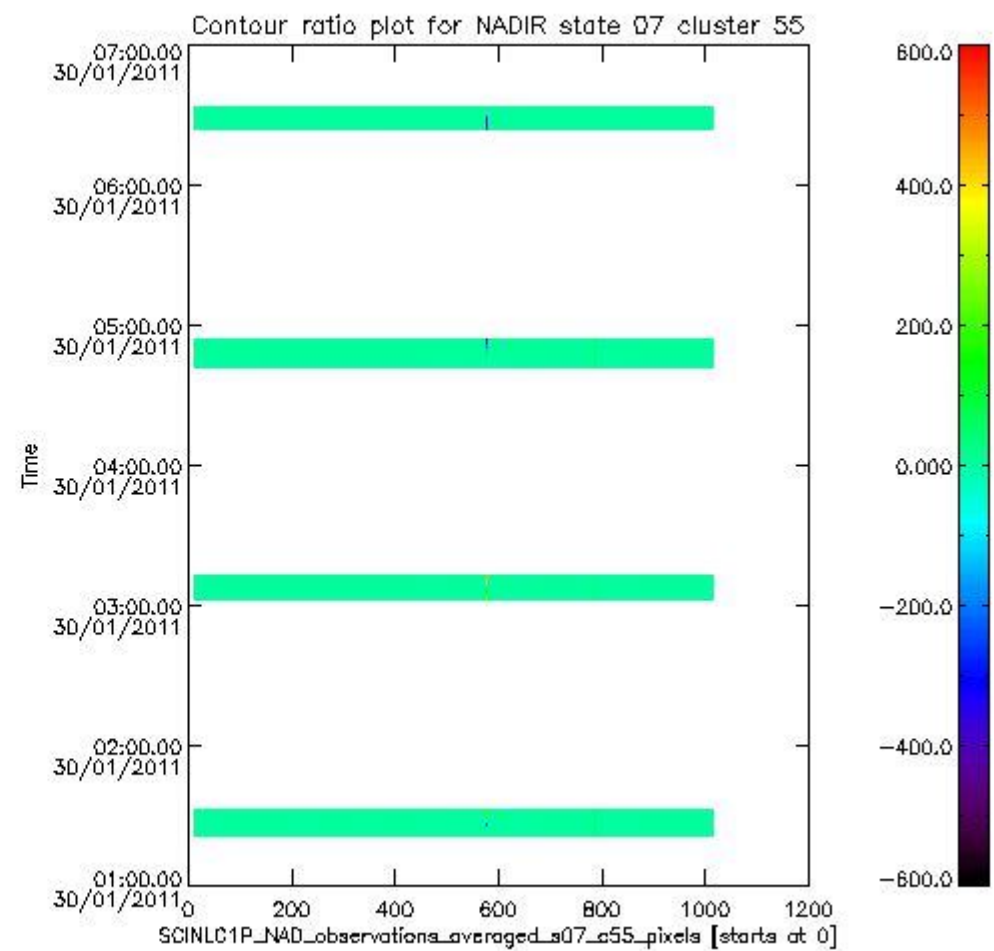
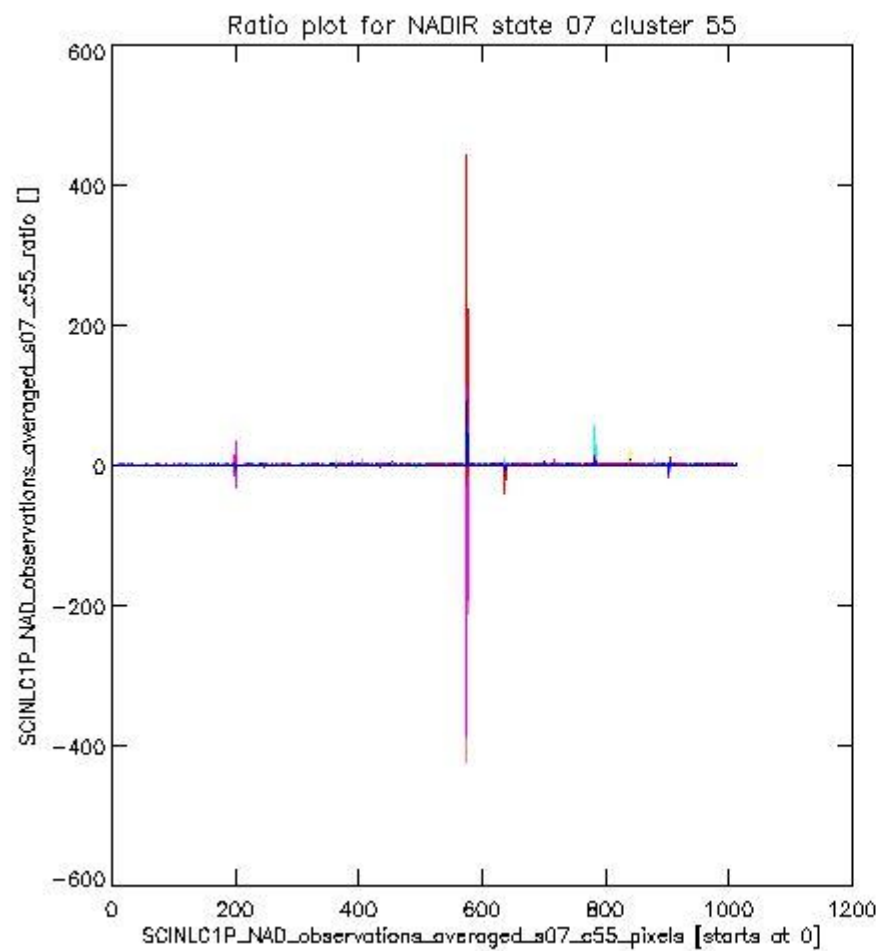
sciamachy_l1b_source_packet_report_SCIA_7_04_U_20110130_7.PNG

1.2.5 NADIR state 07 cluster 55 The data for the analysis of NADIR state 07 cluster 55 have the following characteristics:

Item	Value
Start time of first sample	30JAN2011 01:21:56.525
Start time of last sample	30JAN2011 06:31:56.961
Reference period start time	31DEC2010 01:24:23.191
Reference period stop time	29JAN2011 23:51:02.497
Channel number	8
First pixel number (starts at 0)	10
Last pixel number (starts at 0)	1013



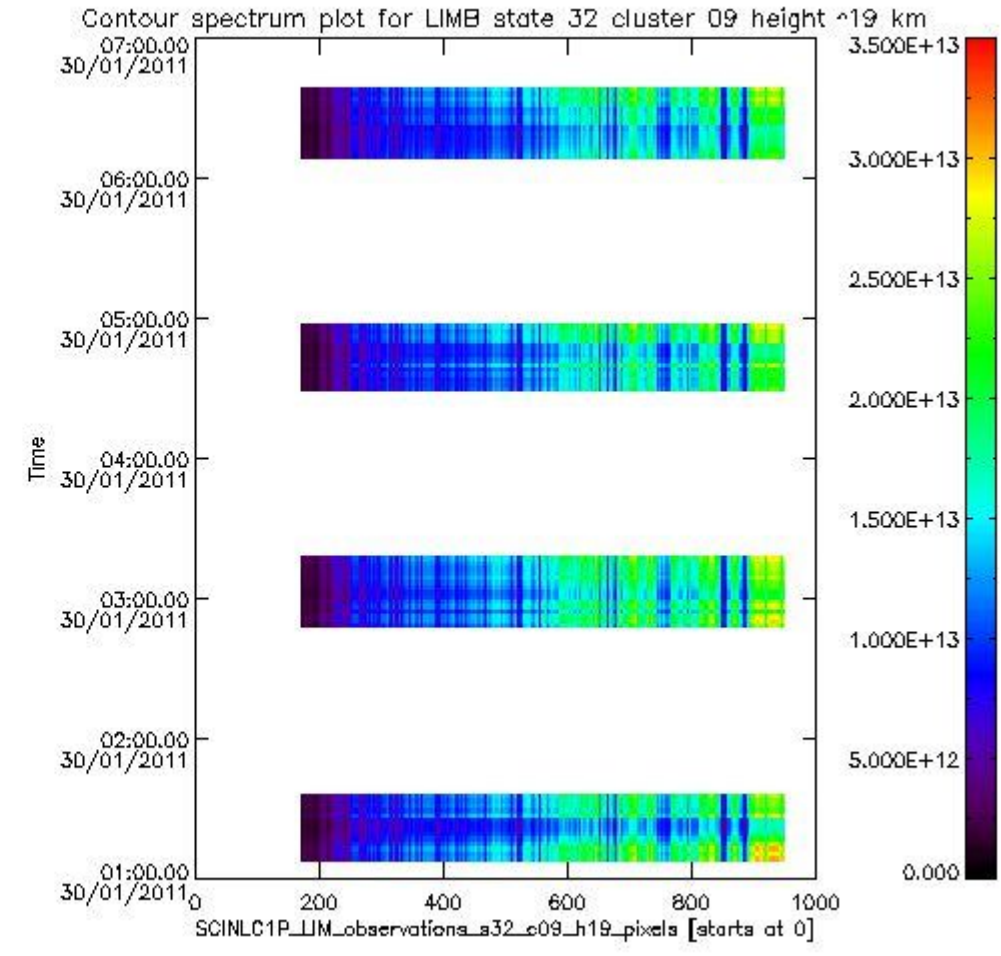
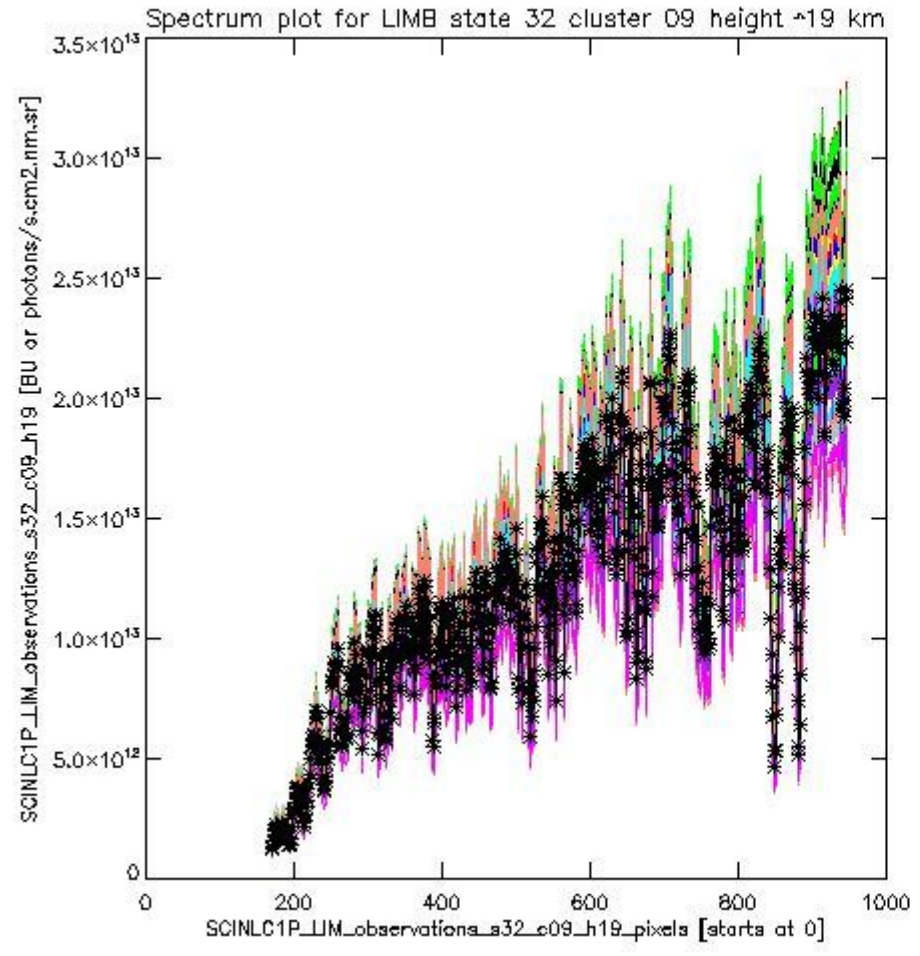
sciamachy_l1b_source_packet_report_SCIA_7_04_U_20110130_8.PNG



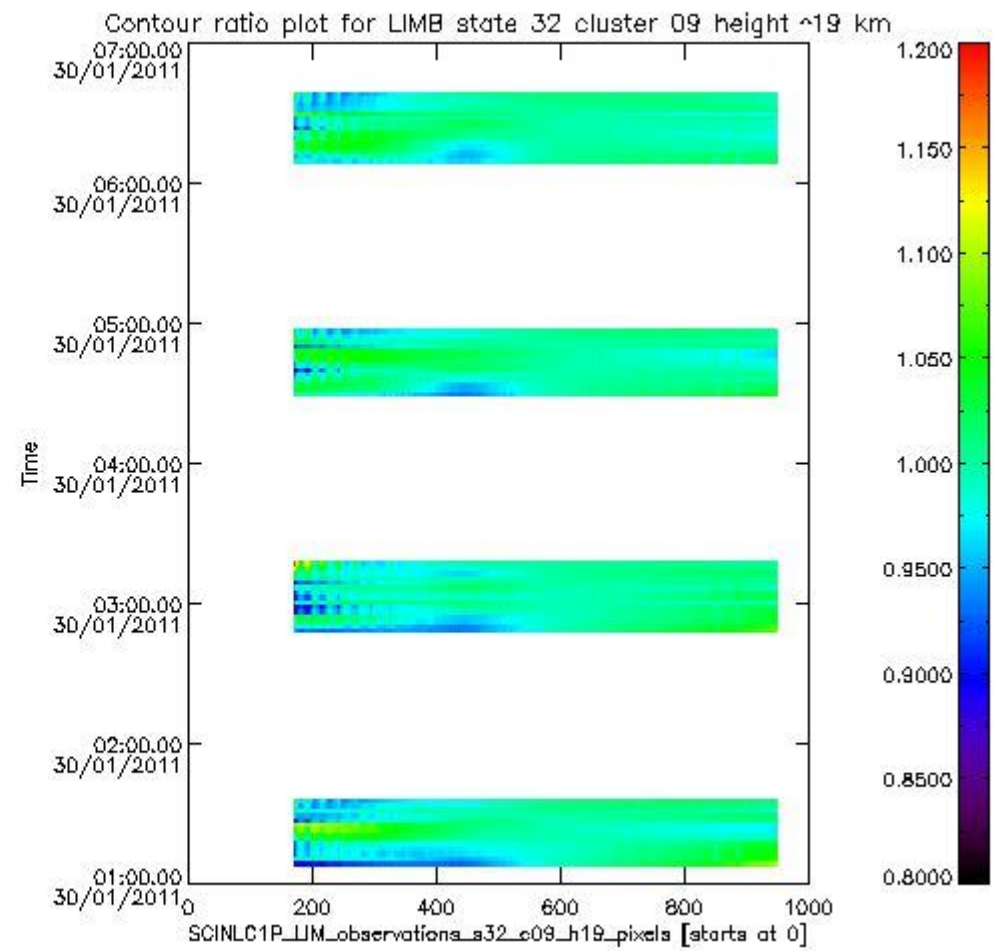
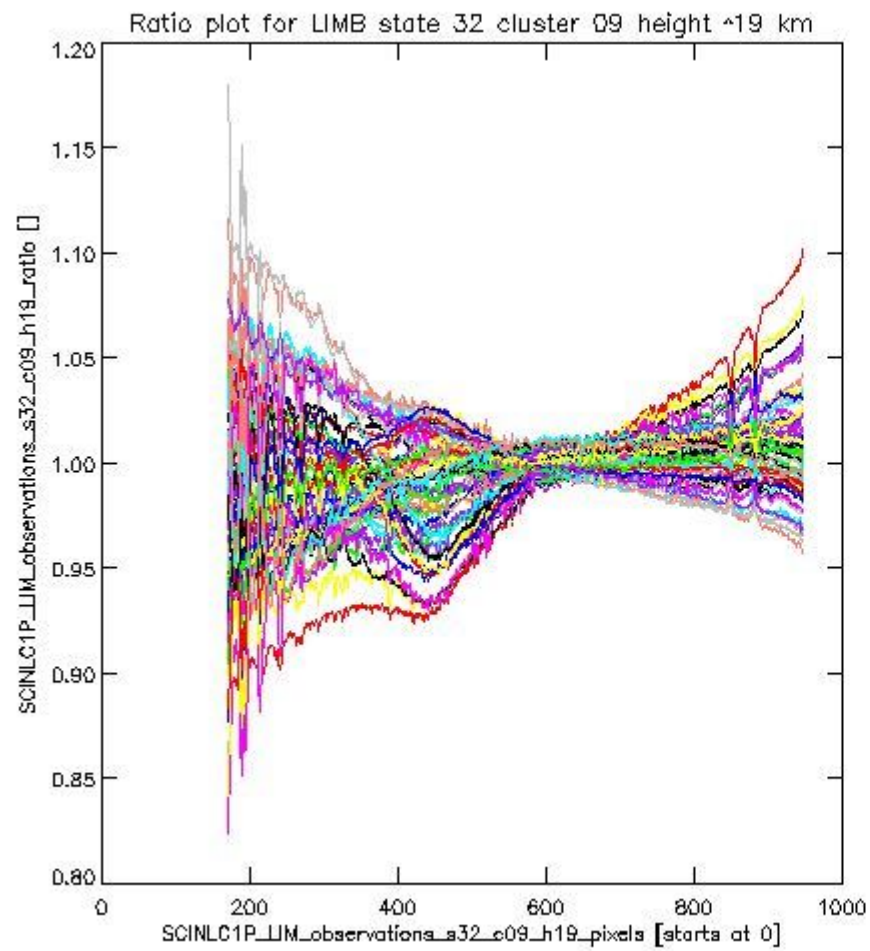
sciamachy_l1b_source_packet_report_SCIA_7_04_U_20110130_9.PNG

1.2.6 LIMB state 32 cluster 09 height ~19 km The data for the analysis of LIMB state 32 cluster 09 height ~19 km have the following characteristics:

Item	Value
Start time of first sample	30JAN2011 01:08:45.884
Start time of last sample	30JAN2011 06:37:11.004
Reference period start time	31DEC2010 01:09:09.812
Reference period stop time	29JAN2011 23:56:16.536
Channel number	2
First pixel number (starts at 0)	170
Last pixel number (starts at 0)	947



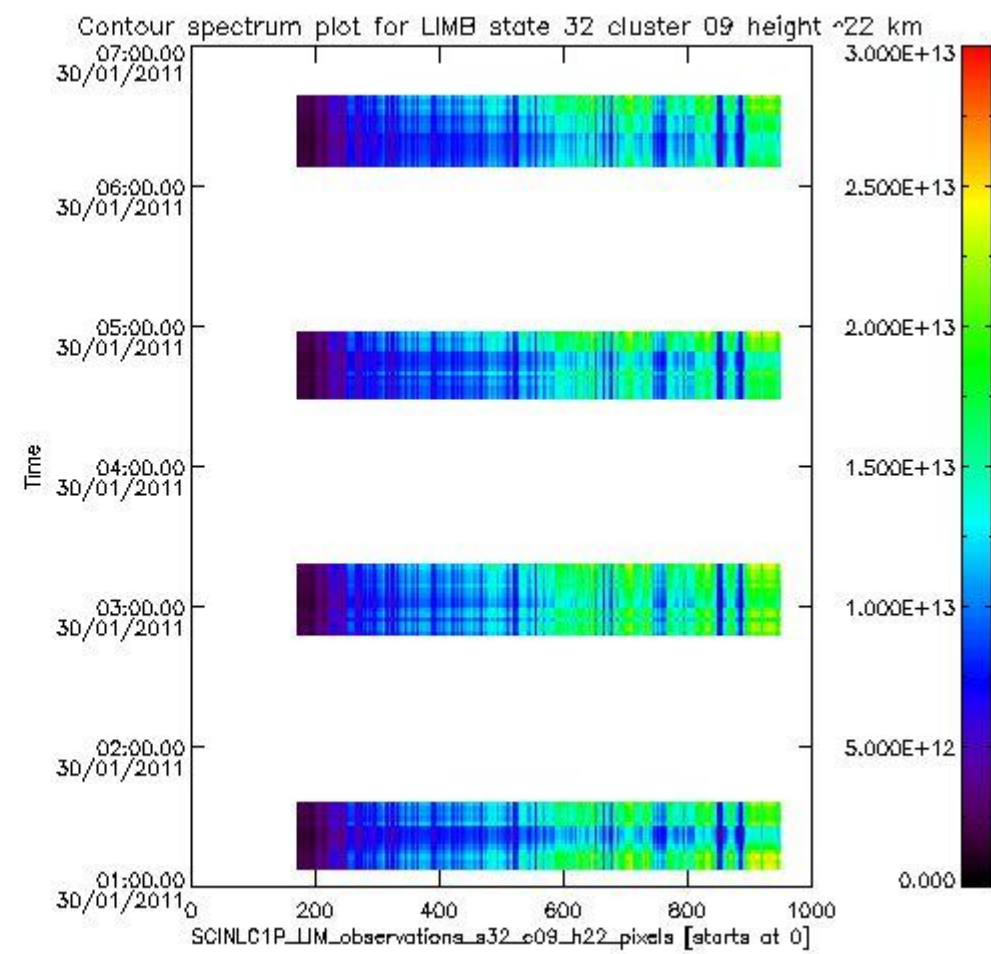
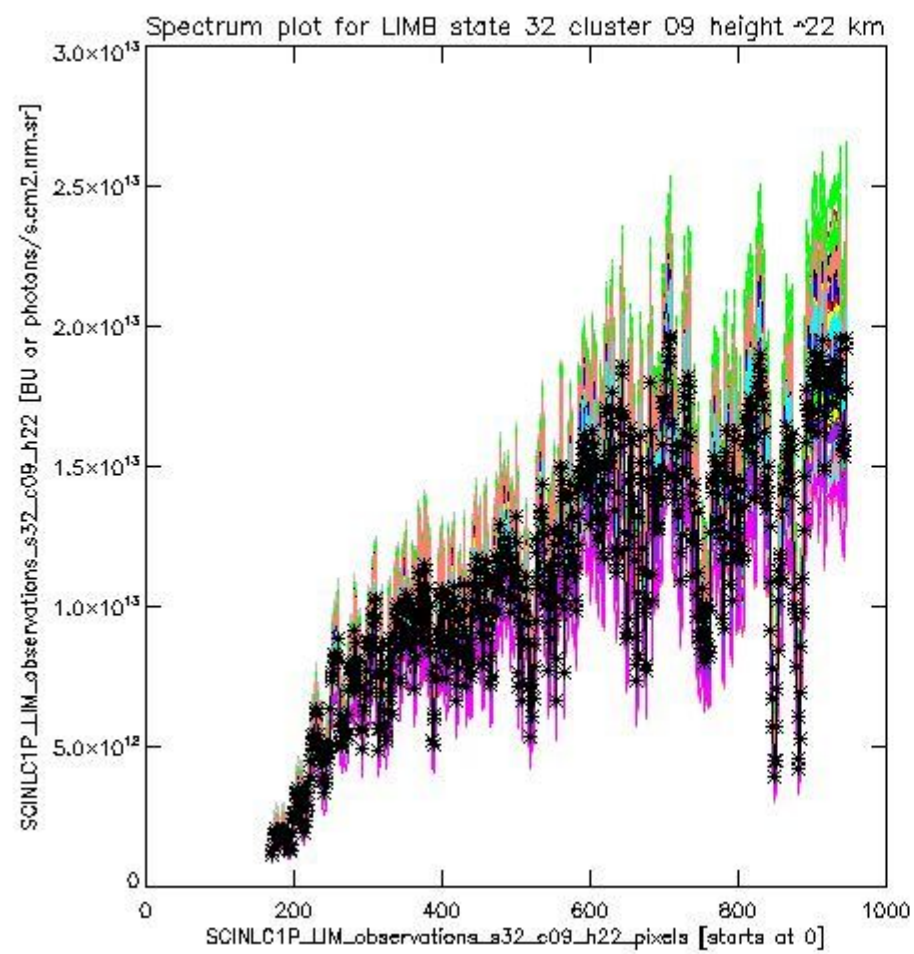
sciamachy_l1b_source_packet_report_SCIA_7_04_U_20110130_10.PNG



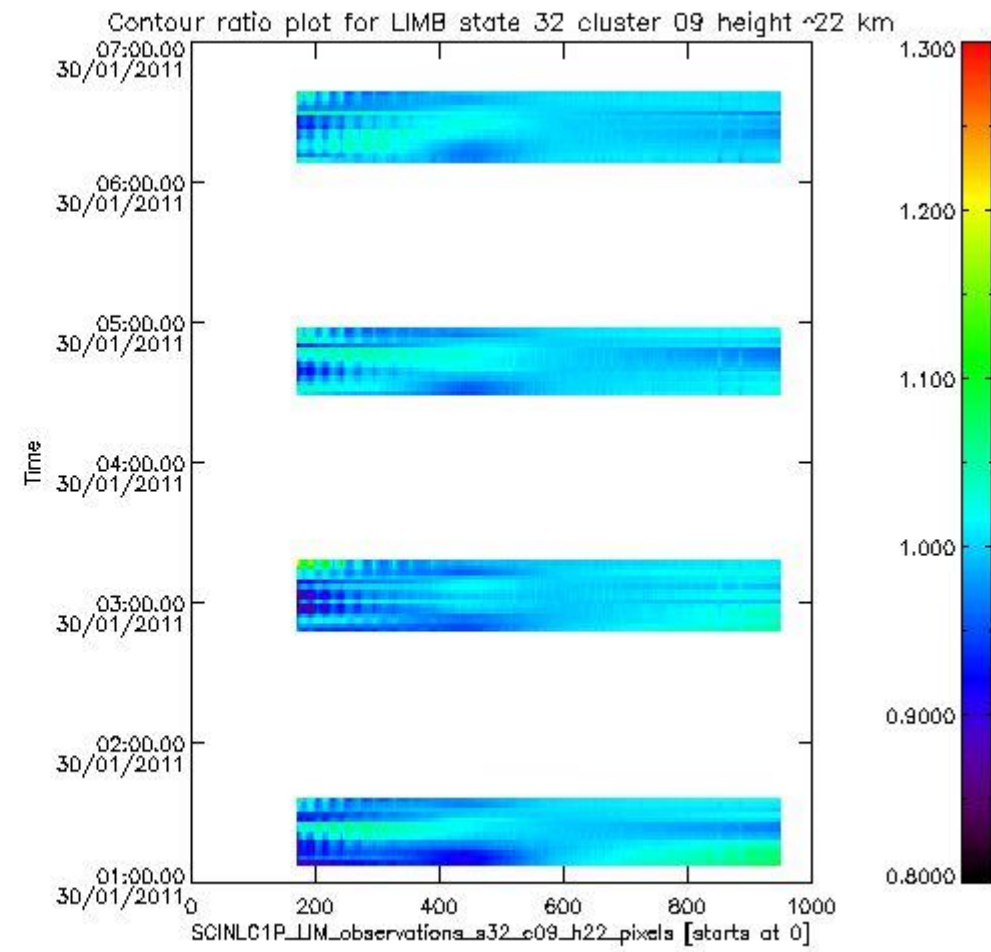
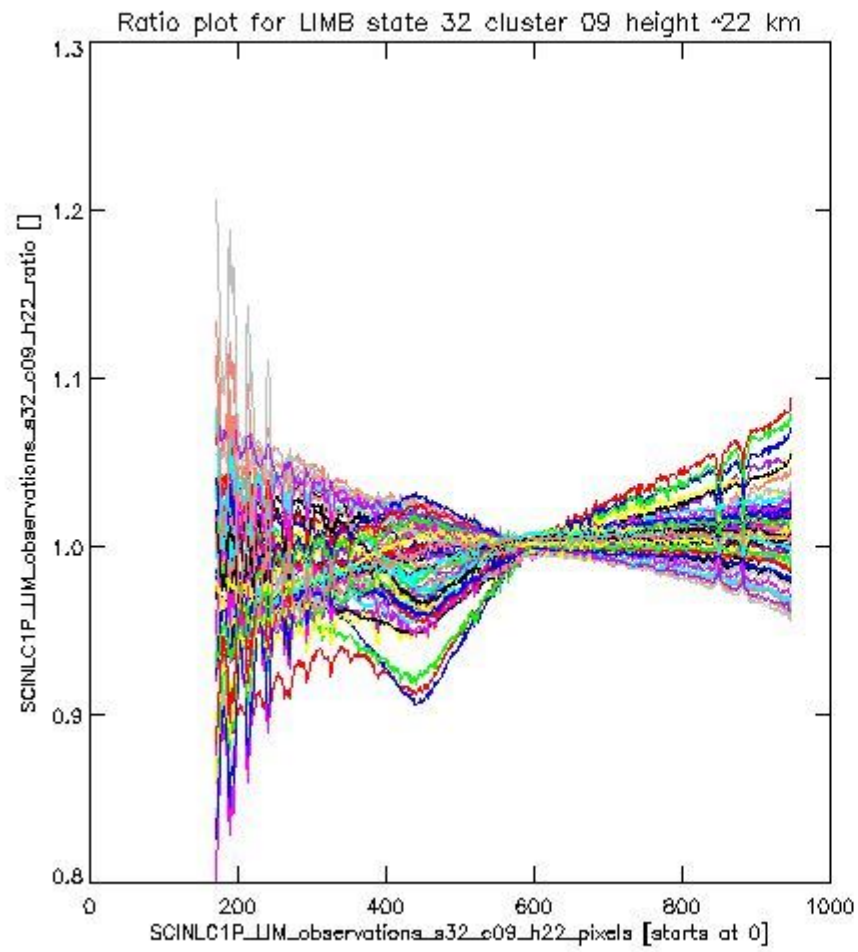
sciamachy_l1b_source_packet_report_SCIA_7_04_U_20110130_11.PNG

1.2.7 LIMB state 32 cluster 09 height ~22 km The data for the analysis of LIMB state 32 cluster 09 height ~22 km have the following characteristics:

Item	Value
Start time of first sample	30JAN2011 01:08:45.884
Start time of last sample	30JAN2011 06:37:11.004
Reference period start time	31DEC2010 01:09:09.812
Reference period stop time	29JAN2011 23:56:16.536
Channel number	2
First pixel number (starts at 0)	170
Last pixel number (starts at 0)	947



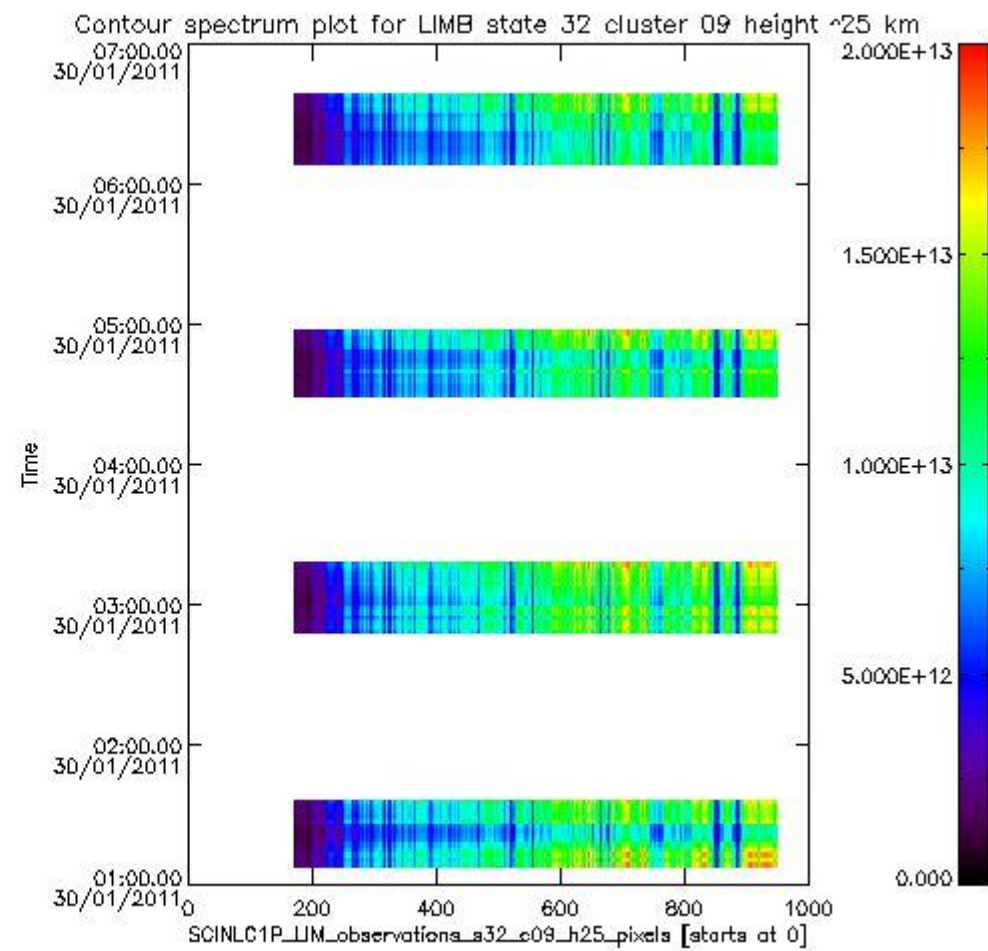
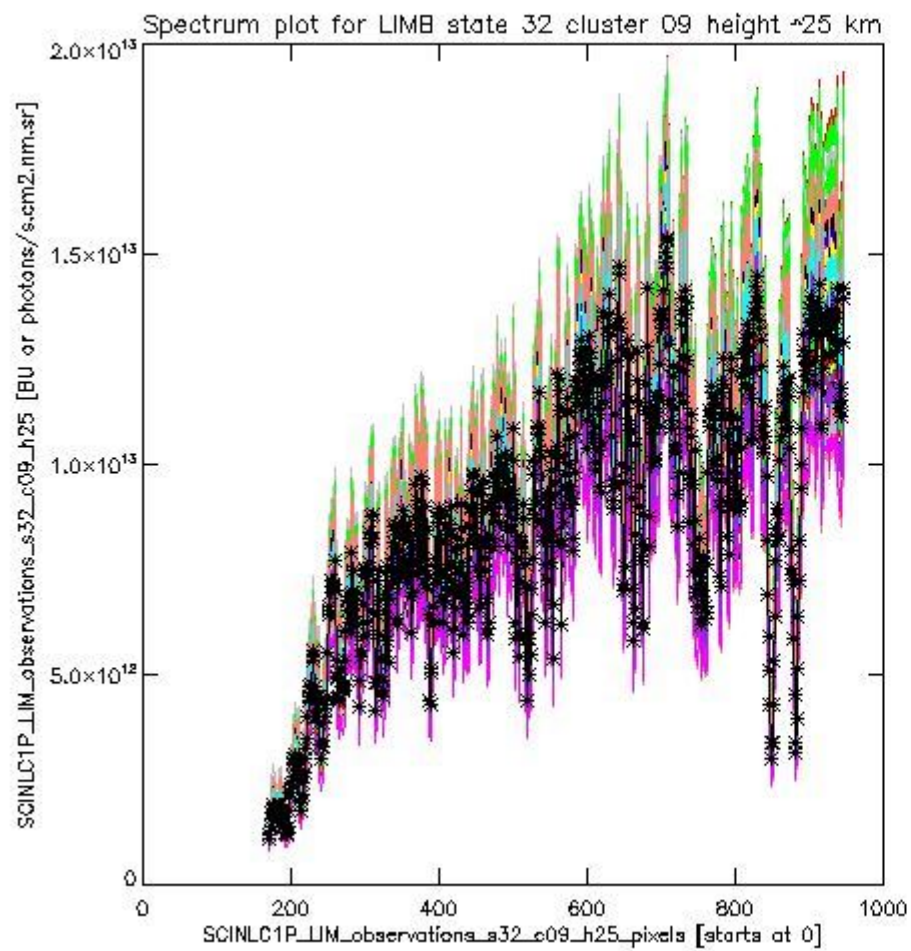
sciamachy_i1b_source_packet_report_SCIA_7_04_U_20110130_12.PNG



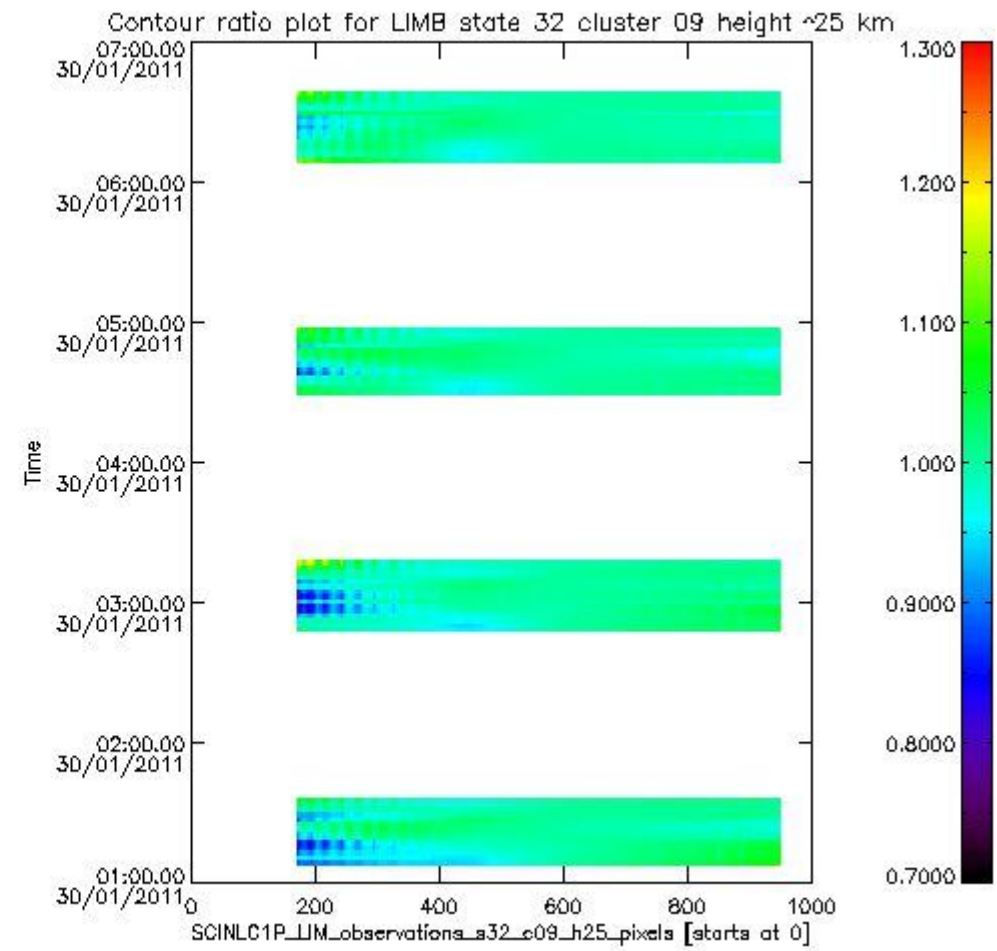
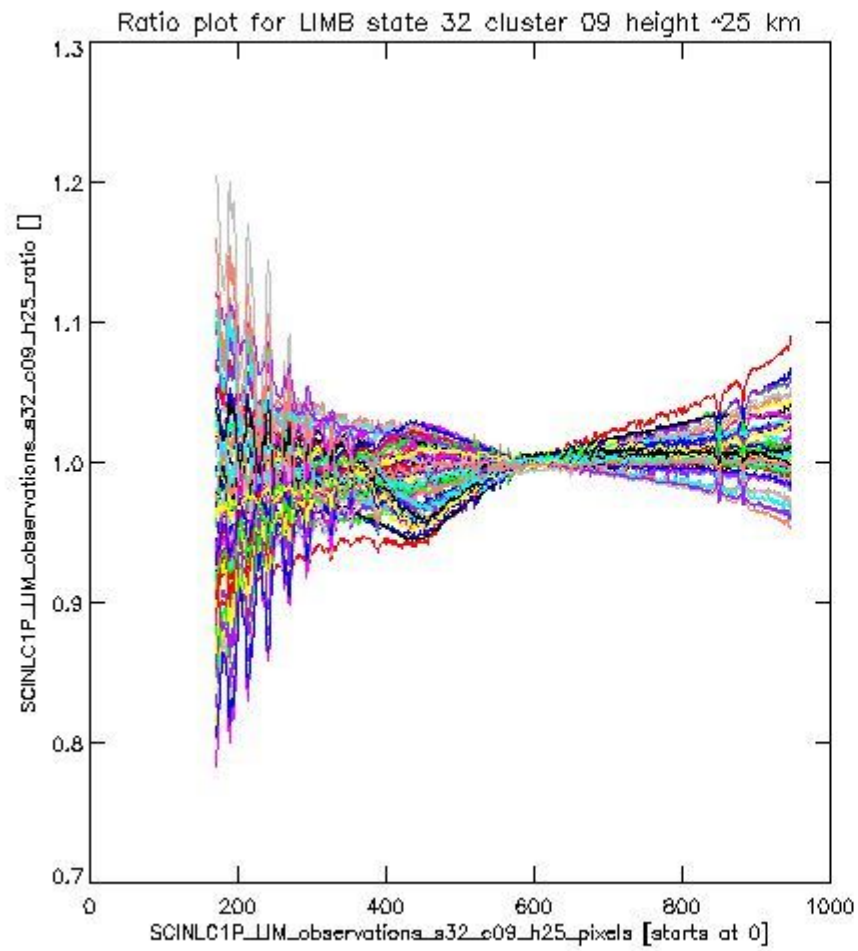
sciamachy_l1b_source_packet_report_SCIA_7_04_U_20110130_13.PNG

1.2.8 LIMB state 32 cluster 09 height ~25 km The data for the analysis of LIMB state 32 cluster 09 height ~25 km have the following characteristics:

Item	Value
Start time of first sample	30JAN2011 01:08:45.884
Start time of last sample	30JAN2011 06:37:11.004
Reference period start time	31DEC2010 01:09:09.812
Reference period stop time	29JAN2011 23:56:16.536
Channel number	2
First pixel number (starts at 0)	170
Last pixel number (starts at 0)	947



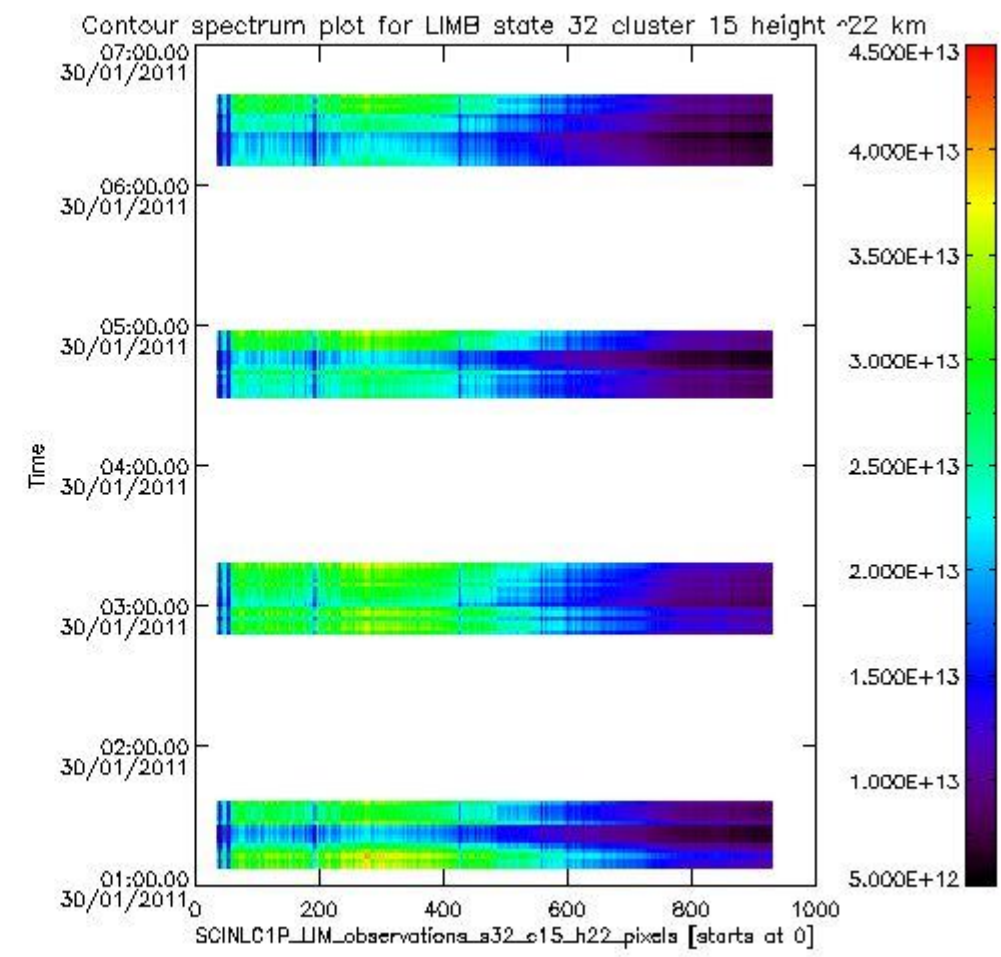
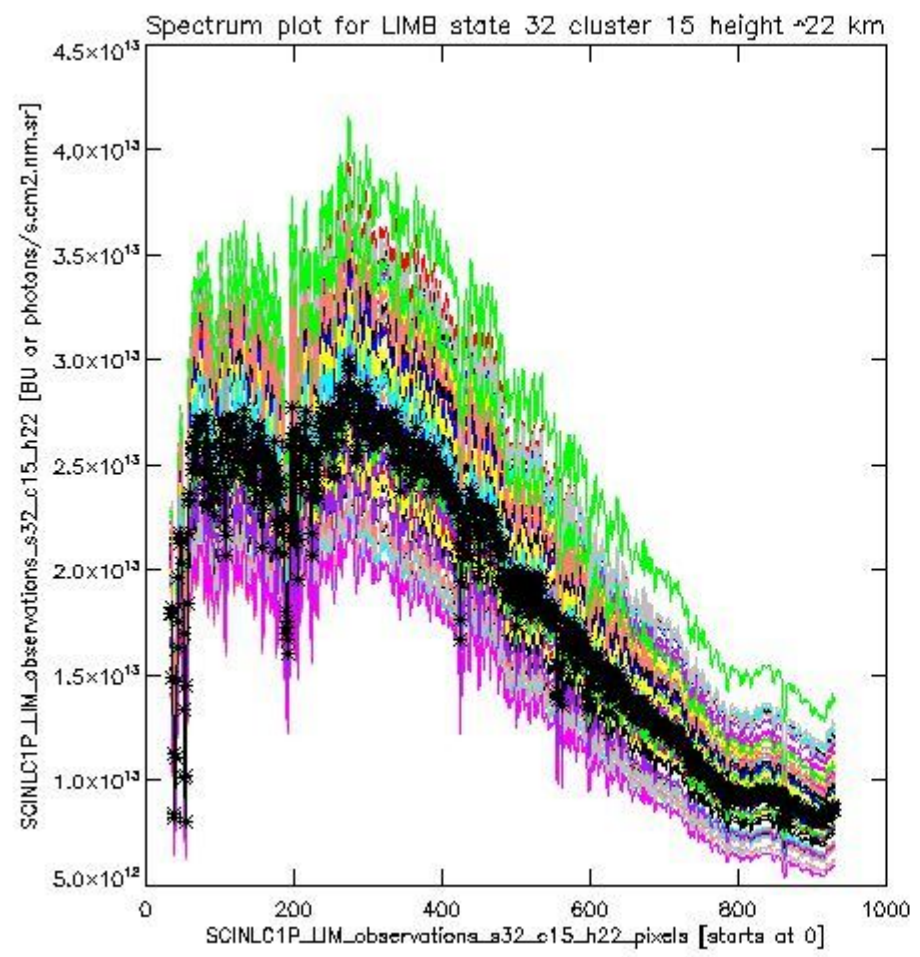
sciamachy_l1b_source_packet_report_SCIA_7_04_U_20110130_14.PNG



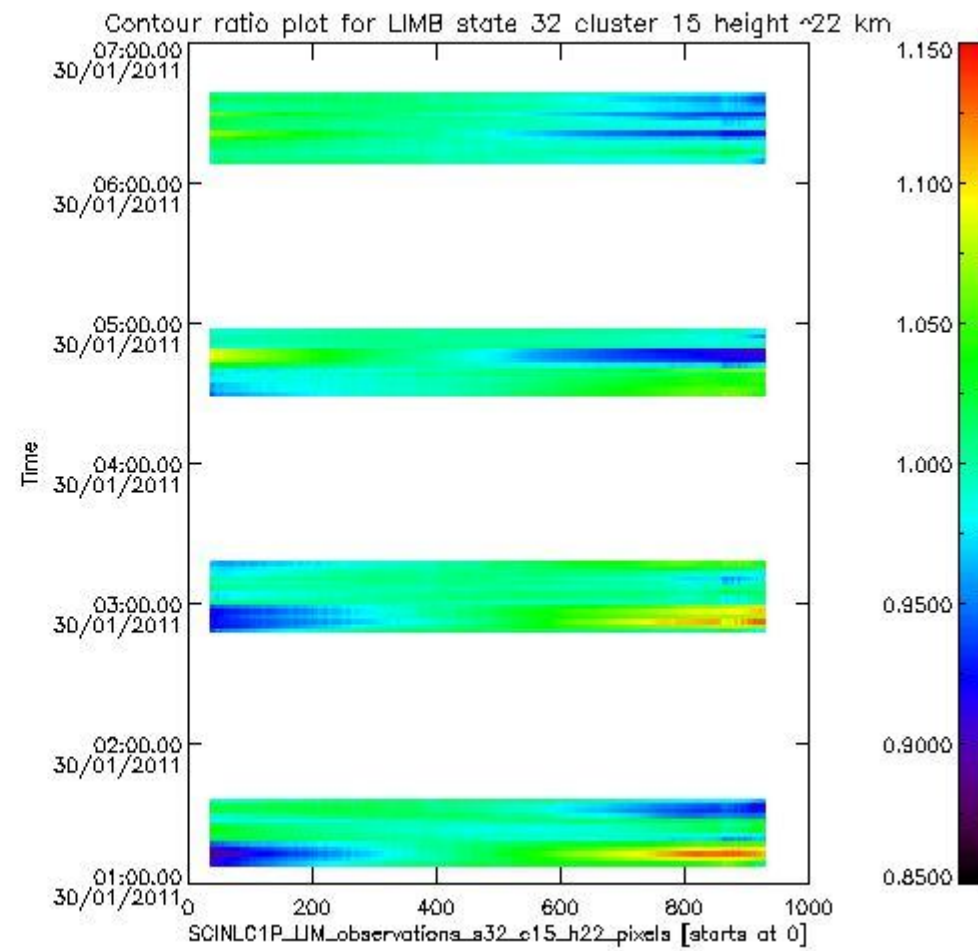
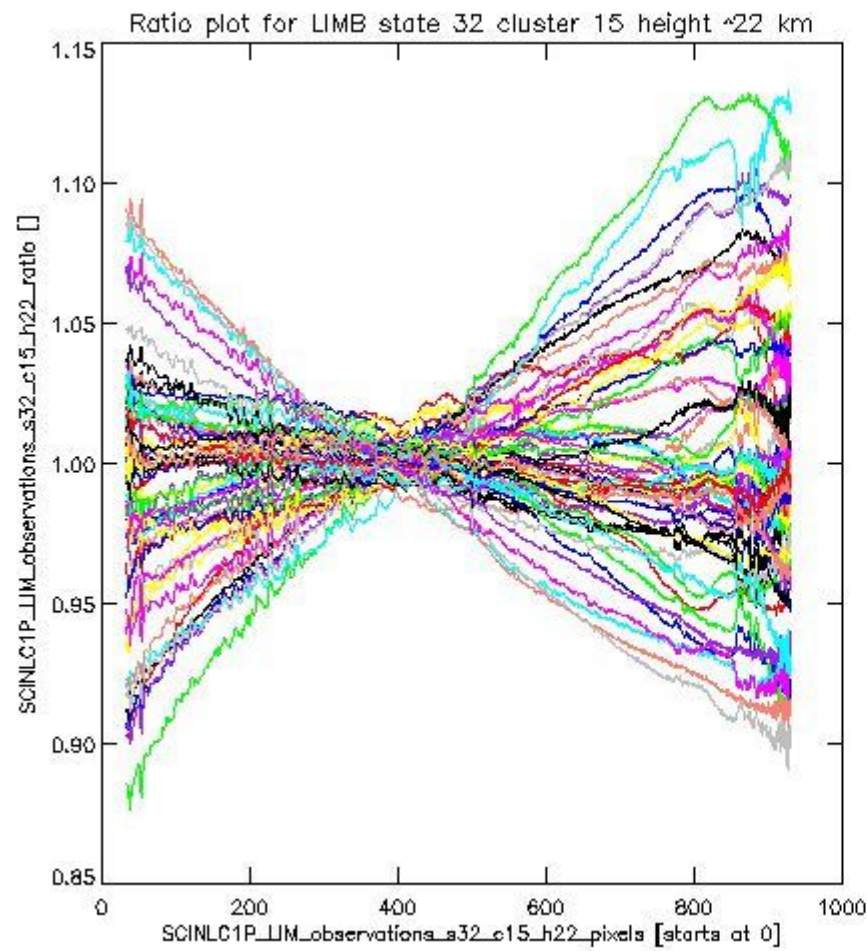
sciamachy_l1b_source_packet_report_SCIA_7_04_U_20110130_15.PNG

1.2.9 LIMB state 32 cluster 15 height ~22 km The data for the analysis of LIMB state 32 cluster 15 height ~22 km have the following characteristics:

Item	Value
Start time of first sample	30JAN2011 01:08:45.884
Start time of last sample	30JAN2011 06:37:11.004
Reference period start time	31DEC2010 01:09:09.812
Reference period stop time	29JAN2011 23:56:16.536
Channel number	3
First pixel number (starts at 0)	33
Last pixel number (starts at 0)	929



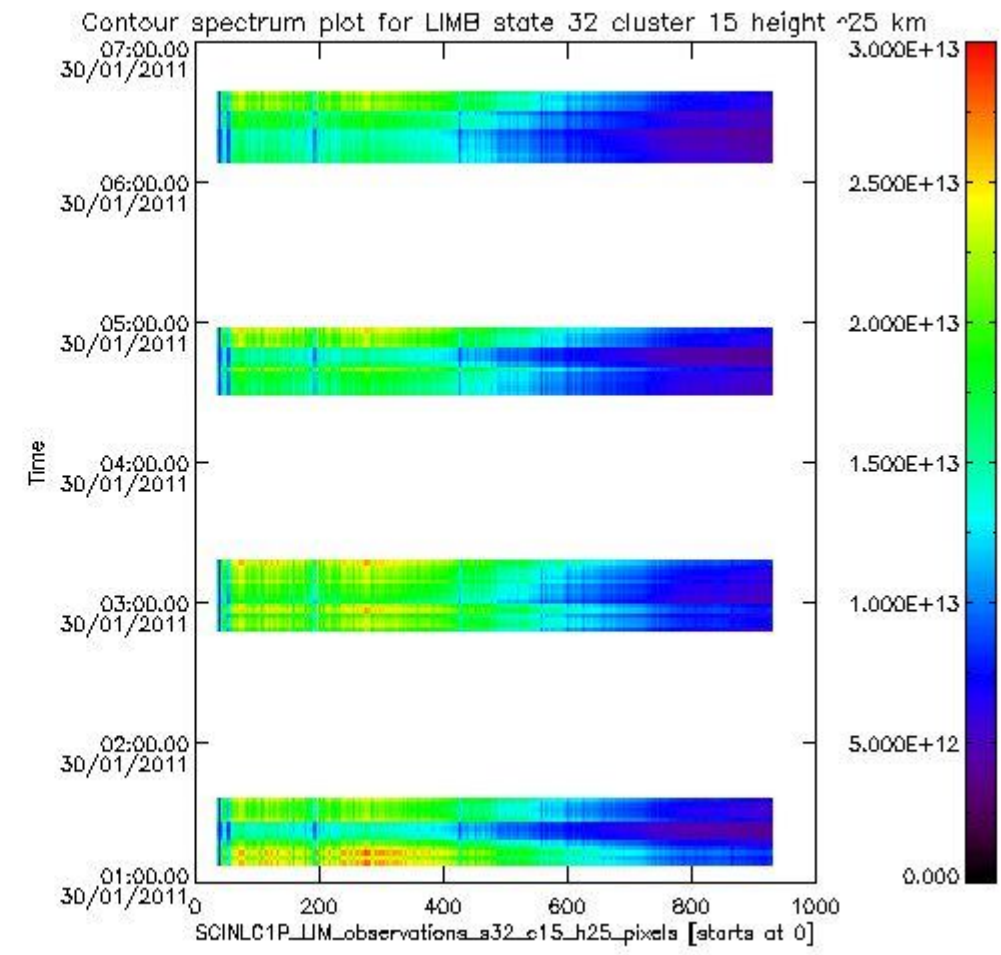
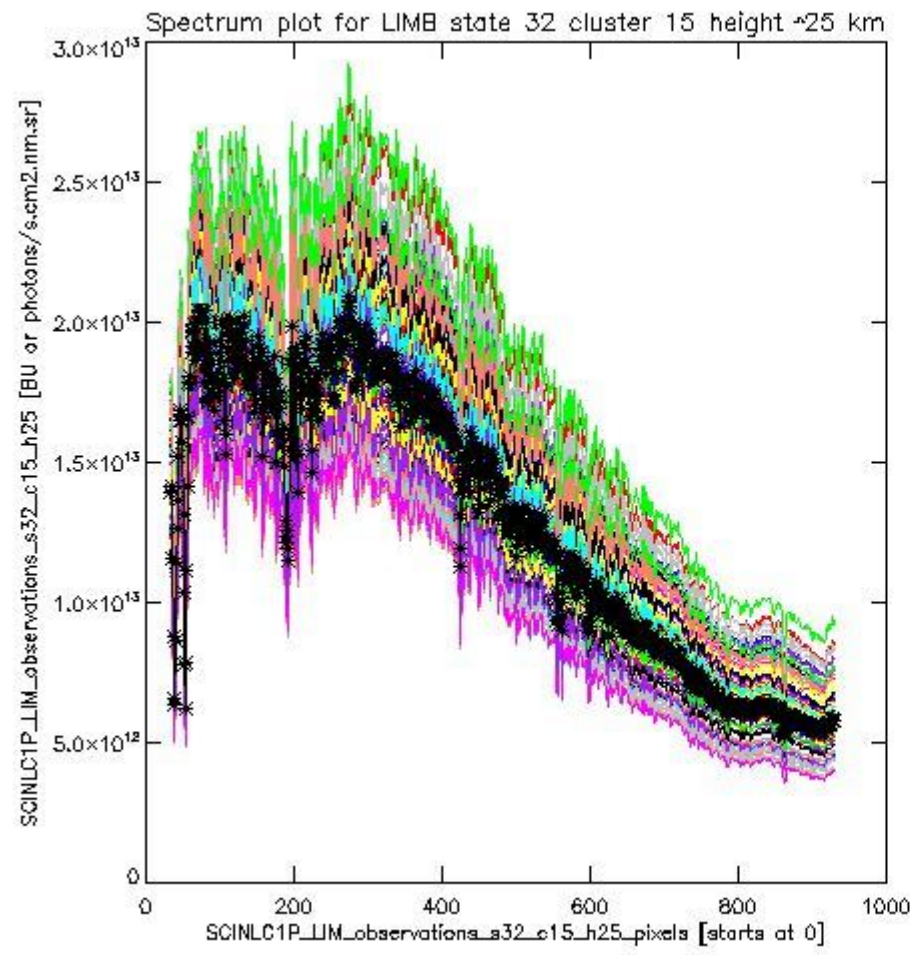
sciamachy_i1b_source_packet_report_SCIA_7_04_U_20110130_16.PNG



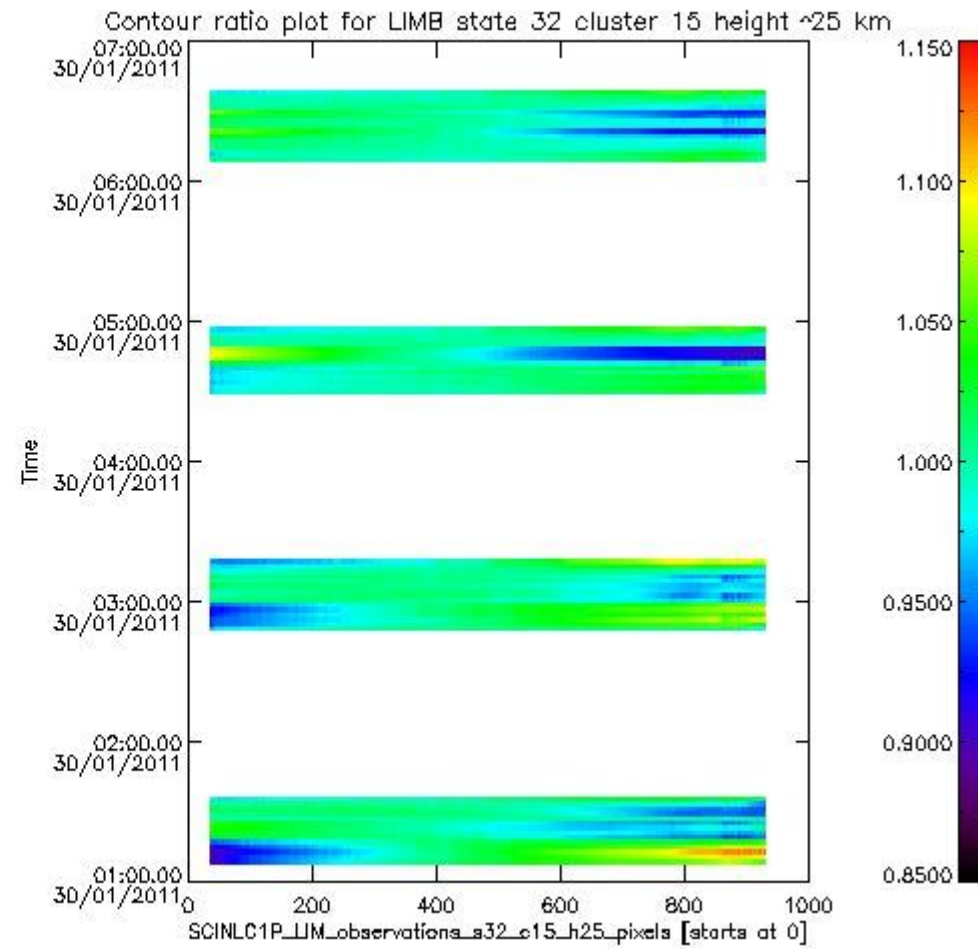
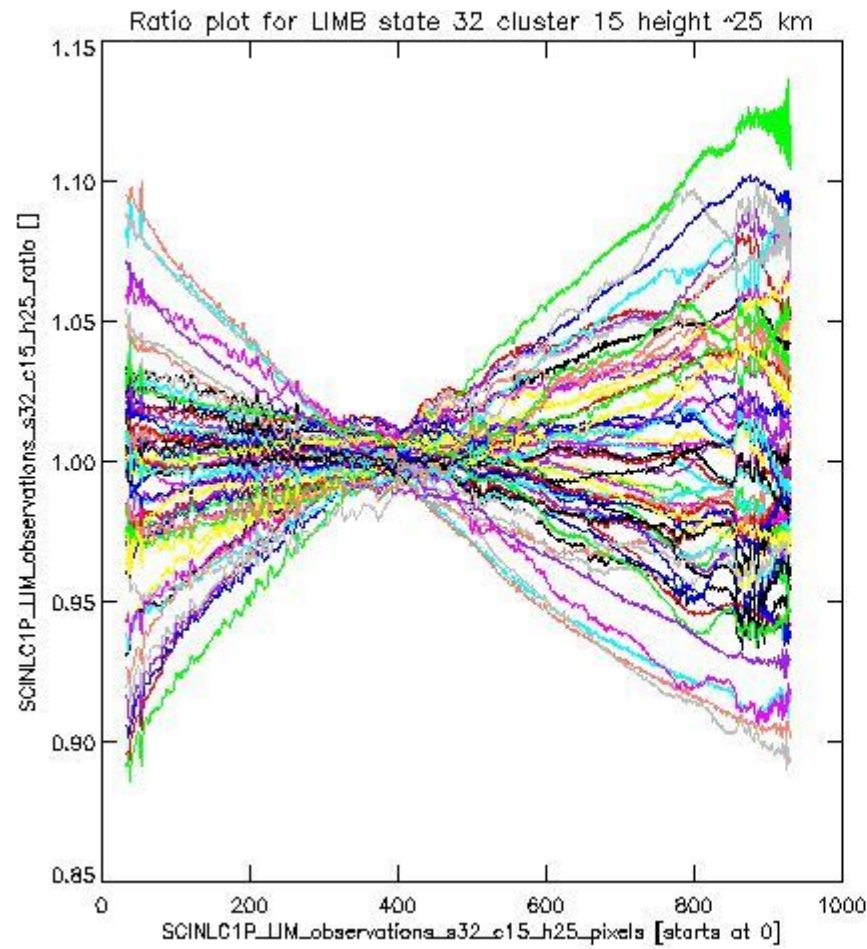
sciamachy_11b_source_packet_report_SCIA_7_04_U_20110130_17.PNG

1.2.10 LIMB state 32 cluster 15 height ~25 km The data for the analysis of LIMB state 32 cluster 15 height ~25 km have the following characteristics:

Item	Value
Start time of first sample	30JAN2011 01:08:45.884
Start time of last sample	30JAN2011 06:37:11.004
Reference period start time	31DEC2010 01:09:09.812
Reference period stop time	29JAN2011 23:56:16.536
Channel number	3
First pixel number (starts at 0)	33
Last pixel number (starts at 0)	929



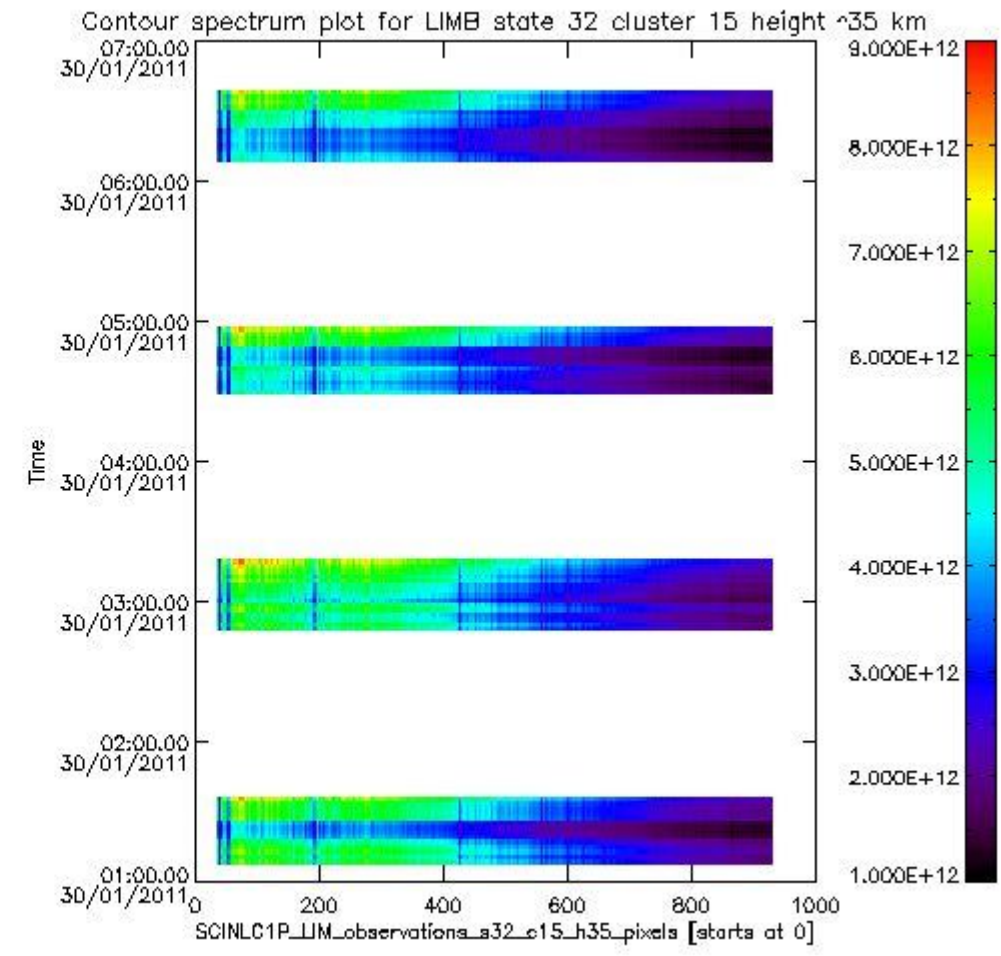
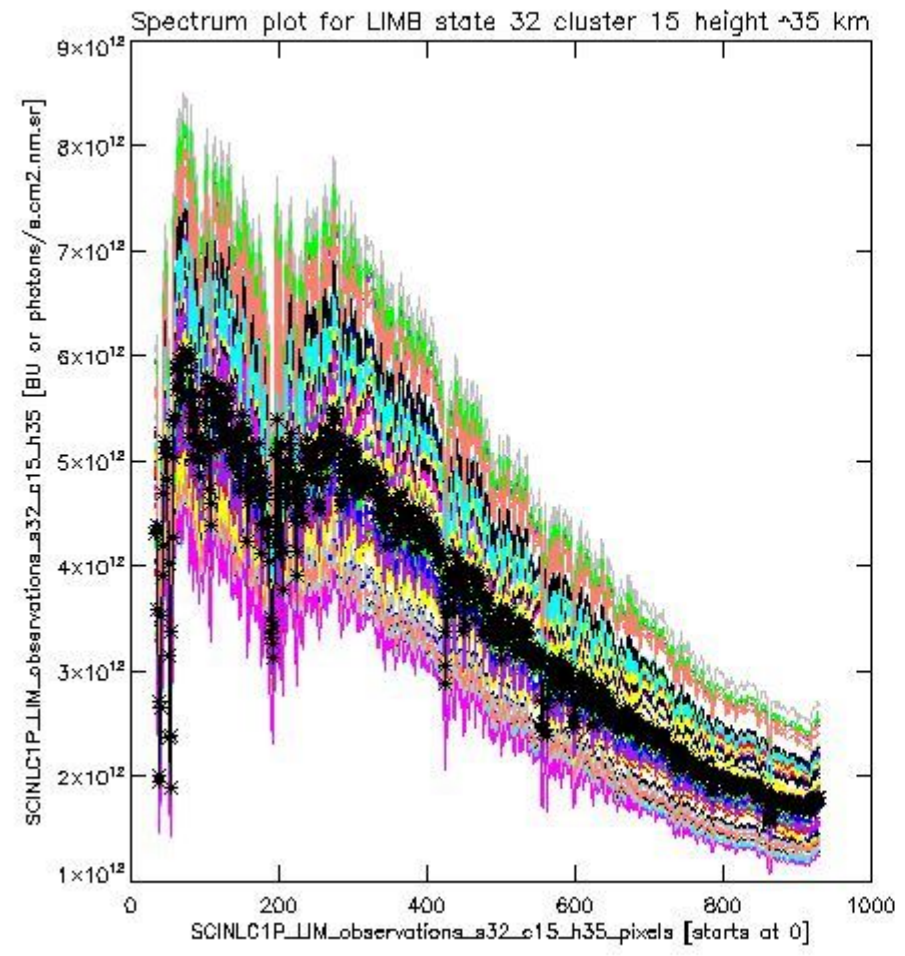
sciamachy_l1b_source_packet_report_SCIA_7_04_U_20110130_18.PNG



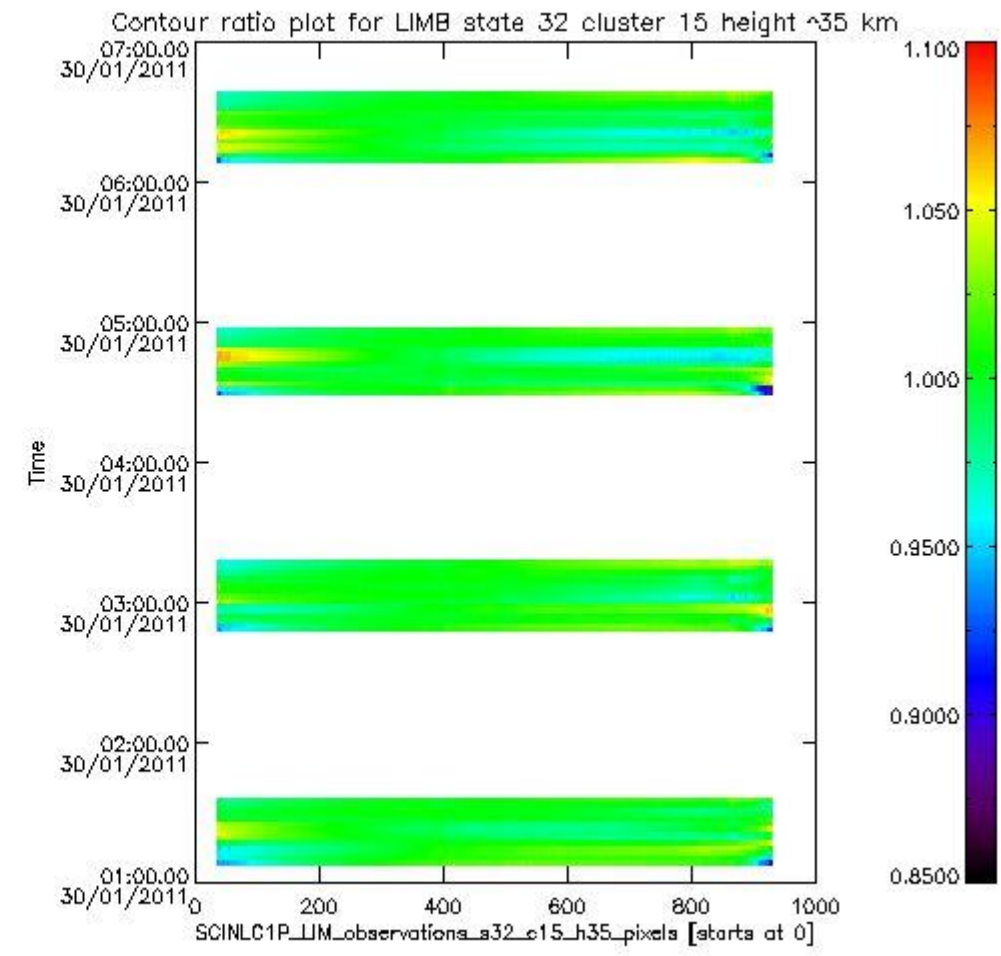
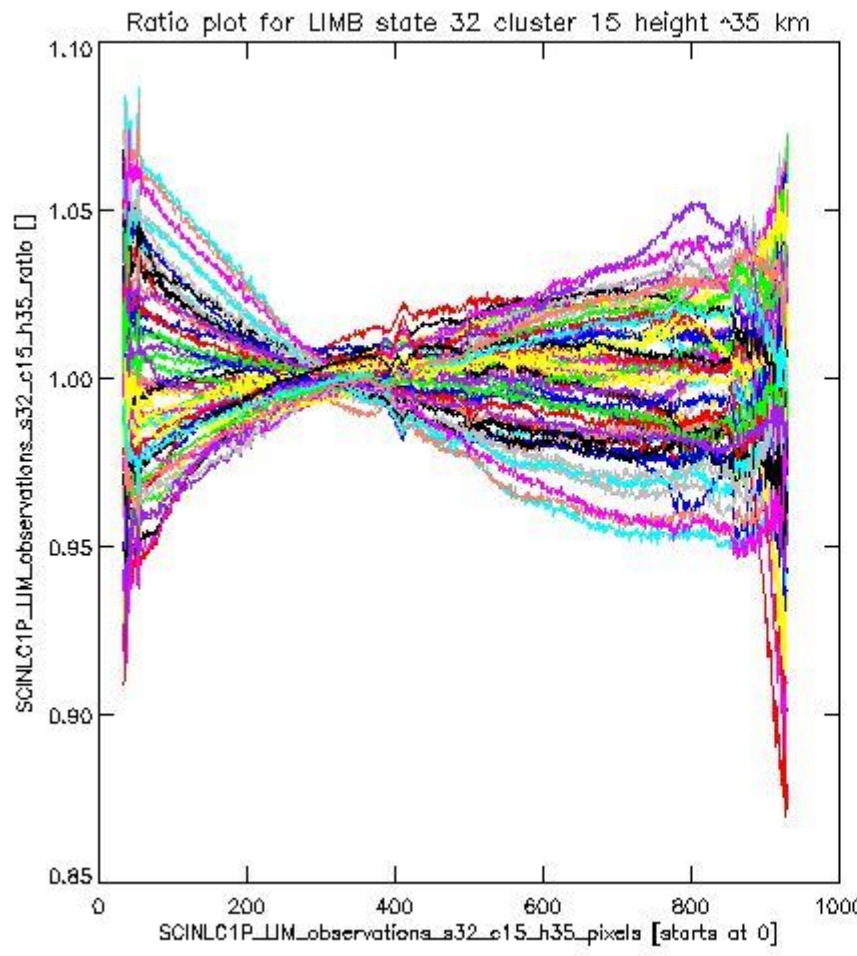
sciamachy_11b_source_packet_report_SCIA_7_04_U_20110130_19.PNG

1.2.11 LIMB state 32 cluster 15 height ~35 km The data for the analysis of LIMB state 32 cluster 15 height ~35 km have the following characteristics:

Item	Value
Start time of first sample	30JAN2011 01:08:45.884
Start time of last sample	30JAN2011 06:37:11.004
Reference period start time	31DEC2010 01:09:09.812
Reference period stop time	29JAN2011 23:56:16.536
Channel number	3
First pixel number (starts at 0)	33
Last pixel number (starts at 0)	929



sciamachy_11b_source_packet_report_SCIA_7_04_U_20110130_20.PNG



sciamachy_i1b_source_packet_report_SCIA_7_04_U_20110130_21.PNG

