

1. SCIAMACHY Level 1B source packet monitoring report

[1.1. General Info](#)

[1.2 Source packet monitoring](#)

1.1 General Info

This report contains results of the analysis on source packets from SCIAMACHY level 1 data (The SCI_NL__1P product).

1.1.1 Report summary

The table below shows general characteristics of the data that are included into this report.

Item	Value
Report version	1.1 (07-01-2010)
Time of report generation	06FEB2011 06:55:35
Data source version	SCIA/7.04-U
Processing scope for products	26JAN2011 00:00:00 to 27JAN2011 00:00:00
Start time of first product within scope	26JAN2011 01:36:57
Stop time of last product within scope	26JAN2011 14:28:47
Total number of level 1 products	8
Number of level 1 products with errors	0
SCIAL1C executable used in processing	scial1c-2.1.73-i686-pc-linux-gnu-gcc-3.3.6
SCIAL1C parameters used in processing	-allcal -type all -cat 1,2,8,10,11,16,19,23 -nadircluster 8,9,15,24,55 -limbcluster 9,15

1.1.2 Source packet summary

The table below shows which source packets have been included into the report.

Item	Mode	State	Cluster	Height	First start time	Last start time
0	NADIR	07	08	N/A	26JAN2011 02:10:08.255	26JAN2011 14:00:48.854
1	NADIR	07	09	N/A	26JAN2011 02:10:08.255	26JAN2011 14:00:48.854
2	NADIR	07	15	N/A	26JAN2011 02:10:08.255	26JAN2011 14:00:48.854
3	NADIR	07	24	N/A	26JAN2011 02:10:08.255	26JAN2011 14:00:48.854
4	NADIR	07	55	N/A	26JAN2011 02:10:08.255	26JAN2011 14:00:48.854
5	LIMB	32	09	~19 km	26JAN2011 01:54:54.880	26JAN2011 14:04:00.155
6	LIMB	32	09	~22 km	26JAN2011 01:54:54.880	26JAN2011 14:04:00.155
7	LIMB	32	09	~25 km	26JAN2011 01:54:54.880	26JAN2011 14:04:00.155
8	LIMB	32	15	~22 km	26JAN2011 01:54:54.880	26JAN2011 14:04:00.155
9	LIMB	32	15	~25 km	26JAN2011 01:54:54.880	26JAN2011 14:04:00.155
10	LIMB	32	15	~35 km	26JAN2011 01:54:54.880	26JAN2011 14:04:00.155

1.1.3 Summary per product

The following table shows a summary for each product used in this report.

Products are linked to a corresponding server directory for view/download. Note: Link access may be restricted by security settings of your internet browser or firewall.

#	Product name	Start time	Stop time	ProdErr	#nadir	#limb	#occ	#mon	#nopro	#cpl_drk	#incpl_drk	Decont
0	SCI_NLC_1CUDPA20110126_012104_000060023099_00003_46569_3965.N1	26JAN2011 01:36:57	26JAN2011 02:47:26	0	36	30	0	0	1	0	0	
1	SCI_NLC_1CUDPA20110126_030110_000060183099_00004_46570_3968.N1	26JAN2011 03:17:10	26JAN2011 04:27:25	0	35	31	0	0	1	0	0	
2	SCI_NLC_1CUDPA20110126_044131_000060023099_00005_46571_3970.N1	26JAN2011 04:57:24	26JAN2011 06:07:53	0	36	30	0	0	1	0	0	
3	SCI_NLC_1CUDPA20110126_062137_000060183099_00006_46572_3973.N1	26JAN2011 06:37:38	26JAN2011 07:47:52	0	35	31	0	0	1	0	0	
4	SCI_NLC_1CUDPA20110126_080159_000060023099_00007_46573_3974.N1	26JAN2011 08:17:51	26JAN2011 09:28:20	0	36	30	0	0	1	0	0	
5	SCI_NLC_1CUDPA20110126_094205_000060173099_00008_46574_3975.N1	26JAN2011 09:58:05	26JAN2011 11:08:20	0	35	31	0	0	1	0	0	

6	SCI_NLC_1CUDPA20110126_112226_000060023099_00009_46575_3977.N1	26JAN2011 11:38:18	26JAN2011 12:48:47	0	36	30	0	0	1	0	0
7	SCI_NLC_1CUDPA20110126_130232_000060183099_00010_46576_3978.N1	26JAN2011 13:18:32	26JAN2011 14:28:47	0	35	31	0	0	1	0	0

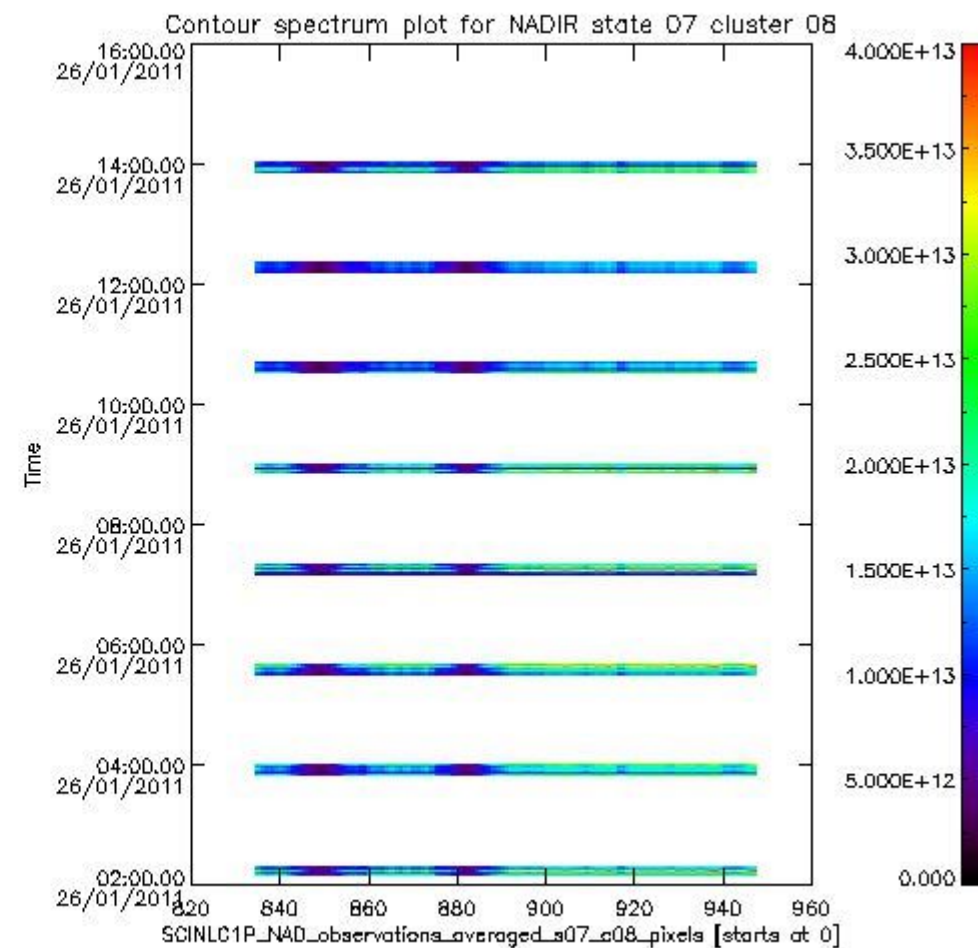
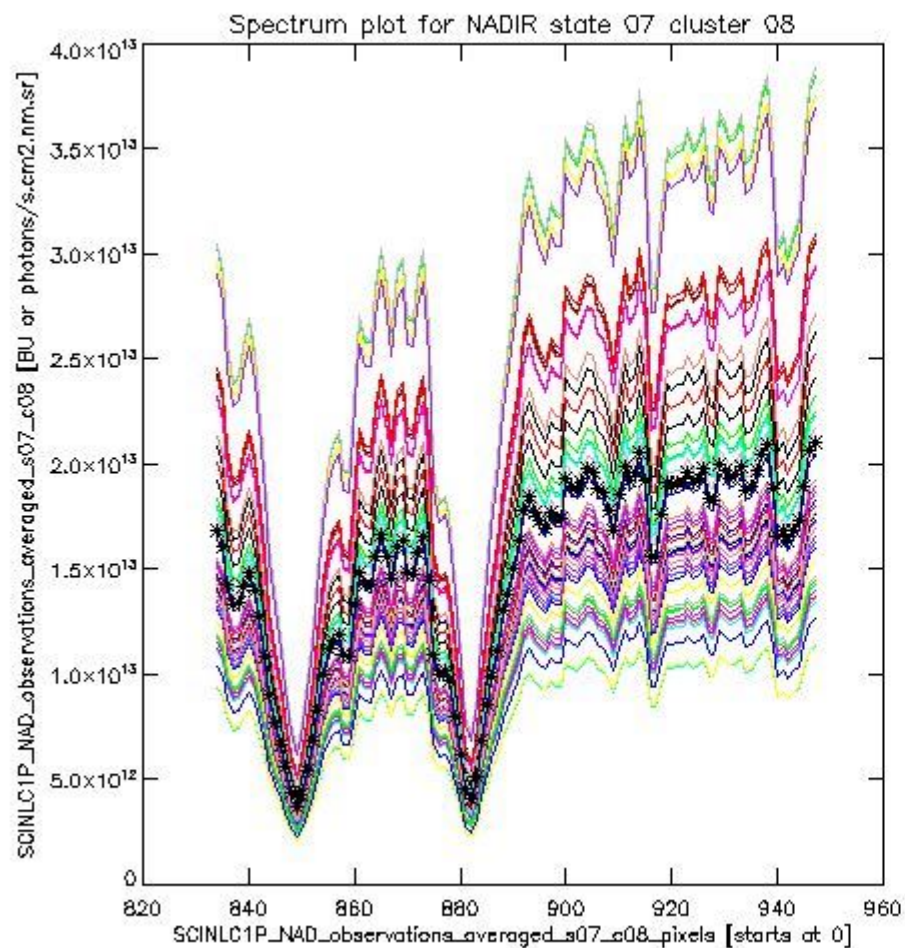
1.2 Source packet monitoring

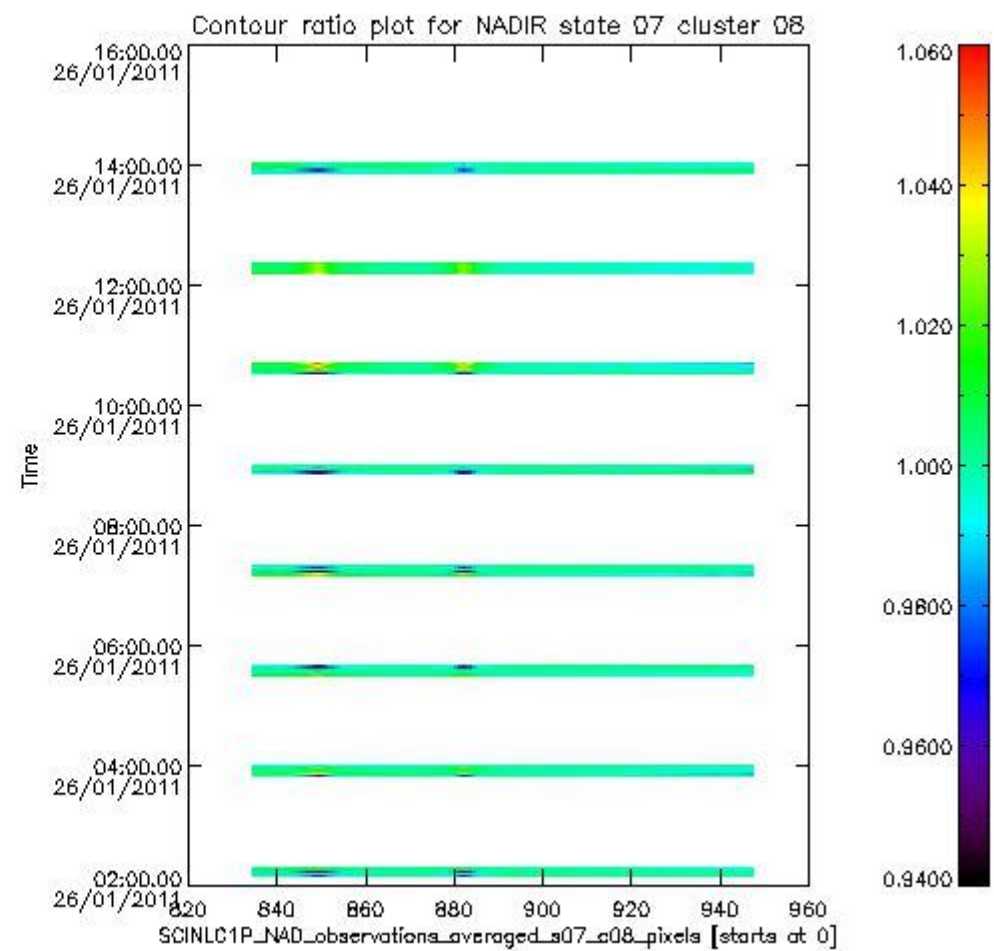
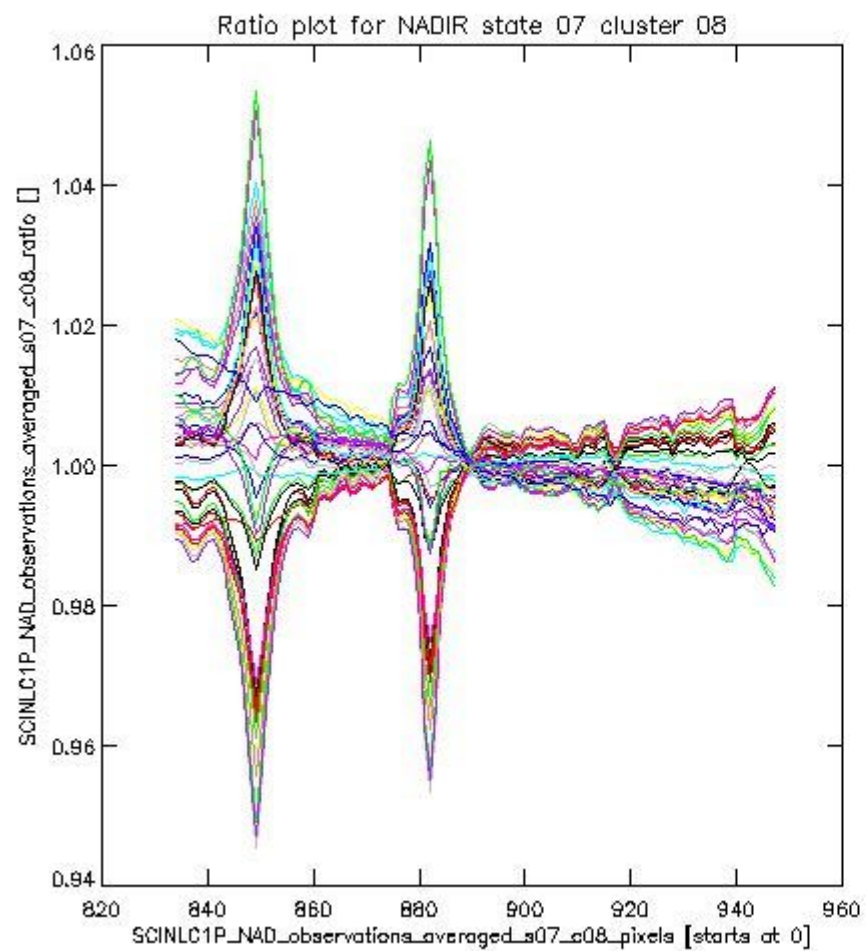
This section shows figures for each of the monitored source packet types listed in the Source Packet Summary section. For each mode-state-cluster(-height) combination the following plots are shown:

- A plot that shows all calibrated averaged spectra vs. pixel number as 2D-profiles. Each line is an average spectrum for a single state occurrence. For Limb modes, the average is performed on spectra recorded at a specific height. The reference spectrum that is used for comparison is also shown as a black line with * markers.
- A plot that shows all calibrated averaged spectra vs. pixel number and time using a coloured contour plot. The colours indicate the intensity.
- A plot that shows ratios of all calibrated averaged spectra and the reference spectrum vs. pixel number. Each line is the ratio of a calibrated averaged spectrum and the reference spectrum, where both spectra have been intensity corrected (the spectrum has been divided by the average pixel intensity) prior to division.
- A plot that shows ratios of all calibrated averaged spectra and the reference spectrum vs. pixel number and time using a coloured contour plot.

1.2.1 NADIR state 07 cluster 08 The data for the analysis of NADIR state 07 cluster 08 have the following characteristics:

Item	Value
Start time of first sample	26JAN2011 02:10:08.255
Start time of last sample	26JAN2011 14:00:48.854
Reference period start time	27DEC2010 00:30:56.342
Reference period stop time	25JAN2011 17:58:26.982
Channel number	2
First pixel number (starts at 0)	834
Last pixel number (starts at 0)	947

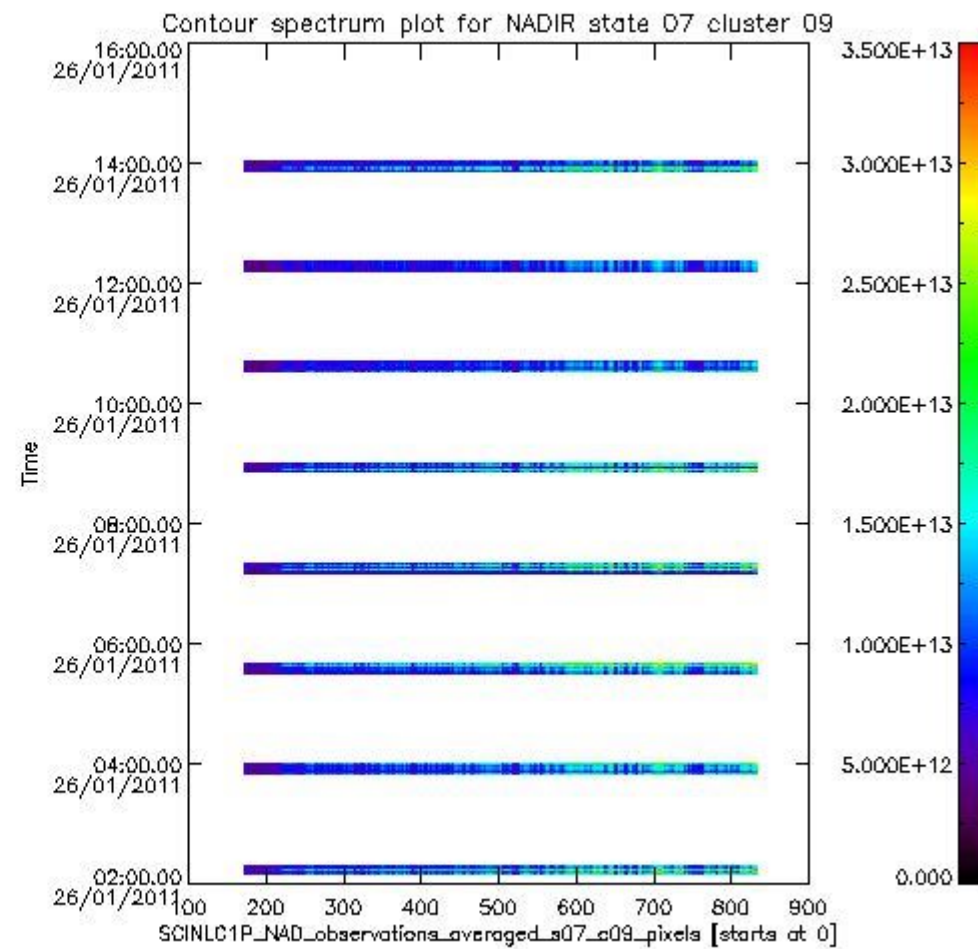
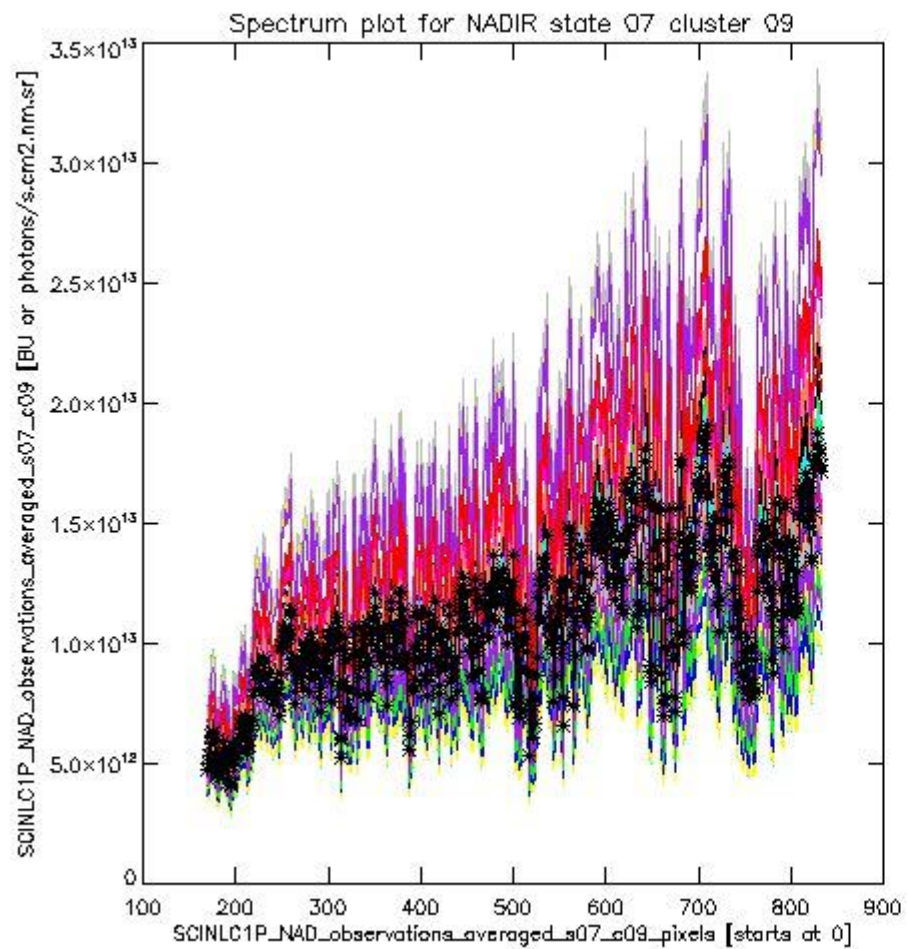




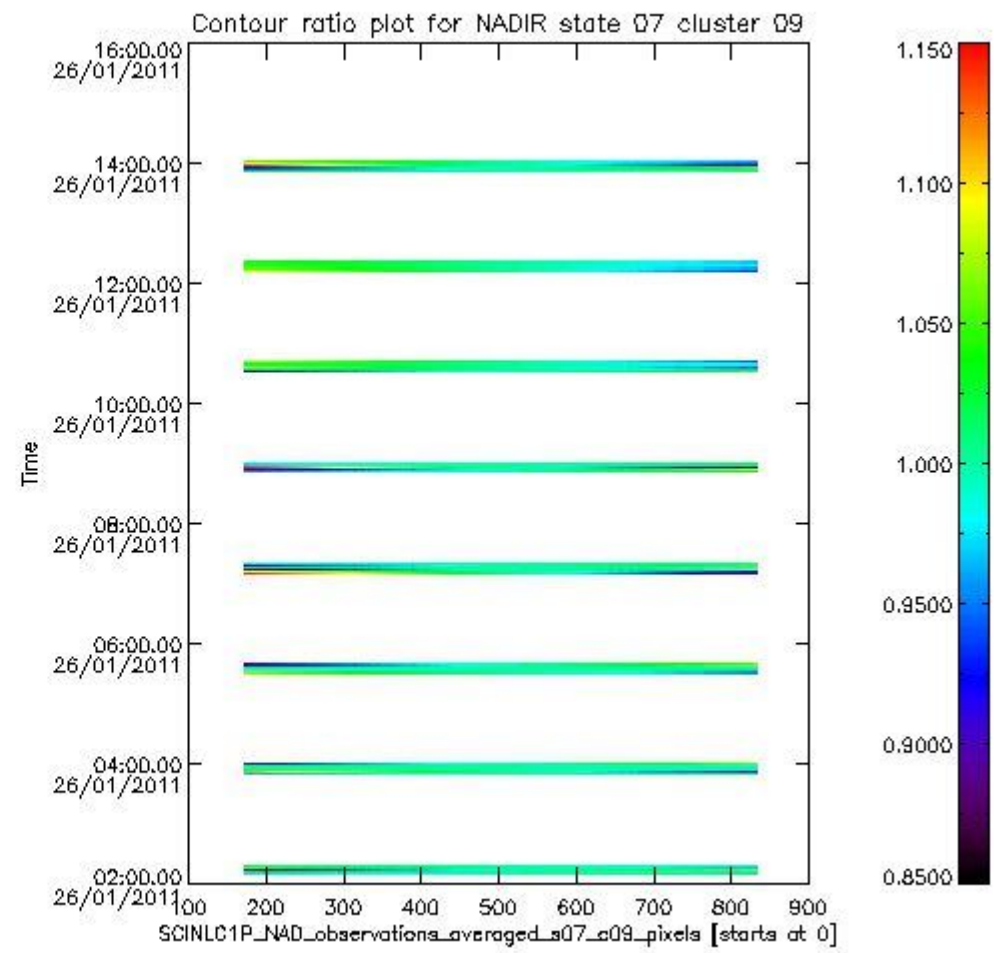
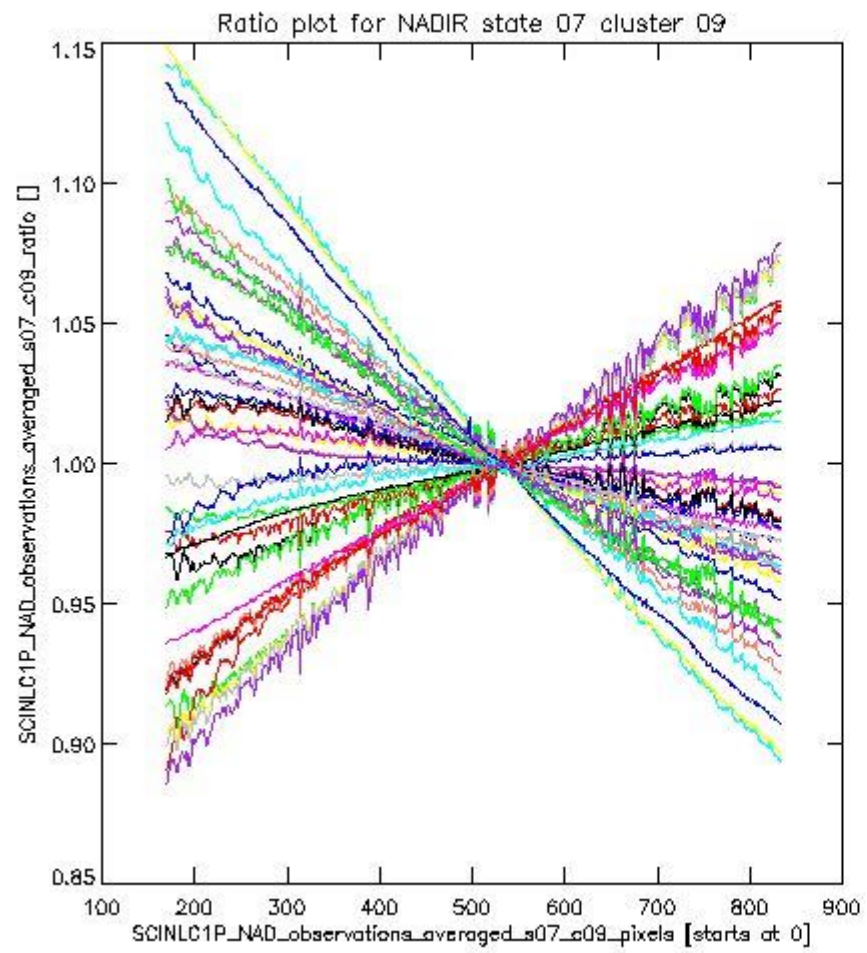
sciamachy_i1b_source_packet_report_SCIA_7_04_U_20110126_1.PNG

1.2.2 NADIR state 07 cluster 09 The data for the analysis of NADIR state 07 cluster 09 have the following characteristics:

Item	Value
Start time of first sample	26JAN2011 02:10:08.255
Start time of last sample	26JAN2011 14:00:48.854
Reference period start time	27DEC2010 00:30:56.342
Reference period stop time	25JAN2011 17:58:26.982
Channel number	2
First pixel number (starts at 0)	170
Last pixel number (starts at 0)	833



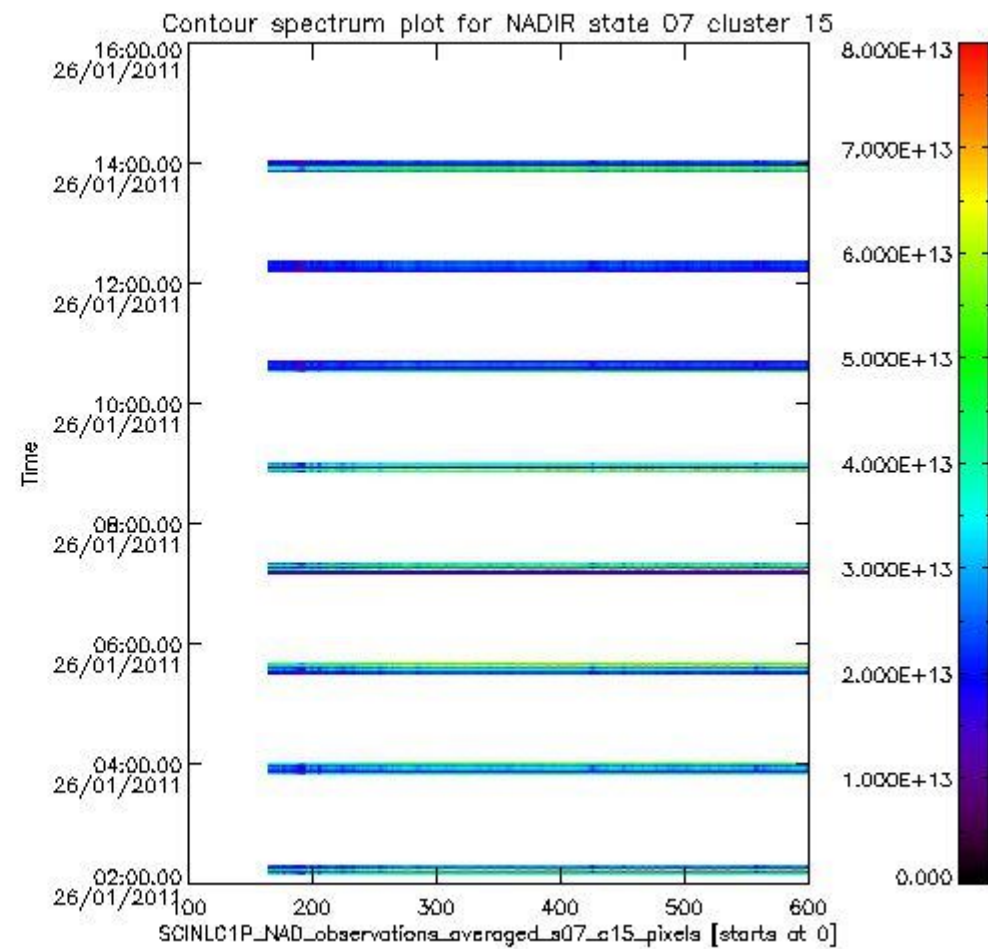
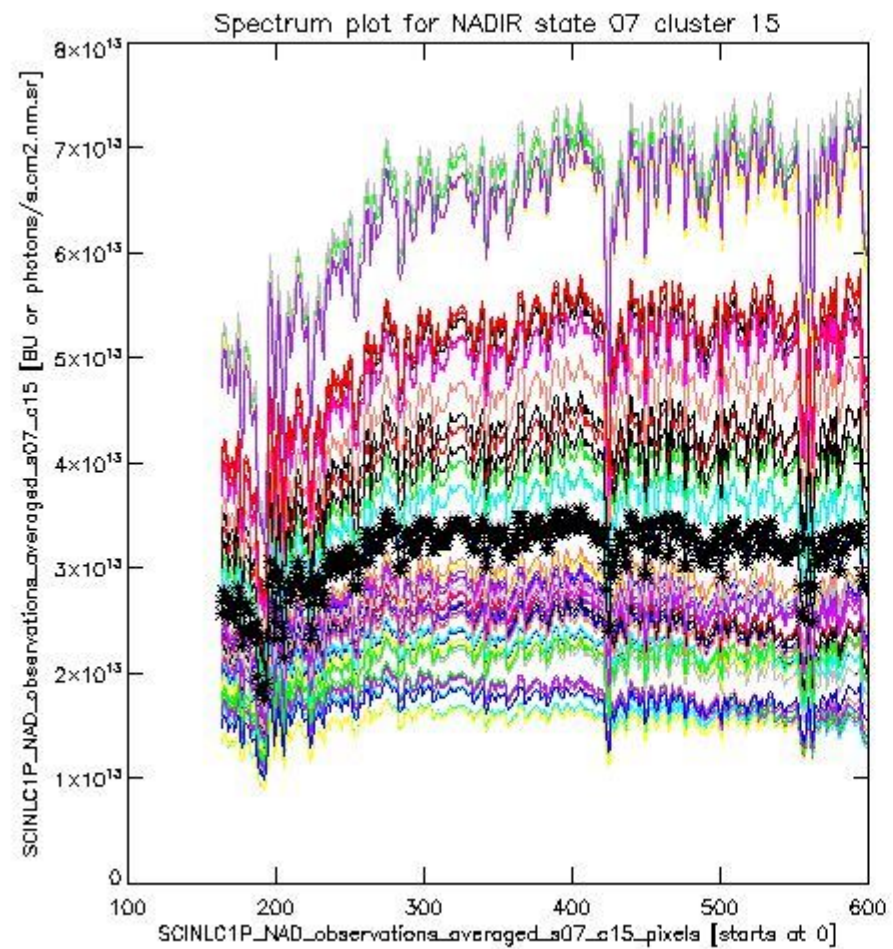
sciamachy_i1b_source_packet_report_SCIA_7_04_U_20110126_2.PNG



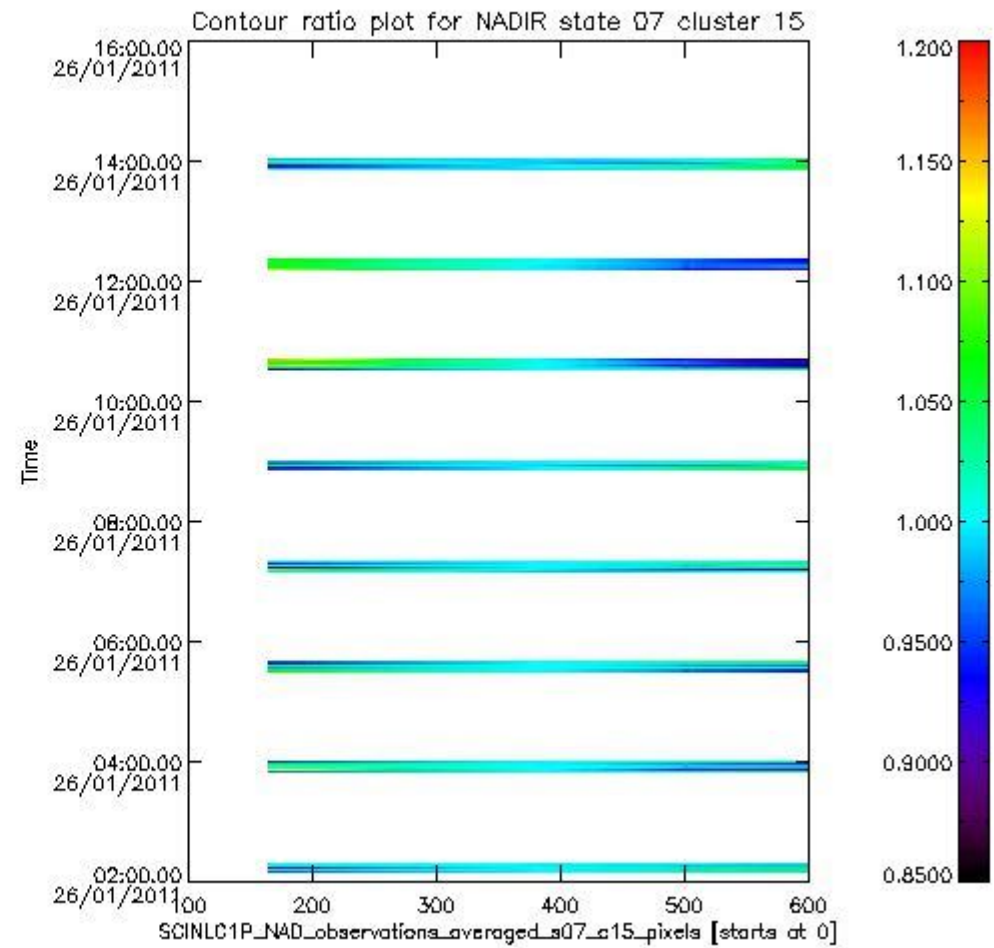
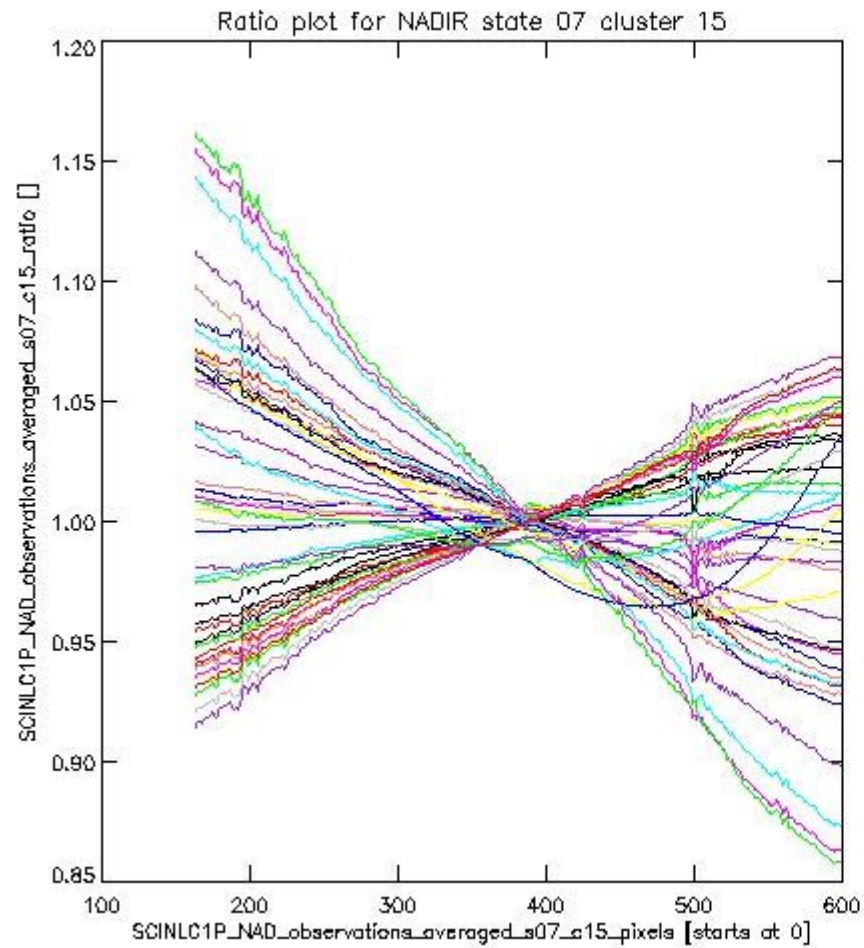
sciamachy_i1b_source_packet_report_SCIA_7_04_U_20110126_3.PNG

1.2.3 NADIR state 07 cluster 15 The data for the analysis of NADIR state 07 cluster 15 have the following characteristics:

Item	Value
Start time of first sample	26JAN2011 02:10:08.255
Start time of last sample	26JAN2011 14:00:48.854
Reference period start time	27DEC2010 00:30:56.342
Reference period stop time	25JAN2011 17:58:26.982
Channel number	3
First pixel number (starts at 0)	163
Last pixel number (starts at 0)	598



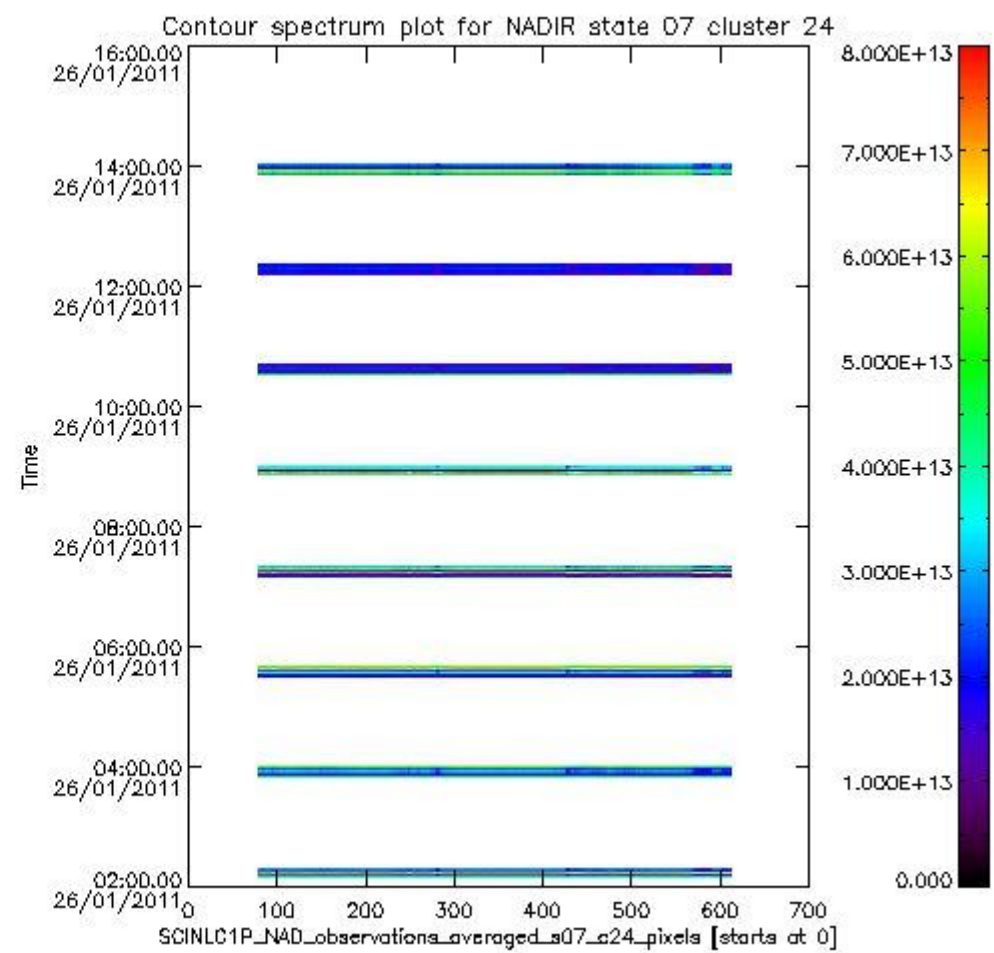
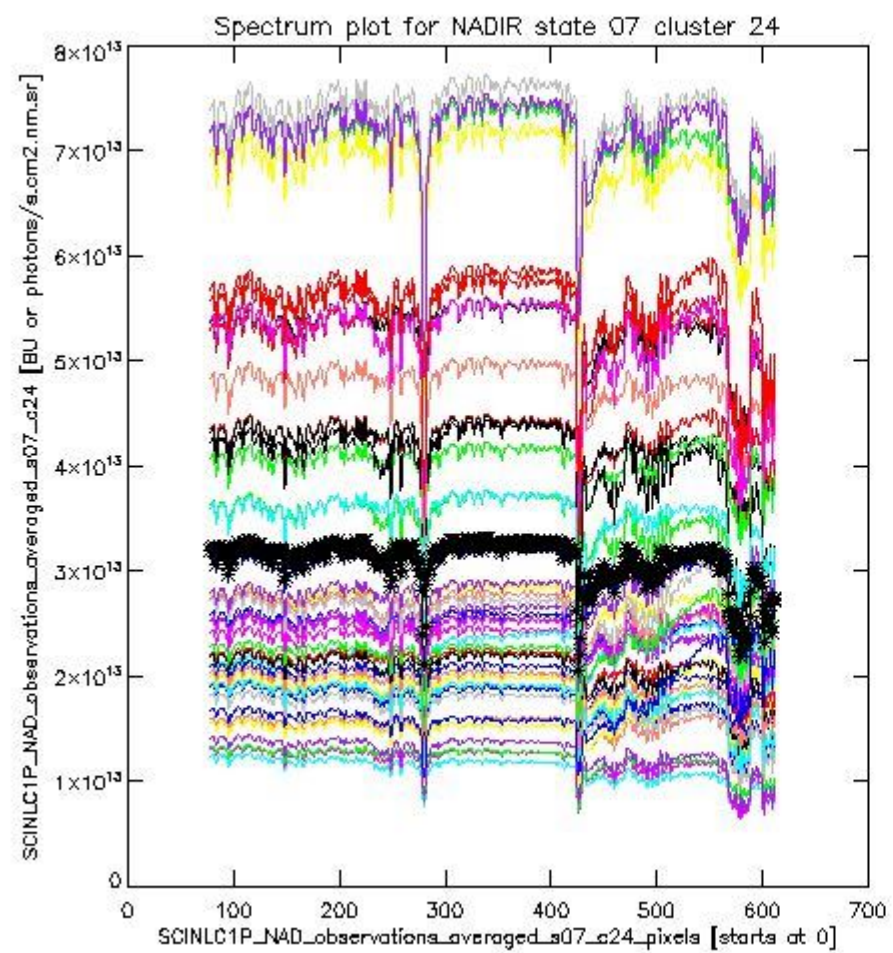
sciamachy_i1b_source_packet_report_SCIA_7_04_U_20110126_4.PNG



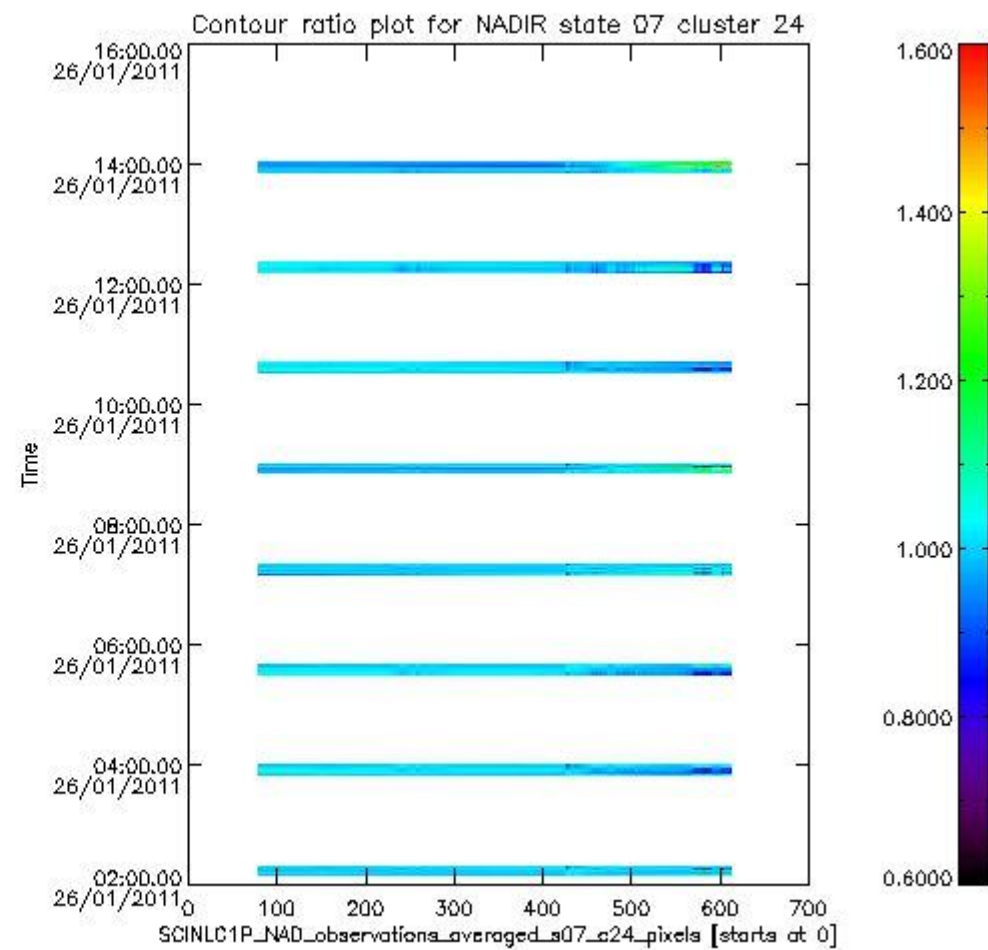
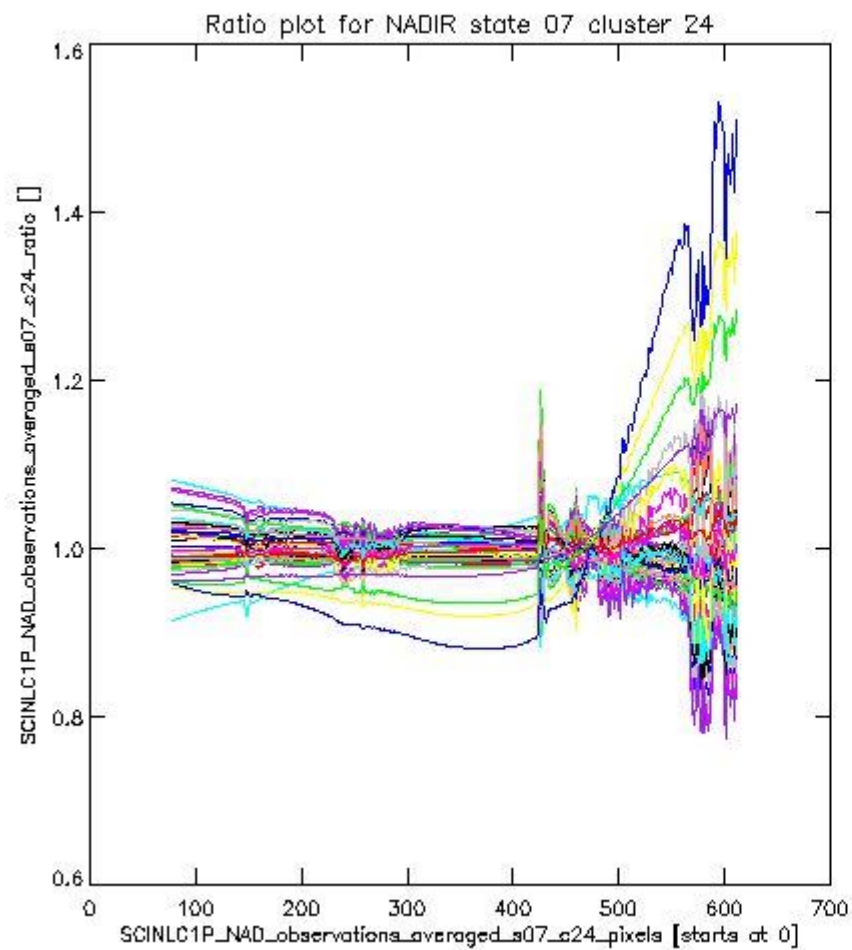
sciamachy_l1b_source_packet_report_SCIA_7_04_U_20110126_5.PNG

1.2.4 NADIR state 07 cluster 24 The data for the analysis of NADIR state 07 cluster 24 have the following characteristics:

Item	Value
Start time of first sample	26JAN2011 02:10:08.255
Start time of last sample	26JAN2011 14:00:48.854
Reference period start time	27DEC2010 00:30:56.342
Reference period stop time	25JAN2011 17:58:26.982
Channel number	4
First pixel number (starts at 0)	78
Last pixel number (starts at 0)	612



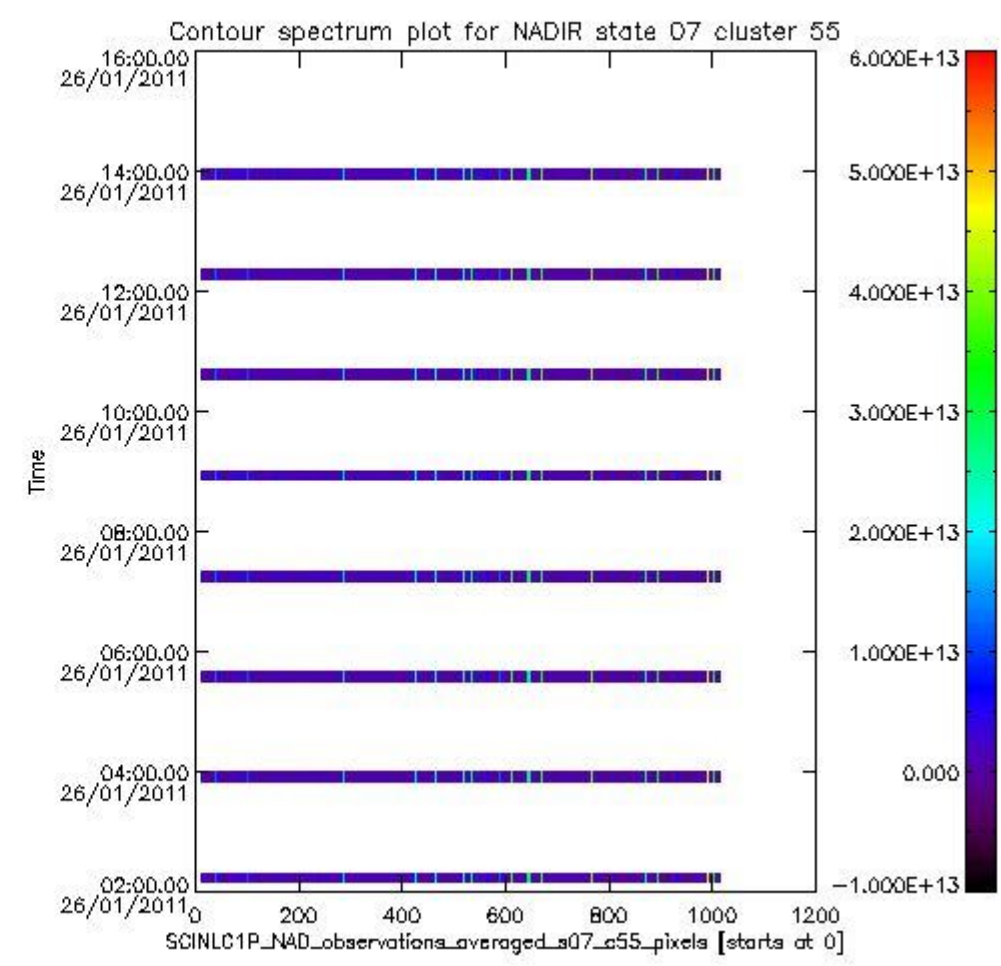
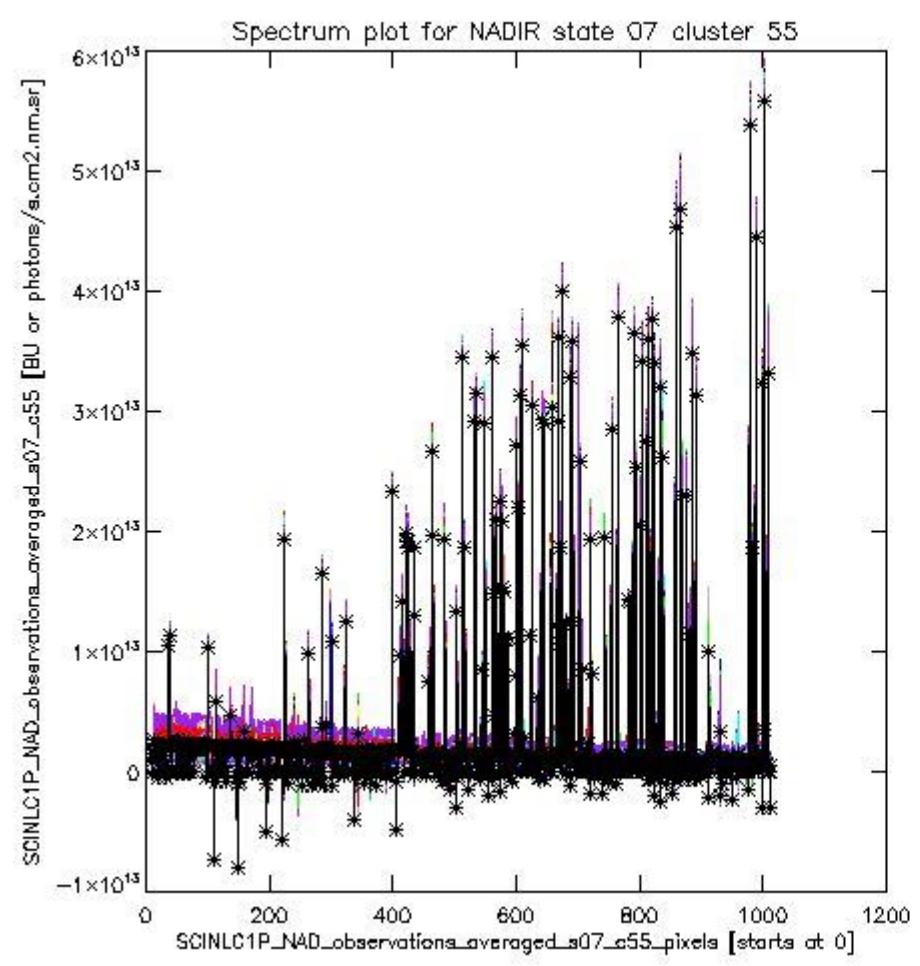
sciamachy_i1b_source_packet_report_SCIA_7_04_U_20110126_6.PNG



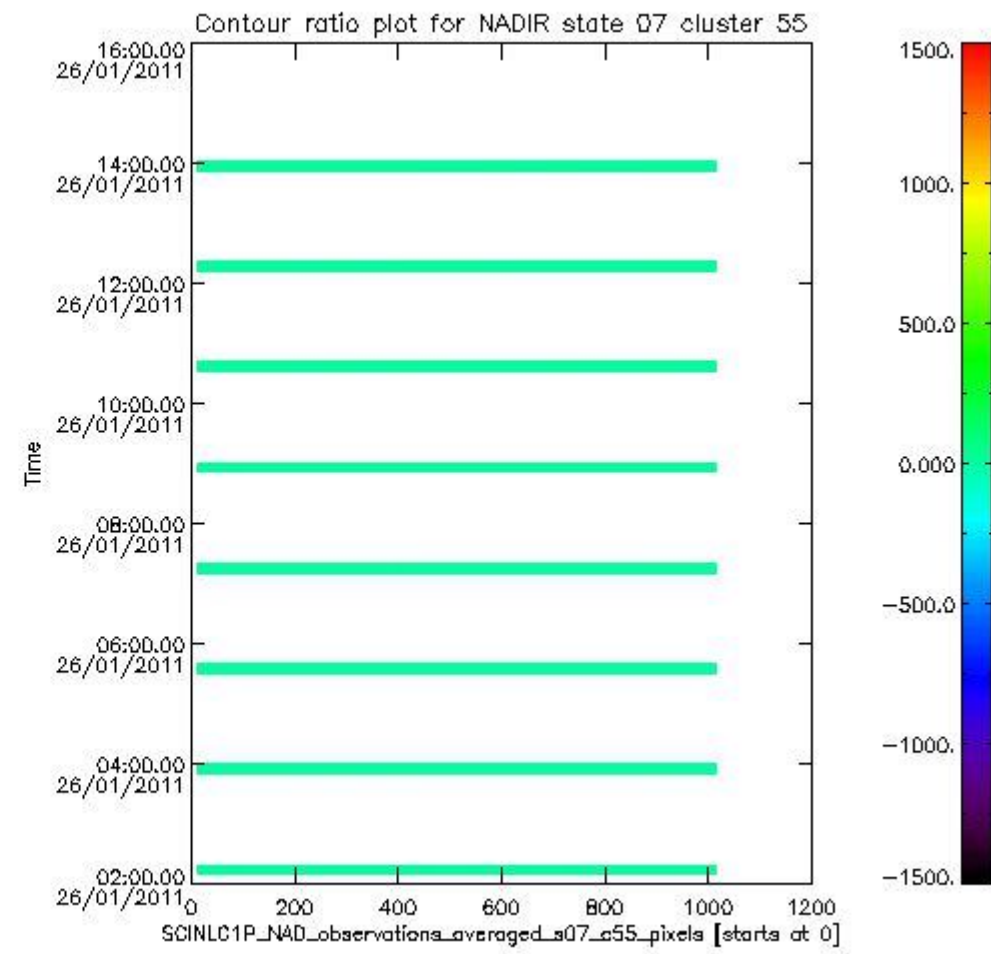
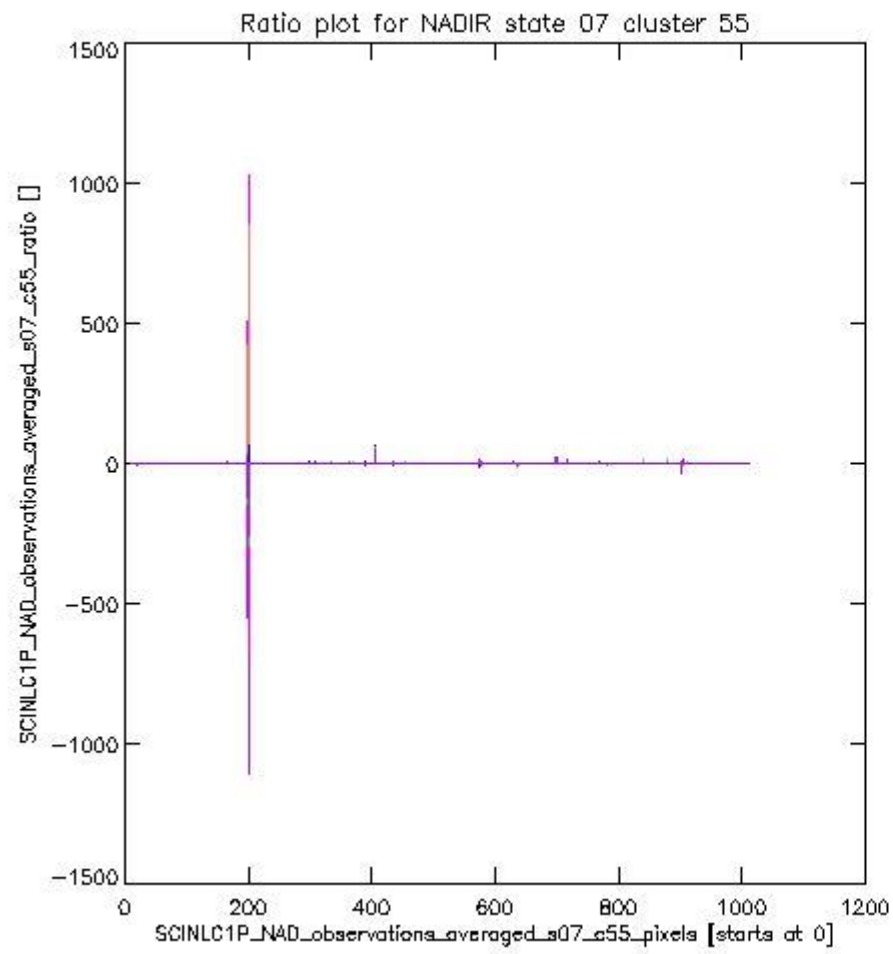
sciamachy_l1b_source_packet_report_SCIA_7_04_U_20110126_7.PNG

1.2.5 NADIR state 07 cluster 55 The data for the analysis of NADIR state 07 cluster 55 have the following characteristics:

Item	Value
Start time of first sample	26JAN2011 02:10:08.255
Start time of last sample	26JAN2011 14:00:48.854
Reference period start time	27DEC2010 00:30:56.342
Reference period stop time	25JAN2011 17:58:26.982
Channel number	8
First pixel number (starts at 0)	10
Last pixel number (starts at 0)	1013



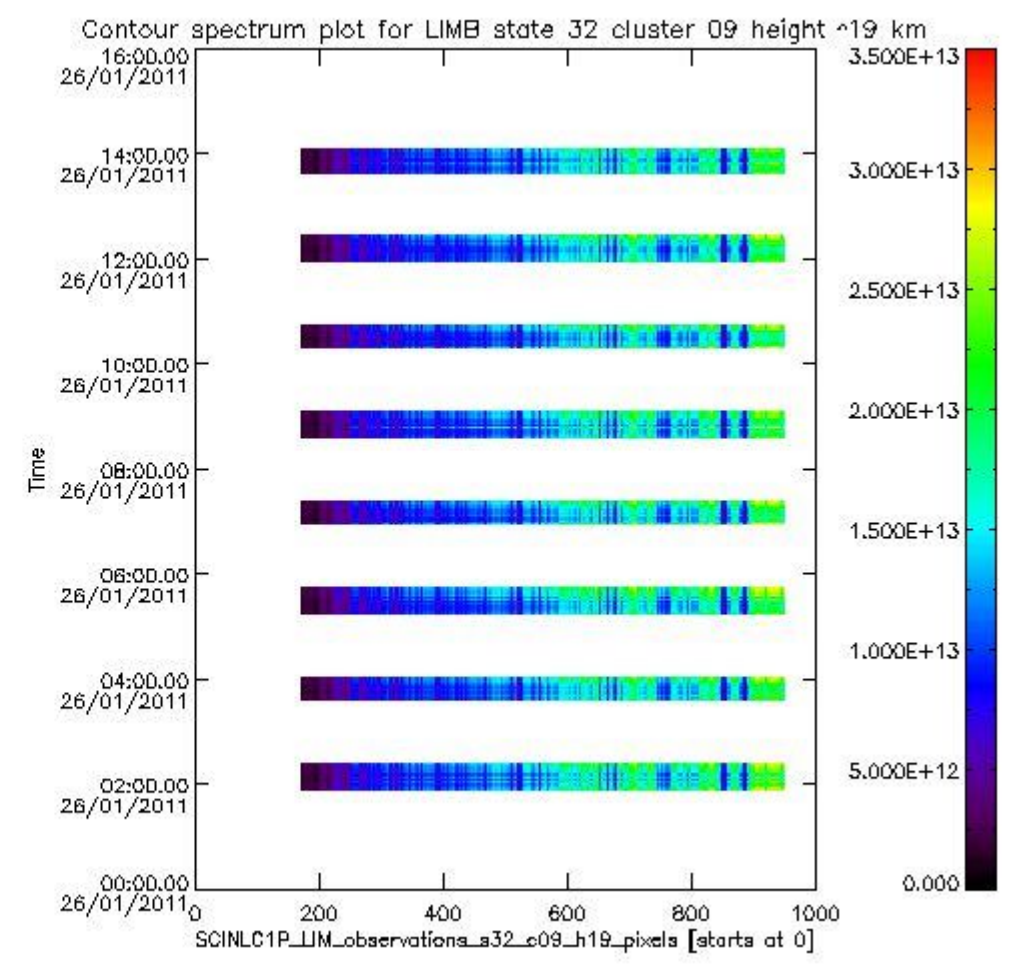
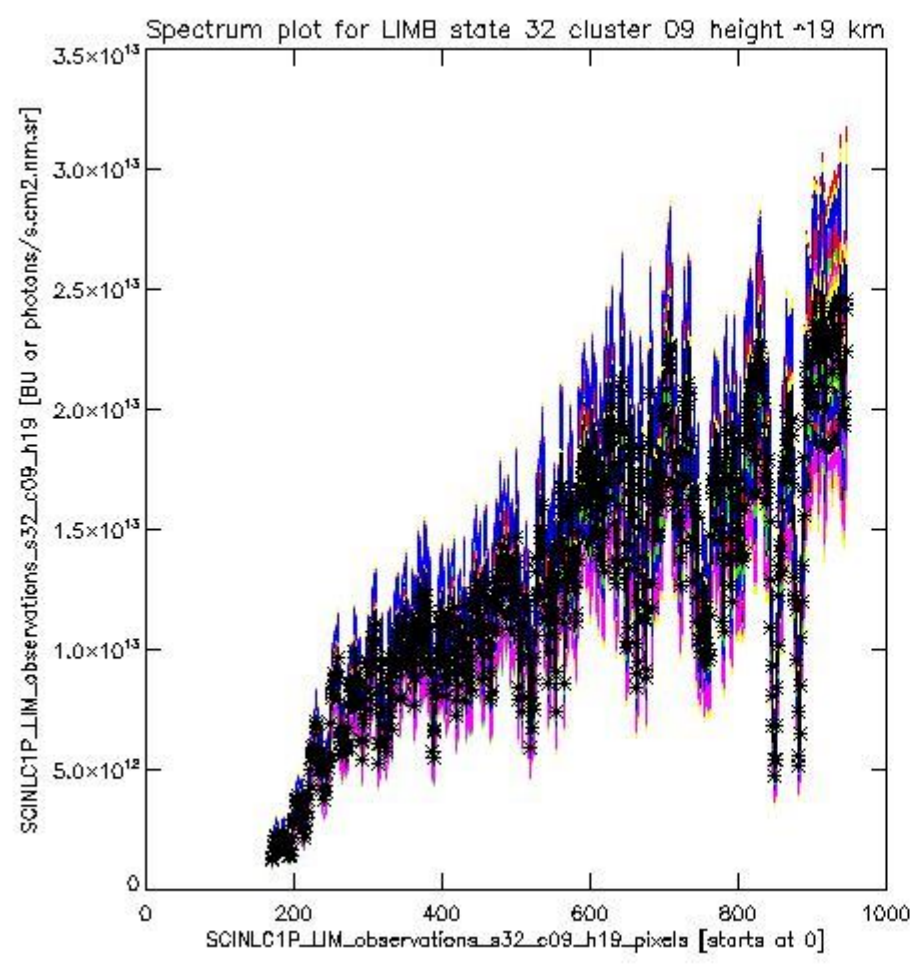
sciamachy_i1b_source_packet_report_SCIA_7_04_U_20110126_8.PNG



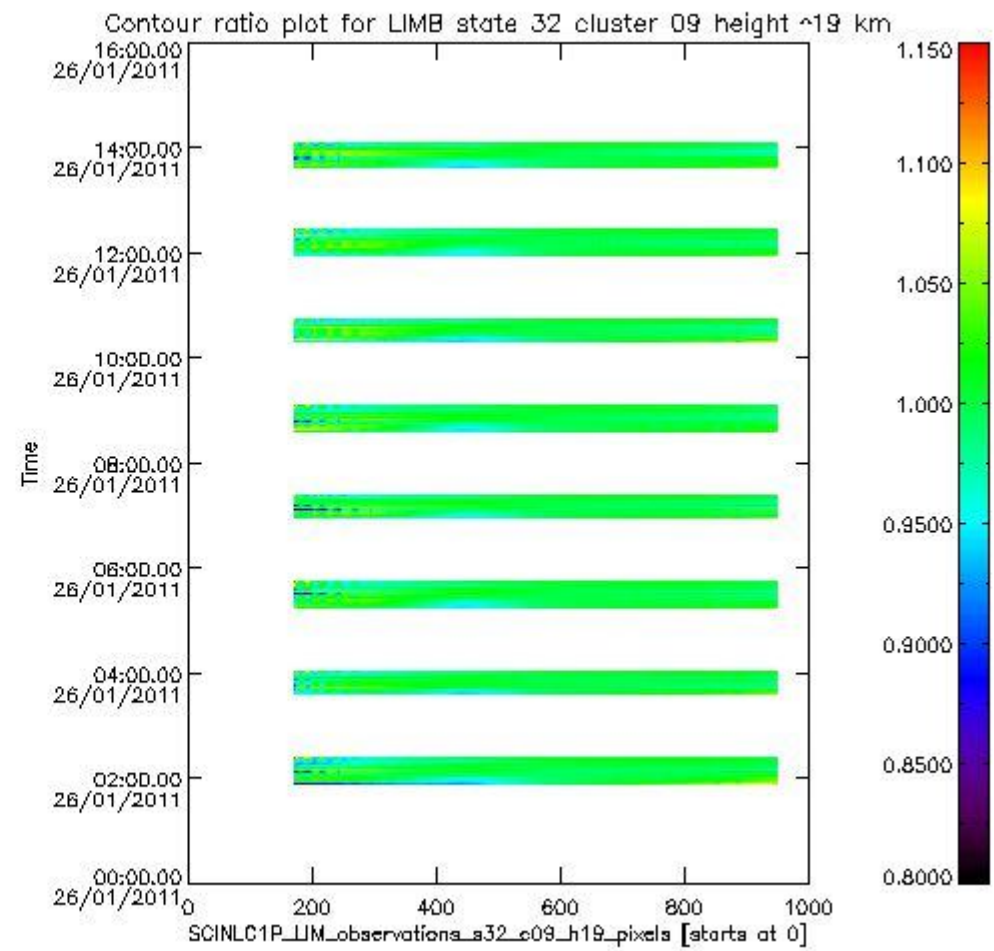
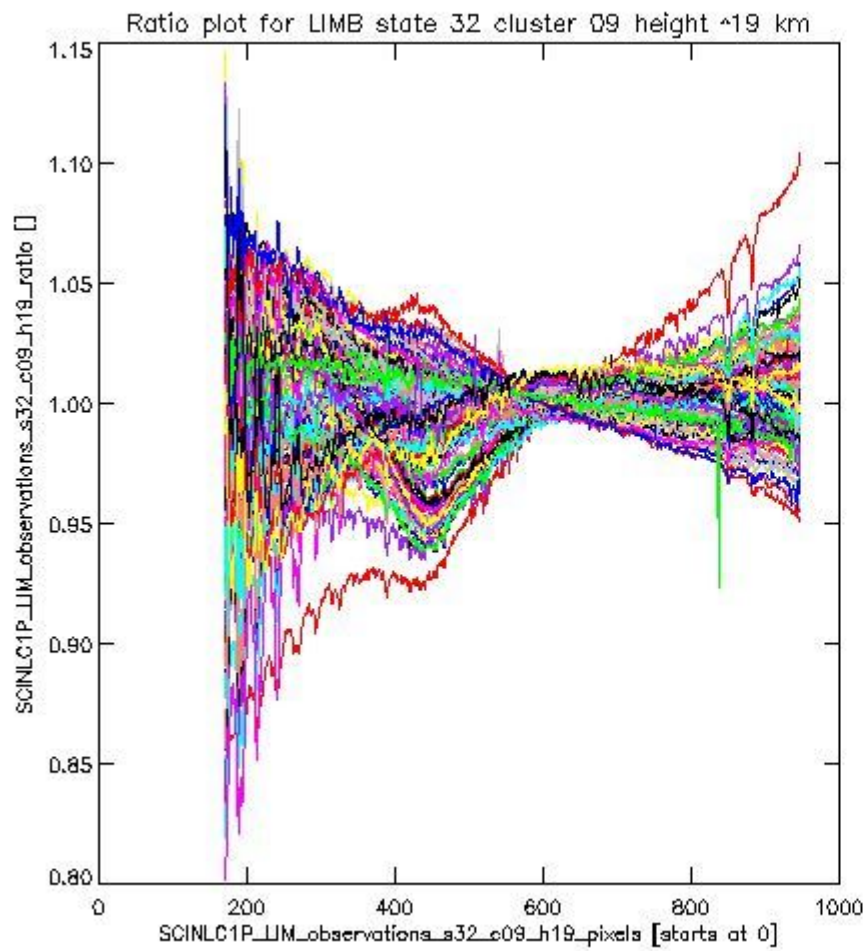
sciamachy_l1b_source_packet_report_SCIA_7_04_U_20110126_9.PNG

1.2.6 LIMB state 32 cluster 09 height ~19 km The data for the analysis of LIMB state 32 cluster 09 height ~19 km have the following characteristics:

Item	Value
Start time of first sample	26JAN2011 01:54:54.880
Start time of last sample	26JAN2011 14:04:00.155
Reference period start time	27DEC2010 00:15:42.963
Reference period stop time	25JAN2011 18:01:38.282
Channel number	2
First pixel number (starts at 0)	170
Last pixel number (starts at 0)	947



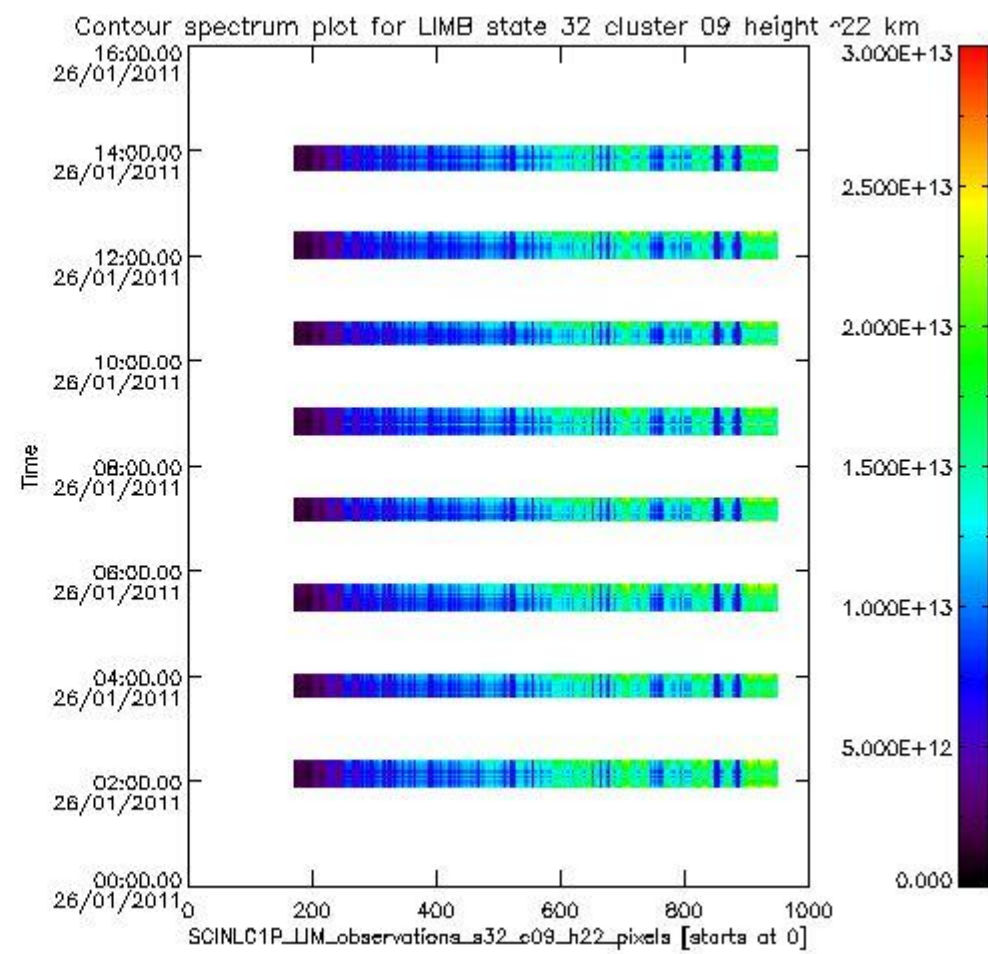
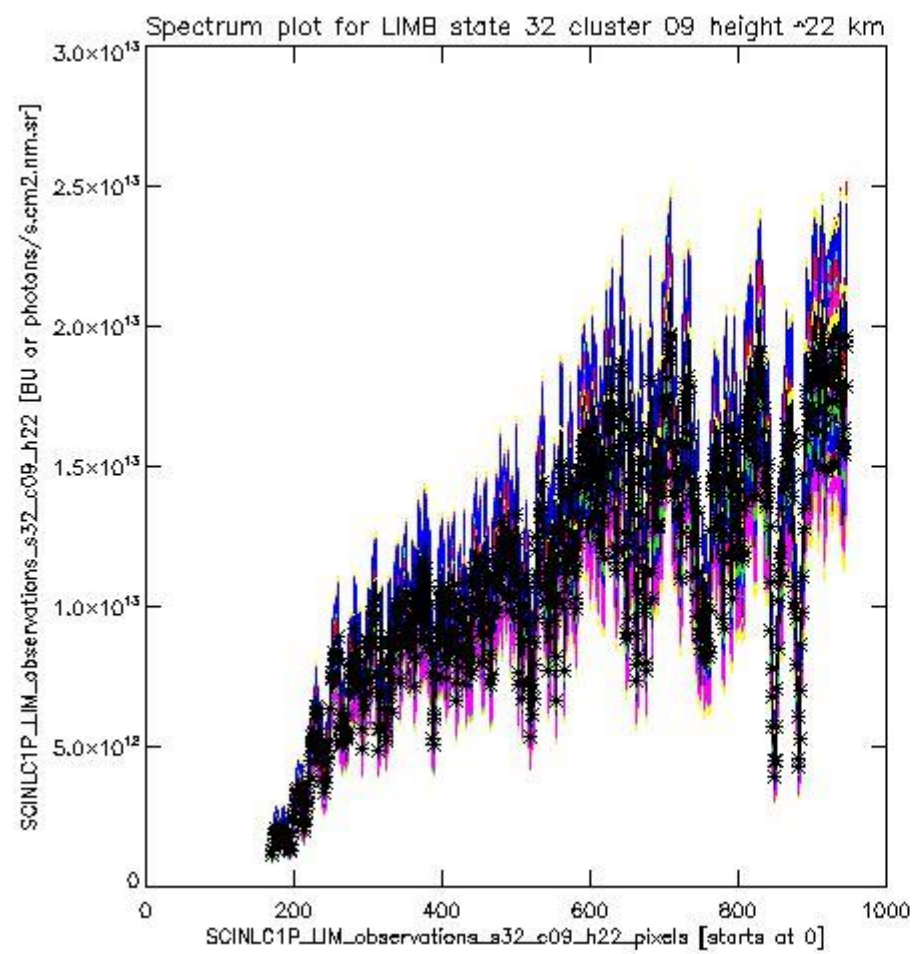
sciamachy_l1b_source_packet_report_SCIA_7_04_U_20110126_10.PNG



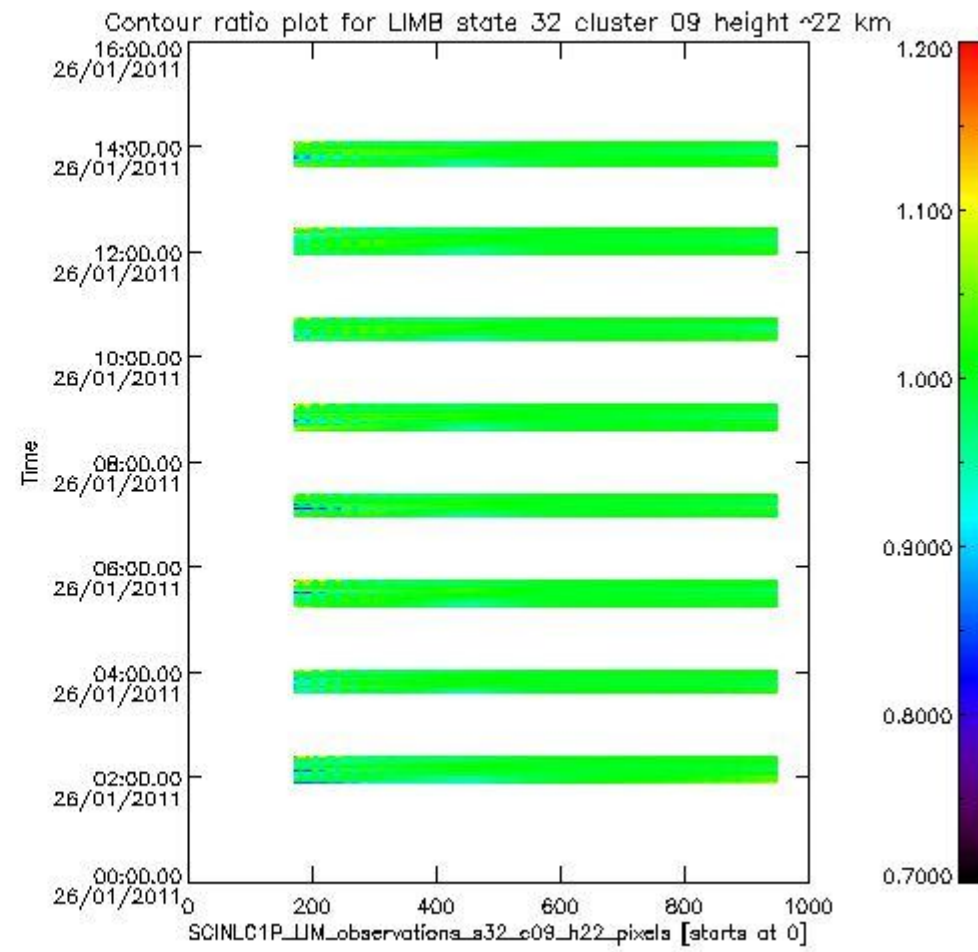
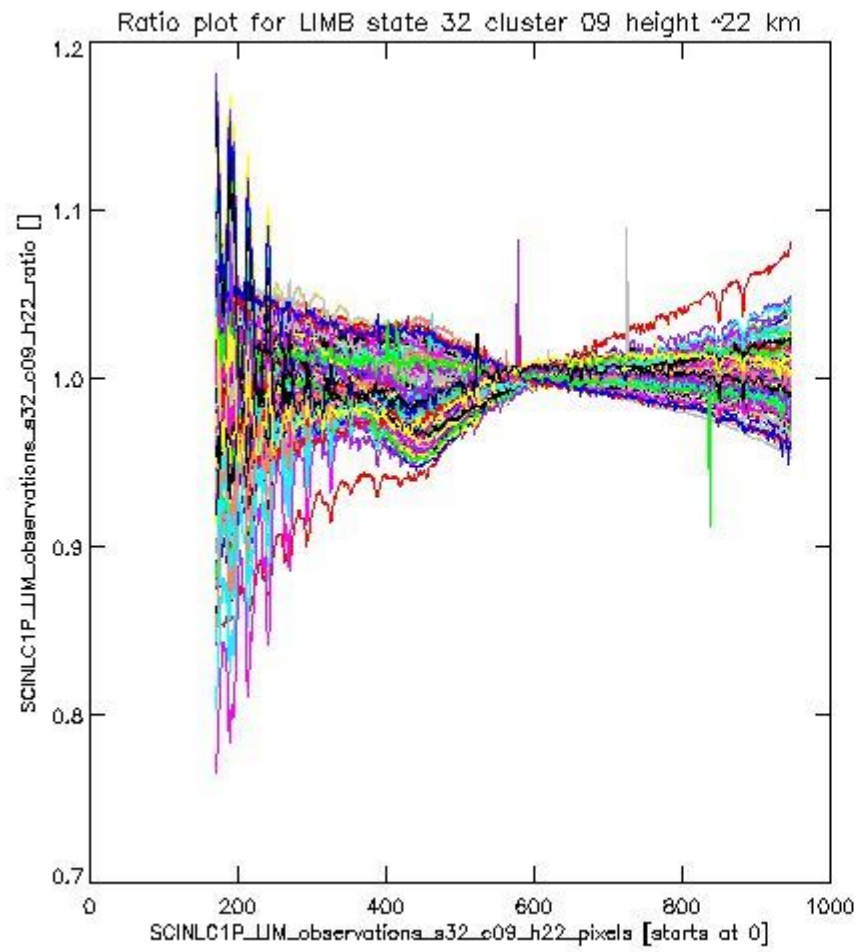
sciamachy_i1b_source_packet_report_SCIA_7_04_U_20110126_11.PNG

1.2.7 LIMB state 32 cluster 09 height ~22 km The data for the analysis of LIMB state 32 cluster 09 height ~22 km have the following characteristics:

Item	Value
Start time of first sample	26JAN2011 01:54:54.880
Start time of last sample	26JAN2011 14:04:00.155
Reference period start time	27DEC2010 00:15:42.963
Reference period stop time	25JAN2011 18:01:38.282
Channel number	2
First pixel number (starts at 0)	170
Last pixel number (starts at 0)	947



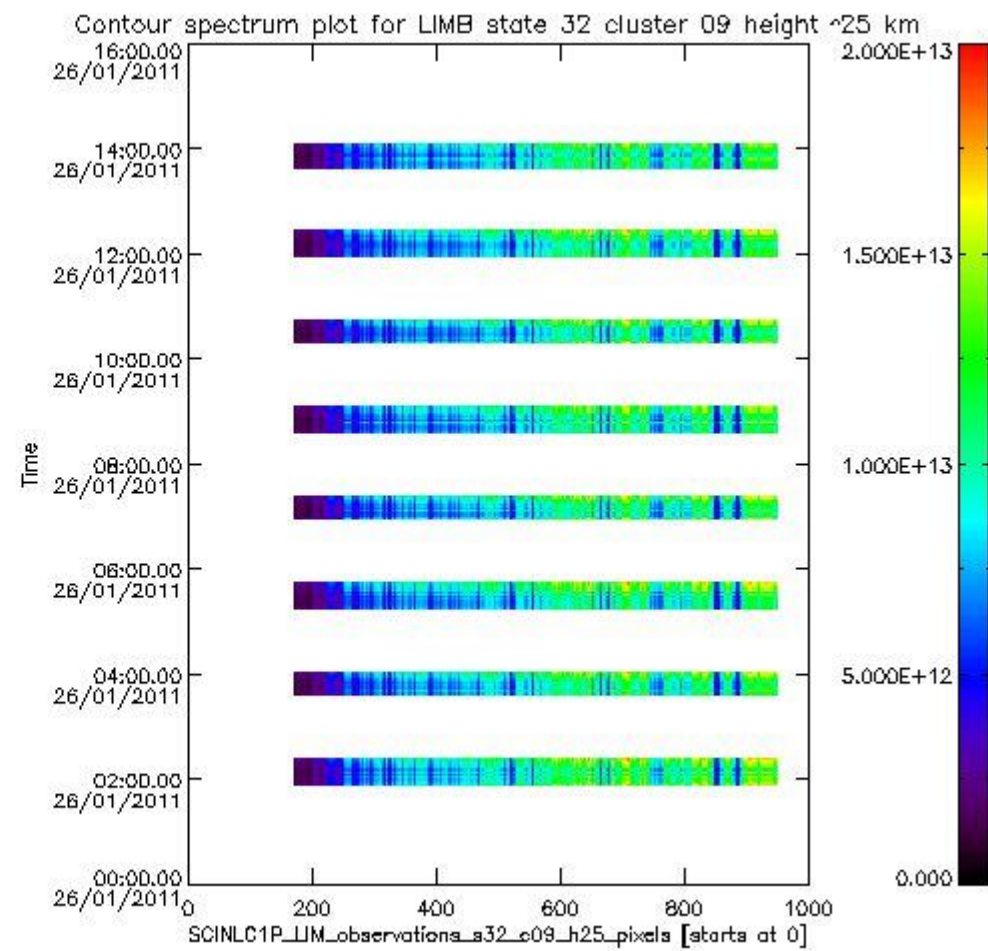
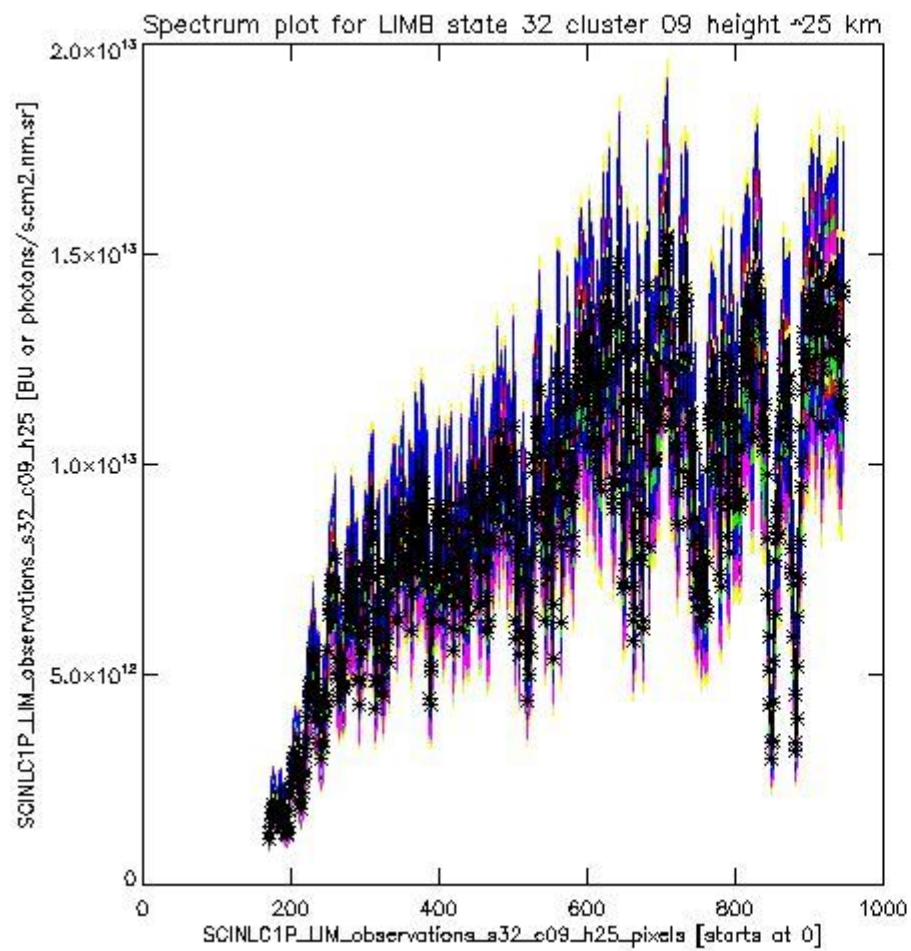
sciamachy_i1b_source_packet_report_SCIA_7_04_U_20110126_12.PNG



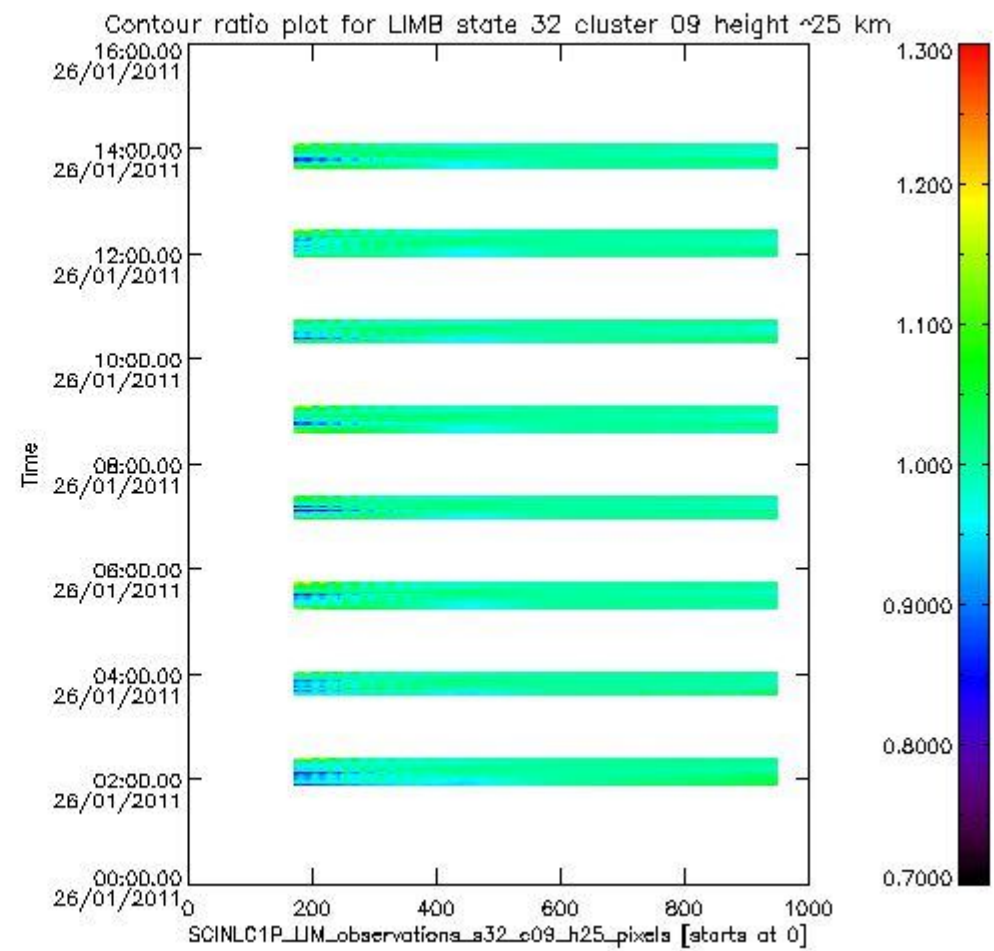
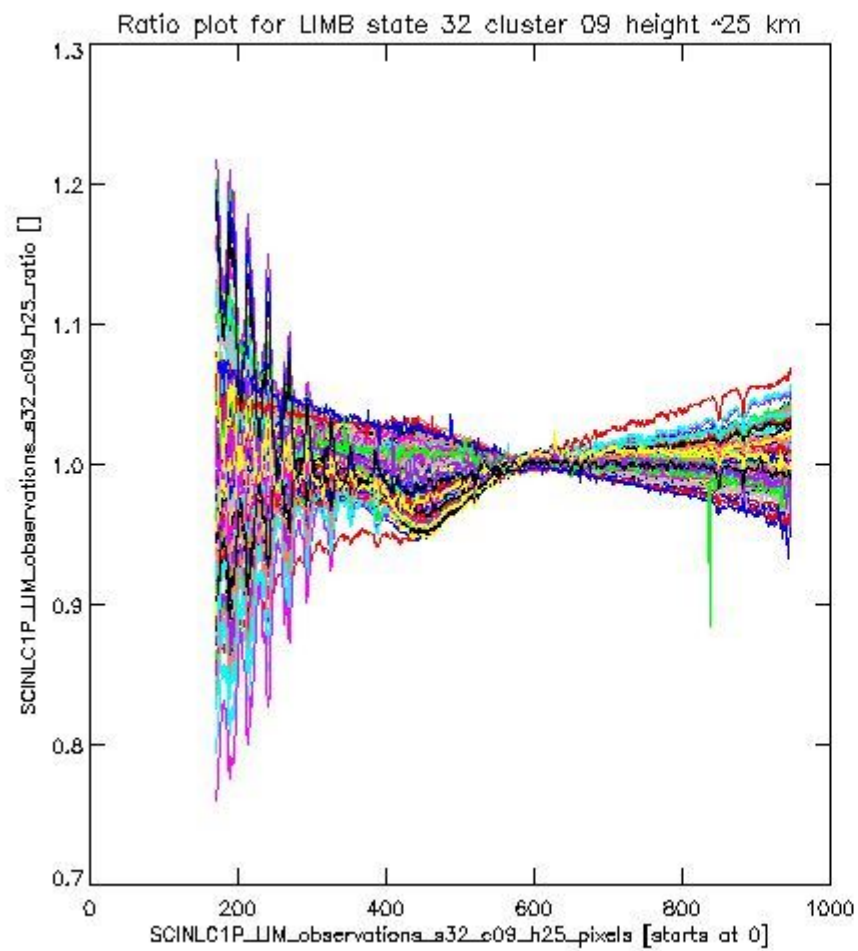
sciamachy_l1b_source_packet_report_SCIA_7_04_U_20110126_13.PNG

1.2.8 LIMB state 32 cluster 09 height ~25 km The data for the analysis of LIMB state 32 cluster 09 height ~25 km have the following characteristics:

Item	Value
Start time of first sample	26JAN2011 01:54:54.880
Start time of last sample	26JAN2011 14:04:00.155
Reference period start time	27DEC2010 00:15:42.963
Reference period stop time	25JAN2011 18:01:38.282
Channel number	2
First pixel number (starts at 0)	170
Last pixel number (starts at 0)	947



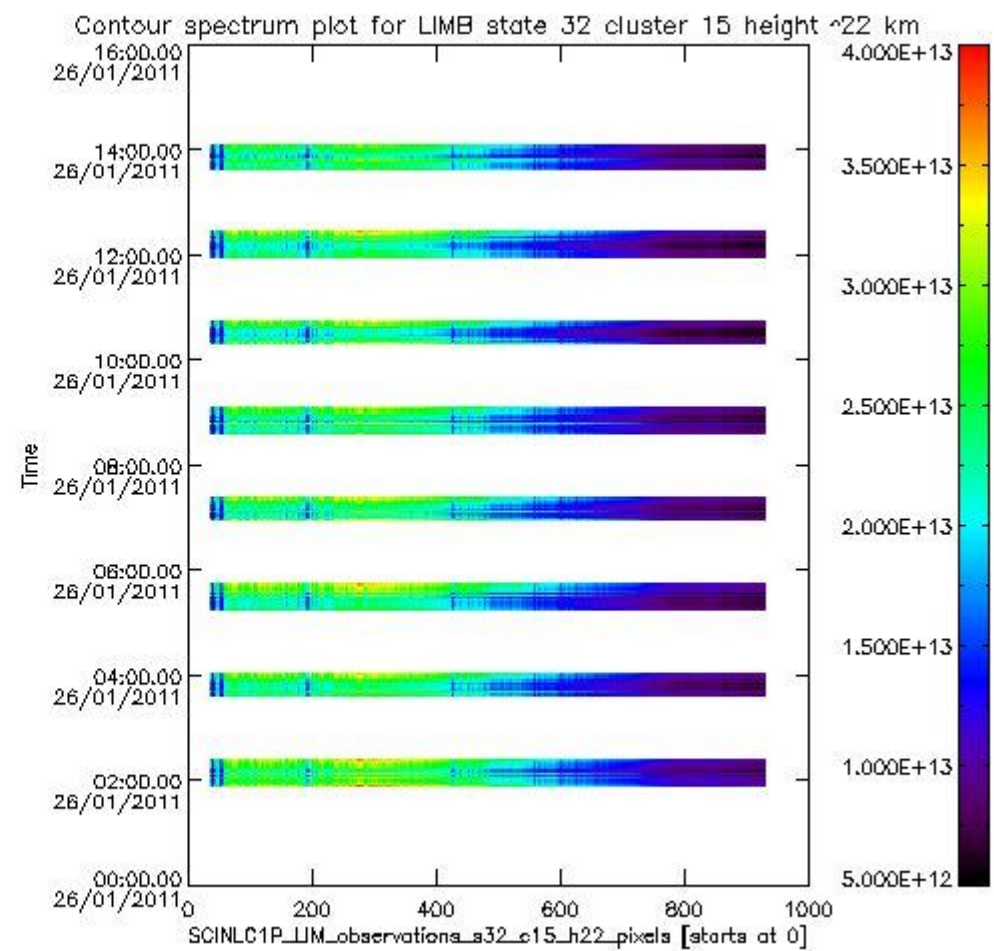
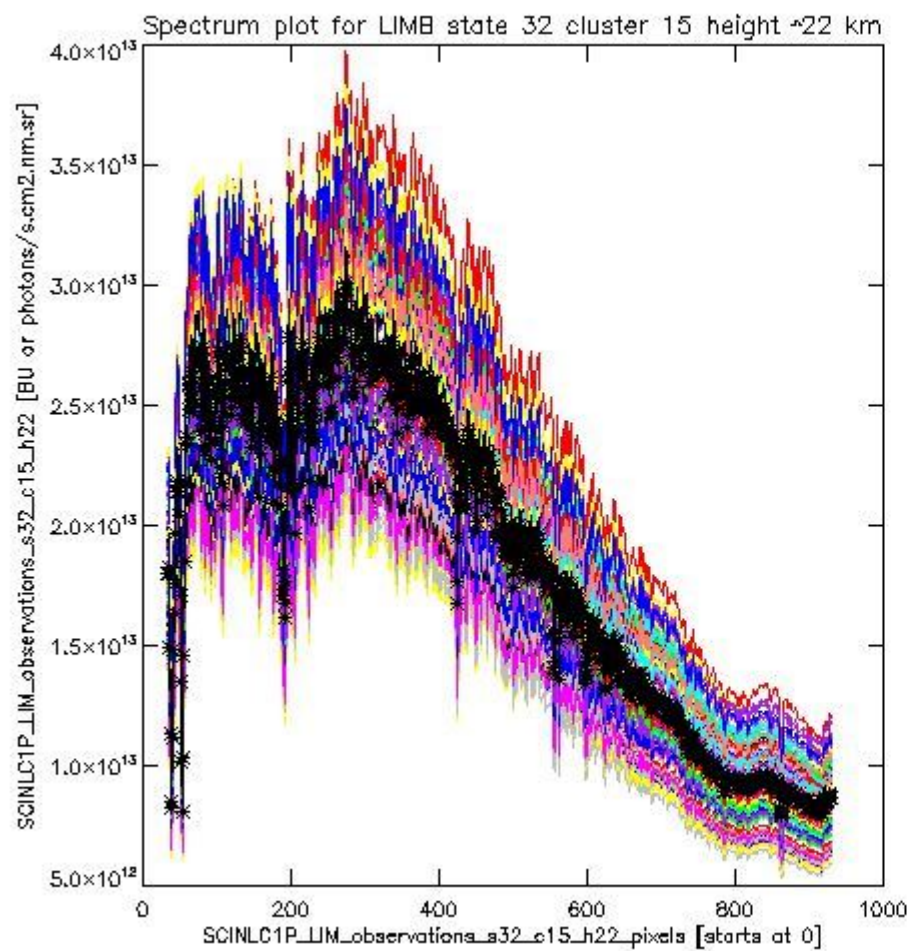
sciamachy_l1b_source_packet_report_SCIA_7_04_U_20110126_14.PNG



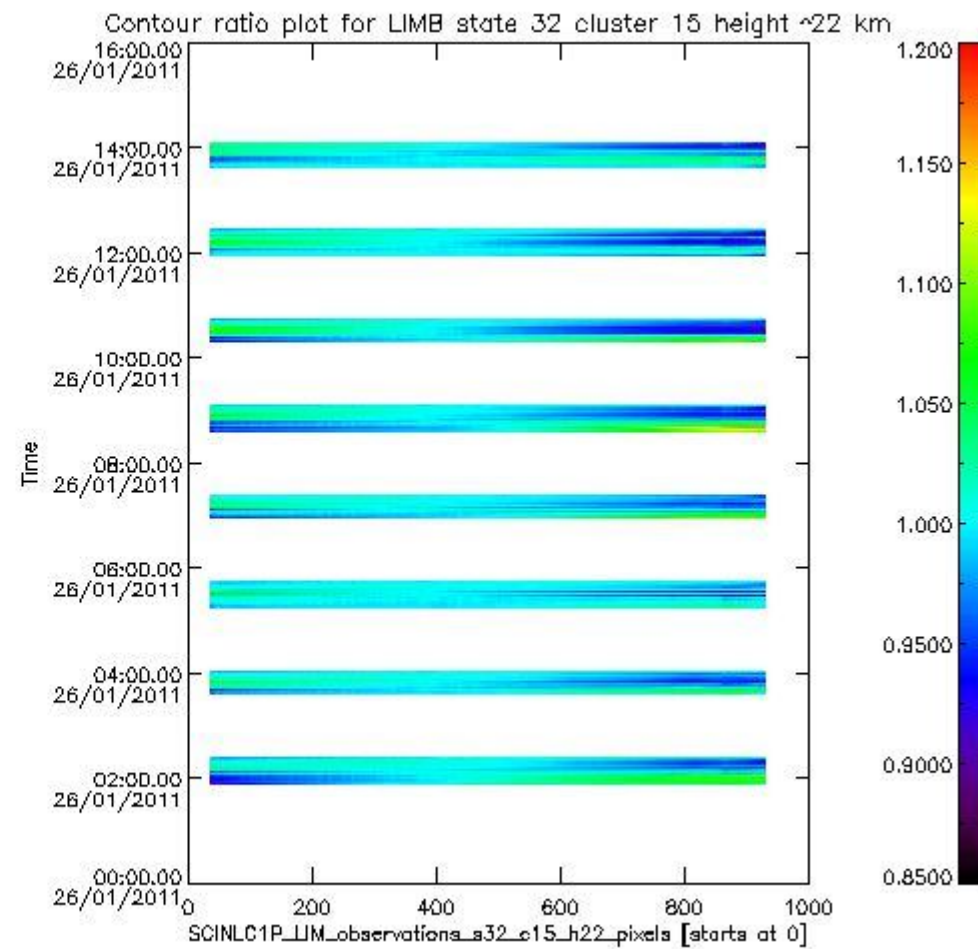
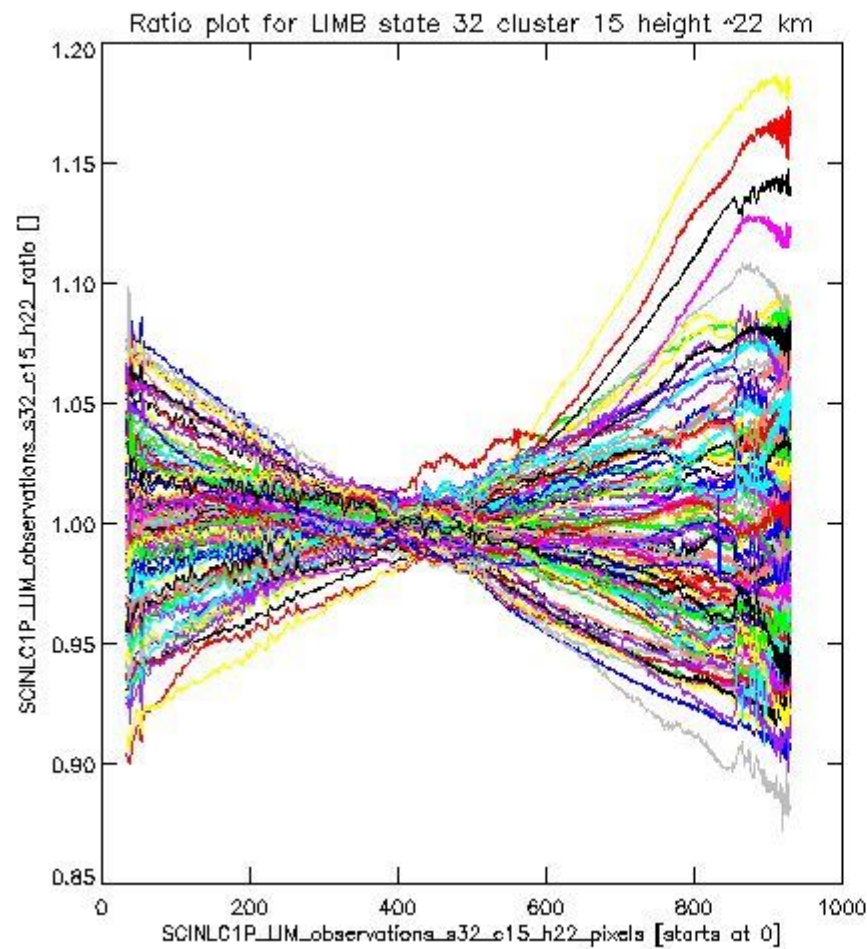
sciamachy_l1b_source_packet_report_SCIA_7_04_U_20110126_15.PNG

1.2.9 LIMB state 32 cluster 15 height ~22 km The data for the analysis of LIMB state 32 cluster 15 height ~22 km have the following characteristics:

Item	Value
Start time of first sample	26JAN2011 01:54:54.880
Start time of last sample	26JAN2011 14:04:00.155
Reference period start time	27DEC2010 00:15:42.963
Reference period stop time	25JAN2011 18:01:38.282
Channel number	3
First pixel number (starts at 0)	33
Last pixel number (starts at 0)	929



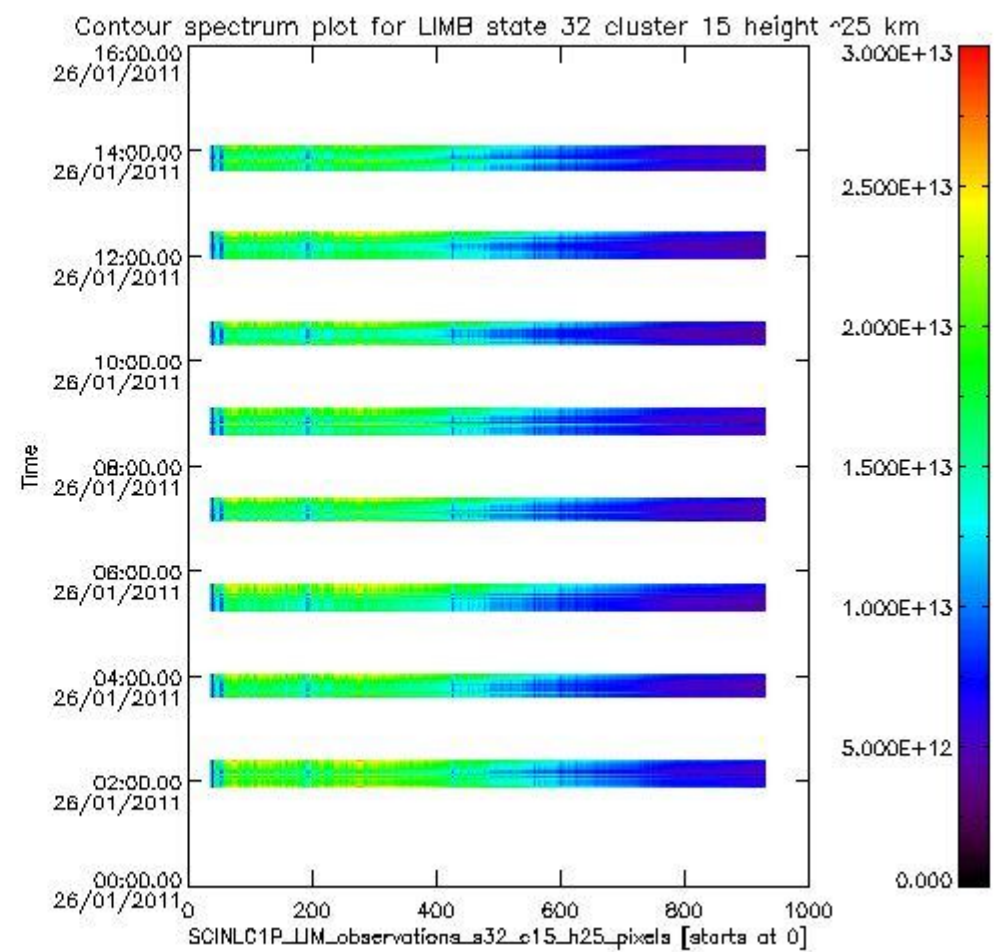
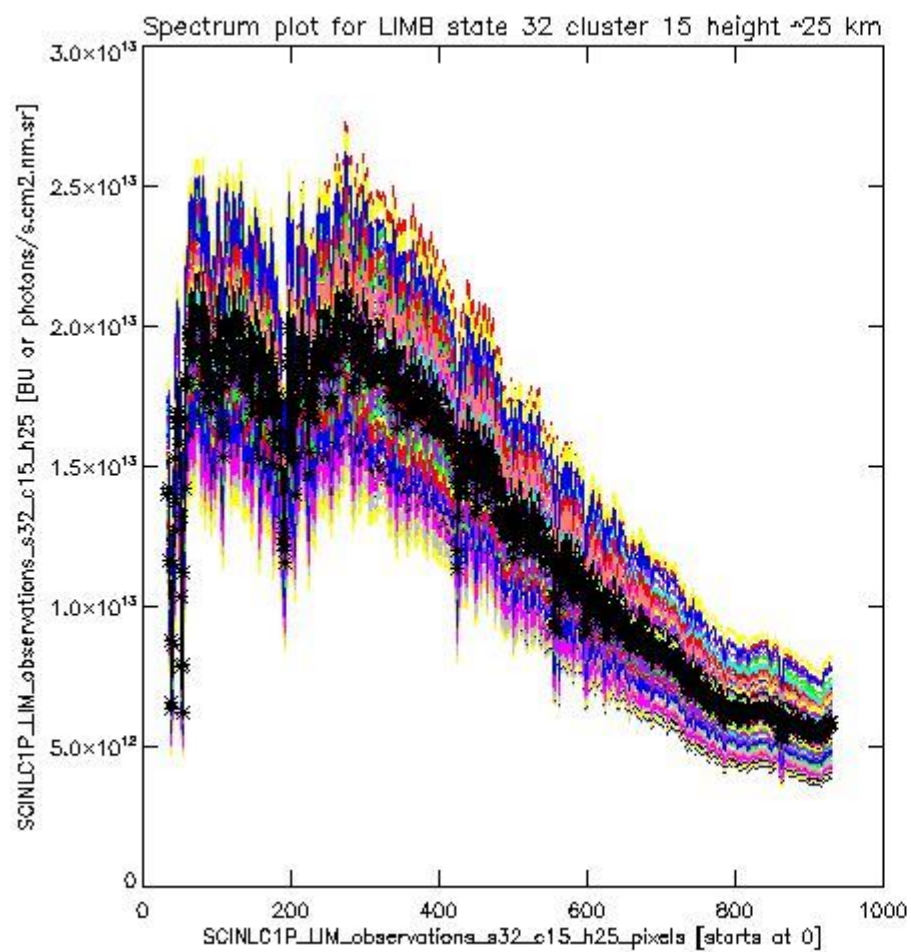
sciamachy_i1b_source_packet_report_SCIA_7_04_U_20110126_16.PNG



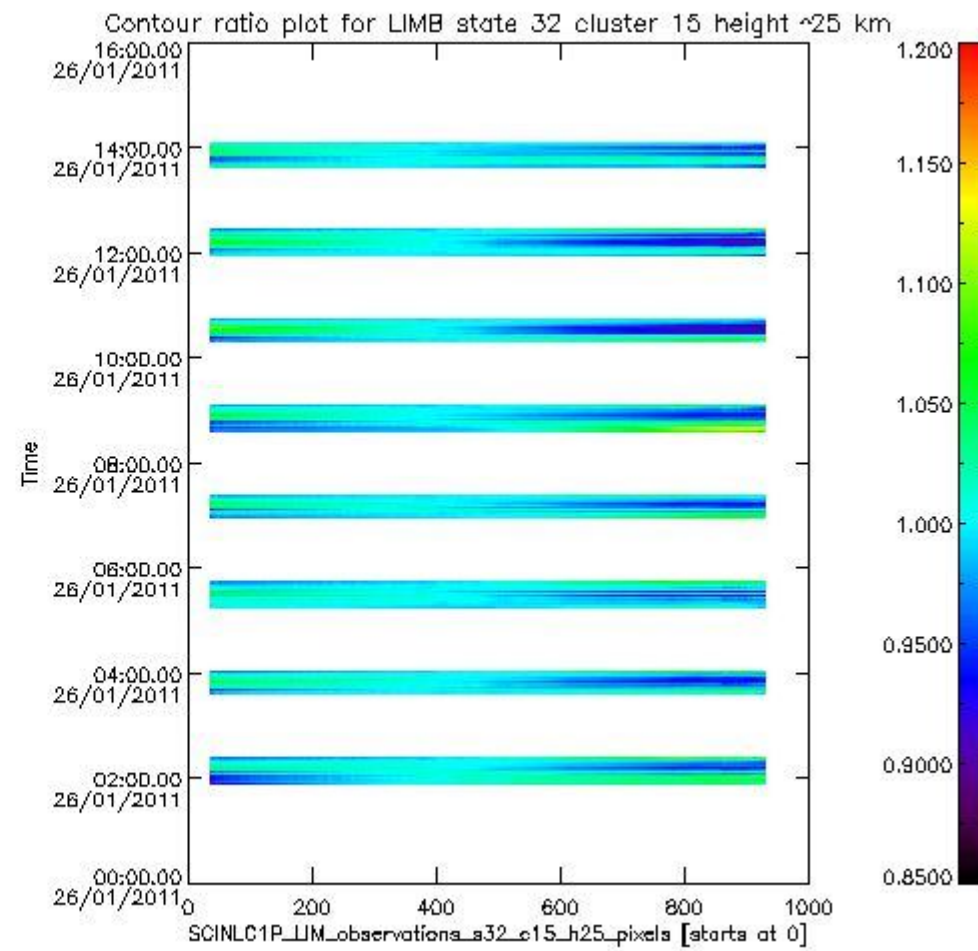
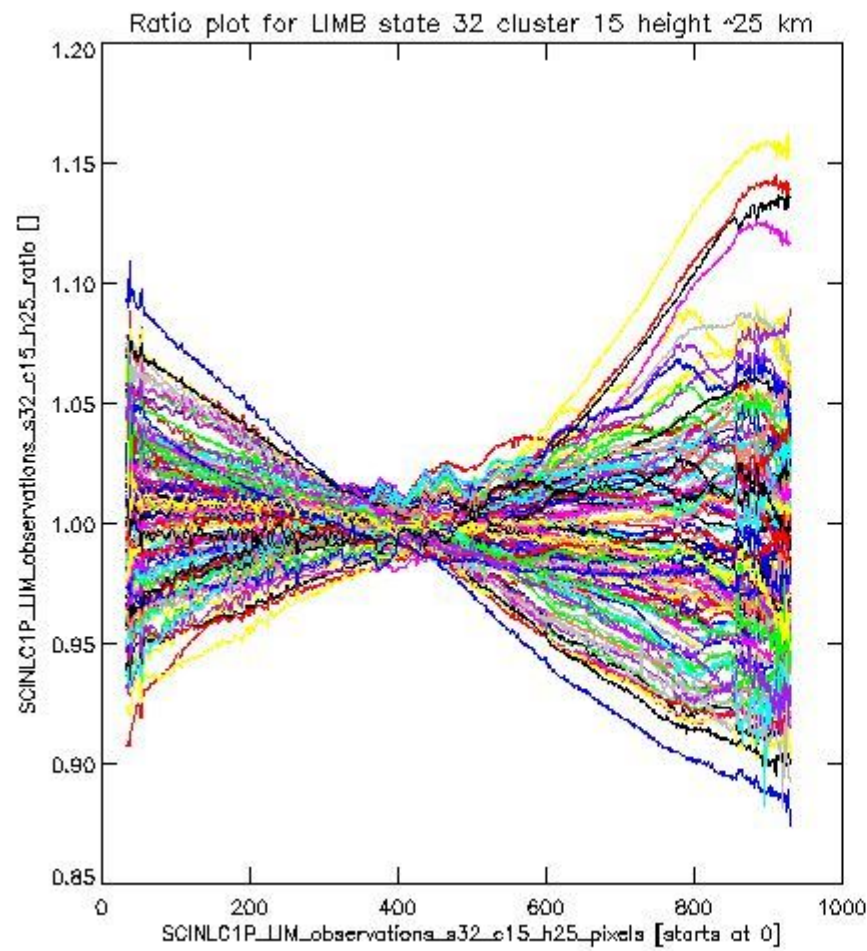
sciamachy_11b_source_packet_report_SCIA_7_04_U_20110126_17.PNG

1.2.10 LIMB state 32 cluster 15 height ~25 km The data for the analysis of LIMB state 32 cluster 15 height ~25 km have the following characteristics:

Item	Value
Start time of first sample	26JAN2011 01:54:54.880
Start time of last sample	26JAN2011 14:04:00.155
Reference period start time	27DEC2010 00:15:42.963
Reference period stop time	25JAN2011 18:01:38.282
Channel number	3
First pixel number (starts at 0)	33
Last pixel number (starts at 0)	929



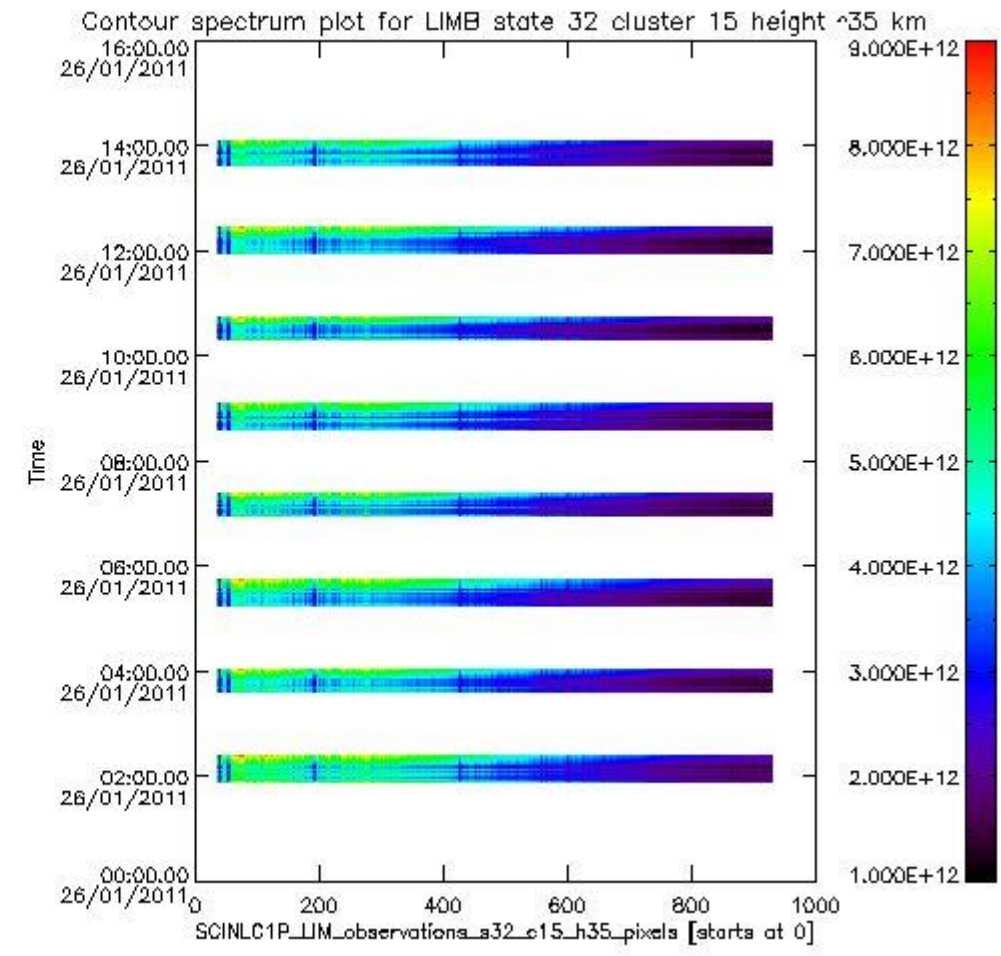
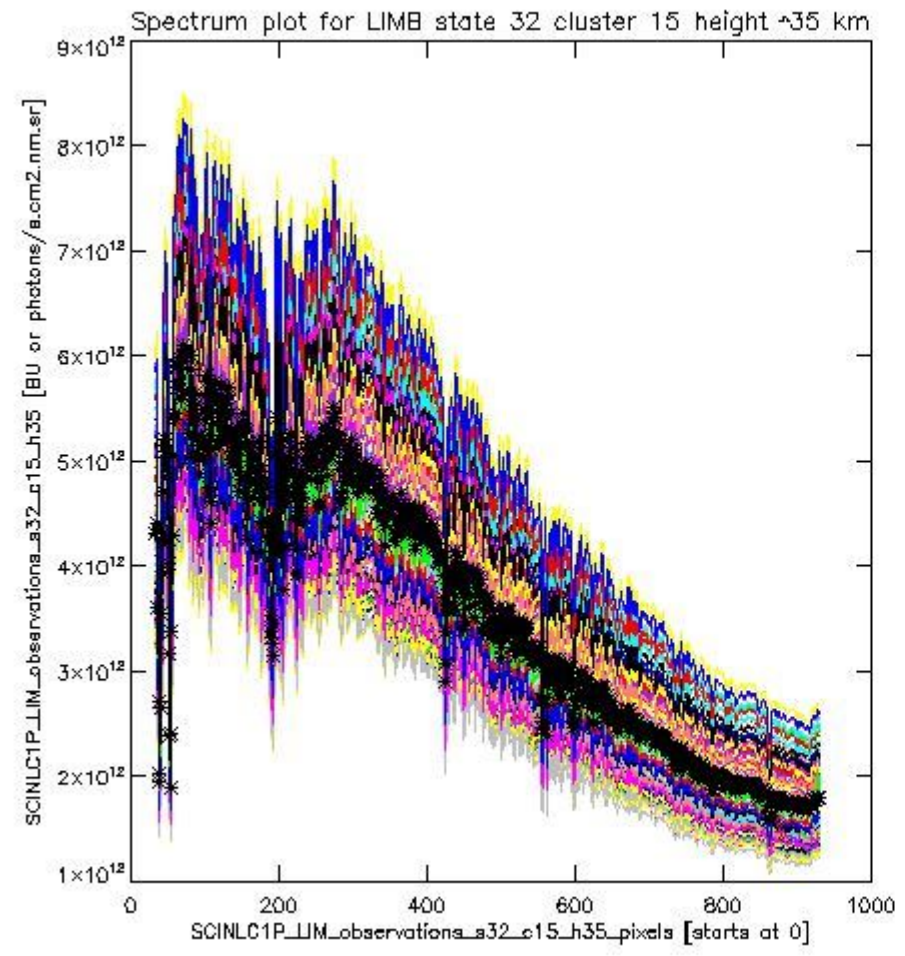
sciamachy_l1b_source_packet_report_SCIA_7_04_U_20110126_18.PNG



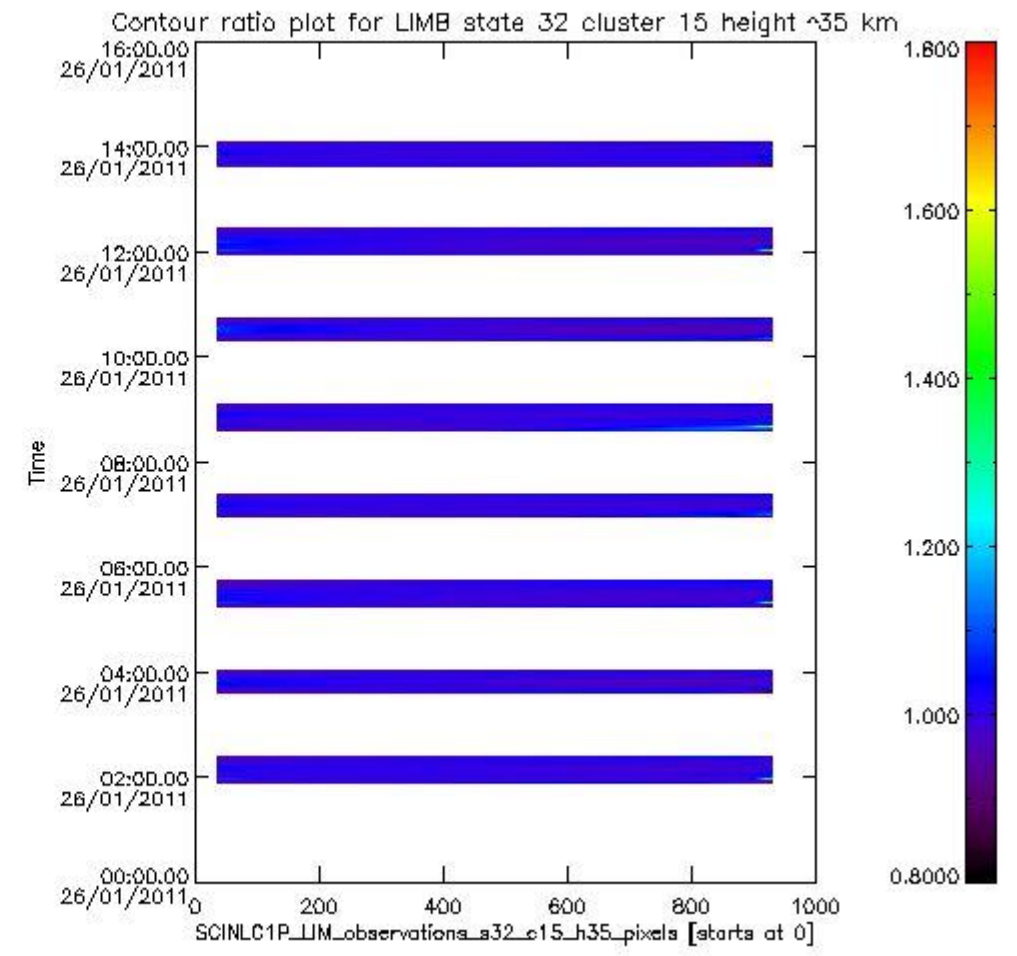
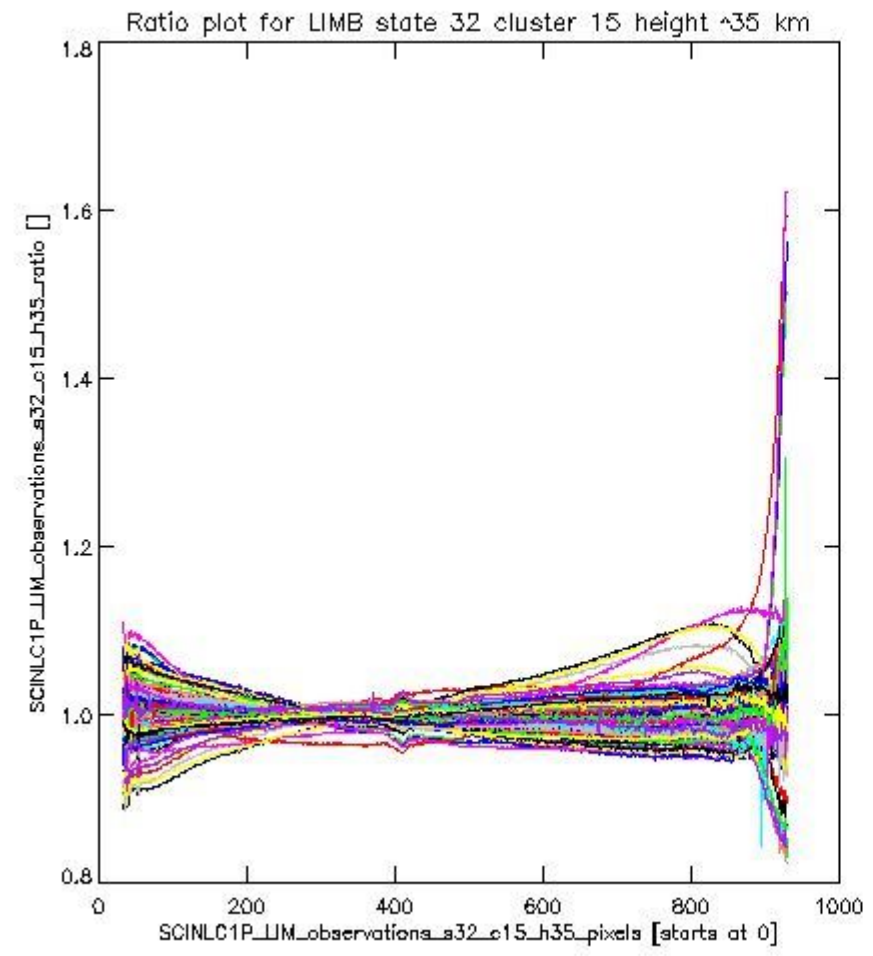
sciamachy_11b_source_packet_report_SCIA_7_04_U_20110126_19.PNG

1.2.11 LIMB state 32 cluster 15 height ~35 km The data for the analysis of LIMB state 32 cluster 15 height ~35 km have the following characteristics:

Item	Value
Start time of first sample	26JAN2011 01:54:54.880
Start time of last sample	26JAN2011 14:04:00.155
Reference period start time	27DEC2010 00:15:42.963
Reference period stop time	25JAN2011 18:01:38.282
Channel number	3
First pixel number (starts at 0)	33
Last pixel number (starts at 0)	929



sciamachy_11b_source_packet_report_SCIA_7_04_U_20110126_20.PNG



sciamachy_i1b_source_packet_report_SCIA_7_04_U_20110126_21.PNG

