

1. SCIAMACHY Level 1B source packet monitoring report

[1.1. General Info](#)

[1.2 Source packet monitoring](#)

1.1 General Info

This report contains results of the analysis on source packets from SCIAMACHY level 1 data (The SCI_NL__1P product).

1.1.1 Report summary

The table below shows general characteristics of the data that are included into this report.

Item	Value
Report version	1.1 (07-01-2010)
Time of report generation	20JAN2011 06:55:31
Data source version	SCIA/7.04-U
Processing scope for products	09JAN2011 00:00:00 to 10JAN2011 00:00:00
Start time of first product within scope	08JAN2011 22:40:43
Stop time of last product within scope	10JAN2011 00:54:25
Total number of level 1 products	16
Number of level 1 products with errors	0
SCIAL1C executable used in processing	scial1c-2.1.73-i686-pc-linux-gnu-gcc-3.3.6
SCIAL1C parameters used in processing	-allcal -type all -cat 1,2,8,10,11,16,19,23 -nadircluster 8,9,15,24,55 -limbcluster 9,15

1.1.2 Source packet summary

The table below shows which source packets have been included into the report.

Item	Mode	State	Cluster	Height	First start time	Last start time
0	NADIR	07	08	N/A	09JAN2011 00:52:59.946	09JAN2011 22:45:18.741
1	NADIR	07	09	N/A	09JAN2011 00:52:59.946	09JAN2011 22:45:18.741
2	NADIR	07	15	N/A	09JAN2011 00:52:59.946	09JAN2011 22:45:18.741
3	NADIR	07	24	N/A	09JAN2011 00:52:59.946	09JAN2011 22:45:18.741
4	NADIR	07	55	N/A	09JAN2011 00:52:59.946	09JAN2011 22:45:18.741
5	LIMB	32	09	~19 km	09JAN2011 00:39:49.313	09JAN2011 22:50:32.788
6	LIMB	32	09	~22 km	09JAN2011 00:39:49.313	09JAN2011 22:50:32.788
7	LIMB	32	09	~25 km	09JAN2011 00:39:49.313	09JAN2011 22:50:32.788
8	LIMB	32	15	~22 km	09JAN2011 00:39:49.313	09JAN2011 22:50:32.788
9	LIMB	32	15	~25 km	09JAN2011 00:39:49.313	09JAN2011 22:50:32.788
10	LIMB	32	15	~35 km	09JAN2011 00:39:49.313	09JAN2011 22:50:32.788

1.1.3 Summary per product

The following table shows a summary for each product used in this report.

Products are linked to a corresponding server directory for view/download. Note: Link access may be restricted by security settings of your internet browser or firewall.

#	Product name	Start time	Stop time	ProdErr	#nadir	#limb	#occ	#mon	#noprocc	#cmpl_drk	#incmpl_drk	Decont
0	SCI_NLC_1CUDPA20110108_222302_000060093098_00188_46323_1576.N1	08JAN2011 22:40:43	08JAN2011 23:51:12	0	36	30	0	0	1	0	0	
1	SCI_NLC_1CUDPA20110109_000316_000060103098_00189_46324_1578.N1	09JAN2011 00:20:57	09JAN2011 01:31:12	0	35	31	0	0	1	0	0	
2	SCI_NLC_1CUDPA20110109_014330_000060093098_00190_46325_1580.N1	09JAN2011 02:01:11	09JAN2011 03:11:40	0	36	30	0	0	1	0	0	
3	SCI_NLC_1CUDPA20110109_032343_000060103098_00191_46326_1583.N1	09JAN2011 03:41:24	09JAN2011 04:51:39	0	35	31	0	0	1	0	0	
4	SCI_NLC_1CUDPA20110109_050358_000060093098_00192_46327_1585.N1	09JAN2011 05:21:38	09JAN2011 06:32:07	0	36	30	0	0	1	0	0	
5	SCI_NLC_1CUDPA20110109_064411_000060103098_00193_46328_1586.N1	09JAN2011 07:01:52	09JAN2011 08:12:07	0	35	31	0	0	1	0	0	

6	SCI_NLC_1CUDPA20110109_082426_000060093098_00194_46329_1588.N1	09JAN2011 08:42:06	09JAN2011 09:52:35	0	36	30	0	0	1	0	0	
7	SCI_NLC_1CUDPA20110109_100439_000060103098_00195_46330_1591.N1	09JAN2011 10:22:20	09JAN2011 11:32:34	0	35	31	0	0	1	0	0	
8	SCI_NLC_1CUDPA20110109_114453_000060093098_00196_46331_1592.N1	09JAN2011 12:02:33	09JAN2011 13:13:02	0	36	30	0	0	1	0	0	
9	SCI_NLC_1CUDPA20110109_132507_000060103098_00197_46332_1594.N1	09JAN2011 13:42:47	09JAN2011 14:53:02	0	35	31	0	0	1	0	0	
10	SCI_NLC_1CUDPA20110109_150521_000060093098_00198_46333_1597.N1	09JAN2011 15:23:01	09JAN2011 16:33:30	0	36	30	0	0	1	0	0	
11	SCI_NLC_1CUDPA20110109_164535_000060103098_00199_46334_1598.N1	09JAN2011 17:03:15	09JAN2011 18:13:29	0	35	31	0	0	1	0	0	
12	SCI_NLC_1CUDPA20110109_182549_000060093098_00200_46335_1601.N1	09JAN2011 18:43:29	09JAN2011 19:54:18	0	36	30	0	1	1	0	0	
13	SCI_NLC_1CUDPA20110109_200603_000060103098_00201_46336_1602.N1	09JAN2011 20:23:42	09JAN2011 21:34:17	0	35	31	0	1	1	0	0	
14	SCI_NLC_1CUDPA20110109_214617_000060093098_00202_46337_1604.N1	09JAN2011 22:03:56	09JAN2011 23:14:25	0	36	30	0	0	1	0	0	
15	SCI_NLC_1CUDPA20110109_232630_000060103098_00203_46338_1606.N1	09JAN2011 23:44:10	10JAN2011 00:54:25	0	35	31	0	0	1	0	0	

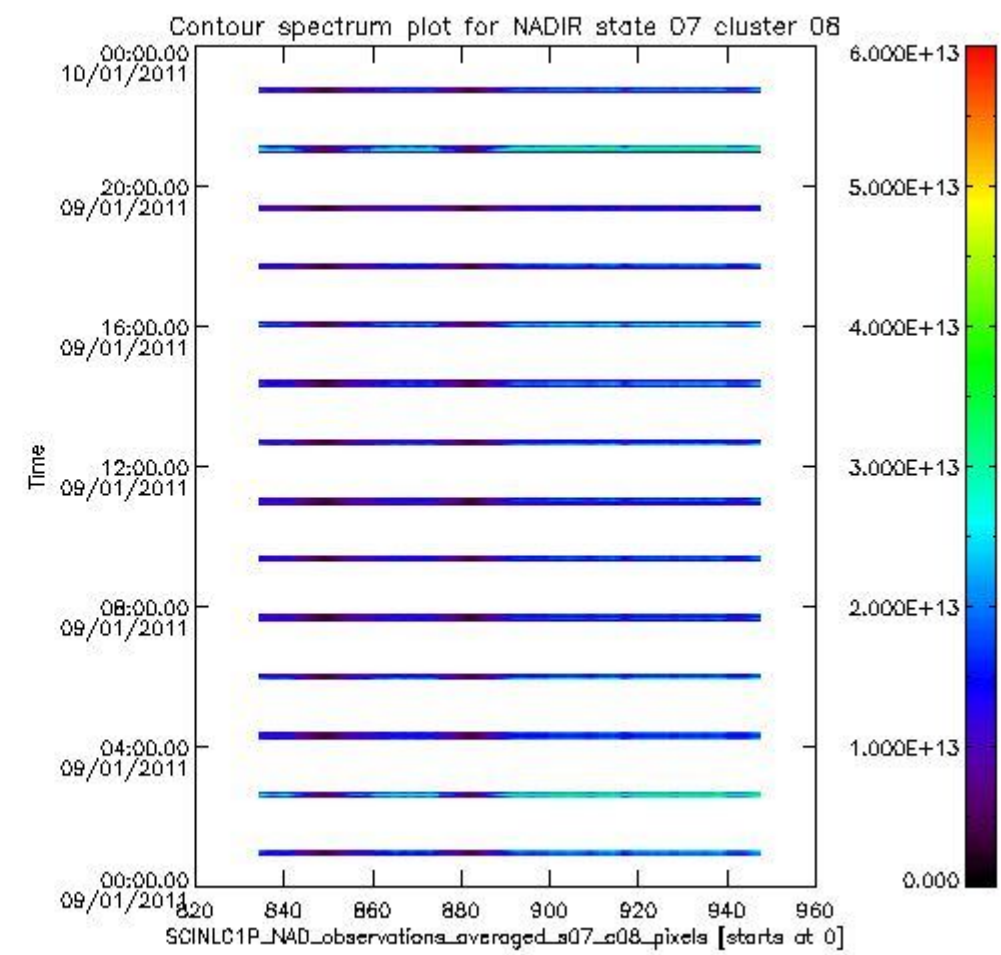
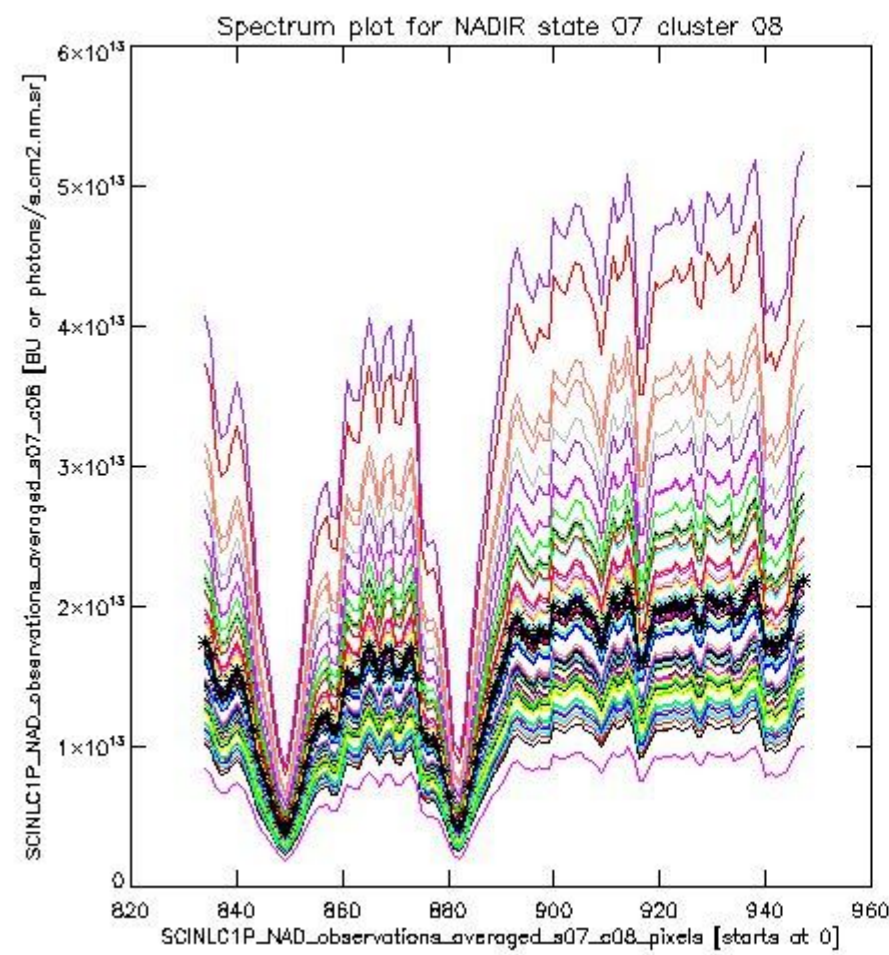
1.2 Source packet monitoring

This section shows figures for each of the monitored source packet types listed in the Source Packet Summary section. For each mode-state-cluster(-height) combination the following plots are shown:

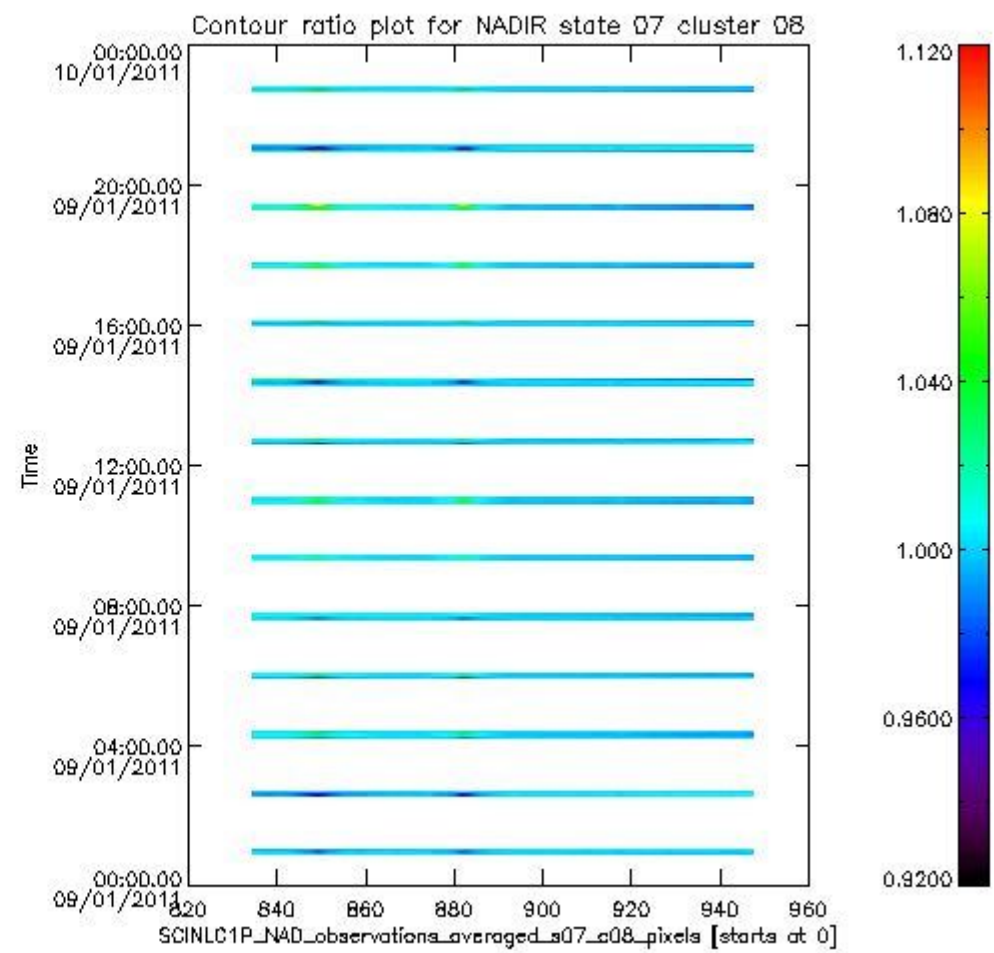
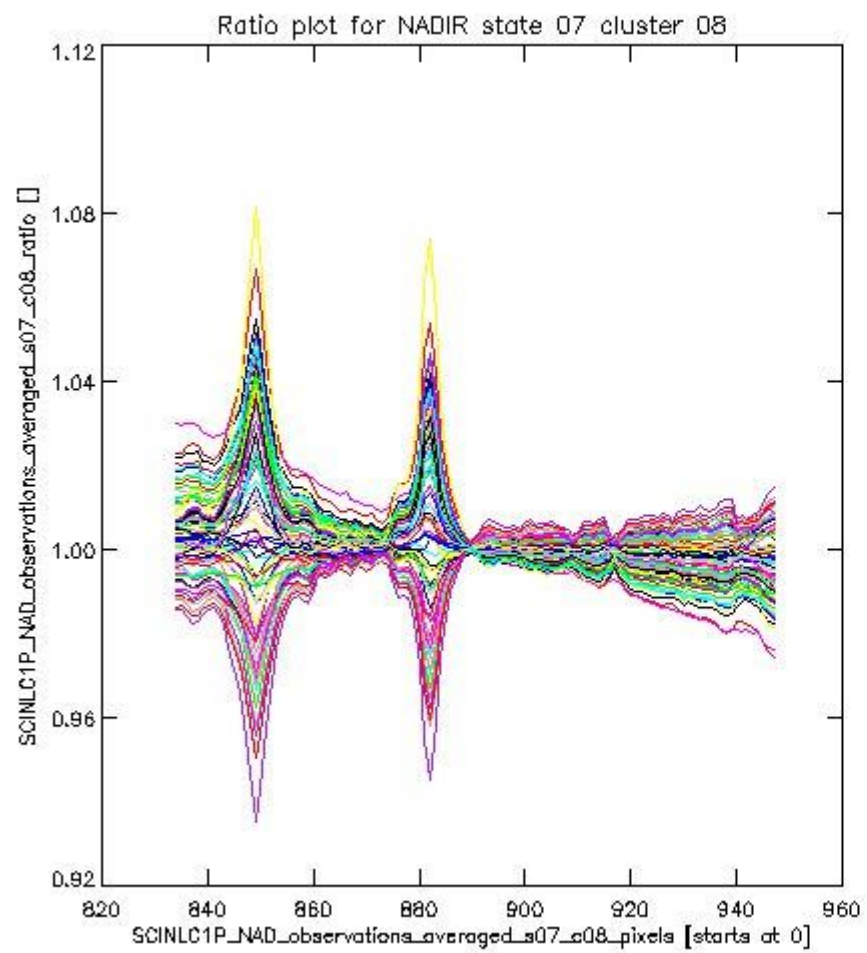
- A plot that shows all calibrated averaged spectra vs. pixel number as 2D-profiles. Each line is an average spectrum for a single state occurrence. For Limb modes, the average is performed on spectra recorded at a specific height. The reference spectrum that is used for comparison is also shown as a black line with * markers.
- A plot that shows all calibrated averaged spectra vs. pixel number and time using a coloured contour plot. The colours indicate the intensity.
- A plot that shows ratios of all calibrated averaged spectra and the reference spectrum vs. pixel number. Each line is the ratio of a calibrated averaged spectrum and the reference spectrum, where both spectra have been intensity corrected (the spectrum has been divided by the average pixel intensity) prior to division.
- A plot that shows ratios of all calibrated averaged spectra and the reference spectrum vs. pixel number and time using a coloured contour plot.

1.2.1 NADIR state 07 cluster 08 The data for the analysis of NADIR state 07 cluster 08 have the following characteristics:

Item	Value
Start time of first sample	09JAN2011 00:52:59.946
Start time of last sample	09JAN2011 22:45:18.741
Reference period start time	10DEC2010 00:53:53.101
Reference period stop time	08JAN2011 23:22:05.742
Channel number	2
First pixel number (starts at 0)	834
Last pixel number (starts at 0)	947



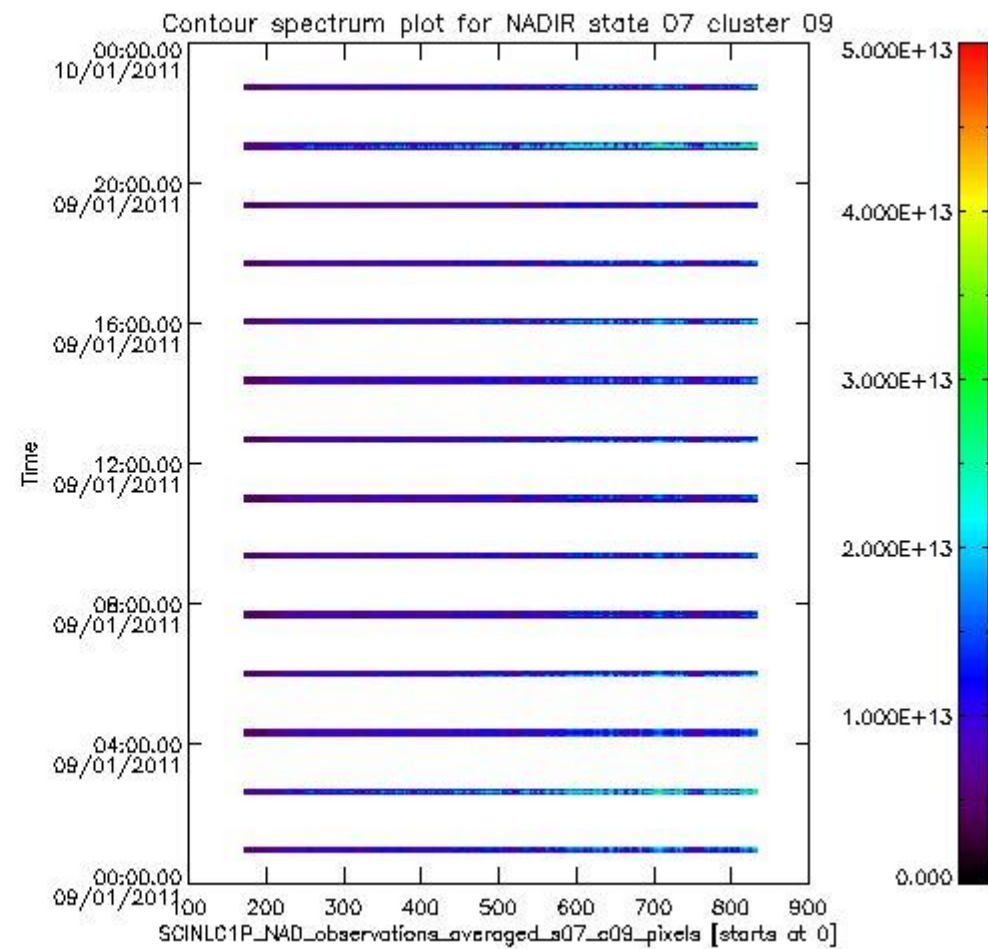
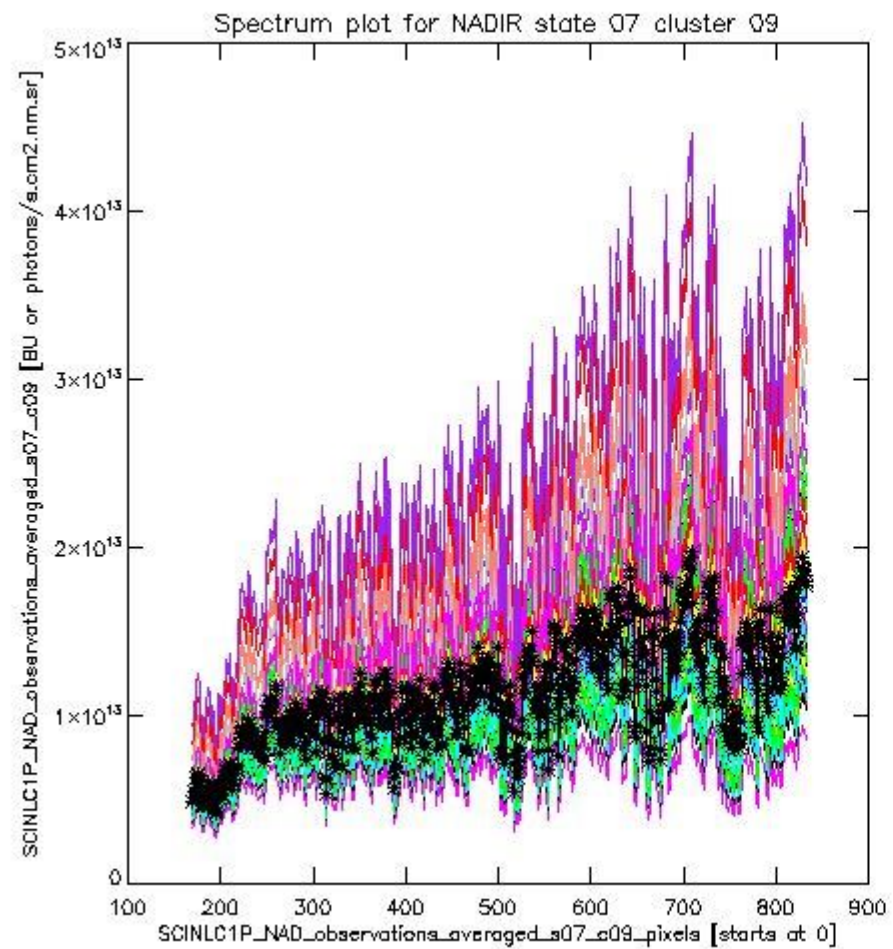
sciamachy_i1b_source_packet_report_SCIA_7_04_U_20110109_0.PNG



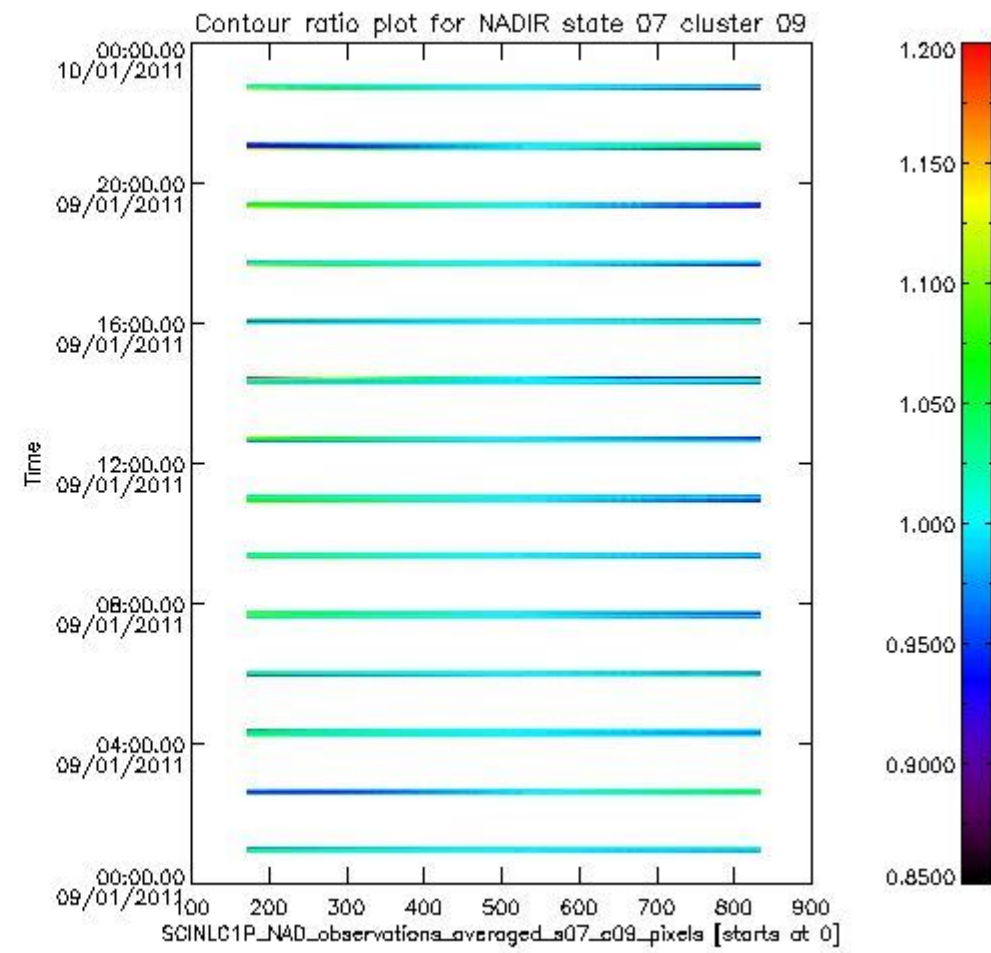
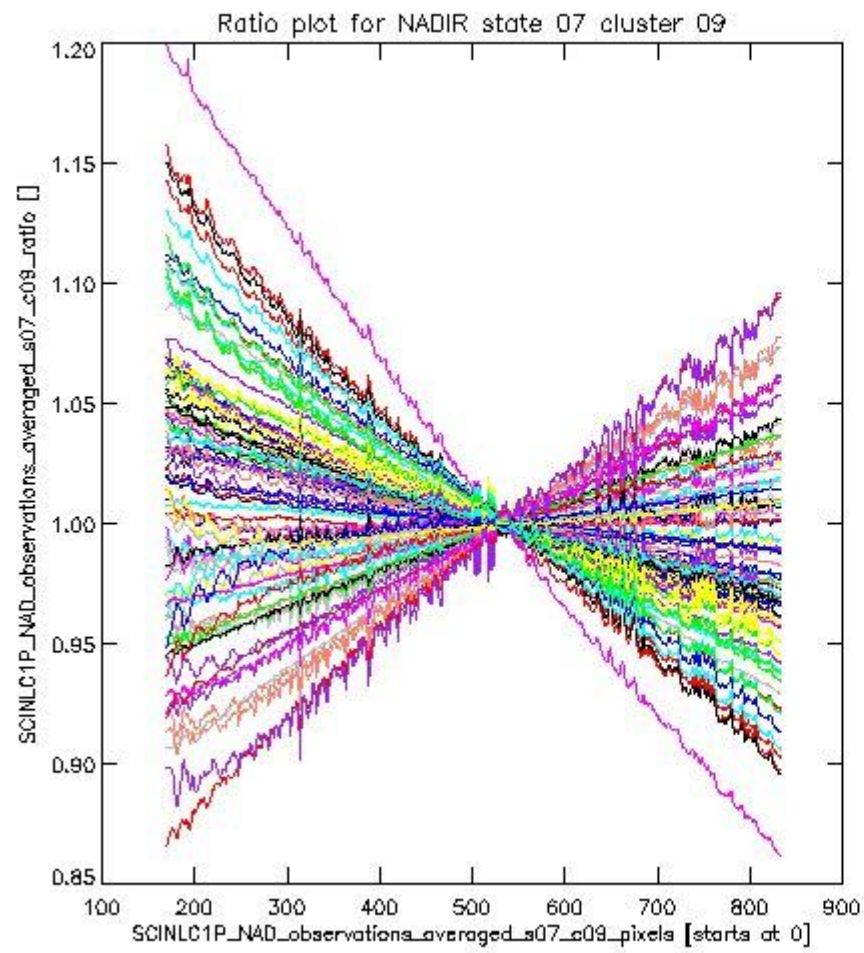
sciamachy_l1b_source_packet_report_SCIA_7_04_U_20110109_1.PNG

1.2.2 NADIR state 07 cluster 09 The data for the analysis of NADIR state 07 cluster 09 have the following characteristics:

Item	Value
Start time of first sample	09JAN2011 00:52:59.946
Start time of last sample	09JAN2011 22:45:18.741
Reference period start time	10DEC2010 00:53:53.101
Reference period stop time	08JAN2011 23:22:05.742
Channel number	2
First pixel number (starts at 0)	170
Last pixel number (starts at 0)	833



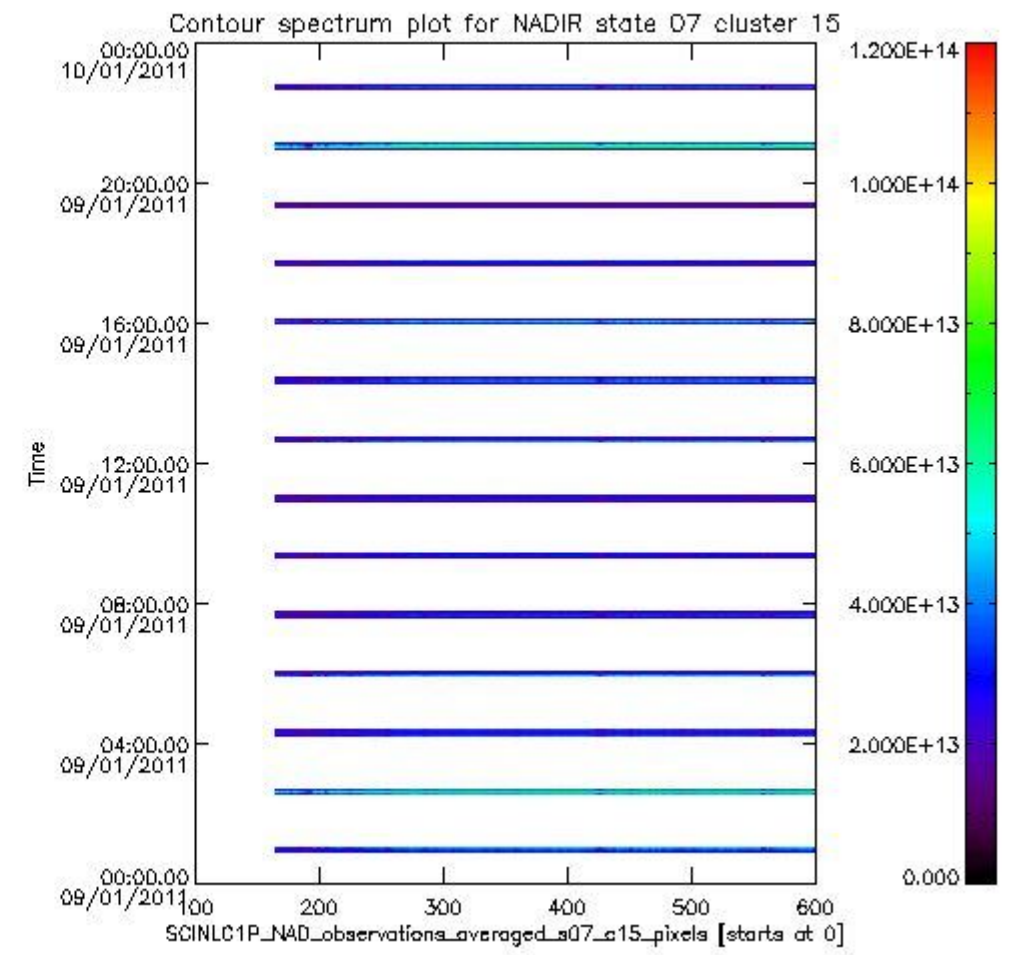
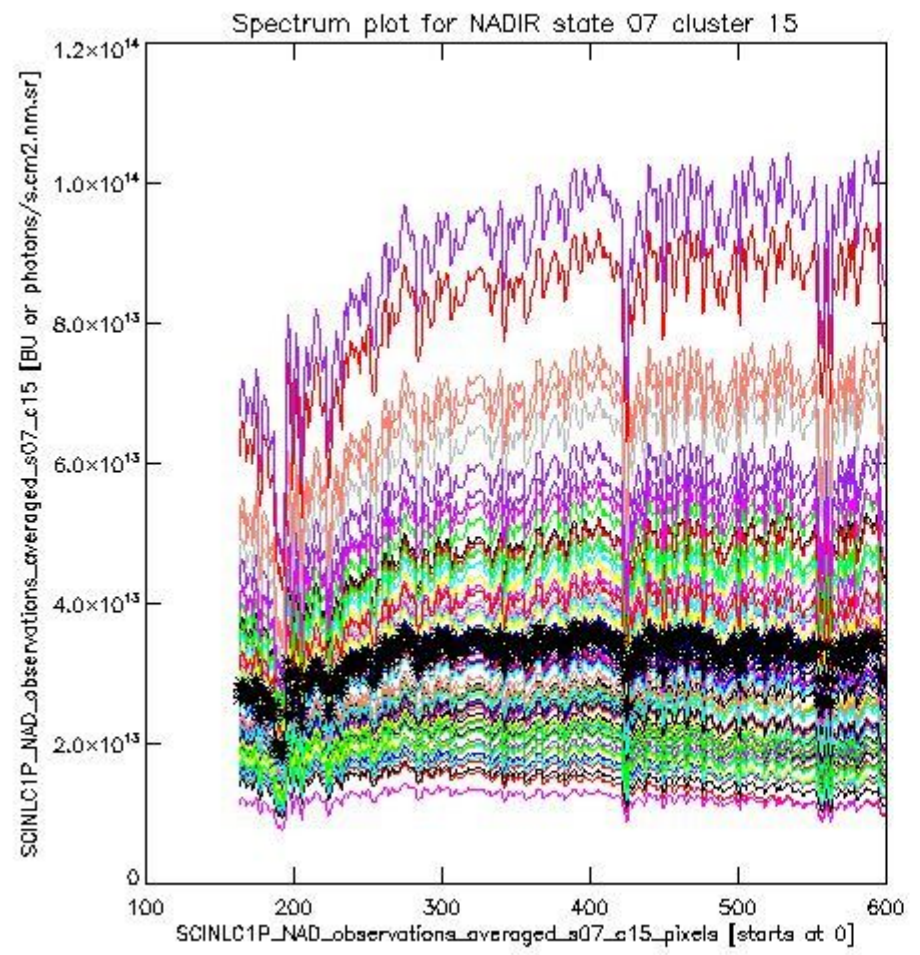
sciamachy_i1b_source_packet_report_SCIA_7_04_U_20110109_2.PNG



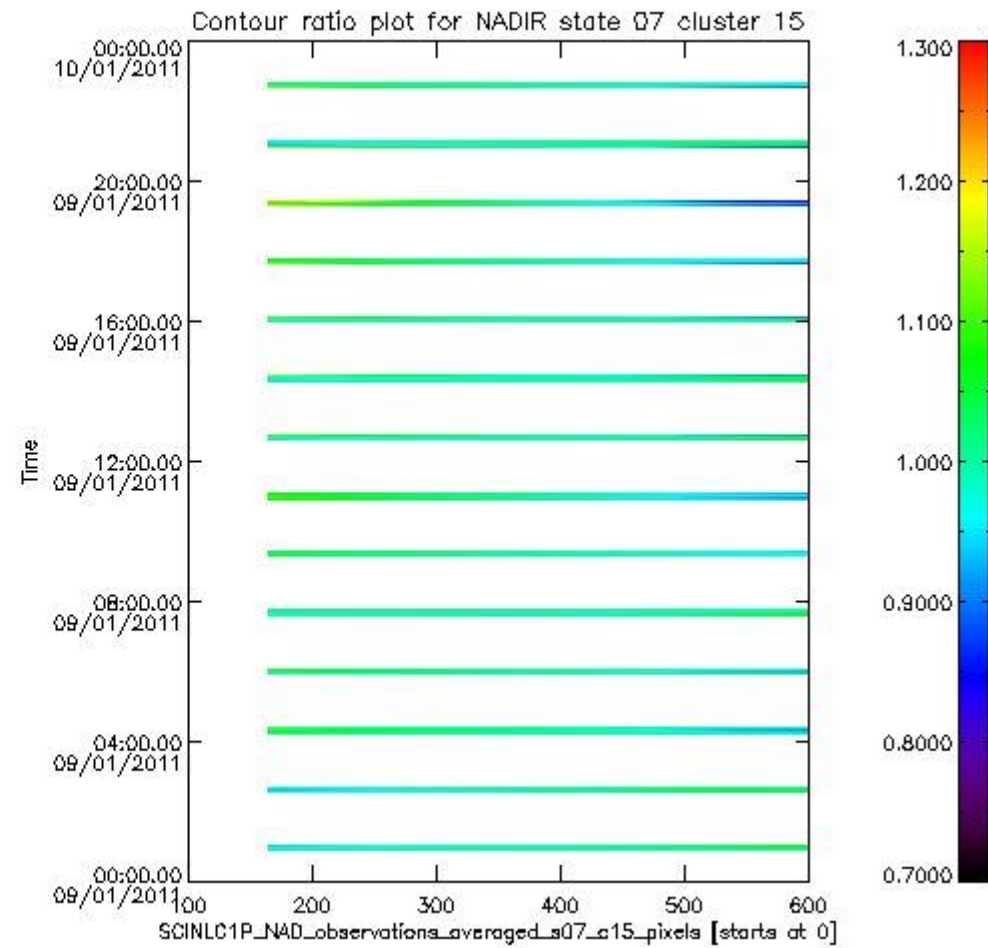
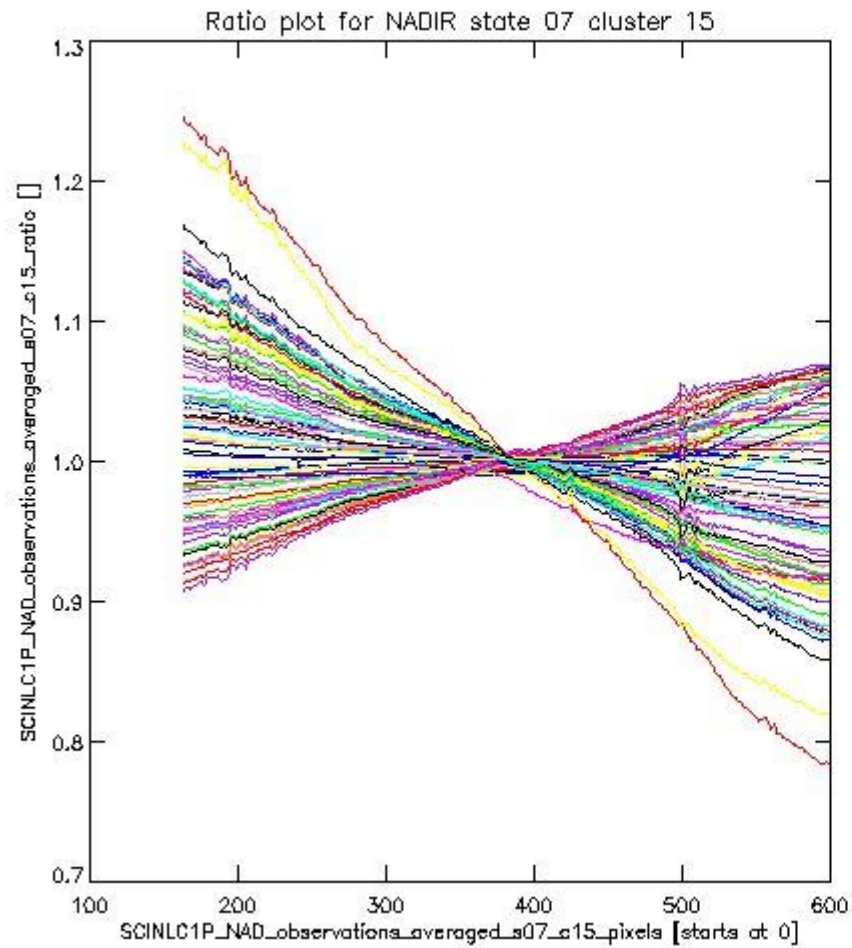
sciamachy_i1b_source_packet_report_SCIA_7_04_U_20110109_3.PNG

1.2.3 NADIR state 07 cluster 15 The data for the analysis of NADIR state 07 cluster 15 have the following characteristics:

Item	Value
Start time of first sample	09JAN2011 00:52:59.946
Start time of last sample	09JAN2011 22:45:18.741
Reference period start time	10DEC2010 00:53:53.101
Reference period stop time	08JAN2011 23:22:05.742
Channel number	3
First pixel number (starts at 0)	163
Last pixel number (starts at 0)	598



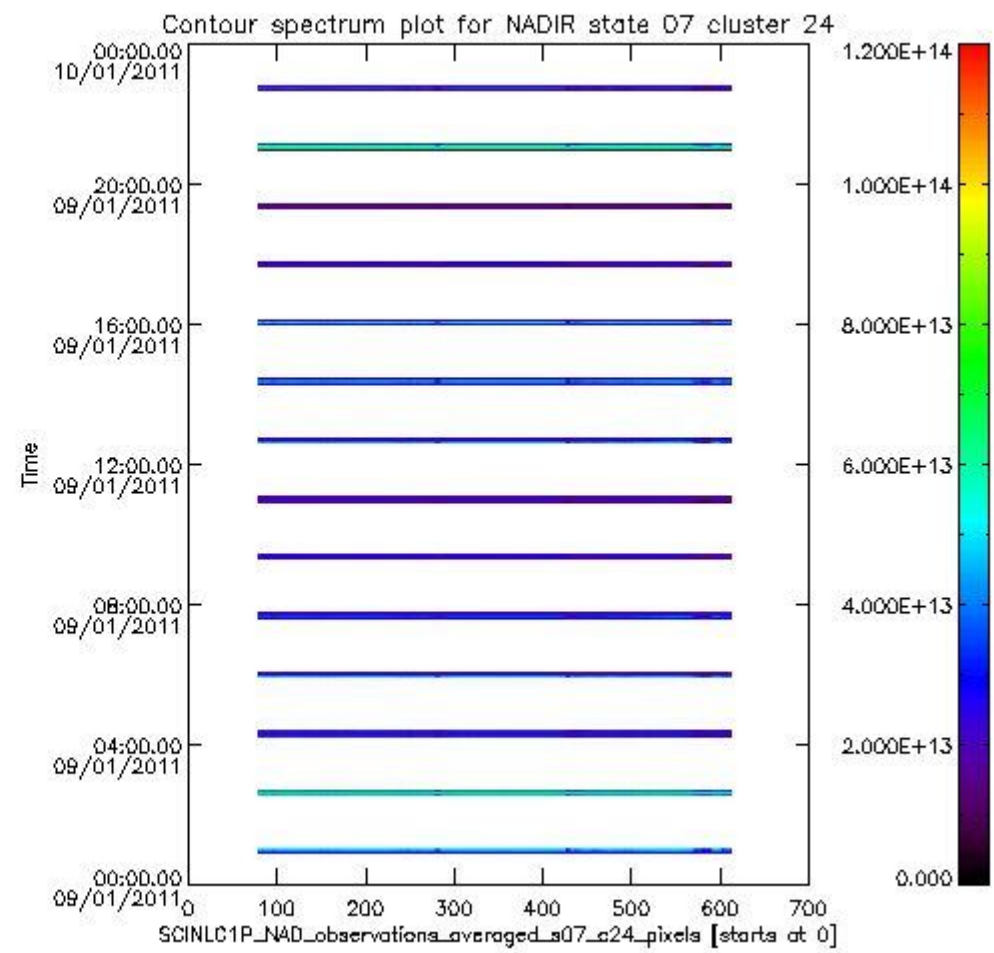
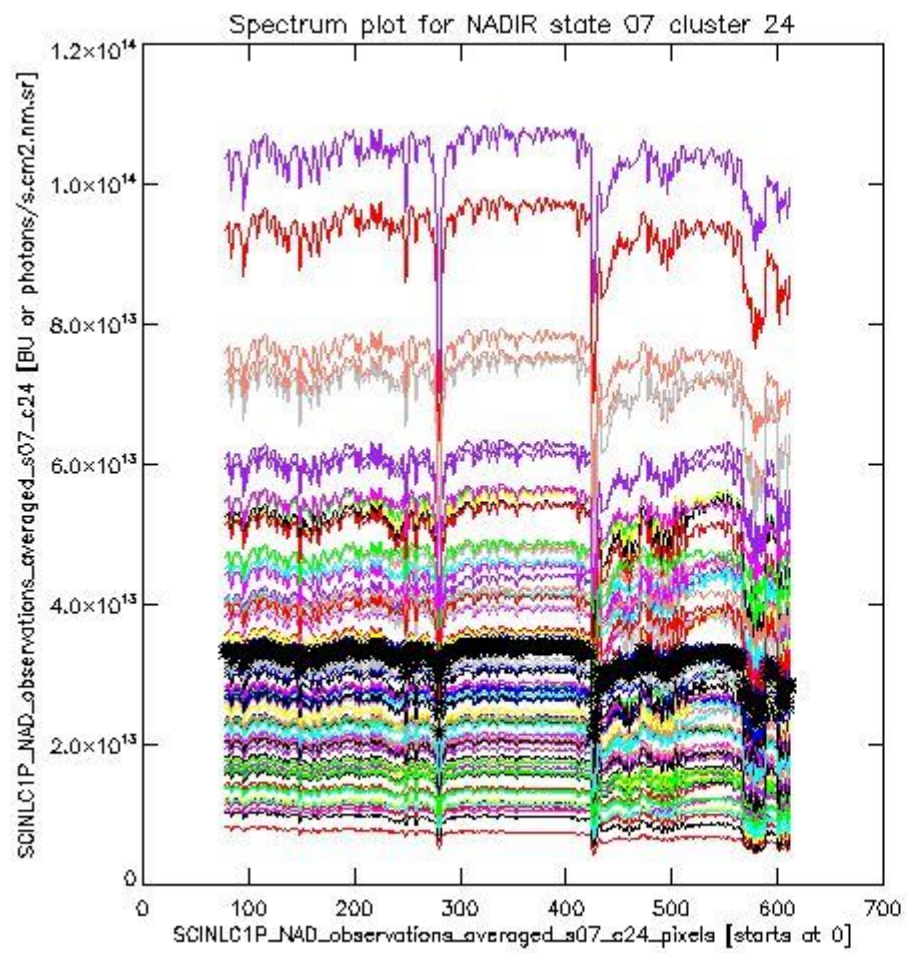
sciamachy_i1b_source_packet_report_SCIA_7_04_U_20110109_4.PNG



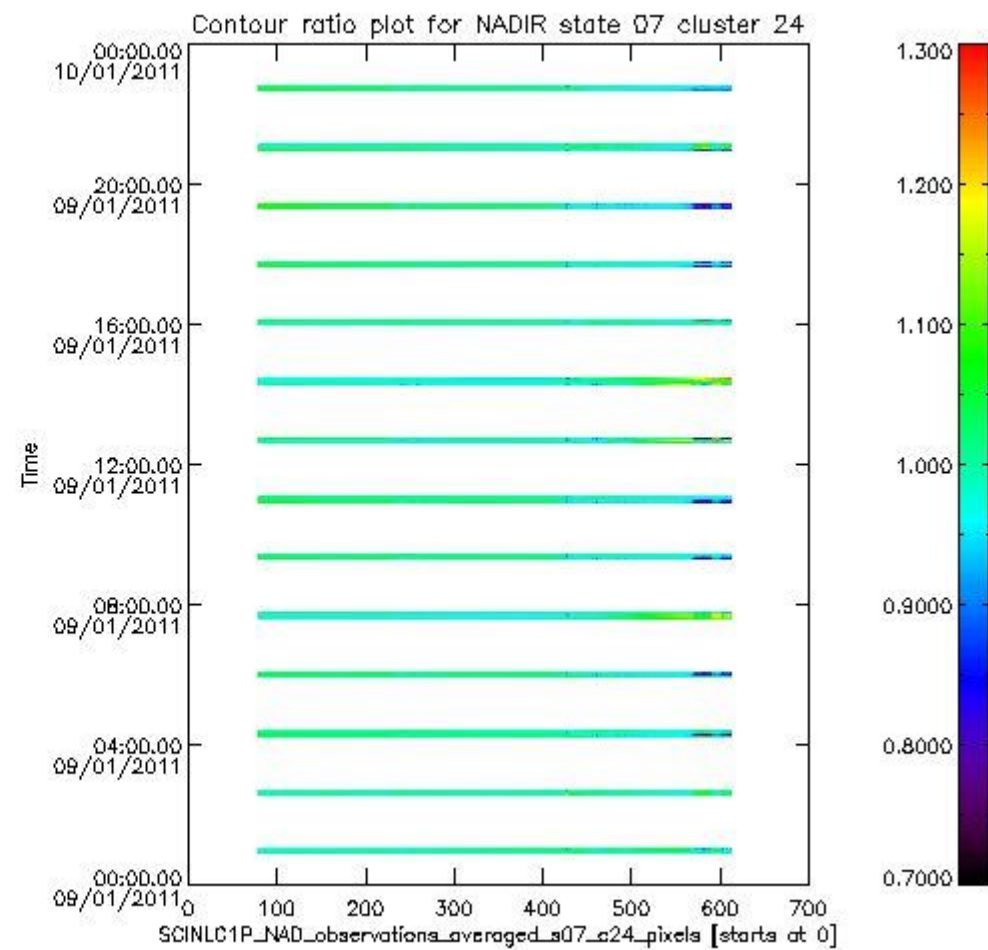
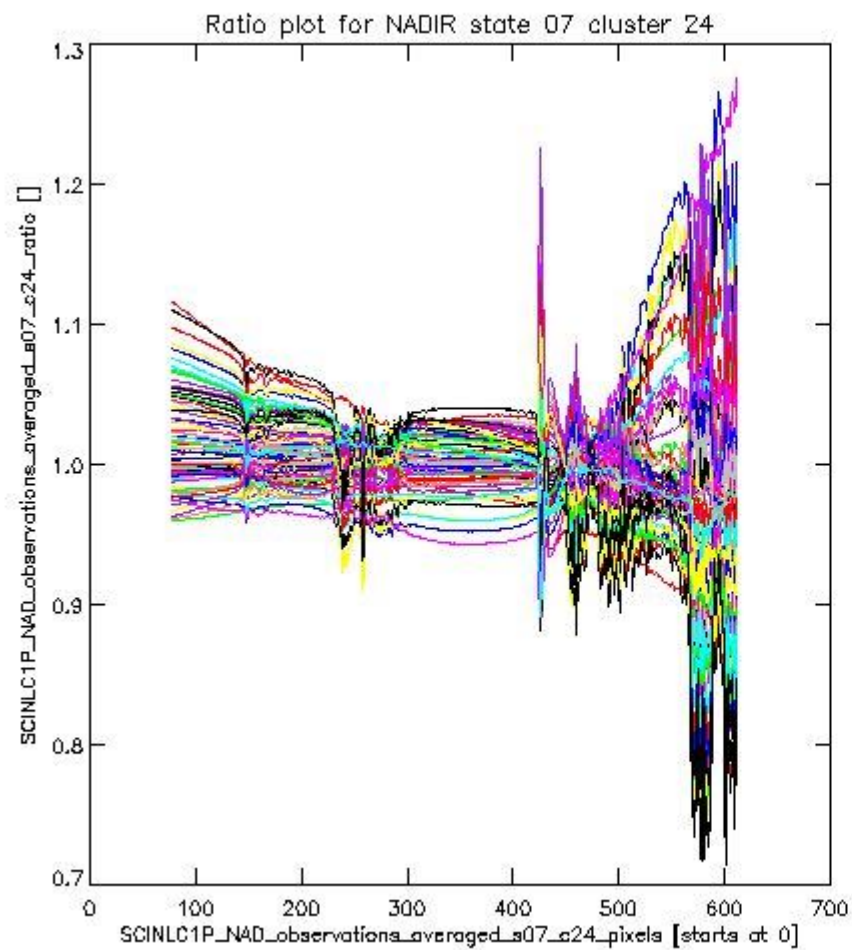
sciamachy_l1b_source_packet_report_SCIA_7_04_U_20110109_5.PNG

1.2.4 NADIR state 07 cluster 24 The data for the analysis of NADIR state 07 cluster 24 have the following characteristics:

Item	Value
Start time of first sample	09JAN2011 00:52:59.946
Start time of last sample	09JAN2011 22:45:18.741
Reference period start time	10DEC2010 00:53:53.101
Reference period stop time	08JAN2011 23:22:05.742
Channel number	4
First pixel number (starts at 0)	78
Last pixel number (starts at 0)	612



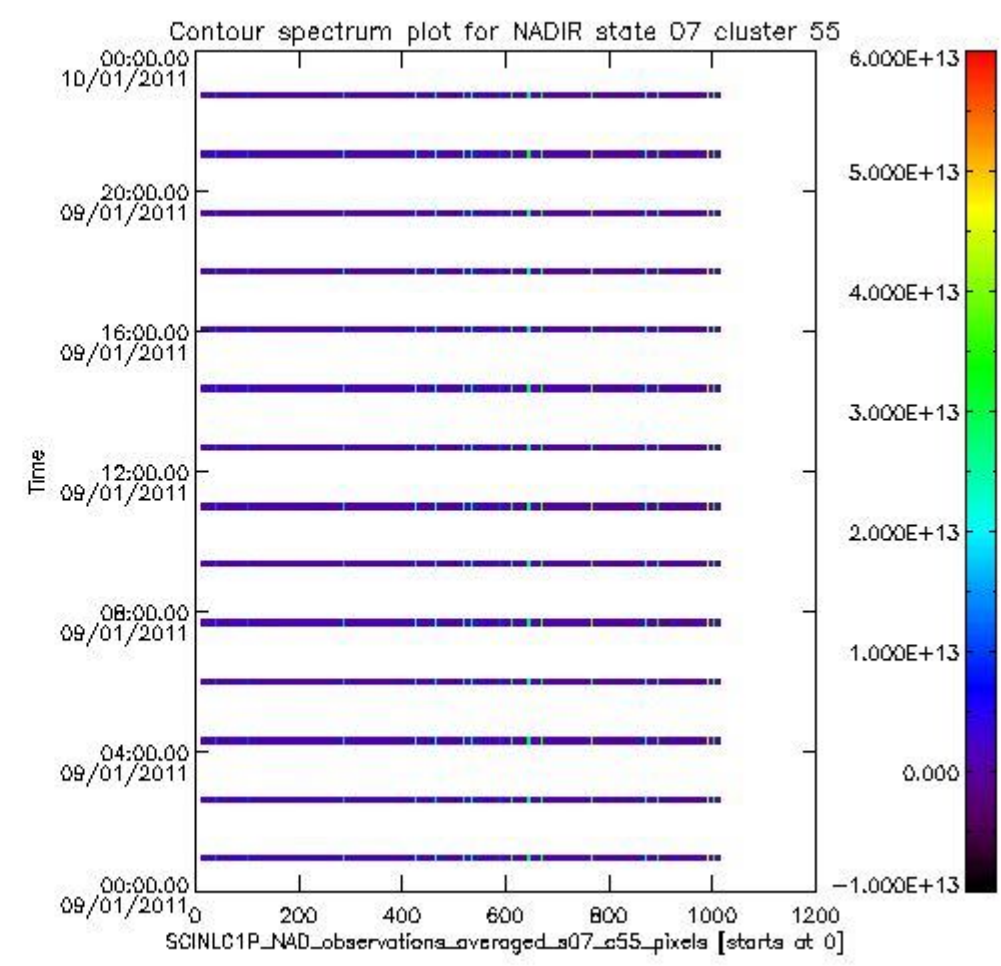
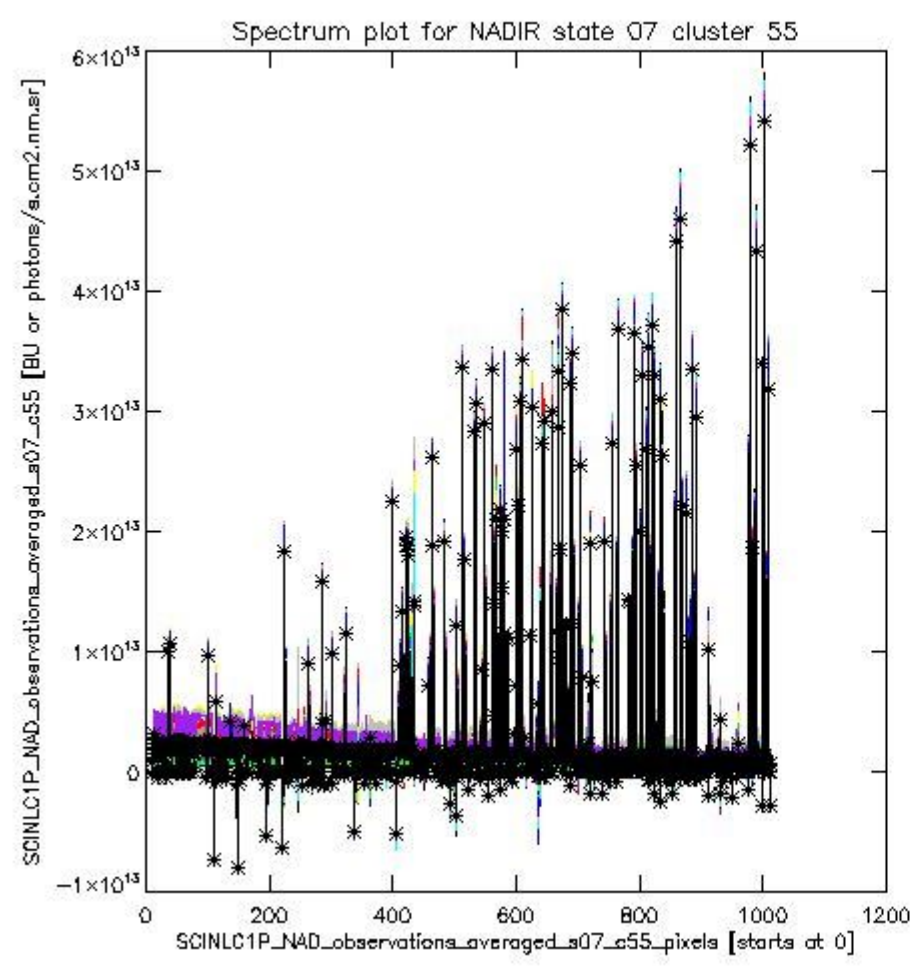
sciamachy_i1b_source_packet_report_SCIA_7_04_U_20110109_6.PNG



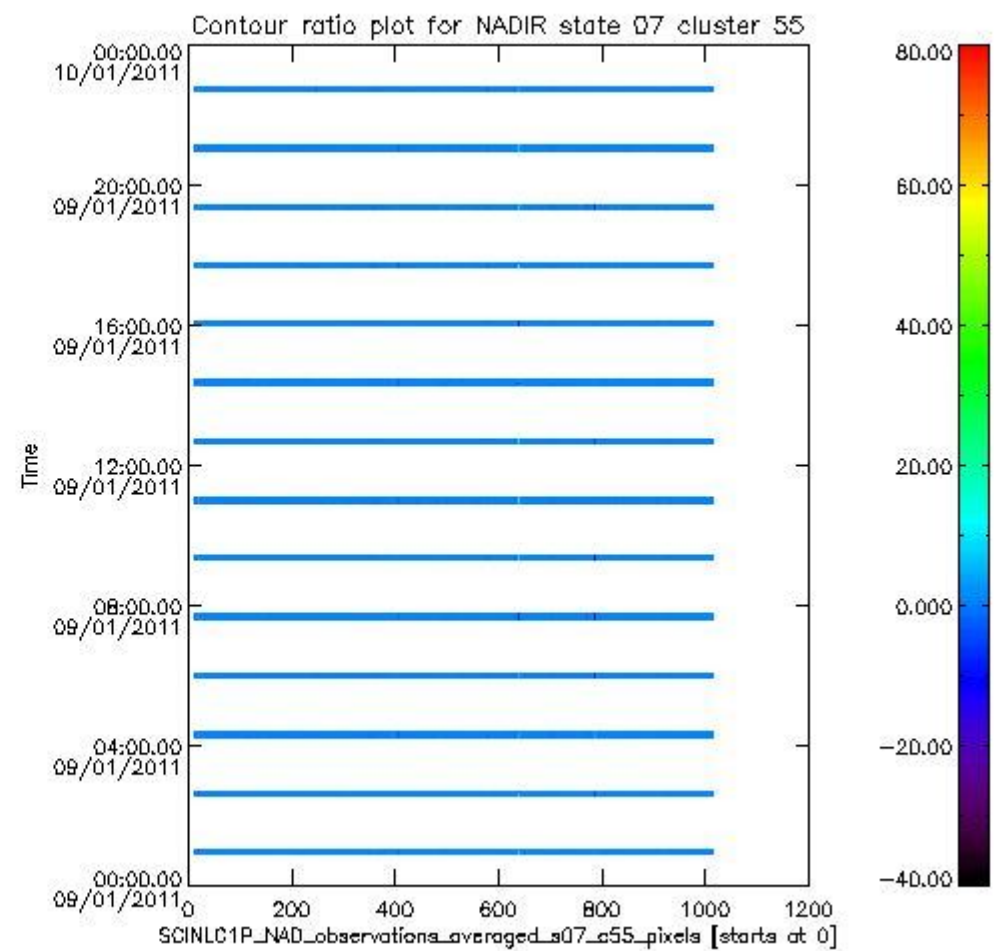
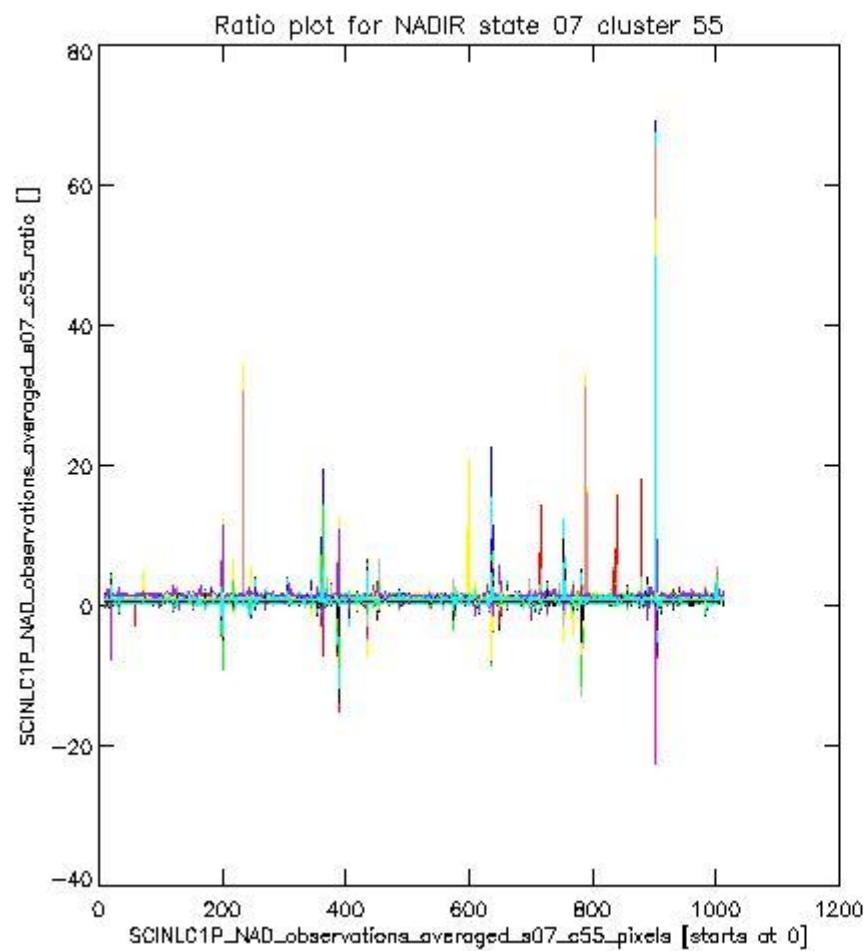
sciamachy_l1b_source_packet_report_SCIA_7_04_U_20110109_7.PNG

1.2.5 NADIR state 07 cluster 55 The data for the analysis of NADIR state 07 cluster 55 have the following characteristics:

Item	Value
Start time of first sample	09JAN2011 00:52:59.946
Start time of last sample	09JAN2011 22:45:18.741
Reference period start time	10DEC2010 00:53:53.101
Reference period stop time	08JAN2011 23:22:05.742
Channel number	8
First pixel number (starts at 0)	10
Last pixel number (starts at 0)	1013



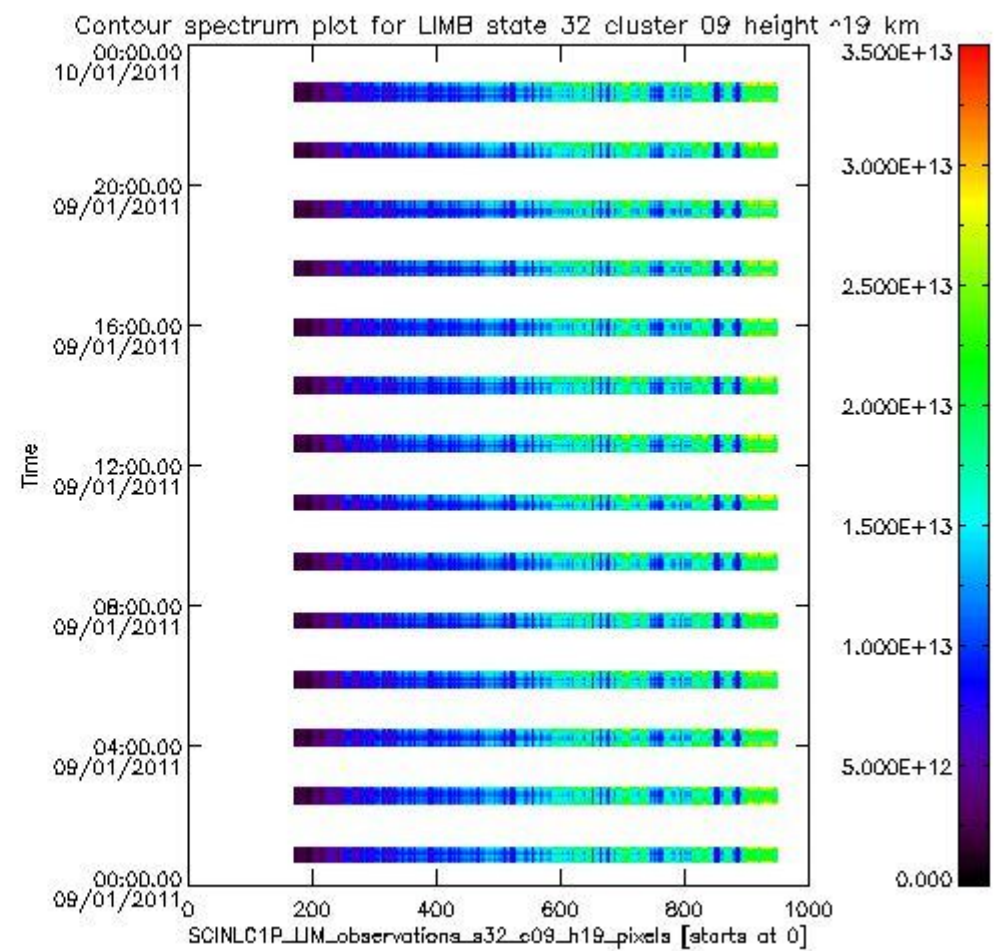
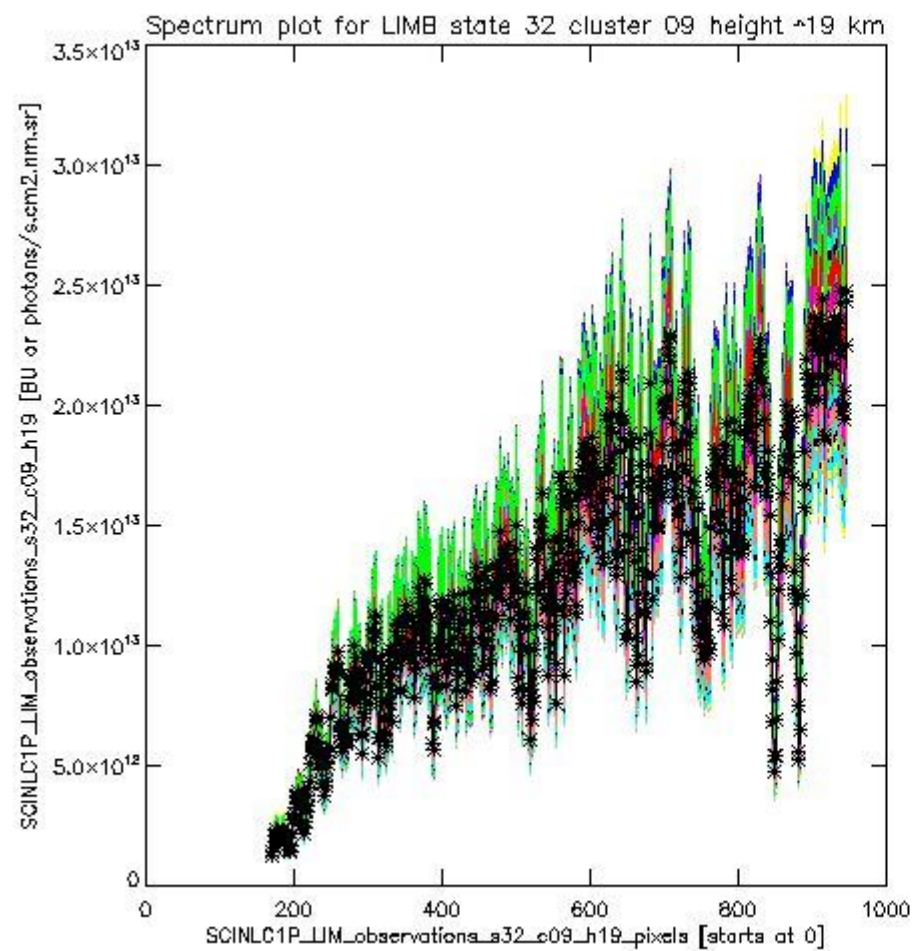
sciamachy_i1b_source_packet_report_SCIA_7_04_U_20110109_8.PNG



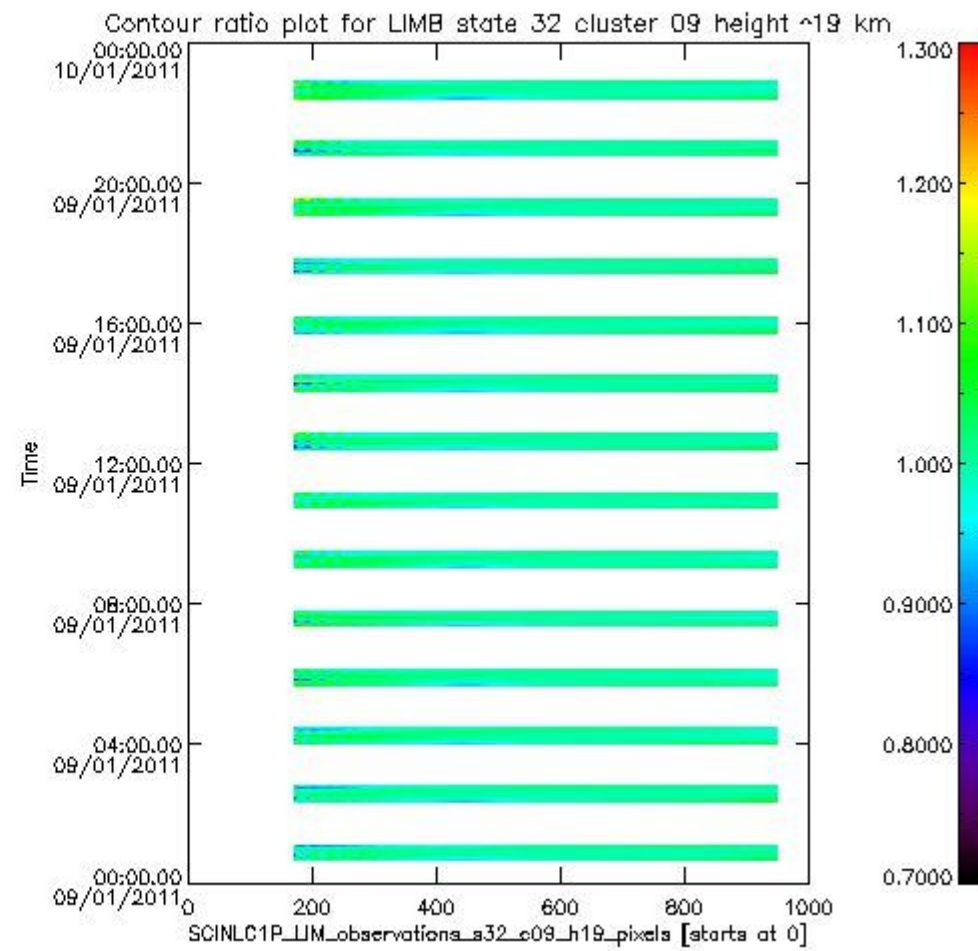
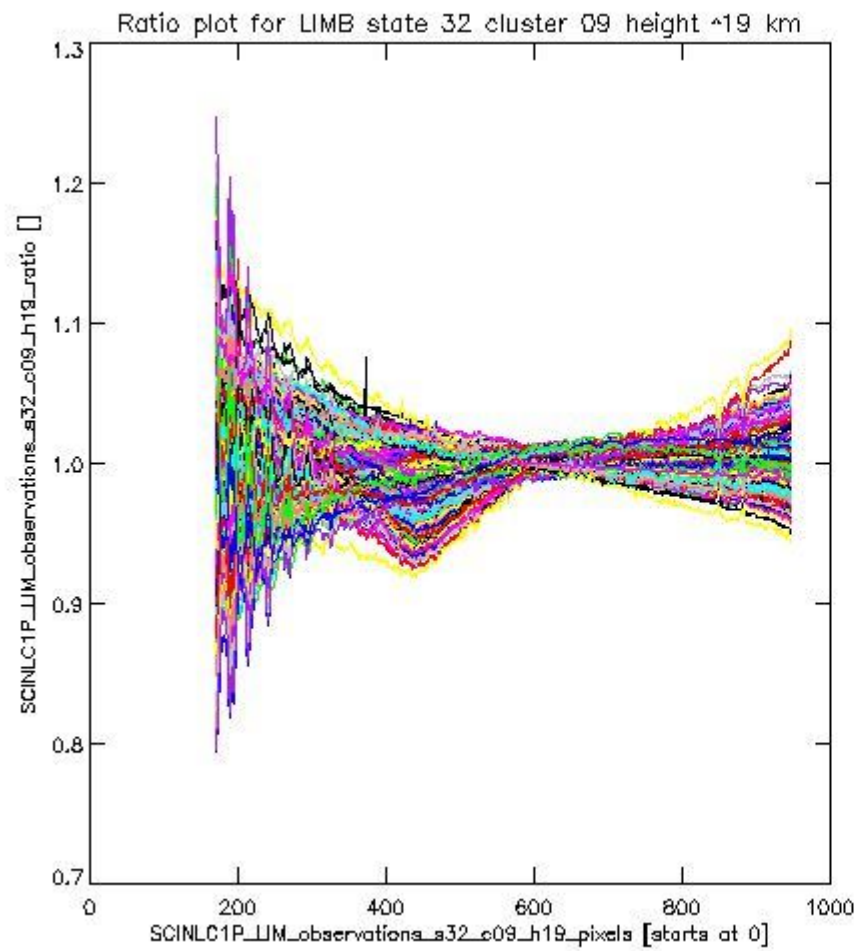
sciamachy_l1b_source_packet_report_SCIA_7_04_U_20110109_9.PNG

1.2.6 LIMB state 32 cluster 09 height ~19 km The data for the analysis of LIMB state 32 cluster 09 height ~19 km have the following characteristics:

Item	Value
Start time of first sample	09JAN2011 00:39:49.313
Start time of last sample	09JAN2011 22:50:32.788
Reference period start time	10DEC2010 00:38:39.718
Reference period stop time	08JAN2011 23:27:19.789
Channel number	2
First pixel number (starts at 0)	170
Last pixel number (starts at 0)	947



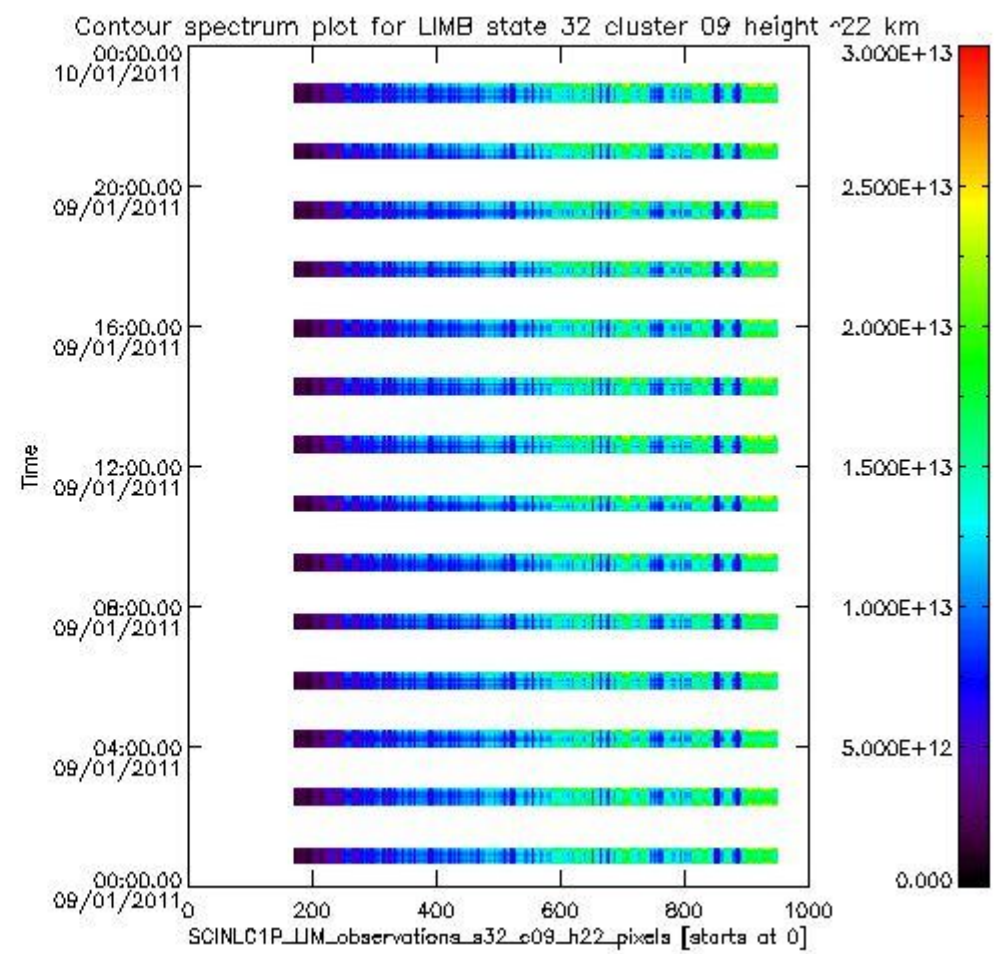
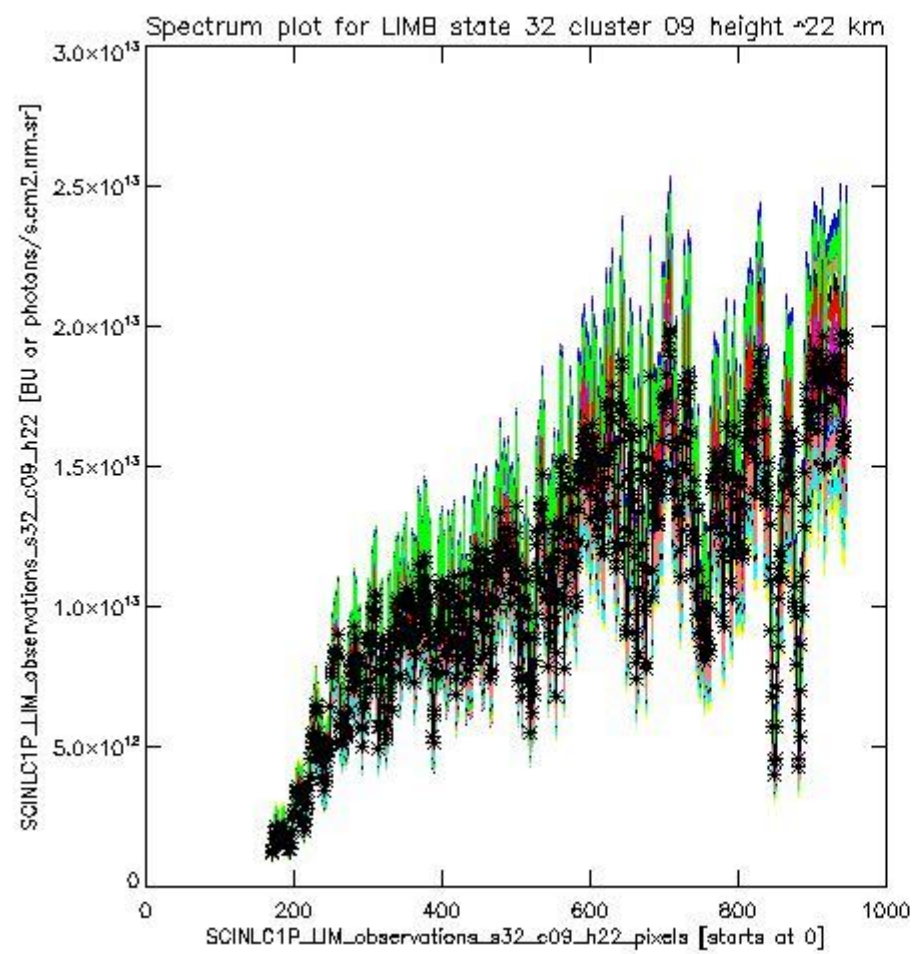
sciamachy_l1b_source_packet_report_SCIA_7_04_U_20110109_10.PNG



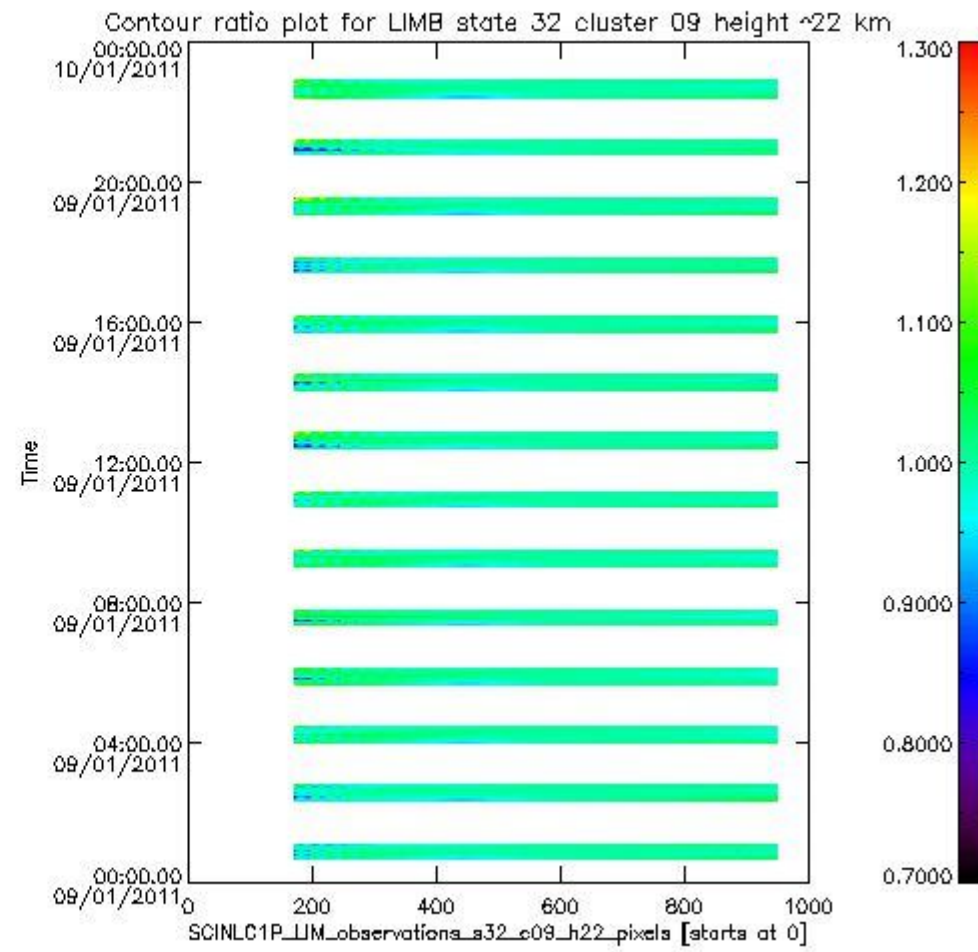
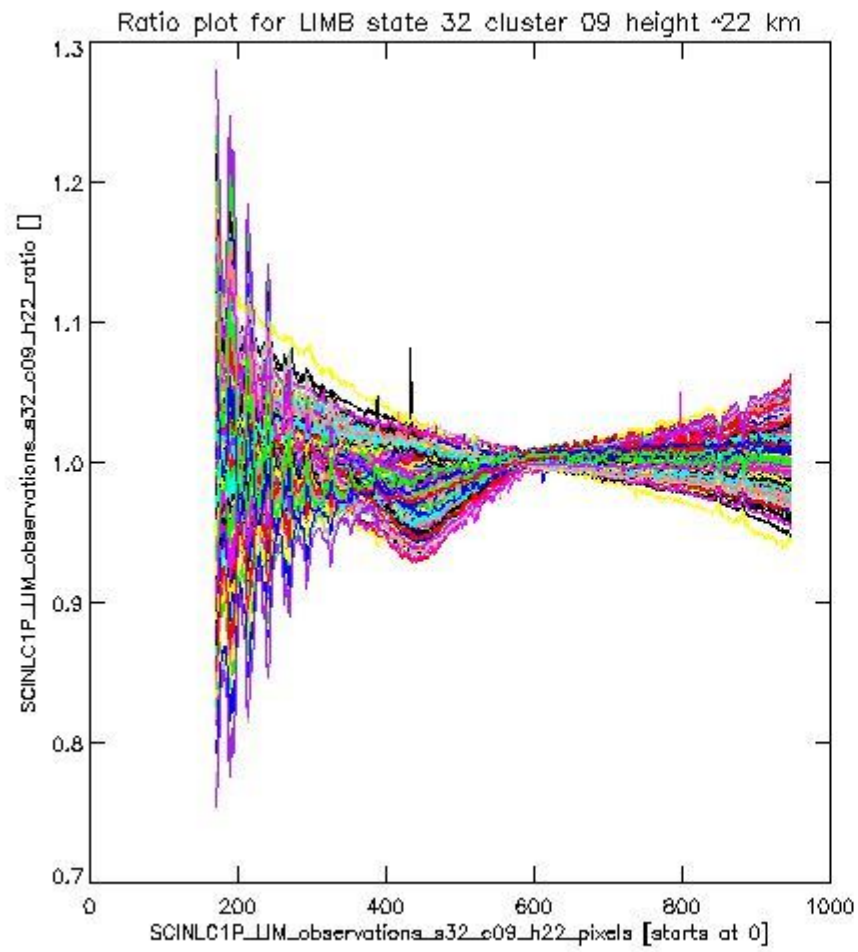
sciamachy_l1b_source_packet_report_SCIA_7_04_U_20110109_11.PNG

1.2.7 LIMB state 32 cluster 09 height ~22 km The data for the analysis of LIMB state 32 cluster 09 height ~22 km have the following characteristics:

Item	Value
Start time of first sample	09JAN2011 00:39:49.313
Start time of last sample	09JAN2011 22:50:32.788
Reference period start time	10DEC2010 00:38:39.718
Reference period stop time	08JAN2011 23:27:19.789
Channel number	2
First pixel number (starts at 0)	170
Last pixel number (starts at 0)	947



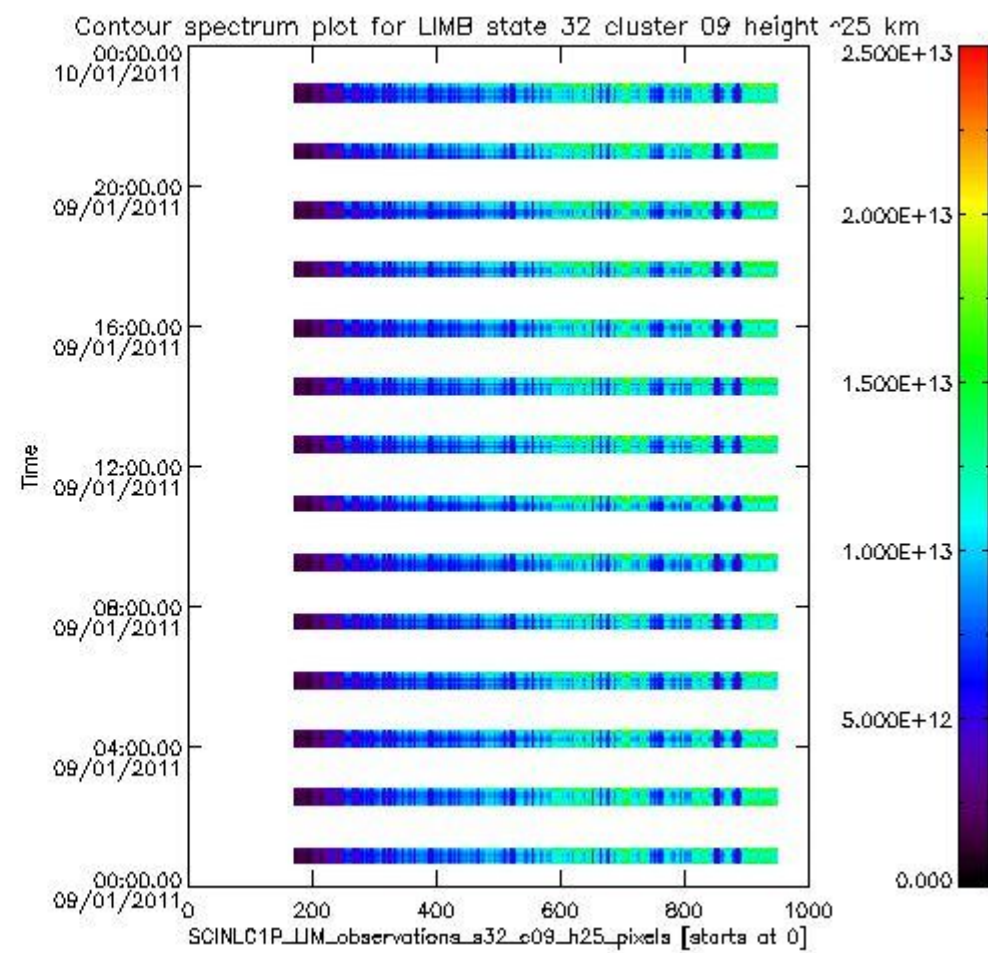
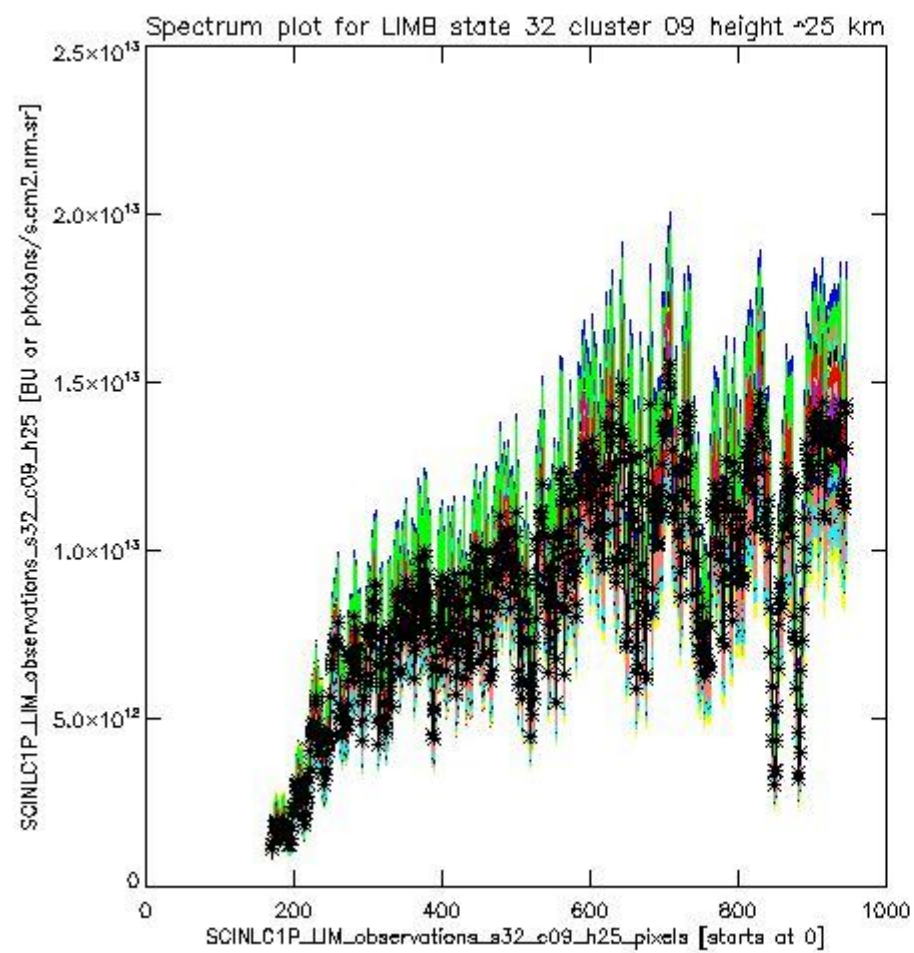
sciamachy_i1b_source_packet_report_SCIA_7_04_U_20110109_12.PNG



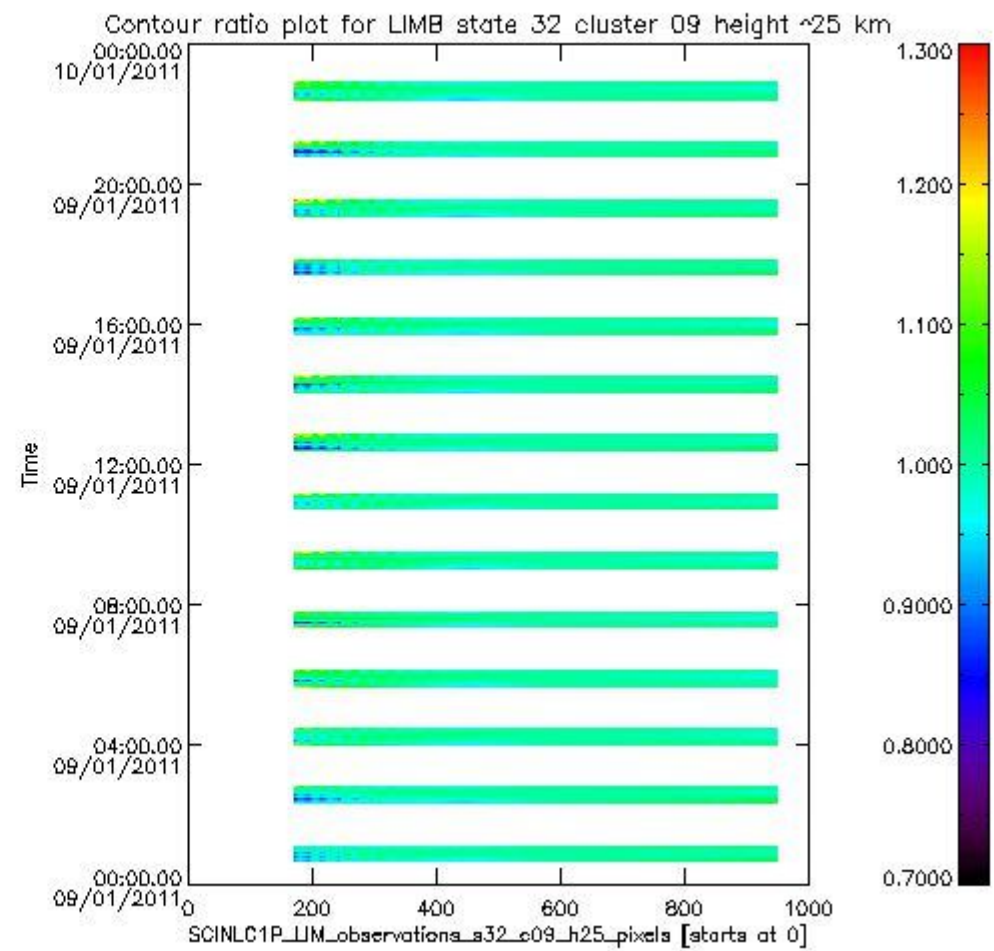
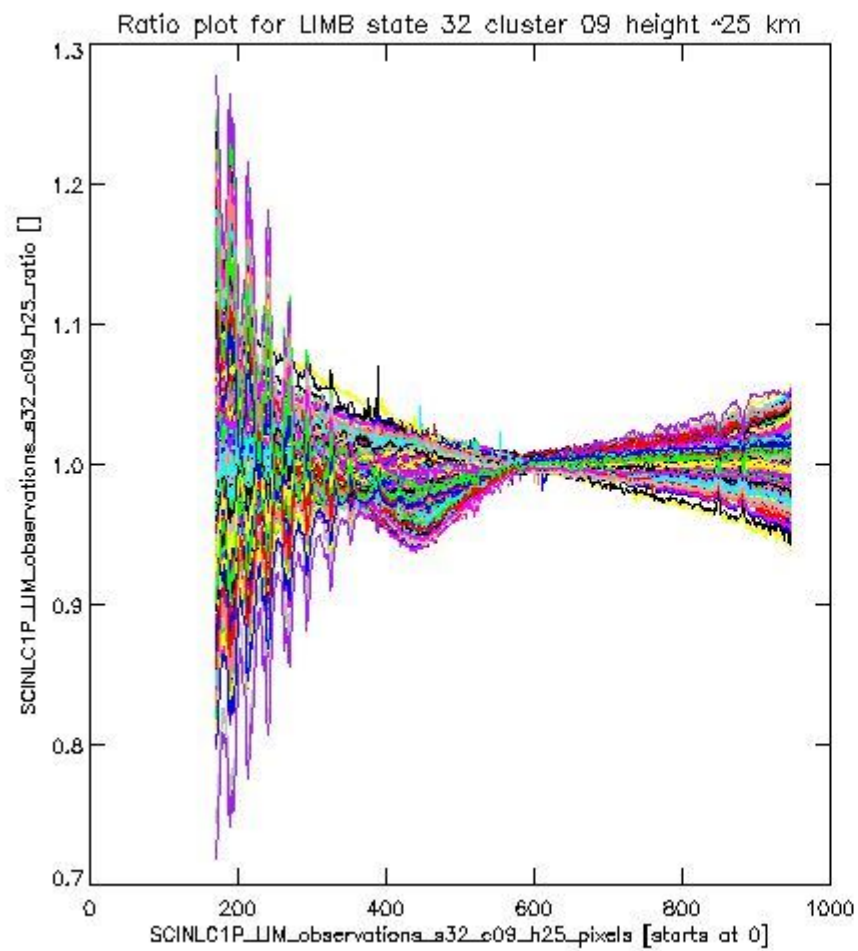
sciamachy_l1b_source_packet_report_SCIA_7_04_U_20110109_13.PNG

1.2.8 LIMB state 32 cluster 09 height ~25 km The data for the analysis of LIMB state 32 cluster 09 height ~25 km have the following characteristics:

Item	Value
Start time of first sample	09JAN2011 00:39:49.313
Start time of last sample	09JAN2011 22:50:32.788
Reference period start time	10DEC2010 00:38:39.718
Reference period stop time	08JAN2011 23:27:19.789
Channel number	2
First pixel number (starts at 0)	170
Last pixel number (starts at 0)	947



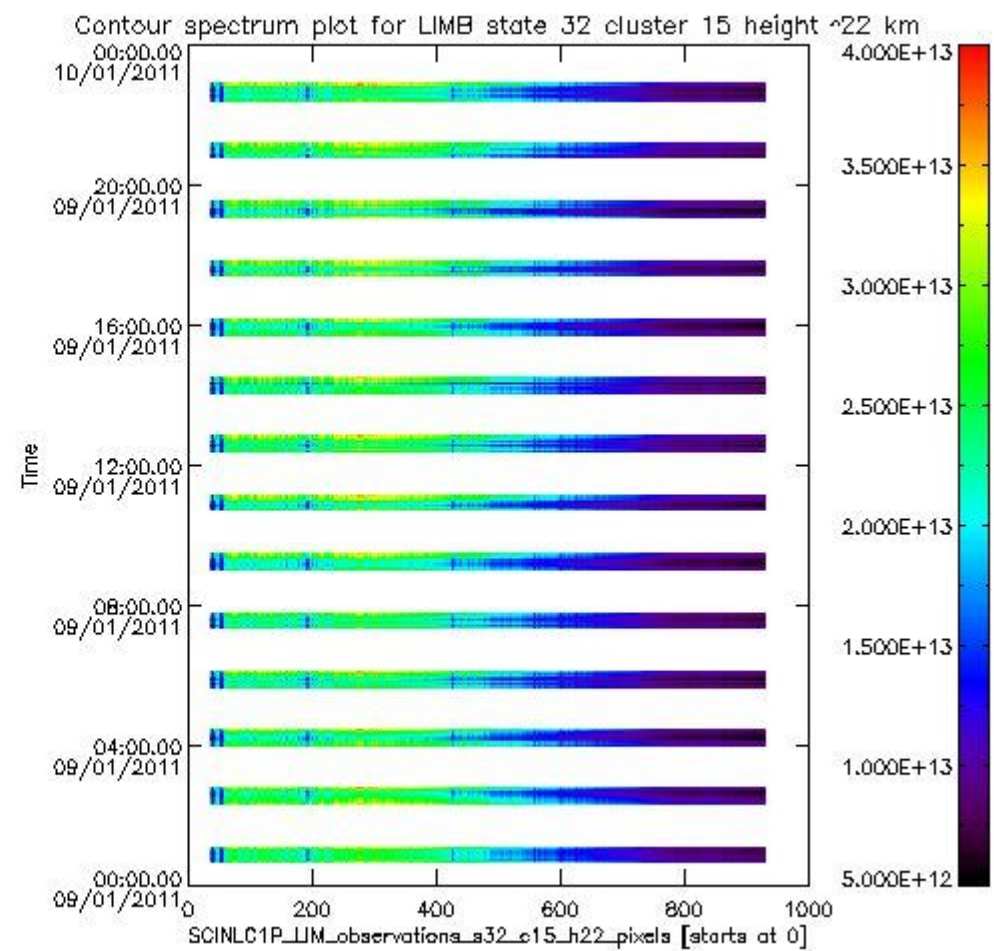
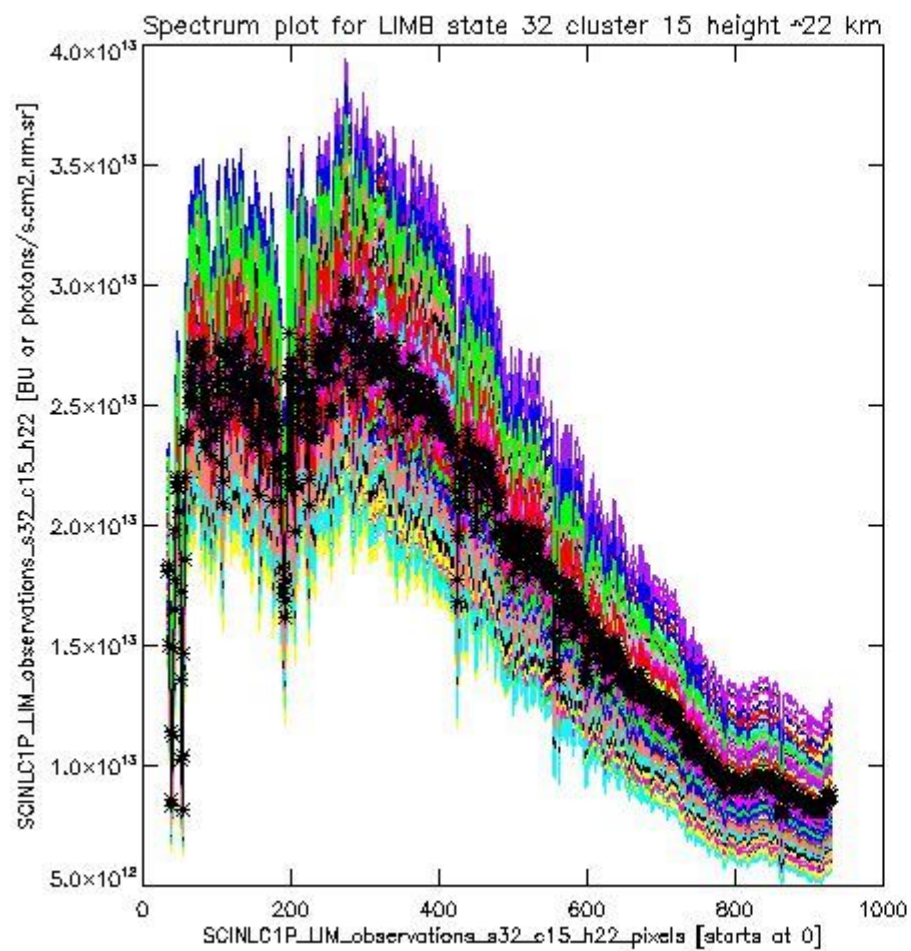
sciamachy_i1b_source_packet_report_SCIA_7_04_U_20110109_14.PNG



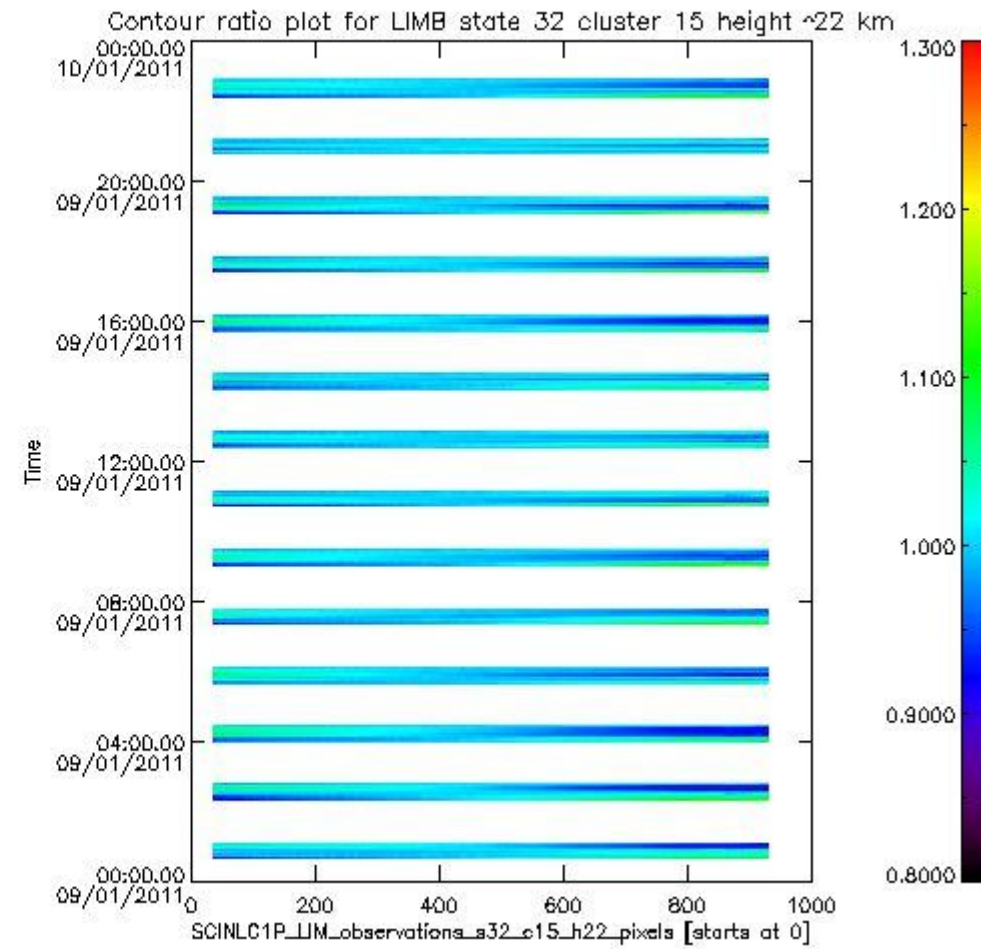
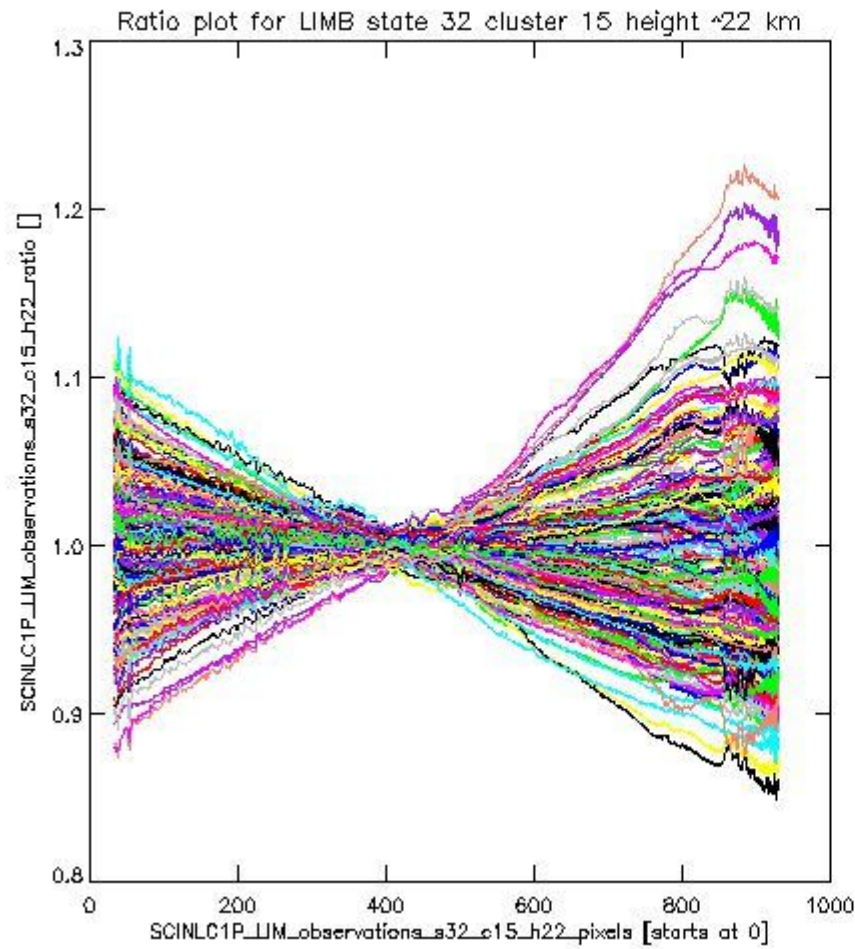
sciamachy_l1b_source_packet_report_SCIA_7_04_U_20110109_15.PNG

1.2.9 LIMB state 32 cluster 15 height ~22 km The data for the analysis of LIMB state 32 cluster 15 height ~22 km have the following characteristics:

Item	Value
Start time of first sample	09JAN2011 00:39:49.313
Start time of last sample	09JAN2011 22:50:32.788
Reference period start time	10DEC2010 00:38:39.718
Reference period stop time	08JAN2011 23:27:19.789
Channel number	3
First pixel number (starts at 0)	33
Last pixel number (starts at 0)	929



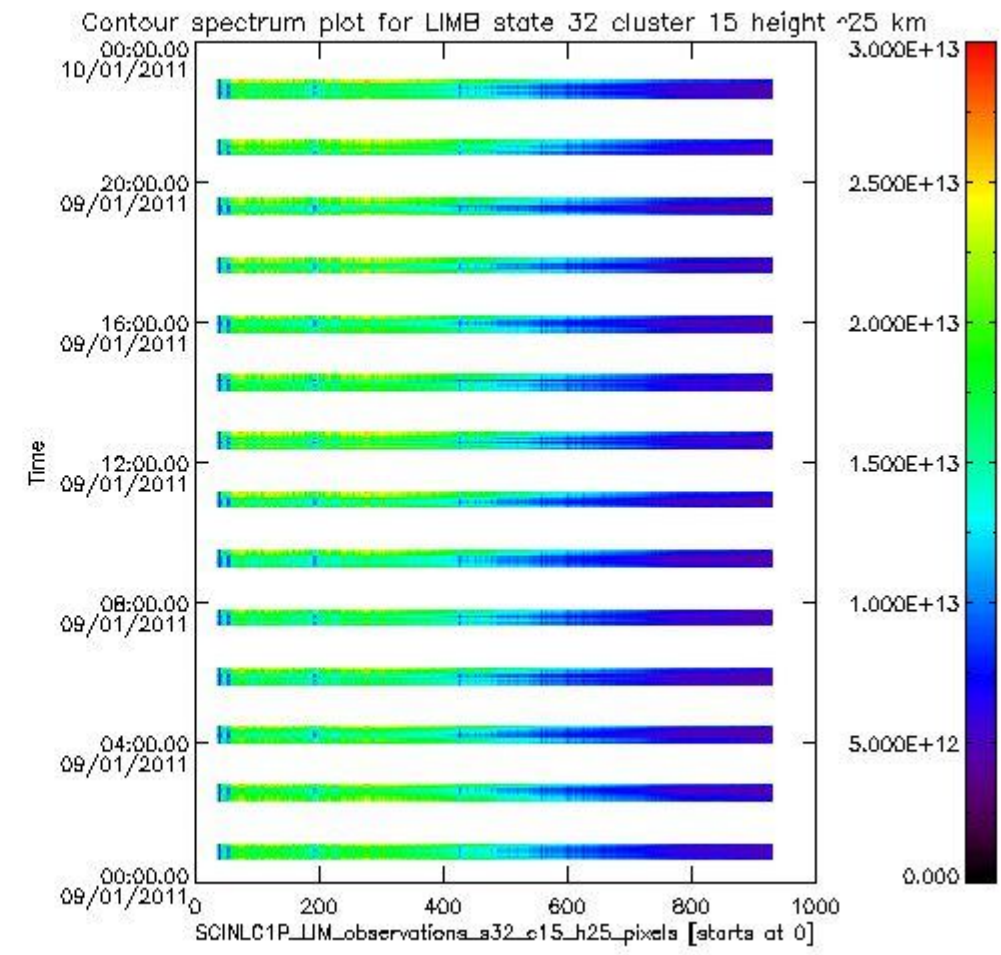
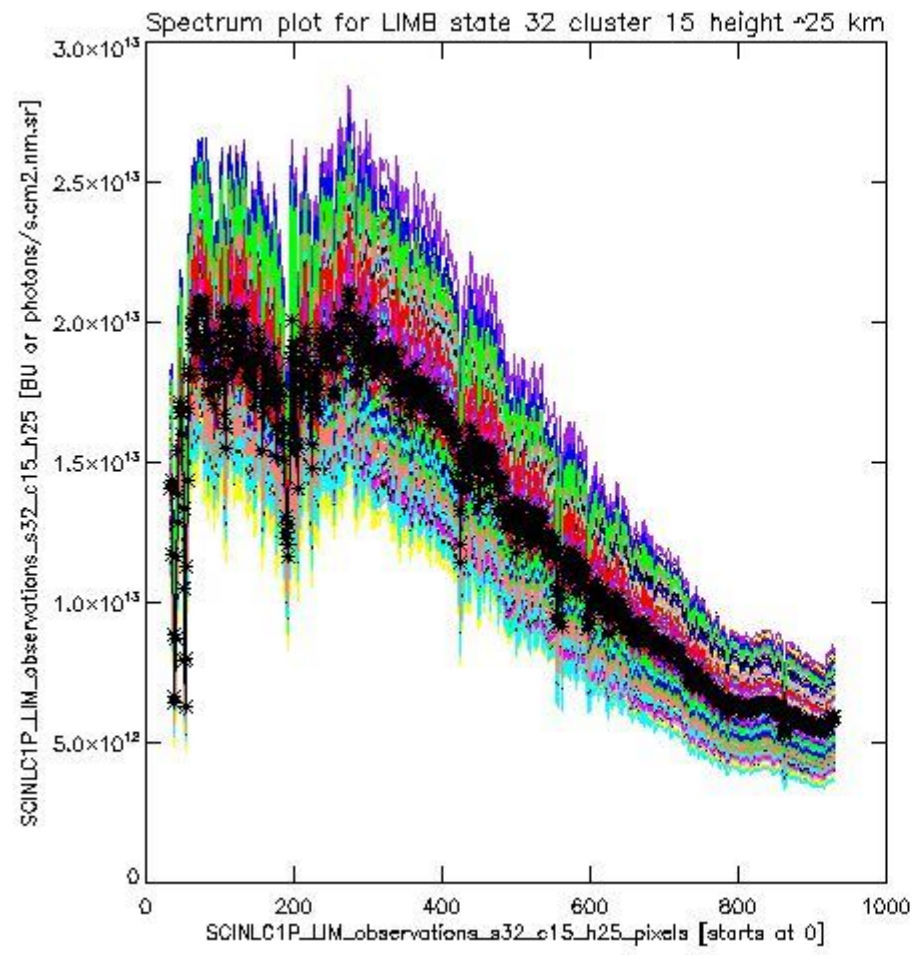
sciamachy_i1b_source_packet_report_SCIA_7_04_U_20110109_16.PNG



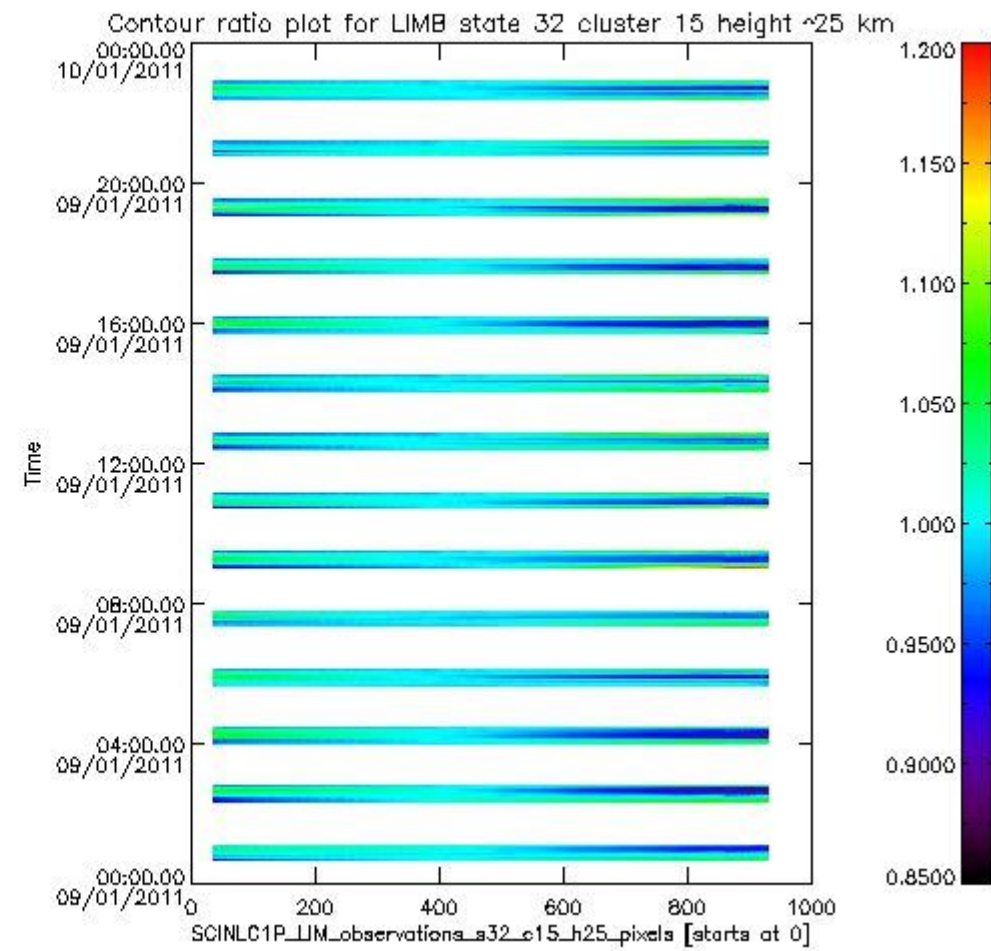
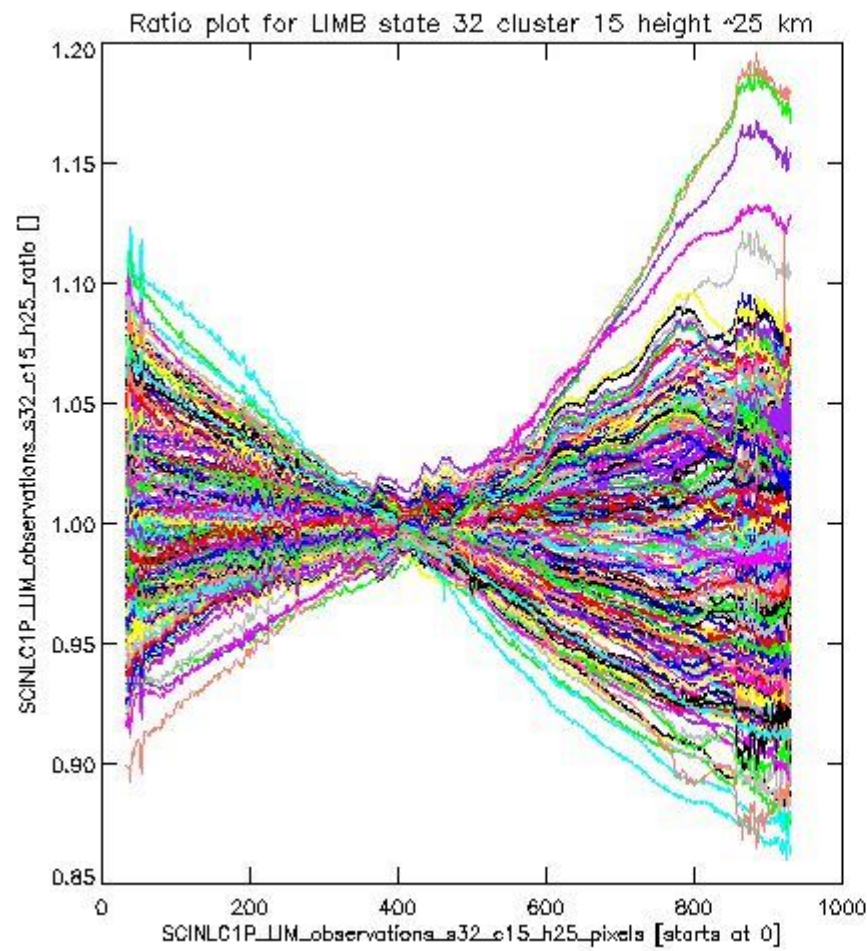
sciamachy_11b_source_packet_report_SCIA_7_04_U_20110109_17.PNG

1.2.10 LIMB state 32 cluster 15 height ~25 km The data for the analysis of LIMB state 32 cluster 15 height ~25 km have the following characteristics:

Item	Value
Start time of first sample	09JAN2011 00:39:49.313
Start time of last sample	09JAN2011 22:50:32.788
Reference period start time	10DEC2010 00:38:39.718
Reference period stop time	08JAN2011 23:27:19.789
Channel number	3
First pixel number (starts at 0)	33
Last pixel number (starts at 0)	929



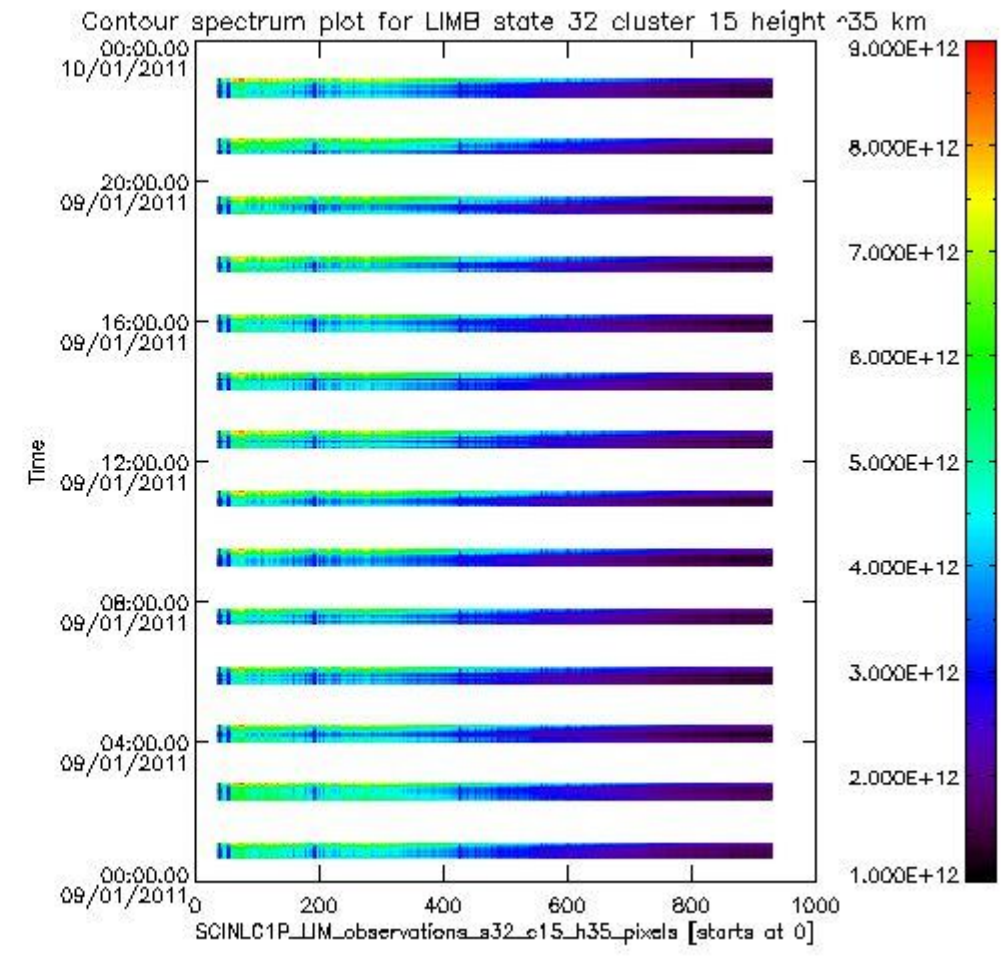
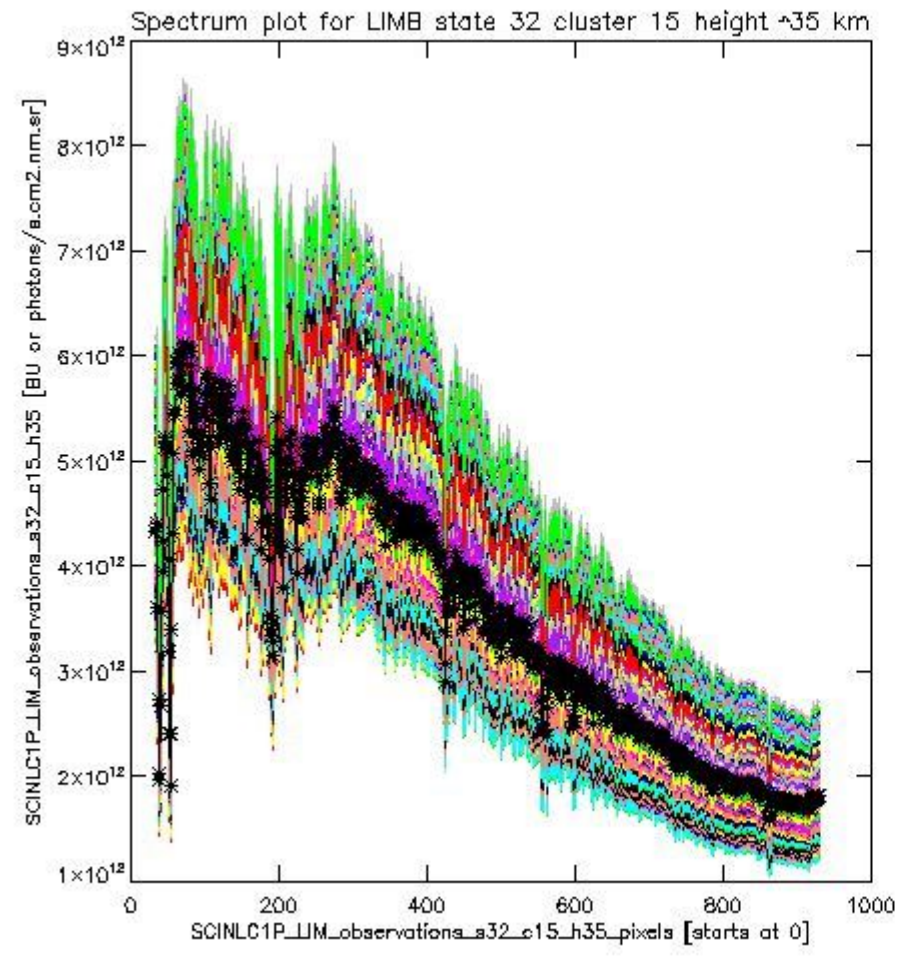
sciamachy_l1b_source_packet_report_SCIA_7_04_U_20110109_18.PNG



sciamachy_11b_source_packet_report_SCIA_7_04_U_20110109_19.PNG

1.2.11 LIMB state 32 cluster 15 height ~35 km The data for the analysis of LIMB state 32 cluster 15 height ~35 km have the following characteristics:

Item	Value
Start time of first sample	09JAN2011 00:39:49.313
Start time of last sample	09JAN2011 22:50:32.788
Reference period start time	10DEC2010 00:38:39.718
Reference period stop time	08JAN2011 23:27:19.789
Channel number	3
First pixel number (starts at 0)	33
Last pixel number (starts at 0)	929



sciamachy_11b_source_packet_report_SCIA_7_04_U_20110109_20.PNG

