

1. SCIAMACHY Level 1B source packet monitoring report

[1.1. General Info](#)

[1.2 Source packet monitoring](#)

1.1 General Info

This report contains results of the analysis on source packets from SCIAMACHY level 1 data (The SCI_NL__1P product).

1.1.1 Report summary

The table below shows general characteristics of the data that are included into this report.

Item	Value
Report version	1.1 (07-01-2010)
Time of report generation	15JAN2011 06:55:34
Data source version	SCIA/7.04-U
Processing scope for products	04JAN2011 00:00:00 to 05JAN2011 00:00:00
Start time of first product within scope	04JAN2011 00:04:22
Stop time of last product within scope	04JAN2011 11:16:00
Total number of level 1 products	7
Number of level 1 products with errors	0
SCIAL1C executable used in processing	scial1c-2.1.73-i686-pc-linux-gnu-gcc-3.3.6
SCIAL1C parameters used in processing	-allcal -type all -cat 1,2,8,10,11,16,19,23 -nadircluster 8,9,15,24,55 -limbcluster 9,15

1.1.2 Source packet summary

The table below shows which source packets have been included into the report.

Item	Mode	State	Cluster	Height	First start time	Last start time
0	NADIR	07	08	N/A	04JAN2011 00:36:25.121	04JAN2011 10:48:01.864
1	NADIR	07	09	N/A	04JAN2011 00:36:25.121	04JAN2011 10:48:01.864
2	NADIR	07	15	N/A	04JAN2011 00:36:25.121	04JAN2011 10:48:01.864
3	NADIR	07	24	N/A	04JAN2011 00:36:25.121	04JAN2011 10:48:01.864
4	NADIR	07	55	N/A	04JAN2011 00:36:25.121	04JAN2011 10:48:01.864
5	LIMB	32	09	~19 km	04JAN2011 00:23:14.484	04JAN2011 10:51:13.165
6	LIMB	32	09	~22 km	04JAN2011 00:23:14.484	04JAN2011 10:51:13.165
7	LIMB	32	09	~25 km	04JAN2011 00:23:14.484	04JAN2011 10:51:13.165
8	LIMB	32	15	~22 km	04JAN2011 00:23:14.484	04JAN2011 10:51:13.165
9	LIMB	32	15	~25 km	04JAN2011 00:23:14.484	04JAN2011 10:51:13.165
10	LIMB	32	15	~35 km	04JAN2011 00:23:14.484	04JAN2011 10:51:13.165

1.1.3 Summary per product

The following table shows a summary for each product used in this report.

Products are linked to a corresponding server directory for view/download. Note: Link access may be restricted by security settings of your internet browser or firewall.

#	Product name	Start time	Stop time	ProdErr	#nadir	#limb	#occ	#mon	#nopro	#cpl_drk	#incpl_drk	Decont
0	SCI_NLC_1CUDPA20110103_234634_000060103098_00117_46252_1441.N1	04JAN2011 00:04:22	04JAN2011 01:14:37	0	35	31	0	0	1	0	0	
1	SCI_NLC_1CUDPA20110104_012648_000060093098_00118_46253_1443.N1	04JAN2011 01:44:36	04JAN2011 02:55:05	0	36	30	0	0	1	0	0	
2	SCI_NLC_1CUDPA20110104_030702_000060103098_00119_46254_1444.N1	04JAN2011 03:24:50	04JAN2011 04:35:04	0	35	31	0	0	1	0	0	
3	SCI_NLC_1CUDPA20110104_044716_000060093098_00120_46255_1447.N1	04JAN2011 05:05:04	04JAN2011 06:15:33	0	36	30	0	0	1	0	0	
4	SCI_NLC_1CUDPA20110104_062730_000060103098_00121_46256_1449.N1	04JAN2011 06:45:17	04JAN2011 07:55:32	0	35	31	0	0	1	0	0	
5	SCI_NLC_1CUDPA20110104_080744_000060093098_00122_46257_1451.N1	04JAN2011 08:25:31	04JAN2011 09:36:00	0	36	30	0	0	1	0	0	

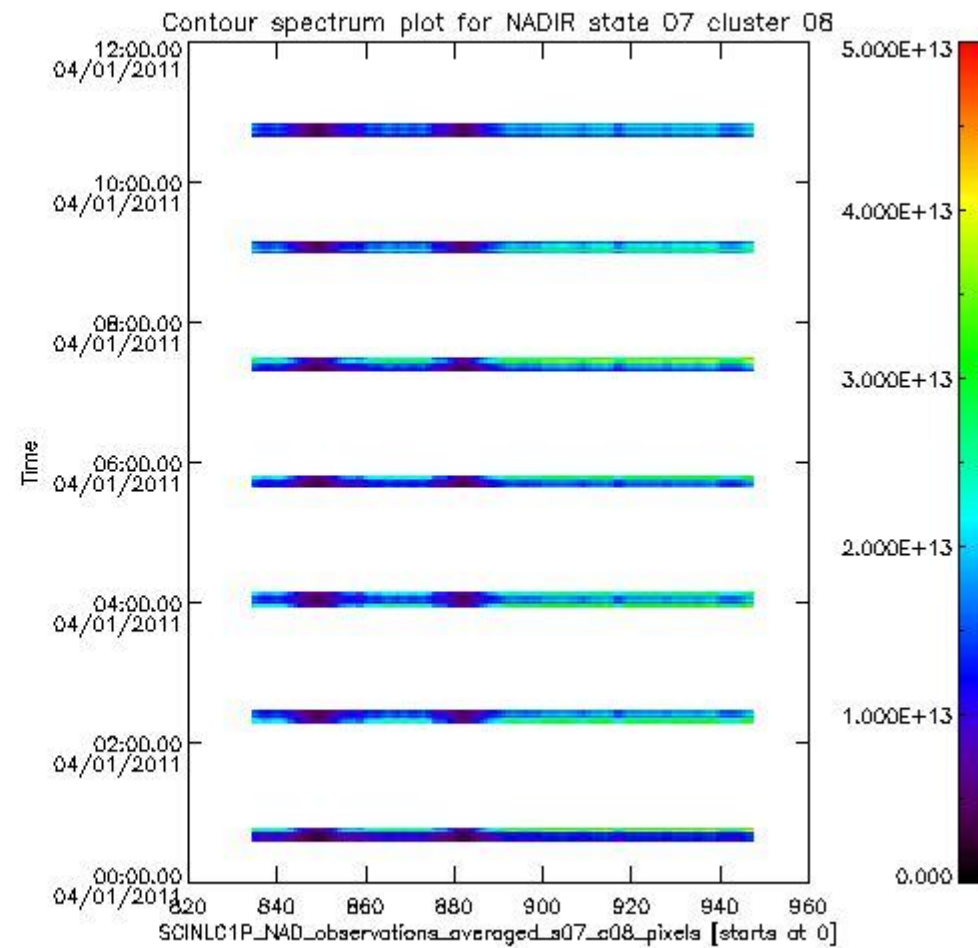
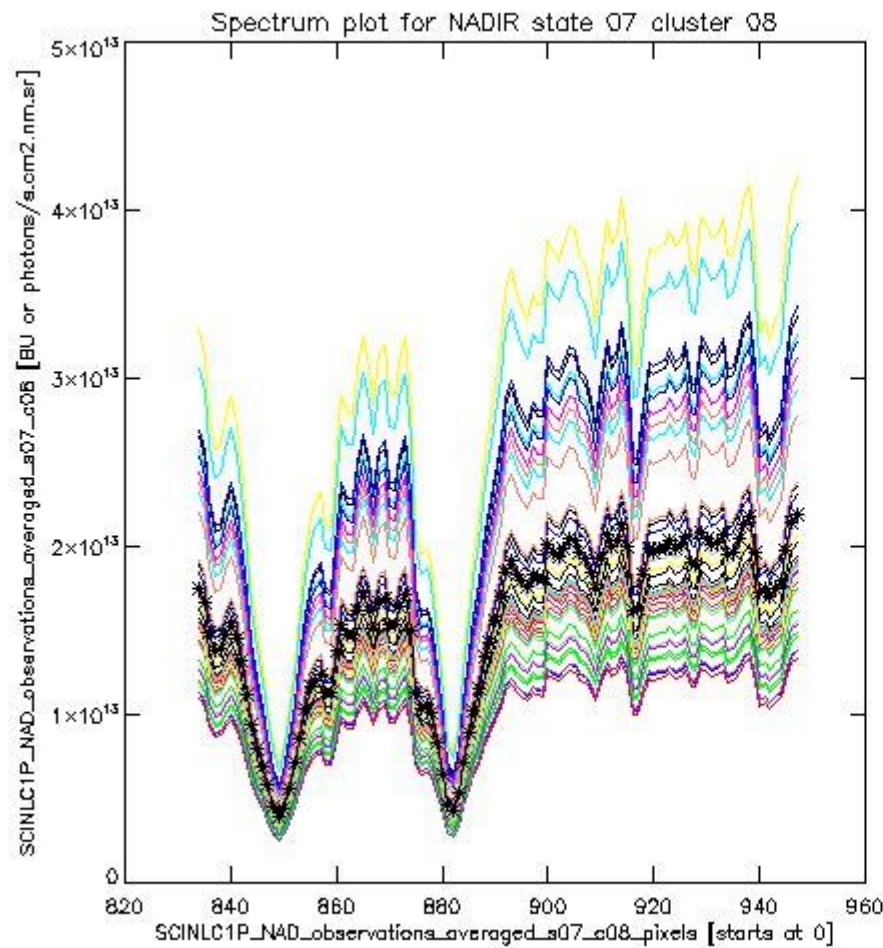
1.2 Source packet monitoring

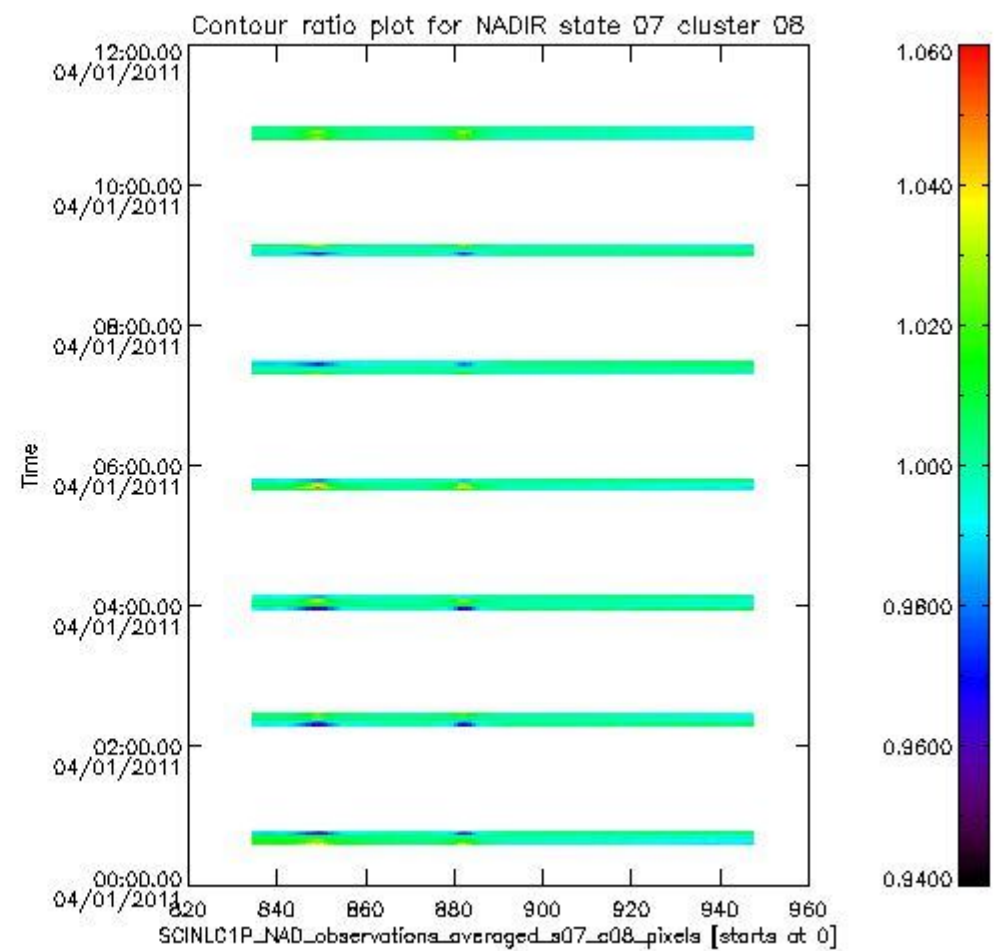
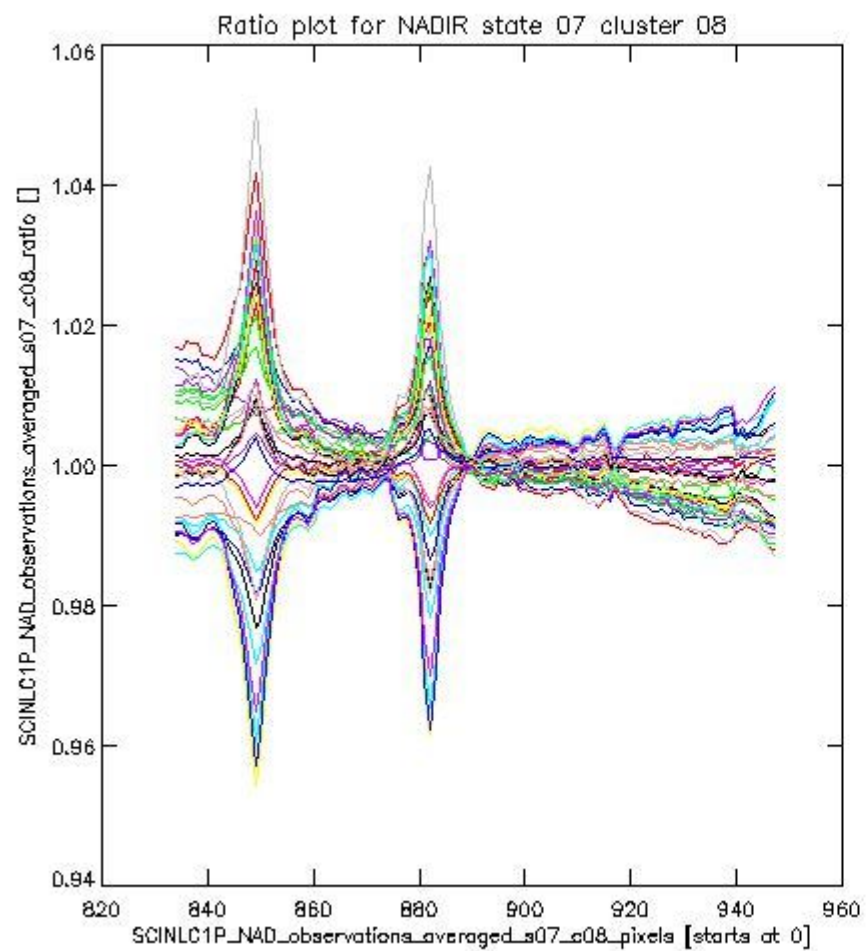
This section shows figures for each of the monitored source packet types listed in the Source Packet Summary section. For each mode-state-cluster(-height) combination the following plots are shown:

- A plot that shows all calibrated averaged spectra vs. pixel number as 2D-profiles. Each line is an average spectrum for a single state occurrence. For Limb modes, the average is performed on spectra recorded at a specific height. The reference spectrum that is used for comparison is also shown as a black line with * markers.
- A plot that shows all calibrated averaged spectra vs. pixel number and time using a coloured contour plot. The colours indicate the intensity.
- A plot that shows ratios of all calibrated averaged spectra and the reference spectrum vs. pixel number. Each line is the ratio of a calibrated averaged spectrum and the reference spectrum, where both spectra have been intensity corrected (the spectrum has been divided by the average pixel intensity) prior to division.
- A plot that shows ratios of all calibrated averaged spectra and the reference spectrum vs. pixel number and time using a coloured contour plot.

1.2.1 NADIR state 07 cluster 08 The data for the analysis of NADIR state 07 cluster 08 have the following characteristics:

Item	Value
Start time of first sample	04JAN2011 00:36:25.121
Start time of last sample	04JAN2011 10:48:01.864
Reference period start time	05DEC2010 00:36:54.374
Reference period stop time	03JAN2011 23:05:30.847
Channel number	2
First pixel number (starts at 0)	834
Last pixel number (starts at 0)	947

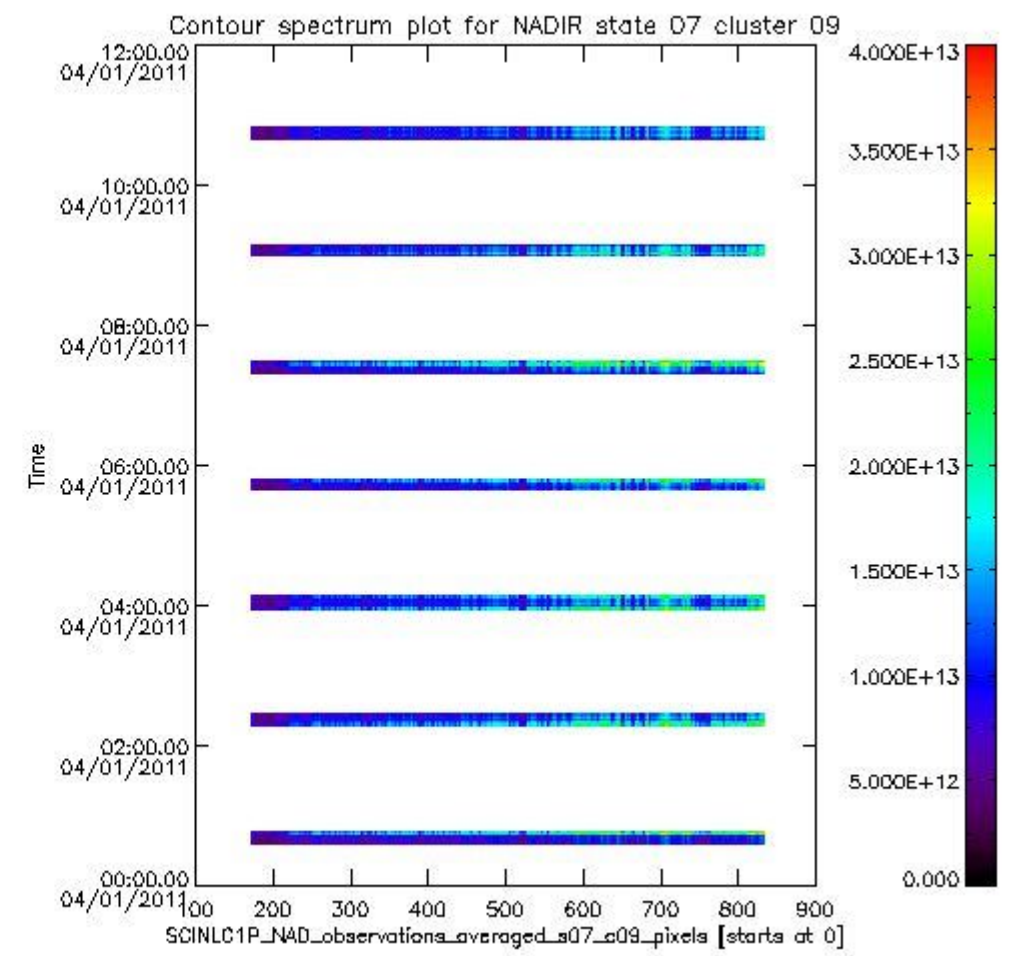
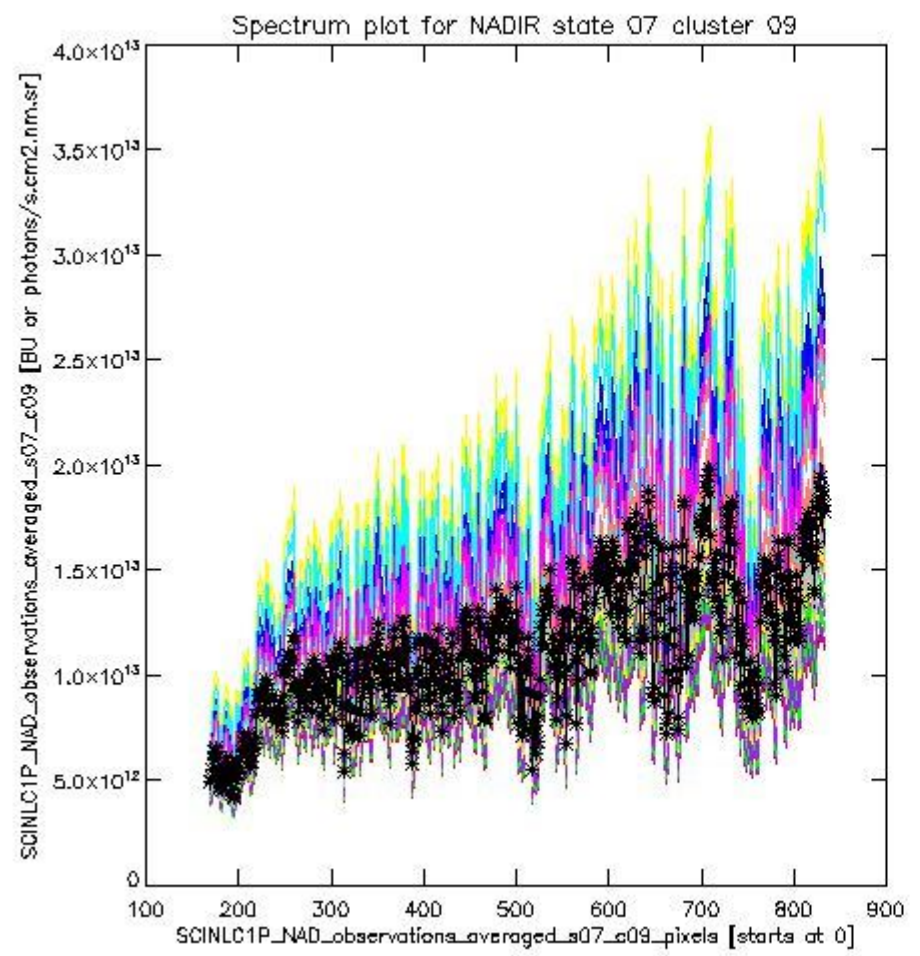




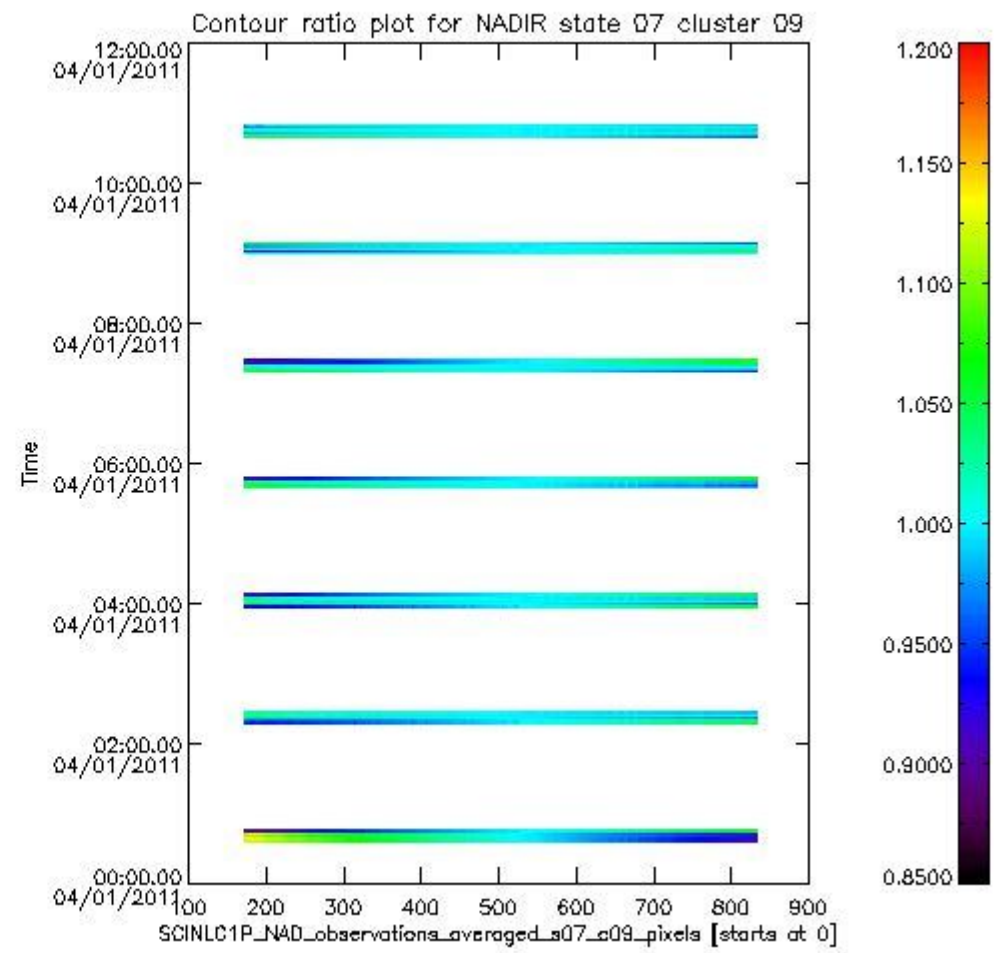
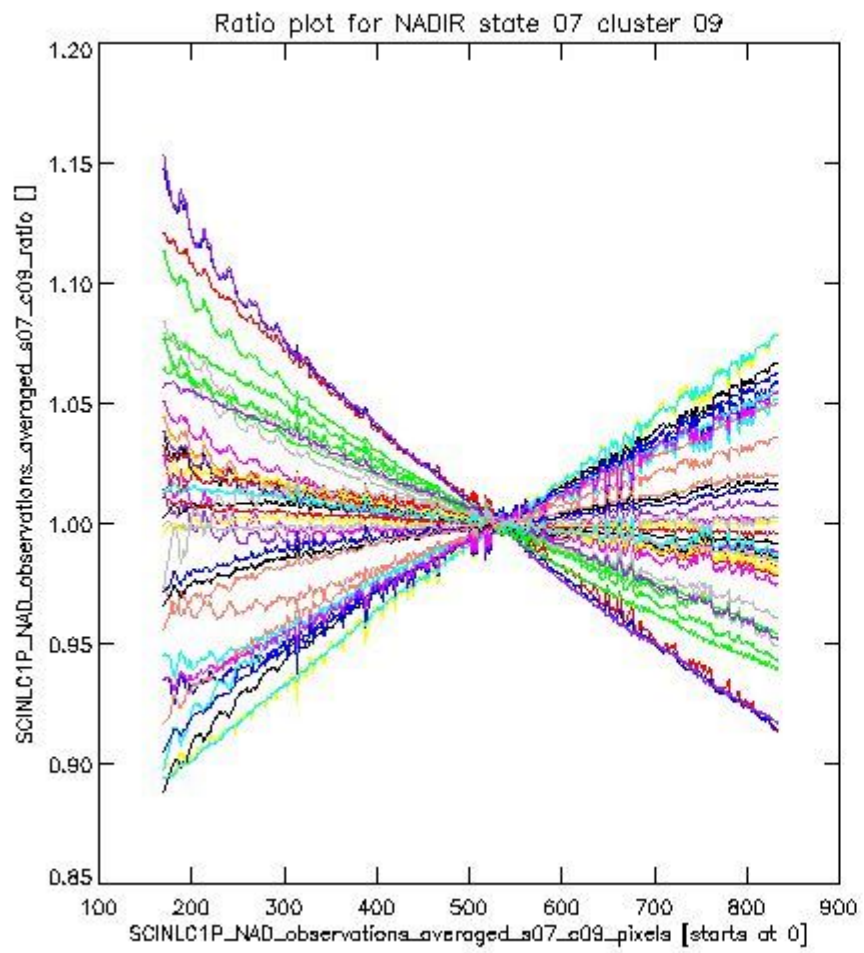
sciamachy_i1b_source_packet_report_SCIA_7_04_U_20110104_1.PNG

1.2.2 NADIR state 07 cluster 09 The data for the analysis of NADIR state 07 cluster 09 have the following characteristics:

Item	Value
Start time of first sample	04JAN2011 00:36:25.121
Start time of last sample	04JAN2011 10:48:01.864
Reference period start time	05DEC2010 00:36:54.374
Reference period stop time	03JAN2011 23:05:30.847
Channel number	2
First pixel number (starts at 0)	170
Last pixel number (starts at 0)	833



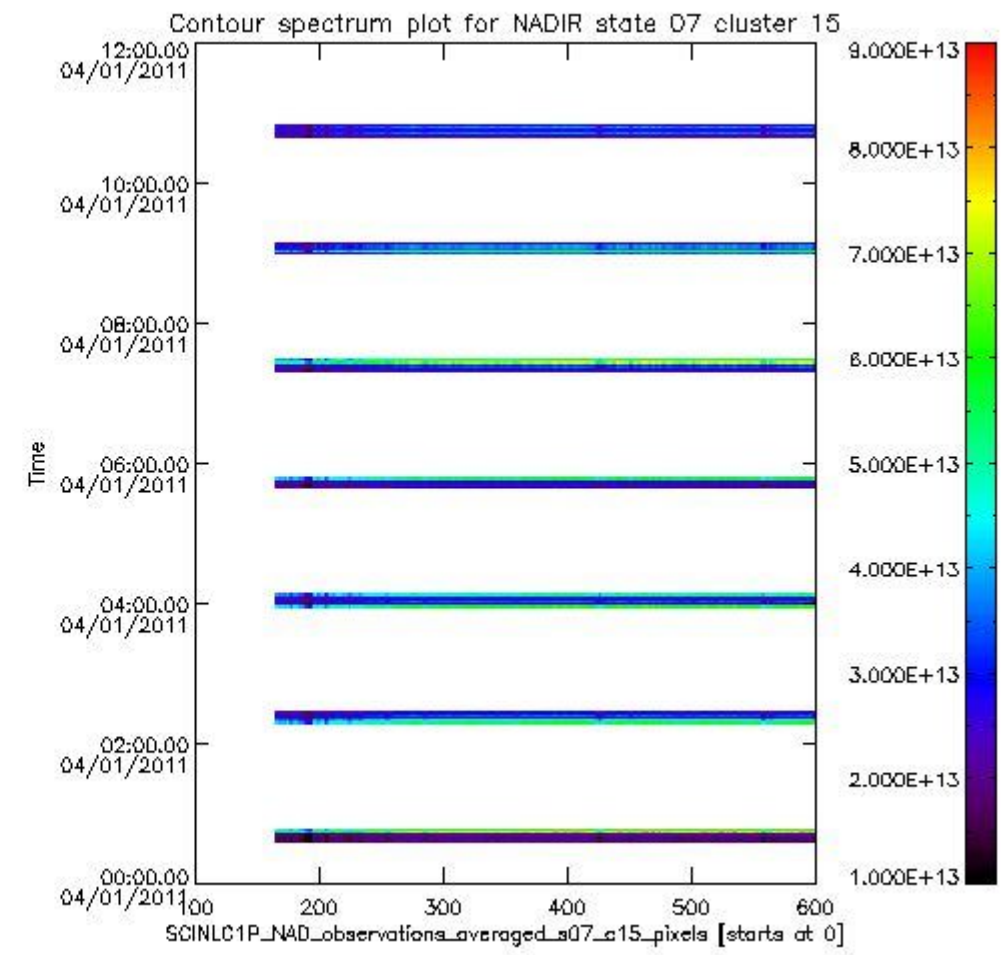
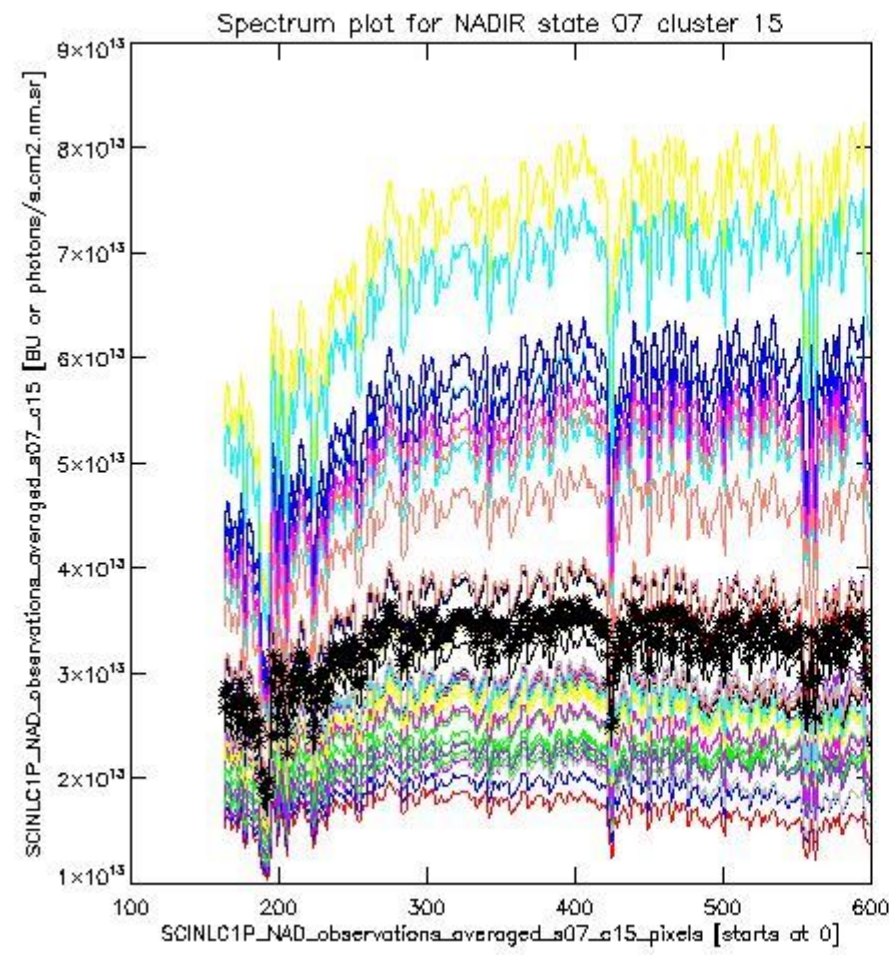
sciamachy_i1b_source_packet_report_SCIA_7_04_U_20110104_2.PNG



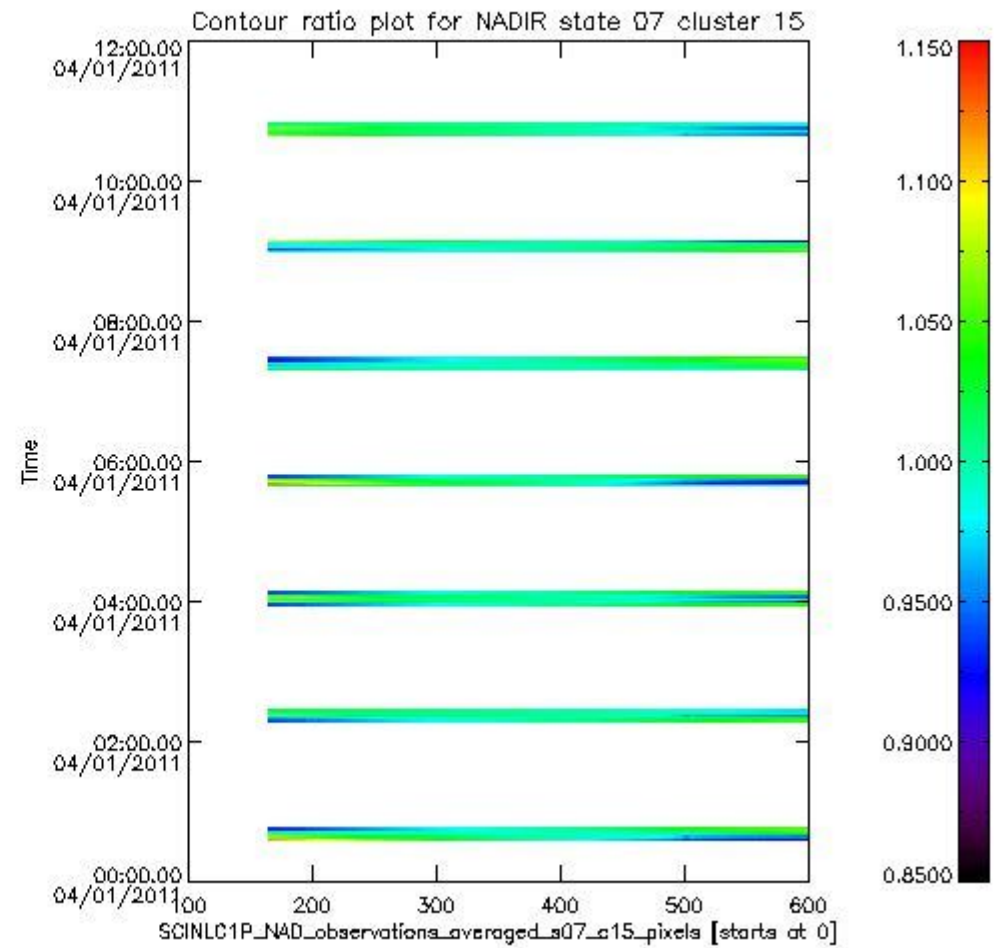
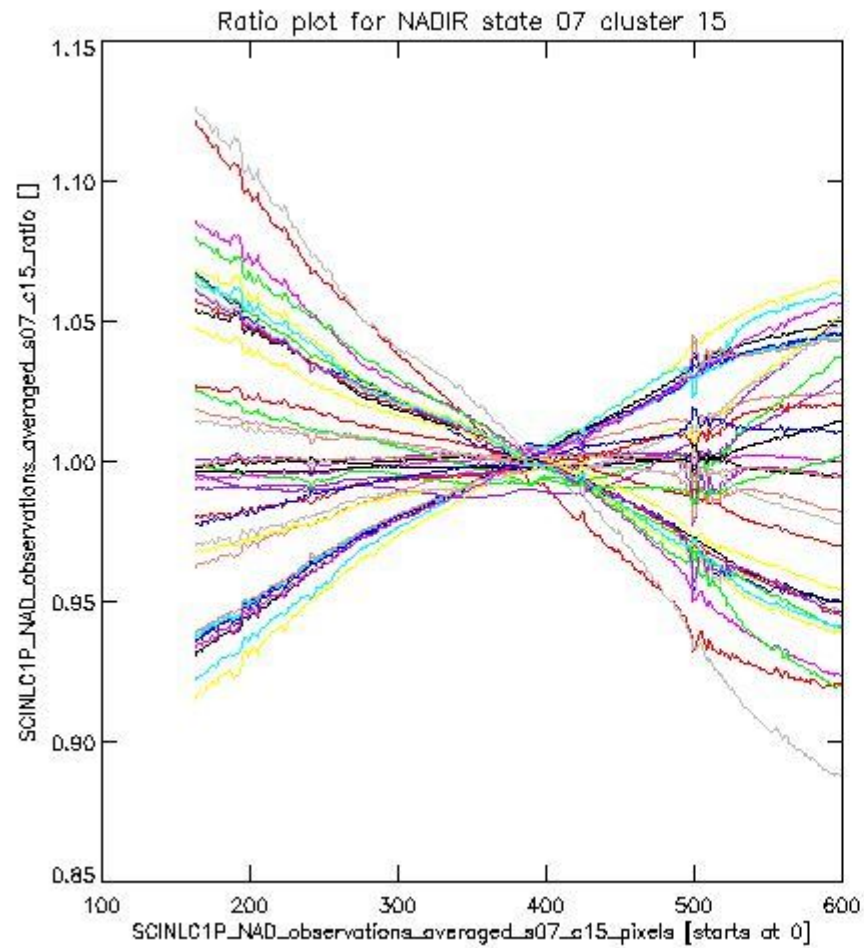
sciamachy_i1b_source_packet_report_SCIA_7_04_U_20110104_3.PNG

1.2.3 NADIR state 07 cluster 15 The data for the analysis of NADIR state 07 cluster 15 have the following characteristics:

Item	Value
Start time of first sample	04JAN2011 00:36:25.121
Start time of last sample	04JAN2011 10:48:01.864
Reference period start time	05DEC2010 00:36:54.374
Reference period stop time	03JAN2011 23:05:30.847
Channel number	3
First pixel number (starts at 0)	163
Last pixel number (starts at 0)	598



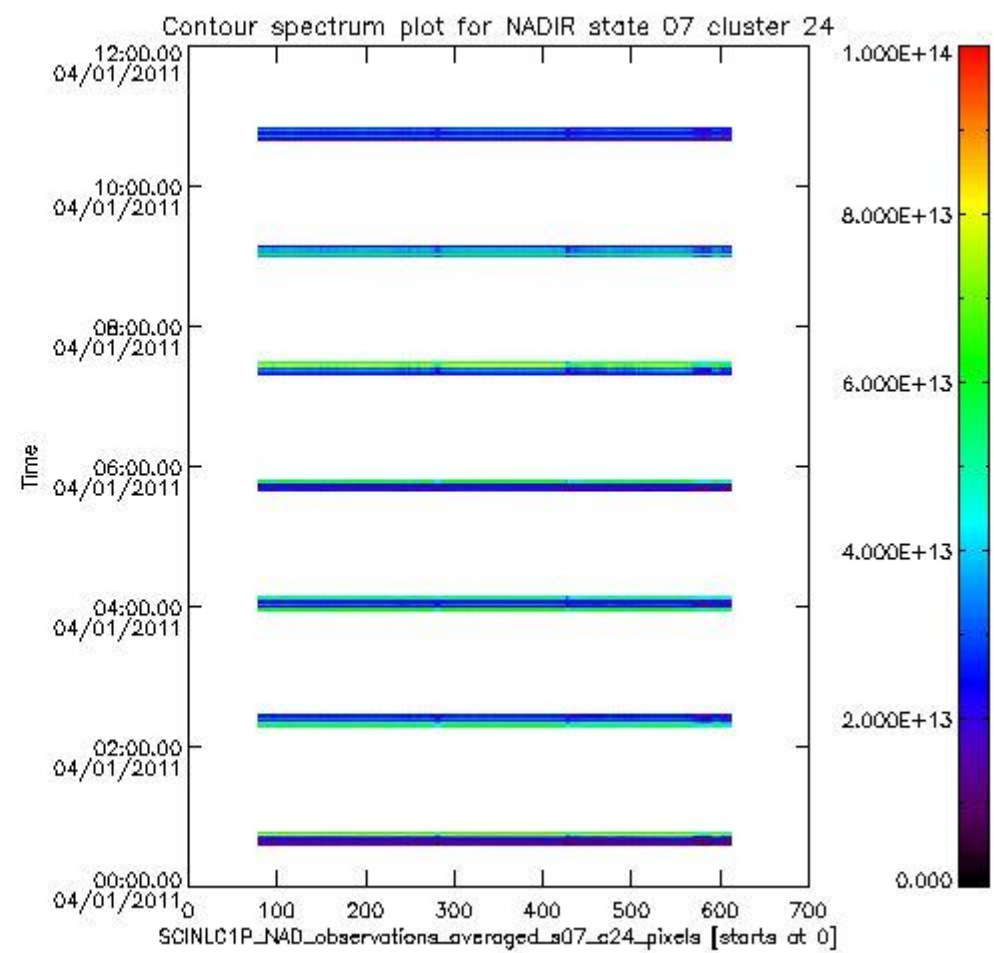
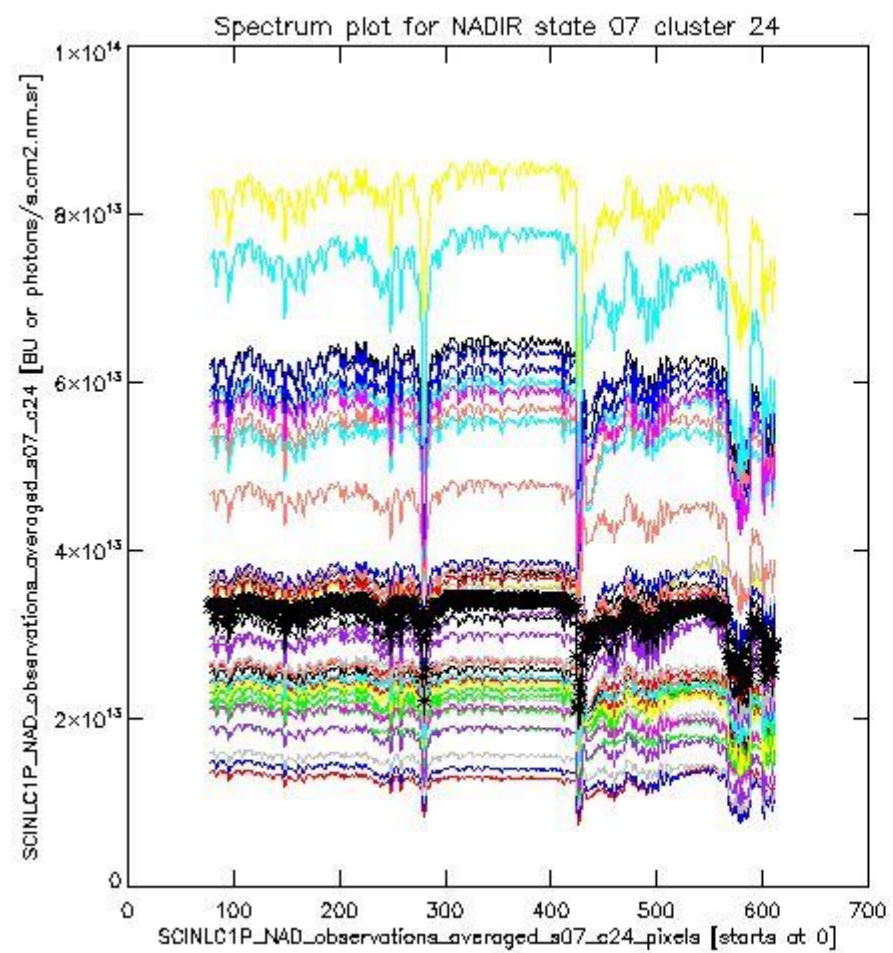
sciamachy_i1b_source_packet_report_SCIA_7_04_U_20110104_4.PNG



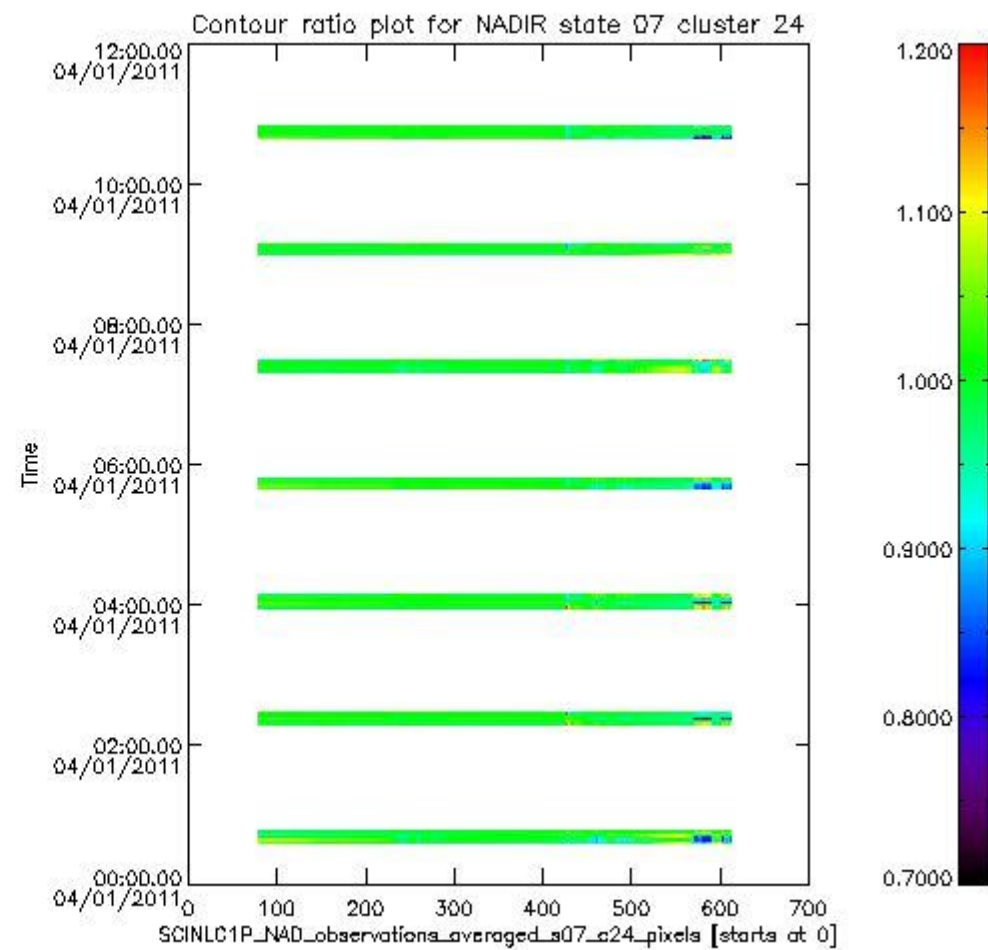
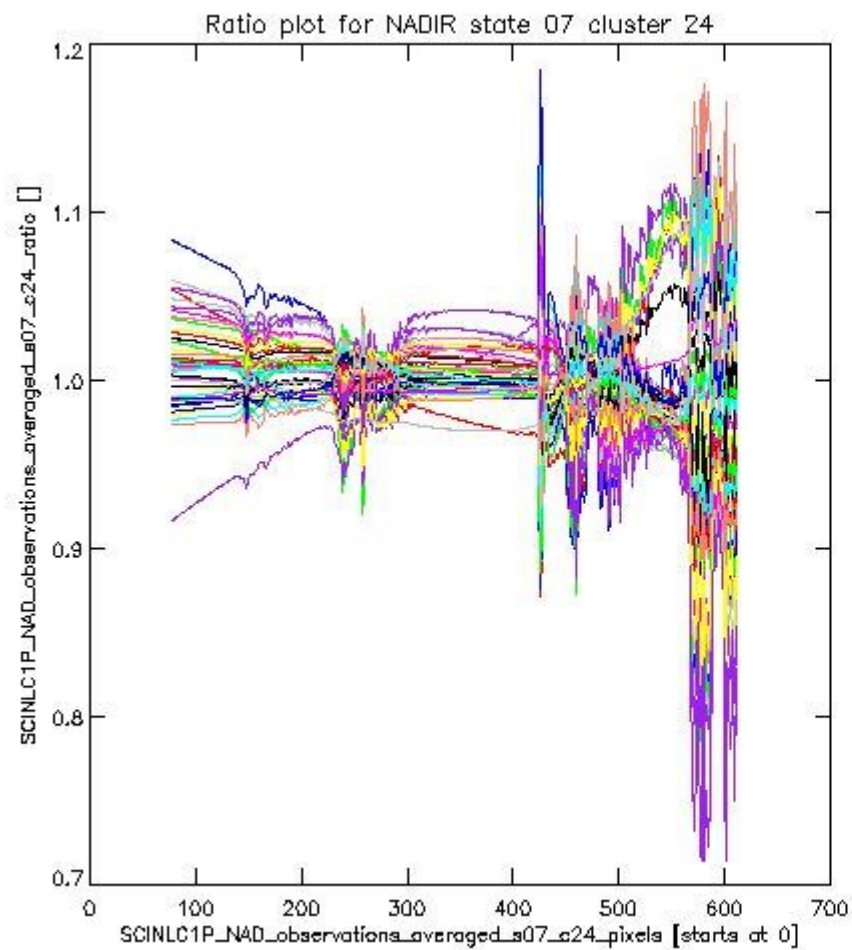
sciamachy_l1b_source_packet_report_SCIA_7_04_U_20110104_5.PNG

1.2.4 NADIR state 07 cluster 24 The data for the analysis of NADIR state 07 cluster 24 have the following characteristics:

Item	Value
Start time of first sample	04JAN2011 00:36:25.121
Start time of last sample	04JAN2011 10:48:01.864
Reference period start time	05DEC2010 00:36:54.374
Reference period stop time	03JAN2011 23:05:30.847
Channel number	4
First pixel number (starts at 0)	78
Last pixel number (starts at 0)	612



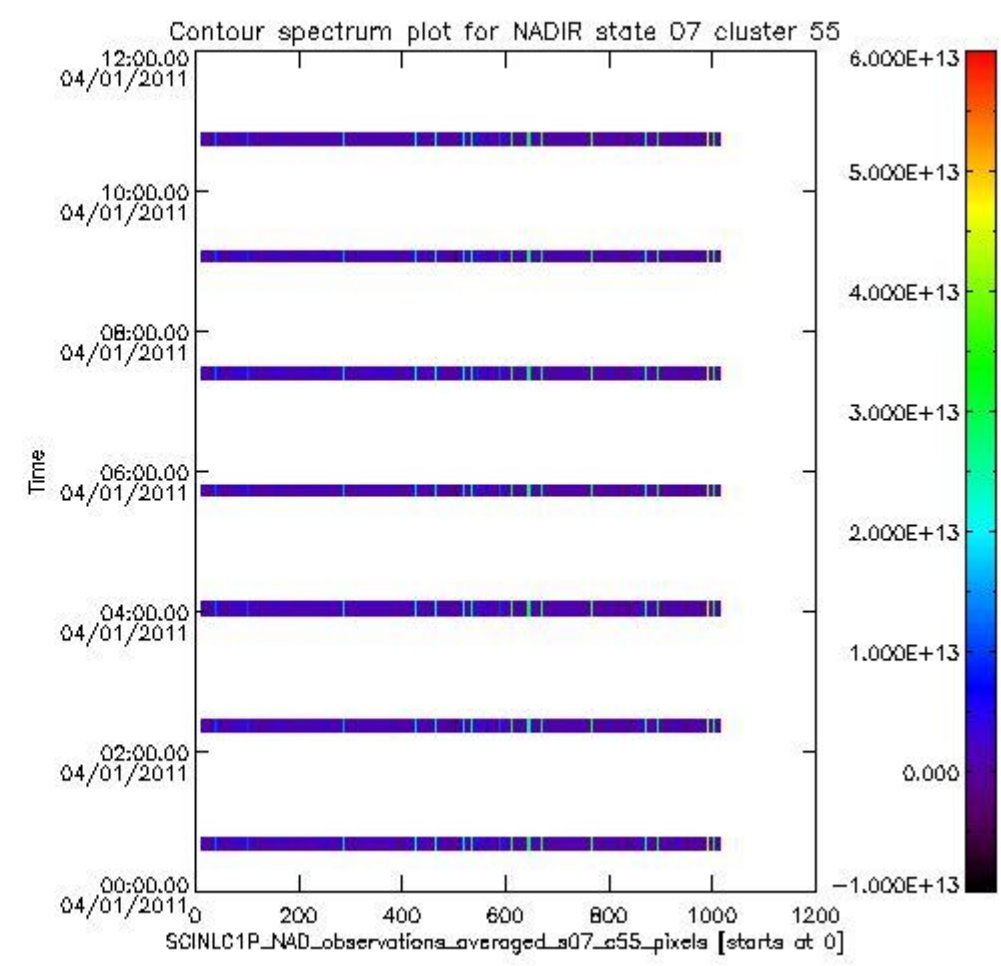
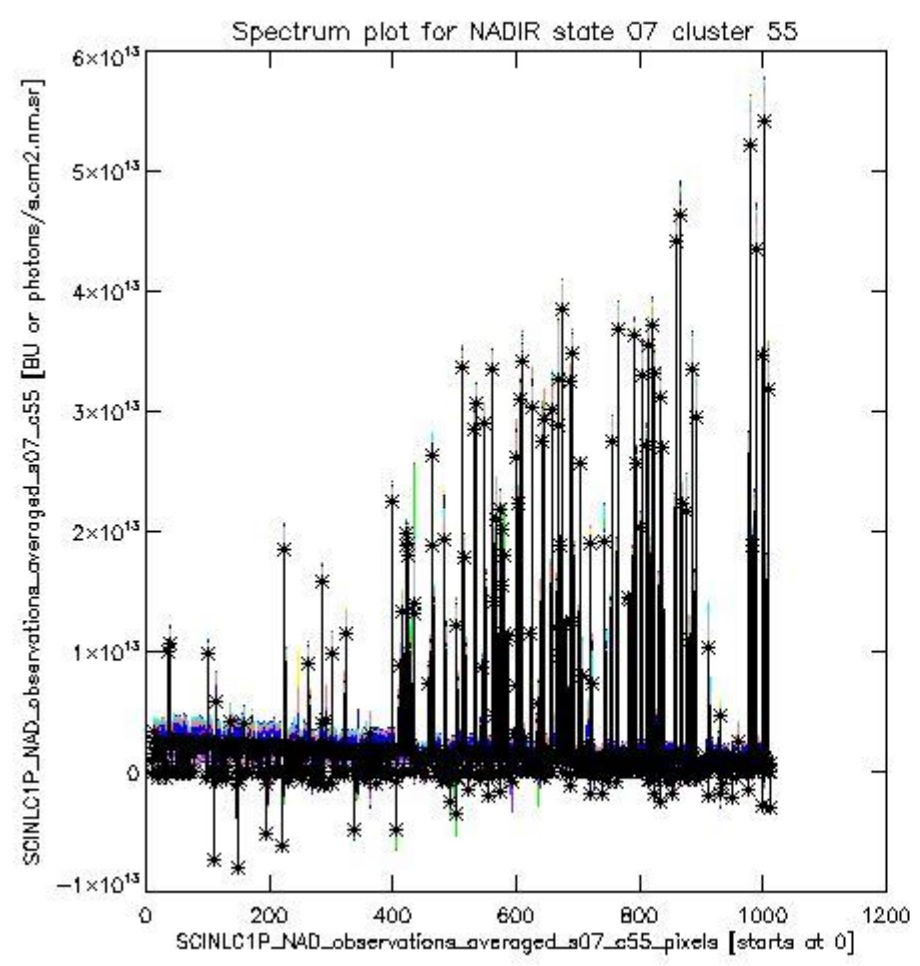
sciamachy_i1b_source_packet_report_SCIA_7_04_U_20110104_6.PNG



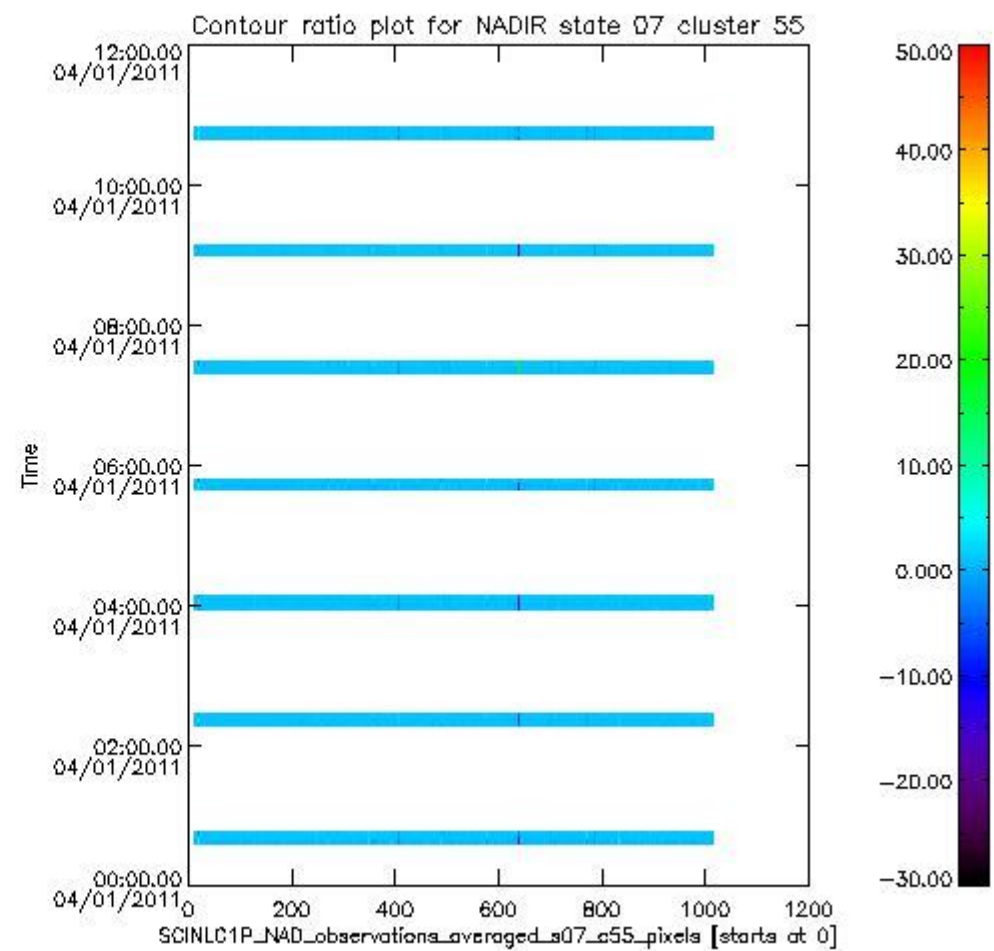
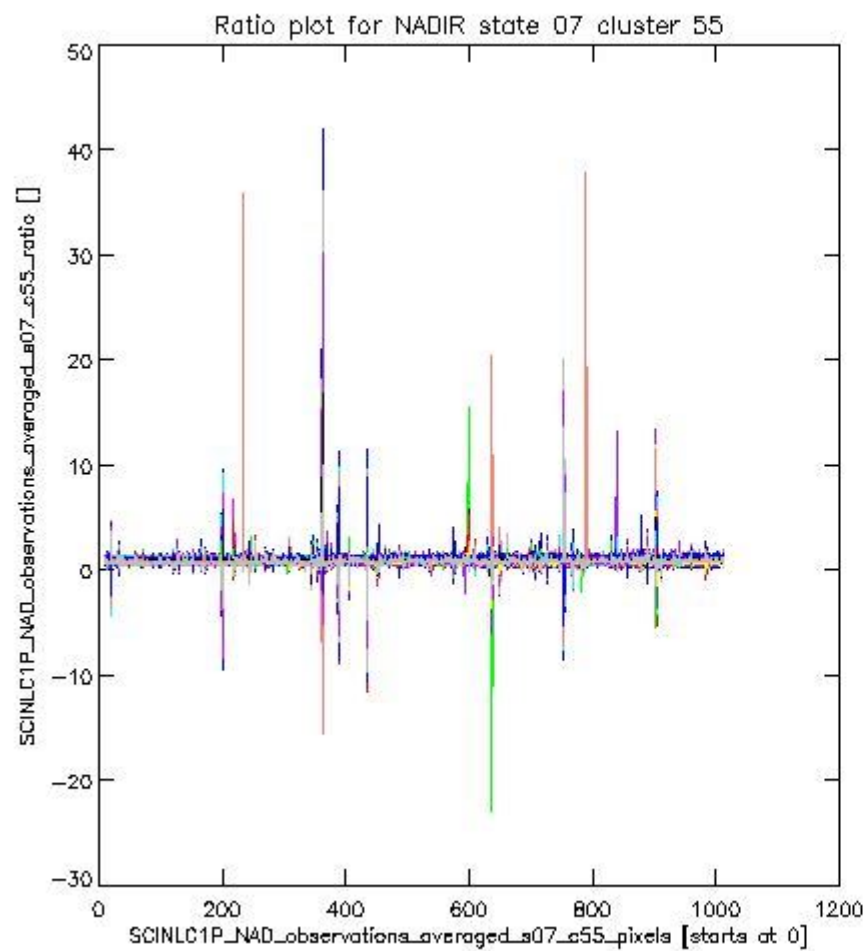
sciamachy_l1b_source_packet_report_SCIA_7_04_U_20110104_7.PNG

1.2.5 NADIR state 07 cluster 55 The data for the analysis of NADIR state 07 cluster 55 have the following characteristics:

Item	Value
Start time of first sample	04JAN2011 00:36:25.121
Start time of last sample	04JAN2011 10:48:01.864
Reference period start time	05DEC2010 00:36:54.374
Reference period stop time	03JAN2011 23:05:30.847
Channel number	8
First pixel number (starts at 0)	10
Last pixel number (starts at 0)	1013



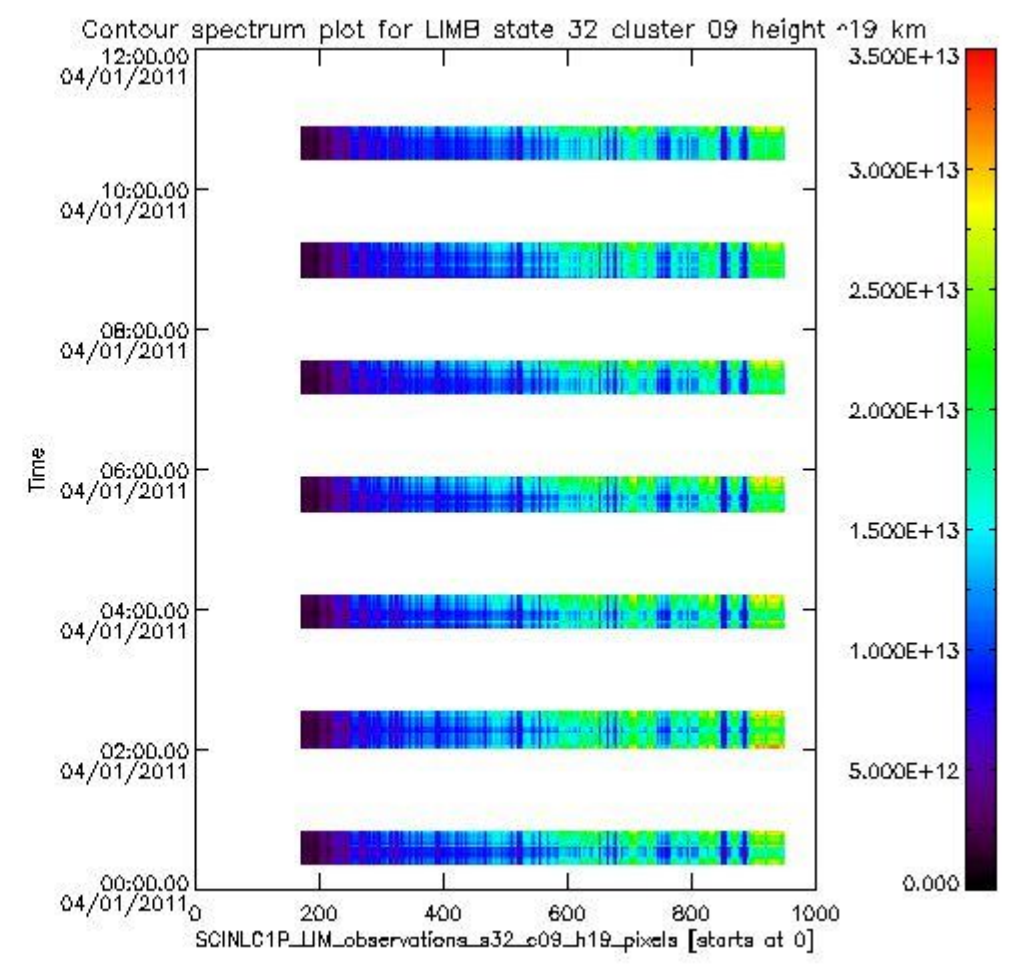
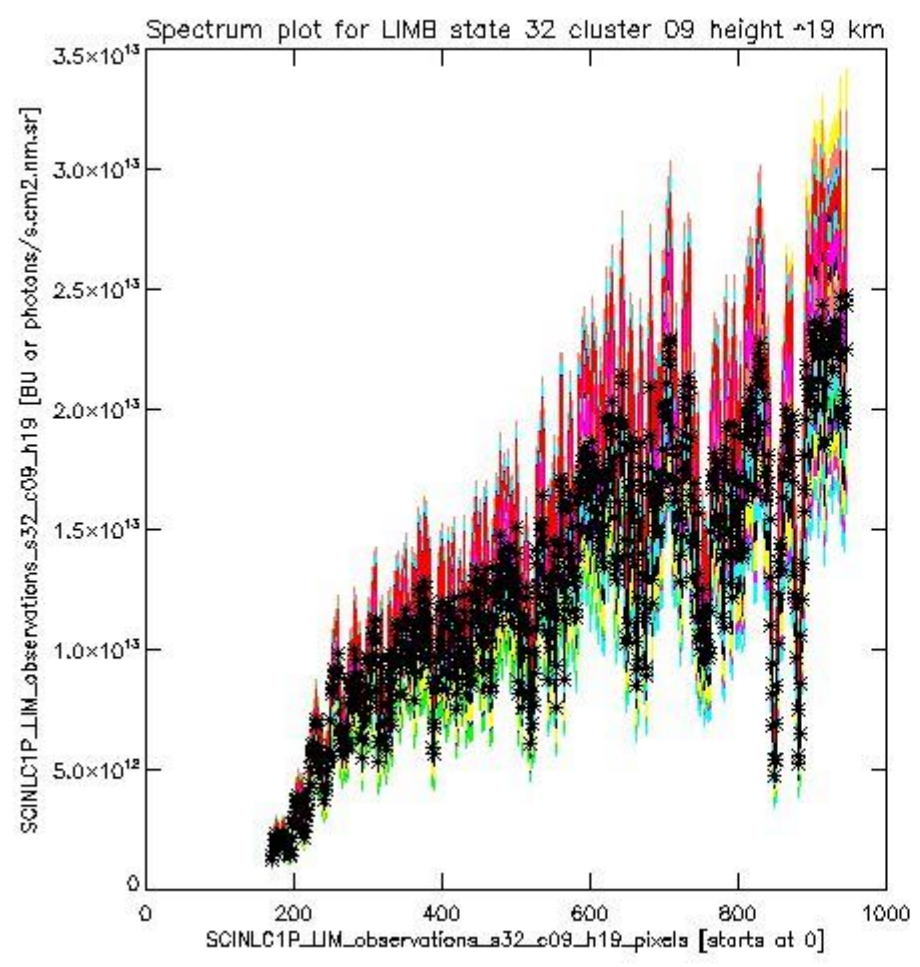
sciamachy_i1b_source_packet_report_SCIA_7_04_U_20110104_8.PNG



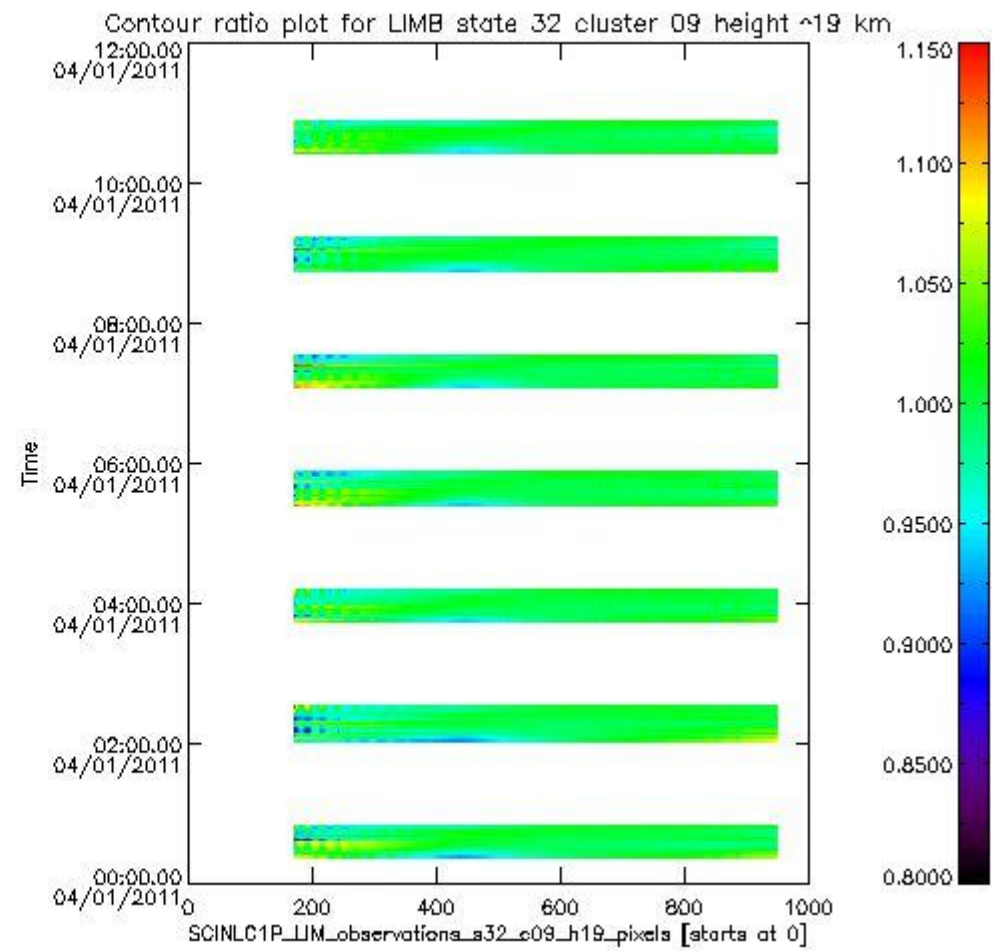
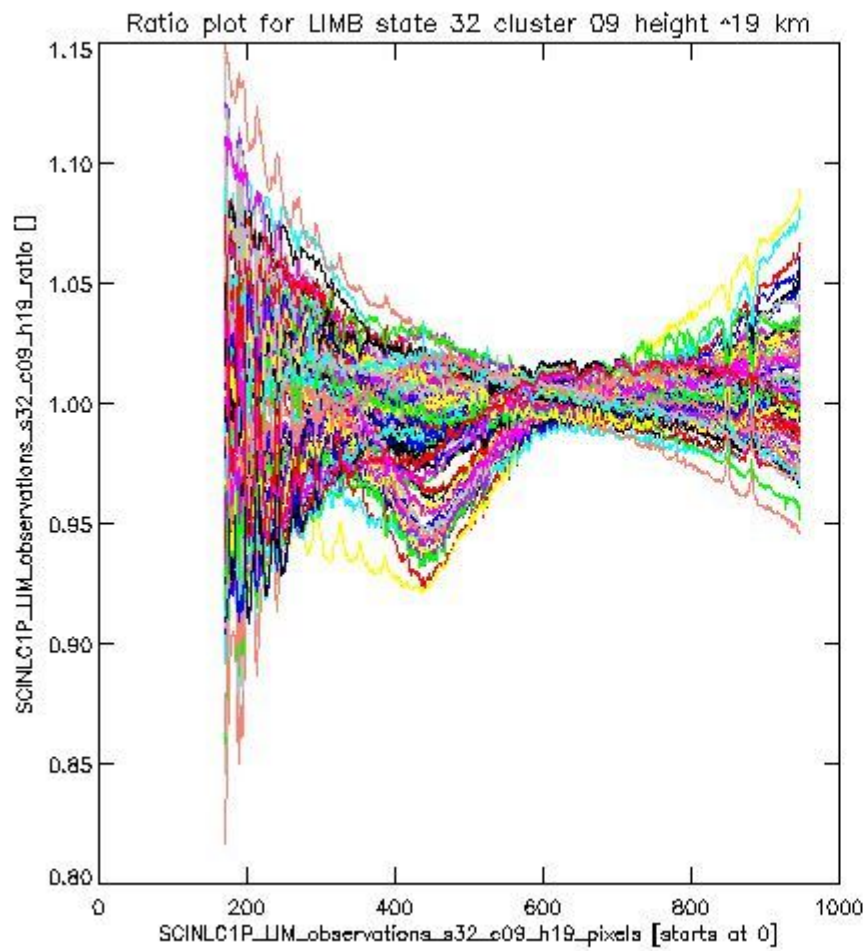
sciamachy_l1b_source_packet_report_SCIA_7_04_U_20110104_9.PNG

1.2.6 LIMB state 32 cluster 09 height ~19 km The data for the analysis of LIMB state 32 cluster 09 height ~19 km have the following characteristics:

Item	Value
Start time of first sample	04JAN2011 00:23:14.484
Start time of last sample	04JAN2011 10:51:13.165
Reference period start time	05DEC2010 00:21:40.995
Reference period stop time	03JAN2011 23:10:44.890
Channel number	2
First pixel number (starts at 0)	170
Last pixel number (starts at 0)	947



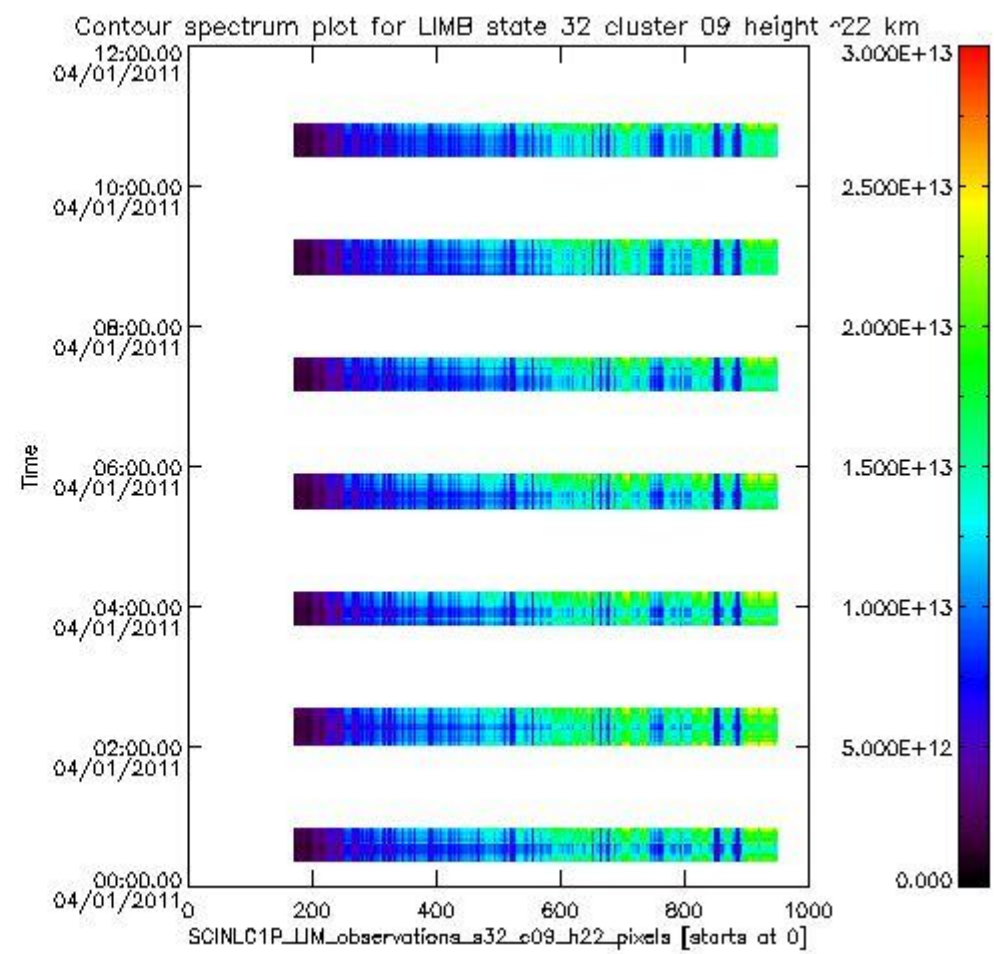
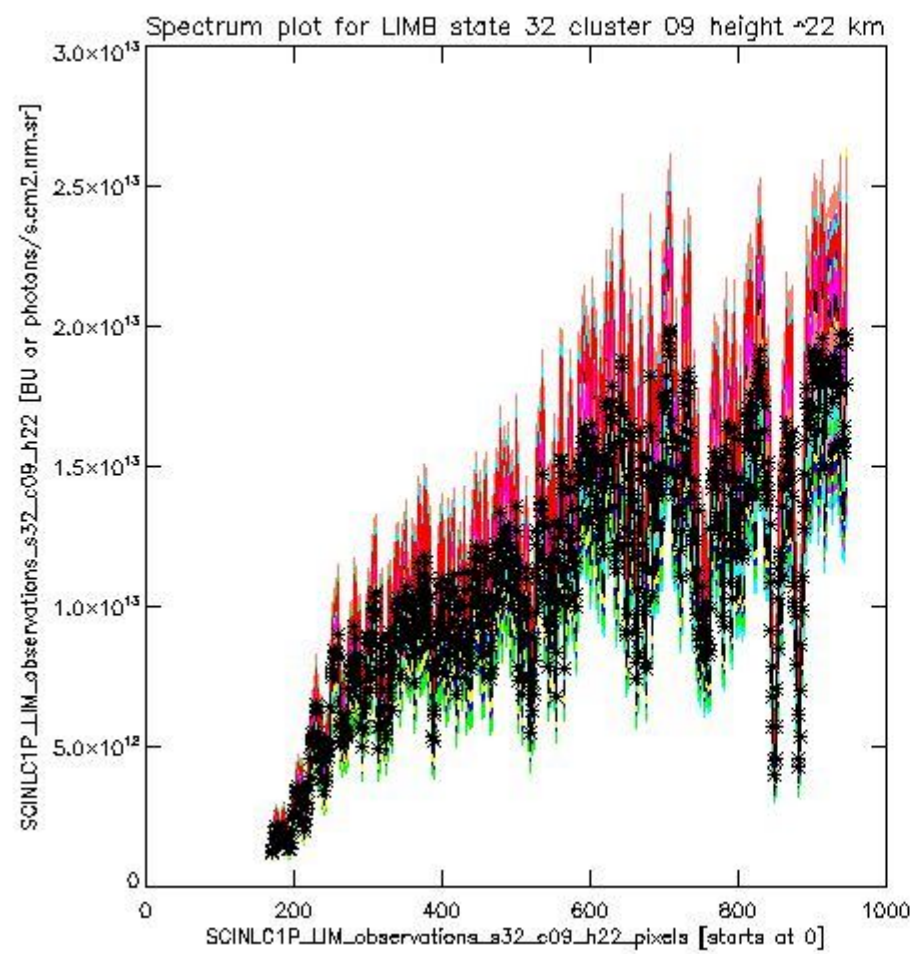
sciamachy_i1b_source_packet_report_SCIA_7_04_U_20110104_10.PNG



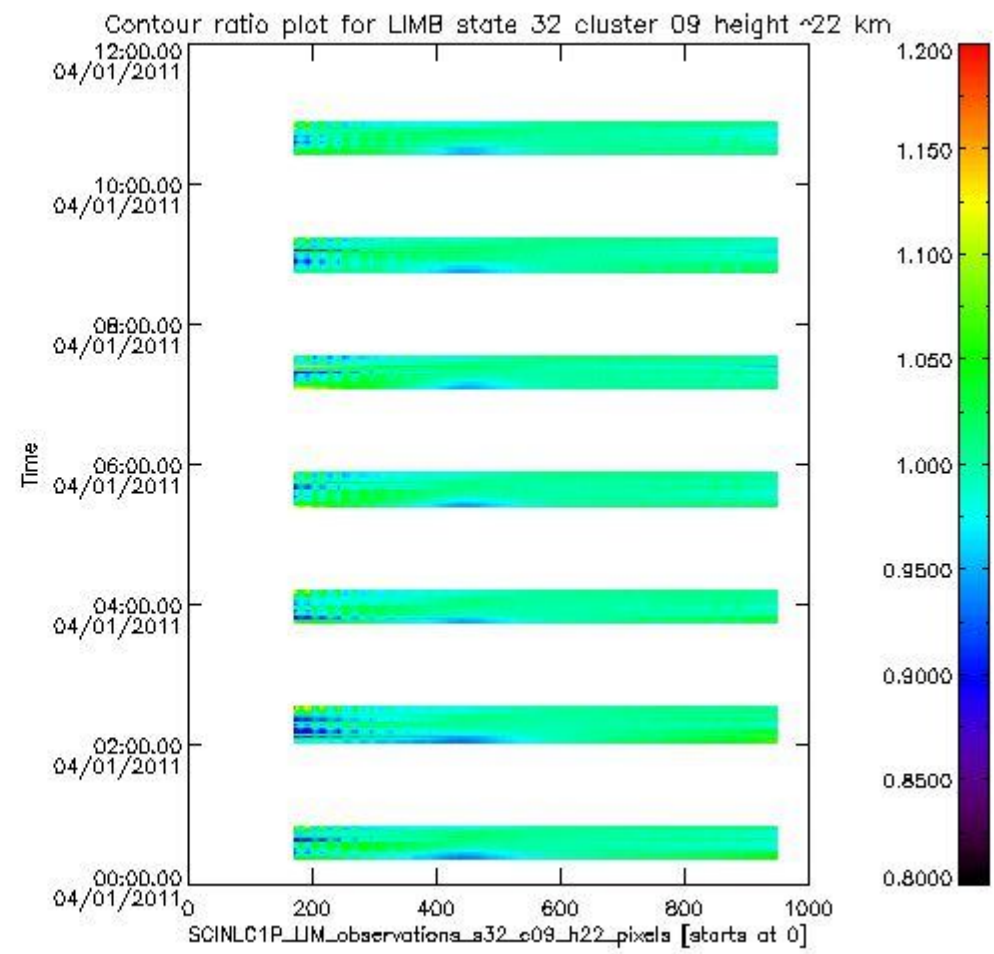
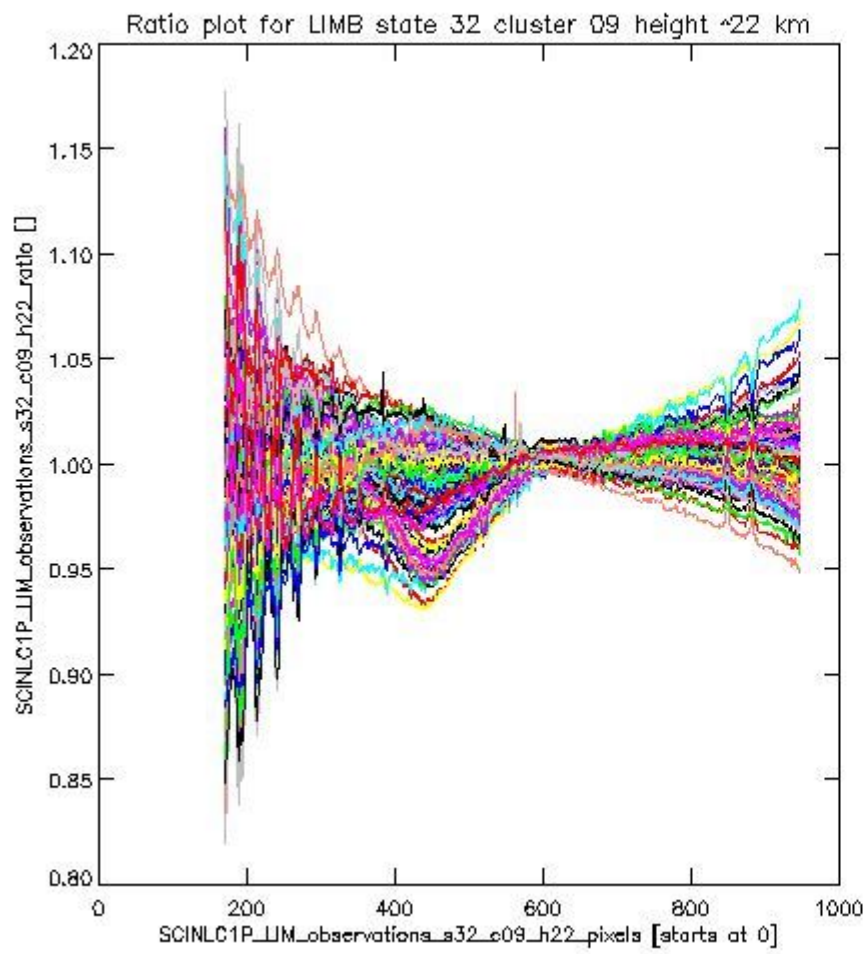
sciamachy_l1b_source_packet_report_SCIA_7_04_U_20110104_11.PNG

1.2.7 LIMB state 32 cluster 09 height ~22 km The data for the analysis of LIMB state 32 cluster 09 height ~22 km have the following characteristics:

Item	Value
Start time of first sample	04JAN2011 00:23:14.484
Start time of last sample	04JAN2011 10:51:13.165
Reference period start time	05DEC2010 00:21:40.995
Reference period stop time	03JAN2011 23:10:44.890
Channel number	2
First pixel number (starts at 0)	170
Last pixel number (starts at 0)	947



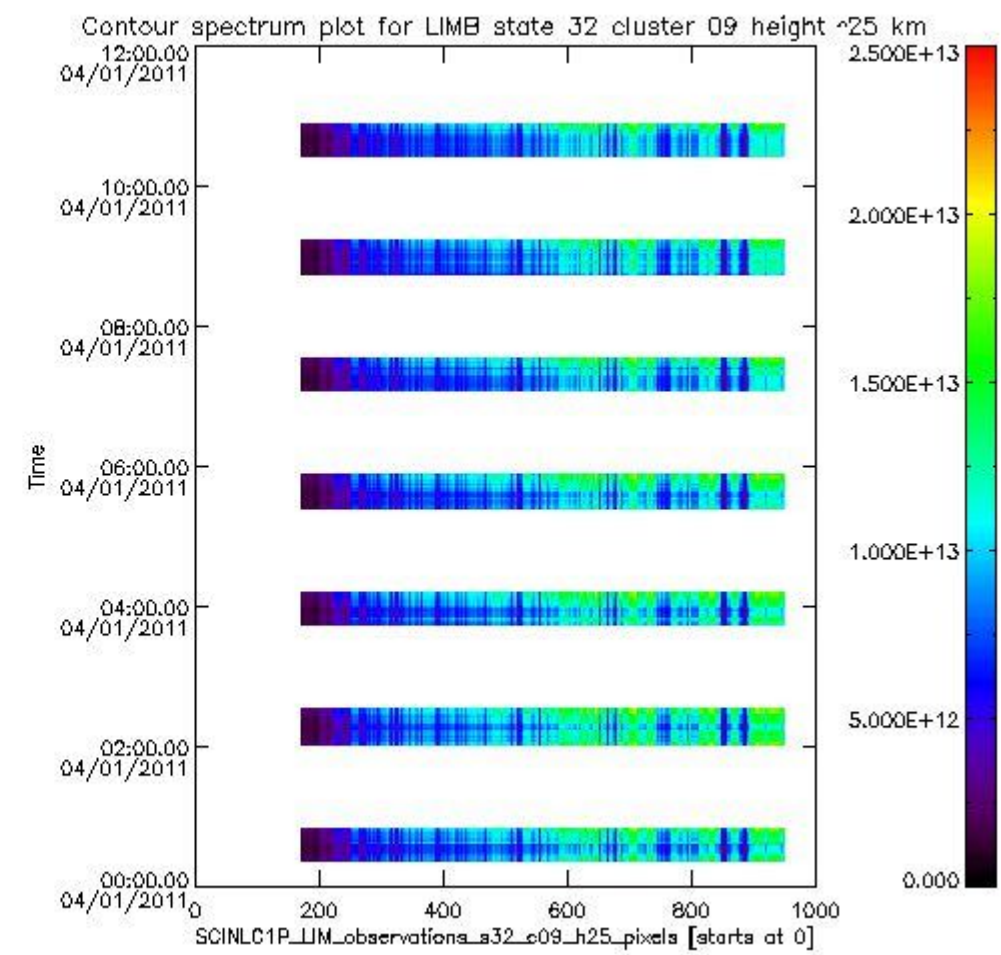
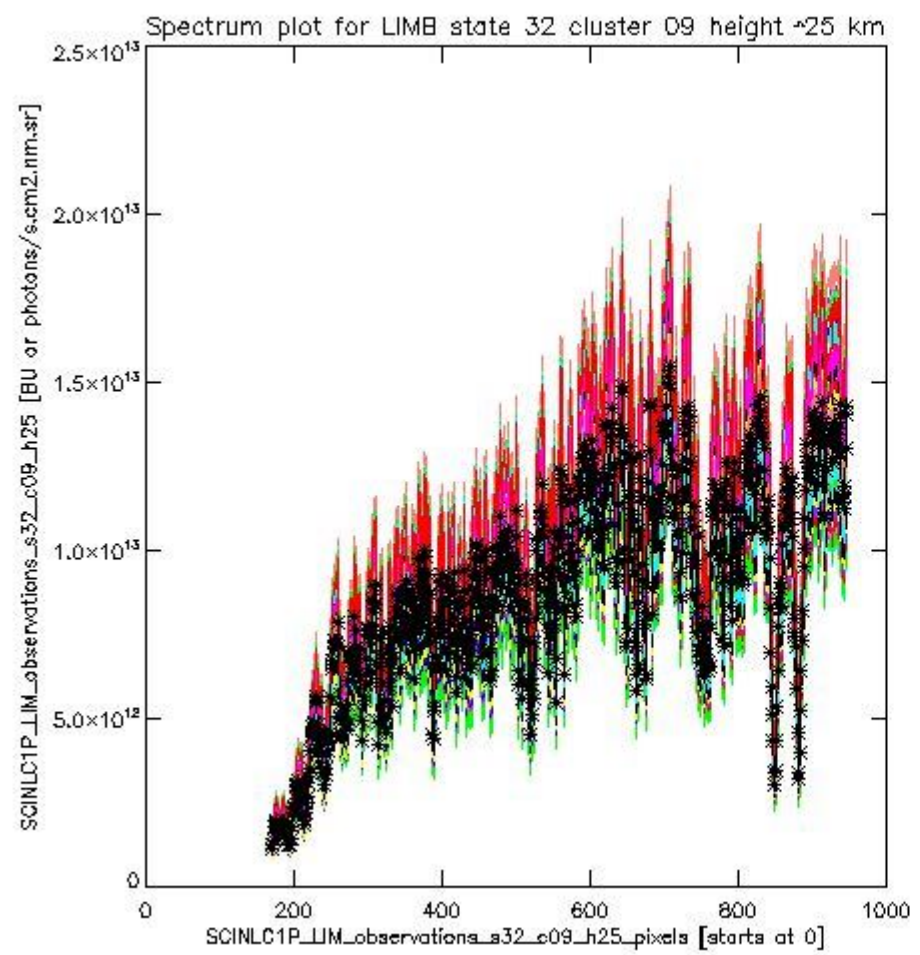
sciamachy_i1b_source_packet_report_SCIA_7_04_U_20110104_12.PNG



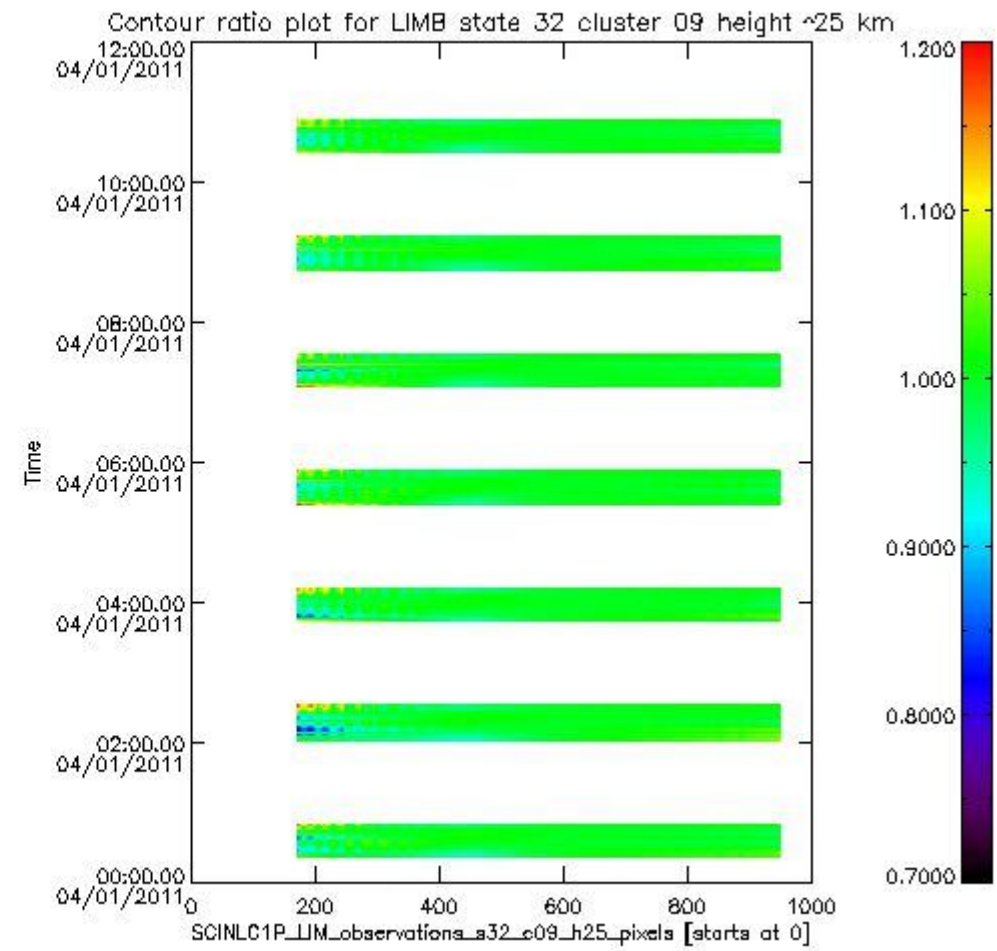
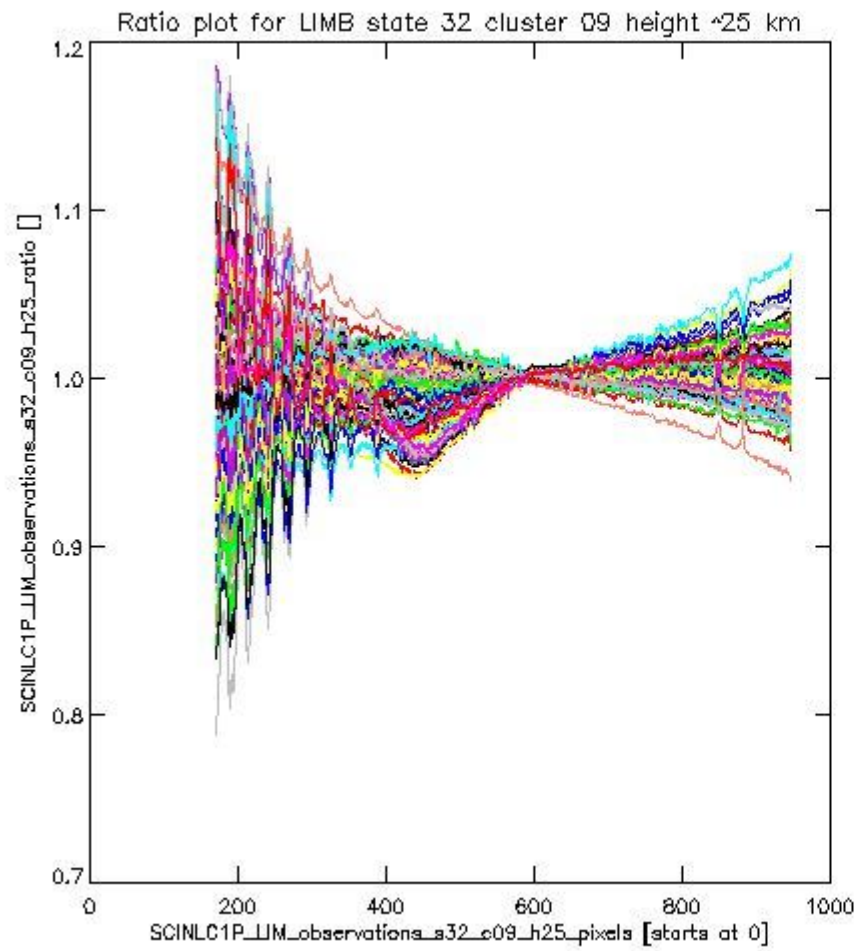
sciamachy_l1b_source_packet_report_SCIA_7_04_U_20110104_13.PNG

1.2.8 LIMB state 32 cluster 09 height ~25 km The data for the analysis of LIMB state 32 cluster 09 height ~25 km have the following characteristics:

Item	Value
Start time of first sample	04JAN2011 00:23:14.484
Start time of last sample	04JAN2011 10:51:13.165
Reference period start time	05DEC2010 00:21:40.995
Reference period stop time	03JAN2011 23:10:44.890
Channel number	2
First pixel number (starts at 0)	170
Last pixel number (starts at 0)	947



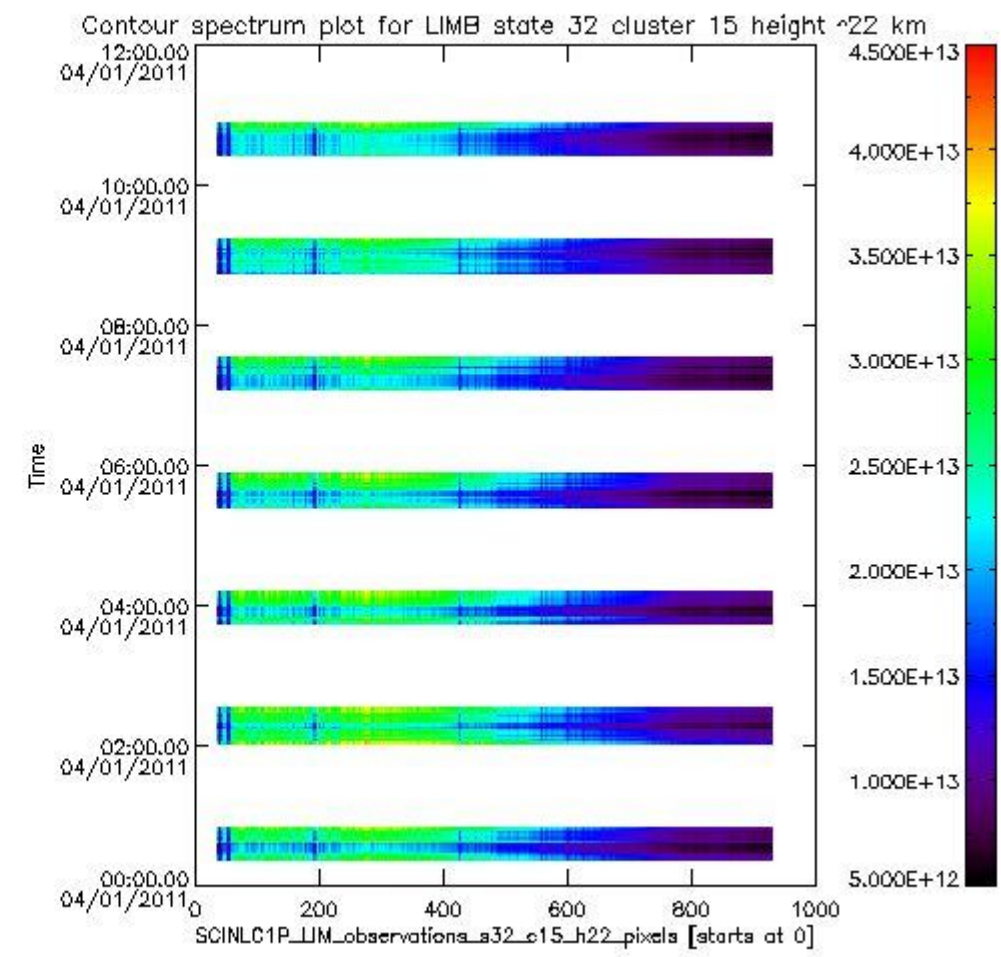
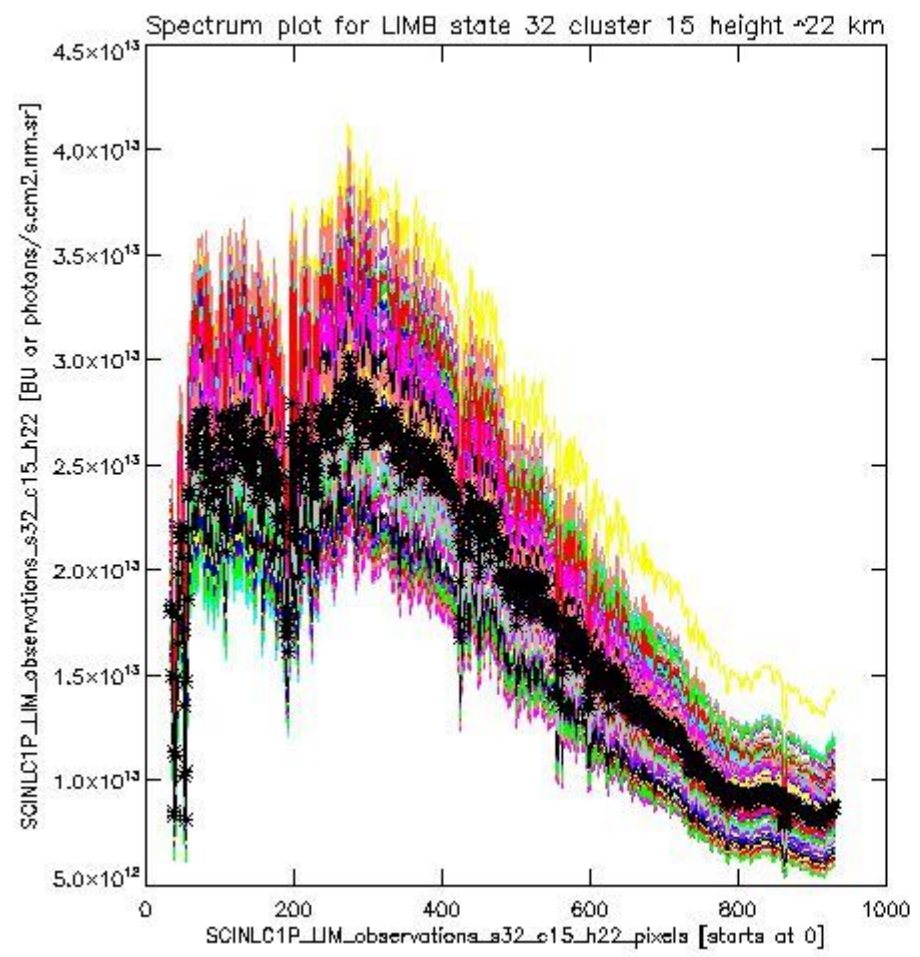
sciamachy_i1b_source_packet_report_SCIA_7_04_U_20110104_14.PNG



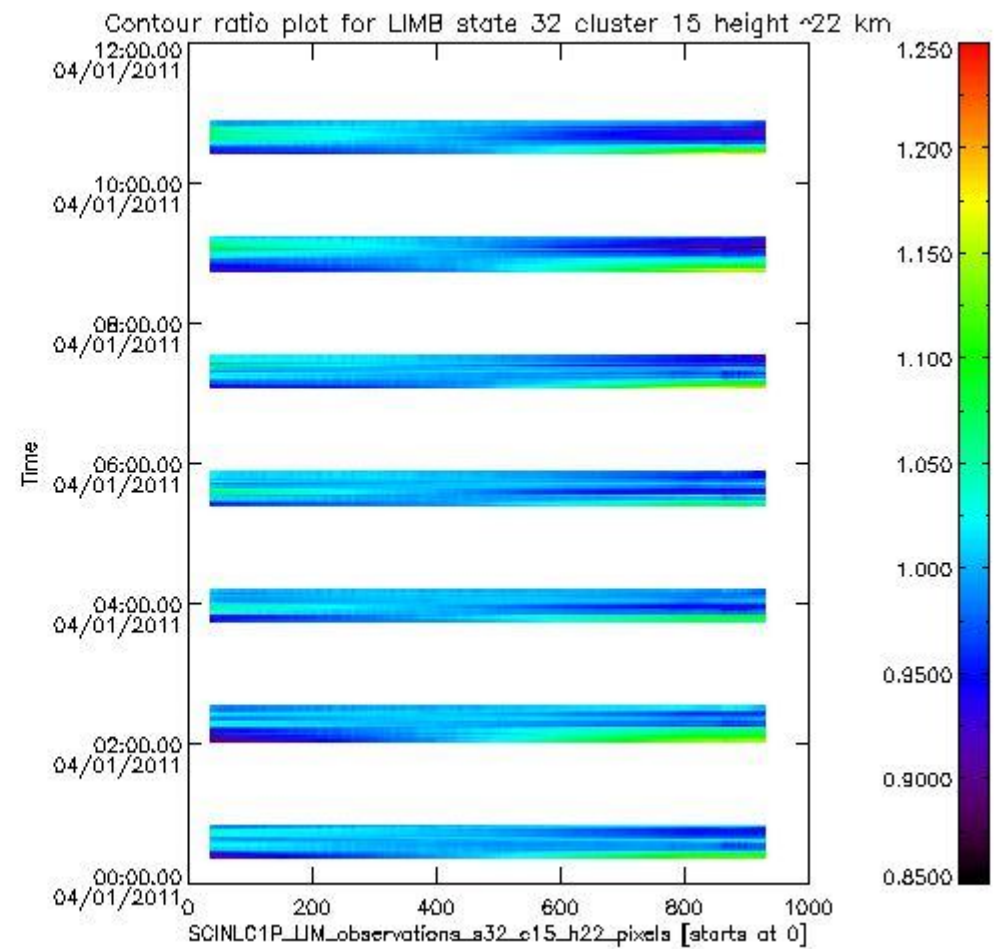
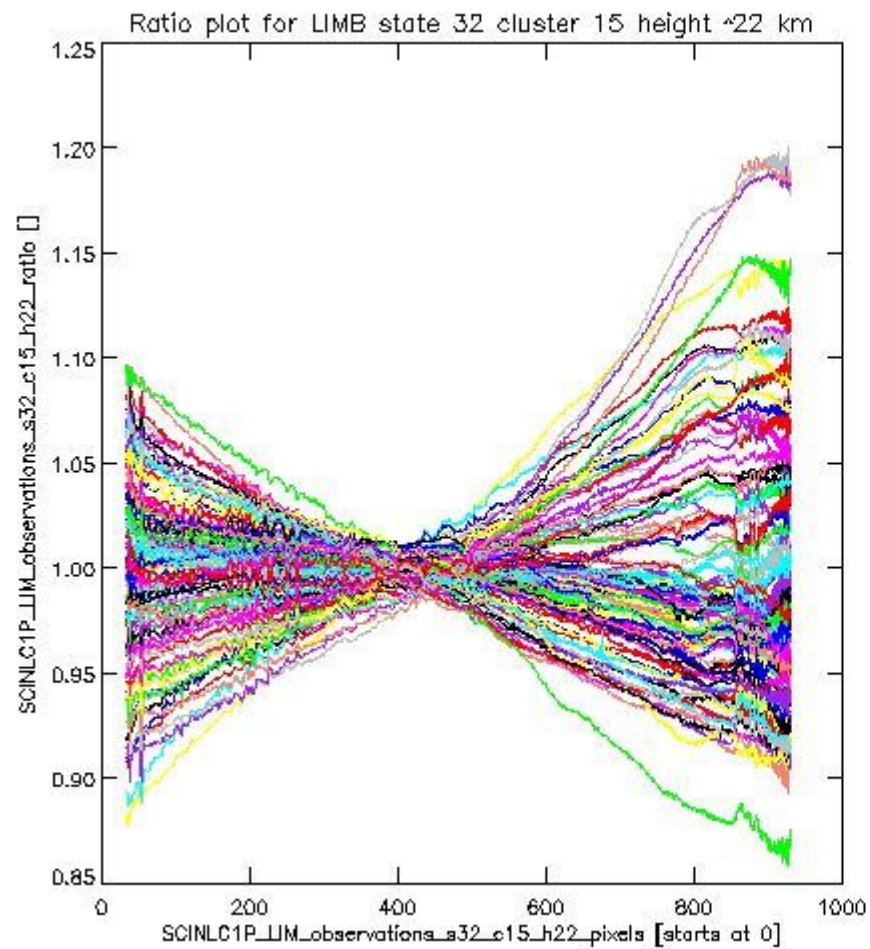
sciamachy_l1b_source_packet_report_SCIA_7_04_U_20110104_15.PNG

1.2.9 LIMB state 32 cluster 15 height ~22 km The data for the analysis of LIMB state 32 cluster 15 height ~22 km have the following characteristics:

Item	Value
Start time of first sample	04JAN2011 00:23:14.484
Start time of last sample	04JAN2011 10:51:13.165
Reference period start time	05DEC2010 00:21:40.995
Reference period stop time	03JAN2011 23:10:44.890
Channel number	3
First pixel number (starts at 0)	33
Last pixel number (starts at 0)	929



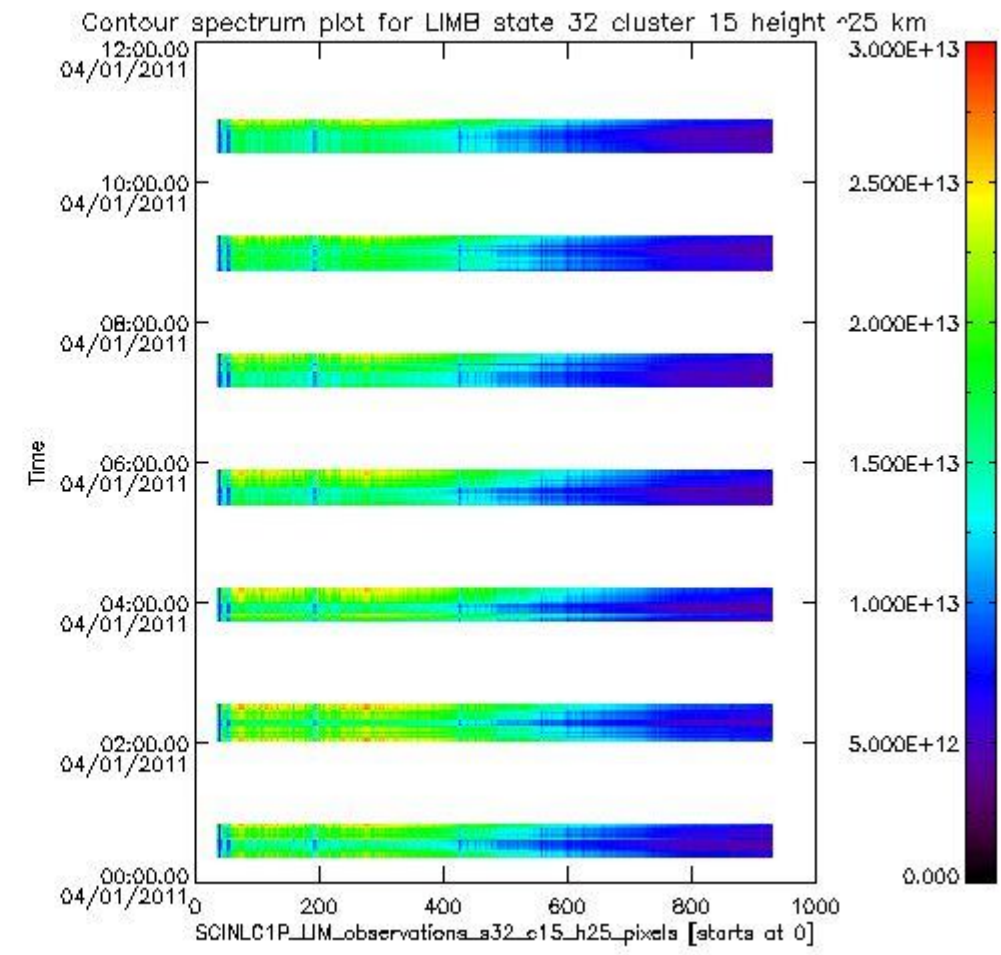
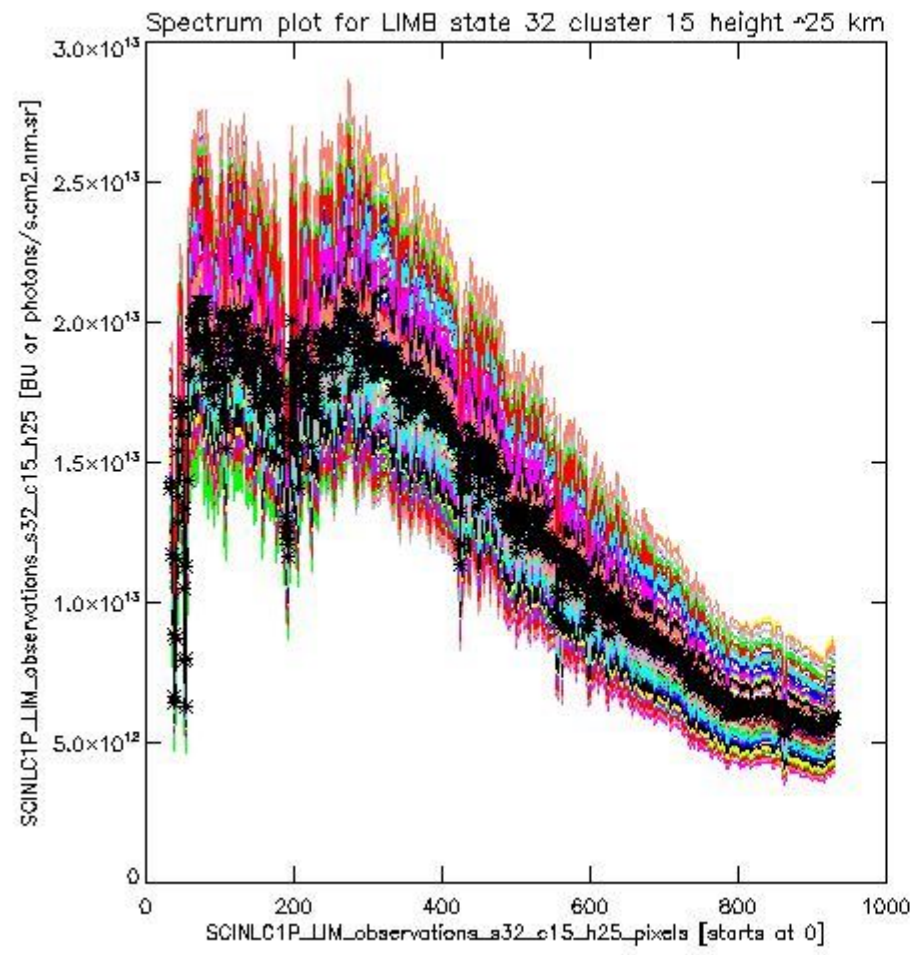
sciamachy_i1b_source_packet_report_SCIA_7_04_U_20110104_16.PNG



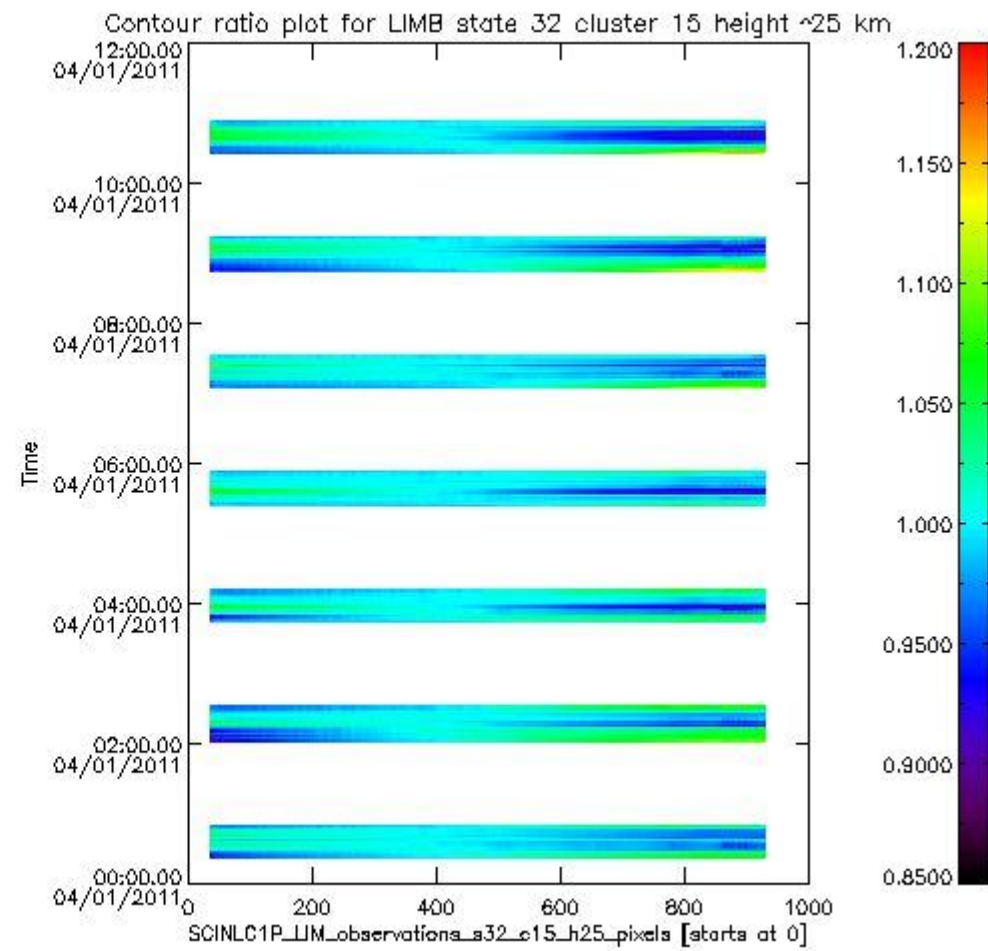
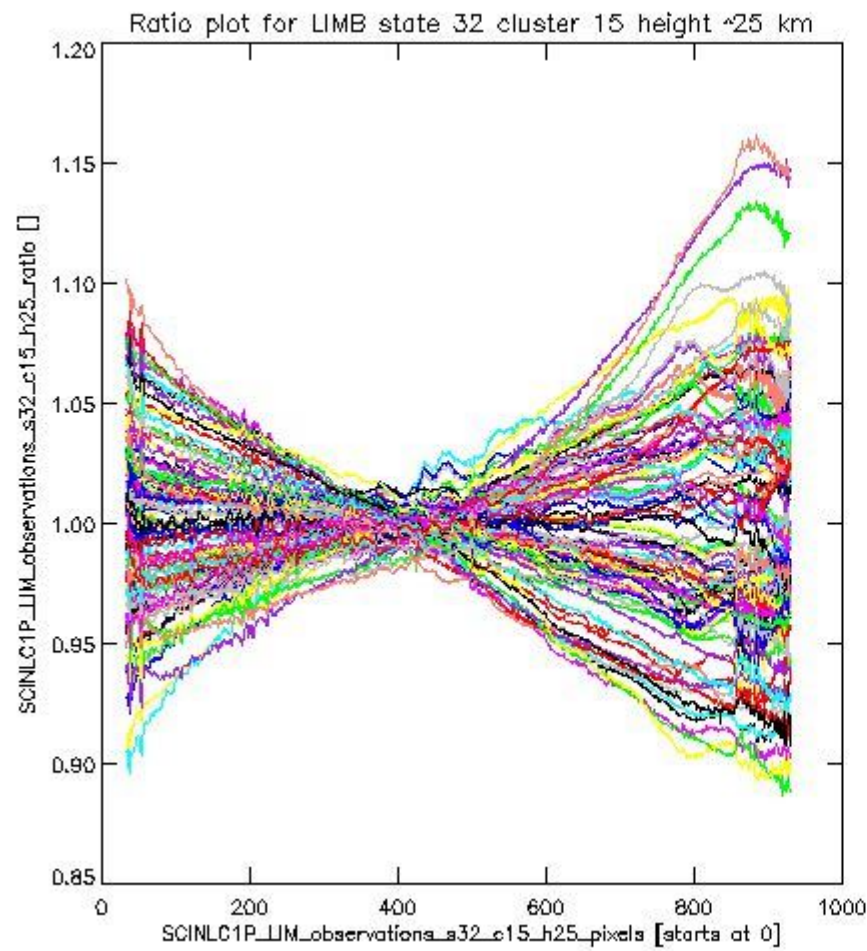
sciamachy_11b_source_packet_report_SCIA_7_04_U_20110104_17.PNG

1.2.10 LIMB state 32 cluster 15 height ~25 km The data for the analysis of LIMB state 32 cluster 15 height ~25 km have the following characteristics:

Item	Value
Start time of first sample	04JAN2011 00:23:14.484
Start time of last sample	04JAN2011 10:51:13.165
Reference period start time	05DEC2010 00:21:40.995
Reference period stop time	03JAN2011 23:10:44.890
Channel number	3
First pixel number (starts at 0)	33
Last pixel number (starts at 0)	929



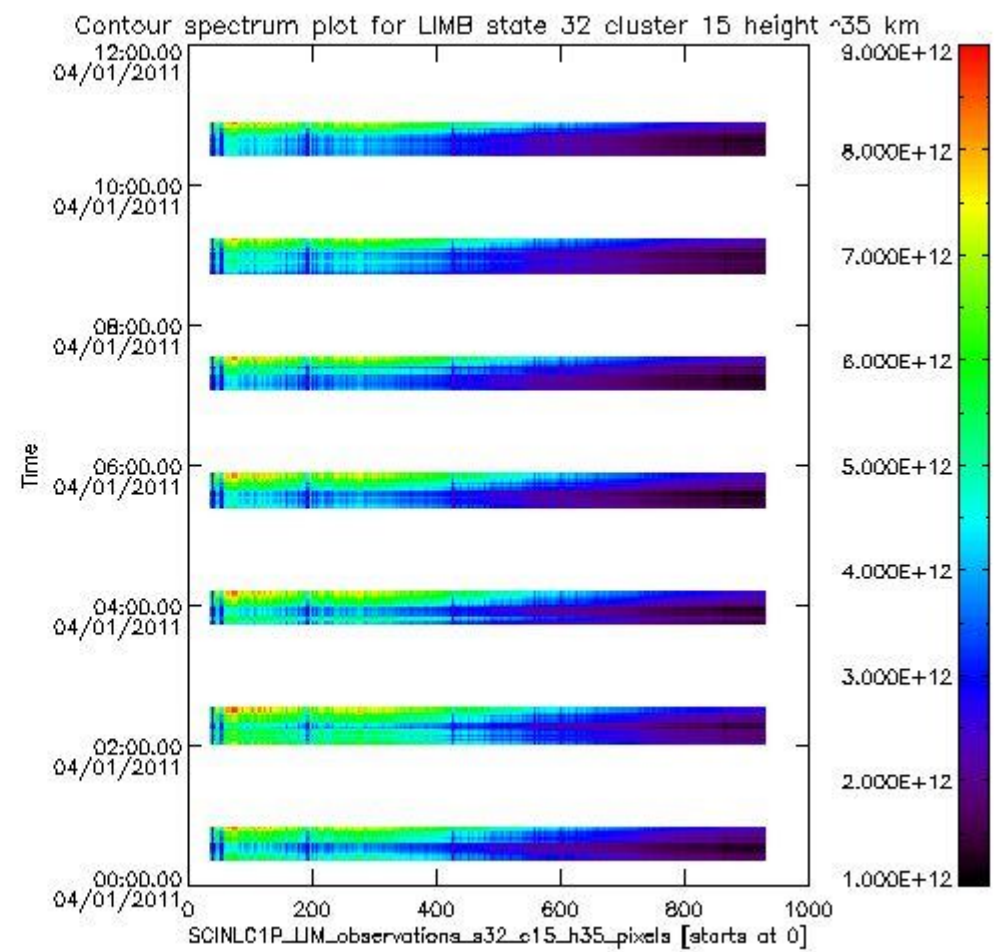
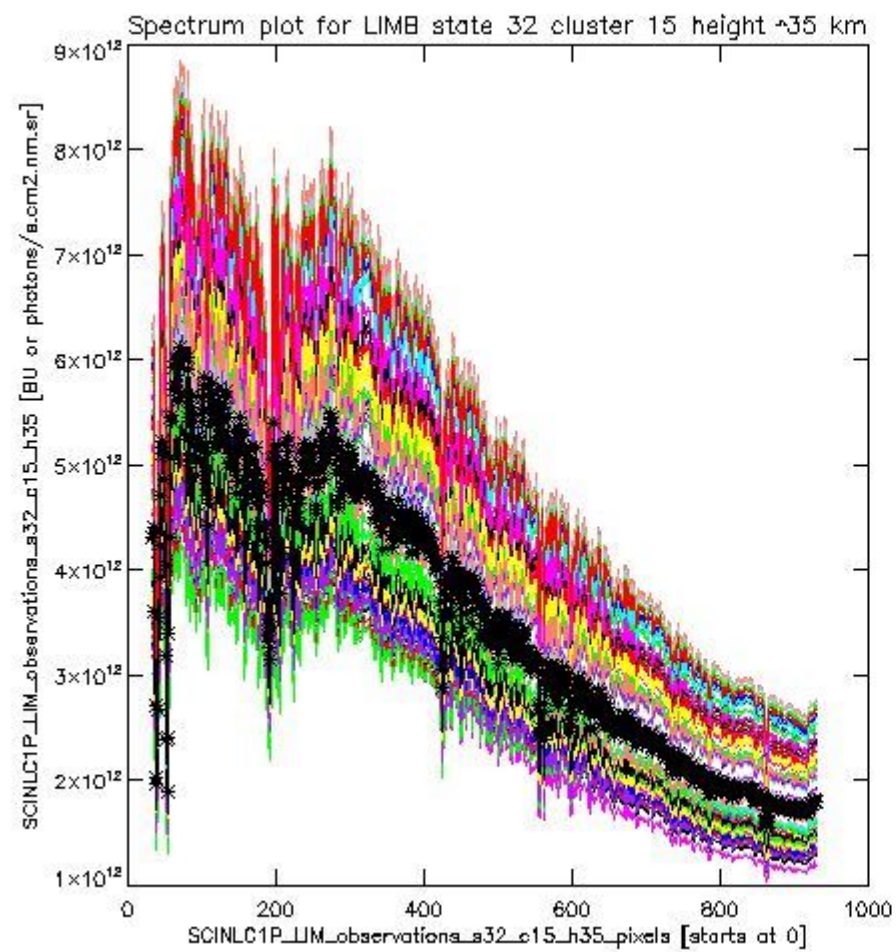
sciamachy_l1b_source_packet_report_SCIA_7_04_U_20110104_18.PNG



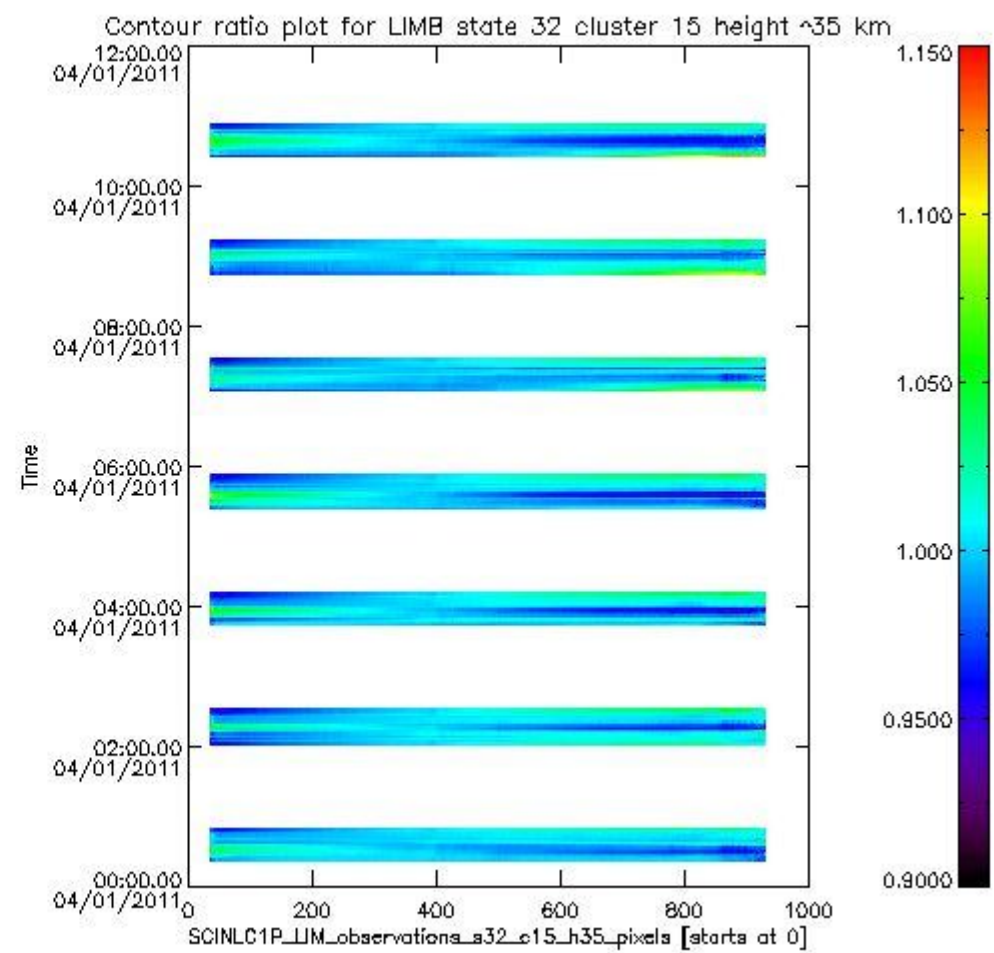
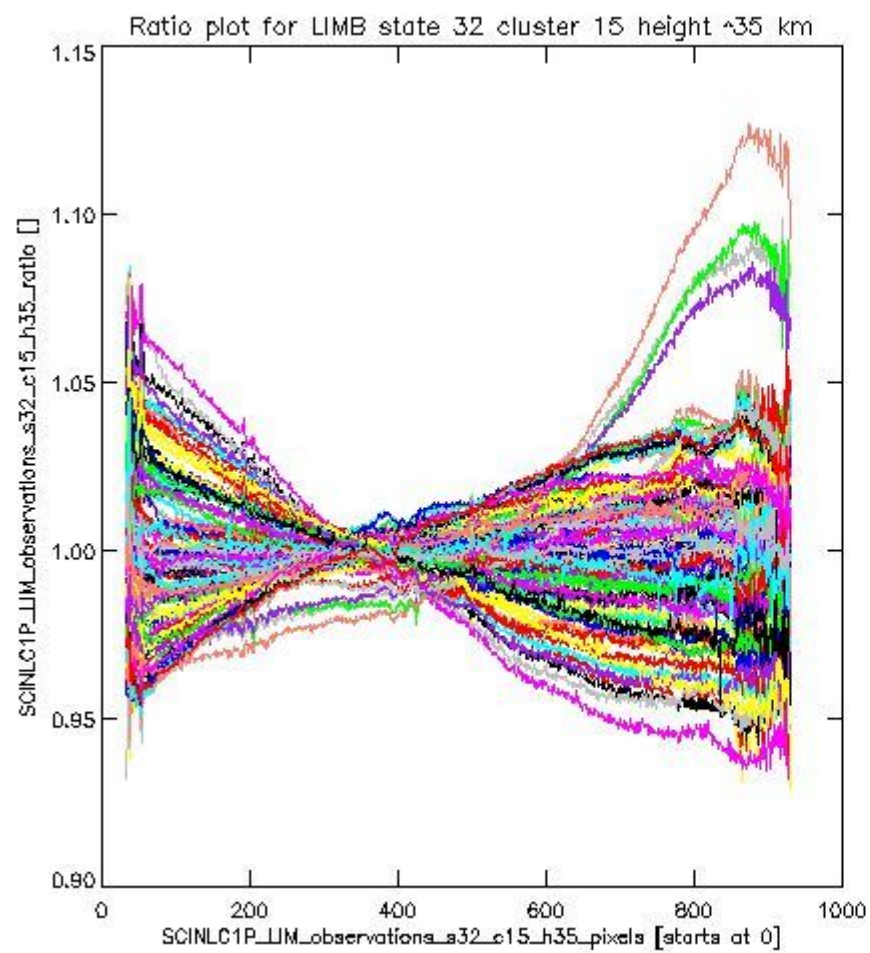
sciamachy_11b_source_packet_report_SCIA_7_04_U_20110104_19.PNG

1.2.11 LIMB state 32 cluster 15 height ~35 km The data for the analysis of LIMB state 32 cluster 15 height ~35 km have the following characteristics:

Item	Value
Start time of first sample	04JAN2011 00:23:14.484
Start time of last sample	04JAN2011 10:51:13.165
Reference period start time	05DEC2010 00:21:40.995
Reference period stop time	03JAN2011 23:10:44.890
Channel number	3
First pixel number (starts at 0)	33
Last pixel number (starts at 0)	929



sciamachy_11b_source_packet_report_SCIA_7_04_U_20110104_20.PNG



sciamachy_11b_source_packet_report_SCIA_7_04_U_20110104_21.PNG

