

idocument title/ titre du document

# **ENVISAT CYCLIC ALTIMETRIC REPORT**



**CYCLE 69** from 26-05-2008 to 30-06-2008

## **Quality Assessment Report**

prepared by	Carolina Nogueira Loddo - SERCO
checked by	EOX Team
approved by	OZ Zanife
reference	ENVI-GSOP-EOPG-03-0011
issue	1
date of issue	07 July 2008
status	Reviewed
Document type	Technical Note

## **TABLE OF CONTENTS**

<b>1</b>	<b>INTRODUCTION .....</b>	<b>1</b>
<b>2</b>	<b>DISTRIBUTION LIST .....</b>	<b>1</b>
<b>3</b>	<b>ACRONYMS.....</b>	<b>1</b>
<b>4</b>	<b>REFERENCE DOCUMENTS .....</b>	<b>2</b>
<b>5</b>	<b>GENERAL QUALITY ASSESSMENT .....</b>	<b>3</b>
5.1	Cycle Overview.....	3
5.2	Payload status.....	4
5.2.1	Altimeter Events .....	4
5.2.1.1	RA-2 instrument planning.....	4
5.2.2	MWR Events.....	6
5.2.3	DORIS Events.....	6
5.3	Availability.....	6
5.4	Orbit quality .....	6
5.5	Ground Segment Processing Chain Status.....	7
5.5.1	IPF Processing Chain .....	7
5.5.1.1	Version.....	7
5.5.1.2	Auxiliary Data File.....	7
<b>6</b>	<b>INSTRUMENT PERFORMANCE .....</b>	<b>8</b>
6.1	RA-2 Performance .....	8
6.1.1	Tracking capability .....	8
6.1.2	IF Filter MASK.....	10
6.1.3	USO.....	14
6.1.4	Datation.....	16
6.1.5	In-Flight Internal Calibration .....	19
6.1.6	Sigma0 Transponder .....	23
6.1.7	Mispointing .....	24
6.1.8	S-Band anomaly .....	28
6.2	MWR Performance .....	29
6.3	DORIS Performance .....	29
<b>7</b>	<b>PRODUCT PERFORMANCE.....</b>	<b>29</b>
7.1	Product disclaimer.....	29

7.2	Data handling recommendations.....	30
7.2.1	S Band Power Drop.....	30
7.2.2	Sea-Ice flag .....	30
7.2.3	Ocean S-Band anomalies detection.....	30
7.2.4	Warning on IPF 4.56 Version Identification field .....	31
7.2.5	S-Band Backscattering Coefficient.....	31
7.2.6	USO Range Correction .....	31
7.2.7	Ku-Band Backscattering Coefficient calibration .....	32
7.2.8	RA-2 Radio Frequency Module switched BACK to a-side.....	33
7.3	Availability of data.....	33
7.3.1	RA-2.....	33
7.3.2	MWR.....	35
7.4	RA-2 Altimeter Parameters.....	36
7.4.1	Orbit .....	36
7.4.2	Altimeter range .....	37
7.4.3	Significant Wave Height.....	39
7.4.4	Backscatter coefficient – Wind Speed .....	42
<b>8</b>	<b>PARTICULAR INVESTIGATIONS .....</b>	<b>48</b>
	<b>APPENDIX 1: IPF UPGRADES.....</b>	<b>48</b>
	<b>APPENDIX 2: AVAILABILITY:.....</b>	<b>51</b>
	<b>APPENDIX 3: LEVEL 2 STATIC AUXILIARY DATA FILES .....</b>	<b>53</b>
	<b>APPENDIX 4: SIGMA0 ABSOLUTE CALIBRATION.....</b>	<b>54</b>
	<b>APPENDIX 5: S-BAND ANOMALY.....</b>	<b>55</b>
	<b>APPENDIX 6: IE SITES COORDINATES .....</b>	<b>55</b>

## 1 INTRODUCTION

This document aims at reporting on the performance of the EnviSat Radar Altimeter, Microwave Radiometer and DORIS sensors, on the data quality of the corresponding Fast Delivery products as well as on the main events which occurred during cycle 69.

This report covers the period from 26<sup>th</sup> May 2008 until 30<sup>th</sup> June 2008.

## 2 DISTRIBUTION LIST

This report is available in PDF format at the internet address

[http://earth.esa.int/pcs/envisat/ra2/reports/pcs\\_cyclic/](http://earth.esa.int/pcs/envisat/ra2/reports/pcs_cyclic/)

## 3 ACRONYMS

AGC	Automatic Gain Control
APC	Antenna Pointing Controller
DORIS	Doppler Orbitography and Radiopositioning Integrated by Satellite
DSR	Data Set Record
EPC	Electronic Power Converter
ERS	European Remote Sensing satellite
ESRIN	European Space Research Institute
ESOC	European Space Operations Centre
FD	Fast Delivery products
GS	Ground Segment
GTS	Global Telecommunication System
HTL	Height Tracking Loop
ICU	Instrument Control Unit
IECF	Instrument Engineering Calibration Facility
IF	Intermediate Frequency
IE	Individual Echoes
IPF	Instrument Processing Facility
HSM	High Speed Multiplexer
LUT	Look Up Table
MCMD	MacroCommand
MPH	Main Product Header
MSS	Mean Sea Surface
MWR	MicroWave Radiometer
MPS	Mission Planning System
MR	Microwave Receiver
NRT	Near Real Time
OBT	On-Board Time

OCM	Orbit Control Mode/Manoeuvres
PCS	ERS Products Control Service
PCF	EnviSat Product Control Facility
PDHS-E	ESRIN Processing and Data Handling Station
PDHS-K	Kiruna Processing and Data Handling Station
PLSOL	Payload Switch-Off Line
PMC	Payload Main Computer
PSO	On-orbit Position
PTR	Point Target Response
RA-2	EnviSat Radar Altimeter bi-frequency
RSL	Resolution Selection Logic
SAD	Static Auxiliary Files
SBT	Satellite Binary Time
SEU	Single Event
SLA	Sea Level Anomalies
SFCM	Stellar Fine Control Mode
SPH	Specific Product header
SPSA	Signal Processing Sub-Assembly
SYSM	Stellar Yaw Steering Mode
S/W	Software
TM	Telemetry
TRP	Transponder
TWT	Traveling Wave Tube
UTC	Coordinated Universal Time
USO	Ultra Stable Oscillator
YSM	Yaw Stellar Mode

## 4 REFERENCE DOCUMENTS

- [R – 1] F-PAC MONTHLY REPORT, SALP-RP-M-OP-XXXX-CN
- [R – 2] ENVISAT Microwave Radiometer Assessment Report Cycle, CLS.DOS/07.182,  
<http://earth.esa.int/pcs/envisat/mwr/reports/>
- [R – 3] Envisat RA-2 IF Mask weird behavior: Investigation Report
- [R – 4] Instrument Performance Evaluation and Analysis Summary, PO-TR-ALS-RA-0042
- [R – 5] Instrument Corrections Applied on RA-2 Level 1b products, Paper presented at the ENVISAT Calibration Review in September 2002
- [R – 6] ENVISAT Phase E Cal/Val Acquisition Plan, ENVI-SPPA-EOPG-TN-03-0008
- [R – 7] RA-2 S-Band Anomaly Investigation, PO-TN-ESA-RA-1342,  
<http://earth.esa.int/pcs/envisat/ra2/articles/>
- [R – 8] RA-2 Performance Results, Paper presented at the ENVISAT Calibration Review in September 2002
- [R – 9a] ECMWF Report on ENVISAT RA- 2 for July 2005, Report on ENVISAT Radar Altimeter - 2 (RA- 2), Wind/ Wave Product with Height Information (RA2\_ WWV\_ 2P),

- [R – 9b] ECMWF Report on ENVISAT RA- 2 for August 2005, Report on ENVISAT Radar Altimeter - 2 (RA- 2), Wind/ Wave Product with Height Information (RA2\_ WWV\_ 2P), <http://earth.esa.int/pcs/envisat/ra2/reports/ecmwf/>
- [R – 10] Envisat GDR Quality Assessment Report, SALP-RP-P2-EX-21121-CLS015
- [R – 11] Envisat RA-2 Range Instrumental correction: USO clock period variations and associated auxiliary file, ENVI-GSEG-EOPG-TN-03-0009
- [R – 12] Defining a Rain flag for the Envisat altimeter, G. Quartly, study presented to the final CCVT plenary meeting, <http://earth.esa.int/pcs/envisat/ra2/articles/>
- [R – 13] ENVISAT Weekly Mission Operations Reports # 308-312, ENVI-ESOC-OPS-RP-1011-TOS-OF
- [R – 14] Envisat validation and cross calibration activities during the verification phase. Synthesis Report ESTEC contract No. 16243/02/NL/FF WP6, <http://earth.esa.int/pcs/envisat/ra2/articles/>
- [R – 15] ENVISAT-1 Products Specifications - Vol. 14: RA-2 Products Specifications, PO-RS-MDA-GS-2009, Iss 3, Rev. N, 24/05/2004
- [R – 16] Algorithm for Flag identification and waveforms reconstruction of RA-2 data affected by “S-Band anomaly”, ENVI-GSEG-TN-04-0004, Issue 1.4
- [R-17] Envisat Cyclic Report Cycle 28, ENVI-GSOP-EOPG-03-0011
- [R-18] ENVISAT RA-2 IF MASK AUX FILE - Updating Strategy: Investigation Report; C. Bignami and C.Loddo and N. Pierdicca.

## 5 GENERAL QUALITY ASSESSMENT

### 5.1 Cycle Overview

- RA-2 Ku Band is nominal.
- RA-2 S Band is no more available. The S Band Power Drop started on cycle 65, on 17 January 2008, 23:23:40, UTC (orbit nb 30759). Investigations have been conducted and the failure of the S Band power stage for the RA-2 RFSS Side A is considered to be permanent. Consequently, all S-band parameters, as well as the dual ionospheric correction are not relevant anymore and MUST NOT be used from this date onwards. Ionospheric corrections from model are available in RA-2 products.
- A similar event affected the redundant (B-Side) S-band on the 20 May 2006 when a switch to the RFM B-Side was performed as part of the investigation tests on the RA-2 Ultra Stable Oscillator (USO) anomaly.
- The RA-2 Ultra-Stable Oscillator (USO) was nominal on cycle 69.

**WARNING: Users are strongly advised not to use the range parameter in Ku and S Band during the current cycle without applying the USO correction.**

- Three USO corrections have been developed for the different Envisat Level 2 altimetry data products for correcting the abnormal RA-2 USO behaviour affecting the Altimetric Range by few meters w.r.t. the Mean Sea Surface:

1. NRT orbit basis USO correction for FDGDR products , available from <http://earth.esa.int/pcs/envisat/ra2/auxdata/>;
  2. An Interim daily USO correction for IGDR products, available at the same F-PAC location as for IGDR, in the directory igdr\_ous\_corr
  3. An OFL cycle USO correction for GDR products, available at the same F-PAC location as for GDR, in the directory gdr\_ous\_corr.
- A software routine has been developed to allow users to insert the RA-2 Ultra-Stable Oscillator (USO) corrections into Envisat Level 2 altimetry data products and is available in the same web site as the correction files, see above.
  - The NRT USO correction has been made available from July 24, 2006 onwards.
  - The II In-Flight Tests aimed to understand the origin of the IF Mask anomaly has been successfully concluded on Cycle 66. It has been recognized that the cause of the IF Mask anomaly is the wrong setting of the AGC used for the IF Calibration Mode from time to time. The NEW procedure consists in setting all the AGC's to 3dB before entering the IF Calibration Mode. This NEW procedure has been used on cycle 69 and all IF Masks were valid.
  - The overall number of valid IF masks has been 34, representing 100 % of the acquired and processed IF masks. The auxiliary file RA2\_IFF\_AX has been updated on date 9 June 2008.
  - Tracking performances in the different resolutions are well in line with the output figures and objectives of the Commissioning Phase.
  - During cycle 69, RA2\_SOL\_AX has been updated on date 27 June 2008.
  - RA2 was never unavailable, data availability was around 99.84%
  - MWR was never unavailable, data availability was around 98.35%
  - DORIS was never unavailable, data availability was around 93.53%

## 5.2 *Payload status*

### 5.2.1 ALTIMETER EVENTS

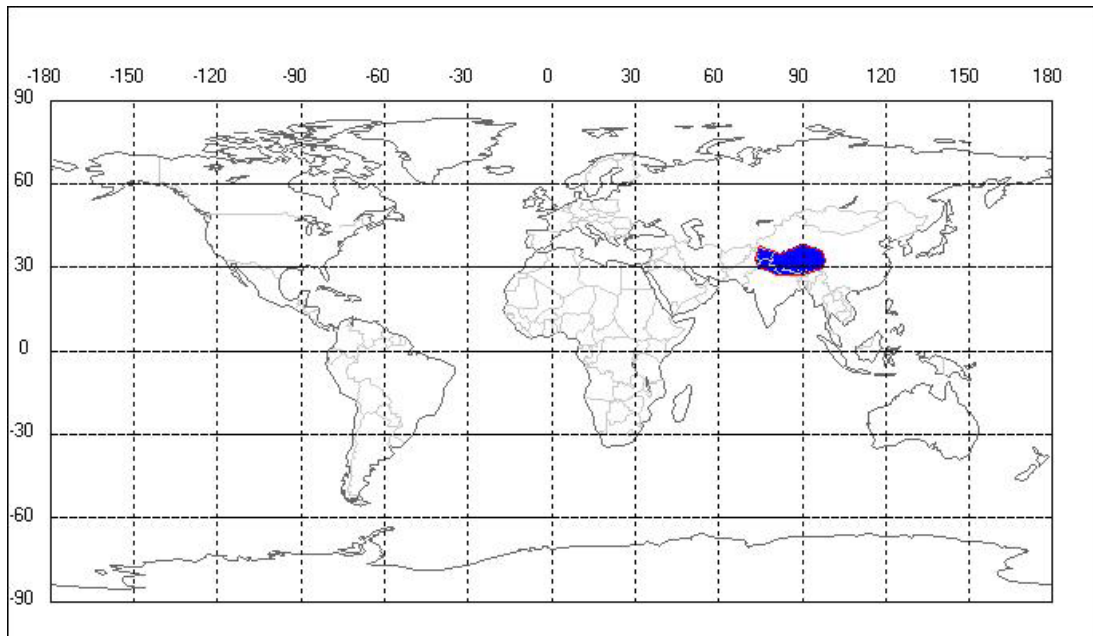
The Radar Altimeter 2, during cycle 69, was never unavailable.

#### 5.2.1.1 *RA-2 instrument planning*

On cycle 69 IF Calibration has been performed only over the Himalaya site. The operational acquisition has been performed on ascending passes with the NEW procedure for IF Calibration described below. In Figure1 a map is reported indicating the calibration site.

The II In-Flight Tests aimed to understand the origin of the IF Mask anomaly has been successfully concluded on cycle 66. It has been recognized that the cause of the IF Mask anomaly is the wrong setting of the AGC used for the IF Calibration Mode from time to time. The IF Calibration procedure to be used in operational IF Calibration consists in setting all the AGC's to

3dB before entering the IF Calibration Mode. These parameters are restored to the original values when the IF Calibration mode has expires, before entering in the Measurement mode.



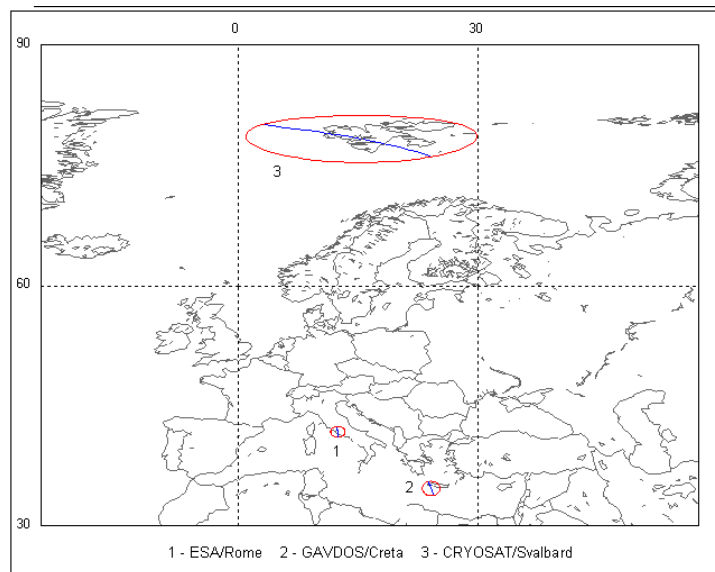
**Figure 1: IF Calibration Acquisition sites**

The RA-2 instrument planning was performed as follows:

- New procedure for IF calibration (through Digital BITE Mode command) over Himalaya for the entire cycle, 1 ascending pass per day
- No IF calibration on Rocky Mountains.
- Individual Echoes background planning: the buffering of 20 Data Blocks of Individual Echoes (1.114 sec.) transmitted every 160 Data Blocks starts after flying over the Himalayan region (both ascending and descending passes) and is operated for half a day.
- Individual Echoes acquisitions during PLO activity over ESA transponder located in Rome (1 second length acquisition, 1 repetition)
- Individual Echoes acquisition (1 second length acquisition, 1 repetition) over the following sites:  
 Capraia, Toulon D, Vostok , Dome C. Appendix 6 contains a table with the coordinates.
- Individual Echoes acquisitions over the Uyuni Salar
- Preset Loop Output mode for GAVDOS Range transponders, located in Creta.
- Preset Loop Output mode over the ESA transponder located in Rome (permanent location); high chirp resolution.

Hereafter the map is reported showing the acquisition sites for both the Range and Sigma\_0 transponders.





**Figure 2A: Transponder Acquisition sites**

### 5.2.2 MWR EVENTS

The MWR, during cycle 69, was never unavailable.

### 5.2.3 DORIS EVENTS

DORIS, during cycle 69, was never unavailable.

## 5.3 Availability

The summary of the RA-2 data products availability for the current cycle is reported in Appendix 2. Data availability was around 99.84% for RA-2 products, 98.35% for MWR products and 93.53% for DORIS products.

## 5.4 Orbit quality

During the period covered by cycle 69 a single burn SFCM orbit correction manoeuvre was executed as planned on May 30, 2008. The manoeuvre overall calibrated performance was -1.9%, with an associated total fuel consumption of 0.0272 kg . The characteristics of the manoeuvre were:

- Planned delta V size: 0.0042 m/s (towards the flight direction)
- Mid thrust time: 03:04:38.500 utc at PSO 351.4 degrees

- Thrust duration: 3 seconds
- Measured delta V: 0.0040 m/s (towards the flight direction)

During the rest of the period covered by this report the spacecraft ground track remained within the +/- 200 m deadband around the reference ground track at ascending node without any orbit control manoeuvre.

## 5.5 *Ground Segment Processing Chain Status*

### 5.5.1 IPF PROCESSING CHAIN

#### 5.5.1.1 *Version*

Cycle 64 has been processed with IPF processing chain V5.06, installed in both PDHS-E and PDHS-K on 20<sup>th</sup> June 2007, orbit 27729.

IPF V5.06 contains the following main evolutions:

1. Increase performance in the usage of DORIS Navigator in NRT products due to DORIS Navigator threshold update to 900 seconds coverage RA2/DORIS;
2. Alignment of Chain B to Prod Spec 3/N

A complete table of IPF Level1b and Level2 upgrades is reported in Appendix 1.

#### 5.5.1.2 *Auxiliary Data File*

The Auxiliary files actually used by the IPF ground processing are reported in Appendix 3.

The RA2\_POL\_AX, RA2\_SOL\_AX and RA2\_PLA\_AX have been regularly updated without problems. The RA2\_IFF\_AX has been updated during the reporting period. The RA2\_USO\_AX has never been updated during the reporting period. Data are corrected with the RA2\_USO\_AX estimated before the USO Clock anomaly (USO\_Clock\_Period = 12499999726, USO\_Range\_Correction= 17.3 mm).

The RA-2 Auxiliary Data Files (ADF) are accessible from the Envisat Web pages under:  
[http://www.envisat.esa.int/services/auxiliary\\_data/ra2mwr/current/](http://www.envisat.esa.int/services/auxiliary_data/ra2mwr/current/)

## 6 INSTRUMENT PERFORMANCE

### 6.1 RA-2 Performance

#### 6.1.1 TRACKING CAPABILITY

The percentages of acquisition in the different resolutions subdivided by surface type are given in the Table below:

Surface type	320 MHz	Commissioning Phase objectives 320 MHz	80 MHz	20MHz
Open Ocean	99.99	>99%	0.01	0.00
Costal Water (ocean depth < 200 m)	98.40	No specific requirement	1.45	0.15
Sea Ice	99.13	>95%	0.78	0.08
Ice Sheet	96.11	>95%	3.29	0.59
Land	81.70	No specific requirement	14.84	3.46
All world	95.23		3.90	0.87

**Table 1: RA-2 Tracking capability: Chirp ID percentages discriminated by surface type**

The figures given for the RA-2 tracking performances during this cycle are in line with the ones recorded at the end of the Commissioning Phase reported in the last column and presented in [R – 8].

In Figure 2, Figure 3 and Figure 4 the cyclic tracking percentages for the three RA-2 bandwidths are reported.

The worsening in performance noticeable for cycle 20 was due to the up-load of wrong on-board software parameters which lasted for about three days whilst for cycle 47 a special operation has been performed to limit RA-2 Chirp Bandwidth to fixed values.

In general, even if a tiny evolution can be observed, the tracking performances are well in line with the output figures and objectives of the Commissioning Phase as given in Table 1.

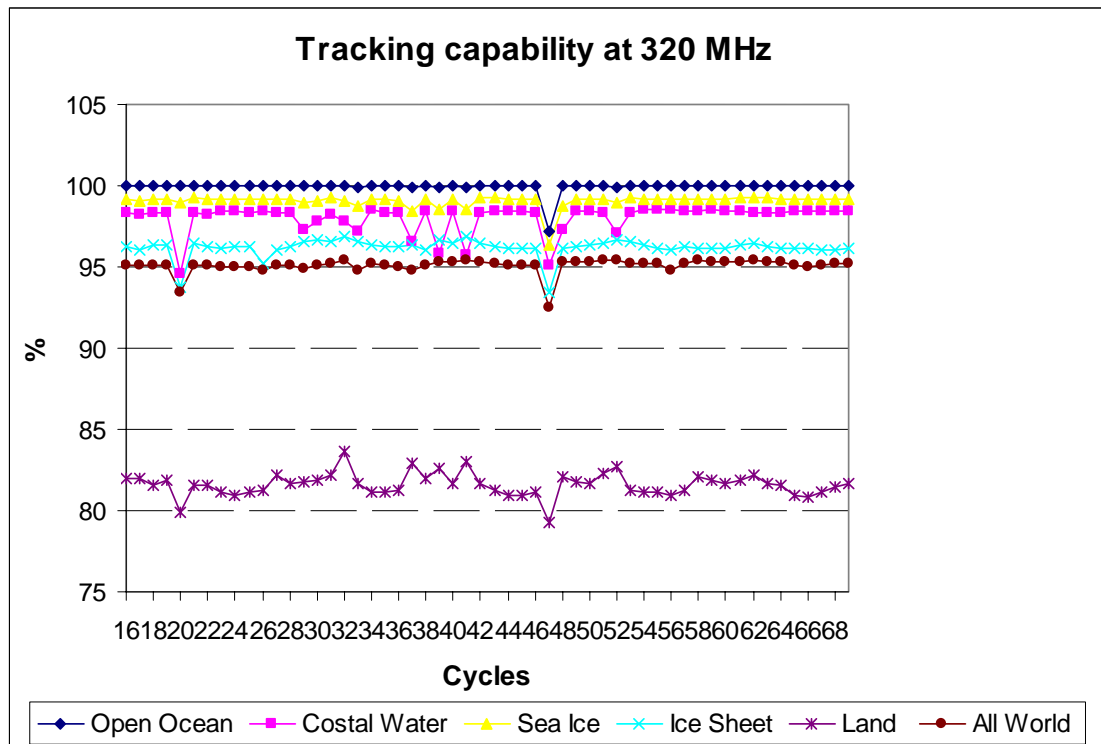


Figure 2: RA-2 Tracking percentage at 320MHz for different surfaces

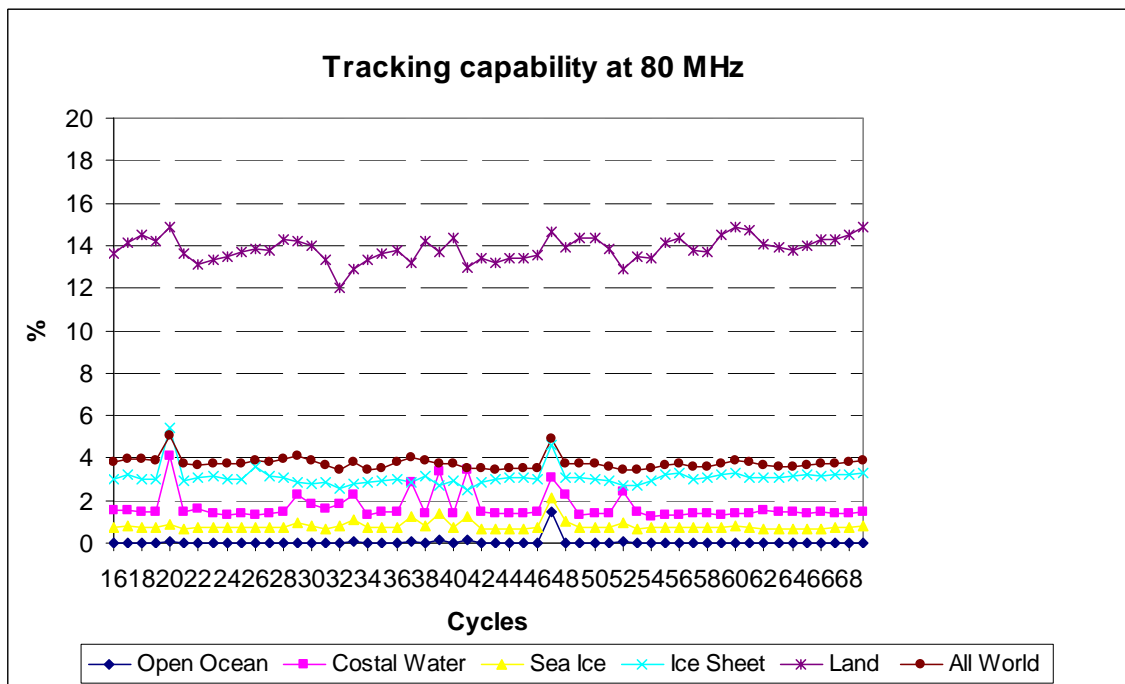


Figure 3: RA-2 Tracking percentage at 80MHz for different surfaces

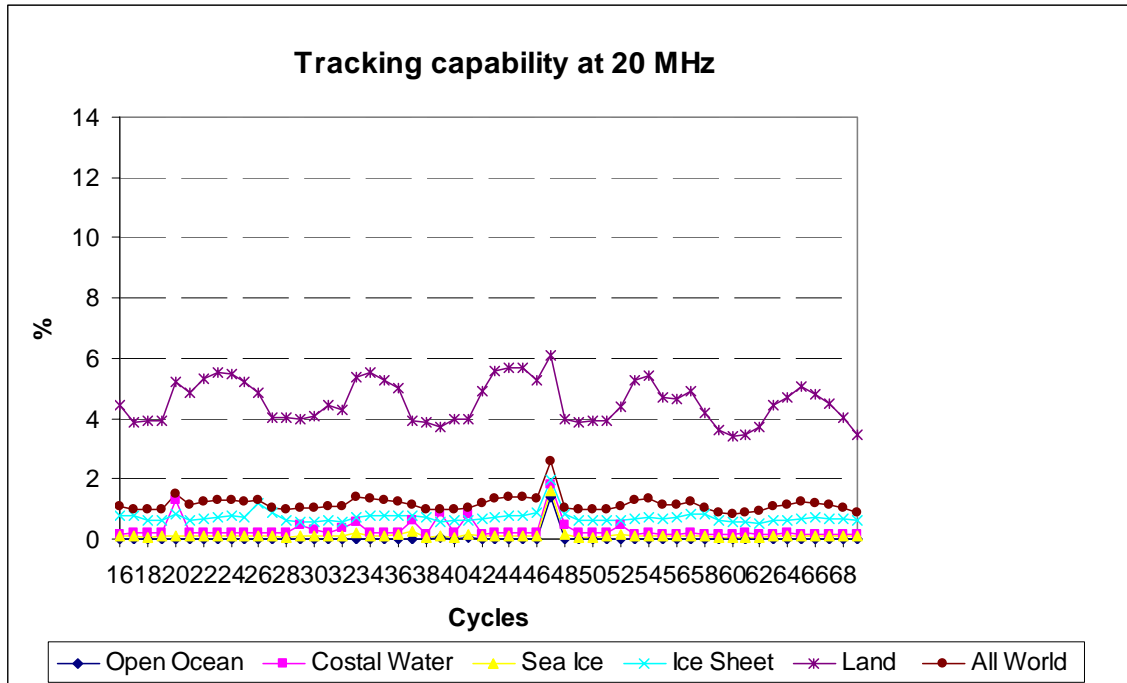


Figure 4: RA-2 Tracking percentage at 20MHz for different surfaces

### 6.1.2 IF FILTER MASK

In Figure 5 all valid IF masks retrieved during the current cycle are plotted in the left panel. The on-ground measured IF mask (ref [R – 4]) is also plotted in that panel with a solid line. In the right panel, the difference of each of the calculated IF masks with respect to the on-ground measured one is reported. The average difference with respect to the on-ground is used as the criteria for defining valid masks: if it is lower than 0.1 db, the mask is considered valid.

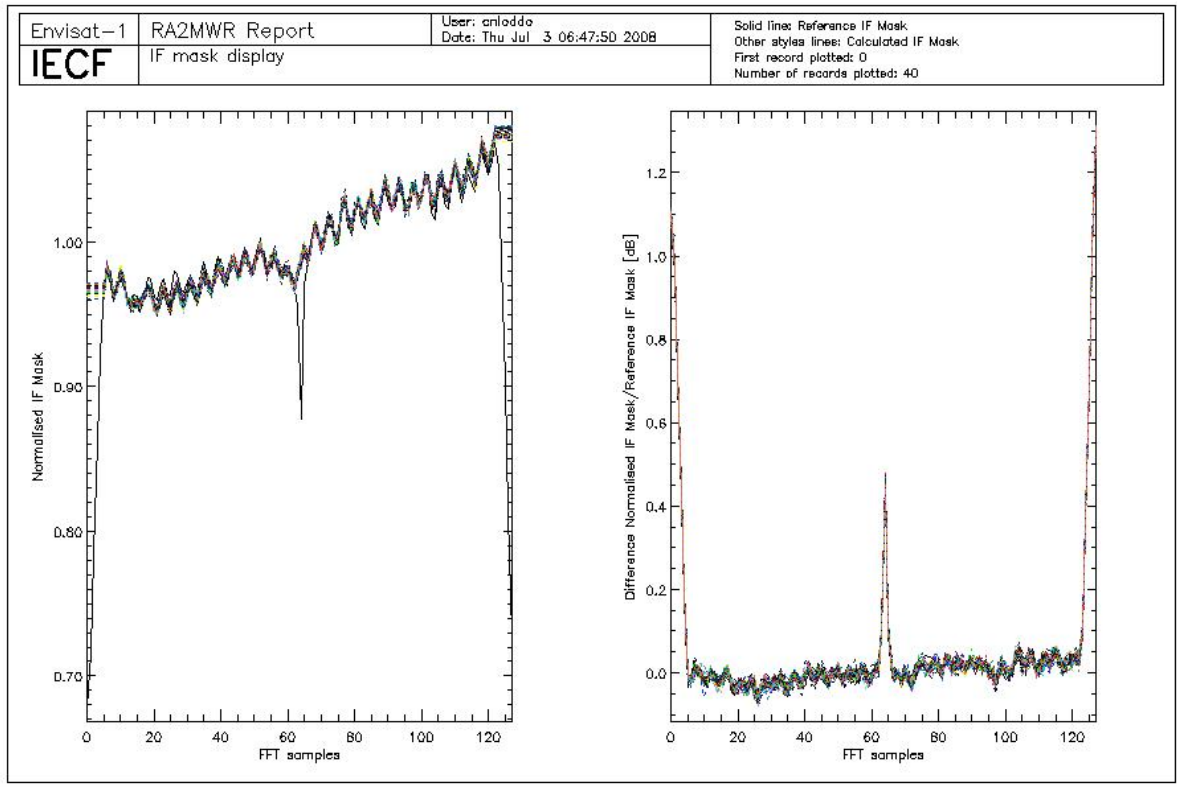
According to the planning defined for the IF Calibration acquisition on cycle 69 (ref. Par. 5.2.1.1), one daily pass over the Himalaya (ascending) has been performed with the New procedure for IF calibration.

The NEW procedure consists in setting all the AGC's to 3dB before entering the IF Calibration Mode and resetting all the parameters to the original values before entering in the Measurement mode.

The number of IF Masks acquired and processed on cycle 69 was 34. All 34 IF Masks acquired were valid:

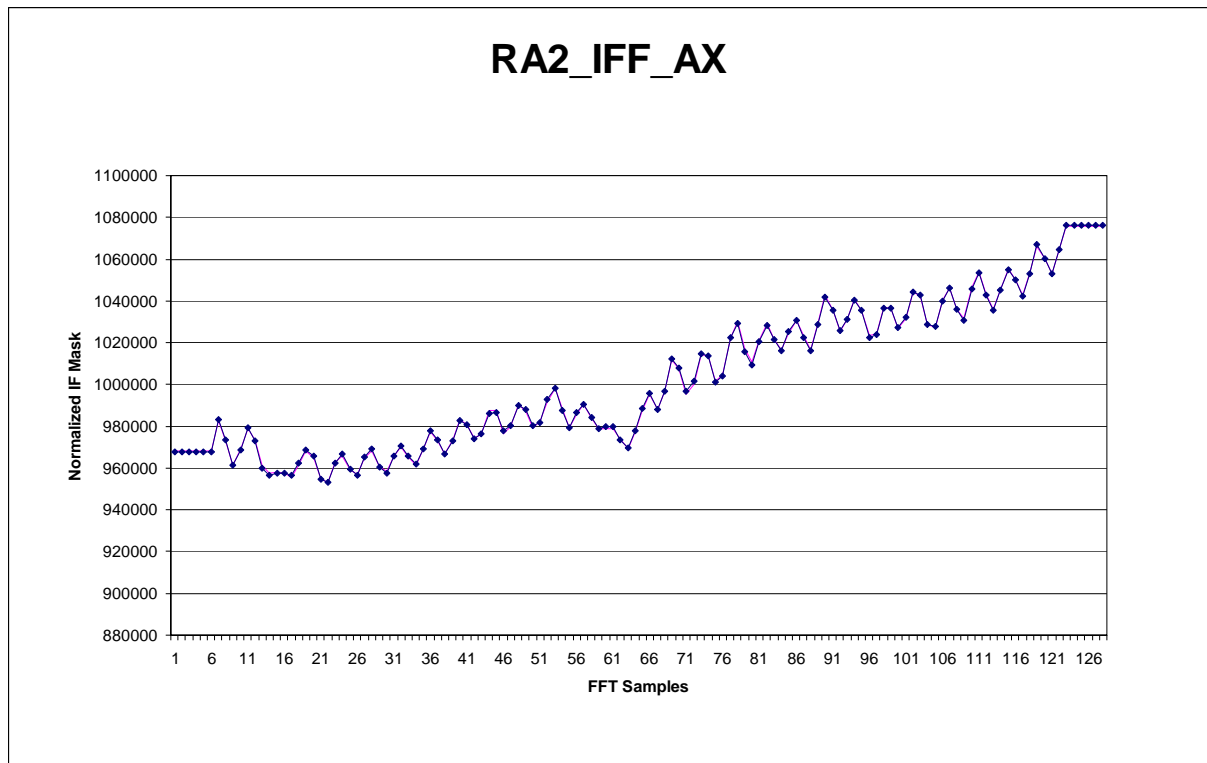
- 100 % of the acquired and processed IF masks were valid.

Only valid IF masks are used to generate the final IF mask used in the Level 1B ground processing; the method used for generating it consists in a monthly average according to the strategy defined in [R-18] with an editing criteria based on the comparison between each of the single IF masks and the reference one (on-ground).



**Figure 5: Valid IF masks retrieved during cycle 69 plotted together with the on-ground reference.**

In Figure 6 the IF Mask, updated on the 2 May 2008, and the previous IF Mask used for processing are plotted.

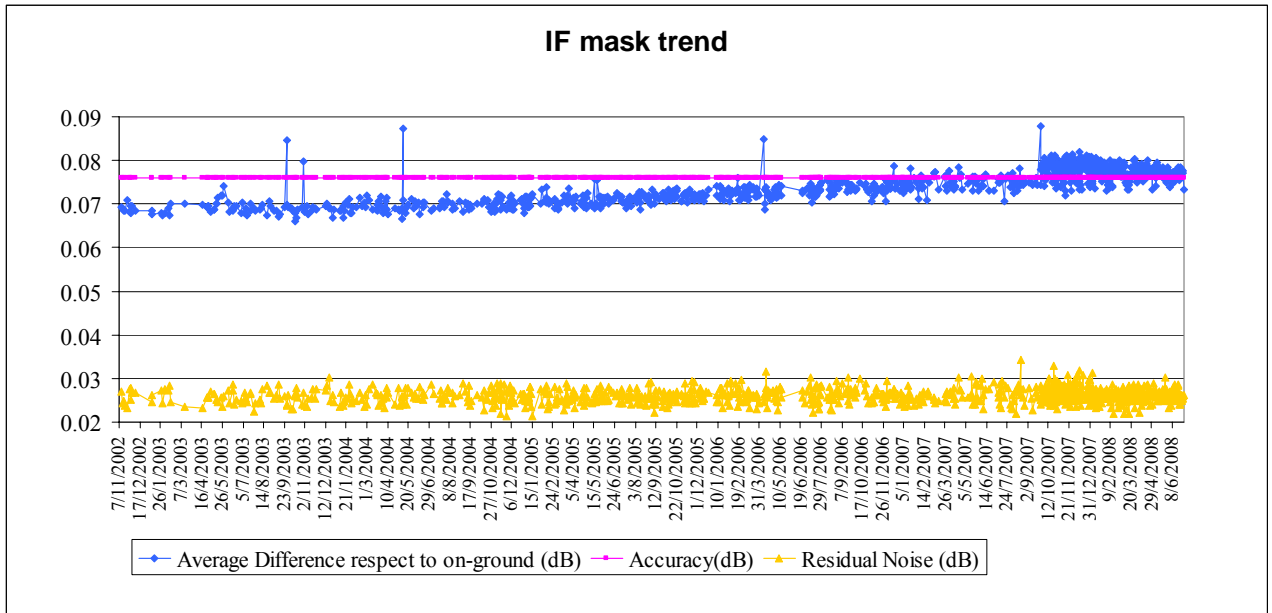


**Figure 6: Previous and IF Mask updated on 9 June 2008**

In Figure 7 the evolution of the IF mask quality parameters evaluated as in [R – 4] is reported only for valid data. It can be observed that the difference with respect to the on-ground reference presents an increasing trend due to the ageing of the instrument. These differences have significantly increased since cycle 56. The masks obtained on the Rocky Mountains present a higher difference with respect to the on-ground mask. This is probably due to the fact that the calibration segments are shorter on this new site and therefore with more noise. However, the difference is always lower than 0.1 db and for this reason the masks are still valid

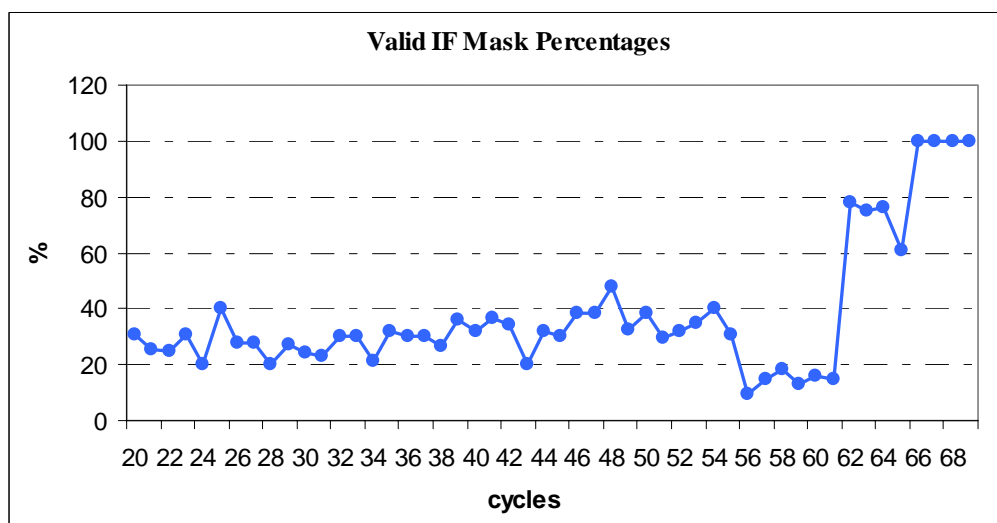
Some peaks are visible on the plot that correspond to the data acquired on September the 27<sup>th</sup> 2003 at 15:48, on October the 29<sup>th</sup> 2003 at 15:42, on May the 10<sup>th</sup> 2004 at 15:45, on April 9<sup>th</sup> 2006, on December 16<sup>th</sup> 2006 and on September 27<sup>th</sup>. The reason of this could be found in the instrument warming up considering that the IF Cal acquisition has been made, in the three first cases, only a couple of hours after an anomaly recovery. In the two last cases the unavailability was very long, more than two days, and the warming up effect lasted longer. The residual noise and the accuracy show a very constant behavior over the whole period.

During the current cycle the IF Calibration Mode was nominal. The weird behavior described in [R – 3] was no more present. According to the In-Flight Tests performed on cycle 62 63, 64 and 65 this problem, present since the beginning of the mission, seems to be related to the AGC used for the calibration mode.



**Figure 7: Evolution of the IF mask related parameters for valid IF masks retrieved up to cycle 69**

In Figure 8 the percentages of valid IF masks from cycle 20 onwards is reported. This percentage is computed with reference to the acquired masks per cycle. The higher number of valid IF Masks in cycle 48 is a consequence of the special IF Calibration operations which took place on 8 and 9 June 2006 when the altimeter was on its side B. The number of valid IF Masks has decrease from cycle 56 until cycle 61. The high number of valid IF Masks in the last five cycles is related to the NEW procedure for IF Calibration Mode applied from cycle 62 onwards, described at the beginning of this chapter. Starting on cycle 66, 100 % of IF Masks were valid because all IF Calibrations were performed using this new procedure.



**Figure 8: Percentages of valid IF Mask up to cycle 69**



### 6.1.3 USO

The RA-2 Ultra-Stable Oscillator (USO) was nominal on cycle 69.

In Figure 9 the USO clock period trend is reported. In order to make the variability visible, the difference of the actual USO clock period with respect to the nominal one has been plotted in the upper panel. In the lower panel the Range error due to the USO clock variability has been reported taking a satellite altitude of 800 Km as a nominal value.

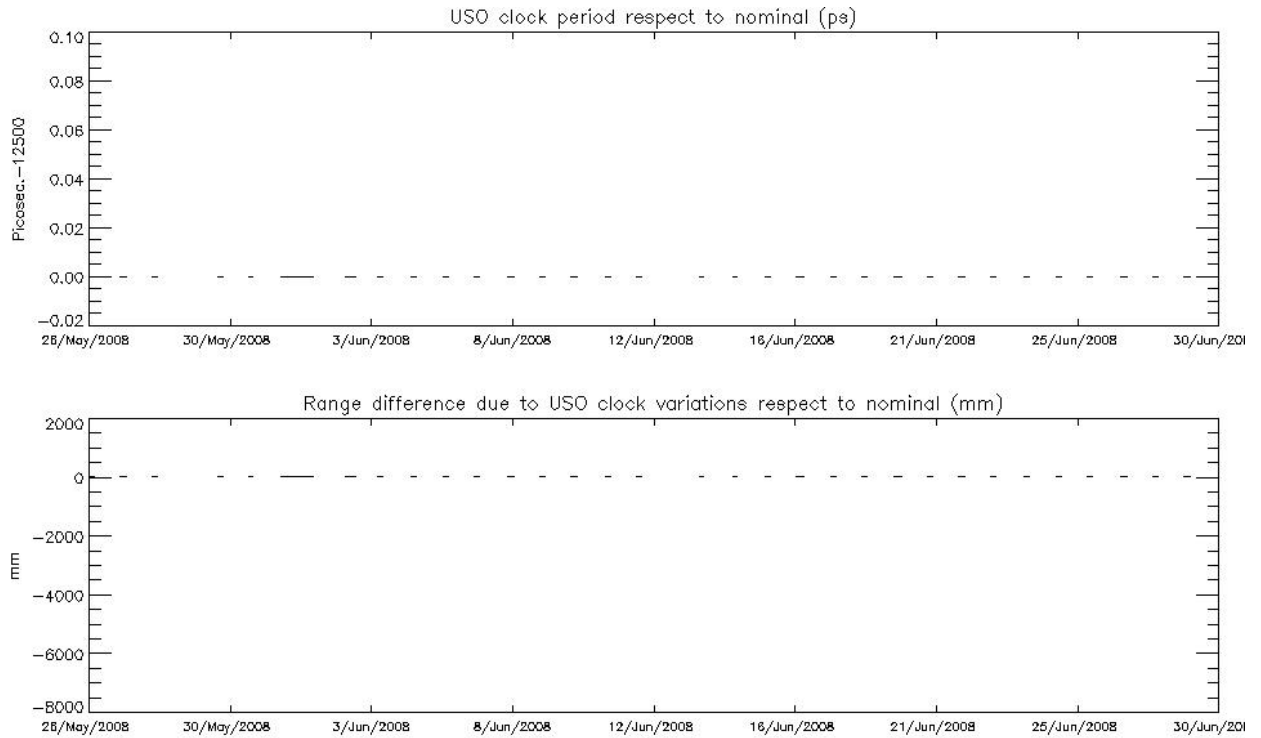
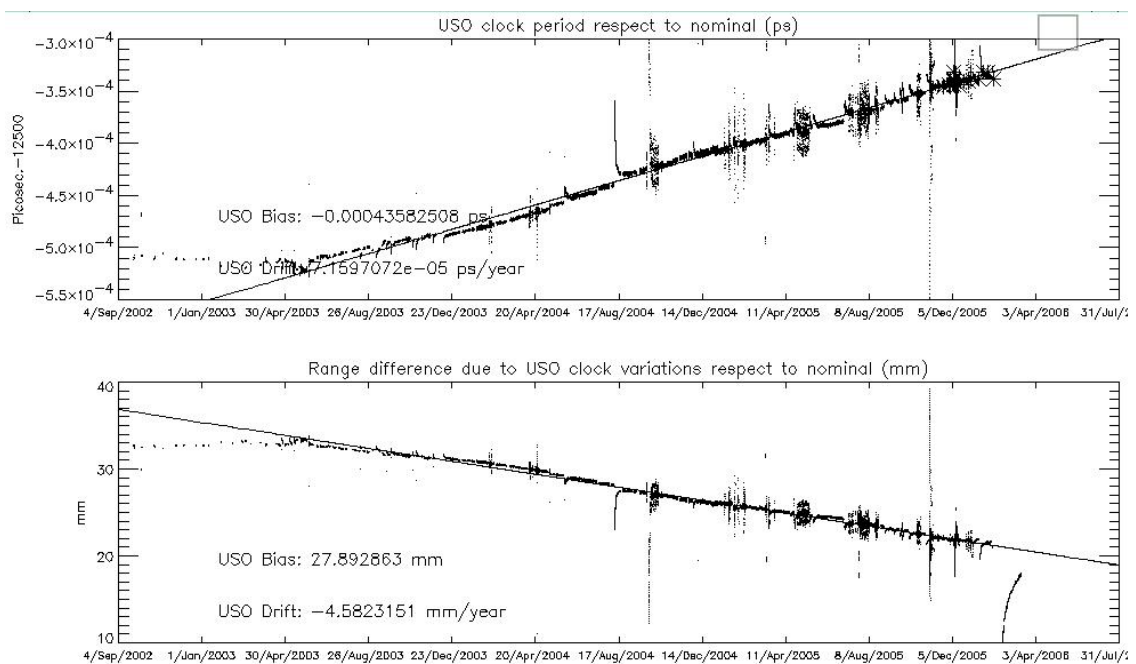


Figure 9: USO clock period (top) and range difference with nominal (bottom) for cycle 69

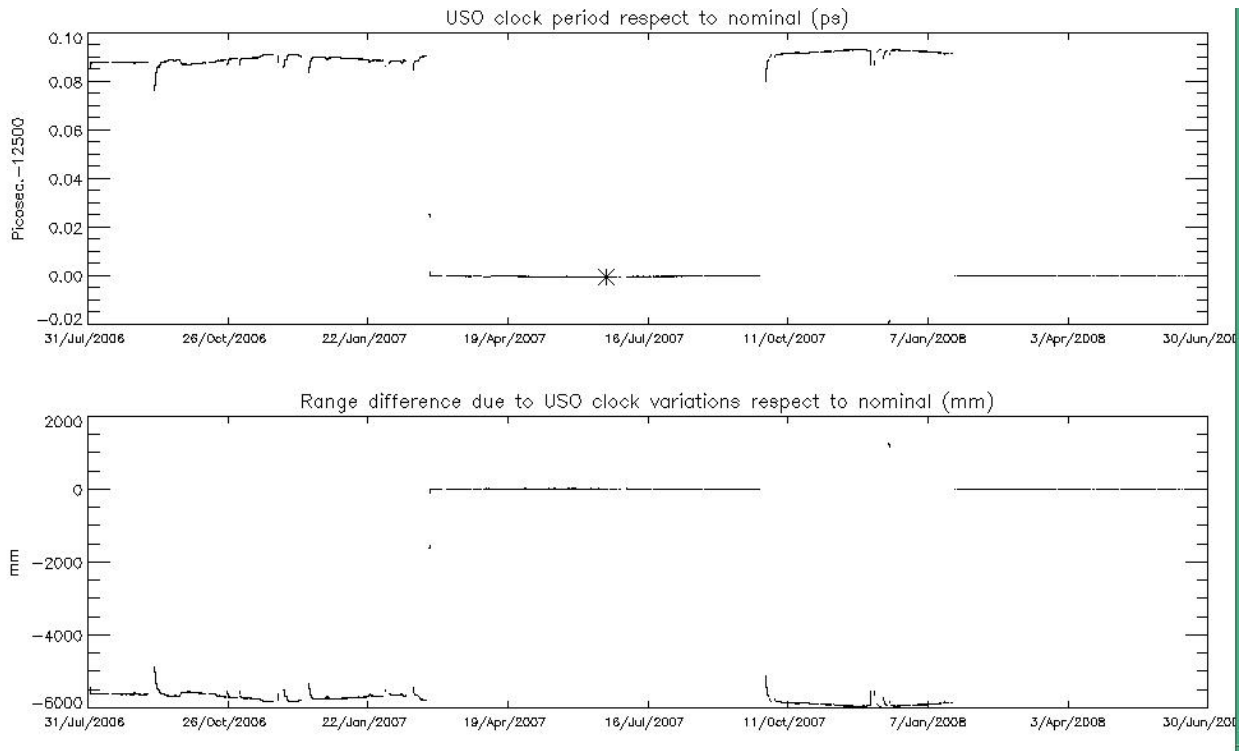
The USO Clock Period anomaly was almost permanently present during 2006 and 2007. It started in cycle 44, on date 1 Feb 2006 12:04:30, Orbit = 205181. It directly happened after the recovery of the RA-2 on-board anomaly which occurred on the 2006/02/01 at 05:17:56. During the anomalous period, the altimetric range jumped by several meters (about 5.6m) w.r.t. the Mean Sea Surface due to an anomaly in the USO clock period. Moreover, oscillations at the orbital period with an amplitude of 20-30 cm affect the Sea Level Anomaly making the range unusable for both Ku and S Band. The anomaly persisted intermittently until the 15<sup>th</sup> of May 2006 14:21:50, Orbit = 21994, when the instrument was configured to its RFSS B-side. It appeared again when the instrument was reconfigured to its nominal RFSS A-side on date 21 June 2006 13:20:15, Orbit = 22523. The anomaly reappeared after the instrument recovery on date 27<sup>th</sup> of September 2007 11:13:30 and disappeared again for an unknown reason on date 3<sup>rd</sup> of December 2007 03:00:00. The anomaly was back again on the 4<sup>th</sup> of December 2007 13:50:00 and it lasted until the 23<sup>rd</sup> January 2008 14:11:35, orbit nb 30840.

Note that the correction comes back to its nominal value in several steps, causing small uncertainties on the associated correction.

In Figure 10, the USO clock period trend retrieved from the beginning of the mission until the last week of cycle 49 is reported. In Figure 10A, the USO clock period trend retrieved from cycle 50 onwards is reported. The actual value of the USO clock period has been used within the L1b processing; only from the 24<sup>th</sup> of October 2005 (IPF V5.02) until the 1<sup>st</sup> of February 2006. This means that, during this period, the data are corrected for the bias and the drift correlated to the actual USO clock period. The evaluation of the actual USO clock period in this period was performed off-line respect to the IPF processing and it was updated once per week in the auxiliary file RA2\_USO\_AX. The method to correct the data from the USO period changes outside of this period is detailed in Part 7.2.6.



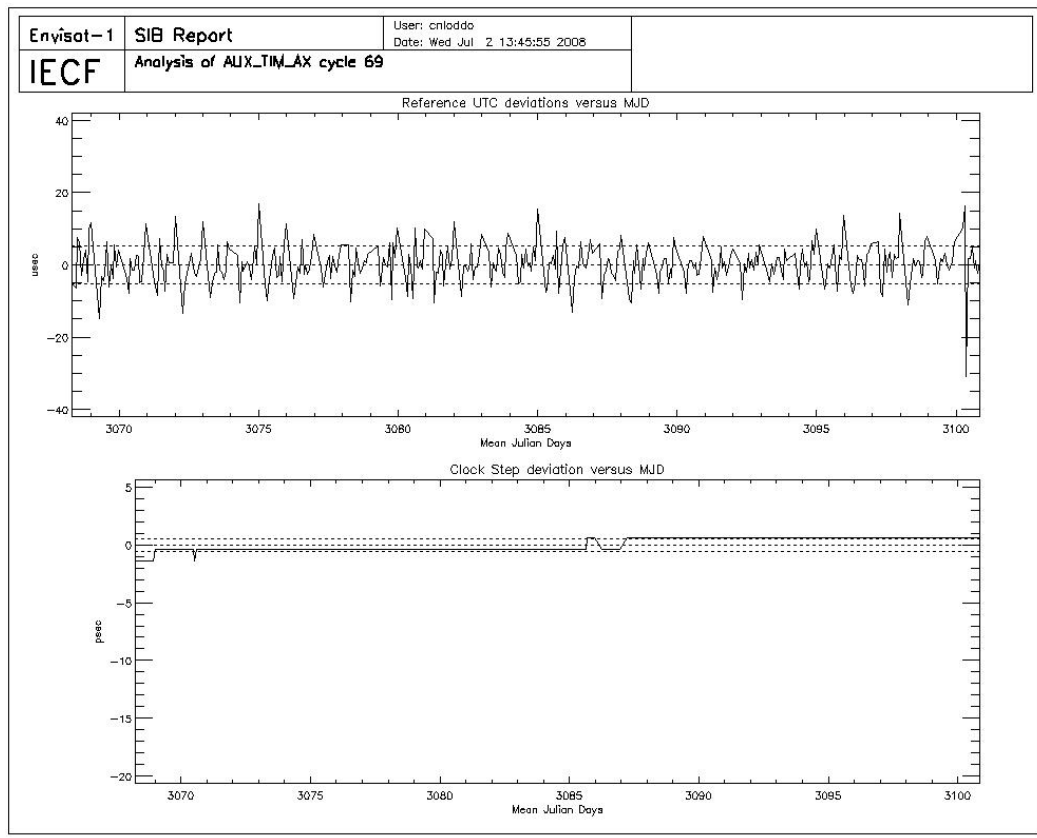
**Figure 10: USO clock period (top) and associated range difference (bottom) until cycle 49**



**Figure 10A: USO clock period (top) and associated range difference (bottom) from cycle 50 onwards**

### 6.1.4 DATATION

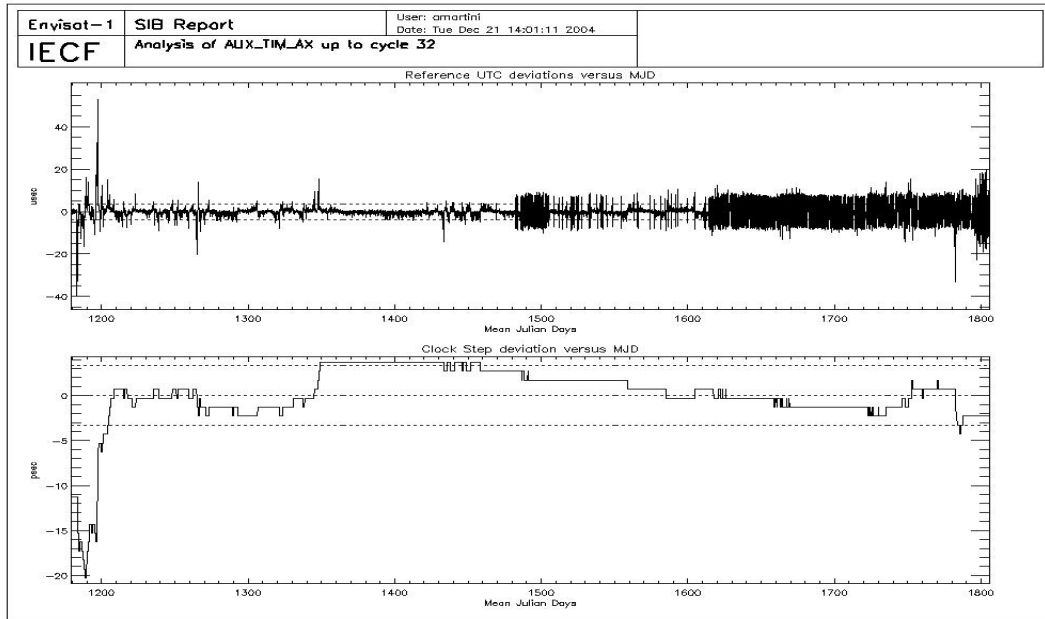
A significant part of an eventual error in the RA-2 products datation could result from imperfect synchronisation between the Satellite Binary Time and the UTC Time due to a drift of the ICU clock period. A correlation between those two times is performed at every Kiruna orbit dump and then extrapolated for the four non-Kiruna orbits. In the upper panel of Figure 11, the differences between the extrapolated UTC values and the corresponding real UTC values measured at the next Kiruna dump, are reported. No anomalous events can be observed in the current cycle. In the lower panel, the ICU clock step for the same period is shown.



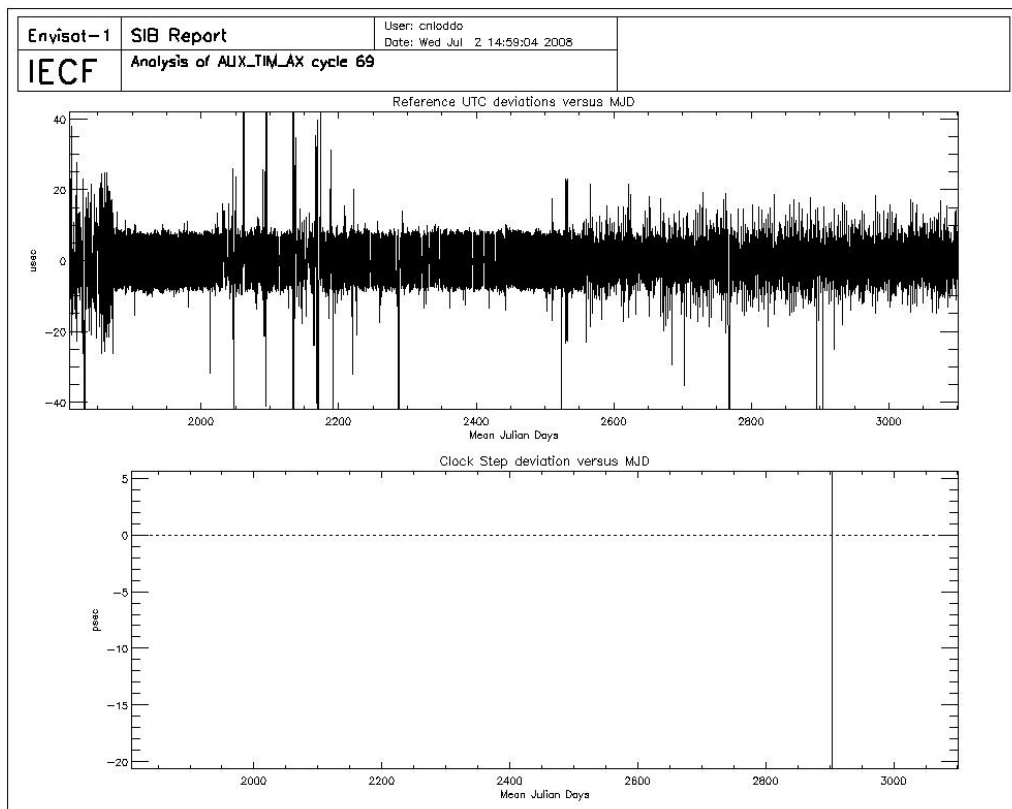
**Figure 11: UTC deviations and ICU clock period for cycle 69**

In Figure 12 (upper panel) the differences between the extrapolated UTC values and the corresponding real UTC values measured at the next Kiruna dump, are reported for data up to cycle 32. The UTC deviations for cycle 33 onwards reported in Figure 13.

Only a few anomalous events can be observed at the beginning of the period (cycles 16/17) for which the difference rises above the 20 microseconds warning threshold. However, starting from cycles 22/23, the number of small differences (10 microseconds plus or minus) has increased a lot. Furthermore, during the last ten days of the cycle 32 and for all cycle 33 and 34, the variability of the deviations has increased reporting many peaks just over the 20 microseconds threshold (first part of Figure 12); this phenomenon is now fixed. In the lower panel of both figures the ICU clock step for the same period is shown where big variations are reported. The jump observed around MJD 2288 (07-APR-2006) on Figure 13 is related to the reconfiguration of the Precise Time Correlation process, which became blocked with invalid data after the Service Module anomaly and reconfiguration occurred on 6 April 2006. This is however not a problem because the ICU clock period variations are included in the algorithm for the SBT/UTC correlation evaluation.



**Figure 12: UTC deviations and ICU clock period up to cycle 32**



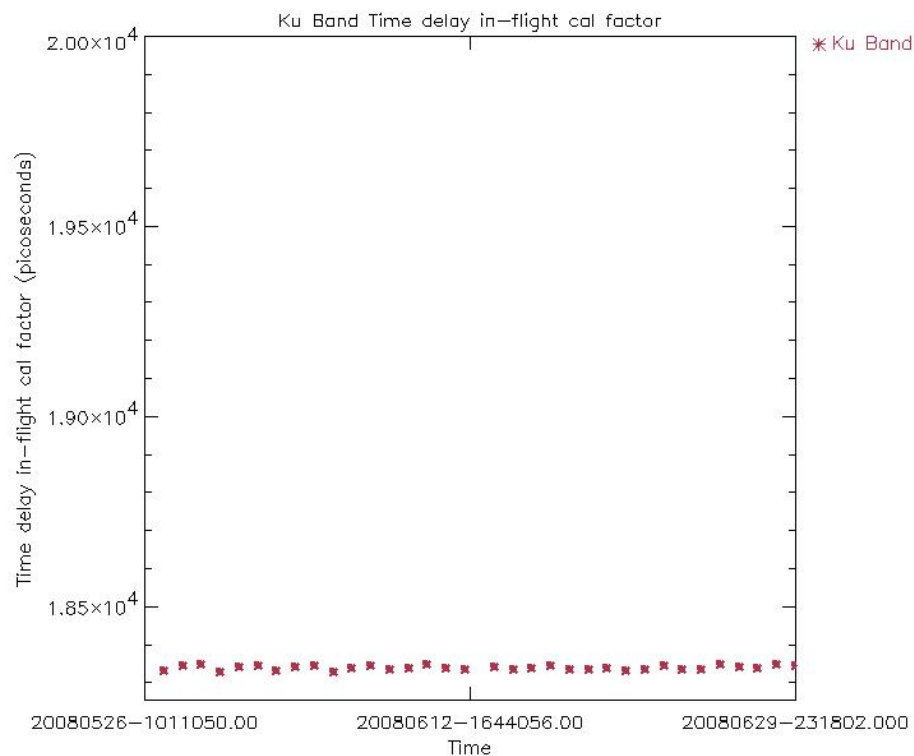
**Figure 13: UTC deviations and ICU clock period from cycle 33 onwards**

### 6.1.5 IN-FLIGHT INTERNAL CALIBRATION

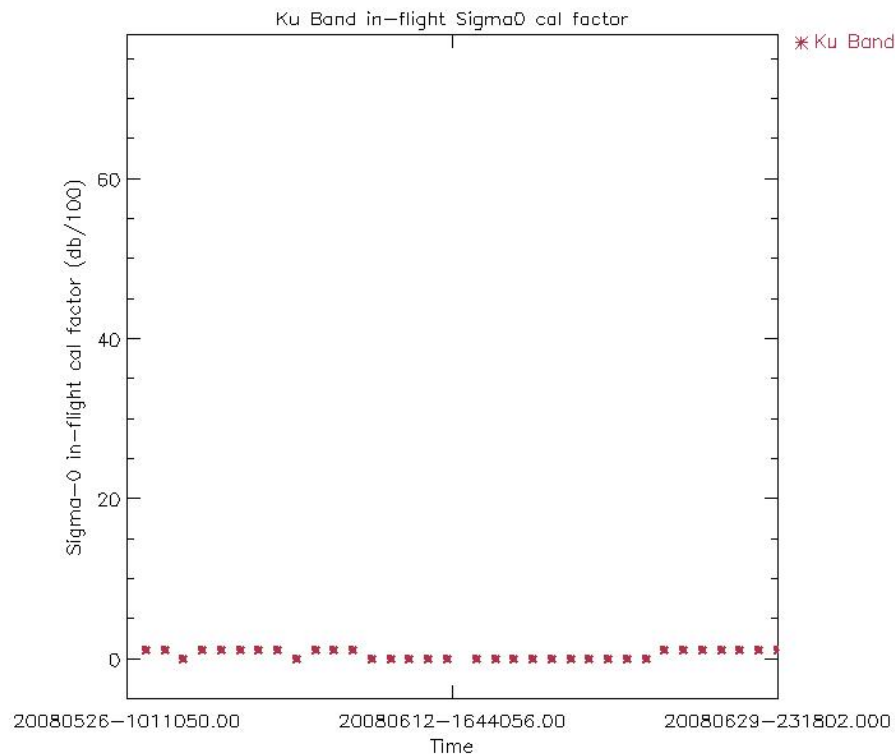
The RA-2 Range and Sigma0 measurements are corrected to take into account the internal path delay and attenuation, respectively. This is done by measuring those two variables in relation to the internal Point Target Response. The two correction factors are calculated during the L1b processing and directly applied. They are also continuously monitored and the results for the current cycle (averaged per day) are reported in the next figures. The correction factors on S Band are no more being monitored from cycle 65 onwards due to the lost of the S-band transmission power, occurred on 17 January 2008, 23:23:40 (orbit 30759), see section 7.2.1.

The Ku Band Time delay in-flight calibration factor, reported in Figure 14, shows a regular behavior as observed on previous cycles.

The Ku band Sigma0 calibration factor, reported in red in Figures 15, is nominal.

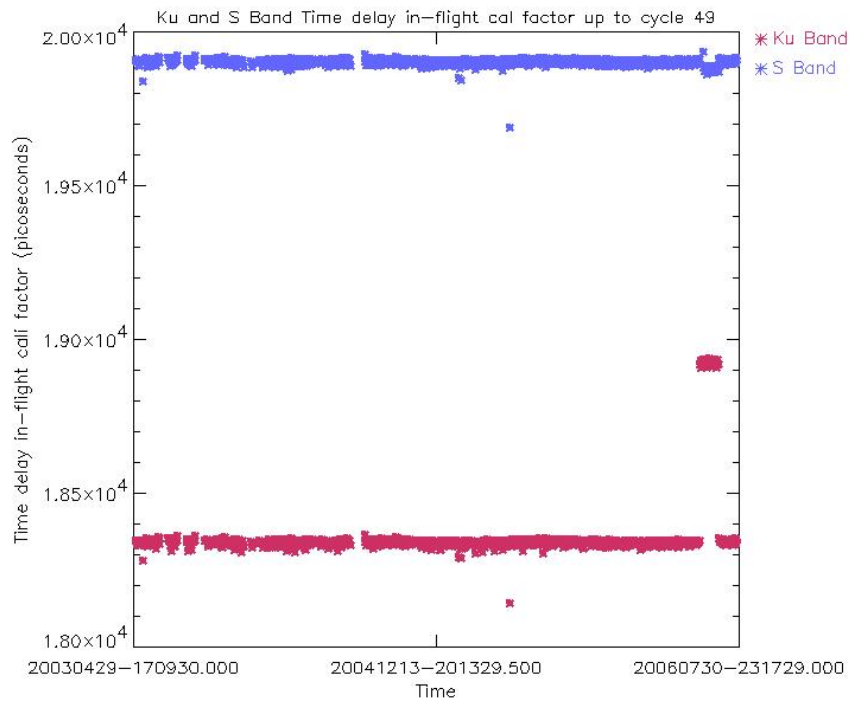


**Figure 14: Ku and S Band in-flight time delay calibration factor for cycle 69 (averaged per day)**

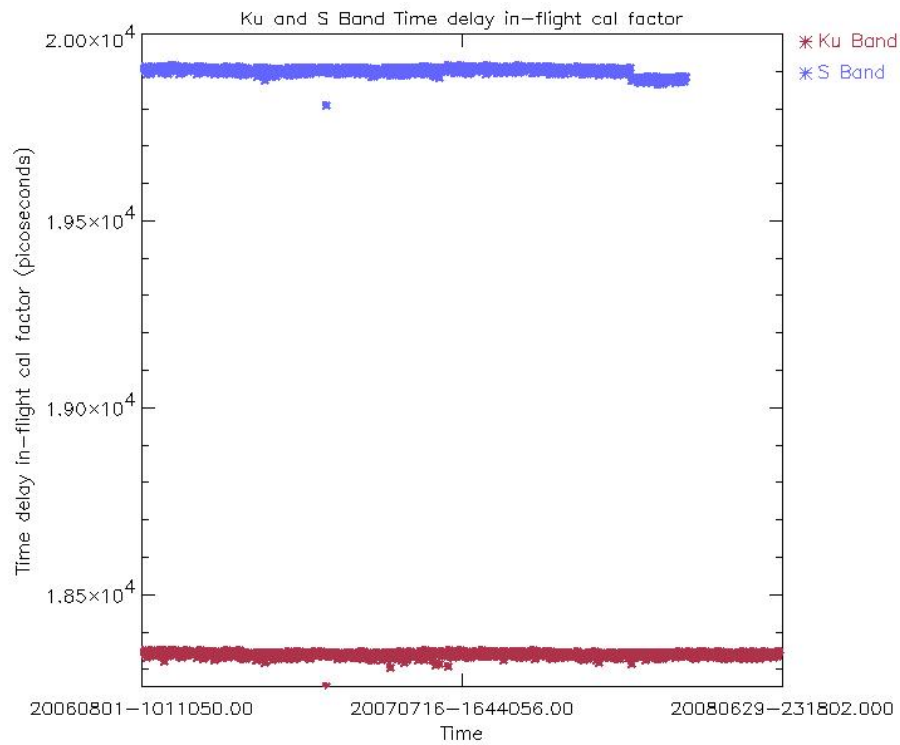


**Figure 15: Ku and S Band in-flight Sigma0 calibration factor for cycle 69 (averaged per day)**

Figure 16 and Figure 17 report Ku and S Band in-flight calibration factors for Time Delay and Sigma0 respectively, daily averaged, up to the current cycle. The Time Delay factor is shown to be very stable for both the working frequencies. The Ku band Sigma0 factor reveals a decrease of about 0.5 dBs over the period starting from cycle 16. As this instability is quite small, it is not being considered a problem for the moment, since the calibration factor is indeed introduced especially to correct for eventual instrumental changes. However, special attention is kept on the monitoring of this parameter. The jump observed on the last part of the plot is related to the period on which the instrument sub-system Radio Frequency Module (RFM) was switched to its B-side, occurred between 15 May and 21 June 2006.

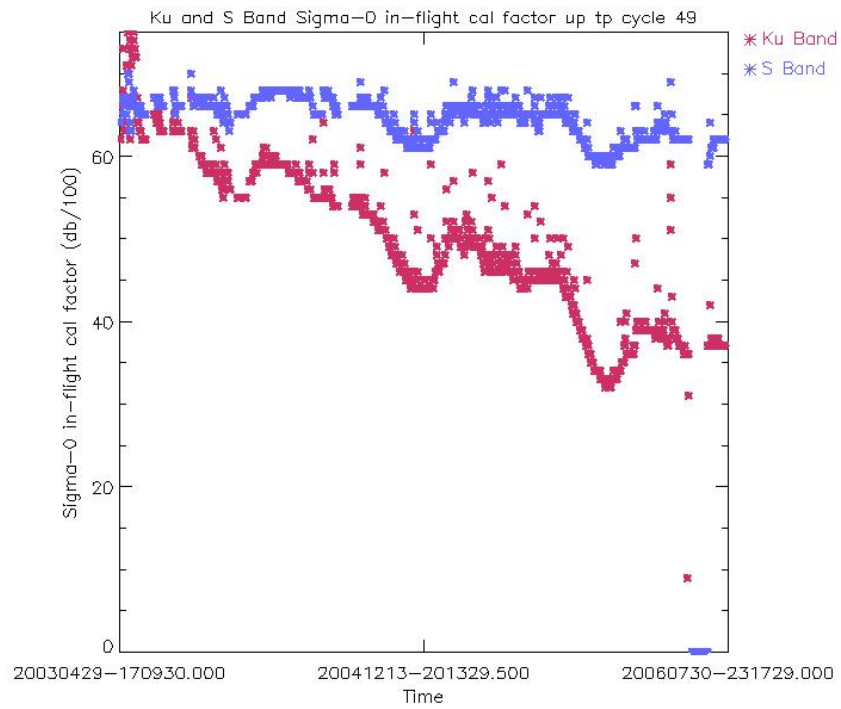


**Figure 16: Ku and S Band in-flight time delay calibration factor up to cycle 49 (averaged per day)**

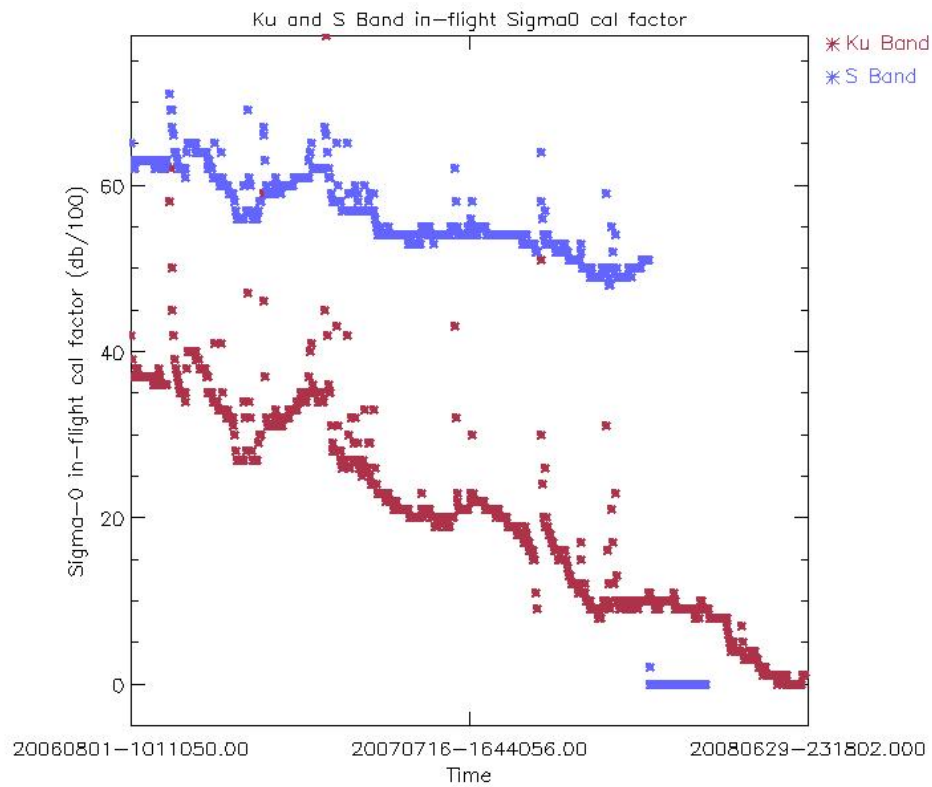


**Figure 16A: Ku and S Band in-flight time delay calibration factor from cycle 50 onwards (averaged per day)**





**Figure 17: Ku and S Band in-flight Sigma0 calibration factor up to cycle 49 (averaged per day)**



**Figure 17A: Ku and S Band in-flight Sigma0 calibration factor from cycle 50 onwards (averaged per day)**

### 6.1.6 SIGMA0 TRANSPONDER

The  $\sigma^0$  absolute calibration of the RA-2 is performed using a reference target given by a transponder that has been developed at ESTEC. This has been exploited during the 6 month Commissioning phase to generate early calibration results. In order to consolidate the calibration results and to monitor the RA-2 calibration of  $\sigma^0$  during the Envisat lifetime, continual monitoring is accomplished by operating the transponder for as many Envisat overpasses as possible.

Since the 11<sup>th</sup> of October 2005 the transponder has been moved to a permanent site located in Rome.

The acquisition planned for the 18th of June 2008 has not been performed due to bad weather conditions.

Absolute Orbit nb	Date of Measurement	Location / Rel. track	RA-2 resolution	Transponder Bias [dB]	ECMWF Wet Tropo. Corr. [dB]

Appendix 4 reports the transponder measurements from cycle 24 onwards.

The mean value of the estimated bias at High Resolution is 1.02 dB with a standard deviation of 0.12 dB. It is possible to notice that the Low Resolution measurements are coherent among themselves but there is a bias with respect to the High Resolution ones. This is due to a processing problem with the internal calibration factor not taken into account in Low Resolution Mode.

In Figure 18, the time behavior of the bias is plotted for both Low and High Resolution. The green line represents the corrected bias for the internal calibration factor (only for the Low Resolution data) and the tropospheric attenuation. The latter is estimated by using the ECMWF meteorological data. The low value of the corrected bias for the orbit 14397 is due to the dew air condition and a probable underestimation of the tropo-attenuation.

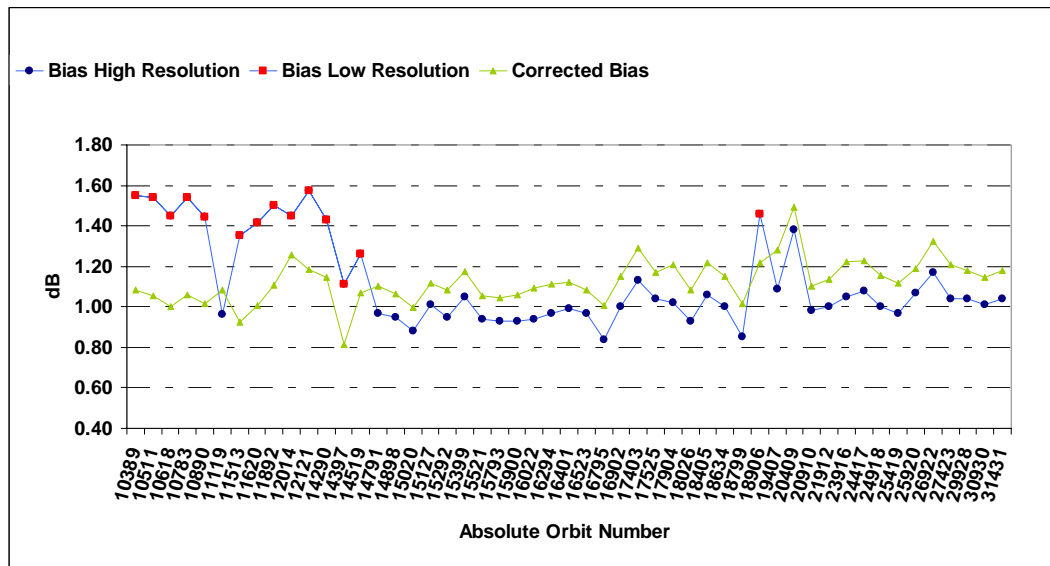


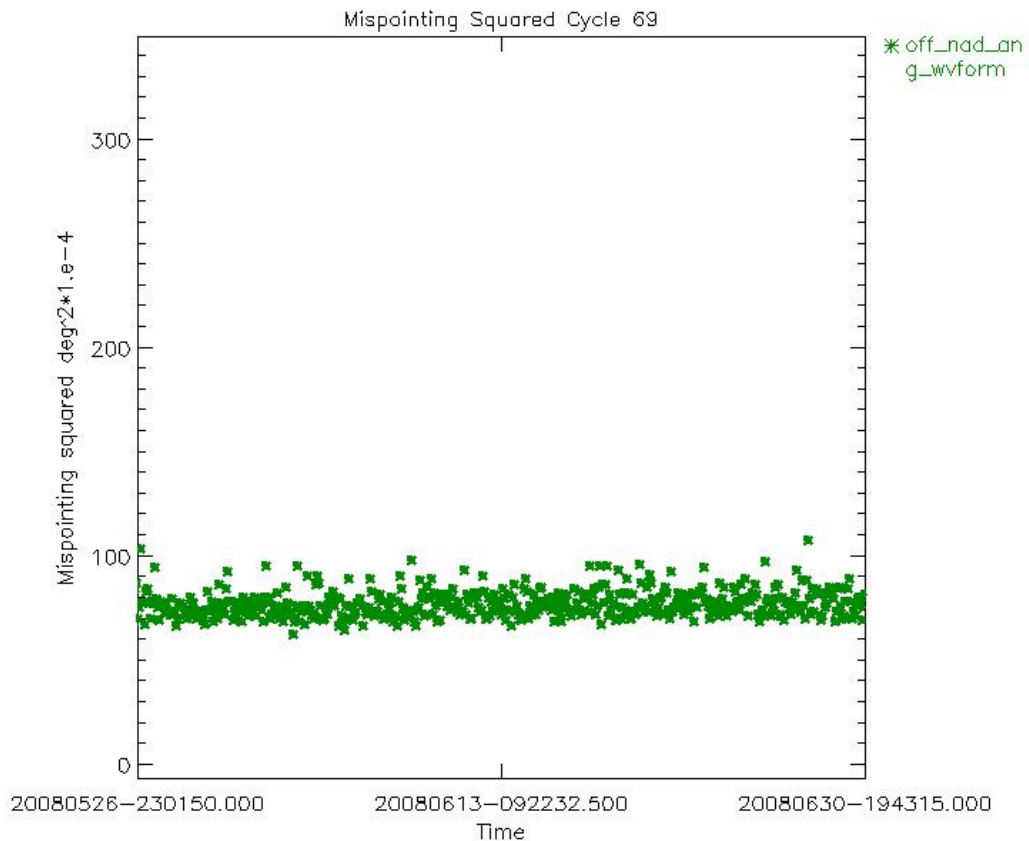
Figure 18: Time behavior of the transponder bias

### 6.1.7 MISPOINTING

In Figure 19, the trend of the mispointing squared (averaged every orbit) is reported in  $\text{deg}^2 \cdot 10e-4$ .

The average squared mispointing value, as extracted from the RA2\_FGD\_2P data products, has decreased from about  $0.028 \text{ deg}^2$ , to  $0.0075 \text{ deg}^2$ . This is due to the new algorithm currently used to retrieve the mispointing value from the RA-2 waveform data, see section 5.5.1.1.

Since IPF version 5.02, the mispointing is estimated through the waveform trailing edge slope using an optimum and fixed gate and no longer an adaptive window as defined previously. This allows avoidance of the filter bump effect that leads to high values of the mispointing.



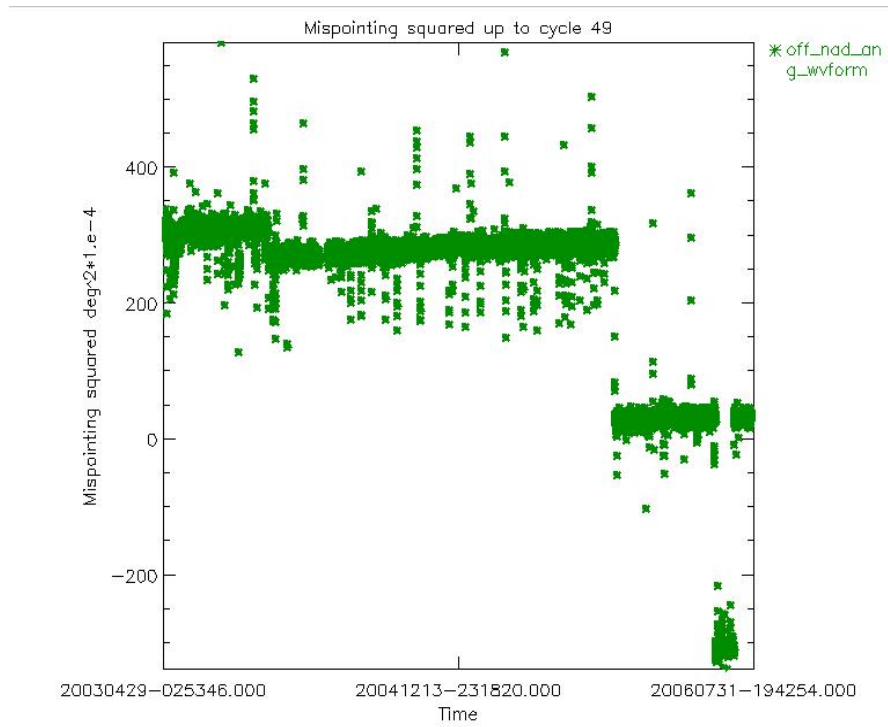
**Figure 19: Smoothed mispointing squared trend for cycle 69 (deg<sup>2</sup>\*10<sup>-4</sup>)**

In Figures 20 and 20A, the overall mispointing squared trend (averaged over each orbit) is plotted for cycles 16 onwards.

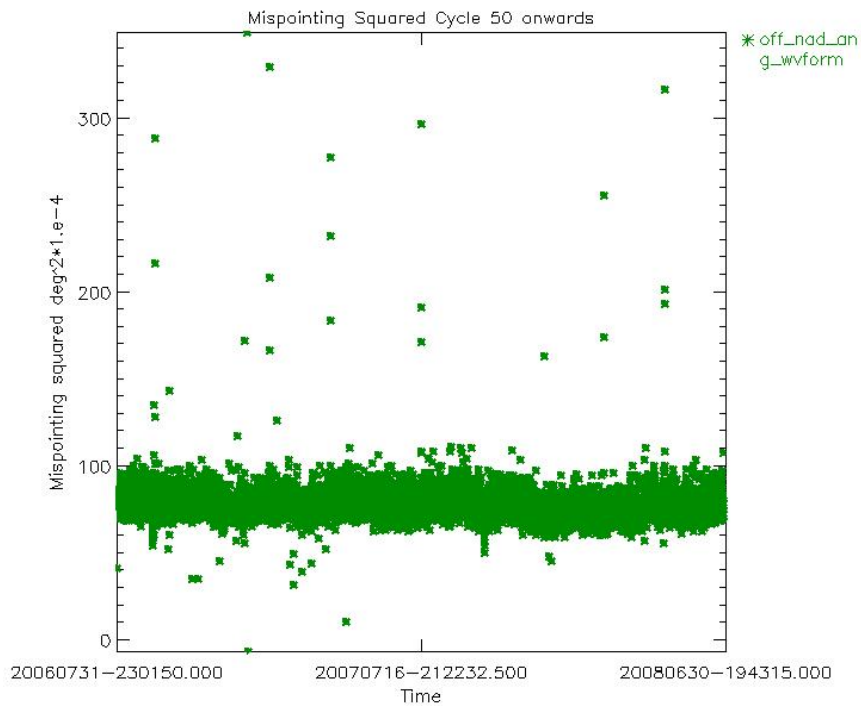
The low values at the end of the plot are related to the acquisition in RFFS B-Side, occurred between 15 May and 21 June 2006.

The jump which occurred on date October 24<sup>th</sup> is related to the upload of IPF version 5.02. The abrupt decreasing of the mispointing squared value is related to the new algorithm, as described in the previous paragraph.

The jump which occurred on November the 26<sup>th</sup> 2003 is correlated to the upload of IPF version 4.56; the abrupt decrease of the mispointing squared value is due to the usage of a new RA2\_IFF\_AX IF mask auxiliary file. After the drop a very tiny increase of the mispointing squared could eventually be detectable. The most probable cause of this phenomenon could be a change in the Intermediate Frequency Filter slope due to ageing effects. For this reason, the RA2\_IFF\_AX will be updated regularly, once per month.



**Figure 20: Smoothed mispointing squared trend until end of cycle 49 (deg<sup>2</sup>\*10e-4)**

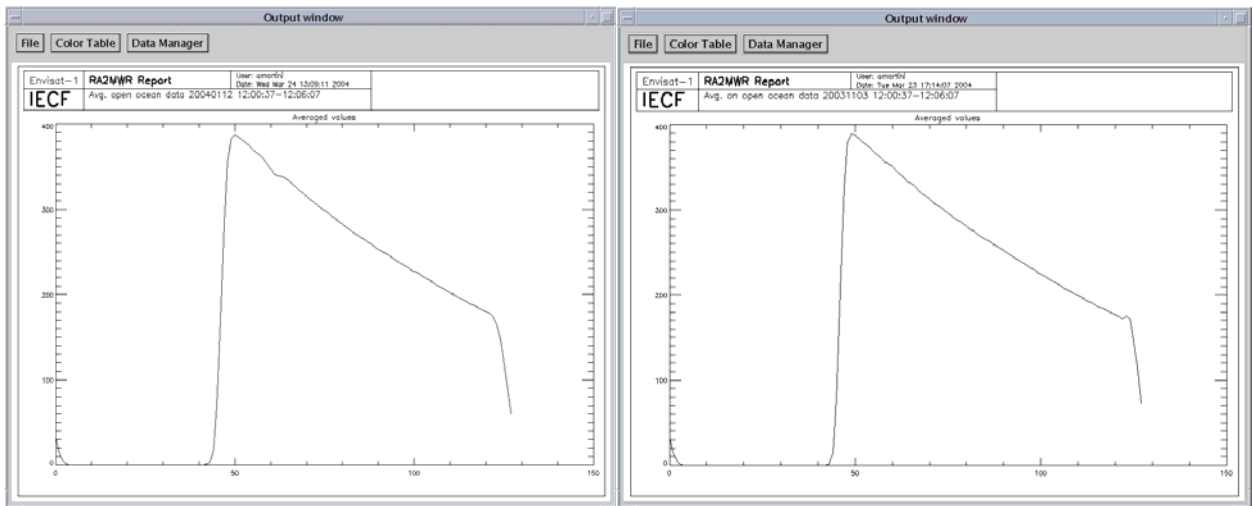


**Figure 20A: Smoothed mispointing squared trend until from cycle 50 onwards (deg<sup>2</sup>\*10e-4)**

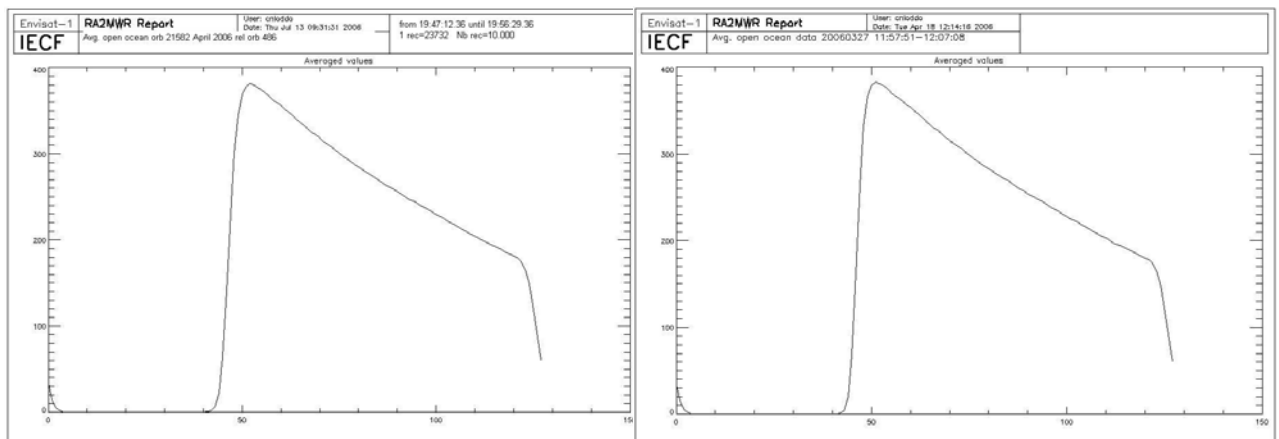
It can be noticed that the mispointing squared assumes lower values just after an instrument anomaly, showing an increasing trend until it reaches a standard mispointing value.

This problem has been reduced with the introduction of the updated mispointing retrieval algorithm as described in the previous paragraph.

This particular behavior has always been explained by the different shape that the over-ocean average waveform has before and after an anomalous event as visible in Figure 21, i.e the disappearance of the small dip in the waveforms acquired after the anomaly. Since the new strategy of updating once per month the RA2\_IFF\_AX file, the small bump is not present anymore in the waveforms, see Figure 21\_A, so a new explanation is currently under investigation.



**Figure 21: Open Ocean average waveforms before (left) and after an anomaly (right)**



**Figure 21\_A: Open Ocean average waveforms before (left) and after an anomaly (right)**

### 6.1.8 S-BAND ANOMALY

Due to the S Band Transmission failure occurred on cycle 65, on 17 January 2008, the S Band parameters are no more relevant. The S Band Anomaly, which consists in the accumulation of the S-Band echo waveforms, are therefore no more present. For this reason, the plot on Figure 22 will no more be updated.

The Patch that prevents the S Band Anomaly by correcting the SW/HW malfunctioning has been successfully uploaded on 27th of June. The Patch has been uploaded for the first time on 16<sup>th</sup> of January 2007, but it has been dismissed on 9<sup>th</sup> of April because it was causing the Instrument to switch down to Heater 0/Refuse Mode. An investigation has been carried out and some parameter monitoring thresholds causing the instrument to switch down have been modified.

The method used for the identification of the “S-Band anomaly” is statistical and requires a minimum of 1000 seconds of data over ocean. This choice is supported by the fact that the “S-Band anomaly” is associated with a particular instrumental behavior that cannot appear and disappear within a short time frame. (ref. [R – 7])

A valuable algorithm to detect the RA-2 DSRs affected by the S-Band anomaly within the L2 products can be found in [R- 12]. Note that the algorithm is only valid for data acquired over open-ocean.

The IPF version 5.03 includes an algorithm that can detect the presence of the so-called “S-Band anomaly” over any surface. In case of S-Band anomaly detection, bit 1 of the L1b products MCD is set to one; the anomaly is properly detected in 99.9% of the cases.

In Figure 22, the percentage of data per cycle that are affected by the so-called “S-Band” anomaly is reported. The figures are variable between 0% and 8.1%.

The number of occurrences of the S Band anomaly decreased from a mean value of 4% to 2% from cycle 31 onwards due to the implementation of the IF CAL procedure (including Heater 2 for S Band anomaly suppression) twice per day over the Himalayan region.

The relatively high value recorded for cycle 27 is due to the fact that on the day 1<sup>st</sup> of June 2004, the S-band anomaly started at around 14:30 while the instrument didn't switch to mode Heater 2 when foreseen (at about 15:50). For this reason the S-Band anomaly continued for the next 24 hours until the next Heater 2 mode on June the 2<sup>nd</sup>.

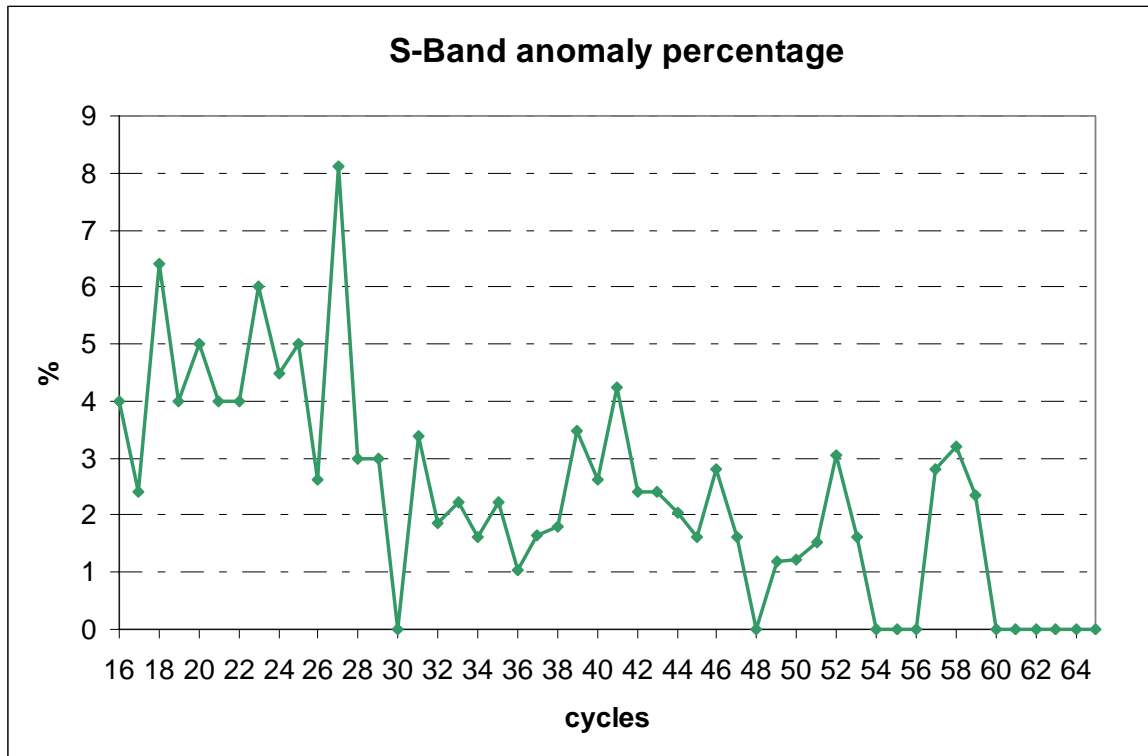


Figure 22: Percentage of data affected by the “S-Band Anomaly” for cycles 16 up to cycle 65

## 6.2 MWR Performance

For MWR performance please refer to the Reference CLS Cyclic Report of the type of [R – 2].

## 6.3 DORIS Performance

For DORIS performance please refer to the Reference F-PAC Monthly Report of the type of [R – 1a] and [R-1b].

# 7 PRODUCT PERFORMANCE

## 7.1 Product disclaimer

A summary of the products released to users and disclaimers on product quality have been established for some products and are available in the following web link:  
<http://envisat.esa.int/dataproducts/availability/>



## 7.2 *Data handling recommendations*

### 7.2.1 S BAND POWER DROP

Ten hours after the recovery of the HSM anomaly on the 17 January 2008, a drop of the RA2 S-band transmission power occurred. The drop occurred in the South Atlantic Anomaly, showing similar characteristics as for the RA-2 RFSS Side B S-band power drop anomaly occurred in May 2006.

Consequently, all the S-band parameters, as well as the dual ionospheric correction are not relevant and MUST NOT be used from the following date: 17 January 2008, 23:23:40, UTC, orbit nb 30759.

Users are advised to use the Ionospheric correction from Bent model, which is available in FGDR data products:

FGDR (*Ionospheric correction from model on Ku-band: field #47* )

Investigations have been conducted and the failure of the S Band power stage is considered to be permanent.

### 7.2.2 SEA-ICE FLAG

The following algorithm is proposed for the determination of a sea-ice flag, presently missing in the Level 2 Ra-2 and MWR data products. (See [R – 14]):

|Latitude (*lat: field#4 of L2 data*)| >50 deg

AND

The number of 20Hz valid data (*num\_18hz\_ku\_ocean: field#23 of L2 data*) < 17

OR

|MWR Wet Tropospheric Correction (*mwr\_wet\_tropo\_corr: field#42 of L2 data*)–ECMWF

Wet Tropospheric Correction (*mod\_wet\_tropo\_corr: field#42 of L2 data*)| > 10 cm

OR

Peakiness (*Ku\_peak: field#139 of L2 data*) >2

### 7.2.3 OCEAN S-BAND ANOMALIES DETECTION

A valuable algorithm to detect the Level 2 DSR affected by the RA-2 S-Band anomaly is proposed in [R- 12].

#### 7.2.4 WARNING ON IPF 4.56 VERSION IDENTIFICATION FIELD

All RA-2 and MWR level 1B and NRT Level 2 products generated after November 26, 2003 report a software version as being 4.54 (available in MPH field 8).

Nevertheless those products have been generated with the IPF V4.56 operational since November 26, 2003. The first nominal generated product, using the new SW version, will be the one relevant to the absolute orbit number 9094.

The software version ID is correct since December 4, 2003.

#### 7.2.5 S-BAND BACKSCATTERING COEFFICIENT

For the data processed with IPF version 4.56 on, the S-Band Backscattering coefficient has been demonstrated to be on average about 0.65 dBs higher than for the previous versions of the processor. This is due to the algorithm used for the retrieval of the AGC in S-Band, corrected in IPF version 4.56 to be closer to the real functioning of the instrument.

An average value of 0.65 dBs is suggested to be added to the old software versions S-Band Sigma0 in order to be in line with the new IPF V4.56 version.

#### 7.2.6 USO RANGE CORRECTION

Three different periods can be distinguished:

##### 1<sup>st</sup> period

From the beginning of the mission until the 24<sup>th</sup> of October 2005 the Nominal USO clock period has been used in the processing. The data was not corrected for the bias and the drift correlated to the actual USO clock period. All data acquired before 24<sup>th</sup> October 2005, beginning of cycle 42, have thus to be corrected using the old correction files available on the web site:

<http://earth.esa.int/pcs/envisat/ra2/auxdata/OldCorrection.html>.

The measured Range shall be corrected considering a drift of -4.58 mm per year and a bias of 29.6 mm.

**Warning for data acquired before cycle 42:** bias and drift have to be **SUBTRACTED** from the original altimetric range, according to the following equation:

$$R_{\text{true}} = R_{\text{original}} - dR$$

where  $R_{\text{original}}$  is the range in the GDR products and  $R_{\text{true}}$  is the true (corrected) range.

##### 2<sup>nd</sup> period

From the 24<sup>th</sup> of October 2005 until the 13<sup>th</sup> of March 2006, outside of the anomaly periods, the actual USO clock period has been used within the processing. The data was corrected for the bias and the drift correlated to the actual USO clock period. Those values, translated into altimetric range figures, are respectively of 28.5 mm and -4.58 mm/year as calculated with data covering the period 13 June 2003 to 01 February 2006.

### 3<sup>rd</sup> period

From the 13<sup>th</sup> of March 2006 onwards, and during the early occurrences of the USO anomaly, data have not been corrected with the proper value of the USO Clock period. All data acquired during this period have thus to be corrected using the new correction files. Three USO corrections have been developed for the different Envisat Level 2 altimetry data products for correcting the abnormal RA-2 USO behaviour affecting the Altimetric Range by few meters w.r.t. the Mean Sea Surface:

- A NRT orbit based USO correction for FDGDR products , available from <http://earth.esa.int/pcs/envisat/ra2/auxdata/NewCorrection.html> ;  
or [ftp://ftp.esrin.esa.it/pub/RA2\\_MWR/USO/auxdata/](ftp://ftp.esrin.esa.it/pub/RA2_MWR/USO/auxdata/)
- An Interim daily USO correction for IGDR products, available at the same F-PAC location as for IGDR, in the directory `igdr_ous_corr`
- An OFL cycle USO correction for GDR products, available at the same F-PAC location as for GDR, in the directory `gdr_ous_corr`.

**Warning for data acquired after 1<sup>st</sup> February 2006:** This correction has to be **ADDED** to the Ku and S Band altimetric range.

A software routine has been developed to allow users to insert the RA-2 Ultra-Stable Oscillator (USO) corrections into Envisat Level 2 altimetry data products and is available in the same web site than the new correction files.

**WARNING: Users are still advised to apply the correction auxiliary files even during the non-anomalous period in order to correct for the nominal ageing drift of the USO device.**

## 7.2.7 KU-BAND BACKSCATTERING COEFFICIENT CALIBRATION

The results of the Ku-Band Sigma0 absolute calibration performed with a transponder have been presented in par. 6.1.4. Those results are going to be consolidated and are summarized in appendix 4, table 18. In order to absolutely calibrate the backscattering coefficient given in the RA2 L2 products, the following shall be used by the end user to get to the real Sigma0 measurement:

$$\text{Sigma}_0_{\text{true}} = \text{Sigma}_0_{\text{prod}} + \text{G}_{\text{tx\_rx\_prod}} - \text{G}_{\text{tx\_rx\_real}} - \text{Bias} \text{ [dB]}$$

Where:

**Bias:** Bias retrieved from the Sigma0 Absolute Calibration (see 6.1.5)

**G<sub>tx\_rx\_prod</sub>:** Current effective Tx-Rx Gain value used in the operational ground processing chain (ADF file RA2\_CHD\_AX). The value nominally used since IPF V4.54 is (for configuration RFSS=A and HPA=A) is 170.70 dB

**G<sub>tx\_rx\_real</sub>:** Pre-launch characterization value (configuration value RFSS=A and HPA=A is 167.46 dB)

### 7.2.8 RA-2 RADIO FREQUENCY MODULE SWITCHED BACK TO A-SIDE

The Envisat RA-2 sensor has been successfully reconfigured on its nominal side (RFSS A-side) and was commanded back into Measurement Mode on June 21, 2006 at 13.20.15.000 UTC time, Orbit = 22523 after a switch to RFSS B-Side on 15 May at 14:21:50 UTC Orbit=21994

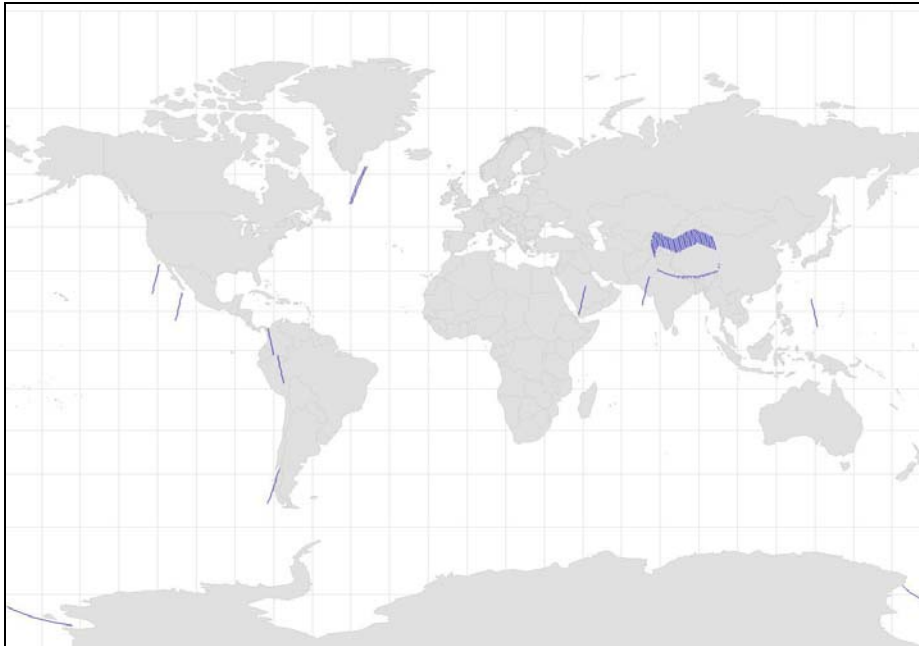
The analysis of the RA-2 data shows an expected behaviour of the RA-2 parameters but also confirmed the persistence of the abnormal RA-2 Ultra-Stable Oscillator (USO) behaviour affecting the Altimetric Range by few meters.

Data from 15 May 2006 until 21 June 2006 was acquired with RFSS B-side and on-ground data processing has been performed with ADFs configured for A-side. For this reason data should be used with maximum care.

## 7.3 *Availability of data*

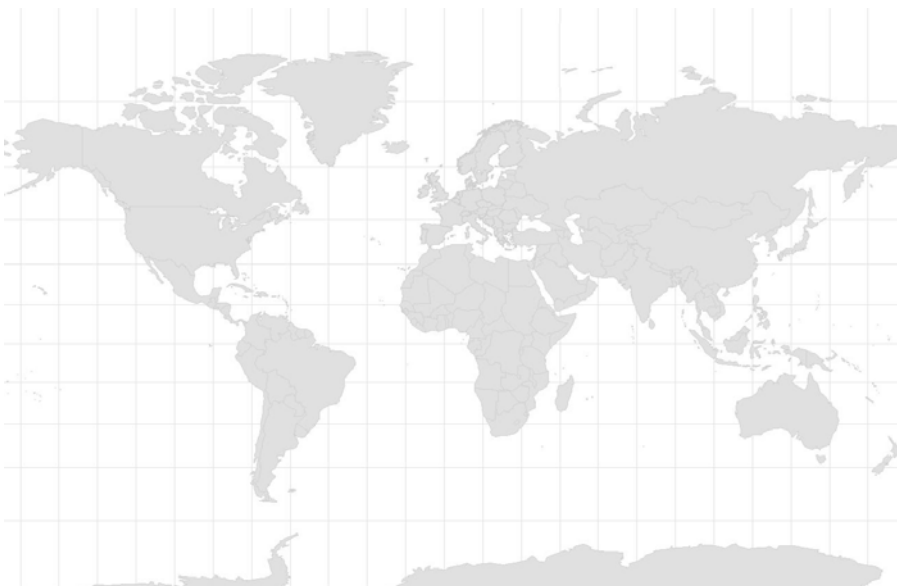
### 7.3.1 RA-2

In Figure 23 and Table 9 (Appendix 2) the summary of unavailable RA2 L0 products is given. It is easy to notice that close to the Himalaya region two small gaps are present per pass, one of about 77 seconds and another of about 10 seconds, is present in the data. This is due to the daily instrument switch-offs (Heater 2 mode) performed as part of the IF calibration commands sequence. Another recurrent gap of around 179 seconds is due to an instrument anomaly under investigation.



**Figure 23: RA-2 L0 unavailable products for cycle 69**

In Figure 24 and Table 11 (Appendix 2) the summary of unavailable RA2 L1b products is given. Starting from cycle 65, the reported gaps, both in the map and table, are related to the RA2 L0 products and not to the DMOP. No gaps greater than 1 second has been detected on cycle 69, therefore the map on plot 69 is empty.



**Figure 24: RA-2 L1b unavailable (with respect to RA2 L0) products for cycle 69**

Hereafter the percentage of the different levels of products availability is reported. An improvement can be observed on the data coverage in the current cycle 69. Considering as reference the instrument unavailability, it is possible to notice that since cycle 32 the situation is slightly improved for all levels of products. The low percentage of data from cycle 56 until cycle 59 is due to the high number of RA-2 Instrument Unavailability occurred as side effect of the SPSA Patch uploaded to prevent the S Band anomaly.

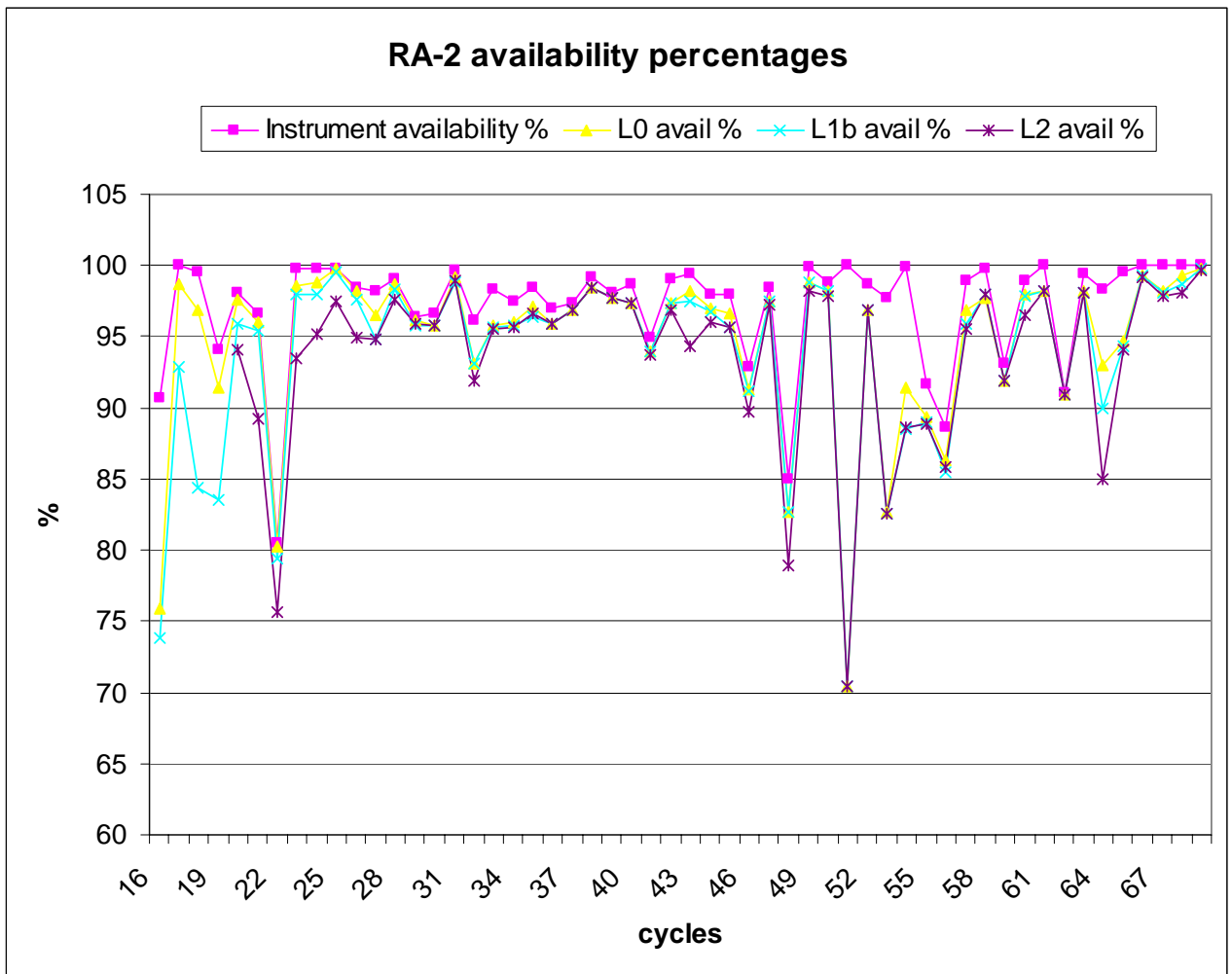


Figure 25: Percentage of Products unavailability

### 7.3.2 MWR

In Figure 26 Table 10 (Appendix 2) the summary of unavailable MWR L0 products is given.

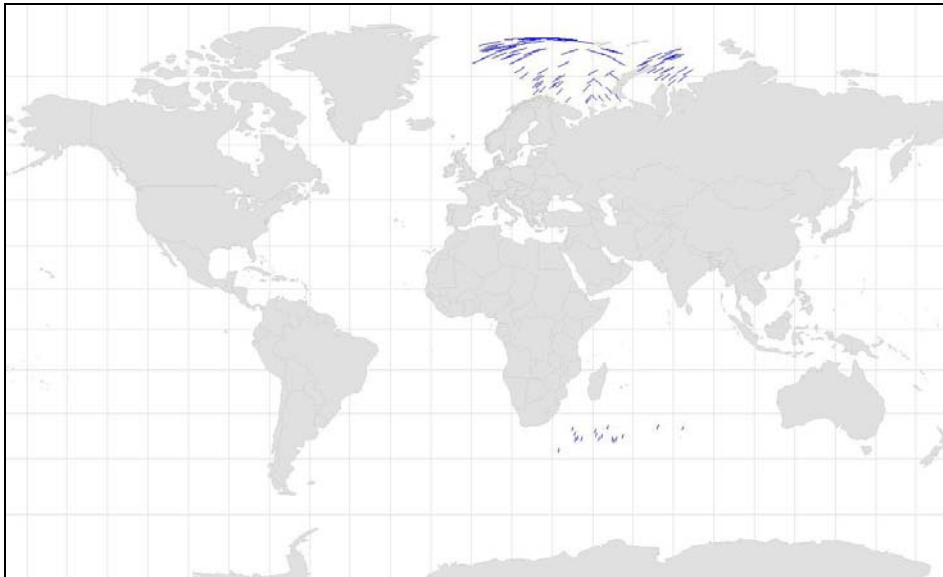


Figure 26: MWR L0 unavailable products for cycle 69

## 7.4 RA-2 Altimeter Parameters

Hereafter a summary of the main Altimetric parameters performances is reported; these results have been obtained using only ocean surface type and all world zone criteria for RA2\_FGD products.

### 7.4.1 ORBIT

Since the 20<sup>th</sup> of June 2007, operations date of IPF version 5.06, the DORIS Navigator usage on NRT processing has increased. The usage of DORIS on NRT processing increases the quality of FDGDR SLA. The SLA variability has decreased from 20 m to about 50 cm.

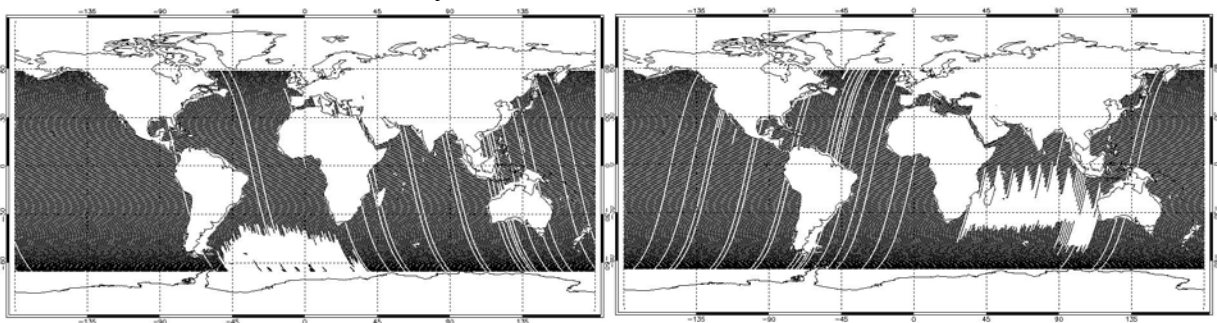


Figure 27: Ascending and Descending passes processed with DORIS on cycle 69

The quality of this Doris Navigator orbit is estimated by comparison to the MOE orbit available in the IGDR products. **Note that from the 3th of June 2008 (Cycle 69), a new MOE configuration is used in the IGDR (Gdr-C configuration).**

Figure 27A shows the [Doris navigator-MOE] radial differences on ascending and descending passes. We can observe that the differences are between -0.4 and 0.4m with systematic ascending/descending + North/South differences.

The statistics of differences are

- mean[Doris navigator-MOE]  $\sim$ -0.7cm
- standard deviation [Doris navigator-MOE]  $\sim$ 23.6cm

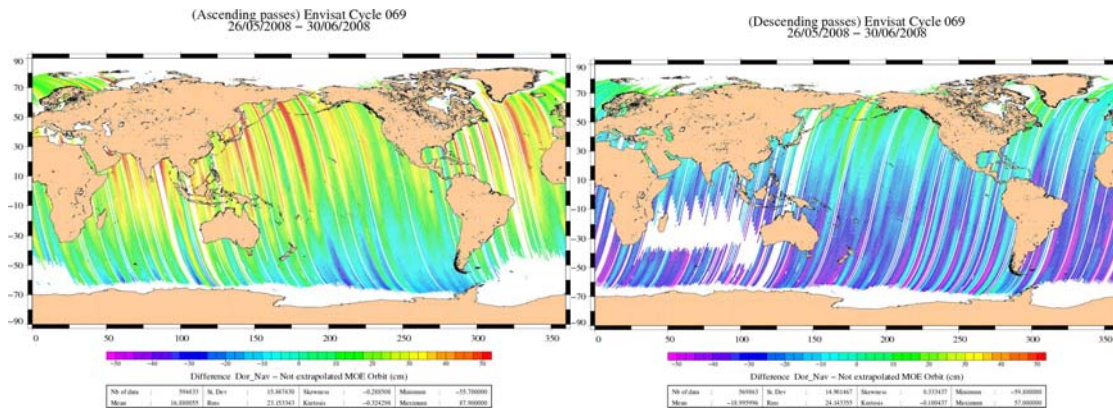


Figure 27A: [Doris navigator-MOE] differences on ascending and descending passes

## 7.4.2 ALTIMETER RANGE

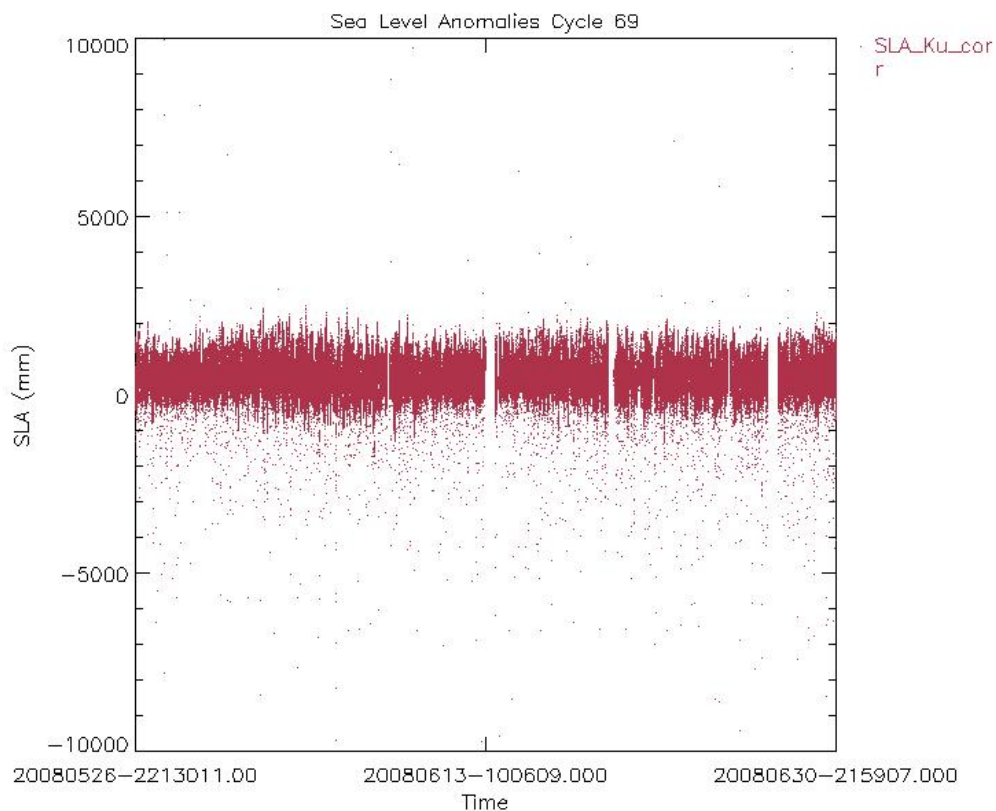
On Figure 27B, it can be observed that the altimetric range was nominal on cycle 69.

The gaps observed in Figure 27B are related to some PDS failures which prevented the usage of DORIS on NRT products on the following dates:

- 13 June from 11:00 until 22:00
- 5 June from 10:15 until 11:54
- 19 June from 13:08:33 until 19:42

The last gap is due to the lack of usage of meteotables on date 27 June from 12:00 until 00:00.



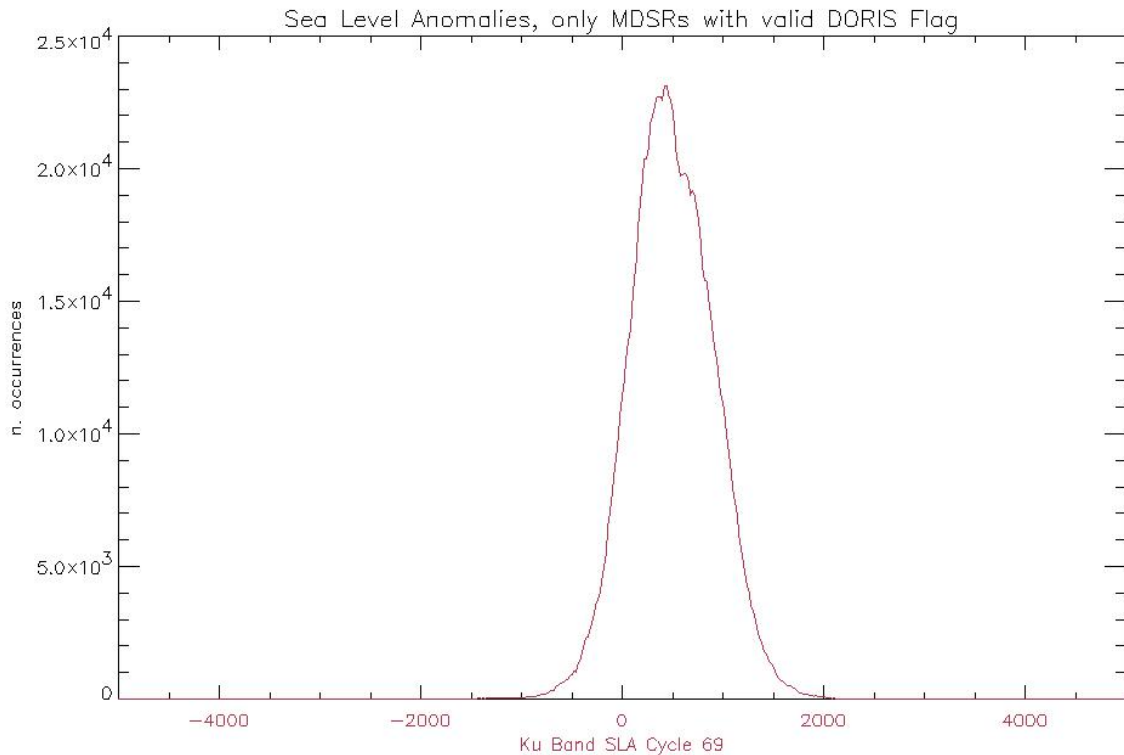


**Figure 27B: Sea Level Anomalies Cycle 69, only MDSRs with valid DORIS Flag**

The Ku Band SLA has been computed with the following corrections:  
 MWR\_WET\_TROPO, DRY\_TROPO, INV\_BMETER\_HEIGHT, SEA\_KU\_BIAS, IONO\_CORR

Due to the S Band Power drop anomaly, started on the 17th of January, see section 7.2.1, the ionospheric correction used for the computation was the Bent model ionospheric correction

In Figure 27C the Histogram of Sea Level Anomalies is reported for the Ku Band. Only MDSRs processed with DORIS have been considered. The peak of the histogram is slightly less than 0.5 meter as expected.

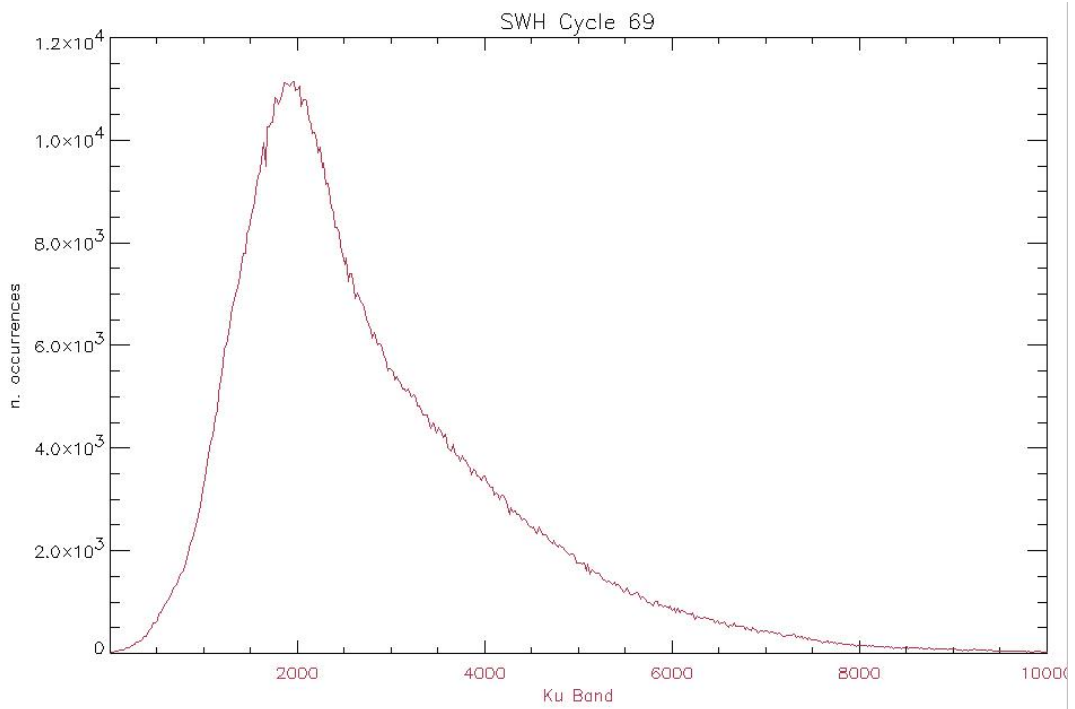


**Figure 27C: Histogram of Sea Level Anomalies on Ku Band computed on MDSRs with valid DORIS Flag**

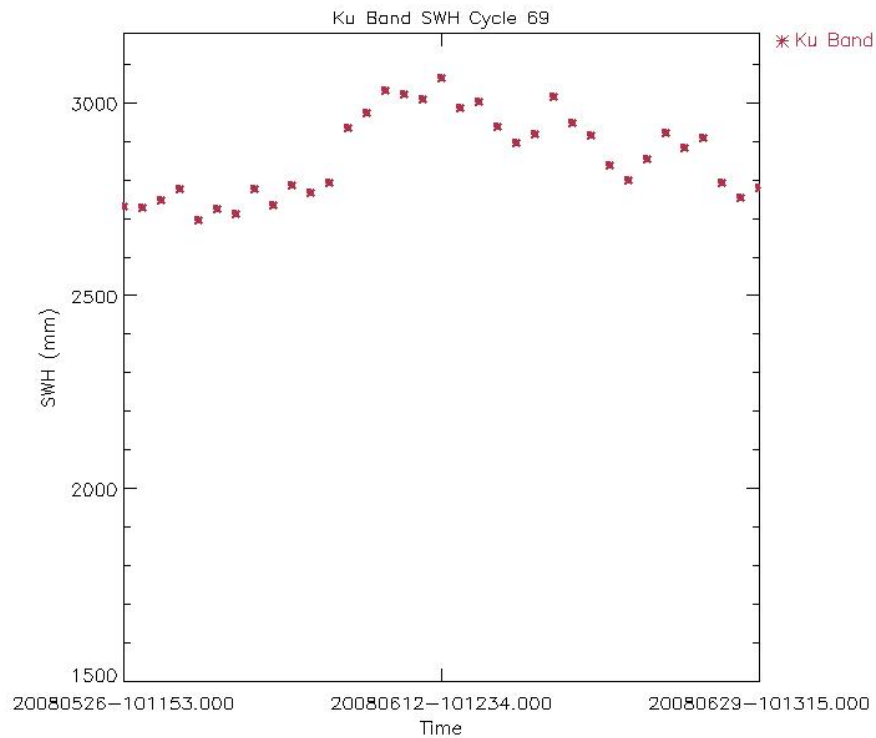
### 7.4.3 SIGNIFICANT WAVE HEIGHT

The histogram of the SWH reported in Figure 28 shows a nominal behavior on the Ku Band. The S Band is no more being monitored due to the S Band Power drop, which started on cycle 65, 17<sup>th</sup> January 2008, see section 7.2.1. The trend goes on following the behavior as detected for the previous cycle. The largest peak (about 60000 data for SWH = 0m) was removed from the plot in order to have the complete picture of the SWH histogram.

Figure 29 shows the Ku Band SWH daily mean.

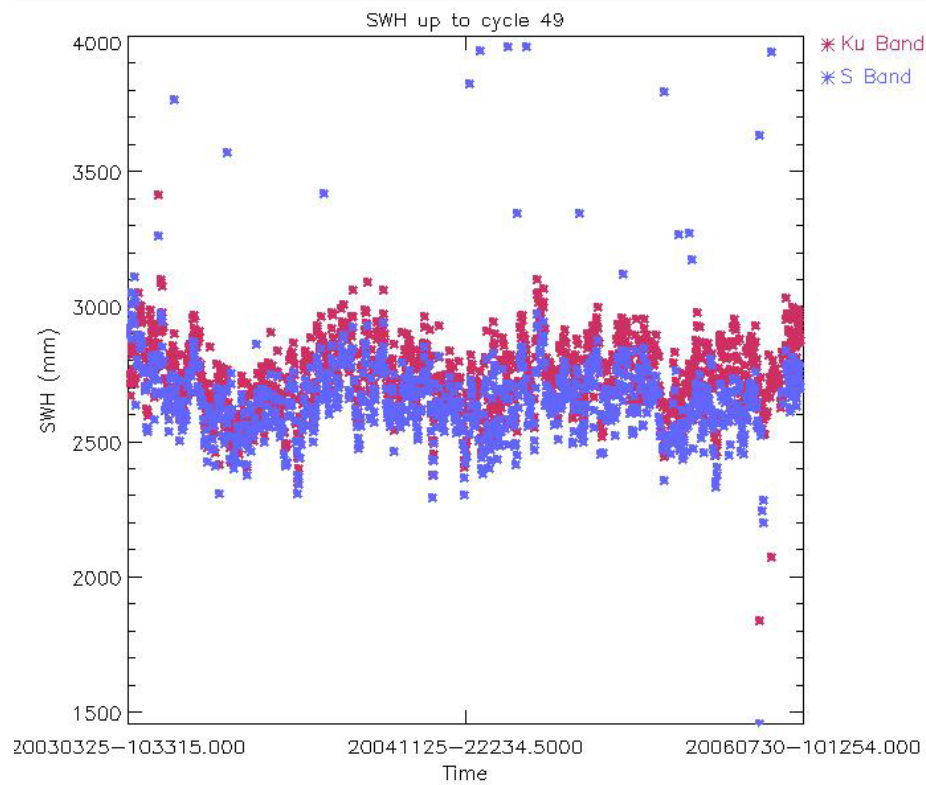


**Figure 28: Histogram of Ku Band SWH for cycle 69**

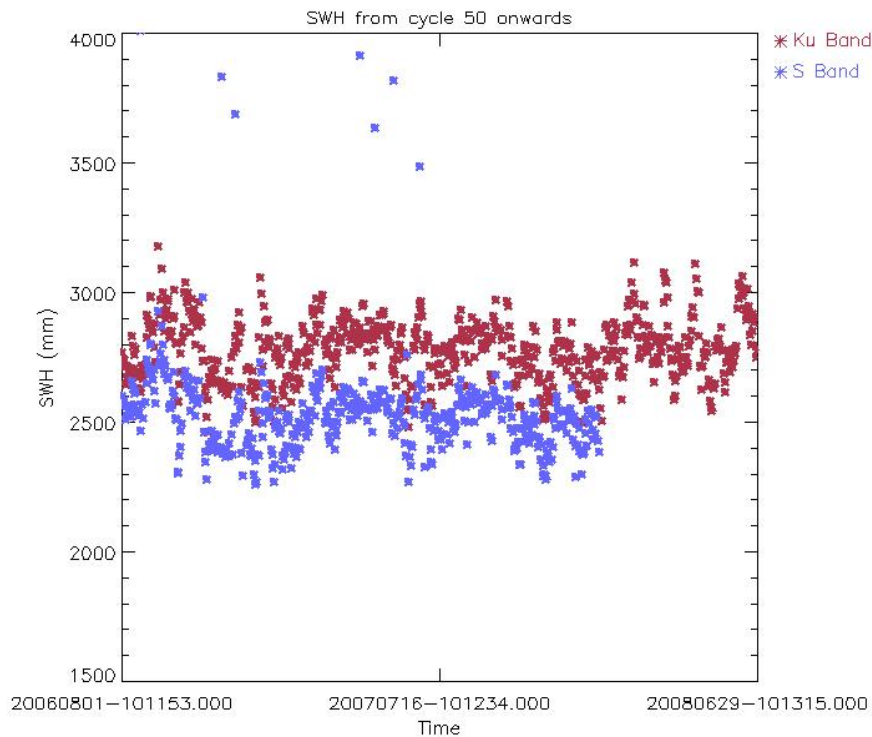


**Figure 29: Ku Band SWH daily average for Cycle 69 (mm)**

The SWH long term plot is reported in two plots, cycle 16 until cycle 49 on Figure 30 and cycle 50 onwards on Figure 30A. It can be noticed that the SWH in both bands shows a trend which follows the seasonal variability. The high daily averages reported (sometimes plotted outside the figure's range) are due to the so-called S-Band anomaly (ref. par.6.1.8).



**Figure 30: Ku and S SWH daily average up to cycle 49 (mm)**



**Figure 30A: Ku and S SWH daily average from cycle 50 onwards (mm)**

#### 7.4.4 BACKSCATTER COEFFICIENT – WIND SPEED

The Sigma-0 histogram in Ku Band is reported in Figure 31. The S Band is no more being monitored due to the S Band Power drop, started on date 17<sup>th</sup> of January, see section 7.2.1.

The Sigma\_0 histogram in Ku Band is nominal. It shows secondary peaks as in the previous cycles. A small investigation on this problem, performed on the data of cycle 29, demonstrated that the backscattering distribution assumes a different behavior for different sea conditions [R-17]. Indeed the majority of the data is concentrated on lower values for rough sea state (southern hemisphere, winter conditions) and on higher values for calm sea state (northern hemisphere, summer conditions).

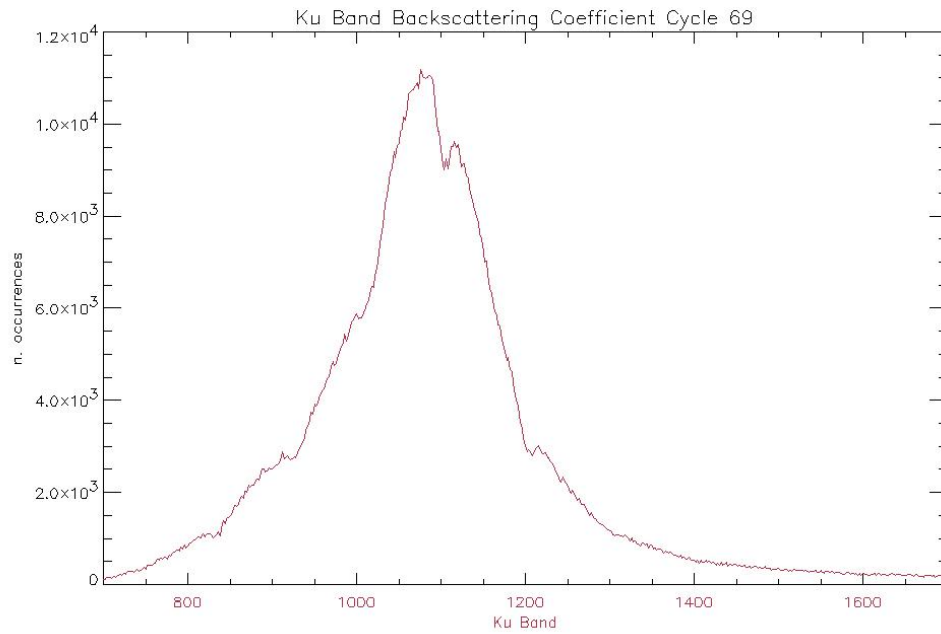


Figure 31: Histogram of Ku Band Backscattering Coefficient for cycle 69

In Figure 32, the backscattering coefficient daily average, computed for only ocean data, trend is reported. The Ku Band shows a nominal behavior.

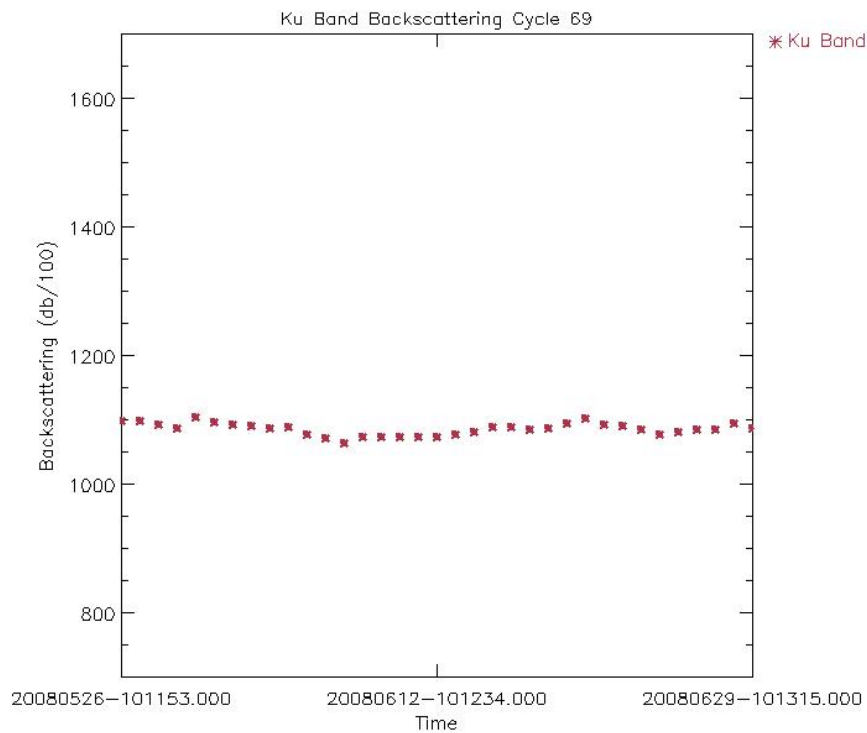
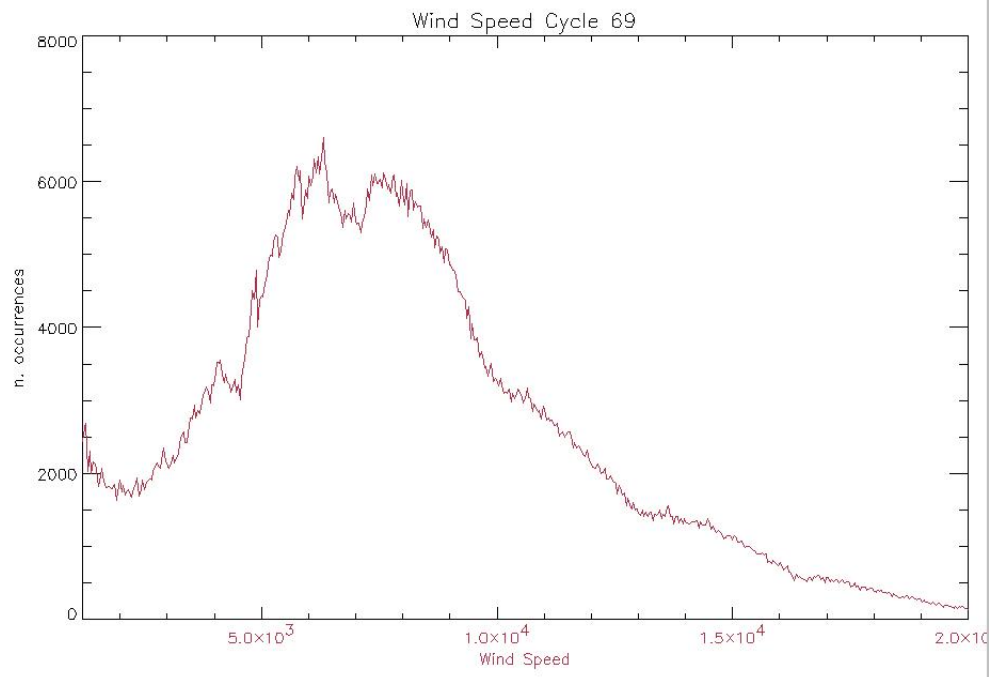


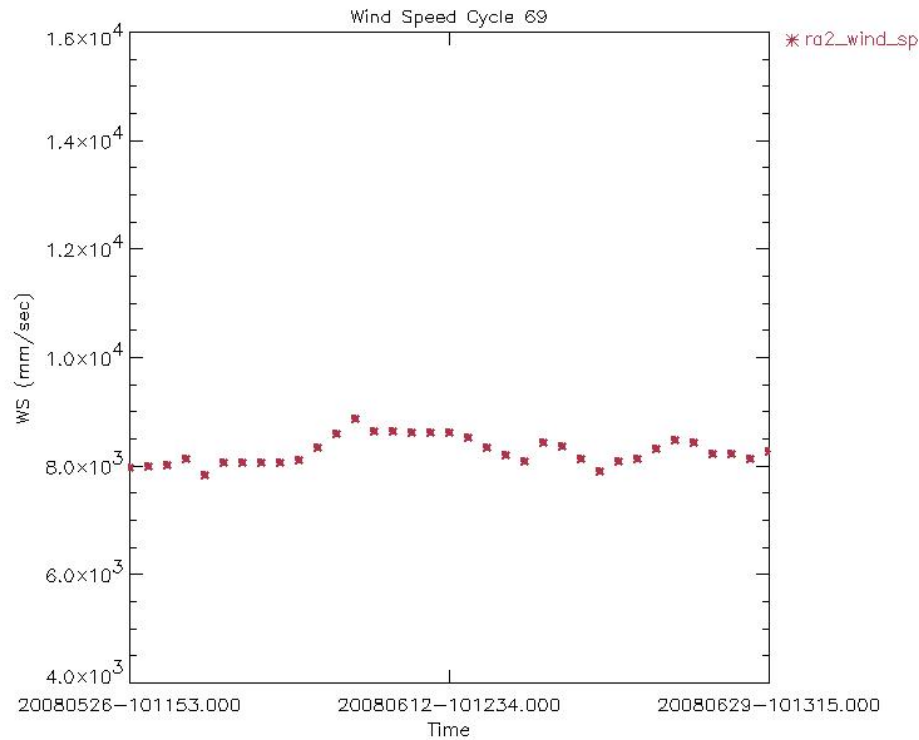
Figure 32: Ku Band Sigma\_0 daily average for cycle 69 (dB/100)

The histograms of Wind Speed computed for the Ku-band and the time behavior during the current cycle are reported in Figure 33 and 34, respectively. Given that the wind table has been updated since IPF version 5.02, S.Abdallah Table is now used, the wind takes values between 1.18m/ and 21.30m/s.

The largest peak present in the histogram (about 50000 data for Wind < 1.2m/s) was removed from the plot in order to have the complete picture of the wind histogram.



**Figure 33: Histogram of Ku Wind Speed for cycle 69 (mm/sec)**



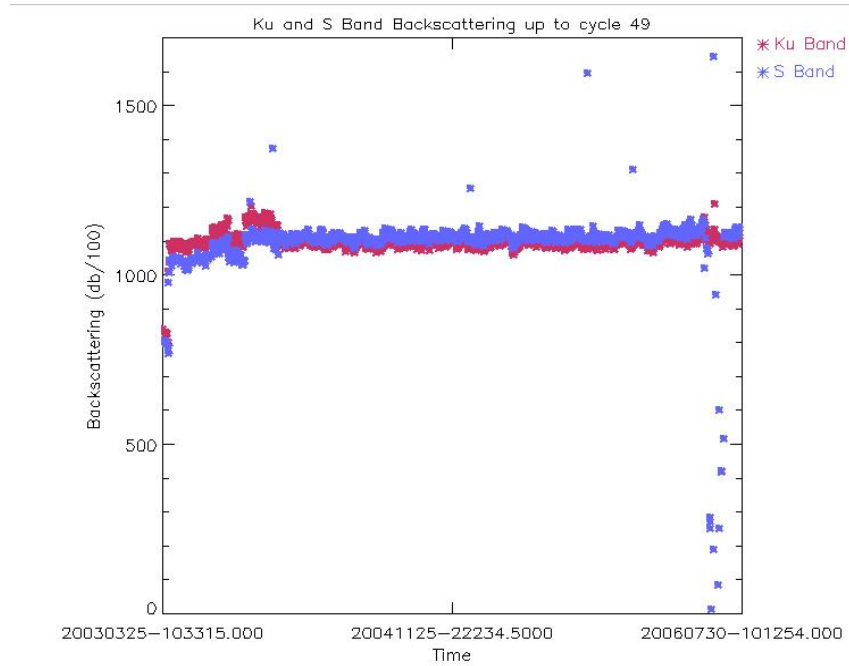
**Figure 34: Ku Band Wind Speed daily average for cycle 69 (mm/s)**

The Ku-Band Sigma<sub>0</sub> trend, reported hereafter (Figure 35 and 35A), is characterized by a jump of on average 3.24 dBs concomitant with the operational up-load of IPF version 4.54 which occurred on the 9<sup>th</sup> of April 2003. This change is due to the upload of a new RA2\_CHD\_AX ADF file that artificially shifted the RA-2 real Sigma<sub>0</sub> in order to align it with ERS-2 Sigma<sub>0</sub> and make it coherent with the Witter and Chelton empirical wind model. A similar change in trend, but in the opposite direction, is also visible in the Wind Speed trend reported in Figure 36.

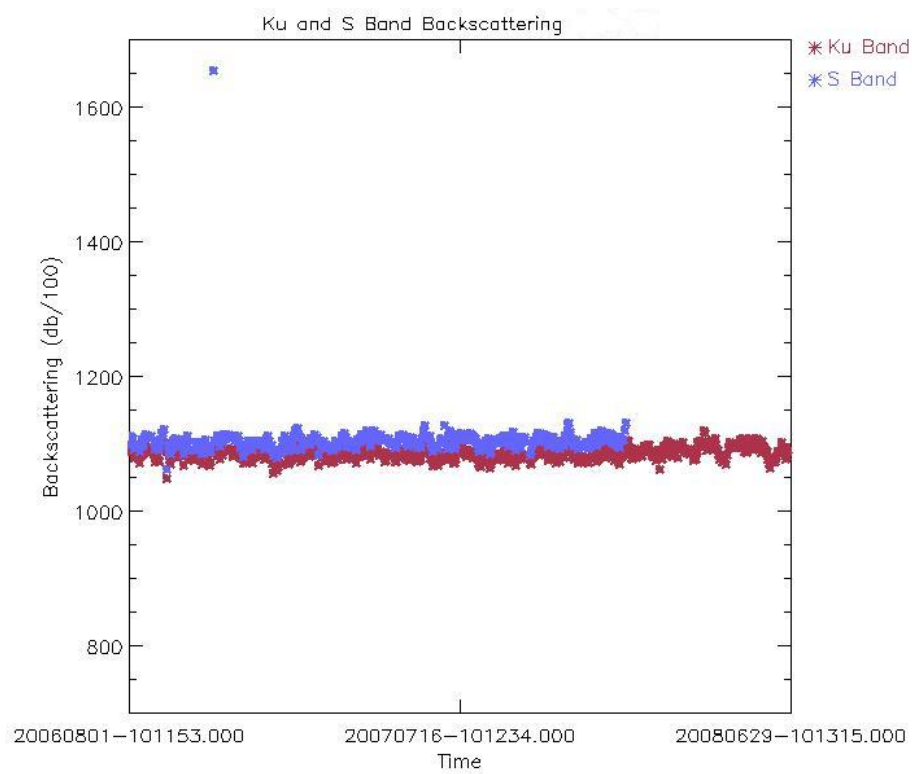
Beyond the huge jump that occurred in April 2003, the S-Band Sigma<sub>0</sub> reports a smaller jump occurring on November the 26<sup>th</sup> 2003. Following the installation of the IPF processing chain V4.56, the average values of the RA-2 S-Band backscattering parameter, shows an increase of ~0.65 dBs, the new S-band sigma<sub>0</sub> being higher with respect to the previous versions. The very low values of the S Band Backscattering around 30 July 2006 are related to the S Band Power Drop Anomaly occurred when the instrument was operating on RFFS B-side from 15 May until 21 June 2006 and from the 17<sup>th</sup> of January onwards due to the S Band Power Drop Anomaly affecting RFFS A-side. The S-Band Sigma<sub>0</sub> daily means that are plotted outside the figure range can be traced back to the so-called S-Band anomaly (ref. par. 6.1.8).

In Figure 35A, the S Band is no more being monitored starting from cycle 65 due to the S Band Power drop, started on date 17<sup>th</sup> of January, see section 7.2.1.

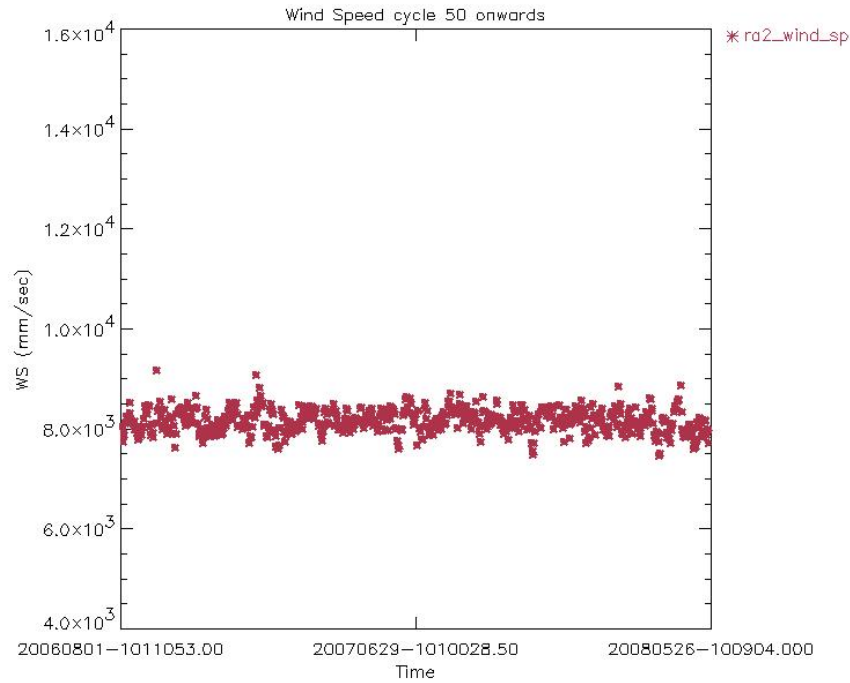




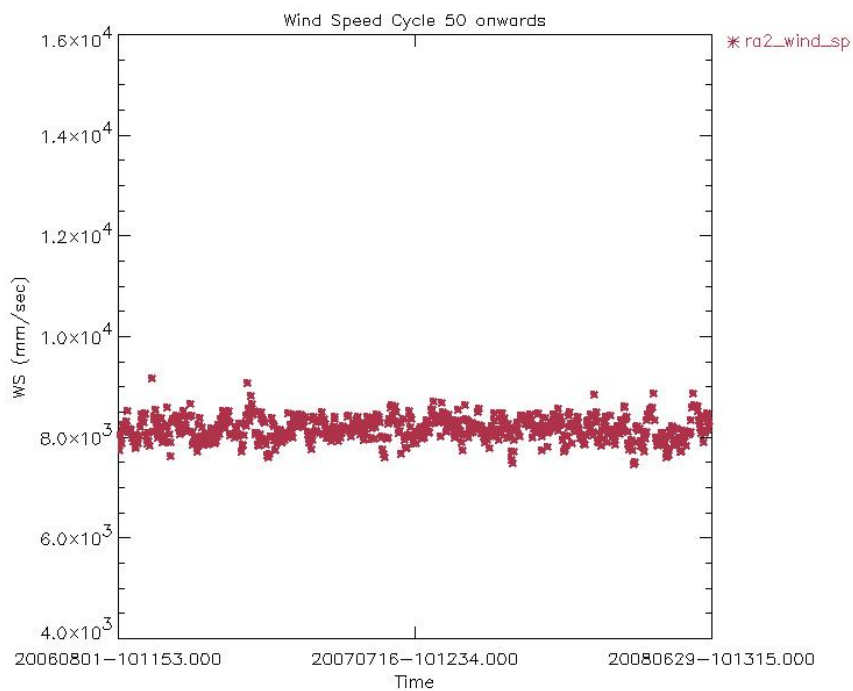
**Figure 35: Ku and S band Backscattering daily averages up to cycle 49 (dB/100)**



**Figure 35A: Ku and S band Backscattering daily averages from cycle 50 onwards (dB/100)**



**Figure 36: Wind Speed daily averages up to cycle 49 (mm/s)**



**Figure 36A: Wind Speed daily averages from cycle 50 onwards (mm/s)**

## 8 PARTICULAR INVESTIGATIONS

An anomaly occurred on the S Band starting from around ten hours after the recovery of the HSM anomaly on the 17 January 2008. A drop of the RA2 S-band transmission power started in the South Atlantic Anomaly region, showing similar characteristics as for the RA-2 RFSS Side B S-band power drop anomaly occurred in May 2006.

Investigations have been conducted and the failure of the S Band power stage for the RA-2 RFSS Side A is considered to be permanent.

On Cycle 65 the II In-Flight Tests aimed to understand the origin of the IF Mask anomaly has been successfully concluded. It has been recognized that the cause of the IF Mask anomaly was the wrong setting of the AGC used for the IF Calibration Mode from time to time. The test was performed by using a new calibration procedure consisting in setting all the AGC's to 3dB before entering the IF Calibration Mode and resetting all the parameters to the original values before entering in the Measurement mode.

## APPENDIX 1: IPF UPGRADES

**Table 4: L1B IPF version**

IPF Version	Date of issue PDHSK& E, LRAC	L1B Algorithhm upgrades	L1B ADF updates	ADF filename
V4.53	Nov. 27, 2002			
V4.54	Apr. 7, 2003	<ul style="list-style-type: none"> <li>*Wrong sign in AGC calibration estimation</li> <li>*Missing integrity check for the Data Block number read from the Level 0 Data Blocks</li> <li>*The altitude above CoG and the altitude rate have to be included in the records also in case of dummy records</li> <li>*1Hz data should be referenced to data block 9.5 not block 10</li> </ul>	Correction of the Tx-Rx gain of Ku and S band parameters (3.5 dB)	RA2_CHD_AX
V4.56	Nov. 26, 2003	<ul style="list-style-type: none"> <li>1- Extrapolation of AGC value to the Waveform center (49.5) for both Ku- and Sband.</li> <li>2 - Correction for an error found in the evaluation of S band AGC.</li> </ul>	RA2 IF Mask	RA2_IFF_AX

V4.57	PDHS-K: 29-04-2004 PDHS-E: 28-04-2004			
V4.58	Aug. 9, 2004			
V5.0.2	Oct. 24, 2005	<p>MWR Side Lobe correction upgrade</p> <p>USO clock period units correction</p> <p>RA-2 alignment: OBDH &amp; USO datation, IE flags correction</p> <p>Rain Flag tuning to compensate for the increase of the S band Sigma0</p> <p>Monthly IF estimation</p> <p>Level 1B S-Band anomaly flag</p> <p>DORIS Navigator CFI upgrade (RA-2 &amp; MWR)</p> <p>Orbit Flag not well implemented: when a DORIS product is used for the processing, the Orbit flag is set to 1 for the whole length of the RA2 L1b product file while it should be set to 1 only for the part of the RA2 product overlapping with the DORIS one. Problem has been traced on OAR 1938 to be solved on next IPF delivery.</p> <p>Correction of the Rx_dist_fine from the Level 0 product, leading to an error in the calculation of the Window_delay (SPR-058).</p>	<p>side lobe table and Config param</p> <p>New ADF format - clock period unit</p> <p>New table in SOI file</p> <p>New format</p>	<p>MWR_SLT_AX MWR_CON_AX</p> <p>RA2_USO_AX RA2_CHD_AX RA2_CON_AX</p> <p>RA2_SOI_AX</p> <p>RA2_IFF_AX</p> <p>RA2_CON_AX</p>
V5.03	Sep. 19, 2006	<p>Level 1B S-Band anomaly flag well implemented</p> <p>Orbit Flag well implemented</p>		

		Correction of the Rx_dist_fine (for 80 and 20 MHz) from the Level 0 product, leading to an error when applying the IF mask correction on to the waveforms (SPR-059)		
V 5.06	Jun. 20, 2007	DORIS Navigator threshold update to 900 seconds coverage RA2/DORIS Alignment of Chain B to Prod Spec 3/N		

**Table 5: L2 IPF version**

PF Version	Date of issue PDHS	L2 Algorithm upgrades	L2 ADF updates	ADF filename
V4.53	Nov. 27, 2002			
V4.54	Apr. 7, 2003			
V4.56	Nov. 26, 2003	SPR 26 Tuning of the Ice2 retracking New MWR NN algorithm	MSS CLS01 Rain flag Updated OCOG retracker thresholds Ice1/Sea Ice Conf file Sea State Bias Table file GOT00.2 Ocean Tide Sol 1 Map file FES 2002 Ocean Tide Sol 2 Map file FES 2002 Tidal Loading Coeff Map	RA2_MSS_AX RA2_SOI_AX RA2_ICT_AX  RA2_SSB_AX  RA2_OT1_AX RA2_OT2_AX RA2_TLD_AX
V4.57	PDHS-K: 29-04-2004 PDHS-E: 28-04-2004	ECMWF meteo files handling		
V4.58	Aug. 9, 2004	Addition of a Pass Number Field in FD Level		
	Oct. 24, 2005	- Handling of the new RA2_CHD_AX ADF - Rain Flag tuning to compensate for the increase of the S band Sigma0 - Improving the mispointing estimation - Export of the Level 1B S-band flag into the Level 2 data product	New table in SOI file  Two needed parameters in SOI file New format	RA2_CHD_AX RA2_SOI_AX RA2_SOI_AX RA2_SOI_AX

		<ul style="list-style-type: none"> <li>- Export of the Level 1B NRT orbit quality flag</li> <li>- Addition of a Pass Number Field in FD Level 2 SPH product</li> <li>- Addition of peakiness in Ku and S band in FDMAR</li> <li>- Addition of square of the SWH in Ku and S band</li> <li>- Correction of MCD flag</li> <li>- SPH pass number (field 8) set to 0 in SPH NRT Level 2 data products</li> </ul>	Addition of GOT2000.2 TLD New DEM AUX file (MACCESS) merge of ACE land elevation data and Smith and Sandwell ocean bathymetry	RA2_TLG_AX  AUX_DEM_AX
V 5.03	Sep. 19, 2006			
V 5.06	Jun. 20, 2007			

## APPENDIX 2: AVAILABILITY:

**Table 6: RA-2 L0, L1b and L2 FGD Data products availability summary for Cycle 69**

Start orbit	Stop orbit	Time [sec] instrum. Unavailability	Data Unav Time [sec]	Time [sec] L0 gaps	Time [sec] L1b gaps	Time [sec] L2 (FGD) gaps	% instrum. avail.	% data avail.	% L0 avail.	% L1b avail.	% L2 (FGD) avail.
32620	32720	0	1177	1177	1	16	100	99.82	99.82	99.82	99.82
32720	32820	0	997	997	0	12	100	99.85	99.83	99.83	99.83
32820	32920	0	997	997	0	15	100	99.85	99.84	99.84	98.89
32920	33020	0	999	999	2	14	100	99.85	99.84	99.84	99.89
33020	33120	0	996	996	0	13	100	99.85	99.84	99.84	99.84

**Table 7: MWR L0 Data products availability summary for Cycle 69**

Start orbit	Stop orbit	Time [sec] instrum. unavailability	Time [sec] L0 gaps	% instrum. avail.	% L0 avail.
32620	32720	0	1440	100	99.29
32720	32820	0	1296	100	99.36
32820	32920	0	1368	100	99.4
32920	33020	0	1632	100	99.35
33020	33120	0	1248	100	99.37

**Table 8: DORIS L0 Data products availability summary for Cycle 69**

Start orbit	Stop orbit	Time [sec] instrum. unavailability	Time [sec] L0 gaps	% instrum. avail.	% L0 avail.
32620	32720	0	70135	100	93.44
32720	32820	0	65348	100	93.79
32820	32920	0	68540	100	93.64
32920	33020	0	70772	100	93.04
33020	33120	0	66635	100	93.74

**Table 9: List of gaps for RA-2 L0 Cycle 69**

The list below only contains gaps higher then 200 seconds.

Small gaps occurring everyday due to calibration or PDS anomalies have been suppressed.

RA2_ME_0P			
start time	stop time	Duration (seconds)	Downlink
No gaps cycle 69			

**Table 10: List of gaps for MWR L0 Cycle 69**

The list below only contains gaps higher then 200 seconds.

MWR_NL_0P			
start time	stop time	Duration (seconds)	downlink
No gaps cycle 69			

**Table 11: List of gaps for RA-2 L1b Cycle 69 (gaps with respect to L0 products)**

The list of gaps below is referred to the L0 production and not to the planning.

RA2_MW_1P				
predecessor name	start time	stop time	coverage missing (seconds)	ancestor coverage missing
RA2_ME__0PNPDK20080530_071419_000051032069_00049_32668_8924.N1	30/05/2008 07:14	30/05/2008 07:14	1	0,02 %
RA2_ME__0PNPDK20080614_061723_000041202069_00263_32882_9076.N1	14/06/2008 06:17	14/06/2008 06:17	1	0,02 %
RA2_ME__0PNPDK20080616_065458_000040362069_00292_32911_9097.N1	16/06/2008 06:54	16/06/2008 06:54	1	0,02 %
RA2_ME__0PNPDK20080619_070014_000040612069_00335_32954_9126.N1	19/06/2008 07:00	19/06/2008 07:00	1	0,02 %

### APPENDIX 3: LEVEL 2 STATIC AUXILIARY DATA FILES

AUX\_DEM\_AXVIEC20031201\_000000\_20031201\_000000\_20200101\_000000  
 AUX\_ATT\_AXVIEC20020924\_131534\_20020703\_120000\_20781231\_235959  
 AUX\_LSM\_AXVIEC20020123\_141228\_20020101\_000000\_20200101\_000000  
 MWR\_LSF\_AXVIEC20020313\_172218\_20020101\_000000\_20200101\_000000  
 MWR\_CHD\_AXVIEC20021111\_131410\_20020101\_000000\_20200101\_000000  
 MWR\_LSF\_AXVIEC20020313\_172218\_20020101\_000000\_20200101\_000000  
 MWR\_SLT\_AXVIEC20050426\_120000\_20020101\_000000\_20200101\_000000  
 RA2\_IFA\_AXVIEC20050216\_125529\_20020101\_000000\_20200101\_000000  
 RA2\_IFB\_AXVIEC20050216\_125738\_20020101\_000000\_20200101\_000000  
 RA2\_CHD\_AXVIEC20051017\_093900\_20020101\_000000\_20200101\_000000  
 RA2\_CST\_AXVIEC20020621\_135858\_20020101\_000000\_20200101\_000000  
 RA2\_DIP\_AXVIEC20020122\_134206\_20020101\_000000\_20200101\_000000  
 RA2\_GEO\_AXVIEC20020314\_093428\_20020101\_000000\_20200101\_000000  
 RA2\_ICT\_AXVIEC20031208\_143628\_20020101\_000000\_20200101\_000000  
 RA2\_IOC\_AXVIEC20020122\_141121\_20020101\_000000\_20200101\_000000  
 RA2\_MET\_AXVIEC20020204\_073357\_20020101\_000000\_20200101\_000000  
 RA2\_MSS\_AXVIEC20031208\_145545\_20020101\_000000\_20200101\_000000  
 RA2\_OT1\_AXVIEC20040120\_082051\_20020101\_000000\_20200101\_000000  
 RA2\_OT2\_AXVIEC20031208\_150159\_20020101\_000000\_20200101\_000000  
 RA2\_SET\_AXVIEC20020122\_150917\_20020101\_000000\_20200101\_000000  
 RA2\_SL1\_AXVIEC20030131\_100228\_20020101\_000000\_20200101\_000000  
 RA2\_SL2\_AXVIEC20030131\_101757\_20020101\_000000\_20200101\_000000  
 RA2\_SOI\_AXVIEC20051003\_170000\_20020101\_000000\_20200101\_000000  
 RA2\_SSB\_AXVIEC20051129\_111810\_20020101\_000000\_20200101\_000000  
 RA2\_TLD\_AXVIEC20031208\_151137\_20020101\_000000\_20200101\_000000



RA2\_TLG\_AXVIEC20040310\_110000\_20020101\_000000\_20200101\_000000

## APPENDIX 4: SIGMA0 ABSOLUTE CALIBRATION

Table 18: Transponder measurement results up to cycle 69

Absolute Orbit nb	Date of Measurement	Location / Rel. track	RA-2 resolution	Transponder Bias [dB]	ECMWF Wet Tropo. Corr. [dB]
10389	24-feb-04	Rome / 315	Low	1,552	0,120
10511	04-mar-04	Valmontone / 437	Low	1,542	0,102
10618	11-mar-04	Fiuggi / 43	Low	1,447	0,135
10783	23-mar-04	Maccarese / 208	Low	1,540	0,142
10890	30-mar-04	Rome / 315	Low	1,442	0,152
11119	15-apr-04	Fiuggi / 43	High	0,963	0,122
11513	13-mag-04	Valmontone / 437	Low	1,353	0,133
11620	20-mag-04	Fiuggi / 43	Low	1,427	0,139
11892	08-giu-04	Rome / 315	Low	1,504	0,154
12014	17-giu-04	Valmontone / 437	Low	1,448	0,348
12121	24-giu-04	Fiuggi / 43	Low	1,576	0,149
14290	23-nov-04	Maccarese / 208	Low	1,43	0,164
14397	30-nov-04	Rome / 315	Low	1,11	0,142
14519	9-dic-04	Valmontone / 437	Low	1,26	0,248
14791	28-dic-04	Maccarese / 208	High	0,97	0,134
14898	4-gen-05	Rome / 315	High	0,95	0,114
15020	13-gen-05	Valmontone / 437	High	0,88	0,118
15127	20-gen-05	Fiuggi / 43	High	1,01	0,108
15292	1-feb-05	Maccarese / 208	High	0,95	0,132
15399	8-feb-05	Rome / 315	High	1,05	0,124
15521	17-feb-05	Valmontone / 437	High	0,94	0,115
15793	8-mar-05	Maccarese / 208	High	0,93	0,116
15900	15-mar-05	Rome / 315	High	0,93	0,128
16022	24-mar-05	Valmontone / 437	High	0,94	0,154
16294	12-apr-05	Maccarese / 208	High	0,97	0,140
16401	19-apr-05	Rome / 315	High	0,99	0,134
16523	28-apr-05	Valmontone / 437	High	0,97	0,114
16795	17-may-05	Maccarese / 208	High	0,84	0,168
16902	24-may-05	Rome / 315	High	1,00	0,152
17403	28-jun-05	Rome / 315	High	1,13	0,16
17525	7-jul-05	Valmontone / 437	High	1,04	0,13
17904	02-aug-05	Rome / 315	High	1,02	0,188
18026	11-aug-05	Valmontone / 437	High	0,93	0,154
18405	06-sep-05	Rome / 315	High	1,06	0,16
18634	22-Sep-05	Fiuggi/43	High	1,00	0,152
18799	04-Oct-05	Maccarese/208	High	0,85	0,164
18906	11-Oct-05	Perm site Rome / 315	Low	1,46	0,156
19407	15-Nov-05	Perm site Rome / 315	High	1,09	0,19

20409	24-Jan-06	Perm site Rome / 315	High	1,38	0,110
20910	28-Feb-06	Perm site Rome / 315	High	0,98	0,124
21912	9-May-06	Perm site Rome / 315	High	1,0	0,138
23916	26-Sep-06	Perm site Rome / 315	High	1,05	0,172
24417	31-Oct-06	Perm site Rome / 315	High	1,08	0,146
24918	05-Dec-06	Perm site Rome / 315	High	1,00	0,156
25419	09-Jan-2007	Perm site Rome / 315	High	0,97	0,148
25929	13-Feb-2007	Perm site Rome / 315	High	1,07	0,118
26922	24-Apr-2007	Perm site Rome / 315	High	1,17	0,154
27423	29-May-2007	Perm site Rome / 315	High	1,04	0,168
29928	20-Nov-2007	Perm site Rome / 315	High	1,04	0,139
30930	29-Jan-2008	Perm site Rome / 315	High	1,01	0,013
31431	04-Mar-2008	Perm site Rome / 315	High	1,04	0,139

## APPENDIX 5: S-BAND ANOMALY

Table 13: List of L2 FGD Files affected by S-Band anomaly during the current cycle, RA-2 S Band has failed on cycle 65.

## APPENDIX 6: IE SITES COORDINATES

<b>ZONE_ID="CapraiaA"</b>
RECORD polygon_pt: LONG=+009.934000<deg> LAT=+042.970000<deg>
ENDRECORD
RECORD polygon_pt: LONG=+009.863000<deg> LAT=+042.970000<deg>
ENDRECORD
RECORD polygon_pt: LONG=+009.863000<deg> LAT=+043.166000<deg>
ENDRECORD
RECORD polygon_pt: LONG=+009.934000<deg> LAT=+043.166000<deg>
ENDRECORD
<b>ZONE_ID="Toulon_D"</b>
RECORD polygon_pt: LONG=+005.500000<deg> LAT=+043.070000<deg>
ENDRECORD
RECORD polygon_pt: LONG=+005.473000<deg> LAT=+043.070000<deg>
ENDRECORD
RECORD polygon_pt: LONG=+005.473000<deg> LAT=+043.160000<deg>
ENDRECORD
RECORD polygon_pt: LONG=+005.500000<deg> LAT=+043.160000<deg>
ENDRECORD
<b>ZONE_ID="Vostok_x"</b>
RECORD polygon_pt: LONG=+106.500000<deg> LAT=-078.000000<deg>

ENDRECORD
RECORD polygon_pt: LONG=+105.500000<deg> LAT=-078.000000<deg>
ENDRECORD
RECORD polygon_pt: LONG=+105.500000<deg> LAT=-077.500000<deg>
ENDRECORD
RECORD polygon_pt: LONG=+106.500000<deg> LAT=-077.500000<deg>
ENDRECORD
<b>ZONE_ID="Dome_x__"</b>
RECORD polygon_pt: LONG=+124.000000<deg> LAT=-075.250000<deg>
ENDRECORD
RECORD polygon_pt: LONG=+122.000000<deg> LAT=-075.250000<deg>
ENDRECORD
RECORD polygon_pt: LONG=+122.000000<deg> LAT=-074.750000<deg>
ENDRECORD
RECORD polygon_pt: LONG=+124.000000<deg> LAT=-074.750000<deg>
ENDRECORD