

# **ENVISAT CYCLIC ALTIMETRIC REPORT**



**CYCLE 57** from 02-04-2007 to 07-05-2007

## **Quality Assessment Report**

prepared by	Carolina Nogueira Loddo - SERCO
checked by	B.Soussi
approved by	B. Soussi
reference	ENVI-GSOP-EOPG-03-0011
issue	1
date of issue	1 June 2007
status	Reviewed
Document type	Technical Note

## **TABLE OF CONTENTS**

<b>1</b>	<b>INTRODUCTION .....</b>	<b>4</b>
<b>2</b>	<b>DISTRIBUTION LIST .....</b>	<b>4</b>
<b>3</b>	<b>ACRONYMS.....</b>	<b>4</b>
<b>4</b>	<b>REFERENCE DOCUMENTS .....</b>	<b>5</b>
<b>5</b>	<b>GENERAL QUALITY ASSESSMENT.....</b>	<b>6</b>
5.1	Cycle Overview.....	6
5.2	Payload status.....	7
5.2.1	Altimeter Events .....	7
5.2.1.1	RA-2 instrument planning.....	1
5.2.2	MWR Events.....	2
5.2.3	DORIS Events.....	2
5.3	Availability.....	3
5.4	Orbit quality .....	3
5.5	Ground Segment Processing Chain Status.....	4
5.5.1	IPF Processing Chain .....	4
5.5.1.1	Version.....	4
5.5.1.2	Auxiliary Data File.....	4
5.5.2	F-PAC Processing Chain .....	<b>Error! Bookmark not defined.</b>
<b>6</b>	<b>INSTRUMENT PERFORMANCE .....</b>	<b>5</b>
6.1	RA-2 Performance .....	5
6.1.1	Tracking capability .....	5
6.1.2	IF Filter MASK.....	7
6.1.3	USO.....	11
6.1.4	Datation.....	13
6.1.5	In-Flight Internal Calibration.....	16
6.1.6	Sigma0 Transponder .....	20
6.1.7	Mispointing .....	21
6.1.8	S-Band anomaly.....	25
6.2	MWR Performance .....	26
6.3	DORIS Performance .....	26
<b>7</b>	<b>PRODUCT PERFORMANCE.....</b>	<b>26</b>
7.1	Product disclaimer.....	26

7.2	Data handling recommendations.....	27
7.2.1	Sea-Ice flag .....	27
7.2.2	Ocean S-Band anomalies detection.....	27
7.2.3	Warning on IPF 4.56 Version Identification field .....	27
7.2.4	S-Band Backscattering Coefficient.....	27
7.2.5	USO Range Correction .....	28
7.2.6	Ku-Band Backscattering Coefficient calibration .....	29
7.2.7	Abnormal RA-2 range behavior after anomaly Recovery .....	29
7.2.8	RA-2 Radio Frequency Module switched BACK to a-side.....	30
7.3	Availability of data.....	30
7.3.1	RA-2.....	30
7.3.2	MWR.....	32
7.4	RA-2 Altimeter Parameters.....	33
7.4.1	Altimeter range .....	<b>Error! Bookmark not defined.</b>
7.4.2	Significant Wave Height.....	34
7.4.3	Backscatter coefficient – Wind Speed .....	37
<b>8</b>	<b>PARTICULAR INVESTIGATIONS .....</b>	<b>42</b>
	<b>APPENDIX 1: IPF UPGRADES.....</b>	<b>43</b>
	<b>APPENDIX 2: AVAILABILITY:.....</b>	<b>45</b>
	<b>APPENDIX 3: LEVEL 2 STATIC AUXILIARY DATA FILES.....</b>	<b>52</b>
	<b>APPENDIX 4: SIGMA0 ABSOLUTE CALIBRATION.....</b>	<b>52</b>
	<b>APPENDIX 5: S-BAND ANOMALY.....</b>	<b>54</b>
	<b>APPENDIX 6: IE SITES COORDINATES .....</b>	<b>54</b>

## 1 INTRODUCTION

This document aims at reporting on the performance of the EnviSat Radar Altimeter, Microwave Radiometer and DORIS sensors, on the data quality of the corresponding Fast Delivery products as well as on the main events which occurred during cycle 57.

This report covers the period from the 2<sup>nd</sup> of April 2007 until the 7<sup>th</sup> of May 2007.

## 2 DISTRIBUTION LIST

This report is available in PDF format at the internet address  
[http://earth.esa.int/pcs/envisat/ra2/reports/pcs\\_cyclic/](http://earth.esa.int/pcs/envisat/ra2/reports/pcs_cyclic/)

## 3 ACRONYMS

AGC	Automatic Gain Control
APC	Antenna Pointing Controller
DORIS	Doppler Orbitography and Radiopositioning Integrated by Satellite
DSR	Data Set Record
EPC	Electronic Power Converter
ERS	European Remote Sensing satellite
ESRIN	European Space Research Institute
ESOC	European Space Operations Centre
FD	Fast Delivery products
GS	Ground Segment
GTS	Global Telecommunication System
HTL	Height Tracking Loop
ICU	Instrument Control Unit
IECF	Instrument Engineering Calibration Facility
IF	Intermediate Frequency
IE	Individual Echoes
IPF	Instrument Processing Facility
LUT	Look Up Table
MCMD	MacroCommand
MPH	Main Product Header
MSS	Mean Sea Surface
MWR	MicroWave Radiometer
MPS	Mission Planning System
NRT	Near Real Time
OBT	On-Board Time
OCM	Orbit Control Mode/Manoeuvres

PCS	ERS Products Control Service
PCF	EnviSat Product Control Facility
PDHS-E	ESRIN Processing and Data Handling Station
PDHS-K	Kiruna Processing and Data Handling Station
PLSOL	Payload Switch-Off Line
PMC	Payload Main Computer
PSO	On-orbit Position
PTR	Point Target Response
RA-2	EnviSat Radar Altimeter bi-frequency
RSL	Resolution Selection Logic
SAD	Static Auxiliary Files
SBT	Satellite Binary Time
SEU	Single Event
SLA	Sea Level Anomalies
SFCM	Stellar Fine Control Mode
SPH	Specific Product header
SPSA	Signal Processing Sub-Assembly
SYSM	Stellar Yaw Steering Mode
S/W	Software
TM	Telemetry
TRP	Transponder
TWT	Traveling Wave Tube
UTC	Coordinated Universal Time
USO	Ultra Stable Oscillator
YSM	Yaw Stellar Mode

## 4 REFERENCE DOCUMENTS

- [R – 2] ENVISAT Microwave Radiometer Assessment Report Cycle, CLS.DOS/05.147,  
<http://earth.esa.int/pcs/envisat/mwr/reports/>
- [R – 3] Envisat RA-2 IF Mask weird behavior: Investigation Report
- [R – 4] Instrument Performance Evaluation and Analysis Summary, PO-TR-ALS-RA-0042
- [R – 5] Instrument Corrections Applied on RA-2 Level 1b products, Paper presented at the ENVISAT Calibration Review in September 2002
- [R – 6] ENVISAT Phase E Cal/Val Acquisition Plan, ENVI-SPPA-EOPG-TN-03-0008
- [R – 7] RA-2 S-Band Anomaly Investigation, PO-TN-ESA-RA-1342,  
<http://earth.esa.int/pcs/envisat/ra2/articles/>
- [R – 8] RA-2 Performance Results, Paper presented at the ENVISAT Calibration Review in September 2002
- [R – 9a] ECMWF Report on ENVISAT RA- 2 for July 2005, Report on ENVISAT Radar Altimeter - 2 (RA- 2), Wind/ Wave Product with Height Information (RA2\_ WWV\_ 2P),

- [R – 9b] ECMWF Report on ENVISAT RA- 2 for August 2005, Report on ENVISAT Radar Altimeter - 2 (RA- 2), Wind/ Wave Product with Height Information (RA2\_WWV\_ 2P),  
<http://earth.esa.int/pcs/envisat/ra2/reports/ecmwf/>
- [R – 10] Envisat GDR Quality Assessment Report, SALP-RP-P2-EX-21121-CLS015
- [R – 11] Envisat RA-2 Range Instrumental correction: USO clock period variations and associated auxiliary file, ENVI-GSEG-EOPG-TN-03-0009
- [R – 12] Defining a Rain flag for the Envisat altimeter, G. Quartly, study presented to the final CCVT plenary meeting, <http://earth.esa.int/pcs/envisat/ra2/articles/>
- [R – 13] ENVISAT Weekly Mission Operations Reports # 249-253, ENVI-ESOC-OPS-RP-1011-TOS-OF
- [R – 14] Envisat validation and cross calibration activities during the verification phase. Synthesis Report ESTEC contract No. 16243/02/NL/FF WP6,  
<http://earth.esa.int/pcs/envisat/ra2/articles/>
- [R – 15] ENVISAT-1 Products Specifications - Vol. 14: RA-2 Products Specifications, PO-RS-MDA-GS-2009, Iss 3, Rev. N, 24/05/2004
- [R – 16] Algorithm for Flag identification and waveforms reconstruction of RA-2 data affected by “S-Band anomaly”, ENVI-GSEG-TN-04-0004, Issue 1.4
- [R-17] Envisat Cyclic Report Cycle 28, ENVI-GSOP-EOPG-03-0011
- [R-18] ENVISAT RA-2 IF MASK AUX FILE - Updating Strategy: Investigation Report; C. Bignami and C.Loddo and N. Pierdicca.

## 5 GENERAL QUALITY ASSESSMENT

### 5.1 Cycle Overview

- The analysis of the RA-2 data confirmed the RA-2 Ultra-Stable Oscillator (USO) anomaly that was affecting the Altimetry data products for a year, disappeared on the 1st of March 2007.

**WARNING: Users are advised not to use the range parameter in Ku and S Band during cycle 57 without applying the USO correction. The auxiliary files should be applied even in the non anomalous period in order to correct for the nominal ageing drift of the USO device.**

- Three USO corrections have been developed for the different Envisat Level 2 altimetry data products for correcting the abnormal RA-2 USO behaviour affecting the Altimetric Range by few meters w.r.t. the Mean Sea Surface:
  1. NRT orbit basis USO correction for FDGDR products , available from <http://earth.esa.int/pcs/envisat/ra2/auxdata/>;
  2. An Interim daily USO correction for IGDR products, available at the same F-PAC location as for IGDR, in the directory igdr\_ous\_corr

3. An OFL cycle USO correction for GDR products, available at the same F-PAC location as for GDR, in the directory `gdr_ous_corr`.
- A software routine has been developed to allow users to insert the RA-2 Ultra-Stable Oscillator (USO) corrections into Envisat Level 2 altimetry data products and is available in the same web site as the correction files, see above.
  - The NRT USO correction has been made available from July 24, 2006 onwards.
  - A new planning for IF calibration was put in place in order to partially free Himalaya. New calibration site is Rocky Mountains. For Continuity and homogenous reasons ascending passes are still used for calibration over Himalaya.
  - There are 12 valid IF masks over the two defined zones (15% of acquired and processed masks). The auxiliary file RA2\_IFF\_AX was updated on date 12 April.
  - There are 14 orbits affected by the S Band Anomaly was 14. The patch correcting the SW/HW anomaly, the original cause of the S Band Anomaly, was dismissed on date 9 April because it was causing the RA2 Instrument to be switched to Heater0/Refuse mode. A new corrected patch will be available soon.
  - Tracking performances in the different resolutions are well in line with the output figures and objectives of the Commissioning Phase.
  - During cycle 57, no update of the RA2\_USO\_AX has been done.
  - RA2 was unavailable three times, data availability was around 97%
  - MWR was never unavailable, data availability was around 98%
  - DORIS was never unavailable, data availability was around 97%

## 5.2 *Payload status*

### 5.2.1 ALTIMETER EVENTS

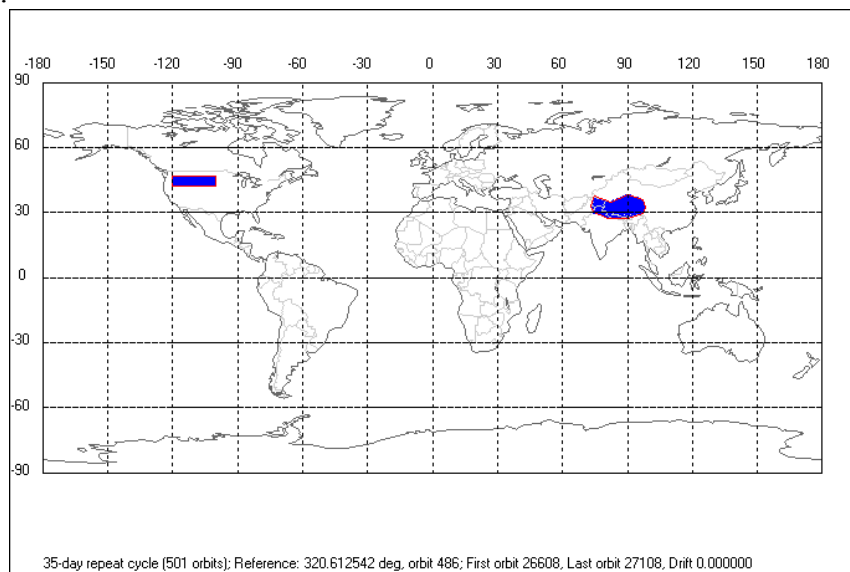
The Radar Altimeter 2, during cycle 57, was unavailable three times, see details below. In all three cases an automatic transition (recovery) to Heater0/Refuse mode due to OOL of the HPA Power Bus current occurred. The recovery, transition to HT0-REF has been suspected to be connected to a “side lobe” effect of the SPSA S-band anomaly patch uploaded on date 16 January 2007. Therefore ESOC has decided to reconfigure the SPSA without this patch on date 9 April 2007. Since that date, RA-2 operations continued nominally throughout the reporting period.



1. start: 3 Apr 2007 12:37:27 Orbit = 26616  
 stop: 3 Apr 2007 13:48:00 Orbit = 26617  
 RA-2 Return to Mesurement from HEATER 0 / REFUSE MODE due to HPA bus current OOL
2. start: 4 Apr 2007 09:49:12 Orbit = 26629  
 stop: 4 Apr 2007 11:30:00 Orbit = 26630  
 RA-2 Return to Measurement after HEATER 0 / REFUSE MODE due to HPA bus current OOL
3. start: 9 Apr 2007 05:08:51 Orbit = 26698  
 stop: 9 Apr 2007 10:36:30 Orbit = 26701  
 RA-2 back to measurement from STBY/REFUSE following HTR0/REFUSE MODE

### 5.2.1.1 RA-2 instrument planning

Starting on Cycle 56, a new calibration site has been defined for the IF masks mode acquisition. The new site is on the Rocky Mountains. The nominal operational acquisition over Himalaya is still being performed, but only on ascending passes. Below a map is reported indicating the two calibration sites:



**Figure 1: IF Calibration Acquisition sites**

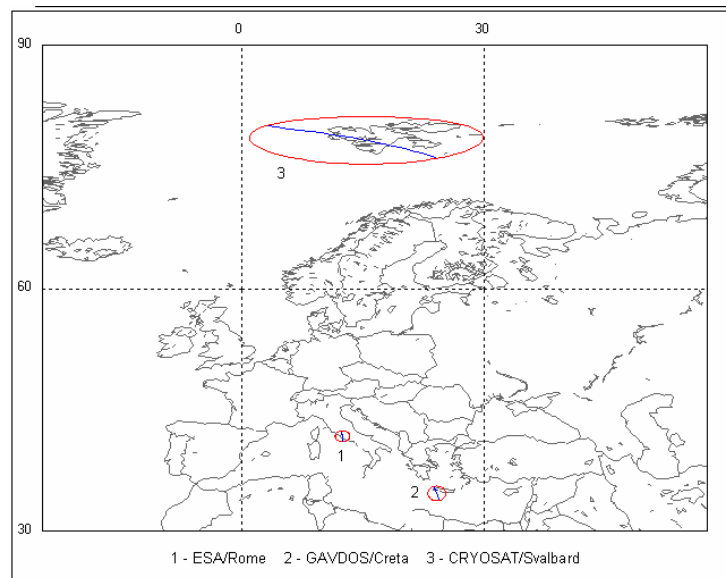
The RA-2 instrument planning was performed as follows:

- IF Calibration Mode according to the nominal operational acquisition scheme: 100 seconds of data once per day over Himalayan region (ascending passes).



- IF Calibration Mode according to the new operational acquisition scheme: 50 seconds of data once or twice per day over Rocky Mountains region (ascending and descending passes).
- Individual Echoes background planning: the buffering of 20 Data Blocks of Individual Echoes (1.114 sec.) transmitted every 160 Data Blocks starts after flying over the Himalayan region (both ascending and descending passes) and is operated for half a day.
- Individual Echoes acquisitions during PLO activity over ESA transponder located in Rome (1 second length acquisition, 1 repetition)
- Individual Echoes acquisition (1 second length acquisition, 1 repetition) over the following sites:  
 Capraia, Toulon D, Vostok , Dome C. Appendix 6 contains a table with the coordinates.
- Individual Echoes acquisitions over the Uyuni Salar
- Preset Loop Output mode for GAVDOS Range transponders, located in Creta.
- Preset Loop Output mode over the ESA transponder located in Rome (permanent location); high chirp resolution.

Hereafter the map is reported showing the acquisition sites for both the Range and Sigma\_0 transponders.



**Figure 2A: Transponder Acquisition sites**

### 5.2.2 MWR EVENTS

The MWR, during cycle 57 was never unavailable.

### 5.2.3 DORIS EVENTS

The DORIS, during cycle 57 was never unavailable.

### 5.3 *Availability*

The summary of the RA-2 data products availability for the current cycle is reported in Appendix 2. Data availability was around 97% for RA-2 products, 98% for MWR products and 97% for DORIS products.

### 5.4 *Orbit quality*

During the period covered by cycle 57 two orbit manoeuvres was executed, whose details are given hereafter:

1) On April 3rd, 2007 (DOY 093) an orbit inclination correction manoeuvre took place. The characteristics of this manoeuvre were:

- Planned delta V size: 1.755 m/s, increasing orbit inclination by approximately 0.01 degree
- Mid thrust time: 04:41:54.78 utc at PSO 0.0 degree
- Thrust duration: 930.875 seconds
- Measured delta V: 1.764 m/s across track, 0.0092 m/s along track (towards flight direction), - 0.0174 m/s radial (towards downward vertical).

The scope of this inclination correction was threefold:

- keep the ground track within its deadband around the reference one in the high latitudes regions;
- keep the local time of ascending node crossings within the allowed range;
- continue a series of inclination control cycles to allow interferometric applications over 2007 and 2008, started with the inclination correction performed on January 23, 2007.

2) On April 5th, 2007 (DOY 095) an orbit in-plane correction manoeuvre took place. The characteristics of this manoeuvre were:

- Planned delta V size: 0.004 m/s, increasing the semi major axis by approximately 10 metres
- Mid thrust time: 03:04:37.0 utc at PSO 238.3 degrees
- Thrust duration: 3 seconds
- Measured delta V: 0.0039 m/s along track (towards flight direction)

The scope of this in plane correction manoeuvre was to initiate a ground track control cycle limited to 200 metres around the reference ground track at ascending node.

During the period covered by this report the spacecraft ground track remained within the +/- 200 m deadband around the reference ground track at ascending node.

## 5.5 *Ground Segment Processing Chain Status*

### 5.5.1 IPF PROCESSING CHAIN

#### 5.5.1.1 *Version*

The current cycle data has been processed with the IPF processing chain V5.03, installed in both PDHS-E and PDHS-K on 19<sup>th</sup> September 2006. It contains the following evolutions:

1. S-band anomaly flag valid for all surfaces well implemented. Users are advised to take advantage of this flag to detect the data affected by the S-band anomaly.  
This flag is available in:  
Level 1B : in bit 1 of MCD (field 14)  
Level 2 : in bit 7 of MCD (field 8).
2. Correction of the Level 0 Rx\_dist\_fine. The error in the window delay (for the 80 and 20 MHz bandwidths) that depends on the L0 parameter Rx\_dist\_fine is now corrected and well implemented.
3. Orbit Flag on L1b and L2 Data Products is properly set in the L1B and L2 data products and can be found at the following locations :  
Level 1B RA2 MDSR : bit 0 of MCD (field 14)  
L1B/L2-MWR MDSR : bit1 of MCD (field 8)  
L2-RA2 MDSR : bit27 of MCD (field 8)
4. MWR MDSR differences: differences between the IPF and the reference processor, up to few tenths of degree Kelvin have been found in the Channel 2 brightness temperature. This is now corrected and well implemented.
5. Peakiness in FDMAR products are no more set to default value: field 89 for Ku band and field 90 for S band.

A complete table of IPF Level1b and Level2 upgrades is reported in Appendix 1.

#### 5.5.1.2 *Auxiliary Data File*

The Auxiliary files actually used by the IPF ground processing are reported in Appendix 3. The RA2\_POL\_AX, RA2\_SOL\_AX and RA2\_PLA\_AX have been regularly updated without problems. The RA2\_IFF\_AX has been updated during the reporting period. The RA2\_USO\_AX has never been updated during the reporting period. Data are corrected with the RA2\_USO\_AX estimated before the USO Clock anomaly (USO\_Clock\_Period = 12499999726, USO\_Range\_Correction= 17.3 mm).

The RA-2 Auxiliary Data Files (ADF) are accessible from the Envisat Web pages under [http://www.envisat.esa.int/services/auxiliary\\_data/ra2mwr/](http://www.envisat.esa.int/services/auxiliary_data/ra2mwr/).

## 6 INSTRUMENT PERFORMANCE

### 6.1 RA-2 Performance

#### 6.1.1 TRACKING CAPABILITY

The percentages of acquisition in the different resolutions subdivided by surface type are given in the Table below:

Surface type	320 MHz	Commissioning Phase objectives 320 MHz	80 MHz	20MHz
Open Ocean	99,99	>99%	0,01	0,00
Costal Water (ocean depth < 200 m)	98,45	No specific requirement	1,36	0,19
Sea Ice	99,14	>95%	0,74	0,12
Ice Sheet	96,21	>95%	2,99	0,81
Land	81,30	No specific requirement	13,77	4,93
All world	95,20		3,58	1,22

**Table 1: RA-2 Tracking capability: Chirp ID percentages discriminated by surface type**

The figures given for the RA-2 tracking performances during this cycle are in line with the ones recorded at the end of the Commissioning Phase reported in the last column and presented in [R – 8].

In Figure 2, Figure 3 and Figure 4 the cyclic tracking percentages for the three RA-2 bandwidths are reported.

The worsening in performance noticeable for cycle 20 was due to the up-load of wrong on-board software parameters which lasted for about three days whilst for cycle 47 a special operation has been performed to limit RA-2 Chirp Bandwidth to fixed values.

In general, even if a tiny evolution can be observed, the tracking performances are well in line with the output figures and objectives of the Commissioning Phase as given in Table 1.

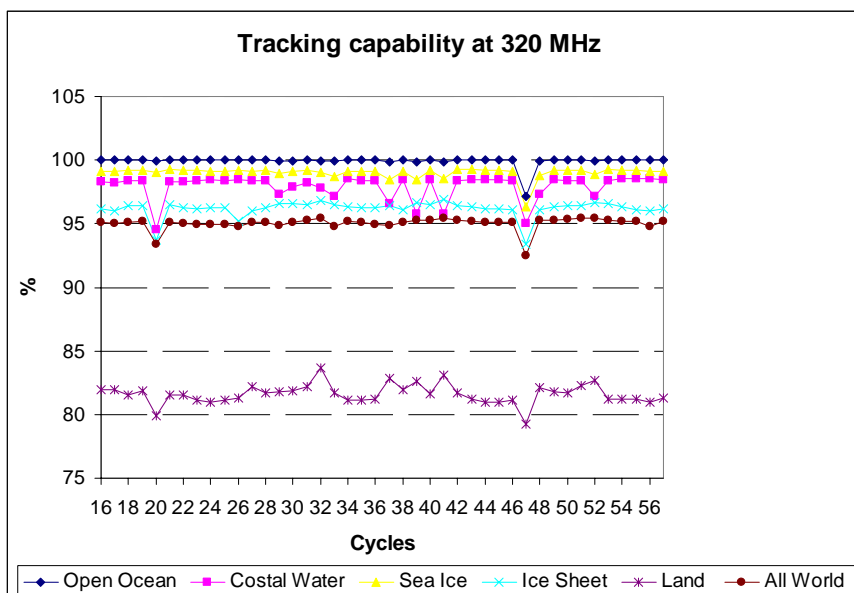


Figure 2: RA-2 Tracking percentage at 320MHz for different surfaces

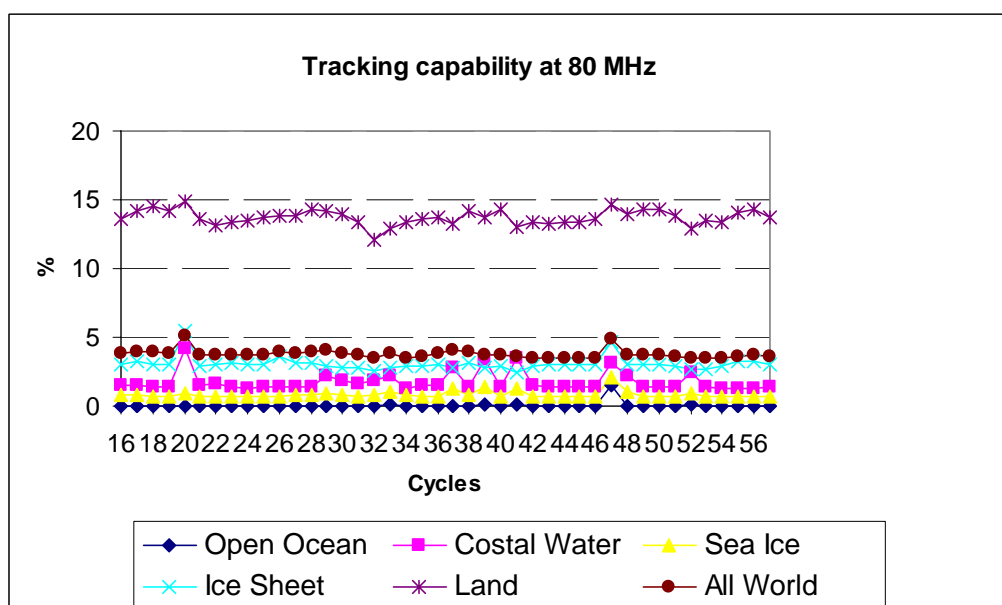


Figure 3: RA-2 Tracking percentage at 80MHz for different surfaces

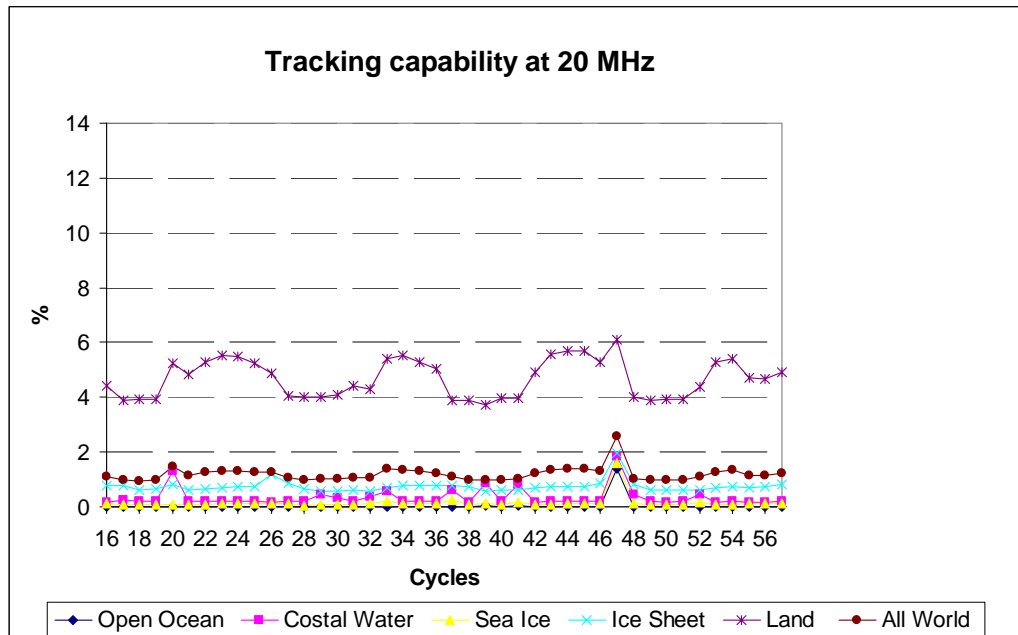


Figure 4: RA-2 Tracking percentage at 20MHz for different surfaces

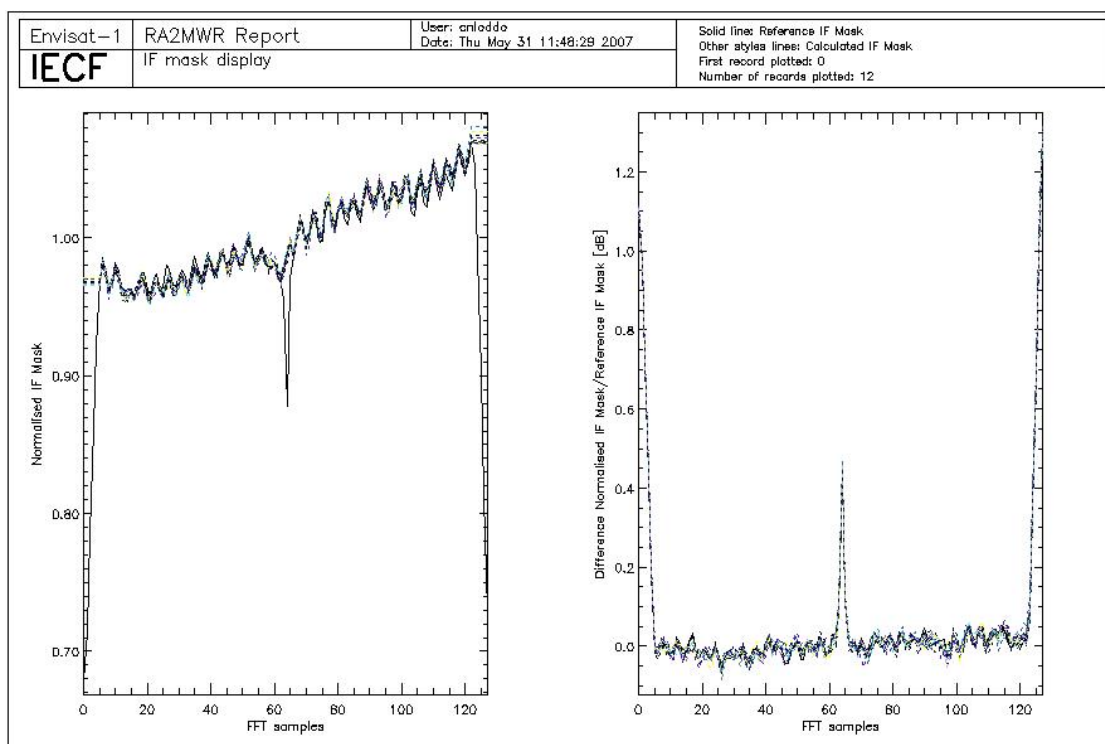
### 6.1.2 IF FILTER MASK

In Figure 5 all valid IF masks retrieved during cycle 57 are plotted in the left panel. The on-ground measured IF mask (ref [R – 4]) is also plotted in that panel with a solid line. In the right panel, the difference of each of the calculated IF masks with respect to the on-ground measured one is reported. The average difference with respect to the on-ground is used as the criteria for defining valid masks: if it is lower than 0.01 dbs, the mask is considered valid.

During cycle 57, according to the new planning defined for the IF Calibration acquisition from cycle 56 onwards, see chapter 5.2.1.1, one daily pass over the site Himalaya (35 ascending passes) and 61 passes over Rocky Mountains (both ascending and descending tracks; less than two per day) have been performed.

- The number of valid IF Masks acquired on the Rocky Mountains site was 4
- The number of valid IF Masks acquired on the Himalaya site was 8

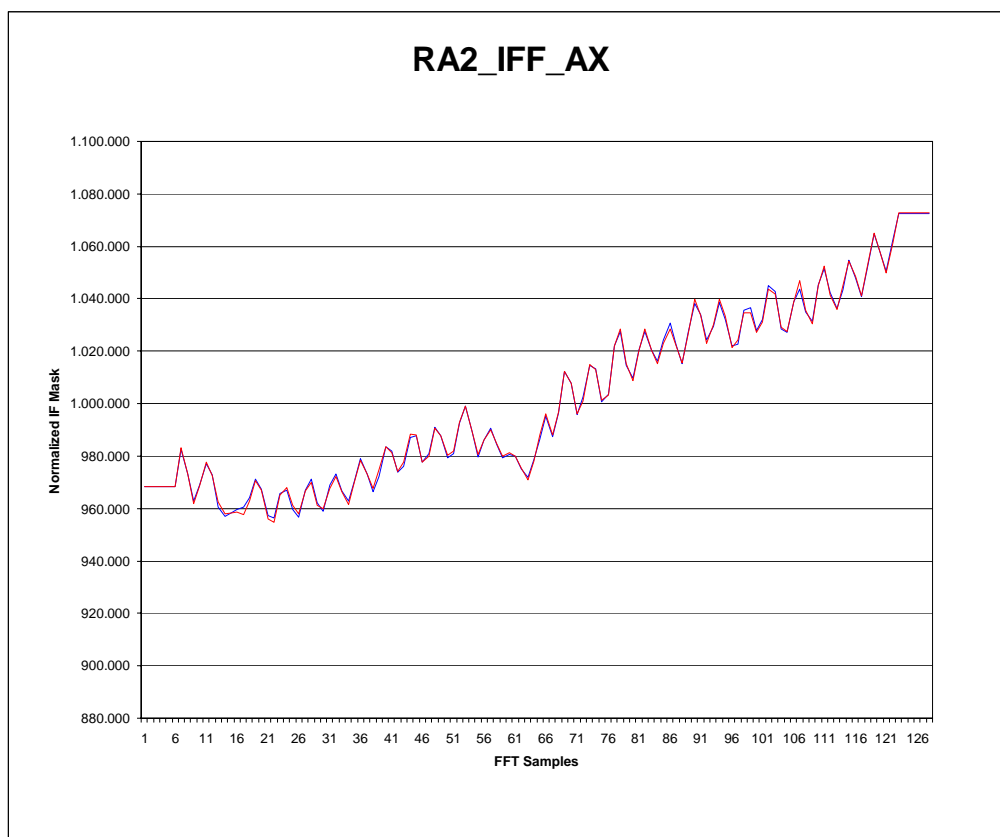
The overall number of valid IF masks has been 12, representing 15 % of the acquired IF masks. Only valid IF masks are used to generate the final IF mask used in the Level 1B ground processing; the method used for generating it consists in a monthly average according to the strategy defined in [R-18] with an editing criteria based on the comparison between each of the single IF masks and the reference one (on-ground).



**Figure 5: Valid IF masks retrieved during cycle 57 plotted together with the on-ground reference.**

In Figure 6 the IF Mask, updated on the 12 of April 2007, and the previous IF Mask used for processing are plotted.



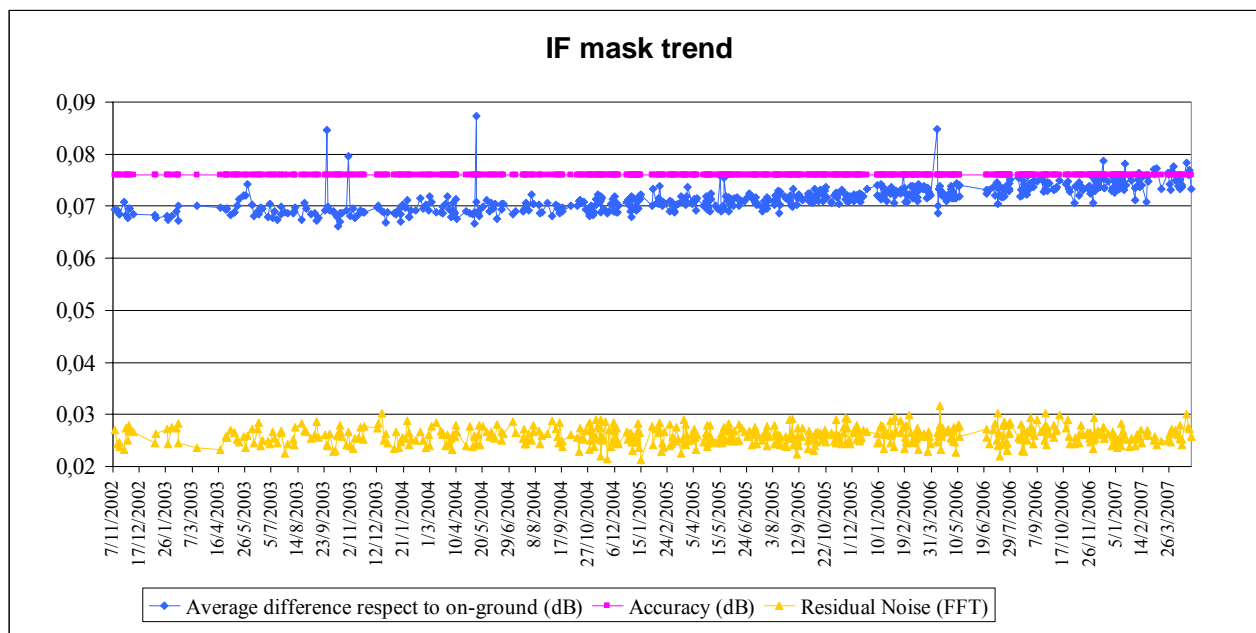


**Figure 6: Previous and IF Mask updated on 12 of April**

In Figure 7 the evolution of the IF mask quality parameters evaluated as in [R – 4] is reported only for valid data. It can be observed that the difference with respect to the on-ground reference presents an increasing trend due to the ageing of the instrument.

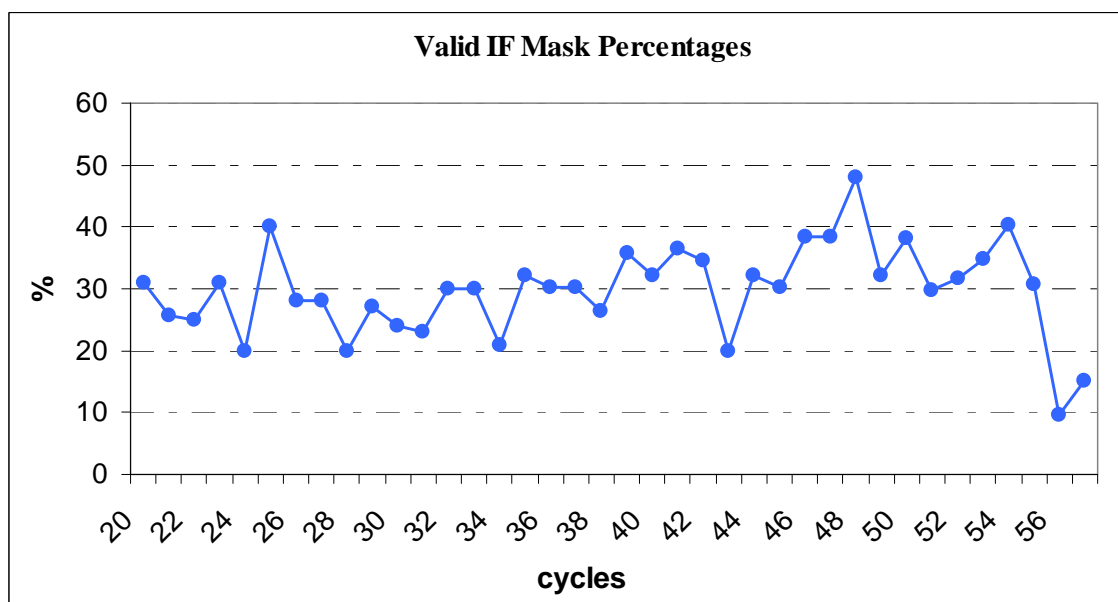
Some peaks are visible on the plot that correspond to the data acquired on September the 27<sup>th</sup> 2003 at 15:48, on October the 29<sup>th</sup> 2003 at 15:42, on May the 10<sup>th</sup> 2004 at 15:45, on April 9<sup>th</sup> 2006 and on December 16<sup>th</sup> 2006. The reason of this could be found in the instrument warming up considering that the IF Cal acquisition has been made, in the three first cases, only a couple of hours after an anomaly recovery. In the two last cases the unavailability was very long, more than two days, and the warming up effect lasted longer. The residual noise and the accuracy show a very constant behavior over the whole period.

During cycle 57 the IF Calibration Mode still shows the weird behavior described in [R – 3]. This problem, present since the beginning of the mission, is under investigation. The anomaly directly affects the number of valid RA-2 IF masks obtained per cycle, but does not prevent the generation of the IF mask correction file, used in input to the Level 1B ground processing as far as at least 10 of them are valid Mask.



**Figure 7: Evolution of the IF mask related parameters for valid IF masks retrieved up to cycle 57**

In Figure 8 the percentages of valid IF masks from cycle 20 onwards is reported. This percentage is computed with reference to the acquired masks per cycle. The higher number of valid IF Masks in cycle 48 is a consequence of the special IF Calibration operations which took place on 8 and 9 June 2006 when the altimeter was on its side B. The number of valid IF Masks has decrease on cycle 56 and 57. This problem is under investigation.

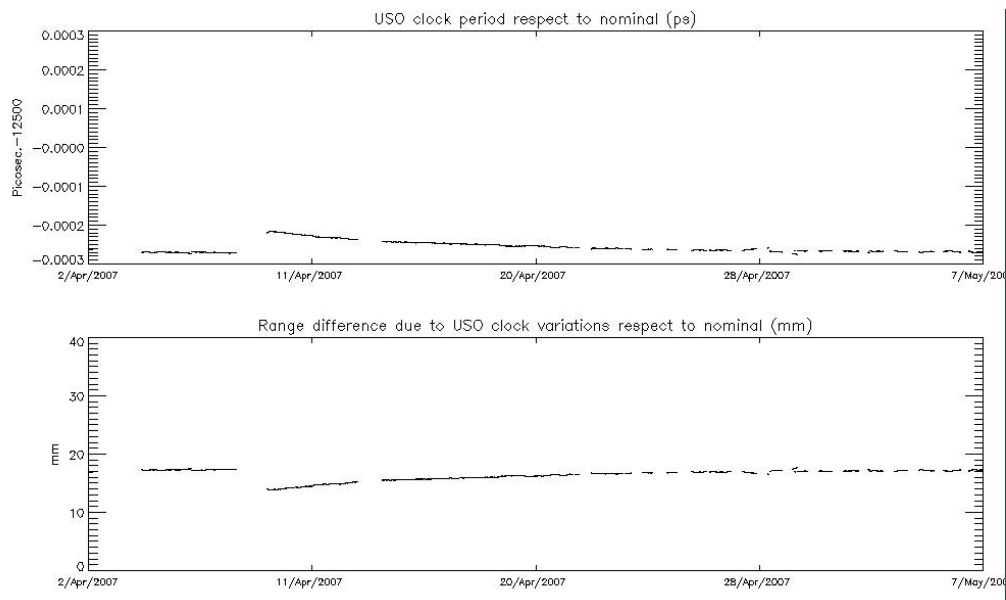


**Figure 8: Percentages of valid IF Mask up to cycle 57**

### 6.1.3 USO

The USO Clock Period anomaly **IS NO MORE PRESENT** in cycle 57. It disappeared on date 1<sup>st</sup> March 2007, after the recovery of a RA-2 on-board anomaly. This anomaly lasted for about 11 cycles (from cycle 44 to beginning of cycle 56).

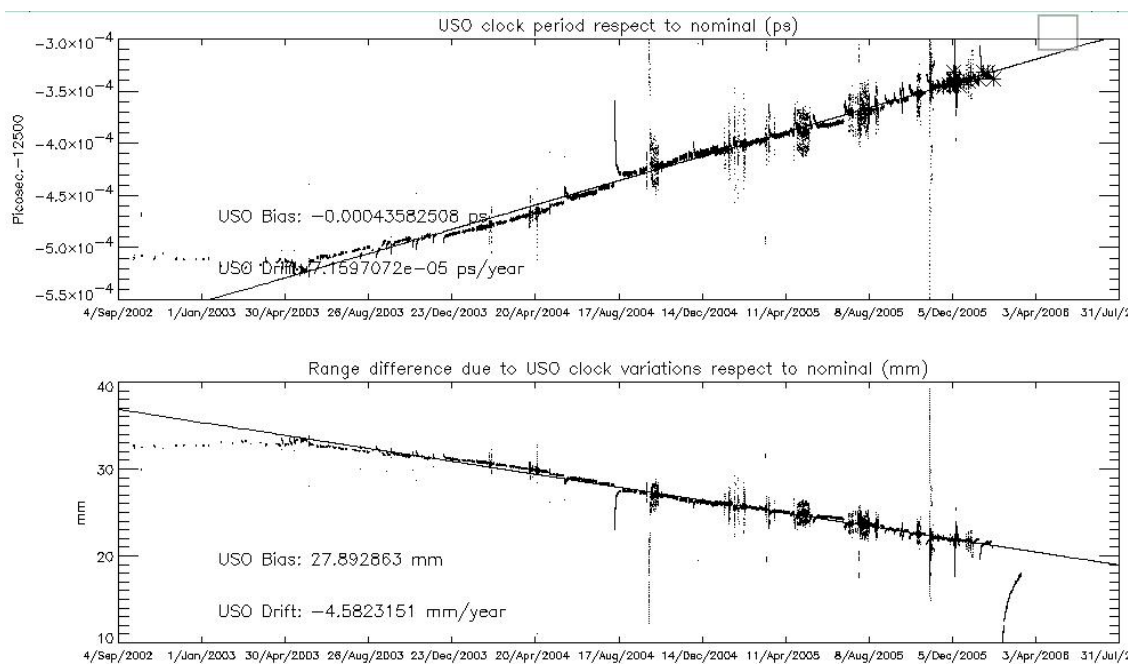
In Figure 9 the USO clock period trend is reported. In order to make the variability visible, the difference of the actual USO clock period with respect to the nominal one has been plotted in the upper panel. In the lower panel the Range error due to the USO clock variability has been reported taking a satellite altitude of 800 Km as a nominal value. The gaps in the plot are related to the RA-2 instrument unavailability on dates 2<sup>nd</sup>, 3<sup>rd</sup> and 9<sup>th</sup> April 2007, see Chapter 5.2.1.



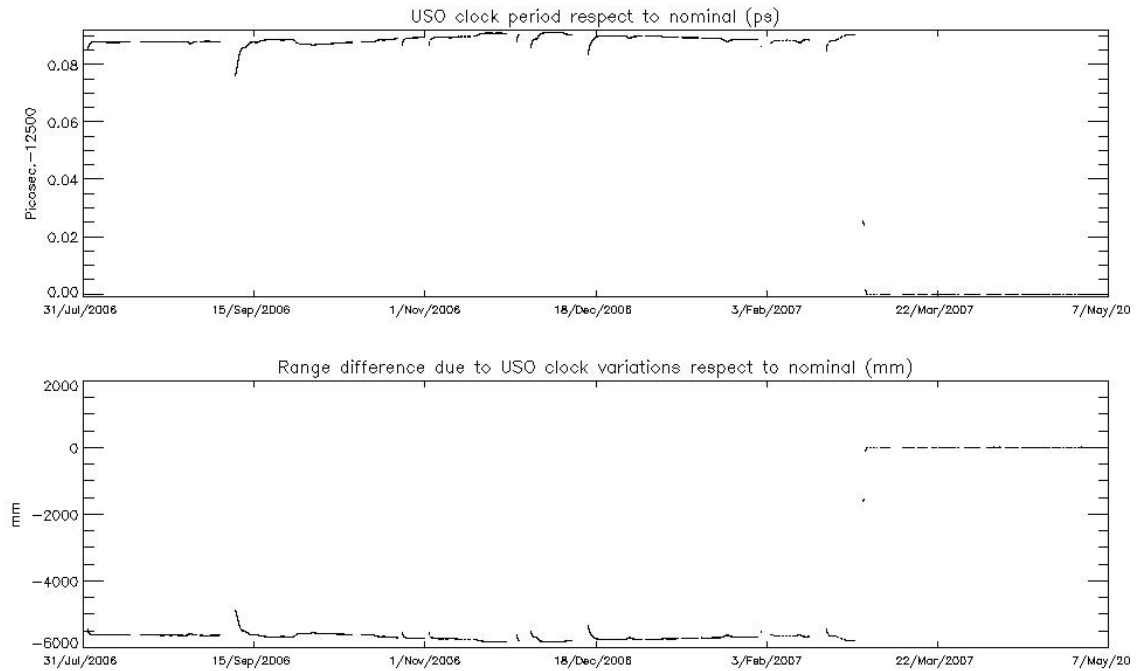
**Figure 9: USO clock period for cycle 57**

The USO Clock Period was almost permanently present in the last year. It started in cycle 44, on date 1 Feb 2006 12:04:30, Orbit = 205181. It directly happened after the recovery of a RA-2 on-board anomaly occurred on the 2006/02/01 at 05:17:56. During the anomalous period, the altimetric range jumped by several meters (about 5.6m) w.r.t. the Mean Sea Surface due to an anomaly in the USO clock period. Moreover, oscillations at the orbital period with an amplitude of 20-30 cm affect the Sea Level Anomalies during the anomaly that make the range unusable for both Ku and S Band. The anomaly persisted intermittently until the 15<sup>th</sup> of May 2006 14:21:50, Orbit = 21994, when the instrument was configured to its RFSS B-side. It appeared again when the instrument was reconfigured to its nominal RFSS A-side on date 21 June 2006 13:20:15, Orbit = 22523.

In Figure 10, the USO clock period trend retrieved from the beginning of the mission until the last week of cycle 49 is reported. In Figure 10A, the USO clock period trend retrieved from cycle 50 onwards is reported. The actual value of the USO clock period has been used within the L1b processing; only from the 24<sup>th</sup> of October 2005 (IPF V5.02) until the 1<sup>st</sup> of February 2006. This means that, during this period, the data are corrected for the bias and the drift correlated to the actual USO clock period. The evaluation of the actual USO clock period is performed off-line respect to the IPF processing and it is updated once per week in the auxiliary file RA2\_USO\_AX. The method to correct the data from the USO period changes outside of this period is detailed in Part 7.2.



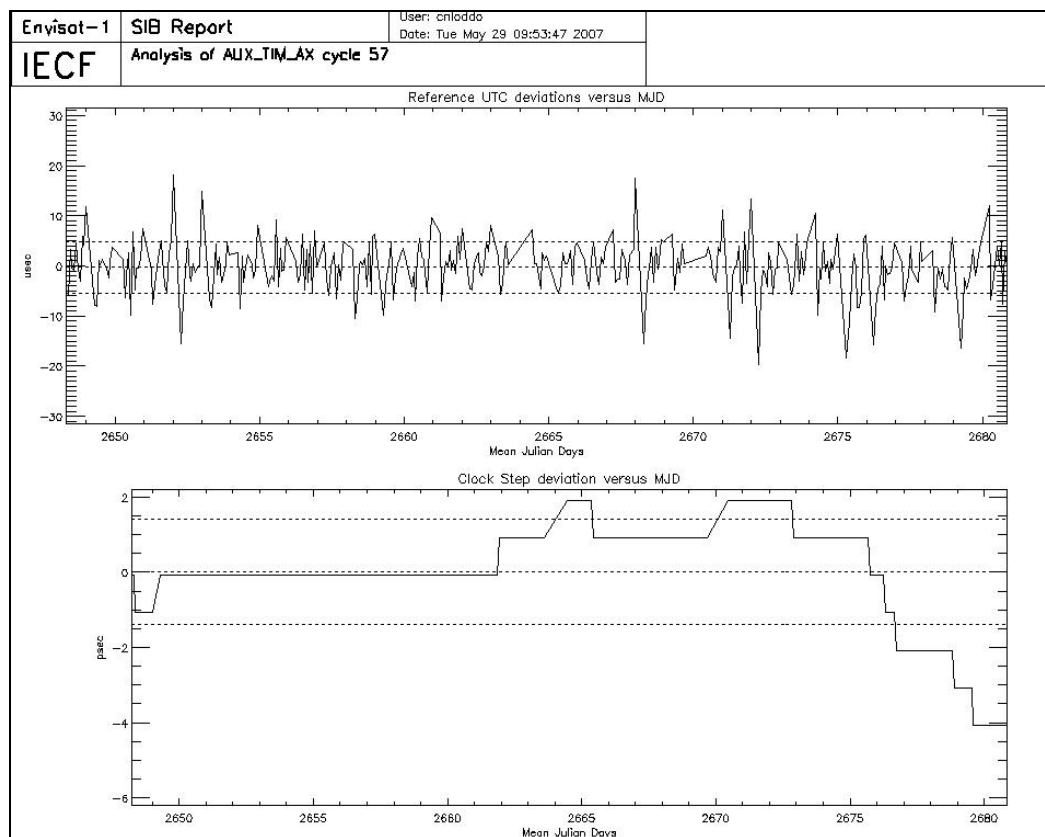
**Figure 10: USO clock period until cycle 49**



**Figure 10A: USO clock period from cycle 50 onwards**

## 6.1.4 DATATION

A significant part of an eventual error in the RA-2 products datation could result from imperfect synchronisation between the Satellite Binary Time and the UTC Time due to a drift of the ICU clock period. A correlation between those two times is performed at every Kiruna orbit dump and then extrapolated for the four non-Kiruna orbits. In the upper panel of Figure 11, the differences between the extrapolated UTC values and the corresponding real UTC values measured at the next Kiruna dump, are reported. In the lower panel, the ICU clock step for the same period is shown.



**Figure 11: UTC deviations and ICU clock period for cycle 57**

In Figure 12 (upper panel) the differences between the extrapolated UTC values and the corresponding real UTC values measured at the next Kiruna dump, are reported for data up to cycle 32. The UTC deviations for cycle 33 onwards are reported in Figure 13.

Only a few anomalous events can be observed at the beginning of the period (cycles 16/17) for which the difference rises above the 20 microseconds warning threshold. However, starting from cycles 22/23, the number of small differences (10 microseconds plus or minus) has increased a lot. Furthermore, during the last ten days of the cycle 32 and for all cycle 33 and 34, the variability of the deviations has increased reporting many peaks just over the 20 microseconds threshold (first part of Figure 12); this phenomenon is now fixed. In the lower panel of both figures the ICU clock step for the same period is shown where big variations are reported. The jump observed around MJD 2288 (07-APR-2006) on Figure 13 is related to the reconfiguration of the Precise Time Correlation process, which became blocked with invalid data after the Service Module anomaly and reconfiguration occurred on 6 April 2006. This is however not a problem because the ICU clock period variations are included in the algorithm for the SBT/UTC correlation evaluation.

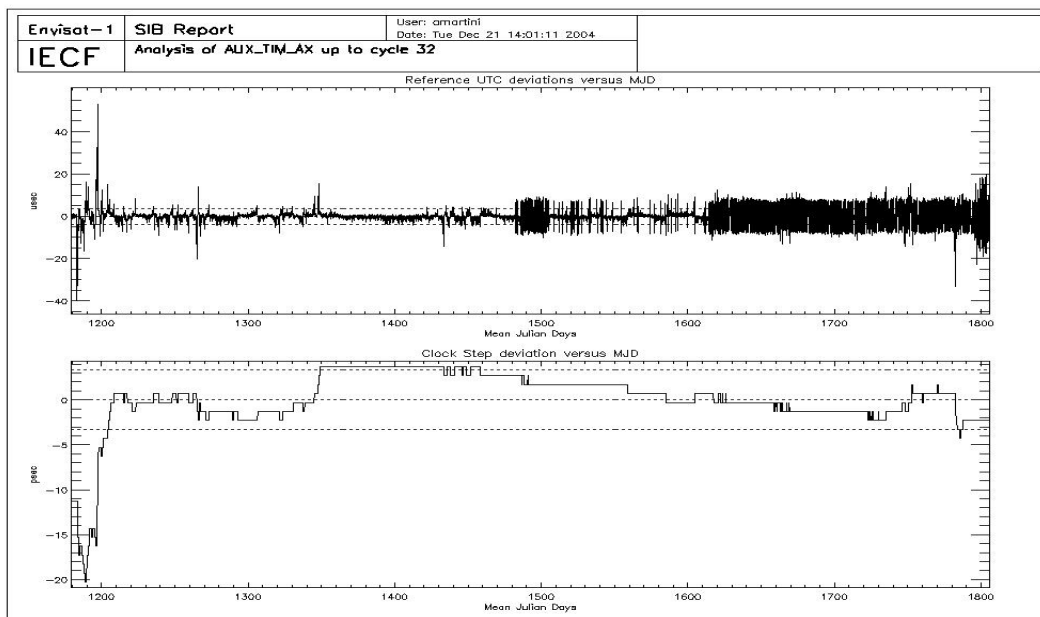


Figure 12: UTC deviations and ICU clock period up to cycle 32

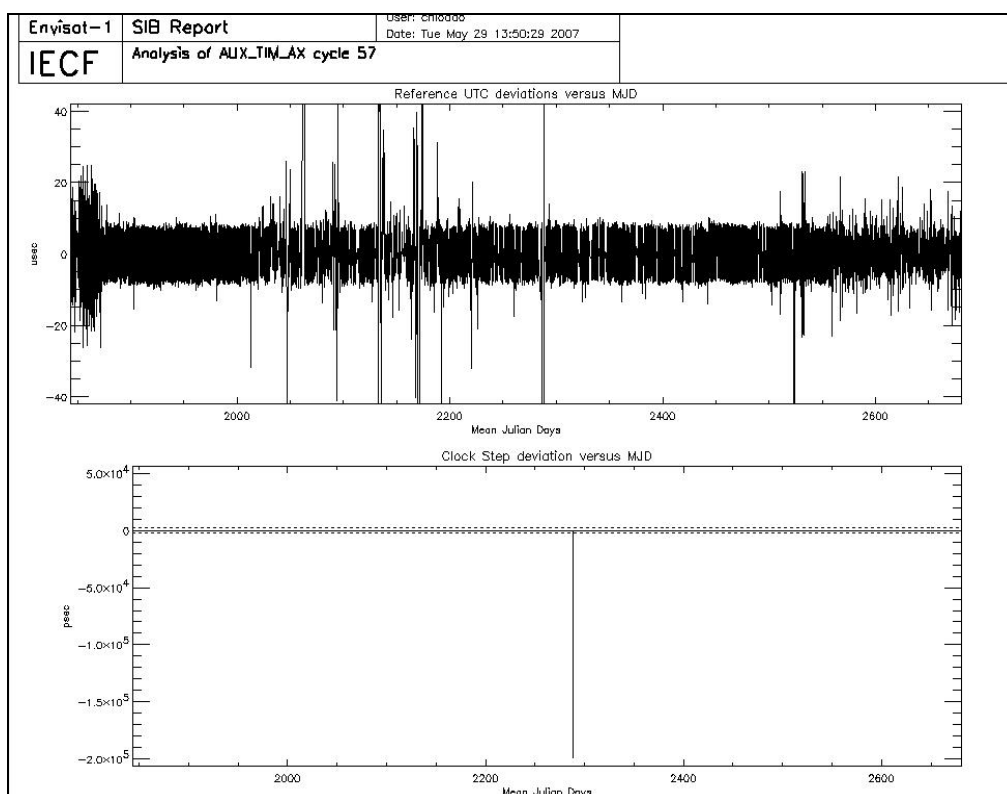


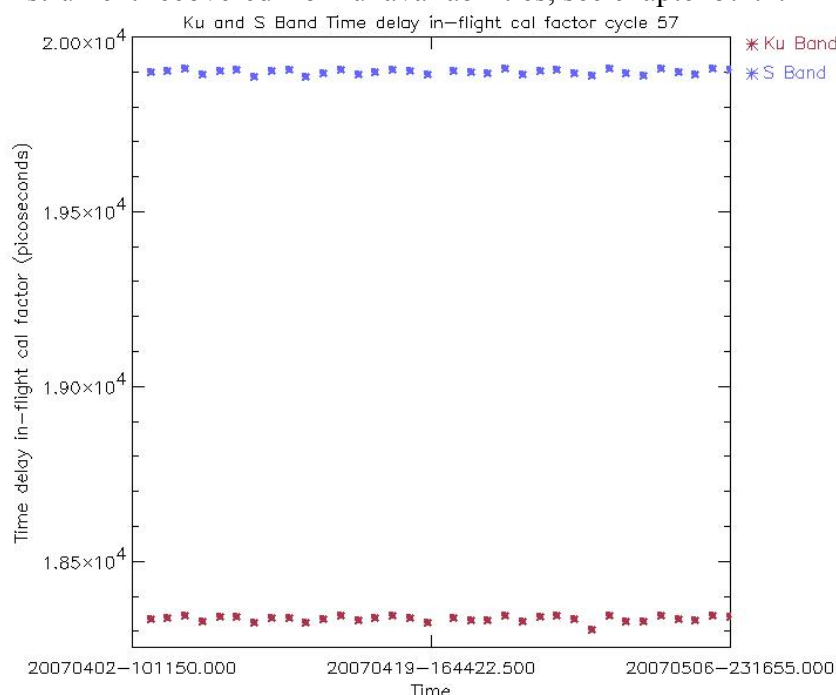
Figure 13: UTC deviations and ICU clock period from cycle 33 onwards



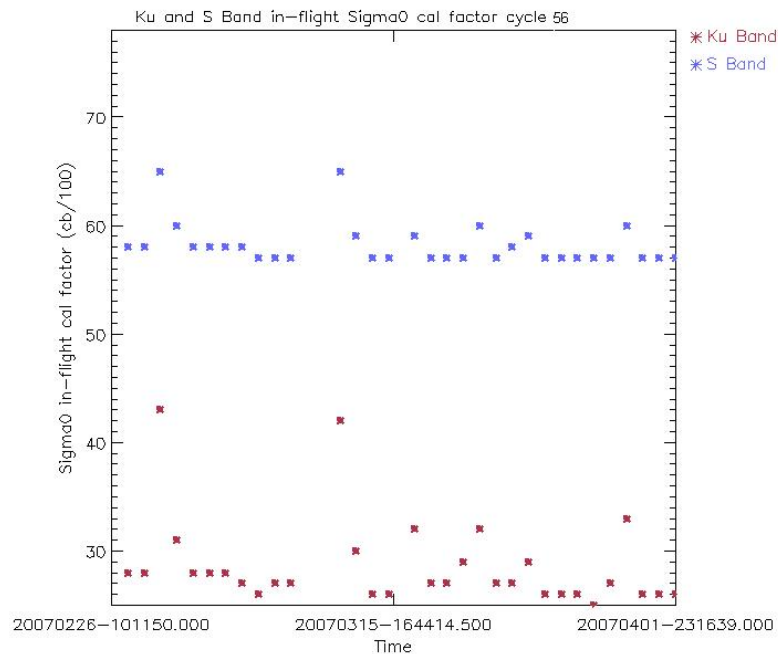
### 6.1.5 IN-FLIGHT INTERNAL CALIBRATION

The RA-2 Range and Sigma0 measurements are corrected to take into account the internal path delay and attenuation, respectively. This is done by measuring those two variables in relation to the internal Point Target Response. The two correction factors are calculated during the L1b processing and directly applied. They are also continuously monitored and the results for the current cycle (averaged per day) are reported in the next figures.

The Time delay in-flight calibration factor, reported in Figures 14, shows a regular behaviour as observed on previous cycles. The Sigma0 calibration factor, reported in Figures 15, shows some jumps when the instrument recovered from unavailabilities, see chapter 5.2.1.

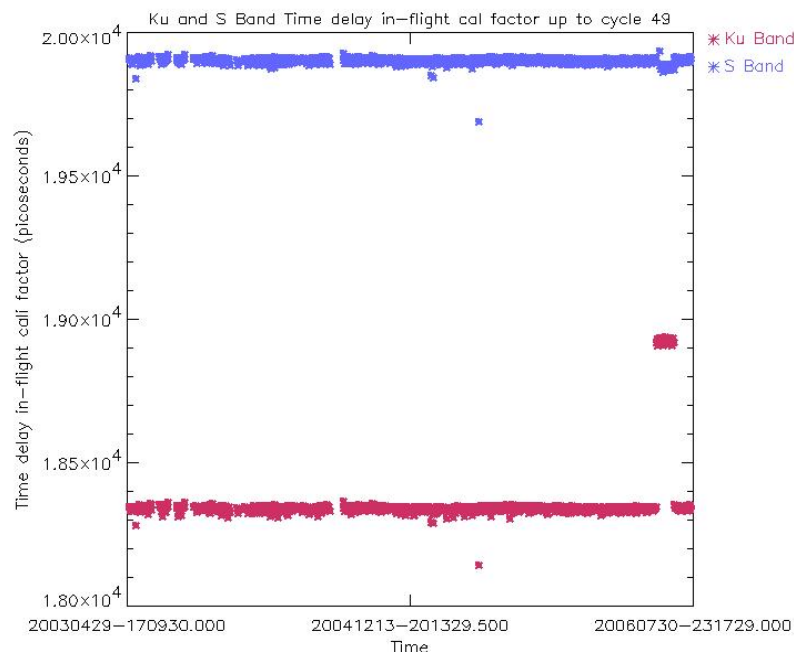


**Figure 14: Ku and S Band in-flight time delay calibration factor for cycle 57 (averaged per day)**

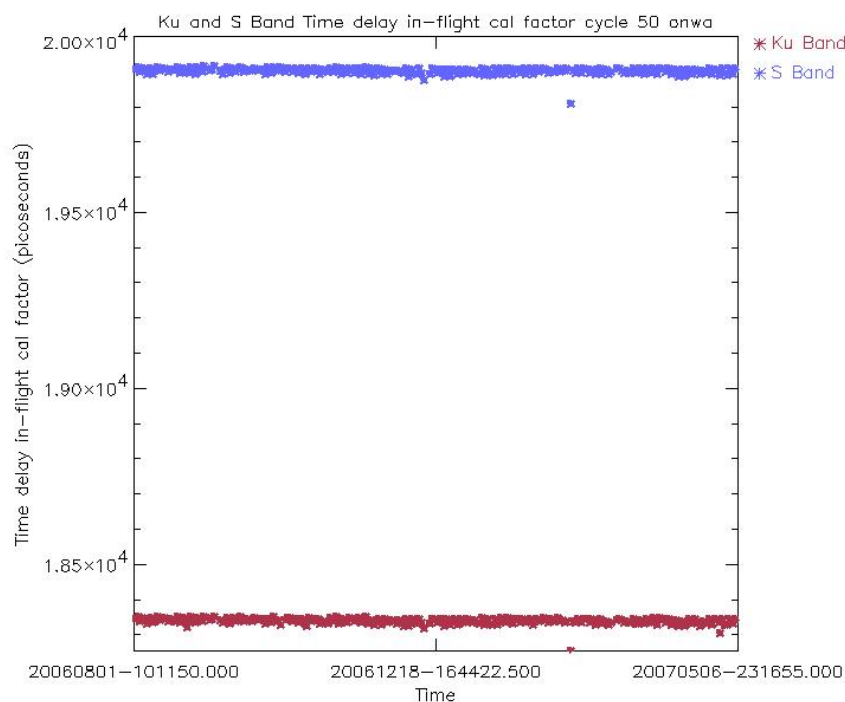


**Figure 15: Ku and S Band in-flight Sigma0 calibration factor for cycle 57 (averaged per day)**

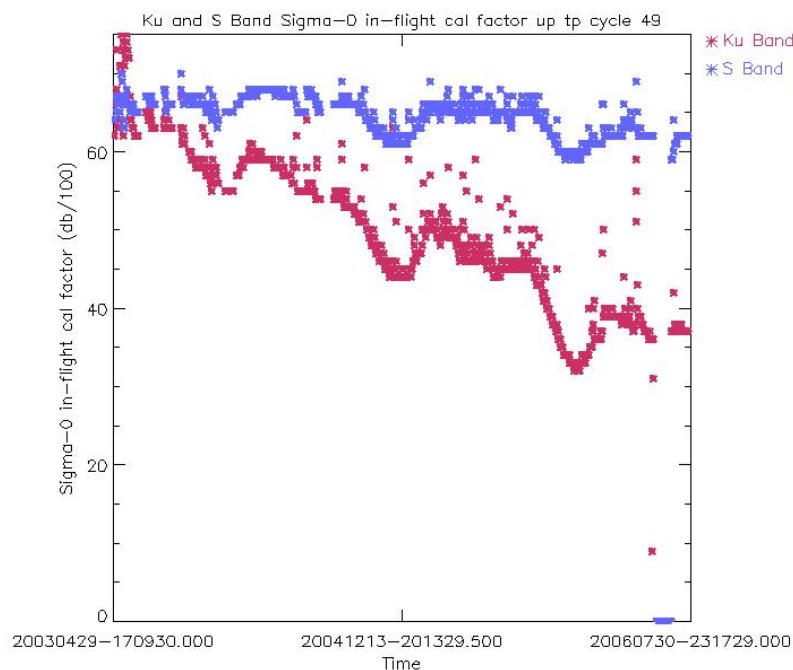
Figure 16 and Figure 17 report Ku and S Band in-flight calibration factors for Time Delay and Sigma0 respectively, daily averaged, up to the current cycle. The Time Delay factor is shown to be very stable for both the working frequencies. The Ku band Sigma0 factor reveals a decrease of about 0.2 dBs over the period starting from cycle 16. As this instability is quite small, it is not being considered a problem for the moment, since the calibration factor is indeed introduced especially to correct for eventual instrumental changes. However, special attention is kept on the monitoring of this parameter. The jump observed on the last part of the plot is related to the period on which the instrument sub-system Radio Frequency Module (RFM) was switched to its B-side, occurred between 15 May and 21 June 2006.



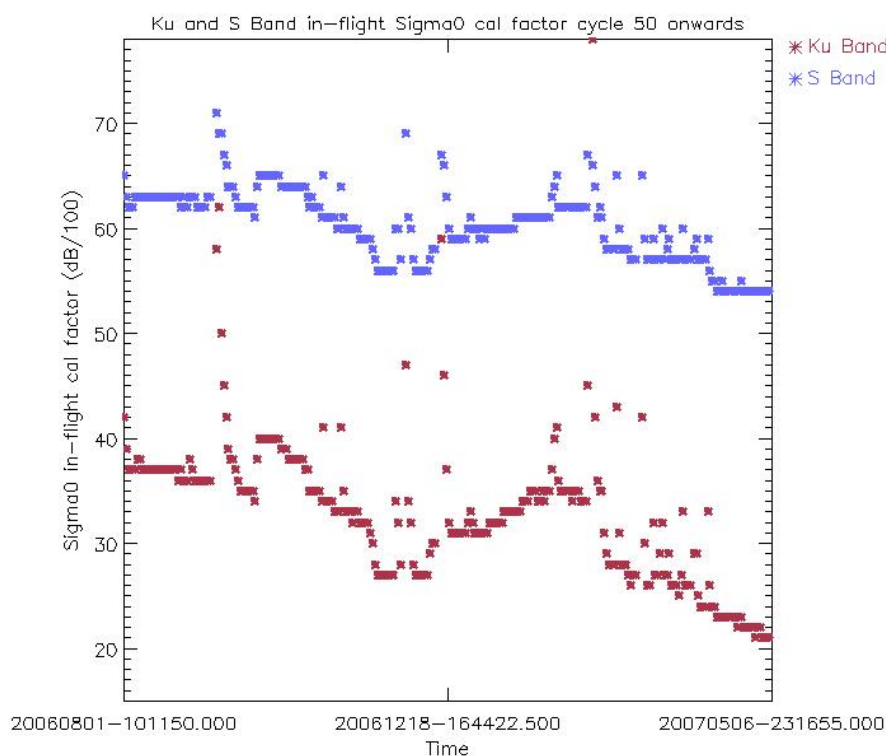
**Figure 16: Ku and S Band in-flight time delay calibration factor up to cycle 49 (averaged per day)**



**Figure 16A: Ku and S Band in-flight time delay calibration factor from cycle 50 onwards (averaged per day)**



**Figure 17: Ku and S Band in-flight Sigma0 calibration factor up to cycle 49 (averaged per day)**



**Figure 17A: Ku and S Band in-flight Sigma0 calibration factor from cycle 50 onwards (averaged per day)**

## 6.1.6 SIGMA0 TRANSPONDER

The  $\sigma^0$  absolute calibration of the RA-2 is performed using a reference target given by a transponder that has been developed at ESTEC. This has been exploited during the 6 month Commissioning phase to generate early calibration results. In order to consolidate the calibration results and to monitor the RA-2 calibration of  $\sigma^0$  during the Envisat lifetime, continual monitoring is accomplished by operating the transponder for as many Envisat overpasses as possible. Since the 11<sup>th</sup> of October the transponder has been moved to a permanent site located in Rome. The acquisition planned for the 24 of April has been successfully performed and results are provided hereafter.

Absolute Orbit nb	Date of Measurement	Location / Rel. track	RA-2 resolution	Transponder Bias [dB]	ECMWF Wet Tropo. Corr. [dB]
26922	24/04/2007	Rome	high	1,17	0,154

Appendix 4 reports the transponder measurements from cycle 24 onwards.

The mean value of the estimated bias at High Resolution is 0.96 dB with a standard deviation of 0.2 dB. It is possible to notice that the Low Resolution measurements are coherent among themselves but there is a bias with respect to the High Resolution ones. This is due to a processing problem with the internal calibration factor not taken into account in Low Resolution Mode.

In Figure 18, the time behavior of the bias is plotted for both Low and High Resolution. The green line represents the corrected bias for the internal calibration factor (only for the Low Resolution data) and the tropospheric attenuation. The latter is estimated by using the ECMWF meteorological data. The low value of the corrected bias for the orbit 14397 is due to the dew air condition and a probable underestimation of the tropo-attenuation.

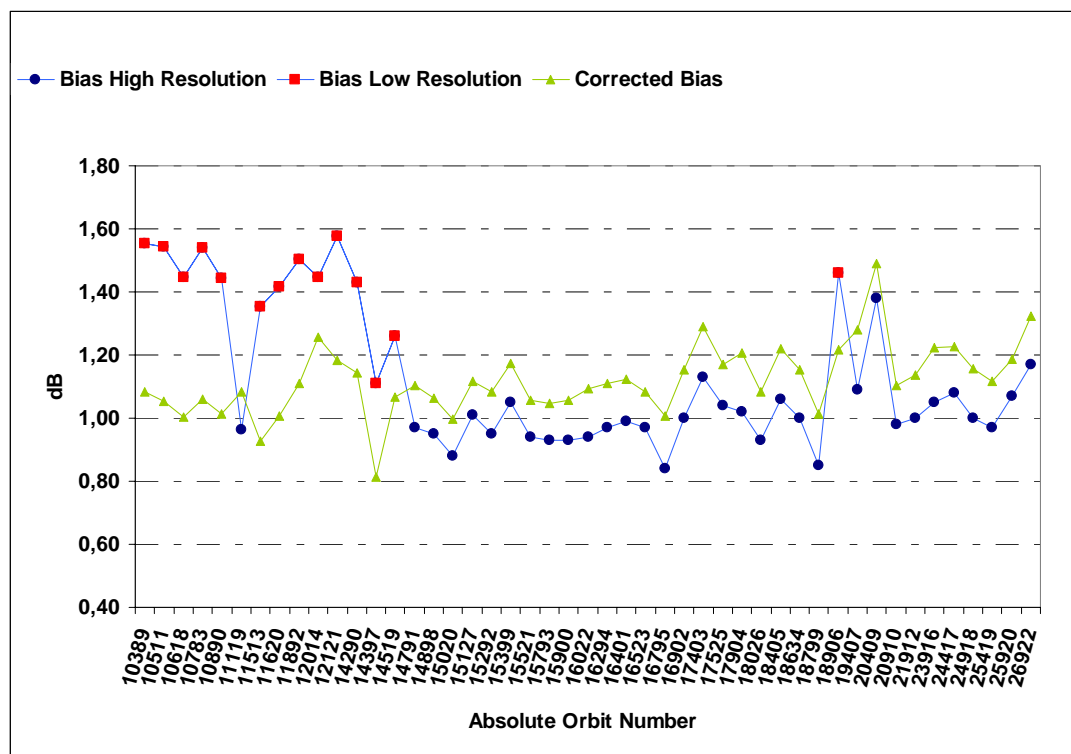


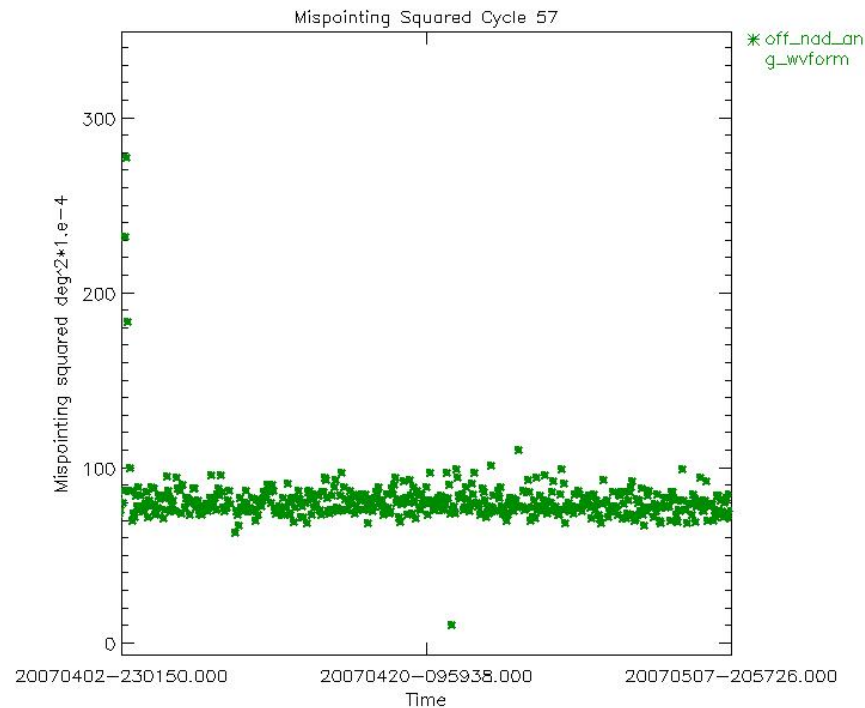
Figure 18: Time behavior of the transponder bias

### 6.1.7 MISPOINTING

In Figure 19, the trend of the mispointing squared (averaged every orbit) is reported in  $\text{deg}^2 \cdot 10^{-4}$ .

The average squared mispointing value, as extracted from the RA2\_FGD\_2P data products, has decreased from about  $0.028 \text{ deg}^2$ , to  $0.0075 \text{ deg}^2$ . This is due to the new algorithm currently used to retrieve the mispointing value from the RA-2 waveform data, see section 5.1.1.1.

Since IPF version 5.02, the mispointing is estimated through the waveform trailing edge slope using an optimum and fixed gate and no longer an adaptive window as defined previously. This allows avoidance of the filter bump effect that leads to high values of the mispointing.



**Figure 19: Smoothed mispointing squared trend for cycle 57 ( $\text{deg}^2 \cdot 10^{-4}$ )**

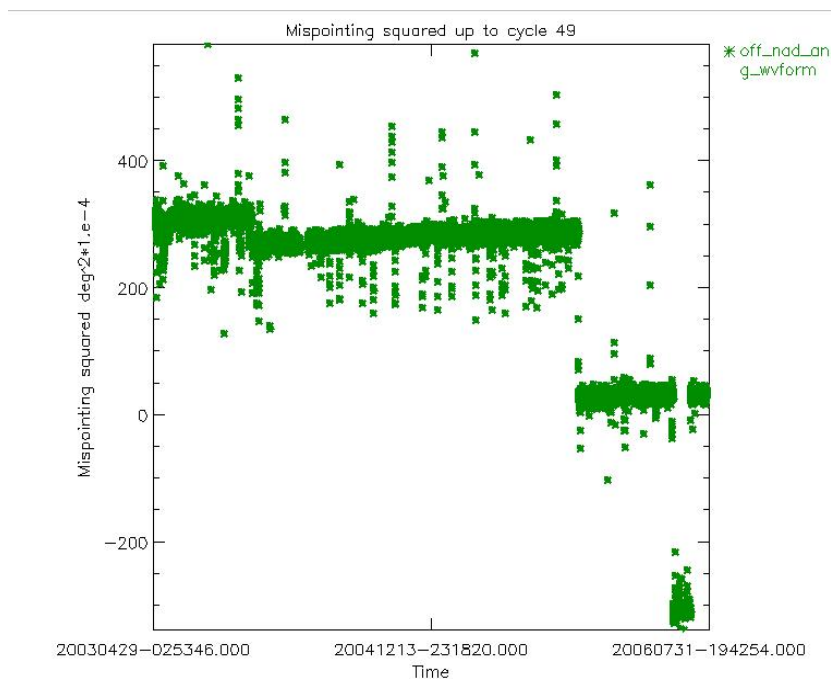
In Figures 20 and 20A, the overall mispointing squared trend (averaged over each orbit) is plotted for cycles 16 onwards.

The low values at the end of the plot are related to the acquisition in RFFS B-Side, occurred between 15 May and 21 June 2006.

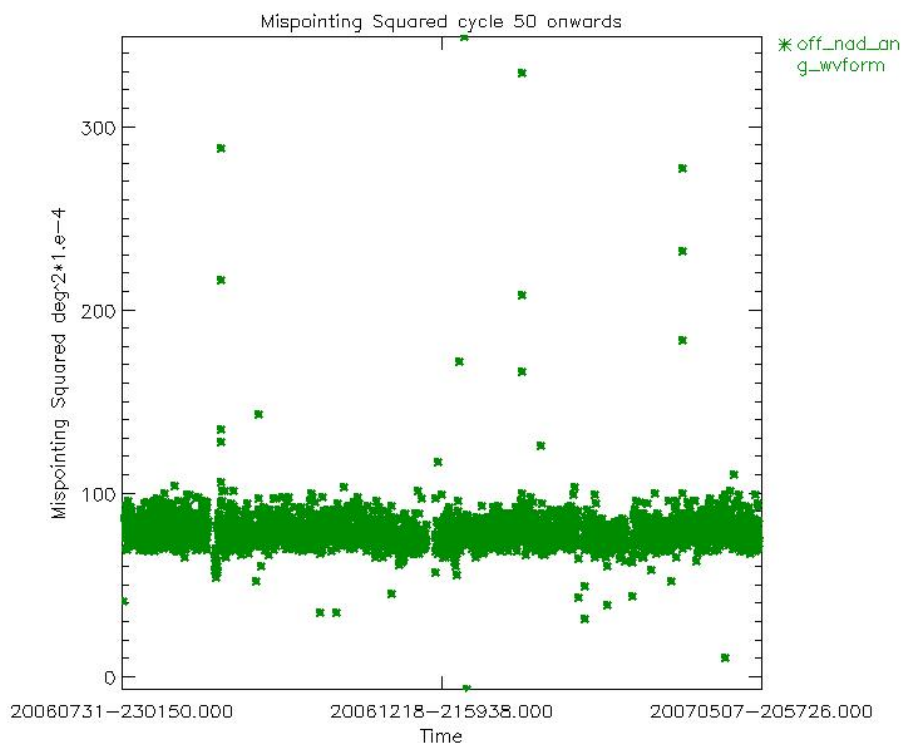
The jump which occurred on date October 24<sup>th</sup> is related to the upload of IPF version 5.02. The abrupt decreasing of the mispointing squared value is related to the new algorithm, as described in the previous paragraph.

The jump which occurred on November the 26<sup>th</sup> 2003 is correlated to the upload of IPF version 4.56; the abrupt decrease of the mispointing squared value is due to the usage of a new RA2\_IFF\_AX IF mask auxiliary file. After the drop a very tiny increase of the mispointing squared could eventually be detectable. The most probable cause of this phenomenon could be a change in the Intermediate Frequency Filter slope due to ageing effects. For this reason, the RA2\_IFF\_AX will be updated regularly, once per month.





**Figure 20: Smoothed mispointing squared trend until end of cycle 49 ( $\text{deg}^2 \cdot 10^{-4}$ )**

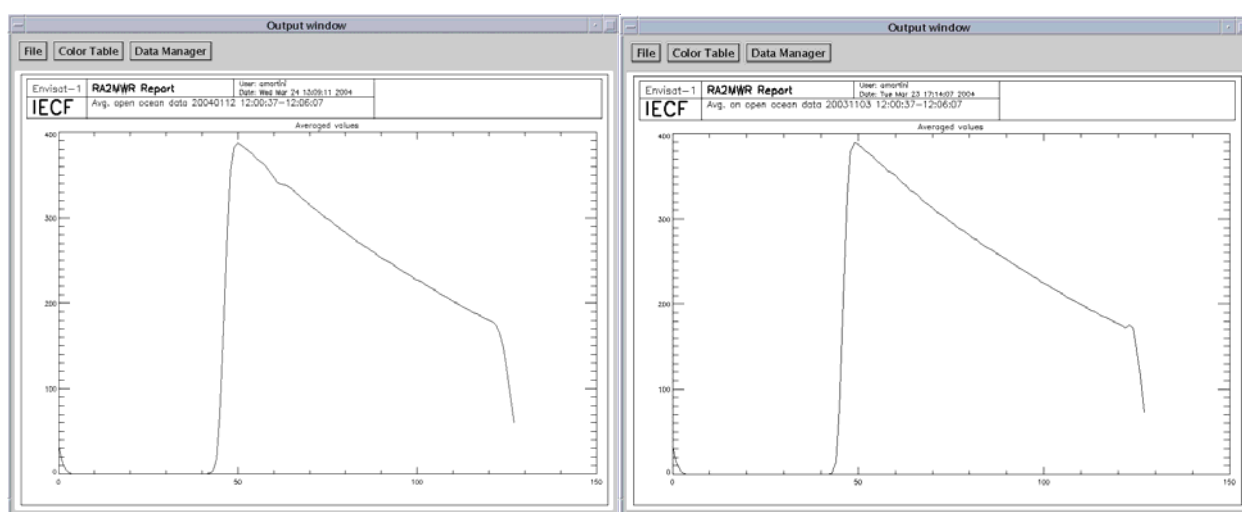


**Figure 20A: Smoothed mispointing squared trend until from cycle 50 onwards ( $\text{deg}^2 \cdot 10^{-4}$ )**

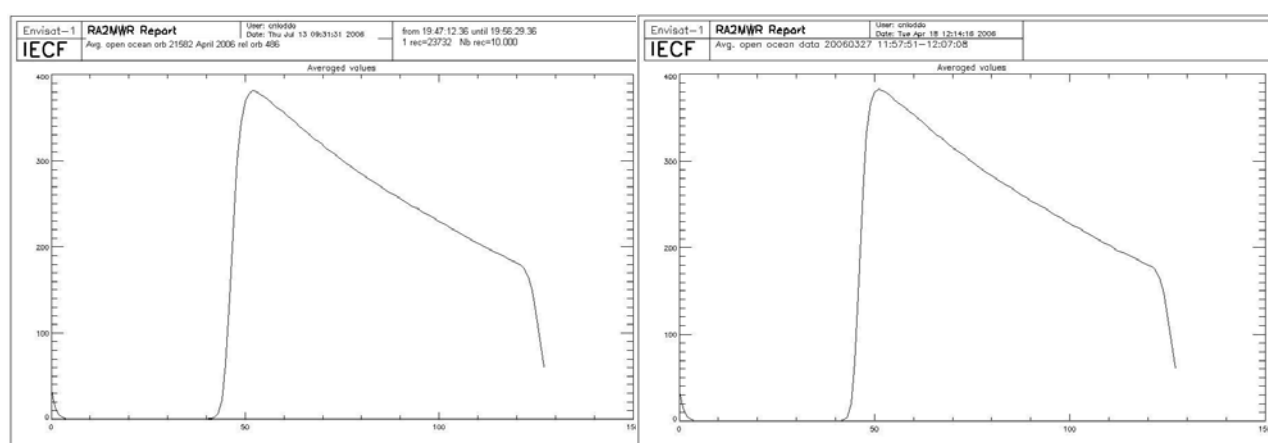
It can be noticed that the mispointing squared assumes lower values just after an instrument anomaly, showing an increasing trend until it reaches a standard mispointing value.

This problem has been reduced with the introduction of the updated mispointing retrieval algorithm as described in the previous paragraph.

This particular behavior has always been explained by the different shape that the over-ocean average waveform has before and after an anomalous event as visible in Figure 21, i.e the disappearance of the small dip in the waveforms acquired after the anomaly. Since the new strategy of updating once per month the RA2\_IFF\_AX file, the small bump is not present anymore in the waveforms, see Figure 21\_A, so a new explanation is currently under investigation.



**Figure 21: Open Ocean average waveforms before (left) and after an anomaly (right)**



**Figure 21\_A: Open Ocean average waveforms before (left) and after an anomaly (right)**

### 6.1.8 S-BAND ANOMALY

The Patch that prevents the S Band Anomaly by correcting the SW/HW malfunctioning, uploaded on 16<sup>th</sup> of January 2007, has been dismissed on 9<sup>th</sup> of April because it was causing the Instrument to switch down to Heater 0/Refuse Mode. Appendix 5 reports the list of product files affected by the anomaly during cycle 57. This corresponds to a total percentage of about 3% of the acquired data.

The method used for the identification of the “S-Band anomaly” is statistical and requires a minimum of 1000 seconds of data over ocean. This choice is supported by the fact that the “S-Band anomaly” is associated with a particular instrumental behavior that cannot appear and disappear within a short time frame. (ref. [R – 7])

A valuable algorithm to detect the RA-2 DSRs affected by the S-Band anomaly within the L2 products can be found in [R- 12]. Note that the algorithm is only valid for data acquired over open-ocean.

The IPF version 5.03 includes an algorithm that can detect the presence of the so-called “S-Band anomaly” over any surface. In case of S-Band anomaly detection, bit 1 of the L1b products MCD is set to one; the anomaly is properly detected in 99.9% of the cases.

In Figure 22, the percentage of data per cycle that are affected by the so-called “S-Band” anomaly is reported. The figures are variable between 0% and 8.1%.

The number of occurrences of the S Band anomaly decreased from a mean value of 4% to 2% from cycle 31 onwards due to the implementation of the IF CAL procedure (including Heater 2 for S Band anomaly suppression) twice per day over the Himalayan region.

The relatively high value recorded for cycle 27 is due to the fact that on the day 1<sup>st</sup> of June 2004, the S-band anomaly started at around 14:30 while the instrument didn't switch to mode Heater 2 when foreseen (at about 15:50). For this reason the S-Band anomaly continued for the next 24 hours until the next Heater 2 mode on June the 2<sup>nd</sup>.

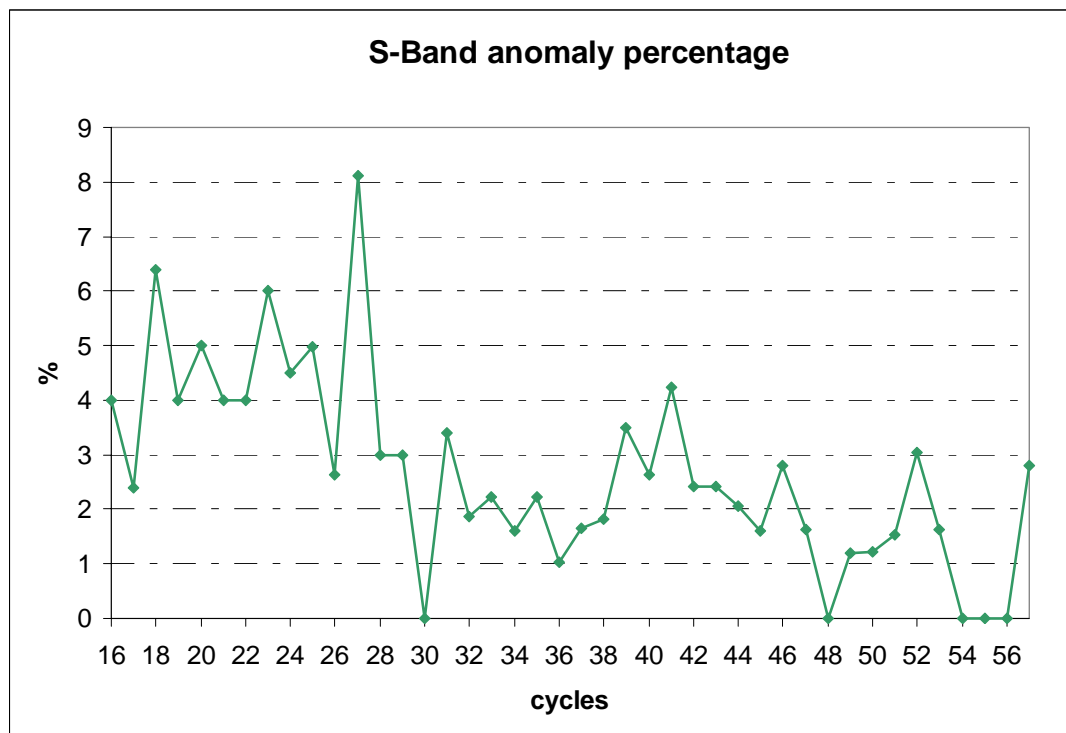


Figure 22: Percentage of data affected by the “S-Band Anomaly” for cycles 16 onwards

## 6.2 MWR Performance

For MWR performance please refer to the Reference CLS Cyclic Report of the type of [R – 2].

## 6.3 DORIS Performance

For DORIS performance please refer to the Reference F-PAC Monthly Report of the type of [R – 1a] and [R-1b].

# 7 PRODUCT PERFORMANCE

## 7.1 Product disclaimer

A summary of the products released to users and disclaimers on product quality have been established for some products and are available in the following web link:  
<http://envisat.esa.int/dataproducts/availability/>

## 7.2 *Data handling recommendations*

### 7.2.1 SEA-ICE FLAG

The following algorithm is proposed for the determination of a sea-ice flag, presently missing in the Level 2 Ra-2 and MWR data products. (See [R – 14]):

|Latitude (*lat: field#4 of L2 data*)| > 50 deg  
AND  
The number of 20Hz valid data (*num\_18hz\_ku\_ocean: field#23 of L2 data*) < 17  
OR  
|MWR Wet Tropospheric Correction (*mwr\_wet\_tropo\_corr: field#42 of L2 data*) – ECMWF  
Wet Tropospheric Correction (*mod\_wet\_tropo\_corr: field#42 of L2 data*)| > 10 cm  
OR  
Peakiness (*Ku\_peak: field#139 of L2 data*) > 2

### 7.2.2 OCEAN S-BAND ANOMALIES DETECTION

A valuable algorithm to detect the Level 2 DSR affected by the RA-2 S-Band anomaly is proposed in [R- 12].

### 7.2.3 WARNING ON IPF 4.56 VERSION IDENTIFICATION FIELD

All RA-2 and MWR level 1B and NRT Level 2 products generated after November 26, 2003 report a software version as being 4.54 (available in MPH field 8).

Nevertheless those products have been generated with the IPF V4.56 operational since November 26, 2003. The first nominal generated product, using the new SW version, will be the one relevant to the absolute orbit number 9094.

The software version ID is correct since December 4, 2003.

### 7.2.4 S-BAND BACKSCATTERING COEFFICIENT

For the data processed with IPF version 4.56 on, the S-Band Backscattering coefficient has been demonstrated to be on average about 0.65 dBs higher than for the previous versions of the processor. This is due to the algorithm used for the retrieval of the AGC in S-Band, corrected in IPF version 4.56 to be closer to the real functioning of the instrument.

An average value of 0.65 dBs is suggested to be added to the old software versions S-Band Sigma0 in order to be in line with the new IPF V4.56 version.

## 7.2.5 USO RANGE CORRECTION

Three different periods can be distinguished:

### 1) 1<sup>st</sup> period

From the beginning of the mission until the 24<sup>th</sup> of October 2005 the Nominal USO clock period has been used in the processing. The data was not corrected for the bias and the drift correlated to the actual USO clock period. All data acquired before 24<sup>th</sup> October 2005, beginning of cycle 42, have thus to be corrected using the old correction files available on the web site:

<http://earth.esa.int/pcs/envisat/ra2/auxdata/OldCorrection>.

The measured Range shall be corrected considering a drift of -4.58 mm per year and a bias of 29.6 mm.

**Warning for data acquired before cycle 42:** bias and drift have to be **SUBTRACTED** from the original altimetric range, according to the following equation:

$$R_{\text{true}} = R_{\text{original}} - dR$$

where  $R_{\text{original}}$  is the range in the GDR products and  $R_{\text{true}}$  is the true (corrected) range.

### 2<sup>nd</sup> period

From the 24<sup>th</sup> of October 2005 until the 13<sup>th</sup> of March 2006, outside of the anomaly periods, the actual USO clock period has been used within the processing. The data was corrected for the bias and the drift correlated to the actual USO clock period. Those values, translated into altimetric range figures, are respectively of 28.5 mm and -4.58 mm/year as calculated with data covering the period 13 June 2003 to 01 February 2006.

### 3<sup>rd</sup> period

From the 13<sup>th</sup> of March 2006 onwards, and during the early occurrences of the USO anomaly, data have not been corrected with the proper value of the USO Clock period. All data acquired during this period have thus to be corrected using the new correction files. Three USO corrections have been developed for the different Envisat Level 2 altimetry data products for correcting the abnormal RA-2 USO behaviour affecting the Altimetric Range by few meters w.r.t. the Mean Sea Surface:

- A NRT orbit based USO correction for FDGDR products, available from <http://earth.esa.int/pcs/envisat/ra2/auxdata/NewCorrection>; or [ftp://ftp.esrin.esa.it/pub/RA2\\_MWR/USO/auxdata/](ftp://ftp.esrin.esa.it/pub/RA2_MWR/USO/auxdata/)
- An Interim daily USO correction for IGDR products, available at the same F-PAC location as for IGDR, in the directory `igdr_ous_corr`
- An OFL cycle USO correction for GDR products, available at the same F-PAC location as for GDR, in the directory `gdr_ous_corr`.

**Warning for data acquired after 1<sup>st</sup> February 2006:** This correction has to be **ADDED** to the Ku and S Band altimetric range.

A software routine has been developed to allow users to insert the RA-2 Ultra-Stable Oscillator (USO) corrections into Envisat Level 2 altimetry data products and is available in the same web site of the new correction files.

**WARNING:** Users are still advised to apply the correction auxiliary files even during the non-anomalous period in order to correct for the nominal ageing drift of the USO device.

## 7.2.6 KU-BAND BACKSCATTERING COEFFICIENT CALIBRATION

The results of the Ku-Band Sigma0 absolute calibration performed with a transponder have been presented in par. 6.1.4. Those results are going to be consolidated and are summarized in appendix 4, table 12. In order to absolutely calibrate the backscattering coefficient given in the RA2 L2 products, the following shall be used by the end user to get to the real Sigma0 measurement:

$$\text{Sigma\_0\_true} = \text{Sigma\_0\_prod} + \text{G\_tx\_rx\_prod} - \text{G\_tx\_rx\_real} - \text{Bias [dB]}$$

Where:

**Bias:** Bias retrieved from the Sigma0 Absolute Calibration (see 9.1.4)

**G\_tx\_rx\_prod:** Current effective Tx-Rx Gain value used in the operational ground processing chain (ADF file RA2\_CHD\_AX). The value nominally used since IPF V4.54 is (for configuration RFSS=A and HPA=A) is 170.70 dB

**G\_tx\_rx\_real:** Pre-launch characterization value (configuration value RFSS=A and HPA=A is 167.46 dB)

## 7.2.7 ABNORMAL RA-2 RANGE BEHAVIOR AFTER ANOMALY RECOVERY

**WARNING:** Since 1<sup>st</sup> of March 2007, Envisat Side A RA-2 is no more affected by the on-board anomaly which was affecting the RA-2 Altimetric Range by few meters. The analysis of the Sea Level Anomaly (SLA) is currently nominal.

The un-expected behavior of the Envisat RA-2 sensor was first observed from 1 Feb 2006 12:04:30, Orbit = 205181 until 11 Feb 2006. This directly happened after the recovery of a RA-2 on-board anomaly occurred on the 2006/02/01 at 05:17:56. The altimetric range jumped by several meters w.r.t. the Mean Sea Surface. The anomaly was almost permanently present over the last year. It disappeared after the Instrument unavailability recovery on date 1 march 2007.

Another un-expected behavior of the Envisat RA-2 sensor was observed in the period from 2004/09/27 at ~16:00 and ending on 2004/09/29 at ~12:00 AM. This directly happened after the recovery of a RA-2 on-board anomaly occurred on the 2004/09/26 at ~13:40. The altimetric range jumped by several meters w.r.t. the Mean Sea Surface; on the other hand everything came back to normal as from the 29<sup>th</sup> of September around noon. RA-2 data from the above period have to be considered with caution.



### 7.2.8 RA-2 RADIO FREQUENCY MODULE SWITCHED BACK TO A-SIDE

The Envisat RA-2 sensor has been successfully reconfigured on its nominal side (RFSS A-side) and was commanded back into Measurement Mode on June 21, 2006 at 13.20.15.000 UTC time, Orbit = 22523 after a switch to RFSS B-Side on 15 May at 14:21:50 UTC Orbit=21994

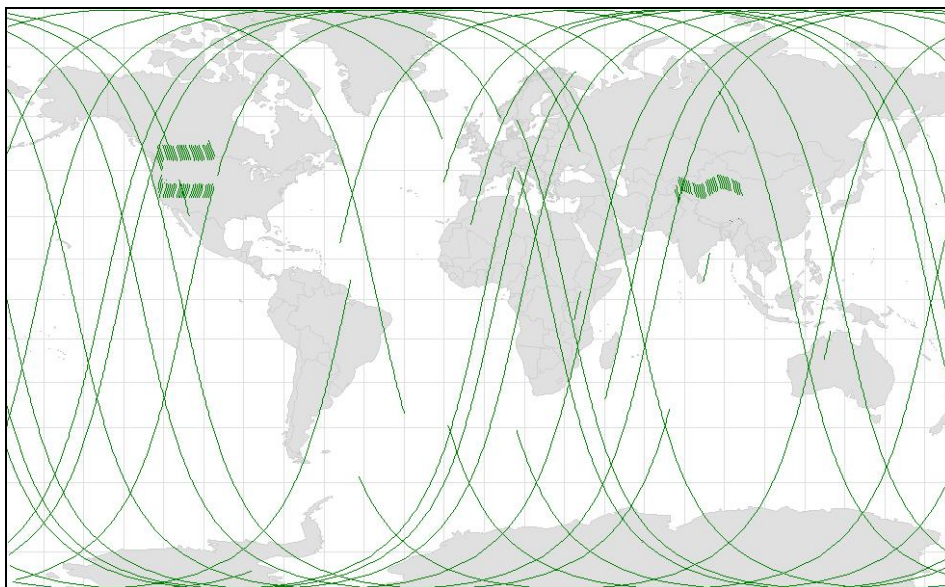
The analysis of the RA-2 data shows an expected behaviour of the RA-2 parameters but also confirmed the persistence of the abnormal RA-2 Ultra-Stable Oscillator (USO) behaviour affecting the Altimetric Range by few meters.

Data from 22 May until 21 June was acquired with RFSS B-side and on-ground data processing has been performed with ADFs configured for A-side. For this reason data should be used with maximum care.

## 7.3 *Availability of data*

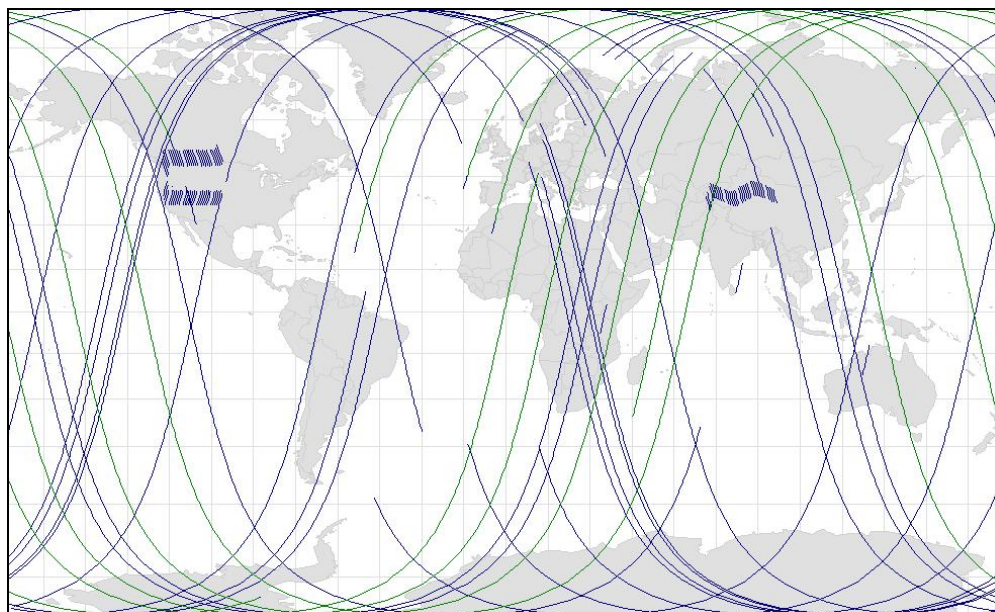
### 7.3.1 RA-2

In Figure 23 and Table 9 (Appendix 2) the summary of unavailable RA-2 L0 products is given. It is easy to notice that close to the Himalayan and Rocky Mountain region one small gap, about 77 seconds, in the data is present. This is due to the daily instrument switch-offs (Heater 2 mode) performed to prevent the S-Band anomaly lasting more than half a day if it occurs.



**Figure 23: RA-2 L0 unavailable products for cycle 57**

In Figure 24 and Table 11 (Appendix 2) the summary of unavailable RA-2 L1b products is given.



**Figure 24: RA-2 L1b unavailable products for cycle 57**

Hereafter the percentage of the different levels of products availability is reported. Due to some operational constraints, the plot could not be updated with data from cycle 55.

Considering as reference the instrument unavailability, it is possible to notice that since cycle 32 the situation is slightly improved for all levels of products. The low percentage of data on cycle 56 is due to the high number of RA-2 Instrument Unavailabilities occurred as side effect of the SPSA Patch uploaded to prevent the S Band anomaly.

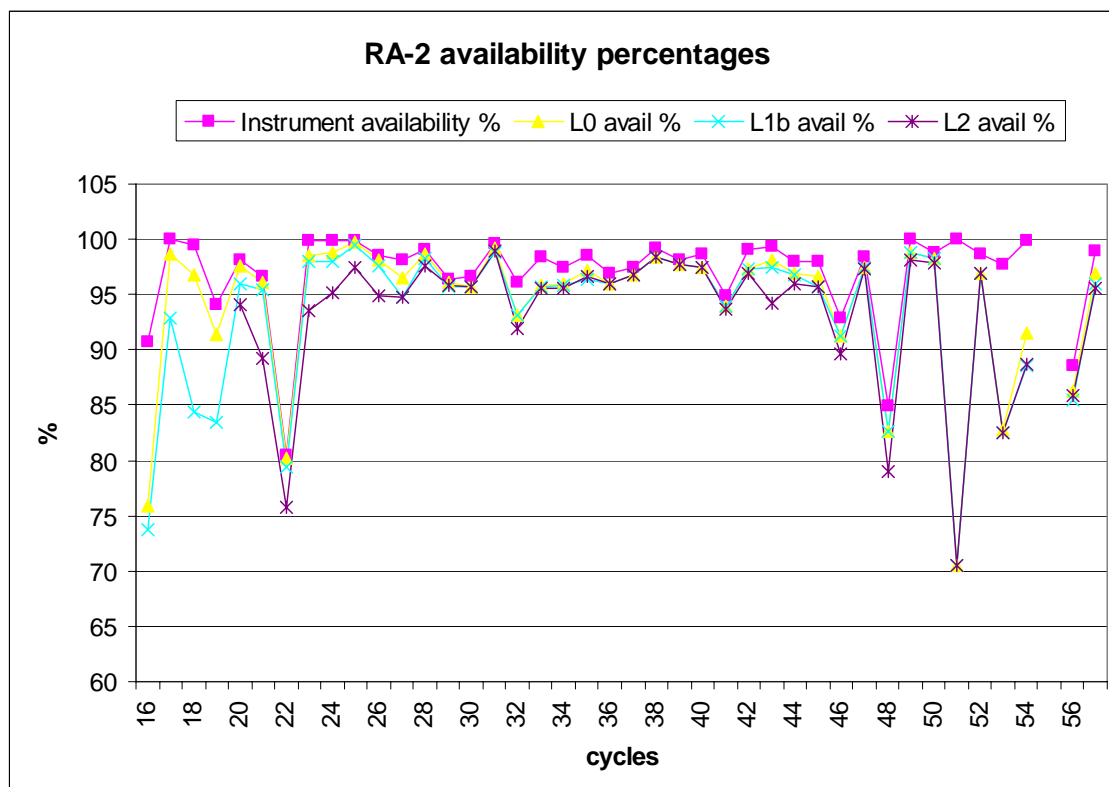


Figure 25: Percentage of Products unavailability

### 7.3.2 MWR

In Figure 26 and Table 10 (Appendix 2) the summary of unavailable MWR L0 products is given.

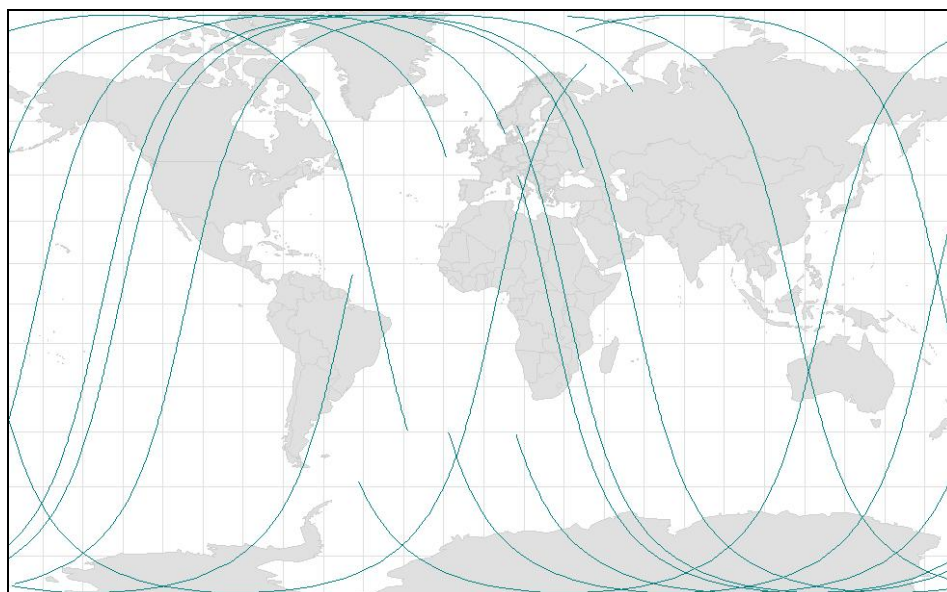


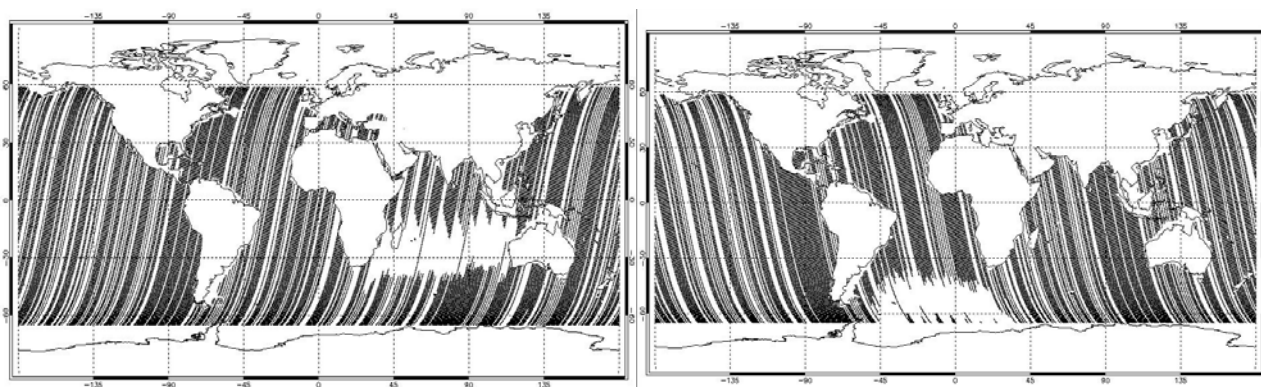
Figure 26: MWR L0 unavailable products for cycle 57

## 7.4 *RA-2 Altimeter Parameters*

Hereafter a summary of the main Altimetric parameters performances is reported; these results have been obtained using only ocean surface type and all world zone criteria for RA2\_FGD products.

### 7.4.1 ORBIT

Since the 24<sup>th</sup> of October, operations date of IPF version 5.02, the DORIS Navigator data were expected to be used to evaluate the location, the altitude and the altitude rate corresponding to any Data Set Record of the products. Due to some operational problems under investigation in the PDS, at least 30 % of NRT data has been processed without DORIS on cycle 57. Figure 27 shows all passes processed with DORIS on the current cycle.

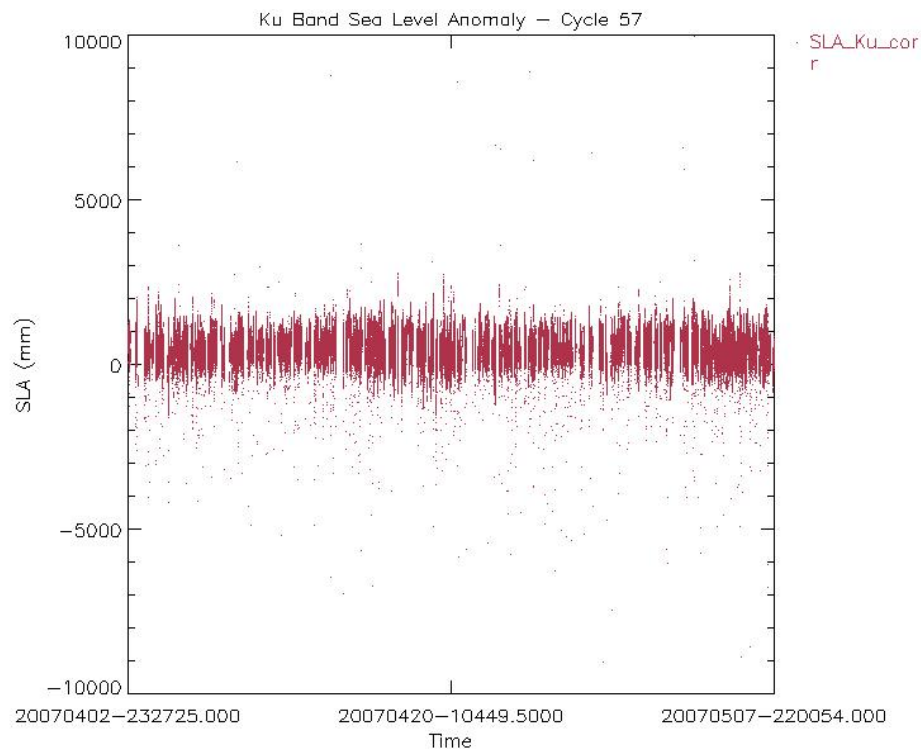


**Figure 27: Ascending and Descending passes processed with DORIS on cycle 57**

### 7.4.2 ALTIMETER RANGE

In Figure 27A it can be observed that the altimetric range was nominal over the entire cycle 57. The un-expected behavior of the Envisat RA-2 sensor observed since cycle 44 has disappeared on date 1<sup>st</sup> March 2007.





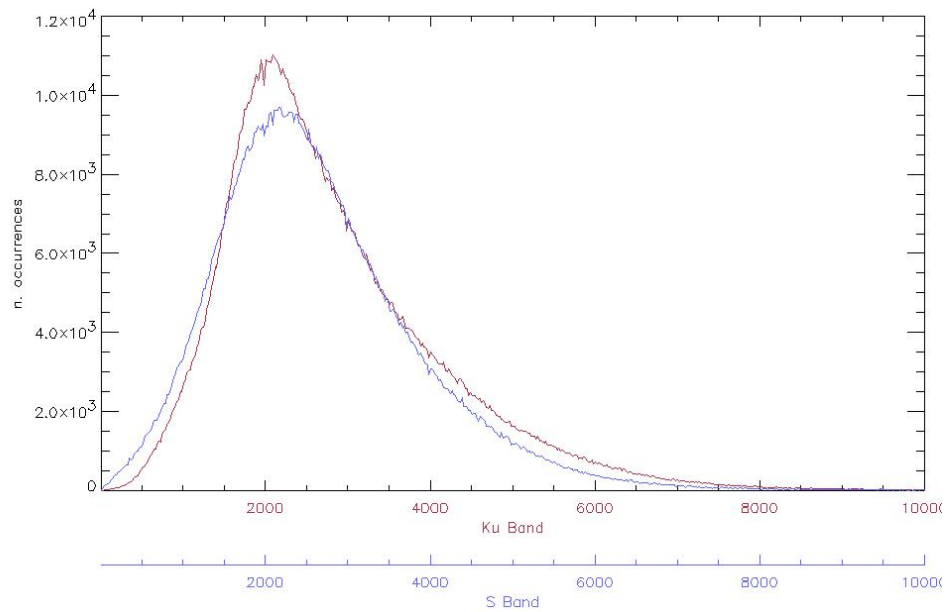
**Figure 27A: Sea Level Anomalies Cycle 57, only MDSRs with valid DORIS Flag**

SLA has been computed for the Ku Band, with the following corrections:  
 RA2\_Ku\_IONO, MWR\_WET\_TROPO, DRY\_TROPO, INV\_BMETER\_HEIGHT,  
 SEA\_KU\_BIAS

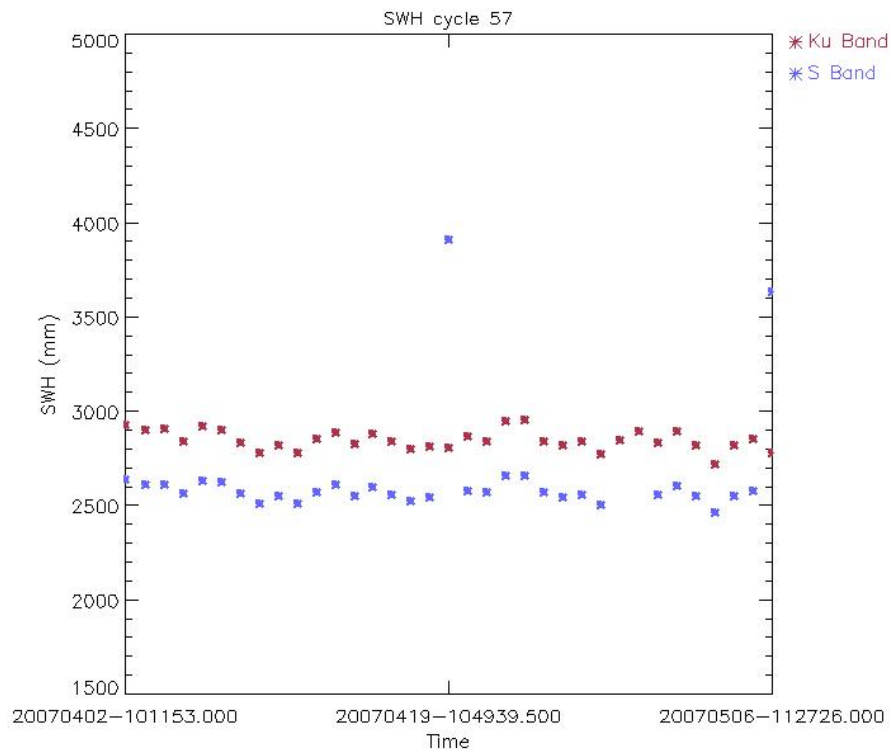
### 7.4.3 SIGNIFICANT WAVE HEIGHT

The histogram of the SWH reported in Figure 28 shows a nominal behavior for the current cycle. The trend goes on following the behavior as detected for the previous cycle. The largest peak (about 60000 data for SWH = 0m) was removed from the plot in order to have the complete picture of the SWH histogram.

Figure 29 shows the SWH daily mean. The high value reported for the S-Band data is due to the so-called S-Band Anomaly occurred on date 19<sup>th</sup> April. Also the possible high values, plotted outside the figure range, are due to the occurrences of S-Band Anomaly on date 28<sup>th</sup> and 29<sup>th</sup> April (ref. par.6.1.8).



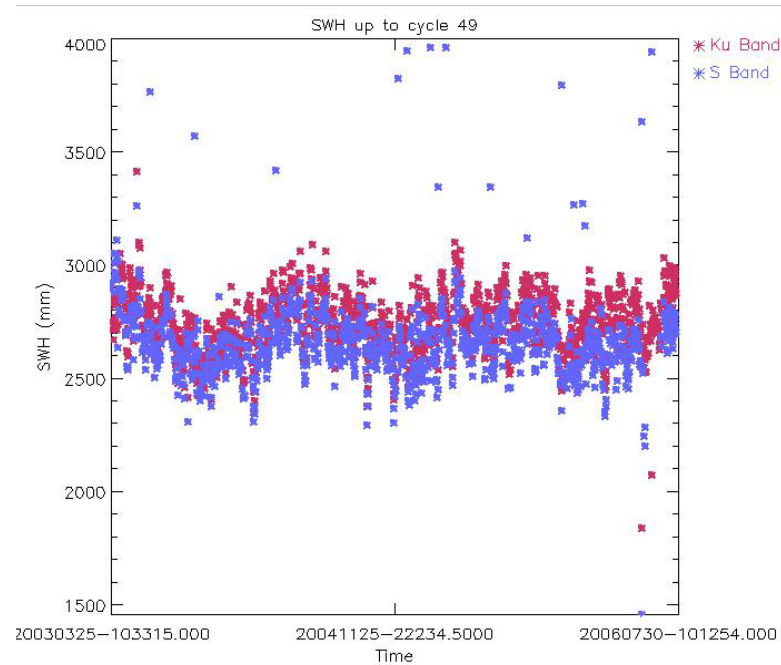
**Figure 28: Histogram of Ku and S Band SWH for cycle 57**



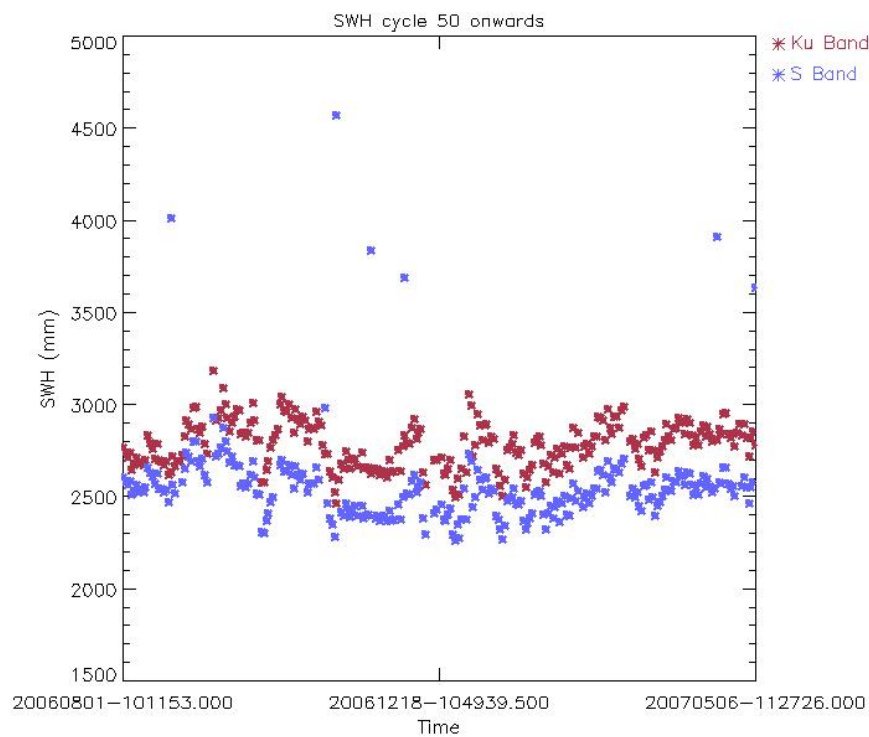
**Figure 29: Ku and S SWH daily average for Cycle 57 (mm)**

The SWH long term plot is reported in two plots, cycle 16 until cycle 49 on Figure 30 and cycle 50 onwards on Figure 30A. It can be noticed that the SWH in both bands shows a trend which follows

the seasonal variability. The high daily averages reported (sometimes plotted outside the figure's range) are due to the so-called S-Band anomaly (ref. par.6.1.8).



**Figure 30: Ku and S SWH daily average up to cycle 49 (mm)**



**Figure 30A: Ku and S SWH daily average from cycle 50 onwards (mm)**

#### 7.4.4 BACKSCATTER COEFFICIENT – WIND SPEED

The Sigma<sub>0</sub> histogram both in Ku and S Band, shows secondary peaks, see Figure 31. A small investigation on this problem, performed on the data of cycle 29, demonstrated that the backscattering distribution assumes a different behavior for different sea conditions [R-17]. Indeed, for both bands, the majority of the data is concentrated on lower values for rough sea state (southern hemisphere, winter conditions) and on higher values for calm sea state (northern hemisphere, summer conditions).

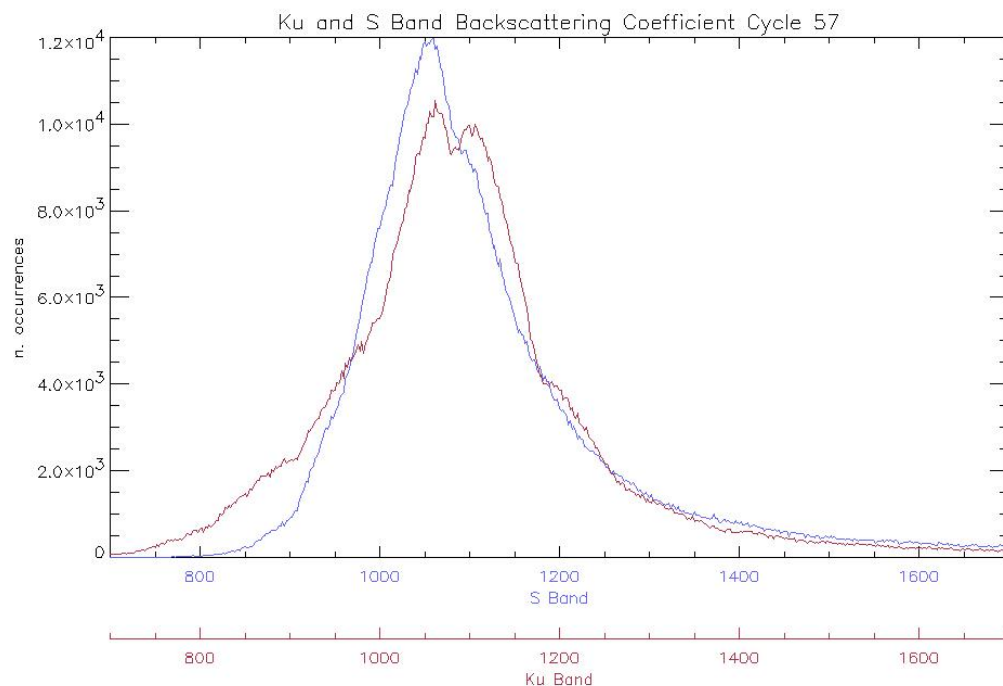
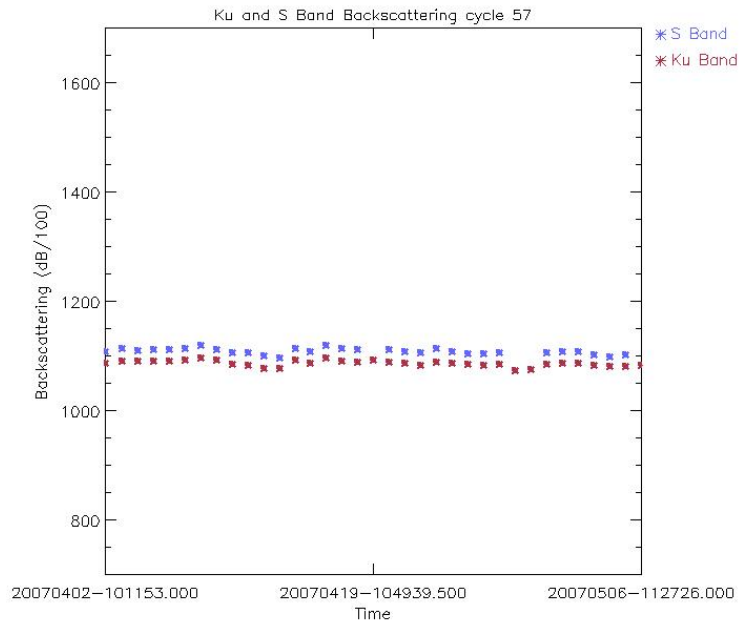


Figure 31: Histogram of Ku and S Band Backscattering Coefficient for cycle 57

In Figure 32, the backscattering coefficient daily average, computed for only ocean data, trend is reported. The high daily averages reported for the S-Band (sometimes plotted outside the figure's range) are due to the so-called S-Band anomaly (ref. par.6.1.8). The trend shows a nominal behavior for both bands.

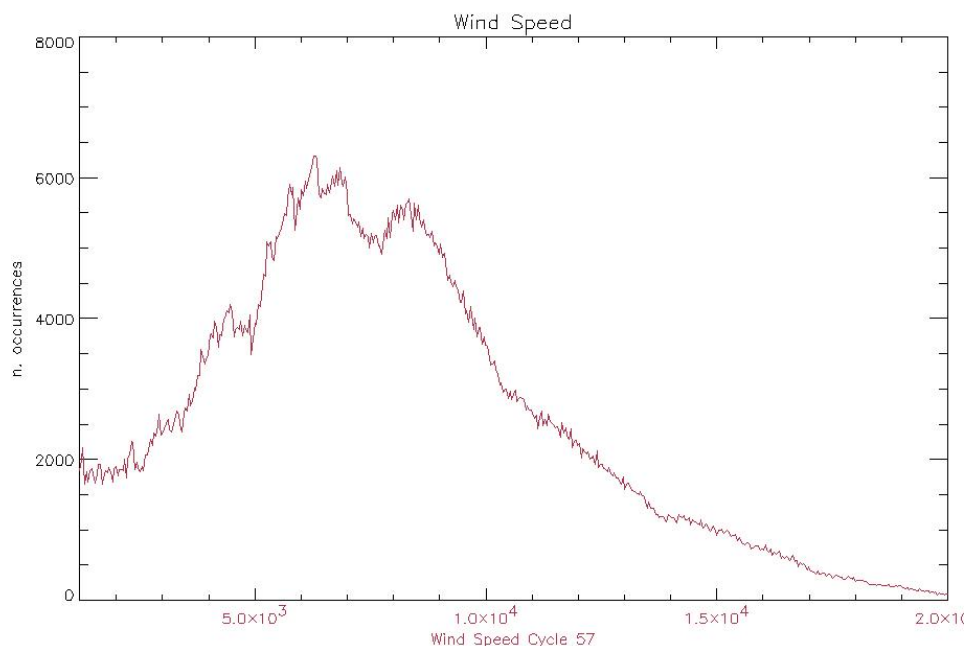




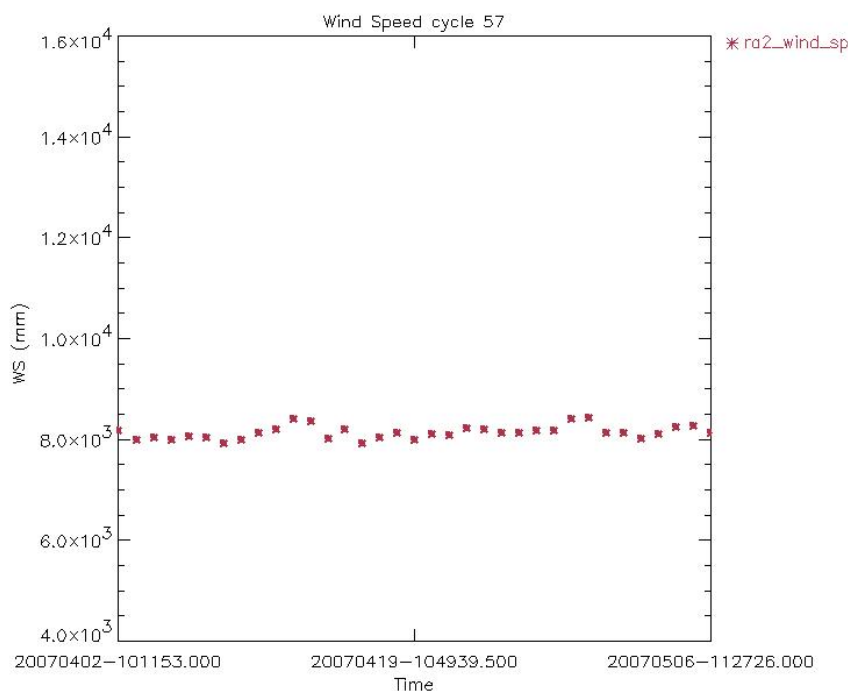
**Figure 32: Ku and S Sigma\_0 daily average for cycle 57 (dB/100)**

The histograms of Wind Speed computed for the Ku-band and the time behavior during cycle 57 are reported in Figure 33 and 34, respectively. Given that the wind table has been updated since IPF version 5.02, S.Abdallah Table is now used, the wind takes values between 1.18m/ and 21.30m/s.

The largest peak present in the histogram (about 50000 data for Wind < 1.2m/s) was removed from the plot in order to have the complete picture of the wind histogram.



**Figure 33: Histogram of Ku Wind Speed for cycle 57 (mm/sec)**



**Figure 34: Ku Band Wind Speed daily average for cycle 57 (mm/s)**

The Ku-Band Sigma<sub>0</sub> trend, reported hereafter (Figure 35 and 35A), is characterized by a jump of on average 3.24 dBs concomitant with the operational up-load of IPF version 4.54 which occurred on the 9<sup>th</sup> of April 2003. This change is due to the upload of a new RA2\_CHD\_AX ADF file that artificially shifted the RA-2 real Sigma<sub>0</sub> in order to align it with ERS-2 Sigma<sub>0</sub> and make it

coherent with the Witter and Chelton empirical wind model. A similar change in trend, but in the opposite direction, is also visible in the Wind Speed trend reported in Figure 36.

Beyond the huge jump that occurred in April 2003, the S-Band Sigma\_0 reports a smaller jump occurring on November the 26<sup>th</sup> 2003. Following the installation of the IPF processing chain V4.56, the average values of the RA-2 S-Band backscattering parameter, shows an increase of ~0.65 dBs, the new S-band sigma0 being higher with respect to the previous versions. The very low values of the S Band Backscattering around 30 July 2006 are related to the S Band Power Drop Anomaly occurred when the instrument was operating on RFFS B-side from 15 May until 21 June 2006. The S-Band Sigma\_0 daily means that are plotted outside the figure range can be traced back to the so-called S-Band anomaly (ref. par. 6.1.8).

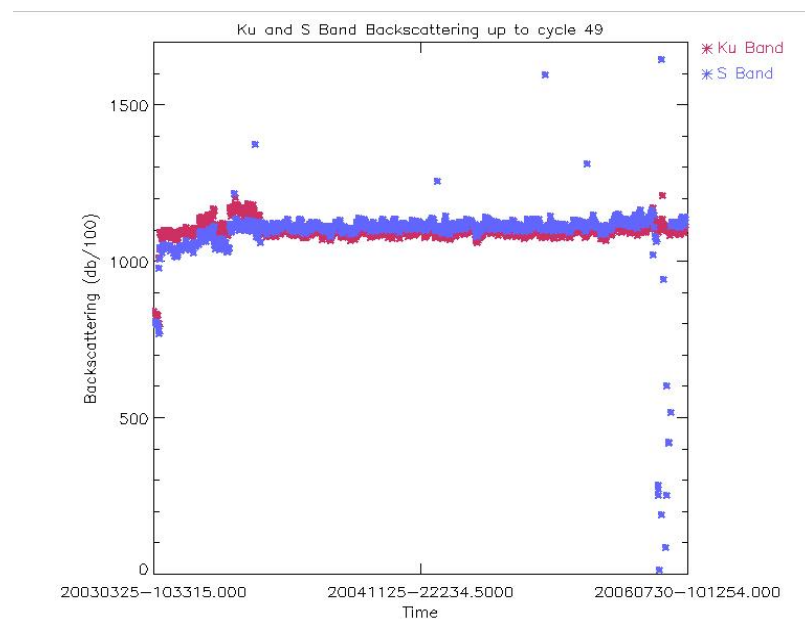
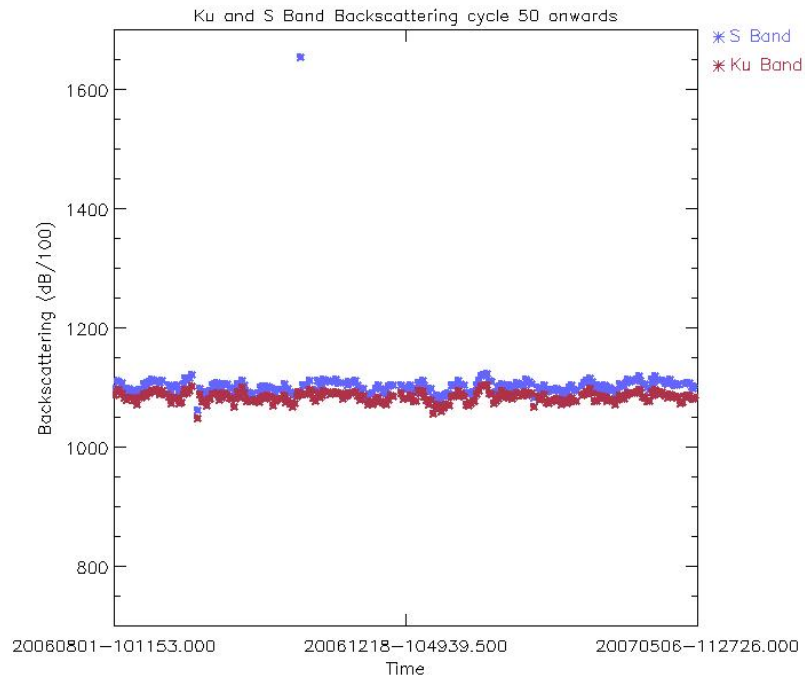
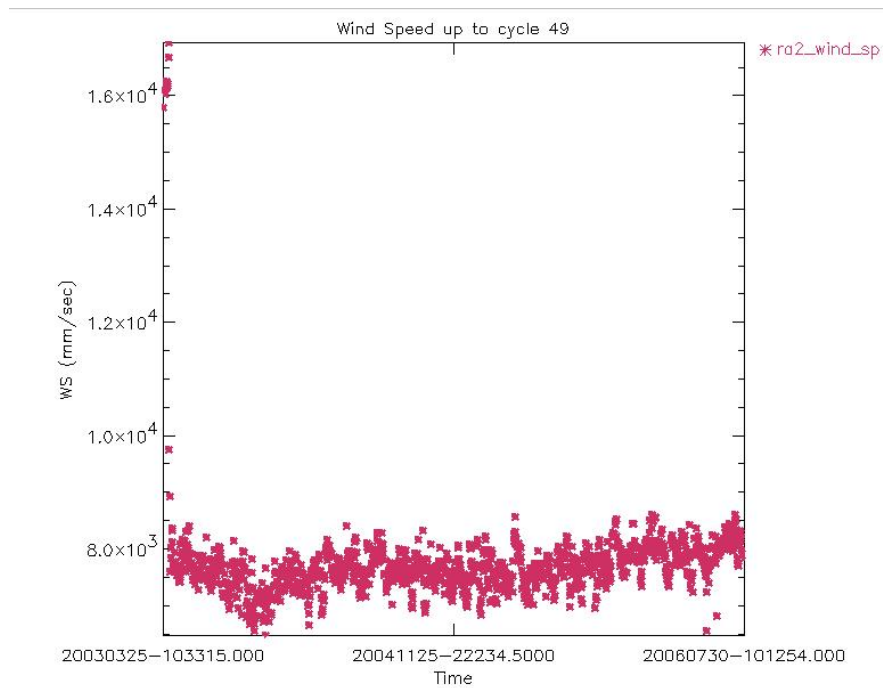


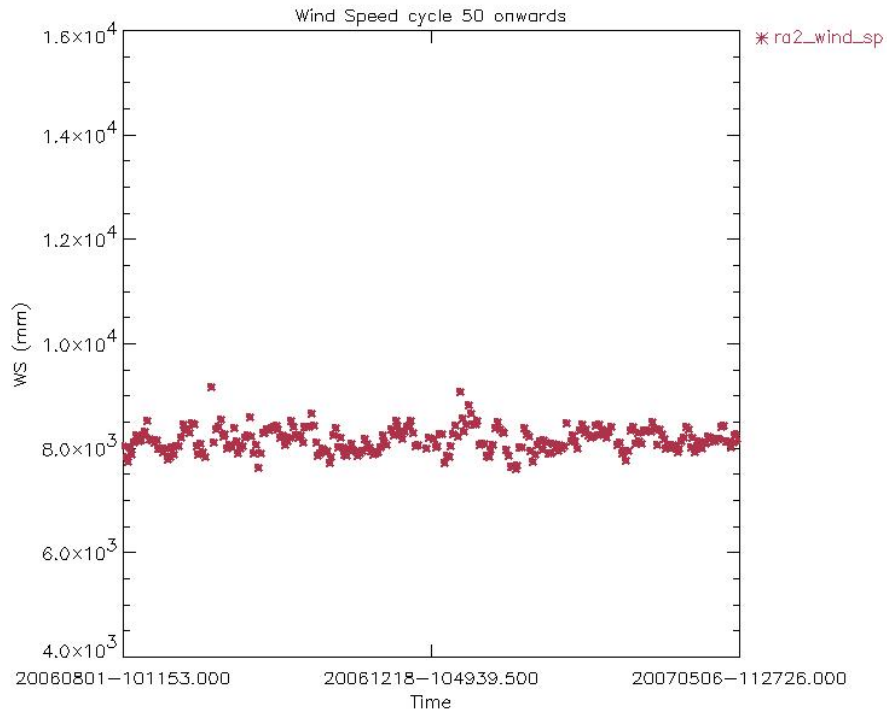
Figure 35: Ku and S band Backscattering daily averages up to cycle 49 (dB/100)



**Figure 35A: Ku and S band Backscattering daily averages from cycle 50 onwards (dB/100)**



**Figure 36: Wind Speed daily averages up to cycle 49 (mm/s)**



**Figure 36A: Wind Speed daily averages from cycle 50 onwards (mm/s)**

## 8 PARTICULAR INVESTIGATIONS

The SPSA Patch uploaded on date 16<sup>th</sup> January to prevent the S Band Anomaly has been dismissed on the 9<sup>th</sup> of April because it was causing the Instrument to switch to HEATER 0/RESET Mode. The problem is under investigation.

A low number of valid IF Masks has been obtained on the last two cycles, 56 and 57. The problem is under investigation and new in-flight tests will be performed during the next cycles aimed to understand and possibly fix the problem.

## APPENDIX 1: IPF UPGRADES

**Table 4: L1B IPF version**

IPF Version	Date of issue PDHSK & E, LRAC	L1B Algorithm upgrades	L1B ADF updates	ADF filename
V4.53	Nov. 27, 2002			
V4.54	Apr. 7, 2003	*Wrong sign in AGC calibration estimation *Missing integrity check for the Data Block number read from the Level 0 Data Blocks *The altitude above CoG and the altitude rate have to be included in the records also in case of dummy records *1Hz data should be referenced to data block 9.5 not block 10	Correction of the Tx-Rx gain of Ku and S band parameters (3.5 dB)	RA2_CHD_AX
V4.56	Nov. 26, 2003	1- Extrapolation of AGC value to the Waveform center (49.5) for both Ku- and Sband. 2 - Correction for an error found in the evaluation of S band AGC.	RA2 IF Mask	RA2_IFF_AX
V4.57	PDHS-K: 29-04-2004 PDHS-E: 28-04-2004			
V4.58	Aug. 9, 2004			
V5.0.2	Oct. 24, 2005	MWR Side Lobe correction upgrade  USO clock period units correction  RA-2 alignment: OBDH & USO datation, IE flags correction  Rain Flag tuning to compensate for the increase of the S band Sigma0  Monthly IF estimation  Level 1B S-Band anomaly flag  DORIS Navigator CFI upgrade (RA-2 & MWR)	side lobe table and Config param  New ADF format - clock period unit    New table in SOI file   New format	MWR_SLT_AX MWR_CON_AX  RA2_USO_AX RA2_CHD_AX RA2_CON_AX   RA2_SOI_AX   RA2_IFF_AX RA2_CON_AX

V5.03	Sep. 19, 2006	Level 1B S-Band anomaly flag well implemented  Orbit Flag		
-------	---------------	---	--	--

**Table 5: L2 IPF version**

PF Version	Date of issue PDHS	L2 Algorithm upgrades	L2 ADF updates	ADF filename
V4.53	Nov. 27, 2002			
V4.54	Apr. 7, 2003			
V4.56	Nov. 26, 2003	SPR 26 Tuning of the Ice2 retracking New MWR NN algorithm	MSS CLS01 Rain flag Updated OCOG retracker thresholds Ice1/Sea Ice Conf file Sea State Bias Table file GOT00.2 Ocean Tide Sol 1 Map file FES 2002 Ocean Tide Sol 2 Map file FES 2002 Tidal Loading Coeff Map	RA2_MSS_AX RA2_SOI_AX RA2_ICT_AX  RA2_SSB_AX   RA2_OT1_AX RA2_OT2_AX RA2_TLD_AX
V4.57	PDHS-K: 29-04- 2004 PDHS-E: 28-04- 2004	ECMWF meteo files handling		
V4.58	Aug. 9, 2004	Addition of a Pass Number Field in FD Level		
V5.0.2	Oct. 24, 2005	<ul style="list-style-type: none"> <li>- Handling of the new RA2_CHD_AX ADF</li> <li>- Rain Flag tuning to compensate for the increase of the S band Sigma0</li> <li>- Improving the mispointing estimation</li> <li>- Export of the Level 1B S-band flag into the Level 2 data product</li> <li>- Export of the Level 1B NRT orbit quality flag</li> <li>- Addition of a Pass Number Field in FD Level 2 SPH product</li> <li>- Addition of peakiness in Ku and S band in FDMAR</li> <li>- Addition of square of the SWH in Ku and S band</li> <li>- Correction of MCD flag</li> <li>- SPH pass number (field 8) set to 0 in SPH NRT Level 2 data products</li> </ul>	New table in SOI file   Two needed parameters in SOI file New format   Addition of GOT2000.2	RA2_CHD_AX  RA2_SOI_AX  RA2_SOI_AX RA2_SOI_AX    RA2_TLG_AX

			TLD New DEM AUX file (MACESS) merge of ACE land elevation data and Smith and Sandwell ocean bathymetry	AUX_DEM_AX
V 5.03	Sep. 19, 2006			

## APPENDIX 2: AVAILABILITY:

**Table 6: RA-2 L0, L1b and L2 FGD Data products availability summary for Cycle 57**

Start orbit	Stop orbit	Time [sec] instrum. Unavail- ability	Data Unav Time [sec]	Time [sec] L0 gaps	Time [sec] L1b gaps	Time [sec] L2 (FGD) gaps	% instrum. avail.	% data avail.	% L0 avail.	% L1b avail.	% L2 (FGD) avail.
26608	26708	29940,00	31818,83	6152,26	6141,83	6171,58	95,05	94,74	93,72	93,72	93,72
26708	26808	0,00	2314,40	7694,18	13756,62	19814,73	100,00	99,62	98,35	97,34	96,34
26808	26909	0,00	2156,59	17770,39	29250,65	29277,46	100,00	99,64	96,71	94,81	94,80
26909	27009	2332,12	4400,54	17516,82	29204,15	33346,35	99,61	99,27	96,38	94,44	93,76
27009	27109	0,00	2249,00	1745,48	1735,04	1767,42	100,00	99,63	99,34	99,34	99,34

**Table 7: MWR L0 Data products availability summary for Cycle 57**

Start orbit	Stop orbit	Time [sec] instrum. unavailability	Time [sec] L0 gaps	% instrum. avail.	% L0 avail.
26608	26708	0,00	4416,00	100,00	99,27
26708	26808	0,00	5904,00	100,00	99,02
26808	26909	0,00	16464,00	100,00	97,28
26909	27009	2332,11	15744,00	99,61	97,01
27009	27109	0,00	0,00	100,00	100,00

**Table 8: DORIS L0 Data products availability summary for Cycle 57**

Start orbit	Stop orbit	Time [sec] instrum. unavailability	Time [sec] L0 gaps	% instrum. avail.	% L0 avail.
26608	26708	0,00	11097,00	100,00	99,08
26708	26808	0,00	114510,00	100,00	90,53
26808	26909	0,00	36153,00	100,00	97,01
26909	27009	4664,23	34157,00	99,61	96,79
27009	27109	0,00	3446,00	100,00	99,72



**Table 9: List of gaps for RA-2 L0 Cycle 57**

Start date	Start time	Stop date	Stop time	Duration [sec]	Start orbit	Stop orbit	Reason
02-apr-07	5.25.12	02-apr-07	5.25.15	3	26598	26598	PDS_UNKNOWN_FAILURE
02-apr-07	5.26.14	02-apr-07	5.27.32	78	26598	26598	PDS_UNKNOWN_FAILURE
02-apr-07	15.27.54	02-apr-07	15.29.12	78	26604	26604	PDS_UNKNOWN_FAILURE
02-apr-07	17.36.11	02-apr-07	17.37.29	78	26605	26605	PDS_UNKNOWN_FAILURE
02-apr-07	20.35.40	02-apr-07	21.46.24	4244	26607	26607	PDS_UNKNOWN_FAILURE
02-apr-07	22.14.39	02-apr-07	23.27.24	4365	26608	26608	PDS_UNKNOWN_FAILURE
03-apr-07	4.55.15	03-apr-07	4.56.33	78	26612	26612	PDS_UNKNOWN_FAILURE
03-apr-07	12.37.22	03-apr-07	12.37.27	5	26616	26616	PDS_UNKNOWN_FAILURE
03-apr-07	13.48.00	03-apr-07	13.49.05	65	26617	26617	PDS_UNKNOWN_FAILURE
03-apr-07	16.36.34	03-apr-07	16.37.52	78	26619	26619	PDS_UNKNOWN_FAILURE
03-apr-07	12.37.27	03-apr-07	13.48.00	4233	26616	26617	UNAV_RA2
04-apr-07	4.23.38	04-apr-07	4.24.56	78	26626	26626	PDS_UNKNOWN_FAILURE
04-apr-07	9.49.07	04-apr-07	9.49.12	5	26629	26629	PDS_UNKNOWN_FAILURE
04-apr-07	11.30.00	04-apr-07	11.31.06	66	26630	26630	PDS_UNKNOWN_FAILURE
04-apr-07	16.04.31	04-apr-07	16.05.48	77	26633	26633	PDS_UNKNOWN_FAILURE
04-apr-07	18.13.33	04-apr-07	18.14.50	77	26634	26634	PDS_UNKNOWN_FAILURE
04-apr-07	9.49.12	04-apr-07	11.30.00	6048	26629	26630	UNAV_RA2
05-apr-07	15.30.42	05-apr-07	15.30.44	2	26647	26647	PDS_UNKNOWN_FAILURE
05-apr-07	15.33.46	05-apr-07	15.35.04	78	26647	26647	PDS_UNKNOWN_FAILURE
05-apr-07	17.41.56	05-apr-07	17.43.14	78	26648	26648	PDS_UNKNOWN_FAILURE
05-apr-07	20.03.17	05-apr-07	20.03.20	3	26649	26649	PDS_UNKNOWN_FAILURE
06-apr-07	5.01.01	06-apr-07	5.02.18	77	26655	26655	PDS_UNKNOWN_FAILURE
06-apr-07	16.41.45	06-apr-07	16.43.03	78	26662	26662	PDS_UNKNOWN_FAILURE
07-apr-07	4.29.24	07-apr-07	4.30.41	77	26669	26669	PDS_UNKNOWN_FAILURE
07-apr-07	16.10.14	07-apr-07	16.11.32	78	26676	26676	PDS_UNKNOWN_FAILURE
07-apr-07	18.19.19	07-apr-07	18.20.36	77	26677	26677	PDS_UNKNOWN_FAILURE
09-apr-07	5.01.44	09-apr-07	5.05.12	208	26698	26698	PDS_UNKNOWN_FAILURE
09-apr-07	5.06.46	09-apr-07	5.08.51	125	26698	26698	PDS_UNKNOWN_FAILURE
09-apr-07	10.36.30	09-apr-07	10.37.35	65	26701	26701	PDS_UNKNOWN_FAILURE
09-apr-07	15.07.14	09-apr-07	15.08.32	78	26704	26704	PDS_UNKNOWN_FAILURE
09-apr-07	17.16.05	09-apr-07	17.17.23	78	26705	26705	PDS_UNKNOWN_FAILURE
09-apr-07	5.08.51	09-apr-07	10.36.30	19659	26698	26701	UNAV_RA2
10-apr-07	4.35.09	10-apr-07	4.36.27	78	26712	26712	PDS_UNKNOWN_FAILURE
10-apr-07	16.16.09	10-apr-07	16.17.27	78	26719	26719	PDS_UNKNOWN_FAILURE
10-apr-07	18.25.04	10-apr-07	18.26.22	78	26720	26720	PDS_UNKNOWN_FAILURE
11-apr-07	15.42.01	11-apr-07	15.42.03	2	26733	26733	PDS_UNKNOWN_FAILURE
11-apr-07	15.44.58	11-apr-07	15.46.16	78	26733	26733	PDS_UNKNOWN_FAILURE
11-apr-07	17.53.27	11-apr-07	17.54.45	78	26734	26734	PDS_UNKNOWN_FAILURE
11-apr-07	4.03.56	11-apr-07	4.05.14	78	26726	26726	PDS_UNKNOWN_FAILURE

11-apr-07	9.21.53	11-apr-07	10.59.45	5872	26729	26730	PDS_UNKNOWN_FAILURE
12-apr-07	5.12.32	12-apr-07	5.13.49	77	26741	26741	PDS_UNKNOWN_FAILURE
12-apr-07	15.10.59	12-apr-07	15.11.01	2	26747	26747	PDS_UNKNOWN_FAILURE
12-apr-07	15.13.09	12-apr-07	15.14.27	78	26747	26747	PDS_UNKNOWN_FAILURE
12-apr-07	17.21.50	12-apr-07	17.23.08	78	26748	26748	PDS_UNKNOWN_FAILURE
13-apr-07	4.40.55	13-apr-07	4.42.12	77	26755	26755	PDS_UNKNOWN_FAILURE
13-apr-07	14.46.48	13-apr-07	14.49.47	179	26761	26761	PDS_UNKNOWN_FAILURE
13-apr-07	16.22.05	13-apr-07	16.23.22	77	26762	26762	PDS_UNKNOWN_FAILURE
13-apr-07	18.30.50	13-apr-07	18.32.07	77	26763	26763	PDS_UNKNOWN_FAILURE
14-apr-07	4.09.18	14-apr-07	4.10.36	78	26769	26769	PDS_UNKNOWN_FAILURE
14-apr-07	15.47.46	14-apr-07	15.47.48	2	26776	26776	PDS_UNKNOWN_FAILURE
14-apr-07	15.50.34	14-apr-07	15.51.52	78	26776	26776	PDS_UNKNOWN_FAILURE
14-apr-07	17.59.13	14-apr-07	18.00.31	78	26777	26777	PDS_UNKNOWN_FAILURE
16-apr-07	4.46.40	16-apr-07	4.47.58	78	26798	26798	PDS_UNKNOWN_FAILURE
16-apr-07	16.28.00	16-apr-07	16.29.18	78	26805	26805	PDS_UNKNOWN_FAILURE
16-apr-07	18.35.45	16-apr-07	18.37.03	78	26806	26806	PDS_UNKNOWN_FAILURE
17-apr-07	0.28.46	17-apr-07	2.04.12	5726	26809	26810	PDS_UNKNOWN_FAILURE
17-apr-07	4.15.03	17-apr-07	4.16.21	78	26812	26812	PDS_UNKNOWN_FAILURE
17-apr-07	15.56.10	17-apr-07	15.57.28	78	26819	26819	PDS_UNKNOWN_FAILURE
17-apr-07	18.04.58	17-apr-07	18.06.16	78	26820	26820	PDS_UNKNOWN_FAILURE
18-apr-07	5.23.54	18-apr-07	5.25.12	78	26827	26827	PDS_UNKNOWN_FAILURE
18-apr-07	15.25.00	18-apr-07	15.26.17	77	26833	26833	PDS_UNKNOWN_FAILURE
18-apr-07	17.33.21	18-apr-07	17.34.39	78	26834	26834	PDS_UNKNOWN_FAILURE
19-apr-07	4.52.26	19-apr-07	4.53.43	77	26841	26841	PDS_UNKNOWN_FAILURE
19-apr-07	16.33.55	19-apr-07	16.35.12	77	26848	26848	PDS_UNKNOWN_FAILURE
20-apr-07	4.20.49	20-apr-07	4.22.06	77	26855	26855	PDS_UNKNOWN_FAILURE
20-apr-07	16.01.46	20-apr-07	16.03.04	78	26862	26862	PDS_UNKNOWN_FAILURE
20-apr-07	18.10.44	20-apr-07	18.12.01	77	26863	26863	PDS_UNKNOWN_FAILURE
21-apr-07	5.27.51	21-apr-07	5.27.54	3	26870	26870	PDS_UNKNOWN_FAILURE
21-apr-07	5.28.53	21-apr-07	5.30.10	77	26870	26870	PDS_UNKNOWN_FAILURE
21-apr-07	15.30.55	21-apr-07	15.32.13	78	26876	26876	PDS_UNKNOWN_FAILURE
21-apr-07	17.39.07	21-apr-07	17.40.24	77	26877	26877	PDS_UNKNOWN_FAILURE
21-apr-07	18.55.18	21-apr-07	20.34.19	5941	26878	26879	PDS_UNKNOWN_FAILURE
23-apr-07	4.26.34	23-apr-07	4.27.52	78	26898	26898	PDS_UNKNOWN_FAILURE
23-apr-07	13.24.11	23-apr-07	14.41.15	4624	26903	26904	PDS_UNKNOWN_FAILURE
23-apr-07	16.07.22	23-apr-07	16.08.40	78	26905	26905	PDS_UNKNOWN_FAILURE
23-apr-07	18.16.29	23-apr-07	18.17.47	78	26906	26906	PDS_UNKNOWN_FAILURE
24-apr-07	1.13.47	24-apr-07	1.16.46	179	26910	26910	PDS_UNKNOWN_FAILURE
24-apr-07	15.33.35	24-apr-07	15.33.37	2	26919	26919	PDS_UNKNOWN_FAILURE
24-apr-07	15.36.37	24-apr-07	15.37.55	78	26919	26919	PDS_UNKNOWN_FAILURE
24-apr-07	17.44.52	24-apr-07	17.46.10	78	26920	26920	PDS_UNKNOWN_FAILURE
25-apr-07	16.54.31	25-apr-07	17.12.28	1077	26934	26934	PDS_UNKNOWN_FAILURE
25-apr-07	17.13.27	25-apr-07	20.12.33	10746	26934	26936	PDS_UNKNOWN_FAILURE

25-apr-07	5.03.56	25-apr-07	5.05.14	78	26927	26927	PDS_UNKNOWN_FAILURE
25-apr-07	16.44.19	25-apr-07	16.45.37	78	26934	26934	PDS_UNKNOWN_FAILURE
26-apr-07	4.32.19	26-apr-07	4.33.37	78	26941	26941	PDS_UNKNOWN_FAILURE
26-apr-07	16.13.14	26-apr-07	16.14.32	78	26948	26948	PDS_UNKNOWN_FAILURE
26-apr-07	18.20.37	26-apr-07	18.20.39	2	26949	26949	PDS_UNKNOWN_FAILURE
26-apr-07	18.22.14	26-apr-07	18.23.32	78	26949	26949	PDS_UNKNOWN_FAILURE
27-apr-07	4.32.31	27-apr-07	4.35.30	179	26955	26955	PDS_UNKNOWN_FAILURE
27-apr-07	15.42.13	27-apr-07	15.43.31	78	26962	26962	PDS_UNKNOWN_FAILURE
27-apr-07	17.50.37	27-apr-07	17.51.55	78	26963	26963	PDS_UNKNOWN_FAILURE
28-apr-07	5.09.41	28-apr-07	5.10.59	78	26970	26970	PDS_UNKNOWN_FAILURE
28-apr-07	15.10.14	28-apr-07	15.11.32	78	26976	26976	PDS_UNKNOWN_FAILURE
28-apr-07	17.19.00	28-apr-07	17.20.18	78	26977	26977	PDS_UNKNOWN_FAILURE
30-apr-07	4.06.35	30-apr-07	4.07.53	78	26998	26998	PDS_UNKNOWN_FAILURE
30-apr-07	4.54.08	30-apr-07	5.56.38	3750	26998	26999	PDS_UNKNOWN_FAILURE
30-apr-07	15.44.56	30-apr-07	15.44.58	2	27005	27005	PDS_UNKNOWN_FAILURE
30-apr-07	15.47.49	30-apr-07	15.49.06	77	27005	27005	PDS_UNKNOWN_FAILURE
30-apr-07	17.56.22	30-apr-07	17.57.40	78	27006	27006	PDS_UNKNOWN_FAILURE
30-apr-07	5.56.38	30-apr-07	6.33.49	2231	26999	26999	UNAV_ARTEMIS
01-MAY-2007	5.15.27	01-MAY-2007	5.16.44	77	27013	27013	PDS_UNKNOWN_FAILURE
01-MAY-2007	15.16.09	01-MAY-2007	15.17.27	78	27019	27019	PDS_UNKNOWN_FAILURE
01-MAY-2007	17.24.45	01-MAY-2007	17.26.03	78	27020	27020	PDS_UNKNOWN_FAILURE
02-MAY-2007	18.33.13	02-MAY-2007	18.34.31	78	27035	27035	PDS_UNKNOWN_FAILURE
02-MAY-2007	4.43.50	02-MAY-2007	4.45.07	77	27027	27027	PDS_UNKNOWN_FAILURE
02-MAY-2007	16.25.04	02-MAY-2007	16.26.22	78	27034	27034	PDS_UNKNOWN_FAILURE
03-MAY-2007	4.12.13	03-MAY-2007	4.13.30	77	27041	27041	PDS_UNKNOWN_FAILURE
03-MAY-2007	15.50.41	03-MAY-2007	15.50.43	2	27048	27048	PDS_UNKNOWN_FAILURE
03-MAY-2007	15.53.24	03-MAY-2007	15.54.42	78	27048	27048	PDS_UNKNOWN_FAILURE
03-MAY-2007	18.02.07	03-MAY-2007	18.03.25	78	27049	27049	PDS_UNKNOWN_FAILURE
04-MAY-2007	5.19.35	04-MAY-2007	5.19.37	2	27056	27056	PDS_UNKNOWN_FAILURE
04-MAY-2007	5.21.12	04-MAY-2007	5.22.29	77	27056	27056	PDS_UNKNOWN_FAILURE
04-MAY-2007	7.37.39	04-MAY-2007	7.40.39	180	27057	27057	PDS_UNKNOWN_FAILURE
04-MAY-2007	10.19.04	04-MAY-2007	10.19.08	4	27059	27059	PDS_UNKNOWN_FAILURE
04-MAY-2007	10.29.45	04-MAY-2007	10.29.48	3	27059	27059	PDS_UNKNOWN_FAILURE
04-MAY-2007	15.19.29	04-MAY-2007	15.19.31	2	27062	27062	PDS_UNKNOWN_FAILURE
04-MAY-2007	15.22.04	04-MAY-2007	15.23.22	78	27062	27062	PDS_UNKNOWN_FAILURE
04-MAY-2007	17.30.30	04-MAY-2007	17.31.48	78	27063	27063	PDS_UNKNOWN_FAILURE
05-MAY-2007	4.49.35	05-MAY-2007	4.50.52	77	27070	27070	PDS_UNKNOWN_FAILURE
05-MAY-2007	16.30.59	05-MAY-2007	16.32.17	78	27077	27077	PDS_UNKNOWN_FAILURE
06-MAY-2007	4.17.58	06-MAY-2007	4.19.15	77	27084	27084	PDS_UNKNOWN_FAILURE

**Table 10: List of gaps for MWR L0 Cycle 57**

Start date	Start	Stop date	Stop	Duration	Start	Stop	Reason
------------	-------	-----------	------	----------	-------	------	--------

	time		time	[sec]	orbit	orbit	
02-apr-07	20.34.47	02-apr-07	21.46.23	4296	26607	26607	PDS_UNKNOWN_FAILURE
02-apr-07	22.13.35	02-apr-07	23.27.11	4416	26608	26608	PDS_UNKNOWN_FAILURE
11-apr-07	9.21.07	11-apr-07	10.59.31	5904	26729	26730	PDS_UNKNOWN_FAILURE
17-apr-07	0.27.44	17-apr-07	2.04.08	5784	26809	26810	PDS_UNKNOWN_FAILURE
21-apr-07	18.54.19	21-apr-07	20.34.19	6000	26878	26879	PDS_UNKNOWN_FAILURE
23-apr-07	13.23.11	23-apr-07	14.41.11	4680	26903	26904	PDS_UNKNOWN_FAILURE
25-apr-07	16.53.40	25-apr-07	20.12.29	11929	26934	26936	PDS_UNKNOWN_FAILURE
30-apr-07	4.53.03	30-apr-07	5.56.38	3815	26998	26999	PDS_UNKNOWN_FAILURE
30-apr-07	5.56.38	30-apr-07	6.33.27	2209	26999	26999	UNAV_ARTEMIS

**Table 11: List of gaps for RA-2 L1b Cycle 57**

Start date	Start time	Stop date	Stop time	Duration [sec]	Start orbit	Stop orbit	Reason
02-apr-07	5.25.13	02-apr-07	5.25.15	2	26598	26598	PDS_UNKNOWN_FAILURE
02-apr-07	5.26.14	02-apr-07	5.27.32	78	26598	26598	PDS_UNKNOWN_FAILURE
02-apr-07	15.27.54	02-apr-07	15.29.12	78	26604	26604	PDS_UNKNOWN_FAILURE
02-apr-07	17.36.11	02-apr-07	17.37.29	78	26605	26605	PDS_UNKNOWN_FAILURE
02-apr-07	20.35.41	02-apr-07	21.46.24	4243	26607	26607	PDS_UNKNOWN_FAILURE
02-apr-07	22.14.40	02-apr-07	23.27.24	4364	26608	26608	PDS_UNKNOWN_FAILURE
03-apr-07	4.55.15	03-apr-07	4.56.33	78	26612	26612	PDS_UNKNOWN_FAILURE
03-apr-07	12.37.24	03-apr-07	12.37.27	3	26616	26616	PDS_UNKNOWN_FAILURE
03-apr-07	13.48.00	03-apr-07	13.49.05	65	26617	26617	PDS_UNKNOWN_FAILURE
03-apr-07	16.36.34	03-apr-07	16.37.52	78	26619	26619	PDS_UNKNOWN_FAILURE
03-apr-07	12.37.27	03-apr-07	13.48.00	4233	26616	26617	UNAV_RA2
04-apr-07	4.23.38	04-apr-07	4.24.56	78	26626	26626	PDS_UNKNOWN_FAILURE
04-apr-07	9.49.08	04-apr-07	9.49.12	4	26629	26629	PDS_UNKNOWN_FAILURE
04-apr-07	11.30.00	04-apr-07	11.31.06	66	26630	26630	PDS_UNKNOWN_FAILURE
04-apr-07	16.04.31	04-apr-07	16.05.48	77	26633	26633	PDS_UNKNOWN_FAILURE
04-apr-07	18.13.33	04-apr-07	18.14.50	77	26634	26634	PDS_UNKNOWN_FAILURE
04-apr-07	9.49.12	04-apr-07	11.30.00	6048	26629	26630	UNAV_RA2
05-apr-07	15.33.46	05-apr-07	15.35.04	78	26647	26647	PDS_UNKNOWN_FAILURE
05-apr-07	17.41.56	05-apr-07	17.43.14	78	26648	26648	PDS_UNKNOWN_FAILURE
06-apr-07	5.01.01	06-apr-07	5.02.18	77	26655	26655	PDS_UNKNOWN_FAILURE
06-apr-07	16.41.45	06-apr-07	16.43.03	78	26662	26662	PDS_UNKNOWN_FAILURE
07-apr-07	4.29.24	07-apr-07	4.30.41	77	26669	26669	PDS_UNKNOWN_FAILURE
07-apr-07	16.10.14	07-apr-07	16.11.32	78	26676	26676	PDS_UNKNOWN_FAILURE
07-apr-07	18.19.19	07-apr-07	18.20.36	77	26677	26677	PDS_UNKNOWN_FAILURE
09-apr-07	5.01.45	09-apr-07	5.05.12	207	26698	26698	PDS_UNKNOWN_FAILURE
09-apr-07	5.06.46	09-apr-07	5.08.51	125	26698	26698	PDS_UNKNOWN_FAILURE
09-apr-07	10.36.30	09-apr-07	10.37.35	65	26701	26701	PDS_UNKNOWN_FAILURE

09-apr-07	15.07.14	09-apr-07	15.08.32	78	26704	26704	PDS_UNKNOWN_FAILURE
09-apr-07	17.16.05	09-apr-07	17.17.23	78	26705	26705	PDS_UNKNOWN_FAILURE
09-apr-07	5.08.51	09-apr-07	10.36.30	19659	26698	26701	UNAV_RA2
10-apr-07	4.35.09	10-apr-07	4.36.27	78	26712	26712	PDS_UNKNOWN_FAILURE
10-apr-07	16.16.09	10-apr-07	16.17.27	78	26719	26719	PDS_UNKNOWN_FAILURE
10-apr-07	18.25.04	10-apr-07	18.26.22	78	26720	26720	PDS_UNKNOWN_FAILURE
11-apr-07	12.40.26	11-apr-07	14.18.29	5883	26731	26732	PDS_UNKNOWN_FAILURE
11-apr-07	15.44.58	11-apr-07	15.46.16	78	26733	26733	PDS_UNKNOWN_FAILURE
11-apr-07	17.53.27	11-apr-07	17.54.45	78	26734	26734	PDS_UNKNOWN_FAILURE
11-apr-07	4.03.56	11-apr-07	4.05.14	78	26726	26726	PDS_UNKNOWN_FAILURE
11-apr-07	7.40.04	11-apr-07	9.21.06	6062	26728	26729	PDS_UNKNOWN_FAILURE
12-apr-07	5.12.32	12-apr-07	5.13.49	77	26741	26741	PDS_UNKNOWN_FAILURE
12-apr-07	15.13.09	12-apr-07	15.14.27	78	26747	26747	PDS_UNKNOWN_FAILURE
12-apr-07	17.21.50	12-apr-07	17.23.08	78	26748	26748	PDS_UNKNOWN_FAILURE
13-apr-07	4.40.55	13-apr-07	4.42.12	77	26755	26755	PDS_UNKNOWN_FAILURE
13-apr-07	14.46.49	13-apr-07	14.49.47	178	26761	26761	PDS_UNKNOWN_FAILURE
13-apr-07	16.22.05	13-apr-07	16.23.22	77	26762	26762	PDS_UNKNOWN_FAILURE
13-apr-07	18.30.50	13-apr-07	18.32.07	77	26763	26763	PDS_UNKNOWN_FAILURE
14-apr-07	4.09.18	14-apr-07	4.10.36	78	26769	26769	PDS_UNKNOWN_FAILURE
14-apr-07	15.50.34	14-apr-07	15.51.52	78	26776	26776	PDS_UNKNOWN_FAILURE
14-apr-07	17.59.13	14-apr-07	18.00.31	78	26777	26777	PDS_UNKNOWN_FAILURE
16-apr-07	4.46.40	16-apr-07	4.47.58	78	26798	26798	PDS_UNKNOWN_FAILURE
16-apr-07	16.28.00	16-apr-07	16.29.18	78	26805	26805	PDS_UNKNOWN_FAILURE
16-apr-07	18.35.45	16-apr-07	18.37.03	78	26806	26806	PDS_UNKNOWN_FAILURE
17-apr-07	0.28.48	17-apr-07	2.04.12	5724	26809	26810	PDS_UNKNOWN_FAILURE
17-apr-07	4.15.03	17-apr-07	4.16.21	78	26812	26812	PDS_UNKNOWN_FAILURE
17-apr-07	15.56.10	17-apr-07	15.57.28	78	26819	26819	PDS_UNKNOWN_FAILURE
17-apr-07	18.04.58	17-apr-07	18.06.16	78	26820	26820	PDS_UNKNOWN_FAILURE
18-apr-07	15.26.17	18-apr-07	15.34.25	488	26833	26833	PDS_UNKNOWN_FAILURE
18-apr-07	17.33.21	18-apr-07	17.34.39	78	26834	26834	PDS_UNKNOWN_FAILURE
18-apr-07	5.23.54	18-apr-07	5.25.12	78	26827	26827	PDS_UNKNOWN_FAILURE
18-apr-07	13.59.36	18-apr-07	15.22.19	4963	26832	26833	PDS_UNKNOWN_FAILURE
18-apr-07	15.25.00	18-apr-07	15.26.17	77	26833	26833	PDS_UNKNOWN_FAILURE
19-apr-07	4.52.26	19-apr-07	4.53.43	77	26841	26841	PDS_UNKNOWN_FAILURE
19-apr-07	16.33.55	19-apr-07	16.35.12	77	26848	26848	PDS_UNKNOWN_FAILURE
20-apr-07	4.20.49	20-apr-07	4.22.06	77	26855	26855	PDS_UNKNOWN_FAILURE
20-apr-07	16.01.46	20-apr-07	16.03.04	78	26862	26862	PDS_UNKNOWN_FAILURE
20-apr-07	18.10.44	20-apr-07	18.12.01	77	26863	26863	PDS_UNKNOWN_FAILURE
21-apr-07	5.28.53	21-apr-07	5.30.10	77	26870	26870	PDS_UNKNOWN_FAILURE
21-apr-07	15.30.55	21-apr-07	15.32.13	78	26876	26876	PDS_UNKNOWN_FAILURE
21-apr-07	17.39.07	21-apr-07	17.40.24	77	26877	26877	PDS_UNKNOWN_FAILURE

21-apr-07	18.55.19	21-apr-07	20.34.19	5940	26878	26879	PDS_UNKNOWN_FAILURE
23-apr-07	4.26.34	23-apr-07	4.27.52	78	26898	26898	PDS_UNKNOWN_FAILURE
23-apr-07	8.03.14	23-apr-07	9.43.52	6038	26900	26901	PDS_UNKNOWN_FAILURE
23-apr-07	13.24.14	23-apr-07	14.41.15	4621	26903	26904	PDS_UNKNOWN_FAILURE
23-apr-07	16.07.22	23-apr-07	16.08.40	78	26905	26905	PDS_UNKNOWN_FAILURE
23-apr-07	18.16.29	23-apr-07	18.17.47	78	26906	26906	PDS_UNKNOWN_FAILURE
24-apr-07	1.13.48	24-apr-07	1.16.46	178	26910	26910	PDS_UNKNOWN_FAILURE
24-apr-07	15.36.37	24-apr-07	15.37.55	78	26919	26919	PDS_UNKNOWN_FAILURE
24-apr-07	17.44.52	24-apr-07	17.46.10	78	26920	26920	PDS_UNKNOWN_FAILURE
25-apr-07	16.54.32	25-apr-07	17.12.28	1076	26934	26934	PDS_UNKNOWN_FAILURE
25-apr-07	17.13.27	25-apr-07	20.12.33	10746	26934	26936	PDS_UNKNOWN_FAILURE
25-apr-07	5.03.56	25-apr-07	5.05.14	78	26927	26927	PDS_UNKNOWN_FAILURE
25-apr-07	16.44.19	25-apr-07	16.45.37	78	26934	26934	PDS_UNKNOWN_FAILURE
26-apr-07	4.32.19	26-apr-07	4.33.37	78	26941	26941	PDS_UNKNOWN_FAILURE
26-apr-07	16.13.14	26-apr-07	16.14.32	78	26948	26948	PDS_UNKNOWN_FAILURE
26-apr-07	18.22.14	26-apr-07	18.23.32	78	26949	26949	PDS_UNKNOWN_FAILURE
27-apr-07	4.32.32	27-apr-07	4.35.30	178	26955	26955	PDS_UNKNOWN_FAILURE
27-apr-07	15.42.13	27-apr-07	15.43.31	78	26962	26962	PDS_UNKNOWN_FAILURE
27-apr-07	17.50.37	27-apr-07	17.51.55	78	26963	26963	PDS_UNKNOWN_FAILURE
27-apr-07	19.09.08	27-apr-07	20.46.59	5871	26964	26965	PDS_UNKNOWN_FAILURE
28-apr-07	5.09.41	28-apr-07	5.10.59	78	26970	26970	PDS_UNKNOWN_FAILURE
28-apr-07	15.10.14	28-apr-07	15.11.32	78	26976	26976	PDS_UNKNOWN_FAILURE
28-apr-07	17.19.00	28-apr-07	17.20.18	78	26977	26977	PDS_UNKNOWN_FAILURE
28-apr-07	18.39.58	28-apr-07	20.17.06	5828	26978	26979	PDS_UNKNOWN_FAILURE
30-apr-07	4.06.35	30-apr-07	4.07.53	78	26998	26998	PDS_UNKNOWN_FAILURE
30-apr-07	4.54.09	30-apr-07	5.56.38	3749	26998	26999	PDS_UNKNOWN_FAILURE
30-apr-07	15.47.49	30-apr-07	15.49.06	77	27005	27005	PDS_UNKNOWN_FAILURE
30-apr-07	17.56.22	30-apr-07	17.57.40	78	27006	27006	PDS_UNKNOWN_FAILURE
30-apr-07	5.56.38	30-apr-07	6.33.49	2231	26999	26999	UNAV_ARTEMIS
01-MAY-2007	5.15.27	01-MAY-2007	5.16.44	77	27013	27013	PDS_UNKNOWN_FAILURE
01-MAY-2007	15.16.09	01-MAY-2007	15.17.27	78	27019	27019	PDS_UNKNOWN_FAILURE
01-MAY-2007	17.24.45	01-MAY-2007	17.26.03	78	27020	27020	PDS_UNKNOWN_FAILURE
02-MAY-2007	4.43.50	02-MAY-2007	4.45.07	77	27027	27027	PDS_UNKNOWN_FAILURE
02-MAY-2007	16.25.04	02-MAY-2007	16.26.22	78	27034	27034	PDS_UNKNOWN_FAILURE
02-MAY-2007	18.33.13	02-MAY-2007	18.34.31	78	27035	27035	PDS_UNKNOWN_FAILURE
03-MAY-2007	4.12.13	03-MAY-2007	4.13.30	77	27041	27041	PDS_UNKNOWN_FAILURE
03-MAY-2007	15.53.24	03-MAY-2007	15.54.42	78	27048	27048	PDS_UNKNOWN_FAILURE
03-MAY-2007	18.02.07	03-MAY-2007	18.03.25	78	27049	27049	PDS_UNKNOWN_FAILURE
04-MAY-2007	5.21.12	04-MAY-2007	5.22.29	77	27056	27056	PDS_UNKNOWN_FAILURE
04-MAY-2007	7.37.40	04-MAY-2007	7.40.39	179	27057	27057	PDS_UNKNOWN_FAILURE
04-MAY-2007	10.19.06	04-MAY-2007	10.19.08	2	27059	27059	PDS_UNKNOWN_FAILURE



04-MAY-2007	10.29.46	04-MAY-2007	10.29.48	2	27059	27059	PDS_UNKNOWN_FAILURE
04-MAY-2007	15.22.04	04-MAY-2007	15.23.22	78	27062	27062	PDS_UNKNOWN_FAILURE
04-MAY-2007	17.30.30	04-MAY-2007	17.31.48	78	27063	27063	PDS_UNKNOWN_FAILURE
05-MAY-2007	4.49.35	05-MAY-2007	4.50.52	77	27070	27070	PDS_UNKNOWN_FAILURE
05-MAY-2007	16.30.59	05-MAY-2007	16.32.17	78	27077	27077	PDS_UNKNOWN_FAILURE
06-MAY-2007	4.17.58	06-MAY-2007	4.19.15	77	27084	27084	PDS_UNKNOWN_FAILURE

## APPENDIX 3: LEVEL 2 STATIC AUXILIARY DATA FILES

AUX\_DEM\_AXVIEC20031201\_000000\_20031201\_000000\_20200101\_000000  
 AUX\_ATT\_AXVIEC20020924\_131534\_20020703\_120000\_20781231\_235959  
 AUX\_LSM\_AXVIEC20020123\_141228\_20020101\_000000\_20200101\_000000  
 MWR\_LSF\_AXVIEC20020313\_172218\_20020101\_000000\_20200101\_000000  
 MWR\_CHD\_AXVIEC20021111\_131410\_20020101\_000000\_20200101\_000000  
 MWR\_LSF\_AXVIEC20020313\_172218\_20020101\_000000\_20200101\_000000  
 MWR\_SLT\_AXVIEC20050426\_120000\_20020101\_000000\_20200101\_000000  
 RA2\_IFA\_AXVIEC20050216\_125529\_20020101\_000000\_20200101\_000000  
 RA2\_IFB\_AXVIEC20050216\_125738\_20020101\_000000\_20200101\_000000  
 RA2\_CHD\_AXVIEC20051017\_093900\_20020101\_000000\_20200101\_000000  
 RA2\_CST\_AXVIEC20020621\_135858\_20020101\_000000\_20200101\_000000  
 RA2\_DIP\_AXVIEC20020122\_134206\_20020101\_000000\_20200101\_000000  
 RA2\_GEO\_AXVIEC20020314\_093428\_20020101\_000000\_20200101\_000000  
 RA2\_ICT\_AXVIEC20031208\_143628\_20020101\_000000\_20200101\_000000  
 RA2\_IOC\_AXVIEC20020122\_141121\_20020101\_000000\_20200101\_000000  
 RA2\_MET\_AXVIEC20020204\_073357\_20020101\_000000\_20200101\_000000  
 RA2\_MSS\_AXVIEC20031208\_145545\_20020101\_000000\_20200101\_000000  
 RA2\_OT1\_AXVIEC20040120\_082051\_20020101\_000000\_20200101\_000000  
 RA2\_OT2\_AXVIEC20031208\_150159\_20020101\_000000\_20200101\_000000  
 RA2\_SET\_AXVIEC20020122\_150917\_20020101\_000000\_20200101\_000000  
 RA2\_SL1\_AXVIEC20030131\_100228\_20020101\_000000\_20200101\_000000  
 RA2\_SL2\_AXVIEC20030131\_101757\_20020101\_000000\_20200101\_000000  
 RA2\_SOI\_AXVIEC20051003\_170000\_20020101\_000000\_20200101\_000000  
 RA2\_SSB\_AXVIEC20051129\_111810\_20020101\_000000\_20200101\_000000  
 RA2\_TLD\_AXVIEC20031208\_151137\_20020101\_000000\_20200101\_000000  
 RA2\_TLG\_AXVIEC20040310\_110000\_20020101\_000000\_20200101\_000000

## APPENDIX 4: SIGMA0 ABSOLUTE CALIBRATION

Table 18: Transponder measurement results up to cycle 55

Absolute Orbit nb	Date of Measurement	Location / Rel. track	RA-2 resolution	Transponder Bias [dB]	ECMWF Wet Tropo. Corr.
-------------------	---------------------	-----------------------	-----------------	-----------------------	------------------------

					[dB]
10389	24-feb-04	Rome / 315	Low	1,552	0,120
10511	04-mar-04	Valmontone / 437	Low	1,542	0,102
10618	11-mar-04	Fiuggi / 43	Low	1,447	0,135
10783	23-mar-04	Maccarese / 208	Low	1,540	0,142
10890	30-mar-04	Rome / 315	Low	1,442	0,152
11119	15-apr-04	Fiuggi / 43	High	0,963	0,122
11513	13-mag-04	Valmontone / 437	Low	1,353	0,133
11620	20-mag-04	Fiuggi / 43	Low	1,427	0,139
11892	08-giu-04	Rome / 315	Low	1,504	0,154
12014	17-giu-04	Valmontone / 437	Low	1,448	0,348
12121	24-giu-04	Fiuggi / 43	Low	1,576	0,149
14290	23-nov-04	Maccarese / 208	Low	1,43	0,164
14397	30-nov-04	Rome / 315	Low	1,11	0,142
14519	9-dic-04	Valmontone / 437	Low	1,26	0,248
14791	28-dic-04	Maccarese / 208	High	0,97	0,134
14898	4-gen-05	Rome / 315	High	0,95	0,114
15020	13-gen-05	Valmontone / 437	High	0,88	0,118
15127	20-gen-05	Fiuggi / 43	High	1,01	0,108
15292	1-feb-05	Maccarese / 208	High	0,95	0,132
15399	8-feb-05	Rome / 315	High	1,05	0,124
15521	17-feb-05	Valmontone / 437	High	0,94	0,115
15793	8-mar-05	Maccarese / 208	High	0,93	0,116
15900	15-mar-05	Rome / 315	High	0,93	0,128
16022	24-mar-05	Valmontone / 437	High	0,94	0,154
16294	12-apr-05	Maccarese / 208	High	0,97	0,140
16401	19-apr-05	Rome / 315	High	0,99	0,134
16523	28-apr-05	Valmontone / 437	High	0,97	0,114
16795	17-may-05	Maccarese / 208	High	0,84	0,168
16902	24-may-05	Rome / 315	High	1,00	0,152
17403	28-jun-05	Rome / 315	High	1,13	0,16
17525	7-jul-05	Valmontone / 437	High	1,04	0,13
17904	02-aug-05	Rome / 315	High	1,02	0,188
18026	11-aug-05	Valmontone / 437	High	0,93	0,154
18405	06-sep-05	Rome / 315	High	1,06	0,16
18634	22-Sep-05	Fiuggi/43	High	1,00	0,152
18799	04-Oct-05	Maccarese/208	High	0,85	0,164
18906	11-Oct-05	Perm site Rome / 315	Low	1,46	0,156
19407	15-Nov-05	Perm site Rome / 315	High	1,09	0,19
20409	24-Jan-06	Perm site Rome / 315	High	1,38	0,110
20910	28-Feb-06	Perm site Rome / 315	High	0,98	0,124
21912	9-May-06	Perm site Rome / 315	High	1,0	0,138
23916	26-Sep-06	Perm site Rome / 315	High	1,05	0,172
24417	31-Oct-06	Perm site Rome / 315	High	1,08	0,146
24918	05-Dec-06	Perm site Rome / 315	High	1,00	0,156
25419	09-Jan-2007	Perm site Rome / 315	High	0,97	0,148
25929	13-Feb-2007	Perm site Rome / 315	High	1,07	0,118
26922	24-Apr-2007	Perm site Rome / 315	High	1,17	0,154



## APPENDIX 5: S-BAND ANOMALY

Table 13: List of L2 FGD Files affected by S-Band anomaly during cycle 57

File name	Start date	Start time	Stop date	Stop time
RA2_FGD_2PNPDE20070419_021744_000061602057_00232_26839_7600.N1	19-apr-07	2.17.44	19-apr-07	
RA2_FGD_2PNPDE20070419_035952_000030592057_00233_26840_7753.N1	19-apr-07	3.59.52	19-apr-07	
RA2_FGD_2PNPDK20070421_153213_000004382057_00269_26876_8364.N1	21-apr-07	15.32.13	21-apr-07	
RA2_FGD_2PNPDK20070428_152238_000059262057_00369_26976_6697.N1	28-apr-07	15.22.38	28-apr-07	
RA2_FGD_2PNPDK20070428_165949_000010572057_00370_26977_6767.N1	28-apr-07	16.59.49	28-apr-07	
RA2_FGD_2PNPDK20070428_183903_000059812057_00371_26978_6885.N1	28-apr-07	18.39.03	28-apr-07	
RA2_FGD_2PNPDE20070428_201706_000044102057_00372_26979_0729.N1	28-apr-07	20.17.06	28-apr-07	
RA2_FGD_2PNPDE20070428_212932_000061882057_00372_26979_0880.N1	28-apr-07	21.29.32	28-apr-07	
RA2_FGD_2PNPDE20070428_231144_000061162057_00373_26980_1014.N1	28-apr-07	23.11.44	29-apr-07	
RA2_FGD_2PNPDE20070429_005240_000043572057_00374_26981_1136.N1	29-apr-07	0.52.40	29-apr-07	
RA2_FGD_2PNPDE20070429_020444_000026452057_00375_26982_1295.N1	29-apr-07	2.04.44	29-apr-07	
RA2_FGD_2PNPDE20070429_025147_000032312057_00376_26983_1304.N1	29-apr-07	2.51.47	29-apr-07	
RA2_FGD_2PNPDK20070506_143214_000050542057_00483_27090_8786.N1	06-may-07	14.32.14	06-may-07	
RA2_FGD_2PNPDE20070429_034504_000030862057_00376_26983_1486.N1	29-apr-07	3.45.04	29-apr-07	

## APPENDIX 6: IE SITES COORDINATES

<b>ZONE_ID="CapraiaA"</b>
RECORD polygon_pt: LONG=+009.934000<deg> LAT=+042.970000<deg>
ENDRECORD
RECORD polygon_pt: LONG=+009.863000<deg> LAT=+042.970000<deg>
ENDRECORD
RECORD polygon_pt: LONG=+009.863000<deg> LAT=+043.166000<deg>
ENDRECORD
RECORD polygon_pt: LONG=+009.934000<deg> LAT=+043.166000<deg>
ENDRECORD
<b>ZONE_ID="Toulon_D"</b>
RECORD polygon_pt: LONG=+005.500000<deg> LAT=+043.070000<deg>
ENDRECORD
RECORD polygon_pt: LONG=+005.473000<deg> LAT=+043.070000<deg>
ENDRECORD
RECORD polygon_pt: LONG=+005.473000<deg> LAT=+043.160000<deg>
ENDRECORD
RECORD polygon_pt: LONG=+005.500000<deg> LAT=+043.160000<deg>
ENDRECORD
<b>ZONE_ID="Vostok_x"</b>
RECORD polygon_pt: LONG=+106.500000<deg> LAT=-078.000000<deg>

ENDRECORD
RECORD polygon_pt: LONG=+105.500000<deg> LAT=-078.000000<deg>
ENDRECORD
RECORD polygon_pt: LONG=+105.500000<deg> LAT=-077.500000<deg>
ENDRECORD
RECORD polygon_pt: LONG=+106.500000<deg> LAT=-077.500000<deg>
ENDRECORD
<b>ZONE_ID="Dome_x_ "</b>
RECORD polygon_pt: LONG=+124.000000<deg> LAT=-075.250000<deg>
ENDRECORD
RECORD polygon_pt: LONG=+122.000000<deg> LAT=-075.250000<deg>
ENDRECORD
RECORD polygon_pt: LONG=+122.000000<deg> LAT=-074.750000<deg>
ENDRECORD
RECORD polygon_pt: LONG=+124.000000<deg> LAT=-074.750000<deg>
ENDRECORD