

0. MIPAS Daily Report for level 0 products

[0.1 General Info](#)

[0.2 Instrument Operational Performance Parameters](#)

[0.3 ADF monitoring](#)

0.1 General Info

This report contains a daily analysis on parameters extracted from MIPAS level 0 data (The MIP_NL__0P product).

0.1.1 Report summary

The table below shows general characteristics of the data that are included into this report.

Item	Value
Report version	v1.6 08-11-2010
Time of report generation	25MAR2012 05:26:09
Data source version	KSPT_L0/4504-N
Processing scope for products	20MAR2012 00:00:00 to 21MAR2012 00:00:00
Start time of first product within scope	20MAR2012 00:09:17
Stop time of last product within scope	21MAR2012 01:14:15
Total number of level 0 products	17
Number of level 0 products with errors	2

0.1.2 Product Quality Indicators per product

The following table shows a summary for each product used in this report.

#	Product name	Start time	Stop time	Prod err	ISP err sign	ISP miss sign	ISP disc sign	rs sign
0	MIP_NL__OPNPDE20120320_000917_000059443112_00418_52587_1256.N1	20MAR2012 00:09:17	20MAR2012 01:48:20	0	0	0	0	0
1	MIP_NL__OPNPDE20120320_014720_000044563112_00419_52588_1257.N1	20MAR2012 01:47:20	20MAR2012 03:01:36	0	0	0	0	0
2	MIP_NL__OPNPDE20120320_030102_000061273112_00420_52589_1258.N1	20MAR2012 03:01:02	20MAR2012 04:43:10	0	0	0	0	0
3	MIP_NL__OPNPDE20120320_044236_000060833112_00421_52590_1259.N1	20MAR2012 04:42:36	20MAR2012 06:23:59	0	0	0	0	0
4	MIP_NL__OPNPDK20120320_062326_000040823112_00422_52591_8979.N1	20MAR2012 06:23:26	20MAR2012 07:31:28	0	0	0	0	0
5	MIP_NL__OPNPDK20120320_073055_000061333112_00423_52592_8983.N1	20MAR2012 07:30:55	20MAR2012 09:13:08	1	1	0	0	0
6	MIP_NL__OPNPDK20120320_081642_000033863112_00423_52592_8981.N1	20MAR2012 08:16:42	20MAR2012 09:13:08	0	0	0	0	0
7	MIP_NL__OPNPDK20120320_091224_000059273112_00424_52593_8982.N1	20MAR2012 09:12:24	20MAR2012 10:51:12	0	0	0	0	0
8	MIP_NL__OPNPDK20120320_105028_000060273112_00425_52594_8984.N1	20MAR2012 10:50:28	20MAR2012 12:30:55	0	0	0	0	0
9	MIP_NL__OPNPDK20120320_123011_000058933112_00426_52595_8985.N1	20MAR2012 12:30:11	20MAR2012 14:08:24	0	0	0	0	0
10	MIP_NL__OPNPDK20120320_140728_000059083112_00427_52596_8986.N1	20MAR2012 14:07:28	20MAR2012 15:45:55	0	0	0	0	0
11	MIP_NL__OPNPDK20120320_154442_000059543112_00428_52597_8987.N1	20MAR2012 15:44:42	20MAR2012 17:23:56	0	0	0	0	0
12	MIP_NL__OPNPDK20120320_172253_000059043112_00429_52598_8988.N1	20MAR2012 17:22:53	20MAR2012 19:01:17	1	1	0	0	0
13	MIP_NL__OPNPDK20120320_190014_000060063112_00430_52599_8989.N1	20MAR2012 19:00:14	20MAR2012 20:40:20	0	0	0	0	0
14	MIP_NL__OPNPDE20120320_203936_000044413112_00431_52600_1260.N1	20MAR2012 20:39:36	20MAR2012 21:53:38	0	0	0	0	0
15	MIP_NL__OPNPDE20120320_215241_000060813112_00431_52600_1261.N1	20MAR2012 21:52:41	20MAR2012 23:34:02	0	0	0	0	0
16	MIP_NL__OPNPDE20120320_233304_000060713113_00001_52601_1262.N1	20MAR2012 23:33:04	21MAR2012 01:14:15	0	0	0	0	0

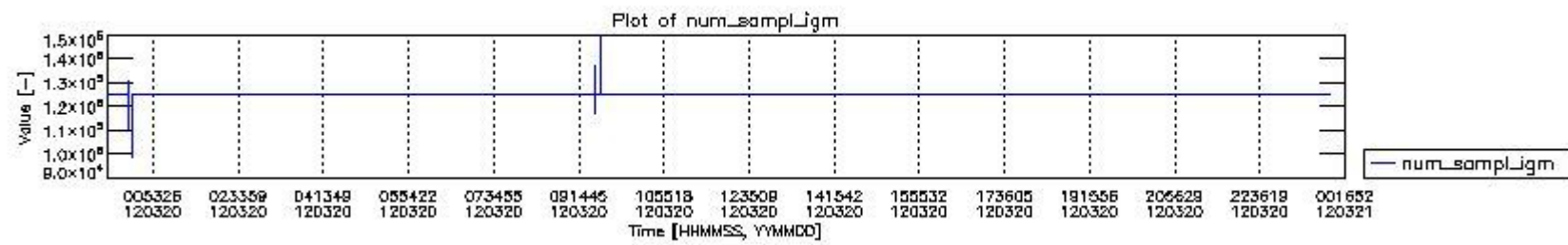
0.2 Instrument Operational Performance Parameters

The following plots give an overview of various instrument parameters for this day. The instrument parameters are part of the auxiliary data field within the source packets of the MIP_NL__0P product. The auxiliary data is normally included twice per interferogram. Note that only the first packet is currently included in monitoring.

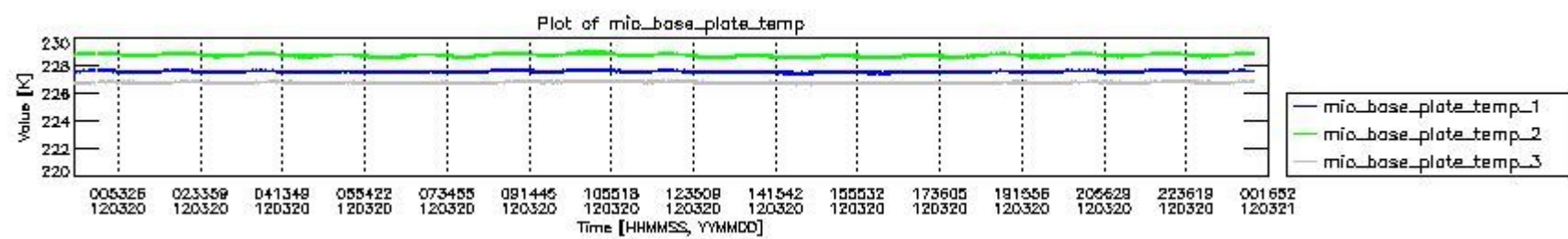
The following table shows the counts of various interferogram number of samples

Number of igm samples	Count [#]	Count [%]
98699	1	0.0024092322

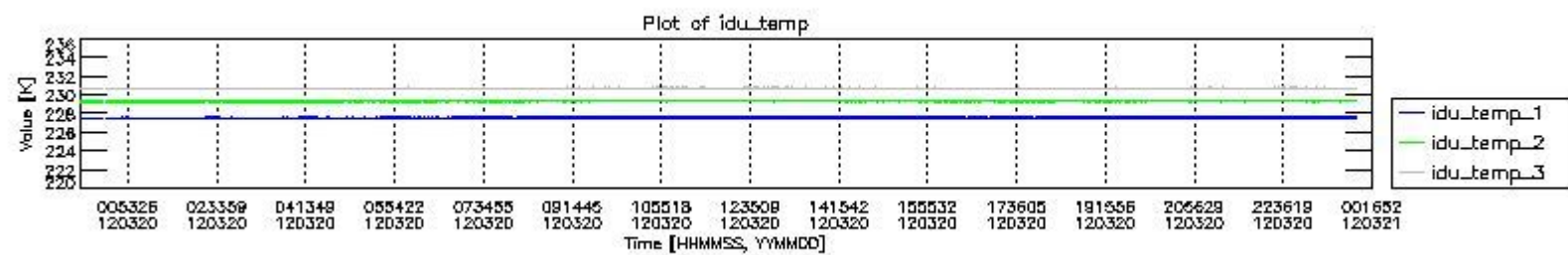
110581	1	0.0024092322
116494	1	0.0024092322
117272	1	0.0024092322
123102	1	0.0024092322
123951	1	0.0024092322
124800	38561	92.902402
124803	2934	7.0686872
127159	1	0.0024092322
129876	1	0.0024092322
130713	1	0.0024092322
137404	1	0.0024092322
147291	1	0.0024092322
149650	1	0.0024092322



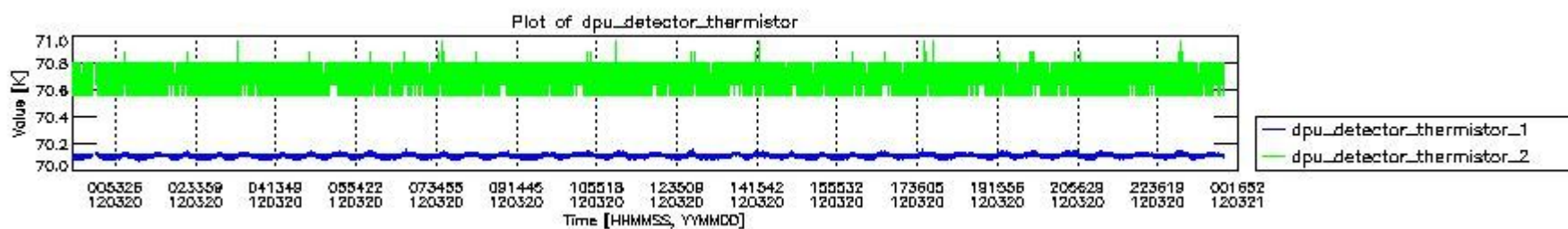
mipas_daily_report_level0_KSPT_L0_4504_N_20120320_0.PNG



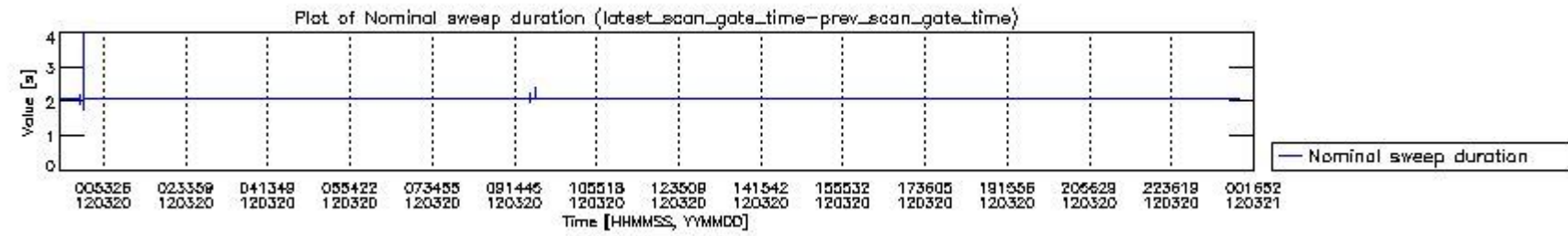
mipas_daily_report_level0_KSPT_L0_4504_N_20120320_1.PNG



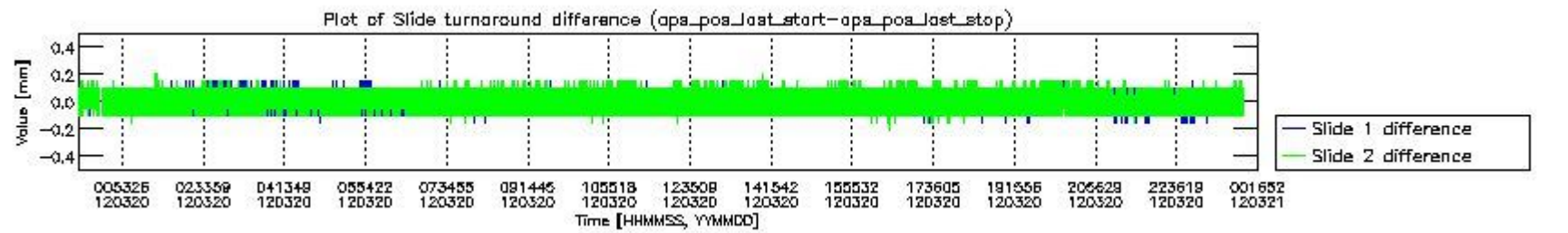
mipas_daily_report_level0_KSPT_L0_4504_N_20120320_2.PNG



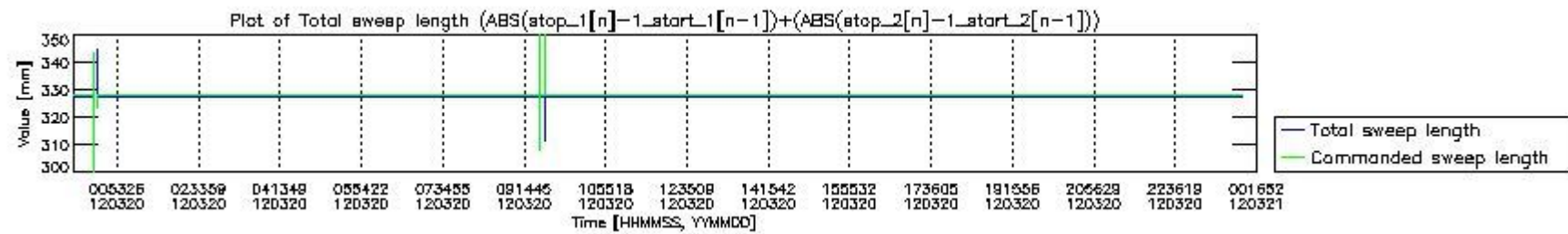
mipas_daily_report_level0_KSPT_L0_4504_N_20120320_3.PNG



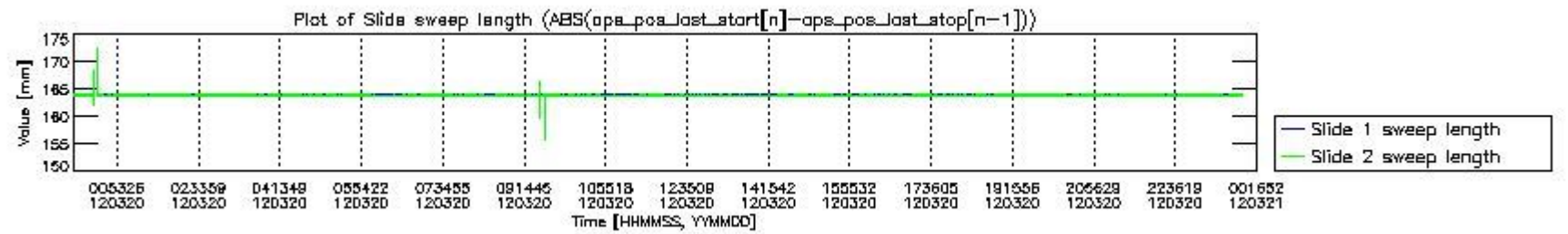
mipas_daily_report_level0_KSPT_L0_4504_N_20120320_4.PNG



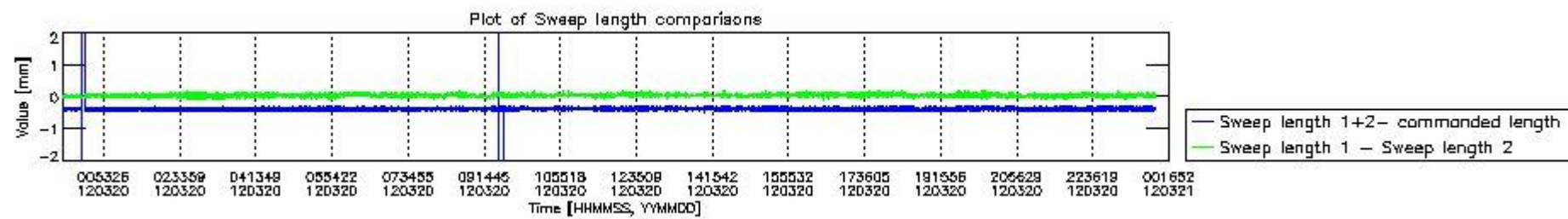
mipas_daily_report_level0_KSPT_L0_4504_N_20120320_5.PNG



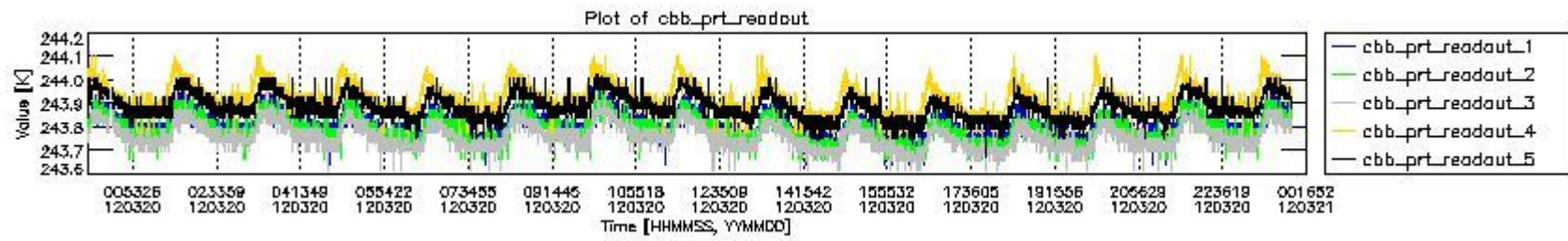
mipas_daily_report_level0_KSPT_L0_4504_N_20120320_6.PNG



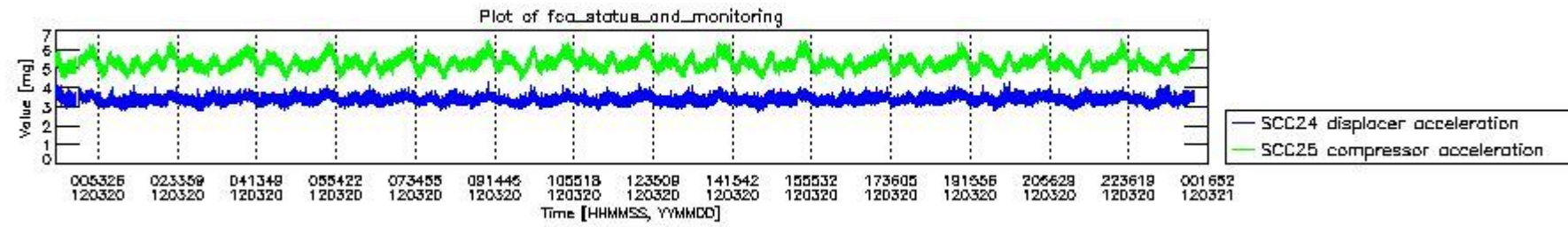
mipas_daily_report_level0_KSPT_L0_4504_N_20120320_7.PNG



mipas_daily_report_level0_KSPT_L0_4504_N_20120320_8.PNG



mipas_daily_report_level0_KSPT_L0_4504_N_20120320_9.PNG

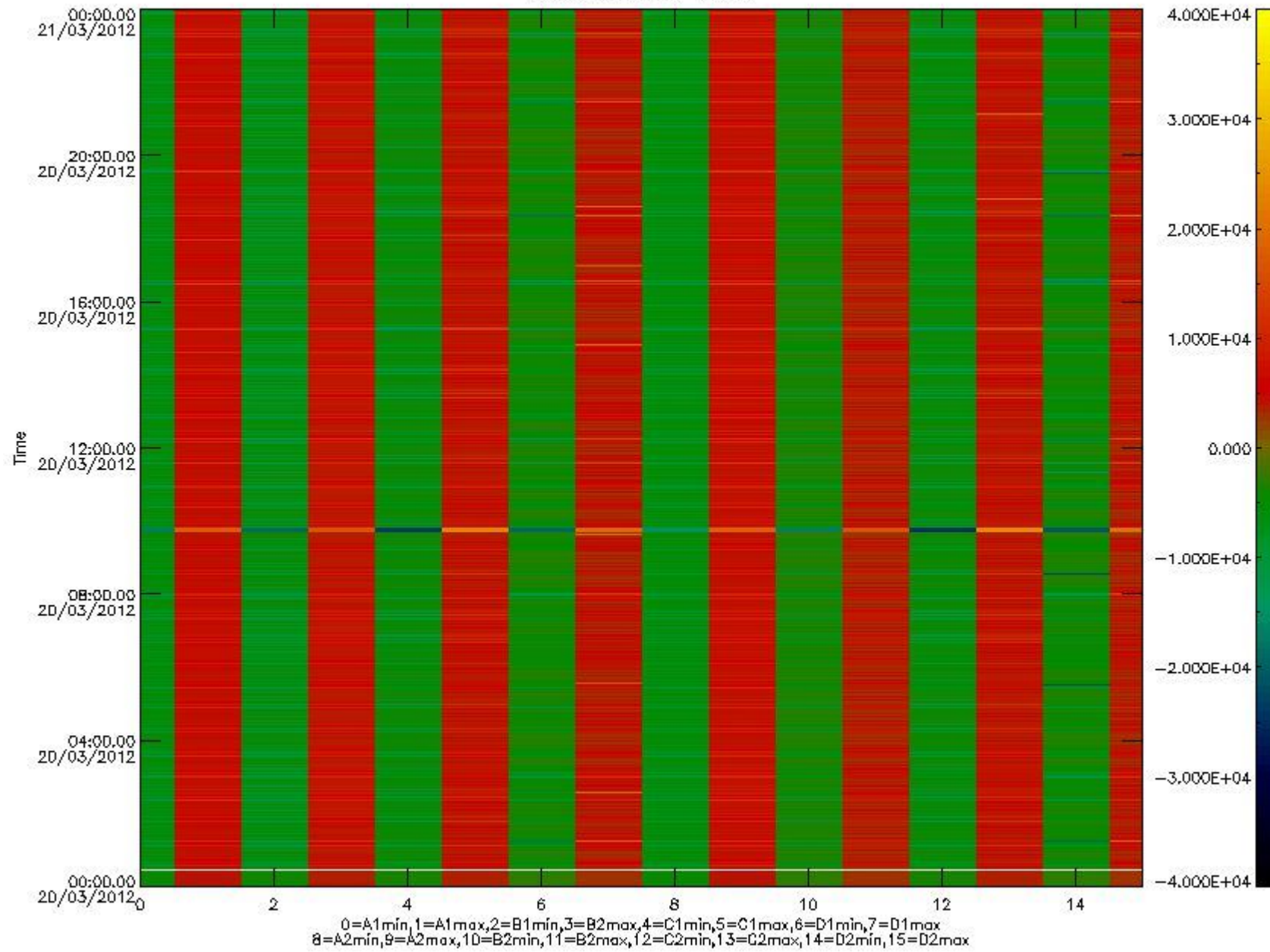


mipas_daily_report_level0_KSPT_L0_4504_N_20120320_10.PNG

The following table shows channel statistics for all channels for this day.

Channel	Min	Max	ADC
A1	-17513	18448	16bit
B1	-19763	17092	16bit
C1	-23944	23791	16bit
D1	-32768	32767	16bit
A2	-15292	18713	16bit
B2	-17526	17287	16bit
C2	-24923	25421	16bit
D2	-32768	32767	16bit

MIPNLOP_MIPSOUPAC_aux_fields_igm_cal, channel statistics plot
Colour indicates value.



mipas_daily_report_level0_KSPT_L0_4504_N_20120320_11.PNG

0.3 ADF monitoring

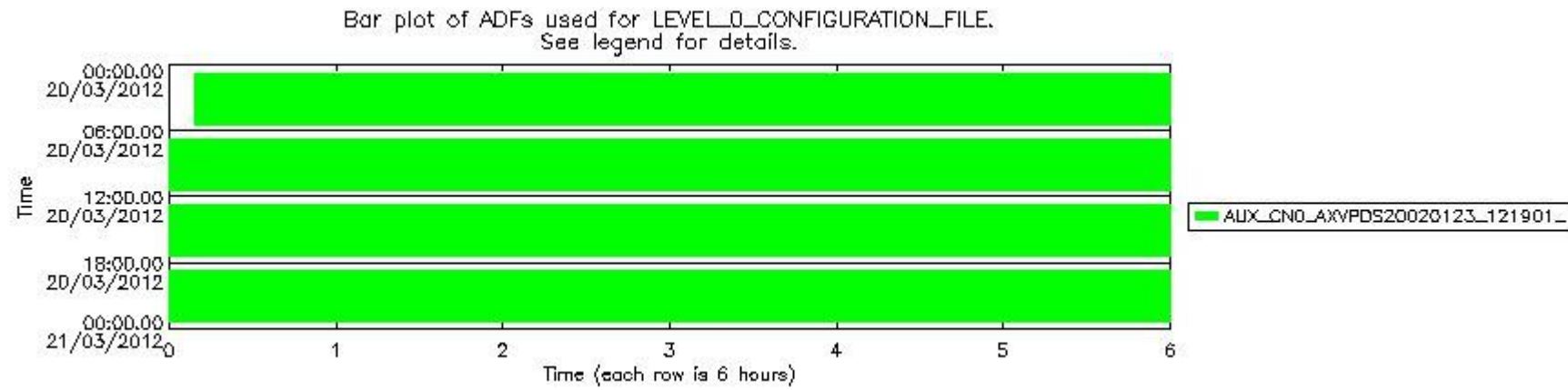
The use of ADFs is shown in two ways:

1. By means of two tables that can be used to find the ADF used for a specific product.
2. By means of plots that show changes in ADF using colours.

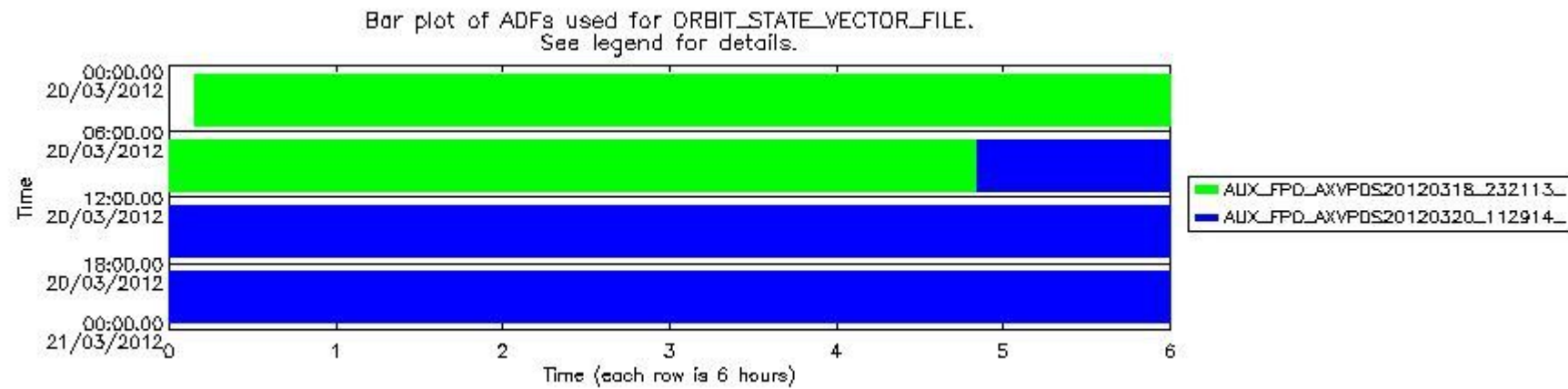
Number	ADF
0	AUX_CN0_AXVPDS20020123_121901_20020101_000000_20200101_000000
1	AUX_FPO_AXVPDS20120318_232113_20120318_195739_20120328_203106
2	AUX_FPO_AXVPDS20120320_112914_20120319_192055_20120329_213435

Number	Product name	#CN0	#FPO
--------	--------------	------	------

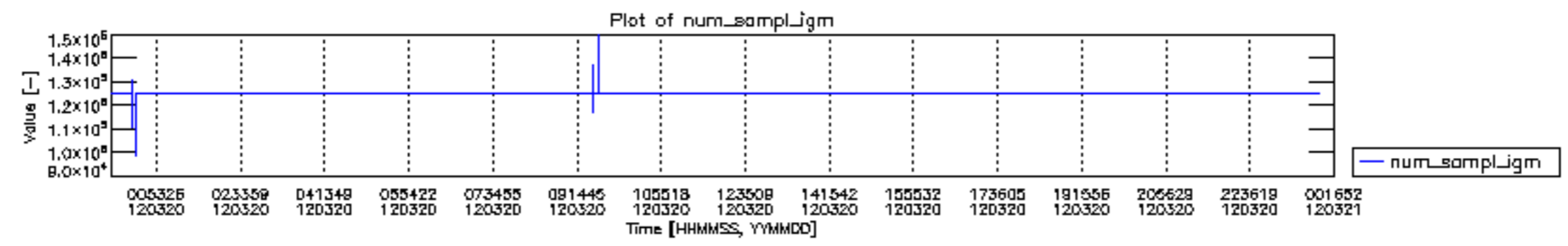
0	MIP_NL__0PNPDE20120320_000917_000059443112_00418_52587_1256.N1	0	1
1	MIP_NL__0PNPDE20120320_014720_000044563112_00419_52588_1257.N1	0	1
2	MIP_NL__0PNPDE20120320_030102_000061273112_00420_52589_1258.N1	0	1
3	MIP_NL__0PNPDE20120320_044236_000060833112_00421_52590_1259.N1	0	1
4	MIP_NL__0PNPDK20120320_062326_000040823112_00422_52591_8979.N1	0	1
5	MIP_NL__0PNPDK20120320_073055_000061333112_00423_52592_8983.N1	0	1
6	MIP_NL__0PNPDK20120320_081642_000033863112_00423_52592_8981.N1	0	1
7	MIP_NL__0PNPDK20120320_091224_000059273112_00424_52593_8982.N1	0	1
8	MIP_NL__0PNPDK20120320_105028_000060273112_00425_52594_8984.N1	0	2
9	MIP_NL__0PNPDK20120320_123011_000058933112_00426_52595_8985.N1	0	2
10	MIP_NL__0PNPDK20120320_140728_000059083112_00427_52596_8986.N1	0	2
11	MIP_NL__0PNPDK20120320_154442_000059543112_00428_52597_8987.N1	0	2
12	MIP_NL__0PNPDK20120320_172253_000059043112_00429_52598_8988.N1	0	2
13	MIP_NL__0PNPDK20120320_190014_000060063112_00430_52599_8989.N1	0	2
14	MIP_NL__0PNPDE20120320_203936_000044413112_00431_52600_1260.N1	0	2
15	MIP_NL__0PNPDE20120320_215241_000060813112_00431_52600_1261.N1	0	2
16	MIP_NL__0PNPDE20120320_233304_000060713113_00001_52601_1262.N1	0	2

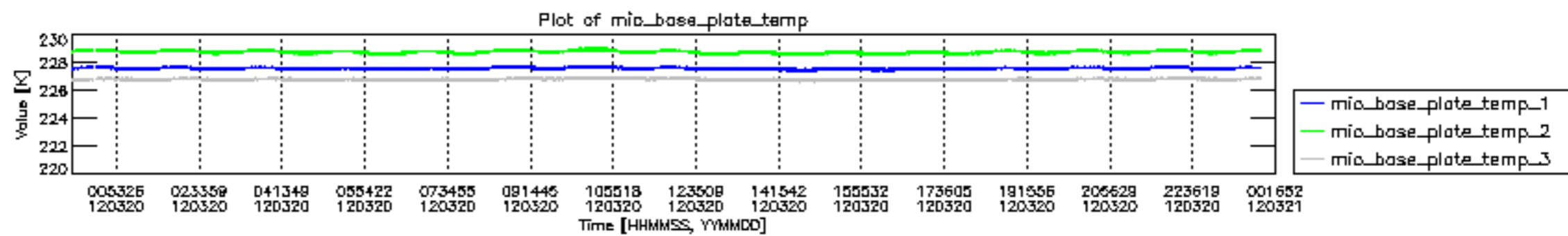


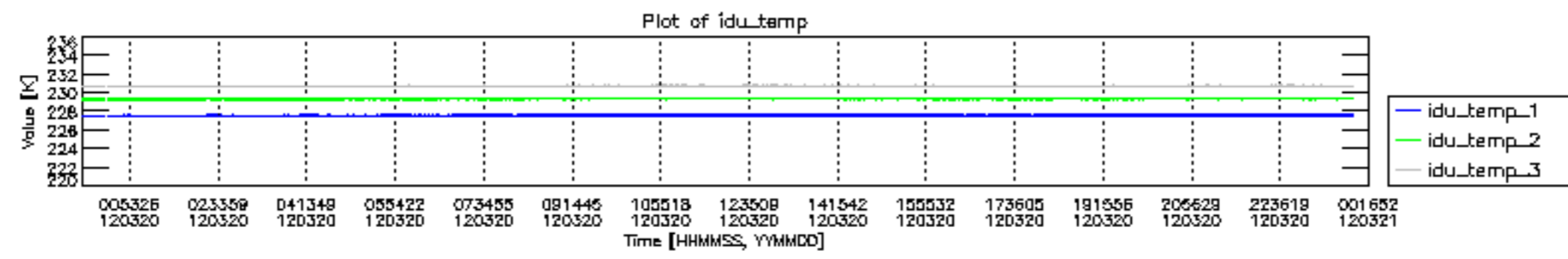
mipas_daily_report_level0_KSPT_L0_4504_N_20120320_12.PNG

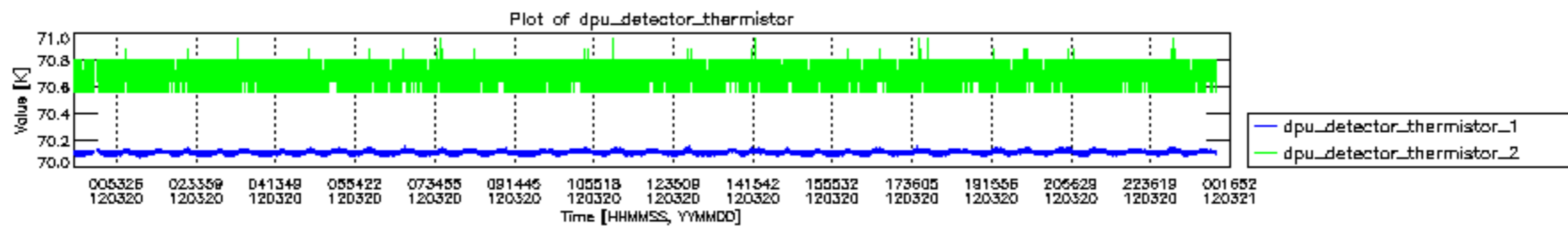


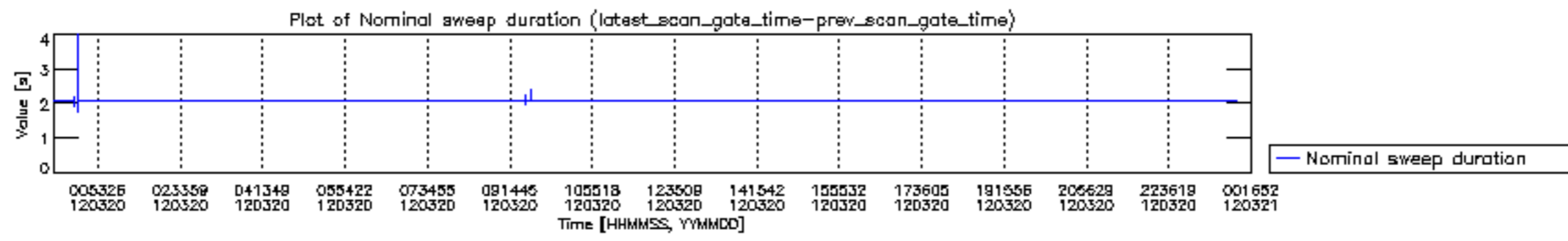
mipas_daily_report_level0_KSPT_L0_4504_N_20120320_13.PNG

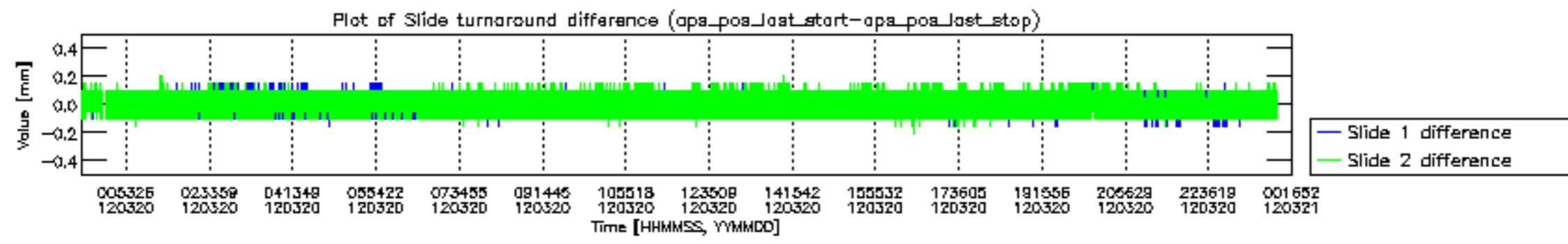


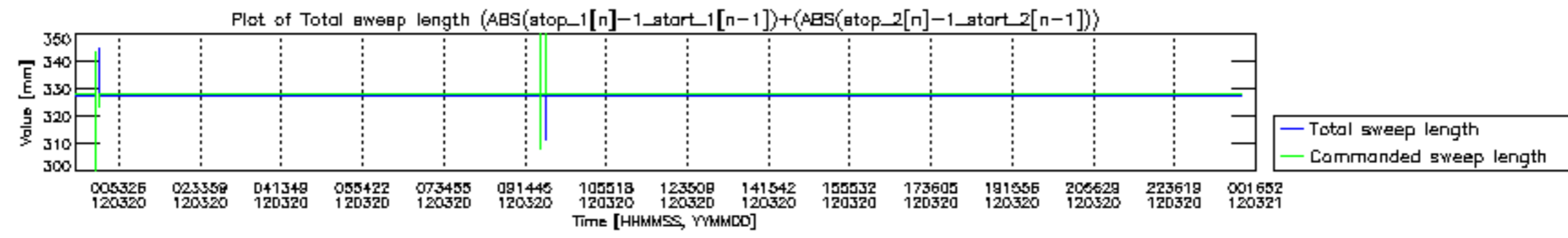


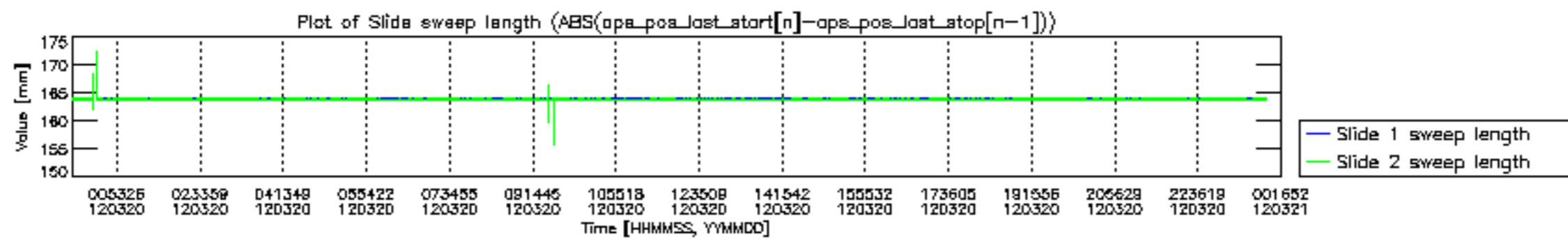


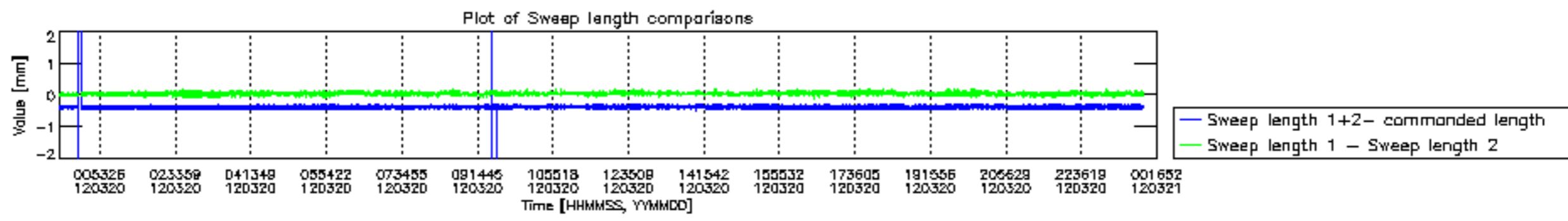


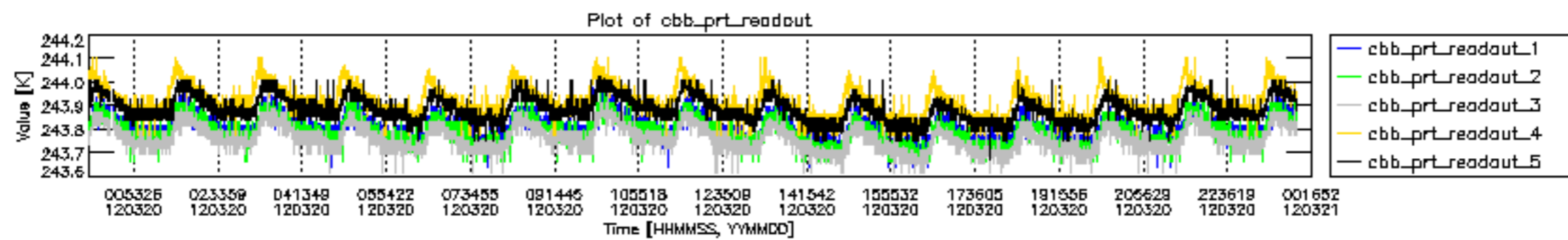


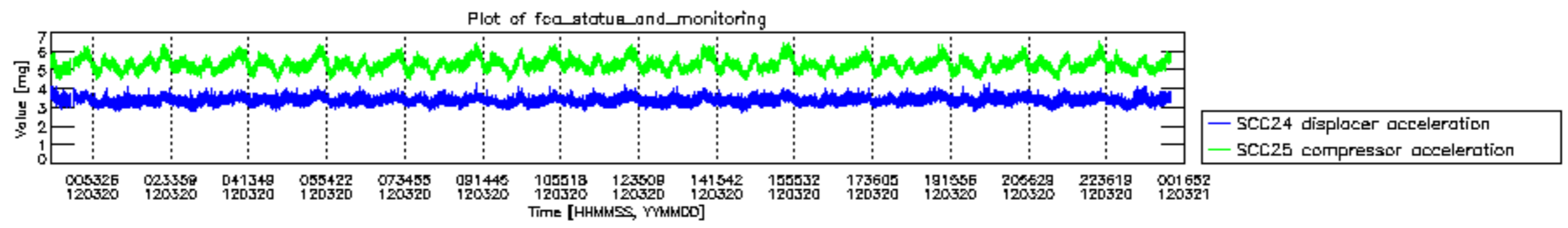












MIPNLOP_MIPSOUPAC_aux_fields_igm_cal, channel statistics plot
 Colour indicates value.

