

# 0. MIPAS Daily Report for level 0 products

## [0.1 General Info](#)

## [0.2 Instrument Operational Performance Parameters](#)

## [0.3 ADF monitoring](#)

### 0.1 General Info

This report contains a daily analysis on parameters extracted from MIPAS level 0 data (The MIP\_NL\_\_0P product).

#### 0.1.1 Report summary

The table below shows general characteristics of the data that are included into this report.

Item	Value
Report version	v1.6 08-11-2010
Time of report generation	19MAR2012 05:24:26
Data source version	KSPT_L0/4504-N
Processing scope for products	14MAR2012 00:00:00 to 15MAR2012 00:00:00
Start time of first product within scope	14MAR2012 00:29:11
Stop time of last product within scope	15MAR2012 01:32:13
Total number of level 0 products	34
Number of level 0 products with errors	15

#### 0.1.2 Product Quality Indicators per product

The following table shows a summary for each product used in this report.

#	Product name	Start time	Stop time	Prod err	ISP err sign	ISP miss sign	ISP disc sign	rs sign
0	MIP_NL__OPNPDE20120314_002911_000058473112_00332_52501_1218.N1	14MAR2012 00:29:11	14MAR2012 02:06:37	0	0	0	0	0
1	MIP_NL__OPNPDE20120314_004928_000046293112_00333_52502_1221.N1	14MAR2012 00:49:28	14MAR2012 02:06:37	0	0	0	0	0
2	MIP_NL__OPNPDE20120314_020529_000046083112_00333_52502_1219.N1	14MAR2012 02:05:29	14MAR2012 03:22:17	0	0	0	0	0
3	MIP_NL__OPNPDE20120314_032144_000060833112_00334_52503_1220.N1	14MAR2012 03:21:44	14MAR2012 05:03:07	0	0	0	0	0
4	MIP_NL__OPNPDE20120314_050233_000060923112_00335_52504_1222.N1	14MAR2012 05:02:33	14MAR2012 06:44:05	0	0	0	0	0
5	MIP_NL__OPNPDK20120314_064332_000040973112_00336_52505_8872.N1	14MAR2012 06:43:32	14MAR2012 07:51:48	0	0	0	0	0
6	MIP_NL__OPNPDK20120314_075115_000060553112_00337_52506_8873.N1	14MAR2012 07:51:15	14MAR2012 09:32:10	0	0	0	0	0
7	MIP_NL__OPNPDK20120314_093126_000060003112_00338_52507_8874.N1	14MAR2012 09:31:26	14MAR2012 11:11:26	0	0	0	0	0
8	MIP_NL__OPNPDK20120314_111040_000020743112_00339_52508_8875.N1	14MAR2012 11:10:40	14MAR2012 11:45:14	0	0	0	0	0
9	MIP_NL__OPNPDK20120314_114514_000000043112_00339_52508_8877.N1	14MAR2012 11:45:14	14MAR2012 11:45:18	1	1	0	0	0
10	MIP_NL__OPNPDK20120314_114515_000000003112_00339_52508_8876.N1	14MAR2012 11:45:15	14MAR2012 11:45:15	1	1	0	0	0
11	MIP_NL__OPNPDK20120314_114518_000000153112_00339_52508_8879.N1	14MAR2012 11:45:18	14MAR2012 11:45:33	0	0	0	0	0
12	MIP_NL__OPNPDK20120314_114533_000000153112_00339_52508_8880.N1	14MAR2012 11:45:33	14MAR2012 11:45:47	0	0	0	0	0
13	MIP_NL__OPNPDK20120314_114547_000000423112_00339_52508_8881.N1	14MAR2012 11:45:47	14MAR2012 11:46:29	1	1	0	0	0
14	MIP_NL__OPNPDK20120314_114629_000000063112_00339_52508_8890.N1	14MAR2012 11:46:29	14MAR2012 11:46:35	1	1	0	0	0
15	MIP_NL__OPNPDK20120314_114635_000000023112_00339_52508_8891.N1	14MAR2012 11:46:35	14MAR2012 11:46:38	0	0	0	0	0
16	MIP_NL__OPNPDK20120314_114638_000000023112_00339_52508_8892.N1	14MAR2012 11:46:38	14MAR2012 11:46:40	1	1	1	0	0
17	MIP_NL__OPNPDK20120314_114640_000000153112_00339_52508_8893.N1	14MAR2012 11:46:40	14MAR2012 11:46:54	1	1	1	0	0
18	MIP_NL__OPNPDK20120314_114654_000000793112_00339_52508_8898.N1	14MAR2012 11:46:54	14MAR2012 11:48:14	1	1	1	0	0
19	MIP_NL__OPNPDK20120314_114814_000000463112_00339_52508_8903.N1	14MAR2012 11:48:14	14MAR2012 11:49:00	1	1	0	0	0
20	MIP_NL__OPNPDK20120314_114900_000006413112_00339_52508_8905.N1	14MAR2012 11:49:00	14MAR2012 11:59:41	1	1	0	0	0
21	MIP_NL__OPNPDK20120314_115941_000000063112_00339_52508_8906.N1	14MAR2012 11:59:41	14MAR2012 11:59:47	1	1	0	0	0
22	MIP_NL__OPNPDK20120314_115947_000000193112_00339_52508_8908.N1	14MAR2012 11:59:47	14MAR2012 12:00:06	1	1	0	0	0
23	MIP_NL__OPNPDK20120314_120006_000000063112_00339_52508_8914.N1	14MAR2012 12:00:06	14MAR2012 12:00:12	1	1	0	0	0
24	MIP_NL__OPNPDK20120314_120014_000000023112_00339_52508_8917.N1	14MAR2012 12:00:14	14MAR2012 12:00:16	1	1	0	0	0
25	MIP_NL__OPNPDK20120314_120016_000000023112_00339_52508_8919.N1	14MAR2012 12:00:16	14MAR2012 12:00:19	1	1	0	0	0
26	MIP_NL__OPNPDK20120314_120021_000030063112_00339_52508_8922.N1	14MAR2012 12:00:21	14MAR2012 12:50:27	1	1	1	0	1
27	MIP_NL__OPNPDK20120314_124930_000059203112_00340_52509_8929.N1	14MAR2012 12:49:30	14MAR2012 14:28:11	0	0	0	0	0

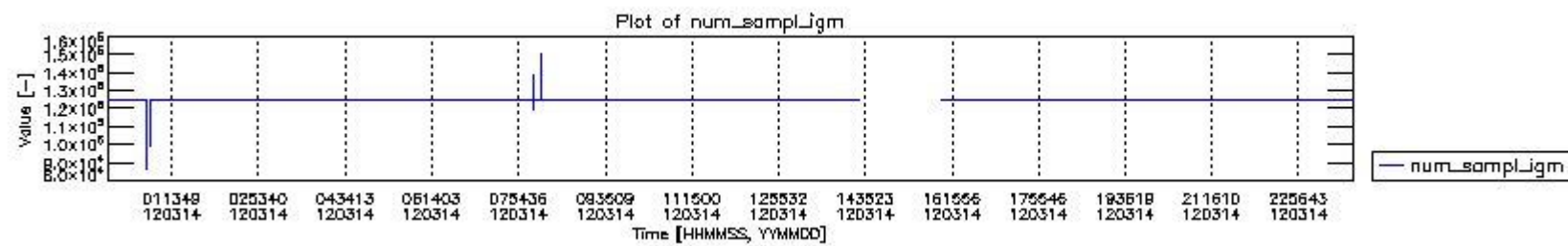
28	MIP_NL__OPNPK20120314_160335_000059753112_00342_52511_8931.N1	14MAR2012 16:03:35	14MAR2012 17:43:09	0	0	0	0	0
29	MIP_NL__OPNPK20120314_174211_000059773112_00343_52512_8932.N1	14MAR2012 17:42:11	14MAR2012 19:21:48	0	0	0	0	0
30	MIP_NL__OPNPK20120314_192009_000060693112_00344_52513_8933.N1	14MAR2012 19:20:09	14MAR2012 21:01:18	0	0	0	0	0
31	MIP_NL__OPNPDE20120314_210034_000043603112_00345_52514_1223.N1	14MAR2012 21:00:34	14MAR2012 22:13:14	0	0	0	0	0
32	MIP_NL__OPNPDE20120314_221211_000061673112_00345_52514_1224.N1	14MAR2012 22:12:11	14MAR2012 23:54:58	0	0	0	0	0
33	MIP_NL__OPNPDE20120314_235358_000058953112_00346_52515_1225.N1	14MAR2012 23:53:58	15MAR2012 01:32:13	0	0	0	0	0

## 0.2 Instrument Operational Performance Parameters

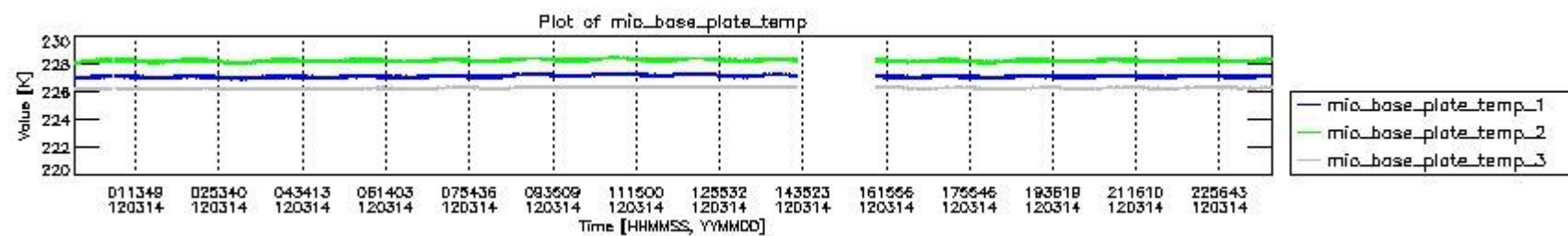
The following plots give an overview of various instrument parameters for this day. The instrument parameters are part of the auxiliary data field within the source packets of the MIP\_NL\_\_OP product. The auxiliary data is normally included twice per interferogram. Note that only the first packet is currently included in monitoring.

The following table shows the counts of various interferogram number of samples

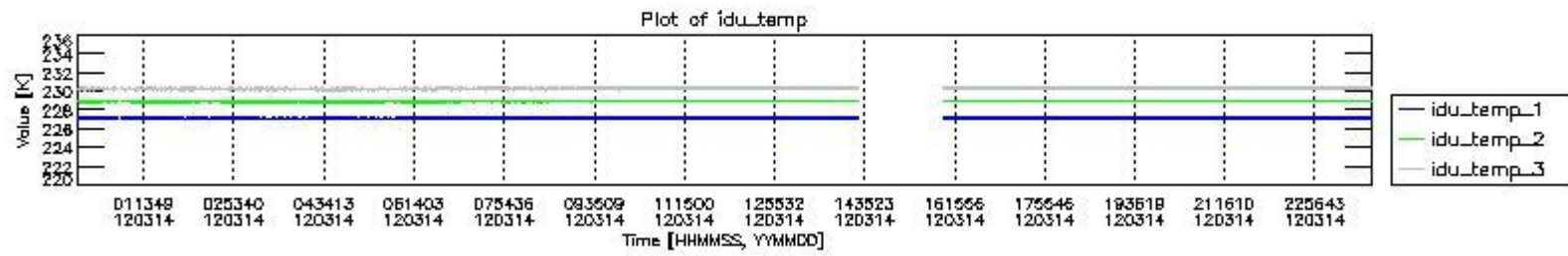
Number of igm samples	Count [#]	Count [%]
86906	1	0.0025812447
95787	1	0.0025812447
98699	1	0.0025812447
115919	1	0.0025812447
118981	1	0.0025812447
123102	1	0.0025812447
123951	1	0.0025812447
124800	36135	93.273276
124803	2594	6.6957487
127456	1	0.0025812447
133294	1	0.0025812447
139113	1	0.0025812447
147588	1	0.0025812447
150244	1	0.0025812447



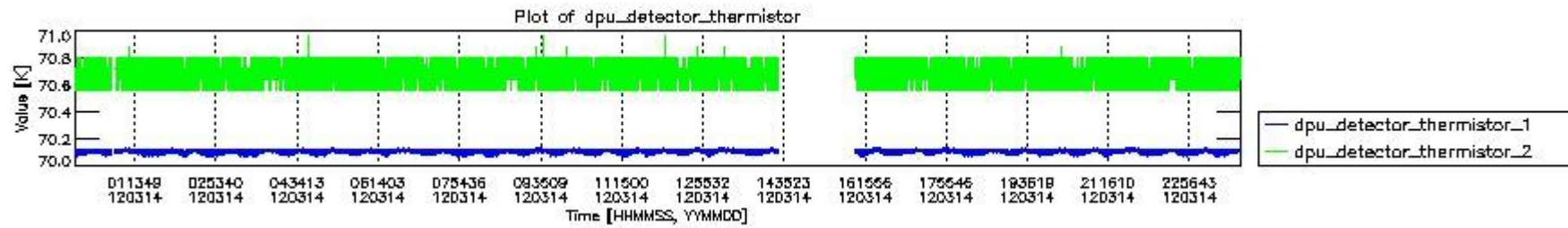
mipas\_daily\_report\_level0\_KSPT\_L0\_4504\_N\_20120314\_0.PNG



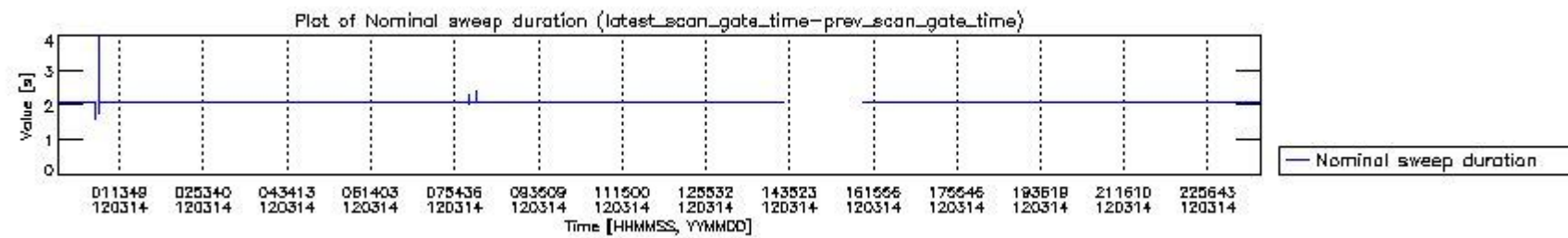
mipas\_daily\_report\_level0\_KSPT\_L0\_4504\_N\_20120314\_1.PNG



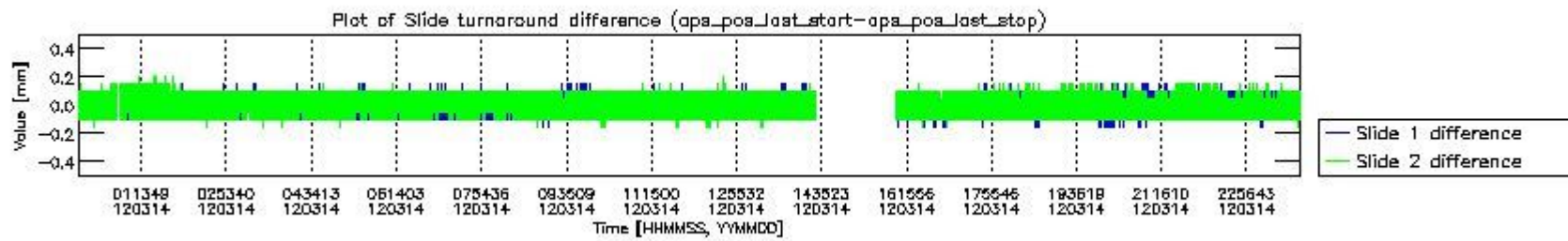
mipas\_daily\_report\_level0\_KSPT\_L0\_4504\_N\_20120314\_2.PNG



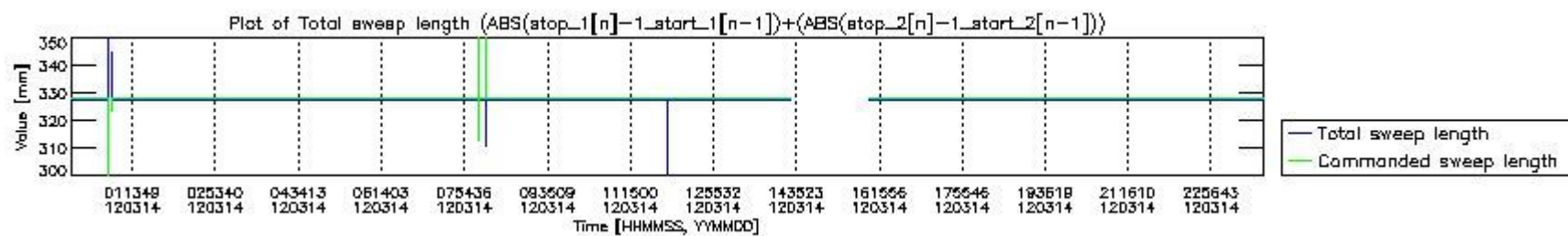
mipas\_daily\_report\_level0\_KSPT\_L0\_4504\_N\_20120314\_3.PNG



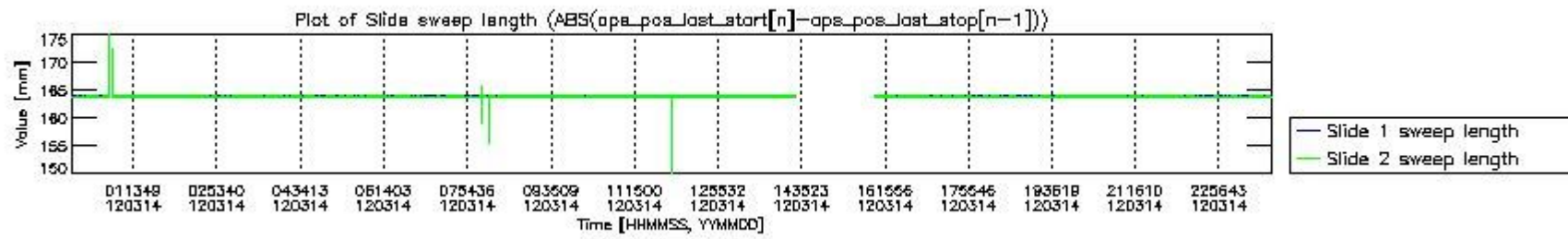
mipas\_daily\_report\_level0\_KSPT\_L0\_4504\_N\_20120314\_4.PNG



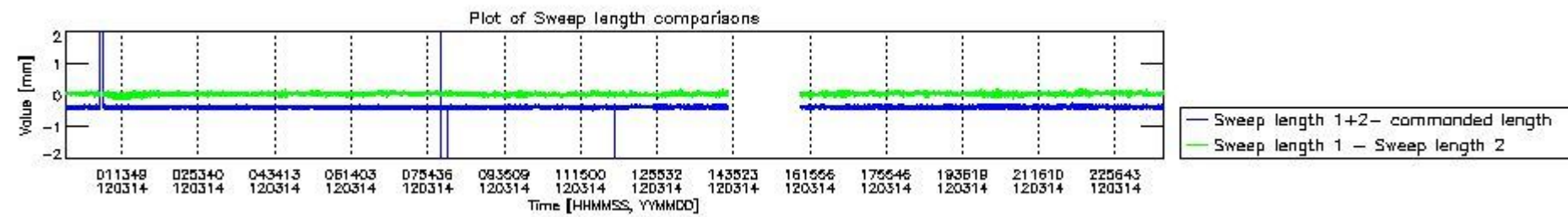
mipas\_daily\_report\_level0\_KSPT\_L0\_4504\_N\_20120314\_5.PNG



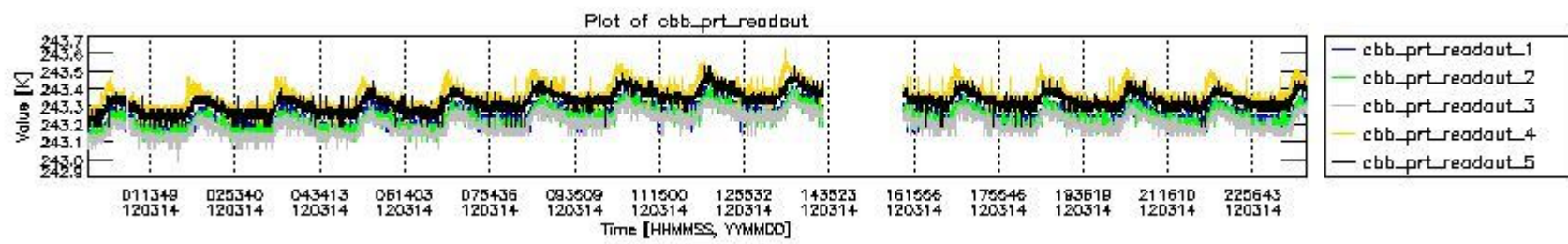
mipas\_daily\_report\_level0\_KSPT\_L0\_4504\_N\_20120314\_6.PNG



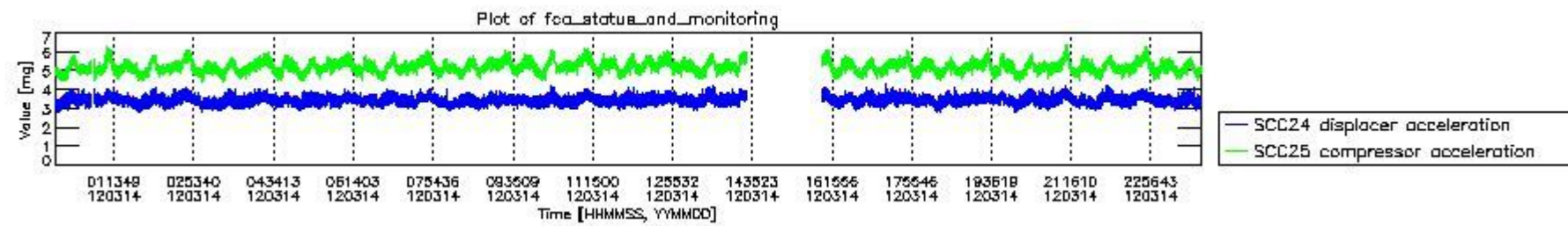
mipas\_daily\_report\_level0\_KSPT\_L0\_4504\_N\_20120314\_7.PNG



mipas\_daily\_report\_level0\_KSPT\_L0\_4504\_N\_20120314\_8.PNG



mipas\_daily\_report\_level0\_KSPT\_L0\_4504\_N\_20120314\_9.PNG

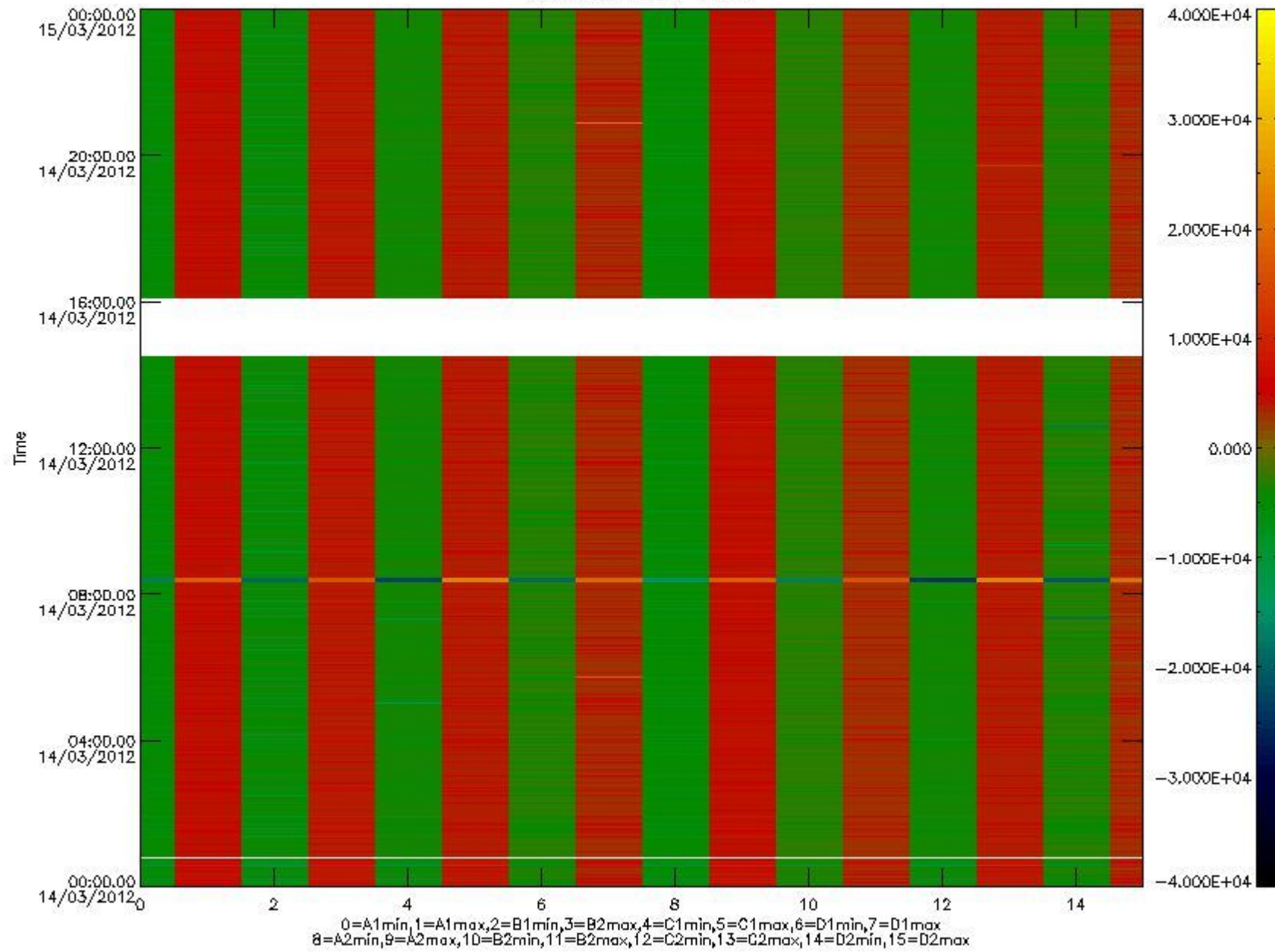


mipas\_daily\_report\_level0\_KSPT\_L0\_4504\_N\_20120314\_10.PNG

The following table shows channel statistics for all channels for this day.

Channel	Min	Max	ADC
A1	-17399	18319	16bit
B1	-19487	16878	16bit
C1	-23419	23281	16bit
D1	-19439	32767	16bit
A2	-15183	18580	16bit
B2	-17216	17008	16bit
C2	-24408	24193	16bit
D2	-32768	21169	16bit

MIPNLOP\_MIPSOUPAC\_aux\_fields\_igm\_cal, channel statistics plot  
Colour indicates value.



mipas\_daily\_report\_level0\_KSPT\_L0\_4504\_N\_20120314\_11.PNG

### 0.3 ADF monitoring

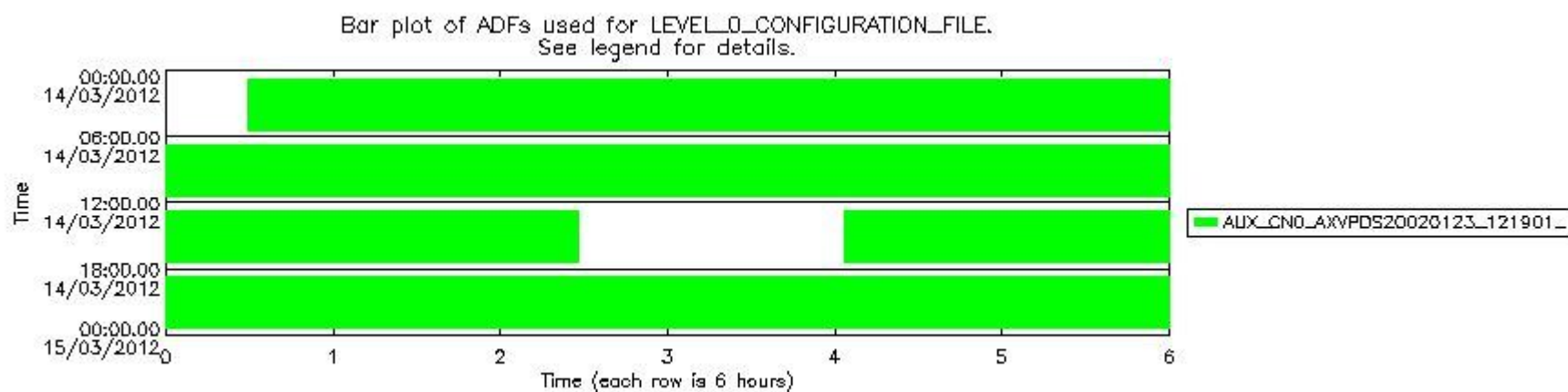
The use of ADFs is shown in two ways:

1. By means of two tables that can be used to find the ADF used for a specific product.
2. By means of plots that show changes in ADF using colours.

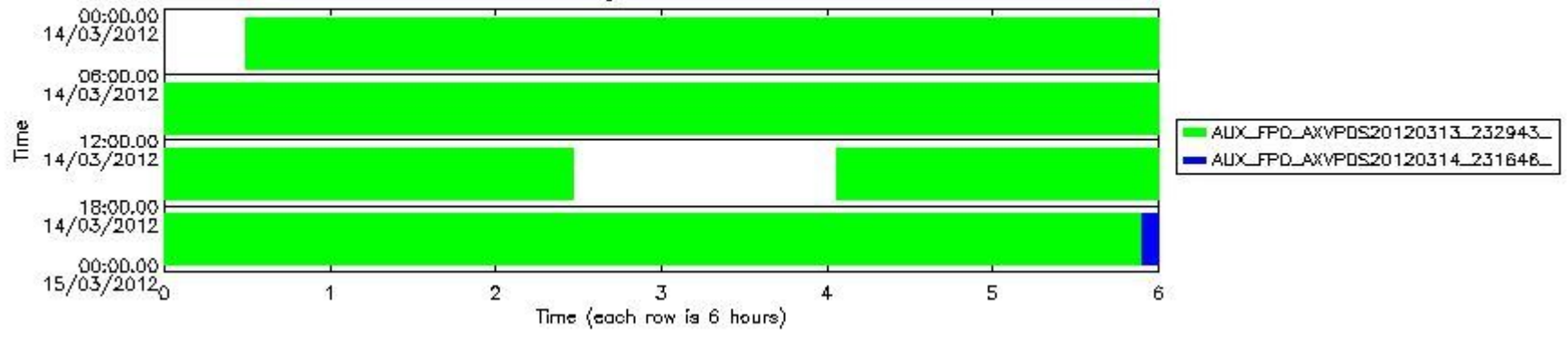
Number	ADF
0	AUX_CN0_AXVPDS20020123_121901_20020101_000000_20200101_000000
1	AUX_FPO_AXVPDS20120313_232943_20120313_194056_20120323_201423
2	AUX_FPO_AXVPDS20120314_231646_20120314_122315_20120324_125642

Number	Product name	#CN0	#FPO
--------	--------------	------	------

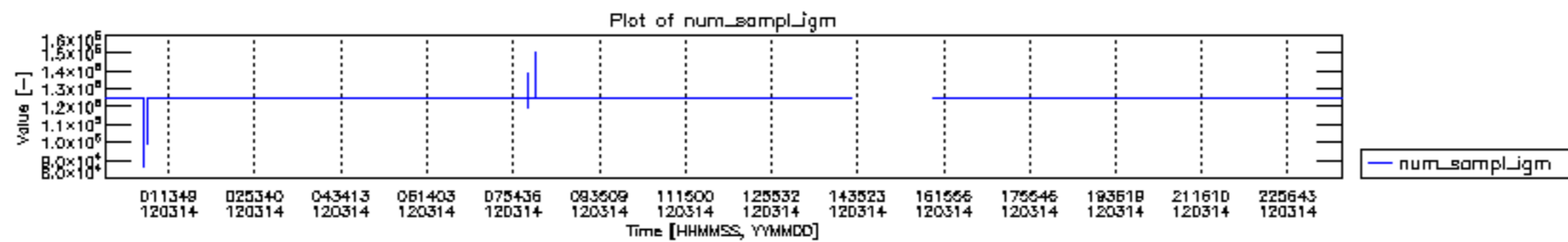
0	MIP_NL__0PNPDE20120314_002911_000058473112_00332_52501_1218.N1	0	1
1	MIP_NL__0PNPDE20120314_004928_000046293112_00333_52502_1221.N1	0	1
2	MIP_NL__0PNPDE20120314_020529_000046083112_00333_52502_1219.N1	0	1
3	MIP_NL__0PNPDE20120314_032144_000060833112_00334_52503_1220.N1	0	1
4	MIP_NL__0PNPDE20120314_050233_000060923112_00335_52504_1222.N1	0	1
5	MIP_NL__0PNPDK20120314_064332_000040973112_00336_52505_8872.N1	0	1
6	MIP_NL__0PNPDK20120314_075115_000060553112_00337_52506_8873.N1	0	1
7	MIP_NL__0PNPDK20120314_093126_000060003112_00338_52507_8874.N1	0	1
8	MIP_NL__0PNPDK20120314_111040_000020743112_00339_52508_8875.N1	0	1
9	MIP_NL__0PNPDK20120314_114514_000000043112_00339_52508_8877.N1	0	1
10	MIP_NL__0PNPDK20120314_114515_000000003112_00339_52508_8876.N1	0	1
11	MIP_NL__0PNPDK20120314_114518_000000153112_00339_52508_8879.N1	0	1
12	MIP_NL__0PNPDK20120314_114533_000000153112_00339_52508_8880.N1	0	1
13	MIP_NL__0PNPDK20120314_114547_000000423112_00339_52508_8881.N1	0	1
14	MIP_NL__0PNPDK20120314_114629_000000063112_00339_52508_8890.N1	0	1
15	MIP_NL__0PNPDK20120314_114635_000000023112_00339_52508_8891.N1	0	1
16	MIP_NL__0PNPDK20120314_114638_000000023112_00339_52508_8892.N1	0	1
17	MIP_NL__0PNPDK20120314_114640_000000153112_00339_52508_8893.N1	0	1
18	MIP_NL__0PNPDK20120314_114654_000000793112_00339_52508_8898.N1	0	1
19	MIP_NL__0PNPDK20120314_114814_000000463112_00339_52508_8903.N1	0	1
20	MIP_NL__0PNPDK20120314_114900_00006413112_00339_52508_8905.N1	0	1
21	MIP_NL__0PNPDK20120314_115941_000000063112_00339_52508_8906.N1	0	1
22	MIP_NL__0PNPDK20120314_115947_000000193112_00339_52508_8908.N1	0	1
23	MIP_NL__0PNPDK20120314_120006_000000063112_00339_52508_8914.N1	0	1
24	MIP_NL__0PNPDK20120314_120014_000000023112_00339_52508_8917.N1	0	1
25	MIP_NL__0PNPDK20120314_120016_000000023112_00339_52508_8919.N1	0	1
26	MIP_NL__0PNPDK20120314_120021_000030063112_00339_52508_8922.N1	0	1
27	MIP_NL__0PNPDK20120314_124930_000059203112_00340_52509_8929.N1	0	1
28	MIP_NL__0PNPDK20120314_160335_000059753112_00342_52511_8931.N1	0	1
29	MIP_NL__0PNPDK20120314_174211_000059773112_00343_52512_8932.N1	0	1
30	MIP_NL__0PNPDK20120314_192009_000060693112_00344_52513_8933.N1	0	1
31	MIP_NL__0PNPDE20120314_210034_000043603112_00345_52514_1223.N1	0	1
32	MIP_NL__0PNPDE20120314_221211_000061673112_00345_52514_1224.N1	0	1
33	MIP_NL__0PNPDE20120314_235358_000058953112_00346_52515_1225.N1	0	2



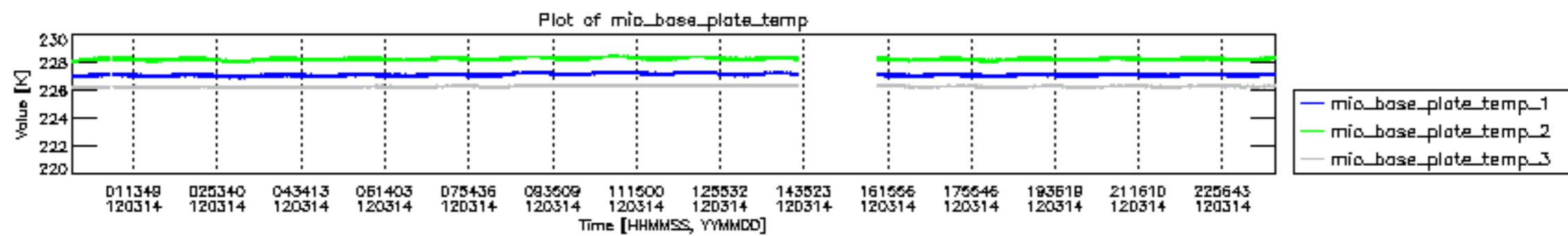
Bar plot of ADFs used for DRBIT\_STATE\_VECTOR\_FILE.  
See legend for details.

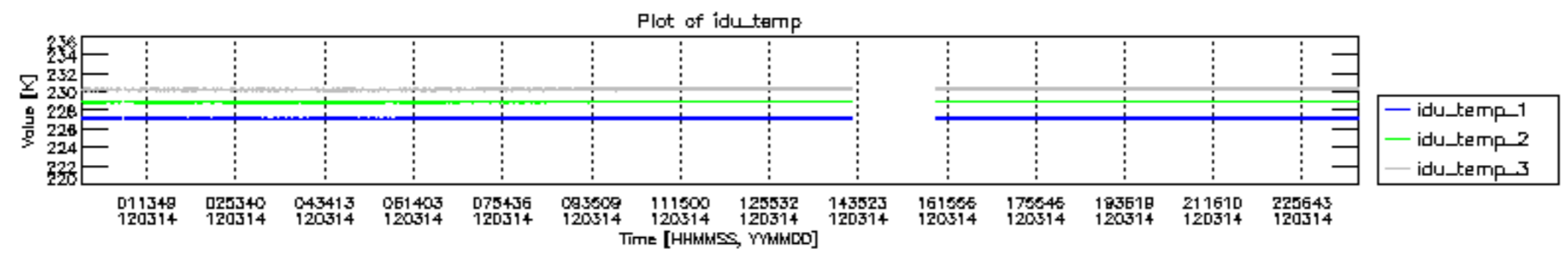


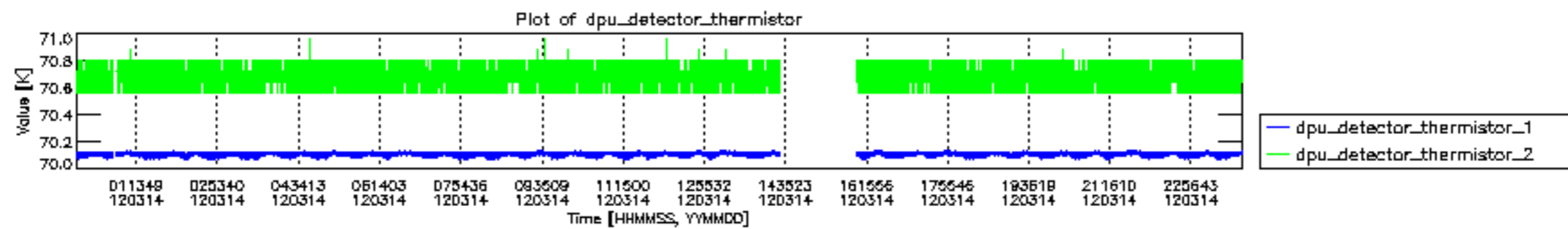
mipas\_daily\_report\_level0\_KSPT\_L0\_4504\_N\_20120314\_13.PNG

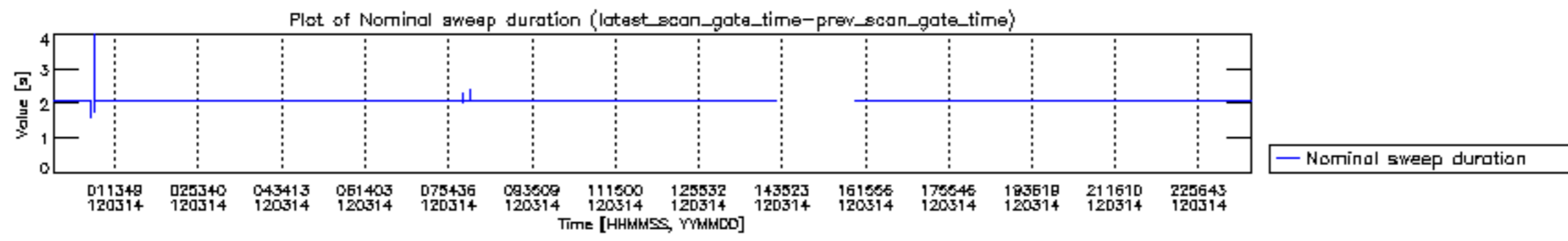


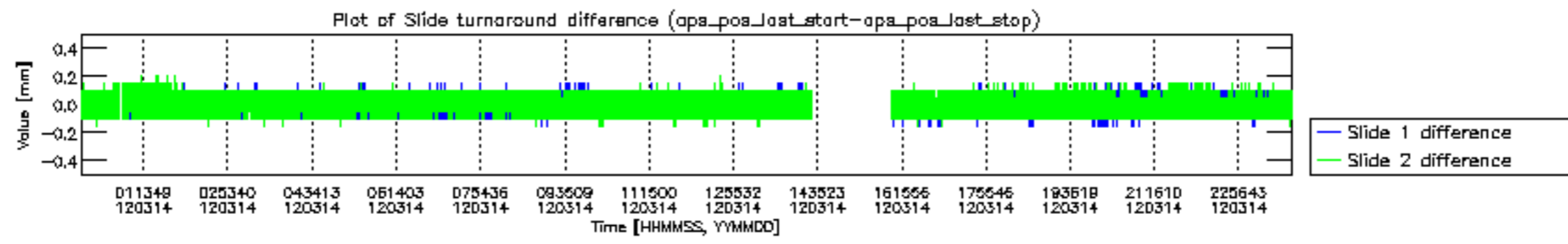


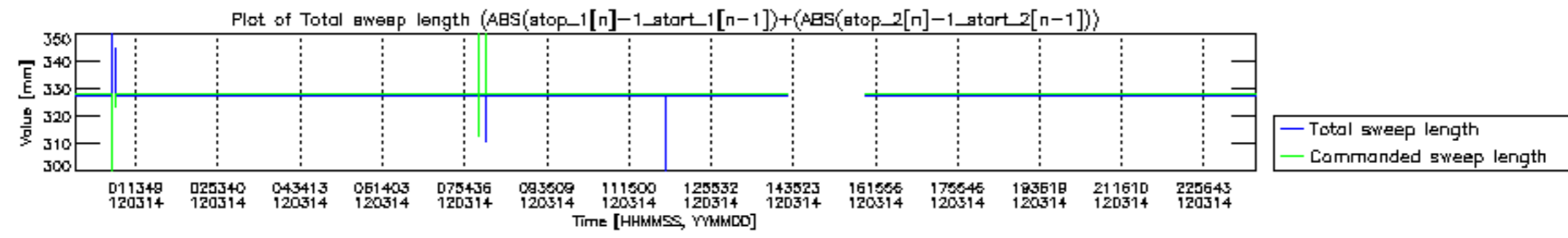


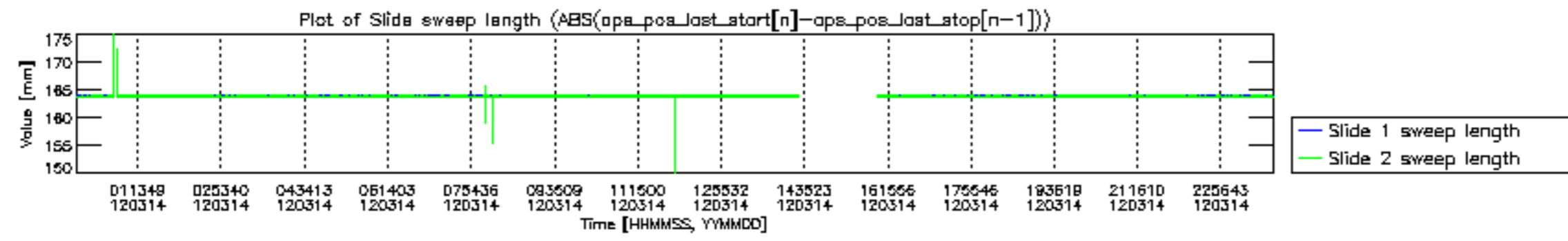


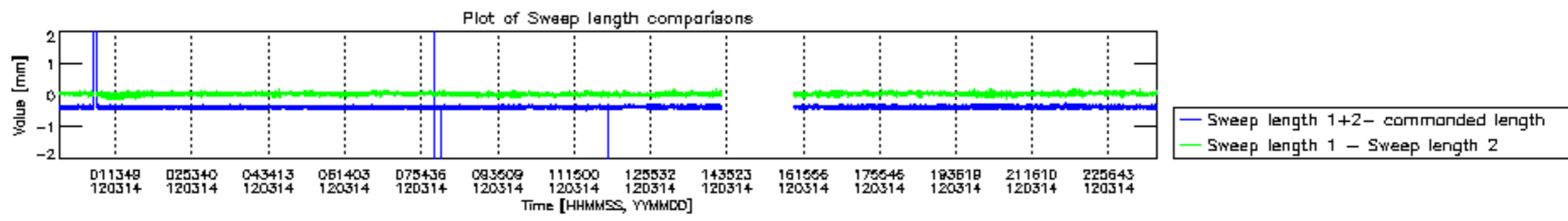




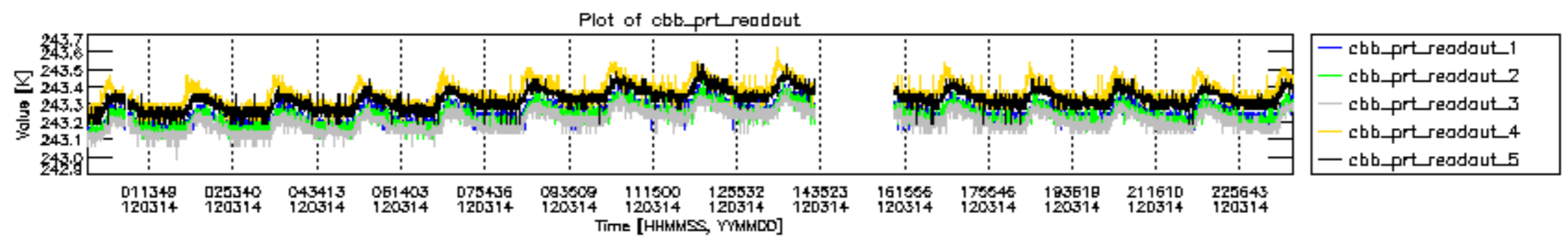


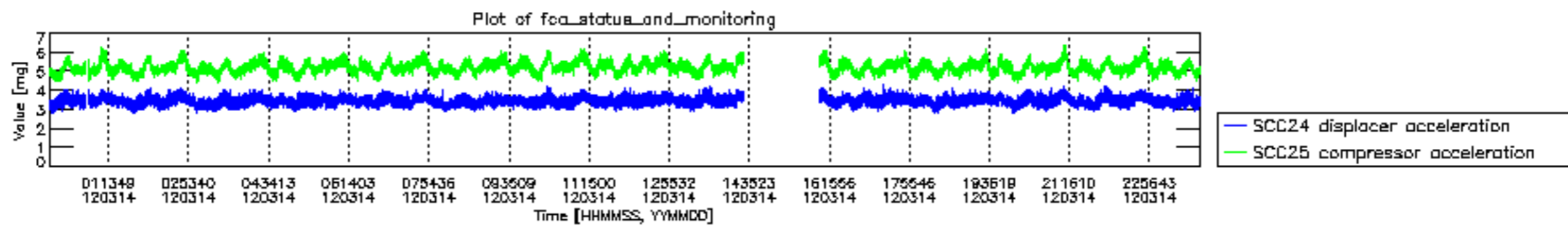












MIPNLOP\_MIPSOUPAC\_aux\_fields\_igm\_cal, channel statistics plot  
 Colour indicates value.

