

0. MIPAS Daily Report for level 0 products

[0.1 General Info](#)

[0.2 Instrument Operational Performance Parameters](#)

[0.3 ADF monitoring](#)

0.1 General Info

This report contains a daily analysis on parameters extracted from MIPAS level 0 data (The MIP_NL__0P product).

0.1.1 Report summary

The table below shows general characteristics of the data that are included into this report.

Item	Value
Report version	v1.6 08-11-2010
Time of report generation	03MAR2012 05:21:48
Data source version	KSPT_L0/4504-N
Processing scope for products	27FEB2012 00:00:00 to 28FEB2012 00:00:00
Start time of first product within scope	27FEB2012 01:54:04
Stop time of last product within scope	28FEB2012 01:20:09
Total number of level 0 products	11
Number of level 0 products with errors	0

0.1.2 Product Quality Indicators per product

The following table shows a summary for each product used in this report.

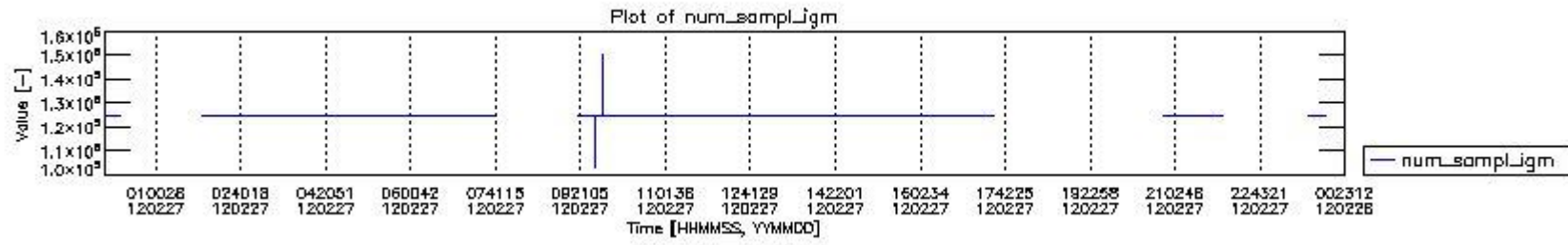
#	Product name	Start time	Stop time	Prod err	ISP err sign	ISP miss sign	ISP disc sign	rs sign
0	MIP_NL__OPNPDE20120227_015404_000044523112_00103_52272_1113.N1	27FEB2012 01:54:04	27FEB2012 03:08:16	0	0	0	0	0
1	MIP_NL__OPNPDE20120227_030742_000061633112_00104_52273_1114.N1	27FEB2012 03:07:42	27FEB2012 04:50:25	0	0	0	0	0
2	MIP_NL__OPNPDE20120227_044952_000060253112_00105_52274_1115.N1	27FEB2012 04:49:52	27FEB2012 06:30:16	0	0	0	0	0
3	MIP_NL__OPNPDK20120227_062943_000041113112_00106_52275_8708.N1	27FEB2012 06:29:43	27FEB2012 07:38:14	0	0	0	0	0
4	MIP_NL__OPNPDK20120227_091847_000058313112_00108_52277_8710.N1	27FEB2012 09:18:47	27FEB2012 10:55:58	0	0	0	0	0
5	MIP_NL__OPNPDK20120227_105449_000061253112_00109_52278_8711.N1	27FEB2012 10:54:49	27FEB2012 12:36:54	0	0	0	0	0
6	MIP_NL__OPNPDK20120227_123520_000059043112_00110_52279_8712.N1	27FEB2012 12:35:20	27FEB2012 14:13:43	0	0	0	0	0
7	MIP_NL__OPNPDK20120227_141205_000060103112_00111_52280_8713.N1	27FEB2012 14:12:05	27FEB2012 15:52:15	0	0	0	0	0
8	MIP_NL__OPNPDK20120227_155037_000059683112_00112_52281_8714.N1	27FEB2012 15:50:37	27FEB2012 17:30:06	0	0	0	0	0
9	MIP_NL__OPNPDE20120227_204839_000042853112_00115_52284_1116.N1	27FEB2012 20:48:39	27FEB2012 22:00:04	0	0	0	0	0
10	MIP_NL__OPNPDE20120227_233947_000060233112_00116_52285_1118.N1	27FEB2012 23:39:47	28FEB2012 01:20:09	0	0	0	0	0

0.2 Instrument Operational Performance Parameters

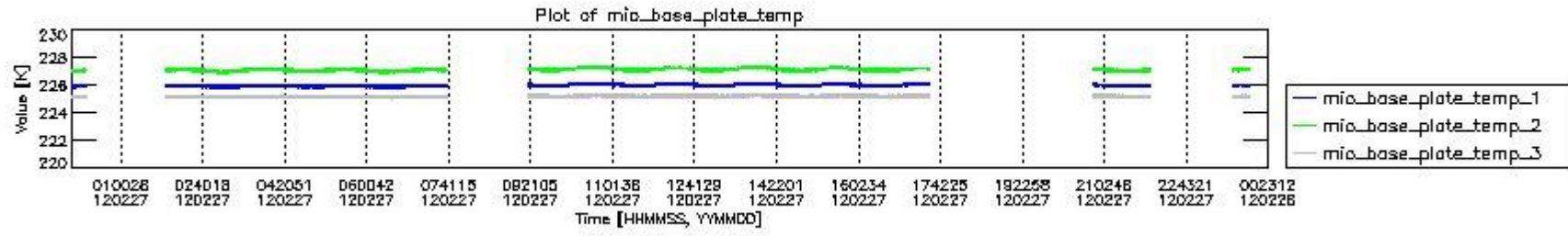
The following plots give an overview of various instrument parameters for this day. The instrument parameters are part of the auxiliary data field within the source packets of the MIP_NL__0P product. The auxiliary data is normally included twice per interferogram. Note that only the first packet is currently included in monitoring.

The following table shows the counts of various interferogram number of samples

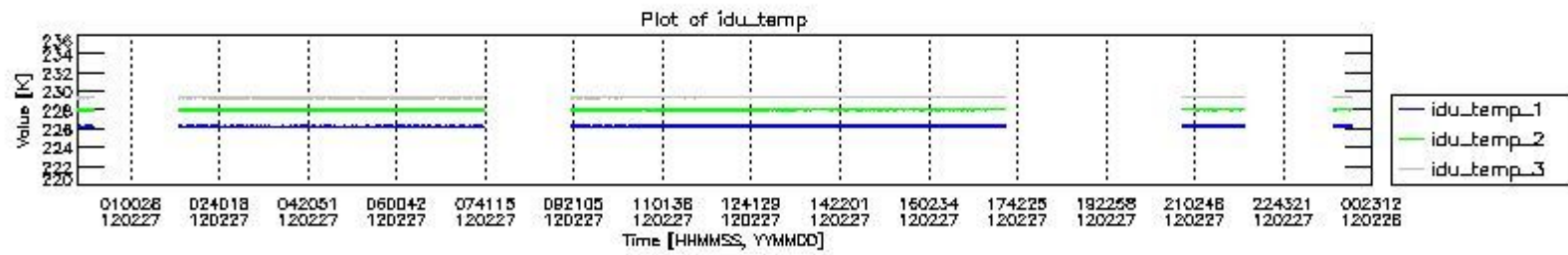
Number of igm samples	Count [#]	Count [%]
103558	1	0.0036679749
104113	1	0.0036679749
124245	1	0.0036679749
124800	25329	92.906137
124803	1928	7.0718556
127456	1	0.0036679749
147588	1	0.0036679749



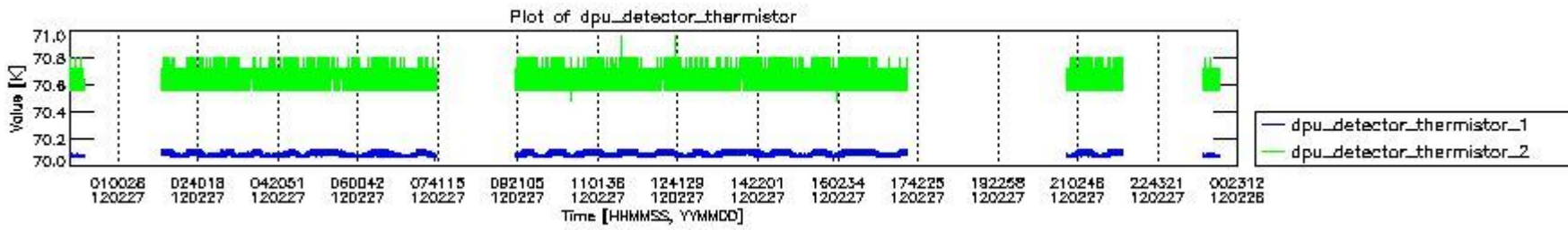
mipas_daily_report_level0_KSPT_L0_4504_N_20120227_0.PNG



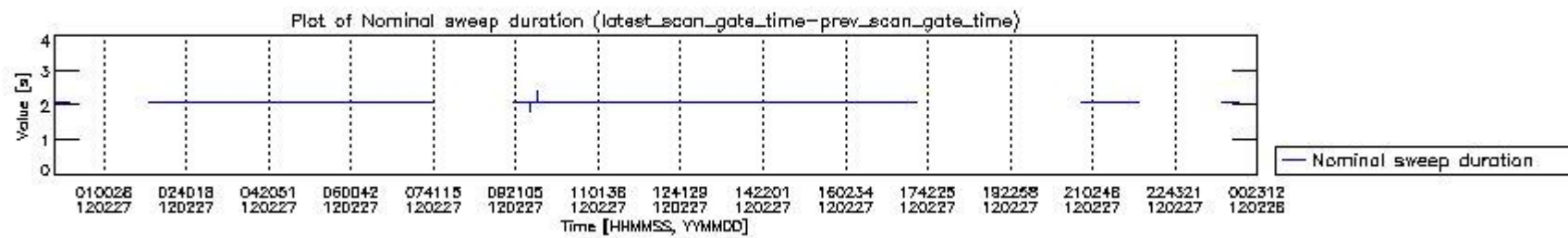
mipas_daily_report_level0_KSPT_L0_4504_N_20120227_1.PNG



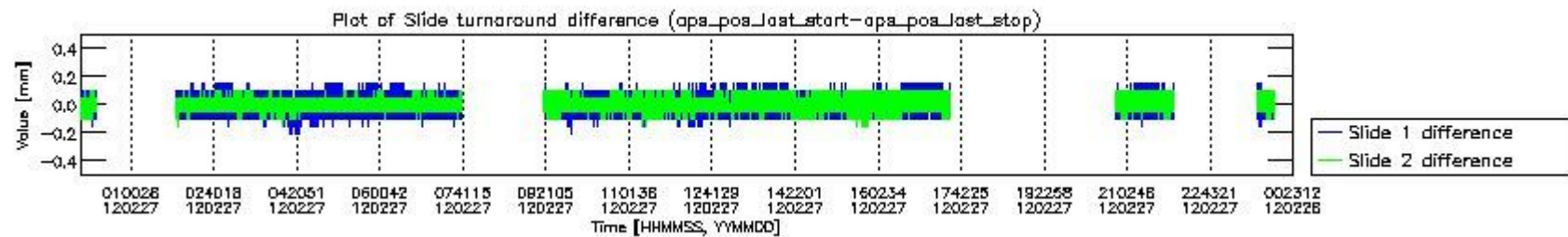
mipas_daily_report_level0_KSPT_L0_4504_N_20120227_2.PNG



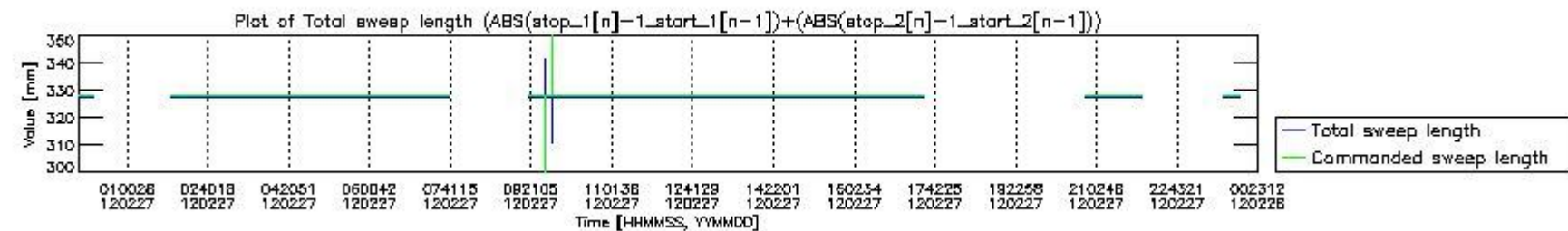
mipas_daily_report_level0_KSPT_L0_4504_N_20120227_3.PNG



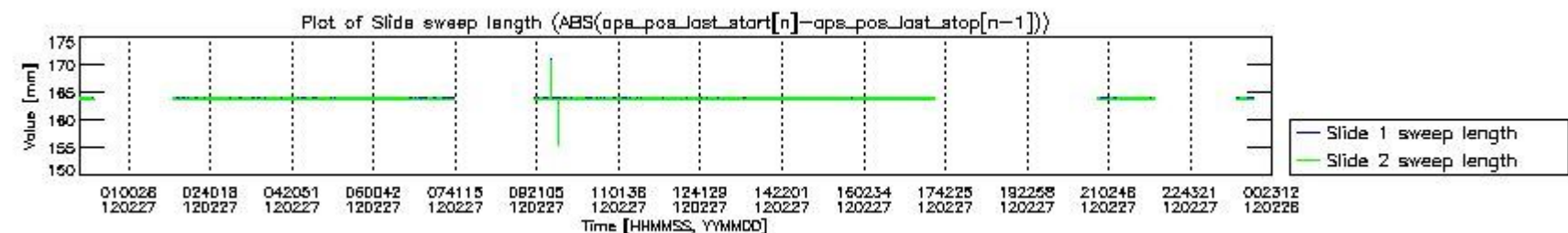
mipas_daily_report_level0_KSPT_L0_4504_N_20120227_4.PNG



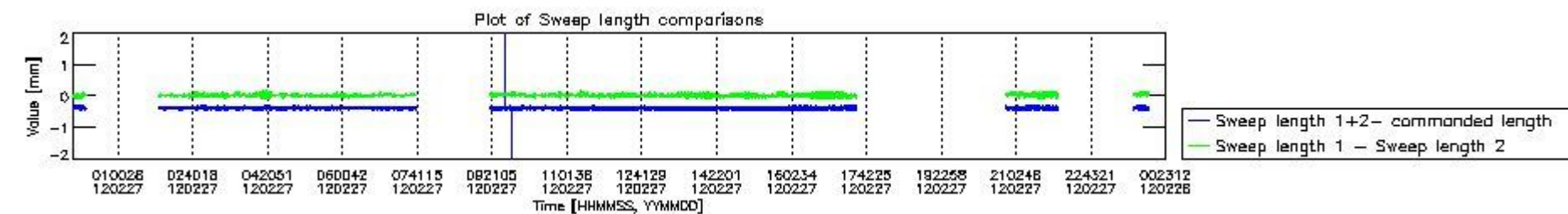
mipas_daily_report_level0_KSPT_L0_4504_N_20120227_5.PNG



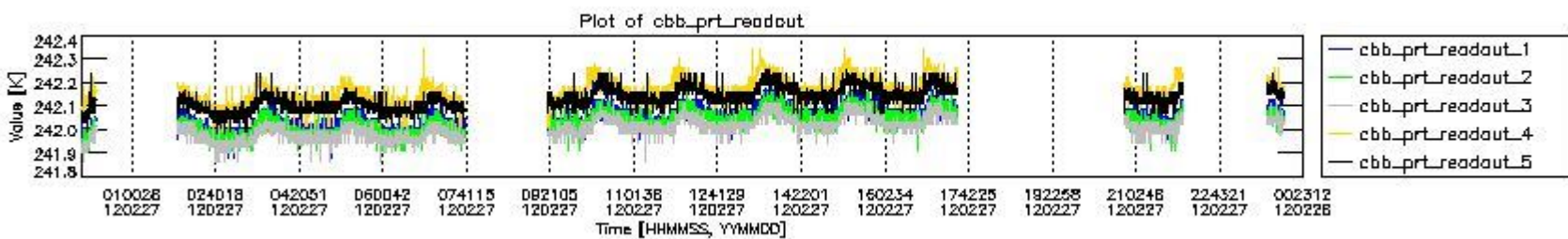
mipas_daily_report_level0_KSPT_L0_4504_N_20120227_6.PNG



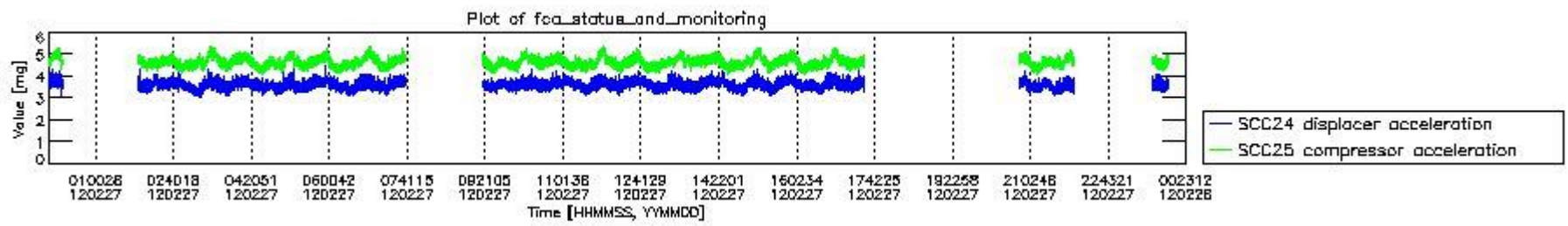
mipas_daily_report_level0_KSPT_L0_4504_N_20120227_7.PNG



mipas_daily_report_level0_KSPT_L0_4504_N_20120227_8.PNG



mipas_daily_report_level0_KSPT_L0_4504_N_20120227_9.PNG

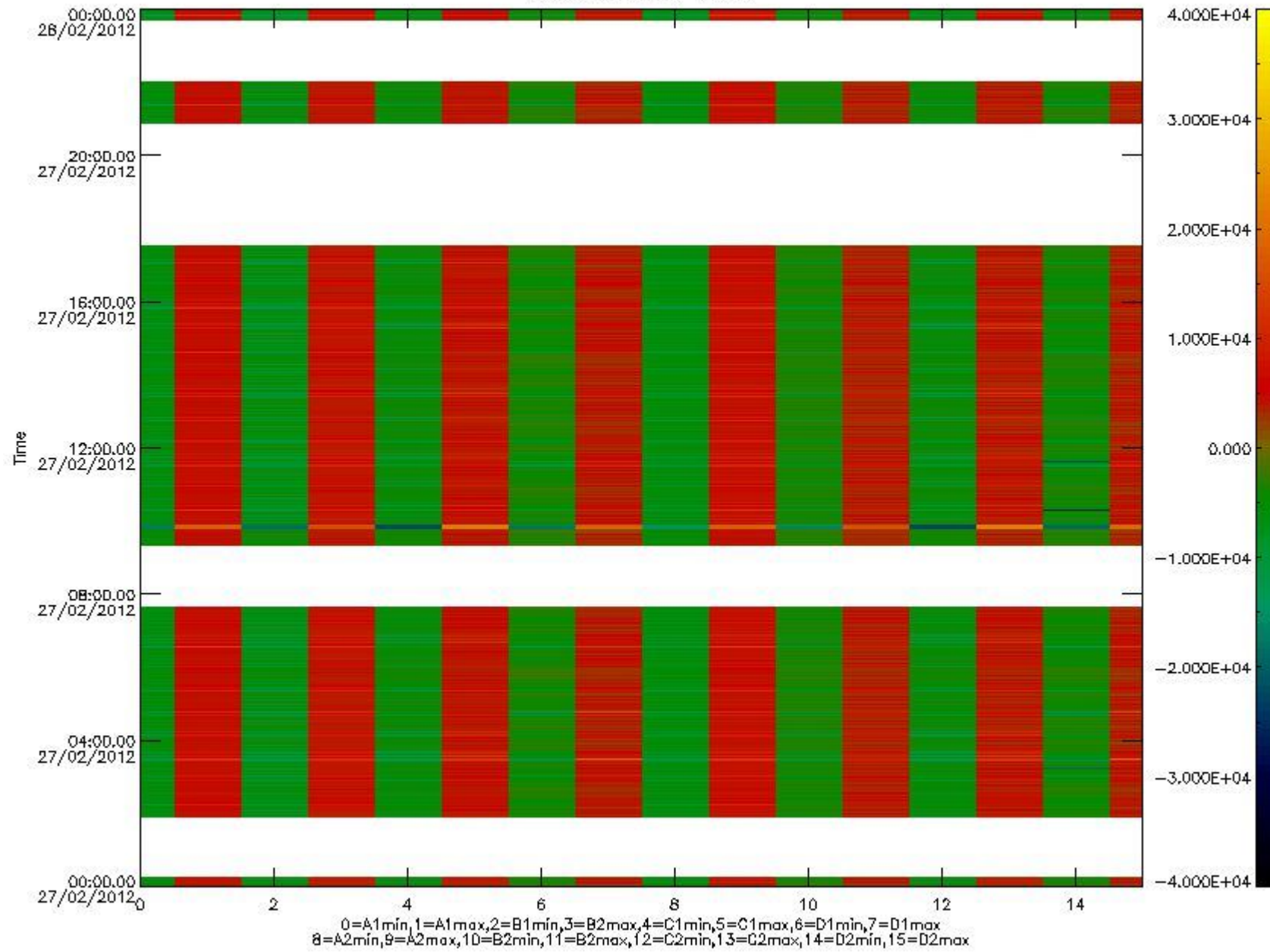


mipas_daily_report_level0_KSPT_L0_4504_N_20120227_10.PNG

The following table shows channel statistics for all channels for this day.

Channel	Min	Max	ADC
A1	-17159	18035	16bit
B1	-18903	16432	16bit
C1	-22324	22152	16bit
D1	-23910	32767	16bit
A2	-14990	18291	16bit
B2	-16595	16405	16bit
C2	-23259	23740	16bit
D2	-32768	27499	16bit

MIPNLOP_MIPSOUPAC_aux_fields_igm_cal, channel statistics plot
Colour indicates value.



mipas_daily_report_level0_KSPT_L0_4504_N_20120227_11.PNG

0.3 ADF monitoring

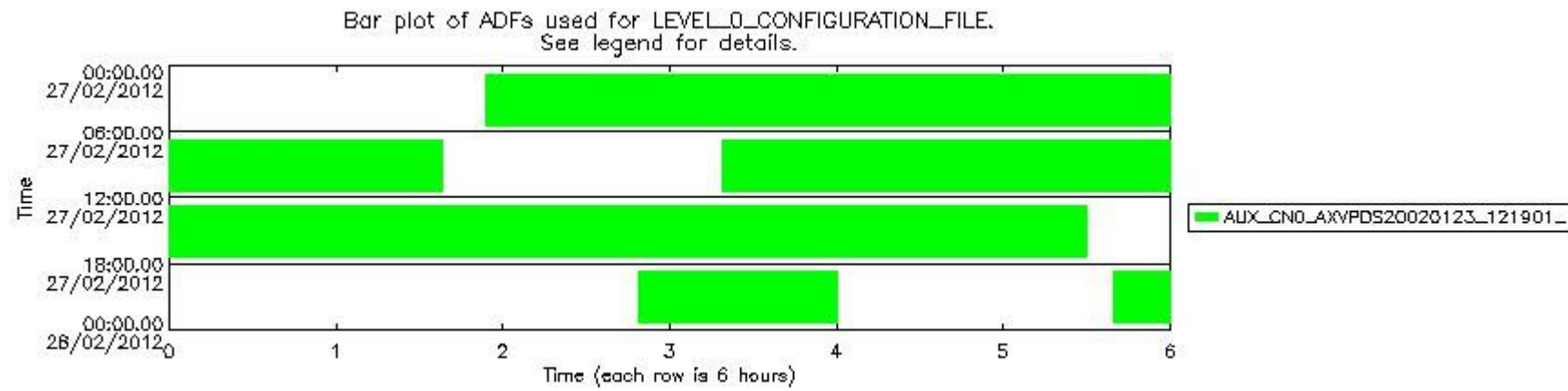
The use of ADFs is shown in two ways:

1. By means of two tables that can be used to find the ADF used for a specific product.
2. By means of plots that show changes in ADF using colours.

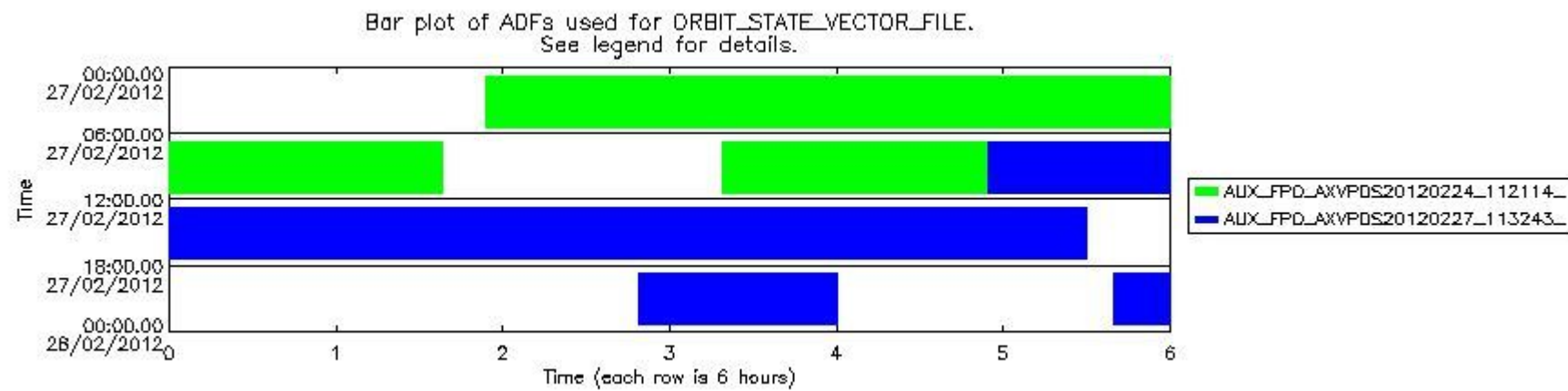
Number	ADF
0	AUX_CN0_AXVPDS20020123_121901_20020101_000000_20200101_000000
1	AUX_FPO_AXVPDS20120224_112114_20120223_193730_20120304_201058
2	AUX_FPO_AXVPDS20120227_113243_20120226_192730_20120307_200057

Number	Product name	#CN0	#FPO
--------	--------------	------	------

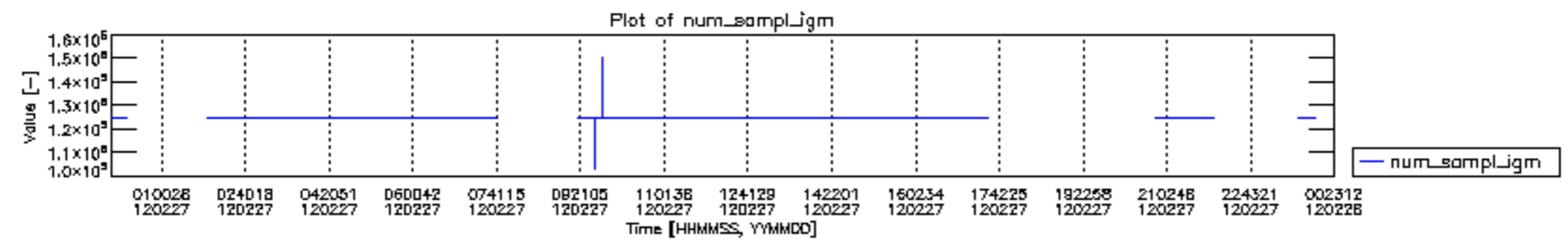
0	MIP_NL__0PNPDE20120227_015404_000044523112_00103_52272_1113.N1	0	1
1	MIP_NL__0PNPDE20120227_030742_000061633112_00104_52273_1114.N1	0	1
2	MIP_NL__0PNPDE20120227_044952_000060253112_00105_52274_1115.N1	0	1
3	MIP_NL__0PNPDK20120227_062943_000041113112_00106_52275_8708.N1	0	1
4	MIP_NL__0PNPDK20120227_091847_000058313112_00108_52277_8710.N1	0	1
5	MIP_NL__0PNPDK20120227_105449_000061253112_00109_52278_8711.N1	0	2
6	MIP_NL__0PNPDK20120227_123520_000059043112_00110_52279_8712.N1	0	2
7	MIP_NL__0PNPDK20120227_141205_000060103112_00111_52280_8713.N1	0	2
8	MIP_NL__0PNPDK20120227_155037_000059683112_00112_52281_8714.N1	0	2
9	MIP_NL__0PNPDE20120227_204839_000042853112_00115_52284_1116.N1	0	2
10	MIP_NL__0PNPDE20120227_233947_000060233112_00116_52285_1118.N1	0	2

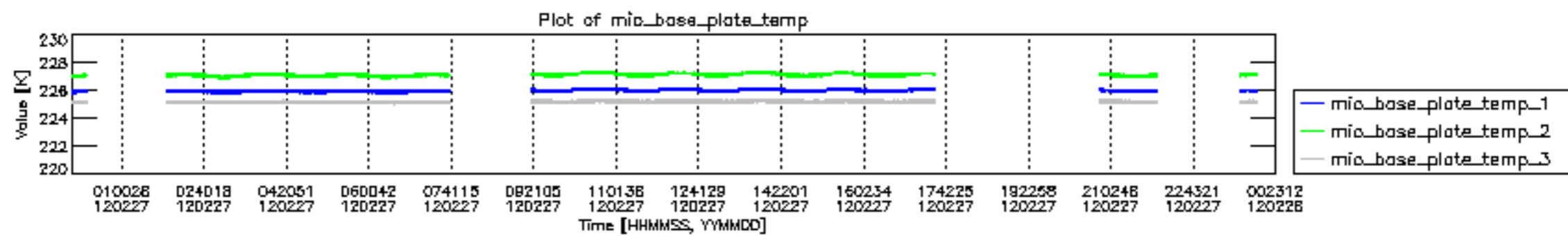


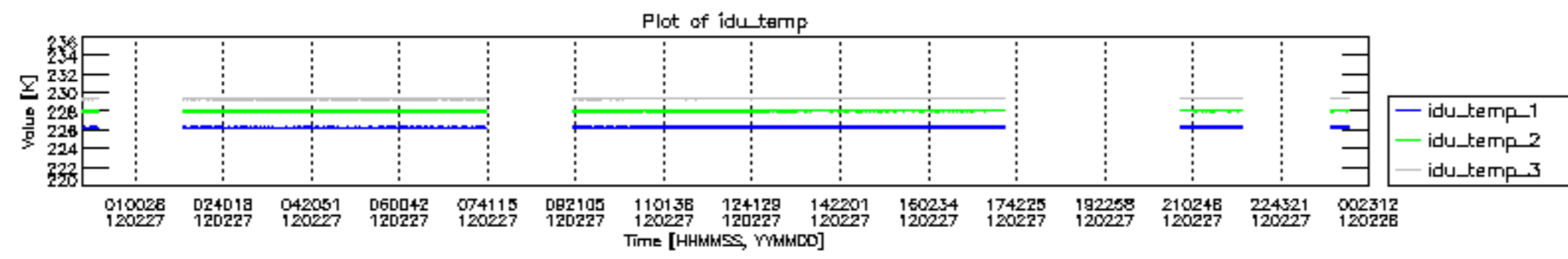
mipas_daily_report_level0_KSPT_L0_4504_N_20120227_12.PNG

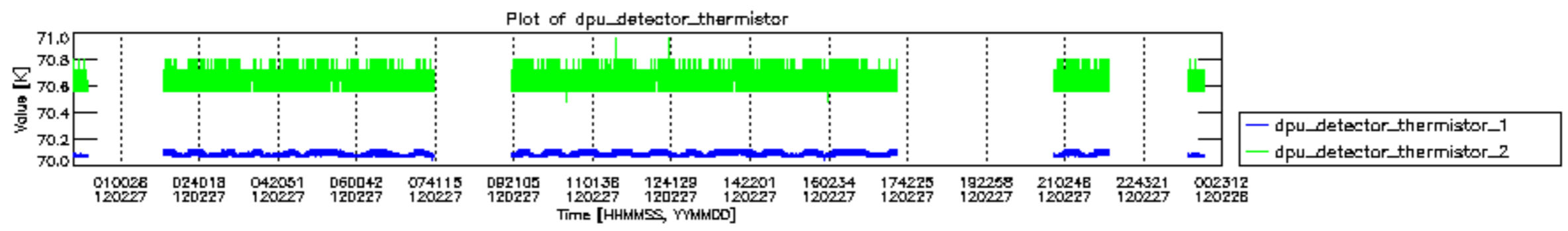


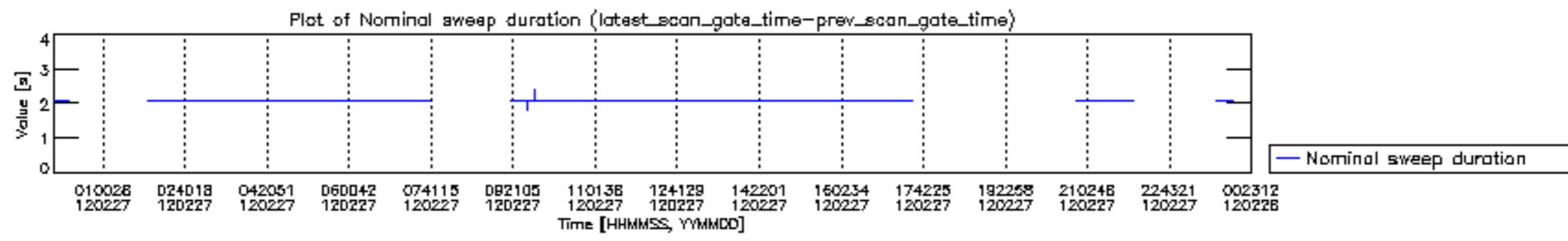
mipas_daily_report_level0_KSPT_L0_4504_N_20120227_13.PNG

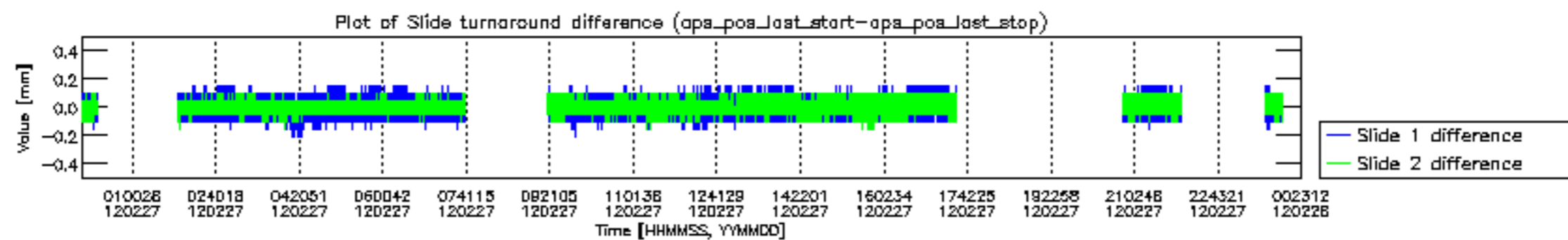


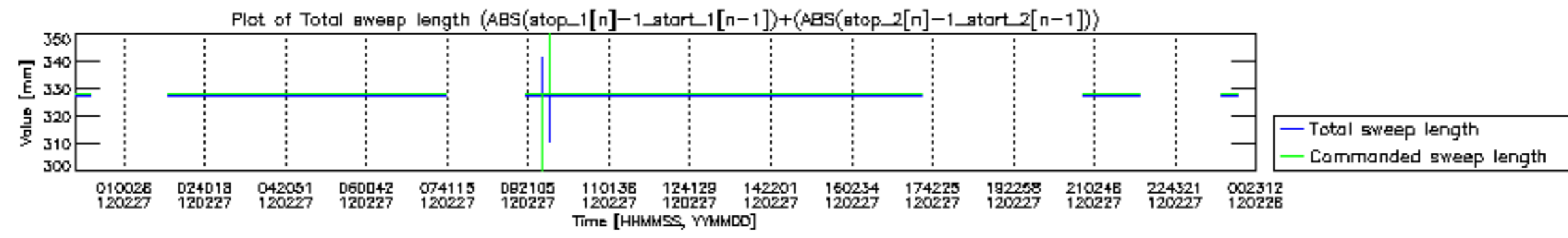


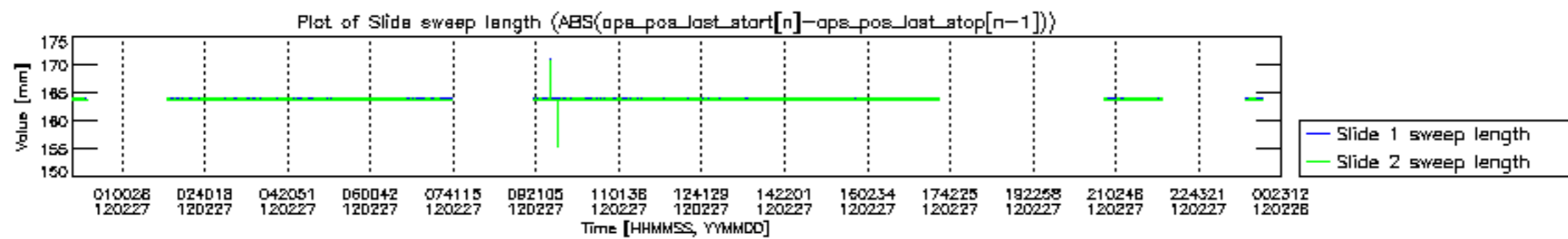


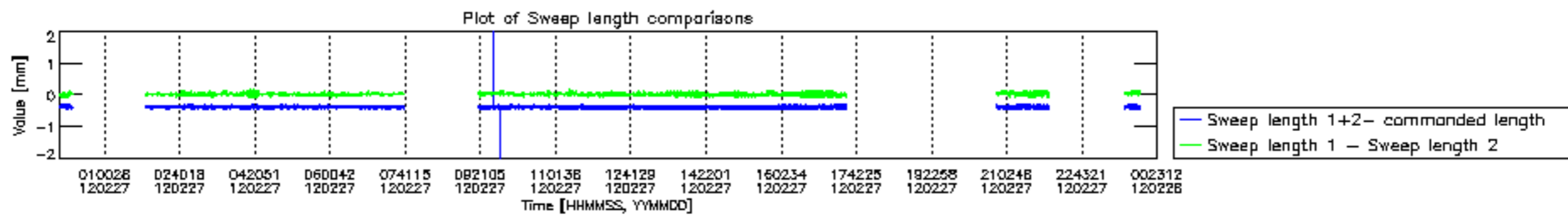


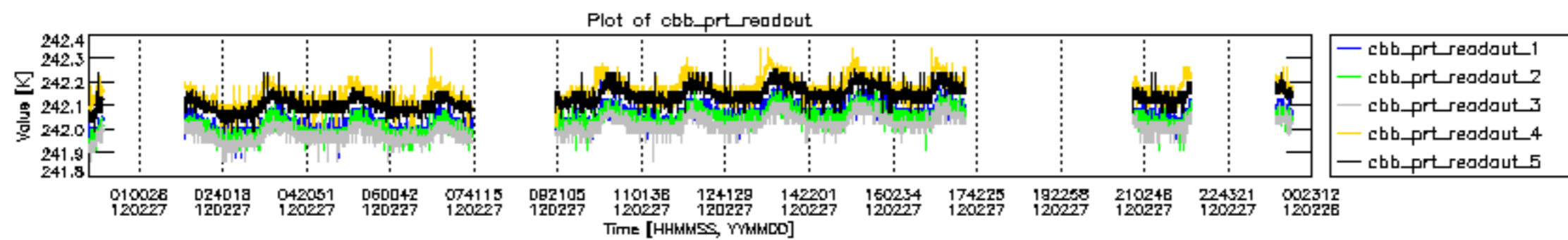


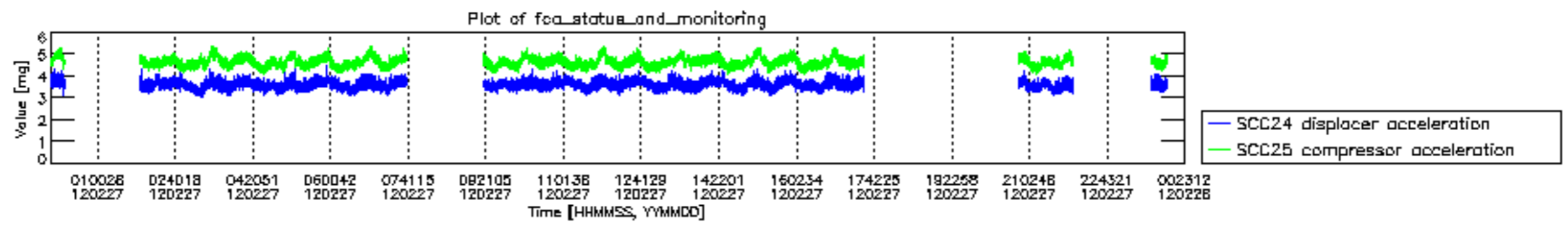












MIPNLOP_MIPSOUPAC_aux_fields_igm_cal, channel statistics plot
 Colour indicates value.

