

## 0. MIPAS Daily Report for level 0 products

### [0.1 General Info](#)

### [0.2 Instrument Operational Performance Parameters](#)

### [0.3 ADF monitoring](#)

## 0.1 General Info

This report contains a daily analysis on parameters extracted from MIPAS level 0 data (The MIP\_NL\_\_0P product).

### 0.1.1 Report summary

The table below shows general characteristics of the data that are included into this report.

Item	Value
Report version	v1.6 08-11-2010
Time of report generation	27FEB2012 05:26:36
Data source version	KSPT_L0/4504-N
Processing scope for products	22FEB2012 00:00:00 to 23FEB2012 00:00:00
Start time of first product within scope	22FEB2012 01:39:02
Stop time of last product within scope	23FEB2012 01:04:50
Total number of level 0 products	13
Number of level 0 products with errors	1

### 0.1.2 Product Quality Indicators per product

The following table shows a summary for each product used in this report.

#	Product name	Start time	Stop time	Prod err	ISP err sign	ISP miss sign	ISP disc sign	rs sign
0	MIP_NL__0PNPDE20120222_013902_000043683112_00031_52200_1081.N1	22FEB2012 01:39:02	22FEB2012 02:51:50	0	0	0	0	0
1	MIP_NL__0PNPDE20120222_025119_000061103112_00032_52201_1082.N1	22FEB2012 02:51:19	22FEB2012 04:33:09	0	0	0	0	0
2	MIP_NL__0PNPDE20120222_043238_000060623112_00033_52202_1083.N1	22FEB2012 04:32:38	22FEB2012 06:13:40	0	0	0	0	0
3	MIP_NL__0PNPDK20120222_061307_000041133112_00034_52203_8645.N1	22FEB2012 06:13:07	22FEB2012 07:21:40	0	0	0	0	0
4	MIP_NL__0PNPDK20120222_090014_000059183112_00036_52205_8647.N1	22FEB2012 09:00:14	22FEB2012 10:38:52	0	0	0	0	0
5	MIP_NL__0PNPDK20120222_103707_000062153112_00037_52206_8648.N1	22FEB2012 10:37:07	22FEB2012 12:20:42	0	0	0	0	0
6	MIP_NL__0PNPDK20120222_121849_000059123112_00038_52207_8649.N1	22FEB2012 12:18:49	22FEB2012 13:57:21	0	0	0	0	0
7	MIP_NL__0PNPDK20120222_135614_000059203112_00039_52208_8650.N1	22FEB2012 13:56:14	22FEB2012 15:34:54	0	0	0	0	0
8	MIP_NL__0PNPDK20120222_153314_000059893112_00040_52209_8651.N1	22FEB2012 15:33:14	22FEB2012 17:13:03	0	0	0	0	0
9	MIP_NL__0PNPDK20120222_171157_000060213112_00041_52210_8652.N1	22FEB2012 17:11:57	22FEB2012 18:52:17	1	1	0	0	0
10	MIP_NL__0PNPDE20120222_202731_000044353112_00043_52212_1084.N1	22FEB2012 20:27:31	22FEB2012 21:41:26	0	0	0	0	0
11	MIP_NL__0PNPDE20120222_214019_000061193112_00043_52212_1085.N1	22FEB2012 21:40:19	22FEB2012 23:22:18	0	0	0	0	0
12	MIP_NL__0PNPDE20120222_232111_000062193112_00044_52213_1086.N1	22FEB2012 23:21:11	23FEB2012 01:04:50	0	0	0	0	0

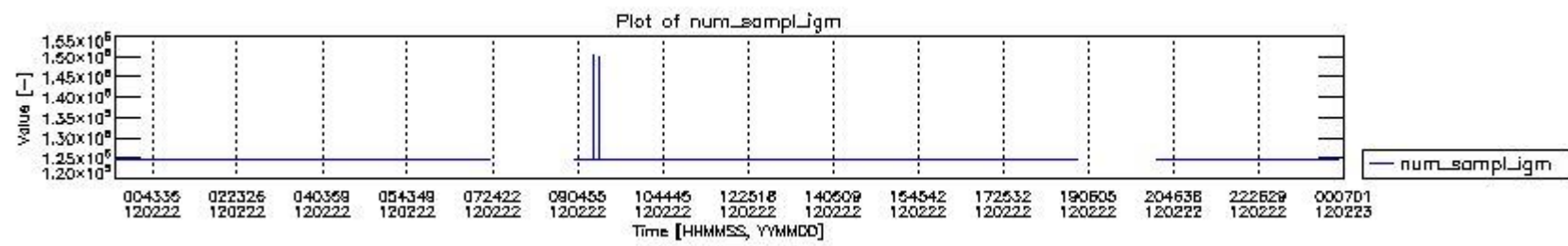
## 0.2 Instrument Operational Performance Parameters

The following plots give an overview of various instrument parameters for this day. The instrument parameters are part of the auxiliary data field within the source packets of the MIP\_NL\_\_0P product. The auxiliary data is normally included twice per interferogram. Note that only the first packet is currently included in monitoring.

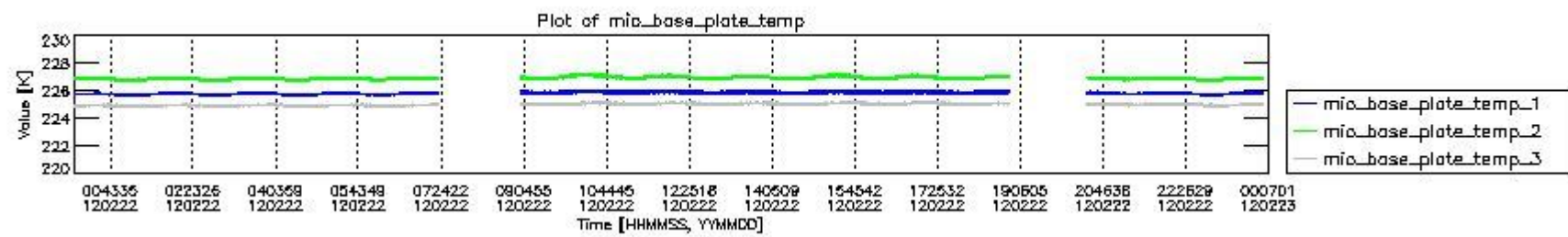
The following table shows the counts of various interferogram number of samples

Number of igm samples	Count [#]	Count [%]
124800	33470	92.905124
124803	2550	7.0782213
127308	1	0.0027757731
127531	1	0.0027757731
147440	1	0.0027757731

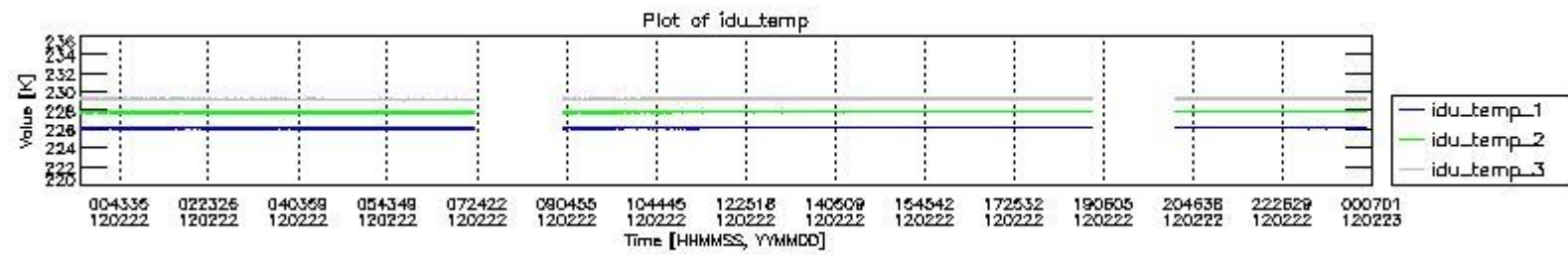
147663	1	0.0027757731
149948	1	0.0027757731
150394	1	0.0027757731



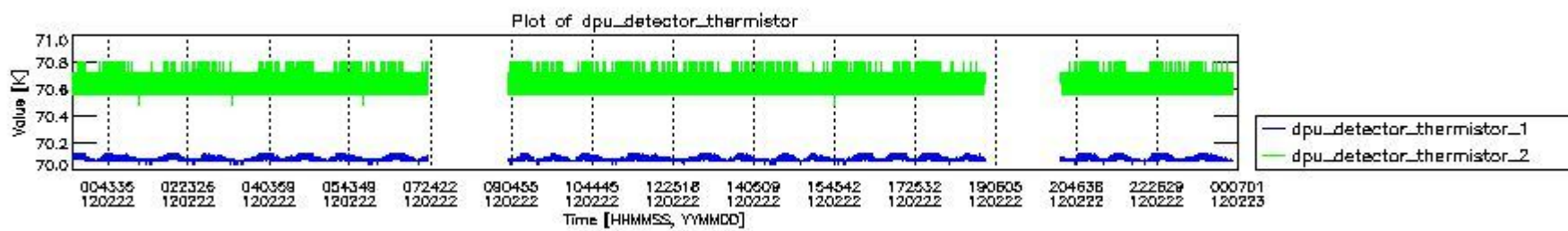
mipas\_daily\_report\_level0\_KSPT\_L0\_4504\_N\_20120222\_0.PNG



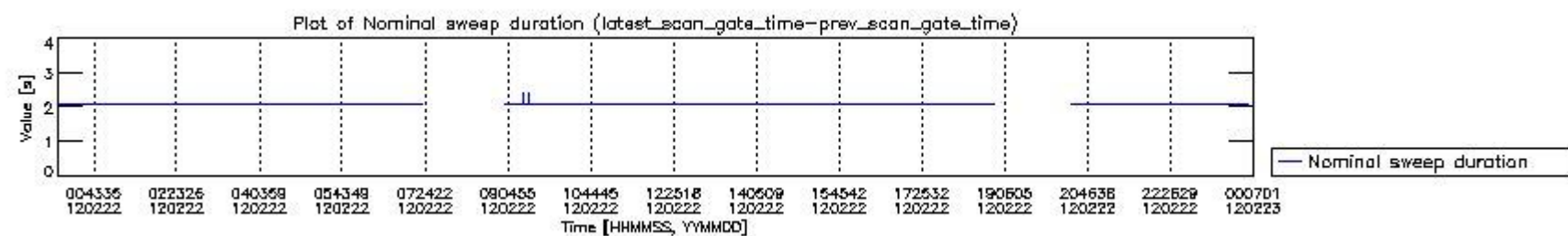
mipas\_daily\_report\_level0\_KSPT\_L0\_4504\_N\_20120222\_1.PNG



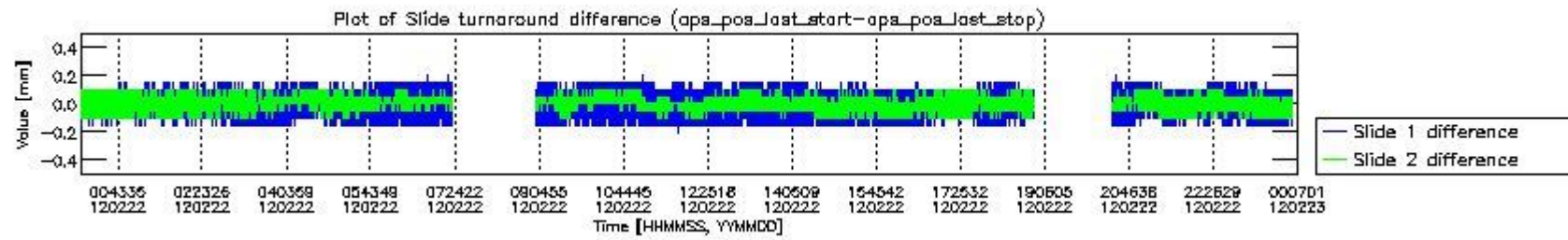
mipas\_daily\_report\_level0\_KSPT\_L0\_4504\_N\_20120222\_2.PNG



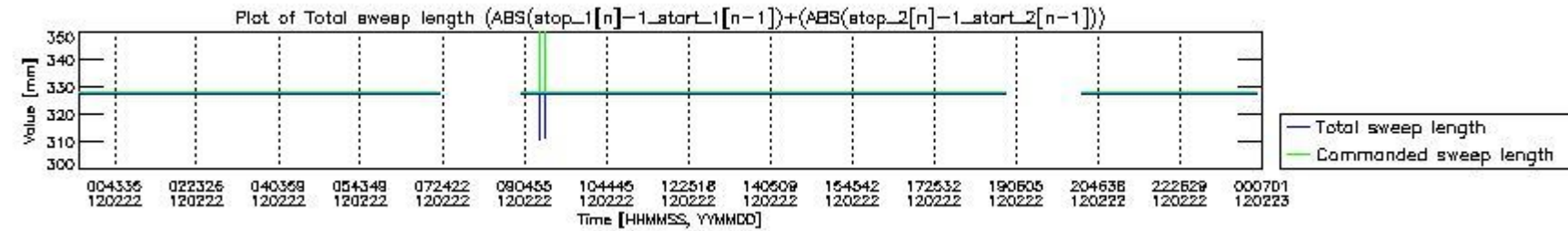
mipas\_daily\_report\_level0\_KSPT\_L0\_4504\_N\_20120222\_3.PNG



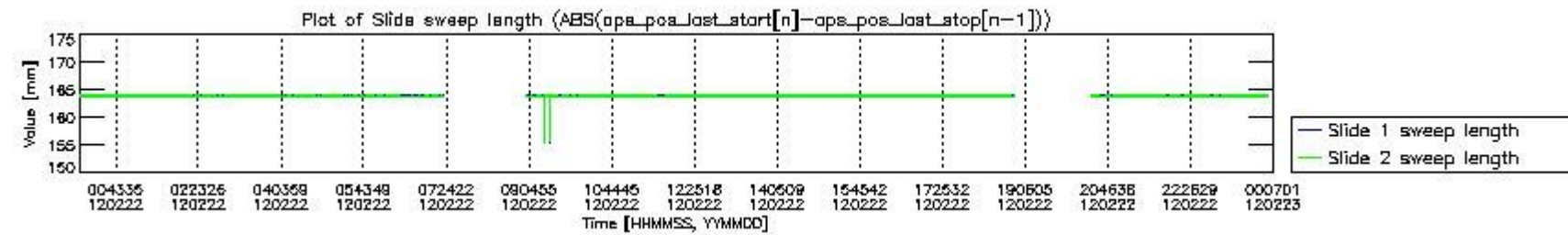
mipas\_daily\_report\_level0\_KSPT\_L0\_4504\_N\_20120222\_4.PNG



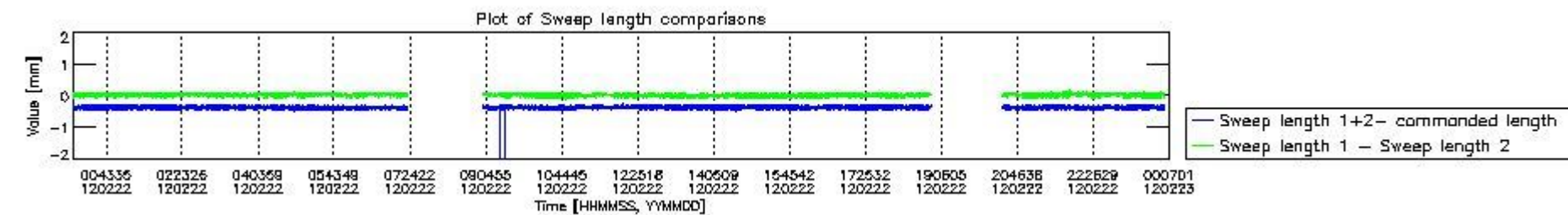
mipas\_daily\_report\_level0\_KSPT\_L0\_4504\_N\_20120222\_5.PNG



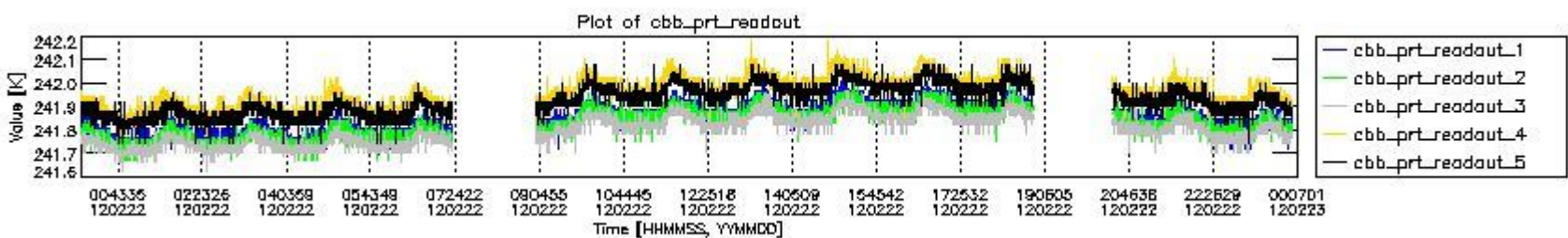
mipas\_daily\_report\_level0\_KSPT\_L0\_4504\_N\_20120222\_6.PNG



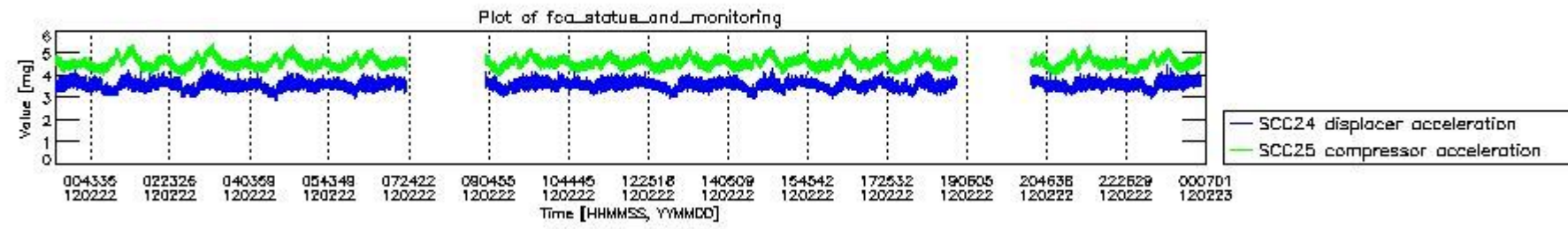
mipas\_daily\_report\_level0\_KSPT\_L0\_4504\_N\_20120222\_7.PNG



mipas\_daily\_report\_level0\_KSPT\_L0\_4504\_N\_20120222\_8.PNG



mipas\_daily\_report\_level0\_KSPT\_L0\_4504\_N\_20120222\_9.PNG

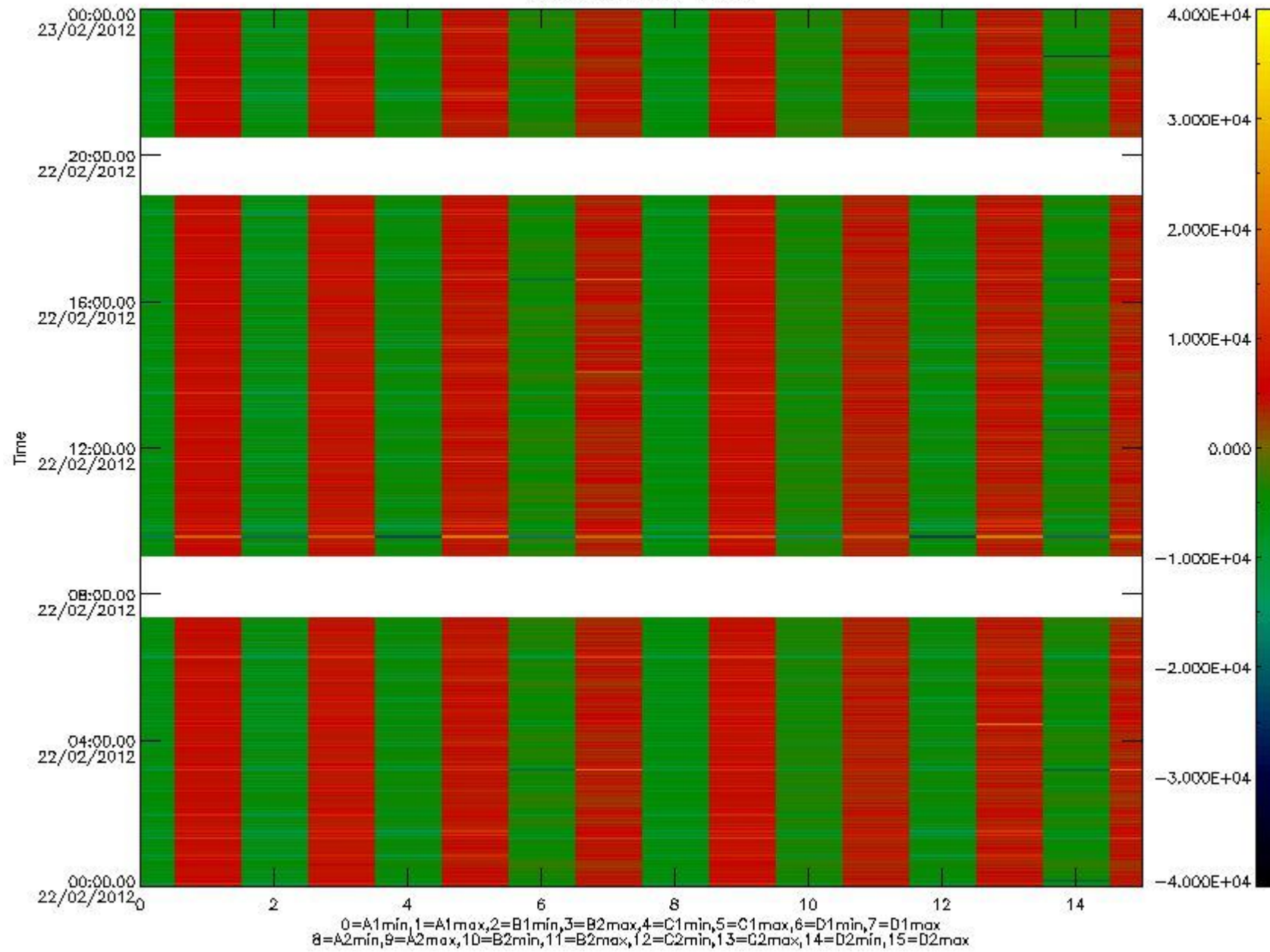


mipas\_daily\_report\_level0\_KSPT\_L0\_4504\_N\_20120222\_10.PNG

The following table shows channel statistics for all channels for this day.

Channel	Min	Max	ADC
A1	-17135	18020	16bit
B1	-18841	16372	16bit
C1	-22154	22032	16bit
D1	-32768	32767	16bit
A2	-14985	18255	16bit
B2	-16520	16341	16bit
C2	-23117	23987	16bit
D2	-32768	32767	16bit

MIPNLOP\_MIPSOUPAC\_aux\_fields\_igm\_cal, channel statistics plot  
Colour indicates value.



mipas\_daily\_report\_level0\_KSPT\_L0\_4504\_N\_20120222\_11.PNG

### 0.3 ADF monitoring

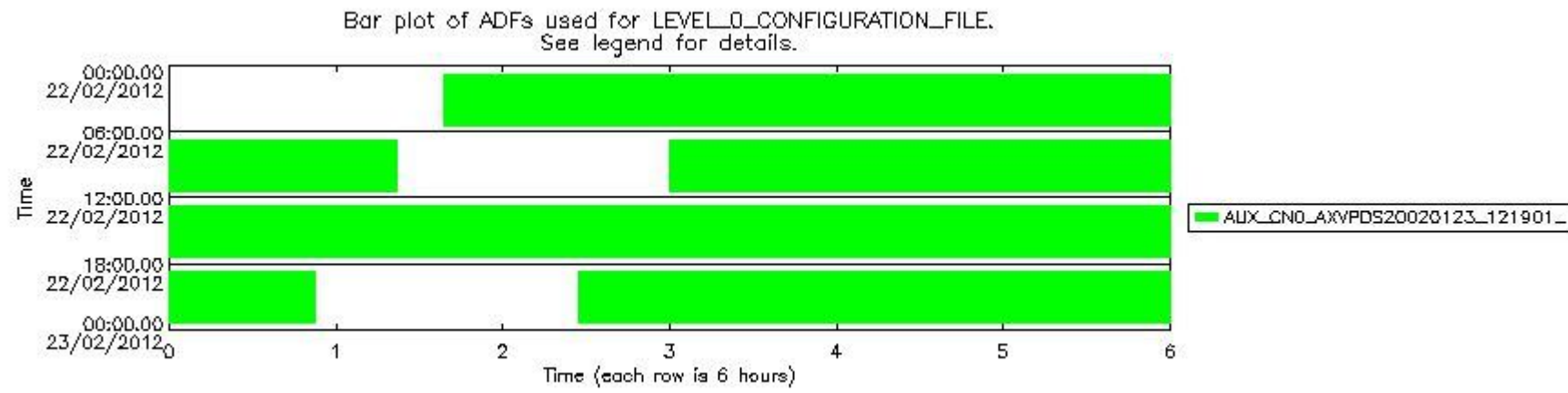
The use of ADFs is shown in two ways:

1. By means of two tables that can be used to find the ADF used for a specific product.
2. By means of plots that show changes in ADF using colours.

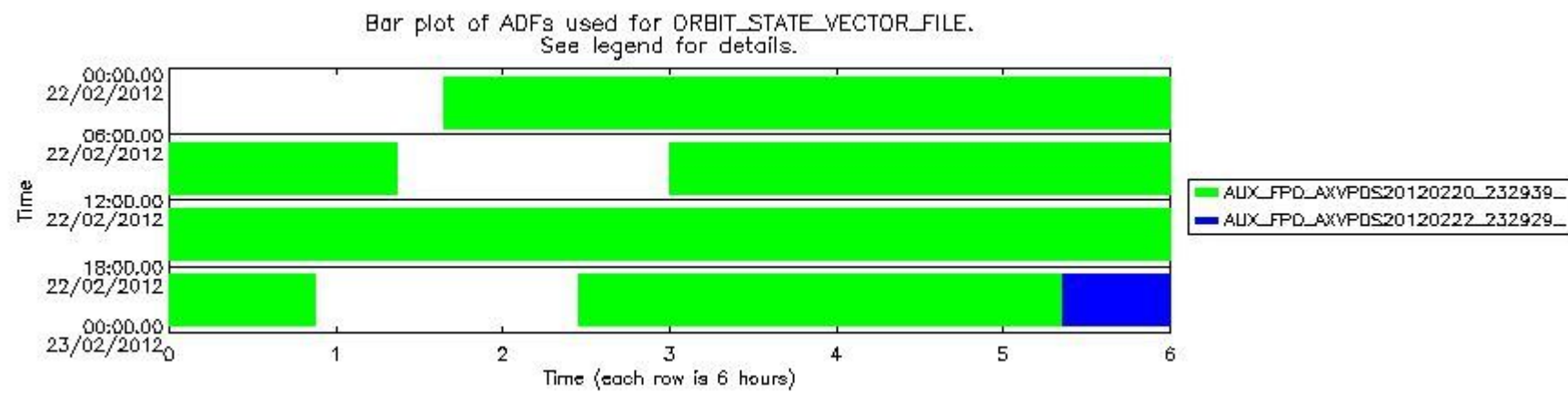
Number	ADF
0	AUX_CN0_AXVPDS20020123_121901_20020101_000000_20200101_000000
1	AUX_FPO_AXVPDS20120220_232939_20120220_194732_20120301_202055
2	AUX_FPO_AXVPDS20120222_232929_20120221_191047_20120302_212428

Number	Product name	#CN0	#FPO
--------	--------------	------	------

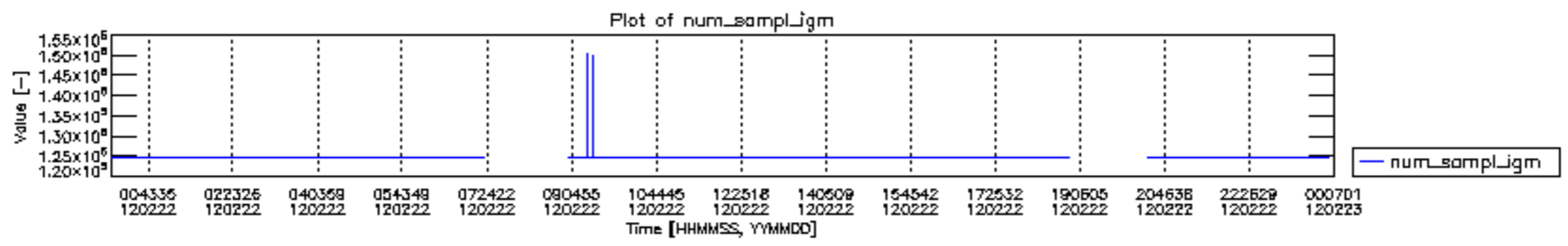
0	MIP_NL__0PNPDE20120222_013902_000043683112_00031_52200_1081.N1	0	1
1	MIP_NL__0PNPDE20120222_025119_000061103112_00032_52201_1082.N1	0	1
2	MIP_NL__0PNPDE20120222_043238_000060623112_00033_52202_1083.N1	0	1
3	MIP_NL__0PNPDK20120222_061307_000041133112_00034_52203_8645.N1	0	1
4	MIP_NL__0PNPDK20120222_090014_000059183112_00036_52205_8647.N1	0	1
5	MIP_NL__0PNPDK20120222_103707_000062153112_00037_52206_8648.N1	0	1
6	MIP_NL__0PNPDK20120222_121849_000059123112_00038_52207_8649.N1	0	1
7	MIP_NL__0PNPDK20120222_135614_000059203112_00039_52208_8650.N1	0	1
8	MIP_NL__0PNPDK20120222_153314_000059893112_00040_52209_8651.N1	0	1
9	MIP_NL__0PNPDK20120222_171157_000060213112_00041_52210_8652.N1	0	1
10	MIP_NL__0PNPDE20120222_202731_000044353112_00043_52212_1084.N1	0	1
11	MIP_NL__0PNPDE20120222_214019_000061193112_00043_52212_1085.N1	0	1
12	MIP_NL__0PNPDE20120222_232111_000062193112_00044_52213_1086.N1	0	2

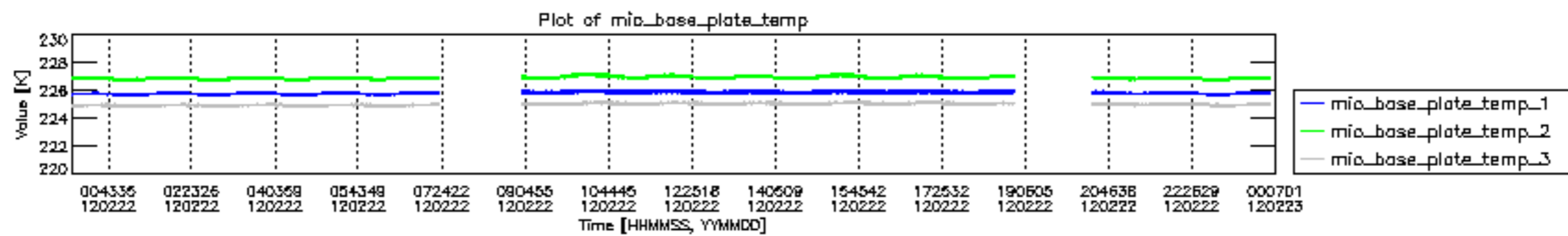


mipas\_daily\_report\_level0\_KSPT\_L0\_4504\_N\_20120222\_12.PNG

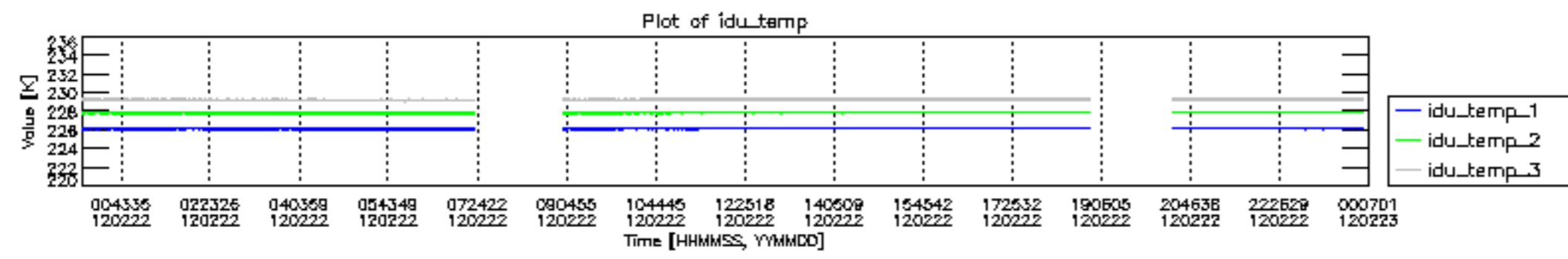


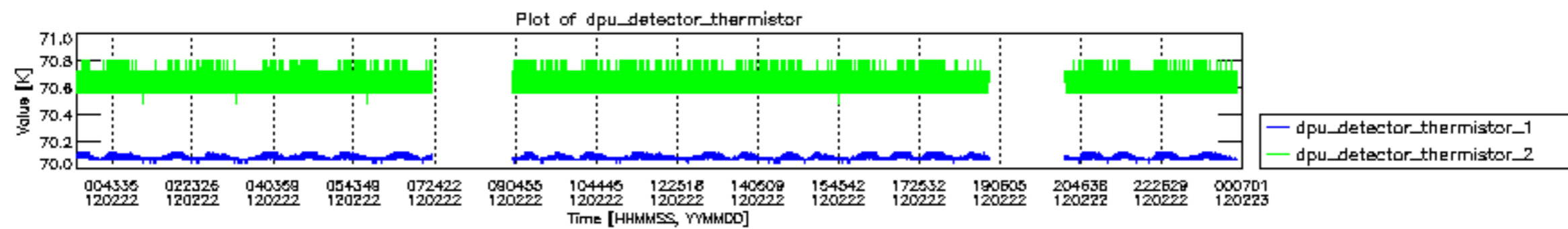
mipas\_daily\_report\_level0\_KSPT\_L0\_4504\_N\_20120222\_13.PNG

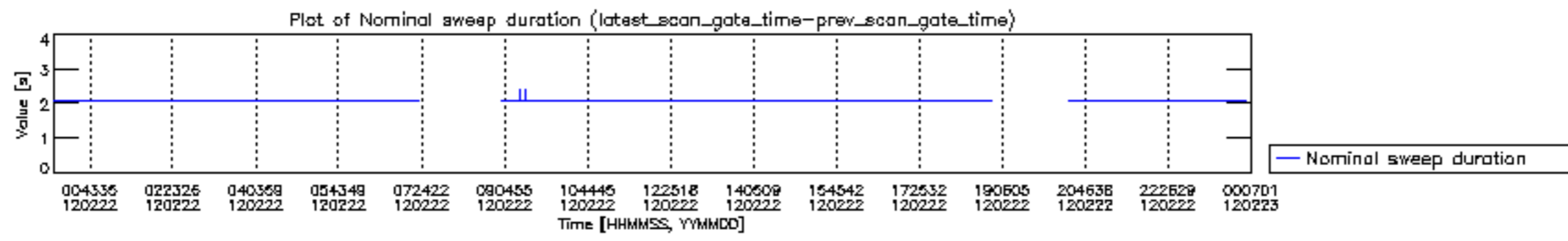




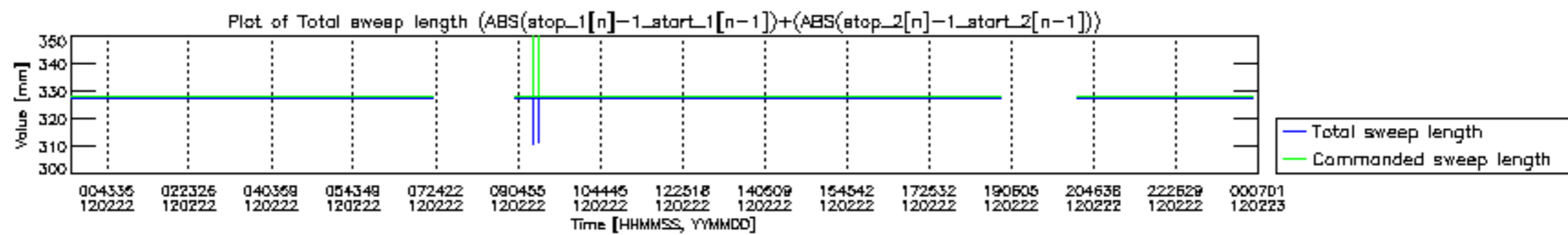


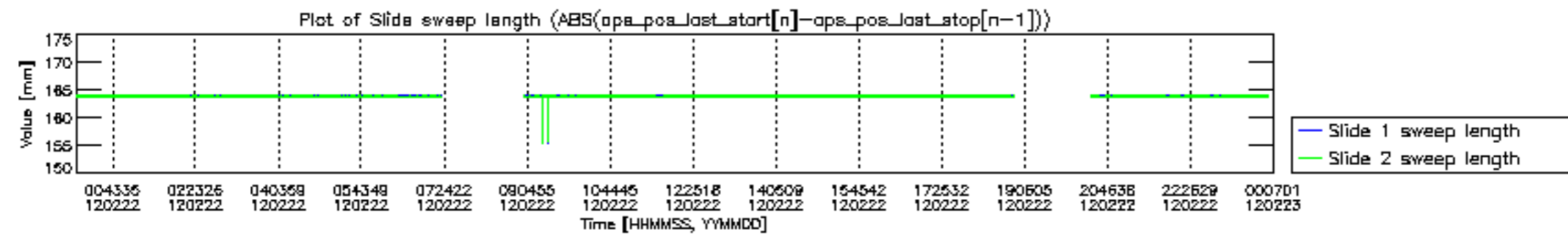


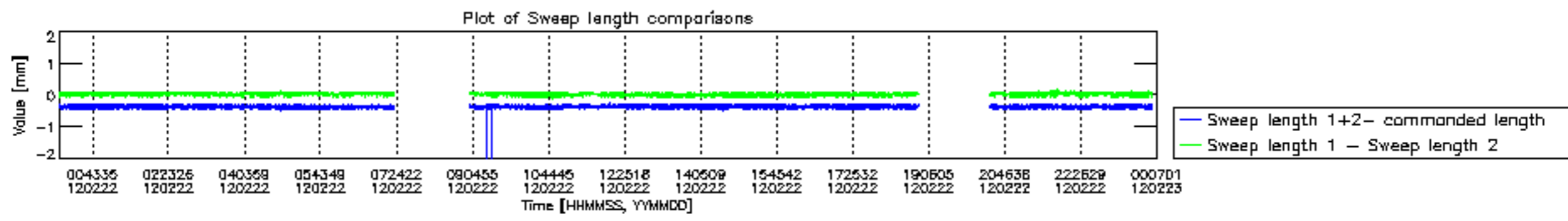






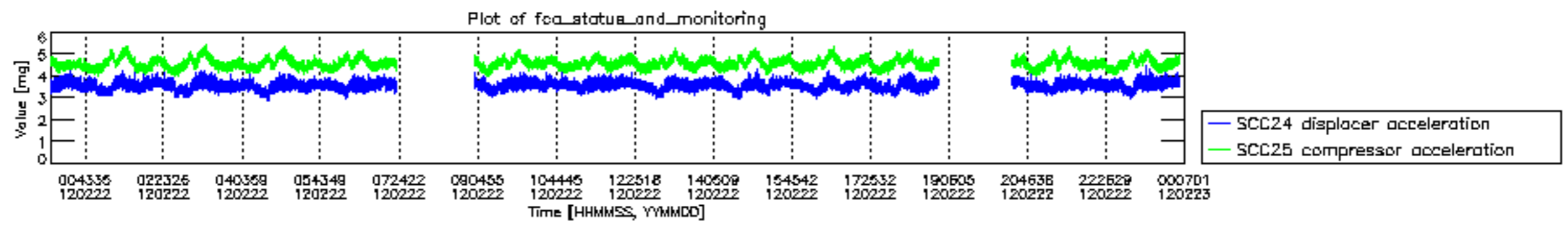












MIPNLOP\_MIPSOUPAC\_aux\_fields\_igm\_cal, channel statistics plot  
 Colour indicates value.

