

0. MIPAS Daily Report for level 0 products

[0.1 General Info](#)

[0.2 Instrument Operational Performance Parameters](#)

[0.3 ADF monitoring](#)

0.1 General Info

This report contains a daily analysis on parameters extracted from MIPAS level 0 data (The MIP_NL__0P product).

0.1.1 Report summary

The table below shows general characteristics of the data that are included into this report.

Item	Value
Report version	v1.6 08-11-2010
Time of report generation	26FEB2012 05:24:03
Data source version	KSPT_L0/4504-N
Processing scope for products	21FEB2012 00:00:00 to 22FEB2012 00:00:00
Start time of first product within scope	21FEB2012 00:35:20
Stop time of last product within scope	22FEB2012 01:40:09
Total number of level 0 products	14
Number of level 0 products with errors	0

0.1.2 Product Quality Indicators per product

The following table shows a summary for each product used in this report.

#	Product name	Start time	Stop time	Prod err	ISP err sign	ISP miss sign	ISP disc sign	rs sign
0	MIP_NL__0PNPDE20120221_003520_000059793112_00016_52185_1074.N1	21FEB2012 00:35:20	21FEB2012 02:14:59	0	0	0	0	0
1	MIP_NL__0PNPDE20120221_021352_000044753112_00017_52186_1075.N1	21FEB2012 02:13:52	21FEB2012 03:28:27	0	0	0	0	0
2	MIP_NL__0PNPDE20120221_050952_000060373112_00019_52188_1077.N1	21FEB2012 05:09:52	21FEB2012 06:50:29	0	0	0	0	0
3	MIP_NL__0PNPDK20120221_075647_000061043112_00021_52190_8637.N1	21FEB2012 07:56:47	21FEB2012 09:38:31	0	0	0	0	0
4	MIP_NL__0PNPDK20120221_093653_000059773112_00022_52191_8638.N1	21FEB2012 09:36:53	21FEB2012 11:16:29	0	0	0	0	0
5	MIP_NL__0PNPDK20120221_111514_000061123112_00023_52192_8639.N1	21FEB2012 11:15:14	21FEB2012 12:57:06	0	0	0	0	0
6	MIP_NL__0PNPDK20120221_125609_000058763112_00024_52193_8640.N1	21FEB2012 12:56:09	21FEB2012 14:34:06	0	0	0	0	0
7	MIP_NL__0PNPDK20120221_143307_000058813112_00025_52194_8641.N1	21FEB2012 14:33:07	21FEB2012 16:11:08	0	0	0	0	0
8	MIP_NL__0PNPDK20120221_160955_000059663112_00026_52195_8642.N1	21FEB2012 16:09:55	21FEB2012 17:49:21	0	0	0	0	0
9	MIP_NL__0PNPDK20120221_174843_000060213112_00027_52196_8643.N1	21FEB2012 17:48:43	21FEB2012 19:29:04	0	0	0	0	0
10	MIP_NL__0PNPDK20120221_192818_000060313112_00028_52197_8644.N1	21FEB2012 19:28:18	21FEB2012 21:08:49	0	0	0	0	0
11	MIP_NL__0PNPDE20120221_210740_000043393112_00029_52198_1078.N1	21FEB2012 21:07:40	21FEB2012 22:19:59	0	0	0	0	0
12	MIP_NL__0PNPDE20120221_221852_000061273112_00029_52198_1079.N1	21FEB2012 22:18:52	22FEB2012 00:00:59	0	0	0	0	0
13	MIP_NL__0PNPDE20120221_235956_000060123112_00030_52199_1080.N1	21FEB2012 23:59:56	22FEB2012 01:40:09	0	0	0	0	0

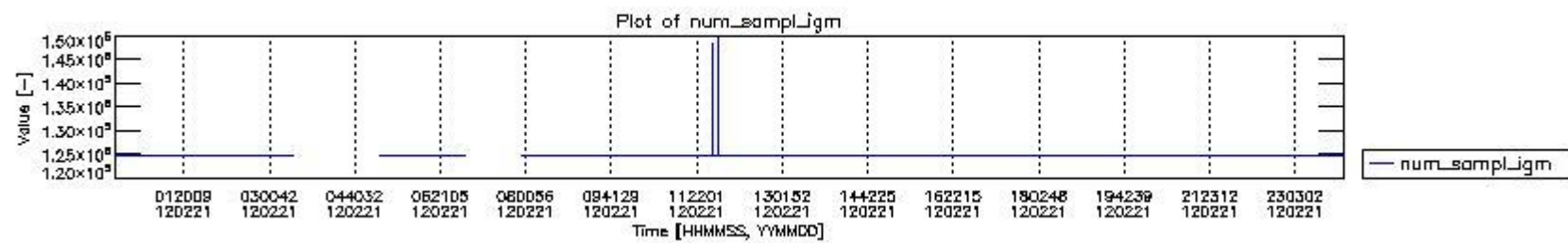
0.2 Instrument Operational Performance Parameters

The following plots give an overview of various instrument parameters for this day. The instrument parameters are part of the auxiliary data field within the source packets of the MIP_NL__0P product. The auxiliary data is normally included twice per interferogram. Note that only the first packet is currently included in monitoring.

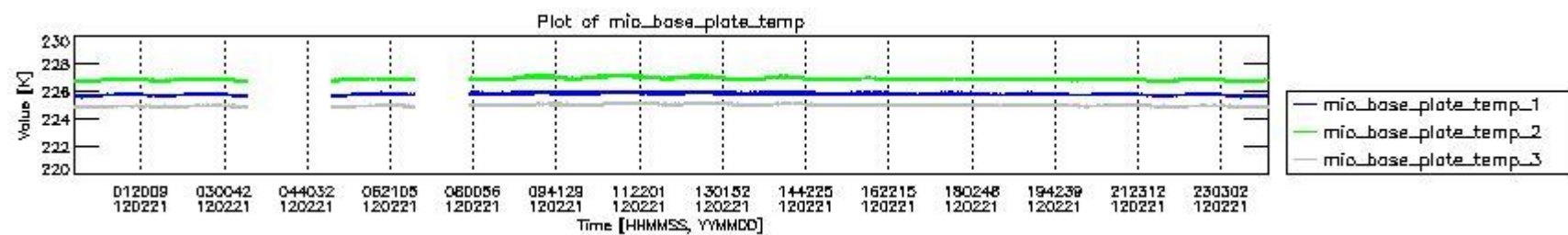
The following table shows the counts of various interferogram number of samples

Number of igm samples	Count [#]	Count [%]
124800	34120	92.886505
124803	2607	7.0971606
126490	1	0.0027223478
127085	1	0.0027223478

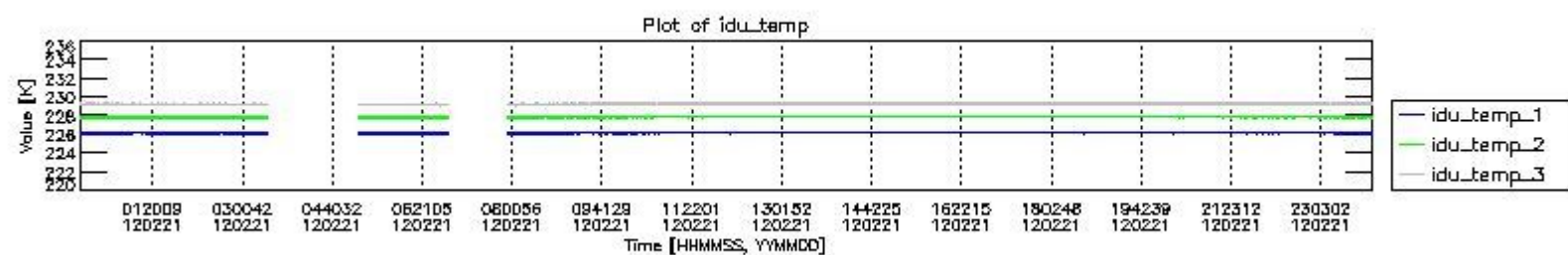
146622	1	0.0027223478
147217	1	0.0027223478
148312	1	0.0027223478
149502	1	0.0027223478



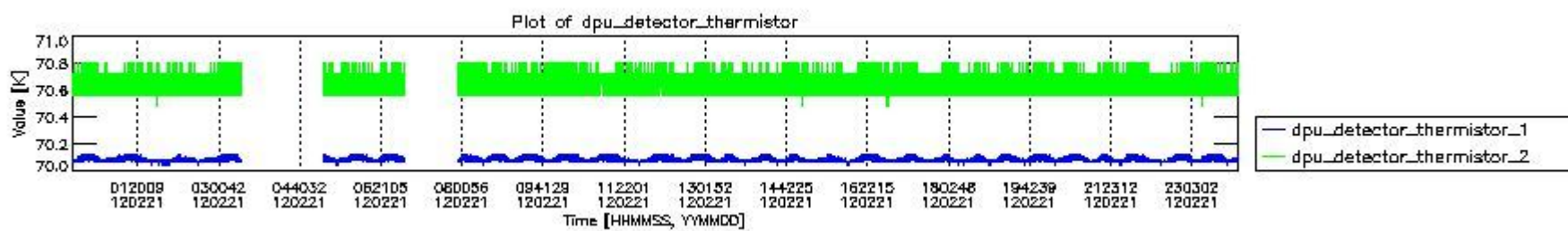
mipas_daily_report_level0_KSPT_L0_4504_N_20120221_0.PNG



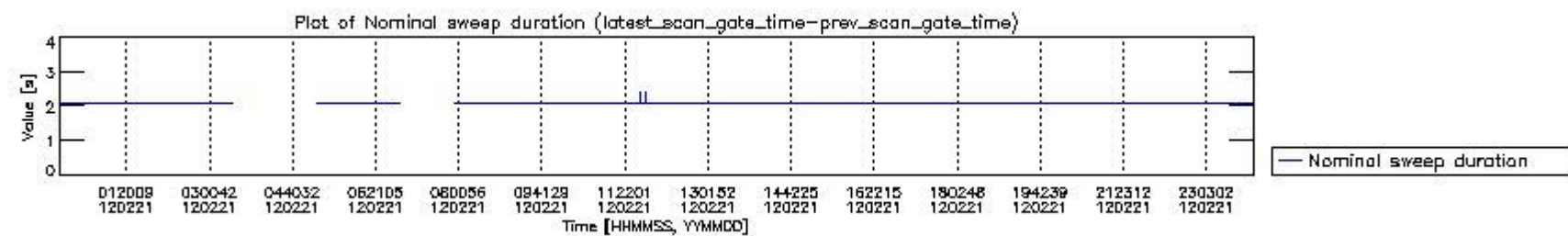
mipas_daily_report_level0_KSPT_L0_4504_N_20120221_1.PNG



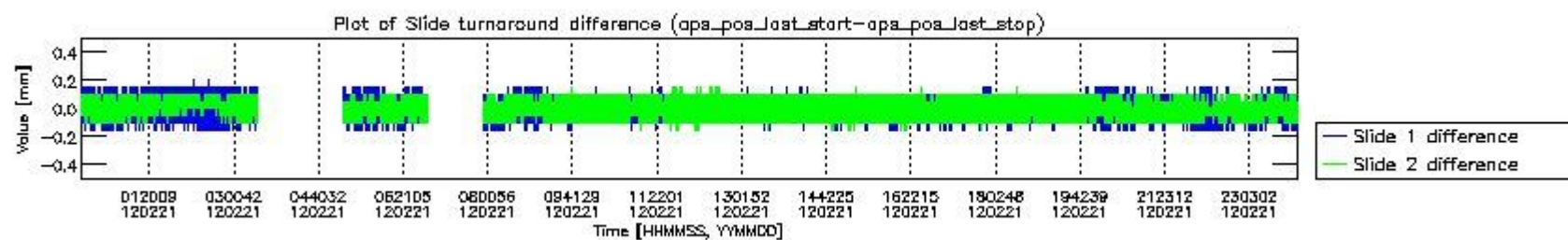
mipas_daily_report_level0_KSPT_L0_4504_N_20120221_2.PNG



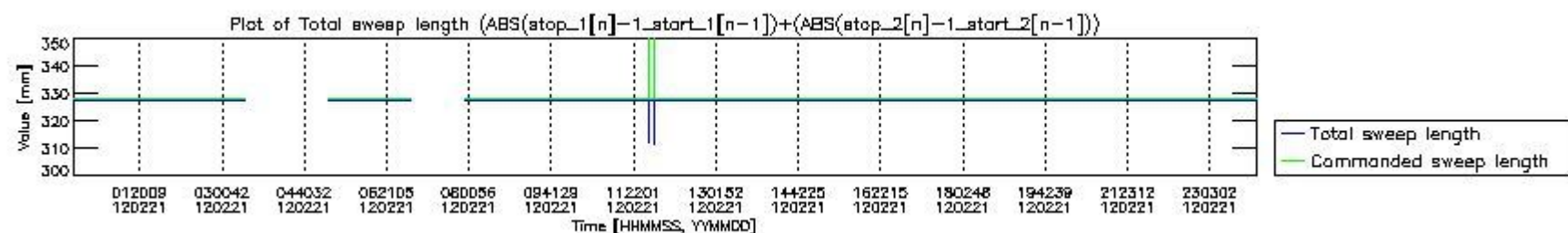
mipas_daily_report_level0_KSPT_L0_4504_N_20120221_3.PNG



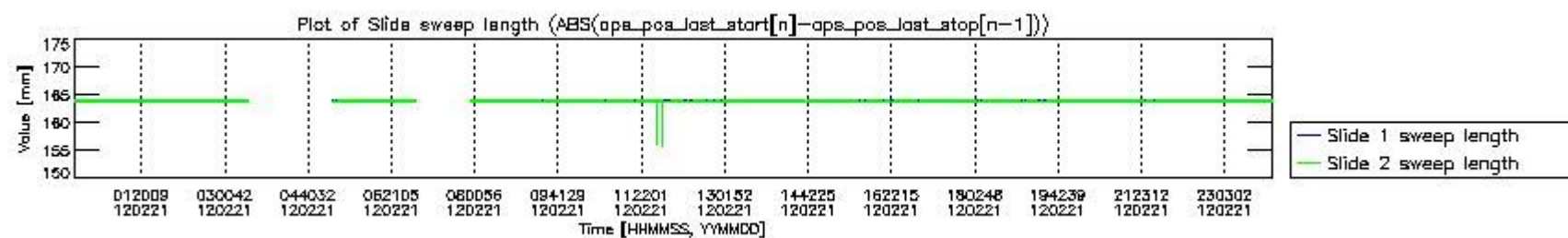
mipas_daily_report_level0_KSPT_L0_4504_N_20120221_4.PNG



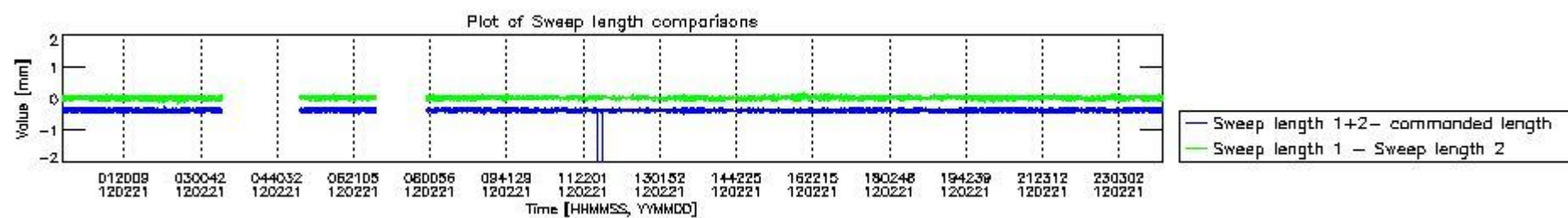
mipas_daily_report_level0_KSPT_L0_4504_N_20120221_5.PNG



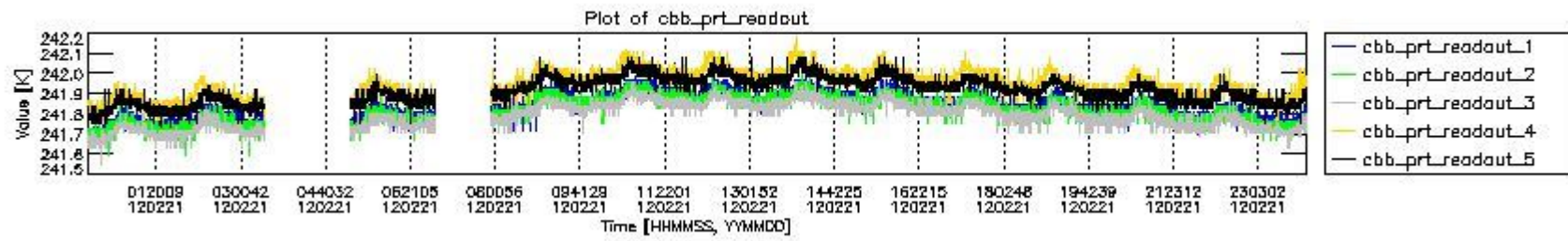
mipas_daily_report_level0_KSPT_L0_4504_N_20120221_6.PNG



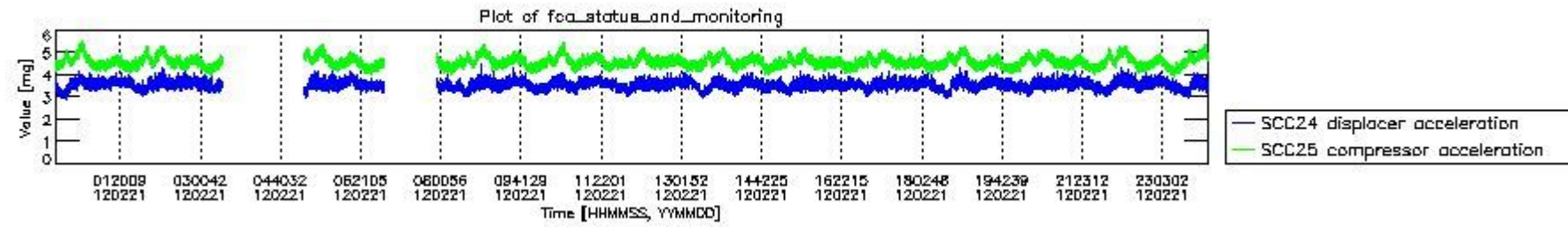
mipas_daily_report_level0_KSPT_L0_4504_N_20120221_7.PNG



mipas_daily_report_level0_KSPT_L0_4504_N_20120221_8.PNG



mipas_daily_report_level0_KSPT_L0_4504_N_20120221_9.PNG

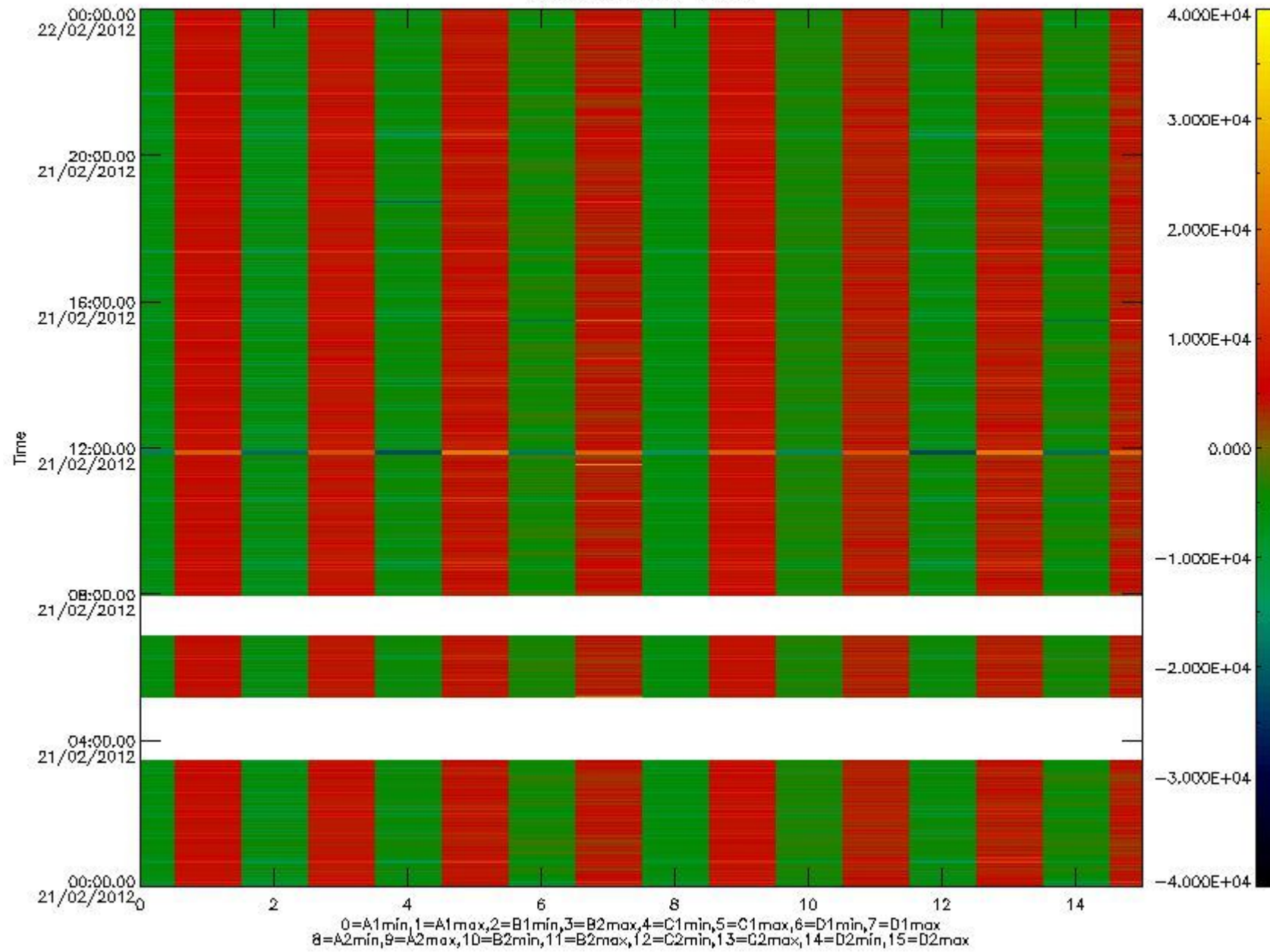


mipas_daily_report_level0_KSPT_L0_4504_N_20120221_10.PNG

The following table shows channel statistics for all channels for this day.

Channel	Min	Max	ADC
A1	-17148	18031	16bit
B1	-18854	16381	16bit
C1	-22481	22038	16bit
D1	-31787	32767	16bit
A2	-14976	18268	16bit
B2	-16529	16349	16bit
C2	-23135	24549	16bit
D2	-32768	32767	16bit

MIPNLOP_MIPSOUPAC_aux_fields_igm_cal, channel statistics plot
Colour indicates value.



mipas_daily_report_level0_KSPT_L0_4504_N_20120221_11.PNG

0.3 ADF monitoring

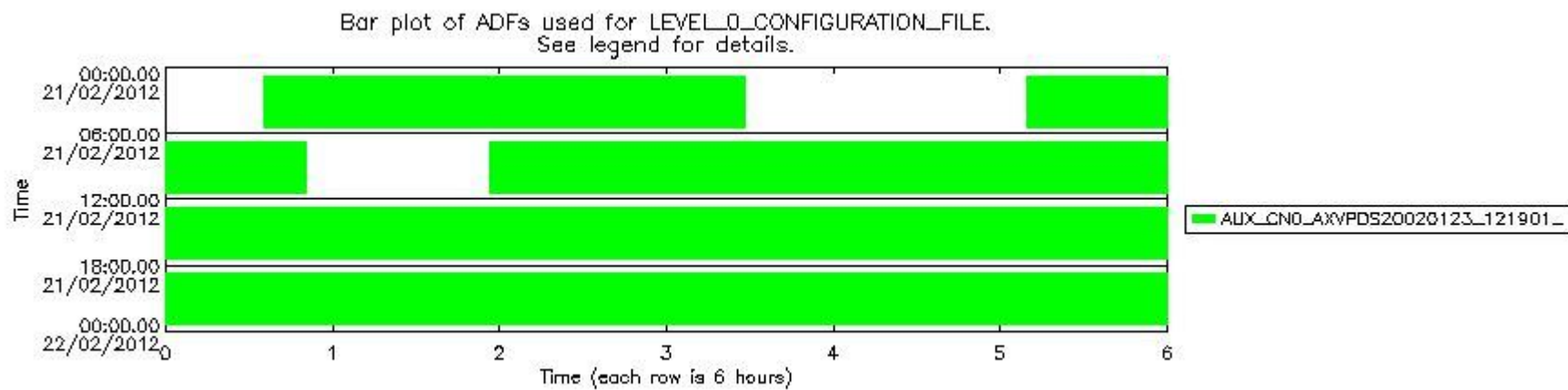
The use of ADFs is shown in two ways:

1. By means of two tables that can be used to find the ADF used for a specific product.
2. By means of plots that show changes in ADF using colours.

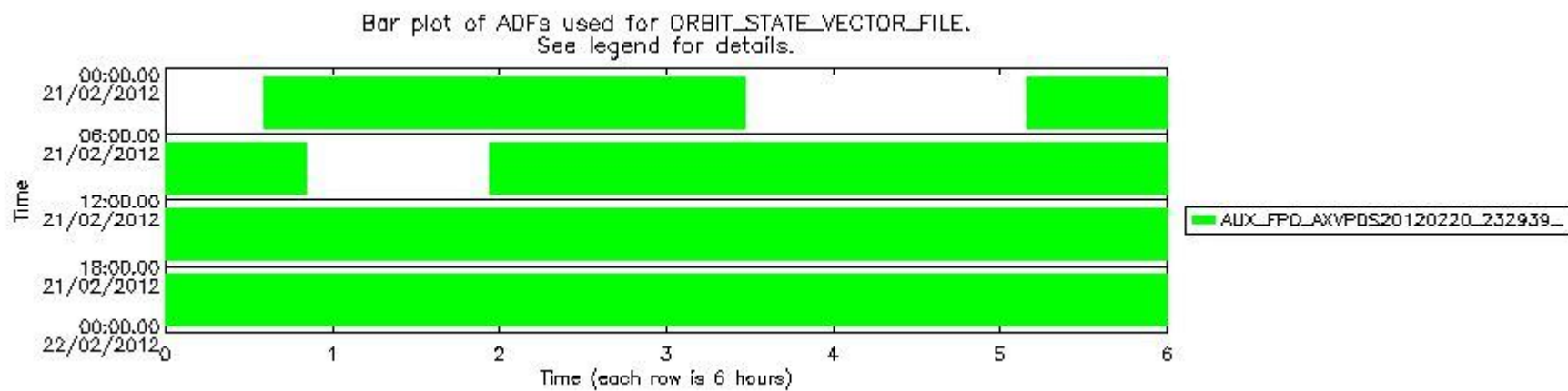
Number	ADF
0	AUX_CN0_AXVPDS20020123_121901_20020101_000000_20200101_000000
1	AUX_FPO_AXVPDS20120220_232939_20120220_194732_20120301_202055

Number	Product name	#CN0	#FPO
0	MIP_NL_0PNPDE20120221_003520_000059793112_00016_52185_1074.N1	0	1

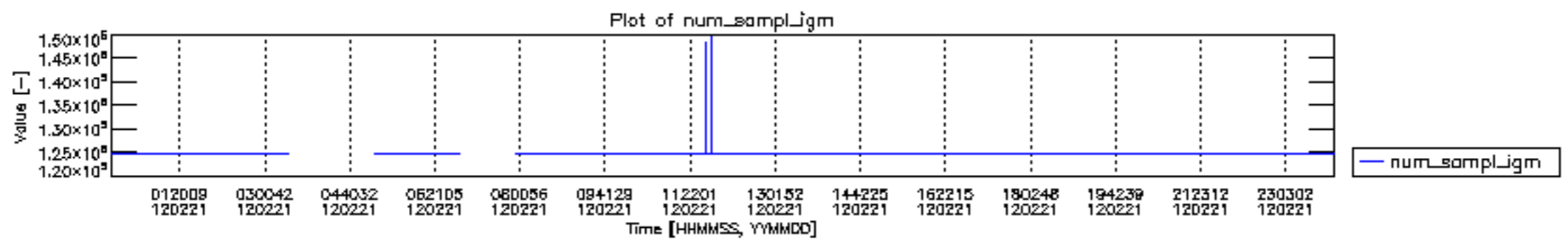
1	MIP_NL__0PNPDE20120221_021352_000044753112_00017_52186_1075.N1	0	1
2	MIP_NL__0PNPDE20120221_050952_000060373112_00019_52188_1077.N1	0	1
3	MIP_NL__0PNPDK20120221_075647_000061043112_00021_52190_8637.N1	0	1
4	MIP_NL__0PNPDK20120221_093653_000059773112_00022_52191_8638.N1	0	1
5	MIP_NL__0PNPDK20120221_111514_000061123112_00023_52192_8639.N1	0	1
6	MIP_NL__0PNPDK20120221_125609_000058763112_00024_52193_8640.N1	0	1
7	MIP_NL__0PNPDK20120221_143307_000058813112_00025_52194_8641.N1	0	1
8	MIP_NL__0PNPDK20120221_160955_000059663112_00026_52195_8642.N1	0	1
9	MIP_NL__0PNPDK20120221_174843_000060213112_00027_52196_8643.N1	0	1
10	MIP_NL__0PNPDK20120221_192818_000060313112_00028_52197_8644.N1	0	1
11	MIP_NL__0PNPDE20120221_210740_000043393112_00029_52198_1078.N1	0	1
12	MIP_NL__0PNPDE20120221_221852_000061273112_00029_52198_1079.N1	0	1
13	MIP_NL__0PNPDE20120221_235956_000060123112_00030_52199_1080.N1	0	1

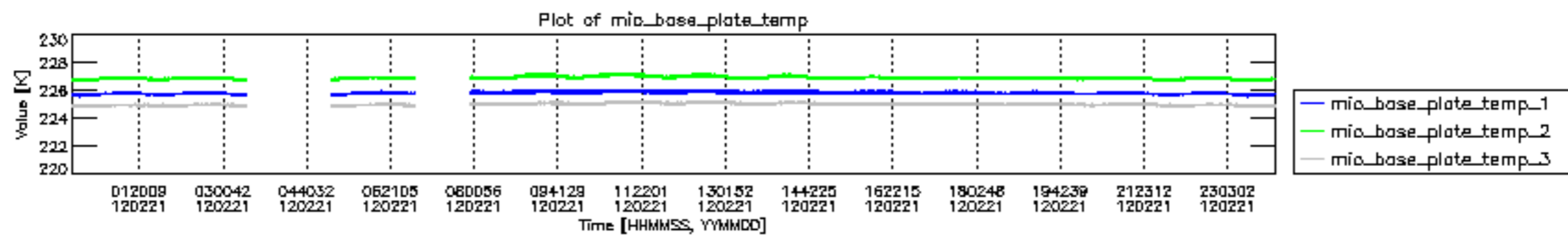


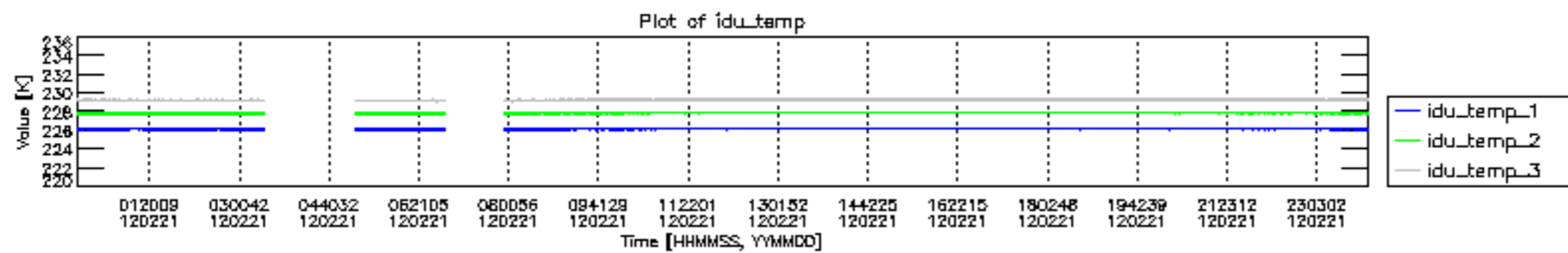
mipas_daily_report_level0_KSPT_L0_4504_N_20120221_12.PNG

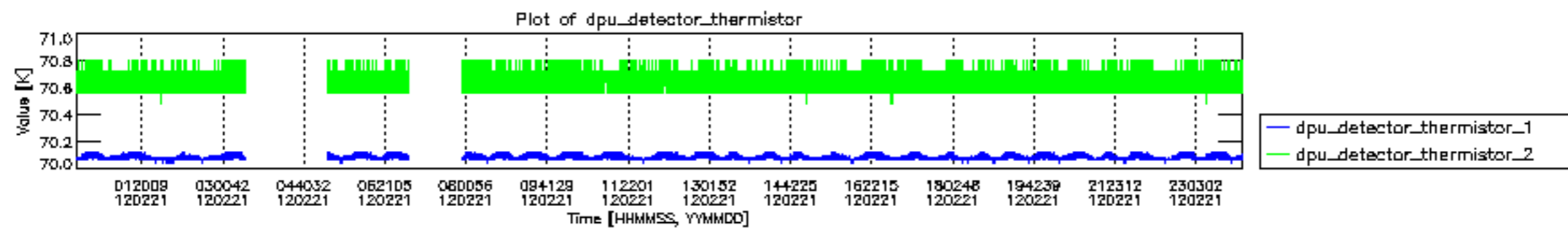


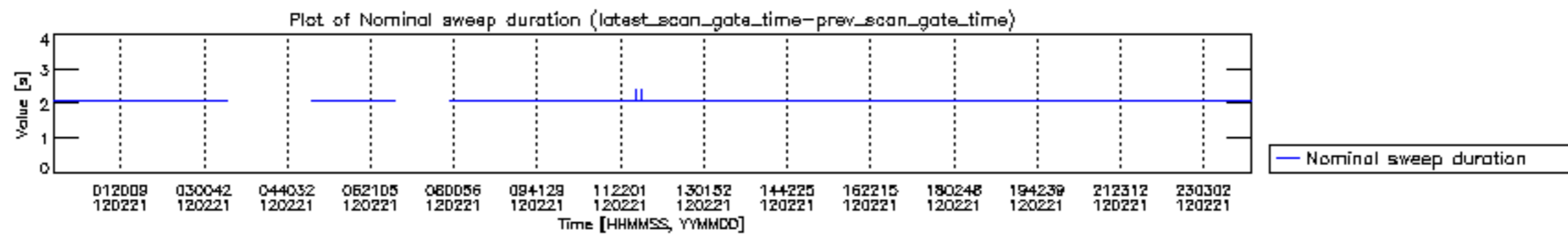
mipas_daily_report_level0_KSPT_L0_4504_N_20120221_13.PNG

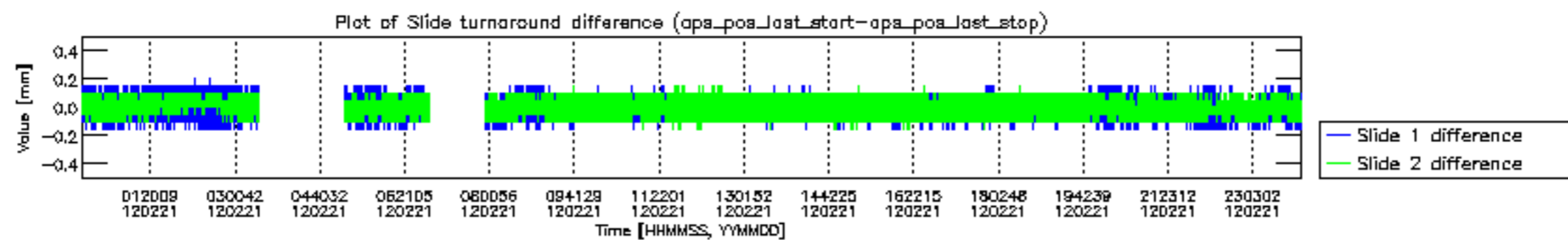


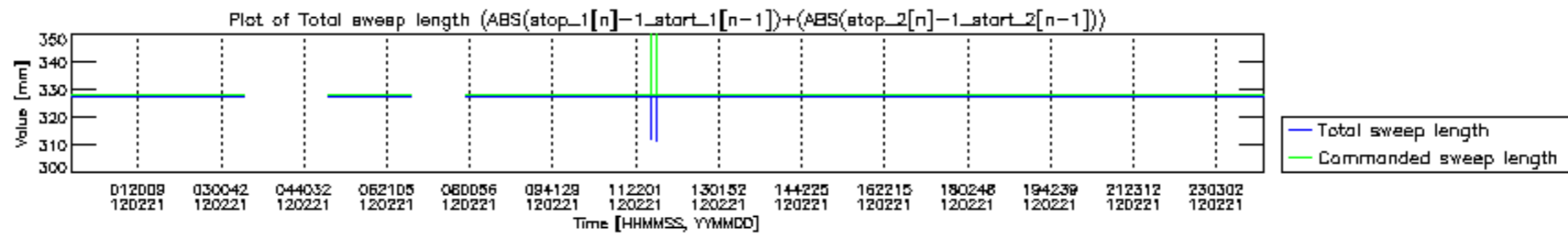


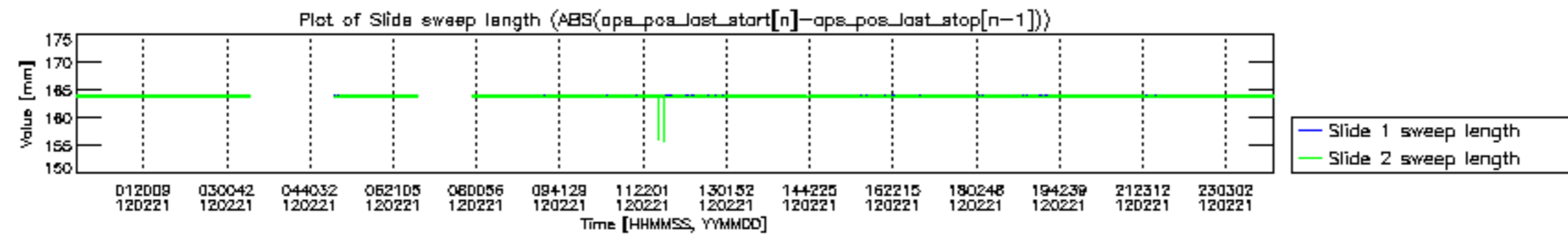


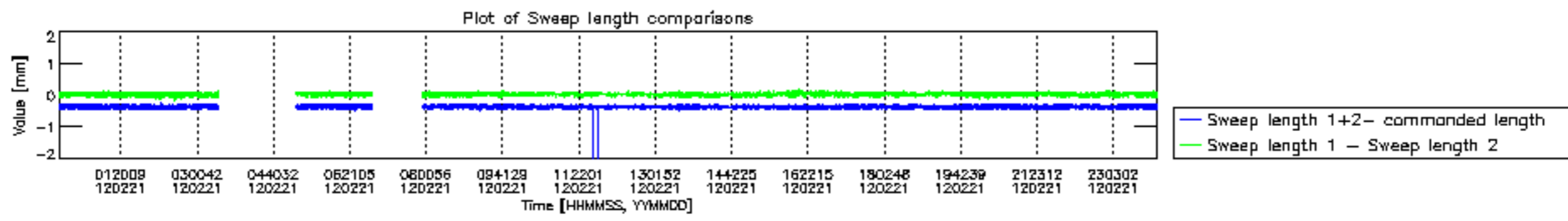


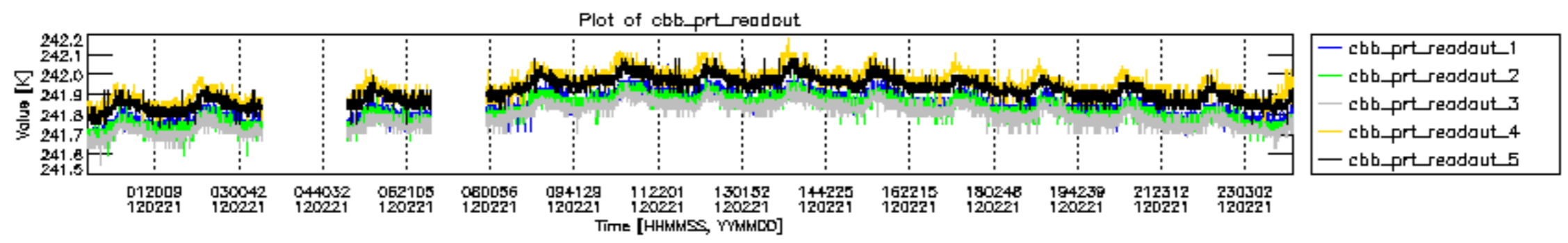


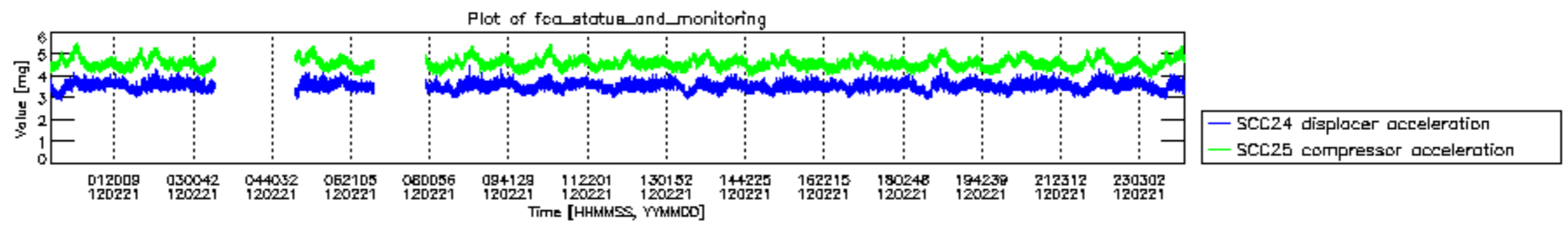












MIPNLOP_MIPSOUPAC_aux_fields_igm_cal, channel statistics plot
 Colour indicates value.

