

## 0. MIPAS Daily Report for level 0 products

### [0.1 General Info](#)

### [0.2 Instrument Operational Performance Parameters](#)

### [0.3 ADF monitoring](#)

## 0.1 General Info

This report contains a daily analysis on parameters extracted from MIPAS level 0 data (The MIP\_NL\_\_0P product).

### 0.1.1 Report summary

The table below shows general characteristics of the data that are included into this report.

Item	Value
Report version	v1.6 08-11-2010
Time of report generation	23FEB2012 05:26:02
Data source version	KSPT_L0/4504-N
Processing scope for products	18FEB2012 00:00:00 to 19FEB2012 00:00:00
Start time of first product within scope	18FEB2012 00:46:03
Stop time of last product within scope	18FEB2012 22:29:16
Total number of level 0 products	6
Number of level 0 products with errors	0

### 0.1.2 Product Quality Indicators per product

The following table shows a summary for each product used in this report.

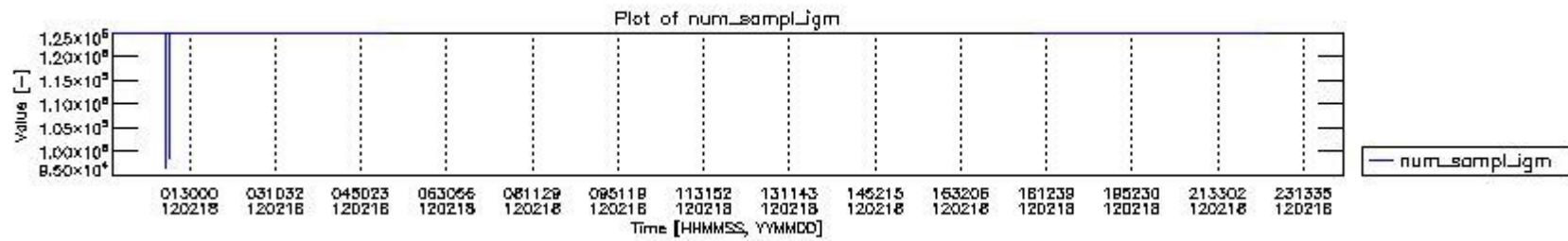
#	Product name	Start time	Stop time	Prod err	ISP err sign	ISP miss sign	ISP disc sign	rs sign
0	MIP_NL__0PNPDE20120218_004603_000057973111_00404_52142_1055.N1	18FEB2012 00:46:03	18FEB2012 02:22:39	0	0	0	0	0
1	MIP_NL__0PNPDE20120218_022139_000046153111_00405_52143_1056.N1	18FEB2012 02:21:39	18FEB2012 03:38:33	0	0	0	0	0
2	MIP_NL__0PNPDE20120218_033758_000061563111_00406_52144_1057.N1	18FEB2012 03:37:58	18FEB2012 05:20:34	0	0	0	0	0
3	MIP_NL__0PNPDK20120218_175918_000059313111_00415_52153_8562.N1	18FEB2012 17:59:18	18FEB2012 19:38:08	0	0	0	0	0
4	MIP_NL__0PNPDK20120218_193618_000061403111_00416_52154_8563.N1	18FEB2012 19:36:18	18FEB2012 21:18:37	0	0	0	0	0
5	MIP_NL__0PNPDE20120218_211655_000043413111_00417_52155_1059.N1	18FEB2012 21:16:55	18FEB2012 22:29:16	0	0	0	0	0

## 0.2 Instrument Operational Performance Parameters

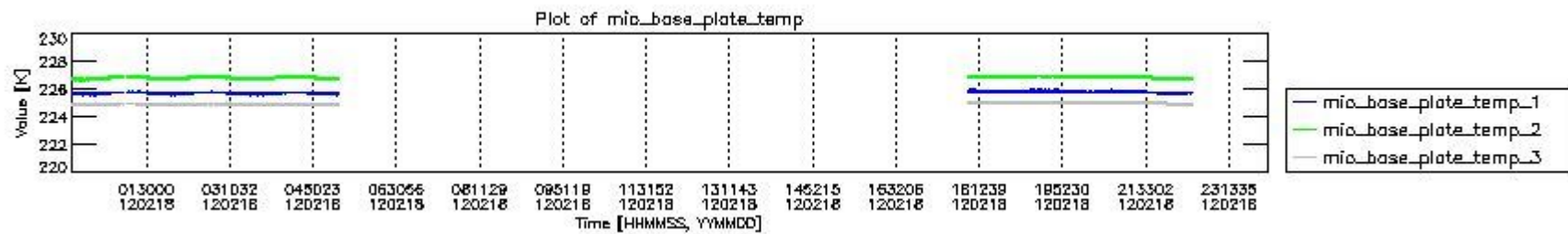
The following plots give an overview of various instrument parameters for this day. The instrument parameters are part of the auxiliary data field within the source packets of the MIP\_NL\_\_0P product. The auxiliary data is normally included twice per interferogram. Note that only the first packet is currently included in monitoring.

The following table shows the counts of various interferogram number of samples

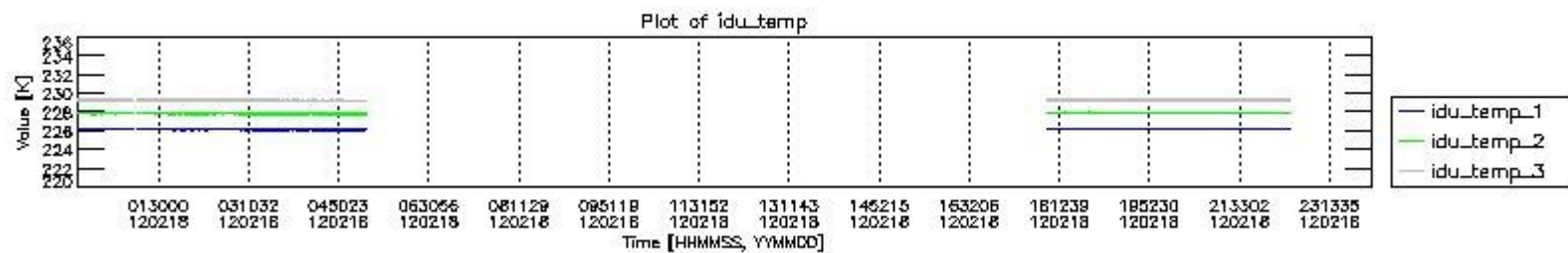
Number of igm samples	Count [#]	Count [%]
96720	1	0.0059017941
98699	1	0.0059017941
100694	1	0.0059017941
120826	1	0.0059017941
123102	1	0.0059017941
123951	1	0.0059017941
124800	15941	94.080500
124803	997	5.8840888



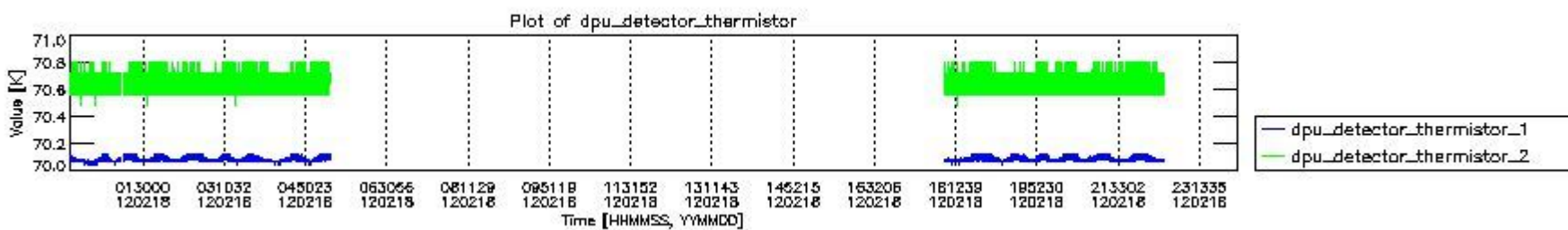
mipas\_daily\_report\_level0\_KSPT\_L0\_4504\_N\_20120218\_0.PNG



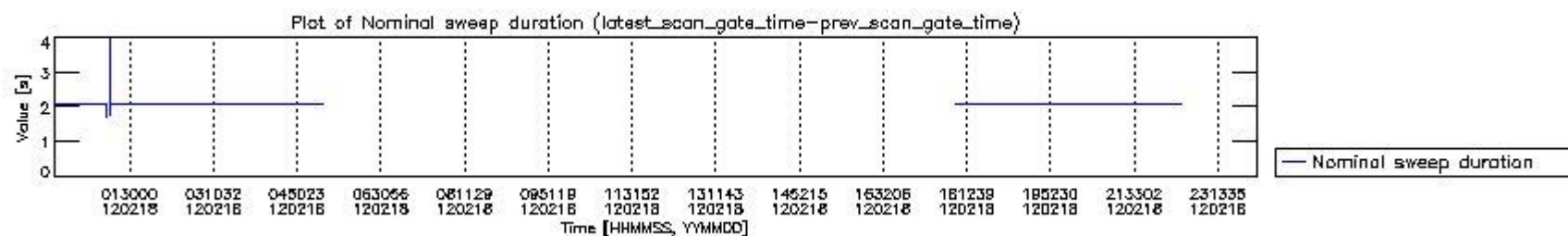
mipas\_daily\_report\_level0\_KSPT\_L0\_4504\_N\_20120218\_1.PNG



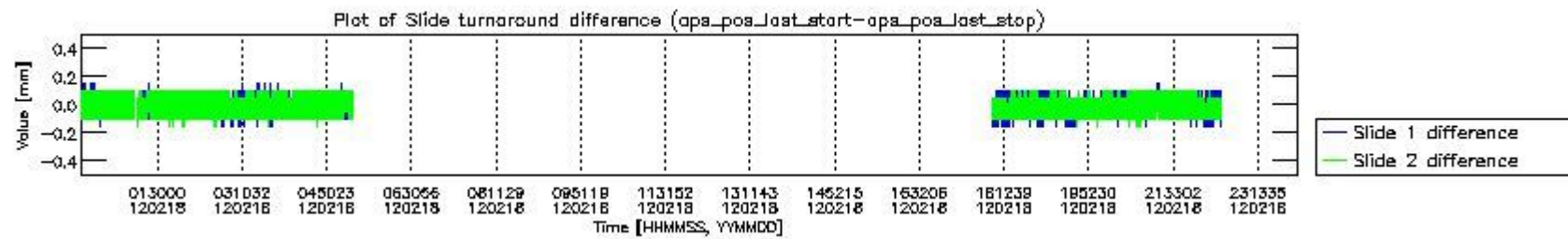
mipas\_daily\_report\_level0\_KSPT\_L0\_4504\_N\_20120218\_2.PNG



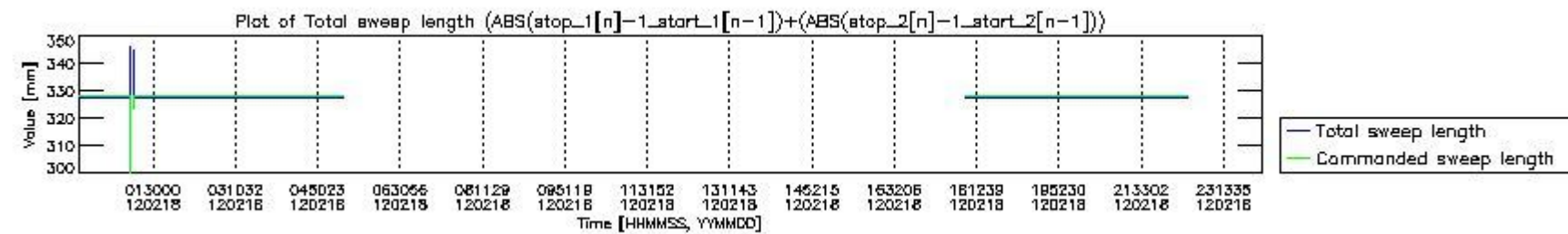
mipas\_daily\_report\_level0\_KSPT\_L0\_4504\_N\_20120218\_3.PNG



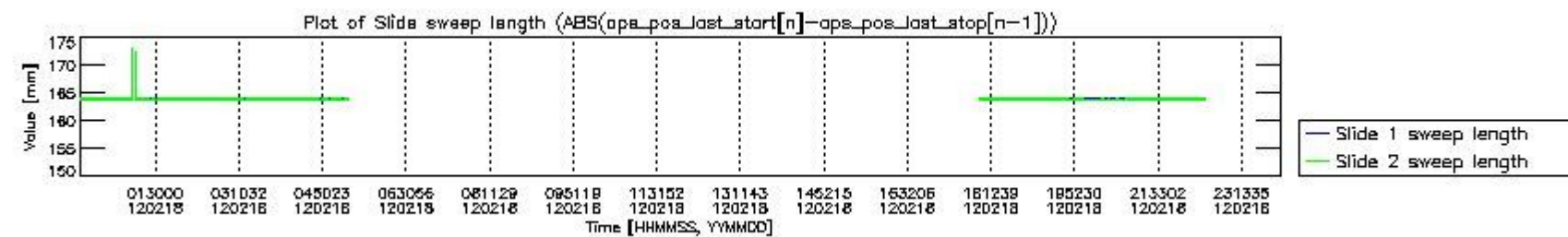
mipas\_daily\_report\_level0\_KSPT\_L0\_4504\_N\_20120218\_4.PNG



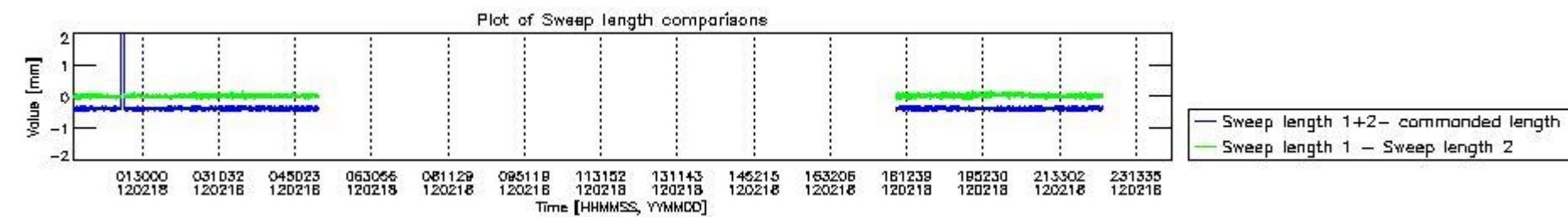
mipas\_daily\_report\_level0\_KSPT\_L0\_4504\_N\_20120218\_5.PNG



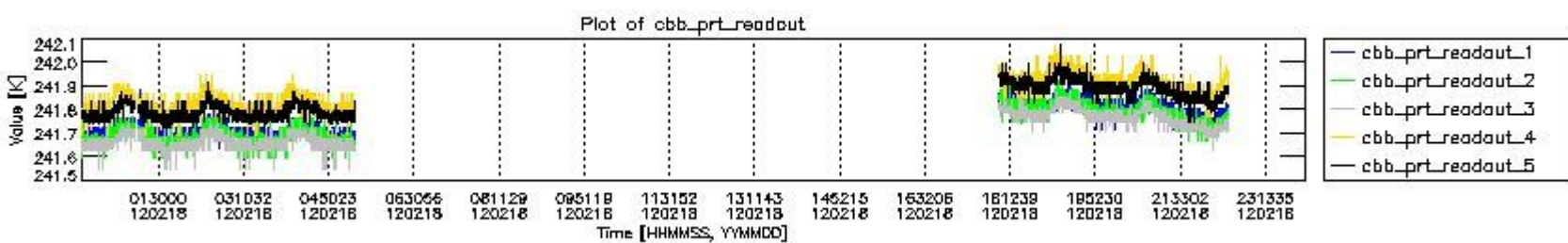
mipas\_daily\_report\_level0\_KSPT\_L0\_4504\_N\_20120218\_6.PNG



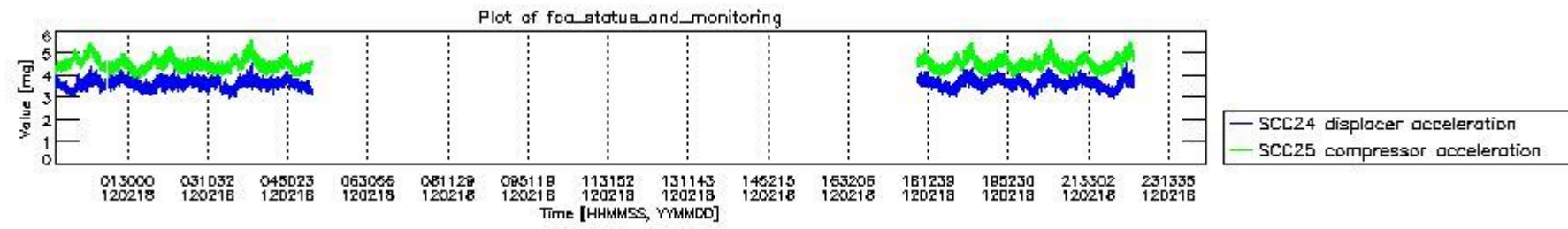
mipas\_daily\_report\_level0\_KSPT\_L0\_4504\_N\_20120218\_7.PNG



mipas\_daily\_report\_level0\_KSPT\_L0\_4504\_N\_20120218\_8.PNG



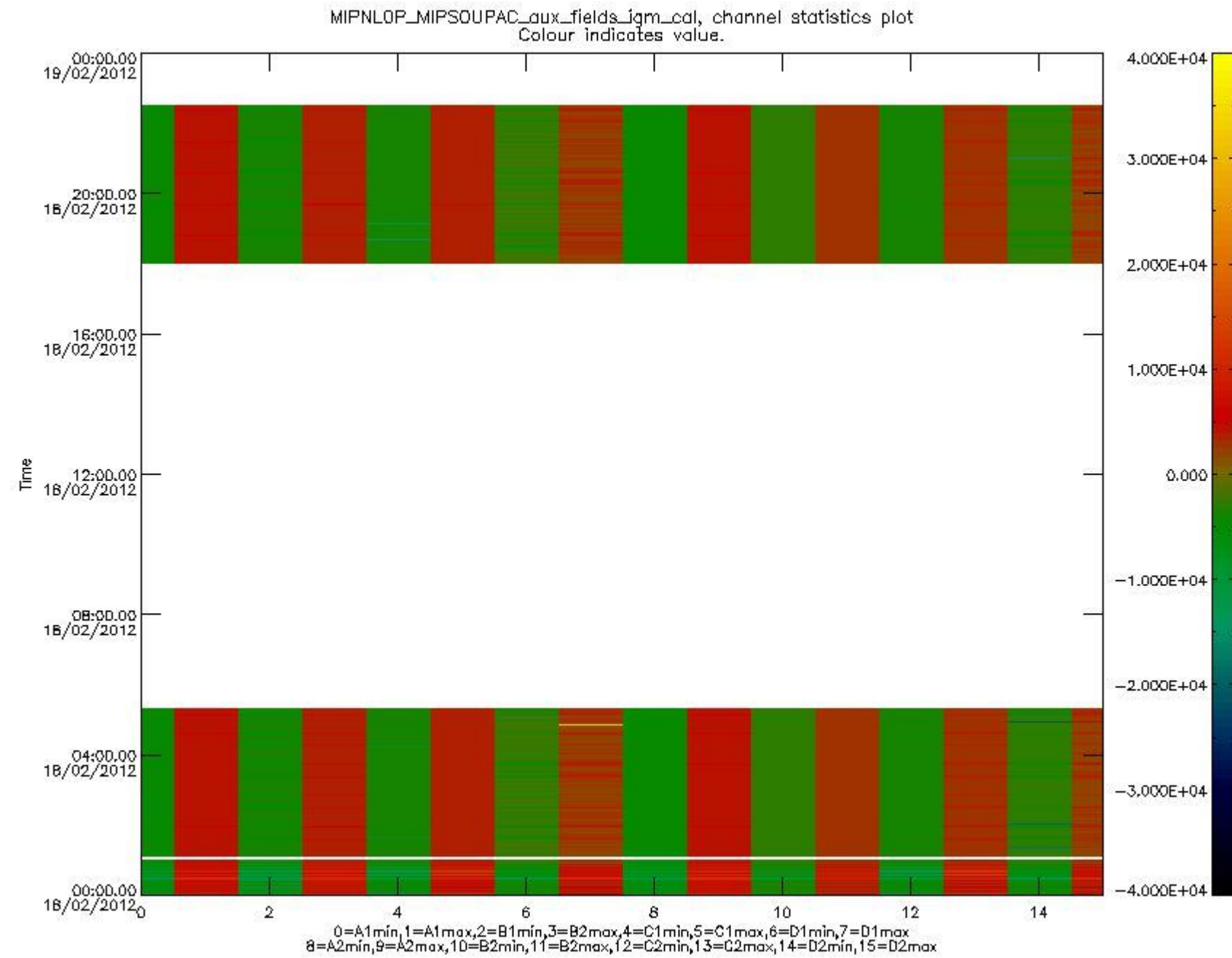
mipas\_daily\_report\_level0\_KSPT\_L0\_4504\_N\_20120218\_9.PNG



mipas\_daily\_report\_level0\_KSPT\_L0\_4504\_N\_20120218\_10.PNG

The following table shows channel statistics for all channels for this day.

Channel	Min	Max	ADC
A1	-15518	15959	16bit
B1	-15493	13709	16bit
C1	-18119	16571	16bit
D1	-17865	32767	16bit
A2	-13657	16228	16bit
B2	-13013	12914	16bit
C2	-17045	25427	16bit
D2	-32768	22384	16bit



mipas\_daily\_report\_level0\_KSPT\_L0\_4504\_N\_20120218\_11.PNG

### 0.3 ADF monitoring

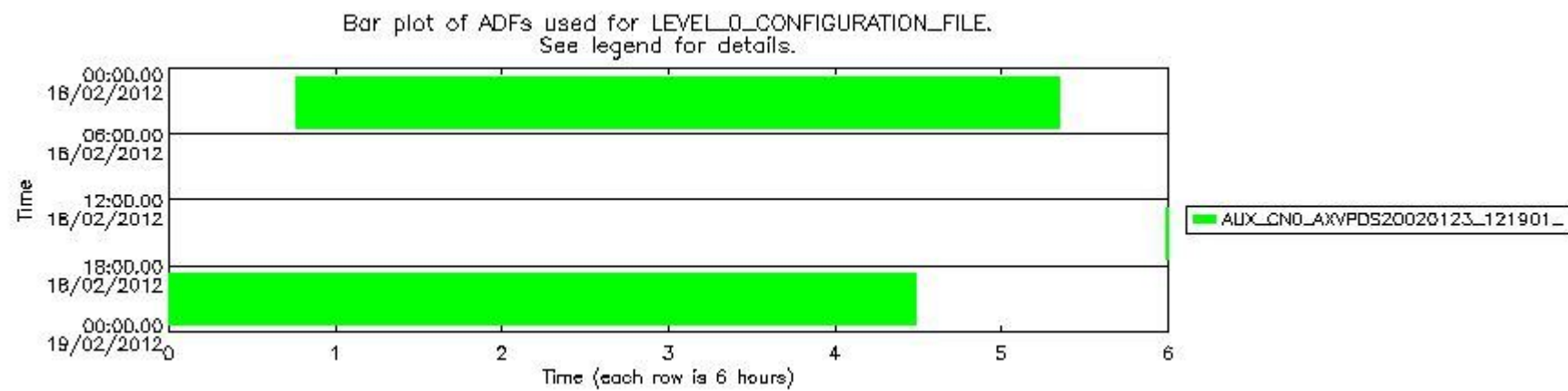
The use of ADFs is shown in two ways:

1. By means of two tables that can be used to find the ADF used for a specific product.
2. By means of plots that show changes in ADF using colours.

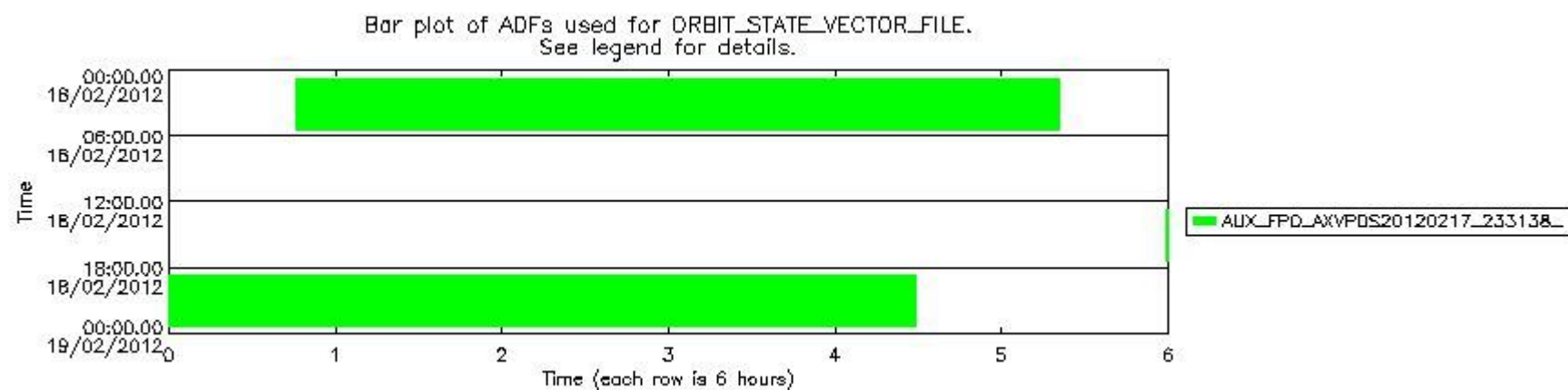
Number	ADF
0	AUX_CN0_AXVPDS20020123_121901_20020101_000000_20200101_000000
1	AUX_FPO_AXVPDS20120217_233138_20120217_195734_20120227_203057

Number	Product name	#CN0	#FPO
0	MIP_NL_0PNPDE20120218_004603_000057973111_00404_52142_1055.N1	0	1

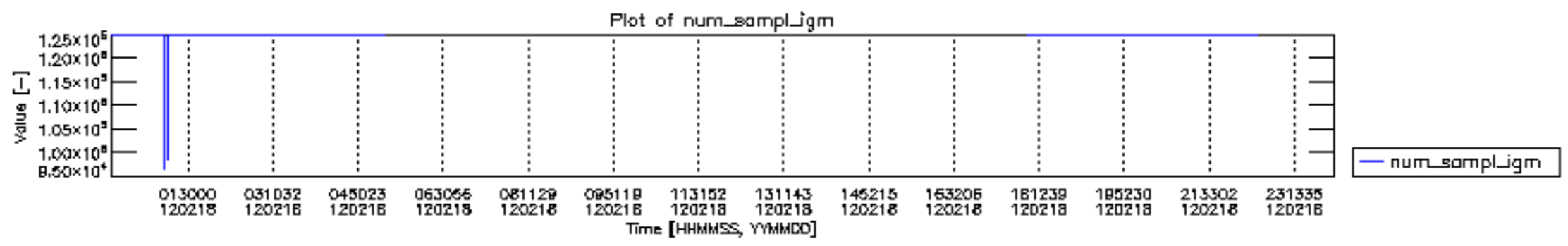
1	MIP_NL__0PNPDE20120218_022139_000046153111_00405_52143_1056.N1	0	1
2	MIP_NL__0PNPDE20120218_033758_000061563111_00406_52144_1057.N1	0	1
3	MIP_NL__0PNPDK20120218_175918_000059313111_00415_52153_8562.N1	0	1
4	MIP_NL__0PNPDK20120218_193618_000061403111_00416_52154_8563.N1	0	1
5	MIP_NL__0PNPDE20120218_211655_000043413111_00417_52155_1059.N1	0	1

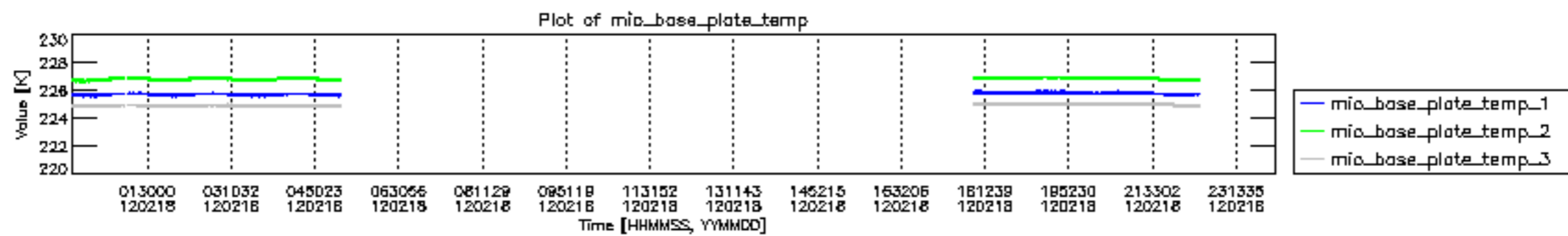


mipas\_daily\_report\_level0\_KSPT\_L0\_4504\_N\_20120218\_12.PNG

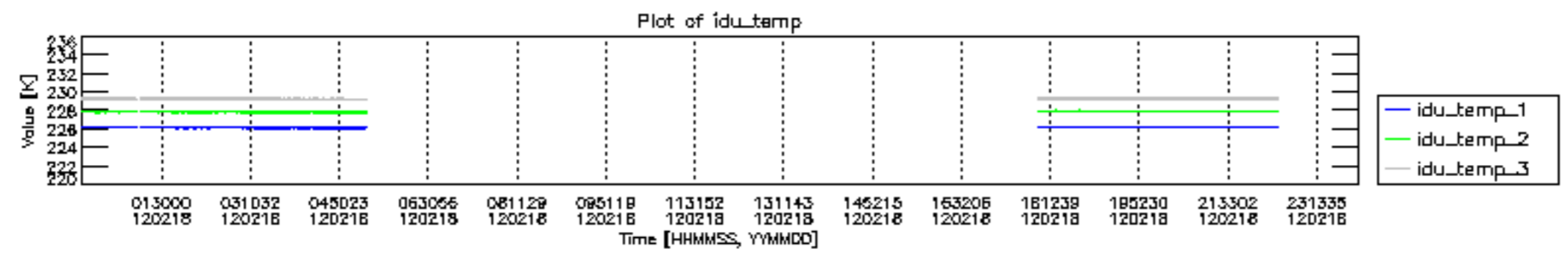


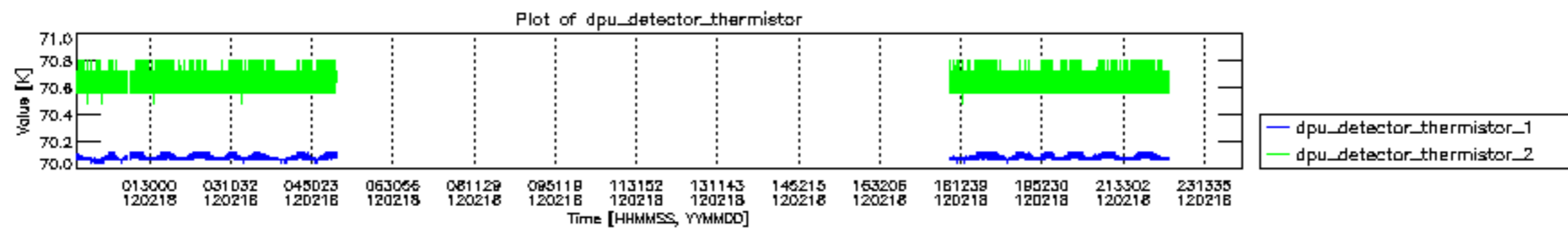
mipas\_daily\_report\_level0\_KSPT\_L0\_4504\_N\_20120218\_13.PNG

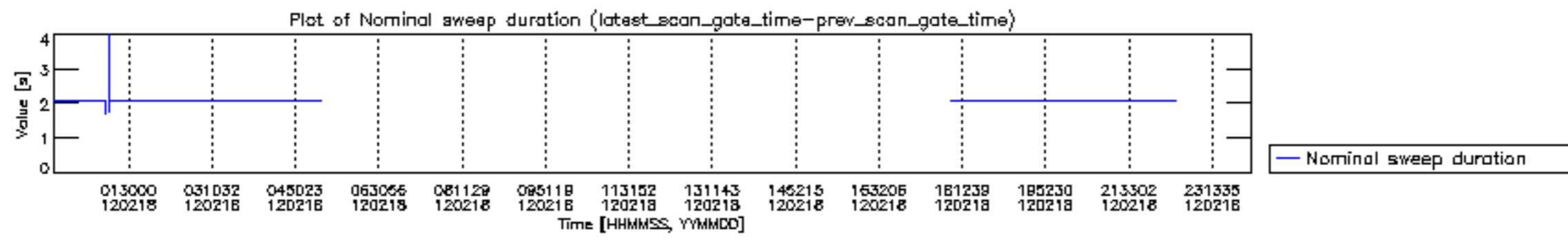


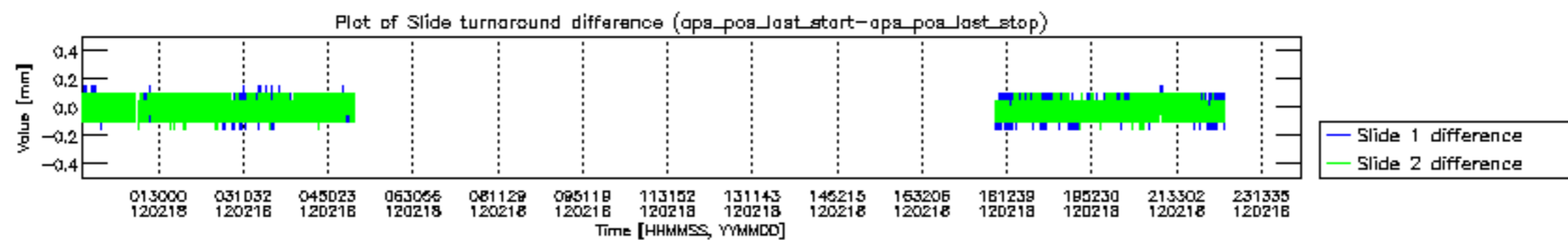


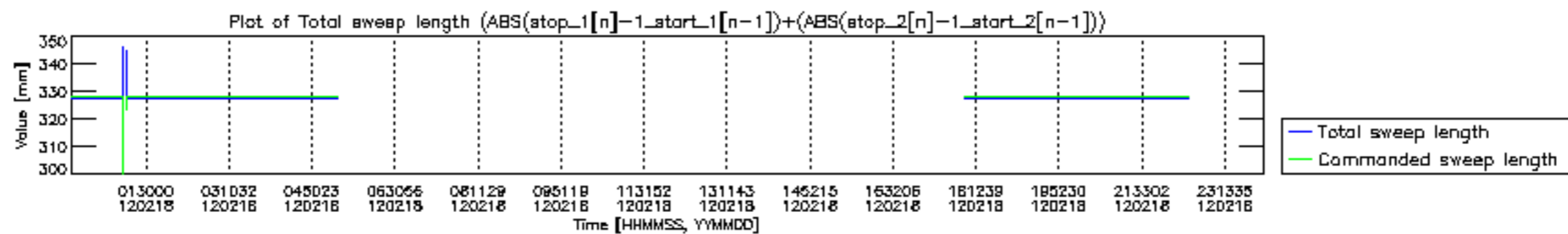


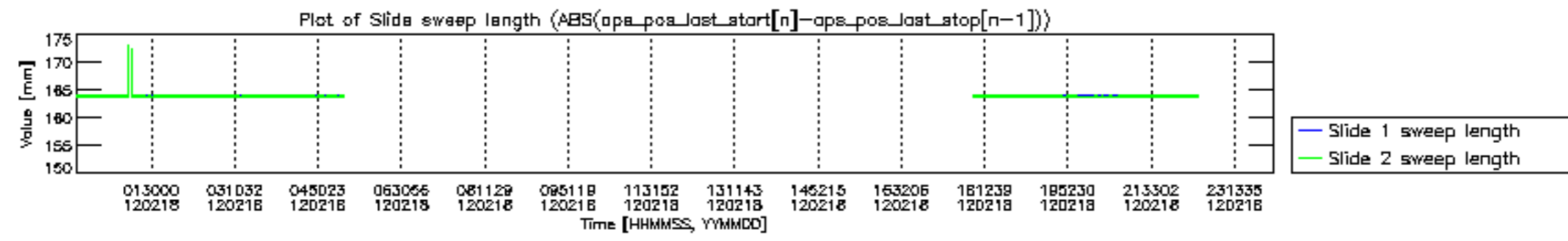


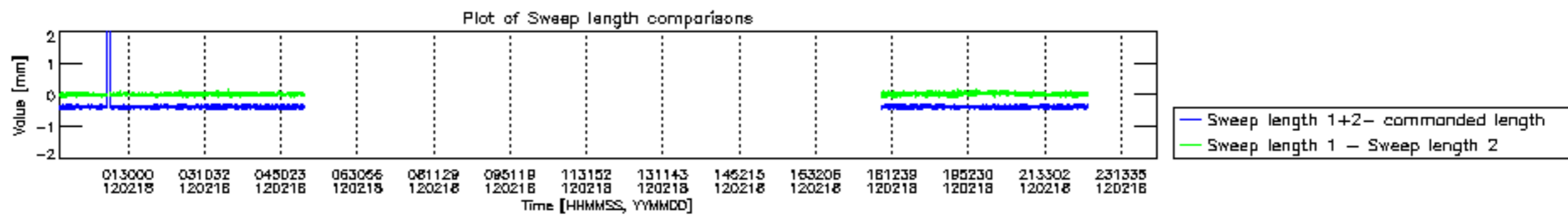


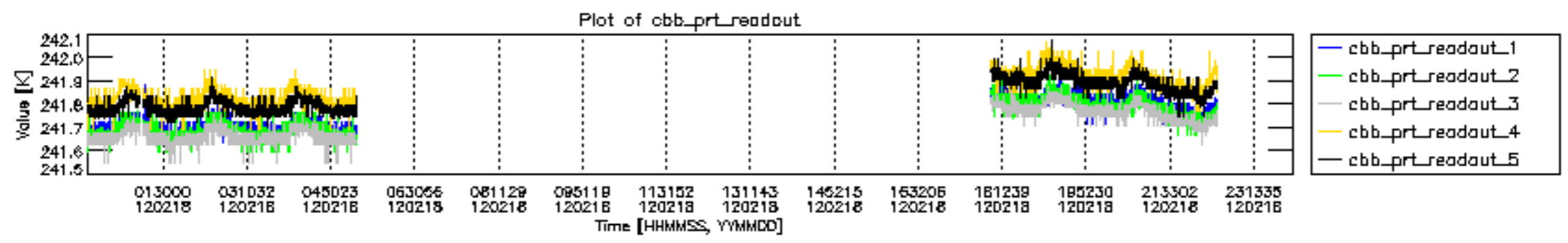




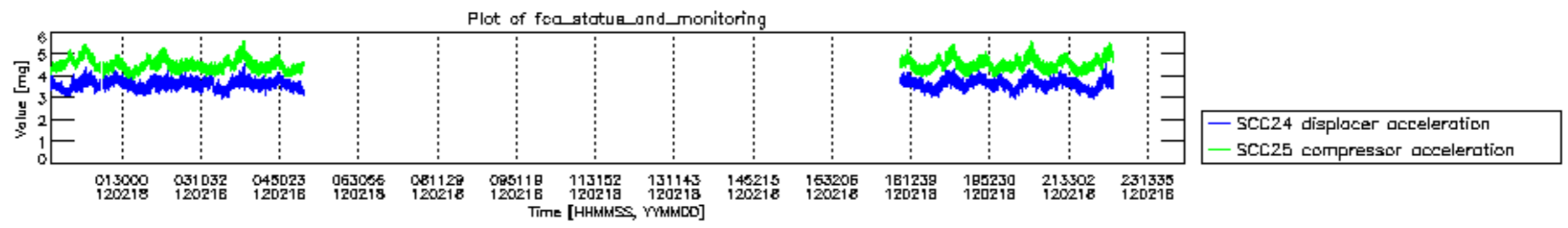












MIPNLOP\_MIPSOUPAC\_aux\_fields\_igm\_cal, channel statistics plot  
 Colour indicates value.

